

National Ambulance Services Employment Report : FEB 2025

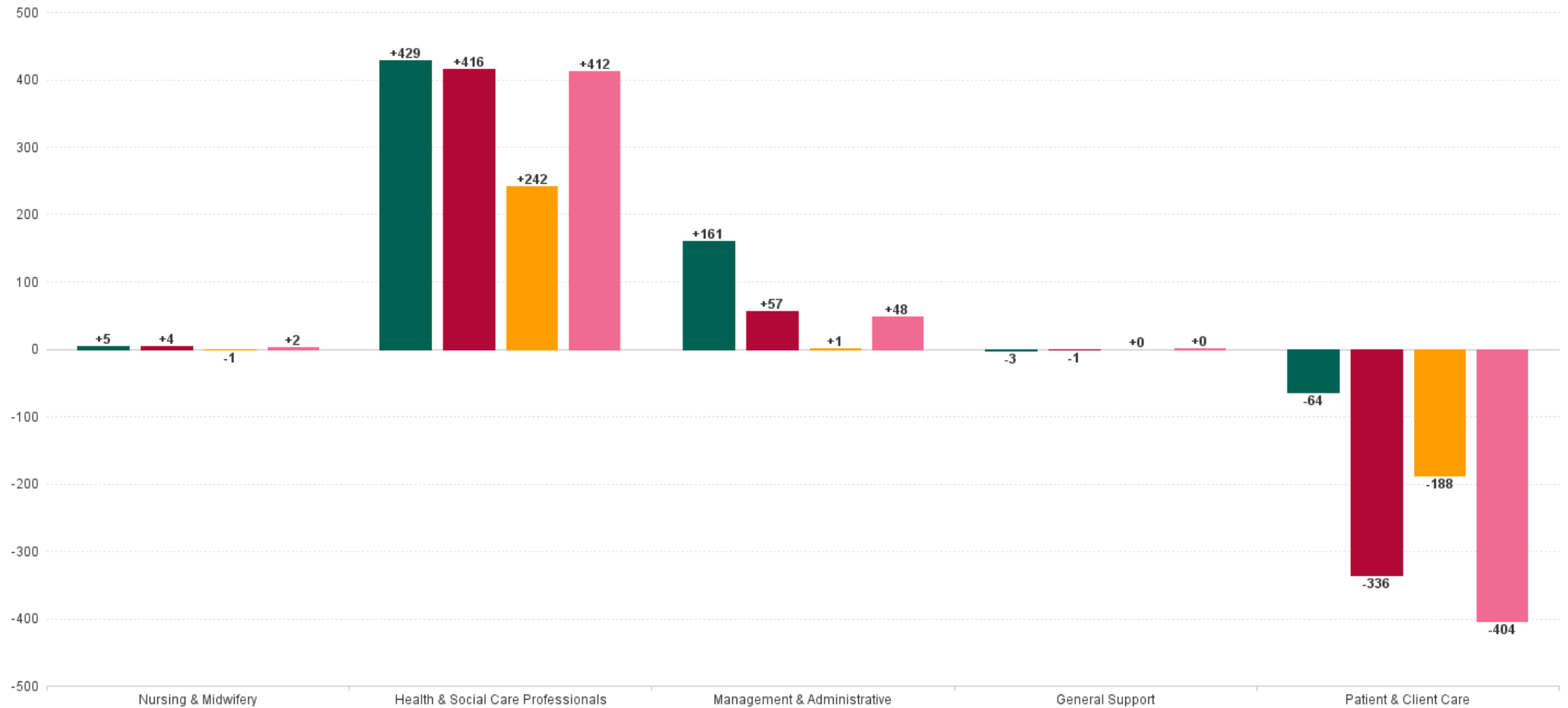
Employment Report by Staff Group

FEB 2025	WTE DEC 2019	WTE DEC 2023	WTE DEC 2024	WTE JAN 2025	WTE FEB 2025	WTE Change 2024	WTE Change 2025	WTE Change JAN 2025	WTE Change Dec 2023 to FEB 2025	WTE Change Dec 2019 to FEB 2025	% WTE Change Dec 2023 to FEB 2025	No. FEB 2025
Overall	1,933	2,321	2,407	2,409	2,461	+86	+54	+52	+140	+528	+6.0%	2,514
Consultants	1	1	1	1	1	+0	+0	+0	+0	+0	+0.0%	1
Medical & Dental	1	1	1	1	1	+0	+0	+0	+0	+0	+0.0%	1
Nurse/ Midwife Manager	1	3	7	7	7	+5	-1	-1	+4	+6	+147.6%	8
Staff Nurse/ Staff Midwife	1									-1	-100.0%	
Nursing & Midwifery	2	3	7	7	7	+5	-1	-1	+4	+5	+147.6%	8
Dietitians	1									-1	-100.0%	
Therapy Professions	1									-1	-100.0%	
Pharmacy			1	1	1	+1	+0	+0	+1	+1	-100.0%	1
H&SC, Other		14	187	306	429	+173	+242	+122	+415	+429	+2,961.4%	431
Health & Social Care Professionals	1	14	188	307	430	+174	+242	+122	+416	+429	+2,968.6%	432
Management (VIII & above)	12	40	42	42	42	+2	+0	+0	+2	+30	+5.0%	42
Administrative/ Supervisory (V to VII)	29	85	141	141	142	+55	+2	+1	+57	+114	+66.9%	144
Clerical (III & IV)	41	61	60	60	59	-1	-1	-1	-2	+17	-4.0%	63
Management & Administrative	82	186	242	243	243	+56	+1	+0	+57	+161	+30.4%	249
Support	4	2	2	2	2	-1	+0	+0	-1	-2	-28.0%	2
Maintenance/ Technical	2	1	1	1	1	+0	+0	+0	+0	-1	+0.0%	1
General Support	6	3	3	3	3	-1	+0	+0	-1	-3	-19.9%	3
Health Care Assistants	2	1	1	1	1	-0	+0	+0	-0	-1	-5.1%	1
Care, other	1,839	2,113	1,965	1,847	1,777	-148	-188	-70	-336	-63	-15.9%	1,820
Patient & Client Care	1,841	2,114	1,966	1,848	1,778	-148	-188	-70	-336	-64	-15.9%	1,821



WTE Change by Staff Category

■ WTE change since DEC 2019 ■ WTE change since DEC 2023 ■ WTE change since DEC 2024 ■ WTE change since FEB 2024



National Ambulance Services Report by Region: FEB 2025

FEB 2025	WTE DEC 2019	WTE DEC 2023	WTE DEC 2024	WTE JAN 2025	WTE FEB 2025	WTE Change 2024	WTE Change 2025	WTE Change JAN 2025	WTE Change Dec 2023 to FEB 2025	WTE Change Dec 2019 to FEB 2025	% WTE Change Dec 2023 to FEB 2025	No. FEB 2025
Overall	1,933	2,321	2,407	2,409	2,461	+86	+54	+52	+140	+528	6.03%	2,514
Ambulance Headquarters	41	160	208	213	209	+47	+1	-4	+49	+168	30.41%	213
NEOC	157	177	191	186	186	+13	-4	+0	+9	+29	4.89%	190
Ambulance Services	1,631	1,799	1,835	1,888	1,895	+36	+60	+7	+96	+264	5.35%	1,939
NASC	103	184	174	122	171	-11	-3	+49	-14	+67	-7.47%	172
National Ambulance Service	1933	2321	2407	2409	2461	+86	+54	+52	+140	+528	6.03%	2,514



National Ambulance Services Employment Report : FEB 2025

Ambulance Headquarters

FEB 2025	WTE DEC 2019	WTE DEC 2023	WTE DEC 2024	WTE JAN 2025	WTE FEB 2025	WTE Change 2024	WTE Change 2025	WTE Change JAN 2025	WTE Change Dec 2023 to FEB 2025	WTE Change Dec 2019 to FEB 2025	% WTE Change Dec 2023 to FEB 2025	No. FEB 2025
Overall	41	160	208	213	209	+47	+1	-4	+49	+168	+30.4%	213
Consultants	1	1	1	1	1	+0	+0	+0	+0	+0	+0.0%	1
Medical & Dental	1	1	1	1	1	+0	+0	+0	+0	+0	+0.0%	1
Nurse/ Midwife Manager		2	6	7	6	+5	-1	-1	+4	+6	+240.0%	7
Nursing & Midwifery		2	6	7	6	+5	-1	-1	+4	+6	+240.0%	7
Dietitians	1					-1				-1	-100.0%	
Therapy Professions	1									-1	-100.0%	
Pharmacy			1	1	1	+1	+0	+0	+1	+1	-100.0%	1
H&SC, Other			13	15	13	+13	-0	-2	+13	+13	-100.0%	13
Health & Social Care Professionals	1		14	16	14	+14	-0	-2	+14	+13	-100.0%	14
Management (VIII & above)	9	21	22	22	22	+1	+0	+0	+1	+13	+4.6%	22
Administrative/ Supervisory (V to VII)	16	48	55	59	60	+7	+5	+0	+12	+44	+24.2%	60
Clerical (III & IV)	10	24	25	25	24	+1	-1	-1	-0	+15	-0.1%	26
Management & Administrative	34	93	102	106	106	+9	+4	-0	+13	+72	+13.4%	108
Care, other	5	64	84	84	82	+20	-2	-1	+18	+77	+28.5%	83
Patient & Client Care	5	64	84	84	82	+20	-2	-1	+18	+77	+28.5%	83



NEOC

FEB 2025	WTE DEC 2019	WTE DEC 2023	WTE DEC 2024	WTE JAN 2025	WTE FEB 2025	WTE Change 2024	WTE Change 2025	WTE Change JAN 2025	WTE Change Dec 2023 to FEB 2025	WTE Change Dec 2019 to FEB 2025	% WTE Change Dec 2023 to FEB 2025	No. FEB 2025
Overall	157	177	191	186	186	+13	-4	+0	+9	+29	+4.9%	190
Nurse/ Midwife Manager	1	1	1	1	1	-0	-0	+0	-0	-0	-14.0%	1
Staff Nurse/ Staff Midwife	1									-1	-100.0%	
Nursing & Midwifery	2	1	1	1	1	-0	-0	+0	-0	-1	-14.0%	1
H&SC, Other			5	5	5	+5	+0	+0	+5	+5	-100.0%	5
Health & Social Care Professionals			5	5	5	+5	+0	+0	+5	+5	-100.0%	5
Management (VIII & above)	1	4	4	2	2	+0	-2	-0	-2	+1	-50.5%	2
Administrative/ Supervisory (V to VII)	1	3	3	2	2	-0	-1	+0	-1	+1	-41.3%	2
Clerical (III & IV)	2	1	0	1	1	-0	+0	+0	-0	-2	-9.8%	1
Management & Administrative	5	8	7	5	5	-1	-3	-0	-4	+0	-42.6%	5
Care, other	150	168	177	175	176	+9	-2	+0	+7	+25	+4.4%	179
Patient & Client Care	150	168	177	175	176	+9	-2	+0	+7	+25	+4.4%	179



Ambulance Services

FEB 2025	WTE DEC 2019	WTE DEC 2023	WTE DEC 2024	WTE JAN 2025	WTE FEB 2025	WTE Change 2024	WTE Change 2025	WTE Change JAN 2025	WTE Change Dec 2023 to FEB 2025	WTE Change Dec 2019 to FEB 2025	% WTE Change Dec 2023 to FEB 2025	No. FEB 2025
Overall	1,631	1,799	1,835	1,888	1,895	+36	+60	+7	+96	+264	+5.3%	1,939
H&SC, Other			125	214	284	+125	+159	+70	+284	+284	-100.0%	286
Health & Social Care Professionals			125	214	284	+125	+159	+70	+284	+284	-100.0%	286
Management (VIII & above)	1	11	13	15	15	+2	+2	+0	+4	+14	+37.1%	15
Administrative/ Supervisory (V to VII)	10	23	48	45	45	+24	-3	+0	+21	+35	+90.3%	45
Clerical (III & IV)	26	30	30	30	29	-1	-1	-1	-1	+3	-4.7%	31
Management & Administrative	37	65	91	89	88	+26	-2	-1	+24	+52	+36.7%	91
Support	4	2	2	2	2	-1	+0	+0	-1	-2	-28.0%	2
Maintenance/ Technical	2	1	1	1	1	+0	+0	+0	+0	-1	+0.0%	1
General Support	6	3	3	3	3	-1	+0	+0	-1	-3	-19.9%	3
Health Care Assistants	2	1	1	1	1	-0	+0	+0	-0	-1	-5.1%	1
Care, other	1,587	1,730	1,616	1,582	1,519	-114	-97	-63	-211	-68	-12.2%	1,558
Patient & Client Care	1,589	1,731	1,617	1,583	1,520	-114	-97	-63	-211	-69	-12.2%	1,559



NASC

FEB 2025	WTE DEC 2019	WTE DEC 2023	WTE DEC 2024	WTE JAN 2025	WTE FEB 2025	WTE Change 2024	WTE Change 2025	WTE Change JAN 2025	WTE Change Dec 2023 to FEB 2025	WTE Change Dec 2019 to FEB 2025	% WTE Change Dec 2023 to FEB 2025	No. FEB 2025
Overall	103	184	174	122	171	-11	-3	+49	-14	+67	-7.5%	172
H&SC, Other		14	44	73	127	+30	+83	+54	+113	+127	+806.3%	127
Health & Social Care Professionals		14	44	73	127	+30	+83	+54	+113	+127	+806.3%	127
Management (VIII & above)	1	4	3	3	3	-1	+0	+0	-1	+2	-25.0%	3
Administrative/ Supervisory (V to VII)	2	11	35	35	36	+25	+1	+1	+26	+34	+244.2%	37
Clerical (III & IV)	3	5	4	4	4	-1	+0	+0	-1	+1	-16.7%	5
Management & Administrative	6	20	43	43	44	+23	+1	+1	+24	+38	+120.1%	45
Care, other	97	151	87	6		-64	-87	-6	-151	-97	-100.0%	
Patient & Client Care	97	151	87	6		-64	-87	-6	-151	-97	-100.0%	

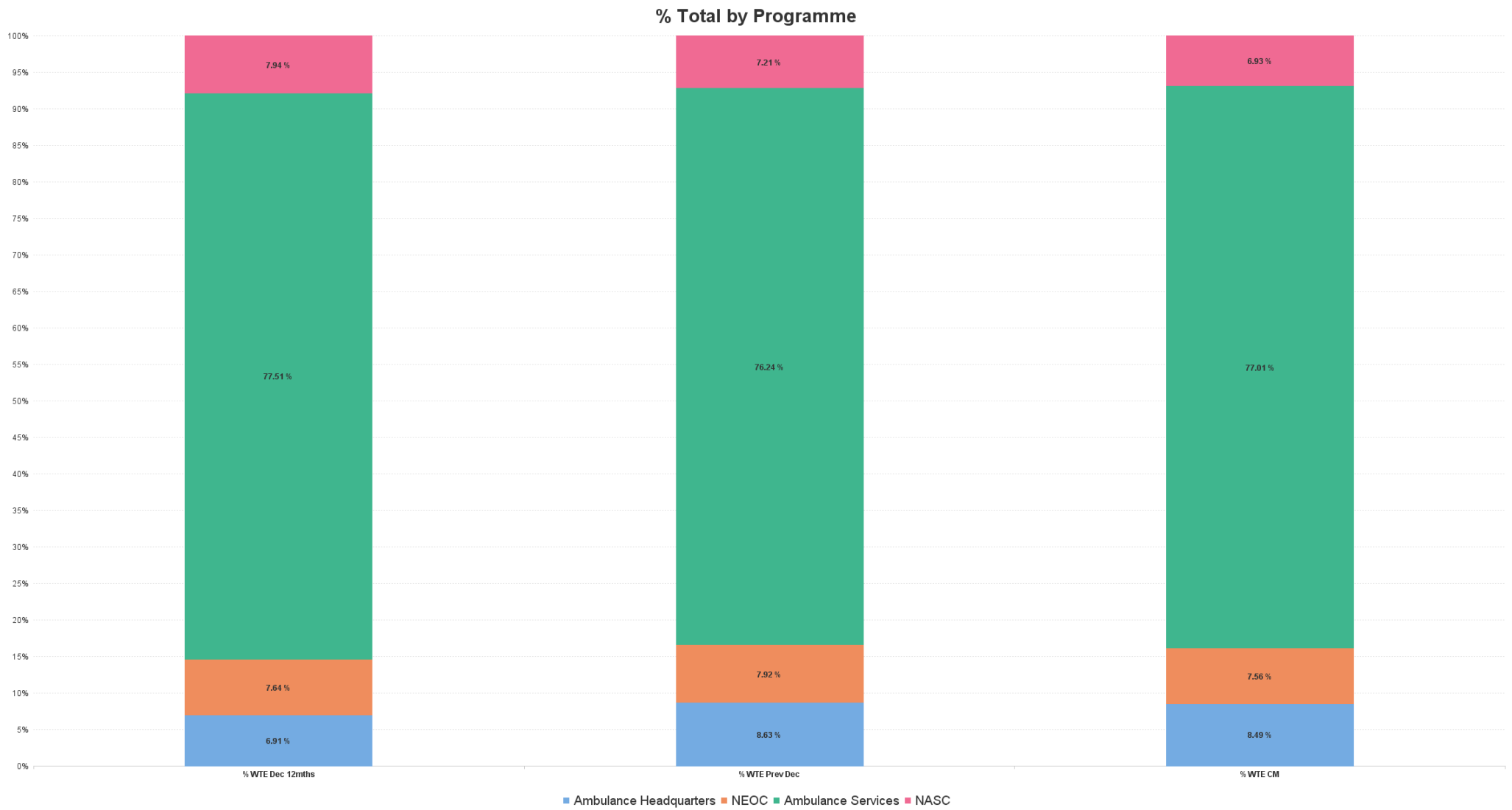


Emergency Services : FEB 2025

Employment Report by Staff Group

FEB 2025	WTE DEC 2019	WTE DEC 2023	WTE DEC 2024	WTE JAN 2025	WTE FEB 2025	WTE Change 2024	WTE Change 2025	WTE Change JAN 2025	WTE Change Dec 2023 to FEB 2025	WTE Change Dec 2019 to FEB 2025	% WTE Change Dec 2023 to FEB 2025	No. FEB 2025
Emergency Services	1,631	1,799	1,835	1,888	1,895	+36	+60	+7	+96	+264	5.35%	1,939
H&SC, Other			125	214	284	+125	+159	+70	+284	+284	-100.00%	286
Health & Social Care Professionals			125	214	284	+125	+159	+70	+284	+284	-100.00%	286
Management (VIII & above)	1	11	13	15	15	+2	+2	+0	+4	+14	37.11%	15
Administrative/ Supervisory (V to VII)	10	23	48	45	45	+24	-3	+0	+21	+35	90.29%	45
Clerical (III & IV)	26	30	30	30	29	-1	-1	-1	-1	+3	-4.71%	31
Management & Administrative	37	65	91	89	88	+26	-2	-1	+24	+52	36.70%	91
Support	4	2	2	2	2	-1	+0	+0	-1	-2	-28.05%	2
Maintenance/ Technical	2	1	1	1	1	+0	+0	+0	+0	-1	0.00%	1
General Support	6	3	3	3	3	-1	+0	+0	-1	-3	-19.94%	3
Health Care Assistants	2	1	1	1	1	-0	+0	+0	-0	-1	-5.10%	1
Care, other	1,587	1,730	1,616	1,582	1,519	-114	-97	-63	-211	-68	-12.18%	1,558
Patient & Client Care	1,589	1,731	1,617	1,583	1,520	-114	-97	-63	-211	-69	-12.18%	1,559



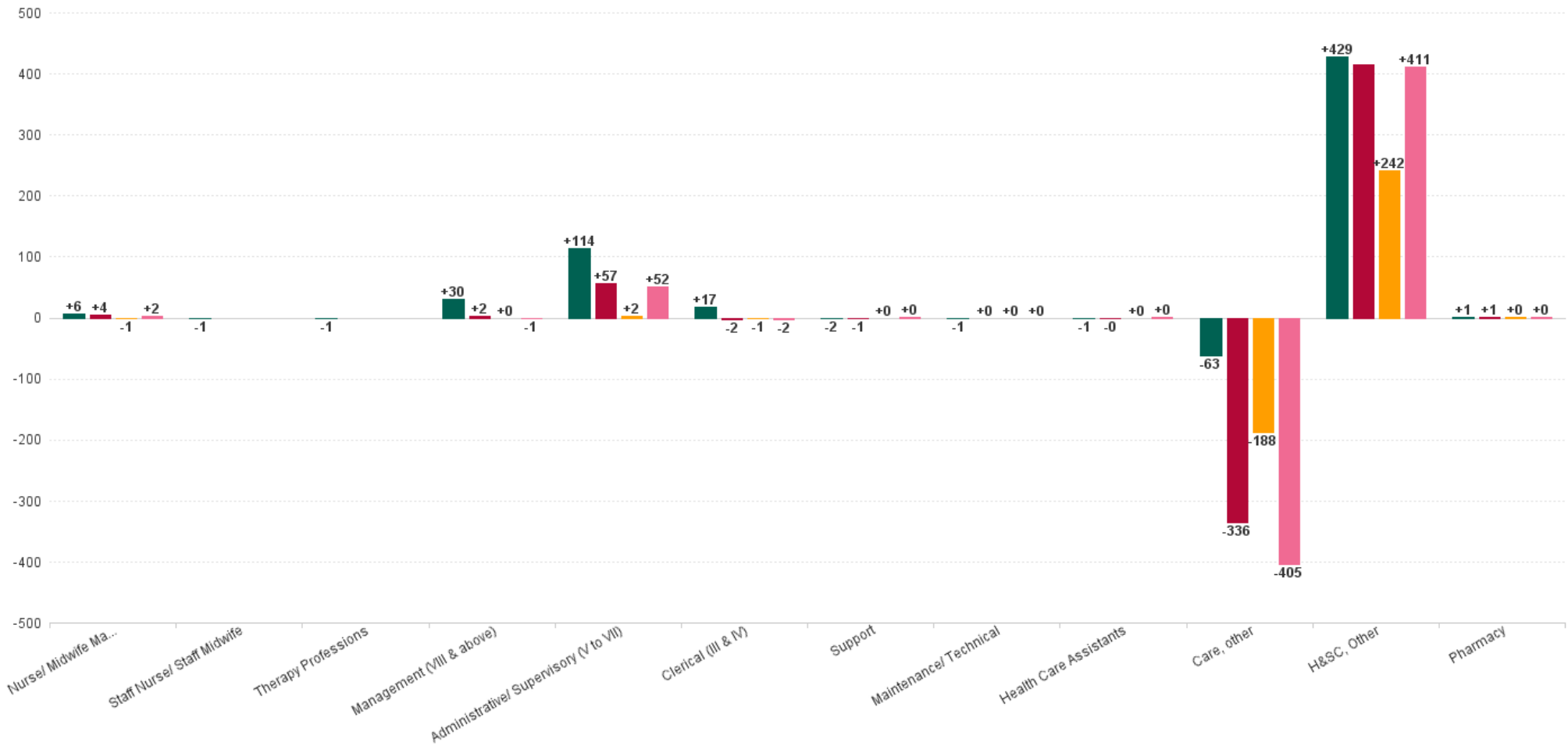


National Ambulance Services Employment Report by Grade Group: FEB 2025

FEB 2025	WTE DEC 2019	WTE DEC 2023	WTE DEC 2024	WTE JAN 2025	WTE FEB 2025	WTE Change 2024	WTE Change 2025	WTE Change JAN 2025	WTE Change Dec 2023 to FEB 2025	WTE Change Dec 2019 to FEB 2025	% WTE Change Dec 2023 to FEB 2025	No. FEB 2025
Overall	1,933	2,321	2,407	2,409	2,461	+86	+54	+52	+140	+528	6.03%	2,514
Consultant Emergency Medicine	1	1	1	1	1	+0	+0	+0	+0	+0	0.00%	1
Consultants	1	1	1	1	1	+0	+0	+0	+0	+0	0.00%	1
Medical & Dental	1	1	1	1	1	+0	+0	+0	+0	+0	0.00%	1
Clinical Nurse/ Midwife Manager 2	1	1	4	4	4	+3	-0	+0	+3	+3	286.00%	4
Director Nursing/Midwifery, Assistant		1	2	3	2	+2	-1	-1	+1	+2	160.00%	3
Director of Nursing/Midwifery		1	1	1	1	+0	+0	+0	+0	+1	0.00%	1
Nurse/ Midwife Manager	1	3	7	7	7	+5	-1	-1	+4	+6	147.64%	8
Staff Nurses [General/ Children's]	1									-1	-100.00%	
Staff Nurse/ Staff Midwife	1									-1	-100.00%	
Nursing & Midwifery	2	3	7	7	7	+5	-1	-1	+4	+5	147.64%	8
Dietitians	1									-1	-100.00%	
Therapy Professions	1									-1	-100.00%	
Pharmacists			1	1	1	+1	+0	+0	+1	+1	-100.00%	1
Pharmacy			1	1	1	+1	+0	+0	+1	+1	-100.00%	1
Ambulance Education		14	15	15	15	+1	+0	+0	+1	+15	7.14%	15
Paramedicine			172	291	414	+172	+242	+122	+414	+414	-100.00%	416
H&SC, Other		14	187	306	429	+173	+242	+122	+415	+429	2,961.43%	431
Health & Social Care Professionals	1	14	188	307	430	+174	+242	+122	+416	+429	2,968.57%	432
General Managers	5	17	19	19	19	+2	-0	+0	+2	+14	11.92%	19
National Director, Assistant	2	4	4	4	4	+0	+0	+0	+0	+2	0.00%	4
Other Executives		7	7	7	7	+0	+0	+0	+0	+7	0.14%	7
VIII	5	12	12	12	12	-0	+0	+0	-0	+7	-0.17%	12
Management (VIII & above)	12	40	42	42	42	+2	+0	+0	+2	+30	5.03%	42
Middle Management (V-VII)	29	85	141	141	142	+55	+2	+1	+57	+114	66.87%	144
Administrative/ Supervisory (V to VII)	29	85	141	141	142	+55	+2	+1	+57	+114	66.87%	144
General Administrative (III & IV)	41	61	60	60	59	-1	-1	-1	-2	+17	-3.97%	63
Clerical (III & IV)	41	61	60	60	59	-1	-1	-1	-2	+17	-3.97%	63
Management & Administrative	82	186	242	243	243	+56	+1	+0	+57	+161	30.41%	249
Other Support	4	2	2	2	2	-1	+0	+0	-1	-2	-28.05%	2
Support	4	2	2	2	2	-1	+0	+0	-1	-2	-28.05%	2
Maintenance	2	1	1	1	1	+0	+0	+0	+0	-1	0.00%	1
Maintenance/ Technical	2	1	1	1	1	+0	+0	+0	+0	-1	0.00%	1
General Support	6	3	3	3	3	-1	+0	+0	-1	-3	-19.94%	3
Attendant/ Aide	2	1	1	1	1	-0	+0	+0	-0	-1	-5.10%	1
Health Care Assistants	2	1	1	1	1	-0	+0	+0	-0	-1	-5.10%	1
Ambulance Control	179	176	193	191	191	+17	-2	+0	+16	+13	8.91%	195
Ambulance Education	1,410	1,602	1,505	1,401	1,332	-97	-172	-69	-269	-78	-16.81%	1,368
Ambulance Operations	236	326	257	245	244	-69	-13	-1	-82	+8	-25.08%	247
Other Care Grades	15	10	10	10	9	+0	-1	-0	-0	-5	-4.03%	10
Care, other	1,839	2,113	1,965	1,847	1,777	-148	-188	-70	-336	-63	-15.89%	1,820
Patient & Client Care	1841	2114	1966	1848	1778	-148	-188	-70	-336	-64	-15.89%	1,821

WTE Change by Staff Category

■ WTE change since DEC 2019 ■ WTE change since DEC 2023 ■ WTE change since DEC 2024 ■ WTE change since FEB 2024



National Ambulance Services Employment Report by WTE, Headcount, Gender, Full-Time / Part-Time etc. FEB 2025

FEB 2025	WTE FEB 2025	No. FEB 2025	WTE : No	% Male	% Female	Male WTE : No.	Female WTE : No	Perm Count %	Perm Count Male %	Perm Count Female %	Fulltime Count %	Part time Count %	FT Count Male %	FT Count Female %
Total	2,461	2,514	1:1	63.84%	36.16%	1:1	1:1	81.62%	55.29%	26.33%	99.32%	0.68%	99.81%	98.46%
Consultants	1	1	1:1	100.00%		1:1	1:	100.00%	100.00%		100.00%		100.00%	
Medical & Dental	1	1	1:1	100.00%		1:1	1:	100.00%	100.00%		100.00%		100.00%	
Nurse/ Midwife Manager	6.81	8	1:0.9	12.50%	87.50%	1:0.7	1:0.9	100.00%	12.50%	87.50%	87.50%	12.50%	100.00%	85.71%
Nursing & Midwifery	7	8	1:0.9	12.50%	87.50%	1:0.7	1:0.9	100.00%	12.50%	87.50%	87.50%	12.50%	100.00%	85.71%
Pharmacists	1	1	1:1		100.00%	1:	1:1	100.00%		100.00%	100.00%			100.00%
Pharmacy	1	1	1:1		100.00%	1:	1:1	100.00%		100.00%	100.00%			100.00%
Ambulance Education	15	15	1:1	80.00%	20.00%	1:1	1:1	100.00%	80.00%	20.00%	100.00%		100.00%	100.00%
Paramedicine	413.6	416	1:1	50.00%	50.00%	1:1	1:1	16.11%	11.06%	5.05%	100.00%		100.00%	100.00%
H&SC, Other	428.6	431	1:1	51.04%	48.96%	1:1	1:1	19.03%	13.46%	5.57%	100.00%		100.00%	100.00%
Health & Social Care Professionals	430	432	1:1	50.93%	49.07%	1:1	1:1	19.21%	13.43%	5.79%	100.00%		100.00%	100.00%
Management (VIII & above)	41.94	42	1:1	76.19%	23.81%	1:1	1:1	100.00%	76.19%	23.81%	100.00%		100.00%	100.00%
Administrative/ Supervisory (V to VII)	142.42	144	1:1	54.86%	45.14%	1:1	1:1	99.31%	54.17%	45.14%	99.31%	0.69%	100.00%	98.46%
Clerical (III & IV)	58.59	63	1:0.9	22.22%	77.78%	1:0.9	1:0.9	98.41%	20.63%	77.78%	88.89%	11.11%	100.00%	85.71%
Management & Administrative	243	249	1:1	50.20%	49.80%	1:1	1:1	99.20%	49.40%	49.80%	96.79%	3.21%	100.00%	93.55%
Support	1.77	2	1:0.9		100.00%	1:	1:0.9	100.00%		100.00%	100.00%			100.00%
Maintenance/ Technical	1	1	1:1	100.00%		1:1	1:	100.00%	100.00%		100.00%		100.00%	
General Support	3	3	1:0.9	33.33%	66.67%	1:1	1:0.9	100.00%	33.33%	66.67%	100.00%		100.00%	100.00%
Care, other	1,332.48	1,368	1:1	91.81%	41.23%	1:1	1:1	124.93%	88.08%	36.84%	132.46%	0.58%	99.76%	99.11%
Health Care Assistants	0.93	1	1:0.9	100.00%		1:0.9	1:	100.00%	100.00%		100.00%		100.00%	
Care, other	444.43	452	1:1	277.88%	124.78%	1:1	1:1	378.10%	266.59%	111.50%	400.88%	1.77%	99.76%	99.11%
Patient & Client Care	1,778	1,821	1:1	69.03%	30.97%	1:1	1:1	93.90%	66.23%	27.68%	99.56%	0.44%	99.76%	99.11%



National Ambulance Services Employment Report by Region: WTE, Headcount, Gender, Full-Time / Part-Time etc. FEB 2025

FEB 2025	WTE FEB 2025	No. FEB 2025	WTE : No	% Male	% Female	Male WTE : No.	Female WTE : No	Perm Count %	Number Male %	Number Female %	Fulltime Count %	Part time Count %	FT Count Male %	FT Count Female %
Total	2,461	2,514	1:1	63.84%	36.16%	1:1	1:1	81.62%	55.29%	26.33%	99.32%	0.68%	99.81%	98.46%
Ambulance Headquarters	209	213	1:1	52.58%	47.42%	1:1	1:1	99.06%	51.64%	47.42%	99.06%	0.94%	100.00%	98.02%
Ambulance Services	1,895	1,939	1:1	67.56%	32.44%	1:1	1:1	81.95%	59.10%	22.85%	99.33%	0.67%	99.77%	98.41%
NASC	171	172	1:1	55.23%	44.77%	1:1	1:1	36.05%	26.74%	9.30%	99.42%	0.58%	100.00%	98.70%
NEOC	186	190	1:1	46.32%	53.68%	1:1	1:1	100.00%	46.32%	53.68%	99.47%	0.53%	100.00%	99.02%



Previous Month Summary

	% WTE change since JAN 2025	WTE change since JAN 2025	Ambulance Headquarters	NEOC	Ambulance Services	NASC
Total	+2.2%	+52.2	-4.4	+0.3	+7.2	+49.1
Consultants	+0.0%	+0.0	+0.0			
Medical & Dental	+0.0%	+0.0	+0.0			
Nurse/ Midwife Manager	-7.5%	-0.6	-0.6	+0.0		
Staff Nurse/ Staff Midwife						
Nursing & Midwifery	-7.5%	-0.6	-0.6	+0.0		
Therapy Professions						
H&SC, Other	+39.9%	+122.2	-2.3	+0.1	+70.4	+53.9
Pharmacy	+0.0%	+0.0	+0.0			
Health & Social Care Professionals	+39.7%	+122.2	-2.3	+0.1	+70.4	+53.9
Management (VIII & above)	+0.2%	+0.1	+0.0	-0.0	+0.0	+0.1
Administrative/ Supervisory (V to VII)	+1.0%	+1.4	+0.4	+0.0	+0.0	+1.0
Clerical (III & IV)	-2.0%	-1.2	-0.7	+0.0	-0.6	+0.2
Management & Administrative	+0.1%	+0.3	-0.3	-0.0	-0.6	+1.2
Support	+4.7%	+0.1			+0.1	
Maintenance/ Technical	+0.0%	+0.0			+0.0	
General Support	+3.0%	+0.1			+0.1	
Health Care Assistants	+9.4%	+0.1			+0.1	
Care, other	-3.8%	-69.8	-1.3	+0.2	-62.7	-6.0
Patient & Client Care	-3.8%	-69.7	-1.3	+0.2	-62.6	-6.0



Year on Year Summary

	% WTE change since FEB 2024	WTE change since FEB 2024	Ambulance Headquarters	NEOC	Ambulance Services	NASC
Total	+2.4%	+58.3	+53.9	+5.7	+57.3	-58.5
Consultants	+0.0%	+0.0	+0.0			
Medical & Dental	+0.0%	+0.0	+0.0			
Nurse/ Midwife Manager	+57.3%	+2.5	+2.6	-0.1		
Staff Nurse/ Staff Midwife						
Nursing & Midwifery	+57.3%	+2.5	+2.6	-0.1		
Therapy Professions						
H&SC, Other	+2,391.9%	+411.4	+12.7	+1.2	+284.0	+113.5
Pharmacy	+20.5%	+0.2	+0.2			
Health & Social Care Professionals	+2,282.7%	+411.6	+12.9	+1.2	+284.0	+113.5
Management (VIII & above)	-2.0%	-0.9	-0.9	-2.0	+3.0	-1.0
Administrative/ Supervisory (V to VII)	+57.0%	+51.7	+7.1	-2.0	+21.9	+24.7
Clerical (III & IV)	-4.0%	-2.4	-0.0	-0.1	-1.8	-0.6
Management & Administrative	+24.9%	+48.5	+6.2	-4.0	+23.2	+23.2
Support	+17.2%	+0.3			+0.3	
Maintenance/ Technical	+0.0%	+0.0			+0.0	
General Support	+10.4%	+0.3			+0.3	
Health Care Assistants	+6.9%	+0.1			+0.1	
Care, other	-18.5%	-404.5	+32.2	+8.7	-250.2	-195.2
Patient & Client Care	-18.5%	-404.5	+32.2	+8.7	-250.2	-195.2

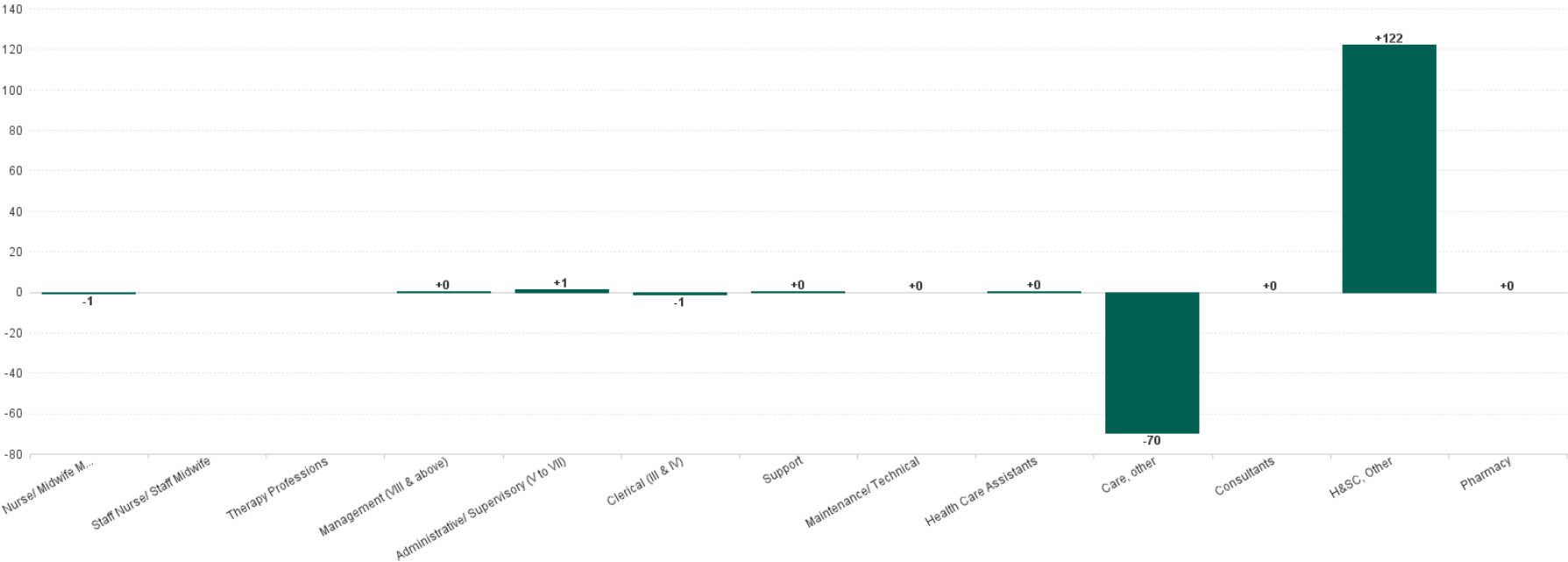


Year to Date Summary

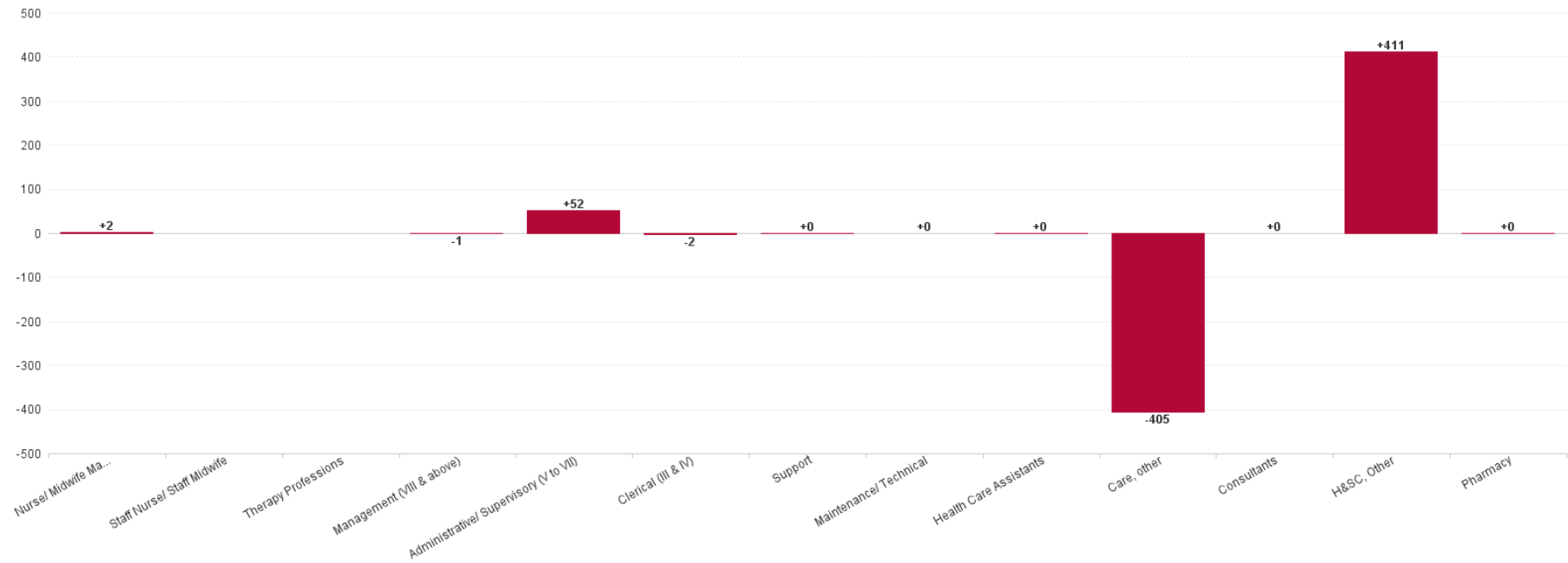
	% WTE change since DEC 2024	WTE change since DEC 2024	Ambulance Headquarters	NEOC	Ambulance Services	NASC
Total	+2.2%	+53.9	+1.4	-4.5	+60.1	-3.0
Consultants	+0.0%	+0.0	+0.0			
Medical & Dental	+0.0%	+0.0	+0.0			
Nurse/ Midwife Manager	-8.3%	-0.6	-0.5	-0.1		
Staff Nurse/ Staff Midwife						
Nursing & Midwifery	-8.3%	-0.6	-0.5	-0.1		
Therapy Professions						
H&SC, Other	+129.5%	+241.9	-0.3	+0.1	+159.3	+82.8
Pharmacy	+1.0%	+0.0	+0.0			
Health & Social Care Professionals	+128.8%	+241.9	-0.3	+0.1	+159.3	+82.8
Management (VIII & above)	+0.0%	+0.0	+0.0	-2.0	+2.0	+0.0
Administrative/ Supervisory (V to VII)	+1.3%	+1.9	+4.8	-1.0	-3.2	+1.2
Clerical (III & IV)	-2.3%	-1.4	-0.9	+0.4	-0.9	+0.0
Management & Administrative	+0.2%	+0.5	+4.0	-2.6	-2.0	+1.2
Support	+0.0%	+0.0			+0.0	
Maintenance/ Technical	+0.0%	+0.0			+0.0	
General Support	+0.0%	+0.0			+0.0	
Health Care Assistants	+0.0%	+0.0			+0.0	
Care, other	-9.6%	-187.8	-1.8	-1.9	-97.2	-87.0
Patient & Client Care	-9.6%	-187.8	-1.8	-1.9	-97.2	-87.0



Previous Month Summary Chart: Change since JAN 2025



Previous Year Summary Chart: Change since FEB 2024



YTD Summary Chart: Change since DEC 2024

