

## National Ambulance Service Services Employment Report: July 2021

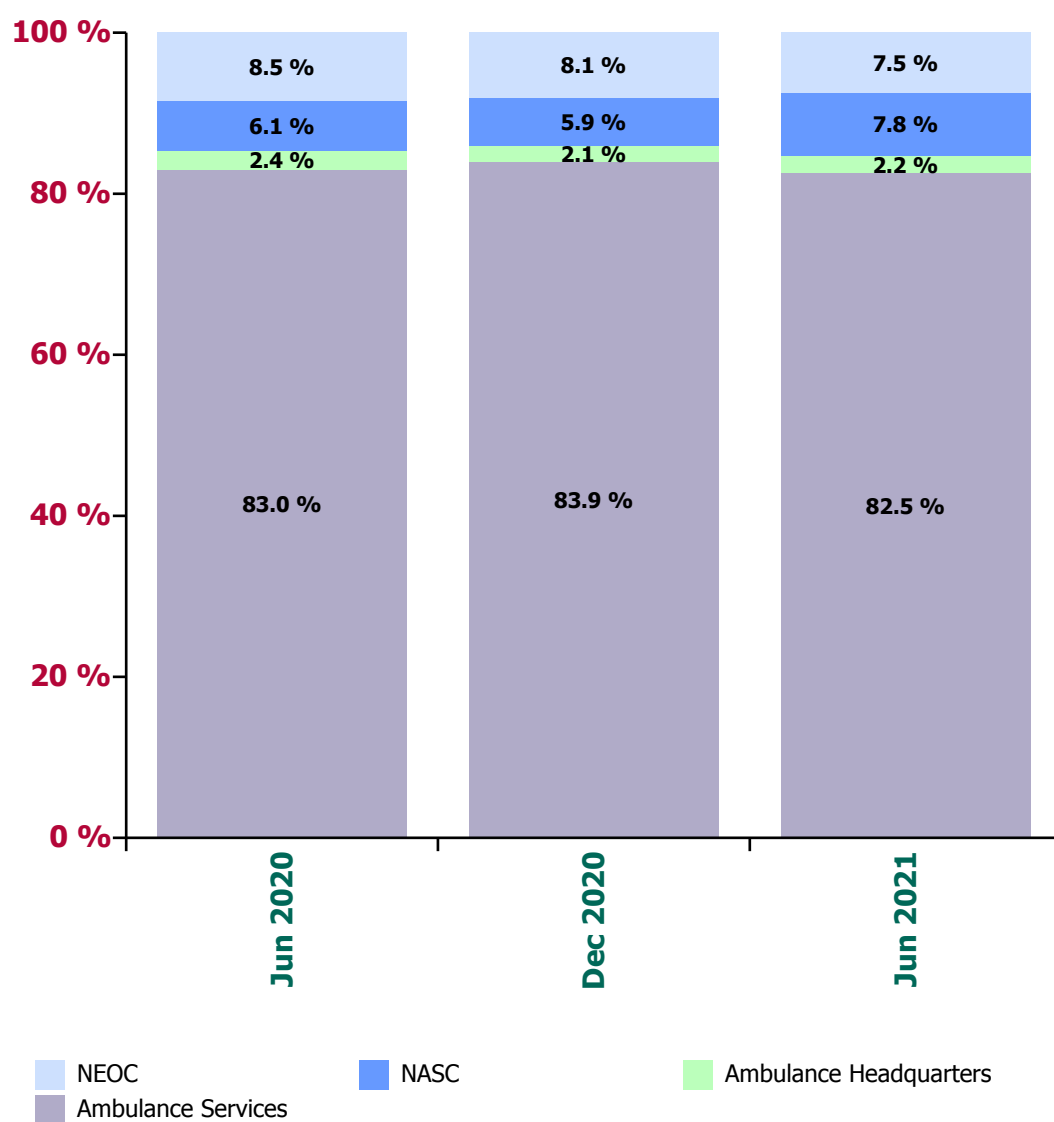
### Employment by Staff Group

Jul 2021 (Dec 2020 figure: 1,990)	WTE Jun 2021	WTE Jul 2021	WTE change since Jun 21	% change since Jun 21	WTE change since Dec 20	WTE change since Jul 20
<b>Overall</b>	<b>2,042</b>	<b>2,037</b>	<b>-5</b>	<b>-0.2%</b>	<b>+47</b>	<b>+91</b>
Consultants	1	1				
SHO/ Interns	1	1			+1	+1
Registrars	1	1			+1	+1
<b>Medical &amp; Dental</b>	<b>3</b>	<b>3</b>			<b>+2</b>	<b>+2</b>
Nurse/ Midwife Manager	1	1				
Staff Nurse/ Staff Midwife	1	1				
<b>Nursing &amp; Midwifery</b>	<b>2</b>	<b>2</b>				
Therapy Professions				-100.0%	-1	-1
<b>Health &amp; Social Care Professionals</b>				<b>-100.0%</b>	<b>-1</b>	<b>-1</b>
Management (VIII & above)	12	12	+0	+0.2%	-2	-3
Administrative/ Supervisory (V to VII)	38	41	+3	+7.5%	+8	+8
Clerical (III & IV)	38	37	-1	-2.6%	-4	-4
<b>Management &amp; Administrative</b>	<b>88</b>	<b>90</b>	<b>+2</b>	<b>+2.1%</b>	<b>+1</b>	<b>+2</b>
Support	3	2	-0	-2.4%	-1	-1
Maintenance/ Technical	2	2				
<b>General Support</b>	<b>5</b>	<b>4</b>	<b>-0</b>	<b>-1.3%</b>	<b>-1</b>	<b>-1</b>
Health Care Assistants	1	1			-1	-1
Ambulance Staff	1,930	1,924	-6	-0.3%	+48	+92
Care, other	13	13	-1	-4.4%	-1	-1
<b>Patient &amp; Client Care</b>	<b>1,944</b>	<b>1,938</b>	<b>-6</b>	<b>-0.3%</b>	<b>+46</b>	<b>+89</b>

## Ambulance Service by Region: Jul 2021

Jul 2021 (Dec 2020 figure: 1,990)	WTE Jun 2021	WTE Jul 2021	WTE change since Jun 21	% change since Jun 21	WTE change since Dec 20	WTE change since Jul 20
<b>Overall</b>	<b>2,042</b>	<b>2,037</b>	<b>-5</b>	<b>-0.2%</b>	<b>+47</b>	<b>+91</b>
North Leinster	610	608	-2	-0.3%	+23	+47
South	482	479	-3	-0.6%	-16	-7
West	593	590	-3	-0.5%	+0	+12
<b>Ambulance Services</b>	<b>1,685</b>	<b>1,677</b>	<b>-8</b>	<b>-0.5%</b>	<b>+8</b>	<b>+52</b>
<b>Ambulance Headquarters</b>	<b>44</b>	<b>47</b>	<b>+3</b>	<b>+5.9%</b>	<b>+5</b>	<b>+2</b>
<b>NASC</b>	<b>159</b>	<b>159</b>	<b>-0</b>	<b>-0.1%</b>	<b>+42</b>	<b>+50</b>
<b>NEOC</b>	<b>153</b>	<b>154</b>	<b>+1</b>	<b>+0.6%</b>	<b>-8</b>	<b>-13</b>

Proportion of total by Service



## National Ambulance Service Services Employment Report: July 2021

### Ambulance Services by staff group

Jul 2021 (Dec 2020 figure: 1,669)	WTE Jun 2021	WTE Jul 2021	WTE change since Jun 21	% change since Jun 21	WTE change since Dec 20	WTE change since Jul 20
<b>Overall</b>	<b>1,685</b>	<b>1,677</b>	<b>-8</b>	<b>-0.5%</b>	<b>+8</b>	<b>+52</b>
SHO/ Interns	1	1			+1	+1
<b>Medical &amp; Dental</b>	<b>1</b>	<b>1</b>			<b>+1</b>	<b>+1</b>
Management (VIII & above)	1	1				
Administrative/ Supervisory (V to VII)	12	12	+1	+4.3%	+2	+2
Clerical (III & IV)	27	27	-1	-3.4%	-2	-2
<b>Management &amp; Administrative</b>	<b>40</b>	<b>40</b>	<b>-0</b>	<b>-1.1%</b>	<b>-0</b>	<b>-0</b>
Support	3	2	-0	-2.4%	-1	-1
Maintenance/ Technical	2	2				
<b>General Support</b>	<b>5</b>	<b>4</b>	<b>-0</b>	<b>-1.3%</b>	<b>-1</b>	<b>-1</b>
Health Care Assistants	1	1			-1	-1
Ambulance Staff	1,626	1,619	-7	-0.4%	+11	+55
Care, other	13	13	-1	-4.4%	-1	-1
<b>Patient &amp; Client Care</b>	<b>1,640</b>	<b>1,632</b>	<b>-7</b>	<b>-0.5%</b>	<b>+9</b>	<b>+53</b>

### Ambulance Headquarters by staff group

Jul 2021 (Dec 2020 figure: 42)	WTE Jun 2021	WTE Jul 2021	WTE change since Jun 21	% change since Jun 21	WTE change since Dec 20	WTE change since Jul 20
<b>Overall</b>	<b>44</b>	<b>47</b>	<b>+3</b>	<b>+5.9%</b>	<b>+5</b>	<b>+2</b>
Consultants	1	1				
Registrars	1	1			+1	+1
<b>Medical &amp; Dental</b>	<b>2</b>	<b>2</b>			<b>+1</b>	<b>+1</b>
Therapy Professions				-100.0%	-1	-1
<b>Health &amp; Social Care Professionals</b>				<b>-100.0%</b>	<b>-1</b>	<b>-1</b>
Management (VIII & above)	8	8	+0	+0.2%	-1	-3
Administrative/ Supervisory (V to VII)	21	24	+2	+11.0%	+5	+5
Clerical (III & IV)	7	7	+0	+2.4%	+0	+1
<b>Management &amp; Administrative</b>	<b>36</b>	<b>39</b>	<b>+3</b>	<b>+7.0%</b>	<b>+4</b>	<b>+3</b>
Ambulance Staff	6	6	+0	+1.0%	+1	-1
<b>Patient &amp; Client Care</b>	<b>6</b>	<b>6</b>	<b>+0</b>	<b>+1.0%</b>	<b>+1</b>	<b>-1</b>

## NASC by staff group

Jul 2021 (Dec 2020 figure: 117)	WTE Jun 2021	WTE Jul 2021	WTE change since Jun 21	% change since Jun 21	WTE change since Dec 20	WTE change since Jul 20
<b>Overall</b>	<b>159</b>	<b>159</b>	<b>-0</b>	<b>-0.1%</b>	<b>+42</b>	<b>+50</b>
Management (VIII & above)	1	1				
Administrative/ Supervisory (V to VII)	4	4			+1	+1
Clerical (III & IV)	2	2	-0	-3.0%	-2	-2
<b>Management &amp; Administrative</b>	<b>7</b>	<b>7</b>	<b>-0</b>	<b>-1.0%</b>	<b>-1</b>	<b>-1</b>
Ambulance Staff	152	152	-0	-0.1%	+43	+51
<b>Patient &amp; Client Care</b>	<b>152</b>	<b>152</b>	<b>-0</b>	<b>-0.1%</b>	<b>+43</b>	<b>+51</b>

## NEOC by staff group

Jul 2021 (Dec 2020 figure: 161)	WTE Jun 2021	WTE Jul 2021	WTE change since Jun 21	% change since Jun 21	WTE change since Dec 20	WTE change since Jul 20
<b>Overall</b>	<b>153</b>	<b>154</b>	<b>+1</b>	<b>+0.6%</b>	<b>-8</b>	<b>-13</b>
Nurse/ Midwife Manager	1	1				
Staff Nurse/ Staff Midwife	1	1				
<b>Nursing &amp; Midwifery</b>	<b>2</b>	<b>2</b>				
Management (VIII & above)	2	2			-1	
Administrative/ Supervisory (V to VII)	1	1				
Clerical (III & IV)	1	1	-0	-11.5%	-0	-1
<b>Management &amp; Administrative</b>	<b>4</b>	<b>4</b>	<b>-0</b>	<b>-3.5%</b>	<b>-1</b>	<b>-1</b>
Ambulance Staff	146	148	+1	+0.7%	-6	-13
<b>Patient &amp; Client Care</b>	<b>146</b>	<b>148</b>	<b>+1</b>	<b>+0.7%</b>	<b>-6</b>	<b>-13</b>

## Emergency Services: July 2021

### North Leinster by staff group

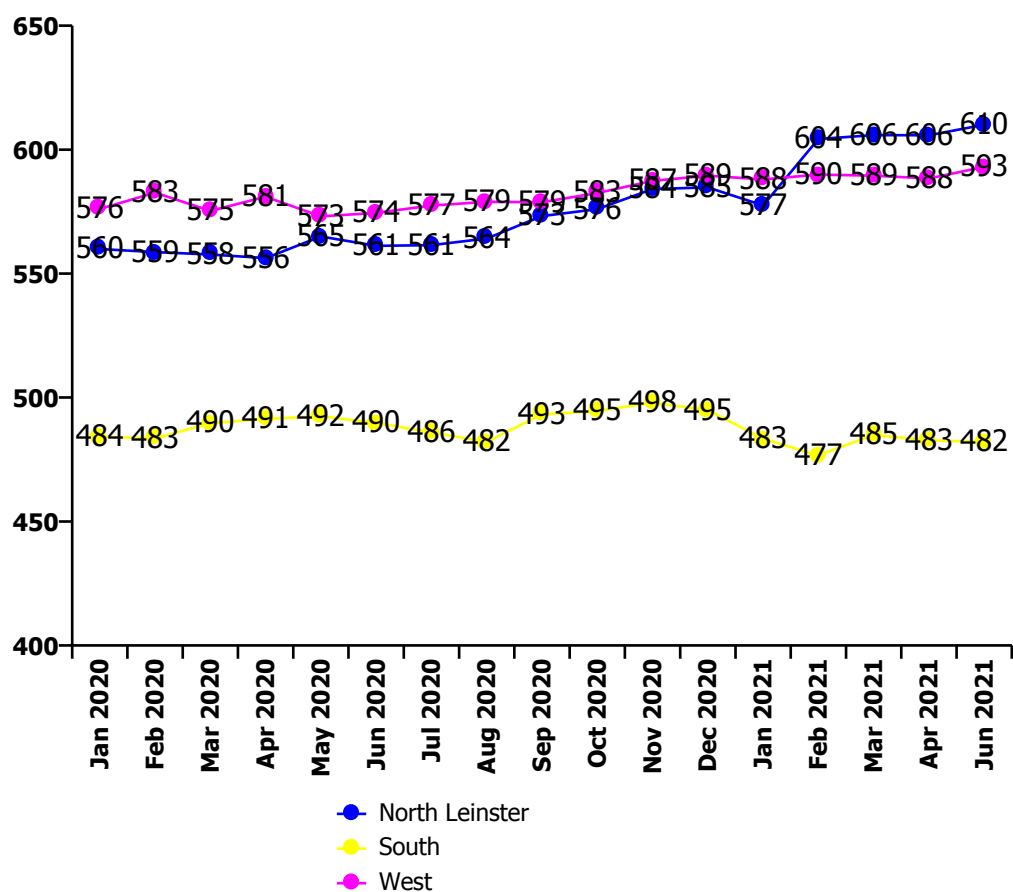
Jul 2021 (Dec 2020 figure: 585)	WTE Jun 2021	WTE Jul 2021	WTE change since Jun 21	% change since Jun 21	WTE change since Dec 20	WTE change since Jul 20
<b>Overall</b>	<b>610</b>	<b>608</b>	<b>-2</b>	<b>-0.3%</b>	<b>+23</b>	<b>+47</b>
Administrative/ Supervisory (V to VII)	5	5			+2	+3
Clerical (III & IV)	5	4	-0	-10.0%	-1	-1
<b>Management &amp; Administrative</b>	<b>10</b>	<b>9</b>	<b>-0</b>	<b>-4.9%</b>	<b>+1</b>	<b>+2</b>
Support	2	1	-0	-4.0%	-1	-1
Maintenance/ Technical	1	1				
<b>General Support</b>	<b>3</b>	<b>2</b>	<b>-0</b>	<b>-2.4%</b>	<b>-1</b>	<b>-1</b>
Ambulance Staff	585	584	-1	-0.1%	+24	+47
Care, other	13	13	-1	-4.4%	-1	-1
<b>Patient &amp; Client Care</b>	<b>598</b>	<b>597</b>	<b>-1</b>	<b>-0.2%</b>	<b>+23</b>	<b>+46</b>

### South by staff group

Jul 2021 (Dec 2020 figure: 495)	WTE Jun 2021	WTE Jul 2021	WTE change since Jun 21	% change since Jun 21	WTE change since Dec 20	WTE change since Jul 20
<b>Overall</b>	<b>482</b>	<b>479</b>	<b>-3</b>	<b>-0.6%</b>	<b>-16</b>	<b>-7</b>
SHO/ Interns	1	1			+1	+1
<b>Medical &amp; Dental</b>	<b>1</b>	<b>1</b>			<b>+1</b>	<b>+1</b>
Administrative/ Supervisory (V to VII)	1	2	+1	+50.0%	-1	-2
Clerical (III & IV)	9	8	-1	-10.0%	+0	+0
<b>Management &amp; Administrative</b>	<b>10</b>	<b>9</b>	<b>-0</b>	<b>-3.8%</b>	<b>-1</b>	<b>-1</b>
Support	1	1				
Maintenance/ Technical	1	1				
<b>General Support</b>	<b>2</b>	<b>2</b>				
Ambulance Staff	470	467	-3	-0.6%	-16	-7
<b>Patient &amp; Client Care</b>	<b>470</b>	<b>467</b>	<b>-3</b>	<b>-0.6%</b>	<b>-16</b>	<b>-7</b>

### West by staff group

Jul 2021 (Dec 2020 figure: 589)	WTE Jun 2021	WTE Jul 2021	WTE change since Jun 21	% change since Jun 21	WTE change since Dec 20	WTE change since Jul 20
<b>Overall</b>	<b>593</b>	<b>590</b>	<b>-3</b>	<b>-0.5%</b>	<b>+0</b>	<b>+12</b>
Management (VIII & above)	1	1				
Administrative/ Supervisory (V to VII)	6	6			+1	+1
Clerical (III & IV)	14	15	+0	+2.7%	-1	-2
<b>Management &amp; Administrative</b>	<b>21</b>	<b>21</b>	<b>+0</b>	<b>+1.9%</b>	<b>-1</b>	<b>-1</b>
Health Care Assistants	1	1			-1	-1
Ambulance Staff	571	568	-4	-0.6%	+2	+15
<b>Patient &amp; Client Care</b>	<b>572</b>	<b>569</b>	<b>-4</b>	<b>-0.6%</b>	<b>+1</b>	<b>+14</b>



## Employment by WTE, Headcount, Gender, Full-Time /Part-Time etc.: Jul 2021

National Ambulance Service	WTE	Headcount	WTE: no.	% Male	% female	Male WTE: no.	Female WTE: no.	% Total Perm	% Male Perm	% Female Perm	% Total Full Time	% Total Part Time	% Male FT	% Female FT
<b>Overall</b>	<b>2,037</b>	<b>2,093</b>	<b>1.03</b>	<b>71.4%</b>	<b>28.6%</b>	<b>1.02</b>	<b>1.05</b>	<b>89.6%</b>	<b>90.2%</b>	<b>88.1%</b>	<b>99.1%</b>	<b>0.9%</b>	<b>99.7%</b>	<b>97.5%</b>
<i>Consultants</i>	1	1	1.00	100.0%		1.00		100.0%	100.0%		100.0%	0.0%	100.0%	
<i>SHO/ Interns</i>	1	1	1.00	100.0%		1.00		0.0%	0.0%		100.0%	0.0%	100.0%	
<i>Registrars</i>	1	1	1.00	100.0%		1.00		0.0%	0.0%		100.0%	0.0%	100.0%	
<b>Medical &amp; Dental</b>	<b>3</b>	<b>3</b>	<b>1.00</b>	<b>100.0%</b>		<b>1.00</b>		<b>33.3%</b>	<b>33.3%</b>		<b>100.0%</b>	<b>0.0%</b>	<b>100.0%</b>	
<i>Nurse/ Midwife Manager</i>	1	1	1.00		100.0%		1.00	100.0%		100.0%	100.0%	0.0%		100.0%
<i>Staff Nurse/ Staff Midwife</i>	1	1	1.00		100.0%		1.00	100.0%		100.0%	100.0%	0.0%		100.0%
<b>Nursing &amp; Midwifery</b>	<b>2</b>	<b>2</b>	<b>1.00</b>		<b>100.0%</b>		<b>1.00</b>	<b>100.0%</b>		<b>100.0%</b>	<b>100.0%</b>	<b>0.0%</b>		<b>100.0%</b>
<i>Management (VIII &amp; above)</i>	12	13	1.08	61.5%	38.5%	1.00	1.24	92.3%	100.0%	80.0%	92.3%	7.7%	100.0%	80.0%
<i>Administrative/ Supervisory (V to VII)</i>	41	42	1.03	28.6%	71.4%	1.00	1.04	100.0%	100.0%	100.0%	100.0%	0.0%	100.0%	100.0%
<i>Clerical (III &amp; IV)</i>	37	43	1.16	16.3%	83.7%	1.00	1.20	95.3%	100.0%	94.4%	81.4%	18.6%	100.0%	77.8%
<b>Management &amp; Administrative</b>	<b>90</b>	<b>98</b>	<b>1.09</b>	<b>27.6%</b>	<b>72.4%</b>	<b>1.00</b>	<b>1.13</b>	<b>96.9%</b>	<b>100.0%</b>	<b>95.8%</b>	<b>90.8%</b>	<b>9.2%</b>	<b>100.0%</b>	<b>87.3%</b>
<i>Support</i>	2	3	1.22	33.3%	66.7%	1.96	1.03	66.7%	0.0%	100.0%	66.7%	33.3%	0.0%	100.0%
<i>Maintenance/ Technical</i>	2	2	1.00	100.0%		1.00		100.0%	100.0%		100.0%	0.0%	100.0%	
<b>General Support</b>	<b>4</b>	<b>5</b>	<b>1.12</b>	<b>60.0%</b>	<b>40.0%</b>	<b>1.20</b>	<b>1.03</b>	<b>80.0%</b>	<b>66.7%</b>	<b>100.0%</b>	<b>80.0%</b>	<b>20.0%</b>	<b>66.7%</b>	<b>100.0%</b>
<i>Health Care Assistants</i>	1	1	1.00	100.0%		1.00		100.0%	100.0%		100.0%	0.0%	100.0%	
Ambulance Control	173	179	1.03	50.3%	49.7%	1.03	1.04	98.9%	98.9%	98.9%	98.9%	1.1%	100.0%	97.8%
Ambulance Education	191	192	1.01	66.1%	33.9%	1.01	1.00	0.0%	0.0%	0.0%	100.0%	0.0%	100.0%	100.0%
Ambulance Officers	85	86	1.01	86.0%	14.0%	1.01	1.00	96.5%	95.9%	100.0%	98.8%	1.2%	98.6%	100.0%
Pre-Hospital Care (Ambulance)	1,475	1,514	1.03	76.6%	23.4%	1.02	1.06	99.1%	99.0%	99.4%	99.7%	0.3%	99.8%	99.2%
<b>Ambulance Staff</b>	<b>1,924</b>	<b>1,971</b>	<b>1.02</b>	<b>73.6%</b>	<b>26.4%</b>	<b>1.02</b>	<b>1.05</b>	<b>89.3%</b>	<b>90.1%</b>	<b>86.9%</b>	<b>99.6%</b>	<b>0.4%</b>	<b>99.8%</b>	<b>99.0%</b>
<i>Care, other</i>	13	13	1.03	69.2%	30.8%	1.00	1.09	100.0%	100.0%	100.0%	92.3%	7.7%	100.0%	75.0%
<b>Patient &amp; Client Care</b>	<b>1,938</b>	<b>1,985</b>	<b>1.02</b>	<b>73.6%</b>	<b>26.4%</b>	<b>1.02</b>	<b>1.05</b>	<b>89.4%</b>	<b>90.2%</b>	<b>87.0%</b>	<b>99.5%</b>	<b>0.5%</b>	<b>99.8%</b>	<b>98.9%</b>

## Employment by WTE, Headcount, Gender, Full-Time /Part-Time etc.: Jul 2021

National Ambulance Service	WTE	Headcount	WTE: no.	% Male	% female	Male WTE: no.	Female WTE: no.	% Total Perm	% Male Perm	% Female Perm	% Total Full Time	% Total Part Time	% Male FT	% Female FT
<b>Overall</b>	<b>2,037</b>	<b>2,093</b>	<b>1.03</b>	<b>71.4%</b>	<b>28.6%</b>	<b>1.02</b>	<b>1.05</b>	<b>89.6%</b>	<b>90.2%</b>	<b>88.1%</b>	<b>99.1%</b>	<b>0.9%</b>	<b>99.7%</b>	<b>97.5%</b>
North Leinster	608	622	1.02	73.8%	26.2%	1.02	1.04	93.7%	93.7%	94.5%	98.9%	1.1%	99.3%	99.3%
South	479	497	1.04	75.9%	24.1%	1.02	1.10	94.6%	94.6%	95.0%	99.6%	0.4%	100.0%	100.0%
West	590	605	1.03	74.9%	25.1%	1.02	1.05	97.0%	97.0%	96.1%	99.2%	0.8%	100.0%	100.0%
<b>Ambulance Services</b>	<b>1,677</b>	<b>1,724</b>	<b>1.03</b>	<b>74.8%</b>	<b>25.2%</b>	<b>1.02</b>	<b>1.06</b>	<b>95.1%</b>	<b>95.1%</b>	<b>95.2%</b>	<b>99.2%</b>	<b>0.8%</b>	<b>99.8%</b>	<b>99.8%</b>
<b>Ambulance Headquarters</b>	<b>47</b>	<b>50</b>	<b>1.07</b>	<b>42.0%</b>	<b>58.0%</b>	<b>1.05</b>	<b>1.08</b>	<b>88.0%</b>	<b>88.0%</b>	<b>93.1%</b>	<b>96.0%</b>	<b>4.0%</b>	<b>95.2%</b>	<b>95.2%</b>
<b>NASC</b>	<b>159</b>	<b>160</b>	<b>1.01</b>	<b>65.6%</b>	<b>34.4%</b>	<b>1.00</b>	<b>1.02</b>	<b>21.9%</b>	<b>21.9%</b>	<b>14.5%</b>	<b>99.4%</b>	<b>0.6%</b>	<b>100.0%</b>	<b>100.0%</b>
<b>NEOC</b>	<b>154</b>	<b>159</b>	<b>1.03</b>	<b>49.7%</b>	<b>50.3%</b>	<b>1.02</b>	<b>1.05</b>	<b>98.7%</b>	<b>98.7%</b>	<b>98.8%</b>	<b>98.7%</b>	<b>1.3%</b>	<b>100.0%</b>	<b>100.0%</b>

# National Ambulance Service Employment by Grade Group & Staff Category: July 2021

Jul 2021 (Jul 2020 figure: 1,946)	WTE Dec 2015	WTE Dec 2016	WTE Dec 2017	WTE Dec 2018	WTE Dec 2019	WTE Dec 2020	WTE Jul 2021
<b>Overall</b>	<b>1,694</b>	<b>1,734</b>	<b>1,843</b>	<b>1,887</b>	<b>1,932.99</b>	<b>1,989.75</b>	<b>2,037</b>
Consultants	100.0%	100.0%	100.0%	100.0%	100.0%	100.0%	33.3%
SHO/ Interns							33.3%
Registrars							33.3%
<b>Medical &amp; Dental</b>	<b>0.1%</b>	<b>0.1%</b>	<b>0.1%</b>	<b>0.1%</b>	<b>0.1%</b>	<b>0.1%</b>	<b>0.1%</b>
Nurse/ Midwife Manager			50.0%	76.3%	50.0%	50.0%	50.0%
Staff Nurse/ Staff Midwife			50.0%	23.7%	50.0%	50.0%	50.0%
<b>Nursing &amp; Midwifery</b>			<b>0.1%</b>	<b>0.1%</b>	<b>0.1%</b>	<b>0.1%</b>	<b>0.1%</b>
Therapy Professions					100.0%	100.0%	
<b>Health &amp; Social Care Professionals</b>					<b>0.1%</b>	<b>0.1%</b>	
Management (VIII & above)	7.9%	7.5%	8.5%	8.9%	14.9%	16.1%	13.4%
Administrative/ Supervisory (V to VII)	20.3%	23.4%	31.1%	28.8%	34.9%	37.0%	45.3%
Clerical (III & IV)	71.9%	69.1%	60.4%	62.3%	50.3%	46.9%	41.3%
<b>Management &amp; Administrative</b>	<b>3.7%</b>	<b>3.8%</b>	<b>3.8%</b>	<b>4.2%</b>	<b>4.2%</b>	<b>4.5%</b>	<b>4.4%</b>
Support	83.8%	81.3%	86.2%	86.2%	63.6%	63.7%	55.1%
Maintenance/ Technical	16.2%	18.7%	13.8%	13.8%	36.4%	36.3%	44.9%
<b>General Support</b>	<b>1.1%</b>	<b>0.9%</b>	<b>0.8%</b>	<b>0.8%</b>	<b>0.3%</b>	<b>0.3%</b>	<b>0.2%</b>
<b>Health Care Assistants</b>	<b>0.2%</b>	<b>0.2%</b>	<b>0.2%</b>	<b>0.2%</b>	<b>0.1%</b>	<b>0.1%</b>	<b>0.1%</b>
Ambulance Control	10.9%	9.8%	9.5%	8.8%		8.8%	8.9%
Ambulance Education	5.9%	9.7%	10.5%	10.3%		10.0%	9.8%
Ambulance Officers	4.5%	4.3%	4.1%	4.3%		4.4%	4.4%
Pre-Hospital Care (Ambulance)	78.0%	75.6%	75.3%	76.0%		76.0%	76.1%
<b>Ambulance Staff</b>	<b>99.3%</b>	<b>99.4%</b>	<b>99.4%</b>	<b>99.4%</b>	<b>99.1%</b>	<b>99.2%</b>	<b>99.3%</b>
Care, other	0.5%	0.4%	0.4%	0.4%	0.8%	0.7%	0.7%
<b>Patient &amp; Client Care</b>	<b>95.1%</b>	<b>95.2%</b>	<b>95.2%</b>	<b>94.9%</b>	<b>95.3%</b>	<b>95.1%</b>	<b>95.1%</b>
<b>Total</b>	<b>100%</b>	<b>100%</b>	<b>100%</b>	<b>100%</b>	<b>100%</b>	<b>100%</b>	<b>100%</b>

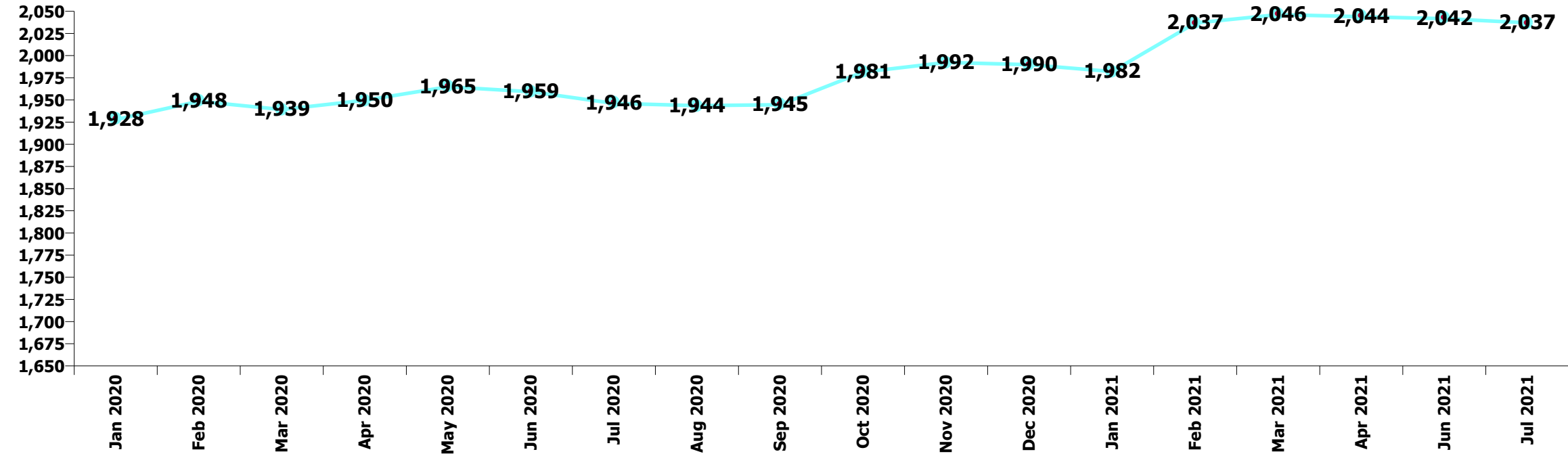
Summary Staff Movement: July 2021

Month-on-month Summary

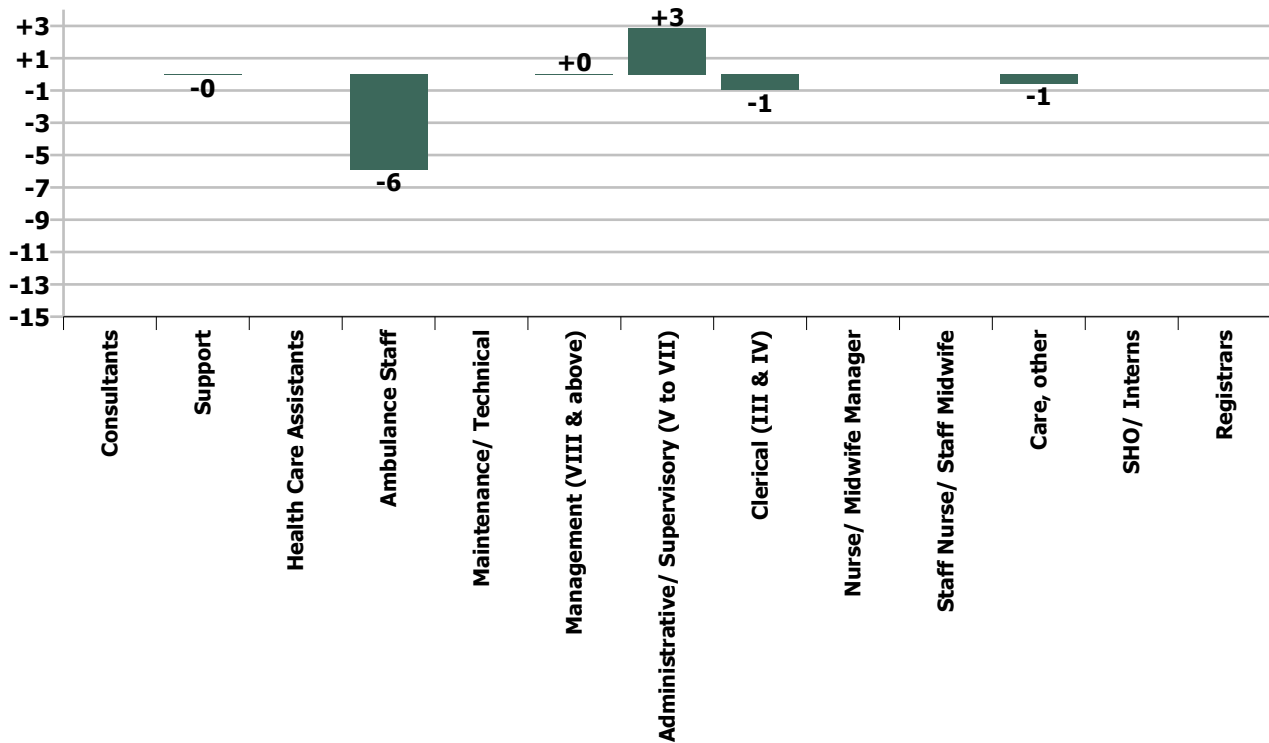
WTE change since Jun 21	% change since Jun 21	overall	Consultants	SHO/ Interns	Registrars	Medical & Dental	Nurse/ Midwife Manager	Staff Nurse/ Staff Midwife	Nursing & Midwifery	Management (VIII & above)	Administrative/ Supervisory (V to VII)	Clerical (III & IV)	Management & Administrative	General Support	Health Care Assistants	Ambulance Staff	Care, other	Patient & Client Care
Overall	-0.2%	-5								+0	+3	-1	+2	-0		-6	-1	-6
North Leinster	-0.3%	-2									0.0	-0.5	-0.5	-0.1		-0.6	-0.6	-1.2
South	-0.6%	-3		0.0		0.0					+0.5	-0.9	-0.4	0.0		-2.7		-2.7
West	-0.5%	-3								0.0	0.0	+0.4	+0.4		0.0	-3.6		-3.6
Ambulance Services	-0.5%	-8		0.0		0.0				0.0	+0.5	-0.9	-0.4	-0.1	0.0	-6.9	-0.6	-7.4
Ambulance Headquarters	+5.9%	+3	0.0		0.0	0.0				+0.0	+2.4	+0.2	+2.5			+0.1		+0.1
NASC	-0.1%	-0								0.0	0.0	-0.1	-0.1			-0.1		-0.1
NEOC	+0.6%	+1					0.0	0.0	0.0	0.0	0.0	-0.1	-0.2			+1.0		+1.0
										+0.2%	+7.5%	-2.6%	+2.1%	-1.3%		-0.3%	-4.4%	-0.3%

Year-on-year Summary

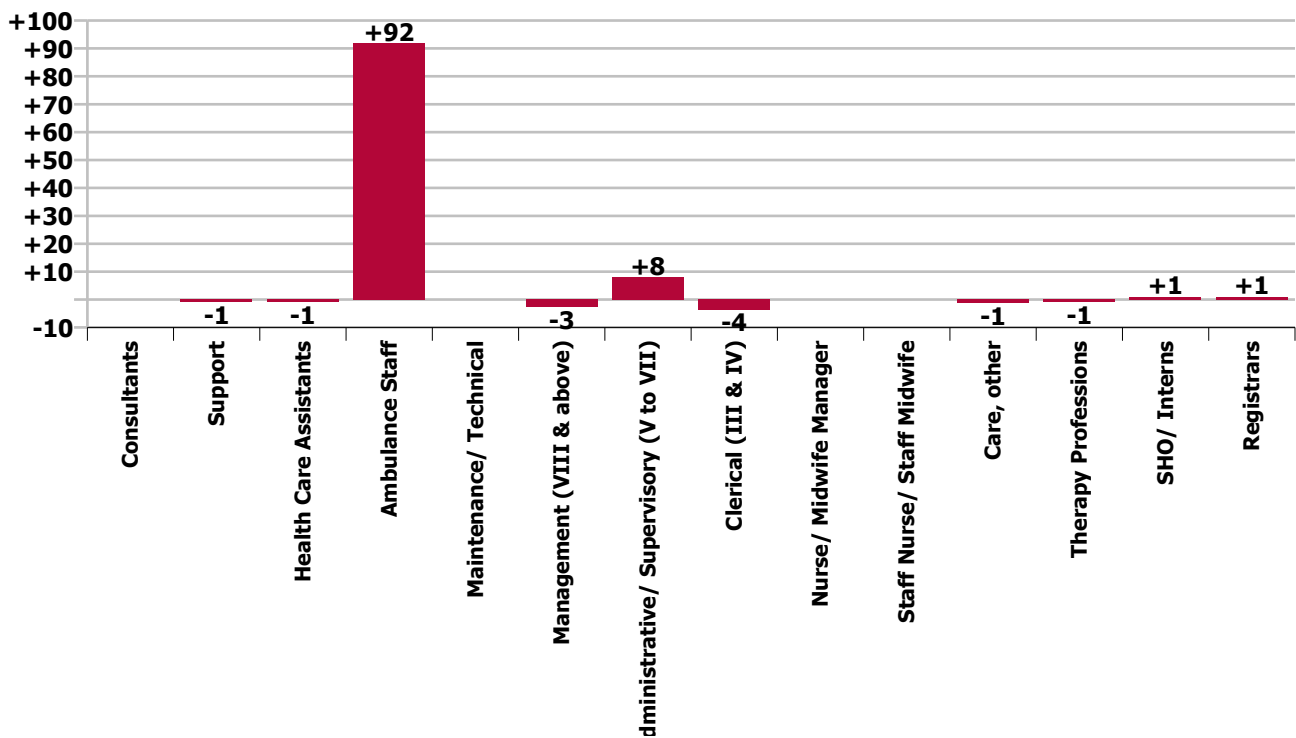
WTE change since Jul 20	% change since Jul 20	overall	Consultants	SHO/ Interns	Registrars	Medical & Dental	Nurse/ Midwife Manager	Staff Nurse/ Staff Midwife	Nursing & Midwifery	Therapy Professions	Health & Social Care Professionals	Management (VIII & above)	Administrative/ Supervisory (V to VII)	Clerical (III & IV)	Management & Administrative	General Support	Health Care Assistants	Ambulance Staff	Care, other	Patient & Client Care		
Overall	+4.7%	+91	0.0	+1.0	+1.0	+2.0	0.0	0.0	0.0	-1.0	-1.0	-2.8	+7.9	-3.6	+1.5	-1.0	-1.0	+91.8	-1.4	+89.4		
North Leinster	+8.3%	+47											+3.0	-0.9	+2.1	-1.0		+47.1	-1.4	+45.7		
South	-1.4%	-7		+1.0		+1.0							-1.5	+0.5	-1.0	0.0		-6.8		-6.8		
West	+2.1%	+12										0.0	+0.5	-1.7	-1.2		-1.0	+14.6		+13.6		
Ambulance Services	+3.2%	+52		+1.0		+1.0						0.0	+2.0	-2.1	-0.1	-1.0	-1.0	+54.9	-1.4	+52.5		
Ambulance Headquarters	+4.4%	+2	0.0		+1.0	+1.0				-1.0	-1.0	-2.8	+4.9	+0.8	+3.0			-1.0		-1.0		
NASC	+45.5%	+50										0.0	+1.0	-1.8	-0.8			+50.6		+50.6		
NEOC	-7.9%	-13					0.0	0.0	0.0			0.0	0.0	-0.5	-0.5			-12.7		-12.7		
						-100.0%	-100.0%	+200.0%				-100.0%	-100.0%	-19.0%	+24.2%	-8.8%	+1.7%	-19.1%	-50.0%	+5.0%	-9.8%	+4.8%



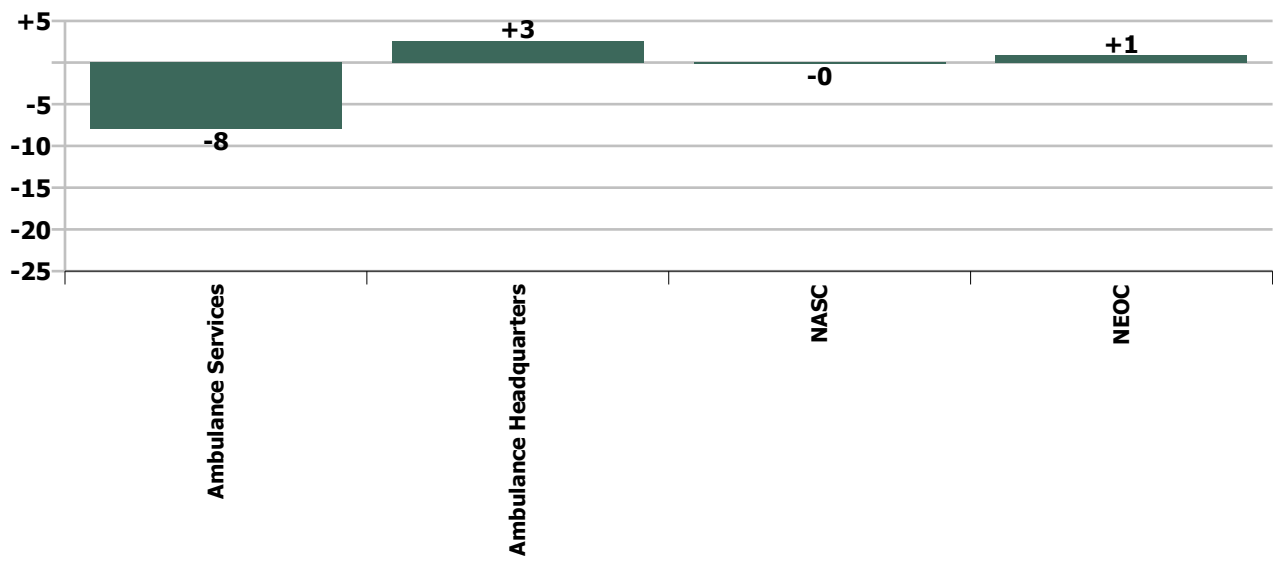
### Staff Group change since: Jun 2021



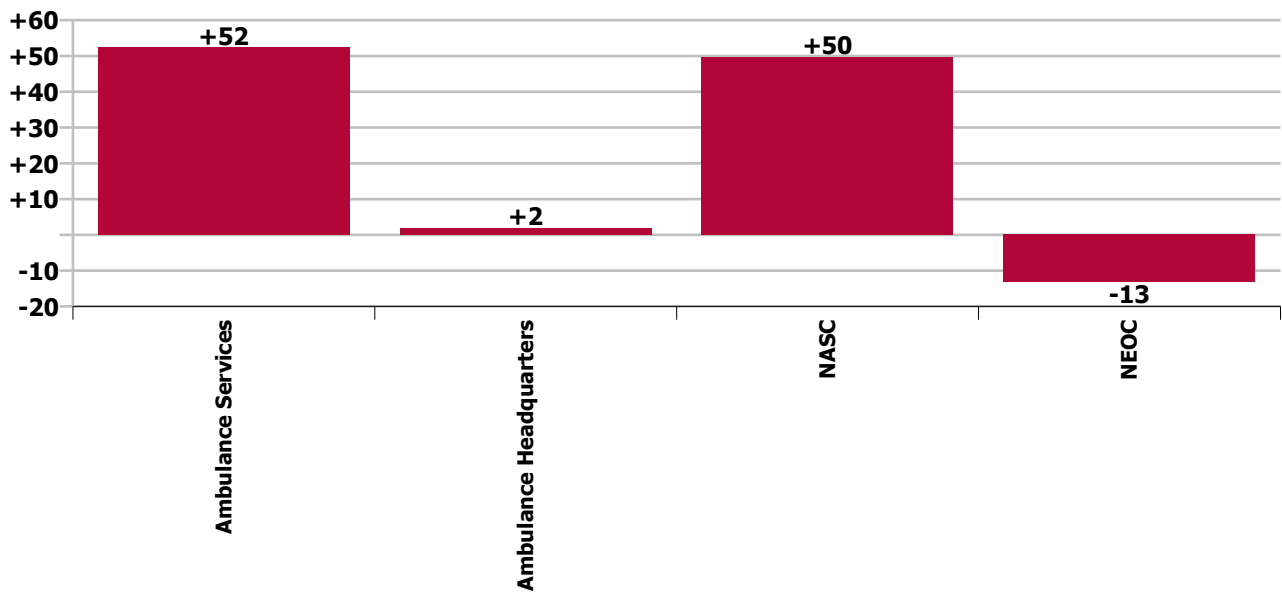
### Staff Group change since: Jul 2020



### Programme change since: Jun 2021



### Programme change since: Jul 2020



## Longitudinal Employment Levels by Grade Group - Dec 2016 to Jul 2021

Jul 2021 (Dec 2015 figure: 1,694)	WTE Jul 2021	WTE change since Dec 16	WTE change since Dec 17	WTE change since Dec 18	WTE change since Dec 19	WTE change since Dec 20	WTE change since Apr 21	% change since Dec 16	% change since Dec 17	% change since Dec 18	% change since Dec 19	% change since Dec 20	% change since Apr 21
<b>Overall</b>	<b>2,037</b>	<b>+303</b>	<b>+194</b>	<b>+150</b>	<b>+104</b>	<b>+47</b>	<b>-7</b>	<b>+17.5%</b>	<b>+10.5%</b>	<b>+7.9%</b>	<b>+5.4%</b>	<b>+2.4%</b>	<b>-0.3%</b>
<b>Consultants</b>	<b>1</b>												
<b>SHO/ Interns</b>	<b>1</b>	<b>+1</b>	<b>+1</b>	<b>+1</b>	<b>+1</b>	<b>+1</b>		<b>-100.0%</b>	<b>-100.0%</b>	<b>-100.0%</b>	<b>-100.0%</b>	<b>-100.0%</b>	
<b>Registrars</b>	<b>1</b>	<b>+1</b>	<b>+1</b>	<b>+1</b>	<b>+1</b>	<b>+1</b>	<b>+0</b>	<b>-100.0%</b>	<b>-100.0%</b>	<b>-100.0%</b>	<b>-100.0%</b>	<b>-100.0%</b>	<b>+49.3%</b>
<b>Medical &amp; Dental</b>	<b>3</b>	<b>+2</b>	<b>+2</b>	<b>+2</b>	<b>+2</b>	<b>+2</b>	<b>+0</b>	<b>+200.0%</b>	<b>+200.0%</b>	<b>+200.0%</b>	<b>+200.0%</b>	<b>+200.0%</b>	<b>+12.4%</b>
<b>Nurse/ Midwife Manager</b>	<b>1</b>	<b>+1</b>					<b>+0</b>	<b>-100.0%</b>					<b>+2.0%</b>
Staff Nurses [General/ Children's]	1	+1		+1				-100.0%	-100.0%				
<b>Staff Nurse/ Staff Midwife</b>	<b>1</b>	<b>+1</b>		<b>+1</b>				<b>-100.0%</b>		<b>+222.6%</b>			
<b>Nursing &amp; Midwifery</b>	<b>2</b>	<b>+2</b>		<b>+1</b>			<b>+0</b>	<b>-100.0%</b>		<b>+52.7%</b>			<b>+1.0%</b>
<b>Therapy Professions</b>					<b>-1</b>	<b>-1</b>	<b>-1</b>	<b>-100.0%</b>	<b>-100.0%</b>	<b>-100.0%</b>	<b>-100.0%</b>	<b>-100.0%</b>	<b>-100.0%</b>
<b>Health &amp; Social Care Professionals</b>					<b>-1</b>	<b>-1</b>	<b>-1</b>	<b>-100.0%</b>	<b>-100.0%</b>	<b>-100.0%</b>	<b>-100.0%</b>	<b>-100.0%</b>	<b>-100.0%</b>
<b>Management (VIII &amp; above)</b>	<b>12</b>	<b>+7</b>	<b>+6</b>	<b>+5</b>	<b>-0</b>	<b>-2</b>	<b>-1</b>	<b>+140.4%</b>	<b>+100.3%</b>	<b>+71.7%</b>	<b>-1.6%</b>	<b>-15.6%</b>	<b>-5.5%</b>
<b>Administrative/ Supervisory (V to VII)</b>	<b>41</b>	<b>+25</b>	<b>+19</b>	<b>+18</b>	<b>+12</b>	<b>+8</b>	<b>+3</b>	<b>+161.3%</b>	<b>+85.6%</b>	<b>+79.3%</b>	<b>+42.4%</b>	<b>+24.3%</b>	<b>+9.1%</b>
<b>Clerical (III &amp; IV)</b>	<b>37</b>	<b>-9</b>	<b>-6</b>	<b>-12</b>	<b>-4</b>	<b>-4</b>	<b>-4</b>	<b>-19.5%</b>	<b>-13.1%</b>	<b>-24.4%</b>	<b>-10.1%</b>	<b>-10.8%</b>	<b>-10.1%</b>
<b>Management &amp; Administrative</b>	<b>90</b>	<b>+23</b>	<b>+19</b>	<b>+11</b>	<b>+8</b>	<b>+1</b>	<b>-1</b>	<b>+34.8%</b>	<b>+27.2%</b>	<b>+14.0%</b>	<b>+9.5%</b>	<b>+1.4%</b>	<b>-1.6%</b>
<b>Support</b>	<b>2</b>	<b>-11</b>	<b>-10</b>	<b>-10</b>	<b>-1</b>	<b>-1</b>	<b>-0</b>	<b>-81.2%</b>	<b>-80.4%</b>	<b>-80.4%</b>	<b>-30.0%</b>	<b>-30.2%</b>	<b>-13.7%</b>
<b>Maintenance/ Technical</b>	<b>2</b>	<b>-1</b>					<b>+0</b>	<b>-33.3%</b>					<b>+0.5%</b>
<b>General Support</b>	<b>4</b>	<b>-12</b>	<b>-10</b>	<b>-10</b>	<b>-1</b>	<b>-1</b>	<b>-0</b>	<b>-72.2%</b>	<b>-69.3%</b>	<b>-69.3%</b>	<b>-19.1%</b>	<b>-19.2%</b>	<b>-7.9%</b>
<b>Health Care Assistants</b>	<b>1</b>	<b>-2</b>	<b>-2</b>	<b>-2</b>	<b>-1</b>	<b>-1</b>		<b>-67.2%</b>	<b>-66.7%</b>	<b>-66.7%</b>	<b>-50.0%</b>	<b>-50.0%</b>	
Ambulance Control	173	+12	+6	+15	-5	-7	-2	-1.0%	+7.2%	+3.8%	-3.1%	-3.9%	-0.9%
Ambulance Education	191	+31	+6	+6	+29	+53	-10	+100.9%	+19.7%	+3.2%	+17.8%	+38.0%	-5.0%
Ambulance Officers	85	+13	+13	+8	+7	+0	-0	+16.6%	+18.7%	+18.4%	+9.0%	+0.6%	-0.4%
Pre-Hospital Care (Ambulance)	1,475	+227	+154	+113	+69	+2	+8	+17.4%	+18.2%	+11.6%	+4.9%	+0.1%	+0.5%
<b>Ambulance Staff</b>	<b>1,924</b>	<b>+284</b>	<b>+179</b>	<b>+142</b>	<b>+99</b>	<b>+48</b>	<b>-4</b>	<b>+17.3%</b>	<b>+10.3%</b>	<b>+8.0%</b>	<b>+5.4%</b>	<b>+2.6%</b>	<b>-0.2%</b>
<b>Care, other</b>	<b>13</b>	<b>+6</b>	<b>+6</b>	<b>+6</b>	<b>-2</b>	<b>-1</b>	<b>-0</b>	<b>+84.4%</b>	<b>+84.7%</b>	<b>+84.4%</b>	<b>-13.8%</b>	<b>-6.6%</b>	<b>-1.6%</b>
<b>Patient &amp; Client Care</b>	<b>1,938</b>	<b>+287</b>	<b>+183</b>	<b>+146</b>	<b>+96</b>	<b>+46</b>	<b>-4</b>	<b>+17.4%</b>	<b>+10.4%</b>	<b>+8.2%</b>	<b>+5.2%</b>	<b>+2.4%</b>	<b>-0.2%</b>

Source: Health Service Personnel Census

## Longitudinal Employment Levels by Service - Dec 2016 to Jul 2021

Jul 2021 (Dec 2015 figure: 1,694)	WTE Jul 2021	WTE change since Dec 16	WTE change since Dec 17	WTE change since Dec 18	WTE change since Dec 19	WTE change since Dec 20	WTE change since Apr 21	% change since Dec 16	% change since Dec 17	% change since Dec 18	% change since Dec 19	% change since Dec 20	% change since Apr 21
<b>Overall</b>	<b>2,037</b>	<b>+303</b>	<b>+194</b>	<b>+150</b>	<b>+104</b>	<b>+47</b>	<b>-7</b>	<b>+17.5%</b>	<b>+10.5%</b>	<b>+7.9%</b>	<b>+5.4%</b>	<b>+2.4%</b>	<b>-0.3%</b>
North Leinster	608	+111	+65	+43	+45	+23	+2	+22.4%	+11.9%	+7.6%	+8.1%	+4.0%	+0.4%
South	479	+34	+10	+6	-7	-16	-4	+7.6%	+2.1%	+1.2%	-1.5%	-3.2%	-0.7%
West	590	+88	+44	+33	+8	+0	+1	+17.6%	+8.1%	+6.0%	+1.4%	+0.1%	+0.3%
<b>Ambulance Services</b>	<b>1,677</b>	<b>+233</b>	<b>+119</b>	<b>+82</b>	<b>+46</b>	<b>+8</b>	<b>+0</b>	<b>+16.2%</b>	<b>+7.6%</b>	<b>+5.1%</b>	<b>+2.8%</b>	<b>+0.5%</b>	<b>+0.0%</b>
<b>Ambulance Headquarters</b>	<b>47</b>	<b>+41</b>	<b>+23</b>	<b>+9</b>	<b>+6</b>	<b>+5</b>	<b>+2</b>	<b>+682.3%</b>	<b>+97.0%</b>	<b>+25.1%</b>	<b>+13.4%</b>	<b>+11.7%</b>	<b>+3.9%</b>
<b>NASC</b>	<b>159</b>	<b>-8</b>	<b>+36</b>	<b>+39</b>	<b>+56</b>	<b>+42</b>	<b>-6</b>	<b>-4.6%</b>	<b>+29.7%</b>	<b>+32.9%</b>	<b>+53.9%</b>	<b>+35.9%</b>	<b>-3.6%</b>
<b>NEOC</b>	<b>154</b>	<b>+36</b>	<b>+16</b>	<b>+19</b>	<b>-3</b>	<b>-8</b>	<b>-3</b>	<b>+31.0%</b>	<b>+11.6%</b>	<b>+14.0%</b>	<b>-2.0%</b>	<b>-4.8%</b>	<b>-2.0%</b>

Source: Health Service Personnel Census