

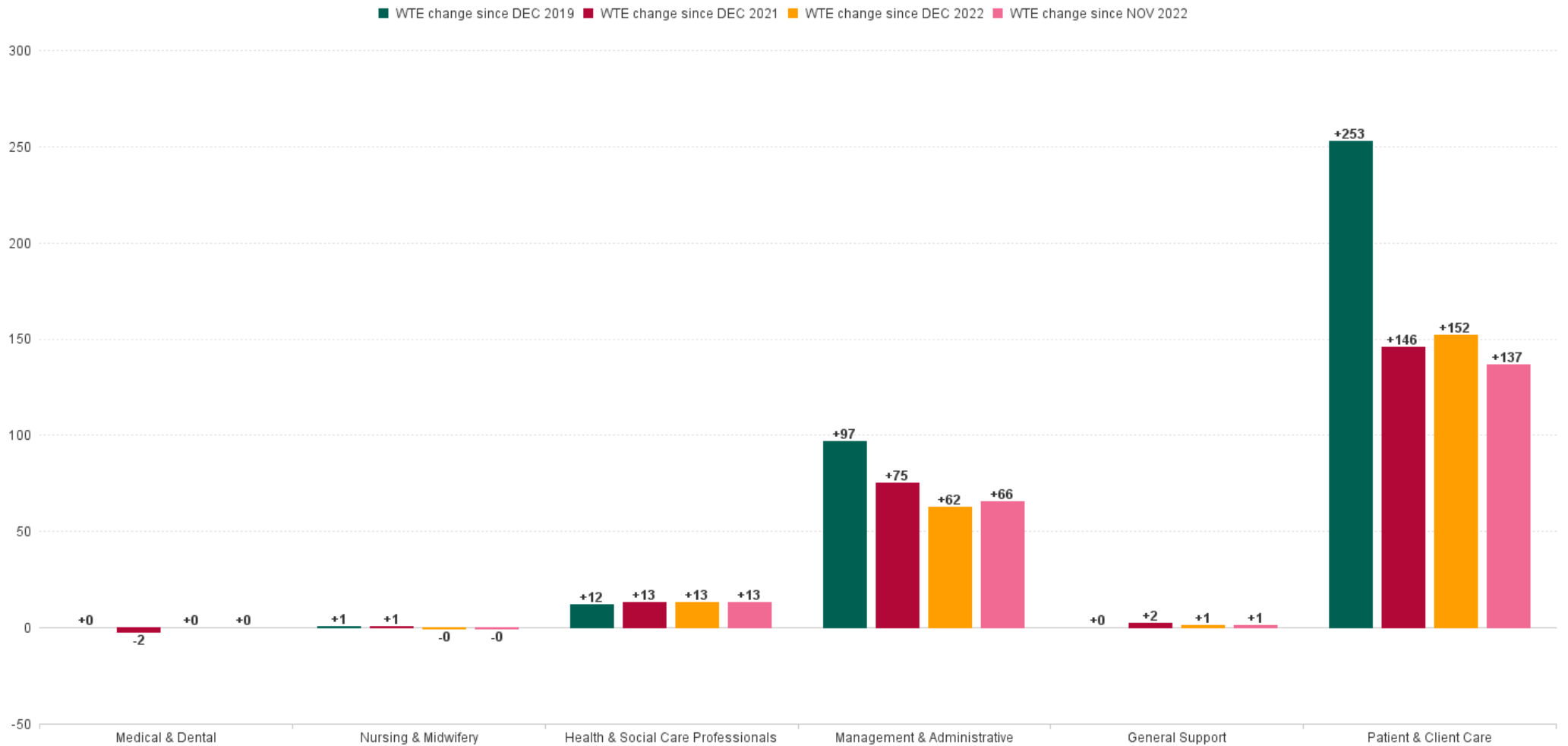
National Ambulance Services Employment Report : NOV 2023

Employment Report by Staff Group

NOV 2023	WTE DEC 2019	WTE DEC 2022	WTE OCT 2023	WTE NOV 2023	WTE change since DEC 2019	% WTE change since Dec 2019	WTE change since DEC 2022	% WTE change since Dec 2022	WTE change since OCT 2023	No. NOV 2023
Overall	1,933	2,067	2,279	2,295	+362	+18.7%	+228	+11.0%	+16	2,361
Consultants	1	1	1	1	+0	+0.0%	+0	+0.0%	+0	1
Medical & Dental	1	1	1	1	+0	+0.0%	+0	+0.0%	+0	1
Nurse/ Midwife Manager	1	3	3	3	+2	+174.0%	-0	-8.1%	-0	3
Staff Nurse/ Staff Midwife	1				-1	-100.0%				
Nursing & Midwifery	2	3	3	3	+1	+37.0%	-0	-8.1%	-0	3
H&SC, Other				13	+13		+13		+13	14
Therapy Professions	1				-1	-100.0%				
Health & Social Care Professionals	1			13	+12	+1,190.0%	+13		+13	14
Administrative/ Supervisory (V to VII)	29	50	76	80	+51	+179.7%	+30	+59.0%	+4	83
Clerical (III & IV)	41	45	56	60	+19	+45.2%	+15	+32.0%	+3	63
Management (VIII & above)	12	21	39	39	+27	+218.8%	+18	+88.2%	+0	39
Management & Administrative	82	116	172	179	+97	+117.9%	+62	+53.6%	+7	185
Maintenance/ Technical	2	1	1	1	-1	-50.0%	+0	+0.0%	+0	1
Support	4	3	3	5	+1	+28.6%	+1	+43.3%	+2	5
General Support	6	4	4	6	+0	+0.0%	+1	+32.9%	+2	6
Ambulance Staff	1,825	1,931	2,089	2,084	+259	+14.2%	+153	+7.9%	-5	2,141
Care, other	15	11	10	10	-5	-35.0%	-1	-11.4%	-1	10
Health Care Assistants	2	1	1	1	-1	-55.0%	+0	+1.1%	-0	1
Patient & Client Care	1,841	1,942	2,100	2,094	+253	+13.7%	+152	+7.8%	-6	2,152



WTE Change by Staff Category



National Ambulance Services Report by Region: NOV 2023

NOV 2023	WTE DEC 2019	WTE DEC 2022	WTE OCT 2023	WTE NOV 2023	WTE change since DEC 2019	% WTE change since Dec 2019	WTE change since DEC 2022	% WTE change since Dec 2022	WTE change since OCT 2023	No. NOV 2023
Overall	1,933	2,067	2,279	2,295	+362	+18.7%	+228	+11.0%	+16	2,361
Ambulance Headquarters	41	148	152	155	+113	+273.8%	+7	+4.7%	+2	158
NEOC	157	143	162	159	+2	+1.4%	+16	+11.2%	-3	164
NASC	103	138	205	219	+116	+112.2%	+81	+58.8%	+15	224
Ambulance Services	1,631	1,638	1,760	1,762	+131	+8.0%	+124	+7.6%	+2	1,815
National Ambulance Service	1933	2067	2279	2295	362.11	+18.7%	228.24	+11.0%	16.18	2,361



National Ambulance Services Employment Report : NOV 2023

Ambulance Headquarters

NOV 2023	WTE DEC 2019	WTE DEC 2022	WTE OCT 2023	WTE NOV 2023	WTE change since DEC 2019	% WTE change since Dec 2019	WTE change since DEC 2022	% WTE change since Dec 2022	WTE change since OCT 2023	No. NOV 2023
Overall	41	148	152	155	+113	+273.8%	+7	+4.7%	+2	158
Consultants	1	1	1	1	+0	+0.0%	+0	+0.0%	+0	1
Medical & Dental	1	1	1	1	+0	+0.0%	+0	+0.0%	+0	1
Nurse/ Midwife Manager		2	2	2	+2		-0	-12.1%	-0	2
Nursing & Midwifery		2	2	2	+2		-0	-12.1%	-0	2
Therapy Professions	1				-1	-100.0%				
Health & Social Care Professionals	1				-1	-100.0%				
Administrative/ Supervisory (V to VII)	16	31	42	45	+30	+189.2%	+14	+47.2%	+3	46
Clerical (III & IV)	10	14	23	23	+14	+139.2%	+9	+62.4%	+1	24
Management (VIII & above)	9	18	21	21	+12	+133.0%	+3	+18.5%	-0	21
Management & Administrative	34	63	86	90	+55	+160.3%	+27	+42.6%	+4	91
Ambulance Staff	5	82	64	63	+58	+1,150.0%	-20	-23.8%	-1	64
Patient & Client Care	5	82	64	63	+58	+1,150.0%	-20	-23.8%	-1	64



NEOC

NOV 2023	WTE DEC 2019	WTE DEC 2022	WTE OCT 2023	WTE NOV 2023	WTE change since DEC 2019	% WTE change since Dec 2019	WTE change since DEC 2022	% WTE change since Dec 2022	WTE change since OCT 2023	No. NOV 2023
Overall	157	143	162	159	+2	+1.4%	+16	+11.2%	-3	164
Nurse/ Midwife Manager	1	1	1	1	+0	+0.0%	+0	+0.0%	+0	1
Staff Nurse/ Staff Midwife	1				-1	-100.0%				
Nursing & Midwifery	2	1	1	1	-1	-50.0%	+0	+0.0%	+0	1
Administrative/ Supervisory (V to VII)	1	2	3	3	+2	+160.0%	+1	+30.7%	-0	3
Clerical (III & IV)	2	2	1	2	-1	-23.8%	-1	-25.0%	+1	2
Management (VIII & above)	1	2	4	4	+3	+230.6%	+2	+101.0%	+0	4
Management & Administrative	5	6	8	8	+4	+82.9%	+2	+31.3%	+0	9
Ambulance Staff	150	136	153	150	-1	-0.4%	+14	+10.3%	-3	154
Patient & Client Care	150	136	153	150	-1	-0.4%	+14	+10.3%	-3	154



NASC

NOV 2023	WTE DEC 2019	WTE DEC 2022	WTE OCT 2023	WTE NOV 2023	WTE change since DEC 2019	% WTE change since Dec 2019	WTE change since DEC 2022	% WTE change since Dec 2022	WTE change since OCT 2023	No. NOV 2023
Overall	103	138	205	219	+116	+112.2%	+81	+58.8%	+15	224
H&SC, Other				13	+13		+13		+13	14
Health & Social Care Professionals				13	+13		+13		+13	14
Administrative/ Supervisory (V to VII)	2	4	9	10	+8	+380.5%	+6	+142.1%	+0	10
Clerical (III & IV)	3	2	3	5	+2	+64.7%	+3	+113.3%	+2	6
Management (VIII & above)	1	1	4	4	+3	+300.0%	+3	+304.0%	+0	4
Management & Administrative	6	7	17	19	+13	+206.4%	+11	+154.4%	+2	20
Ambulance Staff	97	131	188	188	+90	+93.0%	+57	+43.5%	-0	190
Patient & Client Care	97	131	188	188	+90	+93.0%	+57	+43.5%	-0	190



Ambulance Services

NOV 2023	WTE DEC 2019	WTE DEC 2022	WTE OCT 2023	WTE NOV 2023	WTE change since DEC 2019	% WTE change since Dec 2019	WTE change since DEC 2022	% WTE change since Dec 2022	WTE change since OCT 2023	No. NOV 2023
Overall	1,631	1,638	1,760	1,762	+131	+8.0%	+124	+7.6%	+2	1,815
Administrative/ Supervisory (V to VII)	10	14	22	23	+13	+126.7%	+9	+65.2%	+0	24
Clerical (III & IV)	26	26	29	29	+4	+13.7%	+3	+13.0%	+0	31
Management (VIII & above)	1		10	10	+9	+896.0%	+10		+0	10
Management & Administrative	37	40	61	62	+25	+68.2%	+22	+56.0%	+1	65
Maintenance/ Technical	2	1	1	1	-1	-50.0%	+0	+0.0%	+0	1
Support	4	3	3	5	+1	+28.6%	+1	+43.3%	+2	5
General Support	6	4	4	6	+0	+0.0%	+1	+32.9%	+2	6
Ambulance Staff	1,572	1,582	1,684	1,684	+112	+7.1%	+102	+6.4%	-0	1,733
Care, other	15	11	10	10	-5	-35.0%	-1	-11.4%	-1	10
Health Care Assistants	2	1	1	1	-1	-55.0%	+0	+1.1%	-0	1
Patient & Client Care	1,589	1,594	1,695	1,694	+105	+6.6%	+100	+6.3%	-1	1,744

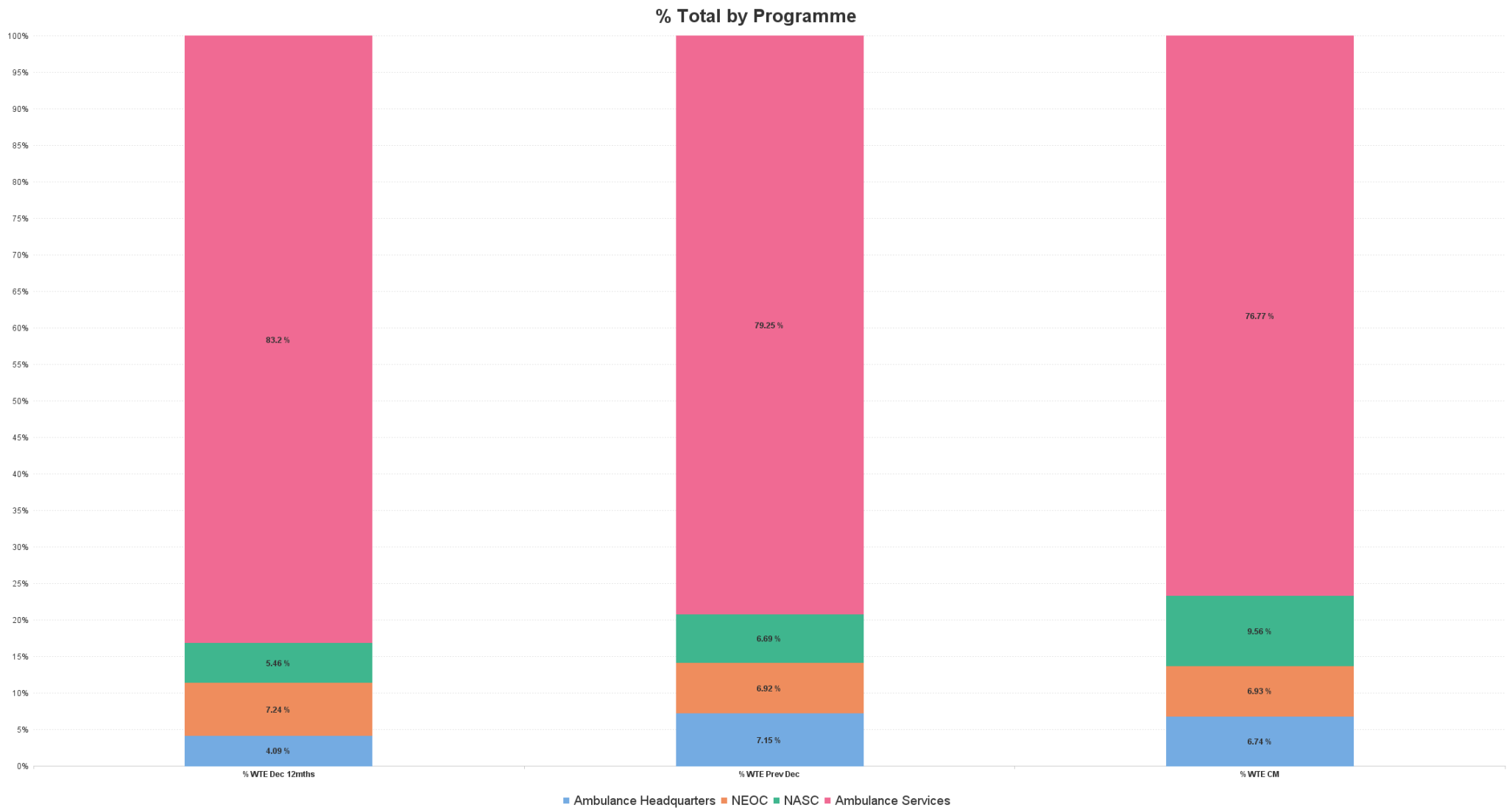


Emergency Services : NOV 2023

Employment Report by Staff Group

NOV 2023	WTE DEC 2019	WTE DEC 2022	WTE OCT 2023	WTE NOV 2023	WTE change since DEC 2019	% WTE change since Dec 2019	WTE change since DEC 2022	% WTE change since Dec 2022	WTE change since OCT 2023	No. NOV 2023
Emergency Services	1,631	1,638	1,760	1,762	+131	+8.0%	+124	+7.6%	+2	1,815
Administrative/ Supervisory (V to VII)	10	14	22	23	+13	+126.7%	+9	+65.2%	+0	24
Clerical (III & IV)	26	26	29	29	+4	+13.7%	+3	+13.0%	+0	31
Management (VIII & above)	1		10	10	+9	+896.0%	+10		+0	10
Management & Administrative	37	40	61	62	+25	+68.2%	+22	+56.0%	+1	65
Maintenance/ Technical	2	1	1	1	-1	-50.0%	+0	+0.0%	+0	1
Support	4	3	3	5	+1	+28.6%	+1	+43.3%	+2	5
General Support	6	4	4	6	+0	+0.0%	+1	+32.9%	+2	6
Ambulance Staff	1,572	1,582	1,684	1,684	+112	+7.1%	+102	+6.4%	-0	1,733
Care, other	15	11	10	10	-5	-35.0%	-1	-11.4%	-1	10
Health Care Assistants	2	1	1	1	-1	-55.0%	+0	+1.1%	-0	1
Patient & Client Care	1,589	1,594	1,695	1,694	+105	+6.6%	+100	+6.3%	-1	1,744



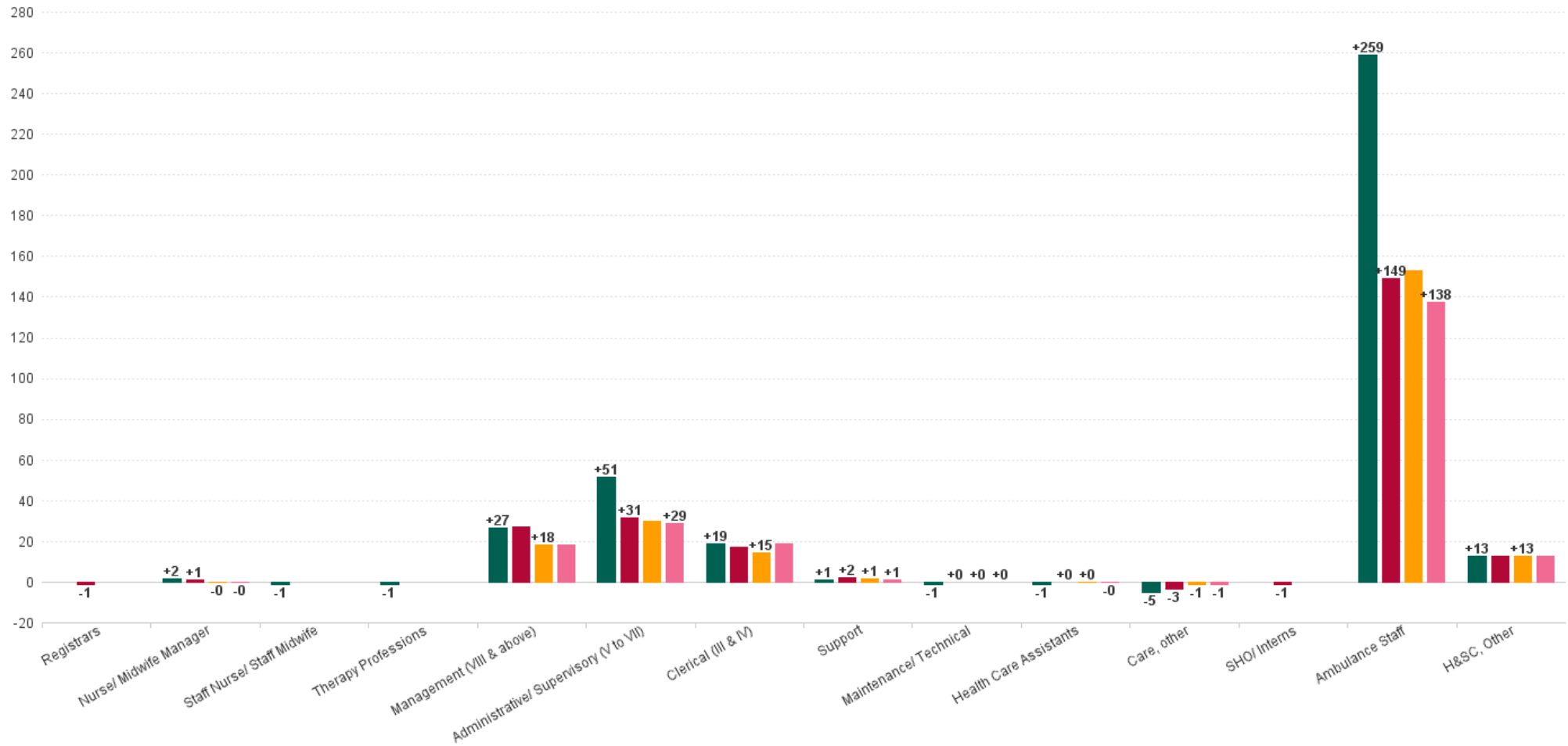


National Ambulance Services Employment Report by Grade Group: NOV 2023

NOV 2023	WTE DEC 2019	WTE DEC 2022	WTE OCT 2023	WTE NOV 2023	WTE change since DEC 2019	% WTE change since Dec 2019	WTE change since DEC 2022	% WTE change since Dec 2022	WTE change since OCT 2023	No. NOV 2023
Overall	1,933	2,067	2,279	2,295	+362	+18.7%	+228	+11.0%	+16	2,361
Consultant Emergency Medicine	1	1	1	1	+0	+0.0%	+0	+0.0%	+0	1
Consultants	1	1	1	1	+0	+0.0%	+0	+0.0%	+0	1
Medical & Dental	1	1	1	1	+0	+0.0%	+0	+0.0%	+0	1
Clinical Nurse/ Midwife Manager 2	1	1	1	1	+0	+0.0%	+0	+0.0%	+0	1
Director Nursing/Midwifery, Assistant		1	1	1	+1		-0	-25.3%	-0	1
Director of Nursing/Midwifery		1	1	1	+1		+0	+1.0%	+0	1
Nurse/ Midwife Manager	1	3	3	3	+2	+174.0%	-0	-8.1%	-0	3
Staff Nurses [General/ Children's]	1				-1	-100.0%				
Staff Nurse/ Staff Midwife	1				-1	-100.0%				
Nursing & Midwifery	2	3	3	3	+1	+37.0%	-0	-8.1%	-0	3
Other Health & Social Care				13	+13		+13		+13	14
H&SC, Other				13	+13		+13		+13	14
Dietitians	1				-1	-100.0%				
Therapy Professions	1				-1	-100.0%				
Health & Social Care Professionals	1			13	+12	+1,190.0%	+13		+13	14
Middle Management (V-VII)	29	50	76	80	+51	+179.7%	+30	+59.0%	+4	83
Administrative/ Supervisory (V to VII)	29	50	76	80	+51	+179.7%	+30	+59.0%	+4	83
General Administrative (III & IV)	41	45	56	60	+19	+45.2%	+15	+32.0%	+3	63
Clerical (III & IV)	41	45	56	60	+19	+45.2%	+15	+32.0%	+3	63
Executive Management	2	7	11	11	+9	+446.5%	+4	+50.8%	-0	11
Senior Management (VIII & GM)	10	13	28	28	+18	+174.2%	+15	+108.5%	+0	28
Management (VIII & above)	12	21	39	39	+27	+218.8%	+18	+88.2%	+0	39
Management & Administrative	82	116	172	179	+97	+117.9%	+62	+53.6%	+7	185
Maintenance	2	1	1	1	-1	-50.0%	+0	+0.0%	+0	1
Maintenance/ Technical	2	1	1	1	-1	-50.0%	+0	+0.0%	+0	1
Other Support	4	3	3	3	-1	-28.6%	-1	-20.4%	-0	3
Portering				2	+2		+2		+2	2
Support	4	3	3	5	+1	+28.6%	+1	+43.3%	+2	5
General Support	6	4	4	6	+0	+0.0%	+1	+32.9%	+2	6
Ambulance Control	179	164	201	196	+18	+9.9%	+33	+19.9%	-5	202
Ambulance Education	162	203	261	238	+76	+47.2%	+35	+17.3%	-23	241
Ambulance Officers	78	87	73	74	-4	-5.5%	-13	-15.1%	+1	75
Pre-Hospital Care (Ambulance)	1,406	1,477	1,553	1,575	+169	+12.0%	+98	+6.7%	+22	1,623
Ambulance Staff	1,825	1,931	2,089	2,084	+259	+14.2%	+153	+7.9%	-5	2,141
Other Care Grades	15	11	10	10	-5	-35.0%	-1	-11.4%	-1	10
Care, other	15	11	10	10	-5	-35.0%	-1	-11.4%	-1	10
Attendant/ Aide	2	1	1	1	-1	-55.0%	+0	+1.1%	-0	1
Health Care Assistants	2	1	1	1	-1	-55.0%	+0	+1.1%	-0	1
Patient & Client Care	1841	1942	2100	2094	+253	+13.7%	+152	+7.8%	-6	2,152

WTE Change by Staff Category

■ WTE change since DEC 2019 ■ WTE change since DEC 2021 ■ WTE change since DEC 2022 ■ WTE change since NOV 2022



National Ambulance Services Employment Report by WTE, Headcount, Gender, Full-Time / Part-Time etc. NOV 2023

NOV 2023	WTE NOV 2023	No. NOV 2023	WTE : No	% Male	% Female	Male WTE : No.	Female WTE : No	Perm Count %	Perm Count Male %	Perm Count Female %	Fulltime Count %	Part time Count %	FT Count Male %	FT Count Female %
Total	2,295	2,361	1:1	67.30%	32.70%	1:1	1:1	81.79%	57.43%	24.35%	99.36%	0.64%	99.87%	98.32%
Consultants	1	1	1:1	100.00%		1:1	1:	100.00%	100.00%		100.00%		100.00%	
Medical & Dental	1	1	1:1	100.00%		1:1	1:	100.00%	100.00%		100.00%		100.00%	
Nurse/ Midwife Manager	2.74	3	1:0.9	33.33%	66.67%	1:0.7	1:1	100.00%	33.33%	66.67%	100.00%		100.00%	100.00%
Nursing & Midwifery	3	3	1:0.9	33.33%	66.67%	1:0.7	1:1	100.00%	33.33%	66.67%	100.00%		100.00%	100.00%
Other Health & Social Care	12.9	14	1:0.9	78.57%	21.43%	1:0.9	1:1	100.00%	78.57%	21.43%	100.00%		100.00%	100.00%
H&SC, Other	12.9	14	1:0.9	78.57%	21.43%	1:0.9	1:1	100.00%	78.57%	21.43%	100.00%		100.00%	100.00%
Health & Social Care Professionals	13	14	1:0.9	78.57%	21.43%	1:0.9	1:1	100.00%	78.57%	21.43%	100.00%		100.00%	100.00%
Management (VIII & above)	38.93	39	1:1	76.92%	23.08%	1:1	1:1	100.00%	76.92%	23.08%	100.00%		100.00%	100.00%
Administrative/ Supervisory (V to VII)	80	83	1:1	31.33%	68.67%	1:1	1:1	100.00%	31.33%	68.67%	97.59%	2.41%	100.00%	96.49%
Clerical (III & IV)	59.88	63	1:1	23.81%	76.19%	1:1	1:0.9	95.24%	22.22%	73.02%	88.89%	11.11%	100.00%	85.42%
Management & Administrative	179	185	1:1	38.38%	61.62%	1:1	1:1	98.38%	37.84%	60.54%	95.14%	4.86%	100.00%	92.11%
Support	4.5	5	1:0.9	60.00%	40.00%	1:0.8	1:1	80.00%	40.00%	40.00%	80.00%	20.00%	66.67%	100.00%
Maintenance/ Technical	1	1	1:1	100.00%		1:1	1:	100.00%	100.00%		100.00%		100.00%	
General Support	6	6	1:0.9	66.67%	33.33%	1:0.9	1:1	83.33%	50.00%	33.33%	83.33%	16.67%	75.00%	100.00%
Health Care Assistants	0.9	1	1:0.9	100.00%		1:0.9	1:	100.00%	100.00%		100.00%		100.00%	
Ambulance Staff	2,083.71	2,141	1:1	69.73%	30.27%	1:1	1:1	80.10%	58.94%	21.16%	99.77%	0.23%	99.93%	99.38%
Care, other	9.54	10	1:1	70.00%	30.00%	1:1	1:0.9	100.00%	70.00%	30.00%	100.00%		100.00%	100.00%
Patient & Client Care	2,094	2,152	1:1	69.75%	30.25%	1:1	1:1	80.20%	59.01%	21.19%	99.77%	0.23%	99.93%	99.39%



National Ambulance Services Employment Report by Region: WTE, Headcount, Gender, Full-Time / Part-Time etc. NOV 2023

NOV 2023	WTE NOV 2023	No. NOV 2023	WTE : No	% Male	% Female	Male WTE : No.	Female WTE : No	Perm Count %	Number Male %	Number Female %	Fulltime Count %	Part time Count %	FT Count Male %	FT Count Female %
Total	2,295	2,361	1:1	67.30%	32.70%	1:1	1:1	81.79%	57.43%	24.35%	99.36%	0.64%	99.87%	98.32%
Ambulance Headquarters	155	158	1:1	56.33%	43.67%	1:1	1:1	98.10%	55.06%	43.04%	98.73%	1.27%	98.88%	98.55%
Ambulance Services	1,762	1,815	1:1	71.79%	28.21%	1:1	1:1	85.51%	63.20%	22.31%	99.39%	0.61%	99.92%	98.05%
NASC	219	224	1:1	53.57%	46.43%	1:1	1:1	27.68%	20.09%	7.59%	99.55%	0.45%	100.00%	99.04%
NEOC	159	164	1:1	46.95%	53.05%	1:1	1:1	98.78%	46.95%	51.83%	99.39%	0.61%	100.00%	98.85%



Previous Month Summary

	% WTE change since OCT 2023	WTE change since OCT 2023	Ambulance Headquarters	NEOC	NASC	Ambulance Services
Total	+0.7%	+16.2	+2.4	-2.9	+14.8	+1.8
Registrars						
Consultants	+0.0%	+0.0	+0.0			
SHO/ Interns						
Medical & Dental	+0.0%	+0.0	+0.0			
Nurse/ Midwife Manager	-8.1%	-0.2	-0.3	+0.0		
Staff Nurse/ Staff Midwife						
Nursing & Midwifery	-8.1%	-0.2	-0.3	+0.0		
Therapy Professions						
H&SC, Other		+12.9			+12.9	
Health & Social Care Professionals		+12.9			+12.9	
Management (VIII & above)	+0.5%	+0.2	-0.0	+0.0	+0.0	+0.2
Administrative/ Supervisory (V to VII)	+4.6%	+3.5	+3.3	-0.4	+0.2	+0.4
Clerical (III & IV)	+6.0%	+3.4	+0.6	+0.8	+1.8	+0.2
Management & Administrative	+4.1%	+7.1	+3.9	+0.4	+2.0	+0.9
Support	+79.3%	+2.0				+2.0
Maintenance/ Technical	+0.0%	+0.0				+0.0
General Support	+56.7%	+2.0				+2.0
Health Care Assistants	-3.2%	-0.0				-0.0
Care, other	-6.5%	-0.7				-0.7
Ambulance Staff	-0.2%	-4.9	-1.2	-3.3	-0.0	-0.4
Patient & Client Care	-0.3%	-5.6	-1.2	-3.3	-0.0	-1.0



Year on Year Summary

	% WTE change since NOV 2022	WTE change since NOV 2022	Ambulance Headquarters	NEOC	NASC	Ambulance Services
Total	+10.4%	+215.9	+31.0	+12.7	+86.2	+86.1
Registrars						
Consultants	+0.0%	+0.0	+0.0			
SHO/ Interns						
Medical & Dental	+0.0%	+0.0	+0.0			
Nurse/ Midwife Manager	-8.1%	-0.2	-0.2	+0.0		
Staff Nurse/ Staff Midwife						
Nursing & Midwifery	-8.1%	-0.2	-0.2	+0.0		
Therapy Professions						
H&SC, Other		+12.9			+12.9	
Health & Social Care Professionals		+12.9			+12.9	
Management (VIII & above)	+86.1%	+18.0	+3.1	+2.0	+3.0	+10.0
Administrative/ Supervisory (V to VII)	+56.2%	+28.8	+14.7	+0.6	+5.0	+8.5
Clerical (III & IV)	+45.6%	+18.8	+13.7	-0.8	+1.7	+4.1
Management & Administrative	+57.9%	+65.6	+31.5	+1.8	+9.7	+22.6
Support	+35.1%	+1.2				+1.2
Maintenance/ Technical	+0.0%	+0.0				+0.0
General Support	+27.0%	+1.2				+1.2
Health Care Assistants	-3.2%	-0.0				-0.0
Care, other	-10.8%	-1.2				-1.2
Ambulance Staff	+7.1%	+137.7	-0.2	+10.9	+63.6	+63.5
Patient & Client Care	+7.0%	+136.6	-0.2	+10.9	+63.6	+62.3

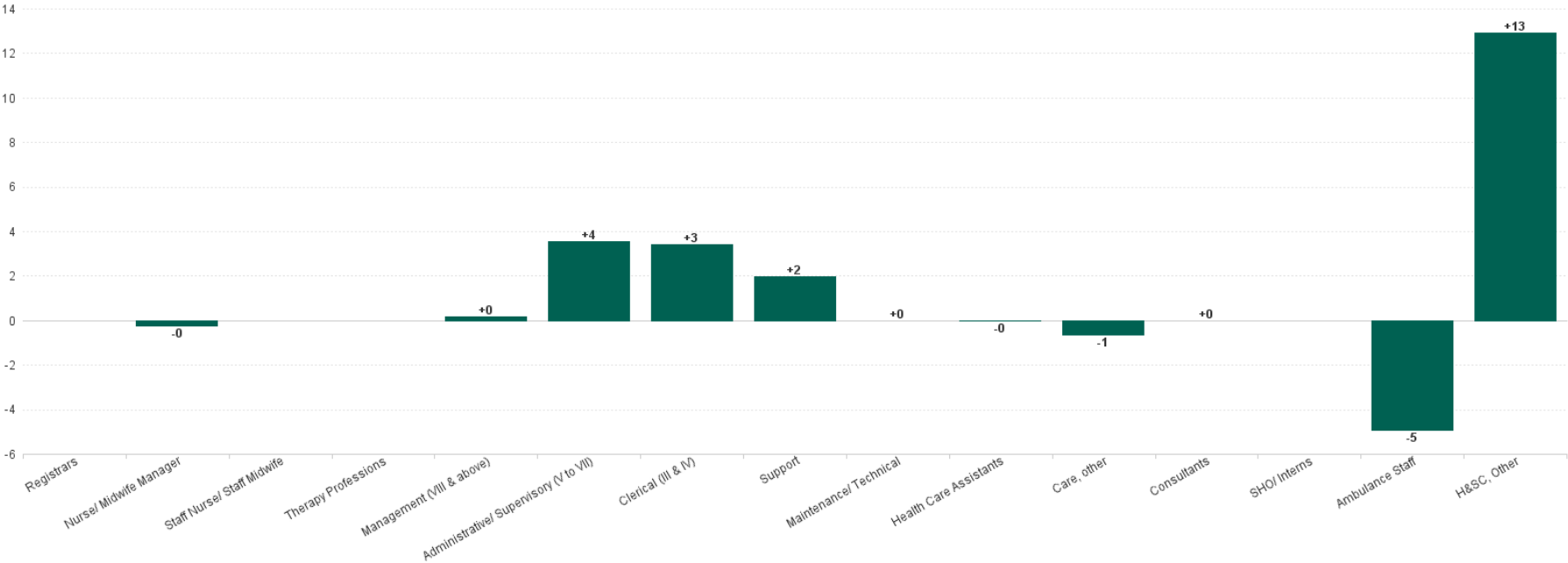


Year to Date Summary

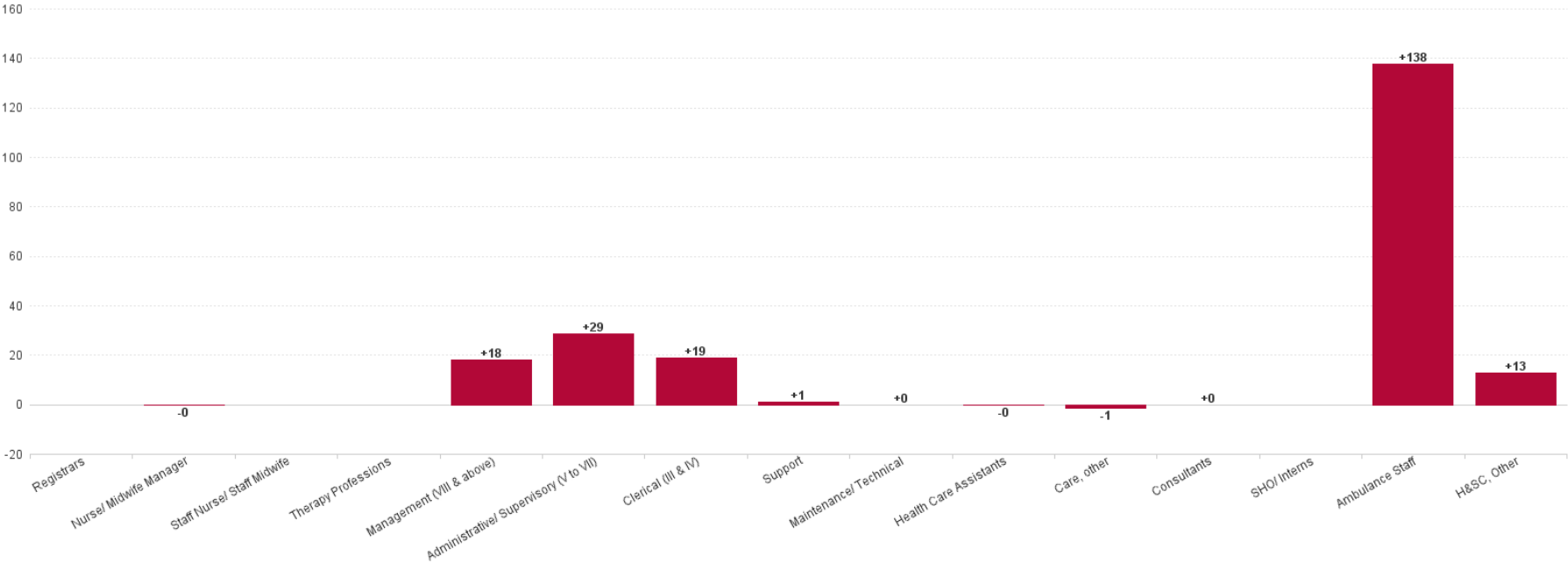
	% WTE change since DEC 2022	WTE change since DEC 2022	Ambulance Headquarters	NEOC	NASC	Ambulance Services
Total	+11.0%	+228.2	+7.0	+16.0	+81.2	+124.0
Registrars						
Consultants	+0.0%	+0.0	+0.0			
SHO/ Interns						
Medical & Dental	+0.0%	+0.0	+0.0			
Nurse/ Midwife Manager	-8.1%	-0.2	-0.2	+0.0		
Staff Nurse/ Staff Midwife						
Nursing & Midwifery	-8.1%	-0.2	-0.2	+0.0		
Therapy Professions						
H&SC, Other		+12.9			+12.9	
Health & Social Care Professionals		+12.9			+12.9	
Management (VIII & above)	+88.2%	+18.3	+3.3	+2.0	+3.0	+10.0
Administrative/ Supervisory (V to VII)	+59.0%	+29.7	+14.5	+0.6	+5.6	+9.0
Clerical (III & IV)	+32.0%	+14.5	+9.0	-0.6	+2.7	+3.4
Management & Administrative	+53.6%	+62.4	+26.8	+2.0	+11.4	+22.3
Support	+43.3%	+1.4				+1.4
Maintenance/ Technical	+0.0%	+0.0				+0.0
General Support	+32.9%	+1.4				+1.4
Health Care Assistants	+1.1%	+0.0				+0.0
Care, other	-11.4%	-1.2				-1.2
Ambulance Staff	+7.9%	+153.0	-19.5	+14.0	+56.9	+101.6
Patient & Client Care	+7.8%	+151.8	-19.5	+14.0	+56.9	+100.4



Previous Month Summary Chart: Change since OCT 2023



Previous Year Summary Chart: Change since NOV 2022



YTD Summary Chart: Change since DEC 2022

