

## National Ambulance Service Services Employment Report: September 2021

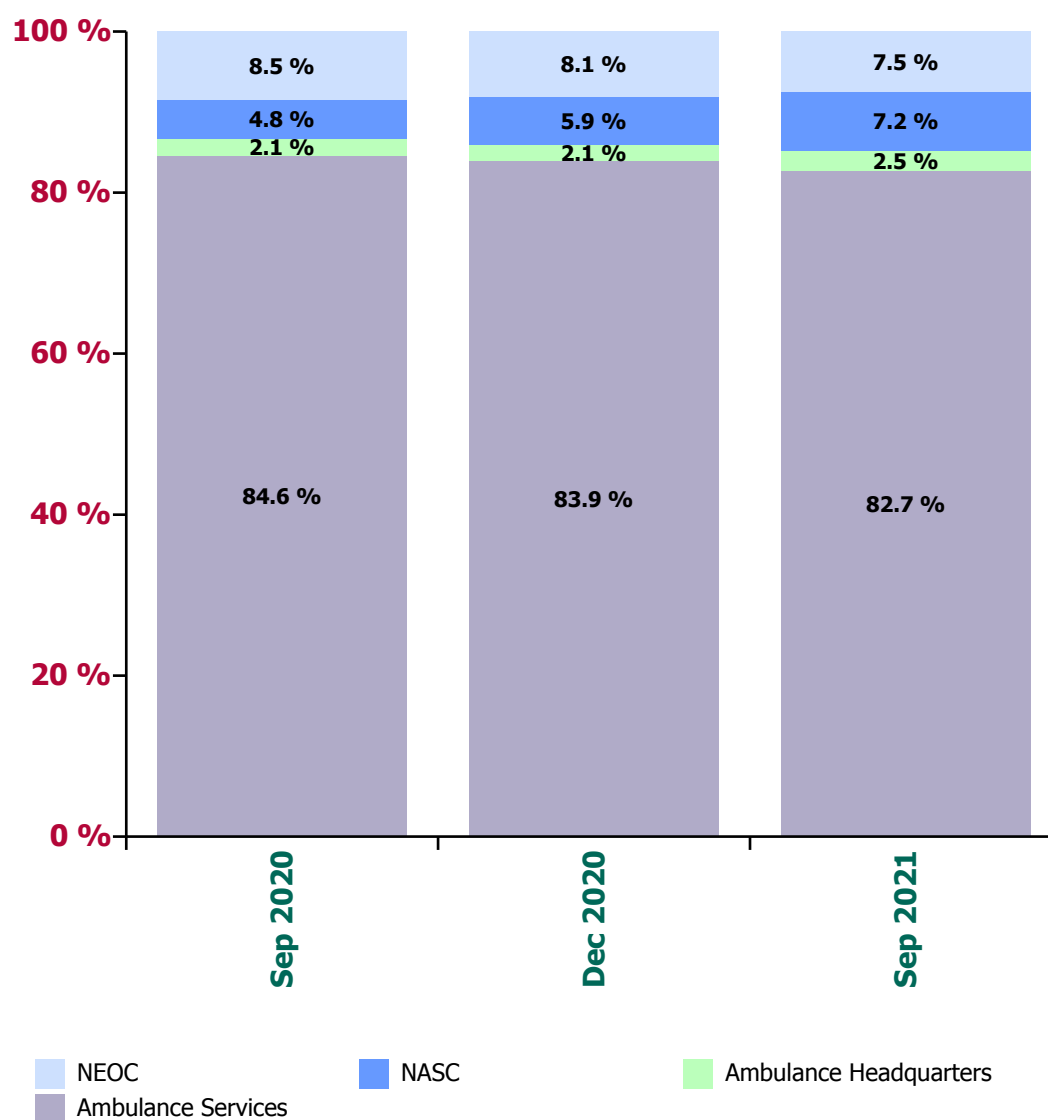
### Employment by Staff Group

Sep 2021 (Dec 2020 figure: 1,990)	WTE Aug 2021	WTE Sep 2021	WTE change since Aug 21	% change since Aug 21	WTE change since Dec 20	WTE change since Sep 20
<b>Overall</b>	<b>2,030</b>	<b>2,027</b>	<b>-3</b>	<b>-0.1%</b>	<b>+37</b>	<b>+82</b>
Consultants	1	1				
SHO/ Interns	1	1			+1	+1
Registrars	1	1			+1	+1
<b>Medical &amp; Dental</b>	<b>3</b>	<b>3</b>			<b>+2</b>	<b>+2</b>
Nurse/ Midwife Manager	1	1				
Staff Nurse/ Staff Midwife				-100.0%	-1	-1
<b>Nursing &amp; Midwifery</b>	<b>1</b>	<b>1</b>			<b>-1</b>	<b>-1</b>
Therapy Professions				-100.0%	-1	-1
<b>Health &amp; Social Care Professionals</b>				<b>-100.0%</b>	<b>-1</b>	<b>-1</b>
Management (VIII & above)	13	13	+0	+3.7%	-1	-1
Administrative/ Supervisory (V to VII)	42	46	+4	+8.6%	+13	+13
Clerical (III & IV)	36	38	+2	+5.3%	-3	-3
<b>Management &amp; Administrative</b>	<b>91</b>	<b>97</b>	<b>+6</b>	<b>+6.6%</b>	<b>+9</b>	<b>+10</b>
Support	3	3			-1	-1
Maintenance/ Technical	2	1	-1	-46.5%	-1	-1
<b>General Support</b>	<b>5</b>	<b>4</b>	<b>-1</b>	<b>-20.6%</b>	<b>-2</b>	<b>-2</b>
Health Care Assistants	1	1			-1	-1
Ambulance Staff	1,916	1,908	-8	-0.4%	+32	+76
Care, other	13	13	+0	+1.7%	-1	-1
<b>Patient &amp; Client Care</b>	<b>1,930</b>	<b>1,922</b>	<b>-8</b>	<b>-0.4%</b>	<b>+31</b>	<b>+75</b>

## Ambulance Service by Region: Sep 2021

Sep 2021 (Dec 2020 figure: 1,990)	WTE Aug 2021	WTE Sep 2021	WTE change since Aug 21	% change since Aug 21	WTE change since Dec 20	WTE change since Sep 20
<b>Overall</b>	<b>2,030</b>	<b>2,027</b>	<b>-3</b>	<b>-0.1%</b>	<b>+37</b>	<b>+82</b>
North Leinster	598	594	-4	-0.7%	+9	+21
South	475	476	+1	+0.2%	-19	-17
West	597	607	+10	+1.7%	+18	+28
<b>Ambulance Services</b>	<b>1,670</b>	<b>1,677</b>	<b>+7</b>	<b>+0.4%</b>	<b>+8</b>	<b>+32</b>
<b>Ambulance Headquarters</b>	<b>46</b>	<b>51</b>	<b>+5</b>	<b>+11.1%</b>	<b>+9</b>	<b>+9</b>
<b>NASC</b>	<b>158</b>	<b>147</b>	<b>-12</b>	<b>-7.3%</b>	<b>+30</b>	<b>+54</b>
<b>NEOC</b>	<b>156</b>	<b>153</b>	<b>-3</b>	<b>-1.8%</b>	<b>-9</b>	<b>-12</b>

Proportion of total by Service



## National Ambulance Service Services Employment Report: September 2021

### Ambulance Services by staff group

Sep 2021 (Dec 2020 figure: 1,669)	WTE Aug 2021	WTE Sep 2021	WTE change since Aug 21	% change since Aug 21	WTE change since Dec 20	WTE change since Sep 20
<b>Overall</b>	<b>1,670</b>	<b>1,677</b>	<b>+7</b>	<b>+0.4%</b>	<b>+8</b>	<b>+32</b>
SHO/ Interns	1	1			+1	+1
<b>Medical &amp; Dental</b>	<b>1</b>	<b>1</b>			<b>+1</b>	<b>+1</b>
Management (VIII & above)	1	1				
Administrative/ Supervisory (V to VII)	14	13	-1	-6.2%	+3	+1
Clerical (III & IV)	26	27	+1	+2.2%	-2	-3
<b>Management &amp; Administrative</b>	<b>41</b>	<b>41</b>	<b>-0</b>	<b>-0.7%</b>	<b>+1</b>	<b>-2</b>
Support	3	3			-1	-1
Maintenance/ Technical	2	1	-1	-46.5%	-1	-1
<b>General Support</b>	<b>5</b>	<b>4</b>	<b>-1</b>	<b>-20.6%</b>	<b>-2</b>	<b>-2</b>
Health Care Assistants	1	1			-1	-1
Ambulance Staff	1,610	1,618	+8	+0.5%	+10	+36
Care, other	13	13	+0	+1.7%	-1	-1
<b>Patient &amp; Client Care</b>	<b>1,624</b>	<b>1,632</b>	<b>+8</b>	<b>+0.5%</b>	<b>+8</b>	<b>+35</b>

### Ambulance Headquarters by staff group

Sep 2021 (Dec 2020 figure: 42)	WTE Aug 2021	WTE Sep 2021	WTE change since Aug 21	% change since Aug 21	WTE change since Dec 20	WTE change since Sep 20
<b>Overall</b>	<b>46</b>	<b>51</b>	<b>+5</b>	<b>+11.1%</b>	<b>+9</b>	<b>+9</b>
Consultants	1	1				
Registrars	1	1			+1	+1
<b>Medical &amp; Dental</b>	<b>2</b>	<b>2</b>			<b>+1</b>	<b>+1</b>
Therapy Professions				-100.0%	-1	-1
<b>Health &amp; Social Care Professionals</b>				<b>-100.0%</b>	<b>-1</b>	<b>-1</b>
Management (VIII & above)	9	9	+0	+5.5%	-0	-1
Administrative/ Supervisory (V to VII)	24	27	+4	+15.1%	+9	+11
Clerical (III & IV)	6	7	+1	+16.7%	+0	+1
<b>Management &amp; Administrative</b>	<b>38</b>	<b>43</b>	<b>+5</b>	<b>+13.2%</b>	<b>+8</b>	<b>+11</b>
Ambulance Staff	5	5	+0	+0.2%	+0	-2
<b>Patient &amp; Client Care</b>	<b>5</b>	<b>5</b>	<b>+0</b>	<b>+0.2%</b>	<b>+0</b>	<b>-2</b>

## NASC by staff group

Sep 2021 (Dec 2020 figure: 117)	WTE Aug 2021	WTE Sep 2021	WTE change since Aug 21	% change since Aug 21	WTE change since Dec 20	WTE change since Sep 20
<b>Overall</b>	<b>158</b>	<b>147</b>	<b>-12</b>	<b>-7.3%</b>	<b>+30</b>	<b>+54</b>
Management (VIII & above)	1	1	-0	-1.0%	-0	-0
Administrative/ Supervisory (V to VII)	4	4			+1	+1
Clerical (III & IV)	2	3	+0	+18.2%	-1	-1
<b>Management &amp; Administrative</b>	<b>7</b>	<b>8</b>	<b>+0</b>	<b>+5.9%</b>	<b>-0</b>	<b>-0</b>
Ambulance Staff	151	139	-12	-7.9%	+30	+54
<b>Patient &amp; Client Care</b>	<b>151</b>	<b>139</b>	<b>-12</b>	<b>-7.9%</b>	<b>+30</b>	<b>+54</b>

## NEOC by staff group

Sep 2021 (Dec 2020 figure: 161)	WTE Aug 2021	WTE Sep 2021	WTE change since Aug 21	% change since Aug 21	WTE change since Dec 20	WTE change since Sep 20
<b>Overall</b>	<b>156</b>	<b>153</b>	<b>-3</b>	<b>-1.8%</b>	<b>-9</b>	<b>-12</b>
Nurse/ Midwife Manager	1	1				
Staff Nurse/ Staff Midwife				-100.0%	-1	-1
<b>Nursing &amp; Midwifery</b>	<b>1</b>	<b>1</b>			<b>-1</b>	<b>-1</b>
Management (VIII & above)	2	2			-1	
Administrative/ Supervisory (V to VII)	1	2	+1	+91.0%	+1	+1
Clerical (III & IV)	2	2	-0	-5.5%	+0	-0
<b>Management &amp; Administrative</b>	<b>5</b>	<b>5</b>	<b>+1</b>	<b>+17.6%</b>	<b>-0</b>	<b>+1</b>
Ambulance Staff	150	146	-4	-2.4%	-8	-12
<b>Patient &amp; Client Care</b>	<b>150</b>	<b>146</b>	<b>-4</b>	<b>-2.4%</b>	<b>-8</b>	<b>-12</b>

## Emergency Services: September 2021

### North Leinster by staff group

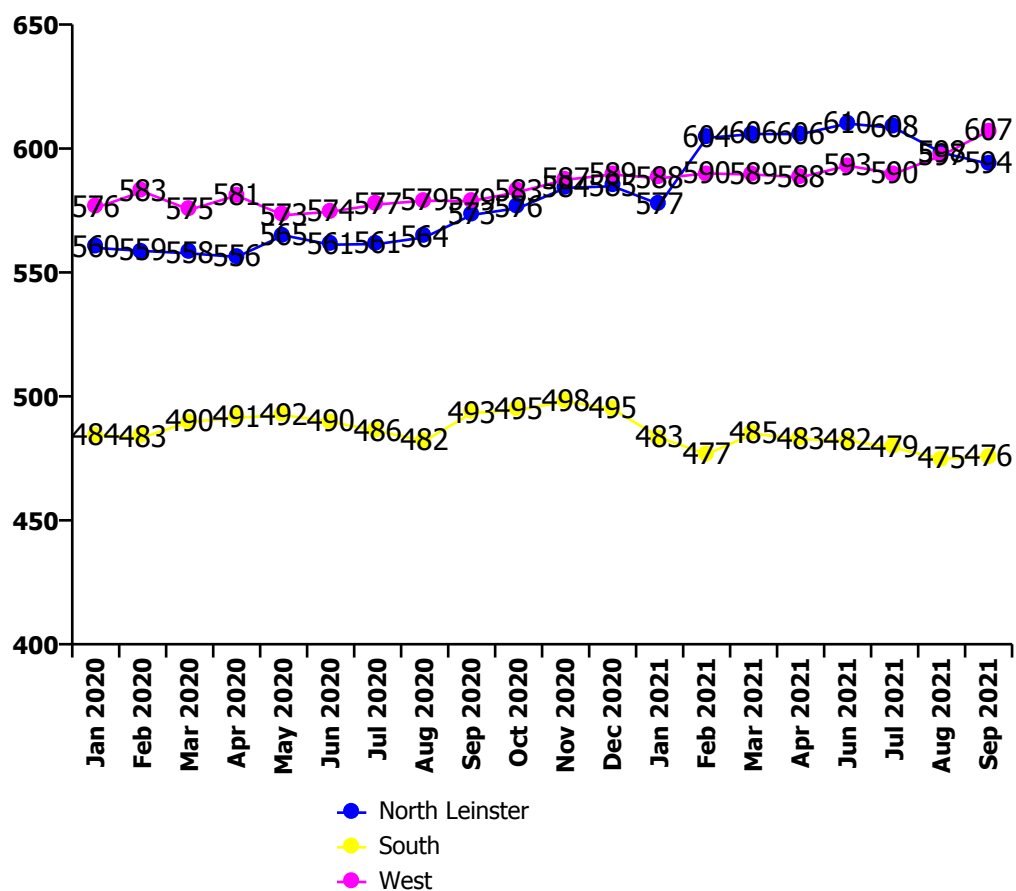
Sep 2021 (Dec 2020 figure: 585)	WTE Aug 2021	WTE Sep 2021	WTE change since Aug 21	% change since Aug 21	WTE change since Dec 20	WTE change since Sep 20
<b>Overall</b>	<b>598</b>	<b>594</b>	<b>-4</b>	<b>-0.7%</b>	<b>+9</b>	<b>+21</b>
Administrative/ Supervisory (V to VII)	5	3	-2	-33.4%	+1	+0
Clerical (III & IV)	4	5	+1	+20.1%	-0	-1
<b>Management &amp; Administrative</b>	<b>9</b>	<b>8</b>	<b>-1</b>	<b>-9.4%</b>	<b>+0</b>	<b>-1</b>
Support	2	2			-1	-1
Maintenance/ Technical	1	0	-1	-93.0%	-1	-1
<b>General Support</b>	<b>3</b>	<b>2</b>	<b>-1</b>	<b>-37.1%</b>	<b>-2</b>	<b>-2</b>
Ambulance Staff	574	571	-3	-0.5%	+12	+24
Care, other	13	13	+0	+1.7%	-1	-1
<b>Patient &amp; Client Care</b>	<b>587</b>	<b>584</b>	<b>-3</b>	<b>-0.5%</b>	<b>+11</b>	<b>+23</b>

### South by staff group

Sep 2021 (Dec 2020 figure: 495)	WTE Aug 2021	WTE Sep 2021	WTE change since Aug 21	% change since Aug 21	WTE change since Dec 20	WTE change since Sep 20
<b>Overall</b>	<b>475</b>	<b>476</b>	<b>+1</b>	<b>+0.2%</b>	<b>-19</b>	<b>-17</b>
SHO/ Interns	1	1			+1	+1
<b>Medical &amp; Dental</b>	<b>1</b>	<b>1</b>			<b>+1</b>	<b>+1</b>
Administrative/ Supervisory (V to VII)	3	4	+1	+25.9%	+2	-0
Clerical (III & IV)	8	8			-0	+1
<b>Management &amp; Administrative</b>	<b>11</b>	<b>12</b>	<b>+1</b>	<b>+7.6%</b>	<b>+2</b>	<b>+1</b>
Support	1	1				
Maintenance/ Technical	1	1				
<b>General Support</b>	<b>2</b>	<b>2</b>				
Ambulance Staff	461	461	+0	+0.1%	-22	-19
<b>Patient &amp; Client Care</b>	<b>461</b>	<b>461</b>	<b>+0</b>	<b>+0.1%</b>	<b>-22</b>	<b>-19</b>

## West by staff group

Sep 2021 (Dec 2020 figure: 589)	WTE Aug 2021	WTE Sep 2021	WTE change since Aug 21	% change since Aug 21	WTE change since Dec 20	WTE change since Sep 20
<b>Overall</b>	<b>597</b>	<b>607</b>	<b>+10</b>	<b>+1.7%</b>	<b>+18</b>	<b>+28</b>
Management (VIII & above)	1	1				
Administrative/ Supervisory (V to VII)	6	6			+1	+1
Clerical (III & IV)	15	14	-0	-1.6%	-2	-3
<b>Management &amp; Administrative</b>	<b>21</b>	<b>21</b>	<b>-0</b>	<b>-1.1%</b>	<b>-1</b>	<b>-2</b>
Health Care Assistants	1	1			-1	-1
Ambulance Staff	575	585	+10	+1.8%	+20	+31
<b>Patient &amp; Client Care</b>	<b>576</b>	<b>586</b>	<b>+10</b>	<b>+1.8%</b>	<b>+19</b>	<b>+30</b>



## Employment by WTE, Headcount, Gender, Full-Time /Part-Time etc.: Sep 2021

National Ambulance Service	WTE	Headcount	WTE: no.	% Male	% female	Male WTE: no.	Female WTE: no.	% Total Perm	% Male Perm	% Female Perm	% Total Full Time	% Total Part Time	% Male FT	% Female FT
<b>Overall</b>	<b>2,027</b>	<b>2,125</b>	<b>1.05</b>	<b>70.7%</b>	<b>29.3%</b>	<b>1.03</b>	<b>1.09</b>	<b>87.5%</b>	<b>88.9%</b>	<b>84.1%</b>	<b>99.2%</b>	<b>0.8%</b>	<b>99.7%</b>	<b>97.9%</b>
<i>Consultants</i>	1	1	1.00	100.0%		1.00		100.0%	100.0%		100.0%	0.0%	100.0%	
<i>SHO/ Interns</i>	1	1	1.00	100.0%		1.00		0.0%	0.0%		100.0%	0.0%	100.0%	
<i>Registrars</i>	1	1	1.00	100.0%		1.00		0.0%	0.0%		100.0%	0.0%	100.0%	
<b>Medical &amp; Dental</b>	<b>3</b>	<b>3</b>	<b>1.00</b>	<b>100.0%</b>		<b>1.00</b>		<b>33.3%</b>	<b>33.3%</b>		<b>100.0%</b>	<b>0.0%</b>	<b>100.0%</b>	
<i>Nurse/ Midwife Manager</i>	1	1	1.00		100.0%		1.00	100.0%		100.0%	100.0%	0.0%		100.0%
<b>Nursing &amp; Midwifery</b>	<b>1</b>	<b>1</b>	<b>1.00</b>		<b>100.0%</b>		<b>1.00</b>	<b>100.0%</b>		<b>100.0%</b>	<b>100.0%</b>	<b>0.0%</b>		<b>100.0%</b>
<i>Management (VIII &amp; above)</i>	13	13	1.00	69.2%	30.8%	1.00	1.00	100.0%	100.0%	100.0%	100.0%	0.0%	100.0%	100.0%
<i>Administrative/ Supervisory (V to VII)</i>	46	48	1.04	31.3%	68.8%	1.01	1.06	100.0%	100.0%	100.0%	100.0%	0.0%	100.0%	100.0%
<i>Clerical (III &amp; IV)</i>	38	45	1.17	13.3%	86.7%	1.00	1.21	91.1%	100.0%	89.7%	82.2%	17.8%	100.0%	79.5%
<b>Management &amp; Administrative</b>	<b>97</b>	<b>106</b>	<b>1.09</b>	<b>28.3%</b>	<b>71.7%</b>	<b>1.00</b>	<b>1.13</b>	<b>96.2%</b>	<b>100.0%</b>	<b>94.7%</b>	<b>92.5%</b>	<b>7.5%</b>	<b>100.0%</b>	<b>89.5%</b>
<i>Support</i>	3	3	1.20	33.3%	66.7%	1.96	1.00	66.7%	0.0%	100.0%	66.7%	33.3%	0.0%	100.0%
<i>Maintenance/ Technical</i>	1	2	1.87	100.0%		1.87		100.0%	100.0%		100.0%	0.0%	100.0%	
<b>General Support</b>	<b>4</b>	<b>5</b>	<b>1.40</b>	<b>60.0%</b>	<b>40.0%</b>	<b>1.90</b>	<b>1.00</b>	<b>80.0%</b>	<b>66.7%</b>	<b>100.0%</b>	<b>80.0%</b>	<b>20.0%</b>	<b>66.7%</b>	<b>100.0%</b>
<i>Health Care Assistants</i>	1	1	1.00	100.0%		1.00		100.0%	100.0%		100.0%	0.0%	100.0%	
Ambulance Control	168	174	1.04	50.0%	50.0%	1.03	1.05	98.9%	98.9%	98.9%	98.9%	1.1%	100.0%	97.7%
Ambulance Education	212	241	1.14	61.8%	38.2%	1.10	1.21	0.0%	0.0%	0.0%	100.0%	0.0%	100.0%	100.0%
Ambulance Officers	85	86	1.01	84.9%	15.1%	1.01	1.00	97.7%	97.3%	100.0%	98.8%	1.2%	98.6%	100.0%
Pre-Hospital Care (Ambulance)	1,443	1,495	1.04	76.7%	23.3%	1.03	1.07	99.1%	99.0%	99.4%	99.7%	0.3%	99.8%	99.1%
<b>Ambulance Staff</b>	<b>1,908</b>	<b>1,996</b>	<b>1.05</b>	<b>72.9%</b>	<b>27.1%</b>	<b>1.03</b>	<b>1.09</b>	<b>87.0%</b>	<b>88.7%</b>	<b>82.4%</b>	<b>99.6%</b>	<b>0.4%</b>	<b>99.8%</b>	<b>99.1%</b>
<i>Care, other</i>	13	13	1.01	76.9%	23.1%	1.00	1.05	100.0%	100.0%	100.0%	100.0%	0.0%	100.0%	100.0%
<b>Patient &amp; Client Care</b>	<b>1,922</b>	<b>2,010</b>	<b>1.05</b>	<b>73.0%</b>	<b>27.0%</b>	<b>1.03</b>	<b>1.09</b>	<b>87.1%</b>	<b>88.8%</b>	<b>82.5%</b>	<b>99.6%</b>	<b>0.4%</b>	<b>99.8%</b>	<b>99.1%</b>

## Employment by WTE, Headcount, Gender, Full-Time /Part-Time etc.: Sep 2021

National Ambulance Service	WTE	Headcount	WTE: no.	% Male	% female	Male WTE: no.	Female WTE: no.	% Total Perm	% Male Perm	% Female Perm	% Total Full Time	% Total Part Time	% Male FT	% Female FT
<b>Overall</b>	<b>2,027</b>	<b>2,125</b>	<b>1.05</b>	<b>70.7%</b>	<b>29.3%</b>	<b>1.03</b>	<b>1.09</b>	<b>87.5%</b>	<b>88.9%</b>	<b>84.1%</b>	<b>99.2%</b>	<b>0.8%</b>	<b>99.7%</b>	<b>97.9%</b>
North Leinster	594	618	1.04	73.5%	26.5%	1.03	1.08	93.7%	93.7%	92.7%	99.0%	1.0%	99.3%	99.3%
South	476	490	1.03	75.9%	24.1%	1.02	1.06	93.5%	93.5%	92.4%	99.6%	0.4%	100.0%	100.0%
West	607	631	1.04	74.3%	25.7%	1.03	1.08	92.4%	92.4%	90.1%	99.2%	0.8%	100.0%	100.0%
<b>Ambulance Services</b>	<b>1,677</b>	<b>1,739</b>	<b>1.04</b>	<b>74.5%</b>	<b>25.5%</b>	<b>1.02</b>	<b>1.07</b>	<b>93.2%</b>	<b>93.2%</b>	<b>91.7%</b>	<b>99.3%</b>	<b>0.7%</b>	<b>99.8%</b>	<b>99.8%</b>
<b>Ambulance Headquarters</b>	<b>51</b>	<b>52</b>	<b>1.03</b>	<b>40.4%</b>	<b>59.6%</b>	<b>1.03</b>	<b>1.02</b>	<b>90.4%</b>	<b>90.4%</b>	<b>93.5%</b>	<b>98.1%</b>	<b>1.9%</b>	<b>95.2%</b>	<b>95.2%</b>
<b>NASC</b>	<b>147</b>	<b>176</b>	<b>1.20</b>	<b>61.4%</b>	<b>38.6%</b>	<b>1.13</b>	<b>1.33</b>	<b>20.5%</b>	<b>20.5%</b>	<b>13.2%</b>	<b>99.4%</b>	<b>0.6%</b>	<b>100.0%</b>	<b>100.0%</b>
<b>NEOC</b>	<b>153</b>	<b>158</b>	<b>1.03</b>	<b>50.0%</b>	<b>50.0%</b>	<b>1.02</b>	<b>1.05</b>	<b>98.7%</b>	<b>98.7%</b>	<b>98.7%</b>	<b>98.7%</b>	<b>1.3%</b>	<b>100.0%</b>	<b>100.0%</b>



# National Ambulance Service Employment by Grade Group & Staff Category: September 2021

Sep 2021 (Sep 2020 figure: 1,945)	WTE Dec 2015	WTE Dec 2016	WTE Dec 2017	WTE Dec 2018	WTE Dec 2019	WTE Dec 2020	WTE Sep 2021
<b>Overall</b>	<b>1,694</b>	<b>1,734</b>	<b>1,843</b>	<b>1,887</b>	<b>1,932.99</b>	<b>1,989.75</b>	<b>2,027</b>
Consultants	100.0%	100.0%	100.0%	100.0%	100.0%	100.0%	33.3%
SHO/ Interns							33.3%
Registrars							33.3%
<b>Medical &amp; Dental</b>	<b>0.1%</b>	<b>0.1%</b>	<b>0.1%</b>	<b>0.1%</b>	<b>0.1%</b>	<b>0.1%</b>	<b>0.1%</b>
Nurse/ Midwife Manager			50.0%	76.3%	50.0%	50.0%	100.0%
Staff Nurse/ Staff Midwife			50.0%	23.7%	50.0%	50.0%	
<b>Nursing &amp; Midwifery</b>			<b>0.1%</b>	<b>0.1%</b>	<b>0.1%</b>	<b>0.1%</b>	<b>0.0%</b>
Therapy Professions					100.0%	100.0%	
<b>Health &amp; Social Care Professionals</b>					<b>0.1%</b>	<b>0.1%</b>	
Management (VIII & above)	7.9%	7.5%	8.5%	8.9%	14.9%	16.1%	13.3%
Administrative/ Supervisory (V to VII)	20.3%	23.4%	31.1%	28.8%	34.9%	37.0%	47.3%
Clerical (III & IV)	71.9%	69.1%	60.4%	62.3%	50.3%	46.9%	39.4%
<b>Management &amp; Administrative</b>	<b>3.7%</b>	<b>3.8%</b>	<b>3.8%</b>	<b>4.2%</b>	<b>4.2%</b>	<b>4.5%</b>	<b>4.8%</b>
Support	83.8%	81.3%	86.2%	86.2%	63.6%	63.7%	70.1%
Maintenance/ Technical	16.2%	18.7%	13.8%	13.8%	36.4%	36.3%	29.9%
<b>General Support</b>	<b>1.1%</b>	<b>0.9%</b>	<b>0.8%</b>	<b>0.8%</b>	<b>0.3%</b>	<b>0.3%</b>	<b>0.2%</b>
<b>Health Care Assistants</b>	<b>0.2%</b>	<b>0.2%</b>	<b>0.2%</b>	<b>0.2%</b>	<b>0.1%</b>	<b>0.1%</b>	<b>0.1%</b>
Ambulance Control	10.9%	9.8%	9.5%	8.8%		9.0%	8.7%
Ambulance Education	5.9%	9.7%	10.5%	10.3%		9.9%	11.0%
Ambulance Officers	4.5%	4.3%	4.1%	4.3%		4.4%	4.4%
Pre-Hospital Care (Ambulance)	78.0%	75.6%	75.3%	76.0%		76.0%	75.1%
<b>Ambulance Staff</b>	<b>99.3%</b>	<b>99.4%</b>	<b>99.4%</b>	<b>99.4%</b>	<b>99.1%</b>	<b>99.2%</b>	<b>99.3%</b>
Care, other	0.5%	0.4%	0.4%	0.4%	0.8%	0.7%	0.7%
<b>Patient &amp; Client Care</b>	<b>95.1%</b>	<b>95.2%</b>	<b>95.2%</b>	<b>94.9%</b>	<b>95.3%</b>	<b>95.1%</b>	<b>94.8%</b>
<b>Total</b>	<b>100%</b>	<b>100%</b>	<b>100%</b>	<b>100%</b>	<b>100%</b>	<b>100%</b>	<b>100%</b>

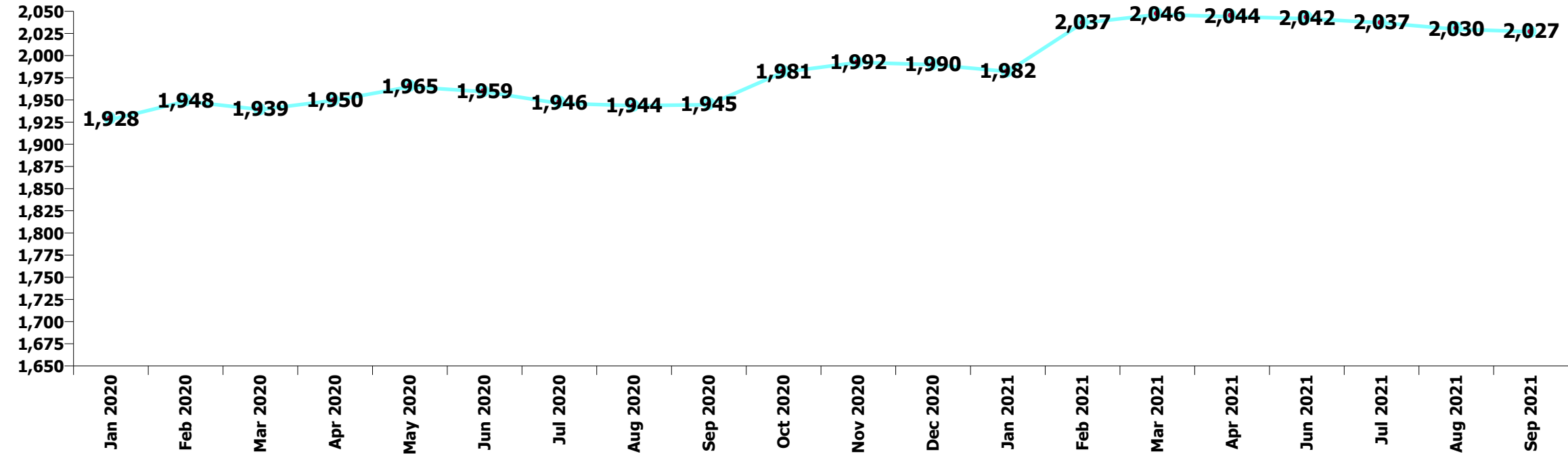
Summary Staff Movement: September 2021

Month-on-month Summary

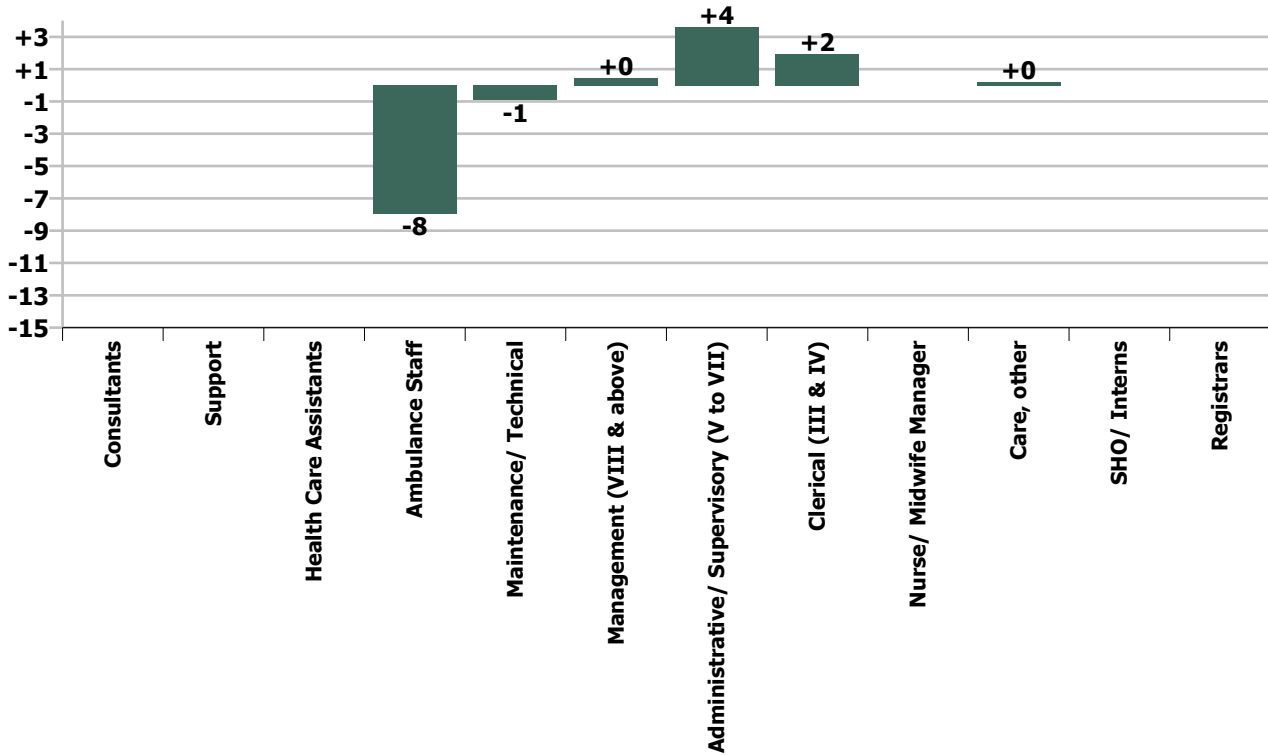
WTE change since Aug 21	% change since Aug 21	overall	Consultants	SHO/ Interns	Registrars	Medical & Dental	Nurse/ Midwife Manager	Nursing & Midwifery	Management (VIII & above)	Administrativ e/ Supervisory (V to VII)	Clerical (III & IV)	Management & Administrative	General Support	Health Care Assistants	Ambulance Staff	Care, other	Patient & Client Care
Overall	-0.1%	-3							+0	+4	+2	+6	-1		-8	+0	-8
North Leinster	-0.7%	-4								-1.7	+0.8	-0.9	-0.9		-2.9	+0.2	-2.7
South	+0.2%	+1		0.0		0.0				+0.8	0.0	+0.8	0.0		+0.3		+0.3
West	+1.7%	+10							0.0	0.0	-0.2	-0.2		0.0	+10.2		+10.2
Ambulance Services	+0.4%	+7		0.0		0.0			0.0	-0.8	+0.6	-0.3	-0.9	0.0	+7.7	+0.2	+7.9
Ambulance Headquarters	+11.1%	+5	0.0		0.0	0.0			+0.5	+3.6	+1.0	+5.0			+0.0		+0.0
NASC	-7.3%	-12							-0.0	0.0	+0.4	+0.4			-12.0		-12.0
NEOC	-1.8%	-3					0.0	0.0	0.0	+0.9	-0.1	+0.8			-3.6		-3.6
									+3.7%	+8.6%	+5.3%	+6.6%	-20.6%		-0.4%	+1.7%	-0.4%

Year-on-year Summary

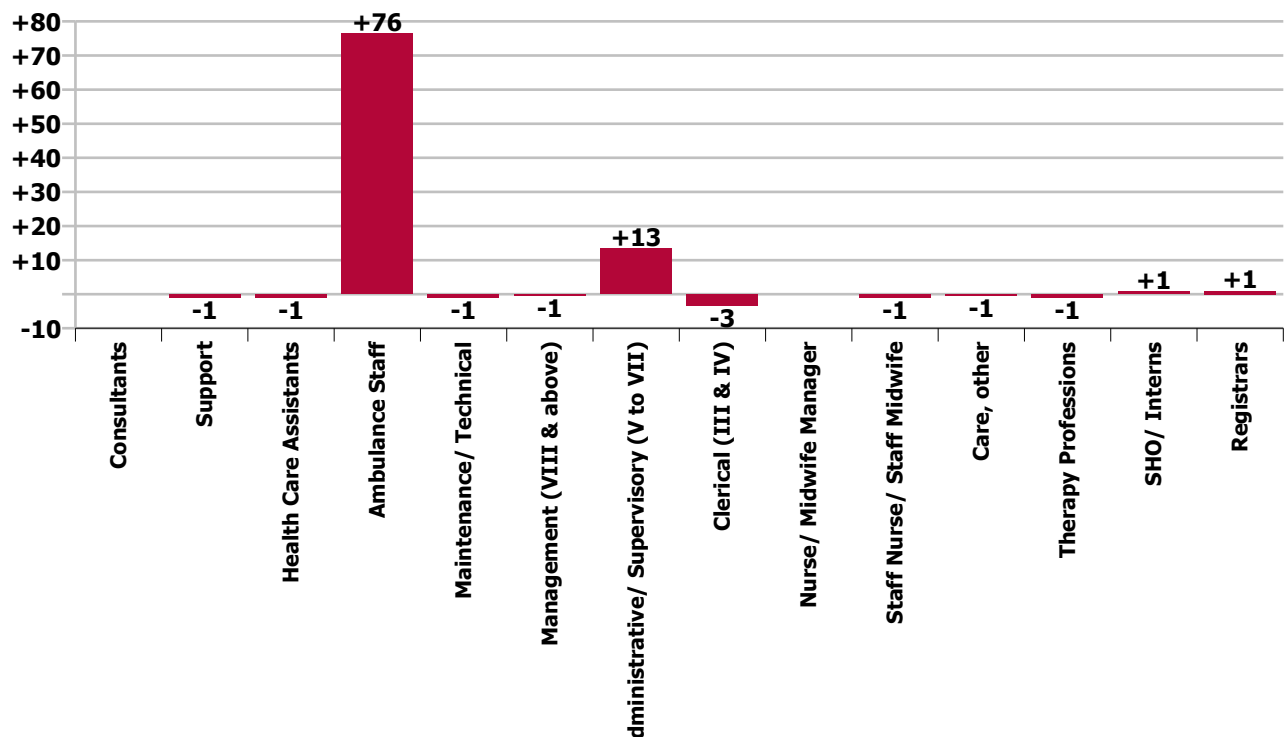
WTE change since Sep 20	% change since Sep 20	overall	Consultants	SHO/ Interns	Registrars	Medical & Dental	Nurse/ Midwife Manager	Staff Nurse/ Staff Midwife	Nursing & Midwifery	Therapy Professions	Health & Social Care Professionals	Management (VIII & above)	Administrativ e/ Supervisory (V to VII)	Clerical (III & IV)	Management & Administrative	General Support	Health Care Assistants	Ambulance Staff	Care, other	Patient & Client Care
Overall	+4.2%	+82	0.0	+0.9	+1.0	+1.9	0.0	-1.0	-1.0	-1.0	-1.0	-0.5	+13.4	-3.3	+9.6	-1.9	-1.0	+76.5	-0.5	+74.9
North Leinster	+3.6%	+21											+0.3	-1.0	-0.7	-1.9		+23.7	-0.5	+23.2
South	-3.5%	-17		+0.9		+0.9							-0.0	+0.8	+0.8	0.0		-19.0		-19.0
West	+4.9%	+28										0.0	+0.5	-2.6	-2.1		-1.0	+31.3		+30.3
Ambulance Services	+1.9%	+32		+0.9		+0.9						0.0	+0.8	-2.7	-1.9	-1.9	-1.0	+36.1	-0.5	+34.6
Ambulance Headquarters	+22.7%	+9	0.0		+1.0	+1.0				-1.0	-1.0	-0.5	+10.7	+0.8	+10.9			-1.6		-1.6
NASC	+58.0%	+54										-0.0	+1.0	-1.3	-0.3			+54.2		+54.2
NEOC	-7.5%	-12					0.0	-1.0	-1.0			0.0	+0.9	-0.1	+0.8			-12.3		-12.3
				+566.7%	-100.0%	+160.9%		-100.0%	-50.0%	-100.0%	-100.0%	-3.9%	+41.2%	-8.0%	+10.9%	-34.9%	-50.0%	+4.2%	-4.0%	+4.1%



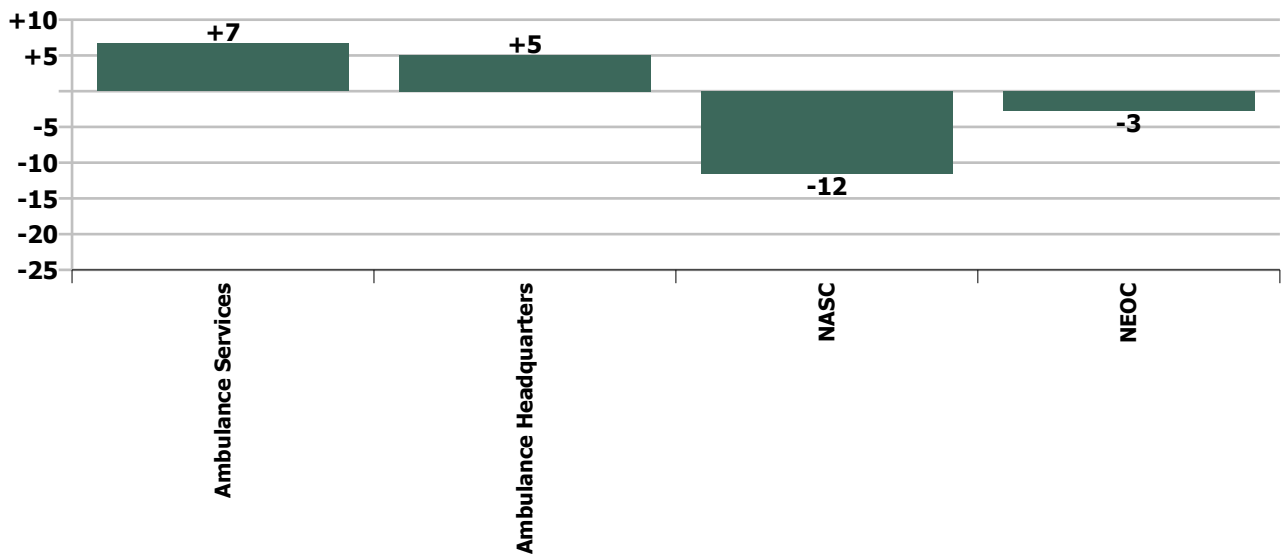
### Staff Group change since: Aug 2021



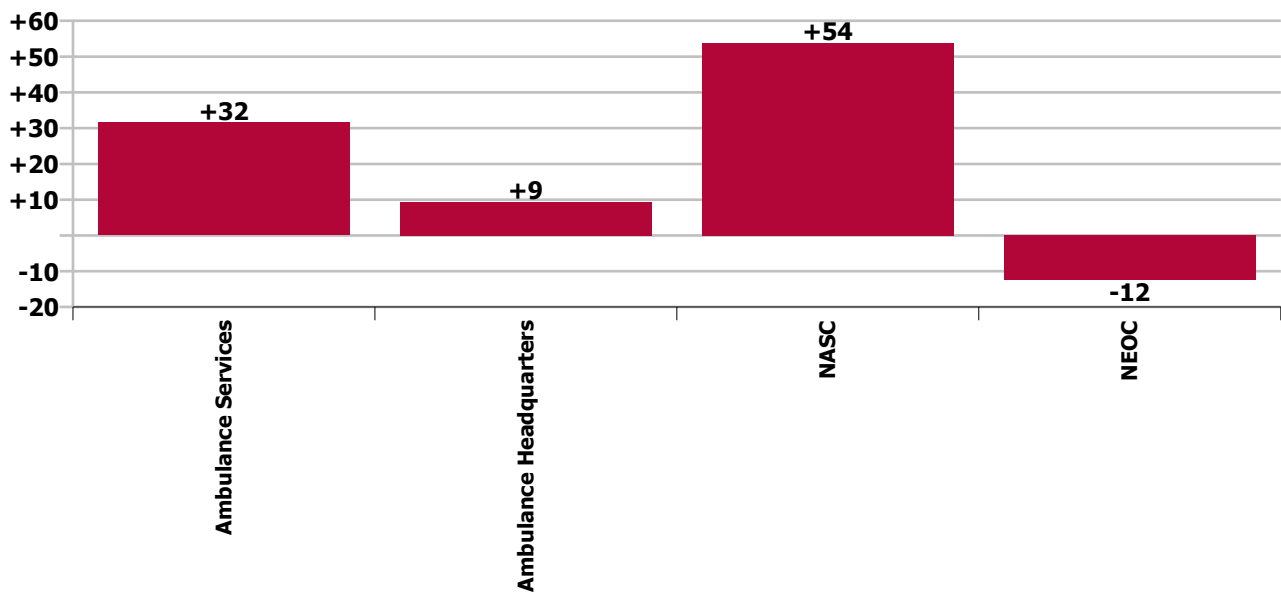
### Staff Group change since: Sep 2020



Programme change since: Aug 2021



Programme change since: Sep 2020



## Longitudinal Employment Levels by Grade Group - Dec 2016 to Sep 2021

Sep 2021 (Dec 2015 figure: 1,694)	WTE Sep 2021	WTE change since Dec 16	WTE change since Dec 17	WTE change since Dec 18	WTE change since Dec 19	WTE change since Dec 20	WTE change since Apr 21	% change since Dec 16	% change since Dec 17	% change since Dec 18	% change since Dec 19	% change since Dec 20	% change since Apr 21
<b>Overall</b>	<b>2,027</b>	<b>+293</b>	<b>+184</b>	<b>+140</b>	<b>+94</b>	<b>+37</b>	<b>-17</b>	<b>+16.9%</b>	<b>+10.0%</b>	<b>+7.4%</b>	<b>+4.9%</b>	<b>+1.9%</b>	<b>-0.8%</b>
<b>Consultants</b>	<b>1</b>												
<b>SHO/ Interns</b>	<b>1</b>	<b>+1</b>	<b>+1</b>	<b>+1</b>	<b>+1</b>	<b>+1</b>		<b>-100.0%</b>	<b>-100.0%</b>	<b>-100.0%</b>	<b>-100.0%</b>	<b>-100.0%</b>	
<b>Registrars</b>	<b>1</b>	<b>+1</b>	<b>+1</b>	<b>+1</b>	<b>+1</b>	<b>+1</b>	<b>+0</b>	<b>-100.0%</b>	<b>-100.0%</b>	<b>-100.0%</b>	<b>-100.0%</b>	<b>-100.0%</b>	<b>+49.3%</b>
<b>Medical &amp; Dental</b>	<b>3</b>	<b>+2</b>	<b>+2</b>	<b>+2</b>	<b>+2</b>	<b>+2</b>	<b>+0</b>	<b>+200.0%</b>	<b>+200.0%</b>	<b>+200.0%</b>	<b>+200.0%</b>	<b>+200.0%</b>	<b>+12.4%</b>
<b>Nurse/ Midwife Manager</b>	<b>1</b>	<b>+1</b>					<b>+0</b>	<b>-100.0%</b>					<b>+2.0%</b>
Staff Nurses [General/ Children's]			-1	-0	-1	-1	-1	-100.0%	-100.0%	-100.0%	-100.0%	-100.0%	-100.0%
<b>Staff Nurse/ Staff Midwife</b>			<b>-1</b>	<b>-0</b>	<b>-1</b>	<b>-1</b>	<b>-1</b>	<b>-100.0%</b>	<b>-100.0%</b>	<b>-100.0%</b>	<b>-100.0%</b>	<b>-100.0%</b>	<b>-100.0%</b>
<b>Nursing &amp; Midwifery</b>	<b>1</b>	<b>+1</b>	<b>-1</b>	<b>-0</b>	<b>-1</b>	<b>-1</b>	<b>-1</b>	<b>-100.0%</b>	<b>-50.0%</b>	<b>-23.7%</b>	<b>-50.0%</b>	<b>-50.0%</b>	<b>-49.5%</b>
<b>Therapy Professions</b>					<b>-1</b>	<b>-1</b>	<b>-1</b>	<b>-100.0%</b>	<b>-100.0%</b>	<b>-100.0%</b>	<b>-100.0%</b>	<b>-100.0%</b>	<b>-100.0%</b>
<b>Health &amp; Social Care Professionals</b>					<b>-1</b>	<b>-1</b>	<b>-1</b>	<b>-100.0%</b>	<b>-100.0%</b>	<b>-100.0%</b>	<b>-100.0%</b>	<b>-100.0%</b>	<b>-100.0%</b>
<b>Management (VIII &amp; above)</b>	<b>13</b>	<b>+8</b>	<b>+7</b>	<b>+6</b>	<b>+1</b>	<b>-1</b>	<b>+0</b>	<b>+159.2%</b>	<b>+116.0%</b>	<b>+85.1%</b>	<b>+6.1%</b>	<b>-9.0%</b>	<b>+1.9%</b>
<b>Administrative/ Supervisory (V to VII)</b>	<b>46</b>	<b>+30</b>	<b>+24</b>	<b>+23</b>	<b>+17</b>	<b>+13</b>	<b>+9</b>	<b>+195.1%</b>	<b>+109.6%</b>	<b>+102.5%</b>	<b>+60.8%</b>	<b>+40.3%</b>	<b>+23.2%</b>
<b>Clerical (III &amp; IV)</b>	<b>38</b>	<b>-8</b>	<b>-4</b>	<b>-11</b>	<b>-3</b>	<b>-3</b>	<b>-3</b>	<b>-16.9%</b>	<b>-10.3%</b>	<b>-22.0%</b>	<b>-7.2%</b>	<b>-7.9%</b>	<b>-7.2%</b>
<b>Management &amp; Administrative</b>	<b>97</b>	<b>+31</b>	<b>+27</b>	<b>+18</b>	<b>+15</b>	<b>+9</b>	<b>+6</b>	<b>+45.9%</b>	<b>+37.6%</b>	<b>+23.4%</b>	<b>+18.5%</b>	<b>+9.8%</b>	<b>+6.5%</b>
<b>Support</b>	<b>3</b>	<b>-11</b>	<b>-10</b>	<b>-10</b>	<b>-1</b>	<b>-1</b>	<b>-0</b>	<b>-80.7%</b>	<b>-79.9%</b>	<b>-79.9%</b>	<b>-28.3%</b>	<b>-28.5%</b>	<b>-11.6%</b>
<b>Maintenance/ Technical</b>	<b>1</b>	<b>-2</b>	<b>-1</b>	<b>-1</b>	<b>-1</b>	<b>-1</b>	<b>-1</b>	<b>-64.3%</b>	<b>-46.5%</b>	<b>-46.5%</b>	<b>-46.5%</b>	<b>-46.5%</b>	<b>-46.2%</b>
<b>General Support</b>	<b>4</b>	<b>-12</b>	<b>-11</b>	<b>-11</b>	<b>-2</b>	<b>-2</b>	<b>-1</b>	<b>-77.6%</b>	<b>-75.3%</b>	<b>-75.3%</b>	<b>-34.9%</b>	<b>-35.0%</b>	<b>-25.9%</b>
<b>Health Care Assistants</b>	<b>1</b>	<b>-2</b>	<b>-2</b>	<b>-2</b>	<b>-1</b>	<b>-1</b>		<b>-67.2%</b>	<b>-66.7%</b>	<b>-66.7%</b>	<b>-50.0%</b>	<b>-50.0%</b>	
Ambulance Control	168	+6	+1	+9	-11	-13	-7	-4.2%	+3.8%	+0.5%	-6.2%	-7.0%	-4.1%
Ambulance Education	212	+53	+27	+28	+50	+74	+11	+123.5%	+33.1%	+14.8%	+31.1%	+53.5%	+5.6%
Ambulance Officers	85	+14	+13	+9	+7	+1	-0	+16.9%	+19.0%	+18.7%	+9.3%	+0.8%	-0.1%
Pre-Hospital Care (Ambulance)	1,443	+195	+122	+81	+37	-30	-24	+14.9%	+15.7%	+9.2%	+2.6%	-2.0%	-1.6%
<b>Ambulance Staff</b>	<b>1,908</b>	<b>+268</b>	<b>+163</b>	<b>+127</b>	<b>+84</b>	<b>+32</b>	<b>-20</b>	<b>+16.3%</b>	<b>+9.4%</b>	<b>+7.1%</b>	<b>+4.6%</b>	<b>+1.7%</b>	<b>-1.0%</b>
<b>Care, other</b>	<b>13</b>	<b>+6</b>	<b>+6</b>	<b>+6</b>	<b>-2</b>	<b>-1</b>		<b>+87.3%</b>	<b>+87.6%</b>	<b>+87.3%</b>	<b>-12.4%</b>	<b>-5.1%</b>	
<b>Patient &amp; Client Care</b>	<b>1,922</b>	<b>+272</b>	<b>+167</b>	<b>+131</b>	<b>+81</b>	<b>+31</b>	<b>-20</b>	<b>+16.5%</b>	<b>+9.5%</b>	<b>+7.3%</b>	<b>+4.4%</b>	<b>+1.6%</b>	<b>-1.0%</b>

Source: Health Service Personnel Census

## Longitudinal Employment Levels by Service - Dec 2016 to Sep 2021

Sep 2021 (Dec 2015 figure: 1,694)	WTE Sep 2021	WTE change since Dec 16	WTE change since Dec 17	WTE change since Dec 18	WTE change since Dec 19	WTE change since Dec 20	WTE change since Apr 21	% change since Dec 16	% change since Dec 17	% change since Dec 18	% change since Dec 19	% change since Dec 20	% change since Apr 21
<b>Overall</b>	<b>2,027</b>	<b>+293</b>	<b>+184</b>	<b>+140</b>	<b>+94</b>	<b>+37</b>	<b>-17</b>	<b>+16.9%</b>	<b>+10.0%</b>	<b>+7.4%</b>	<b>+4.9%</b>	<b>+1.9%</b>	<b>-0.8%</b>
North Leinster	594	+97	+50	+28	+31	+9	-12	+19.5%	+9.3%	+5.0%	+5.5%	+1.5%	-2.0%
South	476	+31	+7	+3	-11	-19	-7	+6.9%	+1.4%	+0.6%	-2.2%	-3.9%	-1.4%
West	607	+106	+61	+51	+25	+18	+19	+21.0%	+11.2%	+9.1%	+4.3%	+3.0%	+3.2%
<b>Ambulance Services</b>	<b>1,677</b>	<b>+233</b>	<b>+118</b>	<b>+82</b>	<b>+45</b>	<b>+8</b>	<b>-0</b>	<b>+16.1%</b>	<b>+7.6%</b>	<b>+5.1%</b>	<b>+2.8%</b>	<b>+0.5%</b>	<b>-0.0%</b>
<b>Ambulance Headquarters</b>	<b>51</b>	<b>+45</b>	<b>+27</b>	<b>+13</b>	<b>+9</b>	<b>+9</b>	<b>+5</b>	<b>+744.3%</b>	<b>+112.6%</b>	<b>+35.1%</b>	<b>+22.4%</b>	<b>+20.6%</b>	<b>+12.1%</b>
<b>NASC</b>	<b>147</b>	<b>-20</b>	<b>+24</b>	<b>+27</b>	<b>+43</b>	<b>+30</b>	<b>-18</b>	<b>-11.9%</b>	<b>+19.8%</b>	<b>+22.7%</b>	<b>+42.1%</b>	<b>+25.4%</b>	<b>-11.0%</b>
<b>NEOC</b>	<b>153</b>	<b>+35</b>	<b>+15</b>	<b>+18</b>	<b>-4</b>	<b>-9</b>	<b>-4</b>	<b>+30.2%</b>	<b>+10.9%</b>	<b>+13.3%</b>	<b>-2.6%</b>	<b>-5.4%</b>	<b>-2.6%</b>

Source: Health Service Personnel Census