

National Ambulance Services Employment Report : DEC 2024

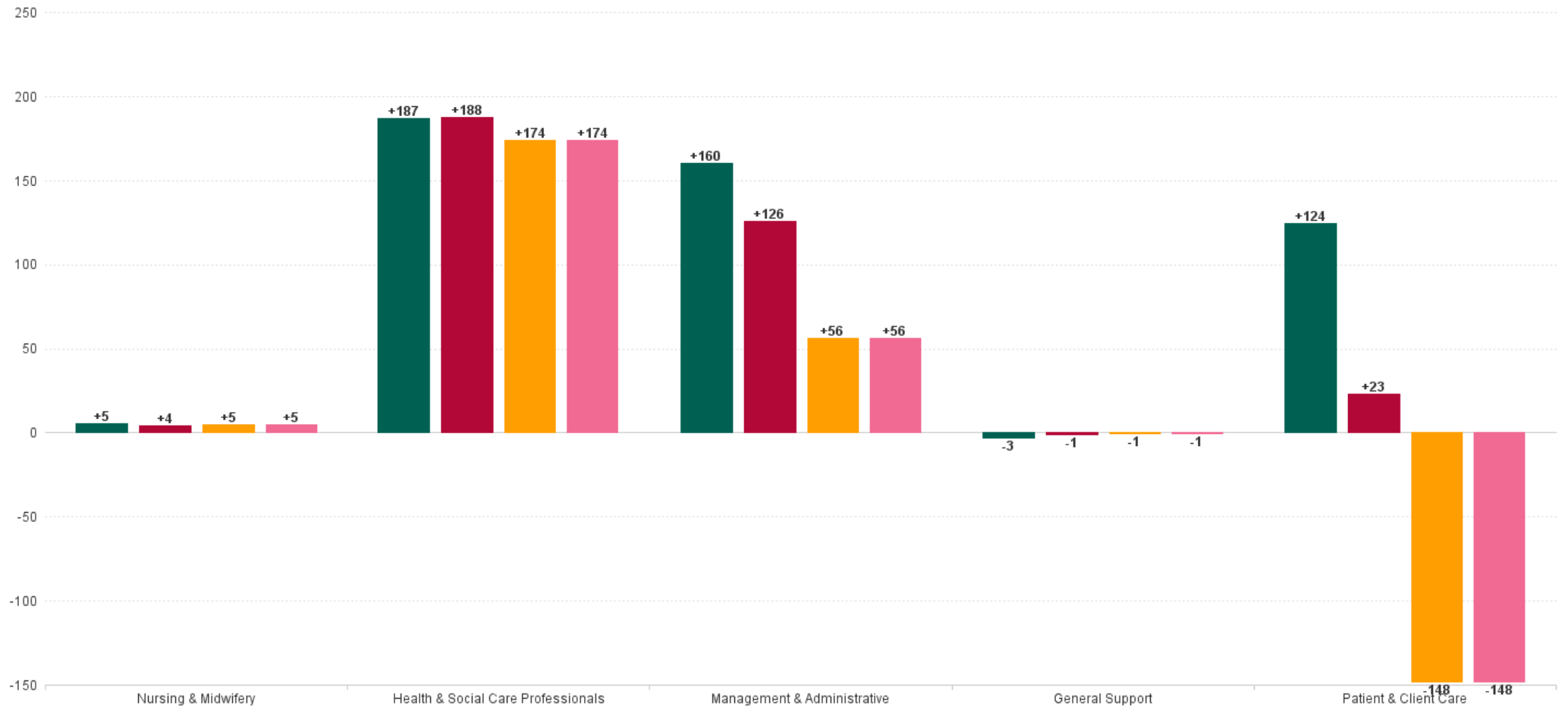
Employment Report by Staff Group

DEC 2024	WTE DEC 2019	WTE DEC 2022	WTE DEC 2023(1)	WTE NOV 2024	WTE DEC 2024	WTE Change 2023	WTE Change 2024	WTE Change NOV 2024	WTE Change Dec 2022 to DEC 2024	WTE Change Dec 2019 to DEC 2024	% WTE Change Dec 2022 to DEC 2024	No. DEC 2024
Overall	1,933	2,067	2,321	2,415	2,407	+254	+86	-8	+340	+474	+16.5%	2,460
Consultants	1	1	1	1	1	+0	+0	+0	+0	+0	+0.0%	1
Medical & Dental	1	1	1	1	1	+0	+0	+0	+0	+0	+0.0%	1
Nurse/ Midwife Manager	1	3	3	7	7	-0	+5	+0	+4	+6	+149.3%	8
Staff Nurse/ Staff Midwife	1									-1	-100.0%	
Nursing & Midwifery	2	3	3	7	7	-0	+5	+0	+4	+5	+149.3%	8
Dietitians	1									-1	-100.0%	
Therapy Professions	1									-1	-100.0%	
Pharmacy				1	1		+1	-0	+1	+1	-100.0%	1
H&SC, Other			14	108	187	+14	+173	+79	+187	+187	-100.0%	188
Health & Social Care Professionals	1		14	109	188	+14	+174	+79	+188	+187	-100.0%	189
Management (VIII & above)	12	21	40	41	42	+19	+2	+1	+21	+30	+102.8%	42
Administrative/ Supervisory (V to VII)	29	50	85	142	141	+35	+55	-1	+90	+112	+179.3%	143
Clerical (III & IV)	41	45	61	60	60	+16	-1	-0	+15	+19	+32.1%	64
Management & Administrative	82	116	186	242	242	+70	+56	-0	+126	+160	+108.3%	249
Support	4	3	2	2	2	-1	-1	+0	-1	-2	-43.6%	2
Maintenance/ Technical	2	1	1	1	1	+0	+0	+0	+0	-1	+0.0%	1
General Support	6	4	3	3	3	-1	-1	+0	-1	-3	-33.1%	3
Health Care Assistants	2	1	1	1	1	+0	-0	+0	+0	-1	+4.5%	1
Care, other	1,839	1,941	2,113	2,051	1,965	+171	-148	-87	+23	+125	+1.2%	2,009
Patient & Client Care	1,841	1,942	2,114	2,052	1,966	+171	-148	-87	+23	+124	+1.2%	2,010



WTE Change by Staff Category

■ WTE change since DEC 2019 ■ WTE change since DEC 2022 ■ WTE change since DEC 2023 ■ WTE change since DEC 2023(1)



National Ambulance Services Report by Region: DEC 2024

DEC 2024	WTE DEC 2019	WTE DEC 2022	WTE DEC 2023(1)	WTE NOV 2024	WTE DEC 2024	WTE Change 2023	WTE Change 2024	WTE Change NOV 2024	WTE Change Dec 2022 to DEC 2024	WTE Change Dec 2019 to DEC 2024	% WTE Change Dec 2022 to DEC 2024	No. DEC 2024
Overall	1,933	2,067	2,321	2,415	2,407	+254	+86	-8	+340	+474	16.46%	2,460
Ambulance Headquarters	41	148	160	207	208	+13	+47	+0	+60	+166	40.51%	211
NEOC	157	143	177	194	191	+34	+13	-3	+48	+34	33.27%	197
Ambulance Services	1,631	1,638	1,799	1,833	1,835	+161	+36	+3	+197	+204	12.05%	1,876
NASC	103	138	184	181	174	+46	-11	-7	+35	+70	25.65%	176
National Ambulance Service	1933	2067	2321	2415	2407	+254	+86	-8	+340	+474	16.46%	2,460



National Ambulance Services Employment Report : DEC 2024

Ambulance Headquarters

DEC 2024	WTE DEC 2019	WTE DEC 2022	WTE DEC 2023(1)	WTE NOV 2024	WTE DEC 2024	WTE Change 2023	WTE Change 2024	WTE Change NOV 2024	WTE Change Dec 2022 to DEC 2024	WTE Change Dec 2019 to DEC 2024	% WTE Change Dec 2022 to DEC 2024	No. DEC 2024
Overall	41	148	160	207	208	+13	+47	+0	+60	+166	+40.5%	211
Consultants	1	1	1	1	1	+0	+0	+0	+0	+0	+0.0%	1
Medical & Dental	1	1	1	1	1	+0	+0	+0	+0	+0	+0.0%	1
Nurse/ Midwife Manager		2	2	7	6	-0	+5	-0	+5	+6	+227.3%	7
Nursing & Midwifery		2	2	7	6	-0	+5	-0	+5	+6	+227.3%	7
Dietitians	1					-1				-1	-100.0%	
Therapy Professions	1									-1	-100.0%	
Pharmacy				1	1		+1	-0	+1	+1	-100.0%	1
H&SC, Other				13	13		+13	+0	+13	+13	-100.0%	13
Health & Social Care Professionals	1			14	14		+14	+0	+14	+13	-100.0%	14
Management (VIII & above)	9	18	21	21	22	+3	+1	+1	+4	+13	+24.0%	22
Administrative/ Supervisory (V to VII)	16	31	48	55	55	+17	+7	-1	+24	+39	+78.8%	56
Clerical (III & IV)	10	14	24	25	25	+10	+1	-0	+11	+16	+75.5%	26
Management & Administrative	34	63	93	102	102	+31	+9	+0	+39	+68	+62.6%	104
Care, other	5	82	64	84	84	-18	+20	-0	+2	+79	+2.5%	85
Patient & Client Care	5	82	64	84	84	-18	+20	-0	+2	+79	+2.5%	85



NEOC

DEC 2024	WTE DEC 2019	WTE DEC 2022	WTE DEC 2023(1)	WTE NOV 2024	WTE DEC 2024	WTE Change 2023	WTE Change 2024	WTE Change NOV 2024	WTE Change Dec 2022 to DEC 2024	WTE Change Dec 2019 to DEC 2024	% WTE Change Dec 2022 to DEC 2024	No. DEC 2024
Overall	157	143	177	194	191	+34	+13	-3	+48	+34	+33.3%	197
Nurse/ Midwife Manager	1	1	1	1	1	+0	-0	+0	-0	-0	-5.0%	1
Staff Nurse/ Staff Midwife	1									-1	-100.0%	
Nursing & Midwifery	2	1	1	1	1	+0	-0	+0	-0	-1	-5.0%	1
H&SC, Other				5	5		+5	-0	+5	+5	-100.0%	5
Health & Social Care Professionals				5	5		+5	-0	+5	+5	-100.0%	5
Management (VIII & above)	1	2	4	4	4	+2	+0	+0	+2	+3	+101.0%	4
Administrative/ Supervisory (V to VII)	1	2	3	3	3	+1	-0	-0	+1	+2	+49.2%	3
Clerical (III & IV)	2	2	1	0	0	-2	-0	+0	-2	-2	-84.8%	1
Management & Administrative	5	6	8	7	7	+2	-1	+0	+1	+3	+14.3%	8
Care, other	150	136	168	181	177	+33	+9	-4	+42	+27	+30.8%	183
Patient & Client Care	150	136	168	181	177	+33	+9	-4	+42	+27	+30.8%	183



Ambulance Services

DEC 2024	WTE DEC 2019	WTE DEC 2022	WTE DEC 2023(1)	WTE NOV 2024	WTE DEC 2024	WTE Change 2023	WTE Change 2024	WTE Change NOV 2024	WTE Change Dec 2022 to DEC 2024	WTE Change Dec 2019 to DEC 2024	% WTE Change Dec 2022 to DEC 2024	No. DEC 2024
Overall	1,631	1,638	1,799	1,833	1,835	+161	+36	+3	+197	+204	+12.0%	1,876
H&SC, Other				46	125		+125	+79	+125	+125	-100.0%	125
Health & Social Care Professionals				46	125		+125	+79	+125	+125	-100.0%	125
Management (VIII & above)	1		11	13	13	+11	+2	+0	+13	+12	-100.0%	13
Administrative/ Supervisory (V to VII)	10	14	23	48	48	+10	+24	+0	+34	+38	+247.4%	48
Clerical (III & IV)	26	26	30	30	30	+4	-1	+0	+4	+4	+14.4%	32
Management & Administrative	37	40	65	90	91	+25	+26	+0	+51	+54	+127.4%	93
Support	4	3	2	2	2	-1	-1	+0	-1	-2	-43.6%	2
Maintenance/ Technical	2	1	1	1	1	+0	+0	+0	+0	-1	+0.0%	1
General Support	6	4	3	3	3	-1	-1	+0	-1	-3	-33.1%	3
Health Care Assistants	2	1	1	1	1	+0	-0	+0	+0	-1	+4.5%	1
Care, other	1,587	1,593	1,730	1,693	1,616	+137	-114	-77	+23	+29	+1.5%	1,654
Patient & Client Care	1,589	1,594	1,731	1,694	1,617	+137	-114	-77	+23	+28	+1.5%	1,655



NASC

DEC 2024	WTE DEC 2019	WTE DEC 2022	WTE DEC 2023(1)	WTE NOV 2024	WTE DEC 2024	WTE Change 2023	WTE Change 2024	WTE Change NOV 2024	WTE Change Dec 2022 to DEC 2024	WTE Change Dec 2019 to DEC 2024	% WTE Change Dec 2022 to DEC 2024	No. DEC 2024
Overall	103	138	184	181	174	+46	-11	-7	+35	+70	+25.7%	176
H&SC, Other			14	45	44	+14	+30	-1	+44	+44	-100.0%	45
Health & Social Care Professionals			14	45	44	+14	+30	-1	+44	+44	-100.0%	45
Management (VIII & above)	1	1	4	3	3	+3	-1	+0	+2	+2	+203.0%	3
Administrative/ Supervisory (V to VII)	2	4	11	36	35	+7	+25	-0	+31	+33	+784.9%	36
Clerical (III & IV)	3	2	5	4	4	+3	-1	-0	+2	+1	+82.6%	5
Management & Administrative	6	7	20	43	43	+12	+23	-0	+35	+36	+477.1%	44
Care, other	97	131	151	93	87	+20	-64	-6	-44	-10	-33.5%	87
Patient & Client Care	97	131	151	93	87	+20	-64	-6	-44	-10	-33.5%	87

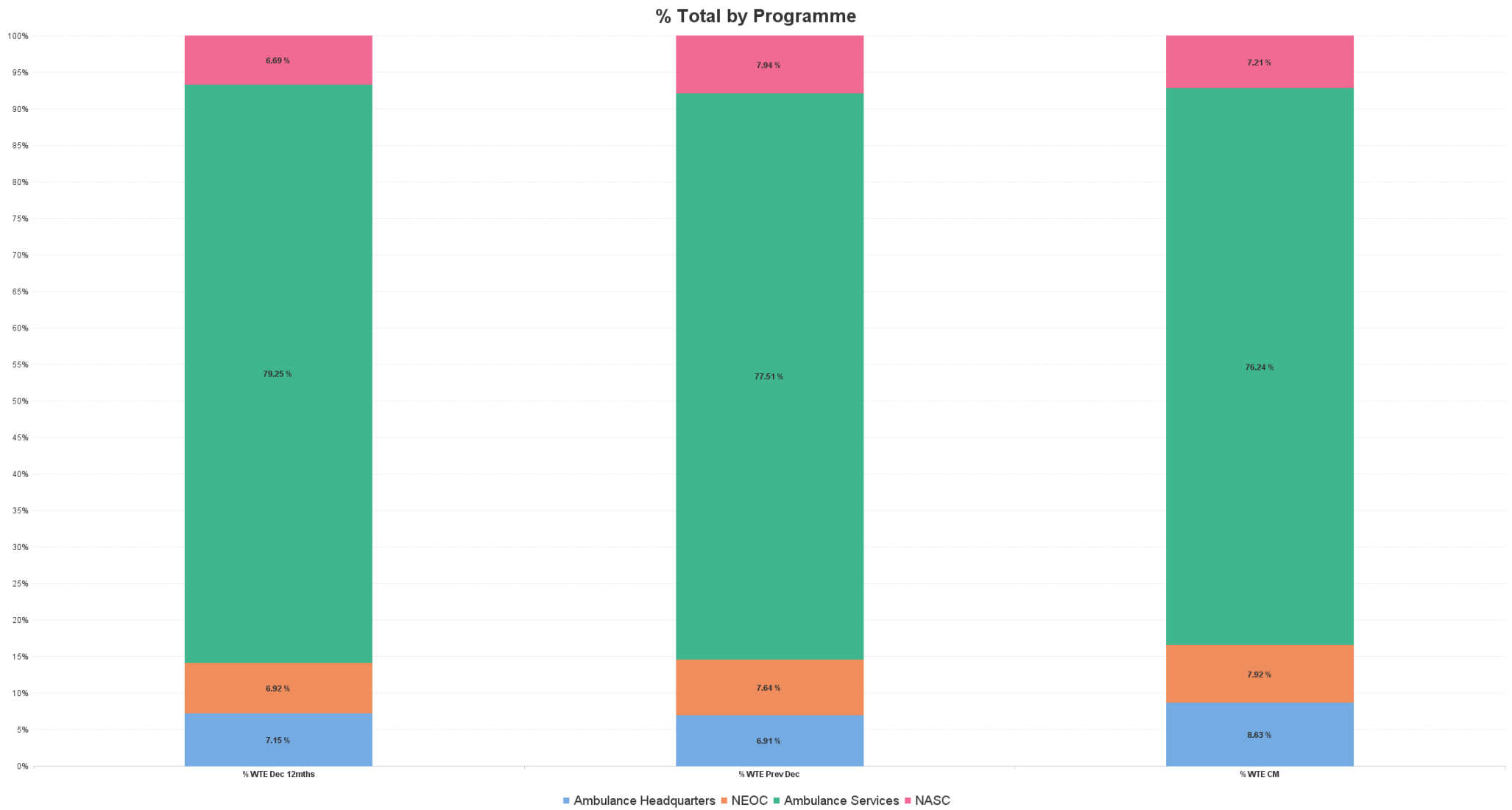


Emergency Services : DEC 2024

Employment Report by Staff Group

DEC 2024	WTE DEC 2019	WTE DEC 2022	WTE DEC 2023(1)	WTE NOV 2024	WTE DEC 2024	WTE Change 2023	WTE Change 2024	WTE Change NOV 2024	WTE Change Dec 2022 to DEC 2024	WTE Change Dec 2019 to DEC 2024	% WTE Change Dec 2022 to DEC 2024	No. DEC 2024
Emergency Services	1,631	1,638	1,799	1,833	1,835	+161	+36	+3	+197	+204	12.05%	1,876
H&SC, Other				46	125		+125	+79	+125	+125	-100.00%	125
Health & Social Care Professionals				46	125		+125	+79	+125	+125	-100.00%	125
Management (VIII & above)	1		11	13	13	+11	+2	+0	+13	+12	-100.00%	13
Administrative/ Supervisory (V to VII)	10	14	23	48	48	+10	+24	+0	+34	+38	247.38%	48
Clerical (III & IV)	26	26	30	30	30	+4	-1	+0	+4	+4	14.41%	32
Management & Administrative	37	40	65	90	91	+25	+26	+0	+51	+54	127.35%	93
Support	4	3	2	2	2	-1	-1	+0	-1	-2	-43.63%	2
Maintenance/ Technical	2	1	1	1	1	+0	+0	+0	+0	-1	0.00%	1
General Support	6	4	3	3	3	-1	-1	+0	-1	-3	-33.09%	3
Health Care Assistants	2	1	1	1	1	+0	-0	+0	+0	-1	4.49%	1
Care, other	1,587	1,593	1,730	1,693	1,616	+137	-114	-77	+23	+29	1.46%	1,654
Patient & Client Care	1,589	1,594	1,731	1,694	1,617	+137	-114	-77	+23	+28	1.46%	1,655





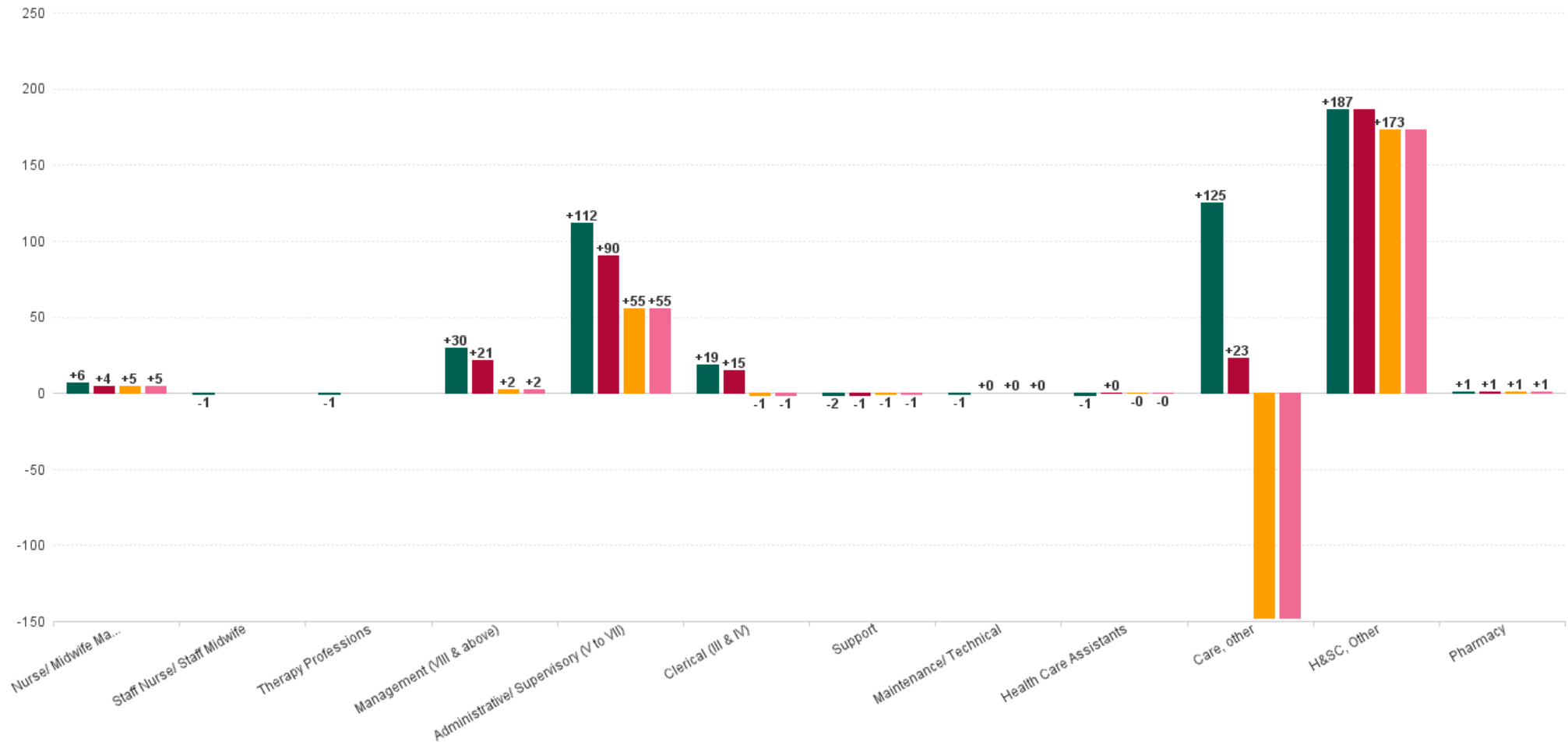
National Ambulance Services Employment Report by Grade Group: DEC 2024

DEC 2024	WTE DEC 2019	WTE DEC 2022	WTE DEC 2023(1)	WTE NOV 2024	WTE DEC 2024	WTE Change 2023	WTE Change 2024	WTE Change NOV 2024	WTE Change Dec 2022 to DEC 2024	WTE Change Dec 2019 to DEC 2024	% WTE Change Dec 2022 to DEC 2024	No. DEC 2024
Overall	1,933	2,067	2,321	2,415	2,407	+254	+86	-8	+340	+474	16.46%	2,460
Consultant Emergency Medicine	1	1	1	1	1	+0	+0	+0	+0	+0	0.00%	1
Consultants	1	1	1	1	1	+0	+0	+0	+0	+0	0.00%	1
Medical & Dental	1	1	1	1	1	+0	+0	+0	+0	+0	0.00%	1
Clinical Nurse/ Midwife Manager 2	1	1	1	4	4	+0	+3	+0	+3	+3	295.00%	4
Director Nursing/Midwifery, Assistant		1	1	3	2	-0	+2	-0	+1	+2	150.51%	3
Director of Nursing/Midwifery		1	1	1	1	+0	+0	+0	+0	+1	1.01%	1
Nurse/ Midwife Manager	1	3	3	7	7	-0	+5	+0	+4	+6	149.33%	8
Staff Nurses [General/ Children's]	1									-1	-100.00%	
Staff Nurse/ Staff Midwife	1									-1	-100.00%	
Nursing & Midwifery	2	3	3	7	7	-0	+5	+0	+4	+5	149.33%	8
Dietitians	1									-1	-100.00%	
Therapy Professions	1									-1	-100.00%	
Pharmacists				1	1		+1	-0	+1	+1	-100.00%	1
Pharmacy				1	1		+1	-0	+1	+1	-100.00%	1
Ambulance Education			14	15	15	+14	+1	+0	+15	+15	-100.00%	15
Paramedicine				93	172		+172	+79	+172	+172	-100.00%	173
H&SC, Other			14	108	187	+14	+173	+79	+187	+187	-100.00%	188
Health & Social Care Professionals	1		14	109	188	+14	+174	+79	+188	+187	-100.00%	189
General Managers	5	5	17	19	19	+12	+2	+0	+14	+14	280.76%	19
National Director		1				-1			-1		-100.00%	
National Director, Assistant	2	4	4	4	4	+0	+0	+0	+0	+2	0.00%	4
Other Executives		2	7	7	7	+5	+0	+0	+5	+7	211.11%	7
VIII	5	8	12	11	12	+4	-0	+1	+4	+7	41.47%	12
Management (VIII & above)	12	21	40	41	42	+19	+2	+1	+21	+30	102.80%	42
Middle Management (V-VII)	29	50	85	142	141	+35	+55	-1	+90	+112	179.26%	143
Administrative/ Supervisory (V to VII)	29	50	85	142	141	+35	+55	-1	+90	+112	179.26%	143
General Administrative (III & IV)	41	45	61	60	60	+16	-1	-0	+15	+19	32.14%	64
Clerical (III & IV)	41	45	61	60	60	+16	-1	-0	+15	+19	32.14%	64
Management & Administrative	82	116	186	242	242	+70	+56	-0	+126	+160	108.32%	249
Other Support	4	3	2	2	2	-1	-1	+0	-1	-2	-43.63%	2
Support	4	3	2	2	2	-1	-1	+0	-1	-2	-43.63%	2
Maintenance	2	1	1	1	1	+0	+0	+0	+0	-1	0.00%	1
Maintenance/ Technical	2	1	1	1	1	+0	+0	+0	+0	-1	0.00%	1
General Support	6	4	3	3	3	-1	-1	+0	-1	-3	-33.09%	3
Attendant/ Aide	2	1	1	1	1	+0	-0	+0	+0	-1	4.49%	1
Health Care Assistants	2	1	1	1	1	+0	-0	+0	+0	-1	4.49%	1
Ambulance Control	179	149	176	196	193	+27	+17	-3	+44	+14	29.80%	199
Ambulance Education	1,410	1,492	1,602	1,587	1,505	+110	-97	-82	+13	+95	0.84%	1,539
Ambulance Operations	236	290	326	258	257	+36	-69	-1	-33	+21	-11.30%	261
Other Care Grades	15	11	10	10	10	-1	+0	+0	-1	-5	-8.64%	10
Care, other	1,839	1,941	2,113	2,051	1,965	+171	-148	-87	+23	+125	1.20%	2,009
Patient & Client Care	1841	1942	2114	2052	1966	+171	-148	-87	+23	+124	1.20%	2,010



WTE Change by Staff Category

■ WTE change since DEC 2019 ■ WTE change since DEC 2022 ■ WTE change since DEC 2023 ■ WTE change since DEC 2023(1)



National Ambulance Services Employment Report by WTE, Headcount, Gender, Full-Time / Part-Time etc. DEC 2024

DEC 2024	WTE DEC 2024	No. DEC 2024	WTE : No	% Male	% Female	Male WTE : No.	Female WTE : No	Perm Count %	Perm Count Male %	Perm Count Female %	Fulltime Count %	Part time Count %	FT Count Male %	FT Count Female %
Total	2,407	2,460	1:1	64.51%	35.49%	1:1	1:1	84.23%	57.03%	27.20%	99.31%	0.69%	99.81%	98.40%
Consultants	1	1	1:1	100.00%		1:1	1:	100.00%	100.00%		100.00%		100.00%	
Medical & Dental	1	1	1:1	100.00%		1:1	1:	100.00%	100.00%		100.00%		100.00%	
Nurse/ Midwife Manager	7.43	8	1:0.9	12.50%	87.50%	1:1	1:0.9	100.00%	12.50%	87.50%	87.50%	12.50%	100.00%	85.71%
Nursing & Midwifery	7	8	1:0.9	12.50%	87.50%	1:1	1:0.9	100.00%	12.50%	87.50%	87.50%	12.50%	100.00%	85.71%
Pharmacists	0.99	1	1:1		100.00%	1:	1:1	100.00%		100.00%	100.00%			100.00%
Pharmacy	0.99	1	1:1		100.00%	1:	1:1	100.00%		100.00%	100.00%			100.00%
Ambulance Education	15	15	1:1	80.00%	20.00%	1:1	1:1	100.00%	80.00%	20.00%	100.00%		100.00%	100.00%
Paramedicine	171.75	173	1:1	55.49%	44.51%	1:1	1:1	24.28%	15.61%	8.67%	100.00%		100.00%	100.00%
H&SC, Other	186.75	188	1:1	57.45%	42.55%	1:1	1:1	30.32%	20.74%	9.57%	100.00%		100.00%	100.00%
Health & Social Care Professionals	188	189	1:1	57.14%	42.86%	1:1	1:1	30.69%	20.63%	10.05%	100.00%		100.00%	100.00%
Management (VIII & above)	41.94	42	1:1	76.19%	23.81%	1:1	1:1	100.00%	76.19%	23.81%	100.00%		100.00%	100.00%
Administrative/ Supervisory (V to VII)	140.55	143	1:1	54.55%	45.45%	1:1	1:1	99.30%	53.85%	45.45%	99.30%	0.70%	100.00%	98.46%
Clerical (III & IV)	59.95	64	1:0.9	21.88%	78.13%	1:1	1:0.9	98.44%	20.31%	78.13%	89.06%	10.94%	100.00%	86.00%
Management & Administrative	242	249	1:1	49.80%	50.20%	1:1	1:1	99.20%	49.00%	50.20%	96.79%	3.21%	100.00%	93.60%
Support	1.77	2	1:0.9		100.00%	1:	1:0.9	100.00%		100.00%	100.00%			100.00%
Maintenance/ Technical	1	1	1:1	100.00%		1:1	1:	100.00%	100.00%		100.00%		100.00%	
General Support	3	3	1:0.9	33.33%	66.67%	1:1	1:0.9	100.00%	33.33%	66.67%	100.00%		100.00%	100.00%
Care, other	1,504.85	1,539	1:1	87.78%	42.76%	1:1	1:1	113.97%	80.44%	33.53%	130.02%	0.52%	99.78%	99.24%
Health Care Assistants	0.93	1	1:0.9	100.00%		1:0.9	1:	100.00%	100.00%		100.00%		100.00%	
Care, other	459.88	470	1:1	287.45%	140.00%	1:1	1:1	373.19%	263.40%	109.79%	425.74%	1.70%	99.78%	99.24%
Patient & Client Care	1,966	2,010	1:1	67.26%	32.74%	1:1	1:1	87.31%	61.64%	25.67%	99.60%	0.40%	99.78%	99.24%



National Ambulance Services Employment Report by Region: WTE, Headcount, Gender, Full-Time / Part-Time etc. DEC 2024

DEC 2024	WTE DEC 2024	No. DEC 2024	WTE : No	% Male	% Female	Male WTE : No.	Female WTE : No	Perm Count %	Number Male %	Number Female %	Fulltime Count %	Part time Count %	FT Count Male %	FT Count Female %
Total	2,407	2,460	1:1	64.51%	35.49%	1:1	1:1	84.23%	57.03%	27.20%	99.31%	0.69%	99.81%	98.40%
Ambulance Headquarters	208	211	1:1	52.13%	47.87%	1:1	1:1	99.05%	51.18%	47.87%	99.05%	0.95%	100.00%	98.02%
Ambulance Services	1,835	1,876	1:1	68.60%	31.40%	1:1	1:1	85.34%	61.57%	23.77%	99.31%	0.69%	99.77%	98.30%
NASC	174	176	1:1	55.68%	44.32%	1:1	1:1	36.93%	27.27%	9.66%	99.43%	0.57%	100.00%	98.72%
NEOC	191	197	1:1	46.70%	53.30%	1:1	1:0.9	100.00%	46.70%	53.30%	99.49%	0.51%	100.00%	99.05%



Previous Month Summary

	% WTE change since NOV 2024	WTE change since NOV 2024	Ambulance Headquarters	NEOC	Ambulance Services	NASC
Total	-0.3%	-7.6	+0.4	-3.4	+2.7	-7.3
Consultants	+0.0%	+0.0	+0.0			
Medical & Dental	+0.0%	+0.0	+0.0			
Nurse/ Midwife Manager	+1.0%	+0.1	-0.0	+0.1		
Staff Nurse/ Staff Midwife						
Nursing & Midwifery	+1.0%	+0.1	-0.0	+0.1		
Therapy Professions						
H&SC, Other	+72.9%	+78.8	+0.5	-0.0	+79.2	-0.9
Pharmacy	-1.0%	-0.0	-0.0			
Health & Social Care Professionals	+72.2%	+78.7	+0.5	-0.0	+79.2	-0.9
Management (VIII & above)	+2.3%	+0.9	+0.9	+0.0	+0.0	+0.0
Administrative/ Supervisory (V to VII)	-0.7%	-1.0	-0.5	-0.0	+0.0	-0.4
Clerical (III & IV)	-0.1%	-0.0	-0.1	+0.1	+0.0	-0.0
Management & Administrative	0.0%	-0.0	+0.4	+0.1	+0.0	-0.5
Support	+16.4%	+0.3			+0.3	
Maintenance/ Technical	+0.0%	+0.0			+0.0	
General Support	+9.9%	+0.3			+0.3	
Health Care Assistants	+9.4%	+0.1			+0.1	
Care, other	-4.2%	-86.7	-0.4	-3.5	-76.9	-6.0
Patient & Client Care	-4.2%	-86.6	-0.4	-3.5	-76.8	-6.0



Year on Year Summary

	% WTE change since DEC 2023 (1)	WTE change since DEC 2023 (1)	Ambulance Headquarters	NEOC	Ambulance Services	NASC
Total	+3.7%	+85.9	+47.3	+13.2	+36.2	-10.7
Consultants	+0.0%	+0.0	+0.0			
Medical & Dental	+0.0%	+0.0	+0.0			
Nurse/ Midwife Manager	+170.2%	+4.7	+4.7	-0.1		
Staff Nurse/ Staff Midwife						
Nursing & Midwifery	+170.2%	+4.7	+4.7	-0.1		
Therapy Professions						
H&SC, Other	+1,233.9%	+172.8	+13.0	+4.9	+124.7	+30.1
Pharmacy		+1.0	+1.0			
Health & Social Care Professionals	+1,241.0%	+173.7	+14.0	+4.9	+124.7	+30.1
Management (VIII & above)	+5.0%	+2.0	+1.0	+0.0	+2.1	-1.0
Administrative/ Supervisory (V to VII)	+64.7%	+55.2	+6.8	-0.4	+24.3	+24.6
Clerical (III & IV)	-1.7%	-1.1	+0.9	-0.5	-0.5	-0.9
Management & Administrative	+30.1%	+56.2	+8.6	-0.9	+25.8	+22.7
Support	-28.0%	-0.7			-0.7	
Maintenance/ Technical	+0.0%	+0.0			+0.0	
General Support	-19.9%	-0.7			-0.7	
Health Care Assistants	-5.1%	-0.1			-0.1	
Care, other	-7.0%	-147.9	+20.0	+9.2	-113.6	-63.5
Patient & Client Care	-7.0%	-147.9	+20.0	+9.2	-113.7	-63.5

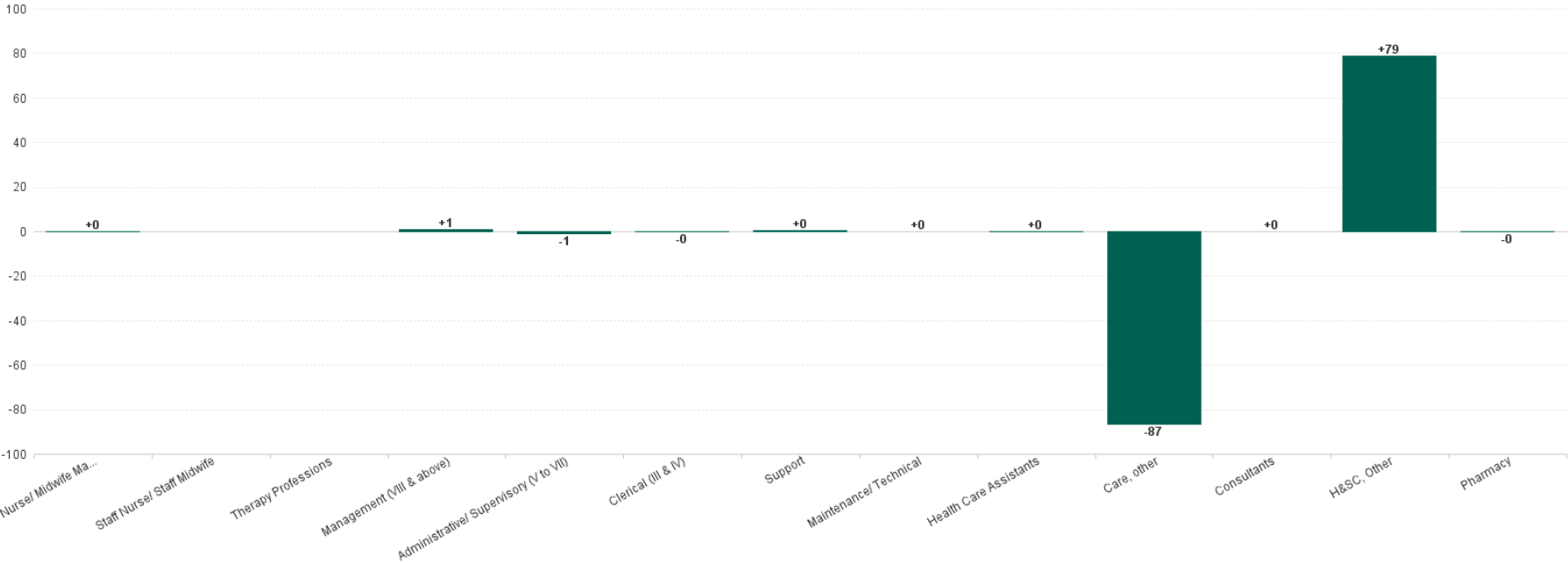


Year to Date Summary

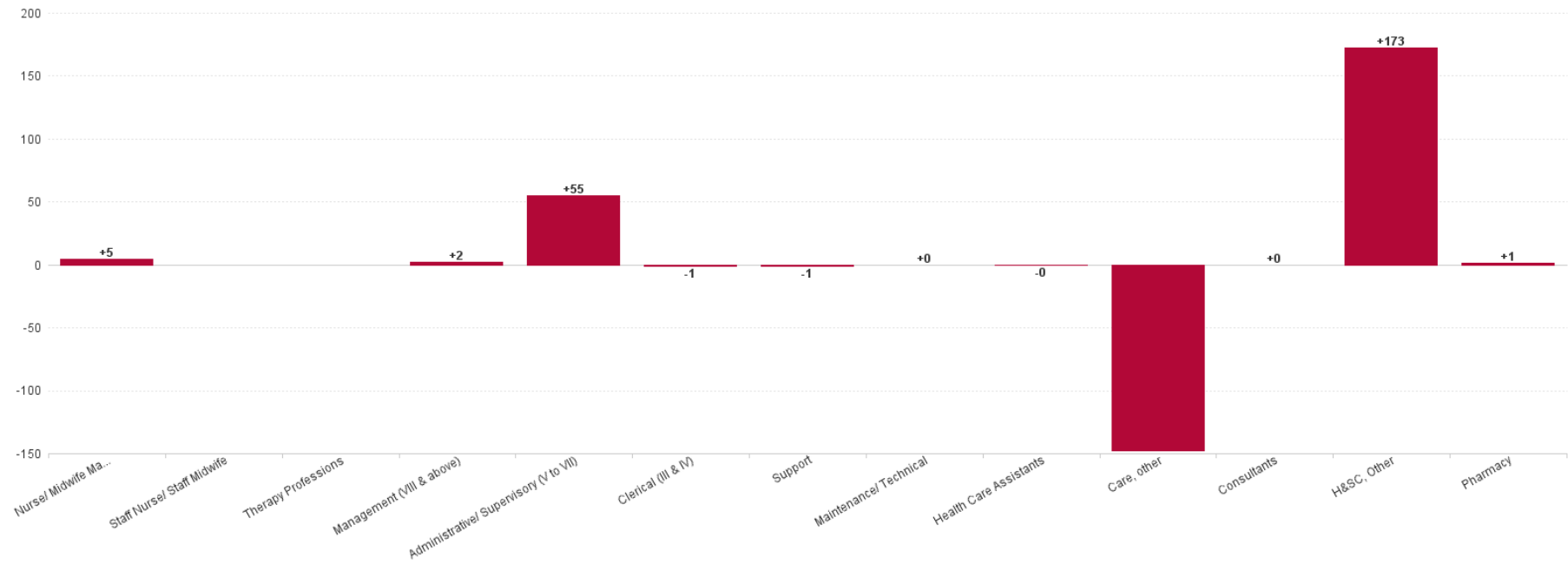
	% WTE change since DEC 2023	WTE change since DEC 2023	Ambulance Headquarters	NEOC	Ambulance Services	NASC
Total	+3.7%	+85.9	+47.3	+13.2	+36.2	-10.7
Consultants	+0.0%	+0.0	+0.0			
Medical & Dental	+0.0%	+0.0	+0.0			
Nurse/ Midwife Manager	+170.2%	+4.7	+4.7	-0.1		
Staff Nurse/ Staff Midwife						
Nursing & Midwifery	+170.2%	+4.7	+4.7	-0.1		
Therapy Professions						
H&SC, Other	+1,233.9%	+172.8	+13.0	+4.9	+124.7	+30.1
Pharmacy		+1.0	+1.0			
Health & Social Care Professionals	+1,241.0%	+173.7	+14.0	+4.9	+124.7	+30.1
Management (VIII & above)	+5.0%	+2.0	+1.0	+0.0	+2.1	-1.0
Administrative/ Supervisory (V to VII)	+64.7%	+55.2	+6.8	-0.4	+24.3	+24.6
Clerical (III & IV)	-1.7%	-1.1	+0.9	-0.5	-0.5	-0.9
Management & Administrative	+30.1%	+56.2	+8.6	-0.9	+25.8	+22.7
Support	-28.0%	-0.7			-0.7	
Maintenance/ Technical	+0.0%	+0.0			+0.0	
General Support	-19.9%	-0.7			-0.7	
Health Care Assistants	-5.1%	-0.1			-0.1	
Care, other	-7.0%	-147.9	+20.0	+9.2	-113.6	-63.5
Patient & Client Care	-7.0%	-147.9	+20.0	+9.2	-113.7	-63.5



Previous Month Summary Chart: Change since NOV 2024



Previous Year Summary Chart: Change since DEC 2023



YTD Summary Chart: Change since 2023(1)

