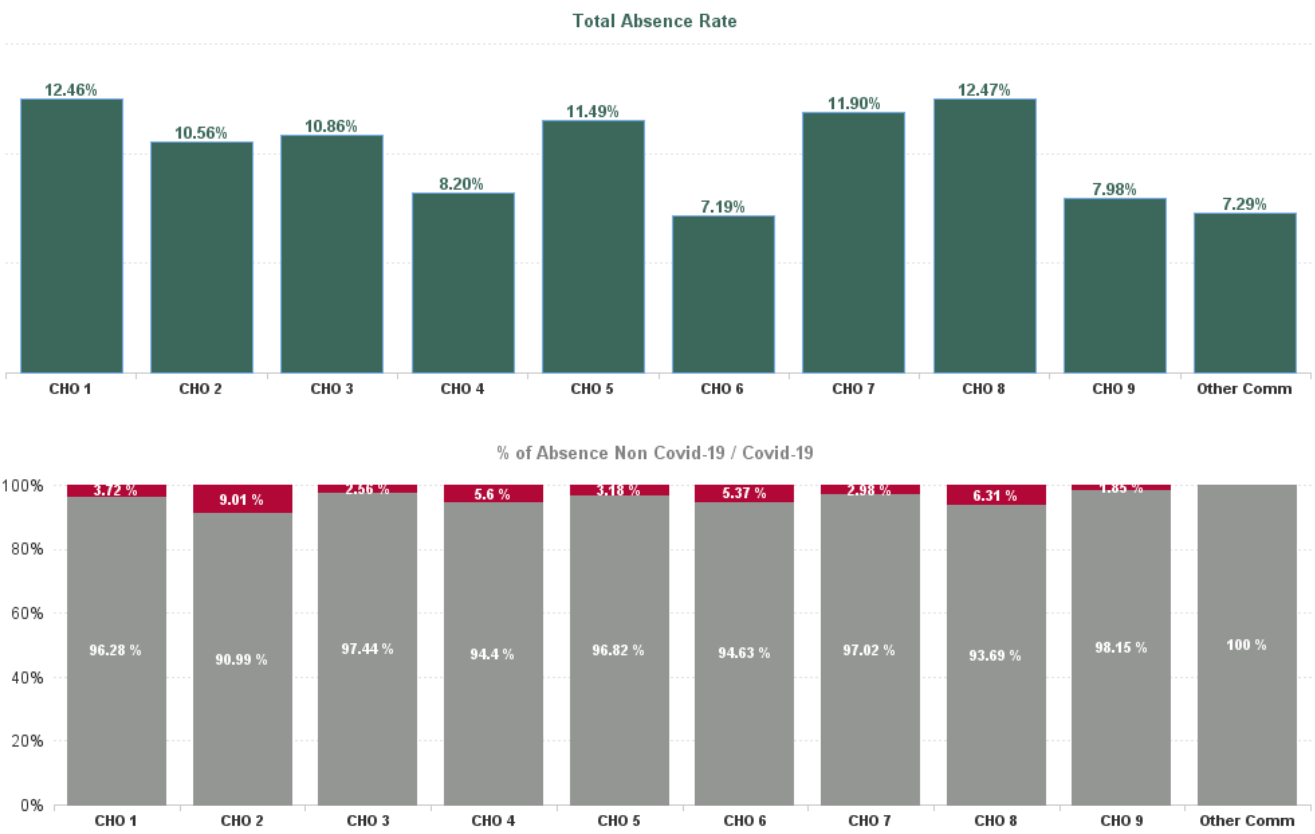


December 2024

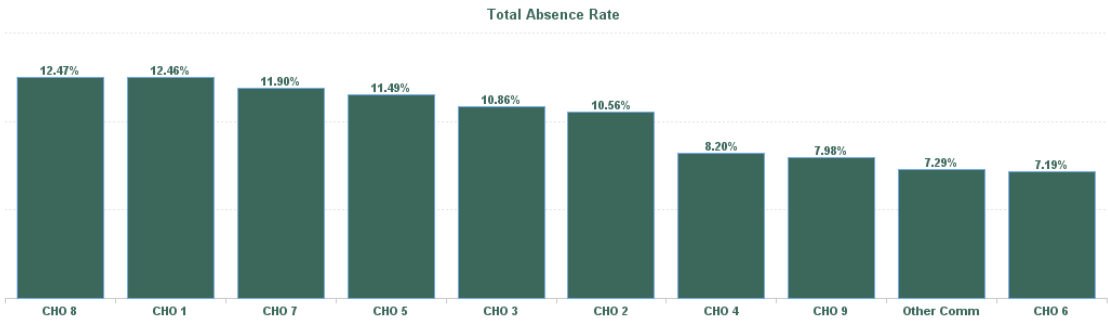
Health Service Absence Rate - by Staff Category: Dec 2024	Certified absence	Self-certified absence	Non Covid-19 absence	Covid-19 Absence	Total absence rate	% Non Covid-19 absence	% Covid-19 absence
Older People	8.84%	0.97%	9.81%	0.48%	10.29%	95.37%	4.63%
Medical & Dental	0.50%	0.46%	0.96%	0.00%	0.96%	100.00%	0.00%
Nursing & Midwifery	8.21%	1.10%	9.30%	0.60%	9.91%	93.92%	6.08%
Health & Social Care Professionals	6.20%	0.81%	7.01%	0.06%	7.08%	99.10%	0.90%
Management & Administrative	6.41%	0.54%	6.95%	0.09%	7.04%	98.74%	1.26%
General Support	8.50%	0.66%	9.16%	0.19%	9.35%	97.94%	2.06%
Patient & Client Care	10.31%	1.04%	11.36%	0.55%	11.91%	95.35%	4.65%

Health Service Absence Rate - by Hospital Group: Dec 2024	Certified absence	Self-certified absence	Non Covid-19 absence	Covid-19 Absence	Total absence rate	% Non Covid-19 absence	% Covid-19 absence
Older People	8.84%	0.97%	9.81%	0.48%	10.29%	95.37%	4.63%
CHO 1	11.25%	0.76%	12.00%	0.46%	12.46%	96.28%	3.72%
CHO 2	8.66%	0.95%	9.61%	0.95%	10.56%	90.99%	9.01%
CHO 3	9.73%	0.85%	10.58%	0.28%	10.86%	97.44%	2.56%
CHO 4	6.79%	0.95%	7.74%	0.46%	8.20%	94.40%	5.60%
CHO 5	10.17%	0.96%	11.13%	0.37%	11.49%	96.82%	3.18%
CHO 6	5.91%	0.89%	6.80%	0.39%	7.19%	94.63%	5.37%
CHO 7	10.13%	1.41%	11.54%	0.35%	11.90%	97.02%	2.98%
CHO 8	10.61%	1.07%	11.68%	0.79%	12.47%	93.69%	6.31%
CHO 9	6.79%	1.04%	7.83%	0.15%	7.98%	98.15%	1.85%
Other Community Services	6.35%	0.94%	7.29%	0.00%	7.29%	100.00%	0.00%



December 2024

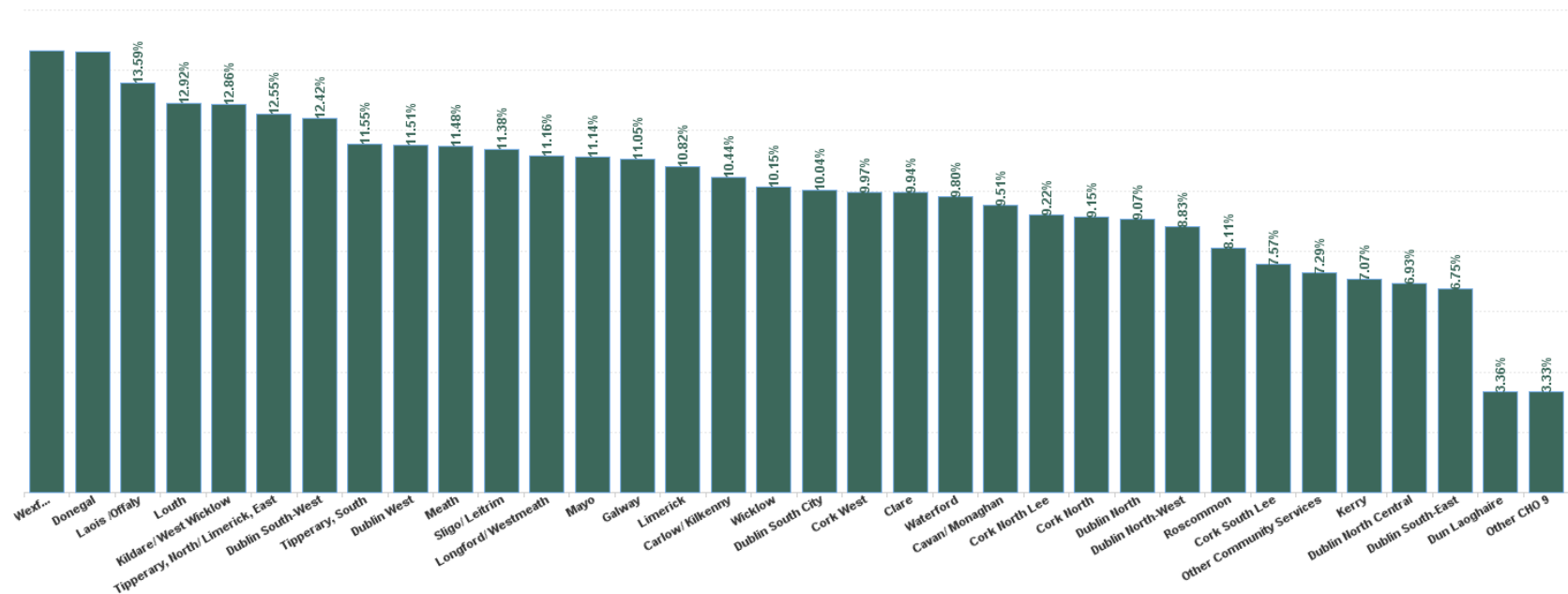
Health Service Absence Rate - by HG, CHO/Care Group & Staff Category : Dec 2024	Certified absence	Self-certified absence	Non Covid-19 absence	Covid-19 Absence	Total absence rate	Medical & Dental	Nursing & Midwifery	Health & Social Care Professionals	Management & Administrative	General Support	Patient & Client Care
Older People	8.84%	0.97%	9.81%	0.48%	10.29%	0.96%	9.91%	7.08%	7.04%	9.35%	11.91%
CHO 1	11.25%	0.76%	12.00%	0.46%	12.46%	0.75%	11.06%	10.38%	8.52%	10.51%	14.97%
CHO 2	8.66%	0.95%	9.61%	0.95%	10.56%	0.00%	12.00%	8.25%	8.06%	6.89%	10.59%
CHO 3	9.73%	0.85%	10.58%	0.28%	10.86%	6.52%	9.64%	6.66%	8.94%	10.57%	12.87%
CHO 4	6.79%	0.95%	7.74%	0.46%	8.20%	0.00%	7.55%	11.18%	3.94%	6.89%	9.89%
CHO 5	10.17%	0.96%	11.13%	0.37%	11.49%	0.00%	13.41%	8.19%	6.89%	12.76%	10.96%
CHO 6	5.91%	0.89%	6.80%	0.39%	7.19%	0.00%	6.71%	3.10%	6.47%	5.15%	9.52%
CHO 7	10.13%	1.41%	11.54%	0.35%	11.90%	0.00%	11.43%	4.61%	8.99%	9.33%	13.98%
CHO 8	10.61%	1.07%	11.68%	0.79%	12.47%	0.00%	10.35%	9.45%	7.77%	12.38%	15.00%
CHO 9	6.79%	1.04%	7.83%	0.15%	7.98%	1.73%	7.53%	6.00%	6.86%	12.01%	8.19%
Other Community Services	6.35%	0.94%	7.29%	0.00%	7.29%		20.37%	13.68%	6.87%		0.00%



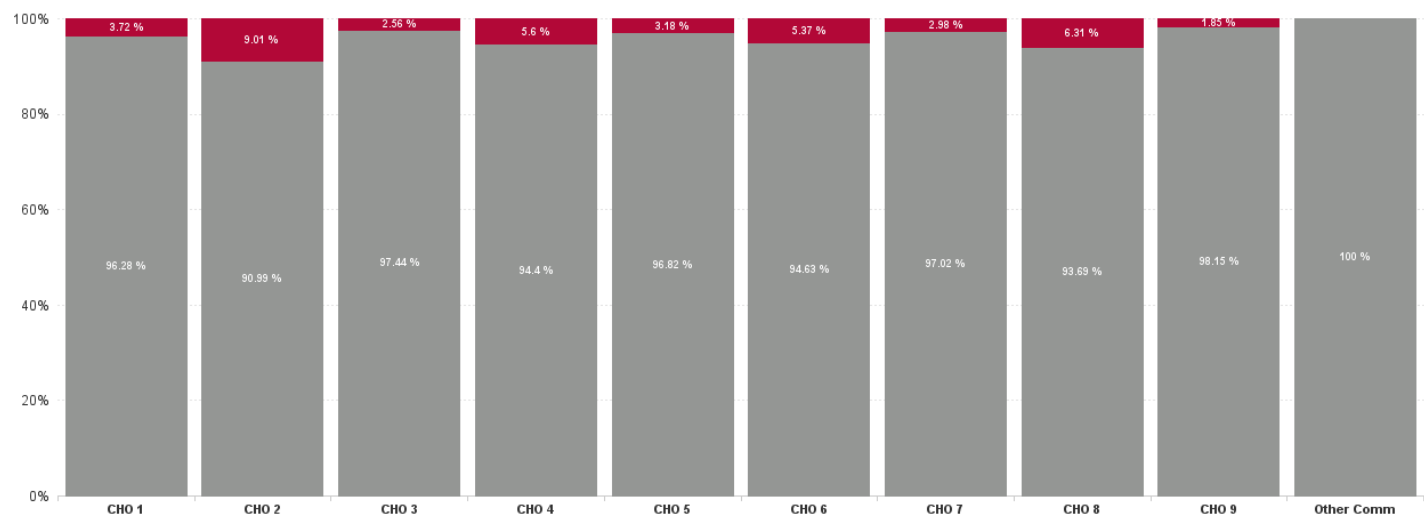
December 2024

Health Service Absence Rate - by HG, CHO/Care Group & Staff Category: Dec 2024	Certified absence	Self- certified absence	Non Covid-19 absence	Covid-19 Absence	Total absence rate	Medical & Dental	Nursing & Midwifery	Health & Social Care Professionals	Management & Administrative	General Support	Patient & Client Care
Total	8.84%	0.97%	9.81%	0.48%	10.29%	0.96%	9.91%	7.08%	7.04%	9.35%	11.91%
Cavan/ Monaghan	8.70%	0.81%	9.51%	0.00%	9.51%	0.00%	7.30%	25.09%	5.07%	5.65%	11.58%
Donegal	12.91%	0.89%	13.80%	0.82%	14.61%	0.00%	12.22%	12.77%	10.68%	13.54%	17.41%
Sligo/ Leitrim	10.58%	0.53%	11.11%	0.27%	11.38%	3.51%	11.78%	4.67%	8.99%	9.86%	13.41%
CHO 1	11.25%	0.76%	12.00%	0.46%	12.46%	0.75%	11.06%	10.38%	8.52%	10.51%	14.97%
Galway	9.33%	0.96%	10.28%	0.77%	11.05%	0.00%	14.60%	2.36%	11.76%	4.39%	10.30%
Mayo	8.65%	0.92%	9.57%	1.57%	11.14%	0.00%	12.31%	12.83%	5.59%	5.98%	11.44%
Roscommon	7.12%	0.99%	8.11%	0.00%	8.11%		5.64%	14.36%	0.00%	10.94%	9.46%
CHO 2	8.66%	0.95%	9.61%	0.95%	10.56%	0.00%	12.00%	8.25%	8.06%	6.89%	10.59%
Clare	8.59%	0.87%	9.46%	0.48%	9.94%	0.00%	7.94%	9.16%	8.02%	16.71%	11.48%
Limerick	9.82%	0.89%	10.71%	0.11%	10.82%	11.20%	11.32%	6.60%	9.31%	8.03%	11.79%
Tipperary, North/ Limerick, East	11.48%	0.70%	12.18%	0.38%	12.55%	0.00%	7.92%	0.00%	10.62%	9.42%	17.39%
CHO 3	9.73%	0.85%	10.58%	0.28%	10.86%	6.52%	9.64%	6.66%	8.94%	10.57%	12.87%
Cork North	7.33%	0.83%	8.16%	0.99%	9.15%	0.00%	10.67%	0.00%	7.53%	0.00%	9.02%
Cork North Lee	7.89%	1.22%	9.11%	0.11%	9.22%	0.00%	7.51%	2.83%	5.21%	0.00%	12.25%
Cork South Lee	6.14%	1.10%	7.24%	0.33%	7.57%	0.00%	5.96%	14.89%	4.02%	6.04%	9.58%
Cork West	7.69%	1.01%	8.69%	1.28%	9.97%	0.00%	9.95%	0.00%	2.65%	13.26%	10.71%
Kerry	6.41%	0.62%	7.03%	0.04%	7.07%	0.00%	7.02%	8.90%	2.81%	6.83%	8.75%
CHO 4	6.79%	0.95%	7.74%	0.46%	8.20%	0.00%	7.55%	11.18%	3.94%	6.89%	9.89%
Carlow/ Kilkenny	8.34%	0.96%	9.30%	1.14%	10.44%	0.00%	11.39%	0.91%	3.03%	6.30%	12.74%
Tipperary, South	10.59%	0.89%	11.48%	0.07%	11.55%	0.00%	17.74%	0.00%	11.30%	12.86%	7.96%
Waterford	8.71%	1.05%	9.76%	0.04%	9.80%	0.00%	11.06%	2.65%	9.62%	21.15%	9.02%
Wexford	13.57%	0.91%	14.49%	0.15%	14.63%	0.00%	14.99%	28.92%	4.48%	14.75%	14.26%
CHO 5	10.17%	0.96%	11.13%	0.37%	11.49%	0.00%	13.41%	8.19%	6.89%	12.76%	10.96%
Dublin South-East	5.51%	0.78%	6.29%	0.46%	6.75%	0.00%	6.48%	3.08%	8.95%	5.77%	8.09%
Dun Laoghaire	2.10%	1.26%	3.36%	0.00%	3.36%		3.59%	2.71%	0.00%	1.24%	5.31%
Wicklow	8.74%	1.15%	9.89%	0.25%	10.15%	0.00%	8.91%	3.65%	4.07%	1.95%	14.51%
CHO 6	5.91%	0.89%	6.80%	0.39%	7.19%	0.00%	6.71%	3.10%	6.47%	5.15%	9.52%
Dublin South City	8.74%	1.29%	10.04%	0.00%	10.04%	0.00%	10.51%	3.09%	19.03%	10.44%	9.85%
Dublin South-West	8.06%	1.98%	10.04%	2.38%	12.42%		11.36%	17.30%	4.14%	3.68%	20.26%
Dublin West	10.05%	1.45%	11.51%	0.00%	11.51%	0.00%	10.54%	2.75%	16.93%	9.27%	14.68%
Kildare/ West Wicklow	11.49%	1.26%	12.76%	0.10%	12.86%	0.00%	12.62%	1.22%	9.40%	11.22%	14.12%
CHO 7	10.13%	1.41%	11.54%	0.35%	11.90%	0.00%	11.43%	4.61%	8.99%	9.33%	13.98%
Laois /Offaly	11.35%	0.94%	12.29%	1.30%	13.59%	0.00%	11.62%	8.93%	14.28%	13.95%	15.17%
Longford/ Westmeath	10.16%	1.01%	11.16%	0.00%	11.16%	0.00%	10.04%	2.98%	5.24%	8.63%	14.72%
Louth	10.35%	1.43%	11.79%	1.13%	12.92%		12.82%	25.46%	2.08%	13.72%	13.68%
Meath	9.87%	1.08%	10.95%	0.53%	11.48%	0.00%	4.23%	1.65%	13.69%	16.38%	16.79%
CHO 8	10.61%	1.07%	11.68%	0.79%	12.47%	0.00%	10.35%	9.45%	7.77%	12.38%	15.00%
Dublin North	8.08%	0.99%	9.07%	0.00%	9.07%		12.89%	3.29%	0.83%	18.11%	5.46%
Dublin North Central	5.67%	1.07%	6.75%	0.18%	6.93%	2.65%	3.91%	6.08%	3.02%	10.91%	10.32%
Dublin North-West	7.63%	1.05%	8.68%	0.15%	8.83%	1.17%	9.44%	6.27%	13.94%	12.17%	6.97%
Other CHO 9	3.33%	0.00%	3.33%	0.00%	3.33%		0.00%		3.95%		
CHO 9	6.79%	1.04%	7.83%	0.15%	7.98%	1.73%	7.53%	6.00%	6.86%	12.01%	8.19%
Other Community Services	6.35%	0.94%	7.29%	0.00%	7.29%		20.37%	13.68%	6.87%		0.00%
Other Community Services	6.35%	0.94%	7.29%	0.00%	7.29%		20.37%	13.68%	6.87%		0.00%
Community Services	8.84%	0.97%	9.81%	0.48%	10.29%	0.96%	9.91%	7.08%	7.04%	9.35%	11.91%

Total Absence Rate



% of Absence Non Covid-19 / Covid-19



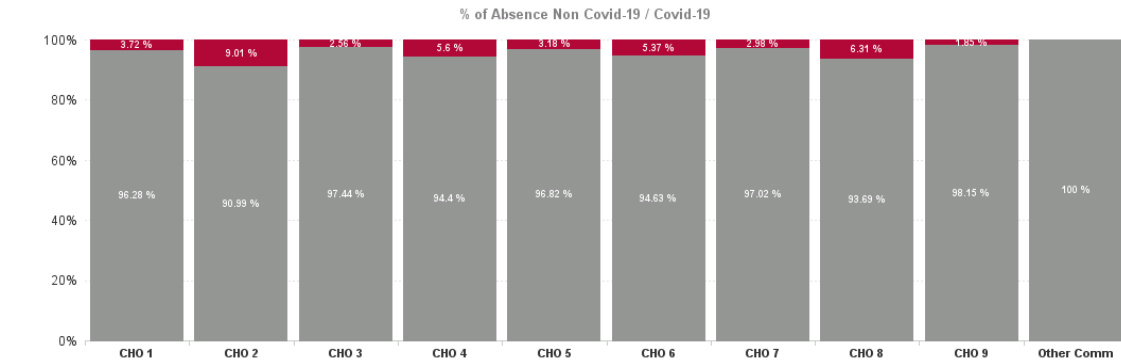
December 2024

Health Service Covid 19 Absence Rate - by Hospital & Staff Category: Dec 2024	Non Covid-19 absence	Covid-19 absence	Total absence rate	Medical & Dental	Nursing & Midwifery	Health & Social Care Professionals	Management & Administrative	General Support	Patient & Client Care
Older People	9.81%	0.48%	10.29%	0.00%	0.60%	0.06%	0.09%	0.19%	0.55%
Cavan/ Monaghan	9.51%	0.00%	9.51%	0.00%	0.00%	0.00%	0.00%	0.00%	0.00%
Donegal	13.80%	0.82%	14.61%	0.00%	0.50%	0.00%	0.00%	0.00%	1.29%
Sligo/ Leitrim	11.11%	0.27%	11.38%	0.00%	0.47%	1.22%	0.00%	0.07%	0.15%
CHO 1	12.00%	0.46%	12.46%	0.00%	0.39%	0.66%	0.00%	0.04%	0.69%
Galway	10.28%	0.77%	11.05%	0.00%	2.35%	0.00%	0.00%	0.00%	0.10%
Mayo	9.57%	1.57%	11.14%	0.00%	3.12%	0.00%	1.18%	2.83%	0.55%
Roscommon	8.11%	0.00%	8.11%		0.00%	0.00%	0.00%	0.00%	0.00%
CHO 2	9.61%	0.95%	10.56%	0.00%	2.26%	0.00%	0.47%	0.77%	0.26%
Clare	9.46%	0.48%	9.94%	0.00%	1.08%	0.00%	0.00%	0.23%	0.13%
Limerick	10.71%	0.11%	10.82%	0.00%	0.31%	0.00%	0.00%	0.00%	0.00%
Tipperary, North/ Limerick, East	12.18%	0.38%	12.55%	0.00%	0.48%	0.00%	0.00%	0.00%	0.47%
CHO 3	10.58%	0.28%	10.86%	0.00%	0.60%	0.00%	0.00%	0.06%	0.14%
Cork North	8.16%	0.99%	9.15%	0.00%	1.65%	0.00%	0.00%	0.00%	0.75%
Cork North Lee	9.11%	0.11%	9.22%	0.00%	0.29%	0.00%	0.00%	0.00%	0.00%
Cork South Lee	7.24%	0.33%	7.57%	0.00%	0.00%	0.00%	0.00%	0.00%	0.73%
Cork West	8.69%	1.28%	9.97%	0.00%	0.83%	0.00%	0.00%	0.00%	1.90%
Kerry	7.03%	0.04%	7.07%	0.00%	0.00%	0.00%	0.00%	0.00%	0.10%
CHO 4	7.74%	0.46%	8.20%	0.00%	0.34%	0.00%	0.00%	0.00%	0.74%
Carlow/ Kilkenny	9.30%	1.14%	10.44%	0.00%	2.08%	0.00%	0.00%	0.00%	0.87%
Tipperary, South	11.48%	0.07%	11.55%	0.00%	0.00%	0.00%	0.89%	0.00%	0.00%
Waterford	9.76%	0.04%	9.80%	0.00%	0.05%	0.00%	0.00%	0.00%	0.05%
Wexford	14.49%	0.15%	14.63%	0.00%	0.22%	0.00%	0.00%	0.00%	0.13%
CHO 5	11.13%	0.37%	11.49%	0.00%	0.60%	0.00%	0.20%	0.00%	0.28%
Dublin South-East	6.29%	0.46%	6.75%	0.00%	0.74%	0.00%	0.12%	0.00%	0.59%
Dun Laoghaire	3.36%	0.00%	3.36%		0.00%	0.00%	0.00%	0.00%	0.00%
Wicklow	9.89%	0.25%	10.15%	0.00%	0.41%	0.00%	0.00%	0.00%	0.28%
CHO 6	6.80%	0.39%	7.19%	0.00%	0.62%	0.00%	0.07%	0.00%	0.47%
Dublin South City	10.04%	0.00%	10.04%	0.00%	0.00%	0.00%	0.00%	0.00%	0.00%
Dublin South-West	10.04%	2.38%	12.42%		2.65%	0.00%	0.00%	0.00%	4.26%
Dublin West	11.51%	0.00%	11.51%	0.00%	0.00%	0.00%	0.00%	0.00%	0.00%
Kildare/ West Wicklow	12.76%	0.10%	12.86%	0.00%	0.00%	0.00%	0.00%	0.83%	0.07%
CHO 7	11.54%	0.35%	11.90%	0.00%	0.37%	0.00%	0.00%	0.22%	0.45%
Laois /Offaly	12.29%	1.30%	13.59%	0.00%	0.59%	0.00%	0.00%	1.05%	2.02%
Longford/ Westmeath	11.16%	0.00%	11.16%	0.00%	0.00%	0.00%	0.00%	0.00%	0.00%
Louth	11.79%	1.13%	12.92%		0.00%	0.00%	0.00%	0.00%	2.29%
Meath	10.95%	0.53%	11.48%	0.00%	0.00%	0.00%	0.00%	0.00%	1.05%
CHO 8	11.68%	0.79%	12.47%	0.00%	0.23%	0.00%	0.00%	0.40%	1.39%
Dublin North	9.07%	0.00%	9.07%		0.00%	0.00%	0.00%	0.00%	0.00%
Dublin North Central	6.75%	0.18%	6.93%	0.00%	0.08%	0.00%	0.00%	1.15%	0.00%
Dublin North-West	8.68%	0.15%	8.83%	0.00%	0.26%	0.00%	0.85%	0.00%	0.00%

Other CHO 9	3.33%	0.00%	3.33%		0.00%		0.00%		
CHO 9	7.83%	0.15%	7.98%	0.00%	0.16%	0.00%	0.31%	0.49%	0.00%
Other Community Services	7.29%	0.00%	7.29%		0.00%	0.00%	0.00%		0.00%
Other Community Services	7.29%	0.00%	7.29%		0.00%	0.00%	0.00%		0.00%
Community Services	9.81%	0.48%	10.29%	0.00%	0.60%	0.06%	0.09%	0.19%	0.55%

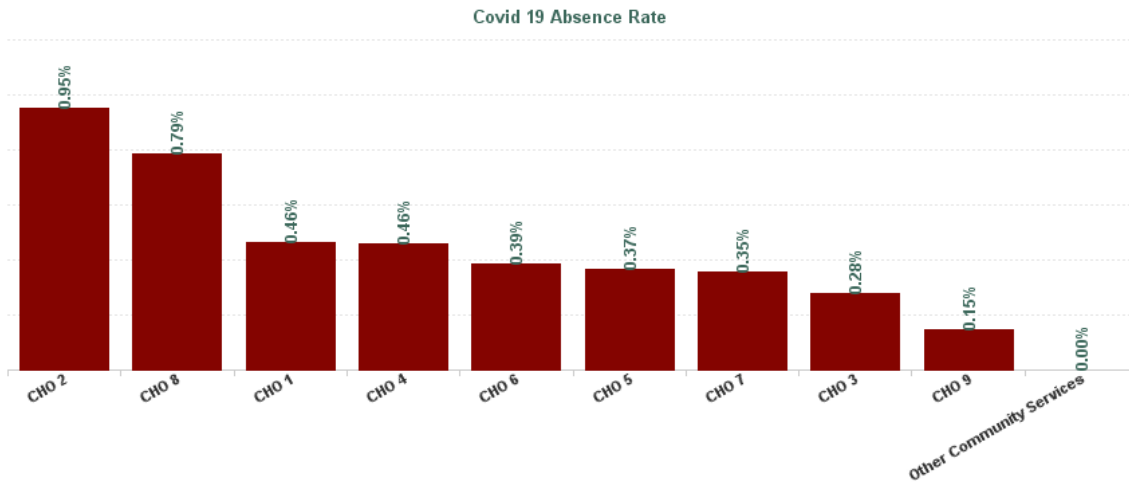
December 2024

Health Service Absence Rate - by HG, CHO/Care Group & Staff Category: Dec 2024	Certified absence	Self-certified absence	Non Covid-19 absence	Covid-19 Absence	Total absence rate	Medical & Dental	Nursing & Midwifery	Health & Social Care Professionals	Management & Administrative	General Support	Patient & Client Care
Total	8.84%	0.97%	9.81%	0.48%	10.29%	0.96%	9.91%	7.08%	7.04%	9.35%	11.91%
Health Service Executive	11.25%	0.76%	12.00%	0.46%	12.46%	0.75%	11.06%	10.38%	8.52%	10.51%	14.97%
CHO 1	11.25%	0.76%	12.00%	0.46%	12.46%	0.75%	11.06%	10.38%	8.52%	10.51%	14.97%
Health Service Executive	8.66%	0.95%	9.61%	0.95%	10.56%	0.00%	12.00%	8.25%	8.06%	6.89%	10.59%
CHO 2	8.66%	0.95%	9.61%	0.95%	10.56%	0.00%	12.00%	8.25%	8.06%	6.89%	10.59%
Health Service Executive	10.36%	0.93%	11.29%	0.30%	11.59%	6.52%	10.43%	6.66%	9.04%	11.53%	13.83%
Section 38 Voluntary Agencies	3.05%	0.00%	3.05%	0.00%	3.05%		1.86%		0.00%	0.76%	4.52%
CHO 3	9.73%	0.85%	10.58%	0.28%	10.86%	6.52%	9.64%	6.66%	8.94%	10.57%	12.87%
Health Service Executive	7.04%	0.93%	7.97%	0.47%	8.44%	0.00%	7.83%	11.18%	3.94%	6.89%	10.24%
Section 38 Voluntary Agencies	1.29%	1.29%	2.58%	0.25%	2.83%	0.00%	2.22%				3.35%
CHO 4	6.79%	0.95%	7.74%	0.46%	8.20%	0.00%	7.55%	11.18%	3.94%	6.89%	9.89%
Health Service Executive	10.17%	0.96%	11.13%	0.37%	11.49%	0.00%	13.41%	8.19%	6.89%	12.76%	10.96%
CHO 5	10.17%	0.96%	11.13%	0.37%	11.49%	0.00%	13.41%	8.19%	6.89%	12.76%	10.96%
Health Service Executive	6.89%	0.99%	7.88%	0.44%	8.33%	0.00%	7.28%	2.38%	5.76%	4.26%	11.76%
Section 38 Voluntary Agencies	5.20%	0.82%	6.02%	0.34%	6.36%	0.00%	6.21%	3.31%	7.23%	5.54%	7.71%
CHO 6	5.91%	0.89%	6.80%	0.39%	7.19%	0.00%	6.71%	3.10%	6.47%	5.15%	9.52%
Health Service Executive	10.13%	1.41%	11.54%	0.35%	11.90%	0.00%	11.43%	4.61%	8.99%	9.33%	13.98%
CHO 7	10.13%	1.41%	11.54%	0.35%	11.90%	0.00%	11.43%	4.61%	8.99%	9.33%	13.98%
Health Service Executive	10.61%	1.07%	11.68%	0.79%	12.47%	0.00%	10.35%	9.45%	7.77%	12.38%	15.00%
CHO 8	10.61%	1.07%	11.68%	0.79%	12.47%	0.00%	10.35%	9.45%	7.77%	12.38%	15.00%
Health Service Executive	7.26%	1.03%	8.28%	0.13%	8.41%	1.13%	8.88%	5.14%	7.79%	11.82%	7.93%
Section 38 Voluntary Agencies	5.62%	1.08%	6.70%	0.20%	6.90%	2.84%	3.69%	6.91%	3.37%	12.39%	8.93%
CHO 9	6.79%	1.04%	7.83%	0.15%	7.98%	1.73%	7.53%	6.00%	6.86%	12.01%	8.19%
Health Service Executive	6.35%	0.94%	7.29%	0.00%	7.29%		20.37%	13.68%	6.87%		0.00%
Other Community Services	6.35%	0.94%	7.29%	0.00%	7.29%		20.37%	13.68%	6.87%		0.00%
Community Services	8.84%	0.97%	9.81%	0.48%	10.29%	0.96%	9.91%	7.08%	7.04%	9.35%	11.91%



December 2024

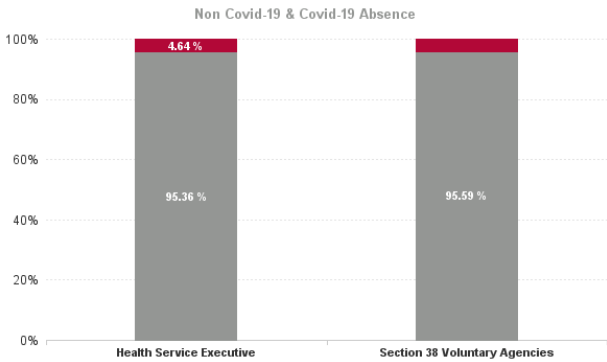
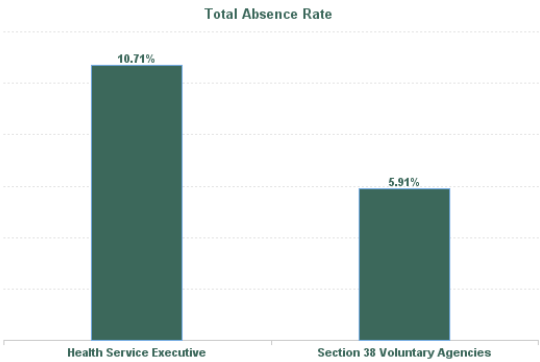
Health Service Covid 19 Absence Rate - by Hospital & Staff Category: Dec 2024	Non Covid-19 absence	Covid-19 Absence	Total absence rate	Medical & Dental	Nursing & Midwifery	Health & Social Care Professionals	Management & Administrative	General Support	Patient & Client Care
Older People	9.81%	0.48%	10.29%	0.00%	0.60%	0.06%	0.09%	0.19%	0.55%
Health Service Executive	12.00%	0.46%	12.46%	0.00%	0.39%	0.66%	0.00%	0.04%	0.69%
CHO 1	12.00%	0.46%	12.46%	0.00%	0.39%	0.66%	0.00%	0.04%	0.69%
Health Service Executive	9.61%	0.95%	10.56%	0.00%	2.26%	0.00%	0.47%	0.77%	0.26%
CHO 2	9.61%	0.95%	10.56%	0.00%	2.26%	0.00%	0.47%	0.77%	0.26%
Health Service Executive	11.29%	0.30%	11.59%	0.00%	0.66%	0.00%	0.00%	0.07%	0.15%
Section 38 Voluntary Agencies	3.05%	0.00%	3.05%		0.00%		0.00%	0.00%	0.00%
CHO 3	10.58%	0.28%	10.86%	0.00%	0.60%	0.00%	0.00%	0.06%	0.14%
Health Service Executive	7.97%	0.47%	8.44%	0.00%	0.36%	0.00%	0.00%	0.00%	0.75%
Section 38 Voluntary Agencies	2.58%	0.25%	2.83%	0.00%	0.00%				0.44%
CHO 4	7.74%	0.46%	8.20%	0.00%	0.34%	0.00%	0.00%	0.00%	0.74%
Health Service Executive	11.13%	0.37%	11.49%	0.00%	0.60%	0.00%	0.20%	0.00%	0.28%
CHO 5	11.13%	0.37%	11.49%	0.00%	0.60%	0.00%	0.20%	0.00%	0.28%
Health Service Executive	7.88%	0.44%	8.33%	0.00%	1.04%	0.00%	0.00%	0.00%	0.16%
Section 38 Voluntary Agencies	6.02%	0.34%	6.36%	0.00%	0.26%	0.00%	0.14%	0.00%	0.73%
CHO 6	6.80%	0.39%	7.19%	0.00%	0.62%	0.00%	0.07%	0.00%	0.47%
Health Service Executive	11.54%	0.35%	11.90%	0.00%	0.37%	0.00%	0.00%	0.22%	0.45%
CHO 7	11.54%	0.35%	11.90%	0.00%	0.37%	0.00%	0.00%	0.22%	0.45%
Health Service Executive	11.68%	0.79%	12.47%	0.00%	0.23%	0.00%	0.00%	0.40%	1.39%
CHO 8	11.68%	0.79%	12.47%	0.00%	0.23%	0.00%	0.00%	0.40%	1.39%
Health Service Executive	8.28%	0.13%	8.41%	0.00%	0.18%	0.00%	0.39%	0.22%	0.00%
Section 38 Voluntary Agencies	6.70%	0.20%	6.90%	0.00%	0.12%	0.00%	0.00%	1.05%	0.00%
CHO 9	7.83%	0.15%	7.98%	0.00%	0.16%	0.00%	0.31%	0.49%	0.00%
Health Service Executive	7.29%	0.00%	7.29%		0.00%	0.00%	0.00%		0.00%
Other Community Services	7.29%	0.00%	7.29%		0.00%	0.00%	0.00%		0.00%
Community Services	9.81%	0.48%	10.29%	0.00%	0.60%	0.06%	0.09%	0.19%	0.55%





December 2024

Health Service Absence Rate - by Admin : Dec 2024	Certified absence	Self-certified absence	Non Covid-19 absence	Covid-19 Absence	Total absence rate	Medical & Dental	Nursing & Midwifery	Health & Social Care Professionals	Management & Administrative	General Support	Patient & Client Care
Total	8.84%	0.97%	9.81%	0.48%	10.29%	0.96%	9.91%	7.08%	7.04%	9.35%	11.91%
Health Service Executive	9.23%	0.98%	10.21%	0.50%	10.71%	0.84%	10.40%	7.72%	7.11%	9.69%	12.30%
Section 38 Voluntary Agencies	4.79%	0.86%	5.65%	0.26%	5.91%	1.91%	4.58%	5.00%	5.87%	7.36%	6.98%



Health Service Absence Rate - by Staff Category: Dec 2024	Certified absence	Self- certified absence	Non Covid-19 absence	Covid-19 Absence	Total absence rate	% Non Covid-19 absence	% Covid-19 absence
<b>CHO 1</b>	<b>11.25%</b>	<b>0.76%</b>	<b>12.00%</b>	<b>0.46%</b>	<b>12.46%</b>	<b>96.28%</b>	<b>3.72%</b>
Medical & Dental	0.00%	0.75%	0.75%	0.00%	0.75%	100.00%	0.00%
Nursing & Midwifery	9.80%	0.88%	10.67%	0.39%	11.06%	96.48%	3.52%
Health & Social Care Professionals	9.03%	0.68%	9.72%	0.66%	10.38%	93.60%	6.40%
Management & Administrative	8.08%	0.44%	8.52%	0.00%	8.52%	100.00%	0.00%
General Support	10.08%	0.39%	10.47%	0.04%	10.51%	99.60%	0.40%
Patient & Client Care	13.48%	0.81%	14.29%	0.69%	14.97%	95.42%	4.58%

Health Service Absence Rate - by Staff Category: Dec 2024	Certified absence	Self- certified absence	Non Covid-19 absence	Covid-19 Absence	Total absence rate	% Non Covid-19 absence	% Covid-19 absence
<b>CHO 2</b>	<b>8.66%</b>	<b>0.95%</b>	<b>9.61%</b>	<b>0.95%</b>	<b>10.56%</b>	<b>90.99%</b>	<b>9.01%</b>
Medical & Dental	0.00%	0.00%	0.00%	0.00%	0.00%		
Nursing & Midwifery	8.63%	1.11%	9.74%	2.26%	12.00%	81.16%	18.84%
Health & Social Care Professionals	7.31%	0.94%	8.25%	0.00%	8.25%	100.00%	0.00%
Management & Administrative	6.90%	0.68%	7.59%	0.47%	8.06%	94.18%	5.82%
General Support	5.49%	0.62%	6.12%	0.77%	6.89%	88.78%	11.22%
Patient & Client Care	9.42%	0.92%	10.34%	0.26%	10.59%	97.58%	2.42%

Health Service Absence Rate - by Staff Category: Dec 2024	Certified absence	Self- certified absence	Non Covid-19 absence	Covid-19 Absence	Total absence rate	% Non Covid-19 absence	% Covid-19 absence
<b>CHO 3</b>	<b>9.73%</b>	<b>0.85%</b>	<b>10.58%</b>	<b>0.28%</b>	<b>10.86%</b>	<b>97.44%</b>	<b>2.56%</b>
Medical & Dental	6.52%	0.00%	6.52%	0.00%	6.52%	100.00%	0.00%
Nursing & Midwifery	8.00%	1.04%	9.04%	0.60%	9.64%	93.80%	6.20%
Health & Social Care Professionals	5.42%	1.24%	6.66%	0.00%	6.66%	100.00%	0.00%
Management & Administrative	8.27%	0.67%	8.94%	0.00%	8.94%	100.00%	0.00%
General Support	10.10%	0.41%	10.51%	0.06%	10.57%	99.43%	0.57%
Patient & Client Care	11.92%	0.81%	12.73%	0.14%	12.87%	98.94%	1.06%

Health Service Absence Rate - by Staff Category: Dec 2024	Certified absence	Self- certified absence	Non Covid-19 absence	Covid-19 Absence	Total absence rate	% Non Covid-19 absence	% Covid-19 absence
<b>CHO 4</b>	<b>6.79%</b>	<b>0.95%</b>	<b>7.74%</b>	<b>0.46%</b>	<b>8.20%</b>	<b>94.40%</b>	<b>5.60%</b>
Medical & Dental	0.00%	0.00%	0.00%	0.00%	0.00%		
Nursing & Midwifery	6.19%	1.02%	7.21%	0.34%	7.55%	95.47%	4.53%
Health & Social Care Professionals	10.94%	0.24%	11.18%	0.00%	11.18%	100.00%	0.00%
Management & Administrative	3.59%	0.35%	3.94%	0.00%	3.94%	100.00%	0.00%
General Support	6.28%	0.61%	6.89%	0.00%	6.89%	100.00%	0.00%
Patient & Client Care	8.05%	1.10%	9.15%	0.74%	9.89%	92.55%	7.45%

Health Service Absence Rate - by Staff Category: Dec 2024	Certified absence	Self- certified absence	Non Covid-19 absence	Covid-19 Absence	Total absence rate	% Non Covid-19 absence	% Covid-19 absence
<b>CHO 5</b>	<b>10.17%</b>	<b>0.96%</b>	<b>11.13%</b>	<b>0.37%</b>	<b>11.49%</b>	<b>96.82%</b>	<b>3.18%</b>
Medical & Dental	0.00%	0.00%	0.00%	0.00%	0.00%		
Nursing & Midwifery	11.59%	1.23%	12.82%	0.60%	13.41%	95.56%	4.44%
Health & Social Care Professionals	7.71%	0.48%	8.19%	0.00%	8.19%	100.00%	0.00%
Management & Administrative	6.36%	0.33%	6.69%	0.20%	6.89%	97.09%	2.91%
General Support	12.35%	0.41%	12.76%	0.00%	12.76%	100.00%	0.00%
Patient & Client Care	9.71%	0.97%	10.68%	0.28%	10.96%	97.46%	2.54%

Health Service Absence Rate - by Staff Category: Dec 2024	Certified absence	Self- certified absence	Non Covid-19 absence	Covid-19 Absence	Total absence rate	% Non Covid-19 absence	% Covid-19 absence
<b>CHO 6</b>	<b>5.91%</b>	<b>0.89%</b>	<b>6.80%</b>	<b>0.39%</b>	<b>7.19%</b>	<b>94.63%</b>	<b>5.37%</b>
Medical & Dental	0.00%	0.00%	0.00%	0.00%	0.00%		
Nursing & Midwifery	5.03%	1.06%	6.08%	0.62%	6.71%	90.71%	9.29%
Health & Social Care Professionals	2.26%	0.84%	3.10%	0.00%	3.10%	100.00%	0.00%
Management & Administrative	6.19%	0.22%	6.40%	0.07%	6.47%	98.96%	1.04%
General Support	4.46%	0.68%	5.15%	0.00%	5.15%	100.00%	0.00%
Patient & Client Care	8.05%	1.00%	9.05%	0.47%	9.52%	95.03%	4.97%

Health Service Absence Rate - by Staff Category: Dec 2024	Certified absence	Self- certified absence	Non Covid-19 absence	Covid-19 Absence	Total absence rate	% Non Covid-19 absence	% Covid-19 absence
<b>CHO 7</b>	<b>10.13%</b>	<b>1.41%</b>	<b>11.54%</b>	<b>0.35%</b>	<b>11.90%</b>	<b>97.02%</b>	<b>2.98%</b>
Medical & Dental	0.00%	0.00%	0.00%	0.00%	0.00%		
Nursing & Midwifery	9.43%	1.63%	11.06%	0.37%	11.43%	96.76%	3.24%
Health & Social Care Professionals	3.08%	1.53%	4.61%	0.00%	4.61%	100.00%	0.00%
Management & Administrative	7.66%	1.33%	8.99%	0.00%	8.99%	100.00%	0.00%
General Support	8.30%	0.81%	9.11%	0.22%	9.33%	97.67%	2.33%
Patient & Client Care	12.10%	1.43%	13.52%	0.45%	13.98%	96.74%	3.26%

Health Service Absence Rate - by Staff Category: Dec 2024	Certified absence	Self- certified absence	Non Covid-19 absence	Covid-19 Absence	Total absence rate	% Non Covid-19 absence	% Covid-19 absence
<b>CHO 8</b>	<b>10.61%</b>	<b>1.07%</b>	<b>11.68%</b>	<b>0.79%</b>	<b>12.47%</b>	<b>93.69%</b>	<b>6.31%</b>
Medical & Dental	0.00%	0.00%	0.00%	0.00%	0.00%		
Nursing & Midwifery	9.12%	1.00%	10.12%	0.23%	10.35%	97.75%	2.25%
Health & Social Care Professionals	8.69%	0.76%	9.45%	0.00%	9.45%	100.00%	0.00%
Management & Administrative	7.38%	0.40%	7.77%	0.00%	7.77%	100.00%	0.00%
General Support	11.29%	0.69%	11.98%	0.40%	12.38%	96.76%	3.24%
Patient & Client Care	12.31%	1.30%	13.61%	1.39%	15.00%	90.73%	9.27%

Health Service Absence Rate - by Staff Category: Dec 2024	Certified absence	Self- certified absence	Non Covid-19 absence	Covid-19 Absence	Total absence rate	% Non Covid-19 absence	% Covid-19 absence
<b>CHO 9</b>	<b>6.79%</b>	<b>1.04%</b>	<b>7.83%</b>	<b>0.15%</b>	<b>7.98%</b>	<b>98.15%</b>	<b>1.85%</b>
Medical & Dental	0.00%	1.73%	1.73%	0.00%	1.73%	100.00%	0.00%
Nursing & Midwifery	6.29%	1.08%	7.37%	0.16%	7.53%	97.86%	2.14%
Health & Social Care Professionals	5.34%	0.66%	6.00%	0.00%	6.00%	100.00%	0.00%
Management & Administrative	5.97%	0.59%	6.55%	0.31%	6.86%	95.48%	4.52%
General Support	10.38%	1.14%	11.52%	0.49%	12.01%	95.90%	4.10%
Patient & Client Care	7.04%	1.14%	8.19%	0.00%	8.19%	100.00%	0.00%

Health Service Absence Rate - by Staff Category: Dec 2024	Certified absence	Self- certified absence	Non Covid-19 absence	Covid-19 Absence	Total absence rate	% Non Covid-19 absence	% Covid-19 absence
<b>Other Comm</b>	<b>6.35%</b>	<b>0.94%</b>	<b>7.29%</b>	<b>0.00%</b>	<b>7.29%</b>	<b>100.00%</b>	<b>0.00%</b>
Medical & Dental							
Nursing & Midwifery	20.37%	0.00%	20.37%	0.00%	20.37%	100.00%	0.00%
Health & Social Care Professionals	0.00%	13.68%	13.68%	0.00%	13.68%	100.00%	0.00%
Management & Administrative	6.01%	0.86%	6.87%	0.00%	6.87%	100.00%	0.00%
General Support							
Patient & Client Care	0.00%	0.00%	0.00%	0.00%	0.00%		

Health Service Absence Rate - by Staff Category: Dec 2024	Certified absence	Self- certified absence	Non Covid-19 absence	Covid-19 Absence	Total absence rate	% Non Covid-19 absence	% Covid-19 absence
<b>Incorporated Orthopaedic Hospital</b>	<b>5.62%</b>	<b>1.08%</b>	<b>6.70%</b>	<b>0.20%</b>	<b>6.90%</b>	<b>97.17%</b>	<b>2.83%</b>
Medical & Dental	0.00%	2.84%	2.84%	0.00%	2.84%	100.00%	0.00%
Nursing & Midwifery	2.81%	0.76%	3.57%	0.12%	3.69%	96.75%	3.25%
Health & Social Care Professionals	5.89%	1.01%	6.91%	0.00%	6.91%	100.00%	0.00%
Management & Administrative	2.95%	0.42%	3.37%	0.00%	3.37%	100.00%	0.00%
General Support	9.60%	1.74%	11.34%	1.05%	12.39%	91.56%	8.44%
Patient & Client Care	7.83%	1.10%	8.93%	0.00%	8.93%	100.00%	0.00%

Health Service Absence Rate - by Staff Category: Dec 2024	Certified absence	Self- certified absence	Non Covid-19 absence	Covid-19 Absence	Total absence rate	% Non Covid-19 absence	% Covid-19 absence
<b>Leopardstown Park Hospital</b>	<b>6.20%</b>	<b>1.17%</b>	<b>7.37%</b>	<b>0.74%</b>	<b>8.11%</b>	<b>90.91%</b>	<b>9.09%</b>
Medical & Dental	0.00%	0.00%	0.00%	0.00%	0.00%		
Nursing & Midwifery	7.10%	1.68%	8.77%	0.68%	9.45%	92.83%	7.17%
Health & Social Care Professionals	3.36%	0.00%	3.36%	0.00%	3.36%	100.00%	0.00%
Management & Administrative	5.42%	0.00%	5.42%	0.00%	5.42%	100.00%	0.00%
General Support	5.58%	0.82%	6.40%	0.00%	6.40%	100.00%	0.00%
Patient & Client Care	6.61%	1.47%	8.08%	1.47%	9.55%	84.60%	15.40%

Health Service Absence Rate - by Staff Category: Dec 2024	Certified absence	Self- certified absence	Non Covid-19 absence	Covid-19 Absence	Total absence rate	% Non Covid-19 absence	% Covid-19 absence
<b>Marymount OP</b>	<b>1.29%</b>	<b>1.29%</b>	<b>2.58%</b>	<b>0.25%</b>	<b>2.83%</b>	<b>91.31%</b>	<b>8.69%</b>
Medical & Dental	0.00%	0.00%	0.00%	0.00%	0.00%		
Nursing & Midwifery	1.11%	1.11%	2.22%	0.00%	2.22%	100.00%	0.00%
Health & Social Care Professionals							
Management & Administrative							
General Support							
Patient & Client Care	1.45%	1.45%	2.90%	0.44%	3.35%	86.74%	13.26%

Health Service Absence Rate - by Staff Category: Dec 2024	Certified absence	Self- certified absence	Non Covid-19 absence	Covid-19 Absence	Total absence rate	% Non Covid-19 absence	% Covid-19 absence
<b>Milford Care Centre OP</b>	<b>3.05%</b>	<b>0.00%</b>	<b>3.05%</b>	<b>0.00%</b>	<b>3.05%</b>	<b>100.00%</b>	<b>0.00%</b>
Medical & Dental							
Nursing & Midwifery	1.86%	0.00%	1.86%	0.00%	1.86%	100.00%	0.00%
Health & Social Care Professionals							
Management & Administrative	0.00%	0.00%	0.00%	0.00%	0.00%		
General Support	0.76%	0.00%	0.76%	0.00%	0.76%	100.00%	0.00%
Patient & Client Care	4.52%	0.00%	4.52%	0.00%	4.52%	100.00%	0.00%



Health Service Absence Rate - by Staff Category: Dec 2024	Certified absence	Self- certified absence	Non Covid-19 absence	Covid-19 Absence	Total absence rate	% Non Covid-19 absence	% Covid-19 absence
Royal Hospital, Donnybrook, Dub	4.37%	0.53%	4.90%	0.02%	4.92%	99.63%	0.37%
Medical & Dental	0.00%	0.00%	0.00%	0.00%	0.00%		
Nursing & Midwifery	3.75%	0.39%	4.14%	0.00%	4.14%	100.00%	0.00%
Health & Social Care Professionals	2.52%	0.77%	3.29%	0.00%	3.29%	100.00%	0.00%
Management & Administrative	9.02%	0.40%	9.41%	0.33%	9.75%	96.57%	3.43%
General Support	3.84%	0.71%	4.55%	0.00%	4.55%	100.00%	0.00%
Patient & Client Care	5.37%	0.53%	5.90%	0.00%	5.90%	100.00%	0.00%

Year / Month	Certified absence	Self-certified absence	Non Covid-19 absence	Covid-19 Absence	Total absence rate	Medical & Dental	Nursing & Midwifery	Health & Social Care Professionals	Management & Administrative	General Support	Patient & Client Care
Dec 2024	8.84%	0.97%	9.81%	0.48%	10.29%	0.96%	9.91%	7.08%	7.04%	9.35%	11.91%
Nov 2024	7.70%	0.72%	8.42%	0.51%	8.93%	1.02%	8.56%	5.40%	5.46%	8.98%	10.48%
Oct 2024	7.62%	0.71%	8.33%	0.68%	9.01%	1.21%	8.69%	4.24%	5.56%	8.26%	10.84%
Sep 2024	7.82%	0.75%	8.57%	0.88%	9.46%	2.14%	9.26%	5.02%	6.19%	9.06%	11.02%
Aug 2024	7.81%	0.64%	8.45%	1.03%	9.48%	1.98%	9.00%	5.62%	6.42%	10.32%	10.85%
Jul 2024	8.20%	0.70%	8.90%	1.21%	10.11%	1.81%	9.63%	4.72%	6.81%	10.55%	11.79%
Jun 2024	7.40%	0.73%	8.13%	1.14%	9.27%	1.60%	8.58%	5.42%	5.89%	10.16%	10.79%
May 2024	7.18%	0.71%	7.88%	0.63%	8.51%	1.44%	8.21%	4.46%	5.72%	9.25%	9.76%
Apr 2024	7.20%	0.74%	7.94%	0.53%	8.47%	0.72%	8.23%	4.78%	5.55%	8.36%	9.82%
Mar 2024	7.29%	0.65%	7.93%	0.50%	8.43%	1.74%	8.19%	5.71%	5.64%	8.14%	9.68%
Feb 2024	7.12%	0.68%	7.81%	0.60%	8.41%	1.51%	8.36%	4.53%	5.02%	8.03%	9.84%
Jan 2024	7.67%	0.81%	8.48%	1.16%	9.64%	1.65%	9.97%	5.56%	6.56%	9.46%	10.75%
2024	7.66%	0.74%	8.39%	0.78%	9.17%	1.48%	8.89%	5.19%	5.98%	9.16%	10.63%
Dec 2023	7.14%	0.84%	7.98%	1.11%	9.09%	1.81%	8.84%	7.41%	5.92%	8.39%	10.41%
Nov 2023	7.03%	0.74%	7.77%	0.77%	8.54%	1.95%	8.34%	5.19%	5.03%	8.27%	10.09%
Oct 2023	6.45%	0.67%	7.12%	0.84%	7.96%	2.19%	7.87%	4.34%	5.63%	8.39%	8.97%
Sep 2023	6.37%	0.72%	7.09%	1.11%	8.21%	2.23%	8.67%	5.01%	5.22%	8.20%	8.97%
Aug 2023	6.88%	0.65%	7.53%	1.12%	8.66%	2.10%	8.56%	4.14%	5.33%	9.94%	9.73%
Jul 2023	5.86%	0.64%	6.51%	0.84%	7.35%	2.45%	7.60%	3.17%	4.47%	7.48%	8.24%
Jun 2023	6.19%	0.64%	6.83%	0.61%	7.44%	2.37%	7.31%	3.42%	4.65%	8.38%	8.49%
May 2023	6.16%	0.61%	6.77%	0.83%	7.59%	1.82%	7.77%	4.04%	4.11%	8.05%	8.67%
Apr 2023	5.83%	0.66%	6.49%	0.87%	7.37%	2.31%	7.68%	3.26%	4.24%	6.93%	8.36%
Mar 2023	5.95%	0.62%	6.57%	0.85%	7.41%	2.63%	7.10%	4.43%	5.13%	7.24%	8.63%
Feb 2023	6.16%	0.56%	6.72%	0.88%	7.59%	2.62%	7.80%	3.62%	5.06%	7.47%	8.50%
Jan 2023	6.98%	0.75%	7.72%	1.42%	9.14%	3.31%	9.46%	4.46%	5.24%	9.05%	10.36%
2023	6.42%	0.68%	7.10%	0.94%	8.03%	2.31%	8.08%	4.39%	5.00%	8.15%	9.13%
Dec 2022	6.72%	0.95%	7.67%	1.68%	9.35%	2.95%	9.37%	4.72%	5.86%	9.23%	10.60%
Nov 2022	6.06%	0.73%	6.79%	1.34%	8.13%	1.54%	8.01%	3.70%	4.19%	7.55%	9.79%
Oct 2022	6.07%	0.67%	6.74%	1.29%	8.03%	1.66%	7.70%	3.99%	3.82%	7.43%	9.78%
Sep 2022	5.68%	0.68%	6.36%	1.19%	7.55%	0.97%	7.33%	3.34%	4.07%	7.31%	9.00%
Aug 2022	5.91%	0.63%	6.54%	1.29%	7.83%	1.69%	7.13%	4.35%	4.51%	7.83%	9.51%
Jul 2022	6.11%	0.60%	6.71%	2.34%	9.05%	1.84%	8.73%	4.93%	5.86%	7.92%	10.68%
Jun 2022	5.85%	0.60%	6.45%	2.19%	8.64%	2.64%	8.44%	5.56%	4.97%	9.43%	9.89%
May 2022	5.38%	0.54%	5.91%	1.64%	7.55%	1.82%	7.31%	5.67%	3.95%	8.11%	8.69%
Apr 2022	5.86%	0.54%	6.40%	3.50%	9.90%	0.52%	10.15%	5.71%	6.38%	10.45%	10.94%
Mar 2022	5.73%	0.52%	6.24%	5.06%	11.30%	0.97%	11.99%	8.47%	7.90%	11.54%	11.93%
Feb 2022	5.77%	0.53%	6.29%	3.66%	9.95%	1.60%	10.75%	7.21%	6.04%	9.80%	10.66%
Jan 2022	5.43%	0.48%	5.91%	6.47%	12.38%	1.24%	12.43%	7.62%	7.19%	12.34%	14.08%
2022	5.88%	0.62%	6.50%	2.63%	9.13%	1.61%	9.10%	5.52%	5.37%	9.08%	10.46%
Dec 2021	5.58%	0.56%	6.14%	3.36%	9.50%	0.82%	9.49%	5.41%	6.12%	10.50%	10.57%
Nov 2021	5.62%	0.76%	6.38%	2.82%	9.20%	1.60%	9.04%	5.61%	5.39%	9.33%	10.62%
Oct 2021	5.73%	0.58%	6.32%	1.91%	8.23%	0.59%	8.01%	4.05%	5.11%	8.15%	9.57%
Sep 2021	5.67%	0.53%	6.20%	1.56%	7.77%	1.14%	7.92%	3.70%	3.78%	7.86%	8.95%
Aug 2021	5.76%	0.55%	6.31%	1.42%	7.73%	0.62%	7.74%	3.11%	4.09%	7.95%	8.92%
Jul 2021	5.57%	0.54%	6.12%	1.18%	7.30%	0.58%	7.04%	1.73%	3.80%	7.89%	8.77%
Jun 2021	5.26%	0.52%	5.79%	1.18%	6.96%	0.51%	7.09%	2.22%	4.12%	7.27%	7.94%
May 2021	4.80%	0.42%	5.21%	1.08%	6.29%	0.20%	6.17%	3.04%	3.97%	6.61%	7.21%
Apr 2021	5.10%	0.43%	5.53%	1.38%	6.92%	0.00%	6.80%	4.13%	4.15%	6.14%	8.12%
Mar 2021	5.00%	0.41%	5.41%	1.65%	7.06%	0.74%	7.40%	4.12%	4.07%	5.82%	8.08%
Feb 2021	5.42%	0.52%	5.93%	4.84%	10.78%	3.85%	11.53%	4.74%	4.40%	8.36%	12.69%
Jan 2021	5.48%	0.36%	5.84%	6.51%	12.35%	4.08%	13.10%	5.33%	6.22%	11.10%	13.96%
2021	5.43%	0.52%	5.94%	2.41%	8.35%	1.23%	8.45%	3.95%	4.61%	8.11%	9.63%

Year / Month	Certified absence	Self-certified absence	Non Covid-19 absence	Covid-19 Absence	Total absence rate	CHO 1	CHO 2	CHO 3	CHO 4	CHO 5	CHO 6	CHO 7	CHO 8	CHO 9	Other Comm	Social Care
Dec 2024	8.84%	0.97%	9.81%	0.48%	10.29%	12.46%	10.56%	10.86%	8.20%	11.49%	7.19%	11.90%	12.47%	7.98%	7.29%	10.29%
Nov 2024	7.70%	0.72%	8.42%	0.51%	8.93%	9.82%	8.93%	9.41%	7.65%	9.37%	6.92%	10.17%	10.89%	7.80%	4.73%	8.93%
Oct 2024	7.62%	0.71%	8.33%	0.68%	9.01%	9.53%	9.31%	9.21%	7.56%	9.90%	7.32%	10.19%	11.80%	7.08%	4.67%	9.01%
Sep 2024	7.82%	0.75%	8.57%	0.88%	9.46%	10.63%	10.38%	8.57%	8.64%	9.91%	7.41%	10.65%	11.19%	7.76%	4.88%	9.46%
Aug 2024	7.81%	0.64%	8.45%	1.03%	9.48%	11.22%	10.14%	9.19%	8.92%	10.72%	6.48%	9.65%	10.99%	7.60%	4.27%	9.48%
Jul 2024	8.20%	0.70%	8.90%	1.21%	10.11%	11.45%	10.75%	9.88%	9.57%	10.63%	6.43%	10.65%	12.92%	7.51%	4.69%	10.11%
Jun 2024	7.40%	0.73%	8.13%	1.14%	9.27%	10.51%	9.17%	9.87%	9.11%	9.79%	6.07%	9.25%	12.24%	6.53%	0.19%	9.27%
May 2024	7.18%	0.71%	7.88%	0.63%	8.51%	10.40%	7.36%	8.62%	8.26%	8.65%	6.09%	8.17%	11.28%	6.59%	2.23%	8.51%
Apr 2024	7.20%	0.74%	7.94%	0.53%	8.47%	10.63%	8.88%	8.71%	7.32%	8.38%	5.63%	9.10%	10.64%	6.50%	1.05%	8.47%
Mar 2024	7.29%	0.65%	7.93%	0.50%	8.43%	11.01%	7.74%	8.80%	7.37%	9.35%	5.84%	8.76%	9.83%	7.20%	3.98%	8.43%
Feb 2024	7.12%	0.68%	7.81%	0.60%	8.41%	11.44%	7.41%	8.32%	7.41%	8.66%	5.86%	9.23%	10.41%	6.89%	4.17%	8.41%
Jan 2024	7.67%	0.81%	8.48%	1.16%	9.64%	12.91%	7.60%	9.98%	8.76%	10.33%	7.29%	10.49%	11.93%	7.08%	5.84%	9.64%
2024	7.66%	0.74%	8.39%	0.78%	9.17%	11.01%	9.03%	9.28%	8.23%	9.76%	6.55%	9.86%	11.39%	7.21%	4.61%	9.17%
Dec 2023	7.14%	0.84%	7.98%	1.11%	9.09%	12.21%	8.32%	9.94%	8.05%	9.15%	6.48%	10.41%	9.89%	7.45%	4.07%	9.09%
Nov 2023	7.03%	0.74%	7.77%	0.77%	8.54%	11.85%	7.35%	9.16%	7.91%	8.35%	6.24%	9.04%	9.78%	6.94%	2.42%	8.54%
Oct 2023	6.45%	0.67%	7.12%	0.84%	7.96%	10.63%	4.28%	9.50%	7.60%	9.13%	5.77%	8.23%	10.07%	6.31%	3.56%	7.96%
Sep 2023	6.37%	0.72%	7.09%	1.11%	8.21%	10.74%	4.75%	10.48%	8.33%	9.34%	5.60%	9.09%	8.94%	6.71%	3.80%	8.21%
Aug 2023	6.88%	0.65%	7.53%	1.12%	8.66%	11.19%	4.57%	10.54%	8.91%	9.29%	7.09%	9.84%	9.88%	7.10%	3.64%	8.66%
Jul 2023	5.86%	0.64%	6.51%	0.84%	7.35%	10.00%	5.08%	9.90%	7.36%	7.51%	5.39%	7.63%	8.27%	4.86%	2.99%	7.35%
Jun 2023	6.19%	0.64%	6.83%	0.61%	7.44%	9.11%	5.26%	9.30%	7.77%	7.20%	5.36%	8.48%	8.41%	6.23%	1.54%	7.44%
May 2023	6.16%	0.61%	6.77%	0.83%	7.59%	9.09%	4.07%	10.00%	7.44%	8.00%	6.09%	8.58%	9.27%	6.55%	2.41%	7.59%
Apr 2023	5.83%	0.66%	6.49%	0.87%	7.37%	10.00%	5.08%	9.91%	7.36%	7.51%	5.45%	7.62%	8.27%	5.03%	1.26%	7.37%
Mar 2023	5.95%	0.62%	6.57%	0.85%	7.41%	10.14%	5.20%	10.39%	5.27%	8.58%	6.24%	7.50%	9.74%	5.83%	2.56%	7.41%
Feb 2023	6.16%	0.56%	6.72%	0.88%	7.59%	10.30%	5.51%	10.02%	6.71%	8.80%	5.42%	7.74%	8.67%	5.64%	1.24%	7.59%
Jan 2023	6.98%	0.75%	7.72%	1.42%	9.14%	12.83%	6.25%	11.80%	8.52%	10.18%	7.74%	8.13%	10.01%	6.45%	3.29%	9.14%
2023	6.42%	0.68%	7.10%	0.94%	8.03%	10.70%	5.45%	10.08%	7.56%	8.60%	6.05%	8.54%	9.29%	6.25%	2.78%	8.03%
Dec 2022	6.72%	0.95%	7.67%	1.68%	9.35%	11.94%	4.67%	12.52%	6.53%	11.79%	8.63%	9.70%	12.50%	8.80%	4.81%	9.35%
Nov 2022	6.06%	0.73%	6.79%	1.34%	8.13%	11.03%	5.07%	10.56%	6.25%	9.03%	7.44%	7.59%	9.96%	7.13%	3.06%	8.13%
Oct 2022	6.07%	0.67%	6.74%	1.29%	8.03%	10.88%	5.59%	9.84%	6.71%	8.96%	6.56%	7.56%	10.38%	5.95%	1.65%	8.03%
Sep 2022	5.68%	0.68%	6.36%	1.19%	7.55%	9.80%	4.65%	8.67%	6.11%	8.29%	7.34%	8.61%	10.70%	5.60%	1.23%	7.55%
Aug 2022	5.91%	0.63%	6.54%	1.29%	7.83%	11.56%	5.66%	8.73%	5.80%	7.93%	6.39%	7.58%	10.45%	6.37%	3.91%	7.83%
Jul 2022	6.11%	0.60%	6.71%	2.34%	9.05%	11.63%	4.89%	10.85%	7.70%	11.24%	6.82%	9.94%	11.63%	7.53%	4.17%	9.05%
Jun 2022	5.85%	0.60%	6.45%	2.19%	8.64%	11.51%	4.77%	10.55%	5.64%	10.91%	7.38%	9.93%	11.23%	8.43%	1.75%	8.64%
May 2022	5.38%	0.54%	5.91%	1.64%	7.55%	9.32%	3.13%	9.59%	6.54%	9.06%	5.65%	7.93%	10.57%	6.91%	1.08%	7.55%
Apr 2022	5.86%	0.54%	6.40%	3.50%	9.90%	9.67%	4.79%	12.25%	10.68%	11.88%	7.30%	11.18%	13.54%	8.26%	2.88%	9.90%
Mar 2022	5.73%	0.52%	6.24%	5.06%	11.30%	13.89%	4.77%	12.81%	8.99%	13.07%	11.29%	11.56%	15.34%	12.17%	2.43%	11.30%
Feb 2022	5.77%	0.53%	6.29%	3.66%	9.95%	11.70%	6.40%	10.88%	9.04%	10.64%	7.85%	11.56%	12.40%	10.04%	0.79%	9.95%
Jan 2022	5.43%	0.48%	5.91%	6.47%	12.38%	14.83%	9.85%	13.96%	10.43%	13.05%	9.78%	14.69%	16.16%	9.32%	2.90%	12.38%
2022	5.88%	0.62%	6.50%	2.63%	9.13%	11.48%	5.33%	10.95%	7.48%	10.50%	7.71%	9.81%	12.09%	8.03%	2.53%	9.13%
Dec 2021	5.58%	0.56%	6.14%	3.36%	9.50%	11.39%	6.22%	10.52%	7.79%	11.59%	8.29%	10.77%	12.52%	8.12%	2.41%	9.50%
Nov 2021	5.62%	0.76%	6.38%	2.82%	9.20%	10.39%	4.96%	11.61%	7.55%	10.38%	9.39%	11.39%	12.49%	7.35%	1.00%	9.20%
Oct 2021	5.73%	0.58%	6.32%	1.91%	8.23%	8.42%	5.82%	11.68%	7.10%	9.20%	6.24%	10.60%	10.40%	6.10%	1.85%	8.23%
Sep 2021	5.67%	0.53%	6.20%	1.56%	7.77%	8.83%	3.93%	10.39%	6.73%	8.83%	6.74%	10.65%	9.63%	6.86%	2.31%	7.77%
Aug 2021	5.76%	0.55%	6.31%	1.42%	7.73%	9.19%	5.38%	9.86%	8.83%	7.92%	6.16%	9.41%	8.81%	7.22%	4.45%	7.73%
Jul 2021	5.57%	0.54%	6.12%	1.18%	7.30%	8.66%	5.72%	9.60%	6.35%	7.77%	5.49%	8.43%	8.76%	6.04%	4.40%	7.30%
Jun 2021	5.26%	0.52%	5.79%	1.18%	6.96%	8.87%	3.77%	8.74%	6.57%	7.57%	6.00%	8.24%	7.72%	6.20%	2.01%	6.96%
May 2021	4.80%	0.42%	5.21%	1.08%	6.29%	7.67%	2.27%	8.15%	6.31%	7.21%	6.38%	6.91%	7.44%	4.70%	1.81%	6.29%
Apr 2021	5.10%	0.43%	5.53%	1.38%	6.92%	8.69%	3.98%	9.15%	7.37%	6.17%	6.72%	7.89%	5.46%	1.95%	6.92%	
Mar 2021	5.00%	0.41%	5.41%	1.65%	7.06%	8.29%	4.88%	9.70%	6.07%	7.63%	7.18%	7.42%	7.99%	5.63%	0.74%	7.06%
Feb 2021	5.42%	0.52%	5.93%	4.84%	10.78%	11.30%	10.97%	10.62%	11.22%	10.40%	10.94%	9.18%	12.04%	10.11%	0.80%	10.78%

