

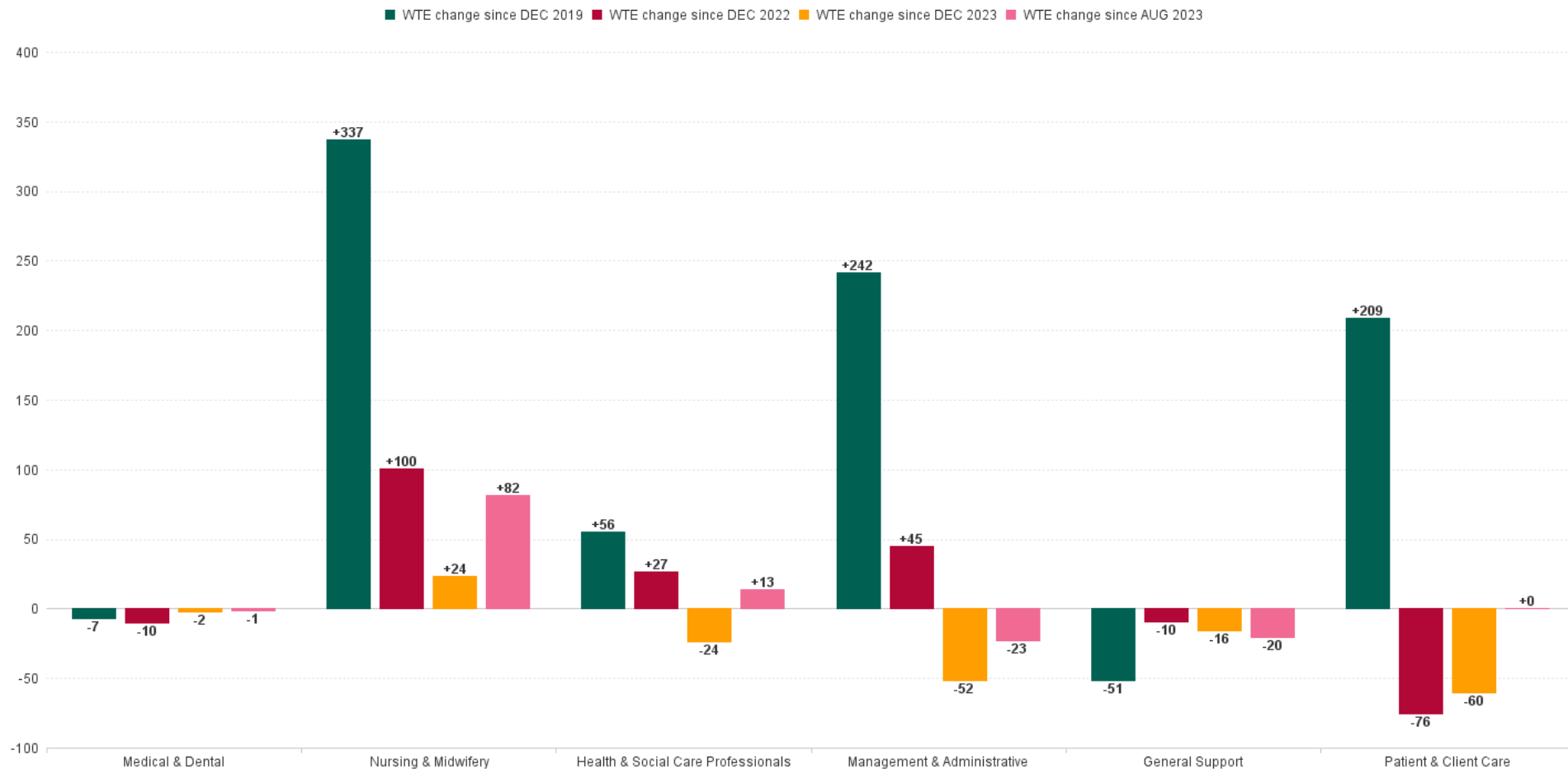
Older People Employment Report : AUG 2024

Older People Employment Report by Staff Group

AUG 2024	WTE DEC 2019	WTE DEC 2022	WTE DEC 2023	WTE JUL 2024	WTE AUG 2024	WTE Change 2023	WTE Change 2024	WTE Change JUL 2024	WTE Change Dec 2022 to AUG 2024	WTE Change Dec 2019 to AUG 2024	% WTE Change Dec 2022 to AUG 2024	No. AUG 2024
Overall	13,239	13,947	14,154	14,066	14,024	+207	-130	-43	+77	+785	+0.5%	16,917
Consultants	4	7	5	5	5	-1	-0	+0	-1	+2	-19.8%	8
Registrars	10	10	11	16	14	+1	+4	-2	+5	+5	+52.3%	16
SHO/ Interns	15	12	18	19	20	+6	+2	+1	+8	+5	+65.9%	20
Medical/ Dental, other	95	98	85	78	77	-14	-8	-1	-22	-19	-22.1%	146
Medical & Dental	124	126	118	118	116	-8	-2	-1	-10	-7	-8.0%	190
Nurse/ Midwife Manager	711	738	811	821	817	+73	+7	-3	+80	+107	+10.8%	863
Nurse/ Midwife Specialist & AN/MP	26	74	111	110	111	+36	+1	+1	+37	+85	+49.7%	118
Staff Nurse/ Staff Midwife	2,575	2,737	2,700	2,731	2,724	-38	+24	-7	-13	+149	-0.5%	3,084
Public Health Nurse	14	13	11	11	11	-1	-0	+0	-2	-4	-14.6%	12
Nursing/ Midwifery awaiting registration	1	1	7	1	1	+7	-7	-0	-0	-0	-31.6%	1
Post-registration Nurse/ Midwife Student	1									-1	-100.0%	
Nursing/ Midwifery Student	2	1	7	1	1	+7	-7	-0	-0	-1	-31.6%	1
Nursing/ Midwifery other	1	3	3	2	2	-0	-1	+0	-1	+1	-33.3%	2
Nursing & Midwifery	3,329	3,566	3,643	3,676	3,666	+77	+24	-10	+100	+337	+2.8%	4,080
Dietitians	16	25	30	33	32	+5	+2	-1	+7	+16	+27.2%	40
Occupational Therapists	113	125	144	137	134	+19	-9	-3	+9	+21	+7.3%	154
Physiotherapists	123	152	163	150	151	+11	-12	+1	-1	+28	-0.8%	173
Podiatrists & Chiropodists	12	3	5	5	5	+1	+0	+0	+2	-7	+45.9%	7
Speech & Language Therapists	23	34	43	41	41	+9	-2	-0	+7	+18	+21.7%	47
Therapy Professions	288	340	385	367	364	+45	-21	-3	+24	+76	+7.0%	421
Health Science/ Diagnostics	6	5	5	5	5	-0	-0	-0	-0	-2	-4.4%	8
Social Care	3	2	3	3	3	+0	+0	+0	+0	-0	+17.7%	4
Social Workers	98	69	52	51	51	-18	-1	-0	-19	-48	-26.8%	58
Psychologists	2	4	4	4	4	+0	+1	-0	+1	+2	+22.9%	6
Pharmacy	15	20	20	20	20	+0	+0	-0	+1	+5	+2.8%	28
H&SC, Other	1	3	26	24	23	+22	-2	-1	+20	+22	+592.0%	27
Health & Social Care Professionals	414	443	493	474	469	+50	-24	-4	+27	+56	+6.0%	552
Management (VIII & above)	75	116	122	114	113	+6	-9	-0	-3	+39	-2.4%	117
Administrative/ Supervisory (V to VII)	169	263	296	288	285	+33	-10	-3	+22	+117	+8.5%	302
Clerical (III & IV)	570	631	689	662	657	+58	-33	-5	+25	+86	+4.0%	745
Management & Administrative	813	1,010	1,107	1,064	1,055	+96	-52	-8	+45	+242	+4.4%	1,164
Support	797	757	762	743	740	+6	-22	-2	-16	-57	-2.2%	853
Maintenance/ Technical	95	94	94	100	101	+0	+6	+1	+7	+5	+7.2%	104
General Support	892	851	857	843	841	+6	-16	-2	-10	-51	-1.1%	957
Home Help	3,448	3,687	3,638	3,586	3,577	-49	-61	-9	-110	+129	-3.0%	5,024
Health Care Assistants	4,079	4,072	4,089	4,091	4,081	+16	-8	-11	+8	+2	+0.2%	4,690
Care, other	140	192	210	216	218	+18	+8	+3	+26	+78	+13.7%	260
Patient & Client Care	7,667	7,951	7,936	7,893	7,876	-15	-60	-17	-76	+209	-1.0%	9,974



WTE Change by Staff Category



Older People Report by CHO: AUG 2024

AUG 2024	WTE DEC 2019	WTE DEC 2022	WTE DEC 2023	WTE JUL 2024	WTE AUG 2024	WTE Change 2023	WTE Change 2024	WTE Change JUL 2024	WTE Change Dec 2022 to AUG 2024	WTE Change Dec 2019 to AUG 2024	% WTE Change Dec 2022 to AUG 2024	No. AUG 2024
Overall	13,239	13,947	14,154	14,066	14,024	+207	-130	-43	+77	+785	0.55%	16,917
CHO 1	1,836	2,087	2,202	2,221	2,213	+114	+11	-9	+125	+377	6.01%	2,613
CHO 2	1,606	1,582	1,596	1,489	1,489	+14	-107	+0	-93	-116	-5.88%	1,807
CHO 3	974	1,264	1,320	1,359	1,346	+56	+27	-13	+82	+372	6.52%	1,626
CHO 4	2,919	3,000	2,752	2,791	2,791	-248	+39	-0	-210	-128	-6.98%	3,644
CHO 5	1,653	1,641	1,733	1,688	1,675	+92	-59	-14	+34	+22	2.05%	2,023
CHO 6	823	813	858	837	834	+46	-25	-3	+21	+10	2.58%	905
CHO 7	996	999	1,025	1,067	1,061	+26	+37	-6	+62	+65	6.26%	1,196
CHO 8	1,488	1,489	1,540	1,487	1,495	+50	-45	+8	+5	+7	0.36%	1,849
CHO 9	870	976	1,001	1,002	999	+25	-2	-4	+23	+129	2.32%	1,122
other Community Services	74	95	128	124	122	+32	-6	-3	+26	+47	27.71%	132





Older People Employment Report by HSE/S38: AUG 2024

AUG 2024	WTE DEC 2019	WTE DEC 2022	WTE DEC 2023	WTE JUL 2024	WTE AUG 2024	WTE Change 2023	WTE Change 2024	WTE Change JUL 2024	WTE Change Dec 2022 to AUG 2024	WTE Change Dec 2019 to AUG 2024	% WTE Change Dec 2022 to AUG 2024	No. AUG 2024
Overall	13,239	13,947	14,154	14,066	14,024	+207	-130	-43	+77	+785	0.55%	16,917
Health Service Executive	12,531	13,217	13,389	13,156	13,113	+172	-276	-43	-104	+581	-0.79%	15,880
Section 38 Voluntary Agencies	708	731	765	910	911	+35	+146	+1	+181	+203	24.71%	1,037



Older People Employment Report by HSE: AUG 2024

AUG 2024	WTE DEC 2019	WTE DEC 2022	WTE DEC 2023	WTE JUL 2024	WTE AUG 2024	WTE Change 2023	WTE Change 2024	WTE Change JUL 2024	WTE Change Dec 2022 to AUG 2024	WTE Change Dec 2019 to AUG 2024	% WTE Change Dec 2022 to AUG 2024	No. AUG 2024
Total HSE	12,531	13,217	+13,389	13,156	13,113	+172	-276	-43	-104	+581	-0.79%	15,880
Consultants	3	5	+4	4	3	-1	-1	-0	-2	+0	-35.57%	5
Registrars	7	7	+7	12	10	+0	+4	-2	+4	+4	61.08%	12
SHO/ Interns	10	8	+12	14	14	+4	+2	+0	+6	+4	73.82%	14
Medical/ Dental, other	93	97	+83	76	75	-15	-7	-1	-22	-18	-22.85%	144
Medical & Dental	113	117	+105	105	103	-12	-2	-3	-14	-10	-12.10%	175
Nurse/ Midwife Manager	657	687	+754	746	743	+67	-11	-3	+56	+86	8.10%	785
Nurse/ Midwife Specialist & AN/MP	26	74	+110	109	110	+35	+1	+1	+36	+84	48.38%	117
Staff Nurse/ Staff Midwife	2,399	2,566	+2,529	2,498	2,491	-37	-37	-7	-74	+92	-2.89%	2,821
Public Health Nurse	14	13	+11	11	11	-1	-0	+0	-2	-4	-14.60%	12
Nursing/ Midwifery awaiting registration	1	1	+7	1	1	+7	-7	-0	-0	-0	-31.63%	1
Post-registration Nurse/ Midwife Student	1									-1	-100.00%	
Nursing/ Midwifery Student	2	1	+7	1	1	+7	-7	-0	-0	-1	-31.63%	1
Nursing/ Midwifery other	1	3	+3	2	2	-0	-1	+0	-1	+1	-33.33%	2
Nursing & Midwifery	3,100	3,344	+3,414	3,368	3,358	+70	-55	-9	+14	+259	0.43%	3,738
Dietitians	14	23	+26	28	27	+4	+1	-1	+5	+13	19.95%	34
Occupational Therapists	93	99	+119	110	107	+20	-12	-3	+8	+14	7.81%	125
Physiotherapists	93	113	+121	121	121	+8	+0	+0	+8	+28	7.20%	140
Podiatrists & Chiropodists	11	3	+5	5	5	+1	+0	+0	+2	-7	48.76%	6
Speech & Language Therapists	19	29	+38	37	37	+9	-2	-0	+7	+18	24.97%	42
Therapy Professions	230	267	+309	300	297	+42	-13	-4	+29	+67	10.96%	347
Health Science/ Diagnostics	5	4	+4	4	4	-0	-0	-0	-0	-2	-5.65%	6
Social Care	3	2	+3	3	3	+0	+0	+0	+0	-0	17.70%	4
Social Workers	84	54	+37	36	36	-17	-0	+1	-18	-48	-32.86%	40
Psychologists	2	4	+3	4	4	-0	+1	-0	+0	+2	8.57%	5
Pharmacy	11	14	+14	14	14	+1	-1	-0	-0	+3	-0.29%	20
H&SC, Other	1	3	+26	24	23	+22	-2	-1	+20	+22	592.01%	27
Health & Social Care Professionals	336	348	+396	384	380	+48	-16	-4	+32	+44	9.23%	449
Management (VIII & above)	73	112	+118	109	108	+6	-10	-0	-4	+36	-3.43%	112
Administrative/ Supervisory (V to VII)	149	239	+266	263	260	+27	-6	-3	+21	+111	8.77%	276
Clerical (III & IV)	543	601	+661	634	629	+60	-32	-5	+28	+86	4.71%	709
Management & Administrative	765	952	+1,045	1,006	998	+93	-47	-8	+45	+233	4.77%	1,097
Support	694	645	+652	627	626	+7	-26	-2	-19	-69	-2.97%	719
Maintenance/ Technical	85	85	+84	89	90	-0	+5	+1	+5	+4	6.11%	93
General Support	780	729	+736	717	716	+7	-21	-1	-14	-64	-1.92%	812
Home Help	3,448	3,687	+3,638	3,586	3,577	-49	-61	-9	-110	+129	-2.99%	5,024
Health Care Assistants	3,856	3,851	+3,849	3,779	3,768	-2	-81	-12	-83	-88	-2.16%	4,333
Care, other	135	188	+207	211	214	+18	+7	+3	+26	+79	13.62%	252
Patient & Client Care	7,438	7,726	+7,693	7,576	7,558	-33	-135	-18	-168	+120	-2.17%	9,609



Older People Employment Report by S38 Voluntary Agencies: AUG 2024

AUG 2024	WTE DEC 2019	WTE DEC 2022	WTE DEC 2023	WTE JUL 2024	WTE AUG 2024	WTE Change 2023	WTE Change 2024	WTE Change JUL 2024	WTE Change Dec 2022 to AUG 2024	WTE Change Dec 2019 to AUG 2024	% WTE Change Dec 2022 to AUG 2024	No. AUG 2024
Total S38 Voluntary Agencies	708	731	765	910	911	+35	+146	+1	+181	+203	+24.7%	1,037
Consultants	1	2	2	2	2	+0	+1	+1	+1	+1	+33.3%	3
Registrars	3	3	4	4	4	+1	+0	+0	+1	+1	+33.3%	4
SHO/ Interns	5	4	6	5	6	+2	+0	+1	+2	+1	+50.0%	6
Medical/ Dental, other	2	1	2	2	2	+1	-0	+0	+1	-0	+53.0%	2
Medical & Dental	11	10	14	12	14	+4	+0	+2	+4	+3	+42.4%	15
Nurse/ Midwife Manager	54	50	57	74	74	+7	+17	-0	+24	+21	+48.5%	78
Nurse/ Midwife Specialist & AN/MP			1	1	1	+1	+0	+0	+1	+1	-100.0%	1
Staff Nurse/ Staff Midwife	176	172	171	233	232	-1	+61	-1	+61	+57	+35.4%	263
Nursing & Midwifery	230	222	229	308	308	+7	+79	-1	+86	+78	+38.8%	342
Dietitians	3	3	4	5	5	+1	+1	+0	+2	+2	+88.1%	6
Occupational Therapists	20	26	25	27	27	-2	+3	-0	+1	+7	+5.3%	29
Physiotherapists	30	39	42	29	30	+3	-12	+1	-9	+0	-23.8%	33
Podiatrists & Chiropodists	1	0	0	0	0	+0	+0	+0	+0	-0	+0.0%	1
Speech & Language Therapists	4	4	4	4	4	+0	+0	+0	+0	+0	+0.0%	5
Therapy Professions	58	73	75	66	67	+3	-8	+1	-6	+9	-7.7%	74
Health Science/ Diagnostics	1	1	1	1	1	+0	+0	+0	+0	+0	+0.0%	2
Social Workers	14	15	15	16	15	-0	-1	-1	-1	+1	-5.8%	18
Psychologists	1		1	1	1	+1	+0	+0	+1	+0	-100.0%	1
Pharmacy	5	6	5	6	6	-0	+1	+0	+1	+2	+10.3%	8
Health & Social Care Professionals	78	95	97	89	89	+3	-8	-0	-5	+12	-5.7%	103
Management (VIII & above)	2	4	4	5	5	+0	+1	+0	+1	+3	+25.0%	5
Administrative/ Supervisory (V to VII)	19	24	30	25	25	+6	-5	+0	+1	+6	+6.3%	26
Clerical (III & IV)	27	31	28	28	27	-2	-1	-0	-3	+0	-10.1%	36
Management & Administrative	49	58	62	58	57	+4	-5	-0	-1	+9	-1.0%	67
Support	103	112	111	115	115	-1	+4	-1	+3	+12	+2.5%	134
Maintenance/ Technical	10	9	10	11	11	+1	+1	+0	+2	+1	+16.9%	11
General Support	113	121	121	126	126	-1	+5	-1	+4	+13	+3.6%	145
Health Care Assistants	223	222	240	312	313	+18	+74	+1	+91	+90	+41.3%	357
Care, other	5	4	4	5	5	-0	+1	+0	+1	-1	+15.6%	8
Patient & Client Care	229	226	243	317	318	+18	+75	+1	+92	+89	+40.8%	365



Older People Employment Report by Grade Group: AUG 2024

CHO 1

AUG 2024	WTE DEC 2019	WTE DEC 2022	WTE DEC 2023	WTE JUL 2024	WTE AUG 2024	WTE Change 2023	WTE Change 2024	WTE Change JUL 2024	WTE Change Dec 2022 to AUG 2024	WTE Change Dec 2019 to AUG 2024	% WTE Change Dec 2022 to AUG 2024	No. AUG 2024
Overall	1836	2087	2202	2221	2213	+114	+11	-9	+125	+377	+6.0%	2,613
Registrars				0	1		+1	+1	+1	+1	-100.0%	1
Medical/ Dental, other	30	27	20	15	14	-7	-6	-1	-13	-16	-48.9%	37
Medical & Dental	30	27	20	15	15	-7	-5	-0	-12	-15	-45.2%	38
Nurse/ Midwife Manager	91	91	93	93	95	+2	+2	+2	+4	+4	+4.3%	99
Nurse/ Midwife Specialist & AN/MP	7	18	23	23	23	+4	+0	+0	+4	+16	+24.4%	24
Staff Nurse/ Staff Midwife	307	338	342	336	335	+4	-8	-1	-4	+27	-1.1%	376
Public Health Nurse		1	1	1	1	+0	+0	+0	+0	+1	+40.8%	1
Nursing/ Midwifery other		1	1	1	1	+0	+0	+0	+0	+1	+0.0%	1
Nursing & Midwifery	405	449	459	453	454	+10	-5	+1	+5	+49	+1.1%	501
Dietitians		1	3	2	2	+2	-1	+0	+1	+1	+141.4%	3
Occupational Therapists	10	20	25	23	21	+5	-4	-1	+1	+1	+4.9%	25
Physiotherapists	1	5	8	8	9	+3	+0	+1	+3	+3	+60.2%	9
Speech & Language Therapists			1	1	1	+1	+0	+0	+1	+1	-100.0%	1
Therapy Professions	11	27	37	34	33	+10	-4	-1	+6	+22	+23.0%	38
Health Science/ Diagnostics	1									-1	-100.0%	
Social Workers	18	9	12	11	11	+3	-1	-0	+1	-7	+15.2%	12
Psychologists				1	1		+1	+0	+1	+1	-100.0%	1
H&SC, Other			6	7	6	+6	+0	-1	+6	+6	-100.0%	7
Health & Social Care Professionals	30	36	55	51	50	+19	-5	-1	+14	+20	+39.2%	58
Management (VIII & above)	8	10	9	10	10	-1	+1	+0	-0	+2	-0.7%	10
Administrative/ Supervisory (V to VII)	14	25	34	33	33	+9	-1	+0	+8	+19	+32.3%	34
Clerical (III & IV)	85	86	88	80	78	+2	-10	-2	-7	-7	-8.6%	92
Management & Administrative	107	121	131	123	121	+10	-10	-2	+1	+14	+0.5%	136
Support	123	111	122	113	112	+12	-10	-1	+1	-11	+1.3%	133
Maintenance/ Technical	7	8	6	6	7	-2	+1	+1	-1	-0	-11.5%	7
General Support	130	118	129	119	119	+10	-10	+0	+1	-11	+0.4%	140
Home Help	543	748	824	876	873	+76	+49	-3	+124	+330	+16.6%	1,060
Health Care Assistants	563	564	557	553	551	-7	-6	-2	-13	-12	-2.3%	646
Care, other	28	24	27	31	30	+3	+3	-1	+6	+2	+23.6%	34
Patient & Client Care	1,134	1,336	1,408	1,460	1,454	+71	+46	-6	+117	+320	+8.8%	1,740



Older People Employment Report by Grade Group: AUG 2024

CHO 2

AUG 2024	WTE DEC 2019	WTE DEC 2022	WTE DEC 2023	WTE JUL 2024	WTE AUG 2024	WTE Change 2023	WTE Change 2024	WTE Change JUL 2024	WTE Change Dec 2022 to AUG 2024	WTE Change Dec 2019 to AUG 2024	% WTE Change Dec 2022 to AUG 2024	No. AUG 2024
Overall	1606	1582	1596	1489	1489	+14	-107	+0	-93	-116	-5.9%	1,807
Medical/ Dental, other	11	10	7	6	6	-3	-0	+0	-3	-5	-34.9%	11
Medical & Dental	11	10	7	6	6	-3	-0	+0	-3	-5	-34.9%	11
Nurse/ Midwife Manager	58	74	73	77	75	-0	+2	-1	+1	+17	+1.8%	82
Nurse/ Midwife Specialist & AN/MP	2	7	12	11	11	+5	-1	+0	+4	+9	+61.9%	12
Staff Nurse/ Staff Midwife	301	305	317	306	309	+12	-8	+3	+4	+8	+1.4%	354
Public Health Nurse	1	1	1	1	1	+0	+0	+0	+0	+0	+0.0%	1
Nursing & Midwifery	362	386	403	395	396	+17	-7	+1	+10	+34	+2.6%	449
Dietitians	1	1	2	2	2	+1	-0	-0	+1	+1	+70.0%	2
Occupational Therapists	10	10	16	16	16	+6	+0	-0	+6	+6	+64.8%	18
Physiotherapists	14	15	18	18	19	+3	+1	+1	+4	+4	+23.8%	21
Speech & Language Therapists	2	2	4	3	3	+2	-1	-0	+1	+1	+28.0%	3
Therapy Professions	26	28	39	39	39	+11	+0	+0	+11	+14	+40.0%	44
Health Science/ Diagnostics	1	1	1	1	1	+0	-0	+0	-0	+0	-13.7%	1
Social Workers	10	13	4	4	4	-9	-0	+0	-9	-6	-69.7%	4
Pharmacy	1	1	1	1	1	-0	+0	+0	-0	-0	-1.9%	1
H&SC, Other			4	3	3	+4	-1	+0	+3	+3	-100.0%	4
Health & Social Care Professionals	37	42	48	47	47	+6	-0	+0	+5	+10	+12.1%	54
Management (VIII & above)	2	6	6	6	6	+0	-0	+0	-0	+4	-1.5%	6
Administrative/ Supervisory (V to VII)	8	16	18	17	17	+2	-1	-0	+1	+10	+9.4%	18
Clerical (III & IV)	72	64	68	68	67	+4	-1	-0	+3	-4	+5.3%	76
Management & Administrative	81	86	92	91	90	+6	-1	-0	+5	+9	+5.6%	100
Support	56	51	51	46	46	+0	-5	-0	-5	-11	-9.9%	51
Maintenance/ Technical	19	20	21	21	21	+1	-0	-0	+1	+2	+3.3%	22
General Support	75	71	72	67	66	+1	-6	-0	-4	-9	-6.1%	73
Home Help	499	407	376	300	303	-31	-72	+3	-104	-196	-25.5%	476
Health Care Assistants	515	536	556	539	535	+20	-21	-3	-0	+20	-0.1%	596
Care, other	24	45	43	44	44	-2	+0	-0	-1	+19	-2.6%	48
Patient & Client Care	1,039	988	975	883	882	-13	-93	-1	-105	-156	-10.7%	1,120

Older People Employment Report by Grade Group: AUG 2024

CHO 3

AUG 2024	WTE DEC 2019	WTE DEC 2022	WTE DEC 2023	WTE JUL 2024	WTE AUG 2024	WTE Change 2023	WTE Change 2024	WTE Change JUL 2024	WTE Change Dec 2022 to AUG 2024	WTE Change Dec 2019 to AUG 2024	% WTE Change Dec 2022 to AUG 2024	No. AUG 2024
Overall	974	1264	1320	1359	1346	+56	+27	-13	+82	+372	+6.5%	1,626
Consultants	1	3	2	2	1	-1	-1	-0	-2	+0	-60.0%	2
Registrars		2	2	5	4	+0	+2	-1	+2	+4	+103.5%	5
SHO/ Interns		2	3	4	3	+1	+0	-1	+1	+3	+51.5%	3
Medical/ Dental, other	5	6	5	5	5	-1	+0	+0	-1	+0	-16.0%	5
Medical & Dental	6	13	12	15	13	-1	+1	-2	+0	+7	+2.6%	15
Nurse/ Midwife Manager	64	68	74	74	71	+5	-3	-3	+2	+7	+3.6%	74
Nurse/ Midwife Specialist & AN/MP	2	11	13	13	13	+2	+1	-0	+3	+12	+27.1%	14
Staff Nurse/ Staff Midwife	239	266	276	285	282	+10	+6	-3	+16	+43	+6.0%	318
Public Health Nurse	1									-1	-100.0%	
Nursing & Midwifery	305	345	363	372	366	+17	+4	-6	+21	+61	+6.1%	406
Dietitians		2	2	3	2	-0	+1	-0	+0	+0	+23.2%	3
Occupational Therapists	12	13	21	18	16	+7	-5	-3	+3	+3	+19.1%	18
Physiotherapists	10	21	17	17	17	-3	-1	-1	-4	-4	-19.3%	20
Podiatrists & Chiropodists	3	2	3	4	4	+1	+1	+0	+2	+2	+118.8%	4
Speech & Language Therapists	2	6	7	7	7	+1	-1	-0	+0	+0	+3.1%	7
Therapy Professions	28	44	49	49	45	+5	-4	-4	+1	+17	+2.8%	52
Health Science/ Diagnostics	1	1	1	1	1	+0	+0	+0	+0	-0	+1.4%	2
Social Workers	7	2	2	2	2	+0	+0	+0	+0	-5	+1.0%	2
Psychologists		1	1	1	1	-0	+0	-0	+0	+1	+0.0%	1
Pharmacy	1	1	1	1	1	+0	+0	+0	+0	+0	+1.0%	1
Health & Social Care Professionals	36	48	54	53	50	+5	-4	-4	+1	+13	+2.6%	58
Management (VIII & above)	6	10	9	10	10	-1	+1	-0	-0	+4	-0.7%	10
Administrative/ Supervisory (V to VII)	21	27	28	25	26	+2	-3	+0	-1	+5	-4.1%	28
Clerical (III & IV)	50	63	68	66	63	+5	-5	-2	+0	+14	+0.8%	74
Management & Administrative	76	99	105	101	99	+6	-7	-2	-1	+23	-0.7%	112
Support	64	46	51	58	59	+6	+8	+1	+13	-5	+29.5%	69
Maintenance/ Technical	22	23	22	27	27	-0	+4	+0	+4	+5	+17.7%	27
General Support	86	68	74	84	86	+6	+12	+1	+17	-1	+25.5%	96
Home Help	175	342	364	358	359	+22	-5	+1	+17	+184	+5.0%	516
Health Care Assistants	279	331	324	352	350	-7	+26	-2	+19	+71	+5.8%	395
Care, other	10	17	25	23	24	+8	-1	+1	+7	+14	+39.6%	28
Patient & Client Care	464	690	712	733	733	+22	+20	-0	+43	+269	+6.2%	939

Older People Employment Report by Grade Group: AUG 2024

CHO 4

AUG 2024	WTE DEC 2019	WTE DEC 2022	WTE DEC 2023	WTE JUL 2024	WTE AUG 2024	WTE Change 2023	WTE Change 2024	WTE Change JUL 2024	WTE Change Dec 2022 to AUG 2024	WTE Change Dec 2019 to AUG 2024	% WTE Change Dec 2022 to AUG 2024	No. AUG 2024
Overall	2919	3000	2752	2791	2791	-248	+39	-0	-210	-128	-7.0%	3,644
Consultants	1	1	1	1	1	+0	+0	+0	+0	+0	+0.0%	2
Registrars	3	0				-0			-0	-3	-100.0%	
SHO/ Interns	1				1		+1	+1	+1	-0	-100.0%	1
Medical/ Dental, other	21	27	25	26	26	-2	+1	+0	-1	+5	-2.9%	55
Medical & Dental	26	28	26	27	28	-2	+2	+1	+0	+2	+0.7%	58
Nurse/ Midwife Manager	118	109	119	125	128	+10	+9	+2	+19	+10	+17.2%	137
Nurse/ Midwife Specialist & AN/MP	3	6	11	10	10	+6	-1	+1	+4	+7	+74.7%	11
Staff Nurse/ Staff Midwife	515	575	513	543	540	-62	+27	-2	-35	+25	-6.1%	655
Public Health Nurse	5	6	5	4	4	-2	-0	+0	-2	-1	-33.0%	5
<i>Nursing/ Midwifery awaiting registration</i>	<i>1</i>		<i>5</i>			<i>+5</i>	<i>-5</i>				<i>-100.0%</i>	
<i>Post-registration Nurse/ Midwife Student</i>	<i>1</i>										<i>-100.0%</i>	
Nursing/ Midwifery Student	2		5			+5	-5			-2	-100.0%	
Nursing & Midwifery	643	697	653	682	683	-44	+30	+0	-14	+40	-2.0%	808
<i>Dietitians</i>	<i>2</i>		<i>2</i>	<i>2</i>	<i>2</i>	<i>+2</i>	<i>+1</i>	<i>+0</i>	<i>+2</i>	<i>+2</i>	<i>-100.0%</i>	<i>2</i>
<i>Occupational Therapists</i>	<i>17</i>	<i>13</i>	<i>10</i>	<i>10</i>	<i>11</i>	<i>-3</i>	<i>+2</i>	<i>+1</i>	<i>-1</i>	<i>-1</i>	<i>-10.8%</i>	<i>13</i>
<i>Physiotherapists</i>	<i>15</i>	<i>16</i>	<i>13</i>	<i>9</i>	<i>10</i>	<i>-3</i>	<i>-3</i>	<i>+1</i>	<i>-6</i>	<i>-6</i>	<i>-37.5%</i>	<i>12</i>
<i>Podiatrists & Chiropodists</i>	<i>6</i>	<i>2</i>	<i>1</i>	<i>1</i>	<i>1</i>	<i>-0</i>	<i>-1</i>	<i>+0</i>	<i>-1</i>	<i>-1</i>	<i>-46.7%</i>	<i>1</i>
<i>Speech & Language Therapists</i>	<i>4</i>	<i>6</i>	<i>4</i>	<i>4</i>	<i>4</i>	<i>-2</i>	<i>-1</i>	<i>-0</i>	<i>-3</i>	<i>-3</i>	<i>-45.3%</i>	<i>4</i>
Therapy Professions	44	37	30	25	28	-7	-2	+2	-9	-16	-24.4%	32
Health Science/ Diagnostics	1	1	1	1	1	+0	+0	+0	+0	+0	+0.0%	2
Social Care	2	1	1	1	1	+0	+0	+0	+0	-0	+0.8%	2
Social Workers	10	9				-9			-9	-10	-100.0%	
Pharmacy	3	5	4	4	4	-0	-1	-0	-1	+1	-13.9%	9
H&SC, Other			5	5	5	+5	+0	+0	+5	+5	-100.0%	5
Health & Social Care Professionals	60	53	41	37	39	-12	-2	+2	-14	-21	-26.5%	50
Management (VIII & above)	13	19	20	17	17	+1	-2	+1	-2	+5	-9.2%	18
Administrative/ Supervisory (V to VII)	17	29	39	48	47	+9	+8	-1	+18	+30	+60.0%	50
Clerical (III & IV)	128	130	128	128	129	-2	+1	+0	-1	+0	-0.9%	151
Management & Administrative	158	178	186	193	193	+8	+7	+0	+15	+35	+8.3%	219
Support	101	124	120	116	115	-3	-5	-1	-8	+15	-6.7%	134
Maintenance/ Technical	6	5	3	3	3	-2	-0	-0	-2	-3	-40.4%	3
General Support	107	129	123	119	118	-5	-5	-1	-10	+12	-8.0%	137
Home Help	1,113	1,068	932	921	917	-136	-15	-5	-151	-197	-14.1%	1,416
Health Care Assistants	781	814	753	774	776	-61	+22	+2	-39	-6	-4.8%	906
Care, other	31	34	37	38	37	+3	+1	-0	+4	+7	+10.9%	50
Patient & Client Care	1,925	1,916	1,722	1,733	1,730	-194	+7	-3	-186	-196	-9.7%	2,372

Older People Employment Report by Grade Group: AUG 2024

CHO 5

AUG 2024	WTE DEC 2019	WTE DEC 2022	WTE DEC 2023	WTE JUL 2024	WTE AUG 2024	WTE Change 2023	WTE Change 2024	WTE Change JUL 2024	WTE Change Dec 2022 to AUG 2024	WTE Change Dec 2019 to AUG 2024	% WTE Change Dec 2022 to AUG 2024	No. AUG 2024
Overall	1653	1641	1733	1688	1675	+92	-59	-14	+34	+22	+2.0%	2,023
Medical/ Dental, other	9	15	13	12	12	-1	-1	-0	-2	+3	-17.0%	16
Medical & Dental	9	15	13	12	12	-1	-1	-0	-2	+3	-17.0%	16
Nurse/ Midwife Manager	83	76	99	95	93	+23	-6	-1	+17	+10	+22.0%	101
Nurse/ Midwife Specialist & AN/MP	2	12	18	17	17	+6	-1	-0	+5	+15	+44.1%	18
Staff Nurse/ Staff Midwife	313	299	318	317	312	+19	-5	-5	+14	-1	+4.6%	357
Public Health Nurse	5	1	1	1	1	+0	+0	+0	+0	-4	+1.0%	1
Nursing/ Midwifery awaiting registration			2			+2	-2				-100.0%	
Nursing/ Midwifery Student			2			+2	-2				-100.0%	
Nursing & Midwifery	403	388	437	430	423	+50	-14	-7	+36	+20	+9.2%	477
Dietitians	4	4	4	4	4	+0	-0	-0	+0	+0	+0.2%	5
Occupational Therapists	13	11	15	16	15	+5	-0	-1	+4	+4	+38.4%	18
Physiotherapists	21	14	15	18	17	+1	+1	-2	+2	+2	+16.4%	21
Podiatrists & Chiropodists	0										-100.0%	
Speech & Language Therapists	3	1	4	3	3	+2	-0	-0	+2	+2	+175.0%	4
Therapy Professions	41	31	39	42	39	+8	+1	-2	+9	-1	+28.2%	48
Social Workers	3	4	5	5	5	+1	+0	+0	+1	+2	+35.9%	6
Psychologists		1	2	2	2	+0	+0	+0	+0	+2	+5.6%	2
Pharmacy		1	1	1	1	-0	-0	+0	-0	+1	-12.6%	1
H&SC, Other		2	6	4	3	+4	-2	-0	+1	+3	+78.7%	4
Health & Social Care Professionals	44	39	52	52	50	+13	-1	-2	+11	+6	+29.5%	61
Management (VIII & above)	4	11	11	12	12	+0	+1	-0	+1	+8	+8.1%	12
Administrative/ Supervisory (V to VII)	17	16	16	17	18	-0	+2	+0	+1	+1	+8.1%	18
Clerical (III & IV)	31	60	61	55	55	+0	-6	+0	-5	+24	-8.6%	60
Management & Administrative	52	87	88	84	84	+0	-3	+0	-3	+33	-3.4%	90
Support	91	75	62	56	55	-13	-7	-1	-20	-36	-26.7%	69
Maintenance/ Technical	5	4	4	4	4	-0	+0	+0	-0	-1	-4.1%	5
General Support	96	79	66	60	59	-13	-7	-1	-20	-37	-25.5%	74
Home Help	614	612	609	603	599	-3	-10	-4	-13	-15	-2.1%	797
Health Care Assistants	427	404	441	422	422	+37	-19	-0	+17	-5	+4.3%	481
Care, other	9	18	28	25	25	+10	-3	-0	+7	+16	+41.6%	27
Patient & Client Care	1,049	1,034	1,078	1,050	1,046	+44	-32	-4	+12	-3	+1.2%	1,305



Older People Employment Report by Grade Group: AUG 2024

CHO 6

AUG 2024	WTE DEC 2019	WTE DEC 2022	WTE DEC 2023	WTE JUL 2024	WTE AUG 2024	WTE Change 2023	WTE Change 2024	WTE Change JUL 2024	WTE Change Dec 2022 to AUG 2024	WTE Change Dec 2019 to AUG 2024	% WTE Change Dec 2022 to AUG 2024	No. AUG 2024
Overall	823	813	858	837	834	+46	-25	-3	+21	+10	+2.6%	905
Consultants				1	1		+1	+0	+1	+1	-100.0%	1
Registrars	1	1	1	1	1	+0	+0	+0	+0	+0	+0.0%	1
Medical/ Dental, other	4	2	3	2	2	+1	-1	+0	-0	-2	-6.9%	3
Medical & Dental	5	3	4	4	4	+1	+0	+0	+1	-1	+30.1%	5
Nurse/ Midwife Manager	68	64	76	74	73	+12	-3	-1	+9	+4	+14.2%	74
Nurse/ Midwife Specialist & AN/MP	1		9	9	9	+9	-0	-0	+9	+8	-100.0%	9
Staff Nurse/ Staff Midwife	204	206	205	207	206	-0	+1	-1	+0	+2	+0.2%	213
Nursing & Midwifery	273	269	290	290	287	+21	-3	-3	+18	+14	+6.8%	296
Dietitians	3	2	3	4	4	+0	+1	-0	+1	+1	+42.3%	5
Occupational Therapists	19	17	19	20	20	+2	+1	+0	+3	+3	+18.2%	23
Physiotherapists	21	19	26	23	23	+7	-2	+0	+5	+5	+24.5%	24
Podiatrists & Chiropodists	1	0	0	0	0	+0	+0	+0	+0	+0	+0.0%	1
Speech & Language Therapists	6	4	6	5	5	+2	-1	+0	+1	+1	+22.3%	6
Therapy Professions	50	42	54	52	52	+11	-2	+0	+10	+2	+22.7%	59
Social Workers	11	7	6	7	7	-1	+1	+0	-0	-5	-2.8%	8
Psychologists	2		1	1	1	+1	+0	+0	+1	-2	-100.0%	1
Pharmacy	3	4	4	5	5	+0	+0	+0	+1	+2	+14.6%	5
H&SC, Other			1	1	1	+1	+0	+0	+1	+1	-100.0%	1
Health & Social Care Professionals	66	53	65	65	65	+12	-0	+0	+12	-1	+21.7%	74
Management (VIII & above)	4	8	12	12	12	+4	+0	+0	+4	+8	+52.9%	12
Administrative/ Supervisory (V to VII)	22	32	39	34	33	+7	-5	-0	+2	+11	+5.7%	35
Clerical (III & IV)	30	33	31	28	28	-2	-3	+1	-5	-1	-14.6%	32
Management & Administrative	56	72	82	73	74	+9	-8	+0	+1	+18	+1.5%	79
Support	108	102	109	105	104	+7	-5	-1	+2	-4	+2.2%	113
Maintenance/ Technical	8	7	8	9	9	+1	+1	+0	+2	+1	+21.5%	9
General Support	116	110	117	114	113	+8	-4	-1	+4	-3	+3.5%	122
Health Care Assistants	300	299	296	286	286	-4	-10	-0	-13	-14	-4.4%	322
Care, other	7	6	5	5	5	-1	+0	+0	-1	-3	-22.5%	7
Patient & Client Care	307	305	300	291	291	-5	-10	-0	-15	-17	-4.8%	329

Older People Employment Report by Grade Group: AUG 2024

CHO 7

AUG 2024	WTE DEC 2019	WTE DEC 2022	WTE DEC 2023	WTE JUL 2024	WTE AUG 2024	WTE Change 2023	WTE Change 2024	WTE Change JUL 2024	WTE Change Dec 2022 to AUG 2024	WTE Change Dec 2019 to AUG 2024	% WTE Change Dec 2022 to AUG 2024	No. AUG 2024
Overall	996	999	1025	1067	1061	+26	+37	-6	+62	+65	+6.3%	1,196
SHO/ Interns	2	2	2	2	2	+0	+0	+0	+0	+0	+1.0%	2
Medical/ Dental, other	4	2	1	1	1	-1	+0	+0	-1	-3	-32.0%	2
Medical & Dental	6	4	3	3	3	-1	+0	+0	-1	-3	-15.7%	4
Nurse/ Midwife Manager	77	88	101	108	107	+13	+7	-1	+19	+30	+21.6%	111
Nurse/ Midwife Specialist & AN/MP	3	6	7	7	7	+1	-0	-0	+1	+4	+18.0%	7
Staff Nurse/ Staff Midwife	219	239	216	224	219	-22	+3	-4	-19	+0	-8.1%	239
<i>Nursing/ Midwifery awaiting registration</i>		1	1	1	1	+0	-0	-0	-0	-0	-31.6%	1
Nursing/ Midwifery Student		1	1	1	1	+0	-0	-0	-0	+1	-31.6%	1
Nursing & Midwifery	299	334	325	340	334	-9	+9	-5	+0	+35	+0.1%	358
<i>Dietitians</i>	1	2	1	1	1	-1	+1	+0	-0	-0	-11.9%	2
<i>Occupational Therapists</i>	4	5	6	5	4	+1	-2	-0	-1	-1	-16.9%	6
<i>Physiotherapists</i>	9	10	9	10	10	-1	+1	-0	-0	-0	-2.6%	11
<i>Podiatrists & Chiropodists</i>			1	0	0	+1	-0	+0	+0	+0	-100.0%	1
<i>Speech & Language Therapists</i>		1	2	1	1	+1	-1	+0	+0	+0	+1.0%	1
Therapy Professions	14	18	18	17	17	+1	-2	-1	-1	+3	-6.0%	21
Social Workers	11	5	5	4	5	-0	+0	+1	-0	-6	-3.3%	5
Pharmacy	3	3	3	3	3	+0	+0	+0	+0	+1	+1.0%	3
H&SC, Other	1	1	2	2	1	+1	-0	-0	+0	+0	+48.5%	2
Health & Social Care Professionals	28	27	28	26	26	+1	-2	+0	-1	-2	-2.7%	31
Management (VIII & above)	5	12	5	4	5	-7	-0	+1	-7	-0	-59.0%	5
Administrative/ Supervisory (V to VII)	12	20	18	16	16	-1	-3	-0	-4	+4	-20.4%	16
Clerical (III & IV)	34	42	46	45	47	+4	+1	+2	+5	+13	+11.7%	51
Management & Administrative	51	74	69	65	68	-4	-2	+3	-6	+17	-8.1%	72
Support	110	104	106	111	110	+2	+4	-1	+6	-0	+5.9%	124
Maintenance/ Technical	2	2	2	3	3	+0	+1	+0	+1	+1	+51.5%	3
General Support	112	106	108	114	113	+2	+5	-1	+7	+1	+6.8%	127
Home Help	108	117	133	133	133	+17	-0	-0	+16	+26	+14.0%	167
Health Care Assistants	388	332	350	378	376	+18	+26	-2	+44	-12	+13.2%	429
Care, other	5	6	8	8	8	+2	+0	+0	+2	+3	+34.2%	8
Patient & Client Care	500	455	492	519	517	+37	+25	-2	+62	+17	+13.7%	604

Older People Employment Report by Grade Group: AUG 2024

CHO 8

AUG 2024	WTE DEC 2019	WTE DEC 2022	WTE DEC 2023	WTE JUL 2024	WTE AUG 2024	WTE Change 2023	WTE Change 2024	WTE Change JUL 2024	WTE Change Dec 2022 to AUG 2024	WTE Change Dec 2019 to AUG 2024	% WTE Change Dec 2022 to AUG 2024	No. AUG 2024
Overall	1488	1489	1540	1487	1495	+50	-45	+8	+5	+7	+0.4%	1,849
Medical/ Dental, other	11	11	11	10	10	+0	-0	-0	-0	-0	-2.3%	17
Medical & Dental	11	11	11	10	10	+0	-0	-0	-0	-0	-2.3%	17
Nurse/ Midwife Manager	77	86	89	83	85	+2	-4	+1	-1	+8	-1.7%	89
Nurse/ Midwife Specialist & AN/MP	2	4	6	7	7	+2	+1	-0	+3	+5	+87.8%	8
Staff Nurse/ Staff Midwife	249	255	262	257	267	+7	+5	+10	+12	+18	+4.7%	297
Public Health Nurse	2	2	3	3	3	+1	-0	-0	+1	+1	+40.7%	4
Nursing/ Midwifery other		2	2	1	1	-0	-1	+0	-1	+1	-50.0%	1
Nursing & Midwifery	330	350	362	352	364	+12	+2	+12	+14	+33	+4.0%	399
Dietitians	1	3	4	4	4	+1	-0	-0	+1	+1	+30.1%	4
Occupational Therapists	9	7	7	7	8	-1	+1	+0	+0	+0	+3.8%	10
Physiotherapists	8	11	12	13	12	+1	+0	-0	+1	+1	+12.8%	16
Podiatrists & Chiropodists	1										-100.0%	
Speech & Language Therapists	2	5	8	8	8	+3	+0	+0	+3	+3	+66.2%	9
Therapy Professions	21	26	30	31	32	+4	+2	+0	+6	+11	+21.8%	39
Health Science/ Diagnostics		1	1	1	1	-0	-0	-0	-0	+1	-12.0%	1
Social Workers	7	1	1	1	1	+0	-0	-0	+0	-5	+16.2%	2
Pharmacy	3	2	2	2	2	+0	-1	-0	-0	-1	-18.2%	2
Health & Social Care Professionals	30	30	34	36	35	+4	+1	-1	+5	+5	+18.0%	44
Management (VIII & above)	6	9	10	9	9	+1	-0	+1	+0	+4	+5.1%	10
Administrative/ Supervisory (V to VII)	20	31	35	28	26	+4	-9	-2	-5	+6	-16.8%	27
Clerical (III & IV)	70	65	87	78	75	+22	-12	-3	+10	+5	+15.8%	82
Management & Administrative	95	105	132	114	111	+27	-21	-4	+5	+15	+5.2%	119
Support	26	26	30	29	29	+4	-1	+0	+3	+3	+10.6%	31
Maintenance/ Technical	24	22	25	25	25	+3	+0	-0	+3	+1	+11.4%	25
General Support	50	48	54	54	53	+6	-1	-0	+5	+4	+10.9%	56
Home Help	395	393	400	394	393	+6	-7	-1	-1	-3	-0.2%	592
Health Care Assistants	556	517	517	492	490	-1	-27	-2	-27	-67	-5.3%	573
Care, other	20	35	30	35	39	-5	+9	+4	+4	+18	+11.3%	49
Patient & Client Care	972	946	946	921	921	+1	-25	+1	-24	-51	-2.6%	1,214

Older People Employment Report by Grade Group: AUG 2024

CHO 9

AUG 2024	WTE DEC 2019	WTE DEC 2022	WTE DEC 2023	WTE JUL 2024	WTE AUG 2024	WTE Change 2023	WTE Change 2024	WTE Change JUL 2024	WTE Change Dec 2022 to AUG 2024	WTE Change Dec 2019 to AUG 2024	% WTE Change Dec 2022 to AUG 2024	No. AUG 2024
Overall	870	976	1001	1002	999	+25	-2	-4	+23	+129	+2.3%	1,122
Consultants	2	3	3	2	2	+0	-1	+1	-1	+0	-20.0%	3
Registrars	6	6	8	10	8	+1	+1	-2	+2	+3	+30.3%	9
SHO/ Interns	12	8	13	13	14	+5	+1	+1	+6	+2	+73.1%	14
Medical/ Dental, other	1									-1	-100.0%	
Medical & Dental	20	17	23	24	24	+6	+1	+0	+7	+4	+43.2%	26
Nurse/ Midwife Manager	75	79	85	89	88	+6	+3	-1	+9	+13	+11.4%	93
Nurse/ Midwife Specialist & AN/MP	5	11	12	13	14	+1	+1	+1	+3	+9	+22.3%	15
Staff Nurse/ Staff Midwife	227	255	249	256	253	-6	+4	-3	-1	+26	-0.6%	275
Public Health Nurse	0	1				-1			-1	-0	-100.0%	
Nursing/ Midwifery other	1									-1	-100.0%	
Nursing & Midwifery	308	346	347	359	355	+1	+8	-4	+9	+47	+2.6%	383
<i>Dietitians</i>	6	10	11	11	11	+1	-0	-0	+1	+1	+5.9%	14
<i>Occupational Therapists</i>	19	29	26	22	23	-3	-3	+1	-6	-6	-20.6%	23
<i>Physiotherapists</i>	25	42	45	34	35	+4	-10	+2	-6	-6	-15.0%	39
<i>Speech & Language Therapists</i>	4	8	8	10	10	+0	+3	-0	+3	+3	+35.5%	12
Therapy Professions	54	88	89	77	79	+1	-10	+2	-9	+25	-10.1%	88
Health Science/ Diagnostics	1	1	1	1	1	+0	+0	+0	+0	-0	+0.0%	2
Social Care	1	1	0	0	0	-1	+0	+0	-1	-1	-61.6%	1
Social Workers	21	19	17	17	16	-2	-1	-1	-3	-5	-13.6%	19
Psychologists		1	1	1	1	-0	+0	+0	-0	+1	-21.9%	1
Pharmacy	3	4	4	5	5	+0	+1	+0	+1	+2	+28.6%	6
H&SC, Other	0	1	3	4	4	+3	+1	+0	+3	+3	+537.5%	4
Health & Social Care Professionals	81	114	115	105	106	+1	-9	+1	-8	+25	-7.3%	121
Management (VIII & above)	9	13	14	12	12	+1	-2	-0	-1	+3	-6.0%	12
Administrative/ Supervisory (V to VII)	15	27	27	28	29	+0	+2	+1	+2	+14	+6.0%	31
Clerical (III & IV)	40	56	58	59	58	+3	-0	-1	+2	+18	+3.8%	67
Management & Administrative	64	96	100	99	99	+4	-1	-1	+3	+35	+3.1%	110
Support	118	119	111	110	110	-8	-1	+0	-9	-8	-7.5%	129
Maintenance/ Technical	2	2	2	2	2	+0	+0	+0	+0	+0	+0.0%	3
General Support	121	122	114	113	113	-8	-1	+0	-9	-8	-7.4%	132
Health Care Assistants	270	275	296	297	296	+21	+1	-1	+21	+27	+7.8%	342
Care, other	6	6	7	6	6	+0	-1	-0	-1	-1	-11.9%	8
Patient & Client Care	276	281	302	303	302	+21	-0	-1	+21	+26	+7.3%	350

Older People Employment Report by Grade Group: AUG 2024

other Community Services

AUG 2024	WTE DEC 2019	WTE DEC 2022	WTE DEC 2023	WTE JUL 2024	WTE AUG 2024	WTE Change 2023	WTE Change 2024	WTE Change JUL 2024	WTE Change Dec 2022 to AUG 2024	WTE Change Dec 2019 to AUG 2024	% WTE Change Dec 2022 to AUG 2024	No. AUG 2024
Overall	74	95	128	124	122	+32	-6	-3	+26	+47	+27.7%	132
Nurse/ Midwife Manager		2	3	3	3	+1	+0	+0	+1	+3	+50.0%	3
Nursing & Midwifery		2	3	3	3	+1	+0	+0	+1	+3	+50.0%	3
Health Science/ Diagnostics	1									-1	-100.0%	
Social Care			1	1	1	+1	+0	+0	+1	+1	-100.0%	1
Health & Social Care Professionals	1		1	1	1	+1	+0	+0	+1	+0	-100.0%	1
Management (VIII & above)	19	19	27	23	21	+7	-6	-2	+1	+2	+6.8%	22
Administrative/ Supervisory (V to VII)	23	40	42	41	41	+2	-1	-1	+1	+17	+2.2%	45
Clerical (III & IV)	31	33	54	55	55	+21	+1	+0	+22	+24	+68.3%	60
Management & Administrative	73	92	123	120	117	+31	-6	-3	+25	+43	+26.8%	127
Health Care Assistants	0	0				-0			-0	-0	-100.0%	
Care, other		1	1	1	1	+0	-0	-0	-0	+1	-1.2%	1
Patient & Client Care	0	1	1	1	1	-0	-0	-0	-0	+1	-24.1%	1

Older People Employment Report by Grade Group: AUG 2024

AUG 2024	WTE DEC 2019	WTE DEC 2022	WTE DEC 2023	WTE JUL 2024	WTE AUG 2024	WTE Change 2023	WTE Change 2024	WTE Change JUL 2024	WTE Change Dec 2022 to AUG 2024	WTE Change Dec 2019 to AUG 2024	% WTE Change Dec 2022 to AUG 2024	No. AUG 2024
Overall	13,239	13,947	14,154	14,066	14,024	+207	-130	-43	+77	+785	0.55%	16,917
Consultant Medicine	4	7	5	5	5	-1	-0	+0	-1	+2	-19.82%	8
Consultants	4	7	5	5	5	-1	-0	+0	-1	+2	-19.82%	8
Registrar	7	6	9	14	12	+2	+3	-2	+5	+5	77.90%	13
Senior Registrar	1	1	1	1	1	-0	+0	+0	-0	+0	-3.85%	1
Specialist Registrar	2	2	1	1	2	-1	+1	+1	-0	-0	-1.51%	2
Registrars	10	10	11	16	14	+1	+4	-2	+5	+5	52.32%	16
Senior House Officer	15	12	18	19	20	+6	+2	+1	+8	+5	65.89%	20
SHO/ Interns	15	12	18	19	20	+6	+2	+1	+8	+5	65.89%	20
Other Medical	95	98	85	78	77	-14	-8	-1	-22	-19	-22.08%	146
Medical/ Dental, other	95	98	85	78	77	-14	-8	-1	-22	-19	-22.08%	146
Medical & Dental	124	126	118	118	116	-8	-2	-1	-10	-7	-8.01%	190
Clinical Nurse/ Midwife Manager 1	176	151	161	178	179	+11	+18	+2	+29	+3	19.02%	188
Clinical Nurse/ Midwife Manager 2	314	365	393	400	396	+28	+3	-4	+31	+83	8.49%	422
Clinical Nurse/ Midwife Manager 3	21	18	23	23	25	+5	+2	+2	+7	+4	40.20%	26
Director Nursing/Midwifery, Assistant	102	106	129	116	113	+23	-15	-3	+8	+12	7.36%	121
Director of Nursing/Midwifery	98	98	105	104	104	+7	-1	+0	+5	+6	5.51%	106
Nurse/ Midwife Manager	711	738	811	821	817	+73	+7	-3	+80	+107	10.83%	863
Advanced Nurse/ Midwife Practitioner	4	23	28	28	28	+5	+0	-0	+5	+24	23.87%	29
Adv. Nurse/ Midwife, Candidate	7	17	28	26	25	+11	-3	-0	+9	+18	52.15%	27
Clinical Nurse/ Midwife Specialist	16	35	55	57	58	+20	+3	+2	+23	+42	65.17%	62
Nurse/ Midwife Specialist & AN/MP	26	74	111	110	111	+36	+1	+1	+37	+85	49.72%	118
Staff Midwives		1	2	2	2	+1	+0	+0	+1	+2	95.24%	2
Staff Nurse [Intellectual Disability]		3	2	3	1	-1	-1	-2	-2	+1	-66.56%	1
Staff Nurse [Psychiatric]	4	4	4	4	4	-0	+0	-0	+0	+0	0.92%	5
Staff Nurses [General/ Children's]	2,571	2,729	2,692	2,722	2,717	-37	+25	-5	-12	+146	-0.45%	3,076
Staff Nurse/ Staff Midwife	2,575	2,737	2,700	2,731	2,724	-38	+24	-7	-13	+149	-0.49%	3,084
Public Health Nurse	14	13	11	11	11	-1	-0	+0	-2	-4	-14.60%	12
Public Health Nurse	14	13	11	11	11	-1	-0	+0	-2	-4	-14.60%	12
Nursing/ Midwifery awaiting registration	1	1	7	1	1	+7	-7	-0	-0	-0	-31.63%	1
Post-registration Nurse/ Midwife Student	1									-1	-100.00%	
Nursing/ Midwifery Student	2	1	7	1	1	+7	-7	-0	-0	-1	-31.63%	1
Nursing Education/Clinical	1	3	3	2	2	-0	-1	+0	-1	+1	-33.33%	2
Nursing/ Midwifery other	1	3	3	2	2	-0	-1	+0	-1	+1	-33.33%	2
Nursing & Midwifery	3329	3566	3643	3676	3666	+77	+24	-10	+100	+337	2.82%	4,080
Dietitians	16	25	30	33	32	+5	+2	-1	+7	+16	27.19%	40
Occupational Therapists	113	125	144	137	134	+19	-9	-3	+9	+21	7.29%	154
Physiotherapists	123	152	163	150	151	+11	-12	+1	-1	+28	-0.77%	173
Podiatrists & Chiropodists	12	3	5	5	5	+1	+0	+0	+2	-7	45.91%	7
Speech & Language Therapists	23	34	43	41	41	+9	-2	-0	+7	+18	21.66%	47
Therapy Professions	288	340	385	367	364	+45	-21	-3	+24	+76	6.98%	421
Clinical Engineering		1	1	1	1	-0	-0	-0	-0	+1	-12.00%	1
Radiographers	6	4	4	3	3	+0	-0	+0	-0	-2	-2.54%	6
Vascular Physiologists	0	0	0	0	0	+0	+0	+0	+0	-0	0.00%	1
Health Science/ Diagnostics	6	5	5	5	5	-0	-0	-0	-0	-2	-4.45%	8
Social Care	3	2	3	3	3	+0	+0	+0	+0	-0	17.70%	4
Social Care	3	2	3	3	3	+0	+0	+0	+0	-0	17.70%	4
Social Workers	98	69	52	51	51	-18	-1	-0	-19	-48	-26.83%	58
Social Workers	98	69	52	51	51	-18	-1	-0	-19	-48	-26.83%	58
Psychologists	2	4	4	4	4	+0	+1	-0	+1	+2	22.86%	6
Psychologists	2	4	4	4	4	+0	+1	-0	+1	+2	22.86%	6
Pharmacists	13	14	14	14	14	+0	-1	-0	-0	+1	-3.48%	21
Pharmacy Technicians	3	5	6	7	7	+0	+1	+0	+1	+4	19.05%	7
Pharmacy	15	20	20	20	20	+0	+0	-0	+1	+5	2.82%	28
Other Health & Social Care	0	2	24	23	22	+22	-2	-1	+20	+22	817.15%	25

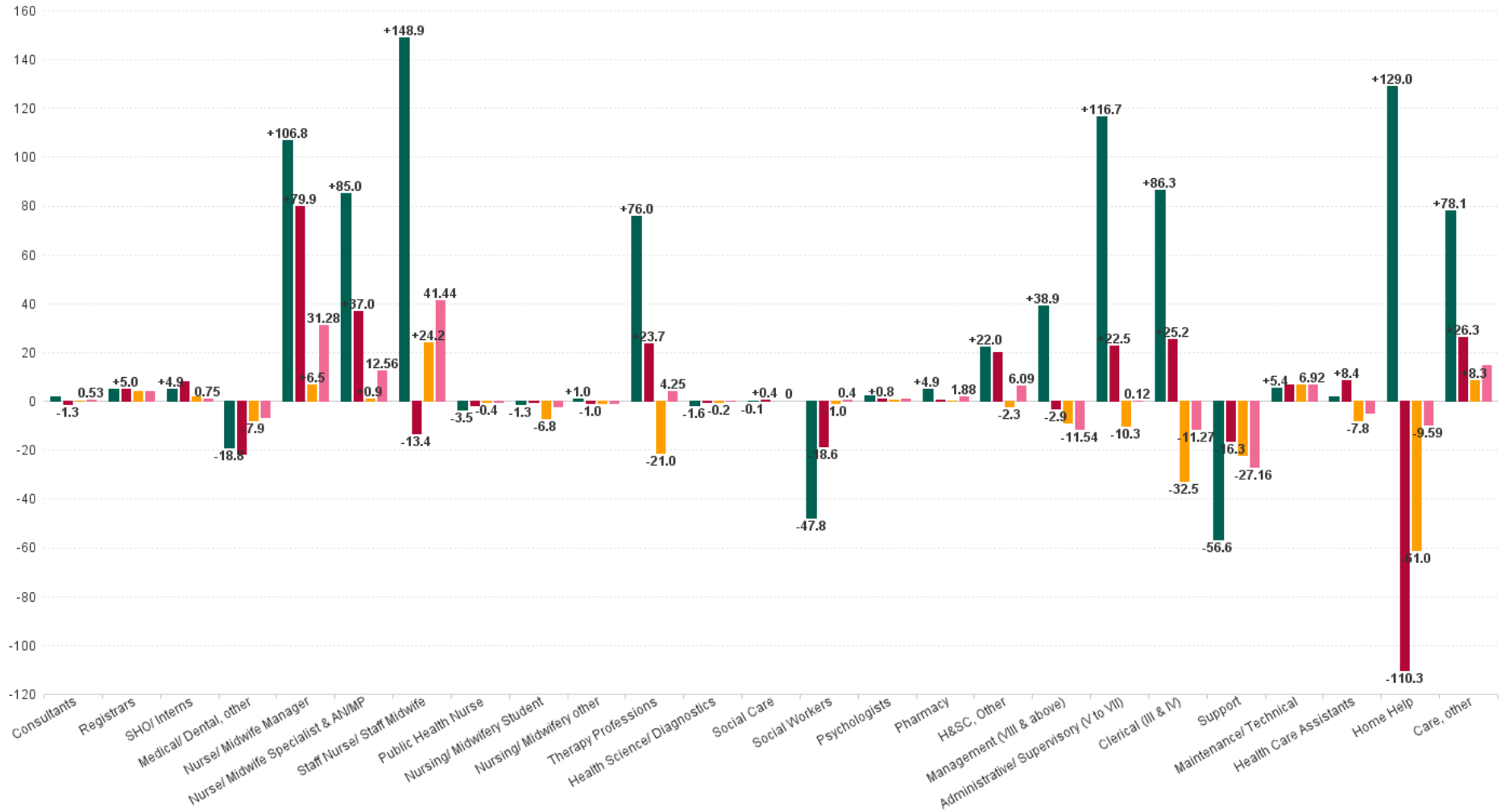


AUG 2024	WTE DEC 2019	WTE DEC 2022	WTE DEC 2023	WTE JUL 2024	WTE AUG 2024	WTE Change 2023	WTE Change 2024	WTE Change JUL 2024	WTE Change Dec 2022 to AUG 2024	WTE Change Dec 2019 to AUG 2024	% WTE Change Dec 2022 to AUG 2024	No. AUG 2024
Overall	13,239	13,947	14,154	14,066	14,024	+207	-130	-43	+77	+785	0.55%	16,917
Play Therapists/ Specialists	1	1	2	2	1	+1	-0	-0	+0	+0	48.48%	2
H&SC, Other	1	3	26	24	23	+22	-2	-1	+20	+22	592.01%	27
Health & Social Care Professionals	414	443	493	474	469	+50	-24	-4	+27	+56	6.03%	552
Executive Management	12	14	17	14	14	+3	-3	-0	+0	+2	0.29%	14
Senior Management (VIII & GM)	63	102	105	100	100	+3	-6	-0	-3	+37	-2.82%	103
Management (VIII & above)	75	116	122	114	113	+6	-9	-0	-3	+39	-2.45%	117
Middle Management (V-VII)	168	263	296	288	285	+33	-10	-3	+22	+118	8.55%	302
Other Administrative	1									-1	-100.00%	
Administrative/ Supervisory (V to VII)	169	263	296	288	285	+33	-10	-3	+22	+117	8.55%	302
General Administrative (III & IV)	570	631	689	662	657	+58	-33	-5	+25	+86	3.99%	745
Clerical (III & IV)	570	631	689	662	657	+58	-33	-5	+25	+86	3.99%	745
Management & Administrative	813	1010	1107	1064	1055	+96	-52	-8	+45	+242	4.43%	1,164
Catering	223	217	341	369	366	+124	+25	-2	+149	+144	68.61%	417
Household Services	461	441	319	282	282	-123	-37	+0	-160	-179	-36.15%	333
Other Support	32	27	22	18	18	-5	-4	+0	-9	-13	-32.57%	25
Portering	81	71	80	74	74	+9	-6	-1	+3	-8	4.26%	78
Support	797	757	762	743	740	+6	-22	-2	-16	-57	-2.16%	853
Maintenance	95	90	90	96	97	+0	+6	+1	+7	+1	7.50%	100
Technical Services		4	4	4	4	+0	+0	+0	+0	+4	0.00%	4
Maintenance/ Technical	95	94	94	100	101	+0	+6	+1	+7	+5	7.18%	104
General Support	892	851	857	843	841	+6	-16	-2	-10	-51	-1.13%	957
Home Helps	3,448	3,687	3,638	3,586	3,577	-49	-61	-9	-110	+129	-2.99%	5,024
Home Help	3,448	3,687	3,638	3,586	3,577	-49	-61	-9	-110	+129	-2.99%	5,024
Attendant/ Aide	2,328	1,632	1,531	1,411	1,398	-101	-134	-13	-234	-931	-14.36%	1,630
Health Care Assistant/ Care Assistant	1,729	2,378	2,470	2,593	2,596	+93	+126	+3	+218	+867	9.19%	2,967
Health & Social Care Assistants	22	63	87	88	87	+24	+0	-1	+24	+65	38.58%	93
Health Care Assistants	4,079	4,072	4,089	4,091	4,081	+16	-8	-11	+8	+2	0.21%	4,690
Home Care Services	84	143	164	171	175	+21	+12	+4	+32	+91	22.55%	185
Other Care Grades	22	23	21	22	22	-2	+1	+0	-1	+0	-2.31%	29
Pastoral Care	32	23	22	20	19	-1	-3	-1	-4	-13	-16.12%	44
Workshop Services	2	4	4	3	2	+0	-2	-1	-2	-0	-49.04%	2
Care, other	140	192	210	216	218	+18	+8	+3	+26	+78	13.66%	260
Patient & Client Care	7667	7951	7936	7893	7876	-15	-60	-17	-76	+209	-0.95%	9,974



WTE Change by Staff Category

■ WTE change since DEC 2019 ■ WTE change since DEC 2022 ■ WTE change since DEC 2023 ■ WTE change since AUG 2023



Older People Employment Report by WTE, Headcount, Gender, Full-Time / Part-Time etc. AUG 2024

AUG 2024	WTE AUG 2024	No. AUG 2024	WTE : No	% Male	% Female	Male WTE : No.	Female WTE : No	Perm Count %	Perm Count Male %	Perm Count Female %	Fulltime Count %	Part time Count %	FT Count Male %	FT Count Female %
Total	14,024	16,917	1:0.8	14.68%	85.32%	1:0.9	1:0.8	89.63%	12.79%	76.84%	52.98%	47.02%	76.40%	48.95%
Consultants	5.26	8	1:0.7	25.00%	75.00%	1:0.5	1:0.7	87.50%	12.50%	75.00%	37.50%	62.50%		50.00%
Medical/ Dental, other	76.62	146	1:0.5	59.59%	40.41%	1:0.5	1:0.6	58.90%	34.25%	24.66%	26.71%	73.29%	22.99%	32.20%
Registrars	11.51	13	1:0.9	61.54%	61.54%	1:0.9	1:0.9	38.46%	15.38%	23.08%	115.38%	7.69%	100.00%	87.50%
SHO/ Interns	19.94	20	1:1	60.00%	40.00%	1:1	1:1	10.00%	10.00%		100.00%		100.00%	100.00%
Registrars	2.96	3	1:0.9	266.67%	266.67%	1:0.9	1:0.9	166.67%	66.67%	100.00%	500.00%	33.33%	100.00%	87.50%
Medical & Dental	116	190	1:0.6	57.37%	42.63%	1:0.6	1:0.6	52.63%	28.95%	23.68%	40.53%	59.47%	36.70%	45.68%
Nurse/ Midwife Specialist & AN/MP	53.2	56	1:0.9	14.29%	196.43%	1:1	1:0.9	194.64%	12.50%	182.14%	203.57%	7.14%	100.00%	96.36%
Nurse/ Midwife Manager	600.13	636	1:0.9	10.69%	125.00%	1:1	1:0.9	131.76%	9.91%	121.86%	118.55%	17.14%	94.12%	86.79%
Nurse/ Midwife Specialist & AN/MP	58.24	62	1:0.9	12.90%	177.42%	1:1	1:0.9	175.81%	11.29%	164.52%	183.87%	6.45%	100.00%	96.36%
Nurse/ Midwife Manager	217.3	227	1:0.9	29.96%	350.22%	1:1	1:0.9	369.16%	27.75%	341.41%	332.16%	48.02%	94.12%	86.79%
Nursing/ Midwifery other	2	2	1:1		100.00%	1:	1:1	100.00%		100.00%	100.00%			100.00%
Nursing/ Midwifery Student	0.67	1	1:0.7	100.00%		1:0.7	1:	100.00%	100.00%		100.00%		100.00%	
Public Health Nurse	10.7	12	1:0.9		100.00%	1:	1:0.9	100.00%		100.00%	66.67%	33.33%		66.67%
Staff Nurse/ Staff Midwife	2,723.87	3,084	1:0.9	9.14%	90.86%	1:1	1:0.9	89.95%	8.17%	81.78%	69.49%	30.51%	90.78%	67.34%
Nursing & Midwifery	3,666	4,080	1:0.9	8.80%	91.20%	1:1	1:0.9	91.57%	7.92%	83.65%	74.07%	25.93%	91.64%	72.37%
Health Science/ Diagnostics	0.88	1	1:0.6	200.00%	600.00%	1:0.7	1:0.5	700.00%	200.00%	500.00%	200.00%	600.00%	50.00%	16.67%
Therapy Professions	166.26	194	1:0.9	24.74%	192.27%	1:1	1:0.9	207.73%	23.20%	184.54%	168.56%	48.45%	93.75%	75.60%
H&SC, Other	21.92	25	1:0.9	12.00%	96.00%	1:0.8	1:0.9	108.00%	12.00%	96.00%	96.00%	12.00%	66.67%	91.67%
Pharmacy	20.08	28	1:0.7	25.00%	75.00%	1:0.6	1:0.7	82.14%	21.43%	60.71%	60.71%	39.29%	57.14%	61.90%
Therapy Professions	151.3	173	1:0.9	27.75%	215.61%	1:1	1:0.9	232.95%	26.01%	206.94%	189.02%	54.34%	93.75%	75.60%
H&SC, Other	1.47	2	1:0.9	150.00%	1,200.00%	1:0.8	1:0.9	1,350.00%	150.00%	1,200.00%	1,200.00%	150.00%	66.67%	91.67%
Therapy Professions	4.99	7	1:0.9	685.71%	5,328.57%	1:1	1:0.9	5,757.14%	642.86%	5,114.29%	4,671.43%	1,342.86%	93.75%	75.60%
Psychologists	4.3	6	1:0.7	16.67%	83.33%	1:0.5	1:0.8	100.00%	16.67%	83.33%	50.00%	50.00%		60.00%
Health Science/ Diagnostics	3.46	6	1:0.6	33.33%	100.00%	1:0.7	1:0.5	116.67%	33.33%	83.33%	33.33%	100.00%	50.00%	16.67%
Social Care	2.66	4	1:0.7	25.00%	75.00%	1:1	1:0.6	100.00%	25.00%	75.00%	25.00%	75.00%	100.00%	
Social Workers	50.61	58	1:0.9	10.34%	89.66%	1:1	1:0.9	91.38%	10.34%	81.03%	74.14%	25.86%	100.00%	71.15%
Therapy Professions	41.23	47	1:0.9	102.13%	793.62%	1:1	1:0.9	857.45%	95.74%	761.70%	695.74%	200.00%	93.75%	75.60%
Health Science/ Diagnostics	0.17	1	1:0.6	200.00%	600.00%	1:0.7	1:0.5	700.00%	200.00%	500.00%	200.00%	600.00%	50.00%	16.67%
Health & Social Care Professionals	469	552	1:0.9	12.32%	87.68%	1:0.9	1:0.8	94.75%	11.59%	83.15%	75.54%	24.46%	86.76%	73.97%
Management (VIII & above)	13.97	14	1:1	292.86%	542.86%	1:1	1:1	828.57%	285.71%	542.86%	835.71%		100.00%	100.00%
Clerical (III & IV)	656.56	745	1:0.9	10.07%	89.93%	1:1	1:0.9	92.48%	9.26%	83.22%	71.14%	28.86%	94.67%	68.51%
Administrative/ Supervisory (V to VII)	285.24	302	1:0.9	16.23%	83.77%	1:1	1:0.9	99.01%	16.23%	82.78%	85.43%	14.57%	93.88%	83.79%
Management (VIII & above)	99.52	103	1:1	39.81%	73.79%	1:1	1:1	112.62%	38.83%	73.79%	113.59%		100.00%	100.00%
Management & Administrative	1,055	1,164	1:0.9	14.18%	85.82%	1:1	1:0.9	94.85%	13.57%	81.27%	77.75%	22.25%	95.76%	74.77%
Support	648.21	750	1:0.9	37.73%	76.00%	1:0.9	1:0.8	98.93%	32.13%	66.80%	70.13%	43.60%	83.75%	50.70%
Maintenance/ Technical	96.85	100	1:1	103.00%	1.00%	1:1	1:1	101.00%	100.00%	1.00%	99.00%	5.00%	95.15%	100.00%
Support	91.98	103	1:0.9	274.76%	553.40%	1:0.9	1:0.8	720.39%	233.98%	486.41%	510.68%	317.48%	83.75%	50.70%
Maintenance/ Technical	4	4	1:1	2,575.00%	25.00%	1:1	1:1	2,525.00%	2,500.00%	25.00%	2,475.00%	125.00%	95.15%	100.00%
General Support	841	957	1:0.9	40.33%	59.67%	1:0.9	1:0.8	88.09%	35.63%	52.46%	65.31%	34.69%	86.79%	50.79%
Health Care Assistants	4,080.77	4,690	1:0.9	21.45%	78.55%	1:0.9	1:0.9	92.47%	19.40%	73.07%	60.45%	39.55%	84.10%	53.99%
Care, other	175.15	185	1:0.8	38.92%	101.62%	1:0.7	1:0.9	123.78%	25.41%	98.38%	105.41%	35.14%	56.94%	81.91%
Home Help	3,576.66	5,024	1:0.7	6.33%	93.67%	1:0.8	1:0.7	85.39%	5.27%	80.12%	17.64%	82.36%	27.99%	16.94%
Care, other	43.33	75	1:0.8	96.00%	250.67%	1:0.7	1:0.9	305.33%	62.67%	242.67%	260.00%	86.67%	56.94%	81.91%
Patient & Client Care	7,876	9,974	1:0.8	14.00%	86.00%	1:0.9	1:0.8	88.79%	12.25%	76.54%	39.26%	60.74%	69.91%	34.27%



AUG 2024	WTE AUG 2024	No. AUG 2024	WTE : No	% Male	% Female	Male WTE : No.	Female WTE : No	Perm Count %	Number Male %	Number Female %	Fulltime Count %	Part time Count %	FT Count Male %	FT Count Female %
Total	14,024	16,917	1:0.8	14.68%	85.32%	1:0.9	1:0.8	89.63%	12.79%	76.84%	52.98%	47.02%	76.40%	48.95%
CHO 1	2,213	2,613	1:0.8	13.09%	86.91%	1:0.9	1:0.8	77.65%	11.25%	66.40%	38.38%	61.62%	58.19%	35.40%
CHO 2	1,489	1,807	1:0.8	14.83%	85.17%	1:0.9	1:0.8	98.17%	14.11%	84.06%	56.00%	44.00%	85.45%	50.88%
CHO 3	1,346	1,626	1:0.8	14.08%	85.92%	1:0.9	1:0.8	91.45%	12.05%	79.40%	61.19%	38.81%	87.77%	56.84%
CHO 4	2,791	3,644	1:0.8	12.65%	87.35%	1:0.9	1:0.8	85.73%	9.93%	75.80%	37.32%	62.68%	62.69%	33.65%
CHO 5	1,675	2,023	1:0.8	10.68%	89.32%	1:0.9	1:0.8	97.78%	9.99%	87.79%	47.40%	52.60%	68.06%	44.94%
CHO 7	1,061	1,196	1:0.9	18.39%	81.61%	1:0.9	1:0.9	86.04%	14.46%	71.57%	72.66%	27.34%	90.00%	68.75%
CHO 8	1,495	1,849	1:0.8	12.87%	87.13%	1:0.9	1:0.8	91.51%	11.14%	80.37%	57.98%	42.02%	77.31%	55.12%
CHO 9	999	1,122	1:0.9	21.57%	78.43%	1:0.9	1:0.9	95.10%	20.05%	75.04%	75.40%	24.60%	87.60%	72.05%
CHO 6	834	905	1:0.9	25.97%	74.03%	1:0.9	1:0.9	94.48%	24.09%	70.39%	80.33%	19.67%	88.09%	77.61%
other Community Services	122	132	1:0.9	24.24%	75.76%	1:1	1:0.9	96.21%	24.24%	71.97%	90.15%	9.85%	96.88%	88.00%



Previous Month Summary

	% WTE change since JUL 2024	WTE change since JUL 2024	CHO 1	CHO 2	CHO 3	CHO 4	CHO 5	CHO 6	CHO 7	CHO 8	CHO 9	other Communi ty Services
Total	-0.3%	-42.5	-8.6	+0.2	-12.8	-0.1	-13.7	-3.1	-5.6	+7.7	-3.7	-2.9
Consultants	+4.0%	+0.2			-0.3	+0.0		+0.0			+0.5	
Registrars	-10.2%	-1.7	+0.7		-0.8			+0.0			-1.6	
SHO/ Interns	+7.8%	+1.4			-1.0	+1.0			+0.0		+1.5	
Medical/ Dental, other	-1.5%	-1.2	-1.2	+0.0	+0.0	+0.1	-0.0	+0.0	+0.0	-0.0		
Medical & Dental	-1.0%	-1.2	-0.5	+0.0	-2.1	+1.1	-0.0	+0.0	+0.0	-0.0	+0.4	
Nurse/ Midwife Manager	-0.4%	-3.4	+1.9	-1.5	-3.1	+2.2	-1.4	-0.9	-0.6	+1.4	-1.3	+0.0
Nurse/ Midwife Specialist & AN/MP	+1.0%	+1.1	+0.1	+0.0	-0.0	+0.6	-0.1	-0.2	-0.0	-0.1	+0.9	
Staff Nurse/ Staff Midwife	-0.3%	-7.3	-1.0	+2.6	-2.8	-2.3	-5.1	-1.4	-4.4	+10.2	-3.1	
Public Health Nurse	+0.1%	+0.0	+0.0	+0.0		+0.0	+0.0			-0.0		
Nursing/ Midwifery Student	-33.0%	-0.3							-0.3			
Nursing/ Midwifery other	+4.2%	+0.1	+0.0							+0.1		
Nursing & Midwifery	-0.3%	-9.8	+1.1	+1.1	-5.9	+0.4	-6.7	-2.6	-5.3	+11.6	-3.6	+0.0
Therapy Professions	-0.8%	-2.8	-0.6	+0.1	-3.7	+2.4	-2.3	+0.0	-0.6	+0.1	+1.9	
Health Science/ Diagnostics	-0.7%	-0.0		+0.0	+0.0	+0.0				-0.0	+0.0	
Social Care	+0.0%	+0.0				+0.0					+0.0	+0.0
Social Workers	-1.0%	-0.5	-0.0	+0.0	+0.0		+0.2	+0.0	+0.7	-0.3	-1.0	
Psychologists	-1.1%	-0.1	+0.0		-0.1		+0.0	+0.0			+0.0	
Pharmacy	-1.1%	-0.2		+0.0	+0.0	-0.1	+0.3	+0.0	+0.0	-0.5	+0.0	
H&SC, Other	-3.8%	-0.9	-0.8	+0.1		+0.1	-0.3	+0.0	-0.0		+0.0	
Health & Social Care Professionals	-0.9%	-4.5	-1.4	+0.2	-3.7	+2.4	-2.1	+0.0	+0.1	-0.8	+0.9	+0.0
Management (VIII & above)	-0.4%	-0.4	+0.0	+0.0	-0.1	+0.6	-0.2	+0.3	+0.9	+0.7	-0.3	-2.4
Administrative/ Supervisory (V to VII)	-0.9%	-2.7	+0.1	-0.0	+0.3	-0.6	+0.1	-0.5	-0.2	-1.8	+0.5	-0.6
Clerical (III & IV)	-0.8%	-5.1	-2.1	-0.3	-2.4	+0.3	+0.2	+0.6	+2.0	-2.6	-1.0	+0.1
Management & Administrative	-0.8%	-8.2	-1.9	-0.3	-2.2	+0.3	+0.2	+0.4	+2.6	-3.7	-0.7	-2.9



Support	-0.3%	-2.4	-0.6	-0.0	+1.3	-1.0	-0.9	-0.6	-0.8	+0.0	+0.2	
Maintenance/ Technical	+0.6%	+0.6	+0.8	-0.3	+0.2	-0.0	+0.0	+0.0	+0.0	-0.1	+0.0	
General Support	-0.2%	-1.8	+0.2	-0.3	+1.4	-1.0	-0.9	-0.6	-0.8	-0.0	+0.2	
Health Care Assistants	-0.3%	-10.7	-2.4	-3.5	-1.7	+1.6	-0.1	-0.4	-1.9	-1.9	-0.6	
Home Help	-0.3%	-9.0	-3.0	+3.4	+0.8	-4.8	-4.0		-0.3	-1.1		
Care, other	+1.3%	+2.7	-0.7	-0.5	+0.6	-0.1	-0.1	+0.0	+0.0	+3.6	-0.2	-0.0
Patient & Client Care	-0.2%	-17.0	-6.1	-0.5	-0.3	-3.3	-4.2	-0.4	-2.1	+0.7	-0.8	-0.0



Year on Year Summary

	% WTE change since AUG 2023	WTE change since AUG 2023	CHO 1	CHO 2	CHO 3	CHO 4	CHO 5	CHO 6	CHO 7	CHO 8	CHO 9	other Communi ty Services
Total	+0.4%	+51.3	+67.1	-75.3	+63.2	+73.6	-46.2	-14.3	+59.8	-68.1	-16.9	+8.4
Consultants	+11.2%	+0.5			+0.0	+0.0		+1.0			-0.5	
Registrars	+37.7%	+4.0	+1.0		+2.1	-1.0		+0.0			+1.9	
SHO/ Interns	+3.9%	+0.8			+0.7	+0.1			+0.0		-0.0	
Medical/ Dental, other	-7.9%	-6.6	-1.4	-3.6	+0.0	+0.6	-0.5	-1.0	-0.4	-0.3		
Medical & Dental	-1.2%	-1.4	-0.5	-3.6	+2.8	-0.4	-0.5	+0.0	-0.4	-0.3	+1.4	
Nurse/ Midwife Manager	+4.0%	+31.3	+3.8	+1.0	-0.9	+15.1	+5.4	+0.8	+5.4	-2.5	+2.7	+0.5
Nurse/ Midwife Specialist & AN/MP	+12.7%	+12.6	+4.3	-0.6	+2.9	-0.8	+0.3	+1.8	+1.7	+2.6	+0.3	
Staff Nurse/ Staff Midwife	+1.5%	+41.4	+3.6	+6.3	+3.4	+35.6	-19.7	-0.2	-1.4	+10.3	+3.6	
Public Health Nurse	-2.9%	-0.3	+0.0	+0.2		-0.1	+0.0			+0.6	-1.0	
Nursing/ Midwifery Student	-77.2%	-2.3					-2.0		-0.3			
Nursing/ Midwifery other	-30.6%	-0.9	+0.0							-0.9		
Nursing & Midwifery	+2.3%	+81.8	+11.6	+6.9	+5.3	+49.8	-16.0	+2.4	+5.5	+10.2	+5.6	+0.5
Therapy Professions	+1.2%	+4.3	+9.0	+5.5	-1.1	-1.2	+0.7	+4.1	-0.6	+9.9	-21.9	
Health Science/ Diagnostics	-0.4%	-0.0		-0.1	+0.0	+0.0				+0.1	+0.0	
Social Care	+0.0%	+0.0				+0.0					+0.0	+0.0
Social Workers	+0.8%	+0.4	-0.3	+1.0	-1.0		+1.4	-0.2	+0.4	-0.3	-0.5	
Psychologists	+26.1%	+0.9	+0.5		-0.1		+0.0	+0.5			+0.0	
Pharmacy	+10.3%	+1.9		+0.0	+0.0	-0.5	-0.1	+1.0	+0.0	-0.5	+2.0	
H&SC, Other	+35.2%	+6.1	+0.0	+1.3		+4.0	-2.4	+0.1	-0.0		+3.0	
Health & Social Care Professionals	+3.0%	+13.5	+9.2	+7.6	-2.1	+2.3	-0.5	+5.5	-0.3	+9.2	-17.4	+0.0
Management (VIII & above)	-9.2%	-11.5	+0.0	-0.1	-0.3	-3.9	-0.3	+1.1	-1.5	-1.1	-2.0	-3.6
Administrative/ Supervisory (V to VII)	+0.0%	+0.1	+3.0	-0.1	-0.4	+8.9	+0.4	-1.3	-1.7	-10.5	-0.1	+2.0
Clerical (III & IV)	-1.7%	-11.3	-5.9	-1.3	-1.5	+5.0	-14.8	-1.2	+9.7	-10.2	-0.7	+9.5
Management & Administrative	-2.1%	-22.7	-2.9	-1.5	-2.3	+10.0	-14.7	-1.4	+6.6	-21.7	-2.7	+7.9
Support	-3.5%	-27.2	-9.6	-6.2	+6.4	-6.3	-12.8	-2.9	+3.0	-1.1	+2.4	
Maintenance/ Technical	+7.4%	+6.9	+0.8	-1.3	+4.0	-0.5	+0.0	+1.0	+1.0	+1.9	+0.0	



General Support	-2.4%	-20.2	-8.8	-7.5	+10.5	-6.9	-12.8	-1.9	+4.0	+0.8	+2.4	
Health Care Assistants	-0.1%	-5.0	-10.2	-5.0	+29.1	+18.8	-16.2	-17.9	+35.2	-33.9	-5.0	
Home Help	-0.3%	-9.6	+64.8	-71.0	+19.4	-2.4	+9.0		+8.2	-37.5		
Care, other	+7.3%	+14.9	+3.8	-1.2	+0.5	+2.4	+5.4	-1.0	+1.0	+5.1	-1.2	-0.0
Patient & Client Care	+0.0%	+0.3	+58.4	-77.2	+49.0	+18.8	-1.8	-18.9	+44.4	-66.3	-6.2	-0.0



Year to Date Summary

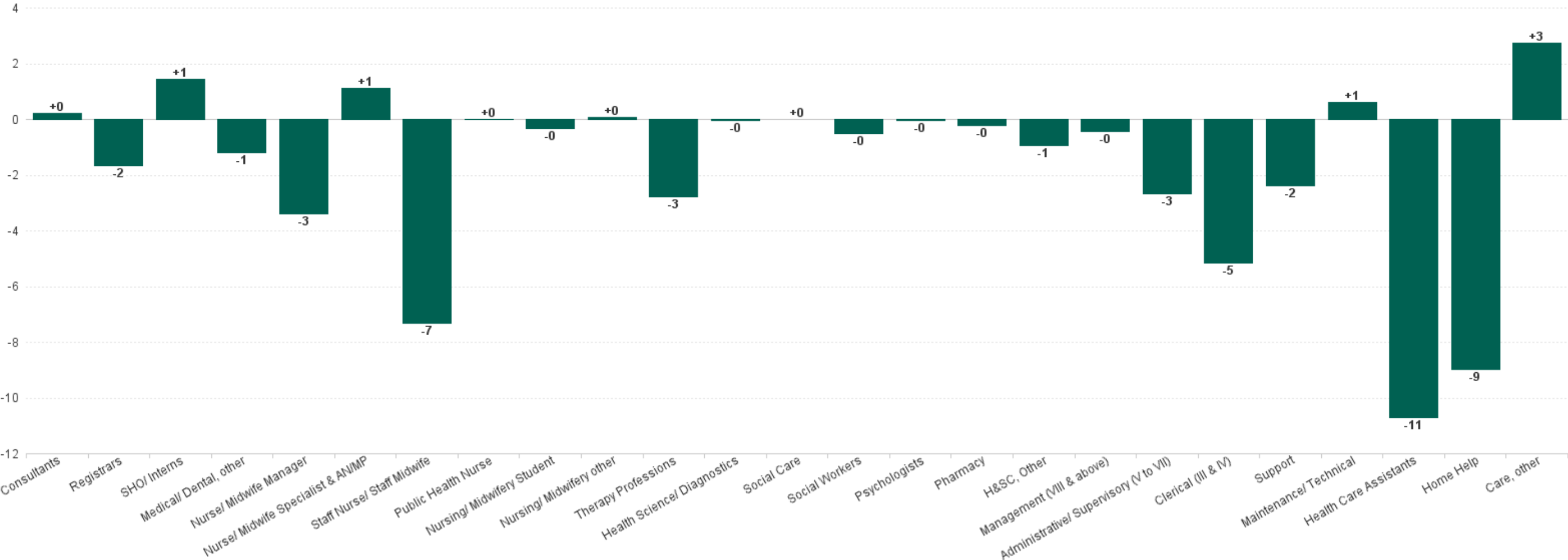
	% WTE change since DEC 2023	WTE change since DEC 2023	CHO 1	CHO 2	CHO 3	CHO 4	CHO 5	CHO 6	CHO 7	CHO 8	CHO 9	other Communi ty Services
Total	-0.9%	-130.2	+11.3	-107.1	+26.6	+38.6	-58.8	-24.8	+36.6	-44.9	-1.9	-6.0
Consultants	-2.4%	-0.1			-0.6	+0.0		+1.0			-0.5	
Registrars	+37.7%	+4.0	+1.0		+2.1			+0.0			+0.9	
SHO/ Interns	+11.1%	+2.0			+0.0	+1.0			+0.0		+1.0	
Medical/ Dental, other	-9.3%	-7.9	-6.5	-0.3	+0.0	+1.1	-1.1	-1.0	+0.0	-0.3		
Medical & Dental	-1.8%	-2.1	-5.5	-0.3	+1.4	+2.1	-1.1	+0.0	+0.0	-0.3	+1.4	
Nurse/ Midwife Manager	+0.8%	+6.5	+2.1	+1.8	-2.9	+8.9	-5.7	-3.2	+6.5	-3.8	+2.9	+0.0
Nurse/ Midwife Specialist & AN/MP	+0.8%	+0.9	+0.2	-0.5	+0.7	-1.1	-1.0	-0.2	-0.0	+1.4	+1.4	
Staff Nurse/ Staff Midwife	+0.9%	+24.2	-7.6	-8.2	+6.1	+27.0	-5.5	+0.6	+3.0	+4.9	+4.0	
Public Health Nurse	-3.3%	-0.4	+0.0	+0.0		-0.4	+0.0			-0.0		
Nursing/ Midwifery Student	-91.1%	-6.8				-4.5	-2.0		-0.3			
Nursing/ Midwifery other	-31.0%	-0.9	+0.0							-0.9		
Nursing & Midwifery	+0.6%	+23.5	-5.3	-6.9	+3.8	+29.9	-14.2	-2.9	+9.1	+1.7	+8.3	+0.0
Therapy Professions	-5.5%	-21.0	-4.2	+0.2	-4.3	-2.0	+0.9	-1.6	-1.6	+1.9	-10.4	
Health Science/ Diagnostics	-3.8%	-0.2		-0.1	+0.0	+0.0				-0.1	+0.0	
Social Care	+0.0%	+0.0				+0.0					+0.0	+0.0
Social Workers	-1.9%	-1.0	-1.3	-0.0	+0.0		+0.2	+1.0	+0.0	-0.3	-0.5	
Psychologists	+13.8%	+0.5	+0.5		+0.0		+0.0	+0.0			+0.0	
Pharmacy	+1.2%	+0.2		+0.0	+0.0	-0.5	-0.0	+0.3	+0.0	-0.5	+1.0	
H&SC, Other	-9.1%	-2.3	+0.0	-0.6		+0.1	-2.4	+0.0	-0.0		+0.5	



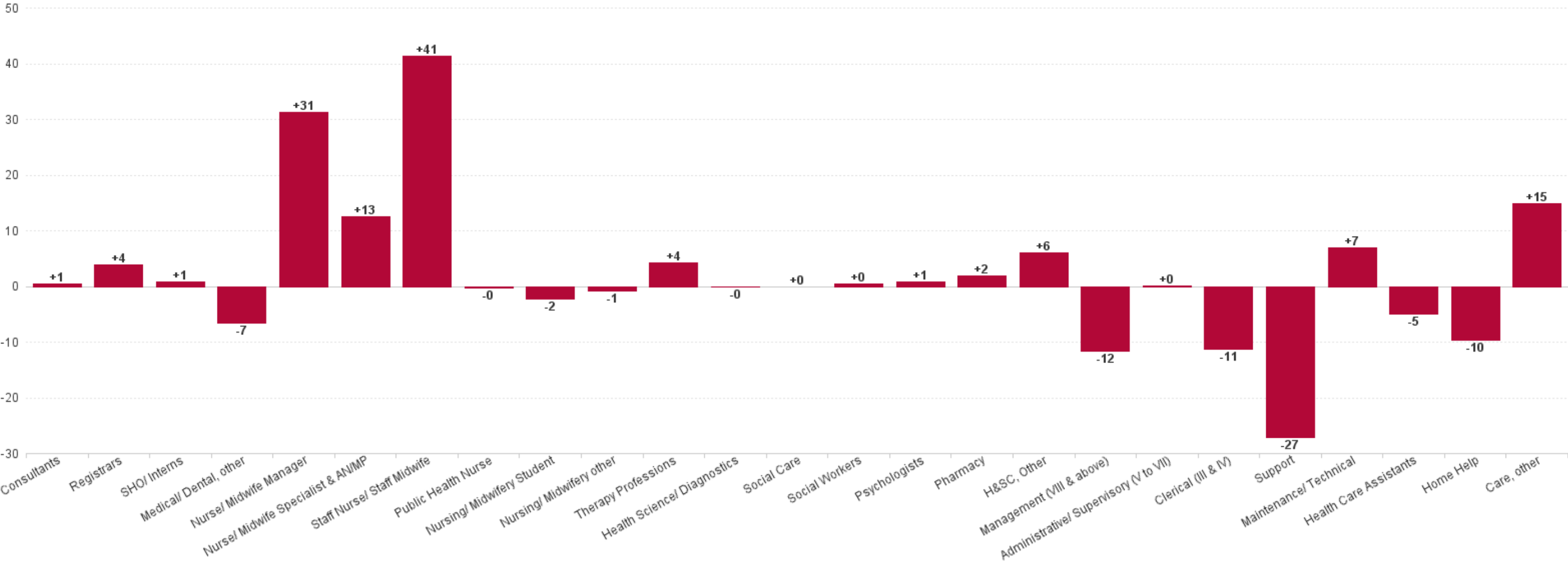
Health & Social Care Professionals	-4.8%	-23.8	-4.9	-0.5	-4.2	-2.4	-1.4	-0.3	-1.7	+1.0	-9.4	+0.0
Management (VIII & above)	-7.2%	-8.8	+1.0	-0.1	+0.6	-2.4	+0.8	+0.0	-0.2	-0.4	-2.0	-6.1
Administrative/ Supervisory (V to VII)	-3.5%	-10.3	-0.9	-0.6	-2.8	+8.5	+1.5	-5.2	-2.5	-8.9	+1.5	-1.0
Clerical (III & IV)	-4.7%	-32.5	-9.6	-0.5	-4.6	+0.6	-5.7	-2.8	+1.2	-11.9	-0.4	+1.1
Management & Administrative	-4.7%	-51.6	-9.5	-1.2	-6.8	+6.7	-3.4	-8.0	-1.5	-21.2	-0.9	-5.9
Support	-2.9%	-22.2	-10.3	-5.1	+7.7	-5.0	-7.0	-4.9	+4.4	-0.9	-0.9	
Maintenance/ Technical	+6.9%	+6.5	+0.7	-0.5	+4.3	-0.0	+0.0	+1.0	+1.0	+0.0	+0.0	
General Support	-1.8%	-15.7	-9.6	-5.6	+12.0	-5.0	-7.0	-3.9	+5.4	-0.9	-0.9	
Health Care Assistants	-0.2%	-7.8	-5.8	-20.7	+26.2	+22.1	-19.1	-9.6	+25.5	-26.9	+0.6	
Home Help	-1.7%	-61.0	+48.7	-72.4	-5.0	-15.4	-9.7		-0.2	-7.0		
Care, other	+4.0%	+8.3	+3.2	+0.5	-0.7	+0.6	-2.9	+0.0	+0.0	+8.8	-1.0	-0.0
Patient & Client Care	-0.8%	-60.5	+46.1	-92.6	+20.4	+7.3	-31.7	-9.6	+25.3	-25.2	-0.4	-0.0



Previous Month Summary Chart: Change since JUL 2024



Previous Year Summary Chart: Change since AUG 2023



YTD Summary Chart: Change since DEC 2023

