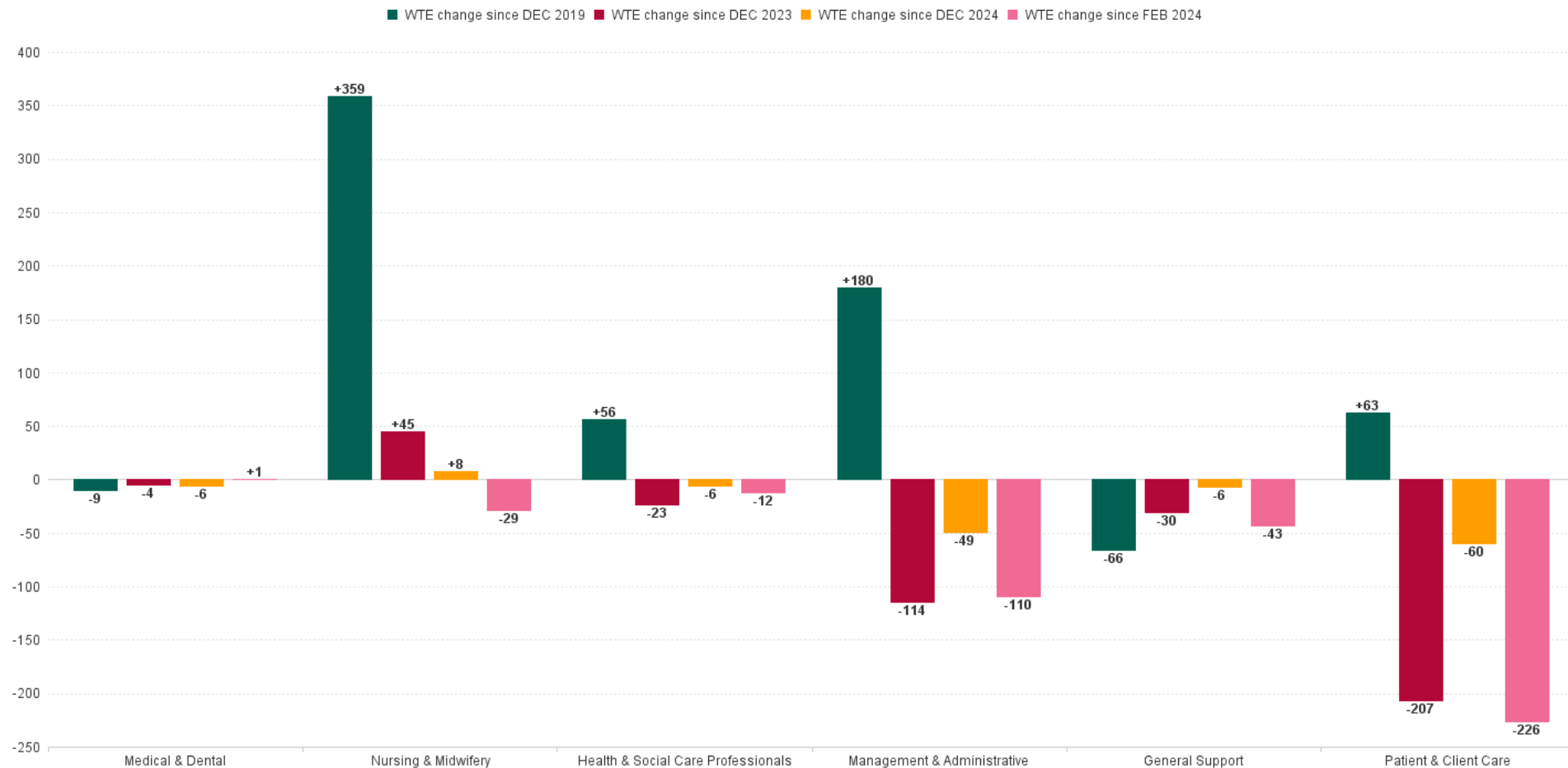


## Older People Employment Report : FEB 2025

### Older People Employment Report by Staff Group

FEB 2025	WTE DEC 2019	WTE DEC 2023	WTE DEC 2024	WTE JAN 2025	WTE FEB 2025	WTE Change 2024	WTE Change 2025	WTE Change JAN 2025	WTE Change Dec 2023 to FEB 2025	WTE Change Dec 2019 to FEB 2025	% WTE Change Dec 2023 to FEB 2025	No. FEB 2025
<b>Overall</b>	<b>13,239</b>	<b>14,154</b>	<b>13,941</b>	<b>13,823</b>	<b>13,821</b>	<b>-214</b>	<b>-119</b>	<b>-2</b>	<b>-333</b>	<b>+582</b>	<b>-2.4%</b>	<b>16,561</b>
Consultants	4	5	6	6	5	+1	-1	-1	-0	+2	-2.0%	7
Registrars	10	11	14	13	13	+3	-0	+0	+3	+4	+28.1%	14
SHO/ Interns	15	18	18	17	19	+0	+1	+2	+1	+4	+7.3%	20
Medical/ Dental, other	95	85	83	77	76	-2	-7	-1	-8	-19	-10.0%	144
<b>Medical &amp; Dental</b>	<b>124</b>	<b>118</b>	<b>120</b>	<b>114</b>	<b>114</b>	<b>+2</b>	<b>-6</b>	<b>+0</b>	<b>-4</b>	<b>-9</b>	<b>-3.6%</b>	<b>185</b>
Nurse/ Midwife Manager	711	811	812	815	817	+1	+5	+2	+6	+106	+0.7%	862
Nurse/ Midwife Specialist & AN/MP	26	111	107	106	108	-3	+0	+1	-3	+81	-2.7%	115
Staff Nurse/ Staff Midwife	2,575	2,700	2,749	2,744	2,753	+50	+3	+8	+53	+178	+2.0%	3,098
Public Health Nurse	14	11	9	9	8	-2	-1	-1	-3	-6	-24.7%	10
<i>Nursing/ Midwifery awaiting registration</i>	<i>1</i>	<i>7</i>	<i>1</i>	<i>2</i>	<i>1</i>	<i>-7</i>	<i>+0</i>	<i>-1</i>	<i>-6</i>	<i>+0</i>	<i>-86.6%</i>	<i>1</i>
<i>Post-registration Nurse/ Midwife Student</i>	<i>1</i>									<i>-1</i>	<i>-100.0%</i>	
Nursing/ Midwifery Student	2	7	1	2	1	-7	+0	-1	-6	-1	-86.6%	1
Nursing/ Midwifery other	1	3	2	2	2	-1	+0	+0	-1	+1	-31.0%	2
<b>Nursing &amp; Midwifery</b>	<b>3,329</b>	<b>3,643</b>	<b>3,680</b>	<b>3,678</b>	<b>3,688</b>	<b>+38</b>	<b>+8</b>	<b>+10</b>	<b>+45</b>	<b>+359</b>	<b>+1.2%</b>	<b>4,088</b>
<i>Dietitians</i>	<i>16</i>	<i>30</i>	<i>33</i>	<i>33</i>	<i>33</i>	<i>+3</i>	<i>-1</i>	<i>-0</i>	<i>+3</i>	<i>+17</i>	<i>+8.5%</i>	<i>37</i>
<i>Occupational Therapists</i>	<i>113</i>	<i>144</i>	<i>140</i>	<i>138</i>	<i>135</i>	<i>-3</i>	<i>-5</i>	<i>-3</i>	<i>-9</i>	<i>+21</i>	<i>-6.1%</i>	<i>153</i>
<i>Physiotherapists</i>	<i>123</i>	<i>163</i>	<i>151</i>	<i>150</i>	<i>150</i>	<i>-12</i>	<i>-2</i>	<i>-0</i>	<i>-13</i>	<i>+27</i>	<i>-8.2%</i>	<i>171</i>
<i>Podiatrists &amp; Chiropodists</i>	<i>12</i>	<i>5</i>	<i>5</i>	<i>5</i>	<i>4</i>	<i>+0</i>	<i>-1</i>	<i>-1</i>	<i>-1</i>	<i>-8</i>	<i>-21.5%</i>	<i>5</i>
<i>Speech &amp; Language Therapists</i>	<i>23</i>	<i>43</i>	<i>40</i>	<i>40</i>	<i>40</i>	<i>-3</i>	<i>+0</i>	<i>-0</i>	<i>-3</i>	<i>+17</i>	<i>-6.4%</i>	<i>45</i>
Therapy Professions	288	385	370	366	361	-15	-8	-5	-23	+74	-6.1%	411
Health Science/ Diagnostics	6	5	5	4	4	-0	-1	-1	-1	-3	-24.1%	7
Social Care	3	3	3	3	3	+0	+0	+0	+0	-0	+0.0%	4
Social Workers	98	52	51	51	53	-1	+2	+2	+1	-46	+2.5%	60
Psychologists	2	4	4	4	4	+1	+0	-0	+1	+2	+14.8%	6
Pharmacy	15	20	21	20	20	+1	-1	+0	+1	+5	+3.0%	29
H&SC, Other	1	26	22	22	25	-4	+3	+2	-1	+23	-3.7%	27
<b>Health &amp; Social Care Professionals</b>	<b>414</b>	<b>493</b>	<b>476</b>	<b>471</b>	<b>470</b>	<b>-17</b>	<b>-6</b>	<b>-1</b>	<b>-23</b>	<b>+56</b>	<b>-4.7%</b>	<b>544</b>
Management (VIII & above)	75	122	113	108	110	-9	-4	+2	-13	+35	-10.3%	111
Administrative/ Supervisory (V to VII)	169	296	282	273	268	-14	-15	-5	-28	+99	-9.5%	282
Clerical (III & IV)	570	689	647	616	616	-42	-31	-0	-73	+46	-10.6%	702
<b>Management &amp; Administrative</b>	<b>813</b>	<b>1,107</b>	<b>1,042</b>	<b>997</b>	<b>993</b>	<b>-65</b>	<b>-49</b>	<b>-4</b>	<b>-114</b>	<b>+180</b>	<b>-10.3%</b>	<b>1,095</b>
Support	797	762	730	726	723	-32	-7	-3	-40	-74	-5.2%	822
Maintenance/ Technical	95	94	103	102	103	+8	+1	+1	+9	+8	+9.6%	106
<b>General Support</b>	<b>892</b>	<b>857</b>	<b>833</b>	<b>829</b>	<b>826</b>	<b>-24</b>	<b>-6</b>	<b>-2</b>	<b>-30</b>	<b>-66</b>	<b>-3.6%</b>	<b>928</b>
Health Care Assistants	7,527	7,726	7,565	7,512	7,504	-161	-62	-8	-222	-23	-2.9%	9,452
Care, other	140	210	224	223	226	+14	+2	+3	+16	+86	+7.5%	269
<b>Patient &amp; Client Care</b>	<b>7,667</b>	<b>7,936</b>	<b>7,789</b>	<b>7,735</b>	<b>7,730</b>	<b>-147</b>	<b>-60</b>	<b>-5</b>	<b>-207</b>	<b>+63</b>	<b>-2.6%</b>	<b>9,721</b>

## WTE Change by Staff Category

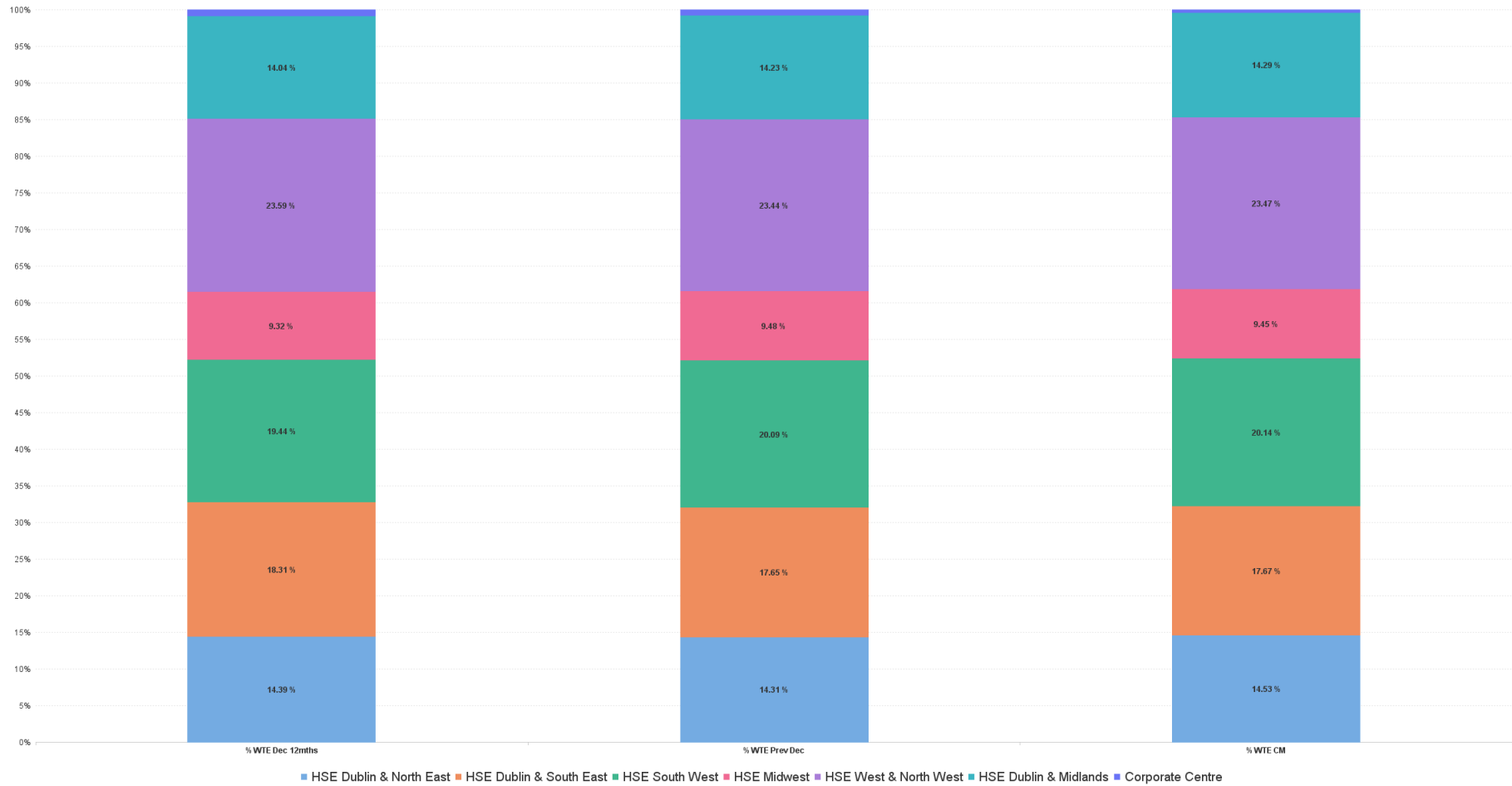


# Older People Report by Health Region: FEB 2025

FEB 2025	WTE DEC 2019	WTE DEC 2023	WTE DEC 2024	WTE JAN 2025	WTE FEB 2025	WTE Change 2024	WTE Change 2025	WTE Change JAN 2025	WTE Change Dec 2023 to FEB 2025	WTE Change Dec 2019 to FEB 2025	% WTE Change Dec 2023 to FEB 2025	No. FEB 2025
Overall	13,239	14,154	13,941	13,823	13,821	-214	-119	-2	-333	+582	-2.35%	16,561
HSE Dublin & North East	1,826	2,036	1,995	1,991	2,008	-41	+13	+18	-28	+182	-1.37%	2,329
HSE Dublin & South East	2,477	2,592	2,460	2,447	2,442	-132	-18	-5	-150	-34	-5.77%	2,841
HSE South West	2,919	2,752	2,801	2,800	2,784	+49	-17	-16	+32	-135	1.15%	3,596
HSE Midwest	974	1,320	1,321	1,311	1,307	+2	-15	-5	-13	+332	-1.01%	1,573
HSE West & North West	3,053	3,339	3,268	3,235	3,243	-72	-24	+9	-96	+191	-2.87%	3,845
HSE Dublin & Midlands	1,917	1,987	1,984	1,977	1,975	-3	-9	-2	-12	+58	-0.62%	2,312
Corporate Centre	74	128	111	62	62	-17	-49	+0	-66	-12	-51.39%	65



% Total by Health Region



## Older People Employment Report by HSE/S38: FEB 2025

FEB 2025	WTE DEC 2019	WTE DEC 2023	WTE DEC 2024	WTE JAN 2025	WTE FEB 2025	WTE Change 2024	WTE Change 2025	WTE Change JAN 2025	WTE Change Dec 2023 to FEB 2025	WTE Change Dec 2019 to FEB 2025	% WTE Change Dec 2023 to FEB 2025	No. FEB 2025
<b>Overall</b>	<b>13,239</b>	<b>14,154</b>	<b>13,941</b>	<b>13,823</b>	<b>13,821</b>	<b>-214</b>	<b>-119</b>	<b>-2</b>	<b>-333</b>	<b>+582</b>	<b>-2.35%</b>	<b>16,561</b>
Health Service Executive	12,531	13,389	13,026	12,916	12,921	-362	-106	+5	-468	+389	-3.50%	15,544
Section 38 Voluntary Agencies	708	765	914	907	901	+149	-14	-7	+135	+193	17.67%	1,017



# Older People Employment Report by HSE: FEB 2025

FEB 2025	WTE DEC 2019	WTE DEC 2023	WTE DEC 2024	WTE JAN 2025	WTE FEB 2025	WTE Change 2024	WTE Change 2025	WTE Change JAN 2025	WTE Change Dec 2023 to FEB 2025	WTE Change Dec 2019 to FEB 2025	% WTE Change Dec 2023 to FEB 2025	No. FEB 2025
<b>Total HSE</b>	<b>12,531</b>	<b>13,389</b>	<b>+13,026</b>	<b>12,916</b>	<b>12,921</b>	<b>-362</b>	<b>-106</b>	<b>+5</b>	<b>-468</b>	<b>+389</b>	<b>-3.50%</b>	<b>15,544</b>
Consultants	3	4	+4	4	3	+0	-1	-1	-1	+0	-15.68%	4
Registrars	7	7	+11	10	10	+4	-0	+0	+4	+4	60.68%	11
SHO/ Interns	10	12	+11	10	12	-1	+1	+2	+0	+2	2.59%	13
Medical/ Dental, other	93	83	+81	76	75	-1	-7	-1	-8	-19	-9.63%	142
<b>Medical &amp; Dental</b>	<b>113</b>	<b>105</b>	<b>+107</b>	<b>100</b>	<b>101</b>	<b>+2</b>	<b>-6</b>	<b>+0</b>	<b>-4</b>	<b>-12</b>	<b>-4.10%</b>	<b>170</b>
Nurse/ Midwife Manager	657	754	+735	741	743	-19	+8	+2	-11	+86	-1.49%	784
Nurse/ Midwife Specialist & AN/MP	26	110	+106	105	107	-3	+0	+1	-3	+80	-2.77%	114
Staff Nurse/ Staff Midwife	2,399	2,529	+2,520	2,512	2,521	-9	+1	+9	-8	+121	-0.32%	2,836
Public Health Nurse	14	11	+9	9	8	-2	-1	-1	-3	-6	-24.68%	10
Nursing/ Midwifery awaiting registration	1	7	+1	2	1	-7	+0	-1	-6	+0	-86.65%	1
Post-registration Nurse/ Midwife Student	1									-1	-100.00%	
Nursing/ Midwifery Student	2	7	+1	2	1	-7	+0	-1	-6	-1	-86.65%	1
Nursing/ Midwifery other	1	3	+2	2	2	-1	+0	+0	-1	+1	-31.03%	2
<b>Nursing &amp; Midwifery</b>	<b>3,100</b>	<b>3,414</b>	<b>+3,373</b>	<b>3,370</b>	<b>3,381</b>	<b>-41</b>	<b>+8</b>	<b>+11</b>	<b>-32</b>	<b>+282</b>	<b>-0.95%</b>	<b>3,747</b>
Dietitians	14	26	+28	28	27	+2	-1	-0	+1	+13	3.58%	31
Occupational Therapists	93	119	+107	107	104	-12	-3	-3	-15	+11	-12.40%	121
Physiotherapists	93	121	+120	118	118	-1	-2	+1	-3	+25	-2.24%	136
Podiatrists & Chiropodists	11	5	+5	4	4	+0	-1	-1	-1	-8	-22.44%	4
Speech & Language Therapists	19	38	+33	33	33	-5	+0	-0	-5	+14	-14.19%	37
Therapy Professions	230	309	+292	290	286	-17	-6	-4	-23	+56	-7.44%	329
Health Science/ Diagnostics	5	4	+4	3	2	-0	-1	-1	-1	-3	-33.33%	5
Social Care	3	3	+3	3	3	+0	+0	+0	+0	-0	0.00%	4
Social Workers	84	37	+34	35	36	-2	+2	+2	-0	-48	-0.60%	40
Psychologists	2	3	+4	4	4	+1	+0	-0	+1	+2	17.07%	5
Pharmacy	11	14	+15	15	15	+1	+0	+1	+1	+5	7.45%	22
H&SC, Other	1	26	+22	22	25	-4	+3	+2	-1	+23	-3.65%	27
<b>Health &amp; Social Care Professionals</b>	<b>336</b>	<b>396</b>	<b>+374</b>	<b>372</b>	<b>372</b>	<b>-22</b>	<b>-2</b>	<b>+0</b>	<b>-24</b>	<b>+36</b>	<b>-6.01%</b>	<b>432</b>
Management (VIII & above)	73	118	+108	103	105	-10	-4	+2	-14	+32	-11.53%	106
Administrative/ Supervisory (V to VII)	149	266	+257	246	241	-9	-16	-5	-25	+92	-9.55%	254
Clerical (III & IV)	543	661	+619	588	588	-41	-31	+0	-73	+45	-10.98%	666
<b>Management &amp; Administrative</b>	<b>765</b>	<b>1,045</b>	<b>+985</b>	<b>937</b>	<b>933</b>	<b>-60</b>	<b>-51</b>	<b>-3</b>	<b>-112</b>	<b>+169</b>	<b>-10.68%</b>	<b>1,026</b>
Support	694	652	+616	613	618	-36	+2	+4	-34	-77	-5.26%	701
Maintenance/ Technical	85	84	+92	92	93	+8	+1	+1	+9	+8	10.70%	96
<b>General Support</b>	<b>780</b>	<b>736</b>	<b>+708</b>	<b>706</b>	<b>711</b>	<b>-28</b>	<b>+3</b>	<b>+5</b>	<b>-25</b>	<b>-69</b>	<b>-3.43%</b>	<b>797</b>
Health Care Assistants	7,304	7,487	+7,259	7,210	7,200	-227	-59	-10	-286	-103	-3.82%	9,110
Care, other	135	207	+221	221	222	+14	+1	+1	+15	+87	7.38%	262
<b>Patient &amp; Client Care</b>	<b>7,438</b>	<b>7,693</b>	<b>+7,480</b>	<b>7,431</b>	<b>7,422</b>	<b>-213</b>	<b>-58</b>	<b>-8</b>	<b>-271</b>	<b>-16</b>	<b>-3.52%</b>	<b>9,372</b>



## Older People Employment Report by S38 Voluntary Agencies: FEB 2025

FEB 2025	WTE DEC 2019	WTE DEC 2023	WTE DEC 2024	WTE JAN 2025	WTE FEB 2025	WTE Change 2024	WTE Change 2025	WTE Change JAN 2025	WTE Change Dec 2023 to FEB 2025	WTE Change Dec 2019 to FEB 2025	% WTE Change Dec 2023 to FEB 2025	No. FEB 2025
<b>Total S38 Voluntary Agencies</b>	<b>708</b>	<b>765</b>	<b>914</b>	<b>907</b>	<b>901</b>	<b>+149</b>	<b>-14</b>	<b>-7</b>	<b>+135</b>	<b>+193</b>	<b>+17.7%</b>	<b>1,017</b>
Consultants	1	2	2	2	2	+1	+0	+0	+1	+1	+33.3%	3
Registrars	3	4	3	3	3	-1	+0	+0	-1	+0	-25.0%	3
SHO/ Interns	5	6	7	7	7	+1	+0	+0	+1	+2	+16.7%	7
Medical/ Dental, other	2	2	2	2	2	-1	+0	+0	-1	-1	-25.0%	2
<b>Medical &amp; Dental</b>	<b>11</b>	<b>14</b>	<b>14</b>	<b>14</b>	<b>14</b>	<b>+0</b>	<b>+0</b>	<b>+0</b>	<b>+0</b>	<b>+3</b>	<b>+0.0%</b>	<b>15</b>
Nurse/ Midwife Manager	54	57	77	74	74	+20	-3	+0	+17	+20	+29.8%	78
Nurse/ Midwife Specialist & AN/MP		1	1	1	1	+0	+0	+0	+0	+1	+0.0%	1
Staff Nurse/ Staff Midwife	176	171	229	233	232	+58	+2	-1	+61	+56	+35.6%	262
<b>Nursing &amp; Midwifery</b>	<b>230</b>	<b>229</b>	<b>307</b>	<b>307</b>	<b>307</b>	<b>+79</b>	<b>-1</b>	<b>-1</b>	<b>+78</b>	<b>+77</b>	<b>+34.0%</b>	<b>341</b>
Dietitians	3	4	6	6	6	+2	+0	+0	+2	+3	+40.1%	6
Occupational Therapists	20	25	33	30	30	+9	-3	+0	+6	+10	+24.2%	32
Physiotherapists	30	42	31	32	31	-11	+0	-1	-11	+2	-25.3%	35
Podiatrists & Chiropodists	1	0	0	0	0	+0	+0	+0	+0	-0	+0.0%	1
Speech & Language Therapists	4	4	7	7	7	+3	+0	+0	+3	+3	+60.1%	8
Therapy Professions	58	75	78	76	75	+2	-3	-1	-0	+17	-0.5%	82
Health Science/ Diagnostics	1	1	1	1	1	+0	+0	+0	+0	+0	+10.0%	2
Social Workers	14	15	17	17	17	+2	+0	+0	+2	+3	+10.1%	20
Psychologists	1	1	1	1	1	+0	+0	+0	+0	+0	+0.0%	1
Pharmacy	5	5	6	5	5	+0	-1	-0	-0	+0	-8.8%	7
<b>Health &amp; Social Care Professionals</b>	<b>78</b>	<b>97</b>	<b>102</b>	<b>99</b>	<b>98</b>	<b>+4</b>	<b>-4</b>	<b>-1</b>	<b>+1</b>	<b>+20</b>	<b>+0.8%</b>	<b>112</b>
Management (VIII & above)	2	4	5	5	5	+1	+0	+0	+1	+3	+25.0%	5
Administrative/ Supervisory (V to VII)	19	30	25	27	27	-4	+2	+0	-3	+8	-8.9%	28
Clerical (III & IV)	27	28	27	28	28	-1	+0	-0	-1	+0	-2.4%	36
<b>Management &amp; Administrative</b>	<b>49</b>	<b>62</b>	<b>58</b>	<b>60</b>	<b>60</b>	<b>-4</b>	<b>+2</b>	<b>-0</b>	<b>-2</b>	<b>+11</b>	<b>-3.8%</b>	<b>69</b>
Support	103	111	114	113	105	+3	-9	-7	-5	+3	-4.7%	121
Maintenance/ Technical	10	10	11	10	10	+1	-1	+0	+0	+0	+0.0%	10
<b>General Support</b>	<b>113</b>	<b>121</b>	<b>125</b>	<b>123</b>	<b>115</b>	<b>+4</b>	<b>-9</b>	<b>-7</b>	<b>-5</b>	<b>+3</b>	<b>-4.3%</b>	<b>131</b>
Health Care Assistants	223	240	306	302	303	+67	-3	+1	+64	+80	+26.6%	342
Care, other	5	4	3	2	4	-0	+1	+2	+1	-1	+16.2%	7
<b>Patient &amp; Client Care</b>	<b>229</b>	<b>243</b>	<b>309</b>	<b>304</b>	<b>307</b>	<b>+66</b>	<b>-2</b>	<b>+3</b>	<b>+64</b>	<b>+79</b>	<b>+26.4%</b>	<b>349</b>

## Older People Employment Report by Grade Group: FEB 2025

### HSE Dublin & North East

FEB 2025	WTE DEC 2019	WTE DEC 2023	WTE DEC 2024	WTE JAN 2025	WTE FEB 2025	WTE Change 2024	WTE Change 2025	WTE Change JAN 2025	WTE Change Dec 2023 to FEB 2025	WTE Change Dec 2019 to FEB 2025	% WTE Change Dec 2023 to FEB 2025	No. FEB 2025
<b>Total HSE Dublin &amp; North East</b>	<b>1826</b>	<b>2036</b>	<b>1995</b>	<b>1991</b>	<b>2008</b>	<b>-41</b>	<b>+13</b>	<b>+18</b>	<b>-28</b>	<b>+182</b>	<b>-1.4%</b>	<b>2,329</b>
Consultants	2	3	3	3	3	+0	+0	+0	+1	+1	+20.0%	4
Registrars	6	8	9	8	8	+1	-0	+0	+1	+3	+12.6%	9
SHO/ Interns	12	13	13	12	14	-0	+1	+2	+1	+2	+7.3%	14
Medical/ Dental, other	5	4	4	4	4	+0	+0	+0	+0	-1	+0.0%	4
<b>Medical &amp; Dental</b>	<b>24</b>	<b>27</b>	<b>28</b>	<b>27</b>	<b>29</b>	<b>+1</b>	<b>+1</b>	<b>+2</b>	<b>+2</b>	<b>+5</b>	<b>+8.9%</b>	<b>31</b>
Nurse/ Midwife Manager	123	139	138	140	142	-1	+4	+2	+3	+19	+1.8%	149
Nurse/ Midwife Specialist & AN/MP	7	16	17	17	18	+1	+1	+1	+2	+12	+11.7%	20
Staff Nurse/ Staff Midwife	398	435	440	442	441	+5	+2	-1	+7	+43	+1.5%	480
Public Health Nurse	1	2				-2			-2	-1	-100.0%	
Nursing/ Midwifery other	1									-1	-100.0%	
<b>Nursing &amp; Midwifery</b>	<b>530</b>	<b>592</b>	<b>595</b>	<b>600</b>	<b>601</b>	<b>+3</b>	<b>+7</b>	<b>+2</b>	<b>+9</b>	<b>+72</b>	<b>+1.6%</b>	<b>649</b>
<i>Dietitians</i>	6	14	13	13	13	-1	-0	-0	-1	-1	-5.3%	15
<i>Occupational Therapists</i>	21	32	33	34	34	+1	+1	+1	+3	+3	+7.9%	38
<i>Physiotherapists</i>	28	53	44	43	42	-9	-2	-1	-11	-11	-20.8%	48
<i>Speech &amp; Language Therapists</i>	6	12	17	17	17	+5	+0	-0	+5	+5	+42.5%	20
Therapy Professions	61	110	107	107	106	-3	-1	-1	-4	+45	-3.7%	121
Health Science/ Diagnostics	1	1	1	1	1	+0	+0	+0	+0	-0	+10.0%	2
Social Care	1	0	0	0	0	+0	+0	+0	+0	-1	+0.0%	1
Social Workers	27	19	20	20	20	+1	-0	+0	+0	-7	+2.5%	23
Psychologists		1	1	1	1	+0	+0	+0	+0	+1	+0.0%	1
Pharmacy	4	4	5	5	5	+1	+0	+0	+1	+1	+12.4%	7
H&SC, Other	0	4	4	4	4	+0	-0	-0	+0	+4	+1.7%	5
<b>Health &amp; Social Care Professionals</b>	<b>95</b>	<b>140</b>	<b>138</b>	<b>138</b>	<b>137</b>	<b>-2</b>	<b>-1</b>	<b>-1</b>	<b>-3</b>	<b>+42</b>	<b>-2.1%</b>	<b>160</b>
Management (VIII & above)	12	17	15	15	17	-2	+2	+2	-0	+5	-2.0%	17
Administrative/ Supervisory (V to VII)	31	45	45	46	43	+0	-2	-3	-2	+12	-4.4%	46
Clerical (III & IV)	79	108	100	97	97	-8	-3	-0	-11	+18	-10.4%	112
<b>Management &amp; Administrative</b>	<b>122</b>	<b>170</b>	<b>161</b>	<b>158</b>	<b>157</b>	<b>-10</b>	<b>-4</b>	<b>-1</b>	<b>-14</b>	<b>+35</b>	<b>-8.0%</b>	<b>175</b>
Support	132	137	128	127	130	-10	+3	+3	-7	-2	-5.4%	154
Maintenance/ Technical	10	10	10	10	9	+0	-1	-1	-1	-1	-9.6%	10
<b>General Support</b>	<b>142</b>	<b>148</b>	<b>138</b>	<b>137</b>	<b>139</b>	<b>-10</b>	<b>+2</b>	<b>+3</b>	<b>-8</b>	<b>-3</b>	<b>-5.7%</b>	<b>164</b>
Health Care Assistants	898	937	909	904	917	-28	+8	+13	-20	+19	-2.1%	1,119
Care, other	16	22	26	26	27	+5	+0	+1	+5	+11	+23.4%	31
<b>Patient &amp; Client Care</b>	<b>914</b>	<b>959</b>	<b>936</b>	<b>930</b>	<b>944</b>	<b>-23</b>	<b>+9</b>	<b>+14</b>	<b>-15</b>	<b>+31</b>	<b>-1.5%</b>	<b>1,150</b>





# Older People Employment Report by Grade Group: FEB 2025

## HSE Dublin & South East

FEB 2025	WTE DEC 2019	WTE DEC 2023	WTE DEC 2024	WTE JAN 2025	WTE FEB 2025	WTE Change 2024	WTE Change 2025	WTE Change JAN 2025	WTE Change Dec 2023 to FEB 2025	WTE Change Dec 2019 to FEB 2025	% WTE Change Dec 2023 to FEB 2025	No. FEB 2025
<b>Total HSE Dublin &amp; South East</b>	<b>2477</b>	<b>2592</b>	<b>2460</b>	<b>2447</b>	<b>2442</b>	<b>-132</b>	<b>-18</b>	<b>-5</b>	<b>-150</b>	<b>-34</b>	<b>-5.8%</b>	<b>2,841</b>
Consultants			1	1	1	+1	+0	+0	+1	+1	-100.0%	1
Registrars	1	1	1	1	1	+0	+0	+0	+0	+0	+0.0%	1
Medical/ Dental, other	13	16	14	14	13	-2	-1	-1	-3	+1	-16.0%	18
<b>Medical &amp; Dental</b>	<b>14</b>	<b>17</b>	<b>16</b>	<b>16</b>	<b>15</b>	<b>-1</b>	<b>-1</b>	<b>-1</b>	<b>-2</b>	<b>+2</b>	<b>-9.2%</b>	<b>20</b>
Nurse/ Midwife Manager	152	175	167	167	165	-7	-2	-1	-9	+14	-5.4%	175
Nurse/ Midwife Specialist & AN/MP	3	27	23	23	23	-4	+0	+0	-4	+20	-13.5%	25
Staff Nurse/ Staff Midwife	517	523	503	502	503	-20	+0	+1	-20	-14	-3.9%	551
Public Health Nurse	5	1	1	1	1	+0	+0	+0	+0	-4	+0.0%	1
<i>Nursing/ Midwifery awaiting registration</i>		2				-2			-2	-2	-100.0%	
Nursing/ Midwifery Student		2				-2			-2		-100.0%	
<b>Nursing &amp; Midwifery</b>	<b>676</b>	<b>727</b>	<b>694</b>	<b>692</b>	<b>692</b>	<b>-34</b>	<b>-1</b>	<b>+0</b>	<b>-35</b>	<b>+16</b>	<b>-4.8%</b>	<b>752</b>
<i>Dietitians</i>	6	7	8	8	8	+1	-0	-0	+1	+1	+8.6%	9
<i>Occupational Therapists</i>	32	34	35	33	33	+1	-2	+0	-1	-1	-2.9%	38
<i>Physiotherapists</i>	42	41	39	40	42	-2	+3	+1	+1	+1	+1.9%	47
<i>Podiatrists &amp; Chiropodists</i>	1	0	0	0	0	+0	+0	+0	+0	+0	+0.0%	1
<i>Speech &amp; Language Therapists</i>	9	10	8	8	7	-2	-1	-0	-3	-3	-28.2%	8
Therapy Professions	91	92	91	89	90	-1	-1	+1	-2	-1	-2.6%	103
Social Workers	15	11	11	12	12	+1	+1	-0	+1	-3	+9.9%	14
Psychologists	2	2	2	2	2	+0	+0	+0	+0	-0	+0.0%	3
Pharmacy	3	5	6	5	5	+0	-1	-0	-1	+2	-10.1%	5
H&SC, Other		7	4	4	5	-3	+1	+1	-2	+5	-28.2%	5
<b>Health &amp; Social Care Professionals</b>	<b>110</b>	<b>117</b>	<b>114</b>	<b>112</b>	<b>113</b>	<b>-3</b>	<b>-0</b>	<b>+2</b>	<b>-4</b>	<b>+3</b>	<b>-3.2%</b>	<b>130</b>
Management (VIII & above)	8	23	25	24	24	+2	-1	-0	+1	+16	+3.0%	24
Administrative/ Supervisory (V to VII)	39	55	53	55	54	-1	+1	-1	-0	+15	-0.8%	57
Clerical (III & IV)	61	92	85	88	90	-7	+5	+2	-2	+29	-1.8%	99
<b>Management &amp; Administrative</b>	<b>107</b>	<b>169</b>	<b>163</b>	<b>167</b>	<b>168</b>	<b>-6</b>	<b>+5</b>	<b>+1</b>	<b>-1</b>	<b>+61</b>	<b>-0.8%</b>	<b>180</b>
Support	199	171	159	158	150	-12	-9	-9	-22	-49	-12.6%	169
Maintenance/ Technical	13	12	13	12	12	+1	-1	+0	+0	-1	+0.0%	13
<b>General Support</b>	<b>212</b>	<b>183</b>	<b>171</b>	<b>170</b>	<b>162</b>	<b>-12</b>	<b>-10</b>	<b>-9</b>	<b>-22</b>	<b>-51</b>	<b>-11.7%</b>	<b>182</b>
Health Care Assistants	1,340	1,345	1,276	1,266	1,265	-69	-12	-1	-80	-76	-6.0%	1,545
Care, other	16	33	26	25	27	-7	+1	+2	-6	+11	-18.1%	32
<b>Patient &amp; Client Care</b>	<b>1,357</b>	<b>1,378</b>	<b>1,302</b>	<b>1,291</b>	<b>1,292</b>	<b>-76</b>	<b>-10</b>	<b>+1</b>	<b>-86</b>	<b>-65</b>	<b>-6.3%</b>	<b>1,577</b>



# Older People Employment Report by Grade Group: FEB 2025

HSE South West

FEB 2025	WTE DEC 2019	WTE DEC 2023	WTE DEC 2024	WTE JAN 2025	WTE FEB 2025	WTE Change 2024	WTE Change 2025	WTE Change JAN 2025	WTE Change Dec 2023 to FEB 2025	WTE Change Dec 2019 to FEB 2025	% WTE Change Dec 2023 to FEB 2025	No. FEB 2025
Total HSE South West	2919	2752	2801	2800	2784	+49	-17	-16	+32	-135	+1.2%	3,596
Consultants	1	1	1	1	1	+0	-1	-0	-1	-0	-50.0%	1
Registrars	3									-3	-100.0%	
SHO/ Interns	1		1	1	1	+1	+1	+0	+1	+0	-100.0%	1
Medical/ Dental, other	21	25	26	26	26	+2	-1	-0	+1	+5	+4.1%	55
Medical & Dental	26	26	28	28	27	+2	-1	-1	+1	+2	+5.7%	57
Nurse/ Midwife Manager	118	119	124	122	124	+5	+0	+1	+5	+6	+4.2%	134
Nurse/ Midwife Specialist & AN/MP	3	11	10	10	10	-1	-0	+0	-1	+7	-9.7%	11
Staff Nurse/ Staff Midwife	515	513	577	577	573	+63	-4	-5	+59	+57	+11.5%	682
Public Health Nurse	5	5	3	3	3	-2	+0	+0	-2	-2	-32.8%	4
Nursing/ Midwifery awaiting registration	1	5				-5			-5	-5	-100.0%	
Post-registration Nurse/ Midwife Student	1										-100.0%	
Nursing/ Midwifery Student	2	5				-5			-5	-2	-100.0%	
Nursing & Midwifery	643	653	714	713	710	+61	-4	-3	+57	+67	+8.7%	831
Dietitians	2	2	2	2	2	+1	+0	+0	+1	+1	+33.3%	2
Occupational Therapists	17	10	11	11	10	+2	-1	-1	+1	+1	+5.6%	11
Physiotherapists	15	13	10	10	10	-2	+0	+0	-2	-2	-17.8%	12
Podiatrists & Chiropodists	6	1	1	1	1	-1	-0	+0	-1	-1	-36.7%	1
Speech & Language Therapists	4	4	3	4	4	-1	+0	+0	-1	-1	-13.3%	4
Therapy Professions	44	30	28	28	27	-2	-1	-0	-2	-17	-7.8%	30
Health Science/ Diagnostics	1	1	1	1	0	+0	-1	-1	-1	-1	-76.9%	1
Social Care	2	1	1	1	1	+0	+0	+0	+0	-0	+0.0%	2
Social Workers	10									-10	-100.0%	
Pharmacy	3	4	5	5	5	+1	+0	+1	+1	+3	+17.4%	10
H&SC, Other		5	3	3	4	-2	+1	+1	-1	+4	-22.0%	4
Health & Social Care Professionals	60	41	38	37	38	-3	-1	+0	-4	-22	-8.7%	47
Management (VIII & above)	13	20	17	17	17	-3	+0	+0	-3	+4	-14.1%	17
Administrative/ Supervisory (V to VII)	17	39	46	46	47	+8	+1	+0	+8	+30	+21.0%	50
Clerical (III & IV)	128	128	126	125	124	-2	-2	-1	-4	-4	-2.9%	148
Management & Administrative	158	186	189	189	188	+3	-1	-1	+2	+30	+0.8%	215
Support	101	120	114	115	115	-6	+1	+0	-5	+15	-4.5%	127
Maintenance/ Technical	6	3	3	3	3	-0	-0	+0	-0	-3	-0.7%	3
General Support	107	123	117	118	118	-6	+1	+0	-5	+11	-4.4%	130
Health Care Assistants	1,895	1,685	1,677	1,678	1,666	-8	-11	-12	-19	-229	-1.1%	2,268
Care, other	31	37	37	37	37	+1	-1	-1	-0	+6	-0.4%	48
Patient & Client Care	1,925	1,722	1,715	1,716	1,703	-7	-12	-13	-19	-223	-1.1%	2,316



# Older People Employment Report by Grade Group: FEB 2025

## HSE Midwest

FEB 2025	WTE DEC 2019	WTE DEC 2023	WTE DEC 2024	WTE JAN 2025	WTE FEB 2025	WTE Change 2024	WTE Change 2025	WTE Change JAN 2025	WTE Change Dec 2023 to FEB 2025	WTE Change Dec 2019 to FEB 2025	% WTE Change Dec 2023 to FEB 2025	No. FEB 2025
Total HSE Midwest	974	1320	1321	1311	1307	+2	-15	-5	-13	+332	-1.0%	1,573
Consultants	1	2	1	1	1	-1	-0	-0	-1	-0	-59.0%	1
Registrars		2	3	3	3	+1	+0	+0	+1	+3	+50.0%	3
SHO/ Interns		3	3	2	2	+0	-1	+0	-1	+2	-21.3%	3
Medical/ Dental, other	5	5	4	4	4	-1	-0	+0	-1	-1	-20.0%	4
Medical & Dental	6	12	11	10	10	-0	-1	+0	-2	+4	-14.5%	11
Nurse/ Midwife Manager	64	74	70	70	70	-4	+0	+1	-4	+6	-5.0%	73
Nurse/ Midwife Specialist & AN/MP	2	13	14	15	13	+1	-1	-1	+1	+12	+5.7%	15
Staff Nurse/ Staff Midwife	239	276	273	268	269	-3	-4	+1	-7	+30	-2.6%	304
Public Health Nurse	1		1	1	1	+1	+0	+0	+1	+0	-100.0%	1
Nursing & Midwifery	305	363	358	353	354	-5	-4	+0	-9	+48	-2.5%	393
Dietitians		2	3	3	3	+1	+0	+0	+1	+1	+65.7%	3
Occupational Therapists	12	21	15	16	15	-5	-0	-1	-6	-6	-26.9%	18
Physiotherapists	10	17	16	16	16	-1	+0	-0	-1	-1	-6.8%	19
Podiatrists & Chiropodists	3	3	4	4	3	+1	-1	-1	+0	+0	+0.0%	3
Speech & Language Therapists	2	7	3	4	4	-4	+1	-0	-3	-3	-47.6%	4
Therapy Professions	28	49	41	42	40	-9	-0	-2	-9	+13	-18.1%	47
Health Science/ Diagnostics	1	1	1	1	1	+0	-0	-0	-0	-0	-11.4%	2
Social Workers	7	2	2	2	2	+0	+0	+0	+0	-5	+0.0%	2
Psychologists		1	1	1	1	+0	+0	-0	+0	+1	+7.7%	1
Pharmacy	1	1	1	1	1	+0	+0	+0	+0	+0	+0.0%	1
Health & Social Care Professionals	36	54	45	47	45	-9	-0	-2	-9	+8	-16.7%	53
Management (VIII & above)	6	9	10	10	10	+1	+0	-0	+1	+4	+6.6%	10
Administrative/ Supervisory (V to VII)	21	28	26	25	24	-3	-1	-1	-4	+4	-14.3%	26
Clerical (III & IV)	50	68	64	64	63	-4	-0	-1	-5	+14	-6.8%	73
Management & Administrative	76	105	99	99	97	-7	-1	-2	-8	+21	-7.7%	109
Support	64	51	57	56	57	+6	+0	+1	+6	-7	+11.6%	67
Maintenance/ Technical	22	22	29	29	30	+6	+1	+1	+7	+8	+32.4%	30
General Support	86	74	86	86	87	+12	+2	+1	+13	+1	+17.9%	97
Health Care Assistants	454	688	699	693	689	+11	-10	-4	+2	+235	+0.3%	883
Care, other	10	25	23	23	24	-1	+1	+1	-0	+14	-2.0%	27
Patient & Client Care	464	712	722	716	714	+10	-9	-3	+1	+249	+0.2%	910



## Older People Employment Report by Grade Group: FEB 2025

### HSE West & North West

FEB 2025	WTE DEC 2019	WTE DEC 2023	WTE DEC 2024	WTE JAN 2025	WTE FEB 2025	WTE Change 2024	WTE Change 2025	WTE Change JAN 2025	WTE Change Dec 2023 to FEB 2025	WTE Change Dec 2019 to FEB 2025	% WTE Change Dec 2023 to FEB 2025	No. FEB 2025
<b>Total HSE West &amp; North West</b>	<b>3053</b>	<b>3339</b>	<b>3268</b>	<b>3235</b>	<b>3243</b>	<b>-72</b>	<b>-24</b>	<b>+9</b>	<b>-96</b>	<b>+191</b>	<b>-2.9%</b>	<b>3,845</b>
Registrars			1	1	1	+1	+0	+0	+1	+1	-100.0%	1
Medical/ Dental, other	38	24	23	19	18	-1	-4	-0	-5	-19	-22.6%	47
<b>Medical &amp; Dental</b>	<b>38</b>	<b>24</b>	<b>24</b>	<b>20</b>	<b>19</b>	<b>+0</b>	<b>-4</b>	<b>-0</b>	<b>-4</b>	<b>-18</b>	<b>-18.4%</b>	<b>48</b>
Nurse/ Midwife Manager	132	147	152	154	155	+5	+3	+1	+8	+23	+5.8%	165
Nurse/ Midwife Specialist & AN/MP	7	31	29	28	28	-2	-1	+0	-3	+21	-8.5%	29
Staff Nurse/ Staff Midwife	532	577	566	564	568	-11	+2	+4	-9	+36	-1.6%	646
Public Health Nurse	1	1	1	1	1	+0	+0	+0	+0	+0	+0.0%	1
Nursing/ Midwifery other		1	1	1	1	-0	+0	+0	+0	+1	+0.0%	1
<b>Nursing &amp; Midwifery</b>	<b>671</b>	<b>756</b>	<b>748</b>	<b>748</b>	<b>753</b>	<b>-8</b>	<b>+5</b>	<b>+5</b>	<b>-3</b>	<b>+82</b>	<b>-0.4%</b>	<b>842</b>
<i>Dietitians</i>	<i>1</i>	<i>4</i>	<i>4</i>	<i>4</i>	<i>4</i>	<i>+0</i>	<i>+0</i>	<i>+0</i>	<i>+0</i>	<i>+0</i>	<i>+6.4%</i>	<i>4</i>
<i>Occupational Therapists</i>	<i>20</i>	<i>37</i>	<i>34</i>	<i>33</i>	<i>31</i>	<i>-2</i>	<i>-3</i>	<i>-2</i>	<i>-5</i>	<i>-5</i>	<i>-14.3%</i>	<i>35</i>
<i>Physiotherapists</i>	<i>14</i>	<i>24</i>	<i>25</i>	<i>24</i>	<i>23</i>	<i>+1</i>	<i>-1</i>	<i>-0</i>	<i>-0</i>	<i>-0</i>	<i>-0.8%</i>	<i>26</i>
<i>Speech &amp; Language Therapists</i>	<i>2</i>	<i>4</i>	<i>4</i>	<i>4</i>	<i>4</i>	<i>+0</i>	<i>+0</i>	<i>+0</i>	<i>+0</i>	<i>+0</i>	<i>+6.9%</i>	<i>4</i>
Therapy Professions	37	68	67	65	63	-1	-4	-2	-5	+26	-7.3%	69
Health Science/ Diagnostics	2	1	1	1	1	-0	+0	+0	-0	-1	-14.9%	1
Social Workers	27	14	12	12	14	-2	+2	+2	-0	-13	-3.2%	15
Psychologists			1	1	1	+1	+0	+0	+1	+1	-100.0%	1
Pharmacy	1	1	1	1	1	+0	+0	+0	+0	-0	+0.0%	1
H&SC, Other		9	10	10	11	+1	+1	+1	+2	+11	+22.1%	11
<b>Health &amp; Social Care Professionals</b>	<b>66</b>	<b>92</b>	<b>90</b>	<b>88</b>	<b>89</b>	<b>-1</b>	<b>-2</b>	<b>+0</b>	<b>-3</b>	<b>+22</b>	<b>-3.3%</b>	<b>98</b>
Management (VIII & above)	8	13	14	14	14	+1	+0	-0	+1	+6	+7.0%	14
Administrative/ Supervisory (V to VII)	18	42	43	45	44	+0	+1	-1	+2	+25	+3.6%	46
Clerical (III & IV)	142	132	123	121	121	-9	-2	+0	-11	-21	-8.3%	141
<b>Management &amp; Administrative</b>	<b>168</b>	<b>188</b>	<b>180</b>	<b>180</b>	<b>179</b>	<b>-8</b>	<b>-1</b>	<b>-1</b>	<b>-9</b>	<b>+11</b>	<b>-4.6%</b>	<b>201</b>
Support	170	155	146	145	145	-10	-1	+0	-10	-25	-6.6%	167
Maintenance/ Technical	24	26	26	26	27	+1	+1	+1	+2	+3	+6.6%	28
<b>General Support</b>	<b>194</b>	<b>181</b>	<b>172</b>	<b>171</b>	<b>172</b>	<b>-9</b>	<b>+0</b>	<b>+1</b>	<b>-9</b>	<b>-22</b>	<b>-4.8%</b>	<b>195</b>
Health Care Assistants	1,867	2,033	1,981	1,955	1,958	-52	-23	+3	-75	+91	-3.7%	2,380
Care, other	47	66	72	72	73	+7	+0	+0	+7	+25	+10.7%	81
<b>Patient &amp; Client Care</b>	<b>1,915</b>	<b>2,099</b>	<b>2,054</b>	<b>2,027</b>	<b>2,031</b>	<b>-45</b>	<b>-23</b>	<b>+3</b>	<b>-68</b>	<b>+116</b>	<b>-3.2%</b>	<b>2,461</b>



# Older People Employment Report by Grade Group: FEB 2025

## HSE Dublin & Midlands

FEB 2025	WTE DEC 2019	WTE DEC 2023	WTE DEC 2024	WTE JAN 2025	WTE FEB 2025	WTE Change 2024	WTE Change 2025	WTE Change JAN 2025	WTE Change Dec 2023 to FEB 2025	WTE Change Dec 2019 to FEB 2025	% WTE Change Dec 2023 to FEB 2025	No. FEB 2025
<b>Total HSE Dublin &amp; Midlands</b>	<b>1917</b>	<b>1987</b>	<b>1984</b>	<b>1977</b>	<b>1975</b>	<b>-3</b>	<b>-9</b>	<b>-2</b>	<b>-12</b>	<b>+58</b>	<b>-0.6%</b>	<b>2,312</b>
SHO/ Interns	2	2	2	2	2	+0	+0	+0	+0	+0	+0.0%	2
Medical/ Dental, other	14	11	11	11	11	-0	-0	-0	-1	-3	-4.8%	16
<b>Medical &amp; Dental</b>	<b>16</b>	<b>13</b>	<b>13</b>	<b>13</b>	<b>13</b>	<b>-0</b>	<b>-0</b>	<b>-0</b>	<b>-1</b>	<b>-3</b>	<b>-4.1%</b>	<b>18</b>
Nurse/ Midwife Manager	123	155	158	158	158	+3	-1	-1	+3	+35	+1.8%	163
Nurse/ Midwife Specialist & AN/MP	5	13	14	13	15	+1	+0	+1	+2	+10	+12.9%	15
Staff Nurse/ Staff Midwife	374	375	392	391	398	+17	+7	+7	+23	+24	+6.2%	435
Public Health Nurse	2	3	3	3	2	+0	-1	-1	-1	+0	-21.4%	3
<i>Nursing/ Midwifery awaiting registration</i>		1	1	2	1	-0	+0	-1	+0	+0	+1.0%	1
Nursing/ Midwifery Student		1	1	2	1	-0	+0	-1	+0	+1	+1.0%	1
Nursing/ Midwifery other		2	1	1	1	-1	+0	+0	-1	+1	-47.4%	1
<b>Nursing &amp; Midwifery</b>	<b>504</b>	<b>549</b>	<b>569</b>	<b>569</b>	<b>575</b>	<b>+20</b>	<b>+6</b>	<b>+6</b>	<b>+26</b>	<b>+71</b>	<b>+4.8%</b>	<b>618</b>
<i>Dietitians</i>	2	2	3	3	3	+1	+0	+0	+1	+1	+32.1%	4
<i>Occupational Therapists</i>	10	11	11	11	11	+0	-0	-0	-0	-0	-1.5%	13
<i>Physiotherapists</i>	13	16	18	17	17	+2	-1	-0	+0	+0	+3.0%	19
<i>Podiatrists &amp; Chiropodists</i>	1	1				-1			-1	-1	-100.0%	
<i>Speech &amp; Language Therapists</i>	1	6	5	4	5	-1	+0	+0	-1	-1	-21.2%	5
Therapy Professions	28	36	36	35	35	+1	-1	-0	-1	+8	-1.9%	41
Health Science/ Diagnostics		1	1	1	1	+0	-0	-0	-0	+1	-4.2%	1
Social Care											-100.0%	
Social Workers	13	5	5	5	5	+0	-0	+0	+0	-7	+4.4%	6
Pharmacy	4	5	5	4	4	+0	-0	-0	-0	+0	-3.1%	5
H&SC, Other	1	2	2	1	1	+0	-0	+0	-0	+0	-0.7%	2
<b>Health &amp; Social Care Professionals</b>	<b>45</b>	<b>48</b>	<b>49</b>	<b>48</b>	<b>47</b>	<b>+1</b>	<b>-1</b>	<b>-0</b>	<b>-1</b>	<b>+2</b>	<b>-1.3%</b>	<b>55</b>
Management (VIII & above)	10	14	14	15	15	+0	+1	+0	+1	+5	+7.5%	15
Administrative/ Supervisory (V to VII)	19	45	35	34	35	-10	+0	+0	-10	+16	-22.0%	36
Clerical (III & IV)	80	106	96	98	97	-11	+1	-0	-9	+17	-8.8%	104
<b>Management &amp; Administrative</b>	<b>109</b>	<b>165</b>	<b>145</b>	<b>147</b>	<b>147</b>	<b>-20</b>	<b>+2</b>	<b>+0</b>	<b>-18</b>	<b>+38</b>	<b>-11.0%</b>	<b>155</b>
Support	130	126	127	125	126	+0	-1	+1	-1	-5	-0.6%	138
Maintenance/ Technical	20	21	22	22	22	+1	+0	+0	+1	+2	+5.2%	22
<b>General Support</b>	<b>150</b>	<b>147</b>	<b>149</b>	<b>147</b>	<b>148</b>	<b>+1</b>	<b>-1</b>	<b>+1</b>	<b>+0</b>	<b>-3</b>	<b>+0.2%</b>	<b>160</b>
Health Care Assistants	1,072	1,038	1,022	1,016	1,008	-16	-14	-8	-30	-64	-2.9%	1,257
Care, other	21	27	38	38	38	+11	-0	-0	+10	+17	+37.6%	49
<b>Patient &amp; Client Care</b>	<b>1,093</b>	<b>1,065</b>	<b>1,060</b>	<b>1,054</b>	<b>1,046</b>	<b>-5</b>	<b>-15</b>	<b>-9</b>	<b>-20</b>	<b>-47</b>	<b>-1.8%</b>	<b>1,306</b>



# Older People Employment Report by Grade Group: FEB 2025

## Corporate Centre

FEB 2025	WTE DEC 2019	WTE DEC 2023	WTE DEC 2024	WTE JAN 2025	WTE FEB 2025	WTE Change 2024	WTE Change 2025	WTE Change JAN 2025	WTE Change Dec 2023 to FEB 2025	WTE Change Dec 2019 to FEB 2025	% WTE Change Dec 2023 to FEB 2025	No. FEB 2025
<b>Total Corporate Centre</b>	<b>74</b>	<b>128</b>	<b>111</b>	<b>62</b>	<b>62</b>	<b>-17</b>	<b>-49</b>	<b>+0</b>	<b>-66</b>	<b>-12</b>	<b>-51.4%</b>	<b>65</b>
Nurse/ Midwife Manager		3	3	3	3	+0	+0	+0	+0	+3	+0.0%	3
<b>Nursing &amp; Midwifery</b>		<b>3</b>	<b>3</b>	<b>3</b>	<b>3</b>	<b>+0</b>	<b>+0</b>	<b>+0</b>	<b>+0</b>	<b>+3</b>	<b>+0.0%</b>	<b>3</b>
Health Science/ Diagnostics	1									-1	-100.0%	
Social Care		1	1	1	1	+0	+0	+0	+0	+1	+0.0%	1
<b>Health &amp; Social Care Professionals</b>	<b>1</b>	<b>1</b>	<b>1</b>	<b>1</b>	<b>1</b>	<b>+0</b>	<b>+0</b>	<b>+0</b>	<b>+0</b>	<b>+0</b>	<b>+0.0%</b>	<b>1</b>
Management (VIII & above)	19	27	19	14	14	-8	-5	+0	-13	-5	-47.6%	14
Administrative/ Supervisory (V to VII)	23	42	35	21	21	-7	-14	+0	-21	-3	-50.9%	21
Clerical (III & IV)	31	54	53	23	23	-2	-30	+0	-32	-9	-58.3%	25
<b>Management &amp; Administrative</b>	<b>73</b>	<b>123</b>	<b>106</b>	<b>57</b>	<b>57</b>	<b>-17</b>	<b>-49</b>	<b>+0</b>	<b>-66</b>	<b>-16</b>	<b>-53.4%</b>	<b>60</b>
Health Care Assistants	0									-0	-100.0%	
Care, other		1	1	1	1	+0	+0	+0	+0	+1	+0.0%	1
<b>Patient &amp; Client Care</b>	<b>0</b>	<b>1</b>	<b>1</b>	<b>1</b>	<b>1</b>	<b>+0</b>	<b>+0</b>	<b>+0</b>	<b>+0</b>	<b>+1</b>	<b>+0.0%</b>	<b>1</b>



Older People Employment Report by Grade Group: FEB 2025

FEB 2025	WTE DEC 2019	WTE DEC 2023	WTE DEC 2024	WTE JAN 2025	WTE FEB 2025	WTE Change 2024	WTE Change 2025	WTE Change JAN 2025	WTE Change Dec 2023 to FEB 2025	WTE Change Dec 2019 to FEB 2025	% WTE Change Dec 2023 to FEB 2025	No. FEB 2025
Overall	13,239	14,154	13,941	13,823	13,821	-214	-119	-2	-333	+582	-2.35%	16,561
Consultant Medicine	4	5	6	6	5	+1	-1	-1	-0	+2	-2.04%	7
Consultants	4	5	6	6	5	+1	-1	-1	-0	+2	-2.04%	7
Registrar	7	9	11	10	10	+2	-0	+0	+2	+4	22.91%	11
Senior Registrar	1	1	1	1	1	+0	+0	+0	+0	+0	0.00%	1
Specialist Registrar	2	1	2	2	2	+1	+0	+0	+1	+0	100.00%	2
Registrars	10	11	14	13	13	+3	-0	+0	+3	+4	28.07%	14
Senior House Officer	15	18	18	17	19	+0	+1	+2	+1	+4	7.30%	20
SHO/ Interns	15	18	18	17	19	+0	+1	+2	+1	+4	7.30%	20
Other Medical	95	85	83	77	76	-2	-7	-1	-8	-19	-10.00%	144
Medical/ Dental, other	95	85	83	77	76	-2	-7	-1	-8	-19	-10.00%	144
Medical & Dental	124	118	120	114	114	+2	-6	+0	-4	-9	-3.63%	185
Clinical Nurse/ Midwife Manager 1	176	161	179	175	174	+18	-5	-1	+13	-2	7.92%	185
Clinical Nurse/ Midwife Manager 2	314	393	389	395	397	-4	+8	+2	+4	+83	1.04%	421
Clinical Nurse/ Midwife Manager 3	21	23	25	24	24	+2	-0	+1	+2	+4	8.33%	26
Director Nursing/Midwifery, Assistant	102	129	114	117	116	-14	+2	-1	-13	+14	-9.94%	123
Director of Nursing/Midwifery	98	105	104	103	105	-1	+0	+1	-0	+6	-0.27%	107
Nurse/ Midwife Manager	711	811	812	815	817	+1	+5	+2	+6	+106	0.70%	862
Advanced Nurse/ Midwife Practitioner	4	28	29	30	33	+2	+3	+2	+5	+29	17.97%	35
Adv. Nurse/ Midwife, Candidate	7	28	21	19	16	-6	-5	-3	-12	+9	-41.65%	17
Clinical Nurse/ Midwife Specialist	16	55	57	56	59	+1	+2	+2	+4	+43	6.48%	63
Nurse/ Midwife Specialist & AN/MP	26	111	107	106	108	-3	+0	+1	-3	+81	-2.74%	115
Staff Midwives		2	2	2	2	+0	+0	+0	+0	+2	0.00%	2
Staff Nurse [Intellectual Disability]		2	3	2	2	+1	-1	+0	+0	+2	0.00%	2
Staff Nurse [Psychiatric]	4	4	4	4	4	+0	+0	+0	+0	+1	5.97%	5
Staff Nurses [General/ Children's]	2,571	2,692	2,741	2,736	2,744	+49	+4	+8	+53	+173	1.95%	3,089
Staff Nurse/ Staff Midwife	2,575	2,700	2,749	2,744	2,753	+50	+3	+8	+53	+178	1.96%	3,098
Public Health Nurse	14	11	9	9	8	-2	-1	-1	-3	-6	-24.68%	10
Public Health Nurse	14	11	9	9	8	-2	-1	-1	-3	-6	-24.68%	10
Nursing/ Midwifery awaiting registration	1	7	1	2	1	-7	+0	-1	-6	+0	-86.65%	1
Post-registration Nurse/ Midwife Student	1									-1	-100.00%	
Nursing/ Midwifery Student	2	7	1	2	1	-7	+0	-1	-6	-1	-86.65%	1
Nursing Education/Clinical	1	3	2	2	2	-1	+0	+0	-1	+1	-31.03%	2
Nursing/ Midwifery other	1	3	2	2	2	-1	+0	+0	-1	+1	-31.03%	2
Nursing & Midwifery	3329	3643	3680	3678	3688	+38	+8	+10	+45	+359	1.25%	4,088
Dietitians	16	30	33	33	33	+3	-1	-0	+3	+17	8.48%	37
Occupational Therapists	113	144	140	138	135	-3	-5	-3	-9	+21	-6.15%	153
Physiotherapists	123	163	151	150	150	-12	-2	-0	-13	+27	-8.19%	171
Podiatrists & Chiropodists	12	5	5	5	4	+0	-1	-1	-1	-8	-21.52%	5
Speech & Language Therapists	23	43	40	40	40	-3	+0	-0	-3	+17	-6.40%	45
Therapy Professions	288	385	370	366	361	-15	-8	-5	-23	+74	-6.08%	411
Clinical Engineering		1	1	1	1	+0	-0	-0	-0	+1	-4.21%	1
Radiographers	6	4	4	3	3	-0	-1	-1	-1	-3	-28.29%	5
Vascular Physiologists	0	0	0	0	0	+0	-0	-0	-0	-0	-47.06%	1
Health Science/ Diagnostics	6	5	5	4	4	-0	-1	-1	-1	-3	-24.09%	7
Social Care	3	3	3	3	3	+0	+0	+0	+0	-0	0.00%	4
Social Care	3	3	3	3	3	+0	+0	+0	+0	-0	0.00%	4
Social Workers	98	52	51	51	53	-1	+2	+2	+1	-46	2.52%	60
Social Workers	98	52	51	51	53	-1	+2	+2	+1	-46	2.52%	60
Psychologists	2	4	4	4	4	+1	+0	-0	+1	+2	14.81%	6
Psychologists	2	4	4	4	4	+1	+0	-0	+1	+2	14.81%	6
Pharmacists	13	14	15	14	14	+1	-1	+0	+0	+2	0.63%	22
Pharmacy Technicians	3	6	6	6	6	+1	+0	+0	+1	+4	9.09%	7
Pharmacy	15	20	21	20	20	+1	-1	+0	+1	+5	2.97%	29
Other Health & Social Care	0	24	21	21	23	-4	+3	+2	-1	+23	-3.84%	25



FEB 2025	WTE DEC 2019	WTE DEC 2023	WTE DEC 2024	WTE JAN 2025	WTE FEB 2025	WTE Change 2024	WTE Change 2025	WTE Change JAN 2025	WTE Change Dec 2023 to FEB 2025	WTE Change Dec 2019 to FEB 2025	% WTE Change Dec 2023 to FEB 2025	No. FEB 2025
<b>Overall</b>	<b>13,239</b>	<b>14,154</b>	<b>13,941</b>	<b>13,823</b>	<b>13,821</b>	<b>-214</b>	<b>-119</b>	<b>-2</b>	<b>-333</b>	<b>+582</b>	<b>-2.35%</b>	<b>16,561</b>
Play Therapists/ Specialists	1	2	2	1	1	+0	-0	+0	-0	+0	-0.67%	2
<b>H&amp;SC, Other</b>	<b>1</b>	<b>26</b>	<b>22</b>	<b>22</b>	<b>25</b>	<b>-4</b>	<b>+3</b>	<b>+2</b>	<b>-1</b>	<b>+23</b>	<b>-3.65%</b>	<b>27</b>
<b>Health &amp; Social Care Professionals</b>	<b>414</b>	<b>493</b>	<b>476</b>	<b>471</b>	<b>470</b>	<b>-17</b>	<b>-6</b>	<b>-1</b>	<b>-23</b>	<b>+56</b>	<b>-4.67%</b>	<b>544</b>
CEO/Chief Officer	1	1				-1			-1	-1	-100.00%	
General Managers	21	34	29	29	29	-5	+0	+0	-5	+8	-14.46%	29
National Director	1	1				-1			-1	-1	-100.00%	
National Director, Assistant	4	5	3	3	3	-2	+0	+0	-2	-1	-39.88%	3
Other Executives	6	10	10	9	9	-0	-1	+0	-1	+3	-10.00%	9
VIII	42	72	72	67	69	+0	-3	+2	-3	+27	-3.88%	70
<b>Management (VIII &amp; above)</b>	<b>75</b>	<b>122</b>	<b>113</b>	<b>108</b>	<b>110</b>	<b>-9</b>	<b>-4</b>	<b>+2</b>	<b>-13</b>	<b>+35</b>	<b>-10.34%</b>	<b>111</b>
Middle Management (V-VII)	168	296	282	273	268	-14	-15	-5	-28	+100	-9.48%	282
Other Administrative	1									-1	-100.00%	
<b>Administrative/ Supervisory (V to VII)</b>	<b>169</b>	<b>296</b>	<b>282</b>	<b>273</b>	<b>268</b>	<b>-14</b>	<b>-15</b>	<b>-5</b>	<b>-28</b>	<b>+99</b>	<b>-9.48%</b>	<b>282</b>
General Administrative (III & IV)	570	689	647	616	616	-42	-31	-0	-73	+46	-10.63%	702
<b>Clerical (III &amp; IV)</b>	<b>570</b>	<b>689</b>	<b>647</b>	<b>616</b>	<b>616</b>	<b>-42</b>	<b>-31</b>	<b>-0</b>	<b>-73</b>	<b>+46</b>	<b>-10.63%</b>	<b>702</b>
<b>Management &amp; Administrative</b>	<b>813</b>	<b>1107</b>	<b>1042</b>	<b>997</b>	<b>993</b>	<b>-65</b>	<b>-49</b>	<b>-4</b>	<b>-114</b>	<b>+180</b>	<b>-10.29%</b>	<b>1,095</b>
Catering	223	341	408	408	409	+67	+1	+1	+68	+187	20.00%	468
Household Services	461	319	232	227	225	-87	-7	-2	-94	-236	-29.50%	258
Other Support	32	22	19	19	18	-4	-1	-2	-5	-14	-21.20%	21
Portering	81	80	71	72	71	-9	+0	-1	-9	-10	-11.15%	75
<b>Support</b>	<b>797</b>	<b>762</b>	<b>730</b>	<b>726</b>	<b>723</b>	<b>-32</b>	<b>-7</b>	<b>-3</b>	<b>-40</b>	<b>-74</b>	<b>-5.18%</b>	<b>822</b>
Maintenance	95	90	99	98	99	+8	+1	+1	+9	+4	9.99%	102
Technical Services		4	4	4	4	+0	+0	+0	+0	+4	0.00%	4
<b>Maintenance/ Technical</b>	<b>95</b>	<b>94</b>	<b>103</b>	<b>102</b>	<b>103</b>	<b>+8</b>	<b>+1</b>	<b>+1</b>	<b>+9</b>	<b>+8</b>	<b>9.57%</b>	<b>106</b>
<b>General Support</b>	<b>892</b>	<b>857</b>	<b>833</b>	<b>829</b>	<b>826</b>	<b>-24</b>	<b>-6</b>	<b>-2</b>	<b>-30</b>	<b>-66</b>	<b>-3.56%</b>	<b>928</b>
Attendant/ Aide	2,328	1,531	1,373	1,361	1,356	-158	-18	-6	-175	-973	-11.46%	1,588
Health Care Assistant/ Care Assistant	1,729	2,470	2,559	2,543	2,543	+89	-17	-1	+72	+814	2.92%	2,894
Health Care Assistant /Home Support	3,448	3,638	3,551	3,527	3,528	-87	-23	+1	-110	+80	-3.02%	4,885
Health & Social Care Assistants	22	87	82	80	78	-5	-4	-2	-9	+56	-10.61%	85
<b>Health Care Assistants</b>	<b>7,527</b>	<b>7,726</b>	<b>7,565</b>	<b>7,512</b>	<b>7,504</b>	<b>-161</b>	<b>-62</b>	<b>-8</b>	<b>-222</b>	<b>-23</b>	<b>-2.88%</b>	<b>9,452</b>
Home Care Services	84	164	185	186	188	+22	+3	+2	+24	+104	14.88%	199
Other Care Grades	22	21	20	20	20	-1	+0	+1	-1	-2	-3.37%	27
Pastoral Care	32	22	16	16	16	-5	-1	-0	-6	-16	-27.60%	41
Workshop Services	2	4	2	2	2	-2	+0	+0	-2	-0	-48.91%	2
<b>Care, other</b>	<b>140</b>	<b>210</b>	<b>224</b>	<b>223</b>	<b>226</b>	<b>+14</b>	<b>+2</b>	<b>+3</b>	<b>+16</b>	<b>+86</b>	<b>7.53%</b>	<b>269</b>
<b>Patient &amp; Client Care</b>	<b>7667</b>	<b>7936</b>	<b>7789</b>	<b>7735</b>	<b>7730</b>	<b>-147</b>	<b>-60</b>	<b>-5</b>	<b>-207</b>	<b>+63</b>	<b>-2.60%</b>	<b>9,721</b>





## WTE Change by Staff Category



## Older People Employment Report by WTE, Headcount, Gender, Full-Time / Part-Time etc. FEB 2025

FEB 2025	WTE FEB 2025	No. FEB 2025	WTE : No	% Male	% Female	Male WTE : No.	Female WTE : No	Perm Count %	Perm Count Male %	Perm Count Female %	Fulltime Count %	Part time Count %	FT Count Male %	FT Count Female %
<b>Total</b>	<b>13,821</b>	<b>16,561</b>	<b>1:0.8</b>	<b>14.66%</b>	<b>85.34%</b>	<b>1:0.9</b>	<b>1:0.8</b>	<b>91.76%</b>	<b>13.15%</b>	<b>78.61%</b>	<b>53.54%</b>	<b>46.46%</b>	<b>76.69%</b>	<b>49.56%</b>
Consultants	5.28	7	1:0.8		100.00%	1:	1:0.8	85.71%		85.71%	57.14%	42.86%		57.14%
Medical/ Dental, other	76.07	144	1:0.5	58.33%	41.67%	1:0.5	1:0.5	62.50%	34.72%	27.78%	26.39%	73.61%	25.00%	28.33%
Registrars	10.46	11	1:1	45.45%	81.82%	1:1	1:0.9	45.45%	18.18%	27.27%	118.18%	9.09%	100.00%	88.89%
SHO/ Interns	19.26	20	1:1	60.00%	40.00%	1:0.9	1:1	10.00%	10.00%		100.00%		100.00%	100.00%
Registrars	3	3	1:1	166.67%	300.00%	1:1	1:0.9	166.67%	66.67%	100.00%	433.33%	33.33%	100.00%	88.89%
<b>Medical &amp; Dental</b>	<b>114</b>	<b>185</b>	<b>1:0.6</b>	<b>54.59%</b>	<b>45.41%</b>	<b>1:0.6</b>	<b>1:0.6</b>	<b>55.68%</b>	<b>29.19%</b>	<b>26.49%</b>	<b>40.54%</b>	<b>59.46%</b>	<b>37.62%</b>	<b>44.05%</b>
Nurse/ Midwife Specialist & AN/MP	48.83	52	1:0.9	13.46%	207.69%	1:1	1:0.9	211.54%	13.46%	198.08%	209.62%	11.54%	100.00%	94.44%
Nurse/ Midwife Manager	595.87	632	1:0.9	10.76%	125.63%	1:1	1:0.9	133.23%	10.44%	122.78%	118.99%	17.41%	97.06%	86.40%
Nurse/ Midwife Specialist & AN/MP	58.69	63	1:0.9	11.11%	171.43%	1:1	1:0.9	174.60%	11.11%	163.49%	173.02%	9.52%	100.00%	94.44%
Nurse/ Midwife Manager	220.7	230	1:1	29.57%	345.22%	1:1	1:0.9	366.09%	28.70%	337.39%	326.96%	47.83%	97.06%	86.40%
Nursing/ Midwifery other	2	2	1:1		100.00%	1:	1:1	100.00%		100.00%	100.00%			100.00%
Nursing/ Midwifery Student	1	1	1:1	100.00%		1:1	1:	100.00%	100.00%		100.00%		100.00%	
Public Health Nurse	8.33	10	1:0.8		100.00%	1:	1:0.8	100.00%		100.00%	60.00%	40.00%		60.00%
Staff Nurse/ Staff Midwife	2,752.52	3,098	1:0.9	9.01%	90.99%	1:1	1:0.9	91.35%	8.33%	83.02%	70.72%	29.28%	90.32%	68.78%
<b>Nursing &amp; Midwifery</b>	<b>3,688</b>	<b>4,088</b>	<b>1:0.9</b>	<b>8.68%</b>	<b>91.32%</b>	<b>1:1</b>	<b>1:0.9</b>	<b>92.83%</b>	<b>8.12%</b>	<b>84.71%</b>	<b>74.88%</b>	<b>25.12%</b>	<b>91.83%</b>	<b>73.27%</b>
Health Science/ Diagnostics	0.91	1	1:0.9	200.00%	500.00%	1:0.7	1:0.4	600.00%	200.00%	400.00%	100.00%	600.00%	50.00%	
Therapy Professions	167.57	190	1:0.9	22.11%	194.21%	1:1	1:0.9	206.32%	22.11%	184.21%	168.42%	47.89%	97.62%	75.61%
H&SC, Other	23.3	25	1:0.9	12.00%	96.00%	1:0.8	1:0.9	108.00%	12.00%	96.00%	96.00%	12.00%	66.67%	91.67%
Pharmacy	20.44	29	1:0.7	24.14%	75.86%	1:0.6	1:0.7	82.76%	20.69%	62.07%	51.72%	48.28%	57.14%	50.00%
Therapy Professions	149.9	171	1:0.9	24.56%	215.79%	1:1	1:0.9	229.24%	24.56%	204.68%	187.13%	53.22%	97.62%	75.61%
H&SC, Other	1.49	2	1:0.7	150.00%	1,200.00%	1:0.8	1:0.9	1,350.00%	150.00%	1,200.00%	1,200.00%	150.00%	66.67%	91.67%
Therapy Professions	3.83	5	1:0.8	840.00%	7,380.00%	1:1	1:0.9	7,840.00%	840.00%	7,000.00%	6,400.00%	1,820.00%	97.62%	75.61%
Psychologists	4.34	6	1:0.7	16.67%	83.33%	1:0.5	1:0.8	100.00%	16.67%	83.33%	50.00%	50.00%		60.00%
Health Science/ Diagnostics	2.56	5	1:0.5	40.00%	100.00%	1:0.7	1:0.4	120.00%	40.00%	80.00%	20.00%	120.00%	50.00%	
Social Care	2.66	4	1:0.7	25.00%	75.00%	1:1	1:0.6	100.00%	25.00%	75.00%	25.00%	75.00%	100.00%	
Social Workers	52.87	60	1:0.9	8.33%	91.67%	1:1	1:0.9	90.00%	8.33%	81.67%	75.00%	25.00%	100.00%	72.73%
Therapy Professions	40.1	45	1:0.9	93.33%	820.00%	1:1	1:0.9	871.11%	93.33%	777.78%	711.11%	202.22%	97.62%	75.61%
Health Science/ Diagnostics	0.09	1	1:0.1	200.00%	500.00%	1:0.7	1:0.4	600.00%	200.00%	400.00%	100.00%	600.00%	50.00%	
<b>Health &amp; Social Care Professionals</b>	<b>470</b>	<b>544</b>	<b>1:0.9</b>	<b>11.21%</b>	<b>88.79%</b>	<b>1:0.9</b>	<b>1:0.9</b>	<b>94.30%</b>	<b>11.03%</b>	<b>83.27%</b>	<b>75.18%</b>	<b>24.82%</b>	<b>88.52%</b>	<b>73.50%</b>
Clerical (III & IV)	615.86	702	1:0.9	10.11%	89.89%	1:1	1:0.9	93.16%	9.26%	83.90%	69.80%	30.20%	92.96%	67.19%
Management (VIII & above)	28.81	29	1:1	124.14%	258.62%	1:1	1:1	379.31%	120.69%	258.62%	382.76%		100.00%	100.00%
Administrative/ Supervisory (V to VII)	267.54	282	1:0.9	14.89%	85.11%	1:1	1:0.9	98.94%	14.89%	84.04%	84.75%	15.25%	95.24%	82.92%
Management (VIII & above)	80.81	82	1:1	43.90%	91.46%	1:1	1:1	134.15%	42.68%	91.46%	135.37%		100.00%	100.00%
<b>Management &amp; Administrative</b>	<b>993</b>	<b>1,095</b>	<b>1:0.9</b>	<b>13.61%</b>	<b>86.39%</b>	<b>1:1</b>	<b>1:0.9</b>	<b>95.25%</b>	<b>12.97%</b>	<b>82.28%</b>	<b>76.71%</b>	<b>23.29%</b>	<b>95.30%</b>	<b>73.78%</b>
Support	634.33	726	1:0.9	38.15%	75.07%	1:0.9	1:0.8	102.62%	34.02%	68.60%	69.01%	44.21%	85.56%	48.44%
Maintenance/ Technical	99.39	102	1:1	102.94%	0.98%	1:1	1:1	101.96%	100.98%	0.98%	99.02%	4.90%	95.24%	100.00%
Support	88.59	96	1:0.9	288.54%	567.71%	1:0.9	1:0.8	776.04%	257.29%	518.75%	521.88%	334.38%	85.56%	48.44%
Maintenance/ Technical	4	4	1:1	2,625.00%	25.00%	1:1	1:1	2,600.00%	2,575.00%	25.00%	2,525.00%	125.00%	95.24%	100.00%
<b>General Support</b>	<b>826</b>	<b>928</b>	<b>1:0.9</b>	<b>41.16%</b>	<b>58.84%</b>	<b>1:1</b>	<b>1:0.8</b>	<b>91.49%</b>	<b>37.72%</b>	<b>53.77%</b>	<b>64.87%</b>	<b>35.13%</b>	<b>88.22%</b>	<b>48.53%</b>
Health Care Assistants	7,503.76	9,452	1:0.8	13.86%	86.14%	1:0.9	1:0.8	91.56%	12.63%	78.93%	38.86%	61.14%	70.69%	33.74%
Care, other	225.98	269	1:0.8	26.02%	73.98%	1:0.6	1:0.9	89.22%	17.10%	72.12%	76.58%	23.42%	55.71%	83.92%
<b>Patient &amp; Client Care</b>	<b>7,730</b>	<b>9,721</b>	<b>1:0.8</b>	<b>14.20%</b>	<b>85.80%</b>	<b>1:0.9</b>	<b>1:0.8</b>	<b>91.49%</b>	<b>12.76%</b>	<b>78.74%</b>	<b>39.90%</b>	<b>60.10%</b>	<b>69.93%</b>	<b>34.94%</b>



## Older People Employment Report by WTE, Headcount, Gender, Full-Time / Part-Time etc. FEB 2025

FEB 2025	WTE FEB 2025	No. FEB 2025	WTE : No	% Male	% Female	Male WTE : No.	Female WTE : No	Perm Count %	Number Male %	Number Female %	Fulltime Count %	Part time Count %	FT Count Male %	FT Count Female %
<b>Total</b>	<b>13,821</b>	<b>16,561</b>	<b>1:0.8</b>	<b>14.66%</b>	<b>85.34%</b>	<b>1:0.9</b>	<b>1:0.8</b>	<b>91.76%</b>	<b>13.15%</b>	<b>78.61%</b>	<b>53.54%</b>	<b>46.46%</b>	<b>76.69%</b>	<b>49.56%</b>
HSE Dublin & North East	2,008	2,329	1:0.9	15.16%	84.84%	1:0.9	1:0.8	95.75%	14.21%	81.54%	62.17%	37.83%	85.27%	58.05%
HSE Dublin & South East	2,442	2,841	1:0.9	15.63%	84.37%	1:0.9	1:0.8	96.87%	14.68%	82.19%	58.11%	41.89%	78.60%	54.32%
HSE South West	2,784	3,596	1:0.8	12.74%	87.26%	1:0.9	1:0.8	86.76%	10.37%	76.39%	38.82%	61.18%	64.85%	35.02%
HSE Midwest	1,307	1,573	1:0.8	13.99%	86.01%	1:0.9	1:0.8	94.15%	12.78%	81.37%	60.97%	39.03%	88.64%	56.47%
HSE West & North West	3,243	3,845	1:0.8	14.72%	85.28%	1:0.9	1:0.8	89.26%	13.45%	75.81%	46.63%	53.37%	70.14%	42.57%
HSE Dublin & Midlands	1,975	2,312	1:0.9	16.05%	83.95%	1:0.9	1:0.8	91.65%	13.97%	77.68%	67.56%	32.44%	83.02%	64.61%
Corporate Centre	62	65	1:1	24.62%	75.38%	1:1	1:0.9	96.92%	24.62%	72.31%	87.69%	12.31%	93.75%	85.71%



Previous Month Summary

	% WTE change since JAN 2025	WTE change since JAN 2025	HSE Dublin & North East	HSE Dublin & South East	HSE South West	HSE Midwest	HSE West & North West	HSE Dublin & Midlands	Corporat e Centre
Total	0.0%	-1.9	+17.7	-5.0	-16.5	-4.6	+8.5	-2.0	+0.0
Consultants	-11.6%	-0.7	+0.0	+0.0	-0.4	-0.3			
Registrars	+3.1%	+0.4	+0.3	+0.0		+0.1	+0.0		
SHO/ Interns	+12.6%	+2.2	+1.8		+0.0	+0.4		+0.0	
Medical/ Dental, other	-1.8%	-1.4	+0.0	-0.6	-0.3	+0.0	-0.3	-0.3	
Medical & Dental	+0.4%	+0.5	+2.1	-0.6	-0.7	+0.2	-0.3	-0.3	
Nurse/ Midwife Manager	+0.2%	+1.9	+1.7	-1.4	+1.5	+0.5	+0.5	-1.0	+0.0
Nurse/ Midwife Specialist & AN/MP	+1.3%	+1.4	+0.7	+0.3	+0.0	-1.1	+0.3	+1.2	
Staff Nurse/ Staff Midwife	+0.3%	+8.2	-0.7	+1.4	-4.8	+0.8	+4.1	+7.3	
Public Health Nurse	-6.4%	-0.6		+0.0	+0.0	+0.0	+0.0	-0.6	
Nursing/ Midwifery Student	-42.5%	-0.7						-0.7	
Nursing/ Midwifery other	+0.0%	+0.0					+0.0	+0.0	
Nursing & Midwifery	+0.3%	+10.2	+1.8	+0.4	-3.2	+0.2	+4.9	+6.2	+0.0
Therapy Professions	-1.4%	-5.0	-1.2	+1.1	-0.4	-1.8	-2.4	-0.2	
Health Science/ Diagnostics	-15.2%	-0.6	+0.0		-0.5	-0.1	+0.0	-0.1	
Social Care	+5.1%	+0.1	+0.0		+0.1				+0.0
Social Workers	+3.5%	+1.8	+0.0	-0.0		+0.0	+1.8	+0.0	
Psychologists	-1.8%	-0.1	+0.0	+0.0		-0.1	+0.0		
Pharmacy	+0.9%	+0.2	+0.0	-0.3	+0.5	+0.0	+0.0	-0.1	
H&SC, Other	+11.1%	+2.5	-0.1	+0.8	+0.8		+1.0	+0.0	
Health & Social Care Professionals	-0.2%	-1.2	-1.3	+1.6	+0.5	-1.9	+0.4	-0.3	+0.0
Management (VIII & above)	+1.6%	+1.7	+1.7	-0.2	+0.2	-0.0	-0.0	+0.1	+0.0
Administrative/ Supervisory (V to VII)	-1.9%	-5.2	-3.0	-1.0	+0.4	-1.1	-1.1	+0.5	+0.0
Clerical (III & IV)	0.0%	-0.2	-0.2	+2.4	-1.1	-0.9	+0.1	-0.5	+0.0
Management & Administrative	-0.4%	-3.7	-1.4	+1.2	-0.6	-2.0	-1.0	+0.1	+0.0



Support	-0.5%	-3.3	+3.2	-8.7	+0.2	+0.9	+0.2	+0.9	
Maintenance/ Technical	+0.9%	+0.9	-0.6	+0.0	+0.0	+0.6	+1.0	+0.0	
<b>General Support</b>	<b>-0.3%</b>	<b>-2.4</b>	<b>+2.6</b>	<b>-8.7</b>	<b>+0.2</b>	<b>+1.4</b>	<b>+1.2</b>	<b>+0.9</b>	
Health Care Assistants	-0.1%	-8.1	+13.4	-0.9	-11.8	-3.6	+2.9	-8.2	
Care, other	+1.3%	+2.9	+0.6	+2.0	-0.8	+1.0	+0.5	-0.4	+0.0
<b>Patient &amp; Client Care</b>	<b>-0.1%</b>	<b>-5.2</b>	<b>+14.0</b>	<b>+1.2</b>	<b>-12.6</b>	<b>-2.6</b>	<b>+3.4</b>	<b>-8.6</b>	<b>+0.0</b>



Year on Year Summary

	% WTE change since FEB 2024	WTE change since FEB 2024	HSE Dublin & North East	HSE Dublin & South East	HSE South West	HSE Midwest	HSE West & North West	HSE Dublin & Midlands	Corporat e Centre
Total	-2.9%	-418.9	-26.5	-118.4	-50.2	-79.0	-92.6	+12.8	-65.0
Consultants	+11.9%	+0.6	+1.5	+0.0	-0.5	-0.4			
Registrars	+2.1%	+0.3	-0.1	+0.0		-0.7	+1.0		
SHO/ Interns	+17.3%	+2.8	+0.2		+1.0	+1.7		+0.0	
Medical/ Dental, other	-3.9%	-3.1	+0.0	-1.0	-0.5	-1.0	-0.1	-0.5	
Medical & Dental	+0.5%	+0.6	+1.6	-1.0	-0.0	-0.4	+0.9	-0.5	
Nurse/ Midwife Manager	+0.9%	+7.2	+0.8	-5.4	+5.4	-7.9	+6.5	+7.9	+0.1
Nurse/ Midwife Specialist & AN/MP	-6.2%	-7.1	+1.1	-3.7	-1.1	-0.7	-2.6	+0.0	
Staff Nurse/ Staff Midwife	-0.9%	-24.1	+5.9	-22.8	+5.9	-23.3	-15.6	+25.8	
Public Health Nurse	-26.0%	-2.9	-1.6	+0.0	-1.7	+1.0	+0.0	-0.6	
Nursing/ Midwifery Student	-50.0%	-1.0		-1.0				+0.0	
Nursing/ Midwifery other	-32.4%	-1.0					+0.0	-1.0	
Nursing & Midwifery	-0.8%	-28.8	+6.1	-32.9	+8.5	-31.0	-11.7	+32.2	+0.1
Therapy Professions	-2.5%	-9.3	+3.9	+0.1	-2.6	-4.9	-5.9	+0.2	
Health Science/ Diagnostics	-21.1%	-1.0	+0.1		-0.9	-0.0	-0.2	+0.0	
Social Care	-5.0%	-0.1	+0.0		+0.0			-0.1	+0.0
Social Workers	-1.9%	-1.0	-0.5	+0.4		+0.0	-0.8	-0.1	
Psychologists	-0.9%	-0.0	+0.0	+0.0		+0.0	-0.1		
Pharmacy	+0.6%	+0.1	+0.6	-1.0	+0.5	+0.0	+0.0	+0.1	
H&SC, Other	-2.6%	-0.7	-0.4	-0.9	-1.1		+1.8	+0.0	
Health & Social Care Professionals	-2.5%	-12.0	+3.6	-1.6	-4.0	-4.9	-5.1	+0.1	+0.0
Management (VIII & above)	-7.5%	-8.9	+0.0	+1.7	-1.6	+0.7	-0.1	+1.1	-10.8
Administrative/ Supervisory (V to VII)	-12.7%	-39.0	-2.9	-1.2	-0.2	-3.2	+1.9	-11.3	-22.1
Clerical (III & IV)	-9.1%	-61.7	-8.6	+3.9	-4.0	-5.8	-8.1	-6.8	-32.2
Management & Administrative	-9.9%	-109.6	-11.5	+4.4	-5.8	-8.3	-6.3	-17.0	-65.1
Support	-6.1%	-46.8	-10.0	-21.6	-3.9	-3.9	-8.9	+1.6	
Maintenance/ Technical	+3.4%	+3.4	-1.0	+0.0	+0.0	+2.2	+1.2	+1.0	



General Support	-5.0%	-43.4	-11.0	-21.6	-3.9	-1.7	-7.8	+2.6	
Health Care Assistants	-3.1%	-237.5	-17.5	-61.6	-46.1	-31.4	-65.2	-15.8	
Care, other	+5.5%	+11.8	+2.2	-4.2	+1.2	-1.3	+2.6	+11.3	+0.0
Patient & Client Care	-2.8%	-225.7	-15.3	-65.7	-44.9	-32.7	-62.6	-4.5	+0.0



Year to Date Summary

	% WTE change since DEC 2024	WTE change since DEC 2024	HSE Dublin & North East	HSE Dublin & South East	HSE South West	HSE Midwest	HSE West & North West	HSE Dublin & Midlands	Corporat e Centre
Total	-0.9%	-119.5	+13.1	-17.7	-17.1	-15.0	-24.4	-9.4	-49.0
Consultants	-12.6%	-0.8	+0.0	+0.0	-0.5	-0.3			
Registrars	-0.4%	-0.1	-0.1	+0.0		+0.0	+0.0		
SHO/ Interns	+7.0%	+1.3	+1.4		+0.5	-0.6		+0.0	
Medical/ Dental, other	-8.0%	-6.6	+0.0	-0.7	-0.7	-0.5	-4.4	-0.3	
Medical & Dental	-5.1%	-6.2	+1.4	-0.7	-0.7	-1.4	-4.4	-0.3	
Nurse/ Midwife Manager	+0.6%	+4.8	+4.0	-2.1	+0.2	+0.1	+3.1	-0.6	+0.0
Nurse/ Midwife Specialist & AN/MP	+0.2%	+0.2	+0.9	+0.5	-0.1	-0.8	-0.8	+0.5	
Staff Nurse/ Staff Midwife	+0.1%	+3.1	+1.6	+0.4	-4.1	-3.7	+2.2	+6.6	
Public Health Nurse	-6.0%	-0.5		+0.0	+0.1	+0.0	+0.0	-0.6	
Nursing/ Midwifery Student	+2.0%	+0.0						+0.0	
Nursing/ Midwifery other	+4.7%	+0.1					+0.1	+0.0	
Nursing & Midwifery	+0.2%	+7.6	+6.5	-1.2	-3.9	-4.4	+4.6	+6.0	+0.0
Therapy Professions	-2.3%	-8.5	-1.2	-1.1	-0.5	-0.4	-4.0	-1.2	
Health Science/ Diagnostics	-23.9%	-1.1	+0.0		-1.0	-0.1	+0.0	-0.0	
Social Care	+0.0%	+0.0	+0.0		+0.0				+0.0
Social Workers	+4.0%	+2.0	-0.0	+0.5		+0.0	+1.6	-0.1	
Psychologists	+0.0%	+0.0	+0.0	+0.0		+0.0	+0.0		
Pharmacy	-3.5%	-0.8	+0.0	-0.8	+0.2	+0.0	+0.0	-0.1	
H&SC, Other	+11.9%	+2.6	-0.0	+1.0	+0.8		+0.9	-0.0	

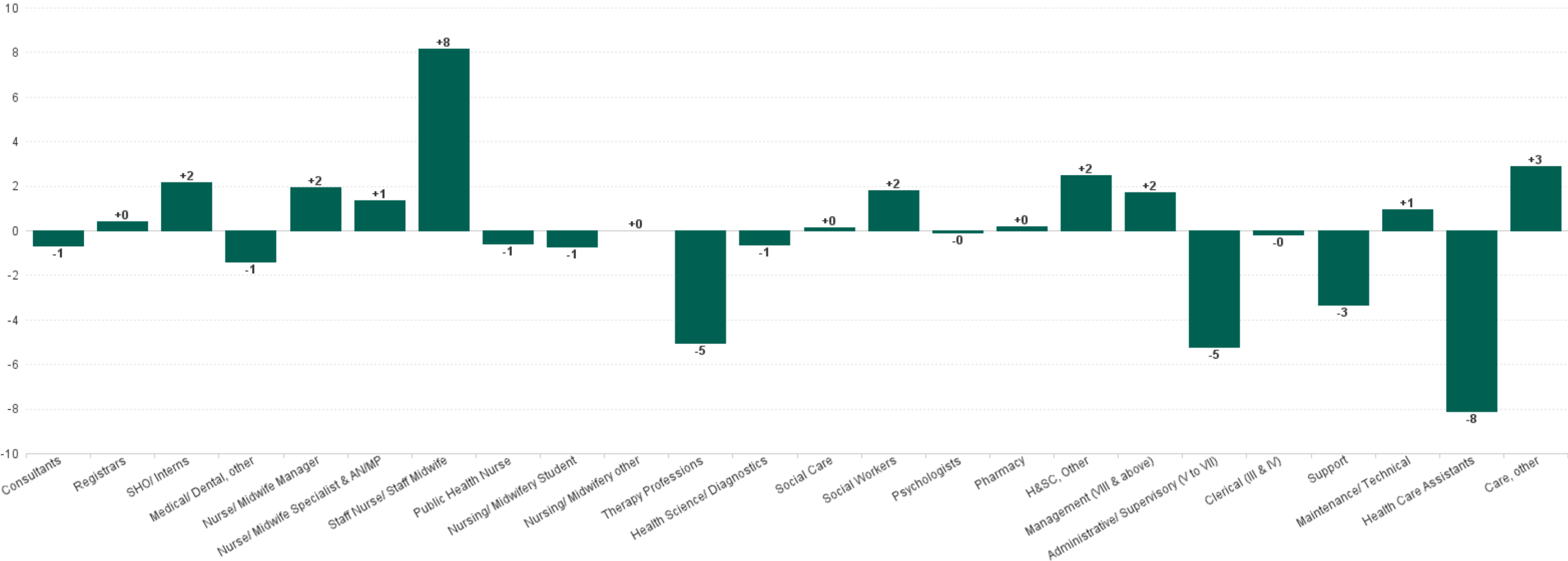




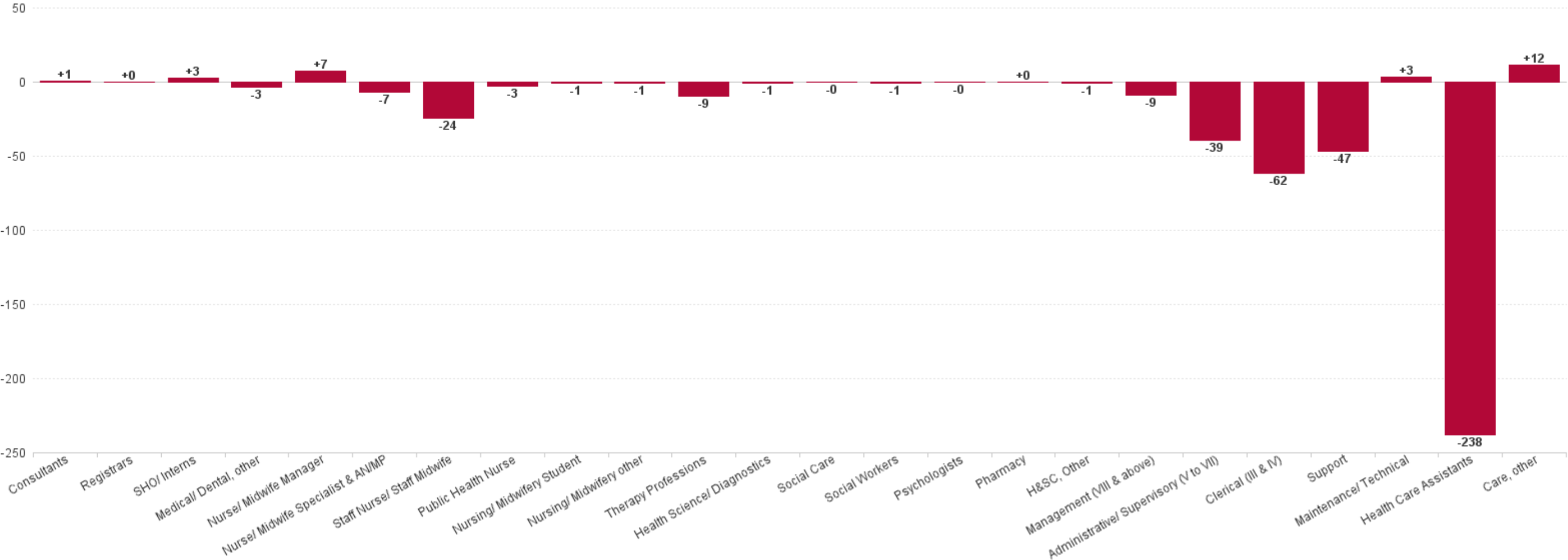
Health & Social Care Professionals	-1.2%	-5.7	-1.3	-0.4	-0.5	-0.4	-1.6	-1.5	+0.0
Management (VIII & above)	-3.4%	-3.9	+1.6	-1.3	+0.0	+0.1	+0.0	+0.6	-4.9
Administrative/ Supervisory (V to VII)	-5.1%	-14.5	-2.0	+0.9	+0.6	-1.2	+1.0	+0.3	-14.1
Clerical (III & IV)	-4.8%	-31.0	-3.4	+4.9	-1.6	-0.3	-1.7	+1.2	-30.0
Management & Administrative	-4.7%	-49.4	-3.9	+4.6	-1.0	-1.5	-0.7	+2.1	-49.0
Support	-1.0%	-7.1	+2.5	-9.1	+1.0	+0.4	-0.7	-1.2	
Maintenance/ Technical	+0.7%	+0.7	-1.0	-0.6	-0.0	+1.1	+1.1	+0.1	
General Support	-0.8%	-6.3	+1.5	-9.7	+1.0	+1.5	+0.5	-1.1	
Health Care Assistants	-0.8%	-61.6	+8.3	-11.7	-11.2	-9.6	-23.2	-14.2	
Care, other	+0.9%	+2.0	+0.5	+1.4	-0.7	+0.7	+0.5	-0.3	+0.0
Patient & Client Care	-0.8%	-59.6	+8.8	-10.3	-11.9	-8.8	-22.8	-14.6	+0.0



Previous Month Summary Chart: Change since JAN 2025



Previous Year Summary Chart: Change since FEB 2024



YTD Summary Chart: Change since DEC 2024

