

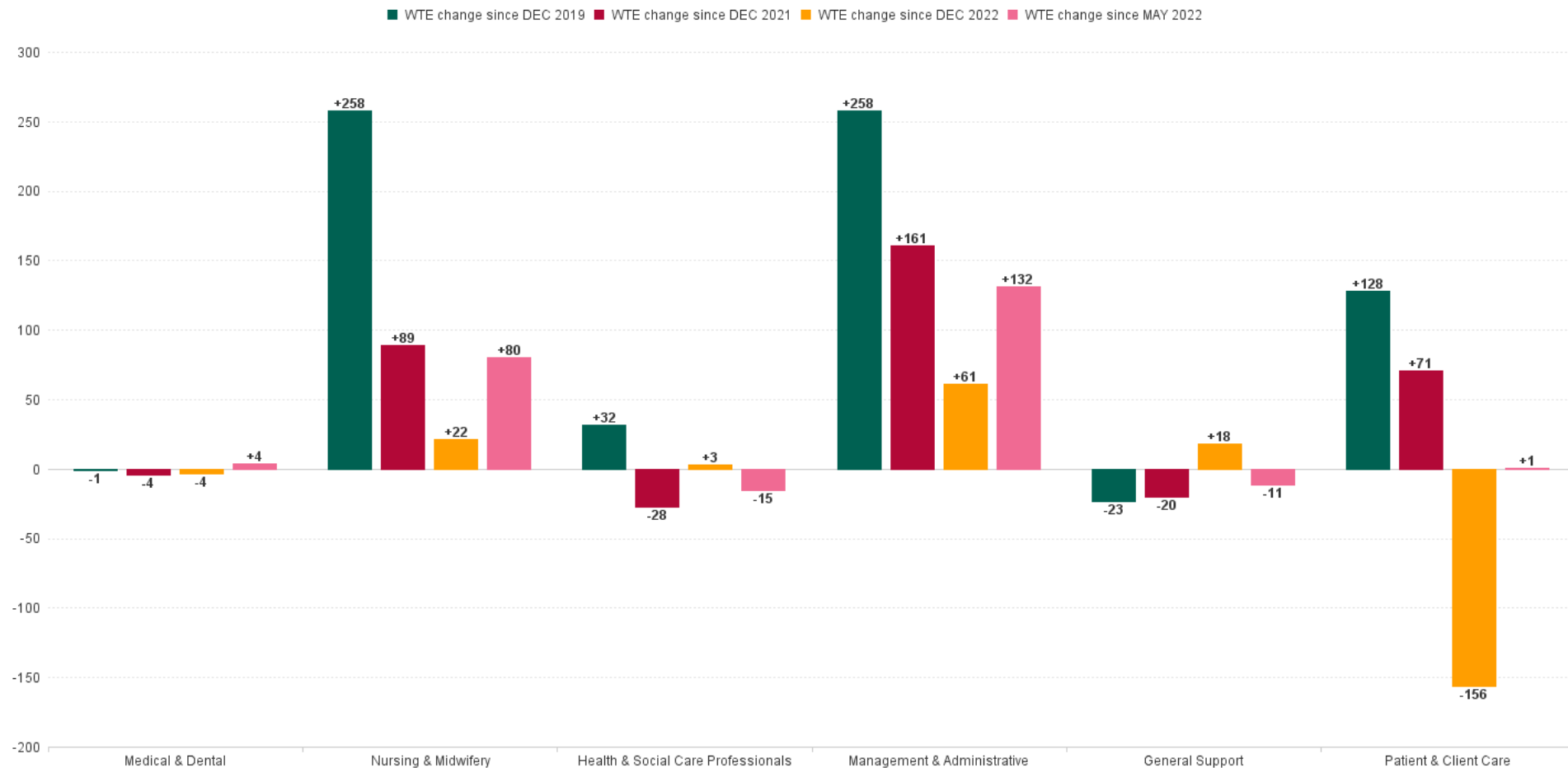
Older People Employment Report : MAY 2023

Older People Employment Report by Staff Group

MAY 2023	WTE DEC 2019	WTE DEC 2022	WTE APR 2023	WTE MAY 2023	WTE change since DEC 2019	% WTE change since Dec 2019	WTE change since DEC 2022	% WTE change since Dec 2022	WTE change since APR 2023	No. MAY 2023
Overall	13,239	13,947	13,969	13,892	+653	0.05	-56	0	-77	16,810
Consultants	4	7	6	6	+2	0.68	-1	-0.08	+0	8
Registrars	10	10	13	12	+3	0.31	+3	0.31	-0	13
SHO/ Interns	15	12	19	19	+4	0.25	+7	0.56	-0	19
Medical/ Dental, other	95	98	86	85	-10	-0.1	-13	-0.13	-0	154
Medical & Dental	124	126	123	123	-1	-0.01	-4	-0.03	-0	194
Nurse/ Midwife Manager	711	738	768	767	+56	0.08	+30	0.04	-0	808
Nurse/ Midwife Specialist & AN/MP	26	74	87	91	+64	2.43	+16	0.22	+3	94
Staff Nurse/ Staff Midwife	2,575	2,737	2,719	2,714	+139	0.05	-24	-0.01	-6	3,084
Public Health Nurse	14	13	11	11	-3	-0.22	-2	-0.12	+0	13
<i>Nursing/ Midwifery awaiting registration</i>	<i>1</i>	<i>1</i>	<i>5</i>	<i>2</i>	<i>+1</i>	<i>1</i>	<i>+1</i>	<i>1.04</i>	<i>-3</i>	<i>2</i>
<i>Post-registration Nurse/ Midwife Student</i>	<i>1</i>				<i>-1</i>	<i>-1</i>				
Nursing/ Midwifery Student	2	1	5	2	+0	0	+1	1.04	-3	2
Nursing/ Midwifery other	1	3	3	3	+2	1.88	-0	-0.04	-0	3
Nursing & Midwifery	3,329	3,566	3,593	3,587	+258	0.08	+22	0.01	-6	4,004
Therapy Professions	288	340	344	342	+54	0.19	+2	0	-2	390
Health Science/ Diagnostics	6	5	4	5	-1	-0.23	-0	0	+0	8
Social Care	3	2	2	1	-1	-0.5	-1	-0.39	-0	3
Social Workers	98	69	59	60	-39	-0.39	-10	-0.14	+1	66
Psychologists	2	4	4	4	+2	0.83	+0	0.1	-0	5
Pharmacy	15	20	19	20	+4	0.28	+0	0	+0	28
H&SC, Other	1	3	14	15	+14	10.12	+12	3.47	+1	17
Health & Social Care Professionals	414	443	446	446	+32	0.08	+3	0.01	-0	517
Management (VIII & above)	75	116	124	125	+50	0.68	+9	0.07	+1	128
Administrative/ Supervisory (V to VII)	169	263	281	280	+111	0.66	+17	0.07	-1	293
Clerical (III & IV)	570	631	660	666	+96	0.17	+35	0.06	+6	763
Management & Administrative	813	1,010	1,066	1,071	+258	0.32	+61	0.06	+6	1,184
Support	797	757	773	776	-21	-0.03	+19	0.03	+3	871
Maintenance/ Technical	95	94	93	94	-2	-0.02	-0	-0.01	+0	97
General Support	892	851	866	869	-23	-0.03	+18	0.02	+3	968
Home Help	3,448	3,687	3,632	3,530	+82	0.02	-157	-0.04	-102	5,058
Health Care Assistants	4,079	4,072	4,047	4,064	-15	0	-9	0	+17	4,638
Care, other	140	192	196	202	+62	0.44	+10	0.05	+6	247
Patient & Client Care	7,667	7,951	7,875	7,795	+128	0.02	-156	-0.02	-79	9,943



WTE Change by Staff Category



Older People Report by CHO: MAY 2023

MAY 2023	WTE DEC 2019	WTE DEC 2022	WTE APR 2023	WTE MAY 2023	WTE change since DEC 2019	% WTE change since Dec 2019	WTE change since DEC 2022	% WTE change since Dec 2022	WTE change since APR 2023	No. MAY 2023
Overall	13,239	13,947	13,969	13,892	+653	0.05	-56	0	-77	16,810
CHO 1	1,836	2,087	2,091	2,117	+281	0.15	+30	0.01	+26	2,486
CHO 2	1,606	1,582	1,578	1,552	-54	-0.03	-31	-0.02	-27	1,815
CHO 3	974	1,264	1,280	1,286	+312	0.32	+22	0.02	+7	1,567
CHO 4	2,919	3,000	2,867	2,731	-188	-0.06	-269	-0.09	-136	3,689
CHO 5	1,653	1,641	1,689	1,703	+50	0.03	+62	0.04	+14	2,078
CHO 6	823	813	823	829	+5	0.01	+16	0.02	+6	903
CHO 7	996	999	1,004	1,006	+10	0.01	+7	0.01	+2	1,135
CHO 8	1,488	1,489	1,519	1,546	+58	0.04	+56	0.04	+27	1,892
CHO 9	870	976	1,017	1,017	+147	0.17	+40	0.04	-0	1,131
other Community Services	74	95	103	106	+31	0.42	+11	0.11	+3	114





Older People Employment Report by HSE/S38: MAY 2023

MAY 2023	WTE DEC 2019	WTE DEC 2022	WTE APR 2023	WTE MAY 2023	WTE change since DEC 2019	% WTE change since Dec 2019	WTE change since DEC 2022	% WTE change since Dec 2022	WTE change since APR 2023	No. MAY 2023
Overall	13,239	13,947	13,969	13,892	+653	0.05	-56	0	-77	16,810
Health Service Executive	12,531	13,217	13,229	13,153	+621	0.05	-64	0	-76	16,000
Section 38 Voluntary Agencies	708	731	740	739	+31	0.04	+9	0.01	-1	810



Primary Care Employment Report by HSE: MAY 2023

MAY 2023	WTE DEC 2019	WTE DEC 2022	WTE APR 2023	WTE MAY 2023	WTE change since DEC 2019	% WTE change since Dec 2019	WTE change since DEC 2022	% WTE change since Dec 2022	WTE change since APR 2023	No. MAY 2023
Total HSE	12,531	13,217	13,229	13,153	+621	0.05	-64	0	-76	16,000
Consultants	3	5	5	5	+2	0.52	-1	-0.1	+0	6
Registrars	7	7	9	8	+2	0.3	+2	0.3	-0	9
SHO/ Interns	10	8	13	13	+3	0.28	+5	0.6	-0	13
Medical/ Dental, other	93	97	84	83	-10	-0.11	-14	-0.14	-1	152
Medical & Dental	113	117	110	109	-4	-0.03	-8	-0.07	-1	180
Nurse/ Midwife Manager	657	687	713	714	+57	0.09	+26	0.04	+0	750
Nurse/ Midwife Specialist & AN/MP	26	74	87	91	+64	2.43	+16	0.22	+3	94
Staff Nurse/ Staff Midwife	2,399	2,566	2,545	2,538	+139	0.06	-27	-0.01	-6	2,896
Public Health Nurse	14	13	11	11	-3	-0.22	-2	-0.12	+0	13
Nursing/ Midwifery awaiting registration	1	1	5	2	+1	1	-1	1.04	-3	2
Post-registration Nurse/ Midwife Student	1				-1	-1				
Pre-registration Nurse/ Midwife Intern					+0					
Nursing/ Midwifery Student	2	1	5	2	+0	0	+1	1.04	-3	2
Nursing/ Midwifery other	1	3	3	3	+2	1.88	-0	-0.04	-0	3
Nursing & Midwifery	3,100	3,344	3,365	3,359	+259	0.08	+15	0	-6	3,758
Therapy Professions	230	267	273	275	+44	0.19	+7	0.03	+2	315
Health Science/ Diagnostics	5	4	3	4	-1	-0.28	-0	0	+0	6
Social Care	3	2	2	1	-1	-0.5	-1	-0.39	-0	3
Social Workers	84	54	42	43	-41	-0.49	-11	-0.2	+1	47
Psychologists	2	4	4	4	+2	1.41	+0	0.1	-0	5
Pharmacy	11	14	14	14	+3	0.31	+0	0.01	+0	20
H&SC, Other	1	3	14	15	+14	10.12	+12	3.47	+1	17
Health & Social Care Professionals	336	348	352	356	+20	0.06	+8	0.02	+4	413
Management (VIII & above)	73	112	120	121	+48	0.67	+9	0.08	+1	124
Administrative/ Supervisory (V to VII)	149	239	257	256	+106	0.71	+16	0.07	-1	268
Clerical (III & IV)	543	601	630	637	+94	0.17	+36	0.06	+7	725
Management & Administrative	765	952	1,007	1,013	+249	0.33	+61	0.06	+6	1,117
Support	694	645	660	664	-31	-0.04	+19	0.03	+4	749
Maintenance/ Technical	85	85	84	85	-1	-0.01	-0	0	+0	88
General Support	780	729	744	748	-31	-0.04	+19	0.03	+4	837
Home Help	3,448	3,687	3,632	3,530	+82	0.02	-157	-0.04	-102	5,058
Health Care Assistants	3,856	3,851	3,827	3,840	-16	0	-11	0	+13	4,398
Care, other	135	188	192	198	+63	0.47	+10	0.05	+6	239
Patient & Client Care	7,438	7,726	7,651	7,567	+129	0.02	-159	-0.02	-83	9,695

Primary Care Employment Report by S38 Voluntary Agencies: MAY 2023

MAY 2023	WTE DEC 2019	WTE DEC 2022	WTE APR 2023	WTE MAY 2023	WTE change since DEC 2019	% WTE change since Dec 2019	WTE change since DEC 2022	% WTE change since Dec 2022	WTE change since APR 2023	No. MAY 2023
Total S38 Voluntary Agencies	708	731	740	739	+31	0.04	+9	0.01	-1	810
Consultants	1	2	2	2	+1	1.5	+0	0	+0	2
Registrars	3	3	4	4	+1	0.33	+1	0.33	+0	4
SHO/ Interns	5	4	6	6	+1	0.2	+2	0.5	+0	6
Medical/ Dental, other	2	1	1	2	+0	0	+1	1	+1	2
Medical & Dental	11	10	13	14	+3	0.27	+4	0.42	+1	14
Nurse/ Midwife Manager	54	50	54	54	-0	-0.01	+3	0.07	-1	58
Staff Nurse/ Staff Midwife	176	172	175	175	-1	0	+3	0.02	+0	188
Nursing & Midwifery	230	222	229	229	-1	0	+7	0.03	-0	246
Therapy Professions	58	73	71	67	+9	0.16	-6	-0.08	-4	75
Health Science/ Diagnostics	1	1	1	1	+0	0	+0	0	+0	2
Social Workers	14	15	16	16	+3	0.18	+1	0.06	+0	19
Psychologists	1				-1	-1				
Pharmacy	5	6	5	6	+1	0.21	-0	-0.02	+0	8
Health & Social Care Professionals	78	95	94	90	+12	0.16	-5	-0.05	-4	104
Management (VIII & above)	2	4	4	4	+2	1	+0	0	+0	4
Administrative/ Supervisory (V to VII)	19	24	24	24	+5	0.26	+1	0.04	+0	25
Clerical (III & IV)	27	31	30	30	+2	0.09	-1	-0.03	-0	38
Management & Administrative	49	58	59	58	+9	0.19	+0	0	-0	67
Support	103	112	113	112	+9	0.09	+0	0	-1	122
Maintenance/ Technical	10	9	9	9	-1	-0.1	-0	-0.04	+0	9
General Support	113	121	122	121	+8	0.07	-0	0	-1	131
Health Care Assistants	223	222	220	224	+1	0	+2	0.01	+4	240
Care, other	5	4	4	4	-1	-0.25	+0	0.03	+0	8
Patient & Client Care	229	226	224	228	-1	0	+2	0.01	+4	248

Older People Employment Report by Grade Group: MAY 2023

CHO 1

MAY 2023	WTE DEC 2019	WTE DEC 2022	WTE APR 2023	WTE MAY 2023	WTE change since DEC 2019	% WTE change since Dec 2019	WTE change since DEC 2022	% WTE change since Dec 2022	WTE change since APR 2023	No. MAY 2023
Overall	1836	2087	2091	2117	+281	0.15	+30	0.01	+26	2,486
Medical/ Dental, other	30	27	15	16	-14	-0.47	-11	-0.41	+1	37
Medical & Dental	30	27	15	16	-14	-0.47	-11	-0.41	+1	37
Nurse/ Midwife Manager	91	91	93	93	+2	0.02	+2	0.02	+0	97
Nurse/ Midwife Specialist & AN/MP	7	18	21	20	+13	1.91	+2	0.08	-1	20
Staff Nurse/ Staff Midwife	307	338	338	331	+24	0.08	-7	-0.02	-7	379
Public Health Nurse		1	1	1	+1		+0	0.41	+0	1
Nursing/ Midwifery other		1	1	1	+1		+0	0	+0	1
Nursing & Midwifery	405	449	453	446	+41	0.1	-3	-0.01	-7	498
Therapy Professions	11	27	27	25	+14	1.23	-2	-0.08	-3	29
Health Science/ Diagnostics	1				-1	-1				
Social Workers	18	9	9	9	-9	-0.49	-0	-0.02	-0	10
Psychologists			1	1	+1		+1		+0	1
H&SC, Other			6	6	+6		+6		+0	6
Health & Social Care Professionals	30	36	43	40	+10	0.35	+4	0.12	-3	46
Management (VIII & above)	8	10	10	10	+2	0.23	-0	-0.02	-0	10
Administrative/ Supervisory (V to VII)	14	25	26	28	+13	0.93	+3	0.1	+2	29
Clerical (III & IV)	85	86	82	84	-1	-0.01	-2	-0.02	+2	97
Management & Administrative	107	121	118	121	+14	0.13	+0	0	+3	136
Support	123	111	118	118	-4	-0.03	+8	0.07	+1	140
Maintenance/ Technical	7	8	6	6	-1	-0.14	-2	-0.22	+0	6
General Support	130	118	124	124	-5	-0.04	+6	0.05	+1	146
Home Help	543	748	745	776	+233	0.43	+28	0.04	+31	934
Health Care Assistants	563	564	569	568	+5	0.01	+4	0.01	-1	658
Care, other	28	24	24	25	-2	-0.09	+1	0.05	+1	31
Patient & Client Care	1,134	1,336	1,338	1,370	+236	0.21	+33	0.02	+31	1,623

Older People Employment Report by Grade Group: MAY 2023

CHO 2

MAY 2023	WTE DEC 2019	WTE DEC 2022	WTE APR 2023	WTE MAY 2023	WTE change since DEC 2019	% WTE change since Dec 2019	WTE change since DEC 2022	% WTE change since Dec 2022	WTE change since APR 2023	No. MAY 2023
Overall	1606	1582	1578	1552	-54	-0.03	-31	-0.02	-27	1,815
Medical/ Dental, other	11	10	10	10	-1	-0.1	+0	0.02	+0	11
Medical & Dental	11	10	10	10	-1	-0.1	+0	0.02	+0	11
Nurse/ Midwife Manager	58	74	72	72	+14	0.24	-2	-0.02	-0	76
Nurse/ Midwife Specialist & AN/MP	2	7	10	10	+8	4	+3	0.43	+0	10
Staff Nurse/ Staff Midwife	301	305	307	303	+2	0.01	-2	-0.01	-4	347
Public Health Nurse	1	1	1	1	+0	0.25	+0	0	+0	1
Nursing & Midwifery	362	386	390	386	+24	0.07	-1	0	-4	434
Therapy Professions	26	28	30	30	+5	0.19	+2	0.08	+0	33
Health Science/ Diagnostics	1	1	1	1	+0	0.27	+0	0.04	+0	1
Social Workers	10	13	3	3	-7	-0.71	-10	-0.77	+0	3
Pharmacy	1	1	1	1	-0	-0.48	-0	-0.02	+0	1
Health & Social Care Professionals	37	42	35	35	-3	-0.07	-8	-0.18	+0	38
Management (VIII & above)	2	6	6	6	+4	2	+0	0	+0	6
Administrative/ Supervisory (V to VII)	8	16	17	17	+10	1.28	+2	0.11	+0	18
Clerical (III & IV)	72	64	69	70	-1	-0.02	+6	0.1	+1	79
Management & Administrative	81	86	92	94	+13	0.15	+8	0.09	+1	103
Support	56	51	51	52	-4	-0.06	+2	0.04	+2	59
Maintenance/ Technical	19	20	21	21	+2	0.12	+1	0.05	+0	22
General Support	75	71	72	74	-1	-0.02	+3	0.04	+2	81
Home Help	499	407	400	371	-129	-0.26	-36	-0.09	-29	506
Health Care Assistants	515	536	536	539	+24	0.05	+3	0.01	+3	594
Care, other	24	45	44	44	+20	0.81	-1	-0.02	+0	48
Patient & Client Care	1,039	988	980	954	-85	-0.08	-34	-0.03	-26	1,148

Older People Employment Report by Grade Group: MAY 2023

CHO 3

MAY 2023	WTE DEC 2019	WTE DEC 2022	WTE APR 2023	WTE MAY 2023	WTE change since DEC 2019	% WTE change since Dec 2019	WTE change since DEC 2022	% WTE change since Dec 2022	WTE change since APR 2023	No. MAY 2023
Overall	974	1264	1280	1286	+312	0.32	+22	0.02	+7	1,567
Consultants	1	3	3	3	+2	1.5	-1	-0.17	-0	3
Registrars		2	2	2	+2		+0	0.01	+0	2
SHO/ Interns		2	2	2	+2		+0	0.01	+0	2
Medical/ Dental, other	5	6	6	6	+1	0.1	-0	-0.08	-1	6
Medical & Dental	6	13	13	12	+6	1	-1	-0.07	-1	13
Nurse/ Midwife Manager	64	68	70	71	+7	0.11	+2	0.03	+1	73
Nurse/ Midwife Specialist & AN/MP	2	11	10	10	+9	4.77	-0	-0.01	+0	11
Staff Nurse/ Staff Midwife	239	266	276	274	+35	0.15	+7	0.03	-2	310
Public Health Nurse	1				-1	-1				
Nursing & Midwifery	305	345	356	355	+50	0.16	+10	0.03	-1	394
Therapy Professions	28	44	45	46	+19	0.67	+2	0.05	+1	53
Health Science/ Diagnostics	1	1	1	1	-0	-0.01	+0	0.01	+0	2
Social Workers	7	2	2	3	-4	-0.57	+1	0.52	+1	3
Psychologists		1	1	1	+1		+0	0.06	-0	1
Pharmacy	1	1	1	1	+0	0	+0	0.01	+0	1
Health & Social Care Professionals	36	48	50	52	+15	0.42	+3	0.07	+2	60
Management (VIII & above)	6	10	10	10	+4	0.74	+0	0.03	+0	11
Administrative/ Supervisory (V to VII)	21	27	28	27	+6	0.3	+0	0	-1	28
Clerical (III & IV)	50	63	65	65	+16	0.32	+2	0.04	+1	76
Management & Administrative	76	99	102	102	+26	0.34	+3	0.03	-0	115
Support	64	46	52	52	-12	-0.19	+7	0.15	+0	59
Maintenance/ Technical	22	23	23	23	+1	0.04	+0	0.01	-0	23
General Support	86	68	75	75	-11	-0.13	+7	0.1	+0	82
Home Help	175	342	337	340	+165	0.94	-2	-0.01	+2	508
Health Care Assistants	279	331	326	328	+49	0.18	-3	-0.01	+2	371
Care, other	10	17	20	23	+13	1.31	+5	0.32	+2	24
Patient & Client Care	464	690	684	690	+226	0.49	+1	0	+6	903



Older People Employment Report by Grade Group: MAY 2023

CHO 4

MAY 2023	WTE DEC 2019	WTE DEC 2022	WTE APR 2023	WTE MAY 2023	WTE change since DEC 2019	% WTE change since Dec 2019	WTE change since DEC 2022	% WTE change since Dec 2022	WTE change since APR 2023	No. MAY 2023
Overall	2919	3000	2867	2731	-188	-0.06	-269	-0.09	-136	3,689
Consultants	1	1	1	1	+0	0.06	+0	0	+0	2
Registrars	3	0	1	1	-2	-0.67	+1	24	+0	1
SHO/ Interns	1		1	1	+0	0	+1		+0	1
Medical/ Dental, other	21	27	25	25	+4	0.19	-2	-0.07	-1	56
Medical & Dental	26	28	28	28	+2	0.08	+0	0	-1	60
Nurse/ Midwife Manager	118	109	113	110	-7	-0.06	+2	0.01	-2	119
Nurse/ Midwife Specialist & AN/MP	3	6	8	8	+5	1.55	+2	0.41	+0	9
Staff Nurse/ Staff Midwife	515	575	515	522	+7	0.01	-53	-0.09	+7	633
Public Health Nurse	5	6	4	5	-0	-0.09	-2	-0.28	+0	6
<i>Nursing/ Midwifery awaiting registration</i>	1				-1					
<i>Post-registration Nurse/ Midwife Student</i>	1				-1					
Nursing/ Midwifery Student	2				-2	-1				
Nursing & Midwifery	643	697	641	646	+2	0	-51	-0.07	+5	767
Therapy Professions	44	37	32	35	-9	-0.2	-1	-0.04	+3	40
Health Science/ Diagnostics	1	1	1	1	+0	0.14	+0	0	+0	2
Social Care	2	1	1	1	-1	-0.43	-0	-0.22	+0	2
Social Workers	10	9	10	10	-1	-0.09	+0	0	-0	10
Pharmacy	3	5	4	4	+2	0.7	-0	-0.02	+0	9
H&SC, Other			1	1	+1		+1		+0	1
Health & Social Care Professionals	60	53	49	52	-8	-0.13	-1	-0.01	+4	64
Management (VIII & above)	13	19	22	22	+9	0.74	+3	0.16	-0	23
Administrative/ Supervisory (V to VII)	17	29	41	41	+24	1.43	+12	0.41	+1	43
Clerical (III & IV)	128	130	127	124	-4	-0.03	-5	-0.04	-3	150
Management & Administrative	158	178	191	188	+30	0.19	+10	0.05	-2	216
Support	101	124	120	120	+19	0.19	-4	-0.03	-1	131
Maintenance/ Technical	6	5	5	5	-1	-0.17	-0	0	+0	5
General Support	107	129	125	125	+18	0.17	-4	-0.03	-1	136
Home Help	1,113	1,068	1,044	904	-209	-0.19	-163	-0.15	-139	1,517
Health Care Assistants	781	814	756	754	-28	-0.04	-61	-0.07	-2	879
Care, other	31	34	34	35	+4	0.14	+1	0.03	+1	50
Patient & Client Care	1,925	1,916	1,833	1,693	-233	-0.12	-223	-0.12	-140	2,446



Older People Employment Report by Grade Group: MAY 2023

CHO 5

MAY 2023	WTE DEC 2019	WTE DEC 2022	WTE APR 2023	WTE MAY 2023	WTE change since DEC 2019	% WTE change since Dec 2019	WTE change since DEC 2022	% WTE change since Dec 2022	WTE change since APR 2023	No. MAY 2023
Overall	1653	1641	1689	1703	+50	0.03	+62	0.04	+14	2,078
Medical/ Dental, other	9	15	14	14	+5	0.59	-1	-0.04	-0	18
Medical & Dental	9	15	14	14	+5	0.59	-1	-0.04	-0	18
Nurse/ Midwife Manager	83	76	81	84	+0	0	+7	0.1	+3	89
Nurse/ Midwife Specialist & AN/MP	2	12	13	14	+12	5.79	+2	0.18	+0	14
Staff Nurse/ Staff Midwife	313	299	324	328	+14	0.05	+29	0.1	+4	383
Public Health Nurse	5	1	1	1	-4	-0.78	+0	0.01	+0	1
<i>Nursing/ Midwifery awaiting registration</i>			4	1	+1		+1		-3	1
Nursing/ Midwifery Student			4	1	+1		+1		-3	1
Nursing & Midwifery	403	388	424	427	+24	0.06	+39	0.1	+3	488
Therapy Professions	41	31	38	38	-2	-0.06	+8	0.25	+1	44
Social Workers	3	4	3	4	+1	0.22	+0	0.01	+1	5
Psychologists		1	2	2	+2		+0	0.06	+0	2
Pharmacy		1	1	1	+1		-0	-0.02	-0	1
H&SC, Other		2	5	5	+5		+4	1.94	+1	6
Health & Social Care Professionals	44	39	48	50	+6	0.14	+11	0.29	+2	58
Management (VIII & above)	4	11	12	12	+8	2.15	+1	0.1	+0	12
Administrative/ Supervisory (V to VII)	17	16	17	17	+0	0	+0	0.02	-1	17
Clerical (III & IV)	31	60	68	68	+37	1.19	+8	0.13	+1	74
Management & Administrative	52	87	97	97	+45	0.88	+9	0.11	-0	103
Support	91	75	74	74	-17	-0.19	-1	-0.02	-0	88
Maintenance/ Technical	5	4	4	4	-1	-0.23	-0	-0.04	+0	5
General Support	96	79	78	78	-18	-0.19	-1	-0.02	-0	93
Home Help	614	612	586	590	-24	-0.04	-22	-0.04	+3	809
Health Care Assistants	427	404	422	429	+2	0	+24	0.06	+6	487
Care, other	9	18	19	19	+10	1.17	+1	0.07	-0	22
Patient & Client Care	1,049	1,034	1,028	1,037	-12	-0.01	+4	0	+10	1,318



Older People Employment Report by Grade Group: MAY 2023

CHO 6

MAY 2023	WTE DEC 2019	WTE DEC 2022	WTE APR 2023	WTE MAY 2023	WTE change since DEC 2019	% WTE change since Dec 2019	WTE change since DEC 2022	% WTE change since Dec 2022	WTE change since APR 2023	No. MAY 2023
Overall	823	813	823	829	+5	0.01	+16	0.02	+6	903
Registrars	1	1	1	1	+0	0	+0	0	+0	1
Medical/ Dental, other	4	2	2	3	-1	-0.31	+1	0.46	+1	4
Medical & Dental	5	3	3	4	-1	-0.25	+1	0.3	+1	5
Nurse/ Midwife Manager	68	64	68	68	+0	0	+5	0.07	+1	70
Nurse/ Midwife Specialist & AN/MP	1		1	5	+4	4.24	+5		+4	6
Staff Nurse/ Staff Midwife	204	206	204	204	+1	0	-1	-0.01	-0	213
Nursing & Midwifery	273	269	273	278	+5	0.02	+9	0.03	+5	289
Therapy Professions	50	42	43	42	-8	-0.15	-0	0	-1	48
Social Workers	11	7	7	7	-5	-0.41	+0	0	+0	8
Psychologists	2				-2	-1				
Pharmacy	3	4	4	4	+1	0.44	-0	-0.02	+0	5
H&SC, Other			1	1	+1		+1		+0	1
Health & Social Care Professionals	66	53	54	54	-12	-0.18	+1	0.01	-0	62
Management (VIII & above)	4	8	9	10	+6	1.5	+2	0.27	+1	10
Administrative/ Supervisory (V to VII)	22	32	33	32	+10	0.43	+0	0.01	-1	33
Clerical (III & IV)	30	33	34	33	+4	0.13	+0	0.01	-1	38
Management & Administrative	56	72	77	75	+19	0.35	+3	0.04	-1	81
Support	108	102	104	102	-7	-0.06	-1	0	-2	110
Maintenance/ Technical	8	7	7	7	-1	-0.13	-0	-0.06	+0	7
General Support	116	110	111	109	-8	-0.06	-1	-0.01	-2	117
Health Care Assistants	300	299	299	303	+3	0.01	+4	0.01	+4	340
Care, other	7	6	6	6	-1	-0.14	+0	0.02	+0	9
Patient & Client Care	307	305	305	309	+2	0.01	+4	0.01	+4	349

Older People Employment Report by Grade Group: MAY 2023

CHO 7

MAY 2023	WTE DEC 2019	WTE DEC 2022	WTE APR 2023	WTE MAY 2023	WTE change since DEC 2019	% WTE change since Dec 2019	WTE change since DEC 2022	% WTE change since Dec 2022	WTE change since APR 2023	No. MAY 2023
Overall	996	999	1004	1006	+10	0.01	+7	0.01	+2	1,135
SHO/ Interns	2	2	2	2	+0	0	+0	0.01	+0	2
Medical/ Dental, other	4	2	2	2	-2	-0.49	+0	0	+0	4
Medical & Dental	6	4	4	4	-2	-0.33	+0	0.01	+0	6
Nurse/ Midwife Manager	77	88	98	100	+22	0.29	+11	0.13	+1	103
Nurse/ Midwife Specialist & AN/MP	3	6	6	6	+3	1.14	+0	0.03	+0	6
Staff Nurse/ Staff Midwife	219	239	231	230	+11	0.05	-8	-0.03	-1	248
<i>Nursing/ Midwifery awaiting registration</i>		1	1	1	+1		+0		+0	1
Nursing/ Midwifery Student		1	1	1	+1		+0	0.02	+0	1
Nursing & Midwifery	299	334	337	337	+38	0.13	+3	0.01	+0	358
Therapy Professions	14	18	18	20	+6	0.43	+2	0.1	+1	23
Social Workers	11	5	4	4	-7	-0.63	-1	-0.19	+0	4
Pharmacy	3	3	3	3	+1	0.2	+0	0.01	+0	3
H&SC, Other	1	1	1	1	+0	0.25	+0	0.26	-0	2
Health & Social Care Professionals	28	27	27	28	-0	-0.01	+1	0.04	+1	32
Management (VIII & above)	5	12	7	5	+0	0.08	-6	-0.54	-2	6
Administrative/ Supervisory (V to VII)	12	20	18	18	+7	0.58	-1	-0.08	-0	19
Clerical (III & IV)	34	42	41	41	+7	0.21	-1	-0.02	+0	47
Management & Administrative	51	74	67	65	+14	0.28	-9	-0.12	-2	72
Support	110	104	107	105	-5	-0.04	+2	0.02	-1	116
Maintenance/ Technical	2	2	2	2	+0	0	+0	0.01	+0	2
General Support	112	106	109	107	-5	-0.04	+2	0.02	-1	118
Home Help	108	117	121	122	+15	0.14	+6	0.05	+2	164
Health Care Assistants	388	332	335	336	-51	-0.13	+4	0.01	+1	379
Care, other	5	6	5	6	+1	0.24	+0	0.01	+1	6
Patient & Client Care	500	455	461	465	-35	-0.07	+10	0.02	+4	549

Older People Employment Report by Grade Group: MAY 2023

CHO 8

MAY 2023	WTE DEC 2019	WTE DEC 2022	WTE APR 2023	WTE MAY 2023	WTE change since DEC 2019	% WTE change since Dec 2019	WTE change since DEC 2022	% WTE change since Dec 2022	WTE change since APR 2023	No. MAY 2023
Overall	1488	1489	1519	1546	+58	0.04	+56	0.04	+27	1,892
Medical/ Dental, other	11	11	11	11	-0	-0.02	+0	0	+0	18
Medical & Dental	11	11	11	11	-0	-0.02	+0	0	+0	18
Nurse/ Midwife Manager	77	86	84	81	+5	0.06	-5	-0.06	-2	88
Nurse/ Midwife Specialist & AN/MP	2	4	4	4	+2	0.98	+0	0	-0	4
Staff Nurse/ Staff Midwife	249	255	260	260	+10	0.04	+4	0.02	-1	290
Public Health Nurse	2	2	2	2	+0	0.03	-0	0	+0	3
Nursing/ Midwifery other		2	2	2	+2		-0	-0.06	-0	2
Nursing & Midwifery	330	350	352	349	+19	0.06	-1	0	-3	387
Therapy Professions	21	26	20	19	-2	-0.09	-7	-0.28	-2	23
Health Science/ Diagnostics		1	1	1	+1		-0	-0.05	+0	1
Social Workers	7	1	1	2	-5	-0.77	+1	0.53	+1	2
Pharmacy	3	2	2	2	-0	-0.18	+0	0.1	+0	3
Health & Social Care Professionals	30	30	24	23	-6	-0.22	-7	-0.22	-0	29
Management (VIII & above)	6	9	10	11	+5	0.96	+2	0.21	+1	11
Administrative/ Supervisory (V to VII)	20	31	37	36	+16	0.77	+4	0.14	-1	37
Clerical (III & IV)	70	65	77	77	+8	0.11	+12	0.19	+0	85
Management & Administrative	95	105	124	124	+29	0.3	+19	0.18	+0	133
Support	26	26	27	29	+3	0.13	+3	0.12	+2	31
Maintenance/ Technical	24	22	23	23	-1	-0.04	+1	0.03	-0	24
General Support	50	48	50	52	+2	0.05	+4	0.08	+2	55
Home Help	395	393	399	427	+31	0.08	+33	0.08	+28	620
Health Care Assistants	556	517	525	526	-31	-0.06	+8	0.02	+0	606
Care, other	20	35	34	34	+14	0.66	-1	-0.03	+0	44
Patient & Client Care	972	946	958	986	+14	0.01	+41	0.04	+28	1,270

Older People Employment Report by Grade Group: MAY 2023

CHO 9

MAY 2023	WTE DEC 2019	WTE DEC 2022	WTE APR 2023	WTE MAY 2023	WTE change since DEC 2019	% WTE change since Dec 2019	WTE change since DEC 2022	% WTE change since Dec 2022	WTE change since APR 2023	No. MAY 2023
Overall	870	976	1017	1017	+147	0.17	+40	0.04	-0	1,131
Consultants	2	3	2	3	+1	0.56	+0	0	+0	3
Registrars	6	6	9	8	+3	0.54	+2	0.31	-0	9
SHO/ Interns	12	8	14	14	+2	0.15	+6	0.71	-0	14
Medical/ Dental, other	1				-1	-1				
Medical & Dental	20	17	25	25	+5	0.23	+8	0.45	-0	26
Nurse/ Midwife Manager	75	79	87	86	+11	0.15	+7	0.09	-1	91
Nurse/ Midwife Specialist & AN/MP	5	11	13	13	+9	1.82	+2	0.19	+0	14
Staff Nurse/ Staff Midwife	227	255	264	262	+35	0.15	+7	0.03	-2	281
Public Health Nurse	0	1	1	1	+1	1.63	+0	0.01	+0	1
Nursing/ Midwifery other	1				-1	-1				
Nursing & Midwifery	308	346	366	363	+55	0.18	+17	0.05	-3	387
Therapy Professions	54	88	90	86	+31	0.58	-2	-0.02	-4	97
Health Science/ Diagnostics	1	1	1	1	-0	-0.31	+0	0	+0	2
Social Care	1	1	1	0	-1	-0.62	-1	-0.62	-0	1
Social Workers	21	19	20	19	-2	-0.1	+0	0	-1	21
Psychologists		1	1	1	+1		-0	-0.22	+0	1
Pharmacy	3	4	4	4	+1	0.26	+0	0	+0	5
H&SC, Other	0	1	1	1	+0	0.56	+0	0	-0	1
Health & Social Care Professionals	81	114	117	111	+30	0.37	-3	-0.03	-6	128
Management (VIII & above)	9	13	14	15	+6	0.66	+2	0.17	+1	15
Administrative/ Supervisory (V to VII)	15	27	26	26	+11	0.7	-2	-0.06	-1	27
Clerical (III & IV)	40	56	59	62	+22	0.55	+6	0.11	+3	72
Management & Administrative	64	96	99	103	+39	0.6	+7	0.07	+4	114
Support	118	119	120	123	+4	0.04	+3	0.03	+2	137
Maintenance/ Technical	2	2	2	2	+0	0	+0	0	+0	3
General Support	121	122	123	125	+4	0.04	+3	0.03	+2	140
Health Care Assistants	270	275	279	281	+12	0.04	+6	0.02	+3	324
Care, other	6	6	9	9	+3	0.4	+2	0.37	-0	12
Patient & Client Care	276	281	288	290	+14	0.05	+9	0.03	+3	336

Older People Employment Report by Grade Group: MAY 2023

other Community Services

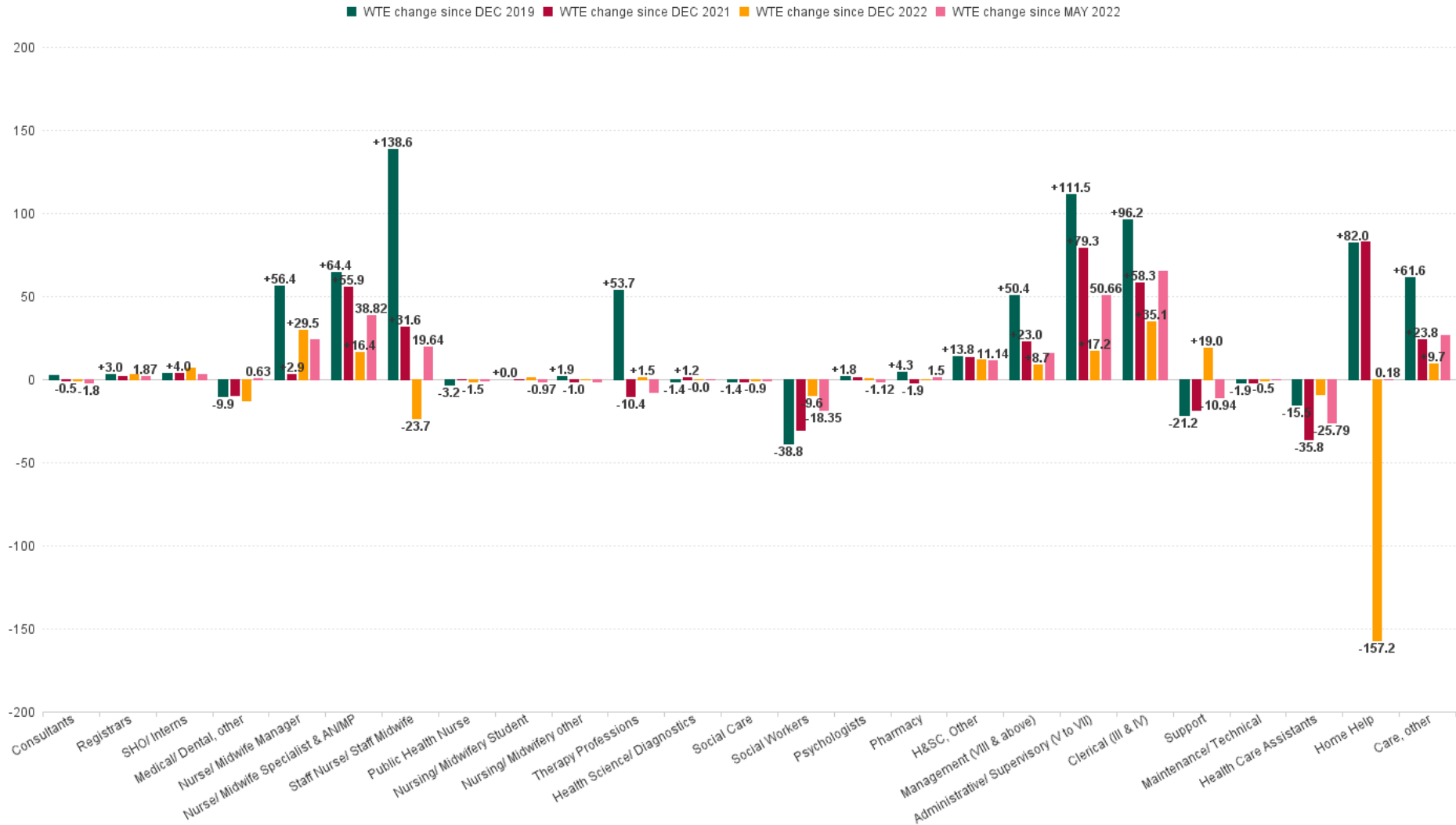
MAY 2023	WTE DEC 2019	WTE DEC 2022	WTE APR 2023	WTE MAY 2023	WTE change since DEC 2019	% WTE change since Dec 2019	WTE change since DEC 2022	% WTE change since Dec 2022	WTE change since APR 2023	No. MAY 2023
Overall	74	95	103	106	+31	0.42	+11	0.11	+3	114
Nurse/ Midwife Manager		2	2	2	+2		+0	0	+0	2
Nursing & Midwifery		2	2	2	+2		+0	0	+0	2
Health Science/ Diagnostics	1				-1	-1				
Health & Social Care Professionals	1				-1	-1				
Management (VIII & above)	19	19	24	24	+5	0.27	+5	0.24	-0	24
Administrative/ Supervisory (V to VII)	23	40	38	39	+15	0.66	-1	-0.02	+1	42
Clerical (III & IV)	31	33	38	40	+9	0.29	+7	0.22	+2	45
Management & Administrative	73	92	100	103	+30	0.4	+11	0.12	+3	111
Health Care Assistants	0	0			-0	-1	-0	-1		
Care, other		1	1	1	+1		+0	0.01	+0	1
Patient & Client Care	0	1	1	1	+1	16.4	-0	-0.22	+0	1

Older People Employment Report by Grade Group: MAY 2023

MAY 2023	WTE DEC 2019	WTE DEC 2022	WTE APR 2023	WTE MAY 2023	WTE change since DEC 2019	% WTE change since Dec 2019	WTE change since DEC 2022	% WTE change since Dec 2022	WTE change since APR 2023	No. MAY 2023
Overall	13,239	13,947	13,969	13,892	+653	0.05	-56	0	-77	16,810
Consultant Medicine	4	7	6	6	+2	0.68	-1	-0.08	+0	8
Consultants	4	7	6	6	+2	0.68	-1	-0.08	+0	8
Registrar	7	6	9	8	+2	0.3	+2	0.31	-0	9
Senior Registrar	1	1	1	1	+0	0	-0	-0.04	+0	1
Specialist Registrar	2	2	3	3	+1	0.5	+1	0.51	+0	3
Registrars	10	10	13	12	+3	0.31	+3	0.31	-0	13
Senior House Officer	15	12	19	19	+4	0.25	+7	0.56	-0	19
SHO/ Interns	15	12	19	19	+4	0.25	+7	0.56	-0	19
Other Medical	95	98	86	85	-10	-0.1	-13	-0.13	-0	154
Medical/ Dental, other	95	98	86	85	-10	-0.1	-13	-0.13	-0	154
Medical & Dental	124	126	123	123	-1	-0.01	-4		-0	194
Clinical Nurse/ Midwife Manager	511	533	549	550	+39	0.08	+17	0.03	+1	585
Director Nursing/Midwifery, Assistant	102	106	118	120	+19	0.18	+14	0.14	+2	124
Director of Nursing/Midwifery	98	98	100	97	-1	-0.01	-1	-0.01	-3	99
Nurse/ Midwife Manager	711	738	768	767	+56	0.08	+30	0.04	-0	808
Advanced Nurse/ Midwife Practitioner	11	39	44	47	+37	3.4	+8	0.21	+3	49
Clinical Nurse/ Midwife Specialist	16	35	44	44	+28	1.77	+8	0.24	-0	45
Nurse/ Midwife Specialist & AN/MP	26	74	87	91	+64	2.43	+16	0.22	+3	94
Staff Midwives		1	2	2	+2		+1	0.95	+0	2
Staff Nurse [Intellectual Disability]		3	3	2	+2		-1	-0.33	-1	2
Staff Nurse [Psychiatric]	4	4	5	4	+0	0.09	-0	-0.02	-0	5
Staff Nurses [General/ Children's]	2,571	2,729	2,710	2,706	+135	0.05	-23	-0.01	-4	3,075
Staff Nurse/ Staff Midwife	2,575	2,737	2,719	2,714	+139	0.05	-24	-0.01	-6	3,084
Public Health Nurse	14	13	11	11	-3	-0.22	-2	-0.12	+0	13
Public Health Nurse	14	13	11	11	-3	-0.22	-2	-0.12	+0	13
Nursing/ Midwifery awaiting registration	1	1	5	2	+1	1	+1	1.04	-3	2
Post-registration Nurse/ Midwife Student	1				-1	-1				
Nursing/ Midwifery Student	2	1	5	2	+0	0	+1	1.04	-3	2
Nursing Education/Clinical	1	3	3	3	+2	1.88	-0	-0.04	-0	3
Nursing/ Midwifery other	1	3	3	3	+2	1.88	-0	-0.04	-0	3
Nursing & Midwifery	3329	3566	3593	3587	+258	0.08	+22		-6	4,004
Dietitians	16	25	26	26	+9	0.57	+0	0.01	-1	32
Occupational Therapists	113	125	128	130	+17	0.15	+6	0.04	+3	146
Physiotherapists	123	152	151	148	+25	0.2	-4	-0.03	-3	167
Podiatrists & Chiropodists	12	3	3	4	-8	-0.67	+1	0.16	+0	6
Speech & Language Therapists	23	34	36	33	+10	0.45	-0	-0.01	-2	39
Therapy Professions	288	340	344	342	+54	0.19	+2	0	-2	390
Clinical Engineering		1	1	1	+1		-0	-0.05	+0	1
Radiographers	6	4	4	4	-2	-0.39	+0	0.01	+0	6
Vascular Physiologists	0	0	0	0	-0	-0.19	+0	0	+0	1
Health Science/ Diagnostics	6	5	4	5	-1	-0.23	-0	0	+0	8
Social Care	3	2	2	1	-1	-0.5	-1	-0.39	-0	3
Social Care	3	2	2	1	-1	-0.5	-1	-0.39	-0	3
Social Workers	98	69	59	60	-39	-0.39	-10	-0.14	+1	66
Social Workers	98	69	59	60	-39	-0.39	-10	-0.14	+1	66
Psychologists	2	4	4	4	+2	0.83	+0	0.1	-0	5
Psychologists	2	4	4	4	+2	0.83	+0	0.1	-0	5
Pharmacists	13	14	14	14	+1	0.1	-0	0	+0	22
Pharmacy Technicians	3	5	6	5	+3	1.2	+0	0.01	-0	6

MAY 2023	WTE DEC 2019	WTE DEC 2022	WTE APR 2023	WTE MAY 2023	WTE change since DEC 2019	% WTE change since Dec 2019	WTE change since DEC 2022	% WTE change since Dec 2022	WTE change since APR 2023	No. MAY 2023
Overall	13,239	13,947	13,969	13,892	+653	0.05	-56	0	-77	16,810
Pharmacy	15	20	19	20	+4	0.28	+0	0	+0	28
Other Health & Social Care	0	2	12	13	+13	34.94	+11	4.41	+1	14
Play Therapists/ Specialists	1	1	1	1	+0	0.25	+0	0.26	-0	2
Podiatrists & Chiropodists			1	1	+1		+1		+0	1
H&SC, Other	1	3	14	15	+14	10.12	+12	3.47	+1	17
Health & Social Care Professionals	414	443	446	446	+32	0.08	+3		-0	517
Executive Management	12	14	17	17	+5	0.42	+3	0.22	-0	17
Senior Management (VIII & GM)	63	102	107	108	+45	0.72	+6	0.06	+1	111
Management (VIII & above)	75	116	124	125	+50	0.68	+9	0.07	+1	128
Middle Management (V-VII)	168	263	281	280	+112	0.67	+17	0.07	-1	293
Other Administrative	1				-1	-1				
Administrative/ Supervisory (V to VII)	169	263	281	280	+111	0.66	+17	0.07	-1	293
General Administrative (III & IV)	570	631	660	666	+96	0.17	+35	0.06	+6	763
Clerical (III & IV)	570	631	660	666	+96	0.17	+35	0.06	+6	763
Management & Administrative	813	1010	1066	1071	+258	0.32	+61		+6	1,184
Catering	223	217	227	228	+5	0.02	+10	0.05	+0	252
Household Services	461	441	446	449	-12	-0.03	+8	0.02	+3	512
Other Support	32	27	26	26	-5	-0.17	-1	-0.04	+0	32
Portering	81	71	74	72	-9	-0.11	+2	0.03	-1	75
Support	797	757	773	776	-21	-0.03	+19	0.03	+3	871
Maintenance	95	90	89	90	-6	-0.06	-0	-0.01	+0	93
Technical Services		4	4	4	+4		+0	0	+0	4
Maintenance/ Technical	95	94	93	94	-2	-0.02	-0	-0.01	+0	97
General Support	892	851	866	869	-23	-0.03	+18		+3	968
Home Helps	3,448	3,687	3,632	3,530	+82	0.02	-157	-0.04	-102	5,058
Home Help	3,448	3,687	3,632	3,530	+82	0.02	-157	-0.04	-102	5,058
Attendant/ Aide	2,328	1,632	1,611	1,586	-742	-0.32	-45	-0.03	-25	1,847
Health Care Assistant/ Care Assistant	1,729	2,378	2,362	2,403	+674	0.39	+25	0.01	+40	2,708
Health & Social Care Assistants	22	63	73	75	+52	2.35	+12	0.19	+1	83
Health Care Assistants	4,079	4,072	4,047	4,064	-15	0	-9	0	+17	4,638
Home Care Services	84	143	147	152	+67	0.8	+9	0.06	+5	160
Other Care Grades	22	23	23	24	+2	0.09	+1	0.06	+1	31
Pastoral Care	32	23	22	22	-9	-0.3	-0	-0.02	+0	52
Workshop Services	2	4	4	4	+2	0.73	+0	0.01	+0	4
Care, other	140	192	196	202	+62	0.44	+10	0.05	+6	247
Patient & Client Care	7667	7951	7875	7795	+128	0.02	-156		-79	9,943

WTE Change by Staff Category



Older People Employment Report by WTE, Headcount, Gender, Full-Time / Part-Time etc. MAY 2023

MAY 2023	WTE MAY 2023	No. MAY 2023	WTE : No	% Male	% Female	Male WTE : No.	Female WTE : No	Perm Count %	Perm Count Male %	Perm Count Female %	Fulltime Count %	Part time Count %	FT Count Male %	FT Count Female %
Total	13,892	16,810	1:0.8	14.22%	85.78%	1:0.9	1:0.8	83.75%	11.56%	72.19%	51.89%	48.11%	77.16%	47.70%
Consultants	6.06	8	1:0.8	12.50%	87.50%	1:0.5	1:0.8	75.00%	12.50%	62.50%	62.50%	37.50%		71.43%
Medical/ Dental, other	85.47	154	1:0.6	60.39%	39.61%	1:0.5	1:0.6	55.19%	34.42%	20.78%	27.92%	72.08%	24.73%	32.79%
Registrars	8.46	9	1:1	77.78%	66.67%	1:1	1:0.9	55.56%	22.22%	33.33%	133.33%	11.11%	100.00%	83.33%
SHO/ Interns	18.8	19	1:1	42.11%	57.89%	1:1	1:1	10.53%	10.53%		100.00%		100.00%	100.00%
Registrars	4	4	1:1	175.00%	150.00%	1:1	1:0.9	125.00%	50.00%	75.00%	300.00%	25.00%	100.00%	83.33%
Medical & Dental	123	194	1:0.6	56.19%	43.81%	1:0.6	1:0.7	50.52%	29.90%	20.62%	40.72%	59.28%	34.86%	48.24%
Nurse/ Midwife Specialist & AN/MP	47.22	49	1:1	16.33%	175.51%	1:0.9	1:1	171.43%	14.29%	157.14%	181.63%	10.20%	100.00%	94.19%
Nurse/ Midwife Manager	549.92	585	1:0.9	10.09%	128.03%	1:1	1:0.9	134.87%	9.91%	124.96%	119.32%	18.80%	93.22%	85.85%
Nurse/ Midwife Specialist & AN/MP	43.64	45	1:1	17.78%	191.11%	1:0.9	1:1	186.67%	15.56%	171.11%	197.78%	11.11%	100.00%	94.19%
Nurse/ Midwife Manager	217.13	223	1:0.9	26.46%	335.87%	1:1	1:0.9	353.81%	26.01%	327.80%	313.00%	49.33%	93.22%	85.85%
Nursing/ Midwifery other	2.88	3	1:1		100.00%	1:	1:1	100.00%		100.00%	100.00%			100.00%
Nursing/ Midwifery Student	2	2	1:1	50.00%	50.00%	1:1	1:1	100.00%	50.00%	50.00%	100.00%		100.00%	100.00%
Public Health Nurse	11.03	13	1:0.8		100.00%	1:	1:0.8	100.00%		100.00%	53.85%	46.15%		53.85%
Staff Nurse/ Staff Midwife	2,713.58	3,084	1:0.9	8.98%	91.02%	1:0.9	1:0.9	86.09%	7.65%	78.44%	67.51%	32.49%	90.97%	65.19%
Nursing & Midwifery	3,587	4,004	1:0.9	8.62%	91.38%	1:1	1:0.9	88.56%	7.54%	81.02%	71.98%	28.05%	91.59%	70.10%
Health Science/ Diagnostics	0.95	1	1:0.6	200.00%	600.00%	1:0.7	1:0.5	600.00%	200.00%	400.00%	200.00%	600.00%	50.00%	16.67%
Therapy Professions	156.1	178	1:0.9	23.60%	195.51%	1:0.9	1:0.9	195.51%	21.35%	174.16%	169.66%	49.44%	90.48%	75.86%
H&SC, Other	12.94	14	1:0.9	14.29%	107.14%	1:0.6	1:0.9	121.43%	14.29%	107.14%	92.86%	28.57%	50.00%	80.00%
Pharmacy	19.55	28	1:0.7	17.86%	82.14%	1:0.5	1:0.7	71.43%	14.29%	57.14%	50.00%	50.00%	40.00%	52.17%
Therapy Professions	148.06	167	1:0.9	25.15%	208.38%	1:0.9	1:0.9	208.38%	22.75%	185.63%	180.84%	52.69%	90.48%	75.86%
H&SC, Other	1.25	2	1:0.9	100.00%	750.00%	1:0.6	1:0.9	850.00%	100.00%	750.00%	650.00%	200.00%	50.00%	80.00%
Therapy Professions	3.96	6	1:0.9	700.00%	5,800.00%	1:0.9	1:0.9	5,800.00%	633.33%	5,166.67%	5,033.33%	1,466.67%	90.48%	75.86%
H&SC, Other	0.93	1	1:0.9	200.00%	1,500.00%	1:0.6	1:0.9	1,700.00%	200.00%	1,500.00%	1,300.00%	400.00%	50.00%	80.00%
Psychologists	3.85	5	1:0.8	20.00%	80.00%	1:0.5	1:0.8	80.00%		80.00%	60.00%	40.00%		75.00%
Health Science/ Diagnostics	3.59	6	1:0.6	33.33%	100.00%	1:0.7	1:0.5	100.00%	33.33%	66.67%	33.33%	100.00%	50.00%	16.67%
Social Care	1.37	3	1:0.5		100.00%	1:	1:0.5	100.00%		100.00%		100.00%		
Social Workers	59.61	66	1:0.9	10.61%	89.39%	1:1	1:0.9	89.39%	9.09%	80.30%	80.30%	19.70%	100.00%	77.97%
Therapy Professions	33.44	39	1:0.9	107.69%	892.31%	1:0.9	1:0.9	892.31%	97.44%	794.87%	774.36%	225.64%	90.48%	75.86%
Health Science/ Diagnostics	0.17	1	1:0.6	200.00%	600.00%	1:0.7	1:0.5	600.00%	200.00%	400.00%	200.00%	600.00%	50.00%	16.67%
Health & Social Care Professionals	446	517	1:0.9	11.41%	88.59%	1:0.9	1:0.9	88.39%	10.06%	78.34%	74.88%	25.15%	83.05%	73.80%
Management (VIII & above)	16.95	17	1:1	258.82%	494.12%	1:1	1:1	717.65%	235.29%	482.35%	741.18%	11.76%	97.73%	98.81%
Clerical (III & IV)	666.44	763	1:0.9	10.09%	89.91%	1:0.9	1:0.9	85.32%	8.13%	77.20%	70.12%	29.88%	94.81%	67.35%
Administrative/ Supervisory (V to VII)	279.99	293	1:1	17.06%	82.94%	1:1	1:0.9	94.54%	15.36%	79.18%	87.37%	12.63%	92.00%	86.42%
Management (VIII & above)	108.05	111	1:1	39.64%	75.68%	1:1	1:1	109.91%	36.04%	73.87%	113.51%	1.80%	97.73%	98.81%
Management & Administrative	1,071	1,184	1:0.9	14.44%	85.56%	1:1	1:0.9	88.68%	12.42%	76.27%	77.45%	22.55%	94.74%	74.53%
Support	676.99	764	1:0.9	36.65%	77.36%	1:1	1:0.9	100.39%	32.07%	68.32%	73.56%	40.45%	89.64%	52.62%
Maintenance/ Technical	89.6	93	1:1	103.23%	1.08%	1:1	1:1	98.92%	97.85%	1.08%	100.00%	4.30%	95.83%	100.00%
Support	98.51	107	1:0.9	261.68%	552.34%	1:1	1:0.9	716.82%	228.97%	487.85%	525.23%	288.79%	89.64%	52.62%
Maintenance/ Technical	4	4	1:1	2,400.00%	25.00%	1:1	1:1	2,300.00%	2,275.00%	25.00%	2,325.00%	100.00%	95.83%	100.00%
General Support	869	968	1:0.9	38.84%	61.16%	1:1	1:0.9	88.74%	34.71%	54.03%	67.67%	32.33%	91.22%	52.70%
Health Care Assistants	4,063.67	4,638	1:0.9	21.04%	78.96%	1:0.9	1:0.9	89.63%	18.43%	71.19%	60.00%	40.00%	84.43%	53.50%
Care, other	151.64	160	1:0.8	47.50%	106.88%	1:0.6	1:0.9	124.38%	25.00%	99.38%	106.25%	48.13%	53.95%	75.44%
Home Help	3,529.7	5,058	1:0.7	5.52%	94.48%	1:0.8	1:0.7	73.39%	3.02%	70.36%	16.82%	83.18%	25.81%	16.30%
Care, other	50.31	87	1:0.8	87.36%	196.55%	1:0.6	1:0.9	228.74%	45.98%	182.76%	195.40%	88.51%	53.95%	75.44%
Patient & Client Care	7,795	9,943	1:0.8	13.39%	86.61%	1:0.9	1:0.8	81.14%	10.54%	70.60%	38.26%	61.74%	70.40%	33.29%

MAY 2023	WTE MAY 2023	No. MAY 2023	WTE : No	% Male	% Female	Male WTE : No.	Female WTE : No	Perm Count %	Number Male %	Number Female %	Fulltime Count %	Part time Count %	FT Count Male %	FT Count Female %
Total	13,892	16,810	1:0.8	14.22%	85.78%	1:0.9	1:0.8	83.75%	11.56%	72.19%	51.89%	48.11%	77.16%	47.70%
CHO 1	2,117	2,486	1:0.9	12.87%	87.13%	1:0.9	1:0.8	76.31%	10.94%	65.37%	39.74%	60.26%	61.88%	36.47%
CHO 2	1,552	1,815	1:0.9	14.27%	85.73%	1:0.9	1:0.8	95.87%	13.44%	82.42%	53.39%	46.61%	85.33%	48.07%
CHO 3	1,286	1,567	1:0.8	12.76%	87.24%	1:1	1:0.8	91.77%	11.42%	80.34%	60.24%	39.76%	91.50%	55.67%
CHO 4	2,731	3,689	1:0.7	12.47%	87.53%	1:0.8	1:0.7	62.18%	6.21%	55.98%	35.29%	64.71%	61.74%	31.53%
CHO 5	1,703	2,078	1:0.8	10.83%	89.17%	1:0.9	1:0.8	97.69%	9.91%	87.78%	47.50%	52.50%	73.78%	44.31%
CHO 6	829	903	1:0.9	25.14%	74.86%	1:1	1:0.9	92.58%	23.26%	69.32%	78.74%	21.26%	89.43%	75.15%
CHO 7	1,006	1,135	1:0.9	17.18%	82.82%	1:0.9	1:0.9	88.72%	14.63%	74.10%	67.93%	32.07%	86.67%	64.04%
CHO 8	1,546	1,892	1:0.8	12.90%	87.10%	1:0.9	1:0.8	90.38%	10.99%	79.39%	56.61%	43.39%	76.64%	53.64%
CHO 9	1,017	1,131	1:0.9	20.78%	79.22%	1:0.9	1:0.9	90.19%	18.21%	71.97%	77.81%	22.19%	88.94%	74.89%
other Community Services	106	114	1:0.9	22.81%	77.19%	1:1	1:0.9	92.98%	20.18%	72.81%	87.72%	12.28%	96.15%	85.23%



Previous Month Summary

	% WTE change since APR 2023	WTE change since APR 2023	CHO 1	CHO 2	CHO 3	CHO 4	CHO 5	CHO 6	CHO 7	CHO 8	CHO 9	other Communi ty Services
Total	-0.6%	-77.3	+26.2	-26.8	+6.7	-135.6	+14.1	+5.8	+2.4	+27.2	-0.5	+3.3
Consultants	+0.3%	+0.0			-0.0	+0.0					+0.1	
Registrars	-0.4%	-0.1			+0.0	+0.0		+0.0			-0.1	
SHO/ Interns	-0.9%	-0.2			+0.0	+0.0			+0.0		-0.2	
Medical/ Dental, other	-0.2%	-0.2	+0.6	+0.0	-0.5	-0.6	-0.2	+0.5	+0.0	+0.0		
Medical & Dental	-0.3%	-0.4	+0.6	+0.0	-0.5	-0.6	-0.2	+0.5	+0.0	+0.0	-0.2	
Nurse/ Midwife Manager	-0.1%	-0.5	+0.1	-0.3	+0.8	-2.4	+2.5	+0.7	+1.3	-2.4	-0.8	+0.0
Nurse/ Midwife Specialist & AN/MP	+3.9%	+3.5	-1.0	+0.0	+0.3	+0.1	+0.1	+4.0	+0.0	-0.0	+0.0	
Staff Nurse/ Staff Midwife	-0.2%	-5.7	-6.5	-3.8	-1.8	+7.0	+3.6	-0.0	-1.1	-0.6	-2.4	
Public Health Nurse	+1.4%	+0.2	+0.0	+0.0		+0.2	+0.0			+0.0	+0.0	
Nursing/ Midwifery Student	-63.4%	-3.5					-3.5		+0.0			
Nursing/ Midwifery other	-0.3%	-0.0	+0.0							-0.0		
Nursing & Midwifery	-0.2%	-6.0	-7.4	-4.1	-0.8	+4.8	+2.7	+4.7	+0.1	-3.0	-3.1	+0.0
Therapy Professions	-0.7%	-2.4	-2.5	+0.1	+0.8	+3.3	+0.9	-0.5	+1.4	-1.5	-4.3	
Health Science/ Diagnostics	+9.8%	+0.4		+0.0	+0.0	+0.0				+0.4	+0.0	
Social Care	-13.3%	-0.2				+0.2					-0.4	
Social Workers	+1.4%	+0.9	-0.0	+0.0	+1.0	-0.1	+0.5	+0.0	+0.0	+0.5	-1.1	
Psychologists	-0.5%	-0.0	+0.0		-0.0		+0.0				+0.0	
Pharmacy	+2.5%	+0.5		+0.0	+0.0	+0.2	-0.1	+0.1	+0.0	+0.2	+0.0	
H&SC, Other	+4.6%	+0.7	+0.0			+0.0	+0.5	+0.3	-0.2		-0.0	
Health & Social Care Professionals	-0.1%	-0.3	-2.5	+0.1	+1.7	+3.5	+1.9	-0.1	+1.2	-0.4	-5.8	
Management (VIII & above)	+0.7%	+0.8	-0.4	+0.0	+0.0	-0.0	+0.1	+0.6	-1.5	+1.1	+1.0	-0.0
Administrative/ Supervisory (V to VII)	-0.5%	-1.3	+1.8	+0.1	-1.0	+0.5	-0.9	-1.0	-0.1	-1.1	-0.9	+1.3
Clerical (III & IV)	+0.9%	+6.2	+1.8	+1.2	+0.6	-3.0	+0.7	-0.9	+0.0	+0.4	+3.4	+2.0
Management & Administrative	+0.5%	+5.7	+3.2	+1.3	-0.4	-2.5	-0.1	-1.4	-1.6	+0.4	+3.6	+3.3



Support	+0.3%	+2.7	+0.8	+1.5	+0.3	-0.8	-0.1	-2.2	-1.3	+2.0	+2.3	
Maintenance/ Technical	+0.5%	+0.4	+0.0	+0.3	-0.0	+0.2	+0.0	+0.0	+0.0	-0.1	+0.0	
General Support	+0.4%	+3.1	+0.8	+1.8	+0.3	-0.6	-0.1	-2.2	-1.3	+2.0	+2.3	
Health Care Assistants	+0.4%	+16.6	-1.1	+3.3	+1.8	-2.2	+6.5	+4.3	+1.0	+0.3	+2.8	
Home Help	-2.8%	-102.1	+31.3	-29.5	+2.4	-139.4	+3.4		+1.9	+27.8		
Care, other	+3.1%	+6.0	+1.4	+0.2	+2.2	+1.3	-0.0	+0.0	+1.0	+0.0	-0.1	+0.0
Patient & Client Care	-1.0%	-79.4	+31.5	-26.0	+6.4	-140.3	+9.9	+4.3	+3.9	+28.1	+2.7	+0.0



Year on Year Summary

	% WTE change since MAY 2022	WTE change since MAY 2022	CHO 1	CHO 2	CHO 3	CHO 4	CHO 5	CHO 6	CHO 7	CHO 8	CHO 9	other Communi ty Services
Total	+1.4%	+190.0	+127.2	+36.5	+20.2	-213.8	+48.6	+24.6	+9.6	+101.8	+15.3	+19.9
Consultants	-22.9%	-1.8			-1.5	-0.2					-0.1	
Registrars	+17.7%	+1.9			+1.0	-1.1		+0.0			+2.0	
SHO/ Interns	+22.2%	+3.4			+0.5	+0.0			+0.0		+2.9	
Medical/ Dental, other	+0.7%	+0.6	+0.6	+0.4	-0.5	+1.4	-1.0	+1.0	+0.0	-0.2	-1.0	
Medical & Dental	+3.5%	+4.1	+0.6	+0.4	-0.5	+0.1	-1.0	+1.0	+0.0	-0.2	+3.8	
Nurse/ Midwife Manager	+3.2%	+24.0	-0.8	+3.7	+6.0	-3.5	+0.7	+4.8	+8.9	-1.1	+3.3	+2.0
Nurse/ Midwife Specialist & AN/MP	+74.6%	+38.8	+7.9	+3.5	+4.8	+4.0	+10.6	+5.2	+2.0	-0.8	+1.6	
Staff Nurse/ Staff Midwife	+0.7%	+19.6	+10.3	-3.0	+7.9	-16.3	+14.9	+5.4	-11.1	+12.4	-0.9	
Public Health Nurse	-5.3%	-0.6	+1.0	+0.0		-0.8	-0.9			+0.1	+0.0	
Nursing/ Midwifery Student	-32.7%	-1.0					+1.0		-2.0			
Nursing/ Midwifery other	-25.6%	-1.0	+0.0							-1.0		
Nursing & Midwifery	+2.3%	+79.9	+18.4	+4.3	+18.7	-16.5	+26.3	+15.4	-2.2	+9.6	+4.0	+2.0
Therapy Professions	-2.2%	-7.6	+1.6	+4.5	+3.8	-8.6	+3.0	+1.7	+6.0	-9.5	-10.0	
Health Science/ Diagnostics	+3.7%	+0.2		+0.2	+0.1	+0.0				-0.1	+0.0	
Social Care	-39.9%	-0.9				-0.3					-0.6	
Social Workers	-23.5%	-18.4	+1.4	-6.2	-5.8	-2.2	-3.3	+0.0	-1.6	+0.5	-1.2	
Psychologists	-22.5%	-1.1	+0.5		-0.0		+0.8	-0.5			-0.9	-1.0
Pharmacy	+8.3%	+1.5		+0.0	+0.0	+0.0	-0.1	-0.1	+0.0	+1.1	+0.5	
H&SC, Other	+279.9%	+11.1	+6.0			+0.9	+3.6	+1.0	+0.3	-0.7	+0.0	
Health & Social Care Professionals	-3.3%	-15.2	+9.5	-1.5	-2.0	-10.2	+4.0	+2.1	+4.6	-8.6	-12.1	-1.0
Management (VIII & above)	+14.2%	+15.6	+1.0	+2.3	+0.3	+2.4	+1.0	+1.1	-3.3	+2.9	+1.2	+6.6
Administrative/ Supervisory (V to VII)	+22.1%	+50.7	+7.2	+2.4	-7.0	+13.7	+4.4	+2.1	-0.1	+18.3	+4.1	+5.4
Clerical (III & IV)	+10.9%	+65.3	+1.8	+9.9	+7.3	-0.6	+17.0	+5.4	+2.4	+13.5	+1.4	+7.1
Management & Administrative	+14.0%	+131.5	+10.0	+14.6	+0.7	+15.5	+22.5	+8.6	-1.0	+34.8	+6.8	+19.1
Support	-1.4%	-10.9	+6.2	+1.3	-3.9	-7.2	-2.3	-5.7	-5.7	+1.3	+5.1	
Maintenance/ Technical	-0.2%	-0.2	-0.9	+2.8	-0.9	-0.0	-0.0	-1.0	+0.0	-0.2	+0.0	



General Support	-1.3%	-11.1	+5.3	+4.1	-4.8	-7.2	-2.3	-6.7	-5.7	+1.2	+5.1	
Health Care Assistants	-0.6%	-25.8	-4.1	+21.7	-9.1	-61.9	+15.3	+3.0	-1.1	+6.2	+4.4	-0.3
Home Help	+0.0%	+0.2	+86.4	-3.3	+1.8	-131.7	-15.7		+14.0	+48.7		
Care, other	+15.0%	+26.4	+1.2	-3.7	+15.5	-2.0	-0.4	+1.2	+1.0	+10.2	+3.3	+0.0
Patient & Client Care	+0.0%	+0.8	+83.4	+14.8	+8.2	-195.5	-0.8	+4.2	+13.9	+65.1	+7.8	-0.3



Year to Date Summary

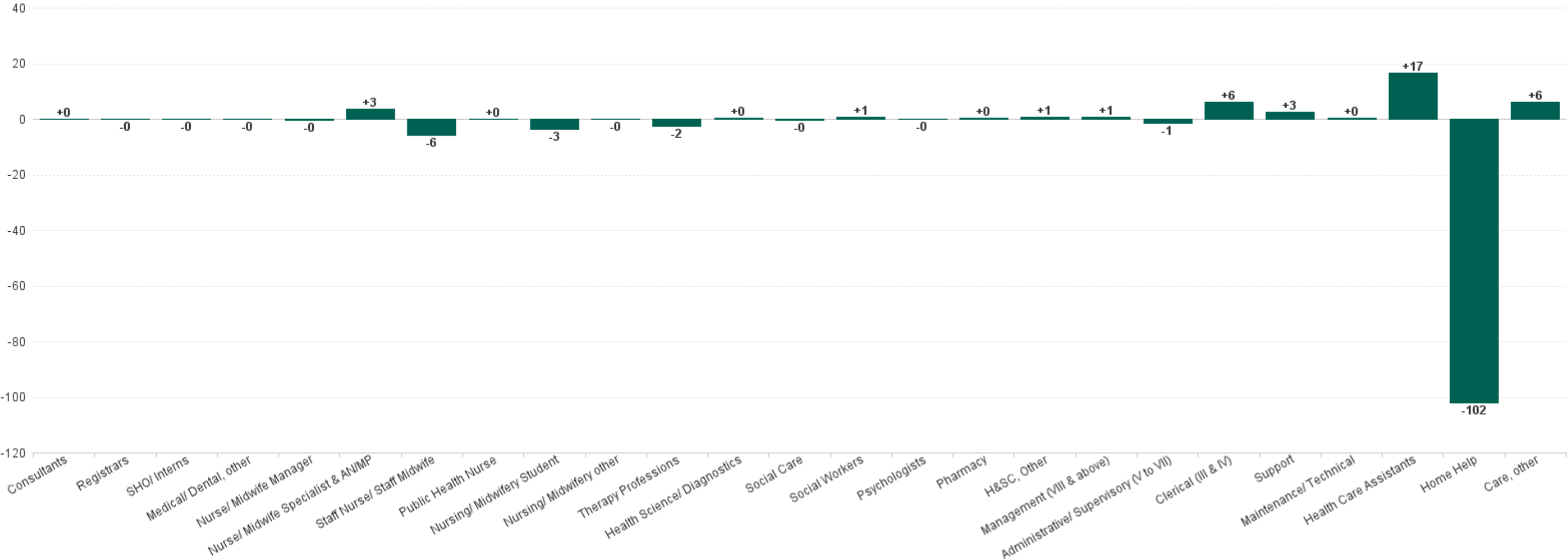
	% WTE change since DEC 2022	WTE change since DEC 2022	CHO 1	CHO 2	CHO 3	CHO 4	CHO 5	CHO 6	CHO 7	CHO 8	CHO 9	other Communi ty Services
Total	-0.4%	-55.5	+29.5	-30.8	+22.2	-269.3	+62.0	+16.0	+7.3	+56.5	+40.4	+10.7
Consultants	-7.6%	-0.5			-0.5	+0.0					+0.0	
Registrars	+31.2%	+3.0			+0.0	+1.0		+0.0			+2.0	
SHO/ Interns	+56.4%	+6.8			+0.0	+1.0			+0.0		+5.7	
Medical/ Dental, other	-13.1%	-12.9	-11.0	+0.2	-0.5	-1.9	-0.6	+0.9	+0.0	+0.0		
Medical & Dental	-2.9%	-3.6	-11.0	+0.2	-0.9	+0.1	-0.6	+0.9	+0.0	+0.0	+7.7	
Nurse/ Midwife Manager	+4.0%	+29.5	+2.0	-1.8	+2.2	+1.6	+7.4	+4.7	+11.2	-4.8	+7.0	+0.0
Nurse/ Midwife Specialist & AN/MP	+22.1%	+16.4	+1.5	+3.0	-0.1	+2.4	+2.0	+5.2	+0.2	+0.0	+2.1	
Staff Nurse/ Staff Midwife	-0.9%	-23.7	-7.2	-1.8	+7.5	-53.3	+29.0	-1.3	-8.3	+4.4	+7.4	
Public Health Nurse	-12.0%	-1.5	+0.3	+0.0		-1.8	+0.0			-0.0	+0.0	
Nursing/ Midwifery Student	+104.1%	+1.0					+1.0		+0.0			
Nursing/ Midwifery other	-4.0%	-0.1	+0.0							-0.1		
Nursing & Midwifery	+0.6%	+21.7	-3.4	-0.6	+9.5	-51.0	+39.4	+8.7	+3.1	-0.5	+16.5	+0.0
Therapy Professions	+0.4%	+1.5	-2.0	+2.4	+2.4	-1.3	+7.7	-0.2	+1.8	-7.2	-2.0	
Health Science/ Diagnostics	-0.2%	-0.0		+0.0	+0.0	+0.0				-0.1	+0.0	
Social Care	-39.4%	-0.9				-0.3					-0.6	
Social Workers	-13.8%	-9.6	-0.2	-10.1	+1.0	+0.0	+0.0	+0.0	-0.9	+0.5	+0.1	
Psychologists	+10.0%	+0.4	+0.5		+0.1		+0.1				-0.3	
Pharmacy	+0.1%	+0.0		-0.0	+0.0	-0.1	-0.0	-0.1	+0.0	+0.2	+0.0	
H&SC, Other	+347.3%	+11.7	+6.0			+0.9	+3.6	+1.0	+0.3		+0.0	



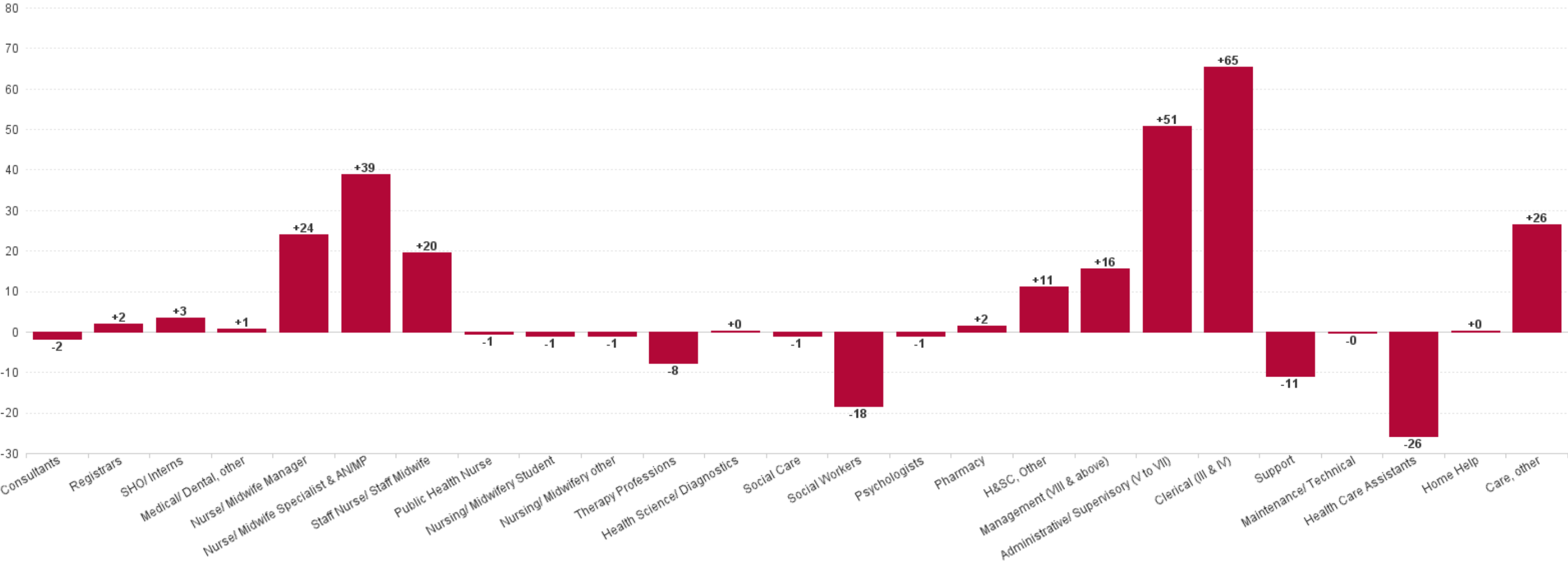
Health & Social Care Professionals	+0.7%	+3.2	+4.3	-7.7	+3.5	-0.7	+11.3	+0.7	+1.2	-6.5	-2.9	
Management (VIII & above)	+7.4%	+8.7	-0.2	+0.0	+0.3	+3.0	+1.1	+2.2	-6.3	+1.9	+2.1	+4.6
Administrative/ Supervisory (V to VII)	+6.5%	+17.2	+2.5	+1.7	+0.0	+12.0	+0.4	+0.3	-1.5	+4.4	-1.6	-1.0
Clerical (III & IV)	+5.6%	+35.1	-1.9	+6.4	+2.4	-5.3	+8.0	+0.2	-0.8	+12.5	+6.3	+7.3
Management & Administrative	+6.0%	+61.0	+0.4	+8.1	+2.7	+9.7	+9.5	+2.7	-8.6	+18.7	+6.8	+10.9
Support	+2.5%	+19.0	+7.7	+2.0	+6.7	-4.2	-1.2	-0.5	+1.8	+3.2	+3.4	
Maintenance/ Technical	-0.5%	-0.5	-1.7	+1.0	+0.2	-0.0	-0.2	-0.4	+0.0	+0.6	+0.0	
General Support	+2.2%	+18.5	+6.0	+3.0	+6.9	-4.2	-1.3	-0.9	+1.8	+3.9	+3.4	
Health Care Assistants	-0.2%	-8.7	+4.4	+3.4	-2.6	-60.8	+24.5	+3.8	+4.1	+8.4	+6.5	-0.3
Home Help	-4.3%	-157.2	+27.7	-36.5	-2.3	-163.4	-21.9		+5.7	+33.4		
Care, other	+5.1%	+9.7	+1.2	-0.8	+5.4	+1.1	+1.2	+0.1	+0.0	-0.9	+2.4	+0.0
Patient & Client Care	-2.0%	-156.2	+33.2	-33.8	+0.5	-223.1	+3.8	+3.9	+9.8	+40.9	+8.9	-0.3



Previous Month Summary Chart: Change since APR 2023



Previous Year Summary Chart: Change since MAY 2022



YTD Summary Chart: Change since DEC 2022

