

# Social Care Older Persons Services Employment Report: August 2022

## Employment by Staff Group

Aug 2022	WTE Dec 2019	WTE Dec 2020	WTE Jul 2022	WTE Aug 2022	WTE change since Jul 22	WTE change since Dec 20	% change since Dec 20	WTE change since Dec 19	% change since Dec 19	No. Aug 2022
<b>Overall</b>	<b>13,233</b>	<b>13,415</b>	<b>13,749</b>	<b>13,769</b>	<b>+20</b>	<b>+354</b>	<b>+2.6%</b>	<b>+536</b>	<b>+4.1%</b>	<b>16,616</b>
Consultants	4	4	7	6	-1	+2	+39.1%	+3	+70.8%	8
Registrars	10	9	11	8	-3	-1	-6.0%	-1	-12.6%	10
SHO/ Interns	15	14	14	12	-2	-2	-13.2%	-3	-20.9%	12
Medical/ Dental, other	96	104	85	87	+2	-17	-16.4%	-10	-10.0%	154
<b>Medical &amp; Dental</b>	<b>125</b>	<b>131</b>	<b>117</b>	<b>113</b>	<b>-4</b>	<b>-18</b>	<b>-13.5%</b>	<b>-11</b>	<b>-9.2%</b>	<b>184</b>
Nurse/ Midwife Manager	709	746	735	732	-2	-14	-1.9%	+23	+3.2%	778
Nurse/ Midwife Specialist & AN/MP	26	38	54	57	+3	+19	+49.5%	+31	+115.8%	61
Staff Nurse/ Staff Midwife	2,576	2,624	2,709	2,716	+6	+92	+3.5%	+139	+5.4%	3,098
Public Health Nurse	13	13	13	12	-0	-1	-7.7%	-1	-7.5%	15
Post-registration Nurse/ Midwife Student	1						-100.0%	-1	-100.0%	
Nursing/ Midwifery awaiting registration	1	1	2	2	-1	+0	+11.1%	+1	+50.0%	2
Nursing/ Midwifery Student	2	1	2	2	-1	+0	+11.1%	-1	-25.0%	2
Nursing/ Midwifery other	1	4	4	4	+0	-0	-2.3%	+3	+289.0%	4
<b>Nursing &amp; Midwifery</b>	<b>3,328</b>	<b>3,427</b>	<b>3,517</b>	<b>3,522</b>	<b>+6</b>	<b>+95</b>	<b>+2.8%</b>	<b>+194</b>	<b>+5.8%</b>	<b>3,958</b>
Therapy Professions	288	295	339	333	-6	+37	+12.6%	+44	+15.4%	382
Health Science/ Diagnostics	6	5	4	4	+0	-1	-24.4%	-2	-36.8%	8
Social Care	3	3	2	3	+0	-0	-8.0%	-0	-8.0%	4
Social Workers	98	100	75	75	-0	-25	-24.8%	-23	-23.7%	84
Psychologists	2	1	5	6	+1	+5	+428.2%	+4	+176.7%	7
Pharmacy	15	17	20	19	-1	+2	+11.0%	+4	+25.3%	29
H&SC, Other	1	2	4	4	-0	+2	+148.7%	+2	+181.6%	5
<b>Health &amp; Social Care Professionals</b>	<b>414</b>	<b>423</b>	<b>449</b>	<b>443</b>	<b>-6</b>	<b>+20</b>	<b>+4.7%</b>	<b>+29</b>	<b>+6.9%</b>	<b>519</b>
Management (VIII & above)	75	79	108	109	+1	+30	+38.4%	+34	+46.1%	111
Administrative/ Supervisory (V to VII)	165	176	242	249	+7	+73	+41.8%	+84	+51.1%	264
Clerical (III & IV)	571	587	611	613	+2	+26	+4.4%	+42	+7.4%	699
<b>Management &amp; Administrative</b>	<b>811</b>	<b>842</b>	<b>962</b>	<b>972</b>	<b>+10</b>	<b>+130</b>	<b>+15.4%</b>	<b>+161</b>	<b>+19.8%</b>	<b>1,074</b>
Support	829	801	779	774	-5	-27	-3.4%	-55	-6.6%	872
Maintenance/ Technical	98	95	95	94	-1	-1	-1.0%	-5	-4.7%	98
<b>General Support</b>	<b>928</b>	<b>896</b>	<b>874</b>	<b>868</b>	<b>-6</b>	<b>-28</b>	<b>-3.1%</b>	<b>-59</b>	<b>-6.4%</b>	<b>970</b>
Health Care Assistants	4,043	4,118	4,103	4,100	-3	-18	-0.4%	+57	+1.4%	4,678
Home Help	3,442	3,431	3,550	3,574	+24	+143	+4.2%	+132	+3.8%	5,016
Care, other	142	147	178	177	-1	+30	+20.6%	+35	+24.6%	217
<b>Patient &amp; Client Care</b>	<b>7,627</b>	<b>7,696</b>	<b>7,831</b>	<b>7,851</b>	<b>+20</b>	<b>+155</b>	<b>+2.0%</b>	<b>+224</b>	<b>+2.9%</b>	<b>9,911</b>

## Social Care Older Persons Services Employment by Administration (HSE / S38): August 2022

Aug 2022	WTE Dec 2019	WTE Dec 2020	WTE Jul 2022	WTE Aug 2022	WTE change since Jul 22	WTE change since Dec 20	% change since Dec 20	WTE change since Dec 19	% change since Dec 19	No. Aug 2022
<b>Total</b>	<b>13,233</b>	<b>13,415</b>	<b>13,749</b>	<b>13,769</b>	<b>+20</b>	<b>+354</b>	<b>+2.6%</b>	<b>+536</b>	<b>+4.1%</b>	<b>16,616</b>
HSE	12,525	12,673	13,012	13,040	+29	+367	+2.9%	+516	+4.1%	15,811
Section 38 Voluntary Agencies	708	742	738	729	-9	-13	-1.8%	+21	+2.9%	805

### Employment by Staff Group

Aug 2022	WTE Dec 2019	WTE Dec 2020	WTE Jul 2022	WTE Aug 2022	WTE change since Jul 22	WTE change since Dec 20	% change since Dec 20	WTE change since Dec 19	% change since Dec 19	No. Aug 2022
<b>Health Service Executive</b>	<b>12,525</b>	<b>12,673</b>	<b>13,012</b>	<b>13,040</b>	<b>+29</b>	<b>+367</b>	<b>+2.9%</b>	<b>+516</b>	<b>+4.1%</b>	<b>15,811</b>
Consultants	3	3	6	5	-0	+2	+82.6%	+2	+71.7%	6
Registrars	7	6	7	5	-2	-1	-9.1%	-1	-18.4%	7
SHO/ Interns	10	10	8	8	-0	-2	-18.7%	-2	-21.4%	8
Medical/ Dental, other	94	102	84	86	+2	-16	-15.7%	-9	-9.1%	153
<b>Medical &amp; Dental</b>	<b>114</b>	<b>120</b>	<b>105</b>	<b>104</b>	<b>-1</b>	<b>-16</b>	<b>-13.3%</b>	<b>-10</b>	<b>-8.6%</b>	<b>174</b>
Nurse/ Midwife Manager	655	697	680	678	-1	-19	-2.7%	+23	+3.5%	720
Nurse/ Midwife Specialist & AN/MP	26	38	54	57	+3	+19	+49.5%	+31	+115.8%	61
Staff Nurse/ Staff Midwife	2,401	2,438	2,538	2,545	+7	+107	+4.4%	+144	+6.0%	2,910
Public Health Nurse	13	13	13	12	-0	-1	-7.7%	-1	-7.5%	15
Post-registration Nurse/ Midwife Student	1						-100.0%	-1	-100.0%	
Nursing/ Midwifery awaiting registration	1	1	2	2	-1	+0	+11.1%	+1	+50.0%	2
Nursing/ Midwifery Student	2	1	2	2	-1	+0	+11.1%	-1	-25.0%	2
Nursing Education/Clinical	1	4	4	4	+0	-0	-2.3%	+3	+289.0%	4
Nursing/ Midwifery other	1	4	4	4	+0	-0	-2.3%	+3	+289.0%	4
<b>Nursing &amp; Midwifery</b>	<b>3,099</b>	<b>3,192</b>	<b>3,290</b>	<b>3,298</b>	<b>+8</b>	<b>+106</b>	<b>+3.3%</b>	<b>+199</b>	<b>+6.4%</b>	<b>3,712</b>
Therapy Professions	231	223	268	261	-8	+37	+16.7%	+30	+13.1%	301
Health Science/ Diagnostics	5	4	3	3	+0	-1	-30.3%	-2	-44.0%	6
Social Care	3	3	2	3	+0	-0	-8.0%	-0	-8.0%	4
Social Workers	84	84	61	61	-0	-24	-27.9%	-24	-28.2%	67
Psychologists	2	1	4	5	+1	+5	+785.0%	+4	+231.9%	6
Pharmacy	11	12	14	14	-0	+2	+19.3%	+3	+32.6%	21
H&SC, Other	1	2	4	4	-0	+2	+148.7%	+2	+181.6%	5
<b>Health &amp; Social Care Professionals</b>	<b>336</b>	<b>328</b>	<b>356</b>	<b>350</b>	<b>-7</b>	<b>+22</b>	<b>+6.6%</b>	<b>+13</b>	<b>+4.0%</b>	<b>410</b>
Management (VIII & above)	73	75	104	105	+1	+30	+40.5%	+32	+44.6%	107
Administrative/ Supervisory (V to VII)	146	157	218	225	+8	+68	+43.2%	+80	+54.9%	239
Clerical (III & IV)	544	557	582	586	+4	+29	+5.3%	+42	+7.7%	663
<b>Management &amp; Administrative</b>	<b>762</b>	<b>789</b>	<b>904</b>	<b>916</b>	<b>+13</b>	<b>+128</b>	<b>+16.2%</b>	<b>+154</b>	<b>+20.2%</b>	<b>1,009</b>
Support	726	694	669	664	-5	-30	-4.3%	-62	-8.6%	753
Maintenance/ Technical	88	84	85	84	-1	+0	+0.3%	-4	-4.9%	88
<b>General Support</b>	<b>815</b>	<b>778</b>	<b>754</b>	<b>748</b>	<b>-5</b>	<b>-29</b>	<b>-3.8%</b>	<b>-67</b>	<b>-8.2%</b>	<b>841</b>
Health Care Assistants	3,820	3,892	3,879	3,876	-3	-16	-0.4%	+56	+1.5%	4,439
Home Help	3,442	3,431	3,550	3,574	+24	+143	+4.2%	+132	+3.8%	5,016
Care, other	136	142	174	173	-1	+31	+21.8%	+37	+27.1%	210
<b>Patient &amp; Client Care</b>	<b>7,398</b>	<b>7,466</b>	<b>7,603</b>	<b>7,623</b>	<b>+21</b>	<b>+158</b>	<b>+2.1%</b>	<b>+225</b>	<b>+3.0%</b>	<b>9,665</b>

## Employment by Staff Group

Aug 2022	WTE Dec 2019	WTE Dec 2020	WTE Jul 2022	WTE Aug 2022	WTE change since Jul 22	WTE change since Dec 20	% change since Dec 20	WTE change since Dec 19	% change since Dec 19	No. Aug 2022
<b>Section 38 Voluntary Agencies</b>	<b>708</b>	<b>742</b>	<b>738</b>	<b>729</b>	<b>-9</b>	<b>-13</b>	<b>-1.8%</b>	<b>+21</b>	<b>+2.9%</b>	<b>805</b>
Consultants	1	2	2	1	-1	-1	-37.5%	+0	+66.7%	2
Registrars	3	3	4	3	-1					3
SHO/ Interns	5	4	6	4	-2			-1	-20.0%	4
Medical/ Dental, other	2	2	1	1		-1	-50.0%	-1	-50.0%	1
<b>Medical &amp; Dental</b>	<b>11</b>	<b>11</b>	<b>13</b>	<b>9</b>	<b>-4</b>	<b>-2</b>	<b>-15.1%</b>	<b>-2</b>	<b>-15.1%</b>	<b>10</b>
Nurse/ Midwife Manager	54	49	55	54	-1	+4	+8.9%	+0	+0.1%	58
Staff Nurse/ Staff Midwife	176	186	172	171	-1	-15	-8.2%	-5	-3.0%	188
<b>Nursing &amp; Midwifery</b>	<b>230</b>	<b>235</b>	<b>227</b>	<b>224</b>	<b>-2</b>	<b>-11</b>	<b>-4.6%</b>	<b>-5</b>	<b>-2.2%</b>	<b>246</b>
Therapy Professions	58	72	71	72	+1	-0	-0.1%	+14	+24.7%	81
Health Science/ Diagnostics	1	1	1	1						2
Social Workers	14	16	14	14	-0	-1	-7.8%	+1	+3.6%	17
Psychologists	1	1	1	1						1
Pharmacy	5	5	5	5	-0	-0	-7.0%	+0	+8.4%	8
<b>Health &amp; Social Care Professionals</b>	<b>78</b>	<b>95</b>	<b>92</b>	<b>93</b>	<b>+1</b>	<b>-2</b>	<b>-1.8%</b>	<b>+15</b>	<b>+19.5%</b>	<b>109</b>
Management (VIII & above)	2	4	4	4				+2	+100.0%	4
Administrative/ Supervisory (V to VII)	19	18	25	24	-1	+5	+29.6%	+4	+23.0%	25
Clerical (III & IV)	27	31	30	27	-2	-3	-10.6%	+0	+0.2%	36
<b>Management &amp; Administrative</b>	<b>49</b>	<b>53</b>	<b>58</b>	<b>55</b>	<b>-3</b>	<b>+2</b>	<b>+4.2%</b>	<b>+7</b>	<b>+13.4%</b>	<b>65</b>
Support	103	107	110	110	-0	+3	+2.6%	+7	+7.1%	119
Maintenance/ Technical	10	11	10	10	-0	-1	-11.4%	-0	-2.5%	10
<b>General Support</b>	<b>113</b>	<b>118</b>	<b>120</b>	<b>120</b>	<b>-1</b>	<b>+1</b>	<b>+1.3%</b>	<b>+7</b>	<b>+6.3%</b>	<b>129</b>
Health Care Assistants	223	226	224	224	+0	-2	-0.9%	+1	+0.2%	239
Care, other	5	4	4	3	-1	-1	-19.2%	-2	-36.5%	7
<b>Patient &amp; Client Care</b>	<b>229</b>	<b>230</b>	<b>228</b>	<b>227</b>	<b>-1</b>	<b>-3</b>	<b>-1.2%</b>	<b>-1</b>	<b>-0.6%</b>	<b>246</b>

## Social Care Older Persons Services Employment by CHO: Aug 2022

Aug 2022	WTE Dec 2019	WTE Dec 2020	WTE Jul 2022	WTE Aug 2022	WTE change since Jul 22	WTE change since Dec 20	% change since Dec 20	WTE change since Dec 19	% change since Dec 19	No. Aug 2022
<b>Overall</b>	<b>13,233</b>	<b>13,415</b>	<b>13,749</b>	<b>13,769</b>	<b>+20</b>	<b>+354</b>	<b>+2.6%</b>	<b>+536</b>	<b>+4.1%</b>	<b>16,616</b>
CHO 1	1,836	1,918	2,009	2,002	-7	+84	+4.4%	+166	+9.1%	2,391
CHO 2	1,606	1,590	1,526	1,539	+13	-51	-3.2%	-67	-4.2%	1,804
CHO 3	974	1,029	1,256	1,254	-3	+225	+21.9%	+280	+28.7%	1,546
CHO 4	2,919	2,930	2,925	2,931	+6	+1	+0.0%	+12	+0.4%	3,781
CHO 5	1,647	1,650	1,666	1,673	+8	+23	+1.4%	+27	+1.6%	2,013
CHO 6	823	804	821	817	-4	+13	+1.6%	-7	-0.8%	894
CHO 7	996	1,021	1,002	1,002	+1	-19	-1.9%	+7	+0.7%	1,146
CHO 8	1,488	1,484	1,473	1,475	+2	-8	-0.6%	-13	-0.9%	1,841
CHO 9	870	914	987	988	+1	+73	+8.0%	+118	+13.6%	1,105
other Community Services	73	75	85	87	+3	+12	+16.2%	+14	+18.9%	95

## Social Care Older Persons Services Employment by CHO etc. Aug 2022

### CHO 1

Aug 2022	WTE Dec 2019	WTE Dec 2020	WTE Jul 2022	WTE Aug 2022	WTE change since Jul 22	WTE change since Dec 20	% change since Dec 20	WTE change since Dec 19	% change since Dec 19	No. Aug 2022
<b>Overall</b>	<b>1,836</b>	<b>1,918</b>	<b>2,009</b>	<b>2,002</b>	<b>-7</b>	<b>+84</b>	<b>+4.4%</b>	<b>+166</b>	<b>+9.1%</b>	<b>2,391</b>
Medical/ Dental, other	30	32	15	15	-0	-17	-53.7%	-15	-49.5%	40
<b>Medical &amp; Dental</b>	<b>30</b>	<b>32</b>	<b>15</b>	<b>15</b>	<b>-0</b>	<b>-17</b>	<b>-53.7%</b>	<b>-15</b>	<b>-49.5%</b>	<b>40</b>
Nurse/ Midwife Manager	91	88	94	95	+1	+7	+7.9%	+4	+4.0%	100
Nurse/ Midwife Specialist & AN/MP	7	9	12	13	+1	+4	+41.1%	+6	+85.4%	14
Staff Nurse/ Staff Midwife	307	315	324	320	-4	+5	+1.7%	+13	+4.1%	365
Nursing/ Midwifery other		1	1	1	0			+1	-100.0%	1
<b>Nursing &amp; Midwifery</b>	<b>405</b>	<b>412</b>	<b>431</b>	<b>428</b>	<b>-2</b>	<b>+16</b>	<b>+3.8%</b>	<b>+23</b>	<b>+5.7%</b>	<b>480</b>
Therapy Professions	11	12	23	25	+1	+12	+98.6%	+14	+122.7%	27
Health Science/ Diagnostics	1	2				-2	-100.0%	-1	-100.0%	
Social Workers	18	15	7	8	+1	-7	-47.1%	-10	-54.6%	9
<b>Health &amp; Social Care Professionals</b>	<b>30</b>	<b>29</b>	<b>30</b>	<b>33</b>	<b>+2</b>	<b>+4</b>	<b>+12.4%</b>	<b>+3</b>	<b>+9.5%</b>	<b>36</b>
Management (VIII & above)	8	8	8	9	+1	+1	+11.8%	+1	+12.6%	9
Administrative/ Supervisory (V to VII)	14	15	22	23	+1	+8	+49.9%	+9	+60.8%	24
Clerical (III & IV)	85	88	83	86	+3	-2	-2.6%	+1	+0.7%	96
<b>Management &amp; Administrative</b>	<b>107</b>	<b>111</b>	<b>113</b>	<b>118</b>	<b>+5</b>	<b>+6</b>	<b>+5.7%</b>	<b>+10</b>	<b>+9.6%</b>	<b>129</b>
Support	123	119	117	117	-0	-2	-1.6%	-6	-4.8%	140
Maintenance/ Technical	7	7	7	7	-0	-0	-5.3%	-0	-5.3%	7
<b>General Support</b>	<b>130</b>	<b>126</b>	<b>124</b>	<b>123</b>	<b>-0</b>	<b>-2</b>	<b>-1.8%</b>	<b>-6</b>	<b>-4.8%</b>	<b>147</b>
Health Care Assistants	563	580	570	567	-3	-13	-2.3%	+3	+0.6%	665
Home Help	543	604	702	695	-7	+91	+15.0%	+152	+28.1%	865
Care, other	28	22	24	23	-1	+1	+4.3%	-5	-16.2%	29
<b>Patient &amp; Client Care</b>	<b>1,134</b>	<b>1,207</b>	<b>1,296</b>	<b>1,285</b>	<b>-11</b>	<b>+78</b>	<b>+6.5%</b>	<b>+151</b>	<b>+13.3%</b>	<b>1,559</b>

## CHO 2

Aug 2022	WTE Dec 2019	WTE Dec 2020	WTE Jul 2022	WTE Aug 2022	WTE change since Jul 22	WTE change since Dec 20	% change since Dec 20	WTE change since Dec 19	% change since Dec 19	No. Aug 2022
<b>Overall</b>	<b>1,606</b>	<b>1,590</b>	<b>1,526</b>	<b>1,539</b>	<b>+13</b>	<b>-51</b>	<b>-3.2%</b>	<b>-67</b>	<b>-4.2%</b>	<b>1,804</b>
Medical/ Dental, other	11	11	9	9	+0	-1	-11.4%	-2	-15.4%	10
<b>Medical &amp; Dental</b>	<b>11</b>	<b>11</b>	<b>9</b>	<b>9</b>		<b>-1</b>	<b>-11.4%</b>	<b>-2</b>	<b>-15.4%</b>	<b>10</b>
Nurse/ Midwife Manager	58	66	69	68	-1	+1	+2.0%	+9	+16.2%	73
Nurse/ Midwife Specialist & AN/MP	2	2	7	7	0	+5	+250.0%	+5	+250.0%	7
Staff Nurse/ Staff Midwife	301	305	306	307	+1	+2	+0.8%	+6	+2.1%	351
Public Health Nurse	1	1	1	1	-0	-0	-10.0%	+0	+12.5%	1
<b>Nursing &amp; Midwifery</b>	<b>362</b>	<b>374</b>	<b>383</b>	<b>383</b>	<b>-0</b>	<b>+9</b>	<b>+2.3%</b>	<b>+21</b>	<b>+5.8%</b>	<b>432</b>
Therapy Professions	26	25	26	24	-2	-1	-5.3%	-2	-6.5%	27
Health Science/ Diagnostics	1	1	1	1	+0	+0	+5.0%	+0	+5.0%	1
Social Workers	10	10	9	9	-1	-2	-14.9%	-1	-13.3%	10
Pharmacy	1	1	1	1	+0	-1	-48.5%	-0	-47.5%	1
H&SC, Other	0						-100.0%		-100.0%	
<b>Health &amp; Social Care Professionals</b>	<b>37</b>	<b>37</b>	<b>36</b>	<b>34</b>	<b>-2</b>	<b>-3</b>	<b>-9.0%</b>	<b>-3</b>	<b>-9.3%</b>	<b>39</b>
Management (VIII & above)	2	2	5	6	+0	+4	+198.0%	+4	+198.0%	6
Administrative/ Supervisory (V to VII)	8	9	14	14	+1	+5	+58.0%	+7	+89.6%	16
Clerical (III & IV)	72	66	62	61	-1	-4	-6.7%	-10	-14.1%	71
<b>Management &amp; Administrative</b>	<b>81</b>	<b>77</b>	<b>81</b>	<b>82</b>	<b>+1</b>	<b>+5</b>	<b>+6.3%</b>	<b>+1</b>	<b>+0.9%</b>	<b>93</b>
Support	56	56	51	52	+1	-4	-7.8%	-4	-7.7%	58
Maintenance/ Technical	19	19	19	18	-0	-1	-5.8%	-1	-3.3%	19
<b>General Support</b>	<b>75</b>	<b>76</b>	<b>69</b>	<b>70</b>	<b>+1</b>	<b>-6</b>	<b>-7.3%</b>	<b>-5</b>	<b>-6.6%</b>	<b>77</b>
Health Care Assistants	515	526	515	515	+1	-10	-2.0%	+0	+0.1%	574
Home Help	499	456	385	400	+15	-57	-12.4%	-100	-20.0%	531
Care, other	24	33	47	46	-1	+13	+40.6%	+21	+87.2%	48
<b>Patient &amp; Client Care</b>	<b>1,039</b>	<b>1,015</b>	<b>946</b>	<b>961</b>	<b>+14</b>	<b>-54</b>	<b>-5.3%</b>	<b>-78</b>	<b>-7.5%</b>	<b>1,153</b>

## CHO 3

Aug 2022	WTE Dec 2019	WTE Dec 2020	WTE Jul 2022	WTE Aug 2022	WTE change since Jul 22	WTE change since Dec 20	% change since Dec 20	WTE change since Dec 19	% change since Dec 19	No. Aug 2022
<b>Overall</b>	<b>974</b>	<b>1,029</b>	<b>1,256</b>	<b>1,254</b>	<b>-3</b>	<b>+225</b>	<b>+21.9%</b>	<b>+280</b>	<b>+28.7%</b>	<b>1,546</b>
Consultants	1	1	4	3	-1	+2	+200.0%	+2	+200.0%	3
Registrars			2	2	-0	+2	-100.0%	+2	-100.0%	2
SHO/ Interns			2	1	-1	+1	-100.0%	+1	-100.0%	1
Medical/ Dental, other	5	6	6	6	-0	-0	-3.3%	+1	+16.0%	6
<b>Medical &amp; Dental</b>	<b>6</b>	<b>7</b>	<b>13</b>	<b>11</b>	<b>-2</b>	<b>+4</b>	<b>+63.1%</b>	<b>+5</b>	<b>+90.3%</b>	<b>12</b>
Nurse/ Midwife Manager	64	64	64	67	+3	+3	+4.1%	+3	+4.4%	70
Nurse/ Midwife Specialist & AN/MP	2	4	6	6	-0	+2	+50.0%	+4	+208.3%	6
Staff Nurse/ Staff Midwife	239	231	265	268	+3	+36	+15.7%	+29	+12.1%	305
Public Health Nurse	1	1				-1	-100.0%	-1	-100.0%	
<b>Nursing &amp; Midwifery</b>	<b>305</b>	<b>300</b>	<b>334</b>	<b>340</b>	<b>+6</b>	<b>+40</b>	<b>+13.3%</b>	<b>+35</b>	<b>+11.3%</b>	<b>381</b>
Therapy Professions	28	29	42	42	-0	+13	+45.1%	+15	+52.7%	48
Health Science/ Diagnostics	1	1	1	1	+0	+0	+6.1%	-0	-1.4%	2
Social Workers	7	6	9	8	-1	+2	+31.8%	+1	+17.0%	9
Psychologists			1	1	+0	+1	-100.0%	+1	-100.0%	1
Pharmacy	1	1	1	1	0					1
<b>Health &amp; Social Care Professionals</b>	<b>36</b>	<b>37</b>	<b>54</b>	<b>53</b>	<b>-1</b>	<b>+16</b>	<b>+43.5%</b>	<b>+17</b>	<b>+45.9%</b>	<b>61</b>
Management (VIII & above)	6	6	10	10	-0	+4	+62.3%	+4	+66.6%	10
Administrative/ Supervisory (V to VII)	21	17	34	34	-1	+17	+101.4%	+13	+63.1%	35
Clerical (III & IV)	50	48	58	60	+2	+12	+24.4%	+11	+21.5%	68
<b>Management &amp; Administrative</b>	<b>76</b>	<b>71</b>	<b>102</b>	<b>103</b>	<b>+1</b>	<b>+32</b>	<b>+45.6%</b>	<b>+27</b>	<b>+36.2%</b>	<b>113</b>
Support	64	63	50	48	-2	-15	-23.6%	-16	-25.3%	54
Maintenance/ Technical	22	21	24	24	+0	+3	+13.6%	+2	+8.1%	24
<b>General Support</b>	<b>86</b>	<b>84</b>	<b>74</b>	<b>72</b>	<b>-2</b>	<b>-12</b>	<b>-14.3%</b>	<b>-14</b>	<b>-16.7%</b>	<b>78</b>
Health Care Assistants	279	301	339	335	-4	+34	+11.3%	+56	+20.1%	382
Home Help	175	216	334	332	-3	+115	+53.1%	+156	+89.2%	511
Care, other	10	12	6	7	+1	-5	-40.6%	-3	-27.7%	8
<b>Patient &amp; Client Care</b>	<b>464</b>	<b>530</b>	<b>679</b>	<b>674</b>	<b>-5</b>	<b>+144</b>	<b>+27.3%</b>	<b>+210</b>	<b>+45.2%</b>	<b>901</b>

## CHO 4

Aug 2022	WTE Dec 2019	WTE Dec 2020	WTE Jul 2022	WTE Aug 2022	WTE change since Jul 22	WTE change since Dec 20	% change since Dec 20	WTE change since Dec 19	% change since Dec 19	No. Aug 2022
<b>Overall</b>	<b>2,919</b>	<b>2,930</b>	<b>2,925</b>	<b>2,931</b>	<b>+6</b>	<b>+1</b>	<b>+0.0%</b>	<b>+12</b>	<b>+0.4%</b>	<b>3,781</b>
Consultants	1	1	1	1	+0	+0	+15.0%	+0	+15.0%	2
Registrars	3	3	1	0	-1	-3	-97.3%	-3	-97.3%	1
SHO/ Interns	1	1	1		-1	-1	-100.0%	-1	-100.0%	
Medical/ Dental, other	21	23	25	28	+3	+4	+19.1%	+7	+32.4%	54
<b>Medical &amp; Dental</b>	<b>26</b>	<b>28</b>	<b>28</b>	<b>29</b>	<b>+1</b>	<b>+1</b>	<b>+2.3%</b>	<b>+3</b>	<b>+11.5%</b>	<b>57</b>
Nurse/ Midwife Manager	118	122	108	107	-2	-15	-12.5%	-11	-9.2%	115
Nurse/ Midwife Specialist & AN/MP	3	6	4	4	+0	-2	-25.4%	+1	+35.0%	5
Staff Nurse/ Staff Midwife	515	528	548	547	-1	+19	+3.6%	+32	+6.2%	667
Public Health Nurse	5	6	6	6	+0	+1	+9.8%	+1	+27.1%	8
Post-registration Nurse/ Midwife Student	1						-100.0%	-1	-100.0%	
Nursing/ Midwifery awaiting registration	1						-100.0%	-1	-100.0%	
Nursing/ Midwifery Student	2						-100.0%	-2	-100.0%	
<b>Nursing &amp; Midwifery</b>	<b>643</b>	<b>662</b>	<b>667</b>	<b>665</b>	<b>-2</b>	<b>+3</b>	<b>+0.4%</b>	<b>+22</b>	<b>+3.4%</b>	<b>795</b>
Therapy Professions	45	41	38	38	-0	-4	-8.7%	-7	-14.9%	46
Health Science/ Diagnostics	1	1	0	1	+0	-1	-57.4%	-1	-51.8%	2
Social Care	2	2	1	2	+0	-0	-12.6%	-0	-12.6%	2
Social Workers	10	12	10	9	-1	-3	-23.8%	-1	-9.1%	10
Pharmacy	3	4	5	5	-0	+1	+24.0%	+2	+81.5%	10
<b>Health &amp; Social Care Professionals</b>	<b>60</b>	<b>61</b>	<b>54</b>	<b>54</b>	<b>+0</b>	<b>-7</b>	<b>-10.9%</b>	<b>-6</b>	<b>-10.4%</b>	<b>70</b>
Management (VIII & above)	13	14	18	18	+0	+4	+28.7%	+5	+43.0%	19
Administrative/ Supervisory (V to VII)	17	20	28	28	-0	+8	+40.4%	+11	+67.2%	31
Clerical (III & IV)	128	131	125	127	+2	-5	-3.5%	-2	-1.3%	148
<b>Management &amp; Administrative</b>	<b>158</b>	<b>166</b>	<b>171</b>	<b>173</b>	<b>+2</b>	<b>+8</b>	<b>+4.7%</b>	<b>+15</b>	<b>+9.6%</b>	<b>198</b>
Support	100	114	124	122	-2	+8	+7.2%	+21	+21.2%	131
Maintenance/ Technical	6	6	5	5	-0	-1	-20.5%	-1	-17.2%	5
<b>General Support</b>	<b>106</b>	<b>120</b>	<b>129</b>	<b>127</b>	<b>-2</b>	<b>+7</b>	<b>+5.7%</b>	<b>+20</b>	<b>+19.0%</b>	<b>136</b>
Health Care Assistants	781	794	824	821	-3	+28	+3.5%	+40	+5.1%	929
Home Help	1,113	1,067	1,013	1,025	+11	-42	-3.9%	-89	-8.0%	1,545
Care, other	31	34	38	37	-0	+4	+10.8%	+7	+22.2%	51
<b>Patient &amp; Client Care</b>	<b>1,925</b>	<b>1,894</b>	<b>1,875</b>	<b>1,884</b>	<b>+8</b>	<b>-11</b>	<b>-0.6%</b>	<b>-42</b>	<b>-2.2%</b>	<b>2,525</b>



## CHO 5

Aug 2022	WTE Dec 2019	WTE Dec 2020	WTE Jul 2022	WTE Aug 2022	WTE change since Jul 22	WTE change since Dec 20	% change since Dec 20	WTE change since Dec 19	% change since Dec 19	No. Aug 2022
<b>Overall</b>	<b>1,647</b>	<b>1,650</b>	<b>1,666</b>	<b>1,673</b>	<b>+8</b>	<b>+23</b>	<b>+1.4%</b>	<b>+27</b>	<b>+1.6%</b>	<b>2,013</b>
Medical/ Dental, other	10	15	15	15	0	-0	-1.1%	+5	+48.5%	18
<b>Medical &amp; Dental</b>	<b>10</b>	<b>15</b>	<b>15</b>	<b>15</b>		<b>-0</b>	<b>-1.1%</b>	<b>+5</b>	<b>+48.5%</b>	<b>18</b>
Nurse/ Midwife Manager	82	88	81	80	-2	-9	-9.9%	-2	-2.7%	84
Nurse/ Midwife Specialist & AN/MP	2	4	4	6	+2	+2	+61.8%	+4	+209.0%	7
Staff Nurse/ Staff Midwife	315	308	309	311	+2	+3	+1.0%	-4	-1.2%	361
Public Health Nurse	4	3	2	2	-0	-1	-33.1%	-2	-52.6%	2
<b>Nursing &amp; Midwifery</b>	<b>403</b>	<b>403</b>	<b>396</b>	<b>399</b>	<b>+3</b>	<b>-4</b>	<b>-1.1%</b>	<b>-4</b>	<b>-0.9%</b>	<b>454</b>
Therapy Professions	41	32	33	32	-1	-1	-2.8%	-9	-22.7%	36
Social Workers	3	4	8	8	+0	+4	+93.3%	+5	+154.4%	10
Psychologists			1	2	+1	+2	-100.0%	+2	-100.0%	2
Pharmacy		1	1	1	0	+0	+3.1%	+1	-100.0%	1
H&SC, Other			2	2	+0	+2	-100.0%	+2	-100.0%	2
<b>Health &amp; Social Care Professionals</b>	<b>44</b>	<b>38</b>	<b>44</b>	<b>44</b>	<b>-0</b>	<b>+7</b>	<b>+17.3%</b>	<b>+0</b>	<b>+0.2%</b>	<b>51</b>
Management (VIII & above)	4	4	10	11	+1	+7	+188.7%	+7	+188.7%	11
Administrative/ Supervisory (V to VII)	14	17	15	15	-1	-2	-13.9%	+1	+4.1%	15
Clerical (III & IV)	32	31	51	53	+1	+22	+69.1%	+20	+63.7%	58
<b>Management &amp; Administrative</b>	<b>50</b>	<b>52</b>	<b>77</b>	<b>78</b>	<b>+1</b>	<b>+26</b>	<b>+50.8%</b>	<b>+28</b>	<b>+56.5%</b>	<b>84</b>
Support	123	83	76	76	+0	-7	-8.5%	-47	-38.2%	90
Maintenance/ Technical	8	4	4	4	-0	+0	+0.7%	-4	-50.7%	5
<b>General Support</b>	<b>131</b>	<b>87</b>	<b>80</b>	<b>80</b>	<b>+0</b>	<b>-7</b>	<b>-8.1%</b>	<b>-51</b>	<b>-39.0%</b>	<b>95</b>
Health Care Assistants	391	448	424	425	+1	-23	-5.2%	+35	+8.8%	478
Home Help	608	599	610	613	+3	+14	+2.4%	+5	+0.8%	811
Care, other	10	9	19	19	-0	+11	+124.2%	+9	+83.6%	22
<b>Patient &amp; Client Care</b>	<b>1,009</b>	<b>1,056</b>	<b>1,054</b>	<b>1,057</b>	<b>+3</b>	<b>+2</b>	<b>+0.2%</b>	<b>+48</b>	<b>+4.8%</b>	<b>1,311</b>

## CHO 6

Aug 2022	WTE Dec 2019	WTE Dec 2020	WTE Jul 2022	WTE Aug 2022	WTE change since Jul 22	WTE change since Dec 20	% change since Dec 20	WTE change since Dec 19	% change since Dec 19	No. Aug 2022
<b>Overall</b>	<b>823</b>	<b>804</b>	<b>821</b>	<b>817</b>	<b>-4</b>	<b>+13</b>	<b>+1.6%</b>	<b>-7</b>	<b>-0.8%</b>	<b>894</b>
Registrars	1	1	1	1	0					1
Medical/ Dental, other	4	3	2	2	-0	-1	-37.8%	-2	-56.0%	3
<b>Medical &amp; Dental</b>	<b>5</b>	<b>4</b>	<b>3</b>	<b>3</b>	<b>-0</b>	<b>-1</b>	<b>-27.9%</b>	<b>-2</b>	<b>-44.8%</b>	<b>4</b>
Nurse/ Midwife Manager	68	63	65	64	-1	+2	+2.4%	-4	-6.1%	66
Nurse/ Midwife Specialist & AN/MP	1	1				-1	-100.0%	-1	-100.0%	
Staff Nurse/ Staff Midwife	204	206	202	203	+1	-3	-1.4%	-1	-0.4%	213
<b>Nursing &amp; Midwifery</b>	<b>273</b>	<b>269</b>	<b>267</b>	<b>267</b>	<b>-0</b>	<b>-2</b>	<b>-0.9%</b>	<b>-6</b>	<b>-2.2%</b>	<b>279</b>
Therapy Professions	50	46	45	43	-2	-3	-7.0%	-7	-13.7%	49
Social Workers	11	10	7	7	0	-4	-35.4%	-5	-40.8%	8
Psychologists	2	1	1	1	0	-1	-54.5%	-2	-76.2%	1
Pharmacy	3	3	4	4	-0	+1	+21.4%	+1	+23.1%	5
<b>Health &amp; Social Care Professionals</b>	<b>66</b>	<b>61</b>	<b>56</b>	<b>54</b>	<b>-2</b>	<b>-7</b>	<b>-11.4%</b>	<b>-12</b>	<b>-18.7%</b>	<b>63</b>
Management (VIII & above)	4	5	9	9	-0	+4	+77.8%	+5	+122.3%	9
Administrative/ Supervisory (V to VII)	22	19	31	32	+0	+12	+62.6%	+9	+41.9%	33
Clerical (III & IV)	30	33	33	31	-3	-3	-7.7%	+1	+3.6%	36
<b>Management &amp; Administrative</b>	<b>56</b>	<b>58</b>	<b>73</b>	<b>71</b>	<b>-2</b>	<b>+14</b>	<b>+23.5%</b>	<b>+15</b>	<b>+27.4%</b>	<b>78</b>
Support	108	102	107	107	+0	+5	+5.0%	-1	-1.0%	117
Maintenance/ Technical	8	9	8	8	-0	-1	-13.9%	-0	-3.1%	8
<b>General Support</b>	<b>116</b>	<b>111</b>	<b>115</b>	<b>115</b>	<b>-0</b>	<b>+4</b>	<b>+3.5%</b>	<b>-1</b>	<b>-1.1%</b>	<b>125</b>
Health Care Assistants	300	296	301	302	+1	+7	+2.2%	+2	+0.8%	338
Care, other	7	6	5	5	-1	-1	-16.2%	-3	-36.3%	7
<b>Patient &amp; Client Care</b>	<b>307</b>	<b>301</b>	<b>307</b>	<b>307</b>	<b>+0</b>	<b>+6</b>	<b>+1.9%</b>	<b>-0</b>	<b>-0.1%</b>	<b>345</b>

## CHO 7

Aug 2022	WTE Dec 2019	WTE Dec 2020	WTE Jul 2022	WTE Aug 2022	WTE change since Jul 22	WTE change since Dec 20	% change since Dec 20	WTE change since Dec 19	% change since Dec 19	No. Aug 2022
<b>Overall</b>	<b>996</b>	<b>1,021</b>	<b>1,002</b>	<b>1,002</b>	<b>+1</b>	<b>-19</b>	<b>-1.9%</b>	<b>+7</b>	<b>+0.7%</b>	<b>1,146</b>
SHO/ Interns	2	2	2	2	0					2
Medical/ Dental, other	4	2	2	2	0			-2	-49.0%	4
<b>Medical &amp; Dental</b>	<b>6</b>	<b>4</b>	<b>4</b>	<b>4</b>				<b>-2</b>	<b>-32.7%</b>	<b>6</b>
Nurse/ Midwife Manager	77	86	88	88	-1	+2	+2.0%	+11	+13.7%	92
Nurse/ Midwife Specialist & AN/MP	3	3	4	5	+1	+2	+63.0%	+2	+77.5%	5
Staff Nurse/ Staff Midwife	219	242	242	242	-0	-0	-0.0%	+23	+10.4%	262
<i>Nursing/ Midwifery awaiting registration</i>		1	2	2	-1	+0	+11.1%	+2	-100.0%	2
Nursing/ Midwifery Student		1	2	2	-1	+0	+11.1%	+2	-100.0%	2
<b>Nursing &amp; Midwifery</b>	<b>299</b>	<b>332</b>	<b>336</b>	<b>336</b>	<b>-0</b>	<b>+4</b>	<b>+1.1%</b>	<b>+37</b>	<b>+12.4%</b>	<b>361</b>
Therapy Professions	14	13	14	17	+3	+4	+31.0%	+4	+26.8%	21
Social Workers	11	12	6	6	+0	-7	-55.0%	-5	-48.5%	6
Pharmacy	3	2	3	3	0	+1	+50.0%	+1	+20.0%	3
H&SC, Other	1	1	1	1	0					1
<b>Health &amp; Social Care Professionals</b>	<b>28</b>	<b>29</b>	<b>24</b>	<b>27</b>	<b>+3</b>	<b>-2</b>	<b>-5.9%</b>	<b>-1</b>	<b>-3.8%</b>	<b>31</b>
Management (VIII & above)	5	7	9	9	+0	+2	+21.6%	+4	+74.6%	9
Administrative/ Supervisory (V to VII)	12	15	17	17	-0	+3	+18.5%	+6	+49.5%	18
Clerical (III & IV)	34	37	42	41	-1	+4	+11.3%	+7	+20.2%	46
<b>Management &amp; Administrative</b>	<b>51</b>	<b>59</b>	<b>68</b>	<b>67</b>	<b>-1</b>	<b>+8</b>	<b>+14.4%</b>	<b>+16</b>	<b>+32.2%</b>	<b>73</b>
Support	110	119	110	108	-2	-11	-9.2%	-2	-2.1%	121
Maintenance/ Technical	2	2	2	2	0					2
<b>General Support</b>	<b>112</b>	<b>121</b>	<b>112</b>	<b>110</b>	<b>-2</b>	<b>-11</b>	<b>-9.1%</b>	<b>-2</b>	<b>-2.0%</b>	<b>123</b>
Health Care Assistants	388	358	337	339	+2	-19	-5.2%	-49	-12.6%	390
Home Help	108	115	116	115	-1	+0	+0.1%	+7	+6.7%	157
Care, other	5	5	5	5	0	-0	-0.2%	+0	+3.3%	5
<b>Patient &amp; Client Care</b>	<b>500</b>	<b>477</b>	<b>457</b>	<b>459</b>	<b>+1</b>	<b>-19</b>	<b>-3.9%</b>	<b>-41</b>	<b>-8.3%</b>	<b>552</b>

## CHO 8

Aug 2022	WTE Dec 2019	WTE Dec 2020	WTE Jul 2022	WTE Aug 2022	WTE change since Jul 22	WTE change since Dec 20	% change since Dec 20	WTE change since Dec 19	% change since Dec 19	No. Aug 2022
<b>Overall</b>	<b>1,488</b>	<b>1,484</b>	<b>1,473</b>	<b>1,475</b>	<b>+2</b>	<b>-8</b>	<b>-0.6%</b>	<b>-13</b>	<b>-0.9%</b>	<b>1,841</b>
Medical/ Dental, other	11	11	11	11	-0	-0	-3.1%	-0	-2.7%	19
<b>Medical &amp; Dental</b>	<b>11</b>	<b>11</b>	<b>11</b>	<b>11</b>	<b>-0</b>	<b>-0</b>	<b>-3.1%</b>	<b>-0</b>	<b>-2.7%</b>	<b>19</b>
Nurse/ Midwife Manager	77	89	84	83	-1	-5	-6.2%	+7	+8.8%	91
Nurse/ Midwife Specialist & AN/MP	2	4	5	4	-1	+0	+2.8%	+2	+98.5%	4
Staff Nurse/ Staff Midwife	249	255	255	255	+0	+0	+0.1%	+6	+2.3%	289
Public Health Nurse	2	3	2	2	-0	-1	-22.1%	-0	-4.3%	3
Nursing/ Midwifery other		2	3	3	+0	+1	+46.0%	+3	-100.0%	3
<b>Nursing &amp; Midwifery</b>	<b>330</b>	<b>353</b>	<b>349</b>	<b>348</b>	<b>-1</b>	<b>-5</b>	<b>-1.4%</b>	<b>+17</b>	<b>+5.2%</b>	<b>390</b>
Therapy Professions	21	24	25	23	-3	-2	-7.1%	+2	+9.6%	27
Health Science/ Diagnostics			1	1	0	+1	-100.0%	+1	-100.0%	1
Social Workers	7	5	1	1	0	-4	-80.0%	-6	-84.8%	1
Pharmacy	3	2	2	2	-0	-0	-8.5%	-1	-26.8%	3
H&SC, Other			1	0	-0	+0	-100.0%	+0	-100.0%	1
<b>Health &amp; Social Care Professionals</b>	<b>30</b>	<b>31</b>	<b>30</b>	<b>27</b>	<b>-3</b>	<b>-5</b>	<b>-14.5%</b>	<b>-3</b>	<b>-9.7%</b>	<b>33</b>
Management (VIII & above)	6	7	8	8	-0	+1	+13.3%	+2	+41.4%	8
Administrative/ Supervisory (V to VII)	20	21	22	26	+4	+4	+20.5%	+6	+28.1%	27
Clerical (III & IV)	70	72	68	67	-2	-5	-7.2%	-3	-4.5%	75
<b>Management &amp; Administrative</b>	<b>95</b>	<b>100</b>	<b>98</b>	<b>100</b>	<b>+2</b>	<b>+0</b>	<b>+0.2%</b>	<b>+5</b>	<b>+5.0%</b>	<b>110</b>
Support	26	25	27	28	+0	+2	+9.3%	+2	+7.2%	30
Maintenance/ Technical	24	24	24	24	-0	+0	+0.7%	+0	+0.3%	25
<b>General Support</b>	<b>50</b>	<b>49</b>	<b>51</b>	<b>52</b>	<b>+0</b>	<b>+3</b>	<b>+5.2%</b>	<b>+2</b>	<b>+3.9%</b>	<b>55</b>
Health Care Assistants	556	544	517	516	-1	-28	-5.2%	-40	-7.2%	601
Home Help	395	374	390	395	+5	+21	+5.7%	-0	-0.1%	596
Care, other	20	22	27	27	+1	+6	+26.7%	+7	+33.2%	37
<b>Patient &amp; Client Care</b>	<b>972</b>	<b>940</b>	<b>933</b>	<b>939</b>	<b>+5</b>	<b>-1</b>	<b>-0.1%</b>	<b>-34</b>	<b>-3.5%</b>	<b>1,234</b>

## CHO 9

Aug 2022	WTE Dec 2019	WTE Dec 2020	WTE Jul 2022	WTE Aug 2022	WTE change since Jul 22	WTE change since Dec 20	% change since Dec 20	WTE change since Dec 19	% change since Dec 19	No. Aug 2022
<b>Overall</b>	<b>870</b>	<b>914</b>	<b>987</b>	<b>988</b>	<b>+1</b>	<b>+73</b>	<b>+8.0%</b>	<b>+118</b>	<b>+13.6%</b>	<b>1,105</b>
Consultants	2	2	3	2	-1	-0	-17.4%	+0	+25.0%	3
Registrars	6	5	7	6	-2	+1	+13.8%			6
SHO/ Interns	12	11	9	9	-0	-2	-16.0%	-3	-25.3%	9
Medical/ Dental, other	1	1	0		-0	-1	-100.0%	-1	-100.0%	
<b>Medical &amp; Dental</b>	<b>20</b>	<b>19</b>	<b>19</b>	<b>16</b>	<b>-3</b>	<b>-2</b>	<b>-13.0%</b>	<b>-4</b>	<b>-18.1%</b>	<b>18</b>
Nurse/ Midwife Manager	75	81	80	82	+1	+1	+1.1%	+7	+9.2%	87
Nurse/ Midwife Specialist & AN/MP	5	6	13	12	-0	+7	+111.3%	+8	+159.1%	13
Staff Nurse/ Staff Midwife	227	234	259	262	+3	+28	+12.1%	+35	+15.6%	285
Public Health Nurse	0		1	1	0	+1	-100.0%	+1	+163.2%	1
Nursing/ Midwifery other	1	1				-1	-100.0%	-1	-100.0%	
<b>Nursing &amp; Midwifery</b>	<b>308</b>	<b>322</b>	<b>353</b>	<b>357</b>	<b>+4</b>	<b>+36</b>	<b>+11.1%</b>	<b>+49</b>	<b>+16.1%</b>	<b>386</b>
Therapy Professions	54	71	92	89	-3	+19	+26.2%	+35	+64.2%	101
Health Science/ Diagnostics	1	1	1	1	0			-0	-31.0%	2
Social Care	1	1	1	1	0					2
Social Workers	21	24	19	19	-0	-5	-19.3%	-2	-10.0%	21
Psychologists			2	2	+0	+2	-100.0%	+2	-100.0%	2
Pharmacy	3	4	4	4	0			+1	+26.4%	5
H&SC, Other	0	1	1	1	+0	+0	+5.6%	+0	+58.3%	1
<b>Health &amp; Social Care Professionals</b>	<b>81</b>	<b>101</b>	<b>119</b>	<b>116</b>	<b>-2</b>	<b>+16</b>	<b>+15.7%</b>	<b>+35</b>	<b>+43.2%</b>	<b>134</b>
Management (VIII & above)	9	9	14	13	-1	+4	+45.9%	+4	+43.9%	13
Administrative/ Supervisory (V to VII)	15	21	23	24	+1	+4	+17.2%	+10	+63.5%	26
Clerical (III & IV)	40	44	58	56	-1	+12	+27.4%	+16	+40.5%	65
<b>Management &amp; Administrative</b>	<b>64</b>	<b>74</b>	<b>95</b>	<b>94</b>	<b>-1</b>	<b>+20</b>	<b>+26.7%</b>	<b>+30</b>	<b>+46.3%</b>	<b>104</b>
Support	118	120	117	117	+0	-3	-2.8%	-1	-1.1%	131
Maintenance/ Technical	2	2	2	2	0					3
<b>General Support</b>	<b>121</b>	<b>123</b>	<b>119</b>	<b>119</b>	<b>+0</b>	<b>-3</b>	<b>-2.7%</b>	<b>-1</b>	<b>-1.1%</b>	<b>134</b>
Health Care Assistants	270	271	275	278	+3	+7	+2.5%	+8	+3.1%	320
Care, other	6	5	6	6	+0	+1	+18.2%	+0	+2.9%	9
<b>Patient &amp; Client Care</b>	<b>276</b>	<b>277</b>	<b>282</b>	<b>285</b>	<b>+3</b>	<b>+8</b>	<b>+2.8%</b>	<b>+9</b>	<b>+3.1%</b>	<b>329</b>

## other Community Services

Aug 2022	WTE Dec 2019	WTE Dec 2020	WTE Jul 2022	WTE Aug 2022	WTE change since Jul 22	WTE change since Dec 20	% change since Dec 20	WTE change since Dec 19	% change since Dec 19	No. Aug 2022
<b>Overall</b>	<b>73</b>	<b>75</b>	<b>85</b>	<b>87</b>	<b>+3</b>	<b>+12</b>	<b>+16.2%</b>	<b>+14</b>	<b>+18.9%</b>	<b>95</b>
Health Science/ Diagnostics	1						-100.0%	-1	-100.0%	
Psychologists			1	1	0	+1	-100.0%	+1	-100.0%	1
<b>Health &amp; Social Care Professionals</b>	<b>1</b>		<b>1</b>	<b>1</b>		<b>+1</b>	<b>-100.0%</b>			<b>1</b>
Management (VIII & above)	19	17	17	17	-0	-0	-0.2%	-2	-10.3%	17
Administrative/ Supervisory (V to VII)	22	21	34	36	+2	+15	+70.6%	+14	+60.8%	39
Clerical (III & IV)	31	37	32	32	+1	-5	-12.6%	+1	+3.4%	36
<b>Management &amp; Administrative</b>	<b>72</b>	<b>75</b>	<b>83</b>	<b>85</b>	<b>+3</b>	<b>+10</b>	<b>+13.7%</b>	<b>+13</b>	<b>+17.7%</b>	<b>92</b>
Health Care Assistants	0	0	0	0	0			+0	+420.0%	1
Care, other			1	1	0	+1	-100.0%	+1	-100.0%	1
<b>Patient &amp; Client Care</b>	<b>0</b>	<b>0</b>	<b>1</b>	<b>1</b>		<b>+1</b>	<b>+334.6%</b>	<b>+1</b>	<b>+2160.0%</b>	<b>2</b>

## Social Care Older Persons Services Employment by Grade Group: Aug 2022

Aug 2022	WTE Dec 2019	WTE Dec 2020	WTE Jul 2022	WTE Aug 2022	WTE change since Jul 22	WTE change since Dec 20	% change since Dec 20	WTE change since Dec 19	% change since Dec 19	No. Aug 2022
<b>Overall</b>	<b>13,233</b>	<b>13,415</b>	<b>13,749</b>	<b>13,769</b>	<b>+20</b>	<b>+354</b>	<b>+2.6%</b>	<b>+536</b>	<b>+4.1%</b>	<b>16,616</b>
Consultant Medicine	4	4	7	6	-1	+2	+39.1%	+3	+70.8%	8
<b>Consultants</b>	<b>4</b>	<b>4</b>	<b>7</b>	<b>6</b>	<b>-1</b>	<b>+2</b>	<b>+39.1%</b>	<b>+3</b>	<b>+70.8%</b>	<b>8</b>
Registrar	7	6	7	5	-2	-0	-6.2%	-1	-15.8%	6
Senior Registrar	1	1	2	1	-1	+0	+8.0%	+0	+8.0%	2
Specialist Registrar	2	2	2	2	-0	-0	-12.5%	-0	-12.5%	2
<b>Registrars</b>	<b>10</b>	<b>9</b>	<b>11</b>	<b>8</b>	<b>-3</b>	<b>-1</b>	<b>-6.0%</b>	<b>-1</b>	<b>-12.6%</b>	<b>10</b>
Senior House Officer	15	14	14	12	-2	-2	-13.2%	-3	-20.9%	12
<b>SHO/ Interns</b>	<b>15</b>	<b>14</b>	<b>14</b>	<b>12</b>	<b>-2</b>	<b>-2</b>	<b>-13.2%</b>	<b>-3</b>	<b>-20.9%</b>	<b>12</b>
Other Medical	96	104	85	87	+2	-17	-16.4%	-10	-10.0%	154
<b>Medical/ Dental, other</b>	<b>96</b>	<b>104</b>	<b>85</b>	<b>87</b>	<b>+2</b>	<b>-17</b>	<b>-16.4%</b>	<b>-10</b>	<b>-10.0%</b>	<b>154</b>
<b>Medical &amp; Dental</b>	<b>125</b>	<b>131</b>	<b>117</b>	<b>113</b>	<b>-4</b>	<b>-18</b>	<b>-13.5%</b>	<b>-11</b>	<b>-9.2%</b>	<b>184</b>
Clinical Nurse/ Midwife Manager	508	536	536	534	-2	-2	-0.5%	+25	+5.0%	574
Director Nursing/Midwifery, Assistant	103	106	98	100	+2	-6	-5.8%	-3	-2.5%	104
Director of Nursing/Midwifery	98	104	101	98	-2	-6	-5.6%	+0	+0.2%	100
<b>Nurse/ Midwife Manager</b>	<b>709</b>	<b>746</b>	<b>735</b>	<b>732</b>	<b>-2</b>	<b>-14</b>	<b>-1.9%</b>	<b>+23</b>	<b>+3.2%</b>	<b>778</b>
Advanced Nurse/ Midwife Practitioner	11	17	21	24	+3	+7	+44.9%	+13	+124.6%	26
Clinical Nurse/ Midwife Specialist	16	22	34	33	-1	+11	+53.1%	+17	+109.7%	35
<b>Nurse/ Midwife Specialist &amp; AN/MP</b>	<b>26</b>	<b>38</b>	<b>54</b>	<b>57</b>	<b>+3</b>	<b>+19</b>	<b>+49.5%</b>	<b>+31</b>	<b>+115.8%</b>	<b>61</b>
Staff Midwives		1	1	1	+0	-0	-3.4%	+1	-100.0%	1
Staff Nurse [Psychiatric]	5	5	6	5	-2	-0	-6.8%	-0	-1.8%	6
Staff Nurses [General/ Children's]	2,572	2,617	2,701	2,709	+8	+92	+3.5%	+137	+5.3%	3,090
Staff Nurse [Intellectual Disability]		1	1	1	+0			+1	-100.0%	1
<b>Staff Nurse/ Staff Midwife</b>	<b>2,576</b>	<b>2,624</b>	<b>2,709</b>	<b>2,716</b>	<b>+6</b>	<b>+92</b>	<b>+3.5%</b>	<b>+139</b>	<b>+5.4%</b>	<b>3,098</b>
Public Health Nurse	13	13	13	12	-0	-1	-7.7%	-1	-7.5%	15
<b>Public Health Nurse</b>	<b>13</b>	<b>13</b>	<b>13</b>	<b>12</b>	<b>-0</b>	<b>-1</b>	<b>-7.7%</b>	<b>-1</b>	<b>-7.5%</b>	<b>15</b>
Post-registration Nurse/ Midwife Student	1						-100.0%	-1	-100.0%	
Nursing/ Midwifery awaiting registration	1	1	2	2	-1	+0	+11.1%	+1	+50.0%	2
<b>Nursing/ Midwifery Student</b>	<b>2</b>	<b>1</b>	<b>2</b>	<b>2</b>	<b>-1</b>	<b>+0</b>	<b>+11.1%</b>	<b>-1</b>	<b>-25.0%</b>	<b>2</b>
Nursing Education/Clinical	1	4	4	4	+0	-0	-2.3%	+3	+289.0%	4
<b>Nursing/ Midwifery other</b>	<b>1</b>	<b>4</b>	<b>4</b>	<b>4</b>	<b>+0</b>	<b>-0</b>	<b>-2.3%</b>	<b>+3</b>	<b>+289.0%</b>	<b>4</b>
<b>Nursing &amp; Midwifery</b>	<b>3,328</b>	<b>3,427</b>	<b>3,517</b>	<b>3,522</b>	<b>+6</b>	<b>+95</b>	<b>+2.8%</b>	<b>+194</b>	<b>+5.8%</b>	<b>3,958</b>
Dietitians	16	18	24	20	-4	+2	+8.9%	+3	+19.6%	25
Occupational Therapists	113	113	116	119	+4	+6	+5.4%	+6	+5.2%	133
Physiotherapists	124	132	160	155	-6	+23	+17.1%	+31	+25.1%	178
Podiatrists & Chiropodists	12	13	3	3	-0	-10	-75.7%	-9	-74.5%	6
Speech & Language Therapists	23	20	36	36	+0	+17	+83.5%	+13	+57.4%	40
<b>Therapy Professions</b>	<b>288</b>	<b>295</b>	<b>339</b>	<b>333</b>	<b>-6</b>	<b>+37</b>	<b>+12.6%</b>	<b>+44</b>	<b>+15.4%</b>	<b>382</b>
Radiographers	6	5	2	3	+0	-2	-45.5%	-3	-54.3%	6
Vascular Physiologists	0	0	0	0		+0	+6.3%	-0	-19.0%	1
Clinical Engineering			1	1		+1	-100.0%	+1	-100.0%	1
<b>Health Science/ Diagnostics</b>	<b>6</b>	<b>5</b>	<b>4</b>	<b>4</b>	<b>+0</b>	<b>-1</b>	<b>-24.4%</b>	<b>-2</b>	<b>-36.8%</b>	<b>8</b>
<b>Social Care</b>	<b>3</b>	<b>3</b>	<b>2</b>	<b>3</b>	<b>+0</b>	<b>-0</b>	<b>-8.0%</b>	<b>-0</b>	<b>-8.0%</b>	<b>4</b>
<b>Social Workers</b>	<b>98</b>	<b>100</b>	<b>75</b>	<b>75</b>	<b>-0</b>	<b>-25</b>	<b>-24.8%</b>	<b>-23</b>	<b>-23.7%</b>	<b>84</b>
<b>Psychologists</b>	<b>2</b>	<b>1</b>	<b>5</b>	<b>6</b>	<b>+1</b>	<b>+5</b>	<b>+428.2%</b>	<b>+4</b>	<b>+176.7%</b>	<b>7</b>
Pharmacists	13	13	14	14	-1	+1	+7.0%	+1	+6.7%	23
Pharmacy Technicians	3	5	6	6		+1	+22.2%	+3	+120.0%	6
<b>Pharmacy</b>	<b>15</b>	<b>17</b>	<b>20</b>	<b>19</b>	<b>-1</b>	<b>+2</b>	<b>+11.0%</b>	<b>+4</b>	<b>+25.3%</b>	<b>29</b>
Other Health & Social Care	0	1	3	3	-0	+2	+424.1%	+2	+686.1%	4
Play Therapists/ Specialists	1	1	1	1						1
<b>H&amp;SC, Other</b>	<b>1</b>	<b>2</b>	<b>4</b>	<b>4</b>	<b>-0</b>	<b>+2</b>	<b>+148.7%</b>	<b>+2</b>	<b>+181.6%</b>	<b>5</b>

Aug 2022	WTE Dec 2019	WTE Dec 2020	WTE Jul 2022	WTE Aug 2022	WTE change since Jul 22	WTE change since Dec 20	% change since Dec 20	WTE change since Dec 19	% change since Dec 19	No. Aug 2022
<b>Overall</b>	<b>13,233</b>	<b>13,415</b>	<b>13,749</b>	<b>13,769</b>	<b>+20</b>	<b>+354</b>	<b>+2.6%</b>	<b>+536</b>	<b>+4.1%</b>	<b>16,616</b>
<b>Health &amp; Social Care Professionals</b>	<b>414</b>	<b>423</b>	<b>449</b>	<b>443</b>	<b>-6</b>	<b>+20</b>	<b>+4.7%</b>	<b>+29</b>	<b>+6.9%</b>	<b>519</b>
Executive Management	12	15	15	14	-1	-1	-5.3%	+2	+17.5%	14
Senior Management (VIII & GM)	63	64	93	95	+1	+31	+48.5%	+32	+51.5%	97
<b>Management (VIII &amp; above)</b>	<b>75</b>	<b>79</b>	<b>108</b>	<b>109</b>	<b>+1</b>	<b>+30</b>	<b>+38.4%</b>	<b>+34</b>	<b>+46.1%</b>	<b>111</b>
Middle Management (V-VII)	164	176	241	248	+7	+73	+41.2%	+84	+51.5%	263
Other Administrative	1		1	1		+1	-100.0%	-0	-5.0%	1
<b>Administrative/ Supervisory (V to VII)</b>	<b>165</b>	<b>176</b>	<b>242</b>	<b>249</b>	<b>+7</b>	<b>+73</b>	<b>+41.8%</b>	<b>+84</b>	<b>+51.1%</b>	<b>264</b>
General Administrative (III & IV)	571	587	611	613	+2	+26	+4.4%	+42	+7.4%	699
<b>Clerical (III &amp; IV)</b>	<b>571</b>	<b>587</b>	<b>611</b>	<b>613</b>	<b>+2</b>	<b>+26</b>	<b>+4.4%</b>	<b>+42</b>	<b>+7.4%</b>	<b>699</b>
<b>Management &amp; Administrative</b>	<b>811</b>	<b>842</b>	<b>962</b>	<b>972</b>	<b>+10</b>	<b>+130</b>	<b>+15.4%</b>	<b>+161</b>	<b>+19.8%</b>	<b>1,074</b>
Catering	221	216	228	226	-2	+10	+4.5%	+5	+2.2%	247
Household Services	492	479	455	452	-3	-27	-5.6%	-40	-8.2%	522
Other Support	34	29	27	26	-1	-3	-9.8%	-8	-22.9%	31
Portering	81	77	70	70	-0	-7	-9.1%	-12	-14.4%	72
<b>Support</b>	<b>829</b>	<b>801</b>	<b>779</b>	<b>774</b>	<b>-5</b>	<b>-27</b>	<b>-3.4%</b>	<b>-55</b>	<b>-6.6%</b>	<b>872</b>
Maintenance	98	95	91	90	-1	-5	-5.3%	-9	-8.7%	94
Technical Services			4	4		+4	-100.0%	+4	-100.0%	4
<b>Maintenance/ Technical</b>	<b>98</b>	<b>95</b>	<b>95</b>	<b>94</b>	<b>-1</b>	<b>-1</b>	<b>-1.0%</b>	<b>-5</b>	<b>-4.7%</b>	<b>98</b>
<b>General Support</b>	<b>928</b>	<b>896</b>	<b>874</b>	<b>868</b>	<b>-6</b>	<b>-28</b>	<b>-3.1%</b>	<b>-59</b>	<b>-6.4%</b>	<b>970</b>
Attendant/ Aide	2,293	2,211	1,687	1,677	-11	-534	-24.2%	-617	-26.9%	1,936
Health & Social Care Assistants	21	27	52	57	+5	+30	+109.1%	+36	+168.2%	63
Health Care Assistant/ Care Assistant	1,729	1,858	2,363	2,366	+3	+508	+27.4%	+638	+36.9%	2,679
HCA (Student Nurse/Midwife COVID-19)		22				-22	-100.0%		-100.0%	
<b>Health Care Assistants</b>	<b>4,043</b>	<b>4,118</b>	<b>4,103</b>	<b>4,100</b>	<b>-3</b>	<b>-18</b>	<b>-0.4%</b>	<b>+57</b>	<b>+1.4%</b>	<b>4,678</b>
<b>Home Help</b>	<b>3,442</b>	<b>3,431</b>	<b>3,550</b>	<b>3,574</b>	<b>+24</b>	<b>+143</b>	<b>+4.2%</b>	<b>+132</b>	<b>+3.8%</b>	<b>5,016</b>
Home Care Services	86	99	126	126	-0	+27	+27.4%	+40	+46.7%	132
Other Care Grades	22	19	25	24	-1	+5	+24.0%	+1	+5.4%	30
Pastoral Care	32	27	23	23	-0	-4	-15.0%	-9	-28.0%	50
Workshop Services	2	2	5	5		+3	+133.0%	+3	+119.8%	5
<b>Care, other</b>	<b>142</b>	<b>147</b>	<b>178</b>	<b>177</b>	<b>-1</b>	<b>+30</b>	<b>+20.6%</b>	<b>+35</b>	<b>+24.6%</b>	<b>217</b>
<b>Patient &amp; Client Care</b>	<b>7,627</b>	<b>7,696</b>	<b>7,831</b>	<b>7,851</b>	<b>+20</b>	<b>+155</b>	<b>+2.0%</b>	<b>+224</b>	<b>+2.9%</b>	<b>9,911</b>



## Employment by WTE, Headcount, Gender, Full-Time /Part-Time etc.: Aug 2022

Social Care Older Persons Services Staff Group	WTE	Headcount	WTE: no.	% Male	% female	Male WTE: no.	Female WTE: no.	% Total Perm	% Male Perm	% Female Perm	% Total Full Time	% Total Part Time	% Male FT	% Female FT
<b>Overall</b>	<b>13,769</b>	<b>16,616</b>	<b>1.21</b>	<b>13.8%</b>	<b>86.2%</b>	<b>1.10</b>	<b>1.22</b>	<b>82.4%</b>	<b>79.5%</b>	<b>82.9%</b>	<b>51.1%</b>	<b>48.9%</b>	<b>77.9%</b>	<b>46.8%</b>
Consultant Medicine	6	8	1.30	12.5%	87.5%	1.61	1.27	75.0%	75.0%	71.4%	50.0%	50.0%	0.0%	57.1%
<b>Consultants</b>	<b>6</b>	<b>8</b>	<b>1.30</b>	<b>12.5%</b>	<b>87.5%</b>	<b>1.61</b>	<b>1.27</b>	<b>75.0%</b>	<b>100.0%</b>	<b>71.4%</b>	<b>50.0%</b>	<b>50.0%</b>	<b>0.0%</b>	<b>57.1%</b>
Registrar	5	6	1.09	50.0%	50.0%	1.00	1.21	66.7%	66.7%	66.7%	83.3%	16.7%	100.0%	66.7%
Senior Registrar	1	2	1.85	50.0%	50.0%	12.50	1.00	50.0%	50.0%	100.0%	50.0%	50.0%	0.0%	100.0%
Specialist Registrar	2	2	1.14	50.0%	50.0%	1.33	1.00	0.0%	0.0%	0.0%	100.0%	0.0%	100.0%	100.0%
<b>Registrars</b>	<b>8</b>	<b>10</b>	<b>1.20</b>	<b>50.0%</b>	<b>50.0%</b>	<b>1.31</b>	<b>1.12</b>	<b>50.0%</b>	<b>40.0%</b>	<b>60.0%</b>	<b>80.0%</b>	<b>20.0%</b>	<b>80.0%</b>	<b>80.0%</b>
Senior House Officer	12	12	1.01	50.0%	50.0%	1.00	1.02	16.7%	16.7%	0.0%	100.0%	0.0%	100.0%	100.0%
<b>SHO/ Interns</b>	<b>12</b>	<b>12</b>	<b>1.01</b>	<b>50.0%</b>	<b>50.0%</b>	<b>1.00</b>	<b>1.02</b>	<b>16.7%</b>	<b>33.3%</b>	<b>0.0%</b>	<b>100.0%</b>	<b>0.0%</b>	<b>100.0%</b>	<b>100.0%</b>
Other Medical	87	154	1.77	62.3%	37.7%	1.87	1.63	55.8%	55.8%	51.7%	27.3%	72.7%	24.0%	32.8%
<b>Medical/ Dental, other</b>	<b>87</b>	<b>154</b>	<b>1.77</b>	<b>62.3%</b>	<b>37.7%</b>	<b>1.87</b>	<b>1.63</b>	<b>55.8%</b>	<b>58.3%</b>	<b>51.7%</b>	<b>27.3%</b>	<b>72.7%</b>	<b>24.0%</b>	<b>32.8%</b>
<b>Medical &amp; Dental</b>	<b>113</b>	<b>184</b>	<b>1.63</b>	<b>58.7%</b>	<b>41.3%</b>	<b>1.75</b>	<b>1.48</b>	<b>53.8%</b>	<b>56.5%</b>	<b>50.0%</b>	<b>35.9%</b>	<b>64.1%</b>	<b>30.6%</b>	<b>43.4%</b>
Clinical Nurse/ Midwife Manager	534	574	1.08	8.5%	91.5%	1.02	1.08	97.2%	97.2%	97.1%	82.8%	17.2%	93.9%	81.7%
Director Nursing/Midwifery, Assistant	100	104	1.04	5.8%	94.2%	1.03	1.04	98.1%	98.1%	99.0%	89.4%	10.6%	100.0%	88.8%
Director of Nursing/Midwifery	98	100	1.02	6.0%	94.0%	1.02	1.02	98.0%	98.0%	97.9%	98.0%	2.0%	100.0%	97.9%
<b>Nurse/ Midwife Manager</b>	<b>732</b>	<b>778</b>	<b>1.06</b>	<b>7.8%</b>	<b>92.2%</b>	<b>1.02</b>	<b>1.07</b>	<b>97.4%</b>	<b>96.7%</b>	<b>97.5%</b>	<b>85.6%</b>	<b>14.4%</b>	<b>95.1%</b>	<b>84.8%</b>
Advanced Nurse/ Midwife Practitioner	24	26	1.08	3.8%	96.2%	1.00	1.08	96.2%	96.2%	96.0%	100.0%	0.0%	100.0%	100.0%
Clinical Nurse/ Midwife Specialist	33	35	1.06	11.4%	88.6%	1.01	1.07	100.0%	100.0%	100.0%	88.6%	11.4%	100.0%	87.1%
<b>Nurse/ Midwife Specialist &amp; AN/MP</b>	<b>57</b>	<b>61</b>	<b>1.07</b>	<b>8.2%</b>	<b>91.8%</b>	<b>1.01</b>	<b>1.07</b>	<b>98.4%</b>	<b>100.0%</b>	<b>98.2%</b>	<b>93.4%</b>	<b>6.6%</b>	<b>100.0%</b>	<b>92.9%</b>
Staff Midwives	1	1	1.18		100.0%		1.18	100.0%	100.0%	100.0%	0.0%	100.0%		0.0%
Staff Nurse [Psychiatric]	5	6	1.24	33.3%	66.7%	1.24	1.25	100.0%	100.0%	100.0%	66.7%	33.3%	50.0%	75.0%
Staff Nurses [General/ Children's]	2,709	3,090	1.14	8.3%	91.7%	1.04	1.15	85.7%	85.7%	85.8%	66.2%	33.8%	92.2%	63.9%
Staff Nurse [Intellectual Disability]	1	1	1.00		100.0%		1.00	100.0%	100.0%	100.0%	100.0%	0.0%		100.0%
<b>Staff Nurse/ Staff Midwife</b>	<b>2,716</b>	<b>3,098</b>	<b>1.14</b>	<b>8.3%</b>	<b>91.7%</b>	<b>1.04</b>	<b>1.15</b>	<b>85.7%</b>	<b>84.9%</b>	<b>85.8%</b>	<b>66.2%</b>	<b>33.8%</b>	<b>91.9%</b>	<b>63.9%</b>
<b>Public Health Nurse</b>	<b>12</b>	<b>15</b>	<b>1.21</b>		<b>100.0%</b>		<b>1.21</b>	<b>93.3%</b>		<b>93.3%</b>	<b>66.7%</b>	<b>33.3%</b>		<b>66.7%</b>
Nursing/ Midwifery awaiting registration	2	2	1.33	50.0%	50.0%	1.00	2.00	50.0%	50.0%	0.0%	100.0%	0.0%	100.0%	100.0%
<b>Nursing/ Midwifery Student</b>	<b>2</b>	<b>2</b>	<b>1.33</b>	<b>50.0%</b>	<b>50.0%</b>	<b>1.00</b>	<b>2.00</b>	<b>50.0%</b>	<b>100.0%</b>	<b>0.0%</b>	<b>100.0%</b>	<b>0.0%</b>	<b>100.0%</b>	<b>100.0%</b>
Nursing Education/Clinical	4	4	1.03		100.0%		1.03	100.0%	100.0%	100.0%	100.0%	0.0%		100.0%
<b>Nursing/ Midwifery other</b>	<b>4</b>	<b>4</b>	<b>1.03</b>		<b>100.0%</b>		<b>1.03</b>	<b>100.0%</b>		<b>100.0%</b>	<b>100.0%</b>	<b>0.0%</b>		<b>100.0%</b>

<b>Nursing &amp; Midwifery</b>	<b>3,522</b>	<b>3,958</b>	<b>1.12</b>	<b>8.2%</b>	<b>91.8%</b>	<b>1.03</b>	<b>1.13</b>	<b>88.3%</b>	<b>87.4%</b>	<b>88.3%</b>	<b>70.5%</b>	<b>29.5%</b>	<b>92.6%</b>	<b>68.5%</b>
Dietitians	20	25	1.28	4.0%	96.0%	2.00	1.26	100.0%	100.0%	100.0%	68.0%	32.0%	100.0%	66.7%
Occupational Therapists	119	133	1.12	6.8%	93.2%	1.16	1.11	87.2%	87.2%	86.3%	82.7%	17.3%	88.9%	82.3%
Physiotherapists	155	178	1.15	16.9%	83.1%	1.04	1.18	87.1%	87.1%	86.5%	74.7%	25.3%	90.0%	71.6%
Podiatrists & Chiropodists	3	6	1.95		100.0%		1.95	66.7%	66.7%	66.7%	16.7%	83.3%		16.7%
Speech & Language Therapists	36	40	1.10		100.0%		1.10	92.5%	92.5%	92.5%	80.0%	20.0%		80.0%
<b>Therapy Professions</b>	<b>333</b>	<b>382</b>	<b>1.15</b>	<b>10.5%</b>	<b>89.5%</b>	<b>1.08</b>	<b>1.16</b>	<b>88.2%</b>	<b>92.5%</b>	<b>87.7%</b>	<b>76.7%</b>	<b>23.3%</b>	<b>90.0%</b>	<b>75.1%</b>
Radiographers	3	6	2.21	16.7%	83.3%	1.89	2.29	83.3%	83.3%	80.0%	16.7%	83.3%	0.0%	20.0%
Vascular Physiologists	0	1	5.88		100.0%		5.88	0.0%	0.0%	0.0%	0.0%	100.0%		0.0%
Clinical Engineering	1	1	1.00	100.0%		1.00		100.0%	100.0%		100.0%	0.0%	100.0%	
<b>Health Science/ Diagnostics</b>	<b>4</b>	<b>8</b>	<b>2.06</b>	<b>25.0%</b>	<b>75.0%</b>	<b>1.31</b>	<b>2.55</b>	<b>75.0%</b>	<b>100.0%</b>	<b>66.7%</b>	<b>25.0%</b>	<b>75.0%</b>	<b>50.0%</b>	<b>16.7%</b>
<b>Social Care</b>	<b>3</b>	<b>4</b>	<b>1.59</b>		<b>100.0%</b>		<b>1.59</b>	<b>100.0%</b>		<b>100.0%</b>	<b>0.0%</b>	<b>100.0%</b>		<b>0.0%</b>
<b>Social Workers</b>	<b>75</b>	<b>84</b>	<b>1.12</b>	<b>15.5%</b>	<b>84.5%</b>	<b>1.00</b>	<b>1.14</b>	<b>92.9%</b>	<b>84.6%</b>	<b>94.4%</b>	<b>81.0%</b>	<b>19.0%</b>	<b>100.0%</b>	<b>77.5%</b>
<b>Psychologists</b>	<b>6</b>	<b>7</b>	<b>1.20</b>	<b>14.3%</b>	<b>85.7%</b>	<b>1.00</b>	<b>1.25</b>	<b>100.0%</b>	<b>100.0%</b>	<b>100.0%</b>	<b>71.4%</b>	<b>28.6%</b>	<b>100.0%</b>	<b>66.7%</b>
Pharmacists	14	23	1.69	21.7%	78.3%	2.91	1.52	78.3%	78.3%	77.8%	34.8%	65.2%	20.0%	38.9%
Pharmacy Technicians	6	6	1.09	16.7%	83.3%	1.00	1.11	66.7%	66.7%	60.0%	83.3%	16.7%	100.0%	80.0%
<b>Pharmacy</b>	<b>19</b>	<b>29</b>	<b>1.52</b>	<b>20.7%</b>	<b>79.3%</b>	<b>2.21</b>	<b>1.41</b>	<b>75.9%</b>	<b>83.3%</b>	<b>73.9%</b>	<b>44.8%</b>	<b>55.2%</b>	<b>33.3%</b>	<b>47.8%</b>
Other Health & Social Care	3	4	1.41		100.0%		1.41	75.0%	75.0%	75.0%	25.0%	75.0%		25.0%
Play Therapists/ Specialists	1	1	1.00	100.0%		1.00		100.0%	100.0%		100.0%	0.0%	100.0%	
<b>H&amp;SC, Other</b>	<b>4</b>	<b>5</b>	<b>1.31</b>	<b>20.0%</b>	<b>80.0%</b>	<b>1.00</b>	<b>1.41</b>	<b>80.0%</b>	<b>100.0%</b>	<b>75.0%</b>	<b>40.0%</b>	<b>60.0%</b>	<b>100.0%</b>	<b>25.0%</b>
<b>Health &amp; Social Care</b>	<b>443</b>	<b>519</b>	<b>1.17</b>	<b>12.1%</b>	<b>87.9%</b>	<b>1.12</b>	<b>1.18</b>	<b>88.2%</b>	<b>90.5%</b>	<b>87.9%</b>	<b>73.8%</b>	<b>26.2%</b>	<b>85.7%</b>	<b>72.1%</b>
Executive Management	14	14	1.00	57.1%	42.9%	1.00	1.00	100.0%	100.0%	100.0%	100.0%	0.0%	100.0%	100.0%
Senior Management (VIII & GM)	95	97	1.02	28.9%	71.1%	1.02	1.02	93.8%	93.8%	97.1%	97.9%	2.1%	96.4%	98.6%
<b>Management (VIII &amp; above)</b>	<b>109</b>	<b>111</b>	<b>1.02</b>	<b>32.4%</b>	<b>67.6%</b>	<b>1.02</b>	<b>1.02</b>	<b>94.6%</b>	<b>88.9%</b>	<b>97.3%</b>	<b>98.2%</b>	<b>1.8%</b>	<b>97.2%</b>	<b>98.7%</b>
Middle Management (V-VII)	248	263	1.06	14.4%	85.6%	1.03	1.06	93.9%	93.9%	94.2%	85.9%	14.1%	84.2%	86.2%
Other Administrative	1	1	1.05		100.0%		1.05	0.0%	0.0%	0.0%	100.0%	0.0%		100.0%
<b>Administrative/ Supervisory (V to VII)</b>	<b>249</b>	<b>264</b>	<b>1.06</b>	<b>14.4%</b>	<b>85.6%</b>	<b>1.03</b>	<b>1.06</b>	<b>93.6%</b>	<b>92.1%</b>	<b>93.8%</b>	<b>86.0%</b>	<b>14.0%</b>	<b>84.2%</b>	<b>86.3%</b>
General Administrative (III & IV)	613	699	1.14	8.9%	91.1%	1.07	1.15	85.0%	85.0%	86.2%	67.5%	32.5%	93.5%	65.0%
<b>Clerical (III &amp; IV)</b>	<b>613</b>	<b>699</b>	<b>1.14</b>	<b>8.9%</b>	<b>91.1%</b>	<b>1.07</b>	<b>1.15</b>	<b>85.0%</b>	<b>72.6%</b>	<b>86.2%</b>	<b>67.5%</b>	<b>32.5%</b>	<b>93.5%</b>	<b>65.0%</b>
<b>Management &amp; Administrative</b>	<b>972</b>	<b>1,074</b>	<b>1.11</b>	<b>12.7%</b>	<b>87.3%</b>	<b>1.04</b>	<b>1.11</b>	<b>88.1%</b>	<b>82.4%</b>	<b>88.9%</b>	<b>75.2%</b>	<b>24.8%</b>	<b>91.9%</b>	<b>72.8%</b>
Catering	226	247	1.09	35.6%	64.4%	1.03	1.13	93.5%	93.5%	95.6%	73.3%	26.7%	92.0%	62.9%
Household Services	452	522	1.15	18.4%	81.6%	1.09	1.17	83.0%	83.0%	84.5%	57.9%	42.1%	84.4%	51.9%
Other Support	26	31	1.18	61.3%	38.7%	1.08	1.38	93.5%	93.5%	91.7%	67.7%	32.3%	89.5%	33.3%
Portering	70	72	1.03	98.6%	1.4%	1.03	1.35	90.3%	90.3%	100.0%	94.4%	5.6%	94.4%	100.0%
<b>Support</b>	<b>774</b>	<b>872</b>	<b>1.13</b>	<b>31.4%</b>	<b>68.6%</b>	<b>1.05</b>	<b>1.16</b>	<b>86.9%</b>	<b>85.4%</b>	<b>87.6%</b>	<b>65.6%</b>	<b>34.4%</b>	<b>89.8%</b>	<b>54.5%</b>

Maintenance	90	94	1.05	98.9%	1.1%	1.05	1.00	95.7%	95.7%	100.0%	93.6%	6.4%	93.5%	100.0%
Technical Services	4	4	1.00	100.0%		1.00		100.0%	100.0%		100.0%	0.0%	100.0%	
<b>Maintenance/ Technical</b>	<b>94</b>	<b>98</b>	<b>1.04</b>	<b>99.0%</b>	<b>1.0%</b>	<b>1.04</b>	<b>1.00</b>	<b>95.9%</b>	<b>95.9%</b>	<b>100.0%</b>	<b>93.9%</b>	<b>6.1%</b>	<b>93.8%</b>	<b>100.0%</b>
<b>General Support</b>	<b>868</b>	<b>970</b>	<b>1.12</b>	<b>38.2%</b>	<b>61.8%</b>	<b>1.05</b>	<b>1.16</b>	<b>87.8%</b>	<b>88.1%</b>	<b>87.6%</b>	<b>68.5%</b>	<b>31.5%</b>	<b>90.8%</b>	<b>54.6%</b>
Attendant/ Aide	1,677	1,936	1.15	20.7%	79.3%	1.07	1.18	84.6%	84.6%	85.4%	56.6%	43.4%	84.0%	49.4%
Health & Social Care Assistants	57	63	1.10	23.8%	76.2%	1.11	1.10	93.7%	93.7%	97.9%	81.0%	19.0%	80.0%	81.3%
Health Care Assistant/ Care Assistant	2,366	2,679	1.13	21.2%	78.8%	1.05	1.16	89.8%	89.8%	90.2%	64.3%	35.7%	88.2%	57.9%
<b>Health Care Assistants</b>	<b>4,100</b>	<b>4,678</b>	<b>1.14</b>	<b>21.0%</b>	<b>79.0%</b>	<b>1.06</b>	<b>1.17</b>	<b>87.7%</b>	<b>85.5%</b>	<b>88.3%</b>	<b>61.3%</b>	<b>38.7%</b>	<b>86.4%</b>	<b>54.7%</b>
<b>Home Help</b>	<b>3,574</b>	<b>5,016</b>	<b>1.40</b>	<b>4.6%</b>	<b>95.4%</b>	<b>1.27</b>	<b>1.41</b>	<b>71.2%</b>	<b>43.5%</b>	<b>72.5%</b>	<b>15.3%</b>	<b>84.7%</b>	<b>19.1%</b>	<b>15.1%</b>
Home Care Services	126	132	1.05	9.1%	90.9%	1.00	1.05	97.7%	97.7%	97.5%	83.3%	16.7%	100.0%	81.7%
Other Care Grades	24	30	1.27	43.3%	56.7%	1.11	1.44	90.0%	90.0%	88.2%	53.3%	46.7%	84.6%	29.4%
Pastoral Care	23	50	2.19	88.0%	12.0%	2.20	2.16	28.0%	28.0%	66.7%	30.0%	70.0%	34.1%	0.0%
Workshop Services	5	5	1.07	20.0%	80.0%	1.00	1.09	80.0%	80.0%	75.0%	40.0%	60.0%	100.0%	25.0%
<b>Care, other</b>	<b>177</b>	<b>217</b>	<b>1.23</b>	<b>32.3%</b>	<b>67.7%</b>	<b>1.56</b>	<b>1.11</b>	<b>80.2%</b>	<b>50.0%</b>	<b>94.6%</b>	<b>65.9%</b>	<b>34.1%</b>	<b>55.7%</b>	<b>70.7%</b>
<b>Patient &amp; Client Care</b>	<b>7,851</b>	<b>9,911</b>	<b>1.26</b>	<b>12.9%</b>	<b>87.1%</b>	<b>1.11</b>	<b>1.29</b>	<b>79.2%</b>	<b>76.1%</b>	<b>79.7%</b>	<b>38.1%</b>	<b>61.9%</b>	<b>72.6%</b>	<b>33.0%</b>

## Employment by WTE, Headcount, Gender, Full-Time /Part-Time etc.: Aug 2022

Social Care Older Persons Services CHO	WTE	Headcount	WTE: no.	% Male	% female	Male WTE: no.	Female WTE: no.	% Total Perm	% Male Perm	% Female Perm	% Total Full Time	% Total Part Time	% Male FT	% Female FT
<b>Overall</b>	<b>13,769</b>	<b>16,616</b>	<b>1.21</b>	<b>13.8%</b>	<b>86.2%</b>	<b>1.10</b>	<b>1.22</b>	<b>82.4%</b>	<b>79.5%</b>	<b>82.9%</b>	<b>51.1%</b>	<b>48.9%</b>	<b>77.9%</b>	<b>46.8%</b>
CHO 1	2,002	2,391	1.19	12.6%	87.4%	1.15	1.20	73.3%	73.3%	71.7%	41.5%	58.5%	66.2%	37.9%
CHO 2	1,539	1,804	1.17	13.1%	86.9%	1.05	1.19	92.8%	92.8%	93.4%	50.3%	49.7%	86.9%	44.7%
CHO 3	1,254	1,546	1.23	12.7%	87.3%	1.05	1.27	90.9%	90.9%	91.5%	58.5%	41.5%	91.4%	53.7%
CHO 4	2,931	3,781	1.29	11.8%	88.2%	1.16	1.31	61.4%	61.4%	63.4%	36.7%	63.3%	63.8%	33.0%
CHO 5	1,673	2,013	1.20	10.7%	89.3%	1.09	1.22	97.4%	97.4%	98.1%	46.1%	53.9%	74.0%	42.8%
CHO 6	817	894	1.09	24.9%	75.1%	1.07	1.10	92.4%	92.4%	92.3%	78.5%	21.5%	88.8%	75.1%
CHO 7	1,002	1,146	1.14	17.0%	83.0%	1.07	1.16	88.9%	88.9%	89.9%	68.8%	31.2%	87.7%	65.0%
CHO 8	1,475	1,841	1.25	12.4%	87.6%	1.17	1.26	90.1%	90.1%	90.8%	51.7%	48.3%	74.6%	48.5%
CHO 9	988	1,105	1.12	19.8%	80.2%	1.08	1.13	89.8%	89.8%	90.5%	76.8%	23.2%	87.7%	74.2%
other Community Services	87	95	1.09	22.1%	77.9%	1.04	1.10	91.6%	91.6%	91.9%	86.3%	13.7%	90.5%	85.1%

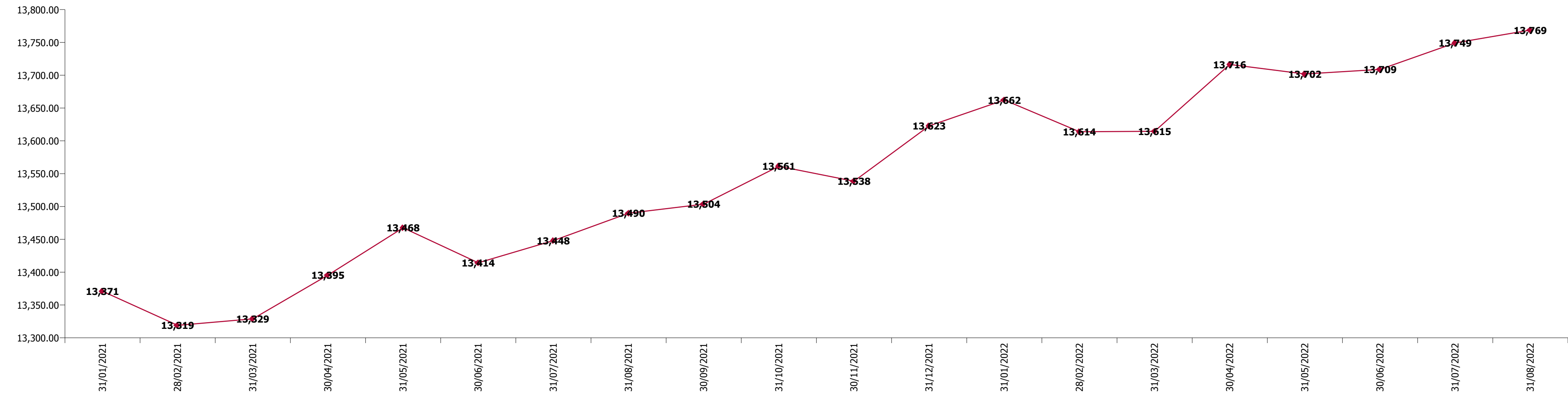
Summary Staff Movement: August 2022

Month-on-month  
Summary

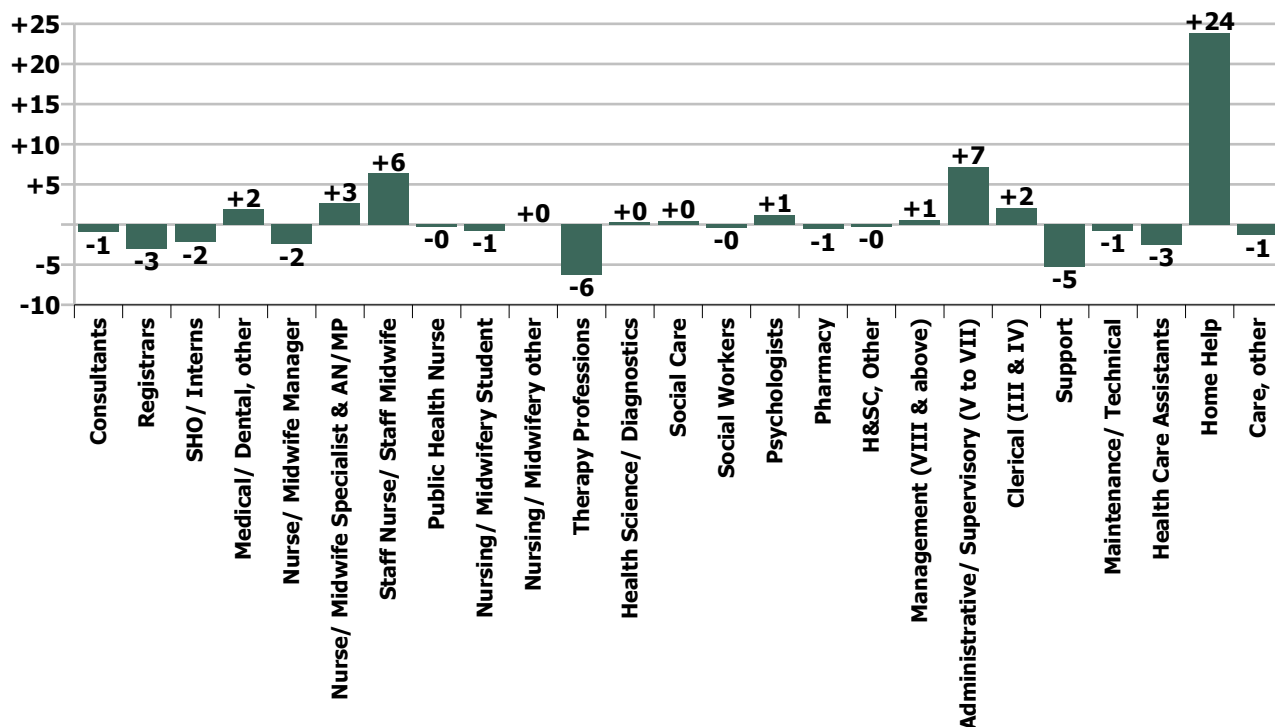
WTE change since Jul 22	% change since Jul 22	overall	Consultants	Registrars	SHO/ Interns	Medical/ Dental, other	Medical & Dental	Nurse/ Midwife Manager	Nurse/ Midwife Specialist & AN/MP	Staff Nurse/ Staff Midwife	Public Health Nurse	Nursing/ Midwifery Student	Nursing/ Midwifery other	Nursing & Midwifery	Therapy Professions	Health Science/ Diagnostics	Social Care	Social Workers	Psychologists	Pharmacy	H&SC, Other	Health & Social Care Professionals	Management (VIII & above)	Administrativ e/ Supervisory (V to VII)	Clerical (III & IV)	Management & Administrative	General Support	Health Care Assistants	Home Help	Care, other	Patient & Client Care	
Overall	+0.1%	+20	-1	-3	-2	+2	-4	-2	+3	+6	-0	-1	+0	+6	-6	+0	+0	-0	+1	-1	-0	-6	+1	+7	+2	+10	-6	-3	+24	-1	+20	
CHO 1	-0.3%	-7				-0	-0	+0	+1	-4				-2	+1			+1				+2	+1	+1	+3	+5	-0	-3	-7	-1	-11	
CHO 2	+0.9%	+13				+0			-1	+1	-0			-0	-2	+0		-1		+0		-2	+0	+1	-1	+1	+1	+1	+15	-1	+14	
CHO 3	-0.2%	-3	-1	-0	-1	-0	-2	+3	-0	+3				+6	-0	+0		-1	+0			-1	-0	-1	+2	+1	-2	-4	-3	+1	-5	
CHO 4	+0.2%	+6	+0	-1	-1	+3	+1	-2	+0	-1	+0			-2	-0	+0	+0	-1		-0		+0	+0	-0	+2	+2	-2	-3	+11	-0	+8	
CHO 5	+0.5%	+8							-2	+2	-0			+3	-1			+0	+1		+0	-0	+1	-1	+1	+1	+0	+1	+3	-0	+3	
CHO 6	-0.5%	-4				-0	-0	-1		+1				-0	-2					-0	+0	-2	-0	+0	-3	-2	-0	+1		-1	+0	
CHO 7	+0.1%	+1						-1	+1	-0		-1		-0	+3			+0				+3	+0	-0	-1	-1	-2	+2	-1		+1	
CHO 8	+0.2%	+2				-0	-0	-1	-1	+0	-0		+0	-1	-3					-0	-0	-3	-0	+4	-2	+2	+0	-1	+5	+1	+5	
CHO 9	+0.1%	+1	-1	-2	-0	-0	-3	+1	-0	+3				+4	-3				-0	+0	+0	-2	-1	+1	-1	-1	+0	+3		+0	+3	
other Community Services	+3.2%	+3																					-0	+2	+1	+3						
		+0.1%	-13.6%	-26.5%	-15.7%	+2.3%	-3.6%	-0.3%	+4.9%	+0.2%	-2.2%	-33.3%	+0.3%	+0.2%	-1.9%	+7.8%	+22.3%	-0.5%	+25.5%	-3.1%	-6.8%	-1.3%	+0.6%	+3.0%	+0.3%	+1.0%	-0.7%	-0.1%	+0.7%	-0.8%	+0.3%	

Year-on-year Summary

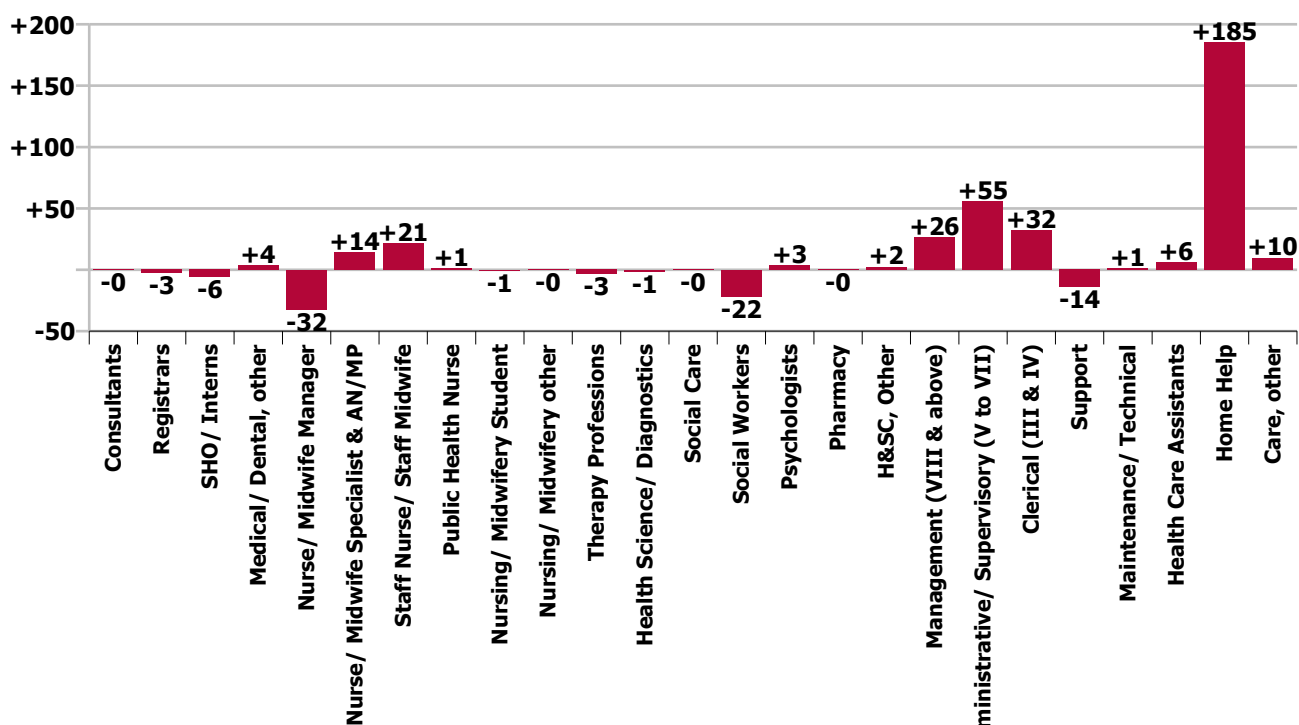
WTE change since Aug 21	% change since Aug 21	overall	Consultants	Registrars	SHO/ Interns	Medical/ Dental, other	Medical & Dental	Nurse/ Midwife Manager	Nurse/ Midwife Specialist & AN/MP	Staff Nurse/ Staff Midwife	Public Health Nurse	Nursing/ Midwifery Student	Nursing/ Midwifery other	Nursing & Midwifery	Therapy Professions	Health Science/ Diagnostics	Social Care	Social Workers	Psychologists	Pharmacy	H&SC, Other	Health & Social Care Professionals	Management (VIII & above)	Administrative/ Supervisory (V to VII)	Clerical (III & IV)	Management & Administrative	General Support	Health Care Assistants	Home Help	Care, other	Patient & Client Care	
Overall	+2.1%	+279	-0	-3	-6	+4	-5	-32	+14	+21	+1	-1	-0	+3	-3	-1	-0	-22	+3	-0	+2	-21	+26	+55	+32	+114	-13	+6	+185	+10	+201	
CHO 1	+5.1%	+98				+0	+0	+7	+3	-7				+3	+6	-2		-6				-2	+1	+6	+2	+9	+2	-10	+99	-3	+86	
CHO 2	-1.7%	-26				-1	-1	-3	+5	-5	-0			-2	+1	+0		-2		+0		-1	+4	+1	+4	+9	-5	-8	-22	+3	-26	
CHO 3	+10.1%	+115		+2	+1	+1	+3	+4	+2	+5	-1	+1		+10	+7	+0		+3				+11	+4	+14	+6	+23	-10	+18	+66	-6	+78	
CHO 4	+0.7%	+20	+0	-3	-2	+6	+1	-18	-0	+4	+2			-12	-13	-1	-0	-2		+0		-15	+2	+8	-3	+7	+6	+27	+4	+2	+33	
CHO 5	+1.5%	+25				-1	-1	-7	+3	-4	+0			-8	+0			+4	+2	+1	+2	+9	+7	-6	+18	+20	-3	+0	-3	+12	+9	
CHO 6	+1.0%	+8		-1			-1	-1	-2	+8				+5	-7			+0		-1		-7	+2	+6	-0	+8	+0	+2		+0	+3	
CHO 7	-1.3%	-13						-9	+2	-4		-1		-12	+1			-7		+1		-5	+2	+2	+6	+10	-9	-5	+8	-2	+2	
CHO 8	+0.7%	+11				-0	-0	-5	-6	+0	-1		-0	-11	-6	+1		-6		-2	+0	-12	+2	+9	+1	+12	+4	-19	+34	+4	+18	
CHO 9	+2.8%	+27	-0	-1	-5	-1	-7	-0	+8	+22	+1			+30	+6				-7	+1		+0	+3	+0	-0	+3	+0	-0		-0	-0	
other Community Services	+19.6%	+14																	+1			+1	-1	+14	+0	+13					-0	-0
		+2.1%	-3.8%	-25.3%	-33.0%	+4.4%	-4.4%	-4.2%	+32.2%	+0.8%	+9.7%	-25.0%	-2.7%	+0.1%	-1.0%	-23.9%	-8.0%	-22.5%	+136.2%	-1.0%	+148.7%	-4.6%	+31.6%	+28.6%	+5.5%	+13.3%	-1.5%	+0.2%	+5.5%	+5.7%	+2.6%	



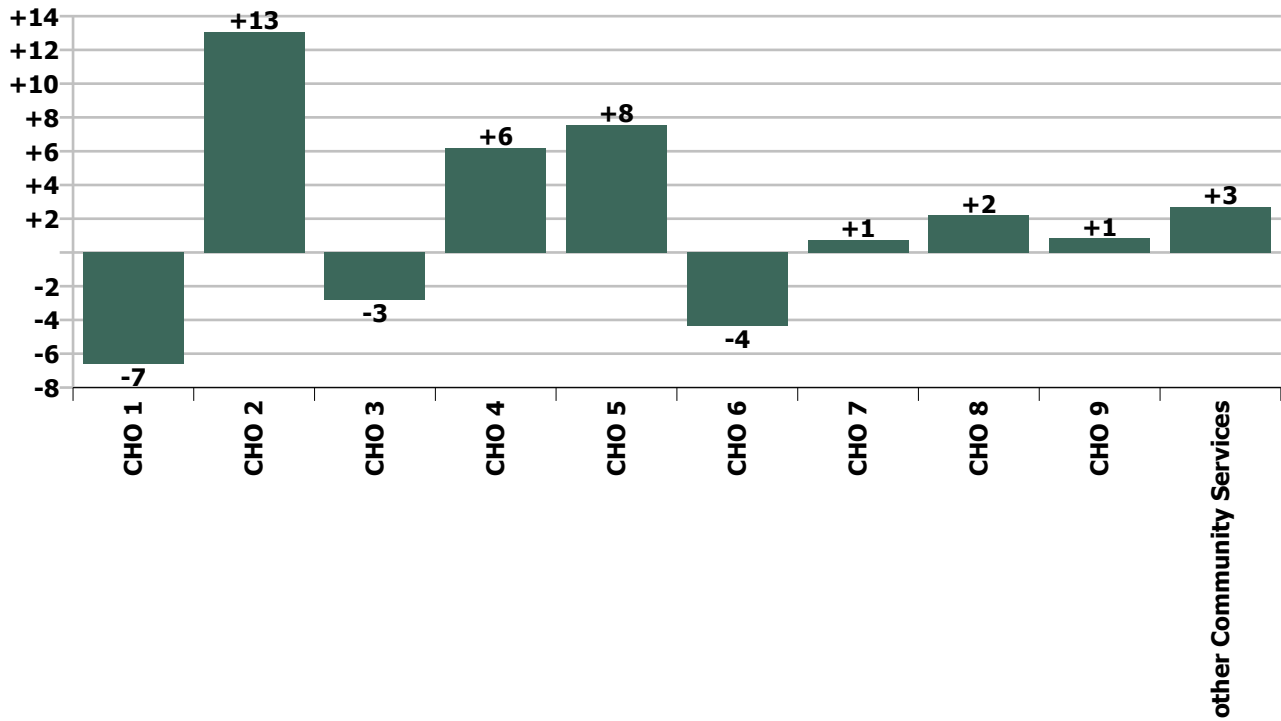
### Staff Group change since: Jul 2022



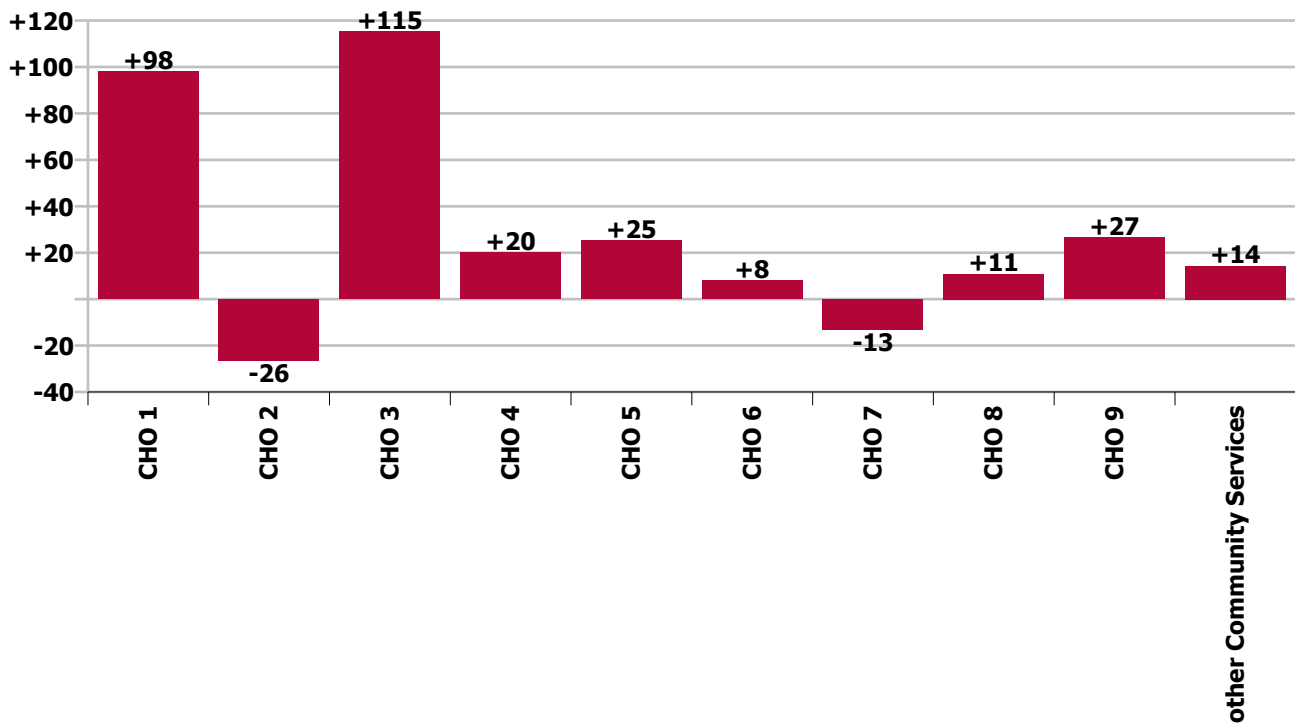
### Staff Group change since: Aug 2021



CHO change since: Jul 2022



CHO change since: Aug 2021





## Longitudinal Employment Levels by Grade Group - Dec 2016 to Aug 2022

Aug 2022 (Dec 2015 figure: 12,607)	WTE Aug 2022	WTE change since Dec 16	WTE change since Dec 17	WTE change since Dec 18	WTE change since Dec 19	WTE change since Dec 20	WTE change since Jul 22	% change since Dec 16	% change since Dec 17	% change since Dec 18	% change since Dec 19	% change since Dec 20	% change since Jul 22
<b>Overall</b>	<b>13,769</b>	<b>+1,286</b>	<b>+665</b>	<b>+464</b>	<b>+536</b>	<b>+354</b>	<b>+20</b>	<b>+10.3%</b>	<b>+5.1%</b>	<b>+3.5%</b>	<b>+4.1%</b>	<b>+2.6%</b>	<b>+0.1%</b>
Consultant Medicine	6	-3	-3	+3	+3	+2	-1	-34.3%	-33.2%	+70.8%	+70.8%	+39.1%	-13.6%
Consultant Psychiatry		-1	-1					-100.0%	-100.0%	-100.0%	-100.0%	-100.0%	-100.0%
Consultant Surgery		-1	-0	-0				-100.0%	-100.0%	-100.0%	-100.0%	-100.0%	-100.0%
<b>Consultants</b>	<b>6</b>	<b>-5</b>	<b>-4</b>	<b>+2</b>	<b>+3</b>	<b>+2</b>	<b>-1</b>	<b>-44.0%</b>	<b>-39.5%</b>	<b>+65.3%</b>	<b>+70.8%</b>	<b>+39.1%</b>	<b>-13.6%</b>
Registrar	5	-0	-2	-2	-1	-0	-2	-0.5%	-27.0%	-25.5%	-15.8%	-6.2%	-24.5%
Senior Registrar	1	+0	+0	-1	+0	+0	-1	+8.0%	+8.0%	-46.0%	+8.0%	+8.0%	-48.1%
Specialist Registrar	2	-0	+1	+1	-0	-0	-0	-12.5%	+75.0%	+75.0%	-12.5%	-12.5%	-11.2%
<b>Registrars</b>	<b>8</b>	<b>-0</b>	<b>-1</b>	<b>-2</b>	<b>-1</b>	<b>-1</b>	<b>-3</b>	<b>-2.4%</b>	<b>-12.6%</b>	<b>-19.8%</b>	<b>-12.6%</b>	<b>-6.0%</b>	<b>-26.5%</b>
Senior House Officer	12	+2	+2	-0	-3	-2	-2	+19.2%	+19.7%	-0.6%	-20.9%	-13.2%	-15.7%
<b>SHO/ Interns</b>	<b>12</b>	<b>+2</b>	<b>+2</b>	<b>-0</b>	<b>-3</b>	<b>-2</b>	<b>-2</b>	<b>+19.2%</b>	<b>+19.7%</b>	<b>-0.6%</b>	<b>-20.9%</b>	<b>-13.2%</b>	<b>-15.7%</b>
Other Medical	87	+1	+1	+1	-10	-17	+2	+1.0%	+1.1%	+1.6%	-10.0%	-16.4%	+2.3%
<b>Medical/ Dental, other</b>	<b>87</b>	<b>+1</b>	<b>+1</b>	<b>+1</b>	<b>-10</b>	<b>-17</b>	<b>+2</b>	<b>+1.0%</b>	<b>+1.1%</b>	<b>+1.6%</b>	<b>-10.0%</b>	<b>-16.4%</b>	<b>+2.3%</b>
<b>Medical &amp; Dental</b>	<b>113</b>	<b>-2</b>	<b>-2</b>	<b>+2</b>	<b>-11</b>	<b>-18</b>	<b>-4</b>	<b>-1.9%</b>	<b>-2.0%</b>	<b>+1.5%</b>	<b>-9.2%</b>	<b>-13.5%</b>	<b>-3.6%</b>
Clinical Nurse/ Midwife Manager	534	-1	+5	+9	+25	-2	-2	-0.2%	+1.0%	+1.8%	+5.0%	-0.5%	-0.4%
Director Nursing/Midwifery, Assistant	100	+12	+8	+13	-3	-6	+2	+14.3%	+9.1%	+15.4%	-2.5%	-5.8%	+1.9%
Director of Nursing/Midwifery	98	+13	+16	+16	+0	-6	-2	+15.9%	+19.3%	+19.1%	+0.2%	-5.6%	-2.1%
<b>Nurse/ Midwife Manager</b>	<b>732</b>	<b>+25</b>	<b>+30</b>	<b>+39</b>	<b>+23</b>	<b>-14</b>	<b>-2</b>	<b>+3.5%</b>	<b>+4.2%</b>	<b>+5.6%</b>	<b>+3.2%</b>	<b>-1.9%</b>	<b>-0.3%</b>
Advanced Nurse/ Midwife Practitioner	24	+21	+21	+17	+13	+7	+3	+702.7%	+702.7%	+245.0%	+124.6%	+44.9%	+15.9%
Clinical Nurse/ Midwife Specialist	33	+20	+22	+16	+17	+11	-1	+163.6%	+194.4%	+97.1%	+109.7%	+53.1%	-1.9%
<b>Nurse/ Midwife Specialist &amp; AN/MP</b>	<b>57</b>	<b>+42</b>	<b>+43</b>	<b>+33</b>	<b>+31</b>	<b>+19</b>	<b>+3</b>	<b>+267.7%</b>	<b>+301.6%</b>	<b>+140.6%</b>	<b>+115.8%</b>	<b>+49.5%</b>	<b>+4.9%</b>
Graduate Nursing/ Midwifery								-100.0%	-100.0%	-100.0%	-100.0%	-100.0%	-100.0%
Staff Midwives	1	+0	-1	+1	+1	-0	+0	+112.5%	-52.8%	-100.0%	-100.0%	-3.4%	+1.2%
Staff Nurse [Psychiatric]	5	-1	-1	-1	-0	-0	-2	-12.7%	-12.7%	-13.0%	-1.8%	-6.8%	-24.8%
Staff Nurses [General/ Children's]	2,709	+126	+148	+104	+137	+92	+8	+4.9%	+5.8%	+4.0%	+5.3%	+3.5%	+0.3%
Staff Nurse [Intellectual Disability]	1		+0		+1		+0		+29.9%		-100.0%		+1.0%
<b>Staff Nurse/ Staff Midwife</b>	<b>2,716</b>	<b>+126</b>	<b>+146</b>	<b>+105</b>	<b>+139</b>	<b>+92</b>	<b>+6</b>	<b>+4.9%</b>	<b>+5.7%</b>	<b>+4.0%</b>	<b>+5.4%</b>	<b>+3.5%</b>	<b>+0.2%</b>
Public Health Nurse	12	-2	-2	-1	-1	-1	-0	-12.9%	-15.9%	-8.5%	-7.5%	-7.7%	-2.2%
<b>Public Health Nurse</b>	<b>12</b>	<b>-2</b>	<b>-2</b>	<b>-1</b>	<b>-1</b>	<b>-1</b>	<b>-0</b>	<b>-12.9%</b>	<b>-15.9%</b>	<b>-8.5%</b>	<b>-7.5%</b>	<b>-7.7%</b>	<b>-2.2%</b>
Post-registration Nurse/ Midwife Student					-1			-100.0%	-100.0%	-100.0%	-100.0%	-100.0%	-100.0%
Nursing/ Midwifery awaiting registration	2	+2	-13	+2	+1	+0	-1	-100.0%	-89.3%	-100.0%	+50.0%	+11.1%	-33.3%
<b>Nursing/ Midwifery Student</b>	<b>2</b>	<b>+2</b>	<b>-13</b>	<b>+2</b>	<b>-1</b>	<b>+0</b>	<b>-1</b>	<b>-100.0%</b>	<b>-89.3%</b>	<b>-100.0%</b>	<b>-25.0%</b>	<b>+11.1%</b>	<b>-33.3%</b>



Aug 2022 (Dec 2015 figure: 12,607)	WTE Aug 2022	WTE change since Dec 16	WTE change since Dec 17	WTE change since Dec 18	WTE change since Dec 19	WTE change since Dec 20	WTE change since Jul 22	% change since Dec 16	% change since Dec 17	% change since Dec 18	% change since Dec 19	% change since Dec 20	% change since Jul 22
<b>Overall</b>	<b>13,769</b>	<b>+1,286</b>	<b>+665</b>	<b>+464</b>	<b>+536</b>	<b>+354</b>	<b>+20</b>	<b>+10.3%</b>	<b>+5.1%</b>	<b>+3.5%</b>	<b>+4.1%</b>	<b>+2.6%</b>	<b>+0.1%</b>
Nursing Education/Clinical	4	+3	+3	+3	+3	-0	+0	+289.0%	+289.0%	+289.0%	+289.0%	-2.3%	+0.3%
<b>Nursing/ Midwifery other</b>	<b>4</b>	<b>+3</b>	<b>+3</b>	<b>+3</b>	<b>+3</b>	<b>-0</b>	<b>+0</b>	<b>+289.0%</b>	<b>+289.0%</b>	<b>+289.0%</b>	<b>+289.0%</b>	<b>-2.3%</b>	<b>+0.3%</b>
<b>Nursing &amp; Midwifery</b>	<b>3,522</b>	<b>+195</b>	<b>+207</b>	<b>+180</b>	<b>+194</b>	<b>+95</b>	<b>+6</b>	<b>+5.9%</b>	<b>+6.2%</b>	<b>+5.4%</b>	<b>+5.8%</b>	<b>+2.8%</b>	<b>+0.2%</b>
Dietitians	20	+4	+2	+2	+3	+2	-4	+23.6%	+11.9%	+13.2%	+19.6%	+8.9%	-16.7%
Occupational Therapists	119	+23	+24	+15	+6	+6	+4	+24.3%	+25.8%	+14.5%	+5.2%	+5.4%	+3.1%
Physiotherapists	155	+39	+34	+27	+31	+23	-6	+33.5%	+27.8%	+21.4%	+25.1%	+17.1%	-3.5%
Podiatrists & Chiropodists	3	-12	-13	-12	-9	-10	-0	-79.1%	-80.8%	-79.4%	-74.5%	-75.7%	-10.2%
Speech & Language Therapists	36	+16	+13	+13	+13	+17	+0	+78.8%	+52.9%	+57.6%	+57.4%	+83.5%	+0.2%
<b>Therapy Professions</b>	<b>333</b>	<b>+70</b>	<b>+60</b>	<b>+46</b>	<b>+44</b>	<b>+37</b>	<b>-6</b>	<b>+26.7%</b>	<b>+21.9%</b>	<b>+16.0%</b>	<b>+15.4%</b>	<b>+12.6%</b>	<b>-1.9%</b>
Medical Science		-1						-100.0%	-100.0%	-100.0%	-100.0%	-100.0%	-100.0%
Phlebotomists		-1	-1					-100.0%	-100.0%	-100.0%	-100.0%	-100.0%	-100.0%
Radiographers	3	-4	-5	-3	-3	-2	+0	-61.9%	-62.4%	-51.9%	-54.3%	-45.5%	+11.5%
Vascular Physiologists	0	+0	+0	+0	-0	+0		-100.0%	-100.0%	+112.5%	-19.0%	+6.3%	
Clinical Engineering	1	+1	+1	+1	+1	+1		-100.0%	-100.0%	-100.0%	-100.0%	-100.0%	
<b>Health Science/ Diagnostics</b>	<b>4</b>	<b>-5</b>	<b>-4</b>	<b>-2</b>	<b>-2</b>	<b>-1</b>	<b>+0</b>	<b>-57.4%</b>	<b>-52.7%</b>	<b>-32.0%</b>	<b>-36.8%</b>	<b>-24.4%</b>	<b>+7.8%</b>
<b>Social Care</b>	<b>3</b>	<b>-0</b>	<b>-0</b>	<b>-0</b>	<b>-0</b>	<b>-0</b>	<b>+0</b>	<b>-6.7%</b>	<b>-5.6%</b>	<b>-8.0%</b>	<b>-8.0%</b>	<b>-8.0%</b>	<b>+22.3%</b>
<b>Social Workers</b>	<b>75</b>	<b>-12</b>	<b>-9</b>	<b>-20</b>	<b>-23</b>	<b>-25</b>	<b>-0</b>	<b>-13.4%</b>	<b>-10.4%</b>	<b>-20.9%</b>	<b>-23.7%</b>	<b>-24.8%</b>	<b>-0.5%</b>
<b>Psychologists</b>	<b>6</b>	<b>+5</b>	<b>+6</b>	<b>+5</b>	<b>+4</b>	<b>+5</b>	<b>+1</b>	<b>#####</b>	<b>-100.0%</b>	<b>+1062.0%</b>	<b>+176.7%</b>	<b>+428.2%</b>	<b>+25.5%</b>
Pharmacists	14	+4	+3	+2	+1	+1	-1	+38.0%	+27.6%	+17.0%	+6.7%	+7.0%	-4.3%
Pharmacy Technicians	6	+1	+1	+1	+3	+1		+17.3%	+17.3%	+17.3%	+120.0%	+22.2%	
<b>Pharmacy</b>	<b>19</b>	<b>+5</b>	<b>+4</b>	<b>+3</b>	<b>+4</b>	<b>+2</b>	<b>-1</b>	<b>+31.3%</b>	<b>+24.5%</b>	<b>+17.1%</b>	<b>+25.3%</b>	<b>+11.0%</b>	<b>-3.1%</b>
Other Health & Social Care	3	+1	+1	+1	+2	+2	-0	+108.1%	+108.1%	+108.1%	+686.1%	+424.1%	-9.0%
Play Therapists/ Specialists	1	-1						-37.1%					
<b>H&amp;SC, Other</b>	<b>4</b>	<b>+1</b>	<b>+1</b>	<b>+1</b>	<b>+2</b>	<b>+2</b>	<b>-0</b>	<b>+29.8%</b>	<b>+62.3%</b>	<b>+62.3%</b>	<b>+181.6%</b>	<b>+148.7%</b>	<b>-6.8%</b>
<b>Health &amp; Social Care Professionals</b>	<b>443</b>	<b>+64</b>	<b>+58</b>	<b>+34</b>	<b>+29</b>	<b>+20</b>	<b>-6</b>	<b>+16.9%</b>	<b>+14.9%</b>	<b>+8.2%</b>	<b>+6.9%</b>	<b>+4.7%</b>	<b>-1.3%</b>
Executive Management	14	+7	+6	+4	+2	-1	-1	+100.0%	+76.8%	+40.0%	+17.5%	-5.3%	-5.7%
Senior Management (VIII & GM)	95	+55	+58	+46	+32	+31	+1	+134.9%	+157.2%	+95.6%	+51.5%	+48.5%	+1.6%
<b>Management (VIII &amp; above)</b>	<b>109</b>	<b>+62</b>	<b>+64</b>	<b>+50</b>	<b>+34</b>	<b>+30</b>	<b>+1</b>	<b>+129.7%</b>	<b>+143.0%</b>	<b>+86.1%</b>	<b>+46.1%</b>	<b>+38.4%</b>	<b>+0.6%</b>
Middle Management (V-VII)	248	+132	+121	+107	+84	+73	+7	+113.0%	+94.6%	+75.1%	+51.5%	+41.2%	+3.0%
Other Administrative	1	-0	-0	-0	-0	+1		-5.0%	-5.0%	-5.0%	-5.0%	-100.0%	
<b>Administrative/ Supervisory (V to VII)</b>	<b>249</b>	<b>+132</b>	<b>+121</b>	<b>+107</b>	<b>+84</b>	<b>+73</b>	<b>+7</b>	<b>+112.0%</b>	<b>+93.8%</b>	<b>+74.6%</b>	<b>+51.1%</b>	<b>+41.8%</b>	<b>+3.0%</b>
General Administrative (III & IV)	613	+130	+104	+49	+42	+26	+2	+26.9%	+20.4%	+8.6%	+7.4%	+4.4%	+0.3%
<b>Clerical (III &amp; IV)</b>	<b>613</b>	<b>+130</b>	<b>+104</b>	<b>+49</b>	<b>+42</b>	<b>+26</b>	<b>+2</b>	<b>+26.9%</b>	<b>+20.4%</b>	<b>+8.6%</b>	<b>+7.4%</b>	<b>+4.4%</b>	<b>+0.3%</b>

Aug 2022 (Dec 2015 figure: 12,607)	WTE Aug 2022	WTE change since Dec 16	WTE change since Dec 17	WTE change since Dec 18	WTE change since Dec 19	WTE change since Dec 20	WTE change since Jul 22	% change since Dec 16	% change since Dec 17	% change since Dec 18	% change since Dec 19	% change since Dec 20	% change since Jul 22
<b>Overall</b>	<b>13,769</b>	<b>+1,286</b>	<b>+665</b>	<b>+464</b>	<b>+536</b>	<b>+354</b>	<b>+20</b>	<b>+10.3%</b>	<b>+5.1%</b>	<b>+3.5%</b>	<b>+4.1%</b>	<b>+2.6%</b>	<b>+0.1%</b>
<b>Management &amp; Administrative</b>	<b>972</b>	<b>+323</b>	<b>+289</b>	<b>+205</b>	<b>+161</b>	<b>+130</b>	<b>+10</b>	<b>+49.8%</b>	<b>+42.3%</b>	<b>+26.8%</b>	<b>+19.8%</b>	<b>+15.4%</b>	<b>+1.0%</b>
Catering	226	+13	+14	+11	+5	+10	-2	+6.2%	+6.8%	+5.0%	+2.2%	+4.5%	-0.7%
Household Services	452	-111	-93	-66	-40	-27	-3	-19.8%	-17.0%	-12.7%	-8.2%	-5.6%	-0.6%
Other Support	26	-14	-17	-12	-8	-3	-1	-34.6%	-39.5%	-30.7%	-22.9%	-9.8%	-2.1%
Portering	70	-15	-14	-10	-12	-7	-0	-18.0%	-16.9%	-12.4%	-14.4%	-9.1%	-0.4%
<b>Support</b>	<b>774</b>	<b>-127</b>	<b>-109</b>	<b>-77</b>	<b>-55</b>	<b>-27</b>	<b>-5</b>	<b>-14.1%</b>	<b>-12.4%</b>	<b>-9.0%</b>	<b>-6.6%</b>	<b>-3.4%</b>	<b>-0.7%</b>
Maintenance	90	-14	-12	-13	-9	-5	-1	-13.3%	-11.8%	-12.3%	-8.7%	-5.3%	-0.9%
Technical Services	4	+4	+4	+4	+4	+4		-100.0%	-100.0%	-100.0%	-100.0%	-100.0%	
<b>Maintenance/ Technical</b>	<b>94</b>	<b>-10</b>	<b>-8</b>	<b>-9</b>	<b>-5</b>	<b>-1</b>	<b>-1</b>	<b>-9.4%</b>	<b>-7.8%</b>	<b>-8.4%</b>	<b>-4.7%</b>	<b>-1.0%</b>	<b>-0.8%</b>
<b>General Support</b>	<b>868</b>	<b>-137</b>	<b>-117</b>	<b>-85</b>	<b>-59</b>	<b>-28</b>	<b>-6</b>	<b>-13.6%</b>	<b>-11.9%</b>	<b>-8.9%</b>	<b>-6.4%</b>	<b>-3.1%</b>	<b>-0.7%</b>
Attendant/ Aide	1,677	-1,087	-1,019	-954	-617	-534	-11	-39.3%	-37.8%	-36.3%	-26.9%	-24.2%	-0.6%
Health & Social Care Assistants	57	+31	+31	+33	+36	+30	+5	+119.7%	+120.3%	+135.4%	+168.2%	+109.1%	+9.1%
Health Care Assistant/ Care Assistant	2,366	+1,083	+976	+866	+638	+508	+3	+84.5%	+70.2%	+57.7%	+36.9%	+27.4%	+0.1%
HCA (Student Nurse/Midwife COVID-19)						-22		-100.0%	-100.0%	-100.0%	-100.0%	-100.0%	-100.0%
<b>Health Care Assistants</b>	<b>4,100</b>	<b>+27</b>	<b>-11</b>	<b>-55</b>	<b>+57</b>	<b>-18</b>	<b>-3</b>	<b>+0.7%</b>	<b>-0.3%</b>	<b>-1.3%</b>	<b>+1.4%</b>	<b>-0.4%</b>	<b>-0.1%</b>
<b>Home Help</b>	<b>3,574</b>	<b>+779</b>	<b>+218</b>	<b>+154</b>	<b>+132</b>	<b>+143</b>	<b>+24</b>	<b>+27.9%</b>	<b>+6.5%</b>	<b>+4.5%</b>	<b>+3.8%</b>	<b>+4.2%</b>	<b>+0.7%</b>
Home Care Services	126	+58	+42	+40	+40	+27	-0	+85.2%	+50.1%	+46.3%	+46.7%	+27.4%	-0.1%
Other Care Grades	24	-11	-9	-1	+1	+5	-1	-31.7%	-28.2%	-4.7%	+5.4%	+24.0%	-4.0%
Pastoral Care	23	-12	-10	-11	-9	-4	-0	-34.1%	-30.7%	-32.6%	-28.0%	-15.0%	-1.3%
Workshop Services	5	+3	+3	+3	+3	+3		+119.8%	+119.8%	+119.8%	+119.8%	+133.0%	
<b>Care, other</b>	<b>177</b>	<b>+38</b>	<b>+25</b>	<b>+30</b>	<b>+35</b>	<b>+30</b>	<b>-1</b>	<b>+27.1%</b>	<b>+16.6%</b>	<b>+20.6%</b>	<b>+24.6%</b>	<b>+20.6%</b>	<b>-0.8%</b>
<b>Patient &amp; Client Care</b>	<b>7,851</b>	<b>+844</b>	<b>+232</b>	<b>+129</b>	<b>+224</b>	<b>+155</b>	<b>+20</b>	<b>+12.0%</b>	<b>+3.0%</b>	<b>+1.7%</b>	<b>+2.9%</b>	<b>+2.0%</b>	<b>+0.3%</b>

Source: Health Service Personnel Census

Longitudinal Employment Levels by Grade Group - Dec 2016 to Aug 2022

Aug 2022 (Dec 2015 figure: 12,607)	WTE Aug 2022	WTE change since Dec 16	WTE change since Dec 17	WTE change since Dec 18	WTE change since Dec 19	WTE change since Dec 20	WTE change since Jul 22	% change since Dec 16	% change since Dec 17	% change since Dec 18	% change since Dec 19	% change since Dec 20	% change since Jul 22
Overall	13,769	+1,286	+665	+464	+536	+354	+20	+10.3%	+5.1%	+3.5%	+4.1%	+2.6%	+0.1%
Consultant Medicine	6	-3	-3	+3	+3	+2	-1	-34.3%	-33.2%	+70.8%	+70.8%	+39.1%	-13.6%
Consultant Psychiatry		-1	-1					-100.0%	-100.0%	-100.0%	-100.0%	-100.0%	-100.0%
Consultant Surgery		-1	-0	-0				-100.0%	-100.0%	-100.0%	-100.0%	-100.0%	-100.0%
Consultants	6	-5	-4	+2	+3	+2	-1	-44.0%	-39.5%	+65.3%	+70.8%	+39.1%	-13.6%
Registrar	5	-0	-2	-2	-1	-0	-2	-0.5%	-27.0%	-25.5%	-15.8%	-6.2%	-24.5%
Senior Registrar	1	+0	+0	-1	+0	+0	-1	+8.0%	+8.0%	-46.0%	+8.0%	+8.0%	-48.1%
Specialist Registrar	2	-0	+1	+1	-0	-0	-0	-12.5%	+75.0%	+75.0%	-12.5%	-12.5%	-11.2%
Registrars	8	-0	-1	-2	-1	-1	-3	-2.4%	-12.6%	-19.8%	-12.6%	-6.0%	-26.5%
Senior House Officer	12	+2	+2	-0	-3	-2	-2	+19.2%	+19.7%	-0.6%	-20.9%	-13.2%	-15.7%
SHO/ Interns	12	+2	+2	-0	-3	-2	-2	+19.2%	+19.7%	-0.6%	-20.9%	-13.2%	-15.7%
Other Medical	87	+1	+1	+1	-10	-17	+2	+1.0%	+1.1%	+1.6%	-10.0%	-16.4%	+2.3%
Medical/ Dental, other	87	+1	+1	+1	-10	-17	+2	+1.0%	+1.1%	+1.6%	-10.0%	-16.4%	+2.3%
Medical & Dental	113	-2	-2	+2	-11	-18	-4	-1.9%	-2.0%	+1.5%	-9.2%	-13.5%	-3.6%
Clinical Nurse/ Midwife Manager	534	-1	+5	+9	+25	-2	-2	-0.2%	+1.0%	+1.8%	+5.0%	-0.5%	-0.4%
Director Nursing/Midwifery, Assistant	100	+12	+8	+13	-3	-6	+2	+14.3%	+9.1%	+15.4%	-2.5%	-5.8%	+1.9%
Director of Nursing/Midwifery	98	+13	+16	+16	+0	-6	-2	+15.9%	+19.3%	+19.1%	+0.2%	-5.6%	-2.1%
Nurse/ Midwife Manager	732	+25	+30	+39	+23	-14	-2	+3.5%	+4.2%	+5.6%	+3.2%	-1.9%	-0.3%
Advanced Nurse/ Midwife Practitioner	24	+21	+21	+17	+13	+7	+3	+702.7%	+702.7%	+245.0%	+124.6%	+44.9%	+15.9%
Clinical Nurse/ Midwife Specialist	33	+20	+22	+16	+17	+11	-1	+163.6%	+194.4%	+97.1%	+109.7%	+53.1%	-1.9%
Nurse/ Midwife Specialist & AN/MP	57	+42	+43	+33	+31	+19	+3	+267.7%	+301.6%	+140.6%	+115.8%	+49.5%	+4.9%
Staff Nurse/ Staff Midwife	2,716	+126	+146	+105	+139	+92	+6	+4.9%	+5.7%	+4.0%	+5.4%	+3.5%	+0.2%
Public Health Nurse	12	-2	-2	-1	-1	-1	-0	-12.9%	-15.9%	-8.5%	-7.5%	-7.7%	-2.2%
Public Health Nurse	12	-2	-2	-1	-1	-1	-0	-12.9%	-15.9%	-8.5%	-7.5%	-7.7%	-2.2%
Post-registration Nurse/ Midwife Student					-1			-100.0%	-100.0%	-100.0%	-100.0%	-100.0%	-100.0%
Nursing/ Midwifery awaiting registration	2	+2	-13	+2	+1	+0	-1	-100.0%	-89.3%	-100.0%	+50.0%	+11.1%	-33.3%
Nursing/ Midwifery Student	2	+2	-13	+2	-1	+0	-1	-100.0%	-89.3%	-100.0%	-25.0%	+11.1%	-33.3%
Nursing Education/Clinical	4	+3	+3	+3	+3	-0	+0	+289.0%	+289.0%	+289.0%	+289.0%	-2.3%	+0.3%
Nursing/ Midwifery other	4	+3	+3	+3	+3	-0	+0	+289.0%	+289.0%	+289.0%	+289.0%	-2.3%	+0.3%
Nursing & Midwifery	3,522	+195	+207	+180	+194	+95	+6	+5.9%	+6.2%	+5.4%	+5.8%	+2.8%	+0.2%
Dietitians	20	+4	+2	+2	+3	+2	-4	+23.6%	+11.9%	+13.2%	+19.6%	+8.9%	-16.7%
Occupational Therapists	119	+23	+24	+15	+6	+6	+4	+24.3%	+25.8%	+14.5%	+5.2%	+5.4%	+3.1%
Physiotherapists	155	+39	+34	+27	+31	+23	-6	+33.5%	+27.8%	+21.4%	+25.1%	+17.1%	-3.5%
Podiatrists & Chiropodists	3	-12	-13	-12	-9	-10	-0	-79.1%	-80.8%	-79.4%	-74.5%	-75.7%	-10.2%
Speech & Language Therapists	36	+16	+13	+13	+13	+17	+0	+78.8%	+52.9%	+57.6%	+57.4%	+83.5%	+0.2%
Therapy Professions	333	+70	+60	+46	+44	+37	-6	+26.7%	+21.9%	+16.0%	+15.4%	+12.6%	-1.9%
Medical Science		-1						-100.0%	-100.0%	-100.0%	-100.0%	-100.0%	-100.0%
Phlebotomists		-1	-1					-100.0%	-100.0%	-100.0%	-100.0%	-100.0%	-100.0%
Radiographers	3	-4	-5	-3	-3	-2	+0	-61.9%	-62.4%	-51.9%	-54.3%	-45.5%	+11.5%
Vascular Physiologists	0	+0	+0	+0	-0	+0		-100.0%	-100.0%	+112.5%	-19.0%	+6.3%	
Clinical Engineering	1	+1	+1	+1	+1	+1		-100.0%	-100.0%	-100.0%	-100.0%	-100.0%	
Health Science/ Diagnostics	4	-5	-4	-2	-2	-1	+0	-57.4%	-52.7%	-32.0%	-36.8%	-24.4%	+7.8%
Social Care	3	-0	-0	-0	-0	-0	+0	-6.7%	-5.6%	-8.0%	-8.0%	-8.0%	+22.3%
Social Workers	75	-12	-9	-20	-23	-25	-0	-13.4%	-10.4%	-20.9%	-23.7%	-24.8%	-0.5%
Psychologists	6	+5	+6	+5	+4	+5	+1	+1062.0%	-100.0%	+1062.0%	+176.7%	+428.2%	+25.5%
Pharmacists	14	+4	+3	+2	+1	+1	-1	+38.0%	+27.6%	+17.0%	+6.7%	+7.0%	-4.3%
Pharmacy Technicians	6	+1	+1	+1	+3	+1		+17.3%	+17.3%	+17.3%	+120.0%	+22.2%	
Pharmacy	19	+5	+4	+3	+4	+2	-1	+31.3%	+24.5%	+17.1%	+25.3%	+11.0%	-3.1%
Other Health & Social Care	3	+1	+1	+1	+2	+2	-0	+108.1%	+108.1%	+108.1%	+686.1%	+424.1%	-9.0%
Play Therapists/ Specialists	1	-1						-37.1%					
H&SC, Other	4	+1	+1	+1	+2	+2	-0	+29.8%	+62.3%	+62.3%	+181.6%	+148.7%	-6.8%
Health & Social Care Professionals	443	+64	+58	+34	+29	+20	-6	+16.9%	+14.9%	+8.2%	+6.9%	+4.7%	-1.3%
Executive Management	14	+7	+6	+4	+2	-1	-1	+100.0%	+76.8%	+40.0%	+17.5%	-5.3%	-5.7%
Senior Management (VIII & GM)	95	+55	+58	+46	+32	+31	+1	+134.9%	+157.2%	+95.6%	+51.5%	+48.5%	+1.6%
Management (VIII & above)	109	+62	+64	+50	+34	+30	+1	+129.7%	+143.0%	+86.1%	+46.1%	+38.4%	+0.6%
Middle Management (V-VII)	248	+132	+121	+107	+84	+73	+7	+113.0%	+94.6%	+75.1%	+51.5%	+41.2%	+3.0%
Other Administrative	1	-0	-0	-0	-0	+1		-5.0%	-5.0%	-5.0%	-5.0%	-100.0%	
Administrative/ Supervisory (V to VII)	249	+132	+121	+107	+84	+73	+7	+112.0%	+93.8%	+74.6%	+51.1%	+41.8%	+3.0%
General Administrative (III & IV)	613	+130	+104	+49	+42	+26	+2	+26.9%	+20.4%	+8.6%	+7.4%	+4.4%	+0.3%
Clerical (III & IV)	613	+130	+104	+49	+42	+26	+2	+26.9%	+20.4%	+8.6%	+7.4%	+4.4%	+0.3%
Management & Administrative	972	+323	+289	+205	+161	+130	+10	+49.8%	+42.3%	+26.8%	+19.8%	+15.4%	+1.0%
Support	774	-127	-109	-77	-55	-27	-5	-14.1%	-12.4%	-9.0%	-6.6%	-3.4%	-0.7%
Maintenance	90	-14	-12	-13	-9	-5	-1	-13.3%	-11.8%	-12.3%	-8.7%	-5.3%	-0.9%
Technical Services	4	+4	+4	+4	+4	+4		-100.0%	-100.0%	-100.0%	-100.0%	-100.0%	
Maintenance/ Technical	94	-10	-8	-9	-5	-1	-1	-9.4%	-7.8%	-8.4%	-4.7%	-1.0%	-0.8%
General Support	868	-137	-117	-85	-59	-28	-6	-13.6%	-11.9%	-8.9%	-6.4%	-3.1%	-0.7%
Attendant/ Aide	1,677	-1,087	-1,019	-954	-617	-534	-11	-39.3%	-37.8%	-36.3%	-26.9%	-24.2%	-0.6%
Health & Social Care Assistants	57	+31	+31	+33	+36	+30	+5	+119.7%	+120.3%	+135.4%	+168.2%	+109.1%	+9.1%
Health Care Assistant/ Care Assistant	2,366	+1,083	+976	+866	+638	+508	+3	+84.5%	+70.2%	+57.7%	+36.9%	+27.4%	+0.1%
HCA (Student Nurse/Midwife COVID-19)						-22		-100.0%	-100.0%	-100.0%	-100.0%	-100.0%	-100.0%
Health Care Assistants	4,100	+27	-11	-55	+57	-18	-3	+0.7%	-0.3%	-1.3%	+1.4%	-0.4%	-0.1%
Home Help	3,574	+779	+218	+154	+132	+143	+24	+27.9%	+6.5%	+4.5%	+3.8%	+4.2%	+0.7%
Home Care Services	126	+58	+42	+40	+40	+27	-0	+85.2%	+50.1%	+46.3%	+46.7%	+27.4%	-0.1%
Other Care Grades	24	-11	-9	-1	+1	+5	-1	-31.7%	-28.2%	-4.7%	+5.4%	+24.0%	-4.0%
Pastoral Care	23	-12	-10	-11	-9	-4	-0	-34.1%	-30.7%	-32.6%	-28.0%	-15.0%	-1.3%
Workshop Services	5	+3	+3	+3	+3	+3		+119.8%	+119.8%	+119.8%	+119.8%	+133.0%	
Care, other	177	+38	+25	+30	+35	+30	-1	+27.1%	+16.6%	+20.6%	+24.6%	+20.6%	-0.8%
Patient & Client Care	7,851	+844	+232	+129	+224	+155	+20	+12.0%	+3.0%	+1.7%	+2.9%	+2.0%	+0.3%

Source: Health Service Personnel Census