

Social Care Older Persons Services Employment Report: January 2023

Employment by Staff Group

Jan 2023	WTE Dec 2020	WTE Dec 2021	WTE Dec 2022	WTE Jan 2023	WTE change since Dec 22	WTE change since Dec 21	% change since Dec 21	WTE change since Dec 20	% change since Dec 20	No. Jan 2023
Overall	13,415	13,623	13,947	13,970	+23	+347	+2.5%	+555	+4.1%	16,751
Consultants	4	7	7	7	-0	-0	-0.3%	+2	+47.3%	8
Registrars	9	11	10	13	+4	+3	+26.3%	+5	+51.2%	14
SHO/ Interns	14	15	12	13	+1	-2	-14.5%	-1	-7.5%	16
Medical/ Dental, other	104	95	98	90	-9	-5	-5.3%	-14	-13.5%	152
Medical & Dental	131	127	126	122	-4	-4	-3.5%	-8	-6.5%	190
Nurse/ Midwife Manager	746	764	738	744	+6	-21	-2.7%	-3	-0.4%	787
Nurse/ Midwife Specialist & AN/MP	38	35	74	77	+2	+42	+119.8%	+39	+101.0%	80
Staff Nurse/ Staff Midwife	2,624	2,682	2,737	2,756	+19	+74	+2.8%	+132	+5.0%	3,136
Public Health Nurse	13	11	13	12	-1	+1	+5.6%	-2	-11.6%	14
<i>Pre-registration Nurse/ Midwife Intern</i>		0		1	+1	+1	+1300.0%	+1	-100.0%	5
<i>Nursing/ Midwifery awaiting registration</i>	1	2	1	3	+2	+1	+50.0%	+2	+122.2%	5
Nursing/ Midwifery Student	1	2	1	4	+3	+2	+98.1%	+3	+205.2%	10
Nursing/ Midwifery other	4	4	3	3	-0	-1	-25.1%	-1	-27.4%	3
Nursing & Midwifery	3,427	3,498	3,566	3,596	+30	+97	+2.8%	+168	+4.9%	4,030
Therapy Professions	295	352	340	351	+11	-1	-0.2%	+56	+18.9%	396
Health Science/ Diagnostics	5	4	5	5	-0	+1	+31.5%	-0	-9.0%	8
Social Care	3	3	2	2	+0	-0	-16.8%	-0	-16.8%	4
Social Workers	100	90	69	72	+2	-18	-20.3%	-28	-28.3%	78
Psychologists	1	2	4	3	-0	+1	+43.8%	+2	+204.5%	4
Pharmacy	17	21	20	19	-0	-2	-10.4%	+2	+11.8%	27
H&SC, Other	2	2	3	3	+0	+2	+122.1%	+2	+122.1%	4
Health & Social Care Professionals	423	473	443	456	+13	-18	-3.7%	+33	+7.7%	521
Management (VIII & above)	79	102	116	119	+3	+17	+16.9%	+41	+51.6%	121
Administrative/ Supervisory (V to VII)	176	201	263	269	+6	+68	+34.1%	+93	+53.0%	282
Clerical (III & IV)	587	608	631	646	+15	+38	+6.2%	+59	+10.0%	734
Management & Administrative	842	911	1,010	1,035	+24	+124	+13.6%	+193	+22.9%	1,137
Support	801	794	757	758	+1	-36	-4.5%	-43	-5.4%	860
Maintenance/ Technical	95	95	94	93	-1	-3	-2.9%	-2	-2.4%	97
General Support	896	889	851	850	-0	-39	-4.3%	-45	-5.1%	957
Health Care Assistants	4,118	4,099	4,072	4,079	+7	-20	-0.5%	-39	-0.9%	4,671
Home Help	3,431	3,447	3,687	3,642	-45	+195	+5.7%	+211	+6.1%	5,013
Care, other	147	178	192	190	-2	+12	+6.6%	+43	+29.6%	232
Patient & Client Care	7,696	7,724	7,951	7,911	-40	+187	+2.4%	+215	+2.8%	9,916

Social Care Older Persons Services Employment by Administration (HSE / S38): January 2023

Jan 2023	WTE Dec 2020	WTE Dec 2021	WTE Dec 2022	WTE Jan 2023	WTE change since Dec 22	WTE change since Dec 21	% change since Dec 21	WTE change since Dec 20	% change since Dec 20	No. Jan 2023
Total	13,415	13,623	13,947	13,970	+23	+347	+2.5%	+555	+4.1%	16,751
HSE	12,673	12,872	13,217	13,236	+20	+364	+2.8%	+563	+4.4%	15,941
Section 38 Voluntary Agencies	742	750	731	734	+3	-17	-2.2%	-8	-1.1%	810

Employment by Staff Group

Jan 2023	WTE Dec 2020	WTE Dec 2021	WTE Dec 2022	WTE Jan 2023	WTE change since Dec 22	WTE change since Dec 21	% change since Dec 21	WTE change since Dec 20	% change since Dec 20	No. Jan 2023
Health Service Executive	12,673	12,872	13,217	13,236	+20	+364	+2.8%	+563	+4.4%	15,941
Consultants	3	5	5	5	-0	+0	+1.6%	+2	+77.7%	6
Registrars	6	7	7	9	+3	+3	+42.2%	+4	+60.4%	10
SHO/ Interns	10	11	8	7	-1	-4	-38.4%	-3	-31.2%	10
Medical/ Dental, other	102	94	97	89	-9	-5	-5.4%	-13	-12.8%	151
Medical & Dental	120	116	117	110	-7	-6	-5.4%	-10	-8.6%	177
Nurse/ Midwife Manager	697	711	687	694	+7	-17	-2.4%	-3	-0.4%	733
Nurse/ Midwife Specialist & AN/MP	38	35	74	77	+2	+42	+119.8%	+39	+101.0%	80
Staff Nurse/ Staff Midwife	2,438	2,503	2,566	2,583	+17	+80	+3.2%	+145	+5.9%	2,944
Public Health Nurse	13	11	13	12	-1	+1	+5.6%	-2	-11.6%	14
Pre-registration Nurse/ Midwife Intern		0		1	+1	+1	+1300.0%	+1	+100.0%	5
Nursing/ Midwifery awaiting registration	1	2	1	3	+2	+1	+50.0%	+2	+122.2%	5
Nursing/ Midwifery Student	1	2	1	4	+3	+2	+98.1%	+3	+205.2%	10
Nursing Education/Clinical	4	4	3	3	-0	-1	-25.1%	-1	-27.4%	3
Nursing/ Midwifery other	4	4	3	3	-0	-1	-25.1%	-1	-27.4%	3
Nursing & Midwifery	3,192	3,267	3,344	3,372	+29	+106	+3.2%	+180	+5.6%	3,784
Therapy Professions	223	275	267	277	+9	+2	+0.7%	+53	+23.9%	313
Health Science/ Diagnostics	4	3	4	4	-0	+1	+43.9%	-0	-11.1%	6
Social Care	3	3	2	2	+0	-0	-16.8%	-0	-16.8%	4
Social Workers	84	75	54	56	+2	-18	-24.7%	-28	-33.3%	60
Psychologists	1	2	4	3	-0	+2	+83.1%	+3	+458.3%	4
Pharmacy	12	16	14	14	-0	-2	-13.2%	+2	+15.8%	19
H&SC, Other	2	2	3	3	+0	+2	+122.1%	+2	+122.1%	4
Health & Social Care Professionals	328	374	348	359	+11	-15	-3.9%	+31	+9.4%	410
Management (VIII & above)	75	98	112	115	+3	+17	+17.6%	+41	+54.3%	117
Administrative/ Supervisory (V to VII)	157	178	239	246	+6	+67	+37.8%	+88	+56.1%	258
Clerical (III & IV)	557	578	601	615	+15	+38	+6.6%	+59	+10.6%	695
Management & Administrative	789	854	952	976	+24	+123	+14.4%	+188	+23.8%	1,070
Support	694	684	645	647	+2	-36	-5.3%	-47	-6.7%	739
Maintenance/ Technical	84	85	85	84	-1	-2	-2.1%	-0	-0.3%	88
General Support	778	769	729	731	+1	-38	-5.0%	-47	-6.0%	827
Health Care Assistants	3,892	3,871	3,851	3,859	+8	-12	-0.3%	-33	-0.9%	4,436

Home Help	3,431	3,447	3,687	3,642	-45	+195	+5.7%	+211	+6.1%	5,013
Care, other	142	175	188	186	-2	+11	+6.6%	+44	+30.8%	224
Patient & Client Care	7,466	7,493	7,726	7,687	-39	+194	+2.6%	+221	+3.0%	9,673

Employment by Staff Group

Jan 2023	WTE Dec 2020	WTE Dec 2021	WTE Dec 2022	WTE Jan 2023	WTE change since Dec 22	WTE change since Dec 21	% change since Dec 21	WTE change since Dec 20	% change since Dec 20	No. Jan 2023
Section 38 Voluntary Agencies	742	750	731	734	+3	-17	-2.2%	-8	-1.1%	810
Consultants	2	2	2	2		-0	-6.3%	-0	-6.3%	2
Registrars	3	4	3	4	+1			+1	+33.3%	4
SHO/ Interns	4	4	4	6	+2	+2	+50.0%	+2	+50.0%	6
Medical/ Dental, other	2	1	1	1				-1	-50.0%	1
Medical & Dental	11	11	10	13	+3	+2	+17.9%	+2	+17.9%	13
Nurse/ Midwife Manager	49	53	50	50	-0	-3	-6.1%	+0	+0.3%	54
Staff Nurse/ Staff Midwife	186	179	172	174	+2	-5	-2.9%	-12	-6.5%	192
Nursing & Midwifery	235	232	222	223	+2	-8	-3.6%	-12	-5.1%	246
Therapy Professions	72	77	73	75	+2	-3	-3.3%	+2	+3.4%	83
Health Science/ Diagnostics	1	1	1	1						2
Social Workers	16	15	15	15		+0	+1.2%	-0	-1.3%	18
Psychologists	1	1				-1	-100.0%	-1	-100.0%	
Pharmacy	5	6	6	6	-0	-0	-2.8%	+0	+3.0%	8
Health & Social Care Professionals	95	100	95	97	+2	-3	-3.0%	+2	+2.0%	111
Management (VIII & above)	4	4	4	4						4
Administrative/ Supervisory (V to VII)	18	22	24	23	-0	+1	+4.7%	+5	+27.0%	24
Clerical (III & IV)	31	31	31	31	+0	+0	+0.1%	+0	+0.3%	39
Management & Administrative	53	57	58	58	+0	+1	+1.9%	+5	+9.6%	67
Support	107	110	112	111	-1	+1	+0.5%	+3	+3.3%	121
Maintenance/ Technical	11	10	9	9	-0	-1	-10.0%	-2	-18.2%	9
General Support	118	120	121	120	-1	-0	-0.4%	+2	+1.3%	130
Health Care Assistants	226	228	222	220	-2	-8	-3.6%	-6	-2.5%	235
Care, other	4	3	4	4	-0	+0	+9.4%	-1	-12.9%	8
Patient & Client Care	230	232	226	224	-2	-8	-3.4%	-6	-2.7%	243

Social Care Older Persons Services Employment by CHO: Jan 2023

Jan 2023	WTE Dec 2020	WTE Dec 2021	WTE Dec 2022	WTE Jan 2023	WTE change since Dec 22	WTE change since Dec 21	% change since Dec 21	WTE change since Dec 20	% change since Dec 20	No. Jan 2023
Overall	13,415	13,623	13,947	13,970	+23	+347	+2.5%	+555	+4.1%	16,751
CHO 1	1,918	1,988	2,087	2,069	-18	+81	+4.1%	+151	+7.9%	2,458
CHO 2	1,590	1,527	1,582	1,572	-11	+45	+2.9%	-18	-1.1%	1,820
CHO 3	1,029	1,190	1,264	1,271	+6	+81	+6.8%	+242	+23.5%	1,549
CHO 4	2,930	2,954	3,000	3,002	+2	+48	+1.6%	+72	+2.5%	3,810
CHO 5	1,650	1,661	1,641	1,650	+8	-11	-0.7%	-1	-0.0%	1,996
CHO 6	804	814	813	817	+5	+3	+0.4%	+14	+1.7%	895
CHO 7	1,021	996	999	1,009	+10	+13	+1.3%	-13	-1.2%	1,153
CHO 8	1,484	1,450	1,489	1,506	+16	+56	+3.9%	+22	+1.5%	1,870
CHO 9	914	967	976	978	+2	+11	+1.2%	+63	+6.9%	1,094
other Community Services	75	77	95	98	+2	+20	+26.2%	+22	+29.9%	106

Social Care Older Persons Services Employment by CHO etc. Jan 2023

CHO 1

Jan 2023	WTE Dec 2020	WTE Dec 2021	WTE Dec 2022	WTE Jan 2023	WTE change since Dec 22	WTE change since Dec 21	% change since Dec 21	WTE change since Dec 20	% change since Dec 20	No. Jan 2023
Overall	1,918	1,988	2,087	2,069	-18	+81	+4.1%	+151	+7.9%	2,458
Medical/ Dental, other	32	27	27	18	-9	-10	-34.9%	-15	-45.2%	38
Medical & Dental	32	27	27	18	-9	-10	-34.9%	-15	-45.2%	38
Nurse/ Midwife Manager	88	96	91	88	-3	-8	-8.7%	+0	+0.3%	93
Nurse/ Midwife Specialist & AN/MP	9	8	18	19	+0	+11	+134.1%	+10	+107.2%	19
Staff Nurse/ Staff Midwife	315	323	338	341	+2	+18	+5.6%	+26	+8.3%	384
Public Health Nurse			1	1	+0	+1	-100.0%	+1	-100.0%	1
Nursing/ Midwifery other	1	1	1	1	0					1
Nursing & Midwifery	412	428	449	449	+0	+21	+5.0%	+37	+9.0%	498
Therapy Professions	12	24	27	26	-1	+2	+7.9%	+13	+107.1%	29
Health Science/ Diagnostics	2						-100.0%	-2	-100.0%	
Social Workers	15	16	9	10	+1	-7	-39.5%	-5	-33.6%	11
Health & Social Care Professionals	29	40	36	36	-0	-5	-11.5%	+7	+23.1%	40
Management (VIII & above)	8	8	10	11	+1	+3	+39.4%	+3	+36.1%	11
Administrative/ Supervisory (V to VII)	15	16	25	25	-0	+9	+54.1%	+9	+61.4%	26
Clerical (III & IV)	88	88	86	87	+1	-2	-1.9%	-1	-1.3%	99
Management & Administrative	111	112	121	122	+2	+10	+9.0%	+11	+10.0%	136
Support	119	111	111	109	-2	-3	-2.4%	-10	-8.5%	136
Maintenance/ Technical	7	7	8	6	-2	-1	-11.3%	-1	-12.4%	7
General Support	126	118	118	115	-4	-3	-2.9%	-11	-8.7%	143
Health Care Assistants	580	589	564	573	+9	-17	-2.8%	-7	-1.3%	666
Home Help	604	647	748	732	-16	+85	+13.1%	+128	+21.1%	907
Care, other	22	25	24	24	-0	-1	-4.6%	+2	+7.8%	30
Patient & Client Care	1,207	1,262	1,336	1,329	-8	+67	+5.3%	+122	+10.1%	1,603

CHO 2

Jan 2023	WTE Dec 2020	WTE Dec 2021	WTE Dec 2022	WTE Jan 2023	WTE change since Dec 22	WTE change since Dec 21	% change since Dec 21	WTE change since Dec 20	% change since Dec 20	No. Jan 2023
Overall	1,590	1,527	1,582	1,572	-11	+45	+2.9%	-18	-1.1%	1,820
Medical/ Dental, other	11	10	10	10	+0	-0	-1.2%	-1	-6.5%	11
Medical & Dental	11	10	10	10	+0	-0	-1.2%	-1	-6.5%	11
Nurse/ Midwife Manager	66	70	74	75	+1	+5	+7.4%	+9	+13.0%	79
Nurse/ Midwife Specialist & AN/MP	2	2	7	7	+0	+5	+250.0%	+5	+250.0%	7
Staff Nurse/ Staff Midwife	305	305	305	305	+0	-0	-0.1%	-0	-0.0%	348
Public Health Nurse	1	1	1	1	0					1
Nursing & Midwifery	374	378	386	388	+2	+10	+2.6%	+14	+3.6%	435
Therapy Professions	25	23	28	27	-1	+4	+15.4%	+2	+6.3%	29
Health Science/ Diagnostics	1	1	1	1	+0	+0	+31.7%	+0	+31.7%	1
Social Workers	10	10	13	14	+1	+3	+31.0%	+3	+31.0%	14
Pharmacy	1	1	1	1	-0	+0	+6.0%	-1	-48.5%	1
Health & Social Care Professionals	37	35	42	42	-0	+7	+20.3%	+5	+12.1%	45
Management (VIII & above)	2	4	6	6	0	+2	+50.8%	+4	+200.0%	6
Administrative/ Supervisory (V to VII)	9	14	16	16	-0	+2	+12.3%	+6	+69.9%	16
Clerical (III & IV)	66	63	64	67	+3	+5	+7.5%	+2	+2.3%	78
Management & Administrative	77	80	86	89	+3	+8	+10.5%	+12	+15.5%	100
Support	56	54	51	49	-2	-5	-8.9%	-7	-13.0%	55
Maintenance/ Technical	19	17	20	20	-0	+3	+16.2%	+1	+4.2%	21
General Support	76	71	71	69	-2	-2	-2.7%	-6	-8.6%	76
Health Care Assistants	526	511	536	532	-3	+21	+4.0%	+6	+1.2%	587
Home Help	456	395	407	397	-10	+2	+0.6%	-59	-12.9%	519
Care, other	33	46	45	44	-1	-2	-3.9%	+12	+35.6%	47
Patient & Client Care	1,015	953	988	974	-14	+21	+2.2%	-41	-4.0%	1,153

CHO 3

Jan 2023	WTE Dec 2020	WTE Dec 2021	WTE Dec 2022	WTE Jan 2023	WTE change since Dec 22	WTE change since Dec 21	% change since Dec 21	WTE change since Dec 20	% change since Dec 20	No. Jan 2023
Overall	1,029	1,190	1,264	1,271	+6	+81	+6.8%	+242	+23.5%	1,549
Consultants	1	3	3	3	0			+2	+200.0%	3
Registrars		1	2	2	+0	+1	+100.0%	+2	-100.0%	2
SHO/ Interns			2	2	+0	+2	-100.0%	+2	-100.0%	2
Medical/ Dental, other	6	5	6	5	-1	+1	+17.3%	-1	-12.0%	6
Medical & Dental	7	9	13	12	-1	+4	+44.5%	+5	+75.4%	13
Nurse/ Midwife Manager	64	63	68	70	+2	+8	+12.3%	+6	+9.8%	73
Nurse/ Midwife Specialist & AN/MP	4	5	11	11	+0	+5	+103.1%	+7	+186.0%	11
Staff Nurse/ Staff Midwife	231	258	266	274	+8	+16	+6.3%	+43	+18.4%	311
Public Health Nurse	1	1				-1	-100.0%	-1	-100.0%	
Nursing & Midwifery	300	327	345	355	+9	+28	+8.6%	+55	+18.2%	395
Therapy Professions	29	40	44	43	-1	+3	+7.8%	+13	+46.4%	48
Health Science/ Diagnostics	1	1	1	1	-0	-0	-6.1%	-0	-6.1%	2
Social Workers	6	8	2	2	+0	-6	-74.0%	-4	-67.9%	2
Psychologists		1	1	1	+0	+0	+2.4%	+1	-100.0%	1
Pharmacy	1	1	1	1	+0					1
Health & Social Care Professionals	37	50	48	47	-1	-3	-5.3%	+10	+27.2%	54
Management (VIII & above)	6	8	10	10	+0	+2	+23.8%	+4	+64.5%	10
Administrative/ Supervisory (V to VII)	17	20	27	27	+0	+7	+35.9%	+10	+62.9%	29
Clerical (III & IV)	48	56	63	63	-0	+7	+11.9%	+14	+29.6%	70
Management & Administrative	71	84	99	100	+0	+16	+18.7%	+29	+40.3%	109
Support	63	62	46	51	+5	-12	-18.8%	-12	-19.6%	56
Maintenance/ Technical	21	23	23	23	+0	-0	-1.5%	+2	+9.6%	23
General Support	84	86	68	74	+5	-12	-14.1%	-10	-12.3%	79
Health Care Assistants	301	324	331	328	-2	+5	+1.4%	+27	+9.0%	376
Home Help	216	294	342	339	-3	+45	+15.5%	+123	+56.6%	507
Care, other	12	18	17	16	-1	-2	-11.9%	+4	+33.1%	16
Patient & Client Care	530	635	690	683	-7	+48	+7.5%	+154	+29.0%	899

CHO 4

Jan 2023	WTE Dec 2020	WTE Dec 2021	WTE Dec 2022	WTE Jan 2023	WTE change since Dec 22	WTE change since Dec 21	% change since Dec 21	WTE change since Dec 20	% change since Dec 20	No. Jan 2023
Overall	2,930	2,954	3,000	3,002	+2	+48	+1.6%	+72	+2.5%	3,810
Consultants	1	1	1	1	-0	+0	+1.0%	+0	+1.0%	2
Registrars	3	2	0	2	+2	-0	-3.8%	-1	-33.3%	2
SHO/ Interns	1	2				-2	-100.0%	-1	-100.0%	
Medical/ Dental, other	23	22	27	28	+1	+6	+25.2%	+4	+18.9%	54
Medical & Dental	28	27	28	31	+3	+3	+12.8%	+2	+8.5%	58
Nurse/ Midwife Manager	122	123	109	113	+4	-11	-8.6%	-9	-7.5%	123
Nurse/ Midwife Specialist & AN/MP	6	4	6	8	+2	+5	+130.9%	+2	+39.3%	9
Staff Nurse/ Staff Midwife	528	550	575	573	-2	+23	+4.2%	+45	+8.5%	687
Public Health Nurse	6	5	6	5	-1	+1	+21.0%	-0	-7.1%	7
Pre-registration Nurse/ Midwife Intern		0		1	+1	+1	+1300.0%	+1	-100.0%	5
Nursing/ Midwifery Student		0		1	+1	+1	+1300.0%	+1	-100.0%	5
Nursing & Midwifery	662	681	697	701	+4	+19	+2.9%	+39	+5.9%	831
Therapy Professions	41	54	37	39	+2	-15	-27.7%	-3	-6.6%	44
Health Science/ Diagnostics	1	1	1	1	0	+0	+0.8%	+0	+0.8%	2
Social Care	2	2	1	1	+0	-0	-26.4%	-0	-26.4%	2
Social Workers	12	11	9	11	+1	-0	-0.9%	-2	-13.7%	11
Pharmacy	4	5	5	4	-0	-0	-10.6%	+0	+11.3%	8
Health & Social Care Professionals	61	72	53	56	+3	-16	-22.0%	-4	-7.3%	67
Management (VIII & above)	14	19	19	21	+2	+2	+10.2%	+7	+49.5%	22
Administrative/ Supervisory (V to VII)	20	27	29	35	+6	+7	+27.2%	+15	+72.3%	36
Clerical (III & IV)	131	130	130	130	+0	+0	+0.1%	-1	-0.7%	152
Management & Administrative	166	177	178	186	+8	+10	+5.4%	+21	+12.6%	210
Support	114	124	124	124	+0	-0	-0.2%	+11	+9.3%	133
Maintenance/ Technical	6	7	5	5	0	-2	-28.6%	-1	-20.0%	5
General Support	120	131	129	129	+0	-2	-1.7%	+9	+7.8%	138
Health Care Assistants	794	802	814	821	+6	+19	+2.3%	+27	+3.4%	934
Home Help	1,067	1,030	1,068	1,046	-22	+16	+1.5%	-21	-2.0%	1,526
Care, other	34	33	34	32	-1	-0	-1.4%	-1	-3.8%	46
Patient & Client Care	1,894	1,865	1,916	1,899	-17	+34	+1.8%	+5	+0.3%	2,506

CHO 5

Jan 2023	WTE Dec 2020	WTE Dec 2021	WTE Dec 2022	WTE Jan 2023	WTE change since Dec 22	WTE change since Dec 21	% change since Dec 21	WTE change since Dec 20	% change since Dec 20	No. Jan 2023
Overall	1,650	1,661	1,641	1,650	+8	-11	-0.7%	-1	-0.0%	1,996
Medical/ Dental, other	15	15	15	15	+0	-1	-4.9%	-0	-1.1%	18
Medical & Dental	15	15	15	15	+0	-1	-4.9%	-0	-1.1%	18
Nurse/ Midwife Manager	88	85	76	76	-1	-9	-10.9%	-13	-14.5%	80
Nurse/ Midwife Specialist & AN/MP	4	2	12	11	-0	+9	+378.2%	+8	+199.2%	12
Staff Nurse/ Staff Midwife	308	312	299	300	+2	-12	-3.9%	-8	-2.6%	357
Public Health Nurse	3	2	1	1	+0	-1	-46.5%	-2	-62.8%	1
<i>Nursing/ Midwifery awaiting registration</i>				2	+2	+2	-100.0%	+2	-100.0%	4
Nursing/ Midwifery Student				2	+2	+2	-100.0%	+2	-100.0%	4
Nursing & Midwifery	403	402	388	390	+3	-11	-2.8%	-13	-3.2%	454
Therapy Professions	32	35	31	36	+5	+1	+2.3%	+3	+10.5%	41
Social Workers	4	7	4	4	+0	-3	-40.6%	-0	-7.4%	5
Psychologists			1	2	+0	+2	-100.0%	+2	-100.0%	2
Pharmacy	1	1	1	1	+0			+0	+3.1%	1
H&SC, Other			2	2	+0	+2	-100.0%	+2	-100.0%	2
Health & Social Care Professionals	38	43	39	44	+5	+1	+3.5%	+6	+17.2%	51
Management (VIII & above)	4	11	11	11	+0	+0	+4.3%	+7	+188.7%	11
Administrative/ Supervisory (V to VII)	17	11	16	17	+1	+6	+56.2%	+0	+2.5%	18
Clerical (III & IV)	31	50	60	63	+3	+13	+25.2%	+32	+102.4%	69
Management & Administrative	52	72	87	91	+4	+19	+26.9%	+39	+76.1%	98
Support	83	79	75	75	-0	-5	-6.0%	-9	-10.3%	89
Maintenance/ Technical	4	5	4	4	-0	-1	-12.0%	+0	+0.7%	5
General Support	87	84	79	79	-0	-5	-6.4%	-9	-9.8%	94
Health Care Assistants	448	419	404	404	+0	-14	-3.4%	-44	-9.8%	466
Home Help	599	610	612	607	-5	-3	-0.5%	+8	+1.4%	793
Care, other	9	17	18	19	+1	+2	+14.6%	+11	+124.1%	22
Patient & Client Care	1,056	1,045	1,034	1,030	-3	-15	-1.4%	-25	-2.4%	1,281

CHO 6

Jan 2023	WTE Dec 2020	WTE Dec 2021	WTE Dec 2022	WTE Jan 2023	WTE change since Dec 22	WTE change since Dec 21	% change since Dec 21	WTE change since Dec 20	% change since Dec 20	No. Jan 2023
Overall	804	814	813	817	+5	+3	+0.4%	+14	+1.7%	895
Registrars	1	1	1	1	0					1
Medical/ Dental, other	3	2	2	2	-0	+0	+9.5%	-1	-35.0%	3
Medical & Dental	4	3	3	3	-0	+0	+6.0%	-1	-25.8%	4
Nurse/ Midwife Manager	63	63	64	64	+0	+1	+1.0%	+1	+2.0%	66
Nurse/ Midwife Specialist & AN/MP	1	1				-1	-100.0%	-1	-100.0%	
Staff Nurse/ Staff Midwife	206	198	206	209	+3	+11	+5.5%	+3	+1.4%	219
Nursing & Midwifery	269	262	269	273	+3	+10	+4.0%	+3	+1.1%	285
Therapy Professions	46	45	42	45	+3	+1	+1.7%	-1	-1.7%	51
Social Workers	10	9	7	7	0	-2	-21.3%	-4	-35.4%	8
Psychologists	1	1				-1	-100.0%	-1	-100.0%	
Pharmacy	3	4	4	4	-0	-0	-3.8%	+1	+40.0%	5
Health & Social Care Professionals	61	58	53	56	+3	-2	-2.9%	-4	-7.3%	64
Management (VIII & above)	5	9	8	7	-1	-2	-22.3%	+2	+38.2%	7
Administrative/ Supervisory (V to VII)	19	26	32	32	+0	+6	+23.7%	+13	+64.4%	33
Clerical (III & IV)	33	30	33	33	-0	+3	+10.7%	-0	-0.5%	38
Management & Administrative	58	64	72	72	-1	+7	+11.4%	+14	+24.8%	78
Support	102	107	102	103	+1	-4	-3.5%	+1	+1.1%	113
Maintenance/ Technical	9	8	7	7	-0	-1	-12.5%	-2	-22.2%	7
General Support	111	115	110	110	+1	-5	-4.2%	-1	-0.8%	120
Health Care Assistants	296	308	299	298	-1	-10	-3.2%	+2	+0.7%	335
Care, other	6	5	6	6	-0	+1	+28.7%	+0	+6.9%	9
Patient & Client Care	301	312	305	304	-1	-9	-2.7%	+2	+0.8%	344

CHO 7

Jan 2023	WTE Dec 2020	WTE Dec 2021	WTE Dec 2022	WTE Jan 2023	WTE change since Dec 22	WTE change since Dec 21	% change since Dec 21	WTE change since Dec 20	% change since Dec 20	No. Jan 2023
Overall	1,021	996	999	1,009	+10	+13	+1.3%	-13	-1.2%	1,153
SHO/ Interns	2	2	2	2	+0					2
Medical/ Dental, other	2	2	2	2	+0					4
Medical & Dental	4	4	4	4	+0					6
Nurse/ Midwife Manager	86	96	88	92	+4	-4	-3.8%	+6	+7.1%	95
Nurse/ Midwife Specialist & AN/MP	3	2	6	5	-0	+3	+123.7%	+2	+79.7%	6
Staff Nurse/ Staff Midwife	242	234	239	240	+1	+6	+2.5%	-2	-0.9%	260
<i>Nursing/ Midwifery awaiting registration</i>	<i>1</i>	<i>2</i>	<i>1</i>	<i>1</i>	<i>+0</i>	<i>-1</i>	<i>-50.0%</i>	<i>-0</i>	<i>-25.9%</i>	<i>1</i>
Nursing/ Midwifery Student	1	2	1	1	+0	-1	-50.0%	-0	-25.9%	1
Nursing & Midwifery	332	334	334	338	+4	+4	+1.3%	+6	+1.8%	362
Therapy Professions	13	13	18	18	+0	+5	+35.9%	+5	+36.7%	21
Social Workers	12	11	5	5	+0	-6	-54.7%	-7	-59.7%	5
Pharmacy	2	3	3	3	+0			+1	+50.0%	3
H&SC, Other	1	1	1	1	+0					1
Health & Social Care Professionals	29	28	27	27	+1	-1	-4.3%	-2	-5.3%	30
Management (VIII & above)	7	8	12	10	-2	+2	+30.4%	+3	+39.3%	10
Administrative/ Supervisory (V to VII)	15	18	20	19	-1	+1	+4.1%	+4	+31.0%	20
Clerical (III & IV)	37	38	42	47	+5	+9	+24.7%	+10	+26.9%	52
Management & Administrative	59	63	74	76	+2	+12	+19.5%	+17	+29.4%	82
Support	119	112	104	106	+2	-6	-5.1%	-13	-10.9%	119
Maintenance/ Technical	2	2	2	2	+0					2
General Support	121	114	106	108	+2	-6	-5.0%	-13	-10.7%	121
Health Care Assistants	358	343	332	333	+1	-10	-2.9%	-25	-7.0%	386
Home Help	115	107	117	117	+0	+11	+10.0%	+3	+2.4%	160
Care, other	5	3	6	6	-0	+3	+93.0%	+1	+15.8%	6
Patient & Client Care	477	452	455	456	+1	+4	+0.8%	-21	-4.5%	552

CHO 8

Jan 2023	WTE Dec 2020	WTE Dec 2021	WTE Dec 2022	WTE Jan 2023	WTE change since Dec 22	WTE change since Dec 21	% change since Dec 21	WTE change since Dec 20	% change since Dec 20	No. Jan 2023
Overall	1,484	1,450	1,489	1,506	+16	+56	+3.9%	+22	+1.5%	1,870
Medical/ Dental, other	11	11	11	11	+0	-0	-0.7%	-0	-1.7%	18
Medical & Dental	11	11	11	11	+0	-0	-0.7%	-0	-1.7%	18
Nurse/ Midwife Manager	89	87	86	86	-0	-1	-1.0%	-3	-3.5%	93
Nurse/ Midwife Specialist & AN/MP	4	5	4	4	-0	-1	-19.1%	+0	+1.0%	4
Staff Nurse/ Staff Midwife	255	248	255	257	+2	+9	+3.8%	+2	+0.8%	291
Public Health Nurse	3	3	2	2	-0	-0	-15.8%	-0	-15.8%	3
Nursing/ Midwifery other	2	3	2	2	-0	-1	-33.9%	-0	-4.5%	2
Nursing & Midwifery	353	345	350	351	+1	+6	+1.8%	-1	-0.4%	393
Therapy Professions	24	29	26	26	-0	-3	-11.7%	+1	+5.4%	31
Health Science/ Diagnostics			1	1	-0	+1	-100.0%	+1	-100.0%	1
Social Workers	5	0	1	1	+0	+1	#DIV/0	-4	-80.0%	1
Pharmacy	2	4	2	2	+0	-2	-45.7%	-0	-5.0%	3
Health & Social Care Professionals	31	33	30	30	-0	-3	-9.4%	-2	-5.8%	36
Management (VIII & above)	7	7	9	9	-0	+2	+30.0%	+2	+29.3%	9
Administrative/ Supervisory (V to VII)	21	19	31	32	+1	+13	+67.2%	+11	+49.9%	33
Clerical (III & IV)	72	68	65	67	+2	-1	-1.3%	-5	-6.4%	75
Management & Administrative	100	94	105	108	+3	+14	+15.0%	+8	+8.1%	117
Support	25	24	26	25	-0	+1	+5.5%	+0	+0.5%	28
Maintenance/ Technical	24	24	22	23	+0	-1	-4.1%	-1	-4.1%	24
General Support	49	48	48	48	-0	+0	+0.8%	-1	-1.8%	52
Health Care Assistants	544	530	517	518	+1	-12	-2.3%	-26	-4.8%	606
Home Help	374	365	393	404	+10	+39	+10.7%	+30	+7.9%	601
Care, other	22	25	35	36	+1	+12	+46.6%	+15	+68.8%	47
Patient & Client Care	940	919	946	958	+12	+38	+4.2%	+18	+1.9%	1,254

CHO 9

Jan 2023	WTE Dec 2020	WTE Dec 2021	WTE Dec 2022	WTE Jan 2023	WTE change since Dec 22	WTE change since Dec 21	% change since Dec 21	WTE change since Dec 20	% change since Dec 20	No. Jan 2023
Overall	914	967	976	978	+2	+11	+1.2%	+63	+6.9%	1,094
Consultants	2	3	3	3	0	-0	-1.2%	+0	+3.3%	3
Registrars	5	7	6	8	+2	+2	+28.6%	+4	+72.9%	9
SHO/ Interns	11	11	8	9	+1	-2	-19.9%	-2	-18.9%	12
Medical/ Dental, other	1	1				-1	-100.0%	-1	-100.0%	
Medical & Dental	19	21	17	20	+2	-1	-6.3%	+1	+3.1%	24
Nurse/ Midwife Manager	81	82	79	78	-1	-3	-4.1%	-2	-2.9%	83
Nurse/ Midwife Specialist & AN/MP	6	6	11	12	+0	+6	+108.3%	+6	+96.9%	12
Staff Nurse/ Staff Midwife	234	255	255	258	+3	+3	+1.3%	+24	+10.3%	279
Public Health Nurse			1	1	+0	+1	-100.0%	+1	-100.0%	1
Nursing/ Midwifery other	1						-100.0%	-1	-100.0%	
Nursing & Midwifery	322	342	346	349	+3	+7	+2.0%	+27	+8.5%	375
Therapy Professions	71	89	88	92	+4	+3	+3.0%	+21	+30.0%	102
Health Science/ Diagnostics	1	1	1	1	0					2
Social Care	1	1	1	1	+0					2
Social Workers	24	18	19	19	-0	+0	+2.0%	-5	-21.6%	21
Psychologists			1	1	-0	+1	-100.0%	+1	-100.0%	1
Pharmacy	4	4	4	4	0					5
H&SC, Other	1	1	1	1	+0	+0	+5.6%	+0	+5.6%	1
Health & Social Care Professionals	101	114	114	118	+4	+4	+3.5%	+17	+17.1%	134
Management (VIII & above)	9	13	13	13	+0	+0	+1.2%	+4	+45.5%	13
Administrative/ Supervisory (V to VII)	21	23	27	27	-0	+4	+17.8%	+6	+29.3%	29
Clerical (III & IV)	44	52	56	55	-1	+3	+5.5%	+11	+25.2%	63
Management & Administrative	74	88	96	95	-1	+7	+8.1%	+21	+28.8%	105
Support	120	120	119	117	-3	-4	-3.0%	-4	-3.1%	131
Maintenance/ Technical	2	2	2	2	0					3
General Support	123	123	122	119	-3	-4	-2.9%	-4	-3.1%	134
Health Care Assistants	271	273	275	272	-3	-1	-0.4%	+1	+0.3%	314
Care, other	5	6	6	5	-1	-1	-12.0%	-0	-0.7%	8
Patient & Client Care	277	279	281	278	-4	-2	-0.6%	+1	+0.3%	322

other Community Services

Jan 2023	WTE Dec 2020	WTE Dec 2021	WTE Dec 2022	WTE Jan 2023	WTE change since Dec 22	WTE change since Dec 21	% change since Dec 21	WTE change since Dec 20	% change since Dec 20	No. Jan 2023
Overall	75	77	95	98	+2	+20	+26.2%	+22	+29.9%	106
Nurse/ Midwife Manager			2	2	0	+2	-100.0%	+2	-100.0%	2
Nursing & Midwifery			2	2		+2	-100.0%	+2	-100.0%	2
Psychologists		1				-1	-100.0%		-100.0%	
Health & Social Care Professionals		1				-1	-100.0%		-100.0%	
Management (VIII & above)	17	16	19	22	+3	+5	+32.4%	+5	+29.1%	22
Administrative/ Supervisory (V to VII)	21	26	40	39	-1	+13	+51.0%	+18	+85.0%	42
Clerical (III & IV)	37	33	33	34	+1	+1	+2.9%	-3	-8.5%	38
Management & Administrative	75	75	92	95	+3	+20	+26.0%	+20	+26.5%	102
Health Care Assistants	0	0	0	0	-0	-0	-88.5%	-0	-88.5%	1
Care, other		1	1	1	+0			+1	-100.0%	1
Patient & Client Care	0	1	1	1	-0	-0	-20.4%	+1	+246.2%	2

Social Care Older Persons Services Employment by Grade Group: Jan 2023

Jan 2023	WTE Dec 2020	WTE Dec 2021	WTE Dec 2022	WTE Jan 2023	WTE change since Dec 22	WTE change since Dec 21	% change since Dec 21	WTE change since Dec 20	% change since Dec 20	No. Jan 2023
Overall	13,415	13,623	13,947	13,970	+23	+347	+2.5%	+555	+4.1%	16,751
Consultant Medicine	4	7	7	7	-0	-0	-0.3%	+2	+47.3%	8
Consultants	4	7	7	7	-0	-0	-0.3%	+2	+47.3%	8
Registrar	6	7	6	8	+2	+2	+29.3%	+3	+44.2%	9
Senior Registrar	1	1	1	1	-0	-0	-7.4%			1
Specialist Registrar	2	3	2	4	+2	+1	+31.7%	+2	+97.5%	4
Registrars	9	11	10	13	+4	+3	+26.3%	+5	+51.2%	14
Senior House Officer	14	15	12	13	+1	-2	-14.5%	-1	-7.5%	16
SHO/ Interns	14	15	12	13	+1	-2	-14.5%	-1	-7.5%	16
Other Medical	104	95	98	90	-9	-5	-5.3%	-14	-13.5%	152
Medical/ Dental, other	104	95	98	90	-9	-5	-5.3%	-14	-13.5%	152
Medical & Dental	131	127	126	122	-4	-4	-3.5%	-8	-6.5%	190
Clinical Nurse/ Midwife Manager	536	557	533	534	+1	-23	-4.1%	-2	-0.4%	572
Director Nursing/Midwifery, Assistant	106	107	106	109	+3	+2	+1.6%	+3	+2.4%	112
Director of Nursing/Midwifery	104	100	98	101	+2	+0	+0.5%	-3	-3.3%	103
Nurse/ Midwife Manager	746	764	738	744	+6	-21	-2.7%	-3	-0.4%	787
Advanced Nurse/ Midwife Practitioner	17	14	39	42	+3	+28	+198.6%	+25	+152.4%	43
Clinical Nurse/ Midwife Specialist	22	21	35	35	-0	+14	+66.8%	+13	+61.5%	37
Nurse/ Midwife Specialist & AN/MP	38	35	74	77	+2	+42	+119.8%	+39	+101.0%	80
Staff Midwives	1	1	1	2	+1	+1	+134.2%	+1	+110.2%	2
Staff Nurse [Psychiatric]	5	7	4	4	+0	-3	-39.8%	-1	-14.1%	5
Staff Nurses [General/ Children's]	2,617	2,673	2,729	2,747	+18	+74	+2.8%	+130	+5.0%	3,126
Staff Nurse [Intellectual Disability]	1	1	3	3	-0	+2	+189.0%	+2	+189.0%	3
Staff Nurse/ Staff Midwife	2,624	2,682	2,737	2,756	+19	+74	+2.8%	+132	+5.0%	3,136
Public Health Nurse	13	11	13	12	-1	+1	+5.6%	-2	-11.6%	14
Public Health Nurse	13	11	13	12	-1	+1	+5.6%	-2	-11.6%	14
Pre-registration Nurse/ Midwife Intern		0		1	+1	+1	+1300.0%	+1	-100.0%	5
Nursing/ Midwifery awaiting registration	1	2	1	3	+2	+1	+50.0%	+2	+122.2%	5
Nursing/ Midwifery Student	1	2	1	4	+3	+2	+98.1%	+3	+205.2%	10
Nursing Education/Clinical	4	4	3	3	-0	-1	-25.1%	-1	-27.4%	3
Nursing/ Midwifery other	4	4	3	3	-0	-1	-25.1%	-1	-27.4%	3
Nursing & Midwifery	3,427	3,498	3,566	3,596	+30	+97	+2.8%	+168	+4.9%	4,030
Dietitians	18	25	25	26	+1	+2	+6.1%	+8	+46.9%	31
Occupational Therapists	113	124	125	127	+2	+3	+2.2%	+14	+12.2%	139
Physiotherapists	132	161	152	159	+7	-2	-1.2%	+27	+20.5%	181
Podiatrists & Chiropodists	13	10	3	2	-1	-8	-76.0%	-10	-80.7%	4
Speech & Language Therapists	20	32	34	37	+3	+5	+15.3%	+17	+84.3%	41
Therapy Professions	295	352	340	351	+11	-1	-0.2%	+56	+18.9%	396
Radiographers	5	3	4	4	+0	+0	+6.8%	-1	-27.2%	6
Vascular Physiologists	0	0	0	0	-0	-0	-43.8%	-0	-43.8%	1
Clinical Engineering			1	1	-0	+1	-100.0%	+1	-100.0%	1
Health Science/ Diagnostics	5	4	5	5	-0	+1	+31.5%	-0	-9.0%	8
Social Care	3	3	2	2	+0	-0	-16.8%	-0	-16.8%	4
Social Workers	100	90	69	72	+2	-18	-20.3%	-28	-28.3%	78
Psychologists	1	2	4	3	-0	+1	+43.8%	+2	+204.5%	4
Pharmacists	13	16	14	14	-0	-2	-14.0%	+1	+8.0%	21
Pharmacy Technicians	5	6	5	6	+0			+1	+22.2%	6

Jan 2023	WTE Dec 2020	WTE Dec 2021	WTE Dec 2022	WTE Jan 2023	WTE change since Dec 22	WTE change since Dec 21	% change since Dec 21	WTE change since Dec 20	% change since Dec 20	No. Jan 2023
Overall	13,415	13,623	13,947	13,970	+23	+347	+2.5%	+555	+4.1%	16,751
Pharmacy	17	21	20	19	-0	-2	-10.4%	+2	+11.8%	27
Other Health & Social Care	1	1	2	2	+0	+2	+348.1%	+2	+348.1%	3
Play Therapists/ Specialists	1	1	1	1	+0					1
H&SC, Other	2	2	3	3	+0	+2	+122.1%	+2	+122.1%	4
Health & Social Care Professionals	423	473	443	456	+13	-18	-3.7%	+33	+7.7%	521
Executive Management	15	15	14	15	+1	+0	+1.3%	+0	+1.4%	15
Senior Management (VIII & GM)	64	87	102	104	+2	+17	+19.6%	+40	+63.2%	106
Management (VIII & above)	79	102	116	119	+3	+17	+16.9%	+41	+51.6%	121
Middle Management (V-VII)	176	201	263	269	+6	+68	+34.1%	+93	+53.0%	282
Administrative/ Supervisory (V to VII)	176	201	263	269	+6	+68	+34.1%	+93	+53.0%	282
General Administrative (III & IV)	587	608	631	646	+15	+38	+6.2%	+59	+10.0%	734
Clerical (III & IV)	587	608	631	646	+15	+38	+6.2%	+59	+10.0%	734
Management & Administrative	842	911	1,010	1,035	+24	+124	+13.6%	+193	+22.9%	1,137
Catering	216	220	217	220	+2	-1	-0.3%	+3	+1.5%	245
Household Services	479	470	441	439	-3	-31	-6.7%	-40	-8.4%	508
Other Support	29	28	27	26	-1	-1	-4.7%	-3	-8.9%	31
Portering	77	75	71	73	+2	-2	-3.2%	-4	-4.7%	76
Support	801	794	757	758	+1	-36	-4.5%	-43	-5.4%	860
Maintenance	95	91	90	89	-1	-3	-3.1%	-6	-6.6%	93
Technical Services		4	4	4				+4	-100.0%	4
Maintenance/ Technical	95	95	94	93	-1	-3	-2.9%	-2	-2.4%	97
General Support	896	889	851	850	-0	-39	-4.3%	-45	-5.1%	957
Attendant/ Aide	2,211	1,960	1,632	1,639	+7	-321	-16.4%	-572	-25.9%	1,898
Health & Social Care Assistants	27	43	63	65	+2	+22	+51.2%	+38	+138.8%	72
Health Care Assistant/ Care Assistant	1,858	2,095	2,378	2,375	-3	+279	+13.3%	+517	+27.8%	2,701
HCA (Student Nurse/Midwife COVID-19)	22	1				-1	-100.0%	-22	-100.0%	
Health Care Assistants	4,118	4,099	4,072	4,079	+7	-20	-0.5%	-39	-0.9%	4,671
Home Help	3,431	3,447	3,687	3,642	-45	+195	+5.7%	+211	+6.1%	5,013
Home Care Services	99	131	143	143	+0	+12	+9.5%	+44	+44.8%	150
Other Care Grades	19	21	23	20	-3	-1	-3.5%	+1	+6.6%	27
Pastoral Care	27	24	23	23	+0	-1	-2.7%	-4	-14.4%	51
Workshop Services	2	3	4	4	+0	+1	+27.5%	+2	+83.0%	4
Care, other	147	178	192	190	-2	+12	+6.6%	+43	+29.6%	232
Patient & Client Care	7,696	7,724	7,951	7,911	-40	+187	+2.4%	+215	+2.8%	9,916

Employment by WTE, Headcount, Gender, Full-Time /Part-Time etc.: Jan 2023

Social Care Older Persons Services Staff Group	WTE	Headcount	WTE: no.	% Male	% female	Male WTE: no.	Female WTE: no.	% Total Perm	% Male Perm	% Female Perm	% Total Full Time	% Total Part Time	% Male FT	% Female FT
Overall	13,970	16,751	1.20	14.1%	85.9%	1.11	1.22	82.7%	79.9%	83.2%	51.7%	48.3%	77.4%	47.5%
Consultant Medicine	7	8	1.23	12.5%	87.5%	1.89	1.17	75.0%	75.0%	71.4%	62.5%	37.5%	0.0%	71.4%
Consultants	7	8	1.23	12.5%	87.5%	1.89	1.17	75.0%	100.0%	71.4%	62.5%	37.5%	0.0%	71.4%
Registrar	8	9	1.07	55.6%	44.4%	1.02	1.14	44.4%	44.4%	50.0%	88.9%	11.1%	100.0%	75.0%
Senior Registrar	1	1	1.00		100.0%		1.00	100.0%	100.0%	100.0%	100.0%	0.0%		100.0%
Specialist Registrar	4	4	1.01	50.0%	50.0%	1.00	1.03	0.0%	0.0%	0.0%	100.0%	0.0%	100.0%	100.0%
Registrars	13	14	1.05	50.0%	50.0%	1.01	1.08	35.7%	28.6%	42.9%	92.9%	7.1%	100.0%	85.7%
Senior House Officer	13	16	1.26	37.5%	62.5%	1.14	1.35	12.5%	12.5%	0.0%	100.0%	0.0%	100.0%	100.0%
SHO/ Interns	13	16	1.26	37.5%	62.5%	1.14	1.35	12.5%	33.3%	0.0%	100.0%	0.0%	100.0%	100.0%
Other Medical	90	152	1.69	61.8%	38.2%	1.80	1.55	55.3%	55.3%	51.7%	28.3%	71.7%	24.5%	34.5%
Medical/ Dental, other	90	152	1.69	61.8%	38.2%	1.80	1.55	55.3%	57.4%	51.7%	28.3%	71.7%	24.5%	34.5%
Medical & Dental	122	190	1.55	56.8%	43.2%	1.66	1.43	51.1%	54.6%	46.3%	40.5%	59.5%	33.3%	50.0%
Clinical Nurse/ Midwife Manager	534	572	1.07	8.4%	91.6%	1.01	1.08	97.2%	97.2%	97.1%	83.4%	16.6%	93.8%	82.4%
Director Nursing/Midwifery, Assistant	109	112	1.03	4.5%	95.5%	1.00	1.03	98.2%	98.2%	98.1%	89.3%	10.7%	100.0%	88.8%
Director of Nursing/Midwifery	101	103	1.02	5.8%	94.2%	1.02	1.02	97.1%	97.1%	96.9%	97.1%	2.9%	83.3%	97.9%
Nurse/ Midwife Manager	744	787	1.06	7.5%	92.5%	1.01	1.06	97.3%	98.3%	97.3%	86.0%	14.0%	93.2%	85.4%
Advanced Nurse/ Midwife Practitioner	42	43	1.03	4.7%	95.3%	1.02	1.03	88.4%	88.4%	87.8%	97.7%	2.3%	100.0%	97.6%
Clinical Nurse/ Midwife Specialist	35	37	1.06	10.8%	89.2%	1.04	1.07	100.0%	100.0%	100.0%	89.2%	10.8%	100.0%	87.9%
Nurse/ Midwife Specialist & AN/MP	77	80	1.04	7.5%	92.5%	1.03	1.04	93.8%	100.0%	93.2%	93.8%	6.3%	100.0%	93.2%
Staff Midwives	2	2	1.08		100.0%		1.08	100.0%	100.0%	100.0%	50.0%	50.0%		50.0%
Staff Nurse [Psychiatric]	4	5	1.13	60.0%	40.0%	1.14	1.11	80.0%	80.0%	100.0%	80.0%	20.0%	66.7%	100.0%
Staff Nurses [General/ Children's]	2,747	3,126	1.14	8.7%	91.3%	1.04	1.15	84.8%	84.8%	84.7%	67.1%	32.9%	92.6%	64.7%
Staff Nurse [Intellectual Disability]	3	3	1.04		100.0%		1.04	100.0%	100.0%	100.0%	100.0%	0.0%		100.0%
Staff Nurse/ Staff Midwife	2,756	3,136	1.14	8.8%	91.2%	1.05	1.15	84.8%	85.5%	84.7%	67.2%	32.8%	92.4%	64.8%
Public Health Nurse	12	14	1.18		100.0%		1.18	100.0%		100.0%	57.1%	42.9%		57.1%
Pre-registration Nurse/ Midwife Intern	1	5	4.46	20.0%	80.0%	4.76	4.40	0.0%	0.0%	0.0%	0.0%	100.0%	0.0%	0.0%
Nursing/ Midwifery awaiting registration	3	5	1.67	20.0%	80.0%	1.00	2.00	20.0%	20.0%	0.0%	100.0%	0.0%	100.0%	100.0%
Nursing/ Midwifery Student	4	10	2.43	20.0%	80.0%	1.65	2.75	10.0%	50.0%	0.0%	50.0%	50.0%	50.0%	50.0%

Nursing Education/Clinical	3	3	1.04		100.0%		1.04	100.0%	100.0%	100.0%	100.0%	0.0%		100.0%	
Nursing/ Midwifery other	3	3	1.04		100.0%		1.04	100.0%		100.0%		100.0%	0.0%	100.0%	
Nursing & Midwifery	3,596	4,030	1.12	8.5%	91.5%	1.04	1.13	87.3%	87.7%	87.3%		71.3%	28.7%	92.4%	69.4%
Dietitians	26	31	1.17	3.2%	96.8%	1.00	1.18	100.0%	100.0%	100.0%		67.7%	32.3%	100.0%	66.7%
Occupational Therapists	127	139	1.10	6.5%	93.5%	1.03	1.10	91.4%	91.4%	90.8%		84.2%	15.8%	88.9%	83.8%
Physiotherapists	159	181	1.14	16.6%	83.4%	1.02	1.16	85.1%	85.1%	84.8%		75.1%	24.9%	93.3%	71.5%
Podiatrists & Chiropodists	2	4	1.63		100.0%		1.63	75.0%	75.0%	75.0%		25.0%	75.0%		25.0%
Speech & Language Therapists	37	41	1.12		100.0%		1.12	95.1%	95.1%	95.1%		80.5%	19.5%		80.5%
Therapy Professions	351	396	1.13	10.1%	89.9%	1.02	1.14	89.4%	90.0%	89.3%		77.8%	22.2%	92.5%	76.1%
Radiographers	4	6	1.66	16.7%	83.3%	1.89	1.62	83.3%	83.3%	80.0%		16.7%	83.3%	0.0%	20.0%
Vascular Physiologists	0	1	11.11		100.0%		11.11	0.0%	0.0%	0.0%		0.0%	100.0%		0.0%
Clinical Engineering	1	1	1.04	100.0%		1.04		100.0%	100.0%			100.0%	0.0%	100.0%	
Health Science/ Diagnostics	5	8	1.71	25.0%	75.0%	1.34	1.89	75.0%	100.0%	66.7%		25.0%	75.0%	50.0%	16.7%
Social Care	2	4	1.75		100.0%		1.75	100.0%		100.0%		0.0%	100.0%		0.0%
Social Workers	72	78	1.09	11.5%	88.5%	1.00	1.10	91.0%	88.9%	91.3%		82.1%	17.9%	100.0%	79.7%
Psychologists	3	4	1.19		100.0%		1.19	100.0%		100.0%		75.0%	25.0%		75.0%
Pharmacists	14	21	1.53	19.0%	81.0%	2.55	1.40	76.2%	76.2%	76.5%		42.9%	57.1%	25.0%	47.1%
Pharmacy Technicians	6	6	1.09	16.7%	83.3%	1.00	1.11	66.7%	66.7%	60.0%		83.3%	16.7%	100.0%	80.0%
Pharmacy	19	27	1.41	18.5%	81.5%	1.95	1.32	74.1%	80.0%	72.7%		51.9%	48.1%	40.0%	54.5%
Other Health & Social Care	2	3	1.24		100.0%		1.24	100.0%	100.0%	100.0%		33.3%	66.7%		33.3%
Play Therapists/ Specialists	1	1	1.00	100.0%		1.00		100.0%	100.0%			100.0%	0.0%	100.0%	
H&SC, Other	3	4	1.17	25.0%	75.0%	1.00	1.24	100.0%	100.0%	100.0%		50.0%	50.0%	100.0%	33.3%
Health & Social Care	456	521	1.14	10.9%	89.1%	1.07	1.15	88.9%	89.5%	88.8%		75.4%	24.6%	87.7%	73.9%
Executive Management	15	15	1.00	53.3%	46.7%	1.00	1.00	100.0%	100.0%	100.0%		100.0%	0.0%	100.0%	100.0%
Senior Management (VIII & GM)	104	106	1.02	28.3%	71.7%	1.02	1.01	94.3%	94.3%	97.4%		98.1%	1.9%	96.7%	98.7%
Management (VIII & above)	119	121	1.01	31.4%	68.6%	1.02	1.01	95.0%	89.5%	97.6%		98.3%	1.7%	97.4%	98.8%
Middle Management (V-VII)	269	282	1.05	17.0%	83.0%	1.03	1.05	95.0%	95.0%	95.3%		86.9%	13.1%	91.7%	85.9%
Administrative/ Supervisory (V to VII)	269	282	1.05	17.0%	83.0%	1.03	1.05	95.0%	93.8%	95.3%		86.9%	13.1%	91.7%	85.9%
General Administrative (III & IV)	646	734	1.14	9.5%	90.5%	1.07	1.14	83.5%	83.5%	84.8%		69.5%	30.5%	92.9%	67.0%
Clerical (III & IV)	646	734	1.14	9.5%	90.5%	1.07	1.14	83.5%	71.4%	84.8%		69.5%	30.5%	92.9%	67.0%
Management & Administrative	1,035	1,137	1.10	13.7%	86.3%	1.05	1.11	87.6%	82.7%	88.4%		76.9%	23.1%	93.6%	74.2%
Catering	220	245	1.12	35.5%	64.5%	1.06	1.15	95.1%	95.1%	96.2%		73.1%	26.9%	92.0%	62.7%
Household Services	439	508	1.16	18.7%	81.3%	1.07	1.18	83.7%	83.7%	85.2%		55.5%	44.5%	84.2%	48.9%

Other Support	26	31	1.17	61.3%	38.7%	1.05	1.42	90.3%	90.3%	91.7%	64.5%	35.5%	89.5%	25.0%
Portering	73	76	1.04	98.7%	1.3%	1.04	1.35	90.8%	90.8%	100.0%	94.7%	5.3%	94.7%	100.0%
Support	758	860	1.13	32.1%	67.9%	1.06	1.18	87.8%	86.6%	88.4%	64.3%	35.7%	89.9%	52.2%
Maintenance	89	93	1.05	98.9%	1.1%	1.05	1.00	95.7%	95.7%	100.0%	95.7%	4.3%	95.7%	100.0%
Technical Services	4	4	1.00	100.0%		1.00		100.0%	100.0%		100.0%	0.0%	100.0%	
Maintenance/ Technical	93	97	1.05	99.0%	1.0%	1.05	1.00	95.9%	95.8%	100.0%	95.9%	4.1%	95.8%	100.0%
General Support	850	957	1.13	38.9%	61.1%	1.05	1.18	88.6%	89.0%	88.4%	67.5%	32.5%	91.4%	52.3%
Attendant/ Aide	1,639	1,898	1.16	20.8%	79.2%	1.07	1.18	84.7%	84.7%	85.6%	54.7%	45.3%	82.5%	47.5%
Health & Social Care Assistants	65	72	1.10	23.6%	76.4%	1.17	1.09	97.2%	97.2%	98.2%	83.3%	16.7%	82.4%	83.6%
Health Care Assistant/ Care Assistant	2,375	2,701	1.14	21.2%	78.8%	1.06	1.16	90.5%	90.5%	91.0%	64.1%	35.9%	86.9%	58.0%
Health Care Assistants	4,079	4,671	1.15	21.0%	79.0%	1.06	1.17	88.2%	85.9%	88.9%	60.6%	39.4%	85.0%	54.1%
Home Help	3,642	5,013	1.38	5.3%	94.7%	1.26	1.38	72.3%	49.6%	73.6%	16.0%	84.0%	22.4%	15.6%
Home Care Services	143	150	1.05	8.7%	91.3%	1.01	1.05	98.7%	98.7%	98.5%	86.7%	13.3%	100.0%	85.4%
Other Care Grades	20	27	1.33	48.1%	51.9%	1.14	1.57	88.9%	88.9%	85.7%	51.9%	48.1%	84.6%	21.4%
Pastoral Care	23	51	2.22	86.3%	13.7%	2.20	2.34	27.5%	27.5%	57.1%	29.4%	70.6%	34.1%	0.0%
Workshop Services	4	4	1.09		100.0%		1.09	75.0%	75.0%	75.0%	25.0%	75.0%		25.0%
Care, other	190	232	1.22	30.2%	69.8%	1.58	1.11	81.5%	50.0%	95.1%	69.0%	31.0%	55.7%	74.7%
Patient & Client Care	7,911	9,916	1.25	13.3%	86.7%	1.12	1.28	80.0%	76.6%	80.5%	38.2%	61.8%	70.8%	33.2%

Employment by WTE, Headcount, Gender, Full-Time /Part-Time etc.: Jan 2023

Social Care Older Persons Services CHO	WTE	Headcount	WTE: no.	% Male	% female	Male WTE: no.	Female WTE: no.	% Total Perm	% Male Perm	% Female Perm	% Total Full Time	% Total Part Time	% Male FT	% Female FT
Overall	13,970	16,751	1.20	14.1%	85.9%	1.11	1.22	82.7%	79.9%	83.2%	51.7%	48.3%	77.4%	47.5%
CHO 1	2,069	2,458	1.19	12.7%	87.3%	1.15	1.19	74.3%	74.3%	73.0%	40.8%	59.2%	63.1%	37.5%
CHO 2	1,572	1,820	1.16	13.9%	86.1%	1.07	1.17	94.2%	94.2%	94.8%	53.5%	46.5%	85.0%	48.4%
CHO 3	1,271	1,549	1.22	12.7%	87.3%	1.05	1.25	91.0%	91.0%	91.4%	59.3%	40.7%	90.3%	54.8%
CHO 4	3,002	3,810	1.27	12.4%	87.6%	1.15	1.29	61.0%	61.0%	62.9%	36.0%	64.0%	63.8%	32.1%
CHO 5	1,650	1,996	1.21	10.8%	89.2%	1.11	1.22	97.5%	97.5%	98.3%	46.5%	53.5%	73.0%	43.3%
CHO 6	817	895	1.09	25.5%	74.5%	1.06	1.11	92.4%	92.4%	92.2%	79.2%	20.8%	90.8%	75.3%
CHO 7	1,009	1,153	1.14	17.1%	82.9%	1.06	1.16	89.2%	89.2%	90.1%	68.5%	31.5%	86.8%	64.7%
CHO 8	1,506	1,870	1.24	12.6%	87.4%	1.19	1.25	90.3%	90.3%	91.0%	54.8%	45.2%	75.3%	51.8%
CHO 9	978	1,094	1.12	20.4%	79.6%	1.07	1.13	90.6%	90.6%	91.4%	77.4%	22.6%	88.8%	74.5%
other Community Services	98	106	1.09	23.6%	76.4%	1.05	1.10	92.5%	92.5%	93.8%	85.8%	14.2%	92.0%	84.0%

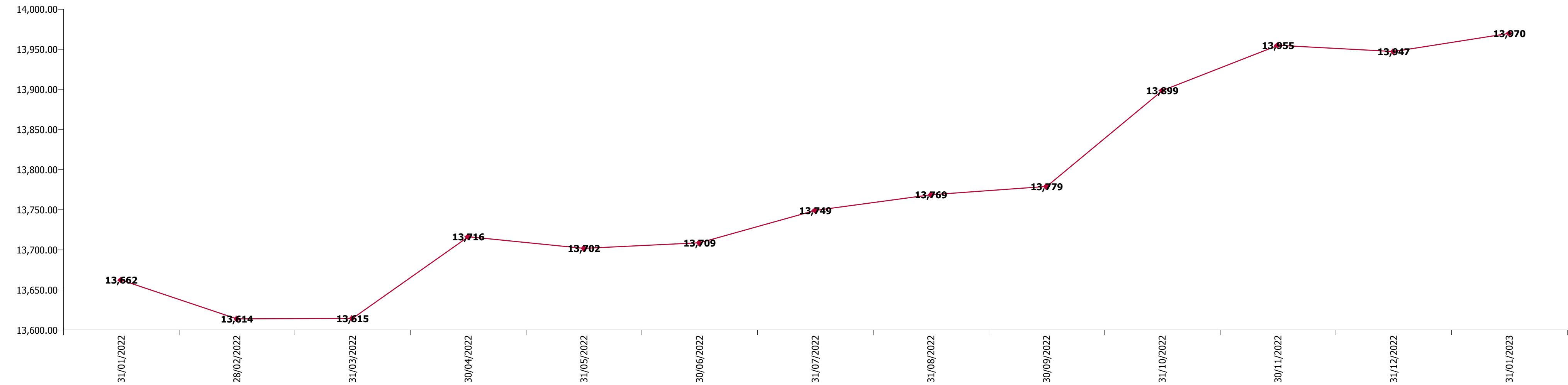
Summary Staff Movement: January 2023

Month-on-month
Summary

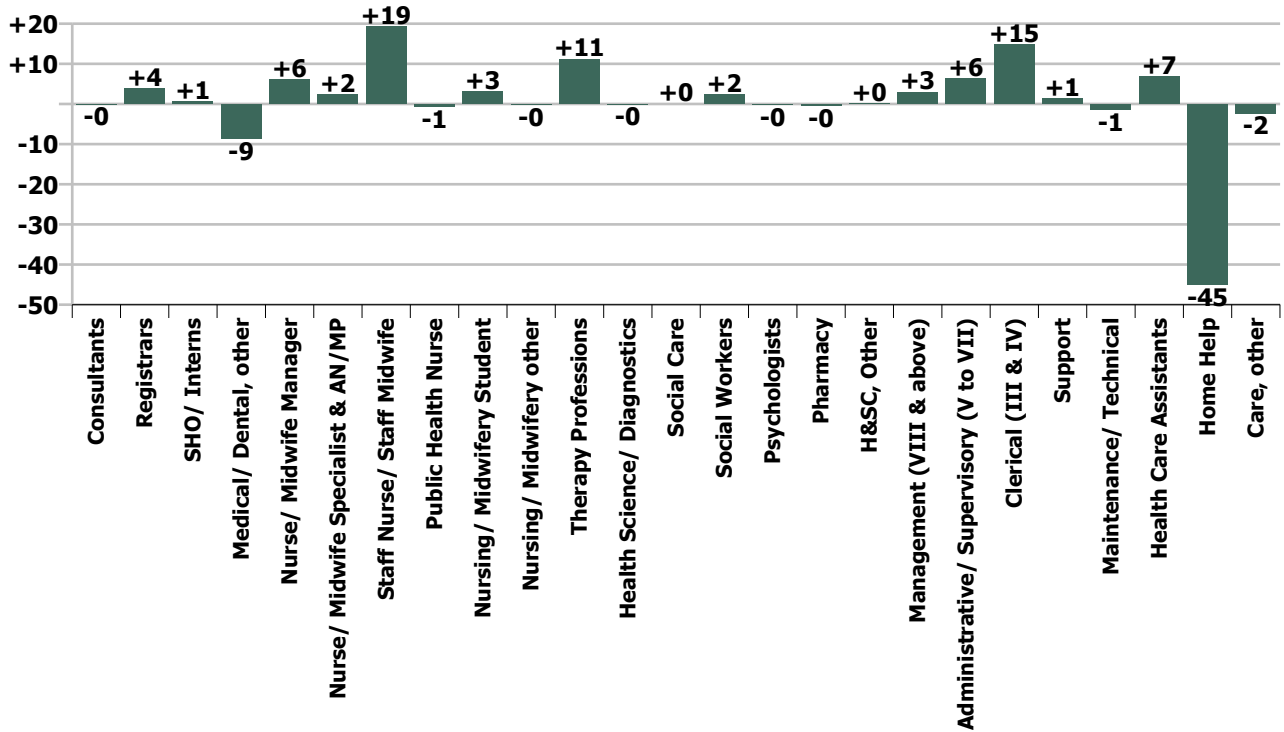
WTE change since Dec 22	% change since Dec 22	overall	Consultants	Registrars	SHO/ Interns	Medical/ Dental, other	Medical & Dental	Nurse/ Midwife Manager	Nurse/ Midwife Specialist & AN/MP	Staff Nurse/ Staff Midwife	Public Health Nurse	Nursing/ Midwifery Student	Nursing/ Midwifery other	Nursing & Midwifery	Therapy Professions	Health Science/ Diagnostics	Social Care	Social Workers	Psychologists	Pharmacy	H&SC, Other	Health & Social Care Professionals	Management (VIII & above)	Administrativ e/ Supervisory (V to VII)	Clerical (III & IV)	Management & Administrative	General Support	Health Care Assistants	Home Help	Care, other	Patient & Client Care
Overall	+0.2%	+23	-0	+4	+1	-9	-4	+6	+2	+19	-1	+3	-0	+30	+11	-0	+0	+2	-0	-0	+0	+13	+3	+6	+15	+24	-0	+7	-45	-2	-40
CHO 1	-0.9%	-18				-9	-9	-3	+0	+2	+0			+0	-1			+1				-0	+1	-0	+1	+2	-4	+9	-16	-0	-8
CHO 2	-0.7%	-11				+0	+0	+1	+0	+0				+2	-1	+0		+1			-0	-0	-0	+3	+3	-2	-3	-10	-1	-14	
CHO 3	+0.5%	+6		+0	+0	-1	-1	+2	+0	+8				+9	-1	-0		+0	+0	+0		-1	+0	+0	-0	+0	+5	-2	-3	-1	-7
CHO 4	+0.1%	+2	-0	+2		+1	+3	+4	+2	-2	-1	+1		+4	+2		+0	+1		-0		+3	+2	+6	+0	+8	+0	+6	-22	-1	-17
CHO 5	+0.5%	+8				+0	+0	-1	-0	+2	+0	+2		+3	+5			+0	+0	+0	+0	+5	+0	+1	+3	+4	-0	+0	-5	+1	-3
CHO 6	+0.6%	+5				-0	-0	+0		+3				+3	+3					-0	+0	+3	-1	+0	-0	-1	+1	-1		-0	-1
CHO 7	+1.0%	+10			+0	+0	+0	+4	-0	+1		+0		+4	+0			+0		+0	+0	+1	-2	-1	+5	+2	+2	+1	+0	-0	+1
CHO 8	+1.1%	+16				+0	+0	-0	-0	+2	-0		-0	+1	-0	-0		+0			+0	-0	-0	+1	+2	+3	-0	+1	+10	+1	+12
CHO 9	+0.2%	+2		+2	+1		+2	-1	+0	+3	+0			+3	+4		+0	-0	-0	-0		+4	+0	-0	-1	-1	-3	-3		-1	-4
other Community Services	+2.6%	+2																				+3	-1	+1	+3		-0		+0		-0
		+0.2%	-0.8%	+40.7%	+5.2%	-8.7%	-3.3%	+0.8%	+3.2%	+0.7%	-5.2%	+320.4%	-3.7%	+0.8%	+3.3%	-1.1%	+0.9%	+3.5%	-4.3%	-1.6%	+1.2%	+3.0%	+2.6%	+2.4%	+2.3%	+2.4%	-0.0%	+0.2%	-1.2%	-1.2%	-0.5%

Year-on-year Summary

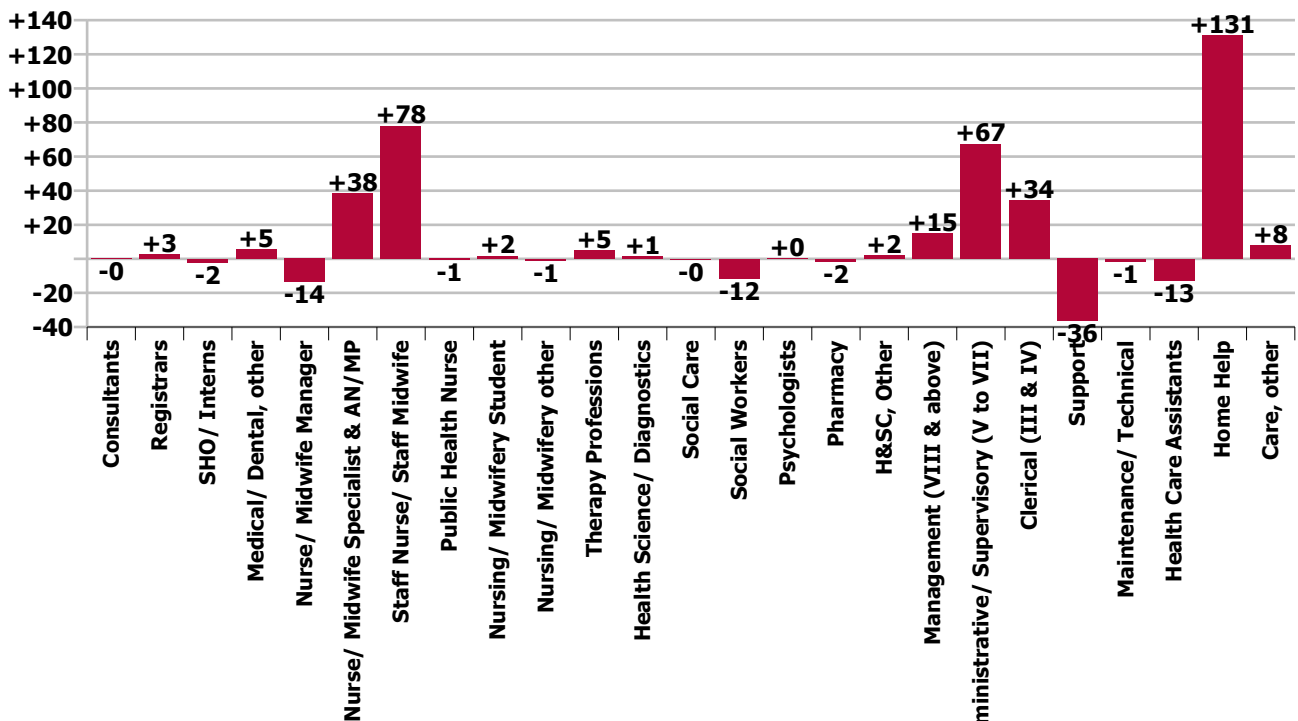
WTE change since Jan 22	% change since Jan 22	overall	Consultants	Registrars	SHO/ Interns	Medical/ Dental, other	Medical & Dental	Nurse/ Midwife Manager	Nurse/ Midwife Specialist & AN/MP	Staff Nurse/ Staff Midwife	Public Health Nurse	Nursing/ Midwifery Student	Nursing/ Midwifery other	Nursing & Midwifery	Therapy Professions	Health Science/ Diagnostics	Social Care	Social Workers	Psychologists	Pharmacy	H&SC, Other	Health & Social Care Professionals	Management (VIII & above)	Administrative/ Supervisory (V to VII)	Clerical (III & IV)	Management & Administrative	General Support	Health Care Assistants	Home Help	Care, other	Patient & Client Care
Overall	+2.3%	+308	-0	+3	-2	+5	+6	-14	+38	+78	-1	+2	-1	+103	+5	+1	-0	-12	+0	-2	+2	-6	+15	+67	+34	+116	-38	-13	+131	+8	+126
CHO 1	+2.8%	+56				-0	-0	-5	+10	+17	+1			+23	+5			+0				+5	+3	+9	+5	+18	-0	-14	+27	-2	+11
CHO 2	+2.4%	+36				+0	+0	+7	+5	-4				+8	+3	+0		+3		+0		+6	+2	+2	+3	+7	-1	+19	-0	-2	+17
CHO 3	+5.1%	+61		+1	+2	+1	+4	+7	+6	+15	-1			+27	+2	+0		-6	-0	+0		-4	+2	+8	+7	+17	-13	+5	+28	-2	+30
CHO 4	+2.1%	+62	+0	-0	-2	+5	+3	-9	+5	+25	+1	+1		+22	-15	+0	-0	-1		+0		-16	+1	+6	+0	+8	-5	+17	+36	-2	+51
CHO 5	-1.0%	-17				-1	-1	-11	+9	-11	-1	+2		-12	+5			-2	+2	+0	+2	+6	+0	+5	+5	+10	-5	-14	-5	+3	-16
CHO 6	+0.8%	+6				+0	+0	-1		+12				+11	+3			-1	-1	-0		+1	-2	+4	+3	+5	-8	-5		+1	-3
CHO 7	+2.1%	+21						-1	+3	+9		-1		+10	+5			-5				-0	+2	+2	+8	+11	-4	-8	+12	+1	+4
CHO 8	+3.7%	+54				+1	+1	+2	-1	+9	-0		-1	+8	-3	+1		+1		-2		-3	+1	+14	-1	+14	+1	-11	+33	+12	+33
CHO 9	+0.6%	+6	-0	+2	-2	-1	-2	-3	+2	+5				+3	+2				-2	+0		+0	+1	+0	+4	+2	+6	-2	+0		-1
other Community Services	+28.2%	+21						+2						+2					-1			-1	+5	+14	+2	+21		-0			-0
		+2.3%	-1.4%	+26.3%	-15.3%	+6.4%	+5.0%	-1.8%	+99.3%	+2.9%	-5.6%	+66.8%	-25.1%	+2.9%	+1.4%	+34.6%	-16.8%	-14.0%	+5.7%	-7.9%	+122.1%	-1.2%	+14.1%	+33.4%	+5.6%	+12.7%	-4.3%	-0.3%	+3.7%	+4.4%	+1.6%



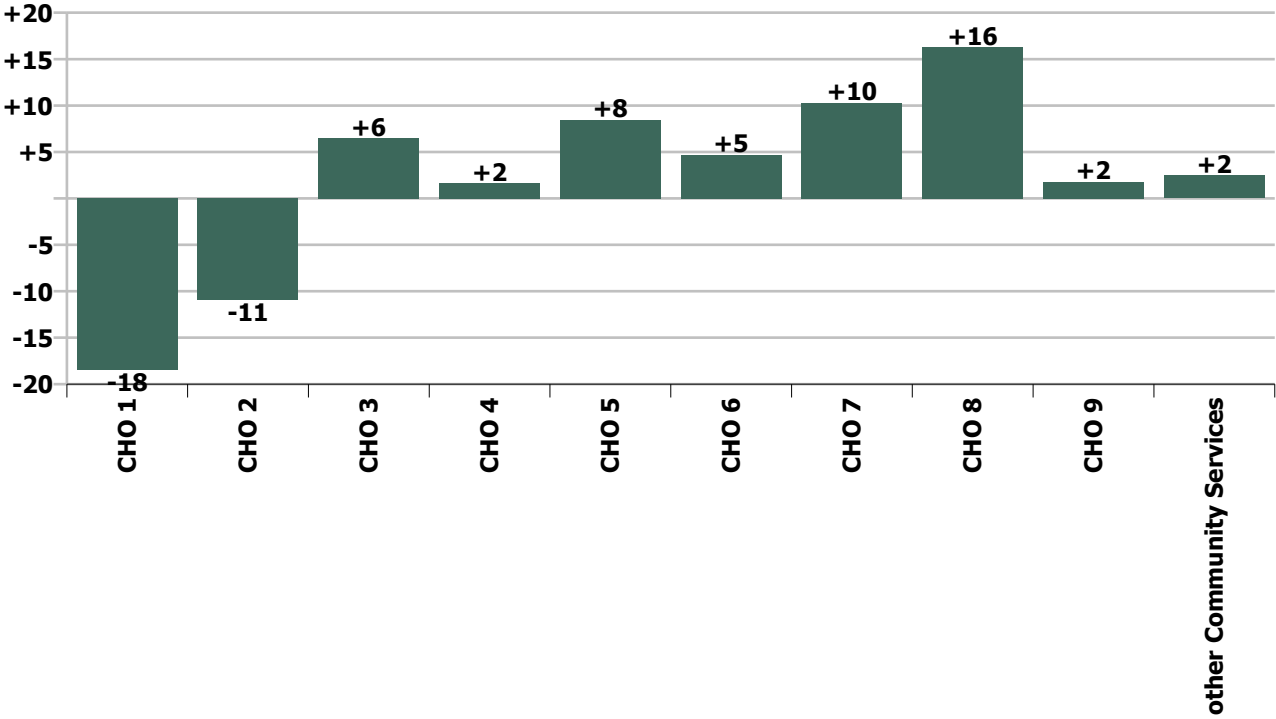
Staff Group change since: Dec 2022



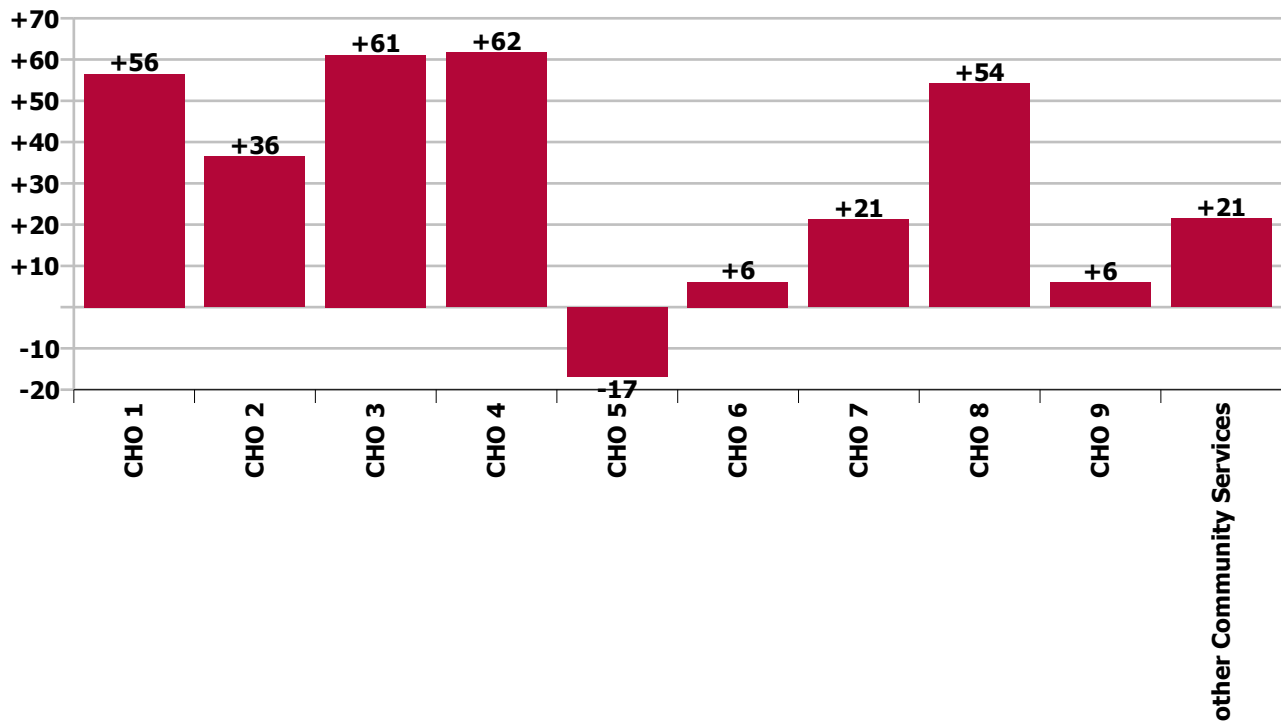
Staff Group change since: Jan 2022



CHO change since: Dec 2022



CHO change since: Jan 2022



Longitudinal Employment Levels by Grade Group - Dec 2017 to Jan 2023

Jan 2023 (Dec 2016 figure: 12,482)	WTE Jan 2023	WTE change since Dec 17	WTE change since Dec 18	WTE change since Dec 19	WTE change since Dec 20	WTE change since Dec 21	WTE change since Dec 22	% change since Dec 17	% change since Dec 18	% change since Dec 19	% change since Dec 20	% change since Dec 21	% change since Dec 22
Overall	13,970	+867	+665	+737	+555	+347	+23	+6.6%	+5.0%	+5.6%	+4.1%	+2.5%	+0.2%
Consultant Medicine	7	-3	+3	+3	+2	-0	-0	-29.2%	+80.8%	+80.8%	+47.3%	-0.3%	-0.8%
Consultant Psychiatry		-1						-100.0%	-100.0%	-100.0%	-100.0%	-100.0%	-100.0%
Consultant Surgery		-0	-0					-100.0%	-100.0%	-100.0%	-100.0%	-100.0%	-100.0%
Consultants	7	-4	+3	+3	+2	-0	-0	-36.0%	+75.0%	+80.8%	+47.3%	-0.3%	-0.8%
Registrar	8	+1	+1	+2	+3	+2	+2	+12.1%	+14.4%	+29.3%	+44.2%	+29.3%	+30.1%
Senior Registrar	1		-1			-0	-0		-50.0%			-7.4%	-3.8%
Specialist Registrar	4	+3	+3	+2	+2	+1	+2	+295.0%	+295.0%	+97.5%	+97.5%	+31.7%	+98.5%
Registrars	13	+4	+3	+4	+5	+3	+4	+40.6%	+29.1%	+40.6%	+51.2%	+26.3%	+40.7%
Senior House Officer	13	+3	+1	-2	-1	-2	+1	+27.6%	+6.0%	-15.7%	-7.5%	-14.5%	+5.2%
SHO/ Interns	13	+3	+1	-2	-1	-2	+1	+27.6%	+6.0%	-15.7%	-7.5%	-14.5%	+5.2%
Other Medical	90	+4	+4	-7	-14	-5	-9	+4.5%	+5.0%	-6.9%	-13.5%	-5.3%	-8.7%
Medical/ Dental, other	90	+4	+4	-7	-14	-5	-9	+4.5%	+5.0%	-6.9%	-13.5%	-5.3%	-8.7%
Medical & Dental	122	+7	+11	-2	-8	-4	-4	+5.9%	+9.7%	-1.8%	-6.5%	-3.5%	-3.3%
Clinical Nurse/ Midwife Manager	534	+6	+10	+26	-2	-23	+1	+1.1%	+1.9%	+5.1%	-0.4%	-4.1%	+0.1%
Director Nursing/Midwifery, Assistant	109	+17	+22	+6	+3	+2	+3	+18.6%	+25.5%	+6.0%	+2.4%	+1.6%	+2.9%
Director of Nursing/Midwifery	101	+18	+18	+3	-3	+1	+2	+22.3%	+22.1%	+2.7%	-3.3%	+0.5%	+2.5%
Nurse/ Midwife Manager	744	+41	+50	+34	-3	-21	+6	+5.9%	+7.2%	+4.9%	-0.4%	-2.7%	+0.8%
Advanced Nurse/ Midwife Practitioner	42	+39	+35	+31	+25	+28	+3	+1298.3%	+501.0%	+291.3%	+152.4%	+198.6%	+7.1%
Clinical Nurse/ Midwife Specialist	35	+24	+18	+19	+13	+14	-0	+210.4%	+107.8%	+121.1%	+61.5%	+66.8%	-1.2%
Nurse/ Midwife Specialist & AN/MP	77	+63	+53	+50	+39	+42	+2	+439.9%	+223.4%	+190.1%	+101.0%	+119.8%	+3.2%
Staff Midwives	2	+0	+2	+2	+1	+1	+1	+2.8%	-100.0%	-100.0%	+110.2%	+134.2%	+120.2%
Staff Nurse [Psychiatric]	4	-1	-1	-0	-1	-3	+0	-19.6%	-19.9%	-9.6%	-14.1%	-39.8%	+2.5%
Staff Nurses [General/ Children's]	2,747	+186	+143	+176	+130	+74	+18	+7.3%	+5.5%	+6.8%	+5.0%	+2.8%	+0.7%
Staff Nurse [Intellectual Disability]	3	+2	+2	+3	+2	+2	-0	+275.3%	+189.0%	-100.0%	+189.0%	+189.0%	-3.3%
Staff Nurse/ Staff Midwife	2,756	+187	+145	+180	+132	+74	+19	+7.3%	+5.6%	+7.0%	+5.0%	+2.8%	+0.7%
Public Health Nurse	12	-3	-2	-2	-2	+1	-1	-19.5%	-12.3%	-11.3%	-11.6%	+5.6%	-5.2%
Public Health Nurse	12	-3	-2	-2	-2	+1	-1	-19.5%	-12.3%	-11.3%	-11.6%	+5.6%	-5.2%
Pre-registration Nurse/ Midwife Intern	1	+1	+1	+1	+1	+1	+1	-100.0%	-100.0%	-100.0%	-100.0%	+1300.0%	-100.0%
Post-registration Nurse/ Midwife Student				-1				-100.0%	-100.0%	-100.0%	-100.0%	-100.0%	-100.0%
Nursing/ Midwifery awaiting registration	3	-11	+3	+2	+2	+1	+2	-78.6%	-100.0%	+200.0%	+122.2%	+50.0%	+206.1%

Jan 2023 (Dec 2016 figure: 12,482)	WTE Jan 2023	WTE change since Dec 17	WTE change since Dec 18	WTE change since Dec 19	WTE change since Dec 20	WTE change since Dec 21	WTE change since Dec 22	% change since Dec 17	% change since Dec 18	% change since Dec 19	% change since Dec 20	% change since Dec 21	% change since Dec 22
Overall	13,970	+867	+665	+737	+555	+347	+23	+6.6%	+5.0%	+5.6%	+4.1%	+2.5%	+0.2%
Nursing/ Midwifery Student	4	-10	+4	+2	+3	+2	+3	-70.6%	-100.0%	+106.0%	+205.2%	+98.1%	+320.4%
Nursing Education/Clinical	3	+2	+2	+2	-1	-1	-0	+189.0%	+189.0%	+189.0%	-27.4%	-25.1%	-3.7%
Nursing/ Midwifery other	3	+2	+2	+2	-1	-1	-0	+189.0%	+189.0%	+189.0%	-27.4%	-25.1%	-3.7%
Nursing & Midwifery	3,596	+280	+253	+267	+168	+97	+30	+8.5%	+7.6%	+8.0%	+4.9%	+2.8%	+0.8%
Dietitians	26	+9	+9	+10	+8	+2	+1	+51.1%	+52.7%	+61.4%	+46.9%	+6.1%	+4.4%
Occupational Therapists	127	+32	+23	+14	+14	+3	+2	+33.9%	+21.8%	+12.0%	+12.2%	+2.2%	+1.4%
Physiotherapists	159	+38	+32	+36	+27	-2	+7	+31.5%	+24.9%	+28.7%	+20.5%	-1.2%	+4.3%
Podiatrists & Chiropodists	2	-14	-13	-10	-10	-8	-1	-84.8%	-83.6%	-79.7%	-80.7%	-76.0%	-28.4%
Speech & Language Therapists	37	+13	+13	+13	+17	+5	+3	+53.6%	+58.4%	+58.1%	+84.3%	+15.3%	+7.8%
Therapy Professions	351	+78	+65	+63	+56	-1	+11	+28.7%	+22.5%	+21.8%	+18.9%	-0.2%	+3.3%
Medical Science								-100.0%	-100.0%	-100.0%	-100.0%	-100.0%	-100.0%
Phlebotomists		-1						-100.0%	-100.0%	-100.0%	-100.0%	-100.0%	-100.0%
Radiographers	4	-4	-2	-2	-1	+0	+0	-49.8%	-35.7%	-39.0%	-27.2%	+6.8%	+2.0%
Vascular Physiologists	0	+0	+0	-0	-0	-0	-0	-100.0%	+12.5%	-57.1%	-43.8%	-43.8%	-47.1%
Clinical Engineering	1	+1	+1	+1	+1	+1	-0	-100.0%	-100.0%	-100.0%	-100.0%	-100.0%	-4.0%
Health Science/ Diagnostics	5	-4	-1	-1	-0	+1	-0	-43.1%	-18.2%	-23.9%	-9.0%	+31.5%	-1.1%
Social Care	2	-0	-0	-0	-0	-0	+0	-14.6%	-16.8%	-16.8%	-16.8%	-16.8%	+0.9%
Social Workers	72	-12	-23	-27	-28	-18	+2	-14.6%	-24.6%	-27.2%	-28.3%	-20.3%	+3.5%
Psychologists	3	+3	+3	+1	+2	+1	-0	-100.0%	+570.0%	+59.5%	+204.5%	+43.8%	-4.3%
Pharmacists	14	+3	+2	+1	+1	-2	-0	+28.9%	+18.1%	+7.7%	+8.0%	-14.0%	-2.6%
Pharmacy Technicians	6	+1	+1	+3	+1		+0	+17.3%	+17.3%	+120.0%	+22.2%		+0.7%
Pharmacy	19	+4	+3	+4	+2	-2	-0	+25.3%	+17.9%	+26.1%	+11.8%	-10.4%	-1.6%
Other Health & Social Care	2	+1	+1	+2	+2	+2	+0	+77.9%	+77.9%	+572.2%	+348.1%	+348.1%	+1.3%
Play Therapists/ Specialists	1						+0						+1.0%
H&SC, Other	3	+1	+1	+2	+2	+2	+0	+44.9%	+44.9%	+151.5%	+122.1%	+122.1%	+1.2%
Health & Social Care Professionals	456	+70	+47	+41	+33	-18	+13	+18.3%	+11.4%	+10.0%	+7.7%	-3.7%	+3.0%
Executive Management	15	+7	+5	+3	+0	+0	+1	+89.4%	+50.0%	+25.9%	+1.4%	+1.3%	+7.7%
Senior Management (VIII & GM)	104	+67	+56	+42	+40	+17	+2	+182.5%	+114.9%	+66.5%	+63.2%	+19.6%	+1.9%
Management (VIII & above)	119	+74	+61	+45	+41	+17	+3	+166.1%	+103.8%	+60.0%	+51.6%	+16.9%	+2.6%
Middle Management (V-VII)	269	+141	+127	+105	+93	+68	+6	+110.8%	+89.7%	+64.1%	+53.0%	+34.1%	+2.4%
Other Administrative		-1	-1	-1				-100.0%	-100.0%	-100.0%	-100.0%	-100.0%	-100.0%

Jan 2023 (Dec 2016 figure: 12,482)	WTE Jan 2023	WTE change since Dec 17	WTE change since Dec 18	WTE change since Dec 19	WTE change since Dec 20	WTE change since Dec 21	WTE change since Dec 22	% change since Dec 17	% change since Dec 18	% change since Dec 19	% change since Dec 20	% change since Dec 21	% change since Dec 22
Overall	13,970	+867	+665	+737	+555	+347	+23	+6.6%	+5.0%	+5.6%	+4.1%	+2.5%	+0.2%
Administrative/ Supervisory (V to VII)	269	+140	+126	+104	+93	+68	+6	+109.2%	+88.4%	+63.1%	+53.0%	+34.1%	+2.4%
General Administrative (III & IV)	646	+137	+81	+75	+59	+38	+15	+26.9%	+14.4%	+13.1%	+10.0%	+6.2%	+2.3%
Clerical (III & IV)	646	+137	+81	+75	+59	+38	+15	+26.9%	+14.4%	+13.1%	+10.0%	+6.2%	+2.3%
Management & Administrative	1,035	+352	+268	+224	+193	+124	+24	+51.5%	+35.0%	+27.6%	+22.9%	+13.6%	+2.4%
Catering	220	+8	+4	-2	+3	-1	+2	+3.7%	+1.9%	-0.8%	+1.5%	-0.3%	+1.1%
Household Services	439	-106	-79	-54	-40	-31	-3	-19.4%	-15.3%	-10.9%	-8.4%	-6.7%	-0.6%
Other Support	26	-17	-11	-8	-3	-1	-1	-38.9%	-30.1%	-22.2%	-8.9%	-4.7%	-2.5%
Portering	73	-11	-7	-8	-4	-2	+2	-12.9%	-8.3%	-10.3%	-4.7%	-3.2%	+3.3%
Support	758	-126	-93	-71	-43	-36	+1	-14.2%	-10.9%	-8.6%	-5.4%	-4.5%	+0.2%
Maintenance	89	-13	-14	-10	-6	-3	-1	-13.0%	-13.5%	-10.0%	-6.6%	-3.1%	-1.7%
Technical Services	4	+4	+4	+4	+4			-100.0%	-100.0%	-100.0%	-100.0%		
Maintenance/ Technical	93	-9	-10	-6	-2	-3	-1	-9.1%	-9.6%	-5.9%	-2.4%	-2.9%	-1.6%
General Support	850	-135	-103	-77	-45	-39	-0	-13.7%	-10.8%	-8.3%	-5.1%	-4.3%	-0.0%
Attendant/ Aide	1,639	-1,056	-992	-654	-572	-321	+7	-39.2%	-37.7%	-28.5%	-25.9%	-16.4%	+0.4%
Health & Social Care Assistants	65	+39	+41	+44	+38	+22	+2	+151.6%	+168.8%	+206.2%	+138.8%	+51.2%	+3.6%
Health Care Assistant/ Care Assistant	2,375	+985	+875	+646	+517	+279	-3	+70.8%	+58.3%	+37.4%	+27.8%	+13.3%	-0.1%
HCA (Student Nurse/Midwife COVID-19)					-22	-1		-100.0%	-100.0%	-100.0%	-100.0%	-100.0%	-100.0%
Health Care Assistants	4,079	-32	-76	+36	-39	-20	+7	-0.8%	-1.8%	+0.9%	-0.9%	-0.5%	+0.2%
Home Help	3,642	+286	+222	+200	+211	+195	-45	+8.5%	+6.5%	+5.8%	+6.1%	+5.7%	-1.2%
Home Care Services	143	+59	+57	+57	+44	+12	+0	+70.7%	+66.4%	+66.8%	+44.8%	+9.5%	+0.1%
Other Care Grades	20	-13	-4	-2	+1	-1	-3	-38.3%	-18.0%	-9.3%	+6.6%	-3.5%	-11.8%
Pastoral Care	23	-10	-11	-9	-4	-1	+0	-30.2%	-32.2%	-27.5%	-14.4%	-2.7%	+1.3%
Workshop Services	4	+2	+2	+2	+2	+1	+0	+72.6%	+72.6%	+72.6%	+83.0%	+27.5%	+0.8%
Care, other	190	+38	+43	+48	+43	+12	-2	+25.2%	+29.5%	+33.9%	+29.6%	+6.6%	-1.2%
Patient & Client Care	7,911	+292	+189	+284	+215	+187	-40	+3.8%	+2.4%	+3.7%	+2.8%	+2.4%	-0.5%

Source: Health Service Personnel Census

Longitudinal Employment Levels by Grade Group - Dec 2017 to Jan 2023

Jan 2023 (Dec 2016 figure: 12,482)	WTE Jan 2023	WTE change since Dec 17	WTE change since Dec 18	WTE change since Dec 19	WTE change since Dec 20	WTE change since Dec 21	WTE change since Dec 22	% change since Dec 17	% change since Dec 18	% change since Dec 19	% change since Dec 20	% change since Dec 21	% change since Dec 22
Overall	13,970	+867	+665	+737	+555	+347	+23	+6.6%	+5.0%	+5.6%	+4.1%	+2.5%	+0.2%
Consultant Medicine	7	-3	+3	+3	+2	-0	-0	-29.2%	+80.8%	+80.8%	+47.3%	-0.3%	-0.8%
Consultant Psychiatry		-1						-100.0%	-100.0%	-100.0%	-100.0%	-100.0%	-100.0%
Consultant Surgery		-0	-0					-100.0%	-100.0%	-100.0%	-100.0%	-100.0%	-100.0%
Consultants	7	-4	+3	+3	+2	-0	-0	-36.0%	+75.0%	+80.8%	+47.3%	-0.3%	-0.8%
Registrar	8	+1	+1	+2	+3	+2	+2	+12.1%	+14.4%	+29.3%	+44.2%	+29.3%	+30.1%
Senior Registrar	1		-1			-0	-0		-50.0%			-7.4%	-3.8%
Specialist Registrar	4	+3	+3	+2	+2	+1	+2	+295.0%	+295.0%	+97.5%	+97.5%	+31.7%	+98.5%
Registrars	13	+4	+3	+4	+5	+3	+4	+40.6%	+29.1%	+40.6%	+51.2%	+26.3%	+40.7%
Senior House Officer	13	+3	+1	-2	-1	-2	+1	+27.6%	+6.0%	-15.7%	-7.5%	-14.5%	+5.2%
SHO/ Interns	13	+3	+1	-2	-1	-2	+1	+27.6%	+6.0%	-15.7%	-7.5%	-14.5%	+5.2%
Other Medical	90	+4	+4	-7	-14	-5	-9	+4.5%	+5.0%	-6.9%	-13.5%	-5.3%	-8.7%
Medical/ Dental, other	90	+4	+4	-7	-14	-5	-9	+4.5%	+5.0%	-6.9%	-13.5%	-5.3%	-8.7%
Medical & Dental	122	+7	+11	-2	-8	-4	-4	+5.9%	+9.7%	-1.8%	-6.5%	-3.5%	-3.3%
Clinical Nurse/ Midwife Manager	534	+6	+10	+26	-2	-23	+1	+1.1%	+1.9%	+5.1%	-0.4%	-4.1%	+0.1%
Director Nursing/Midwifery, Assistant	109	+17	+22	+6	+3	+2	+3	+18.6%	+25.5%	+6.0%	+2.4%	+1.6%	+2.9%
Director of Nursing/Midwifery	101	+18	+18	+3	-3	+1	+2	+22.3%	+22.1%	+2.7%	-3.3%	+0.5%	+2.5%
Nurse/ Midwife Manager	744	+41	+50	+34	-3	-21	+6	+5.9%	+7.2%	+4.9%	-0.4%	-2.7%	+0.8%
Advanced Nurse/ Midwife Practitioner	42	+39	+35	+31	+25	+28	+3	+1298.3%	+501.0%	+291.3%	+152.4%	+198.6%	+7.1%
Clinical Nurse/ Midwife Specialist	35	+24	+18	+19	+13	+14	-0	+210.4%	+107.8%	+121.1%	+61.5%	+66.8%	-1.2%
Nurse/ Midwife Specialist & AN/MP	77	+63	+53	+50	+39	+42	+2	+439.9%	+223.4%	+190.1%	+101.0%	+119.8%	+3.2%
Staff Nurse/ Staff Midwife	2,756	+187	+145	+180	+132	+74	+19	+7.3%	+5.6%	+7.0%	+5.0%	+2.8%	+0.7%
Public Health Nurse	12	-3	-2	-2	-2	+1	-1	-19.5%	-12.3%	-11.3%	-11.6%	+5.6%	-5.2%
Public Health Nurse	12	-3	-2	-2	-2	+1	-1	-19.5%	-12.3%	-11.3%	-11.6%	+5.6%	-5.2%
Pre-registration Nurse/ Midwife Intern	1	+1	+1	+1	+1	+1	+1	-100.0%	-100.0%	-100.0%	-100.0%	+1300.0%	-100.0%
Post-registration Nurse/ Midwife Student				-1				-100.0%	-100.0%	-100.0%	-100.0%	-100.0%	-100.0%
Nursing/ Midwifery awaiting registration	3	-11	+3	+2	+2	+1	+2	-78.6%	-100.0%	+200.0%	+122.2%	+50.0%	+206.1%
Nursing/ Midwifery Student	4	-10	+4	+2	+3	+2	+3	-70.6%	-100.0%	+106.0%	+205.2%	+98.1%	+320.4%
Nursing Education/Clinical	3	+2	+2	+2	-1	-1	-0	+189.0%	+189.0%	+189.0%	-27.4%	-25.1%	-3.7%
Nursing/ Midwifery other	3	+2	+2	+2	-1	-1	-0	+189.0%	+189.0%	+189.0%	-27.4%	-25.1%	-3.7%
Nursing & Midwifery	3,596	+280	+253	+267	+168	+97	+30	+8.5%	+7.6%	+8.0%	+4.9%	+2.8%	+0.8%
Dietitians	26	+9	+9	+10	+8	+2	+1	+51.1%	+52.7%	+61.4%	+46.9%	+6.1%	+4.4%
Occupational Therapists	127	+32	+23	+14	+14	+3	+2	+33.9%	+21.8%	+12.0%	+12.2%	+2.2%	+1.4%
Physiotherapists	159	+38	+32	+36	+27	-2	+7	+31.5%	+24.9%	+28.7%	+20.5%	-1.2%	+4.3%
Podiatrists & Chiropodists	2	-14	-13	-10	-10	-8	-1	-84.8%	-83.6%	-79.7%	-80.7%	-76.0%	-28.4%
Speech & Language Therapists	37	+13	+13	+13	+17	+5	+3	+53.6%	+58.4%	+58.1%	+84.3%	+15.3%	+7.8%
Therapy Professions	351	+78	+65	+63	+56	-1	+11	+28.7%	+22.5%	+21.8%	+18.9%	-0.2%	+3.3%
Medical Science								-100.0%	-100.0%	-100.0%	-100.0%	-100.0%	-100.0%
Phlebotomists		-1						-100.0%	-100.0%	-100.0%	-100.0%	-100.0%	-100.0%
Radiographers	4	-4	-2	-2	-1	+0	+0	-49.8%	-35.7%	-39.0%	-27.2%	+6.8%	+2.0%
Vascular Physiologists	0	+0	+0	-0	-0	-0	-0	-100.0%	+12.5%	-57.1%	-43.8%	-43.8%	-47.1%
Clinical Engineering	1	+1	+1	+1	+1	+1	-0	-100.0%	-100.0%	-100.0%	-100.0%	-100.0%	-4.0%
Health Science/ Diagnostics	5	-4	-1	-1	-0	+1	-0	-43.1%	-18.2%	-23.9%	-9.0%	+31.5%	-1.1%
Social Care	2	-0	-0	-0	-0	-0	+0	-14.6%	-16.8%	-16.8%	-16.8%	-16.8%	+0.9%
Social Workers	72	-12	-23	-27	-28	-18	+2	-14.6%	-24.6%	-27.2%	-28.3%	-20.3%	+3.5%
Psychologists	3	+3	+3	+1	+2	+1	-0	-100.0%	+570.0%	+59.5%	+204.5%	+43.8%	-4.3%
Pharmacists	14	+3	+2	+1	+1	-2	-0	+28.9%	+18.1%	+7.7%	+8.0%	-14.0%	-2.6%
Pharmacy Technicians	6	+1	+1	+3	+1		+0	+17.3%	+17.3%	+120.0%	+22.2%		+0.7%
Pharmacy	19	+4	+3	+4	+2	-2	-0	+25.3%	+17.9%	+26.1%	+11.8%	-10.4%	-1.6%
Other Health & Social Care	2	+1	+1	+2	+2	+2	+0	+77.9%	+77.9%	+572.2%	+348.1%	+348.1%	+1.3%
Play Therapists/ Specialists	1						+0						+1.0%
H&SC, Other	3	+1	+1	+2	+2	+2	+0	+44.9%	+44.9%	+151.5%	+122.1%	+122.1%	+1.2%
Health & Social Care Professionals	456	+70	+47	+41	+33	-18	+13	+18.3%	+11.4%	+10.0%	+7.7%	-3.7%	+3.0%
Executive Management	15	+7	+5	+3	+0	+0	+1	+89.4%	+50.0%	+25.9%	+1.4%	+1.3%	+7.7%
Senior Management (VIII & GM)	104	+67	+56	+42	+40	+17	+2	+182.5%	+114.9%	+66.5%	+63.2%	+19.6%	+1.9%
Management (VIII & above)	119	+74	+61	+45	+41	+17	+3	+166.1%	+103.8%	+60.0%	+51.6%	+16.9%	+2.6%
Middle Management (V-VII)	269	+141	+127	+105	+93	+68	+6	+110.8%	+89.7%	+64.1%	+53.0%	+34.1%	+2.4%
Other Administrative		-1	-1	-1				-100.0%	-100.0%	-100.0%	-100.0%	-100.0%	-100.0%
Administrative/ Supervisory (V to VII)	269	+140	+126	+104	+93	+68	+6	+109.2%	+88.4%	+63.1%	+53.0%	+34.1%	+2.4%
General Administrative (III & IV)	646	+137	+81	+75	+59	+38	+15	+26.9%	+14.4%	+13.1%	+10.0%	+6.2%	+2.3%
Clerical (III & IV)	646	+137	+81	+75	+59	+38	+15	+26.9%	+14.4%	+13.1%	+10.0%	+6.2%	+2.3%
Management & Administrative	1,035	+352	+268	+224	+193	+124	+24	+51.5%	+35.0%	+27.6%	+22.9%	+13.6%	+2.4%
Support	758	-126	-93	-71	-43	-36	+1	-14.2%	-10.9%	-8.6%	-5.4%	-4.5%	+0.2%
Maintenance	89	-13	-14	-10	-6	-3	-1	-13.0%	-13.5%	-10.0%	-6.6%	-3.1%	-1.7%
Technical Services	4	+4	+4	+4	+4			-100.0%	-100.0%	-100.0%	-100.0%		
Maintenance/ Technical	93	-9	-10	-6	-2	-3	-1	-9.1%	-9.6%	-5.9%	-2.4%	-2.9%	-1.6%
General Support	850	-135	-103	-77	-45	-39	-0	-13.7%	-10.8%	-8.3%	-5.1%	-4.3%	-0.0%
Attendant/ Aide	1,639	-1,056	-992	-654	-572	-321	+7	-39.2%	-37.7%	-28.5%	-25.9%	-16.4%	+0.4%
Health & Social Care Assistants	65	+39	+41	+44	+38	+22	+2	+151.6%	+168.8%	+206.2%	+138.8%	+51.2%	+3.6%
Health Care Assistant/ Care Assistant	2,375	+985	+875	+646	+517	+279	-3	+70.8%	+58.3%	+37.4%	+27.8%	+13.3%	-0.1%
HCA (Student Nurse/Midwife COVID-19)					-22	-1		-100.0%	-100.0%	-100.0%	-100.0%	-100.0%	-100.0%
Health Care Assistants	4,079	-32	-76	+36	-39	-20	+7	-0.8%	-1.8%	+0.9%	-0.9%	-0.5%	+0.2%
Home Help	3,642	+286	+222	+200	+211	+195	-45	+8.5%	+6.5%	+5.8%	+6.1%	+5.7%	-1.2%
Home Care Services	143	+59	+57	+57	+44	+12	+0	+70.7%	+66.4%	+66.8%	+44.8%	+9.5%	+0.1%
Other Care Grades	20	-13	-4	-2	+1	-1	-3	-38.3%	-18.0%	-9.3%	+6.6%	-3.5%	-11.8%
Pastoral Care	23	-10	-11	-9	-4	-1	+0	-30.2%	-32.2%	-27.5%	-14.4%	-2.7%	+1.3%
Workshop Services	4	+2	+2	+2	+2	+1	+0	+72.6%	+72.6%	+72.6%	+83.0%	+27.5%	+0.8%
Care, other	190	+38	+43	+48	+43	+12	-2	+25.2%	+29.5%	+33.9%	+29.6%	+6.6%	-1.2%
Patient & Client Care	7,911	+292	+189	+284	+215	+187	-40	+3.8%	+2.4%	+3.7%	+2.8%	+2.4%	-0.5%

Source: Health Service Personnel Census