

# Social Care Older Persons Services Employment Report: October 2022

## Employment by Staff Group

Oct 2022	WTE Dec 2019	WTE Dec 2020	WTE Sep 2022	WTE Oct 2022	WTE change since Sep 22	WTE change since Dec 20	% change since Dec 20	WTE change since Dec 19	% change since Dec 19	No. Oct 2022
<b>Overall</b>	<b>13,233</b>	<b>13,415</b>	<b>13,779</b>	<b>13,899</b>	<b>+120</b>	<b>+484</b>	<b>+3.6%</b>	<b>+666</b>	<b>+5.0%</b>	<b>16,648</b>
Consultants	4	4	6	6	-0	+1	+28.7%	+2	+58.1%	8
Registrars	10	9	10	11	+1	+2	+19.7%	+1	+11.3%	12
SHO/ Interns	15	14	12	13	+1	-1	-5.3%	-2	-13.7%	13
Medical/ Dental, other	96	104	86	88	+1	-16	-15.3%	-8	-8.8%	152
<b>Medical &amp; Dental</b>	<b>125</b>	<b>131</b>	<b>115</b>	<b>117</b>	<b>+3</b>	<b>-14</b>	<b>-10.4%</b>	<b>-7</b>	<b>-5.9%</b>	<b>185</b>
Nurse/ Midwife Manager	709	746	732	739	+7	-7	-1.0%	+30	+4.2%	780
Nurse/ Midwife Specialist & AN/MP	26	38	67	70	+4	+32	+83.8%	+44	+165.2%	74
Staff Nurse/ Staff Midwife	2,576	2,624	2,710	2,731	+21	+107	+4.1%	+155	+6.0%	3,116
Public Health Nurse	13	13	12	12	+0	-2	-11.7%	-2	-11.4%	14
Post-registration Nurse/ Midwife Student	1						-100.0%	-1	-100.0%	
Nursing/ Midwifery awaiting registration	1	1	1	1	+0	-0	-25.9%			1
Nursing/ Midwifery Student	2	1	1	1	+0	-0	-25.9%	-1	-50.0%	1
Nursing/ Midwifery other	1	4	4	3	-1	-1	-24.6%	+2	+200.0%	3
<b>Nursing &amp; Midwifery</b>	<b>3,328</b>	<b>3,427</b>	<b>3,525</b>	<b>3,556</b>	<b>+31</b>	<b>+129</b>	<b>+3.8%</b>	<b>+228</b>	<b>+6.8%</b>	<b>3,988</b>
Therapy Professions	288	295	336	331	-5	+36	+12.1%	+43	+14.9%	377
Health Science/ Diagnostics	6	5	4	6	+2	+0	+7.2%	-1	-10.4%	8
Social Care	3	3	2	2	+0	-0	-16.8%	-0	-16.8%	4
Social Workers	98	100	63	67	+5	-32	-32.5%	-31	-31.5%	74
Psychologists	2	1	5	5	-0	+4	+350.9%	+3	+136.2%	7
Pharmacy	15	17	19	19	-1	+2	+9.3%	+4	+23.4%	27
H&SC, Other	1	2	4	4	-0	+2	+148.1%	+2	+180.9%	5
<b>Health &amp; Social Care Professionals</b>	<b>414</b>	<b>423</b>	<b>434</b>	<b>434</b>	<b>+0</b>	<b>+11</b>	<b>+2.6%</b>	<b>+20</b>	<b>+4.7%</b>	<b>502</b>
Management (VIII & above)	75	79	109	111	+2	+32	+41.2%	+37	+49.1%	113
Administrative/ Supervisory (V to VII)	165	176	257	258	+1	+82	+46.8%	+93	+56.5%	273
Clerical (III & IV)	571	587	606	622	+16	+35	+6.0%	+51	+9.0%	708
<b>Management &amp; Administrative</b>	<b>811</b>	<b>842</b>	<b>973</b>	<b>992</b>	<b>+19</b>	<b>+150</b>	<b>+17.8%</b>	<b>+181</b>	<b>+22.3%</b>	<b>1,094</b>
Support	829	801	768	772	+4	-29	-3.7%	-57	-6.9%	867
Maintenance/ Technical	98	95	93	93	-0	-2	-1.6%	-5	-5.2%	98
<b>General Support</b>	<b>928</b>	<b>896</b>	<b>861</b>	<b>865</b>	<b>+4</b>	<b>-31</b>	<b>-3.4%</b>	<b>-62</b>	<b>-6.7%</b>	<b>965</b>
Health Care Assistants	4,043	4,118	4,072	4,077	+5	-41	-1.0%	+34	+0.8%	4,658
Home Help	3,442	3,431	3,620	3,671	+51	+240	+7.0%	+229	+6.7%	5,033
Care, other	142	147	179	185	+6	+39	+26.5%	+44	+30.7%	223
<b>Patient &amp; Client Care</b>	<b>7,627</b>	<b>7,696</b>	<b>7,872</b>	<b>7,934</b>	<b>+63</b>	<b>+238</b>	<b>+3.1%</b>	<b>+307</b>	<b>+4.0%</b>	<b>9,914</b>

## Social Care Older Persons Services Employment by Administration (HSE / S38): October 2022

Oct 2022	WTE Dec 2019	WTE Dec 2020	WTE Sep 2022	WTE Oct 2022	WTE change since Sep 22	WTE change since Dec 20	% change since Dec 20	WTE change since Dec 19	% change since Dec 19	No. Oct 2022
<b>Total</b>	<b>13,233</b>	<b>13,415</b>	<b>13,779</b>	<b>13,899</b>	<b>+120</b>	<b>+484</b>	<b>+3.6%</b>	<b>+666</b>	<b>+5.0%</b>	<b>16,648</b>
HSE	12,525	12,673	13,056	13,163	+107	+490	+3.9%	+639	+5.1%	15,838
Section 38 Voluntary Agencies	708	742	723	735	+12	-6	-0.8%	+27	+3.9%	810

### Employment by Staff Group

Oct 2022	WTE Dec 2019	WTE Dec 2020	WTE Sep 2022	WTE Oct 2022	WTE change since Sep 22	WTE change since Dec 20	% change since Dec 20	WTE change since Dec 19	% change since Dec 19	No. Oct 2022
<b>Health Service Executive</b>	<b>12,525</b>	<b>12,673</b>	<b>13,056</b>	<b>13,163</b>	<b>+107</b>	<b>+490</b>	<b>+3.9%</b>	<b>+639</b>	<b>+5.1%</b>	<b>15,838</b>
Consultants	3	3	5	5	+0	+2	+84.0%	+2	+73.0%	7
Registrars	7	6	6	7	+1	+1	+12.7%	+0	+1.1%	8
SHO/ Interns	10	10	8	9	+1	-1	-7.4%	-1	-10.5%	9
Medical/ Dental, other	94	102	85	87	+1	-15	-14.6%	-7	-7.9%	151
<b>Medical &amp; Dental</b>	<b>114</b>	<b>120</b>	<b>105</b>	<b>108</b>	<b>+3</b>	<b>-12</b>	<b>-10.4%</b>	<b>-6</b>	<b>-5.5%</b>	<b>175</b>
Nurse/ Midwife Manager	655	697	679	687	+8	-10	-1.4%	+32	+4.8%	723
Nurse/ Midwife Specialist & AN/MP	26	38	67	70	+4	+32	+83.8%	+44	+165.2%	74
Staff Nurse/ Staff Midwife	2,401	2,438	2,539	2,555	+15	+117	+4.8%	+154	+6.4%	2,922
Public Health Nurse	13	13	12	12	+0	-2	-11.7%	-2	-11.4%	14
Post-registration Nurse/ Midwife Student	1						-100.0%	-1	-100.0%	
Nursing/ Midwifery awaiting registration	1	1	1	1	+0	-0	-25.9%			1
Nursing/ Midwifery Student	2	1	1	1	+0	-0	-25.9%	-1	-50.0%	1
Nursing Education/Clinical	1	4	4	3	-1	-1	-24.6%	+2	+200.0%	3
Nursing/ Midwifery other	1	4	4	3	-1	-1	-24.6%	+2	+200.0%	3
<b>Nursing &amp; Midwifery</b>	<b>3,099</b>	<b>3,192</b>	<b>3,302</b>	<b>3,328</b>	<b>+26</b>	<b>+136</b>	<b>+4.2%</b>	<b>+229</b>	<b>+7.4%</b>	<b>3,737</b>
Therapy Professions	231	223	266	260	-5	+37	+16.5%	+30	+12.8%	296
Health Science/ Diagnostics	5	4	3	5	+2	+0	+9.0%	-1	-12.5%	6
Social Care	3	3	2	2	+0	-0	-16.8%	-0	-16.8%	4
Social Workers	84	84	49	52	+3	-32	-38.3%	-33	-38.5%	56
Psychologists	2	1	5	4	-0	+4	+643.3%	+3	+178.7%	6
Pharmacy	11	12	14	13	-1	+1	+11.3%	+3	+23.8%	19
H&SC, Other	1	2	4	4	-0	+2	+148.1%	+2	+180.9%	5
<b>Health &amp; Social Care Professionals</b>	<b>336</b>	<b>328</b>	<b>342</b>	<b>340</b>	<b>-2</b>	<b>+12</b>	<b>+3.6%</b>	<b>+4</b>	<b>+1.1%</b>	<b>392</b>
Management (VIII & above)	73	75	105	107	+2	+32	+43.4%	+35	+47.7%	109
Administrative/ Supervisory (V to VII)	146	157	233	234	+1	+77	+48.7%	+89	+60.9%	248
Clerical (III & IV)	544	557	579	592	+14	+36	+6.4%	+48	+8.9%	670
<b>Management &amp; Administrative</b>	<b>762</b>	<b>789</b>	<b>917</b>	<b>934</b>	<b>+16</b>	<b>+145</b>	<b>+18.4%</b>	<b>+172</b>	<b>+22.5%</b>	<b>1,027</b>
Support	726	694	659	663	+3	-31	-4.5%	-64	-8.8%	748
Maintenance/ Technical	88	84	84	83	-0	-1	-0.6%	-5	-5.8%	88
<b>General Support</b>	<b>815</b>	<b>778</b>	<b>743</b>	<b>746</b>	<b>+3</b>	<b>-32</b>	<b>-4.1%</b>	<b>-69</b>	<b>-8.5%</b>	<b>836</b>
Health Care Assistants	3,820	3,892	3,851	3,854	+3	-38	-1.0%	+35	+0.9%	4,422

Home Help	3,442	3,431	3,620	3,671	+51	+240	+7.0%	+229	+6.7%	5,033
Care, other	136	142	176	182	+6	+40	+27.9%	+46	+33.4%	216
<b>Patient &amp; Client Care</b>	<b>7,398</b>	<b>7,466</b>	<b>7,647</b>	<b>7,708</b>	<b>+61</b>	<b>+242</b>	<b>+3.2%</b>	<b>+310</b>	<b>+4.2%</b>	<b>9,671</b>

## Employment by Staff Group

Oct 2022	WTE Dec 2019	WTE Dec 2020	WTE Sep 2022	WTE Oct 2022	WTE change since Sep 22	WTE change since Dec 20	% change since Dec 20	WTE change since Dec 19	% change since Dec 19	No. Oct 2022
<b>Section 38 Voluntary Agencies</b>	<b>708</b>	<b>742</b>	<b>723</b>	<b>735</b>	<b>+12</b>	<b>-6</b>	<b>-0.8%</b>	<b>+27</b>	<b>+3.9%</b>	<b>810</b>
Consultants	1	2	1	1	-1	-1	-68.8%	-0	-16.7%	1
Registrars	3	3	4	4		+1	+33.3%	+1	+33.3%	4
SHO/ Interns	5	4	4	4				-1	-20.0%	4
Medical/ Dental, other	2	2	1	1		-1	-50.0%	-1	-50.0%	1
<b>Medical &amp; Dental</b>	<b>11</b>	<b>11</b>	<b>10</b>	<b>10</b>	<b>-1</b>	<b>-1</b>	<b>-10.4%</b>	<b>-1</b>	<b>-10.4%</b>	<b>10</b>
Nurse/ Midwife Manager	54	49	53	52	-1	+3	+5.5%	-2	-3.0%	57
Staff Nurse/ Staff Midwife	176	186	170	176	+6	-9	-5.1%	+0	+0.3%	194
<b>Nursing &amp; Midwifery</b>	<b>230</b>	<b>235</b>	<b>223</b>	<b>228</b>	<b>+5</b>	<b>-7</b>	<b>-2.9%</b>	<b>-1</b>	<b>-0.5%</b>	<b>251</b>
Therapy Professions	58	72	71	71	+0	-1	-1.4%	+13	+23.1%	81
Health Science/ Diagnostics	1	1	1	1						2
Social Workers	14	16	13	15	+2	-0	-1.3%	+2	+10.8%	18
Psychologists	1	1	1	1						1
Pharmacy	5	5	6	6	-0	+0	+5.0%	+1	+22.5%	8
<b>Health &amp; Social Care Professionals</b>	<b>78</b>	<b>95</b>	<b>91</b>	<b>94</b>	<b>+2</b>	<b>-1</b>	<b>-1.0%</b>	<b>+16</b>	<b>+20.4%</b>	<b>110</b>
Management (VIII & above)	2	4	4	4				+2	+100.0%	4
Administrative/ Supervisory (V to VII)	19	18	24	24	+0	+6	+30.7%	+5	+24.0%	25
Clerical (III & IV)	27	31	28	30	+2	-1	-1.8%	+3	+10.1%	38
<b>Management &amp; Administrative</b>	<b>49</b>	<b>53</b>	<b>56</b>	<b>58</b>	<b>+2</b>	<b>+5</b>	<b>+9.6%</b>	<b>+9</b>	<b>+19.3%</b>	<b>67</b>
Support	103	107	109	109	+0	+2	+2.0%	+7	+6.5%	119
Maintenance/ Technical	10	11	10	10	+0	-1	-9.1%			10
<b>General Support</b>	<b>113</b>	<b>118</b>	<b>119</b>	<b>119</b>	<b>+1</b>	<b>+1</b>	<b>+1.0%</b>	<b>+7</b>	<b>+6.0%</b>	<b>129</b>
Health Care Assistants	223	226	221	223	+2	-3	-1.3%	-0	-0.2%	236
Care, other	5	4	3	3		-1	-19.2%	-2	-36.5%	7
<b>Patient &amp; Client Care</b>	<b>229</b>	<b>230</b>	<b>224</b>	<b>226</b>	<b>+2</b>	<b>-4</b>	<b>-1.6%</b>	<b>-2</b>	<b>-1.0%</b>	<b>243</b>

## Social Care Older Persons Services Employment by CHO: Oct 2022

Oct 2022	WTE Dec 2019	WTE Dec 2020	WTE Sep 2022	WTE Oct 2022	WTE change since Sep 22	WTE change since Dec 20	% change since Dec 20	WTE change since Dec 19	% change since Dec 19	No. Oct 2022
<b>Overall</b>	<b>13,233</b>	<b>13,415</b>	<b>13,779</b>	<b>13,899</b>	<b>+120</b>	<b>+484</b>	<b>+3.6%</b>	<b>+666</b>	<b>+5.0%</b>	<b>16,648</b>
CHO 1	1,836	1,918	2,022	2,046	+24	+128	+6.7%	+210	+11.4%	2,420
CHO 2	1,606	1,590	1,543	1,563	+20	-27	-1.7%	-43	-2.7%	1,819
CHO 3	974	1,029	1,249	1,263	+14	+235	+22.8%	+289	+29.7%	1,553
CHO 4	2,919	2,930	2,940	3,001	+61	+71	+2.4%	+82	+2.8%	3,777
CHO 5	1,647	1,650	1,670	1,658	-12	+8	+0.5%	+11	+0.7%	1,999
CHO 6	823	804	819	827	+8	+24	+2.9%	+4	+0.5%	903
CHO 7	996	1,021	1,002	995	-7	-26	-2.6%	-1	-0.1%	1,131
CHO 8	1,488	1,484	1,461	1,462	+1	-22	-1.5%	-26	-1.8%	1,840
CHO 9	870	914	988	991	+4	+77	+8.4%	+122	+14.0%	1,106
other Community Services	73	75	87	92	+5	+16	+21.9%	+18	+24.7%	100

## Social Care Older Persons Services Employment by CHO etc. Oct 2022

### CHO 1

Oct 2022	WTE Dec 2019	WTE Dec 2020	WTE Sep 2022	WTE Oct 2022	WTE change since Sep 22	WTE change since Dec 20	% change since Dec 20	WTE change since Dec 19	% change since Dec 19	No. Oct 2022
<b>Overall</b>	<b>1,836</b>	<b>1,918</b>	<b>2,022</b>	<b>2,046</b>	<b>+24</b>	<b>+128</b>	<b>+6.7%</b>	<b>+210</b>	<b>+11.4%</b>	<b>2,420</b>
Medical/ Dental, other	30	32	15	16	+0	-17	-51.5%	-14	-47.1%	40
<b>Medical &amp; Dental</b>	<b>30</b>	<b>32</b>	<b>15</b>	<b>16</b>	<b>+0</b>	<b>-17</b>	<b>-51.5%</b>	<b>-14</b>	<b>-47.1%</b>	<b>40</b>
Nurse/ Midwife Manager	91	88	93	93	+0	+5	+6.2%	+2	+2.5%	98
Nurse/ Midwife Specialist & AN/MP	7	9	16	17	+1	+8	+86.9%	+10	+145.7%	17
Staff Nurse/ Staff Midwife	307	315	325	328	+4	+13	+4.3%	+21	+6.8%	376
Nursing/ Midwifery other		1	1	1	0			+1	-100.0%	1
<b>Nursing &amp; Midwifery</b>	<b>405</b>	<b>412</b>	<b>434</b>	<b>439</b>	<b>+5</b>	<b>+27</b>	<b>+6.5%</b>	<b>+34</b>	<b>+8.4%</b>	<b>492</b>
Therapy Professions	11	12	25	26	+1	+13	+105.1%	+14	+130.1%	28
Health Science/ Diagnostics	1	2		1	+1	-1	-42.4%	-0	-26.6%	1
Social Workers	18	15	8	8	+0	-7	-46.9%	-10	-54.4%	9
<b>Health &amp; Social Care Professionals</b>	<b>30</b>	<b>29</b>	<b>33</b>	<b>34</b>	<b>+2</b>	<b>+5</b>	<b>+18.5%</b>	<b>+5</b>	<b>+15.4%</b>	<b>38</b>
Management (VIII & above)	8	8	9	10	+1	+2	+25.0%	+2	+25.9%	10
Administrative/ Supervisory (V to VII)	14	15	25	24	-1	+9	+55.9%	+10	+67.1%	25
Clerical (III & IV)	85	88	82	83	+1	-5	-6.2%	-3	-3.0%	93
<b>Management &amp; Administrative</b>	<b>107</b>	<b>111</b>	<b>116</b>	<b>116</b>	<b>+1</b>	<b>+5</b>	<b>+4.6%</b>	<b>+9</b>	<b>+8.5%</b>	<b>128</b>
Support	123	119	116	116	-0	-2	-2.0%	-6	-5.2%	140
Maintenance/ Technical	7	7	7	7	0	-0	-1.3%	-0	-1.3%	7
<b>General Support</b>	<b>130</b>	<b>126</b>	<b>123</b>	<b>123</b>	<b>-0</b>	<b>-2</b>	<b>-2.0%</b>	<b>-6</b>	<b>-5.0%</b>	<b>147</b>
Health Care Assistants	563	580	564	570	+6	-10	-1.7%	+7	+1.2%	661
Home Help	543	604	713	723	+10	+118	+19.6%	+180	+33.1%	884
Care, other	28	22	24	24	+0	+2	+7.0%	-4	-14.1%	30
<b>Patient &amp; Client Care</b>	<b>1,134</b>	<b>1,207</b>	<b>1,300</b>	<b>1,317</b>	<b>+17</b>	<b>+110</b>	<b>+9.1%</b>	<b>+183</b>	<b>+16.1%</b>	<b>1,575</b>

## CHO 2

Oct 2022	WTE Dec 2019	WTE Dec 2020	WTE Sep 2022	WTE Oct 2022	WTE change since Sep 22	WTE change since Dec 20	% change since Dec 20	WTE change since Dec 19	% change since Dec 19	No. Oct 2022
<b>Overall</b>	<b>1,606</b>	<b>1,590</b>	<b>1,543</b>	<b>1,563</b>	<b>+20</b>	<b>-27</b>	<b>-1.7%</b>	<b>-43</b>	<b>-2.7%</b>	<b>1,819</b>
Medical/ Dental, other	11	11	9	10	+1	-0	-2.0%	-1	-6.4%	11
<b>Medical &amp; Dental</b>	<b>11</b>	<b>11</b>	<b>9</b>	<b>10</b>	<b>+1</b>	<b>-0</b>	<b>-2.0%</b>	<b>-1</b>	<b>-6.4%</b>	<b>11</b>
Nurse/ Midwife Manager	58	66	67	70	+3	+4	+6.2%	+12	+21.0%	74
Nurse/ Midwife Specialist & AN/MP	2	2	7	7	-0	+5	+249.0%	+5	+249.0%	7
Staff Nurse/ Staff Midwife	301	305	305	306	+1	+1	+0.4%	+5	+1.7%	350
Public Health Nurse	1	1	1	1	+0			+0	+25.0%	1
<b>Nursing &amp; Midwifery</b>	<b>362</b>	<b>374</b>	<b>381</b>	<b>385</b>	<b>+4</b>	<b>+10</b>	<b>+2.8%</b>	<b>+23</b>	<b>+6.2%</b>	<b>432</b>
Therapy Professions	26	25	26	25	-1	-1	-2.8%	-1	-4.1%	27
Health Science/ Diagnostics	1	1	1	1	+0	+0	+26.7%	+0	+26.7%	1
Social Workers	10	10	9	12	+3	+1	+13.3%	+2	+15.3%	13
Pharmacy	1	1	1	1	0	-1	-48.5%	-0	-47.5%	1
H&SC, Other	0						-100.0%		-100.0%	
<b>Health &amp; Social Care Professionals</b>	<b>37</b>	<b>37</b>	<b>36</b>	<b>38</b>	<b>+2</b>	<b>+0</b>	<b>+0.9%</b>	<b>+0</b>	<b>+0.6%</b>	<b>42</b>
Management (VIII & above)	2	2	6	6	+0	+4	+200.0%	+4	+200.0%	6
Administrative/ Supervisory (V to VII)	8	9	15	15	+1	+6	+68.4%	+8	+102.2%	16
Clerical (III & IV)	72	66	62	65	+3	-1	-1.8%	-7	-9.6%	73
<b>Management &amp; Administrative</b>	<b>81</b>	<b>77</b>	<b>82</b>	<b>86</b>	<b>+4</b>	<b>+9</b>	<b>+11.8%</b>	<b>+5</b>	<b>+6.1%</b>	<b>95</b>
Support	56	56	51	51	+0	-5	-9.0%	-5	-8.9%	58
Maintenance/ Technical	19	19	18	19	+0	-1	-5.1%	-0	-2.5%	19
<b>General Support</b>	<b>75</b>	<b>76</b>	<b>69</b>	<b>70</b>	<b>+0</b>	<b>-6</b>	<b>-8.0%</b>	<b>-5</b>	<b>-7.3%</b>	<b>77</b>
Health Care Assistants	515	526	516	528	+12	+2	+0.3%	+13	+2.5%	588
Home Help	499	456	404	401	-4	-55	-12.1%	-99	-19.7%	527
Care, other	24	33	45	46	+1	+13	+40.0%	+21	+86.3%	47
<b>Patient &amp; Client Care</b>	<b>1,039</b>	<b>1,015</b>	<b>965</b>	<b>974</b>	<b>+9</b>	<b>-41</b>	<b>-4.0%</b>	<b>-65</b>	<b>-6.2%</b>	<b>1,162</b>

## CHO 3

Oct 2022	WTE Dec 2019	WTE Dec 2020	WTE Sep 2022	WTE Oct 2022	WTE change since Sep 22	WTE change since Dec 20	% change since Dec 20	WTE change since Dec 19	% change since Dec 19	No. Oct 2022
<b>Overall</b>	<b>974</b>	<b>1,029</b>	<b>1,249</b>	<b>1,263</b>	<b>+14</b>	<b>+235</b>	<b>+22.8%</b>	<b>+289</b>	<b>+29.7%</b>	<b>1,553</b>
Consultants	1	1	3	3	-0	+2	+199.0%	+2	+199.0%	3
Registrars			2	2	+0	+2	-100.0%	+2	-100.0%	2
SHO/ Interns			1	2	+1	+2	-100.0%	+2	-100.0%	2
Medical/ Dental, other	5	6	5	6	+1	-0	-4.2%	+1	+15.0%	6
<b>Medical &amp; Dental</b>	<b>6</b>	<b>7</b>	<b>11</b>	<b>13</b>	<b>+2</b>	<b>+6</b>	<b>+81.3%</b>	<b>+7</b>	<b>+111.5%</b>	<b>13</b>
Nurse/ Midwife Manager	64	64	70	67	-3	+3	+4.9%	+3	+5.2%	69
Nurse/ Midwife Specialist & AN/MP	2	4	8	10	+2	+7	+176.6%	+8	+468.5%	11
Staff Nurse/ Staff Midwife	239	231	263	269	+6	+38	+16.3%	+30	+12.7%	309
Public Health Nurse	1	1				-1	-100.0%	-1	-100.0%	
<b>Nursing &amp; Midwifery</b>	<b>305</b>	<b>300</b>	<b>341</b>	<b>346</b>	<b>+6</b>	<b>+46</b>	<b>+15.5%</b>	<b>+41</b>	<b>+13.5%</b>	<b>389</b>
Therapy Professions	28	29	42	41	-1	+12	+42.0%	+14	+49.5%	48
Health Science/ Diagnostics	1	1	1	1	-0	-0	-19.7%	-0	-25.4%	1
Social Workers	7	6	3	2	-1	-4	-67.9%	-5	-71.5%	2
Psychologists			1	1	-0	+1	-100.0%	+1	-100.0%	1
Pharmacy	1	1	1	1	0					1
<b>Health &amp; Social Care Professionals</b>	<b>36</b>	<b>37</b>	<b>48</b>	<b>46</b>	<b>-2</b>	<b>+9</b>	<b>+23.4%</b>	<b>+9</b>	<b>+25.5%</b>	<b>53</b>
Management (VIII & above)	6	6	10	10	-0	+4	+64.4%	+4	+68.6%	10
Administrative/ Supervisory (V to VII)	21	17	34	27	-7	+10	+62.2%	+6	+31.4%	29
Clerical (III & IV)	50	48	60	61	+1	+12	+25.5%	+11	+22.5%	68
<b>Management &amp; Administrative</b>	<b>76</b>	<b>71</b>	<b>104</b>	<b>98</b>	<b>-6</b>	<b>+27</b>	<b>+37.3%</b>	<b>+22</b>	<b>+28.4%</b>	<b>107</b>
Support	64	63	48	49	+1	-14	-21.5%	-15	-23.2%	54
Maintenance/ Technical	22	21	24	23	-0	+2	+10.4%	+1	+5.0%	24
<b>General Support</b>	<b>86</b>	<b>84</b>	<b>71</b>	<b>72</b>	<b>+1</b>	<b>-11</b>	<b>-13.5%</b>	<b>-14</b>	<b>-16.0%</b>	<b>78</b>
Health Care Assistants	279	301	332	334	+2	+32	+10.7%	+54	+19.5%	380
Home Help	175	216	334	340	+6	+124	+57.2%	+165	+94.2%	518
Care, other	10	12	8	15	+7	+3	+22.7%	+5	+49.5%	15
<b>Patient &amp; Client Care</b>	<b>464</b>	<b>530</b>	<b>674</b>	<b>688</b>	<b>+15</b>	<b>+159</b>	<b>+30.0%</b>	<b>+224</b>	<b>+48.3%</b>	<b>913</b>

## CHO 4

Oct 2022	WTE Dec 2019	WTE Dec 2020	WTE Sep 2022	WTE Oct 2022	WTE change since Sep 22	WTE change since Dec 20	% change since Dec 20	WTE change since Dec 19	% change since Dec 19	No. Oct 2022
<b>Overall</b>	<b>2,919</b>	<b>2,930</b>	<b>2,940</b>	<b>3,001</b>	<b>+61</b>	<b>+71</b>	<b>+2.4%</b>	<b>+82</b>	<b>+2.8%</b>	<b>3,777</b>
Consultants	1	1	1	1	+0	+0	+20.0%	+0	+20.0%	3
Registrars	3	3	0	0	0	-3	-97.3%	-3	-97.3%	1
SHO/ Interns	1	1				-1	-100.0%	-1	-100.0%	
Medical/ Dental, other	21	23	27	27	-1	+4	+15.8%	+6	+28.7%	52
<b>Medical &amp; Dental</b>	<b>26</b>	<b>28</b>	<b>28</b>	<b>28</b>	<b>-0</b>	<b>-0</b>	<b>-0.2%</b>	<b>+2</b>	<b>+8.7%</b>	<b>56</b>
Nurse/ Midwife Manager	118	122	107	109	+2	-13	-10.7%	-9	-7.5%	116
Nurse/ Midwife Specialist & AN/MP	3	6	4	4	-0	-2	-29.2%	+1	+28.0%	6
Staff Nurse/ Staff Midwife	515	528	546	555	+9	+27	+5.1%	+40	+7.7%	671
Public Health Nurse	5	6	6	6	+0	+1	+9.5%	+1	+26.7%	8
Post-registration Nurse/ Midwife Student	1						-100.0%	-1	-100.0%	
Nursing/ Midwifery awaiting registration	1						-100.0%	-1	-100.0%	
Nursing/ Midwifery Student	2						-100.0%	-2	-100.0%	
<b>Nursing &amp; Midwifery</b>	<b>643</b>	<b>662</b>	<b>664</b>	<b>674</b>	<b>+10</b>	<b>+12</b>	<b>+1.9%</b>	<b>+31</b>	<b>+4.9%</b>	<b>801</b>
Therapy Professions	45	41	39	37	-2	-5	-11.2%	-8	-17.3%	43
Health Science/ Diagnostics	1	1	0	1	+1	+0	+0.8%	+0	+14.0%	2
Social Care	2	2	1	1	0	-0	-26.4%	-0	-26.4%	2
Social Workers	10	12	9	10	+0	-3	-20.6%	-1	-5.3%	10
Pharmacy	3	4	5	4	-0	+1	+16.4%	+2	+70.3%	9
<b>Health &amp; Social Care Professionals</b>	<b>60</b>	<b>61</b>	<b>55</b>	<b>54</b>	<b>-1</b>	<b>-7</b>	<b>-11.6%</b>	<b>-7</b>	<b>-11.1%</b>	<b>66</b>
Management (VIII & above)	13	14	18	18	+0	+4	+28.7%	+5	+43.0%	19
Administrative/ Supervisory (V to VII)	17	20	30	31	+1	+11	+53.6%	+14	+83.0%	32
Clerical (III & IV)	128	131	127	129	+1	-3	-2.0%	+0	+0.2%	150
<b>Management &amp; Administrative</b>	<b>158</b>	<b>166</b>	<b>176</b>	<b>178</b>	<b>+2</b>	<b>+12</b>	<b>+7.4%</b>	<b>+20</b>	<b>+12.6%</b>	<b>201</b>
Support	100	114	122	124	+2	+10	+9.0%	+23	+23.3%	132
Maintenance/ Technical	6	6	5	5	0	-1	-20.2%	-1	-16.8%	5
<b>General Support</b>	<b>106</b>	<b>120</b>	<b>127</b>	<b>129</b>	<b>+2</b>	<b>+9</b>	<b>+7.5%</b>	<b>+22</b>	<b>+21.0%</b>	<b>137</b>
Health Care Assistants	781	794	817	814	-3	+20	+2.6%	+33	+4.2%	925
Home Help	1,113	1,067	1,036	1,087	+51	+20	+1.9%	-27	-2.4%	1,542
Care, other	31	34	38	38	-1	+4	+11.2%	+7	+22.7%	49
<b>Patient &amp; Client Care</b>	<b>1,925</b>	<b>1,894</b>	<b>1,890</b>	<b>1,938</b>	<b>+48</b>	<b>+44</b>	<b>+2.3%</b>	<b>+13</b>	<b>+0.7%</b>	<b>2,516</b>



## CHO 5

Oct 2022	WTE Dec 2019	WTE Dec 2020	WTE Sep 2022	WTE Oct 2022	WTE change since Sep 22	WTE change since Dec 20	% change since Dec 20	WTE change since Dec 19	% change since Dec 19	No. Oct 2022
<b>Overall</b>	<b>1,647</b>	<b>1,650</b>	<b>1,670</b>	<b>1,658</b>	<b>-12</b>	<b>+8</b>	<b>+0.5%</b>	<b>+11</b>	<b>+0.7%</b>	<b>1,999</b>
Medical/ Dental, other	10	15	15	15	0	-0	-1.1%	+5	+48.5%	18
<b>Medical &amp; Dental</b>	<b>10</b>	<b>15</b>	<b>15</b>	<b>15</b>		<b>-0</b>	<b>-1.1%</b>	<b>+5</b>	<b>+48.5%</b>	<b>18</b>
Nurse/ Midwife Manager	82	88	77	75	-2	-13	-14.9%	-7	-8.1%	81
Nurse/ Midwife Specialist & AN/MP	2	4	9	11	+1	+7	+179.3%	+9	+433.5%	11
Staff Nurse/ Staff Midwife	315	308	306	305	-1	-3	-1.0%	-10	-3.1%	356
Public Health Nurse	4	3	1	1	+0	-2	-62.8%	-3	-73.7%	1
<b>Nursing &amp; Midwifery</b>	<b>403</b>	<b>403</b>	<b>393</b>	<b>392</b>	<b>-1</b>	<b>-11</b>	<b>-2.8%</b>	<b>-11</b>	<b>-2.6%</b>	<b>449</b>
Therapy Professions	41	32	30	31	+0	-2	-5.0%	-10	-24.5%	34
Social Workers	3	4	4	4	+0	-0	-6.9%	+1	+22.5%	5
Psychologists			1	1	+0	+1	-100.0%	+1	-100.0%	2
Pharmacy		1	1	1	-0	-0	-29.9%	+1	-100.0%	1
H&SC, Other			2	2	0	+2	-100.0%	+2	-100.0%	2
<b>Health &amp; Social Care Professionals</b>	<b>44</b>	<b>38</b>	<b>38</b>	<b>39</b>	<b>+0</b>	<b>+1</b>	<b>+2.5%</b>	<b>-5</b>	<b>-12.4%</b>	<b>44</b>
Management (VIII & above)	4	4	11	11	-0	+7	+187.7%	+7	+187.7%	11
Administrative/ Supervisory (V to VII)	14	17	15	16	+1	-1	-3.2%	+2	+17.0%	17
Clerical (III & IV)	32	31	52	57	+5	+26	+82.5%	+25	+76.6%	63
<b>Management &amp; Administrative</b>	<b>50</b>	<b>52</b>	<b>79</b>	<b>84</b>	<b>+6</b>	<b>+32</b>	<b>+62.2%</b>	<b>+34</b>	<b>+68.3%</b>	<b>91</b>
Support	123	83	77	77	+0	-6	-7.0%	-46	-37.1%	90
Maintenance/ Technical	8	4	4	4	-0			-4	-51.1%	5
<b>General Support</b>	<b>131</b>	<b>87</b>	<b>81</b>	<b>81</b>	<b>+0</b>	<b>-6</b>	<b>-6.7%</b>	<b>-50</b>	<b>-38.0%</b>	<b>95</b>
Health Care Assistants	391	448	421	418	-3	-30	-6.8%	+27	+6.9%	474
Home Help	608	599	624	612	-12	+13	+2.1%	+4	+0.6%	807
Care, other	10	9	19	18	-1	+10	+112.5%	+8	+74.0%	21
<b>Patient &amp; Client Care</b>	<b>1,009</b>	<b>1,056</b>	<b>1,064</b>	<b>1,047</b>	<b>-17</b>	<b>-8</b>	<b>-0.8%</b>	<b>+38</b>	<b>+3.8%</b>	<b>1,302</b>

## CHO 6

Oct 2022	WTE Dec 2019	WTE Dec 2020	WTE Sep 2022	WTE Oct 2022	WTE change since Sep 22	WTE change since Dec 20	% change since Dec 20	WTE change since Dec 19	% change since Dec 19	No. Oct 2022
<b>Overall</b>	<b>823</b>	<b>804</b>	<b>819</b>	<b>827</b>	<b>+8</b>	<b>+24</b>	<b>+2.9%</b>	<b>+4</b>	<b>+0.5%</b>	<b>903</b>
Registrars	1	1	1	1	0					1
Medical/ Dental, other	4	3	2	2	0	-1	-34.3%	-2	-53.5%	3
<b>Medical &amp; Dental</b>	<b>5</b>	<b>4</b>	<b>3</b>	<b>3</b>		<b>-1</b>	<b>-25.3%</b>	<b>-2</b>	<b>-42.8%</b>	<b>4</b>
Nurse/ Midwife Manager	68	63	64	64	-0	+1	+2.1%	-4	-6.4%	67
Nurse/ Midwife Specialist & AN/MP	1	1	1		-1	-1	-100.0%	-1	-100.0%	
Staff Nurse/ Staff Midwife	204	206	204	208	+4	+2	+1.0%	+4	+2.0%	218
<b>Nursing &amp; Midwifery</b>	<b>273</b>	<b>269</b>	<b>269</b>	<b>272</b>	<b>+2</b>	<b>+2</b>	<b>+0.9%</b>	<b>-1</b>	<b>-0.5%</b>	<b>285</b>
Therapy Professions	50	46	43	43	+0	-3	-7.3%	-7	-13.9%	50
Social Workers	11	10	6	7	+1	-4	-35.4%	-5	-40.8%	8
Psychologists	2	1	1	1	0	-1	-54.5%	-2	-76.2%	1
Pharmacy	3	3	4	4	-0	+1	+43.8%	+1	+45.8%	5
<b>Health &amp; Social Care Professionals</b>	<b>66</b>	<b>61</b>	<b>53</b>	<b>54</b>	<b>+1</b>	<b>-6</b>	<b>-10.5%</b>	<b>-12</b>	<b>-17.9%</b>	<b>64</b>
Management (VIII & above)	4	5	9	8	-1	+3	+57.4%	+4	+96.8%	8
Administrative/ Supervisory (V to VII)	22	19	32	33	+1	+13	+69.3%	+11	+47.8%	34
Clerical (III & IV)	30	33	29	32	+4	-1	-2.0%	+3	+9.9%	37
<b>Management &amp; Administrative</b>	<b>56</b>	<b>58</b>	<b>70</b>	<b>73</b>	<b>+4</b>	<b>+16</b>	<b>+27.2%</b>	<b>+17</b>	<b>+31.3%</b>	<b>79</b>
Support	108	102	106	106	-1	+4	+3.5%	-3	-2.4%	116
Maintenance/ Technical	8	9	8	8	+0	-1	-11.1%			8
<b>General Support</b>	<b>116</b>	<b>111</b>	<b>114</b>	<b>114</b>	<b>-0</b>	<b>+3</b>	<b>+2.3%</b>	<b>-3</b>	<b>-2.2%</b>	<b>124</b>
Health Care Assistants	300	296	306	307	+2	+11	+3.8%	+7	+2.3%	340
Care, other	7	6	5	5	0	-1	-16.2%	-3	-36.3%	7
<b>Patient &amp; Client Care</b>	<b>307</b>	<b>301</b>	<b>310</b>	<b>312</b>	<b>+2</b>	<b>+10</b>	<b>+3.4%</b>	<b>+4</b>	<b>+1.4%</b>	<b>347</b>

## CHO 7

Oct 2022	WTE Dec 2019	WTE Dec 2020	WTE Sep 2022	WTE Oct 2022	WTE change since Sep 22	WTE change since Dec 20	% change since Dec 20	WTE change since Dec 19	% change since Dec 19	No. Oct 2022
<b>Overall</b>	<b>996</b>	<b>1,021</b>	<b>1,002</b>	<b>995</b>	<b>-7</b>	<b>-26</b>	<b>-2.6%</b>	<b>-1</b>	<b>-0.1%</b>	<b>1,131</b>
SHO/ Interns	2	2	2	2	0					2
Medical/ Dental, other	4	2	2	2	0			-2	-49.0%	4
<b>Medical &amp; Dental</b>	<b>6</b>	<b>4</b>	<b>4</b>	<b>4</b>				<b>-2</b>	<b>-32.7%</b>	<b>6</b>
Nurse/ Midwife Manager	77	86	89	92	+3	+6	+7.1%	+15	+19.3%	95
Nurse/ Midwife Specialist & AN/MP	3	3	5	5	-0	+2	+63.3%	+2	+77.9%	5
Staff Nurse/ Staff Midwife	219	242	245	241	-4	-1	-0.5%	+21	+9.8%	258
<i>Nursing/ Midwifery awaiting registration</i>		1	1	1	+0	-0	-25.9%	+1	-100.0%	1
Nursing/ Midwifery Student		1	1	1	+0	-0	-25.9%	+1	-100.0%	1
<b>Nursing &amp; Midwifery</b>	<b>299</b>	<b>332</b>	<b>340</b>	<b>339</b>	<b>-2</b>	<b>+6</b>	<b>+1.9%</b>	<b>+40</b>	<b>+13.2%</b>	<b>359</b>
Therapy Professions	14	13	18	18	-0	+4	+32.1%	+4	+27.8%	20
Social Workers	11	12	5	5	+0	-7	-59.7%	-6	-53.9%	5
Pharmacy	3	2	3	3	0	+1	+50.0%	+1	+20.0%	3
H&SC, Other	1	1	1	1	0					1
<b>Health &amp; Social Care Professionals</b>	<b>28</b>	<b>29</b>	<b>27</b>	<b>27</b>	<b>-0</b>	<b>-2</b>	<b>-7.4%</b>	<b>-2</b>	<b>-5.4%</b>	<b>29</b>
Management (VIII & above)	5	7	9	9	-0	+2	+21.2%	+4	+74.0%	9
Administrative/ Supervisory (V to VII)	12	15	17	17	-0	+2	+17.1%	+5	+47.7%	18
Clerical (III & IV)	34	37	41	38	-3	+2	+4.1%	+4	+12.4%	43
<b>Management &amp; Administrative</b>	<b>51</b>	<b>59</b>	<b>67</b>	<b>64</b>	<b>-3</b>	<b>+6</b>	<b>+9.4%</b>	<b>+13</b>	<b>+26.5%</b>	<b>70</b>
Support	110	119	107	106	-2	-13	-11.2%	-5	-4.1%	118
Maintenance/ Technical	2	2	2	2	0					2
<b>General Support</b>	<b>112</b>	<b>121</b>	<b>109</b>	<b>108</b>	<b>-2</b>	<b>-13</b>	<b>-11.0%</b>	<b>-5</b>	<b>-4.1%</b>	<b>120</b>
Health Care Assistants	388	358	335	335	+0	-22	-6.2%	-52	-13.5%	386
Home Help	108	115	115	113	-1	-2	-1.4%	+5	+5.1%	155
Care, other	5	5	5	6	+1	+1	+19.6%	+1	+23.8%	6
<b>Patient &amp; Client Care</b>	<b>500</b>	<b>477</b>	<b>455</b>	<b>454</b>	<b>-0</b>	<b>-23</b>	<b>-4.8%</b>	<b>-46</b>	<b>-9.1%</b>	<b>547</b>

## CHO 8

Oct 2022	WTE Dec 2019	WTE Dec 2020	WTE Sep 2022	WTE Oct 2022	WTE change since Sep 22	WTE change since Dec 20	% change since Dec 20	WTE change since Dec 19	% change since Dec 19	No. Oct 2022
<b>Overall</b>	<b>1,488</b>	<b>1,484</b>	<b>1,460</b>	<b>1,462</b>	<b>+1</b>	<b>-22</b>	<b>-1.5%</b>	<b>-26</b>	<b>-1.8%</b>	<b>1,840</b>
Medical/ Dental, other	11	11	11	11	+0	-0	-1.7%	-0	-1.3%	18
<b>Medical &amp; Dental</b>	<b>11</b>	<b>11</b>	<b>11</b>	<b>11</b>	<b>+0</b>	<b>-0</b>	<b>-1.7%</b>	<b>-0</b>	<b>-1.3%</b>	<b>18</b>
Nurse/ Midwife Manager	77	89	83	85	+3	-4	-4.0%	+9	+11.4%	92
Nurse/ Midwife Specialist & AN/MP	2	4	4	4	-0	+0	+1.6%	+2	+96.0%	4
Staff Nurse/ Staff Midwife	249	255	253	255	+1	-0	-0.1%	+5	+2.1%	291
Public Health Nurse	2	3	2	2	+0	-0	-15.4%	+0	+3.9%	3
Nursing/ Midwifery other		2	3	2	-1	+0	+1.0%	+2	-100.0%	2
<b>Nursing &amp; Midwifery</b>	<b>330</b>	<b>353</b>	<b>345</b>	<b>348</b>	<b>+3</b>	<b>-4</b>	<b>-1.2%</b>	<b>+18</b>	<b>+5.4%</b>	<b>392</b>
Therapy Professions	21	24	22	23	+0	-2	-6.9%	+2	+9.8%	28
Health Science/ Diagnostics			1	1	0	+1	-100.0%	+1	-100.0%	1
Social Workers	7	5	0	0	0	-5	-100.0%	-7	-100.0%	0
Pharmacy	3	2	2	2	0	-1	-25.0%	-1	-40.0%	2
H&SC, Other			0	0	-0	+0	-100.0%	+0	-100.0%	1
<b>Health &amp; Social Care Professionals</b>	<b>30</b>	<b>31</b>	<b>25</b>	<b>26</b>	<b>+0</b>	<b>-6</b>	<b>-18.6%</b>	<b>-4</b>	<b>-14.0%</b>	<b>32</b>
Management (VIII & above)	6	7	8	8	+0	+1	+15.1%	+2	+43.6%	8
Administrative/ Supervisory (V to VII)	20	21	27	31	+3	+9	+42.0%	+10	+51.0%	33
Clerical (III & IV)	70	72	66	69	+4	-2	-3.5%	-0	-0.7%	80
<b>Management &amp; Administrative</b>	<b>95</b>	<b>100</b>	<b>100</b>	<b>108</b>	<b>+7</b>	<b>+8</b>	<b>+7.6%</b>	<b>+12</b>	<b>+12.8%</b>	<b>121</b>
Support	26	25	26	26	-1	+0	+1.4%	-0	-0.6%	28
Maintenance/ Technical	24	24	23	23	+0	-0	-1.5%	-0	-1.9%	25
<b>General Support</b>	<b>50</b>	<b>49</b>	<b>50</b>	<b>49</b>	<b>-1</b>	<b>+0</b>	<b>+0.0%</b>	<b>-1</b>	<b>-1.2%</b>	<b>53</b>
Health Care Assistants	556	544	506	497	-9	-48	-8.7%	-59	-10.7%	586
Home Help	395	374	395	396	+1	+22	+5.9%	+1	+0.1%	600
Care, other	20	22	28	28	-1	+6	+29.3%	+7	+36.0%	38
<b>Patient &amp; Client Care</b>	<b>972</b>	<b>940</b>	<b>929</b>	<b>921</b>	<b>-9</b>	<b>-19</b>	<b>-2.0%</b>	<b>-52</b>	<b>-5.3%</b>	<b>1,224</b>

## CHO 9

Oct 2022	WTE Dec 2019	WTE Dec 2020	WTE Sep 2022	WTE Oct 2022	WTE change since Sep 22	WTE change since Dec 20	% change since Dec 20	WTE change since Dec 19	% change since Dec 19	No. Oct 2022
<b>Overall</b>	<b>870</b>	<b>914</b>	<b>988</b>	<b>991</b>	<b>+4</b>	<b>+77</b>	<b>+8.4%</b>	<b>+122</b>	<b>+14.0%</b>	<b>1,106</b>
Consultants	2	2	2	2	-1	-1	-38.0%	-0	-6.3%	2
Registrars	6	5	7	8	+0	+3	+55.0%	+2	+36.1%	8
SHO/ Interns	12	11	9	9	+0	-2	-15.7%	-3	-25.0%	9
Medical/ Dental, other	1	1				-1	-100.0%	-1	-100.0%	
<b>Medical &amp; Dental</b>	<b>20</b>	<b>19</b>	<b>18</b>	<b>18</b>	<b>+0</b>	<b>-1</b>	<b>-4.9%</b>	<b>-2</b>	<b>-10.5%</b>	<b>19</b>
Nurse/ Midwife Manager	75	81	81	82	+1	+1	+1.7%	+7	+9.8%	87
Nurse/ Midwife Specialist & AN/MP	5	6	12	12	+0	+7	+112.5%	+8	+160.6%	13
Staff Nurse/ Staff Midwife	227	234	263	265	+2	+31	+13.1%	+38	+16.6%	287
Public Health Nurse	0		1	1	0	+1	-100.0%	+1	+163.2%	1
Nursing/ Midwifery other	1	1				-1	-100.0%	-1	-100.0%	
<b>Nursing &amp; Midwifery</b>	<b>308</b>	<b>322</b>	<b>357</b>	<b>360</b>	<b>+3</b>	<b>+39</b>	<b>+12.0%</b>	<b>+52</b>	<b>+17.0%</b>	<b>388</b>
Therapy Professions	54	71	92	89	-2	+18	+25.7%	+35	+63.6%	99
Health Science/ Diagnostics	1	1	1	1	0			-0	-31.0%	2
Social Care	1	1	1	1	0					2
Social Workers	21	24	19	20	+1	-4	-15.5%	-1	-5.8%	22
Psychologists			2	2	+0	+2	-100.0%	+2	-100.0%	2
Pharmacy	3	4	4	4	0			+1	+26.4%	5
H&SC, Other	0	1	1	1	0	+0	+5.6%	+0	+58.3%	1
<b>Health &amp; Social Care Professionals</b>	<b>81</b>	<b>101</b>	<b>118</b>	<b>117</b>	<b>-1</b>	<b>+16</b>	<b>+16.4%</b>	<b>+36</b>	<b>+44.0%</b>	<b>133</b>
Management (VIII & above)	9	9	13	13	+0	+4	+45.6%	+4	+43.7%	13
Administrative/ Supervisory (V to VII)	15	21	25	26	+1	+5	+23.4%	+11	+72.2%	28
Clerical (III & IV)	40	44	57	57	+0	+13	+29.5%	+17	+42.7%	65
<b>Management &amp; Administrative</b>	<b>64</b>	<b>74</b>	<b>95</b>	<b>96</b>	<b>+1</b>	<b>+22</b>	<b>+29.7%</b>	<b>+32</b>	<b>+49.8%</b>	<b>106</b>
Support	118	120	114	117	+3	-3	-2.8%	-1	-1.1%	131
Maintenance/ Technical	2	2	2	2	0					3
<b>General Support</b>	<b>121</b>	<b>123</b>	<b>116</b>	<b>119</b>	<b>+3</b>	<b>-3</b>	<b>-2.8%</b>	<b>-1</b>	<b>-1.1%</b>	<b>134</b>
Health Care Assistants	270	271	276	275	-1	+3	+1.2%	+5	+1.9%	317
Care, other	6	5	6	6	0	+1	+18.2%	+0	+2.9%	9
<b>Patient &amp; Client Care</b>	<b>276</b>	<b>277</b>	<b>283</b>	<b>281</b>	<b>-1</b>	<b>+4</b>	<b>+1.6%</b>	<b>+5</b>	<b>+1.9%</b>	<b>326</b>

## other Community Services

Oct 2022	WTE Dec 2019	WTE Dec 2020	WTE Sep 2022	WTE Oct 2022	WTE change since Sep 22	WTE change since Dec 20	% change since Dec 20	WTE change since Dec 19	% change since Dec 19	No. Oct 2022
<b>Overall</b>	<b>73</b>	<b>75</b>	<b>87</b>	<b>92</b>	<b>+5</b>	<b>+16</b>	<b>+21.9%</b>	<b>+18</b>	<b>+24.7%</b>	<b>100</b>
Nurse/ Midwife Manager				1	+1	+1	-100.0%	+1	-100.0%	1
<b>Nursing &amp; Midwifery</b>				<b>1</b>	<b>+1</b>	<b>+1</b>	<b>-100.0%</b>	<b>+1</b>	<b>-100.0%</b>	<b>1</b>
Health Science/ Diagnostics	1						-100.0%	-1	-100.0%	
Psychologists			1	1	-0	+1	-100.0%	+1	-100.0%	1
<b>Health &amp; Social Care Professionals</b>	<b>1</b>		<b>1</b>	<b>1</b>	<b>-0</b>	<b>+1</b>	<b>-100.0%</b>	<b>-0</b>	<b>-46.0%</b>	<b>1</b>
Management (VIII & above)	19	17	17	19	+2	+2	+11.6%	+0	+0.3%	19
Administrative/ Supervisory (V to VII)	22	21	37	38	+1	+17	+80.0%	+16	+69.7%	41
Clerical (III & IV)	31	37	31	32	+1	-5	-13.3%	+1	+2.6%	36
<b>Management &amp; Administrative</b>	<b>72</b>	<b>75</b>	<b>85</b>	<b>89</b>	<b>+4</b>	<b>+14</b>	<b>+18.7%</b>	<b>+17</b>	<b>+22.8%</b>	<b>96</b>
Health Care Assistants	0	0	0	0	-0	-0	-7.7%	+0	+380.0%	1
Care, other			1	1	0	+1	-100.0%	+1	-100.0%	1
<b>Patient &amp; Client Care</b>	<b>0</b>	<b>0</b>	<b>1</b>	<b>1</b>	<b>-0</b>	<b>+1</b>	<b>+326.9%</b>	<b>+1</b>	<b>+2120.0%</b>	<b>2</b>

## Social Care Older Persons Services Employment by Grade Group: Oct 2022

Oct 2022	WTE Dec 2019	WTE Dec 2020	WTE Sep 2022	WTE Oct 2022	WTE change since Sep 22	WTE change since Dec 20	% change since Dec 20	WTE change since Dec 19	% change since Dec 19	No. Oct 2022
<b>Overall</b>	<b>13,233</b>	<b>13,415</b>	<b>13,779</b>	<b>13,899</b>	<b>+120</b>	<b>+484</b>	<b>+3.6%</b>	<b>+666</b>	<b>+5.0%</b>	<b>16,648</b>
Consultant Medicine	4	4	6	6	-1	+1	+26.7%	+2	+55.6%	7
Consultant Psychiatry				0	+0	+0	-100.0%	+0	-100.0%	1
<b>Consultants</b>	<b>4</b>	<b>4</b>	<b>6</b>	<b>6</b>	<b>-0</b>	<b>+1</b>	<b>+28.7%</b>	<b>+2</b>	<b>+58.1%</b>	<b>8</b>
Registrar	7	6	7	8	+1	+2	+28.4%	+1	+15.2%	8
Senior Registrar	1	1	1	1		+0	+8.0%	+0	+8.0%	2
Specialist Registrar	2	2	2	2						2
<b>Registrars</b>	<b>10</b>	<b>9</b>	<b>10</b>	<b>11</b>	<b>+1</b>	<b>+2</b>	<b>+19.7%</b>	<b>+1</b>	<b>+11.3%</b>	<b>12</b>
Senior House Officer	15	14	12	13	+1	-1	-5.3%	-2	-13.7%	13
<b>SHO/ Interns</b>	<b>15</b>	<b>14</b>	<b>12</b>	<b>13</b>	<b>+1</b>	<b>-1</b>	<b>-5.3%</b>	<b>-2</b>	<b>-13.7%</b>	<b>13</b>
Other Medical	96	104	86	88	+1	-16	-15.3%	-8	-8.8%	152
<b>Medical/ Dental, other</b>	<b>96</b>	<b>104</b>	<b>86</b>	<b>88</b>	<b>+1</b>	<b>-16</b>	<b>-15.3%</b>	<b>-8</b>	<b>-8.8%</b>	<b>152</b>
<b>Medical &amp; Dental</b>	<b>125</b>	<b>131</b>	<b>115</b>	<b>117</b>	<b>+3</b>	<b>-14</b>	<b>-10.4%</b>	<b>-7</b>	<b>-5.9%</b>	<b>185</b>
Clinical Nurse/ Midwife Manager	508	536	530	533	+3	-3	-0.5%	+25	+4.9%	568
Director Nursing/Midwifery, Assistant	103	106	104	106	+2	-0	-0.3%	+3	+3.2%	110
Director of Nursing/Midwifery	98	104	97	100	+3	-4	-4.1%	+2	+1.8%	102
<b>Nurse/ Midwife Manager</b>	<b>709</b>	<b>746</b>	<b>732</b>	<b>739</b>	<b>+7</b>	<b>-7</b>	<b>-1.0%</b>	<b>+30</b>	<b>+4.2%</b>	<b>780</b>
Advanced Nurse/ Midwife Practitioner	11	17	31	34	+4	+18	+107.3%	+24	+221.5%	37
Clinical Nurse/ Midwife Specialist	16	22	36	36	+0	+14	+65.6%	+20	+126.9%	37
<b>Nurse/ Midwife Specialist &amp; AN/MP</b>	<b>26</b>	<b>38</b>	<b>67</b>	<b>70</b>	<b>+4</b>	<b>+32</b>	<b>+83.8%</b>	<b>+44</b>	<b>+165.2%</b>	<b>74</b>
Staff Midwives		1	1	1		-0	-3.4%	+1	-100.0%	1
Staff Nurse [Psychiatric]	5	5	3	3	-1	-2	-47.4%	-2	-44.6%	4
Staff Nurses [General/ Children's]	2,572	2,617	2,704	2,726	+22	+110	+4.2%	+155	+6.0%	3,110
Staff Nurse [Intellectual Disability]		1	1	1				+1	-100.0%	1
<b>Staff Nurse/ Staff Midwife</b>	<b>2,576</b>	<b>2,624</b>	<b>2,710</b>	<b>2,731</b>	<b>+21</b>	<b>+107</b>	<b>+4.1%</b>	<b>+155</b>	<b>+6.0%</b>	<b>3,116</b>
Public Health Nurse	13	13	12	12	+0	-2	-11.7%	-2	-11.4%	14
<b>Public Health Nurse</b>	<b>13</b>	<b>13</b>	<b>12</b>	<b>12</b>	<b>+0</b>	<b>-2</b>	<b>-11.7%</b>	<b>-2</b>	<b>-11.4%</b>	<b>14</b>
Post-registration Nurse/ Midwife Student	1						-100.0%	-1	-100.0%	
Nursing/ Midwifery awaiting registration	1	1	1	1	+0	-0	-25.9%			1
<b>Nursing/ Midwifery Student</b>	<b>2</b>	<b>1</b>	<b>1</b>	<b>1</b>	<b>+0</b>	<b>-0</b>	<b>-25.9%</b>	<b>-1</b>	<b>-50.0%</b>	<b>1</b>
Nursing Education/Clinical	1	4	4	3	-1	-1	-24.6%	+2	+200.0%	3
<b>Nursing/ Midwifery other</b>	<b>1</b>	<b>4</b>	<b>4</b>	<b>3</b>	<b>-1</b>	<b>-1</b>	<b>-24.6%</b>	<b>+2</b>	<b>+200.0%</b>	<b>3</b>
<b>Nursing &amp; Midwifery</b>	<b>3,328</b>	<b>3,427</b>	<b>3,525</b>	<b>3,556</b>	<b>+31</b>	<b>+129</b>	<b>+3.8%</b>	<b>+228</b>	<b>+6.8%</b>	<b>3,988</b>
Dietitians	16	18	22	23	+1	+5	+28.1%	+7	+40.7%	28
Occupational Therapists	113	113	118	117	-1	+4	+3.8%	+4	+3.6%	129
Physiotherapists	124	132	154	151	-3	+19	+14.2%	+27	+22.1%	173
Podiatrists & Chiropodists	12	13	4	3	-1	-10	-76.8%	-9	-75.6%	5
Speech & Language Therapists	23	20	38	37	-1	+17	+87.6%	+14	+60.9%	42
<b>Therapy Professions</b>	<b>288</b>	<b>295</b>	<b>336</b>	<b>331</b>	<b>-5</b>	<b>+36</b>	<b>+12.1%</b>	<b>+43</b>	<b>+14.9%</b>	<b>377</b>
Radiographers	6	5	2	4	+1	-1	-27.8%	-2	-39.5%	6
Vascular Physiologists	0	0	0		-0	-0	-100.0%	-0	-100.0%	
Clinical Engineering			1	1		+1	-100.0%	+1	-100.0%	1
Audiology				1	+1	+1	-100.0%	+1	-100.0%	1
<b>Health Science/ Diagnostics</b>	<b>6</b>	<b>5</b>	<b>4</b>	<b>6</b>	<b>+2</b>	<b>+0</b>	<b>+7.2%</b>	<b>-1</b>	<b>-10.4%</b>	<b>8</b>
<b>Social Care</b>	<b>3</b>	<b>3</b>	<b>2</b>	<b>2</b>	<b>+0</b>	<b>-0</b>	<b>-16.8%</b>	<b>-0</b>	<b>-16.8%</b>	<b>4</b>
<b>Social Workers</b>	<b>98</b>	<b>100</b>	<b>63</b>	<b>67</b>	<b>+5</b>	<b>-32</b>	<b>-32.5%</b>	<b>-31</b>	<b>-31.5%</b>	<b>74</b>
<b>Psychologists</b>	<b>2</b>	<b>1</b>	<b>5</b>	<b>5</b>	<b>-0</b>	<b>+4</b>	<b>+350.9%</b>	<b>+3</b>	<b>+136.2%</b>	<b>7</b>

Oct 2022	WTE Dec 2019	WTE Dec 2020	WTE Sep 2022	WTE Oct 2022	WTE change since Sep 22	WTE change since Dec 20	% change since Dec 20	WTE change since Dec 19	% change since Dec 19	No. Oct 2022
<b>Overall</b>	<b>13,233</b>	<b>13,415</b>	<b>13,779</b>	<b>13,899</b>	<b>+120</b>	<b>+484</b>	<b>+3.6%</b>	<b>+666</b>	<b>+5.0%</b>	<b>16,648</b>
Pharmacists	13	13	14	13	-1	+1	+4.7%	+1	+4.4%	21
Pharmacy Technicians	3	5	6	6		+1	+22.2%	+3	+120.0%	6
<b>Pharmacy</b>	<b>15</b>	<b>17</b>	<b>19</b>	<b>19</b>	<b>-1</b>	<b>+2</b>	<b>+9.3%</b>	<b>+4</b>	<b>+23.4%</b>	<b>27</b>
Other Health & Social Care	0	1	3	3	-0	+2	+422.2%	+2	+683.3%	4
Play Therapists/ Specialists	1	1	1	1						1
<b>H&amp;SC, Other</b>	<b>1</b>	<b>2</b>	<b>4</b>	<b>4</b>	<b>-0</b>	<b>+2</b>	<b>+148.1%</b>	<b>+2</b>	<b>+180.9%</b>	<b>5</b>
<b>Health &amp; Social Care Professionals</b>	<b>414</b>	<b>423</b>	<b>434</b>	<b>434</b>	<b>+0</b>	<b>+11</b>	<b>+2.6%</b>	<b>+20</b>	<b>+4.7%</b>	<b>502</b>
Executive Management	12	15	14	14	-0	-1	-5.5%	+2	+17.3%	14
Senior Management (VIII & GM)	63	64	95	97	+2	+33	+52.1%	+35	+55.1%	99
<b>Management (VIII &amp; above)</b>	<b>75</b>	<b>79</b>	<b>109</b>	<b>111</b>	<b>+2</b>	<b>+32</b>	<b>+41.2%</b>	<b>+37</b>	<b>+49.1%</b>	<b>113</b>
Middle Management (V-VII)	164	176	257	258	+1	+82	+46.8%	+94	+57.5%	273
Other Administrative	1		0		-0		-100.0%	-1	-100.0%	
<b>Administrative/ Supervisory (V to VII)</b>	<b>165</b>	<b>176</b>	<b>257</b>	<b>258</b>	<b>+1</b>	<b>+82</b>	<b>+46.8%</b>	<b>+93</b>	<b>+56.5%</b>	<b>273</b>
General Administrative (III & IV)	571	587	606	622	+16	+35	+6.0%	+51	+9.0%	708
<b>Clerical (III &amp; IV)</b>	<b>571</b>	<b>587</b>	<b>606</b>	<b>622</b>	<b>+16</b>	<b>+35</b>	<b>+6.0%</b>	<b>+51</b>	<b>+9.0%</b>	<b>708</b>
<b>Management &amp; Administrative</b>	<b>811</b>	<b>842</b>	<b>973</b>	<b>992</b>	<b>+19</b>	<b>+150</b>	<b>+17.8%</b>	<b>+181</b>	<b>+22.3%</b>	<b>1,094</b>
Catering	221	216	225	226	+1	+9	+4.2%	+4	+1.9%	247
Household Services	492	479	446	449	+3	-30	-6.2%	-43	-8.8%	515
Other Support	34	29	27	27	-0	-2	-6.4%	-7	-20.0%	33
Portering	81	77	70	70	+0	-7	-8.8%	-12	-14.2%	72
<b>Support</b>	<b>829</b>	<b>801</b>	<b>768</b>	<b>772</b>	<b>+4</b>	<b>-29</b>	<b>-3.7%</b>	<b>-57</b>	<b>-6.9%</b>	<b>867</b>
Maintenance	98	95	89	89	-0	-6	-5.8%	-9	-9.3%	94
Technical Services			4	4		+4	-100.0%	+4	-100.0%	4
<b>Maintenance/ Technical</b>	<b>98</b>	<b>95</b>	<b>93</b>	<b>93</b>	<b>-0</b>	<b>-2</b>	<b>-1.6%</b>	<b>-5</b>	<b>-5.2%</b>	<b>98</b>
<b>General Support</b>	<b>928</b>	<b>896</b>	<b>861</b>	<b>865</b>	<b>+4</b>	<b>-31</b>	<b>-3.4%</b>	<b>-62</b>	<b>-6.7%</b>	<b>965</b>
Attendant/ Aide	2,293	2,211	1,644	1,632	-12	-579	-26.2%	-661	-28.8%	1,893
Health & Social Care Assistants	21	27	57	59	+3	+32	+117.1%	+38	+178.5%	68
Health Care Assistant/ Care Assistant	1,729	1,858	2,372	2,386	+14	+528	+28.4%	+657	+38.0%	2,697
HCA (Student Nurse/Midwife COVID-19)		22				-22	-100.0%		-100.0%	
<b>Health Care Assistants</b>	<b>4,043</b>	<b>4,118</b>	<b>4,072</b>	<b>4,077</b>	<b>+5</b>	<b>-41</b>	<b>-1.0%</b>	<b>+34</b>	<b>+0.8%</b>	<b>4,658</b>
<b>Home Help</b>	<b>3,442</b>	<b>3,431</b>	<b>3,620</b>	<b>3,671</b>	<b>+51</b>	<b>+240</b>	<b>+7.0%</b>	<b>+229</b>	<b>+6.7%</b>	<b>5,033</b>
Home Care Services	86	99	128	135	+7	+37	+37.0%	+50	+57.8%	141
Other Care Grades	22	19	24	24	-0	+5	+26.8%	+2	+7.8%	30
Pastoral Care	32	27	23	22	-1	-5	-18.6%	-10	-31.0%	47
Workshop Services	2	2	4	4	-0	+2	+108.0%	+2	+96.2%	5
<b>Care, other</b>	<b>142</b>	<b>147</b>	<b>179</b>	<b>185</b>	<b>+6</b>	<b>+39</b>	<b>+26.5%</b>	<b>+44</b>	<b>+30.7%</b>	<b>223</b>
<b>Patient &amp; Client Care</b>	<b>7,627</b>	<b>7,696</b>	<b>7,872</b>	<b>7,934</b>	<b>+63</b>	<b>+238</b>	<b>+3.1%</b>	<b>+307</b>	<b>+4.0%</b>	<b>9,914</b>



## Employment by WTE, Headcount, Gender, Full-Time /Part-Time etc.: Oct 2022

Social Care Older Persons Services Staff Group	WTE	Headcount	WTE: no.	% Male	% female	Male WTE: no.	Female WTE: no.	% Total Perm	% Male Perm	% Female Perm	% Total Full Time	% Total Part Time	% Male FT	% Female FT
<b>Overall</b>	<b>13,899</b>	<b>16,648</b>	<b>1.20</b>	<b>13.8%</b>	<b>86.2%</b>	<b>1.10</b>	<b>1.21</b>	<b>82.4%</b>	<b>79.4%</b>	<b>82.9%</b>	<b>51.4%</b>	<b>48.6%</b>	<b>77.6%</b>	<b>47.2%</b>
Consultant Medicine	6	7	1.25	14.3%	85.7%	1.72	1.20	71.4%	71.4%	66.7%	57.1%	42.9%	0.0%	66.7%
Consultant Psychiatry	0	1	11.11		100.0%		11.11	0.0%	0.0%	0.0%	0.0%	100.0%		0.0%
<b>Consultants</b>	<b>6</b>	<b>8</b>	<b>1.41</b>	<b>12.5%</b>	<b>87.5%</b>	<b>1.72</b>	<b>1.37</b>	<b>62.5%</b>	<b>100.0%</b>	<b>57.1%</b>	<b>50.0%</b>	<b>50.0%</b>	<b>0.0%</b>	<b>57.1%</b>
Registrar	8	8	1.07	50.0%	50.0%	1.00	1.14	50.0%	50.0%	50.0%	87.5%	12.5%	100.0%	75.0%
Senior Registrar	1	2	1.85	50.0%	50.0%	12.50	1.00	50.0%	50.0%	100.0%	50.0%	50.0%	0.0%	100.0%
Specialist Registrar	2	2	1.00	50.0%	50.0%	1.00	1.00	0.0%	0.0%	0.0%	100.0%	0.0%	100.0%	100.0%
<b>Registrars</b>	<b>11</b>	<b>12</b>	<b>1.13</b>	<b>50.0%</b>	<b>50.0%</b>	<b>1.18</b>	<b>1.09</b>	<b>41.7%</b>	<b>33.3%</b>	<b>50.0%</b>	<b>83.3%</b>	<b>16.7%</b>	<b>83.3%</b>	<b>83.3%</b>
Senior House Officer	13	13	1.00	46.2%	53.8%	1.00	1.01	15.4%	15.4%	0.0%	100.0%	0.0%	100.0%	100.0%
<b>SHO/ Interns</b>	<b>13</b>	<b>13</b>	<b>1.00</b>	<b>46.2%</b>	<b>53.8%</b>	<b>1.00</b>	<b>1.01</b>	<b>15.4%</b>	<b>33.3%</b>	<b>0.0%</b>	<b>100.0%</b>	<b>0.0%</b>	<b>100.0%</b>	<b>100.0%</b>
Other Medical	88	152	1.73	62.5%	37.5%	1.83	1.58	55.3%	55.3%	52.6%	27.6%	72.4%	24.2%	33.3%
<b>Medical/ Dental, other</b>	<b>88</b>	<b>152</b>	<b>1.73</b>	<b>62.5%</b>	<b>37.5%</b>	<b>1.83</b>	<b>1.58</b>	<b>55.3%</b>	<b>56.8%</b>	<b>52.6%</b>	<b>27.6%</b>	<b>72.4%</b>	<b>24.2%</b>	<b>33.3%</b>
<b>Medical &amp; Dental</b>	<b>117</b>	<b>185</b>	<b>1.58</b>	<b>58.4%</b>	<b>41.6%</b>	<b>1.70</b>	<b>1.44</b>	<b>51.9%</b>	<b>54.6%</b>	<b>48.1%</b>	<b>37.3%</b>	<b>62.7%</b>	<b>31.5%</b>	<b>45.5%</b>
Clinical Nurse/ Midwife Manager	533	568	1.07	8.5%	91.5%	1.01	1.07	97.0%	97.0%	96.9%	83.1%	16.9%	93.8%	82.1%
Director Nursing/Midwifery, Assistant	106	110	1.04	4.5%	95.5%	1.00	1.04	98.2%	98.2%	98.1%	90.9%	9.1%	100.0%	90.5%
Director of Nursing/Midwifery	100	102	1.02	6.9%	93.1%	1.01	1.02	97.1%	97.1%	96.8%	97.1%	2.9%	85.7%	97.9%
<b>Nurse/ Midwife Manager</b>	<b>739</b>	<b>780</b>	<b>1.06</b>	<b>7.7%</b>	<b>92.3%</b>	<b>1.01</b>	<b>1.06</b>	<b>97.2%</b>	<b>98.3%</b>	<b>97.1%</b>	<b>86.0%</b>	<b>14.0%</b>	<b>93.3%</b>	<b>85.4%</b>
Advanced Nurse/ Midwife Practitioner	34	37	1.07	5.4%	94.6%	1.03	1.08	89.2%	89.2%	88.6%	97.3%	2.7%	100.0%	97.1%
Clinical Nurse/ Midwife Specialist	36	37	1.04	10.8%	89.2%	1.02	1.04	100.0%	100.0%	100.0%	89.2%	10.8%	100.0%	87.9%
<b>Nurse/ Midwife Specialist &amp; AN/MP</b>	<b>70</b>	<b>74</b>	<b>1.05</b>	<b>8.1%</b>	<b>91.9%</b>	<b>1.02</b>	<b>1.06</b>	<b>94.6%</b>	<b>100.0%</b>	<b>94.1%</b>	<b>93.2%</b>	<b>6.8%</b>	<b>100.0%</b>	<b>92.6%</b>
Staff Midwives	1	1	1.18		100.0%		1.18	100.0%	100.0%	100.0%	0.0%	100.0%		0.0%
Staff Nurse [Psychiatric]	3	4	1.47	50.0%	50.0%	1.22	1.85	100.0%	100.0%	100.0%	75.0%	25.0%	50.0%	100.0%
Staff Nurses [General/ Children's]	2,726	3,110	1.14	8.4%	91.6%	1.04	1.15	85.2%	85.2%	85.3%	66.5%	33.5%	92.7%	64.1%
Staff Nurse [Intellectual Disability]	1	1	1.00		100.0%		1.00	100.0%	100.0%	100.0%	100.0%	0.0%		100.0%
<b>Staff Nurse/ Staff Midwife</b>	<b>2,731</b>	<b>3,116</b>	<b>1.14</b>	<b>8.4%</b>	<b>91.6%</b>	<b>1.04</b>	<b>1.15</b>	<b>85.3%</b>	<b>84.8%</b>	<b>85.3%</b>	<b>66.5%</b>	<b>33.5%</b>	<b>92.4%</b>	<b>64.1%</b>
<b>Public Health Nurse</b>	<b>12</b>	<b>14</b>	<b>1.18</b>		<b>100.0%</b>		<b>1.18</b>	<b>92.9%</b>		<b>92.9%</b>	<b>64.3%</b>	<b>35.7%</b>		<b>64.3%</b>
Nursing/ Midwifery awaiting registration	1	1	1.00	100.0%		1.00		100.0%	100.0%		100.0%	0.0%	100.0%	
<b>Nursing/ Midwifery Student</b>	<b>1</b>	<b>1</b>	<b>1.00</b>	<b>100.0%</b>		<b>1.00</b>		<b>100.0%</b>	<b>100.0%</b>	<b>#DIV/0</b>	<b>100.0%</b>	<b>0.0%</b>	<b>100.0%</b>	

Nursing Education/Clinical	3	3	1.00		100.0%		1.00	100.0%	100.0%	100.0%	100.0%	0.0%		100.0%	
<b>Nursing/ Midwifery other</b>	<b>3</b>	<b>3</b>	<b>1.00</b>		<b>100.0%</b>		<b>1.00</b>	<b>100.0%</b>		<b>100.0%</b>		<b>100.0%</b>	<b>0.0%</b>	<b>100.0%</b>	
<b>Nursing &amp; Midwifery</b>	<b>3,556</b>	<b>3,988</b>	<b>1.12</b>	<b>8.3%</b>	<b>91.7%</b>	<b>1.04</b>	<b>1.13</b>	<b>87.8%</b>	<b>87.6%</b>	<b>87.8%</b>		<b>70.8%</b>	<b>29.2%</b>	<b>92.7%</b>	<b>68.9%</b>
Dietitians	23	28	1.22	3.6%	96.4%	1.11	1.22	100.0%	100.0%	100.0%		67.9%	32.1%	100.0%	66.7%
Occupational Therapists	117	129	1.10	6.2%	93.8%	1.10	1.10	89.1%	89.1%	88.4%		83.7%	16.3%	87.5%	83.5%
Physiotherapists	151	173	1.15	16.8%	83.2%	1.07	1.16	85.5%	85.5%	84.7%		76.3%	23.7%	93.1%	72.9%
Podiatrists & Chiropodists	3	5	1.70		100.0%		1.70	80.0%	80.0%	80.0%		20.0%	80.0%		20.0%
Speech & Language Therapists	37	42	1.13		100.0%		1.13	92.9%	92.9%	92.9%		81.0%	19.0%		81.0%
<b>Therapy Professions</b>	<b>331</b>	<b>377</b>	<b>1.14</b>	<b>10.1%</b>	<b>89.9%</b>	<b>1.08</b>	<b>1.14</b>	<b>88.6%</b>	<b>92.1%</b>	<b>88.2%</b>		<b>78.0%</b>	<b>22.0%</b>	<b>92.1%</b>	<b>76.4%</b>
Radiographers	4	6	1.67	16.7%	83.3%	1.89	1.63	83.3%	83.3%	80.0%		16.7%	83.3%	0.0%	20.0%
Clinical Engineering	1	1	1.00	100.0%		1.00		100.0%	100.0%			100.0%	0.0%	100.0%	
Audiology	1	1	1.10		100.0%		1.10	100.0%	100.0%	100.0%		100.0%	0.0%		100.0%
<b>Health Science/ Diagnostics</b>	<b>6</b>	<b>8</b>	<b>1.45</b>	<b>25.0%</b>	<b>75.0%</b>	<b>1.31</b>	<b>1.51</b>	<b>87.5%</b>	<b>100.0%</b>	<b>83.3%</b>		<b>37.5%</b>	<b>62.5%</b>	<b>50.0%</b>	<b>33.3%</b>
<b>Social Care</b>	<b>2</b>	<b>4</b>	<b>1.75</b>		<b>100.0%</b>		<b>1.75</b>	<b>100.0%</b>		<b>100.0%</b>		<b>0.0%</b>	<b>100.0%</b>		<b>0.0%</b>
<b>Social Workers</b>	<b>67</b>	<b>74</b>	<b>1.10</b>	<b>13.5%</b>	<b>86.5%</b>	<b>1.00</b>	<b>1.12</b>	<b>90.5%</b>	<b>80.0%</b>	<b>92.2%</b>		<b>79.7%</b>	<b>20.3%</b>	<b>100.0%</b>	<b>76.6%</b>
<b>Psychologists</b>	<b>5</b>	<b>7</b>	<b>1.41</b>	<b>14.3%</b>	<b>85.7%</b>	<b>1.85</b>	<b>1.36</b>	<b>100.0%</b>	<b>100.0%</b>	<b>100.0%</b>		<b>71.4%</b>	<b>28.6%</b>	<b>100.0%</b>	<b>66.7%</b>
Pharmacists	13	21	1.58	23.8%	76.2%	2.75	1.39	76.2%	76.2%	75.0%		42.9%	57.1%	20.0%	50.0%
Pharmacy Technicians	6	6	1.09	16.7%	83.3%	1.00	1.11	66.7%	66.7%	60.0%		83.3%	16.7%	100.0%	80.0%
<b>Pharmacy</b>	<b>19</b>	<b>27</b>	<b>1.44</b>	<b>22.2%</b>	<b>77.8%</b>	<b>2.13</b>	<b>1.31</b>	<b>74.1%</b>	<b>83.3%</b>	<b>71.4%</b>		<b>51.9%</b>	<b>48.1%</b>	<b>33.3%</b>	<b>57.1%</b>
Other Health & Social Care	3	4	1.42		100.0%		1.42	75.0%	75.0%	75.0%		25.0%	75.0%		25.0%
Play Therapists/ Specialists	1	1	1.00	100.0%		1.00		100.0%	100.0%			100.0%	0.0%	100.0%	
<b>H&amp;SC, Other</b>	<b>4</b>	<b>5</b>	<b>1.31</b>	<b>20.0%</b>	<b>80.0%</b>	<b>1.00</b>	<b>1.42</b>	<b>80.0%</b>	<b>100.0%</b>	<b>75.0%</b>		<b>40.0%</b>	<b>60.0%</b>	<b>100.0%</b>	<b>25.0%</b>
<b>Health &amp; Social Care</b>	<b>434</b>	<b>502</b>	<b>1.16</b>	<b>11.6%</b>	<b>88.4%</b>	<b>1.14</b>	<b>1.16</b>	<b>88.2%</b>	<b>89.7%</b>	<b>88.1%</b>		<b>75.1%</b>	<b>24.9%</b>	<b>86.2%</b>	<b>73.6%</b>
Executive Management	14	14	1.00	57.1%	42.9%	1.00	1.00	100.0%	100.0%	100.0%		100.0%	0.0%	100.0%	100.0%
Senior Management (VIII & GM)	97	99	1.02	29.3%	70.7%	1.02	1.02	93.9%	93.9%	97.1%		98.0%	2.0%	96.6%	98.6%
<b>Management (VIII &amp; above)</b>	<b>111</b>	<b>113</b>	<b>1.02</b>	<b>32.7%</b>	<b>67.3%</b>	<b>1.02</b>	<b>1.02</b>	<b>94.7%</b>	<b>89.2%</b>	<b>97.4%</b>		<b>98.2%</b>	<b>1.8%</b>	<b>97.3%</b>	<b>98.7%</b>
Middle Management (V-VII)	258	273	1.06	15.4%	84.6%	1.06	1.06	94.9%	94.9%	95.2%		86.8%	13.2%	88.1%	86.6%
<b>Administrative/ Supervisory (V to VII)</b>	<b>258</b>	<b>273</b>	<b>1.06</b>	<b>15.4%</b>	<b>84.6%</b>	<b>1.06</b>	<b>1.06</b>	<b>94.9%</b>	<b>92.9%</b>	<b>95.2%</b>		<b>86.8%</b>	<b>13.2%</b>	<b>88.1%</b>	<b>86.6%</b>
General Administrative (III & IV)	622	708	1.14	8.9%	91.1%	1.05	1.15	84.0%	84.0%	85.6%		67.8%	32.2%	92.1%	65.4%
<b>Clerical (III &amp; IV)</b>	<b>622</b>	<b>708</b>	<b>1.14</b>	<b>8.9%</b>	<b>91.1%</b>	<b>1.05</b>	<b>1.15</b>	<b>84.0%</b>	<b>68.3%</b>	<b>85.6%</b>		<b>67.8%</b>	<b>32.2%</b>	<b>92.1%</b>	<b>65.4%</b>
<b>Management &amp; Administrative</b>	<b>992</b>	<b>1,094</b>	<b>1.10</b>	<b>13.0%</b>	<b>87.0%</b>	<b>1.05</b>	<b>1.11</b>	<b>87.8%</b>	<b>81.0%</b>	<b>88.9%</b>		<b>75.7%</b>	<b>24.3%</b>	<b>92.3%</b>	<b>73.2%</b>
Catering	226	247	1.10	34.8%	65.2%	1.03	1.13	94.3%	94.3%	96.3%		72.1%	27.9%	91.9%	61.5%
Household Services	449	515	1.15	18.8%	81.2%	1.07	1.17	82.7%	82.7%	84.4%		56.3%	43.7%	85.6%	49.5%

Other Support	27	33	1.21	63.6%	36.4%	1.11	1.45	90.9%	90.9%	91.7%	63.6%	36.4%	85.7%	25.0%
Portering	70	72	1.03	98.6%	1.4%	1.03	1.35	91.7%	91.7%	100.0%	94.4%	5.6%	94.4%	100.0%
<b>Support</b>	<b>772</b>	<b>867</b>	<b>1.12</b>	<b>31.7%</b>	<b>68.3%</b>	<b>1.05</b>	<b>1.16</b>	<b>87.1%</b>	<b>85.5%</b>	<b>87.8%</b>	<b>64.2%</b>	<b>35.8%</b>	<b>89.8%</b>	<b>52.4%</b>
Maintenance	89	94	1.05	98.9%	1.1%	1.05	1.00	96.8%	96.8%	100.0%	93.6%	6.4%	93.5%	100.0%
Technical Services	4	4	1.00	100.0%		1.00		100.0%	100.0%		100.0%	0.0%	100.0%	
<b>Maintenance/ Technical</b>	<b>93</b>	<b>98</b>	<b>1.05</b>	<b>99.0%</b>	<b>1.0%</b>	<b>1.05</b>	<b>1.00</b>	<b>96.9%</b>	<b>96.9%</b>	<b>100.0%</b>	<b>93.9%</b>	<b>6.1%</b>	<b>93.8%</b>	<b>100.0%</b>
<b>General Support</b>	<b>865</b>	<b>965</b>	<b>1.12</b>	<b>38.5%</b>	<b>61.5%</b>	<b>1.05</b>	<b>1.16</b>	<b>88.1%</b>	<b>88.4%</b>	<b>87.9%</b>	<b>67.3%</b>	<b>32.7%</b>	<b>90.9%</b>	<b>52.4%</b>
Attendant/ Aide	1,632	1,893	1.16	20.9%	79.1%	1.07	1.19	84.1%	84.1%	84.9%	55.9%	44.1%	83.6%	48.6%
Health & Social Care Assistants	59	68	1.15	22.1%	77.9%	1.27	1.12	95.6%	95.6%	98.1%	82.4%	17.6%	80.0%	83.0%
Health Care Assistant/ Care Assistant	2,386	2,697	1.13	21.2%	78.8%	1.05	1.15	90.2%	90.2%	90.6%	64.0%	36.0%	87.4%	57.8%
<b>Health Care Assistants</b>	<b>4,077</b>	<b>4,658</b>	<b>1.14</b>	<b>21.1%</b>	<b>78.9%</b>	<b>1.06</b>	<b>1.17</b>	<b>87.8%</b>	<b>85.6%</b>	<b>88.4%</b>	<b>61.0%</b>	<b>39.0%</b>	<b>85.7%</b>	<b>54.4%</b>
<b>Home Help</b>	<b>3,671</b>	<b>5,033</b>	<b>1.37</b>	<b>4.9%</b>	<b>95.1%</b>	<b>1.23</b>	<b>1.38</b>	<b>71.3%</b>	<b>45.3%</b>	<b>72.7%</b>	<b>16.2%</b>	<b>83.8%</b>	<b>19.6%</b>	<b>16.0%</b>
Home Care Services	135	141	1.04	9.2%	90.8%	1.00	1.05	97.9%	97.9%	97.7%	83.0%	17.0%	100.0%	81.3%
Other Care Grades	24	30	1.24	43.3%	56.7%	1.11	1.38	90.0%	90.0%	88.2%	56.7%	43.3%	84.6%	35.3%
Pastoral Care	22	47	2.15	87.2%	12.8%	2.15	2.16	27.7%	27.7%	66.7%	29.8%	70.2%	34.1%	0.0%
Workshop Services	4	5	1.20	20.0%	80.0%	2.00	1.09	80.0%	80.0%	75.0%	40.0%	60.0%	100.0%	25.0%
<b>Care, other</b>	<b>185</b>	<b>223</b>	<b>1.20</b>	<b>30.5%</b>	<b>69.5%</b>	<b>1.54</b>	<b>1.10</b>	<b>81.6%</b>	<b>51.5%</b>	<b>94.8%</b>	<b>67.3%</b>	<b>32.7%</b>	<b>57.4%</b>	<b>71.6%</b>
<b>Patient &amp; Client Care</b>	<b>7,934</b>	<b>9,914</b>	<b>1.25</b>	<b>13.1%</b>	<b>86.9%</b>	<b>1.11</b>	<b>1.27</b>	<b>79.3%</b>	<b>76.2%</b>	<b>79.8%</b>	<b>38.4%</b>	<b>61.6%</b>	<b>71.7%</b>	<b>33.4%</b>

## Employment by WTE, Headcount, Gender, Full-Time /Part-Time etc.: Oct 2022

Social Care Older Persons Services CHO	WTE	Headcount	WTE: no.	% Male	% female	Male WTE: no.	Female WTE: no.	% Total Perm	% Male Perm	% Female Perm	% Total Full Time	% Total Part Time	% Male FT	% Female FT
<b>Overall</b>	<b>13,899</b>	<b>16,648</b>	<b>1.20</b>	<b>13.8%</b>	<b>86.2%</b>	<b>1.10</b>	<b>1.21</b>	<b>82.4%</b>	<b>79.4%</b>	<b>82.9%</b>	<b>51.4%</b>	<b>48.6%</b>	<b>77.6%</b>	<b>47.2%</b>
CHO 1	2,046	2,420	1.18	12.7%	87.3%	1.15	1.19	73.4%	73.4%	71.9%	40.7%	59.3%	64.3%	37.3%
CHO 2	1,563	1,819	1.16	13.5%	86.5%	1.06	1.18	93.1%	93.1%	93.7%	52.2%	47.8%	85.0%	47.1%
CHO 3	1,263	1,553	1.23	12.7%	87.3%	1.05	1.26	91.0%	91.0%	91.5%	58.3%	41.7%	90.4%	53.7%
CHO 4	3,001	3,777	1.26	12.0%	88.0%	1.14	1.28	60.8%	60.8%	62.7%	36.9%	63.1%	64.4%	33.1%
CHO 5	1,658	1,999	1.21	10.7%	89.3%	1.09	1.22	97.5%	97.5%	98.3%	46.3%	53.7%	73.7%	43.0%
CHO 6	827	903	1.09	25.1%	74.9%	1.06	1.10	92.5%	92.5%	92.5%	78.6%	21.4%	89.0%	75.1%
CHO 7	995	1,131	1.14	16.9%	83.1%	1.07	1.15	89.6%	89.6%	90.5%	68.7%	31.3%	87.4%	64.9%
CHO 8	1,462	1,840	1.26	12.2%	87.8%	1.19	1.27	89.8%	89.8%	90.7%	52.7%	47.3%	74.2%	49.7%
CHO 9	991	1,106	1.12	20.0%	80.0%	1.06	1.13	89.9%	89.9%	90.5%	77.2%	22.8%	88.7%	74.4%
other Community Services	92	100	1.09	24.0%	76.0%	1.08	1.09	92.0%	92.0%	93.4%	86.0%	14.0%	91.7%	84.2%

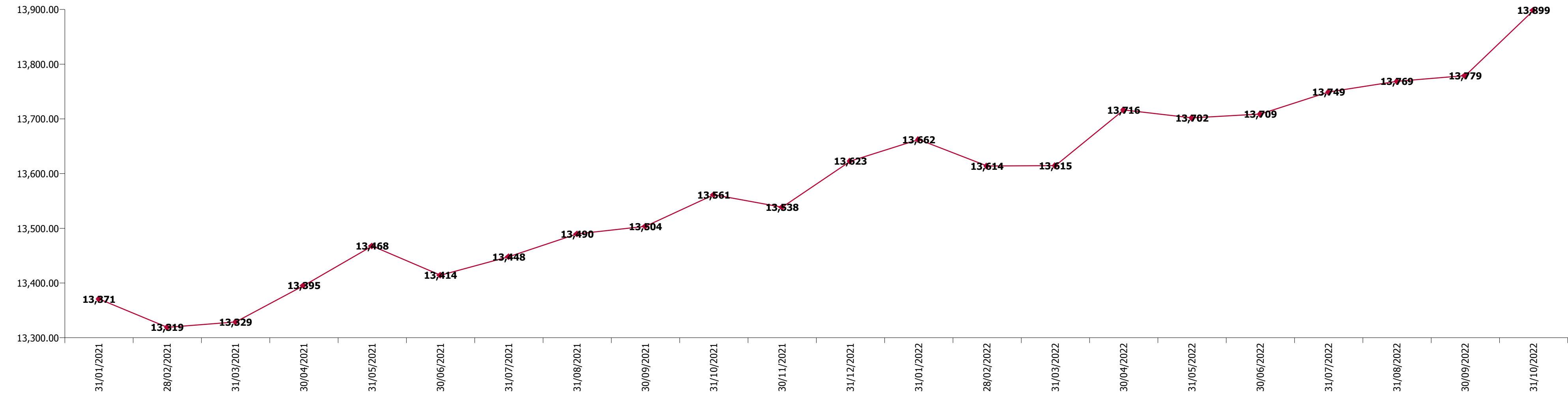
Summary Staff Movement: October 2022

Month-on-month  
Summary

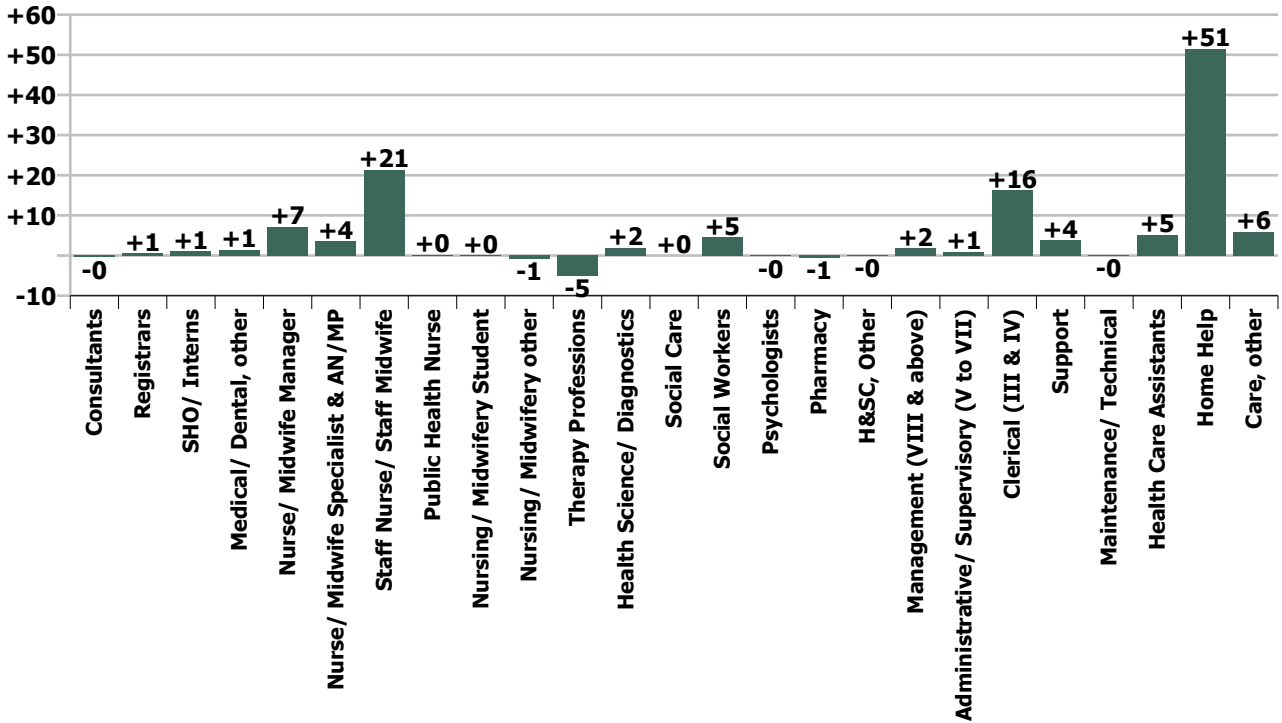
WTE change since Sep 22	% change since Sep 22	overall	Consultants	Registrars	SHO/ Interns	Medical/ Dental, other	Medical & Dental	Nurse/ Midwife Manager	Nurse/ Midwife Specialist & AN/MP	Staff Nurse/ Staff Midwife	Public Health Nurse	Nursing/ Midwifery Student	Nursing/ Midwifery other	Nursing & Midwifery	Therapy Professions	Health Science/ Diagnostics	Social Care	Social Workers	Psychologists	Pharmacy	H&SC, Other	Health & Social Care Professionals	Management (VIII & above)	Administrative/ Supervisory (V to VII)	Clerical (III & IV)	Management & Administrative	General Support	Health Care Assistants	Home Help	Care, other	Patient & Client Care	
Overall	+0.9%	+120	-0	+1	+1	+1	+3	+7	+4	+21	+0	+0	-1	+31	-5	+2	+0	+5	-0	-1	-0	+0	+2	+1	+1	+16	+19	+4	+5	+51	+6	+63
CHO 1	+1.2%	+24				+0	+0	+0	+1	+4				+5	+1	+1		+0				+2	+1	-1	+1	+1	+1	-0	+6	+10	+0	+17
CHO 2	+1.3%	+20				+1	+1	+3	-0	+1	+0			+4	-1	+0		+3				+2	+0	+1	+3	+4	+0	+12	-4	+1	+9	
CHO 3	+1.1%	+14	-0	+0	+1	+1	+2	-3	+2	+6				+6	-1	-0		-1	-0			-2	-0	-7	+1	-6	+1	+2	+6	+7	+15	
CHO 4	+2.1%	+61	+0			-1	-0	+2	-0	+9	+0			+10	-2	+1		+0			-0	-1	+0	+1	+1	+2	+2	-3	+51	-1	+48	
CHO 5	-0.7%	-12						-2	+1	-1	+0			-1	+0			+0	+0		-0	+0	-0	+1	+5	+6	+0	-3	-12	-1	-17	
CHO 6	+1.0%	+8						-0	-1	+4				+2	+0			+1			-0	+1	-1	+1	+4	+4	-0	+2		-0	+2	
CHO 7	-0.7%	-7						+3	-0	-4		+0		-2	-0			+0				-0	-0	-0	-3	-3	-2	+0	-1	+1	-0	
CHO 8	+0.1%	+1				+0	+0	+3	-0	+1	+0		-1	+3	+0						-0	+0	+0	+3	+4	+7	-1	-9	+1	-1	-9	
CHO 9	+0.4%	+4	-1	+0	+0		+0	+1	+0	+2				+3	-2			+1	+0			-1	+0	+1	+0	+1	+3	-1			-1	
other Community Services	+5.6%	+5						+1						+1					-0			-0	+2	+1	+1	+4		-0			-0	
		+0.9%	-7.2%	+5.0%	+8.4%	+1.7%	+2.2%	+1.0%	+5.3%	+0.8%	+1.1%	+6.4%	-22.9%	+0.9%	-1.5%	+54.1%	+0.0%	+7.2%	-5.0%	-2.8%	-2.6%	+0.1%	+1.6%	+0.3%	+2.7%	+1.9%	+0.4%	+0.1%	+1.4%	+3.3%	+0.8%	

Year-on-year Summary

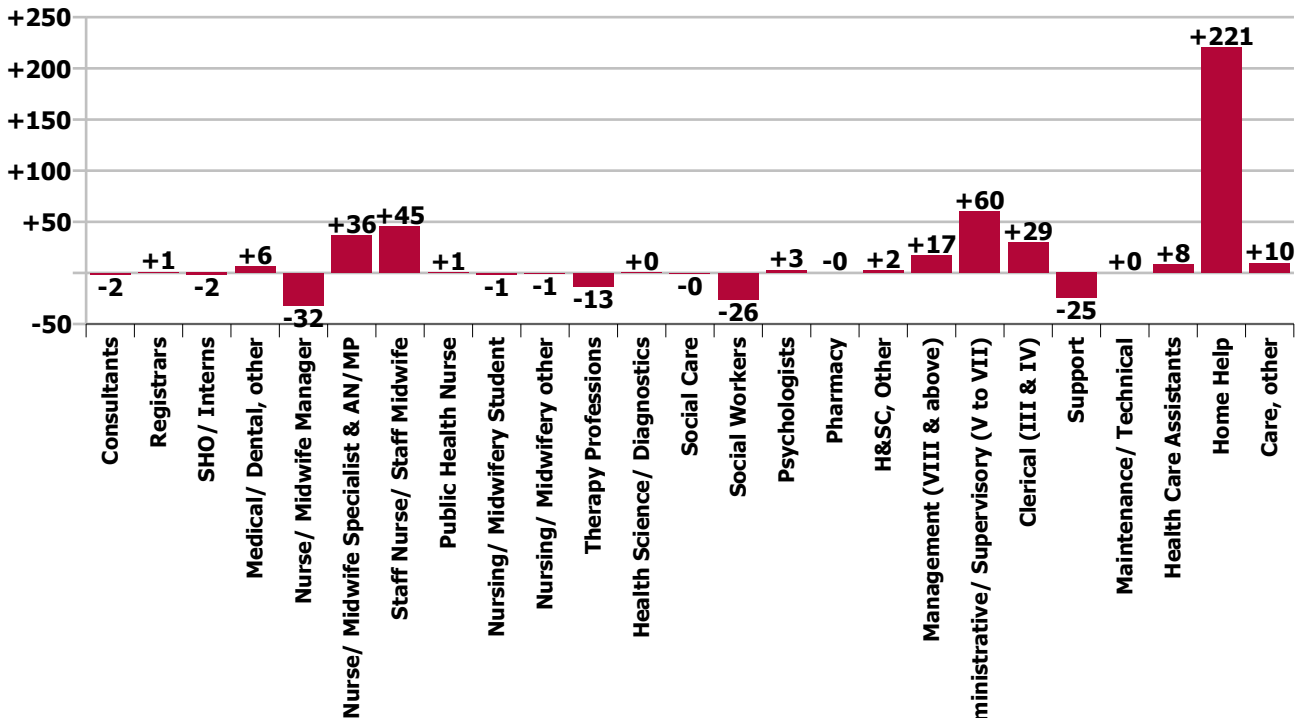
WTE change since Oct 21	% change since Oct 21	overall	Consultants	Registrars	SHO/ Interns	Medical/ Dental, other	Medical & Dental	Nurse/ Midwife Manager	Nurse/ Midwife Specialist & AN/MP	Staff Nurse/ Staff Midwife	Public Health Nurse	Nursing/ Midwifery Student	Nursing/ Midwifery other	Nursing & Midwifery	Therapy Professions	Health Science/ Diagnostics	Social Care	Social Workers	Psychologists	Pharmacy	H&SC, Other	Health & Social Care Professionals	Management (VIII & above)	Administrative/ Supervisory (V to VII)	Clerical (III & IV)	Management & Administrative	General Support	Health Care Assistants	Home Help	Care, other	Patient & Client Care	
Overall	+2.5%	+337	-2	+1	-2	+6	+3	-32	+36	+45	+1	-1	-1	+48	-13	+0	-0	-26	+3	-0	+2	-35	+17	+60	+29	+106	-25	+8	+221	+10	+238	
CHO 1	+4.2%	+83				+1	+1	-2	+10	+6				+14	+2	-1		-7				-5	+2	+6	-4	+4	+4	-16	+84	-3	+65	
CHO 2	+1.9%	+29				-0	-0	-1	+5	-1				+3	+2	+0		+1		+0		+4	+3	+2	+3	+8	-1	+15	-1	+1	+15	
CHO 3	+9.0%	+104	-1	+2	+2	+2	+4	+2	+6	+11	-1			+19	+3	-0		-4				-1	+3	+8	+7	+17	-12	+20	+59	-3	+76	
CHO 4	+2.4%	+71	+0	-2	-2	+5	+1	-17	+1	+13	+2	-0		-1	-13	+0	-0	-2		+0		-16	-1	+5	-1	+3	+2	+17	+60	+6	+82	
CHO 5	-0.2%	-3				-1	-1	-11	+7	-9	-1			-14	-2			-2	+1	+1	+2	+0	+5	+5	+16	+26	-1	-1	-13	+0	-14	
CHO 6	+1.7%	+14				+0	+0	+1	-1	+9				+9	-6			-2				-8	+1	+9	+1	+11	-5	+6		+0	+6	
CHO 7	-0.3%	-3						-5	+2	+0		-1		-4	+5			-7		+1		-1	+3	-1	+2	+4	-11	+1	+5	+2	+8	
CHO 8	+0.4%	+6				-0	-0	-2	-1	+5	-0		-1	+0	-6	+1		-4			-2	+0	-10	+1	+12	+3	+16	+1	-34	+26	+7	-1
CHO 9	+2.1%	+21	-1	+1	-2	-1	-3	+1	+8	+11	+1			+21	+2				-1	+1		+2	-1	+1	+2	+3	-2	+0			+0	
other Community Services	+20.1%	+15						+1						+1					+1		+0	+1	+1	+13	-0	+14		-0			-0	
		+2.5%	-25.1%	+10.3%	-13.3%	+7.7%	+3.0%	-4.1%	+108.3%	+1.7%	+5.4%	-59.8%	-22.7%	+1.4%	-3.8%	+5.4%	-16.8%	-28.1%	+132.9%	-0.5%	+148.1%	-7.4%	+17.8%	+30.4%	+5.0%	+12.0%	-2.8%	+0.2%	+6.4%	+5.5%	+3.1%	



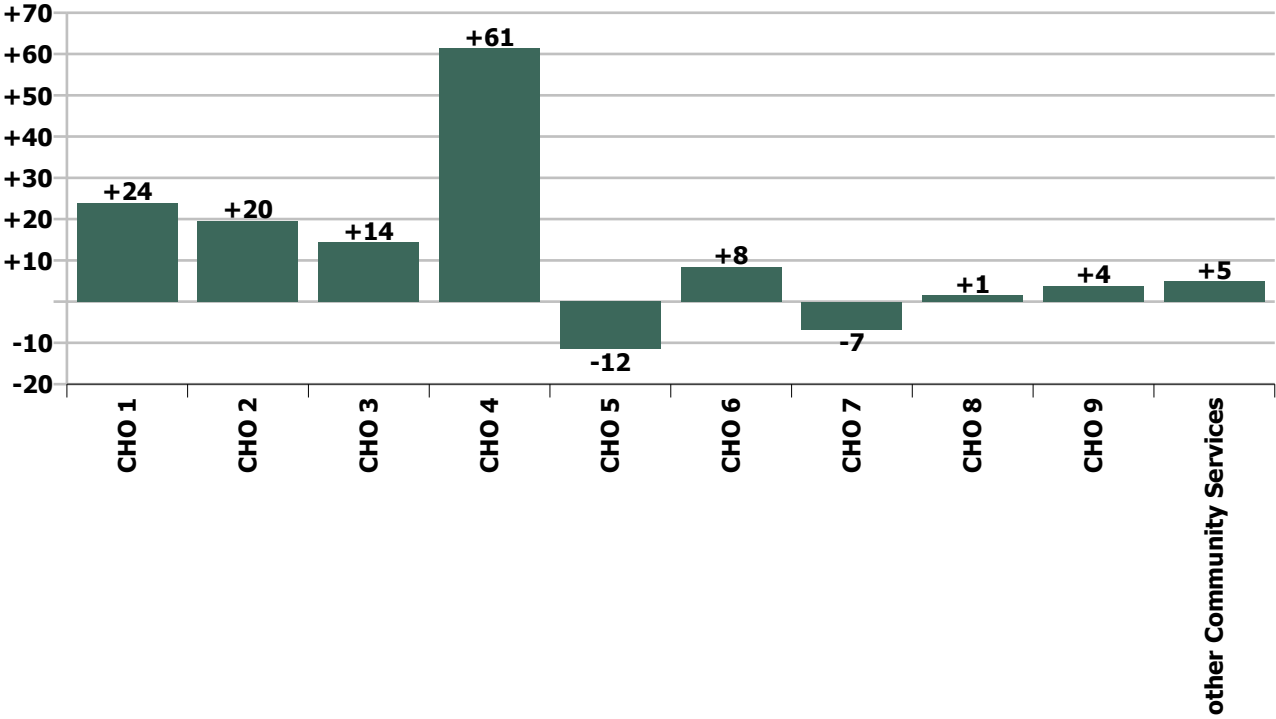
### Staff Group change since: Sep 2022



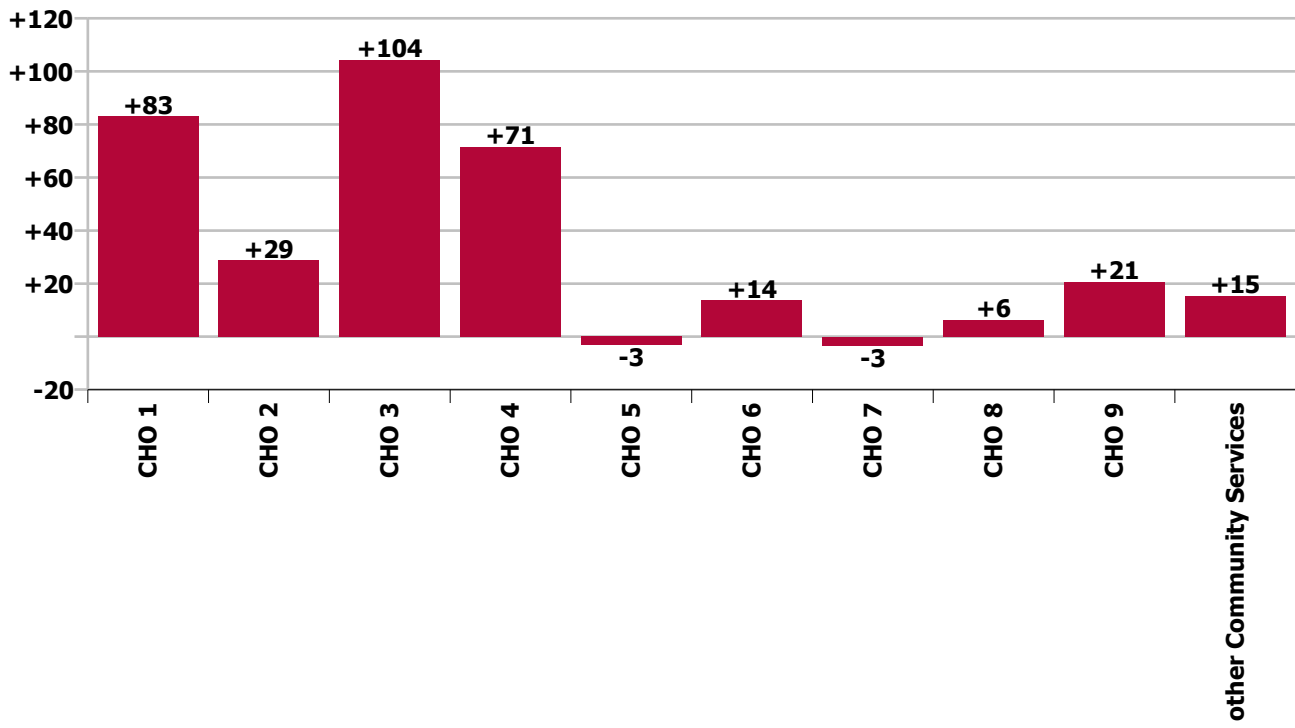
### Staff Group change since: Oct 2021



CHO change since: Sep 2022



**CHO change since: Oct 2021**





## Longitudinal Employment Levels by Grade Group - Dec 2016 to Oct 2022

Oct 2022 (Dec 2015 figure: 12,607)	WTE Oct 2022	WTE change since Dec 16	WTE change since Dec 17	WTE change since Dec 18	WTE change since Dec 19	WTE change since Dec 20	WTE change since Sep 22	% change since Dec 16	% change since Dec 17	% change since Dec 18	% change since Dec 19	% change since Dec 20	% change since Sep 22
<b>Overall</b>	<b>13,899</b>	<b>+1,416</b>	<b>+795</b>	<b>+594</b>	<b>+666</b>	<b>+484</b>	<b>+120</b>	<b>+11.3%</b>	<b>+6.1%</b>	<b>+4.5%</b>	<b>+5.0%</b>	<b>+3.6%</b>	<b>+0.9%</b>
Consultant Medicine	6	-4	-4	+2	+2	+1	-1	-40.2%	-39.1%	+55.6%	+55.6%	+26.7%	-8.6%
Consultant Psychiatry	0	-1	-1	+0	+0	+0	+0	-89.7%	-89.4%	-100.0%	-100.0%	-100.0%	-100.0%
Consultant Surgery		-1	-0	-0				-100.0%	-100.0%	-100.0%	-100.0%	-100.0%	-100.0%
<b>Consultants</b>	<b>6</b>	<b>-5</b>	<b>-4</b>	<b>+2</b>	<b>+2</b>	<b>+1</b>	<b>-0</b>	<b>-48.2%</b>	<b>-44.1%</b>	<b>+53.0%</b>	<b>+58.1%</b>	<b>+28.7%</b>	<b>-7.2%</b>
Registrar	8	+2	-0	+0	+1	+2	+1	+36.1%	-0.1%	+1.9%	+15.2%	+28.4%	+7.1%
Senior Registrar	1	+0	+0	-1	+0	+0		+8.0%	+8.0%	-46.0%	+8.0%	+8.0%	
Specialist Registrar	2		+1	+1					+100.0%	+100.0%			
<b>Registrars</b>	<b>11</b>	<b>+2</b>	<b>+1</b>	<b>+0</b>	<b>+1</b>	<b>+2</b>	<b>+1</b>	<b>+24.3%</b>	<b>+11.3%</b>	<b>+2.1%</b>	<b>+11.3%</b>	<b>+19.7%</b>	<b>+5.0%</b>
Senior House Officer	13	+3	+3	+1	-2	-1	+1	+30.2%	+30.7%	+8.5%	-13.7%	-5.3%	+8.4%
<b>SHO/ Interns</b>	<b>13</b>	<b>+3</b>	<b>+3</b>	<b>+1</b>	<b>-2</b>	<b>-1</b>	<b>+1</b>	<b>+30.2%</b>	<b>+30.7%</b>	<b>+8.5%</b>	<b>-13.7%</b>	<b>-5.3%</b>	<b>+8.4%</b>
Other Medical	88	+2	+2	+3	-8	-16	+1	+2.4%	+2.4%	+2.9%	-8.8%	-15.3%	+1.7%
<b>Medical/ Dental, other</b>	<b>88</b>	<b>+2</b>	<b>+2</b>	<b>+3</b>	<b>-8</b>	<b>-16</b>	<b>+1</b>	<b>+2.4%</b>	<b>+2.4%</b>	<b>+2.9%</b>	<b>-8.8%</b>	<b>-15.3%</b>	<b>+1.7%</b>
<b>Medical &amp; Dental</b>	<b>117</b>	<b>+2</b>	<b>+2</b>	<b>+6</b>	<b>-7</b>	<b>-14</b>	<b>+3</b>	<b>+1.6%</b>	<b>+1.5%</b>	<b>+5.1%</b>	<b>-5.9%</b>	<b>-10.4%</b>	<b>+2.2%</b>
Clinical Nurse/ Midwife Manager	533	-1	+5	+9	+25	-3	+3	-0.2%	+1.0%	+1.8%	+4.9%	-0.5%	+0.5%
Director Nursing/Midwifery, Assistant	106	+18	+14	+19	+3	-0	+2	+20.9%	+15.5%	+22.1%	+3.2%	-0.3%	+1.6%
Director of Nursing/Midwifery	100	+15	+17	+17	+2	-4	+3	+17.7%	+21.2%	+21.0%	+1.8%	-4.1%	+2.7%
<b>Nurse/ Midwife Manager</b>	<b>739</b>	<b>+32</b>	<b>+37</b>	<b>+46</b>	<b>+30</b>	<b>-7</b>	<b>+7</b>	<b>+4.5%</b>	<b>+5.2%</b>	<b>+6.6%</b>	<b>+4.2%</b>	<b>-1.0%</b>	<b>+1.0%</b>
Advanced Nurse/ Midwife Practitioner	34	+31	+31	+27	+24	+18	+4	+1048.7%	+1048.7%	+393.7%	+221.5%	+107.3%	+11.3%
Clinical Nurse/ Midwife Specialist	36	+23	+25	+19	+20	+14	+0	+185.2%	+218.4%	+113.2%	+126.9%	+65.6%	+0.1%
<b>Nurse/ Midwife Specialist &amp; AN/MP</b>	<b>70</b>	<b>+55</b>	<b>+56</b>	<b>+46</b>	<b>+44</b>	<b>+32</b>	<b>+4</b>	<b>+352.0%</b>	<b>+393.6%</b>	<b>+195.7%</b>	<b>+165.2%</b>	<b>+83.8%</b>	<b>+5.3%</b>
Graduate Nursing/ Midwifery								-100.0%	-100.0%	-100.0%	-100.0%	-100.0%	-100.0%
Staff Midwives	1	+0	-1	+1	+1	-0		+112.5%	-52.8%	-100.0%	-100.0%	-3.4%	
Staff Nurse [Psychiatric]	3	-3	-3	-3	-2	-2	-1	-50.7%	-50.7%	-50.9%	-44.6%	-47.4%	-20.7%
Staff Nurses [General/ Children's]	2,726	+144	+165	+122	+155	+110	+22	+5.6%	+6.5%	+4.7%	+6.0%	+4.2%	+0.8%
Staff Nurse [Intellectual Disability]	1		+0		+1				+29.9%		-100.0%		
<b>Staff Nurse/ Staff Midwife</b>	<b>2,731</b>	<b>+142</b>	<b>+162</b>	<b>+120</b>	<b>+155</b>	<b>+107</b>	<b>+21</b>	<b>+5.5%</b>	<b>+6.3%</b>	<b>+4.6%</b>	<b>+6.0%</b>	<b>+4.1%</b>	<b>+0.8%</b>
Public Health Nurse	12	-2	-3	-2	-2	-2	+0	-16.6%	-19.5%	-12.4%	-11.4%	-11.7%	+1.1%
<b>Public Health Nurse</b>	<b>12</b>	<b>-2</b>	<b>-3</b>	<b>-2</b>	<b>-2</b>	<b>-2</b>	<b>+0</b>	<b>-16.6%</b>	<b>-19.5%</b>	<b>-12.4%</b>	<b>-11.4%</b>	<b>-11.7%</b>	<b>+1.1%</b>
Post-registration Nurse/ Midwife Student					-1			-100.0%	-100.0%	-100.0%	-100.0%	-100.0%	-100.0%
Nursing/ Midwifery awaiting registration	1	+1	-13	+1		-0	+0	-100.0%	-92.9%	-100.0%		-25.9%	+6.4%

Oct 2022 (Dec 2015 figure: 12,607)	WTE Oct 2022	WTE change since Dec 16	WTE change since Dec 17	WTE change since Dec 18	WTE change since Dec 19	WTE change since Dec 20	WTE change since Sep 22	% change since Dec 16	% change since Dec 17	% change since Dec 18	% change since Dec 19	% change since Dec 20	% change since Sep 22
<b>Overall</b>	<b>13,899</b>	<b>+1,416</b>	<b>+795</b>	<b>+594</b>	<b>+666</b>	<b>+484</b>	<b>+120</b>	<b>+11.3%</b>	<b>+6.1%</b>	<b>+4.5%</b>	<b>+5.0%</b>	<b>+3.6%</b>	<b>+0.9%</b>
<b>Nursing/ Midwifery Student</b>	<b>1</b>	<b>+1</b>	<b>-13</b>	<b>+1</b>	<b>-1</b>	<b>-0</b>	<b>+0</b>	<b>-100.0%</b>	<b>-92.9%</b>	<b>-100.0%</b>	<b>-50.0%</b>	<b>-25.9%</b>	<b>+6.4%</b>
Nursing Education/Clinical	3	+2	+2	+2	+2	-1	-1	+200.0%	+200.0%	+200.0%	+200.0%	-24.6%	-22.9%
<b>Nursing/ Midwifery other</b>	<b>3</b>	<b>+2</b>	<b>+2</b>	<b>+2</b>	<b>+2</b>	<b>-1</b>	<b>-1</b>	<b>+200.0%</b>	<b>+200.0%</b>	<b>+200.0%</b>	<b>+200.0%</b>	<b>-24.6%</b>	<b>-22.9%</b>
<b>Nursing &amp; Midwifery</b>	<b>3,556</b>	<b>+229</b>	<b>+241</b>	<b>+214</b>	<b>+228</b>	<b>+129</b>	<b>+31</b>	<b>+6.9%</b>	<b>+7.3%</b>	<b>+6.4%</b>	<b>+6.8%</b>	<b>+3.8%</b>	<b>+0.9%</b>
Dietitians	23	+7	+6	+6	+7	+5	+1	+45.4%	+31.7%	+33.1%	+40.7%	+28.1%	+2.5%
Occupational Therapists	117	+21	+23	+13	+4	+4	-1	+22.4%	+23.8%	+12.7%	+3.6%	+3.8%	-0.7%
Physiotherapists	151	+35	+30	+24	+27	+19	-3	+30.2%	+24.7%	+18.5%	+22.1%	+14.2%	-2.1%
Podiatrists & Chiropodists	3	-12	-13	-12	-9	-10	-1	-80.0%	-81.7%	-80.4%	-75.6%	-76.8%	-16.7%
Speech & Language Therapists	37	+17	+13	+14	+14	+17	-1	+82.8%	+56.4%	+61.2%	+60.9%	+87.6%	-2.6%
<b>Therapy Professions</b>	<b>331</b>	<b>+69</b>	<b>+58</b>	<b>+45</b>	<b>+43</b>	<b>+36</b>	<b>-5</b>	<b>+26.2%</b>	<b>+21.3%</b>	<b>+15.5%</b>	<b>+14.9%</b>	<b>+12.1%</b>	<b>-1.5%</b>
Medical Science		-1						-100.0%	-100.0%	-100.0%	-100.0%	-100.0%	-100.0%
Phlebotomists		-1	-1					-100.0%	-100.0%	-100.0%	-100.0%	-100.0%	-100.0%
Radiographers	4	-4	-4	-2	-2	-1	+1	-49.5%	-50.2%	-36.2%	-39.5%	-27.8%	+45.9%
Vascular Physiologists				-0	-0	-0	-0	-100.0%	-100.0%	-100.0%	-100.0%	-100.0%	-100.0%
Clinical Engineering	1	+1	+1	+1	+1	+1	+1	-100.0%	-100.0%	-100.0%	-100.0%	-100.0%	
Audiology	1	+1	+1	+1	+1	+1	+1	-100.0%	-100.0%	-100.0%	-100.0%	-100.0%	-100.0%
<b>Health Science/ Diagnostics</b>	<b>6</b>	<b>-4</b>	<b>-3</b>	<b>-0</b>	<b>-1</b>	<b>+0</b>	<b>+2</b>	<b>-39.6%</b>	<b>-33.0%</b>	<b>-3.7%</b>	<b>-10.4%</b>	<b>+7.2%</b>	<b>+54.1%</b>
<b>Social Care</b>	<b>2</b>	<b>-0</b>	<b>-0</b>	<b>-0</b>	<b>-0</b>	<b>-0</b>	<b>+0</b>	<b>-15.6%</b>	<b>-14.6%</b>	<b>-16.8%</b>	<b>-16.8%</b>	<b>-16.8%</b>	<b>+0.0%</b>
<b>Social Workers</b>	<b>67</b>	<b>-19</b>	<b>-16</b>	<b>-28</b>	<b>-31</b>	<b>-32</b>	<b>+5</b>	<b>-22.3%</b>	<b>-19.6%</b>	<b>-29.0%</b>	<b>-31.5%</b>	<b>-32.5%</b>	<b>+7.2%</b>
<b>Psychologists</b>	<b>5</b>	<b>+4</b>	<b>+5</b>	<b>+4</b>	<b>+3</b>	<b>+4</b>	<b>-0</b>	<b>+892.0%</b>	<b>-100.0%</b>	<b>+892.0%</b>	<b>+136.2%</b>	<b>+350.9%</b>	<b>-5.0%</b>
Pharmacists	13	+3	+3	+2	+1	+1	-1	+35.1%	+24.9%	+14.5%	+4.4%	+4.7%	-4.0%
Pharmacy Technicians	6	+1	+1	+1	+3	+1		+17.3%	+17.3%	+17.3%	+120.0%	+22.2%	
<b>Pharmacy</b>	<b>19</b>	<b>+4</b>	<b>+3</b>	<b>+2</b>	<b>+4</b>	<b>+2</b>	<b>-1</b>	<b>+29.3%</b>	<b>+22.6%</b>	<b>+15.3%</b>	<b>+23.4%</b>	<b>+9.3%</b>	<b>-2.8%</b>
Other Health & Social Care	3	+1	+1	+1	+2	+2	-0	+107.4%	+107.4%	+107.4%	+683.3%	+422.2%	-3.4%
Play Therapists/ Specialists	1	-1						-37.1%					
<b>H&amp;SC, Other</b>	<b>4</b>	<b>+1</b>	<b>+1</b>	<b>+1</b>	<b>+2</b>	<b>+2</b>	<b>-0</b>	<b>+29.5%</b>	<b>+61.9%</b>	<b>+61.9%</b>	<b>+180.9%</b>	<b>+148.1%</b>	<b>-2.6%</b>
<b>Health &amp; Social Care Professionals</b>	<b>434</b>	<b>+55</b>	<b>+49</b>	<b>+25</b>	<b>+20</b>	<b>+11</b>	<b>+0</b>	<b>+14.5%</b>	<b>+12.6%</b>	<b>+6.0%</b>	<b>+4.7%</b>	<b>+2.6%</b>	<b>+0.1%</b>
Executive Management	14	+7	+6	+4	+2	-1	-0	+99.6%	+76.4%	+39.7%	+17.3%	-5.5%	-0.1%
Senior Management (VIII & GM)	97	+57	+60	+49	+35	+33	+2	+140.5%	+163.3%	+100.3%	+55.1%	+52.1%	+1.9%
<b>Management (VIII &amp; above)</b>	<b>111</b>	<b>+64</b>	<b>+66</b>	<b>+53</b>	<b>+37</b>	<b>+32</b>	<b>+2</b>	<b>+134.4%</b>	<b>+147.9%</b>	<b>+89.9%</b>	<b>+49.1%</b>	<b>+41.2%</b>	<b>+1.6%</b>
Middle Management (V-VII)	258	+142	+131	+116	+94	+82	+1	+121.4%	+102.3%	+82.1%	+57.5%	+46.8%	+0.5%

Oct 2022 (Dec 2015 figure: 12,607)	WTE Oct 2022	WTE change since Dec 16	WTE change since Dec 17	WTE change since Dec 18	WTE change since Dec 19	WTE change since Dec 20	WTE change since Sep 22	% change since Dec 16	% change since Dec 17	% change since Dec 18	% change since Dec 19	% change since Dec 20	% change since Sep 22
<b>Overall</b>	<b>13,899</b>	<b>+1,416</b>	<b>+795</b>	<b>+594</b>	<b>+666</b>	<b>+484</b>	<b>+120</b>	<b>+11.3%</b>	<b>+6.1%</b>	<b>+4.5%</b>	<b>+5.0%</b>	<b>+3.6%</b>	<b>+0.9%</b>
Other Administrative		-1	-1	-1	-1		-0	-100.0%	-100.0%	-100.0%	-100.0%	-100.0%	-100.0%
<b>Administrative/ Supervisory (V to VII)</b>	<b>258</b>	<b>+141</b>	<b>+130</b>	<b>+115</b>	<b>+93</b>	<b>+82</b>	<b>+1</b>	<b>+119.5%</b>	<b>+100.7%</b>	<b>+80.8%</b>	<b>+56.5%</b>	<b>+46.8%</b>	<b>+0.3%</b>
General Administrative (III & IV)	622	+139	+113	+58	+51	+35	+16	+28.8%	+22.2%	+10.2%	+9.0%	+6.0%	+2.7%
<b>Clerical (III &amp; IV)</b>	<b>622</b>	<b>+139</b>	<b>+113</b>	<b>+58</b>	<b>+51</b>	<b>+35</b>	<b>+16</b>	<b>+28.8%</b>	<b>+22.2%</b>	<b>+10.2%</b>	<b>+9.0%</b>	<b>+6.0%</b>	<b>+2.7%</b>
<b>Management &amp; Administrative</b>	<b>992</b>	<b>+343</b>	<b>+309</b>	<b>+226</b>	<b>+181</b>	<b>+150</b>	<b>+19</b>	<b>+52.9%</b>	<b>+45.3%</b>	<b>+29.5%</b>	<b>+22.3%</b>	<b>+17.8%</b>	<b>+1.9%</b>
Catering	226	+13	+14	+10	+4	+9	+1	+5.9%	+6.5%	+4.7%	+1.9%	+4.2%	+0.4%
Household Services	449	-114	-95	-69	-43	-30	+3	-20.3%	-17.5%	-13.3%	-8.8%	-6.2%	+0.7%
Other Support	27	-13	-16	-11	-7	-2	-0	-32.2%	-37.3%	-28.2%	-20.0%	-6.4%	-0.6%
Portering	70	-15	-14	-10	-12	-7	+0	-17.7%	-16.6%	-12.2%	-14.2%	-8.8%	+0.1%
<b>Support</b>	<b>772</b>	<b>-130</b>	<b>-112</b>	<b>-79</b>	<b>-57</b>	<b>-29</b>	<b>+4</b>	<b>-14.4%</b>	<b>-12.6%</b>	<b>-9.3%</b>	<b>-6.9%</b>	<b>-3.7%</b>	<b>+0.5%</b>
Maintenance	89	-14	-12	-13	-9	-6	-0	-13.8%	-12.3%	-12.8%	-9.3%	-5.8%	-0.1%
Technical Services	4	+4	+4	+4	+4	+4		-100.0%	-100.0%	-100.0%	-100.0%	-100.0%	
<b>Maintenance/ Technical</b>	<b>93</b>	<b>-10</b>	<b>-8</b>	<b>-9</b>	<b>-5</b>	<b>-2</b>	<b>-0</b>	<b>-9.9%</b>	<b>-8.3%</b>	<b>-8.9%</b>	<b>-5.2%</b>	<b>-1.6%</b>	<b>-0.1%</b>
<b>General Support</b>	<b>865</b>	<b>-140</b>	<b>-120</b>	<b>-88</b>	<b>-62</b>	<b>-31</b>	<b>+4</b>	<b>-13.9%</b>	<b>-12.2%</b>	<b>-9.2%</b>	<b>-6.7%</b>	<b>-3.4%</b>	<b>+0.4%</b>
Attendant/ Aide	1,632	-1,132	-1,063	-999	-661	-579	-12	-41.0%	-39.4%	-38.0%	-28.8%	-26.2%	-0.7%
Health & Social Care Assistants	59	+33	+33	+35	+38	+32	+3	+128.1%	+128.7%	+144.4%	+178.5%	+117.1%	+4.5%
Health Care Assistant/ Care Assistant	2,386	+1,103	+996	+886	+657	+528	+14	+86.0%	+71.6%	+59.0%	+38.0%	+28.4%	+0.6%
HCA (Student Nurse/Midwife COVID-19)						-22		-100.0%	-100.0%	-100.0%	-100.0%	-100.0%	-100.0%
<b>Health Care Assistants</b>	<b>4,077</b>	<b>+5</b>	<b>-34</b>	<b>-78</b>	<b>+34</b>	<b>-41</b>	<b>+5</b>	<b>+0.1%</b>	<b>-0.8%</b>	<b>-1.9%</b>	<b>+0.8%</b>	<b>-1.0%</b>	<b>+0.1%</b>
<b>Home Help</b>	<b>3,671</b>	<b>+876</b>	<b>+315</b>	<b>+251</b>	<b>+229</b>	<b>+240</b>	<b>+51</b>	<b>+31.4%</b>	<b>+9.4%</b>	<b>+7.3%</b>	<b>+6.7%</b>	<b>+7.0%</b>	<b>+1.4%</b>
Home Care Services	135	+67	+52	+49	+50	+37	+7	+99.2%	+61.5%	+57.4%	+57.8%	+37.0%	+5.5%
Other Care Grades	24	-10	-9	-1	+2	+5	-0	-30.1%	-26.6%	-2.5%	+7.8%	+26.8%	-0.2%
Pastoral Care	22	-13	-11	-12	-10	-5	-1	-36.9%	-33.6%	-35.5%	-31.0%	-18.6%	-3.7%
Workshop Services	4	+2	+2	+2	+2	+2	-0	+96.2%	+96.2%	+96.2%	+96.2%	+108.0%	-3.9%
<b>Care, other</b>	<b>185</b>	<b>+46</b>	<b>+34</b>	<b>+39</b>	<b>+44</b>	<b>+39</b>	<b>+6</b>	<b>+33.2%</b>	<b>+22.3%</b>	<b>+26.4%</b>	<b>+30.7%</b>	<b>+26.5%</b>	<b>+3.3%</b>
<b>Patient &amp; Client Care</b>	<b>7,934</b>	<b>+927</b>	<b>+315</b>	<b>+212</b>	<b>+307</b>	<b>+238</b>	<b>+63</b>	<b>+13.2%</b>	<b>+4.1%</b>	<b>+2.7%</b>	<b>+4.0%</b>	<b>+3.1%</b>	<b>+0.8%</b>

Source: Health Service Personnel Census

Longitudinal Employment Levels by Grade Group - Dec 2016 to Oct 2022

Oct 2022 (Dec 2015 figure: 12,607)	WTE Oct 2022	WTE change since Dec 16	WTE change since Dec 17	WTE change since Dec 18	WTE change since Dec 19	WTE change since Dec 20	WTE change since Sep 22	% change since Dec 16	% change since Dec 17	% change since Dec 18	% change since Dec 19	% change since Dec 20	% change since Sep 22
Overall	13,899	+1,416	+795	+594	+666	+484	+120	+11.3%	+6.1%	+4.5%	+5.0%	+3.6%	+0.9%
Consultant Medicine	6	-4	-4	+2	+2	+1	-1	-40.2%	-39.1%	+55.6%	+55.6%	+26.7%	-8.6%
Consultant Psychiatry	0	-1	-1	+0	+0	+0	+0	-89.7%	-89.4%	-100.0%	-100.0%	-100.0%	-100.0%
Consultant Surgery		-1	-0	-0				-100.0%	-100.0%	-100.0%	-100.0%	-100.0%	-100.0%
Consultants	6	-5	-4	+2	+2	+1	-0	-48.2%	-44.1%	+53.0%	+58.1%	+28.7%	-7.2%
Registrar	8	+2	-0	+0	+1	+2	+1	+36.1%	-0.1%	+1.9%	+15.2%	+28.4%	+7.1%
Senior Registrar	1	+0	+0	-1	+0	+0		+8.0%	+8.0%	-46.0%	+8.0%	+8.0%	
Specialist Registrar	2		+1	+1					+100.0%	+100.0%			
Registrars	11	+2	+1	+0	+1	+2	+1	+24.3%	+11.3%	+2.1%	+11.3%	+19.7%	+5.0%
Senior House Officer	13	+3	+3	+1	-2	-1	+1	+30.2%	+30.7%	+8.5%	-13.7%	-5.3%	+8.4%
SHO/ Interns	13	+3	+3	+1	-2	-1	+1	+30.2%	+30.7%	+8.5%	-13.7%	-5.3%	+8.4%
Other Medical	88	+2	+2	+3	-8	-16	+1	+2.4%	+2.4%	+2.9%	-8.8%	-15.3%	+1.7%
Medical/ Dental, other	88	+2	+2	+3	-8	-16	+1	+2.4%	+2.4%	+2.9%	-8.8%	-15.3%	+1.7%
Medical & Dental	117	+2	+2	+6	-7	-14	+3	+1.6%	+1.5%	+5.1%	-5.9%	-10.4%	+2.2%
Clinical Nurse/ Midwife Manager	533	-1	+5	+9	+25	-3	+3	-0.2%	+1.0%	+1.8%	+4.9%	-0.5%	+0.5%
Director Nursing/Midwifery, Assistant	106	+18	+14	+19	+3	-0	+2	+20.9%	+15.5%	+22.1%	+3.2%	-0.3%	+1.6%
Director of Nursing/Midwifery	100	+15	+17	+17	+2	-4	+3	+17.7%	+21.2%	+21.0%	+1.8%	-4.1%	+2.7%
Nurse/ Midwife Manager	739	+32	+37	+46	+30	-7	+7	+4.5%	+5.2%	+6.6%	+4.2%	-1.0%	+1.0%
Advanced Nurse/ Midwife Practitioner	34	+31	+31	+27	+24	+18	+4	+1048.7%	+1048.7%	+393.7%	+221.5%	+107.3%	+11.3%
Clinical Nurse/ Midwife Specialist	36	+23	+25	+19	+20	+14	+0	+185.2%	+218.4%	+113.2%	+126.9%	+65.6%	+0.1%
Nurse/ Midwife Specialist & AN/MP	70	+55	+56	+46	+44	+32	+4	+352.0%	+393.6%	+195.7%	+165.2%	+83.8%	+5.3%
Staff Nurse/ Staff Midwife	2,731	+142	+162	+120	+155	+107	+21	+5.5%	+6.3%	+4.6%	+6.0%	+4.1%	+0.8%
Public Health Nurse	12	-2	-3	-2	-2	-2	+0	-16.6%	-19.5%	-12.4%	-11.4%	-11.7%	+1.1%
Public Health Nurse	12	-2	-3	-2	-2	-2	+0	-16.6%	-19.5%	-12.4%	-11.4%	-11.7%	+1.1%
Post-registration Nurse/ Midwife Student					-1			-100.0%	-100.0%	-100.0%	-100.0%	-100.0%	-100.0%
Nursing/ Midwifery awaiting registration	1	+1	-13	+1		-0	+0	-100.0%	-92.9%	-100.0%		-25.9%	+6.4%
Nursing/ Midwifery Student	1	+1	-13	+1	-1	-0	+0	-100.0%	-92.9%	-100.0%	-50.0%	-25.9%	+6.4%
Nursing Education/Clinical	3	+2	+2	+2	+2	-1	-1	+200.0%	+200.0%	+200.0%	+200.0%	-24.6%	-22.9%
Nursing/ Midwifery other	3	+2	+2	+2	+2	-1	-1	+200.0%	+200.0%	+200.0%	+200.0%	-24.6%	-22.9%
Nursing & Midwifery	3,556	+229	+241	+214	+228	+129	+31	+6.9%	+7.3%	+6.4%	+6.8%	+3.8%	+0.9%
Dietitians	23	+7	+6	+6	+7	+5	+1	+45.4%	+31.7%	+33.1%	+40.7%	+28.1%	+2.5%
Occupational Therapists	117	+21	+23	+13	+4	+4	-1	+22.4%	+23.8%	+12.7%	+3.6%	+3.8%	-0.7%
Physiotherapists	151	+35	+30	+24	+27	+19	-3	+30.2%	+24.7%	+18.5%	+22.1%	+14.2%	-2.1%
Podiatrists & Chiropodists	3	-12	-13	-12	-9	-10	-1	-80.0%	-81.7%	-80.4%	-75.6%	-76.8%	-16.7%
Speech & Language Therapists	37	+17	+13	+14	+14	+17	-1	+82.8%	+56.4%	+61.2%	+60.9%	+87.6%	-2.6%
Therapy Professions	331	+69	+58	+45	+43	+36	-5	+26.2%	+21.3%	+15.5%	+14.9%	+12.1%	-1.5%
Medical Science		-1						-100.0%	-100.0%	-100.0%	-100.0%	-100.0%	-100.0%
Phlebotomists		-1	-1					-100.0%	-100.0%	-100.0%	-100.0%	-100.0%	-100.0%
Radiographers	4	-4	-4	-2	-2	-1	+1	-49.5%	-50.2%	-36.2%	-39.5%	-27.8%	+45.9%
Vascular Physiologists				-0	-0	-0	-0	-100.0%	-100.0%	-100.0%	-100.0%	-100.0%	-100.0%
Clinical Engineering	1	+1	+1	+1	+1	+1		-100.0%	-100.0%	-100.0%	-100.0%	-100.0%	
Audiology	1	+1	+1	+1	+1	+1	+1	-100.0%	-100.0%	-100.0%	-100.0%	-100.0%	-100.0%
Health Science/ Diagnostics	6	-4	-3	-0	-1	+0	+2	-39.6%	-33.0%	-3.7%	-10.4%	+7.2%	+54.1%
Social Care	2	-0	-0	-0	-0	-0	+0	-15.6%	-14.6%	-16.8%	-16.8%	-16.8%	+0.0%
Social Workers	67	-19	-16	-28	-31	-32	+5	-22.3%	-19.6%	-29.0%	-31.5%	-32.5%	+7.2%
Psychologists	5	+4	+5	+4	+3	+4	-0	+892.0%	-100.0%	+892.0%	+136.2%	+350.9%	-5.0%
Pharmacists	13	+3	+3	+2	+1	+1	-1	+35.1%	+24.9%	+14.5%	+4.4%	+4.7%	-4.0%
Pharmacy Technicians	6	+1	+1	+1	+3	+1		+17.3%	+17.3%	+17.3%	+120.0%	+22.2%	
Pharmacy	19	+4	+3	+2	+4	+2	-1	+29.3%	+22.6%	+15.3%	+23.4%	+9.3%	-2.8%
Other Health & Social Care	3	+1	+1	+1	+2	+2	-0	+107.4%	+107.4%	+107.4%	+683.3%	+422.2%	-3.4%
Play Therapists/ Specialists	1	-1						-37.1%					
H&SC, Other	4	+1	+1	+1	+2	+2	-0	+29.5%	+61.9%	+61.9%	+180.9%	+148.1%	-2.6%
Health & Social Care Professionals	434	+55	+49	+25	+20	+11	+0	+14.5%	+12.6%	+6.0%	+4.7%	+2.6%	+0.1%
Executive Management	14	+7	+6	+4	+2	-1	-0	+99.6%	+76.4%	+39.7%	+17.3%	-5.5%	-0.1%
Senior Management (VIII & GM)	97	+57	+60	+49	+35	+33	+2	+140.5%	+163.3%	+100.3%	+55.1%	+52.1%	+1.9%
Management (VIII & above)	111	+64	+66	+53	+37	+32	+2	+134.4%	+147.9%	+89.9%	+49.1%	+41.2%	+1.6%
Middle Management (V-VII)	258	+142	+131	+116	+94	+82	+1	+121.4%	+102.3%	+82.1%	+57.5%	+46.8%	+0.5%
Other Administrative		-1	-1	-1	-1		-0	-100.0%	-100.0%	-100.0%	-100.0%	-100.0%	-100.0%
Administrative/ Supervisory (V to VII)	258	+141	+130	+115	+93	+82	+1	+119.5%	+100.7%	+80.8%	+56.5%	+46.8%	+0.3%
General Administrative (III & IV)	622	+139	+113	+58	+51	+35	+16	+28.8%	+22.2%	+10.2%	+9.0%	+6.0%	+2.7%
Clerical (III & IV)	622	+139	+113	+58	+51	+35	+16	+28.8%	+22.2%	+10.2%	+9.0%	+6.0%	+2.7%
Management & Administrative	992	+343	+309	+226	+181	+150	+19	+52.9%	+45.3%	+29.5%	+22.3%	+17.8%	+1.9%
Support	772	-130	-112	-79	-57	-29	+4	-14.4%	-12.6%	-9.3%	-6.9%	-3.7%	+0.5%
Maintenance	89	-14	-12	-13	-9	-6	-0	-13.8%	-12.3%	-12.8%	-9.3%	-5.8%	-0.1%
Technical Services	4	+4	+4	+4	+4	+4		-100.0%	-100.0%	-100.0%	-100.0%	-100.0%	
Maintenance/ Technical	93	-10	-8	-9	-5	-2	-0	-9.9%	-8.3%	-8.9%	-5.2%	-1.6%	-0.1%
General Support	865	-140	-120	-88	-62	-31	+4	-13.9%	-12.2%	-9.2%	-6.7%	-3.4%	+0.4%
Attendant/ Aide	1,632	-1,132	-1,063	-999	-661	-579	-12	-41.0%	-39.4%	-38.0%	-28.8%	-26.2%	-0.7%
Health & Social Care Assistants	59	+33	+33	+35	+38	+32	+3	+128.1%	+128.7%	+144.4%	+178.5%	+117.1%	+4.5%
Health Care Assistant/ Care Assistant	2,386	+1,103	+996	+886	+657	+528	+14	+86.0%	+71.6%	+59.0%	+38.0%	+28.4%	+0.6%
HCA (Student Nurse/Midwife COVID-19)						-22		-100.0%	-100.0%	-100.0%	-100.0%	-100.0%	-100.0%
Health Care Assistants	4,077	+5	-34	-78	+34	-41	+5	+0.1%	-0.8%	-1.9%	+0.8%	-1.0%	+0.1%
Home Help	3,671	+876	+315	+251	+229	+240	+51	+31.4%	+9.4%	+7.3%	+6.7%	+7.0%	+1.4%
Home Care Services	135	+67	+52	+49	+50	+37	+7	+99.2%	+61.5%	+57.4%	+57.8%	+37.0%	+5.5%
Other Care Grades	24	-10	-9	-1	+2	+5	-0	-30.1%	-26.6%	-2.5%	+7.8%	+26.8%	-0.2%
Pastoral Care	22	-13	-11	-12	-10	-5	-1	-36.9%	-33.6%	-35.5%	-31.0%	-18.6%	-3.7%
Workshop Services	4	+2	+2	+2	+2	+2	-0	+96.2%	+96.2%	+96.2%	+96.2%	+108.0%	-3.9%
Care, other	185	+46	+34	+39	+44	+39	+6	+33.2%	+22.3%	+26.4%	+30.7%	+26.5%	+3.3%
Patient & Client Care	7,934	+927	+315	+212	+307	+238	+63	+13.2%	+4.1%	+2.7%	+4.0%	+3.1%	+0.8%

Oct 2022 (Dec 2015 figure: 12,607)	WTE Oct 2022	WTE change since Dec 16	WTE change since Dec 17	WTE change since Dec 18	WTE change since Dec 19	WTE change since Dec 20	WTE change since Sep 22	% change since Dec 16	% change since Dec 17	% change since Dec 18	% change since Dec 19	% change since Dec 20	% change since Sep 22
Overall	13,899	+1,416	+795	+594	+666	+484	+120	+11.3%	+6.1%	+4.5%	+5.0%	+3.6%	+0.9%

Source: Health Service Personnel Census