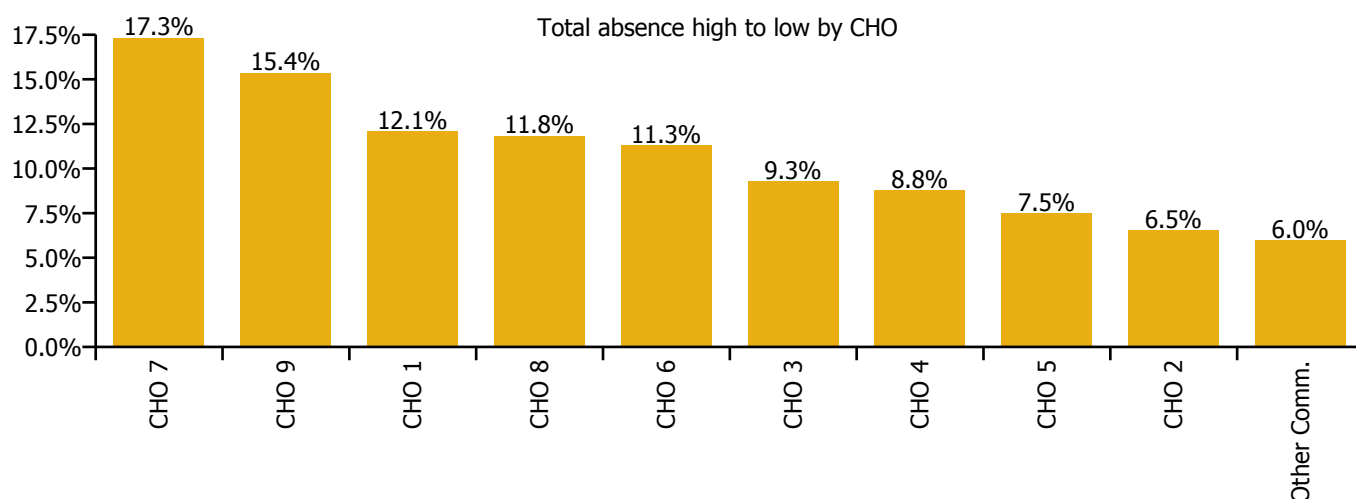
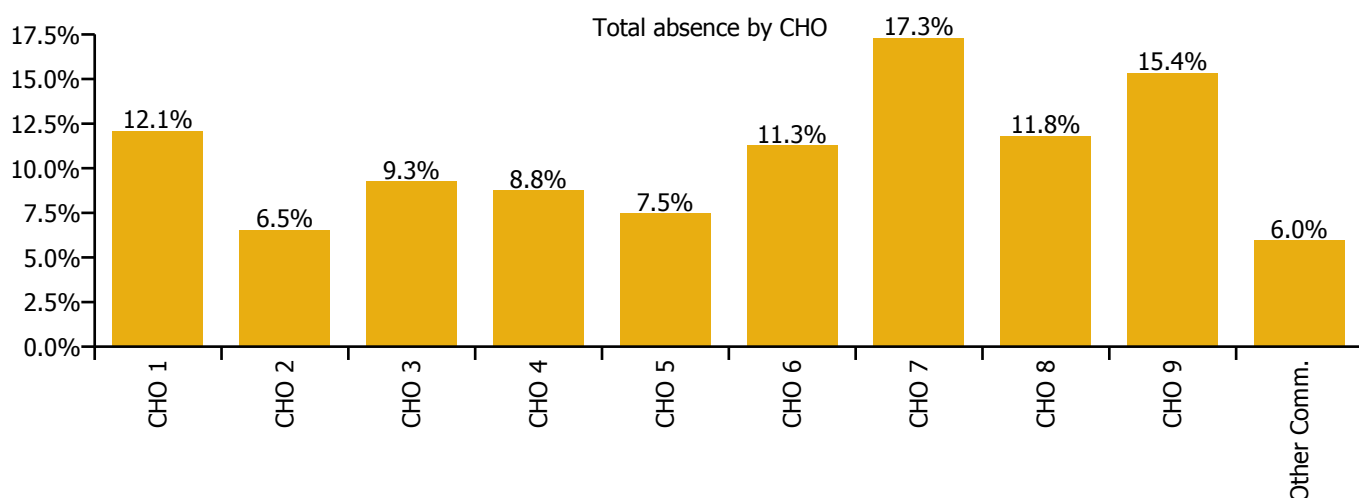


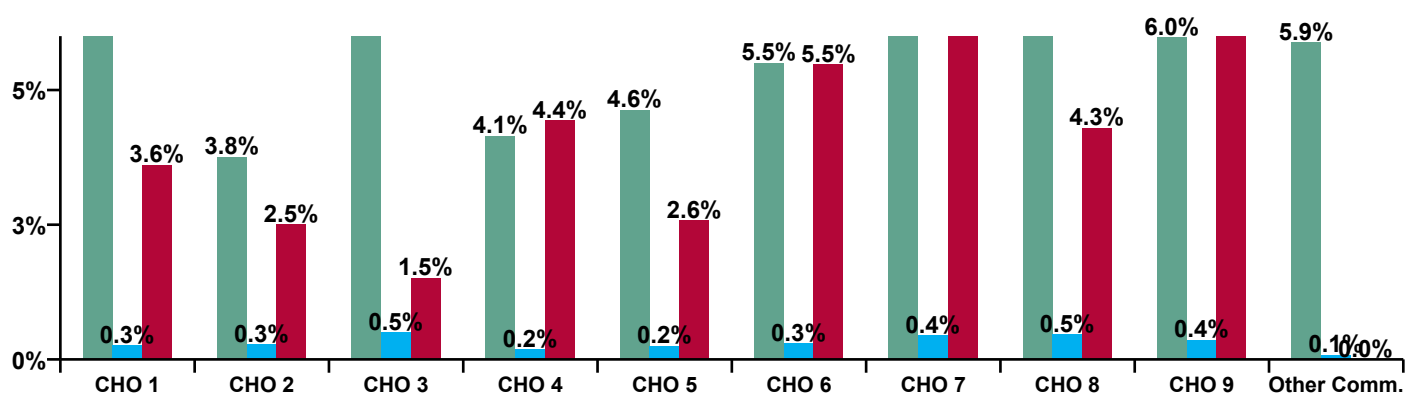
May 2020

Older People Absence Rate - by Staff Category: May 2020	Certified absence	Self-certified absence	COVID-19 absence	Total absence rate	Certified	Self-certified	COVID-19
Older People	6.1%	0.3%	4.4%	10.8%	56.4%	3.0%	40.6%
Medical & Dental	0.8%	0.1%	2.1%	3.0%	25.5%	4.0%	70.5%
Nursing & Midwifery	5.1%	0.4%	5.8%	11.2%	45.4%	3.2%	51.4%
Health & Social Care Professionals	3.0%	0.2%	2.2%	5.3%	56.0%	3.1%	40.9%
Management & Administrative	4.5%	0.1%	1.0%	5.6%	80.1%	2.1%	17.8%
General Support	7.7%	0.2%	3.2%	11.2%	69.2%	1.7%	29.0%
Patient & Client Care	7.2%	0.4%	4.4%	11.9%	60.1%	3.1%	36.8%



Older People Absence Rate - by Care Group: May 2020	Certified absence	Self-certified absence	COVID-19 absence	Total absence rate	Certified	Self-certified	COVID-19
Older People	6.1%	0.3%	4.4%	10.8%	56.4%	3.0%	40.6%
CHO 1	8.2%	0.3%	3.6%	12.1%	68.0%	2.2%	29.9%
CHO 2	3.8%	0.3%	2.5%	6.5%	57.4%	4.2%	38.4%
CHO 3	7.3%	0.5%	1.5%	9.3%	78.2%	5.4%	16.4%
CHO 4	4.1%	0.2%	4.4%	8.8%	47.3%	2.1%	50.6%
CHO 5	4.6%	0.2%	2.6%	7.5%	62.1%	3.3%	34.6%
Health Service Executive	7.9%	0.4%	6.0%	14.3%	55.3%	3.0%	41.8%
Section 38 Voluntary Agencies	3.9%	0.2%	5.1%	9.3%	42.3%	2.3%	55.4%
CHO 6	5.5%	0.3%	5.5%	11.3%	48.8%	2.6%	48.6%
CHO 7	9.4%	0.4%	7.5%	17.3%	54.3%	2.6%	43.2%
CHO 8	7.1%	0.5%	4.3%	11.8%	59.7%	4.0%	36.3%
Health Service Executive	5.9%	0.4%	9.6%	15.9%	36.9%	2.7%	60.4%
Section 38 Voluntary Agencies	6.4%	0.2%	7.2%	13.7%	46.6%	1.1%	52.3%
CHO 9	6.0%	0.4%	9.0%	15.4%	39.0%	2.3%	58.7%
Other Community Services	5.9%	0.1%		6.0%	98.6%	1.4%	0.0%

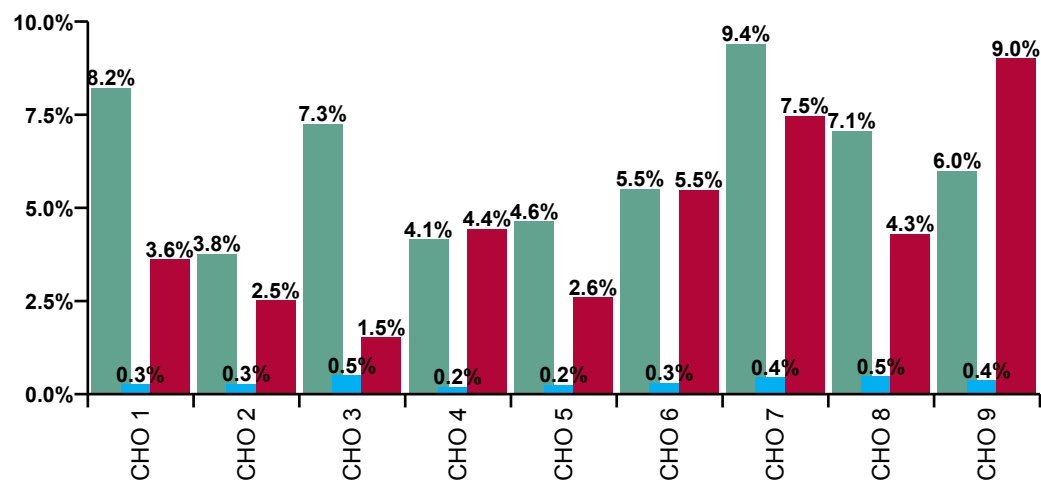
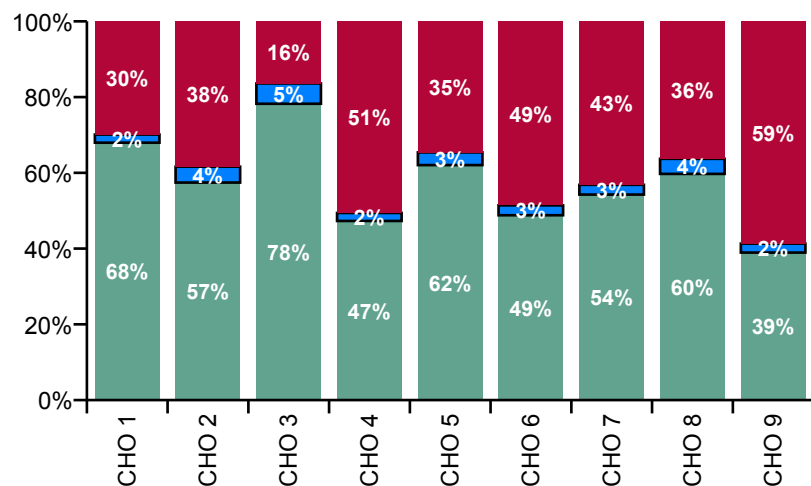
Certified, self-certified & COVID-19: May 2020



Legend

Certified absence
Self-certified absence
COVID-19 absence

Older People Overall Absence Rate - by Care Group & Staff Category: May 2020	Medical & Dental	Nursing & Midwifery	Health & Social Care Professionals	Management & Administrative	General Support	Patient & Client Care	Certified absence	Self-certified absence	COVID-19 absence	Total absence
Older People	3.0%	11.2%	5.3%	5.6%	11.2%	11.9%	6.1%	0.3%	4.4%	10.8%
CHO 1	4.3%	12.4%	0.0%	5.2%	10.2%	14.0%	8.2%	0.3%	3.6%	12.1%
CHO 2	1.7%	7.0%	5.5%	2.9%	6.4%	6.9%	3.8%	0.3%	2.5%	6.5%
CHO 3	0.0%	9.7%	10.7%	4.7%	12.0%	9.2%	7.3%	0.5%	1.5%	9.3%
CHO 4	0.0%	10.5%	1.1%	3.4%	4.6%	9.4%	4.1%	0.2%	4.4%	8.8%
CHO 5	0.0%	8.1%	1.7%	8.9%	9.2%	6.9%	4.6%	0.2%	2.6%	7.5%
Health Service Executive	0.0%	13.1%	2.1%	11.8%	16.1%	15.8%	7.9%	0.4%	6.0%	14.3%
Section 38 Voluntary Agencies	0.0%	11.6%	5.9%	7.7%	9.3%	8.7%	3.9%	0.2%	5.1%	9.3%
CHO 6	0.0%	12.3%	5.4%	8.6%	11.7%	11.7%	5.5%	0.3%	5.5%	11.3%
CHO 7	0.0%	13.7%	7.3%	14.7%	24.9%	19.4%	9.4%	0.4%	7.5%	17.3%
CHO 8	2.3%	10.0%	6.1%	5.6%	1.5%	14.9%	7.1%	0.5%	4.3%	11.8%
Health Service Executive	5.7%	20.3%	8.0%	1.8%	13.6%	17.4%	5.9%	0.4%	9.6%	15.9%
Section 38 Voluntary Agencies	15.0%	13.9%	7.9%	3.7%	11.3%	20.6%	6.4%	0.2%	7.2%	13.7%
CHO 9	8.9%	18.9%	8.0%	2.3%	12.9%	18.0%	6.0%	0.4%	9.0%	15.4%
Other Community Services				6.0%		0.0%	5.9%	0.1%		6.0%



COVID-19 absence

Social Care Absence Rate - by Care Group, Staff Category & Absence type: May 2020

CHO 1 by Staff Category May 2020	Certified absence	Self-certified absence	COVID-19 absence	Total absence	Certified	Self-certified	COVID-19
Older People	8.2%	0.3%	3.6%	12.1%	68.0%	2.2%	29.9%
Medical & Dental	4.3%			4.3%	100.0%	0.0%	0.0%
Nursing & Midwifery	7.7%	0.4%	4.4%	12.4%	61.6%	3.1%	35.3%
Health & Social Care Professionals							
Management & Administrative	3.7%	0.2%	1.2%	5.2%	71.5%	4.5%	24.0%
General Support	9.3%		0.9%	10.2%	90.8%	0.0%	9.2%
Patient & Client Care	9.5%	0.3%	4.3%	14.0%	67.6%	1.8%	30.5%

CHO 2 by Staff Category May 2020	Certified absence	Self-certified absence	COVID-19 absence	Total absence	Certified	Self-certified	COVID-19
Older People	3.8%	0.3%	2.5%	6.5%	57.4%	4.2%	38.4%
Medical & Dental			1.7%	1.7%	0.0%	0.0%	100.0%
Nursing & Midwifery	3.4%	0.3%	3.3%	7.0%	48.7%	4.2%	47.1%
Health & Social Care Professionals	4.9%		0.7%	5.5%	87.7%	0.0%	12.3%
Management & Administrative	1.5%		1.4%	2.9%	51.6%	0.0%	48.4%
General Support	4.1%	0.2%	2.1%	6.4%	64.8%	2.6%	32.6%
Patient & Client Care	4.2%	0.3%	2.3%	6.9%	61.3%	4.9%	33.9%

CHO 3 by Staff Category May 2020	Certified absence	Self-certified absence	COVID-19 absence	Total absence	Certified	Self-certified	COVID-19
Older People	7.3%	0.5%	1.5%	9.3%	78.2%	5.4%	16.4%
Medical & Dental							
Nursing & Midwifery	7.7%	0.5%	1.5%	9.7%	79.7%	5.2%	15.2%
Health & Social Care Professionals	9.8%	0.2%	0.7%	10.7%	91.6%	1.4%	7.0%
Management & Administrative	4.3%	0.1%	0.3%	4.7%	92.1%	1.6%	6.3%
General Support	8.0%	0.6%	3.4%	12.0%	66.5%	5.1%	28.4%
Patient & Client Care	7.1%	0.6%	1.4%	9.2%	77.7%	6.5%	15.8%

CHO 4 by Staff Category May 2020	Certified absence	Self-certified absence	COVID-19 absence	Total absence	Certified	Self-certified	COVID-19
Older People	4.1%	0.2%	4.4%	8.8%	47.3%	2.1%	50.6%
Medical & Dental							
Nursing & Midwifery	4.0%	0.1%	6.3%	10.5%	38.4%	1.4%	60.3%
Health & Social Care Professionals		0.2%	0.8%	1.1%	0.0%	22.4%	77.6%
Management & Administrative	2.1%	0.2%	1.1%	3.4%	63.3%	5.0%	31.6%
General Support	4.4%	0.1%	0.2%	4.6%	95.3%	1.3%	3.4%
Patient & Client Care	4.8%	0.2%	4.4%	9.4%	51.2%	2.5%	46.2%

CHO 5 by Staff Category May 2020	Certified absence	Self-certified absence	COVID-19 absence	Total absence	Certified	Self-certified	COVID-19
Older People	4.6%	0.2%	2.6%	7.5%	62.1%	3.3%	34.6%
Medical & Dental							
Nursing & Midwifery	3.4%	0.3%	4.5%	8.1%	41.6%	3.3%	55.1%
Health & Social Care Professionals	1.7%			1.7%	100.0%	0.0%	0.0%
Management & Administrative	8.7%		0.2%	8.9%	97.7%	0.0%	2.3%
General Support	7.3%	0.4%	1.6%	9.2%	79.2%	3.9%	16.9%
Patient & Client Care	5.0%	0.3%	1.7%	6.9%	72.1%	3.8%	24.2%

CHO 6 by Staff Category May 2020	Certified absence	Self-certified absence	COVID-19 absence	Total absence	Certified	Self-certified	COVID-19
Older People	5.5%	0.3%	5.5%	11.3%	48.8%	2.6%	48.6%
Medical & Dental							
Nursing & Midwifery	3.7%	0.4%	8.2%	12.3%	30.4%	2.9%	66.8%
Health & Social Care Professionals	3.8%	0.1%	1.5%	5.4%	70.6%	1.8%	27.6%
Management & Administrative	6.7%		1.9%	8.6%	77.9%	0.0%	22.1%
General Support	6.8%	0.1%	4.8%	11.7%	58.6%	0.6%	40.8%
Patient & Client Care	6.8%	0.4%	4.6%	11.7%	57.6%	3.5%	38.9%

CHO 7 by Staff Category May 2020	Certified absence	Self-certified absence	COVID-19 absence	Total absence	Certified	Self-certified	COVID-19
Older People	9.4%	0.4%	7.5%	17.3%	54.3%	2.6%	43.2%
Medical & Dental							
Nursing & Midwifery	5.1%	0.6%	8.0%	13.7%	37.3%	4.1%	58.6%
Health & Social Care Professionals	5.2%	0.2%	1.9%	7.3%	71.2%	2.8%	26.0%
Management & Administrative	13.9%	0.2%	0.6%	14.7%	94.7%	1.5%	3.8%
General Support	15.6%	0.2%	9.1%	24.9%	62.5%	0.9%	36.6%
Patient & Client Care	11.2%	0.5%	7.7%	19.4%	57.7%	2.4%	39.9%

CHO 8 by Staff Category May 2020	Certified absence	Self-certified absence	COVID-19 absence	Total absence	Certified	Self-certified	COVID-19
Older People	7.1%	0.5%	4.3%	11.8%	59.7%	4.0%	36.3%
Medical & Dental			2.3%	2.3%	0.0%	0.0%	100.0%
Nursing & Midwifery	5.4%	0.5%	4.2%	10.0%	53.4%	5.0%	41.6%
Health & Social Care Professionals	4.1%	0.4%	1.5%	6.1%	68.2%	7.0%	24.7%
Management & Administrative	3.9%	0.0%	1.7%	5.6%	68.8%	0.9%	30.3%
General Support	0.7%	0.1%	0.7%	1.5%	45.2%	8.6%	46.2%
Patient & Client Care	9.2%	0.5%	5.2%	14.9%	61.6%	3.7%	34.7%

CHO 9 by Staff Category May 2020	Certified absence	Self-certified absence	COVID-19 absence	Total absence	Certified	Self-certified	COVID-19
Older People	6.0%	0.4%	9.0%	15.4%	39.0%	2.3%	58.7%
Medical & Dental	0.5%	0.5%	7.8%	8.9%	5.7%	5.7%	88.5%
Nursing & Midwifery	6.1%	0.4%	12.3%	18.9%	32.5%	2.4%	65.2%
Health & Social Care Professionals	1.2%	0.3%	6.5%	8.0%	14.5%	3.6%	81.9%
Management & Administrative	1.1%	0.3%	1.0%	2.3%	46.1%	11.0%	42.9%
General Support	7.9%	0.2%	4.8%	12.9%	61.3%	1.7%	37.1%
Patient & Client Care	7.8%	0.4%	9.8%	18.0%	43.4%	2.0%	54.6%

Other Community Services by Staff Category May 2020	Certified absence	Self-certified absence	COVID-19 absence	Total absence	Certified	Self-certified	COVID-19
Older People	5.9%	0.1%	0.0%	6.0%	98.6%	1.4%	0.0%
Medical & Dental							
Nursing & Midwifery							#DIV/0
Health & Social Care Professionals	#DIV/0	#DIV/0	#DIV/0				
Management & Administrative	5.9%	0.1%		6.0%	98.6%	1.4%	0.0%
General Support	#DIV/0	#DIV/0	#DIV/0				
Patient & Client Care					#DIV/0	#DIV/0	#DIV/0

Older People Absence Rate - by Staff Category & Care Group	CHO 1	CHO 2	CHO 3	CHO 4	CHO 5	HSE	S38	CHO 6	CHO 7	CHO 8	HSE	S38	CHO 9	Other Comm.	Total absence	Certified absence	Self-certified absence	COVID-19 absence
Older People: 2020 overall	9.6%	6.6%	10.4%	6.4%	7.7%	13.6%	7.5%	9.9%	15.6%	11.1%	12.9%	12.8%	12.8%	6.2%	9.5%	6.1%	0.5%	3.0%
Medical & Dental	3.3%	0.3%	0.3%	0.7%	0.0%	0.0%	0.0%	0.0%	2.4%	1.3%	3.0%	14.6%	7.1%		2.5%	0.6%	0.1%	1.8%
Nursing & Midwifery	10.1%	6.7%	10.1%	7.0%	7.3%	13.0%	9.0%	10.8%	14.0%	9.8%	15.7%	15.0%	15.5%		9.6%	5.1%	0.5%	4.0%
Health & Social Care Professionals	4.2%	6.2%	11.0%	1.8%	2.2%	3.4%	4.1%	4.0%	7.5%	5.2%	4.9%	8.4%	6.0%	3.4%	5.1%	3.0%	0.2%	1.9%
Management & Administrative	5.4%	3.6%	5.3%	2.7%	7.9%	7.2%	10.5%	9.9%	12.7%	6.5%	2.5%	1.6%	2.3%	6.2%	5.5%	4.1%	0.2%	1.1%
General Support	9.7%	7.2%	12.9%	5.1%	9.3%	12.0%	5.9%	8.2%	20.2%	2.9%	11.5%	9.7%	10.9%		10.0%	7.5%	0.3%	2.1%
Patient & Client Care	10.3%	7.0%	11.3%	7.1%	8.4%	15.8%	7.3%	11.0%	16.4%	13.5%	15.3%	14.2%	15.1%	29.3%	10.5%	7.5%	0.3%	2.1%
Total May:	12.1%	6.5%	9.3%	8.8%	7.5%	14.3%	9.3%	11.3%	17.3%	11.8%	15.9%	13.7%	15.4%	6.0%	10.8%	6.1%	0.3%	4.4%
Medical & Dental	4.3%	1.7%	0.0%	0.0%	0.0%	0.0%	0.0%	0.0%	0.0%	2.3%	5.7%	15.0%	8.9%		3.0%	0.8%	0.1%	2.1%
Nursing & Midwifery	12.4%	7.0%	9.7%	10.5%	8.1%	13.1%	11.6%	12.3%	13.7%	10.0%	20.3%	13.9%	18.9%		11.2%	5.1%	0.4%	5.8%
Health & Social Care Professionals	0.0%	5.5%	10.7%	1.1%	1.7%	2.1%	5.9%	5.4%	7.3%	6.1%	8.0%	7.9%	8.0%		5.3%	3.0%	0.2%	2.2%
Management & Administrative	5.2%	2.9%	4.7%	3.4%	8.9%	11.8%	7.7%	8.6%	14.7%	5.6%	1.8%	3.7%	2.3%	6.0%	5.6%	4.5%	0.1%	1.0%
General Support	10.2%	6.4%	12.0%	4.6%	9.2%	16.1%	9.3%	11.7%	24.9%	1.5%	13.6%	11.3%	12.9%		11.2%	7.7%	0.2%	3.2%
Patient & Client Care	14.0%	6.9%	9.2%	9.4%	6.9%	15.8%	8.7%	11.7%	19.4%	14.9%	17.4%	20.6%	18.0%	0.0%	11.9%	7.2%	0.4%	4.4%
Total April:	14.8%	8.6%	11.6%	9.9%	9.8%	24.3%	10.5%	16.5%	25.2%	14.5%	25.4%	16.3%	23.1%	4.9%	14.2%	6.2%	0.2%	7.7%
Medical & Dental	3.9%	0.0%	0.0%	2.6%	0.0%	0.0%	0.0%	0.0%	9.5%	1.5%	5.5%	22.5%	10.5%		4.1%	0.5%	0.1%	3.4%
Nursing & Midwifery	17.3%	10.4%	11.8%	11.9%	10.0%	26.9%	15.9%	21.3%	25.3%	14.0%	34.6%	26.6%	32.8%		16.5%	5.3%	0.2%	11.0%
Health & Social Care Professionals	3.7%	7.6%	12.2%	2.3%	3.9%	0.0%	6.5%	5.6%	10.9%	8.1%	7.5%	2.9%	6.2%		6.2%	2.6%	0.1%	3.6%
Management & Administrative	7.3%	4.5%	4.2%	7.2%	10.9%	17.0%	11.7%	12.8%	20.5%	6.6%	3.7%	3.2%	3.6%	4.9%	7.5%	4.5%	0.1%	2.8%
General Support	14.1%	8.0%	14.1%	5.6%	8.7%	16.6%	7.7%	11.4%	31.1%	5.4%	16.2%	6.9%	13.2%		12.9%	8.1%	0.1%	4.7%
Patient & Client Care	15.4%	8.2%	12.5%	10.5%	10.8%	26.2%	8.3%	16.7%	25.1%	17.2%	30.7%	18.7%	27.9%	0.0%	14.8%	7.3%	0.3%	7.3%
Total March:	8.1%	6.8%	11.5%	5.0%	7.5%	12.7%	7.4%	9.5%	12.4%	11.0%	9.2%	21.2%	12.8%	10.1%	8.8%	6.0%	0.4%	2.4%
Medical & Dental	4.4%	0.0%	0.0%	0.0%	0.0%	0.0%	0.0%	0.0%	2.4%	2.9%	1.8%	30.2%	13.0%		4.1%	1.2%		2.9%
Nursing & Midwifery	8.2%	7.0%	11.5%	5.2%	6.4%	12.2%	8.7%	10.3%	10.7%	10.9%	8.5%	24.7%	13.0%		8.7%	5.2%	0.4%	3.1%
Health & Social Care Professionals	6.0%	8.7%	13.9%	1.8%	1.1%	8.6%	4.2%	4.7%	10.0%	6.2%	4.7%	21.6%	10.7%		7.0%	3.3%	0.2%	3.6%
Management & Administrative	5.8%	5.0%	6.5%	1.5%	7.4%	0.7%	11.2%	9.4%	14.2%	8.5%	2.7%	0.0%	2.0%	10.2%	6.2%	4.3%	0.3%	1.7%
General Support	10.7%	7.7%	11.5%	5.4%	9.7%	10.1%	7.2%	8.4%	14.3%	4.9%	10.5%	16.8%	12.7%		9.8%	7.2%	0.3%	2.3%
Patient & Client Care	8.0%	6.7%	12.6%	5.7%	8.8%	15.1%	6.5%	10.1%	13.0%	12.3%	12.8%	22.9%	15.7%	0.0%	9.5%	7.1%	0.4%	2.0%
Total February:	6.1%	5.3%	9.4%	4.5%	6.3%	8.0%	5.3%	6.3%	8.7%	8.7%	6.1%	4.8%	5.8%	5.2%	6.4%	5.8%	0.7%	
Medical & Dental	2.9%	0.0%	1.6%	0.0%	0.0%	0.0%	0.0%	0.0%	0.0%	0.0%	0.4%	0.0%	0.3%		0.6%	0.5%	0.2%	
Nursing & Midwifery	6.3%	4.5%	8.7%	5.2%	4.6%	5.4%	5.2%	5.3%	6.0%	6.9%	6.5%	3.2%	5.7%		5.8%	5.0%	0.7%	
Health & Social Care Professionals	7.0%	3.4%	8.9%	2.5%	1.6%	5.9%	2.5%	2.8%	4.2%	3.6%	1.8%	5.5%	3.0%	0.0%	3.7%	3.4%	0.4%	
Management & Administrative	3.8%	2.8%	5.9%	1.8%	3.6%	0.6%	9.9%	8.1%	6.1%	4.7%	1.1%	0.0%	0.8%	5.2%	3.8%	3.5%	0.4%	
General Support	7.0%	6.4%	12.1%	5.0%	9.7%	11.3%	1.2%	5.1%	11.9%	0.4%	7.8%	7.1%	7.5%		7.5%	7.0%	0.5%	
Patient & Client Care	6.2%	6.2%	10.4%	4.5%	7.7%	10.0%	7.2%	8.3%	9.8%	11.2%	7.7%	4.3%	6.8%	50.0%	7.5%	6.8%	0.7%	
Total January:	6.4%	5.8%	10.2%	4.4%	7.4%	6.9%	5.1%	5.8%	10.5%	9.1%	6.4%	4.0%	5.9%	5.0%	6.8%	6.1%	0.7%	
Medical & Dental	0.9%	0.0%	0.0%	0.0%	0.0%	0.0%	0.0%	0.0%	0.0%	0.0%	0.8%	0.0%	0.5%		0.3%	0.1%	0.1%	
Nursing & Midwifery	6.0%	4.6%	8.9%	4.4%	7.1%	5.1%	4.1%	4.6%	7.1%	6.6%	6.6%	4.0%	6.0%		5.8%	5.0%	0.8%	
Health & Social Care Professionals	4.8%	5.7%	9.0%	1.0%	2.6%	2.7%	1.7%	1.9%	5.1%	1.6%	1.6%	1.0%	1.4%	4.5%	3.2%	2.8%	0.4%	
Management & Administrative	4.8%	2.6%	5.3%	1.4%	8.4%	3.8%	12.3%	10.5%	6.1%	6.9%	3.2%	1.3%	2.7%	4.6%	4.4%	4.1%	0.4%	
General Support	6.3%	7.6%	14.7%	4.5%	9.4%	5.1%	3.9%	4.3%	14.7%	1.8%	9.0%	5.7%	7.9%		8.2%	7.5%	0.6%	
Patient & Client Care	7.3%	6.9%	11.8%	5.3%	7.7%	9.8%	6.1%	7.6%	12.8%	11.7%	7.3%	3.3%	6.4%	100.0%	8.3%	7.5%	0.7%	
Older People: 2019 overall	6.1%	5.1%	7.8%	4.3%	5.7%	6.4%	4.3%	5.1%	8.2%	7.9%	5.8%	4.2%	5.4%		5.9%	5.4%	0.6%	
Medical & Dental	0.0%	0.0%	2.7%	0.6%	2.3%	0.0%	2.2%	1.6%	2.4%	0.1%	0.8%	1.0%	0.9%		1.0%	0.9%	0.1%	
Nursing & Midwifery	5.5%	5.0%	8.1%	4.1%	5.5%	2.8%	3.5%	3.2%	6.0%	7.3%	5.6%	2.6%	4.8%		5.4%	4.7%	0.6%	
Health & Social Care Professionals	5.7%	2.1%	4.8%	1.7%	2.2%	3.8%	2.4%	2.6%	4.3%	2.1%	3.6%	3.9%	3.7%		3.2%	2.8%	0.4%	
Management & Administrative	4.6%	2.2%	4.3%	2.8%	4.0%	5.8%	4.1%	4.4%	5.7%	4.8%	3.7%	1.9%	3.3%		3.8%	3.5%	0.3%	
General Support	6.1%	4.3%	10.9%	4.4%	6.3%	6.5%	3.5%	4.7%	10.5%	4.7%	6.4%	4.9%	5.9%		6.4%	5.9%	0.4%	
Patient & Client Care	7.0%	5.9%	8.1%	4.8%	6.4%	9.9%	5.8%	7.4%	9.9%	9.3%	7.5%	4.9%	6.8%		7.0%	5.9%	0.4%	

Older People Absence Rate - by Staff Category & S38 Agency	Incorporated Orthopaedic Hospital	Leopardstown Park Hospital	Royal Hospital, Donnybrook, Dublin	Total absence	Certified absence	Self-certified absence	COVID-19 absence
Older People: S38 2020 overall	12.8%	7.6%	7.4%	9.1%	4.4%	0.3%	4.4%
Medical & Dental	14.6%	0.0%	0.0%	10.3%	1.0%		9.3%
Nursing & Midwifery	15.0%	11.0%	7.7%	10.9%	4.1%	0.3%	6.5%
Health & Social Care Professionals	8.4%	8.3%	3.0%	5.7%	2.3%	0.3%	3.1%
Management & Administrative	1.6%	8.5%	13.3%	7.7%	5.4%	0.2%	2.2%
General Support	9.7%	5.3%	6.6%	7.3%	4.4%	0.3%	2.6%
Patient & Client Care	14.2%	6.1%	8.6%	9.2%	4.9%	0.4%	3.8%
Total May:	13.7%	8.3%	10.1%	10.6%	4.7%	0.2%	5.8%
Medical & Dental	15.0%	0.0%	0.0%	10.4%			10.4%
Nursing & Midwifery	13.9%	10.9%	12.1%	12.3%	4.0%	0.2%	8.2%
Health & Social Care Professionals	7.9%	11.1%	4.4%	6.6%	3.1%	0.4%	3.0%
Management & Administrative	3.7%	9.5%	5.3%	6.5%	4.8%		1.7%
General Support	11.3%	3.9%	14.6%	10.0%	5.6%	0.0%	4.4%
Patient & Client Care	20.6%	8.0%	9.3%	11.5%	5.5%	0.3%	5.7%
Total April:	16.3%	10.1%	10.9%	12.4%	4.5%	0.1%	7.8%
Medical & Dental	22.5%	0.0%	0.0%	15.7%			15.7%
Nursing & Midwifery	26.6%	16.4%	15.5%	19.4%	5.3%	0.2%	14.0%
Health & Social Care Professionals	2.9%	12.8%	4.8%	5.2%	2.3%	0.1%	2.8%
Management & Administrative	3.2%	7.7%	17.7%	8.9%	3.3%	0.2%	5.3%
General Support	6.9%	9.2%	6.1%	7.4%	4.2%	0.1%	3.2%
Patient & Client Care	18.7%	6.6%	10.1%	11.2%	5.1%	0.1%	6.0%
Total March:	21.2%	9.5%	5.8%	12.1%	3.8%	0.3%	8.0%
Medical & Dental	30.2%	0.0%	0.0%	22.6%	4.2%		18.4%
Nursing & Midwifery	24.7%	14.9%	4.7%	14.2%	3.7%	0.1%	10.4%
Health & Social Care Professionals	21.6%	12.6%	2.2%	11.0%	1.9%	0.2%	8.8%
Management & Administrative	0.0%	7.4%	15.9%	7.8%	3.7%	0.2%	4.0%
General Support	16.8%	8.8%	5.7%	10.7%	5.2%	0.5%	5.0%
Patient & Client Care	22.9%	6.3%	6.8%	11.5%	3.7%	0.5%	7.3%
Total February:	4.8%	4.5%	6.0%	5.2%	4.7%	0.5%	
Medical & Dental	0.0%	0.0%	0.0%	0.0%			
Nursing & Midwifery	3.2%	6.6%	4.2%	4.6%	4.1%	0.4%	
Health & Social Care Professionals	5.5%	4.8%	1.8%	3.5%	3.1%	0.4%	
Management & Administrative	0.0%	6.4%	14.5%	6.7%	6.5%	0.3%	
General Support	7.1%	0.4%	2.0%	3.3%	3.0%	0.3%	
Patient & Client Care	4.3%	4.4%	10.1%	6.4%	5.7%	0.7%	
Total January:	4.0%	5.6%	4.7%	4.8%	4.3%	0.5%	
Medical & Dental	0.0%	0.0%	0.0%	0.0%			
Nursing & Midwifery	4.0%	6.3%	2.8%	4.1%	3.5%	0.6%	
Health & Social Care Professionals	1.0%	1.4%	1.8%	1.5%	1.2%	0.3%	
Management & Administrative	1.3%	11.5%	13.2%	8.9%	8.7%	0.1%	
General Support	5.7%	4.0%	3.8%	4.5%	4.0%	0.5%	
Patient & Client Care	3.3%	5.2%	7.0%	5.4%	4.8%	0.6%	
Older People: S38 2019 overall	4.2%	4.3%	4.3%	4.2%	3.6%	0.7%	
Medical & Dental	1.0%	6.9%	0.0%	1.4%	1.2%	0.2%	
Nursing & Midwifery	2.6%	4.3%	2.9%	3.2%	2.5%	0.7%	
Health & Social Care Professionals	3.9%	2.8%	2.4%	2.9%	2.4%	0.5%	
Management & Administrative	1.9%	3.0%	5.6%	3.5%	3.0%	0.5%	
General Support	4.9%	2.5%	4.6%	4.0%	3.5%	0.5%	
Patient & Client Care	4.9%	5.5%	6.2%	5.6%	4.8%	0.7%	