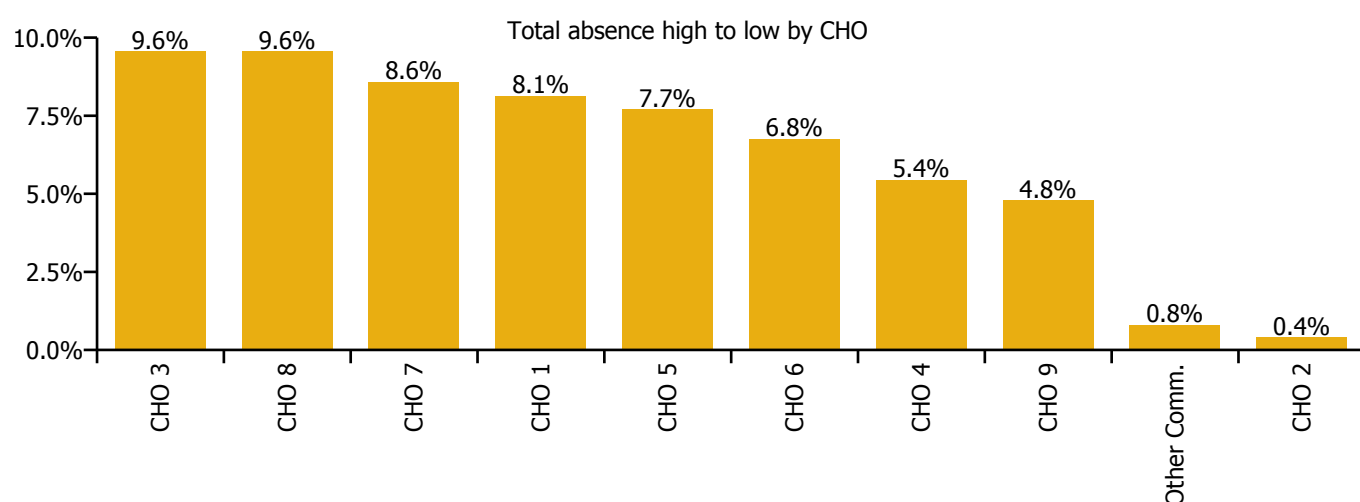
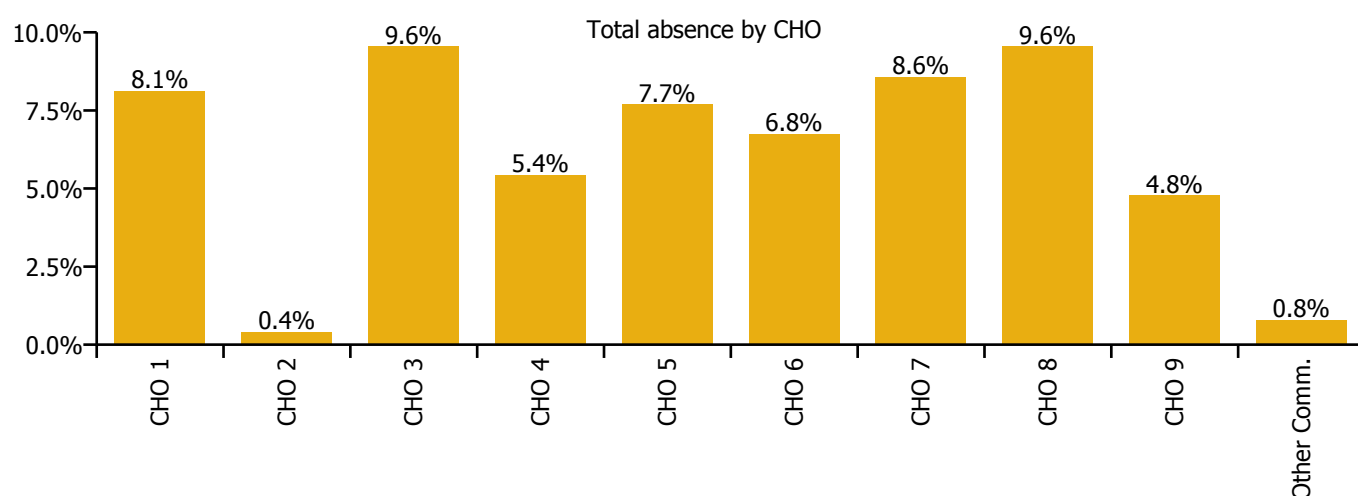


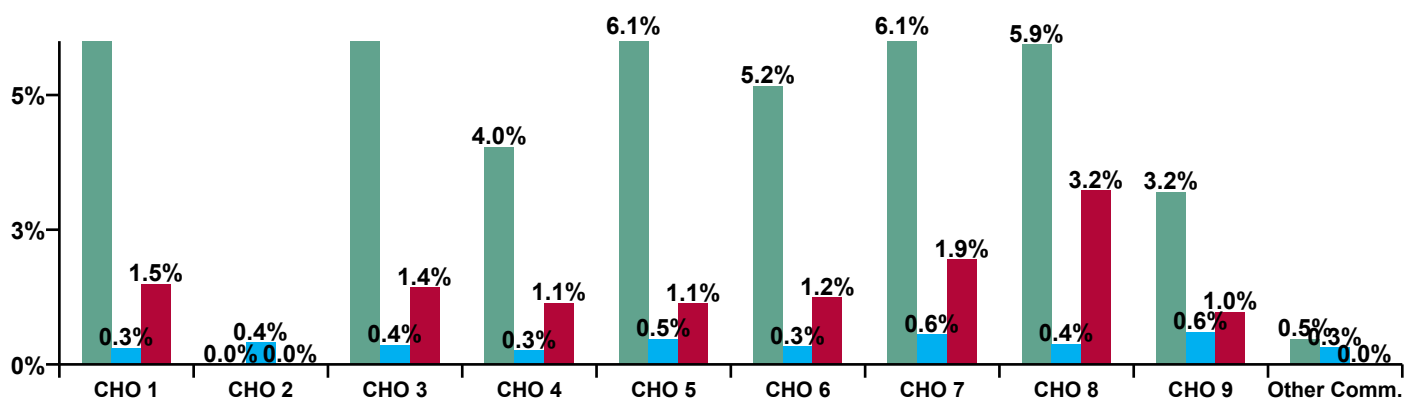
November 2020

Older People Absence Rate - by Staff Category: Nov 2020	Certified absence	Self-certified absence	COVID-19 absence	Total absence rate	Certified	Self-certified	COVID-19
Older People	5.4%	0.4%	1.6%	7.4%	73.6%	5.3%	21.0%
Medical & Dental	1.2%	0.0%	0.0%	1.2%	100.0%	0.0%	0.0%
Nursing & Midwifery	5.2%	0.5%	1.5%	7.2%	72.1%	6.5%	21.5%
Health & Social Care Professionals	3.0%	0.1%	0.5%	3.6%	83.2%	3.3%	13.5%
Management & Administrative	4.3%	0.2%	0.5%	4.9%	86.8%	3.3%	9.9%
General Support	5.5%	0.3%	1.4%	7.2%	75.8%	4.3%	19.9%
Patient & Client Care	6.2%	0.4%	1.9%	8.6%	72.3%	5.1%	22.6%



Older People Absence Rate - by Care Group: Nov 2020	Certified absence	Self-certified absence	COVID-19 absence	Total absence rate	Certified	Self-certified	COVID-19
Older People	5.4%	0.4%	1.6%	7.4%	73.6%	5.3%	21.0%
CHO 1	6.3%	0.3%	1.5%	8.1%	77.8%	3.8%	18.4%
CHO 2		0.4%		0.4%	0.0%	100.0%	0.0%
CHO 3	7.8%	0.4%	1.4%	9.6%	81.3%	3.8%	14.9%
CHO 4	4.0%	0.3%	1.1%	5.4%	74.2%	4.8%	21.0%
CHO 5	6.1%	0.5%	1.1%	7.7%	79.1%	6.2%	14.8%
Health Service Executive	4.2%	0.4%	1.9%	6.6%	64.2%	6.4%	29.4%
Section 38 Voluntary Agencies	5.8%	0.3%	0.8%	6.9%	84.6%	4.0%	11.4%
CHO 6	5.2%	0.3%	1.2%	6.8%	76.6%	5.0%	18.5%
CHO 7	6.1%	0.6%	1.9%	8.6%	70.8%	6.5%	22.7%
CHO 8	5.9%	0.4%	3.2%	9.6%	62.2%	4.0%	33.8%
Health Service Executive	3.4%	0.8%	1.3%	5.4%	61.7%	13.9%	24.4%
Section 38 Voluntary Agencies	2.8%	0.2%	0.1%	3.2%	89.0%	7.3%	3.7%
CHO 9	3.2%	0.6%	1.0%	4.8%	66.9%	12.7%	20.5%
Other Community Services	0.5%	0.3%		0.8%	59.7%	40.3%	0.0%

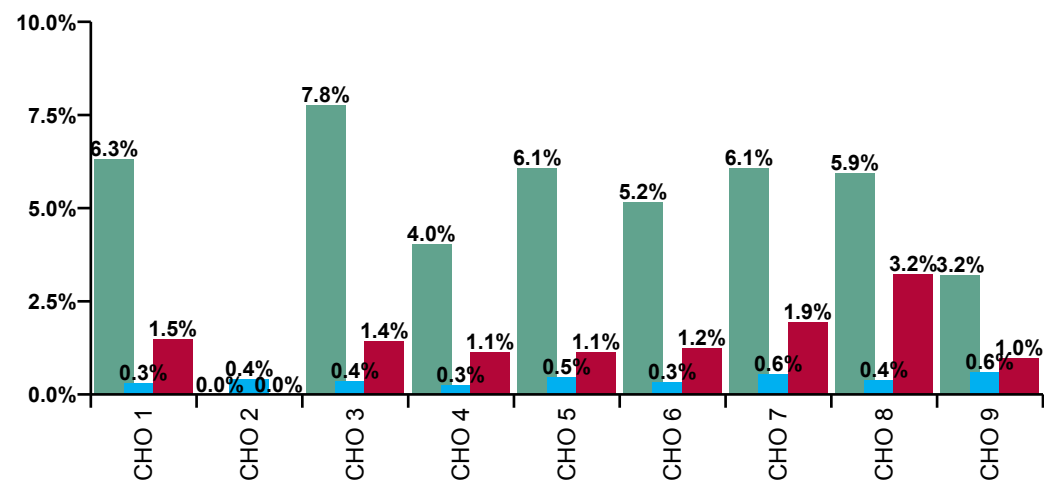
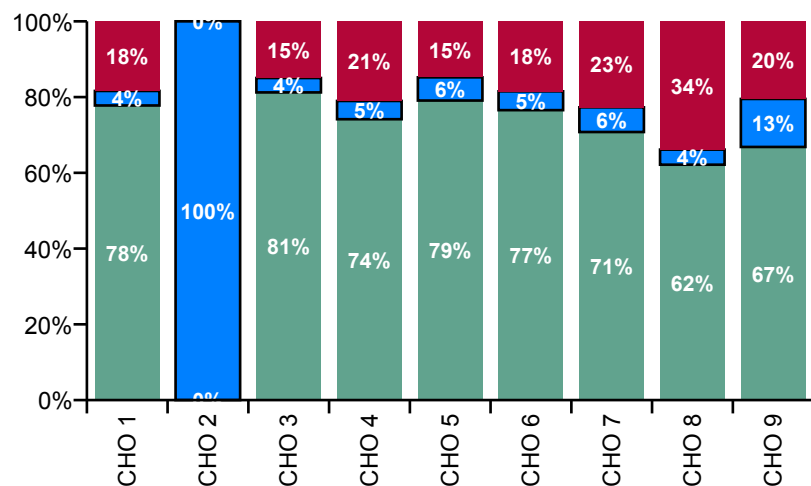
Certified, self-certified & COVID-19: Nov 2020



Legend

Certified absence
Self-certified absence
COVID-19 absence

Older People Overall Absence Rate - by Care Group & Staff Category: Nov 2020	Medical & Dental	Nursing & Midwifery	Health & Social Care Professionals	Management & Administrative	General Support	Patient & Client Care	Certified absence	Self-certified absence	COVID-19 absence	Total absence
Older People	1.2%	7.2%	3.6%	4.9%	7.2%	8.6%	5.4%	0.4%	1.6%	7.4%
CHO 1	0.0%	7.3%	5.7%	6.9%	8.1%	9.3%	6.3%	0.3%	1.5%	8.1%
CHO 2				0.5%		0.0%		0.4%		0.4%
CHO 3	0.0%	10.6%	10.6%	5.1%	9.9%	9.6%	7.8%	0.4%	1.4%	9.6%
CHO 4	0.0%	5.0%	0.6%	2.4%	5.7%	6.7%	4.0%	0.3%	1.1%	5.4%
CHO 5	0.0%	8.2%	2.2%	7.3%	5.9%	8.4%	6.1%	0.5%	1.1%	7.7%
Health Service Executive	0.0%	5.6%	0.3%	11.1%	4.8%	7.8%	4.2%	0.4%	1.9%	6.6%
Section 38 Voluntary Agencies	0.0%	9.1%	2.3%	12.6%	6.3%	5.4%	5.8%	0.3%	0.8%	6.9%
CHO 6	0.0%	7.5%	1.8%	11.9%	5.8%	6.5%	5.2%	0.3%	1.2%	6.8%
CHO 7	0.0%	6.0%	9.3%	5.7%	10.5%	11.0%	6.1%	0.6%	1.9%	8.6%
CHO 8	0.0%	9.5%	4.8%	3.6%	6.6%	11.1%	5.9%	0.4%	3.2%	9.6%
Health Service Executive	8.8%	6.2%	0.9%	4.0%	5.4%	5.9%	3.4%	0.8%	1.3%	5.4%
Section 38 Voluntary Agencies	0.0%	1.6%	2.1%	3.4%	6.2%	4.0%	2.8%	0.2%	0.1%	3.2%
CHO 9	6.0%	5.0%	1.4%	3.9%	5.7%	5.5%	3.2%	0.6%	1.0%	4.8%
Other Community Services				0.8%		0.0%	0.5%	0.3%		0.8%



COVID-19 absence

Social Care Absence Rate - by Care Group, Staff Category & Absence type: Nov 2020

CHO 1 by Staff Category Nov 2020	Certified absence	Self-certified absence	COVID-19 absence	Total absence	Certified	Self-certified	COVID-19
Older People	6.3%	0.3%	1.5%	8.1%	77.8%	3.8%	18.4%
Medical & Dental							
Nursing & Midwifery	6.0%	0.4%	0.9%	7.3%	82.5%	5.4%	12.1%
Health & Social Care Professionals	5.7%			5.7%	100.0%	0.0%	0.0%
Management & Administrative	6.1%	0.2%	0.6%	6.9%	88.4%	3.0%	8.7%
General Support	7.0%	0.1%	1.0%	8.1%	86.1%	1.6%	12.3%
Patient & Client Care	6.6%	0.3%	2.3%	9.3%	71.7%	3.7%	24.6%

CHO 2 by Staff Category Nov 2020	Certified absence	Self-certified absence	COVID-19 absence	Total absence	Certified	Self-certified	COVID-19
Older People	0.0%	0.4%	0.0%	0.4%	0.0%	100.0%	0.0%
Medical & Dental							
Nursing & Midwifery							#DIV/0
Health & Social Care Professionals	#DIV/0	#DIV/0	#DIV/0				
Management & Administrative		0.5%		0.5%	0.0%	100.0%	0.0%
General Support	#DIV/0	#DIV/0	#DIV/0				
Patient & Client Care					#DIV/0	#DIV/0	#DIV/0

CHO 3 by Staff Category Nov 2020	Certified absence	Self-certified absence	COVID-19 absence	Total absence	Certified	Self-certified	COVID-19
Older People	7.8%	0.4%	1.4%	9.6%	81.3%	3.8%	14.9%
Medical & Dental							
Nursing & Midwifery	8.7%	0.5%	1.4%	10.6%	82.3%	4.4%	13.3%
Health & Social Care Professionals	8.1%	0.1%	2.4%	10.6%	76.0%	1.4%	22.7%
Management & Administrative	2.5%	0.3%	2.2%	5.1%	50.2%	5.5%	44.2%
General Support	9.6%	0.3%		9.9%	96.8%	3.2%	0.0%
Patient & Client Care	7.7%	0.3%	1.6%	9.6%	80.3%	3.4%	16.3%

CHO 4 by Staff Category Nov 2020	Certified absence	Self-certified absence	COVID-19 absence	Total absence	Certified	Self-certified	COVID-19
Older People	4.0%	0.3%	1.1%	5.4%	74.2%	4.8%	21.0%
Medical & Dental							
Nursing & Midwifery	3.8%	0.4%	0.9%	5.0%	74.9%	8.2%	16.9%
Health & Social Care Professionals			0.6%	0.6%	0.0%	0.0%	100.0%
Management & Administrative	2.0%	0.0%	0.3%	2.4%	86.8%	1.8%	11.5%
General Support	5.0%	0.1%	0.7%	5.7%	86.7%	1.2%	12.1%
Patient & Client Care	4.8%	0.2%	1.6%	6.7%	71.7%	3.6%	24.7%

CHO 5 by Staff Category Nov 2020	Certified absence	Self-certified absence	COVID-19 absence	Total absence	Certified	Self-certified	COVID-19
Older People	6.1%	0.5%	1.1%	7.7%	79.1%	6.2%	14.8%
Medical & Dental							
Nursing & Midwifery	6.5%	0.5%	1.2%	8.2%	79.5%	5.9%	14.6%
Health & Social Care Professionals	2.1%	0.1%		2.2%	94.4%	5.6%	0.0%
Management & Administrative	6.7%	0.5%	0.2%	7.3%	90.8%	6.6%	2.6%
General Support	4.8%	0.2%	0.9%	5.9%	80.4%	4.2%	15.4%
Patient & Client Care	6.4%	0.6%	1.4%	8.4%	77.1%	6.6%	16.3%

CHO 6 by Staff Category Nov 2020	Certified absence	Self-certified absence	COVID-19 absence	Total absence	Certified	Self-certified	COVID-19
Older People	5.2%	0.3%	1.2%	6.8%	76.6%	5.0%	18.5%
Medical & Dental							
Nursing & Midwifery	5.4%	0.4%	1.7%	7.5%	71.9%	5.8%	22.3%
Health & Social Care Professionals	1.1%	0.3%	0.5%	1.8%	58.4%	15.9%	25.7%
Management & Administrative	11.6%	0.0%	0.3%	11.9%	96.8%	0.4%	2.8%
General Support	4.3%	0.4%	1.2%	5.8%	73.9%	6.1%	20.0%
Patient & Client Care	4.9%	0.3%	1.3%	6.5%	75.7%	4.8%	19.5%

CHO 7 by Staff Category Nov 2020	Certified absence	Self-certified absence	COVID-19 absence	Total absence	Certified	Self-certified	COVID-19
Older People	6.1%	0.6%	1.9%	8.6%	70.8%	6.5%	22.7%
Medical & Dental							
Nursing & Midwifery	3.6%	0.6%	1.7%	6.0%	61.0%	10.4%	28.5%
Health & Social Care Professionals	9.3%			9.3%	100.0%	0.0%	0.0%
Management & Administrative	5.5%		0.2%	5.7%	96.7%	0.0%	3.3%
General Support	4.6%	0.4%	5.6%	10.5%	43.5%	3.8%	52.7%
Patient & Client Care	8.7%	0.7%	1.6%	11.0%	79.3%	6.3%	14.4%

CHO 8 by Staff Category Nov 2020	Certified absence	Self-certified absence	COVID-19 absence	Total absence	Certified	Self-certified	COVID-19
Older People	5.9%	0.4%	3.2%	9.6%	62.2%	4.0%	33.8%
Medical & Dental							
Nursing & Midwifery	5.6%	0.4%	3.6%	9.5%	58.2%	3.9%	37.9%
Health & Social Care Professionals	4.6%	0.2%		4.8%	96.4%	3.6%	0.0%
Management & Administrative	3.0%	0.2%	0.5%	3.6%	82.5%	4.2%	13.3%
General Support	4.1%	0.3%	2.2%	6.6%	62.5%	4.6%	32.9%
Patient & Client Care	6.9%	0.4%	3.7%	11.1%	62.4%	4.0%	33.6%

CHO 9 by Staff Category Nov 2020	Certified absence	Self-certified absence	COVID-19 absence	Total absence	Certified	Self-certified	COVID-19
Older People	3.2%	0.6%	1.0%	4.8%	66.9%	12.7%	20.5%
Medical & Dental	6.0%			6.0%	100.0%	0.0%	0.0%
Nursing & Midwifery	2.7%	0.6%	1.7%	5.0%	53.6%	12.5%	33.9%
Health & Social Care Professionals	0.9%	0.1%	0.4%	1.4%	65.9%	7.6%	26.5%
Management & Administrative	3.9%			3.9%	100.0%	0.0%	0.0%
General Support	4.2%	0.7%	0.8%	5.7%	74.7%	11.6%	13.7%
Patient & Client Care	3.8%	0.9%	0.8%	5.5%	68.7%	17.2%	14.1%

Other Community Services by Staff Category Nov 2020	Certified absence	Self-certified absence	COVID-19 absence	Total absence	Certified	Self-certified	COVID-19
Older People	0.5%	0.3%	0.0%	0.8%	59.7%	40.3%	0.0%
Medical & Dental							
Nursing & Midwifery							#DIV/0
Health & Social Care Professionals	#DIV/0	#DIV/0	#DIV/0				
Management & Administrative	0.5%	0.3%		0.8%	59.7%	40.3%	0.0%
General Support	#DIV/0	#DIV/0	#DIV/0				
Patient & Client Care					#DIV/0	#DIV/0	#DIV/0

Older People Absence Rate - by Staff Category & Care Group	CHO 1	CHO 2	CHO 3	CHO 4	CHO 5	HSE	S38	CHO 6	CHO 7	CHO 8	HSE	S38	CHO 9	Other Comm.	Total absence	Certified absence	Self-certified absence	COVID-19 absence
Older People: 2020 overall	8.8%	5.1%	10.4%	5.9%	7.2%	10.8%	7.3%	8.7%	12.5%	10.2%	9.4%	8.0%	9.0%	4.8%	8.3%	5.8%	0.4%	2.1%
Medical & Dental	2.2%	0.2%	0.1%	0.3%	0.0%	0.0%	0.5%	0.4%	1.1%	0.6%	2.9%	8.3%	4.8%		1.6%	0.6%	0.0%	1.0%
Nursing & Midwifery	8.6%	5.5%	10.3%	6.1%	7.4%	10.0%	8.9%	9.4%	9.5%	8.8%	11.4%	8.0%	10.5%		8.2%	5.1%	0.5%	2.6%
Health & Social Care Professionals	3.8%	3.7%	9.8%	1.2%	2.2%	3.2%	3.6%	3.5%	5.6%	5.1%	3.5%	4.6%	3.9%	3.4%	4.0%	2.6%	0.2%	1.2%
Management & Administrative	5.7%	2.8%	6.1%	2.6%	7.5%	8.0%	7.7%	7.8%	11.1%	5.1%	3.3%	3.6%	3.4%	4.8%	5.1%	4.2%	0.2%	0.7%
General Support	10.1%	4.2%	12.9%	5.4%	8.2%	11.4%	7.3%	8.7%	16.5%	4.6%	7.9%	7.7%	7.9%		9.1%	6.9%	0.3%	1.9%
Patient & Client Care	9.6%	5.4%	11.0%	6.7%	7.5%	12.3%	6.8%	9.1%	14.6%	12.5%	11.1%	10.2%	10.9%	12.4%	9.3%	6.9%	0.3%	1.9%
Total November:	8.1%	0.4%	9.6%	5.4%	7.7%	6.6%	6.9%	6.8%	8.6%	9.6%	5.4%	3.2%	4.8%	0.8%	7.4%	5.4%	0.4%	1.6%
Medical & Dental	0.0%		0.0%	0.0%	0.0%	0.0%	0.0%	0.0%	0.0%	0.0%	8.8%	0.0%	6.0%		1.2%	1.2%		
Nursing & Midwifery	7.3%		10.6%	5.0%	8.2%	5.6%	9.1%	7.5%	6.0%	9.5%	6.2%	1.6%	5.0%		7.2%	5.2%	0.5%	1.5%
Health & Social Care Professionals	5.7%		10.6%	0.6%	2.2%	0.3%	2.3%	1.8%	9.3%	4.8%	0.9%	2.1%	1.4%		3.6%	3.0%	0.1%	0.5%
Management & Administrative	6.9%	0.5%	5.1%	2.4%	7.3%	11.1%	12.6%	11.9%	5.7%	3.6%	4.0%	3.4%	3.9%	0.8%	4.9%	4.3%	0.2%	0.5%
General Support	8.1%		9.9%	5.7%	5.9%	4.8%	6.3%	5.8%	10.5%	6.6%	5.4%	6.2%	5.7%		7.2%	5.5%	0.3%	1.4%
Patient & Client Care	9.3%	0.0%	9.6%	6.7%	8.4%	7.8%	5.4%	6.5%	11.0%	11.1%	5.9%	4.0%	5.5%	0.0%	8.6%	6.2%	0.4%	1.9%
Total October:	9.7%	4.7%	10.4%	5.5%	7.8%	8.4%	6.9%	7.5%	10.5%	10.7%	5.7%	2.7%	4.8%	2.0%	7.7%	5.5%	0.4%	1.8%
Medical & Dental	0.0%	0.0%	0.0%	0.0%	0.0%	0.0%	0.0%	0.0%	0.0%	0.0%	0.7%	0.0%	0.5%		0.1%			0.1%
Nursing & Midwifery	8.6%	5.6%	11.0%	5.0%	8.4%	7.3%	9.0%	8.2%	7.2%	8.5%	5.8%	1.3%	4.6%		7.3%	4.9%	0.5%	1.9%
Health & Social Care Professionals	6.6%	1.1%	8.6%	1.4%	3.8%	0.7%	2.5%	2.0%	4.7%	3.2%	0.7%	1.4%	1.0%		2.9%	1.9%	0.2%	0.8%
Management & Administrative	5.9%	2.5%	6.0%	2.9%	6.8%	5.7%	10.3%	8.4%	10.2%	5.2%	7.0%	7.1%	7.0%	2.0%	5.3%	4.7%	0.1%	0.5%
General Support	12.7%	2.5%	12.3%	7.2%	4.9%	7.6%	8.6%	8.3%	14.6%	8.6%	5.3%	0.0%	3.5%		8.4%	5.7%	0.3%	2.4%
Patient & Client Care	10.9%	4.9%	10.5%	6.4%	8.6%	11.0%	4.8%	7.5%	12.7%	13.6%	6.9%	7.1%	7.0%	0.0%	8.9%	6.4%	0.5%	2.0%
Total September:	9.2%	4.2%	12.8%	5.4%	5.2%	8.2%	7.9%	8.0%	10.9%	10.1%	6.7%	4.7%	6.1%	2.8%	7.7%	5.9%	0.5%	1.4%
Medical & Dental	0.0%	0.0%	0.0%	0.0%	0.0%	0.0%	5.2%	4.0%	0.0%	0.0%	0.0%	2.3%	0.7%		0.3%			0.3%
Nursing & Midwifery	8.2%	4.9%	12.2%	5.1%	7.7%	10.0%	8.9%	9.4%	8.0%	8.6%	8.0%	2.1%	6.3%		7.6%	5.6%	0.6%	1.4%
Health & Social Care Professionals	5.7%	2.1%	9.2%	0.6%	4.7%	6.9%	3.1%	4.1%	1.1%	3.2%	3.8%	4.4%	4.0%		3.9%	2.7%	0.3%	0.9%
Management & Administrative	6.5%	1.8%	10.7%	2.0%	9.6%	5.0%	2.4%	3.5%	10.2%	5.4%	2.8%	6.5%	3.7%	2.9%	5.4%	4.6%	0.2%	0.6%
General Support	11.9%	1.0%	15.8%	5.4%	5.1%	11.6%	12.3%	12.1%	11.8%	8.5%	4.5%	8.7%	6.0%		9.0%	7.1%	0.3%	1.5%
Patient & Client Care	10.1%	4.5%	13.7%	6.5%	3.9%	6.4%	7.5%	7.0%	14.2%	12.3%	8.5%	5.9%	7.9%	0.0%	8.5%	6.5%	0.5%	1.4%
Total August:	7.8%	3.3%	10.6%	6.1%	7.4%	8.2%	7.5%	7.8%	10.2%	8.7%	6.7%	5.6%	6.4%	4.1%	7.3%	5.8%	0.4%	1.1%
Medical & Dental	0.0%	0.0%	0.0%	0.0%	0.0%	0.0%	0.0%	0.0%	0.0%	0.0%	0.0%	0.0%	0.0%		0.0%			
Nursing & Midwifery	6.5%	3.9%	9.2%	5.6%	6.8%	5.2%	9.5%	7.6%	7.2%	8.7%	4.7%	4.7%	7.7%		6.6%	4.9%	0.5%	1.1%
Health & Social Care Professionals	0.3%	0.7%	12.0%	0.0%	2.4%	7.3%	1.9%	3.1%	3.0%	7.9%	2.8%	1.7%	2.4%		3.1%	2.6%	0.1%	0.4%
Management & Administrative	5.9%	2.6%	9.0%	3.5%	10.6%	10.8%	1.9%	5.5%	13.6%	2.7%	3.2%	6.6%	4.1%	4.1%	5.3%	5.1%	0.1%	0.2%
General Support	10.4%	0.5%	14.3%	6.2%	9.0%	13.5%	10.1%	11.2%	13.3%	7.8%	4.8%	8.4%	6.1%		9.0%	7.3%	0.3%	1.4%
Patient & Client Care	8.8%	3.6%	11.2%	7.4%	7.8%	9.2%	7.1%	8.0%	13.3%	10.5%	7.5%	6.6%	7.3%	0.0%	8.4%	6.6%	0.4%	1.3%
Total July:	7.2%	3.3%	10.4%	4.7%	6.3%	9.6%	6.3%	7.7%	10.2%	8.5%	6.5%	4.0%	5.9%	3.5%	6.7%	5.2%	0.4%	1.1%
Medical & Dental	3.1%	0.0%	0.0%	0.0%	0.0%	0.0%	0.0%	0.0%	0.0%	0.0%	1.3%	0.0%	0.8%		0.7%	0.7%		
Nursing & Midwifery	5.7%	4.0%	10.4%	5.1%	6.4%	8.7%	8.7%	8.7%	5.8%	7.3%	8.3%	2.7%	7.0%		6.3%	4.9%	0.4%	1.0%
Health & Social Care Professionals	0.0%	0.6%	6.3%	0.5%	0.8%	0.9%	3.0%	2.4%	3.8%	4.4%	2.2%	1.9%	2.1%		2.2%	1.5%	0.2%	0.5%
Management & Administrative	5.8%	1.6%	4.6%	2.1%	2.7%	7.2%	2.2%	4.5%	10.4%	2.5%	4.9%	4.1%	4.7%	3.5%	3.8%	3.4%	0.2%	0.2%
General Support	10.8%	0.9%	14.2%	3.6%	8.3%	16.4%	6.8%	10.0%	14.9%	3.3%	3.0%	3.6%	3.2%		8.0%	6.2%	0.3%	1.5%
Patient & Client Care	8.0%	3.5%	11.0%	5.4%	6.7%	10.0%	5.8%	7.7%	13.2%	10.8%	7.9%	7.2%	7.7%	0.0%	7.8%	6.0%	0.4%	1.3%
Total June:	7.4%	3.2%	8.7%	5.5%	6.8%	9.4%	7.0%	7.9%	9.9%	9.1%	7.7%	6.5%	7.4%	8.4%	7.1%	5.3%	0.4%	1.4%
Medical & Dental	4.3%	0.0%	0.0%	0.0%	0.0%	0.0%	0.0%	0.0%	0.0%	0.0%	6.2%	13.3%	8.5%		2.7%	1.2%		1.4%
Nursing & Midwifery	7.4%	3.9%	8.8%	6.0%	7.7%	7.3%	8.2%	7.8%	4.9%	7.1%	9.6%	4.5%	8.4%		6.7%	4.6%	0.4%	1.8%
Health & Social Care Professionals	1.3%	1.9%	6.3%	0.0%	0.4%	2.5%	6.2%	5.6%	1.8%	8.0%	3.6%	1.1%	2.9%		3.0%	2.2%	0.2%	0.5%
Management & Administrative	4.1%	1.5%	5.2%	2.4%	6.7%	13.5%	2.4%	4.9%	11.3%	3.6%	1.6%	3.8%	2.2%	8.4%	4.5%	4.1%	0.1%	0.3%
General Support	9.5%	2.4%	10.9%	5.8%	8.0%	10.6%	6.5%	7.9%	15.8%	2.4%	6.1%	9.2%	7.1%		8.3%	6.4%	0.3%	1.6%
Patient & Client Care	7.7%	3.3%	9.1%	6.1%	6.4%	11.2%	7.3%	8.9%	13.1%	11.7%	8.8%	9.2%	8.9%	0.0%	8.0%	6.2%	0.4%	1.4%
Total May:	12.1%	6.5%	9.3%	8.8%	7.5%	14.3%	9.3%	11.3%	17.3%	11.8%	15.9%	13.7%	15.4%	6.0%	10.8%	6.1%	0.3%	4.4%
Medical & Dental	4.3%	1.7%	0.0%	0.0%	0.0%	0.0%	0.0%	0.0%	0.0%	2.3%	5.7%	15.0%	8.9%		3.0%	0.8%	0.1%	2.1%
Nursing & Midwifery	12.4%	7.0%	9.7%	10.5%	8.1%	13.1%	11.6%	12.3%	13.7%	10.0%	20.3%	13.9%	18.9%		11.2%	5.1%	0.4%	5.8%
Health & Social Care Professionals	0.0%	5.5%	10.7%	1.1%	1.7%	2.1%	5.9%	5.4%	7.3%	6.1%	8.0%	7.9%	8.0%		5.3%	3.0%	0.2%	2.2%
Management & Administrative	5.2%	2.9%	4.7%	3.4%	8.9%	11.8%	7.7%	8.6%	14.7%	5.6%	1.8%	3.7%	2.3%	6.0%	5.6%	4.5%	0.1%	1.0%
General Support	10.2%	6.4%	12.0%	4.6%	9.2%	16.1%	9.3%	11.7%	24.9%	1.5%	13.6%	11.3%	12.9%		11.2%	7.7%	0.2%	3.2%
Patient & Client Care	14.0%	6.9%	9.2%	9.4%	6.9%	15.8%	8.7%	11.7%	19.4%	14.9%	17.4%	20.6%	18.0%	0.0%	11.9%	7.2%	0.4%	4.4%
Total April:	14.8%	8.6%	11.6%	9.9%	9.8%	24.3%	10.5%	16.5%	25.2%	14.5%	25.4%	16.3%	23.1%	4.9%	14.2%	6.2%	0.2%	7.7%
Medical & Dental	3.9%	0.0%	0.0%	2.6%	0.0%	0.0%	0.0%	0.0%	0.0%	1.5%	5.5%	22.5%	10.5%		4.1%	0.5%	0.1%	3.4%
Nursing & Midwifery	17.3%	10.4%	11.8%	11.9%	10.0%	26.9%	15.9%	21.3%	25.3%	14.0%	34.6%	26.6%	32.8%		16.5%	5.3%	0.2%	11.0%
Health & Social Care Professionals	3.7%	7.6%	12.2%	2.3%	3.9%	0.0%	6.5%	5.6%	10.9%	8.1%	7.5%	2.9%	6.2%		6.2%	2.6%	0.1%	3.6%
Management & Administrative	7.3%	4.5%	4.2%	7.2%	10.9%	17.0%	11.7%	12.8%	20.5%	6.6%	3.7%	3.2%	3.6%	4.9%	7.5%	4.5%	0.1%	2.8%
General Support	14.1%	8.0%	14.1%	5.6%	8.7%	16.6%	7.7%	11.4%	31.1%	5.4%	16.2%	6.9%	13.2%		12.9%	8.1%	0.1%	4.7%
Patient & Client Care	15.4%	8.2%	12.5%	10.5%	10.8%	26.2%	8.3%	16.7%	25.1%	17.2%	30.7%	18.7%	27.9%	0.0%	14.8%	7.3%	0.3%	7.3%
Total March:	8.1%	6.8%	11.5%	5.0%	7.5%	12.7%	7.4%	9.5%	12.4%	11.0%	9.2%	21.2%	12.8%	10.1%	8.8%	6.0%	0.4%	2.4%
Medical & Dental	4.4%	0.0%	0.0%	0.0%	0.0%	0.0%	0.0%	0.0%	2.4%	2.9%	1.8%	30.2%	13.0%		4.1%	1.2%		2.9%
Nursing & Midwifery	8.2%	7.0%	11.5%	5.2%	6.4%	12.2%	8.7%	10.3%	10.7%	10.9%	8.5%	24.7%	13.0%		8.7%	5.2%	0.4%	3.1%
Health & Social Care Professionals	6.0%	8.7%	13.9%	1.8%	1.1%	8.6%	4.2%	4.7%	10.0%	6.2%	4.7%	21.6%	10.7%		7.0%	3.3%	0.2%	3.6%
Management & Administrative	5.8%	5.0%	6.5%	1.5%	7.4%	0.7%	11.2%	9.4%	14.2%	8.5%	2.7%	0.0%	2.0%	10.2%	6.2%	4.3%	0.3%	1.7%
General Support	10.7%	7.7%	11.5%	5.4%	9.7%	10.1%	7.2%	8.4%	14.3%	4.9%	10.5%	16.8%	12.7%		9.8%	7.2%	0.3%	2.3%
Patient & Client Care	8.0%	6.7%	12.6%	5.7%	8.8%	15.1%	6.5%	10.1%	13.0%	12.3%	12.8%	22.9%	15.7%	0.0%	9.5%	7.1%	0.4%	2.0%
Total February:	6.1%	5.3%	9.4%	4.5%	6.3%	8.0%	5.3%	6.3%	8.7%	8.7%	6.1%	4.8%	5.8%	5.2%	6.4%	5.8%	0.7%	
Medical & Dental	2.9%	0.0%	1.6%	0.0%	0.0%	0.0%	0.0%	0.0%	0.0%	0.0%	0.4%	0.0%	0.3%		0.6%	0.5%	0.2%	
Nursing & Midwifery	6.3%	4.5%	8.7%	5.2%	4.6%	5.4%	5.2%	5.3%	6.0%	6.9%	6.5%	3.2%	5.7%		5.8%	5.0%	0.7%	
Health & Social Care Professionals	7.0%	3.4%	8.9%	2.5%	1.6%	5.9%	2.5%	3.8%	4.2%	3.6%	1.8%	5.5%	3.0%	0.0%	3.7%	3.4%	0.4%	
Management & Administrative	3.8%	2.8%	5.9%	1.8%	3.6%	0.6%	9.9%	8.1%	6.1%	4.7%	1.1%	0.0%	0.8%	5.2%	3.8%	3.5%	0.4%	
General Support	7.0%	6.4%	12.1%	5.0%	9.7%	11.3%	1.2%	5.1%	11.9%	0.4%	7.8%	7.1%	7.5%		7.5%	7.0%	0.5%	
Patient & Client Care	6.2%	6.2%	10.4%	4.5%	7.7%	10.0%	7.2%	8.3%	9.8%	11.2%	7.7%	4.3%	6.8%	50.0%	7.5%	6.8%	0.7%	
Total January:	6.4%	5.8%	10.2%	4.4%	7.4													

Older People Absence Rate - by Staff Category & S38 Agency	Incorporated Orthopaedic Hospital	Leopardstown Park Hospital	Royal Hospital, Donnybrook, Dublin	Total absence	Certified absence	Self-certified absence	COVID-19 absence
Older People: S38 2020 overall	8.0%	6.8%	7.6%	7.5%	4.4%	0.3%	2.8%
Medical & Dental	8.3%	0.0%	0.7%	6.0%	0.5%		5.5%
Nursing & Midwifery	8.0%	10.4%	8.0%	8.6%	4.5%	0.3%	3.8%
Health & Social Care Professionals	4.6%	4.9%	3.2%	4.0%	1.8%	0.3%	1.9%
Management & Administrative	3.6%	6.9%	8.9%	6.4%	5.1%	0.2%	1.1%
General Support	7.7%	4.0%	10.8%	7.4%	4.3%	0.3%	2.8%
Patient & Client Care	10.2%	6.0%	7.5%	7.7%	5.1%	0.4%	2.2%
Total November:	3.2%	5.9%	7.7%	5.6%	4.8%	0.3%	0.6%
Medical & Dental	0.0%	0.0%	0.0%	0.0%			
Nursing & Midwifery	1.6%	8.6%	9.3%	6.3%	5.5%	0.3%	0.5%
Health & Social Care Professionals	2.1%	3.7%	1.8%	2.2%	1.4%	0.2%	0.7%
Management & Administrative	3.4%	13.0%	11.9%	9.7%	9.2%	0.0%	0.4%
General Support	6.2%	2.4%	10.4%	6.3%	4.7%	0.4%	1.1%
Patient & Client Care	4.0%	4.1%	6.7%	5.0%	4.5%	0.3%	0.3%
Total October:	2.7%	5.2%	8.2%	5.4%	3.6%	0.3%	1.5%
Medical & Dental	0.0%	0.0%	0.0%	0.0%			
Nursing & Midwifery	1.3%	9.2%	8.9%	6.1%	4.5%	0.3%	1.3%
Health & Social Care Professionals	1.4%	0.0%	3.3%	1.9%	0.4%	0.1%	1.4%
Management & Administrative	7.1%	9.1%	11.7%	9.3%	9.0%	0.2%	0.1%
General Support	0.0%	1.0%	16.6%	5.5%	1.5%	0.2%	3.8%
Patient & Client Care	7.1%	4.3%	5.3%	5.4%	3.8%	0.5%	1.1%
Total September:	4.7%	7.4%	8.4%	6.8%	4.5%	0.3%	2.1%
Medical & Dental	2.3%	0.0%	7.8%	3.2%			3.2%
Nursing & Midwifery	2.1%	8.5%	9.1%	6.3%	4.5%	0.2%	1.6%
Health & Social Care Professionals	4.4%	3.9%	2.8%	3.7%	0.5%	0.3%	2.9%
Management & Administrative	6.5%	4.1%	0.0%	3.7%	2.7%	0.2%	0.7%
General Support	8.7%	6.3%	19.0%	11.0%	6.1%	0.4%	4.5%
Patient & Client Care	5.9%	8.5%	6.6%	7.1%	5.6%	0.3%	1.2%
Total August:	5.6%	7.7%	7.3%	6.9%	5.0%	0.4%	1.5%
Medical & Dental	0.0%	0.0%	0.0%	0.0%			
Nursing & Midwifery	4.7%	11.2%	8.5%	8.0%	5.5%	0.4%	2.1%
Health & Social Care Professionals	1.7%	0.5%	2.4%	1.9%	1.0%	0.3%	0.6%
Management & Administrative	6.6%	2.5%	1.1%	3.4%	2.8%	0.4%	0.2%
General Support	8.4%	6.9%	13.5%	9.5%	6.6%	0.2%	2.8%
Patient & Client Care	6.6%	7.8%	6.6%	7.0%	5.7%	0.4%	0.9%
Total July:	4.0%	5.9%	6.7%	5.6%	4.0%	0.3%	1.3%
Medical & Dental	0.0%	0.0%	0.0%	0.0%			
Nursing & Midwifery	2.7%	12.6%	6.2%	6.8%	4.9%	0.4%	1.5%
Health & Social Care Professionals	1.9%	0.7%	3.6%	2.6%	2.1%	0.5%	
Management & Administrative	4.1%	2.2%	2.3%	2.8%	2.2%	0.7%	
General Support	3.6%	0.5%	13.5%	5.7%	2.4%	0.2%	3.2%
Patient & Client Care	7.2%	5.3%	6.3%	6.2%	5.2%	0.3%	0.7%
Total June:	6.5%	5.2%	8.3%	6.8%	4.6%	0.5%	1.8%
Medical & Dental	13.3%	0.0%	0.0%	9.3%			9.3%
Nursing & Midwifery	4.5%	8.9%	7.7%	7.0%	4.2%	0.4%	2.4%
Health & Social Care Professionals	1.1%	4.9%	6.6%	4.4%	3.4%	0.5%	0.5%
Management & Administrative	3.8%	1.7%	3.4%	2.9%	2.4%	0.1%	0.4%
General Support	9.2%	0.1%	13.0%	7.5%	3.4%	1.0%	3.1%
Patient & Client Care	9.2%	5.9%	8.6%	7.8%	6.6%	0.3%	0.8%
Total May:	13.7%	8.3%	10.1%	10.6%	4.7%	0.2%	5.8%
Medical & Dental	15.0%	0.0%	0.0%	10.4%			10.4%
Nursing & Midwifery	13.9%	10.9%	12.1%	12.3%	4.0%	0.2%	8.2%
Health & Social Care Professionals	7.9%	11.1%	4.4%	6.6%	3.1%	0.4%	3.0%
Management & Administrative	3.7%	9.5%	5.3%	6.5%	4.8%		1.7%
General Support	11.3%	3.9%	14.6%	10.0%	5.6%	0.0%	4.4%
Patient & Client Care	20.6%	8.0%	9.3%	11.5%	5.5%	0.3%	5.7%
Total April:	16.3%	10.1%	10.9%	12.4%	4.5%	0.1%	7.8%
Medical & Dental	22.5%	0.0%	0.0%	15.7%			15.7%
Nursing & Midwifery	26.6%	16.4%	15.5%	19.4%	5.3%	0.2%	14.0%
Health & Social Care Professionals	2.9%	12.8%	4.8%	5.2%	2.3%	0.1%	2.8%
Management & Administrative	3.2%	7.7%	17.7%	8.9%	3.3%	0.2%	5.3%
General Support	6.9%	9.2%	6.1%	7.4%	4.2%	0.1%	3.2%
Patient & Client Care	18.7%	6.6%	10.1%	11.2%	5.1%	0.1%	6.0%
Total March:	21.2%	9.5%	5.8%	12.1%	3.8%	0.3%	8.0%
Medical & Dental	30.2%	0.0%	0.0%	22.6%	4.2%		18.4%
Nursing & Midwifery	24.7%	14.9%	4.7%	14.2%	3.7%	0.1%	10.4%
Health & Social Care Professionals	21.6%	12.6%	2.2%	11.0%	1.9%	0.2%	8.8%
Management & Administrative	0.0%	7.4%	15.9%	7.8%	3.7%	0.2%	4.0%
General Support	16.8%	8.8%	5.7%	10.7%	5.2%	0.5%	5.0%
Patient & Client Care	22.9%	6.3%	6.8%	11.5%	3.7%	0.5%	7.3%
Total February:	4.8%	4.5%	6.0%	5.2%	4.7%	0.5%	
Medical & Dental	0.0%	0.0%	0.0%	0.0%			
Nursing & Midwifery	3.2%	6.6%	4.2%	4.6%	4.1%	0.4%	
Health & Social Care Professionals	5.5%	4.8%	1.8%	3.5%	3.1%	0.4%	
Management & Administrative	0.0%	6.4%	14.5%	6.7%	6.5%	0.3%	
General Support	7.1%	0.4%	2.0%	3.3%	3.0%	0.3%	
Patient & Client Care	4.3%	4.4%	10.1%	6.4%	5.7%	0.7%	
Total January:	4.0%	5.6%	4.7%	4.8%	4.3%	0.5%	
Medical & Dental	0.0%	0.0%	0.0%	0.0%			
Nursing & Midwifery	4.0%	6.3%	2.8%	4.1%	3.5%	0.6%	
Health & Social Care Professionals	1.0%	1.4%	1.8%	1.5%	1.2%	0.3%	
Management & Administrative	1.3%	11.5%	13.2%	8.9%	8.7%	0.1%	
General Support	5.7%	4.0%	3.8%	4.5%	4.0%	0.5%	
Patient & Client Care	3.3%	5.2%	7.0%	5.4%	4.8%	0.6%	
Older People: S38 2019 overall	4.2%	4.3%	4.3%	4.2%	3.6%	0.7%	
Medical & Dental	1.0%	6.9%	0.0%	1.4%	1.2%	0.2%	
Nursing & Midwifery	2.6%	4.3%	2.9%	3.2%	2.5%	0.7%	
Health & Social Care Professionals	3.9%	2.8%	2.4%	2.9%	2.4%	0.5%	
Management & Administrative	1.9%	3.0%	5.6%	3.5%	3.0%	0.5%	
General Support	4.9%	2.5%	4.6%	4.0%	3.5%	0.5%	
Patient & Client Care	4.9%	5.5%	6.2%	5.6%	4.8%	0.7%	