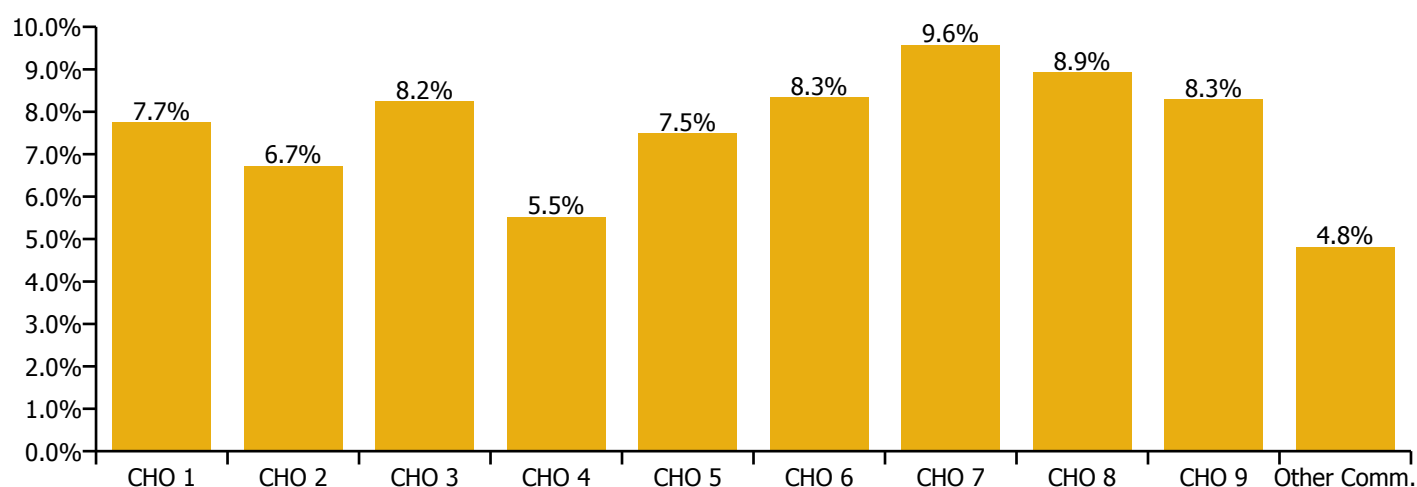


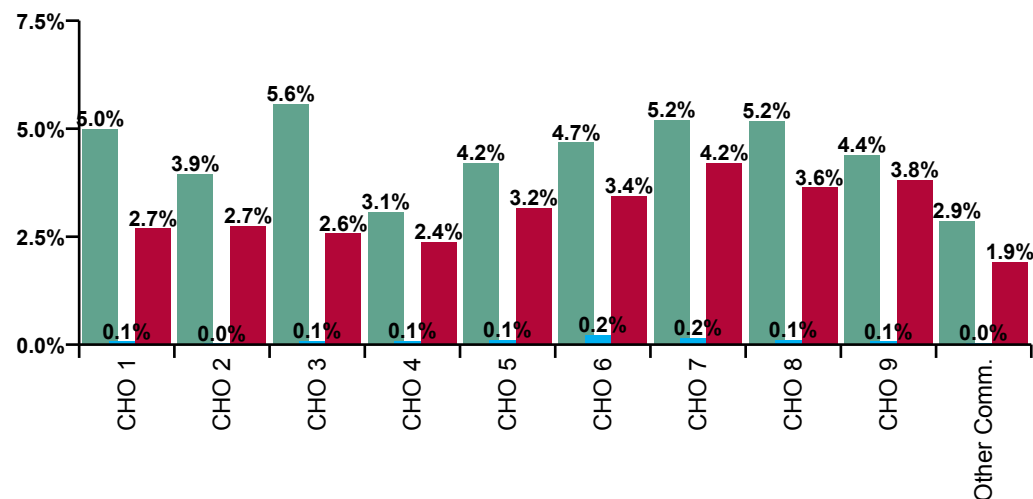
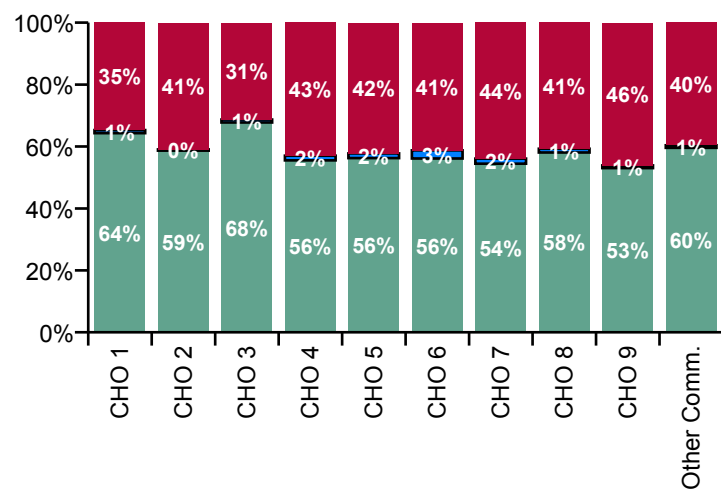
April 2020

Primary Care Absence Rate - by Staff Category: Apr 2020	Certified absence	Self-certified absence	COVID-19 absence	Total absence rate	Certified	Self-certified	COVID-19
Primary Care	4.6%	0.1%	3.3%	7.9%	57.7%	1.3%	41.1%
Medical & Dental	2.9%	0.1%	2.2%	5.2%	55.7%	2.4%	41.9%
Nursing & Midwifery	5.5%	0.1%	4.5%	10.1%	54.6%	0.7%	44.7%
Health & Social Care Professionals	3.8%	0.1%	3.1%	7.0%	54.3%	1.3%	44.3%
Management & Administrative	4.6%	0.1%	2.3%	7.0%	65.3%	1.8%	32.9%
General Support	3.3%	0.1%	2.4%	5.8%	56.4%	1.5%	42.0%
Patient & Client Care	5.9%	0.1%	3.7%	9.7%	60.9%	1.2%	37.8%

Primary Care Absence Rate - by Care Group: Apr 2020	Certified absence	Self-certified absence	COVID-19 absence	Total absence rate	Certified	Self-certified	COVID-19
Primary Care	4.6%	0.1%	3.3%	7.9%	57.7%	1.3%	41.1%
CHO 1	5.0%	0.1%	2.7%	7.7%	64.3%	1.0%	34.7%
CHO 2	3.9%	0.0%	2.7%	6.7%	58.7%	0.4%	40.9%
CHO 3	5.6%	0.1%	2.6%	8.2%	67.8%	0.9%	31.3%
Health Service Executive	2.8%	0.1%	2.6%	5.5%	51.4%	1.3%	47.3%
Section 38 Voluntary Agencies	5.6%	0.2%		5.8%	96.6%	3.4%	0.0%
CHO 4	3.1%	0.1%	2.4%	5.5%	55.5%	1.5%	43.0%
CHO 5	4.2%	0.1%	3.2%	7.5%	56.3%	1.5%	42.2%
Health Service Executive	5.3%	0.2%	3.6%	9.1%	58.1%	2.5%	39.4%
Section 38 Voluntary Agencies	1.1%	0.2%	2.6%	3.9%	29.0%	4.5%	66.4%
CHO 6	4.7%	0.2%	3.4%	8.3%	56.1%	2.6%	41.2%
Health Service Executive	5.5%	0.2%	3.7%	9.4%	59.2%	1.7%	39.1%
Section 38 Voluntary Agencies	4.4%	0.2%	5.6%	10.1%	43.5%	1.5%	55.0%
CHO 7	5.2%	0.2%	4.2%	9.6%	54.4%	1.6%	43.9%
CHO 8	5.2%	0.1%	3.6%	8.9%	58.1%	1.2%	40.7%
CHO 9	4.4%	0.1%	3.8%	8.3%	53.0%	0.9%	46.1%
Other Community Services	2.9%	0.0%	1.9%	4.8%	59.6%	0.8%	39.6%



Primary Care Overall Absence Rate - by Care Group & Staff Category: Apr 2020	Medical & Dental	Nursing & Midwifery	Health & Social Care Professionals	Management & Administrative	General Support	Patient & Client Care	Certified absence	Self- certified absence	COVID-19 absence	Total absence
Primary Care	5.2%	10.1%	7.0%	7.0%	5.8%	9.7%	4.6%	0.1%	3.3%	7.9%
CHO 1	5.2%	10.1%	7.3%	8.0%	4.9%	4.8%	5.0%	0.1%	2.7%	7.7%
CHO 2	5.2%	8.4%	6.2%	7.3%	1.4%	5.6%	3.9%	0.0%	2.7%	6.7%
CHO 3	9.9%	9.9%	5.3%	10.1%	0.1%	5.8%	5.6%	0.1%	2.6%	8.2%
Health Service Executive	5.8%	8.2%	3.1%	4.9%	0.0%	9.0%	2.8%	0.1%	2.6%	5.5%
Section 38 Voluntary Agencies	2.5%	0.0%	0.0%	0.0%	10.5%	14.8%	5.6%	0.2%		5.8%
CHO 4	5.3%	7.9%	3.1%	4.3%	7.5%	10.6%	3.1%	0.1%	2.4%	5.5%
CHO 5	8.1%	7.0%	9.4%	6.8%	1.3%	6.5%	4.2%	0.1%	3.2%	7.5%
Health Service Executive	9.6%	14.1%	5.2%	4.5%	12.5%	3.0%	5.3%	0.2%	3.6%	9.1%
Section 38 Voluntary Agencies	1.6%	46.4%	0.0%	1.1%	2.7%	0.4%	1.1%	0.2%	2.6%	3.9%
CHO 6	7.1%	14.9%	5.2%	3.7%	7.3%	1.3%	4.7%	0.2%	3.4%	8.3%
Health Service Executive	5.2%	9.8%	8.5%	8.7%	11.2%	13.0%	5.5%	0.2%	3.7%	9.4%
Section 38 Voluntary Agencies	1.6%	12.0%	10.8%	3.5%	7.1%	13.4%	4.4%	0.2%	5.6%	10.1%
CHO 7	4.7%	10.5%	8.9%	7.9%	8.5%	13.2%	5.2%	0.2%	4.2%	9.6%
CHO 8	3.1%	11.3%	9.7%	7.0%	14.8%	10.9%	5.2%	0.1%	3.6%	8.9%
CHO 9	2.6%	11.1%	7.0%	6.6%	9.8%	12.7%	4.4%	0.1%	3.8%	8.3%
Other Community Services	5.8%	3.2%	8.8%	2.3%	0.0%	6.5%	2.9%	0.0%	1.9%	4.8%



Certified absence

Self-certified absence

COVID-19 absence

Primary Care Absence Rate - by Care Group, Staff Category & Absence type: Apr 2020

CHO 1 by Staff Category Apr 2020	Certified absence	Self-certified absence	COVID-19 absence	Total absence	Certified	Self-certified	COVID-19
Primary Care	5.0%	0.1%	2.7%	7.7%	64.3%	1.0%	34.7%
Medical & Dental	3.5%		1.7%	5.2%	67.5%		32.5%
Nursing & Midwifery	5.9%	0.1%	4.1%	10.1%	58.8%	0.6%	40.6%
Health & Social Care Professionals	4.9%	0.1%	2.4%	7.3%	66.6%	0.8%	32.5%
Management & Administrative	5.5%	0.1%	2.4%	8.0%	69.0%	1.0%	30.0%
General Support	4.2%	0.1%	0.6%	4.9%	84.4%	3.0%	12.6%
Patient & Client Care	2.2%	0.2%	2.5%	4.8%	45.6%	3.4%	51.1%

CHO 2 by Staff Category Apr 2020	Certified absence	Self-certified absence	COVID-19 absence	Total absence	Certified	Self-certified	COVID-19
Primary Care	3.9%	0.0%	2.7%	6.7%	58.7%	0.4%	40.9%
Medical & Dental	3.0%		2.2%	5.2%	58.3%		41.7%
Nursing & Midwifery	4.6%	0.0%	3.8%	8.4%	54.2%	0.4%	45.4%
Health & Social Care Professionals	3.6%		2.6%	6.2%	58.1%		41.9%
Management & Administrative	4.8%	0.1%	2.5%	7.3%	65.4%	0.9%	33.8%
General Support	1.3%		0.1%	1.4%	94.0%	0.0%	6.0%
Patient & Client Care	2.6%		3.0%	5.6%	45.9%	0.0%	54.1%

CHO 3 by Staff Category Apr 2020	Certified absence	Self-certified absence	COVID-19 absence	Total absence	Certified	Self-certified	COVID-19
Primary Care	5.6%	0.1%	2.6%	8.2%	67.8%	0.9%	31.3%
Medical & Dental	7.0%	0.3%	2.5%	9.9%	71.3%	3.1%	25.7%
Nursing & Midwifery	6.4%	0.1%	3.4%	9.9%	64.5%	0.7%	34.8%
Health & Social Care Professionals	2.4%		2.9%	5.3%	45.9%		54.1%
Management & Administrative	8.2%	0.0%	1.9%	10.1%	81.1%	0.3%	18.6%
General Support			0.1%	0.1%	0.0%	0.0%	100.0%
Patient & Client Care	2.2%	0.2%	3.4%	5.8%	37.3%	3.7%	58.9%

CHO 4 by Staff Category Apr 2020	Certified absence	Self-certified absence	COVID-19 absence	Total absence	Certified	Self-certified	COVID-19
Primary Care	3.1%	0.1%	2.4%	5.5%	55.5%	1.5%	43.0%
Medical & Dental	2.7%	0.1%	2.5%	5.3%	51.4%	1.7%	47.0%
Nursing & Midwifery	3.0%	0.1%	4.8%	7.9%	38.2%	1.2%	60.6%
Health & Social Care Professionals	1.8%	0.1%	1.3%	3.1%	57.9%	2.1%	40.1%
Management & Administrative	2.4%	0.0%	1.8%	4.3%	56.8%	0.6%	42.7%
General Support	7.5%			7.5%	100.0%	0.0%	0.0%
Patient & Client Care	9.0%	0.2%	1.3%	10.6%	85.3%	2.2%	12.5%

CHO 5 by Staff Category Apr 2020	Certified absence	Self-certified absence	COVID-19 absence	Total absence	Certified	Self-certified	COVID-19
Primary Care	4.2%	0.1%	3.2%	7.5%	56.3%	1.5%	42.2%
Medical & Dental	3.6%	0.2%	4.3%	8.1%	44.3%	2.5%	53.2%
Nursing & Midwifery	3.8%	0.2%	3.0%	7.0%	55.1%	2.3%	42.6%
Health & Social Care Professionals	5.5%	0.1%	3.7%	9.4%	58.4%	1.6%	40.0%
Management & Administrative	4.1%	0.0%	2.7%	6.8%	59.6%	0.6%	39.7%
General Support	1.1%		0.2%	1.3%	81.8%	0.0%	18.2%
Patient & Client Care	3.3%		3.2%	6.5%	51.1%	0.0%	48.9%

CHO 6 by Staff Category Apr 2020	Certified absence	Self-certified absence	COVID-19 absence	Total absence	Certified	Self-certified	COVID-19
Primary Care	4.7%	0.2%	3.4%	8.3%	56.1%	2.6%	41.2%
Medical & Dental	4.3%	1.1%	1.7%	7.1%	59.8%	15.8%	24.4%
Nursing & Midwifery	7.3%	0.1%	7.5%	14.9%	49.2%	0.5%	50.3%
Health & Social Care Professionals	4.1%	0.1%	1.0%	5.2%	78.4%	2.5%	19.1%
Management & Administrative	2.5%	0.3%	0.9%	3.7%	66.6%	8.5%	24.9%
General Support	4.2%	0.4%	2.7%	7.3%	57.9%	5.7%	36.4%
Patient & Client Care	0.2%		1.1%	1.3%	17.9%	0.0%	82.1%

CHO 7 by Staff Category Apr 2020	Certified absence	Self-certified absence	COVID-19 absence	Total absence	Certified	Self-certified	COVID-19
Primary Care	5.2%	0.2%	4.2%	9.6%	54.4%	1.6%	43.9%
Medical & Dental	2.6%		2.0%	4.7%	56.3%		43.7%
Nursing & Midwifery	5.9%	0.1%	4.6%	10.5%	55.9%	0.7%	43.3%
Health & Social Care Professionals	3.9%	0.2%	4.8%	8.9%	43.6%	1.8%	54.6%
Management & Administrative	4.8%	0.4%	2.7%	7.9%	60.8%	4.9%	34.3%
General Support	3.0%	0.1%	5.4%	8.5%	35.2%	1.6%	63.2%
Patient & Client Care	8.3%	0.1%	4.7%	13.2%	63.1%	1.0%	35.9%

CHO 8 by Staff Category Apr 2020	Certified absence	Self-certified absence	COVID-19 absence	Total absence	Certified	Self-certified	COVID-19
Primary Care	5.2%	0.1%	3.6%	8.9%	58.1%	1.2%	40.7%
Medical & Dental	0.8%	0.1%	2.2%	3.1%	25.3%	3.4%	71.2%
Nursing & Midwifery	7.1%	0.1%	4.1%	11.3%	63.0%	0.6%	36.4%
Health & Social Care Professionals	4.9%	0.1%	4.7%	9.7%	50.6%	1.4%	48.0%
Management & Administrative	4.3%	0.2%	2.5%	7.0%	61.5%	2.3%	36.2%
General Support	6.8%		8.0%	14.8%	46.0%	0.0%	54.0%
Patient & Client Care	7.2%		3.7%	10.9%	66.0%	0.0%	34.0%

CHO 9 by Staff Category Apr 2020	Certified absence	Self-certified absence	COVID-19 absence	Total absence	Certified	Self-certified	COVID-19
Primary Care	4.4%	0.1%	3.8%	8.3%	53.0%	0.9%	46.1%
Medical & Dental	2.1%		0.5%	2.6%	82.0%		18.0%
Nursing & Midwifery	5.4%	0.0%	5.7%	11.1%	48.4%	0.3%	51.3%
Health & Social Care Professionals	3.5%	0.1%	3.4%	7.0%	49.8%	1.4%	48.8%
Management & Administrative	3.9%	0.1%	2.5%	6.6%	60.2%	1.2%	38.5%
General Support	7.1%		2.7%	9.8%	72.3%	0.0%	27.7%
Patient & Client Care	6.4%	0.2%	6.1%	12.7%	50.8%	1.5%	47.8%

Other Community Services by Staff Category Apr 2020	Certified absence	Self-certified absence	COVID-19 absence	Total absence	Certified	Self-certified	COVID-19
Primary Care	2.9%	0.0%	1.9%	4.8%	59.6%	0.8%	39.6%
Medical & Dental	2.3%		3.5%	5.8%	39.4%		60.6%
Nursing & Midwifery			3.2%	3.2%			100.0%
Health & Social Care Professionals	4.9%		3.9%	8.8%	55.6%		44.4%
Management & Administrative	1.6%	0.1%	0.6%	2.3%	71.0%	4.2%	24.8%
General Support				0.0%			
Patient & Client Care	6.2%		0.3%	6.5%	94.8%	0.0%	5.2%

Primary Care Absence Rate - by Staff Category & Care Group	CHO 1	CHO 2	CHO 3	HSE	S38	CHO 4	CHO 5	HSE	S38	CHO 6	HSE	S38	CHO 7	CHO 8	CHO 9	Other Comm.	Total absence	Certified absence	Self-certified absence	COVID-19 absence
Primary Care: 2020 overall	6.5%	5.2%	7.5%	3.8%	5.9%	4.0%	5.9%	8.7%	5.3%	8.2%	8.1%	7.1%	7.8%	7.5%	6.8%	5.0%	6.5%	4.7%	0.3%	1.5%
Medical & Dental	4.4%	3.7%	7.1%	3.9%	2.6%	3.6%	5.1%	10.1%	8.4%	9.6%	5.8%	3.2%	5.4%	2.4%	3.2%	6.3%	4.5%	3.1%	0.2%	1.1%
Nursing & Midwifery	7.5%	5.7%	8.3%	4.3%	6.3%	4.3%	5.7%	10.0%	26.6%	10.5%	7.7%	7.5%	7.6%	9.2%	7.6%	3.4%	7.3%	5.1%	0.3%	1.9%
Health & Social Care Professionals	6.8%	5.5%	4.3%	2.8%	0.8%	2.8%	6.7%	8.0%	0.0%	7.9%	6.5%	7.1%	6.6%	7.0%	4.9%	9.7%	5.8%	4.1%	0.3%	1.4%
Management & Administrative	6.8%	5.6%	9.8%	3.7%	0.4%	3.4%	5.6%	6.8%	2.3%	5.8%	8.4%	3.7%	7.6%	7.3%	6.5%	1.4%	6.4%	5.0%	0.3%	1.1%
General Support	5.3%	0.8%	2.9%	0.0%	10.3%	7.5%	3.8%	9.7%	5.3%	7.3%	13.8%	6.0%	8.5%	9.1%	10.4%	9.3%	6.1%	4.7%	0.3%	1.2%
Patient & Client Care	4.7%	5.3%	5.9%	5.4%	12.8%	7.2%	6.6%	6.1%	2.1%	3.9%	11.8%	9.8%	11.0%	9.3%	10.5%	6.7%	8.3%	4.7%	0.3%	1.2%
Total April:	7.7%	6.7%	8.2%	5.5%	5.8%	5.5%	7.5%	9.1%	3.9%	8.3%	9.4%	10.1%	9.6%	8.9%	8.3%	4.8%	7.9%	4.6%	0.1%	3.3%
Medical & Dental	5.2%	5.2%	9.9%	5.8%	2.5%	5.3%	8.1%	9.6%	1.6%	7.1%	5.2%	1.6%	4.7%	3.1%	2.6%	5.8%	5.2%	2.4%	55.7%	41.9%
Nursing & Midwifery	10.1%	8.4%	9.9%	8.2%	0.0%	7.9%	7.0%	14.1%	46.4%	14.9%	9.8%	12.0%	10.5%	11.3%	11.1%	3.2%	10.1%	5.5%	0.1%	4.5%
Health & Social Care Professionals	7.3%	6.2%	5.3%	3.1%	0.0%	3.1%	9.4%	5.2%	0.0%	5.2%	8.5%	10.8%	8.9%	9.7%	7.0%	8.8%	7.0%	3.8%	0.1%	3.1%
Management & Administrative	8.0%	7.3%	10.1%	4.9%	0.0%	4.3%	6.8%	4.5%	1.1%	3.7%	8.7%	3.5%	7.9%	7.0%	6.6%	2.3%	7.0%	4.6%	0.1%	2.3%
General Support	4.9%	1.4%	0.1%	0.0%	10.5%	7.5%	1.3%	12.5%	2.7%	7.3%	11.2%	7.1%	8.5%	14.8%	9.8%	0.0%	5.8%	3.3%	0.1%	2.4%
Patient & Client Care	4.8%	5.6%	5.8%	9.0%	14.8%	10.6%	6.5%	3.0%	0.4%	1.3%	13.0%	13.4%	13.2%	10.9%	12.7%	6.5%	9.7%	5.9%	0.1%	3.7%
Total March:	8.5%	6.8%	9.3%	3.3%	4.3%	3.4%	6.6%	11.8%	8.3%	11.3%	10.4%	8.7%	9.9%	8.5%	9.2%	7.5%	8.0%	5.1%	0.3%	2.7%
Medical & Dental	5.6%	3.6%	9.3%	3.6%	0.8%	3.0%	4.6%	11.4%	15.4%	12.4%	9.0%	10.8%	9.3%	4.1%	1.8%	11.7%	6.0%	3.2%	56.0%	40.8%
Nursing & Midwifery	9.7%	8.4%	10.8%	4.2%	0.0%	4.1%	6.6%	14.4%	37.0%	15.3%	9.8%	8.0%	9.2%	9.8%	8.5%	8.9%	8.9%	5.4%	0.2%	3.3%
Health & Social Care Professionals	9.7%	7.5%	6.8%	2.2%	0.0%	2.2%	7.2%	10.9%	0.0%	10.7%	9.2%	12.1%	9.6%	8.5%	4.7%	12.5%	7.6%	4.9%	0.3%	2.5%
Management & Administrative	7.7%	6.6%	10.7%	2.9%	0.0%	2.6%	6.8%	10.0%	4.7%	9.1%	10.4%	2.7%	9.1%	7.7%	2.7%	2.0%	7.2%	4.9%	0.2%	2.1%
General Support	7.9%	1.2%	2.8%	0.0%	9.9%	8.1%	4.3%	5.5%	4.3%	4.9%	23.7%	7.8%	12.3%	9.7%	10.5%	0.0%	7.7%	5.3%	0.3%	2.1%
Patient & Client Care	6.8%	6.4%	8.1%	4.9%	11.2%	6.6%	6.5%	10.6%	2.5%	6.8%	12.5%	11.4%	12.1%	11.5%	12.8%	12.1%	9.9%	6.3%	0.5%	3.1%
Total February:	4.8%	3.1%	5.7%	3.4%	6.6%	3.7%	4.8%	6.2%	3.6%	5.7%	6.1%	5.0%	5.8%	5.6%	5.1%	4.9%	4.9%	4.5%	0.4%	
Medical & Dental	3.3%	1.7%	5.2%	4.1%	2.8%	3.9%	3.9%	8.3%	6.1%	7.5%	5.0%	0.0%	4.3%	0.6%	3.0%	3.9%	3.3%	12.6%	87.4%	
Nursing & Midwifery	5.2%	2.7%	5.9%	4.0%	8.0%	4.1%	4.6%	6.3%	8.9%	6.3%	5.3%	5.0%	5.2%	6.8%	5.2%	1.0%	5.1%	4.7%	0.3%	
Health & Social Care Professionals	4.8%	3.9%	1.9%	2.5%	0.0%	2.5%	5.6%	6.7%	0.0%	6.5%	3.9%	1.3%	3.5%	4.2%	3.4%	12.7%	4.1%	3.6%	0.5%	
Management & Administrative	5.2%	3.4%	8.6%	3.0%	1.8%	2.9%	4.2%	4.2%	1.7%	3.6%	6.8%	6.0%	6.6%	7.1%	5.8%	0.6%	5.3%	4.9%	0.4%	
General Support	4.4%	0.1%	3.9%	0.0%	19.9%	13.9%	3.9%	13.3%	5.9%	9.1%	11.9%	4.8%	7.1%	2.4%	13.5%	34.3%	5.8%	5.4%	0.4%	
Patient & Client Care	4.2%	4.9%	3.6%	4.1%	9.8%	5.5%	6.6%	4.2%	2.5%	3.2%	10.0%	7.3%	9.0%	7.2%	7.3%	3.5%	6.5%	5.9%	0.6%	
Total January:	5.1%	4.0%	6.7%	3.1%	7.1%	3.4%	4.6%	7.2%	5.0%	6.9%	6.4%	4.6%	5.9%	6.7%	5.7%	2.7%	5.3%	4.9%	0.4%	
Medical & Dental	3.2%	4.3%	4.3%	1.6%	4.2%	2.1%	3.6%	9.9%	9.7%	9.9%	3.9%	0.0%	3.3%	1.5%	4.0%	3.2%	3.5%	7.9%	92.1%	
Nursing & Midwifery	4.9%	3.4%	6.7%	2.3%	16.3%	2.6%	4.6%	5.8%	8.9%	5.9%	5.0%	4.7%	4.9%	8.6%	5.5%	0.6%	5.1%	4.7%	0.4%	
Health & Social Care Professionals	5.3%	4.3%	3.1%	3.1%	3.0%	3.1%	4.5%	9.5%	0.0%	9.3%	4.6%	4.3%	4.5%	5.2%	4.0%	5.2%	4.6%	4.2%	0.4%	
Management & Administrative	6.3%	5.0%	9.7%	4.1%	0.0%	3.9%	4.5%	6.2%	1.6%	5.0%	7.5%	2.6%	6.7%	7.5%	7.6%	0.6%	6.1%	5.7%	0.5%	
General Support	4.1%	0.6%	5.0%	0.0%	0.0%	0.0%	5.5%	8.1%	8.2%	8.2%	10.6%	4.4%	6.5%	9.5%	7.8%	14.9%	5.1%	4.8%	0.3%	
Patient & Client Care	3.0%	4.3%	6.1%	4.4%	15.3%	6.6%	6.6%	3.8%	2.7%	3.2%	11.5%	6.7%	9.7%	7.4%	7.7%	4.3%	7.0%	6.3%	0.6%	
Primary Care: 2019 overall	5.8%	3.9%	5.2%	2.7%	3.8%	2.8%	5.1%	4.8%	9.0%	5.5%	5.9%	4.3%	5.4%	5.4%	3.9%		4.7%	4.3%	0.4%	
Medical & Dental	2.2%	2.0%	4.4%	2.5%	0.3%	2.2%	3.1%	6.1%	9.9%	7.0%	3.2%	0.8%	2.8%	1.4%	3.5%		2.8%	2.5%	0.3%	
Nursing & Midwifery	7.4%	5.1%	5.9%	2.9%	3.8%	2.9%	6.9%	4.8%	19.7%	5.9%	5.1%	3.3%	4.5%	7.6%	4.5%		5.5%	5.0%	0.5%	
Health & Social Care Professionals	4.8%	3.6%	3.4%	2.3%	6.1%	2.3%	4.5%	4.1%	0.2%	4.0%	4.2%	2.9%	4.0%	4.1%	2.9%		3.7%	3.3%	0.4%	
Management & Administrative	5.7%	4.0%	6.1%	3.2%	2.1%	3.1%	4.5%	4.6%	6.5%	5.0%	6.6%	5.3%	6.4%	4.9%	5.5%		5.0%	4.6%	0.4%	
General Support	6.7%	1.0%	3.5%	0.6%	6.4%	4.5%	2.7%	4.8%	17.7%	12.0%	10.4%	6.0%	7.6%	5.4%	3.7%		5.2%	4.8%	0.4%	
Patient & Client Care	6.0%	4.1%	5.1%	3.1%	6.7%	4.0%	6.7%	6.5%	0.7%	4.2%	9.8%	5.4%	8.1%	6.8%	6.8%		6.3%	4.8%	0.4%	

Primary Care Absence Rate - by Staff Category & S38 Agency	Cork Dental Hospital	Dublin Dental Hospital	Our Lady's Hospice & Care Services	Total absence	Certified absence	Self-certified absence	COVID-19 absence
Primary Care: S38 2020 overall	5.9%	5.3%	7.1%	6.7%	4.5%	0.4%	1.8%
<i>Medical & Dental</i>	2.6%	8.4%	3.2%	4.1%	3.0%	0.1%	1.0%
<i>Nursing & Midwifery</i>	6.3%	26.6%	7.5%	8.0%	4.7%	0.6%	2.8%
<i>Health & Social Care Professionals</i>	0.8%	0.0%	7.1%	6.6%	2.8%	0.3%	3.4%
<i>Management & Administrative</i>	0.4%	2.3%	3.7%	2.5%	2.0%	0.1%	0.4%
<i>General Support</i>	10.3%	5.3%	6.0%	6.4%	4.4%	0.5%	1.5%
<i>Patient & Client Care</i>	12.8%	2.1%	9.8%	9.1%	7.1%	0.5%	1.5%
Total April:	5.8%	3.9%	10.1%	8.7%	4.2%	0.2%	4.4%
Medical & Dental	2.5%	1.6%	1.6%	2.0%		100.0%	
Nursing & Midwifery	0.0%	46.4%	12.0%	12.4%	4.9%	0.1%	7.4%
Health & Social Care Professionals	0.0%	0.0%	10.8%	9.9%	2.9%	0.3%	6.7%
Management & Administrative	0.0%	1.1%	3.5%	2.0%	1.6%	0.1%	0.3%
General Support	10.5%	2.7%	7.1%	6.9%	2.8%	0.2%	3.9%
Patient & Client Care	14.8%	0.4%	13.4%	11.6%	7.1%	0.3%	4.2%
Total March:	4.3%	8.3%	8.7%	8.0%	4.8%	0.3%	2.8%
Medical & Dental	0.8%	15.4%	10.8%	7.5%	2.3%	44.9%	52.8%
Nursing & Midwifery	0.0%	37.0%	8.0%	8.8%	4.8%	0.3%	3.6%
Health & Social Care Professionals	0.0%	0.0%	12.1%	11.0%	4.0%		7.0%
Management & Administrative	0.0%	4.7%	2.7%	2.5%	1.1%	0.2%	1.2%
General Support	9.9%	4.3%	7.8%	7.6%	5.1%	0.7%	1.8%
Patient & Client Care	11.2%	2.5%	11.4%	9.9%	7.8%	0.4%	1.7%
Total February:	6.6%	3.6%	5.0%	5.1%	4.6%	0.5%	
Medical & Dental	2.8%	6.1%	0.0%	2.7%	3.5%	96.5%	
Nursing & Midwifery	8.0%	8.9%	5.0%	5.3%	4.6%	0.7%	
Health & Social Care Professionals	0.0%	0.0%	1.3%	1.2%	0.6%	0.5%	
Management & Administrative	1.8%	1.7%	6.0%	3.8%	3.7%	0.1%	
General Support	19.9%	5.9%	4.8%	6.4%	6.0%	0.4%	
Patient & Client Care	9.8%	2.5%	7.3%	7.0%	6.4%	0.6%	
Total January:	7.1%	5.0%	4.6%	5.1%	4.4%	0.7%	
Medical & Dental	4.2%	9.7%	0.0%	4.1%	2.2%	97.8%	
Nursing & Midwifery	16.3%	8.9%	4.7%	5.4%	4.4%	1.2%	
Health & Social Care Professionals	3.0%	0.0%	4.3%	4.1%	3.7%	0.5%	
Management & Administrative	0.0%	1.6%	2.6%	1.7%	1.7%	0.0%	
General Support	0.0%	8.2%	4.4%	4.5%	3.8%	0.7%	
Patient & Client Care	15.3%	2.7%	6.7%	7.7%	7.0%	0.7%	
Primary Care: S38 2019 overall	3.8%	9.0%	4.3%	4.7%	4.2%	0.5%	
<i>Medical & Dental</i>	0.3%	9.9%	0.8%	2.4%	2.1%	0.3%	
<i>Nursing & Midwifery</i>	3.8%	19.7%	3.3%	4.1%	3.5%	0.6%	
<i>Health & Social Care Professionals</i>	6.1%	0.2%	2.9%	3.0%	2.5%	0.5%	
<i>Management & Administrative</i>	2.1%	6.5%	5.3%	4.7%	4.3%	0.4%	
<i>General Support</i>	6.4%	17.7%	6.0%	7.3%	6.5%	0.8%	
<i>Patient & Client Care</i>	6.7%	0.7%	5.4%	5.2%	4.7%	0.5%	