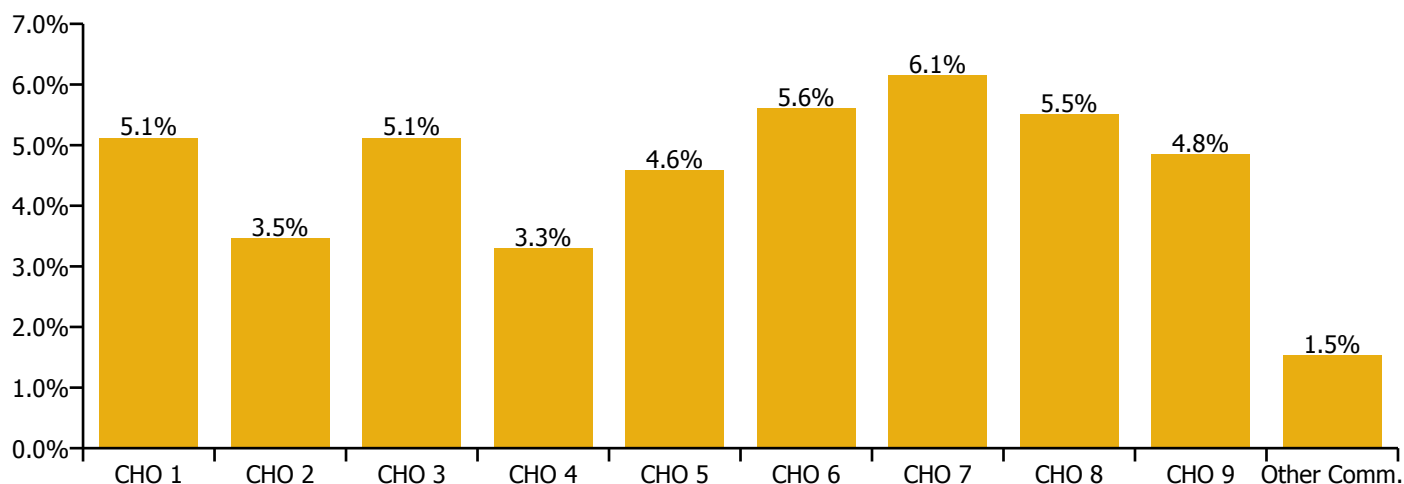


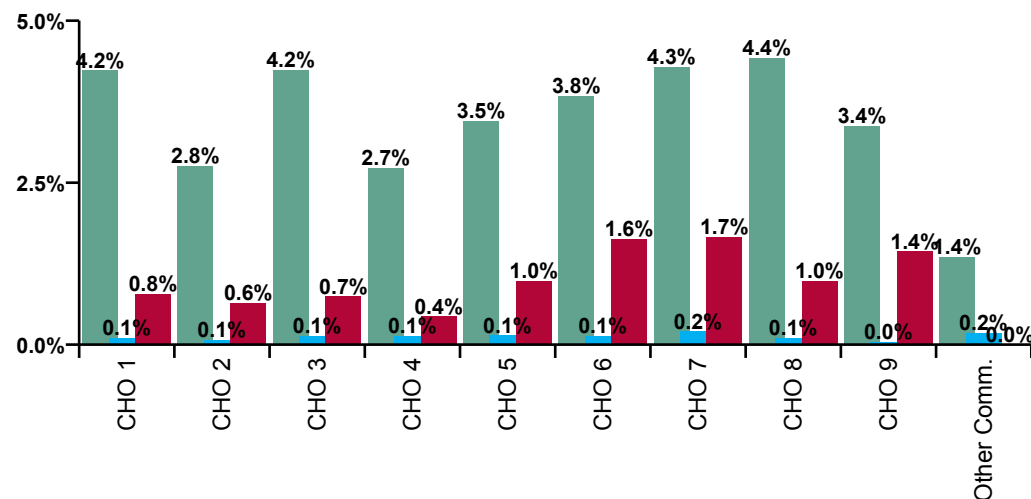
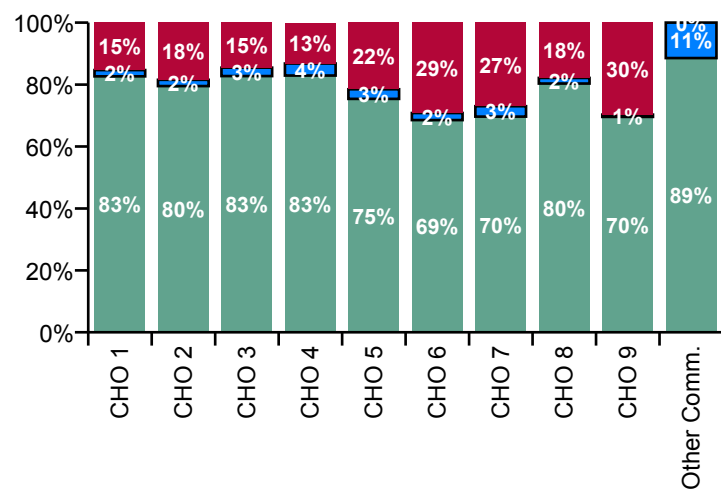
May 2020

Primary Care Absence Rate - by Staff Category: May 2020	Certified absence	Self-certified absence	COVID-19 absence	Total absence rate	Certified	Self-certified	COVID-19
Primary Care	3.7%	0.1%	1.1%	4.9%	76.1%	2.4%	21.5%
Medical & Dental	1.8%	0.1%	0.6%	2.5%	71.9%	3.8%	24.3%
Nursing & Midwifery	4.7%	0.1%	1.8%	6.6%	71.8%	1.3%	26.9%
Health & Social Care Professionals	2.9%	0.1%	0.7%	3.8%	78.6%	2.7%	18.7%
Management & Administrative	3.8%	0.2%	0.6%	4.5%	83.5%	3.7%	12.8%
General Support	2.9%	0.1%	1.8%	4.8%	60.1%	2.4%	37.5%
Patient & Client Care	4.5%	0.2%	1.0%	5.7%	79.6%	3.0%	17.5%

Primary Care Absence Rate - by Care Group: May 2020	Certified absence	Self-certified absence	COVID-19 absence	Total absence rate	Certified	Self-certified	COVID-19
Primary Care	3.7%	0.1%	1.1%	4.9%	76.1%	2.4%	21.5%
CHO 1	4.2%	0.1%	0.8%	5.1%	82.7%	2.0%	15.3%
CHO 2	2.8%	0.1%	0.6%	3.5%	79.5%	2.0%	18.5%
CHO 3	4.2%	0.1%	0.7%	5.1%	82.7%	2.7%	14.5%
Health Service Executive	2.5%	0.1%	0.5%	3.1%	79.7%	4.6%	15.7%
Section 38 Voluntary Agencies	4.6%			4.6%	100.0%	0.0%	0.0%
CHO 4	2.7%	0.1%	0.4%	3.3%	82.9%	3.9%	13.2%
CHO 5	3.5%	0.1%	1.0%	4.6%	75.4%	3.1%	21.5%
Health Service Executive	4.2%	0.1%	1.8%	6.1%	68.9%	2.0%	29.2%
Section 38 Voluntary Agencies	2.2%	0.2%	1.0%	3.3%	65.5%	5.3%	29.2%
CHO 6	3.8%	0.1%	1.6%	5.6%	68.5%	2.3%	29.2%
Health Service Executive	4.4%	0.2%	0.9%	5.5%	79.2%	3.9%	16.9%
Section 38 Voluntary Agencies	4.1%	0.2%	3.5%	7.8%	52.9%	2.3%	44.9%
CHO 7	4.3%	0.2%	1.7%	6.1%	69.7%	3.3%	27.0%
CHO 8	4.4%	0.1%	1.0%	5.5%	80.3%	1.8%	17.9%
CHO 9	3.4%	0.0%	1.4%	4.8%	69.6%	0.7%	29.7%
Other Community Services	1.4%	0.2%		1.5%	88.5%	11.5%	0.0%



Primary Care Overall Absence Rate - by Care Group & Staff Category: May 2020	Medical & Dental	Nursing & Midwifery	Health & Social Care Professionals	Management & Administrative	General Support	Patient & Client Care	Certified absence	Self-certified absence	COVID-19 absence	Total absence
Primary Care	2.5%	6.6%	3.8%	4.5%	4.8%	5.7%	3.7%	0.1%	1.1%	4.9%
CHO 1	3.2%	6.4%	4.8%	5.7%	4.0%	2.2%	4.2%	0.1%	0.8%	5.1%
CHO 2	1.7%	4.5%	2.7%	3.8%	3.0%	3.0%	2.8%	0.1%	0.6%	3.5%
CHO 3	5.7%	6.8%	1.4%	6.4%	0.0%	5.5%	4.2%	0.1%	0.7%	5.1%
Health Service Executive	1.6%	4.1%	1.7%	3.4%	0.0%	6.3%	2.5%	0.1%	0.5%	3.1%
Section 38 Voluntary Agencies	0.0%	0.0%	0.0%	0.0%	8.9%	13.1%	4.6%			4.6%
CHO 4	1.3%	3.9%	1.6%	3.0%	7.5%	8.5%	2.7%	0.1%	0.4%	3.3%
CHO 5	5.2%	4.3%	5.1%	4.7%	1.3%	3.7%	3.5%	0.1%	1.0%	4.6%
Health Service Executive	0.4%	8.5%	4.1%	4.6%	4.8%	1.9%	4.2%	0.1%	1.8%	6.1%
Section 38 Voluntary Agencies	2.1%	20.8%	0.0%	1.1%	8.6%	0.4%	2.2%	0.2%	1.0%	3.3%
CHO 6	1.3%	8.9%	4.0%	3.8%	7.0%	0.8%	3.8%	0.1%	1.6%	5.6%
Health Service Executive	3.4%	7.0%	4.1%	4.8%	7.9%	6.8%	4.4%	0.2%	0.9%	5.5%
Section 38 Voluntary Agencies	0.0%	9.4%	5.1%	5.9%	8.2%	8.2%	4.1%	0.2%	3.5%	7.8%
CHO 7	2.9%	7.8%	4.2%	5.0%	8.1%	7.4%	4.3%	0.2%	1.7%	6.1%
CHO 8	2.0%	8.4%	5.2%	4.1%	1.4%	6.2%	4.4%	0.1%	1.0%	5.5%
CHO 9	1.0%	7.0%	3.3%	4.6%	6.1%	6.6%	3.4%	0.0%	1.4%	4.8%
Other Community Services	3.8%	0.0%	4.3%	0.2%	0.0%	0.0%	1.4%	0.2%		1.5%



Certified absence

Self-certified absence

COVID-19 absence

Primary Care Absence Rate - by Care Group, Staff Category & Absence type: May 2020

CHO 1 by Staff Category May 2020	Certified absence	Self-certified absence	COVID-19 absence	Total absence	Certified	Self-certified	COVID-19
Primary Care	4.2%	0.1%	0.8%	5.1%	82.7%	2.0%	15.3%
Medical & Dental	2.2%	0.1%	0.9%	3.2%	68.8%	4.0%	27.2%
Nursing & Midwifery	4.9%	0.1%	1.4%	6.4%	76.5%	1.3%	22.2%
Health & Social Care Professionals	4.4%	0.1%	0.3%	4.8%	91.6%	2.4%	6.0%
Management & Administrative	5.0%	0.1%	0.6%	5.7%	86.9%	2.3%	10.9%
General Support	2.9%	0.1%	0.9%	4.0%	73.1%	3.2%	23.7%
Patient & Client Care	2.0%		0.1%	2.2%	95.1%	0.0%	4.9%

CHO 2 by Staff Category May 2020	Certified absence	Self-certified absence	COVID-19 absence	Total absence	Certified	Self-certified	COVID-19
Primary Care	2.8%	0.1%	0.6%	3.5%	79.5%	2.0%	18.5%
Medical & Dental	0.9%	0.2%	0.6%	1.7%	52.0%	10.1%	37.9%
Nursing & Midwifery	3.1%	0.1%	1.4%	4.5%	68.4%	1.5%	30.1%
Health & Social Care Professionals	2.2%	0.0%	0.4%	2.7%	83.7%	0.5%	15.9%
Management & Administrative	3.5%	0.1%	0.2%	3.8%	90.7%	2.9%	6.5%
General Support	2.6%		0.3%	3.0%	88.6%	0.0%	11.4%
Patient & Client Care	2.7%	0.1%	0.2%	3.0%	89.7%	2.7%	7.6%

CHO 3 by Staff Category May 2020	Certified absence	Self-certified absence	COVID-19 absence	Total absence	Certified	Self-certified	COVID-19
Primary Care	4.2%	0.1%	0.7%	5.1%	82.7%	2.7%	14.5%
Medical & Dental	5.1%		0.7%	5.7%	88.5%		11.5%
Nursing & Midwifery	5.6%	0.0%	1.1%	6.8%	82.6%	0.7%	16.6%
Health & Social Care Professionals	0.3%	0.1%	0.9%	1.4%	24.1%	9.8%	66.1%
Management & Administrative	5.7%	0.2%	0.4%	6.4%	90.0%	3.5%	6.5%
General Support				0.0%			
Patient & Client Care	4.2%	0.4%	0.9%	5.5%	77.1%	6.6%	16.3%

CHO 4 by Staff Category May 2020	Certified absence	Self-certified absence	COVID-19 absence	Total absence	Certified	Self-certified	COVID-19
Primary Care	2.7%	0.1%	0.4%	3.3%	82.9%	3.9%	13.2%
Medical & Dental	0.9%	0.1%	0.2%	1.3%	70.4%	11.0%	18.6%
Nursing & Midwifery	2.7%	0.1%	1.1%	3.9%	67.9%	3.2%	29.0%
Health & Social Care Professionals	1.3%	0.1%	0.3%	1.6%	78.8%	5.0%	16.2%
Management & Administrative	2.7%	0.2%	0.1%	3.0%	87.8%	7.5%	4.7%
General Support	7.5%			7.5%	100.0%	0.0%	0.0%
Patient & Client Care	8.5%			8.5%	100.0%	0.0%	0.0%

CHO 5 by Staff Category May 2020	Certified absence	Self-certified absence	COVID-19 absence	Total absence	Certified	Self-certified	COVID-19
Primary Care	3.5%	0.1%	1.0%	4.6%	75.4%	3.1%	21.5%
Medical & Dental	2.9%	0.1%	2.3%	5.2%	55.1%	1.3%	43.6%
Nursing & Midwifery	3.2%	0.0%	1.0%	4.3%	75.7%	1.0%	23.4%
Health & Social Care Professionals	4.0%	0.3%	0.9%	5.1%	77.0%	5.0%	18.0%
Management & Administrative	3.6%	0.2%	0.9%	4.7%	77.2%	3.5%	19.3%
General Support	1.3%			1.3%	100.0%	0.0%	0.0%
Patient & Client Care	3.3%	0.2%	0.2%	3.7%	90.5%	5.3%	4.2%

CHO 6 by Staff Category May 2020	Certified absence	Self-certified absence	COVID-19 absence	Total absence	Certified	Self-certified	COVID-19
Primary Care	3.8%	0.1%	1.6%	5.6%	68.5%	2.3%	29.2%
Medical & Dental	0.2%		1.1%	1.3%	15.4%		84.6%
Nursing & Midwifery	5.5%	0.1%	3.3%	8.9%	61.6%	0.9%	37.5%
Health & Social Care Professionals	3.8%		0.2%	4.0%	94.8%		5.2%
Management & Administrative	2.5%	0.3%	0.9%	3.8%	66.2%	8.7%	25.0%
General Support	5.3%	0.7%	1.0%	7.0%	75.7%	9.5%	14.8%
Patient & Client Care	0.8%			0.8%	100.0%	0.0%	0.0%

CHO 7 by Staff Category May 2020	Certified absence	Self-certified absence	COVID-19 absence	Total absence	Certified	Self-certified	COVID-19
Primary Care	4.3%	0.2%	1.7%	6.1%	69.7%	3.3%	27.0%
Medical & Dental	2.5%	0.2%	0.3%	2.9%	85.2%	6.2%	8.7%
Nursing & Midwifery	5.2%	0.2%	2.4%	7.8%	66.7%	2.3%	30.9%
Health & Social Care Professionals	3.5%	0.1%	0.6%	4.2%	82.8%	3.4%	13.8%
Management & Administrative	4.0%	0.2%	0.8%	5.0%	80.9%	3.7%	15.4%
General Support	3.3%	0.2%	4.6%	8.1%	40.5%	2.3%	57.2%
Patient & Client Care	5.1%	0.4%	1.9%	7.4%	69.4%	5.0%	25.6%

CHO 8 by Staff Category May 2020	Certified absence	Self-certified absence	COVID-19 absence	Total absence	Certified	Self-certified	COVID-19
Primary Care	4.4%	0.1%	1.0%	5.5%	80.3%	1.8%	17.9%
Medical & Dental	1.3%	0.0%	0.7%	2.0%	64.4%	0.8%	34.8%
Nursing & Midwifery	7.1%	0.1%	1.2%	8.4%	84.9%	0.9%	14.3%
Health & Social Care Professionals	3.6%	0.1%	1.5%	5.2%	70.0%	2.0%	28.0%
Management & Administrative	3.5%	0.2%	0.4%	4.1%	86.5%	4.0%	9.5%
General Support	0.3%		1.0%	1.4%	25.1%	0.0%	74.9%
Patient & Client Care	4.8%	0.1%	1.2%	6.2%	78.1%	1.8%	20.1%

CHO 9 by Staff Category May 2020	Certified absence	Self-certified absence	COVID-19 absence	Total absence	Certified	Self-certified	COVID-19
Primary Care	3.4%	0.0%	1.4%	4.8%	69.6%	0.7%	29.7%
Medical & Dental	1.0%			1.0%	100.0%		
Nursing & Midwifery	4.4%		2.6%	7.0%	62.3%		37.7%
Health & Social Care Professionals	2.3%	0.0%	1.0%	3.3%	68.1%	1.4%	30.5%
Management & Administrative	3.5%	0.1%	1.1%	4.6%	74.9%	1.8%	23.4%
General Support	4.9%		1.2%	6.1%	79.6%	0.0%	20.4%
Patient & Client Care	5.1%	0.0%	1.4%	6.6%	77.6%	0.6%	21.8%

Other Community Services by Staff Category May 2020	Certified absence	Self-certified absence	COVID-19 absence	Total absence	Certified	Self-certified	COVID-19
Primary Care	1.4%	0.2%	0.0%	1.5%	88.5%	11.5%	0.0%
Medical & Dental	3.1%	0.7%		3.8%	81.4%	18.6%	
Nursing & Midwifery				0.0%			
Health & Social Care Professionals	4.3%			4.3%	100.0%		
Management & Administrative		0.2%		0.2%	0.0%	100.0%	0.0%
General Support				0.0%			
Patient & Client Care				0.0%			

Primary Care Absence Rate - by Staff Category & Care Group	CHO 1	CHO 2	CHO 3	HSE	S38	CHO 4	CHO 5	HSE	S38	CHO 6	HSE	S38	CHO 7	CHO 8	CHO 9	Other Comm.	Total absence	Certified absence	Self-certified absence	COVID-19 absence
Primary Care: 2020 overall	6.3%	4.8%	7.1%	3.7%	5.7%	3.9%	5.6%	8.2%	4.9%	7.7%	7.6%	7.3%	7.5%	7.1%	6.4%	4.3%	6.2%	4.5%	0.3%	1.4%
Medical & Dental	4.1%	3.3%	6.9%	3.5%	2.1%	3.2%	5.1%	9.3%	7.2%	8.7%	5.3%	2.6%	4.9%	2.3%	2.7%	5.8%	4.1%	2.8%	0.2%	1.0%
Nursing & Midwifery	7.3%	5.5%	8.0%	4.2%	5.1%	4.3%	5.4%	9.7%	25.5%	10.2%	7.6%	7.9%	7.7%	9.0%	7.5%	2.6%	7.1%	5.0%	0.2%	1.9%
Health & Social Care Professionals	6.4%	4.9%	3.7%	2.6%	0.6%	2.6%	6.4%	7.3%	0.0%	7.2%	6.0%	6.7%	6.1%	6.6%	4.5%	8.7%	5.4%	3.9%	0.3%	1.3%
Management & Administrative	6.6%	5.2%	9.2%	3.7%	0.4%	3.4%	5.4%	6.4%	2.1%	5.5%	7.6%	4.1%	7.0%	6.7%	6.1%	1.2%	6.0%	4.8%	0.3%	1.0%
General Support	5.0%	1.2%	2.3%	0.0%	10.0%	7.5%	3.3%	8.9%	6.0%	7.3%	12.5%	6.5%	8.5%	7.8%	9.8%	6.7%	5.9%	4.3%	0.2%	1.3%
Patient & Client Care	4.2%	4.9%	5.8%	5.5%	12.9%	7.4%	6.0%	5.6%	1.7%	3.4%	10.8%	9.4%	10.3%	8.7%	9.9%	5.3%	7.8%	4.3%	0.2%	1.3%
Total May:	5.1%	3.5%	5.1%	3.1%	4.6%	3.3%	4.6%	6.1%	3.3%	5.6%	5.5%	7.8%	6.1%	5.5%	4.8%	1.5%	4.9%	3.7%	0.1%	1.1%
Medical & Dental	3.2%	1.7%	5.7%	1.6%	0.0%	1.3%	5.2%	0.4%	2.1%	1.3%	3.4%	0.0%	2.9%	2.0%	1.0%	3.8%	2.5%	1.8%	0.1%	0.6%
Nursing & Midwifery	6.4%	4.5%	6.8%	4.1%	0.0%	3.9%	4.3%	8.5%	20.8%	8.9%	7.0%	9.4%	7.8%	8.4%	7.0%	0.0%	6.6%	4.7%	0.1%	1.8%
Health & Social Care Professionals	4.8%	2.7%	1.4%	1.7%	0.0%	1.6%	5.1%	4.1%	0.0%	4.0%	4.1%	5.1%	4.2%	5.2%	3.3%	4.3%	3.8%	2.9%	0.1%	0.7%
Management & Administrative	5.7%	3.8%	6.4%	3.4%	0.0%	3.0%	4.7%	4.6%	1.1%	3.8%	4.8%	5.9%	5.0%	4.1%	4.6%	0.2%	4.5%	3.8%	0.2%	0.6%
General Support	4.0%	3.0%	0.0%	0.0%	8.9%	7.5%	1.3%	4.8%	8.6%	7.0%	7.9%	8.2%	8.1%	1.4%	6.1%	0.0%	4.8%	2.9%	0.1%	1.8%
Patient & Client Care	2.2%	3.0%	5.5%	6.3%	13.1%	8.5%	3.7%	1.9%	0.4%	0.8%	6.8%	8.2%	7.4%	6.2%	6.6%	0.0%	5.7%	4.5%	0.2%	1.0%
Total April:	7.7%	6.7%	8.2%	5.5%	5.8%	5.5%	7.5%	9.1%	3.9%	8.3%	9.4%	10.1%	9.6%	8.9%	8.3%	4.8%	7.9%	4.6%	0.1%	3.3%
Medical & Dental	5.2%	5.2%	9.9%	5.8%	2.5%	5.3%	8.1%	9.6%	1.6%	7.1%	5.2%	1.6%	4.7%	3.1%	2.6%	5.8%	5.2%	2.9%	0.1%	2.2%
Nursing & Midwifery	10.1%	8.4%	9.9%	8.2%	0.0%	7.9%	7.0%	14.1%	46.4%	14.9%	9.8%	12.0%	10.5%	11.3%	11.1%	3.2%	10.1%	5.5%	0.1%	4.5%
Health & Social Care Professionals	7.3%	6.2%	5.3%	3.1%	0.0%	3.1%	9.4%	5.2%	0.0%	5.2%	8.5%	10.8%	8.9%	9.7%	7.0%	8.8%	7.0%	3.8%	0.1%	3.1%
Management & Administrative	8.0%	7.3%	10.1%	4.9%	0.0%	4.3%	6.8%	4.5%	1.1%	3.7%	8.7%	3.5%	7.9%	7.0%	6.6%	2.3%	7.0%	4.6%	0.1%	2.3%
General Support	4.9%	1.4%	0.1%	0.0%	10.5%	7.5%	1.3%	12.5%	2.7%	7.3%	11.2%	7.1%	8.5%	14.8%	9.8%	0.0%	5.8%	3.3%	0.1%	2.4%
Patient & Client Care	4.8%	5.6%	5.8%	9.0%	14.8%	10.6%	6.5%	3.0%	0.4%	1.3%	13.0%	13.4%	13.2%	10.9%	12.7%	6.5%	9.7%	5.9%	0.1%	3.7%
Total March:	8.5%	6.8%	9.3%	3.3%	4.3%	3.4%	6.6%	11.8%	8.3%	11.3%	10.4%	8.7%	9.9%	8.5%	9.2%	7.5%	8.0%	5.1%	0.3%	2.7%
Medical & Dental	5.6%	3.6%	9.3%	3.6%	0.8%	3.0%	4.6%	11.4%	15.4%	12.4%	9.0%	10.8%	9.3%	4.1%	1.8%	11.7%	6.0%	3.4%	0.2%	2.5%
Nursing & Midwifery	9.7%	8.4%	10.8%	4.2%	0.0%	4.1%	6.6%	14.4%	37.0%	15.3%	9.8%	8.0%	9.2%	9.8%	8.5%	8.9%	8.9%	5.4%	0.2%	3.3%
Health & Social Care Professionals	9.7%	7.5%	6.8%	2.2%	0.0%	2.2%	7.2%	10.9%	0.0%	10.7%	9.2%	12.1%	9.6%	8.5%	4.7%	12.5%	7.6%	4.9%	0.3%	2.5%
Management & Administrative	7.7%	6.6%	10.7%	2.9%	0.0%	2.6%	6.8%	10.0%	4.7%	9.1%	10.4%	2.7%	9.1%	7.7%	2.7%	2.0%	7.2%	4.9%	0.2%	2.1%
General Support	7.9%	1.2%	2.8%	0.0%	9.9%	8.1%	4.3%	5.5%	4.3%	4.9%	23.7%	7.8%	12.3%	9.7%	10.5%	0.0%	7.7%	5.3%	0.3%	2.1%
Patient & Client Care	6.8%	6.4%	8.1%	4.9%	11.2%	6.6%	6.5%	10.6%	2.5%	6.8%	12.5%	11.4%	12.1%	11.5%	12.8%	12.1%	9.9%	6.3%	0.5%	3.1%
Total February:	4.8%	3.1%	5.7%	3.4%	6.6%	3.7%	4.8%	6.2%	3.6%	5.7%	6.1%	5.0%	5.8%	5.6%	5.1%	4.9%	4.9%	4.5%	0.4%	
Medical & Dental	3.3%	1.7%	5.2%	4.1%	2.8%	3.9%	3.9%	8.3%	6.1%	7.5%	5.0%	0.0%	4.3%	0.6%	3.0%	3.9%	3.3%	2.9%	0.4%	
Nursing & Midwifery	5.2%	2.7%	5.9%	4.0%	8.0%	4.1%	4.6%	6.3%	8.9%	6.3%	5.3%	5.0%	5.2%	6.8%	5.2%	1.0%	5.1%	4.7%	0.3%	
Health & Social Care Professionals	4.8%	3.9%	1.9%	2.5%	0.0%	2.5%	5.6%	6.7%	0.0%	6.5%	3.9%	1.3%	3.5%	4.2%	3.4%	12.7%	4.1%	3.6%	0.5%	
Management & Administrative	5.2%	3.4%	8.6%	3.0%	1.8%	2.9%	4.2%	4.2%	1.7%	3.6%	6.8%	6.0%	6.6%	7.1%	5.8%	0.6%	5.3%	4.9%	0.4%	
General Support	4.4%	0.1%	3.9%	0.0%	19.9%	13.9%	3.9%	13.3%	5.9%	9.1%	11.9%	4.8%	7.1%	2.4%	13.5%	34.3%	5.8%	5.4%	0.4%	
Patient & Client Care	4.2%	4.9%	3.6%	4.1%	9.8%	5.5%	6.6%	4.2%	2.5%	3.2%	10.0%	7.3%	9.0%	7.2%	7.3%	3.5%	6.5%	5.9%	0.6%	
Total January:	5.1%	4.0%	6.7%	3.1%	7.1%	3.4%	4.6%	7.2%	5.0%	6.9%	6.4%	4.6%	5.9%	6.7%	5.7%	2.7%	5.3%	4.9%	0.4%	
Medical & Dental	3.2%	4.3%	4.3%	1.6%	4.2%	2.1%	3.6%	9.9%	9.7%	9.9%	3.9%	0.0%	3.3%	1.5%	4.0%	3.2%	3.5%	3.2%	0.3%	
Nursing & Midwifery	4.9%	3.4%	6.7%	2.3%	16.3%	2.6%	4.6%	5.8%	8.9%	5.9%	5.0%	4.7%	4.9%	8.6%	5.5%	0.6%	5.1%	4.7%	0.4%	
Health & Social Care Professionals	5.3%	4.3%	3.1%	3.1%	3.0%	3.1%	4.5%	9.5%	0.0%	9.3%	4.6%	4.3%	4.5%	5.2%	4.0%	5.2%	4.6%	4.2%	0.4%	
Management & Administrative	6.3%	5.0%	9.7%	4.1%	0.0%	3.9%	4.5%	6.2%	1.6%	5.0%	7.5%	2.6%	6.7%	7.5%	7.6%	0.6%	6.1%	5.7%	0.5%	
General Support	4.1%	0.6%	5.0%	0.0%	0.0%	0.0%	5.5%	8.1%	8.2%	8.2%	10.6%	4.4%	6.5%	9.5%	7.8%	14.9%	5.1%	4.8%	0.3%	
Patient & Client Care	3.0%	4.3%	6.1%	4.4%	15.3%	6.6%	6.6%	3.8%	2.7%	3.2%	11.5%	6.7%	9.7%	7.4%	7.7%	4.3%	7.0%	6.3%	0.6%	
Primary Care: 2019 overall	5.8%	3.9%	5.2%	2.7%	3.8%	2.8%	5.1%	4.8%	9.0%	5.5%	5.9%	4.3%	5.4%	5.4%	3.9%		4.7%	4.3%	0.4%	
Medical & Dental	2.2%	2.0%	4.4%	2.5%	0.3%	2.2%	3.1%	6.1%	9.9%	7.0%	3.2%	0.8%	2.8%	1.4%	3.5%		2.8%	2.5%	0.3%	
Nursing & Midwifery	7.4%	5.1%	5.9%	2.9%	3.8%	2.9%	6.9%	4.8%	19.7%	5.9%	5.1%	3.3%	4.5%	7.6%	4.5%		5.5%	5.0%	0.5%	
Health & Social Care Professionals	4.8%	3.6%	3.4%	2.3%	6.1%	2.3%	4.5%	4.1%	0.2%	4.0%	4.2%	2.9%	4.0%	4.1%	2.9%		3.7%	3.3%	0.4%	
Management & Administrative	5.7%	4.0%	6.1%	3.2%	2.1%	3.1%	4.5%	4.6%	6.5%	5.0%	6.6%	5.3%	6.4%	4.9%	5.5%		5.0%	4.6%	0.4%	
General Support	6.7%	1.0%	3.5%	0.6%	6.4%	4.5%	2.7%	4.8%	17.7%	12.0%	10.4%	6.0%	7.6%	5.4%	3.7%		5.2%	4.8%	0.4%	
Patient & Client Care	6.0%	4.1%	5.1%	3.1%	6.7%	4.0%	6.7%	6.5%	0.7%	4.2%	9.8%	5.4%	8.1%	6.8%	6.8%		6.3%	4.8%	0.4%	

Primary Care Absence Rate - by Staff Category & S38 Agency	Cork Dental Hospital	Dublin Dental Hospital	Our Lady's Hospice & Care Services	Total absence	Certified absence	Self-certified absence	COVID-19 absence
Primary Care: S38 2020 overall	5.7%	4.9%	7.3%	6.7%	4.4%	0.4%	2.0%
<i>Medical & Dental</i>	2.1%	7.2%	2.6%	3.4%	2.4%	0.1%	0.9%
<i>Nursing & Midwifery</i>	5.1%	25.5%	7.9%	8.3%	4.7%	0.5%	3.1%
<i>Health & Social Care Professionals</i>	0.6%	0.0%	6.7%	6.2%	3.0%	0.3%	2.9%
<i>Management & Administrative</i>	0.4%	2.1%	4.1%	2.6%	2.1%	0.1%	0.5%
<i>General Support</i>	10.0%	6.0%	6.5%	6.8%	4.3%	0.5%	2.0%
<i>Patient & Client Care</i>	12.9%	1.7%	9.4%	8.8%	6.7%	0.4%	1.6%
Total May:	4.6%	3.3%	7.8%	6.7%	3.9%	0.1%	2.6%
Medical & Dental	0.0%	2.1%	0.0%	0.5%			0.5%
Nursing & Midwifery	0.0%	20.8%	9.4%	9.2%	4.8%	0.1%	4.3%
Health & Social Care Professionals	0.0%	0.0%	5.1%	4.6%	3.6%		0.9%
Management & Administrative	0.0%	1.1%	5.9%	3.1%	2.2%	0.1%	0.8%
General Support	8.9%	8.6%	8.2%	8.3%	4.0%	0.3%	4.1%
Patient & Client Care	13.1%	0.4%	8.2%	7.8%	5.4%	0.2%	2.2%
Total April:	5.8%	3.9%	10.1%	8.7%	4.2%	0.2%	4.4%
Medical & Dental	2.5%	1.6%	1.6%	2.0%	2.0%		
Nursing & Midwifery	0.0%	46.4%	12.0%	12.4%	4.9%	0.1%	7.4%
Health & Social Care Professionals	0.0%	0.0%	10.8%	9.9%	2.9%	0.3%	6.7%
Management & Administrative	0.0%	1.1%	3.5%	2.0%	1.6%	0.1%	0.3%
General Support	10.5%	2.7%	7.1%	6.9%	2.8%	0.2%	3.9%
Patient & Client Care	14.8%	0.4%	13.4%	11.6%	7.1%	0.3%	4.2%
Total March:	4.3%	8.3%	8.7%	8.0%	4.8%	0.3%	2.8%
Medical & Dental	0.8%	15.4%	10.8%	7.5%	3.4%	0.2%	4.0%
Nursing & Midwifery	0.0%	37.0%	8.0%	8.8%	4.8%	0.3%	3.6%
Health & Social Care Professionals	0.0%	0.0%	12.1%	11.0%	4.0%		7.0%
Management & Administrative	0.0%	4.7%	2.7%	2.5%	1.1%	0.2%	1.2%
General Support	9.9%	4.3%	7.8%	7.6%	5.1%	0.7%	1.8%
Patient & Client Care	11.2%	2.5%	11.4%	9.9%	7.8%	0.4%	1.7%
Total February:	6.6%	3.6%	5.0%	5.1%	4.6%	0.5%	
Medical & Dental	2.8%	6.1%	0.0%	2.7%	2.7%	0.1%	
Nursing & Midwifery	8.0%	8.9%	5.0%	5.3%	4.6%	0.7%	
Health & Social Care Professionals	0.0%	0.0%	1.3%	1.2%	0.6%	0.5%	
Management & Administrative	1.8%	1.7%	6.0%	3.8%	3.7%	0.1%	
General Support	19.9%	5.9%	4.8%	6.4%	6.0%	0.4%	
Patient & Client Care	9.8%	2.5%	7.3%	7.0%	6.4%	0.6%	
Total January:	7.1%	5.0%	4.6%	5.1%	4.4%	0.7%	
Medical & Dental	4.2%	9.7%	0.0%	4.1%	4.0%	0.1%	
Nursing & Midwifery	16.3%	8.9%	4.7%	5.4%	4.4%	1.2%	
Health & Social Care Professionals	3.0%	0.0%	4.3%	4.1%	3.7%	0.5%	
Management & Administrative	0.0%	1.6%	2.6%	1.7%	1.7%	0.0%	
General Support	0.0%	8.2%	4.4%	4.5%	3.8%	0.7%	
Patient & Client Care	15.3%	2.7%	6.7%	7.7%	7.0%	0.7%	
Primary Care: S38 2019 overall	3.8%	9.0%	4.3%	4.7%	4.2%	0.5%	
<i>Medical & Dental</i>	0.3%	9.9%	0.8%	2.4%	2.1%	0.3%	
<i>Nursing & Midwifery</i>	3.8%	19.7%	3.3%	4.1%	3.5%	0.6%	
<i>Health & Social Care Professionals</i>	6.1%	0.2%	2.9%	3.0%	2.5%	0.5%	
<i>Management & Administrative</i>	2.1%	6.5%	5.3%	4.7%	4.3%	0.4%	
<i>General Support</i>	6.4%	17.7%	6.0%	7.3%	6.5%	0.8%	
<i>Patient & Client Care</i>	6.7%	0.7%	5.4%	5.2%	4.7%	0.5%	