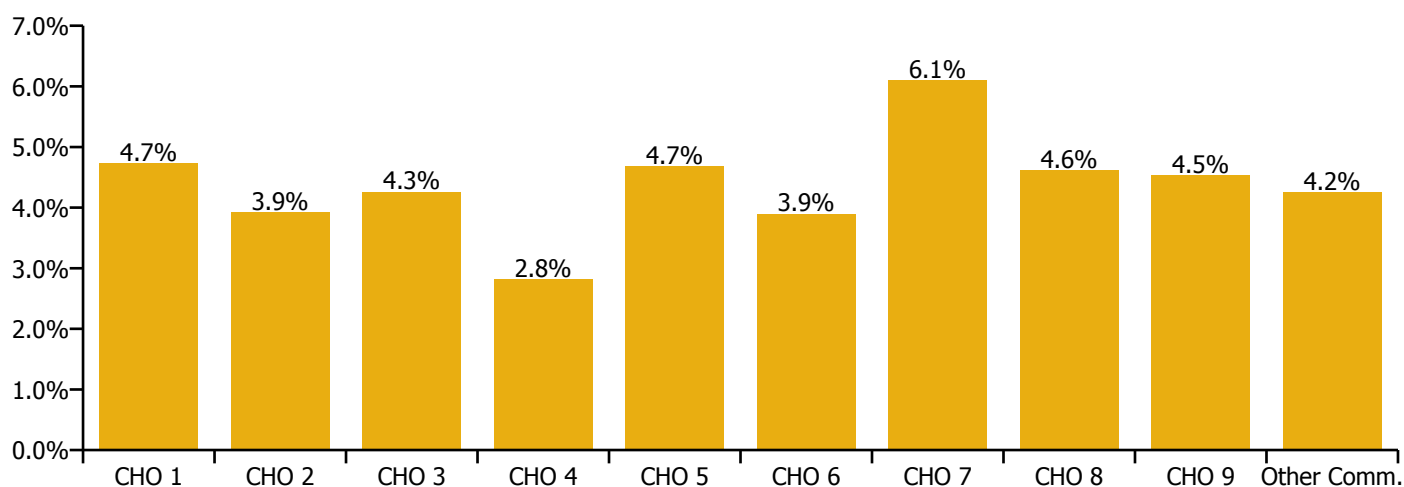


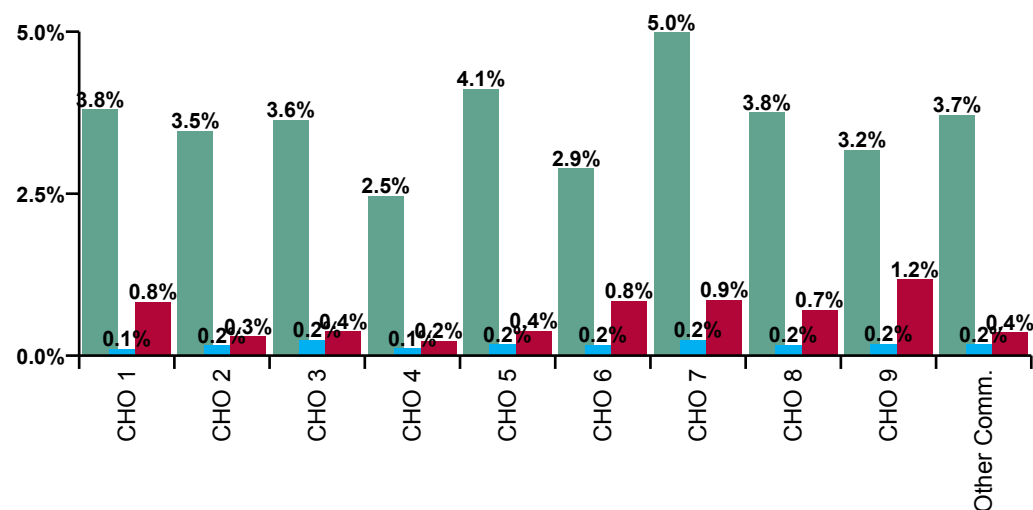
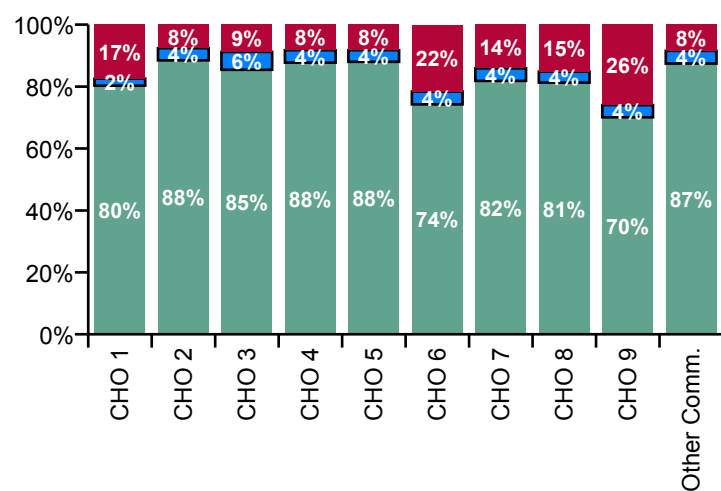
November 2020

Primary Care Absence Rate - by Staff Category: Nov 2020	Certified absence	Self-certified absence	COVID-19 absence	Total absence rate	Certified	Self-certified	COVID-19
Primary Care	3.7%	0.2%	0.7%	4.5%	81.5%	3.8%	14.7%
Medical & Dental	2.7%	0.1%	0.6%	3.4%	79.5%	2.3%	18.2%
Nursing & Midwifery	4.5%	0.2%	1.0%	5.7%	79.8%	2.7%	17.5%
Health & Social Care Professionals	3.1%	0.2%	0.3%	3.5%	86.6%	5.1%	8.3%
Management & Administrative	3.4%	0.2%	0.5%	4.0%	83.5%	5.2%	11.3%
General Support	3.4%	0.2%	1.2%	4.8%	70.5%	3.2%	26.2%
Patient & Client Care	4.5%	0.2%	0.9%	5.6%	80.3%	3.8%	15.9%

Primary Care Absence Rate - by Care Group: Nov 2020	Certified absence	Self-certified absence	COVID-19 absence	Total absence rate	Certified	Self-certified	COVID-19
Primary Care	3.7%	0.2%	0.7%	4.5%	81.5%	3.8%	14.7%
CHO 1	3.8%	0.1%	0.8%	4.7%	80.3%	2.3%	17.4%
CHO 2	3.5%	0.2%	0.3%	3.9%	88.5%	3.9%	7.6%
CHO 3	3.6%	0.2%	0.4%	4.3%	85.4%	5.8%	8.8%
Health Service Executive	2.6%	0.1%	0.2%	3.0%	88.7%	3.7%	7.6%
Section 38 Voluntary Agencies	1.1%	0.1%	0.3%	1.5%	71.7%	9.4%	19.0%
CHO 4	2.5%	0.1%	0.2%	2.8%	87.8%	4.0%	8.2%
CHO 5	4.1%	0.2%	0.4%	4.7%	88.0%	3.7%	8.3%
Health Service Executive	3.0%	0.2%	0.8%	4.0%	74.6%	4.5%	20.9%
Section 38 Voluntary Agencies	1.9%		0.8%	2.7%	69.1%	0.0%	30.9%
CHO 6	2.9%	0.2%	0.8%	3.9%	74.2%	4.1%	21.6%
Health Service Executive	5.3%	0.2%	1.2%	6.7%	79.2%	3.6%	17.3%
Section 38 Voluntary Agencies	4.1%	0.3%	0.1%	4.4%	92.2%	5.7%	2.1%
CHO 7	5.0%	0.2%	0.9%	6.1%	81.9%	4.0%	14.1%
CHO 8	3.8%	0.2%	0.7%	4.6%	81.3%	3.5%	15.2%
CHO 9	3.2%	0.2%	1.2%	4.5%	70.1%	3.9%	26.0%
Other Community Services	3.7%	0.2%	0.4%	4.2%	87.4%	4.1%	8.5%



Primary Care Overall Absence Rate - by Care Group & Staff Category: Nov 2020	Medical & Dental	Nursing & Midwifery	Health & Social Care Professionals	Management & Administrative	General Support	Patient & Client Care	Certified absence	Self-certified absence	COVID-19 absence	Total absence
Primary Care	3.4%	5.7%	3.5%	4.0%	4.8%	5.6%	3.7%	0.2%	0.7%	4.5%
CHO 1	3.4%	6.2%	3.7%	4.3%	6.0%	4.4%	3.8%	0.1%	0.8%	4.7%
CHO 2	4.7%	6.3%	2.6%	3.7%	0.2%	2.4%	3.5%	0.2%	0.3%	3.9%
CHO 3	6.5%	3.8%	3.2%	4.7%	3.9%	4.1%	3.6%	0.2%	0.4%	4.3%
Health Service Executive	3.1%	3.6%	1.7%	3.2%	0.0%	3.2%	2.6%	0.1%	0.2%	3.0%
Section 38 Voluntary Agencies	0.0%	3.6%	0.0%	0.0%	0.0%	4.5%	1.1%	0.1%	0.3%	1.5%
CHO 4	2.5%	3.6%	1.7%	2.9%	0.0%	3.6%	2.5%	0.1%	0.2%	2.8%
CHO 5	5.6%	6.1%	3.0%	4.4%	0.0%	5.2%	4.1%	0.2%	0.4%	4.7%
Health Service Executive	1.1%	4.4%	4.1%	4.4%	8.7%	3.3%	3.0%	0.2%	0.8%	4.0%
Section 38 Voluntary Agencies	3.4%	14.3%	0.0%	1.0%	3.5%	1.7%	1.9%		0.8%	2.7%
CHO 6	1.5%	4.6%	4.1%	4.0%	6.3%	2.9%	2.9%	0.2%	0.8%	3.9%
Health Service Executive	3.5%	8.3%	4.9%	5.5%	13.9%	9.3%	5.3%	0.2%	1.2%	6.7%
Section 38 Voluntary Agencies	0.0%	2.9%	4.4%	3.2%	4.8%	8.2%	4.1%	0.3%	0.1%	4.4%
CHO 7	2.9%	6.6%	4.9%	5.1%	7.6%	8.9%	5.0%	0.2%	0.9%	6.1%
CHO 8	1.9%	6.7%	3.7%	4.0%	5.2%	5.0%	3.8%	0.2%	0.7%	4.6%
CHO 9	2.8%	5.3%	3.9%	3.7%	6.2%	6.5%	3.2%	0.2%	1.2%	4.5%
Other Community Services	4.1%	0.3%	5.6%	0.7%	0.0%	19.3%	3.7%	0.2%	0.4%	4.2%



Certified absence

Self-certified absence

COVID-19 absence

Primary Care Absence Rate - by Care Group, Staff Category & Absence type: Nov 2020

CHO 1 by Staff Category Nov 2020	Certified absence	Self-certified absence	COVID-19 absence	Total absence	Certified	Self-certified	COVID-19
Primary Care	3.8%	0.1%	0.8%	4.7%	80.3%	2.3%	17.4%
Medical & Dental	2.7%		0.7%	3.4%	78.7%		21.3%
Nursing & Midwifery	4.6%	0.0%	1.6%	6.2%	74.4%	0.6%	25.1%
Health & Social Care Professionals	3.2%	0.2%	0.3%	3.7%	87.6%	5.1%	7.3%
Management & Administrative	3.7%	0.1%	0.4%	4.3%	87.2%	2.4%	10.3%
General Support	3.6%	0.3%	2.2%	6.0%	59.7%	4.5%	35.8%
Patient & Client Care	4.0%	0.1%	0.3%	4.4%	89.6%	2.5%	7.9%

CHO 2 by Staff Category Nov 2020	Certified absence	Self-certified absence	COVID-19 absence	Total absence	Certified	Self-certified	COVID-19
Primary Care	3.5%	0.2%	0.3%	3.9%	88.5%	3.9%	7.6%
Medical & Dental	4.3%	0.0%	0.4%	4.7%	91.5%	0.9%	7.7%
Nursing & Midwifery	5.4%	0.1%	0.8%	6.3%	85.7%	2.3%	12.0%
Health & Social Care Professionals	2.5%	0.1%	0.0%	2.6%	95.0%	4.7%	0.3%
Management & Administrative	3.2%	0.3%	0.2%	3.7%	86.6%	7.0%	6.4%
General Support	0.2%			0.2%	100.0%	0.0%	0.0%
Patient & Client Care	2.3%	0.2%		2.4%	92.6%	7.4%	0.0%

CHO 3 by Staff Category Nov 2020	Certified absence	Self-certified absence	COVID-19 absence	Total absence	Certified	Self-certified	COVID-19
Primary Care	3.6%	0.2%	0.4%	4.3%	85.4%	5.8%	8.8%
Medical & Dental	6.1%	0.1%	0.3%	6.5%	94.1%	1.1%	4.8%
Nursing & Midwifery	3.6%	0.2%	0.1%	3.8%	92.6%	4.3%	3.2%
Health & Social Care Professionals	2.1%	0.3%	0.8%	3.2%	66.9%	9.5%	23.6%
Management & Administrative	3.9%	0.3%	0.4%	4.7%	84.4%	7.0%	8.6%
General Support	3.8%	0.1%		3.9%	96.5%	3.5%	0.0%
Patient & Client Care	3.2%	0.3%	0.6%	4.1%	78.0%	8.1%	13.9%

CHO 4 by Staff Category Nov 2020	Certified absence	Self-certified absence	COVID-19 absence	Total absence	Certified	Self-certified	COVID-19
Primary Care	2.5%	0.1%	0.2%	2.8%	87.8%	4.0%	8.2%
Medical & Dental	2.5%			2.5%	100.0%		
Nursing & Midwifery	3.3%	0.1%	0.2%	3.6%	92.4%	2.6%	5.1%
Health & Social Care Professionals	1.6%	0.1%	0.1%	1.7%	91.2%	3.8%	5.0%
Management & Administrative	2.0%	0.2%	0.7%	2.9%	68.9%	7.7%	23.4%
General Support				0.0%			
Patient & Client Care	3.4%	0.2%		3.6%	94.8%	5.2%	0.0%

CHO 5 by Staff Category Nov 2020	Certified absence	Self-certified absence	COVID-19 absence	Total absence	Certified	Self-certified	COVID-19
Primary Care	4.1%	0.2%	0.4%	4.7%	88.0%	3.7%	8.3%
Medical & Dental	4.4%	0.3%	0.9%	5.6%	78.2%	4.9%	16.8%
Nursing & Midwifery	5.3%	0.2%	0.6%	6.1%	87.4%	3.0%	9.6%
Health & Social Care Professionals	2.5%	0.2%	0.3%	3.0%	83.5%	7.8%	8.7%
Management & Administrative	4.2%	0.1%	0.1%	4.4%	93.7%	3.1%	3.2%
General Support				0.0%			
Patient & Client Care	4.9%	0.0%	0.2%	5.2%	95.6%	0.9%	3.5%

CHO 6 by Staff Category Nov 2020	Certified absence	Self-certified absence	COVID-19 absence	Total absence	Certified	Self-certified	COVID-19
Primary Care	2.9%	0.2%	0.8%	3.9%	74.2%	4.1%	21.6%
Medical & Dental	0.7%	0.2%	0.6%	1.5%	49.0%	10.2%	40.8%
Nursing & Midwifery	2.6%	0.2%	1.8%	4.6%	57.1%	3.5%	39.4%
Health & Social Care Professionals	3.7%	0.1%	0.3%	4.1%	91.1%	1.8%	7.2%
Management & Administrative	3.0%	0.2%	0.8%	4.0%	75.5%	5.6%	18.9%
General Support	5.7%		0.6%	6.3%	90.8%	0.0%	9.2%
Patient & Client Care	2.7%	0.2%		2.9%	92.4%	7.6%	0.0%

CHO 7 by Staff Category Nov 2020	Certified absence	Self-certified absence	COVID-19 absence	Total absence	Certified	Self-certified	COVID-19
Primary Care	5.0%	0.2%	0.9%	6.1%	81.9%	4.0%	14.1%
Medical & Dental	2.3%	0.1%	0.5%	2.9%	79.5%	3.6%	16.9%
Nursing & Midwifery	4.9%	0.2%	1.4%	6.6%	75.1%	3.6%	21.3%
Health & Social Care Professionals	4.4%	0.2%	0.2%	4.9%	90.5%	4.8%	4.7%
Management & Administrative	4.2%	0.2%	0.7%	5.1%	82.0%	4.7%	13.3%
General Support	4.7%	0.3%	2.6%	7.6%	61.5%	4.3%	34.2%
Patient & Client Care	8.3%	0.3%	0.3%	8.9%	93.5%	3.5%	3.0%

CHO 8 by Staff Category Nov 2020	Certified absence	Self-certified absence	COVID-19 absence	Total absence	Certified	Self-certified	COVID-19
Primary Care	3.8%	0.2%	0.7%	4.6%	81.3%	3.5%	15.2%
Medical & Dental	1.5%	0.0%	0.3%	1.9%	81.3%	1.9%	16.9%
Nursing & Midwifery	5.4%	0.1%	1.2%	6.7%	80.5%	1.5%	18.1%
Health & Social Care Professionals	3.3%	0.2%	0.2%	3.7%	89.8%	4.8%	5.4%
Management & Administrative	3.4%	0.3%	0.4%	4.0%	83.2%	6.8%	10.0%
General Support	5.2%			5.2%	100.0%	0.0%	0.0%
Patient & Client Care	3.3%	0.2%	1.5%	5.0%	66.4%	3.6%	30.0%

CHO 9 by Staff Category Nov 2020	Certified absence	Self-certified absence	COVID-19 absence	Total absence	Certified	Self-certified	COVID-19
Primary Care	3.2%	0.2%	1.2%	4.5%	70.1%	3.9%	26.0%
Medical & Dental	1.1%	0.0%	1.6%	2.8%	39.7%	1.5%	58.8%
Nursing & Midwifery	4.2%	0.2%	0.9%	5.3%	79.4%	3.6%	17.0%
Health & Social Care Professionals	3.0%	0.2%	0.7%	3.9%	76.0%	6.0%	18.0%
Management & Administrative	3.1%	0.1%	0.5%	3.7%	82.9%	3.5%	13.6%
General Support	5.0%		1.1%	6.2%	81.6%	0.0%	18.4%
Patient & Client Care	2.5%	0.2%	3.7%	6.5%	38.5%	3.5%	58.0%

Other Community Services by Staff Category Nov 2020	Certified absence	Self-certified absence	COVID-19 absence	Total absence	Certified	Self-certified	COVID-19
Primary Care	3.7%	0.2%	0.4%	4.2%	87.4%	4.1%	8.5%
Medical & Dental	2.4%		1.7%	4.1%	58.9%		41.1%
Nursing & Midwifery		0.3%		0.3%		100.0%	
Health & Social Care Professionals	5.6%			5.6%	100.0%		
Management & Administrative	0.5%	0.2%		0.7%	71.2%	28.8%	0.0%
General Support				0.0%			
Patient & Client Care	17.3%	0.5%	1.4%	19.3%	89.9%	2.6%	7.4%

Primary Care Absence Rate - by Staff Category & Care Group	CHO 1	CHO 2	CHO 3	HSE	S38	CHO 4	CHO 5	HSE	S38	CHO 6	HSE	S38	CHO 7	CHO 8	CHO 9	Other Comm.	Total absence	Certified absence	Self-certified absence	COVID-19 absence
Primary Care: 2020 overall	5.7%	4.2%	5.6%	3.1%	4.0%	3.2%	5.3%	5.9%	3.8%	5.7%	7.3%	6.6%	7.1%	6.1%	5.3%	3.8%	5.4%	4.2%	0.2%	1.0%
Medical & Dental	3.4%	3.1%	5.9%	3.0%	1.5%	2.7%	5.8%	4.1%	4.7%	4.2%	4.7%	1.4%	4.2%	2.0%	2.9%	4.8%	3.6%	2.7%	0.2%	0.7%
Nursing & Midwifery	7.0%	5.1%	6.1%	3.4%	5.4%	3.5%	5.3%	7.4%	21.3%	7.7%	7.9%	6.6%	7.4%	8.1%	6.1%	2.2%	6.4%	4.8%	0.2%	1.4%
Health & Social Care Professionals	5.4%	4.1%	3.9%	2.3%	0.2%	2.3%	5.0%	5.4%	0.0%	5.3%	5.8%	5.6%	5.8%	5.3%	3.7%	6.9%	4.6%	3.6%	0.2%	0.8%
Management & Administrative	5.7%	4.3%	7.0%	3.1%	0.6%	2.8%	5.1%	5.2%	1.3%	4.6%	6.6%	3.8%	6.1%	5.6%	4.9%	1.0%	5.0%	4.2%	0.2%	0.6%
General Support	4.1%	1.2%	2.2%	0.1%	5.9%	4.4%	3.0%	6.5%	5.6%	6.0%	11.8%	7.2%	8.8%	6.8%	7.6%	3.7%	5.3%	4.0%	0.2%	1.1%
Patient & Client Care	5.2%	4.5%	4.7%	5.3%	8.5%	6.2%	6.5%	4.9%	1.7%	3.6%	10.4%	9.2%	9.9%	7.3%	8.8%	7.4%	7.2%	4.0%	0.2%	1.1%
Total November:	4.7%	3.9%	4.3%	3.0%	1.5%	2.8%	4.7%	4.0%	2.7%	3.9%	6.7%	4.4%	6.1%	4.6%	4.5%	4.2%	4.5%	3.7%	0.2%	0.7%
Medical & Dental	3.4%	4.7%	6.5%	3.1%	0.0%	2.5%	5.6%	1.1%	3.4%	1.5%	3.5%	0.0%	2.9%	1.9%	2.8%	4.1%	3.4%	2.7%	0.1%	0.6%
Nursing & Midwifery	6.2%	6.3%	3.8%	3.6%	3.6%	3.6%	6.1%	4.4%	14.3%	4.6%	8.3%	2.9%	6.6%	6.7%	5.3%	0.3%	5.7%	4.5%	0.2%	1.0%
Health & Social Care Professionals	3.7%	2.6%	3.2%	1.7%	0.0%	1.7%	3.0%	4.1%	0.0%	4.1%	4.9%	4.4%	4.9%	3.7%	3.9%	5.6%	3.5%	3.1%	0.2%	0.3%
Management & Administrative	4.3%	3.7%	4.7%	3.2%	0.0%	2.9%	4.4%	4.4%	1.0%	4.0%	5.5%	3.2%	5.1%	4.0%	3.7%	0.7%	4.0%	3.4%	0.2%	0.5%
General Support	6.0%	0.2%	3.9%	0.0%	0.0%	0.0%	0.0%	8.7%	3.5%	6.3%	13.9%	4.8%	7.6%	5.2%	6.2%	0.0%	4.8%	3.4%	0.2%	1.2%
Patient & Client Care	4.4%	2.4%	4.1%	3.2%	4.5%	3.6%	5.2%	3.3%	1.7%	2.9%	9.3%	8.2%	8.9%	5.0%	6.5%	19.3%	5.6%	4.5%	0.2%	0.9%
Total October:	6.4%	4.7%	4.1%	2.7%	2.0%	2.7%	5.4%	5.0%	2.7%	4.7%	8.1%	5.8%	7.5%	6.1%	4.7%	6.5%	5.4%	4.0%	0.2%	1.1%
Medical & Dental	4.9%	3.2%	5.1%	4.0%	0.0%	3.3%	7.1%	1.8%	4.2%	2.2%	4.5%	1.5%	4.0%	2.2%	2.9%	4.3%	3.8%	2.9%	0.2%	0.7%
Nursing & Midwifery	9.4%	6.9%	4.4%	3.0%	10.5%	3.2%	7.0%	7.7%	14.3%	7.9%	7.8%	4.3%	6.9%	7.9%	4.6%	3.2%	6.6%	4.7%	0.2%	1.7%
Health & Social Care Professionals	4.6%	3.4%	4.3%	1.6%	0.0%	1.5%	2.6%	3.9%	0.0%	3.8%	5.5%	6.7%	5.7%	5.7%	3.9%	6.3%	4.0%	3.2%	0.2%	0.6%
Management & Administrative	6.0%	4.8%	3.8%	2.9%	1.6%	2.8%	4.7%	4.4%	0.0%	3.8%	11.1%	1.9%	9.1%	5.4%	4.4%	1.6%	5.0%	4.0%	0.2%	0.8%
General Support	3.6%	1.2%	0.7%	0.7%	0.0%	0.2%	3.1%	7.7%	3.5%	5.8%	11.7%	7.7%	9.0%	9.8%	8.4%	0.0%	5.2%	3.3%	0.2%	1.8%
Patient & Client Care	6.5%	4.9%	4.5%	4.4%	2.8%	3.9%	8.6%	1.9%	2.1%	2.0%	11.8%	8.9%	10.7%	7.5%	8.1%	30.7%	7.6%	5.5%	0.2%	1.8%
Total September:	6.0%	3.5%	4.5%	2.5%	6.3%	3.0%	4.8%	4.9%	2.8%	4.7%	7.8%	7.2%	7.6%	5.7%	4.9%	3.3%	5.2%	4.2%	0.2%	0.8%
Medical & Dental	3.9%	2.6%	4.5%	1.2%	1.9%	1.4%	8.6%	2.9%	1.9%	2.8%	4.6%	0.2%	3.8%	2.3%	3.0%	3.9%	3.2%	2.7%	0.1%	0.4%
Nursing & Midwifery	7.0%	3.7%	4.2%	1.7%	15.0%	2.2%	5.1%	5.6%	16.8%	5.9%	9.3%	7.5%	8.7%	8.0%	5.8%	2.9%	6.0%	4.6%	0.2%	1.3%
Health & Social Care Professionals	5.7%	4.7%	4.8%	2.8%	0.0%	2.7%	2.2%	4.0%	0.0%	3.9%	6.6%	5.7%	6.5%	4.3%	3.1%	7.1%	4.5%	3.6%	0.2%	0.6%
Management & Administrative	5.9%	2.7%	6.0%	3.2%	1.9%	3.0%	5.1%	5.1%	0.6%	4.5%	5.4%	2.5%	5.0%	5.4%	4.7%	1.6%	4.7%	3.9%	0.2%	0.5%
General Support	2.7%	0.2%	1.0%	0.0%	9.9%	5.3%	4.2%	8.1%	4.7%	6.5%	14.1%	8.6%	10.6%	8.5%	4.5%	1.6%	5.2%	3.9%	0.2%	1.1%
Patient & Client Care	8.1%	4.4%	2.6%	6.0%	11.4%	7.9%	7.3%	5.7%	2.1%	6.3%	10.8%	10.3%	10.6%	6.4%	9.2%	1.5%	7.6%	6.5%	0.3%	0.9%
Total August:	5.1%	3.8%	5.5%	2.5%	2.8%	2.6%	5.1%	4.4%	3.2%	4.2%	7.1%	6.4%	6.9%	5.4%	4.9%	2.6%	4.9%	4.3%	0.2%	0.4%
Medical & Dental	2.6%	2.5%	4.3%	2.0%	6.6%	2.6%	8.1%	0.5%	2.1%	0.8%	4.5%	0.2%	3.7%	2.0%	3.9%	5.2%	3.2%	2.9%	0.1%	0.2%
Nursing & Midwifery	5.7%	4.2%	5.3%	2.2%	3.6%	2.2%	3.8%	4.4%	19.8%	4.9%	8.1%	7.1%	6.9%	6.9%	6.6%	3.7%	5.5%	4.6%	0.1%	0.8%
Health & Social Care Professionals	4.8%	4.1%	7.3%	2.5%	0.0%	2.5%	4.1%	4.2%	0.0%	4.2%	6.7%	3.8%	6.2%	3.8%	2.2%	5.4%	4.2%	3.7%	0.1%	0.3%
Management & Administrative	5.3%	3.2%	5.9%	2.1%	1.0%	2.0%	5.5%	4.7%	0.0%	4.0%	4.9%	4.1%	4.8%	5.8%	3.9%	0.5%	4.4%	4.1%	0.1%	0.2%
General Support	2.5%	0.0%	3.4%	0.0%	0.0%	0.0%	5.1%	2.5%	6.3%	4.4%	12.9%	8.6%	10.1%	4.5%	0.2%	0.0%	4.4%	3.7%	0.3%	0.4%
Patient & Client Care	8.1%	8.9%	4.3%	6.0%	3.6%	5.4%	9.0%	8.7%	2.7%	6.6%	9.2%	7.3%	8.4%	7.1%	11.5%	0.6%	7.8%	7.0%	0.3%	0.5%
Total July:	4.5%	3.3%	4.3%	2.5%	0.3%	2.3%	5.4%	4.9%	3.0%	4.7%	6.7%	6.0%	6.5%	4.8%	4.2%	1.8%	4.4%	3.9%	0.2%	0.3%
Medical & Dental	1.3%	2.6%	4.6%	2.0%	0.0%	1.7%	5.3%	2.4%	2.1%	2.3%	4.0%	1.2%	3.3%	1.4%	3.2%	3.2%	2.6%	2.4%	0.1%	0.1%
Nursing & Midwifery	6.3%	3.9%	4.4%	2.7%	0.0%	2.7%	4.5%	5.2%	19.8%	5.6%	7.7%	5.8%	7.1%	7.6%	4.6%	0.4%	5.3%	4.5%	0.1%	0.6%
Health & Social Care Professionals	4.1%	3.3%	3.9%	2.0%	0.0%	2.0%	5.9%	4.7%	0.0%	4.6%	6.7%	3.6%	6.2%	3.4%	3.3%	4.4%	4.1%	3.6%	0.2%	0.3%
Management & Administrative	4.0%	3.2%	5.2%	1.7%	0.0%	1.6%	5.5%	5.3%	0.9%	4.8%	3.8%	4.1%	3.9%	3.8%	3.7%	0.7%	3.7%	3.4%	0.2%	0.1%
General Support	2.6%	1.2%	2.4%	0.0%	0.0%	0.0%	4.4%	2.0%	6.3%	3.9%	9.9%	6.5%	7.7%	5.2%	5.1%	1.3%	4.1%	3.6%	0.1%	0.4%
Patient & Client Care	5.4%	4.3%	2.7%	6.0%	1.2%	4.9%	7.7%	6.9%	0.8%	5.0%	10.5%	9.5%	10.0%	5.7%	6.9%	0.9%	6.3%	5.7%	0.3%	0.3%
Total June:	4.5%	3.0%	4.1%	2.7%	2.2%	2.6%	4.3%	3.9%	3.0%	3.8%	5.8%	6.8%	6.1%	4.8%	3.7%	2.0%	4.2%	3.6%	0.1%	0.5%
Medical & Dental	1.3%	2.2%	5.5%	2.2%	0.0%	1.8%	4.8%	3.0%	2.1%	2.7%	4.1%	0.0%	3.5%	1.2%	2.5%	3.7%	2.6%	2.3%	0.1%	0.3%
Nursing & Midwifery	6.2%	3.5%	4.6%	3.1%	0.0%	3.0%	4.1%	5.4%	19.8%	5.7%	7.3%	5.8%	6.8%	7.1%	4.3%	1.9%	5.2%	4.3%	0.1%	0.8%
Health & Social Care Professionals	4.6%	2.5%	1.9%	1.7%	0.0%	1.7%	4.8%	3.2%	0.0%	3.2%	3.9%	3.8%	3.9%	3.9%	2.2%	4.0%	3.3%	2.9%	0.1%	0.2%
Management & Administrative	4.4%	3.3%	4.6%	2.5%	0.0%	2.2%	4.1%	3.2%	1.1%	2.7%	5.1%	4.8%	5.0%	4.0%	4.0%	0.2%	3.8%	3.5%	0.2%	0.2%
General Support	2.7%	3.9%	1.3%	0.0%	8.7%	7.1%	0.0%	0.4%	7.1%	3.8%	7.0%	10.7%	9.2%	2.2%	5.6%	6.1%	5.0%	4.0%	0.2%	0.8%
Patient & Client Care	2.8%	1.9%	5.3%	5.3%	4.6%	5.1%	4.7%	1.8%	0.4%	1.2%	8.3%	9.4%	8.7%	6.2%	5.6%	1.5%	5.5%	4.8%	0.2%	0.5%
Total May:	5.1%	3.5%	5.1%	3.1%	4.6%	3.3%	4.6%	6.1%	3.3%	5.6%	5.5%	7.8%	6.1%	5.5%	4.8%	1.5%	4.9%	3.7%	0.1%	1.1%
Medical & Dental	3.2%	1.7%	5.7%	1.6%	0.0%	1.3%	5.2%	0.4%	2.1%	1.3%	3.4%	0.0%	2.9%	2.0%	1.0%	3.8%	2.5%	1.8%	0.1%	0.6%
Nursing & Midwifery	6.4%	4.5%	6.8%	4.1%	0.0%	3.9%	4.3%	8.5%	20.8%	8.9%	7.0%	9.4%	7.8%	8.4%	7.0%	0.0%	6.6%	4.7%	0.1%	1.8%
Health & Social Care Professionals	4.8%	2.7%	1.4%	1.7%	0.0%	1.6%	5.1%	4.1%	0.0%	4.0%	4.1%	5.1%	4.2%	5.2%	3.3%	4.3%	3.8%	2.9%	0.1%	0.7%
Management & Administrative	5.7%	3.8%	6.4%	3.4%	0.0%	3.0%	4.7%	4.6%	1.1%	3.8%	4.8%	5.9%	5.0%	4.1%	4.6%	0.2%	4.5%	3.8%	0.2%	0.6%
General Support	4.0%	3.0%	0.0%	0.0%	8.9%	7.5%	1.3%	4.8%	8.6%	7.0%	7.9%	8.2%	8.1%	1.4%	6.1%	0.0%	4.8%	2.9%	0.1%	1.8%
Patient & Client Care	2.2%	3.0%	5.5%	6.3%	13.1%	8.5%	3.7%	1.9%	0.4%	0.8%	6.8%	8.2%	7.4%	6.2%	6.6%	0.0%	5.7%	4.5%	0.2%	1.0%
Total April:	7.7%	6.7%	8.2%	5.5%	5.8%	5.5%	7.5%	9.1%	3.9%	8.3%	9.4%	10.1%	9.6%	8.9%	8.3%	4.8%	7.9%	4.6%	0.1%	3.3%
Medical & Dental	5.2%	5.2%	9.9%	5.8%	2.5%	5.3%	8.1%	9.6%	1.6%	7.1%	5.2%	1.6%	4.7%	3.1%	2.6%	5.8%	5.2%	2.9%	0.1%	2.2%
Nursing & Midwifery	10.1%	8.4%	9.9%	8.2%	0.0%	7.9%	7.0%	14.1%	46.4%	14.9%	9.8%	12.0%	10.5%	11.3%	11.1%	3.2%	10.1%	5.5%	0.1%	4.5%
Health & Social Care Professionals	7.3%	6.2%	5.3%	3.1%	0.0%	3.1%	9.4%	5.2%	0.0%	5.2%	8.5%	10.8%	8.9%	9.7%	7.0%	8.8%	7.0%	3.8%	0.1%	3.1%
Management & Administrative	8.0%	7.3%	10.1%	4.9%	0.0%	4.3%	6.8%	4.5%	1.1%	3.7%	8.7%	3.5%	7.9%	7.0%	6.6%	2.3%	7.0%	4.6%	0.1%	2.3%
General Support	4.9%	1.4%	0.1%	0.0%	10.5%	7.5%	1.3%	12.5%	2.7%	7.3%	11.2%	7.1%	8.5%	14.8%	9.8%	0.0%	5.8%	3.3%	0.1%	2.4%
Patient & Client Care	4.8%	5.6%	5.8%	9.0%	14.8%	10.6%	6.5%	3.0%	0.4%	1.3%	13.0%	13.4%	13.2%	10.9%	12.7%	6.5%	9.7%	5.9%	0.1%	3.7%
Total March:	8.5%	6.8%	9.3%	3.3%	4.3%	3.4%	6.6%	11.8%	8.3%	11.3%	10.4%	8.7%	9.9%	8.5%	9.2%	7.5%	8.0%	5.1%	0.3%	2.7%
Medical & Dental	5.6%	3.6%	9.3%	3.6%	0.8%	3.0%	4.6%	11.4%	15.4%	12.4%	9.0%	10.8%	9.3%	4.1%	1.8%	11.7%	6.0%	3.4%	0.2%	2.5%
Nursing & Midwifery	9.7%	8.4%	10.8%	4.2%	0.0%	4.1%	6.6%	14.4%	37.0%	15.3%	9.8%	8.0%	9.2%	9.8%	8.5%	8.9%	8.9%	5.4%	0.2%	3.3%
Health & Social Care Professionals	9.7%	7.5%	6.8%	2.2%	0.0%	2.2%	7.2%	10.9%	0.0%	10.7%	9.2%	12.1%	9.6%	8.5%	4.7%	12.5%	7.6%	4.9%	0.3%	2.5%
Management & Administrative	7.7%	6.6%	10.7%	2.9%	0.0%	2.6%	6.8%	10.0%	4.7%	9.1%	10.4%	2.7%	9.1%	7.7%	2.7%	2.0%	7.2%	4.9%	0.2%	2.1%
General Support	7.9%	1.2%	2.8%	0.0%	9.9%	8.1%	4.3%	5.5%	4.3%	4.9%	23.7%	7.8%	12.3%	9.7%	10.5%	0.0%	7.7%	5.3%	0.3%	2.1%
Patient & Client Care	6.8%	6.4%	8.1%	4.9%	11.2%	6.6%	6.5%	10.6%	2.5%	6.8%										

Primary Care Absence Rate - by Staff Category & S38 Agency	Cork Dental Hospital	Dublin Dental Hospital	Our Lady's Hospice & Care Services	Total absence	Certified absence	Self-certified absence	COVID-19 absence
Primary Care: S38 2020 overall	4.0%	3.8%	6.6%	5.9%	4.5%	0.3%	1.1%
Medical & Dental	1.5%	4.7%	1.4%	2.2%	1.4%	0.0%	0.7%
Nursing & Midwifery	5.4%	21.3%	6.6%	7.0%	4.9%	0.4%	1.7%
Health & Social Care Professionals	0.2%	0.0%	5.6%	5.1%	3.2%	0.2%	1.6%
Management & Administrative	0.6%	1.3%	3.8%	2.3%	2.0%	0.1%	0.3%
General Support	5.9%	5.6%	7.2%	6.8%	5.3%	0.3%	1.2%
Patient & Client Care	8.5%	1.7%	9.2%	7.8%	6.5%	0.4%	0.9%
Total November:	1.5%	2.7%	4.4%	3.8%	3.3%	0.2%	0.2%
Medical & Dental	0.0%	3.4%	0.0%	0.7%			0.7%
Nursing & Midwifery	3.6%	14.3%	2.9%	3.2%	2.6%	0.3%	0.3%
Health & Social Care Professionals	0.0%	0.0%	4.4%	3.9%	3.5%	0.1%	0.4%
Management & Administrative	0.0%	1.0%	3.2%	1.8%	1.7%	0.1%	
General Support	0.0%	3.5%	4.8%	4.0%	3.6%	0.3%	0.2%
Patient & Client Care	4.5%	1.7%	8.2%	6.5%	6.3%	0.2%	
Total October:	2.0%	2.7%	5.8%	4.8%	3.9%	0.2%	0.6%
Medical & Dental	0.0%	4.2%	1.5%	1.3%	0.5%		0.9%
Nursing & Midwifery	10.5%	14.3%	4.3%	4.9%	3.6%	0.4%	0.8%
Health & Social Care Professionals	0.0%	0.0%	6.7%	6.0%	3.8%	0.2%	2.1%
Management & Administrative	1.6%	0.0%	1.9%	1.3%	1.1%	0.1%	0.1%
General Support	0.0%	3.5%	7.7%	6.3%	5.5%	0.1%	0.8%
Patient & Client Care	2.8%	2.1%	8.9%	6.8%	6.6%	0.2%	
Total September:	6.3%	2.8%	7.2%	6.5%	5.9%	0.2%	0.4%
Medical & Dental	1.9%	1.9%	0.2%	1.3%	0.8%	0.1%	0.4%
Nursing & Midwifery	15.0%	16.8%	7.5%	8.2%	7.2%	0.3%	0.7%
Health & Social Care Professionals	0.0%	0.0%	5.7%	5.1%	4.0%	0.1%	1.1%
Management & Administrative	1.9%	0.6%	2.5%	1.9%	1.9%		
General Support	9.9%	4.7%	8.6%	8.3%	7.8%	0.3%	0.2%
Patient & Client Care	11.4%	2.1%	10.3%	9.2%	8.7%	0.3%	0.2%
Total August:	2.8%	3.2%	6.4%	5.5%	5.0%	0.3%	0.2%
Medical & Dental	6.6%	2.1%	0.2%	2.7%	2.1%	0.1%	0.6%
Nursing & Midwifery	3.6%	19.8%	7.1%	7.3%	6.5%	0.4%	0.4%
Health & Social Care Professionals	0.0%	0.0%	3.8%	3.4%	3.1%	0.3%	
Management & Administrative	1.0%	0.0%	4.1%	2.2%	2.0%		0.2%
General Support	0.0%	6.3%	8.6%	7.4%	7.0%	0.4%	
Patient & Client Care	3.6%	2.7%	7.3%	6.0%	5.5%	0.4%	0.1%
Total July:	0.3%	3.0%	6.0%	4.8%	4.3%	0.2%	0.3%
Medical & Dental	0.0%	2.1%	1.2%	0.9%	0.5%		0.5%
Nursing & Midwifery	0.0%	19.8%	5.8%	5.9%	5.4%	0.2%	0.3%
Health & Social Care Professionals	0.0%	0.0%	3.6%	3.2%	3.0%	0.2%	
Management & Administrative	0.0%	0.9%	4.1%	2.3%	2.1%	0.0%	0.1%
General Support	0.0%	6.3%	6.5%	5.6%	5.6%	0.1%	
Patient & Client Care	1.2%	0.8%	9.5%	6.5%	5.4%	0.7%	0.5%
Total June:	2.2%	3.0%	6.8%	5.6%	4.7%	0.1%	0.8%
Medical & Dental	0.0%	2.1%	0.0%	0.5%			0.5%
Nursing & Midwifery	0.0%	19.8%	5.8%	5.9%	5.3%		0.6%
Health & Social Care Professionals	0.0%	0.0%	3.8%	3.4%	2.8%	0.3%	0.3%
Management & Administrative	0.0%	1.1%	4.8%	2.6%	2.5%	0.1%	
General Support	8.7%	7.1%	10.7%	10.0%	8.0%	0.3%	1.8%
Patient & Client Care	4.6%	0.4%	9.4%	7.0%	5.9%	0.1%	1.1%
Total May:	4.6%	3.3%	7.8%	6.7%	3.9%	0.1%	2.6%
Medical & Dental	0.0%	2.1%	0.0%	0.5%			0.5%
Nursing & Midwifery	0.0%	20.8%	9.4%	9.2%	4.8%	0.1%	4.3%
Health & Social Care Professionals	0.0%	0.0%	5.1%	4.6%	3.6%		0.9%
Management & Administrative	0.0%	1.1%	5.9%	3.1%	2.2%	0.1%	0.8%
General Support	8.9%	8.6%	8.2%	8.3%	4.0%	0.3%	4.1%
Patient & Client Care	13.1%	0.4%	8.2%	7.8%	5.4%	0.2%	2.2%
Total April:	5.8%	3.9%	10.1%	8.7%	4.2%	0.2%	4.4%
Medical & Dental	2.5%	1.6%	1.6%	2.0%	2.0%		
Nursing & Midwifery	0.0%	46.4%	12.0%	12.4%	4.9%	0.1%	7.4%
Health & Social Care Professionals	0.0%	0.0%	10.8%	9.9%	2.9%	0.3%	6.7%
Management & Administrative	0.0%	1.1%	3.5%	2.0%	1.6%	0.1%	0.3%
General Support	10.5%	2.7%	7.1%	6.9%	2.8%	0.2%	3.9%
Patient & Client Care	14.8%	0.4%	13.4%	11.6%	7.1%	0.3%	4.2%
Total March:	4.3%	8.3%	8.7%	8.0%	4.8%	0.3%	2.8%
Medical & Dental	0.8%	15.4%	10.8%	7.5%	3.4%	0.2%	4.0%
Nursing & Midwifery	0.0%	37.0%	8.0%	8.8%	4.8%	0.3%	3.6%
Health & Social Care Professionals	0.0%	0.0%	12.1%	11.0%	4.0%		7.0%
Management & Administrative	0.0%	4.7%	2.7%	2.5%	1.1%	0.2%	1.2%
General Support	9.9%	4.3%	7.8%	7.6%	5.1%	0.7%	1.8%
Patient & Client Care	11.2%	2.5%	11.4%	9.9%	7.8%	0.4%	1.7%
Total February:	6.6%	3.6%	5.0%	5.1%	4.6%	0.5%	
Medical & Dental	2.8%	6.1%	0.0%	2.7%	2.7%	0.1%	
Nursing & Midwifery	8.0%	8.9%	5.0%	5.3%	4.6%	0.7%	
Health & Social Care Professionals	0.0%	0.0%	1.3%	1.2%	0.6%	0.5%	
Management & Administrative	1.8%	1.7%	6.0%	3.8%	3.7%	0.1%	
General Support	19.9%	5.9%	4.8%	6.4%	6.0%	0.4%	
Patient & Client Care	9.8%	2.5%	7.3%	7.0%	6.4%	0.6%	
Total January:	7.1%	5.0%	4.6%	5.1%	4.4%	0.7%	
Medical & Dental	4.2%	9.7%	0.0%	4.1%	4.0%	0.1%	
Nursing & Midwifery	16.3%	8.9%	4.7%	5.4%	4.4%	1.2%	
Health & Social Care Professionals	3.0%	0.0%	4.3%	4.1%	3.7%	0.5%	
Management & Administrative	0.0%	1.6%	2.6%	1.7%	1.7%	0.0%	
General Support	0.0%	8.2%	4.4%	4.5%	3.8%	0.7%	
Patient & Client Care	15.3%	2.7%	6.7%	7.7%	7.0%	0.7%	
Primary Care: S38 2019 overall	3.8%	9.0%	4.3%	4.7%	4.2%	0.5%	
Medical & Dental	0.3%	9.9%	0.8%	2.4%	2.1%	0.3%	
Nursing & Midwifery	3.8%	19.7%	3.3%	4.1%	3.5%	0.6%	
Health & Social Care Professionals	6.1%	0.2%	2.9%	3.0%	2.5%	0.5%	
Management & Administrative	2.1%	6.5%	5.3%	4.7%	4.3%	0.4%	
General Support	6.4%	17.7%	6.0%	7.3%	6.5%	0.8%	
Patient & Client Care	6.7%	0.7%	5.4%	5.2%	4.7%	0.5%	