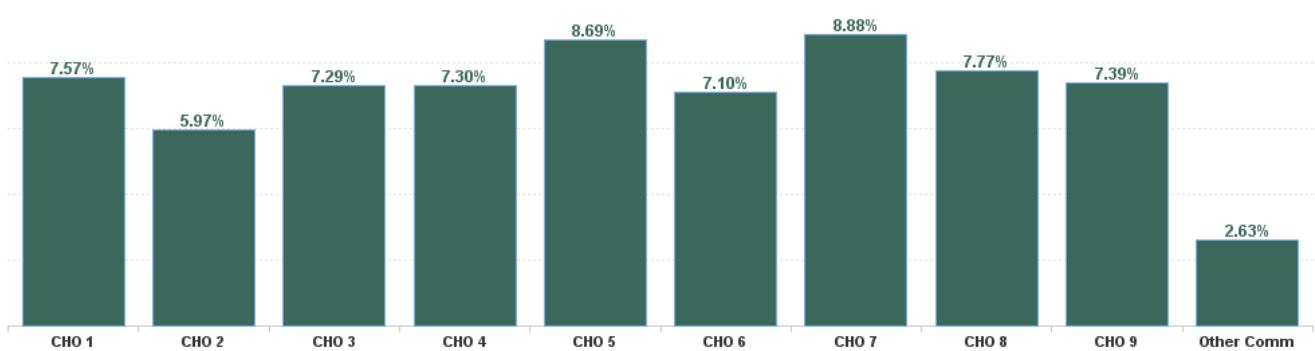


December 2024

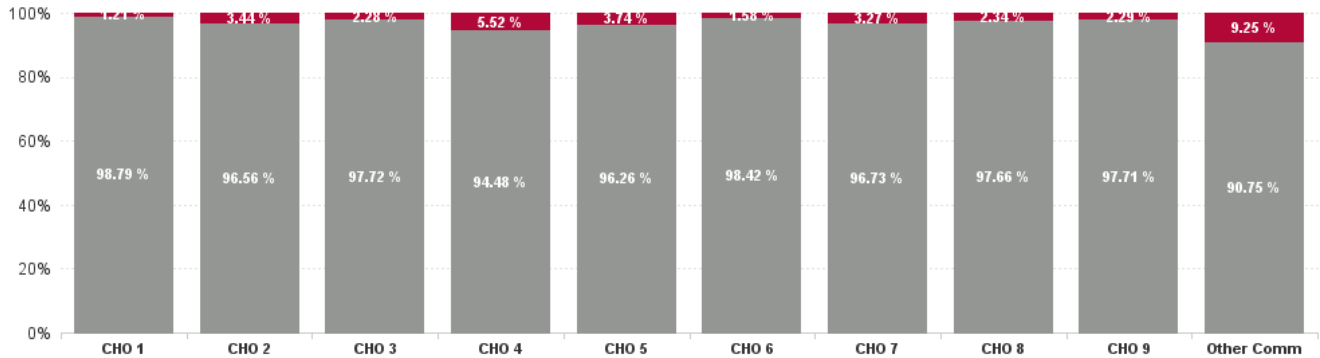
Health Service Absence Rate - by Staff Category: Dec 2024	Certified absence	Self-certified absence	Non Covid-19 absence	Covid-19 Absence	Total absence rate	% Non Covid-19 absence	% Covid-19 absence
PC	6.75%	0.56%	7.31%	0.23%	7.54%	96.98%	3.02%
Medical & Dental	4.70%	0.53%	5.23%	0.04%	5.28%	99.16%	0.84%
Nursing & Midwifery	7.17%	0.52%	7.69%	0.32%	8.02%	95.97%	4.03%
Health & Social Care Professionals	6.42%	0.58%	7.00%	0.13%	7.12%	98.24%	1.76%
Management & Administrative	6.48%	0.56%	7.04%	0.12%	7.16%	98.28%	1.72%
General Support	7.82%	0.49%	8.31%	0.54%	8.85%	93.88%	6.12%
Patient & Client Care	8.27%	0.65%	8.92%	0.43%	9.34%	95.42%	4.58%

Health Service Absence Rate - by Hospital Group: Dec 2024	Certified absence	Self-certified absence	Non Covid-19 absence	Covid-19 Absence	Total absence rate	% Non Covid-19 absence	% Covid-19 absence
PC	6.75%	0.56%	7.31%	0.23%	7.54%	96.98%	3.02%
CHO 1	7.07%	0.41%	7.48%	0.09%	7.57%	98.79%	1.21%
CHO 2	5.34%	0.43%	5.77%	0.21%	5.97%	96.56%	3.44%
CHO 3	6.63%	0.49%	7.13%	0.17%	7.29%	97.72%	2.28%
CHO 4	6.35%	0.55%	6.89%	0.40%	7.30%	94.48%	5.52%
CHO 5	7.76%	0.60%	8.37%	0.32%	8.69%	96.26%	3.74%
CHO 6	6.27%	0.72%	6.99%	0.11%	7.10%	98.42%	1.58%
CHO 7	7.87%	0.71%	8.59%	0.29%	8.88%	96.73%	3.27%
CHO 8	7.13%	0.45%	7.58%	0.18%	7.77%	97.66%	2.34%
CHO 9	6.58%	0.65%	7.22%	0.17%	7.39%	97.71%	2.29%
Other Community Services	1.83%	0.56%	2.39%	0.24%	2.63%	90.75%	9.25%

Total Absence Rate

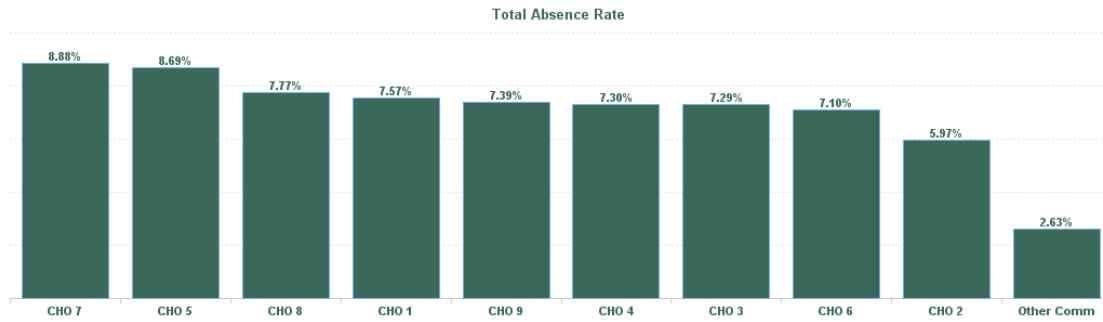


% of Absence Non Covid-19 / Covid-19



December 2024

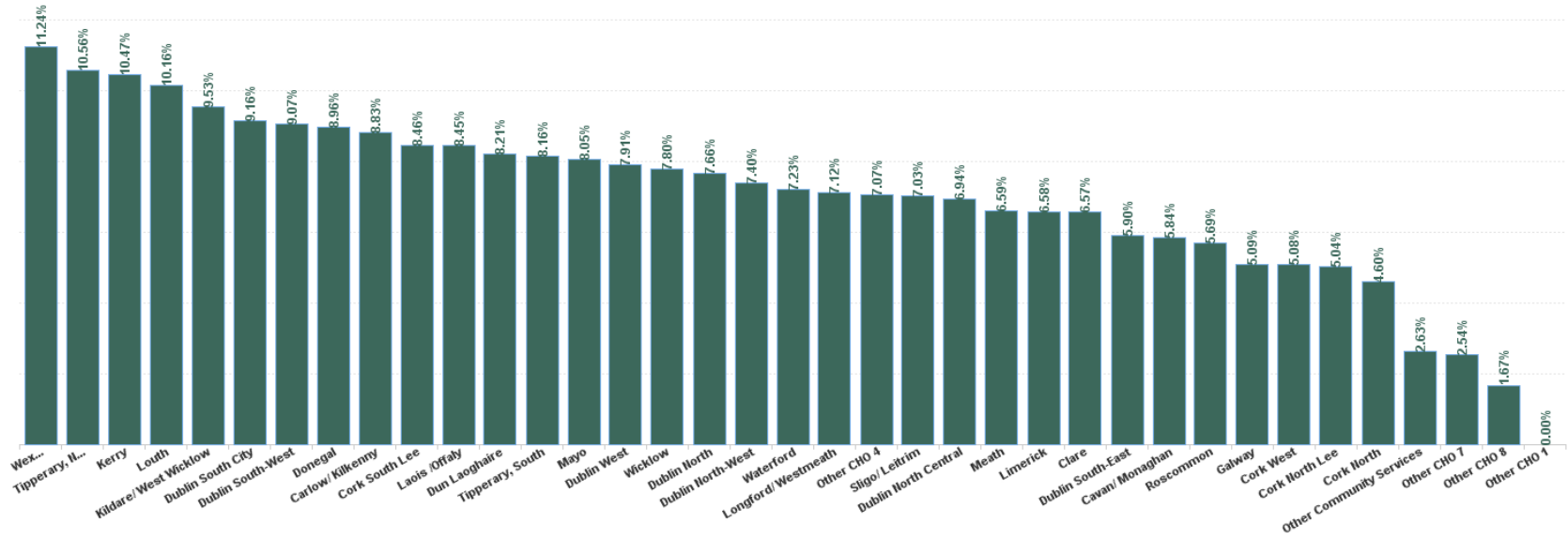
Health Service Absence Rate - by HG, CHO/Care Group & Staff Category : Dec 2024	Certified absence	Self-certified absence	Non Covid-19 absence	Covid-19 Absence	Total absence rate	Medical & Dental	Nursing & Midwifery	Health & Social Care Professionals	Management & Administrative	General Support	Patient & Client Care
PC	6.75%	0.56%	7.31%	0.23%	7.54%	5.28%	8.02%	7.12%	7.16%	8.85%	9.34%
CHO 1	7.07%	0.41%	7.48%	0.09%	7.57%	5.66%	7.68%	7.53%	7.60%	7.42%	8.96%
CHO 2	5.34%	0.43%	5.77%	0.21%	5.97%	8.44%	5.34%	5.05%	7.24%	6.12%	5.01%
CHO 3	6.63%	0.49%	7.13%	0.17%	7.29%	9.34%	7.82%	6.59%	7.75%	3.13%	7.86%
CHO 4	6.35%	0.55%	6.89%	0.40%	7.30%	5.29%	8.80%	8.08%	4.38%	12.13%	7.22%
CHO 5	7.76%	0.60%	8.37%	0.32%	8.69%	7.47%	7.59%	10.58%	8.32%	6.33%	10.53%
CHO 6	6.27%	0.72%	6.99%	0.11%	7.10%	3.44%	8.73%	4.23%	8.32%	8.81%	10.80%
CHO 7	7.87%	0.71%	8.59%	0.29%	8.88%	4.39%	8.88%	7.79%	8.14%	10.84%	12.43%
CHO 8	7.13%	0.45%	7.58%	0.18%	7.77%	2.63%	9.64%	6.78%	7.31%	15.71%	9.15%
CHO 9	6.58%	0.65%	7.22%	0.17%	7.39%	3.72%	7.45%	6.59%	7.93%	12.78%	9.86%
Other Community Services	1.83%	0.56%	2.39%	0.24%	2.63%	3.20%	0.93%	5.38%	1.57%	2.12%	0.37%



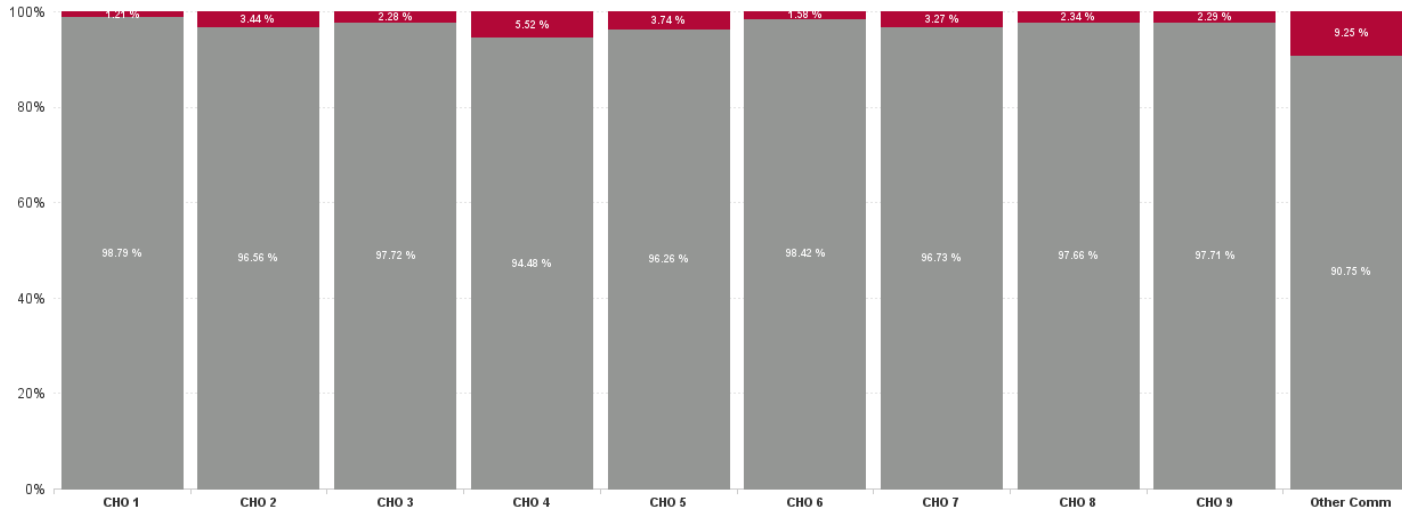
December 2024

Health Service Absence Rate - by HG, CHO/Care Group & Staff Category: Dec 2024	Certified absence	Self-certified absence	Non Covid-19 absence	Covid-19 Absence	Total absence rate	Medical & Dental	Nursing & Midwifery	Health & Social Care Professionals	Management & Administrative	General Support	Patient & Client Care
Total	6.75%	0.56%	7.31%	0.23%	7.54%	5.28%	8.02%	7.12%	7.16%	8.85%	9.34%
Cavan/ Monaghan	5.24%	0.48%	5.72%	0.11%	5.84%	0.48%	5.90%	5.85%	5.66%	7.04%	7.88%
Donegal	8.43%	0.40%	8.83%	0.13%	8.96%	8.45%	8.33%	8.94%	9.40%	10.16%	9.40%
Other CHO 1	0.00%	0.00%	0.00%	0.00%	0.00%				0.00%		
Sligo/ Leitrim	6.67%	0.36%	7.03%	0.00%	7.03%	4.16%	8.26%	7.40%	7.07%	0.00%	8.79%
CHO 1	7.07%	0.41%	7.48%	0.09%	7.57%	5.66%	7.68%	7.53%	7.60%	7.42%	8.96%
Galway	4.58%	0.37%	4.95%	0.14%	5.09%	7.12%	4.88%	3.43%	7.38%	1.73%	4.87%
Mayo	7.20%	0.54%	7.74%	0.31%	8.05%	11.43%	7.11%	8.97%	5.52%	18.24%	6.29%
Roscommon	4.88%	0.48%	5.36%	0.33%	5.69%	8.14%	4.15%	2.56%	10.39%	6.25%	0.00%
CHO 2	5.34%	0.43%	5.77%	0.21%	5.97%	8.44%	5.34%	5.05%	7.24%	6.12%	5.01%
Clare	5.80%	0.59%	6.38%	0.19%	6.57%	15.70%	7.32%	5.73%	5.59%	0.00%	4.84%
Limerick	6.12%	0.29%	6.42%	0.16%	6.58%	8.96%	6.48%	7.17%	6.20%	3.28%	7.33%
Tipperary, North/ Limerick, East	9.26%	1.14%	10.40%	0.16%	10.56%	5.72%	12.73%	5.14%	15.31%	4.14%	11.00%
CHO 3	6.63%	0.49%	7.13%	0.17%	7.29%	9.34%	7.82%	6.59%	7.75%	3.13%	7.86%
Cork North	4.23%	0.37%	4.60%	0.00%	4.60%	4.59%	4.91%	3.76%	2.20%	8.69%	7.15%
Cork North Lee	4.07%	0.82%	4.89%	0.15%	5.04%	2.49%	5.06%	8.71%	2.01%		4.30%
Cork South Lee	6.81%	0.62%	7.44%	1.03%	8.46%	5.90%	9.87%	7.46%	4.74%	12.74%	8.23%
Cork West	4.54%	0.33%	4.86%	0.22%	5.08%	2.56%	5.15%	8.29%	4.33%	0.00%	0.28%
Kerry	9.98%	0.49%	10.47%	0.00%	10.47%	12.47%	12.60%	8.22%	4.95%	15.54%	10.37%
Other CHO 4	6.38%	0.56%	6.94%	0.13%	7.07%	0.00%	6.42%	8.53%	5.49%	0.00%	1.45%
CHO 4	6.35%	0.55%	6.89%	0.40%	7.30%	5.29%	8.80%	8.08%	4.38%	12.13%	7.22%
Carlow/ Kilkenny	7.93%	0.68%	8.60%	0.22%	8.83%	9.99%	6.57%	10.23%	8.57%	0.00%	11.48%
Tipperary, South	6.47%	0.53%	6.99%	1.16%	8.16%	1.01%	7.98%	14.21%	2.95%	0.00%	24.47%
Waterford	6.52%	0.45%	6.97%	0.26%	7.23%	4.00%	7.00%	9.01%	7.30%	0.49%	7.89%
Wexford	10.50%	0.74%	11.24%	0.00%	11.24%	10.51%	9.66%	12.64%	14.40%	13.01%	7.84%
CHO 5	7.76%	0.60%	8.37%	0.32%	8.69%	7.47%	7.59%	10.58%	8.32%	6.33%	10.53%
Dublin South-East	5.09%	0.74%	5.83%	0.07%	5.90%	2.37%	8.79%	3.08%	8.01%	10.00%	14.87%
Dun Laoghaire	7.68%	0.44%	8.12%	0.10%	8.21%	5.58%	8.51%	6.34%	10.08%	0.00%	14.44%
Wicklow	6.82%	0.82%	7.63%	0.16%	7.80%	5.04%	8.81%	4.22%	8.24%	10.04%	9.57%
CHO 6	6.27%	0.72%	6.99%	0.11%	7.10%	3.44%	8.73%	4.23%	8.32%	8.81%	10.80%
Dublin South City	8.06%	0.88%	8.94%	0.23%	9.16%	9.59%	8.81%	4.37%	8.66%	8.48%	13.54%
Dublin South-West	8.23%	0.56%	8.79%	0.28%	9.07%	4.04%	11.60%	7.46%	7.62%	0.99%	11.65%
Dublin West	6.94%	0.67%	7.60%	0.31%	7.91%	1.40%	7.37%	10.48%	6.25%	27.00%	11.02%
Kildare/ West Wicklow	8.63%	0.50%	9.13%	0.40%	9.53%	10.53%	8.72%	8.86%	9.89%	18.12%	11.99%
Other CHO 7	0.28%	2.26%	2.54%	0.00%	2.54%	0.00%	0.00%	7.01%	0.00%		
CHO 7	7.87%	0.71%	8.59%	0.29%	8.88%	4.39%	8.88%	7.79%	8.14%	10.84%	12.43%
Laois /Offaly	7.55%	0.60%	8.16%	0.29%	8.45%	12.10%	10.85%	6.73%	3.13%	30.33%	8.10%
Longford/ Westmeath	6.56%	0.53%	7.09%	0.03%	7.12%	2.41%	8.02%	6.01%	8.43%	0.00%	9.82%
Louth	9.54%	0.51%	10.05%	0.11%	10.16%	3.92%	10.64%	8.60%	11.74%	0.00%	12.45%
Meath	5.95%	0.27%	6.23%	0.37%	6.59%	1.14%	9.81%	4.54%	7.43%	16.92%	7.30%
Other CHO 8	1.67%	0.00%	1.67%	0.00%	1.67%	0.00%	0.00%		1.80%	0.00%	
CHO 8	7.13%	0.45%	7.58%	0.18%	7.77%	2.63%	9.64%	6.78%	7.31%	15.71%	9.15%
Dublin North	6.85%	0.70%	7.55%	0.12%	7.66%	3.52%	7.06%	7.23%	10.16%	11.10%	10.95%
Dublin North Central	6.24%	0.65%	6.89%	0.05%	6.94%	0.85%	8.79%	4.75%	4.23%	35.85%	10.21%
Dublin North-West	6.46%	0.54%	7.00%	0.40%	7.40%	6.94%	6.66%	8.05%	8.43%	2.31%	7.77%
CHO 9	6.58%	0.65%	7.22%	0.17%	7.39%	3.72%	7.45%	6.59%	7.93%	12.78%	9.86%
Other Community Services	1.83%	0.56%	2.39%	0.24%	2.63%	3.20%	0.93%	5.38%	1.57%	2.12%	0.37%
Other Community Services	1.83%	0.56%	2.39%	0.24%	2.63%	3.20%	0.93%	5.38%	1.57%	2.12%	0.37%
Community Services	6.75%	0.56%	7.31%	0.23%	7.54%	5.28%	8.02%	7.12%	7.16%	8.85%	9.34%

Total Absence Rate



% of Absence Non Covid-19 / Covid-19



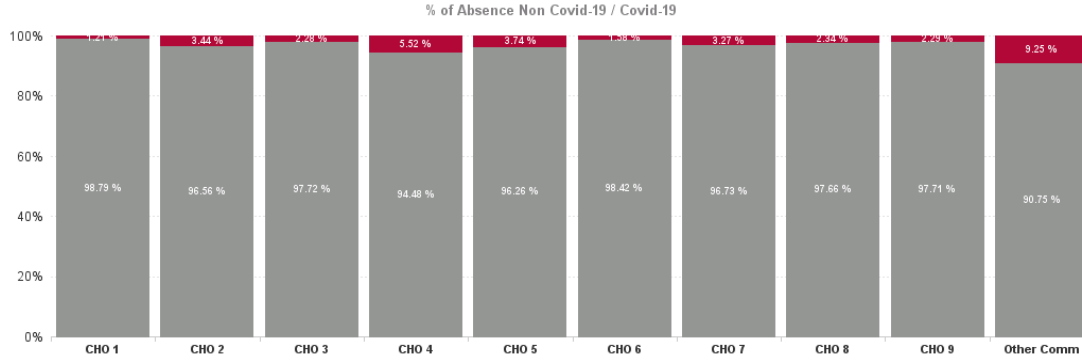
December 2024

Health Service Covid 19 Absence Rate - by Hospital & Staff Category: Dec 2024	Non Covid-19 absence	Covid-19 absence	Total absence rate	Medical & Dental	Nursing & Midwifery	Health & Social Care Professionals	Management & Administrative	General Support	Patient & Client Care
PC	7.31%	0.23%	7.54%	0.04%	0.32%	0.13%	0.12%	0.54%	0.43%
Cavan/ Monaghan	5.72%	0.11%	5.84%	0.00%	0.25%	0.11%	0.05%	0.00%	0.00%
Donegal	8.83%	0.13%	8.96%	0.36%	0.13%	0.36%	0.00%	0.00%	0.00%
Other CHO 1	0.00%	0.00%	0.00%				0.00%		
Sligo/ Leitrim	7.03%	0.00%	7.03%	0.00%	0.00%	0.00%	0.00%	0.00%	0.00%
CHO 1	7.48%	0.09%	7.57%	0.16%	0.12%	0.18%	0.01%	0.00%	0.00%
Galway	4.95%	0.14%	5.09%	0.00%	0.00%	0.08%	0.61%	0.00%	0.00%
Mayo	7.74%	0.31%	8.05%	0.00%	0.84%	0.00%	0.31%	0.00%	0.00%
Roscommon	5.36%	0.33%	5.69%	2.50%	0.60%	0.00%	0.00%	0.00%	0.00%
CHO 2	5.77%	0.21%	5.97%	0.14%	0.27%	0.05%	0.43%	0.00%	0.00%
Clare	6.38%	0.19%	6.57%	0.00%	0.49%	0.00%	0.00%	0.00%	0.00%
Limerick	6.42%	0.16%	6.58%	0.00%	0.05%	0.62%	0.00%	0.00%	0.00%
Tipperary, North/ Limerick, East	10.40%	0.16%	10.56%	0.00%	0.24%	0.00%	0.00%	1.74%	0.00%
CHO 3	7.13%	0.17%	7.29%	0.00%	0.17%	0.42%	0.00%	0.19%	0.00%
Cork North	4.60%	0.00%	4.60%	0.00%	0.00%	0.00%	0.00%	0.00%	0.00%
Cork North Lee	4.89%	0.15%	5.04%	0.00%	0.00%	0.00%	0.00%		3.07%
Cork South Lee	7.44%	1.03%	8.46%	0.00%	1.31%	0.25%	0.00%	2.84%	1.57%
Cork West	4.86%	0.22%	5.08%	0.00%	0.00%	0.00%	0.59%	0.00%	0.00%
Kerry	10.47%	0.00%	10.47%	0.00%	0.00%	0.00%	0.00%	0.00%	0.00%
Other CHO 4	6.94%	0.13%	7.07%	0.00%	0.00%	0.00%	0.39%	0.00%	0.00%
CHO 4	6.89%	0.40%	7.30%	0.00%	0.52%	0.06%	0.18%	2.33%	0.84%
Carlow/ Kilkenny	8.60%	0.22%	8.83%	0.00%	0.00%	0.45%	0.29%	0.00%	0.00%
Tipperary, South	6.99%	1.16%	8.16%	0.00%	0.69%	0.00%	0.00%	0.00%	15.58%
Waterford	6.97%	0.26%	7.23%	0.00%	0.69%	0.00%	0.00%	0.00%	0.00%
Wexford	11.24%	0.00%	11.24%	0.00%	0.00%	0.00%	0.00%	0.00%	0.00%
CHO 5	8.37%	0.32%	8.69%	0.00%	0.32%	0.26%	0.12%	0.00%	1.63%
Dublin South-East	5.83%	0.07%	5.90%	0.00%	0.00%	0.09%	0.15%	0.00%	0.00%
Dun Laoghaire	8.12%	0.10%	8.21%	0.00%	0.00%	0.00%	0.62%	0.00%	0.00%
Wicklow	7.63%	0.16%	7.80%	0.00%	0.18%	0.00%	0.14%	1.06%	0.14%
CHO 6	6.99%	0.11%	7.10%	0.00%	0.08%	0.04%	0.20%	0.81%	0.11%
Dublin South City	8.94%	0.23%	9.16%	0.00%	0.14%	0.18%	0.00%	0.73%	0.30%
Dublin South-West	8.79%	0.28%	9.07%	3.14%	0.00%	0.00%	0.50%	0.00%	0.78%
Dublin West	7.60%	0.31%	7.91%	0.00%	0.00%	0.00%	0.00%	0.00%	1.54%
Kildare/ West Wicklow	9.13%	0.40%	9.53%	0.00%	0.97%	0.05%	0.00%	0.00%	0.48%
Other CHO 7	2.54%	0.00%	2.54%	0.00%	0.00%	0.00%	0.00%		
CHO 7	8.59%	0.29%	8.88%	0.13%	0.29%	0.06%	0.08%	0.57%	0.74%
Laois /Offaly	8.16%	0.29%	8.45%	0.00%	0.64%	0.00%	0.26%	0.00%	0.00%
Longford/ Westmeath	7.09%	0.03%	7.12%	0.00%	0.08%	0.00%	0.00%	0.00%	0.00%
Louth	10.05%	0.11%	10.16%	0.00%	0.24%	0.00%	0.00%	0.00%	0.96%
Meath	6.23%	0.37%	6.59%	0.00%	1.37%	0.00%	0.00%	0.00%	0.00%
Other CHO 8	1.67%	0.00%	1.67%	0.00%	0.00%		0.00%	0.00%	

CHO 8	7.58%	0.18%	7.77%	0.00%	0.52%	0.00%	0.04%	0.00%	0.15%
Dublin North	7.55%	0.12%	7.66%	0.00%	0.10%	0.00%	0.25%	0.00%	0.32%
Dublin North Central	6.89%	0.05%	6.94%	0.00%	0.18%	0.00%	0.00%	0.00%	0.00%
Dublin North-West	7.00%	0.40%	7.40%	0.00%	1.12%	0.18%	0.00%	0.00%	0.00%
CHO 9	7.22%	0.17%	7.39%	0.00%	0.37%	0.06%	0.12%	0.00%	0.14%
Other Community Services	2.39%	0.24%	2.63%	0.00%	0.00%	0.96%	0.00%	0.00%	0.00%
Other Community Services	2.39%	0.24%	2.63%	0.00%	0.00%	0.96%	0.00%	0.00%	0.00%
Community Services	7.31%	0.23%	7.54%	0.04%	0.32%	0.13%	0.12%	0.54%	0.43%

December 2024

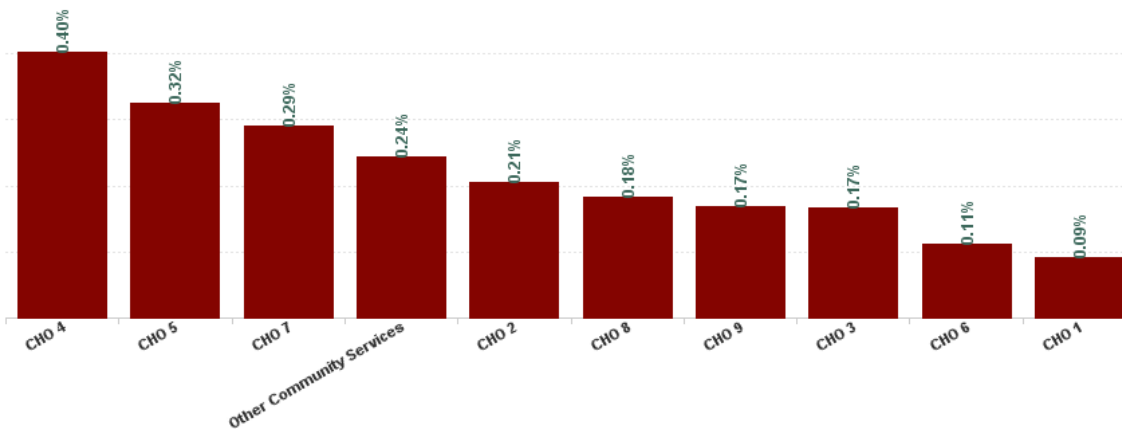
Health Service Absence Rate - by HG, CHO/Care Group & Staff Category: Dec 2024	Certified absence	Self-certified absence	Non Covid-19 absence	Covid-19 Absence	Total absence rate	Medical & Dental	Nursing & Midwifery	Health & Social Care Professionals	Management & Administrative	General Support	Patient & Client Care
Total	6.75%	0.56%	7.31%	0.23%	7.54%	5.28%	8.02%	7.12%	7.16%	8.85%	9.34%
Health Service Executive	7.07%	0.41%	7.48%	0.09%	7.57%	5.66%	7.68%	7.53%	7.60%	7.42%	8.96%
CHO 1	7.07%	0.41%	7.48%	0.09%	7.57%	5.66%	7.68%	7.53%	7.60%	7.42%	8.96%
Health Service Executive	5.34%	0.48%	5.82%	0.25%	6.07%	9.13%	5.09%	5.31%	6.44%	8.42%	6.00%
Section 38 Voluntary Agencies	5.33%	0.19%	5.52%	0.00%	5.52%	0.00%	6.24%	2.74%	12.61%	0.32%	3.07%
CHO 2	5.34%	0.43%	5.77%	0.21%	5.97%	8.44%	5.34%	5.05%	7.24%	6.12%	5.01%
Health Service Executive	7.75%	0.69%	8.44%	0.23%	8.67%	9.34%	10.11%	7.16%	8.98%	1.66%	8.66%
Section 38 Voluntary Agencies	3.75%	0.00%	3.75%	0.00%	3.75%		2.72%	4.18%	4.35%	3.70%	5.86%
CHO 3	6.63%	0.49%	7.13%	0.17%	7.29%	9.34%	7.82%	6.59%	7.75%	3.13%	7.86%
Health Service Executive	6.40%	0.51%	6.91%	0.10%	7.01%	6.85%	7.82%	8.42%	4.51%	11.08%	6.54%
Section 38 Voluntary Agencies	6.16%	0.69%	6.86%	1.41%	8.27%	0.12%	12.43%	3.83%	3.80%	12.19%	8.11%
CHO 4	6.35%	0.55%	6.89%	0.40%	7.30%	5.29%	8.80%	8.08%	4.38%	12.13%	7.22%
Health Service Executive	7.76%	0.60%	8.37%	0.32%	8.69%	7.47%	7.59%	10.58%	8.32%	6.33%	10.53%
CHO 5	7.76%	0.60%	8.37%	0.32%	8.69%	7.47%	7.59%	10.58%	8.32%	6.33%	10.53%
Health Service Executive	6.58%	0.66%	7.24%	0.11%	7.35%	3.63%	8.25%	4.02%	8.47%	17.47%	16.16%
Section 38 Voluntary Agencies	4.68%	1.07%	5.74%	0.13%	5.87%	2.43%	11.22%	12.27%	7.53%	2.48%	1.41%
CHO 6	6.27%	0.72%	6.99%	0.11%	7.10%	3.44%	8.73%	4.23%	8.32%	8.81%	10.80%
Health Service Executive	7.86%	0.65%	8.51%	0.31%	8.82%	4.55%	8.86%	8.82%	8.27%	14.68%	11.61%
Section 38 Voluntary Agencies	7.90%	0.86%	8.75%	0.25%	9.01%	3.50%	8.91%	2.51%	7.59%	9.09%	13.41%
CHO 7	7.87%	0.71%	8.59%	0.29%	8.88%	4.39%	8.88%	7.79%	8.14%	10.84%	12.43%
Health Service Executive	7.13%	0.45%	7.58%	0.18%	7.77%	2.63%	9.64%	6.78%	7.31%	15.71%	9.15%
CHO 8	7.13%	0.45%	7.58%	0.18%	7.77%	2.63%	9.64%	6.78%	7.31%	15.71%	9.15%
Health Service Executive	6.63%	0.66%	7.29%	0.20%	7.48%	2.73%	7.51%	6.16%	8.91%	16.33%	10.92%
Section 38 Voluntary Agencies	6.23%	0.58%	6.81%	0.00%	6.81%	17.86%	7.21%	13.64%	0.43%	5.66%	4.96%
CHO 9	6.58%	0.65%	7.22%	0.17%	7.39%	3.72%	7.45%	6.59%	7.93%	12.78%	9.86%
Health Service Executive	1.83%	0.56%	2.39%	0.24%	2.63%	3.20%	0.93%	5.38%	1.57%	2.12%	0.37%
Other Community Services	1.83%	0.56%	2.39%	0.24%	2.63%	3.20%	0.93%	5.38%	1.57%	2.12%	0.37%
Community Services	6.75%	0.56%	7.31%	0.23%	7.54%	5.28%	8.02%	7.12%	7.16%	8.85%	9.34%



December 2024

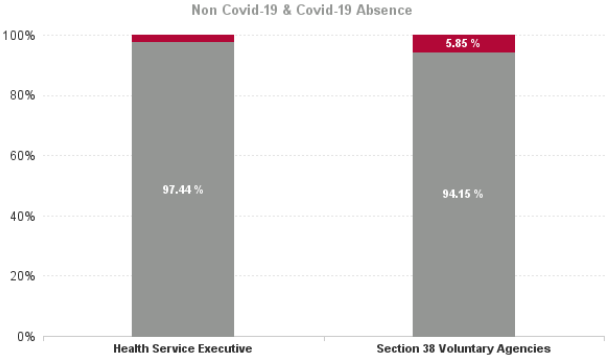
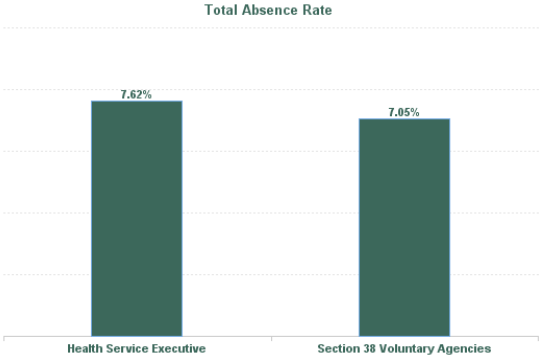
Health Service Covid 19 Absence Rate - by Hospital & Staff Category: Dec 2024	Non Covid-19 absence	Covid-19 Absence	Total absence rate	Professional Categories					
				Medical & Dental	Nursing & Midwifery	Health & Social Care Professionals	Management & Administrative	General Support	Patient & Client Care
PC	7.31%	0.23%	7.54%	0.04%	0.32%	0.13%	0.12%	0.54%	0.43%
Health Service Executive	7.48%	0.09%	7.57%	0.16%	0.12%	0.18%	0.01%	0.00%	0.00%
CHO 1	7.48%	0.09%	7.57%	0.16%	0.12%	0.18%	0.01%	0.00%	0.00%
Health Service Executive	5.82%	0.25%	6.07%	0.15%	0.35%	0.06%	0.50%	0.00%	0.00%
Section 38 Voluntary Agencies	5.52%	0.00%	5.52%	0.00%	0.00%	0.00%	0.00%	0.00%	0.00%
CHO 2	5.77%	0.21%	5.97%	0.14%	0.27%	0.05%	0.43%	0.00%	0.00%
Health Service Executive	8.44%	0.23%	8.67%	0.00%	0.25%	0.52%	0.00%	0.70%	0.00%
Section 38 Voluntary Agencies	3.75%	0.00%	3.75%		0.00%	0.00%	0.00%	0.00%	0.00%
CHO 3	7.13%	0.17%	7.29%	0.00%	0.17%	0.42%	0.00%	0.19%	0.00%
Health Service Executive	6.91%	0.10%	7.01%	0.00%	0.00%	0.06%	0.22%	0.00%	0.51%
Section 38 Voluntary Agencies	6.86%	1.41%	8.27%	0.00%	2.46%	0.00%	0.00%	2.47%	1.28%
CHO 4	6.89%	0.40%	7.30%	0.00%	0.52%	0.06%	0.18%	2.33%	0.84%
Health Service Executive	8.37%	0.32%	8.69%	0.00%	0.32%	0.26%	0.12%	0.00%	1.63%
CHO 5	8.37%	0.32%	8.69%	0.00%	0.32%	0.26%	0.12%	0.00%	1.63%
Health Service Executive	7.24%	0.11%	7.35%	0.00%	0.00%	0.04%	0.23%	1.91%	0.17%
Section 38 Voluntary Agencies	5.74%	0.13%	5.87%	0.00%	0.52%	0.00%	0.00%	0.00%	0.00%
CHO 6	6.99%	0.11%	7.10%	0.00%	0.08%	0.04%	0.20%	0.81%	0.11%
Health Service Executive	8.51%	0.31%	8.82%	0.15%	0.36%	0.02%	0.09%	0.00%	1.23%
Section 38 Voluntary Agencies	8.75%	0.25%	9.01%	0.00%	0.18%	0.29%	0.00%	0.83%	0.16%
CHO 7	8.59%	0.29%	8.88%	0.13%	0.29%	0.06%	0.08%	0.57%	0.74%
Health Service Executive	7.58%	0.18%	7.77%	0.00%	0.52%	0.00%	0.04%	0.00%	0.15%
CHO 8	7.58%	0.18%	7.77%	0.00%	0.52%	0.00%	0.04%	0.00%	0.15%
Health Service Executive	7.29%	0.20%	7.48%	0.00%	0.47%	0.06%	0.13%	0.00%	0.17%
Section 38 Voluntary Agencies	6.81%	0.00%	6.81%	0.00%	0.00%	0.00%	0.00%	0.00%	0.00%
CHO 9	7.22%	0.17%	7.39%	0.00%	0.37%	0.06%	0.12%	0.00%	0.14%
Health Service Executive	2.39%	0.24%	2.63%	0.00%	0.00%	0.96%	0.00%	0.00%	0.00%
Other Community Services	2.39%	0.24%	2.63%	0.00%	0.00%	0.96%	0.00%	0.00%	0.00%
Community Services	7.31%	0.23%	7.54%	0.04%	0.32%	0.13%	0.12%	0.54%	0.43%

Covid 19 Absence Rate



December 2024

Health Service Absence Rate - by Admin : Dec 2024	Certified absence	Self-certified absence	Non Covid-19 absence	Covid-19 Absence	Total absence rate	Medical & Dental	Nursing & Midwifery	Health & Social Care Professionals	Management & Administrative	General Support	Patient & Client Care
Total	6.75%	0.56%	7.31%	0.23%	7.54%	5.28%	8.02%	7.12%	7.16%	8.85%	9.34%
Health Service Executive	6.88%	0.55%	7.43%	0.20%	7.62%	5.53%	8.01%	7.30%	7.33%	9.91%	9.70%
Section 38 Voluntary Agencies	6.06%	0.58%	6.64%	0.41%	7.05%	2.78%	8.05%	4.67%	5.76%	7.69%	8.38%



Health Service Absence Rate - by Staff Category: Dec 2024	Certified absence	Self-certified absence	Non Covid-19 absence	Covid-19 Absence	Total absence rate	% Non Covid-19 absence	% Covid-19 absence
CHO 1	7.07%	0.41%	7.48%	0.09%	7.57%	98.79%	1.21%
Medical & Dental	4.84%	0.65%	5.49%	0.16%	5.66%	97.13%	2.87%
Nursing & Midwifery	7.37%	0.19%	7.56%	0.12%	7.68%	98.39%	1.61%
Health & Social Care Professionals	6.77%	0.57%	7.35%	0.18%	7.53%	97.55%	2.45%
Management & Administrative	7.07%	0.51%	7.58%	0.01%	7.60%	99.82%	0.18%
General Support	7.26%	0.16%	7.42%	0.00%	7.42%	100.00%	0.00%
Patient & Client Care	8.52%	0.43%	8.96%	0.00%	8.96%	100.00%	0.00%

Health Service Absence Rate - by Staff Category: Dec 2024	Certified absence	Self-certified absence	Non Covid-19 absence	Covid-19 Absence	Total absence rate	% Non Covid-19 absence	% Covid-19 absence
CHO 2	5.34%	0.43%	5.77%	0.21%	5.97%	96.56%	3.44%
Medical & Dental	7.92%	0.37%	8.30%	0.14%	8.44%	98.35%	1.65%
Nursing & Midwifery	4.66%	0.41%	5.07%	0.27%	5.34%	94.94%	5.06%
Health & Social Care Professionals	4.49%	0.51%	5.00%	0.05%	5.05%	99.01%	0.99%
Management & Administrative	6.26%	0.54%	6.80%	0.43%	7.24%	94.00%	6.00%
General Support	6.12%	0.00%	6.12%	0.00%	6.12%	100.00%	0.00%
Patient & Client Care	4.65%	0.35%	5.01%	0.00%	5.01%	100.00%	0.00%

Health Service Absence Rate - by Staff Category: Dec 2024	Certified absence	Self-certified absence	Non Covid-19 absence	Covid-19 Absence	Total absence rate	% Non Covid-19 absence	% Covid-19 absence
CHO 3	6.63%	0.49%	7.13%	0.17%	7.29%	97.72%	2.28%
Medical & Dental	8.68%	0.66%	9.34%	0.00%	9.34%	100.00%	0.00%
Nursing & Midwifery	7.40%	0.25%	7.65%	0.17%	7.82%	97.84%	2.16%
Health & Social Care Professionals	5.44%	0.73%	6.17%	0.42%	6.59%	93.66%	6.34%
Management & Administrative	6.89%	0.85%	7.75%	0.00%	7.75%	100.00%	0.00%
General Support	2.94%	0.00%	2.94%	0.19%	3.13%	93.82%	6.18%
Patient & Client Care	7.60%	0.26%	7.86%	0.00%	7.86%	100.00%	0.00%

Health Service Absence Rate - by Staff Category: Dec 2024	Certified absence	Self-certified absence	Non Covid-19 absence	Covid-19 Absence	Total absence rate	% Non Covid-19 absence	% Covid-19 absence
CHO 4	6.35%	0.55%	6.89%	0.40%	7.30%	94.48%	5.52%
Medical & Dental	4.97%	0.32%	5.29%	0.00%	5.29%	100.00%	0.00%
Nursing & Midwifery	7.78%	0.50%	8.28%	0.52%	8.80%	94.07%	5.93%
Health & Social Care Professionals	7.42%	0.60%	8.02%	0.06%	8.08%	99.28%	0.72%
Management & Administrative	3.70%	0.50%	4.20%	0.18%	4.38%	95.97%	4.03%
General Support	8.74%	1.05%	9.79%	2.33%	12.13%	80.76%	19.24%
Patient & Client Care	5.62%	0.76%	6.38%	0.84%	7.22%	88.30%	11.70%

Health Service Absence Rate - by Staff Category: Dec 2024	Certified absence	Self-certified absence	Non Covid-19 absence	Covid-19 Absence	Total absence rate	% Non Covid-19 absence	% Covid-19 absence
CHO 5	7.76%	0.60%	8.37%	0.32%	8.69%	96.26%	3.74%
Medical & Dental	6.39%	1.07%	7.47%	0.00%	7.47%	100.00%	0.00%
Nursing & Midwifery	6.89%	0.38%	7.27%	0.32%	7.59%	95.74%	4.26%
Health & Social Care Professionals	9.82%	0.50%	10.32%	0.26%	10.58%	97.51%	2.49%
Management & Administrative	7.45%	0.75%	8.20%	0.12%	8.32%	98.56%	1.44%
General Support	5.80%	0.52%	6.33%	0.00%	6.33%	100.00%	0.00%
Patient & Client Care	7.88%	1.02%	8.90%	1.63%	10.53%	84.55%	15.45%

Health Service Absence Rate - by Staff Category: Dec 2024	Certified absence	Self-certified absence	Non Covid-19 absence	Covid-19 Absence	Total absence rate	% Non Covid-19 absence	% Covid-19 absence
CHO 6	6.27%	0.72%	6.99%	0.11%	7.10%	98.42%	1.58%
Medical & Dental	2.89%	0.56%	3.44%	0.00%	3.44%	100.00%	0.00%
Nursing & Midwifery	7.77%	0.88%	8.65%	0.08%	8.73%	99.03%	0.97%
Health & Social Care Professionals	3.48%	0.71%	4.19%	0.04%	4.23%	99.08%	0.92%
Management & Administrative	7.46%	0.67%	8.13%	0.20%	8.32%	97.64%	2.36%
General Support	6.57%	1.43%	8.00%	0.81%	8.81%	90.84%	9.16%
Patient & Client Care	10.14%	0.56%	10.70%	0.11%	10.80%	99.01%	0.99%

Health Service Absence Rate - by Staff Category: Dec 2024	Certified absence	Self-certified absence	Non Covid-19 absence	Covid-19 Absence	Total absence rate	% Non Covid-19 absence	% Covid-19 absence
CHO 7	7.87%	0.71%	8.59%	0.29%	8.88%	96.73%	3.27%
Medical & Dental	3.61%	0.65%	4.26%	0.13%	4.39%	97.10%	2.90%
Nursing & Midwifery	7.65%	0.94%	8.59%	0.29%	8.88%	96.70%	3.30%
Health & Social Care Professionals	7.14%	0.60%	7.73%	0.06%	7.79%	99.19%	0.81%
Management & Administrative	7.79%	0.27%	8.06%	0.08%	8.14%	99.08%	0.92%
General Support	9.72%	0.56%	10.27%	0.57%	10.84%	94.74%	5.26%
Patient & Client Care	10.73%	0.96%	11.69%	0.74%	12.43%	94.02%	5.98%

Health Service Absence Rate - by Staff Category: Dec 2024	Certified absence	Self-certified absence	Non Covid-19 absence	Covid-19 Absence	Total absence rate	% Non Covid-19 absence	% Covid-19 absence
CHO 8	7.13%	0.45%	7.58%	0.18%	7.77%	97.66%	2.34%
Medical & Dental	2.35%	0.28%	2.63%	0.00%	2.63%	100.00%	0.00%
Nursing & Midwifery	8.61%	0.50%	9.11%	0.52%	9.64%	94.56%	5.44%
Health & Social Care Professionals	6.42%	0.36%	6.78%	0.00%	6.78%	100.00%	0.00%
Management & Administrative	6.74%	0.53%	7.27%	0.04%	7.31%	99.44%	0.56%
General Support	15.56%	0.15%	15.71%	0.00%	15.71%	100.00%	0.00%
Patient & Client Care	8.45%	0.55%	9.00%	0.15%	9.15%	98.34%	1.66%

Health Service Absence Rate - by Staff Category: Dec 2024	Certified absence	Self-certified absence	Non Covid-19 absence	Covid-19 Absence	Total absence rate	% Non Covid-19 absence	% Covid-19 absence
CHO 9	6.58%	0.65%	7.22%	0.17%	7.39%	97.71%	2.29%
Medical & Dental	3.23%	0.49%	3.72%	0.00%	3.72%	100.00%	0.00%
Nursing & Midwifery	6.40%	0.67%	7.07%	0.37%	7.45%	94.99%	5.01%
Health & Social Care Professionals	5.84%	0.69%	6.54%	0.06%	6.59%	99.12%	0.88%
Management & Administrative	7.20%	0.62%	7.82%	0.12%	7.93%	98.53%	1.47%
General Support	11.84%	0.94%	12.78%	0.00%	12.78%	100.00%	0.00%
Patient & Client Care	9.14%	0.58%	9.72%	0.14%	9.86%	98.61%	1.39%

Health Service Absence Rate - by Staff Category: Dec 2024	Certified absence	Self-certified absence	Non Covid-19 absence	Covid-19 Absence	Total absence rate	% Non Covid-19 absence	% Covid-19 absence
Other Comm	1.83%	0.56%	2.39%	0.24%	2.63%	90.75%	9.25%
Medical & Dental	2.51%	0.68%	3.20%	0.00%	3.20%	100.00%	0.00%
Nursing & Midwifery	0.00%	0.93%	0.93%	0.00%	0.93%	100.00%	0.00%
Health & Social Care Professionals	4.04%	0.38%	4.42%	0.96%	5.38%	82.19%	17.81%
Management & Administrative	1.16%	0.42%	1.57%	0.00%	1.57%	100.00%	0.00%
General Support	0.00%	2.12%	2.12%	0.00%	2.12%	100.00%	0.00%
Patient & Client Care	0.00%	0.37%	0.37%	0.00%	0.37%	100.00%	0.00%

Health Service Absence Rate - by Staff Category: Dec 2024	Certified absence	Self-certified absence	Non Covid-19 absence	Covid-19 Absence	Total absence rate	% Non Covid-19 absence	% Covid-19 absence
Galway Hospice Foundation	5.33%	0.19%	5.52%	0.00%	5.52%	100.00%	0.00%
Medical & Dental	0.00%	0.00%	0.00%	0.00%	0.00%		
Nursing & Midwifery	6.05%	0.19%	6.24%	0.00%	6.24%	100.00%	0.00%
Health & Social Care Professionals	2.57%	0.17%	2.74%	0.00%	2.74%	100.00%	0.00%
Management & Administrative	12.44%	0.17%	12.61%	0.00%	12.61%	100.00%	0.00%
General Support	0.32%	0.00%	0.32%	0.00%	0.32%	100.00%	0.00%
Patient & Client Care	2.72%	0.36%	3.07%	0.00%	3.07%	100.00%	0.00%

Health Service Absence Rate - by Staff Category: Dec 2024	Certified absence	Self-certified absence	Non Covid-19 absence	Covid-19 Absence	Total absence rate	% Non Covid-19 absence	% Covid-19 absence
Marymount	7.35%	0.81%	8.16%	1.88%	10.04%	81.31%	18.69%
Medical & Dental	0.00%	0.00%	0.00%	0.00%	0.00%		
Nursing & Midwifery	9.74%	0.82%	10.56%	2.62%	13.18%	80.15%	19.85%
Health & Social Care Professionals	3.83%	0.40%	4.23%	0.00%	4.23%	100.00%	0.00%
Management & Administrative	4.87%	0.12%	4.99%	0.00%	4.99%	100.00%	0.00%
General Support	8.66%	1.23%	9.89%	2.89%	12.78%	77.36%	22.64%
Patient & Client Care	6.71%	1.48%	8.18%	2.17%	10.35%	79.07%	20.93%

Health Service Absence Rate - by Staff Category: Dec 2024	Certified absence	Self- certified absence	Non Covid-19 absence	Covid-19 Absence	Total absence rate	% Non Covid-19 absence	% Covid-19 absence
Milford Care Centre	3.75%	0.00%	3.75%	0.00%	3.75%	100.00%	0.00%
Medical & Dental							
Nursing & Midwifery	2.72%	0.00%	2.72%	0.00%	2.72%	100.00%	0.00%
Health & Social Care Professionals	4.18%	0.00%	4.18%	0.00%	4.18%	100.00%	0.00%
Management & Administrative	4.35%	0.00%	4.35%	0.00%	4.35%	100.00%	0.00%
General Support	3.70%	0.00%	3.70%	0.00%	3.70%	100.00%	0.00%
Patient & Client Care	5.86%	0.00%	5.86%	0.00%	5.86%	100.00%	0.00%

Health Service Absence Rate - by Staff Category: Dec 2024	Certified absence	Self- certified absence	Non Covid-19 absence	Covid-19 Absence	Total absence rate	% Non Covid-19 absence	% Covid-19 absence
Our Lady's Hospice & Care, Dubli	7.90%	0.86%	8.75%	0.25%	9.01%	97.19%	2.81%
Medical & Dental	1.88%	1.61%	3.50%	0.00%	3.50%	100.00%	0.00%
Nursing & Midwifery	7.49%	1.24%	8.73%	0.18%	8.91%	97.95%	2.05%
Health & Social Care Professionals	1.50%	0.73%	2.22%	0.29%	2.51%	88.46%	11.54%
Management & Administrative	7.54%	0.05%	7.59%	0.00%	7.59%	100.00%	0.00%
General Support	7.68%	0.58%	8.26%	0.83%	9.09%	90.87%	9.13%
Patient & Client Care	12.56%	0.69%	13.25%	0.16%	13.41%	98.78%	1.22%

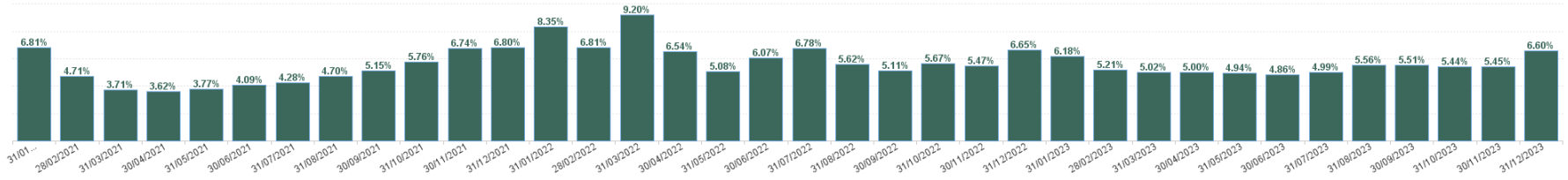
Health Service Absence Rate - by Staff Category: Dec 2024	Certified absence	Self- certified absence	Non Covid-19 absence	Covid-19 Absence	Total absence rate	% Non Covid-19 absence	% Covid-19 absence
Our Lady's Hospice & Care, Wick	10.57%	1.21%	11.78%	0.42%	12.20%	96.58%	3.42%
Medical & Dental	0.00%	3.80%	3.80%	0.00%	3.80%	100.00%	0.00%
Nursing & Midwifery	10.11%	1.03%	11.14%	0.69%	11.83%	94.19%	5.81%
Health & Social Care Professionals	21.95%	0.00%	21.95%	0.00%	21.95%	100.00%	0.00%
Management & Administrative	27.42%	0.00%	27.42%	0.00%	27.42%	100.00%	0.00%
General Support							
Patient & Client Care	6.20%	1.35%	7.55%	0.00%	7.55%	100.00%	0.00%

Health Service Absence Rate - by Staff Category: Dec 2024	Certified absence	Self- certified absence	Non Covid-19 absence	Covid-19 Absence	Total absence rate	% Non Covid-19 absence	% Covid-19 absence
St Francis	6.23%	0.58%	6.81%	0.00%	6.81%	100.00%	0.00%
Medical & Dental	17.20%	0.66%	17.86%	0.00%	17.86%	100.00%	0.00%
Nursing & Midwifery	6.40%	0.82%	7.21%	0.00%	7.21%	100.00%	0.00%
Health & Social Care Professionals	12.64%	1.00%	13.64%	0.00%	13.64%	100.00%	0.00%
Management & Administrative	0.27%	0.16%	0.43%	0.00%	0.43%	100.00%	0.00%
General Support	5.18%	0.47%	5.66%	0.00%	5.66%	100.00%	0.00%
Patient & Client Care	4.96%	0.00%	4.96%	0.00%	4.96%	100.00%	0.00%

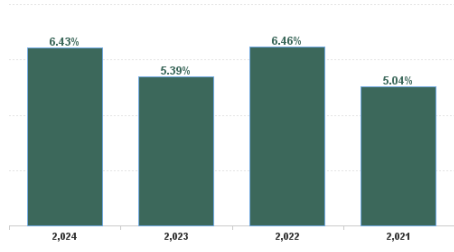
Year / Month	Certified absence	Self-certified absence	Non Covid-19 absence	Covid-19 Absence	Total absence rate	Medical & Dental	Nursing & Midwifery	Health & Social Care Professionals	Management & Administrative	General Support	Patient & Client Care
Dec 2024	6.75%	0.56%	7.31%	0.23%	7.54%	5.28%	8.02%	7.12%	7.16%	8.85%	9.34%
Nov 2024	5.62%	0.50%	6.12%	0.19%	6.31%	4.12%	6.79%	5.68%	6.27%	8.20%	7.76%
Oct 2024	5.48%	0.45%	5.93%	0.29%	6.22%	3.64%	6.60%	5.21%	6.81%	7.66%	8.08%
Sep 2024	5.19%	0.42%	5.61%	0.48%	6.09%	3.87%	6.75%	5.06%	6.48%	7.31%	7.29%
Aug 2024	5.85%	0.35%	6.00%	0.65%	6.65%	4.41%	7.78%	5.54%	6.48%	8.03%	7.75%
Jul 2024	5.64%	0.42%	6.06%	1.01%	7.07%	4.16%	7.86%	5.99%	7.02%	8.36%	9.47%
Jun 2024	5.57%	0.40%	5.97%	0.67%	6.65%	3.62%	7.51%	5.59%	6.61%	8.57%	8.30%
May 2024	5.42%	0.40%	5.82%	0.29%	6.11%	3.28%	6.96%	4.90%	6.16%	8.01%	8.01%
Apr 2024	5.22%	0.39%	5.61%	0.17%	5.78%	3.42%	6.75%	4.64%	5.89%	6.69%	6.96%
Mar 2024	5.42%	0.40%	5.82%	0.22%	6.04%	3.47%	7.06%	5.00%	6.30%	6.29%	6.94%
Feb 2024	5.46%	0.40%	5.85%	0.31%	6.16%	3.52%	7.18%	4.75%	6.32%	7.52%	7.08%
Jan 2024	5.49%	0.55%	6.04%	0.60%	6.65%	4.21%	7.55%	5.27%	7.39%	6.35%	7.88%
2024	5.57%	0.44%	6.00%	0.43%	6.43%	3.92%	7.22%	5.37%	6.58%	7.68%	7.90%
Dec 2023	5.46%	0.52%	5.98%	0.62%	6.60%	4.22%	7.31%	5.76%	7.09%	6.16%	7.66%
Nov 2023	4.60%	0.48%	5.08%	0.37%	5.45%	3.60%	6.17%	4.51%	5.54%	6.25%	6.90%
Oct 2023	4.51%	0.43%	4.94%	0.50%	5.44%	3.93%	5.96%	5.00%	5.24%	6.53%	6.49%
Sep 2023	4.46%	0.36%	4.82%	0.70%	5.51%	3.54%	6.03%	5.06%	5.65%	5.92%	6.53%
Aug 2023	4.55%	0.33%	4.88%	0.68%	5.56%	3.48%	6.54%	5.05%	5.37%	7.21%	5.90%
Jul 2023	4.35%	0.29%	4.64%	0.35%	4.99%	3.74%	5.63%	4.14%	4.98%	5.21%	6.34%
Jun 2023	4.35%	0.29%	4.64%	0.22%	4.86%	3.04%	5.93%	3.97%	4.69%	5.68%	5.74%
May 2023	4.26%	0.33%	4.59%	0.35%	4.94%	2.57%	5.96%	4.16%	4.76%	5.84%	6.17%
Apr 2023	4.35%	0.29%	4.64%	0.36%	5.00%	3.64%	5.56%	4.35%	4.87%	5.27%	6.40%
Mar 2023	4.22%	0.35%	4.57%	0.46%	5.02%	3.62%	5.62%	4.25%	4.97%	5.98%	6.33%
Feb 2023	4.41%	0.36%	4.77%	0.43%	5.21%	3.08%	5.91%	3.98%	5.09%	6.13%	7.83%
Jan 2023	4.95%	0.43%	5.37%	0.80%	6.18%	3.29%	7.00%	5.05%	5.94%	8.39%	8.48%
2023	4.53%	0.37%	4.90%	0.49%	5.39%	3.48%	6.13%	4.60%	5.34%	6.23%	6.72%
Dec 2022	5.04%	0.50%	5.54%	1.11%	6.65%	4.22%	7.17%	5.60%	6.82%	8.12%	8.42%
Nov 2022	4.37%	0.43%	4.80%	0.67%	5.47%	3.66%	6.15%	4.60%	5.26%	6.69%	7.10%
Oct 2022	4.49%	0.45%	4.94%	0.73%	5.67%	3.72%	6.40%	4.86%	5.50%	7.65%	6.70%
Sep 2022	4.16%	0.33%	4.50%	0.61%	5.11%	3.40%	6.12%	4.64%	4.29%	6.68%	6.16%
Aug 2022	4.61%	0.29%	4.89%	0.72%	5.62%	3.79%	6.64%	4.64%	5.27%	7.17%	6.73%
Jul 2022	4.52%	0.30%	4.82%	1.96%	6.78%	4.09%	7.66%	5.87%	6.33%	8.34%	8.69%
Jun 2022	3.86%	0.35%	4.21%	1.86%	6.07%	4.05%	6.89%	5.58%	5.54%	8.65%	6.57%
May 2022	3.85%	0.32%	4.17%	0.92%	5.08%	2.76%	6.22%	4.22%	4.31%	6.10%	6.65%
Apr 2022	4.18%	0.34%	4.52%	2.02%	6.54%	3.67%	7.85%	5.91%	5.65%	7.87%	7.73%
Mar 2022	4.42%	0.41%	4.84%	4.36%	9.20%	5.09%	11.29%	8.45%	8.36%	9.11%	10.39%
Feb 2022	3.86%	0.37%	4.23%	2.59%	6.81%	3.99%	8.68%	6.06%	5.45%	6.34%	8.65%
Jan 2022	3.75%	0.29%	4.04%	4.31%	8.35%	5.42%	9.83%	7.24%	7.32%	9.21%	10.35%
2022	4.24%	0.36%	4.61%	1.85%	6.46%	3.98%	7.56%	5.63%	5.85%	7.66%	7.95%
Dec 2021	4.39%	0.29%	4.68%	2.12%	6.80%	4.18%	8.29%	5.83%	5.92%	5.86%	8.69%
Nov 2021	4.61%	0.42%	5.03%	1.71%	6.74%	4.79%	8.00%	5.80%	5.92%	6.36%	8.57%
Oct 2021	4.41%	0.38%	4.79%	0.97%	5.76%	4.10%	6.61%	5.32%	4.89%	5.70%	7.30%
Sep 2021	4.13%	0.30%	4.43%	0.72%	5.15%	3.99%	6.21%	4.57%	4.21%	4.72%	6.53%
Aug 2021	3.88%	0.22%	4.10%	0.61%	4.70%	3.64%	5.81%	3.95%	3.77%	3.85%	6.34%
Jul 2021	3.67%	0.20%	3.87%	0.40%	4.28%	2.76%	4.78%	3.70%	3.84%	3.96%	5.85%
Jun 2021	3.49%	0.23%	3.72%	0.37%	4.09%	2.77%	5.08%	3.35%	3.68%	4.27%	4.80%
May 2021	3.22%	0.18%	3.40%	0.36%	3.77%	2.87%	4.52%	2.88%	3.26%	3.97%	4.96%
Apr 2021	3.02%	0.18%	3.20%	0.42%	3.62%	2.84%	4.23%	2.77%	3.32%	3.58%	4.72%
Mar 2021	2.99%	0.21%	3.20%	0.51%	3.71%	3.29%	4.31%	3.15%	3.25%	3.69%	4.44%
Feb 2021	3.36%	0.27%	3.63%	1.08%	4.71%	3.26%	5.81%	3.83%	4.05%	5.13%	5.92%
Jan 2021	3.78%	0.14%	3.92%	2.90%	6.81%	3.43%	8.52%	5.30%	6.05%	8.86%	8.48%
2021	3.76%	0.25%	4.02%	1.02%	5.04%	3.51%	6.04%	4.23%	4.37%	5.00%	6.41%

Year / Month	Certified absence	Self-certified absence	Non Covid-19 absence	Covid-19 Absence	Total absence rate	CHO 1	CHO 2	CHO 3	CHO 4	CHO 5	CHO 6	CHO 7	CHO 8	CHO 9	Other Comm	Primary Care
Dec 2024	6.75%	0.56%	7.31%	0.23%	7.54%	7.57%	5.97%	7.29%	7.30%	8.69%	7.10%	8.88%	7.77%	7.39%	2.63%	7.54%
Nov 2024	5.62%	0.50%	6.12%	0.19%	6.31%	6.58%	4.94%	5.93%	5.97%	6.55%	6.15%	7.54%	6.78%	6.24%	3.94%	6.31%
Oct 2024	5.48%	0.45%	5.93%	0.29%	6.22%	6.28%	4.92%	6.16%	5.74%	7.22%	5.34%	6.58%	6.65%	7.03%	5.11%	6.22%
Sep 2024	5.19%	0.42%	5.61%	0.48%	6.09%	5.87%	4.93%	6.23%	5.34%	7.21%	5.67%	6.83%	6.49%	6.47%	4.13%	6.09%
Aug 2024	5.65%	0.35%	6.00%	0.65%	6.65%	6.76%	6.05%	7.45%	6.46%	8.34%	5.65%	6.72%	6.40%	6.39%	5.39%	6.65%
Jul 2024	5.64%	0.42%	6.06%	1.01%	7.07%	6.68%	6.28%	7.37%	6.77%	8.31%	7.14%	8.26%	6.64%	6.51%	6.10%	7.07%
Jun 2024	5.57%	0.40%	5.97%	0.67%	6.65%	6.49%	5.58%	7.59%	6.94%	7.45%	5.80%	7.45%	6.38%	5.96%	6.70%	6.65%
May 2024	5.42%	0.40%	5.82%	0.29%	6.11%	5.79%	4.83%	6.51%	5.97%	6.93%	5.90%	6.28%	6.86%	6.03%	4.42%	6.11%
Apr 2024	5.22%	0.39%	5.61%	0.17%	5.78%	5.38%	4.31%	6.62%	5.28%	6.65%	5.61%	6.14%	6.70%	5.85%	3.86%	5.78%
Mar 2024	5.42%	0.40%	5.82%	0.22%	6.04%	5.90%	4.01%	7.74%	5.98%	7.23%	5.83%	6.01%	6.48%	6.03%	3.91%	6.04%
Feb 2024	5.46%	0.40%	5.85%	0.31%	6.16%	5.72%	4.87%	8.03%	5.60%	6.70%	5.37%	6.06%	6.17%	6.41%	5.32%	6.16%
Jan 2024	5.49%	0.55%	6.04%	0.60%	6.65%	6.75%	5.84%	7.18%	5.96%	8.40%	6.36%	6.52%	6.45%	7.04%	4.73%	6.65%
2024	5.57%	0.44%	6.00%	0.43%	6.43%	6.30%	5.19%	7.04%	6.09%	7.46%	5.99%	6.92%	6.64%	6.44%	4.71%	6.43%
Dec 2023	5.46%	0.52%	5.98%	0.62%	6.60%	6.86%	5.24%	7.09%	5.59%	8.39%	6.25%	6.86%	6.29%	7.35%	5.44%	6.60%
Nov 2023	4.60%	0.48%	5.08%	0.37%	5.44%	5.44%	4.06%	6.34%	5.26%	6.34%	5.23%	5.86%	5.36%	5.66%	2.51%	5.45%
Oct 2023	4.51%	0.43%	4.94%	0.50%	5.44%	5.46%	3.18%	6.60%	5.52%	6.50%	5.57%	6.00%	4.95%	5.72%	3.58%	5.44%
Sep 2023	4.46%	0.36%	4.82%	0.70%	5.51%	5.19%	4.00%	7.79%	5.26%	6.07%	5.43%	5.87%	5.48%	5.53%	4.56%	5.51%
Aug 2023	4.55%	0.33%	4.88%	0.68%	5.56%	6.25%	3.04%	7.81%	5.06%	6.48%	4.72%	6.35%	5.89%	5.70%	2.39%	5.56%
Jul 2023	4.35%	0.29%	4.64%	0.35%	4.99%	5.22%	3.01%	5.65%	4.10%	5.94%	4.73%	5.56%	5.74%	5.41%	3.57%	4.99%
Jun 2023	4.35%	0.29%	4.64%	0.22%	4.86%	4.54%	2.91%	4.79%	4.20%	5.95%	3.97%	5.67%	5.79%	5.81%	3.16%	4.86%
May 2023	4.26%	0.33%	4.59%	0.35%	4.94%	4.61%	2.56%	5.05%	4.31%	5.91%	3.86%	6.06%	6.07%	5.59%	4.38%	4.94%
Apr 2023	4.35%	0.29%	4.64%	0.36%	5.00%	5.21%	3.00%	5.65%	5.93%	4.07%	5.94%	5.72%	5.48%	4.26%	5.00%	5.00%
Mar 2023	4.22%	0.35%	4.57%	0.46%	5.02%	4.58%	2.67%	5.32%	3.22%	5.94%	4.72%	6.26%	6.17%	6.80%	4.88%	5.02%
Feb 2023	4.41%	0.36%	4.77%	0.43%	5.21%	4.77%	3.19%	5.80%	3.34%	5.01%	5.70%	6.07%	6.40%	6.39%	4.48%	5.21%
Jan 2023	4.95%	0.43%	5.37%	0.80%	6.18%	6.51%	3.76%	6.69%	4.67%	6.38%	6.62%	6.89%	6.62%	7.02%	5.52%	6.18%
2023	4.53%	0.37%	4.90%	0.49%	5.39%	5.38%	3.36%	6.23%	4.58%	6.23%	5.07%	6.11%	5.87%	6.03%	3.94%	5.39%
Dec 2022	5.04%	0.50%	5.54%	1.11%	6.65%	7.26%	3.22%	7.11%	3.56%	7.77%	7.79%	8.06%	7.31%	8.12%	6.15%	6.65%
Nov 2022	4.37%	0.43%	4.80%	0.67%	5.47%	5.92%	1.92%	7.24%	4.17%	5.86%	5.91%	6.22%	6.27%	6.17%	5.66%	5.47%
Oct 2022	4.49%	0.45%	4.94%	0.73%	5.67%	5.71%	3.21%	7.64%	3.85%	6.09%	6.14%	6.43%	6.14%	6.47%	3.78%	5.67%
Sep 2022	4.16%	0.33%	4.50%	0.61%	5.11%	5.75%	2.26%	6.08%	3.37%	5.95%	5.34%	5.70%	5.75%	5.98%	3.22%	5.11%
Aug 2022	4.61%	0.29%	4.89%	0.72%	5.62%	6.06%	2.67%	7.34%	3.16%	6.96%	6.41%	6.54%	6.02%	6.08%	2.56%	5.62%
Jul 2022	4.52%	0.30%	4.82%	1.96%	6.78%	6.37%	4.31%	8.66%	5.32%	8.24%	7.74%	7.70%	6.55%	7.18%	4.17%	6.78%
Jun 2022	3.86%	0.35%	4.21%	1.86%	6.07%	5.69%	3.73%	7.67%	3.24%	7.76%	6.58%	7.20%	6.47%	6.79%	7.11%	6.07%
May 2022	3.85%	0.32%	4.17%	0.92%	5.08%	4.35%	3.20%	5.89%	3.88%	6.03%	5.96%	6.03%	5.50%	5.10%	3.96%	5.08%
Apr 2022	4.18%	0.34%	4.52%	2.02%	6.54%	5.93%	4.19%	7.91%	6.42%	7.89%	6.76%	7.57%	6.96%	5.56%	5.97%	6.54%
Mar 2022	4.42%	0.41%	4.84%	4.36%	9.20%	9.25%	6.45%	9.70%	7.59%	11.30%	9.10%	10.37%	9.80%	9.16%	4.62%	9.20%
Feb 2022	3.86%	0.37%	4.23%	2.59%	6.81%	7.25%	4.05%	7.28%	5.59%	7.59%	6.16%	8.68%	7.04%	7.15%	3.60%	6.81%
Jan 2022	3.75%	0.29%	4.04%	4.31%	8.35%	8.30%	6.42%	11.39%	6.54%	9.81%	6.62%	8.81%	8.66%	8.63%	5.55%	8.35%
2022	4.24%	0.36%	4.61%	1.85%	6.46%	6.46%	3.77%	7.85%	4.71%	7.62%	6.70%	7.48%	6.91%	6.89%	4.69%	6.46%
Dec 2021	4.39%	0.29%	4.68%	2.12%	6.80%	7.04%	3.88%	8.51%	3.62%	9.36%	6.33%	8.17%	7.63%	7.25%	3.40%	6.80%
Nov 2021	4.61%	0.42%	5.03%	1.71%	6.74%	7.38%	3.50%	7.74%	4.39%	8.07%	6.30%	8.58%	7.35%	7.23%	3.16%	6.74%
Oct 2021	4.41%	0.38%	4.79%	0.97%	5.76%	7.62%	3.00%	6.46%	3.58%	5.79%	5.25%	6.97%	7.03%	5.82%	3.46%	5.76%
Sep 2021	4.13%	0.30%	4.43%	0.72%	5.15%	6.56%	2.68%	6.45%	3.07%	5.50%	5.30%	6.32%	6.20%	5.07%	2.47%	5.15%
Aug 2021	3.88%	0.22%	4.10%	0.61%	4.70%	5.72%	2.45%	5.60%	2.46%	5.38%	4.59%	5.62%	5.15%	5.64%	1.29%	4.70%
Jul 2021	3.67%	0.20%	3.87%	0.40%	4.28%	4.67%	2.12%	5.12%	2.44%	4.82%	3.85%	5.41%	5.21%	5.39%	2.19%	4.28%
Jun 2021	3.49%	0.23%	3.72%	0.37%	4.09%	5.13%	2.18%	4.81%	2.73%	5.46%	3.62%	4.58%	4.27%	4.22%	2.22%	4.09%
May 2021	3.22%	0.18%	3.40%	0.36%	3.77%	4.27%	1.83%	4.51%	2.30%	4.93%	3.19%	4.65%	4.04%	3.38%	2.43%	3.77%
Apr 2021	3.02%	0.18%	3.20%	0.42%	3.62%	4.37%	2.11%	3.79%	1.69%	4.65%	3.15%	4.45%	4.35%	3.58%	1.94%	3.62%
Mar 2021	2.99%	0.21%	3.20%	0.51%	3.71%	4.33%	2.32%	3.13%	2.34%	5.02%	2.94%	4.49%	4.05%	4.04%	2.69%	3.71%
Feb 2021	3.36%	0.27%	3.63%	1.08%	4.71%	4.83%	3.26%	4.07%	3.54%	5.67%	3.91%	5.90%	5.58%	4.73%	2.97%	4.71%

Total Absence Rate



Total Absence Rate



% of Absence Non Covid-19 / Covid-19

