

Primary Care Employment Report : AUG 2023

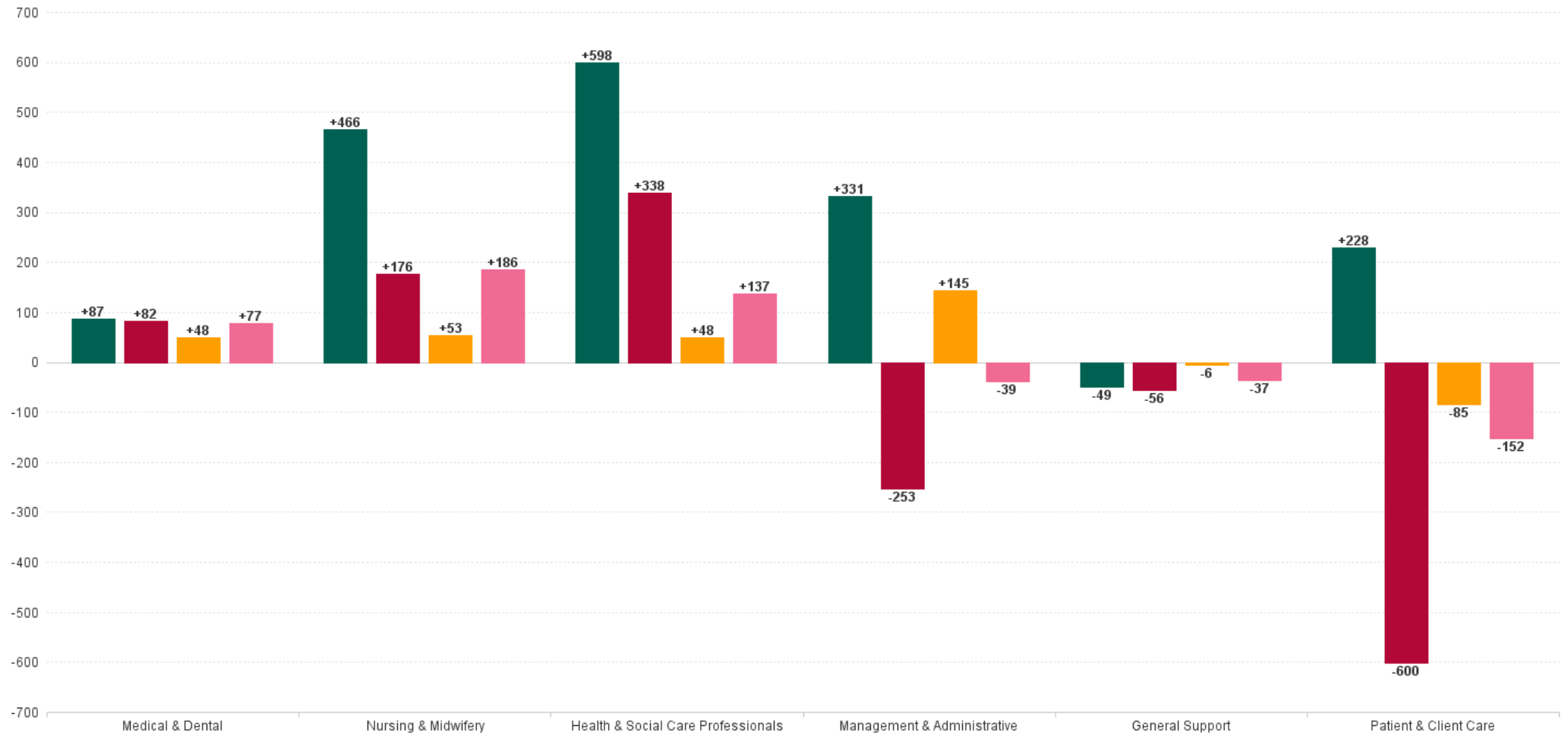
Primary Care Employment Report by Staff Group

AUG 2023	WTE DEC 2019	WTE DEC 2022	WTE JUL 2023	WTE AUG 2023	WTE change since DEC 2019	% WTE change since Dec 2019	WTE change since DEC 2022	% WTE change since Dec 2022	WTE change since JUL 2023	No. AUG 2023
Overall	10,606	12,064	12,364	12,267	+1,661	+15.7%	+203	+1.7%	-97	14,636
Consultants	44	50	54	56	+12	+27.0%	+5	+10.7%	+2	68
Registrars	396	433	531	497	+102	+25.7%	+64	+14.8%	-34	536
SHO/ Interns	36	39	41	45	+9	+24.7%	+6	+15.5%	+4	60
Medical/ Dental, other	520	511	497	484	-36	-6.9%	-27	-5.3%	-14	690
Medical & Dental	995	1,034	1,123	1,082	+87	+8.7%	+48	+4.7%	-41	1,354
Nurse/ Midwife Manager	358	477	489	488	+129	+36.1%	+11	+2.3%	-2	545
Nurse/ Midwife Specialist & AN/MP	143	278	344	340	+197	+137.9%	+62	+22.2%	-5	389
Staff Nurse/ Staff Midwife	862	1,057	1,142	1,132	+270	+31.4%	+76	+7.2%	-10	1,466
Public Health Nurse	1,513	1,477	1,440	1,453	-61	-4.0%	-24	-1.6%	+13	1,764
Post-registration Nurse/ Midwife Student	96	96	29	25	-71	-74.2%	-71	-74.2%	-4	26
Nursing/ Midwifery Student	96	96	29	25	-71	-74.2%	-71	-74.2%	-4	26
Nursing/ Midwifery other	4	5	4	5	+1	+21.1%	-0	-6.9%	+0	5
Nursing & Midwifery	2,976	3,389	3,449	3,442	+466	+15.7%	+53	+1.6%	-7	4,195
Therapy Professions	1,733	2,162	2,217	2,190	+457	+26.3%	+28	+1.3%	-27	2,610
Health Science/ Diagnostics	82	99	99	100	+18	+22.5%	+1	+1.3%	+1	110
Social Care	35	39	41	39	+3	+9.1%	+0	+0.4%	-2	43
Social Workers	139	195	205	202	+63	+45.4%	+7	+3.7%	-2	224
Psychologists	303	292	302	296	-6	-2.1%	+5	+1.6%	-6	335
Pharmacy	58	68	74	74	+16	+27.7%	+6	+8.4%	-1	87
H&SC, Other	209	255	255	256	+47	+22.6%	+2	+0.6%	+2	305
Health & Social Care Professionals	2,559	3,109	3,192	3,158	+598	+23.4%	+48	+1.6%	-34	3,714
Management (VIII & above)	306	253	249	242	-64	-20.8%	-11	-4.4%	-7	254
Administrative/ Supervisory (V to VII)	623	762	798	801	+178	+28.5%	+39	+5.1%	+3	862
Clerical (III & IV)	1,746	1,847	1,970	1,963	+217	+12.4%	+117	+6.3%	-7	2,265
Management & Administrative	2,675	2,862	3,017	3,007	+331	+12.4%	+145	+5.1%	-10	3,381
Support	346	327	325	324	-22	-6.4%	-3	-1.0%	-1	475
Maintenance/ Technical	59	36	32	32	-27	-45.4%	-3	-8.9%	+0	36
General Support	405	362	357	356	-49	-12.1%	-6	-1.8%	-1	511
Home Help	18	15	19	18	+0	+0.4%	+3	+22.8%	-0	42
Health Care Assistants	254	466	410	405	+151	+59.4%	-61	-13.2%	-5	477
Care, other	723	827	798	800	+77	+10.7%	-27	-3.2%	+2	962
Patient & Client Care	995	1,308	1,226	1,223	+228	+22.9%	-85	-6.5%	-3	1,481



WTE Change by Staff Category

■ WTE change since DEC 2019 ■ WTE change since DEC 2021 ■ WTE change since DEC 2022 ■ WTE change since AUG 2022



Primary Care Report by CHO: AUG 2023

AUG 2023	WTE DEC 2019	WTE DEC 2022	WTE JUL 2023	WTE AUG 2023	WTE change since DEC 2019	% WTE change since Dec 2019	WTE change since DEC 2022	% WTE change since Dec 2022	WTE change since JUL 2023	No. AUG 2023
Overall	10,606	12,064	12,364	12,267	+1,661	+15.7%	+203	+1.7%	-97	14,636
CHO 1	1,182	1,472	1,526	1,509	+327	+27.7%	+38	+2.6%	-17	1,770
CHO 2	1,134	1,351	1,303	1,267	+133	+11.8%	-84	-6.2%	-36	1,494
CHO 3	764	772	835	823	+59	+7.8%	+51	+6.7%	-12	985
CHO 4	1,346	1,707	1,806	1,778	+432	+32.1%	+71	+4.2%	-28	2,212
CHO 5	958	1,152	1,178	1,157	+199	+20.7%	+6	+0.5%	-21	1,384
CHO 6	765	864	877	881	+116	+15.2%	+16	+1.9%	+4	1,116
CHO 7	1,702	1,765	1,779	1,783	+81	+4.8%	+18	+1.0%	+4	2,087
CHO 8	1,387	1,498	1,544	1,546	+159	+11.5%	+48	+3.2%	+2	1,846
CHO 9	1,247	1,357	1,389	1,392	+145	+11.7%	+36	+2.6%	+4	1,602
other Community Services	122	127	127	131	+8	+6.7%	+3	+2.4%	+3	140



% Total by CHO



Primary Care Employment Report by HSE/S38: AUG 2023

AUG 2023	WTE DEC 2019	WTE DEC 2022	WTE JUL 2023	WTE AUG 2023	WTE change since DEC 2019	% WTE change since Dec 2019	WTE change since DEC 2022	% WTE change since Dec 2022	WTE change since JUL 2023	No. AUG 2023
Overall	10,606	12,064	12,364	12,267	+1,661	0.16	+203	0.02	-97	14,636
Health Service Executive	9,930	11,284	11,615	11,522	+1,592	0.16	+238	0.02	-93	13,648
Section 38 Voluntary Agencies	676	780	749	745	+69	0.1	-35	-0.04	-4	988



Primary Care Employment Report by HSE: AUG 2023

AUG 2023	WTE DEC 2019	WTE DEC 2022	WTE JUL 2023	WTE AUG 2023	WTE change since DEC 2019	% WTE change since Dec 2019	WTE change since DEC 2022	% WTE change since Dec 2022	WTE change since JUL 2023	No. AUG 2023
Total HSE	9,930	11,284	11,615	11,522	+1,592	+16.0%	+238	+2.1%	-93	13,648
Consultants	32	34	36	37	+4	+12.6%	+3	+8.4%	+1	44
Registrars	385	422	519	484	+100	+25.9%	+63	+14.8%	-35	520
SHO/ Interns	19	22	26	28	+9	+51.1%	+6	+29.3%	+2	30
Medical/ Dental, other	505	490	481	469	-36	-7.1%	-20	-4.1%	-12	655
Medical & Dental	941	967	1,062	1,018	+77	+8.2%	+52	+5.3%	-43	1,249
Nurse/ Midwife Manager	309	421	438	436	+127	+41.0%	+16	+3.7%	-1	487
Nurse/ Midwife Specialist & AN/MP	114	235	299	296	+182	+159.7%	+61	+26.2%	-3	333
Staff Nurse/ Staff Midwife	752	929	1,013	1,007	+255	+33.9%	+78	+8.4%	-5	1,312
Public Health Nurse	1,513	1,477	1,440	1,453	-61	-4.0%	-24	-1.6%	+13	1,764
Post-registration Nurse/ Midwife Student	96	96	29	25	+47	-74.2%	-6	-74.2%	-4	26
Nursing/ Midwifery Student	96	96	29	25	-71	-74.2%	-71	-74.2%	-4	26
Nursing/ Midwifery other	2	3	3	3	+1	+64.4%	+0	+0.7%	+0	3
Nursing & Midwifery	2,786	3,160	3,221	3,220	+434	+15.6%	+60	+1.9%	-1	3,925
Therapy Professions	1,696	2,124	2,183	2,157	+461	+27.2%	+33	+1.5%	-26	2,564
Health Science/ Diagnostics	78	95	95	97	+18	+23.5%	+1	+1.4%	+1	104
Social Care	35	39	41	39	+3	+9.1%	+0	+0.4%	-2	43
Social Workers	128	181	191	188	+60	+46.5%	+7	+3.7%	-2	209
Psychologists	302	291	301	295	-7	-2.3%	+5	+1.6%	-6	334
Pharmacy	48	60	66	65	+18	+36.6%	+5	+8.9%	-1	77
H&SC, Other	208	251	251	253	+45	+21.9%	+2	+0.6%	+2	299
Health & Social Care Professionals	2,496	3,041	3,127	3,094	+598	+24.0%	+52	+1.7%	-34	3,630
Management (VIII & above)	297	245	239	233	-64	-21.5%	-12	-4.8%	-6	241
Administrative/ Supervisory (V to VII)	590	728	762	766	+176	+29.8%	+38	+5.2%	+4	813
Clerical (III & IV)	1,683	1,773	1,899	1,890	+208	+12.3%	+117	+6.6%	-9	2,168
Management & Administrative	2,570	2,745	2,900	2,889	+319	+12.4%	+144	+5.2%	-11	3,222
Support	251	230	232	232	-19	-7.6%	+2	+1.0%	-0	365
Maintenance/ Technical	50	25	23	23	-27	-53.9%	-2	-7.3%	+0	24
General Support	301	255	255	255	-46	-15.3%	+1	+0.2%	+0	389
Home Help	18	15	19	18	+0	+0.4%	+3	+22.8%	-0	42
Health Care Assistants	152	338	293	288	+136	+89.8%	-50	-14.8%	-6	331
Care, other	666	763	738	739	+74	+11.0%	-24	-3.1%	+2	860
Patient & Client Care	836	1,116	1,049	1,045	+210	+25.1%	-71	-6.3%	-4	1,233

Primary Care Employment Report by S38 Hospitals: AUG 2023

AUG 2023	WTE DEC 2019	WTE DEC 2022	WTE JUL 2023	WTE AUG 2023	WTE change since DEC 2019	% WTE change since Dec 2019	WTE change since DEC 2022	% WTE change since Dec 2022	WTE change since JUL 2023	No. AUG 2023
Total S38 Vols	676	780	749	745	+69	+10.3%	-35	-4.4%	-4	988
Consultants	11	17	18	19	+8	+68.1%	+3	+15.4%	+1	24
Registrars	11	11	12	13	+2	+19.6%	+2	+14.8%	+1	16
SHO/ Interns	18	17	16	17	-1	-3.2%	-0	-1.7%	+2	30
Medical/ Dental, other	14	21	16	14	-0	-0.6%	-7	-33.3%	-2	35
Medical & Dental	54	67	61	64	+9	+17.0%	-3	-4.7%	+2	105
Nurse/ Midwife Manager	49	56	52	51	+2	+4.9%	-5	-8.5%	-0	58
Nurse/ Midwife Specialist & AN/MP	29	43	46	44	+15	+51.7%	+0	+0.6%	-2	56
Staff Nurse/ Staff Midwife	110	128	130	125	+15	+14.0%	-3	-2.1%	-4	154
Nursing/ Midwifery other	2	2	2	2	-0	-18.0%	-0	-18.0%	+0	2
Nursing & Midwifery	190	229	228	222	+32	+17.0%	-8	-3.3%	-6	270
Therapy Professions	37	38	34	33	-4	-10.5%	-5	-12.5%	-1	46
Health Science/ Diagnostics	4	4	4	4	+0	+0.5%	-0	-1.6%	+0	6
Social Workers	11	14	14	14	+4	+32.4%	+1	+3.6%	+0	15
Psychologists	1	1	1	1	+0	+66.7%	+0	+0.0%	+0	1
Pharmacy	10	8	8	8	-2	-15.4%	+0	+4.8%	+0	10
H&SC, Other	2	3	3	3	+2	+117.3%	+0	+0.0%	+0	6
Health & Social Care Professionals	64	68	64	64	+0	+0.4%	-4	-5.8%	-1	84
Management (VIII & above)	9	9	10	9	+1	+5.9%	+1	+5.9%	-1	13
Administrative/ Supervisory (V to VII)	34	35	36	36	+2	+6.3%	+1	+2.6%	-1	49
Clerical (III & IV)	64	73	71	73	+9	+14.7%	-0	-0.5%	+2	97
Management & Administrative	106	117	117	118	+12	+11.3%	+1	+0.9%	+1	159
Support	95	97	92	92	-3	-3.4%	-6	-5.8%	-1	110
Maintenance/ Technical	9	11	9	9	+0	+2.6%	-1	-12.8%	+0	12
General Support	104	108	102	101	-3	-2.9%	-7	-6.4%	-1	122
Health Care Assistants	102	128	116	117	+15	+14.5%	-11	-8.8%	+1	146
Care, other	57	63	61	61	+4	+6.7%	-3	-4.5%	+0	102
Patient & Client Care	159	192	177	178	+19	+11.7%	-14	-7.4%	+1	248



Primary Care Employment Report by Staff Group: AUG 2023

CHO 1

AUG 2023	WTE DEC 2019	WTE DEC 2022	WTE JUL 2023	WTE AUG 2023	WTE change since DEC 2019	% WTE change since Dec 2019	WTE change since DEC 2022	% WTE change since Dec 2022	WTE change since JUL 2023	No. AUG 2023
Overall	1,182	1,472	1,526	1,509	+327	+27.7%	+38	+2.6%	-17	1,770
Consultants	3	5	5	5	+2	+62.3%	-0	-3.8%	-0	6
Registrars	41	42	45	37	-4	-9.8%	-5	-12.4%	-8	43
SHO/ Interns	1	1	1	1	-0	-5.0%	-0	-4.0%	-0	1
Medical/ Dental, other	47	42	43	42	-5	-11.5%	-0	-1.0%	-1	53
Medical & Dental	92	90	94	85	-8	-8.3%	-6	-6.5%	-9	103
Nurse/ Midwife Manager	36	51	58	57	+21	+56.8%	+6	+11.8%	-1	63
Nurse/ Midwife Specialist & AN/MP	21	49	62	63	+43	+206.3%	+15	+30.2%	+2	68
Staff Nurse/ Staff Midwife	85	116	148	154	+69	+80.3%	+38	+32.3%	+6	195
Public Health Nurse	156	151	144	144	-12	-7.5%	-6	-4.3%	-0	169
Post-registration Nurse/ Midwife Student	7	10	6	2	-5	-71.3%	-8	-79.1%	-4	2
Nursing/ Midwifery Student	7	10	6	2	-5	-71.3%	-8	-79.1%	-4	2
Nursing/ Midwifery other	1	1	1	1	+0	+0.0%	+0	+0.0%	+0	1
Nursing & Midwifery	306	377	418	422	+115	+37.6%	+44	+11.7%	+4	498
Therapy Professions	227	279	283	281	+54	+23.9%	+3	+0.9%	-2	326
Health Science/ Diagnostics	5	9	10	10	+4	+83.6%	+0	+4.0%	-0	11
Social Workers	13	25	30	30	+17	+134.1%	+4	+17.5%	-0	32
Psychologists	35	28	27	26	-9	-24.8%	-2	-5.5%	-0	30
Pharmacy	1	1	2	2	+1	+120.0%	+1	+111.0%	+0	2
H&SC, Other	7	20	16	16	+9	+126.1%	-4	-21.6%	-0	28
Health & Social Care Professionals	287	362	367	364	+77	+26.7%	+2	+0.7%	-3	429
Management (VIII & above)	32	30	32	31	-1	-3.1%	+1	+4.9%	-1	32
Administrative/ Supervisory (V to VII)	64	94	109	110	+46	+72.7%	+16	+16.7%	+1	117
Clerical (III & IV)	236	293	299	293	+58	+24.5%	+1	+0.3%	-5	338
Management & Administrative	331	416	439	434	+103	+31.1%	+18	+4.3%	-5	487
Support	72	84	77	77	+5	+7.5%	-7	-7.9%	-0	110
Maintenance/ Technical	6	9	8	8	+2	+30.9%	-1	-9.6%	+0	8
General Support	78	93	85	85	+7	+9.3%	-7	-8.1%	+0	118
Home Help		0	0	0	+0		+0	+29.6%	+0	1
Health Care Assistants	32	69	65	63	+31	+96.1%	-7	-9.7%	-3	68
Care, other	55	64	58	57	+2	+3.6%	-7	-11.0%	-1	66
Patient & Client Care	87	134	123	120	+33	+38.0%	-14	-10.2%	-3	135

CHO 2

AUG 2023	WTE DEC 2019	WTE DEC 2022	WTE JUL 2023	WTE AUG 2023	WTE change since DEC 2019	% WTE change since Dec 2019	WTE change since DEC 2022	% WTE change since Dec 2022	WTE change since JUL 2023	No. AUG 2023
Overall	1,134	1,351	1,303	1,267	+133	+11.8%	-84	-6.2%	-36	1,494
Consultants	1	3	4	4	+3	+221.6%	+1	+34.0%	+0	5
Registrars	40	53	68	59	+19	+46.4%	+6	+11.3%	-10	59
SHO/ Interns	1	3		2	+1	+100.0%	-1	-32.9%	+2	2
Medical/ Dental, other	46	46	48	46	+0	+0.2%	+0	+0.5%	-2	59
Medical & Dental	88	104	120	110	+22	+25.5%	+6	+5.9%	-9	125
Nurse/ Midwife Manager	27	34	32	33	+6	+20.2%	-1	-2.3%	+1	36
Nurse/ Midwife Specialist & AN/MP	17	38	44	43	+26	+150.1%	+5	+13.6%	-0	49
Staff Nurse/ Staff Midwife	74	92	107	104	+30	+40.7%	+12	+12.9%	-3	130
Public Health Nurse	191	186	178	177	-14	-7.4%	-10	-5.1%	-1	211
<i>Post-registration Nurse/ Midwife Student</i>	<i>4</i>	<i>14</i>	<i>1</i>		<i>-4</i>	<i>-100.0%</i>	<i>-14</i>	<i>-100.0%</i>	<i>-1</i>	
Nursing/ Midwifery Student	4	14	1		-4	-100.0%	-14	-100.0%	-1	
Nursing & Midwifery	313	365	361	357	+44	+13.9%	-8	-2.1%	-4	426
Therapy Professions	226	291	269	253	+27	+12.0%	-38	-12.9%	-16	305
Health Science/ Diagnostics	6	9	10	10	+4	+69.6%	+1	+11.0%	+0	10
Social Care	8	7	6	5	-4	-42.9%	-2	-26.7%	-1	6
Social Workers	7	19	15	15	+9	+124.4%	-3	-17.6%	+0	17
Psychologists	24	32	27	25	+1	+3.3%	-7	-21.5%	-2	30
Pharmacy	1	1	1	1	+0	+0.0%	+0	+0.0%	+0	1
H&SC, Other	40	63	53	56	+16	+40.1%	-7	-10.4%	+4	66
Health & Social Care Professionals	312	421	381	365	+53	+17.0%	-55	-13.1%	-15	435
Management (VIII & above)	33	29	24	23	-10	-30.7%	-6	-20.7%	-2	24
Administrative/ Supervisory (V to VII)	62	85	82	77	+15	+23.7%	-8	-9.4%	-6	88
Clerical (III & IV)	238	219	220	215	-22	-9.4%	-4	-1.7%	-5	250
Management & Administrative	333	332	327	315	-18	-5.3%	-18	-5.3%	-12	362
Support	21	17	19	20	-1	-5.2%	+2	+14.3%	+1	39
Maintenance/ Technical	9	11	10	10	+1	+11.1%	-1	-9.0%	+0	10
General Support	30	28	29	30	-0	-0.3%	+1	+5.2%	+1	49
Health Care Assistants	14	33	28	28	+14	+96.1%	-5	-14.6%	+0	30
Care, other	43	68	58	61	+18	+43.0%	-6	-9.1%	+4	67
Patient & Client Care	57	100	85	89	+32	+56.3%	-11	-10.9%	+4	97

CHO 3

AUG 2023	WTE DEC 2019	WTE DEC 2022	WTE JUL 2023	WTE AUG 2023	WTE change since DEC 2019	% WTE change since Dec 2019	WTE change since DEC 2022	% WTE change since Dec 2022	WTE change since JUL 2023	No. AUG 2023
Overall	764	772	835	823	+59	+7.8%	+51	+6.7%	-12	985
Consultants	2	1	1	1	-1	-34.0%	+0	+0.0%	+0	2
Registrars	24	29	38	30	+6	+24.9%	+0	+0.7%	-8	30
SHO/ Interns	6				-6	-100.0%				
Medical/ Dental, other	52	45	46	45	-8	-14.4%	-1	-2.0%	-1	61
Medical & Dental	84	76	85	75	-8	-9.9%	-1	-0.9%	-9	93
Nurse/ Midwife Manager	19	23	24	24	+5	+26.1%	+1	+2.4%	-0	27
Nurse/ Midwife Specialist & AN/MP	2	7	13	13	+11	+525.5%	+6	+81.3%	-0	15
Staff Nurse/ Staff Midwife	56	75	80	77	+21	+38.0%	+2	+2.3%	-3	103
Public Health Nurse	126	125	121	125	-2	-1.4%	-0	-0.2%	+4	154
<i>Post-registration Nurse/ Midwife Student</i>		6	3	1	+1		-5	-83.2%	-2	1
Nursing/ Midwifery Student		6	3	1	+1		-5	-83.2%	-2	1
Nursing & Midwifery	203	236	240	239	+36	+17.7%	+3	+1.1%	-1	300
Therapy Professions	86	162	184	182	+96	+112.3%	+21	+12.9%	-1	212
Health Science/ Diagnostics	5	5	5	6	+1	+16.4%	+1	+22.6%	+1	6
Social Care	1				-1	-100.0%				
Social Workers	11	12	12	11	+1	+8.7%	-1	-8.2%	-1	13
Psychologists	15	14	18	17	+2	+12.4%	+3	+24.3%	-1	20
Pharmacy	1	1	2	2	+1	+100.0%	+1	+102.0%	+0	3
H&SC, Other	11	12	13	12	+2	+15.2%	+0	+3.4%	-0	15
Health & Social Care Professionals	129	205	233	231	+102	+78.7%	+26	+12.5%	-2	269
Management (VIII & above)	23	10	8	9	-15	-62.4%	-1	-9.4%	+1	9
Administrative/ Supervisory (V to VII)	54	28	28	29	-25	-47.0%	+0	+1.7%	+1	32
Clerical (III & IV)	156	127	152	150	-6	-3.7%	+23	+18.3%	-1	168
Management & Administrative	234	165	188	188	-46	-19.7%	+23	+13.9%	+0	209
Support	13	12	10	11	-2	-18.9%	-2	-12.3%	+0	25
Maintenance/ Technical	30				-30	-100.0%				
General Support	43	12	10	11	-32	-75.1%	-2	-12.3%	+0	25
Home Help	1				-1	-100.0%				
Health Care Assistants	21	26	29	29	+9	+40.6%	+4	+14.8%	+0	33
Care, other	49	51	50	50	+0	+0.8%	-1	-2.7%	+0	56
Patient & Client Care	71	77	79	79	+8	+11.5%	+2	+3.1%	+0	89

CHO 4

AUG 2023	WTE DEC 2019	WTE DEC 2022	WTE JUL 2023	WTE AUG 2023	WTE change since DEC 2019	% WTE change since Dec 2019	WTE change since DEC 2022	% WTE change since Dec 2022	WTE change since JUL 2023	No. AUG 2023
Overall	1,346	1,707	1,806	1,778	+432	+32.1%	+71	+4.2%	-28	2,212
Consultants	3	7	7	6	+4	+144.4%	-0	-6.2%	-0	10
Registrars	55	40	75	60	+6	+10.1%	+21	+51.9%	-14	66
SHO/ Interns	6	4	3	3	-3	-51.2%	-1	-25.0%	+0	3
Medical/ Dental, other	88	110	101	97	+9	+10.0%	-13	-11.8%	-4	162
Medical & Dental	152	160	186	167	+15	+9.9%	+6	+3.8%	-19	241
Nurse/ Midwife Manager	56	72	70	70	+14	+24.8%	-2	-2.8%	+1	77
Nurse/ Midwife Specialist & AN/MP	4	14	34	31	+27	+639.0%	+17	+114.5%	-2	35
Staff Nurse/ Staff Midwife	119	177	198	199	+79	+66.6%	+22	+12.5%	+0	273
Public Health Nurse	211	210	201	204	-7	-3.3%	-6	-2.9%	+3	257
<i>Post-registration Nurse/ Midwife Student</i>	17	11	8	7	-10	-60.5%	-4	-37.8%	-1	7
Nursing/ Midwifery Student	17	11	8	7	-10	-60.5%	-4	-37.8%	-1	7
Nursing & Midwifery	408	484	510	510	+103	+25.2%	+26	+5.4%	+0	649
Therapy Professions	222	327	341	336	+114	+51.3%	+9	+2.7%	-5	407
Health Science/ Diagnostics	11	13	11	11	+0	+2.1%	-2	-16.1%	+0	12
Social Care	8	7	6	6	-1	-18.3%	-0	-3.0%	+0	7
Social Workers	24	37	43	40	+16	+65.4%	+3	+9.5%	-3	45
Psychologists	20	23	30	28	+7	+35.2%	+4	+18.0%	-2	32
Pharmacy	3	2	5	5	+2	+55.4%	+3	+165.9%	-0	5
H&SC, Other	41	39	46	45	+4	+10.6%	+7	+16.8%	-0	53
Health & Social Care Professionals	329	447	481	471	+142	+43.1%	+24	+5.3%	-10	561
Management (VIII & above)	37	44	43	43	+6	+17.5%	-1	-2.0%	+1	44
Administrative/ Supervisory (V to VII)	68	114	118	123	+55	+80.5%	+9	+8.3%	+5	133
Clerical (III & IV)	205	255	279	277	+72	+35.4%	+23	+8.9%	-1	331
Management & Administrative	310	412	439	444	+134	+43.2%	+31	+7.5%	+5	508
Support	16	16	20	19	+3	+22.3%	+3	+16.1%	-1	30
Maintenance/ Technical		1	1	1	+1		+0	+0.0%	+0	1
General Support	16	17	21	20	+4	+28.8%	+3	+15.2%	-1	31
Home Help	10	8	12	12	+2	+19.9%	+4	+46.3%	-0	25
Health Care Assistants	17	47	34	32	+15	+83.8%	-15	-31.9%	-2	38
Care, other	105	130	123	123	+18	+17.2%	-7	-5.7%	-1	159
Patient & Client Care	132	185	169	167	+35	+26.2%	-18	-10.0%	-3	222

CHO 5

AUG 2023	WTE DEC 2019	WTE DEC 2022	WTE JUL 2023	WTE AUG 2023	WTE change since DEC 2019	% WTE change since Dec 2019	WTE change since DEC 2022	% WTE change since Dec 2022	WTE change since JUL 2023	No. AUG 2023
Overall	958	1,152	1,178	1,157	+199	+20.7%	+6	+0.5%	-21	1,384
Consultants	3	2	2	2	-1	-37.7%	-0	-6.5%	+0	2
Registrars	19	30	44	33	+14	+74.8%	+4	+12.3%	-11	34
SHO/ Interns	5		1	1	-4	-80.0%	+1		+0	1
Medical/ Dental, other	54	59	59	55	+1	+2.3%	-3	-5.4%	-3	81
Medical & Dental	81	90	105	92	+10	+12.8%	+1	+1.5%	-14	118
Nurse/ Midwife Manager	25	47	50	51	+25	+99.8%	+3	+6.8%	+1	57
Nurse/ Midwife Specialist & AN/MP	6	25	32	32	+27	+465.7%	+7	+26.7%	-0	36
Staff Nurse/ Staff Midwife	67	117	115	116	+49	+73.0%	-1	-1.2%	+1	147
Public Health Nurse	166	154	152	149	-18	-10.5%	-5	-3.4%	-3	182
<i>Post-registration Nurse/ Midwife Student</i>	5	4	4	1	-4	-83.0%	-3	-78.4%	-3	1
Nursing/ Midwifery Student	5	4	4	1	-4	-83.0%	-3	-78.4%	-3	1
Nursing/ Midwifery other	1				-1	-100.0%				
Nursing & Midwifery	270	348	352	348	+78	+28.9%	+0	+0.1%	-4	423
Therapy Professions	185	243	263	262	+77	+41.2%	+19	+7.8%	-1	299
Health Science/ Diagnostics	4	7	11	11	+7	+180.3%	+3	+42.4%	-0	11
Social Care	5	8	8	7	+2	+33.2%	-1	-17.1%	-1	8
Social Workers	8	5	6	5	-3	-33.1%	+0	+2.8%	-0	6
Psychologists	46	34	36	36	-10	-20.8%	+2	+6.0%	+0	40
Pharmacy	1		1	1	+0	+0.0%	+1		+0	1
H&SC, Other	18	19	18	17	-1	-5.7%	-2	-11.3%	-1	19
Health & Social Care Professionals	268	318	343	339	+72	+26.9%	+22	+6.9%	-3	384
Management (VIII & above)	25	18	13	13	-12	-47.0%	-5	-26.6%	+1	14
Administrative/ Supervisory (V to VII)	56	67	73	73	+17	+29.9%	+6	+9.4%	+0	74
Clerical (III & IV)	164	169	171	175	+11	+6.9%	+6	+3.8%	+4	198
Management & Administrative	245	254	257	262	+16	+6.7%	+8	+3.1%	+5	286
Support	25	21	22	22	-3	-11.9%	+1	+5.3%	-0	51
General Support	25	21	22	22	-3	-11.9%	+1	+5.3%	-0	51
Home Help	7	6	6	6	-1	-17.6%	-1	-8.1%	+0	16
Health Care Assistants	8	50	37	33	+25	+317.1%	-17	-33.5%	-3	36
Care, other	54	64	56	55	+1	+2.0%	-10	-14.8%	-1	70
Patient & Client Care	69	121	98	94	+25	+36.5%	-27	-22.2%	-4	122

CHO 6

AUG 2023	WTE DEC 2019	WTE DEC 2022	WTE JUL 2023	WTE AUG 2023	WTE change since DEC 2019	% WTE change since Dec 2019	WTE change since DEC 2022	% WTE change since Dec 2022	WTE change since JUL 2023	No. AUG 2023
Overall	765	864	877	881	+116	+15.2%	+16	+1.9%	+4	1,116
Consultants	9	10	11	12	+3	+33.2%	+2	+24.5%	+1	15
Registrars	26	32	34	45	+19	+74.3%	+14	+43.0%	+12	46
SHO/ Interns	7	7	10	10	+4	+54.0%	+3	+40.4%	+1	18
Medical/ Dental, other	46	45	44	44	-3	-5.5%	-1	-2.1%	+0	64
Medical & Dental	88	93	98	111	+23	+26.6%	+18	+19.3%	+14	143
Nurse/ Midwife Manager	22	31	33	31	+9	+40.0%	+0	+0.5%	-2	35
Nurse/ Midwife Specialist & AN/MP	6	10	14	15	+9	+150.8%	+5	+52.2%	+1	17
Staff Nurse/ Staff Midwife	52	61	62	61	+9	+18.3%	+0	+0.3%	-1	89
Public Health Nurse	117	99	100	100	-17	-14.6%	+1	+0.7%	+0	121
<i>Post-registration Nurse/ Midwife Student</i>	14	7	1	2	-12	-85.2%	-5	-72.6%	+1	2
Nursing/ Midwifery Student	14	7	1	2	-12	-85.2%	-5	-72.6%	+1	2
Nursing & Midwifery	210	208	210	209	-1	-0.6%	+1	+0.4%	-1	264
Therapy Professions	104	143	145	142	+39	+37.2%	-1	-0.4%	-3	177
Health Science/ Diagnostics	18	17	16	16	-2	-9.8%	-1	-3.9%	+1	19
Social Care	4	4	4	4	+0	+5.3%	+0	+1.3%	-0	4
Social Workers	5	10	9	9	+4	+82.2%	-2	-16.5%	-1	11
Psychologists	19	16	18	17	-2	-9.3%	+1	+4.9%	-1	22
Pharmacy	1	3	2	2	+1	+122.5%	-1	-29.1%	-0	3
H&SC, Other	4	6	9	9	+5	+133.6%	+3	+45.0%	+0	10
Health & Social Care Professionals	154	199	202	199	+45	+29.4%	-0	-0.1%	-4	246
Management (VIII & above)	30	29	25	21	-9	-30.2%	-8	-26.7%	-4	25
Administrative/ Supervisory (V to VII)	68	78	72	71	+3	+5.0%	-6	-8.3%	-1	85
Clerical (III & IV)	112	136	139	137	+26	+22.9%	+1	+1.0%	-2	161
Management & Administrative	210	242	237	230	+20	+9.5%	-13	-5.2%	-7	271
Support	24	23	22	23	-0	-1.8%	+1	+3.5%	+1	35
Maintenance/ Technical	2	2	2	2	+0	+0.0%	+0	+0.0%	+0	4
General Support	26	25	24	25	-0	-1.7%	+1	+3.3%	+1	39
Health Care Assistants	6	16	19	20	+13	+209.8%	+4	+23.4%	+0	24
Care, other	71	81	87	87	+16	+22.9%	+6	+7.3%	-0	129
Patient & Client Care	77	97	107	107	+29	+38.1%	+10	+9.9%	+0	153

AUG 2023	WTE DEC 2019	WTE DEC 2022	WTE JUL 2023	WTE AUG 2023	WTE change since DEC 2019	% WTE change since Dec 2019	WTE change since DEC 2022	% WTE change since Dec 2022	WTE change since JUL 2023	No. AUG 2023
Overall	1,702	1,765	1,779	1,783	+81	+4.8%	+18	+1.0%	+4	2,087
Consultants	11	11	11	12	+1	+6.3%	+1	+12.5%	+1	14
Registrars	46	45	49	58	+12	+27.2%	+13	+30.2%	+9	63
SHO/ Interns	6	12	14	15	+9	+158.5%	+3	+28.7%	+2	21
Medical/ Dental, other	75	61	62	61	-14	-18.8%	+0	+0.1%	-0	88
Medical & Dental	139	129	136	147	+8	+6.1%	+18	+14.2%	+11	186
Nurse/ Midwife Manager	80	100	100	100	+20	+24.8%	+0	+0.1%	+1	112
Nurse/ Midwife Specialist & AN/MP	46	65	67	64	+19	+40.3%	-0	-0.4%	-3	78
Staff Nurse/ Staff Midwife	205	198	200	198	-7	-3.6%	-0	-0.1%	-3	245
Public Health Nurse	175	164	170	171	-4	-2.3%	+7	+4.3%	+1	206
<i>Post-registration Nurse/ Midwife Student</i>	<i>21</i>	<i>25</i>	<i>5</i>	<i>3</i>	<i>-18</i>	<i>-84.9%</i>	<i>-22</i>	<i>-87.2%</i>	<i>-2</i>	<i>4</i>
Nursing/ Midwifery Student	21	25	5	3	-18	-84.9%	-22	-87.2%	-2	4
Nursing/ Midwifery other	2	2	2	2	-0	-18.0%	-0	-18.0%	+0	2
Nursing & Midwifery	530	554	544	539	+9	+1.6%	-15	-2.7%	-5	647
Therapy Professions	267	267	258	261	-6	-2.1%	-6	-2.3%	+3	309
Health Science/ Diagnostics	0	8	8	8	+8	+3,531.8%	+0	+2.2%	-0	10
Social Care	3	4	4	4	+0	+14.3%	-0	-3.1%	+0	4
Social Workers	26	30	33	33	+7	+26.4%	+3	+9.3%	-0	35
Psychologists	22	26	28	29	+8	+35.1%	+3	+12.6%	+1	32
Pharmacy	32	31	31	30	-2	-5.3%	-0	-1.5%	-0	35
H&SC, Other	24	24	24	24	-0	-1.3%	-1	-2.2%	-0	28
Health & Social Care Professionals	373	390	387	389	+15	+4.1%	-1	-0.2%	+2	453
Management (VIII & above)	33	23	28	26	-7	-20.5%	+3	+13.7%	-2	27
Administrative/ Supervisory (V to VII)	76	84	87	89	+13	+16.4%	+5	+5.8%	+1	92
Clerical (III & IV)	178	180	196	199	+21	+11.8%	+19	+10.3%	+3	222
Management & Administrative	287	287	311	314	+27	+9.3%	+27	+9.3%	+3	341
Support	116	106	100	98	-18	-15.5%	-8	-7.6%	-2	114
Maintenance/ Technical	9	10	9	9	-0	-1.9%	-1	-13.8%	-0	10
General Support	125	116	109	106	-18	-14.5%	-9	-8.1%	-2	124
Health Care Assistants	121	155	153	152	+31	+25.8%	-3	-1.6%	-0	186
Care, other	128	136	140	137	+9	+7.2%	+1	+0.8%	-3	150
Patient & Client Care	249	291	293	289	+40	+16.3%	-1	-0.5%	-4	336

CHO 8

AUG 2023	WTE DEC 2019	WTE DEC 2022	WTE JUL 2023	WTE AUG 2023	WTE change since DEC 2019	% WTE change since Dec 2019	WTE change since DEC 2022	% WTE change since Dec 2022	WTE change since JUL 2023	No. AUG 2023
Overall	1,387	1,498	1,544	1,546	+159	+11.5%	+48	+3.2%	+2	1,846
Consultants	6	6	7	6	+1	+9.8%	+1	+8.9%	-0	7
Registrars	78	92	108	95	+17	+21.6%	+3	+3.1%	-13	112
SHO/ Interns	2		1	1	-1	-50.0%	+1		+0	1
Medical/ Dental, other	61	53	47	48	-13	-21.1%	-6	-10.5%	+0	61
Medical & Dental	147	152	163	150	+4	+2.5%	-1	-0.8%	-12	181
Nurse/ Midwife Manager	51	60	58	58	+7	+13.7%	-2	-3.0%	+0	66
Nurse/ Midwife Specialist & AN/MP	35	47	51	51	+16	+46.5%	+3	+7.1%	-0	59
Staff Nurse/ Staff Midwife	98	110	110	111	+13	+12.8%	+1	+0.9%	+1	151
Public Health Nurse	196	217	204	204	+8	+4.1%	-13	-6.0%	-0	247
<i>Post-registration Nurse/ Midwife Student</i>	2			3	+1	+51.5%	+3		+3	3
Nursing/ Midwifery Student	2			3	+1	+51.5%	+3		+3	3
Nursing & Midwifery	382	434	424	427	+45	+11.7%	-8	-1.7%	+3	526
Therapy Professions	221	222	245	248	+27	+12.2%	+26	+11.6%	+3	302
Health Science/ Diagnostics	5	10	9	9	+4	+72.5%	-1	-12.1%	-0	10
Social Care		1	5	5	+5		+4	+447.0%	-0	6
Social Workers	16	29	28	27	+12	+75.7%	-1	-4.8%	-0	31
Psychologists	56	46	42	43	-13	-22.7%	-3	-5.8%	+1	48
Pharmacy	4	7	6	6	+3	+69.8%	-0	-6.2%	+0	7
H&SC, Other	25	36	35	35	+10	+41.1%	-1	-2.6%	-0	39
Health & Social Care Professionals	326	351	371	374	+48	+14.8%	+24	+6.7%	+3	443
Management (VIII & above)	45	36	36	35	-10	-22.0%	-1	-3.4%	-0	37
Administrative/ Supervisory (V to VII)	78	95	101	104	+26	+33.9%	+9	+9.5%	+2	109
Clerical (III & IV)	265	272	303	307	+42	+16.0%	+35	+13.0%	+4	363
Management & Administrative	387	403	440	446	+59	+15.1%	+43	+10.7%	+6	509
Support	23	19	21	22	-1	-4.7%	+2	+11.4%	+0	35
Maintenance/ Technical	3	2	2	2	-1	-28.8%	+0	+0.5%	+0	2
General Support	25	21	23	24	-2	-7.4%	+2	+10.4%	+0	37
Home Help	0				-0	-100.0%				
Health Care Assistants	21	36	21	24	+3	+16.8%	-12	-32.4%	+3	33
Care, other	98	101	102	101	+2	+2.4%	-1	-0.6%	-1	117
Patient & Client Care	120	137	123	125	+6	+4.6%	-12	-8.9%	+2	150

AUG 2023	WTE DEC 2019	WTE DEC 2022	WTE JUL 2023	WTE AUG 2023	WTE change since DEC 2019	% WTE change since Dec 2019	WTE change since DEC 2022	% WTE change since Dec 2022	WTE change since JUL 2023	No. AUG 2023
Overall	1,247	1,357	1,389	1,392	+145	+11.7%	+36	+2.6%	+4	1,602
Consultants	4	3	4	4	-0	-3.4%	+1	+23.4%	+0	5
Registrars	56	60	58	68	+12	+21.3%	+7	+11.9%	+9	70
SHO/ Interns	1	7	10	9	+8	+786.0%	+2	+27.8%	-1	10
Medical/ Dental, other	50	50	49	46	-3	-6.5%	-4	-7.1%	-2	61
Medical & Dental	111	121	121	127	+16	+14.8%	+6	+5.3%	+6	146
Nurse/ Midwife Manager	37	53	60	58	+21	+58.3%	+5	+9.5%	-2	66
Nurse/ Midwife Specialist & AN/MP	6	23	28	27	+21	+326.6%	+5	+20.6%	-1	32
Staff Nurse/ Staff Midwife	100	105	119	110	+10	+9.7%	+5	+4.8%	-9	129
Public Health Nurse	175	171	172	180	+5	+2.7%	+9	+5.2%	+8	217
<i>Post-registration Nurse/ Midwife Student</i>	26	19	1	6	-20	-77.3%	-13	-68.7%	+5	6
Nursing/ Midwifery Student	26	19	1	6	-20	-77.3%	-13	-68.7%	+5	6
Nursing/ Midwifery other		2	2	2	+2		+0	+1.0%	+0	2
Nursing & Midwifery	345	373	381	383	+39	+11.2%	+11	+2.9%	+2	452
Therapy Professions	196	229	229	225	+28	+14.5%	-5	-2.1%	-4	273
Health Science/ Diagnostics	20	13	14	14	-6	-30.8%	+1	+9.0%	+0	14
Social Care	4	6	5	5	+1	+26.5%	-1	-14.1%	+0	6
Social Workers	17	23	24	26	+10	+57.4%	+3	+12.0%	+2	28
Psychologists	65	72	74	74	+9	+13.2%	+2	+2.6%	-0	80
Pharmacy	12	13	14	14	+2	+19.0%	+1	+6.6%	+0	18
H&SC, Other	37	33	37	37	+1	+1.4%	+4	+12.6%	+0	42
Health & Social Care Professionals	351	390	397	396	+44	+12.6%	+5	+1.3%	-2	461
Management (VIII & above)	28	15	19	19	-9	-32.1%	+4	+25.3%	+0	20
Administrative/ Supervisory (V to VII)	77	93	103	103	+25	+32.4%	+10	+10.5%	-1	107
Clerical (III & IV)	182	185	200	196	+14	+7.6%	+11	+6.0%	-4	220
Management & Administrative	288	293	322	318	+30	+10.4%	+25	+8.5%	-4	347
Support	35	27	30	30	-5	-14.2%	+2	+8.6%	+0	34
General Support	35	27	30	30	-5	-14.2%	+2	+8.6%	+0	34
Health Care Assistants	13	35	24	23	+10	+76.8%	-11	-32.9%	-1	29
Care, other	105	118	113	116	+11	+10.6%	-2	-1.8%	+3	133
Patient & Client Care	118	153	138	139	+21	+17.9%	-14	-8.9%	+1	162

other Community Services

AUG 2023	WTE DEC 2019	WTE DEC 2022	WTE JUL 2023	WTE AUG 2023	WTE change since DEC 2019	% WTE change since Dec 2019	WTE change since DEC 2022	% WTE change since Dec 2022	WTE change since JUL 2023	No. AUG 2023
Overall	122	127	127	131	+8	+6.7%	+3	+2.4%	+3	140
Consultants	1	2	2	2	+1	+100.0%	+0	+0.0%	+0	2
Registrars	12	11	12	13	+1	+8.3%	+2	+18.1%	+1	13
SHO/ Interns	2	5	2	3	+1	+81.9%	-2	-43.6%	+1	3
Medical/ Dental, other	0				-0	-100.0%				
Medical & Dental	15	18	16	18	+3	+19.5%	-0	-1.1%	+1	18
Nurse/ Midwife Manager	4	5	5	6	+2	+44.4%	+0	+5.2%	+0	6
Staff Nurse/ Staff Midwife	5	5	3	3	-2	-42.7%	-2	-43.4%	-0	4
Nursing & Midwifery	9	10	9	9	-0	-4.9%	-2	-18.6%	-0	10
Health Science/ Diagnostics	8	8	6	6	-2	-19.9%	-2	-20.9%	+0	7
Social Care	2	2	2	2	+0	+17.7%	+0	+3.9%	+0	2
Social Workers	14	4	5	5	-8	-61.7%	+1	+23.6%	+0	6
Psychologists	1	1	1	1	+0	+0.0%	+0	+0.0%	+0	1
Pharmacy	3	10	11	11	+8	+305.1%	+1	+7.2%	-0	12
H&SC, Other	3	2	5	5	+2	+64.9%	+2	+92.8%	+0	5
Health & Social Care Professionals	30	28	30	30	+1	+1.8%	+3	+9.1%	+0	33
Management (VIII & above)	19	19	22	21	+3	+13.7%	+2	+9.9%	-1	22
Administrative/ Supervisory (V to VII)	20	26	24	24	+3	+17.2%	-2	-8.4%	+0	25
Clerical (III & IV)	12	12	12	13	+1	+7.1%	+1	+9.2%	+1	14
Management & Administrative	51	57	58	58	+7	+13.5%	+1	+1.5%	+0	61
Support	2	1	2	2	-0	-5.2%	+1	+217.5%	+0	2
Maintenance/ Technical	1	1	1	1	+0	+0.0%	+0	+0.0%	+0	1
General Support	3	2	3	3	-0	-3.5%	+1	+84.0%	+0	3
Care, other	15	13	11	13	-2	-10.6%	+0	+3.7%	+2	15
Patient & Client Care	15	13	11	13	-2	-10.6%	+0	+3.7%	+2	15

Primary Care Employment Report by Grade Group: AUG 2023

AUG 2023	WTE DEC 2019	WTE DEC 2022	WTE JUL 2023	WTE AUG 2023	WTE change since DEC 2019	% WTE change since Dec 2019	WTE change since DEC 2022	% WTE change since Dec 2022	WTE change since JUL 2023	No. AUG 2023
Overall	10,606	12,064	12,364	12,267	+1,661	+15.7%	+203	+1.7%	-97	14,636
Consultant Dentistry	11	13	15	15	+4	+38.7%	+2	+17.8%	+0	18
Consultant Medicine	18	24	25	26	+8	+45.6%	+2	+8.3%	+1	33
Consultant Paediatrics	2	2	2	2	+0	+2.0%	+0	+0.0%	+0	2
Consultant Pathology			1	1	+1		+1		+0	1
Consultant Psychiatry	8	8	8	8	+0	+0.6%	+0	+4.1%	+0	9
Consultant Radiology	1	1	1	1	+0	+0.0%	+0	+0.0%	+0	1
Consultant Surgery	4	3	3	2	-2	-40.7%	-0	-9.4%	-0	4
Consultants	44	50	54	56	+12	+27.0%	+5	+10.7%	+2	68
Registrar	383	422	522	486	+103	+26.8%	+64	+15.1%	-36	521
Senior Registrar	3	3	3	3	+0	+15.5%	-0	-3.3%	+1	4
Specialist Registrar	10	8	7	9	-1	-13.4%	+1	+8.9%	+2	11
Registrars	396	433	531	497	+102	+25.7%	+64	+14.8%	-34	536
Senior House Officer	36	39	41	45	+9	+24.7%	+6	+15.5%	+4	60
SHO/ Interns	36	39	41	45	+9	+24.7%	+6	+15.5%	+4	60
Dentists	301	307	297	287	-14	-4.8%	-20	-6.5%	-10	385
Other Medical	218	204	200	197	-21	-9.8%	-7	-3.6%	-3	305
Medical/ Dental, other	520	511	497	484	-36	-6.9%	-27	-5.3%	-14	690
Medical & Dental	995	1034	1123	1082	+87	+8.7%	+48	+4.7%	-41	1,354
Clinical Nurse/ Midwife Manager 1	41	46	47	45	+4	+9.9%	-1	-2.6%	-3	50
Clinical Nurse/ Midwife Manager 2	106	136	143	146	+40	+37.8%	+10	+7.1%	+3	169
Clinical Nurse/ Midwife Manager 3	22	33	30	31	+9	+43.9%	-2	-5.5%	+1	33
Director Nursing/Midwifery, Assistant	153	218	225	222	+68	+44.7%	+3	+1.5%	-4	246
Director of Nursing/Midwifery	38	44	45	45	+7	+19.9%	+1	+1.8%	+0	47
Nurse/ Midwife Manager	358	477	489	488	+129	+36.1%	+11	+2.3%	-2	545
Advanced Nurse/ Midwife Practitioner	3	17	24	25	+23	+895.7%	+8	+47.5%	+1	26
Adv. Nurse/ Midwife, Candidate		21	27	26	+26		+5	+23.2%	-1	26
Clinical Nurse/ Midwife Specialist	140	240	294	289	+149	+106.0%	+49	+20.3%	-5	337
Nurse/ Midwife Specialist & AN/MP	143	278	344	340	+197	+137.9%	+62	+22.2%	-5	389
Staff Midwives	8	5	5	4	-4	-45.3%	-0	-3.7%	-0	6
Staff Nurse [Intellectual Disability]		2	2	3	+3		+0	+18.5%	+1	3
Staff Nurse [Psychiatric]	8	14	13	13	+5	+65.0%	-2	-10.8%	-0	17
Staff Nurses [General/ Children's]	846	1,036	1,123	1,113	+267	+31.5%	+77	+7.4%	-11	1,440
Staff Nurse/ Staff Midwife	862	1,057	1,142	1,132	+270	+31.4%	+76	+7.2%	-10	1,466
Public Health Nurse	1,513	1,477	1,440	1,453	-61	-4.0%	-24	-1.6%	+13	1,764
Public Health Nurse	1,513	1,477	1,440	1,453	-61	-4.0%	-24	-1.6%	+13	1,764
Post-registration Nurse/ Midwife Student	96	96	29	25	-71	-74.2%	-71	-74.2%	-4	26
Nursing/ Midwifery Student	96	96	29	25	-71	-74.2%	-71	-74.2%	-4	26
Nursing Education/Clinical	4	5	4	5	+1	+21.1%	-0	-6.9%	+0	5
Nursing/ Midwifery other	4	5	4	5	+1	+21.1%	-0	-6.9%	+0	5
Nursing & Midwifery	2976	3389	3449	3442	+466	+15.7%	+53	+1.6%	-7	4,195
Dietitians	109	195	212	211	+101	+92.6%	+16	+8.0%	-1	249
Occupational Therapists	516	638	639	629	+113	+21.8%	-10	-1.6%	-11	745
Orthoptists	13	20	19	20	+7	+49.8%	-0	-0.6%	+0	23
Physiotherapists	543	654	691	689	+146	+27.0%	+35	+5.3%	-2	835
Podiatrists & Chiropodists	25	82	90	89	+64	+261.5%	+7	+7.9%	-1	102
Speech & Language Therapists	527	572	565	553	+26	+4.8%	-19	-3.4%	-12	656
Therapy Professions	1,733	2,162	2,217	2,190	+457	+26.3%	+28	+1.3%	-27	2,610
Audiology	44	57	61	61	+17	+39.3%	+4	+7.0%	-0	66
Biochemists	8	8	6	6	-2	-19.9%	-2	-20.9%	+0	7
Cardiac Physiologists		1	1	1	+1		+0	+0.0%	+0	1
Clinical Engineering	8	9	8	8	+0	+0.0%	-1	-10.6%	+0	8
Medical Science	16	14	13	14	-2	-11.8%	-1	-4.7%	+1	15

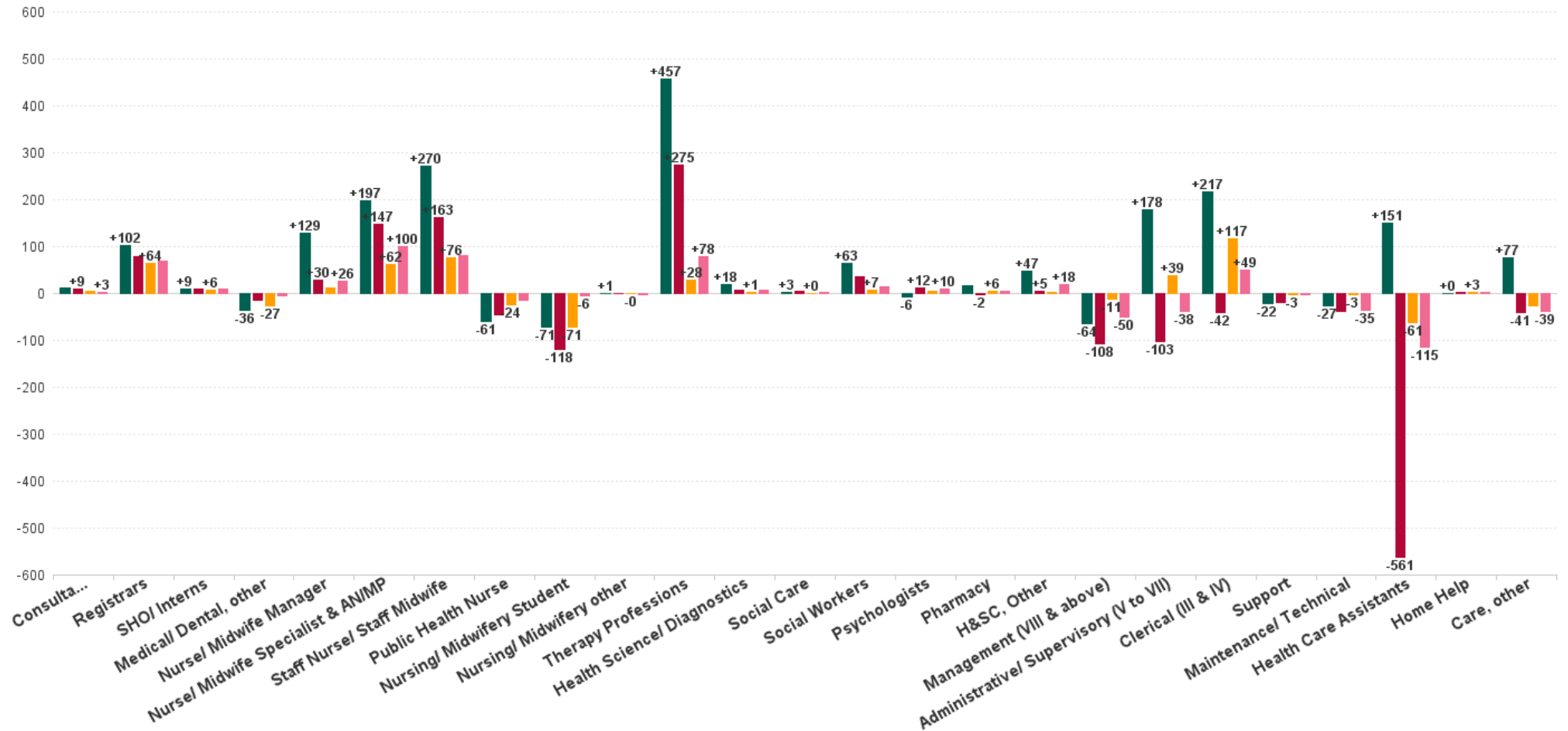


AUG 2023	WTE DEC 2019	WTE DEC 2022	WTE JUL 2023	WTE AUG 2023	WTE change since DEC 2019	% WTE change since Dec 2019	WTE change since DEC 2022	% WTE change since Dec 2022	WTE change since JUL 2023	No. AUG 2023
Overall	10,606	12,064	12,364	12,267	+1,661	+15.7%	+203	+1.7%	-97	14,636
Phlebotomists	0	0	0	0	+0	+9.1%	-0	-20.0%	+0	1
Physicists	2	2	2	2	-0	-13.5%	+0	+6.8%	+0	2
Radiographers	4	8	8	8	+4	+84.5%	+0	+5.3%	-0	10
Health Science/ Diagnostics	82	99	99	100	+18	+22.5%	+1	+1.3%	+1	110
Social Care	35	39	41	39	+3	+9.1%	+0	+0.4%	-2	43
Social Care	35	39	41	39	+3	+9.1%	+0	+0.4%	-2	43
Social Workers	139	195	205	202	+63	+45.4%	+7	+3.7%	-2	224
Social Workers	139	195	205	202	+63	+45.4%	+7	+3.7%	-2	224
Psychologists	303	292	302	296	-6	-2.1%	+5	+1.6%	-6	335
Psychologists	303	292	302	296	-6	-2.1%	+5	+1.6%	-6	335
Pharmacists	50	58	62	62	+12	+23.9%	+4	+6.2%	-0	74
Pharmacy Technicians	8	10	12	12	+4	+51.8%	+2	+21.0%	-0	13
Pharmacy	58	68	74	74	+16	+27.7%	+6	+8.4%	-1	87
Counsellor Therapists	115	122	134	135	+20	+17.7%	+14	+11.2%	+2	150
Dental Hygienists	58	61	59	58	+0	+0.8%	-3	-4.8%	-1	75
Other Health & Social Care	34	44	48	50	+16	+46.2%	+6	+13.7%	+2	55
Play Therapists/ Specialists	2	1	2	1	-1	-42.0%	-0	-8.8%	-0	2
Vaccinators		26	12	12	+12		-15	-56.4%	-0	23
H&SC, Other	209	255	255	256	+47	+22.6%	+2	+0.6%	+2	305
Health & Social Care Professionals	2559	3109	3192	3158	+598	+23.4%	+48	+1.6%	-34	3,714
Executive Management	71	37	32	31	-40	-56.1%	-6	-15.8%	-1	32
Senior Management (VIII & GM)	235	216	217	211	-24	-10.2%	-5	-2.5%	-6	222
Management (VIII & above)	306	253	249	242	-64	-20.8%	-11	-4.4%	-7	254
Middle Management (V-VII)	621	761	796	799	+178	+28.6%	+38	+5.0%	+3	860
Other Administrative	2	1	2	2	+0	+0.0%	+1	+102.0%	+0	2
Administrative/ Supervisory (V to VII)	623	762	798	801	+178	+28.5%	+39	+5.1%	+3	862
General Administrative (III & IV)	1,746	1,847	1,970	1,963	+217	+12.4%	+117	+6.3%	-7	2,265
Clerical (III & IV)	1,746	1,847	1,970	1,963	+217	+12.4%	+117	+6.3%	-7	2,265
Management & Administrative	2675	2862	3017	3007	+331	+12.4%	+145	+5.1%	-10	3,381
Catering	22	23	22	21	-1	-4.1%	-2	-9.2%	-1	25
Household Services	134	139	132	129	-5	-3.5%	-10	-7.0%	-2	159
Other Labs & Associated	3	1	6	6	+3	+92.9%	+5	+322.5%	+0	6
Other Support	112	104	103	105	-7	-6.1%	+1	+1.3%	+2	217
Portering	74	59	62	62	-13	-17.0%	+3	+4.7%	-0	68
Support	346	327	325	324	-22	-6.4%	-3	-1.0%	-1	475
Maintenance	58	34	30	30	-28	-47.9%	-3	-9.5%	+0	34
Technical Services	1	2	2	2	+1	+100.0%	+0	+0.0%	+0	2
Maintenance/ Technical	59	36	32	32	-27	-45.4%	-3	-8.9%	+0	36
General Support	405	362	357	356	-49	-12.1%	-6	-1.8%	-1	511
Home Helps	18	15	19	18	+0	+0.4%	+3	+22.8%	-0	42
Home Help	18	15	19	18	+0	+0.4%	+3	+22.8%	-0	42
Attendant/ Aide	35	61	64	64	+29	+84.8%	+4	+6.1%	+0	77
Health Care Assistant/ Care Assistant	150	308	206	204	+55	+36.5%	-104	-33.7%	-2	247
Health & Social Care Assistants	69	97	139	136	+67	+96.3%	+39	+40.0%	-4	153
Health Care Assistants	254	466	410	405	+151	+59.4%	-61	-13.2%	-5	477
Health Promotion		1					-1	-100.0%		
Home Care Services	3	3	1	1	-3	-80.0%	-2	-74.3%	+0	2
Other Care Grades	713	819	793	795	+83	+11.6%	-24	-3.0%	+2	955
Pastoral Care	4	3	3	3	-1	-28.9%	-0	-3.8%	+0	3
Workshop Services	3	1	2	1	-1	-46.8%	+0	+48.0%	-0	2
Care, other	723	827	798	800	+77	+10.7%	-27	-3.2%	+2	962
Patient & Client Care	995	1308	1226	1223	+228	+22.9%	-85	-6.5%	-3	1,481



WTE Change by Staff Category

■ WTE change since DEC 2019 ■ WTE change since DEC 2021 ■ WTE change since DEC 2022 ■ WTE change since AUG 2022



Primary Care Employment Report by WTE, Headcount, Gender, Full-Time / Part-Time etc. AUG 2023

AUG 2023	WTE AUG 2023	No. AUG 2023	WTE : No	% Male	% Female	Male WTE : No.	Female WTE : No	Perm Count %	Perm Count Male %	Perm Count Female %	Fulltime Count %	Part time Count %	FT Count Male %	FT Count Female %
Total	12,267	14,636	1:0.8	13.41%	86.59%	1:0.9	1:0.8	85.99%	10.28%	75.70%	69.32%	30.68%	84.81%	66.92%
Consultants	55.65	68	1:0.8	33.82%	66.18%	1:0.8	1:0.8	86.76%	30.88%	55.88%	66.18%	33.82%	78.26%	60.00%
Registrars	497.48	536	1:0.9	37.31%	62.69%	1:0.9	1:0.9	1.87%	0.93%	0.93%	98.32%	1.68%	99.50%	97.62%
SHO/ Interns	45.1	60	1:0.8	35.00%	65.00%	1:0.7	1:0.8	3.33%		3.33%	100.00%		100.00%	100.00%
Medical/ Dental, other	483.7	690	1:0.7	26.38%	73.62%	1:0.7	1:0.7	84.93%	20.72%	64.20%	44.78%	55.22%	50.00%	42.91%
Medical & Dental	1,082	1,354	1:0.8	31.46%	68.54%	1:0.8	1:0.8	48.52%	12.48%	36.04%	69.50%	30.50%	77.23%	65.95%
Nurse/ Midwife Manager	487.76	545	1:0.9	3.30%	96.70%	1:1	1:0.9	96.33%	3.12%	93.21%	75.96%	24.04%	83.33%	75.71%
Nurse/ Midwife Specialist & AN/MP	339.65	389	1:0.9	4.63%	95.37%	1:1	1:0.9	97.94%	4.63%	93.32%	73.78%	26.22%	100.00%	72.51%
Staff Nurse/ Staff Midwife	1,132.4	1,466	1:0.8	3.89%	96.11%	1:0.9	1:0.8	86.83%	3.48%	83.36%	48.98%	51.02%	78.95%	47.76%
Public Health Nurse	1,452.8	1,764	1:0.8	0.57%	99.43%	1:0.9	1:0.8	96.26%	0.57%	95.69%	69.73%	30.27%	80.00%	69.67%
Nursing/ Midwifery Student	24.72	26	1:1		100.00%	1:	1:1	34.62%		34.62%	100.00%			100.00%
Nursing/ Midwifery other	4.6	5	1:0.9		100.00%	1:	1:0.9	100.00%		100.00%	80.00%	20.00%		80.00%
Nursing & Midwifery	3,442	4,195	1:0.8	2.46%	97.54%	1:0.9	1:0.8	92.75%	2.29%	90.46%	63.86%	36.14%	83.50%	63.37%
Therapy Professions	2,189.8	2,610	1:0.8	9.73%	90.27%	1:0.9	1:0.8	94.37%	8.85%	85.52%	72.45%	27.55%	88.98%	70.67%
Health Science/ Diagnostics	100.28	110	1:0.9	22.73%	77.27%	1:0.9	1:0.9	90.00%	21.82%	68.18%	85.45%	14.55%	92.00%	83.53%
Social Care	38.68	43	1:0.9	37.21%	62.79%	1:0.9	1:0.9	88.37%	32.56%	55.81%	90.70%	9.30%	93.75%	88.89%
Social Workers	202.4	224	1:0.9	16.52%	83.48%	1:1	1:0.9	90.18%	13.39%	76.79%	85.27%	14.73%	97.30%	82.89%
Psychologists	296.3	335	1:0.9	17.01%	82.99%	1:1	1:0.9	71.64%	13.73%	57.91%	77.01%	22.99%	92.98%	73.74%
Pharmacy	73.77	87	1:0.8	20.69%	79.31%	1:0.9	1:0.8	67.82%	11.49%	56.32%	62.07%	37.93%	44.44%	66.67%
H&SC, Other	256.35	305	1:0.8	25.57%	74.43%	1:0.9	1:0.8	89.18%	24.26%	64.92%	66.89%	33.11%	88.46%	59.47%
Health & Social Care Professionals	3,158	3,714	1:0.9	13.06%	86.94%	1:0.9	1:0.8	90.82%	11.55%	79.27%	73.53%	26.47%	88.66%	71.26%
Management (VIII & above)	242.12	254	1:1	22.83%	77.17%	1:0.9	1:1	98.43%	22.05%	76.38%	95.67%	4.33%	96.55%	95.41%
Administrative/ Supervisory (V to VII)	801.19	862	1:0.9	17.40%	82.60%	1:0.9	1:0.9	96.17%	16.24%	79.93%	89.21%	10.79%	99.33%	87.08%
Clerical (III & IV)	1,963.31	2,265	1:0.9	10.55%	89.45%	1:0.9	1:0.9	86.00%	8.39%	77.62%	69.67%	30.33%	89.96%	67.28%
Management & Administrative	3,007	3,381	1:0.9	13.22%	86.78%	1:0.9	1:0.9	89.53%	11.42%	78.11%	76.60%	23.40%	93.96%	73.96%
Support	323.64	475	1:0.7	40.21%	59.79%	1:0.9	1:0.6	72.00%	33.05%	38.95%	47.58%	52.42%	77.49%	27.46%
Maintenance/ Technical	32.41	36	1:0.9	94.44%	5.56%	1:0.9	1:0.9	100.00%	94.44%	5.56%	91.67%	8.33%	94.12%	50.00%
General Support	356	511	1:0.7	44.03%	55.97%	1:0.9	1:0.6	73.97%	37.38%	36.59%	50.68%	49.32%	80.00%	27.62%
Health Care Assistants	404.64	477	1:0.8	20.75%	79.25%	1:0.9	1:0.8	68.76%	15.09%	53.67%	69.60%	30.40%	85.86%	65.34%
Home Help	18.45	42	1:0.4	26.19%	73.81%	1:0.4	1:0.5	21.43%	4.76%	16.67%	4.76%	95.24%		6.45%
Care, other	799.98	962	1:0.8	17.26%	82.74%	1:0.9	1:0.8	95.84%	16.63%	79.21%	63.62%	36.38%	80.72%	60.05%
Patient & Client Care	1,223	1,481	1:0.8	18.64%	81.36%	1:0.9	1:0.8	85.01%	15.80%	69.21%	63.88%	36.12%	79.35%	60.33%

Primary Care Employment Report by WTE, Headcount, Gender, Full-Time / Part-Time etc. AUG 2023

AUG 2023	WTE AUG 2023	No. AUG 2023	WTE : No	% Male	% Female	Male WTE : No.	Female WTE : No	Perm Count %	Number Male %	Number Female %	Fulltime Count %	Part time Count %	FT Count Male %	FT Count Female %
Total	12,267	14,636	1:0.8	13.41%	86.59%	1:0.9	1:0.8	85.99%	10.28%	75.70%	69.32%	30.68%	84.81%	66.92%
CHO 1	1,509	1,770	1:0.9	13.39%	86.61%	1:0.9	1:0.8	88.08%	10.17%	77.91%	67.91%	32.09%	83.54%	65.49%
CHO 2	1,267	1,494	1:0.8	13.65%	86.35%	1:0.9	1:0.8	87.95%	10.37%	77.58%	74.83%	25.17%	86.27%	73.02%
CHO 3	823	985	1:0.8	8.83%	91.17%	1:0.9	1:0.8	88.32%	6.80%	81.52%	71.57%	28.43%	82.76%	70.49%
CHO 4	1,778	2,212	1:0.8	10.17%	89.83%	1:0.8	1:0.8	74.73%	6.15%	68.58%	58.05%	41.95%	74.22%	56.22%
CHO 5	1,157	1,384	1:0.8	13.01%	86.99%	1:0.9	1:0.8	89.60%	10.19%	79.41%	66.33%	33.67%	80.56%	64.20%
CHO 6	881	1,116	1:0.8	14.43%	85.57%	1:0.8	1:0.8	87.72%	11.47%	76.25%	72.40%	27.60%	90.68%	69.32%
CHO 7	1,783	2,087	1:0.9	17.20%	82.80%	1:0.9	1:0.8	89.03%	14.85%	74.17%	71.73%	28.27%	84.96%	68.98%
CHO 8	1,546	1,846	1:0.8	13.38%	86.62%	1:0.9	1:0.8	88.03%	9.59%	78.44%	68.58%	31.42%	87.85%	65.60%
CHO 9	1,392	1,602	1:0.9	13.42%	86.58%	1:0.9	1:0.9	86.02%	11.05%	74.97%	76.47%	23.53%	90.70%	74.26%
other Community Services	131	140	1:0.9	33.57%	66.43%	1:1	1:0.9	77.86%	24.29%	53.57%	87.86%	12.14%	91.49%	86.02%



Previous Month Summary

	% WTE change since JUL 2023	WTE change since JUL 2023	CHO 1	CHO 2	CHO 3	CHO 4	CHO 5	CHO 6	CHO 7	CHO 8	CHO 9	other Communi ty Services
Total	-0.8%	-96.8	-16.8	-36.5	-11.8	-27.7	-21.0	+3.7	+4.0	+2.2	+3.7	+3.3
Consultants	+3.8%	+2.0	-0.2	+0.1	+0.0	-0.2	+0.1	+1.4	+0.9	-0.1	+0.1	+0.0
Registrars	-6.3%	-33.7	-8.0	-9.7	-8.1	-14.4	-10.8	+11.5	+8.7	-12.7	+9.4	+0.6
SHO/ Interns	+9.9%	+4.1	-0.1	+2.0		+0.0	+0.1	+0.5	+1.5	+0.1	-0.9	+0.8
Medical/ Dental, other	-2.7%	-13.5	-0.8	-1.9	-1.0	-4.4	-3.2	+0.1	-0.3	+0.3	-2.3	
Medical & Dental	-3.7%	-41.1	-9.1	-9.5	-9.1	-19.0	-13.9	+13.6	+10.7	-12.4	+6.2	+1.4
Nurse/ Midwife Manager	-0.3%	-1.6	-0.6	+0.8	-0.1	+0.6	+0.9	-2.0	+0.6	+0.0	-2.0	+0.2
Nurse/ Midwife Specialist & AN/MP	-1.3%	-4.6	+1.8	-0.2	-0.3	-2.5	-0.3	+0.8	-2.6	-0.5	-0.9	
Staff Nurse/ Staff Midwife	-0.8%	-9.7	+6.5	-2.7	-2.9	+0.2	+1.1	-0.7	-2.8	+0.7	-8.5	-0.4
Public Health Nurse	+0.9%	+12.6	-0.3	-0.8	+4.1	+3.2	-2.9	+0.1	+1.1	-0.2	+8.3	
Nursing/ Midwifery Student	-14.3%	-4.1	-3.9	-1.0	-2.0	-1.2	-3.2	+1.0	-1.8	+3.0	+4.9	
Nursing/ Midwifery other	+2.9%	+0.1	+0.0						+0.1		+0.0	
Nursing & Midwifery	-0.2%	-7.2	+3.5	-4.0	-1.1	+0.3	-4.4	-0.8	-5.4	+3.0	+1.9	-0.3
Therapy Professions	-1.2%	-26.8	-1.6	-16.0	-1.3	-4.8	-1.4	-3.0	+2.5	+2.9	-4.1	
Health Science/ Diagnostics	+1.2%	+1.2	-0.1	+0.0	+1.0	+0.1	-0.2	+0.7	-0.5	-0.3	+0.0	+0.5
Social Care	-4.8%	-1.9		-0.8		+0.0	-1.3	-0.0	+0.0	-0.0	+0.0	+0.1
Social Workers	-1.1%	-2.3	-0.2	+0.0	-0.7	-2.6	-0.1	-0.5	-0.2	-0.2	+2.1	+0.0
Psychologists	-1.8%	-5.5	-0.4	-2.3	-1.1	-2.5	+0.1	-0.6	+0.7	+0.7	-0.2	+0.0
Pharmacy	-0.8%	-0.6	+0.0	+0.0	+0.0	-0.0	+0.0	-0.1	-0.5	+0.2	+0.3	-0.4
H&SC, Other	+0.7%	+1.7	-0.4	+3.6	-0.4	-0.2	-0.6	+0.0	-0.5	-0.3	+0.4	+0.0
Health & Social Care Professionals	-1.1%	-34.3	-2.8	-15.4	-2.4	-10.0	-3.4	-3.6	+1.7	+3.0	-1.5	+0.1
Management (VIII & above)	-2.7%	-6.8	-0.5	-1.6	+1.0	+0.7	+0.6	-4.3	-1.5	-0.5	+0.2	-0.8
Administrative/ Supervisory (V to VII)	+0.4%	+3.2	+0.6	-5.7	+0.5	+5.2	+0.3	-0.9	+1.3	+2.5	-0.6	+0.0



Clerical (III & IV)	-0.3%	-6.7	-5.4	-4.9	-1.4	-1.2	+4.0	-1.7	+3.2	+3.9	-4.0	+0.8
Management & Administrative	-0.3%	-10.3	-5.3	-12.2	+0.1	+4.7	+4.8	-6.9	+3.0	+5.9	-4.4	+0.1
Support	-0.3%	-0.9	-0.1	+0.7	+0.5	-0.8	-0.1	+1.0	-2.4	+0.3	+0.1	+0.0
Maintenance/ Technical	+0.8%	+0.3	+0.3	+0.0		+0.0		+0.0	-0.0	+0.0		+0.0
General Support	-0.2%	-0.6	+0.1	+0.7	+0.5	-0.8	-0.1	+1.0	-2.5	+0.3	+0.1	+0.0
Health Care Assistants	-1.2%	-5.0	-2.8	+0.4	+0.4	-1.8	-3.3	+0.5	-0.3	+3.2	-1.2	
Home Help	-0.7%	-0.1	+0.0			-0.2	+0.0					
Care, other	+0.2%	+1.8	-0.6	+3.5	+0.0	-0.8	-0.8	-0.1	-3.3	-0.7	+2.7	+2.0
Patient & Client Care	-0.3%	-3.3	-3.4	+3.9	+0.4	-2.8	-4.1	+0.4	-3.6	+2.5	+1.5	+2.0



Year on Year Summary

	% WTE change since AUG 2022	WTE change since AUG 2022	CHO 1	CHO 2	CHO 3	CHO 4	CHO 5	CHO 6	CHO 7	CHO 8	CHO 9	other Communi ty Services
Total	+1.4%	+172.0	-25.2	-20.4	-142.2	+120.4	+44.2	+14.1	+64.8	+57.6	+73.9	-15.2
Consultants	+6.4%	+3.4	-0.2	+1.1	+0.0	-0.4	-0.1	+2.3	+0.4	-0.4	+0.8	+0.0
Registrars	+16.2%	+69.3	-5.8	+6.6	+2.7	+24.6	+3.4	+15.4	+10.6	-1.4	+11.2	+2.0
SHO/ Interns	+24.7%	+8.9	+1.0	-1.0		-1.0	+1.0	+2.5	+3.7	+1.0	+1.9	-0.2
Medical/ Dental, other	-0.8%	-4.1	+3.4	+1.8	-0.1	-2.2	+0.0	-0.1	+1.7	-5.7	-3.1	
Medical & Dental	+7.7%	+77.4	-1.6	+8.5	+2.5	+21.0	+4.3	+20.1	+16.4	-6.5	+10.9	+1.8
Nurse/ Midwife Manager	+5.7%	+26.4	+1.1	+5.4	-0.8	-0.5	+0.5	+3.7	+3.3	+5.1	+8.3	+0.2
Nurse/ Midwife Specialist & AN/MP	+42.0%	+100.4	+17.7	+10.2	+5.6	+20.0	+7.3	+6.0	+12.0	+6.7	+14.9	
Staff Nurse/ Staff Midwife	+7.7%	+81.0	+40.1	-2.4	-2.6	+33.7	+8.2	-5.5	+0.4	+7.9	+5.7	-4.5
Public Health Nurse	-1.0%	-14.4	-11.4	+1.7	+3.8	+2.6	+1.6	-3.6	+0.4	-6.3	-3.2	
Nursing/ Midwifery Student	-19.1%	-5.8	-4.0	-1.0	+1.0	-10.0	-2.2	+0.3	+2.2	+3.0	+4.9	
Nursing/ Midwifery other	-22.8%	-1.4	+0.0					-1.0	-0.4		+0.0	
Nursing & Midwifery	+5.7%	+186.1	+43.5	+13.8	+7.0	+45.8	+15.5	-0.1	+18.0	+16.3	+30.5	-4.2
Therapy Professions	+3.7%	+77.5	+19.0	-21.9	+28.3	+23.5	+22.7	-0.3	-3.3	+13.3	-3.7	
Health Science/ Diagnostics	+8.2%	+7.6	-0.2	+1.1	+1.6	-2.0	+4.8	-0.5	+3.0	+0.4	+1.0	-1.5
Social Care	+9.0%	+3.2		-4.7	-1.0	-1.0	+2.5	+1.0	-0.2	+4.5	+2.0	+0.0
Social Workers	+8.1%	+15.1	-5.0	+5.4	+0.2	+10.6	+1.2	+2.8	+6.9	+4.0	+1.8	-12.7
Psychologists	+3.7%	+10.5	+0.7	-4.5	+3.3	+11.5	+2.5	-2.6	+0.8	-5.9	+4.8	+0.0
Pharmacy	+6.3%	+4.4	-1.1	-0.1	-0.5	+0.4	+0.6	+0.8	-0.8	+0.6	+1.5	+3.0
H&SC, Other	+7.7%	+18.4	-1.5	+2.0	+1.1	+7.6	-1.1	+2.8	-0.5	+2.1	+4.1	+1.8
Health & Social Care Professionals	+4.5%	+136.6	+11.9	-22.8	+32.9	+50.5	+33.1	+4.0	+6.0	+19.0	+11.4	-9.4
Management (VIII & above)	-17.2%	-50.2	-13.6	-7.7	-20.5	-0.0	-4.5	-8.5	+0.9	+6.3	+2.4	-5.1
Administrative/ Supervisory (V to VII)	-4.5%	-37.7	-15.0	-1.2	-77.5	+17.9	+8.0	-3.8	+8.1	+13.4	+13.6	-1.2



Clerical (III & IV)	+2.6%	+48.9	-20.8	-0.8	-35.0	+17.6	+20.5	+1.0	+17.9	+32.8	+15.7	+0.1
Management & Administrative	-1.3%	-39.0	-49.3	-9.6	-133.0	+35.4	+24.0	-11.2	+26.9	+52.5	+31.6	-6.2
Support	-0.5%	-1.8	-6.1	+1.8	-1.7	+3.4	-0.3	-0.5	-2.5	+2.2	+0.7	+1.2
Maintenance/ Technical	-51.9%	-35.0	-1.0	-1.0	-33.0	+0.0		+0.0	-1.0	+0.0		+1.0
General Support	-9.4%	-36.8	-7.1	+0.8	-34.7	+3.4	-0.3	-0.5	-3.6	+2.2	+0.7	+2.2
Health Care Assistants	-22.2%	-115.3	-11.3	-7.2	-7.0	-32.8	-21.5	-6.0	+3.1	-24.9	-7.9	
Home Help	+10.3%	+1.7	+0.0			+2.8	-1.0					
Care, other	-4.6%	-38.8	-11.2	-4.0	-9.8	-5.8	-9.9	+7.8	-2.2	-1.0	-3.3	+0.6
Patient & Client Care	-11.1%	-152.4	-22.5	-11.1	-16.8	-35.8	-32.4	+1.8	+1.0	-25.9	-11.2	+0.6



Year to Date Summary

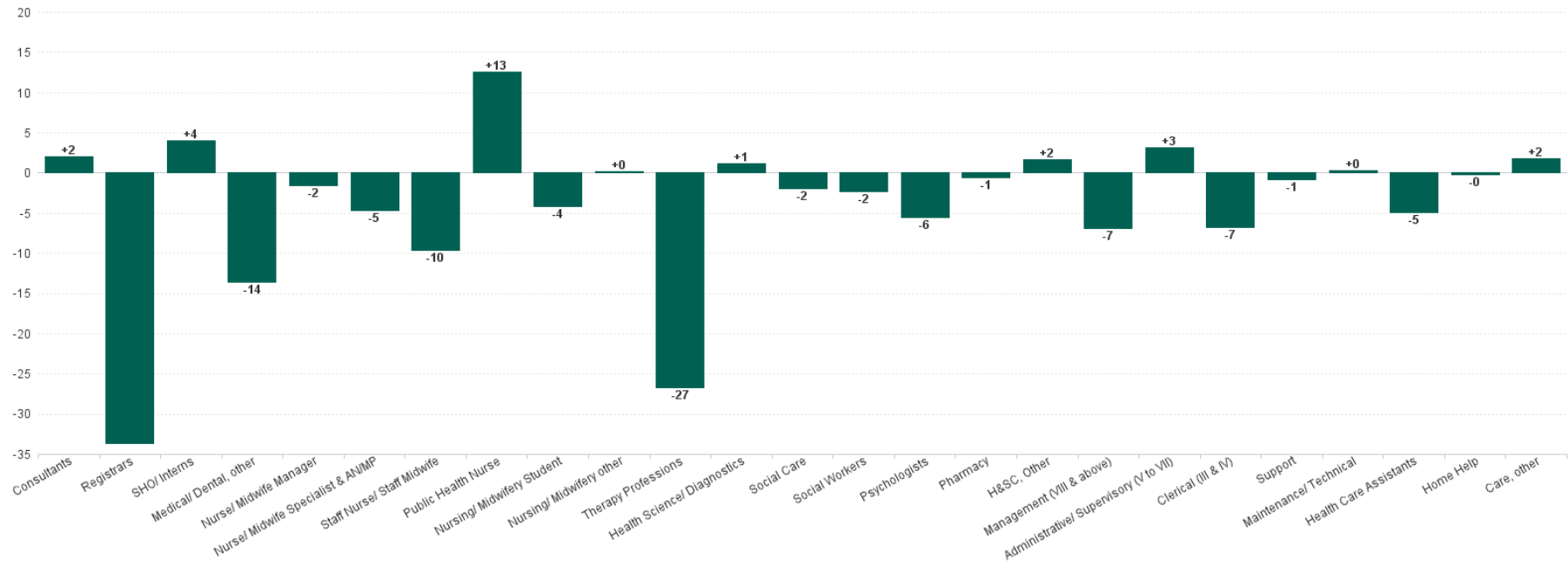
	% WTE change since DEC 2022	WTE change since DEC 2022	CHO 1	CHO 2	CHO 3	CHO 4	CHO 5	CHO 6	CHO 7	CHO 8	CHO 9	other Communi ty Services
Total	+1.7%	+203.1	+37.5	-83.6	+51.4	+71.3	+5.5	+16.4	+18.1	+47.8	+35.6	+3.1
Consultants	+10.7%	+5.4	-0.2	+1.0	+0.0	-0.4	-0.1	+2.4	+1.4	+0.5	+0.8	+0.0
Registrars	+14.8%	+64.3	-5.2	+5.9	+0.2	+20.6	+3.6	+13.6	+13.5	+2.9	+7.2	+2.0
SHO/ Interns	+15.5%	+6.1	-0.0	-1.0		-1.0	+1.0	+2.9	+3.5	+1.0	+1.9	-2.2
Medical/ Dental, other	-5.3%	-27.3	-0.4	+0.2	-0.9	-13.0	-3.1	-1.0	+0.1	-5.6	-3.6	
Medical & Dental	+4.7%	+48.4	-5.9	+6.2	-0.7	+6.1	+1.4	+18.0	+18.3	-1.2	+6.4	-0.2
Nurse/ Midwife Manager	+2.3%	+10.8	+6.0	-0.8	+0.6	-2.0	+3.2	+0.1	+0.1	-1.8	+5.0	+0.3
Nurse/ Midwife Specialist & AN/MP	+22.2%	+61.7	+14.7	+5.2	+5.6	+16.6	+6.8	+5.1	-0.3	+3.3	+4.6	
Staff Nurse/ Staff Midwife	+7.2%	+75.8	+37.6	+11.9	+1.7	+22.1	-1.4	+0.2	-0.2	+1.0	+5.0	-2.2
Public Health Nurse	-1.6%	-24.1	-6.5	-9.5	-0.3	-6.2	-5.3	+0.7	+7.1	-13.1	+8.8	
Nursing/ Midwifery Student	-74.2%	-71.0	-7.6	-14.4	-4.9	-4.1	-3.1	-5.3	-21.6	+3.0	-12.9	
Nursing/ Midwifery other	-6.9%	-0.3	+0.0						-0.4		+0.0	
Nursing & Midwifery	+1.6%	+52.8	+44.3	-7.7	+2.7	+26.4	+0.3	+0.9	-15.2	-7.5	+10.6	-2.0
Therapy Professions	+1.3%	+27.8	+2.6	-37.6	+20.9	+8.8	+19.1	-0.6	-6.1	+25.7	-4.9	
Health Science/ Diagnostics	+1.3%	+1.3	+0.4	+1.0	+1.0	-2.1	+3.2	-0.7	+0.2	-1.2	+1.2	-1.6
Social Care	+0.4%	+0.2		-1.8		-0.2	-1.4	+0.1	-0.1	+4.5	-0.9	+0.1
Social Workers	+3.7%	+7.2	+4.4	-3.3	-1.0	+3.5	+0.2	-1.7	+2.8	-1.4	+2.8	+1.0
Psychologists	+1.6%	+4.6	-1.5	-6.8	+3.4	+4.2	+2.0	+0.8	+3.3	-2.6	+1.9	+0.0
Pharmacy	+8.4%	+5.7	+0.8	+0.0	+1.0	+2.9	+1.0	-0.7	-0.5	-0.4	+0.9	+0.7
H&SC, Other	+0.6%	+1.6	-4.3	-6.5	+0.4	+6.5	-2.2	+2.7	-0.5	-1.0	+4.2	+2.3
Health & Social Care Professionals	+1.6%	+48.4	+2.4	-55.0	+25.7	+23.6	+21.8	-0.1	-0.9	+23.5	+5.1	+2.5
Management (VIII & above)	-4.4%	-11.2	+1.4	-5.9	-0.9	-0.9	-4.9	-7.7	+3.2	-1.3	+3.9	+1.9
Administrative/ Supervisory (V to VII)	+5.1%	+39.0	+15.7	-8.0	+0.5	+9.4	+6.3	-6.4	+4.9	+9.0	+9.7	-2.2
Clerical (III & IV)	+6.3%	+116.8	+0.8	-3.7	+23.3	+22.6	+6.4	+1.4	+18.6	+35.2	+11.2	+1.1



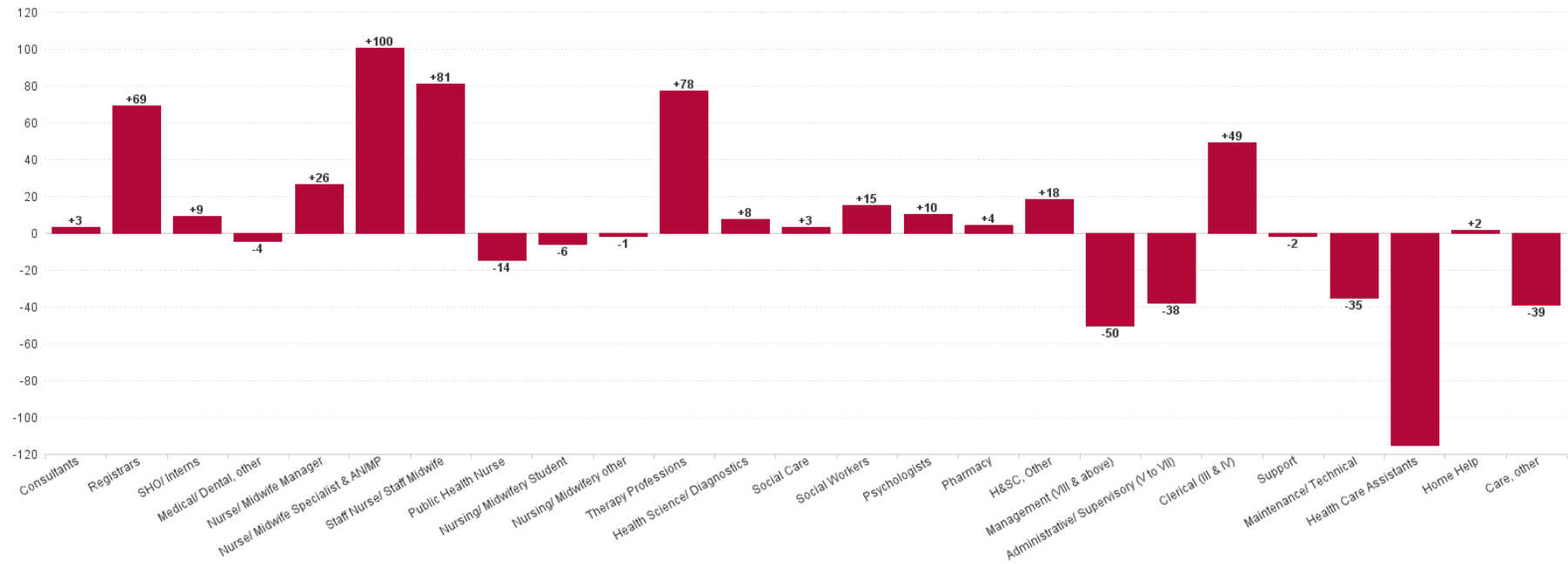
Management & Administrative	+5.1%	+144.6	+17.9	-17.7	+22.8	+31.1	+7.8	-12.7	+26.7	+43.0	+24.8	+0.8
Support	-1.0%	-3.2	-6.7	+2.5	-1.5	+2.6	+1.1	+0.8	-8.0	+2.2	+2.4	+1.4
Maintenance/ Technical	-8.9%	-3.2	-0.8	-1.0		+0.0		+0.0	-1.4	+0.0		+0.0
General Support	-1.8%	-6.4	-7.5	+1.5	-1.5	+2.6	+1.1	+0.8	-9.4	+2.2	+2.4	+1.4
Health Care Assistants	-13.2%	-61.3	-6.8	-4.8	+3.8	-15.0	-16.8	+3.7	-2.5	-11.6	-11.4	
Home Help	+22.8%	+3.4	+0.1			+3.9	-0.5					
Care, other	-3.2%	-26.8	-7.0	-6.2	-1.4	-7.4	-9.5	+5.9	+1.1	-0.6	-2.2	+0.5
Patient & Client Care	-6.5%	-84.7	-13.7	-11.0	+2.4	-18.5	-26.9	+9.6	-1.5	-12.2	-13.6	+0.5



Previous Month Summary Chart: Change since JUL 2023



Previous Year Summary Chart: Change since AUG 2022



YTD Summary Chart: Change since DEC 2022

