

# Primary Care Employment Report : DEC 2023

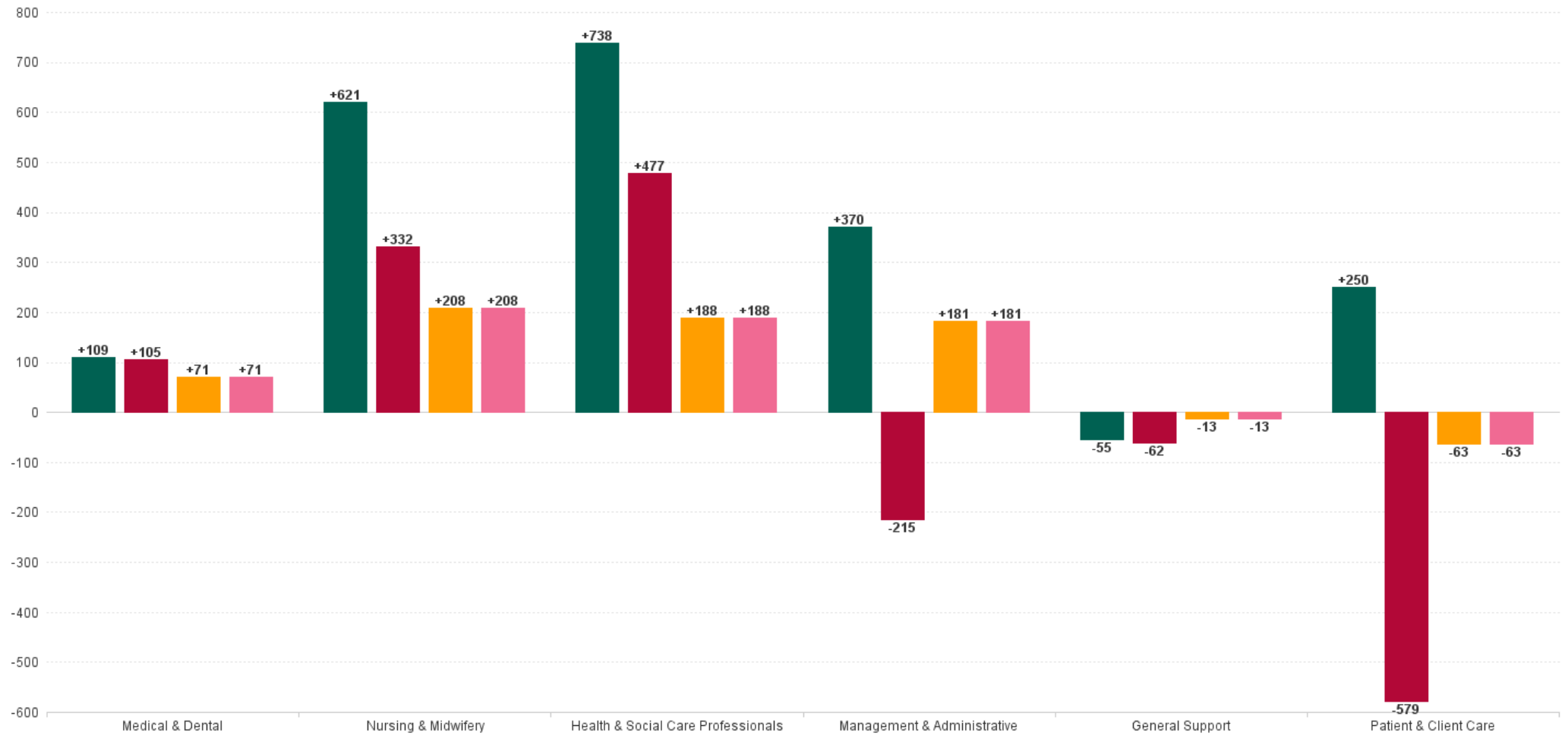
## Primary Care Employment Report by Staff Group

DEC 2023	WTE DEC 2019	WTE DEC 2022(1)	WTE NOV 2023	WTE DEC 2023	WTE change since DEC 2019	% WTE change since Dec 2019	WTE change since DEC 2022	% WTE change since Dec 2022	WTE change since NOV 2023	No. DEC 2023
<b>Overall</b>	<b>10,597</b>	<b>12,057</b>	<b>12,591</b>	<b>12,631</b>	<b>+2,033</b>	<b>+19.2%</b>	<b>+573</b>	<b>+4.8%</b>	<b>+39</b>	<b>14,839</b>
Consultants	44	50	58	59	+15	+33.8%	+8	+16.7%	+0	71
Registrars	396	433	499	494	+99	+24.9%	+61	+14.1%	-4	514
SHO/ Interns	36	39	46	45	+8	+23.2%	+6	+14.2%	-2	52
Medical/ Dental, other	520	511	505	507	-12	-2.4%	-4	-0.8%	+2	722
<b>Medical &amp; Dental</b>	<b>995</b>	<b>1,034</b>	<b>1,108</b>	<b>1,105</b>	<b>+109</b>	<b>+11.0%</b>	<b>+71</b>	<b>+6.9%</b>	<b>-3</b>	<b>1,359</b>
Nurse/ Midwife Manager	358	477	500	502	+144	+40.1%	+25	+5.3%	+2	551
Nurse/ Midwife Specialist & AN/MP	143	278	363	368	+226	+158.0%	+90	+32.5%	+6	411
Staff Nurse/ Staff Midwife	862	1,057	1,134	1,151	+289	+33.5%	+94	+8.9%	+16	1,467
Public Health Nurse	1,513	1,477	1,467	1,467	-46	-3.0%	-9	-0.6%	+0	1,745
Post-registration Nurse/ Midwife Student	96	96	107	105	+10	+10.0%	+10	+10.0%	-1	106
Nursing/ Midwifery Student	96	96	107	105	+10	+10.0%	+10	+10.0%	-1	106
Nursing/ Midwifery other	4	5	3	3	-0	-12.4%	-2	-32.6%	+0	4
<b>Nursing &amp; Midwifery</b>	<b>2,976</b>	<b>3,389</b>	<b>3,574</b>	<b>3,597</b>	<b>+621</b>	<b>+20.9%</b>	<b>+208</b>	<b>+6.1%</b>	<b>+23</b>	<b>4,284</b>
Therapy Professions	1,733	2,162	2,254	2,261	+528	+30.5%	+99	+4.6%	+7	2,621
Health Science/ Diagnostics	82	99	104	100	+18	+22.0%	+1	+0.8%	-4	109
Social Care	35	39	44	45	+10	+27.4%	+7	+17.3%	+1	48
Social Workers	138	194	204	205	+67	+48.1%	+11	+5.5%	+1	224
Psychologists	303	292	344	347	+44	+14.6%	+55	+18.9%	+3	383
Pharmacy	58	68	77	78	+21	+35.6%	+10	+15.1%	+2	90
H&SC, Other	209	255	255	260	+51	+24.4%	+5	+2.1%	+5	300
<b>Health &amp; Social Care Professionals</b>	<b>2,558</b>	<b>3,108</b>	<b>3,282</b>	<b>3,297</b>	<b>+738</b>	<b>+28.9%</b>	<b>+188</b>	<b>+6.1%</b>	<b>+15</b>	<b>3,775</b>
Management (VIII & above)	305	252	234	234	-71	-23.2%	-18	-7.2%	+0	245
Administrative/ Supervisory (V to VII)	621	762	810	809	+187	+30.2%	+47	+6.1%	-1	860
Clerical (III & IV)	1,742	1,842	1,994	1,995	+253	+14.5%	+153	+8.3%	+1	2,309
<b>Management &amp; Administrative</b>	<b>2,668</b>	<b>2,856</b>	<b>3,038</b>	<b>3,038</b>	<b>+370</b>	<b>+13.9%</b>	<b>+181</b>	<b>+6.3%</b>	<b>-0</b>	<b>3,414</b>
Support	346	327	320	317	-29	-8.2%	-10	-2.9%	-3	468
Maintenance/ Technical	59	36	32	32	-27	-45.3%	-3	-8.9%	+0	36
<b>General Support</b>	<b>405</b>	<b>362</b>	<b>352</b>	<b>350</b>	<b>-55</b>	<b>-13.7%</b>	<b>-13</b>	<b>-3.5%</b>	<b>-2</b>	<b>504</b>
Home Help	18	15	22	22	+4	+19.5%	+7	+46.3%	+0	44
Health Care Assistants	254	466	413	422	+169	+66.5%	-43	-9.3%	+9	494
Care, other	723	827	802	800	+78	+10.7%	-26	-3.2%	-2	965
<b>Patient &amp; Client Care</b>	<b>995</b>	<b>1,308</b>	<b>1,237</b>	<b>1,245</b>	<b>+250</b>	<b>+25.1%</b>	<b>-63</b>	<b>-4.8%</b>	<b>+7</b>	<b>1,503</b>



## WTE Change by Staff Category

■ WTE change since DEC 2019 ■ WTE change since DEC 2021 ■ WTE change since DEC 2022 ■ WTE change since DEC 2022(1)



## Primary Care Report by CHO: DEC 2023

DEC 2023	WTE DEC 2019	WTE DEC 2022(1)	WTE NOV 2023	WTE DEC 2023	WTE change since DEC 2019	% WTE change since Dec 2019	WTE change since DEC 2022	% WTE change since Dec 2022	WTE change since NOV 2023	No. DEC 2023
<b>Overall</b>	<b>10,597</b>	<b>12,057</b>	<b>12,591</b>	<b>12,631</b>	<b>+2,033</b>	<b>+19.2%</b>	<b>+573</b>	<b>+4.8%</b>	<b>+39</b>	<b>14,839</b>
CHO 1	1,182	1,472	1,548	1,554	+372	+31.5%	+82	+5.6%	+6	1,798
CHO 2	1,134	1,351	1,312	1,310	+176	+15.5%	-41	-3.0%	-3	1,494
CHO 3	764	772	883	889	+125	+16.4%	+117	+15.2%	+6	1,039
CHO 4	1,346	1,707	1,815	1,816	+470	+34.9%	+109	+6.4%	+1	2,256
CHO 5	958	1,152	1,207	1,214	+256	+26.7%	+63	+5.5%	+7	1,437
CHO 6	765	864	913	928	+163	+21.4%	+63	+7.3%	+15	1,158
CHO 7	1,702	1,765	1,809	1,803	+101	+5.9%	+38	+2.1%	-6	2,072
CHO 8	1,378	1,491	1,543	1,556	+178	+12.9%	+65	+4.3%	+13	1,825
CHO 9	1,247	1,357	1,434	1,435	+188	+15.1%	+78	+5.7%	+1	1,627
other Community Services	122	127	127	126	+4	+3.2%	-1	-0.9%	-1	133



% Total by CHO



## Primary Care Employment Report by HSE/S38: DEC 2023

DEC 2023	WTE DEC 2019	WTE DEC 2022(1)	WTE NOV 2023	WTE DEC 2023	WTE change since DEC 2019	% WTE change since Dec 2019	WTE change since DEC 2022	% WTE change since Dec 2022	WTE change since NOV 2023	No. DEC 2023
<b>Overall</b>	<b>10,597</b>	<b>12,057</b>	<b>12,591</b>	<b>12,631</b>	<b>+2,033</b>	<b>0.19</b>	<b>+573</b>	<b>0.05</b>	<b>+39</b>	<b>14,839</b>
Health Service Executive	9,921	11,277	11,828	11,868	+1,947	0.2	+591	0.05	+41	13,835
Section 38 Voluntary Agencies	676	780	764	762	+86	0.13	-18	-0.02	-1	1,004



## Primary Care Employment Report by HSE: DEC 2023

DEC 2023	WTE DEC 2019	WTE DEC 2022(1)	WTE NOV 2023	WTE DEC 2023	WTE change since DEC 2019	% WTE change since Dec 2019	WTE change since DEC 2022	% WTE change since Dec 2022	WTE change since NOV 2023	No. DEC 2023
<b>Total HSE</b>	<b>9,921</b>	<b>11,277</b>	<b>11,828</b>	<b>11,868</b>	<b>+1,947</b>	<b>+19.6%</b>	<b>+591</b>	<b>+5.2%</b>	<b>+41</b>	<b>13,835</b>
Consultants	32	34	40	40	+8	+24.7%	+7	+20.0%	+1	49
Registrars	385	422	487	482	+98	+25.4%	+61	+14.3%	-4	501
SHO/ Interns	19	22	29	28	+9	+48.8%	+6	+27.3%	-2	28
Medical/ Dental, other	505	490	486	488	-17	-3.3%	-1	-0.2%	+3	672
<b>Medical &amp; Dental</b>	<b>941</b>	<b>967</b>	<b>1,042</b>	<b>1,039</b>	<b>+98</b>	<b>+10.4%</b>	<b>+72</b>	<b>+7.4%</b>	<b>-3</b>	<b>1,250</b>
Nurse/ Midwife Manager	309	421	450	453	+143	+46.3%	+32	+7.6%	+3	497
Nurse/ Midwife Specialist & AN/MP	114	235	316	322	+208	+182.7%	+88	+37.4%	+6	354
Staff Nurse/ Staff Midwife	752	929	1,005	1,018	+266	+35.4%	+90	+9.7%	+14	1,315
Public Health Nurse	1,513	1,477	1,467	1,467	-46	-3.0%	-9	-0.6%	+0	1,745
Post-registration Nurse/ Midwife Student	96	96	107	105	+47	+10.0%	+10	+10.0%	-1	106
Nursing/ Midwifery Student	96	96	107	105	+10	+10.0%	+10	+10.0%	-1	106
Nursing/ Midwifery other	2	3	2	2	+0	+5.6%	-1	-35.4%	+0	2
<b>Nursing &amp; Midwifery</b>	<b>2,786</b>	<b>3,160</b>	<b>3,347</b>	<b>3,368</b>	<b>+582</b>	<b>+20.9%</b>	<b>+208</b>	<b>+6.6%</b>	<b>+21</b>	<b>4,019</b>
Therapy Professions	1,696	2,124	2,223	2,231	+535	+31.5%	+107	+5.0%	+8	2,583
Health Science/ Diagnostics	78	95	100	96	+18	+23.0%	+1	+0.9%	-4	103
Social Care	35	39	44	45	+10	+27.4%	+7	+17.3%	+1	48
Social Workers	128	180	190	191	+63	+49.4%	+10	+5.6%	+1	208
Psychologists	302	291	343	345	+43	+14.3%	+55	+18.8%	+3	381
Pharmacy	48	60	67	68	+20	+41.3%	+8	+12.6%	+0	77
H&SC, Other	208	251	253	258	+50	+24.2%	+6	+2.6%	+5	295
<b>Health &amp; Social Care Professionals</b>	<b>2,495</b>	<b>3,040</b>	<b>3,220</b>	<b>3,234</b>	<b>+739</b>	<b>+29.6%</b>	<b>+193</b>	<b>+6.4%</b>	<b>+14</b>	<b>3,695</b>
Management (VIII & above)	296	244	224	225	-72	-24.2%	-19	-7.9%	+0	231
Administrative/ Supervisory (V to VII)	588	728	770	770	+182	+30.9%	+42	+5.8%	-1	807
Clerical (III & IV)	1,678	1,768	1,923	1,923	+245	+14.6%	+154	+8.7%	+0	2,201
<b>Management &amp; Administrative</b>	<b>2,562</b>	<b>2,740</b>	<b>2,917</b>	<b>2,917</b>	<b>+355</b>	<b>+13.9%</b>	<b>+177</b>	<b>+6.5%</b>	<b>-0</b>	<b>3,239</b>
Support	251	230	229	226	-25	-9.8%	-3	-1.4%	-2	358
Maintenance/ Technical	50	25	23	23	-27	-53.9%	-2	-7.2%	+0	24
<b>General Support</b>	<b>301</b>	<b>255</b>	<b>252</b>	<b>250</b>	<b>-52</b>	<b>-17.2%</b>	<b>-5</b>	<b>-2.0%</b>	<b>-2</b>	<b>382</b>
Home Help	18	15	22	22	+4	+19.5%	+7	+46.3%	+0	44
Health Care Assistants	152	338	287	299	+147	+97.2%	-39	-11.5%	+12	342
Care, other	666	763	741	740	+74	+11.2%	-23	-3.0%	-1	864
<b>Patient &amp; Client Care</b>	<b>836</b>	<b>1,116</b>	<b>1,050</b>	<b>1,061</b>	<b>+225</b>	<b>+27.0%</b>	<b>-55</b>	<b>-4.9%</b>	<b>+11</b>	<b>1,250</b>

## Primary Care Employment Report by S38 Hospitals: DEC 2023

DEC 2023	WTE DEC 2019	WTE DEC 2022(1)	WTE NOV 2023	WTE DEC 2023	WTE change since DEC 2019	% WTE change since Dec 2019	WTE change since DEC 2022	% WTE change since Dec 2022	WTE change since NOV 2023	No. DEC 2023
<b>Total S38 Vols</b>	<b>676</b>	<b>780</b>	<b>764</b>	<b>762</b>	<b>+86</b>	<b>+12.8%</b>	<b>-18</b>	<b>-2.3%</b>	<b>-1</b>	<b>1,004</b>
Consultants	11	17	18	18	+7	+60.0%	+2	+9.9%	-0	22
Registrars	11	11	12	12	+1	+9.0%	+1	+4.6%	-0	13
SHO/ Interns	18	17	17	17	-1	-3.7%	-0	-2.2%	-0	24
Medical/ Dental, other	14	21	19	19	+4	+29.9%	-3	-12.7%	-0	50
<b>Medical &amp; Dental</b>	<b>54</b>	<b>67</b>	<b>66</b>	<b>66</b>	<b>+11</b>	<b>+21.1%</b>	<b>-1</b>	<b>-1.4%</b>	<b>-0</b>	<b>109</b>
Nurse/ Midwife Manager	49	56	50	50	+1	+1.1%	-7	-11.8%	-1	54
Nurse/ Midwife Specialist & AN/MP	29	43	46	46	+17	+60.1%	+3	+6.2%	-0	57
Staff Nurse/ Staff Midwife	110	128	130	132	+22	+20.4%	+4	+3.4%	+3	152
Nursing/ Midwifery other	2	2	1	1	-1	-28.5%	-1	-28.5%	-0	2
<b>Nursing &amp; Midwifery</b>	<b>190</b>	<b>229</b>	<b>228</b>	<b>229</b>	<b>+40</b>	<b>+20.9%</b>	<b>-0</b>	<b>-0.1%</b>	<b>+2</b>	<b>265</b>
Therapy Professions	37	38	31	30	-7	-18.1%	-8	-20.0%	-1	38
Health Science/ Diagnostics	4	4	4	4	+0	+0.3%	-0	-1.8%	-0	6
Social Workers	11	14	14	14	+3	+32.0%	+0	+3.3%	+0	16
Psychologists	1	1	2	2	+1	+150.0%	+1	+50.0%	-0	2
Pharmacy	10	8	9	11	+1	+7.8%	+3	+33.5%	+1	13
H&SC, Other	2	3	2	2	+1	+50.7%	-1	-30.7%	+0	5
<b>Health &amp; Social Care Professionals</b>	<b>64</b>	<b>68</b>	<b>62</b>	<b>63</b>	<b>-1</b>	<b>-1.3%</b>	<b>-5</b>	<b>-7.4%</b>	<b>+1</b>	<b>80</b>
Management (VIII & above)	9	9	10	10	+1	+11.8%	+1	+11.8%	+0	14
Administrative/ Supervisory (V to VII)	34	35	39	39	+6	+16.9%	+4	+12.9%	-0	53
Clerical (III & IV)	64	73	72	72	+8	+13.1%	-1	-1.9%	+0	108
<b>Management &amp; Administrative</b>	<b>106</b>	<b>117</b>	<b>120</b>	<b>121</b>	<b>+15</b>	<b>+14.2%</b>	<b>+4</b>	<b>+3.5%</b>	<b>+0</b>	<b>175</b>
Support	95	97	91	91	-4	-4.1%	-6	-6.4%	-0	110
Maintenance/ Technical	9	11	9	9	+0	+2.6%	-1	-12.8%	-0	12
<b>General Support</b>	<b>104</b>	<b>108</b>	<b>100</b>	<b>100</b>	<b>-4</b>	<b>-3.5%</b>	<b>-8</b>	<b>-7.0%</b>	<b>-0</b>	<b>122</b>
Health Care Assistants	102	128	126	124	+21	+21.0%	-5	-3.6%	-2	152
Care, other	57	63	61	60	+3	+5.6%	-3	-5.5%	-1	101
<b>Patient &amp; Client Care</b>	<b>159</b>	<b>192</b>	<b>187</b>	<b>184</b>	<b>+25</b>	<b>+15.5%</b>	<b>-8</b>	<b>-4.2%</b>	<b>-3</b>	<b>253</b>



## Primary Care Employment Report by Staff Group: DEC 2023

### CHO 1

DEC 2023	WTE DEC 2019	WTE DEC 2022(1)	WTE NOV 2023	WTE DEC 2023	WTE change since DEC 2019	% WTE change since Dec 2019	WTE change since DEC 2022	% WTE change since Dec 2022	WTE change since NOV 2023	No. DEC 2023
<b>Overall</b>	<b>1,182</b>	<b>1,472</b>	<b>1,548</b>	<b>1,554</b>	<b>+372</b>	<b>+31.5%</b>	<b>+82</b>	<b>+5.6%</b>	<b>+6</b>	<b>1,798</b>
Consultants	3	5	6	6	+3	+105.7%	+1	+21.9%	+0	7
Registrars	41	42	46	44	+4	+8.6%	+2	+5.4%	-2	48
SHO/ Interns	1	1	2	2	+1	+100.0%	+1	+102.0%	+0	2
Medical/ Dental, other	47	42	41	42	-6	-11.6%	-0	-1.1%	+0	53
<b>Medical &amp; Dental</b>	<b>92</b>	<b>90</b>	<b>96</b>	<b>94</b>	<b>+2</b>	<b>+2.4%</b>	<b>+4</b>	<b>+4.4%</b>	<b>-1</b>	<b>110</b>
Nurse/ Midwife Manager	36	51	59	60	+24	+64.7%	+9	+17.4%	+1	66
Nurse/ Midwife Specialist & AN/MP	21	49	60	62	+41	+196.8%	+13	+26.2%	+1	66
Staff Nurse/ Staff Midwife	85	116	143	145	+60	+70.3%	+29	+24.9%	+2	180
Public Health Nurse	156	151	161	161	+5	+3.3%	+10	+6.9%	+0	184
<i>Post-registration Nurse/ Midwife Student</i>	7	10	10	10	+3	+43.3%	+0	+4.4%	+0	10
Nursing/ Midwifery Student	7	10	10	10	+3	+43.3%	+0	+4.4%	+0	10
Nursing/ Midwifery other	1	1			-1	-100.0%	-1	-100.0%		
<b>Nursing &amp; Midwifery</b>	<b>306</b>	<b>377</b>	<b>433</b>	<b>438</b>	<b>+131</b>	<b>+42.9%</b>	<b>+60</b>	<b>+16.0%</b>	<b>+5</b>	<b>506</b>
Therapy Professions	227	279	286	289	+62	+27.5%	+11	+3.8%	+3	329
Health Science/ Diagnostics	5	9	11	11	+6	+110.8%	+2	+19.4%	+1	13
Social Workers	13	25	27	26	+14	+107.2%	+1	+4.0%	-1	28
Psychologists	35	28	27	26	-9	-25.5%	-2	-6.3%	-1	29
Pharmacy	1	1	2	2	+1	+120.0%	+1	+111.0%	+0	2
H&SC, Other	7	20	18	17	+10	+148.1%	-3	-13.9%	-1	26
<b>Health &amp; Social Care Professionals</b>	<b>287</b>	<b>362</b>	<b>371</b>	<b>371</b>	<b>+84</b>	<b>+29.3%</b>	<b>+10</b>	<b>+2.7%</b>	<b>+1</b>	<b>427</b>
Management (VIII & above)	32	30	32	33	+1	+1.7%	+3	+10.1%	+0	34
Administrative/ Supervisory (V to VII)	64	94	108	107	+43	+67.6%	+13	+13.3%	-2	112
Clerical (III & IV)	236	293	302	304	+68	+28.9%	+11	+3.8%	+1	347
<b>Management &amp; Administrative</b>	<b>331</b>	<b>416</b>	<b>443</b>	<b>443</b>	<b>+112</b>	<b>+33.7%</b>	<b>+27</b>	<b>+6.4%</b>	<b>-0</b>	<b>493</b>
Support	72	84	78	77	+5	+6.7%	-7	-8.6%	-1	111
Maintenance/ Technical	6	9	9	9	+3	+47.7%	+0	+2.0%	+0	9
<b>General Support</b>	<b>78</b>	<b>93</b>	<b>86</b>	<b>86</b>	<b>+8</b>	<b>+9.9%</b>	<b>-7</b>	<b>-7.6%</b>	<b>-1</b>	<b>120</b>
Home Help		0	0	0	+0		+0	+29.6%	+0	1
Health Care Assistants	32	69	59	61	+29	+92.3%	-8	-11.5%	+2	68
Care, other	55	64	60	60	+5	+9.7%	-4	-5.8%	+0	73
<b>Patient &amp; Client Care</b>	<b>87</b>	<b>134</b>	<b>120</b>	<b>122</b>	<b>+35</b>	<b>+40.4%</b>	<b>-12</b>	<b>-8.6%</b>	<b>+3</b>	<b>142</b>



## CHO 2

DEC 2023	WTE DEC 2019	WTE DEC 2022(1)	WTE NOV 2023	WTE DEC 2023	WTE change since DEC 2019	% WTE change since Dec 2019	WTE change since DEC 2022	% WTE change since Dec 2022	WTE change since NOV 2023	No. DEC 2023
<b>Overall</b>	<b>1,134</b>	<b>1,351</b>	<b>1,312</b>	<b>1,310</b>	<b>+176</b>	<b>+15.5%</b>	<b>-41</b>	<b>-3.0%</b>	<b>-3</b>	<b>1,494</b>
Consultants	1	3	5	5	+4	+300.0%	+2	+66.7%	-0	6
Registrars	40	53	54	53	+13	+33.2%	+1	+1.2%	-0	55
SHO/ Interns	1	3	2	2	+1	+100.0%	-1	-32.9%	+0	2
Medical/ Dental, other	46	46	47	47	+1	+3.2%	+2	+3.5%	-0	61
<b>Medical &amp; Dental</b>	<b>88</b>	<b>104</b>	<b>108</b>	<b>107</b>	<b>+20</b>	<b>+22.2%</b>	<b>+3</b>	<b>+3.1%</b>	<b>-1</b>	<b>124</b>
Nurse/ Midwife Manager	27	34	34	36	+9	+32.1%	+2	+7.4%	+2	38
Nurse/ Midwife Specialist & AN/MP	17	38	44	42	+24	+141.4%	+4	+9.7%	-2	46
Staff Nurse/ Staff Midwife	74	92	103	103	+28	+38.3%	+10	+11.0%	-0	126
Public Health Nurse	191	186	186	189	-2	-1.2%	+2	+1.3%	+2	216
<i>Post-registration Nurse/ Midwife Student</i>	<i>4</i>	<i>14</i>	<i>11</i>	<i>11</i>	<i>+7</i>	<i>+175.0%</i>	<i>-3</i>	<i>-23.8%</i>	<i>+0</i>	<i>11</i>
Nursing/ Midwifery Student	4	14	11	11	+7	+175.0%	-3	-23.8%	+0	11
<b>Nursing &amp; Midwifery</b>	<b>313</b>	<b>365</b>	<b>379</b>	<b>380</b>	<b>+66</b>	<b>+21.2%</b>	<b>+15</b>	<b>+4.2%</b>	<b>+1</b>	<b>437</b>
Therapy Professions	226	291	265	261	+35	+15.4%	-30	-10.3%	-4	296
Health Science/ Diagnostics	6	9	8	7	+2	+25.9%	-2	-17.6%	-0	8
Social Care	8	7	5	5	-4	-43.5%	-2	-27.5%	-0	5
Social Workers	7	19	17	18	+11	+156.2%	-1	-6.0%	+1	18
Psychologists	24	32	27	27	+3	+10.6%	-5	-16.0%	-0	30
Pharmacy	1	1	1	1	+0	+0.0%	+0	+0.0%	+0	1
H&SC, Other	40	63	50	52	+12	+30.5%	-10	-16.6%	+2	56
<b>Health &amp; Social Care Professionals</b>	<b>312</b>	<b>421</b>	<b>372</b>	<b>371</b>	<b>+58</b>	<b>+18.6%</b>	<b>-50</b>	<b>-11.8%</b>	<b>-1</b>	<b>414</b>
Management (VIII & above)	33	29	24	23	-10	-29.0%	-5	-18.6%	-0	24
Administrative/ Supervisory (V to VII)	62	85	89	88	+26	+42.8%	+4	+4.5%	-1	94
Clerical (III & IV)	238	219	227	222	-15	-6.5%	+3	+1.5%	-4	251
<b>Management &amp; Administrative</b>	<b>333</b>	<b>332</b>	<b>339</b>	<b>334</b>	<b>+2</b>	<b>+0.5%</b>	<b>+2</b>	<b>+0.5%</b>	<b>-5</b>	<b>369</b>
Support	21	17	15	14	-7	-32.4%	-3	-18.5%	-1	36
Maintenance/ Technical	9	11	11	11	+2	+22.2%	+0	+0.1%	+0	11
<b>General Support</b>	<b>30</b>	<b>28</b>	<b>26</b>	<b>25</b>	<b>-5</b>	<b>-15.9%</b>	<b>-3</b>	<b>-11.3%</b>	<b>-1</b>	<b>47</b>
Health Care Assistants	14	33	31	33	+18	+128.8%	-0	-0.3%	+2	35
Care, other	43	68	58	60	+17	+39.0%	-8	-11.7%	+1	68
<b>Patient &amp; Client Care</b>	<b>57</b>	<b>100</b>	<b>89</b>	<b>92</b>	<b>+35</b>	<b>+61.4%</b>	<b>-8</b>	<b>-8.0%</b>	<b>+3</b>	<b>103</b>

### CHO 3

DEC 2023	WTE DEC 2019	WTE DEC 2022(1)	WTE NOV 2023	WTE DEC 2023	WTE change since DEC 2019	% WTE change since Dec 2019	WTE change since DEC 2022	% WTE change since Dec 2022	WTE change since NOV 2023	No. DEC 2023
<b>Overall</b>	<b>764</b>	<b>772</b>	<b>883</b>	<b>889</b>	<b>+125</b>	<b>+16.4%</b>	<b>+117</b>	<b>+15.2%</b>	<b>+6</b>	<b>1,039</b>
Consultants	2	1	2	2	-0	-9.0%	+1	+37.9%	-0	3
Registrars	24	29	32	32	+8	+35.2%	+3	+8.9%	-0	32
SHO/ Interns	6				-6	-100.0%				
Medical/ Dental, other	52	45	46	48	-4	-8.3%	+2	+5.0%	+1	64
<b>Medical &amp; Dental</b>	<b>84</b>	<b>76</b>	<b>81</b>	<b>82</b>	<b>-2</b>	<b>-2.6%</b>	<b>+5</b>	<b>+7.1%</b>	<b>+1</b>	<b>99</b>
Nurse/ Midwife Manager	19	23	28	29	+10	+52.7%	+6	+24.0%	+1	31
Nurse/ Midwife Specialist & AN/MP	2	7	15	17	+15	+749.5%	+10	+146.2%	+2	18
Staff Nurse/ Staff Midwife	56	75	78	81	+25	+45.0%	+6	+7.5%	+3	104
Public Health Nurse	126	125	124	125	-1	-0.9%	+0	+0.3%	+1	152
Post-registration Nurse/ Midwife Student		6	15	14	+14		+8	+142.4%	-1	15
Nursing/ Midwifery Student		6	15	14	+14		+8	+142.4%	-1	15
<b>Nursing &amp; Midwifery</b>	<b>203</b>	<b>236</b>	<b>259</b>	<b>266</b>	<b>+63</b>	<b>+31.2%</b>	<b>+30</b>	<b>+12.8%</b>	<b>+7</b>	<b>320</b>
Therapy Professions	86	162	188	189	+103	+120.4%	+28	+17.2%	+1	215
Health Science/ Diagnostics	5	5	5	5	+0	+3.6%	+0	+9.1%	-0	5
Social Care	1				-1	-100.0%				
Social Workers	11	12	11	11	+0	+0.8%	-2	-14.9%	-1	13
Psychologists	15	14	34	33	+18	+116.3%	+19	+139.2%	-0	36
Pharmacy	1	1	2	2	+1	+100.0%	+1	+102.0%	+0	3
H&SC, Other	11	12	12	12	+1	+10.2%	-0	-1.1%	-0	14
<b>Health &amp; Social Care Professionals</b>	<b>129</b>	<b>205</b>	<b>252</b>	<b>252</b>	<b>+123</b>	<b>+95.0%</b>	<b>+47</b>	<b>+22.7%</b>	<b>+0</b>	<b>286</b>
Management (VIII & above)	23	10	11	11	-13	-53.9%	+1	+11.2%	+0	11
Administrative/ Supervisory (V to VII)	54	28	30	30	-24	-44.1%	+2	+7.3%	+0	32
Clerical (III & IV)	156	127	158	156	+0	+0.2%	+29	+23.1%	-2	176
<b>Management &amp; Administrative</b>	<b>234</b>	<b>165</b>	<b>199</b>	<b>197</b>	<b>-36</b>	<b>-15.5%</b>	<b>+33</b>	<b>+19.7%</b>	<b>-2</b>	<b>219</b>
Support	13	12	10	10	-3	-23.2%	-2	-17.0%	+0	23
Maintenance/ Technical	30				-30	-100.0%				
<b>General Support</b>	<b>43</b>	<b>12</b>	<b>10</b>	<b>10</b>	<b>-33</b>	<b>-76.4%</b>	<b>-2</b>	<b>-17.0%</b>	<b>+0</b>	<b>23</b>
Home Help	1				-1	-100.0%				
Health Care Assistants	21	26	28	28	+7	+33.4%	+2	+8.9%	-0	32
Care, other	49	51	54	53	+4	+8.5%	+2	+4.7%	-0	60
<b>Patient &amp; Client Care</b>	<b>71</b>	<b>77</b>	<b>82</b>	<b>81</b>	<b>+10</b>	<b>+14.8%</b>	<b>+5</b>	<b>+6.1%</b>	<b>-1</b>	<b>92</b>

## CHO 4

DEC 2023	WTE DEC 2019	WTE DEC 2022(1)	WTE NOV 2023	WTE DEC 2023	WTE change since DEC 2019	% WTE change since Dec 2019	WTE change since DEC 2022	% WTE change since Dec 2022	WTE change since NOV 2023	No. DEC 2023
<b>Overall</b>	<b>1,346</b>	<b>1,707</b>	<b>1,815</b>	<b>1,816</b>	<b>+470</b>	<b>+34.9%</b>	<b>+109</b>	<b>+6.4%</b>	<b>+1</b>	<b>2,256</b>
Consultants	3	7	7	8	+5	+191.2%	+1	+11.8%	+0	12
Registrars	55	40	59	60	+5	+9.9%	+20	+51.7%	+1	65
SHO/ Interns	6	4	3	3	-3	-51.2%	-1	-25.0%	+0	3
Medical/ Dental, other	88	110	108	106	+18	+20.6%	-4	-3.3%	-1	180
<b>Medical &amp; Dental</b>	<b>152</b>	<b>160</b>	<b>178</b>	<b>177</b>	<b>+25</b>	<b>+16.8%</b>	<b>+17</b>	<b>+10.4%</b>	<b>-1</b>	<b>260</b>
Nurse/ Midwife Manager	56	72	69	70	+13	+23.8%	-3	-3.6%	+1	76
Nurse/ Midwife Specialist & AN/MP	4	14	34	33	+29	+682.6%	+18	+127.2%	-1	37
Staff Nurse/ Staff Midwife	119	177	191	192	+73	+61.1%	+16	+8.8%	+1	267
Public Health Nurse	211	210	207	204	-7	-3.3%	-6	-2.9%	-3	261
<i>Post-registration Nurse/ Midwife Student</i>	17	11	20	20	+3	+15.9%	+9	+82.6%	+0	20
Nursing/ Midwifery Student	17	11	20	20	+3	+15.9%	+9	+82.6%	+0	20
<b>Nursing &amp; Midwifery</b>	<b>408</b>	<b>484</b>	<b>522</b>	<b>518</b>	<b>+111</b>	<b>+27.2%</b>	<b>+34</b>	<b>+7.1%</b>	<b>-3</b>	<b>661</b>
Therapy Professions	222	327	343	341	+119	+53.7%	+14	+4.3%	-2	402
Health Science/ Diagnostics	11	13	12	12	+1	+11.7%	-1	-8.2%	-0	13
Social Care	8	7	7	7	-1	-7.4%	+1	+9.9%	-0	8
Social Workers	24	37	43	44	+19	+79.6%	+7	+18.9%	+1	47
Psychologists	20	23	26	26	+5	+26.9%	+3	+10.7%	+0	29
Pharmacy	3	2	5	5	+2	+53.7%	+3	+163.0%	-0	5
H&SC, Other	41	39	41	41	-0	-0.1%	+2	+5.6%	+0	49
<b>Health &amp; Social Care Professionals</b>	<b>329</b>	<b>447</b>	<b>476</b>	<b>475</b>	<b>+146</b>	<b>+44.4%</b>	<b>+28</b>	<b>+6.3%</b>	<b>-1</b>	<b>553</b>
Management (VIII & above)	37	44	43	44	+7	+18.9%	-0	-0.8%	+1	45
Administrative/ Supervisory (V to VII)	68	114	131	133	+65	+94.9%	+19	+16.9%	+2	141
Clerical (III & IV)	205	255	279	284	+79	+38.7%	+29	+11.6%	+5	349
<b>Management &amp; Administrative</b>	<b>310</b>	<b>412</b>	<b>453</b>	<b>461</b>	<b>+151</b>	<b>+48.7%</b>	<b>+48</b>	<b>+11.7%</b>	<b>+8</b>	<b>535</b>
Support	16	16	19	18	+2	+14.6%	+1	+8.8%	-1	27
Maintenance/ Technical		1					-1	-100.0%		
<b>General Support</b>	<b>16</b>	<b>17</b>	<b>19</b>	<b>18</b>	<b>+2</b>	<b>+14.6%</b>	<b>+0</b>	<b>+2.5%</b>	<b>-1</b>	<b>27</b>
Home Help	10	8	12	12	+2	+16.2%	+3	+41.8%	+0	24
Health Care Assistants	17	47	32	33	+15	+87.2%	-14	-30.6%	+0	39
Care, other	105	130	124	122	+17	+16.6%	-8	-6.1%	-2	157
<b>Patient &amp; Client Care</b>	<b>132</b>	<b>185</b>	<b>168</b>	<b>166</b>	<b>+34</b>	<b>+25.9%</b>	<b>-19</b>	<b>-10.2%</b>	<b>-2</b>	<b>220</b>

# CHO 5

DEC 2023	WTE DEC 2019	WTE DEC 2022(1)	WTE NOV 2023	WTE DEC 2023	WTE change since DEC 2019	% WTE change since Dec 2019	WTE change since DEC 2022	% WTE change since Dec 2022	WTE change since NOV 2023	No. DEC 2023
<b>Overall</b>	<b>958</b>	<b>1,152</b>	<b>1,207</b>	<b>1,214</b>	<b>+256</b>	<b>+26.7%</b>	<b>+63</b>	<b>+5.5%</b>	<b>+7</b>	<b>1,437</b>
Consultants	3	2	2	2	-1	-40.0%	-0	-10.0%	+0	2
Registrars	19	30	34	35	+16	+83.7%	+5	+18.0%	+1	36
SHO/ Interns	5		1	1	-4	-80.0%	+1		+0	1
Medical/ Dental, other	54	59	57	56	+2	+4.3%	-2	-3.6%	-0	80
<b>Medical &amp; Dental</b>	<b>81</b>	<b>90</b>	<b>94</b>	<b>94</b>	<b>+13</b>	<b>+16.1%</b>	<b>+4</b>	<b>+4.5%</b>	<b>+1</b>	<b>119</b>
Nurse/ Midwife Manager	25	47	52	51	+26	+101.7%	+4	+7.8%	-1	58
Nurse/ Midwife Specialist & AN/MP	6	25	43	45	+39	+686.6%	+19	+76.2%	+1	50
Staff Nurse/ Staff Midwife	67	117	122	127	+60	+89.9%	+10	+8.5%	+5	160
Public Health Nurse	166	154	152	151	-16	-9.4%	-3	-2.1%	-1	181
Post-registration Nurse/ Midwife Student	5	4	9	9	+4	+80.0%	+5	+129.0%	+0	9
Nursing/ Midwifery Student	5	4	9	9	+4	+80.0%	+5	+129.0%	+0	9
Nursing/ Midwifery other	1				-1	-100.0%				
<b>Nursing &amp; Midwifery</b>	<b>270</b>	<b>348</b>	<b>378</b>	<b>383</b>	<b>+113</b>	<b>+41.7%</b>	<b>+35</b>	<b>+10.0%</b>	<b>+4</b>	<b>458</b>
Therapy Professions	185	243	265	266	+81	+43.6%	+23	+9.6%	+1	304
Health Science/ Diagnostics	4	7	11	11	+7	+197.1%	+4	+50.9%	-0	12
Social Care	5	8	9	8	+3	+61.6%	+0	+0.6%	-0	9
Social Workers	8	5	5	4	-4	-45.9%	-1	-16.8%	-1	6
Psychologists	46	34	44	44	-2	-3.3%	+10	+29.3%	+0	48
Pharmacy	1		1	1	-0	-15.0%	+1		-0	1
H&SC, Other	18	19	18	18	-0	-1.3%	-1	-7.1%	+0	20
<b>Health &amp; Social Care Professionals</b>	<b>268</b>	<b>318</b>	<b>353</b>	<b>353</b>	<b>+86</b>	<b>+32.1%</b>	<b>+36</b>	<b>+11.3%</b>	<b>+0</b>	<b>400</b>
Management (VIII & above)	25	18	14	13	-12	-49.1%	-5	-29.4%	-1	13
Administrative/ Supervisory (V to VII)	56	67	72	72	+15	+27.1%	+5	+7.0%	+0	73
Clerical (III & IV)	164	169	178	180	+17	+10.2%	+12	+7.0%	+2	204
<b>Management &amp; Administrative</b>	<b>245</b>	<b>254</b>	<b>264</b>	<b>265</b>	<b>+20</b>	<b>+8.0%</b>	<b>+11</b>	<b>+4.4%</b>	<b>+1</b>	<b>290</b>
Support	25	21	20	20	-5	-21.7%	-1	-6.5%	-0	47
<b>General Support</b>	<b>25</b>	<b>21</b>	<b>20</b>	<b>20</b>	<b>-5</b>	<b>-21.7%</b>	<b>-1</b>	<b>-6.5%</b>	<b>-0</b>	<b>47</b>
Home Help	7	6	6	6	-1	-19.0%	-1	-9.7%	+0	15
Health Care Assistants	8	50	34	35	+27	+337.0%	-15	-30.4%	+1	36
Care, other	54	64	59	59	+5	+9.1%	-6	-8.8%	-0	72
<b>Patient &amp; Client Care</b>	<b>69</b>	<b>121</b>	<b>98</b>	<b>99</b>	<b>+31</b>	<b>+44.3%</b>	<b>-22</b>	<b>-17.8%</b>	<b>+1</b>	<b>123</b>

## CHO 6

DEC 2023	WTE DEC 2019	WTE DEC 2022(1)	WTE NOV 2023	WTE DEC 2023	WTE change since DEC 2019	% WTE change since Dec 2019	WTE change since DEC 2022	% WTE change since Dec 2022	WTE change since NOV 2023	No. DEC 2023
<b>Overall</b>	<b>765</b>	<b>864</b>	<b>913</b>	<b>928</b>	<b>+163</b>	<b>+21.4%</b>	<b>+63</b>	<b>+7.3%</b>	<b>+15</b>	<b>1,158</b>
Consultants	9	10	11	12	+2	+24.7%	+2	+16.5%	+1	14
Registrars	26	32	45	46	+20	+75.2%	+14	+43.7%	+1	47
SHO/ Interns	7	7	9	9	+3	+38.5%	+2	+26.2%	+0	16
Medical/ Dental, other	46	45	43	43	-3	-5.9%	-1	-2.6%	+0	64
<b>Medical &amp; Dental</b>	<b>88</b>	<b>93</b>	<b>108</b>	<b>110</b>	<b>+22</b>	<b>+24.5%</b>	<b>+16</b>	<b>+17.3%</b>	<b>+1</b>	<b>141</b>
Nurse/ Midwife Manager	22	31	35	36	+13	+60.0%	+5	+14.7%	+0	39
Nurse/ Midwife Specialist & AN/MP	6	10	17	17	+11	+183.4%	+7	+72.0%	-0	19
Staff Nurse/ Staff Midwife	52	61	67	72	+20	+38.3%	+11	+17.2%	+4	96
Public Health Nurse	117	99	96	98	-19	-15.9%	-1	-0.7%	+2	115
<i>Post-registration Nurse/ Midwife Student</i>	<i>14</i>	<i>7</i>	<i>6</i>	<i>6</i>	<i>-8</i>	<i>-56.3%</i>	<i>-1</i>	<i>-19.3%</i>	<i>-0</i>	<i>6</i>
Nursing/ Midwifery Student	14	7	6	6	-8	-56.3%	-1	-19.3%	-0	6
<b>Nursing &amp; Midwifery</b>	<b>210</b>	<b>208</b>	<b>222</b>	<b>228</b>	<b>+18</b>	<b>+8.5%</b>	<b>+20</b>	<b>+9.6%</b>	<b>+6</b>	<b>275</b>
Therapy Professions	104	143	157	160	+56	+54.2%	+17	+11.9%	+3	194
Health Science/ Diagnostics	18	17	17	17	-1	-4.5%	+0	+1.8%	-0	20
Social Care	4	4	4	4	+0	+5.9%	+0	+1.8%	+0	4
Social Workers	5	10	8	8	+4	+78.0%	-2	-18.4%	+0	10
Psychologists	19	16	23	22	+3	+17.8%	+6	+36.4%	-0	25
Pharmacy	1	3	2	2	+1	+146.3%	-1	-21.5%	+0	4
H&SC, Other	4	6	8	8	+4	+113.8%	+2	+32.7%	+0	9
<b>Health &amp; Social Care Professionals</b>	<b>154</b>	<b>199</b>	<b>219</b>	<b>222</b>	<b>+68</b>	<b>+44.4%</b>	<b>+23</b>	<b>+11.5%</b>	<b>+3</b>	<b>266</b>
Management (VIII & above)	30	29	22	20	-10	-32.0%	-8	-28.7%	-1	25
Administrative/ Supervisory (V to VII)	68	78	68	69	+1	+1.5%	-9	-11.3%	+1	82
Clerical (III & IV)	112	136	140	143	+32	+28.4%	+7	+5.5%	+4	172
<b>Management &amp; Administrative</b>	<b>210</b>	<b>242</b>	<b>229</b>	<b>233</b>	<b>+23</b>	<b>+11.0%</b>	<b>-10</b>	<b>-3.9%</b>	<b>+3</b>	<b>279</b>
Support	24	23	23	23	-1	-3.4%	+0	+1.8%	-0	35
Maintenance/ Technical	2	2	2	2	+0	+0.0%	+0	+0.0%	+0	4
<b>General Support</b>	<b>26</b>	<b>25</b>	<b>25</b>	<b>25</b>	<b>-1</b>	<b>-3.2%</b>	<b>+0</b>	<b>+1.7%</b>	<b>-0</b>	<b>39</b>
Health Care Assistants	6	16	20	21	+15	+234.9%	+5	+33.4%	+1	26
Care, other	71	81	90	90	+19	+26.2%	+8	+10.1%	-0	132
<b>Patient &amp; Client Care</b>	<b>77</b>	<b>97</b>	<b>110</b>	<b>111</b>	<b>+33</b>	<b>+43.1%</b>	<b>+14</b>	<b>+13.9%</b>	<b>+1</b>	<b>158</b>

## CHO 7

DEC 2023	WTE DEC 2019	WTE DEC 2022(1)	WTE NOV 2023	WTE DEC 2023	WTE change since DEC 2019	% WTE change since Dec 2019	WTE change since DEC 2022	% WTE change since Dec 2022	WTE change since NOV 2023	No. DEC 2023
<b>Overall</b>	<b>1,702</b>	<b>1,765</b>	<b>1,809</b>	<b>1,803</b>	<b>+101</b>	<b>+5.9%</b>	<b>+38</b>	<b>+2.1%</b>	<b>-6</b>	<b>2,072</b>
Consultants	11	11	13	13	+1	+11.9%	+2	+18.4%	-0	14
Registrars	46	45	58	57	+11	+24.0%	+12	+26.9%	-1	58
SHO/ Interns	6	12	15	15	+9	+147.2%	+3	+23.1%	-0	15
Medical/ Dental, other	75	61	63	65	-10	-13.5%	+4	+6.7%	+2	95
<b>Medical &amp; Dental</b>	<b>139</b>	<b>129</b>	<b>149</b>	<b>149</b>	<b>+11</b>	<b>+7.9%</b>	<b>+21</b>	<b>+16.2%</b>	<b>+1</b>	<b>182</b>
Nurse/ Midwife Manager	80	100	97	95	+14	+17.7%	-6	-5.6%	-2	102
Nurse/ Midwife Specialist & AN/MP	46	65	66	68	+22	+47.5%	+3	+4.7%	+2	78
Staff Nurse/ Staff Midwife	205	198	203	205	-0	-0.2%	+7	+3.4%	+1	245
Public Health Nurse	175	164	162	158	-17	-10.0%	-6	-3.8%	-4	188
Post-registration Nurse/ Midwife Student	21	25	11	10	-11	-52.4%	-15	-59.6%	-1	10
Nursing/ Midwifery Student	21	25	11	10	-11	-52.4%	-15	-59.6%	-1	10
Nursing/ Midwifery other	2	2	2	2	+0	+16.5%	+0	+16.5%	+0	3
<b>Nursing &amp; Midwifery</b>	<b>530</b>	<b>554</b>	<b>541</b>	<b>537</b>	<b>+7</b>	<b>+1.4%</b>	<b>-16</b>	<b>-3.0%</b>	<b>-3</b>	<b>626</b>
Therapy Professions	267	267	257	254	-13	-4.7%	-13	-4.9%	-4	294
Health Science/ Diagnostics	0	8	8	6	+6	+2,845.5%	-1	-17.1%	-2	8
Social Care	3	4	4	4	+1	+18.8%	+0	+0.8%	+0	4
Social Workers	26	30	33	34	+8	+29.5%	+4	+12.1%	+0	37
Psychologists	22	26	35	37	+15	+70.5%	+11	+42.1%	+2	41
Pharmacy	32	31	32	34	+2	+7.2%	+4	+11.5%	+2	38
H&SC, Other	24	24	28	28	+5	+18.9%	+4	+17.8%	+0	34
<b>Health &amp; Social Care Professionals</b>	<b>373</b>	<b>390</b>	<b>398</b>	<b>397</b>	<b>+24</b>	<b>+6.4%</b>	<b>+8</b>	<b>+2.0%</b>	<b>-0</b>	<b>456</b>
Management (VIII & above)	33	23	26	27	-6	-18.8%	+4	+16.0%	+1	27
Administrative/ Supervisory (V to VII)	76	84	94	94	+18	+23.7%	+10	+12.4%	-0	98
Clerical (III & IV)	178	180	202	201	+23	+13.1%	+21	+11.5%	-1	225
<b>Management &amp; Administrative</b>	<b>287</b>	<b>287</b>	<b>322</b>	<b>322</b>	<b>+35</b>	<b>+12.2%</b>	<b>+35</b>	<b>+12.2%</b>	<b>-0</b>	<b>350</b>
Support	116	106	98	97	-18	-15.9%	-9	-8.0%	-0	113
Maintenance/ Technical	9	10	9	9	-0	-1.6%	-1	-13.5%	-0	10
<b>General Support</b>	<b>125</b>	<b>116</b>	<b>107</b>	<b>106</b>	<b>-19</b>	<b>-14.9%</b>	<b>-10</b>	<b>-8.5%</b>	<b>-1</b>	<b>123</b>
Home Help			4	4	+4		+4		+0	4
Health Care Assistants	121	155	159	157	+36	+29.7%	+2	+1.5%	-2	189
Care, other	128	136	130	130	+2	+1.9%	-6	-4.3%	-0	142
<b>Patient &amp; Client Care</b>	<b>249</b>	<b>291</b>	<b>293</b>	<b>291</b>	<b>+42</b>	<b>+17.1%</b>	<b>+0</b>	<b>+0.2%</b>	<b>-2</b>	<b>335</b>

DEC 2023	WTE DEC 2019	WTE DEC 2022(1)	WTE NOV 2023	WTE DEC 2023	WTE change since DEC 2019	% WTE change since Dec 2019	WTE change since DEC 2022	% WTE change since Dec 2022	WTE change since NOV 2023	No. DEC 2023
<b>Overall</b>	<b>1,378</b>	<b>1,491</b>	<b>1,543</b>	<b>1,556</b>	<b>+178</b>	<b>+12.9%</b>	<b>+65</b>	<b>+4.3%</b>	<b>+13</b>	<b>1,825</b>
Consultants	6	6	6	5	-1	-13.2%	-1	-13.9%	-1	6
Registrars	78	92	91	89	+11	+13.8%	-3	-3.6%	-2	91
SHO/ Interns	2		1	1	-1	-50.0%	+1		+0	1
Medical/ Dental, other	61	53	48	51	-9	-15.5%	-2	-4.1%	+3	64
<b>Medical &amp; Dental</b>	<b>147</b>	<b>152</b>	<b>147</b>	<b>146</b>	<b>-0</b>	<b>-0.3%</b>	<b>-5</b>	<b>-3.5%</b>	<b>-0</b>	<b>162</b>
Nurse/ Midwife Manager	51	60	58	58	+7	+13.2%	-2	-3.4%	-1	65
Nurse/ Midwife Specialist & AN/MP	35	47	51	53	+19	+53.5%	+6	+12.2%	+2	60
Staff Nurse/ Staff Midwife	98	110	109	113	+15	+15.0%	+3	+2.8%	+4	154
Public Health Nurse	196	217	208	210	+15	+7.4%	-7	-3.1%	+3	247
Post-registration Nurse/ Midwife Student	2		5	5	+3	+152.5%	+5		+0	5
Nursing/ Midwifery Student	2		5	5	+3	+152.5%	+5		+0	5
<b>Nursing &amp; Midwifery</b>	<b>382</b>	<b>434</b>	<b>431</b>	<b>439</b>	<b>+58</b>	<b>+15.1%</b>	<b>+5</b>	<b>+1.2%</b>	<b>+9</b>	<b>531</b>
Therapy Professions	221	222	267	268	+47	+21.5%	+46	+20.8%	+1	316
Health Science/ Diagnostics	5	10	9	8	+3	+59.1%	-2	-18.9%	-1	9
Social Care		1	6	7	+7		+6	+600.0%	+1	7
Social Workers	15	28	28	29	+14	+96.7%	+1	+4.2%	+2	32
Psychologists	56	46	50	52	-4	-6.4%	+6	+14.1%	+3	57
Pharmacy	4	7	5	5	+1	+36.6%	-2	-24.5%	-0	6
H&SC, Other	25	36	37	39	+14	+56.9%	+3	+8.2%	+3	42
<b>Health &amp; Social Care Professionals</b>	<b>325</b>	<b>350</b>	<b>401</b>	<b>409</b>	<b>+84</b>	<b>+25.8%</b>	<b>+59</b>	<b>+16.9%</b>	<b>+8</b>	<b>469</b>
Management (VIII & above)	44	35	26	26	-18	-40.7%	-9	-26.1%	+0	27
Administrative/ Supervisory (V to VII)	76	95	96	95	+19	+25.1%	-0	-0.3%	-1	100
Clerical (III & IV)	260	267	295	293	+33	+12.6%	+26	+9.6%	-2	350
<b>Management &amp; Administrative</b>	<b>380</b>	<b>397</b>	<b>417</b>	<b>413</b>	<b>+34</b>	<b>+8.9%</b>	<b>+16</b>	<b>+4.1%</b>	<b>-3</b>	<b>477</b>
Support	23	19	26	26	+4	+15.5%	+7	+35.0%	+0	40
Maintenance/ Technical	3	2	1	1	-2	-64.4%	-1	-49.7%	+0	1
<b>General Support</b>	<b>25</b>	<b>21</b>	<b>27</b>	<b>27</b>	<b>+2</b>	<b>+6.7%</b>	<b>+6</b>	<b>+27.1%</b>	<b>+0</b>	<b>41</b>
Home Help	0				-0	-100.0%				
Health Care Assistants	21	36	24	23	+3	+12.9%	-12	-34.7%	-0	31
Care, other	98	101	97	98	-1	-0.7%	-4	-3.6%	+0	114
<b>Patient &amp; Client Care</b>	<b>120</b>	<b>137</b>	<b>121</b>	<b>121</b>	<b>+2</b>	<b>+1.4%</b>	<b>-16</b>	<b>-11.7%</b>	<b>+0</b>	<b>145</b>

DEC 2023	WTE DEC 2019	WTE DEC 2022(1)	WTE NOV 2023	WTE DEC 2023	WTE change since DEC 2019	% WTE change since Dec 2019	WTE change since DEC 2022	% WTE change since Dec 2022	WTE change since NOV 2023	No. DEC 2023
<b>Overall</b>	<b>1,247</b>	<b>1,357</b>	<b>1,434</b>	<b>1,435</b>	<b>+188</b>	<b>+15.1%</b>	<b>+78</b>	<b>+5.7%</b>	<b>+1</b>	<b>1,627</b>
Consultants	4	3	4	5	+0	+9.8%	+1	+40.4%	+1	5
Registrars	56	60	65	63	+8	+13.8%	+3	+5.0%	-2	66
SHO/ Interns	1	7	12	12	+11	+1,080.0%	+5	+70.3%	+0	12
Medical/ Dental, other	50	50	50	48	-2	-4.0%	-2	-4.7%	-2	61
<b>Medical &amp; Dental</b>	<b>111</b>	<b>121</b>	<b>131</b>	<b>128</b>	<b>+17</b>	<b>+15.3%</b>	<b>+7</b>	<b>+5.7%</b>	<b>-4</b>	<b>144</b>
Nurse/ Midwife Manager	37	53	63	65	+28	+75.0%	+11	+21.0%	+2	71
Nurse/ Midwife Specialist & AN/MP	6	23	32	33	+26	+413.1%	+10	+45.0%	+1	37
Staff Nurse/ Staff Midwife	100	105	114	110	+10	+10.1%	+5	+5.1%	-4	131
Public Health Nurse	175	171	172	171	-4	-2.2%	+0	+0.2%	-1	201
Post-registration Nurse/ Midwife Student	26	19	20	20	-6	-23.1%	+1	+6.3%	+0	20
Nursing/ Midwifery Student	26	19	20	20	-6	-23.1%	+1	+6.3%	+0	20
Nursing/ Midwifery other		2	1	1	+1		-1	-48.5%	+0	1
<b>Nursing &amp; Midwifery</b>	<b>345</b>	<b>373</b>	<b>402</b>	<b>400</b>	<b>+55</b>	<b>+16.0%</b>	<b>+27</b>	<b>+7.3%</b>	<b>-2</b>	<b>461</b>
Therapy Professions	196	229	226	233	+37	+18.7%	+3	+1.5%	+6	271
Health Science/ Diagnostics	20	13	14	13	-7	-35.7%	+0	+1.2%	-1	13
Social Care	4	6	8	8	+4	+84.9%	+2	+25.6%	+0	9
Social Workers	17	23	26	26	+9	+56.2%	+3	+11.2%	-0	27
Psychologists	65	72	80	79	+14	+20.8%	+7	+9.5%	-1	87
Pharmacy	12	13	15	15	+3	+27.3%	+2	+14.0%	-0	18
H&SC, Other	37	33	39	39	+3	+7.4%	+6	+19.2%	+1	45
<b>Health &amp; Social Care Professionals</b>	<b>351</b>	<b>390</b>	<b>408</b>	<b>413</b>	<b>+62</b>	<b>+17.6%</b>	<b>+23</b>	<b>+5.9%</b>	<b>+5</b>	<b>470</b>
Management (VIII & above)	28	15	17	17	-11	-38.2%	+2	+14.0%	+0	18
Administrative/ Supervisory (V to VII)	77	93	100	100	+23	+29.1%	+7	+7.7%	+0	105
Clerical (III & IV)	182	185	203	201	+19	+10.3%	+16	+8.6%	-2	225
<b>Management &amp; Administrative</b>	<b>288</b>	<b>293</b>	<b>320</b>	<b>318</b>	<b>+31</b>	<b>+10.6%</b>	<b>+25</b>	<b>+8.6%</b>	<b>-2</b>	<b>348</b>
Support	35	27	29	29	-5	-15.7%	+2	+6.6%	+0	33
<b>General Support</b>	<b>35</b>	<b>27</b>	<b>29</b>	<b>29</b>	<b>-5</b>	<b>-15.7%</b>	<b>+2</b>	<b>+6.6%</b>	<b>+0</b>	<b>33</b>
Health Care Assistants	13	35	27	31	+18	+139.0%	-3	-9.4%	+5	38
Care, other	105	118	116	115	+10	+9.8%	-3	-2.5%	-1	133
<b>Patient &amp; Client Care</b>	<b>118</b>	<b>153</b>	<b>143</b>	<b>147</b>	<b>+29</b>	<b>+24.2%</b>	<b>-6</b>	<b>-4.1%</b>	<b>+4</b>	<b>171</b>



## other Community Services

DEC 2023	WTE DEC 2019	WTE DEC 2022(1)	WTE NOV 2023	WTE DEC 2023	WTE change since DEC 2019	% WTE change since Dec 2019	WTE change since DEC 2022	% WTE change since Dec 2022	WTE change since NOV 2023	No. DEC 2023
<b>Overall</b>	<b>122</b>	<b>127</b>	<b>127</b>	<b>126</b>	<b>+4</b>	<b>+3.2%</b>	<b>-1</b>	<b>-0.9%</b>	<b>-1</b>	<b>133</b>
Consultants	1	2	2	2	+1	+100.0%	+0	+0.0%	+0	2
Registrars	12	11	14	15	+3	+26.1%	+4	+37.5%	+1	16
SHO/ Interns	2	5	2		-2	-100.0%	-5	-100.0%	-2	
Medical/ Dental, other	0				-0	-100.0%				
<b>Medical &amp; Dental</b>	<b>15</b>	<b>18</b>	<b>18</b>	<b>17</b>	<b>+2</b>	<b>+14.9%</b>	<b>-1</b>	<b>-4.8%</b>	<b>-1</b>	<b>18</b>
Nurse/ Midwife Manager	4	5	5	5	+1	+17.2%	-1	-14.6%	-1	5
Staff Nurse/ Staff Midwife	5	5	3	3	-2	-39.4%	-2	-40.1%	+0	4
<b>Nursing &amp; Midwifery</b>	<b>9</b>	<b>10</b>	<b>8</b>	<b>8</b>	<b>-1</b>	<b>-14.8%</b>	<b>-3</b>	<b>-27.1%</b>	<b>-1</b>	<b>9</b>
Health Science/ Diagnostics	8	8	8	8	+0	+4.8%	+0	+3.6%	+0	8
Social Care	2	2	2	2	+0	+17.7%	+0	+3.9%	+0	2
Social Workers	14	4	5	5	-8	-61.7%	+1	+23.6%	+0	6
Psychologists	1	1	1	1	+0	+0.0%	+0	+0.0%	+0	1
Pharmacy	3	10	12	12	+9	+336.3%	+2	+15.4%	+0	12
H&SC, Other	3	2	5	5	+2	+64.9%	+2	+92.8%	+0	5
<b>Health &amp; Social Care Professionals</b>	<b>30</b>	<b>28</b>	<b>33</b>	<b>33</b>	<b>+3</b>	<b>+11.1%</b>	<b>+5</b>	<b>+19.0%</b>	<b>+0</b>	<b>34</b>
Management (VIII & above)	19	19	20	20	+1	+6.1%	+0	+2.6%	-1	21
Administrative/ Supervisory (V to VII)	20	26	22	22	+1	+7.1%	-4	-16.2%	-0	23
Clerical (III & IV)	12	12	9	10	-2	-17.9%	-2	-16.3%	+1	10
<b>Management &amp; Administrative</b>	<b>51</b>	<b>57</b>	<b>51</b>	<b>51</b>	<b>+0</b>	<b>+0.8%</b>	<b>-6</b>	<b>-9.9%</b>	<b>-0</b>	<b>54</b>
Support	2	1	3	3	+1	+42.2%	+2	+376.2%	+0	3
Maintenance/ Technical	1	1	1	1	+0	+0.0%	+0	+0.0%	+0	1
<b>General Support</b>	<b>3</b>	<b>2</b>	<b>4</b>	<b>4</b>	<b>+1</b>	<b>+28.6%</b>	<b>+2</b>	<b>+145.4%</b>	<b>+0</b>	<b>4</b>
Care, other	15	13	13	13	-2	-10.4%	+1	+4.0%	-0	14
<b>Patient &amp; Client Care</b>	<b>15</b>	<b>13</b>	<b>13</b>	<b>13</b>	<b>-2</b>	<b>-10.4%</b>	<b>+1</b>	<b>+4.0%</b>	<b>-0</b>	<b>14</b>

Primary Care Employment Report by Grade Group: DEC 2023

DEC 2023	WTE DEC 2019	WTE DEC 2022(1)	WTE NOV 2023	WTE DEC 2023	WTE change since DEC 2019	% WTE change since Dec 2019	WTE change since DEC 2022	% WTE change since Dec 2022	WTE change since NOV 2023	No. DEC 2023
Overall	10,597	12,057	12,591	12,631	+2,033	+19.2%	+573	+4.8%	+39	14,839
Consultant Dentistry	11	13	15	15	+4	+34.1%	+2	+13.9%	-0	18
Consultant Medicine	18	24	27	28	+10	+57.8%	+4	+17.4%	+1	35
Consultant Paediatrics	2	2	2	2	+1	+35.3%	+1	+32.7%	-0	3
Consultant Pathology			1	1	+1		+1		+0	1
Consultant Psychiatry	8	8	9	9	+1	+7.5%	+1	+11.2%	+0	9
Consultant Radiology	1	1	1	1	+0	+0.0%	+0	+0.0%	+0	1
Consultant Surgery	4	3	2	3	-1	-34.6%	+0	+0.0%	+0	4
Consultants	44	50	58	59	+15	+33.8%	+8	+16.7%	+0	71
Registrar	383	422	487	483	+100	+26.0%	+61	+14.3%	-4	501
Senior Registrar	3	3	3	3	+0	+15.5%	-0	-3.3%	+0	4
Specialist Registrar	10	8	9	9	-1	-14.5%	+1	+7.5%	+0	9
Registrars	396	433	499	494	+99	+24.9%	+61	+14.1%	-4	514
Senior House Officer	36	39	46	45	+8	+23.2%	+6	+14.2%	-2	52
SHO/ Interns	36	39	46	45	+8	+23.2%	+6	+14.2%	-2	52
Dentists	301	307	302	302	+1	+0.2%	-5	-1.6%	+0	400
Other Medical	218	204	203	205	-13	-6.0%	+1	+0.5%	+2	322
Medical/ Dental, other	520	511	505	507	-12	-2.4%	-4	-0.8%	+2	722
Medical & Dental	995	1034	1108	1105	+109	+11.0%	+71	+6.9%	-3	1,359
Clinical Nurse/ Midwife Manager 1	41	46	41	41	+0	+0.8%	-5	-10.7%	-0	46
Clinical Nurse/ Midwife Manager 2	106	136	157	155	+49	+46.8%	+19	+14.1%	-2	177
Clinical Nurse/ Midwife Manager 3	22	33	33	33	+12	+54.4%	+0	+1.4%	-0	34
Director Nursing/Midwifery, Assistant	153	218	223	228	+75	+49.2%	+10	+4.7%	+5	248
Director of Nursing/Midwifery	38	44	46	45	+7	+18.9%	+0	+0.9%	-1	46
Nurse/ Midwife Manager	358	477	500	502	+144	+40.1%	+25	+5.3%	+2	551
Advanced Nurse/ Midwife Practitioner	3	17	25	26	+24	+932.7%	+9	+52.9%	+1	27
Adv. Nurse/ Midwife, Candidate		21	25	24	+24		+3	+15.0%	-2	24
Clinical Nurse/ Midwife Specialist	140	240	312	318	+178	+126.9%	+78	+32.5%	+6	360
Nurse/ Midwife Specialist & AN/MP	143	278	363	368	+226	+158.0%	+90	+32.5%	+6	411
Staff Midwives	8	5	3	3	-5	-58.9%	-1	-27.5%	+0	5
Staff Nurse [Intellectual Disability]		2	2	2	+2		-1	-28.9%	+0	2
Staff Nurse [Psychiatric]	8	14	15	15	+7	+96.4%	+1	+6.1%	-0	20
Staff Nurses [General/ Children's]	846	1,036	1,115	1,131	+285	+33.6%	+95	+9.2%	+16	1,440
Staff Nurse/ Staff Midwife	862	1,057	1,134	1,151	+289	+33.5%	+94	+8.9%	+16	1,467
Public Health Nurse	1,513	1,477	1,467	1,467	-46	-3.0%	-9	-0.6%	+0	1,745
Public Health Nurse	1,513	1,477	1,467	1,467	-46	-3.0%	-9	-0.6%	+0	1,745
Post-registration Nurse/ Midwife Student	96	96	107	105	+10	+10.0%	+10	+10.0%	-1	106
Nursing/ Midwifery Student	96	96	107	105	+10	+10.0%	+10	+10.0%	-1	106
Nursing Education/Clinical	4	5	3	3	-0	-12.4%	-2	-32.6%	+0	4
Nursing/ Midwifery other	4	5	3	3	-0	-12.4%	-2	-32.6%	+0	4
Nursing & Midwifery	2976	3389	3574	3597	+621	+20.9%	+208	+6.1%	+23	4,284
Dietitians	109	195	222	223	+114	+103.9%	+28	+14.4%	+1	258
Occupational Therapists	516	638	643	645	+129	+25.0%	+7	+1.0%	+3	744
Orthoptists	13	20	20	20	+7	+54.4%	+1	+2.5%	+1	24
Physiotherapists	543	654	708	712	+169	+31.1%	+58	+8.8%	+4	842
Podiatrists & Chiropodists	25	82	88	85	+61	+247.2%	+3	+3.6%	-3	96
Speech & Language Therapists	527	572	574	575	+48	+9.2%	+4	+0.6%	+1	657
Therapy Professions	1,733	2,162	2,254	2,261	+528	+30.5%	+99	+4.6%	+7	2,621
Audiology	44	57	63	59	+15	+33.4%	+1	+2.5%	-4	63
Biochemists	8	8	8	8	+0	+4.8%	+0	+3.6%	+0	8
Cardiac Physiologists		1	1	1	+1		+0	+0.0%	+0	1
Clinical Engineering	8	9	7	7	-1	-12.5%	-2	-21.8%	+0	7
Medical Science	16	14	15	15	-1	-5.6%	+0	+2.0%	-0	16

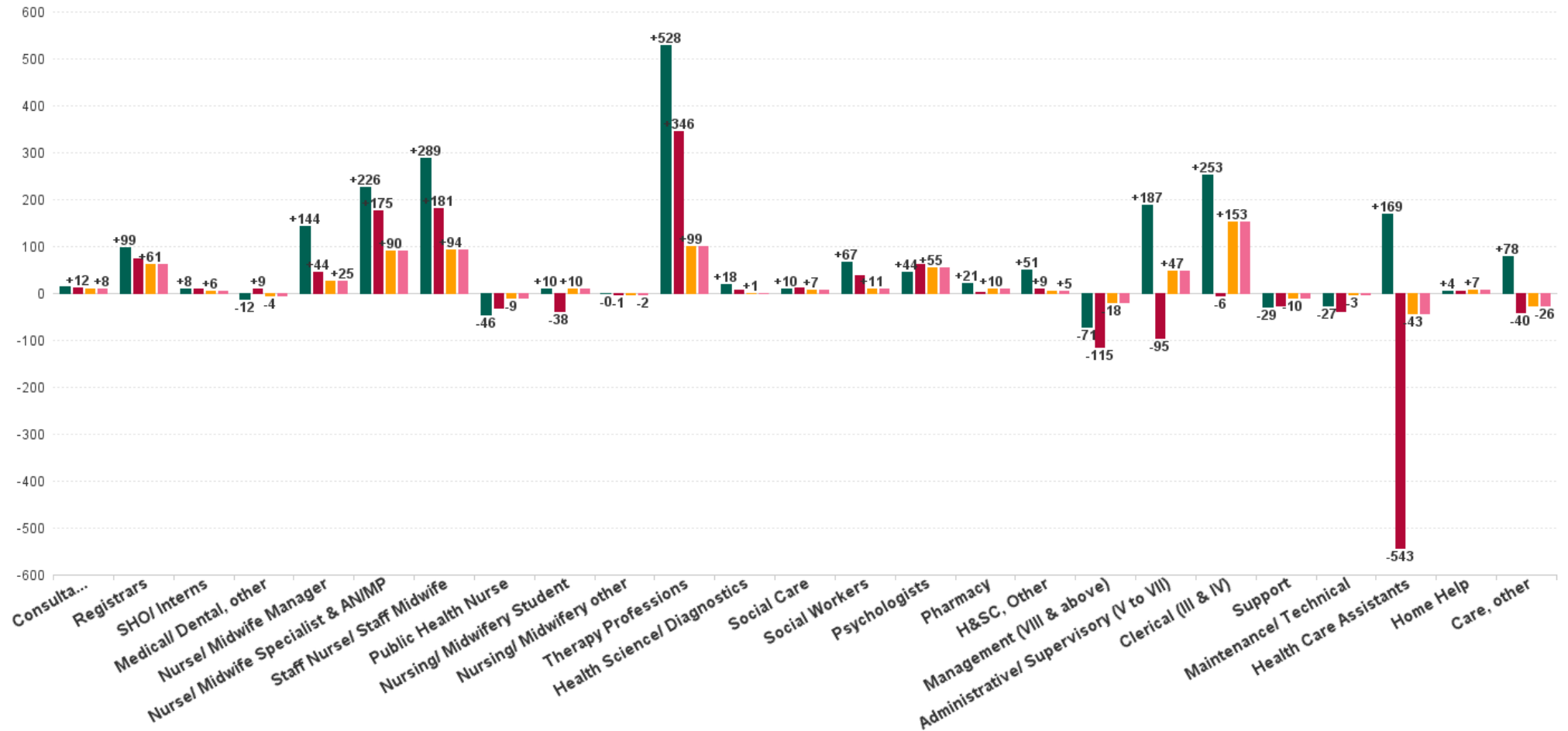


DEC 2023	WTE DEC 2019	WTE DEC 2022(1)	WTE NOV 2023	WTE DEC 2023	WTE change since DEC 2019	% WTE change since Dec 2019	WTE change since DEC 2022	% WTE change since Dec 2022	WTE change since NOV 2023	No. DEC 2023
<b>Overall</b>	<b>10,597</b>	<b>12,057</b>	<b>12,591</b>	<b>12,631</b>	<b>+2,033</b>	<b>+19.2%</b>	<b>+573</b>	<b>+4.8%</b>	<b>+39</b>	<b>14,839</b>
Phlebotomists	0	0	0	0	+0	+4.5%	-0	-23.3%	-0	1
Physicists	2	2	2	2	-0	-20.0%	-0	-1.2%	-0	2
Radiographers	4	8	8	9	+4	+94.6%	+1	+11.1%	+1	11
<b>Health Science/ Diagnostics</b>	<b>82</b>	<b>99</b>	<b>104</b>	<b>100</b>	<b>+18</b>	<b>+22.0%</b>	<b>+1</b>	<b>+0.8%</b>	<b>-4</b>	<b>109</b>
Social Care	35	39	44	45	+10	+27.4%	+7	+17.3%	+1	48
<b>Social Care</b>	<b>35</b>	<b>39</b>	<b>44</b>	<b>45</b>	<b>+10</b>	<b>+27.4%</b>	<b>+7</b>	<b>+17.3%</b>	<b>+1</b>	<b>48</b>
Social Workers	138	194	204	205	+67	+48.1%	+11	+5.5%	+1	224
<b>Social Workers</b>	<b>138</b>	<b>194</b>	<b>204</b>	<b>205</b>	<b>+67</b>	<b>+48.1%</b>	<b>+11</b>	<b>+5.5%</b>	<b>+1</b>	<b>224</b>
Psychologists	303	292	344	347	+44	+14.6%	+55	+18.9%	+3	383
<b>Psychologists</b>	<b>303</b>	<b>292</b>	<b>344</b>	<b>347</b>	<b>+44</b>	<b>+14.6%</b>	<b>+55</b>	<b>+18.9%</b>	<b>+3</b>	<b>383</b>
Pharmacists	50	58	65	67	+17	+33.8%	+9	+14.7%	+1	78
Pharmacy Technicians	8	10	12	12	+4	+47.1%	+2	+17.3%	+0	12
<b>Pharmacy</b>	<b>58</b>	<b>68</b>	<b>77</b>	<b>78</b>	<b>+21</b>	<b>+35.6%</b>	<b>+10</b>	<b>+15.1%</b>	<b>+2</b>	<b>90</b>
Counsellor Therapists	115	122	127	131	+16	+13.9%	+9	+7.6%	+3	142
Dental Hygienists	58	61	57	57	-0	-0.7%	-4	-6.2%	-0	72
Other Health & Social Care	34	44	54	57	+22	+65.4%	+13	+28.6%	+3	62
Play Therapists/ Specialists	2	1	2	2	-1	-33.3%	+0	+4.8%	+0	2
Vaccinators		26	15	14	+14		-13	-47.9%	-1	22
<b>H&amp;SC, Other</b>	<b>209</b>	<b>255</b>	<b>255</b>	<b>260</b>	<b>+51</b>	<b>+24.4%</b>	<b>+5</b>	<b>+2.1%</b>	<b>+5</b>	<b>300</b>
<b>Health &amp; Social Care Professionals</b>	<b>2558</b>	<b>3108</b>	<b>3282</b>	<b>3297</b>	<b>+738</b>	<b>+28.9%</b>	<b>+188</b>	<b>+6.1%</b>	<b>+15</b>	<b>3,775</b>
Executive Management	71	37	28	28	-43	-60.4%	-9	-24.0%	-0	29
Senior Management (VIII & GM)	234	215	206	206	-28	-11.9%	-9	-4.3%	+0	216
<b>Management (VIII &amp; above)</b>	<b>305</b>	<b>252</b>	<b>234</b>	<b>234</b>	<b>-71</b>	<b>-23.2%</b>	<b>-18</b>	<b>-7.2%</b>	<b>+0</b>	<b>245</b>
Middle Management (V-VII)	619	761	809	808	+188	+30.4%	+47	+6.1%	-1	859
Other Administrative	2	1	1	1	-1	-50.0%	+0	+1.0%	+0	1
<b>Administrative/ Supervisory (V to VII)</b>	<b>621</b>	<b>762</b>	<b>810</b>	<b>809</b>	<b>+187</b>	<b>+30.2%</b>	<b>+47</b>	<b>+6.1%</b>	<b>-1</b>	<b>860</b>
General Administrative (III & IV)	1,742	1,842	1,994	1,995	+253	+14.5%	+153	+8.3%	+1	2,309
<b>Clerical (III &amp; IV)</b>	<b>1,742</b>	<b>1,842</b>	<b>1,994</b>	<b>1,995</b>	<b>+253</b>	<b>+14.5%</b>	<b>+153</b>	<b>+8.3%</b>	<b>+1</b>	<b>2,309</b>
<b>Management &amp; Administrative</b>	<b>2668</b>	<b>2856</b>	<b>3038</b>	<b>3038</b>	<b>+370</b>	<b>+13.9%</b>	<b>+181</b>	<b>+6.3%</b>	<b>-0</b>	<b>3,414</b>
Catering	22	23	20	20	-2	-9.2%	-3	-14.1%	-0	23
Household Services	134	139	123	122	-12	-8.9%	-17	-12.2%	-1	156
Other Labs & Associated	3	1	7	7	+4	+118.6%	+5	+378.9%	+0	7
Other Support	112	104	109	108	-5	-4.1%	+4	+3.4%	-1	216
Portering	74	59	61	61	-14	-18.4%	+2	+3.0%	-1	66
<b>Support</b>	<b>346</b>	<b>327</b>	<b>320</b>	<b>317</b>	<b>-29</b>	<b>-8.2%</b>	<b>-10</b>	<b>-2.9%</b>	<b>-3</b>	<b>468</b>
Maintenance	58	34	31	31	-27	-46.1%	-2	-6.4%	+0	35
Technical Services	1	2	1	1	+0	+0.0%	-1	-50.0%	+0	1
<b>Maintenance/ Technical</b>	<b>59</b>	<b>36</b>	<b>32</b>	<b>32</b>	<b>-27</b>	<b>-45.3%</b>	<b>-3</b>	<b>-8.9%</b>	<b>+0</b>	<b>36</b>
<b>General Support</b>	<b>405</b>	<b>362</b>	<b>352</b>	<b>350</b>	<b>-55</b>	<b>-13.7%</b>	<b>-13</b>	<b>-3.5%</b>	<b>-2</b>	<b>504</b>
Home Helps	18	15	22	22	+4	+19.5%	+7	+46.3%	+0	44
<b>Home Help</b>	<b>18</b>	<b>15</b>	<b>22</b>	<b>22</b>	<b>+4</b>	<b>+19.5%</b>	<b>+7</b>	<b>+46.3%</b>	<b>+0</b>	<b>44</b>
Attendant/ Aide	35	61	63	66	+31	+88.6%	+5	+8.3%	+2	79
Health Care Assistant/ Care Assistant	150	308	220	219	+69	+46.1%	-89	-29.0%	-1	261
Health & Social Care Assistants	69	97	130	138	+69	+99.4%	+41	+42.2%	+8	154
<b>Health Care Assistants</b>	<b>254</b>	<b>466</b>	<b>413</b>	<b>422</b>	<b>+169</b>	<b>+66.5%</b>	<b>-43</b>	<b>-9.3%</b>	<b>+9</b>	<b>494</b>
Health Promotion		11	12	12	+12		+0	+2.2%	-1	13
Home Care Services	3	3	1	1	-3	-80.0%	-2	-74.3%	+0	2
Other Care Grades	713	809	786	784	+72	+10.1%	-25	-3.0%	-1	946
Pastoral Care	4	3	3	3	-1	-29.5%	-0	-4.5%	-0	3
Workshop Services	3	1	1	1	-2	-64.0%	+0	+0.0%	+0	1
<b>Care, other</b>	<b>723</b>	<b>827</b>	<b>802</b>	<b>800</b>	<b>+78</b>	<b>+10.7%</b>	<b>-26</b>	<b>-3.2%</b>	<b>-2</b>	<b>965</b>
<b>Patient &amp; Client Care</b>	<b>995</b>	<b>1308</b>	<b>1237</b>	<b>1245</b>	<b>+250</b>	<b>+25.1%</b>	<b>-63</b>	<b>-4.8%</b>	<b>+7</b>	<b>1,503</b>



## WTE Change by Staff Category

■ WTE change since DEC 2019 ■ WTE change since DEC 2021 ■ WTE change since DEC 2022 ■ WTE change since DEC 2022(1)



## Primary Care Employment Report by WTE, Headcount, Gender, Full-Time / Part-Time etc. DEC 2023

DEC 2023	WTE DEC 2023	No. DEC 2023	WTE : No	% Male	% Female	Male WTE : No.	Female WTE : No	Perm Count %	Perm Count Male %	Perm Count Female %	Fulltime Count %	Part time Count %	FT Count Male %	FT Count Female %
<b>Total</b>	<b>12,631</b>	<b>14,839</b>	<b>1:0.9</b>	<b>13.33%</b>	<b>86.67%</b>	<b>1:0.9</b>	<b>1:0.8</b>	<b>86.59%</b>	<b>10.54%</b>	<b>76.05%</b>	<b>69.33%</b>	<b>30.67%</b>	<b>84.58%</b>	<b>66.99%</b>
Consultants	58.65	71	1:0.8	33.80%	66.20%	1:0.9	1:0.8	85.92%	29.58%	56.34%	69.01%	30.99%	87.50%	59.57%
Registrars	494.26	514	1:1	36.96%	63.04%	1:1	1:0.9	2.14%	1.17%	0.97%	98.25%	1.75%	98.42%	98.15%
SHO/ Interns	44.58	52	1:0.9	21.15%	78.85%	1:0.8	1:0.9	3.85%		3.85%	100.00%		100.00%	100.00%
Medical/ Dental, other	507.08	722	1:0.7	26.45%	73.55%	1:0.7	1:0.7	85.18%	21.19%	63.99%	42.24%	57.76%	46.07%	40.87%
<b>Medical &amp; Dental</b>	<b>1,105</b>	<b>1,359</b>	<b>1:0.8</b>	<b>30.61%</b>	<b>69.39%</b>	<b>1:0.8</b>	<b>1:0.8</b>	<b>50.70%</b>	<b>13.25%</b>	<b>37.45%</b>	<b>67.03%</b>	<b>32.97%</b>	<b>73.80%</b>	<b>64.05%</b>
Nurse/ Midwife Manager	502.33	551	1:0.9	3.27%	96.73%	1:1	1:0.9	96.91%	3.09%	93.83%	76.95%	23.05%	88.89%	76.55%
Nurse/ Midwife Specialist & AN/MP	368.28	411	1:0.9	4.14%	95.86%	1:1	1:0.9	97.81%	4.14%	93.67%	73.97%	26.03%	100.00%	72.84%
Staff Nurse/ Staff Midwife	1,150.65	1,467	1:0.8	4.29%	95.71%	1:0.9	1:0.8	88.89%	3.89%	85.00%	49.28%	50.72%	79.37%	47.93%
Public Health Nurse	1,467.49	1,745	1:0.8	0.52%	99.48%	1:1	1:0.8	96.96%	0.52%	96.45%	69.34%	30.66%	88.89%	69.24%
Nursing/ Midwifery Student	105.3	106	1:1	1.89%	98.11%	1:1	1:1	35.85%		35.85%	99.06%	0.94%	100.00%	99.04%
Nursing/ Midwifery other	3.33	4	1:0.8		100.00%	1:	1:0.8	100.00%		100.00%	75.00%	25.00%		75.00%
<b>Nursing &amp; Midwifery</b>	<b>3,597</b>	<b>4,284</b>	<b>1:0.8</b>	<b>2.54%</b>	<b>97.46%</b>	<b>1:0.9</b>	<b>1:0.8</b>	<b>92.76%</b>	<b>2.33%</b>	<b>90.43%</b>	<b>64.64%</b>	<b>35.36%</b>	<b>85.32%</b>	<b>64.10%</b>
Therapy Professions	2,261.36	2,621	1:0.9	9.92%	90.08%	1:0.9	1:0.9	95.46%	9.16%	86.30%	72.07%	27.93%	89.62%	70.14%
Health Science/ Diagnostics	99.86	109	1:0.9	23.85%	76.15%	1:1	1:0.9	90.83%	22.94%	67.89%	88.07%	11.93%	92.31%	86.75%
Social Care	45.18	48	1:0.9	37.50%	62.50%	1:1	1:0.9	93.75%	35.42%	58.33%	91.67%	8.33%	94.44%	90.00%
Social Workers	204.81	224	1:0.9	15.63%	84.38%	1:1	1:0.9	92.86%	13.84%	79.02%	82.14%	17.86%	100.00%	78.84%
Psychologists	346.9	383	1:0.9	16.45%	83.55%	1:1	1:0.9	66.84%	13.32%	53.52%	79.37%	20.63%	92.06%	76.88%
Pharmacy	78.32	90	1:0.9	21.11%	78.89%	1:0.9	1:0.9	68.89%	12.22%	56.67%	62.22%	37.78%	52.63%	64.79%
H&SC, Other	260.14	300	1:0.9	26.00%	74.00%	1:0.9	1:0.8	89.33%	24.67%	64.67%	68.67%	31.33%	88.46%	61.71%
<b>Health &amp; Social Care Professionals</b>	<b>3,297</b>	<b>3,775</b>	<b>1:0.9</b>	<b>13.22%</b>	<b>86.78%</b>	<b>1:0.9</b>	<b>1:0.9</b>	<b>91.13%</b>	<b>11.89%</b>	<b>79.23%</b>	<b>73.62%</b>	<b>26.38%</b>	<b>89.38%</b>	<b>71.21%</b>
Management (VIII & above)	234.12	245	1:1	23.27%	76.73%	1:0.9	1:1	98.37%	22.04%	76.33%	95.51%	4.49%	96.49%	95.21%
Administrative/ Supervisory (V to VII)	808.79	860	1:0.9	16.74%	83.26%	1:0.9	1:0.9	96.40%	15.58%	80.81%	88.72%	11.28%	99.31%	86.59%
Clerical (III & IV)	1,994.71	2,309	1:0.9	10.65%	89.35%	1:0.9	1:0.9	87.14%	9.22%	77.91%	69.51%	30.49%	90.24%	67.04%
<b>Management &amp; Administrative</b>	<b>3,038</b>	<b>3,414</b>	<b>1:0.9</b>	<b>13.09%</b>	<b>86.91%</b>	<b>1:0.9</b>	<b>1:0.9</b>	<b>90.28%</b>	<b>11.75%</b>	<b>78.53%</b>	<b>76.22%</b>	<b>23.78%</b>	<b>93.96%</b>	<b>73.54%</b>
Support	317.3	468	1:0.7	41.03%	58.97%	1:0.9	1:0.5	74.15%	35.04%	39.10%	48.72%	51.28%	79.17%	27.54%
Maintenance/ Technical	32.44	36	1:0.9	97.22%	2.78%	1:0.9	1:0.8	100.00%	97.22%	2.78%	91.67%	8.33%	94.29%	
<b>General Support</b>	<b>350</b>	<b>504</b>	<b>1:0.7</b>	<b>45.04%</b>	<b>54.96%</b>	<b>1:0.9</b>	<b>1:0.5</b>	<b>75.99%</b>	<b>39.48%</b>	<b>36.51%</b>	<b>51.79%</b>	<b>48.21%</b>	<b>81.50%</b>	<b>27.44%</b>
Health Care Assistants	422.47	494	1:0.9	21.26%	78.74%	1:0.9	1:0.8	69.03%	15.18%	53.85%	69.64%	30.36%	86.67%	65.04%
Home Help	21.97	44	1:0.5	25.00%	75.00%	1:0.4	1:0.5	29.55%	4.55%	25.00%	13.64%	86.36%		18.18%
Care, other	800.31	965	1:0.8	16.99%	83.01%	1:0.9	1:0.8	96.06%	16.37%	79.69%	63.83%	36.17%	79.88%	60.55%
<b>Patient &amp; Client Care</b>	<b>1,245</b>	<b>1,503</b>	<b>1:0.8</b>	<b>18.63%</b>	<b>81.37%</b>	<b>1:0.9</b>	<b>1:0.8</b>	<b>85.23%</b>	<b>15.64%</b>	<b>69.59%</b>	<b>64.27%</b>	<b>35.73%</b>	<b>79.29%</b>	<b>60.83%</b>

## Primary Care Employment Report by WTE, Headcount, Gender, Full-Time / Part-Time etc. DEC 2023

DEC 2023	WTE DEC 2023	No. DEC 2023	WTE : No	% Male	% Female	Male WTE : No.	Female WTE : No	Perm Count %	Number Male %	Number Female %	Fulltime Count %	Part time Count %	FT Count Male %	FT Count Female %
<b>Total</b>	<b>12,631</b>	<b>14,839</b>	<b>1:0.9</b>	<b>13.33%</b>	<b>86.67%</b>	<b>1:0.9</b>	<b>1:0.8</b>	<b>86.59%</b>	<b>10.54%</b>	<b>76.05%</b>	<b>69.33%</b>	<b>30.67%</b>	<b>84.58%</b>	<b>66.99%</b>
CHO 1	1,554	1,798	1:0.9	13.57%	86.43%	1:0.9	1:0.9	87.99%	10.29%	77.70%	68.91%	31.09%	84.84%	66.41%
CHO 2	1,310	1,494	1:0.9	13.79%	86.21%	1:0.9	1:0.9	88.09%	10.84%	77.24%	75.70%	24.30%	87.38%	73.84%
CHO 3	889	1,039	1:0.9	8.37%	91.63%	1:0.9	1:0.9	87.87%	6.64%	81.23%	71.90%	28.10%	81.61%	71.01%
CHO 4	1,816	2,256	1:0.8	10.02%	89.98%	1:0.8	1:0.8	77.22%	6.47%	70.74%	56.83%	43.17%	71.68%	55.17%
CHO 5	1,214	1,437	1:0.8	12.87%	87.13%	1:0.9	1:0.8	88.87%	10.23%	78.64%	67.01%	32.99%	79.46%	65.18%
CHO 6	928	1,158	1:0.8	14.77%	85.23%	1:0.8	1:0.8	88.43%	12.18%	76.25%	72.97%	27.03%	90.06%	70.01%
CHO 7	1,803	2,072	1:0.9	17.18%	82.82%	1:0.9	1:0.9	90.49%	15.44%	75.05%	70.75%	29.25%	84.55%	67.89%
CHO 8	1,556	1,825	1:0.9	12.88%	87.12%	1:0.9	1:0.8	88.88%	9.53%	79.34%	67.89%	32.11%	86.81%	65.09%
CHO 9	1,435	1,627	1:0.9	13.77%	86.23%	1:0.9	1:0.9	85.43%	11.49%	73.94%	77.14%	22.86%	91.07%	74.91%
other Community Services	126	133	1:0.9	33.08%	66.92%	1:1	1:0.9	81.20%	24.81%	56.39%	90.98%	9.02%	97.73%	87.64%



## Previous Month Summary

	% WTE change since NOV 2023	WTE change since NOV 2023	CHO 1	CHO 2	CHO 3	CHO 4	CHO 5	CHO 6	CHO 7	CHO 8	CHO 9	other Community Services
<b>Total</b>	<b>+0.3%</b>	<b>+39.2</b>	<b>+6.0</b>	<b>-2.8</b>	<b>+6.3</b>	<b>+0.7</b>	<b>+7.2</b>	<b>+15.2</b>	<b>-6.2</b>	<b>+13.0</b>	<b>+0.8</b>	<b>-1.0</b>
Consultants	+0.7%	+0.4	+0.3	-0.0	-0.4	+0.3	+0.1	+0.5	-0.1	-1.0	+0.7	+0.0
Registrars	-0.9%	-4.4	-1.9	-0.2	-0.1	+0.6	+0.8	+0.7	-1.0	-2.2	-2.0	+1.0
SHO/ Interns	-3.7%	-1.7	+0.0	+0.0		+0.0	+0.0	+0.0	-0.1	+0.0	+0.0	-1.6
Medical/ Dental, other	+0.5%	+2.4	+0.4	-0.3	+1.4	-1.5	-0.3	+0.3	+1.8	+2.9	-2.3	
<b>Medical &amp; Dental</b>	<b>-0.3%</b>	<b>-3.3</b>	<b>-1.3</b>	<b>-0.5</b>	<b>+0.9</b>	<b>-0.6</b>	<b>+0.6</b>	<b>+1.5</b>	<b>+0.6</b>	<b>-0.3</b>	<b>-3.6</b>	<b>-0.6</b>
Nurse/ Midwife Manager	+0.5%	+2.4	+1.0	+1.7	+1.2	+0.5	-0.7	+0.5	-2.1	-0.5	+1.6	-0.7
Nurse/ Midwife Specialist & AN/MP	+1.6%	+5.7	+1.4	-2.2	+2.0	-1.4	+1.3	-0.2	+2.0	+2.2	+0.8	
Staff Nurse/ Staff Midwife	+1.4%	+16.3	+2.3	-0.5	+3.4	+0.6	+4.7	+4.2	+1.2	+4.1	-3.8	+0.0
Public Health Nurse	+0.0%	+0.0	+0.2	+2.3	+1.4	-3.2	-1.0	+2.0	-3.6	+2.9	-1.0	
Nursing/ Midwifery Student	-1.4%	-1.5	+0.0	+0.0	-0.6	+0.1	+0.1	-0.1	-0.9	+0.0	+0.0	
Nursing/ Midwifery other	+1.2%	+0.0							+0.0		+0.0	
<b>Nursing &amp; Midwifery</b>	<b>+0.6%</b>	<b>+23.0</b>	<b>+4.8</b>	<b>+1.3</b>	<b>+7.3</b>	<b>-3.4</b>	<b>+4.4</b>	<b>+6.4</b>	<b>-3.5</b>	<b>+8.7</b>	<b>-2.4</b>	<b>-0.7</b>
Therapy Professions	+0.3%	+7.0	+3.0	-3.9	+1.3	-1.6	+1.0	+2.9	-3.5	+1.3	+6.5	
Health Science/ Diagnostics	-3.8%	-3.9	+0.6	-0.4	-0.0	-0.2	-0.2	-0.1	-1.7	-1.0	-1.0	+0.1
Social Care	+2.4%	+1.1		-0.0		-0.1	-0.0	+0.0	+0.2	+1.0	+0.1	+0.0
Social Workers	+0.5%	+1.0	-1.2	+0.8	-0.6	+0.7	-0.7	+0.5	+0.5	+1.6	-0.4	+0.0
Psychologists	+0.8%	+2.7	-0.8	-0.2	-0.3	+0.2	+0.4	-0.5	+1.9	+2.5	-0.6	+0.0
Pharmacy	+2.0%	+1.6	+0.0	+0.0	+0.0	-0.1	-0.2	+0.0	+2.0	-0.3	-0.0	+0.1
H&SC, Other	+2.1%	+5.3	-1.0	+2.4	-0.2	+0.5	+0.0	+0.1	+0.4	+2.5	+0.7	+0.0
<b>Health &amp; Social Care Professionals</b>	<b>+0.4%</b>	<b>+14.6</b>	<b>+0.6</b>	<b>-1.4</b>	<b>+0.2</b>	<b>-0.7</b>	<b>+0.2</b>	<b>+2.9</b>	<b>-0.4</b>	<b>+7.6</b>	<b>+5.2</b>	<b>+0.2</b>
Management (VIII & above)	+0.1%	+0.2	+0.4	-0.1	+0.0	+1.2	-1.0	-1.1	+1.1	+0.3	+0.0	-0.5
Administrative/ Supervisory (V to VII)	-0.1%	-0.9	-1.7	-0.6	+0.1	+2.0	+0.0	+0.7	-0.4	-1.1	+0.0	-0.1



Clerical (III & IV)	+0.0%	+0.5	+1.2	-4.3	-1.7	+4.9	+1.9	+3.8	-1.2	-2.4	-2.2	+0.5
<b>Management &amp; Administrative</b>	<b>0.0%</b>	<b>-0.1</b>	<b>-0.1</b>	<b>-5.0</b>	<b>-1.6</b>	<b>+8.0</b>	<b>+0.9</b>	<b>+3.5</b>	<b>-0.4</b>	<b>-3.2</b>	<b>-2.1</b>	<b>-0.1</b>
Support	-0.8%	-2.6	-1.0	-0.6	+0.0	-0.7	-0.1	-0.0	-0.5	+0.0	+0.0	+0.2
Maintenance/ Technical	+0.9%	+0.3	+0.3	+0.1				+0.0	-0.0	+0.0		+0.0
<b>General Support</b>	<b>-0.7%</b>	<b>-2.3</b>	<b>-0.7</b>	<b>-0.5</b>	<b>+0.0</b>	<b>-0.7</b>	<b>-0.1</b>	<b>-0.0</b>	<b>-0.5</b>	<b>+0.0</b>	<b>+0.0</b>	<b>+0.2</b>
Health Care Assistants	+2.3%	+9.4	+2.5	+1.9	-0.4	+0.2	+1.4	+1.2	-1.6	-0.3	+4.7	
Home Help	+0.0%	+0.0	+0.0			+0.0	+0.0		+0.0			
Care, other	-0.3%	-2.1	+0.1	+1.5	-0.1	-2.2	-0.2	-0.2	-0.4	+0.4	-0.9	-0.1
<b>Patient &amp; Client Care</b>	<b>+0.6%</b>	<b>+7.3</b>	<b>+2.6</b>	<b>+3.4</b>	<b>-0.5</b>	<b>-2.0</b>	<b>+1.2</b>	<b>+1.0</b>	<b>-2.0</b>	<b>+0.1</b>	<b>+3.7</b>	<b>-0.1</b>





## Year on Year Summary

	% WTE change since DEC 2022 (1)	WTE change since DEC 2022 (1)	CHO 1	CHO 2	CHO 3	CHO 4	CHO 5	CHO 6	CHO 7	CHO 8	CHO 9	other Communi ty Services
<b>Total</b>	<b>+4.8%</b>	<b>+573.2</b>	<b>+82.1</b>	<b>-40.8</b>	<b>+117.4</b>	<b>+108.8</b>	<b>+62.9</b>	<b>+63.5</b>	<b>+37.8</b>	<b>+64.9</b>	<b>+78.0</b>	<b>-1.2</b>
Consultants	+16.7%	+8.4	+1.1	+2.0	+0.5	+0.8	-0.2	+1.6	+2.0	-0.8	+1.4	+0.0
Registrars	+14.1%	+61.0	+2.3	+0.7	+2.6	+20.5	+5.3	+13.9	+12.0	-3.3	+3.0	+4.1
SHO/ Interns	+14.2%	+5.5	+1.0	-1.0		-1.0	+1.0	+1.9	+2.8	+1.0	+4.9	-5.0
Medical/ Dental, other	-0.8%	-3.9	-0.5	+1.6	+2.3	-3.7	-2.1	-1.2	+4.1	-2.2	-2.3	
<b>Medical &amp; Dental</b>	<b>+6.9%</b>	<b>+71.0</b>	<b>+3.9</b>	<b>+3.2</b>	<b>+5.4</b>	<b>+16.6</b>	<b>+4.1</b>	<b>+16.2</b>	<b>+20.9</b>	<b>-5.3</b>	<b>+6.9</b>	<b>-0.9</b>
Nurse/ Midwife Manager	+5.3%	+25.4	+8.9	+2.5	+5.6	-2.6	+3.7	+4.6	-5.6	-2.1	+11.2	-0.8
Nurse/ Midwife Specialist & AN/MP	+32.5%	+90.3	+12.8	+3.7	+10.1	+18.4	+19.4	+7.1	+3.1	+5.8	+10.1	
Staff Nurse/ Staff Midwife	+8.9%	+94.0	+29.0	+10.2	+5.7	+15.5	+9.9	+10.5	+6.8	+3.1	+5.4	-2.1
Public Health Nurse	-0.6%	-9.4	+10.4	+2.4	+0.4	-6.0	-3.3	-0.7	-6.3	-6.6	+0.3	
Nursing/ Midwifery Student	+10.0%	+9.6	+0.4	-3.4	+8.5	+9.1	+5.1	-1.4	-14.8	+5.0	+1.2	
Nursing/ Midwifery other	-32.6%	-1.6	-1.0						+0.3		-0.9	
<b>Nursing &amp; Midwifery</b>	<b>+6.1%</b>	<b>+208.2</b>	<b>+60.5</b>	<b>+15.3</b>	<b>+30.2</b>	<b>+34.4</b>	<b>+34.8</b>	<b>+20.0</b>	<b>-16.5</b>	<b>+5.2</b>	<b>+27.3</b>	<b>-2.8</b>
Therapy Professions	+4.6%	+99.4	+10.7	-29.9	+27.8	+14.0	+23.4	+17.0	-13.2	+46.2	+3.4	
Health Science/ Diagnostics	+0.8%	+0.8	+1.8	-1.6	+0.4	-1.1	+3.8	+0.3	-1.3	-1.9	+0.2	+0.3
Social Care	+17.3%	+6.7		-1.8		+0.7	+0.1	+0.1	+0.0	+6.0	+1.6	+0.1
Social Workers	+5.5%	+10.6	+1.0	-1.1	-1.9	+6.9	-0.9	-1.9	+3.7	+1.2	+2.6	+1.0
Psychologists	+18.9%	+55.2	-1.8	-5.1	+19.5	+2.5	+10.0	+5.9	+10.9	+6.4	+6.9	+0.0
Pharmacy	+15.1%	+10.3	+0.8	+0.0	+1.0	+2.8	+0.9	-0.5	+3.5	-1.7	+1.9	+1.6
H&SC, Other	+2.1%	+5.4	-2.8	-10.4	-0.1	+2.2	-1.4	+2.0	+4.3	+3.0	+6.4	+2.3
<b>Health &amp; Social Care Professionals</b>	<b>+6.1%</b>	<b>+188.4</b>	<b>+9.8</b>	<b>-49.8</b>	<b>+46.7</b>	<b>+28.0</b>	<b>+35.9</b>	<b>+22.8</b>	<b>+7.9</b>	<b>+59.1</b>	<b>+22.9</b>	<b>+5.3</b>
Management (VIII & above)	-7.2%	-18.2	+3.0	-5.4	+1.1	-0.4	-5.4	-8.2	+3.7	-9.3	+2.1	+0.5
Administrative/ Supervisory (V to VII)	+6.1%	+46.6	+12.5	+3.8	+2.1	+19.1	+4.7	-8.8	+10.4	-0.3	+7.2	-4.2



Clerical (III & IV)	+8.3%	+152.9	+11.0	+3.2	+29.3	+29.5	+11.8	+7.5	+20.8	+25.7	+16.0	-1.9
<b>Management &amp; Administrative</b>	<b>+6.3%</b>	<b>+181.3</b>	<b>+26.6</b>	<b>+1.7</b>	<b>+32.5</b>	<b>+48.3</b>	<b>+11.1</b>	<b>-9.5</b>	<b>+34.9</b>	<b>+16.2</b>	<b>+25.3</b>	<b>-5.6</b>
Support	-2.9%	-9.5	-7.2	-3.2	-2.1	+1.4	-1.4	+0.4	-8.5	+6.8	+1.8	+2.4
Maintenance/ Technical	-8.9%	-3.2	+0.2	+0.0		-1.0		+0.0	-1.3	-1.0		+0.0
<b>General Support</b>	<b>-3.5%</b>	<b>-12.7</b>	<b>-7.0</b>	<b>-3.2</b>	<b>-2.1</b>	<b>+0.4</b>	<b>-1.4</b>	<b>+0.4</b>	<b>-9.9</b>	<b>+5.8</b>	<b>+1.8</b>	<b>+2.4</b>
Health Care Assistants	-9.3%	-43.5	-8.0	-0.1	+2.3	-14.4	-15.2	+5.3	+2.3	-12.4	-3.2	
Home Help	+46.3%	+7.0	+0.1			+3.5	-0.6		+4.0			
Care, other	-3.2%	-26.5	-3.7	-7.9	+2.4	-7.9	-5.7	+8.3	-5.8	-3.7	-3.0	+0.5
<b>Patient &amp; Client Care</b>	<b>-4.8%</b>	<b>-63.0</b>	<b>-11.6</b>	<b>-8.0</b>	<b>+4.7</b>	<b>-18.8</b>	<b>-21.6</b>	<b>+13.5</b>	<b>+0.5</b>	<b>-16.1</b>	<b>-6.2</b>	<b>+0.5</b>



## Year to Date Summary

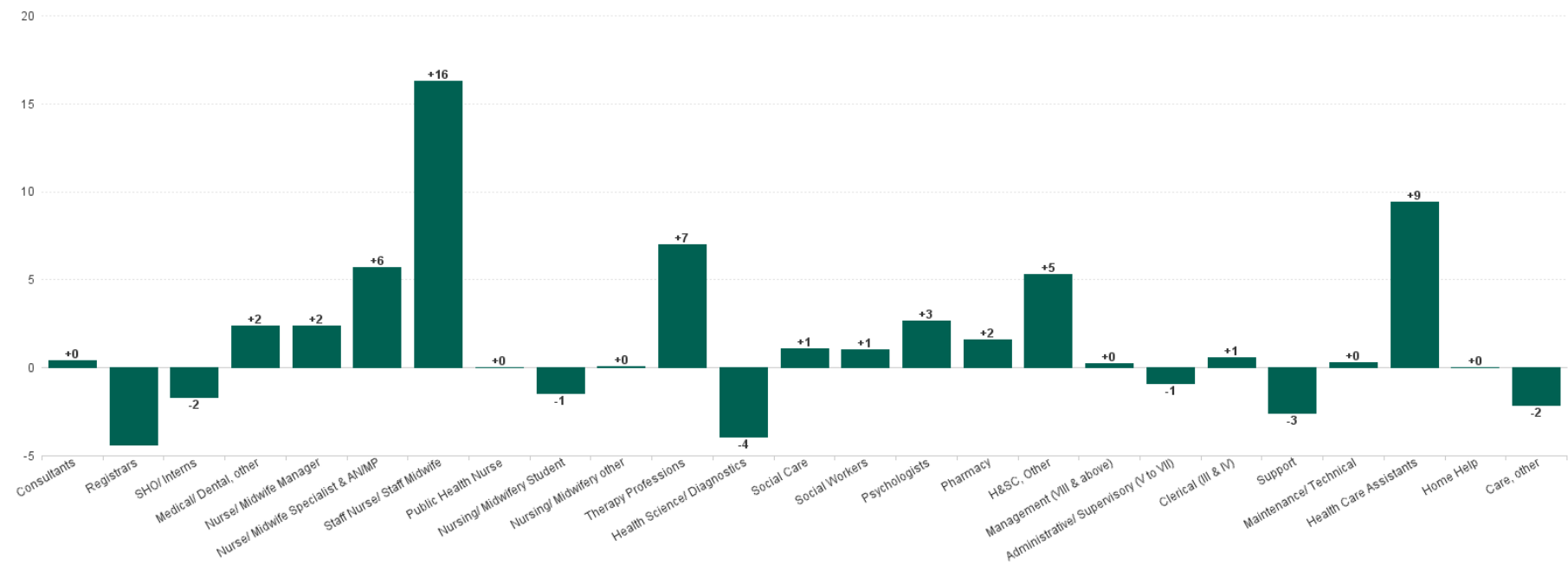
	% WTE change since DEC 2022	WTE change since DEC 2022	CHO 1	CHO 2	CHO 3	CHO 4	CHO 5	CHO 6	CHO 7	CHO 8	CHO 9	other Communi ty Services
<b>Total</b>	<b>+4.8%</b>	<b>+573.2</b>	<b>+82.1</b>	<b>-40.8</b>	<b>+117.4</b>	<b>+108.8</b>	<b>+62.9</b>	<b>+63.5</b>	<b>+37.8</b>	<b>+64.9</b>	<b>+78.0</b>	<b>-1.2</b>
Consultants	+16.7%	+8.4	+1.1	+2.0	+0.5	+0.8	-0.2	+1.6	+2.0	-0.8	+1.4	+0.0
Registrars	+14.1%	+61.0	+2.3	+0.7	+2.6	+20.5	+5.3	+13.9	+12.0	-3.3	+3.0	+4.1
SHO/ Interns	+14.2%	+5.5	+1.0	-1.0		-1.0	+1.0	+1.9	+2.8	+1.0	+4.9	-5.0
Medical/ Dental, other	-0.8%	-3.9	-0.5	+1.6	+2.3	-3.7	-2.1	-1.2	+4.1	-2.2	-2.3	
<b>Medical &amp; Dental</b>	<b>+6.9%</b>	<b>+71.0</b>	<b>+3.9</b>	<b>+3.2</b>	<b>+5.4</b>	<b>+16.6</b>	<b>+4.1</b>	<b>+16.2</b>	<b>+20.9</b>	<b>-5.3</b>	<b>+6.9</b>	<b>-0.9</b>
Nurse/ Midwife Manager	+5.3%	+25.4	+8.9	+2.5	+5.6	-2.6	+3.7	+4.6	-5.6	-2.1	+11.2	-0.8
Nurse/ Midwife Specialist & AN/MP	+32.5%	+90.3	+12.8	+3.7	+10.1	+18.4	+19.4	+7.1	+3.1	+5.8	+10.1	
Staff Nurse/ Staff Midwife	+8.9%	+94.0	+29.0	+10.2	+5.7	+15.5	+9.9	+10.5	+6.8	+3.1	+5.4	-2.1
Public Health Nurse	-0.6%	-9.4	+10.4	+2.4	+0.4	-6.0	-3.3	-0.7	-6.3	-6.6	+0.3	
Nursing/ Midwifery Student	+10.0%	+9.6	+0.4	-3.4	+8.5	+9.1	+5.1	-1.4	-14.8	+5.0	+1.2	
Nursing/ Midwifery other	-32.6%	-1.6	-1.0						+0.3		-0.9	
<b>Nursing &amp; Midwifery</b>	<b>+6.1%</b>	<b>+208.2</b>	<b>+60.5</b>	<b>+15.3</b>	<b>+30.2</b>	<b>+34.4</b>	<b>+34.8</b>	<b>+20.0</b>	<b>-16.5</b>	<b>+5.2</b>	<b>+27.3</b>	<b>-2.8</b>
Therapy Professions	+4.6%	+99.4	+10.7	-29.9	+27.8	+14.0	+23.4	+17.0	-13.2	+46.2	+3.4	
Health Science/ Diagnostics	+0.8%	+0.8	+1.8	-1.6	+0.4	-1.1	+3.8	+0.3	-1.3	-1.9	+0.2	+0.3
Social Care	+17.3%	+6.7		-1.8		+0.7	+0.1	+0.1	+0.0	+6.0	+1.6	+0.1
Social Workers	+5.5%	+10.6	+1.0	-1.1	-1.9	+6.9	-0.9	-1.9	+3.7	+1.2	+2.6	+1.0
Psychologists	+18.9%	+55.2	-1.8	-5.1	+19.5	+2.5	+10.0	+5.9	+10.9	+6.4	+6.9	+0.0
Pharmacy	+15.1%	+10.3	+0.8	+0.0	+1.0	+2.8	+0.9	-0.5	+3.5	-1.7	+1.9	+1.6
H&SC, Other	+2.1%	+5.4	-2.8	-10.4	-0.1	+2.2	-1.4	+2.0	+4.3	+3.0	+6.4	+2.3
<b>Health &amp; Social Care Professionals</b>	<b>+6.1%</b>	<b>+188.4</b>	<b>+9.8</b>	<b>-49.8</b>	<b>+46.7</b>	<b>+28.0</b>	<b>+35.9</b>	<b>+22.8</b>	<b>+7.9</b>	<b>+59.1</b>	<b>+22.9</b>	<b>+5.3</b>
Management (VIII & above)	-7.2%	-18.2	+3.0	-5.4	+1.1	-0.4	-5.4	-8.2	+3.7	-9.3	+2.1	+0.5
Administrative/ Supervisory (V to VII)	+6.1%	+46.6	+12.5	+3.8	+2.1	+19.1	+4.7	-8.8	+10.4	-0.3	+7.2	-4.2
Clerical (III & IV)	+8.3%	+152.9	+11.0	+3.2	+29.3	+29.5	+11.8	+7.5	+20.8	+25.7	+16.0	-1.9



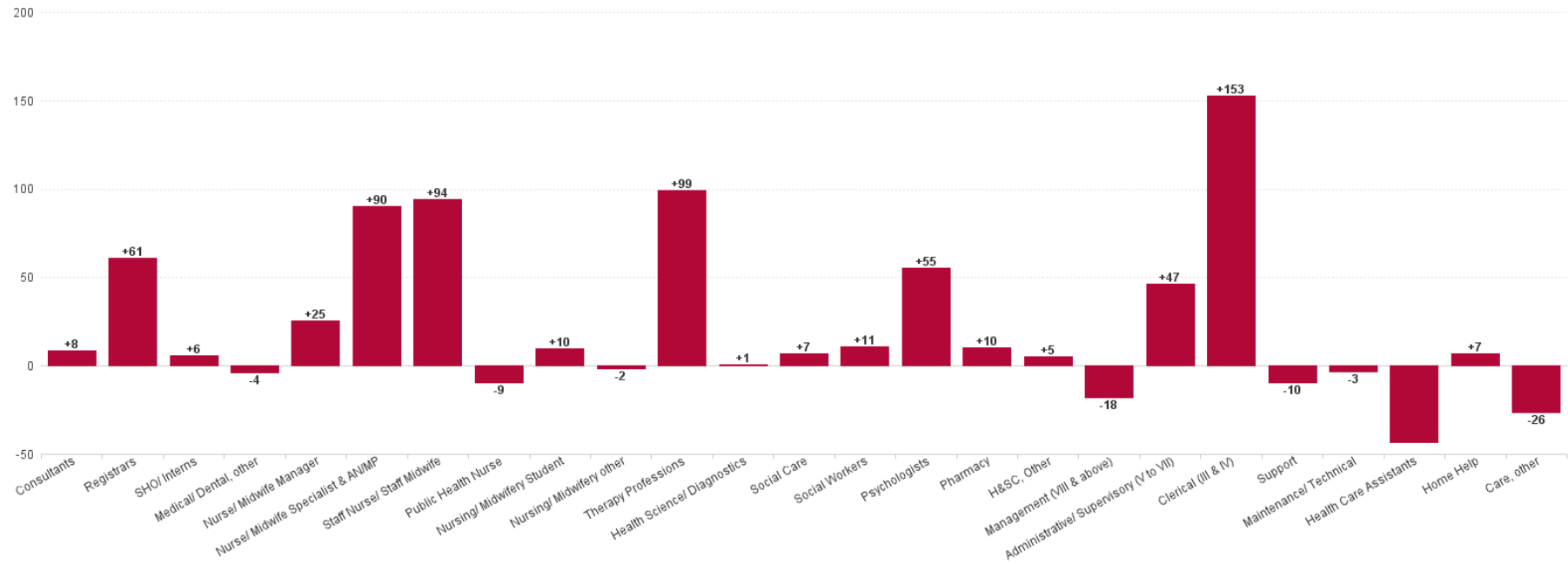
<b>Management &amp; Administrative</b>	<b>+6.3%</b>	<b>+181.3</b>	<b>+26.6</b>	<b>+1.7</b>	<b>+32.5</b>	<b>+48.3</b>	<b>+11.1</b>	<b>-9.5</b>	<b>+34.9</b>	<b>+16.2</b>	<b>+25.3</b>	<b>-5.6</b>
Support	-2.9%	-9.5	-7.2	-3.2	-2.1	+1.4	-1.4	+0.4	-8.5	+6.8	+1.8	+2.4
Maintenance/ Technical	-8.9%	-3.2	+0.2	+0.0		-1.0		+0.0	-1.3	-1.0		+0.0
<b>General Support</b>	<b>-3.5%</b>	<b>-12.7</b>	<b>-7.0</b>	<b>-3.2</b>	<b>-2.1</b>	<b>+0.4</b>	<b>-1.4</b>	<b>+0.4</b>	<b>-9.9</b>	<b>+5.8</b>	<b>+1.8</b>	<b>+2.4</b>
Health Care Assistants	-9.3%	-43.5	-8.0	-0.1	+2.3	-14.4	-15.2	+5.3	+2.3	-12.4	-3.2	
Home Help	+46.3%	+7.0	+0.1			+3.5	-0.6		+4.0			
Care, other	-3.2%	-26.5	-3.7	-7.9	+2.4	-7.9	-5.7	+8.3	-5.8	-3.7	-3.0	+0.5
<b>Patient &amp; Client Care</b>	<b>-4.8%</b>	<b>-63.0</b>	<b>-11.6</b>	<b>-8.0</b>	<b>+4.7</b>	<b>-18.8</b>	<b>-21.6</b>	<b>+13.5</b>	<b>+0.5</b>	<b>-16.1</b>	<b>-6.2</b>	<b>+0.5</b>



Previous Month Summary Chart: Change since NOV 2023



Previous Year Summary Chart: Change since DEC 2022



YTD Summary Chart: Change since 2022(1)

