

Primary Care Service Employment Report: February 2022

Employment by Staff Group

Feb 2022	WTE Dec 2019	WTE Dec 2020	WTE Jan 2022	WTE Feb 2022	WTE change since Jan 22	WTE change since Dec 20	% change since Dec 20	WTE change since Dec 19	% change since Dec 19	No. Feb 2022
Overall	10,599	11,572	12,789	12,884	+95	+1,312	+11.3%	+2,285	+21.6%	15,234
Consultants	44	42	50	51	+1	+9	+21.5%	+7	+16.4%	60
Registrars	395	403	409	406	-3	+3	+0.6%	+11	+2.8%	420
SHO/ Interns	37	42	39	39	-0	-3	-7.6%	+1	+3.7%	46
Medical/ Dental, other	520	519	495	500	+5	-19	-3.7%	-20	-3.8%	680
Medical & Dental	995	1,006	993	995	+3	-11	-1.1%	-0	-0.0%	1,206
Nurse/ Midwife Manager	359	404	463	470	+7	+65	+16.1%	+110	+30.7%	523
Nurse/ Midwife Specialist & AN/MP	143	184	204	209	+4	+25	+13.3%	+66	+46.2%	242
Staff Nurse/ Staff Midwife	862	927	984	993	+9	+66	+7.2%	+131	+15.2%	1,301
Public Health Nurse	1,512	1,533	1,492	1,479	-14	-54	-3.5%	-34	-2.2%	1,769
Post-registration Nurse/ Midwife Student	96	106	142	145	+3	+39	+36.3%	+49	+51.2%	145
Nursing/ Midwifery Student	96	106	142	145	+3	+39	+36.3%	+49	+51.2%	145
Nursing/ Midwifery other	4	7	5	6	+1	-1	-10.4%	+2	+56.8%	6
Nursing & Midwifery	2,976	3,161	3,291	3,301	+10	+140	+4.4%	+325	+10.9%	3,986
Therapy Professions	1,731	1,792	1,979	1,992	+13	+200	+11.2%	+261	+15.1%	2,359
Health Science/ Diagnostics	82	93	93	94	+1	+1	+1.0%	+12	+15.2%	106
Social Care	35	33	35	34	-0	+2	+5.1%	-1	-3.0%	37
Social Workers	139	151	180	185	+5	+34	+22.3%	+46	+32.9%	204
Psychologists	301	300	282	287	+5	-13	-4.3%	-14	-4.6%	322
Pharmacy	58	63	72	74	+2	+11	+17.3%	+16	+27.8%	82
H&SC, Other	209	209	258	242	-16	+33	+15.9%	+33	+15.8%	286
Health & Social Care Professionals	2,555	2,641	2,899	2,909	+10	+268	+10.1%	+354	+13.8%	3,396
Management (VIII & above)	306	299	355	361	+6	+63	+21.0%	+56	+18.3%	378
Administrative/ Supervisory (V to VII)	619	685	930	964	+34	+279	+40.8%	+345	+55.8%	1,030
Clerical (III & IV)	1,746	1,838	2,025	2,028	+3	+191	+10.4%	+282	+16.2%	2,368
Management & Administrative	2,671	2,821	3,310	3,354	+44	+533	+18.9%	+683	+25.6%	3,776
Support	346	351	340	342	+2	-9	-2.7%	-5	-1.4%	506
Maintenance/ Technical	59	56	69	69	+0	+13	+23.4%	+10	+17.0%	73
General Support	406	407	409	411	+2	+4	+0.9%	+5	+1.3%	579
Health Care Assistants	254	779	1,003	1,026	+23	+247	+31.6%	+772	+304.3%	1,203
Home Help	18	18	17	17	-0	-1	-6.9%	-1	-7.0%	43
Care, other	724	737	866	870	+4	+133	+18.0%	+146	+20.2%	1,045
Patient & Client Care	996	1,535	1,887	1,913	+27	+378	+24.6%	+917	+92.1%	2,291

Primary Care Services Employment by Administration (HSE / S38): February 2022

Feb 2022	WTE Dec 2019	WTE Dec 2020	WTE Jan 2022	WTE Feb 2022	WTE change since Jan 22	WTE change since Dec 20	% change since Dec 20	WTE change since Dec 19	% change since Dec 19	No. Feb 2022
Total	10,599	11,572	12,789	12,884	+95	+1,312	+11.3%	+2,285	+21.6%	15,234
HSE	9,923	10,872	12,068	12,153	+85	+1,280	+11.8%	+2,229	+22.5%	14,261
Section 38 Voluntary Agencies	676	700	722	732	+10	+31	+4.5%	+56	+8.2%	973

Employment by Staff Group

Feb 2022	WTE Dec 2019	WTE Dec 2020	WTE Jan 2022	WTE Feb 2022	WTE change since Jan 22	WTE change since Dec 20	% change since Dec 20	WTE change since Dec 19	% change since Dec 19	No. Feb 2022
Health Service Executive	9,923	10,872	12,068	12,153	+85	+1,280	+11.8%	+2,229	+22.5%	14,261
Consultants	32	30	35	35	+0	+5	+17.1%	+2	+7.2%	40
Registrars	384	390	397	393	-4	+4	+0.9%	+10	+2.5%	406
SHO/ Interns	20	22	23	23	-0	+1	+4.5%	+4	+17.9%	24
Medical/ Dental, other	505	505	477	479	+2	-25	-5.0%	-26	-5.1%	627
Medical & Dental	941	947	933	931	-2	-16	-1.7%	-10	-1.1%	1,097
Nurse/ Midwife Manager	310	356	411	418	+7	+62	+17.4%	+107	+34.5%	465
Nurse/ Midwife Specialist & AN/MP	114	147	167	172	+5	+25	+17.1%	+58	+50.9%	197
Staff Nurse/ Staff Midwife	752	819	868	877	+9	+57	+7.0%	+125	+16.6%	1,159
Public Health Nurse	1,512	1,533	1,492	1,479	-14	-54	-3.5%	-34	-2.2%	1,769
Post-registration Nurse/ Midwife Student	96	106	142	145	+3	+39	+36.3%	+49	+51.2%	145
Nursing/ Midwifery Student	96	106	142	145	+3	+39	+36.3%	+49	+51.2%	145
Nursing/ Midwifery other	2	5	3	4	+1	-1	-14.8%	+2	+120.0%	4
Nursing & Midwifery	2,787	2,965	3,083	3,094	+11	+129	+4.3%	+307	+11.0%	3,739
Therapy Professions	1,694	1,756	1,946	1,957	+11	+201	+11.4%	+263	+15.5%	2,313
Health Science/ Diagnostics	78	89	90	92	+1	+3	+3.3%	+13	+17.2%	101
Social Care	35	33	35	34	-0	+2	+5.1%	-1	-3.0%	37
Social Workers	128	141	169	173	+4	+32	+22.8%	+45	+34.8%	190
Psychologists	300	299	281	286	+5	-13	-4.3%	-14	-4.6%	321
Pharmacy	48	53	62	64	+2	+11	+20.0%	+16	+34.0%	71
H&SC, Other	208	206	255	239	-16	+33	+16.2%	+31	+15.0%	280
Health & Social Care Professionals	2,492	2,577	2,838	2,846	+8	+268	+10.4%	+354	+14.2%	3,313
Management (VIII & above)	297	290	347	353	+6	+63	+21.6%	+56	+18.8%	366
Administrative/ Supervisory (V to VII)	585	653	895	930	+35	+277	+42.4%	+345	+58.9%	984
Clerical (III & IV)	1,683	1,769	1,957	1,956	-1	+187	+10.6%	+274	+16.3%	2,262
Management & Administrative	2,565	2,713	3,199	3,240	+40	+527	+19.4%	+674	+26.3%	3,612
Support	252	255	247	248	+1	-7	-2.9%	-4	-1.4%	393
Maintenance/ Technical	50	46	59	59	-0	+13	+27.5%	+9	+17.2%	60
General Support	302	302	306	307	+1	+5	+1.8%	+5	+1.7%	453
Health Care Assistants	152	671	891	914	+23	+243	+36.2%	+763	+503.5%	1,066
Home Help	18	18	17	17	-0	-1	-6.9%	-1	-7.0%	43
Care, other	667	679	800	804	+4	+126	+18.5%	+137	+20.6%	938
Patient & Client Care	837	1,368	1,709	1,736	+27	+367	+26.8%	+899	+107.4%	2,047

Employment by Staff Group

Feb 2022	WTE Dec 2019	WTE Dec 2020	WTE Jan 2022	WTE Feb 2022	WTE change since Jan 22	WTE change since Dec 20	% change since Dec 20	WTE change since Dec 19	% change since Dec 19	No. Feb 2022
Section 38 Voluntary Agencies	676	700	722	732	+10	+31	+4.5%	+56	+8.2%	973
Consultants	11	12	15	16	+1	+4	+32.1%	+5	+42.6%	20
Registrars	11	13	12	12	+1	-1	-7.4%	+1	+12.2%	14
SHO/ Interns	18	20	16	16		-4	-21.1%	-2	-12.1%	22
Medical/ Dental, other	14	14	18	21	+3	+6	+43.2%	+6	+43.3%	53
Medical & Dental	54	60	60	65	+5	+5	+8.4%	+10	+18.9%	109
Nurse/ Midwife Manager	49	49	52	52	-0	+3	+6.6%	+3	+6.2%	58
Nurse/ Midwife Specialist & AN/MP	29	37	37	37	-1	-1	-1.7%	+8	+27.5%	45
Staff Nurse/ Staff Midwife	110	108	117	117	-0	+9	+8.2%	+7	+6.0%	142
Nursing/ Midwifery other	2	2	2	2						2
Nursing & Midwifery	190	196	208	207	-1	+11	+5.8%	+18	+9.3%	247
Therapy Professions	37	36	33	35	+2	-0	-0.9%	-2	-4.9%	46
Health Science/ Diagnostics	4	5	3	3	-0	-2	-42.4%	-1	-26.9%	5
Social Workers	11	10	11	12	+1	+2	+16.1%	+1	+9.5%	14
Psychologists	1	1	1	1	-0					1
Pharmacy	10	9	10	10	-0	+0	+1.6%	-0	-2.3%	11
H&SC, Other	2	3	3	3		+0	+1.2%	+2	+128.7%	6
Health & Social Care Professionals	64	64	61	63	+2	-0	-0.8%	-0	-0.2%	83
Management (VIII & above)	9	9	8	9	+0					12
Administrative/ Supervisory (V to VII)	34	32	35	34	-1	+3	+8.1%	+1	+1.8%	46
Clerical (III & IV)	64	68	68	72	+4	+4	+5.5%	+8	+13.1%	106
Management & Administrative	106	108	111	115	+4	+6	+5.8%	+9	+8.5%	164
Support	95	96	93	94	+0	-2	-2.3%	-1	-1.2%	113
Maintenance/ Technical	9	10	10	10	+0	+0	+4.5%	+1	+16.1%	13
General Support	104	106	103	104	+1	-2	-1.6%	+0	+0.3%	126
Health Care Assistants	102	108	112	112	-0	+4	+3.4%	+9	+9.3%	137
Care, other	57	59	66	66	+0	+7	+12.3%	+9	+16.2%	107
Patient & Client Care	159	167	178	178	-0	+11	+6.5%	+19	+11.7%	244

Primary Care Services Employment by CHO: Feb 2022

Feb 2022	WTE Dec 2019	WTE Dec 2020	WTE Jan 2022	WTE Feb 2022	WTE change since Jan 22	WTE change since Dec 20	% change since Dec 20	WTE change since Dec 19	% change since Dec 19	No. Feb 2022
Overall	10,599	11,572	12,789	12,884	+95	+1,312	+11.3%	+2,285	+21.6%	15,234
CHO 1	1,182	1,296	1,482	1,505	+23	+209	+16.1%	+323	+27.4%	1,752
CHO 2	1,134	1,235	1,399	1,407	+8	+173	+14.0%	+274	+24.1%	1,597
CHO 3	764	812	989	1,003	+14	+192	+23.6%	+240	+31.4%	1,172
CHO 4	1,346	1,517	1,721	1,728	+7	+211	+13.9%	+382	+28.4%	2,143
CHO 5	952	1,061	1,157	1,185	+27	+124	+11.7%	+233	+24.5%	1,429
CHO 6	765	811	873	889	+15	+78	+9.6%	+124	+16.2%	1,126
CHO 7	1,702	1,789	1,889	1,905	+16	+116	+6.5%	+203	+11.9%	2,218
CHO 8	1,387	1,506	1,618	1,610	-8	+104	+6.9%	+223	+16.1%	1,917
CHO 9	1,247	1,412	1,511	1,505	-6	+93	+6.6%	+258	+20.7%	1,721
other Community Services	122	134	150	147	-3	+13	+9.8%	+25	+20.0%	159

Primary Care Services Employment by CHO etc. Feb 2022

CHO 1

Feb 2022	WTE Dec 2019	WTE Dec 2020	WTE Jan 2022	WTE Feb 2022	WTE change since Jan 22	WTE change since Dec 20	% change since Dec 20	WTE change since Dec 19	% change since Dec 19	No. Feb 2022
Overall	1,182	1,296	1,482	1,505	+23	+209	+16.1%	+323	+27.4%	1,752
Consultants	3	4	5	5	0	+2	+43.8%	+2	+68.7%	6
Registrars	41	42	44	46	+2	+4	+9.7%	+5	+12.8%	48
SHO/ Interns	1	1	1	1	0					1
Medical/ Dental, other	47	45	42	43	+0	-2	-5.0%	-5	-9.6%	51
Medical & Dental	92	92	93	95	+2	+3	+3.7%	+3	+3.0%	106
Nurse/ Midwife Manager	36	39	44	41	-2	+3	+6.7%	+5	+13.8%	48
Nurse/ Midwife Specialist & AN/MP	21	26	31	32	+1	+6	+22.7%	+11	+55.1%	34
Staff Nurse/ Staff Midwife	85	96	108	110	+3	+14	+14.6%	+25	+29.2%	145
Public Health Nurse	156	153	146	147	+0	-6	-3.8%	-9	-5.8%	171
Nursing/ Midwifery Student	7	3	15	15	0	+12	+400.0%	+8	+114.9%	15
Nursing/ Midwifery other	1	1	1	2	+1	+1	+104.1%	+1	+100.0%	2
Nursing & Midwifery	306	318	345	348	+3	+30	+9.4%	+41	+13.5%	415
Therapy Professions	227	230	231	231	-0	+1	+0.3%	+4	+1.8%	271
Health Science/ Diagnostics	5	5	8	8	+1	+3	+65.6%	+3	+58.4%	11
Social Workers	13	16	27	30	+3	+15	+91.8%	+18	+141.2%	33
Psychologists	35	31	27	29	+1	-3	-9.2%	-6	-17.8%	32
Pharmacy	1	2	3	3	-0	+1	+66.5%	+2	+304.3%	4
H&SC, Other	7	7	16	14	-2	+6	+88.0%	+7	+97.7%	24
Health & Social Care Professionals	287	292	312	315	+3	+23	+8.0%	+28	+9.7%	375
Management (VIII & above)	32	30	40	41	+1	+11	+35.2%	+9	+27.2%	42
Administrative/ Supervisory (V to VII)	64	76	99	106	+6	+30	+39.0%	+42	+66.3%	112
Clerical (III & IV)	236	250	315	318	+3	+68	+27.3%	+82	+34.9%	363
Management & Administrative	331	356	454	464	+10	+108	+30.5%	+133	+40.1%	517
Support	72	77	82	84	+3	+7	+8.8%	+12	+17.2%	116
Maintenance/ Technical	6	7	9	9	0	+2	+29.1%	+3	+50.5%	9
General Support	78	84	91	93	+3	+9	+10.5%	+15	+19.7%	125
Health Care Assistants	32	96	111	110	-2	+14	+14.6%	+78	+244.0%	121
Home Help		1	1	0	-0	-0	-42.7%	+0	-100.0%	1
Care, other	55	58	76	80	+4	+21	+36.7%	+25	+44.9%	92
Patient & Client Care	87	155	188	190	+2	+35	+22.6%	+103	+118.5%	214

CHO 2

Feb 2022	WTE Dec 2019	WTE Dec 2020	WTE Jan 2022	WTE Feb 2022	WTE change since Jan 22	WTE change since Dec 20	% change since Dec 20	WTE change since Dec 19	% change since Dec 19	No. Feb 2022
Overall	1,134	1,235	1,399	1,407	+8	+173	+14.0%	+274	+24.1%	1,597
Consultants	1	1	3	3	0	+2	+130.8%	+2	+140.0%	3
Registrars	40	47	47	47	-0	-1	-1.6%	+7	+16.3%	48
SHO/ Interns	1	3	4	3	-1			+2	+200.0%	3
Medical/ Dental, other	46	49	42	44	+1	-6	-11.5%	-2	-4.5%	55
Medical & Dental	88	101	96	96	+0	-5	-4.7%	+8	+9.4%	109
Nurse/ Midwife Manager	27	28	28	28	+0	+0	+0.8%	+1	+2.9%	31
Nurse/ Midwife Specialist & AN/MP	17	21	25	26	+0	+5	+22.1%	+8	+48.7%	29
Staff Nurse/ Staff Midwife	74	79	92	91	-1	+12	+15.1%	+17	+22.8%	111
Public Health Nurse	191	198	188	187	-1	-11	-5.3%	-4	-1.9%	215
Post-registration Nurse/ Midwife Student	4		20	20	0	+20	-100.0%	+16	+400.0%	20
Nursing/ Midwifery Student	4		20	20	0	+20	-100.0%	+16	+400.0%	20
Nursing & Midwifery	313	326	353	352	-1	+26	+8.1%	+38	+12.3%	406
Therapy Professions	226	248	268	273	+6	+26	+10.3%	+47	+20.9%	313
Health Science/ Diagnostics	6	7	9	9	0	+2	+28.9%	+3	+51.5%	9
Social Care	8	9	8	8	+0	-0	-2.8%	-0	-0.4%	9
Social Workers	7	6	8	9	+1	+3	+51.6%	+2	+27.9%	9
Psychologists	24	27	29	27	-2	+1	+1.9%	+3	+12.8%	33
Pharmacy	1	1	2	2	0	+1	+100.0%	+1	+100.0%	2
H&SC, Other	40	42	49	50	+0	+8	+19.1%	+10	+24.0%	55
Health & Social Care Professionals	312	339	373	378	+5	+40	+11.7%	+66	+21.1%	430
Management (VIII & above)	33	35	42	41	-1	+6	+16.7%	+8	+25.0%	42
Administrative/ Supervisory (V to VII)	62	73	112	117	+5	+44	+60.4%	+55	+89.1%	121
Clerical (III & IV)	238	229	242	241	-0	+13	+5.6%	+4	+1.6%	269
Management & Administrative	333	337	396	400	+4	+63	+18.7%	+67	+20.2%	432
Support	21	22	20	20	+0	-2	-9.1%	-1	-3.9%	40
Maintenance/ Technical	9	8	10	10	0	+2	+25.3%	+1	+11.1%	10
General Support	30	30	30	30	+0	+0	+0.0%	+0	+0.6%	50
Health Care Assistants	14	57	86	86	+0	+30	+51.9%	+72	+505.0%	98
Care, other	43	46	65	65	-0	+19	+41.0%	+22	+50.6%	72
Patient & Client Care	57	103	151	151	-0	+48	+47.1%	+94	+164.1%	170

CHO 3

Feb 2022	WTE Dec 2019	WTE Dec 2020	WTE Jan 2022	WTE Feb 2022	WTE change since Jan 22	WTE change since Dec 20	% change since Dec 20	WTE change since Dec 19	% change since Dec 19	No. Feb 2022
Overall	764	812	989	1,003	+14	+192	+23.6%	+240	+31.4%	1,172
Consultants	2	1	1	1	0			-1	-35.0%	2
Registrars	24	25	27	26	-1	+1	+4.3%	+2	+9.9%	27
SHO/ Interns	6	1				-1	-100.0%	-6	-100.0%	
Medical/ Dental, other	52	52	44	43	-1	-9	-17.0%	-9	-17.3%	53
Medical & Dental	84	79	73	70	-2	-9	-11.1%	-13	-16.0%	82
Nurse/ Midwife Manager	19	23	20	23	+3	+0	+2.1%	+5	+24.5%	26
Nurse/ Midwife Specialist & AN/MP	2	3	9	9	-0	+6	+192.7%	+7	+339.0%	9
Staff Nurse/ Staff Midwife	56	56	69	69	+1	+14	+24.6%	+14	+24.4%	90
Public Health Nurse	126	126	126	123	-3	-3	-2.1%	-3	-2.5%	154
Post-registration Nurse/ Midwife Student		4	11	11	0	+7	+175.0%	+11	-100.0%	11
Nursing/ Midwifery Student		4	11	11	0	+7	+175.0%	+11	-100.0%	11
Nursing & Midwifery	203	212	236	236	+0	+24	+11.5%	+33	+16.2%	290
Therapy Professions	86	84	141	136	-5	+53	+63.2%	+50	+58.7%	160
Health Science/ Diagnostics	5	6	5	4	-1	-2	-29.1%	-1	-11.4%	5
Social Care	1	1	1	1	0					1
Social Workers	11	10	12	11	-0	+1	+12.5%	+1	+6.8%	13
Psychologists	15	15	13	14	+1	-0	-2.7%	-1	-8.5%	16
Pharmacy	1	1	2	2	0	+1	+100.0%	+1	+100.0%	2
H&SC, Other	11	10	9	9	+0	-1	-10.3%	-2	-14.7%	11
Health & Social Care Professionals	129	126	183	178	-5	+52	+41.1%	+49	+37.7%	208
Management (VIII & above)	23	24	31	30	-1	+6	+26.4%	+7	+29.1%	31
Administrative/ Supervisory (V to VII)	54	63	83	92	+9	+29	+46.0%	+38	+70.5%	100
Clerical (III & IV)	156	150	188	189	+1	+39	+26.2%	+33	+21.2%	219
Management & Administrative	234	237	302	312	+10	+75	+31.5%	+78	+33.4%	350
Support	13	13	15	14	-1	+1	+4.3%	+1	+5.2%	30
Maintenance/ Technical	30	27	35	35	-0	+8	+29.2%	+5	+17.1%	35
General Support	43	40	50	49	-1	+8	+21.0%	+6	+13.4%	65
Health Care Assistants	21	67	83	95	+12	+28	+41.2%	+74	+352.8%	106
Home Help	1	1				-1	-100.0%	-1	-100.0%	
Care, other	49	50	63	64	+1	+14	+29.1%	+15	+29.9%	71
Patient & Client Care	71	117	146	159	+13	+41	+35.2%	+88	+124.0%	177

CHO 4

Feb 2022	WTE Dec 2019	WTE Dec 2020	WTE Jan 2022	WTE Feb 2022	WTE change since Jan 22	WTE change since Dec 20	% change since Dec 20	WTE change since Dec 19	% change since Dec 19	No. Feb 2022
Overall	1,346	1,517	1,721	1,728	+7	+211	+13.9%	+382	+28.4%	2,143
Consultants	3	3	5	6	+1	+4	+141.9%	+4	+141.0%	10
Registrars	55	58	46	48	+2	-10	-16.6%	-6	-11.4%	51
SHO/ Interns	6	7	3	4	+1	-3	-44.1%	-2	-35.0%	4
Medical/ Dental, other	88	91	95	101	+6	+10	+11.4%	+13	+14.8%	167
Medical & Dental	152	159	150	160	+10	+1	+0.8%	+8	+5.5%	232
Nurse/ Midwife Manager	56	61	77	76	-1	+15	+25.1%	+20	+35.0%	84
Nurse/ Midwife Specialist & AN/MP	4	7	7	8	+1	+1	+9.3%	+4	+85.0%	9
Staff Nurse/ Staff Midwife	119	139	143	146	+3	+7	+5.1%	+27	+22.4%	201
Public Health Nurse	211	222	214	212	-2	-10	-4.4%	+1	+0.5%	257
Post-registration Nurse/ Midwife Student	17	15	23	24	+1	+9	+60.6%	+7	+39.1%	24
Nursing/ Midwifery Student	17	15	23	24	+1	+9	+60.6%	+7	+39.1%	24
Nursing & Midwifery	408	443	464	465	+1	+22	+5.0%	+58	+14.1%	575
Therapy Professions	222	237	282	291	+9	+54	+22.6%	+69	+31.2%	350
Health Science/ Diagnostics	11	12	13	12	-0	+0	+2.3%	+2	+13.9%	14
Social Care	8	5	8	8	0	+3	+60.0%	+0	+2.4%	8
Social Workers	24	28	30	29	-1	+1	+4.1%	+5	+20.8%	31
Psychologists	20	22	19	17	-1	-4	-19.5%	-3	-14.5%	21
Pharmacy	3	4	4	4	0	+0	+5.2%	+1	+35.8%	5
H&SC, Other	41	41	56	42	-15	+1	+2.2%	+1	+1.7%	47
Health & Social Care Professionals	329	349	412	404	-8	+55	+15.7%	+75	+22.7%	476
Management (VIII & above)	37	35	34	38	+4	+3	+8.5%	+1	+2.6%	39
Administrative/ Supervisory (V to VII)	68	73	95	94	-1	+22	+29.7%	+26	+38.3%	104
Clerical (III & IV)	205	224	257	253	-5	+29	+13.0%	+48	+23.3%	313
Management & Administrative	310	331	387	385	-2	+54	+16.2%	+75	+24.2%	456
Support	16	18	16	16	-0	-2	-12.6%	+0	+1.1%	31
Maintenance/ Technical			1	1	0	+1	-100.0%	+1	-100.0%	1
General Support	16	18	17	17	-0	-1	-7.1%	+1	+7.5%	32
Health Care Assistants	17	103	158	162	+5	+59	+57.3%	+145	+834.0%	190
Home Help	10	9	9	9	+0	+0	+2.5%	-1	-7.2%	22
Care, other	105	105	124	126	+2	+21	+19.6%	+21	+20.3%	160
Patient & Client Care	132	218	291	298	+6	+80	+36.7%	+165	+125.2%	372

CHO 5

Feb 2022	WTE Dec 2019	WTE Dec 2020	WTE Jan 2022	WTE Feb 2022	WTE change since Jan 22	WTE change since Dec 20	% change since Dec 20	WTE change since Dec 19	% change since Dec 19	No. Feb 2022
Overall	952	1,061	1,157	1,185	+27	+124	+11.7%	+233	+24.5%	1,429
Consultants	3	1	2	2	+0	+1	+100.0%	-1	-33.3%	2
Registrars	18	21	26	26	-0	+5	+25.2%	+8	+44.2%	26
SHO/ Interns	6	2	1	1	0	-1	-55.6%	-5	-83.3%	1
Medical/ Dental, other	54	55	58	58	-0	+3	+6.4%	+4	+7.3%	81
Medical & Dental	81	79	88	87	-0	+8	+10.7%	+6	+7.3%	110
Nurse/ Midwife Manager	26	46	50	51	+0	+4	+9.4%	+24	+92.6%	57
Nurse/ Midwife Specialist & AN/MP	6	18	20	23	+4	+6	+31.6%	+18	+311.2%	28
Staff Nurse/ Staff Midwife	67	84	93	98	+4	+14	+16.1%	+31	+45.9%	130
Public Health Nurse	165	167	158	160	+2	-7	-4.3%	-5	-3.0%	193
Post-registration Nurse/ Midwife Student	5	3	6	7	+1	+4	+110.2%	+2	+40.0%	7
Nursing/ Midwifery Student	5	3	6	7	+1	+4	+110.2%	+2	+40.0%	7
Nursing/ Midwifery other	1	1				-1	-100.0%	-1	-100.0%	
Nursing & Midwifery	270	320	328	339	+11	+19	+6.0%	+69	+25.5%	415
Therapy Professions	183	186	224	230	+6	+45	+24.0%	+47	+25.7%	266
Health Science/ Diagnostics	4	8	7	7	+0	-1	-12.8%	+3	+75.0%	7
Social Care	5	5	4	5	+0	-1	-11.9%	-1	-14.1%	5
Social Workers	8	7	5	7	+1	-0	-3.0%	-1	-17.8%	8
Psychologists	44	38	34	35	+1	-3	-8.9%	-9	-20.2%	39
Pharmacy	1	1	1	1	0	-0	-12.0%	-0	-12.0%	1
H&SC, Other	18	19	19	19	+0	-0	-0.2%	+0	+2.5%	21
Health & Social Care Professionals	264	264	294	303	+9	+39	+14.9%	+39	+14.9%	347
Management (VIII & above)	25	24	24	26	+1	+2	+9.6%	+0	+1.7%	28
Administrative/ Supervisory (V to VII)	52	59	69	68	-1	+9	+15.5%	+16	+30.2%	71
Clerical (III & IV)	164	161	158	162	+4	+1	+0.8%	-2	-1.0%	187
Management & Administrative	241	243	251	255	+4	+13	+5.2%	+14	+6.0%	286
Support	26	26	24	24	-1	-3	-10.2%	-2	-8.2%	53
General Support	26	26	24	24	-1	-3	-10.2%	-2	-8.2%	53
Health Care Assistants	8	70	105	108	+3	+38	+54.4%	+100	+1247.5%	120
Home Help	7	8	7	7	-0	-0	-6.0%	+0	+1.0%	20
Care, other	55	52	61	62	+1	+9	+18.0%	+7	+12.1%	78
Patient & Client Care	70	130	173	177	+4	+47	+36.2%	+107	+151.9%	218

CHO 6

Feb 2022	WTE Dec 2019	WTE Dec 2020	WTE Jan 2022	WTE Feb 2022	WTE change since Jan 22	WTE change since Dec 20	% change since Dec 20	WTE change since Dec 19	% change since Dec 19	No. Feb 2022
Overall	765	811	873	889	+15	+78	+9.6%	+124	+16.2%	1,126
Consultants	9	8	8	8	0			-1	-10.2%	10
Registrars	26	24	25	25	-0	+1	+3.1%	-2	-5.8%	25
SHO/ Interns	7	7	7	7	0					13
Medical/ Dental, other	46	41	43	43	-0	+1	+3.6%	-4	-7.7%	61
Medical & Dental	88	80	83	82	-1	+2	+2.8%	-6	-6.8%	109
Nurse/ Midwife Manager	22	22	23	24	+1	+2	+8.1%	+2	+8.8%	28
Nurse/ Midwife Specialist & AN/MP	6	4	5	5	-0	+1	+38.3%	-1	-18.7%	5
Staff Nurse/ Staff Midwife	52	55	56	56	+0	+1	+2.0%	+4	+8.2%	82
Public Health Nurse	117	112	107	104	-3	-8	-7.2%	-13	-11.1%	123
Post-registration Nurse/ Midwife Student	14	15	10	11	+1	-4	-27.9%	-3	-20.4%	11
Nursing/ Midwifery Student	14	15	10	11	+1	-4	-27.9%	-3	-20.4%	11
Nursing Education/Clinical		1	1	1	0			+1	-100.0%	1
Nursing/ Midwifery other		1	1	1	0			+1	-100.0%	1
Nursing & Midwifery	210	209	202	201	-1	-8	-3.8%	-10	-4.6%	250
Therapy Professions	104	110	119	120	+1	+9	+8.6%	+16	+15.6%	151
Health Science/ Diagnostics	18	20	19	19	+1	-1	-4.3%	+1	+6.0%	22
Social Care	4	3	3	3	0	+0	+8.6%	-1	-21.9%	3
Social Workers	5	4	11	10	-1	+6	+138.6%	+6	+119.9%	12
Psychologists	19	20	18	20	+2	+0	+2.5%	+2	+8.2%	24
Pharmacy	1	1	3	3	0	+2	+200.0%	+2	+275.0%	3
H&SC, Other	4	4	8	8	-0	+4	+102.3%	+4	+108.7%	9
Health & Social Care Professionals	154	162	181	184	+2	+21	+13.2%	+30	+19.5%	224
Management (VIII & above)	30	30	39	41	+1	+10	+34.6%	+11	+35.3%	45
Administrative/ Supervisory (V to VII)	68	65	84	88	+4	+22	+34.4%	+20	+28.9%	102
Clerical (III & IV)	112	128	132	133	+2	+6	+4.4%	+22	+19.5%	163
Management & Administrative	210	223	255	262	+6	+39	+17.3%	+52	+24.8%	310
Support	24	26	24	24	-0	-2	-6.3%	+0	+1.5%	38
Maintenance/ Technical	2	2	2	2	0					4
General Support	26	28	26	26	-0	-2	-5.9%	+0	+1.4%	42
Health Care Assistants	6	38	46	53	+7	+15	+39.7%	+47	+739.2%	67
Care, other	71	72	81	82	+1	+10	+14.2%	+11	+15.2%	124
Patient & Client Care	77	110	127	135	+8	+25	+23.0%	+57	+74.1%	191

CHO 7

Feb 2022	WTE Dec 2019	WTE Dec 2020	WTE Jan 2022	WTE Feb 2022	WTE change since Jan 22	WTE change since Dec 20	% change since Dec 20	WTE change since Dec 19	% change since Dec 19	No. Feb 2022
Overall	1,702	1,789	1,889	1,905	+16	+116	+6.5%	+203	+11.9%	2,218
Consultants	11	13	13	13	+0	+0	+1.6%	+1	+11.4%	14
Registrars	46	44	46	46	-0	+3	+6.0%	+1	+1.1%	47
SHO/ Interns	6	9	10	10	0	+1	+11.1%	+4	+67.2%	10
Medical/ Dental, other	75	77	65	65	-0	-12	-15.8%	-11	-14.4%	88
Medical & Dental	139	142	134	133	-0	-8	-5.8%	-5	-3.7%	159
Nurse/ Midwife Manager	80	86	100	102	+3	+17	+19.4%	+22	+27.3%	112
Nurse/ Midwife Specialist & AN/MP	46	56	54	54	-1	-2	-3.6%	+8	+16.5%	63
Staff Nurse/ Staff Midwife	205	199	200	201	+0	+1	+0.7%	-5	-2.2%	251
Public Health Nurse	175	177	169	164	-5	-13	-7.1%	-11	-6.5%	203
Post-registration Nurse/ Midwife Student	21	23	25	25	0	+2	+8.7%	+4	+19.0%	25
Nursing/ Midwifery Student	21	23	25	25	0	+2	+8.7%	+4	+19.0%	25
Nursing/ Midwifery other	2	2	2	2	0					2
Nursing & Midwifery	530	542	550	547	-3	+5	+1.0%	+18	+3.3%	656
Therapy Professions	267	257	252	258	+5	+0	+0.2%	-9	-3.3%	305
Health Science/ Diagnostics	0	1	0	3	+3	+2	+159.8%	+3	+1340.9%	5
Social Care	3	4	3	3	-0	-1	-25.1%	-1	-15.8%	3
Social Workers	26	26	26	27	+1	+1	+2.1%	+0	+1.8%	30
Psychologists	22	25	27	28	+1	+3	+9.9%	+6	+29.1%	32
Pharmacy	32	31	33	34	+1	+3	+10.3%	+2	+6.2%	37
H&SC, Other	24	21	23	23	+0	+3	+12.0%	-0	-2.0%	29
Health & Social Care Professionals	373	365	364	375	+12	+10	+2.8%	+2	+0.5%	441
Management (VIII & above)	33	30	41	41	+0	+11	+37.1%	+8	+24.4%	42
Administrative/ Supervisory (V to VII)	76	87	117	128	+11	+41	+46.7%	+52	+68.4%	133
Clerical (III & IV)	178	193	204	208	+3	+15	+7.8%	+30	+16.7%	238
Management & Administrative	287	310	362	377	+15	+67	+21.6%	+90	+31.3%	413
Support	116	110	104	105	+1	-5	-4.9%	-11	-9.5%	121
Maintenance/ Technical	9	9	10	10	+0	+0	+4.8%	+1	+12.3%	11
General Support	125	120	114	115	+1	-5	-4.1%	-10	-7.9%	132
Health Care Assistants	121	184	214	213	-1	+28	+15.4%	+92	+75.6%	257
Care, other	128	126	152	145	-7	+19	+14.8%	+17	+13.3%	160
Patient & Client Care	249	310	366	357	-8	+47	+15.1%	+108	+43.6%	417

CHO 8

Feb 2022	WTE Dec 2019	WTE Dec 2020	WTE Jan 2022	WTE Feb 2022	WTE change since Jan 22	WTE change since Dec 20	% change since Dec 20	WTE change since Dec 19	% change since Dec 19	No. Feb 2022
Overall	1,387	1,506	1,618	1,610	-8	+104	+6.9%	+223	+16.1%	1,917
Consultants	6	6	6	6	0	-0	-2.0%			6
Registrars	78	82	85	84	-2	+2	+1.9%	+5	+6.8%	87
SHO/ Interns	2	1				-1	-100.0%	-2	-100.0%	
Medical/ Dental, other	61	61	56	54	-2	-7	-11.0%	-7	-10.9%	66
Medical & Dental	147	149	147	143	-3	-6	-4.0%	-3	-2.2%	159
Nurse/ Midwife Manager	51	51	61	63	+2	+12	+23.9%	+12	+23.1%	69
Nurse/ Midwife Specialist & AN/MP	35	42	42	43	+0	+1	+2.2%	+8	+23.4%	52
Staff Nurse/ Staff Midwife	98	104	107	107	+0	+3	+2.7%	+9	+8.8%	151
Public Health Nurse	196	197	203	201	-2	+4	+2.0%	+5	+2.6%	239
Post-registration Nurse/ Midwife Student	2	12	8	8	0	-4	-33.3%	+6	+304.0%	8
Nursing/ Midwifery Student	2	12	8	8	0	-4	-33.3%	+6	+304.0%	8
Nursing/ Midwifery other		1				-1	-100.0%		-100.0%	
Nursing & Midwifery	382	407	421	422	+0	+15	+3.7%	+40	+10.4%	519
Therapy Professions	221	228	238	234	-4	+6	+2.6%	+14	+6.2%	287
Health Science/ Diagnostics	5	7	9	9	-0	+2	+23.0%	+4	+72.1%	10
Social Care		1	1	1	0			+1	-100.0%	1
Social Workers	16	16	21	21	+0	+5	+34.2%	+5	+34.9%	24
Psychologists	56	56	50	49	-0	-7	-11.8%	-6	-11.5%	55
Pharmacy	4	5	7	7	+0	+2	+43.7%	+3	+83.3%	7
H&SC, Other	25	26	32	32	-0	+6	+23.3%	+7	+28.8%	38
Health & Social Care Professionals	326	339	358	354	-4	+14	+4.3%	+28	+8.6%	422
Management (VIII & above)	45	41	45	45	+0	+4	+10.0%	-0	-0.4%	47
Administrative/ Supervisory (V to VII)	78	84	113	112	-1	+28	+32.9%	+34	+43.8%	118
Clerical (III & IV)	265	272	275	274	-1	+2	+0.8%	+10	+3.7%	330
Management & Administrative	387	397	433	431	-2	+34	+8.5%	+44	+11.2%	495
Support	23	20	20	20	+0	-0	-0.3%	-2	-10.3%	37
Maintenance/ Technical	3	3	3	3	-0	-0	-6.5%	-0	-2.8%	3
General Support	25	23	23	23	+0	-0	-1.1%	-2	-9.4%	40
Health Care Assistants	21	90	127	126	-1	+36	+39.8%	+106	+509.3%	153
Home Help	0						-100.0%	-0	-100.0%	
Care, other	98	100	110	111	+1	+11	+11.3%	+13	+12.9%	129
Patient & Client Care	120	190	237	237	+1	+47	+24.8%	+118	+98.6%	282

CHO 9

Feb 2022	WTE Dec 2019	WTE Dec 2020	WTE Jan 2022	WTE Feb 2022	WTE change since Jan 22	WTE change since Dec 20	% change since Dec 20	WTE change since Dec 19	% change since Dec 19	No. Feb 2022
Overall	1,247	1,412	1,511	1,505	-6	+93	+6.6%	+258	+20.7%	1,721
Consultants	4	4	4	4	0			+0	+0.7%	5
Registrars	56	52	51	47	-4	-5	-10.3%	-9	-15.9%	49
SHO/ Interns	1	5	10	9	-1	+4	+81.0%	+8	+805.0%	10
Medical/ Dental, other	50	49	50	50	+0	+1	+2.0%	+0	+0.7%	58
Medical & Dental	111	111	114	110	-4	-0	-0.3%	-0	-0.4%	122
Nurse/ Midwife Manager	37	43	55	55	+0	+12	+29.2%	+18	+50.1%	62
Nurse/ Midwife Specialist & AN/MP	6	8	10	10	-1	+2	+20.1%	+3	+54.9%	13
Staff Nurse/ Staff Midwife	100	105	110	108	-2	+3	+2.5%	+8	+7.6%	131
Public Health Nurse	175	182	180	181	+0	-1	-0.7%	+6	+3.2%	214
Post-registration Nurse/ Midwife Student	26	31	24	24	0	-7	-22.6%	-2	-7.7%	24
Nursing/ Midwifery Student	26	31	24	24	0	-7	-22.6%	-2	-7.7%	24
Nursing/ Midwifery other		1	1	1	0	-0	-4.0%	+1	-100.0%	1
Nursing & Midwifery	345	370	380	379	-2	+8	+2.3%	+34	+9.9%	445
Therapy Professions	196	211	223	218	-5	+8	+3.6%	+22	+11.3%	256
Health Science/ Diagnostics	20	20	18	16	-2	-4	-19.5%	-4	-22.3%	16
Social Care	4	4	4	4	-1	+0	+4.7%	-1	-11.6%	5
Social Workers	17	23	23	25	+1	+2	+9.1%	+8	+48.5%	26
Psychologists	65	65	65	66	+2	+1	+1.6%	+1	+1.6%	69
Pharmacy	12	15	14	14	+0	-1	-3.9%	+2	+20.0%	17
H&SC, Other	37	36	42	43	+1	+7	+20.4%	+6	+16.8%	49
Health & Social Care Professionals	351	373	390	386	-3	+14	+3.7%	+35	+9.9%	438
Management (VIII & above)	28	29	34	34	-0	+5	+17.8%	+6	+20.2%	35
Administrative/ Supervisory (V to VII)	77	88	133	137	+4	+49	+54.9%	+60	+76.9%	145
Clerical (III & IV)	182	221	233	231	-2	+10	+4.7%	+49	+26.8%	265
Management & Administrative	288	338	400	402	+1	+64	+19.0%	+114	+39.6%	445
Support	35	33	33	32	-0	-1	-3.5%	-2	-7.0%	37
General Support	35	33	33	32	-0	-1	-3.5%	-2	-7.0%	37
Health Care Assistants	13	74	74	73	-1	-1	-1.3%	+60	+456.8%	91
Care, other	105	114	120	123	+3	+10	+8.5%	+18	+17.4%	143
Patient & Client Care	118	187	194	196	+2	+9	+4.6%	+78	+66.1%	234

other Community Services

Feb 2022	WTE Dec 2019	WTE Dec 2020	WTE Jan 2022	WTE Feb 2022	WTE change since Jan 22	WTE change since Dec 20	% change since Dec 20	WTE change since Dec 19	% change since Dec 19	No. Feb 2022
Overall	122	134	150	147	-3	+13	+9.8%	+25	+20.0%	159
Consultants	1	1	2	2	0	+1	+100.0%	+1	+100.0%	2
Registrars	12	9	11	12	+0	+3	+34.6%	-0	-1.8%	12
SHO/ Interns	2	6	4	4	+0	-2	-33.3%	+2	+158.1%	4
Medical/ Dental, other	0	0				-0	-100.0%	-0	-100.0%	
Medical & Dental	15	16	17	18	+1	+2	+12.2%	+3	+19.3%	18
Nurse/ Midwife Manager	4	6	6	6	+0	-1	-11.1%	+2	+43.1%	6
Staff Nurse/ Staff Midwife	5	9	7	8	+0	-2	-19.5%	+2	+47.8%	9
Nursing & Midwifery	9	16	13	13	+0	-3	-16.1%	+4	+45.8%	15
Health Science/ Diagnostics	8	8	7	7	+0	-1	-12.2%	-1	-10.7%	7
Social Care	2	2	2	2	+0	+0	+3.2%	+0	+21.5%	2
Social Workers	14	16	17	16	-1	+0	+0.1%	+2	+15.3%	18
Psychologists	1	1	1	1	0					1
Pharmacy	3	3	4	4	+0	+1	+33.3%	+1	+46.5%	4
H&SC, Other	3	4	3	3	0	-1	-21.1%	+0	+3.1%	3
Health & Social Care Professionals	30	33	33	33	-0	-1	-2.0%	+3	+10.1%	35
Management (VIII & above)	19	21	25	25	+0	+4	+17.9%	+6	+34.6%	27
Administrative/ Supervisory (V to VII)	20	17	25	23	-2	+6	+38.9%	+3	+14.5%	24
Clerical (III & IV)	12	12	21	19	-1	+7	+58.4%	+7	+60.2%	21
Management & Administrative	51	50	70	68	-3	+17	+34.8%	+17	+32.7%	72
Support	2	4	2	2	+0	-2	-40.5%	+0	+12.8%	3
Maintenance/ Technical	1						-100.0%	-1	-100.0%	
General Support	3	4	2	2	+0	-2	-40.5%	-1	-23.5%	3
Care, other	15	15	15	14	-2	-1	-9.9%	-1	-9.1%	16
Patient & Client Care	15	15	15	14	-2	-1	-9.9%	-1	-9.1%	16

Primary Care Services Employment by Grade Group: Feb 2022

Feb 2022	WTE Dec 2019	WTE Dec 2020	WTE Jan 2022	WTE Feb 2022	WTE change since Jan 22	WTE change since Dec 20	% change since Dec 20	WTE change since Dec 19	% change since Dec 19	No. Feb 2022
Overall	10,599	11,572	12,789	12,884	+95	+1,312	+11.3%	+2,285	+21.6%	15,234
Consultant Dentistry	11	10	12	13	+1	+2	+23.0%	+1	+12.6%	15
Consultant Medicine	18	20	24	24	+0	+4	+17.9%	+6	+34.7%	28
Consultant Paediatrics	2	2	2	2						2
Consultant Psychiatry	8	8	9	9		+1	+11.9%	+1	+12.3%	10
Consultant Radiology	1	1	1	1						1
Consultant Surgery	4	1	3	3		+2	+338.3%	-1	-35.1%	4
Consultants	44	42	50	51	+1	+9	+21.5%	+7	+16.4%	60
Registrar	382	390	395	391	-5	+1	+0.2%	+9	+2.3%	403
Senior Registrar	3	2	4	5	+1	+3	+145.2%	+2	+73.7%	5
Specialist Registrar	10	11	10	10	+1	-1	-8.7%	+0	+3.4%	12
Registrars	395	403	409	406	-3	+3	+0.6%	+11	+2.8%	420
Senior House Officer	37	42	39	39	-0	-3	-7.6%	+1	+3.7%	46
SHO/ Interns	37	42	39	39	-0	-3	-7.6%	+1	+3.7%	46
Dentists	301	302	304	305	+1	+3	+1.1%	+4	+1.3%	410
Other Medical	218	217	191	195	+4	-22	-10.3%	-23	-10.7%	270
Medical/ Dental, other	520	519	495	500	+5	-19	-3.7%	-20	-3.8%	680
Medical & Dental	995	1,006	993	995	+3	-11	-1.1%	-0	-0.0%	1,206
Clinical Nurse/ Midwife Manager	168	192	208	211	+2	+18	+9.5%	+43	+25.5%	239
Director Nursing/Midwifery, Assistant	154	172	209	214	+5	+42	+24.4%	+60	+38.6%	236
Director of Nursing/Midwifery	38	40	46	45	-1	+5	+12.6%	+8	+21.1%	48
Nurse/ Midwife Manager	359	404	463	470	+7	+65	+16.1%	+110	+30.7%	523
Advanced Nurse/ Midwife Practitioner	3	13	15	16	+1	+3	+22.1%	+14	+537.8%	17
Clinical Nurse/ Midwife Specialist	140	171	189	192	+3	+22	+12.7%	+52	+37.3%	225
Nurse/ Midwife Specialist & AN/MP	143	184	204	209	+4	+25	+13.3%	+66	+46.2%	242
Staff Midwives	8	6	5	4	-0	-1	-20.4%	-4	-46.1%	6
Staff Nurse [Psychiatric]	9	14	12	13	+0	-1	-5.8%	+4	+50.3%	19
Staff Nurses [General/ Children's]	845	908	967	976	+9	+68	+7.5%	+130	+15.4%	1,275
Staff Nurse [Intellectual Disability]			1	1	-0	+1	-100.0%	+1	-100.0%	1
Staff Nurse/ Staff Midwife	862	927	984	993	+9	+66	+7.2%	+131	+15.2%	1,301
Public Health Nurse	1,512	1,533	1,492	1,479	-14	-54	-3.5%	-34	-2.2%	1,769
Post-registration Nurse/ Midwife Student	96	106	142	145	+3	+39	+36.3%	+49	+51.2%	145
Nursing/ Midwifery Student	96	106	142	145	+3	+39	+36.3%	+49	+51.2%	145
Nursing Education/Clinical	4	7	5	6	+1	-1	-10.4%	+2	+56.8%	6
Nursing/ Midwifery other	4	7	5	6	+1	-1	-10.4%	+2	+56.8%	6
Nursing & Midwifery	2,976	3,161	3,291	3,301	+10	+140	+4.4%	+325	+10.9%	3,986
Dietitians	109	125	133	134	+1	+10	+7.9%	+25	+23.2%	163
Occupational Therapists	515	543	608	612	+4	+68	+12.6%	+97	+18.7%	714
Orthoptists	13	18	17	18	+1	+0	+2.7%	+5	+35.8%	22
Physiotherapists	543	561	624	624	-0	+63	+11.2%	+81	+15.0%	756
Podiatrists & Chiropodists	25	30	55	60	+5	+31	+103.9%	+36	+144.6%	72
Speech & Language Therapists	526	516	542	544	+2	+28	+5.5%	+18	+3.4%	632
Therapy Professions	1,731	1,792	1,979	1,992	+13	+200	+11.2%	+261	+15.1%	2,359
Audiology	44	52	53	53	-0	+1	+1.7%	+9	+21.3%	59
Biochemists	8	8	7	7	+0	-1	-12.2%	-1	-10.7%	7
Cardiac Physiologists			1	1		+1	-100.0%	+1	-100.0%	1
Clinical Engineering	8	8	9	9	+0	+1	+8.7%	+1	+8.7%	9
Medical Science	16	18	17	18	+1	+0	+0.1%	+2	+12.9%	19
Phlebotomists	0	1	0	0	-0	-1	-82.0%			1
Physicists	2	2	2	2	+0	-0	-10.0%	-0	-10.0%	2
Radiographers	4	4	4	5	+1	+0	+9.8%	+0	+8.1%	8
Health Science/ Diagnostics	82	93	93	94	+1	+1	+1.0%	+12	+15.2%	106

Feb 2022	WTE Dec 2019	WTE Dec 2020	WTE Jan 2022	WTE Feb 2022	WTE change since Jan 22	WTE change since Dec 20	% change since Dec 20	WTE change since Dec 19	% change since Dec 19	No. Feb 2022
Overall	10,599	11,572	12,789	12,884	+95	+1,312	+11.3%	+2,285	+21.6%	15,234
Social Care	35	33	35	34	-0	+2	+5.1%	-1	-3.0%	37
Social Workers	139	151	180	185	+5	+34	+22.3%	+46	+32.9%	204
Psychologists	301	300	282	287	+5	-13	-4.3%	-14	-4.6%	322
Pharmacists	50	55	63	65	+2	+10	+17.7%	+15	+29.9%	72
Pharmacy Technicians	8	8	9	9	-0	+1	+14.2%	+1	+14.9%	10
Pharmacy	58	63	72	74	+2	+11	+17.3%	+16	+27.8%	82
Counsellor Therapists	115	112	123	125	+1	+13	+11.6%	+10	+8.6%	140
Dental Hygienists	57	61	60	60	+0	-1	-1.4%	+3	+5.2%	74
Environmental Health Officers	1						-100.0%	-1	-100.0%	
HSCP Trainees/ Students			0	0	+0	+0	-100.0%	+0	-100.0%	1
Other Health & Social Care	34	34	40	40	+0	+6	+18.0%	+6	+16.7%	43
Play Therapists/ Specialists	2	2	1	1		-1	-32.2%	-1	-37.2%	2
Vaccinators			33	16	-18	+16	-100.0%	+16	-100.0%	26
H&SC, Other	209	209	258	242	-16	+33	+15.9%	+33	+15.8%	286
Health & Social Care Professionals	2,555	2,641	2,899	2,909	+10	+268	+10.1%	+354	+13.8%	3,396
Executive Management	71	74	76	75	-1	+1	+1.1%	+4	+6.3%	77
Senior Management (VIII & GM)	235	224	279	286	+7	+62	+27.5%	+51	+21.9%	301
Management (VIII & above)	306	299	355	361	+6	+63	+21.0%	+56	+18.3%	378
Middle Management (V-VII)	617	684	925	953	+28	+269	+39.4%	+336	+54.5%	1,019
Other Administrative	2	1	5	11	+6	+10	+1025.8%	+9	+446.0%	11
Administrative/ Supervisory (V to VII)	619	685	930	964	+34	+279	+40.8%	+345	+55.8%	1,030
General Administrative (III & IV)	1,746	1,838	2,025	2,028	+3	+191	+10.4%	+282	+16.2%	2,368
Clerical (III & IV)	1,746	1,838	2,025	2,028	+3	+191	+10.4%	+282	+16.2%	2,368
Management & Administrative	2,671	2,821	3,310	3,354	+44	+533	+18.9%	+683	+25.6%	3,776
Catering	22	22	21	21	-0	-1	-5.1%	-2	-7.0%	23
Household Services	134	137	136	137	+1	+0	+0.1%	+3	+2.2%	169
Other Labs & Associated	3	5	3	3	+0	-2	-33.4%	+0	+7.1%	4
Other Support	113	113	111	112	+1	-1	-1.0%	-1	-0.5%	236
Portering	74	74	69	68	-1	-6	-7.8%	-6	-7.9%	74
Support	346	351	340	342	+2	-9	-2.7%	-5	-1.4%	506
Maintenance	58	55	67	67	+0	+12	+22.1%	+9	+15.6%	71
Technical Services	1	1	2	2		+1	+100.0%	+1	+100.0%	2
Maintenance/ Technical	59	56	69	69	+0	+13	+23.4%	+10	+17.0%	73
General Support	406	407	409	411	+2	+4	+0.9%	+5	+1.3%	579
Attendant/ Aide	35	41	46	44	-2	+3	+7.5%	+9	+25.8%	55
Health & Social Care Assistants	69	105	73	79	+5	-26	-24.6%	+10	+14.0%	85
Health Care Assistant/ Care Assistant	150	634	884	903	+19	+270	+42.6%	+754	+503.2%	1,063
HCA (Student Nurse/Midwife COVID-19)		0				-0	-100.0%		-100.0%	
Health Care Assistants	254	779	1,003	1,026	+23	+247	+31.6%	+772	+304.3%	1,203
Home Help	18	18	17	17	-0	-1	-6.9%	-1	-7.0%	43
Health Promotion			1	1		+1	-100.0%	+1	-100.0%	1
Home Care Services	5	5	3	3	+1	-1	-28.5%	-2	-36.4%	5
Other Care Grades	712	728	857	860	+3	+132	+18.2%	+148	+20.8%	1,032
Pastoral Care	4	3	3	3		+0	+10.8%	-1	-25.8%	4
Workshop Services	3	2	3	3		+1	+23.5%	+0	+2.2%	3
Care, other	724	737	866	870	+4	+133	+18.0%	+146	+20.2%	1,045
Patient & Client Care	996	1,535	1,887	1,913	+27	+378	+24.6%	+917	+92.1%	2,291

Employment by WTE, Headcount, Gender, Full-Time /Part-Time etc.: Feb 2022

Primary Care Services Staff Group	WTE	Headcount	WTE: no.	% Male	% female	Male WTE: no.	Female WTE: no.	% Total Perm	% Male Perm	% Female Perm	% Total Full Time	% Total Part Time	% Male FT	% Female FT
Overall	12,884	15,234	1.18	14.6%	85.4%	1.10	1.20	78.8%	66.6%	80.9%	69.8%	30.2%	84.8%	67.2%
Consultant Dentistry	13	15	1.19	46.7%	53.3%	1.15	1.24	86.7%	86.7%	75.0%	66.7%	33.3%	71.4%	62.5%
Consultant Medicine	24	28	1.17	21.4%	78.6%	1.06	1.20	60.7%	60.7%	54.5%	75.0%	25.0%	83.3%	72.7%
Consultant Paediatrics	2	2	1.33		100.0%		1.33	100.0%	100.0%	100.0%	50.0%	50.0%		50.0%
Consultant Psychiatry	9	10	1.06	70.0%	30.0%	1.09	1.00	100.0%	100.0%	100.0%	90.0%	10.0%	85.7%	100.0%
Consultant Radiology	1	1	1.00	100.0%		1.00		100.0%	100.0%		100.0%	0.0%	100.0%	
Consultant Surgery	3	4	1.52	75.0%	25.0%	1.29	3.33	75.0%	75.0%	100.0%	50.0%	50.0%	66.7%	0.0%
Consultants	51	60	1.18	40.0%	60.0%	1.12	1.22	76.7%	91.7%	66.7%	73.3%	26.7%	79.2%	69.4%
Registrar	391	403	1.03	33.3%	66.7%	1.01	1.04	2.2%	2.2%	1.9%	99.5%	0.5%	99.3%	99.6%
Senior Registrar	5	5	1.04	80.0%	20.0%	1.00	1.20	20.0%	20.0%	0.0%	80.0%	20.0%	100.0%	0.0%
Specialist Registrar	10	12	1.16		100.0%		1.16	25.0%	25.0%	25.0%	83.3%	16.7%		83.3%
Registrars	406	420	1.04	32.9%	67.1%	1.01	1.05	3.1%	3.6%	2.8%	98.8%	1.2%	99.3%	98.6%
Senior House Officer	39	46	1.19	34.8%	65.2%	1.19	1.20	2.2%	2.2%	3.3%	100.0%	0.0%	100.0%	100.0%
SHO/ Interns	39	46	1.19	34.8%	65.2%	1.19	1.20	2.2%	0.0%	3.3%	100.0%	0.0%	100.0%	100.0%
Dentists	305	410	1.34	25.9%	74.1%	1.35	1.34	88.8%	88.8%	89.1%	51.7%	48.3%	55.7%	50.3%
Other Medical	195	270	1.39	23.7%	76.3%	1.31	1.41	72.6%	72.6%	75.7%	42.6%	57.4%	50.0%	40.3%
Medical/ Dental, other	500	680	1.36	25.0%	75.0%	1.33	1.37	82.4%	78.2%	83.7%	48.1%	51.9%	53.5%	46.3%
Medical & Dental	995	1,206	1.21	28.9%	71.1%	1.16	1.23	51.4%	46.0%	53.6%	69.0%	31.0%	75.6%	66.3%
Nursing & Midwifery	3,301	3,986	1.21	2.1%	97.9%	1.08	1.21	89.6%	90.6%	89.6%	64.9%	35.1%	84.7%	64.4%
Dietitians	134	163	1.21	3.1%	96.9%	1.01	1.22	90.8%	90.8%	91.1%	66.3%	33.7%	100.0%	65.2%
Occupational Therapists	612	714	1.17	6.3%	93.7%	1.05	1.18	90.9%	90.9%	91.0%	70.6%	29.4%	93.3%	69.1%
Orthoptists	18	22	1.22	22.7%	77.3%	1.14	1.25	59.1%	59.1%	64.7%	63.6%	36.4%	80.0%	58.8%
Physiotherapists	624	756	1.21	19.7%	80.3%	1.06	1.25	93.1%	93.1%	94.1%	65.6%	34.4%	88.6%	60.0%
Podiatrists & Chiropodists	60	72	1.20	5.6%	94.4%	1.00	1.21	93.1%	93.1%	92.6%	70.8%	29.2%	100.0%	69.1%
Speech & Language Therapists	544	632	1.16	1.3%	98.7%	1.09	1.16	90.5%	90.5%	90.4%	72.9%	27.1%	75.0%	72.9%
Therapy Professions	1,992	2,359	1.18	9.2%	90.8%	1.06	1.20	91.3%	88.4%	91.6%	69.3%	30.7%	89.4%	67.2%
Audiology	53	59	1.11	16.9%	83.1%	1.07	1.12	88.1%	88.1%	85.7%	79.7%	20.3%	90.0%	77.6%
Biochemists	7	7	1.03	14.3%	85.7%	1.00	1.03	100.0%	100.0%	100.0%	85.7%	14.3%	100.0%	83.3%
Cardiac Physiologists	1	1	1.00	100.0%		1.00		100.0%	100.0%		100.0%	0.0%	100.0%	
Clinical Engineering	9	9	1.03	100.0%		1.03		88.9%	88.9%		88.9%	11.1%	88.9%	

Medical Science	18	19	1.08	31.6%	68.4%	1.19	1.03	78.9%	78.9%	84.6%	89.5%	10.5%	83.3%	92.3%
Phlebotomists	0	1	4.55		100.0%		4.55	100.0%	100.0%	100.0%	0.0%	100.0%		0.0%
Physicists	2	2	1.11		100.0%		1.11	100.0%	100.0%	100.0%	100.0%	0.0%		100.0%
Radiographers	5	8	1.67	12.5%	87.5%	2.00	1.63	100.0%	100.0%	100.0%	62.5%	37.5%	100.0%	57.1%
Health Science/ Diagnostics	94	106	1.12	26.4%	73.6%	1.09	1.14	88.7%	89.3%	88.5%	81.1%	18.9%	89.3%	78.2%
Social Care	34	37	1.08	45.9%	54.1%	1.03	1.12	81.1%	76.5%	85.0%	83.8%	16.2%	94.1%	75.0%
Social Workers	185	204	1.10	18.6%	81.4%	1.05	1.12	91.2%	84.2%	92.8%	81.4%	18.6%	89.5%	79.5%
Psychologists	287	322	1.12	15.2%	84.8%	1.02	1.14	71.7%	77.6%	70.7%	77.3%	22.7%	95.9%	74.0%
Pharmacists	65	72	1.11	22.2%	77.8%	1.08	1.12	61.1%	61.1%	66.1%	61.1%	38.9%	50.0%	64.3%
Pharmacy Technicians	9	10	1.09		100.0%		1.09	80.0%	80.0%	80.0%	90.0%	10.0%		90.0%
Pharmacy	74	82	1.11	19.5%	80.5%	1.08	1.12	63.4%	43.8%	68.2%	64.6%	35.4%	50.0%	68.2%
Counsellor Therapists	125	140	1.12	41.4%	58.6%	1.06	1.17	97.1%	97.1%	97.6%	76.4%	23.6%	86.2%	69.5%
Dental Hygienists	60	74	1.23	1.4%	98.6%	1.00	1.23	94.6%	94.6%	94.5%	51.4%	48.6%	100.0%	50.7%
HSCP Trainees/ Students	0	1	3.70		100.0%		3.70	0.0%	0.0%	0.0%	0.0%	100.0%		0.0%
Other Health & Social Care	40	43	1.07	27.9%	72.1%	1.09	1.07	100.0%	100.0%	100.0%	83.7%	16.3%	83.3%	83.9%
Play Therapists/ Specialists	1	2	1.38		100.0%		1.38	100.0%	100.0%	100.0%	50.0%	50.0%		50.0%
Vaccinators	16	26	1.68	23.1%	76.9%	1.37	1.80	3.8%	3.8%	0.0%	46.2%	53.8%	100.0%	30.0%
H&SC, Other	242	286	1.18	26.9%	73.1%	1.08	1.22	88.1%	90.9%	87.1%	67.8%	32.2%	87.0%	60.8%
Health & Social Care	2,909	3,396	1.17	13.0%	87.0%	1.06	1.19	88.3%	85.3%	88.7%	71.1%	28.9%	88.4%	68.5%
Executive Management	75	77	1.02	36.4%	63.6%	1.06	1.01	93.5%	93.5%	93.9%	97.4%	2.6%	92.9%	100.0%
Senior Management (VIII & GM)	286	301	1.05	23.9%	76.1%	1.05	1.05	94.7%	94.7%	96.5%	93.4%	6.6%	95.8%	92.6%
Management (VIII & above)	361	378	1.05	26.5%	73.5%	1.05	1.04	94.4%	90.0%	96.0%	94.2%	5.8%	95.0%	93.9%
Middle Management (V-VII)	953	1,019	1.07	17.8%	82.2%	1.04	1.07	95.1%	95.1%	95.8%	89.6%	10.4%	98.9%	87.6%
Other Administrative	11	11	1.01	54.5%	45.5%	1.01	1.01	9.1%	9.1%	20.0%	90.9%	9.1%	100.0%	80.0%
Administrative/ Supervisory (V to VII)	964	1,030	1.07	18.2%	81.8%	1.04	1.07	94.2%	88.8%	95.4%	89.6%	10.4%	98.9%	87.5%
General Administrative (III & IV)	2,028	2,368	1.17	10.0%	90.0%	1.09	1.18	77.9%	77.9%	79.1%	68.2%	31.8%	88.6%	65.9%
Clerical (III & IV)	2,028	2,368	1.17	10.0%	90.0%	1.09	1.18	77.9%	67.5%	79.1%	68.2%	31.8%	88.6%	65.9%
Management & Administrative	3,354	3,776	1.13	13.9%	86.1%	1.06	1.14	84.0%	79.4%	84.7%	76.6%	23.4%	93.5%	73.9%
Catering	21	23	1.11	34.8%	65.2%	1.03	1.16	100.0%	100.0%	100.0%	65.2%	34.8%	100.0%	46.7%
Household Services	137	169	1.23	24.9%	75.1%	1.06	1.30	78.1%	78.1%	80.3%	49.1%	50.9%	81.0%	38.6%
Other Labs & Associated	3	4	1.20	25.0%	75.0%	1.00	1.29	75.0%	75.0%	66.7%	75.0%	25.0%	100.0%	66.7%
Other Support	112	236	2.10	33.5%	66.5%	1.36	2.91	54.7%	54.7%	43.3%	31.8%	68.2%	60.8%	17.2%
Portering	68	74	1.08	93.2%	6.8%	1.07	1.27	87.8%	87.8%	100.0%	87.8%	12.2%	91.3%	40.0%
Support	342	506	1.48	39.3%	60.7%	1.16	1.80	69.6%	80.4%	62.5%	47.6%	52.4%	77.4%	28.3%
Maintenance	67	71	1.05	98.6%	1.4%	1.05	1.00	97.2%	97.2%	100.0%	97.2%	2.8%	97.1%	100.0%

Technical Services	2	2	1.00	50.0%	50.0%	1.00	1.00	100.0%	100.0%	100.0%	50.0%	50.0%	100.0%	0.0%
Maintenance/ Technical	69	73	1.05	97.3%	2.7%	1.05	1.00	97.3%	97.2%	100.0%	95.9%	4.1%	97.2%	50.0%
General Support	411	579	1.41	46.6%	53.4%	1.13	1.79	73.1%	84.8%	62.8%	53.7%	46.3%	82.6%	28.5%
Attendant/ Aide	44	55	1.26	36.4%	63.6%	1.04	1.43	69.1%	69.1%	65.7%	67.3%	32.7%	95.0%	51.4%
Health & Social Care Assistants	79	85	1.08	11.8%	88.2%	1.00	1.09	29.4%	29.4%	28.0%	90.6%	9.4%	100.0%	89.3%
Health Care Assistant/ Care Assistant	903	1,063	1.18	30.8%	69.2%	1.15	1.19	19.8%	19.8%	22.8%	76.7%	23.3%	82.0%	74.3%
Health Care Assistants	1,026	1,203	1.17	29.7%	70.3%	1.14	1.19	22.7%	17.1%	25.1%	77.2%	22.8%	83.2%	74.7%
Home Help	17	43	2.51	25.6%	74.4%	2.59	2.49	25.6%	18.2%	28.1%	4.7%	95.3%	9.1%	3.1%
Health Promotion	1	1	1.00		100.0%		1.00	100.0%	100.0%	100.0%	100.0%	0.0%		100.0%
Home Care Services	3	5	1.50	20.0%	80.0%	1.96	1.41	60.0%	60.0%	75.0%	60.0%	40.0%	0.0%	75.0%
Other Care Grades	860	1,032	1.20	18.2%	81.8%	1.09	1.23	90.4%	90.4%	91.5%	63.2%	36.8%	80.3%	59.4%
Pastoral Care	3	4	1.39	50.0%	50.0%	1.79	1.14	50.0%	50.0%	100.0%	50.0%	50.0%	50.0%	50.0%
Workshop Services	3	3	1.06	66.7%	33.3%	1.00	1.19	100.0%	100.0%	100.0%	66.7%	33.3%	100.0%	0.0%
Care, other	870	1,045	1.20	18.5%	81.5%	1.10	1.23	90.1%	84.5%	91.4%	63.2%	36.8%	79.8%	59.4%
Patient & Client Care	1,913	2,291	1.20	24.5%	75.5%	1.14	1.22	53.5%	40.3%	57.8%	69.4%	30.6%	80.6%	65.8%

Employment by WTE, Headcount, Gender, Full-Time /Part-Time etc.: Feb 2022

Primary Care Services CHO	WTE	Headcount	WTE: no.	% Male	% female	Male WTE: no.	Female WTE: no.	% Total Perm	% Male Perm	% Female Perm	% Total Full Time	% Total Part Time	% Male FT	% Female FT
Overall	12,884	15,234	1.18	14.6%	85.4%	1.10	1.20	78.8%	66.6%	80.9%	69.8%	30.2%	84.8%	67.2%
CHO 1	1,505	1,752	1.16	15.3%	84.7%	1.09	1.18	79.9%	79.9%	82.3%	69.7%	30.3%	85.1%	66.9%
CHO 2	1,407	1,597	1.13	13.8%	86.2%	1.09	1.14	81.3%	81.3%	84.0%	74.3%	25.7%	85.5%	72.5%
CHO 3	1,003	1,172	1.17	13.2%	86.8%	1.05	1.19	73.8%	73.8%	75.7%	75.9%	24.1%	95.5%	73.0%
CHO 4	1,728	2,143	1.24	11.6%	88.4%	1.19	1.25	64.3%	64.3%	66.8%	60.8%	39.2%	74.7%	59.0%
CHO 5	1,185	1,429	1.21	13.5%	86.5%	1.12	1.22	82.2%	82.2%	84.9%	66.5%	33.5%	82.9%	63.9%
CHO 6	889	1,126	1.27	14.5%	85.5%	1.24	1.27	81.6%	81.6%	82.9%	70.3%	29.7%	89.0%	67.2%
CHO 7	1,905	2,218	1.16	17.0%	83.0%	1.08	1.18	85.6%	85.6%	86.9%	70.0%	30.0%	82.8%	67.4%
CHO 8	1,610	1,917	1.19	14.6%	85.4%	1.09	1.21	83.0%	83.0%	86.1%	66.6%	33.4%	83.6%	63.7%
CHO 9	1,505	1,721	1.14	16.1%	83.9%	1.08	1.16	80.1%	80.1%	81.6%	76.7%	23.3%	89.2%	74.3%
other Community Services	147	159	1.08	29.6%	70.4%	1.08	1.08	67.9%	67.9%	68.8%	86.2%	13.8%	89.4%	84.8%

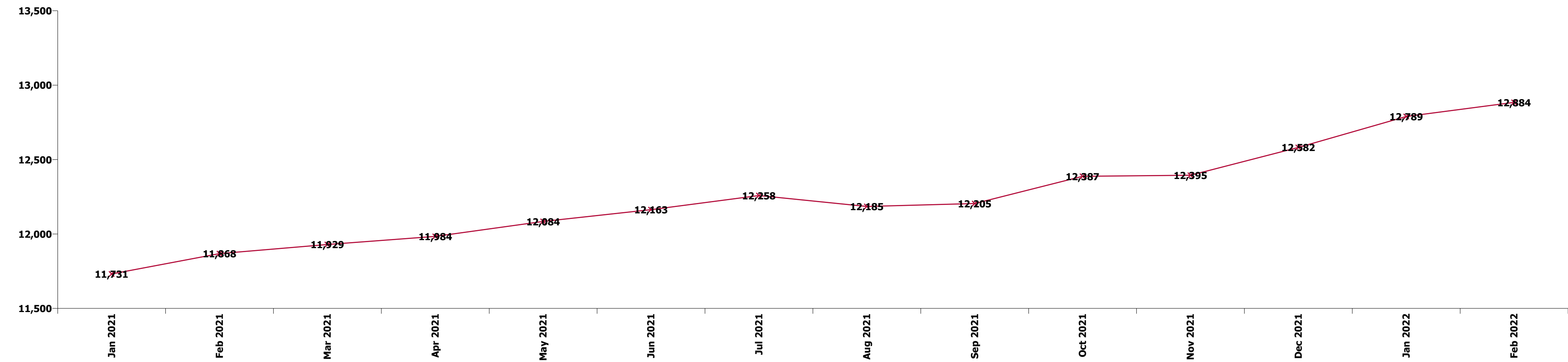
Summary Staff Movement: February 2022

Month-on-month
Summary

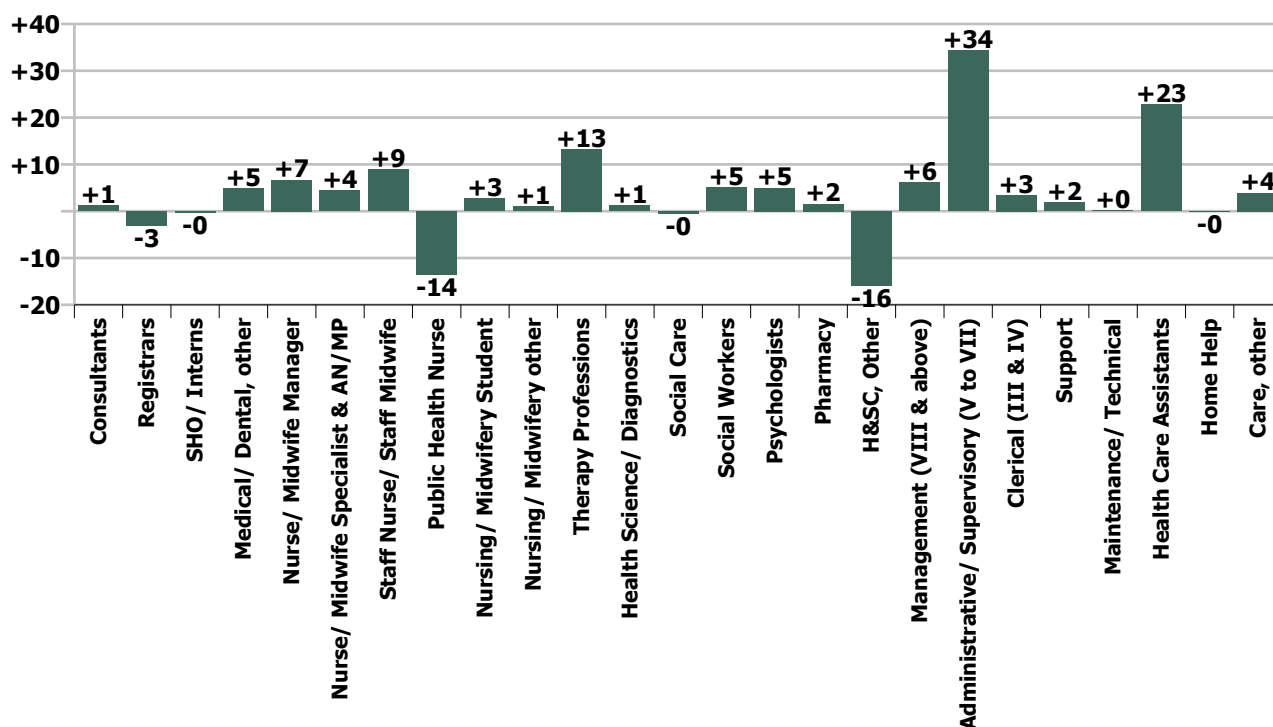
WTE change since Jan 22	% change since Jan 22	overall	Consultants	Registrars	SHO/ Interns	Medical/ Dental, other	Medical & Dental	Nurse/ Midwife Manager	Nurse/ Midwife Specialist & AN/MP	Staff Nurse/ Staff Midwife	Public Health Nurse	Nursing/ Midwifery Student	Nursing/ Midwifery other	Nursing & Midwifery	Therapy Professions	Health Science/ Diagnostics	Social Care	Social Workers	Psychologists	Pharmacy	H&SC, Other	Health & Social Care Professionals	Management (VIII & above)	Administrativ e/ Supervisory (V to VII)	Clerical (III & IV)	Management & Administrative	General Support	Health Care Assistants	Home Help	Care, other	Patient & Client Care
Overall	+0.7%	+95	+1	-3	-0	+5	+3	+7	+4	+9	-14	+3	+1	+10	+13	+1	-0	+5	+5	+2	-16	+10	+6	+34	+3	+44	+2	+23	-0	+4	+27
CHO 1	+1.5%	+23		+2		+0	+2	-2	+1	+3	+0		+1	+3	-0	+1		+3	+1	-0	-2	+3	+1	+6	+3	+10	+3	-2	-0	+4	+2
CHO 2	+0.6%	+8		-0	-1	+1	+0	+0	+0	-1	-1			-1	+6		+0	+1	-2		+0	+5	-1	+5	-0	+4	+0	+0		-0	-0
CHO 3	+1.5%	+14		-1		-1	-2	+3	-0	+1	-3			+0	-5	-1		-0	+1		+0	-5	-1	+9	+1	+10	-1	+12		+1	+13
CHO 4	+0.4%	+7	+1	+2	+1	+6	+10	-1	+1	+3	-2	+1		+1	+9	-0		-1	-1		-15	-8	+4	-1	-5	-2	-0	+5	+0	+2	+6
CHO 5	+2.4%	+27	+0	-0		-0	-0	+0	+4	+4	+2	+1		+11	+6	+0	+0	+1	+1		+0	+9	+1	-1	+4	+4	-1	+3	-0	+1	+4
CHO 6	+1.8%	+15		-0		-0	-1	+1	-0	+0	-3	+1		-1	+1	+1		-1	+2		-0	+1	+1	+4	+2	+6	-0	+7		+1	+8
CHO 7	+0.9%	+16	+0	-0		-0	-0	+3	-1	+0	-5			-3	+5	+3	-0	+1	+1	+1	+0	+12	+0	+11	+3	+15	+1	-1		-7	-8
CHO 8	-0.5%	-8		-2		-2	-3	+2	+0	+0	-2			+0	-4	-0		+0	-0	+0	-0	-4	+0	-1	-1	-2	+0	-1		+1	+1
CHO 9	-0.4%	-6		-4	-1	+0	-4	+0	-1	-2	+0			-2	-5	-2	-1	+1	+2	+0	+1	-3	-0	+4	-2	+1	-0	-1		+3	+2
other Community Services	-2.3%	-3		+0	+0		+1	+0		+0				+0		+0	+0	-1		+0	+0	-0	+0	-2	-1	-3	+0			-2	-2
	+0.7%		+2.5%	-0.8%	-0.9%	+1.0%	+0.3%	+1.4%	+2.2%	+0.9%	-0.9%	+1.9%	+20.2%	+0.3%	+0.7%	+1.3%	-1.3%	+2.8%	+1.8%	+2.1%	-6.2%	+0.3%	+1.7%	+3.7%	+0.2%	+1.3%	+0.5%	+2.3%	-0.9%	+0.5%	+1.4%

Year-on-year Summary

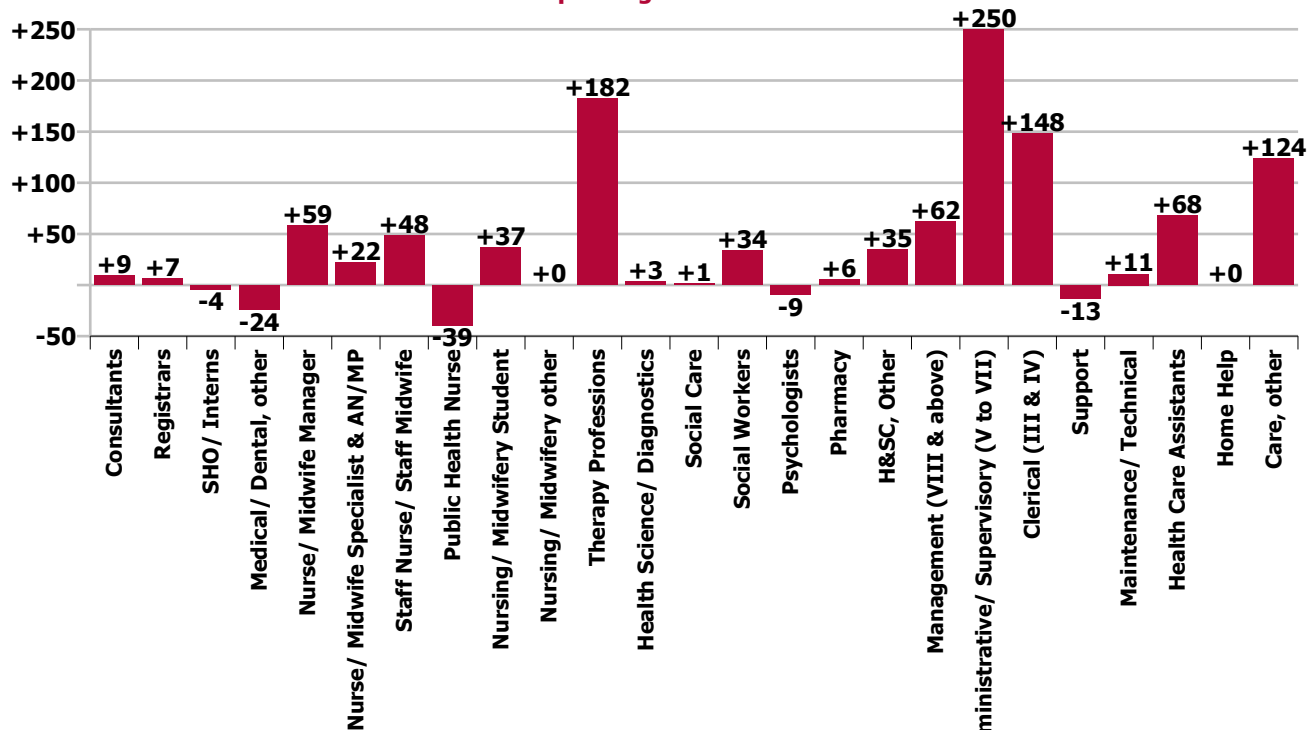
WTE change since Feb 21	% change since Feb 21	overall	Consultants	Registrars	SHO/ Interns	Medical/ Dental, other	Medical & Dental	Nurse/ Midwife Manager	Nurse/ Midwife Specialist & AN/MP	Staff Nurse/ Staff Midwife	Public Health Nurse	Nursing/ Midwifery Student	Nursing/ Midwifery other	Nursing & Midwifery	Therapy Professions	Health Science/ Diagnostics	Social Care	Social Workers	Psychologists	Pharmacy	H&SC, Other	Health & Social Care Professionals	Management (VIII & above)	Administrative/ Supervisory (V to VII)	Clerical (III & IV)	Management & Administrative	General Support	Health Care Assistants	Home Help	Care, other	Patient & Client Care
Overall	+8.6%	+1,016	+9	+7	-4	-24	-12	+59	+22	+48	-39	+37	+0	+127	+182	+3	+1	+34	-9	+6	+35	+252	+62	+250	+148	+460	-2	+68	+0	+124	+192
CHO 1	+12.1%	+163	+1	+4	+0	-4	+1	+4	+5	+14	-4	+12	+1	+31	-4	+3		+14	-2	+1	+7	+20	+9	+25	+51	+85	+1	+6	-0	+20	+25
CHO 2	+12.8%	+159	+2	-2	+1	-2	-0	-1	+4	+10	-8	+20		+25	+27	+2	-0	+4	+0	+0	+9	+42	+4	+38	+15	+56	-1	+19		+19	+38
CHO 3	+15.4%	+134		+1	-1	-9	-9	+1	+6	+13	-3	+7		+23	+49	-1		+1	-1	+0	-1	+48	+6	+22	+28	+55	+7	-5	-1	+14	+9
CHO 4	+9.9%	+156	+4	-8	-3	+5	-2	+7	+1	+2	-3	+9		+16	+44	+0	+3	+1	-3	+0	+1	+46	+4	+16	+18	+38	-1	+42	+1	+17	+59
CHO 5	+12.4%	+131	+1	+4	-1	+1	+4	+14	+6	+14	-8	+3		+29	+45	+0	-1	+2	-1	-0	-0	+46	+8	+14	+10	+32	-1	+12	+0	+9	+21
CHO 6	+5.6%	+47		+2		-1	+0	+1	+1	-1	-6	-4		-11	+4	-0		+6	+1	+3	+4	+18	+10	+21	-2	+29	-0	+3		+9	+12
CHO 7	+4.9%	+90	-1	+2	+1	-10	-8	+15	-2	-1	-8	+2		+5	+6	+2	-1	-1	+2	+1	+2	+12	+11	+35	+16	+62	-5	+5		+18	+23
CHO 8	+3.9%	+60		+4	-1	-6	-3	+12	+1	+1	-0	-5	-1	+7	+1	+1		+6	-5	+0	+6	+9	+4	+29	+4	+36	+0	-2		+13	+11
CHO 9	+4.7%	+68	+1	-1	+1	+2	+3	+8	+1	-2	+1	-7		+2	+11	-4	+0	+2	-1	-1	+8	+16	+5	+45	+2	+52	+0	-12		+7	-5
other Community Services	+6.3%	+9	+1	+2	-1		+2	-1		-2				-2		-1	-0	-2		+1	-1	-3	+3	+6	+6	+15	-2			-2	-2
		+8.6%	+21.7%	+1.7%	-9.3%	-4.5%	-1.2%	+14.2%	+11.9%	+5.1%	-2.6%	+34.1%	+0.3%	+4.0%	+10.1%	+3.7%	+4.0%	+22.4%	-3.1%	+8.6%	+16.7%	+9.5%	+20.7%	+35.0%	+7.9%	+15.9%	-0.6%	+7.1%	+0.5%	+16.6%	+11.1%



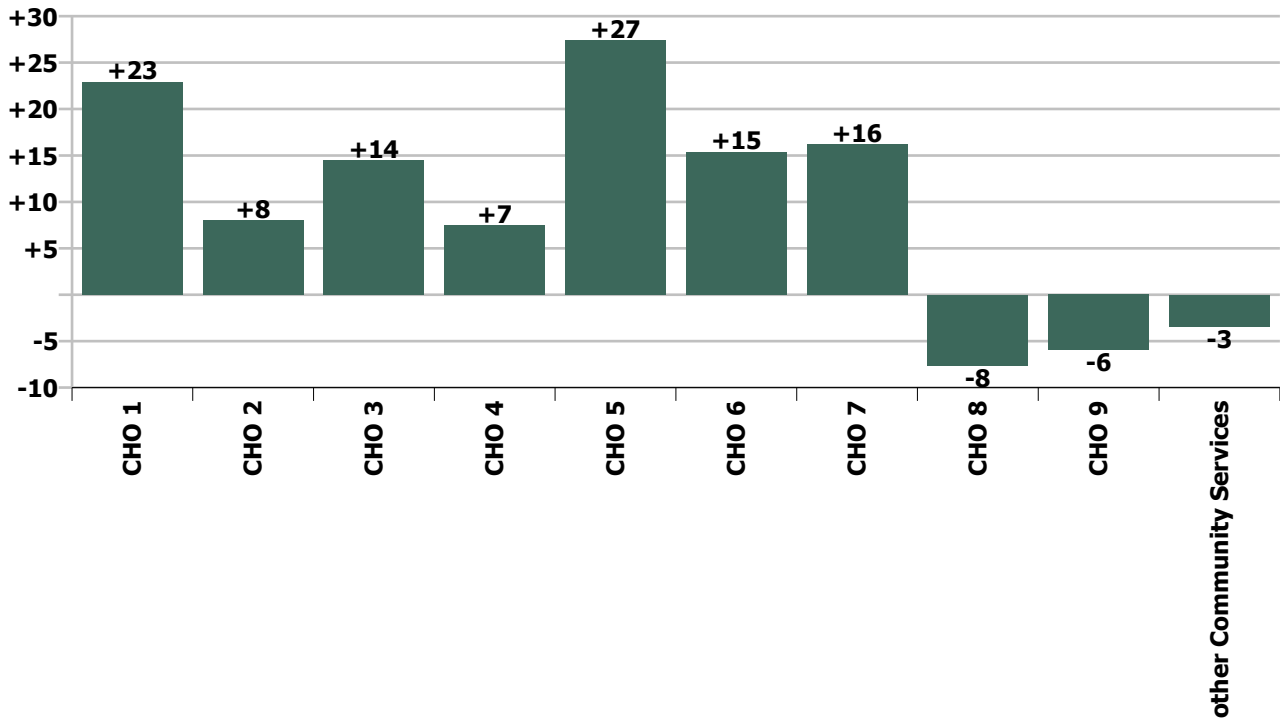
Staff Group change since: Jan 2022



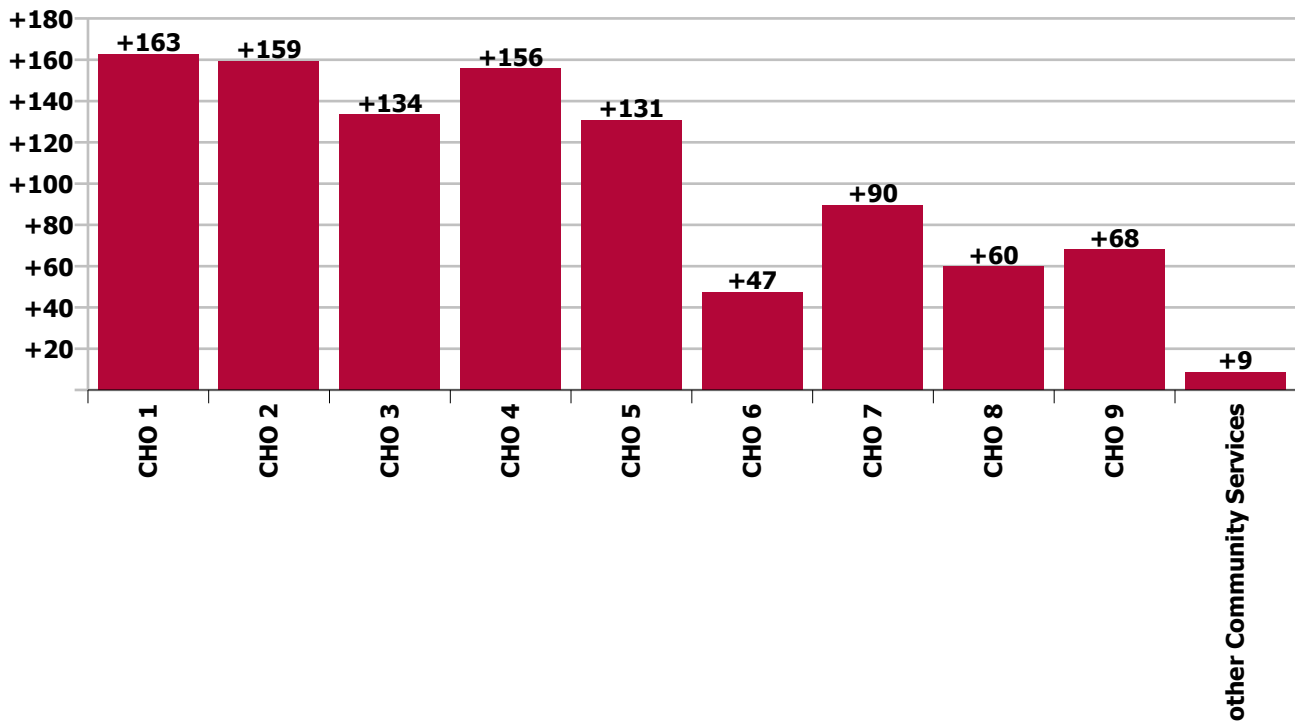
Staff Group change since: Feb 2021



CHO change since: Jan 2022



CHO change since: Feb 2021



Longitudinal Employment Levels by Grade Group - Dec 2016 to Feb 2022

Feb 2022 (Dec 2015 figure: 10,311)	WTE Feb 2022	WTE change since Dec 16	WTE change since Dec 17	WTE change since Dec 18	WTE change since Dec 19	WTE change since Dec 20	WTE change since Jan 22	% change since Dec 16	% change since Dec 17	% change since Dec 18	% change since Dec 19	% change since Dec 20	% change since Jan 22
Overall	12,884	+2,438	+2,365	+1,953	+2,285	+1,312	+95	+23.3%	+22.5%	+17.9%	+21.6%	+11.3%	+0.7%
Consultant Dentistry	13	+2	+1	+1	+1	+2	+1	+18.4%	+8.2%	+8.2%	+12.6%	+23.0%	+9.2%
Consultant Medicine	24	+6	+4	+7	+6	+4	+0	+31.8%	+20.6%	+40.8%	+34.7%	+17.9%	+0.8%
Consultant, Other		-1						-100.0%	-100.0%	-100.0%	-100.0%	-100.0%	-100.0%
Consultant Paediatrics	2	+1						+50.0%					
Consultant Psychiatry	9	+2	-0	+3	+1	+1		+34.3%	-0.3%	+46.9%	+12.3%	+11.9%	
Consultant Radiology	1												
Consultant Surgery	3	-2	-2	-2	-1	+2		-47.8%	-44.9%	-41.6%	-35.1%	+338.3%	
Consultants	51	+7	+3	+9	+7	+9	+1	+16.5%	+6.0%	+21.5%	+16.4%	+21.5%	+2.5%
Registrar	391	+61	+48	+30	+9	+1	-5	+18.4%	+14.0%	+8.3%	+2.3%	+0.2%	-1.2%
Senior Registrar	5	+1	+1	+1	+2	+3	+1	+29.5%	+29.5%	+20.1%	+73.7%	+145.2%	+20.8%
Specialist Registrar	10	+2	+1	+1	+0	-1	+1	+31.1%	+6.8%	+6.6%	+3.4%	-8.7%	+8.0%
Registrars	406	+64	+50	+31	+11	+3	-3	+18.8%	+13.9%	+8.4%	+2.8%	+0.6%	-0.8%
Senior House Officer	39	-2	+9	+2	+1	-3	-0	-3.8%	+30.2%	+4.2%	+3.7%	-7.6%	-0.9%
SHO/ Interns	39	-2	+9	+2	+1	-3	-0	-3.8%	+30.2%	+4.2%	+3.7%	-7.6%	-0.9%
Dentists	305	+1	+3	-0	+4	+3	+1	+0.4%	+0.9%	-0.1%	+1.3%	+1.1%	+0.3%
Other Medical	195	-22	-39	-43	-23	-22	+4	-9.9%	-16.8%	-18.0%	-10.7%	-10.3%	+2.1%
Medical/ Dental, other	500	-20	-37	-43	-20	-19	+5	-3.9%	-6.8%	-7.9%	-3.8%	-3.7%	+1.0%
Medical & Dental	995	+50	+25	-1	-0	-11	+3	+5.2%	+2.6%	-0.1%	-0.0%	-1.1%	+0.3%
Clinical Nurse/ Midwife Manager	211	+61	+51	+40	+43	+18	+2	+41.2%	+32.3%	+23.4%	+25.5%	+9.5%	+1.0%
Director Nursing/Midwifery, Assistant	214	+61	+74	+63	+60	+42	+5	+40.2%	+53.2%	+42.1%	+38.6%	+24.4%	+2.5%
Director of Nursing/Midwifery	45	+12	+12	+10	+8	+5	-1	+37.7%	+35.3%	+26.8%	+21.1%	+12.6%	-1.3%
Nurse/ Midwife Manager	470	+135	+137	+113	+110	+65	+7	+40.4%	+41.4%	+31.6%	+30.7%	+16.1%	+1.4%
Advanced Nurse/ Midwife Practitioner	16	+13	+14	+14	+14	+3	+1	+480.6%	+607.4%	+537.8%	+537.8%	+22.1%	+6.8%
Clinical Nurse/ Midwife Specialist	192	+75	+53	+49	+52	+22	+3	+63.7%	+37.8%	+34.3%	+37.3%	+12.7%	+1.8%
Nurse/ Midwife Specialist & AN/MP	209	+88	+67	+63	+66	+25	+4	+73.3%	+47.0%	+43.1%	+46.2%	+13.3%	+2.2%
Staff Midwives	4	+2	-1	-2	-4	-1	-0	+57.6%	-16.7%	-32.5%	-46.1%	-20.4%	-5.0%
Staff Nurse [Psychiatric]	13	+7	-1	+4	+4	-1	+0	+141.3%	-9.8%	+53.5%	+50.3%	-5.8%	+3.8%

Feb 2022 (Dec 2015 figure: 10,311)	WTE Feb 2022	WTE change since Dec 16	WTE change since Dec 17	WTE change since Dec 18	WTE change since Dec 19	WTE change since Dec 20	WTE change since Jan 22	% change since Dec 16	% change since Dec 17	% change since Dec 18	% change since Dec 19	% change since Dec 20	% change since Jan 22
Overall	12,884	+2,438	+2,365	+1,953	+2,285	+1,312	+95	+23.3%	+22.5%	+17.9%	+21.6%	+11.3%	+0.7%
Staff Nurses [General/ Children's]	976	+166	+138	+110	+130	+68	+9	+20.6%	+16.5%	+12.8%	+15.4%	+7.5%	+0.9%
Staff Nurse [Intellectual Disability]	1	+1	+1	+1	+1	+1	-0	-100.0%	-100.0%	-100.0%	-100.0%	-100.0%	-9.1%
Staff Nurse/ Staff Midwife	993	+176	+136	+113	+131	+66	+9	+21.5%	+15.9%	+12.9%	+15.2%	+7.2%	+0.9%
Public Health Nurse	1,479	+6	-9	-37	-34	-54	-14	+0.4%	-0.6%	-2.4%	-2.2%	-3.5%	-0.9%
Post-registration Nurse/ Midwife Student	145	+33	+16	+52	+49	+39	+3	+29.2%	+12.1%	+55.6%	+51.2%	+36.3%	+1.9%
Nursing/ Midwifery Student	145	+33	+16	+52	+49	+39	+3	+29.2%	+12.1%	+55.6%	+51.2%	+36.3%	+1.9%
Nursing Education/Clinical	6	+2	+2	+3	+2	-1	+1	+70.3%	+70.3%	+98.7%	+56.8%	-10.4%	+20.2%
Other Nursing/ Midwifery		-2	-0	-1				-100.0%	-100.0%	-100.0%	-100.0%	-100.0%	-100.0%
Nursing/ Midwifery other	6	+0	+2	+2	+2	-1	+1	+8.4%	+50.9%	+49.0%	+56.8%	-10.4%	+20.2%
Nursing & Midwifery	3,301	+439	+349	+306	+325	+140	+10	+15.3%	+11.8%	+10.2%	+10.9%	+4.4%	+0.3%
Dietitians	134	+44	+30	+18	+25	+10	+1	+49.4%	+28.6%	+15.1%	+23.2%	+7.9%	+1.1%
Occupational Therapists	612	+116	+95	+71	+97	+68	+4	+23.4%	+18.5%	+13.2%	+18.7%	+12.6%	+0.7%
Orthoptists	18	+12	+12	+8	+5	+0	+1	+207.5%	+182.4%	+81.9%	+35.8%	+2.7%	+5.9%
Physiotherapists	624	+80	+61	+61	+81	+63	-0	+14.7%	+10.8%	+10.8%	+15.0%	+11.2%	-0.0%
Podiatrists & Chiropodists	60	+41	+38	+37	+36	+31	+5	+211.9%	+169.1%	+155.7%	+144.6%	+103.9%	+8.7%
Speech & Language Therapists	544	+42	-1	-4	+18	+28	+2	+8.4%	-0.3%	-0.8%	+3.4%	+5.5%	+0.4%
Therapy Professions	1,992	+335	+234	+190	+261	+200	+13	+20.2%	+13.3%	+10.6%	+15.1%	+11.2%	+0.7%
Audiology	53	+24	+23	+5	+9	+1	-0	+82.9%	+78.6%	+10.7%	+21.3%	+1.7%	-0.4%
Biochemists	7	-1	-1	-1	-1	-1	+0	-10.6%	-10.6%	-14.9%	-10.7%	-12.2%	+0.4%
Cardiac Physiologists	1	+1	+1	+1	+1	+1		-100.0%	-100.0%	-100.0%	-100.0%	-100.0%	
Clinical Engineering	9	+6	+7	+2	+1	+1	+0	+190.0%	+335.0%	+24.3%	+8.7%	+8.7%	+0.2%
Medical Science	18	-0	-2	-3	+2	+0	+1	-2.6%	-9.9%	-13.3%	+12.9%	+0.1%	+3.3%
Phlebotomists	0	-0	-0			-1	-0	-66.2%	-65.1%			-82.0%	-12.0%
Physicists	2	-1	+0	-0	-0	-0	+0	-40.0%	+1.1%	-10.0%	-10.0%	-10.0%	+16.9%
Radiographers	5	-1	-1	-1	+0	+0	+1	-11.1%	-20.0%	-12.6%	+8.1%	+9.8%	+14.3%
Health Science/ Diagnostics	94	+27	+27	+3	+12	+1	+1	+40.8%	+39.7%	+3.3%	+15.2%	+1.0%	+1.3%
Social Care	34	-1	+1	+0	-1	+2	-0	-2.0%	+4.0%	+0.7%	-3.0%	+5.1%	-1.3%
Social Workers	185	+35	+32	+33	+46	+34	+5	+23.0%	+20.6%	+21.3%	+32.9%	+22.3%	+2.8%
Psychologists	287	+3	+3	-11	-14	-13	+5	+1.0%	+1.1%	-3.6%	-4.6%	-4.3%	+1.8%

Feb 2022 (Dec 2015 figure: 10,311)	WTE Feb 2022	WTE change since Dec 16	WTE change since Dec 17	WTE change since Dec 18	WTE change since Dec 19	WTE change since Dec 20	WTE change since Jan 22	% change since Dec 16	% change since Dec 17	% change since Dec 18	% change since Dec 19	% change since Dec 20	% change since Jan 22
Overall	12,884	+2,438	+2,365	+1,953	+2,285	+1,312	+95	+23.3%	+22.5%	+17.9%	+21.6%	+11.3%	+0.7%
Pharmacists	65	+8	+8	+11	+15	+10	+2	+15.0%	+13.3%	+20.9%	+29.9%	+17.7%	+2.6%
Pharmacy Technicians	9	+3	+3	+4	+1	+1	-0	+50.7%	+54.6%	+81.2%	+14.9%	+14.2%	-1.0%
Pharmacy	74	+12	+11	+15	+16	+11	+2	+18.5%	+17.2%	+26.1%	+27.8%	+17.3%	+2.1%
Counsellor Therapists	125	+10	+3	+9	+10	+13	+1	+8.7%	+2.9%	+7.8%	+8.6%	+11.6%	+1.1%
Dental Hygienists	60	+5	+6	+3	+3	-1	+0	+9.9%	+11.1%	+5.2%	+5.2%	-1.4%	+0.4%
Environmental Health Officers					-1			-100.0%	-100.0%	-100.0%	-100.0%	-100.0%	-100.0%
HSCP Trainees/ Students	0	+0	+0	+0	+0	+0	+0	-100.0%	-100.0%	-100.0%	-100.0%	-100.0%	+3.8%
Other Health & Social Care	40	+5	+5	+4	+6	+6	+0	+14.0%	+14.5%	+11.7%	+16.7%	+18.0%	+0.9%
Play Therapists/ Specialists	1	-0	-1	-1	-1	-1		-24.1%	-42.2%	-42.2%	-37.2%	-32.2%	
Vaccinators	16	+16	+16	+16	+16	+16	-18	-100.0%	-100.0%	-100.0%	-100.0%	-100.0%	-53.5%
H&SC, Other	242	+36	+29	+31	+33	+33	-16	+17.2%	+13.8%	+14.6%	+15.8%	+15.9%	-6.2%
Health & Social Care Professionals	2,909	+447	+337	+261	+354	+268	+10	+18.1%	+13.1%	+9.9%	+13.8%	+10.1%	+0.3%
Executive Management	75	+10	+4	+1	+4	+1	-1	+15.4%	+5.7%	+1.6%	+6.3%	+1.1%	-1.2%
Senior Management (VIII & GM)	286	+92	+65	+51	+51	+62	+7	+47.7%	+29.4%	+21.5%	+21.9%	+27.5%	+2.5%
Management (VIII & above)	361	+102	+69	+52	+56	+63	+6	+39.5%	+23.6%	+16.8%	+18.3%	+21.0%	+1.7%
Middle Management (V-VII)	953	+464	+410	+328	+336	+269	+28	+94.7%	+75.3%	+52.5%	+54.5%	+39.4%	+3.0%
Other Administrative	11	+10	+10	+9	+9	+10	+6	+2084.0%	+2084.0%	+446.0%	+446.0%	+1025.8%	+130.9%
Administrative/ Supervisory (V to VII)	964	+474	+420	+337	+345	+279	+34	+96.7%	+77.1%	+53.7%	+55.8%	+40.8%	+3.7%
General Administrative (III & IV)	2,028	+256	+230	+199	+282	+191	+3	+14.4%	+12.8%	+10.9%	+16.2%	+10.4%	+0.2%
Clerical (III & IV)	2,028	+256	+230	+199	+282	+191	+3	+14.4%	+12.8%	+10.9%	+16.2%	+10.4%	+0.2%
Management & Administrative	3,354	+832	+719	+588	+683	+533	+44	+33.0%	+27.3%	+21.3%	+25.6%	+18.9%	+1.3%
Catering	21	-1	-4	-3	-2	-1	-0	-4.6%	-17.8%	-11.4%	-7.0%	-5.1%	-1.0%
Household Services	137	-10	-3	-10	+3	+0	+1	-6.7%	-2.4%	-6.7%	+2.2%	+0.1%	+0.7%
Other Labs & Associated	3	+1	-2	-1	+0	-2	+0	+66.5%	-31.5%	-29.7%	+7.1%	-33.4%	+16.8%
Other Support	112	-12	-21	-17	-1	-1	+1	-9.6%	-15.6%	-13.3%	-0.5%	-1.0%	+1.1%
Portering	68	-17	-14	-11	-6	-6	-1	-20.3%	-17.0%	-14.0%	-7.9%	-7.8%	-0.9%
Support	342	-39	-44	-42	-5	-9	+2	-10.2%	-11.4%	-11.0%	-1.4%	-2.7%	+0.5%
Maintenance	67	+10	+12	+10	+9	+12	+0	+17.7%	+20.9%	+17.7%	+15.6%	+22.1%	+0.2%
Technical Services	2	+1	+1	+1	+1	+1		+100.0%	+100.0%	+122.2%	+100.0%	+100.0%	

Feb 2022 (Dec 2015 figure: 10,311)	WTE Feb 2022	WTE change since Dec 16	WTE change since Dec 17	WTE change since Dec 18	WTE change since Dec 19	WTE change since Dec 20	WTE change since Jan 22	% change since Dec 16	% change since Dec 17	% change since Dec 18	% change since Dec 19	% change since Dec 20	% change since Jan 22
Overall	12,884	+2,438	+2,365	+1,953	+2,285	+1,312	+95	+23.3%	+22.5%	+17.9%	+21.6%	+11.3%	+0.7%
Maintenance/ Technical	69	+11	+13	+11	+10	+13	+0	+19.1%	+22.3%	+19.3%	+17.0%	+23.4%	+0.2%
General Support	411	-28	-31	-31	+5	+4	+2	-6.3%	-7.1%	-7.0%	+1.3%	+0.9%	+0.5%
Attendant/ Aide	44	-2	-1	-5	+9	+3	-2	-4.6%	-3.3%	-10.2%	+25.8%	+7.5%	-3.9%
Health & Social Care Assistants	79	+59	+56	-46	+10	-26	+5	+303.5%	+241.9%	-36.9%	+14.0%	-24.6%	+7.4%
Health Care Assistant/ Care Assistant	903	+779	+773	+753	+754	+270	+19	+628.6%	+592.1%	+502.6%	+503.2%	+42.6%	+2.2%
HCA (Student Nurse/Midwife COVID-19)						-0		-100.0%	-100.0%	-100.0%	-100.0%	-100.0%	-100.0%
Health Care Assistants	1,026	+837	+827	+702	+772	+247	+23	+441.8%	+416.0%	+216.9%	+304.3%	+31.6%	+2.3%
Home Help	17	-266	-5	-2	-1	-1	-0	-94.0%	-23.4%	-10.8%	-7.0%	-6.9%	-0.9%
Health Promotion	1	+1	+1	+1	+1	+1		-100.0%	-100.0%	-100.0%	-100.0%	-100.0%	
Home Care Services	3	-10	-2	-2	-2	-1	+1	-75.8%	-41.2%	-41.9%	-36.4%	-28.5%	+24.2%
Other Care Grades	860	+138	+148	+132	+148	+132	+3	+19.2%	+20.8%	+18.1%	+20.8%	+18.2%	+0.4%
Pastoral Care	3	-1	-2	-1	-1	+0		-33.6%	-38.9%	-25.8%	-25.8%	+10.8%	
Workshop Services	3	-0	-0	+0	+0	+1		-1.7%	-5.3%	+1.8%	+2.2%	+23.5%	
Care, other	870	+127	+145	+129	+146	+133	+4	+17.1%	+20.0%	+17.5%	+20.2%	+18.0%	+0.5%
Pre-Hospital Care (Ambulance)								-100.0%	-100.0%	-100.0%	-100.0%	-100.0%	-100.0%
Ambulance Staff								-100.0%	-100.0%	-100.0%	-100.0%	-100.0%	-100.0%
Patient & Client Care	1,913	+698	+967	+830	+917	+378	+27	+57.4%	+102.1%	+76.6%	+92.1%	+24.6%	+1.4%

Source: Health Service Personnel Census

Longitudinal Employment Levels by Grade Group - Dec 2016 to Feb 2022

Feb 2022 (Dec 2015 figure: 10,311)	WTE Feb 2022	WTE change since Dec 16	WTE change since Dec 17	WTE change since Dec 18	WTE change since Dec 19	WTE change since Dec 20	WTE change since Jan 22	% change since Dec 16	% change since Dec 17	% change since Dec 18	% change since Dec 19	% change since Dec 20	% change since Jan 22
Overall	12,884	+2,438	+2,365	+1,953	+2,285	+1,312	+95	+23.3%	+22.5%	+17.9%	+21.6%	+11.3%	+0.7%
Consultant Dentistry	13	+2	+1	+1	+1	+2	+1	+18.4%	+8.2%	+8.2%	+12.6%	+23.0%	+9.2%
Consultant Medicine	24	+6	+4	+7	+6	+4	+0	+31.8%	+20.6%	+40.8%	+34.7%	+17.9%	+0.8%
Consultant, Other		-1						-100.0%	-100.0%	-100.0%	-100.0%	-100.0%	-100.0%
Consultant Paediatrics	2	+1						+50.0%					
Consultant Psychiatry	9	+2	-0	+3	+1	+1		+34.3%	-0.3%	+46.9%	+12.3%	+11.9%	
Consultant Radiology	1												
Consultant Surgery	3	-2	-2	-2	-1	+2		-47.8%	-44.9%	-41.6%	-35.1%	+338.3%	
Consultants	51	+7	+3	+9	+7	+9	+1	+16.5%	+6.0%	+21.5%	+16.4%	+21.5%	+2.5%
Registrar	391	+61	+48	+30	+9	+1	-5	+18.4%	+14.0%	+8.3%	+2.3%	+0.2%	-1.2%
Senior Registrar	5	+1	+1	+1	+2	+3	+1	+29.5%	+29.5%	+20.1%	+73.7%	+145.2%	+20.8%
Specialist Registrar	10	+2	+1	+1	+0	-1	+1	+31.1%	+6.8%	+6.6%	+3.4%	-8.7%	+8.0%
Registrars	406	+64	+50	+31	+11	+3	-3	+18.8%	+13.9%	+8.4%	+2.8%	+0.6%	-0.8%
Senior House Officer	39	-2	+9	+2	+1	-3	-0	-3.8%	+30.2%	+4.2%	+3.7%	-7.6%	-0.9%
SHO/ Interns	39	-2	+9	+2	+1	-3	-0	-3.8%	+30.2%	+4.2%	+3.7%	-7.6%	-0.9%
Dentists	305	+1	+3	-0	+4	+3	+1	+0.4%	+0.9%	-0.1%	+1.3%	+1.1%	+0.3%
Other Medical	195	-22	-39	-43	-23	-22	+4	-9.9%	-16.8%	-18.0%	-10.7%	-10.3%	+2.1%
Medical/ Dental, other	500	-20	-37	-43	-20	-19	+5	-3.9%	-6.8%	-7.9%	-3.8%	-3.7%	+1.0%
Medical & Dental	995	+50	+25	-1	-0	-11	+3	+5.2%	+2.6%	-0.1%	-0.0%	-1.1%	+0.3%
Clinical Nurse/ Midwife Manager	211	+61	+51	+40	+43	+18	+2	+41.2%	+32.3%	+23.4%	+25.5%	+9.5%	+1.0%
Director Nursing/Midwifery, Assistant	214	+61	+74	+63	+60	+42	+5	+40.2%	+53.2%	+42.1%	+38.6%	+24.4%	+2.5%
Director of Nursing/Midwifery	45	+12	+12	+10	+8	+5	-1	+37.7%	+35.3%	+26.8%	+21.1%	+12.6%	-1.3%
Nurse/ Midwife Manager	470	+135	+137	+113	+110	+65	+7	+40.4%	+41.4%	+31.6%	+30.7%	+16.1%	+1.4%
Advanced Nurse/ Midwife Practitioner	16	+13	+14	+14	+14	+3	+1	+480.6%	+607.4%	+537.8%	+537.8%	+22.1%	+6.8%
Clinical Nurse/ Midwife Specialist	192	+75	+53	+49	+52	+22	+3	+63.7%	+37.8%	+34.3%	+37.3%	+12.7%	+1.8%
Nurse/ Midwife Specialist & AN/MP	209	+88	+67	+63	+66	+25	+4	+73.3%	+47.0%	+43.1%	+46.2%	+13.3%	+2.2%
Staff Midwives	4	+2	-1	-2	-4	-1	-0	+57.6%	-16.7%	-32.5%	-46.1%	-20.4%	-5.0%
Staff Nurse [Psychiatric]	13	+7	-1	+4	+4	-1	+0	+141.3%	-9.8%	+53.5%	+50.3%	-5.8%	+3.8%
Staff Nurses [General/ Children's]	976	+166	+138	+110	+130	+68	+9	+20.6%	+16.5%	+12.8%	+15.4%	+7.5%	+0.9%
Staff Nurse [Intellectual Disability]	1	+1	+1	+1	+1	+1	-0	-100.0%	-100.0%	-100.0%	-100.0%	-100.0%	-9.1%
Staff Nurse/ Staff Midwife	993	+176	+136	+113	+131	+66	+9	+21.5%	+15.9%	+12.9%	+15.2%	+7.2%	+0.9%
Public Health Nurse	1,479	+6	-9	-37	-34	-54	-14	+0.4%	-0.6%	-2.4%	-2.2%	-3.5%	-0.9%
Public Health Nurse	1,479	+6	-9	-37	-34	-54	-14	+0.4%	-0.6%	-2.4%	-2.2%	-3.5%	-0.9%
Post-registration Nurse/ Midwife Student	145	+33	+16	+52	+49	+39	+3	+29.2%	+12.1%	+55.6%	+51.2%	+36.3%	+1.9%
Nursing/ Midwifery Student	145	+33	+16	+52	+49	+39	+3	+29.2%	+12.1%	+55.6%	+51.2%	+36.3%	+1.9%
Nursing Education/Clinical	6	+2	+2	+3	+2	-1	+1	+70.3%	+70.3%	+98.7%	+56.8%	-10.4%	+20.2%
Other Nursing/ Midwifery		-2	-0	-1				-100.0%	-100.0%	-100.0%	-100.0%	-100.0%	-100.0%
Nursing/ Midwifery other	6	+0	+2	+2	+2	-1	+1	+8.4%	+50.9%	+49.0%	+56.8%	-10.4%	+20.2%
Nursing & Midwifery	3,301	+439	+349	+306	+325	+140	+10	+15.3%	+11.8%	+10.2%	+10.9%	+4.4%	+0.3%
Dietitians	134	+44	+30	+18	+25	+10	+1	+49.4%	+28.6%	+15.1%	+23.2%	+7.9%	+1.1%
Occupational Therapists	612	+116	+95	+71	+97	+68	+4	+23.4%	+18.5%	+13.2%	+18.7%	+12.6%	+0.7%
Orthoptists	18	+12	+12	+8	+5	+0	+1	+207.5%	+182.4%	+81.9%	+35.8%	+2.7%	+5.9%
Physiotherapists	624	+80	+61	+61	+81	+63	-0	+14.7%	+10.8%	+10.8%	+15.0%	+11.2%	-0.0%
Podiatrists & Chiropodists	60	+41	+38	+37	+36	+31	+5	+211.9%	+169.1%	+155.7%	+144.6%	+103.9%	+8.7%
Speech & Language Therapists	544	+42	-1	-4	+18	+28	+2	+8.4%	-0.3%	-0.8%	+3.4%	+5.5%	+0.4%
Therapy Professions	1,992	+335	+234	+190	+261	+200	+13	+20.2%	+13.3%	+10.6%	+15.1%	+11.2%	+0.7%
Audiology	53	+24	+23	+5	+9	+1	-0	+82.9%	+78.6%	+10.7%	+21.3%	+1.7%	-0.4%
Biochemists	7	-1	-1	-1	-1	-1	+0	-10.6%	-10.6%	-14.9%	-10.7%	-12.2%	+0.4%
Cardiac Physiologists	1	+1	+1	+1	+1	+1		-100.0%	-100.0%	-100.0%	-100.0%	-100.0%	
Clinical Engineering	9	+6	+7	+2	+1	+1	+0	+190.0%	+335.0%	+24.3%	+8.7%	+8.7%	+0.2%
Medical Science	18	-0	-2	-3	+2	+0	+1	-2.6%	-9.9%	-13.3%	+12.9%	+0.1%	+3.3%
Phlebotomists	0	-0	-0			-1	-0	-66.2%	-65.1%			-82.0%	-12.0%
Physicists	2	-1	+0	-0	-0	-0	+0	-40.0%	+1.1%	-10.0%	-10.0%	-10.0%	+16.9%
Radiographers	5	-1	-1	-1	+0	+0	+1	-11.1%	-20.0%	-12.6%	+8.1%	+9.8%	+14.3%
Health Science/ Diagnostics	94	+27	+27	+3	+12	+1	+1	+40.8%	+39.7%	+3.3%	+15.2%	+1.0%	+1.3%
Social Care	34	-1	+1	+0	-1	+2	-0	-2.0%	+4.0%	+0.7%	-3.0%	+5.1%	-1.3%
Social Workers	185	+35	+32	+33	+46	+34	+5	+23.0%	+20.6%	+21.3%	+32.9%	+22.3%	+2.8%
Psychologists	287	+3	+3	-11	-14	-13	+5	+1.0%	+1.1%	-3.6%	-4.6%	-4.3%	+1.8%
Pharmacists	65	+8	+8	+11	+15	+10	+2	+15.0%	+13.3%	+20.9%	+29.9%	+17.7%	+2.6%
Pharmacy Technicians	9	+3	+3	+4	+1	+1	-0	+50.7%	+54.6%	+81.2%	+14.9%	+14.2%	-1.0%
Pharmacy	74	+12	+11	+15	+16	+11	+2	+18.5%	+17.2%	+26.1%	+27.8%	+17.3%	+2.1%
Counsellor Therapists	125	+10	+3	+9	+10	+13	+1	+8.7%	+2.9%	+7.8%	+8.6%	+11.6%	+1.1%
Dental Hygienists	60	+5	+6	+3	+3	-1	+0	+9.9%	+11.1%	+5.2%	+5.2%	-1.4%	+0.4%
Environmental Health Officers					-1			-100.0%	-100.0%	-100.0%	-100.0%	-100.0%	-100.0%
HSCP Trainees/ Students	0	+0	+0	+0	+0	+0	+0	-100.0%	-100.0%	-100.0%	-100.0%	-100.0%	+3.8%
Other Health & Social Care	40	+5	+5	+4	+6	+6	+0	+14.0%	+14.5%	+11.7%	+16.7%	+18.0%	+0.9%
Play Therapists/ Specialists	1	-0	-1	-1	-1	-1		-24.1%	-42.2%	-42.2%	-37.2%	-32.2%	
Vaccinators	16	+16	+16	+16	+16	+16	-18	-100.0%	-100.0%	-100.0%	-100.0%	-100.0%	-53.5%
H&SC, Other	242	+36	+29	+31	+33	+33	-16	+17.2%	+13.8%	+14.6%	+15.8%	+15.9%	-6.2%
Health & Social Care Professionals	2,909	+447	+337	+261	+354	+268	+10	+18.1%	+13.1%	+9.9%	+13.8%	+10.1%	+0.3%
Executive Management	75	+10	+4	+1	+4	+1	-1	+15.4%	+5.7%	+1.6%	+6.3%	+1.1%	-1.2%
Senior Management (VIII & GM)	286	+92	+65	+51	+51	+62	+7	+47.7%	+29.4%	+21.5%	+21.9%	+27.5%	+2.5%
Management (VIII & above)	361	+102	+69	+52	+56	+63	+6	+39.5%	+23.6%	+16.8%	+18.3%	+21.0%	+1.7%
Middle Management (V-VII)	953	+464	+409	+328	+336	+269	+28	+94.7%	+75.3%	+52.5%	+54.5%	+39.4%	+3.0%
Other Administrative	11	+10	+10	+9	+9	+10	+6	+2084.0%	+2084.0%	+446.0%	+446.0%	+1025.8%	+130.9%
Administrative/ Supervisory (V to VII)	964	+474	+420	+337	+345	+279	+34	+96.7%	+77.1%	+53.7%	+55.8%	+40.8%	+3.7%
General Administrative (III & IV)	2,028	+256	+230	+199	+282	+191	+3	+14.4%	+12.8%	+10.9%	+16.2%	+10.4%	+0.2%
Clerical (III & IV)	2,028	+256	+230	+199	+282	+191	+3	+14.4%	+12.8%	+10.9%	+16.2%	+10.4%	+0.2%
Management & Administrative	3,354	+832	+719	+588	+683	+533	+44	+33.0%	+27.3%	+21.3%	+25.6%	+18.9%	+1.3%
Support	342	-39	-44	-42	-5	-9	+2	-10.2%	-11.4%	-11.0%	-1.4%	-2.7%	+0.5%
Maintenance	67	+10	+12	+10	+9	+12	+0	+17.7%	+20.9%	+17.7%	+15.6%	+22.1%	+0.2%

Feb 2022 (Dec 2015 figure: 10,311)	WTE Feb 2022	WTE change since Dec 16	WTE change since Dec 17	WTE change since Dec 18	WTE change since Dec 19	WTE change since Dec 20	WTE change since Jan 22	% change since Dec 16	% change since Dec 17	% change since Dec 18	% change since Dec 19	% change since Dec 20	% change since Jan 22
Overall	12,884	+2,438	+2,365	+1,953	+2,285	+1,312	+95	+23.3%	+22.5%	+17.9%	+21.6%	+11.3%	+0.7%
Technical Services	2	+1	+1	+1	+1	+1		+100.0%	+100.0%	+122.2%	+100.0%	+100.0%	
Maintenance/ Technical	69	+11	+13	+11	+10	+13	+0	+19.1%	+22.3%	+19.3%	+17.0%	+23.4%	+0.2%
General Support	411	-28	-31	-31	+5	+4	+2	-6.3%	-7.1%	-7.0%	+1.3%	+0.9%	+0.5%
Attendant/ Aide	44	-2	-1	-5	+9	+3	-2	-4.6%	-3.3%	-10.2%	+25.8%	+7.5%	-3.9%
Health & Social Care Assistants	79	+59	+56	-46	+10	-26	+5	+303.5%	+241.9%	-36.9%	+14.0%	-24.6%	+7.4%
Health Care Assistant/ Care Assistant	903	+779	+773	+753	+754	+270	+19	+628.6%	+592.1%	+502.6%	+503.2%	+42.6%	+2.2%
HCA (Student Nurse/Midwife COVID-19)						-0		-100.0%	-100.0%	-100.0%	-100.0%	-100.0%	-100.0%
Health Care Assistants	1,026	+837	+827	+702	+772	+247	+23	+441.8%	+416.0%	+216.9%	+304.3%	+31.6%	+2.3%
Home Help	17	-266	-5	-2	-1	-1	-0	-94.0%	-23.4%	-10.8%	-7.0%	-6.9%	-0.9%
Health Promotion	1	+1	+1	+1	+1	+1		-100.0%	-100.0%	-100.0%	-100.0%	-100.0%	
Home Care Services	3	-10	-2	-2	-2	-1	+1	-75.8%	-41.2%	-41.9%	-36.4%	-28.5%	+24.2%
Other Care Grades	860	+138	+148	+132	+148	+132	+3	+19.2%	+20.8%	+18.1%	+20.8%	+18.2%	+0.4%
Pastoral Care	3	-1	-2	-1	-1	+0		-33.6%	-38.9%	-25.8%	-25.8%	+10.8%	
Workshop Services	3	-0	-0	+0	+0	+1		-1.7%	-5.3%	+1.8%	+2.2%	+23.5%	
Care, other	870	+127	+145	+129	+146	+133	+4	+17.1%	+20.0%	+17.5%	+20.2%	+18.0%	+0.5%
Pre-Hospital Care (Ambulance)								-100.0%	-100.0%	-100.0%	-100.0%	-100.0%	-100.0%
Ambulance Staff								-100.0%	-100.0%	-100.0%	-100.0%	-100.0%	-100.0%
Patient & Client Care	1,913	+698	+967	+830	+917	+378	+27	+57.4%	+102.1%	+76.6%	+92.1%	+24.6%	+1.4%

Source: Health Service Personnel Census