

Primary Care Service Employment Report: January 2023

Employment by Staff Group

Jan 2023	WTE Dec 2020	WTE Dec 2021	WTE Dec 2022	WTE Jan 2023	WTE change since Dec 22	WTE change since Dec 21	% change since Dec 21	WTE change since Dec 20	% change since Dec 20	No. Jan 2023
Overall	11,572	12,582	12,064	12,102	+38	-479	-3.8%	+530	+4.6%	14,337
Consultants	42	46	50	51	+1	+5	+10.4%	+9	+21.9%	61
Registrars	403	420	433	431	-2	+11	+2.6%	+28	+6.9%	459
SHO/ Interns	42	36	39	41	+1	+5	+13.4%	-1	-2.9%	50
Medical/ Dental, other	519	499	511	504	-7	+5	+0.9%	-15	-2.9%	700
Medical & Dental	1,006	1,001	1,034	1,027	-7	+25	+2.5%	+20	+2.0%	1,270
Nurse/ Midwife Manager	404	459	477	478	+1	+19	+4.1%	+73	+18.1%	528
Nurse/ Midwife Specialist & AN/MP	184	193	278	285	+7	+92	+47.8%	+101	+54.9%	329
Staff Nurse/ Staff Midwife	927	970	1,057	1,049	-8	+79	+8.2%	+122	+13.2%	1,345
Public Health Nurse	1,533	1,497	1,477	1,476	-1	-22	-1.4%	-57	-3.7%	1,764
Post-registration Nurse/ Midwife Student	106	143	96	101	+5	-42	-29.6%	-6	-5.3%	103
Nursing/ Midwifery Student	106	143	96	101	+5	-42	-29.6%	-6	-5.3%	103
Nursing/ Midwifery other	7	5	5	4	-1	-1	-15.0%	-3	-40.5%	4
Nursing & Midwifery	3,161	3,267	3,389	3,392	+3	+126	+3.8%	+231	+7.3%	4,073
Therapy Professions	1,792	1,915	2,162	2,189	+27	+274	+14.3%	+397	+22.2%	2,549
Health Science/ Diagnostics	93	93	99	99	-0	+6	+6.2%	+5	+5.6%	112
Social Care	33	34	39	39	+0	+5	+14.7%	+6	+18.0%	42
Social Workers	151	167	195	202	+7	+36	+21.3%	+51	+33.9%	222
Psychologists	300	285	292	299	+8	+15	+5.2%	-0	-0.2%	333
Pharmacy	63	76	68	69	+1	-7	-8.9%	+6	+9.4%	77
H&SC, Other	209	251	255	254	-1	+2	+0.9%	+44	+21.3%	325
Health & Social Care Professionals	2,641	2,820	3,109	3,150	+41	+330	+11.7%	+509	+19.3%	3,660
Management (VIII & above)	299	350	253	256	+3	-94	-26.8%	-43	-14.2%	268
Administrative/ Supervisory (V to VII)	685	905	762	783	+21	-122	-13.5%	+98	+14.3%	835
Clerical (III & IV)	1,838	2,004	1,847	1,860	+14	-144	-7.2%	+23	+1.2%	2,167
Management & Administrative	2,821	3,258	2,862	2,899	+37	-359	-11.0%	+78	+2.8%	3,270
Support	351	342	327	324	-3	-18	-5.3%	-27	-7.7%	484
Maintenance/ Technical	56	69	36	35	-0	-34	-48.9%	-21	-36.9%	39
General Support	407	412	362	360	-3	-52	-12.6%	-48	-11.7%	523
Health Care Assistants	779	966	466	427	-39	-539	-55.8%	-353	-45.2%	503
Home Help	18	17	15	15	-0	-2	-12.3%	-4	-19.4%	39
Care, other	737	841	827	832	+6	-8	-1.0%	+95	+12.9%	999
Patient & Client Care	1,535	1,823	1,308	1,274	-34	-550	-30.1%	-261	-17.0%	1,541

Primary Care Services Employment by Administration (HSE / S38): January 2023

Jan 2023	WTE Dec 2020	WTE Dec 2021	WTE Dec 2022	WTE Jan 2023	WTE change since Dec 22	WTE change since Dec 21	% change since Dec 21	WTE change since Dec 20	% change since Dec 20	No. Jan 2023
Total	11,572	12,582	12,064	12,102	+38	-479	-3.8%	+530	+4.6%	14,337
HSE	10,872	11,856	11,284	11,374	+90	-482	-4.1%	+502	+4.6%	13,371
Section 38 Voluntary Agencies	700	725	780	728	-52	+3	+0.4%	+28	+4.0%	966

Employment by Staff Group

Jan 2023	WTE Dec 2020	WTE Dec 2021	WTE Dec 2022	WTE Jan 2023	WTE change since Dec 22	WTE change since Dec 21	% change since Dec 21	WTE change since Dec 20	% change since Dec 20	No. Jan 2023
Health Service Executive	10,872	11,856	11,284	11,374	+90	-482	-4.1%	+502	+4.6%	13,371
Consultants	30	35	34	35	+1	-0	-1.4%	+5	+16.1%	40
Registrars	390	404	422	420	-2	+16	+4.1%	+30	+7.7%	447
SHO/ Interns	22	20	22	24	+3	+4	+19.8%	+2	+9.8%	27
Medical/ Dental, other	505	478	490	488	-2	+9	+2.0%	-17	-3.4%	651
Medical & Dental	947	937	967	966	-1	+29	+3.1%	+20	+2.1%	1,165
Nurse/ Midwife Manager	356	408	421	425	+4	+16	+4.0%	+69	+19.4%	469
Nurse/ Midwife Specialist & AN/MP	147	156	235	244	+10	+88	+56.3%	+97	+66.3%	277
Staff Nurse/ Staff Midwife	819	850	929	932	+3	+82	+9.6%	+113	+13.7%	1,204
Public Health Nurse	1,533	1,497	1,477	1,476	-1	-22	-1.4%	-57	-3.7%	1,764
Post-registration Nurse/ Midwife Student	106	143	96	101	+5	-42	-29.6%	-6	-5.3%	103
Nursing/ Midwifery Student	106	143	96	101	+5	-42	-29.6%	-6	-5.3%	103
Nursing/ Midwifery other	5	3	3	2	-1	-1	-26.3%	-3	-57.8%	2
Nursing & Midwifery	2,965	3,057	3,160	3,179	+19	+122	+4.0%	+214	+7.2%	3,819
Therapy Professions	1,756	1,883	2,124	2,154	+30	+271	+14.4%	+397	+22.6%	2,505
Health Science/ Diagnostics	89	89	95	95	-0	+6	+6.4%	+6	+7.0%	106
Social Care	33	34	39	39	+0	+5	+14.7%	+6	+18.0%	42
Social Workers	141	155	181	189	+8	+34	+21.8%	+48	+34.1%	207
Psychologists	299	284	291	298	+8	+14	+5.1%	-1	-0.3%	332
Pharmacy	53	65	60	62	+2	-3	-5.3%	+9	+16.0%	69
H&SC, Other	206	248	251	250	-1	+2	+1.0%	+45	+21.7%	319
Health & Social Care Professionals	2,577	2,758	3,041	3,087	+46	+329	+11.9%	+510	+19.8%	3,580
Management (VIII & above)	290	341	245	247	+2	-94	-27.6%	-43	-14.8%	255
Administrative/ Supervisory (V to VII)	653	871	728	749	+21	-122	-14.0%	+95	+14.6%	788
Clerical (III & IV)	1,769	1,935	1,773	1,791	+18	-143	-7.4%	+22	+1.2%	2,071
Management & Administrative	2,713	3,147	2,745	2,787	+42	-360	-11.4%	+74	+2.7%	3,114
Support	255	248	230	233	+3	-15	-6.2%	-22	-8.8%	372
Maintenance/ Technical	46	59	25	25	+0	-34	-57.2%	-21	-45.4%	26
General Support	302	307	255	258	+4	-49	-16.0%	-43	-14.4%	398
Health Care Assistants	671	856	338	312	-26	-544	-63.6%	-360	-53.6%	361
Home Help	18	17	15	15	-0	-2	-12.3%	-4	-19.4%	39
Care, other	679	777	763	770	+7	-7	-0.9%	+92	+13.5%	895
Patient & Client Care	1,368	1,650	1,116	1,097	-19	-553	-33.5%	-272	-19.9%	1,295

Employment by Staff Group

Jan 2023	WTE Dec 2020	WTE Dec 2021	WTE Dec 2022	WTE Jan 2023	WTE change since Dec 22	WTE change since Dec 21	% change since Dec 21	WTE change since Dec 20	% change since Dec 20	No. Jan 2023
Section 38 Voluntary Agencies	700	725	780	728	-52	+3	+0.4%	+28	+4.0%	966
Consultants	12	11	17	17	+0	+5	+46.5%	+4	+36.0%	21
Registrars	13	16	11	11	-1	-5	-32.8%	-2	-18.0%	12
SHO/ Interns	20	16	17	16	-1	+1	+5.1%	-3	-17.1%	23
Medical/ Dental, other	14	21	21	16	-5	-5	-22.6%	+2	+14.3%	49
Medical & Dental	60	64	67	60	-6	-4	-6.3%	+1	+1.2%	105
Nurse/ Midwife Manager	49	51	56	53	-3	+2	+4.8%	+4	+9.0%	59
Nurse/ Midwife Specialist & AN/MP	37	37	43	41	-2	+4	+11.6%	+4	+9.9%	52
Staff Nurse/ Staff Midwife	108	120	128	117	-11	-3	-2.3%	+9	+8.8%	141
Nursing/ Midwifery other	2	2	2	2						2
Nursing & Midwifery	196	209	229	213	-16	+4	+1.9%	+18	+9.0%	254
Therapy Professions	36	33	38	35	-3	+3	+7.7%	-0	-1.1%	44
Health Science/ Diagnostics	5	4	4	4	-0	+0	+1.3%	-1	-20.1%	6
Social Workers	10	12	14	13	-0	+2	+14.8%	+3	+31.3%	15
Psychologists	1	1	1	1		+0	+66.7%	+0	+66.7%	1
Pharmacy	9	10	8	7	-1	-3	-32.3%	-3	-27.6%	8
H&SC, Other	3	3	3	3		-0	-5.0%	-0	-3.8%	6
Health & Social Care Professionals	64	62	68	63	-4	+1	+2.0%	-1	-0.8%	80
Management (VIII & above)	9	9	9	9	+1	+1	+5.9%	+1	+5.9%	13
Administrative/ Supervisory (V to VII)	32	34	35	34	-0	+0	+1.2%	+3	+8.7%	47
Clerical (III & IV)	68	69	73	69	-5	-0	-0.4%	+1	+0.9%	96
Management & Administrative	108	112	117	112	-4	+1	+0.6%	+4	+3.6%	156
Support	96	94	97	91	-6	-3	-2.9%	-4	-4.7%	112
Maintenance/ Technical	10	10	11	10	-0	-0	-1.5%	+0	+2.3%	13
General Support	106	104	108	102	-6	-3	-2.8%	-4	-4.0%	125
Health Care Assistants	108	110	128	115	-13	+5	+4.6%	+7	+6.6%	142
Care, other	59	64	63	62	-1	-1	-2.2%	+3	+5.6%	104
Patient & Client Care	167	174	192	177	-15	+4	+2.1%	+10	+6.3%	246

Primary Care Services Employment by CHO: Jan 2023

Jan 2023	WTE Dec 2020	WTE Dec 2021	WTE Dec 2022	WTE Jan 2023	WTE change since Dec 22	WTE change since Dec 21	% change since Dec 21	WTE change since Dec 20	% change since Dec 20	No. Jan 2023
Overall	11,572	12,582	12,064	12,102	+38	-479	-3.8%	+530	+4.6%	14,337
CHO 1	1,296	1,456	1,472	1,485	+14	+30	+2.0%	+189	+14.6%	1,735
CHO 2	1,235	1,378	1,351	1,343	-8	-36	-2.6%	+108	+8.7%	1,556
CHO 3	812	933	772	790	+19	-143	-15.3%	-22	-2.7%	928
CHO 4	1,517	1,693	1,707	1,713	+6	+19	+1.2%	+195	+12.9%	2,117
CHO 5	1,061	1,127	1,152	1,162	+11	+36	+3.2%	+101	+9.5%	1,390
CHO 6	811	874	864	867	+2	-7	-0.8%	+56	+6.9%	1,098
CHO 7	1,789	1,885	1,765	1,735	-30	-150	-8.0%	-54	-3.0%	2,011
CHO 8	1,506	1,589	1,498	1,498	+0	-91	-5.7%	-8	-0.5%	1,769
CHO 9	1,412	1,498	1,357	1,378	+21	-120	-8.0%	-34	-2.4%	1,582
other Community Services	134	149	127	131	+4	-18	-11.8%	-2	-1.9%	151

Primary Care Services Employment by CHO etc. Jan 2023

CHO 1

Jan 2023	WTE Dec 2020	WTE Dec 2021	WTE Dec 2022	WTE Jan 2023	WTE change since Dec 22	WTE change since Dec 21	% change since Dec 21	WTE change since Dec 20	% change since Dec 20	No. Jan 2023
Overall	1,296	1,456	1,472	1,485	+14	+30	+2.0%	+189	+14.6%	1,735
Consultants	4	5	5	5	-0	-0	-4.1%	+1	+38.4%	6
Registrars	42	43	42	42	+0	-1	-2.6%	+0	+0.6%	44
SHO/ Interns	1	1	1	1	+0					1
Medical/ Dental, other	45	43	42	42	-0	-1	-1.5%	-3	-6.3%	56
Medical & Dental	92	92	90	90	-0	-2	-2.2%	-1	-1.4%	107
Nurse/ Midwife Manager	39	42	51	50	-1	+8	+19.0%	+11	+29.1%	56
Nurse/ Midwife Specialist & AN/MP	26	31	49	50	+1	+19	+63.7%	+24	+90.6%	52
Staff Nurse/ Staff Midwife	96	102	116	122	+5	+19	+19.0%	+25	+26.3%	155
Public Health Nurse	153	148	151	156	+5	+8	+5.2%	+3	+2.0%	175
Nursing/ Midwifery Student	3	15	10	8	-2	-7	-46.7%	+5	+166.7%	8
Nursing/ Midwifery other	1	1	1		-1	-1	-100.0%	-1	-100.0%	
Nursing & Midwifery	318	339	377	385	+8	+46	+13.7%	+67	+21.2%	446
Therapy Professions	230	234	279	278	-1	+44	+18.6%	+47	+20.5%	323
Health Science/ Diagnostics	5	8	9	10	+0	+2	+23.9%	+5	+91.7%	12
Social Workers	16	19	25	25	+0	+6	+32.7%	+9	+58.4%	29
Psychologists	31	31	28	28	+0	-3	-9.1%	-3	-11.1%	32
Pharmacy	2	4	1	1	+0	-3	-80.9%	-1	-56.5%	1
H&SC, Other	7	14	20	20	-0	+6	+40.1%	+12	+169.2%	33
Health & Social Care Professionals	292	310	362	361	-0	+51	+16.6%	+69	+23.7%	430
Management (VIII & above)	30	41	30	32	+2	-9	-22.1%	+1	+4.8%	32
Administrative/ Supervisory (V to VII)	76	95	94	96	+2	+1	+1.2%	+20	+26.0%	102
Clerical (III & IV)	250	309	293	296	+4	-13	-4.2%	+47	+18.8%	342
Management & Administrative	356	445	416	424	+8	-21	-4.7%	+68	+19.1%	476
Support	77	83	84	84	-0	+1	+0.6%	+6	+8.1%	113
Maintenance/ Technical	7	9	9	9	+0	+0	+1.3%	+2	+27.1%	9
General Support	84	92	93	92	-0	+1	+0.7%	+8	+9.7%	122
Health Care Assistants	96	105	69	67	-2	-37	-35.5%	-28	-29.6%	77
Home Help	1	1	0	0	+0	-0	-31.4%	-0	-53.3%	1
Care, other	58	73	64	65	+1	-9	-11.8%	+6	+10.8%	76
Patient & Client Care	155	178	134	132	-1	-46	-25.8%	-23	-14.5%	154

CHO 2

Jan 2023	WTE Dec 2020	WTE Dec 2021	WTE Dec 2022	WTE Jan 2023	WTE change since Dec 22	WTE change since Dec 21	% change since Dec 21	WTE change since Dec 20	% change since Dec 20	No. Jan 2023
Overall	1,235	1,378	1,351	1,343	-8	-36	-2.6%	+108	+8.7%	1,556
Consultants	1	3	3	3	0	-0	-4.2%	+2	+130.8%	3
Registrars	47	48	53	51	-1	+4	+7.9%	+4	+8.4%	53
SHO/ Interns	3	4	3	4	+1			+1	+33.3%	4
Medical/ Dental, other	49	43	46	43	-2	-0	-0.8%	-6	-12.4%	54
Medical & Dental	101	98	104	101	-3	+3	+3.4%	+1	+0.6%	114
Nurse/ Midwife Manager	28	28	34	35	+1	+7	+25.4%	+7	+24.0%	37
Nurse/ Midwife Specialist & AN/MP	21	25	38	37	-1	+12	+50.2%	+16	+76.1%	42
Staff Nurse/ Staff Midwife	79	85	92	95	+3	+10	+12.2%	+16	+20.2%	118
Public Health Nurse	198	187	186	184	-2	-3	-1.4%	-13	-6.8%	212
Post-registration Nurse/ Midwife Student		20	14	18	+4	-2	-9.8%	+18	-100.0%	18
Nursing/ Midwifery Student		20	14	18	+4	-2	-9.8%	+18	-100.0%	18
Nursing & Midwifery	326	344	365	369	+4	+25	+7.3%	+43	+13.3%	427
Therapy Professions	248	263	291	289	-2	+26	+9.8%	+41	+16.7%	333
Health Science/ Diagnostics	7	9	9	8	-1	-1	-7.9%	+1	+15.3%	8
Social Care	9	8	7	7	+0	-1	-16.8%	-2	-21.1%	8
Social Workers	6	8	19	19	+0	+11	+141.8%	+13	+224.6%	19
Psychologists	27	30	32	31	-0	+1	+4.4%	+5	+18.1%	35
Pharmacy	1	2	1	1	+0	-1	-47.5%	+0	+5.0%	2
H&SC, Other	42	50	63	61	-1	+11	+22.7%	+20	+46.8%	92
Health & Social Care Professionals	339	370	421	417	-4	+47	+12.6%	+78	+23.1%	497
Management (VIII & above)	35	42	29	29	+0	-12	-29.8%	-6	-17.1%	30
Administrative/ Supervisory (V to VII)	73	108	85	90	+6	-17	-16.1%	+17	+24.0%	95
Clerical (III & IV)	229	241	219	211	-9	-30	-12.6%	-18	-7.9%	239
Management & Administrative	337	391	332	330	-2	-60	-15.4%	-7	-2.0%	364
Support	22	19	17	18	+1	-1	-4.1%	-4	-16.8%	38
Maintenance/ Technical	8	10	11	11	+0	+1	+10.0%	+3	+37.8%	11
General Support	30	29	28	29	+1	+0	+0.7%	-1	-2.3%	49
Health Care Assistants	57	82	33	33	-0	-50	-60.3%	-24	-42.5%	35
Care, other	46	64	68	63	-4	-1	-1.4%	+17	+38.1%	70
Patient & Client Care	103	147	100	96	-4	-51	-34.5%	-7	-6.6%	105



CHO 3

Jan 2023	WTE Dec 2020	WTE Dec 2021	WTE Dec 2022	WTE Jan 2023	WTE change since Dec 22	WTE change since Dec 21	% change since Dec 21	WTE change since Dec 20	% change since Dec 20	No. Jan 2023
Overall	812	933	772	790	+19	-143	-15.3%	-22	-2.7%	928
Consultants	1	1	1	1	0	+0	+1.5%	+0	+1.5%	2
Registrars	25	25	29	29	-0	+4	+16.5%	+4	+16.9%	30
SHO/ Interns	1						-100.0%	-1	-100.0%	
Medical/ Dental, other	52	44	45	45	-0	+1	+3.3%	-7	-12.8%	55
Medical & Dental	79	70	76	76	-0	+6	+7.9%	-3	-4.3%	87
Nurse/ Midwife Manager	23	20	23	24	+0	+3	+15.8%	+1	+2.5%	26
Nurse/ Midwife Specialist & AN/MP	3	8	7	8	+1	+0	+2.1%	+5	+155.7%	8
Staff Nurse/ Staff Midwife	56	67	75	78	+2	+10	+15.0%	+22	+39.1%	100
Public Health Nurse	126	128	125	128	+3	+0	+0.4%	+2	+1.8%	153
Post-registration Nurse/ Midwife Student	4	11	6	6	+0	-5	-45.1%	+2	+50.0%	6
Nursing/ Midwifery Student	4	11	6	6	+0	-5	-45.1%	+2	+50.0%	6
Nursing & Midwifery	212	234	236	243	+7	+9	+3.9%	+31	+14.8%	293
Therapy Professions	84	106	162	170	+9	+65	+61.0%	+87	+103.9%	193
Health Science/ Diagnostics	6	5	5	5	+0	-0	-8.6%	-1	-23.4%	5
Social Care	1	1				-1	-100.0%	-1	-100.0%	
Social Workers	10	11	12	12	-0	+1	+9.7%	+2	+23.6%	14
Psychologists	15	13	14	16	+2	+3	+19.9%	+1	+8.9%	18
Pharmacy	1	2	1	1	+0	-1	-50.0%			1
H&SC, Other	10	9	12	13	+1	+4	+41.2%	+3	+29.4%	15
Health & Social Care Professionals	126	148	205	217	+12	+70	+47.2%	+91	+72.2%	246
Management (VIII & above)	24	29	10	10	+0	-19	-65.5%	-14	-59.0%	10
Administrative/ Supervisory (V to VII)	63	79	28	30	+2	-49	-62.4%	-33	-52.9%	32
Clerical (III & IV)	150	179	127	128	+1	-51	-28.5%	-22	-14.7%	148
Management & Administrative	237	286	165	167	+2	-119	-41.6%	-70	-29.4%	190
Support	13	15	12	12	+0	-2	-16.4%	-1	-7.2%	28
Maintenance/ Technical	27	35				-35	-100.0%	-27	-100.0%	
General Support	40	50	12	12	+0	-37	-75.2%	-28	-69.4%	28
Health Care Assistants	67	83	26	23	-3	-60	-72.1%	-44	-65.6%	26
Home Help	1						-100.0%	-1	-100.0%	
Care, other	50	62	51	51	+0	-11	-17.2%	+2	+3.7%	58
Patient & Client Care	117	145	77	74	-2	-70	-48.6%	-43	-36.6%	84



CHO 4

Jan 2023	WTE Dec 2020	WTE Dec 2021	WTE Dec 2022	WTE Jan 2023	WTE change since Dec 22	WTE change since Dec 21	% change since Dec 21	WTE change since Dec 20	% change since Dec 20	No. Jan 2023
Overall	1,517	1,693	1,707	1,713	+6	+19	+1.2%	+195	+12.9%	2,117
Consultants	3	3	7	7	-0	+4	+151.2%	+4	+151.2%	10
Registrars	58	50	40	39	-1	-12	-23.3%	-19	-33.4%	42
SHO/ Interns	7	3	4	4	0	+1	+33.3%	-3	-44.1%	4
Medical/ Dental, other	91	98	110	105	-5	+7	+7.2%	+14	+15.7%	171
Medical & Dental	159	154	160	154	-6	+0	+0.2%	-4	-2.7%	227
Nurse/ Midwife Manager	61	80	72	73	+1	-7	-8.2%	+12	+20.6%	82
Nurse/ Midwife Specialist & AN/MP	7	6	14	18	+3	+12	+203.6%	+11	+151.9%	22
Staff Nurse/ Staff Midwife	139	140	177	172	-5	+32	+22.9%	+33	+23.6%	233
Public Health Nurse	222	211	210	209	-1	-2	-1.1%	-13	-5.7%	261
Post-registration Nurse/ Midwife Student	15	23	11	15	+4	-8	-34.8%	+0	+0.4%	15
Nursing/ Midwifery Student	15	23	11	15	+4	-8	-34.8%	+0	+0.4%	15
Nursing & Midwifery	443	460	484	487	+3	+27	+5.9%	+44	+9.8%	613
Therapy Professions	237	279	327	333	+6	+54	+19.5%	+96	+40.4%	389
Health Science/ Diagnostics	12	13	13	13	-0	-0	-0.9%	+1	+5.2%	15
Social Care	5	8	7	6	-0	-2	-19.0%	+1	+29.6%	7
Social Workers	28	29	37	41	+4	+12	+39.5%	+13	+45.9%	44
Psychologists	22	20	23	28	+5	+8	+41.9%	+6	+28.7%	32
Pharmacy	4	4	2	3	+1	-1	-31.3%	-1	-27.7%	3
H&SC, Other	41	53	39	39	-0	-14	-26.5%	-2	-5.3%	46
Health & Social Care Professionals	349	405	447	463	+16	+57	+14.2%	+114	+32.6%	536
Management (VIII & above)	35	34	44	45	+1	+11	+33.9%	+10	+29.4%	46
Administrative/ Supervisory (V to VII)	73	86	114	115	+1	+29	+33.7%	+42	+58.2%	125
Clerical (III & IV)	224	268	255	252	-3	-16	-6.1%	+29	+12.8%	305
Management & Administrative	331	388	412	412	-0	+24	+6.2%	+81	+24.5%	476
Support	18	17	16	17	+1	+0	+2.0%	-1	-4.5%	31
Maintenance/ Technical		1	1	1	0			+1	-100.0%	1
General Support	18	18	17	18	+1	+0	+1.8%	+0	+1.1%	32
Health Care Assistants	103	143	47	38	-9	-105	-73.3%	-65	-63.1%	46
Home Help	9	9	8	8	-0	-1	-10.8%	-1	-11.1%	21
Care, other	105	117	130	132	+2	+16	+13.5%	+27	+25.7%	166
Patient & Client Care	218	268	185	179	-7	-90	-33.4%	-39	-17.9%	233

CHO 5

Jan 2023	WTE Dec 2020	WTE Dec 2021	WTE Dec 2022	WTE Jan 2023	WTE change since Dec 22	WTE change since Dec 21	% change since Dec 21	WTE change since Dec 20	% change since Dec 20	No. Jan 2023
Overall	1,061	1,127	1,152	1,162	+11	+36	+3.2%	+101	+9.5%	1,390
Consultants	1	2	2	2	0			+1	+100.0%	2
Registrars	21	28	30	31	+1	+3	+10.4%	+10	+48.5%	31
SHO/ Interns	2	1				-1	-100.0%	-2	-100.0%	
Medical/ Dental, other	55	57	59	59	+1	+2	+3.8%	+5	+8.7%	82
Medical & Dental	79	88	90	92	+2	+4	+4.6%	+14	+17.3%	115
Nurse/ Midwife Manager	46	51	47	47	-0	-3	-6.9%	+1	+1.7%	54
Nurse/ Midwife Specialist & AN/MP	18	15	25	27	+1	+12	+77.9%	+9	+49.6%	31
Staff Nurse/ Staff Midwife	84	91	117	116	-1	+25	+27.2%	+31	+37.4%	147
Public Health Nurse	167	157	154	155	+1	-2	-1.1%	-12	-7.2%	189
Post-registration Nurse/ Midwife Student	3	6	4	4	+0	-2	-33.3%	+1	+20.1%	4
Nursing/ Midwifery Student	3	6	4	4	+0	-2	-33.3%	+1	+20.1%	4
Nursing/ Midwifery other	1						-100.0%	-1	-100.0%	
Nursing & Midwifery	320	320	348	349	+1	+29	+9.1%	+29	+9.1%	425
Therapy Professions	186	211	243	252	+9	+42	+19.7%	+66	+35.7%	286
Health Science/ Diagnostics	8	7	7	8	+0	+1	+21.0%	+0	+4.3%	9
Social Care	5	5	8	8	-0	+4	+86.9%	+3	+64.6%	9
Social Workers	7	5	5	5	-0	+1	+16.2%	-2	-24.1%	6
Psychologists	38	33	34	34	+0	+1	+2.9%	-4	-10.3%	38
Pharmacy	1	1				-1	-100.0%	-1	-100.0%	
H&SC, Other	19	18	19	20	+1	+2	+9.5%	+1	+6.2%	22
Health & Social Care Professionals	264	279	318	328	+10	+49	+17.7%	+65	+24.5%	370
Management (VIII & above)	24	24	18	18	-1	-7	-28.0%	-6	-25.1%	18
Administrative/ Supervisory (V to VII)	59	69	67	68	+1	-1	-1.4%	+9	+16.2%	70
Clerical (III & IV)	161	155	169	167	-2	+12	+7.5%	+6	+3.7%	190
Management & Administrative	243	249	254	253	-1	+4	+1.6%	+10	+4.0%	278
Support	26	25	21	22	+0	-3	-12.3%	-5	-18.3%	50
General Support	26	25	21	22	+0	-3	-12.3%	-5	-18.3%	50
Health Care Assistants	70	100	50	47	-3	-53	-52.9%	-23	-32.4%	53
Home Help	8	7	6	6	-0	-1	-12.8%	-1	-18.5%	17
Care, other	52	59	64	66	+1	+6	+10.2%	+13	+25.6%	82
Patient & Client Care	130	167	121	119	-2	-48	-28.7%	-11	-8.2%	152



CHO 6

Jan 2023	WTE Dec 2020	WTE Dec 2021	WTE Dec 2022	WTE Jan 2023	WTE change since Dec 22	WTE change since Dec 21	% change since Dec 21	WTE change since Dec 20	% change since Dec 20	No. Jan 2023
Overall	811	874	864	867	+2	-7	-0.8%	+56	+6.9%	1,098
Consultants	8	8	10	10	-0	+2	+18.9%	+2	+18.9%	12
Registrars	24	25	32	32	+1	+7	+29.6%	+9	+36.3%	34
SHO/ Interns	7	7	7	7	-0	+1	+7.7%	+1	+7.7%	13
Medical/ Dental, other	41	42	45	46	+1	+4	+8.7%	+5	+11.2%	66
Medical & Dental	80	82	93	95	+2	+13	+16.0%	+15	+19.2%	125
Nurse/ Midwife Manager	22	21	31	32	+1	+11	+53.4%	+9	+41.2%	34
Nurse/ Midwife Specialist & AN/MP	4	5	10	11	+1	+6	+113.6%	+7	+204.6%	13
Staff Nurse/ Staff Midwife	55	57	61	61	-0	+4	+7.4%	+6	+10.8%	85
Public Health Nurse	112	110	99	97	-2	-13	-11.8%	-15	-13.4%	115
Post-registration Nurse/ Midwife Student	15	11	7	7	-0	-4	-36.4%	-8	-53.0%	7
Nursing/ Midwifery Student	15	11	7	7	-0	-4	-36.4%	-8	-53.0%	7
Nursing Education/Clinical	1	1				-1	-100.0%	-1	-100.0%	
Nursing/ Midwifery other	1	1				-1	-100.0%	-1	-100.0%	
Nursing & Midwifery	209	204	208	207	-1	+3	+1.5%	-2	-0.8%	254
Therapy Professions	110	115	143	142	-1	+27	+23.3%	+32	+28.7%	176
Health Science/ Diagnostics	20	18	17	17	+0	-0	-2.6%	-3	-13.2%	21
Social Care	3	3	4	4	+0	+1	+35.6%	+1	+47.2%	4
Social Workers	4	11	10	11	+0	-0	-0.8%	+6	+144.4%	12
Psychologists	20	18	16	16	-1	-3	-15.4%	-4	-21.3%	19
Pharmacy	1	3	3	2	-0	-1	-18.7%	+1	+143.0%	3
H&SC, Other	4	7	6	6	+0	-1	-17.4%	+2	+56.7%	7
Health & Social Care Professionals	162	175	199	198	-1	+23	+12.9%	+36	+22.2%	242
Management (VIII & above)	30	39	29	28	-1	-11	-29.3%	-2	-8.1%	33
Administrative/ Supervisory (V to VII)	65	85	78	79	+1	-6	-7.3%	+14	+21.6%	93
Clerical (III & IV)	128	135	136	138	+2	+3	+2.5%	+11	+8.3%	168
Management & Administrative	223	260	242	245	+3	-14	-5.5%	+22	+9.9%	294
Support	26	24	23	23	+0	-1	-4.9%	-3	-10.7%	37
Maintenance/ Technical	2	2	2	2	0					4
General Support	28	26	25	25	+0	-1	-4.5%	-3	-9.9%	41
Health Care Assistants	38	46	16	15	-1	-31	-67.5%	-23	-60.3%	19
Care, other	72	80	81	81	-0	+1	+0.8%	+9	+13.1%	123
Patient & Client Care	110	127	97	96	-1	-31	-24.2%	-13	-12.3%	142



CHO 7

Jan 2023	WTE Dec 2020	WTE Dec 2021	WTE Dec 2022	WTE Jan 2023	WTE change since Dec 22	WTE change since Dec 21	% change since Dec 21	WTE change since Dec 20	% change since Dec 20	No. Jan 2023
Overall	1,789	1,885	1,765	1,735	-30	-150	-8.0%	-54	-3.0%	2,011
Consultants	13	12	11	12	+1	+1	+5.4%	-0	-2.0%	14
Registrars	44	47	45	45	+0	-2	-3.9%	+2	+3.5%	47
SHO/ Interns	9	10	12	11	-1	+1	+12.7%	+2	+25.2%	12
Medical/ Dental, other	77	69	61	60	-1	-9	-12.7%	-17	-21.7%	88
Medical & Dental	142	137	129	129	+0	-9	-6.3%	-13	-9.2%	161
Nurse/ Midwife Manager	86	98	100	99	-2	+1	+0.9%	+13	+15.1%	108
Nurse/ Midwife Specialist & AN/MP	56	54	65	62	-3	+8	+14.9%	+6	+11.0%	74
Staff Nurse/ Staff Midwife	199	203	198	186	-12	-17	-8.3%	-13	-6.5%	225
Public Health Nurse	177	175	164	164	-0	-12	-6.6%	-13	-7.2%	201
Post-registration Nurse/ Midwife Student	23	25	25	23	-2	-2	-7.1%	+0	+1.0%	25
Nursing/ Midwifery Student	23	25	25	23	-2	-2	-7.1%	+0	+1.0%	25
Nursing/ Midwifery other	2	2	2	2	0					2
Nursing & Midwifery	542	557	554	536	-18	-21	-3.8%	-6	-1.2%	635
Therapy Professions	257	249	267	271	+3	+22	+8.7%	+13	+5.1%	309
Health Science/ Diagnostics	1	0	8	8	-0	+7	+3409.1%	+6	+532.8%	10
Social Care	4	3	4	4	-0	+1	+32.2%	+0	+4.3%	4
Social Workers	26	25	30	31	+1	+6	+25.0%	+5	+18.5%	34
Psychologists	25	26	26	25	-1	-1	-2.5%	-0	-0.8%	28
Pharmacy	31	35	31	30	-1	-5	-13.8%	-1	-1.9%	33
H&SC, Other	21	22	24	24	-1	+1	+5.8%	+3	+12.6%	29
Health & Social Care Professionals	365	360	390	392	+2	+32	+9.0%	+27	+7.3%	447
Management (VIII & above)	30	39	23	22	-1	-16	-42.6%	-8	-26.2%	23
Administrative/ Supervisory (V to VII)	87	116	84	85	+2	-30	-26.3%	-2	-2.3%	87
Clerical (III & IV)	193	201	180	181	+0	-20	-10.2%	-12	-6.2%	203
Management & Administrative	310	356	287	288	+1	-67	-19.0%	-22	-7.0%	313
Support	110	104	106	100	-6	-3	-3.2%	-10	-9.0%	119
Maintenance/ Technical	9	10	10	10	-0	-0	-1.1%	+0	+2.5%	11
General Support	120	113	116	110	-6	-3	-3.1%	-10	-8.1%	130
Health Care Assistants	184	211	155	142	-13	-69	-32.6%	-42	-22.9%	171
Care, other	126	151	136	139	+3	-13	-8.3%	+13	+10.1%	154
Patient & Client Care	310	362	291	281	-10	-81	-22.5%	-29	-9.5%	325



CHO 8

Jan 2023	WTE Dec 2020	WTE Dec 2021	WTE Dec 2022	WTE Jan 2023	WTE change since Dec 22	WTE change since Dec 21	% change since Dec 21	WTE change since Dec 20	% change since Dec 20	No. Jan 2023
Overall	1,506	1,589	1,498	1,498	+0	-91	-5.7%	-8	-0.5%	1,769
Consultants	6	6	6	6	-0	-0	-0.7%	-0	-2.7%	6
Registrars	82	84	92	93	+1	+9	+10.6%	+11	+13.2%	95
SHO/ Interns	1						-100.0%	-1	-100.0%	
Medical/ Dental, other	61	53	53	51	-2	-1	-2.1%	-9	-15.1%	64
Medical & Dental	149	142	152	150	-1	+8	+5.4%	+1	+0.5%	165
Nurse/ Midwife Manager	51	62	60	59	-0	-3	-4.2%	+9	+17.1%	66
Nurse/ Midwife Specialist & AN/MP	42	40	47	48	+1	+8	+18.7%	+6	+14.8%	57
Staff Nurse/ Staff Midwife	104	108	110	110	-0	+1	+1.2%	+5	+5.2%	149
Public Health Nurse	197	200	217	211	-6	+11	+5.5%	+14	+7.2%	254
Post-registration Nurse/ Midwife Student	12	8				-8	-100.0%	-12	-100.0%	
Nursing/ Midwifery Student	12	8				-8	-100.0%	-12	-100.0%	
Nursing/ Midwifery other	1						-100.0%	-1	-100.0%	
Nursing & Midwifery	407	419	434	428	-6	+9	+2.2%	+22	+5.3%	526
Therapy Professions	228	238	222	223	+1	-15	-6.3%	-6	-2.6%	267
Health Science/ Diagnostics	7	9	10	10	+0	+1	+14.5%	+3	+41.1%	11
Social Care	1	1	1	1	0	+0	+33.3%			1
Social Workers	16	20	29	29	-0	+9	+43.0%	+13	+83.5%	32
Psychologists	56	49	46	45	-0	-4	-7.5%	-11	-18.9%	50
Pharmacy	5	7	7	7	+0	-0	-0.6%	+2	+44.7%	7
H&SC, Other	26	32	36	35	-1	+3	+8.5%	+9	+34.7%	39
Health & Social Care Professionals	339	356	351	350	-1	-6	-1.6%	+11	+3.2%	407
Management (VIII & above)	41	46	36	36	-0	-10	-21.1%	-5	-11.4%	38
Administrative/ Supervisory (V to VII)	84	112	95	96	+1	-16	-14.1%	+12	+14.7%	101
Clerical (III & IV)	272	266	272	286	+15	+21	+7.7%	+14	+5.2%	341
Management & Administrative	397	424	403	419	+16	-5	-1.2%	+22	+5.5%	480
Support	20	20	19	19	-0	-1	-4.7%	-1	-5.9%	33
Maintenance/ Technical	3	3	2	2	+0	-1	-32.0%	-1	-31.5%	2
General Support	23	23	21	21	-0	-2	-8.2%	-2	-9.1%	35
Health Care Assistants	90	120	36	26	-10	-94	-78.4%	-64	-71.3%	36
Care, other	100	105	101	104	+2	-1	-0.8%	+4	+4.0%	120
Patient & Client Care	190	225	137	130	-7	-95	-42.3%	-60	-31.7%	156



CHO 9

Jan 2023	WTE Dec 2020	WTE Dec 2021	WTE Dec 2022	WTE Jan 2023	WTE change since Dec 22	WTE change since Dec 21	% change since Dec 21	WTE change since Dec 20	% change since Dec 20	No. Jan 2023
Overall	1,412	1,498	1,357	1,378	+21	-120	-8.0%	-34	-2.4%	1,582
Consultants	4	4	3	3	+0	-1	-21.8%	-1	-21.8%	4
Registrars	52	58	60	55	-5	-2	-3.9%	+3	+6.3%	63
SHO/ Interns	5	7	7	10	+3	+3	+34.7%	+5	+94.2%	10
Medical/ Dental, other	49	50	50	52	+2	+1	+2.2%	+3	+5.3%	64
Medical & Dental	111	120	121	120	-0	+0	+0.4%	+10	+8.7%	141
Nurse/ Midwife Manager	43	52	53	55	+2	+3	+6.2%	+12	+29.2%	60
Nurse/ Midwife Specialist & AN/MP	8	10	23	26	+3	+15	+147.9%	+17	+213.2%	30
Staff Nurse/ Staff Midwife	105	110	105	106	+1	-4	-3.8%	+1	+0.8%	127
Public Health Nurse	182	181	171	172	+0	-9	-5.2%	-10	-5.7%	204
Post-registration Nurse/ Midwife Student	31	24	19	19	+0	-5	-19.5%	-12	-37.8%	20
Nursing/ Midwifery Student	31	24	19	19	+0	-5	-19.5%	-12	-37.8%	20
Nursing/ Midwifery other	1	1	2	2	+0	+1	+104.2%	+1	+96.0%	2
Nursing & Midwifery	370	379	373	380	+7	+1	+0.3%	+10	+2.6%	443
Therapy Professions	211	221	229	231	+2	+10	+4.6%	+20	+9.6%	273
Health Science/ Diagnostics	20	18	13	13	+0	-5	-29.3%	-7	-34.2%	13
Social Care	4	3	6	6	-0	+3	+85.3%	+3	+70.5%	7
Social Workers	23	23	23	25	+2	+2	+9.2%	+3	+11.9%	27
Psychologists	65	63	72	75	+3	+12	+18.2%	+10	+14.7%	80
Pharmacy	15	15	13	14	+0	-1	-9.0%	-1	-9.4%	16
H&SC, Other	36	42	33	33	-1	-10	-22.8%	-3	-8.6%	38
Health & Social Care Professionals	373	386	390	397	+6	+10	+2.7%	+24	+6.4%	454
Management (VIII & above)	29	32	15	16	+1	-16	-49.3%	-12	-42.7%	17
Administrative/ Supervisory (V to VII)	88	130	93	96	+3	-33	-25.8%	+8	+8.8%	102
Clerical (III & IV)	221	229	185	188	+3	-41	-18.0%	-33	-14.8%	216
Management & Administrative	338	391	293	301	+8	-91	-23.2%	-37	-11.0%	335
Support	33	33	27	27	+0	-5	-16.5%	-6	-18.0%	33
General Support	33	33	27	27	+0	-5	-16.5%	-6	-18.0%	33
Health Care Assistants	74	75	35	35	+0	-40	-53.6%	-39	-52.6%	40
Care, other	114	114	118	119	+0	+4	+3.9%	+5	+4.4%	136
Patient & Client Care	187	190	153	154	+1	-36	-18.9%	-34	-18.0%	176

other Community Services

Jan 2023	WTE Dec 2020	WTE Dec 2021	WTE Dec 2022	WTE Jan 2023	WTE change since Dec 22	WTE change since Dec 21	% change since Dec 21	WTE change since Dec 20	% change since Dec 20	No. Jan 2023
Overall	134	149	127	131	+4	-18	-11.8%	-2	-1.9%	151
Consultants	1	2	2	2	0			+1	+100.0%	2
Registrars	9	12	11	13	+2	+1	+8.0%	+4	+47.9%	20
SHO/ Interns	6	3	5	4	-1	+1	+17.3%	-2	-41.3%	6
Medical/ Dental, other	0						-100.0%	-0	-100.0%	
Medical & Dental	16	17	18	18	+0	+1	+8.7%	+3	+16.6%	28
Nurse/ Midwife Manager	6	6	5	4	-1	-2	-30.4%	-2	-29.9%	5
Staff Nurse/ Staff Midwife	9	6	5	5	-0	-2	-26.1%	-5	-49.9%	6
Nursing & Midwifery	16	13	10	9	-1	-4	-28.2%	-7	-41.9%	11
Health Science/ Diagnostics	8	7	8	8	-0	+1	+11.0%	-0	-2.6%	8
Social Care	2	2	2	2	+0	-0	-6.7%	-0	-2.2%	2
Social Workers	16	16	4	4	-0	-12	-74.0%	-12	-73.3%	5
Psychologists	1	1	1	1	0					1
Pharmacy	3	3	10	10	-0	+7	+243.0%	+7	+243.0%	11
H&SC, Other	4	3	2	4	+1	+1	+18.7%	-0	-6.3%	4
Health & Social Care Professionals	33	32	28	28	+1	-3	-10.9%	-5	-14.3%	31
Management (VIII & above)	21	25	19	20	+1	-5	-18.2%	-1	-4.3%	21
Administrative/ Supervisory (V to VII)	17	25	26	27	+1	+2	+8.2%	+10	+61.0%	28
Clerical (III & IV)	12	20	12	13	+1	-7	-34.5%	+1	+7.9%	15
Management & Administrative	50	70	57	60	+3	-9	-13.5%	+10	+20.4%	64
Support	4	3	1	1	+0	-2	-61.2%	-3	-72.2%	2
Maintenance/ Technical			1	1	0	+1	-100.0%	+1	-100.0%	1
General Support	4	3	2	2	+0	-1	-26.2%	-2	-47.2%	3
Care, other	15	15	13	13	+0	-2	-12.2%	-2	-14.4%	14
Patient & Client Care	15	15	13	13	+0	-2	-12.2%	-2	-14.4%	14



Primary Care Services Employment by Grade Group: Jan 2023

Jan 2023	WTE Dec 2020	WTE Dec 2021	WTE Dec 2022	WTE Jan 2023	WTE change since Dec 22	WTE change since Dec 21	% change since Dec 21	WTE change since Dec 20	% change since Dec 20	No. Jan 2023
Overall	11,572	12,582	12,064	12,102	+38	-479	-3.8%	+530	+4.6%	14,337
Consultant Dentistry	10	10	13	13	-0	+3	+25.7%	+3	+25.7%	15
Consultant Medicine	20	23	24	24	+0	+1	+5.1%	+4	+18.3%	29
Consultant Paediatrics	2	2	2	1	-0	-0	-1.3%	-0	-1.3%	2
Consultant Psychiatry	8	9	8	9	+1	+0	+0.4%	+1	+12.4%	10
Consultant Radiology	1	1	1	1						1
Consultant Surgery	1	1	3	2	-0	+1	+70.6%	+2	+306.7%	4
Consultants	42	46	50	51	+1	+5	+10.4%	+9	+21.9%	61
Registrar	390	402	422	420	-2	+19	+4.7%	+30	+7.8%	447
Senior Registrar	2	4	3	3	+0	-1	-16.0%	+1	+70.6%	4
Specialist Registrar	11	14	8	7	-1	-7	-48.6%	-4	-35.3%	8
Registrars	403	420	433	431	-2	+11	+2.6%	+28	+6.9%	459
Senior House Officer	42	36	39	41	+1	+5	+13.4%	-1	-2.9%	50
SHO/ Interns	42	36	39	41	+1	+5	+13.4%	-1	-2.9%	50
Dentists	302	305	307	304	-3	-1	-0.4%	+2	+0.6%	406
Other Medical	217	194	204	200	-4	+6	+3.0%	-17	-7.9%	294
Medical/ Dental, other	519	499	511	504	-7	+5	+0.9%	-15	-2.9%	700
Medical & Dental	1,006	1,001	1,034	1,027	-7	+25	+2.5%	+20	+2.0%	1,270
Clinical Nurse/ Midwife Manager	192	210	214	214	-0	+4	+1.8%	+22	+11.3%	239
Director Nursing/Midwifery, Assistant	172	204	218	220	+2	+16	+7.6%	+48	+28.1%	243
Director of Nursing/Midwifery	40	44	44	44	-0	-1	-1.4%	+3	+8.3%	46
Nurse/ Midwife Manager	404	459	477	478	+1	+19	+4.1%	+73	+18.1%	528
Advanced Nurse/ Midwife Practitioner	13	15	38	40	+2	+25	+165.1%	+27	+202.9%	42
Clinical Nurse/ Midwife Specialist	171	178	240	245	+5	+67	+37.8%	+74	+43.4%	287
Nurse/ Midwife Specialist & AN/MP	184	193	278	285	+7	+92	+47.8%	+101	+54.9%	329
Staff Midwives	6	4	5	3	-2	-1	-19.2%	-2	-44.2%	4
Staff Nurse [Psychiatric]	14	12	14	12	-2	+1	+4.3%	-1	-8.2%	19
Staff Nurses [General/ Children's]	908	954	1,036	1,031	-4	+78	+8.2%	+123	+13.6%	1,319
Staff Nurse [Intellectual Disability]		1	2	2	+0	+2	+324.0%	+2	-100.0%	3
Staff Nurse/ Staff Midwife	927	970	1,057	1,049	-8	+79	+8.2%	+122	+13.2%	1,345
Public Health Nurse	1,533	1,497	1,477	1,476	-1	-22	-1.4%	-57	-3.7%	1,764
Post-registration Nurse/ Midwife Student	106	143	96	101	+5	-42	-29.6%	-6	-5.3%	103
Nursing/ Midwifery Student	106	143	96	101	+5	-42	-29.6%	-6	-5.3%	103
Nursing Education/Clinical	7	5	5	4	-1	-1	-15.0%	-3	-40.5%	4
Nursing/ Midwifery other	7	5	5	4	-1	-1	-15.0%	-3	-40.5%	4
Nursing & Midwifery	3,161	3,267	3,389	3,392	+3	+126	+3.8%	+231	+7.3%	4,073
Dietitians	125	134	195	197	+2	+63	+47.2%	+73	+58.4%	227
Occupational Therapists	543	584	638	650	+12	+66	+11.3%	+107	+19.7%	752
Orthoptists	18	17	20	19	-1	+2	+12.5%	+2	+10.6%	22
Physiotherapists	561	605	654	661	+7	+57	+9.4%	+100	+17.9%	792
Podiatrists & Chiropodists	30	52	82	88	+6	+36	+69.8%	+59	+200.0%	99
Speech & Language Therapists	516	523	572	572	+0	+49	+9.4%	+56	+10.9%	657
Therapy Professions	1,792	1,915	2,162	2,189	+27	+274	+14.3%	+397	+22.2%	2,549
Audiology	52	53	57	57	-1	+3	+6.6%	+4	+8.0%	64
Biochemists	8	7	8	8	-0	+1	+11.0%	-0	-2.6%	8
Cardiac Physiologists		1	1	1				+1	-100.0%	1
Clinical Engineering	8	9	9	9	+0	+0	+3.3%	+1	+12.4%	9
Medical Science	18	16	14	15	+0	-1	-9.0%	-3	-15.8%	17
Phlebotomists	1	0	0	0	-0	+0	+22.7%	-1	-77.9%	1

Jan 2023	WTE Dec 2020	WTE Dec 2021	WTE Dec 2022	WTE Jan 2023	WTE change since Dec 22	WTE change since Dec 21	% change since Dec 21	WTE change since Dec 20	% change since Dec 20	No. Jan 2023
Overall	11,572	12,582	12,064	12,102	+38	-479	-3.8%	+530	+4.6%	14,337
Physicists	2	2	2	2	+0	+0	+5.8%	-0	-18.5%	2
Radiographers	4	5	8	8	-0	+3	+49.2%	+3	+77.6%	10
Health Science/ Diagnostics	93	93	99	99	-0	+6	+6.2%	+5	+5.6%	112
Social Care	33	34	39	39	+0	+5	+14.7%	+6	+18.0%	42
Social Workers	151	167	195	202	+7	+36	+21.3%	+51	+33.9%	222
Psychologists	300	285	292	299	+8	+15	+5.2%	-0	-0.2%	333
Pharmacists	55	66	58	59	+1	-8	-11.3%	+4	+7.2%	67
Pharmacy Technicians	8	9	10	10	+0	+1	+8.6%	+2	+24.7%	10
Pharmacy	63	76	68	69	+1	-7	-8.9%	+6	+9.4%	77
Counsellor Therapists	112	123	122	123	+2	-0	-0.2%	+11	+10.1%	137
Dental Hygienists	61	59	61	61	-1	+2	+3.3%	-1	-1.0%	78
HSCP Trainees/ Students		0				-0	-100.0%		-100.0%	
Other Health & Social Care	34	40	44	43	-1	+3	+7.0%	+9	+26.5%	46
Play Therapists/ Specialists	2	1	1	2	+0	+0	+6.2%	-1	-28.0%	2
Vaccinators		27	26	25	-1	-2	-7.3%	+25	-100.0%	62
H&SC, Other	209	251	255	254	-1	+2	+0.9%	+44	+21.3%	325
Health & Social Care Professionals	2,641	2,820	3,109	3,150	+41	+330	+11.7%	+509	+19.3%	3,660
Executive Management	74	77	37	37	+0	-40	-52.0%	-37	-50.0%	39
Senior Management (VIII & GM)	224	273	216	219	+3	-53	-19.6%	-5	-2.4%	229
Management (VIII & above)	299	350	253	256	+3	-94	-26.8%	-43	-14.2%	268
Middle Management (V-VII)	684	904	761	782	+20	-122	-13.5%	+98	+14.3%	833
Other Administrative	1	1	1	1	+0	+0	+28.9%	+0	+28.9%	2
Administrative/ Supervisory (V to VII)	685	905	762	783	+21	-122	-13.5%	+98	+14.3%	835
General Administrative (III & IV)	1,838	2,004	1,847	1,860	+14	-144	-7.2%	+23	+1.2%	2,167
Clerical (III & IV)	1,838	2,004	1,847	1,860	+14	-144	-7.2%	+23	+1.2%	2,167
Management & Administrative	2,821	3,258	2,862	2,899	+37	-359	-11.0%	+78	+2.8%	3,270
Catering	22	21	23	22	-2	+1	+5.4%	+0	+0.9%	25
Household Services	137	136	139	136	-3	-0	-0.3%	-1	-0.9%	170
Other Labs & Associated	5	4	1	2	+1	-2	-46.4%	-3	-60.8%	3
Other Support	113	112	104	106	+2	-7	-6.2%	-8	-6.8%	219
Portering	74	69	59	59	+0	-10	-14.5%	-15	-20.3%	67
Support	351	342	327	324	-3	-18	-5.3%	-27	-7.7%	484
Maintenance	55	67	34	33	-0	-34	-50.3%	-22	-39.4%	37
Technical Services	1	2	2	2				+1	+100.0%	2
Maintenance/ Technical	56	69	36	35	-0	-34	-48.9%	-21	-36.9%	39
General Support	407	412	362	360	-3	-52	-12.6%	-48	-11.7%	523
Attendant/ Aide	41	45	61	60	-0	+16	+35.4%	+20	+48.6%	75
Health & Social Care Assistants	105	75	97	99	+2	+25	+32.9%	-5	-5.0%	106
Health Care Assistant/ Care Assistant	634	846	308	267	-41	-579	-68.5%	-367	-57.9%	322
HCA (Student Nurse/Midwife COVID-19)	0						-100.0%	-0	-100.0%	
Health Care Assistants	779	966	466	427	-39	-539	-55.8%	-353	-45.2%	503
Home Help	18	17	15	15	-0	-2	-12.3%	-4	-19.4%	39
Health Promotion		1	11	13	+1	+12	+1169.0%	+13	-100.0%	14
Home Care Services	5	3	3	2	-0	-1	-23.8%	-2	-48.0%	4
Other Care Grades	728	831	809	813	+4	-18	-2.2%	+85	+11.7%	975
Pastoral Care	3	3	3	3	+0			+0	+10.8%	4
Workshop Services	2	3	1	2	+1	-1	-40.1%	-1	-26.1%	2
Care, other	737	841	827	832	+6	-8	-1.0%	+95	+12.9%	999
Patient & Client Care	1,535	1,823	1,308	1,274	-34	-550	-30.1%	-261	-17.0%	1,541

Employment by WTE, Headcount, Gender, Full-Time /Part-Time etc.: Jan 2023

Primary Care Services Staff Group	WTE	Headcount	WTE: no.	% Male	% female	Male WTE: no.	Female WTE: no.	% Total Perm	% Male Perm	% Female Perm	% Total Full Time	% Total Part Time	% Male FT	% Female FT
Overall	12,102	14,337	1.18	13.2%	86.8%	1.11	1.20	84.1%	74.8%	85.5%	68.8%	31.2%	84.1%	66.5%
Consultant Dentistry	13	15	1.17	40.0%	60.0%	1.17	1.17	93.3%	93.3%	88.9%	73.3%	26.7%	83.3%	66.7%
Consultant Medicine	24	29	1.21	24.1%	75.9%	1.14	1.23	75.9%	75.9%	77.3%	69.0%	31.0%	71.4%	68.2%
Consultant Paediatrics	1	2	1.35		100.0%		1.35	100.0%	100.0%	100.0%	50.0%	50.0%		50.0%
Consultant Psychiatry	9	10	1.06	60.0%	40.0%	1.10	1.00	100.0%	100.0%	100.0%	90.0%	10.0%	83.3%	100.0%
Consultant Radiology	1	1	1.00	100.0%		1.00		100.0%	100.0%		100.0%	0.0%	100.0%	
Consultant Surgery	2	4	1.64	75.0%	25.0%	1.42	3.13	100.0%	100.0%	100.0%	50.0%	50.0%	66.7%	0.0%
Consultants	51	61	1.19	37.7%	62.3%	1.16	1.21	86.9%	91.3%	84.2%	72.1%	27.9%	78.3%	68.4%
Registrar	420	447	1.06	36.0%	64.0%	1.05	1.07	1.6%	1.6%	1.0%	99.3%	0.7%	99.4%	99.3%
Senior Registrar	3	4	1.19	75.0%	25.0%	1.00	2.78	25.0%	25.0%	0.0%	100.0%	0.0%	100.0%	100.0%
Specialist Registrar	7	8	1.09		100.0%		1.09	37.5%	37.5%	37.5%	87.5%	12.5%		87.5%
Registrars	431	459	1.07	35.7%	64.3%	1.05	1.08	2.4%	3.0%	2.0%	99.1%	0.9%	99.4%	99.0%
Senior House Officer	41	50	1.23	38.0%	62.0%	1.25	1.23	4.0%	4.0%	6.5%	100.0%	0.0%	100.0%	100.0%
SHO/ Interns	41	50	1.23	38.0%	62.0%	1.25	1.23	4.0%	0.0%	6.5%	100.0%	0.0%	100.0%	100.0%
Dentists	304	406	1.34	24.9%	75.1%	1.33	1.34	90.4%	90.4%	90.5%	49.8%	50.2%	56.4%	47.5%
Other Medical	200	294	1.47	26.9%	73.1%	1.56	1.44	67.3%	67.3%	72.6%	35.4%	64.6%	39.2%	34.0%
Medical/ Dental, other	504	700	1.39	25.7%	74.3%	1.42	1.38	80.7%	73.9%	83.1%	43.7%	56.3%	48.9%	41.9%
Medical & Dental	1,027	1,270	1.24	30.4%	69.6%	1.21	1.25	49.7%	41.2%	53.4%	67.3%	32.7%	74.6%	64.1%
Nursing & Midwifery	3,392	4,073	1.20	2.4%	97.6%	1.07	1.20	90.5%	89.6%	90.5%	65.2%	34.8%	84.4%	64.7%
Dietitians	197	227	1.15	4.0%	96.0%	1.00	1.16	95.6%	95.6%	95.4%	75.3%	24.7%	100.0%	74.3%
Occupational Therapists	650	752	1.16	6.5%	93.5%	1.09	1.16	91.4%	91.4%	91.6%	72.2%	27.8%	91.8%	70.8%
Orthoptists	19	22	1.14	13.6%	86.4%	1.16	1.13	77.3%	77.3%	73.7%	72.7%	27.3%	66.7%	73.7%
Physiotherapists	661	792	1.20	20.6%	79.4%	1.06	1.24	93.8%	93.8%	94.8%	67.2%	32.8%	89.6%	61.4%
Podiatrists & Chiropodists	88	99	1.12	6.1%	93.9%	1.03	1.13	93.9%	93.9%	95.7%	82.8%	17.2%	100.0%	81.7%
Speech & Language Therapists	572	657	1.15	1.4%	98.6%	1.12	1.15	93.6%	93.6%	93.7%	73.8%	26.2%	77.8%	73.8%
Therapy Professions	2,189	2,549	1.16	9.4%	90.6%	1.07	1.18	93.1%	89.5%	93.4%	71.8%	28.2%	90.0%	69.9%
Audiology	57	64	1.13	14.1%	85.9%	1.02	1.15	87.5%	87.5%	85.5%	78.1%	21.9%	88.9%	76.4%
Biochemists	8	8	1.06	12.5%	87.5%	1.03	1.06	100.0%	100.0%	100.0%	75.0%	25.0%	100.0%	71.4%
Cardiac Physiologists	1	1	1.00	100.0%		1.00		100.0%	100.0%		100.0%	0.0%	100.0%	

Clinical Engineering	9	9	1.00	100.0%		1.00		88.9%	88.9%		100.0%	0.0%	100.0%	
Medical Science	15	17	1.14	29.4%	70.6%	1.09	1.17	82.4%	82.4%	83.3%	88.2%	11.8%	80.0%	91.7%
Phlebotomists	0	1	3.70		100.0%		3.70	100.0%	100.0%	100.0%	0.0%	100.0%		0.0%
Physicists	2	2	1.23		100.0%		1.23	100.0%	100.0%	100.0%	100.0%	0.0%		100.0%
Radiographers	8	10	1.29	30.0%	70.0%	1.20	1.33	100.0%	100.0%	100.0%	80.0%	20.0%	100.0%	71.4%
Health Science/ Diagnostics	99	112	1.14	25.0%	75.0%	1.04	1.17	89.3%	92.9%	88.1%	81.3%	18.8%	92.9%	77.4%
Social Care	39	42	1.09	40.5%	59.5%	1.04	1.13	85.7%	88.2%	84.0%	78.6%	21.4%	76.5%	80.0%
Social Workers	202	222	1.10	15.8%	84.2%	1.02	1.11	90.1%	77.1%	92.5%	83.3%	16.7%	97.1%	80.7%
Psychologists	299	333	1.11	16.2%	83.8%	1.02	1.13	70.9%	77.8%	69.5%	76.9%	23.1%	98.1%	72.8%
Pharmacists	59	67	1.14	25.4%	74.6%	1.15	1.13	59.7%	59.7%	68.0%	58.2%	41.8%	41.2%	64.0%
Pharmacy Technicians	10	10	1.00		100.0%		1.00	90.0%	90.0%	90.0%	100.0%	0.0%		100.0%
Pharmacy	69	77	1.12	22.1%	77.9%	1.15	1.11	63.6%	35.3%	71.7%	63.6%	36.4%	41.2%	70.0%
Counsellor Therapists	123	137	1.11	40.1%	59.9%	1.06	1.15	97.8%	97.8%	98.8%	77.4%	22.6%	90.9%	68.3%
Dental Hygienists	61	78	1.29	1.3%	98.7%	1.00	1.29	94.9%	94.9%	94.8%	51.3%	48.7%	100.0%	50.6%
Other Health & Social Care	43	46	1.07	28.3%	71.7%	1.12	1.06	95.7%	95.7%	93.9%	87.0%	13.0%	84.6%	87.9%
Play Therapists/ Specialists	2	2	1.30		100.0%		1.30	100.0%	100.0%	100.0%	50.0%	50.0%		50.0%
Vaccinators	25	62	2.44	12.9%	87.1%	1.88	2.55	1.6%	1.6%	0.0%	4.8%	95.2%	12.5%	3.7%
H&SC, Other	254	325	1.28	23.7%	76.3%	1.12	1.34	78.5%	88.3%	75.4%	58.5%	41.5%	81.8%	51.2%
Health & Social Care	3,150	3,660	1.16	12.8%	87.2%	1.06	1.18	88.7%	85.2%	89.3%	71.9%	28.1%	88.0%	69.6%
Executive Management	37	39	1.05	30.8%	69.2%	1.08	1.04	92.3%	92.3%	92.6%	97.4%	2.6%	91.7%	100.0%
Senior Management (VIII & GM)	219	229	1.05	23.1%	76.9%	1.05	1.04	97.8%	97.8%	98.3%	95.6%	4.4%	98.1%	94.9%
Management (VIII & above)	256	268	1.05	24.3%	75.7%	1.06	1.04	97.0%	95.4%	97.5%	95.9%	4.1%	96.9%	95.6%
Middle Management (V-VII)	782	833	1.07	17.5%	82.5%	1.05	1.07	95.1%	95.1%	95.3%	88.8%	11.2%	98.6%	86.8%
Other Administrative	1	2	1.60		100.0%		1.60	50.0%	50.0%	50.0%	100.0%	0.0%		100.0%
Administrative/ Supervisory (V to VII)	783	835	1.07	17.5%	82.5%	1.05	1.07	95.0%	93.8%	95.2%	88.9%	11.1%	98.6%	86.8%
Clerical (III & IV)	1,860	2,167	1.16	10.0%	90.0%	1.08	1.18	83.2%	71.3%	84.5%	67.9%	32.1%	89.4%	65.6%
Management & Administrative	2,899	3,270	1.13	13.1%	86.9%	1.07	1.14	87.3%	82.7%	88.0%	75.6%	24.4%	93.7%	72.8%
Catering	22	25	1.14	36.0%	64.0%	1.03	1.21	100.0%	100.0%	100.0%	60.0%	40.0%	100.0%	37.5%
Household Services	136	170	1.25	24.1%	75.9%	1.06	1.33	78.2%	78.2%	79.8%	48.2%	51.8%	82.9%	37.2%
Other Labs & Associated	2	3	1.53	33.3%	66.7%	1.92	1.39	100.0%	100.0%	100.0%	100.0%	0.0%	100.0%	100.0%
Other Support	106	219	2.08	33.8%	66.2%	1.28	3.05	56.2%	56.2%	44.1%	34.2%	65.8%	63.5%	19.3%
Portering	59	67	1.13	92.5%	7.5%	1.11	1.44	92.5%	92.5%	100.0%	85.1%	14.9%	88.7%	40.0%
Support	324	484	1.49	38.6%	61.4%	1.16	1.83	71.5%	83.4%	64.0%	47.9%	52.1%	78.1%	29.0%
Maintenance	33	37	1.11	97.3%	2.7%	1.10	1.30	100.0%	100.0%	100.0%	91.9%	8.1%	94.4%	0.0%

Technical Services	2	2	1.00	50.0%	50.0%	1.00	1.00	100.0%	100.0%	100.0%	100.0%	0.0%	100.0%	100.0%
Maintenance/ Technical	35	39	1.10	94.9%	5.1%	1.10	1.13	100.0%	100.0%	100.0%	92.3%	7.7%	94.6%	50.0%
General Support	360	523	1.45	42.8%	57.2%	1.15	1.82	73.6%	86.2%	64.2%	51.2%	48.8%	80.8%	29.1%
Attendant/ Aide	60	75	1.24	32.0%	68.0%	1.12	1.30	58.7%	58.7%	54.9%	68.0%	32.0%	91.7%	56.9%
Health & Social Care Assistants	99	106	1.07	14.2%	85.8%	1.04	1.07	50.0%	50.0%	46.2%	87.7%	12.3%	93.3%	86.8%
Health Care Assistant/ Care Assistant	267	322	1.21	21.7%	78.3%	1.14	1.23	66.8%	66.8%	69.0%	61.5%	38.5%	74.3%	57.9%
Health Care Assistants	427	503	1.18	21.7%	78.3%	1.12	1.20	62.0%	62.4%	61.9%	68.0%	32.0%	80.7%	64.5%
Home Help	15	39	2.63	28.2%	71.8%	2.84	2.56	23.1%	18.2%	25.0%	0.0%	100.0%	0.0%	0.0%
Health Promotion	13	14	1.10	14.3%	85.7%	1.02	1.12	100.0%	100.0%	100.0%	100.0%	0.0%	100.0%	100.0%
Home Care Services	2	4	1.65	25.0%	75.0%	1.96	1.56	50.0%	50.0%	66.7%	50.0%	50.0%	0.0%	66.7%
Other Care Grades	813	975	1.20	16.8%	83.2%	1.06	1.23	93.5%	93.5%	93.7%	64.3%	35.7%	82.9%	60.5%
Pastoral Care	3	4	1.39	50.0%	50.0%	1.79	1.14	50.0%	50.0%	100.0%	50.0%	50.0%	50.0%	50.0%
Workshop Services	2	2	1.18	100.0%		1.18		100.0%	100.0%		100.0%	0.0%	100.0%	
Care, other	832	999	1.20	17.1%	82.9%	1.07	1.23	93.3%	91.2%	93.7%	64.8%	35.2%	82.5%	61.1%
Patient & Client Care	1,274	1,541	1.21	18.9%	81.1%	1.12	1.23	81.3%	77.7%	82.2%	64.2%	35.8%	78.7%	60.8%

Employment by WTE, Headcount, Gender, Full-Time /Part-Time etc.: Jan 2023

Primary Care Services CHO	WTE	Headcount	WTE: no.	% Male	% female	Male WTE: no.	Female WTE: no.	% Total Perm	% Male Perm	% Female Perm	% Total Full Time	% Total Part Time	% Male FT	% Female FT
Overall	12,102	14,337	1.18	13.2%	86.8%	1.11	1.20	84.1%	74.8%	85.5%	68.8%	31.2%	84.1%	66.5%
CHO 1	1,485	1,735	1.17	14.3%	85.7%	1.10	1.18	85.6%	85.6%	87.9%	68.1%	31.9%	84.7%	65.4%
CHO 2	1,343	1,556	1.16	12.7%	87.3%	1.07	1.17	84.3%	84.3%	85.9%	72.5%	27.5%	83.8%	70.8%
CHO 3	790	928	1.17	7.7%	92.3%	1.09	1.18	86.6%	86.6%	87.9%	70.6%	29.4%	87.3%	69.2%
CHO 4	1,713	2,117	1.24	9.4%	90.6%	1.19	1.24	70.2%	70.2%	71.4%	58.4%	41.6%	69.5%	57.3%
CHO 5	1,162	1,390	1.20	12.2%	87.8%	1.14	1.20	87.1%	87.1%	88.8%	65.8%	34.2%	78.2%	64.1%
CHO 6	867	1,098	1.27	14.3%	85.7%	1.25	1.27	88.2%	88.2%	89.1%	71.1%	28.9%	90.4%	67.9%
CHO 7	1,735	2,011	1.16	17.3%	82.7%	1.07	1.18	89.1%	89.1%	89.7%	71.0%	29.0%	85.3%	67.9%
CHO 8	1,498	1,769	1.18	13.3%	86.7%	1.07	1.20	88.0%	88.0%	90.5%	68.0%	32.0%	85.6%	65.3%
CHO 9	1,378	1,582	1.15	13.2%	86.8%	1.07	1.16	84.5%	84.5%	85.2%	76.4%	23.6%	90.4%	74.3%
other Community Services	131	151	1.15	35.8%	64.2%	1.19	1.13	71.5%	71.5%	80.4%	88.1%	11.9%	92.6%	85.6%

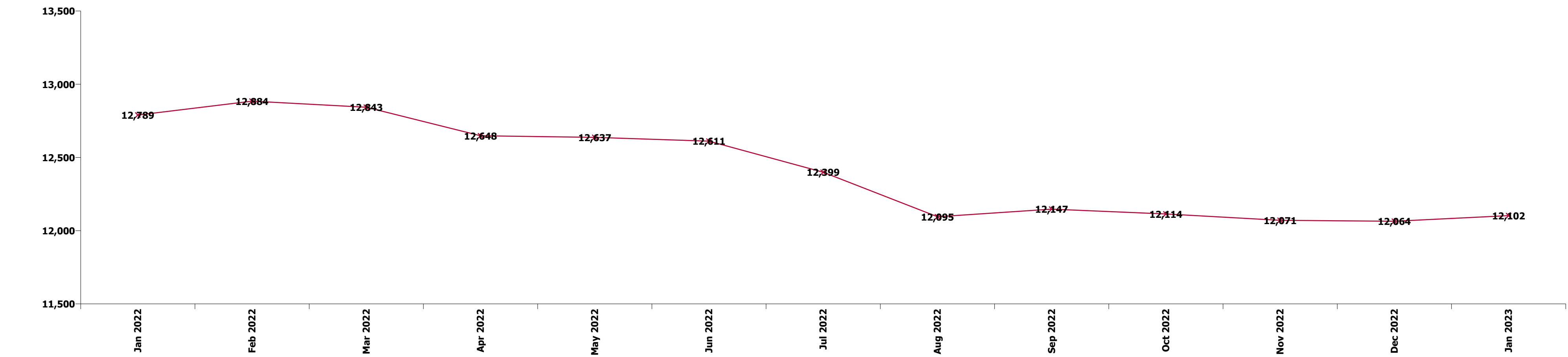
Summary Staff Movement: January 2023

Month-on-month
Summary

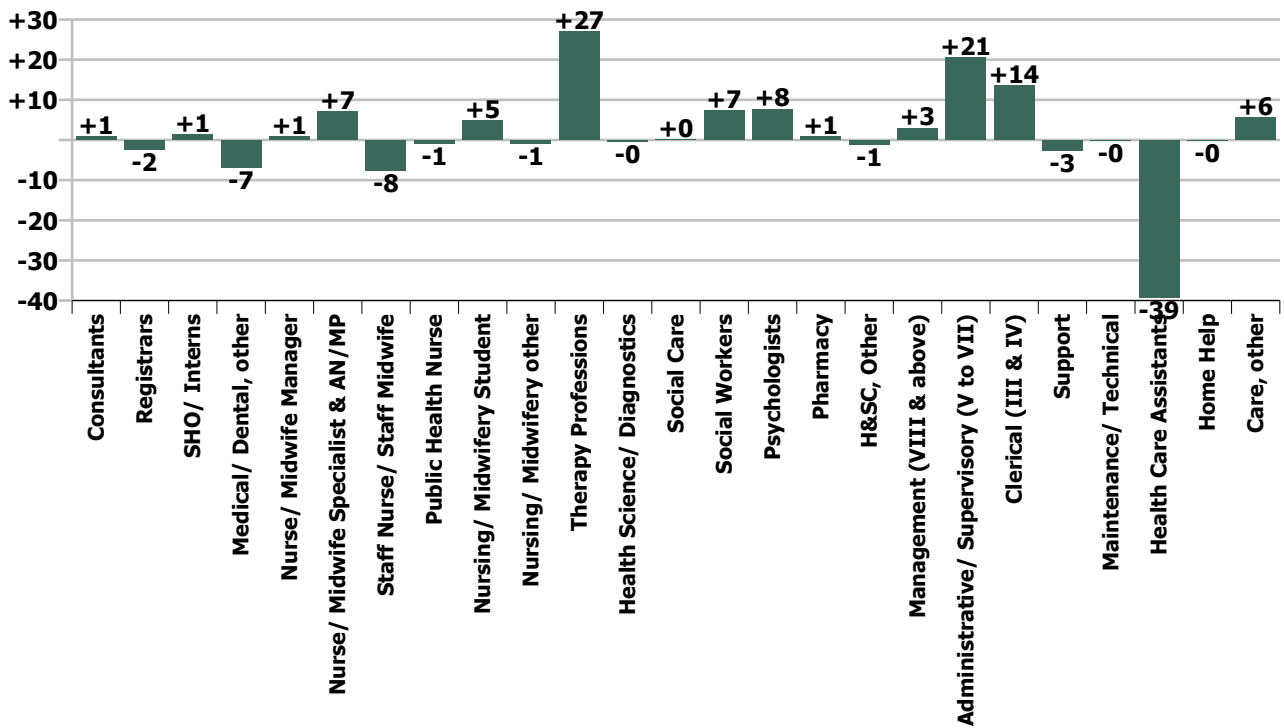
WTE change since Dec 22	% change since Dec 22	overall	Consultants	Registrars	SHO/ Interns	Medical/ Dental, other	Medical & Dental	Nurse/ Midwife Manager	Nurse/ Midwife Specialist & AN/MP	Staff Nurse/ Staff Midwife	Public Health Nurse	Nursing/ Midwifery Student	Nursing/ Midwifery other	Nursing & Midwifery	Therapy Professions	Health Science/ Diagnostics	Social Care	Social Workers	Psychologists	Pharmacy	H&SC, Other	Health & Social Care Professionals	Management (VIII & above)	Administrativ e/ Supervisory (V to VII)	Clerical (III & IV)	Management & Administrative	General Support	Health Care Assistants	Home Help	Care, other	Patient & Client Care
Overall	+0.3%	+38	+1	-2	+1	-7	-7	+1	+7	-8	-1	+5	-1	+3	+27	-0	+0	+7	+8	+1	-1	+41	+3	+21	+14	+37	-3	-39	-0	+6	-34
CHO 1	+0.9%	+14	-0	+0	+0	-0	-0	-1	+1	+5	+5	-2	-1	+8	-1	+0		+0	+0	+0	-0	-0	+2	+2	+4	+8	-0	-2	+0	+1	-1
CHO 2	-0.6%	-8		-1	+1	-2	-3	+1	-1	+3	-2	+4		+4	-2	-1	+0	+0	-0	+0	-1	-4	+0	+6	-9	-2	+1	-0		-4	-4
CHO 3	+2.4%	+19	+1	-0		-0	-0	+0	+1	+2	+3	+0		+7	+9	+0		-0	+2	+0	+1	+12	+0	+2	+1	+2	+0	-3		+0	-2
CHO 4	+0.4%	+6	-0	-1		-5	-6	+1	+3	-5	-1	+4		+3	+6	-0	-0	+4	+5	+1	-0	+16	+1	+1	-3	-0	+1	-9	-0	+2	-7
CHO 5	+0.9%	+11		+1		+1	+2	-0	+1	-1	+1	+0		+1	+9	+0	-0	-0	+0		+1	+10	-1	+1	-2	-1	+0	-3	-0	+1	-2
CHO 6	+0.2%	+2	-0	+1	-0	+1	+2	+1	+1	-0	-2	-0		-1	-1	+0	+0	+0	-1	-0	+0	-1	-1	+1	+2	+3	+0	-1		-0	-1
CHO 7	-1.7%	-30	+1	+0	-1	-1	+0	-2	-3	-12	-0	-2		-18	+3	-0	-0	+1	-1	-1	-1	+2	-1	+2	+0	+1	-6	-13		+3	-10
CHO 8	+0.0%	+0	-0	+1		-2	-1	-0	+1	-0	-6			-6	+1	+0		-0	-0	+0	-1	-1	-0	+1	+15	+16	-0	-10		+2	-7
CHO 9	+1.6%	+21	+0	-5	+3	+2	-0	+2	+3	+1	+0	+0	+0	+7	+2	+0	-0	+2	+3	+0	-1	+6	+1	+3	+3	+8	+0	+0		+0	+1
other Community Services	+3.0%	+4		+2	-1		+0	-1		-0				-1		-0	+0	-0		-0	+1	+1	+1	+1	+1	+3	+0		+0		+0
		+0.3%	+1.9%	-0.5%	+3.7%	-1.4%	-0.7%	+0.2%	+2.6%	-0.7%	-0.1%	+5.0%	-19.8%	+0.1%	+1.2%	-0.4%	+0.2%	+3.7%	+2.7%	+1.2%	-0.5%	+1.3%	+1.2%	+2.7%	+0.7%	+1.3%	-0.7%	-8.4%	-1.4%	+0.7%	-2.6%

Year-on-year Summary

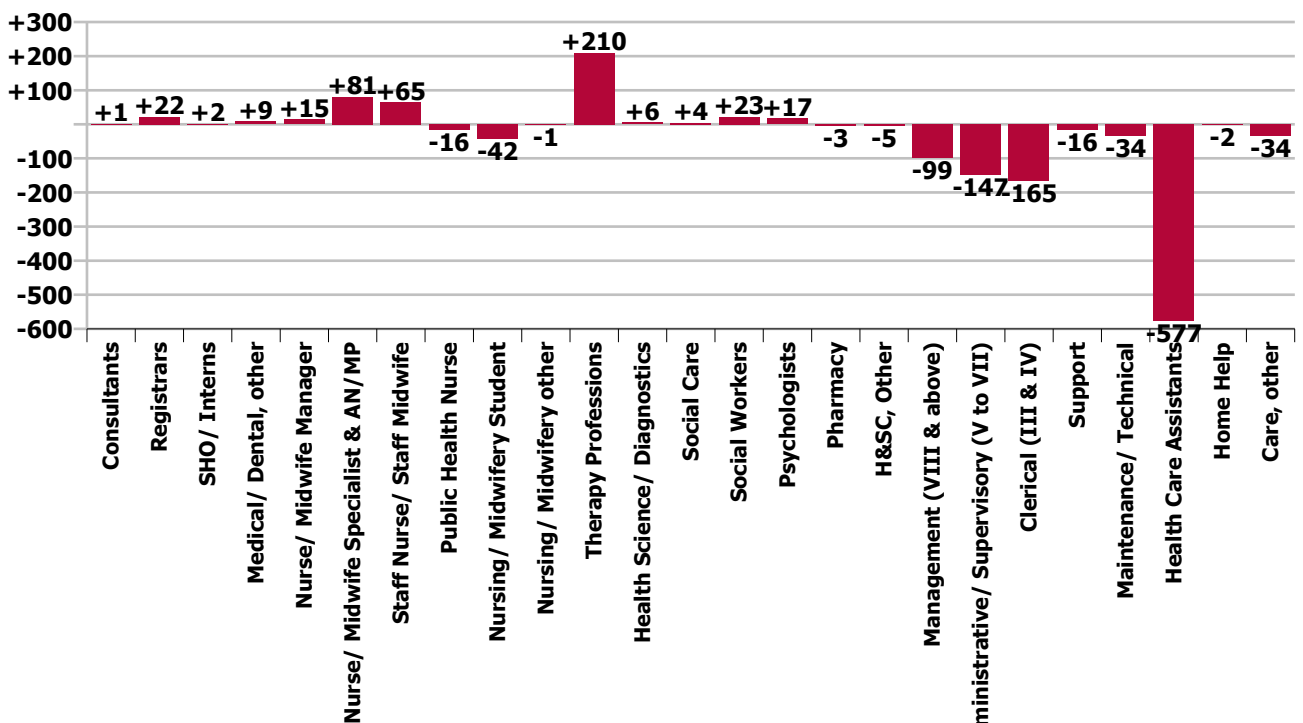
WTE change since Jan 22	% change since Jan 22	overall	Consultants	Registrars	SHO/ Interns	Medical/ Dental, other	Medical & Dental	Nurse/ Midwife Manager	Nurse/ Midwife Specialist & AN/MP	Staff Nurse/ Staff Midwife	Public Health Nurse	Nursing/ Midwifery Student	Nursing/ Midwifery other	Nursing & Midwifery	Therapy Professions	Health Science/ Diagnostics	Social Care	Social Workers	Psychologists	Pharmacy	H&SC, Other	Health & Social Care Professionals	Management (VIII & above)	Administrative/ Supervisory (V to VII)	Clerical (III & IV)	Management & Administrative	General Support	Health Care Assistants	Home Help	Care, other	Patient & Client Care
Overall	-5.4%	-687	+1	+22	+2	+9	+34	+15	+81	+65	-16	-42	-1	+101	+210	+6	+4	+23	+17	-3	-5	+251	-99	-147	-165	-411	-49	-577	-2	-34	-613
CHO 1	+0.2%	+3	-0	-2		-0	-2	+6	+19	+14	+9	-7	-1	+41	+47	+2		-2	+1	-2	+4	+49	-8	-3	-19	-30	+2	-44	-0	-11	-55
CHO 2	-4.0%	-57		+5		+1	+6	+7	+12	+3	-4	-2		+16	+21	-1	-1	+11	+3	-1	+12	+44	-13	-22	-31	-66	-1	-53		-2	-55
CHO 3	-20.1%	-199	+0	+2		+1	+3	+3	-1	+9	+2	-5		+7	+29	-0	-1	+1	+3	-1	+4	+34	-21	-53	-60	-134	-37	-60		-12	-72
CHO 4	-0.5%	-8	+1	-8	+1	+10	+5	-4	+11	+28	-5	-8		+22	+52	+0	-2	+11	+9	-1	-18	+51	+11	+19	-5	+25	+1	-119	-1	+8	-113
CHO 5	+0.4%	+5	+0	+4	-1	+1	+5	-3	+7	+22	-3	-2		+21	+28	+1	+4	-0	+1	-1	+1	+34	-7	-0	+8	+1	-3	-57	-1	+5	-54
CHO 6	-0.8%	-7	+2	+7	+1	+3	+12	+9	+6	+5	-10	-3	-1	+5	+23	-1	+1	-0	-3	-1	-2	+17	-12	-5	+7	-10	-1	-31		+0	-30
CHO 7	-8.1%	-154	-0	-1	+1	-5	-5	-1	+7	-14	-5	-2		-14	+18	+7	+1	+5	-2	-3	+1	+28	-19	-32	-23	-74	-4	-72		-13	-85
CHO 8	-7.4%	-119	-0	+8		-4	+4	-1	+5	+3	+8	-8		+7	-16	+1		+8	-4	+0	+3	-8	-9	-16	+11	-14	+3	-101		-6	-107
CHO 9	-8.8%	-133	-1	+5	+0	+2	+6	+0	+15	-4	-9	-5	+1	-1	+8	-5	+2	+2	+10	-1	-10	+7	-18	-37	-45	-100	-5	-39		-1	-40
other Community Services	-12.6%	-19		+2	-0		+1	-1		-3				-4		+1	-0	-12		+7	+1	-4	-4	+2	-8	-10	+0			-2	-2
		-5.4%	+2.9%	+5.4%	+4.1%	+1.8%	+3.4%	+3.2%	+39.6%	+6.6%	-1.1%	-29.3%	-20.2%	+3.1%	+10.6%	+6.0%	+10.8%	+12.6%	+6.2%	-4.7%	-1.8%	+8.7%	-27.9%	-15.8%	-8.1%	-12.4%	-12.1%	-57.5%	-14.2%	-3.9%	-32.5%



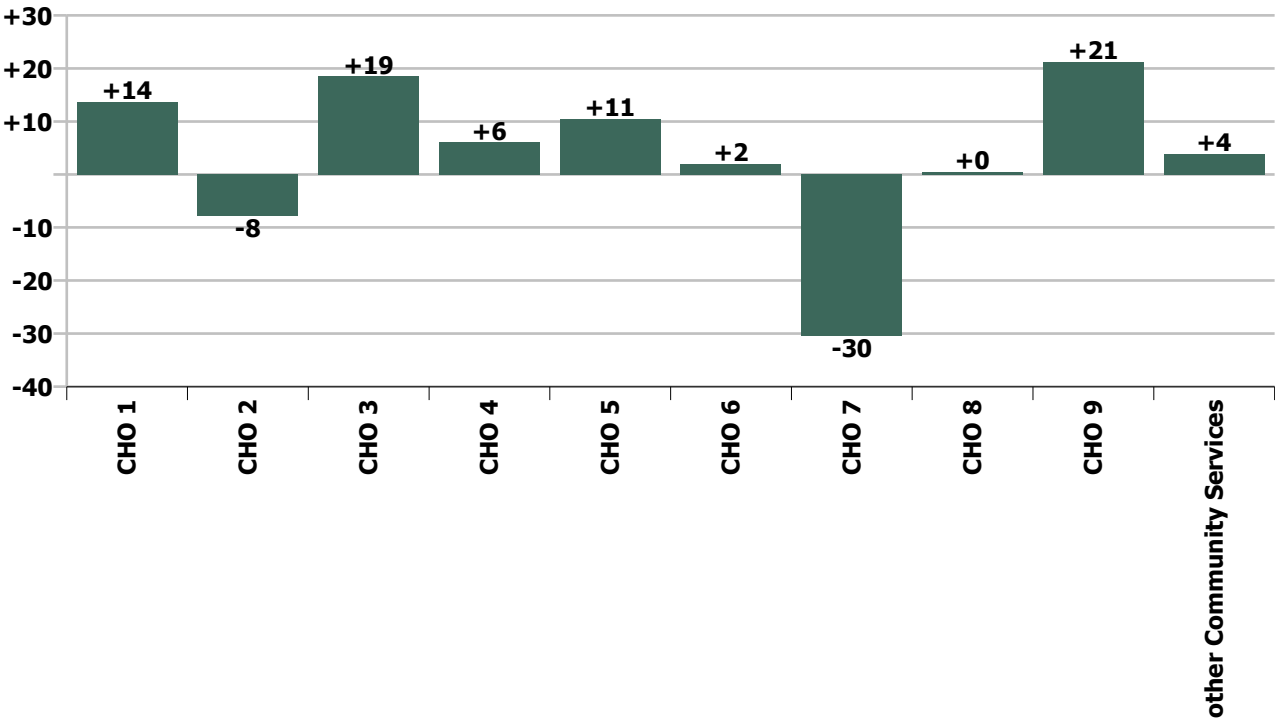
Staff Group change since: Dec 2022



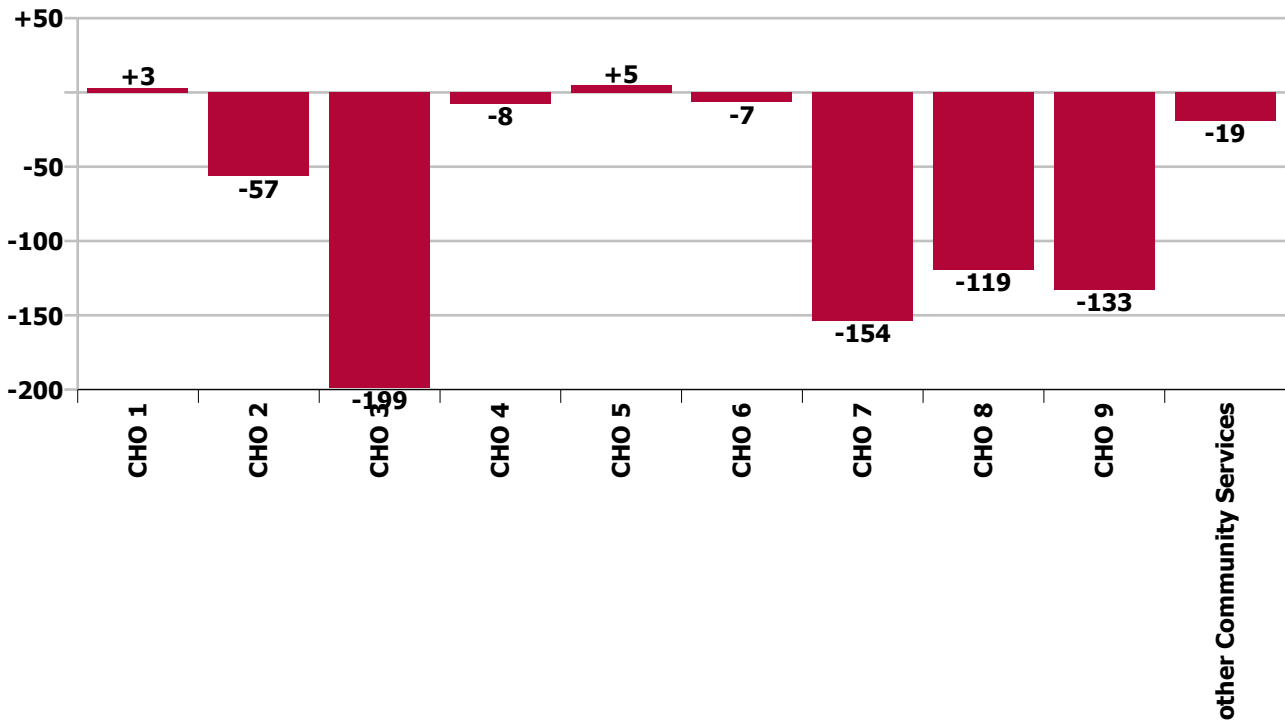
Staff Group change since: Jan 2022



CHO change since: Dec 2022



CHO change since: Jan 2022



Longitudinal Employment Levels by Grade Group - Dec 2017 to Jan 2023

Jan 2023 (Dec 2016 figure: 10,447)	WTE Jan 2023	WTE change since Dec 17	WTE change since Dec 18	WTE change since Dec 19	WTE change since Dec 20	WTE change since Dec 21	WTE change since Dec 22	% change since Dec 17	% change since Dec 18	% change since Dec 19	% change since Dec 20	% change since Dec 21	% change since Dec 22
Overall	12,102	+1,584	+1,172	+1,503	+530	-479	+38	+15.1%	+10.7%	+14.2%	+4.6%	-3.8%	+0.3%
Consultant Dentistry	13	+1	+1	+2	+3	+3	-0	+10.5%	+10.5%	+15.1%	+25.7%	+25.7%	-2.3%
Consultant Medicine	24	+4	+7	+6	+4	+1	+0	+21.1%	+41.3%	+35.2%	+18.3%	+5.1%	+0.6%
Consultant, Other								-100.0%	-100.0%	-100.0%	-100.0%	-100.0%	-100.0%
Consultant Paediatrics	1	-0	-0	-0	-0	-0	-0	-1.3%	-1.3%	-1.3%	-1.3%	-1.3%	-3.3%
Consultant Psychiatry	9	+0	+3	+1	+1	+0	+1	+0.1%	+47.5%	+12.8%	+12.4%	+0.4%	+16.7%
Consultant Radiology	1												
Consultant Surgery	2	-2	-2	-2	+2	+1	-0	-48.8%	-45.8%	-39.8%	+306.7%	+70.6%	-7.9%
Consultants	51	+3	+9	+7	+9	+5	+1	+6.4%	+21.9%	+16.8%	+21.9%	+10.4%	+1.9%
Registrar	420	+77	+60	+38	+30	+19	-2	+22.6%	+16.5%	+10.0%	+7.8%	+4.7%	-0.4%
Senior Registrar	3	-0	-1	+1	+1	-1	+0	-9.9%	-16.4%	+20.9%	+70.6%	-16.0%	+1.2%
Specialist Registrar	7	-2	-2	-3	-4	-7	-1	-24.3%	-24.4%	-26.7%	-35.3%	-48.6%	-7.8%
Registrars	431	+75	+57	+36	+28	+11	-2	+21.0%	+15.1%	+9.2%	+6.9%	+2.6%	-0.5%
Senior House Officer	41	+11	+4	+3	-1	+5	+1	+36.8%	+9.5%	+8.9%	-2.9%	+13.4%	+3.7%
SHO/ Interns	41	+11	+4	+3	-1	+5	+1	+36.8%	+9.5%	+8.9%	-2.9%	+13.4%	+3.7%
Dentists	304	+2	-1	+3	+2	-1	-3	+0.5%	-0.5%	+0.9%	+0.6%	-0.4%	-1.0%
Other Medical	200	-34	-37	-18	-17	+6	-4	-14.6%	-15.8%	-8.3%	-7.9%	+3.0%	-2.0%
Medical/ Dental, other	504	-33	-39	-16	-15	+5	-7	-6.1%	-7.2%	-3.0%	-2.9%	+0.9%	-1.4%
Medical & Dental	1,027	+56	+30	+31	+20	+25	-7	+5.8%	+3.1%	+3.1%	+2.0%	+2.5%	-0.7%
Clinical Nurse/ Midwife Manager	214	+55	+43	+46	+22	+4	-0	+34.5%	+25.4%	+27.6%	+11.3%	+1.8%	-0.2%
Director Nursing/Midwifery, Assistant	220	+81	+70	+66	+48	+16	+2	+57.7%	+46.2%	+42.7%	+28.1%	+7.6%	+0.8%
Director of Nursing/Midwifery	44	+10	+8	+6	+3	-1	-0	+30.2%	+22.0%	+16.5%	+8.3%	-1.4%	-1.1%
Nurse/ Midwife Manager	478	+146	+121	+118	+73	+19	+1	+43.8%	+33.8%	+32.9%	+18.1%	+4.1%	+0.2%
Advanced Nurse/ Midwife Practitioner	40	+38	+38	+38	+27	+25	+2	+1655.0%	+1482.3%	+1482.3%	+202.9%	+165.1%	+6.0%
Clinical Nurse/ Midwife Specialist	245	+105	+102	+105	+74	+67	+5	+75.4%	+70.9%	+74.7%	+43.4%	+37.8%	+2.0%
Nurse/ Midwife Specialist & AN/MP	285	+143	+139	+142	+101	+92	+7	+100.8%	+95.5%	+99.7%	+54.9%	+47.8%	+2.6%
Staff Midwives	3	-2	-3	-5	-2	-1	-2	-41.6%	-52.7%	-62.2%	-44.2%	-19.2%	-33.4%

Jan 2023 (Dec 2016 figure: 10,447)	WTE Jan 2023	WTE change since Dec 17	WTE change since Dec 18	WTE change since Dec 19	WTE change since Dec 20	WTE change since Dec 21	WTE change since Dec 22	% change since Dec 17	% change since Dec 18	% change since Dec 19	% change since Dec 20	% change since Dec 21	% change since Dec 22
Overall	12,102	+1,584	+1,172	+1,503	+530	-479	+38	+15.1%	+10.7%	+14.2%	+4.6%	-3.8%	+0.3%
Staff Nurse [Psychiatric]	12	-2	+4	+4	-1	+1	-2	-12.1%	+49.7%	+46.5%	-8.2%	+4.3%	-12.2%
Staff Nurses [General/ Children's]	1,031	+194	+166	+186	+123	+78	-4	+23.1%	+19.2%	+22.0%	+13.6%	+8.2%	-0.4%
Staff Nurse [Intellectual Disability]	2	+2	+2	+2	+2	+2	+0	-100.0%	-100.0%	-100.0%	-100.0%	+324.0%	+0.5%
Staff Nurse/ Staff Midwife	1,049	+192	+169	+187	+122	+79	-8	+22.4%	+19.2%	+21.7%	+13.2%	+8.2%	-0.7%
Public Health Nurse	1,476	-12	-39	-36	-57	-22	-1	-0.8%	-2.6%	-2.4%	-3.7%	-1.4%	-0.1%
Post-registration Nurse/ Midwife Student	101	-29	+8	+5	-6	-42	+5	-22.2%	+8.1%	+5.0%	-5.3%	-29.6%	+5.0%
Nursing/ Midwifery Student	101	-29	+8	+5	-6	-42	+5	-22.2%	+8.1%	+5.0%	-5.3%	-29.6%	+5.0%
Nursing Education/Clinical	4	+0	+1	+0	-3	-1	-1	+13.1%	+32.0%	+4.2%	-40.5%	-15.0%	-19.8%
Other Nursing/ Midwifery		-0	-1					-100.0%	-100.0%	-100.0%	-100.0%	-100.0%	-100.0%
Nursing/ Midwifery other	4	+0	-0	+0	-3	-1	-1	+0.3%	-1.0%	+4.2%	-40.5%	-15.0%	-19.8%
Nursing & Midwifery	3,392	+440	+397	+416	+231	+126	+3	+14.9%	+13.3%	+14.0%	+7.3%	+3.8%	+0.1%
Dietitians	197	+93	+81	+88	+73	+63	+2	+88.7%	+69.0%	+80.8%	+58.4%	+47.2%	+1.3%
Occupational Therapists	650	+134	+110	+135	+107	+66	+12	+26.0%	+20.4%	+26.3%	+19.7%	+11.3%	+1.9%
Orthoptists	19	+13	+9	+6	+2	+2	-1	+203.9%	+95.8%	+46.1%	+10.6%	+12.5%	-3.0%
Physiotherapists	661	+98	+98	+119	+100	+57	+7	+17.5%	+17.4%	+21.8%	+17.9%	+9.4%	+1.1%
Podiatrists & Chiropodists	88	+66	+65	+64	+59	+36	+6	+295.9%	+276.2%	+259.9%	+200.0%	+69.8%	+7.4%
Speech & Language Therapists	572	+26	+23	+46	+56	+49	+0	+4.8%	+4.3%	+8.7%	+10.9%	+9.4%	+0.0%
Therapy Professions	2,189	+431	+387	+458	+397	+274	+27	+24.5%	+21.5%	+26.5%	+22.2%	+14.3%	+1.2%
Audiology	57	+27	+8	+13	+4	+4	-1	+89.5%	+17.5%	+28.7%	+8.0%	+6.6%	-1.1%
Biochemists	8	-0	-0	-0	-0	+1	-0	-0.8%	-5.5%	-0.9%	-2.6%	+11.0%	-2.1%
Cardiac Physiologists	1	+1	+1	+1	+1			-100.0%	-100.0%	-100.0%	-100.0%		
Clinical Engineering	9	+7	+2	+1	+1	+0	+0	+349.5%	+28.4%	+12.4%	+12.4%	+3.3%	+0.4%
Medical Science	15	-5	-6	-1	-3	-1	+0	-24.2%	-27.0%	-4.9%	-15.8%	-9.0%	+2.7%
Phlebotomists	0	-0	+0	+0	-1	+0	-0	-57.1%	+22.7%	+22.7%	-77.9%	+22.7%	-10.0%
Physicists	2	-0	-0	-0	-0	+0	+0	-8.4%	-18.5%	-18.5%	-18.5%	+5.8%	+0.6%
Radiographers	8	+2	+2	+3	+3	+3	-0	+29.3%	+41.3%	+74.8%	+77.6%	+49.2%	-0.3%
Health Science/ Diagnostics	99	+31	+7	+17	+5	+6	-0	+46.2%	+8.1%	+20.5%	+5.6%	+6.2%	-0.4%
Social Care	39	+6	+4	+3	+6	+5	+0	+16.7%	+13.0%	+8.8%	+18.0%	+14.7%	+0.2%

Jan 2023 (Dec 2016 figure: 10,447)	WTE Jan 2023	WTE change since Dec 17	WTE change since Dec 18	WTE change since Dec 19	WTE change since Dec 20	WTE change since Dec 21	WTE change since Dec 22	% change since Dec 17	% change since Dec 18	% change since Dec 19	% change since Dec 20	% change since Dec 21	% change since Dec 22
Overall	12,102	+1,584	+1,172	+1,503	+530	-479	+38	+15.1%	+10.7%	+14.2%	+4.6%	-3.8%	+0.3%
Social Workers	202	+49	+50	+63	+51	+36	+7	+32.1%	+32.9%	+45.5%	+33.9%	+21.3%	+3.7%
Psychologists	299	+16	+2	-1	-0	+15	+8	+5.5%	+0.6%	-0.4%	-0.2%	+5.2%	+2.7%
Pharmacists	59	+2	+5	+9	+4	-8	+1	+3.2%	+10.0%	+18.2%	+7.2%	-11.3%	+1.3%
Pharmacy Technicians	10	+4	+5	+2	+2	+1	+0	+68.8%	+97.8%	+25.5%	+24.7%	+8.6%	+0.1%
Pharmacy	69	+6	+10	+11	+6	-7	+1	+9.4%	+17.6%	+19.2%	+9.4%	-8.9%	+1.2%
Counsellor Therapists	123	+2	+7	+8	+11	-0	+2	+1.5%	+6.3%	+7.2%	+10.1%	-0.2%	+1.3%
Dental Hygienists	61	+6	+3	+3	-1	+2	-1	+11.5%	+5.6%	+5.6%	-1.0%	+3.3%	-0.9%
Environmental Health Officers				-1				-100.0%	-100.0%	-100.0%	-100.0%	-100.0%	-100.0%
HSCP Trainees/ Students						-0		-100.0%	-100.0%	-100.0%	-100.0%	-100.0%	-100.0%
Other Health & Social Care	43	+8	+7	+9	+9	+3	-1	+22.8%	+19.7%	+25.1%	+26.5%	+7.0%	-2.7%
Play Therapists/ Specialists	2	-1	-1	-1	-1	+0	+0	-38.6%	-38.6%	-33.3%	-28.0%	+6.2%	+4.8%
Vaccinators	25	+25	+25	+25	+25	-2	-1	-100.0%	-100.0%	-100.0%	-100.0%	-7.3%	-3.9%
H&SC, Other	254	+41	+42	+44	+44	+2	-1	+19.0%	+19.9%	+21.2%	+21.3%	+0.9%	-0.5%
Health & Social Care Professionals	3,150	+579	+503	+595	+509	+330	+41	+22.5%	+19.0%	+23.3%	+19.3%	+11.7%	+1.3%
Executive Management	37	-34	-37	-34	-37	-40	+0	-47.8%	-49.8%	-47.5%	-50.0%	-52.0%	+0.7%
Senior Management (VIII & GM)	219	-2	-16	-16	-5	-53	+3	-1.0%	-7.0%	-6.7%	-2.4%	-19.6%	+1.3%
Management (VIII & above)	256	-36	-53	-49	-43	-94	+3	-12.4%	-17.2%	-16.2%	-14.2%	-26.8%	+1.2%
Middle Management (V-VII)	782	+238	+156	+165	+98	-122	+20	+43.7%	+25.0%	+26.7%	+14.3%	-13.5%	+2.7%
Other Administrative	1	+1	-1	-1	+0	+0	+0	+150.0%	-37.5%	-37.5%	+28.9%	+28.9%	+26.3%
Administrative/ Supervisory (V to VII)	783	+238	+155	+164	+98	-122	+21	+43.8%	+24.8%	+26.5%	+14.3%	-13.5%	+2.7%
General Administrative (III & IV)	1,860	+62	+31	+114	+23	-144	+14	+3.4%	+1.7%	+6.5%	+1.2%	-7.2%	+0.7%
Clerical (III & IV)	1,860	+62	+31	+114	+23	-144	+14	+3.4%	+1.7%	+6.5%	+1.2%	-7.2%	+0.7%
Management & Administrative	2,899	+264	+133	+228	+78	-359	+37	+10.0%	+4.8%	+8.6%	+2.8%	-11.0%	+1.3%
Catering	22	-3	-1	-0	+0	+1	-2	-12.6%	-5.9%	-1.2%	+0.9%	+5.4%	-6.4%
Household Services	136	-5	-11	+2	-1	-0	-3	-3.4%	-7.7%	+1.2%	-0.9%	-0.3%	-2.5%
Other Labs & Associated	2	-3	-3	-1	-3	-2	+1	-59.7%	-58.6%	-37.0%	-60.8%	-46.4%	+38.0%
Other Support	106	-27	-24	-7	-8	-7	+2	-20.5%	-18.5%	-6.4%	-6.8%	-6.2%	+1.4%
Portering	59	-23	-20	-15	-15	-10	+0	-28.2%	-25.6%	-20.3%	-20.3%	-14.5%	+0.5%

Jan 2023 (Dec 2016 figure: 10,447)	WTE Jan 2023	WTE change since Dec 17	WTE change since Dec 18	WTE change since Dec 19	WTE change since Dec 20	WTE change since Dec 21	WTE change since Dec 22	% change since Dec 17	% change since Dec 18	% change since Dec 19	% change since Dec 20	% change since Dec 21	% change since Dec 22
Overall	12,102	+1,584	+1,172	+1,503	+530	-479	+38	+15.1%	+10.7%	+14.2%	+4.6%	-3.8%	+0.3%
Support	324	-61	-60	-22	-27	-18	-3	-15.9%	-15.6%	-6.4%	-7.7%	-5.3%	-0.8%
Maintenance	33	-22	-24	-25	-22	-34	-0	-40.0%	-41.6%	-42.6%	-39.4%	-50.3%	-0.4%
Technical Services	2	+1	+1	+1	+1			+100.0%	+122.2%	+100.0%	+100.0%		
Maintenance/ Technical	35	-21	-23	-24	-21	-34	-0	-37.5%	-39.1%	-40.2%	-36.9%	-48.9%	-0.3%
General Support	360	-83	-82	-46	-48	-52	-3	-18.7%	-18.6%	-11.3%	-11.7%	-12.6%	-0.7%
Attendant/ Aide	60	+15	+12	+26	+20	+16	-0	+33.7%	+24.1%	+73.8%	+48.6%	+35.4%	-0.2%
Health & Social Care Assistants	99	+76	-26	+30	-5	+25	+2	+330.8%	-20.5%	+43.6%	-5.0%	+32.9%	+2.4%
Health Care Assistant/ Care Assistant	267	+136	+117	+117	-367	-579	-41	+104.4%	+78.0%	+78.2%	-57.9%	-68.5%	-13.5%
HCA (Student Nurse/Midwife COVID-19)					-0			-100.0%	-100.0%	-100.0%	-100.0%	-100.0%	-100.0%
Health Care Assistants	427	+228	+103	+173	-353	-539	-39	+114.6%	+31.8%	+68.1%	-45.2%	-55.8%	-8.4%
Home Help	15	-8	-4	-4	-4	-2	-0	-33.7%	-22.7%	-19.4%	-19.4%	-12.3%	-1.4%
Health Promotion	13	+13	+13	+13	+13	+12	+1	-100.0%	-100.0%	-100.0%	-100.0%	+1169.0%	+12.3%
Home Care Services	2	-3	-3	-3	-2	-1	-0	-57.2%	-57.7%	-53.7%	-48.0%	-23.8%	-9.3%
Other Care Grades	813	+101	+84	+101	+85	-18	+4	+14.1%	+11.6%	+14.1%	+11.7%	-2.2%	+0.5%
Pastoral Care	3	-2	-1	-1	+0		+0	-38.9%	-25.8%	-25.8%	+10.8%		+0.3%
Workshop Services	2	-1	-1	-1	-1	-1	+1	-43.3%	-39.1%	-38.8%	-26.1%	-40.1%	+70.0%
Care, other	832	+107	+92	+109	+95	-8	+6	+14.8%	+12.4%	+15.0%	+12.9%	-1.0%	+0.7%
Patient & Client Care	1,274	+327	+190	+278	-261	-550	-34	+34.6%	+17.6%	+27.9%	-17.0%	-30.1%	-2.6%

Source: Health Service Personnel Census

Longitudinal Employment Levels by Grade Group - Dec 2017 to Jan 2023

Jan 2023 (Dec 2016 figure: 10,447)	WTE Jan 2023	WTE change since Dec 17	WTE change since Dec 18	WTE change since Dec 19	WTE change since Dec 20	WTE change since Dec 21	WTE change since Dec 22	% change since Dec 17	% change since Dec 18	% change since Dec 19	% change since Dec 20	% change since Dec 21	% change since Dec 22
Overall	12,102	+1,584	+1,172	+1,503	+530	-479	+38	+15.1%	+10.7%	+14.2%	+4.6%	-3.8%	+0.3%
Consultant Dentistry	13	+1	+1	+2	+3	+3	-0	+10.5%	+10.5%	+15.1%	+25.7%	+25.7%	-2.3%
Consultant Medicine	24	+4	+7	+6	+4	+1	+0	+21.1%	+41.3%	+35.2%	+18.3%	+5.1%	+0.6%
Consultant, Other								-100.0%	-100.0%	-100.0%	-100.0%	-100.0%	-100.0%
Consultant Paediatrics	1	-0	-0	-0	-0	-0	-0	-1.3%	-1.3%	-1.3%	-1.3%	-1.3%	-3.3%
Consultant Psychiatry	9	+0	+3	+1	+1	+0	+1	+0.1%	+47.5%	+12.8%	+12.4%	+0.4%	+16.7%
Consultant Radiology	1												
Consultant Surgery	2	-2	-2	-2	+2	+1	-0	-48.8%	-45.8%	-39.8%	+306.7%	+70.6%	-7.9%
Consultants	51	+3	+9	+7	+9	+5	+1	+6.4%	+21.9%	+16.8%	+21.9%	+10.4%	+1.9%
Registrar	420	+77	+60	+38	+30	+19	-2	+22.6%	+16.5%	+10.0%	+7.8%	+4.7%	-0.4%
Senior Registrar	3	-0	-1	+1	+1	-1	+0	-9.9%	-16.4%	+20.9%	+70.6%	-16.0%	+1.2%
Specialist Registrar	7	-2	-2	-3	-4	-7	-1	-24.3%	-24.4%	-26.7%	-35.3%	-48.6%	-7.8%
Registrars	431	+75	+57	+36	+28	+11	-2	+21.0%	+15.1%	+9.2%	+6.9%	+2.6%	-0.5%
Senior House Officer	41	+11	+4	+3	-1	+5	+1	+36.8%	+9.5%	+8.9%	-2.9%	+13.4%	+3.7%
SHO/ Interns	41	+11	+4	+3	-1	+5	+1	+36.8%	+9.5%	+8.9%	-2.9%	+13.4%	+3.7%
Dentists	304	+2	-1	+3	+2	-1	-3	+0.5%	-0.5%	+0.9%	+0.6%	-0.4%	-1.0%
Other Medical	200	-34	-37	-18	-17	+6	-4	-14.6%	-15.8%	-8.3%	-7.9%	+3.0%	-2.0%
Medical/ Dental, other	504	-33	-39	-16	-15	+5	-7	-6.1%	-7.2%	-3.0%	-2.9%	+0.9%	-1.4%
Medical & Dental	1,027	+56	+30	+31	+20	+25	-7	+5.8%	+3.1%	+3.1%	+2.0%	+2.5%	-0.7%
Clinical Nurse/ Midwife Manager	214	+55	+43	+46	+22	+4	-0	+34.5%	+25.4%	+27.6%	+11.3%	+1.8%	-0.2%
Director Nursing/Midwifery, Assistant	220	+81	+70	+66	+48	+16	+2	+57.7%	+46.2%	+42.7%	+28.1%	+7.6%	+0.8%
Director of Nursing/Midwifery	44	+10	+8	+6	+3	-1	-0	+30.2%	+22.0%	+16.5%	+8.3%	-1.4%	-1.1%
Nurse/ Midwife Manager	478	+146	+121	+118	+73	+19	+1	+43.8%	+33.8%	+32.9%	+18.1%	+4.1%	+0.2%
Advanced Nurse/ Midwife Practitioner	40	+38	+38	+38	+27	+25	+2	+1655.0%	+1482.3%	+1482.3%	+202.9%	+165.1%	+6.0%
Clinical Nurse/ Midwife Specialist	245	+105	+102	+105	+74	+67	+5	+75.4%	+70.9%	+74.7%	+43.4%	+37.8%	+2.0%
Nurse/ Midwife Specialist & AN/MP	285	+143	+139	+142	+101	+92	+7	+100.8%	+95.5%	+99.7%	+54.9%	+47.8%	+2.6%
Staff Midwives	3	-2	-3	-5	-2	-1	-2	-41.6%	-52.7%	-62.2%	-44.2%	-19.2%	-33.4%
Staff Nurse [Psychiatric]	12	-2	+4	+4	-1	+1	-2	-12.1%	+49.7%	+46.5%	-8.2%	+4.3%	-12.2%
Staff Nurses [General/ Children's]	1,031	+194	+166	+186	+123	+78	-4	+23.1%	+19.2%	+22.0%	+13.6%	+8.2%	-0.4%
Staff Nurse [Intellectual Disability]	2	+2	+2	+2	+2	+2	+0	-100.0%	-100.0%	-100.0%	-100.0%	+324.0%	+0.5%
Staff Nurse/ Staff Midwife	1,049	+192	+169	+187	+122	+79	-8	+22.4%	+19.2%	+21.7%	+13.2%	+8.2%	-0.7%
Public Health Nurse	1,476	-12	-39	-36	-57	-22	-1	-0.8%	-2.6%	-2.4%	-3.7%	-1.4%	-0.1%
Public Health Nurse	1,476	-12	-39	-36	-57	-22	-1	-0.8%	-2.6%	-2.4%	-3.7%	-1.4%	-0.1%
Post-registration Nurse/ Midwife Student	101	-29	+8	+5	-6	-42	+5	-22.2%	+8.1%	+5.0%	-5.3%	-29.6%	+5.0%
Nursing/ Midwifery Student	101	-29	+8	+5	-6	-42	+5	-22.2%	+8.1%	+5.0%	-5.3%	-29.6%	+5.0%
Nursing Education/Clinical	4	+0	+1	+0	-3	-1	-1	+13.1%	+32.0%	+4.2%	-40.5%	-15.0%	-19.8%
Other Nursing/ Midwifery		-0	-1					-100.0%	-100.0%	-100.0%	-100.0%	-100.0%	-100.0%
Nursing/ Midwifery other	4	+0	-0	+0	-3	-1	-1	+0.3%	-1.0%	+4.2%	-40.5%	-15.0%	-19.8%
Nursing & Midwifery	3,392	+440	+397	+416	+231	+126	+3	+14.9%	+13.3%	+14.0%	+7.3%	+3.8%	+0.1%
Dietitians	197	+93	+81	+88	+73	+63	+2	+88.7%	+69.0%	+80.8%	+58.4%	+47.2%	+1.3%
Occupational Therapists	650	+134	+110	+135	+107	+66	+12	+26.0%	+20.4%	+26.3%	+19.7%	+11.3%	+1.9%
Orthoptists	19	+13	+9	+6	+2	+2	-1	+203.9%	+95.8%	+46.1%	+10.6%	+12.5%	-3.0%
Physiotherapists	661	+98	+98	+119	+100	+57	+7	+17.5%	+17.4%	+21.8%	+17.9%	+9.4%	+1.1%
Podiatrists & Chiropodists	88	+66	+65	+64	+59	+36	+6	+295.9%	+276.2%	+259.9%	+200.0%	+69.8%	+7.4%
Speech & Language Therapists	572	+26	+23	+46	+56	+49	+0	+4.8%	+4.3%	+8.7%	+10.9%	+9.4%	+0.0%
Therapy Professions	2,189	+431	+387	+458	+397	+274	+27	+24.5%	+21.5%	+26.5%	+22.2%	+14.3%	+1.2%
Audiology	57	+27	+8	+13	+4	+3	-1	+89.5%	+17.5%	+28.7%	+8.0%	+6.6%	-1.1%
Biochemists	8	-0	-0	-0	-0	+1	-0	-0.8%	-5.5%	-0.9%	-2.6%	+11.0%	-2.1%
Cardiac Physiologists	1	+1	+1	+1	+1			-100.0%	-100.0%	-100.0%	-100.0%		
Clinical Engineering	9	+7	+2	+1	+1	+0	+0	+349.5%	+28.4%	+12.4%	+12.4%	+3.3%	+0.4%
Medical Science	15	-5	-6	-1	-3	-1	+0	-24.2%	-27.0%	-4.9%	-15.8%	-9.0%	+2.7%
Phlebotomists	0	-0	+0	+0	-1	+0	-0	-57.1%	+22.7%	+22.7%	-77.9%	+22.7%	-10.0%
Physicists	2	-0	-0	-0	-0	+0	+0	-8.4%	-18.5%	-18.5%	-18.5%	+5.8%	+0.6%
Radiographers	8	+2	+2	+3	+3	+3	-0	+29.3%	+41.3%	+74.8%	+77.6%	+49.2%	-0.3%
Health Science/ Diagnostics	99	+31	+7	+17	+5	+6	-0	+46.2%	+8.1%	+20.5%	+5.6%	+6.2%	-0.4%
Social Care	39	+6	+4	+3	+6	+5	+0	+16.7%	+13.0%	+8.8%	+18.0%	+14.7%	+0.2%
Social Workers	202	+49	+50	+63	+51	+36	+7	+32.1%	+32.9%	+45.5%	+33.9%	+21.3%	+3.7%
Psychologists	299	+16	+2	-1	-0	+15	+8	+5.5%	+0.6%	-0.4%	-0.2%	+5.2%	+2.7%
Pharmacists	59	+2	+5	+9	+4	-8	+1	+3.2%	+10.0%	+18.2%	+7.2%	-11.3%	+1.3%
Pharmacy Technicians	10	+4	+5	+2	+2	+1	+0	+68.8%	+97.8%	+25.5%	+24.7%	+8.6%	+0.1%
Pharmacy	69	+6	+10	+11	+6	-7	+1	+9.4%	+17.6%	+19.2%	+9.4%	-8.9%	+1.2%
Counsellor Therapists	123	+2	+7	+8	+11	-0	+2	+1.5%	+6.3%	+7.2%	+10.1%	-0.2%	+1.3%
Dental Hygienists	61	+6	+3	+3	-1	+2	-1	+11.5%	+5.6%	+5.6%	-1.0%	+3.3%	-0.9%
Environmental Health Officers				-1				-100.0%	-100.0%	-100.0%	-100.0%	-100.0%	-100.0%
HSCP Trainees/ Students						-0		-100.0%	-100.0%	-100.0%	-100.0%	-100.0%	-100.0%
Other Health & Social Care	43	+8	+7	+9	+9	+3	-1	+22.8%	+19.7%	+25.1%	+26.5%	+7.0%	-2.7%
Play Therapists/ Specialists	2	-1	-1	-1	-1	+0	+0	-38.6%	-38.6%	-33.3%	-28.0%	+6.2%	+4.8%
Vaccinators	25	+25	+25	+25	+25	-2	-1	-100.0%	-100.0%	-100.0%	-100.0%	-7.3%	-3.9%
H&SC, Other	254	+41	+42	+44	+44	+2	-1	+19.0%	+19.9%	+21.2%	+21.3%	+0.9%	-0.5%
Health & Social Care Professionals	3,150	+579	+503	+595	+509	+330	+41	+22.5%	+19.0%	+23.3%	+19.3%	+11.7%	+1.3%
Executive Management	37	-34	-37	-34	-37	-40	+0	-47.8%	-49.8%	-47.5%	-50.0%	-52.0%	+0.7%
Senior Management (VIII & GM)	219	-2	-16	-16	-5	-53	+3	-1.0%	-7.0%	-6.7%	-2.4%	-19.6%	+1.3%
Management (VIII & above)	256	-36	-53	-49	-43	-94	+3	-12.4%	-17.2%	-16.2%	-14.2%	-26.8%	+1.2%
Middle Management (V-VII)	782	+238	+156	+165	+98	-122	+20	+43.7%	+25.0%	+26.7%	+14.3%	-13.5%	+2.7%
Other Administrative	1	+1	-1	-1	+0	+0	+0	+150.0%	-37.5%	-37.5%	+28.9%	+28.9%	+26.3%
Administrative/ Supervisory (V to VII)	783	+238	+155	+164	+98	-122	+21	+43.8%	+24.8%	+26.5%	+14.3%	-13.5%	+2.7%
General Administrative (III & IV)	1,860	+62	+31	+114	+23	-144	+14	+3.4%	+1.7%	+6.5%	+1.2%	-7.2%	+0.7%
Clerical (III & IV)	1,860	+62	+31	+114	+23	-144	+14	+3.4%	+1.7%	+6.5%	+1.2%	-7.2%	+0.7%



Jan 2023 (Dec 2016 figure: 10,447)	WTE Jan 2023	WTE change since Dec 17	WTE change since Dec 18	WTE change since Dec 19	WTE change since Dec 20	WTE change since Dec 21	WTE change since Dec 22	% change since Dec 17	% change since Dec 18	% change since Dec 19	% change since Dec 20	% change since Dec 21	% change since Dec 22
Overall	12,102	+1,584	+1,172	+1,503	+530	-479	+38	+15.1%	+10.7%	+14.2%	+4.6%	-3.8%	+0.3%
Management & Administrative	2,899	+264	+133	+228	+78	-359	+37	+10.0%	+4.8%	+8.6%	+2.8%	-11.0%	+1.3%
Support	324	-61	-60	-22	-27	-18	-3	-15.9%	-15.6%	-6.4%	-7.7%	-5.3%	-0.8%
Maintenance	33	-22	-24	-25	-22	-34	-0	-40.0%	-41.6%	-42.6%	-39.4%	-50.3%	-0.4%
Technical Services	2	+1	+1	+1	+1			+100.0%	+122.2%	+100.0%	+100.0%		
Maintenance/ Technical	35	-21	-23	-24	-21	-34	-0	-37.5%	-39.1%	-40.2%	-36.9%	-48.9%	-0.3%
General Support	360	-83	-82	-46	-48	-52	-3	-18.7%	-18.6%	-11.3%	-11.7%	-12.6%	-0.7%
Attendant/ Aide	60	+15	+12	+26	+20	+16	-0	+33.7%	+24.1%	+73.8%	+48.6%	+35.4%	-0.2%
Health & Social Care Assistants	99	+76	-26	+30	-5	+25	+2	+330.8%	-20.5%	+43.6%	-5.0%	+32.9%	+2.4%
Health Care Assistant/ Care Assistant	267	+136	+117	+117	-367	-579	-41	+104.4%	+78.0%	+78.2%	-57.9%	-68.5%	-13.5%
HCA (Student Nurse/Midwife COVID-19)					-0			-100.0%	-100.0%	-100.0%	-100.0%	-100.0%	-100.0%
Health Care Assistants	427	+228	+103	+173	-353	-539	-39	+114.6%	+31.8%	+68.1%	-45.2%	-55.8%	-8.4%
Home Help	15	-8	-4	-4	-4	-2	-0	-33.7%	-22.7%	-19.4%	-19.4%	-12.3%	-1.4%
Health Promotion	13	+13	+13	+13	+13	+12	+1	-100.0%	-100.0%	-100.0%	-100.0%	+1169.0%	+12.3%
Home Care Services	2	-3	-3	-3	-2	-1	-0	-57.2%	-57.7%	-53.7%	-48.0%	-23.8%	-9.3%
Other Care Grades	813	+101	+84	+101	+85	-18	+4	+14.1%	+11.6%	+14.1%	+11.7%	-2.2%	+0.5%
Pastoral Care	3	-2	-1	-1	+0		+0	-38.9%	-25.8%	-25.8%	+10.8%		+0.3%
Workshop Services	2	-1	-1	-1	-1	-1	+1	-43.3%	-39.1%	-38.8%	-26.1%	-40.1%	+70.0%
Care, other	832	+107	+92	+109	+95	-8	+6	+14.8%	+12.4%	+15.0%	+12.9%	-1.0%	+0.7%
Patient & Client Care	1,274	+327	+190	+278	-261	-550	-34	+34.6%	+17.6%	+27.9%	-17.0%	-30.1%	-2.6%

Source: Health Service Personnel Census