

# Primary Care Service Employment Report: July 2022

## Employment by Staff Group

Jul 2022	WTE Dec 2019	WTE Dec 2020	WTE Jun 2022	WTE Jul 2022	WTE change since Jun 22	WTE change since Dec 20	% change since Dec 20	WTE change since Dec 19	% change since Dec 19	No. Jul 2022
<b>Overall</b>	<b>10,599</b>	<b>11,572</b>	<b>12,611</b>	<b>12,399</b>	<b>-213</b>	<b>+826</b>	<b>+7.1%</b>	<b>+1,799</b>	<b>+17.0%</b>	<b>15,008</b>
Consultants	44	42	52	52	-0	+10	+23.0%	+8	+17.9%	62
Registrars	395	403	392	474	+82	+71	+17.6%	+80	+20.2%	555
SHO/ Interns	37	42	38	33	-5	-8	-20.0%	-4	-10.3%	45
Medical/ Dental, other	520	519	498	499	+1	-20	-3.9%	-20	-3.9%	670
<b>Medical &amp; Dental</b>	<b>995</b>	<b>1,006</b>	<b>981</b>	<b>1,059</b>	<b>+78</b>	<b>+52</b>	<b>+5.2%</b>	<b>+63</b>	<b>+6.4%</b>	<b>1,332</b>
Nurse/ Midwife Manager	359	404	463	451	-12	+47	+11.5%	+92	+25.5%	505
Nurse/ Midwife Specialist & AN/MP	143	184	232	237	+5	+53	+28.6%	+94	+65.9%	275
Staff Nurse/ Staff Midwife	862	927	1,028	1,063	+34	+136	+14.6%	+201	+23.3%	1,382
Public Health Nurse	1,512	1,533	1,444	1,450	+6	-83	-5.4%	-63	-4.1%	1,760
Post-registration Nurse/ Midwife Student	96	106	109	49	-60	-58	-54.3%	-47	-49.3%	49
Nursing/ Midwifery Student	96	106	109	49	-60	-58	-54.3%	-47	-49.3%	49
Nursing/ Midwifery other	4	7	5	6	+1	-1	-10.8%	+2	+56.1%	6
<b>Nursing &amp; Midwifery</b>	<b>2,976</b>	<b>3,161</b>	<b>3,281</b>	<b>3,255</b>	<b>-26</b>	<b>+94</b>	<b>+3.0%</b>	<b>+279</b>	<b>+9.4%</b>	<b>3,977</b>
Therapy Professions	1,731	1,792	2,091	2,113	+22	+321	+17.9%	+382	+22.1%	2,499
Health Science/ Diagnostics	82	93	97	96	-1	+3	+2.7%	+14	+17.1%	108
Social Care	35	33	35	35	-0	+2	+5.7%	-1	-2.5%	37
Social Workers	139	151	179	185	+6	+33	+22.1%	+45	+32.6%	207
Psychologists	301	300	294	288	-6	-12	-3.9%	-13	-4.2%	326
Pharmacy	58	63	72	69	-3	+6	+10.1%	+12	+20.0%	82
H&SC, Other	209	209	254	241	-12	+32	+15.4%	+32	+15.3%	328
<b>Health &amp; Social Care Professionals</b>	<b>2,555</b>	<b>2,641</b>	<b>3,022</b>	<b>3,027</b>	<b>+5</b>	<b>+385</b>	<b>+14.6%</b>	<b>+471</b>	<b>+18.4%</b>	<b>3,587</b>
Management (VIII & above)	306	299	292	292	+0	-6	-2.2%	-13	-4.4%	306
Administrative/ Supervisory (V to VII)	619	685	824	832	+7	+147	+21.4%	+213	+34.4%	896
Clerical (III & IV)	1,746	1,838	1,931	1,928	-3	+90	+4.9%	+181	+10.4%	2,260
<b>Management &amp; Administrative</b>	<b>2,671</b>	<b>2,821</b>	<b>3,047</b>	<b>3,052</b>	<b>+5</b>	<b>+230</b>	<b>+8.2%</b>	<b>+381</b>	<b>+14.3%</b>	<b>3,462</b>
Support	346	351	344	331	-14	-20	-5.8%	-16	-4.5%	500
Maintenance/ Technical	59	56	67	65	-1	+9	+16.3%	+6	+10.3%	69
<b>General Support</b>	<b>406</b>	<b>407</b>	<b>411</b>	<b>396</b>	<b>-15</b>	<b>-11</b>	<b>-2.8%</b>	<b>-10</b>	<b>-2.4%</b>	<b>569</b>
Health Care Assistants	254	779	977	739	-238	-40	-5.2%	+485	+191.3%	1,009
Home Help	18	18	17	17	+0	-2	-9.3%	-2	-9.4%	42
Care, other	724	737	876	855	-21	+117	+15.9%	+131	+18.1%	1,030
<b>Patient &amp; Client Care</b>	<b>996</b>	<b>1,535</b>	<b>1,869</b>	<b>1,611</b>	<b>-259</b>	<b>+76</b>	<b>+4.9%</b>	<b>+615</b>	<b>+61.7%</b>	<b>2,081</b>

## Primary Care Services Employment by Administration (HSE / S38): July 2022

Jul 2022	WTE Dec 2019	WTE Dec 2020	WTE Jun 2022	WTE Jul 2022	WTE change since Jun 22	WTE change since Dec 20	% change since Dec 20	WTE change since Dec 19	% change since Dec 19	No. Jul 2022
<b>Total</b>	<b>10,599</b>	<b>11,572</b>	<b>12,611</b>	<b>12,399</b>	<b>-213</b>	<b>+826</b>	<b>+7.1%</b>	<b>+1,799</b>	<b>+17.0%</b>	<b>15,008</b>
HSE	9,923	10,872	11,865	11,658	-207	+786	+7.2%	+1,734	+17.5%	14,033
Section 38 Voluntary Agencies	676	700	747	741	-6	+41	+5.8%	+65	+9.6%	975

## Employment by Staff Group

Jul 2022	WTE Dec 2019	WTE Dec 2020	WTE Jun 2022	WTE Jul 2022	WTE change since Jun 22	WTE change since Dec 20	% change since Dec 20	WTE change since Dec 19	% change since Dec 19	No. Jul 2022
<b>Health Service Executive</b>	<b>9,923</b>	<b>10,872</b>	<b>11,865</b>	<b>11,658</b>	<b>-207</b>	<b>+786</b>	<b>+7.2%</b>	<b>+1,734</b>	<b>+17.5%</b>	<b>14,033</b>
Consultants	32	30	35	35	+0	+5	+18.1%	+3	+8.2%	41
Registrars	384	390	380	463	+83	+73	+18.8%	+79	+20.7%	543
SHO/ Interns	20	22	23	19	-4	-3	-13.5%	-0	-2.5%	24
Medical/ Dental, other	505	505	478	483	+5	-22	-4.4%	-23	-4.5%	624
<b>Medical &amp; Dental</b>	<b>941</b>	<b>947</b>	<b>916</b>	<b>1,000</b>	<b>+84</b>	<b>+53</b>	<b>+5.6%</b>	<b>+59</b>	<b>+6.3%</b>	<b>1,232</b>
Nurse/ Midwife Manager	310	356	409	394	-15	+39	+10.9%	+84	+27.0%	442
Nurse/ Midwife Specialist & AN/MP	114	147	193	198	+5	+52	+35.1%	+84	+74.1%	227
Staff Nurse/ Staff Midwife	752	819	909	944	+34	+124	+15.2%	+191	+25.4%	1,235
Public Health Nurse	1,512	1,533	1,444	1,450	+6	-83	-5.4%	-63	-4.1%	1,760
Post-registration Nurse/ Midwife Student	96	106	109	49	-60	-58	-54.3%	-47	-49.3%	49
Nursing/ Midwifery Student	96	106	109	49	-60	-58	-54.3%	-47	-49.3%	49
Nursing/ Midwifery other	2	5	3	4	+1	-1	-15.5%	+2	+118.3%	4
<b>Nursing &amp; Midwifery</b>	<b>2,787</b>	<b>2,965</b>	<b>3,067</b>	<b>3,038</b>	<b>-29</b>	<b>+73</b>	<b>+2.5%</b>	<b>+252</b>	<b>+9.0%</b>	<b>3,717</b>
Therapy Professions	1,694	1,756	2,054	2,076	+22	+320	+18.2%	+382	+22.6%	2,453
Health Science/ Diagnostics	78	89	93	92	-1	+4	+4.0%	+14	+18.0%	102
Social Care	35	33	35	35	-0	+2	+5.7%	-1	-2.5%	37
Social Workers	128	141	168	173	+5	+32	+22.7%	+45	+34.8%	194
Psychologists	300	299	293	287	-6	-13	-4.2%	-13	-4.5%	324
Pharmacy	48	53	62	61	-2	+7	+13.2%	+13	+26.4%	71
H&SC, Other	208	206	250	238	-12	+32	+15.6%	+30	+14.4%	322
<b>Health &amp; Social Care Professionals</b>	<b>2,492</b>	<b>2,577</b>	<b>2,955</b>	<b>2,961</b>	<b>+6</b>	<b>+384</b>	<b>+14.9%</b>	<b>+469</b>	<b>+18.8%</b>	<b>3,503</b>
Management (VIII & above)	297	290	283	284	+0	-6	-2.2%	-13	-4.5%	294
Administrative/ Supervisory (V to VII)	585	653	791	799	+7	+145	+22.2%	+213	+36.4%	851
Clerical (III & IV)	1,683	1,769	1,859	1,855	-4	+86	+4.9%	+173	+10.3%	2,161
<b>Management &amp; Administrative</b>	<b>2,565</b>	<b>2,713</b>	<b>2,934</b>	<b>2,938</b>	<b>+4</b>	<b>+225</b>	<b>+8.3%</b>	<b>+373</b>	<b>+14.5%</b>	<b>3,306</b>
Support	252	255	250	237	-12	-18	-7.0%	-14	-5.6%	388
Maintenance/ Technical	50	46	57	55	-1	+9	+19.4%	+5	+9.7%	56
<b>General Support</b>	<b>302</b>	<b>302</b>	<b>306</b>	<b>293</b>	<b>-14</b>	<b>-9</b>	<b>-3.0%</b>	<b>-9</b>	<b>-3.1%</b>	<b>444</b>
Health Care Assistants	151	671	862	623	-239	-48	-7.2%	+472	+311.4%	868
Home Help	18	18	17	17	+0	-2	-9.3%	-2	-9.4%	42
Care, other	667	679	808	788	-20	+109	+16.1%	+121	+18.1%	921
<b>Patient &amp; Client Care</b>	<b>837</b>	<b>1,368</b>	<b>1,686</b>	<b>1,428</b>	<b>-259</b>	<b>+60</b>	<b>+4.4%</b>	<b>+591</b>	<b>+70.6%</b>	<b>1,831</b>

## Employment by Staff Group

Jul 2022	WTE Dec 2019	WTE Dec 2020	WTE Jun 2022	WTE Jul 2022	WTE change since Jun 22	WTE change since Dec 20	% change since Dec 20	WTE change since Dec 19	% change since Dec 19	No. Jul 2022
<b>Section 38 Voluntary Agencies</b>	<b>676</b>	<b>700</b>	<b>747</b>	<b>741</b>	<b>-6</b>	<b>+41</b>	<b>+5.8%</b>	<b>+65</b>	<b>+9.6%</b>	<b>975</b>
Consultants	11	12	17	17	-0	+4	+35.0%	+5	+45.7%	21
Registrars	11	13	12	11	-1	-2	-14.8%	+0	+3.3%	12
SHO/ Interns	18	20	15	14	-1	-5	-27.3%	-3	-18.9%	21
Medical/ Dental, other	14	14	21	17	-4	+2	+15.1%	+2	+15.1%	46
<b>Medical &amp; Dental</b>	<b>54</b>	<b>60</b>	<b>65</b>	<b>59</b>	<b>-6</b>	<b>-1</b>	<b>-1.5%</b>	<b>+4</b>	<b>+8.1%</b>	<b>100</b>
Nurse/ Midwife Manager	49	49	54	57	+3	+8	+16.6%	+8	+16.1%	63
Nurse/ Midwife Specialist & AN/MP	29	37	39	38	-0	+1	+2.9%	+10	+33.5%	48
Staff Nurse/ Staff Midwife	110	108	119	119	+0	+12	+10.8%	+9	+8.5%	147
Nursing/ Midwifery other	2	2	2	2						2
<b>Nursing &amp; Midwifery</b>	<b>190</b>	<b>196</b>	<b>214</b>	<b>217</b>	<b>+3</b>	<b>+21</b>	<b>+10.6%</b>	<b>+27</b>	<b>+14.2%</b>	<b>260</b>
Therapy Professions	37	36	37	37	-0	+1	+3.6%	-0	-0.6%	46
Health Science/ Diagnostics	4	5	4	4		-1	-21.0%	+0	+0.3%	6
Social Workers	11	10	11	12	+0	+1	+13.4%	+1	+6.9%	13
Psychologists	1	1	2	2	-0	+1	+151.7%	+1	+151.7%	2
Pharmacy	10	9	10	9	-1	-1	-7.8%	-1	-11.4%	11
H&SC, Other	2	3	3	3		+0	+1.2%	+2	+128.7%	6
<b>Health &amp; Social Care Professionals</b>	<b>64</b>	<b>64</b>	<b>67</b>	<b>66</b>	<b>-1</b>	<b>+2</b>	<b>+2.9%</b>	<b>+2</b>	<b>+3.5%</b>	<b>84</b>
Management (VIII & above)	9	9	9	9						12
Administrative/ Supervisory (V to VII)	34	32	33	33	-0	+1	+4.4%	-1	-1.6%	45
Clerical (III & IV)	64	68	72	72	+1	+4	+5.9%	+9	+13.5%	99
<b>Management &amp; Administrative</b>	<b>106</b>	<b>108</b>	<b>113</b>	<b>114</b>	<b>+1</b>	<b>+5</b>	<b>+5.0%</b>	<b>+8</b>	<b>+7.6%</b>	<b>156</b>
Support	95	96	94	93	-1	-3	-2.7%	-2	-1.6%	112
Maintenance/ Technical	9	10	10	10	-0	+0	+2.3%	+1	+13.7%	13
<b>General Support</b>	<b>104</b>	<b>106</b>	<b>105</b>	<b>103</b>	<b>-1</b>	<b>-2</b>	<b>-2.2%</b>	<b>-0</b>	<b>-0.3%</b>	<b>125</b>
Health Care Assistants	102	108	115	116	+1	+8	+7.3%	+14	+13.3%	141
Care, other	57	59	68	67	-1	+8	+13.8%	+10	+17.8%	109
<b>Patient &amp; Client Care</b>	<b>159</b>	<b>167</b>	<b>183</b>	<b>183</b>	<b>-0</b>	<b>+16</b>	<b>+9.6%</b>	<b>+24</b>	<b>+14.9%</b>	<b>250</b>

## Primary Care Services Employment by CHO: Jul 2022

Jul 2022	WTE Dec 2019	WTE Dec 2020	WTE Jun 2022	WTE Jul 2022	WTE change since Jun 22	WTE change since Dec 20	% change since Dec 20	WTE change since Dec 19	% change since Dec 19	No. Jul 2022
<b>Overall</b>	<b>10,599</b>	<b>11,572</b>	<b>12,611</b>	<b>12,399</b>	<b>-213</b>	<b>+826</b>	<b>+7.1%</b>	<b>+1,799</b>	<b>+17.0%</b>	<b>15,008</b>
CHO 1	1,182	1,296	1,587	1,556	-30	+260	+20.1%	+375	+31.7%	1,853
CHO 2	1,134	1,235	1,357	1,331	-26	+97	+7.8%	+198	+17.4%	1,602
CHO 3	764	812	1,034	997	-37	+186	+22.9%	+234	+30.6%	1,194
CHO 4	1,346	1,517	1,759	1,732	-27	+215	+14.2%	+387	+28.7%	2,173
CHO 5	952	1,061	1,171	1,149	-22	+88	+8.3%	+197	+20.7%	1,404
CHO 6	765	811	858	862	+3	+51	+6.3%	+97	+12.7%	1,110
CHO 7	1,702	1,789	1,777	1,743	-34	-46	-2.6%	+41	+2.4%	2,072
CHO 8	1,387	1,506	1,557	1,545	-12	+39	+2.6%	+158	+11.4%	1,855
CHO 9	1,247	1,412	1,370	1,342	-28	-70	-4.9%	+95	+7.6%	1,581
other Community Services	122	134	141	141	-1	+7	+5.2%	+18	+15.0%	164

## Primary Care Services Employment by CHO etc. Jul 2022

### CHO 1

Jul 2022	WTE Dec 2019	WTE Dec 2020	WTE Jun 2022	WTE Jul 2022	WTE change since Jun 22	WTE change since Dec 20	% change since Dec 20	WTE change since Dec 19	% change since Dec 19	No. Jul 2022
<b>Overall</b>	<b>1,182</b>	<b>1,296</b>	<b>1,587</b>	<b>1,556</b>	<b>-30</b>	<b>+260</b>	<b>+20.1%</b>	<b>+375</b>	<b>+31.7%</b>	<b>1,853</b>
Consultants	3	4	5	5	+0	+2	+42.9%	+2	+67.7%	6
Registrars	41	42	44	48	+3	+6	+13.2%	+7	+16.5%	54
SHO/ Interns	1	1	1	1	-0	-0	-23.0%	-0	-23.0%	1
Medical/ Dental, other	47	45	42	41	-1	-4	-9.0%	-6	-13.4%	50
<b>Medical &amp; Dental</b>	<b>92</b>	<b>92</b>	<b>92</b>	<b>94</b>	<b>+3</b>	<b>+3</b>	<b>+3.0%</b>	<b>+2</b>	<b>+2.4%</b>	<b>111</b>
Nurse/ Midwife Manager	36	39	53	54	+1	+15	+38.2%	+17	+47.4%	60
Nurse/ Midwife Specialist & AN/MP	21	26	38	42	+3	+15	+58.9%	+21	+100.8%	45
Staff Nurse/ Staff Midwife	85	96	109	117	+8	+20	+21.2%	+31	+36.6%	155
Public Health Nurse	156	153	148	148	+0	-4	-2.8%	-8	-4.8%	172
Nursing/ Midwifery Student	7	3	14	7	-7	+4	+128.3%	-0	-1.9%	7
Nursing/ Midwifery other	1	1	1	1	0	+0	+2.0%			1
<b>Nursing &amp; Midwifery</b>	<b>306</b>	<b>318</b>	<b>364</b>	<b>368</b>	<b>+5</b>	<b>+50</b>	<b>+15.8%</b>	<b>+62</b>	<b>+20.1%</b>	<b>440</b>
Therapy Professions	227	230	255	255	+0	+25	+10.8%	+29	+12.6%	300
Health Science/ Diagnostics	5	5	10	10	-0	+5	+92.3%	+4	+83.9%	12
Social Workers	13	16	32	33	+1	+18	+110.8%	+21	+165.1%	40
Psychologists	35	31	29	28	-1	-4	-11.3%	-7	-19.7%	32
Pharmacy	1	2	3	3	-1	+1	+57.6%	+2	+282.9%	4
H&SC, Other	7	7	22	17	-6	+9	+127.8%	+10	+139.6%	36
<b>Health &amp; Social Care Professionals</b>	<b>287</b>	<b>292</b>	<b>352</b>	<b>346</b>	<b>-6</b>	<b>+54</b>	<b>+18.5%</b>	<b>+59</b>	<b>+20.4%</b>	<b>424</b>
Management (VIII & above)	32	30	47	47	-1	+16	+54.1%	+14	+45.0%	48
Administrative/ Supervisory (V to VII)	64	76	114	114	+1	+38	+50.5%	+51	+80.2%	122
Clerical (III & IV)	236	250	337	327	-10	+77	+31.0%	+91	+38.8%	379
<b>Management &amp; Administrative</b>	<b>331</b>	<b>356</b>	<b>498</b>	<b>488</b>	<b>-10</b>	<b>+132</b>	<b>+37.2%</b>	<b>+157</b>	<b>+47.4%</b>	<b>549</b>
Support	72	77	85	83	-2	+6	+7.5%	+11	+15.8%	116
Maintenance/ Technical	6	7	9	9	-1	+2	+26.7%	+3	+47.7%	9
<b>General Support</b>	<b>78</b>	<b>84</b>	<b>94</b>	<b>92</b>	<b>-2</b>	<b>+8</b>	<b>+9.1%</b>	<b>+14</b>	<b>+18.2%</b>	<b>125</b>
Health Care Assistants	32	96	113	99	-14	+4	+3.7%	+67	+211.3%	121
Home Help		1	0	0	0	-0	-53.3%	+0	-100.0%	1
Care, other	55	58	74	68	-5	+10	+17.0%	+13	+24.1%	82
<b>Patient &amp; Client Care</b>	<b>87</b>	<b>155</b>	<b>187</b>	<b>168</b>	<b>-19</b>	<b>+13</b>	<b>+8.4%</b>	<b>+81</b>	<b>+93.2%</b>	<b>204</b>

CHO 2

Jul 2022	WTE Dec 2019	WTE Dec 2020	WTE Jun 2022	WTE Jul 2022	WTE change since Jun 22	WTE change since Dec 20	% change since Dec 20	WTE change since Dec 19	% change since Dec 19	No. Jul 2022
Overall	1,134	1,235	1,357	1,331	-26	+97	+7.8%	+198	+17.4%	1,602
Consultants	1	1	3	3	-0	+2	+127.7%	+2	+136.8%	3
Registrars	40	47	46	72	+26	+24	+51.0%	+31	+78.5%	75
SHO/ Interns	1	3	3	3	-0	-0	-4.0%	+2	+188.0%	3
Medical/ Dental, other	46	49	44	45	+1	-4	-7.9%	-0	-0.7%	55
Medical & Dental	88	101	96	123	+27	+22	+21.6%	+35	+39.5%	136
Nurse/ Midwife Manager	27	28	28	26	-2	-2	-8.3%	-2	-6.3%	28
Nurse/ Midwife Specialist & AN/MP	17	21	31	32	+1	+11	+50.7%	+14	+83.4%	35
Staff Nurse/ Staff Midwife	74	79	104	105	+2	+26	+33.4%	+31	+42.4%	130
Public Health Nurse	191	198	180	174	-6	-24	-12.1%	-17	-8.9%	207
Post-registration Nurse/ Midwife Student	4		6	4	-2	+4	-100.0%			4
Nursing/ Midwifery Student	4		6	4	-2	+4	-100.0%			4
Nursing & Midwifery	313	326	348	341	-7	+15	+4.6%	+27	+8.6%	404
Therapy Professions	226	248	278	277	-1	+29	+11.8%	+51	+22.5%	324
Health Science/ Diagnostics	6	7	9	9	+0	+2	+28.5%	+3	+51.0%	9
Social Care	8	9	9	9	0	-0	-1.0%	+0	+1.4%	9
Social Workers	7	6	9	10	+0	+4	+69.0%	+3	+42.5%	10
Psychologists	24	27	31	30	-2	+3	+11.4%	+6	+23.4%	35
Pharmacy	1	1	1	1	-0	+0	+16.0%	+0	+16.0%	2
H&SC, Other	40	42	61	58	-3	+16	+38.2%	+18	+43.9%	98
Health & Social Care Professionals	312	339	399	393	-6	+54	+16.0%	+80	+25.7%	487
Management (VIII & above)	33	35	29	29	+0	-6	-18.1%	-4	-12.3%	29
Administrative/ Supervisory (V to VII)	62	73	82	79	-3	+6	+8.3%	+17	+27.6%	85
Clerical (III & IV)	238	229	224	224	-0	-5	-2.2%	-14	-6.0%	261
Management & Administrative	333	337	335	331	-3	-5	-1.6%	-1	-0.4%	375
Support	21	22	18	19	+1	-3	-12.4%	-2	-7.4%	42
Maintenance/ Technical	9	8	10	10	0	+2	+25.2%	+1	+11.0%	10
General Support	30	30	28	29	+1	-1	-2.4%	-1	-1.8%	52
Health Care Assistants	14	57	81	45	-35	-12	-20.7%	+31	+215.7%	72
Care, other	43	46	71	69	-2	+24	+51.5%	+27	+61.8%	76
Patient & Client Care	57	103	152	115	-37	+12	+11.5%	+57	+100.2%	148

CHO 3

Jul 2022	WTE Dec 2019	WTE Dec 2020	WTE Jun 2022	WTE Jul 2022	WTE change since Jun 22	WTE change since Dec 20	% change since Dec 20	WTE change since Dec 19	% change since Dec 19	No. Jul 2022
Overall	764	812	1,034	997	-37	+186	+22.9%	+234	+30.6%	1,194
Consultants	2	1	1	1	+0	+0	+1.5%	-1	-34.0%	2
Registrars	24	25	25	34	+10	+10	+38.2%	+11	+45.7%	35
SHO/ Interns	6	1				-1	-100.0%	-6	-100.0%	
Medical/ Dental, other	52	52	46	45	-0	-7	-13.1%	-7	-13.4%	56
Medical & Dental	84	79	71	81	+9	+2	+2.2%	-3	-3.4%	93
Nurse/ Midwife Manager	19	23	22	22	+0	-0	-2.1%	+4	+19.4%	25
Nurse/ Midwife Specialist & AN/MP	2	3	8	7	-1	+4	+131.7%	+5	+247.5%	7
Staff Nurse/ Staff Midwife	56	56	76	83	+8	+28	+49.5%	+27	+49.2%	106
Public Health Nurse	126	126	122	119	-3	-7	-5.8%	-8	-6.1%	147
Post-registration Nurse/ Midwife Student		4	11	2	-9	-2	-50.0%	+2	-100.0%	2
Nursing/ Midwifery Student		4	11	2	-9	-2	-50.0%	+2	-100.0%	2
Nursing & Midwifery	203	212	238	233	-5	+22	+10.3%	+30	+14.9%	287
Therapy Professions	86	84	151	157	+6	+73	+87.9%	+71	+82.7%	180
Health Science/ Diagnostics	5	6	4	4	+0	-2	-33.3%	-1	-16.6%	5
Social Care	1	1	1	1	0					1
Social Workers	11	10	11	11	+0	+1	+12.2%	+1	+6.6%	13
Psychologists	15	15	13	14	+1	-1	-5.5%	-2	-11.1%	16
Pharmacy	1	1	2	2	0	+1	+100.0%	+1	+100.0%	2
H&SC, Other	11	10	10	10	+0	+0	+0.2%	-1	-4.8%	13
Health & Social Care Professionals	129	126	192	199	+7	+73	+57.8%	+70	+53.9%	230
Management (VIII & above)	23	24	28	29	+1	+5	+21.9%	+6	+24.6%	30
Administrative/ Supervisory (V to VII)	54	63	107	108	+1	+44	+70.0%	+53	+98.5%	115
Clerical (III & IV)	156	150	182	183	+2	+34	+22.6%	+28	+17.7%	213
Management & Administrative	234	237	317	320	+3	+83	+35.2%	+87	+37.1%	358
Support	13	13	22	13	-10	-1	-5.7%	-1	-4.9%	28
Maintenance/ Technical	30	27	33	32	-1	+5	+18.5%	+2	+7.4%	32
General Support	43	40	55	45	-10	+4	+10.5%	+2	+3.7%	60
Health Care Assistants	21	67	95	59	-37	-9	-12.9%	+38	+179.2%	96
Home Help	1	1				-1	-100.0%	-1	-100.0%	
Care, other	49	50	66	61	-5	+11	+22.6%	+12	+23.4%	70
Patient & Client Care	71	117	161	119	-41	+2	+1.5%	+48	+68.2%	166

CHO 4

Jul 2022	WTE Dec 2019	WTE Dec 2020	WTE Jun 2022	WTE Jul 2022	WTE change since Jun 22	WTE change since Dec 20	% change since Dec 20	WTE change since Dec 19	% change since Dec 19	No. Jul 2022
Overall	1,346	1,517	1,759	1,732	-27	+215	+14.2%	+387	+28.7%	2,173
Consultants	3	3	6	6	-0	+4	+136.2%	+4	+135.2%	10
Registrars	55	58	46	46	-0	-12	-20.9%	-9	-16.1%	48
SHO/ Interns	6	7	4	2	-2	-5	-72.0%	-4	-67.5%	2
Medical/ Dental, other	88	91	102	103	+1	+12	+12.9%	+14	+16.4%	164
Medical & Dental	152	159	158	157	-1	-2	-1.3%	+5	+3.4%	224
Nurse/ Midwife Manager	56	61	72	71	-1	+10	+16.9%	+15	+26.2%	80
Nurse/ Midwife Specialist & AN/MP	4	7	12	12	-0	+5	+64.0%	+7	+177.6%	14
Staff Nurse/ Staff Midwife	119	139	152	164	+11	+25	+17.8%	+44	+37.2%	223
Public Health Nurse	211	222	208	205	-3	-17	-7.5%	-6	-2.8%	255
Post-registration Nurse/ Midwife Student	17	15	23	17	-6	+2	+13.3%	-0	-1.9%	17
Nursing/ Midwifery Student	17	15	23	17	-6	+2	+13.3%	-0	-1.9%	17
Nursing & Midwifery	408	443	467	468	+1	+25	+5.6%	+60	+14.8%	589
Therapy Professions	222	237	312	317	+5	+80	+33.5%	+95	+42.9%	379
Health Science/ Diagnostics	11	12	13	13	+0	+1	+10.6%	+3	+23.2%	15
Social Care	8	5	8	8	+0	+3	+51.4%	-0	-3.1%	8
Social Workers	24	28	29	30	+1	+2	+6.6%	+6	+23.8%	32
Psychologists	20	22	16	16	-1	-6	-28.3%	-5	-23.9%	19
Pharmacy	3	4	4	4	+0	+0	+11.5%	+1	+43.9%	5
H&SC, Other	41	41	39	39	+0	-2	-4.4%	-2	-4.9%	44
Health & Social Care Professionals	329	349	421	427	+6	+78	+22.3%	+98	+29.7%	502
Management (VIII & above)	37	35	42	42	+0	+8	+21.9%	+6	+15.2%	44
Administrative/ Supervisory (V to VII)	68	73	107	108	+1	+35	+48.4%	+40	+58.2%	118
Clerical (III & IV)	205	224	259	260	+1	+36	+16.1%	+55	+26.7%	314
Management & Administrative	310	331	408	410	+1	+79	+23.8%	+100	+32.3%	476
Support	16	18	16	16	-0	-2	-12.1%	+0	+1.7%	31
Maintenance/ Technical			1	1	0	+1	-100.0%	+1	-100.0%	1
General Support	16	18	17	17	-0	-1	-6.6%	+1	+8.1%	32
Health Care Assistants	17	103	145	109	-36	+6	+6.0%	+92	+529.7%	156
Home Help	10	9	9	9	-0	+0	+1.3%	-1	-8.2%	22
Care, other	105	105	133	136	+2	+30	+28.8%	+31	+29.6%	172
Patient & Client Care	132	218	288	254	-33	+37	+16.8%	+122	+92.5%	350



CHO 5

Jul 2022	WTE Dec 2019	WTE Dec 2020	WTE Jun 2022	WTE Jul 2022	WTE change since Jun 22	WTE change since Dec 20	% change since Dec 20	WTE change since Dec 19	% change since Dec 19	No. Jul 2022
Overall	952	1,061	1,171	1,149	-22	+88	+8.3%	+197	+20.7%	1,404
Consultants	3	1	2	2	0	+1	+100.0%	-1	-33.3%	2
Registrars	18	21	28	40	+12	+20	+94.7%	+22	+124.2%	42
SHO/ Interns	6	2	2	1	-1	-1	-55.6%	-5	-83.3%	1
Medical/ Dental, other	54	55	58	57	-1	+2	+4.3%	+3	+5.2%	80
Medical & Dental	81	79	90	100	+10	+22	+27.6%	+19	+23.6%	125
Nurse/ Midwife Manager	26	46	47	48	+1	+2	+3.9%	+22	+83.0%	54
Nurse/ Midwife Specialist & AN/MP	6	18	27	26	-0	+9	+48.7%	+21	+364.5%	31
Staff Nurse/ Staff Midwife	67	84	106	106	-0	+22	+26.1%	+39	+58.4%	136
Public Health Nurse	165	167	153	150	-3	-17	-10.3%	-15	-9.2%	188
Post-registration Nurse/ Midwife Student	5	3	6	5	-1	+1	+42.6%	-0	-5.0%	5
Nursing/ Midwifery Student	5	3	6	5	-1	+1	+42.6%	-0	-5.0%	5
Nursing/ Midwifery other	1	1				-1	-100.0%	-1	-100.0%	
Nursing & Midwifery	270	320	340	336	-5	+16	+4.9%	+65	+24.2%	414
Therapy Professions	183	186	236	234	-2	+48	+25.8%	+50	+27.5%	271
Health Science/ Diagnostics	4	8	7	6	-1	-1	-16.0%	+3	+68.7%	8
Social Care	5	5	5	4	-0	-1	-15.7%	-1	-17.7%	5
Social Workers	8	7	4	4	+0	-3	-36.9%	-4	-46.5%	5
Psychologists	44	38	35	34	-1	-4	-11.5%	-10	-22.5%	38
Pharmacy	1	1	0	0	0	-1	-62.0%	-1	-62.0%	1
H&SC, Other	18	19	18	18	-0	-1	-3.3%	-0	-0.7%	20
Health & Social Care Professionals	264	264	306	301	-4	+38	+14.3%	+38	+14.3%	348
Management (VIII & above)	25	24	16	17	+1	-7	-28.1%	-8	-33.2%	17
Administrative/ Supervisory (V to VII)	52	59	53	62	+9	+3	+5.9%	+10	+19.3%	64
Clerical (III & IV)	164	161	154	156	+2	-5	-3.1%	-8	-4.8%	181
Management & Administrative	241	243	223	235	+11	-8	-3.3%	-6	-2.6%	262
Support	26	26	23	23	-0	-4	-13.5%	-3	-11.6%	53
General Support	26	26	23	23	-0	-4	-13.5%	-3	-11.6%	53
Health Care Assistants	8	70	116	82	-34	+12	+17.5%	+74	+925.5%	102
Home Help	7	8	7	7	+0	-1	-9.3%	-0	-2.5%	19
Care, other	55	52	66	65	-1	+13	+24.6%	+10	+18.3%	81
Patient & Client Care	70	130	188	154	-34	+24	+18.8%	+84	+119.7%	202

CHO 6

Jul 2022	WTE Dec 2019	WTE Dec 2020	WTE Jun 2022	WTE Jul 2022	WTE change since Jun 22	WTE change since Dec 20	% change since Dec 20	WTE change since Dec 19	% change since Dec 19	No. Jul 2022
Overall	765	811	858	862	+3	+51	+6.3%	+97	+12.7%	1,110
Consultants	9	8	11	11	+0	+3	+30.5%	+2	+17.2%	13
Registrars	26	24	24	26	+2	+2	+9.8%	+0	+0.3%	36
SHO/ Interns	7	7	8	8	0	+1	+15.4%	+1	+15.4%	14
Medical/ Dental, other	46	41	42	42	+0	+1	+3.2%	-4	-8.1%	61
Medical & Dental	88	80	85	87	+2	+7	+9.0%	-1	-1.2%	124
Nurse/ Midwife Manager	22	22	28	26	-1	+4	+18.1%	+4	+18.9%	31
Nurse/ Midwife Specialist & AN/MP	6	4	9	10	+1	+6	+183.1%	+4	+66.6%	11
Staff Nurse/ Staff Midwife	52	55	71	68	-3	+13	+24.0%	+16	+31.6%	97
Public Health Nurse	117	112	95	101	+6	-11	-9.8%	-16	-13.6%	120
Post-registration Nurse/ Midwife Student	14	15	5	2	-3	-13	-86.6%	-12	-85.2%	2
Nursing/ Midwifery Student	14	15	5	2	-3	-13	-86.6%	-12	-85.2%	2
Nursing Education/Clinical		1	1	1	-0	-0	-3.0%	+1	-100.0%	1
Nursing/ Midwifery other		1	1	1	-0	-0	-3.0%	+1	-100.0%	1
Nursing & Midwifery	210	209	209	208	-1	-0	-0.1%	-2	-0.9%	262
Therapy Professions	104	110	136	141	+5	+30	+27.4%	+37	+35.6%	177
Health Science/ Diagnostics	18	20	18	19	+0	-1	-5.7%	+1	+4.4%	21
Social Care	4	3	3	3	+0	+0	+8.6%	-1	-21.9%	3
Social Workers	5	4	6	6	-0	+1	+31.7%	+1	+21.4%	7
Psychologists	19	20	18	18	-0	-2	-9.8%	-1	-4.8%	21
Pharmacy	1	1	1	1	0			+0	+25.0%	1
H&SC, Other	4	4	6	6	-0	+2	+55.6%	+2	+60.6%	7
Health & Social Care Professionals	154	162	188	193	+5	+31	+19.1%	+40	+25.8%	237
Management (VIII & above)	30	30	29	31	+1	+1	+1.8%	+1	+2.3%	36
Administrative/ Supervisory (V to VII)	68	65	67	71	+4	+6	+9.0%	+3	+4.5%	85
Clerical (III & IV)	112	128	138	139	+1	+11	+8.4%	+27	+24.0%	167
Management & Administrative	210	223	234	240	+6	+17	+7.7%	+31	+14.6%	288
Support	24	26	24	24	+0	-2	-7.3%	+0	+0.5%	38
Maintenance/ Technical	2	2	2	2	0					4
General Support	26	28	26	26	+0	-2	-6.8%	+0	+0.4%	42
Health Care Assistants	6	38	38	28	-9	-9	-24.9%	+22	+351.4%	37
Care, other	71	72	79	79	+0	+7	+10.1%	+8	+11.0%	120
Patient & Client Care	77	110	117	107	-9	-2	-2.0%	+30	+38.6%	157

CHO 7

Jul 2022	WTE Dec 2019	WTE Dec 2020	WTE Jun 2022	WTE Jul 2022	WTE change since Jun 22	WTE change since Dec 20	% change since Dec 20	WTE change since Dec 19	% change since Dec 19	No. Jul 2022
Overall	1,702	1,789	1,777	1,743	-34	-46	-2.6%	+41	+2.4%	2,072
Consultants	11	13	12	12	-0	-1	-7.5%	+0	+1.4%	13
Registrars	46	44	42	46	+4	+2	+5.0%	+0	+0.1%	64
SHO/ Interns	6	9	9	9	+0	+0	+2.7%	+3	+54.5%	11
Medical/ Dental, other	75	77	62	61	-1	-16	-20.9%	-15	-19.7%	81
Medical & Dental	139	142	125	127	+2	-15	-10.3%	-11	-8.2%	169
Nurse/ Midwife Manager	80	86	96	97	+1	+11	+13.1%	+17	+20.6%	108
Nurse/ Midwife Specialist & AN/MP	46	56	51	52	+1	-4	-6.8%	+6	+12.6%	61
Staff Nurse/ Staff Midwife	205	199	194	199	+6	+0	+0.1%	-6	-2.8%	250
Public Health Nurse	175	177	165	164	-1	-12	-6.9%	-11	-6.3%	205
Post-registration Nurse/ Midwife Student	21	23	19	4	-15	-19	-82.6%	-17	-81.0%	4
Nursing/ Midwifery Student	21	23	19	4	-15	-19	-82.6%	-17	-81.0%	4
Nursing/ Midwifery other	2	2	2	2	0					2
Nursing & Midwifery	530	542	527	518	-8	-24	-4.4%	-11	-2.1%	630
Therapy Professions	267	257	264	267	+4	+10	+3.9%	+1	+0.4%	311
Health Science/ Diagnostics	0	1	6	5	-1	+4	+333.6%	+5	+2304.5%	7
Social Care	3	4	4	4	0	+0	+5.9%	+1	+19.1%	4
Social Workers	26	26	25	26	+1	+0	+0.3%			29
Psychologists	22	25	29	27	-2	+2	+8.2%	+6	+27.2%	32
Pharmacy	32	31	33	31	-1	+1	+2.9%	-0	-0.9%	37
H&SC, Other	24	21	22	23	+1	+2	+9.9%	-1	-3.8%	29
Health & Social Care Professionals	373	365	383	385	+1	+20	+5.4%	+11	+3.0%	449
Management (VIII & above)	33	30	27	26	-1	-4	-12.9%	-7	-20.9%	27
Administrative/ Supervisory (V to VII)	76	87	78	80	+2	-7	-8.5%	+4	+5.1%	83
Clerical (III & IV)	178	193	175	180	+5	-13	-6.5%	+2	+1.2%	202
Management & Administrative	287	310	281	286	+5	-24	-7.7%	-1	-0.3%	312
Support	116	110	105	102	-3	-8	-7.2%	-14	-11.7%	120
Maintenance/ Technical	9	9	10	10	-0	+0	+2.5%	+1	+9.8%	11
General Support	125	120	115	112	-3	-8	-6.5%	-13	-10.1%	131
Health Care Assistants	121	184	202	171	-30	-13	-7.0%	+50	+41.6%	223
Care, other	128	126	145	143	-2	+17	+13.6%	+16	+12.2%	158
Patient & Client Care	249	310	347	314	-32	+4	+1.4%	+66	+26.5%	381

CHO 8

Jul 2022	WTE Dec 2019	WTE Dec 2020	WTE Jun 2022	WTE Jul 2022	WTE change since Jun 22	WTE change since Dec 20	% change since Dec 20	WTE change since Dec 19	% change since Dec 19	No. Jul 2022
Overall	1,387	1,506	1,557	1,545	-12	+39	+2.6%	+158	+11.4%	1,855
Consultants	6	6	5	6	+1	+0	+5.6%	+0	+7.8%	7
Registrars	78	82	83	104	+22	+22	+27.4%	+26	+33.5%	109
SHO/ Interns	2	1				-1	-100.0%	-2	-100.0%	
Medical/ Dental, other	61	61	52	55	+2	-6	-10.0%	-6	-9.9%	65
Medical & Dental	147	149	141	165	+25	+16	+10.7%	+19	+12.7%	181
Nurse/ Midwife Manager	51	51	61	54	-7	+3	+5.9%	+3	+5.1%	61
Nurse/ Midwife Specialist & AN/MP	35	42	44	44	-1	+2	+4.3%	+9	+26.0%	55
Staff Nurse/ Staff Midwife	98	104	104	104	+1	+0	+0.1%	+6	+6.1%	146
Public Health Nurse	196	197	199	210	+11	+13	+6.5%	+14	+7.2%	250
Post-registration Nurse/ Midwife Student	2	12	7	4	-3	-8	-66.7%	+2	+102.0%	4
Nursing/ Midwifery Student	2	12	7	4	-3	-8	-66.7%	+2	+102.0%	4
Nursing/ Midwifery other		1				-1	-100.0%		-100.0%	
Nursing & Midwifery	382	407	414	416	+2	+9	+2.2%	+34	+8.9%	516
Therapy Professions	221	228	237	237	+0	+9	+3.9%	+17	+7.6%	288
Health Science/ Diagnostics	5	7	9	9	-0	+2	+21.0%	+4	+69.4%	10
Social Care		1	1	1	0			+1	-100.0%	1
Social Workers	16	16	22	22	+0	+7	+42.8%	+7	+43.6%	26
Psychologists	56	56	49	49	-1	-7	-13.0%	-7	-12.7%	53
Pharmacy	4	5	6	6	-0	+1	+23.3%	+2	+57.3%	6
H&SC, Other	25	26	33	34	+0	+8	+29.2%	+9	+34.9%	37
Health & Social Care Professionals	326	339	358	358	-0	+19	+5.5%	+32	+9.8%	421
Management (VIII & above)	45	41	31	29	-2	-11	-28.1%	-16	-34.9%	31
Administrative/ Supervisory (V to VII)	78	84	106	98	-8	+14	+16.3%	+20	+25.9%	103
Clerical (III & IV)	265	272	260	264	+4	-8	-3.0%	-1	-0.3%	317
Management & Administrative	387	397	397	391	-6	-6	-1.5%	+4	+1.0%	451
Support	23	20	20	20	-0	-1	-3.3%	-3	-13.0%	35
Maintenance/ Technical	3	3	2	2	-0	-1	-31.5%	-1	-28.8%	2
General Support	25	23	22	22	-0	-2	-6.9%	-4	-14.7%	37
Health Care Assistants	21	90	122	90	-32	-1	-0.8%	+69	+332.2%	128
Home Help	0						-100.0%	-0	-100.0%	
Care, other	98	100	103	104	+1	+4	+3.7%	+5	+5.2%	121
Patient & Client Care	120	190	225	193	-32	+3	+1.5%	+74	+61.6%	249

CHO 9

Jul 2022	WTE Dec 2019	WTE Dec 2020	WTE Jun 2022	WTE Jul 2022	WTE change since Jun 22	WTE change since Dec 20	% change since Dec 20	WTE change since Dec 19	% change since Dec 19	No. Jul 2022
Overall	1,247	1,412	1,370	1,342	-28	-70	-4.9%	+95	+7.6%	1,581
Consultants	4	4	4	3	-1	-1	-22.5%	-1	-22.0%	4
Registrars	56	52	43	49	+6	-3	-5.6%	-6	-11.5%	74
SHO/ Interns	1	5	9	7	-2	+2	+40.0%	+6	+600.0%	7
Medical/ Dental, other	50	49	51	51	-1	+2	+3.2%	+1	+1.9%	58
Medical & Dental	111	111	107	110	+3	-0	-0.3%	-0	-0.4%	143
Nurse/ Midwife Manager	37	43	50	48	-2	+5	+12.5%	+11	+30.7%	52
Nurse/ Midwife Specialist & AN/MP	6	8	13	13	+0	+5	+61.6%	+7	+108.3%	16
Staff Nurse/ Staff Midwife	100	105	107	108	+2	+3	+3.0%	+8	+8.1%	131
Public Health Nurse	175	182	173	178	+5	-3	-1.9%	+3	+1.9%	216
Post-registration Nurse/ Midwife Student	26	31	18	4	-14	-27	-87.1%	-22	-84.6%	4
Nursing/ Midwifery Student	26	31	18	4	-14	-27	-87.1%	-22	-84.6%	4
Nursing/ Midwifery other		1	1	2	+1	+1	+96.0%	+2	-100.0%	2
Nursing & Midwifery	345	370	362	354	-8	-16	-4.3%	+10	+2.8%	421
Therapy Professions	196	211	223	227	+5	+16	+7.8%	+31	+15.8%	269
Health Science/ Diagnostics	20	20	13	13	+0	-7	-33.4%	-7	-35.7%	13
Social Care	4	4	3	3	0	-0	-6.3%	-1	-20.9%	4
Social Workers	17	23	24	25	+1	+2	+9.6%	+8	+49.2%	26
Psychologists	65	65	72	73	+1	+7	+11.1%	+7	+11.0%	79
Pharmacy	12	15	13	13	-1	-2	-15.1%	+1	+6.1%	16
H&SC, Other	37	36	39	34	-5	-2	-5.1%	-3	-7.9%	41
Health & Social Care Professionals	351	373	387	387	+1	+15	+4.0%	+36	+10.3%	448
Management (VIII & above)	28	29	16	18	+1	-11	-38.4%	-10	-37.1%	18
Administrative/ Supervisory (V to VII)	77	88	85	87	+1	-2	-1.8%	+9	+12.1%	94
Clerical (III & IV)	182	221	190	184	-6	-37	-16.6%	+2	+0.9%	213
Management & Administrative	288	338	292	288	-3	-49	-14.6%	+1	+0.2%	325
Support	35	33	30	29	-1	-4	-11.9%	-5	-15.1%	35
General Support	35	33	30	29	-1	-4	-11.9%	-5	-15.1%	35
Health Care Assistants	13	74	66	55	-11	-19	-25.3%	+42	+321.1%	74
Care, other	105	114	126	117	-8	+4	+3.2%	+12	+11.7%	135
Patient & Client Care	118	187	192	172	-19	-15	-8.0%	+54	+46.0%	209

other Community Services

Jul 2022	WTE Dec 2019	WTE Dec 2020	WTE Jun 2022	WTE Jul 2022	WTE change since Jun 22	WTE change since Dec 20	% change since Dec 20	WTE change since Dec 19	% change since Dec 19	No. Jul 2022
Overall	122	134	141	141	-1	+7	+5.2%	+18	+15.0%	164
Consultants	1	1	2	2	0	+1	+100.0%	+1	+100.0%	2
Registrars	12	9	11	9	-2	+0	+4.9%	-3	-23.4%	18
SHO/ Interns	2	6	3	3	-0	-3	-50.5%	+1	+91.6%	6
Medical/ Dental, other	0	0				-0	-100.0%	-0	-100.0%	
Medical & Dental	15	16	16	14	-2	-2	-10.7%	-1	-5.0%	26
Nurse/ Midwife Manager	4	6	6	5	-1	-1	-15.9%	+1	+35.4%	6
Staff Nurse/ Staff Midwife	5	9	6	7	+1	-2	-21.7%	+2	+43.9%	8
Nursing & Midwifery	9	16	13	13	-0	-3	-19.3%	+4	+40.2%	14
Health Science/ Diagnostics	8	8	8	8	-0	-0	-1.7%			8
Social Care	2	2	2	2	0	-0	-1.6%	+0	+15.8%	2
Social Workers	14	16	15	17	+1	+1	+6.0%	+3	+22.0%	19
Psychologists	1	1	1	1	0					1
Pharmacy	3	3	8	8	+0	+5	+155.0%	+5	+180.2%	8
H&SC, Other	3	4	3	3	-0	-1	-21.8%	+0	+2.1%	3
Health & Social Care Professionals	30	33	37	38	+1	+5	+13.9%	+8	+27.9%	41
Management (VIII & above)	19	21	24	24	+0	+3	+14.6%	+6	+30.9%	26
Administrative/ Supervisory (V to VII)	20	17	25	26	+1	+9	+53.4%	+5	+26.4%	27
Clerical (III & IV)	12	12	13	12	-1	-0	-3.0%	-0	-1.9%	13
Management & Administrative	51	50	61	62	+0	+12	+23.2%	+11	+21.3%	66
Support	2	4	1	2	+1	-2	-62.3%	-1	-28.4%	2
Maintenance/ Technical	1						-100.0%	-1	-100.0%	
General Support	3	4	1	2	+1	-2	-62.3%	-2	-51.4%	2
Care, other	15	15	14	13	-1	-2	-13.9%	-2	-13.2%	15
Patient & Client Care	15	15	14	13	-1	-2	-13.9%	-2	-13.2%	15

## Primary Care Services Employment by Grade Group: Jul 2022

Jul 2022	WTE Dec 2019	WTE Dec 2020	WTE Jun 2022	WTE Jul 2022	WTE change since Jun 22	WTE change since Dec 20	% change since Dec 20	WTE change since Dec 19	% change since Dec 19	No. Jul 2022
<b>Overall</b>	<b>10,599</b>	<b>11,572</b>	<b>12,611</b>	<b>12,399</b>	<b>-213</b>	<b>+826</b>	<b>+7.1%</b>	<b>+1,799</b>	<b>+17.0%</b>	<b>15,008</b>
Consultant Dentistry	11	10	13	13	+0	+3	+31.8%	+2	+20.7%	16
Consultant Medicine	18	20	24	25	+0	+4	+21.4%	+7	+38.7%	30
Consultant Paediatrics	2	2	2	2	+0	+0	+0.7%	+0	+0.7%	2
Consultant Psychiatry	8	8	9	8	-1	+0	+0.1%	+0	+0.5%	9
Consultant Radiology	1	1	1	1						1
Consultant Surgery	4	1	2	3	+0	+2	+341.7%	-1	-34.6%	4
<b>Consultants</b>	<b>44</b>	<b>42</b>	<b>52</b>	<b>52</b>	<b>-0</b>	<b>+10</b>	<b>+23.0%</b>	<b>+8</b>	<b>+17.9%</b>	<b>62</b>
Registrar	382	390	378	462	+84	+72	+18.6%	+80	+21.0%	539
Senior Registrar	3	2	4	3	-2	+1	+27.4%	-0	-9.7%	5
Specialist Registrar	10	11	10	10	-0	-2	-15.7%	-0	-4.5%	11
<b>Registrars</b>	<b>395</b>	<b>403</b>	<b>392</b>	<b>474</b>	<b>+82</b>	<b>+71</b>	<b>+17.6%</b>	<b>+80</b>	<b>+20.2%</b>	<b>555</b>
Senior House Officer	37	42	38	33	-5	-8	-20.0%	-4	-10.3%	45
<b>SHO/ Interns</b>	<b>37</b>	<b>42</b>	<b>38</b>	<b>33</b>	<b>-5</b>	<b>-8</b>	<b>-20.0%</b>	<b>-4</b>	<b>-10.3%</b>	<b>45</b>
Dentists	301	302	304	303	-1	+2	+0.5%	+2	+0.7%	401
Other Medical	218	217	194	196	+2	-22	-9.9%	-22	-10.3%	269
<b>Medical/ Dental, other</b>	<b>520</b>	<b>519</b>	<b>498</b>	<b>499</b>	<b>+1</b>	<b>-20</b>	<b>-3.9%</b>	<b>-20</b>	<b>-3.9%</b>	<b>670</b>
<b>Medical &amp; Dental</b>	<b>995</b>	<b>1,006</b>	<b>981</b>	<b>1,059</b>	<b>+78</b>	<b>+52</b>	<b>+5.2%</b>	<b>+63</b>	<b>+6.4%</b>	<b>1,332</b>
Clinical Nurse/ Midwife Manager	168	192	209	212	+3	+20	+10.2%	+44	+26.4%	239
Director Nursing/Midwifery, Assistant	154	172	211	200	-11	+28	+16.4%	+46	+29.7%	224
Director of Nursing/Midwifery	38	40	43	39	-3	-1	-2.8%	+2	+4.5%	42
<b>Nurse/ Midwife Manager</b>	<b>359</b>	<b>404</b>	<b>463</b>	<b>451</b>	<b>-12</b>	<b>+47</b>	<b>+11.5%</b>	<b>+92</b>	<b>+25.5%</b>	<b>505</b>
Advanced Nurse/ Midwife Practitioner	3	13	21	22	+1	+9	+64.7%	+19	+760.2%	23
Clinical Nurse/ Midwife Specialist	140	171	211	215	+4	+44	+25.8%	+75	+53.3%	252
<b>Nurse/ Midwife Specialist &amp; AN/MP</b>	<b>143</b>	<b>184</b>	<b>232</b>	<b>237</b>	<b>+5</b>	<b>+53</b>	<b>+28.6%</b>	<b>+94</b>	<b>+65.9%</b>	<b>275</b>
Staff Midwives	8	6	8	5	-3	-1	-11.5%	-3	-40.0%	7
Staff Nurse [Psychiatric]	9	14	10	12	+2	-1	-10.8%	+4	+42.3%	18
Staff Nurses [General/ Children's]	845	908	1,009	1,044	+35	+136	+14.9%	+198	+23.5%	1,354
Staff Nurse [Intellectual Disability]			2	2	+0	+2	-100.0%	+2	-100.0%	3
<b>Staff Nurse/ Staff Midwife</b>	<b>862</b>	<b>927</b>	<b>1,028</b>	<b>1,063</b>	<b>+34</b>	<b>+136</b>	<b>+14.6%</b>	<b>+201</b>	<b>+23.3%</b>	<b>1,382</b>
<b>Public Health Nurse</b>	<b>1,512</b>	<b>1,533</b>	<b>1,444</b>	<b>1,450</b>	<b>+6</b>	<b>-83</b>	<b>-5.4%</b>	<b>-63</b>	<b>-4.1%</b>	<b>1,760</b>
Post-registration Nurse/ Midwife Student	96	106	109	49	-60	-58	-54.3%	-47	-49.3%	49
<b>Nursing/ Midwifery Student</b>	<b>96</b>	<b>106</b>	<b>109</b>	<b>49</b>	<b>-60</b>	<b>-58</b>	<b>-54.3%</b>	<b>-47</b>	<b>-49.3%</b>	<b>49</b>
Nursing Education/Clinical	4	7	5	6	+1	-1	-10.8%	+2	+56.1%	6
<b>Nursing/ Midwifery other</b>	<b>4</b>	<b>7</b>	<b>5</b>	<b>6</b>	<b>+1</b>	<b>-1</b>	<b>-10.8%</b>	<b>+2</b>	<b>+56.1%</b>	<b>6</b>
<b>Nursing &amp; Midwifery</b>	<b>2,976</b>	<b>3,161</b>	<b>3,281</b>	<b>3,255</b>	<b>-26</b>	<b>+94</b>	<b>+3.0%</b>	<b>+279</b>	<b>+9.4%</b>	<b>3,977</b>
Dietitians	109	125	168	183	+15	+59	+47.0%	+74	+67.8%	220
Occupational Therapists	515	543	613	620	+7	+77	+14.1%	+105	+20.4%	721
Orthoptists	13	18	20	20	+0	+3	+16.5%	+7	+54.0%	23
Physiotherapists	543	561	648	648	-0	+87	+15.5%	+105	+19.4%	783
Podiatrists & Chiropodists	25	30	71	74	+3	+44	+150.8%	+49	+200.9%	87
Speech & Language Therapists	526	516	571	567	-4	+51	+10.0%	+41	+7.8%	665
<b>Therapy Professions</b>	<b>1,731</b>	<b>1,792</b>	<b>2,091</b>	<b>2,113</b>	<b>+22</b>	<b>+321</b>	<b>+17.9%</b>	<b>+382</b>	<b>+22.1%</b>	<b>2,499</b>
Audiology	44	52	54	52	-2	-0	-0.6%	+8	+18.5%	59
Biochemists	8	8	8	8	-0	-0	-1.7%			8
Cardiac Physiologists			1	1		+1	-100.0%	+1	-100.0%	1
Clinical Engineering	8	8	9	9	+0	+1	+9.3%	+1	+9.3%	9
Medical Science	16	18	17	17	+0	-0	-1.5%	+2	+11.1%	18
Phlebotomists	0	1	0	0		-1	-81.1%	+0	+4.5%	1
Physicists	2	2	2	2		-0	-20.5%	-0	-20.5%	2
Radiographers	4	4	7	7	+0	+3	+65.9%	+3	+63.3%	10
<b>Health Science/ Diagnostics</b>	<b>82</b>	<b>93</b>	<b>97</b>	<b>96</b>	<b>-1</b>	<b>+3</b>	<b>+2.7%</b>	<b>+14</b>	<b>+17.1%</b>	<b>108</b>



Jul 2022	WTE Dec 2019	WTE Dec 2020	WTE Jun 2022	WTE Jul 2022	WTE change since Jun 22	WTE change since Dec 20	% change since Dec 20	WTE change since Dec 19	% change since Dec 19	No. Jul 2022
<b>Overall</b>	<b>10,599</b>	<b>11,572</b>	<b>12,611</b>	<b>12,399</b>	<b>-213</b>	<b>+826</b>	<b>+7.1%</b>	<b>+1,799</b>	<b>+17.0%</b>	<b>15,008</b>
<b>Social Care</b>	<b>35</b>	<b>33</b>	<b>35</b>	<b>35</b>	<b>-0</b>	<b>+2</b>	<b>+5.7%</b>	<b>-1</b>	<b>-2.5%</b>	<b>37</b>
<b>Social Workers</b>	<b>139</b>	<b>151</b>	<b>179</b>	<b>185</b>	<b>+6</b>	<b>+33</b>	<b>+22.1%</b>	<b>+45</b>	<b>+32.6%</b>	<b>207</b>
<b>Psychologists</b>	<b>301</b>	<b>300</b>	<b>294</b>	<b>288</b>	<b>-6</b>	<b>-12</b>	<b>-3.9%</b>	<b>-13</b>	<b>-4.2%</b>	<b>326</b>
Pharmacists	50	55	62	59	-3	+4	+7.4%	+9	+18.5%	71
Pharmacy Technicians	8	8	10	10	-0	+2	+28.5%	+2	+29.3%	11
<b>Pharmacy</b>	<b>58</b>	<b>63</b>	<b>72</b>	<b>69</b>	<b>-3</b>	<b>+6</b>	<b>+10.1%</b>	<b>+12</b>	<b>+20.0%</b>	<b>82</b>
Counsellor Therapists	115	112	122	119	-2	+7	+6.6%	+4	+3.9%	133
Dental Hygienists	57	61	57	59	+2	-2	-3.3%	+2	+3.1%	76
Environmental Health Officers	1						-100.0%	-1	-100.0%	
HSCP Trainees/ Students			0		-0		-100.0%		-100.0%	
Other Health & Social Care	34	34	39	39	+0	+5	+16.2%	+5	+15.0%	43
Play Therapists/ Specialists	2	2	1	1	-0	-1	-32.7%	-1	-37.7%	2
Vaccinators			34	22	-12	+22	-100.0%	+22	-100.0%	74
<b>H&amp;SC, Other</b>	<b>209</b>	<b>209</b>	<b>254</b>	<b>241</b>	<b>-12</b>	<b>+32</b>	<b>+15.4%</b>	<b>+32</b>	<b>+15.3%</b>	<b>328</b>
<b>Health &amp; Social Care Professionals</b>	<b>2,555</b>	<b>2,641</b>	<b>3,022</b>	<b>3,027</b>	<b>+5</b>	<b>+385</b>	<b>+14.6%</b>	<b>+471</b>	<b>+18.4%</b>	<b>3,587</b>
Executive Management	71	74	51	50	-1	-24	-32.6%	-21	-29.2%	51
Senior Management (VIII & GM)	235	224	241	242	+1	+18	+7.9%	+7	+3.1%	255
<b>Management (VIII &amp; above)</b>	<b>306</b>	<b>299</b>	<b>292</b>	<b>292</b>	<b>+0</b>	<b>-6</b>	<b>-2.2%</b>	<b>-13</b>	<b>-4.4%</b>	<b>306</b>
Middle Management (V-VII)	617	684	813	820	+7	+136	+19.9%	+203	+32.9%	884
Other Administrative	2	1	11	12	+1	+11	+1085.6%	+10	+475.0%	12
<b>Administrative/ Supervisory (V to VII)</b>	<b>619</b>	<b>685</b>	<b>824</b>	<b>832</b>	<b>+7</b>	<b>+147</b>	<b>+21.4%</b>	<b>+213</b>	<b>+34.4%</b>	<b>896</b>
General Administrative (III & IV)	1,746	1,838	1,931	1,928	-3	+90	+4.9%	+181	+10.4%	2,260
<b>Clerical (III &amp; IV)</b>	<b>1,746</b>	<b>1,838</b>	<b>1,931</b>	<b>1,928</b>	<b>-3</b>	<b>+90</b>	<b>+4.9%</b>	<b>+181</b>	<b>+10.4%</b>	<b>2,260</b>
<b>Management &amp; Administrative</b>	<b>2,671</b>	<b>2,821</b>	<b>3,047</b>	<b>3,052</b>	<b>+5</b>	<b>+230</b>	<b>+8.2%</b>	<b>+381</b>	<b>+14.3%</b>	<b>3,462</b>
Catering	22	22	22	22	+0	+1	+2.9%	+0	+0.8%	25
Household Services	134	137	137	135	-2	-1	-1.0%	+1	+1.1%	169
Other Labs & Associated	3	5	2	3	+1	-2	-49.8%	-1	-19.3%	3
Other Support	113	113	118	107	-11	-6	-5.6%	-6	-5.2%	232
Portering	74	74	66	63	-2	-11	-14.6%	-11	-14.6%	71
<b>Support</b>	<b>346</b>	<b>351</b>	<b>344</b>	<b>331</b>	<b>-14</b>	<b>-20</b>	<b>-5.8%</b>	<b>-16</b>	<b>-4.5%</b>	<b>500</b>
Maintenance	58	55	65	63	-1	+8	+14.8%	+5	+8.7%	67
Technical Services	1	1	2	2		+1	+100.0%	+1	+100.0%	2
<b>Maintenance/ Technical</b>	<b>59</b>	<b>56</b>	<b>67</b>	<b>65</b>	<b>-1</b>	<b>+9</b>	<b>+16.3%</b>	<b>+6</b>	<b>+10.3%</b>	<b>69</b>
<b>General Support</b>	<b>406</b>	<b>407</b>	<b>411</b>	<b>396</b>	<b>-15</b>	<b>-11</b>	<b>-2.8%</b>	<b>-10</b>	<b>-2.4%</b>	<b>569</b>
Attendant/ Aide	35	41	45	50	+5	+9	+23.1%	+15	+44.0%	67
Health & Social Care Assistants	69	105	85	82	-3	-23	-21.6%	+13	+18.6%	91
Health Care Assistant/ Care Assistant	150	634	847	607	-240	-27	-4.2%	+457	+305.3%	851
HCA (Student Nurse/Midwife COVID-19)		0				-0	-100.0%		-100.0%	
<b>Health Care Assistants</b>	<b>254</b>	<b>779</b>	<b>977</b>	<b>739</b>	<b>-238</b>	<b>-40</b>	<b>-5.2%</b>	<b>+485</b>	<b>+191.3%</b>	<b>1,009</b>
<b>Home Help</b>	<b>18</b>	<b>18</b>	<b>17</b>	<b>17</b>	<b>+0</b>	<b>-2</b>	<b>-9.3%</b>	<b>-2</b>	<b>-9.4%</b>	<b>42</b>
Health Promotion			7	8	+1	+8	-100.0%	+8	-100.0%	8
Home Care Services	5	5	3	3		-1	-31.7%	-2	-39.2%	5
Other Care Grades	712	728	860	839	-21	+111	+15.3%	+127	+17.8%	1,011
Pastoral Care	4	3	4	3	-1	+0	+13.1%	-1	-24.3%	4
Workshop Services	3	2	2	2		-0	-20.0%	-1	-33.8%	2
<b>Care, other</b>	<b>724</b>	<b>737</b>	<b>876</b>	<b>855</b>	<b>-21</b>	<b>+117</b>	<b>+15.9%</b>	<b>+131</b>	<b>+18.1%</b>	<b>1,030</b>
<b>Patient &amp; Client Care</b>	<b>996</b>	<b>1,535</b>	<b>1,869</b>	<b>1,611</b>	<b>-259</b>	<b>+76</b>	<b>+4.9%</b>	<b>+615</b>	<b>+61.7%</b>	<b>2,081</b>



## Employment by WTE, Headcount, Gender, Full-Time /Part-Time etc.: Jul 2022

Primary Care Services Staff Group	WTE	Headcount	WTE: no.	% Male	% female	Male WTE: no.	Female WTE: no.	% Total Perm	% Male Perm	% Female Perm	% Total Full Time	% Total Part Time	% Male FT	% Female FT
<b>Overall</b>	<b>12,399</b>	<b>15,008</b>	<b>1.21</b>	<b>14.4%</b>	<b>85.6%</b>	<b>1.15</b>	<b>1.22</b>	<b>79.5%</b>	<b>66.9%</b>	<b>81.7%</b>	<b>69.7%</b>	<b>30.3%</b>	<b>84.7%</b>	<b>67.2%</b>
Consultant Dentistry	13	16	1.19	43.8%	56.3%	1.14	1.23	87.5%	87.5%	77.8%	68.8%	31.3%	71.4%	66.7%
Consultant Medicine	25	30	1.22	23.3%	76.7%	1.05	1.28	56.7%	56.7%	52.2%	73.3%	26.7%	85.7%	69.6%
Consultant Paediatrics	2	2	1.32		100.0%		1.32	100.0%	100.0%	100.0%	50.0%	50.0%		50.0%
Consultant Psychiatry	8	9	1.07	66.7%	33.3%	1.11	1.00	100.0%	100.0%	100.0%	88.9%	11.1%	83.3%	100.0%
Consultant Radiology	1	1	1.00	100.0%		1.00		100.0%	100.0%		100.0%	0.0%	100.0%	
Consultant Surgery	3	4	1.51	75.0%	25.0%	1.29	3.13	75.0%	75.0%	100.0%	50.0%	50.0%	66.7%	0.0%
<b>Consultants</b>	<b>52</b>	<b>62</b>	<b>1.20</b>	<b>38.7%</b>	<b>61.3%</b>	<b>1.12</b>	<b>1.26</b>	<b>74.2%</b>	<b>87.5%</b>	<b>65.8%</b>	<b>72.6%</b>	<b>27.4%</b>	<b>79.2%</b>	<b>68.4%</b>
Registrar	462	539	1.17	36.5%	63.5%	1.14	1.18	1.7%	1.7%	1.5%	99.6%	0.4%	99.5%	99.7%
Senior Registrar	3	5	1.99	80.0%	20.0%	1.72	5.26	20.0%	20.0%	0.0%	80.0%	20.0%	100.0%	0.0%
Specialist Registrar	10	11	1.15		100.0%		1.15	27.3%	27.3%	27.3%	90.9%	9.1%		90.9%
<b>Registrars</b>	<b>474</b>	<b>555</b>	<b>1.17</b>	<b>36.2%</b>	<b>63.8%</b>	<b>1.15</b>	<b>1.18</b>	<b>2.3%</b>	<b>2.5%</b>	<b>2.3%</b>	<b>99.3%</b>	<b>0.7%</b>	<b>99.5%</b>	<b>99.2%</b>
Senior House Officer	33	45	1.35	28.9%	71.1%	1.50	1.30	2.2%	2.2%	3.1%	100.0%	0.0%	100.0%	100.0%
<b>SHO/ Interns</b>	<b>33</b>	<b>45</b>	<b>1.35</b>	<b>28.9%</b>	<b>71.1%</b>	<b>1.50</b>	<b>1.30</b>	<b>2.2%</b>	<b>0.0%</b>	<b>3.1%</b>	<b>100.0%</b>	<b>0.0%</b>	<b>100.0%</b>	<b>100.0%</b>
Dentists	303	401	1.32	25.4%	74.6%	1.33	1.32	90.5%	90.5%	91.0%	51.9%	48.1%	56.9%	50.2%
Other Medical	196	269	1.37	26.4%	73.6%	1.34	1.39	71.0%	71.0%	76.3%	43.1%	56.9%	50.7%	40.4%
<b>Medical/ Dental, other</b>	<b>499</b>	<b>670</b>	<b>1.34</b>	<b>25.8%</b>	<b>74.2%</b>	<b>1.34</b>	<b>1.34</b>	<b>82.7%</b>	<b>75.7%</b>	<b>85.1%</b>	<b>48.4%</b>	<b>51.6%</b>	<b>54.3%</b>	<b>46.3%</b>
<b>Medical &amp; Dental</b>	<b>1,059</b>	<b>1,332</b>	<b>1.26</b>	<b>30.9%</b>	<b>69.1%</b>	<b>1.23</b>	<b>1.27</b>	<b>46.1%</b>	<b>38.2%</b>	<b>49.6%</b>	<b>72.4%</b>	<b>27.6%</b>	<b>79.3%</b>	<b>69.4%</b>
<b>Nursing &amp; Midwifery</b>	<b>3,255</b>	<b>3,977</b>	<b>1.22</b>	<b>2.2%</b>	<b>97.8%</b>	<b>1.08</b>	<b>1.23</b>	<b>90.6%</b>	<b>90.9%</b>	<b>90.6%</b>	<b>65.3%</b>	<b>34.7%</b>	<b>86.4%</b>	<b>64.8%</b>
Dietitians	183	220	1.20	3.6%	96.4%	1.01	1.21	93.2%	93.2%	93.4%	74.1%	25.9%	100.0%	73.1%
Occupational Therapists	620	721	1.16	6.2%	93.8%	1.05	1.17	92.1%	92.1%	92.3%	72.8%	27.2%	93.3%	71.4%
Orthoptists	20	23	1.13	17.4%	82.6%	1.04	1.15	69.6%	69.6%	68.4%	69.6%	30.4%	75.0%	68.4%
Physiotherapists	648	783	1.21	20.2%	79.8%	1.06	1.25	93.5%	93.5%	94.2%	66.9%	33.1%	88.0%	61.6%
Podiatrists & Chiropodists	74	87	1.18	5.7%	94.3%	1.00	1.19	90.8%	90.8%	91.5%	74.7%	25.3%	100.0%	73.2%
Speech & Language Therapists	567	665	1.17	1.2%	98.8%	1.10	1.17	91.9%	91.9%	91.9%	74.4%	25.6%	75.0%	74.4%
<b>Therapy Professions</b>	<b>2,113</b>	<b>2,499</b>	<b>1.18</b>	<b>9.1%</b>	<b>90.9%</b>	<b>1.06</b>	<b>1.20</b>	<b>92.3%</b>	<b>89.5%</b>	<b>92.6%</b>	<b>71.5%</b>	<b>28.5%</b>	<b>89.0%</b>	<b>69.8%</b>
Audiology	52	59	1.13	16.9%	83.1%	1.04	1.15	86.4%	86.4%	83.7%	78.0%	22.0%	90.0%	75.5%
Biochemists	8	8	1.05	12.5%	87.5%	1.00	1.06	100.0%	100.0%	100.0%	87.5%	12.5%	100.0%	85.7%
Cardiac Physiologists	1	1	1.00	100.0%		1.00		100.0%	100.0%		100.0%	0.0%	100.0%	
Clinical Engineering	9	9	1.03	100.0%		1.03		88.9%	88.9%		88.9%	11.1%	88.9%	

Medical Science	17	18	1.04	27.8%	72.2%	1.09	1.01	83.3%	83.3%	84.6%	88.9%	11.1%	80.0%	92.3%
Phlebotomists	0	1	4.35		100.0%		4.35	100.0%	100.0%	100.0%	0.0%	100.0%		0.0%
Physicists	2	2	1.26		100.0%		1.26	100.0%	100.0%	100.0%	100.0%	0.0%		100.0%
Radiographers	7	10	1.38	20.0%	80.0%	1.33	1.39	100.0%	100.0%	100.0%	70.0%	30.0%	100.0%	62.5%
<b>Health Science/ Diagnostics</b>	<b>96</b>	<b>108</b>	<b>1.13</b>	<b>25.9%</b>	<b>74.1%</b>	<b>1.06</b>	<b>1.15</b>	<b>88.9%</b>	<b>92.9%</b>	<b>87.5%</b>	<b>80.6%</b>	<b>19.4%</b>	<b>89.3%</b>	<b>77.5%</b>
<b>Social Care</b>	<b>35</b>	<b>37</b>	<b>1.07</b>	<b>48.6%</b>	<b>51.4%</b>	<b>1.05</b>	<b>1.10</b>	<b>83.8%</b>	<b>83.3%</b>	<b>84.2%</b>	<b>83.8%</b>	<b>16.2%</b>	<b>94.4%</b>	<b>73.7%</b>
<b>Social Workers</b>	<b>185</b>	<b>207</b>	<b>1.12</b>	<b>16.9%</b>	<b>83.1%</b>	<b>1.07</b>	<b>1.13</b>	<b>91.8%</b>	<b>88.6%</b>	<b>92.4%</b>	<b>82.6%</b>	<b>17.4%</b>	<b>97.1%</b>	<b>79.7%</b>
<b>Psychologists</b>	<b>288</b>	<b>326</b>	<b>1.13</b>	<b>16.3%</b>	<b>83.7%</b>	<b>1.03</b>	<b>1.15</b>	<b>70.9%</b>	<b>77.4%</b>	<b>69.6%</b>	<b>76.7%</b>	<b>23.3%</b>	<b>96.2%</b>	<b>72.9%</b>
Pharmacists	59	71	1.20	23.9%	76.1%	1.26	1.19	62.0%	62.0%	70.4%	60.6%	39.4%	47.1%	64.8%
Pharmacy Technicians	10	11	1.07		100.0%		1.07	90.9%	90.9%	90.9%	90.9%	9.1%		90.9%
<b>Pharmacy</b>	<b>69</b>	<b>82</b>	<b>1.18</b>	<b>20.7%</b>	<b>79.3%</b>	<b>1.26</b>	<b>1.17</b>	<b>65.9%</b>	<b>35.3%</b>	<b>73.8%</b>	<b>64.6%</b>	<b>35.4%</b>	<b>47.1%</b>	<b>69.2%</b>
Counsellor Therapists	119	133	1.12	39.8%	60.2%	1.05	1.16	97.7%	97.7%	98.8%	77.4%	22.6%	88.7%	70.0%
Dental Hygienists	59	76	1.28	1.3%	98.7%	1.00	1.29	94.7%	94.7%	94.7%	51.3%	48.7%	100.0%	50.7%
Other Health & Social Care	39	43	1.09	27.9%	72.1%	1.20	1.05	100.0%	100.0%	100.0%	88.4%	11.6%	83.3%	90.3%
Play Therapists/ Specialists	1	2	1.39		100.0%		1.39	100.0%	100.0%	100.0%	50.0%	50.0%		50.0%
Vaccinators	22	74	3.37	10.8%	89.2%	2.25	3.59	0.0%	0.0%	0.0%	2.7%	97.3%	0.0%	3.0%
<b>H&amp;SC, Other</b>	<b>241</b>	<b>328</b>	<b>1.36</b>	<b>22.6%</b>	<b>77.4%</b>	<b>1.14</b>	<b>1.44</b>	<b>75.3%</b>	<b>86.5%</b>	<b>72.0%</b>	<b>55.8%</b>	<b>44.2%</b>	<b>78.4%</b>	<b>49.2%</b>
<b>Health &amp; Social Care</b>	<b>3,027</b>	<b>3,587</b>	<b>1.19</b>	<b>12.6%</b>	<b>87.4%</b>	<b>1.07</b>	<b>1.20</b>	<b>88.0%</b>	<b>85.4%</b>	<b>88.4%</b>	<b>71.5%</b>	<b>28.5%</b>	<b>87.4%</b>	<b>69.1%</b>
Executive Management	50	51	1.02	37.3%	62.7%	1.05	1.00	96.1%	96.1%	96.9%	98.0%	2.0%	94.7%	100.0%
Senior Management (VIII & GM)	242	255	1.05	22.7%	77.3%	1.06	1.05	94.5%	94.5%	97.0%	95.3%	4.7%	98.3%	94.4%
<b>Management (VIII &amp; above)</b>	<b>292</b>	<b>306</b>	<b>1.05</b>	<b>25.2%</b>	<b>74.8%</b>	<b>1.06</b>	<b>1.04</b>	<b>94.8%</b>	<b>88.3%</b>	<b>96.9%</b>	<b>95.8%</b>	<b>4.2%</b>	<b>97.4%</b>	<b>95.2%</b>
Middle Management (V-VII)	820	884	1.08	17.8%	82.2%	1.05	1.08	93.6%	93.6%	94.4%	89.4%	10.6%	98.1%	87.5%
Other Administrative	12	12	1.04	50.0%	50.0%	1.04	1.04	8.3%	8.3%	16.7%	100.0%	0.0%	100.0%	100.0%
<b>Administrative/ Supervisory (V to VII)</b>	<b>832</b>	<b>896</b>	<b>1.08</b>	<b>18.2%</b>	<b>81.8%</b>	<b>1.05</b>	<b>1.08</b>	<b>92.4%</b>	<b>86.5%</b>	<b>93.7%</b>	<b>89.5%</b>	<b>10.5%</b>	<b>98.2%</b>	<b>87.6%</b>
<b>Clerical (III &amp; IV)</b>	<b>1,928</b>	<b>2,260</b>	<b>1.17</b>	<b>10.3%</b>	<b>89.7%</b>	<b>1.09</b>	<b>1.18</b>	<b>78.9%</b>	<b>68.1%</b>	<b>80.2%</b>	<b>67.7%</b>	<b>32.3%</b>	<b>86.6%</b>	<b>65.5%</b>
<b>Management &amp; Administrative</b>	<b>3,052</b>	<b>3,462</b>	<b>1.13</b>	<b>13.6%</b>	<b>86.4%</b>	<b>1.07</b>	<b>1.15</b>	<b>83.8%</b>	<b>77.8%</b>	<b>84.8%</b>	<b>75.8%</b>	<b>24.2%</b>	<b>92.4%</b>	<b>73.2%</b>
Catering	22	25	1.12	36.0%	64.0%	1.01	1.18	100.0%	100.0%	100.0%	64.0%	36.0%	100.0%	43.8%
Household Services	135	169	1.25	25.4%	74.6%	1.08	1.32	78.1%	78.1%	81.0%	49.1%	50.9%	81.4%	38.1%
Other Labs & Associated	3	3	1.20		100.0%		1.20	100.0%	100.0%	100.0%	100.0%	0.0%		100.0%
Other Support	107	232	2.17	32.8%	67.2%	1.38	3.02	53.9%	53.9%	42.3%	32.8%	67.2%	61.8%	18.6%
Portering	63	71	1.12	93.0%	7.0%	1.11	1.27	88.7%	88.7%	100.0%	85.9%	14.1%	89.4%	40.0%
<b>Support</b>	<b>331</b>	<b>500</b>	<b>1.51</b>	<b>38.8%</b>	<b>61.2%</b>	<b>1.19</b>	<b>1.83</b>	<b>69.6%</b>	<b>80.4%</b>	<b>62.7%</b>	<b>47.8%</b>	<b>52.2%</b>	<b>77.3%</b>	<b>29.1%</b>
Maintenance	63	67	1.06	98.5%	1.5%	1.05	1.30	97.0%	97.0%	100.0%	95.5%	4.5%	97.0%	0.0%
Technical Services	2	2	1.00	50.0%	50.0%	1.00	1.00	100.0%	100.0%	100.0%	50.0%	50.0%	100.0%	0.0%
<b>Maintenance/ Technical</b>	<b>65</b>	<b>69</b>	<b>1.05</b>	<b>97.1%</b>	<b>2.9%</b>	<b>1.05</b>	<b>1.13</b>	<b>97.1%</b>	<b>97.0%</b>	<b>100.0%</b>	<b>94.2%</b>	<b>5.8%</b>	<b>97.0%</b>	<b>0.0%</b>

<b>General Support</b>	<b>396</b>	<b>569</b>	<b>1.44</b>	<b>45.9%</b>	<b>54.1%</b>	<b>1.15</b>	<b>1.82</b>	<b>72.9%</b>	<b>84.7%</b>	<b>63.0%</b>	<b>53.4%</b>	<b>46.6%</b>	<b>82.4%</b>	<b>28.9%</b>
Attendant/ Aide	50	67	1.34	35.8%	64.2%	1.15	1.47	62.7%	62.7%	62.8%	71.6%	28.4%	95.8%	58.1%
Health & Social Care Assistants	82	91	1.11	14.3%	85.7%	1.00	1.13	45.1%	45.1%	43.6%	90.1%	9.9%	100.0%	88.5%
Health Care Assistant/ Care Assistant	607	851	1.40	28.4%	71.6%	1.45	1.38	25.3%	25.3%	28.1%	72.7%	27.3%	80.2%	69.8%
<b>Health Care Assistants</b>	<b>739</b>	<b>1,009</b>	<b>1.37</b>	<b>27.7%</b>	<b>72.3%</b>	<b>1.39</b>	<b>1.35</b>	<b>29.5%</b>	<b>23.7%</b>	<b>31.8%</b>	<b>74.2%</b>	<b>25.8%</b>	<b>82.4%</b>	<b>71.1%</b>
<b>Home Help</b>	<b>17</b>	<b>42</b>	<b>2.52</b>	<b>26.2%</b>	<b>73.8%</b>	<b>2.59</b>	<b>2.50</b>	<b>23.8%</b>	<b>18.2%</b>	<b>25.8%</b>	<b>4.8%</b>	<b>95.2%</b>	<b>9.1%</b>	<b>3.2%</b>
Health Promotion	8	8	1.00	25.0%	75.0%	1.00	1.00	100.0%	100.0%	100.0%	100.0%	0.0%	100.0%	100.0%
Home Care Services	3	5	1.57	20.0%	80.0%	1.96	1.49	60.0%	60.0%	75.0%	60.0%	40.0%	0.0%	75.0%
Other Care Grades	839	1,011	1.21	17.4%	82.6%	1.09	1.23	91.3%	91.3%	91.5%	63.5%	36.5%	81.3%	59.8%
Pastoral Care	3	4	1.37	50.0%	50.0%	1.79	1.10	50.0%	50.0%	100.0%	50.0%	50.0%	50.0%	50.0%
Workshop Services	2	2	1.09	50.0%	50.0%	1.00	1.19	100.0%	100.0%	100.0%	50.0%	50.0%	100.0%	0.0%
<b>Care, other</b>	<b>855</b>	<b>1,030</b>	<b>1.20</b>	<b>17.7%</b>	<b>82.3%</b>	<b>1.10</b>	<b>1.23</b>	<b>91.1%</b>	<b>89.0%</b>	<b>91.5%</b>	<b>63.7%</b>	<b>36.3%</b>	<b>80.8%</b>	<b>60.0%</b>
<b>Patient &amp; Client Care</b>	<b>1,611</b>	<b>2,081</b>	<b>1.29</b>	<b>22.7%</b>	<b>77.3%</b>	<b>1.27</b>	<b>1.30</b>	<b>59.9%</b>	<b>48.7%</b>	<b>63.1%</b>	<b>67.6%</b>	<b>32.4%</b>	<b>80.1%</b>	<b>64.0%</b>

## Employment by WTE, Headcount, Gender, Full-Time /Part-Time etc.: Jul 2022

Primary Care Services CHO	WTE	Headcount	WTE: no.	% Male	% female	Male WTE: no.	Female WTE: no.	% Total Perm	% Male Perm	% Female Perm	% Total Full Time	% Total Part Time	% Male FT	% Female FT
<b>Overall</b>	<b>12,399</b>	<b>15,008</b>	<b>1.21</b>	<b>14.4%</b>	<b>85.6%</b>	<b>1.15</b>	<b>1.22</b>	<b>79.5%</b>	<b>66.9%</b>	<b>81.7%</b>	<b>69.7%</b>	<b>30.3%</b>	<b>84.7%</b>	<b>67.2%</b>
<i>CHO 1</i>	<i>1,556</i>	<i>1,853</i>	<i>1.19</i>	<i>15.1%</i>	<i>84.9%</i>	<i>1.11</i>	<i>1.21</i>	<i>80.5%</i>	<i>80.5%</i>	<i>82.8%</i>	<i>70.2%</i>	<i>29.8%</i>	<i>84.6%</i>	<i>67.6%</i>
<i>CHO 2</i>	<i>1,331</i>	<i>1,602</i>	<i>1.20</i>	<i>13.9%</i>	<i>86.1%</i>	<i>1.16</i>	<i>1.21</i>	<i>78.8%</i>	<i>78.8%</i>	<i>81.4%</i>	<i>71.3%</i>	<i>28.7%</i>	<i>83.8%</i>	<i>69.3%</i>
<i>CHO 3</i>	<i>997</i>	<i>1,194</i>	<i>1.20</i>	<i>13.4%</i>	<i>86.6%</i>	<i>1.11</i>	<i>1.21</i>	<i>75.2%</i>	<i>75.2%</i>	<i>77.5%</i>	<i>76.3%</i>	<i>23.7%</i>	<i>95.0%</i>	<i>73.4%</i>
<i>CHO 4</i>	<i>1,732</i>	<i>2,173</i>	<i>1.25</i>	<i>11.4%</i>	<i>88.6%</i>	<i>1.24</i>	<i>1.26</i>	<i>65.9%</i>	<i>65.9%</i>	<i>68.4%</i>	<i>61.9%</i>	<i>38.1%</i>	<i>72.5%</i>	<i>60.6%</i>
<i>CHO 5</i>	<i>1,149</i>	<i>1,404</i>	<i>1.22</i>	<i>13.3%</i>	<i>86.7%</i>	<i>1.15</i>	<i>1.23</i>	<i>83.0%</i>	<i>83.0%</i>	<i>85.7%</i>	<i>65.5%</i>	<i>34.5%</i>	<i>81.3%</i>	<i>63.1%</i>
<i>CHO 6</i>	<i>862</i>	<i>1,110</i>	<i>1.29</i>	<i>13.4%</i>	<i>86.6%</i>	<i>1.29</i>	<i>1.29</i>	<i>85.4%</i>	<i>85.4%</i>	<i>86.7%</i>	<i>71.2%</i>	<i>28.8%</i>	<i>91.3%</i>	<i>68.1%</i>
<i>CHO 7</i>	<i>1,743</i>	<i>2,072</i>	<i>1.19</i>	<i>17.3%</i>	<i>82.7%</i>	<i>1.12</i>	<i>1.20</i>	<i>86.6%</i>	<i>86.6%</i>	<i>87.7%</i>	<i>70.0%</i>	<i>30.0%</i>	<i>85.0%</i>	<i>66.9%</i>
<i>CHO 8</i>	<i>1,545</i>	<i>1,855</i>	<i>1.20</i>	<i>14.4%</i>	<i>85.6%</i>	<i>1.11</i>	<i>1.22</i>	<i>83.0%</i>	<i>83.0%</i>	<i>86.5%</i>	<i>67.1%</i>	<i>32.9%</i>	<i>82.8%</i>	<i>64.4%</i>
<i>CHO 9</i>	<i>1,342</i>	<i>1,581</i>	<i>1.18</i>	<i>14.9%</i>	<i>85.1%</i>	<i>1.11</i>	<i>1.19</i>	<i>81.3%</i>	<i>81.3%</i>	<i>82.5%</i>	<i>76.3%</i>	<i>23.7%</i>	<i>89.8%</i>	<i>74.0%</i>
<i>other Community Services</i>	<i>141</i>	<i>164</i>	<i>1.17</i>	<i>30.5%</i>	<i>69.5%</i>	<i>1.22</i>	<i>1.14</i>	<i>72.0%</i>	<i>72.0%</i>	<i>77.2%</i>	<i>90.2%</i>	<i>9.8%</i>	<i>94.0%</i>	<i>88.6%</i>

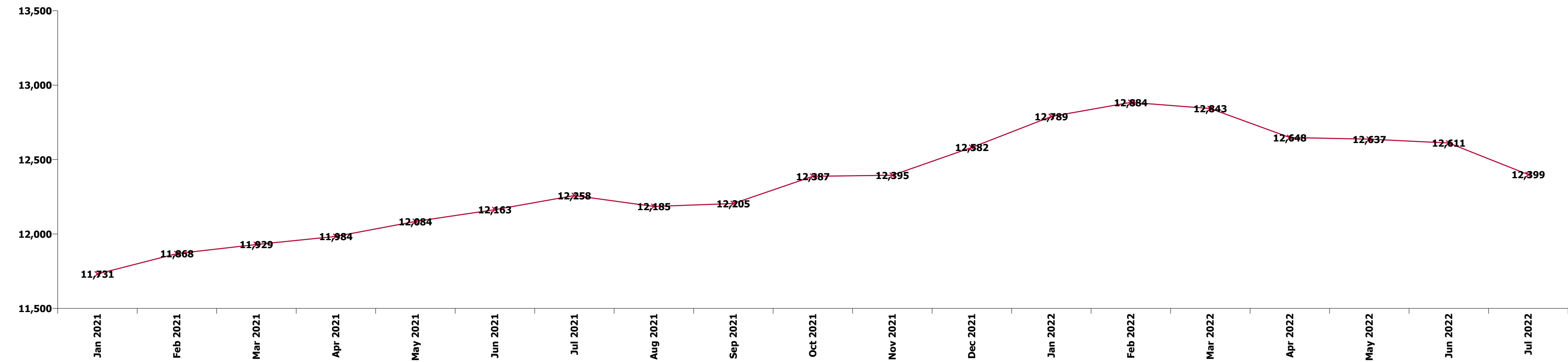
Summary Staff Movement: July 2022

Month-on-month  
Summary

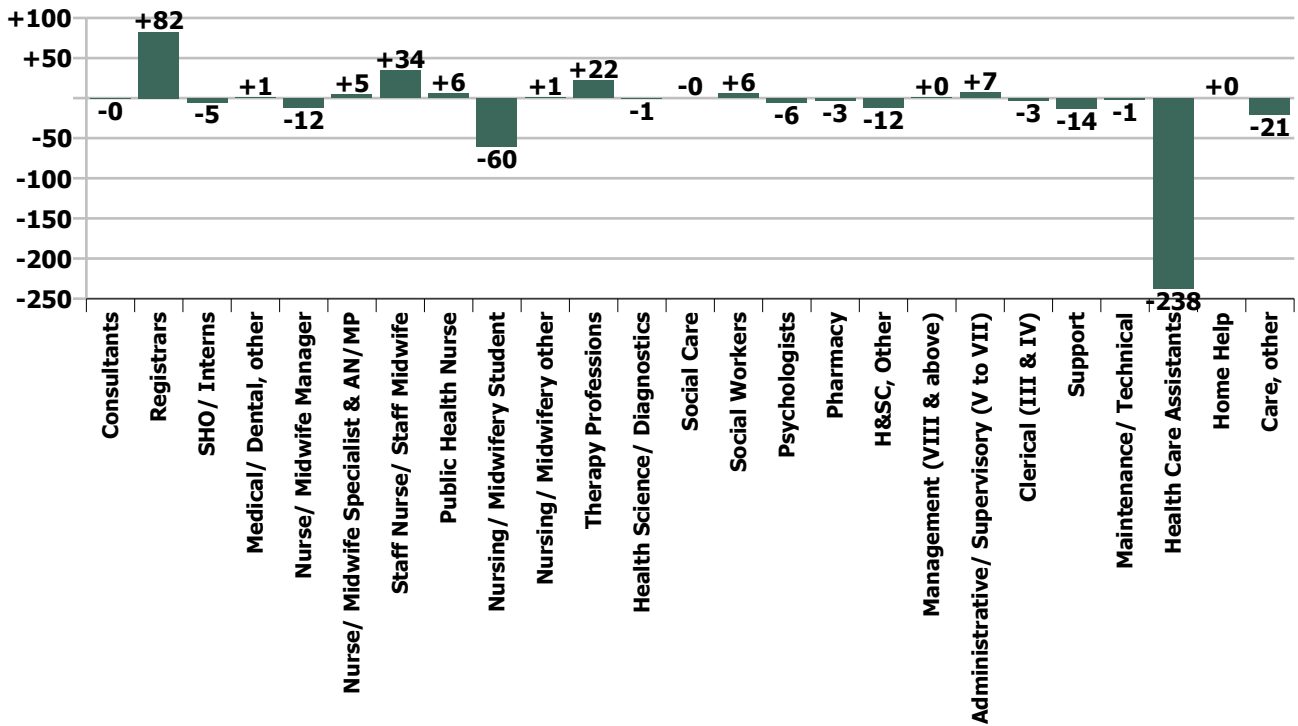
WTE change since Jun 22	% change since Jun 22	overall	Consultants	Registrars	SHO/ Interns	Medical/ Dental, other	Medical & Dental	Nurse/ Midwife Manager	Nurse/ Midwife Specialist & AN/MP	Staff Nurse/ Staff Midwife	Public Health Nurse	Nursing/ Midwifery Student	Nursing/ Midwifery other	Nursing & Midwifery	Therapy Professions	Health Science/ Diagnostics	Social Care	Social Workers	Psychologists	Pharmacy	H&SC, Other	Health & Social Care Professionals	Management (VIII & above)	Administrativ e/ Supervisory (V to VII)	Clerical (III & IV)	Management & Administrative	General Support	Health Care Assistants	Home Help	Care, other	Patient & Client Care
Overall	-1.7%	-213	-0	+82	-5	+1	+78	-12	+5	+34	+6	-60	+1	-26	+22	-1	-0	+6	-6	-3	-12	+5	+0	+7	-3	+5	-15	-238	+0	-21	-259
CHO 1	-1.9%	-30	+0	+3	-0	-1	+3	+1	+3	+8	+0	-7		+5	+0	-0		+1	-1	-1	-6	-6	-1	+1	-10	-10	-2	-14		-5	-19
CHO 2	-1.9%	-26	-0	+26	-0	+1	+27	-2	+1	+2	-6	-2		-7	-1	+0		+0	-2	-0	-3	-6	+0	-3	-0	-3	+1	-35		-2	-37
CHO 3	-3.6%	-37	+0	+10			+9	+0	-1	+8	-3	-9		-5	+6	+0		+0	+1		+0	+7	+1	+1	+2	+3	-10	-37		-5	-41
CHO 4	-1.5%	-27	-0	-0	-2	+1	-1	-1	-0	+11	-3	-6		+1	+5	+0	+0	+1	-1	+0	+0	+6	+0	+1	+1	+1	-0	-36	-0	+2	-33
CHO 5	-1.9%	-22		+12	-1	-1	+10	+1	-0	-0	-3	-1		-5	-2	-1	-0	+0	-1		-0	-4	+1	+9	+2	+11	-0	-34	+0	-1	-34
CHO 6	+0.4%	+3	+0	+2		+0	+2	-1	+1	-3	+6	-3	-0	-1	+5	+0	+0	-0	-0		-0	+5	+1	+4	+1	+6	+0	-9		+0	-9
CHO 7	-1.9%	-34	-0	+4	+0	-1	+2	+1	+1	+6	-1	-15		-8	+4	-1		+1	-2	-1	+1	+1	-1	+2	+5	+5	-3	-30		-2	-32
CHO 8	-0.8%	-12	+1	+22		+2	+25	-7	-1	+1	+11	-3		+2	+0	-0		+0	-1	-0	+0	-0	-2	-8	+4	-6	-0	-32		+1	-32
CHO 9	-2.0%	-28	-1	+6	-2	-1	+3	-2	+0	+2	+5	-14	+1	-8	+5	+0		+1	+1	-1	-5	+1	+1	+1	-6	-3	-1	-11		-8	-19
other Community Services	-0.4%	-1		-2	-0		-2	-1		+1				-0		-0		+1			+0	-0	+1	+0	+1	-1	+0	+1		-1	-1
	-1.7%		-0.5%	+21.0%	-13.1%	+0.2%	+7.9%	-2.5%	+2.1%	+3.3%	+0.4%	-55.5%	+19.6%	-0.8%	+1.0%	-1.3%	-0.2%	+3.2%	-2.1%	-3.8%	-4.9%	+0.2%	+0.1%	+0.9%	-0.2%	+0.1%	-3.6%	-24.3%	+0.2%	-2.4%	-13.8%

Year-on-year Summary

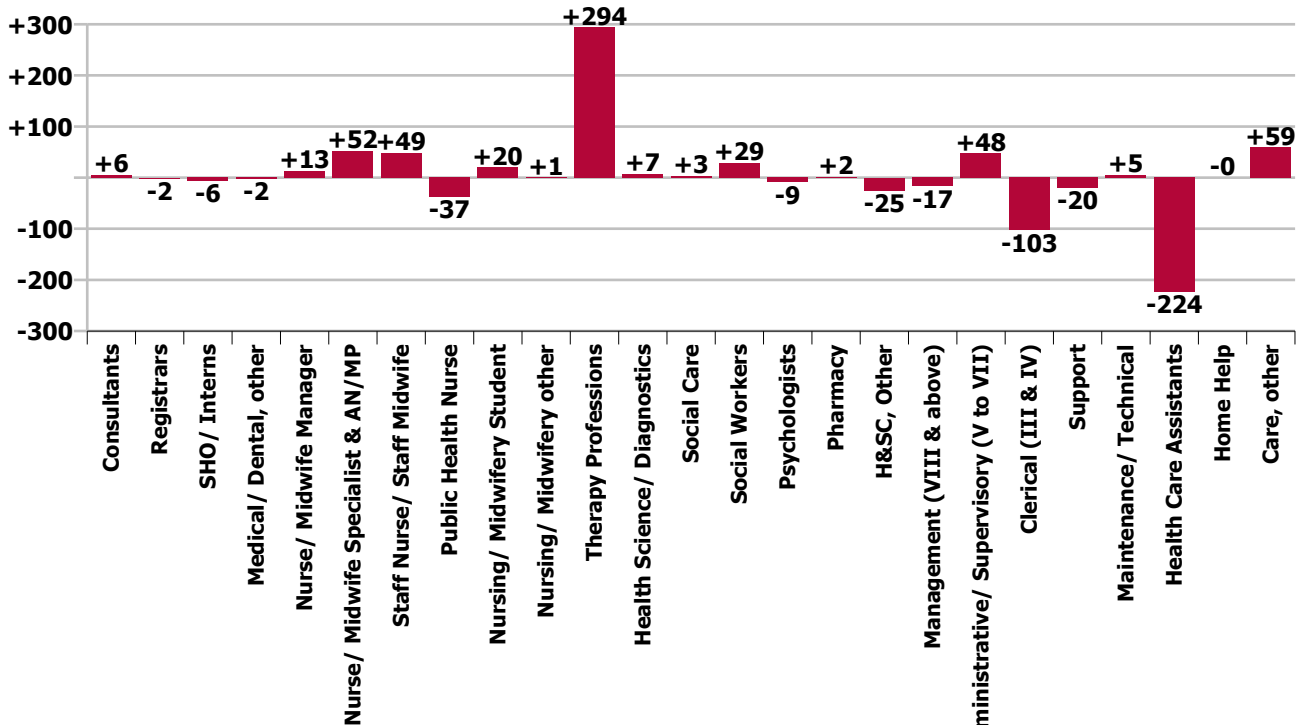
WTE change since Jul 21	% change since Jul 21	overall	Consultants	Registrars	SHO/ Interns	Medical/ Dental, other	Medical & Dental	Nurse/ Midwife Manager	Nurse/ Midwife Specialist & AN/MP	Staff Nurse/ Staff Midwife	Public Health Nurse	Nursing/ Midwifery Student	Nursing/ Midwifery other	Nursing & Midwifery	Therapy Professions	Health Science/ Diagnostics	Social Care	Social Workers	Psychologists	Pharmacy	H&SC, Other	Health & Social Care Professionals	Management (VIII & above)	Administrative/ Supervisory (V to VII)	Clerical (III & IV)	Management & Administrative	General Support	Health Care Assistants	Home Help	Care, other	Patient & Client Care
Overall	+1.1%	+140	+6	-2	-6	-2	-5	+13	+52	+49	-37	+20	+1	+96	+294	+7	+3	+29	-9	+2	-25	+300	-17	+48	-103	-72	-15	-224	-0	+59	-165
CHO 1	+10.1%	+143	+2	-10	+1	-5	-13	+11	+15	+24	+4	+4	+1	+58	+25	+5	+3	+16	-2	-1	+0	+43	+10	+24	+25	+59	-1	-5	-0	+2	-3
CHO 2	+4.8%	+61	-0	+13	+1	+3	+17	-3	+8	+18	-12	+4		+15	+25	+2	+1	+5	+1	-1	+11	+44	-10	-1	-2	-13	-1	-17		+15	-2
CHO 3	+10.6%	+95	+0	+3		+2	+5	+1	+3	+9	-3	+2		+13	+67	-1		+0	-2	+0	+0	+65	+5	+31	+6	+42	+2	-34		+3	-31
CHO 4	+2.3%	+39	+4	-19	-4	+10	-10	-3	+6	+11	-6	+11		+19	+51	+3	+2	+3	-4	+0	-30	+24	+13	+28	-35	+6	-0	-20	+0	+20	-0
CHO 5	+6.7%	+72		+6	-1	-2	+3	+3	+11	+21	-11	+1		+24	+42	-0	-0	+1	-2	-1	-0	+40	-1	-0	+10	+8	-2	-5	-0	+4	-2
CHO 6	+0.5%	+4	+3	+2	+1	+0	+6	+6	+6	+2	-12	-2	-0	-1	+29	-0		+0	-3	-1	+1	+27	-2	-7	-1	-10	+1	-17		+1	-17
CHO 7	-5.3%	-98	-2	+2	-3	-11	-13	-1	-2	-16	-11	+1		-29	+22	+4	+1	-2	+0	+1	+0	+26	-7	-19	-16	-42	-6	-44		+10	-34
CHO 8	-2.2%	-34	+0	+5		-0	+5	-1	+2	-5	+19	-4	-1	+10	+14	-0		+4	-5	-0	-0	+12	-16	+3	-12	-25	-1	-41		+5	-36
CHO 9	-9.2%	-136	-1	-3	-1	+1	-3	+1	+4	-16	-6	+2	+1	-14	+19	-6	-0	+2	+9	-2	-6	+16	-10	-16	-67	-93	-4	-40		+1	-39
other Community Services	-3.6%	-5	+1	-2	-1		-2	-0		+1				+1		+1	+0	-1		+5	-1	+4	-0	+5	-10	-5	-2			-2	-2
		+1.1%	+12.4%	-0.3%	-15.8%	-0.5%	-0.4%	+2.9%	+28.0%	+4.8%	-2.5%	+67.5%	+10.0%	+3.0%	+16.1%	+7.9%	+10.7%	+18.7%	-3.1%	+2.2%	-9.5%	+11.0%	-5.4%	+6.1%	-5.1%	-2.3%	-3.6%	-23.2%	-0.5%	+7.5%	-9.3%



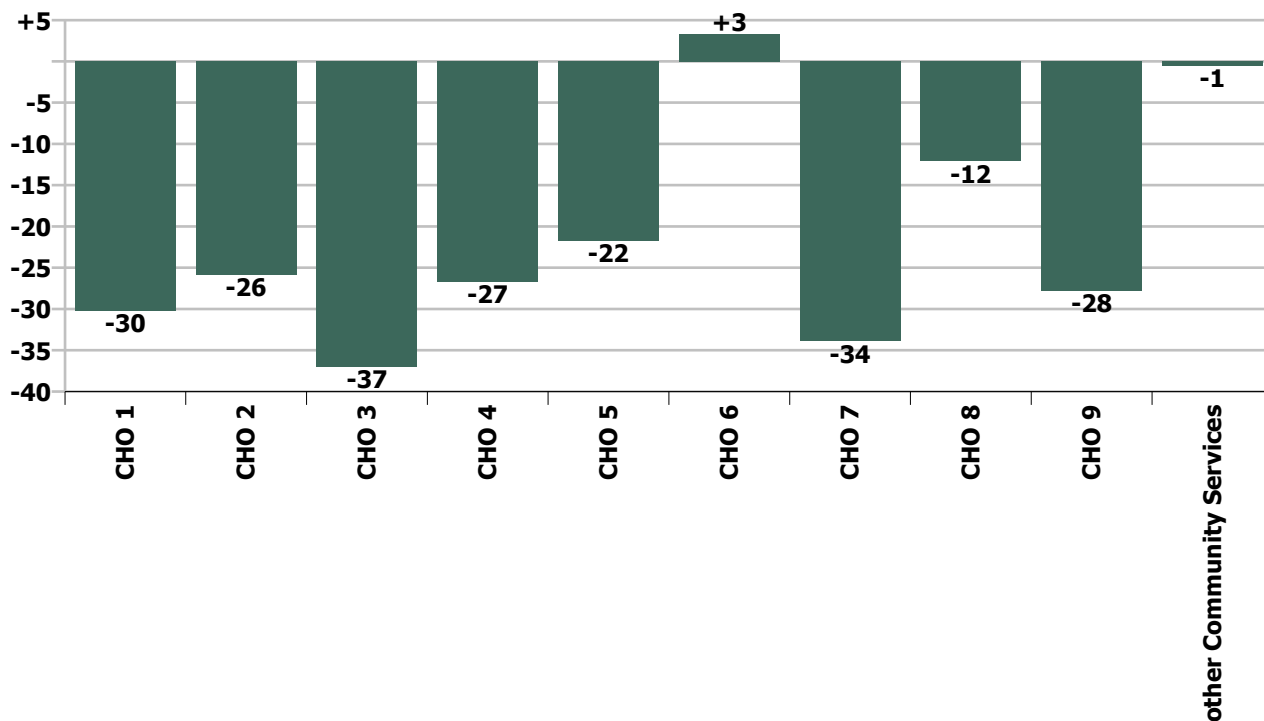
### Staff Group change since: Jun 2022



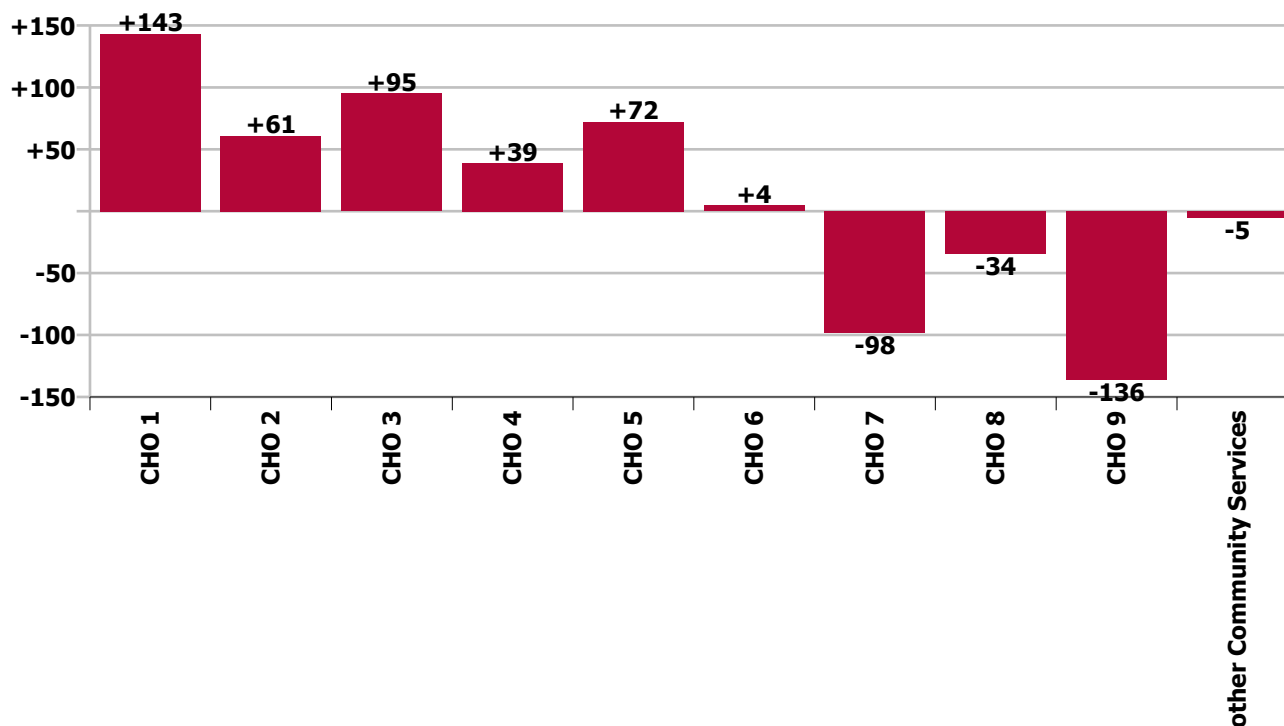
### Staff Group change since: Jul 2021



CHO change since: Jun 2022



CHO change since: Jul 2021





## Longitudinal Employment Levels by Grade Group - Dec 2016 to Jul 2022

Jul 2022 (Dec 2015 figure: 10,311)	WTE Jul 2022	WTE change since Dec 16	WTE change since Dec 17	WTE change since Dec 18	WTE change since Dec 19	WTE change since Dec 20	WTE change since Jun 22	% change since Dec 16	% change since Dec 17	% change since Dec 18	% change since Dec 19	% change since Dec 20	% change since Jun 22
<b>Overall</b>	<b>12,399</b>	<b>+1,952</b>	<b>+1,880</b>	<b>+1,468</b>	<b>+1,799</b>	<b>+826</b>	<b>-213</b>	<b>+18.7%</b>	<b>+17.9%</b>	<b>+13.4%</b>	<b>+17.0%</b>	<b>+7.1%</b>	<b>-1.7%</b>
Consultant Dentistry	13	+3	+2	+2	+2	+3	+0	+26.9%	+15.9%	+15.9%	+20.7%	+31.8%	+0.4%
Consultant Medicine	25	+6	+5	+8	+7	+4	+0	+35.8%	+24.3%	+45.0%	+38.7%	+21.4%	+2.0%
Consultant, Other		-1						-100.0%	-100.0%	-100.0%	-100.0%	-100.0%	-100.0%
Consultant Paediatrics	2	+1	+0	+0	+0	+0	+0	+51.0%	+0.7%	+0.7%	+0.7%	+0.7%	+0.7%
Consultant Psychiatry	8	+1	-1	+2	+0	+0	-1	+20.1%	-10.8%	+31.4%	+0.5%	+0.1%	-10.5%
Consultant Radiology	1												
Consultant Surgery	3	-2	-2	-2	-1	+2	+0	-47.4%	-44.4%	-41.1%	-34.6%	+341.7%	+7.7%
<b>Consultants</b>	<b>52</b>	<b>+8</b>	<b>+4</b>	<b>+10</b>	<b>+8</b>	<b>+10</b>	<b>-0</b>	<b>+18.0%</b>	<b>+7.3%</b>	<b>+23.0%</b>	<b>+17.9%</b>	<b>+23.0%</b>	<b>-0.5%</b>
Registrar	462	+132	+120	+102	+80	+72	+84	+40.1%	+34.9%	+28.2%	+21.0%	+18.6%	+22.3%
Senior Registrar	3	-1	-1	-2	-0	+1	-2	-32.7%	-32.7%	-37.6%	-9.7%	+27.4%	-40.1%
Specialist Registrar	10	+2	-0	-0	-0	-2	-0	+21.0%	-1.3%	-1.5%	-4.5%	-15.7%	-4.6%
<b>Registrars</b>	<b>474</b>	<b>+133</b>	<b>+118</b>	<b>+100</b>	<b>+80</b>	<b>+71</b>	<b>+82</b>	<b>+38.9%</b>	<b>+33.2%</b>	<b>+26.7%</b>	<b>+20.2%</b>	<b>+17.6%</b>	<b>+21.0%</b>
Senior House Officer	33	-7	+4	-4	-4	-8	-5	-16.7%	+12.7%	-9.8%	-10.3%	-20.0%	-13.1%
<b>SHO/ Interns</b>	<b>33</b>	<b>-7</b>	<b>+4</b>	<b>-4</b>	<b>-4</b>	<b>-8</b>	<b>-5</b>	<b>-16.7%</b>	<b>+12.7%</b>	<b>-9.8%</b>	<b>-10.3%</b>	<b>-20.0%</b>	<b>-13.1%</b>
Dentists	303	-1	+1	-2	+2	+2	-1	-0.2%	+0.4%	-0.6%	+0.7%	+0.5%	-0.3%
Other Medical	196	-21	-39	-42	-22	-22	+2	-9.5%	-16.4%	-17.6%	-10.3%	-9.9%	+0.9%
<b>Medical/ Dental, other</b>	<b>499</b>	<b>-21</b>	<b>-37</b>	<b>-44</b>	<b>-20</b>	<b>-20</b>	<b>+1</b>	<b>-4.0%</b>	<b>-7.0%</b>	<b>-8.1%</b>	<b>-3.9%</b>	<b>-3.9%</b>	<b>+0.2%</b>
<b>Medical &amp; Dental</b>	<b>1,059</b>	<b>+113</b>	<b>+88</b>	<b>+62</b>	<b>+63</b>	<b>+52</b>	<b>+78</b>	<b>+11.9%</b>	<b>+9.1%</b>	<b>+6.3%</b>	<b>+6.4%</b>	<b>+5.2%</b>	<b>+7.9%</b>
Clinical Nurse/ Midwife Manager	212	+63	+53	+41	+44	+20	+3	+42.1%	+33.2%	+24.2%	+26.4%	+10.2%	+1.4%
Director Nursing/Midwifery, Assistant	200	+48	+61	+50	+46	+28	-11	+31.2%	+43.4%	+32.9%	+29.7%	+16.4%	-5.2%
Director of Nursing/Midwifery	39	+6	+6	+3	+2	-1	-3	+18.8%	+16.8%	+9.4%	+4.5%	-2.8%	-8.1%
<b>Nurse/ Midwife Manager</b>	<b>451</b>	<b>+116</b>	<b>+119</b>	<b>+94</b>	<b>+92</b>	<b>+47</b>	<b>-12</b>	<b>+34.8%</b>	<b>+35.8%</b>	<b>+26.4%</b>	<b>+25.5%</b>	<b>+11.5%</b>	<b>-2.5%</b>
Advanced Nurse/ Midwife Practitioner	22	+19	+20	+19	+19	+9	+1	+683.2%	+854.1%	+760.2%	+760.2%	+64.7%	+3.8%
Clinical Nurse/ Midwife Specialist	215	+97	+75	+72	+75	+44	+4	+82.8%	+53.9%	+50.0%	+53.3%	+25.8%	+1.9%
<b>Nurse/ Midwife Specialist &amp; AN/MP</b>	<b>237</b>	<b>+116</b>	<b>+95</b>	<b>+91</b>	<b>+94</b>	<b>+53</b>	<b>+5</b>	<b>+96.7%</b>	<b>+66.8%</b>	<b>+62.4%</b>	<b>+65.9%</b>	<b>+28.6%</b>	<b>+2.1%</b>
Staff Midwives	5	+2	-0	-2	-3	-1	-3	+75.2%	-7.4%	-25.0%	-40.0%	-11.5%	-35.6%
Staff Nurse [Psychiatric]	12	+7	-2	+4	+4	-1	+2	+128.5%	-14.6%	+45.4%	+42.3%	-10.8%	+17.5%
Staff Nurses [General/ Children's]	1,044	+234	+206	+178	+198	+136	+35	+29.0%	+24.6%	+20.6%	+23.5%	+14.9%	+3.5%



Jul 2022 (Dec 2015 figure: 10,311)	WTE Jul 2022	WTE change since Dec 16	WTE change since Dec 17	WTE change since Dec 18	WTE change since Dec 19	WTE change since Dec 20	WTE change since Jun 22	% change since Dec 16	% change since Dec 17	% change since Dec 18	% change since Dec 19	% change since Dec 20	% change since Jun 22
<b>Overall</b>	<b>12,399</b>	<b>+1,952</b>	<b>+1,880</b>	<b>+1,468</b>	<b>+1,799</b>	<b>+826</b>	<b>-213</b>	<b>+18.7%</b>	<b>+17.9%</b>	<b>+13.4%</b>	<b>+17.0%</b>	<b>+7.1%</b>	<b>-1.7%</b>
Staff Nurse [Intellectual Disability]	2	+2	+2	+2	+2	+2	+0	-100.0%	-100.0%	-100.0%	-100.0%	-100.0%	+5.5%
<b>Staff Nurse/ Staff Midwife</b>	<b>1,063</b>	<b>+245</b>	<b>+206</b>	<b>+183</b>	<b>+201</b>	<b>+136</b>	<b>+34</b>	<b>+30.0%</b>	<b>+24.0%</b>	<b>+20.7%</b>	<b>+23.3%</b>	<b>+14.6%</b>	<b>+3.3%</b>
<b>Public Health Nurse</b>	<b>1,450</b>	<b>-23</b>	<b>-38</b>	<b>-65</b>	<b>-63</b>	<b>-83</b>	<b>+6</b>	<b>-1.6%</b>	<b>-2.5%</b>	<b>-4.3%</b>	<b>-4.1%</b>	<b>-5.4%</b>	<b>+0.4%</b>
Post-registration Nurse/ Midwife Student	49	-63	-81	-44	-47	-58	-60	-56.7%	-62.4%	-47.8%	-49.3%	-54.3%	-55.5%
<b>Nursing/ Midwifery Student</b>	<b>49</b>	<b>-63</b>	<b>-81</b>	<b>-44</b>	<b>-47</b>	<b>-58</b>	<b>-60</b>	<b>-56.7%</b>	<b>-62.4%</b>	<b>-47.8%</b>	<b>-49.3%</b>	<b>-54.3%</b>	<b>-55.5%</b>
Nursing Education/Clinical	6	+2	+2	+3	+2	-1	+1	+69.4%	+69.4%	+97.7%	+56.1%	-10.8%	+19.6%
Other Nursing/ Midwifery		-2	-0	-1				-100.0%	-100.0%	-100.0%	-100.0%	-100.0%	-100.0%
<b>Nursing/ Midwifery other</b>	<b>6</b>	<b>+0</b>	<b>+2</b>	<b>+2</b>	<b>+2</b>	<b>-1</b>	<b>+1</b>	<b>+7.8%</b>	<b>+50.1%</b>	<b>+48.2%</b>	<b>+56.1%</b>	<b>-10.8%</b>	<b>+19.6%</b>
<b>Nursing &amp; Midwifery</b>	<b>3,255</b>	<b>+392</b>	<b>+303</b>	<b>+260</b>	<b>+279</b>	<b>+94</b>	<b>-26</b>	<b>+13.7%</b>	<b>+10.3%</b>	<b>+8.7%</b>	<b>+9.4%</b>	<b>+3.0%</b>	<b>-0.8%</b>
Dietitians	183	+93	+79	+66	+74	+59	+15	+103.6%	+75.2%	+56.9%	+67.8%	+47.0%	+9.1%
Occupational Therapists	620	+124	+104	+80	+105	+77	+7	+25.1%	+20.1%	+14.8%	+20.4%	+14.1%	+1.2%
Orthoptists	20	+15	+14	+11	+7	+3	+0	+248.7%	+220.3%	+106.3%	+54.0%	+16.5%	+1.9%
Physiotherapists	648	+104	+85	+85	+105	+87	-0	+19.1%	+15.1%	+15.0%	+19.4%	+15.5%	-0.0%
Podiatrists & Chiropodists	74	+55	+52	+50	+49	+44	+3	+283.8%	+231.1%	+214.6%	+200.9%	+150.8%	+3.5%
Speech & Language Therapists	567	+65	+22	+19	+41	+51	-4	+13.0%	+4.0%	+3.4%	+7.8%	+10.0%	-0.7%
<b>Therapy Professions</b>	<b>2,113</b>	<b>+456</b>	<b>+355</b>	<b>+311</b>	<b>+382</b>	<b>+321</b>	<b>+22</b>	<b>+27.5%</b>	<b>+20.2%</b>	<b>+17.2%</b>	<b>+22.1%</b>	<b>+17.9%</b>	<b>+1.0%</b>
Audiology	52	+23	+22	+4	+8	-0	-2	+78.8%	+74.6%	+8.2%	+18.5%	-0.6%	-3.2%
Biochemists	8	+0	+0	-0		-0	-0	+0.1%	+0.1%	-4.6%		-1.7%	-1.3%
Cardiac Physiologists	1	+1	+1	+1	+1	+1		-100.0%	-100.0%	-100.0%	-100.0%	-100.0%	
Clinical Engineering	9	+6	+7	+2	+1	+1	+0	+191.3%	+337.0%	+24.9%	+9.3%	+9.3%	+0.7%
Medical Science	17	-1	-2	-3	+2	-0	+0	-4.1%	-11.4%	-14.7%	+11.1%	-1.5%	+2.6%
Phlebotomists	0	-0	-0	+0	+0	-1		-64.6%	-63.5%	+4.5%	+4.5%	-81.1%	
Physicists	2	-1	-0	-0	-0	-0		-47.0%	-10.7%	-20.5%	-20.5%	-20.5%	
Radiographers	7	+2	+1	+2	+3	+3	+0	+34.3%	+20.8%	+32.1%	+63.3%	+65.9%	+0.7%
<b>Health Science/ Diagnostics</b>	<b>96</b>	<b>+29</b>	<b>+28</b>	<b>+5</b>	<b>+14</b>	<b>+3</b>	<b>-1</b>	<b>+43.3%</b>	<b>+42.1%</b>	<b>+5.1%</b>	<b>+17.1%</b>	<b>+2.7%</b>	<b>-1.3%</b>
<b>Social Care</b>	<b>35</b>	<b>-1</b>	<b>+2</b>	<b>+0</b>	<b>-1</b>	<b>+2</b>	<b>-0</b>	<b>-1.4%</b>	<b>+4.6%</b>	<b>+1.2%</b>	<b>-2.5%</b>	<b>+5.7%</b>	<b>-0.2%</b>
<b>Social Workers</b>	<b>185</b>	<b>+34</b>	<b>+31</b>	<b>+32</b>	<b>+45</b>	<b>+33</b>	<b>+6</b>	<b>+22.8%</b>	<b>+20.4%</b>	<b>+21.1%</b>	<b>+32.6%</b>	<b>+22.1%</b>	<b>+3.2%</b>
<b>Psychologists</b>	<b>288</b>	<b>+4</b>	<b>+4</b>	<b>-9</b>	<b>-13</b>	<b>-12</b>	<b>-6</b>	<b>+1.5%</b>	<b>+1.6%</b>	<b>-3.1%</b>	<b>-4.2%</b>	<b>-3.9%</b>	<b>-2.1%</b>
Pharmacists	59	+3	+2	+6	+9	+4	-3	+5.0%	+3.4%	+10.3%	+18.5%	+7.4%	-4.1%
Pharmacy Technicians	10	+4	+4	+5	+2	+2	-0	+69.5%	+73.8%	+103.8%	+29.3%	+28.5%	-1.6%

Jul 2022 (Dec 2015 figure: 10,311)	WTE Jul 2022	WTE change since Dec 16	WTE change since Dec 17	WTE change since Dec 18	WTE change since Dec 19	WTE change since Dec 20	WTE change since Jun 22	% change since Dec 16	% change since Dec 17	% change since Dec 18	% change since Dec 19	% change since Dec 20	% change since Jun 22
<b>Overall</b>	<b>12,399</b>	<b>+1,952</b>	<b>+1,880</b>	<b>+1,468</b>	<b>+1,799</b>	<b>+826</b>	<b>-213</b>	<b>+18.7%</b>	<b>+17.9%</b>	<b>+13.4%</b>	<b>+17.0%</b>	<b>+7.1%</b>	<b>-1.7%</b>
<b>Pharmacy</b>	<b>69</b>	<b>+7</b>	<b>+6</b>	<b>+11</b>	<b>+12</b>	<b>+6</b>	<b>-3</b>	<b>+11.3%</b>	<b>+10.0%</b>	<b>+18.3%</b>	<b>+20.0%</b>	<b>+10.1%</b>	<b>-3.8%</b>
Counsellor Therapists	119	+4	-2	+3	+4	+7	-2	+3.9%	-1.7%	+3.0%	+3.9%	+6.6%	-2.0%
Dental Hygienists	59	+4	+5	+2	+2	-2	+2	+7.7%	+8.9%	+3.1%	+3.1%	-3.3%	+3.8%
Environmental Health Officers					-1			-100.0%	-100.0%	-100.0%	-100.0%	-100.0%	-100.0%
HSCP Trainees/ Students							-0	-100.0%	-100.0%	-100.0%	-100.0%	-100.0%	-100.0%
Other Health & Social Care	39	+4	+4	+4	+5	+5	+0	+12.3%	+12.8%	+10.0%	+15.0%	+16.2%	+0.4%
Play Therapists/ Specialists	1	-0	-1	-1	-1	-1	-0	-24.6%	-42.6%	-42.6%	-37.7%	-32.7%	-0.7%
Vaccinators	22	+22	+22	+22	+22	+22	-12	-100.0%	-100.0%	-100.0%	-100.0%	-100.0%	-35.5%
<b>H&amp;SC, Other</b>	<b>241</b>	<b>+34</b>	<b>+28</b>	<b>+30</b>	<b>+32</b>	<b>+32</b>	<b>-12</b>	<b>+16.7%</b>	<b>+13.2%</b>	<b>+14.0%</b>	<b>+15.3%</b>	<b>+15.4%</b>	<b>-4.9%</b>
<b>Health &amp; Social Care Professionals</b>	<b>3,027</b>	<b>+564</b>	<b>+455</b>	<b>+379</b>	<b>+471</b>	<b>+385</b>	<b>+5</b>	<b>+22.9%</b>	<b>+17.7%</b>	<b>+14.3%</b>	<b>+18.4%</b>	<b>+14.6%</b>	<b>+0.2%</b>
Executive Management	50	-15	-21	-24	-21	-24	-1	-23.2%	-29.6%	-32.4%	-29.2%	-32.6%	-1.5%
Senior Management (VIII & GM)	242	+48	+21	+7	+7	+18	+1	+24.9%	+9.5%	+2.8%	+3.1%	+7.9%	+0.5%
<b>Management (VIII &amp; above)</b>	<b>292</b>	<b>+33</b>	<b>-0</b>	<b>-17</b>	<b>-13</b>	<b>-6</b>	<b>+0</b>	<b>+12.8%</b>	<b>-0.0%</b>	<b>-5.6%</b>	<b>-4.4%</b>	<b>-2.2%</b>	<b>+0.1%</b>
Middle Management (V-VII)	820	+331	+276	+195	+203	+136	+7	+67.5%	+50.8%	+31.2%	+32.9%	+19.9%	+0.8%
Other Administrative	12	+11	+11	+10	+10	+11	+1	+2200.0%	+2200.0%	+475.0%	+475.0%	+1085.6%	+4.8%
<b>Administrative/ Supervisory (V to VII)</b>	<b>832</b>	<b>+342</b>	<b>+287</b>	<b>+204</b>	<b>+213</b>	<b>+147</b>	<b>+7</b>	<b>+69.7%</b>	<b>+52.8%</b>	<b>+32.6%</b>	<b>+34.4%</b>	<b>+21.4%</b>	<b>+0.9%</b>
General Administrative (III & IV)	1,928	+155	+129	+99	+181	+90	-3	+8.7%	+7.2%	+5.4%	+10.4%	+4.9%	-0.2%
<b>Clerical (III &amp; IV)</b>	<b>1,928</b>	<b>+155</b>	<b>+129</b>	<b>+99</b>	<b>+181</b>	<b>+90</b>	<b>-3</b>	<b>+8.7%</b>	<b>+7.2%</b>	<b>+5.4%</b>	<b>+10.4%</b>	<b>+4.9%</b>	<b>-0.2%</b>
<b>Management &amp; Administrative</b>	<b>3,052</b>	<b>+530</b>	<b>+416</b>	<b>+286</b>	<b>+381</b>	<b>+230</b>	<b>+5</b>	<b>+21.0%</b>	<b>+15.8%</b>	<b>+10.3%</b>	<b>+14.3%</b>	<b>+8.2%</b>	<b>+0.1%</b>
Catering	22	+1	-3	-1	+0	+1	+0	+3.4%	-10.9%	-4.0%	+0.8%	+2.9%	+1.8%
Household Services	135	-11	-5	-11	+1	-1	-2	-7.8%	-3.5%	-7.8%	+1.1%	-1.0%	-1.3%
Other Labs & Associated	3	+1	-2	-2	-1	-2	+1	+25.5%	-48.4%	-47.0%	-19.3%	-49.8%	+59.9%
Other Support	107	-17	-26	-23	-6	-6	-11	-13.9%	-19.5%	-17.4%	-5.2%	-5.6%	-9.3%
Portering	63	-22	-19	-16	-11	-11	-2	-26.1%	-23.1%	-20.2%	-14.6%	-14.6%	-3.2%
<b>Support</b>	<b>331</b>	<b>-50</b>	<b>-55</b>	<b>-53</b>	<b>-16</b>	<b>-20</b>	<b>-14</b>	<b>-13.1%</b>	<b>-14.3%</b>	<b>-13.9%</b>	<b>-4.5%</b>	<b>-5.8%</b>	<b>-3.9%</b>
Maintenance	63	+6	+8	+6	+5	+8	-1	+10.7%	+13.8%	+10.7%	+8.7%	+14.8%	-2.1%
Technical Services	2	+1	+1	+1	+1	+1		+100.0%	+100.0%	+122.2%	+100.0%	+100.0%	
<b>Maintenance/ Technical</b>	<b>65</b>	<b>+7</b>	<b>+9</b>	<b>+7</b>	<b>+6</b>	<b>+9</b>	<b>-1</b>	<b>+12.3%</b>	<b>+15.3%</b>	<b>+12.4%</b>	<b>+10.3%</b>	<b>+16.3%</b>	<b>-2.1%</b>
<b>General Support</b>	<b>396</b>	<b>-43</b>	<b>-46</b>	<b>-46</b>	<b>-10</b>	<b>-11</b>	<b>-15</b>	<b>-9.7%</b>	<b>-10.5%</b>	<b>-10.4%</b>	<b>-2.4%</b>	<b>-2.8%</b>	<b>-3.6%</b>
Attendant/ Aide	50	+4	+5	+1	+15	+9	+5	+9.3%	+10.8%	+2.8%	+44.0%	+23.1%	+11.8%

Jul 2022 (Dec 2015 figure: 10,311)	WTE Jul 2022	WTE change since Dec 16	WTE change since Dec 17	WTE change since Dec 18	WTE change since Dec 19	WTE change since Dec 20	WTE change since Jun 22	% change since Dec 16	% change since Dec 17	% change since Dec 18	% change since Dec 19	% change since Dec 20	% change since Jun 22
<b>Overall</b>	<b>12,399</b>	<b>+1,952</b>	<b>+1,880</b>	<b>+1,468</b>	<b>+1,799</b>	<b>+826</b>	<b>-213</b>	<b>+18.7%</b>	<b>+17.9%</b>	<b>+13.4%</b>	<b>+17.0%</b>	<b>+7.1%</b>	<b>-1.7%</b>
Health & Social Care Assistants	82	+63	+59	-43	+13	-23	-3	+319.6%	+255.6%	-34.4%	+18.6%	-21.6%	-3.7%
Health Care Assistant/ Care Assistant	607	+483	+476	+457	+457	-27	-240	+389.6%	+365.0%	+304.9%	+305.3%	-4.2%	-28.3%
HCA (Student Nurse/Midwife COVID-19)						-0		-100.0%	-100.0%	-100.0%	-100.0%	-100.0%	-100.0%
<b>Health Care Assistants</b>	<b>739</b>	<b>+550</b>	<b>+540</b>	<b>+415</b>	<b>+485</b>	<b>-40</b>	<b>-238</b>	<b>+290.3%</b>	<b>+271.8%</b>	<b>+128.3%</b>	<b>+191.3%</b>	<b>-5.2%</b>	<b>-24.3%</b>
<b>Home Help</b>	<b>17</b>	<b>-266</b>	<b>-6</b>	<b>-3</b>	<b>-2</b>	<b>-2</b>	<b>+0</b>	<b>-94.1%</b>	<b>-25.4%</b>	<b>-13.0%</b>	<b>-9.4%</b>	<b>-9.3%</b>	<b>+0.2%</b>
Health Promotion	8	+8	+8	+8	+8	+8	+1	-100.0%	-100.0%	-100.0%	-100.0%	-100.0%	+14.3%
Home Care Services	3	-11	-2	-3	-2	-1		-76.9%	-43.8%	-44.5%	-39.2%	-31.7%	
Other Care Grades	839	+117	+127	+111	+127	+111	-21	+16.2%	+17.8%	+15.2%	+17.8%	+15.3%	-2.4%
Pastoral Care	3	-1	-2	-1	-1	+0	-1	-32.2%	-37.7%	-24.3%	-24.3%	+13.1%	-24.3%
Workshop Services	2	-1	-1	-1	-1	-0		-36.3%	-38.7%	-34.1%	-33.8%	-20.0%	
<b>Care, other</b>	<b>855</b>	<b>+112</b>	<b>+130</b>	<b>+114</b>	<b>+131</b>	<b>+117</b>	<b>-21</b>	<b>+15.1%</b>	<b>+17.9%</b>	<b>+15.4%</b>	<b>+18.1%</b>	<b>+15.9%</b>	<b>-2.4%</b>
Pre-Hospital Care (Ambulance)								-100.0%	-100.0%	-100.0%	-100.0%	-100.0%	-100.0%
<b>Ambulance Staff</b>								<b>-100.0%</b>	<b>-100.0%</b>	<b>-100.0%</b>	<b>-100.0%</b>	<b>-100.0%</b>	<b>-100.0%</b>
<b>Patient &amp; Client Care</b>	<b>1,611</b>	<b>+395</b>	<b>+664</b>	<b>+527</b>	<b>+615</b>	<b>+76</b>	<b>-259</b>	<b>+32.5%</b>	<b>+70.2%</b>	<b>+48.6%</b>	<b>+61.7%</b>	<b>+4.9%</b>	<b>-13.8%</b>

Source: Health Service Personnel Census

Longitudinal Employment Levels by Grade Group - Dec 2016 to Jul 2022

Jul 2022 (Dec 2015 figure: 10,311)	WTE Jul 2022	WTE change since Dec 16	WTE change since Dec 17	WTE change since Dec 18	WTE change since Dec 19	WTE change since Dec 20	WTE change since Jun 22	% change since Dec 16	% change since Dec 17	% change since Dec 18	% change since Dec 19	% change since Dec 20	% change since Jun 22
Overall	12,399	+1,952	+1,880	+1,468	+1,799	+826	-213	+18.7%	+17.9%	+13.4%	+17.0%	+7.1%	-1.7%
Consultant Dentistry	13	+3	+2	+2	+2	+3	+0	+26.9%	+15.9%	+15.9%	+20.7%	+31.8%	+0.4%
Consultant Medicine	25	+6	+5	+8	+7	+4	+0	+35.8%	+24.3%	+45.0%	+38.7%	+21.4%	+2.0%
Consultant, Other		-1						-100.0%	-100.0%	-100.0%	-100.0%	-100.0%	-100.0%
Consultant Paediatrics	2	+1	+0	+0	+0	+0	+0	+51.0%	+0.7%	+0.7%	+0.7%	+0.7%	+0.7%
Consultant Psychiatry	8	+1	-1	+2	+0	+0	-1	+20.1%	-10.8%	+31.4%	+0.5%	+0.1%	-10.5%
Consultant Radiology	1												
Consultant Surgery	3	-2	-2	-2	-1	+2	+0	-47.4%	-44.4%	-41.1%	-34.6%	+341.7%	+7.7%
Consultants	52	+8	+4	+10	+8	+10	-0	+18.0%	+7.3%	+23.0%	+17.9%	+23.0%	-0.5%
Registrar	462	+132	+120	+102	+80	+72	+84	+40.1%	+34.9%	+28.2%	+21.0%	+18.6%	+22.3%
Senior Registrar	3	-1	-1	-2	-0	+1	-2	-32.7%	-32.7%	-37.6%	-9.7%	+27.4%	-40.1%
Specialist Registrar	10	+2	-0	-0	-0	-2	-0	+21.0%	-1.3%	-1.5%	-4.5%	-15.7%	-4.6%
Registrars	474	+133	+118	+100	+80	+71	+82	+38.9%	+33.2%	+26.7%	+20.2%	+17.6%	+21.0%
Senior House Officer	33	-7	+4	-4	-4	-8	-5	-16.7%	+12.7%	-9.8%	-10.3%	-20.0%	-13.1%
SHO/ Interns	33	-7	+4	-4	-4	-8	-5	-16.7%	+12.7%	-9.8%	-10.3%	-20.0%	-13.1%
Dentists	303	-1	+1	-2	+2	+2	-1	-0.2%	+0.4%	-0.6%	+0.7%	+0.5%	-0.3%
Other Medical	196	-21	-39	-42	-22	-22	+2	-9.5%	-16.4%	-17.6%	-10.3%	-9.9%	+0.9%
Medical/ Dental, other	499	-21	-37	-44	-20	-20	+1	-4.0%	-7.0%	-8.1%	-3.9%	-3.9%	+0.2%
Medical & Dental	1,059	+113	+88	+62	+63	+52	+78	+11.9%	+9.1%	+6.3%	+6.4%	+5.2%	+7.9%
Clinical Nurse/ Midwife Manager	212	+63	+53	+41	+44	+20	+3	+42.1%	+33.2%	+24.2%	+26.4%	+10.2%	+1.4%
Director Nursing/Midwifery, Assistant	200	+48	+61	+50	+46	+28	-11	+31.2%	+43.4%	+32.9%	+29.7%	+16.4%	-5.2%
Director of Nursing/Midwifery	39	+6	+6	+3	+2	-1	-3	+18.8%	+16.8%	+9.4%	+4.5%	-2.8%	-8.1%
Nurse/ Midwife Manager	451	+116	+119	+94	+92	+47	-12	+34.8%	+35.8%	+26.4%	+25.5%	+11.5%	-2.5%
Advanced Nurse/ Midwife Practitioner	22	+19	+20	+19	+19	+9	+1	+683.2%	+854.1%	+760.2%	+760.2%	+64.7%	+3.8%
Clinical Nurse/ Midwife Specialist	215	+97	+75	+72	+75	+44	+4	+82.8%	+53.9%	+50.0%	+53.3%	+25.8%	+1.9%
Nurse/ Midwife Specialist & AN/MP	237	+116	+95	+91	+94	+53	+5	+96.7%	+66.8%	+62.4%	+65.9%	+28.6%	+2.1%
Staff Midwives	5	+2	-0	-2	-3	-1	-3	+75.2%	-7.4%	-25.0%	-40.0%	-11.5%	-35.6%
Staff Nurse [Psychiatric]	12	+7	-2	+4	+4	-1	+2	+128.5%	-14.6%	+45.4%	+42.3%	-10.8%	+17.5%
Staff Nurses [General/ Children's]	1,044	+234	+206	+178	+198	+136	+35	+29.0%	+24.6%	+20.6%	+23.5%	+14.9%	+3.5%
Staff Nurse [Intellectual Disability]	2	+2	+2	+2	+2	+2	+0	-100.0%	-100.0%	-100.0%	-100.0%	-100.0%	+5.5%
Staff Nurse/ Staff Midwife	1,063	+245	+206	+183	+201	+136	+34	+30.0%	+24.0%	+20.7%	+23.3%	+14.6%	+3.3%
Public Health Nurse	1,450	-23	-38	-65	-63	-83	+6	-1.6%	-2.5%	-4.3%	-4.1%	-5.4%	+0.4%
Public Health Nurse	1,450	-23	-38	-65	-63	-83	+6	-1.6%	-2.5%	-4.3%	-4.1%	-5.4%	+0.4%
Post-registration Nurse/ Midwife Student	49	-63	-81	-44	-47	-58	-60	-56.7%	-62.4%	-47.8%	-49.3%	-54.3%	-55.5%
Nursing/ Midwifery Student	49	-63	-81	-44	-47	-58	-60	-56.7%	-62.4%	-47.8%	-49.3%	-54.3%	-55.5%
Nursing Education/Clinical	6	+2	+2	+3	+2	-1	+1	+69.4%	+69.4%	+97.7%	+56.1%	-10.8%	+19.6%
Other Nursing/ Midwifery		-2	-0	-1				-100.0%	-100.0%	-100.0%	-100.0%	-100.0%	-100.0%
Nursing/ Midwifery other	6	+0	+2	+2	+2	-1	+1	+7.8%	+50.1%	+48.2%	+56.1%	-10.8%	+19.6%
Nursing & Midwifery	3,255	+392	+303	+260	+279	+94	-26	+13.7%	+10.3%	+8.7%	+9.4%	+3.0%	-0.8%
Dietitians	183	+93	+79	+66	+74	+59	+15	+103.6%	+75.2%	+56.9%	+67.8%	+47.0%	+9.1%
Occupational Therapists	620	+124	+104	+80	+105	+77	+7	+25.1%	+20.1%	+14.8%	+20.4%	+14.1%	+1.2%
Orthoptists	20	+15	+14	+11	+7	+3	+0	+248.7%	+220.3%	+106.3%	+54.0%	+16.5%	+1.9%
Physiotherapists	648	+104	+85	+85	+105	+87	-0	+19.1%	+15.1%	+15.0%	+19.4%	+15.5%	-0.0%
Podiatrists & Chiropodists	74	+55	+52	+50	+49	+44	+3	+283.8%	+231.1%	+214.6%	+200.9%	+150.8%	+3.5%
Speech & Language Therapists	567	+65	+22	+19	+41	+51	-4	+13.0%	+4.0%	+3.4%	+7.8%	+10.0%	-0.7%
Therapy Professions	2,113	+456	+355	+311	+382	+321	+22	+27.5%	+20.2%	+17.2%	+22.1%	+17.9%	+1.0%
Audiology	52	+23	+22	+4	+8	-0	-2	+78.8%	+74.6%	+8.2%	+18.5%	-0.6%	-3.2%
Biochemists	8	+0	+0	-0		-0	-0	+0.1%	+0.1%	-4.6%		-1.7%	-1.3%
Cardiac Physiologists	1	+1	+1	+1	+1	+1		-100.0%	-100.0%	-100.0%	-100.0%	-100.0%	
Clinical Engineering	9	+6	+7	+2	+1	+1	+0	+191.3%	+337.0%	+24.9%	+9.3%	+9.3%	+0.7%
Medical Science	17	-1	-2	-3	+2	-0	+0	-4.1%	-11.4%	-14.7%	+11.1%	-1.5%	+2.6%
Phlebotomists	0	-0	-0	+0	+0	-1		-64.6%	-63.5%	+4.5%	+4.5%	-81.1%	
Physicists	2	-1	-0	-0	-0	-0		-47.0%	-10.7%	-20.5%	-20.5%	-20.5%	
Radiographers	7	+2	+1	+2	+3	+3	+0	+34.3%	+20.8%	+32.1%	+63.3%	+65.9%	+0.7%
Health Science/ Diagnostics	96	+29	+28	+5	+14	+3	-1	+43.3%	+42.1%	+5.1%	+17.1%	+2.7%	-1.3%
Social Care	35	-1	+2	+0	-1	+2	-0	-1.4%	+4.6%	+1.2%	-2.5%	+5.7%	-0.2%
Social Workers	185	+34	+31	+32	+45	+33	+6	+22.8%	+20.4%	+21.1%	+32.6%	+22.1%	+3.2%
Psychologists	288	+4	+4	-9	-13	-12	-6	+1.5%	+1.6%	-3.1%	-4.2%	-3.9%	-2.1%
Pharmacists	59	+3	+2	+6	+9	+4	-3	+5.0%	+3.4%	+10.3%	+18.5%	+7.4%	-4.1%
Pharmacy Technicians	10	+4	+4	+5	+2	+2	-0	+69.5%	+73.8%	+103.8%	+29.3%	+28.5%	-1.6%
Pharmacy	69	+7	+6	+11	+12	+6	-3	+11.3%	+10.0%	+18.3%	+20.0%	+10.1%	-3.8%
Counsellor Therapists	119	+4	-2	+3	+4	+7	-2	+3.9%	-1.7%	+3.0%	+3.9%	+6.6%	-2.0%
Dental Hygienists	59	+4	+5	+2	+2	-2	+2	+7.7%	+8.9%	+3.1%	+3.1%	-3.3%	+3.8%
Environmental Health Officers					-1			-100.0%	-100.0%	-100.0%	-100.0%	-100.0%	-100.0%
HSCP Trainees/ Students							-0	-100.0%	-100.0%	-100.0%	-100.0%	-100.0%	-100.0%
Other Health & Social Care	39	+4	+4	+4	+5	+5	+0	+12.3%	+12.8%	+10.0%	+15.0%	+16.2%	+0.4%
Play Therapists/ Specialists	1	-0	-1	-1	-1	-1	-0	-24.6%	-42.6%	-42.6%	-37.7%	-32.7%	-0.7%
Vaccinators	22	+22	+22	+22	+22	+22	-12	-100.0%	-100.0%	-100.0%	-100.0%	-100.0%	-35.5%
H&SC, Other	241	+34	+28	+30	+32	+32	-12	+16.7%	+13.2%	+14.0%	+15.3%	+15.4%	-4.9%
Health & Social Care Professionals	3,027	+564	+455	+379	+471	+385	+5	+22.9%	+17.7%	+14.3%	+18.4%	+14.6%	+0.2%
Executive Management	50	-15	-21	-24	-21	-24	-1	-23.2%	-29.6%	-32.4%	-29.2%	-32.6%	-1.5%
Senior Management (VIII & GM)	242	+48	+21	+7	+7	+18	+1	+24.9%	+9.5%	+2.8%	+3.1%	+7.9%	+0.5%
Management (VIII & above)	292	+33	-0	-17	-13	-6	+0	+12.8%	-0.0%	-5.6%	-4.4%	-2.2%	+0.1%
Middle Management (V-VII)	820	+331	+276	+195	+203	+136	+7	+67.5%	+50.8%	+31.2%	+32.9%	+19.9%	+0.8%
Other Administrative	12	+11	+11	+10	+10	+11	+1	+2200.0%	+2200.0%	+475.0%	+475.0%	+1085.6%	+4.8%
Administrative/ Supervisory (V to VII)	832	+342	+287	+204	+213	+147	+7	+69.7%	+52.8%	+32.6%	+34.4%	+21.4%	+0.9%
General Administrative (III & IV)	1,928	+155	+129	+99	+181	+90	-3	+8.7%	+7.2%	+5.4%	+10.4%	+4.9%	-0.2%
Clerical (III & IV)	1,928	+155	+129	+99	+181	+90	-3	+8.7%	+7.2%	+5.4%	+10.4%	+4.9%	-0.2%
Management & Administrative	3,052	+530	+416	+286	+381	+230	+5	+21.0%	+15.8%	+10.3%	+14.3%	+8.2%	+0.1%
Support	331	-50	-55	-53	-16	-20	-14	-13.1%	-14.3%	-13.9%	-4.5%	-5.8%	-3.9%
Maintenance	63	+6	+8	+6	+5	+8	-1	+10.7%	+13.8%	+10.7%	+8.7%	+14.8%	-2.1%

Jul 2022 (Dec 2015 figure: 10,311)	WTE Jul 2022	WTE change since Dec 16	WTE change since Dec 17	WTE change since Dec 18	WTE change since Dec 19	WTE change since Dec 20	WTE change since Jun 22	% change since Dec 16	% change since Dec 17	% change since Dec 18	% change since Dec 19	% change since Dec 20	% change since Jun 22
Overall	12,399	+1,952	+1,880	+1,468	+1,799	+826	-213	+18.7%	+17.9%	+13.4%	+17.0%	+7.1%	-1.7%
Technical Services	2	+1	+1	+1	+1	+1		+100.0%	+100.0%	+122.2%	+100.0%	+100.0%	
Maintenance/ Technical	65	+7	+9	+7	+6	+9	-1	+12.3%	+15.3%	+12.4%	+10.3%	+16.3%	-2.1%
General Support	396	-43	-46	-46	-10	-11	-15	-9.7%	-10.5%	-10.4%	-2.4%	-2.8%	-3.6%
Attendant/ Aide	50	+4	+5	+1	+15	+9	+5	+9.3%	+10.8%	+2.8%	+44.0%	+23.1%	+11.8%
Health & Social Care Assistants	82	+63	+59	-43	+13	-23	-3	+319.6%	+255.6%	-34.4%	+18.6%	-21.6%	-3.7%
Health Care Assistant/ Care Assistant	607	+483	+476	+457	+457	-27	-240	+389.6%	+365.0%	+304.9%	+305.3%	-4.2%	-28.3%
HCA (Student Nurse/Midwife COVID-19)						-0		-100.0%	-100.0%	-100.0%	-100.0%	-100.0%	-100.0%
Health Care Assistants	739	+550	+540	+415	+485	-40	-238	+290.3%	+271.8%	+128.3%	+191.3%	-5.2%	-24.3%
Home Help	17	-266	-6	-3	-2	-2	+0	-94.1%	-25.4%	-13.0%	-9.4%	-9.3%	+0.2%
Health Promotion	8	+8	+8	+8	+8	+8	+1	-100.0%	-100.0%	-100.0%	-100.0%	-100.0%	+14.3%
Home Care Services	3	-11	-2	-3	-2	-1		-76.9%	-43.8%	-44.5%	-39.2%	-31.7%	
Other Care Grades	839	+117	+127	+111	+127	+111	-21	+16.2%	+17.8%	+15.2%	+17.8%	+15.3%	-2.4%
Pastoral Care	3	-1	-2	-1	-1	+0	-1	-32.2%	-37.7%	-24.3%	-24.3%	+13.1%	-24.3%
Workshop Services	2	-1	-1	-1	-1	-0		-36.3%	-38.7%	-34.1%	-33.8%	-20.0%	
Care, other	855	+112	+130	+114	+131	+117	-21	+15.1%	+17.9%	+15.4%	+18.1%	+15.9%	-2.4%
Pre-Hospital Care (Ambulance)								-100.0%	-100.0%	-100.0%	-100.0%	-100.0%	-100.0%
Ambulance Staff								-100.0%	-100.0%	-100.0%	-100.0%	-100.0%	-100.0%
Patient & Client Care	1,611	+395	+664	+527	+615	+76	-259	+32.5%	+70.2%	+48.6%	+61.7%	+4.9%	-13.8%

Source: Health Service Personnel Census