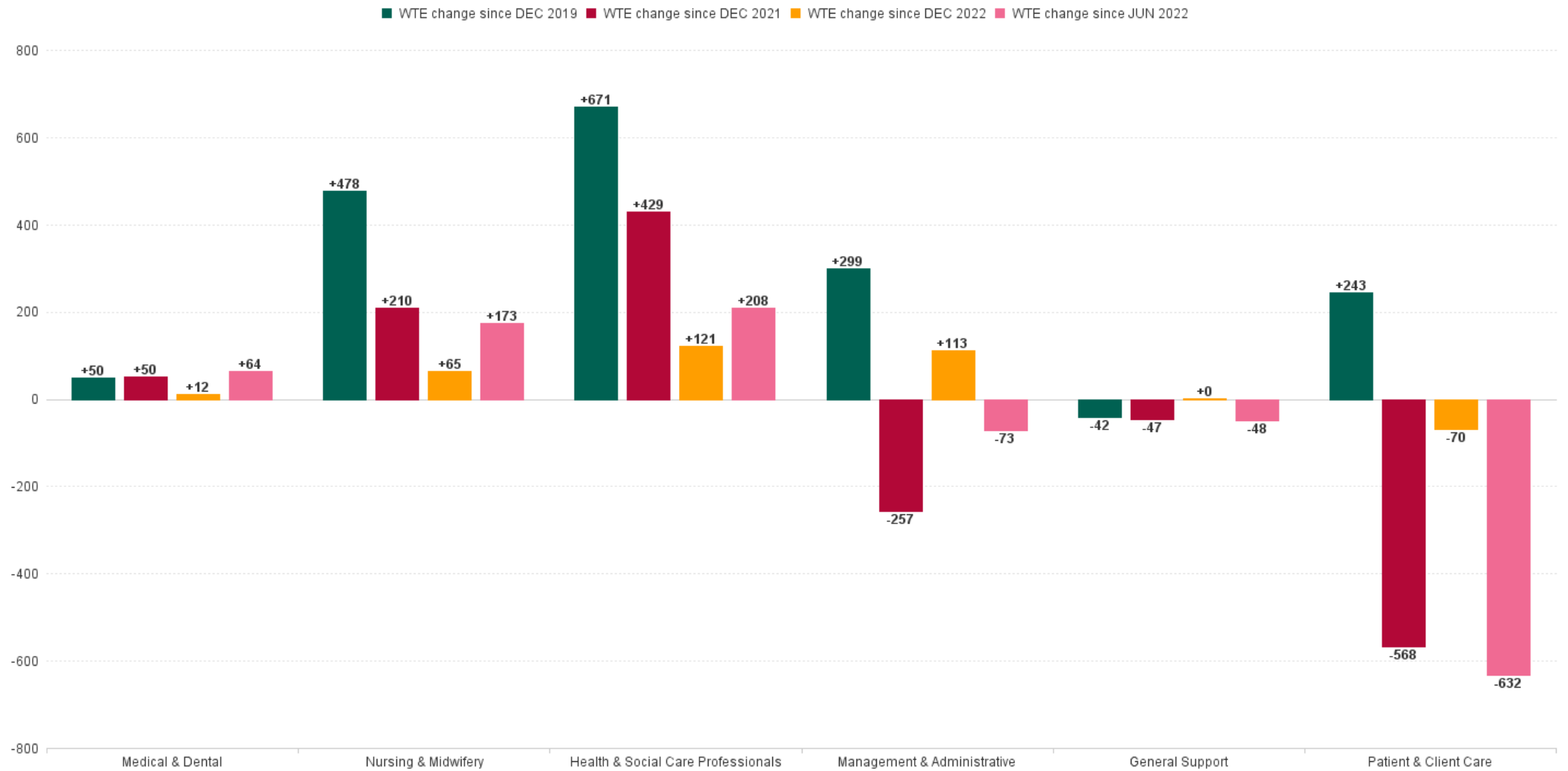


# Primary Care Employment Report : JUN 2023

## Primary Care Employment Report by Staff Group

JUN 2023	WTE DEC 2019	WTE DEC 2022	WTE MAY 2023	WTE JUN 2023	WTE change since DEC 2019	% WTE change since Dec 2019	WTE change since DEC 2022	% WTE change since Dec 2022	WTE change since MAY 2023	No. JUN 2023
<b>Overall</b>	<b>10,606</b>	<b>12,064</b>	<b>12,249</b>	<b>12,305</b>	<b>+1,699</b>	<b>+16.0%</b>	<b>+240</b>	<b>+2.0%</b>	<b>+56</b>	<b>14,556</b>
Consultants	44	50	53	54	+10	+23.2%	+4	+7.4%	+1	65
Registrars	396	433	443	446	+51	+12.8%	+13	+3.0%	+3	461
SHO/ Interns	36	39	36	36	+0	+0.5%	-3	-6.9%	-0	44
Medical/ Dental, other	520	511	510	508	-11	-2.1%	-3	-0.5%	-1	719
<b>Medical &amp; Dental</b>	<b>995</b>	<b>1,034</b>	<b>1,042</b>	<b>1,045</b>	<b>+50</b>	<b>+5.0%</b>	<b>+12</b>	<b>+1.1%</b>	<b>+3</b>	<b>1,289</b>
Nurse/ Midwife Manager	358	477	489	486	+128	+35.7%	+9	+1.9%	-2	533
Nurse/ Midwife Specialist & AN/MP	143	278	334	341	+199	+139.2%	+64	+22.9%	+8	385
Staff Nurse/ Staff Midwife	862	1,057	1,082	1,142	+280	+32.5%	+85	+8.1%	+59	1,462
Public Health Nurse	1,513	1,477	1,437	1,430	-84	-5.5%	-47	-3.2%	-8	1,721
Post-registration Nurse/ Midwife Student	96	96	96	50	-46	-47.8%	-46	-47.8%	-46	50
Nursing/ Midwifery Student	96	96	96	50	-46	-47.8%	-46	-47.8%	-46	50
Nursing/ Midwifery other	4	5	5	5	+1	+30.8%	+0	+0.6%	+0	5
<b>Nursing &amp; Midwifery</b>	<b>2,976</b>	<b>3,389</b>	<b>3,442</b>	<b>3,454</b>	<b>+478</b>	<b>+16.1%</b>	<b>+65</b>	<b>+1.9%</b>	<b>+12</b>	<b>4,156</b>
Therapy Professions	1,733	2,162	2,254	2,247	+514	+29.7%	+85	+3.9%	-7	2,609
Health Science/ Diagnostics	82	99	99	100	+18	+21.7%	+1	+0.6%	+1	110
Social Care	35	39	42	42	+6	+17.4%	+3	+8.1%	+0	44
Social Workers	139	195	202	204	+65	+46.4%	+9	+4.4%	+2	224
Psychologists	303	292	305	308	+5	+1.6%	+16	+5.5%	+3	343
Pharmacy	58	68	74	75	+18	+30.6%	+7	+10.8%	+1	88
H&SC, Other	209	255	255	255	+46	+21.8%	+0	+0.0%	+0	303
<b>Health &amp; Social Care Professionals</b>	<b>2,559</b>	<b>3,109</b>	<b>3,230</b>	<b>3,230</b>	<b>+671</b>	<b>+26.2%</b>	<b>+121</b>	<b>+3.9%</b>	<b>-0</b>	<b>3,721</b>
Management (VIII & above)	306	253	252	257	-48	-15.8%	+4	+1.6%	+6	271
Administrative/ Supervisory (V to VII)	623	762	782	793	+170	+27.3%	+31	+4.1%	+11	848
Clerical (III & IV)	1,746	1,847	1,903	1,924	+178	+10.2%	+77	+4.2%	+21	2,257
<b>Management &amp; Administrative</b>	<b>2,675</b>	<b>2,862</b>	<b>2,937</b>	<b>2,975</b>	<b>+299</b>	<b>+11.2%</b>	<b>+113</b>	<b>+3.9%</b>	<b>+38</b>	<b>3,376</b>
Support	346	327	330	330	-16	-4.5%	+3	+1.1%	+0	486
Maintenance/ Technical	59	36	32	33	-27	-45.2%	-3	-8.6%	+0	37
<b>General Support</b>	<b>405</b>	<b>362</b>	<b>362</b>	<b>363</b>	<b>-42</b>	<b>-10.5%</b>	<b>+0</b>	<b>+0.1%</b>	<b>+0</b>	<b>523</b>
Home Help	18	15	18	18	+0	+0.5%	+3	+23.0%	+0	43
Health Care Assistants	254	466	413	413	+159	+62.8%	-53	-11.4%	-0	477
Care, other	723	827	803	806	+84	+11.6%	-21	-2.5%	+3	971
<b>Patient &amp; Client Care</b>	<b>995</b>	<b>1,308</b>	<b>1,234</b>	<b>1,238</b>	<b>+243</b>	<b>+24.4%</b>	<b>-70</b>	<b>-5.4%</b>	<b>+3</b>	<b>1,491</b>

## WTE Change by Staff Category

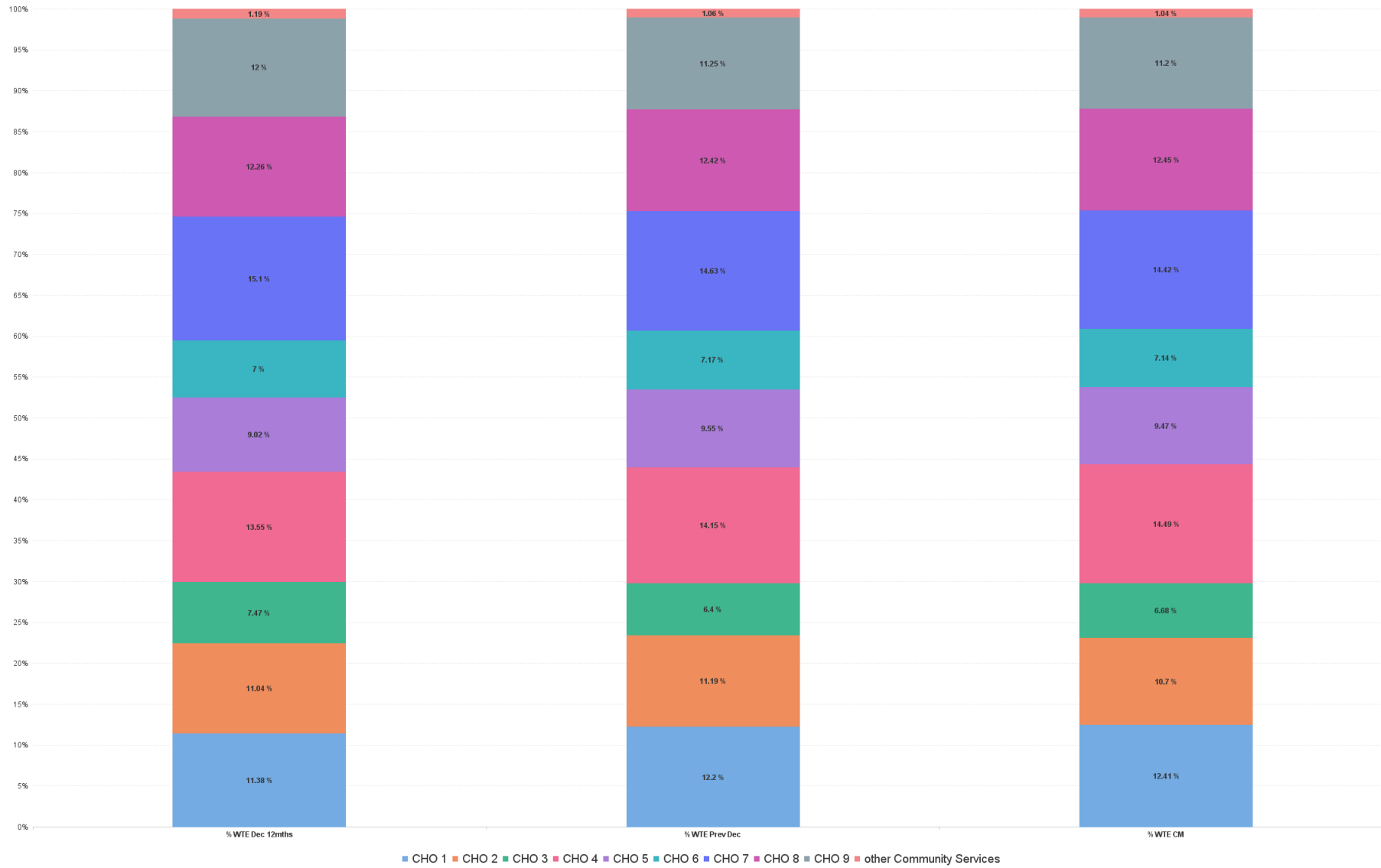


## Primary Care Report by CHO: JUN 2023

JUN 2023	WTE DEC 2019	WTE DEC 2022	WTE MAY 2023	WTE JUN 2023	WTE change since DEC 2019	% WTE change since Dec 2019	WTE change since DEC 2022	% WTE change since Dec 2022	WTE change since MAY 2023	No. JUN 2023
<b>Overall</b>	<b>10,606</b>	<b>12,064</b>	<b>12,249</b>	<b>12,305</b>	<b>+1,699</b>	<b>+16.0%</b>	<b>+240</b>	<b>+2.0%</b>	<b>+56</b>	<b>14,556</b>
CHO 1	1,182	1,472	1,519	1,528	+346	+29.2%	+56	+3.8%	+9	1,786
CHO 2	1,134	1,351	1,326	1,316	+183	+16.1%	-34	-2.5%	-9	1,506
CHO 3	764	772	824	822	+58	+7.6%	+50	+6.5%	-2	975
CHO 4	1,346	1,707	1,777	1,783	+437	+32.5%	+76	+4.5%	+6	2,221
CHO 5	958	1,152	1,169	1,165	+207	+21.6%	+13	+1.2%	-4	1,389
CHO 6	765	864	863	878	+114	+14.9%	+14	+1.6%	+15	1,106
CHO 7	1,702	1,765	1,747	1,774	+72	+4.2%	+9	+0.5%	+27	2,048
CHO 8	1,387	1,498	1,516	1,532	+146	+10.5%	+34	+2.3%	+16	1,804
CHO 9	1,247	1,357	1,378	1,379	+132	+10.5%	+22	+1.6%	+0	1,580
other Community Services	122	127	130	128	+6	+4.6%	+0	+0.4%	-2	141



% Total by CHO



## Primary Care Employment Report by HSE/S38: JUN 2023

JUN 2023	WTE DEC 2019	WTE DEC 2022	WTE MAY 2023	WTE JUN 2023	WTE change since DEC 2019	% WTE change since Dec 2019	WTE change since DEC 2022	% WTE change since Dec 2022	WTE change since MAY 2023	No. JUN 2023
<b>Overall</b>	<b>10,606</b>	<b>12,064</b>	<b>12,249</b>	<b>12,305</b>	<b>+1,699</b>	<b>0.16</b>	<b>+240</b>	<b>0.02</b>	<b>+56</b>	<b>14,556</b>
Health Service Executive	9,930	11,284	11,503	11,537	+1,607	0.16	+253	0.02	+35	13,544
Section 38 Voluntary Agencies	676	780	746	767	+91	0.13	-13	-0.02	+21	1,012



## Primary Care Employment Report by HSE: JUN 2023

JUN 2023	WTE DEC 2019	WTE DEC 2022	WTE MAY 2023	WTE JUN 2023	WTE change since DEC 2019	% WTE change since Dec 2019	WTE change since DEC 2022	% WTE change since Dec 2022	WTE change since MAY 2023	No. JUN 2023
<b>Total HSE</b>	<b>9,930</b>	<b>11,284</b>	<b>11,503</b>	<b>11,537</b>	<b>+1,607</b>	<b>+16.2%</b>	<b>+253</b>	<b>+2.2%</b>	<b>+35</b>	<b>13,544</b>
Consultants	32	34	35	36	+4	+11.0%	+2	+6.9%	+1	43
Registrars	385	422	430	433	+49	+12.6%	+11	+2.7%	+3	446
SHO/ Interns	19	22	22	21	+3	+15.1%	-0	-1.5%	-0	23
Medical/ Dental, other	505	490	490	488	-18	-3.5%	-2	-0.4%	-2	663
<b>Medical &amp; Dental</b>	<b>941</b>	<b>967</b>	<b>977</b>	<b>978</b>	<b>+37</b>	<b>+4.0%</b>	<b>+11</b>	<b>+1.2%</b>	<b>+1</b>	<b>1,175</b>
Nurse/ Midwife Manager	309	421	438	435	+125	+40.5%	+14	+3.3%	-3	477
Nurse/ Midwife Specialist & AN/MP	114	235	291	297	+183	+160.7%	+63	+26.7%	+6	329
Staff Nurse/ Staff Midwife	752	929	958	1,010	+258	+34.3%	+82	+8.8%	+53	1,308
Public Health Nurse	1,513	1,477	1,437	1,430	-84	-5.5%	-47	-3.2%	-8	1,721
Post-registration Nurse/ Midwife Student	96	96	96	50	+45	-47.8%	-59	-47.8%	-46	50
Nursing/ Midwifery Student	96	96	96	50	-46	-47.8%	-46	-47.8%	-46	50
Nursing/ Midwifery other	2	3	3	3	+1	+65.0%	+0	+1.0%	+0	3
<b>Nursing &amp; Midwifery</b>	<b>2,786</b>	<b>3,160</b>	<b>3,223</b>	<b>3,225</b>	<b>+439</b>	<b>+15.7%</b>	<b>+65</b>	<b>+2.1%</b>	<b>+2</b>	<b>3,888</b>
Therapy Professions	1,696	2,124	2,220	2,213	+517	+30.5%	+89	+4.2%	-7	2,568
Health Science/ Diagnostics	78	95	95	96	+18	+22.7%	+1	+0.7%	+1	104
Social Care	35	39	42	42	+6	+17.4%	+3	+8.1%	+0	44
Social Workers	128	181	189	190	+61	+47.7%	+8	+4.5%	+0	207
Psychologists	302	291	304	307	+5	+1.5%	+16	+5.5%	+3	342
Pharmacy	48	60	66	67	+19	+40.2%	+7	+11.7%	+1	79
H&SC, Other	208	251	251	252	+44	+21.1%	+0	+0.0%	+0	297
<b>Health &amp; Social Care Professionals</b>	<b>2,496</b>	<b>3,041</b>	<b>3,168</b>	<b>3,166</b>	<b>+670</b>	<b>+26.8%</b>	<b>+124</b>	<b>+4.1%</b>	<b>-2</b>	<b>3,641</b>
Management (VIII & above)	297	245	242	247	-50	-16.9%	+2	+0.8%	+5	256
Administrative/ Supervisory (V to VII)	590	728	746	757	+167	+28.4%	+30	+4.1%	+11	798
Clerical (III & IV)	1,683	1,773	1,833	1,854	+172	+10.2%	+81	+4.6%	+21	2,154
<b>Management &amp; Administrative</b>	<b>2,570</b>	<b>2,745</b>	<b>2,822</b>	<b>2,858</b>	<b>+289</b>	<b>+11.2%</b>	<b>+113</b>	<b>+4.1%</b>	<b>+36</b>	<b>3,208</b>
Support	251	230	235	233	-18	-7.1%	+4	+1.5%	-2	369
Maintenance/ Technical	50	25	23	23	-27	-53.9%	-2	-7.2%	+0	24
<b>General Support</b>	<b>301</b>	<b>255</b>	<b>258</b>	<b>256</b>	<b>-45</b>	<b>-14.9%</b>	<b>+2</b>	<b>+0.7%</b>	<b>-1</b>	<b>393</b>
Home Help	18	15	18	18	+0	+0.5%	+3	+23.0%	+0	43
Health Care Assistants	152	338	299	293	+142	+93.6%	-44	-13.1%	-5	333
Care, other	666	763	739	742	+76	+11.4%	-21	-2.8%	+4	863
<b>Patient &amp; Client Care</b>	<b>836</b>	<b>1,116</b>	<b>1,056</b>	<b>1,054</b>	<b>+218</b>	<b>+26.1%</b>	<b>-62</b>	<b>-5.6%</b>	<b>-2</b>	<b>1,239</b>

## Primary Care Employment Report by S38 Hospitals: JUN 2023

JUN 2023	WTE DEC 2019	WTE DEC 2022	WTE MAY 2023	WTE JUN 2023	WTE change since DEC 2019	% WTE change since Dec 2019	WTE change since DEC 2022	% WTE change since Dec 2022	WTE change since MAY 2023	No. JUN 2023
<b>Total S38 Vols</b>	<b>676</b>	<b>780</b>	<b>746</b>	<b>767</b>	<b>+91</b>	<b>+13.5%</b>	<b>-13</b>	<b>-1.6%</b>	<b>+21</b>	<b>1,012</b>
Consultants	11	17	18	18	+7	+57.9%	+1	+8.4%	+0	22
Registrars	11	11	13	13	+2	+19.2%	+2	+14.4%	+0	15
SHO/ Interns	18	17	15	15	-3	-14.9%	-2	-13.6%	+0	21
Medical/ Dental, other	14	21	20	21	+7	+46.3%	-0	-1.8%	+1	56
<b>Medical &amp; Dental</b>	<b>54</b>	<b>67</b>	<b>65</b>	<b>67</b>	<b>+13</b>	<b>+23.3%</b>	<b>+0</b>	<b>+0.4%</b>	<b>+2</b>	<b>114</b>
Nurse/ Midwife Manager	49	56	51	51	+3	+5.1%	-5	-8.3%	+1	56
Nurse/ Midwife Specialist & AN/MP	29	43	43	44	+16	+54.2%	+1	+2.2%	+2	56
Staff Nurse/ Staff Midwife	110	128	125	131	+21	+19.5%	+3	+2.7%	+7	154
Nursing/ Midwifery other	2	2	2	2	+0	+0.0%	+0	+0.0%	+0	2
<b>Nursing &amp; Midwifery</b>	<b>190</b>	<b>229</b>	<b>220</b>	<b>229</b>	<b>+40</b>	<b>+20.9%</b>	<b>-0</b>	<b>-0.1%</b>	<b>+9</b>	<b>268</b>
Therapy Professions	37	38	34	34	-3	-8.2%	-4	-10.2%	+0	41
Health Science/ Diagnostics	4	4	4	4	+0	+1.1%	-0	-1.1%	+0	6
Social Workers	11	14	13	14	+3	+31.1%	+0	+2.6%	+1	17
Psychologists	1	1	1	1	+0	+66.7%	+0	+0.0%	+0	1
Pharmacy	10	8	8	8	-2	-16.1%	+0	+3.9%	+0	9
H&SC, Other	2	3	3	3	+2	+117.3%	+0	+0.0%	+0	6
<b>Health &amp; Social Care Professionals</b>	<b>64</b>	<b>68</b>	<b>63</b>	<b>64</b>	<b>+1</b>	<b>+1.5%</b>	<b>-3</b>	<b>-4.8%</b>	<b>+2</b>	<b>80</b>
Management (VIII & above)	9	9	9	11	+2	+23.5%	+2	+23.5%	+1	15
Administrative/ Supervisory (V to VII)	34	35	36	36	+3	+8.2%	+2	+4.5%	+0	50
Clerical (III & IV)	64	73	70	70	+6	+9.3%	-4	-5.2%	+0	103
<b>Management &amp; Administrative</b>	<b>106</b>	<b>117</b>	<b>115</b>	<b>116</b>	<b>+11</b>	<b>+10.1%</b>	<b>-0</b>	<b>-0.2%</b>	<b>+1</b>	<b>168</b>
Support	95	97	95	97	+2	+2.4%	-0	-0.1%	+2	117
Maintenance/ Technical	9	11	9	9	+0	+3.6%	-1	-11.9%	+0	13
<b>General Support</b>	<b>104</b>	<b>108</b>	<b>105</b>	<b>106</b>	<b>+3</b>	<b>+2.5%</b>	<b>-1</b>	<b>-1.2%</b>	<b>+2</b>	<b>130</b>
Health Care Assistants	102	128	114	120	+17	+17.1%	-9	-6.7%	+5	144
Care, other	57	63	64	64	+7	+12.8%	+1	+1.0%	-0	108
<b>Patient &amp; Client Care</b>	<b>159</b>	<b>192</b>	<b>179</b>	<b>184</b>	<b>+25</b>	<b>+15.5%</b>	<b>-8</b>	<b>-4.2%</b>	<b>+5</b>	<b>252</b>



## Primary Care Employment Report by Staff Group: JUN 2023

### CHO 1

JUN 2023	WTE DEC 2019	WTE DEC 2022	WTE MAY 2023	WTE JUN 2023	WTE change since DEC 2019	% WTE change since Dec 2019	WTE change since DEC 2022	% WTE change since Dec 2022	WTE change since MAY 2023	No. JUN 2023
<b>Overall</b>	<b>1,182</b>	<b>1,472</b>	<b>1,519</b>	<b>1,528</b>	<b>+346</b>	<b>+29.2%</b>	<b>+56</b>	<b>+3.8%</b>	<b>+9</b>	<b>1,786</b>
Consultants	3	5	5	5	+2	+70.7%	+0	+1.2%	+0	6
Registrars	41	42	41	40	-0	-1.0%	-2	-3.8%	-0	42
SHO/ Interns	1	1	1	1	+0	+0.0%	+0	+1.0%	+0	1
Medical/ Dental, other	47	42	42	43	-4	-9.3%	+1	+1.5%	+1	55
<b>Medical &amp; Dental</b>	<b>92</b>	<b>90</b>	<b>88</b>	<b>90</b>	<b>-3</b>	<b>-2.9%</b>	<b>-1</b>	<b>-1.0%</b>	<b>+1</b>	<b>104</b>
Nurse/ Midwife Manager	36	51	57	56	+20	+53.8%	+5	+9.6%	-1	62
Nurse/ Midwife Specialist & AN/MP	21	49	60	62	+41	+196.9%	+13	+26.3%	+1	65
Staff Nurse/ Staff Midwife	85	116	135	143	+58	+67.3%	+26	+22.7%	+8	186
Public Health Nurse	156	151	146	145	-11	-6.8%	-5	-3.5%	-1	166
Post-registration Nurse/ Midwife Student	7	10	10	9	+2	+28.9%	-1	-6.1%	-1	9
Nursing/ Midwifery Student	7	10	10	9	+2	+28.9%	-1	-6.1%	-1	9
Nursing/ Midwifery other	1	1	1	1	+0	+0.0%	+0	+0.0%	+0	1
<b>Nursing &amp; Midwifery</b>	<b>306</b>	<b>377</b>	<b>409</b>	<b>416</b>	<b>+109</b>	<b>+35.7%</b>	<b>+38</b>	<b>+10.1%</b>	<b>+7</b>	<b>489</b>
Therapy Professions	227	279	289	287	+60	+26.3%	+8	+2.9%	-2	330
Health Science/ Diagnostics	5	9	10	10	+5	+85.8%	+0	+5.2%	-0	11
Social Workers	13	25	28	29	+17	+131.3%	+4	+16.1%	+2	32
Psychologists	35	28	26	26	-8	-23.9%	-1	-4.4%	-0	30
Pharmacy	1	1	2	2	+1	+138.6%	+1	+128.8%	-0	2
H&SC, Other	7	20	18	18	+11	+161.4%	-2	-9.3%	+0	31
<b>Health &amp; Social Care Professionals</b>	<b>287</b>	<b>362</b>	<b>373</b>	<b>372</b>	<b>+85</b>	<b>+29.5%</b>	<b>+10</b>	<b>+2.9%</b>	<b>-1</b>	<b>436</b>
Management (VIII & above)	32	30	32	33	+1	+4.1%	+4	+12.7%	+1	34
Administrative/ Supervisory (V to VII)	64	94	105	111	+48	+75.0%	+17	+18.3%	+6	118
Clerical (III & IV)	236	293	296	294	+58	+24.7%	+1	+0.5%	-2	340
<b>Management &amp; Administrative</b>	<b>331</b>	<b>416</b>	<b>433</b>	<b>438</b>	<b>+107</b>	<b>+32.4%</b>	<b>+22</b>	<b>+5.4%</b>	<b>+6</b>	<b>492</b>
Support	72	84	80	80	+8	+10.7%	-4	-5.2%	-1	112
Maintenance/ Technical	6	9	8	8	+2	+30.9%	-1	-9.6%	+0	8
<b>General Support</b>	<b>78</b>	<b>93</b>	<b>88</b>	<b>87</b>	<b>+10</b>	<b>+12.3%</b>	<b>-5</b>	<b>-5.6%</b>	<b>-1</b>	<b>120</b>
Home Help		0	0	0	+0		+0	+29.6%	+0	1
Health Care Assistants	32	69	69	65	+33	+102.4%	-5	-6.8%	-4	75
Care, other	55	64	60	59	+4	+8.0%	-5	-7.2%	-0	69
<b>Patient &amp; Client Care</b>	<b>87</b>	<b>134</b>	<b>129</b>	<b>125</b>	<b>+38</b>	<b>+43.1%</b>	<b>-9</b>	<b>-6.9%</b>	<b>-4</b>	<b>145</b>



## CHO 2

JUN 2023	WTE DEC 2019	WTE DEC 2022	WTE MAY 2023	WTE JUN 2023	WTE change since DEC 2019	% WTE change since Dec 2019	WTE change since DEC 2022	% WTE change since Dec 2022	WTE change since MAY 2023	No. JUN 2023
<b>Overall</b>	<b>1,134</b>	<b>1,351</b>	<b>1,326</b>	<b>1,316</b>	<b>+183</b>	<b>+16.1%</b>	<b>-34</b>	<b>-2.5%</b>	<b>-9</b>	<b>1,506</b>
Consultants	1	3	4	4	+3	+228.8%	+1	+37.0%	+0	5
Registrars	40	53	49	50	+10	+23.8%	-3	-5.9%	+1	50
SHO/ Interns	1	3	5	5	+4	+399.0%	+2	+67.4%	+0	5
Medical/ Dental, other	46	46	49	48	+3	+5.7%	+3	+5.9%	-1	60
<b>Medical &amp; Dental</b>	<b>88</b>	<b>104</b>	<b>106</b>	<b>107</b>	<b>+19</b>	<b>+21.6%</b>	<b>+3</b>	<b>+2.6%</b>	<b>+1</b>	<b>120</b>
Nurse/ Midwife Manager	27	34	33	33	+5	+20.1%	-1	-2.4%	-0	35
Nurse/ Midwife Specialist & AN/MP	17	38	42	45	+28	+160.3%	+7	+18.3%	+3	49
Staff Nurse/ Staff Midwife	74	92	95	102	+28	+37.6%	+10	+10.4%	+7	126
Public Health Nurse	191	186	185	183	-7	-3.8%	-3	-1.5%	-1	213
<i>Post-registration Nurse/ Midwife Student</i>	<i>4</i>	<i>14</i>	<i>16</i>	<i>6</i>	<i>+2</i>	<i>+50.0%</i>	<i>-8</i>	<i>-58.4%</i>	<i>-10</i>	<i>6</i>
Nursing/ Midwifery Student	4	14	16	6	+2	+50.0%	-8	-58.4%	-10	6
<b>Nursing &amp; Midwifery</b>	<b>313</b>	<b>365</b>	<b>371</b>	<b>369</b>	<b>+56</b>	<b>+17.8%</b>	<b>+5</b>	<b>+1.2%</b>	<b>-2</b>	<b>429</b>
Therapy Professions	226	291	293	281	+55	+24.2%	-10	-3.5%	-12	319
Health Science/ Diagnostics	6	9	9	10	+4	+69.6%	+1	+11.0%	+1	10
Social Care	8	7	6	6	-3	-33.1%	-1	-14.2%	+0	6
Social Workers	7	19	17	16	+10	+138.2%	-2	-12.6%	-0	17
Psychologists	24	32	30	28	+4	+15.9%	-4	-11.9%	-2	32
Pharmacy	1	1	1	1	+0	+0.0%	+0	+0.0%	+0	1
H&SC, Other	40	63	53	53	+13	+31.4%	-10	-16.0%	-0	60
<b>Health &amp; Social Care Professionals</b>	<b>312</b>	<b>421</b>	<b>409</b>	<b>394</b>	<b>+82</b>	<b>+26.2%</b>	<b>-26</b>	<b>-6.2%</b>	<b>-14</b>	<b>445</b>
Management (VIII & above)	33	29	24	24	-9	-27.2%	-5	-16.6%	-0	25
Administrative/ Supervisory (V to VII)	62	85	83	83	+21	+33.7%	-2	-2.1%	-0	88
Clerical (III & IV)	238	219	210	219	-19	-8.1%	-1	-0.2%	+9	252
<b>Management &amp; Administrative</b>	<b>333</b>	<b>332</b>	<b>317</b>	<b>325</b>	<b>-7</b>	<b>-2.2%</b>	<b>-7</b>	<b>-2.1%</b>	<b>+8</b>	<b>365</b>
Support	21	17	19	19	-2	-7.9%	+2	+11.0%	-0	38
Maintenance/ Technical	9	11	10	10	+1	+11.1%	-1	-9.0%	+0	10
<b>General Support</b>	<b>30</b>	<b>28</b>	<b>29</b>	<b>29</b>	<b>-1</b>	<b>-2.2%</b>	<b>+1</b>	<b>+3.2%</b>	<b>-0</b>	<b>48</b>
Health Care Assistants	14	33	33	30	+16	+109.7%	-3	-8.7%	-3	32
Care, other	43	68	60	61	+18	+42.4%	-6	-9.5%	+1	67
<b>Patient &amp; Client Care</b>	<b>57</b>	<b>100</b>	<b>93</b>	<b>91</b>	<b>+34</b>	<b>+59.2%</b>	<b>-9</b>	<b>-9.3%</b>	<b>-2</b>	<b>99</b>

## CHO 3

JUN 2023	WTE DEC 2019	WTE DEC 2022	WTE MAY 2023	WTE JUN 2023	WTE change since DEC 2019	% WTE change since Dec 2019	WTE change since DEC 2022	% WTE change since Dec 2022	WTE change since MAY 2023	No. JUN 2023
<b>Overall</b>	<b>764</b>	<b>772</b>	<b>824</b>	<b>822</b>	<b>+58</b>	<b>+7.6%</b>	<b>+50</b>	<b>+6.5%</b>	<b>-2</b>	<b>975</b>
Consultants	2	1	1	1	-1	-34.0%	+0	+0.0%	+0	2
Registrars	24	29	28	28	+4	+19.0%	-1	-4.1%	+1	29
SHO/ Interns	6				-6	-100.0%				
Medical/ Dental, other	52	45	47	47	-6	-10.6%	+1	+2.4%	-1	62
<b>Medical &amp; Dental</b>	<b>84</b>	<b>76</b>	<b>76</b>	<b>76</b>	<b>-8</b>	<b>-9.2%</b>	<b>-0</b>	<b>-0.2%</b>	<b>-0</b>	<b>93</b>
Nurse/ Midwife Manager	19	23	23	23	+5	+24.3%	+0	+0.9%	+0	26
Nurse/ Midwife Specialist & AN/MP	2	7	13	13	+11	+554.0%	+6	+89.6%	-0	14
Staff Nurse/ Staff Midwife	56	75	75	77	+21	+38.0%	+2	+2.3%	+3	99
Public Health Nurse	126	125	127	121	-5	-4.0%	-4	-2.8%	-6	149
<i>Post-registration Nurse/ Midwife Student</i>		6	5	4	+4		-2	-32.7%	-1	4
Nursing/ Midwifery Student		6	5	4	+4		-2	-32.7%	-1	4
<b>Nursing &amp; Midwifery</b>	<b>203</b>	<b>236</b>	<b>243</b>	<b>239</b>	<b>+36</b>	<b>+17.6%</b>	<b>+3</b>	<b>+1.1%</b>	<b>-4</b>	<b>292</b>
Therapy Professions	86	162	186	184	+98	+114.2%	+22	+13.9%	-2	211
Health Science/ Diagnostics	5	5	5	4	-0	-6.5%	-0	-1.6%	-0	5
Social Care	1				-1	-100.0%				
Social Workers	11	12	13	12	+2	+17.7%	-0	-0.6%	-1	14
Psychologists	15	14	19	18	+3	+18.4%	+4	+30.9%	-0	20
Pharmacy	1	1	2	2	+1	+100.0%	+1	+102.0%	+0	3
H&SC, Other	11	12	13	13	+2	+19.8%	+1	+7.5%	-0	15
<b>Health &amp; Social Care Professionals</b>	<b>129</b>	<b>205</b>	<b>237</b>	<b>234</b>	<b>+105</b>	<b>+80.9%</b>	<b>+29</b>	<b>+13.9%</b>	<b>-3</b>	<b>268</b>
Management (VIII & above)	23	10	10	9	-15	-62.3%	-1	-9.2%	-1	9
Administrative/ Supervisory (V to VII)	54	28	29	28	-27	-49.1%	-1	-2.3%	-1	30
Clerical (III & IV)	156	127	139	148	-8	-5.0%	+21	+16.8%	+10	171
<b>Management &amp; Administrative</b>	<b>234</b>	<b>165</b>	<b>177</b>	<b>185</b>	<b>-49</b>	<b>-21.0%</b>	<b>+20</b>	<b>+12.0%</b>	<b>+8</b>	<b>210</b>
Support	13	12	11	10	-3	-22.6%	-2	-16.3%	-1	25
Maintenance/ Technical	30				-30	-100.0%				
<b>General Support</b>	<b>43</b>	<b>12</b>	<b>11</b>	<b>10</b>	<b>-33</b>	<b>-76.2%</b>	<b>-2</b>	<b>-16.3%</b>	<b>-1</b>	<b>25</b>
Home Help	1				-1	-100.0%				
Health Care Assistants	21	26	29	28	+7	+32.9%	+2	+8.5%	-1	31
Care, other	49	51	50	50	+1	+2.3%	-1	-1.3%	-0	56
<b>Patient &amp; Client Care</b>	<b>71</b>	<b>77</b>	<b>80</b>	<b>78</b>	<b>+7</b>	<b>+10.3%</b>	<b>+2</b>	<b>+2.0%</b>	<b>-1</b>	<b>87</b>

## CHO 4

JUN 2023	WTE DEC 2019	WTE DEC 2022	WTE MAY 2023	WTE JUN 2023	WTE change since DEC 2019	% WTE change since Dec 2019	WTE change since DEC 2022	% WTE change since Dec 2022	WTE change since MAY 2023	No. JUN 2023
<b>Overall</b>	<b>1,346</b>	<b>1,707</b>	<b>1,777</b>	<b>1,783</b>	<b>+437</b>	<b>+32.5%</b>	<b>+76</b>	<b>+4.5%</b>	<b>+6</b>	<b>2,221</b>
Consultants	3	7	7	7	+4	+154.0%	-0	-2.5%	+0	10
Registrars	55	40	59	57	+2	+4.4%	+17	+44.1%	-1	60
SHO/ Interns	6	4	3	3	-3	-51.2%	-1	-25.0%	+0	3
Medical/ Dental, other	88	110	107	108	+20	+22.2%	-2	-2.1%	+1	182
<b>Medical &amp; Dental</b>	<b>152</b>	<b>160</b>	<b>175</b>	<b>174</b>	<b>+23</b>	<b>+15.1%</b>	<b>+14</b>	<b>+8.7%</b>	<b>-1</b>	<b>255</b>
Nurse/ Midwife Manager	56	72	71	68	+12	+21.5%	-4	-5.3%	-2	74
Nurse/ Midwife Specialist & AN/MP	4	14	29	31	+27	+645.5%	+17	+116.4%	+2	35
Staff Nurse/ Staff Midwife	119	177	189	189	+70	+58.3%	+12	+7.0%	+0	263
Public Health Nurse	211	210	207	204	-7	-3.3%	-6	-2.9%	-3	257
<i>Post-registration Nurse/ Midwife Student</i>	17	11	14	13	-4	-24.6%	+2	+18.7%	-1	13
Nursing/ Midwifery Student	17	11	14	13	-4	-24.6%	+2	+18.7%	-1	13
<b>Nursing &amp; Midwifery</b>	<b>408</b>	<b>484</b>	<b>510</b>	<b>505</b>	<b>+98</b>	<b>+23.9%</b>	<b>+21</b>	<b>+4.4%</b>	<b>-4</b>	<b>642</b>
Therapy Professions	222	327	345	345	+123	+55.4%	+18	+5.5%	+0	402
Health Science/ Diagnostics	11	13	11	11	+0	+2.8%	-2	-15.6%	+0	13
Social Care	8	7	7	6	-1	-18.3%	-0	-3.0%	-1	7
Social Workers	24	37	41	42	+18	+75.0%	+6	+15.9%	+1	46
Psychologists	20	23	28	30	+10	+46.8%	+7	+28.0%	+2	34
Pharmacy	3	2	5	5	+2	+53.7%	+3	+163.0%	-0	5
H&SC, Other	41	39	45	45	+4	+10.2%	+6	+16.4%	+0	53
<b>Health &amp; Social Care Professionals</b>	<b>329</b>	<b>447</b>	<b>481</b>	<b>484</b>	<b>+155</b>	<b>+47.2%</b>	<b>+37</b>	<b>+8.3%</b>	<b>+4</b>	<b>560</b>
Management (VIII & above)	37	44	44	45	+8	+21.5%	+1	+1.4%	+1	47
Administrative/ Supervisory (V to VII)	68	114	111	115	+46	+68.3%	+1	+0.9%	+4	125
Clerical (III & IV)	205	255	268	268	+63	+30.6%	+13	+5.1%	-0	331
<b>Management &amp; Administrative</b>	<b>310</b>	<b>412</b>	<b>423</b>	<b>427</b>	<b>+117</b>	<b>+37.8%</b>	<b>+15</b>	<b>+3.5%</b>	<b>+4</b>	<b>503</b>
Support	16	16	20	20	+5	+29.5%	+4	+22.9%	+1	34
Maintenance/ Technical		1	1	1	+1		+0	+0.0%	+0	1
<b>General Support</b>	<b>16</b>	<b>17</b>	<b>21</b>	<b>21</b>	<b>+6</b>	<b>+35.9%</b>	<b>+4</b>	<b>+21.6%</b>	<b>+1</b>	<b>35</b>
Home Help	10	8	12	12	+2	+20.1%	+4	+46.6%	+0	26
Health Care Assistants	17	47	31	32	+15	+86.8%	-14	-30.8%	+1	37
Care, other	105	130	125	126	+21	+20.4%	-4	-3.1%	+1	163
<b>Patient &amp; Client Care</b>	<b>132</b>	<b>185</b>	<b>168</b>	<b>171</b>	<b>+38</b>	<b>+29.1%</b>	<b>-15</b>	<b>-7.9%</b>	<b>+3</b>	<b>226</b>

# CHO 5

JUN 2023	WTE DEC 2019	WTE DEC 2022	WTE MAY 2023	WTE JUN 2023	WTE change since DEC 2019	% WTE change since Dec 2019	WTE change since DEC 2022	% WTE change since Dec 2022	WTE change since MAY 2023	No. JUN 2023
<b>Overall</b>	<b>958</b>	<b>1,152</b>	<b>1,169</b>	<b>1,165</b>	<b>+207</b>	<b>+21.6%</b>	<b>+13</b>	<b>+1.2%</b>	<b>-4</b>	<b>1,389</b>
Consultants	3	2	2	2	-1	-40.0%	-0	-10.0%	+0	2
Registrars	19	30	33	32	+13	+70.6%	+3	+9.6%	-0	33
SHO/ Interns	5				-5	-100.0%				
Medical/ Dental, other	54	59	60	60	+6	+11.0%	+2	+2.6%	+1	83
<b>Medical &amp; Dental</b>	<b>81</b>	<b>90</b>	<b>94</b>	<b>94</b>	<b>+13</b>	<b>+16.2%</b>	<b>+4</b>	<b>+4.6%</b>	<b>+0</b>	<b>118</b>
Nurse/ Midwife Manager	25	47	51	49	+23	+92.5%	+1	+2.9%	-2	55
Nurse/ Midwife Specialist & AN/MP	6	25	32	32	+27	+468.7%	+7	+27.4%	+0	37
Staff Nurse/ Staff Midwife	67	117	112	110	+43	+64.7%	-7	-5.9%	-2	144
Public Health Nurse	166	154	153	152	-15	-8.8%	-2	-1.5%	-1	185
<i>Post-registration Nurse/ Midwife Student</i>	5	4	4	4	-1	-20.8%	+0	+0.8%	-0	4
Nursing/ Midwifery Student	5	4	4	4	-1	-20.8%	+0	+0.8%	-0	4
Nursing/ Midwifery other	1				-1	-100.0%				
<b>Nursing &amp; Midwifery</b>	<b>270</b>	<b>348</b>	<b>352</b>	<b>347</b>	<b>+77</b>	<b>+28.5%</b>	<b>-1</b>	<b>-0.3%</b>	<b>-5</b>	<b>425</b>
Therapy Professions	185	243	263	266	+80	+43.2%	+23	+9.3%	+3	299
Health Science/ Diagnostics	4	7	11	12	+8	+205.3%	+4	+55.1%	+0	12
Social Care	5	8	9	9	+3	+62.2%	+0	+1.0%	+0	9
Social Workers	8	5	5	5	-3	-34.3%	+0	+0.9%	-0	6
Psychologists	46	34	38	37	-9	-19.4%	+3	+7.8%	-1	40
Pharmacy	1		1	1	+0	+0.0%	+1		+0	1
H&SC, Other	18	19	20	19	+1	+5.8%	-0	-0.4%	-1	21
<b>Health &amp; Social Care Professionals</b>	<b>268</b>	<b>318</b>	<b>346</b>	<b>348</b>	<b>+81</b>	<b>+30.1%</b>	<b>+31</b>	<b>+9.6%</b>	<b>+2</b>	<b>388</b>
Management (VIII & above)	25	18	16	16	-10	-38.4%	-3	-14.6%	+0	16
Administrative/ Supervisory (V to VII)	56	67	73	73	+17	+30.1%	+6	+9.6%	+0	75
Clerical (III & IV)	164	169	162	163	-1	-0.5%	-6	-3.4%	+1	189
<b>Management &amp; Administrative</b>	<b>245</b>	<b>254</b>	<b>251</b>	<b>252</b>	<b>+6</b>	<b>+2.6%</b>	<b>-2</b>	<b>-0.8%</b>	<b>+1</b>	<b>280</b>
Support	25	21	22	22	-3	-13.2%	+1	+3.6%	-0	50
<b>General Support</b>	<b>25</b>	<b>21</b>	<b>22</b>	<b>22</b>	<b>-3</b>	<b>-13.2%</b>	<b>+1</b>	<b>+3.6%</b>	<b>-0</b>	<b>50</b>
Home Help	7	6	6	6	-1	-17.6%	-1	-8.1%	+0	16
Health Care Assistants	8	50	38	38	+30	+369.4%	-13	-25.2%	-1	39
Care, other	54	64	60	59	+5	+8.9%	-6	-9.1%	-2	73
<b>Patient &amp; Client Care</b>	<b>69</b>	<b>121</b>	<b>104</b>	<b>102</b>	<b>+33</b>	<b>+48.0%</b>	<b>-19</b>	<b>-15.7%</b>	<b>-2</b>	<b>128</b>

# CHO 6

JUN 2023	WTE DEC 2019	WTE DEC 2022	WTE MAY 2023	WTE JUN 2023	WTE change since DEC 2019	% WTE change since Dec 2019	WTE change since DEC 2022	% WTE change since Dec 2022	WTE change since MAY 2023	No. JUN 2023
<b>Overall</b>	<b>765</b>	<b>864</b>	<b>863</b>	<b>878</b>	<b>+114</b>	<b>+14.9%</b>	<b>+14</b>	<b>+1.6%</b>	<b>+15</b>	<b>1,106</b>
Consultants	9	10	11	11	+2	+16.7%	+1	+9.0%	-0	13
Registrars	26	32	31	33	+7	+26.2%	+1	+3.5%	+2	34
SHO/ Interns	7	7	7	7	+1	+7.7%	-0	-1.8%	+0	13
Medical/ Dental, other	46	45	45	44	-2	-4.6%	-1	-1.3%	-1	64
<b>Medical &amp; Dental</b>	<b>88</b>	<b>93</b>	<b>93</b>	<b>95</b>	<b>+7</b>	<b>+7.6%</b>	<b>+1</b>	<b>+1.4%</b>	<b>+1</b>	<b>124</b>
Nurse/ Midwife Manager	22	31	32	32	+10	+45.2%	+1	+4.1%	+0	35
Nurse/ Midwife Specialist & AN/MP	6	10	13	14	+8	+128.9%	+4	+39.0%	+1	17
Staff Nurse/ Staff Midwife	52	61	62	66	+14	+27.9%	+5	+8.4%	+4	89
Public Health Nurse	117	99	94	95	-22	-18.5%	-4	-3.8%	+1	115
<i>Post-registration Nurse/ Midwife Student</i>	<i>14</i>	<i>7</i>	<i>6</i>	<i>5</i>	<i>-9</i>	<i>-63.0%</i>	<i>-2</i>	<i>-31.6%</i>	<i>-1</i>	<i>5</i>
Nursing/ Midwifery Student	14	7	6	5	-9	-63.0%	-2	-31.6%	-1	5
<b>Nursing &amp; Midwifery</b>	<b>210</b>	<b>208</b>	<b>207</b>	<b>212</b>	<b>+2</b>	<b>+1.0%</b>	<b>+4</b>	<b>+2.0%</b>	<b>+5</b>	<b>261</b>
Therapy Professions	104	143	146	148	+44	+42.9%	+5	+3.6%	+2	180
Health Science/ Diagnostics	18	17	16	15	-3	-15.5%	-2	-10.0%	-0	19
Social Care	4	4	4	4	+0	+5.9%	+0	+1.8%	+0	4
Social Workers	5	10	9	9	+4	+93.2%	-1	-11.5%	+0	10
Psychologists	19	16	17	20	+1	+5.4%	+4	+22.1%	+3	24
Pharmacy	1	3	3	3	+2	+292.5%	+1	+25.1%	+0	4
H&SC, Other	4	6	7	8	+4	+99.2%	+1	+23.6%	+1	9
<b>Health &amp; Social Care Professionals</b>	<b>154</b>	<b>199</b>	<b>202</b>	<b>207</b>	<b>+53</b>	<b>+34.8%</b>	<b>+8</b>	<b>+4.0%</b>	<b>+5</b>	<b>250</b>
Management (VIII & above)	30	29	24	24	-6	-19.1%	-4	-15.2%	+0	29
Administrative/ Supervisory (V to VII)	68	78	76	76	+9	+12.6%	-1	-1.6%	+0	90
Clerical (III & IV)	112	136	134	135	+24	+21.1%	-1	-0.5%	+1	162
<b>Management &amp; Administrative</b>	<b>210</b>	<b>242</b>	<b>234</b>	<b>236</b>	<b>+26</b>	<b>+12.6%</b>	<b>-6</b>	<b>-2.6%</b>	<b>+2</b>	<b>281</b>
Support	24	23	25	25	+1	+3.4%	+2	+9.0%	-0	38
Maintenance/ Technical	2	2	2	2	+0	+0.0%	+0	+0.0%	+0	4
<b>General Support</b>	<b>26</b>	<b>25</b>	<b>27</b>	<b>27</b>	<b>+1</b>	<b>+3.1%</b>	<b>+2</b>	<b>+8.3%</b>	<b>-0</b>	<b>42</b>
Health Care Assistants	6	16	17	19	+13	+203.7%	+3	+20.9%	+2	23
Care, other	71	81	83	83	+12	+16.5%	+1	+1.7%	+0	125
<b>Patient &amp; Client Care</b>	<b>77</b>	<b>97</b>	<b>100</b>	<b>102</b>	<b>+25</b>	<b>+31.8%</b>	<b>+5</b>	<b>+4.9%</b>	<b>+2</b>	<b>148</b>

JUN 2023	WTE DEC 2019	WTE DEC 2022	WTE MAY 2023	WTE JUN 2023	WTE change since DEC 2019	% WTE change since Dec 2019	WTE change since DEC 2022	% WTE change since Dec 2022	WTE change since MAY 2023	No. JUN 2023
<b>Overall</b>	<b>1,702</b>	<b>1,765</b>	<b>1,747</b>	<b>1,774</b>	<b>+72</b>	<b>+4.2%</b>	<b>+9</b>	<b>+0.5%</b>	<b>+27</b>	<b>2,048</b>
Consultants	11	11	11	12	+0	+0.4%	+1	+6.3%	+0	13
Registrars	46	45	46	47	+2	+3.7%	+3	+6.1%	+1	50
SHO/ Interns	6	12	11	11	+5	+83.8%	-1	-8.5%	+0	11
Medical/ Dental, other	75	61	60	60	-16	-21.1%	-2	-2.6%	-1	89
<b>Medical &amp; Dental</b>	<b>139</b>	<b>129</b>	<b>129</b>	<b>129</b>	<b>-9</b>	<b>-6.6%</b>	<b>+1</b>	<b>+0.6%</b>	<b>+1</b>	<b>163</b>
Nurse/ Midwife Manager	80	100	97	99	+18	+22.7%	-2	-1.6%	+2	106
Nurse/ Midwife Specialist & AN/MP	46	65	65	66	+20	+42.8%	+1	+1.4%	+1	76
Staff Nurse/ Staff Midwife	205	198	195	215	+9	+4.6%	+17	+8.4%	+20	255
Public Health Nurse	175	164	159	162	-14	-7.8%	-2	-1.5%	+3	199
<i>Post-registration Nurse/ Midwife Student</i>	<i>21</i>	<i>25</i>	<i>23</i>	<i>8</i>	<i>-13</i>	<i>-61.9%</i>	<i>-17</i>	<i>-67.7%</i>	<i>-15</i>	<i>8</i>
Nursing/ Midwifery Student	21	25	23	8	-13	-61.9%	-17	-67.7%	-15	8
Nursing/ Midwifery other	2	2	2	2	+0	+0.0%	+0	+0.0%	+0	2
<b>Nursing &amp; Midwifery</b>	<b>530</b>	<b>554</b>	<b>540</b>	<b>550</b>	<b>+21</b>	<b>+3.9%</b>	<b>-3</b>	<b>-0.6%</b>	<b>+10</b>	<b>646</b>
Therapy Professions	267	267	261	260	-6	-2.4%	-7	-2.6%	-1	299
Health Science/ Diagnostics	0	8	8	8	+8	+3,754.5%	+1	+8.4%	+1	10
Social Care	3	4	4	4	+1	+15.5%	-0	-2.1%	-0	4
Social Workers	26	30	29	30	+4	+15.1%	-0	-0.4%	+1	34
Psychologists	22	26	28	28	+7	+31.0%	+2	+9.2%	+0	33
Pharmacy	32	31	30	30	-1	-4.5%	-0	-0.7%	+0	34
H&SC, Other	24	24	22	22	-2	-8.4%	-2	-9.2%	-0	26
<b>Health &amp; Social Care Professionals</b>	<b>373</b>	<b>390</b>	<b>383</b>	<b>383</b>	<b>+10</b>	<b>+2.6%</b>	<b>-6</b>	<b>-1.7%</b>	<b>+1</b>	<b>440</b>
Management (VIII & above)	33	23	27	28	-5	-15.5%	+5	+20.8%	+1	29
Administrative/ Supervisory (V to VII)	76	84	86	87	+11	+14.6%	+4	+4.2%	+1	91
Clerical (III & IV)	178	180	187	190	+12	+7.0%	+10	+5.5%	+3	216
<b>Management &amp; Administrative</b>	<b>287</b>	<b>287</b>	<b>300</b>	<b>305</b>	<b>+18</b>	<b>+6.4%</b>	<b>+18</b>	<b>+6.4%</b>	<b>+5</b>	<b>336</b>
Support	116	106	101	103	-13	-11.0%	-3	-2.7%	+2	118
Maintenance/ Technical	9	10	9	9	-0	-0.6%	-1	-12.6%	+0	11
<b>General Support</b>	<b>125</b>	<b>116</b>	<b>110</b>	<b>112</b>	<b>-13</b>	<b>-10.3%</b>	<b>-4</b>	<b>-3.5%</b>	<b>+2</b>	<b>129</b>
Health Care Assistants	121	155	147	155	+33	+27.6%	-0	-0.2%	+7	182
Care, other	128	136	138	139	+12	+9.3%	+4	+2.7%	+1	152
<b>Patient &amp; Client Care</b>	<b>249</b>	<b>291</b>	<b>286</b>	<b>294</b>	<b>+45</b>	<b>+18.2%</b>	<b>+3</b>	<b>+1.2%</b>	<b>+8</b>	<b>334</b>

JUN 2023	WTE DEC 2019	WTE DEC 2022	WTE MAY 2023	WTE JUN 2023	WTE change since DEC 2019	% WTE change since Dec 2019	WTE change since DEC 2022	% WTE change since Dec 2022	WTE change since MAY 2023	No. JUN 2023
<b>Overall</b>	<b>1,387</b>	<b>1,498</b>	<b>1,516</b>	<b>1,532</b>	<b>+146</b>	<b>+10.5%</b>	<b>+34</b>	<b>+2.3%</b>	<b>+16</b>	<b>1,804</b>
Consultants	6	6	7	7	+1	+11.7%	+1	+10.7%	+0	7
Registrars	78	92	90	92	+14	+17.9%	-0	-0.1%	+3	94
SHO/ Interns	2				-2	-100.0%				
Medical/ Dental, other	61	53	49	49	-12	-19.2%	-4	-8.2%	-0	59
<b>Medical &amp; Dental</b>	<b>147</b>	<b>152</b>	<b>145</b>	<b>148</b>	<b>+1</b>	<b>+0.7%</b>	<b>-4</b>	<b>-2.5%</b>	<b>+2</b>	<b>160</b>
Nurse/ Midwife Manager	51	60	60	61	+10	+19.7%	+1	+2.2%	+1	68
Nurse/ Midwife Specialist & AN/MP	35	47	50	52	+17	+49.0%	+4	+8.9%	+2	60
Staff Nurse/ Staff Midwife	98	110	108	109	+11	+11.0%	-1	-0.7%	+1	147
Public Health Nurse	196	217	201	205	+9	+4.5%	-12	-5.7%	+3	246
<i>Post-registration Nurse/ Midwife Student</i>	2				-2	-100.0%				
Nursing/ Midwifery Student	2				-2	-100.0%				
<b>Nursing &amp; Midwifery</b>	<b>382</b>	<b>434</b>	<b>420</b>	<b>426</b>	<b>+45</b>	<b>+11.7%</b>	<b>-8</b>	<b>-1.8%</b>	<b>+7</b>	<b>521</b>
Therapy Professions	221	222	245	248	+27	+12.3%	+26	+11.6%	+3	296
Health Science/ Diagnostics	5	10	9	9	+4	+78.6%	-1	-9.0%	+0	10
Social Care		1	5	6	+6		+5	+500.0%	+1	6
Social Workers	16	29	30	29	+14	+87.1%	+0	+1.3%	-0	33
Psychologists	56	46	44	43	-12	-21.9%	-2	-4.8%	-0	48
Pharmacy	4	7	6	6	+2	+65.8%	-1	-8.4%	+0	7
H&SC, Other	25	36	35	35	+10	+39.3%	-1	-3.9%	-1	39
<b>Health &amp; Social Care Professionals</b>	<b>326</b>	<b>351</b>	<b>374</b>	<b>377</b>	<b>+51</b>	<b>+15.6%</b>	<b>+26</b>	<b>+7.4%</b>	<b>+3</b>	<b>439</b>
Management (VIII & above)	45	36	37	38	-7	-14.8%	+2	+5.5%	+1	40
Administrative/ Supervisory (V to VII)	78	95	97	97	+19	+24.9%	+2	+2.2%	-1	102
Clerical (III & IV)	265	272	300	301	+36	+13.6%	+29	+10.7%	+1	359
<b>Management &amp; Administrative</b>	<b>387</b>	<b>403</b>	<b>434</b>	<b>436</b>	<b>+49</b>	<b>+12.6%</b>	<b>+33</b>	<b>+8.2%</b>	<b>+2</b>	<b>501</b>
Support	23	19	19	20	-3	-12.3%	+1	+2.6%	+1	34
Maintenance/ Technical	3	2	2	2	-1	-28.8%	+0	+0.5%	+0	2
<b>General Support</b>	<b>25</b>	<b>21</b>	<b>21</b>	<b>22</b>	<b>-4</b>	<b>-14.1%</b>	<b>+1</b>	<b>+2.4%</b>	<b>+1</b>	<b>36</b>
Home Help	0				-0	-100.0%				
Health Care Assistants	21	36	21	21	+1	+3.0%	-14	-40.4%	+0	29
Care, other	98	101	100	102	+4	+3.7%	+1	+0.7%	+2	118
<b>Patient &amp; Client Care</b>	<b>120</b>	<b>137</b>	<b>121</b>	<b>124</b>	<b>+4</b>	<b>+3.3%</b>	<b>-14</b>	<b>-10.0%</b>	<b>+3</b>	<b>147</b>

JUN 2023	WTE DEC 2019	WTE DEC 2022	WTE MAY 2023	WTE JUN 2023	WTE change since DEC 2019	% WTE change since Dec 2019	WTE change since DEC 2022	% WTE change since Dec 2022	WTE change since MAY 2023	No. JUN 2023
<b>Overall</b>	<b>1,247</b>	<b>1,357</b>	<b>1,378</b>	<b>1,379</b>	<b>+132</b>	<b>+10.5%</b>	<b>+22</b>	<b>+1.6%</b>	<b>+0</b>	<b>1,580</b>
Consultants	4	3	4	4	-0	-5.7%	+1	+20.5%	+0	5
Registrars	56	60	54	52	-3	-5.8%	-8	-13.1%	-2	55
SHO/ Interns	1	7	7	7	+6	+630.0%	+0	+5.3%	+0	8
Medical/ Dental, other	50	50	52	50	+1	+1.6%	+0	+0.8%	-1	65
<b>Medical &amp; Dental</b>	<b>111</b>	<b>121</b>	<b>117</b>	<b>114</b>	<b>+4</b>	<b>+3.3%</b>	<b>-6</b>	<b>-5.3%</b>	<b>-3</b>	<b>133</b>
Nurse/ Midwife Manager	37	53	60	60	+23	+62.1%	+6	+12.0%	+0	66
Nurse/ Midwife Specialist & AN/MP	6	23	29	27	+21	+330.5%	+5	+21.7%	-2	32
Staff Nurse/ Staff Midwife	100	105	109	128	+28	+27.5%	+23	+21.8%	+18	149
Public Health Nurse	175	171	165	162	-13	-7.2%	-9	-5.0%	-2	191
<i>Post-registration Nurse/ Midwife Student</i>	<i>26</i>	<i>19</i>	<i>18</i>	<i>1</i>	<i>-25</i>	<i>-96.2%</i>	<i>-18</i>	<i>-94.7%</i>	<i>-17</i>	<i>1</i>
Nursing/ Midwifery Student	26	19	18	1	-25	-96.2%	-18	-94.7%	-17	1
Nursing/ Midwifery other		2	2	2	+2		+0	+1.5%	+0	2
<b>Nursing &amp; Midwifery</b>	<b>345</b>	<b>373</b>	<b>383</b>	<b>380</b>	<b>+36</b>	<b>+10.4%</b>	<b>+8</b>	<b>+2.1%</b>	<b>-2</b>	<b>441</b>
Therapy Professions	196	229	228	230	+33	+17.1%	+0	+0.1%	+2	273
Health Science/ Diagnostics	20	13	14	14	-6	-30.8%	+1	+9.0%	+0	14
Social Care	4	6	5	5	+1	+26.5%	-1	-14.1%	+0	6
Social Workers	17	23	25	24	+8	+46.3%	+1	+4.1%	-0	26
Psychologists	65	72	75	76	+10	+15.9%	+4	+5.1%	+1	81
Pharmacy	12	13	14	14	+2	+16.6%	+1	+4.5%	-0	17
H&SC, Other	37	33	37	38	+1	+2.8%	+5	+14.1%	+1	44
<b>Health &amp; Social Care Professionals</b>	<b>351</b>	<b>390</b>	<b>397</b>	<b>401</b>	<b>+50</b>	<b>+14.1%</b>	<b>+10</b>	<b>+2.7%</b>	<b>+3</b>	<b>461</b>
Management (VIII & above)	28	15	19	20	-8	-29.0%	+5	+31.0%	+1	21
Administrative/ Supervisory (V to VII)	77	93	97	98	+21	+27.0%	+6	+6.0%	+2	103
Clerical (III & IV)	182	185	194	195	+13	+7.3%	+11	+5.7%	+1	224
<b>Management &amp; Administrative</b>	<b>288</b>	<b>293</b>	<b>310</b>	<b>314</b>	<b>+26</b>	<b>+9.0%</b>	<b>+21</b>	<b>+7.1%</b>	<b>+4</b>	<b>348</b>
Support	35	27	29	29	-5	-15.0%	+2	+7.6%	+0	34
<b>General Support</b>	<b>35</b>	<b>27</b>	<b>29</b>	<b>29</b>	<b>-5</b>	<b>-15.0%</b>	<b>+2</b>	<b>+7.6%</b>	<b>+0</b>	<b>34</b>
Health Care Assistants	13	35	27	26	+12	+94.9%	-9	-26.1%	-1	29
Care, other	105	118	115	114	+9	+8.9%	-4	-3.3%	-0	134
<b>Patient &amp; Client Care</b>	<b>118</b>	<b>153</b>	<b>142</b>	<b>140</b>	<b>+22</b>	<b>+18.5%</b>	<b>-13</b>	<b>-8.5%</b>	<b>-2</b>	<b>163</b>



## other Community Services

JUN 2023	WTE DEC 2019	WTE DEC 2022	WTE MAY 2023	WTE JUN 2023	WTE change since DEC 2019	% WTE change since Dec 2019	WTE change since DEC 2022	% WTE change since Dec 2022	WTE change since MAY 2023	No. JUN 2023
<b>Overall</b>	<b>122</b>	<b>127</b>	<b>130</b>	<b>128</b>	<b>+6</b>	<b>+4.6%</b>	<b>+0</b>	<b>+0.4%</b>	<b>-2</b>	<b>141</b>
Consultants	1	2	2	2	+1	+100.0%	+0	+0.0%	+0	2
Registrars	12	11	14	14	+2	+15.8%	+3	+26.4%	+0	14
SHO/ Interns	2	5	3	2	+1	+34.2%	-3	-58.4%	-1	3
Medical/ Dental, other	0				-0	-100.0%				
<b>Medical &amp; Dental</b>	<b>15</b>	<b>18</b>	<b>18</b>	<b>18</b>	<b>+3</b>	<b>+20.6%</b>	<b>-0</b>	<b>-0.1%</b>	<b>-0</b>	<b>19</b>
Nurse/ Midwife Manager	4	5	5	5	+1	+37.9%	+0	+0.6%	-0	6
Staff Nurse/ Staff Midwife	5	5	3	3	-2	-37.0%	-2	-37.7%	+1	4
<b>Nursing &amp; Midwifery</b>	<b>9</b>	<b>10</b>	<b>8</b>	<b>9</b>	<b>-0</b>	<b>-4.5%</b>	<b>-2</b>	<b>-18.2%</b>	<b>+1</b>	<b>10</b>
Health Science/ Diagnostics	8	8	6	6	-2	-25.8%	-2	-26.7%	-0	6
Social Care	2	2	2	2	+0	+17.7%	+0	+3.9%	+0	2
Social Workers	14	4	5	5	-8	-61.7%	+1	+23.6%	+0	6
Psychologists	1	1	1	1	+0	+0.0%	+0	+0.0%	+0	1
Pharmacy	3	10	11	11	+9	+318.3%	+1	+10.7%	+1	14
H&SC, Other	3	2	5	5	+2	+64.9%	+2	+92.8%	+0	5
<b>Health &amp; Social Care Professionals</b>	<b>30</b>	<b>28</b>	<b>29</b>	<b>30</b>	<b>+0</b>	<b>+1.5%</b>	<b>+2</b>	<b>+8.8%</b>	<b>+0</b>	<b>34</b>
Management (VIII & above)	19	19	19	20	+1	+7.9%	+1	+4.3%	+1	21
Administrative/ Supervisory (V to VII)	20	26	25	25	+5	+23.7%	-1	-3.3%	-0	26
Clerical (III & IV)	12	12	13	11	-1	-7.6%	-1	-5.8%	-2	13
<b>Management &amp; Administrative</b>	<b>51</b>	<b>57</b>	<b>58</b>	<b>56</b>	<b>+5</b>	<b>+10.5%</b>	<b>-1</b>	<b>-1.2%</b>	<b>-1</b>	<b>60</b>
Support	2	1	3	2	+0	+2.8%	+2	+244.4%	-1	3
Maintenance/ Technical	1	1	1	1	+0	+0.0%	+0	+0.0%	+0	1
<b>General Support</b>	<b>3</b>	<b>2</b>	<b>4</b>	<b>3</b>	<b>+0</b>	<b>+1.9%</b>	<b>+2</b>	<b>+94.5%</b>	<b>-1</b>	<b>4</b>
Care, other	15	13	13	12	-3	-19.4%	-1	-6.4%	-1	14
<b>Patient &amp; Client Care</b>	<b>15</b>	<b>13</b>	<b>13</b>	<b>12</b>	<b>-3</b>	<b>-19.4%</b>	<b>-1</b>	<b>-6.4%</b>	<b>-1</b>	<b>14</b>

## Primary Care Employment Report by Grade Group: JUN 2023

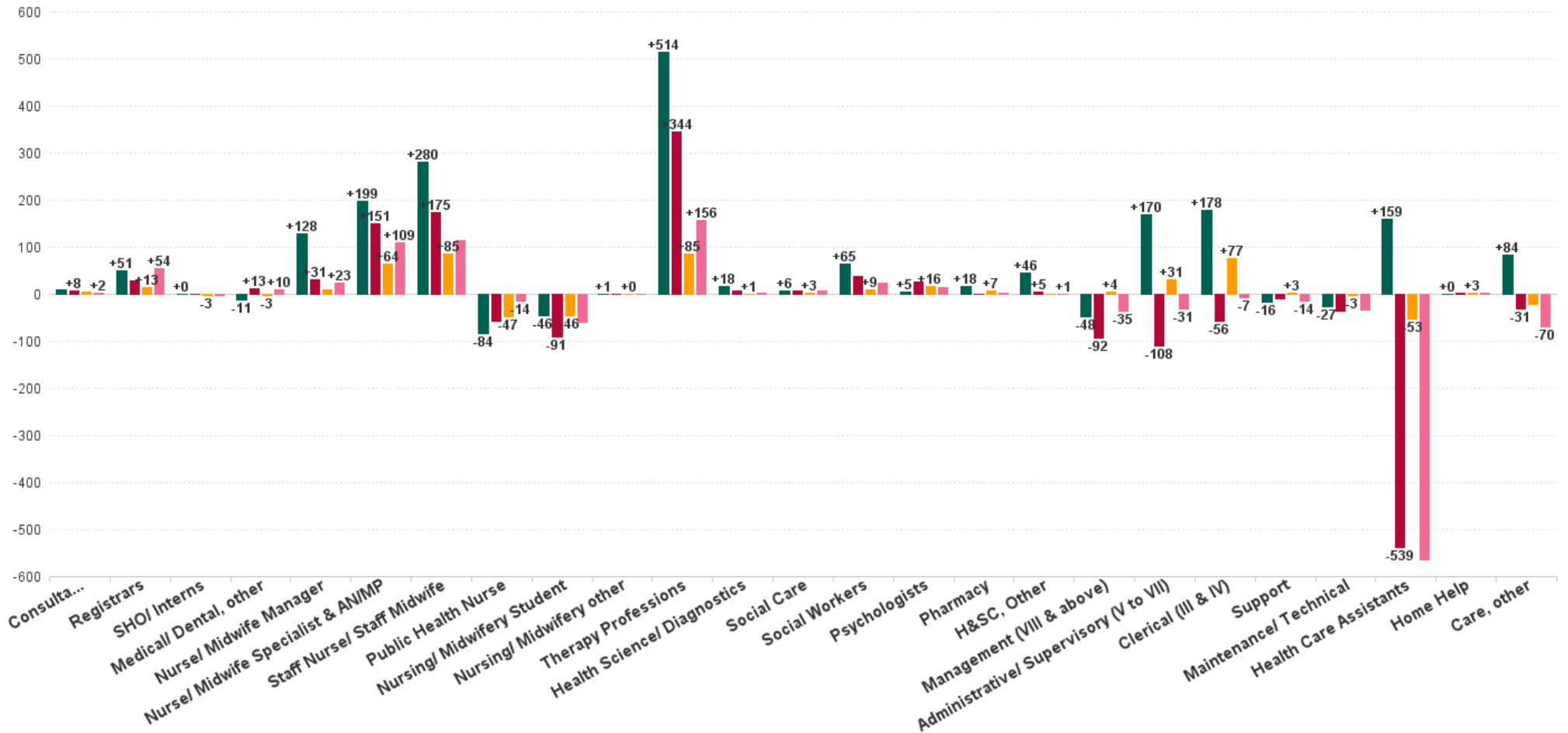
JUN 2023	WTE DEC 2019	WTE DEC 2022	WTE MAY 2023	WTE JUN 2023	WTE change since DEC 2019	% WTE change since Dec 2019	WTE change since DEC 2022	% WTE change since Dec 2022	WTE change since MAY 2023	No. JUN 2023
<b>Overall</b>	<b>10,606</b>	<b>12,064</b>	<b>12,249</b>	<b>12,305</b>	<b>+1,699</b>	<b>+16.0%</b>	<b>+240</b>	<b>+2.0%</b>	<b>+56</b>	<b>14,556</b>
Consultant Dentistry	11	13	15	15	+3	+30.6%	+1	+10.9%	-0	17
Consultant Medicine	18	24	25	26	+8	+45.4%	+2	+8.2%	+1	32
Consultant Paediatrics	2	2	2	2	+0	+2.0%	+0	+0.0%	+0	2
Consultant Psychiatry	8	8	8	8	+0	+0.6%	+0	+4.1%	+0	9
Consultant Radiology	1	1	1	1	+0	+0.0%	+0	+0.0%	+0	1
Consultant Surgery	4	3	3	3	-1	-34.6%	+0	+0.0%	+0	4
<b>Consultants</b>	<b>44</b>	<b>50</b>	<b>53</b>	<b>54</b>	<b>+10</b>	<b>+23.2%</b>	<b>+4</b>	<b>+7.4%</b>	<b>+1</b>	<b>65</b>
Registrar	383	422	432	436	+53	+13.7%	+14	+3.2%	+3	448
Senior Registrar	3	3	4	4	+1	+51.4%	+1	+26.8%	+0	5
Specialist Registrar	10	8	6	7	-3	-33.9%	-1	-16.9%	+0	8
<b>Registrars</b>	<b>396</b>	<b>433</b>	<b>443</b>	<b>446</b>	<b>+51</b>	<b>+12.8%</b>	<b>+13</b>	<b>+3.0%</b>	<b>+3</b>	<b>461</b>
Senior House Officer	36	39	36	36	+0	+0.5%	-3	-6.9%	-0	44
<b>SHO/ Interns</b>	<b>36</b>	<b>39</b>	<b>36</b>	<b>36</b>	<b>+0</b>	<b>+0.5%</b>	<b>-3</b>	<b>-6.9%</b>	<b>-0</b>	<b>44</b>
Dentists	301	307	309	308	+7	+2.2%	+1	+0.3%	-1	412
Other Medical	218	204	201	201	-18	-8.1%	-4	-1.7%	-0	307
<b>Medical/ Dental, other</b>	<b>520</b>	<b>511</b>	<b>510</b>	<b>508</b>	<b>-11</b>	<b>-2.1%</b>	<b>-3</b>	<b>-0.5%</b>	<b>-1</b>	<b>719</b>
<b>Medical &amp; Dental</b>	<b>995</b>	<b>1034</b>	<b>1042</b>	<b>1045</b>	<b>+50</b>	<b>+5.0%</b>	<b>+12</b>	<b>+1.1%</b>	<b>+3</b>	<b>1,289</b>
Clinical Nurse/ Midwife Manager	168	214	216	216	+49	+29.0%	+2	+0.9%	+1	241
Director Nursing/Midwifery, Assistant	153	218	228	225	+72	+46.7%	+6	+3.0%	-3	245
Director of Nursing/Midwifery	38	44	45	45	+8	+20.3%	+1	+2.1%	-0	47
<b>Nurse/ Midwife Manager</b>	<b>358</b>	<b>477</b>	<b>489</b>	<b>486</b>	<b>+128</b>	<b>+35.7%</b>	<b>+9</b>	<b>+1.9%</b>	<b>-2</b>	<b>533</b>
Advanced Nurse/ Midwife Practitioner	3	38	48	50	+47	+1,865.0%	+12	+31.7%	+2	51
Clinical Nurse/ Midwife Specialist	140	240	286	292	+151	+108.0%	+52	+21.5%	+6	334
<b>Nurse/ Midwife Specialist &amp; AN/MP</b>	<b>143</b>	<b>278</b>	<b>334</b>	<b>341</b>	<b>+199</b>	<b>+139.2%</b>	<b>+64</b>	<b>+22.9%</b>	<b>+8</b>	<b>385</b>
Staff Midwives	8	5	5	5	-4	-44.1%	-0	-1.5%	-0	6
Staff Nurse [Intellectual Disability]		2	2	2	+2		+0	+0.0%	-0	3
Staff Nurse [Psychiatric]	8	14	14	12	+5	+62.5%	-2	-12.2%	-1	18
Staff Nurses [General/ Children's]	846	1,036	1,062	1,123	+276	+32.7%	+87	+8.4%	+61	1,435
<b>Staff Nurse/ Staff Midwife</b>	<b>862</b>	<b>1,057</b>	<b>1,082</b>	<b>1,142</b>	<b>+280</b>	<b>+32.5%</b>	<b>+85</b>	<b>+8.1%</b>	<b>+59</b>	<b>1,462</b>
Public Health Nurse	1,513	1,477	1,437	1,430	-84	-5.5%	-47	-3.2%	-8	1,721
<b>Public Health Nurse</b>	<b>1,513</b>	<b>1,477</b>	<b>1,437</b>	<b>1,430</b>	<b>-84</b>	<b>-5.5%</b>	<b>-47</b>	<b>-3.2%</b>	<b>-8</b>	<b>1,721</b>
Post-registration Nurse/ Midwife Student	96	96	96	50	-46	-47.8%	-46	-47.8%	-46	50
<b>Nursing/ Midwifery Student</b>	<b>96</b>	<b>96</b>	<b>96</b>	<b>50</b>	<b>-46</b>	<b>-47.8%</b>	<b>-46</b>	<b>-47.8%</b>	<b>-46</b>	<b>50</b>
Nursing Education/Clinical	4	5	5	5	+1	+30.8%	+0	+0.6%	+0	5
<b>Nursing/ Midwifery other</b>	<b>4</b>	<b>5</b>	<b>5</b>	<b>5</b>	<b>+1</b>	<b>+30.8%</b>	<b>+0</b>	<b>+0.6%</b>	<b>+0</b>	<b>5</b>
<b>Nursing &amp; Midwifery</b>	<b>2976</b>	<b>3389</b>	<b>3442</b>	<b>3454</b>	<b>+478</b>	<b>+16.1%</b>	<b>+65</b>	<b>+1.9%</b>	<b>+12</b>	<b>4,156</b>
Dietitians	109	195	209	211	+102	+93.0%	+16	+8.3%	+2	247
Occupational Therapists	516	638	654	652	+136	+26.4%	+14	+2.1%	-2	758
Orthoptists	13	20	19	18	+5	+38.0%	-2	-8.4%	-0	22
Physiotherapists	543	654	697	696	+153	+28.3%	+42	+6.4%	-1	820
Podiatrists & Chiropodists	25	82	92	91	+66	+269.3%	+8	+10.2%	-1	101
Speech & Language Therapists	527	572	583	579	+52	+9.8%	+7	+1.2%	-5	661
<b>Therapy Professions</b>	<b>1,733</b>	<b>2,162</b>	<b>2,254</b>	<b>2,247</b>	<b>+514</b>	<b>+29.7%</b>	<b>+85</b>	<b>+3.9%</b>	<b>-7</b>	<b>2,609</b>
Audiology	44	57	61	62	+18	+41.2%	+5	+8.5%	+1	67
Biochemists	8	8	6	6	-2	-25.8%	-2	-26.7%	-0	6
Cardiac Physiologists		1	1	1	+1		+0	+0.0%	+0	1
Clinical Engineering	8	9	8	8	+0	+0.0%	-1	-10.6%	+0	8
Medical Science	16	14	13	13	-3	-18.3%	-2	-11.7%	-0	15
Phlebotomists	0	0	0	0	+0	+18.2%	-0	-13.3%	+0	1
Physicists	2	2	2	2	-0	-18.5%	+0	+0.6%	-0	2
Radiographers	4	8	8	8	+4	+86.3%	+0	+6.3%	+0	10



JUN 2023	WTE DEC 2019	WTE DEC 2022	WTE MAY 2023	WTE JUN 2023	WTE change since DEC 2019	% WTE change since Dec 2019	WTE change since DEC 2022	% WTE change since Dec 2022	WTE change since MAY 2023	No. JUN 2023
<b>Overall</b>	<b>10,606</b>	<b>12,064</b>	<b>12,249</b>	<b>12,305</b>	<b>+1,699</b>	<b>+16.0%</b>	<b>+240</b>	<b>+2.0%</b>	<b>+56</b>	<b>14,556</b>
<b>Health Science/ Diagnostics</b>	<b>82</b>	<b>99</b>	<b>99</b>	<b>100</b>	<b>+18</b>	<b>+21.7%</b>	<b>+1</b>	<b>+0.6%</b>	<b>+1</b>	<b>110</b>
Social Care	35	39	42	42	+6	+17.4%	+3	+8.1%	+0	44
<b>Social Care</b>	<b>35</b>	<b>39</b>	<b>42</b>	<b>42</b>	<b>+6</b>	<b>+17.4%</b>	<b>+3</b>	<b>+8.1%</b>	<b>+0</b>	<b>44</b>
Social Workers	139	195	202	204	+65	+46.4%	+9	+4.4%	+2	224
<b>Social Workers</b>	<b>139</b>	<b>195</b>	<b>202</b>	<b>204</b>	<b>+65</b>	<b>+46.4%</b>	<b>+9</b>	<b>+4.4%</b>	<b>+2</b>	<b>224</b>
Psychologists	303	292	305	308	+5	+1.6%	+16	+5.5%	+3	343
<b>Psychologists</b>	<b>303</b>	<b>292</b>	<b>305</b>	<b>308</b>	<b>+5</b>	<b>+1.6%</b>	<b>+16</b>	<b>+5.5%</b>	<b>+3</b>	<b>343</b>
Pharmacists	50	58	63	63	+13	+27.0%	+5	+8.8%	+0	75
Pharmacy Technicians	8	10	12	12	+4	+52.9%	+2	+21.9%	+1	13
<b>Pharmacy</b>	<b>58</b>	<b>68</b>	<b>74</b>	<b>75</b>	<b>+18</b>	<b>+30.6%</b>	<b>+7</b>	<b>+10.8%</b>	<b>+1</b>	<b>88</b>
Counsellor Therapists	115	122	135	134	+20	+17.0%	+13	+10.5%	-1	150
Dental Hygienists	58	61	60	60	+2	+3.1%	-2	-2.6%	-1	75
Other Health & Social Care	34	44	44	46	+11	+32.9%	+1	+3.4%	+2	50
Play Therapists/ Specialists	2	1	2	2	-1	-33.3%	+0	+4.8%	+0	2
Vaccinators		26	14	14	+14		-13	-48.1%	-0	26
<b>H&amp;SC, Other</b>	<b>209</b>	<b>255</b>	<b>255</b>	<b>255</b>	<b>+46</b>	<b>+21.8%</b>	<b>+0</b>	<b>+0.0%</b>	<b>+0</b>	<b>303</b>
<b>Health &amp; Social Care Professionals</b>	<b>2559</b>	<b>3109</b>	<b>3230</b>	<b>3230</b>	<b>+671</b>	<b>+26.2%</b>	<b>+121</b>	<b>+3.9%</b>	<b>-0</b>	<b>3,721</b>
Executive Management	71	37	33	34	-37	-52.6%	-3	-9.1%	+1	35
Senior Management (VIII & GM)	235	216	219	224	-11	-4.7%	+7	+3.4%	+5	236
<b>Management (VIII &amp; above)</b>	<b>306</b>	<b>253</b>	<b>252</b>	<b>257</b>	<b>-48</b>	<b>-15.8%</b>	<b>+4</b>	<b>+1.6%</b>	<b>+6</b>	<b>271</b>
Middle Management (V-VII)	621	761	780	791	+170	+27.4%	+30	+4.0%	+11	846
Other Administrative	2	1	2	2	+0	+0.0%	+1	+102.0%	+0	2
<b>Administrative/ Supervisory (V to VII)</b>	<b>623</b>	<b>762</b>	<b>782</b>	<b>793</b>	<b>+170</b>	<b>+27.3%</b>	<b>+31</b>	<b>+4.1%</b>	<b>+11</b>	<b>848</b>
General Administrative (III & IV)	1,746	1,847	1,903	1,924	+178	+10.2%	+77	+4.2%	+21	2,257
<b>Clerical (III &amp; IV)</b>	<b>1,746</b>	<b>1,847</b>	<b>1,903</b>	<b>1,924</b>	<b>+178</b>	<b>+10.2%</b>	<b>+77</b>	<b>+4.2%</b>	<b>+21</b>	<b>2,257</b>
<b>Management &amp; Administrative</b>	<b>2675</b>	<b>2862</b>	<b>2937</b>	<b>2975</b>	<b>+299</b>	<b>+11.2%</b>	<b>+113</b>	<b>+3.9%</b>	<b>+38</b>	<b>3,376</b>
Catering	22	23	22	22	+0	+0.0%	-1	-5.3%	+0	25
Household Services	134	139	137	137	+3	+2.3%	-2	-1.4%	-0	168
Other Labs & Associated	3	1	7	6	+3	+92.9%	+5	+322.5%	-1	7
Other Support	112	104	104	104	-8	-7.0%	+0	+0.2%	+0	220
Portering	74	59	60	61	-14	-18.4%	+2	+3.0%	+1	66
<b>Support</b>	<b>346</b>	<b>327</b>	<b>330</b>	<b>330</b>	<b>-16</b>	<b>-4.5%</b>	<b>+3</b>	<b>+1.1%</b>	<b>+0</b>	<b>486</b>
Maintenance	58	34	30	31	-28	-47.7%	-3	-9.1%	+0	35
Technical Services	1	2	2	2	+1	+100.0%	+0	+0.0%	+0	2
<b>Maintenance/ Technical</b>	<b>59</b>	<b>36</b>	<b>32</b>	<b>33</b>	<b>-27</b>	<b>-45.2%</b>	<b>-3</b>	<b>-8.6%</b>	<b>+0</b>	<b>37</b>
<b>General Support</b>	<b>405</b>	<b>362</b>	<b>362</b>	<b>363</b>	<b>-42</b>	<b>-10.5%</b>	<b>+0</b>	<b>+0.1%</b>	<b>+0</b>	<b>523</b>
Home Helps	18	15	18	18	+0	+0.5%	+3	+23.0%	+0	43
<b>Home Help</b>	<b>18</b>	<b>15</b>	<b>18</b>	<b>18</b>	<b>+0</b>	<b>+0.5%</b>	<b>+3</b>	<b>+23.0%</b>	<b>+0</b>	<b>43</b>
Attendant/ Aide	35	61	68	66	+31	+89.1%	+5	+8.6%	-2	81
Health Care Assistant/ Care Assistant	150	308	204	207	+57	+38.1%	-102	-32.9%	+2	247
Health & Social Care Assistants	69	97	141	141	+71	+103.0%	+43	+44.8%	-1	149
<b>Health Care Assistants</b>	<b>254</b>	<b>466</b>	<b>413</b>	<b>413</b>	<b>+159</b>	<b>+62.8%</b>	<b>-53</b>	<b>-11.4%</b>	<b>-0</b>	<b>477</b>
Health Promotion		1	1				-1	-100.0%	-1	
Home Care Services	3	3	1	1	-2	-58.3%	-1	-46.3%	+0	3
Other Care Grades	713	819	797	800	+88	+12.3%	-19	-2.3%	+3	963
Pastoral Care	4	3	3	3	-1	-28.9%	-0	-3.8%	+0	3
Workshop Services	3	1	1	2	-1	-34.5%	+1	+82.0%	+1	2
<b>Care, other</b>	<b>723</b>	<b>827</b>	<b>803</b>	<b>806</b>	<b>+84</b>	<b>+11.6%</b>	<b>-21</b>	<b>-2.5%</b>	<b>+3</b>	<b>971</b>
<b>Patient &amp; Client Care</b>	<b>995</b>	<b>1308</b>	<b>1234</b>	<b>1238</b>	<b>+243</b>	<b>+24.4%</b>	<b>-70</b>	<b>-5.4%</b>	<b>+3</b>	<b>1,491</b>

## WTE Change by Staff Category

■ WTE change since DEC 2019 ■ WTE change since DEC 2021 ■ WTE change since DEC 2022 ■ WTE change since JUN 2022



## Primary Care Employment Report by WTE, Headcount, Gender, Full-Time / Part-Time etc. JUN 2023

JUN 2023	WTE JUN 2023	No. JUN 2023	WTE : No	% Male	% Female	Male WTE : No.	Female WTE : No	Perm Count %	Perm Count Male %	Perm Count Female %	Fulltime Count %	Part time Count %	FT Count Male %	FT Count Female %
<b>Total</b>	<b>12,305</b>	<b>14,556</b>	<b>1:0.8</b>	<b>13.18%</b>	<b>86.82%</b>	<b>1:0.9</b>	<b>1:0.8</b>	<b>85.66%</b>	<b>10.18%</b>	<b>75.47%</b>	<b>68.70%</b>	<b>31.30%</b>	<b>83.95%</b>	<b>66.38%</b>
Consultants	53.98	65	1:0.8	35.38%	64.62%	1:0.9	1:0.8	86.15%	32.31%	53.85%	66.15%	33.85%	78.26%	59.52%
Registrars	446.35	461	1:1	37.53%	62.47%	1:1	1:1	2.39%	1.08%	1.30%	98.92%	1.08%	99.42%	98.61%
SHO/ Interns	36.36	44	1:0.8	29.55%	70.45%	1:0.8	1:0.8	4.55%		4.55%	97.73%	2.27%	100.00%	96.77%
Medical/ Dental, other	508.49	719	1:0.7	26.29%	73.71%	1:0.7	1:0.7	82.89%	20.31%	62.59%	42.42%	57.58%	47.62%	40.57%
<b>Medical &amp; Dental</b>	<b>1,045</b>	<b>1,289</b>	<b>1:0.8</b>	<b>30.88%</b>	<b>69.12%</b>	<b>1:0.8</b>	<b>1:0.8</b>	<b>51.59%</b>	<b>13.34%</b>	<b>38.25%</b>	<b>65.71%</b>	<b>34.29%</b>	<b>73.62%</b>	<b>62.18%</b>
Nurse/ Midwife Manager	486.25	533	1:0.9	3.56%	96.44%	1:1	1:0.9	95.12%	3.19%	91.93%	76.36%	23.64%	84.21%	76.07%
Nurse/ Midwife Specialist & AN/MP	341.48	385	1:0.9	4.68%	95.32%	1:1	1:0.9	97.66%	4.68%	92.99%	73.25%	26.75%	100.00%	71.93%
Staff Nurse/ Staff Midwife	1,141.78	1,462	1:0.8	4.04%	95.96%	1:0.9	1:0.8	85.29%	3.49%	81.81%	49.73%	50.27%	76.27%	48.61%
Public Health Nurse	1,429.75	1,721	1:0.8	0.41%	99.59%	1:1	1:0.8	95.70%	0.41%	95.29%	68.97%	31.03%	100.00%	68.84%
Nursing/ Midwifery Student	49.96	50	1:1		100.00%	1:	1:1	38.00%		38.00%	100.00%			100.00%
Nursing/ Midwifery other	4.97	5	1:1		100.00%	1:	1:1	100.00%		100.00%	100.00%			100.00%
<b>Nursing &amp; Midwifery</b>	<b>3,454</b>	<b>4,156</b>	<b>1:0.8</b>	<b>2.48%</b>	<b>97.52%</b>	<b>1:0.9</b>	<b>1:0.8</b>	<b>91.46%</b>	<b>2.24%</b>	<b>89.22%</b>	<b>63.96%</b>	<b>36.04%</b>	<b>83.50%</b>	<b>63.46%</b>
Therapy Professions	2,247.2	2,609	1:0.9	9.43%	90.57%	1:0.9	1:0.9	94.06%	8.51%	85.55%	72.25%	27.75%	89.02%	70.50%
Health Science/ Diagnostics	99.66	110	1:0.9	22.73%	77.27%	1:1	1:0.9	90.91%	21.82%	69.09%	84.55%	15.45%	92.00%	82.35%
Social Care	41.62	44	1:0.9	34.09%	65.91%	1:1	1:0.9	88.64%	29.55%	59.09%	88.64%	11.36%	93.33%	86.21%
Social Workers	203.71	224	1:0.9	16.52%	83.48%	1:1	1:0.9	90.63%	13.39%	77.23%	84.38%	15.63%	97.30%	81.82%
Psychologists	307.65	343	1:0.9	16.62%	83.38%	1:1	1:0.9	71.43%	13.41%	58.02%	76.09%	23.91%	94.74%	72.38%
Pharmacy	75.4	88	1:0.9	22.73%	77.27%	1:0.9	1:0.9	65.91%	11.36%	54.55%	60.23%	39.77%	45.00%	64.71%
H&SC, Other	254.76	303	1:0.8	25.41%	74.59%	1:0.9	1:0.8	86.47%	23.76%	62.71%	66.34%	33.66%	87.01%	59.29%
<b>Health &amp; Social Care Professionals</b>	<b>3,230</b>	<b>3,721</b>	<b>1:0.9</b>	<b>12.82%</b>	<b>87.18%</b>	<b>1:0.9</b>	<b>1:0.9</b>	<b>90.33%</b>	<b>11.21%</b>	<b>79.12%</b>	<b>73.13%</b>	<b>26.87%</b>	<b>88.47%</b>	<b>70.87%</b>
Management (VIII & above)	257.34	271	1:0.9	24.35%	75.65%	1:0.9	1:1	97.79%	23.62%	74.17%	95.57%	4.43%	96.97%	95.12%
Administrative/ Supervisory (V to VII)	793.44	848	1:0.9	17.22%	82.78%	1:1	1:0.9	96.23%	16.16%	80.07%	88.80%	11.20%	99.32%	86.61%
Clerical (III & IV)	1,923.9	2,257	1:0.9	10.41%	89.59%	1:0.9	1:0.8	85.42%	7.93%	77.49%	68.72%	31.28%	87.23%	66.57%
<b>Management &amp; Administrative</b>	<b>2,975</b>	<b>3,376</b>	<b>1:0.9</b>	<b>13.24%</b>	<b>86.76%</b>	<b>1:0.9</b>	<b>1:0.9</b>	<b>89.13%</b>	<b>11.26%</b>	<b>77.87%</b>	<b>75.92%</b>	<b>24.08%</b>	<b>92.62%</b>	<b>73.37%</b>
Support	330.29	486	1:0.7	38.68%	61.32%	1:0.9	1:0.6	71.60%	31.89%	39.71%	47.74%	52.26%	78.72%	28.19%
Maintenance/ Technical	32.53	37	1:0.9	94.59%	5.41%	1:0.9	1:0.9	100.00%	94.59%	5.41%	91.89%	8.11%	94.29%	50.00%
<b>General Support</b>	<b>363</b>	<b>523</b>	<b>1:0.7</b>	<b>42.64%</b>	<b>57.36%</b>	<b>1:0.9</b>	<b>1:0.6</b>	<b>73.61%</b>	<b>36.33%</b>	<b>37.28%</b>	<b>50.86%</b>	<b>49.14%</b>	<b>81.17%</b>	<b>28.33%</b>
Health Care Assistants	413.06	477	1:0.9	19.71%	80.29%	1:0.9	1:0.9	67.51%	14.68%	52.83%	68.76%	31.24%	86.17%	64.49%
Home Help	18.47	43	1:0.4	25.58%	74.42%	1:0.4	1:0.4	20.93%	4.65%	16.28%	4.65%	95.35%		6.25%
Care, other	806.18	971	1:0.8	17.10%	82.90%	1:0.9	1:0.8	94.34%	16.27%	78.06%	63.34%	36.66%	80.72%	59.75%
<b>Patient &amp; Client Care</b>	<b>1,238</b>	<b>1,491</b>	<b>1:0.8</b>	<b>18.18%</b>	<b>81.82%</b>	<b>1:0.9</b>	<b>1:0.8</b>	<b>83.64%</b>	<b>15.43%</b>	<b>68.21%</b>	<b>63.38%</b>	<b>36.62%</b>	<b>79.34%</b>	<b>59.84%</b>

## Primary Care Employment Report by WTE, Headcount, Gender, Full-Time / Part-Time etc. JUN 2023

JUN 2023	WTE JUN 2023	No. JUN 2023	WTE : No	% Male	% Female	Male WTE : No.	Female WTE : No	Perm Count %	Number Male %	Number Female %	Fulltime Count %	Part time Count %	FT Count Male %	FT Count Female %
<b>Total</b>	<b>12,305</b>	<b>14,556</b>	<b>1:0.8</b>	<b>13.18%</b>	<b>86.82%</b>	<b>1:0.9</b>	<b>1:0.8</b>	<b>85.66%</b>	<b>10.18%</b>	<b>75.47%</b>	<b>68.70%</b>	<b>31.30%</b>	<b>83.95%</b>	<b>66.38%</b>
CHO 1	1,528	1,786	1:0.9	13.33%	86.67%	1:0.9	1:0.8	87.29%	9.85%	77.44%	67.81%	32.19%	84.03%	65.31%
CHO 2	1,316	1,506	1:0.9	12.82%	87.18%	1:0.9	1:0.9	87.98%	9.96%	78.02%	74.44%	25.56%	85.49%	72.81%
CHO 3	822	975	1:0.8	8.21%	91.79%	1:0.9	1:0.8	87.28%	6.36%	80.92%	71.59%	28.41%	82.50%	70.61%
CHO 4	1,783	2,221	1:0.8	10.18%	89.82%	1:0.8	1:0.8	72.94%	6.12%	66.82%	56.82%	43.18%	72.12%	55.09%
CHO 5	1,165	1,389	1:0.8	12.38%	87.62%	1:0.9	1:0.8	88.77%	9.72%	79.05%	66.45%	33.55%	80.81%	64.42%
CHO 6	878	1,106	1:0.8	14.01%	85.99%	1:0.8	1:0.8	89.24%	11.66%	77.58%	71.70%	28.30%	90.32%	68.66%
CHO 7	1,774	2,048	1:0.9	17.43%	82.57%	1:0.9	1:0.9	89.11%	15.23%	73.88%	70.70%	29.30%	84.87%	67.71%
CHO 8	1,532	1,804	1:0.8	13.30%	86.70%	1:0.9	1:0.8	88.75%	9.81%	78.94%	68.13%	31.87%	85.00%	65.54%
CHO 9	1,379	1,580	1:0.9	13.29%	86.71%	1:0.9	1:0.9	86.08%	11.01%	75.06%	75.63%	24.37%	89.52%	73.50%
other Community Services	128	141	1:0.9	34.04%	65.96%	1:0.9	1:0.9	75.89%	21.99%	53.90%	85.11%	14.89%	89.58%	82.80%



## Previous Month Summary

	% WTE change since MAY 2023	WTE change since MAY 2023	CHO 1	CHO 2	CHO 3	CHO 4	CHO 5	CHO 6	CHO 7	CHO 8	CHO 9	other Communi ty Services
<b>Total</b>	<b>+0.5%</b>	<b>+55.9</b>	<b>+8.6</b>	<b>-9.5</b>	<b>-2.1</b>	<b>+5.7</b>	<b>-4.3</b>	<b>+15.4</b>	<b>+27.2</b>	<b>+16.4</b>	<b>+0.3</b>	<b>-1.9</b>
Consultants	+1.9%	+1.0	+0.2	+0.5	+0.0	+0.1	+0.0	-0.1	+0.4	+0.0	+0.0	+0.0
Registrars	+0.8%	+3.5	-0.1	+0.6	+0.5	-1.5	-0.4	+2.0	+0.9	+2.7	-1.5	+0.2
SHO/ Interns	-0.3%	-0.1	+0.0	+0.0		+0.0		+0.1	+0.1		+0.2	-0.5
Medical/ Dental, other	-0.3%	-1.5	+1.3	-0.6	-0.7	+0.7	+0.5	-0.6	-0.6	-0.3	-1.4	
<b>Medical &amp; Dental</b>	<b>+0.3%</b>	<b>+2.9</b>	<b>+1.4</b>	<b>+0.5</b>	<b>-0.2</b>	<b>-0.7</b>	<b>+0.1</b>	<b>+1.5</b>	<b>+0.8</b>	<b>+2.4</b>	<b>-2.7</b>	<b>-0.3</b>
Nurse/ Midwife Manager	-0.5%	-2.3	-1.0	-0.3	+0.4	-2.2	-1.8	+0.2	+1.6	+0.8	+0.1	-0.0
Nurse/ Midwife Specialist & AN/MP	+2.3%	+7.8	+1.2	+2.8	-0.1	+1.9	+0.2	+0.7	+0.8	+2.0	-1.7	
Staff Nurse/ Staff Midwife	+5.5%	+59.4	+8.4	+6.8	+2.6	-0.1	-2.1	+4.2	+19.9	+0.6	+18.5	+0.7
Public Health Nurse	-0.5%	-7.6	-0.5	-1.4	-5.9	-3.1	-1.4	+0.8	+2.9	+3.2	-2.3	
Nursing/ Midwifery Student	-47.8%	-45.7	-1.0	-9.7	-1.0	-1.0	-0.0	-1.0	-15.0		-17.0	
Nursing/ Midwifery other	+5.7%	+0.3	+0.0						+0.3		+0.0	
<b>Nursing &amp; Midwifery</b>	<b>+0.3%</b>	<b>+11.8</b>	<b>+7.1</b>	<b>-1.8</b>	<b>-4.0</b>	<b>-4.5</b>	<b>-5.2</b>	<b>+4.8</b>	<b>+10.5</b>	<b>+6.6</b>	<b>-2.4</b>	<b>+0.7</b>
Therapy Professions	-0.3%	-6.7	-1.9	-12.2	-1.5	+0.2	+3.0	+2.4	-1.2	+2.8	+1.7	
Health Science/ Diagnostics	+0.9%	+0.9	-0.3	+0.6	-0.1	+0.4	+0.1	-0.2	+0.7	+0.0	+0.0	-0.4
Social Care	+0.1%	+0.0		+0.0		-0.5	+0.0	+0.0	-0.1	+0.6	+0.0	+0.0
Social Workers	+0.7%	+1.5	+1.6	-0.3	-1.1	+1.3	-0.2	+0.0	+0.9	-0.4	-0.5	+0.0
Psychologists	+0.9%	+2.7	-0.1	-2.2	-0.2	+2.0	-0.6	+2.6	+0.1	-0.2	+1.2	+0.0
Pharmacy	+1.3%	+1.0	-0.1	+0.0	+0.0	-0.1	+0.0	+0.0	+0.1	+0.3	-0.1	+0.8
H&SC, Other	+0.1%	+0.2	+0.1	-0.3	-0.2	+0.4	-0.7	+0.5	-0.1	-0.6	+1.0	+0.0
<b>Health &amp; Social Care Professionals</b>	<b>0.0%</b>	<b>-0.3</b>	<b>-0.6</b>	<b>-14.3</b>	<b>-3.1</b>	<b>+3.7</b>	<b>+1.8</b>	<b>+5.3</b>	<b>+0.5</b>	<b>+2.5</b>	<b>+3.4</b>	<b>+0.5</b>
Management (VIII & above)	+2.3%	+5.8	+1.2	-0.0	-1.0	+0.7	+0.0	+0.4	+1.3	+1.4	+0.8	+0.9
Administrative/ Supervisory (V to VII)	+1.4%	+11.0	+6.3	-0.4	-1.0	+3.6	+0.5	+0.3	+0.9	-0.6	+1.6	-0.2



Clerical (III & IV)	+1.1%	+21.0	-1.7	+8.9	+9.6	-0.3	+0.8	+1.1	+2.8	+0.8	+1.1	-2.1
<b>Management &amp; Administrative</b>	<b>+1.3%</b>	<b>+37.8</b>	<b>+5.8</b>	<b>+8.4</b>	<b>+7.6</b>	<b>+4.0</b>	<b>+1.3</b>	<b>+1.7</b>	<b>+5.0</b>	<b>+1.7</b>	<b>+3.5</b>	<b>-1.3</b>
Support	+0.1%	+0.2	-0.7	-0.3	-0.9	+0.6	-0.0	-0.3	+1.9	+0.5	+0.1	-0.7
Maintenance/ Technical	+0.7%	+0.2	+0.0	+0.0		+0.0		+0.0	+0.2	+0.0		+0.0
<b>General Support</b>	<b>+0.1%</b>	<b>+0.4</b>	<b>-0.7</b>	<b>-0.3</b>	<b>-0.9</b>	<b>+0.6</b>	<b>-0.0</b>	<b>-0.3</b>	<b>+2.1</b>	<b>+0.5</b>	<b>+0.1</b>	<b>-0.7</b>
Health Care Assistants	0.0%	-0.1	-4.3	-3.2	-1.4	+1.2	-0.8	+2.2	+7.3	+0.2	-1.4	
Home Help	+1.0%	+0.2	+0.0			+0.2	+0.0					
Care, other	+0.4%	+3.3	-0.1	+1.1	-0.1	+1.2	-1.5	+0.1	+1.0	+2.5	-0.2	-0.7
<b>Patient &amp; Client Care</b>	<b>+0.3%</b>	<b>+3.3</b>	<b>-4.4</b>	<b>-2.0</b>	<b>-1.5</b>	<b>+2.5</b>	<b>-2.3</b>	<b>+2.3</b>	<b>+8.3</b>	<b>+2.7</b>	<b>-1.7</b>	<b>-0.7</b>





## Year on Year Summary

	% WTE change since JUN 2022	WTE change since JUN 2022	CHO 1	CHO 2	CHO 3	CHO 4	CHO 5	CHO 6	CHO 7	CHO 8	CHO 9	other Communi ty Services
<b>Total</b>	<b>-2.4%</b>	<b>-306.8</b>	<b>-59.2</b>	<b>-41.1</b>	<b>-212.6</b>	<b>+23.6</b>	<b>-5.5</b>	<b>+20.0</b>	<b>-3.0</b>	<b>-24.6</b>	<b>+8.7</b>	<b>-13.3</b>
Consultants	+4.0%	+2.1	+0.3	+1.1	+0.0	+0.5	-0.2	-0.0	-0.5	+1.2	-0.3	+0.0
Registrars	+13.8%	+54.3	-3.7	+4.0	+3.5	+10.9	+4.0	+8.5	+5.2	+9.4	+9.6	+2.9
SHO/ Interns	-5.3%	-2.0	+0.0	+2.0		-1.0	-2.0	-0.5	+2.1		-1.7	-0.9
Medical/ Dental, other	+2.0%	+10.1	+1.2	+4.0	+1.0	+6.0	+2.4	+1.9	-2.3	-3.5	-0.7	
<b>Medical &amp; Dental</b>	<b>+6.6%</b>	<b>+64.3</b>	<b>-2.3</b>	<b>+11.1</b>	<b>+4.5</b>	<b>+16.4</b>	<b>+4.2</b>	<b>+9.9</b>	<b>+4.5</b>	<b>+7.1</b>	<b>+6.9</b>	<b>+2.0</b>
Nurse/ Midwife Manager	+5.1%	+23.5	+3.0	+4.9	+1.0	-3.5	+1.3	+4.8	+2.4	+0.6	+9.7	-0.9
Nurse/ Midwife Specialist & AN/MP	+47.2%	+109.5	+23.2	+14.3	+5.6	+19.6	+5.4	+4.8	+14.8	+7.4	+14.4	
Staff Nurse/ Staff Midwife	+11.0%	+113.4	+33.9	-1.7	+1.5	+36.6	+3.7	-5.1	+20.9	+5.6	+21.2	-3.2
Public Health Nurse	-1.0%	-14.0	-3.0	+3.9	-0.4	-4.3	-1.8	-0.2	-3.3	+6.0	-11.0	
Nursing/ Midwifery Student	-54.2%	-59.0	-5.0	+0.0	-7.0	-10.0	-2.0	+0.0	-11.0	-7.0	-17.0	
Nursing/ Midwifery other	+0.2%	+0.0	+0.0					-1.0	+0.0		+1.0	
<b>Nursing &amp; Midwifery</b>	<b>+5.3%</b>	<b>+173.3</b>	<b>+52.1</b>	<b>+21.4</b>	<b>+0.6</b>	<b>+38.4</b>	<b>+6.6</b>	<b>+3.4</b>	<b>+23.8</b>	<b>+12.7</b>	<b>+18.3</b>	<b>-4.1</b>
Therapy Professions	+7.5%	+156.0	+31.5	+2.6	+33.4	+32.7	+29.8	+12.4	-3.5	+10.4	+7.0	
Health Science/ Diagnostics	+2.6%	+2.5	-0.0	+1.1	+0.5	-2.2	+4.4	-3.2	+2.4	+0.3	+1.0	-2.1
Social Care	+20.2%	+7.0		-2.9	-1.0	-1.2	+4.0	+1.1	-0.1	+5.0	+2.0	+0.0
Social Workers	+13.9%	+24.8	-3.3	+7.0	+1.2	+13.5	+1.2	+3.1	+4.7	+7.1	+0.6	-10.2
Psychologists	+4.5%	+13.2	-2.2	-3.6	+5.1	+13.4	+1.7	+1.6	-0.9	-6.0	+4.1	+0.0
Pharmacy	+4.7%	+3.4	-1.5	-0.5	+0.0	+0.3	+0.6	+2.1	-2.6	+0.3	+0.8	+3.8
H&SC, Other	+0.4%	+1.1	-4.1	-8.2	+3.1	+6.6	+0.9	+1.4	-0.3	+1.3	-1.4	+1.8
<b>Health &amp; Social Care Professionals</b>	<b>+6.9%</b>	<b>+208.0</b>	<b>+20.3</b>	<b>-4.4</b>	<b>+42.3</b>	<b>+63.2</b>	<b>+42.6</b>	<b>+18.6</b>	<b>-0.3</b>	<b>+18.4</b>	<b>+14.1</b>	<b>-6.6</b>
Management (VIII & above)	-11.9%	-34.6	-13.9	-4.9	-19.6	+2.6	-0.8	-5.1	+0.5	+7.0	+3.5	-4.1
Administrative/ Supervisory (V to VII)	-3.7%	-30.9	-2.6	+0.4	-79.5	+7.5	+20.4	+9.5	+9.1	-9.2	+12.9	+0.5
Clerical (III & IV)	-0.4%	-7.0	-43.2	-5.0	-33.7	+8.6	+8.9	-2.5	+14.7	+41.0	+5.8	-1.7



<b>Management &amp; Administrative</b>	<b>-2.4%</b>	<b>-72.5</b>	<b>-59.6</b>	<b>-9.5</b>	<b>-132.7</b>	<b>+18.7</b>	<b>+28.5</b>	<b>+1.9</b>	<b>+24.4</b>	<b>+38.8</b>	<b>+22.2</b>	<b>-5.3</b>
Support	-4.1%	-14.0	-5.5	+1.1	-12.2	+4.1	-1.1	+0.8	-1.8	+0.2	-1.0	+1.5
Maintenance/ Technical	-51.3%	-34.3	-1.5	+0.0	-32.6	+0.0		+0.0	-0.9	-0.3		+1.0
<b>General Support</b>	<b>-11.7%</b>	<b>-48.2</b>	<b>-7.0</b>	<b>+1.1</b>	<b>-44.8</b>	<b>+4.1</b>	<b>-1.1</b>	<b>+0.8</b>	<b>-2.8</b>	<b>-0.1</b>	<b>-1.0</b>	<b>+2.5</b>
Health Care Assistants	-57.7%	-564.0	-48.7	-50.6	-67.2	-112.5	-78.1	-18.8	-47.0	-100.7	-40.5	
Home Help	+11.1%	+1.9	+0.0			+2.9	-1.0					
Care, other	-7.9%	-69.6	-14.1	-10.2	-15.3	-7.5	-7.3	+4.3	-5.6	-0.7	-11.4	-1.8
<b>Patient &amp; Client Care</b>	<b>-33.8%</b>	<b>-631.8</b>	<b>-62.8</b>	<b>-60.8</b>	<b>-82.5</b>	<b>-117.2</b>	<b>-86.4</b>	<b>-14.5</b>	<b>-52.6</b>	<b>-101.4</b>	<b>-51.8</b>	<b>-1.8</b>



## Year to Date Summary

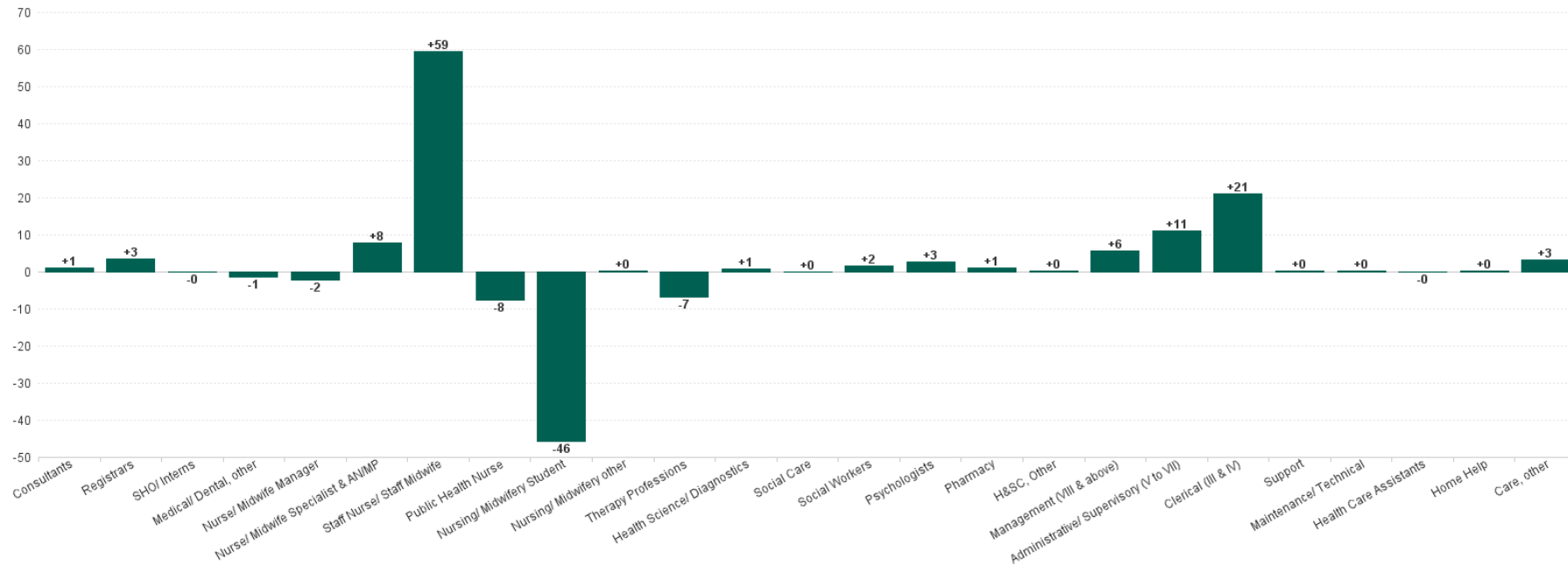
	% WTE change since DEC 2022	WTE change since DEC 2022	CHO 1	CHO 2	CHO 3	CHO 4	CHO 5	CHO 6	CHO 7	CHO 8	CHO 9	other Communi ty Services
<b>Total</b>	<b>+2.0%</b>	<b>+240.5</b>	<b>+55.8</b>	<b>-34.4</b>	<b>+50.3</b>	<b>+76.1</b>	<b>+13.5</b>	<b>+14.0</b>	<b>+8.6</b>	<b>+34.4</b>	<b>+21.7</b>	<b>+0.5</b>
Consultants	+7.4%	+3.7	+0.1	+1.1	+0.0	-0.2	-0.2	+0.9	+0.7	+0.6	+0.7	+0.0
Registrars	+3.0%	+13.1	-1.6	-3.1	-1.2	+17.5	+2.8	+1.1	+2.7	-0.1	-7.9	+2.9
SHO/ Interns	-6.9%	-2.7	+0.0	+2.0		-1.0		-0.1	-1.0		+0.4	-2.9
Medical/ Dental, other	-0.5%	-2.5	+0.7	+2.7	+1.1	-2.3	+1.5	-0.6	-1.6	-4.4	+0.4	
<b>Medical &amp; Dental</b>	<b>+1.1%</b>	<b>+11.6</b>	<b>-0.9</b>	<b>+2.7</b>	<b>-0.1</b>	<b>+14.0</b>	<b>+4.2</b>	<b>+1.3</b>	<b>+0.8</b>	<b>-3.8</b>	<b>-6.4</b>	<b>-0.0</b>
Nurse/ Midwife Manager	+1.9%	+9.3	+4.9	-0.8	+0.2	-3.9	+1.4	+1.3	-1.6	+1.3	+6.4	+0.0
Nurse/ Midwife Specialist & AN/MP	+22.9%	+63.5	+12.8	+7.0	+6.2	+16.8	+7.0	+3.8	+0.9	+4.2	+4.9	
Staff Nurse/ Staff Midwife	+8.1%	+85.1	+26.5	+9.6	+1.7	+12.3	-6.9	+5.2	+16.7	-0.8	+22.9	-1.9
Public Health Nurse	-3.2%	-47.2	-5.3	-2.8	-3.6	-6.0	-2.4	-3.8	-2.4	-12.4	-8.5	
Nursing/ Midwifery Student	-47.8%	-45.8	-0.6	-8.4	-1.9	+2.1	+0.0	-2.3	-16.8		-17.8	
Nursing/ Midwifery other	+0.6%	+0.0	+0.0						+0.0		+0.0	
<b>Nursing &amp; Midwifery</b>	<b>+1.9%</b>	<b>+65.0</b>	<b>+38.3</b>	<b>+4.6</b>	<b>+2.6</b>	<b>+21.3</b>	<b>-0.9</b>	<b>+4.2</b>	<b>-3.2</b>	<b>-7.7</b>	<b>+7.8</b>	<b>-1.9</b>
Therapy Professions	+3.9%	+85.2	+8.1	-10.1	+22.5	+17.8	+22.7	+5.2	-6.9	+25.8	+0.2	
Health Science/ Diagnostics	+0.6%	+0.6	+0.5	+1.0	-0.1	-2.0	+4.1	-1.7	+0.7	-0.9	+1.2	-2.1
Social Care	+8.1%	+3.1		-0.9		-0.2	+0.1	+0.1	-0.1	+5.0	-0.9	+0.1
Social Workers	+4.4%	+8.5	+4.1	-2.4	-0.1	+5.8	+0.1	-1.2	-0.1	+0.4	+1.0	+1.0
Psychologists	+5.5%	+16.0	-1.2	-3.8	+4.3	+6.6	+2.7	+3.6	+2.4	-2.2	+3.7	+0.0
Pharmacy	+10.8%	+7.3	+0.9	+0.0	+1.0	+2.8	+1.0	+0.6	-0.2	-0.6	+0.6	+1.1
H&SC, Other	+0.0%	+0.0	-1.9	-10.0	+0.9	+6.4	-0.1	+1.4	-2.2	-1.4	+4.7	+2.3
<b>Health &amp; Social Care Professionals</b>	<b>+3.9%</b>	<b>+120.9</b>	<b>+10.5</b>	<b>-26.2</b>	<b>+28.5</b>	<b>+37.1</b>	<b>+30.5</b>	<b>+8.1</b>	<b>-6.5</b>	<b>+26.1</b>	<b>+10.4</b>	<b>+2.4</b>
Management (VIII & above)	+1.6%	+4.1	+3.8	-4.8	-0.9	+0.6	-2.7	-4.4	+4.8	+2.0	+4.7	+0.8
Administrative/ Supervisory (V to VII)	+4.1%	+31.2	+17.2	-1.8	-0.7	+1.0	+6.4	-1.3	+3.5	+2.1	+5.5	-0.8
Clerical (III & IV)	+4.2%	+77.4	+1.4	-0.5	+21.3	+12.9	-5.8	-0.7	+9.9	+29.0	+10.6	-0.7



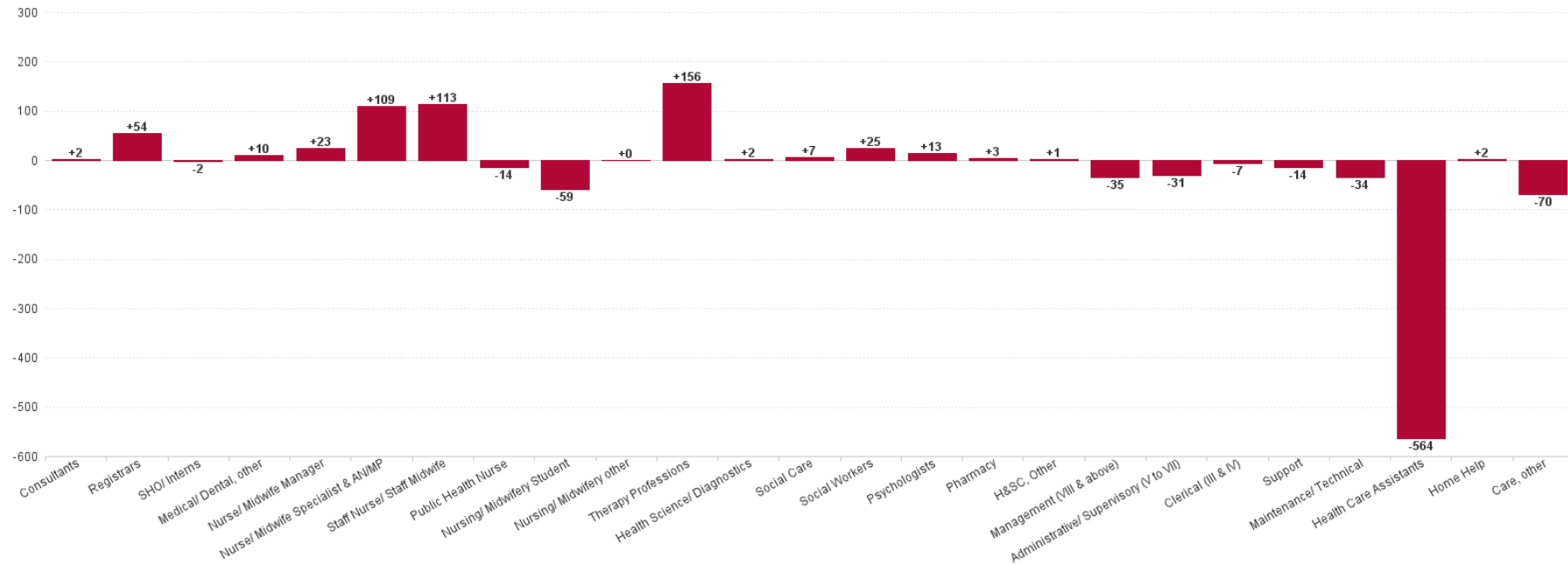
<b>Management &amp; Administrative</b>	<b>+3.9%</b>	<b>+112.6</b>	<b>+22.3</b>	<b>-7.1</b>	<b>+19.7</b>	<b>+14.5</b>	<b>-2.0</b>	<b>-6.3</b>	<b>+18.3</b>	<b>+33.1</b>	<b>+20.8</b>	<b>-0.7</b>
Support	+1.1%	+3.5	-4.3	+1.9	-2.0	+3.8	+0.8	+2.0	-2.8	+0.5	+2.1	+1.5
Maintenance/ Technical	-8.6%	-3.1	-0.8	-1.0		+0.0		+0.0	-1.3	+0.0		+0.0
<b>General Support</b>	<b>+0.1%</b>	<b>+0.4</b>	<b>-5.2</b>	<b>+0.9</b>	<b>-2.0</b>	<b>+3.8</b>	<b>+0.8</b>	<b>+2.0</b>	<b>-4.1</b>	<b>+0.5</b>	<b>+2.1</b>	<b>+1.5</b>
Health Care Assistants	-11.4%	-52.9	-4.7	-2.8	+2.2	-14.5	-12.7	+3.3	-0.3	-14.5	-9.0	
Home Help	+23.0%	+3.5	+0.1			+3.9	-0.5					
Care, other	-2.5%	-20.6	-4.6	-6.5	-0.7	-4.0	-5.8	+1.4	+3.6	+0.7	-4.0	-0.8
<b>Patient &amp; Client Care</b>	<b>-5.4%</b>	<b>-70.1</b>	<b>-9.2</b>	<b>-9.3</b>	<b>+1.5</b>	<b>-14.6</b>	<b>-19.0</b>	<b>+4.7</b>	<b>+3.4</b>	<b>-13.8</b>	<b>-13.0</b>	<b>-0.8</b>



Previous Month Summary Chart: Change since MAY 2023



Previous Year Summary Chart: Change since JUN 2022



YTD Summary Chart: Change since DEC 2022

