

Primary Care Employment Report : MAY 2023

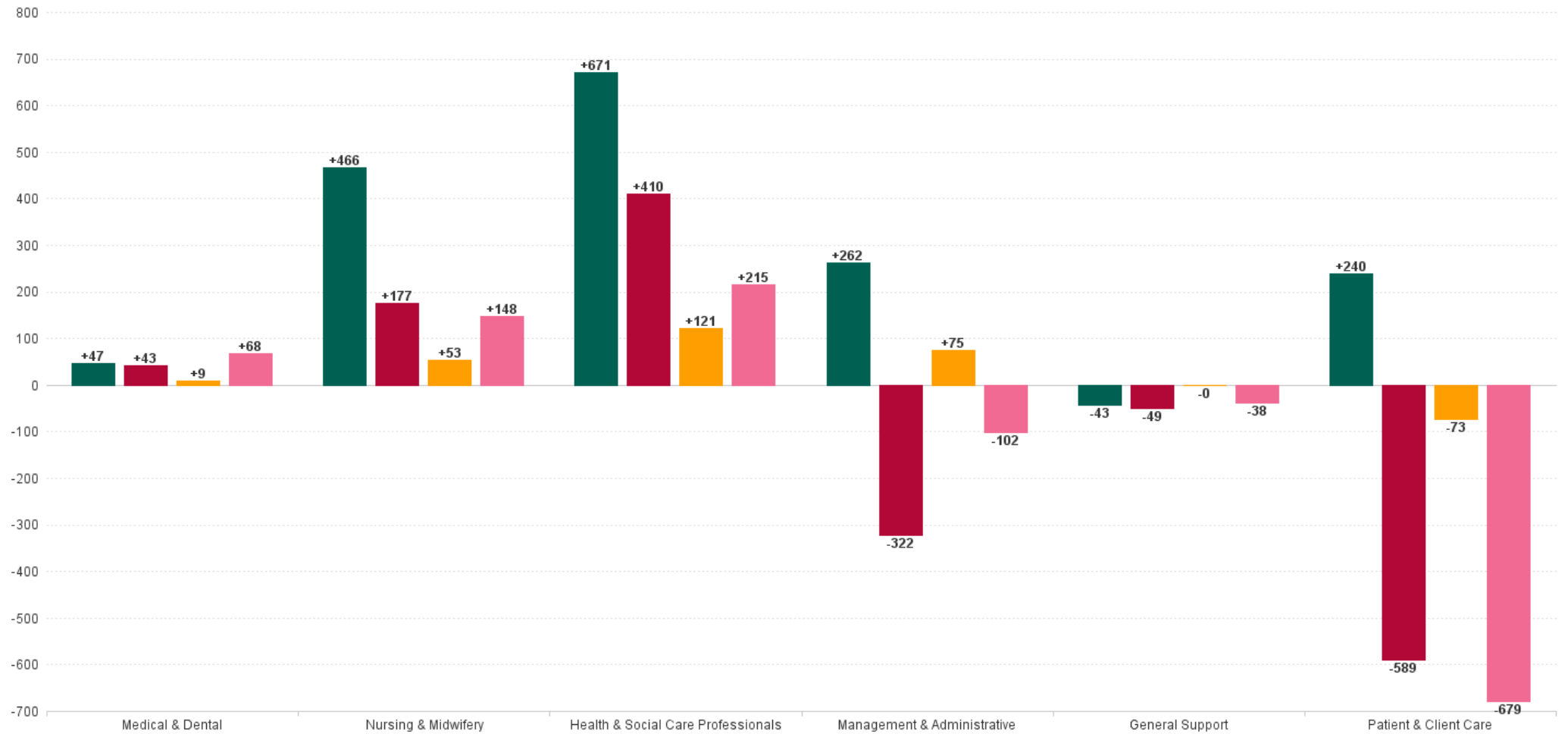
Primary Care Employment Report by Staff Group

MAY 2023	WTE DEC 2019	WTE DEC 2022	WTE APR 2023	WTE MAY 2023	WTE change since DEC 2019	% WTE change since Dec 2019	WTE change since DEC 2022	% WTE change since Dec 2022	WTE change since APR 2023	No. MAY 2023
Overall	10,606	12,064	12,322	12,249	+1,643	+15.5%	+185	+1.5%	-74	14,473
Consultants	44	50	51	53	+9	+20.9%	+3	+5.4%	+2	65
Registrars	396	433	446	443	+47	+11.9%	+10	+2.2%	-3	459
SHO/ Interns	36	39	39	36	+0	+0.8%	-3	-6.6%	-3	44
Medical/ Dental, other	520	511	511	510	-10	-1.8%	-1	-0.2%	-1	715
Medical & Dental	995	1,034	1,047	1,042	+47	+4.7%	+9	+0.8%	-5	1,283
Nurse/ Midwife Manager	358	477	492	489	+130	+36.3%	+12	+2.4%	-4	541
Nurse/ Midwife Specialist & AN/MP	143	278	331	334	+191	+133.7%	+56	+20.0%	+3	376
Staff Nurse/ Staff Midwife	862	1,057	1,075	1,082	+220	+25.6%	+26	+2.4%	+7	1,399
Public Health Nurse	1,513	1,477	1,454	1,437	-76	-5.0%	-40	-2.7%	-17	1,729
Post-registration Nurse/ Midwife Student	96	96	106	96	-0	-0.1%	-0	-0.1%	-10	96
Nursing/ Midwifery Student	96	96	106	96	-0	-0.1%	-0	-0.1%	-10	96
Nursing/ Midwifery other	4	5	4	5	+1	+23.7%	-0	-4.9%	+1	5
Nursing & Midwifery	2,976	3,389	3,463	3,442	+466	+15.7%	+53	+1.6%	-20	4,146
Therapy Professions	1,733	2,162	2,271	2,253	+520	+30.0%	+91	+4.2%	-18	2,610
Health Science/ Diagnostics	82	99	100	99	+17	+20.6%	-0	-0.3%	-1	112
Social Care	35	39	42	42	+6	+17.3%	+3	+8.0%	-1	45
Social Workers	139	195	212	202	+63	+45.3%	+7	+3.6%	-9	222
Psychologists	303	292	307	305	+2	+0.7%	+13	+4.5%	-2	339
Pharmacy	58	68	79	74	+17	+28.9%	+6	+9.4%	-4	85
H&SC, Other	209	255	252	256	+46	+22.2%	+1	+0.3%	+3	304
Health & Social Care Professionals	2,559	3,109	3,262	3,230	+671	+26.2%	+121	+3.9%	-31	3,717
Management (VIII & above)	306	253	258	252	-54	-17.7%	-2	-0.7%	-6	262
Administrative/ Supervisory (V to VII)	623	762	789	782	+159	+25.5%	+20	+2.7%	-6	837
Clerical (III & IV)	1,746	1,847	1,905	1,903	+157	+9.0%	+56	+3.1%	-3	2,209
Management & Administrative	2,675	2,862	2,952	2,937	+262	+9.8%	+75	+2.6%	-15	3,308
Support	346	327	338	330	-16	-4.6%	+3	+1.0%	-8	484
Maintenance/ Technical	59	36	34	32	-27	-45.5%	-3	-9.2%	-1	36
General Support	405	362	372	362	-43	-10.6%	-0	0.0%	-9	520
Home Help	18	15	14	18	-0	-0.5%	+3	+21.7%	+4	43
Health Care Assistants	254	466	417	413	+159	+62.8%	-53	-11.3%	-4	484
Care, other	723	827	796	803	+80	+11.1%	-24	-2.9%	+7	972
Patient & Client Care	995	1,308	1,227	1,234	+240	+24.1%	-73	-5.6%	+7	1,499



WTE Change by Staff Category

■ WTE change since DEC 2019 ■ WTE change since DEC 2021 ■ WTE change since DEC 2022 ■ WTE change since MAY 2022



Primary Care Report by CHO: MAY 2023

MAY 2023	WTE DEC 2019	WTE DEC 2022	WTE APR 2023	WTE MAY 2023	WTE change since DEC 2019	% WTE change since Dec 2019	WTE change since DEC 2022	% WTE change since Dec 2022	WTE change since APR 2023	No. MAY 2023
Overall	10,606	12,064	12,322	12,249	+1,643	+15.5%	+185	+1.5%	-74	14,473
CHO 1	1,182	1,472	1,534	1,519	+337	+28.5%	+47	+3.2%	-15	1,770
CHO 2	1,134	1,351	1,324	1,326	+192	+16.9%	-25	-1.8%	+2	1,511
CHO 3	764	772	827	824	+60	+7.9%	+52	+6.8%	-3	968
CHO 4	1,346	1,707	1,785	1,777	+431	+32.0%	+70	+4.1%	-7	2,223
CHO 5	958	1,152	1,174	1,169	+211	+22.0%	+18	+1.5%	-5	1,386
CHO 6	765	864	867	863	+98	+12.9%	-1	-0.2%	-4	1,092
CHO 7	1,702	1,765	1,782	1,747	+45	+2.6%	-19	-1.1%	-35	2,023
CHO 8	1,387	1,498	1,517	1,516	+129	+9.3%	+18	+1.2%	-1	1,797
CHO 9	1,247	1,357	1,381	1,378	+131	+10.5%	+21	+1.6%	-3	1,564
other Community Services	122	127	132	130	+7	+6.1%	+2	+1.8%	-2	139



% Total by CHO



Primary Care Employment Report by HSE/S38: MAY 2023

MAY 2023	WTE DEC 2019	WTE DEC 2022	WTE APR 2023	WTE MAY 2023	WTE change since DEC 2019	% WTE change since Dec 2019	WTE change since DEC 2022	% WTE change since Dec 2022	WTE change since APR 2023	No. MAY 2023
Overall	10,606	12,064	12,322	12,249	+1,643	0.15	+185	0.02	-74	14,473
Health Service Executive	9,930	11,284	11,545	11,503	+1,573	0.16	+219	0.02	-42	13,469
Section 38 Voluntary Agencies	676	780	778	746	+70	0.1	-34	-0.04	-31	1,004



Primary Care Employment Report by HSE: MAY 2023

MAY 2023	WTE DEC 2019	WTE DEC 2022	WTE APR 2023	WTE MAY 2023	WTE change since DEC 2019	% WTE change since Dec 2019	WTE change since DEC 2022	% WTE change since Dec 2022	WTE change since APR 2023	No. MAY 2023
Total HSE	9,930	11,284	11,545	11,503	+1,573	+15.8%	+219	+1.9%	-42	13,469
Consultants	32	34	34	35	+3	+9.2%	+2	+5.1%	+1	43
Registrars	385	422	432	430	+45	+11.8%	+8	+2.0%	-2	445
SHO/ Interns	19	22	22	22	+3	+16.9%	+0	+0.0%	-0	23
Medical/ Dental, other	505	490	493	490	-15	-3.0%	+0	+0.0%	-3	661
Medical & Dental	941	967	981	977	+36	+3.8%	+10	+1.1%	-4	1,172
Nurse/ Midwife Manager	309	421	439	438	+128	+41.4%	+17	+4.0%	-1	482
Nurse/ Midwife Specialist & AN/MP	114	235	285	291	+177	+155.3%	+56	+24.1%	+7	322
Staff Nurse/ Staff Midwife	752	929	948	958	+206	+27.4%	+29	+3.1%	+10	1,249
Public Health Nurse	1,513	1,477	1,454	1,437	-76	-5.0%	-40	-2.7%	-17	1,729
Post-registration Nurse/ Midwife Student	96	96	106	96	+47	-0.1%	-37	-0.1%	-10	96
Nursing/ Midwifery Student	96	96	106	96	-0	-0.1%	-0	-0.1%	-10	96
Nursing/ Midwifery other	2	3	2	3	+1	+64.4%	+0	+0.7%	+1	3
Nursing & Midwifery	2,786	3,160	3,233	3,223	+436	+15.7%	+63	+2.0%	-11	3,881
Therapy Professions	1,696	2,124	2,232	2,219	+523	+30.8%	+95	+4.5%	-13	2,567
Health Science/ Diagnostics	78	95	96	95	+17	+21.6%	-0	-0.2%	-1	106
Social Care	35	39	42	42	+6	+17.3%	+3	+8.0%	-1	45
Social Workers	128	181	196	189	+61	+47.5%	+8	+4.4%	-7	206
Psychologists	302	291	305	304	+2	+0.6%	+13	+4.6%	-1	338
Pharmacy	48	60	69	66	+18	+38.3%	+6	+10.2%	-3	76
H&SC, Other	208	251	249	252	+45	+21.5%	+1	+0.3%	+3	298
Health & Social Care Professionals	2,496	3,041	3,191	3,168	+672	+26.9%	+126	+4.1%	-23	3,636
Management (VIII & above)	297	245	248	242	-55	-18.5%	-3	-1.1%	-6	248
Administrative/ Supervisory (V to VII)	590	728	751	746	+157	+26.6%	+19	+2.6%	-5	787
Clerical (III & IV)	1,683	1,773	1,833	1,833	+151	+9.0%	+60	+3.4%	-0	2,105
Management & Administrative	2,570	2,745	2,833	2,822	+252	+9.8%	+77	+2.8%	-11	3,140
Support	251	230	239	235	-16	-6.5%	+5	+2.2%	-4	368
Maintenance/ Technical	50	25	24	23	-27	-53.9%	-2	-7.3%	-1	24
General Support	301	255	263	258	-44	-14.4%	+3	+1.3%	-5	392
Home Help	18	15	14	18	-0	-0.5%	+3	+21.7%	+4	43
Health Care Assistants	152	338	298	299	+147	+97.2%	-39	-11.5%	+1	342
Care, other	666	763	733	739	+73	+10.9%	-25	-3.3%	+6	863
Patient & Client Care	836	1,116	1,044	1,056	+220	+26.3%	-60	-5.4%	+11	1,248

Primary Care Employment Report by S38 Hospitals: MAY 2023

MAY 2023	WTE DEC 2019	WTE DEC 2022	WTE APR 2023	WTE MAY 2023	WTE change since DEC 2019	% WTE change since Dec 2019	WTE change since DEC 2022	% WTE change since Dec 2022	WTE change since APR 2023	No. MAY 2023
Total S38 Vols	676	780	778	746	+70	+10.4%	-34	-4.4%	-31	1,004
Consultants	11	17	17	18	+6	+54.3%	+1	+5.9%	+1	22
Registrars	11	11	14	13	+2	+15.9%	+1	+11.3%	-1	14
SHO/ Interns	18	17	17	15	-3	-16.2%	-3	-14.9%	-2	21
Medical/ Dental, other	14	21	19	20	+6	+40.3%	-1	-5.8%	+2	54
Medical & Dental	54	67	66	65	+11	+20.0%	-2	-2.3%	-1	111
Nurse/ Midwife Manager	49	56	54	51	+2	+3.9%	-5	-9.4%	-3	59
Nurse/ Midwife Specialist & AN/MP	29	43	46	43	+14	+48.3%	-1	-1.7%	-4	54
Staff Nurse/ Staff Midwife	110	128	127	125	+15	+13.3%	-3	-2.7%	-3	150
Nursing/ Midwifery other	2	2	2	2	-0	-13.0%	-0	-13.0%	-0	2
Nursing & Midwifery	190	229	229	220	+30	+15.9%	-10	-4.2%	-9	265
Therapy Professions	37	38	38	34	-3	-9.1%	-4	-11.2%	-5	43
Health Science/ Diagnostics	4	4	4	4	+0	+0.5%	-0	-1.6%	-0	6
Social Workers	11	14	15	13	+2	+19.6%	-1	-6.5%	-2	16
Psychologists	1	1	1	1	+0	+63.3%	-0	-2.0%	-0	1
Pharmacy	10	8	9	8	-2	-16.7%	+0	+3.1%	-1	9
H&SC, Other	2	3	3	3	+2	+117.3%	+0	+0.0%	+0	6
Health & Social Care Professionals	64	68	71	63	-1	-1.2%	-5	-7.3%	-8	81
Management (VIII & above)	9	9	10	9	+1	+11.1%	+1	+11.1%	-0	14
Administrative/ Supervisory (V to VII)	34	35	37	36	+2	+7.4%	+1	+3.7%	-1	50
Clerical (III & IV)	64	73	72	70	+6	+9.2%	-4	-5.4%	-3	104
Management & Administrative	106	117	119	115	+9	+8.8%	-2	-1.5%	-4	168
Support	95	97	99	95	+1	+0.6%	-2	-1.8%	-4	116
Maintenance/ Technical	9	11	9	9	+0	+1.4%	-1	-13.7%	-0	12
General Support	104	108	109	105	+1	+0.7%	-3	-3.0%	-4	128
Health Care Assistants	102	128	120	114	+12	+11.9%	-14	-10.8%	-5	142
Care, other	57	63	63	64	+8	+13.4%	+1	+1.5%	+1	109
Patient & Client Care	159	192	183	179	+20	+12.5%	-13	-6.7%	-4	251



Primary Care Employment Report by Staff Group: MAY 2023

CHO 1

MAY 2023	WTE DEC 2019	WTE DEC 2022	WTE APR 2023	WTE MAY 2023	WTE change since DEC 2019	% WTE change since Dec 2019	WTE change since DEC 2022	% WTE change since Dec 2022	WTE change since APR 2023	No. MAY 2023
Overall	1,182	1,472	1,534	1,519	+337	+28.5%	+47	+3.2%	-15	1,770
Consultants	3	5	5	5	+2	+65.7%	-0	-1.8%	+0	6
Registrars	41	42	39	41	-0	-0.7%	-1	-3.5%	+1	42
SHO/ Interns	1	1	2	1	+0	+0.0%	+0	+1.0%	-1	1
Medical/ Dental, other	47	42	43	42	-6	-12.1%	-1	-1.6%	-2	53
Medical & Dental	92	90	90	88	-4	-4.4%	-2	-2.5%	-1	102
Nurse/ Midwife Manager	36	51	57	57	+21	+56.4%	+6	+11.5%	-1	62
Nurse/ Midwife Specialist & AN/MP	21	49	60	60	+40	+191.4%	+12	+23.9%	+1	64
Staff Nurse/ Staff Midwife	85	116	131	135	+49	+57.5%	+18	+15.6%	+4	175
Public Health Nurse	156	151	151	146	-10	-6.5%	-5	-3.2%	-6	168
Post-registration Nurse/ Midwife Student	7	10	10	10	+3	+43.3%	+0	+4.4%	+0	10
Nursing/ Midwifery Student	7	10	10	10	+3	+43.3%	+0	+4.4%	+0	10
Nursing/ Midwifery other	1	1		1	+0	+0.0%	+0	+0.0%	+1	1
Nursing & Midwifery	306	377	409	409	+102	+33.4%	+31	+8.3%	-1	480
Therapy Professions	227	279	291	289	+62	+27.1%	+10	+3.6%	-3	329
Health Science/ Diagnostics	5	9	10	10	+5	+91.9%	+1	+8.7%	+1	12
Social Workers	13	25	28	28	+15	+118.6%	+2	+9.7%	-1	30
Psychologists	35	28	28	26	-8	-23.8%	-1	-4.2%	-1	30
Pharmacy	1	1	2	2	+1	+148.6%	+1	+138.4%	+0	2
H&SC, Other	7	20	19	18	+11	+159.5%	-2	-10.0%	-1	30
Health & Social Care Professionals	287	362	377	373	+85	+29.7%	+11	+3.1%	-5	433
Management (VIII & above)	32	30	34	32	+0	+0.4%	+3	+8.6%	-2	33
Administrative/ Supervisory (V to VII)	64	94	100	105	+41	+65.1%	+11	+11.6%	+5	112
Clerical (III & IV)	236	293	306	296	+60	+25.5%	+3	+1.0%	-10	340
Management & Administrative	331	416	440	433	+101	+30.6%	+16	+4.0%	-7	485
Support	72	84	81	80	+8	+11.7%	-4	-4.3%	-1	111
Maintenance/ Technical	6	9	8	8	+2	+30.4%	-1	-9.9%	+0	8
General Support	78	93	89	88	+10	+13.1%	-5	-4.9%	-1	119
Home Help		0	0	0	+0		+0	+29.6%	+0	1
Health Care Assistants	32	69	68	69	+37	+116.0%	-0	-0.5%	+1	78
Care, other	55	64	62	60	+5	+8.2%	-5	-7.1%	-2	72
Patient & Client Care	87	134	130	129	+42	+48.2%	-5	-3.6%	-1	151

CHO 2

MAY 2023	WTE DEC 2019	WTE DEC 2022	WTE APR 2023	WTE MAY 2023	WTE change since DEC 2019	% WTE change since Dec 2019	WTE change since DEC 2022	% WTE change since Dec 2022	WTE change since APR 2023	No. MAY 2023
Overall	1,134	1,351	1,324	1,326	+192	+16.9%	-25	-1.8%	+2	1,511
Consultants	1	3	3	4	+2	+192.0%	+1	+21.7%	+1	5
Registrars	40	53	49	49	+9	+22.3%	-4	-7.1%	-0	50
SHO/ Interns	1	3	5	5	+4	+396.0%	+2	+66.4%	+0	5
Medical/ Dental, other	46	46	48	49	+3	+7.0%	+3	+7.2%	+1	59
Medical & Dental	88	104	105	106	+18	+21.0%	+2	+2.1%	+1	119
Nurse/ Midwife Manager	27	34	33	33	+6	+21.2%	-0	-1.4%	+0	35
Nurse/ Midwife Specialist & AN/MP	17	38	41	42	+25	+144.0%	+4	+10.9%	+1	48
Staff Nurse/ Staff Midwife	74	92	94	95	+21	+28.5%	+3	+3.1%	+2	119
Public Health Nurse	191	186	186	185	-6	-3.1%	-1	-0.7%	-1	214
<i>Post-registration Nurse/ Midwife Student</i>	<i>4</i>	<i>14</i>	<i>19</i>	<i>16</i>	<i>+12</i>	<i>+291.3%</i>	<i>+1</i>	<i>+8.4%</i>	<i>-3</i>	<i>16</i>
Nursing/ Midwifery Student	4	14	19	16	+12	+291.3%	+1	+8.4%	-3	16
Nursing & Midwifery	313	365	373	371	+58	+18.4%	+6	+1.7%	-2	432
Therapy Professions	226	291	294	293	+67	+29.5%	+2	+0.7%	-1	332
Health Science/ Diagnostics	6	9	8	9	+4	+59.5%	+0	+4.5%	+1	10
Social Care	8	7	7	6	-3	-33.3%	-1	-14.5%	-1	6
Social Workers	7	19	17	17	+10	+141.8%	-2	-11.2%	-0	17
Psychologists	24	32	30	30	+6	+24.9%	-2	-5.1%	-0	34
Pharmacy	1	1	1	1	+0	+0.0%	+0	+0.0%	+0	1
H&SC, Other	40	63	49	53	+13	+32.2%	-10	-15.5%	+4	60
Health & Social Care Professionals	312	421	407	409	+96	+30.8%	-12	-2.8%	+2	460
Management (VIII & above)	33	29	25	24	-9	-27.2%	-5	-16.6%	-1	24
Administrative/ Supervisory (V to VII)	62	85	86	83	+21	+34.4%	-1	-1.6%	-3	89
Clerical (III & IV)	238	219	206	210	-28	-11.8%	-9	-4.3%	+4	238
Management & Administrative	333	332	316	317	-16	-4.7%	-16	-4.7%	+0	351
Support	21	17	20	19	-1	-6.7%	+2	+12.5%	-1	39
Maintenance/ Technical	9	11	11	10	+1	+11.1%	-1	-9.0%	-1	10
General Support	30	28	31	29	-0	-1.3%	+1	+4.1%	-2	49
Health Care Assistants	14	33	33	33	+19	+131.7%	+0	+0.9%	-0	36
Care, other	43	68	58	60	+17	+39.7%	-8	-11.2%	+2	64
Patient & Client Care	57	100	91	93	+36	+62.7%	-7	-7.2%	+2	100

CHO 3

MAY 2023	WTE DEC 2019	WTE DEC 2022	WTE APR 2023	WTE MAY 2023	WTE change since DEC 2019	% WTE change since Dec 2019	WTE change since DEC 2022	% WTE change since Dec 2022	WTE change since APR 2023	No. MAY 2023
Overall	764	772	827	824	+60	+7.9%	+52	+6.8%	-3	968
Consultants	2	1	1	1	-1	-34.0%	+0	+0.0%	+0	2
Registrars	24	29	28	28	+4	+16.9%	-2	-5.8%	-1	28
SHO/ Interns	6				-6	-100.0%				
Medical/ Dental, other	52	45	46	47	-5	-9.3%	+2	+3.9%	+1	61
Medical & Dental	84	76	76	76	-8	-9.0%	+0	+0.1%	+1	91
Nurse/ Midwife Manager	19	23	23	23	+4	+22.4%	-0	-0.6%	+0	26
Nurse/ Midwife Specialist & AN/MP	2	7	13	13	+11	+558.0%	+6	+90.7%	+0	14
Staff Nurse/ Staff Midwife	56	75	74	75	+19	+33.4%	-1	-1.1%	+0	96
Public Health Nurse	126	125	128	127	+1	+0.7%	+2	+1.9%	-0	155
<i>Post-registration Nurse/ Midwife Student</i>		6	6	5	+5		-1	-15.8%	-1	5
Nursing/ Midwifery Student		6	6	5	+5		-1	-15.8%	-1	5
Nursing & Midwifery	203	236	244	243	+40	+19.6%	+7	+2.8%	-1	296
Therapy Professions	86	162	184	186	+100	+116.0%	+24	+14.9%	+1	208
Health Science/ Diagnostics	5	5	5	5	-0	-4.2%	+0	+0.9%	+0	5
Social Care	1				-1	-100.0%				
Social Workers	11	12	13	13	+3	+27.6%	+1	+7.8%	+0	15
Psychologists	15	14	18	19	+3	+19.9%	+5	+32.6%	+0	20
Pharmacy	1	1	2	2	+1	+100.0%	+1	+102.0%	+0	3
H&SC, Other	11	12	13	13	+2	+21.5%	+1	+9.0%	-0	15
Health & Social Care Professionals	129	205	236	237	+108	+83.3%	+32	+15.4%	+1	266
Management (VIII & above)	23	10	10	10	-14	-58.1%	+0	+0.9%	+0	10
Administrative/ Supervisory (V to VII)	54	28	30	29	-26	-47.2%	+0	+1.3%	-2	31
Clerical (III & IV)	156	127	137	139	-17	-11.1%	+12	+9.2%	+2	159
Management & Administrative	234	165	177	177	-57	-24.2%	+12	+7.4%	-0	200
Support	13	12	13	11	-2	-15.8%	-1	-9.0%	-2	26
Maintenance/ Technical	30				-30	-100.0%				
General Support	43	12	13	11	-32	-74.2%	-1	-9.0%	-2	26
Home Help	1				-1	-100.0%				
Health Care Assistants	21	26	28	29	+8	+39.3%	+4	+13.8%	+1	33
Care, other	49	51	53	50	+1	+2.5%	-1	-1.1%	-2	56
Patient & Client Care	71	77	81	80	+9	+12.4%	+3	+3.9%	-2	89

CHO 4

MAY 2023	WTE DEC 2019	WTE DEC 2022	WTE APR 2023	WTE MAY 2023	WTE change since DEC 2019	% WTE change since Dec 2019	WTE change since DEC 2022	% WTE change since Dec 2022	WTE change since APR 2023	No. MAY 2023
Overall	1,346	1,707	1,785	1,777	+431	+32.0%	+70	+4.1%	-7	2,223
Consultants	3	7	7	7	+4	+151.3%	-0	-3.5%	+0	10
Registrars	55	40	58	59	+4	+7.1%	+19	+47.8%	+0	61
SHO/ Interns	6	4	4	3	-3	-51.2%	-1	-25.0%	-1	3
Medical/ Dental, other	88	110	105	107	+19	+21.3%	-3	-2.8%	+2	182
Medical & Dental	152	160	174	175	+24	+15.5%	+15	+9.1%	+2	256
Nurse/ Midwife Manager	56	72	74	71	+14	+25.4%	-2	-2.3%	-3	78
Nurse/ Midwife Specialist & AN/MP	4	14	25	29	+25	+600.7%	+15	+103.4%	+5	32
Staff Nurse/ Staff Midwife	119	177	187	189	+70	+58.4%	+12	+7.0%	+2	262
Public Health Nurse	211	210	206	207	-4	-1.8%	-3	-1.4%	+1	263
<i>Post-registration Nurse/ Midwife Student</i>	17	11	14	14	-3	-18.8%	+3	+27.9%	+0	14
Nursing/ Midwifery Student	17	11	14	14	-3	-18.8%	+3	+27.9%	+0	14
Nursing & Midwifery	408	484	506	510	+102	+25.0%	+26	+5.3%	+4	649
Therapy Professions	222	327	351	345	+123	+55.3%	+18	+5.4%	-6	404
Health Science/ Diagnostics	11	13	10	11	-0	-0.8%	-2	-18.5%	+0	12
Social Care	8	7	7	7	-1	-11.8%	+0	+4.7%	-0	8
Social Workers	24	37	45	41	+17	+69.7%	+5	+12.4%	-4	45
Psychologists	20	23	28	28	+8	+36.8%	+5	+19.3%	+0	32
Pharmacy	3	2	7	5	+2	+55.4%	+3	+165.9%	-2	5
H&SC, Other	41	39	45	45	+4	+9.2%	+6	+15.4%	-0	53
Health & Social Care Professionals	329	447	494	481	+152	+46.1%	+33	+7.5%	-13	559
Management (VIII & above)	37	44	43	44	+7	+19.5%	-0	-0.3%	+1	45
Administrative/ Supervisory (V to VII)	68	114	122	111	+43	+63.0%	-3	-2.2%	-11	121
Clerical (III & IV)	205	255	263	268	+63	+30.8%	+13	+5.2%	+5	330
Management & Administrative	310	412	428	423	+113	+36.5%	+11	+2.6%	-5	496
Support	16	16	19	20	+4	+25.8%	+3	+19.4%	+1	33
Maintenance/ Technical		1	1	1	+1		+0	+0.0%	+0	1
General Support	16	17	20	21	+5	+32.2%	+3	+18.3%	+1	34
Home Help	10	8	8	12	+2	+18.3%	+4	+44.3%	+4	26
Health Care Assistants	17	47	36	31	+14	+80.1%	-16	-33.3%	-5	39
Care, other	105	130	119	125	+20	+19.3%	-5	-4.0%	+6	164
Patient & Client Care	132	185	163	168	+36	+27.2%	-17	-9.2%	+5	229

CHO 5

MAY 2023	WTE DEC 2019	WTE DEC 2022	WTE APR 2023	WTE MAY 2023	WTE change since DEC 2019	% WTE change since Dec 2019	WTE change since DEC 2022	% WTE change since Dec 2022	WTE change since APR 2023	No. MAY 2023
Overall	958	1,152	1,174	1,169	+211	+22.0%	+18	+1.5%	-5	1,386
Consultants	3	2	2	2	-1	-40.0%	-0	-10.0%	-0	2
Registrars	19	30	33	33	+14	+72.6%	+3	+10.9%	+0	33
SHO/ Interns	5				-5	-100.0%				
Medical/ Dental, other	54	59	59	60	+5	+10.0%	+1	+1.7%	+0	84
Medical & Dental	81	90	94	94	+13	+16.0%	+4	+4.5%	+0	119
Nurse/ Midwife Manager	25	47	50	51	+25	+99.8%	+3	+6.8%	+0	57
Nurse/ Midwife Specialist & AN/MP	6	25	32	32	+26	+464.5%	+7	+26.4%	+0	36
Staff Nurse/ Staff Midwife	67	117	111	112	+45	+67.9%	-5	-4.1%	+1	143
Public Health Nurse	166	154	157	153	-13	-7.9%	-1	-0.6%	-4	183
<i>Post-registration Nurse/ Midwife Student</i>	5	4	4	4	-1	-20.0%	+0	+1.8%	+0	4
Nursing/ Midwifery Student	5	4	4	4	-1	-20.0%	+0	+1.8%	+0	4
Nursing/ Midwifery other	1				-1	-100.0%				
Nursing & Midwifery	270	348	354	352	+82	+30.4%	+4	+1.2%	-2	423
Therapy Professions	185	243	265	263	+77	+41.6%	+20	+8.1%	-2	297
Health Science/ Diagnostics	4	7	12	11	+8	+201.6%	+4	+53.2%	-0	12
Social Care	5	8	8	9	+3	+62.2%	+0	+1.0%	+0	9
Social Workers	8	5	5	5	-3	-32.5%	+0	+3.8%	+0	6
Psychologists	46	34	38	38	-8	-18.1%	+3	+9.5%	-0	41
Pharmacy	1		1	1	+0	+0.0%	+1		+0	1
H&SC, Other	18	19	20	20	+2	+9.5%	+1	+3.1%	-0	23
Health & Social Care Professionals	268	318	349	346	+79	+29.4%	+29	+9.1%	-3	389
Management (VIII & above)	25	18	15	16	-10	-38.4%	-3	-14.6%	+1	16
Administrative/ Supervisory (V to VII)	56	67	69	73	+17	+29.3%	+6	+8.9%	+4	74
Clerical (III & IV)	164	169	164	162	-2	-1.0%	-7	-3.9%	-2	184
Management & Administrative	245	254	248	251	+5	+2.1%	-3	-1.3%	+2	274
Support	25	21	22	22	-3	-13.2%	+1	+3.7%	+0	50
General Support	25	21	22	22	-3	-13.2%	+1	+3.7%	+0	50
Home Help	7	6	6	6	-1	-17.6%	-1	-8.1%	+0	16
Health Care Assistants	8	50	40	38	+30	+379.0%	-12	-23.7%	-2	40
Care, other	54	64	60	60	+6	+11.6%	-4	-6.7%	-0	75
Patient & Client Care	69	121	107	104	+35	+51.3%	-17	-13.8%	-2	131

CHO 6

MAY 2023	WTE DEC 2019	WTE DEC 2022	WTE APR 2023	WTE MAY 2023	WTE change since DEC 2019	% WTE change since Dec 2019	WTE change since DEC 2022	% WTE change since Dec 2022	WTE change since APR 2023	No. MAY 2023
Overall	765	864	867	863	+98	+12.9%	-1	-0.2%	-4	1,092
Consultants	9	10	10	11	+2	+17.3%	+1	+9.6%	+1	13
Registrars	26	32	31	31	+5	+18.5%	-1	-2.7%	-0	32
SHO/ Interns	7	7	7	7	+0	+5.8%	-0	-3.5%	-0	13
Medical/ Dental, other	46	45	46	45	-2	-3.4%	-0	0.0%	-1	64
Medical & Dental	88	93	94	93	+5	+5.9%	-0	-0.2%	-1	122
Nurse/ Midwife Manager	22	31	31	32	+10	+44.4%	+1	+3.6%	+1	35
Nurse/ Midwife Specialist & AN/MP	6	10	14	13	+7	+117.8%	+3	+32.2%	-1	15
Staff Nurse/ Staff Midwife	52	61	59	62	+10	+19.9%	+1	+1.6%	+3	86
Public Health Nurse	117	99	96	94	-22	-19.2%	-5	-4.7%	-2	113
<i>Post-registration Nurse/ Midwife Student</i>	<i>14</i>	<i>7</i>	<i>8</i>	<i>6</i>	<i>-8</i>	<i>-55.6%</i>	<i>-1</i>	<i>-17.9%</i>	<i>-2</i>	<i>6</i>
Nursing/ Midwifery Student	14	7	8	6	-8	-55.6%	-1	-17.9%	-2	6
Nursing & Midwifery	210	208	208	207	-3	-1.3%	-1	-0.3%	-1	255
Therapy Professions	104	143	148	146	+42	+40.5%	+3	+1.9%	-2	180
Health Science/ Diagnostics	18	17	17	16	-3	-14.2%	-1	-8.6%	-1	20
Social Care	4	4	4	4	+0	+5.9%	+0	+1.8%	+0	4
Social Workers	5	10	10	9	+4	+92.8%	-1	-11.7%	-1	11
Psychologists	19	16	16	17	-2	-8.2%	+1	+6.2%	+1	21
Pharmacy	1	3	2	3	+2	+292.5%	+1	+25.1%	+1	4
H&SC, Other	4	6	7	7	+3	+85.4%	+1	+15.1%	+0	8
Health & Social Care Professionals	154	199	203	202	+48	+31.3%	+3	+1.4%	-2	248
Management (VIII & above)	30	29	25	24	-6	-20.3%	-5	-16.4%	-1	29
Administrative/ Supervisory (V to VII)	68	78	74	76	+8	+12.2%	-2	-2.0%	+2	90
Clerical (III & IV)	112	136	137	134	+22	+20.1%	-2	-1.3%	-3	159
Management & Administrative	210	242	237	234	+25	+11.8%	-8	-3.3%	-3	278
Support	24	23	25	25	+1	+4.4%	+2	+10.1%	+0	38
Maintenance/ Technical	2	2	2	2	+0	+0.0%	+0	+0.0%	+0	4
General Support	26	25	27	27	+1	+4.1%	+2	+9.3%	+0	42
Health Care Assistants	6	16	15	17	+11	+168.4%	+1	+6.9%	+2	22
Care, other	71	81	83	83	+12	+16.4%	+1	+1.6%	-1	125
Patient & Client Care	77	97	98	100	+22	+28.7%	+2	+2.5%	+1	147

MAY 2023	WTE DEC 2019	WTE DEC 2022	WTE APR 2023	WTE MAY 2023	WTE change since DEC 2019	% WTE change since Dec 2019	WTE change since DEC 2022	% WTE change since Dec 2022	WTE change since APR 2023	No. MAY 2023
Overall	1,702	1,765	1,782	1,747	+45	+2.6%	-19	-1.1%	-35	2,023
Consultants	11	11	11	11	-0	-2.9%	+0	+2.8%	-0	13
Registrars	46	45	49	46	+1	+1.7%	+2	+4.0%	-2	49
SHO/ Interns	6	12	11	11	+5	+82.3%	-1	-9.2%	-0	11
Medical/ Dental, other	75	61	62	60	-15	-20.3%	-1	-1.7%	-1	88
Medical & Dental	139	129	132	129	-10	-7.2%	-0	0.0%	-4	161
Nurse/ Midwife Manager	80	100	100	97	+17	+20.7%	-3	-3.2%	-3	108
Nurse/ Midwife Specialist & AN/MP	46	65	66	65	+19	+41.0%	+0	+0.1%	-1	76
Staff Nurse/ Staff Midwife	205	198	194	195	-10	-5.1%	-3	-1.6%	+0	236
Public Health Nurse	175	164	158	159	-17	-9.4%	-5	-3.3%	+1	196
<i>Post-registration Nurse/ Midwife Student</i>	<i>21</i>	<i>25</i>	<i>25</i>	<i>23</i>	<i>+2</i>	<i>+9.5%</i>	<i>-2</i>	<i>-7.1%</i>	<i>-2</i>	<i>23</i>
Nursing/ Midwifery Student	21	25	25	23	+2	+9.5%	-2	-7.1%	-2	23
Nursing/ Midwifery other	2	2	2	2	-0	-13.0%	-0	-13.0%	-0	2
Nursing & Midwifery	530	554	546	540	+10	+1.9%	-14	-2.5%	-6	641
Therapy Professions	267	267	270	261	-5	-1.9%	-6	-2.1%	-9	302
Health Science/ Diagnostics	0	8	8	8	+8	+3,427.3%	-0	-0.8%	-0	10
Social Care	3	4	4	4	+1	+17.3%	-0	-0.5%	+0	4
Social Workers	26	30	31	29	+3	+11.7%	-1	-3.4%	-2	32
Psychologists	22	26	30	28	+7	+30.5%	+2	+8.7%	-2	31
Pharmacy	32	31	32	30	-2	-4.8%	-0	-1.0%	-2	34
H&SC, Other	24	24	23	22	-2	-8.0%	-2	-8.9%	-0	27
Health & Social Care Professionals	373	390	398	383	+9	+2.4%	-7	-1.8%	-16	440
Management (VIII & above)	33	23	28	27	-6	-19.4%	+4	+15.3%	-1	27
Administrative/ Supervisory (V to VII)	76	84	89	86	+10	+13.4%	+3	+3.1%	-2	90
Clerical (III & IV)	178	180	186	187	+10	+5.4%	+7	+4.0%	+2	209
Management & Administrative	287	287	302	300	+13	+4.7%	+13	+4.6%	-2	326
Support	116	106	106	101	-15	-12.7%	-5	-4.5%	-5	117
Maintenance/ Technical	9	10	9	9	-0	-2.7%	-1	-14.5%	-0	10
General Support	125	116	115	110	-15	-12.0%	-6	-5.3%	-6	127
Health Care Assistants	121	155	151	147	+26	+21.6%	-8	-4.9%	-4	178
Care, other	128	136	137	138	+11	+8.5%	+3	+2.0%	+1	150
Patient & Client Care	249	291	288	286	+37	+14.9%	-5	-1.7%	-2	328

MAY 2023	WTE DEC 2019	WTE DEC 2022	WTE APR 2023	WTE MAY 2023	WTE change since DEC 2019	% WTE change since Dec 2019	WTE change since DEC 2022	% WTE change since Dec 2022	WTE change since APR 2023	No. MAY 2023
Overall	1,387	1,498	1,517	1,516	+129	+9.3%	+18	+1.2%	-1	1,797
Consultants	6	6	6	7	+1	+11.7%	+1	+10.7%	+0	7
Registrars	78	92	91	90	+11	+14.4%	-3	-3.0%	-2	94
SHO/ Interns	2				-2	-100.0%				
Medical/ Dental, other	61	53	50	49	-11	-18.7%	-4	-7.7%	-0	59
Medical & Dental	147	152	147	145	-1	-0.9%	-6	-4.1%	-2	160
Nurse/ Midwife Manager	51	60	59	60	+9	+18.1%	+0	+0.8%	+1	68
Nurse/ Midwife Specialist & AN/MP	35	47	51	50	+15	+43.3%	+2	+4.7%	-1	58
Staff Nurse/ Staff Midwife	98	110	112	108	+10	+10.4%	-1	-1.3%	-4	148
Public Health Nurse	196	217	207	201	+6	+2.8%	-16	-7.2%	-6	241
Post-registration Nurse/ Midwife Student	2				-2	-100.0%				
Nursing/ Midwifery Student	2				-2	-100.0%				
Nursing & Midwifery	382	434	429	420	+38	+10.0%	-14	-3.3%	-9	515
Therapy Professions	221	222	238	245	+24	+11.0%	+23	+10.3%	+6	294
Health Science/ Diagnostics	5	10	10	9	+4	+78.2%	-1	-9.2%	-1	10
Social Care		1	4	5	+5		+4	+445.0%	+2	6
Social Workers	16	29	31	30	+14	+89.8%	+1	+2.8%	-2	34
Psychologists	56	46	43	44	-12	-21.6%	-2	-4.4%	+0	49
Pharmacy	4	7	7	6	+2	+57.8%	-1	-12.8%	-1	7
H&SC, Other	25	36	35	35	+10	+41.6%	-1	-2.3%	-0	39
Health & Social Care Professionals	326	351	369	374	+48	+14.8%	+24	+6.7%	+5	439
Management (VIII & above)	45	36	38	37	-8	-18.0%	+1	+1.6%	-1	38
Administrative/ Supervisory (V to VII)	78	95	97	97	+20	+25.6%	+3	+2.8%	+0	102
Clerical (III & IV)	265	272	299	300	+35	+13.3%	+28	+10.4%	+1	358
Management & Administrative	387	403	435	434	+47	+12.1%	+31	+7.8%	-0	498
Support	23	19	20	19	-3	-14.5%	+0	+0.0%	-0	33
Maintenance/ Technical	3	2	2	2	-1	-28.8%	+0	+0.5%	+0	2
General Support	25	21	22	21	-4	-16.1%	+0	+0.0%	-0	35
Home Help	0				-0	-100.0%				
Health Care Assistants	21	36	19	21	+0	+2.1%	-15	-40.9%	+2	29
Care, other	98	101	96	100	+1	+1.2%	-2	-1.8%	+4	121
Patient & Client Care	120	137	115	121	+1	+1.1%	-16	-12.0%	+6	150

MAY 2023	WTE DEC 2019	WTE DEC 2022	WTE APR 2023	WTE MAY 2023	WTE change since DEC 2019	% WTE change since Dec 2019	WTE change since DEC 2022	% WTE change since Dec 2022	WTE change since APR 2023	No. MAY 2023
Overall	1,247	1,357	1,381	1,378	+131	+10.5%	+21	+1.6%	-3	1,564
Consultants	4	3	4	4	-0	-5.7%	+1	+20.5%	+0	5
Registrars	56	60	53	54	-2	-3.1%	-6	-10.6%	+1	56
SHO/ Interns	1	7	7	7	+6	+610.0%	+0	+2.5%	+0	8
Medical/ Dental, other	50	50	54	52	+2	+4.3%	+2	+3.6%	-2	65
Medical & Dental	111	121	118	117	+6	+5.7%	-4	-3.1%	-1	134
Nurse/ Midwife Manager	37	53	59	60	+23	+61.7%	+6	+11.8%	+0	66
Nurse/ Midwife Specialist & AN/MP	6	23	30	29	+23	+356.8%	+7	+29.1%	-1	33
Staff Nurse/ Staff Midwife	100	105	110	109	+9	+9.1%	+4	+4.2%	-1	131
Public Health Nurse	175	171	165	165	-10	-5.9%	-6	-3.6%	+0	196
<i>Post-registration Nurse/ Midwife Student</i>	<i>26</i>	<i>19</i>	<i>20</i>	<i>18</i>	<i>-8</i>	<i>-30.8%</i>	<i>-1</i>	<i>-4.3%</i>	<i>-2</i>	<i>18</i>
Nursing/ Midwifery Student	26	19	20	18	-8	-30.8%	-1	-4.3%	-2	18
Nursing/ Midwifery other		2	2	2	+2		+0	+1.0%	+0	2
Nursing & Midwifery	345	373	385	383	+38	+11.1%	+10	+2.7%	-3	446
Therapy Professions	196	229	228	227	+31	+15.7%	-2	-1.1%	-1	264
Health Science/ Diagnostics	20	13	13	14	-6	-31.0%	+1	+8.6%	+1	14
Social Care	4	6	6	5	+1	+26.5%	-1	-14.1%	-1	6
Social Workers	17	23	25	25	+8	+49.0%	+1	+6.1%	-0	26
Psychologists	65	72	74	75	+9	+14.1%	+2	+3.4%	+1	80
Pharmacy	12	13	15	14	+2	+17.7%	+1	+5.4%	-0	17
H&SC, Other	37	33	36	38	+1	+2.6%	+5	+14.0%	+2	44
Health & Social Care Professionals	351	390	397	397	+46	+13.1%	+7	+1.8%	+0	451
Management (VIII & above)	28	15	18	19	-9	-31.8%	+4	+25.8%	+1	20
Administrative/ Supervisory (V to VII)	77	93	98	97	+19	+24.9%	+4	+4.2%	-1	101
Clerical (III & IV)	182	185	194	194	+12	+6.7%	+9	+5.1%	+1	218
Management & Administrative	288	293	310	310	+23	+7.8%	+17	+5.9%	+1	339
Support	35	27	30	29	-5	-15.1%	+2	+7.4%	-0	34
General Support	35	27	30	29	-5	-15.1%	+2	+7.4%	-0	34
Health Care Assistants	13	35	26	27	+14	+105.8%	-8	-21.9%	+1	29
Care, other	105	118	115	115	+10	+9.1%	-4	-3.2%	-1	131
Patient & Client Care	118	153	141	142	+23	+19.9%	-11	-7.4%	+0	160

other Community Services

MAY 2023	WTE DEC 2019	WTE DEC 2022	WTE APR 2023	WTE MAY 2023	WTE change since DEC 2019	% WTE change since Dec 2019	WTE change since DEC 2022	% WTE change since Dec 2022	WTE change since APR 2023	No. MAY 2023
Overall	122	127	132	130	+7	+6.1%	+2	+1.8%	-2	139
Consultants	1	2	2	2	+1	+100.0%	+0	+0.0%	+0	2
Registrars	12	11	13	14	+2	+13.8%	+3	+24.2%	+0	14
SHO/ Interns	2	5	3	3	+1	+69.0%	-2	-47.6%	-1	3
Medical/ Dental, other	0				-0	-100.0%				
Medical & Dental	15	18	18	18	+3	+22.6%	+0	+1.6%	-0	19
Nurse/ Midwife Manager	4	5	5	5	+2	+38.5%	+0	+0.9%	-0	6
Staff Nurse/ Staff Midwife	5	5	3	3	-3	-50.4%	-3	-51.0%	+0	3
Nursing & Midwifery	9	10	8	8	-1	-11.8%	-3	-24.5%	-0	9
Health Science/ Diagnostics	8	8	7	6	-2	-21.2%	-2	-22.2%	-1	7
Social Care	2	2	2	2	+0	+15.2%	+0	+1.7%	-0	2
Social Workers	14	4	5	5	-8	-61.7%	+1	+23.6%	+0	6
Psychologists	1	1	1	1	+0	+0.0%	+0	+0.0%	+0	1
Pharmacy	3	10	11	11	+8	+289.0%	+0	+2.9%	-0	11
H&SC, Other	3	2	5	5	+2	+64.9%	+2	+92.8%	+0	5
Health & Social Care Professionals	30	28	31	29	-0	-0.1%	+2	+7.0%	-1	32
Management (VIII & above)	19	19	21	19	+1	+2.8%	-0	-0.6%	-2	20
Administrative/ Supervisory (V to VII)	20	26	24	25	+5	+24.6%	-1	-2.6%	+1	27
Clerical (III & IV)	12	12	14	13	+1	+9.3%	+1	+11.4%	-0	14
Management & Administrative	51	57	58	58	+7	+13.0%	+1	+1.0%	-1	61
Support	2	1	2	3	+1	+37.9%	+2	+361.9%	+0	3
Maintenance/ Technical	1	1	1	1	+0	+0.0%	+0	+0.0%	+0	1
General Support	3	2	3	4	+1	+25.7%	+2	+139.9%	+0	4
Care, other	15	13	13	13	-2	-14.8%	-0	-1.1%	-0	14
Patient & Client Care	15	13	13	13	-2	-14.8%	-0	-1.1%	-0	14

Primary Care Employment Report by Grade Group: MAY 2023

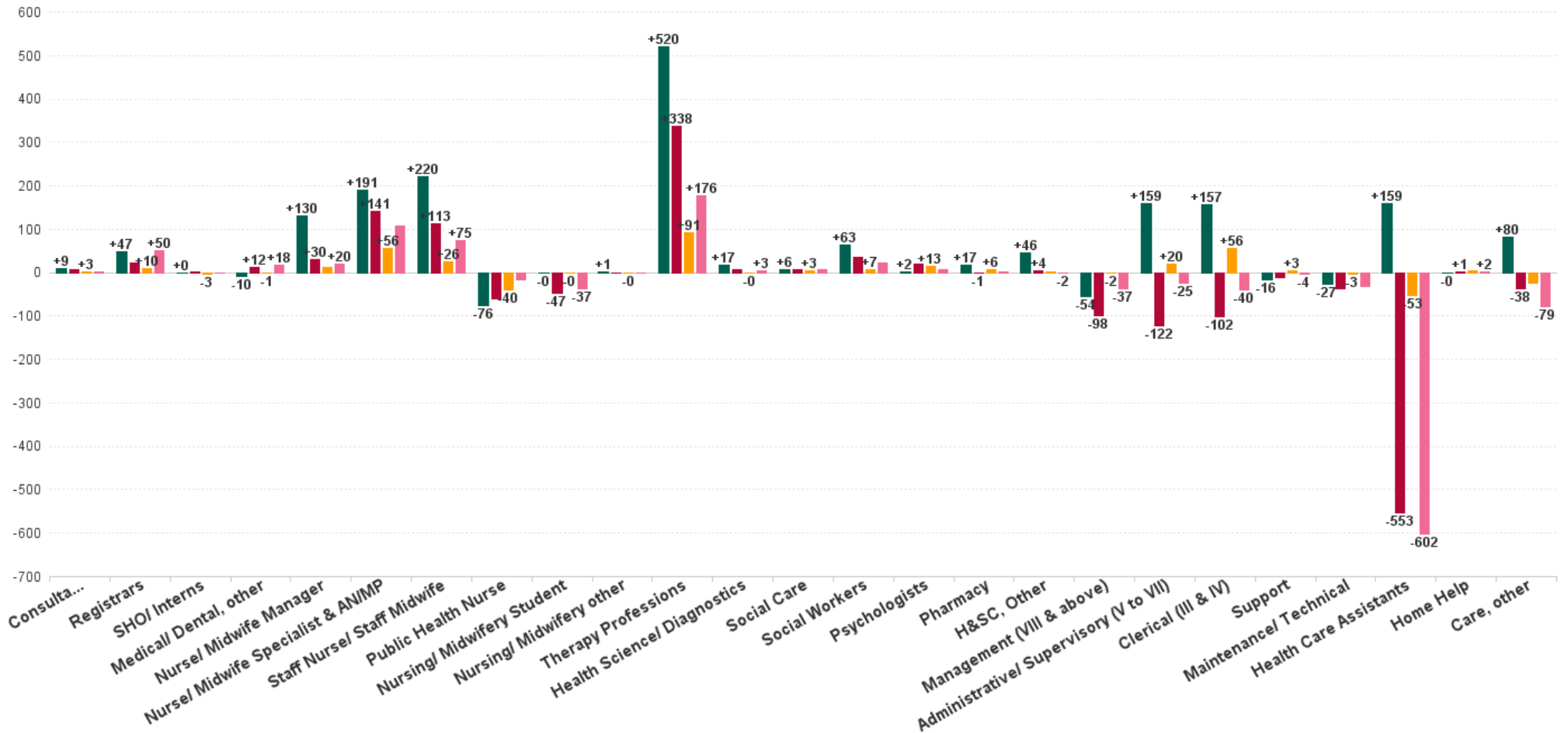
MAY 2023	WTE DEC 2019	WTE DEC 2022	WTE APR 2023	WTE MAY 2023	WTE change since DEC 2019	% WTE change since Dec 2019	WTE change since DEC 2022	% WTE change since Dec 2022	WTE change since APR 2023	No. MAY 2023
Overall	10,606	12,064	12,322	12,249	+1,643	+15.5%	+185	+1.5%	-74	14,473
Consultant Dentistry	11	13	13	15	+3	+30.8%	+1	+11.0%	+1	17
Consultant Medicine	18	24	24	25	+7	+40.5%	+1	+4.5%	+1	32
Consultant Paediatrics	2	2	2	2	+0	+2.0%	+0	+0.0%	+0	2
Consultant Psychiatry	8	8	8	8	+0	+0.6%	+0	+4.1%	+0	9
Consultant Radiology	1	1	1	1	+0	+0.0%	+0	+0.0%	+0	1
Consultant Surgery	4	3	2	3	-2	-38.3%	-0	-5.7%	+0	4
Consultants	44	50	51	53	+9	+20.9%	+3	+5.4%	+2	65
Registrar	383	422	435	432	+49	+12.9%	+10	+2.4%	-2	447
Senior Registrar	3	3	4	4	+1	+51.4%	+1	+26.8%	+0	5
Specialist Registrar	10	8	7	6	-4	-36.0%	-2	-19.5%	-1	7
Registrars	396	433	446	443	+47	+11.9%	+10	+2.2%	-3	459
Senior House Officer	36	39	39	36	+0	+0.8%	-3	-6.6%	-3	44
SHO/ Interns	36	39	39	36	+0	+0.8%	-3	-6.6%	-3	44
Dentists	301	307	311	309	+8	+2.5%	+2	+0.7%	-2	411
Other Medical	218	204	200	201	-17	-7.9%	-3	-1.5%	+1	304
Medical/ Dental, other	520	511	511	510	-10	-1.8%	-1	-0.2%	-1	715
Medical & Dental	995	1034	1047	1042	+47	+4.7%	+9	+0.8%	-5	1,283
Clinical Nurse/ Midwife Manager	168	214	220	216	+48	+28.6%	+1	+0.6%	-5	243
Director Nursing/Midwifery, Assistant	153	218	226	228	+74	+48.6%	+9	+4.2%	+1	251
Director of Nursing/Midwifery	38	44	45	45	+8	+20.8%	+1	+2.5%	-0	47
Nurse/ Midwife Manager	358	477	492	489	+130	+36.3%	+12	+2.4%	-4	541
Advanced Nurse/ Midwife Practitioner	3	38	47	48	+45	+1,774.8%	+10	+25.6%	+0	50
Clinical Nurse/ Midwife Specialist	140	240	284	286	+146	+104.0%	+46	+19.2%	+3	326
Nurse/ Midwife Specialist & AN/MP	143	278	331	334	+191	+133.7%	+56	+20.0%	+3	376
Staff Midwives	8	5	3	5	-3	-39.2%	+0	+7.2%	+1	7
Staff Nurse [Intellectual Disability]		2	2	2	+2		+0	+0.5%	+0	3
Staff Nurse [Psychiatric]	8	14	14	14	+6	+79.6%	-0	-3.0%	+0	19
Staff Nurses [General/ Children's]	846	1,036	1,056	1,062	+215	+25.5%	+26	+2.5%	+5	1,370
Staff Nurse/ Staff Midwife	862	1,057	1,075	1,082	+220	+25.6%	+26	+2.4%	+7	1,399
Public Health Nurse	1,513	1,477	1,454	1,437	-76	-5.0%	-40	-2.7%	-17	1,729
Public Health Nurse	1,513	1,477	1,454	1,437	-76	-5.0%	-40	-2.7%	-17	1,729
Post-registration Nurse/ Midwife Student	96	96	106	96	-0	-0.1%	-0	-0.1%	-10	96
Nursing/ Midwifery Student	96	96	106	96	-0	-0.1%	-0	-0.1%	-10	96
Nursing Education/Clinical	4	5	4	5	+1	+23.7%	-0	-4.9%	+1	5
Nursing/ Midwifery other	4	5	4	5	+1	+23.7%	-0	-4.9%	+1	5
Nursing & Midwifery	2976	3389	3463	3442	+466	+15.7%	+53	+1.6%	-20	4,146
Dietitians	109	195	205	209	+99	+90.9%	+14	+7.1%	+3	244
Occupational Therapists	516	638	658	654	+138	+26.7%	+15	+2.4%	-4	757
Orthoptists	13	20	19	19	+6	+41.5%	-1	-6.1%	-0	22
Physiotherapists	543	654	702	697	+154	+28.4%	+43	+6.5%	-5	819
Podiatrists & Chiropodists	25	82	91	91	+66	+269.5%	+8	+10.3%	-0	101
Speech & Language Therapists	527	572	596	583	+56	+10.7%	+12	+2.0%	-12	667
Therapy Professions	1,733	2,162	2,271	2,253	+520	+30.0%	+91	+4.2%	-18	2,610
Audiology	44	57	59	61	+17	+38.5%	+4	+6.4%	+2	67
Biochemists	8	8	7	6	-2	-21.2%	-2	-22.2%	-1	7
Cardiac Physiologists		1	1	1	+1		+0	+0.0%	+0	1
Clinical Engineering	8	9	9	8	-0	-0.3%	-1	-10.8%	-1	8
Medical Science	16	14	14	13	-3	-16.8%	-1	-10.2%	-1	16
Phlebotomists	0	0	0	0	+0	+9.1%	-0	-20.0%	-0	1
Physicists	2	2	2	2	-0	-14.5%	+0	+5.6%	+0	2
Radiographers	4	8	7	8	+4	+79.3%	+0	+2.3%	+1	10



MAY 2023	WTE DEC 2019	WTE DEC 2022	WTE APR 2023	WTE MAY 2023	WTE change since DEC 2019	% WTE change since Dec 2019	WTE change since DEC 2022	% WTE change since Dec 2022	WTE change since APR 2023	No. MAY 2023
Overall	10,606	12,064	12,322	12,249	+1,643	+15.5%	+185	+1.5%	-74	14,473
Health Science/ Diagnostics	82	99	100	99	+17	+20.6%	-0	-0.3%	-1	112
Social Care	35	39	42	42	+6	+17.3%	+3	+8.0%	-1	45
Social Care	35	39	42	42	+6	+17.3%	+3	+8.0%	-1	45
Social Workers	139	195	212	202	+63	+45.3%	+7	+3.6%	-9	222
Social Workers	139	195	212	202	+63	+45.3%	+7	+3.6%	-9	222
Psychologists	303	292	307	305	+2	+0.7%	+13	+4.5%	-2	339
Psychologists	303	292	307	305	+2	+0.7%	+13	+4.5%	-2	339
Pharmacists	50	58	66	63	+13	+26.3%	+5	+8.3%	-3	73
Pharmacy Technicians	8	10	12	12	+4	+45.0%	+2	+15.6%	-1	12
Pharmacy	58	68	79	74	+17	+28.9%	+6	+9.4%	-4	85
Counsellor Therapists	115	122	133	135	+20	+17.7%	+14	+11.1%	+2	151
Dental Hygienists	58	61	60	60	+3	+4.4%	-1	-1.3%	+0	76
Other Health & Social Care	34	44	42	44	+10	+27.9%	-0	-0.5%	+2	48
Play Therapists/ Specialists	2	1	2	2	-1	-33.3%	+0	+4.8%	+0	2
Podiatrists & Chiropodists			1	1	+1		+1		+0	1
Vaccinators		26	15	14	+14		-13	-48.1%	-1	26
H&SC, Other	209	255	252	256	+46	+22.2%	+1	+0.3%	+3	304
Health & Social Care Professionals	2559	3109	3262	3230	+671	+26.2%	+121	+3.9%	-31	3,717
Executive Management	71	37	35	33	-38	-53.9%	-4	-11.5%	-3	34
Senior Management (VIII & GM)	235	216	222	219	-16	-6.8%	+3	+1.2%	-3	228
Management (VIII & above)	306	253	258	252	-54	-17.7%	-2	-0.7%	-6	262
Middle Management (V-VII)	621	761	787	780	+159	+25.6%	+19	+2.5%	-6	835
Other Administrative	2	1	2	2	+0	+0.0%	+1	+102.0%	+0	2
Administrative/ Supervisory (V to VII)	623	762	789	782	+159	+25.5%	+20	+2.7%	-6	837
General Administrative (III & IV)	1,746	1,847	1,905	1,903	+157	+9.0%	+56	+3.1%	-3	2,209
Clerical (III & IV)	1,746	1,847	1,905	1,903	+157	+9.0%	+56	+3.1%	-3	2,209
Management & Administrative	2675	2862	2952	2937	+262	+9.8%	+75	+2.6%	-15	3,308
Catering	22	23	21	22	-0	-1.2%	-2	-6.5%	+1	24
Household Services	134	139	142	137	+3	+2.5%	-2	-1.2%	-4	170
Other Labs & Associated	3	1	6	7	+4	+120.6%	+5	+383.1%	+1	7
Other Support	112	104	107	104	-8	-7.3%	-0	0.0%	-3	218
Portering	74	59	63	60	-14	-19.4%	+1	+1.7%	-3	65
Support	346	327	338	330	-16	-4.6%	+3	+1.0%	-8	484
Maintenance	58	34	32	30	-28	-48.0%	-3	-9.8%	-1	34
Technical Services	1	2	2	2	+1	+100.0%	+0	+0.0%	+0	2
Maintenance/ Technical	59	36	34	32	-27	-45.5%	-3	-9.2%	-1	36
General Support	405	362	372	362	-43	-10.6%	-0	0.0%	-9	520
Home Helps	18	15	14	18	-0	-0.5%	+3	+21.7%	+4	43
Home Help	18	15	14	18	-0	-0.5%	+3	+21.7%	+4	43
Attendant/ Aide	35	61	69	68	+33	+94.2%	+7	+11.5%	-1	82
Health Care Assistant/ Care Assistant	150	308	214	204	+55	+36.4%	-104	-33.7%	-10	248
Health & Social Care Assistants	69	97	134	141	+72	+104.1%	+44	+45.5%	+7	154
Health Care Assistants	254	466	417	413	+159	+62.8%	-53	-11.3%	-4	484
Health Promotion		1	1	1	+1		+0	+0.0%	+0	1
Home Care Services	3	3	1	1	-2	-58.3%	-1	-46.3%	+1	3
Other Care Grades	713	819	790	797	+84	+11.8%	-22	-2.7%	+7	964
Pastoral Care	4	3	3	3	-1	-29.5%	-0	-4.5%	-0	3
Workshop Services	3	1	1	1	-2	-64.0%	+0	+0.0%	+0	1
Care, other	723	827	796	803	+80	+11.1%	-24	-2.9%	+7	972
Patient & Client Care	995	1308	1227	1234	+240	+24.1%	-73	-5.6%	+7	1,499

WTE Change by Staff Category

■ WTE change since DEC 2019 ■ WTE change since DEC 2021 ■ WTE change since DEC 2022 ■ WTE change since MAY 2022



Primary Care Employment Report by WTE, Headcount, Gender, Full-Time / Part-Time etc. MAY 2023

MAY 2023	WTE MAY 2023	No. MAY 2023	WTE : No	% Male	% Female	Male WTE : No.	Female WTE : No	Perm Count %	Perm Count Male %	Perm Count Female %	Fulltime Count %	Part time Count %	FT Count Male %	FT Count Female %
Total	12,249	14,473	1:0.8	13.13%	86.87%	1:0.9	1:0.8	85.44%	10.12%	75.32%	68.57%	31.43%	84.17%	66.21%
Consultants	52.98	65	1:0.8	35.38%	64.62%	1:0.9	1:0.8	86.15%	32.31%	53.85%	66.15%	33.85%	78.26%	59.52%
Registrars	442.88	459	1:1	37.69%	62.31%	1:1	1:0.9	2.40%	1.09%	1.31%	98.91%	1.09%	99.42%	98.60%
SHO/ Interns	36.46	44	1:0.8	29.55%	70.45%	1:0.8	1:0.8	4.55%		4.55%	97.73%	2.27%	100.00%	96.77%
Medical/ Dental, other	509.97	715	1:0.7	26.43%	73.57%	1:0.7	1:0.7	82.10%	20.28%	61.82%	43.08%	56.92%	47.62%	41.44%
Medical & Dental	1,042	1,283	1:0.8	31.02%	68.98%	1:0.8	1:0.8	51.13%	13.33%	37.80%	66.10%	33.90%	73.62%	62.71%
Nurse/ Midwife Manager	488.53	541	1:0.9	3.51%	96.49%	1:1	1:0.9	95.56%	3.14%	92.42%	76.71%	23.29%	89.47%	76.25%
Nurse/ Midwife Specialist & AN/MP	333.67	376	1:0.9	4.26%	95.74%	1:1	1:0.9	97.87%	4.26%	93.62%	73.14%	26.86%	100.00%	71.94%
Staff Nurse/ Staff Midwife	1,082.43	1,399	1:0.8	3.93%	96.07%	1:0.9	1:0.8	86.20%	3.43%	82.77%	47.75%	52.25%	74.55%	46.65%
Public Health Nurse	1,437.39	1,729	1:0.8	0.40%	99.60%	1:1	1:0.8	95.43%	0.40%	95.03%	68.77%	31.23%	100.00%	68.64%
Nursing/ Midwifery Student	95.65	96	1:1	2.08%	97.92%	1:1	1:1	29.17%		29.17%	100.00%		100.00%	100.00%
Nursing/ Midwifery other	4.7	5	1:0.9		100.00%	1:	1:0.9	100.00%		100.00%	100.00%			100.00%
Nursing & Midwifery	3,442	4,146	1:0.8	2.39%	97.61%	1:0.9	1:0.8	91.03%	2.12%	88.90%	63.87%	36.13%	83.84%	63.38%
Therapy Professions	2,234.13	2,588	1:0.9	9.35%	91.50%	1:0.9	1:0.9	95.02%	8.58%	86.44%	72.60%	28.25%	90.08%	70.14%
H&SC, Other	1	1	1:0.8	7,900.00%	22,500.00%	1:0.9	1:0.8	26,400.00%	7,300.00%	19,100.00%	20,200.00%	10,200.00%	86.08%	59.56%
Therapy Professions	18.75	22	1:0.9	1,100.00%	10,763.64%	1:0.9	1:0.9	11,177.27%	1,009.09%	10,168.18%	8,540.91%	3,322.73%	90.08%	70.14%
Health Science/ Diagnostics	98.77	112	1:0.9	23.21%	76.79%	1:0.9	1:0.9	89.29%	21.43%	67.86%	84.82%	15.18%	92.31%	82.56%
Social Care	41.58	45	1:0.9	35.56%	64.44%	1:0.9	1:0.9	86.67%	31.11%	55.56%	88.89%	11.11%	93.75%	86.21%
Social Workers	202.21	222	1:0.9	16.67%	83.33%	1:1	1:0.9	90.09%	13.06%	77.03%	84.23%	15.77%	97.30%	81.62%
Psychologists	304.92	339	1:0.9	16.22%	83.78%	1:1	1:0.9	71.39%	13.27%	58.11%	75.52%	24.48%	94.55%	71.83%
Pharmacy	74.44	85	1:0.9	22.35%	77.65%	1:0.9	1:0.9	68.24%	11.76%	56.47%	64.71%	35.29%	47.37%	69.70%
H&SC, Other	254.53	303	1:0.8	26.07%	74.26%	1:0.9	1:0.8	87.13%	24.09%	63.04%	66.67%	33.66%	86.08%	59.56%
Health & Social Care Professionals	3,230	3,717	1:0.9	12.75%	87.25%	1:0.9	1:0.9	90.45%	11.22%	79.23%	73.02%	26.98%	89.03%	70.68%
Management (VIII & above)	251.57	262	1:1	24.05%	75.95%	1:0.9	1:1	97.71%	23.28%	74.43%	95.42%	4.58%	96.83%	94.97%
Administrative/ Supervisory (V to VII)	782.44	837	1:0.9	17.56%	82.44%	1:0.9	1:0.9	96.06%	16.49%	79.57%	89.01%	10.99%	99.32%	86.81%
Clerical (III & IV)	1,902.88	2,209	1:0.9	10.32%	89.68%	1:0.9	1:0.9	85.11%	7.83%	77.27%	68.09%	31.91%	87.72%	65.83%
Management & Administrative	2,937	3,308	1:0.9	13.24%	86.76%	1:0.9	1:0.9	88.88%	11.25%	77.63%	75.54%	24.46%	92.92%	72.89%
Support	330.08	484	1:0.7	38.64%	61.36%	1:0.9	1:0.6	72.11%	32.44%	39.67%	47.73%	52.27%	79.14%	27.95%
Maintenance/ Technical	32.31	36	1:0.9	94.44%	5.56%	1:0.9	1:0.9	100.00%	94.44%	5.56%	91.67%	8.33%	94.12%	50.00%
General Support	362	520	1:0.7	42.50%	57.50%	1:0.9	1:0.6	74.04%	36.73%	37.31%	50.77%	49.23%	81.45%	28.09%
Health Care Assistants	413.18	484	1:0.9	20.04%	79.96%	1:0.9	1:0.8	65.91%	14.26%	51.65%	69.63%	30.37%	85.57%	65.63%
Home Help	18.28	43	1:0.4	25.58%	74.42%	1:0.4	1:0.4	20.93%	4.65%	16.28%	4.65%	95.35%		6.25%
Care, other	802.93	972	1:0.8	16.77%	83.23%	1:0.9	1:0.8	94.75%	15.95%	78.81%	62.96%	37.04%	80.98%	59.33%
Patient & Client Care	1,234	1,499	1:0.8	18.08%	81.92%	1:0.9	1:0.8	83.32%	15.08%	68.25%	63.44%	36.56%	79.34%	59.93%

Primary Care Employment Report by WTE, Headcount, Gender, Full-Time / Part-Time etc. MAY 2023

MAY 2023	WTE MAY 2023	No. MAY 2023	WTE : No	% Male	% Female	Male WTE : No.	Female WTE : No	Perm Count %	Number Male %	Number Female %	Fulltime Count %	Part time Count %	FT Count Male %	FT Count Female %
Total	12,249	14,473	1:0.8	13.13%	86.87%	1:0.9	1:0.8	85.44%	10.12%	75.32%	68.57%	31.43%	84.17%	66.21%
CHO 1	1,519	1,770	1:0.9	13.45%	86.55%	1:0.9	1:0.8	87.12%	9.89%	77.23%	67.68%	32.32%	84.45%	65.08%
CHO 2	1,326	1,511	1:0.9	12.51%	87.49%	1:0.9	1:0.9	87.82%	9.73%	78.09%	74.52%	25.48%	86.24%	72.84%
CHO 3	824	968	1:0.9	8.37%	91.63%	1:0.9	1:0.8	86.88%	6.30%	80.58%	71.07%	28.93%	82.72%	70.01%
CHO 4	1,777	2,223	1:0.8	10.03%	89.97%	1:0.8	1:0.8	72.51%	6.07%	66.44%	56.41%	43.59%	73.09%	54.55%
CHO 5	1,169	1,386	1:0.8	12.48%	87.52%	1:0.9	1:0.8	88.17%	9.60%	78.57%	66.02%	33.98%	79.77%	64.06%
CHO 6	863	1,092	1:0.8	14.19%	85.81%	1:0.8	1:0.8	89.47%	11.90%	77.56%	71.52%	28.48%	90.97%	68.30%
CHO 7	1,747	2,023	1:0.9	17.20%	82.80%	1:0.9	1:0.9	89.03%	15.08%	73.95%	70.93%	29.07%	84.77%	68.06%
CHO 8	1,516	1,797	1:0.8	13.30%	86.70%	1:0.9	1:0.8	88.65%	9.85%	78.80%	68.00%	32.00%	84.94%	65.40%
CHO 9	1,378	1,564	1:0.9	13.30%	86.70%	1:0.9	1:0.9	85.93%	10.93%	75.00%	75.70%	24.30%	89.42%	73.60%
other Community Services	130	139	1:0.9	33.81%	66.19%	1:1	1:0.9	76.98%	22.30%	54.68%	87.05%	12.95%	91.49%	84.78%



Previous Month Summary

	% WTE change since APR 2023	WTE change since APR 2023	CHO 1	CHO 2	CHO 3	CHO 4	CHO 5	CHO 6	CHO 7	CHO 8	CHO 9	other Communi ty Services
Total	-0.6%	-73.7	-15.4	+2.0	-2.7	-7.4	-4.7	-4.3	-35.1	-1.1	-2.7	-2.3
Consultants	+3.7%	+1.9	+0.1	+0.6	+0.0	+0.0	-0.2	+1.0	-0.2	+0.4	+0.1	+0.0
Registrars	-0.7%	-3.0	+1.1	-0.1	-0.5	+0.1	+0.0	-0.4	-2.2	-1.8	+0.6	+0.4
SHO/ Interns	-7.3%	-2.9	-1.0	+0.0		-1.0		-0.3	-0.1		+0.1	-0.5
Medical/ Dental, other	-0.2%	-1.2	-1.6	+0.9	+1.1	+2.5	+0.4	-0.9	-1.4	-0.4	-1.8	
Medical & Dental	-0.5%	-5.2	-1.5	+1.4	+0.6	+1.5	+0.2	-0.6	-3.8	-1.7	-1.1	-0.2
Nurse/ Midwife Manager	-0.8%	-3.7	-0.6	+0.1	+0.5	-3.4	+0.5	+0.9	-3.3	+1.2	+0.5	-0.0
Nurse/ Midwife Specialist & AN/MP	+0.8%	+2.8	+0.8	+0.8	+0.4	+4.8	+0.2	-1.0	-1.4	-1.3	-0.7	
Staff Nurse/ Staff Midwife	+0.6%	+6.9	+3.6	+1.6	+0.0	+1.7	+1.2	+3.0	+0.2	-3.6	-0.8	+0.0
Public Health Nurse	-1.2%	-17.1	-5.6	-1.2	-0.5	+0.6	-4.1	-1.6	+0.8	-5.6	+0.3	
Nursing/ Midwifery Student	-9.4%	-9.9	+0.3	-3.2	-1.0	+0.0	+0.0	-2.0	-2.0		-2.0	
Nursing/ Midwifery other	+19.0%	+0.8	+1.0						-0.3		+0.0	
Nursing & Midwifery	-0.6%	-20.3	-0.6	-1.9	-0.6	+3.7	-2.3	-0.7	-5.9	-9.3	-2.7	-0.0
Therapy Professions	-0.8%	-17.9	-2.6	-1.4	+1.1	-6.4	-2.4	-2.3	-9.1	+6.2	-1.0	
Health Science/ Diagnostics	-1.1%	-1.1	+0.6	+0.9	+0.0	+0.3	-0.2	-1.4	-0.3	-1.0	+1.0	-1.0
Social Care	-1.7%	-0.7		-1.1		-0.5	+0.0	+0.0	+0.0	+2.0	-1.0	-0.1
Social Workers	-4.4%	-9.3	-0.6	-0.1	+0.0	-4.3	+0.2	-0.9	-1.6	-1.7	-0.5	+0.0
Psychologists	-0.5%	-1.7	-1.4	-0.4	+0.1	+0.2	-0.2	+1.3	-2.2	+0.3	+0.5	+0.0
Pharmacy	-5.2%	-4.1	+0.1	+0.0	+0.0	-2.1	+0.0	+1.4	-1.8	-1.1	-0.4	-0.3
H&SC, Other	+1.3%	+3.4	-0.7	+3.9	-0.3	-0.5	-0.2	+0.0	-0.5	-0.1	+1.7	+0.0
Health & Social Care Professionals	-1.0%	-31.4	-4.6	+1.9	+1.0	-13.2	-2.7	-1.8	-15.5	+4.6	+0.4	-1.4
Management (VIII & above)	-2.4%	-6.1	-2.0	-1.0	+0.0	+0.6	+0.7	-1.4	-1.2	-1.1	+1.0	-1.7
Administrative/ Supervisory (V to VII)	-0.8%	-6.1	+5.2	-2.6	-1.8	-10.6	+3.9	+1.9	-2.4	+0.1	-1.1	+1.2



Clerical (III & IV)	-0.1%	-2.6	-10.2	+4.1	+1.6	+4.8	-2.4	-3.1	+1.5	+0.7	+0.8	-0.4
Management & Administrative	-0.5%	-14.8	-6.9	+0.5	-0.1	-5.2	+2.2	-2.6	-2.1	-0.4	+0.7	-0.9
Support	-2.3%	-7.9	-0.6	-0.6	-2.0	+0.6	+0.0	+0.0	-5.2	-0.2	-0.3	+0.4
Maintenance/ Technical	-3.8%	-1.3	+0.0	-1.0		+0.0		+0.0	-0.3	+0.0		+0.0
General Support	-2.5%	-9.2	-0.6	-1.6	-2.0	+0.6	+0.0	+0.0	-5.5	-0.2	-0.3	+0.4
Health Care Assistants	-1.0%	-4.3	+0.9	-0.2	+0.8	-4.8	-2.0	+1.9	-3.5	+1.8	+0.8	
Home Help	+27.7%	+4.0	+0.0			+4.0	+0.0					
Care, other	+0.9%	+7.3	-2.1	+2.0	-2.4	+6.0	-0.3	-0.6	+1.3	+4.1	-0.6	-0.2
Patient & Client Care	+0.6%	+7.0	-1.2	+1.8	-1.5	+5.2	-2.3	+1.3	-2.2	+5.8	+0.3	-0.2



Year on Year Summary

	% WTE change since MAY 2022	WTE change since MAY 2022	CHO 1	CHO 2	CHO 3	CHO 4	CHO 5	CHO 6	CHO 7	CHO 8	CHO 9	other Communi ty Services
Total	-3.1%	-388.4	-59.6	-33.0	-204.9	+18.3	-13.0	-14.5	-26.9	-45.6	-0.3	-9.1
Consultants	+2.6%	+1.4	+0.9	+0.7	+0.0	+0.2	-0.2	+0.0	-0.7	+0.7	-0.3	+0.0
Registrars	+12.6%	+49.6	-4.2	+3.4	+3.0	+11.9	+4.2	+6.3	+2.7	+8.8	+11.0	+2.7
SHO/ Interns	-4.0%	-1.5	+0.0	+2.0		-1.0	-2.0	-0.6	+1.9		-1.9	+0.1
Medical/ Dental, other	+3.7%	+18.2	-1.4	+5.7	+1.7	+8.9	+2.4	+3.1	+1.3	-4.1	+0.6	
Medical & Dental	+6.9%	+67.7	-4.7	+11.7	+4.7	+20.0	+4.4	+8.8	+5.1	+5.4	+9.4	+2.8
Nurse/ Midwife Manager	+4.2%	+19.6	+4.7	+3.8	-0.5	-2.1	-0.8	+4.2	+2.0	+0.6	+8.7	-0.9
Nurse/ Midwife Specialist & AN/MP	+47.6%	+107.5	+24.3	+12.1	+6.2	+19.0	+5.5	+3.9	+14.4	+5.4	+16.9	
Staff Nurse/ Staff Midwife	+7.4%	+74.8	+22.6	+2.7	+0.3	+38.9	+8.6	-9.5	+10.6	+3.4	+1.1	-3.8
Public Health Nurse	-1.2%	-17.1	-0.9	+4.4	+3.0	-3.0	-0.9	-3.7	-5.6	+0.6	-11.0	
Nursing/ Midwifery Student	-27.9%	-37.1	-4.3	-4.4	-6.0	-10.0	-1.5	+0.0	-1.0	-8.0	-2.0	
Nursing/ Midwifery other	-5.2%	-0.3	+0.0					-1.0	-0.3		+1.0	
Nursing & Midwifery	+4.5%	+147.6	+46.5	+18.6	+3.0	+42.8	+10.9	-6.2	+20.1	+1.9	+14.6	-4.7
Therapy Professions	+8.5%	+175.8	+37.0	+22.3	+34.9	+34.2	+20.5	+10.6	+2.0	+11.3	+3.1	
Health Science/ Diagnostics	+3.2%	+3.1	+0.4	+0.9	+0.7	-1.5	+4.1	-2.7	+1.7	+0.3	+1.0	-1.7
Social Care	+20.6%	+7.1		-3.0	-1.0	-0.6	+4.0	+1.1	-0.1	+4.5	+2.0	+0.1
Social Workers	+12.6%	+22.6	-6.3	+7.9	+2.2	+12.6	+1.5	+3.5	+2.2	+7.2	+2.0	-10.1
Psychologists	+2.4%	+7.0	-4.1	-1.2	+5.0	+9.3	+2.3	-2.2	-2.1	-6.0	+6.0	+0.0
Pharmacy	+1.5%	+1.1	-1.3	-0.8	+0.0	+0.4	+0.1	+1.9	-3.6	-0.0	+0.5	+3.9
H&SC, Other	-0.8%	-1.9	-2.6	-9.5	+3.2	+5.3	+1.9	+0.1	-1.0	+2.3	-3.4	+1.8
Health & Social Care Professionals	+7.1%	+214.8	+23.0	+16.6	+45.0	+59.7	+34.4	+12.4	-0.8	+19.5	+11.2	-6.1
Management (VIII & above)	-12.9%	-37.3	-12.3	-3.7	-19.6	+3.2	+0.1	-5.5	-0.9	+3.2	+2.4	-4.4
Administrative/ Supervisory (V to VII)	-3.1%	-25.1	-11.5	+2.9	-73.4	+10.2	+23.4	+7.0	+10.0	-6.9	+12.5	+0.9



Clerical (III & IV)	-2.1%	-39.9	-36.1	-17.4	-46.0	+9.2	+6.0	-8.1	+11.4	+39.3	+1.4	+0.5
Management & Administrative	-3.4%	-102.3	-59.9	-18.2	-139.0	+22.6	+29.5	-6.7	+20.5	+35.6	+16.3	-3.0
Support	-1.3%	-4.5	-3.9	+1.9	-2.2	+3.7	-1.5	+1.0	-4.0	-0.3	-0.7	+1.5
Maintenance/ Technical	-50.7%	-33.2	-0.6	+0.0	-32.9	+0.0		+0.0	-0.7	-0.1		+1.0
General Support	-9.4%	-37.7	-4.4	+1.9	-35.1	+3.7	-1.5	+1.0	-4.7	-0.4	-0.7	+2.5
Health Care Assistants	-59.3%	-601.8	-45.2	-52.9	-69.7	-121.4	-82.2	-27.2	-59.8	-103.5	-39.8	
Home Help	+11.4%	+1.9	+0.0			+3.0	-1.1					
Care, other	-8.9%	-78.6	-14.9	-10.7	-13.8	-12.2	-7.3	+3.4	-7.2	-4.1	-11.2	-0.7
Patient & Client Care	-35.5%	-678.5	-60.1	-63.6	-83.5	-130.6	-90.6	-23.8	-67.1	-107.6	-51.0	-0.7



Year to Date Summary

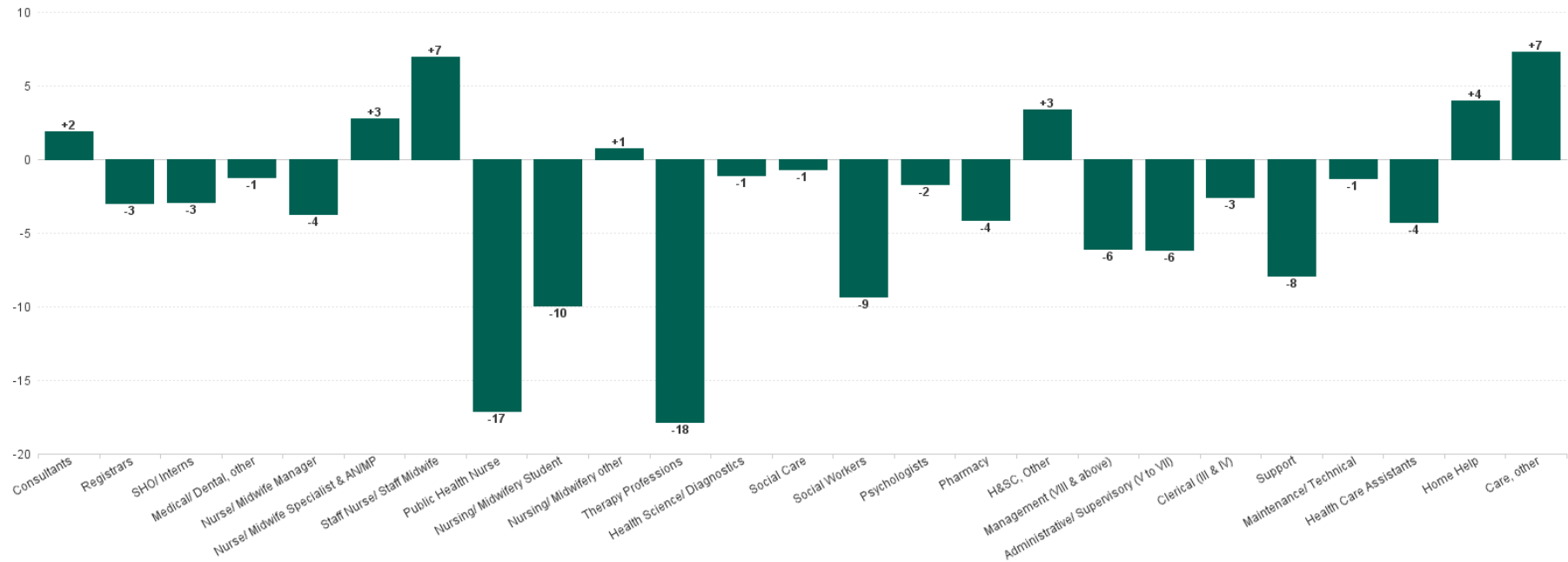
	% WTE change since DEC 2022	WTE change since DEC 2022	CHO 1	CHO 2	CHO 3	CHO 4	CHO 5	CHO 6	CHO 7	CHO 8	CHO 9	other Communi ty Services
Total	+1.5%	+184.6	+47.2	-25.0	+52.4	+70.5	+17.7	-1.4	-18.6	+18.0	+21.5	+2.4
Consultants	+5.4%	+2.7	-0.1	+0.7	+0.0	-0.2	-0.2	+1.0	+0.3	+0.6	+0.7	+0.0
Registrars	+2.2%	+9.7	-1.5	-3.7	-1.7	+18.9	+3.2	-0.9	+1.8	-2.8	-6.4	+2.7
SHO/ Interns	-6.6%	-2.6	+0.0	+2.0		-1.0		-0.3	-1.1		+0.2	-2.4
Medical/ Dental, other	-0.2%	-1.1	-0.7	+3.3	+1.8	-3.0	+1.0	-0.0	-1.0	-4.1	+1.8	
Medical & Dental	+0.8%	+8.7	-2.3	+2.2	+0.1	+14.7	+4.0	-0.2	-0.1	-6.3	-3.7	+0.3
Nurse/ Midwife Manager	+2.4%	+11.6	+5.9	-0.5	-0.2	-1.7	+3.2	+1.1	-3.2	+0.5	+6.3	+0.1
Nurse/ Midwife Specialist & AN/MP	+20.0%	+55.7	+11.7	+4.1	+6.3	+15.0	+6.7	+3.2	+0.1	+2.2	+6.6	
Staff Nurse/ Staff Midwife	+2.4%	+25.8	+18.1	+2.8	-0.8	+12.4	-4.8	+1.0	-3.2	-1.4	+4.4	-2.6
Public Health Nurse	-2.7%	-39.5	-4.8	-1.4	+2.3	-3.0	-0.9	-4.6	-5.4	-15.6	-6.2	
Nursing/ Midwifery Student	-0.1%	-0.1	+0.4	+1.2	-0.9	+3.1	+0.1	-1.3	-1.8		-0.8	
Nursing/ Midwifery other	-4.9%	-0.2	+0.0						-0.3		+0.0	
Nursing & Midwifery	+1.6%	+53.2	+31.2	+6.4	+6.7	+25.7	+4.3	-0.7	-13.7	-14.3	+10.2	-2.6
Therapy Professions	+4.2%	+90.9	+10.0	+2.1	+24.0	+17.7	+19.7	+2.8	-5.7	+22.9	-2.5	
Health Science/ Diagnostics	-0.3%	-0.3	+0.8	+0.4	+0.0	-2.4	+4.0	-1.5	-0.1	-0.9	+1.1	-1.7
Social Care	+8.0%	+3.1		-1.0		+0.3	+0.1	+0.1	-0.0	+4.5	-0.9	+0.0
Social Workers	+3.6%	+7.0	+2.4	-2.1	+1.0	+4.5	+0.2	-1.2	-1.0	+0.8	+1.4	+1.0
Psychologists	+4.5%	+13.3	-1.2	-1.6	+4.6	+4.5	+3.2	+1.0	+2.3	-2.0	+2.5	+0.0
Pharmacy	+9.4%	+6.4	+1.0	+0.0	+1.0	+2.9	+1.0	+0.6	-0.3	-0.9	+0.7	+0.3
H&SC, Other	+0.3%	+0.8	-2.0	-9.7	+1.1	+6.0	+0.6	+0.9	-2.1	-0.8	+4.6	+2.3
Health & Social Care Professionals	+3.9%	+121.2	+11.1	-11.9	+31.6	+33.4	+28.8	+2.7	-7.0	+23.5	+7.0	+1.9
Management (VIII & above)	-0.7%	-1.7	+2.6	-4.8	+0.1	-0.1	-2.7	-4.7	+3.5	+0.6	+3.9	-0.1
Administrative/ Supervisory (V to VII)	+2.7%	+20.2	+10.9	-1.4	+0.4	-2.5	+5.9	-1.5	+2.6	+2.7	+3.9	-0.7
Clerical (III & IV)	+3.1%	+56.3	+3.1	-9.4	+11.7	+13.2	-6.6	-1.8	+7.2	+28.2	+9.5	+1.4



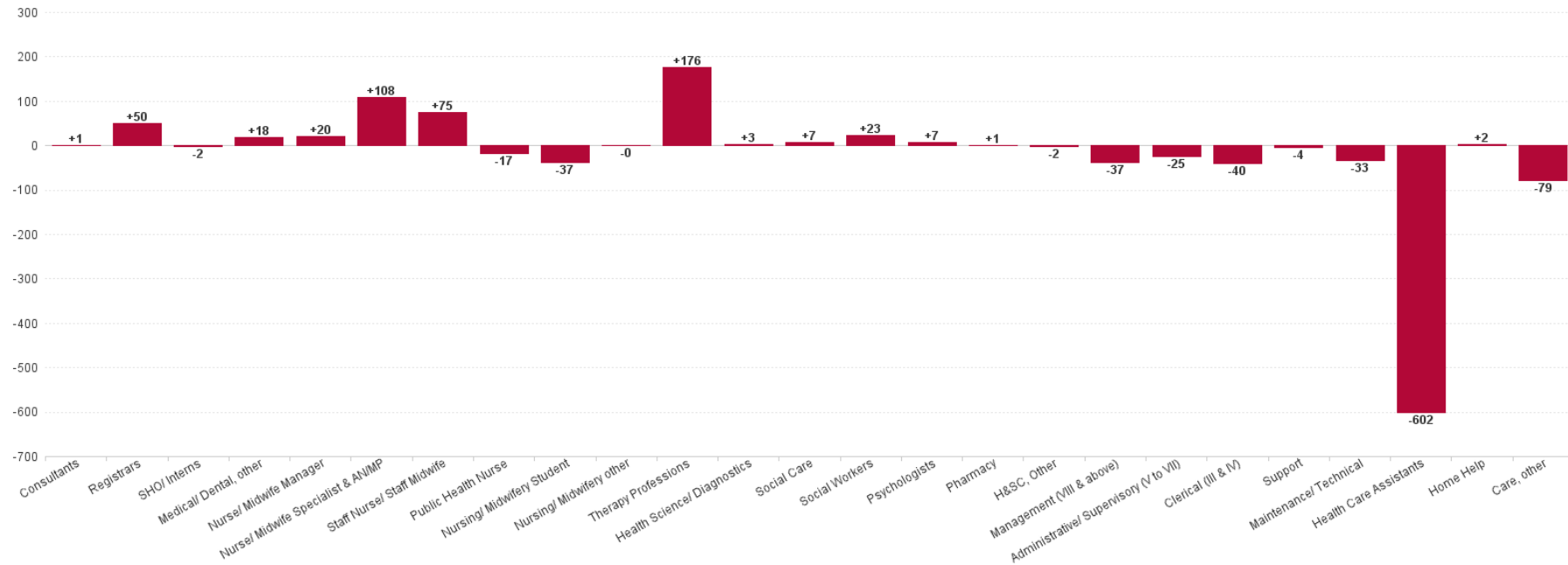
Management & Administrative	+2.6%	+74.9	+16.5	-15.5	+12.2	+10.5	-3.4	-8.0	+13.3	+31.4	+17.3	+0.6
Support	+1.0%	+3.2	-3.6	+2.2	-1.1	+3.2	+0.8	+2.3	-4.7	+0.0	+2.0	+2.3
Maintenance/ Technical	-9.2%	-3.3	-0.9	-1.0		+0.0		+0.0	-1.4	+0.0		+0.0
General Support	0.0%	-0.0	-4.5	+1.2	-1.1	+3.2	+0.8	+2.3	-6.2	+0.0	+2.0	+2.3
Health Care Assistants	-11.3%	-52.8	-0.4	+0.3	+3.5	-15.6	-11.9	+1.1	-7.6	-14.7	-7.6	
Home Help	+21.7%	+3.3	+0.1			+3.7	-0.5					
Care, other	-2.9%	-23.9	-4.5	-7.6	-0.5	-5.2	-4.3	+1.3	+2.7	-1.8	-3.7	-0.1
Patient & Client Care	-5.6%	-73.4	-4.8	-7.3	+3.0	-17.1	-16.7	+2.4	-5.0	-16.4	-11.3	-0.1



Previous Month Summary Chart: Change since APR 2023



Previous Year Summary Chart: Change since MAY 2022



YTD Summary Chart: Change since DEC 2022

