

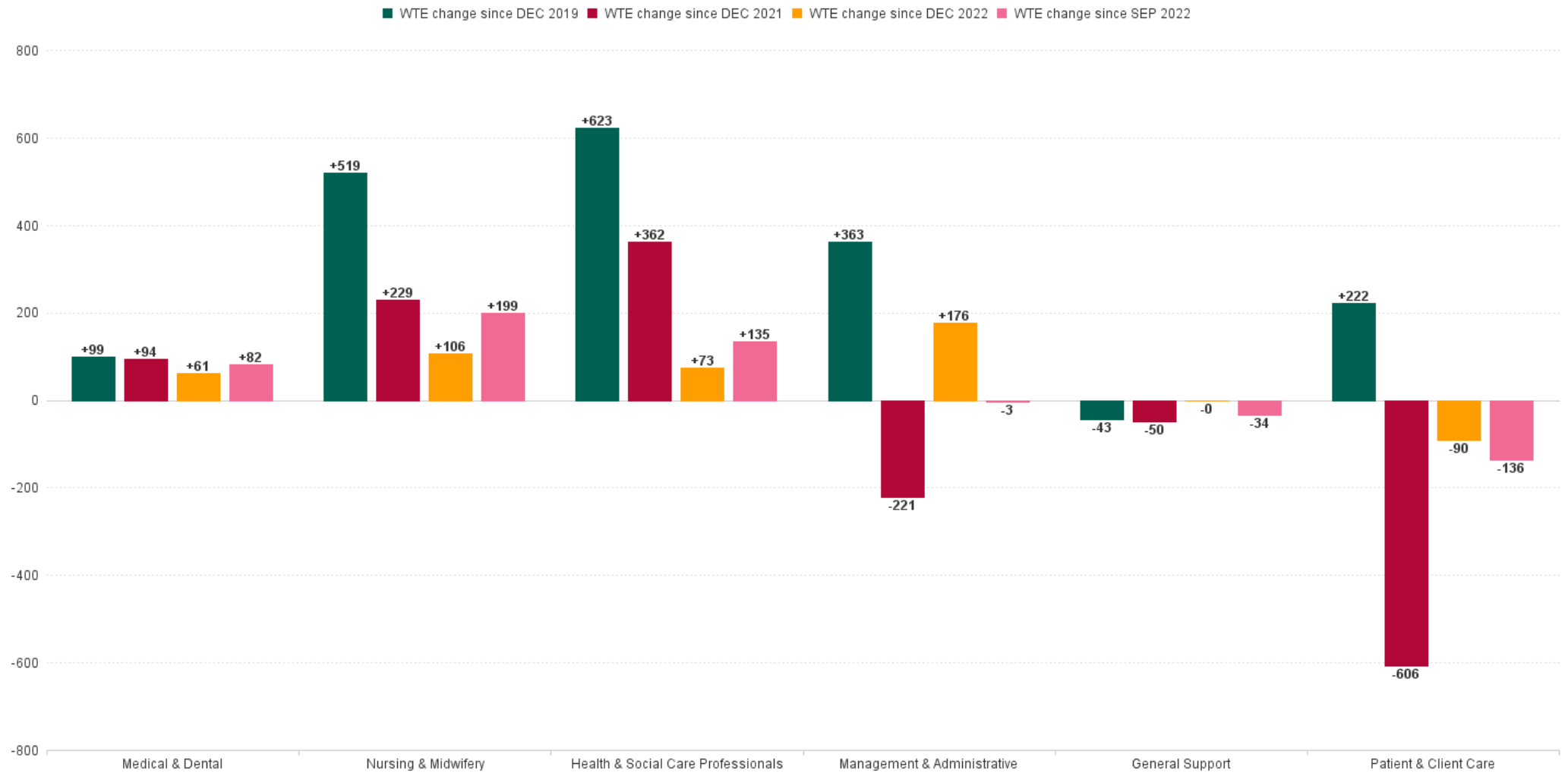
Primary Care Employment Report : SEP 2023

Primary Care Employment Report by Staff Group

SEP 2023	WTE DEC 2019	WTE DEC 2022	WTE AUG 2023	WTE SEP 2023	WTE change since DEC 2019	% WTE change since Dec 2019	WTE change since DEC 2022	% WTE change since Dec 2022	WTE change since AUG 2023	No. SEP 2023
Overall	10,606	12,064	12,267	12,389	+1,783	+16.8%	+325	+2.7%	+122	14,747
Consultants	44	50	56	55	+11	+25.8%	+5	+9.7%	-1	69
Registrars	396	433	497	503	+108	+27.2%	+70	+16.2%	+6	523
SHO/ Interns	36	39	45	47	+10	+28.6%	+7	+19.2%	+1	55
Medical/ Dental, other	520	511	484	489	-30	-5.9%	-22	-4.3%	+5	697
Medical & Dental	995	1,034	1,082	1,094	+99	+9.9%	+61	+5.9%	+12	1,344
Nurse/ Midwife Manager	358	477	488	489	+130	+36.4%	+12	+2.5%	+1	544
Nurse/ Midwife Specialist & AN/MP	143	278	340	346	+203	+142.1%	+68	+24.3%	+6	395
Staff Nurse/ Staff Midwife	862	1,057	1,132	1,113	+251	+29.1%	+56	+5.3%	-19	1,441
Public Health Nurse	1,513	1,477	1,453	1,469	-45	-3.0%	-8	-0.6%	+16	1,764
Post-registration Nurse/ Midwife Student	96	96	25	76	-20	-20.6%	-20	-20.6%	+51	95
Nursing/ Midwifery Student	96	96	25	76	-20	-20.6%	-20	-20.6%	+51	95
Nursing/ Midwifery other	4	5	5	3	-0	-9.7%	-2	-30.6%	-1	4
Nursing & Midwifery	2,976	3,389	3,442	3,495	+519	+17.4%	+106	+3.1%	+53	4,243
Therapy Professions	1,733	2,162	2,190	2,210	+477	+27.5%	+48	+2.2%	+20	2,614
Health Science/ Diagnostics	82	99	100	99	+17	+20.8%	-0	-0.1%	-1	109
Social Care	35	39	39	43	+8	+21.2%	+4	+11.6%	+4	47
Social Workers	139	195	202	202	+63	+45.4%	+7	+3.7%	+0	223
Psychologists	303	292	296	303	+0	+0.1%	+11	+3.9%	+7	359
Pharmacy	58	68	74	72	+14	+25.0%	+4	+6.1%	-2	86
H&SC, Other	209	255	256	253	+44	+20.9%	-2	-0.8%	-4	307
Health & Social Care Professionals	2,559	3,109	3,158	3,183	+623	+24.4%	+73	+2.4%	+25	3,745
Management (VIII & above)	306	253	242	243	-62	-20.4%	-10	-4.0%	+1	255
Administrative/ Supervisory (V to VII)	623	762	801	813	+190	+30.5%	+51	+6.7%	+12	877
Clerical (III & IV)	1,746	1,847	1,963	1,982	+235	+13.5%	+135	+7.3%	+18	2,290
Management & Administrative	2,675	2,862	3,007	3,038	+363	+13.6%	+176	+6.2%	+31	3,422
Support	346	327	324	329	-16	-4.8%	+3	+0.8%	+6	480
Maintenance/ Technical	59	36	32	33	-27	-45.1%	-3	-8.5%	+0	37
General Support	405	362	356	362	-43	-10.7%	-0	-0.1%	+6	517
Home Help	18	15	18	19	+1	+5.7%	+4	+29.4%	+1	44
Health Care Assistants	254	466	405	409	+155	+61.1%	-57	-12.3%	+4	478
Care, other	723	827	800	789	+66	+9.2%	-38	-4.6%	-11	954
Patient & Client Care	995	1,308	1,223	1,217	+222	+22.4%	-90	-6.9%	-6	1,476



WTE Change by Staff Category



Primary Care Report by CHO: SEP 2023

SEP 2023	WTE DEC 2019	WTE DEC 2022	WTE AUG 2023	WTE SEP 2023	WTE change since DEC 2019	% WTE change since Dec 2019	WTE change since DEC 2022	% WTE change since Dec 2022	WTE change since AUG 2023	No. SEP 2023
Overall	10,606	12,064	12,267	12,389	+1,783	+16.8%	+325	+2.7%	+122	14,747
CHO 1	1,182	1,472	1,509	1,524	+342	+29.0%	+52	+3.6%	+15	1,799
CHO 2	1,134	1,351	1,267	1,287	+154	+13.6%	-63	-4.7%	+20	1,499
CHO 3	764	772	823	851	+88	+11.5%	+80	+10.4%	+29	1,018
CHO 4	1,346	1,707	1,778	1,790	+444	+33.0%	+83	+4.9%	+12	2,225
CHO 5	958	1,152	1,157	1,157	+199	+20.7%	+5	+0.5%	-0	1,397
CHO 6	765	864	881	890	+126	+16.5%	+26	+3.0%	+10	1,124
CHO 7	1,702	1,765	1,783	1,798	+96	+5.6%	+33	+1.8%	+14	2,086
CHO 8	1,387	1,498	1,546	1,552	+165	+11.9%	+54	+3.6%	+6	1,830
CHO 9	1,247	1,357	1,392	1,409	+162	+13.0%	+52	+3.9%	+17	1,627
other Community Services	122	127	131	130	+8	+6.4%	+3	+2.2%	-0	142



% Total by CHO



Primary Care Employment Report by HSE/S38: SEP 2023

SEP 2023	WTE DEC 2019	WTE DEC 2022	WTE AUG 2023	WTE SEP 2023	WTE change since DEC 2019	% WTE change since Dec 2019	WTE change since DEC 2022	% WTE change since Dec 2022	WTE change since AUG 2023	No. SEP 2023
Overall	10,606	12,064	12,267	12,389	+1,783	0.17	+325	0.03	+122	14,747
Health Service Executive	9,930	11,284	11,522	11,630	+1,700	0.17	+346	0.03	+108	13,757
Section 38 Voluntary Agencies	676	780	745	759	+83	0.12	-21	-0.03	+14	990



Primary Care Employment Report by HSE: SEP 2023

SEP 2023	WTE DEC 2019	WTE DEC 2022	WTE AUG 2023	WTE SEP 2023	WTE change since DEC 2019	% WTE change since Dec 2019	WTE change since DEC 2022	% WTE change since Dec 2022	WTE change since AUG 2023	No. SEP 2023
Total HSE	9,930	11,284	11,522	11,630	+1,700	+17.1%	+346	+3.1%	+108	13,757
Consultants	32	34	37	37	+4	+12.6%	+3	+8.4%	+0	46
Registrars	385	422	484	492	+107	+27.8%	+70	+16.6%	+7	510
SHO/ Interns	19	22	28	30	+11	+59.5%	+8	+36.4%	+2	31
Medical/ Dental, other	505	490	469	473	-33	-6.5%	-17	-3.5%	+3	653
Medical & Dental	941	967	1,018	1,030	+89	+9.5%	+63	+6.6%	+12	1,240
Nurse/ Midwife Manager	309	421	436	438	+129	+41.6%	+17	+4.1%	+2	488
Nurse/ Midwife Specialist & AN/MP	114	235	296	301	+187	+163.7%	+66	+28.1%	+5	337
Staff Nurse/ Staff Midwife	752	929	1,007	984	+232	+30.9%	+56	+6.0%	-23	1,290
Public Health Nurse	1,513	1,477	1,453	1,469	-45	-3.0%	-8	-0.6%	+16	1,764
Post-registration Nurse/ Midwife Student	96	96	25	76	+47	-20.6%	+1	-20.6%	+51	95
Nursing/ Midwifery Student	96	96	25	76	-20	-20.6%	-20	-20.6%	+51	95
Nursing/ Midwifery other	2	3	3	2	+0	+11.1%	-1	-32.0%	-1	2
Nursing & Midwifery	2,786	3,160	3,220	3,270	+483	+17.3%	+110	+3.5%	+49	3,976
Therapy Professions	1,696	2,124	2,157	2,176	+480	+28.3%	+52	+2.4%	+19	2,573
Health Science/ Diagnostics	78	95	97	95	+17	+21.8%	-0	0.0%	-1	103
Social Care	35	39	39	43	+8	+21.2%	+4	+11.6%	+4	47
Social Workers	128	181	188	188	+60	+46.8%	+7	+3.9%	+0	207
Psychologists	302	291	295	302	+0	+0.0%	+11	+4.0%	+7	358
Pharmacy	48	60	65	64	+17	+34.6%	+4	+7.2%	-1	77
H&SC, Other	208	251	253	251	+43	+20.6%	-1	-0.4%	-3	302
Health & Social Care Professionals	2,496	3,041	3,094	3,120	+624	+25.0%	+78	+2.6%	+26	3,667
Management (VIII & above)	297	245	233	234	-63	-21.4%	-11	-4.5%	+1	241
Administrative/ Supervisory (V to VII)	590	728	766	775	+185	+31.4%	+48	+6.5%	+10	825
Clerical (III & IV)	1,683	1,773	1,890	1,907	+224	+13.3%	+134	+7.5%	+16	2,190
Management & Administrative	2,570	2,745	2,889	2,916	+346	+13.5%	+170	+6.2%	+27	3,256
Support	251	230	232	237	-14	-5.6%	+7	+3.2%	+5	369
Maintenance/ Technical	50	25	23	23	-27	-53.6%	-2	-6.6%	+0	25
General Support	301	255	255	260	-41	-13.6%	+6	+2.3%	+5	394
Home Help	18	15	18	19	+1	+5.7%	+4	+29.4%	+1	44
Health Care Assistants	152	338	288	287	+136	+89.8%	-50	-14.8%	-0	328
Care, other	666	763	739	728	+62	+9.3%	-35	-4.6%	-11	852
Patient & Client Care	836	1,116	1,045	1,035	+199	+23.8%	-81	-7.3%	-10	1,224

Primary Care Employment Report by S38 Hospitals: SEP 2023

SEP 2023	WTE DEC 2019	WTE DEC 2022	WTE AUG 2023	WTE SEP 2023	WTE change since DEC 2019	% WTE change since Dec 2019	WTE change since DEC 2022	% WTE change since Dec 2022	WTE change since AUG 2023	No. SEP 2023
Total S38 Vols	676	780	745	759	+83	+12.3%	-21	-2.7%	+14	990
Consultants	11	17	19	19	+7	+63.5%	+2	+12.3%	-1	23
Registrars	11	11	13	12	+1	+6.5%	+0	+2.2%	-1	13
SHO/ Interns	18	17	17	17	-1	-3.9%	-0	-2.4%	-0	24
Medical/ Dental, other	14	21	14	17	+2	+15.8%	-5	-22.2%	+2	44
Medical & Dental	54	67	64	64	+10	+17.5%	-3	-4.3%	+0	104
Nurse/ Midwife Manager	49	56	51	51	+2	+3.5%	-5	-9.7%	-1	56
Nurse/ Midwife Specialist & AN/MP	29	43	44	45	+16	+56.5%	+2	+3.8%	+1	58
Staff Nurse/ Staff Midwife	110	128	125	129	+19	+17.0%	+1	+0.5%	+3	151
Nursing/ Midwifery other	2	2	2	1	-1	-28.5%	-1	-28.5%	-0	2
Nursing & Midwifery	190	229	222	226	+36	+19.0%	-4	-1.6%	+4	267
Therapy Professions	37	38	33	34	-3	-7.7%	-4	-9.8%	+1	41
Health Science/ Diagnostics	4	4	4	4	+0	+0.3%	-0	-1.8%	-0	6
Social Workers	11	14	14	14	+3	+29.9%	+0	+1.7%	-0	16
Psychologists	1	1	1	1	+0	+66.7%	+0	+0.0%	+0	1
Pharmacy	10	8	8	8	-2	-21.4%	-0	-2.6%	-1	9
H&SC, Other	2	3	3	2	+1	+50.7%	-1	-30.7%	-1	5
Health & Social Care Professionals	64	68	64	63	-1	-0.9%	-5	-7.0%	-1	78
Management (VIII & above)	9	9	9	10	+1	+11.8%	+1	+11.8%	+1	14
Administrative/ Supervisory (V to VII)	34	35	36	38	+5	+14.0%	+3	+10.1%	+3	52
Clerical (III & IV)	64	73	73	75	+11	+17.6%	+1	+1.9%	+2	100
Management & Administrative	106	117	118	123	+17	+16.0%	+6	+5.1%	+5	166
Support	95	97	92	92	-2	-2.6%	-5	-5.0%	+1	111
Maintenance/ Technical	9	11	9	9	+0	+2.6%	-1	-12.8%	+0	12
General Support	104	108	101	102	-2	-2.1%	-6	-5.8%	+1	123
Health Care Assistants	102	128	117	121	+19	+18.6%	-7	-5.5%	+4	150
Care, other	57	63	61	61	+4	+7.6%	-2	-3.7%	+0	102
Patient & Client Care	159	192	178	182	+23	+14.6%	-9	-4.9%	+5	252



Primary Care Employment Report by Staff Group: SEP 2023

CHO 1

SEP 2023	WTE DEC 2019	WTE DEC 2022	WTE AUG 2023	WTE SEP 2023	WTE change since DEC 2019	% WTE change since Dec 2019	WTE change since DEC 2022	% WTE change since Dec 2022	WTE change since AUG 2023	No. SEP 2023
Overall	1,182	1,472	1,509	1,524	+342	+29.0%	+52	+3.6%	+15	1,799
Consultants	3	5	5	5	+2	+54.0%	-0	-8.7%	-0	6
Registrars	41	42	37	48	+7	+17.8%	+6	+14.5%	+11	52
SHO/ Interns	1	1	1	2	+1	+100.0%	+1	+102.0%	+1	2
Medical/ Dental, other	47	42	42	39	-8	-17.8%	-3	-8.0%	-3	52
Medical & Dental	92	90	85	94	+1	+1.6%	+3	+3.6%	+9	112
Nurse/ Midwife Manager	36	51	57	57	+20	+56.2%	+6	+11.3%	-0	63
Nurse/ Midwife Specialist & AN/MP	21	49	63	63	+42	+204.5%	+14	+29.5%	-0	67
Staff Nurse/ Staff Midwife	85	116	154	145	+60	+70.1%	+29	+24.8%	-9	184
Public Health Nurse	156	151	144	159	+3	+2.1%	+9	+5.7%	+15	185
<i>Post-registration Nurse/ Midwife Student</i>	7	10	2	3	-4	-57.0%	-7	-68.7%	+1	3
Nursing/ Midwifery Student	7	10	2	3	-4	-57.0%	-7	-68.7%	+1	3
Nursing/ Midwifery other	1	1	1	1	+0	+0.0%	+0	+0.0%	+0	1
Nursing & Midwifery	306	377	422	428	+122	+39.8%	+51	+13.5%	+7	503
Therapy Professions	227	279	281	278	+51	+22.5%	-0	-0.2%	-3	329
Health Science/ Diagnostics	5	9	10	10	+4	+81.9%	+0	+3.0%	-0	11
Social Workers	13	25	30	29	+16	+128.2%	+4	+14.6%	-1	31
Psychologists	35	28	26	28	-7	-19.1%	+0	+1.6%	+2	34
Pharmacy	1	1	2	1	+0	+62.9%	+0	+56.2%	-0	2
H&SC, Other	7	20	16	13	+6	+90.5%	-7	-33.9%	-2	26
Health & Social Care Professionals	287	362	364	359	+72	+25.0%	-2	-0.7%	-5	433
Management (VIII & above)	32	30	31	32	-1	-1.7%	+2	+6.4%	+0	33
Administrative/ Supervisory (V to VII)	64	94	110	110	+46	+73.0%	+16	+16.9%	+0	117
Clerical (III & IV)	236	293	293	296	+61	+25.8%	+4	+1.3%	+3	343
Management & Administrative	331	416	434	438	+107	+32.2%	+22	+5.2%	+4	493
Support	72	84	77	77	+5	+7.5%	-7	-7.9%	+0	112
Maintenance/ Technical	6	9	8	9	+3	+42.3%	-0	-1.7%	+1	9
General Support	78	93	85	86	+8	+10.1%	-7	-7.4%	+1	121
Home Help		0	0	0	+0		+0	+29.6%	+0	1
Health Care Assistants	32	69	63	62	+30	+94.8%	-7	-10.3%	-0	70
Care, other	55	64	57	57	+2	+3.4%	-7	-11.2%	-0	66
Patient & Client Care	87	134	120	119	+32	+37.3%	-14	-10.7%	-1	137

CHO 2

SEP 2023	WTE DEC 2019	WTE DEC 2022	WTE AUG 2023	WTE SEP 2023	WTE change since DEC 2019	% WTE change since Dec 2019	WTE change since DEC 2022	% WTE change since Dec 2022	WTE change since AUG 2023	No. SEP 2023
Overall	1,134	1,351	1,267	1,287	+154	+13.6%	-63	-4.7%	+20	1,499
Consultants	1	3	4	5	+4	+282.4%	+2	+59.3%	+1	6
Registrars	40	53	59	56	+16	+40.1%	+3	+6.5%	-3	59
SHO/ Interns	1	3	2	2	+1	+75.0%	-1	-41.3%	-0	2
Medical/ Dental, other	46	46	46	47	+1	+3.3%	+2	+3.5%	+1	59
Medical & Dental	88	104	110	110	+22	+24.9%	+6	+5.4%	-1	126
Nurse/ Midwife Manager	27	34	33	34	+6	+23.2%	+0	+0.1%	+1	37
Nurse/ Midwife Specialist & AN/MP	17	38	43	42	+25	+142.0%	+4	+9.9%	-1	48
Staff Nurse/ Staff Midwife	74	92	104	103	+29	+38.8%	+11	+11.4%	-1	126
Public Health Nurse	191	186	177	180	-11	-5.9%	-7	-3.6%	+3	209
<i>Post-registration Nurse/ Midwife Student</i>	<i>4</i>	<i>14</i>		<i>6</i>	<i>+2</i>	<i>+43.3%</i>	<i>-9</i>	<i>-60.3%</i>	<i>+6</i>	<i>9</i>
Nursing/ Midwifery Student	4	14		6	+2	+43.3%	-9	-60.3%	+6	9
Nursing & Midwifery	313	365	357	364	+50	+16.0%	-1	-0.3%	+7	429
Therapy Professions	226	291	253	259	+33	+14.5%	-32	-11.0%	+6	302
Health Science/ Diagnostics	6	9	10	9	+3	+52.6%	-0	-0.1%	-1	9
Social Care	8	7	5	5	-4	-43.5%	-2	-27.5%	-0	5
Social Workers	7	19	15	16	+9	+136.4%	-2	-13.2%	+1	17
Psychologists	24	32	25	25	+1	+5.2%	-6	-20.1%	+0	29
Pharmacy	1	1	1	1	+0	+0.0%	+0	+0.0%	+0	1
H&SC, Other	40	63	56	58	+18	+44.1%	-5	-7.9%	+2	67
Health & Social Care Professionals	312	421	365	373	+61	+19.4%	-47	-11.3%	+8	430
Management (VIII & above)	33	29	23	23	-10	-29.7%	-6	-19.4%	+0	24
Administrative/ Supervisory (V to VII)	62	85	77	83	+21	+33.5%	-2	-2.3%	+6	94
Clerical (III & IV)	238	219	215	218	-20	-8.3%	-1	-0.5%	+3	252
Management & Administrative	333	332	315	324	-9	-2.6%	-9	-2.6%	+9	370
Support	21	17	20	20	-1	-5.0%	+3	+14.5%	+0	38
Maintenance/ Technical	9	11	10	10	+1	+16.2%	-1	-4.8%	+0	11
General Support	30	28	30	30	+0	+1.4%	+2	+7.0%	+1	49
Health Care Assistants	14	33	28	27	+13	+91.9%	-5	-16.4%	-1	30
Care, other	43	68	61	59	+16	+37.8%	-8	-12.4%	-2	65
Patient & Client Care	57	100	89	87	+29	+51.3%	-14	-13.7%	-3	95

CHO 3

SEP 2023	WTE DEC 2019	WTE DEC 2022	WTE AUG 2023	WTE SEP 2023	WTE change since DEC 2019	% WTE change since Dec 2019	WTE change since DEC 2022	% WTE change since Dec 2022	WTE change since AUG 2023	No. SEP 2023
Overall	764	772	823	851	+88	+11.5%	+80	+10.4%	+29	1,018
Consultants	2	1	1	1	-1	-34.0%	+0	+0.0%	+0	2
Registrars	24	29	30	32	+8	+34.5%	+2	+8.4%	+2	32
SHO/ Interns	6				-6	-100.0%				
Medical/ Dental, other	52	45	45	45	-7	-13.2%	-0	-0.6%	+1	60
Medical & Dental	84	76	75	78	-5	-6.5%	+2	+2.9%	+3	94
Nurse/ Midwife Manager	19	23	24	24	+5	+27.2%	+1	+3.3%	+0	27
Nurse/ Midwife Specialist & AN/MP	2	7	13	14	+12	+603.5%	+7	+103.9%	+2	15
Staff Nurse/ Staff Midwife	56	75	77	77	+21	+37.9%	+2	+2.2%	-0	100
Public Health Nurse	126	125	125	125	-1	-1.1%	+0	+0.1%	+0	153
Post-registration Nurse/ Midwife Student		6	1	10	+10		+4	+75.6%	+9	13
Nursing/ Midwifery Student		6	1	10	+10		+4	+75.6%	+9	13
Nursing & Midwifery	203	236	239	251	+47	+23.3%	+14	+6.0%	+12	308
Therapy Professions	86	162	182	187	+101	+117.6%	+25	+15.7%	+5	218
Health Science/ Diagnostics	5	5	6	5	+1	+10.5%	+1	+16.4%	-0	6
Social Care	1				-1	-100.0%				
Social Workers	11	12	11	12	+1	+11.8%	-1	-5.6%	+0	14
Psychologists	15	14	17	22	+6	+40.6%	+8	+55.5%	+4	34
Pharmacy	1	1	2	2	+1	+100.0%	+1	+102.0%	+0	3
H&SC, Other	11	12	12	12	+2	+15.3%	+0	+3.5%	+0	15
Health & Social Care Professionals	129	205	231	240	+111	+85.6%	+35	+16.9%	+9	290
Management (VIII & above)	23	10	9	9	-15	-62.4%	-1	-9.4%	+0	9
Administrative/ Supervisory (V to VII)	54	28	29	30	-24	-44.9%	+2	+5.9%	+1	32
Clerical (III & IV)	156	127	150	154	-2	-1.4%	+27	+21.2%	+4	173
Management & Administrative	234	165	188	193	-41	-17.6%	+28	+16.8%	+5	214
Support	13	12	11	11	-2	-16.4%	-1	-9.6%	+0	24
Maintenance/ Technical	30				-30	-100.0%				
General Support	43	12	11	11	-32	-74.3%	-1	-9.6%	+0	24
Home Help	1				-1	-100.0%				
Health Care Assistants	21	26	29	28	+7	+34.2%	+2	+9.6%	-1	31
Care, other	49	51	50	51	+2	+3.4%	-0	-0.2%	+1	57
Patient & Client Care	71	77	79	79	+8	+11.5%	+2	+3.1%	-0	88

CHO 4

SEP 2023	WTE DEC 2019	WTE DEC 2022	WTE AUG 2023	WTE SEP 2023	WTE change since DEC 2019	% WTE change since Dec 2019	WTE change since DEC 2022	% WTE change since Dec 2022	WTE change since AUG 2023	No. SEP 2023
Overall	1,346	1,707	1,778	1,790	+444	+33.0%	+83	+4.9%	+12	2,225
Consultants	3	7	6	6	+4	+145.6%	-0	-5.7%	+0	10
Registrars	55	40	60	61	+7	+12.4%	+22	+55.1%	+1	64
SHO/ Interns	6	4	3	3	-3	-51.2%	-1	-25.0%	+0	3
Medical/ Dental, other	88	110	97	100	+12	+13.6%	-10	-8.9%	+3	170
Medical & Dental	152	160	167	171	+19	+12.8%	+11	+6.6%	+5	247
Nurse/ Midwife Manager	56	72	70	71	+15	+26.4%	-1	-1.5%	+1	77
Nurse/ Midwife Specialist & AN/MP	4	14	31	34	+30	+712.9%	+20	+135.9%	+3	38
Staff Nurse/ Staff Midwife	119	177	199	184	+65	+54.5%	+8	+4.4%	-14	261
Public Health Nurse	211	210	204	202	-9	-4.2%	-8	-3.8%	-2	257
Post-registration Nurse/ Midwife Student	17	11	7	19	+2	+12.9%	+9	+77.8%	+13	21
Nursing/ Midwifery Student	17	11	7	19	+2	+12.9%	+9	+77.8%	+13	21
Nursing & Midwifery	408	484	510	511	+103	+25.3%	+27	+5.5%	+0	654
Therapy Professions	222	327	336	342	+120	+54.0%	+15	+4.5%	+6	407
Health Science/ Diagnostics	11	13	11	11	-0	-0.9%	-2	-18.6%	-0	13
Social Care	8	7	6	6	-1	-18.7%	-0	-3.5%	-0	7
Social Workers	24	37	40	41	+16	+67.6%	+4	+11.0%	+1	45
Psychologists	20	23	28	26	+6	+27.2%	+3	+11.0%	-2	29
Pharmacy	3	2	5	5	+2	+58.8%	+3	+171.7%	+0	5
H&SC, Other	41	39	45	45	+4	+8.9%	+6	+15.0%	-1	54
Health & Social Care Professionals	329	447	471	475	+146	+44.2%	+27	+6.1%	+4	560
Management (VIII & above)	37	44	43	43	+6	+17.0%	-1	-2.4%	-0	44
Administrative/ Supervisory (V to VII)	68	114	123	124	+56	+81.8%	+10	+9.0%	+1	134
Clerical (III & IV)	205	255	277	281	+76	+37.2%	+26	+10.4%	+4	335
Management & Administrative	310	412	444	448	+138	+44.6%	+36	+8.6%	+4	513
Support	16	16	19	19	+3	+22.4%	+3	+16.1%	+0	30
Maintenance/ Technical		1	1				-1	-100.0%	-1	
General Support	16	17	20	19	+3	+22.4%	+2	+9.5%	-1	30
Home Help	10	8	12	12	+2	+16.2%	+3	+41.8%	-0	24
Health Care Assistants	17	47	32	33	+16	+89.9%	-14	-29.6%	+1	38
Care, other	105	130	123	121	+17	+16.2%	-8	-6.5%	-1	159
Patient & Client Care	132	185	167	166	+34	+25.9%	-19	-10.2%	-0	221

CHO 5

SEP 2023	WTE DEC 2019	WTE DEC 2022	WTE AUG 2023	WTE SEP 2023	WTE change since DEC 2019	% WTE change since Dec 2019	WTE change since DEC 2022	% WTE change since Dec 2022	WTE change since AUG 2023	No. SEP 2023
Overall	958	1,152	1,157	1,157	+199	+20.7%	+5	+0.5%	-0	1,397
Consultants	3	2	2	2	-1	-40.0%	-0	-10.0%	-0	2
Registrars	19	30	33	32	+13	+68.7%	+2	+8.4%	-1	33
SHO/ Interns	5		1	1	-4	-80.0%	+1		+0	1
Medical/ Dental, other	54	59	55	56	+2	+4.3%	-2	-3.6%	+1	82
Medical & Dental	81	90	92	91	+10	+12.5%	+1	+1.3%	-0	118
Nurse/ Midwife Manager	25	47	51	50	+24	+95.6%	+2	+4.6%	-1	56
Nurse/ Midwife Specialist & AN/MP	6	25	32	32	+26	+455.0%	+6	+24.3%	-1	35
Staff Nurse/ Staff Midwife	67	117	116	116	+49	+73.5%	-1	-0.9%	+0	150
Public Health Nurse	166	154	149	149	-17	-10.2%	-5	-3.0%	+1	182
Post-registration Nurse/ Midwife Student	5	4	1	6	+1	+10.0%	+2	+39.9%	+5	9
Nursing/ Midwifery Student	5	4	1	6	+1	+10.0%	+2	+39.9%	+5	9
Nursing/ Midwifery other	1				-1	-100.0%				
Nursing & Midwifery	270	348	348	352	+82	+30.4%	+4	+1.2%	+4	432
Therapy Professions	185	243	262	258	+72	+39.0%	+15	+6.1%	-4	299
Health Science/ Diagnostics	4	7	11	11	+7	+178.2%	+3	+41.3%	-0	11
Social Care	5	8	7	8	+2	+43.1%	-1	-10.9%	+1	9
Social Workers	8	5	5	5	-3	-39.5%	-0	-7.0%	-1	6
Psychologists	46	34	36	39	-7	-15.6%	+4	+12.9%	+2	46
Pharmacy	1		1	1	-0	-25.0%	+1		-0	1
H&SC, Other	18	19	17	17	-1	-5.7%	-2	-11.3%	+0	19
Health & Social Care Professionals	268	318	339	337	+70	+26.0%	+20	+6.2%	-2	391
Management (VIII & above)	25	18	13	13	-12	-49.1%	-5	-29.5%	-1	13
Administrative/ Supervisory (V to VII)	56	67	73	73	+16	+28.7%	+6	+8.4%	-1	74
Clerical (III & IV)	164	169	175	175	+12	+7.1%	+7	+4.0%	+0	197
Management & Administrative	245	254	262	261	+15	+6.3%	+7	+2.7%	-1	284
Support	25	21	22	22	-3	-13.8%	+1	+3.0%	-0	50
General Support	25	21	22	22	-3	-13.8%	+1	+3.0%	-0	50
Home Help	7	6	6	6	-1	-19.6%	-1	-10.3%	-0	16
Health Care Assistants	8	50	33	33	+25	+311.9%	-17	-34.4%	-0	34
Care, other	54	64	55	55	+1	+2.4%	-9	-14.4%	+0	72
Patient & Client Care	69	121	94	94	+25	+36.0%	-27	-22.5%	-0	122

CHO 6

SEP 2023	WTE DEC 2019	WTE DEC 2022	WTE AUG 2023	WTE SEP 2023	WTE change since DEC 2019	% WTE change since Dec 2019	WTE change since DEC 2022	% WTE change since Dec 2022	WTE change since AUG 2023	No. SEP 2023
Overall	765	864	881	890	+126	+16.5%	+26	+3.0%	+10	1,124
Consultants	9	10	12	12	+2	+25.4%	+2	+17.2%	-1	14
Registrars	26	32	45	44	+18	+71.1%	+13	+40.4%	-1	46
SHO/ Interns	7	7	10	10	+4	+53.8%	+3	+40.3%	-0	17
Medical/ Dental, other	46	45	44	43	-4	-7.9%	-2	-4.7%	-1	65
Medical & Dental	88	93	111	109	+21	+23.5%	+15	+16.4%	-3	142
Nurse/ Midwife Manager	22	31	31	33	+11	+48.1%	+2	+6.2%	+2	37
Nurse/ Midwife Specialist & AN/MP	6	10	15	15	+9	+154.1%	+5	+54.3%	+0	17
Staff Nurse/ Staff Midwife	52	61	61	63	+11	+22.1%	+2	+3.4%	+2	88
Public Health Nurse	117	99	100	98	-19	-16.2%	-1	-1.1%	-2	115
<i>Post-registration Nurse/ Midwife Student</i>	<i>14</i>	<i>7</i>	<i>2</i>	<i>5</i>	<i>-9</i>	<i>-66.7%</i>	<i>-3</i>	<i>-38.4%</i>	<i>+3</i>	<i>6</i>
Nursing/ Midwifery Student	14	7	2	5	-9	-66.7%	-3	-38.4%	+3	6
Nursing & Midwifery	210	208	209	214	+3	+1.6%	+5	+2.6%	+5	263
Therapy Professions	104	143	142	146	+43	+41.2%	+4	+2.5%	+4	183
Health Science/ Diagnostics	18	17	16	16	-2	-9.7%	-1	-3.8%	+0	19
Social Care	4	4	4	4	+0	+5.9%	+0	+1.8%	+0	4
Social Workers	5	10	9	8	+4	+78.2%	-2	-18.3%	-0	10
Psychologists	19	16	17	19	-0	-0.6%	+2	+15.0%	+2	23
Pharmacy	1	3	2	2	+1	+123.8%	-1	-28.7%	+0	3
H&SC, Other	4	6	9	9	+5	+133.6%	+3	+45.0%	+0	10
Health & Social Care Professionals	154	199	199	204	+51	+33.1%	+6	+2.8%	+6	252
Management (VIII & above)	30	29	21	22	-8	-25.4%	-6	-21.8%	+1	27
Administrative/ Supervisory (V to VII)	68	78	71	70	+2	+3.1%	-8	-10.0%	-1	84
Clerical (III & IV)	112	136	137	139	+28	+24.6%	+3	+2.4%	+2	164
Management & Administrative	210	242	230	232	+22	+10.5%	-11	-4.4%	+2	275
Support	24	23	23	24	-0	-0.9%	+1	+4.5%	+0	36
Maintenance/ Technical	2	2	2	2	+0	+0.0%	+0	+0.0%	+0	4
General Support	26	25	25	26	-0	-0.9%	+1	+4.1%	+0	40
Health Care Assistants	6	16	20	20	+13	+211.1%	+4	+23.9%	+0	24
Care, other	71	81	87	87	+16	+22.6%	+6	+7.0%	-0	128
Patient & Client Care	77	97	107	107	+29	+37.9%	+9	+9.8%	-0	152

SEP 2023	WTE DEC 2019	WTE DEC 2022	WTE AUG 2023	WTE SEP 2023	WTE change since DEC 2019	% WTE change since Dec 2019	WTE change since DEC 2022	% WTE change since Dec 2022	WTE change since AUG 2023	No. SEP 2023
Overall	1,702	1,765	1,783	1,798	+96	+5.6%	+33	+1.8%	+14	2,086
Consultants	11	11	12	12	+1	+8.7%	+2	+15.1%	+0	15
Registrars	46	45	58	57	+12	+26.0%	+13	+28.9%	-1	60
SHO/ Interns	6	12	15	16	+10	+162.2%	+4	+30.6%	+0	16
Medical/ Dental, other	75	61	61	63	-13	-16.6%	+2	+2.8%	+2	89
Medical & Dental	139	129	147	149	+10	+7.2%	+20	+15.5%	+2	180
Nurse/ Midwife Manager	80	100	100	101	+21	+25.7%	+1	+0.9%	+1	110
Nurse/ Midwife Specialist & AN/MP	46	65	64	65	+19	+42.2%	+1	+1.0%	+1	80
Staff Nurse/ Staff Midwife	205	198	198	199	-6	-2.9%	+1	+0.6%	+1	240
Public Health Nurse	175	164	171	172	-4	-2.1%	+8	+4.6%	+0	203
<i>Post-registration Nurse/ Midwife Student</i>	<i>21</i>	<i>25</i>	<i>3</i>	<i>9</i>	<i>-12</i>	<i>-58.5%</i>	<i>-16</i>	<i>-64.8%</i>	<i>+6</i>	<i>11</i>
Nursing/ Midwifery Student	21	25	3	9	-12	-58.5%	-16	-64.8%	+6	11
Nursing/ Midwifery other	2	2	2	1	-1	-28.5%	-1	-28.5%	-0	2
Nursing & Midwifery	530	554	539	547	+18	+3.3%	-6	-1.1%	+9	646
Therapy Professions	267	267	261	262	-5	-1.7%	-5	-1.9%	+1	307
Health Science/ Diagnostics	0	8	8	7	+7	+3,272.7%	-0	-5.1%	-1	9
Social Care	3	4	4	4	+0	+9.1%	-0	-7.5%	-0	4
Social Workers	26	30	33	32	+6	+22.2%	+2	+5.8%	-1	35
Psychologists	22	26	29	28	+6	+28.4%	+2	+7.0%	-1	32
Pharmacy	32	31	30	30	-2	-6.7%	-1	-3.0%	-0	34
H&SC, Other	24	24	24	24	+0	+1.2%	+0	+0.2%	+1	31
Health & Social Care Professionals	373	390	389	386	+13	+3.5%	-3	-0.8%	-2	452
Management (VIII & above)	33	23	26	26	-7	-21.8%	+3	+11.7%	-0	26
Administrative/ Supervisory (V to VII)	76	84	89	94	+18	+23.2%	+10	+12.0%	+5	98
Clerical (III & IV)	178	180	199	199	+21	+11.8%	+18	+10.3%	-0	224
Management & Administrative	287	287	314	318	+31	+10.9%	+31	+10.9%	+5	348
Support	116	106	98	98	-18	-15.6%	-8	-7.7%	-0	112
Maintenance/ Technical	9	10	9	9	-0	-1.6%	-1	-13.5%	+0	10
General Support	125	116	106	106	-18	-14.6%	-9	-8.2%	-0	122
Home Help				2	+2		+2		+2	3
Health Care Assistants	121	155	152	155	+34	+28.3%	+1	+0.3%	+3	188
Care, other	128	136	137	134	+6	+5.1%	-2	-1.3%	-3	147
Patient & Client Care	249	291	289	291	+42	+17.0%	+0	+0.1%	+2	338

CHO 8

SEP 2023	WTE DEC 2019	WTE DEC 2022	WTE AUG 2023	WTE SEP 2023	WTE change since DEC 2019	% WTE change since Dec 2019	WTE change since DEC 2022	% WTE change since Dec 2022	WTE change since AUG 2023	No. SEP 2023
Overall	1,387	1,498	1,546	1,552	+165	+11.9%	+54	+3.6%	+6	1,830
Consultants	6	6	6	6	+0	+3.7%	+0	+2.9%	-0	7
Registrars	78	92	95	91	+13	+16.1%	-1	-1.6%	-4	93
SHO/ Interns	2		1	1	-1	-50.0%	+1		+0	1
Medical/ Dental, other	61	53	48	48	-13	-21.4%	-6	-10.8%	-0	57
Medical & Dental	147	152	150	146	-1	-0.8%	-6	-4.0%	-5	158
Nurse/ Midwife Manager	51	60	58	56	+5	+9.3%	-4	-6.7%	-2	65
Nurse/ Midwife Specialist & AN/MP	35	47	51	50	+16	+45.0%	+3	+5.9%	-1	58
Staff Nurse/ Staff Midwife	98	110	111	111	+13	+13.4%	+2	+1.4%	+1	152
Public Health Nurse	196	217	204	205	+9	+4.7%	-12	-5.5%	+1	247
Post-registration Nurse/ Midwife Student	2		3	3	+1	+32.3%	+3		-0	3
Nursing/ Midwifery Student	2		3	3	+1	+32.3%	+3		-0	3
Nursing & Midwifery	382	434	427	425	+43	+11.3%	-9	-2.1%	-2	525
Therapy Professions	221	222	248	258	+37	+16.9%	+36	+16.3%	+10	306
Health Science/ Diagnostics	5	10	9	9	+4	+78.2%	-1	-9.2%	+0	10
Social Care		1	5	7	+7		+6	+600.0%	+2	7
Social Workers	16	29	27	27	+11	+72.7%	-2	-6.5%	-0	30
Psychologists	56	46	43	44	-12	-21.6%	-2	-4.4%	+1	50
Pharmacy	4	7	6	5	+2	+42.7%	-1	-21.1%	-1	6
H&SC, Other	25	36	35	34	+9	+37.6%	-2	-5.1%	-1	38
Health & Social Care Professionals	326	351	374	385	+59	+18.1%	+34	+9.7%	+10	447
Management (VIII & above)	45	36	35	35	-11	-23.4%	-2	-5.1%	-1	36
Administrative/ Supervisory (V to VII)	78	95	104	105	+27	+35.2%	+10	+10.6%	+1	111
Clerical (III & IV)	265	272	307	307	+42	+16.0%	+35	+13.0%	+0	363
Management & Administrative	387	403	446	447	+59	+15.2%	+43	+10.8%	+0	510
Support	23	19	22	26	+3	+13.3%	+6	+32.5%	+4	40
Maintenance/ Technical	3	2	2	2	-1	-28.8%	+0	+0.5%	+0	2
General Support	25	21	24	28	+2	+8.7%	+6	+29.5%	+4	42
Home Help	0				-0	-100.0%				
Health Care Assistants	21	36	24	26	+5	+23.3%	-10	-28.7%	+1	34
Care, other	98	101	101	97	-1	-1.4%	-4	-4.3%	-4	114
Patient & Client Care	120	137	125	123	+3	+2.6%	-15	-10.6%	-2	148

SEP 2023	WTE DEC 2019	WTE DEC 2022	WTE AUG 2023	WTE SEP 2023	WTE change since DEC 2019	% WTE change since Dec 2019	WTE change since DEC 2022	% WTE change since Dec 2022	WTE change since AUG 2023	No. SEP 2023
Overall	1,247	1,357	1,392	1,409	+162	+13.0%	+52	+3.9%	+17	1,627
Consultants	4	3	4	4	-0	-7.6%	+1	+18.1%	-0	5
Registrars	56	60	68	68	+12	+22.2%	+8	+12.7%	+0	71
SHO/ Interns	1	7	9	9	+8	+830.0%	+2	+34.2%	+0	10
Medical/ Dental, other	50	50	46	48	-1	-2.9%	-2	-3.6%	+2	63
Medical & Dental	111	121	127	130	+19	+17.0%	+9	+7.3%	+2	149
Nurse/ Midwife Manager	37	53	58	59	+22	+58.9%	+5	+9.9%	+0	66
Nurse/ Midwife Specialist & AN/MP	6	23	27	30	+24	+375.3%	+8	+34.4%	+3	37
Staff Nurse/ Staff Midwife	100	105	110	111	+10	+10.4%	+6	+5.5%	+1	136
Public Health Nurse	175	171	180	179	+4	+2.2%	+8	+4.6%	-1	213
<i>Post-registration Nurse/ Midwife Student</i>	26	19	6	16	-10	-38.5%	-3	-14.9%	+10	20
Nursing/ Midwifery Student	26	19	6	16	-10	-38.5%	-3	-14.9%	+10	20
Nursing/ Midwifery other		2	2	1	+1		-1	-48.5%	-1	1
Nursing & Midwifery	345	373	383	395	+51	+14.8%	+23	+6.1%	+12	473
Therapy Professions	196	229	225	220	+24	+12.4%	-9	-3.9%	-4	263
Health Science/ Diagnostics	20	13	14	14	-6	-30.9%	+1	+8.8%	-0	14
Social Care	4	6	5	8	+4	+84.9%	+2	+25.6%	+3	9
Social Workers	17	23	26	27	+11	+65.5%	+4	+17.7%	+1	29
Psychologists	65	72	74	73	+7	+11.0%	+0	+0.6%	-1	81
Pharmacy	12	13	14	15	+3	+24.5%	+2	+11.5%	+1	18
H&SC, Other	37	33	37	36	-1	-3.0%	+3	+7.7%	-2	42
Health & Social Care Professionals	351	390	396	393	+42	+11.8%	+2	+0.6%	-3	456
Management (VIII & above)	28	15	19	19	-9	-31.9%	+4	+25.6%	+0	20
Administrative/ Supervisory (V to VII)	77	93	103	104	+26	+33.7%	+11	+11.5%	+1	109
Clerical (III & IV)	182	185	196	200	+17	+9.6%	+15	+8.0%	+4	226
Management & Administrative	288	293	318	322	+35	+12.0%	+29	+10.0%	+5	355
Support	35	27	30	30	-4	-12.5%	+3	+10.7%	+1	34
General Support	35	27	30	30	-4	-12.5%	+3	+10.7%	+1	34
Health Care Assistants	13	35	23	25	+11	+87.5%	-10	-28.9%	+1	29
Care, other	105	118	116	114	+9	+8.8%	-4	-3.5%	-2	131
Patient & Client Care	118	153	139	139	+21	+17.5%	-14	-9.2%	-1	160

other Community Services

SEP 2023	WTE DEC 2019	WTE DEC 2022	WTE AUG 2023	WTE SEP 2023	WTE change since DEC 2019	% WTE change since Dec 2019	WTE change since DEC 2022	% WTE change since Dec 2022	WTE change since AUG 2023	No. SEP 2023
Overall	122	127	131	130	+8	+6.4%	+3	+2.2%	-0	142
Consultants	1	2	2	2	+1	+100.0%	+0	+0.0%	+0	2
Registrars	12	11	13	13	+1	+8.1%	+2	+17.9%	-0	13
SHO/ Interns	2	5	3	3	+1	+80.6%	-2	-44.0%	-0	3
Medical/ Dental, other	0				-0	-100.0%				
Medical & Dental	15	18	18	18	+3	+19.2%	-0	-1.3%	-0	18
Nurse/ Midwife Manager	4	5	6	6	+2	+41.0%	+0	+2.8%	-0	6
Staff Nurse/ Staff Midwife	5	5	3	3	-2	-40.7%	-2	-41.4%	+0	4
Nursing & Midwifery	9	10	9	9	-0	-5.2%	-2	-18.9%	-0	10
Health Science/ Diagnostics	8	8	6	7	-1	-10.6%	-1	-11.7%	+1	7
Social Care	2	2	2	2	+0	+15.2%	+0	+1.7%	-0	2
Social Workers	14	4	5	5	-8	-61.7%	+1	+23.6%	+0	6
Psychologists	1	1	1	1	+0	+0.0%	+0	+0.0%	+0	1
Pharmacy	3	10	11	11	+8	+297.1%	+1	+5.0%	-0	13
H&SC, Other	3	2	5	5	+2	+63.2%	+2	+90.8%	-0	5
Health & Social Care Professionals	30	28	30	30	+1	+3.2%	+3	+10.6%	+0	34
Management (VIII & above)	19	19	21	22	+3	+16.9%	+2	+13.0%	+1	23
Administrative/ Supervisory (V to VII)	20	26	24	22	+2	+10.4%	-4	-13.6%	-1	24
Clerical (III & IV)	12	12	13	12	+0	+2.6%	+1	+4.5%	-1	13
Management & Administrative	51	57	58	56	+6	+10.9%	-0	-0.9%	-1	60
Support	2	1	2	3	+1	+46.9%	+2	+392.1%	+1	4
Maintenance/ Technical	1	1	1	1	+0	+0.0%	+0	+0.0%	+0	1
General Support	3	2	3	4	+1	+31.8%	+2	+151.5%	+1	5
Care, other	15	13	13	13	-2	-13.3%	+0	+0.7%	-0	15
Patient & Client Care	15	13	13	13	-2	-13.3%	+0	+0.7%	-0	15

Primary Care Employment Report by Grade Group: SEP 2023

SEP 2023	WTE DEC 2019	WTE DEC 2022	WTE AUG 2023	WTE SEP 2023	WTE change since DEC 2019	% WTE change since Dec 2019	WTE change since DEC 2022	% WTE change since Dec 2022	WTE change since AUG 2023	No. SEP 2023
Overall	10,606	12,064	12,267	12,389	+1,783	+16.8%	+325	+2.7%	+122	14,747
Consultant Dentistry	11	13	15	15	+4	+37.4%	+2	+16.7%	-0	18
Consultant Medicine	18	24	26	25	+8	+43.1%	+2	+6.5%	-0	33
Consultant Paediatrics	2	2	2	2	+0	+2.0%	+0	+0.0%	+0	2
Consultant Pathology			1	1	+1		+1		+0	1
Consultant Psychiatry	8	8	8	8	+0	+1.4%	+0	+4.9%	+0	10
Consultant Radiology	1	1	1	1	+0	+0.0%	+0	+0.0%	+0	1
Consultant Surgery	4	3	2	2	-2	-40.7%	-0	-9.4%	+0	4
Consultants	44	50	56	55	+11	+25.8%	+5	+9.7%	-1	69
Registrar	383	422	486	493	+110	+28.6%	+71	+16.7%	+7	511
Senior Registrar	3	3	3	3	+0	+15.5%	-0	-3.3%	+0	4
Specialist Registrar	10	8	9	8	-2	-24.0%	-0	-4.4%	-1	8
Registrars	396	433	497	503	+108	+27.2%	+70	+16.2%	+6	523
Senior House Officer	36	39	45	47	+10	+28.6%	+7	+19.2%	+1	55
SHO/ Interns	36	39	45	47	+10	+28.6%	+7	+19.2%	+1	55
Dentists	301	307	287	294	-8	-2.5%	-13	-4.3%	+7	395
Other Medical	218	204	197	195	-23	-10.5%	-9	-4.3%	-1	302
Medical/ Dental, other	520	511	484	489	-30	-5.9%	-22	-4.3%	+5	697
Medical & Dental	995	1034	1082	1094	+99	+9.9%	+61	+5.9%	+12	1,344
Clinical Nurse/ Midwife Manager 1	41	46	45	43	+3	+7.2%	-2	-5.1%	-1	49
Clinical Nurse/ Midwife Manager 2	106	136	146	147	+42	+39.7%	+12	+8.6%	+2	171
Clinical Nurse/ Midwife Manager 3	22	33	31	31	+10	+45.6%	-1	-4.4%	+0	32
Director Nursing/Midwifery, Assistant	153	218	222	223	+70	+45.7%	+5	+2.3%	+2	246
Director of Nursing/Midwifery	38	44	45	43	+6	+15.1%	-1	-2.3%	-2	46
Nurse/ Midwife Manager	358	477	488	489	+130	+36.4%	+12	+2.5%	+1	544
Advanced Nurse/ Midwife Practitioner	3	17	25	26	+24	+926.4%	+9	+52.0%	+1	27
Adv. Nurse/ Midwife, Candidate		21	26	25	+25		+4	+21.1%	-0	27
Clinical Nurse/ Midwife Specialist	140	240	289	294	+154	+110.0%	+54	+22.6%	+6	341
Nurse/ Midwife Specialist & AN/MP	143	278	340	346	+203	+142.1%	+68	+24.3%	+6	395
Staff Midwives	8	5	4	3	-5	-63.7%	-2	-36.0%	-1	5
Staff Nurse [Intellectual Disability]		2	3	2	+2		-1	-28.9%	-1	2
Staff Nurse [Psychiatric]	8	14	13	13	+5	+70.4%	-1	-7.9%	+0	17
Staff Nurses [General/ Children's]	846	1,036	1,113	1,095	+249	+29.4%	+60	+5.8%	-17	1,417
Staff Nurse/ Staff Midwife	862	1,057	1,132	1,113	+251	+29.1%	+56	+5.3%	-19	1,441
Public Health Nurse	1,513	1,477	1,453	1,469	-45	-3.0%	-8	-0.6%	+16	1,764
Public Health Nurse	1,513	1,477	1,453	1,469	-45	-3.0%	-8	-0.6%	+16	1,764
Post-registration Nurse/ Midwife Student	96	96	25	76	-20	-20.6%	-20	-20.6%	+51	95
Nursing/ Midwifery Student	96	96	25	76	-20	-20.6%	-20	-20.6%	+51	95
Nursing Education/Clinical	4	5	5	3	-0	-9.7%	-2	-30.6%	-1	4
Nursing/ Midwifery other	4	5	5	3	-0	-9.7%	-2	-30.6%	-1	4
Nursing & Midwifery	2976	3389	3442	3495	+519	+17.4%	+106	+3.1%	+53	4,243
Dietitians	109	195	211	212	+103	+93.9%	+17	+8.8%	+1	251
Occupational Therapists	516	638	629	631	+115	+22.4%	-7	-1.1%	+3	743
Orthoptists	13	20	20	18	+5	+38.9%	-2	-7.8%	-1	22
Physiotherapists	543	654	689	697	+154	+28.4%	+43	+6.5%	+8	841
Podiatrists & Chiropodists	25	82	89	88	+64	+258.5%	+6	+7.0%	-1	99
Speech & Language Therapists	527	572	553	563	+36	+6.8%	-9	-1.6%	+10	658
Therapy Professions	1,733	2,162	2,190	2,210	+477	+27.5%	+48	+2.2%	+20	2,614
Audiology	44	57	61	60	+16	+37.5%	+3	+5.7%	-1	66
Biochemists	8	8	6	7	-1	-10.6%	-1	-11.7%	+1	7
Cardiac Physiologists		1	1	1	+1		+0	+0.0%	+0	1
Clinical Engineering	8	9	8	7	-1	-12.5%	-2	-21.8%	-1	7
Medical Science	16	14	14	14	-2	-11.6%	-1	-4.6%	+0	15

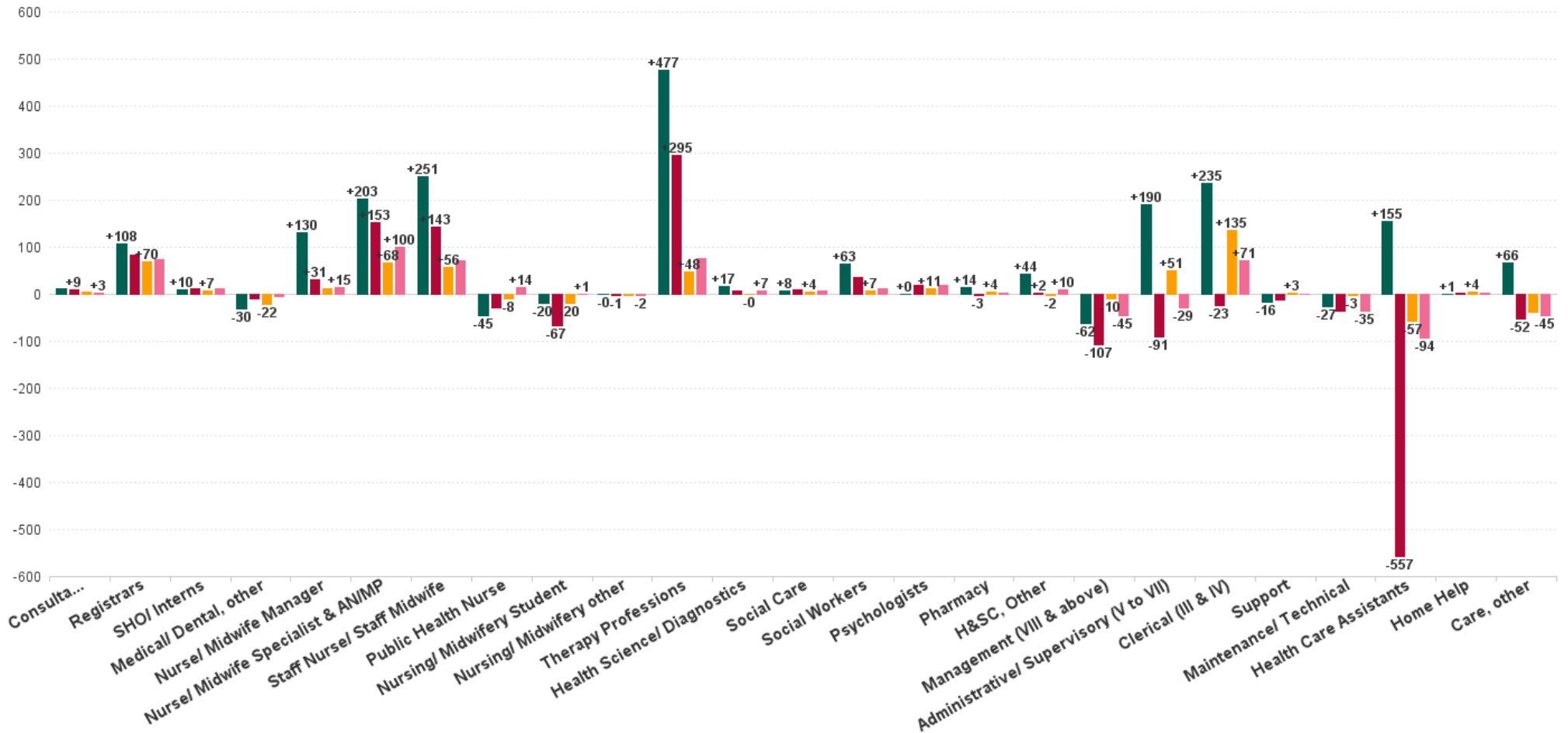


SEP 2023	WTE DEC 2019	WTE DEC 2022	WTE AUG 2023	WTE SEP 2023	WTE change since DEC 2019	% WTE change since Dec 2019	WTE change since DEC 2022	% WTE change since Dec 2022	WTE change since AUG 2023	No. SEP 2023
Overall	10,606	12,064	12,267	12,389	+1,783	+16.8%	+325	+2.7%	+122	14,747
Phlebotomists	0	0	0	0	+0	+4.5%	-0	-23.3%	-0	1
Physicists	2	2	2	2	-0	-20.0%	-0	-1.2%	-0	2
Radiographers	4	8	8	8	+4	+81.1%	+0	+3.3%	-0	10
Health Science/ Diagnostics	82	99	100	99	+17	+20.8%	-0	-0.1%	-1	109
Social Care	35	39	39	43	+8	+21.2%	+4	+11.6%	+4	47
Social Care	35	39	39	43	+8	+21.2%	+4	+11.6%	+4	47
Social Workers	139	195	202	202	+63	+45.4%	+7	+3.7%	+0	223
Social Workers	139	195	202	202	+63	+45.4%	+7	+3.7%	+0	223
Psychologists	303	292	296	303	+0	+0.1%	+11	+3.9%	+7	359
Psychologists	303	292	296	303	+0	+0.1%	+11	+3.9%	+7	359
Pharmacists	50	58	62	61	+11	+22.7%	+3	+5.2%	-1	74
Pharmacy Technicians	8	10	12	11	+3	+39.3%	+1	+11.1%	-1	12
Pharmacy	58	68	74	72	+14	+25.0%	+4	+6.1%	-2	86
Counsellor Therapists	115	122	135	135	+21	+18.0%	+14	+11.4%	+0	153
Dental Hygienists	58	61	58	57	-1	-1.4%	-4	-6.9%	-1	74
Other Health & Social Care	34	44	50	49	+15	+43.9%	+5	+11.9%	-1	56
Play Therapists/ Specialists	2	1	1	1	-2	-65.8%	-1	-46.3%	-1	2
Vaccinators		26	12	10	+10		-16	-61.0%	-1	22
H&SC, Other	209	255	256	253	+44	+20.9%	-2	-0.8%	-4	307
Health & Social Care Professionals	2559	3109	3158	3183	+623	+24.4%	+73	+2.4%	+25	3,745
Executive Management	71	37	31	30	-41	-57.6%	-7	-18.6%	-1	31
Senior Management (VIII & GM)	235	216	211	213	-22	-9.3%	-3	-1.5%	+2	224
Management (VIII & above)	306	253	242	243	-62	-20.4%	-10	-4.0%	+1	255
Middle Management (V-VII)	621	761	799	812	+190	+30.6%	+50	+6.6%	+12	875
Other Administrative	2	1	2	2	-0	-14.0%	+1	+73.7%	-0	2
Administrative/ Supervisory (V to VII)	623	762	801	813	+190	+30.5%	+51	+6.7%	+12	877
General Administrative (III & IV)	1,746	1,847	1,963	1,982	+235	+13.5%	+135	+7.3%	+18	2,290
Clerical (III & IV)	1,746	1,847	1,963	1,982	+235	+13.5%	+135	+7.3%	+18	2,290
Management & Administrative	2675	2862	3007	3038	+363	+13.6%	+176	+6.2%	+31	3,422
Catering	22	23	21	22	-0	-0.9%	-1	-6.2%	+1	24
Household Services	134	139	129	127	-7	-5.3%	-12	-8.7%	-2	158
Other Labs & Associated	3	1	6	7	+4	+126.4%	+6	+395.8%	+1	8
Other Support	112	104	105	111	-1	-1.2%	+7	+6.6%	+5	222
Portering	74	59	62	63	-12	-15.8%	+4	+6.2%	+1	68
Support	346	327	324	329	-16	-4.8%	+3	+0.8%	+6	480
Maintenance	58	34	30	32	-27	-45.9%	-2	-6.0%	+1	36
Technical Services	1	2	2	1	+0	+0.0%	-1	-50.0%	-1	1
Maintenance/ Technical	59	36	32	33	-27	-45.1%	-3	-8.5%	+0	37
General Support	405	362	356	362	-43	-10.7%	-0	-0.1%	+6	517
Home Helps	18	15	18	19	+1	+5.7%	+4	+29.4%	+1	44
Home Help	18	15	18	19	+1	+5.7%	+4	+29.4%	+1	44
Attendant/ Aide	35	61	64	64	+29	+82.6%	+3	+4.8%	-1	77
Health Care Assistant/ Care Assistant	150	308	204	209	+60	+39.8%	-99	-32.1%	+5	252
Health & Social Care Assistants	69	97	136	136	+67	+96.3%	+39	+40.0%	+0	149
Health Care Assistants	254	466	405	409	+155	+61.1%	-57	-12.3%	+4	478
Health Promotion		1					-1	-100.0%		
Home Care Services	3	3	1	1	-3	-80.0%	-2	-74.3%	+0	2
Other Care Grades	713	819	795	785	+72	+10.1%	-35	-4.2%	-10	948
Pastoral Care	4	3	3	3	-1	-28.9%	-0	-3.8%	+0	3
Workshop Services	3	1	1	1	-2	-64.0%	+0	+0.0%	-0	1
Care, other	723	827	800	789	+66	+9.2%	-38	-4.6%	-11	954
Patient & Client Care	995	1308	1223	1217	+222	+22.4%	-90	-6.9%	-6	1,476



WTE Change by Staff Category

■ WTE change since DEC 2019 ■ WTE change since DEC 2021 ■ WTE change since DEC 2022 ■ WTE change since SEP 2022



Primary Care Employment Report by WTE, Headcount, Gender, Full-Time / Part-Time etc. SEP 2023

SEP 2023	WTE SEP 2023	No. SEP 2023	WTE : No	% Male	% Female	Male WTE : No.	Female WTE : No	Perm Count %	Perm Count Male %	Perm Count Female %	Fulltime Count %	Part time Count %	FT Count Male %	FT Count Female %
Total	12,389	14,747	1:0.8	13.38%	86.62%	1:0.9	1:0.8	85.85%	10.33%	75.52%	69.43%	30.57%	84.59%	67.09%
Consultants	55.14	69	1:0.8	34.78%	65.22%	1:0.8	1:0.8	86.96%	30.43%	56.52%	68.12%	31.88%	83.33%	60.00%
Registrars	503.31	523	1:1	38.05%	61.95%	1:1	1:1	1.91%	0.96%	0.96%	98.47%	1.53%	98.99%	98.15%
SHO/ Interns	46.53	55	1:0.8	30.91%	69.09%	1:0.9	1:0.8	3.64%		3.64%	100.00%		100.00%	100.00%
Medical/ Dental, other	489.1	697	1:0.7	26.40%	73.60%	1:0.7	1:0.7	85.08%	20.95%	64.13%	43.90%	56.10%	47.28%	42.69%
Medical & Dental	1,094	1,344	1:0.8	31.55%	68.45%	1:0.8	1:0.8	49.48%	12.80%	36.68%	68.68%	31.32%	75.71%	65.43%
Nurse/ Midwife Manager	488.78	544	1:0.9	3.31%	96.69%	1:1	1:0.9	96.32%	3.13%	93.20%	76.29%	23.71%	83.33%	76.05%
Nurse/ Midwife Specialist & AN/MP	345.6	395	1:0.9	4.56%	95.44%	1:1	1:0.9	97.72%	4.56%	93.16%	74.18%	25.82%	100.00%	72.94%
Staff Nurse/ Staff Midwife	1,112.91	1,441	1:0.8	3.89%	96.11%	1:0.9	1:0.8	86.95%	3.47%	83.48%	48.72%	51.28%	76.79%	47.58%
Public Health Nurse	1,468.57	1,764	1:0.8	0.51%	99.49%	1:0.9	1:0.8	95.92%	0.51%	95.41%	70.07%	29.93%	88.89%	69.97%
Nursing/ Midwifery Student	75.97	95	1:0.8	2.11%	97.89%	1:0.9	1:0.8	32.63%		32.63%	97.89%	2.11%	100.00%	97.85%
Nursing/ Midwifery other	3.43	4	1:0.9		100.00%	1:	1:0.9	100.00%		100.00%	75.00%	25.00%		75.00%
Nursing & Midwifery	3,495	4,243	1:0.8	2.43%	97.57%	1:0.9	1:0.8	91.68%	2.22%	89.47%	64.62%	35.38%	83.50%	64.15%
Therapy Professions	2,210.06	2,614	1:0.8	9.68%	90.32%	1:0.9	1:0.8	94.41%	8.80%	85.62%	72.00%	28.00%	88.93%	70.18%
Health Science/ Diagnostics	98.93	109	1:0.9	21.10%	78.90%	1:1	1:0.9	88.99%	20.18%	68.81%	86.24%	13.76%	91.30%	84.88%
Social Care	42.97	47	1:0.9	38.30%	61.70%	1:1	1:0.9	89.36%	34.04%	55.32%	91.49%	8.51%	94.44%	89.66%
Social Workers	202.42	223	1:0.9	16.59%	83.41%	1:1	1:0.9	90.58%	13.45%	77.13%	84.30%	15.70%	97.30%	81.72%
Psychologists	303.16	359	1:0.8	16.43%	83.57%	1:1	1:0.8	67.41%	12.81%	54.60%	78.55%	21.45%	93.22%	75.67%
Pharmacy	72.2	86	1:0.8	23.26%	76.74%	1:0.8	1:0.8	67.44%	12.79%	54.65%	61.63%	38.37%	50.00%	65.15%
H&SC, Other	252.8	307	1:0.8	26.38%	73.62%	1:0.9	1:0.8	89.25%	25.08%	64.17%	66.78%	33.22%	87.65%	59.29%
Health & Social Care Professionals	3,183	3,745	1:0.8	13.11%	86.89%	1:0.9	1:0.8	90.33%	11.54%	78.80%	73.35%	26.65%	88.59%	71.05%
Management (VIII & above)	243.2	255	1:1	23.53%	76.47%	1:0.9	1:1	98.43%	22.75%	75.69%	95.69%	4.31%	96.67%	95.38%
Administrative/ Supervisory (V to VII)	813.34	877	1:0.9	17.10%	82.90%	1:0.9	1:0.9	96.35%	16.19%	80.16%	89.05%	10.95%	99.33%	86.93%
Clerical (III & IV)	1,981.54	2,290	1:0.9	10.48%	89.52%	1:0.9	1:0.9	86.29%	8.52%	77.77%	69.61%	30.39%	89.58%	67.27%
Management & Administrative	3,038	3,422	1:0.9	13.15%	86.85%	1:0.9	1:0.9	89.77%	11.54%	78.23%	76.53%	23.47%	93.78%	73.92%
Support	329.4	480	1:0.7	41.25%	58.75%	1:0.9	1:0.6	72.92%	34.58%	38.33%	48.54%	51.46%	78.28%	27.66%
Maintenance/ Technical	32.58	37	1:0.9	97.30%	2.70%	1:0.9	1:0.8	100.00%	97.30%	2.70%	91.89%	8.11%	94.44%	
General Support	362	517	1:0.7	45.26%	54.74%	1:0.9	1:0.6	74.85%	39.07%	35.78%	51.64%	48.36%	80.77%	27.56%
Health Care Assistants	408.76	478	1:0.9	21.13%	78.87%	1:0.9	1:0.8	69.46%	15.27%	54.18%	68.62%	31.38%	86.14%	63.93%
Home Help	19.43	44	1:0.4	25.00%	75.00%	1:0.4	1:0.5	27.27%	4.55%	22.73%	11.36%	88.64%		15.15%
Care, other	789.09	954	1:0.8	16.67%	83.33%	1:0.9	1:0.8	96.44%	16.14%	80.29%	63.73%	36.27%	81.13%	60.25%
Patient & Client Care	1,217	1,476	1:0.8	18.36%	81.64%	1:0.9	1:0.8	85.64%	15.51%	70.12%	63.75%	36.25%	79.70%	60.17%

Primary Care Employment Report by WTE, Headcount, Gender, Full-Time / Part-Time etc. SEP 2023

SEP 2023	WTE SEP 2023	No. SEP 2023	WTE : No	% Male	% Female	Male WTE : No.	Female WTE : No	Perm Count %	Number Male %	Number Female %	Fulltime Count %	Part time Count %	FT Count Male %	FT Count Female %
Total	12,389	14,747	1:0.8	13.38%	86.62%	1:0.9	1:0.8	85.85%	10.33%	75.52%	69.43%	30.57%	84.59%	67.09%
CHO 1	1,524	1,799	1:0.8	13.73%	86.27%	1:0.9	1:0.8	87.55%	10.23%	77.32%	68.70%	31.30%	84.62%	66.17%
CHO 2	1,287	1,499	1:0.9	13.68%	86.32%	1:0.9	1:0.8	88.26%	10.61%	77.65%	75.45%	24.55%	86.83%	73.65%
CHO 3	851	1,018	1:0.8	8.35%	91.65%	1:0.9	1:0.8	86.64%	6.39%	80.26%	72.40%	27.60%	83.53%	71.38%
CHO 4	1,790	2,225	1:0.8	10.16%	89.84%	1:0.8	1:0.8	74.38%	6.20%	68.18%	57.53%	42.47%	72.12%	55.88%
CHO 5	1,157	1,397	1:0.8	12.96%	87.04%	1:0.9	1:0.8	89.12%	10.09%	79.03%	66.50%	33.50%	80.11%	64.47%
CHO 6	890	1,124	1:0.8	14.50%	85.50%	1:0.8	1:0.8	87.99%	11.39%	76.60%	72.33%	27.67%	89.57%	69.41%
CHO 7	1,798	2,086	1:0.9	17.21%	82.79%	1:0.9	1:0.8	89.45%	14.96%	74.50%	71.28%	28.72%	84.96%	68.44%
CHO 8	1,552	1,830	1:0.8	13.11%	86.89%	1:0.9	1:0.8	88.91%	9.78%	79.13%	68.52%	31.48%	87.08%	65.72%
CHO 9	1,409	1,627	1:0.9	13.40%	86.60%	1:0.9	1:0.9	85.19%	11.19%	74.00%	76.58%	23.42%	90.37%	74.45%
other Community Services	130	142	1:0.9	34.51%	65.49%	1:0.9	1:0.9	79.58%	25.35%	54.23%	88.73%	11.27%	93.88%	86.02%



Previous Month Summary

	% WTE change since AUG 2023	WTE change since AUG 2023	CHO 1	CHO 2	CHO 3	CHO 4	CHO 5	CHO 6	CHO 7	CHO 8	CHO 9	other Communi ty Services
Total	+1.0%	+122.0	+14.7	+20.3	+28.5	+12.0	-0.2	+9.6	+14.5	+6.2	+16.7	-0.3
Consultants	-0.9%	-0.5	-0.3	+0.8	+0.0	+0.0	-0.1	-0.7	+0.3	-0.4	-0.2	+0.0
Registrars	+1.2%	+5.8	+11.3	-2.5	+2.3	+1.3	-1.2	-0.9	-0.6	-4.3	+0.5	-0.0
SHO/ Interns	+3.2%	+1.4	+1.1	-0.3		+0.0	+0.0	-0.0	+0.2	+0.0	+0.4	-0.0
Medical/ Dental, other	+1.1%	+5.4	-3.0	+1.4	+0.6	+3.2	+1.1	-1.1	+1.7	-0.2	+1.8	
Medical & Dental	+1.1%	+12.2	+9.1	-0.6	+2.9	+4.5	-0.2	-2.7	+1.6	-4.9	+2.5	-0.0
Nurse/ Midwife Manager	+0.2%	+1.0	-0.2	+0.8	+0.2	+0.9	-1.1	+1.8	+0.8	-2.3	+0.2	-0.1
Nurse/ Midwife Specialist & AN/MP	+1.8%	+6.0	-0.4	-1.4	+1.6	+3.1	-0.6	+0.2	+0.9	-0.5	+3.1	
Staff Nurse/ Staff Midwife	-1.7%	-19.5	-8.8	-1.4	-0.0	-14.4	+0.4	+1.9	+1.4	+0.5	+0.7	+0.1
Public Health Nurse	+1.1%	+15.8	+15.1	+2.8	+0.4	-1.8	+0.6	-1.9	+0.4	+1.1	-0.9	
Nursing/ Midwifery Student	+207.3%	+51.3	+1.0	+5.7	+9.4	+12.7	+4.7	+2.5	+5.6	-0.4	+10.1	
Nursing/ Midwifery other	-25.4%	-1.2	+0.0						-0.2		-1.0	
Nursing & Midwifery	+1.5%	+53.3	+6.7	+6.6	+11.6	+0.5	+3.9	+4.6	+8.8	-1.6	+12.3	-0.0
Therapy Professions	+0.9%	+20.3	-3.1	+5.7	+4.6	+5.9	-4.2	+4.2	+1.0	+10.4	-4.1	
Health Science/ Diagnostics	-1.3%	-1.4	-0.1	-1.0	-0.3	-0.3	-0.1	+0.0	-0.6	+0.3	-0.0	+0.7
Social Care	+11.1%	+4.3		-0.1		-0.0	+0.5	+0.0	-0.2	+1.5	+2.5	-0.0
Social Workers	+0.0%	+0.0	-0.7	+0.8	+0.3	+0.5	-0.5	-0.2	-1.1	-0.5	+1.3	+0.0
Psychologists	+2.3%	+6.9	+2.0	+0.4	+4.4	-1.6	+2.4	+1.6	-1.5	+0.6	-1.4	+0.0
Pharmacy	-2.1%	-1.6	-0.4	+0.0	+0.0	+0.1	-0.3	+0.0	-0.5	-1.0	+0.7	-0.2
H&SC, Other	-1.4%	-3.6	-2.5	+1.6	+0.0	-0.7	+0.0	+0.0	+0.6	-0.9	-1.6	-0.1
Health & Social Care Professionals	+0.8%	+25.0	-4.9	+7.5	+9.0	+3.9	-2.2	+5.6	-2.2	+10.5	-2.7	+0.4
Management (VIII & above)	+0.4%	+1.1	+0.5	+0.4	+0.0	-0.2	-0.5	+1.4	-0.5	-0.6	+0.0	+0.6
Administrative/ Supervisory (V to VII)	+1.5%	+12.2	+0.2	+6.1	+1.2	+0.9	-0.7	-1.3	+5.1	+1.1	+1.0	-1.4



Clerical (III & IV)	+0.9%	+18.2	+3.0	+2.7	+3.7	+3.8	+0.3	+1.9	-0.1	+0.0	+3.6	-0.6
Management & Administrative	+1.0%	+31.5	+3.6	+9.1	+4.9	+4.5	-0.9	+2.0	+4.5	+0.5	+4.6	-1.3
Support	+1.8%	+5.8	+0.0	+0.0	+0.3	+0.0	-0.5	+0.2	-0.1	+4.1	+0.6	+1.1
Maintenance/ Technical	+0.5%	+0.2	+0.7	+0.5		-1.0		+0.0	+0.0	+0.0		+0.0
General Support	+1.7%	+5.9	+0.7	+0.5	+0.3	-1.0	-0.5	+0.2	-0.1	+4.1	+0.6	+1.1
Health Care Assistants	+1.0%	+4.1	-0.4	-0.6	-1.3	+1.1	-0.4	+0.1	+3.0	+1.3	+1.4	
Home Help	+5.3%	+1.0	+0.0			-0.4	-0.1		+1.5			
Care, other	-1.4%	-10.9	-0.1	-2.2	+1.3	-1.1	+0.2	-0.2	-2.8	-3.7	-1.9	-0.4
Patient & Client Care	-0.5%	-5.8	-0.6	-2.8	-0.1	-0.4	-0.3	-0.1	+1.8	-2.4	-0.5	-0.4



Year on Year Summary

	% WTE change since SEP 2022	WTE change since SEP 2022	CHO 1	CHO 2	CHO 3	CHO 4	CHO 5	CHO 6	CHO 7	CHO 8	CHO 9	other Communi ty Services
Total	+2.0%	+243.2	-21.7	-20.6	-111.0	+130.5	+36.8	+30.1	+66.7	+51.6	+82.2	-1.5
Consultants	+6.0%	+3.1	-0.4	+1.8	+0.0	-0.3	-0.2	+1.8	+0.7	-0.8	+0.6	+0.0
Registrars	+17.3%	+74.1	+6.0	+3.9	+2.2	+27.5	+2.2	+14.1	+9.6	-4.0	+10.7	+2.0
SHO/ Interns	+30.6%	+10.9	+2.0	-1.2		-1.0	+1.0	+3.0	+4.0	+1.0	+3.3	-1.2
Medical/ Dental, other	-1.1%	-5.7	+1.1	+1.8	-1.1	-3.6	+0.1	-1.5	+2.5	-5.4	+0.4	
Medical & Dental	+8.1%	+82.4	+8.7	+6.3	+1.1	+22.6	+3.1	+17.3	+16.7	-9.2	+15.0	+0.8
Nurse/ Midwife Manager	+3.2%	+15.0	+1.7	+2.8	-1.7	-1.6	-0.1	+2.2	+3.0	+1.3	+7.3	+0.2
Nurse/ Midwife Specialist & AN/MP	+40.9%	+100.4	+16.5	+7.6	+7.6	+22.6	+7.1	+6.3	+11.1	+5.5	+16.3	
Staff Nurse/ Staff Midwife	+6.9%	+71.4	+28.8	+2.7	-0.1	+17.0	+4.2	+0.8	+1.4	+10.5	+10.4	-4.3
Public Health Nurse	+1.0%	+14.3	+4.9	+1.8	+6.0	+3.6	+1.2	-4.6	+5.2	-4.9	+1.1	
Nursing/ Midwifery Student	+1.0%	+0.8	-6.5	-8.7	+6.5	+6.1	+1.0	-0.5	-3.4	+2.6	+3.6	
Nursing/ Midwifery other	-40.8%	-2.4	+0.0					-0.8	-0.6		-1.0	
Nursing & Midwifery	+6.1%	+199.5	+45.5	+6.1	+18.3	+47.7	+13.4	+3.3	+16.6	+15.0	+37.8	-4.2
Therapy Professions	+3.6%	+76.9	+13.9	-19.9	+35.3	+26.6	+15.2	+8.2	-6.3	+13.4	-9.6	
Health Science/ Diagnostics	+7.5%	+6.9	-0.2	-0.1	+1.3	-1.9	+5.4	+0.7	+1.6	+0.2	+1.0	-1.1
Social Care	+20.9%	+7.4		-3.1	-1.0	-1.6	+1.9	+1.0	-0.3	+6.0	+4.5	+0.0
Social Workers	+6.5%	+12.3	-6.1	+2.2	-5.1	+8.0	+0.5	+2.2	+5.1	+0.4	+4.1	+1.0
Psychologists	+6.4%	+18.3	+1.8	-5.8	+7.8	+9.7	+5.2	+1.1	+0.4	-3.5	+1.6	+0.0
Pharmacy	+4.7%	+3.3	-0.9	+0.0	-1.0	+1.0	+0.4	+0.8	-0.6	-0.4	+2.0	+2.0
H&SC, Other	+3.9%	+9.6	-3.0	+1.2	+0.8	+5.7	-1.4	+2.7	-0.4	+0.5	+1.7	+1.8
Health & Social Care Professionals	+4.4%	+134.7	+5.5	-25.5	+38.1	+47.5	+27.3	+16.7	-0.6	+16.7	+5.3	+3.7
Management (VIII & above)	-15.7%	-45.3	-14.6	-5.2	-20.4	+0.2	-4.8	-7.2	+0.4	+5.1	+1.9	-0.6
Administrative/ Supervisory (V to VII)	-3.5%	-29.4	-19.9	+4.8	-70.5	+17.3	+8.9	-6.8	+14.8	+9.1	+16.1	-3.3
Clerical (III & IV)	+3.7%	+71.4	-15.6	+2.6	-30.2	+23.4	+17.2	+5.8	+19.1	+33.6	+17.3	-1.7



Management & Administrative	-0.1%	-3.3	-50.1	+2.2	-121.2	+40.9	+21.3	-8.2	+34.3	+47.8	+35.2	-5.6
Support	+0.2%	+0.8	-8.4	+1.8	-1.4	+2.5	-0.4	-0.0	-3.1	+6.2	+1.1	+2.5
Maintenance/ Technical	-51.8%	-35.0	-0.3	-0.5	-33.2	-1.0		+0.0	-1.0	+0.0		+1.0
General Support	-8.6%	-34.2	-8.7	+1.2	-34.6	+1.6	-0.4	-0.0	-4.1	+6.2	+1.1	+3.5
Health Care Assistants	-18.6%	-93.5	-11.9	-5.4	-5.9	-27.2	-18.5	-5.9	+7.4	-20.7	-5.4	
Home Help	+18.6%	+3.1	+0.0			+2.8	-1.2		+1.5			
Care, other	-5.4%	-45.4	-10.7	-5.5	-6.8	-5.4	-8.2	+6.8	-5.1	-4.2	-6.7	+0.3
Patient & Client Care	-10.0%	-135.9	-22.6	-10.9	-12.7	-29.8	-27.9	+0.9	+3.8	-24.8	-12.1	+0.3



Year to Date Summary

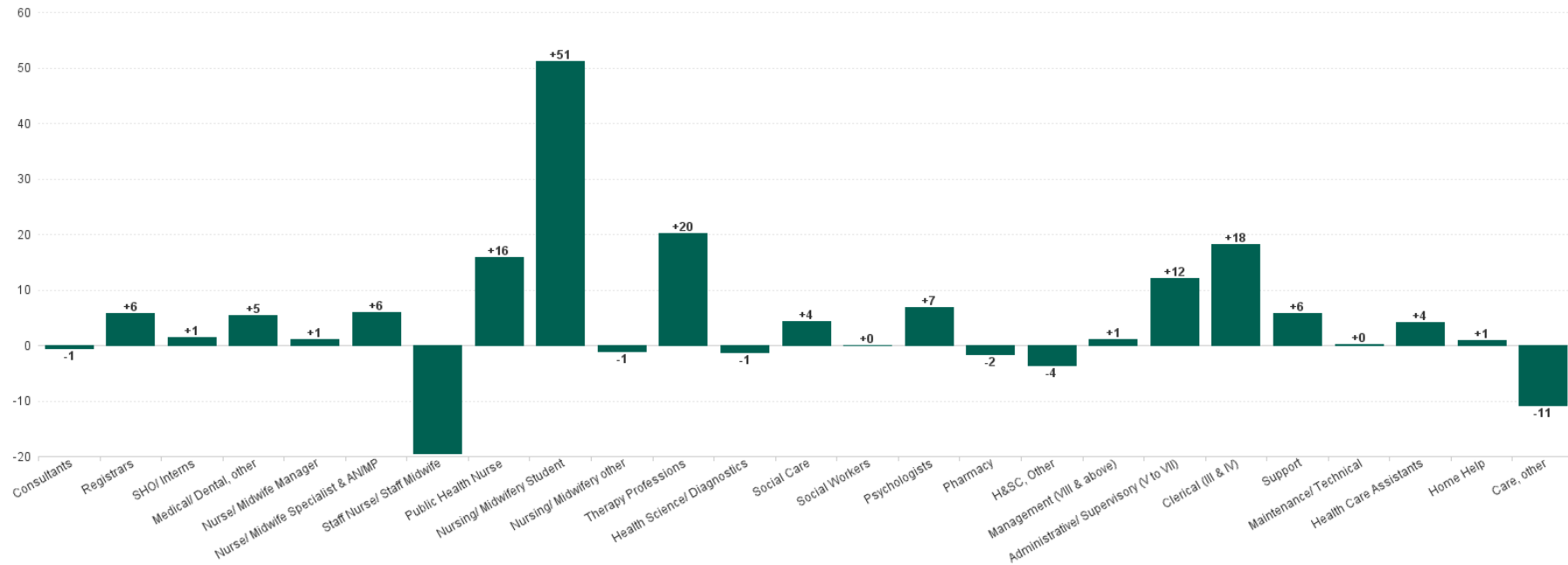
	% WTE change since DEC 2022	WTE change since DEC 2022	CHO 1	CHO 2	CHO 3	CHO 4	CHO 5	CHO 6	CHO 7	CHO 8	CHO 9	other Communi ty Services
Total	+2.7%	+325.1	+52.3	-63.3	+79.9	+83.3	+5.3	+26.0	+32.6	+54.0	+52.3	+2.8
Consultants	+9.7%	+4.9	-0.4	+1.8	+0.0	-0.4	-0.2	+1.7	+1.6	+0.2	+0.6	+0.0
Registrars	+16.2%	+70.1	+6.1	+3.4	+2.5	+21.8	+2.5	+12.8	+12.9	-1.5	+7.7	+2.0
SHO/ Interns	+19.2%	+7.5	+1.0	-1.2		-1.0	+1.0	+2.9	+3.7	+1.0	+2.4	-2.2
Medical/ Dental, other	-4.3%	-21.9	-3.4	+1.6	-0.3	-9.8	-2.1	-2.1	+1.7	-5.8	-1.8	
Medical & Dental	+5.9%	+60.5	+3.3	+5.6	+2.2	+10.6	+1.2	+15.3	+19.9	-6.1	+8.8	-0.2
Nurse/ Midwife Manager	+2.5%	+11.8	+5.8	+0.0	+0.8	-1.1	+2.2	+1.9	+0.9	-4.0	+5.3	+0.2
Nurse/ Midwife Specialist & AN/MP	+24.3%	+67.7	+14.4	+3.8	+7.2	+19.7	+6.2	+5.3	+0.6	+2.8	+7.7	
Staff Nurse/ Staff Midwife	+5.3%	+56.3	+28.8	+10.5	+1.7	+7.7	-1.0	+2.1	+1.3	+1.5	+5.7	-2.1
Public Health Nurse	-0.6%	-8.4	+8.6	-6.7	+0.1	-8.0	-4.7	-1.1	+7.5	-12.0	+7.9	
Nursing/ Midwifery Student	-20.6%	-19.7	-6.6	-8.7	+4.5	+8.5	+1.6	-2.8	-16.0	+2.6	-2.8	
Nursing/ Midwifery other	-30.6%	-1.5	+0.0						-0.6		-0.9	
Nursing & Midwifery	+3.1%	+106.1	+51.0	-1.1	+14.2	+26.9	+4.2	+5.4	-6.3	-9.1	+22.9	-2.0
Therapy Professions	+2.2%	+48.1	-0.5	-31.9	+25.4	+14.7	+14.8	+3.5	-5.1	+36.1	-9.0	
Health Science/ Diagnostics	-0.1%	-0.1	+0.3	-0.0	+0.7	-2.4	+3.1	-0.7	-0.4	-0.9	+1.1	-0.9
Social Care	+11.6%	+4.5		-1.8		-0.2	-0.9	+0.1	-0.3	+6.0	+1.6	+0.0
Social Workers	+3.7%	+7.2	+3.7	-2.5	-0.7	+4.0	-0.4	-1.9	+1.7	-1.9	+4.1	+1.0
Psychologists	+3.9%	+11.5	+0.5	-6.4	+7.8	+2.6	+4.4	+2.4	+1.8	-2.0	+0.5	+0.0
Pharmacy	+6.1%	+4.1	+0.4	+0.0	+1.0	+3.0	+0.8	-0.7	-0.9	-1.4	+1.6	+0.5
H&SC, Other	-0.8%	-1.9	-6.8	-5.0	+0.4	+5.8	-2.2	+2.7	+0.1	-1.8	+2.5	+2.3
Health & Social Care Professionals	+2.4%	+73.4	-2.5	-47.5	+34.7	+27.4	+19.6	+5.5	-3.1	+34.0	+2.4	+2.9
Management (VIII & above)	-4.0%	-10.1	+1.9	-5.6	-0.9	-1.1	-5.4	-6.2	+2.7	-1.9	+3.9	+2.5
Administrative/ Supervisory (V to VII)	+6.7%	+51.1	+15.9	-1.9	+1.7	+10.3	+5.6	-7.7	+10.0	+10.1	+10.7	-3.5
Clerical (III & IV)	+7.3%	+135.0	+3.7	-1.0	+27.0	+26.4	+6.7	+3.3	+18.5	+35.3	+14.7	+0.5



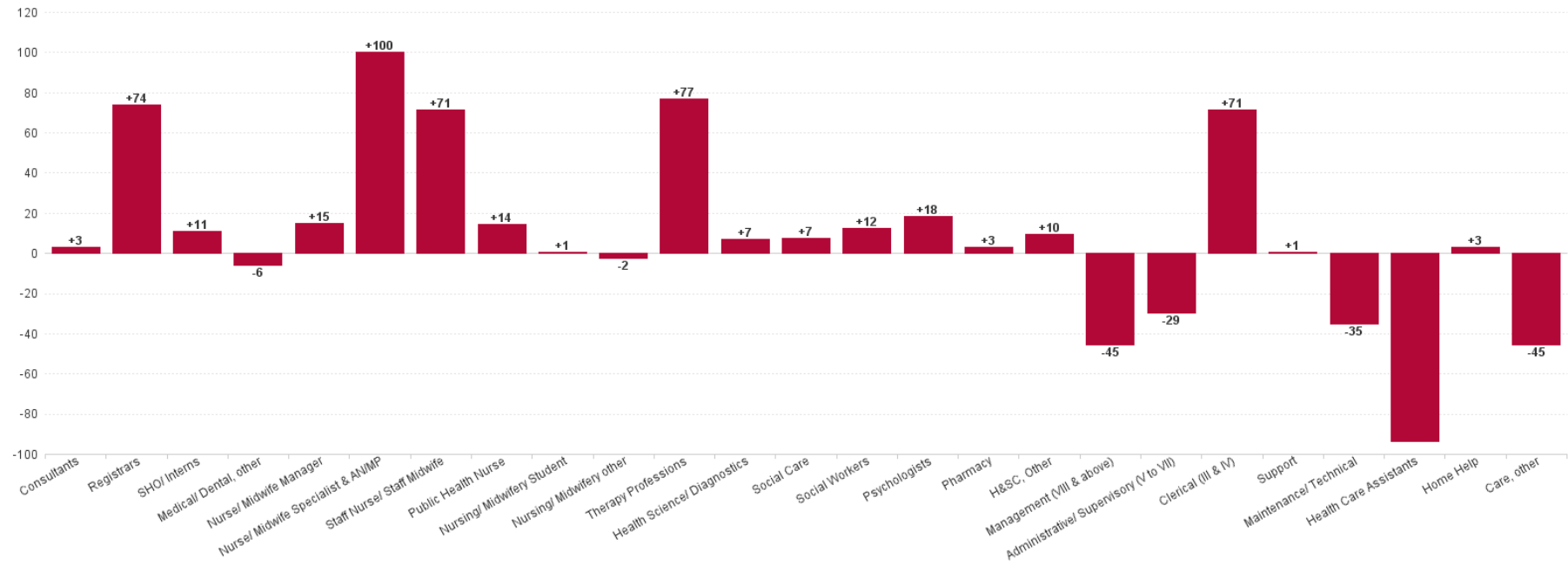
Management & Administrative	+6.2%	+176.0	+21.5	-8.5	+27.7	+35.6	+6.9	-10.7	+31.2	+43.5	+29.3	-0.5
Support	+0.8%	+2.6	-6.7	+2.5	-1.2	+2.7	+0.6	+1.0	-8.1	+6.3	+2.9	+2.5
Maintenance/ Technical	-8.5%	-3.0	-0.2	-0.5		-1.0		+0.0	-1.3	+0.0		+0.0
General Support	-0.1%	-0.4	-6.8	+2.0	-1.2	+1.7	+0.6	+1.0	-9.5	+6.3	+2.9	+2.5
Health Care Assistants	-12.3%	-57.2	-7.2	-5.4	+2.5	-13.9	-17.3	+3.8	+0.5	-10.3	-10.0	
Home Help	+29.4%	+4.4	+0.1			+3.5	-0.7		+1.5			
Care, other	-4.6%	-37.7	-7.2	-8.4	-0.1	-8.4	-9.3	+5.7	-1.7	-4.3	-4.1	+0.1
Patient & Client Care	-6.9%	-90.5	-14.3	-13.8	+2.3	-18.8	-27.2	+9.5	+0.3	-14.6	-14.1	+0.1



Previous Month Summary Chart: Change since AUG 2023



Previous Year Summary Chart: Change since SEP 2022



YTD Summary Chart: Change since DEC 2022

