

Primary Care Service Employment Report: April 2021

Employment by Staff Group

Apr 2021 (Dec 2020 figure: 11,572)	WTE Mar 2021	WTE Apr 2021	WTE change since Mar 21	% change since Mar 21	WTE change since Dec 20	WTE change since Apr 20
Overall	11,929	11,984	+55	+0.5%	+411	+1,313
Consultants	44	44	+1	+1.3%	+2	+1
Registrars	394	394	-0	-0.1%	-9	+7
SHO/ Interns	43	41	-2	-5.1%	-1	+5
Medical/ Dental, other	528	504	-24	-4.5%	-15	-19
Medical & Dental	1,009	984	-26	-2.5%	-22	-5
Nurse/ Midwife Manager	408	427	+18	+4.5%	+22	+42
Nurse/ Midwife Specialist & AN/MP	194	194	+0	+0.0%	+9	+40
Staff Nurse/ Staff Midwife	955	971	+16	+1.6%	+44	+111
Public Health Nurse	1,510	1,497	-12	-0.8%	-36	-1
<i>Post-registration Nurse/ Midwife Student</i>	<i>108</i>	<i>109</i>	<i>+0</i>	<i>+0.1%</i>	<i>+13</i>	<i>+13</i>
Nursing/ Midwifery Student	108	109	+0	+0.1%	+2	+13
Nursing/ Midwifery other	6	6	+0	+0.3%	-1	+0
Nursing & Midwifery	3,181	3,203	+22	+0.7%	+42	+206
Therapy Professions	1,813	1,827	+14	+0.8%	+35	+89
Health Science/ Diagnostics	92	93	+2	+1.8%	-0	+9
Social Care	32	32	-0	-1.4%	-1	-2
Social Workers	153	154	+1	+0.8%	+3	+16
Psychologists	295	294	-1	-0.5%	-6	-0
Pharmacy	70	69	-1	-1.1%	+6	+14
H&SC, Other	215	226	+11	+5.2%	+17	+20
Health & Social Care Professionals	2,670	2,695	+25	+0.9%	+54	+145
Management (VIII & above)	294	301	+7	+2.3%	+2	+2
Administrative/ Supervisory (V to VII)	727	737	+10	+1.3%	+52	+93
Clerical (III & IV)	1,874	1,890	+16	+0.9%	+53	+144
Management & Administrative	2,896	2,928	+32	+1.1%	+107	+238
Support	358	354	-4	-1.2%	+2	-15
Maintenance/ Technical	60	60	+1	+1.3%	+4	+1
General Support	418	414	-4	-0.9%	+7	-14
Health Care Assistants	974	968	-7	-0.7%	+188	+701
Home Help	18	18	+0	+0.9%	-1	-2
Care, other	764	775	+11	+1.4%	+37	+45
Patient & Client Care	1,756	1,760	+4	+0.3%	+225	+744

Primary Care Services Employment by Administration (HSE / S38): April 2021

Apr 2021 (Dec 2020 figure: 11,572)	WTE Mar 2021	WTE Apr 2021	WTE change since Mar 21	% change since Mar 21	WTE change since Dec 20	WTE change since Apr 20
Total	11,929	11,984	+55	+0.5%	+411	+1,313
HSE	11,216	11,262	+46	+0.4%	+390	+1,318
Section 38 Voluntary Agencies	713	722	+9	+1.2%	+22	-5

Employment by Staff Group

Apr 2021 (Dec 2020 figure: 10,872)	WTE Mar 2021	WTE Apr 2021	WTE change since Mar 21	% change since Mar 21	WTE change since Dec 20	WTE change since Apr 20
Health Service Executive	11,216	11,262	+46	+0.4%	+390	+1,318
Consultants	31	32	+1	+3.6%	+2	-1
Registrars	381	381	-0	-0.1%	-9	+6
SHO/ Interns	23	20	-3	-13.8%	-2	+2
Medical/ Dental, other	512	487	-24	-4.8%	-18	-20
Medical & Dental	947	921	-27	-2.8%	-26	-13
Nurse/ Midwife Manager	358	376	+18	+5.1%	+20	+43
Nurse/ Midwife Specialist & AN/MP	156	156	+0	+0.2%	+9	+32
Staff Nurse/ Staff Midwife	843	856	+13	+1.5%	+36	+108
Public Health Nurse	1,510	1,497	-12	-0.8%	-36	-1
Post-registration Nurse/ Midwife Student	108	109	+0	+0.1%	+13	+13
Nursing/ Midwifery Student	108	109	+0	+0.1%	+2	+13
Nursing/ Midwifery other	4	4	+0	+0.5%	-1	+0
Nursing & Midwifery	2,978	2,997	+19	+0.6%	+32	+194
Therapy Professions	1,779	1,793	+13	+0.8%	+36	+93
Health Science/ Diagnostics	87	89	+2	+2.2%	+0	+9
Social Care	32	32	-0	-1.4%	-1	-2
Social Workers	142	142	+0	+0.2%	+1	+15
Psychologists	294	293	-1	-0.5%	-6	-0
Pharmacy	60	59	-1	-1.6%	+5	+12
H&SC, Other	211	222	+11	+5.2%	+16	+17
Health & Social Care Professionals	2,606	2,629	+24	+0.9%	+52	+143
Management (VIII & above)	285	293	+8	+2.7%	+2	+2
Administrative/ Supervisory (V to VII)	694	703	+9	+1.2%	+49	+104
Clerical (III & IV)	1,805	1,821	+16	+0.9%	+51	+151
Management & Administrative	2,784	2,816	+32	+1.1%	+103	+256
Support	263	258	-5	-1.9%	+2	-4
Maintenance/ Technical	50	51	+1	+1.5%	+4	+2
General Support	313	308	-4	-1.4%	+7	-2
Health Care Assistants	865	857	-8	-0.9%	+185	+698
Home Help	18	18	+0	+0.9%	-1	-2
Care, other	706	716	+10	+1.4%	+38	+44
Patient & Client Care	1,588	1,590	+2	+0.1%	+222	+740

Employment by Staff Group

Apr 2021 (Dec 2020 figure: 700)	WTE Mar 2021	WTE Apr 2021	WTE change since Mar 21	% change since Mar 21	WTE change since Dec 20	WTE change since Apr 20
Section 38 Voluntary Agencies	713	722	+9	+1.2%	+22	-5
Consultants	13	12	-1	-4.3%	+0	+2
Registrars	13	13			-0	+1
SHO/ Interns	20	21	+1	+5.4%	+1	+3
Medical/ Dental, other	16	17	+1	+4.9%	+3	+2
Medical & Dental	62	63	+1	+2.1%	+3	+8
Nurse/ Midwife Manager	50	50	+0	+0.0%	+2	-1
Nurse/ Midwife Specialist & AN/MP	38	38	-0	-0.7%	+1	+8
Staff Nurse/ Staff Midwife	113	115	+3	+2.4%	+8	+4
Nursing/ Midwifery other	2	2				
Nursing & Midwifery	203	206	+2	+1.2%	+10	+11
Therapy Professions	34	34	+0	+1.2%	-1	-4
Health Science/ Diagnostics	4	4	-0	-4.7%	-0	-0
Social Workers	11	12	+1	+9.0%	+2	+1
Psychologists	1	1	+0	+3.3%	+0	
Pharmacy	10	10	+0	+1.9%	+1	+2
H&SC, Other	4	4	+0	+1.0%	+1	+3
Health & Social Care Professionals	64	66	+1	+2.3%	+2	+1
Management (VIII & above)	10	9	-1	-10.5%		
Administrative/ Supervisory (V to VII)	33	34	+1	+3.2%	+3	-11
Clerical (III & IV)	69	70	+1	+0.8%	+1	-7
Management & Administrative	112	112	+1	+0.5%	+4	-18
Support	95	96	+1	+0.7%	+0	-11
Maintenance/ Technical	10	10	+0	+0.1%	-0	-1
General Support	105	106	+1	+0.6%	-0	-12
Health Care Assistants	109	111	+2	+1.4%	+3	+3
Care, other	58	59	+1	+1.1%	-0	+1
Patient & Client Care	167	170	+2	+1.3%	+3	+4

Primary Care Services Employment by CHO: Apr 2021

Apr 2021 (Dec 2020 figure: 11,572)	WTE Mar 2021	WTE Apr 2021	WTE change since Mar 21	% change since Mar 21	WTE change since Dec 20	WTE change since Apr 20
Overall	11,929	11,984	+55	+0.5%	+411	+1,313
CHO 1	1,369	1,346	-23	-1.7%	+49	+147
CHO 2	1,271	1,281	+10	+0.8%	+47	+130
CHO 3	891	887	-4	-0.5%	+76	+125
CHO 4	1,582	1,606	+24	+1.5%	+88	+254
CHO 5	1,048	1,056	+8	+0.7%	-5	+115
CHO 6	844	853	+9	+1.1%	+42	+97
CHO 7	1,814	1,824	+9	+0.5%	+35	+92
CHO 8	1,566	1,565	-1	-0.0%	+59	+152
CHO 9	1,405	1,417	+13	+0.9%	+6	+176
other Community Services	139	148	+10	+6.9%	+14	+26

Primary Care Services Employment by CHO etc. Apr 2021

CHO 1

Apr 2021 (Dec 2020 figure: 1,296)	WTE Mar 2021	WTE Apr 2021	WTE change since Mar 21	% change since Mar 21	WTE change since Dec 20	WTE change since Apr 20
Overall	1,369	1,346	-23	-1.7%	+49	+147
Consultants	4	4	0		+0	+1
Registrars	41	42	+1	+2%	-0	+4
SHO/ Interns	1	1	0			+0
Medical/ Dental, other	49	46	-3	-6%	+1	-0
Medical & Dental	94	92	-2	-2.1%	+0	+5
Nurse/ Midwife Manager	38	39	+1	+4%	+0	-4
Nurse/ Midwife Specialist & AN/MP	28	27	-1	-4%	+1	+3
Staff Nurse/ Staff Midwife	98	94	-4	-4%	-2	+6
Public Health Nurse	153	151	-2	-2%	-2	-1
Nursing/ Midwifery Student	3	3	0			-4
Nursing/ Midwifery other	1	1	+0	+4%	+0	
Nursing & Midwifery	322	316	-6	-1.9%	-2	-0
Therapy Professions	238	231	-7	-3%	+1	+6
Health Science/ Diagnostics	5	5	-0	-0%	-0	+1
Social Workers	18	18	-0	-1%	+2	+5
Psychologists	31	30	-1	-3%	-2	-3
Pharmacy	2	2	0			+1
H&SC, Other	7	7	+0	+0%	-0	-0
Health & Social Care Professionals	300	292	-8	-2.6%	+1	+9
Management (VIII & above)	32	33	+1	+3%	+3	+1
Administrative/ Supervisory (V to VII)	85	84	-1	-2%	+7	+13
Clerical (III & IV)	268	266	-2	-1%	+16	+31
Management & Administrative	385	382	-3	-0.7%	+27	+45
Support	88	86	-2	-2%	+9	+11
Maintenance/ Technical	7	8	+1	+10%	+1	+1
General Support	95	94	-1	-1.5%	+9	+12
Health Care Assistants	108	104	-4	-3%	+9	+70
Home Help	1	0	-0	-23%	-0	+0
Care, other	64	65	+1	+2%	+7	+7
Patient & Client Care	173	170	-3	-1.6%	+15	+77

CHO 2

Apr 2021 (Dec 2020 figure: 1,235)	WTE Mar 2021	WTE Apr 2021	WTE change since Mar 21	% change since Mar 21	WTE change since Dec 20	WTE change since Apr 20
Overall	1,271	1,281	+10	+0.8%	+47	+130
Consultants	1	2	+1	+38%	+1	+1
Registrars	47	48	+1	+2%	+0	+7
Senior House Officer	3	2	-1	-33%	+1	
SHO/ Interns	3	2	-1	-33%	-1	
Medical/ Dental, other	47	45	-2	-5%	-4	-3
Medical & Dental	99	97	-2	-2.1%	-4	+5
Nurse/ Midwife Manager	31	33	+1	+4%	+5	+7
Nurse/ Midwife Specialist & AN/MP	23	24	+1	+5%	+3	+5
Staff Nurse/ Staff Midwife	82	90	+8	+10%	+11	+14
Public Health Nurse	193	190	-3	-1%	-7	-4
Post-registration Nurse/ Midwife Student				-100%	-4	-4
Nursing/ Midwifery Student				-100%		-4
Nursing & Midwifery	330	338	+8	+2.3%	+12	+17
Therapy Professions	254	260	+6	+2%	+12	+23
Health Science/ Diagnostics	7	8	+0	+7%	+1	+2
Social Care	9	9	-0	-2%	-0	-0
Social Workers	6	5	-1	-14%	-1	-2
Psychologists	29	30	+0	+1%	+3	+6
Pharmacy	2	2	-0	-17%	+1	+2
H&SC, Other	42	45	+3	+7%	+3	+5
Health & Social Care Professionals	349	357	+8	+2.3%	+19	+36
Management (VIII & above)	37	38	+2	+5%	+3	+5
Administrative/ Supervisory (V to VII)	81	77	-4	-5%	+4	+13
Clerical (III & IV)	229	230	+1	+0%	+1	-3
Management & Administrative	347	345	-2	-0.5%	+8	+16
Support	22	20	-2	-8%	-2	-1
Maintenance/ Technical	9	9	0		+1	
General Support	31	29	-2	-5.5%	-1	-1
Health Care Assistants	68	65	-2	-4%	+9	+52
Care, other	48	50	+2	+4%	+4	+5
Patient & Client Care	116	115	-1	-0.6%	+12	+57

CHO 3

Apr 2021 (Dec 2020 figure: 812)	WTE Mar 2021	WTE Apr 2021	WTE change since Mar 21	% change since Mar 21	WTE change since Dec 20	WTE change since Apr 20
Overall	891	887	-4	-0.5%	+76	+125
Consultants	1	1	0			-1
Registrars	25	24	-1	-2%	-1	+3
SHO/ Interns	1	1	0			-5
Medical/ Dental, other	51	44	-7	-13%	-8	-8
Medical & Dental	78	71	-7	-9.4%	-8	-11
Nurse/ Midwife Manager	21	22	+1	+4%	-1	+1
Nurse/ Midwife Specialist & AN/MP	3	3	0			+1
Staff Nurse/ Staff Midwife	62	64	+2	+3%	+9	+9
Public Health Nurse	126	126	-1	-1%	-0	-3
<i>Post-registration Nurse/ Midwife Student</i>	4	4	0		+4	+4
Nursing/ Midwifery Student	4	4	0			+4
Nursing & Midwifery	217	219	+2	+1.0%	+7	+12
Therapy Professions	86	86	-1	-1%	+2	+1
<i>Audiology</i>	5	5	0		+0	+0
Health Science/ Diagnostics	5	5	0		-1	+0
Social Care	1	1	0			
Social Workers	10	10	-0	-1%	-0	-0
Psychologists	15	15	-0	-1%	+0	+1
Pharmacy	2	2	+0	+10%	+1	+1
H&SC, Other	10	10	-0	-0%	-1	-2
Health & Social Care Professionals	129	128	-1	-0.5%	+2	+2
Management (VIII & above)	25	25	+0	+1%	+1	+1
Administrative/ Supervisory (V to VII)	77	78	+1	+1%	+14	+18
Clerical (III & IV)	168	170	+2	+1%	+20	+20
Management & Administrative	269	272	+3	+1.1%	+35	+40
Support	13	13	-0	-0%	+0	-0
Maintenance/ Technical	30	30	+0	+0%	+3	+2
General Support	43	43	+0	+0.1%	+3	+1
Health Care Assistants	103	101	-2	-2%	+33	+78
Home Help	1	1	0			
Care, other	52	53	+1	+1%	+4	+4
Patient & Client Care	156	154	-1	-0.8%	+37	+81

CHO 4

Apr 2021 (Dec 2020 figure: 1,517)	WTE Mar 2021	WTE Apr 2021	WTE change since Mar 21	% change since Mar 21	WTE change since Dec 20	WTE change since Apr 20
Overall	1,582	1,606	+24	+1.5%	+88	+254
Consultants	3	3	+0	+0%	+0	+0
Registrars	55	53	-2	-4%	-5	+0
SHO/ Interns	7	7	+0	+1%		+1
Medical/ Dental, other	95	93	-2	-2%	+3	+2
Medical & Dental	160	156	-4	-2.5%	-2	+3
Nurse/ Midwife Manager	68	72	+4	+6%	+11	+10
Nurse/ Midwife Specialist & AN/MP	8	8	+0	+1%	+0	+2
Staff Nurse/ Staff Midwife	142	143	+1	+1%	+4	+25
Public Health Nurse	216	215	-1	-0%	-6	+5
<i>Post-registration Nurse/ Midwife Student</i>	15	15	-0	-3%	-3	-4
Nursing/ Midwifery Student	15	15	-0	-3%	-0	-4
Nursing & Midwifery	449	452	+4	+0.8%	+9	+38
Therapy Professions	252	257	+5	+2%	+19	+38
Health Science/ Diagnostics	12	13	+1	+5%	+1	+1
Social Care	5	5	0			-1
Social Workers	27	27	-1	-2%	-2	+1
Psychologists	20	20	+0	+2%	-1	-0
Pharmacy	4	4	+0	+1%	+0	+1
H&SC, Other	41	46	+5	+12%	+5	+6
Health & Social Care Professionals	361	371	+10	+2.9%	+22	+46
Management (VIII & above)	33	32	-1	-4%	-3	-4
Administrative/ Supervisory (V to VII)	78	80	+2	+3%	+7	+14
Clerical (III & IV)	243	254	+11	+5%	+31	+52
Management & Administrative	354	366	+12	+3.5%	+35	+62
Support	18	18	-0	-0%	-0	-3
General Support	18	18	-0	-0.1%	-0	-3
Health Care Assistants	120	120	+0	+0%	+17	+101
Home Help	9	9	+0	+3%	+0	-1
Care, other	112	113	+1	+1%	+8	+7
Patient & Client Care	241	242	+1	+0.6%	+25	+107

CHO 5

Apr 2021 (Dec 2020 figure: 1,061)	WTE Mar 2021	WTE Apr 2021	WTE change since Mar 21	% change since Mar 21	WTE change since Dec 20	WTE change since Apr 20
Overall	1,048	1,056	+8	+0.7%	-5	+115
Consultants	2	2	0		+1	-1
Registrars	24	24	-0	-2%	+3	+1
SHO/ Interns	1	0	-1	-83%	-2	+0
Medical/ Dental, other	59	59	-0	-1%	+4	+5
Medical & Dental	86	85	-2	-1.9%	+6	+5
Nurse/ Midwife Manager	35	40	+5	+14%	-6	+11
Nurse/ Midwife Specialist & AN/MP	17	18	+0	+1%	-0	+10
Staff Nurse/ Staff Midwife	85	84	-0	-0%	+0	+19
Public Health Nurse	165	166	+1	+0%	-2	+4
<i>Post-registration Nurse/ Midwife Student</i>	4	4	0		-1	-1
Nursing/ Midwifery Student	4	4	0		+1	-1
<i>Nursing Education/Clinical</i>				-100%	-1	-1
Nursing/ Midwifery other				-100%	-1	-1
Nursing & Midwifery	306	312	+6	+1.8%	-8	+42
Therapy Professions	186	192	+7	+4%	+7	+12
Health Science/ Diagnostics	7	7	+0	+2%	-1	+2
Social Care	4	5	+0	+2%	-1	-0
Social Workers	5	4	-1	-22%	-3	-5
Psychologists	34	34	+0	+0%	-5	-7
Pharmacy	1	1	0			
H&SC, Other	18	18	+1	+3%	-0	+0
Health & Social Care Professionals	254	260	+7	+2.6%	-3	+2
Management (VIII & above)	19	19	+0	+0%	-4	-5
Administrative/ Supervisory (V to VII)	59	58	-1	-2%	-1	+8
Clerical (III & IV)	141	142	+1	+1%	-19	-23
Management & Administrative	219	219	+0	+0.0%	-24	-20
Support	25	24	-0	-2%	-2	-3
General Support	25	24	-0	-1.6%	-2	-3
Health Care Assistants	93	86	-7	-7%	+16	+81
Home Help	7	7	+0	+0%	-1	-1
Care, other	59	63	+4	+7%	+11	+9
Patient & Client Care	158	156	-3	-1.6%	+26	+89

CHO 6

Apr 2021 (Dec 2020 figure: 811)	WTE Mar 2021	WTE Apr 2021	WTE change since Mar 21	% change since Mar 21	WTE change since Dec 20	WTE change since Apr 20
Overall	844	853	+9	+1.1%	+42	+97
Consultants	8	8	0			+0
Registrars	23	23	+0	+0%	-1	-1
SHO/ Interns	7	7	0			
Medical/ Dental, other	44	44	-0	-0%	+3	+0
Medical & Dental	82	82	-0	-0.1%	+2	-1
Nurse/ Midwife Manager	22	23	+1	+6%	+1	+0
Nurse/ Midwife Specialist & AN/MP	4	4	0		+1	-2
Staff Nurse/ Staff Midwife	59	61	+2	+3%	+6	+15
Public Health Nurse	109	107	-2	-2%	-5	-5
<i>Post-registration Nurse/ Midwife Student</i>	15	15	0		+2	+2
Nursing/ Midwifery Student	15	15	0		+0	+2
<i>Nursing Education/Clinical</i>	1	1	-0	-2%	+1	+0
Nursing/ Midwifery other	1	1	-0	-2%	-0	+0
Nursing & Midwifery	210	211	+1	+0.5%	+3	+9
Therapy Professions	115	115	-0	-0%	+4	+6
Health Science/ Diagnostics	19	19	-0	-1%	-1	+2
Social Care	3	2	-0	-16%	-0	-0
Social Workers	5	6	+1	+27%	+2	+1
Psychologists	19	19	+1	+3%	-1	-1
Pharmacy	2	2	+0	+3%	+1	+1
H&SC, Other	4	4	+0	+6%	+0	+1
Health & Social Care Professionals	166	167	+1	+0.6%	+5	+9
Management (VIII & above)	30	30	-0	-0%	-0	-2
Administrative/ Supervisory (V to VII)	69	76	+7	+10%	+11	+11
Clerical (III & IV)	138	136	-1	-1%	+8	+25
Management & Administrative	237	242	+5	+2.3%	+19	+35
Support	25	26	+1	+4%	-0	-1
Maintenance/ Technical	2	2	0			
General Support	27	28	+1	+4.0%	-0	-1
Health Care Assistants	50	51	+1	+3%	+13	+43
Care, other	72	72	-1	-1%	-0	+2
Patient & Client Care	122	123	+1	+0.7%	+13	+45

CHO 7

Apr 2021 (Dec 2020 figure: 1,789)	WTE Mar 2021	WTE Apr 2021	WTE change since Mar 21	% change since Mar 21	WTE change since Dec 20	WTE change since Apr 20
Overall	1,814	1,824	+9	+0.5%	+35	+92
Consultants	13	13	-1	-4%	+0	+1
Registrars	44	43	-1	-2%	-0	-2
SHO/ Interns	10	10	+0	+3%	+1	+3
Medical/ Dental, other	74	71	-3	-4%	-6	-6
Medical & Dental	141	137	-4	-2.9%	-5	-4
Nurse/ Midwife Manager	90	92	+2	+2%	+7	+3
Nurse/ Midwife Specialist & AN/MP	57	57	-1	-1%	+1	+9
Staff Nurse/ Staff Midwife	201	207	+6	+3%	+8	+5
Public Health Nurse	171	172	+0	+0%	-5	+9
<i>Post-registration Nurse/ Midwife Student</i>	23	23	0		+2	+2
Nursing/ Midwifery Student	23	23	0			+2
Nursing/ Midwifery other	2	2	0			
Nursing & Midwifery	544	553	+8	+1.5%	+10	+28
Therapy Professions	249	248	-2	-1%	-10	-16
Health Science/ Diagnostics	1	1	-0	-22%	-0	-0
Social Care	4	4	+0	+1%	+0	-0
Social Workers	27	28	+1	+5%	+2	+3
Psychologists	24	24	-0	-0%	-1	+2
Pharmacy	32	31	-0	-1%	+1	+2
H&SC, Other	21	21	-0	-0%	-0	-2
Health & Social Care Professionals	358	357	-1	-0.3%	-8	-11
Management (VIII & above)	32	33	+1	+2%	+3	+4
Administrative/ Supervisory (V to VII)	91	95	+4	+5%	+8	+6
Clerical (III & IV)	190	190	-0	-0%	-3	-1
Management & Administrative	313	318	+5	+1.5%	+8	+9
Support	110	109	-1	-1%	-1	-16
Maintenance/ Technical	9	9	+0	+0%	-0	-1
General Support	119	118	-1	-0.5%	-1	-17
Health Care Assistants	212	213	+1	+0%	+29	+87
Care, other	126	128	+1	+1%	+2	+1
Patient & Client Care	338	341	+2	+0.7%	+30	+88

CHO 8

Apr 2021 (Dec 2020 figure: 1,506)	WTE Mar 2021	WTE Apr 2021	WTE change since Mar 21	% change since Mar 21	WTE change since Dec 20	WTE change since Apr 20
Overall	1,566	1,565	-1	-0.0%	+59	+152
Consultants	6	6	+1	+9%	+0	+1
Registrars	78	78	-0	-0%	-4	+1
SHO/ Interns	1	0	-1	-72%	-1	-2
Medical/ Dental, other	61	56	-5	-8%	-5	-6
Medical & Dental	146	141	-5	-3.6%	-9	-6
Nurse/ Midwife Manager	50	50	+0	+1%	-1	-2
Nurse/ Midwife Specialist & AN/MP	44	44	+0	+1%	+2	+9
Staff Nurse/ Staff Midwife	106	107	+0	+0%	+2	+3
Public Health Nurse	199	199	+0	+0%	+2	-6
<i>Post-registration Nurse/ Midwife Student</i>	13	13	0		+11	+11
Nursing/ Midwifery Student	13	13	0		+1	+11
Nursing/ Midwifery other	1	1	0		+0	+0
Nursing & Midwifery	414	414	+1	+0.2%	+8	+15
Therapy Professions	229	230	+1	+0%	+1	+5
Health Science/ Diagnostics	8	8	0		+1	+2
Social Care	1	1	0			+1
Social Workers	16	17	+2	+10%	+1	+1
Psychologists	55	56	+1	+1%	-0	+1
Pharmacy	7	7	0		+2	+3
H&SC, Other	34	34	+0	+1%	+8	+9
Health & Social Care Professionals	350	353	+4	+1.1%	+14	+22
Management (VIII & above)	43	44	+1	+2%	+3	+2
Administrative/ Supervisory (V to VII)	83	86	+3	+4%	+2	+5
Clerical (III & IV)	273	269	-4	-2%	-3	-1
Management & Administrative	399	399	+0	+0.0%	+2	+6
Support	21	20	-0	-2%	-0	-2
Maintenance/ Technical	3	3	0			+0
General Support	24	23	-0	-1.8%	-0	-1
Health Care Assistants	134	134	+0	+0%	+44	+117
Home Help				-100%		
Care, other	100	100	+0	+0%	+0	-1
Patient & Client Care	234	235	+0	+0.2%	+45	+116

CHO 9

Apr 2021 (Dec 2020 figure: 1,412)	WTE Mar 2021	WTE Apr 2021	WTE change since Mar 21	% change since Mar 21	WTE change since Dec 20	WTE change since Apr 20
Overall	1,405	1,417	+13	+0.9%	+6	+176
Consultants	4	4	0			
Registrars	47	49	+2	+4%	-3	-2
SHO/ Interns	8	8	+0	+0%	+3	+4
Medical/ Dental, other	47	46	-1	-2%	-3	-2
Medical & Dental	106	107	+1	+0.8%	-3	-1
Nurse/ Midwife Manager	48	49	+1	+1%	+6	+14
Nurse/ Midwife Specialist & AN/MP	9	9	0		+1	+3
Staff Nurse/ Staff Midwife	109	112	+3	+3%	+6	+12
Public Health Nurse	176	171	-5	-3%	-11	+1
<i>Post-registration Nurse/ Midwife Student</i>	31	32	+1	+2%	+6	+7
Nursing/ Midwifery Student	31	32	+1	+2%	+1	+7
Nursing/ Midwifery other	1	1	0		-0	+1
Nursing & Midwifery	375	374	-1	-0.3%	+4	+37
Therapy Professions	204	209	+5	+2%	-2	+14
Health Science/ Diagnostics	20	20	+1	+4%	+1	+0
Social Care	4	4	+0	+0%	+0	-1
Social Workers	22	21	-1	-5%	-1	+5
Psychologists	68	65	-3	-4%	+0	+0
Pharmacy	16	16	-0	-3%	+1	+3
H&SC, Other	35	37	+2	+7%	+1	+1
Health & Social Care Professionals	368	372	+4	+1.0%	-1	+22
Management (VIII & above)	23	24	+0	+1%	-5	-6
Administrative/ Supervisory (V to VII)	86	86	-0	-0%	-2	+5
Clerical (III & IV)	211	214	+3	+1%	-7	+35
Management & Administrative	320	323	+3	+0.9%	-14	+34
Support	33	33	-0	-0%	-1	-0
General Support	33	33	-0	-0.5%	-1	-0
Health Care Assistants	87	92	+6	+6%	+19	+72
Care, other	116	116	+0	+0%	+3	+11
Patient & Client Care	203	209	+6	+3.0%	+21	+84

other Community Services

Apr 2021 (Dec 2020 figure: 134)	WTE Mar 2021	WTE Apr 2021	WTE change since Mar 21	% change since Mar 21	WTE change since Dec 20	WTE change since Apr 20
Overall	139	148	+10	+6.9%	+15	+26
Consultants	1	1	0			
Registrars	10	10	+0	+1%	+1	-4
SHO/ Interns	5	5	0		-1	+4
Medical/ Dental, other				-100%	-0	-0
Medical & Dental	16	16	+0	+0.3%	+0	-0
Nurse/ Midwife Manager	5	6	+2	+41%	+0	+2
Staff Nurse/ Staff Midwife	11	9	-2	-21%	-1	+4
Nursing & Midwifery	15	15	-0	-2.8%	-1	+6
Health Science/ Diagnostics	8	8	+0	+1%	-0	-0
Social Care	2	2	0		+0	+0
Social Workers	18	18	+1	+4%	+3	+7
Psychologists	1	1	0			
Pharmacy	3	3	-0	-0%	-0	+0
H&SC, Other	4	4	0			
Health & Social Care Professionals	35	36	+1	+2.4%	+3	+8
Management (VIII & above)	21	24	+3	+16%	+3	+5
Administrative/ Supervisory (V to VII)	19	18	-1	-4%	+1	-0
Clerical (III & IV)	14	20	+6	+42%	+8	+8
Management & Administrative	54	62	+9	+16.2%	+12	+13
Support	4	4	+0	+0%	-0	+1
Maintenance/ Technical				-100%		-1
General Support	4	4	+0	+0.3%	-0	-0
Care, other	15	15	+0	+3%	+0	+0
Patient & Client Care	15	15	+0	+2.7%	+0	+0

Primary Care Services Employment by Grade Group: Apr 2021

Apr 2021 (Dec 2020 figure: 11,572)	WTE Mar 2021	WTE Apr 2021	WTE change since Mar 21	% change since Mar 21	WTE change since Dec 20	WTE change since Apr 20
Overall	11,929	11,984	+55	+0.5%	+411	+1,313
Consultant Dentistry	10	10			+0	+0
Consultant Medicine	22	23	+1	+3.1%	+2	+5
Consultant Paediatrics	2	2				
Consultant Psychiatry	8	8				
Consultant Radiology	1	1				
Consultant Surgery	1	1	-0	-16.4%	+0	-3
Consultants	44	44	+1	+1.3%	+2	+1
Registrar	380	381	+1	+0.2%	-9	+6
Senior Registrar	3	2	-1	-32.7%	+0	-1
Specialist Registrar	11	11			-0	+1
Registrars	394	394	-0	-0.1%	-9	+7
Senior House Officer	43	41	-2	-5.1%	-1	+5
SHO/ Interns	43	41	-2	-5.1%	-1	+5
Dentists	302	303	+1	+0.4%	+1	-2
Other Medical	226	201	-25	-11.0%	-16	-17
Medical/ Dental, other	528	504	-24	-4.5%	-15	-19
Medical & Dental	1,009	984	-26	-2.5%	-22	-5
Clinical Nurse/ Midwife Manager	189	199	+9	+5.0%	+7	+18
Director Nursing/Midwifery, Assistant	179	186	+6	+3.4%	+14	+22
Director of Nursing/Midwifery	39	42	+3	+6.6%	+2	+2
Nurse/ Midwife Manager	408	427	+18	+4.5%	+22	+42
Advanced Nurse/ Midwife Practitioner	16	16			+3	+12
Clinical Nurse/ Midwife Specialist	177	177	+0	+0.0%	+6	+28
Nurse/ Midwife Specialist & AN/MP	194	194	+0	+0.0%	+9	+40
Staff Midwives	6	7	+1	+12.7%	+2	+1
Staff Nurse [Psychiatric]	15	15	-0	-0.3%	+1	+6
Staff Nurses [General/ Children's]	934	949	+15	+1.6%	+41	+105
Staff Nurse/ Staff Midwife	955	971	+16	+1.6%	+44	+111
Public Health Nurse	1,510	1,497	-12	-0.8%	-36	-1
Public Health Nurse	1,510	1,497	-12	-0.8%	-36	-1
Post-registration Nurse/ Midwife Student	108	109	+0	+0.1%	+2	+13
Nursing/ Midwifery Student	108	109	+0	+0.1%	+2	+13
Nursing Education/Clinical	6	6	+0	+0.3%	-1	+0
Nursing/ Midwifery other	6	6	+0	+0.3%	-1	+0
Nursing & Midwifery	3,181	3,203	+22	+0.7%	+42	+206
Dietitians	122	123	+1	+0.6%	-2	+10
Occupational Therapists	562	563	+1	+0.1%	+19	+45
Orthoptists	16	16	-0	-0.6%	-1	+3
Physiotherapists	566	573	+7	+1.1%	+12	+24
Podiatrists & Chiropodists	32	30	-2	-7.1%	+0	+1
Speech & Language Therapists	515	523	+8	+1.6%	+7	+5
Therapy Professions	1,813	1,827	+14	+0.8%	+35	+89
Audiology	52	53	+1	+2.7%	+1	+7
Biochemists	8	8	+0	+1.0%	-0	-0
Clinical Engineering	8	8	+0	+0.5%		
Medical Science	17	17	-0	-0.5%	-1	+2
Phlebotomists	1	1	+0	+43.3%	+0	+0
Physicists	2	2	-0	-1.0%	-0	-0
Radiographers	4	4	-0	-3.4%	-0	-0
Health Science/ Diagnostics	92	93	+2	+1.8%	-0	+9
Social Care	32	32	-0	-1.4%	-1	-2

Apr 2021 (Dec 2020 figure: 11,572)	WTE Mar 2021	WTE Apr 2021	WTE change since Mar 21	% change since Mar 21	WTE change since Dec 20	WTE change since Apr 20
Overall	11,929	11,984	+55	+0.5%	+411	+1,313
Social Workers	153	154	+1	+0.8%	+3	+16
Psychologists	295	294	-1	-0.5%	-6	-0
Pharmacy	70	69	-1	-1.1%	+6	+14
Counsellor Therapists	121	125	+4	+3.4%	+13	+12
Dental Hygienists	60	61	+1	+1.6%	-1	+2
Environmental Health Officers				-100.0%		
Other Health & Social Care	33	35	+2	+6.3%	+1	+2
Play Therapists/ Specialists	1	1			-1	-1
Vaccinators		4	+4	-100.0%	+4	+4
H&SC, Other	215	226	+11	+5.2%	+17	+20
Health & Social Care Professionals	2,670	2,695	+25	+0.9%	+54	+145
Executive Management	71	74	+3	+4.1%	-0	+3
Senior Management (VIII & GM)	223	227	+4	+1.7%	+2	-1
Management (VIII & above)	294	301	+7	+2.3%	+2	+2
Middle Management (V-VII)	720	730	+10	+1.4%	+46	+91
Other Administrative	7	7			+6	+2
Administrative/ Supervisory (V to VII)	727	737	+10	+1.3%	+52	+92
General Administrative (III & IV)	1,874	1,890	+16	+0.9%	+53	+144
Clerical (III & IV)	1,874	1,890	+16	+0.9%	+53	+144
Management & Administrative	2,896	2,928	+32	+1.1%	+107	+238
Catering	22	21	-0	-2.1%	-0	-1
Household Services	145	144	-2	-1.2%	+7	-11
Other Labs & Associated	5	5	-0	-0.0%	-0	+0
Other Support	114	113	-2	-1.6%	-1	-3
Portering	72	71	-0	-0.6%	-3	-1
Support	358	354	-4	-1.2%	+2	-15
Maintenance	59	59	+1	+1.3%	+4	+1
Technical Services	1	1				
Maintenance/ Technical	60	60	+1	+1.3%	+4	+1
General Support	418	414	-4	-0.9%	+7	-14
HCA, Nurse's Aide, etc.	210	210	+1	+0.3%	+7	+16
Health & Social Care Assistants	116	117	+1	+0.8%	+12	+44
Swabber (COVID-19)	649	641	-8	-1.3%	+169	+641
Health Care Assistants	974	968	-7	-0.7%	+188	+701
Home Help	18	18	+0	+0.9%	-1	-2
Care, other	764	775	+11	+1.4%	+37	+45
Patient & Client Care	1,756	1,760	+4	+0.3%	+225	+744

Employment by WTE, Headcount, Gender, Full-Time /Part-Time etc.: Apr 2021

Primary Care Services Staff Group	WTE	Headcount	WTE: no.	% Male	% female	Male WTE: no.	Female WTE: no.	% Total Perm	% Male Perm	% Female Perm	% Total Full Time	% Total Part Time	% Male FT	% Female FT
Overall	11,984	14,226	1.19	14.0%	86.0%	1.10	1.20	78.3%	67.3%	80.0%	67.6%	32.4%	84.2%	64.9%
Consultant Dentistry	10	12	1.18	50.0%	50.0%	1.17	1.18	100.0%	100.0%	100.0%	66.7%	33.3%	66.7%	66.7%
Consultant Medicine	23	28	1.24	25.0%	75.0%	1.05	1.31	57.1%	57.1%	52.4%	78.6%	21.4%	85.7%	76.2%
Consultant Paediatrics	2	2	1.33		100.0%		1.33	100.0%	100.0%	100.0%	50.0%	50.0%		50.0%
Consultant Psychiatry	8	9	1.07	77.8%	22.2%	1.09	1.00	66.7%	66.7%	50.0%	88.9%	11.1%	85.7%	100.0%
Consultant Radiology	1	1	1.00	100.0%		1.00		100.0%	100.0%		100.0%	0.0%	100.0%	
Consultant Surgery	1	2	3.28		100.0%		3.28	50.0%	50.0%	50.0%	0.0%	100.0%		0.0%
Consultants	44	54	1.22	38.9%	61.1%	1.09	1.31	70.4%	81.0%	63.6%	74.1%	25.9%	81.0%	69.7%
Registrar	381	392	1.03	34.4%	65.6%	1.01	1.04	1.5%	1.5%	0.8%	99.0%	1.0%	98.5%	99.2%
Senior Registrar	2	2	1.00	50.0%	50.0%	1.00	1.00	0.0%	0.0%	0.0%	100.0%	0.0%	100.0%	100.0%
Specialist Registrar	11	12	1.07	25.0%	75.0%	1.29	1.02	33.3%	33.3%	22.2%	91.7%	8.3%	66.7%	100.0%
Registrars	394	406	1.03	34.2%	65.8%	1.02	1.04	2.5%	4.3%	1.5%	98.8%	1.2%	97.8%	99.3%
Senior House Officer	41	50	1.22	24.0%	76.0%	1.26	1.21	4.0%	4.0%	5.3%	94.0%	6.0%	100.0%	92.1%
SHO/ Interns	41	50	1.22	24.0%	76.0%	1.26	1.21	4.0%	0.0%	5.3%	94.0%	6.0%	100.0%	92.1%
Dentists	303	402	1.33	25.4%	74.6%	1.30	1.33	87.6%	87.6%	86.3%	51.2%	48.8%	59.8%	48.3%
Other Medical	201	279	1.39	25.8%	74.2%	1.37	1.39	66.7%	66.7%	69.1%	41.9%	58.1%	51.4%	38.6%
Medical/ Dental, other	504	681	1.35	25.6%	74.4%	1.33	1.36	79.0%	78.2%	79.3%	47.4%	52.6%	56.3%	44.4%
Medical & Dental	984	1,191	1.21	29.1%	70.9%	1.17	1.23	49.4%	46.0%	50.8%	68.1%	31.9%	76.0%	64.9%
Clinical Nurse/ Midwife Manager	199	226	1.14	4.9%	95.1%	1.00	1.14	94.2%	94.2%	94.4%	66.4%	33.6%	100.0%	64.7%
Director Nursing/Midwifery, Assistant	186	204	1.10	1.0%	99.0%	1.30	1.10	98.0%	98.0%	98.0%	78.4%	21.6%	100.0%	78.2%
Director of Nursing/Midwifery	42	46	1.10	2.2%	97.8%	1.00	1.10	91.3%	91.3%	91.1%	84.8%	15.2%	100.0%	84.4%
Nurse/ Midwife Manager	427	476	1.12	2.9%	97.1%	1.04	1.12	95.6%	92.9%	95.7%	73.3%	26.7%	100.0%	72.5%
Advanced Nurse/ Midwife Practitioner	16	17	1.04		100.0%		1.04	94.1%	94.1%	94.1%	88.2%	11.8%		88.2%
Clinical Nurse/ Midwife Specialist	177	207	1.17	5.8%	94.2%	1.10	1.17	96.1%	96.1%	95.9%	63.8%	36.2%	100.0%	61.5%
Nurse/ Midwife Specialist & AN/MP	194	224	1.16	5.4%	94.6%	1.10	1.16	96.0%	100.0%	95.8%	65.6%	34.4%	100.0%	63.7%
Staff Midwives	7	10	1.41		100.0%		1.41	100.0%	100.0%	100.0%	10.0%	90.0%		10.0%
Staff Nurse [Psychiatric]	15	20	1.35	20.0%	80.0%	1.35	1.35	55.0%	55.0%	62.5%	50.0%	50.0%	25.0%	56.3%
Staff Nurses [General/ Children's]	949	1,258	1.33	3.3%	96.7%	1.10	1.33	82.8%	82.8%	82.7%	44.8%	55.2%	81.0%	43.5%
Staff Nurse/ Staff Midwife	971	1,288	1.33	3.6%	96.4%	1.12	1.34	82.5%	80.4%	82.6%	44.6%	55.4%	76.1%	43.4%
Public Health Nurse	1,497	1,790	1.20	0.4%	99.6%	1.07	1.20	94.3%	94.3%	94.3%	70.3%	29.7%	85.7%	70.2%

Public Health Nurse	1,497	1,790	1.20	0.4%	99.6%	1.07	1.20	94.3%	100.0%	94.3%	70.3%	29.7%	85.7%	70.2%
Post-registration Nurse/ Midwife Student	109	109	1.00	1.8%	98.2%	1.00	1.00	25.7%	25.7%	26.2%	98.2%	1.8%	100.0%	98.1%
Nursing/ Midwifery Student	109	109	1.00	1.8%	98.2%	1.00	1.00	25.7%	0.0%	26.2%	98.2%	1.8%	100.0%	98.1%
Nursing Education/Clinical	6	6	1.01		100.0%		1.01	83.3%	83.3%	83.3%	100.0%	0.0%		100.0%
Nursing/ Midwifery other	6	6	1.01		100.0%		1.01	83.3%		83.3%	100.0%	0.0%		100.0%
Nursing & Midwifery	3,203	3,893	1.22	2.1%	97.9%	1.09	1.22	88.7%	85.2%	88.8%	62.7%	37.3%	85.2%	62.2%
Health & Social Care	2,695	3,137	1.16	12.5%	87.5%	1.05	1.18	87.6%	86.5%	87.8%	69.9%	30.1%	87.5%	67.4%
Executive Management	74	77	1.04	36.4%	63.6%	1.06	1.02	92.2%	92.2%	91.8%	96.1%	3.9%	92.9%	98.0%
Senior Management (VIII & GM)	227	239	1.05	26.4%	73.6%	1.07	1.05	95.8%	95.8%	96.0%	91.2%	8.8%	93.7%	90.3%
Management (VIII & above)	301	316	1.05	28.8%	71.2%	1.06	1.04	94.9%	94.5%	95.1%	92.4%	7.6%	93.4%	92.0%
Middle Management (V-VII)	730	789	1.08	17.5%	82.5%	1.06	1.09	95.3%	95.3%	96.0%	86.1%	13.9%	97.8%	83.6%
Other Administrative	7	7	1.00	28.6%	71.4%	1.00	1.01	14.3%	14.3%	20.0%	85.7%	14.3%	100.0%	80.0%
Administrative/ Supervisory (V to VII)	737	796	1.08	17.6%	82.4%	1.06	1.09	94.6%	90.7%	95.4%	86.1%	13.9%	97.9%	83.5%
General Administrative (III & IV)	1,890	2,212	1.17	9.1%	90.9%	1.10	1.18	78.4%	78.4%	80.0%	66.0%	34.0%	87.6%	63.8%
Clerical (III & IV)	1,890	2,212	1.17	9.1%	90.9%	1.10	1.18	78.4%	63.4%	80.0%	66.0%	34.0%	87.6%	63.8%
Management & Administrative	2,928	3,324	1.14	13.0%	87.0%	1.08	1.14	83.9%	78.8%	84.6%	73.3%	26.7%	92.1%	70.5%
Catering	21	24	1.12	29.2%	70.8%	1.02	1.17	100.0%	100.0%	100.0%	66.7%	33.3%	100.0%	52.9%
Household Services	144	177	1.23	26.0%	74.0%	1.05	1.31	76.8%	76.8%	77.9%	47.5%	52.5%	78.3%	36.6%
Other Labs & Associated	5	5	1.05	20.0%	80.0%	1.00	1.06	100.0%	100.0%	100.0%	100.0%	0.0%	100.0%	100.0%
Other Support	113	241	2.14	32.0%	68.0%	1.34	2.99	51.5%	51.5%	39.0%	32.0%	68.0%	62.3%	17.7%
Portering	71	76	1.07	93.4%	6.6%	1.05	1.26	88.2%	88.2%	80.0%	90.8%	9.2%	94.4%	40.0%
Support	354	523	1.48	38.6%	61.4%	1.14	1.81	68.1%	81.7%	59.5%	48.0%	52.0%	78.7%	28.7%
Maintenance	59	63	1.06	98.4%	1.6%	1.06	1.00	96.8%	96.8%	100.0%	98.4%	1.6%	98.4%	100.0%
Technical Services	1	1	1.00	100.0%		1.00		100.0%	100.0%		100.0%	0.0%	100.0%	
Maintenance/ Technical	60	64	1.06	98.4%	1.6%	1.06	1.00	96.9%	96.8%	100.0%	98.4%	1.6%	98.4%	100.0%
General Support	414	587	1.42	45.1%	54.9%	1.12	1.81	71.2%	85.3%	59.6%	53.5%	46.5%	83.4%	28.9%
HCA, Nurse's Aide, etc.	210	259	1.23	17.4%	82.6%	1.04	1.28	89.2%	89.2%	87.9%	60.6%	39.4%	84.4%	55.6%
Health & Social Care Assistants	117	122	1.05	10.7%	89.3%	1.00	1.05	16.4%	16.4%	17.4%	93.4%	6.6%	100.0%	92.7%
Swabber (COVID-19)	641	726	1.13	31.3%	68.7%	1.10	1.15	1.0%	1.0%	0.8%	79.3%	20.7%	84.6%	77.0%
Health Care Assistants	968	1,107	1.14	25.7%	74.3%	1.09	1.17	23.3%	16.5%	25.7%	76.5%	23.5%	85.3%	73.5%
Home Help	18	43	2.43	25.6%	74.4%	2.59	2.38	27.9%	18.2%	31.3%	4.7%	95.3%	9.1%	3.1%
Care, other	775	944	1.22	18.9%	81.1%	1.09	1.25	91.9%	88.2%	92.8%	60.3%	39.7%	77.5%	56.3%
Patient & Client Care	1,760	2,094	1.19	22.6%	77.4%	1.10	1.22	54.3%	43.5%	57.5%	67.7%	32.3%	80.6%	64.0%

Employment by WTE, Headcount, Gender, Full-Time /Part-Time etc.: Apr 2021

Primary Care Services CHO	WTE	Headcount	WTE: no.	% Male	% female	Male WTE: no.	Female WTE: no.	% Total Perm	% Male Perm	% Female Perm	% Total Full Time	% Total Part Time	% Male FT	% Female FT
Overall	11,984	14,226	1.19	14.0%	86.0%	1.10	1.20	78.3%	67.3%	80.0%	67.6%	32.4%	84.2%	64.9%
CHO 1	1,346	1,568	1.17	14.7%	85.3%	1.08	1.18	83.7%	83.7%	86.0%	67.5%	32.5%	84.4%	64.5%
CHO 2	1,281	1,461	1.14	12.1%	87.9%	1.08	1.15	81.7%	81.7%	83.0%	70.8%	29.2%	83.6%	69.0%
CHO 3	887	1,029	1.16	13.5%	86.5%	1.06	1.18	72.8%	72.8%	74.2%	73.4%	26.6%	91.4%	70.6%
CHO 4	1,606	2,003	1.25	10.8%	89.2%	1.19	1.26	66.4%	66.4%	68.1%	60.4%	39.6%	75.0%	58.6%
CHO 5	1,056	1,283	1.22	11.7%	88.3%	1.13	1.23	80.0%	80.0%	81.6%	63.8%	36.2%	82.0%	61.4%
CHO 6	853	1,095	1.28	13.4%	86.6%	1.23	1.29	76.0%	76.0%	76.8%	68.6%	31.4%	91.8%	65.0%
CHO 7	1,824	2,143	1.18	16.1%	83.9%	1.07	1.20	84.9%	84.9%	86.5%	68.3%	31.7%	82.9%	65.5%
CHO 8	1,565	1,856	1.19	14.4%	85.6%	1.08	1.21	82.1%	82.1%	85.1%	64.3%	35.7%	82.0%	61.4%
CHO 9	1,417	1,627	1.15	16.3%	83.7%	1.07	1.16	76.0%	76.0%	78.1%	73.3%	26.7%	88.3%	70.3%
other Community Services	148	161	1.09	32.3%	67.7%	1.06	1.10	68.9%	68.9%	71.6%	84.5%	15.5%	88.5%	82.6%

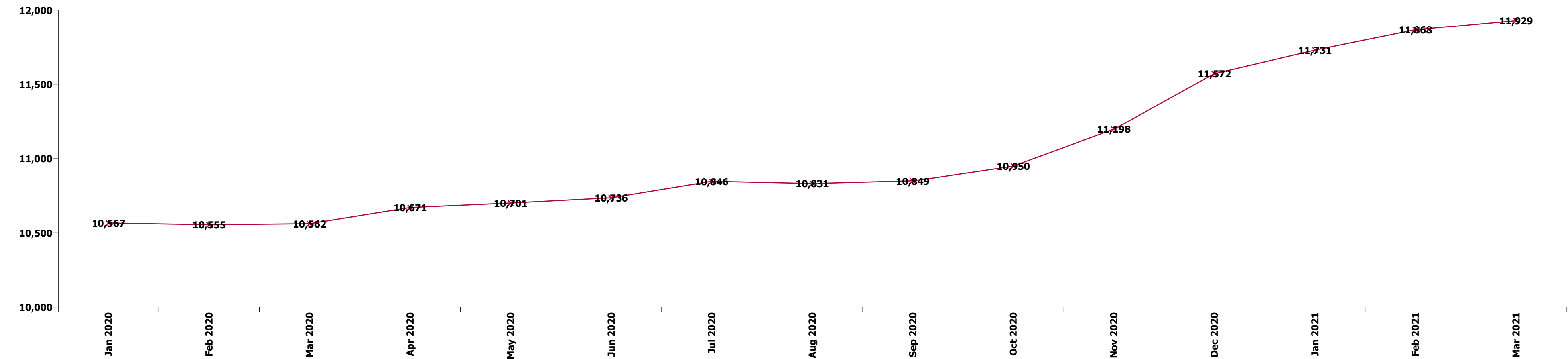
Summary Staff Movement: April 2021

Month-on-month
Summary

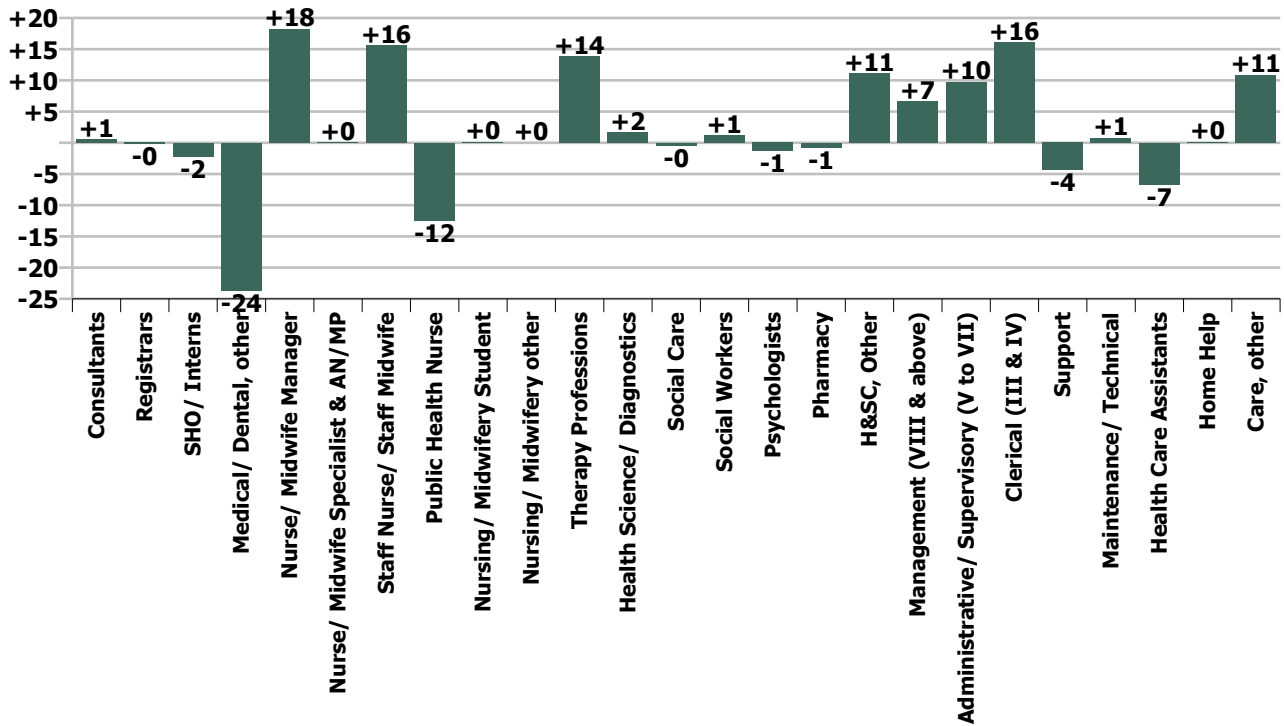
WTE change since Mar 21	% change since Mar 21	overall	Consultants	Registrars	SHO/ Interns	Medical/ Dental, other	Medical & Dental	Nurse/ Midwife Manager	Nurse/ Midwife Specialist & AN/MP	Staff Nurse/ Staff Midwife	Public Health Nurse	Nursing/ Midwifery Student	Nursing/ Midwifery other	Nursing & Midwifery	Therapy Professions	Health Science/ Diagnostics	Social Care	Social Workers	Psychologists	Pharmacy	H&SC, Other	Health & Social Care Professionals	Management (VIII & above)	Administrative/ Supervisory (V to VII)	Clerical (III & IV)	Management & Administrative	General Support	Health Care Assistants	Home Help	Care, other	Patient & Client Care
Overall	+0.5%	+55	+1	-0	-2	-24	-26	+18	+0	+16	-12	+0	+0	+22	+14	+2	-0	+1	-1	-1	+11	+25	+7	+10	+16	+32	-4	-7	+0	+11	+4
CHO 1	-1.7%	-23		+1		-3	-2	+1	-1	-4	-2		+0	-6	-7	-0		-0	-1	-1	+0	-8	+1	-1	-2	-3	-1	-4	-0	+1	-3
CHO 2	+0.8%	+10	+1	+1	-1	-2	-2	+1	+1	+8	-3			+8	+6	+0	-0	-1	+0	-0	+3	+8	+2	-4	+1	-2	-2	-2		+2	-1
CHO 3	-0.5%	-4		-1		-7	-7	+1		+2	-1			+2	-1			-0	-0	+0	-0	-1	+0	+1	+2	+3	+0	-2		+1	-1
CHO 4	+1.5%	+24	+0	-2	+0	-2	-4	+4	+0	+1	-1	-0		+4	+5	+1		-1	+0	+0	+5	+10	-1	+2	+11	+12	-0	+0	+0	+1	+1
CHO 5	+0.7%	+8		-0	-1	-0	-2	+5	+0	-0	+1			+6	+7	+0	+0	-1	+0		+1	+7	+0	-1	+1	+0	-0	-7	+0	+4	-3
CHO 6	+1.1%	+9		+0		-0	-0	+1		+2	-2		-0	+1	-0	-0	-0	+1	+1	+0	+0	+1	-0	+7	-1	+5	+1	+1		-1	+1
CHO 7	+0.5%	+9	-1	-1	+0	-3	-4	+2	-1	+6	+0			+8	-2	-0	+0	+1	-0	-0	-0	-1	+1	+4	-0	+5	-1	+1		+1	+2
CHO 8	-0.0%	-1	+1	-0	-1	-5	-5	+0	+0	+0	+0			+1	+1			+2	+1		+0	+4	+1	+3	-4	+0	-0	+0		+0	+0
CHO 9	+0.9%	+13		+2	+0	-1	+1	+1		+3	-5	+1		-1	+5	+1	+0		-1	-3	-0	+2	+4	+0	-0	+3	-0	+6		+0	+6
other Community Services	+6.9%	+10		+0			+0	+2		-2				-0		+0		+1		-0	+2	+1	+3	-1	+6	+9	+0			+0	+0
		+0.5%	+1.3%	-0.1%	-5.1%	-4.5%	-2.5%	+4.5%	+0.0%	+1.6%	-0.8%	+0.1%	+0.3%	+0.7%	+0.8%	+1.8%	-1.4%	+0.8%	-0.5%	-1.1%	+5.2%	+0.9%	+2.3%	+1.3%	+0.9%	+1.1%	-0.9%	-0.7%	+0.9%	+1.4%	+0.3%

Year-on-year Summary

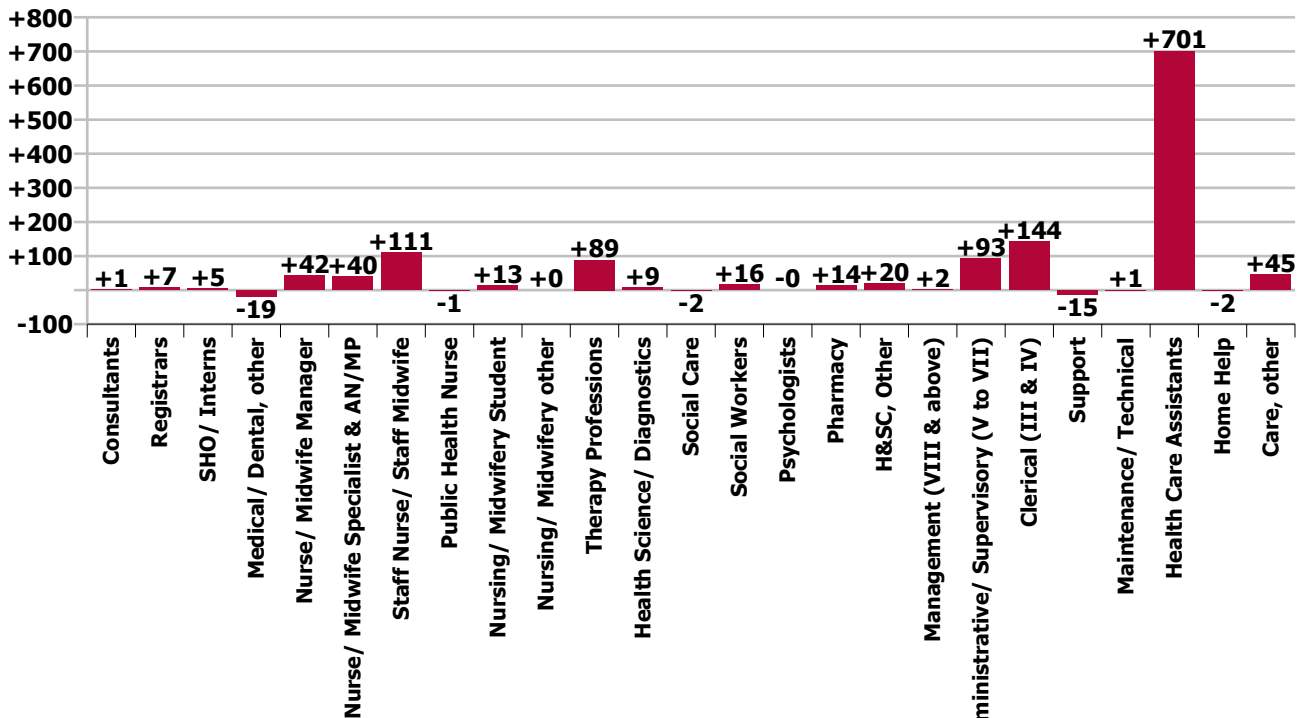
WTE change since Apr 20	% change since Apr 20	overall	Consultants	Registrars	SHO/ Interns	Medical/ Dental, other	Medical & Dental	Nurse/ Midwife Manager	Nurse/ Midwife Specialist & AN/MP	Staff Nurse/ Staff Midwife	Public Health Nurse	Nursing/ Midwifery Student	Nursing/ Midwifery other	Nursing & Midwifery	Therapy Professions	Health Science/ Diagnostics	Social Care	Social Workers	Psychologists	Pharmacy	H&SC, Other	Health & Social Care Professionals	Management (VIII & above)	Administrative/ Supervisory (V to VII)	Clerical (III & IV)	Management & Administrative	General Support	Health Care Assistants	Home Help	Care, other	Patient & Client Care
Overall	+12.3%	+1,313	+1	+7	+5	-19	-5	+42	+40	+111	-1	+13	+0	+206	+89	+9	-2	+16	-0	+14	+20	+145	+2	+92	+144	+238	-14	+701	-2	+45	+744
CHO 1	+12.3%	+147	+1	+4	+0	-0	+5	-4	+3	+6	-1	-4		-0	+6	+1		+5	-3	+1	-0	+9	+1	+13	+31	+45	+12	+70	+0	+7	+77
CHO 2	+11.3%	+130	+1	+7		-3	+5	+7	+5	+14	-4	-4		+17	+23	+2	-0	-2	+6	+2	+5	+36	+5	+13	-3	+16	-1	+52		+5	+57
CHO 3	+16.3%	+125	-1	+3	-5	-8	-11	+1	+1	+9	-3	+4		+12	+1	+0		-0	+1	+1	-2	+2	+1	+18	+20	+40	+1	+78		+4	+81
CHO 4	+18.8%	+254	+0	+0	+1	+2	+3	+10	+2	+25	+5	-4		+38	+38	+1	-1	+1	-0	+1	+6	+46	-4	+14	+52	+62	-3	+101	-1	+7	+107
CHO 5	+12.2%	+115	-1	+1	+0	+5	+5	+11	+10	+19	+4	-1	-1	+42	+12	+2	-0	-5	-7		+0	+2	-5	+8	-23	-20	-3	+81	-1	+9	+89
CHO 6	+12.8%	+97	+0	-1		+0	-1	+0	-2	+15	-5	+2	+0	+9	+6	+2	-0	+1	-1	+1	+1	+9	-2	+11	+25	+35	-1	+43		+2	+45
CHO 7	+5.3%	+92	+1	-2	+3	-6	-4	+3	+9	+5	+9	+2		+28	-16	-0	-0	+3	+2	+2	-2	-11	+4	+6	-1	+9	-17	+87		+1	+88
CHO 8	+10.7%	+152	+1	+1	-2	-6	-6	-2	+9	+3	-6	+11	+0	+15	+5	+2	+1	+1	+1	+3	+9	+22	+2	+5	-1	+6	-1	+117		-1	+116
CHO 9	+14.2%	+176		-2	+4	-2	-1	+14	+3	+12	+1	+7	+1	+37	+14	+0	-1	+5	+0	+3	+1	+22	-6	+5	+35	+34	-0	+72		+11	+84
other Community Services	+21.2%	+26		-4	+4	-0	-0	+2		+4				+6		-0	+0	+7		+0		+8	+5	-0	+8	+13	-0			+0	+0
		+12.3%	+2.8%	+1.7%	+15.0%	-3.6%	-0.5%	+11.0%	+26.3%	+13.0%	-0.1%	+13.5%	+4.0%	+6.9%	+5.1%	+10.3%	-5.2%	+11.4%	-0.1%	+25.3%	+9.5%	+5.7%	+0.7%	+14.4%	+8.2%	+8.9%	-3.3%	+262.6%	-8.4%	+6.2%	+73.3%



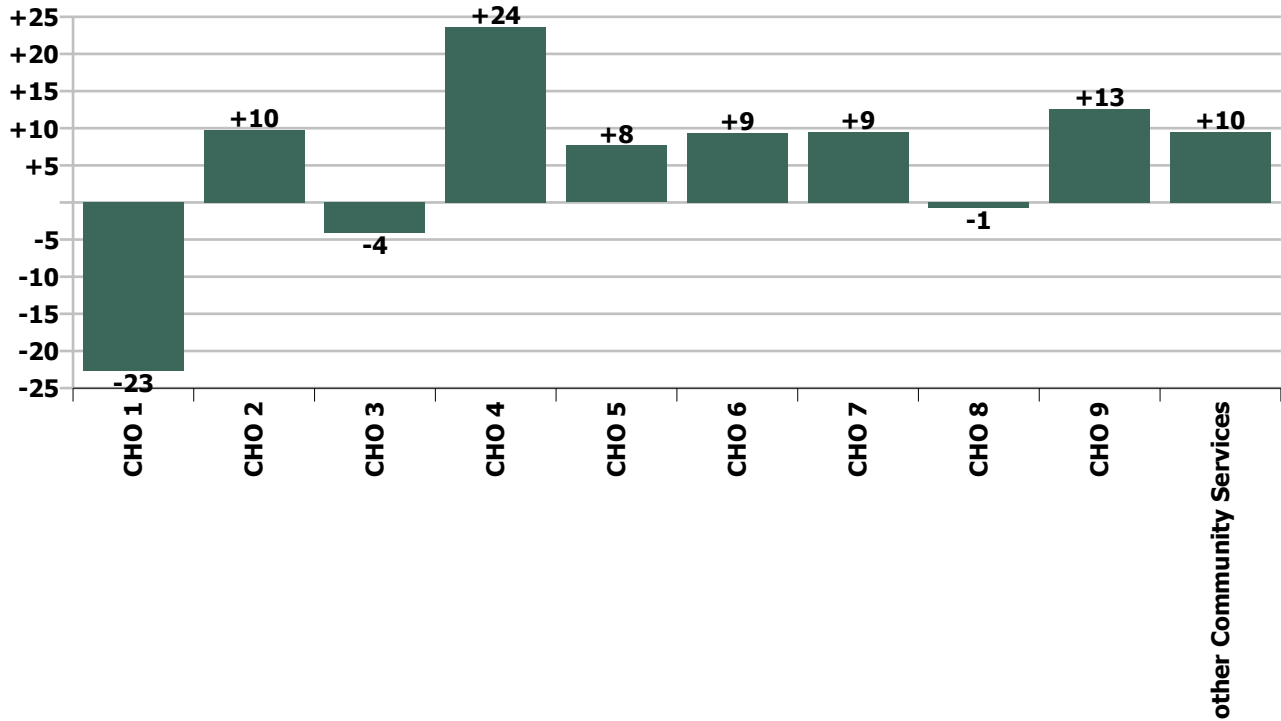
Staff Group change since: Mar 2021



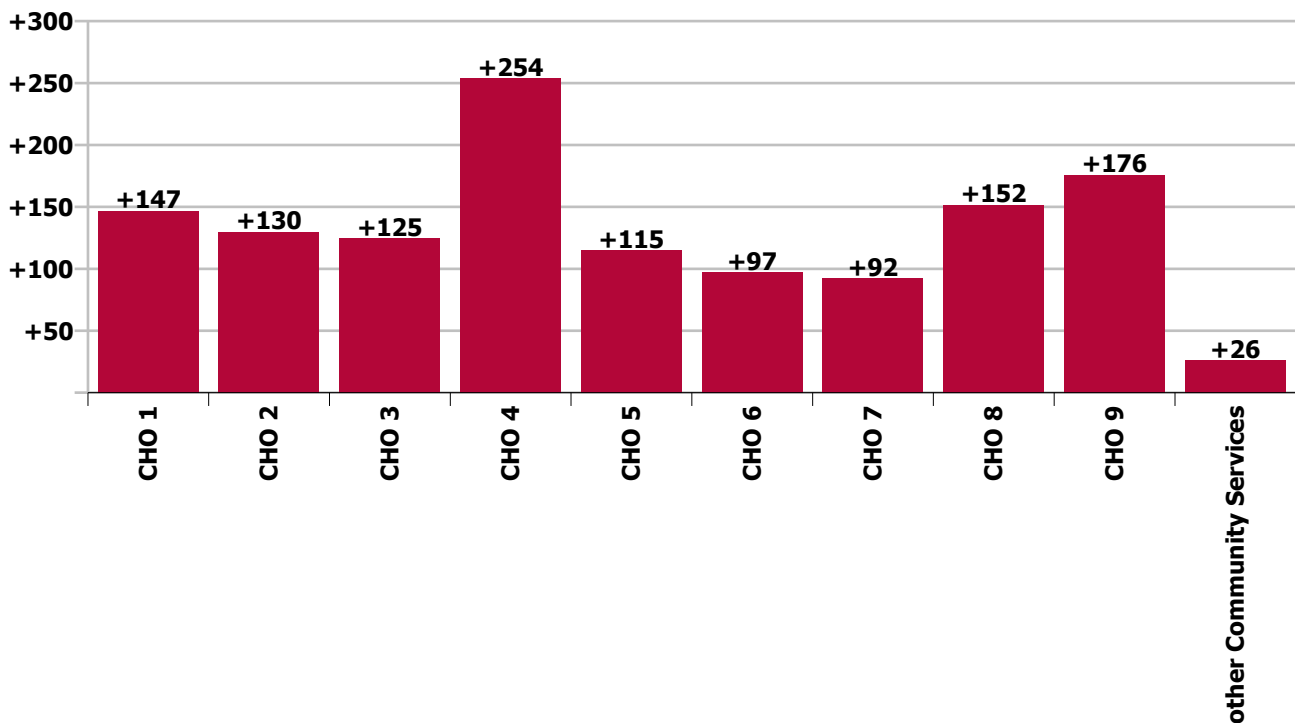
Staff Group change since: Apr 2020



CHO change since: Mar 2021



CHO change since: Apr 2020



Longitudinal Employment Levels by Grade Group - Dec 2015 to Apr 2021

Apr 2021 (Dec 2015 figure: 10,311)	WTE Apr 2021	WTE change since Dec 15	WTE change since Dec 16	WTE change since Dec 17	WTE change since Dec 18	WTE change since Dec 19	WTE change since Dec 20	% change since Dec 15	% change since Dec 16	% change since Dec 17	% change since Dec 18	% change since Dec 19	% change since Dec 20
Overall	11,984	+1,673	+1,537	+1,465	+1,053	+1,384	+411	+16.2%	+14.7%	+13.9%	+9.6%	+13.1%	+3.6%
Consultant Dentistry	10	-0	-0	-1	-1	-1	+0	-3.8%	-3.8%	-12.1%	-12.1%	-8.4%	+0.0%
Consultant Medicine	23	+6	+4	+3	+6	+5	+2	+40.2%	+24.7%	+14.2%	+33.3%	+27.5%	+11.6%
Consultant, Other		-1	-1					-100.0%	-100.0%	-100.0%	-100.0%	-100.0%	-100.0%
Consultant Paediatrics	2	+1	+1					+50.0%	+50.0%				
Consultant Psychiatry	8	-1	+1	-1	+2	+0		-6.0%	+20.0%	-10.9%	+31.3%	+0.4%	
Consultant Radiology	1												
Consultant Surgery	1	-4	-4	-4	-4	-3	+0	-87.8%	-87.9%	-87.2%	-86.4%	-84.9%	+1.7%
Consultants	44	+1	+1	-4	+2	+1	+2	+1.5%	+1.3%	-7.9%	+5.6%	+1.2%	+5.6%
Registrar	381	+43	+51	+38	+20	-1	-9	+12.9%	+15.5%	+11.2%	+5.7%	-0.2%	-2.3%
Senior Registrar	2	-2	-2	-2	-2	-1	+0	-45.9%	-46.4%	-46.4%	-50.2%	-28.1%	+1.5%
Specialist Registrar	11	+2	+3	+1	+1	+1	-0	+25.2%	+41.6%	+15.4%	+15.2%	+11.7%	-1.4%
Registrars	394	+44	+53	+38	+20	-0	-9	+12.5%	+15.4%	+10.7%	+5.3%	-0.1%	-2.2%
Senior House Officer	41	-7	+1	+11	+4	+4	-1	-13.8%	+2.0%	+38.1%	+10.6%	+10.0%	-1.9%
SHO/ Interns	41	-7	+1	+11	+4	+4	-1	-13.8%	+2.0%	+38.1%	+10.6%	+10.0%	-1.9%
Dentists	303	+2	-1	+1	-2	+2	+1	+0.8%	-0.3%	+0.3%	-0.7%	+0.6%	+0.4%
Other Medical	201	-20	-15	-33	-37	-17	-16	-9.3%	-7.0%	-14.2%	-15.4%	-7.9%	-7.5%
Medical/ Dental, other	504	-18	-16	-32	-39	-15	-15	-3.5%	-3.1%	-6.0%	-7.1%	-2.9%	-2.9%
Medical & Dental	984	+20	+38	+13	-13	-12	-22	+2.1%	+4.0%	+1.4%	-1.3%	-1.2%	-2.2%
Clinical Nurse/ Midwife Manager	199	+49	+50	+40	+28	+31	+7	+32.6%	+33.4%	+25.0%	+16.6%	+18.7%	+3.5%
Director Nursing/Midwifery, Assistant	186	+48	+33	+46	+35	+31	+14	+35.0%	+21.7%	+33.0%	+23.4%	+20.4%	+8.0%
Director of Nursing/Midwifery	42	+7	+9	+8	+6	+4	+2	+21.1%	+27.1%	+24.9%	+17.0%	+11.8%	+3.9%
Nurse/ Midwife Manager	427	+104	+92	+94	+70	+67	+22	+32.4%	+27.5%	+28.4%	+19.5%	+18.7%	+5.5%
Advanced Nurse/ Midwife Practitioner	16	+14	+14	+14	+14	+14	+3	+717.0%	+485.7%	+613.5%	+543.3%	+543.3%	+23.1%
Clinical Nurse/ Midwife Specialist	177	+64	+60	+38	+34	+37	+6	+57.1%	+50.7%	+26.9%	+23.7%	+26.4%	+3.8%
Nurse/ Midwife Specialist & AN/MP	194	+79	+73	+52	+48	+51	+9	+68.6%	+60.8%	+36.4%	+32.7%	+35.6%	+5.2%
Staff Midwives	7	+5	+4	+2	+1	-1	+2	+255.5%	+155.8%	+35.2%	+9.6%	-12.4%	+29.3%
Staff Nurse [Psychiatric]	15	+10	+10	+1	+6	+6	+1	+236.4%	+179.2%	+4.4%	+77.7%	+73.9%	+9.0%

Apr 2021 (Dec 2015 figure: 10,311)	WTE Apr 2021	WTE change since Dec 15	WTE change since Dec 16	WTE change since Dec 17	WTE change since Dec 18	WTE change since Dec 19	WTE change since Dec 20	% change since Dec 15	% change since Dec 16	% change since Dec 17	% change since Dec 18	% change since Dec 19	% change since Dec 20
Overall	11,984	+1,673	+1,537	+1,465	+1,053	+1,384	+411	+16.2%	+14.7%	+13.9%	+9.6%	+13.1%	+3.6%
Staff Nurses [General/ Children's]	949	+192	+140	+111	+84	+104	+41	+25.4%	+17.3%	+13.3%	+9.7%	+12.3%	+4.5%
Staff Nurse/ Staff Midwife	971	+208	+154	+114	+91	+109	+44	+27.2%	+18.8%	+13.3%	+10.3%	+12.6%	+4.7%
Public Health Nurse	1,497	+26	+25	+11	-17	-15		+1.8%	+1.7%	+0.7%	-1.1%	-1.0%	
Public Health Nurse, Senior (Immunisation)		-1	-1	-1	-1	-0		-100.0%	-100.0%	-100.0%	-100.0%	-100.0%	
Public Health Nurse	1,497	+25	+24	+10	-18	-15	-36	+1.7%	+1.7%	+0.6%	-1.2%	-1.0%	-2.3%
Public Health Nurse	1,497	+25	+24	+10	-18	-15	-36	+1.7%	+1.7%	+0.6%	-1.2%	-1.0%	-2.3%
Post-registration Nurse/ Midwife Student	109	-2	-3	-21	+16	+13	+2	-2.2%	-3.1%	-16.0%	+16.7%	+13.4%	+2.2%
Nursing/ Midwifery Student	109	-2	-3	-21	+16	+13	+2	-2.2%	-3.1%	-16.0%	+16.7%	+13.4%	+2.2%
Nursing Education/Clinical	6	+2	+2	+2	+3	+2	-1	+46.3%	+69.7%	+69.7%	+98.0%	+56.3%	-10.7%
Other Nursing/ Midwifery		-2	-2	-0	-1			-100.0%	-100.0%	-100.0%	-100.0%	-100.0%	-100.0%
Nursing/ Midwifery other	6	-0	+0	+2	+2	+2	-1	-2.0%	+8.0%	+50.4%	+48.5%	+56.3%	-10.7%
Nursing & Midwifery	3,203	+413	+340	+251	+208	+227	+42	+14.8%	+11.9%	+8.5%	+6.9%	+7.6%	+1.3%
Dietitians	123	+35	+33	+18	+6	+14	-2	+39.5%	+36.5%	+17.5%	+5.2%	+12.5%	-1.4%
Occupational Therapists	563	+59	+67	+46	+22	+47	+19	+11.6%	+13.5%	+9.0%	+4.1%	+9.2%	+3.6%
Orthoptists	16	+9	+10	+10	+6	+3	-1	+125.2%	+174.5%	+152.1%	+62.4%	+21.2%	-8.3%
Physiotherapists	573	+31	+29	+10	+9	+30	+12	+5.8%	+5.3%	+1.7%	+1.7%	+5.5%	+2.1%
Podiatrists & Chiropodists	30	+14	+10	+7	+6	+5	+0	+95.0%	+53.1%	+32.1%	+25.5%	+20.0%	+0.1%
Speech & Language Therapists	523	+72	+21	-23	-25	-3	+7	+15.9%	+4.2%	-4.2%	-4.6%	-0.6%	+1.4%
Therapy Professions	1,827	+220	+170	+68	+24	+96	+35	+13.7%	+10.2%	+3.9%	+1.4%	+5.5%	+1.9%
Audiology	53	+25	+24	+23	+5	+9	+1	+89.0%	+82.6%	+78.3%	+10.5%	+21.1%	+1.6%
Biochemists	8	+1	+0	+0	-0	+0	-0	+14.5%	+1.6%	+1.6%	-3.2%	+1.4%	-0.3%
Clinical Engineering	8	+7	+5	+6	+1			+700.0%	+166.7%	+300.0%	+14.3%		
Laboratory Manager			-1	-1	-1	-1		-100.0%	-100.0%	-100.0%	-100.0%	-100.0%	
Medical Scientist	11	-7	+0	-0	+1	+5		-38.6%	+1.6%	-2.8%	+9.3%	+76.3%	
Medical Scientist, Chief	1	-1						-44.8%					
Medical Scientist, Senior	4	-6	-2	-1	-3	-2		-61.5%	-33.3%	-20.0%	-42.9%	-33.3%	
Medical Scientist, Specialist	1	+1	+1	-1	-1	-1		-100.0%	-100.0%	-51.0%	-51.0%	-51.0%	
Medical Science	17	-13	-1	-3	-4	+1	-1	-43.7%	-7.6%	-14.6%	-17.8%	+7.1%	-5.1%
Phlebotomists	1	+1	+1	+1	+1	+1	+0	+223.3%	+113.8%	+120.6%	+531.8%	+531.8%	+13.9%
Physicists	2	-1	-1	+0	-0	-0	-0	-34.0%	-34.0%	+11.2%	-1.0%	-1.0%	-1.0%

Apr 2021 (Dec 2015 figure: 10,311)	WTE Apr 2021	WTE change since Dec 15	WTE change since Dec 16	WTE change since Dec 17	WTE change since Dec 18	WTE change since Dec 19	WTE change since Dec 20	% change since Dec 15	% change since Dec 16	% change since Dec 17	% change since Dec 18	% change since Dec 19	% change since Dec 20
Overall	11,984	+1,673	+1,537	+1,465	+1,053	+1,384	+411	+16.2%	+14.7%	+13.9%	+9.6%	+13.1%	+3.6%
Radiographers	4	-1	-1	-2	-1	-0	-0	-21.3%	-21.3%	-29.2%	-22.6%	-4.3%	-2.7%
Health Science/ Diagnostics	93	+19	+26	+26	+2	+11	-0	+25.3%	+39.4%	+38.3%	+2.3%	+14.0%	-0.1%
Social Care	32	-3	-3	-1	-2	-4	-1	-7.8%	-9.0%	-3.4%	-6.5%	-10.0%	-2.4%
Social Workers	154	+14	+4	+1	+2	+15	+3	+10.1%	+2.6%	+0.6%	+1.2%	+10.8%	+2.0%
Psychologists	294	+1	+10	+10	-4	-7	-6	+0.3%	+3.4%	+3.5%	-1.3%	-2.3%	-2.1%
Pharmacy	69	+4	+7	+6	+11	+11	+6	+6.5%	+11.2%	+10.0%	+18.3%	+19.9%	+10.0%
Counsellor Therapists	125	+28	+10	+3	+9	+10	+13	+29.4%	+8.6%	+2.8%	+7.7%	+8.6%	+11.5%
Dental Hygienists	61	+6	+6	+6	+3	+3	-1	+11.7%	+10.3%	+11.5%	+5.6%	+5.6%	-1.0%
Environmental Health Officers						-1		-100.0%	-100.0%	-100.0%	-100.0%	-100.0%	-100.0%
Other Health & Social Care	35	+0	+0	+0	-1	+1	+1	+0.6%	+0.6%	+1.0%	-1.5%	+3.0%	+4.1%
Play Therapists/ Specialists	1	-1	-0	-1	-1	-1	-1	-39.6%	-24.1%	-42.2%	-42.2%	-37.2%	-32.2%
Vaccinator - COVID 19 Vaccination Programme	4	+4	+4	+4	+4	+4		-100.0%	-100.0%	-100.0%	-100.0%	-100.0%	
Vaccinators	4	+4	+4	+4	+4	+4	+4	-100.0%	-100.0%	-100.0%	-100.0%	-100.0%	-100.0%
H&SC, Other	226	+38	+19	+13	+15	+17	+17	+20.2%	+9.3%	+6.1%	+6.9%	+8.0%	+8.1%
Health & Social Care Professionals	2,695	+293	+233	+123	+47	+140	+54	+12.2%	+9.5%	+4.8%	+1.8%	+5.5%	+2.0%
Executive Management	74	+37	+9	+3	+0	+4	-0	+101.3%	+14.0%	+4.4%	+0.3%	+5.0%	-0.1%
Senior Management (VIII & GM)	227	+32	+33	+6	-9	-8	+2	+16.5%	+17.0%	+2.5%	-3.7%	-3.4%	+1.1%
Management (VIII & above)	301	+70	+42	+9	-8	-5	+2	+30.0%	+16.2%	+3.0%	-2.7%	-1.5%	+0.8%
Middle Management (V-VII)	730	+274	+240	+186	+104	+113	+46	+60.0%	+49.0%	+34.2%	+16.7%	+18.3%	+6.7%
Other Administrative	7	+6	+6	+6	+5	+5	+6	+1294.0%	+1294.0%	+1294.0%	+248.5%	+248.5%	+618.6%
Administrative/ Supervisory (V to VII)	737	+280	+246	+192	+109	+118	+52	+61.3%	+50.3%	+35.3%	+17.4%	+19.0%	+7.5%
General Administrative (III & IV)	1,890	+116	+118	+92	+61	+144	+53	+6.6%	+6.6%	+5.1%	+3.4%	+8.3%	+2.9%
Clerical (III & IV)	1,890	+116	+118	+92	+61	+144	+53	+6.6%	+6.6%	+5.1%	+3.4%	+8.3%	+2.9%
Management & Administrative	2,928	+466	+406	+293	+162	+257	+107	+18.9%	+16.1%	+11.1%	+5.9%	+9.6%	+3.8%
Catering	21	-1	-0	-4	-2	-1	-0	-4.7%	-1.4%	-15.0%	-8.4%	-3.8%	-1.8%
Household Services	144	-8	-3	+3	-3	+10	+7	-5.0%	-2.3%	+2.2%	-2.3%	+7.1%	+4.9%
Other Labs & Associated	5	+1	+3	-0	+0	+2	-0	+24.5%	+138.5%	-1.9%	+0.6%	+53.4%	-4.6%
Other Support	113	-7	-12	-20	-17	-0	-1	-5.8%	-9.3%	-15.3%	-13.0%	-0.2%	-0.6%
Portering	71	-17	-15	-11	-8	-3	-3	-19.2%	-17.0%	-13.6%	-10.4%	-4.0%	-4.0%

Apr 2021 (Dec 2015 figure: 10,311)	WTE Apr 2021	WTE change since Dec 15	WTE change since Dec 16	WTE change since Dec 17	WTE change since Dec 18	WTE change since Dec 19	WTE change since Dec 20	% change since Dec 15	% change since Dec 16	% change since Dec 17	% change since Dec 18	% change since Dec 19	% change since Dec 20
Overall	11,984	+1,673	+1,537	+1,465	+1,053	+1,384	+411	+16.2%	+14.7%	+13.9%	+9.6%	+13.1%	+3.6%
Support	354	-32	-27	-32	-30	+7	+2	-8.2%	-7.1%	-8.3%	-7.9%	+2.1%	+0.7%
Maintenance	59	-5	+2	+4	+2	+1	+4	-8.3%	+3.8%	+6.7%	+3.8%	+2.0%	+7.6%
Technical Services	1	+1			+0			-100.0%			+11.1%		
Maintenance/ Technical	60	-4	+2	+4	+2	+1	+4	-6.7%	+3.8%	+6.5%	+3.9%	+1.9%	+7.5%
General Support	414	-36	-25	-28	-28	+8	+7	-8.0%	-5.7%	-6.4%	-6.4%	+2.0%	+1.6%
HCA, Nurse's Aide, etc.	210	+40	+40	+34	+11	+26	+7	+23.7%	+23.7%	+19.6%	+5.8%	+13.9%	+3.7%
Health & Social Care Assistants	117	+99	+97	+94	-8	+47	+12	+561.5%	+496.3%	+405.3%	-6.8%	+68.5%	+11.4%
Community Swabber (COVID-19)	641	+641	+641	+641	+641	+641		-100.0%	-100.0%	-100.0%	-100.0%	-100.0%	
Swabber (COVID-19)	641	+641	+641	+641	+641	+641	+169	-100.0%	-100.0%	-100.0%	-100.0%	-100.0%	+35.8%
Health Care Assistants	968	+780	+778	+769	+644	+714	+188	+415.9%	+410.9%	+386.6%	+198.9%	+281.3%	+24.1%
Home Help	18	-280	-265	-5	-1	-1	-1	-94.1%	-93.7%	-20.8%	-7.7%	-3.8%	-3.7%
Other Care Grades	775	+17	+32	+49	+34	+51	+37	+2.3%	+4.3%	+6.8%	+4.6%	+7.0%	+5.1%
Care, other	775	+17	+32	+49	+34	+51	+37	+2.3%	+4.3%	+6.8%	+4.6%	+7.0%	+5.1%
Pre-Hospital Care (Ambulance)		-1						-100.0%	-100.0%	-100.0%	-100.0%	-100.0%	-100.0%
Ambulance Staff		-1						-100.0%	-100.0%	-100.0%	-100.0%	-100.0%	-100.0%
Patient & Client Care	1,760	+517	+545	+814	+676	+764	+225	+41.6%	+44.8%	+86.0%	+62.4%	+76.7%	+14.6%

Source: Health Service Personnel Census

Longitudinal Employment Levels by Grade Group - Dec 2015 to Apr 2021

Apr 2021 (Dec 2015 figure: 10,311)	WTE Apr 2021	WTE change since Dec 15	WTE change since Dec 18	WTE change since Dec 19	WTE change since Dec 20	% change since Dec 15	% change since Dec 18	% change since Dec 19	% change since Dec 20
Overall	11,984	+1,673	+1,053	+1,384	+411	+16.2%	+9.6%	+13.1%	+3.6%
Consultant Dentistry	10	-0	-1	-1	+0	-3.8%	-12.1%	-8.4%	+0.0%
Consultant Medicine	23	+6	+6	+5	+2	+40.2%	+33.3%	+27.5%	+11.6%
Consultant, Other		-1				-100.0%	-100.0%	-100.0%	-100.0%
Consultant Paediatrics	2	+1				+50.0%			
Consultant Psychiatry	8	-1	+2	+0		-6.0%	+31.3%	+0.4%	
Consultant Radiology	1								
Consultant Surgery	1	-4	-4	-3	+0	-87.8%	-86.4%	-84.9%	+1.7%
Consultants	44	+1	+2	+1	+2	+1.5%	+5.6%	+1.2%	+5.6%
Registrar	381	+43	+20	-1	-9	+12.9%	+5.7%	-0.2%	-2.3%
Senior Registrar	2	-2	-2	-1	+0	-45.9%	-50.2%	-28.1%	+1.5%
Specialist Registrar	11	+2	+1	+1	-0	+25.2%	+15.2%	+11.7%	-1.4%
Registrars	394	+44	+20	-1	-9	+12.5%	+5.3%	-0.1%	-2.2%
Senior House Officer	41	-7	+4	+4	-1	-13.8%	+10.6%	+10.0%	-1.9%
SHO/ Interns	41	-7	+4	+4	-1	-13.8%	+10.6%	+10.0%	-1.9%
Dentists	303	+2	-2	+2	+1	+0.8%	-0.7%	+0.6%	+0.4%
Other Medical	201	-21	-37	-17	-16	-9.3%	-15.4%	-7.9%	-7.5%
Medical/ Dental, other	504	-18	-39	-15	-15	-3.5%	-7.1%	-2.9%	-2.9%
Medical & Dental	984	+20	-13	-12	-22	+2.1%	-1.3%	-1.2%	-2.2%
Clinical Nurse/ Midwife Manager	199	+49	+28	+31	+7	+32.6%	+16.6%	+18.7%	+3.5%
Director Nursing/Midwifery, Assistant	186	+48	+35	+31	+14	+35.0%	+23.4%	+20.4%	+8.0%
Director of Nursing/Midwifery	42	+7	+6	+4	+2	+21.1%	+17.0%	+11.8%	+3.9%
Nurse/ Midwife Manager	427	+104	+70	+67	+22	+32.4%	+19.5%	+18.7%	+5.5%
Advanced Nurse/ Midwife Practitioner	16	+14	+14	+14	+3	+717.0%	+543.3%	+543.3%	+23.1%
Clinical Nurse/ Midwife Specialist	177	+64	+34	+37	+6	+57.1%	+23.7%	+26.4%	+3.8%
Nurse/ Midwife Specialist & AN/MP	194	+79	+48	+51	+9	+68.6%	+32.7%	+35.6%	+5.2%
Staff Midwives	7	+5	+1	-1	+2	+255.5%	+9.6%	-12.4%	+29.3%
Staff Nurse [Psychiatric]	15	+10	+6	+6	+1	+236.4%	+77.7%	+73.9%	+9.0%
Staff Nurses [General/ Children's]	949	+192	+84	+104	+41	+25.4%	+9.7%	+12.3%	+4.5%
Staff Nurse/ Staff Midwife	971	+208	+91	+109	+44	+27.2%	+10.3%	+12.6%	+4.7%
Public Health Nurse	1,497	+25	-18	-15	-36	+1.7%	-1.2%	-1.0%	-2.3%
Public Health Nurse	1,497	+25	-18	-15	-36	+1.7%	-1.2%	-1.0%	-2.3%
Post-registration Nurse/ Midwife Student	109	-2	+16	+13	+2	-2.2%	+16.7%	+13.4%	+2.2%
Nursing/ Midwifery Student	109	-2	+16	+13	+2	-2.2%	+16.7%	+13.4%	+2.2%
Nursing Education/Clinical	6	+2	+3	+2	-1	+46.3%	+98.0%	+56.3%	-10.7%
Other Nursing/ Midwifery		-2	-1			-100.0%	-100.0%	-100.0%	-100.0%
Nursing/ Midwifery other	6	-0	+2	+2	-1	-2.0%	+48.5%	+56.3%	-10.7%
Nursing & Midwifery	3,203	+413	+208	+227	+42	+14.8%	+6.9%	+7.6%	+1.3%
Dietitians	123	+35	+6	+14	-2	+39.5%	+5.2%	+12.5%	-1.4%
Occupational Therapists	563	+59	+22	+47	+19	+11.6%	+4.1%	+9.2%	+3.6%
Orthoptists	16	+9	+6	+3	-1	+125.2%	+62.4%	+21.2%	-8.3%
Physiotherapists	573	+31	+9	+30	+12	+5.8%	+1.7%	+5.5%	+2.1%
Podiatrists & Chiropodists	30	+14	+6	+5	+0	+95.0%	+25.5%	+20.0%	+0.1%
Speech & Language Therapists	523	+72	-25	-3	+7	+15.9%	-4.6%	-0.6%	+1.4%
Therapy Professions	1,827	+220	+24	+96	+35	+13.7%	+1.4%	+5.5%	+1.9%
Audiology	53	+25	+5	+9	+1	+89.0%	+10.5%	+21.1%	+1.6%
Biochemists	8	+1	-0	+0	-0	+14.5%	-3.2%	+1.4%	-0.3%
Clinical Engineering	8	+7	+1			+700.0%	+14.3%		
Medical Science	17	-13	-4	+1	-1	-43.7%	-17.8%	+7.1%	-5.1%
Phlebotomists	1	+1	+1	+1	+0	+223.3%	+531.8%	+531.8%	+13.9%
Physicists	2	-1	-0	-0	-0	-34.0%	-1.0%	-1.0%	-1.0%
Radiographers	4	-1	-1	-0	-0	-21.3%	-22.6%	-4.3%	-2.7%
Health Science/ Diagnostics	93	+19	+2	+11	-0	+25.3%	+2.3%	+14.0%	-0.1%
Social Care	32	-3	-2	-4	-1	-7.8%	-6.5%	-10.0%	-2.4%
Social Workers	154	+14	+2	+15	+3	+10.1%	+1.2%	+10.8%	+2.0%
Psychologists	294	+1	-4	-7	-6	+0.3%	-1.3%	-2.3%	-2.1%
Pharmacy	69	+4	+11	+11	+6	+6.5%	+18.3%	+19.9%	+10.0%
Counsellor Therapists	125	+28	+9	+10	+13	+29.4%	+7.7%	+8.6%	+11.5%
Dental Hygienists	61	+6	+3	+3	-1	+11.7%	+5.6%	+5.6%	-1.0%
Environmental Health Officers				-1		-100.0%	-100.0%	-100.0%	-100.0%
Other Health & Social Care	35	+0	-1	+1	+1	+0.6%	-1.5%	+3.0%	+4.1%
Play Therapists/ Specialists	1	-1	-1	-1	-1	-39.6%	-42.2%	-37.2%	-32.2%
Vaccinators	4	+4	+4	+4	+4	-100.0%	-100.0%	-100.0%	-100.0%
H&SC, Other	226	+38	+15	+17	+17	+20.2%	+6.9%	+8.0%	+8.1%

Apr 2021 (Dec 2015 figure: 10,311)	WTE Apr 2021	WTE change since Dec 15	WTE change since Dec 18	WTE change since Dec 19	WTE change since Dec 20	% change since Dec 15	% change since Dec 18	% change since Dec 19	% change since Dec 20
Overall	11,984	+1,673	+1,053	+1,384	+411	+16.2%	+9.6%	+13.1%	+3.6%
Health & Social Care Professionals	2,695	+293	+47	+140	+54	+12.2%	+1.8%	+5.5%	+2.0%
Executive Management	74	+37	+0	+4	-0	+101.3%	+0.3%	+5.0%	-0.1%
Senior Management (VIII & GM)	227	+32	-9	-8	+2	+16.5%	-3.7%	-3.4%	+1.1%
Management (VIII & above)	301	+70	-8	-5	+2	+30.0%	-2.7%	-1.5%	+0.8%
Middle Management (V-VII)	730	+274	+104	+113	+46	+60.0%	+16.7%	+18.3%	+6.7%
Other Administrative	7	+6	+5	+5	+6	+1294.0%	+248.5%	+248.5%	+618.6%
Administrative/ Supervisory (V to VII)	737	+280	+109	+118	+52	+61.3%	+17.4%	+19.0%	+7.5%
General Administrative (III & IV)	1,890	+116	+61	+144	+53	+6.6%	+3.4%	+8.3%	+2.9%
Clerical (III & IV)	1,890	+116	+61	+144	+53	+6.6%	+3.4%	+8.3%	+2.9%
Management & Administrative	2,928	+466	+162	+257	+107	+18.9%	+5.9%	+9.6%	+3.8%
Support	354	-32	-30	+7	+2	-8.2%	-7.9%	+2.1%	+0.7%
Maintenance	59	-5	+2	+1	+4	-8.3%	+3.8%	+2.0%	+7.6%
Technical Services	1	+1	+0			-100.0%	+11.1%		
Maintenance/ Technical	60	-4	+2	+1	+4	-6.7%	+3.9%	+1.9%	+7.5%
General Support	414	-36	-28	+8	+7	-8.0%	-6.4%	+2.0%	+1.6%
HCA, Nurse's Aide, etc.	210	+40	+11	+26	+7	+23.7%	+5.8%	+13.9%	+3.7%
Health & Social Care Assistants	117	+99	-8	+47	+12	+561.5%	-6.8%	+68.5%	+11.4%
Swabber (COVID-19)	641	+641	+641	+641	+169	-100.0%	-100.0%	-100.0%	+35.8%
Health Care Assistants	968	+780	+644	+714	+188	+415.9%	+198.9%	+281.3%	+24.1%
Home Help	18	-280	-1	-1	-1	-94.1%	-7.7%	-3.8%	-3.7%
Other Care Grades	775	+17	+34	+51	+37	+2.3%	+4.6%	+7.0%	+5.1%
Care, other	775	+17	+34	+51	+37	+2.3%	+4.6%	+7.0%	+5.1%
Pre-Hospital Care (Ambulance)		-1				-100.0%	-100.0%	-100.0%	-100.0%
Ambulance Staff		-1				-100.0%	-100.0%	-100.0%	-100.0%
Patient & Client Care	1,760	+517	+676	+764	+225	+41.6%	+62.4%	+76.7%	+14.6%

Source: Health Service Personnel Census