

Primary Care Service Employment Report: December 2020

Employment by Staff Group

Dec 2020 (Dec 2019 figure: 10,599)	WTE Nov 2020	WTE Dec 2020	WTE change since Nov 20	% change since Nov 20	WTE change since Dec 19	WTE change since Dec 19
Overall	11,198	11,572	+374	+3.3%	+973	+973
Consultants	44	42	-2	-4.1%	-2	-2
Registrars	404	403	-1	-0.3%	+9	+9
SHO/ Interns	42	42			+5	+5
Medical/ Dental, other	524	519	-5	-1.0%	-0	-0
Medical & Dental	1,014	1,006	-8	-0.8%	+11	+11
Nurse/ Midwife Manager	396	404	+9	+2.3%	+45	+45
Nurse/ Midwife Specialist & AN/MP	179	184	+5	+2.7%	+41	+41
Staff Nurse/ Staff Midwife	910	927	+17	+1.9%	+65	+65
Public Health Nurse	1,538	1,533	-5	-0.3%	+20	+20
<i>Post-registration Nurse/ Midwife Student</i>	<i>104</i>	<i>106</i>	<i>+2</i>	<i>+1.8%</i>	<i>+13</i>	<i>+10</i>
Nursing/ Midwifery Student	104	106	+2	+1.8%	+10	+10
Nursing/ Midwifery other	7	7	-1	-8.5%	+3	+3
Nursing & Midwifery	3,134	3,161	+27	+0.9%	+185	+185
Therapy Professions	1,793	1,792	-1	-0.1%	+61	+61
Health Science/ Diagnostics	118	121	+3	+2.4%	+12	+12
Social Care	31	33	+1	+3.9%	-3	-3
Social Workers	148	151	+3	+2.3%	+12	+12
Psychologists	296	300	+3	+1.2%	-1	-1
Pharmacy	63	63	-0	-0.5%	+5	+5
H&SC, Other	181	182	+1	+0.5%	-1	-1
Health & Social Care Professionals	2,631	2,641	+10	+0.4%	+86	+86
Management (VIII & above)	298	299	+1	+0.3%	-7	-7
Administrative/ Supervisory (V to VII)	658	685	+27	+4.1%	+66	+66
Clerical (III & IV)	1,811	1,838	+26	+1.5%	+91	+91
Management & Administrative	2,767	2,821	+55	+2.0%	+150	+150
Support	351	351	+0	+0.1%	+5	+5
Maintenance/ Technical	57	56	-1	-1.8%	-3	-3
General Support	408	407	-1	-0.2%	+2	+2
Health Care Assistants	491	779	+288	+58.8%	+526	+526
Home Help	18	18	+0	+2.3%	-0	-0
Care, other	736	737	+2	+0.2%	+14	+14
Patient & Client Care	1,245	1,535	+291	+23.3%	+539	+539

Primary Care Services Employment by Administration (HSE / S38): December 2020

Dec 2020 (Dec 2019 figure: 10,599)	WTE Nov 2020	WTE Dec 2020	WTE change since Nov 20	% change since Nov 20	WTE change since Dec 19	WTE change since Dec 19
Total	11,198	11,572	+374	+3.3%	+973	+973
HSE	10,505	10,872	+367	+3.5%	+949	+949
Section 38 Voluntary Agencies	694	700	+7	+1.0%	+24	+24

Employment by Staff Group

Dec 2020 (Dec 2019 figure: 9,923)	WTE Nov 2020	WTE Dec 2020	WTE change since Nov 20	% change since Nov 20	WTE change since Dec 19	WTE change since Dec 19
Health Service Executive	10,505	10,872	+367	+3.5%	+949	+949
Consultants	31	30	-1	-4.6%	-3	-3
Registrars	391	390	-2	-0.4%	+6	+6
SHO/ Interns	22	22	-0	-0.3%	+3	+3
Medical/ Dental, other	510	505	-5	-1.0%	-0	-0
Medical & Dental	955	947	-8	-0.9%	+6	+6
Nurse/ Midwife Manager	347	356	+9	+2.5%	+45	+45
Nurse/ Midwife Specialist & AN/MP	145	147	+2	+1.4%	+33	+33
Staff Nurse/ Staff Midwife	804	819	+15	+1.9%	+67	+67
Public Health Nurse	1,538	1,533	-5	-0.3%	+20	+20
Post-registration Nurse/ Midwife Student	104	106	+2	+1.8%	+13	+10
Nursing/ Midwifery Student	104	106	+2	+1.8%	+10	+10
Nursing/ Midwifery other	5	5	-1	-11.8%	+3	+3
Nursing & Midwifery	2,943	2,965	+22	+0.7%	+179	+179
Therapy Professions	1,756	1,756	+1	+0.0%	+62	+62
Health Science/ Diagnostics	113	116	+3	+2.5%	+11	+11
Social Care	31	33	+1	+3.9%	-3	-3
Social Workers	137	141	+4	+3.1%	+13	+13
Psychologists	296	299	+3	+1.2%	-1	-1
Pharmacy	54	53	-0	-0.7%	+6	+6
H&SC, Other	177	178	+1	+0.5%	-3	-3
Health & Social Care Professionals	2,564	2,577	+13	+0.5%	+85	+85
Management (VIII & above)	289	290	+1	+0.3%	-7	-7
Administrative/ Supervisory (V to VII)	626	653	+27	+4.3%	+68	+68
Clerical (III & IV)	1,744	1,769	+26	+1.5%	+87	+87
Management & Administrative	2,659	2,713	+54	+2.0%	+148	+148
Support	254	255	+1	+0.5%	+4	+4
Maintenance/ Technical	47	46	-1	-2.2%	-4	-4
General Support	301	302	+0	+0.1%	-0	-0
Health Care Assistants	386	671	+286	+74.1%	+520	+520
Home Help	18	18	+0	+2.3%	-0	-0
Care, other	678	679	+0	+0.1%	+12	+12
Patient & Client Care	1,082	1,368	+287	+26.5%	+531	+531

Employment by Staff Group

Dec 2020 (Dec 2019 figure: 676)	WTE Nov 2020	WTE Dec 2020	WTE change since Nov 20	% change since Nov 20	WTE change since Dec 19	WTE change since Dec 19
Section 38 Voluntary Agencies	694	700	+7	+1.0%	+24	+24
Consultants	13	12	-0	-2.9%	+1	+1
Registrars	13	13	+0	+2.5%	+2	+2
SHO/ Interns	20	20	+0	+0.3%	+2	+2
Medical/ Dental, other	14	14	+0	+2.2%	+0	+0
Medical & Dental	59	60	+0	+0.6%	+5	+5
Nurse/ Midwife Manager	49	49	+0	+0.6%	-0	-0
Nurse/ Midwife Specialist & AN/MP	34	37	+3	+8.1%	+9	+9
Staff Nurse/ Staff Midwife	105	108	+2	+2.1%	-2	-2
Nursing/ Midwifery other	2	2				
Nursing & Midwifery	190	196	+5	+2.8%	+6	+6
Therapy Professions	37	36	-2	-4.8%	-2	-2
Health Science/ Diagnostics	5	5	-0	-0.2%	+1	+1
Social Workers	11	10	-1	-7.8%	-1	-1
Psychologists	1	1	-0	-4.8%		
Pharmacy	9	9	+0	+0.9%	-0	-0
H&SC, Other	3	3	+0	+0.3%	+2	+2
Health & Social Care Professionals	67	64	-3	-3.9%	+0	+0
Management (VIII & above)	9	9				
Administrative/ Supervisory (V to VII)	31	32	+0	+0.4%	-2	-2
Clerical (III & IV)	68	68	+1	+0.9%	+5	+5
Management & Administrative	108	108	+1	+0.7%	+3	+3
Support	97	96	-1	-1.1%	+1	+1
Maintenance/ Technical	10	10			+1	+1
General Support	107	106	-1	-1.0%	+2	+2
Health Care Assistants	105	108	+3	+2.6%	+6	+6
Care, other	58	59	+1	+2.1%	+2	+2
Patient & Client Care	163	167	+4	+2.4%	+8	+8

Primary Care Services Employment by CHO: Dec 2020

Dec 2020 (Dec 2019 figure: 10,599)	WTE Nov 2020	WTE Dec 2020	WTE change since Nov 20	% change since Nov 20	WTE change since Dec 19	WTE change since Dec 19
Overall	11,198	11,572	+374	+3.3%	+973	+973
CHO 1	1,267	1,296	+29	+2.3%	+115	+115
CHO 2	1,191	1,235	+43	+3.6%	+101	+101
CHO 3	763	812	+48	+6.3%	+48	+48
CHO 4	1,458	1,517	+60	+4.1%	+172	+172
CHO 5	1,017	1,061	+44	+4.3%	+109	+109
CHO 6	802	811	+8	+1.0%	+46	+46
CHO 7	1,745	1,789	+44	+2.5%	+87	+87
CHO 8	1,456	1,506	+49	+3.4%	+119	+119
CHO 9	1,366	1,412	+46	+3.4%	+165	+165
other Community Services	132	134	+2	+1.3%	+11	+11

Primary Care Services Employment by CHO etc. Dec 2020

CHO 1

Dec 2020 (Dec 2019 figure: 1,182)	WTE Nov 2020	WTE Dec 2020	WTE change since Nov 20	% change since Nov 20	WTE change since Dec 19	WTE change since Dec 19
Overall	1,267	1,296	+29	+2.3%	+115	+115
Consultants	3	4	+0	+4%	+1	+1
Registrars	42	42	-0	-1%	+1	+1
SHO/ Interns	1	1	0			
Medical/ Dental, other	44	45	+1	+2%	-2	-2
Medical & Dental	91	92	+1	+0.6%	-1	-1
Nurse/ Midwife Manager	37	39	+2	+6%	+2	+2
Nurse/ Midwife Specialist & AN/MP	28	26	-2	-6%	+5	+5
Staff Nurse/ Staff Midwife	95	96	+1	+1%	+11	+11
Public Health Nurse	153	153	-1	-0%	-3	-3
Nursing/ Midwifery Student	3	3	0		-4	-4
Nursing/ Midwifery other	1	1	-0	-2%	-0	-0
Nursing & Midwifery	317	318	+1	+0.3%	+11	+11
Therapy Professions	235	230	-4	-2%	+4	+4
Health Science/ Diagnostics	5	5	-0	-3%	-0	-0
Social Workers	17	16	-1	-5%	+3	+3
Psychologists	28	31	+3	+11%	-3	-3
Pharmacy	2	2	0		+1	+1
H&SC, Other	7	7	-0	-1%	+0	+0
Health & Social Care Professionals	294	292	-2	-0.7%	+5	+5
Management (VIII & above)	30	30	+0	+1%	-2	-2
Administrative/ Supervisory (V to VII)	73	76	+3	+4%	+13	+13
Clerical (III & IV)	250	250	-1	-0%	+14	+14
Management & Administrative	354	356	+2	+0.6%	+25	+25
Support	77	77	+1	+1%	+6	+6
Maintenance/ Technical	7	7	-0	-0%	+1	+1
General Support	84	84	+1	+0.8%	+7	+7
Health Care Assistants	71	96	+25	+35%	+64	+64
Home Help	0	1	+0	+88%	+1	+1
Care, other	56	58	+2	+4%	+3	+3
Patient & Client Care	128	155	+27	+21.2%	+68	+68

CHO 2

Dec 2020 (Dec 2019 figure: 1,134)	WTE Nov 2020	WTE Dec 2020	WTE change since Nov 20	% change since Nov 20	WTE change since Dec 19	WTE change since Dec 19
Overall	1,191	1,235	+43	+3.6%	+101	+101
Consultants	1	1	+0	+2%	+0	+0
Registrars	50	47	-3	-5%	+7	+7
Senior House Officer	3	3	+0	+2%	+3	+2
SHO/ Interns	3	3	+0	+2%	+2	+2
Medical/ Dental, other	49	49	+0	+0%	+4	+4
Medical & Dental	103	101	-3	-2.5%	+13	+13
Nurse/ Midwife Manager	28	28	+0	+0%	+1	+1
Nurse/ Midwife Specialist & AN/MP	20	21	+1	+4%	+4	+4
Staff Nurse/ Staff Midwife	77	79	+2	+2%	+5	+5
Public Health Nurse	198	198	-0	-0%	+7	+7
Post-registration Nurse/ Midwife Student				-100%	-13	-4
Nursing/ Midwifery Student				-100%	-4	-4
Nursing & Midwifery	323	326	+2	+0.7%	+12	+12
Therapy Professions	246	248	+2	+1%	+22	+22
Health Science/ Diagnostics	34	34	+1	+2%	+2	+2
Social Care	9	9	0		+0	+0
Social Workers	6	6	0		-1	-1
Psychologists	26	27	+1	+2%	+3	+3
Pharmacy	1	1	0			
H&SC, Other	12	14	+2	+19%	+1	+1
Health & Social Care Professionals	333	339	+5	+1.6%	+26	+26
Management (VIII & above)	34	35	+1	+3%	+2	+2
Administrative/ Supervisory (V to VII)	69	73	+3	+5%	+11	+11
Clerical (III & IV)	229	229	-0	-0%	-9	-9
Management & Administrative	333	337	+4	+1.2%	+4	+4
Support	22	22	-0	-2%	+1	+1
Maintenance/ Technical	8	8	-0	-0%	-1	-1
General Support	30	30	-0	-1.2%	+0	+0
Health Care Assistants	22	57	+35	+155%	+43	+43
Care, other	46	46	+0	+0%	+3	+3
Patient & Client Care	68	103	+35	+50.9%	+46	+46

CHO 3

Dec 2020 (Dec 2019 figure: 764)	WTE Nov 2020	WTE Dec 2020	WTE change since Nov 20	% change since Nov 20	WTE change since Dec 19	WTE change since Dec 19
Overall	763	812	+48	+6.3%	+48	+48
Consultants	2	1	-1	-35%	-1	-1
Registrars	24	25	+1	+2%	+1	+1
SHO/ Interns	1	1	+0	+54%	-5	-5
Medical/ Dental, other	52	52	-0	-1%	-0	-0
Medical & Dental	79	79	-0	-0.3%	-5	-5
Nurse/ Midwife Manager	22	23	+1	+5%	+4	+4
Nurse/ Midwife Specialist & AN/MP	3	3	0		+1	+1
Staff Nurse/ Staff Midwife	52	56	+4	+8%	-0	-0
Public Health Nurse	126	126	-0	-0%	-0	-0
<i>Post-registration Nurse/ Midwife Student</i>	4	4	0			+4
Nursing/ Midwifery Student	4	4	0		+4	+4
Nursing & Midwifery	207	212	+5	+2.5%	+9	+9
Therapy Professions	82	84	+1	+1%	-2	-2
<i>Audiology</i>	6	6	+0	+1%	+2	+1
Health Science/ Diagnostics	6	6	+0	+1%	+1	+1
Social Care	1	1	0			
Social Workers	10	10	+0	+1%	-1	-1
Psychologists	15	15	+0	+0%	-1	-1
Pharmacy	1	1	0			
H&SC, Other	10	10	-0	-2%	-1	-1
Health & Social Care Professionals	125	126	+1	+0.9%	-3	-3
Management (VIII & above)	23	24	+1	+2%	+1	+1
Administrative/ Supervisory (V to VII)	57	63	+6	+11%	+9	+9
Clerical (III & IV)	145	150	+5	+4%	-6	-6
Management & Administrative	225	237	+12	+5.2%	+3	+3
Support	13	13	-0	-1%	+0	+0
Maintenance/ Technical	28	27	-1	-4%	-3	-3
General Support	41	40	-1	-2.7%	-3	-3
Health Care Assistants	36	67	+32	+89%	+46	+46
Home Help	1	1	0			
Care, other	50	50	-0	-0%	+0	+0
Patient & Client Care	86	117	+32	+36.7%	+47	+47

CHO 4

Dec 2020 (Dec 2019 figure: 1,346)	WTE Nov 2020	WTE Dec 2020	WTE change since Nov 20	% change since Nov 20	WTE change since Dec 19	WTE change since Dec 19
Overall	1,458	1,517	+60	+4.1%	+172	+172
Consultants	3	3	0		-0	-0
Registrars	56	58	+2	+4%	+3	+3
SHO/ Interns	7	7	0		+1	+1
Medical/ Dental, other	91	91	-0	-0%	+3	+3
Medical & Dental	157	159	+2	+1.2%	+7	+7
Nurse/ Midwife Manager	57	61	+3	+6%	+4	+4
Nurse/ Midwife Specialist & AN/MP	7	7	+0	+7%	+3	+3
Staff Nurse/ Staff Midwife	130	139	+9	+7%	+20	+20
Public Health Nurse	226	222	-5	-2%	+11	+11
<i>Post-registration Nurse/ Midwife Student</i>	15	15	+0	+1%	+1	-2
Nursing/ Midwifery Student	15	15	+0	+1%	-2	-2
Nursing & Midwifery	436	443	+8	+1.8%	+35	+35
Therapy Professions	232	237	+5	+2%	+16	+16
Health Science/ Diagnostics	12	12	+0	+0%	+1	+1
Social Care	5	5	+0	+0%	-3	-3
Social Workers	28	28	+0	+2%	+4	+4
Psychologists	21	22	+0	+1%	+1	+1
Pharmacy	4	4	+0	+0%	+1	+1
H&SC, Other	42	41	-1	-3%	-0	-0
Health & Social Care Professionals	344	349	+5	+1.4%	+20	+20
Management (VIII & above)	35	35	-1	-2%	-2	-2
Administrative/ Supervisory (V to VII)	71	73	+2	+3%	+5	+5
Clerical (III & IV)	220	224	+3	+1%	+19	+19
Management & Administrative	327	331	+4	+1.3%	+21	+21
Support	18	18	-0	-1%	+2	+2
General Support	18	18	-0	-0.6%	+2	+2
Health Care Assistants	63	103	+40	+64%	+86	+86
Home Help	9	9	+0	+4%	-1	-1
Care, other	105	105	+0	+0%	+1	+1
Patient & Client Care	177	218	+41	+23.1%	+86	+86

CHO 5

Dec 2020 (Dec 2019 figure: 952)	WTE Nov 2020	WTE Dec 2020	WTE change since Nov 20	% change since Nov 20	WTE change since Dec 19	WTE change since Dec 19
Overall	1,017	1,061	+44	+4.3%	+109	+109
Consultants	1	1	0		-2	-2
Registrars	19	21	+2	+10%	+3	+3
SHO/ Interns	3	2	-0	-17%	-4	-4
Medical/ Dental, other	54	55	+0	+1%	+0	+0
Medical & Dental	77	79	+2	+2.4%	-3	-3
Nurse/ Midwife Manager	47	46	-0	-0%	+20	+20
Nurse/ Midwife Specialist & AN/MP	17	18	+1	+5%	+12	+12
Staff Nurse/ Staff Midwife	83	84	+1	+1%	+17	+17
Public Health Nurse	166	167	+2	+1%	+2	+2
<i>Post-registration Nurse/ Midwife Student</i>	3	3	+0	+11%	-4	-2
Nursing/ Midwifery Student	3	3	+0	+11%	-2	-2
<i>Nursing Education/Clinical</i>	1	1	-0	-6%	+1	
Nursing/ Midwifery other	1	1	-0	-6%		
Nursing & Midwifery	316	320	+4	+1.2%	+50	+50
Therapy Professions	184	186	+1	+1%	+2	+2
Health Science/ Diagnostics	7	8	+1	+8%	+4	+4
Social Care	5	5	+0	+1%	-0	-0
Social Workers	7	7	-0	-1%	-1	-1
Psychologists	38	38	+0	+1%	-5	-5
Pharmacy	1	1	0			
H&SC, Other	19	19	+0	+0%	+0	+0
Health & Social Care Professionals	261	264	+2	+0.8%	-0	-0
Management (VIII & above)	25	24	-1	-6%	-2	-2
Administrative/ Supervisory (V to VII)	57	59	+2	+4%	+7	+7
Clerical (III & IV)	160	161	+1	+1%	-3	-3
Management & Administrative	241	243	+2	+0.8%	+2	+2
Support	25	26	+1	+5%	+1	+1
General Support	25	26	+1	+5.0%	+1	+1
Health Care Assistants	36	70	+34	+93%	+62	+62
Home Help	8	8	-0	-3%	+1	+1
Care, other	52	52	-0	-0%	-3	-3
Patient & Client Care	96	130	+33	+34.7%	+60	+60

CHO 6

Dec 2020 (Dec 2019 figure: 765)	WTE Nov 2020	WTE Dec 2020	WTE change since Nov 20	% change since Nov 20	WTE change since Dec 19	WTE change since Dec 19
Overall	802	811	+8	+1.0%	+46	+46
Consultants	8	8	0		-1	-1
Registrars	24	24	+0	+1%	-2	-2
SHO/ Interns	7	7	0			
Medical/ Dental, other	45	41	-4	-8%	-5	-5
Medical & Dental	83	80	-4	-4.2%	-8	-8
Nurse/ Midwife Manager	24	22	-2	-6%	+0	+0
Nurse/ Midwife Specialist & AN/MP	5	4	-1	-28%	-2	-2
Staff Nurse/ Staff Midwife	55	55	+0	+0%	+3	+3
Public Health Nurse	114	112	-2	-2%	-5	-5
<i>Post-registration Nurse/ Midwife Student</i>	14	15	+1	+6%	+4	+1
Nursing/ Midwifery Student	14	15	+1	+6%	+1	+1
<i>Nursing Education/Clinical</i>	2	1	-1	-33%	+1	+1
Nursing/ Midwifery other	2	1	-1	-33%	+1	+1
Nursing & Midwifery	213	209	-5	-2.1%	-2	-2
Therapy Professions	112	110	-2	-1%	+7	+7
Health Science/ Diagnostics	19	20	+1	+6%	+2	+2
Social Care	3	3	+0	+6%	-1	-1
Social Workers	4	4	+0	+4%	-0	-0
Psychologists	19	20	+1	+7%	+1	+1
Pharmacy	1	1	0		+0	+0
H&SC, Other	4	4	-0	-4%	+0	+0
Health & Social Care Professionals	161	162	+1	+0.7%	+9	+9
Management (VIII & above)	30	30	+0	+1%	+0	+0
Administrative/ Supervisory (V to VII)	65	65	+1	+1%	-3	-3
Clerical (III & IV)	126	128	+2	+2%	+16	+16
Management & Administrative	220	223	+3	+1.2%	+13	+13
Support	26	26	-0	-0%	+2	+2
Maintenance/ Technical	2	2	0			
General Support	28	28	-0	-0.3%	+2	+2
Health Care Assistants	26	38	+12	+44%	+32	+32
Care, other	71	72	+1	+2%	+1	+1
Patient & Client Care	97	110	+13	+13.2%	+32	+32

CHO 7

Dec 2020 (Dec 2019 figure: 1,702)	WTE Nov 2020	WTE Dec 2020	WTE change since Nov 20	% change since Nov 20	WTE change since Dec 19	WTE change since Dec 19
Overall	1,745	1,789	+44	+2.5%	+87	+87
Consultants	13	13	-0	-3%	+1	+1
Registrars	44	44	-0	-1%	-2	-2
SHO/ Interns	9	9	+0	+1%	+3	+3
Medical/ Dental, other	78	77	-2	-2%	+1	+1
Medical & Dental	144	142	-2	-1.5%	+3	+3
Nurse/ Midwife Manager	84	86	+2	+2%	+5	+5
Nurse/ Midwife Specialist & AN/MP	54	56	+2	+4%	+10	+10
Staff Nurse/ Staff Midwife	196	199	+3	+2%	-6	-6
Public Health Nurse	175	177	+1	+1%	+1	+1
<i>Post-registration Nurse/ Midwife Student</i>	22	23	+1	+5%	+16	+2
Nursing/ Midwifery Student	22	23	+1	+5%	+2	+2
Nursing/ Midwifery other	2	2	0			
Nursing & Midwifery	533	542	+9	+1.7%	+12	+12
Therapy Professions	259	257	-2	-1%	-9	-9
Health Science/ Diagnostics	1	1	-0	-1%	+1	+1
Social Care	4	4	+0	+2%	+0	+0
Social Workers	26	26	-0	-1%	-0	-0
Psychologists	24	25	+1	+3%	+4	+4
Pharmacy	31	31	-0	-1%	-1	-1
H&SC, Other	21	21	+0	+2%	-3	-3
Health & Social Care Professionals	366	365	-1	-0.3%	-8	-8
Management (VIII & above)	28	30	+2	+6%	-3	-3
Administrative/ Supervisory (V to VII)	82	87	+5	+6%	+11	+11
Clerical (III & IV)	192	193	+0	+0%	+15	+15
Management & Administrative	303	310	+7	+2.3%	+23	+23
Support	112	110	-1	-1%	-6	-6
Maintenance/ Technical	9	9	+0	+0%	+1	+1
General Support	121	120	-1	-1.2%	-5	-5
Health Care Assistants	151	184	+33	+22%	+63	+63
Care, other	126	126	+0	+0%	-2	-2
Patient & Client Care	277	310	+33	+11.9%	+62	+62

CHO 8

Dec 2020 (Dec 2019 figure: 1,387)	WTE Nov 2020	WTE Dec 2020	WTE change since Nov 20	% change since Nov 20	WTE change since Dec 19	WTE change since Dec 19
Overall	1,456	1,506	+49	+3.4%	+119	+119
Consultants	7	6	-1	-13%	+0	+0
Registrars	84	82	-2	-3%	+4	+4
SHO/ Interns	1	1	0		-1	-1
Medical/ Dental, other	60	61	+0	+0%	+0	+0
Medical & Dental	153	149	-3	-2.0%	+3	+3
Nurse/ Midwife Manager	52	51	-1	-2%	-0	-0
Nurse/ Midwife Specialist & AN/MP	38	42	+4	+9%	+7	+7
Staff Nurse/ Staff Midwife	107	104	-3	-3%	+6	+6
Public Health Nurse	195	197	+2	+1%	+1	+1
<i>Post-registration Nurse/ Midwife Student</i>	12	12	+0	+1%	+4	+10
Nursing/ Midwifery Student	12	12	+0	+1%	+10	+10
Nursing/ Midwifery other	1	1	-0	-5%	+1	+1
Nursing & Midwifery	406	407	+1	+0.3%	+25	+25
Therapy Professions	230	228	-2	-1%	+8	+8
Health Science/ Diagnostics	7	7	0		+2	+2
Social Care	1	1	0		+1	+1
Social Workers	16	16	-1	-4%	+0	+0
Psychologists	57	56	-1	-1%	+0	+0
Pharmacy	5	5	0		+1	+1
H&SC, Other	26	26	+0	+0%	+1	+1
Health & Social Care Professionals	342	339	-3	-1.0%	+13	+13
Management (VIII & above)	42	41	-1	-2%	-4	-4
Administrative/ Supervisory (V to VII)	80	84	+4	+5%	+6	+6
Clerical (III & IV)	272	272	-0	-0%	+8	+8
Management & Administrative	394	397	+3	+0.7%	+10	+10
Support	21	20	-0	-2%	-2	-2
Maintenance/ Technical	3	3	0		+0	+0
General Support	24	23	-0	-1.9%	-2	-2
Health Care Assistants	37	90	+53	+143%	+70	+70
Home Help				-100%	-0	-0
Care, other	101	100	-1	-1%	+1	+1
Patient & Client Care	138	190	+52	+38.0%	+71	+71

CHO 9

Dec 2020 (Dec 2019 figure: 1,247)	WTE Nov 2020	WTE Dec 2020	WTE change since Nov 20	% change since Nov 20	WTE change since Dec 19	WTE change since Dec 19
Overall	1,366	1,412	+46	+3.4%	+165	+165
Consultants	4	4	0		+0	+0
Registrars	51	52	+1	+2%	-3	-3
SHO/ Interns	5	5	0		+4	+4
Medical/ Dental, other	49	49	-0	-1%	-1	-1
Medical & Dental	110	111	+1	+0.6%	-0	-0
Nurse/ Midwife Manager	41	43	+2	+4%	+6	+6
Nurse/ Midwife Specialist & AN/MP	8	8	+0	+0%	+2	+2
Staff Nurse/ Staff Midwife	103	105	+2	+2%	+5	+5
Public Health Nurse	183	182	-1	-1%	+7	+7
<i>Post-registration Nurse/ Midwife Student</i>	32	31	-1	-2%	+9	+5
Nursing/ Midwifery Student	32	31	-1	-2%	+5	+5
Nursing/ Midwifery other	1	1	0		+1	+1
Nursing & Midwifery	368	370	+2	+0.7%	+26	+26
Therapy Professions	212	211	-1	-0%	+15	+15
Health Science/ Diagnostics	19	20	+1	+3%	-1	-1
Social Care	3	4	+1	+36%	-1	-1
Social Workers	20	23	+2	+11%	+6	+6
Psychologists	67	65	-2	-3%	-0	-0
Pharmacy	15	15	-0	-0%	+3	+3
H&SC, Other	36	36	-0	-1%	-1	-1
Health & Social Care Professionals	372	373	+0	+0.1%	+21	+21
Management (VIII & above)	28	29	+0	+1%	+1	+1
Administrative/ Supervisory (V to VII)	87	88	+1	+2%	+11	+11
Clerical (III & IV)	205	221	+16	+8%	+38	+38
Management & Administrative	320	338	+17	+5.4%	+50	+50
Support	33	33	+0	+1%	-1	-1
General Support	33	33	+0	+1.4%	-1	-1
Health Care Assistants	48	74	+26	+54%	+61	+61
Care, other	115	114	-1	-1%	+9	+9
Patient & Client Care	163	187	+25	+15.2%	+69	+69

other Community Services

Dec 2020 (Dec 2019 figure: 122)	WTE Nov 2020	WTE Dec 2020	WTE change since Nov 20	% change since Nov 20	WTE change since Dec 19	WTE change since Dec 19
Overall	132	134	+2	+1.3%	+11	+11
Consultants	1	1	0			
Registrars	10	9	-1	-12%	-3	-3
SHO/ Interns	6	6	0		+4	+4
Medical/ Dental, other	0	0	-0	-53%	-0	-0
Medical & Dental	17	16	-1	-7.7%	+1	+1
Nurse/ Midwife Manager	5	6	+2	+37%	+2	+2
Staff Nurse/ Staff Midwife	11	9	-2	-17%	+4	+4
Nursing & Midwifery	16	16	-0	-1.1%	+7	+7
Health Science/ Diagnostics	8	8	+0	+0%	+0	+0
Social Care	2	2	0		+0	+0
Social Workers	14	16	+2	+16%	+2	+2
Psychologists	1	1	0			
Pharmacy	3	3	0		+0	+0
H&SC, Other	4	4	0		+1	+1
Health & Social Care Professionals	31	33	+2	+7.2%	+4	+4
Management (VIII & above)	21	21	+0	+0%	+3	+3
Administrative/ Supervisory (V to VII)	16	17	+0	+2%	-4	-4
Clerical (III & IV)	12	12	+0	+3%	+0	+0
Management & Administrative	49	50	+1	+1.3%	-1	-1
Support	4	4	+0	+10%	+2	+2
Maintenance/ Technical				-100%	-1	-1
General Support	4	4	+0	+10.2%	+1	+1
Care, other	15	15	0		+0	+0
Patient & Client Care	15	15			+0	+0

Primary Care Services Employment by Grade Group: Dec 2020

Dec 2020 (Dec 2019 figure: 10,599)	WTE Nov 2020	WTE Dec 2020	WTE change since Nov 20	% change since Nov 20	WTE change since Dec 19	WTE change since Dec 19
Overall	11,198	11,572	+374	+3.3%	+973	+973
Consultant Dentistry	10	10	+0	+0.0%	-1	-1
Consultant Medicine	21	20	-1	-5.2%	+3	+3
Consultant Paediatrics	2	2				
Consultant Psychiatry	8	8			+0	+0
Consultant Radiology	1	1				
Consultant Surgery	1	1	-1	-53.1%	-3	-3
Consultants	44	42	-2	-4.1%	-2	-2
Registrar	391	390	-2	-0.4%	+8	+8
Senior Registrar	2	2			-1	-1
Specialist Registrar	11	11	+0	+3.0%	+1	+1
Registrars	404	403	-1	-0.3%	+9	+9
Senior House Officer	42	42			+5	+5
SHO/ Interns	42	42			+5	+5
Dentists	301	302	+1	+0.4%	+1	+1
Other Medical	224	217	-6	-2.8%	-1	-1
Medical/ Dental, other	524	519	-5	-1.0%	-0	-0
Medical & Dental	1,014	1,006	-8	-0.8%	+11	+11
Clinical Nurse/ Midwife Manager	188	192	+4	+2.1%	+25	+25
Director Nursing/Midwifery, Assistant	168	172	+4	+2.2%	+18	+18
Director of Nursing/Midwifery	39	40	+1	+3.3%	+3	+3
Nurse/ Midwife Manager	396	404	+9	+2.3%	+45	+45
Advanced Nurse/ Midwife Practitioner	10	13	+3	+28.6%	+11	+11
Clinical Nurse/ Midwife Specialist	169	171	+2	+1.1%	+31	+31
Nurse/ Midwife Specialist & AN/MP	179	184	+5	+2.7%	+41	+41
Staff Midwives	5	6	+1	+16.3%	-3	-3
Staff Nurse [Psychiatric]	11	14	+3	+25.2%	+5	+5
Staff Nurses [General/ Children's]	894	908	+14	+1.5%	+63	+63
Staff Nurse/ Staff Midwife	910	927	+17	+1.9%	+65	+65
Public Health Nurse	1,538	1,533	-5	-0.3%	+20	+20
Public Health Nurse	1,538	1,533	-5	-0.3%	+20	+20
Post-registration Nurse/ Midwife Student	104	106	+2	+1.8%	+10	+10
Nursing/ Midwifery Student	104	106	+2	+1.8%	+10	+10
Nursing Education/Clinical	7	7	-1	-8.5%	+3	+3
Nursing/ Midwifery other	7	7	-1	-8.5%	+3	+3
Nursing & Midwifery	3,134	3,161	+27	+0.9%	+185	+185
Dietitians	122	125	+3	+2.1%	+15	+15
Occupational Therapists	546	543	-2	-0.4%	+28	+28
Orthoptists	17	18	+0	+0.6%	+4	+4
Physiotherapists	559	561	+2	+0.4%	+18	+18
Podiatrists & Chiropodists	30	30	-1	-1.7%	+5	+5
Speech & Language Therapists	519	516	-3	-0.6%	-10	-10
Therapy Professions	1,793	1,792	-1	-0.1%	+61	+61
Audiology	51	52	+2	+3.0%	+8	+8
Biochemists	8	8	+0	+0.4%	+0	+0
Clinical Engineering	8	8				
Medical Laboratory	44	45	+1	+2.8%	+3	+3
Phlebotomists	1	1	-0	-0.8%	+1	+1
Physicists	2	2				
Radiographers	4	4			-0	-0
Health Science/ Diagnostics	118	121	+3	+2.4%	+12	+12
Social Care	31	33	+1	+3.9%	-3	-3

Dec 2020 (Dec 2019 figure: 10,599)	WTE Nov 2020	WTE Dec 2020	WTE change since Nov 20	% change since Nov 20	WTE change since Dec 19	WTE change since Dec 19
Overall	11,198	11,572	+374	+3.3%	+973	+973
Social Workers	148	151	+3	+2.3%	+12	+12
Psychologists	296	300	+3	+1.2%	-1	-1
Pharmacy	63	63	-0	-0.5%	+5	+5
Counsellor Therapists	111	112	+1	+0.7%	-3	-3
Dental Hygienists	61	61	-0	-0.1%	+4	+4
Environmental Health Officers				-100.0%	-1	-1
Other Health & Social Care	6	6	+1	+10.1%	-1	-1
Play Therapists/ Specialists	2	2	-0	-13.4%	-0	-0
H&SC, Other	181	182	+1	+0.5%	-1	-1
Health & Social Care Professionals	2,631	2,641	+10	+0.4%	+86	+86
Executive Management	78	74	-3	-4.3%	+4	+4
Senior Management (VIII & GM)	220	224	+4	+2.0%	-10	-10
Management (VIII & above)	298	299	+1	+0.3%	-7	-7
Middle Management (V-VII)	657	684	+27	+4.1%	+67	+67
Other Administrative	1	1	-0	-3.0%	-1	-1
Administrative/ Supervisory (V to VII)	658	685	+27	+4.1%	+66	+66
General Administrative (III & IV)	1,811	1,838	+26	+1.5%	+91	+91
Clerical (III & IV)	1,811	1,838	+26	+1.5%	+91	+91
Management & Administrative	2,767	2,821	+55	+2.0%	+150	+150
Catering	21	22	+0	+1.3%	-0	-0
Household Services	138	137	-1	-0.9%	+3	+3
Other Labs & Associated	5	5	+0	+8.0%	+2	+2
Other Support	112	113	+1	+1.0%	+0	+0
Portering	74	74	-0	-0.3%	-0	-0
Support	351	351	+0	+0.1%	+5	+5
Maintenance	56	55	-1	-1.8%	-3	-3
Technical Services	1	1				
Maintenance/ Technical	57	56	-1	-1.8%	-3	-3
General Support	408	407	-1	-0.2%	+2	+2
HCA, Nurse's Aide, etc.	388	675	+286	+73.8%	+490	+490
Health & Social Care Assistants	103	105	+2	+2.0%	+35	+35
Health Care Assistants	491	779	+288	+58.8%	+526	+526
Home Help	18	18	+0	+2.3%	-0	-0
Care, other	736	737	+2	+0.2%	+14	+14
Patient & Client Care	1,245	1,535	+291	+23.3%	+539	+539

Employment by WTE, Headcount, Gender, Full-Time /Part-Time etc.: Dec 2020

Primary Care Services Staff Group	WTE	Headcount	WTE: no.	% Male	% female	Male WTE: no.	Female WTE: no.	% Total Perm	% Male Perm	% Female Perm	% Total Full Time	% Total Part Time	% Male FT	% Female FT
Overall	11,572	13,899	1.20	13.9%	86.1%	1.11	1.22	79.3%	67.4%	81.2%	66.9%	33.1%	83.8%	64.2%
Consultant Dentistry	10	12	1.18	50.0%	50.0%	1.17	1.18	100.0%	100.0%	100.0%	66.7%	33.3%	66.7%	66.7%
Consultant Medicine	20	25	1.23	28.0%	72.0%	1.05	1.32	60.0%	60.0%	55.6%	72.0%	28.0%	85.7%	66.7%
Consultant Paediatrics	2	2	1.33		100.0%		1.33	100.0%	100.0%	100.0%	50.0%	50.0%		50.0%
Consultant Psychiatry	8	9	1.07	77.8%	22.2%	1.09	1.00	66.7%	66.7%	50.0%	88.9%	11.1%	85.7%	100.0%
Consultant Radiology	1	1	1.00	100.0%		1.00		100.0%	100.0%		100.0%	0.0%	100.0%	
Consultant Surgery	1	2	3.33		100.0%		3.33	50.0%	50.0%	50.0%	0.0%	100.0%		0.0%
Consultants	42	51	1.21	41.2%	58.8%	1.10	1.31	72.5%	81.0%	66.7%	70.6%	29.4%	81.0%	63.3%
Registrar	390	401	1.03	32.9%	67.1%	1.01	1.04	1.2%	1.2%	0.7%	99.3%	0.7%	98.5%	99.6%
Senior Registrar	2	4	2.03	25.0%	75.0%	2.50	1.91	0.0%	0.0%	0.0%	25.0%	75.0%	0.0%	33.3%
Specialist Registrar	11	12	1.06	25.0%	75.0%	1.29	1.00	33.3%	33.3%	22.2%	91.7%	8.3%	66.7%	100.0%
Registrars	403	417	1.03	32.6%	67.4%	1.02	1.04	2.2%	3.7%	1.4%	98.3%	1.7%	97.1%	98.9%
Senior House Officer	42	50	1.20	32.0%	68.0%	1.19	1.21	0.0%	0.0%	0.0%	94.0%	6.0%	100.0%	91.2%
SHO/ Interns	42	50	1.20	32.0%	68.0%	1.19	1.21	0.0%	0.0%	0.0%	94.0%	6.0%	100.0%	91.2%
Dentists	302	388	1.28	26.0%	74.0%	1.26	1.30	90.2%	90.2%	90.2%	53.4%	46.6%	63.4%	49.8%
Other Medical	217	299	1.38	27.4%	72.6%	1.36	1.38	57.2%	57.2%	64.1%	39.8%	60.2%	46.3%	37.3%
Medical/ Dental, other	519	687	1.32	26.6%	73.4%	1.30	1.33	75.8%	67.2%	79.0%	47.5%	52.5%	55.7%	44.4%
Medical & Dental	1,006	1,205	1.20	29.5%	70.5%	1.16	1.21	47.1%	40.7%	49.7%	68.0%	32.0%	75.0%	65.0%
Clinical Nurse/ Midwife Manager	192	223	1.16	4.9%	95.1%	1.00	1.17	94.2%	94.2%	94.3%	65.5%	34.5%	100.0%	63.7%
Director Nursing/Midwifery, Assistant	172	191	1.11	1.6%	98.4%	1.00	1.11	97.9%	97.9%	97.9%	77.5%	22.5%	100.0%	77.1%
Director of Nursing/Midwifery	40	44	1.09	2.3%	97.7%	1.00	1.09	93.2%	93.2%	93.0%	86.4%	13.6%	100.0%	86.0%
Nurse/ Midwife Manager	404	458	1.13	3.3%	96.7%	1.00	1.14	95.6%	93.3%	95.7%	72.5%	27.5%	100.0%	71.6%
Advanced Nurse/ Midwife Practitioner	13	14	1.06		100.0%		1.06	92.9%	92.9%	92.9%	85.7%	14.3%		85.7%
Clinical Nurse/ Midwife Specialist	171	198	1.16	5.6%	94.4%	1.05	1.17	96.5%	96.5%	96.3%	67.7%	32.3%	100.0%	65.8%
Nurse/ Midwife Specialist & AN/MP	184	212	1.15	5.2%	94.8%	1.05	1.16	96.2%	100.0%	96.0%	68.9%	31.1%	100.0%	67.2%
Staff Midwives	6	8	1.45		100.0%		1.45	100.0%	100.0%	100.0%	12.5%	87.5%		12.5%
Staff Nurse [Psychiatric]	14	19	1.40	21.1%	78.9%	1.38	1.40	57.9%	57.9%	66.7%	52.6%	47.4%	25.0%	60.0%
Staff Nurses [General/ Children's]	908	1,212	1.33	3.2%	96.8%	1.06	1.35	82.1%	82.1%	82.1%	44.5%	55.5%	82.1%	43.2%
Staff Nurse/ Staff Midwife	927	1,239	1.34	3.5%	96.5%	1.09	1.35	81.8%	76.7%	82.0%	44.4%	55.6%	76.7%	43.2%
Public Health Nurse	1,533	1,834	1.20	0.4%	99.6%	1.07	1.20	94.3%	94.3%	94.3%	70.4%	29.6%	85.7%	70.4%

Public Health Nurse	1,533	1,834	1.20	0.4%	99.6%	1.07	1.20	94.3%	100.0%	94.3%	70.4%	29.6%	85.7%	70.4%
Post-registration Nurse/ Midwife Student	106	107	1.01	1.9%	98.1%	1.00	1.01	24.3%	24.3%	24.8%	98.1%	1.9%	100.0%	98.1%
Nursing/ Midwifery Student	106	107	1.01	1.9%	98.1%	1.00	1.01	24.3%	0.0%	24.8%	98.1%	1.9%	100.0%	98.1%
Nursing Education/Clinical	7	7	1.05		100.0%		1.05	85.7%	85.7%	85.7%	100.0%	0.0%		100.0%
Nursing/ Midwifery other	7	7	1.05		100.0%		1.05	85.7%		85.7%	100.0%	0.0%		100.0%
Nursing & Midwifery	3,161	3,857	1.22	2.0%	98.0%	1.06	1.22	88.6%	83.3%	88.7%	63.1%	36.9%	85.9%	62.6%
Health & Social Care	2,641	3,076	1.16	12.8%	87.2%	1.05	1.18	89.0%	87.0%	89.3%	70.2%	29.8%	88.0%	67.6%
Executive Management	74	78	1.05	38.5%	61.5%	1.09	1.03	88.5%	88.5%	89.6%	94.9%	5.1%	90.0%	97.9%
Senior Management (VIII & GM)	224	238	1.06	25.6%	74.4%	1.06	1.06	95.4%	95.4%	95.5%	89.9%	10.1%	95.1%	88.1%
Management (VIII & above)	299	316	1.06	28.8%	71.2%	1.07	1.05	93.7%	92.3%	94.2%	91.1%	8.9%	93.4%	90.2%
Middle Management (V-VII)	684	747	1.09	18.3%	81.7%	1.06	1.10	95.0%	95.0%	96.4%	83.9%	16.1%	97.8%	80.8%
Other Administrative	1	1	1.03		100.0%		1.03	100.0%	100.0%	100.0%	0.0%	100.0%		0.0%
Administrative/ Supervisory (V to VII)	685	748	1.09	18.3%	81.7%	1.06	1.10	95.1%	89.1%	96.4%	83.8%	16.2%	97.8%	80.7%
General Administrative (III & IV)	1,838	2,171	1.18	8.5%	91.5%	1.09	1.19	82.2%	82.2%	83.4%	64.4%	35.6%	87.0%	62.3%
Clerical (III & IV)	1,838	2,171	1.18	8.5%	91.5%	1.09	1.19	82.2%	69.2%	83.4%	64.4%	35.6%	87.0%	62.3%
Management & Administrative	2,821	3,235	1.15	12.8%	87.2%	1.07	1.16	86.3%	80.9%	87.1%	71.5%	28.5%	92.0%	68.5%
Catering	22	24	1.10	29.2%	70.8%	1.02	1.14	100.0%	100.0%	100.0%	62.5%	37.5%	100.0%	47.1%
Household Services	137	172	1.26	23.8%	76.2%	1.04	1.34	77.9%	77.9%	77.9%	43.6%	56.4%	75.6%	33.6%
Other Labs & Associated	5	5	1.00	20.0%	80.0%	1.00	1.00	100.0%	100.0%	100.0%	100.0%	0.0%	100.0%	100.0%
Other Support	113	247	2.18	31.2%	68.8%	1.36	2.99	47.8%	47.8%	35.9%	30.0%	70.0%	58.4%	17.1%
Portering	74	79	1.06	93.7%	6.3%	1.05	1.30	82.3%	82.3%	80.0%	91.1%	8.9%	94.6%	40.0%
Support	351	527	1.50	38.0%	62.0%	1.15	1.85	65.7%	79.0%	57.5%	45.7%	54.3%	77.0%	26.6%
Maintenance	55	58	1.05	98.3%	1.7%	1.05	1.00	93.1%	93.1%	100.0%	98.3%	1.7%	98.2%	100.0%
Technical Services	1	1	1.00	100.0%		1.00		100.0%	100.0%		100.0%	0.0%	100.0%	
Maintenance/ Technical	56	59	1.05	98.3%	1.7%	1.05	1.00	93.2%	93.1%	100.0%	98.3%	1.7%	98.3%	100.0%
General Support	407	586	1.44	44.0%	56.0%	1.12	1.84	68.4%	82.2%	57.6%	51.0%	49.0%	81.8%	26.8%
HCA, Nurse's Aide, etc.	675	879	1.30	26.5%	73.5%	1.24	1.33	25.8%	25.8%	28.6%	73.9%	26.1%	85.4%	69.8%
Health & Social Care Assistants	105	109	1.04	14.7%	85.3%	1.04	1.04	17.4%	17.4%	18.3%	93.6%	6.4%	100.0%	92.5%
Health Care Assistants	779	988	1.27	25.2%	74.8%	1.22	1.28	24.9%	17.7%	27.3%	76.1%	23.9%	86.3%	72.7%
Home Help	18	45	2.45	24.4%	75.6%	2.59	2.41	13.3%	0.0%	17.6%	4.4%	95.6%	9.1%	2.9%
Care, other	737	907	1.23	19.4%	80.6%	1.10	1.27	94.2%	92.0%	94.7%	57.9%	42.1%	76.1%	53.5%
Patient & Client Care	1,535	1,940	1.26	22.5%	77.5%	1.19	1.29	57.0%	47.2%	59.8%	65.9%	34.1%	80.3%	61.8%

Employment by WTE, Headcount, Gender, Full-Time /Part-Time etc.: Dec 2020

Primary Care Services CHO	WTE	Headcount	WTE: no.	% Male	% female	Male WTE: no.	Female WTE: no.	% Total Perm	% Male Perm	% Female Perm	% Total Full Time	% Total Part Time	% Male FT	% Female FT
Overall	11,572	13,899	1.20	13.9%	86.1%	1.11	1.22	79.3%	67.4%	81.2%	66.9%	33.1%	83.8%	64.2%
CHO 1	1,296	1,541	1.19	14.3%	85.7%	1.08	1.21	85.2%	85.2%	87.2%	65.9%	34.1%	85.1%	62.7%
CHO 2	1,235	1,431	1.16	12.5%	87.5%	1.09	1.17	82.2%	82.2%	83.9%	70.2%	29.8%	82.7%	68.4%
CHO 3	812	981	1.21	12.6%	87.4%	1.10	1.23	74.9%	74.9%	76.3%	71.7%	28.3%	90.3%	69.0%
CHO 4	1,517	1,887	1.24	10.9%	89.1%	1.21	1.25	69.3%	69.3%	71.0%	59.6%	40.4%	72.7%	58.0%
CHO 5	1,061	1,300	1.23	11.5%	88.5%	1.13	1.24	81.0%	81.0%	83.0%	63.6%	36.4%	82.6%	61.2%
CHO 6	811	1,055	1.30	12.9%	87.1%	1.29	1.30	76.8%	76.8%	77.5%	68.2%	31.8%	92.6%	64.5%
CHO 7	1,789	2,110	1.18	16.4%	83.6%	1.08	1.20	84.1%	84.1%	86.6%	68.5%	31.5%	82.4%	65.7%
CHO 8	1,506	1,819	1.21	14.2%	85.8%	1.10	1.23	83.1%	83.1%	86.1%	62.9%	37.1%	81.4%	59.9%
CHO 9	1,412	1,626	1.15	16.2%	83.8%	1.07	1.17	76.0%	76.0%	78.0%	73.4%	26.6%	89.0%	70.4%
other Community Services	134	149	1.11	34.2%	65.8%	1.09	1.13	70.5%	70.5%	70.4%	83.2%	16.8%	86.3%	81.6%

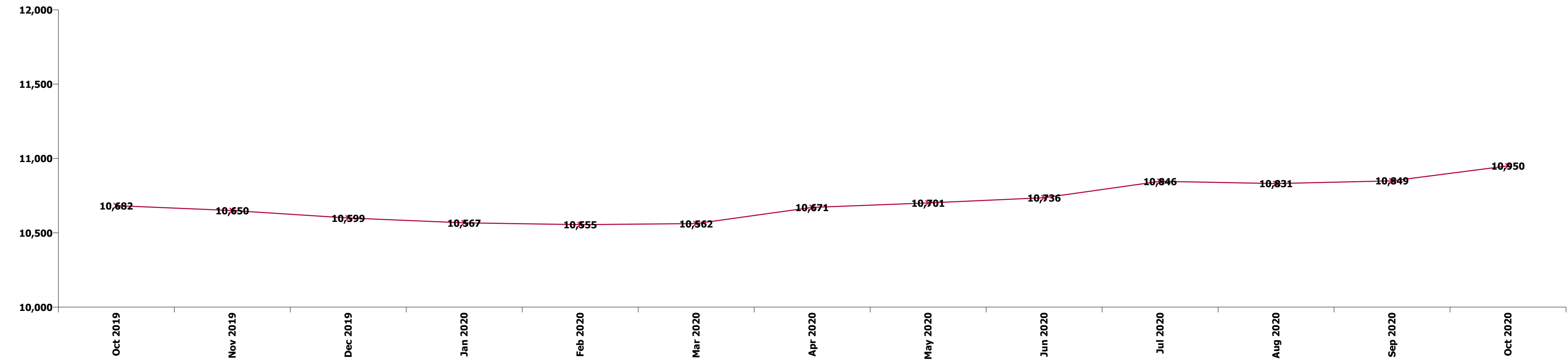
Summary Staff Movement: December 2020

Month-on-month
Summary

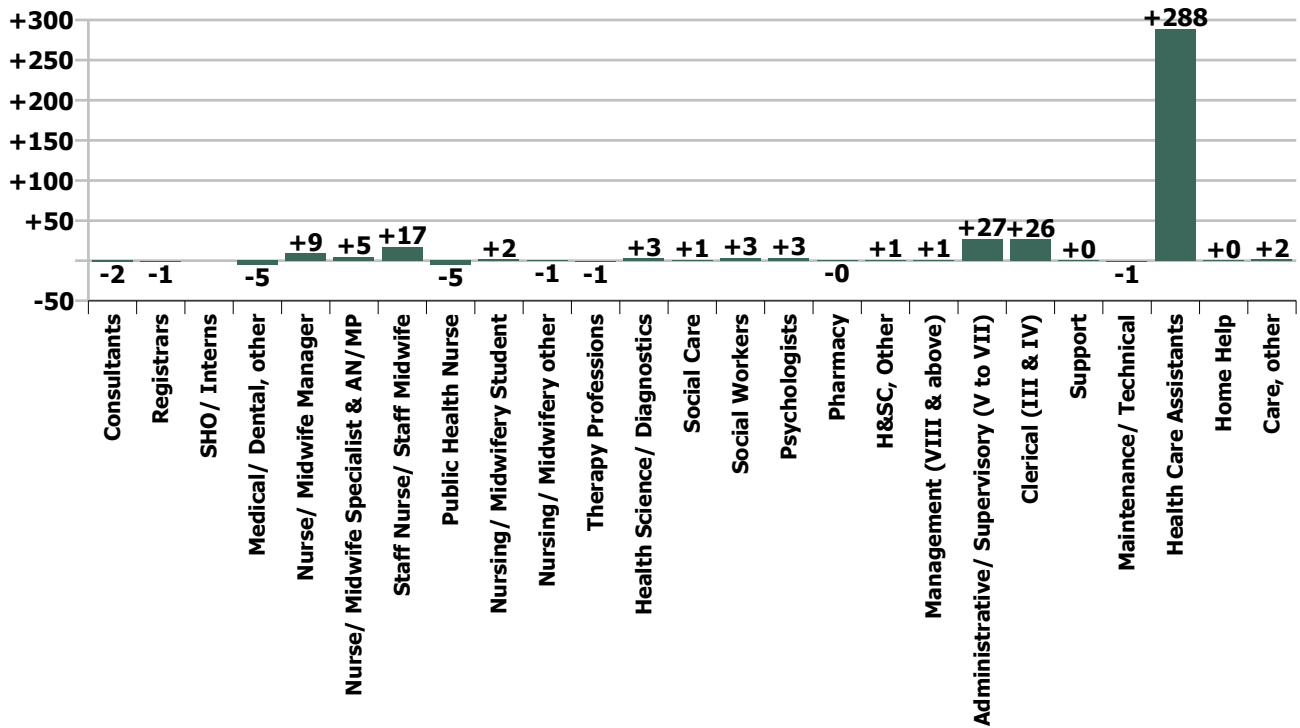
WTE change since Nov 20	% change since Nov 20	overall	Consultants	Registrars	SHO/ Interns	Medical/ Dental, other	Medical & Dental	Nurse/ Midwife Manager	Nurse/ Midwife Specialist & AN/MP	Staff Nurse/ Staff Midwife	Public Health Nurse	Nursing/ Midwifery Student	Nursing/ Midwifery other	Nursing & Midwifery	Therapy Professions	Health Science/ Diagnostics	Social Care	Social Workers	Psychologists	Pharmacy	H&SC, Other	Health & Social Care Professionals	Management (VIII & above)	Administrativ e/ Supervisory (V to VII)	Clerical (III & IV)	Management & Administrative	General Support	Health Care Assistants	Home Help	Care, other	Patient & Client Care
Overall	+3.3%	+374	-2	-1		-5	-8	+9	+5	+17	-5	+2	-1	+27	-1	+3	+1	+3	+3	-0	+1	+10	+1	+27	+26	+55	-1	+288	+0	+2	+291
CHO 1	+2.3%	+29	+0	-0		+1	+1	+2	-2	+1	-1		-0	+1	-4	-0		-1	+3		-0	-2	+0	+3	-1	+2	+1	+25	+0	+2	+27
CHO 2	+3.6%	+43	+0	-3	+0	+0	-3	+0	+0	+1	+2	-0		+2	+2	+1			+1		+2	+5	+1	+3	-0	+4	-0	+35		+0	+35
CHO 3	+6.3%	+48	-1	+1	+0	-0	-0	+1		+4	-0			+5	+1	+0		+0	+0		-0	+1	+1	+6	+5	+12	-1	+32		-0	+32
CHO 4	+4.1%	+60		+2		-0	+2	+3	+0	+9	-5	+0		+8	+5	+0	+0	+0	+0	+0	-1	+5	-1	+2	+3	+4	-0	+40	+0	+0	+41
CHO 5	+4.3%	+44		+2	-0	+0	+2	-0	+1	+1	+2	+0	-0	+4	+1	+1	+0	+0	+0	+0	+0	+2	-1	+2	+1	+2	+1	+34	-0	-0	+33
CHO 6	+1.0%	+8		+0		-4	-4	-2	-1	+0	-2	+1	-1	-5	-2	+1	+0	+0	+1		-0	+1	+0	+1	+2	+3	-0	+12		+1	+13
CHO 7	+2.5%	+44	-0	-0	+0	-2	-2	+2	+3	+3	+1	+1		+9	-2	-0	+0	-0	+1	-0	+0	-1	+2	+5	+0	+7	-1	+33		+0	+33
CHO 8	+3.4%	+49	-1	-2		+0	-3	-1	+4	-3	+2	+0	-0	+1	-2			-1	-1		+0	-3	-1	+4	-0	+3	-0	+53		-1	+52
CHO 9	+3.4%	+46		+1		-0	+1	+2	+0	+2	-1	-1		+2	-1	+1	+1	+2	-2	-0	-0	+0	+0	+1	+16	+17	+0	+26		-1	+25
other Community Services	+1.3%	+2		-1		-0	-1	+2		-2				-0		+0		+2				+2	+0	+0	+0	+1	+0				
		+3.3%	-4.1%	-0.3%		-1.0%	-0.8%	+2.3%	+2.7%	+1.9%	-0.3%	+1.8%	-8.5%	+0.9%	-0.1%	+2.4%	+3.9%	+2.3%	+1.2%	-0.5%	+0.5%	+0.4%	+0.3%	+4.1%	+1.5%	+2.0%	-0.2%	+58.8%	+2.3%	+0.2%	+23.3%

Year-on-year Summary

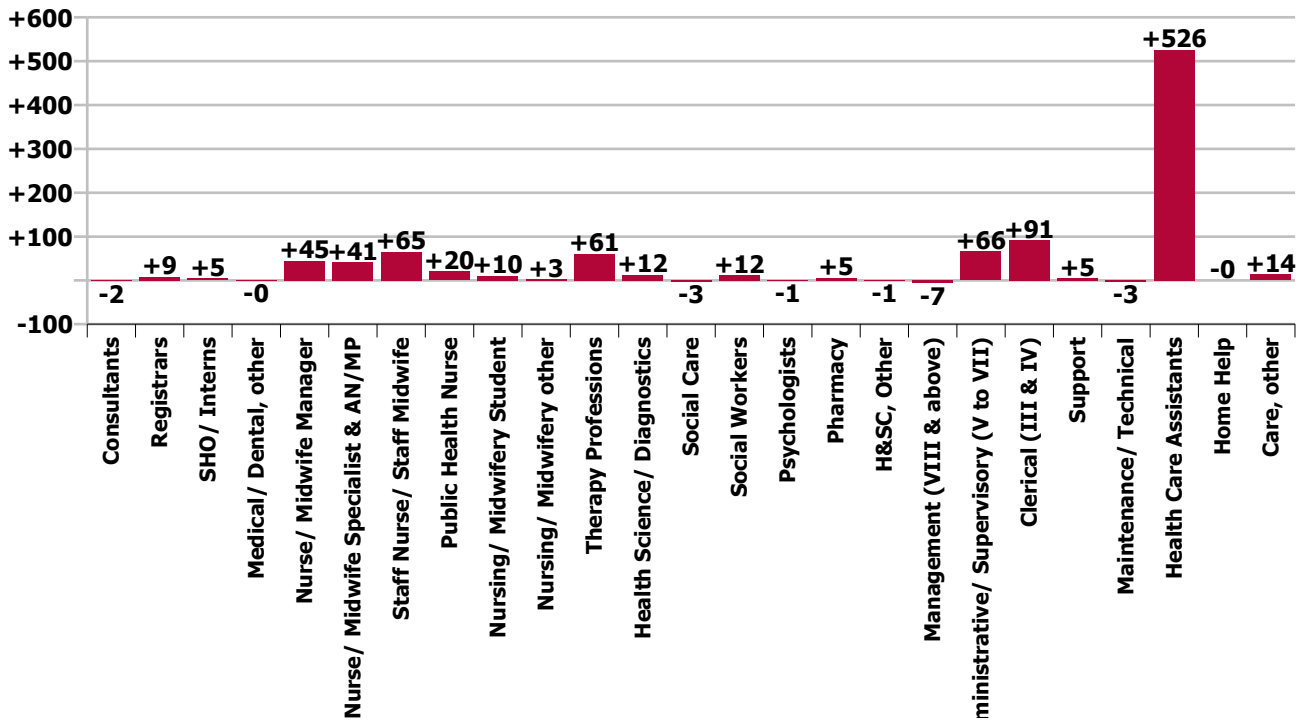
WTE change since Dec 19	% change since Dec 19	overall	Consultants	Registrars	SHO/ Interns	Medical/ Dental, other	Medical & Dental	Nurse/ Midwife Manager	Nurse/ Midwife Specialist & AN/MP	Staff Nurse/ Staff Midwife	Public Health Nurse	Nursing/ Midwifery Student	Nursing/ Midwifery other	Nursing & Midwifery	Therapy Professions	Health Science/ Diagnostics	Social Care	Social Workers	Psychologists	Pharmacy	H&SC, Other	Health & Social Care Professionals	Management (VIII & above)	Administrativ e/ Supervisory (V to VII)	Clerical (III & IV)	Management & Administrative	General Support	Health Care Assistants	Home Help	Care, other	Patient & Client Care
Overall	+9.2%	+973	-2	+9	+5	-0	+11	+45	+41	+65	+20	+10	+3	+185	+61	+12	-3	+12	-1	+5	-1	+86	-7	+66	+91	+150	+2	+526	-0	+14	+539
CHO 1	+9.7%	+115	+1	+1		-2	-1	+2	+5	+11	-3	-4	-0	+11	+4	-0		+3	-3	+1	+0	+5	-2	+13	+14	+25	+7	+64	+1	+3	+68
CHO 2	+8.9%	+101	+0	+7	+2	+4	+13	+1	+4	+5	+7	-4		+12	+22	+2	+0	-1	+3		+1	+26	+2	+11	-9	+4	+0	+43		+3	+46
CHO 3	+6.3%	+48	-1	+1	-5	-0	-5	+4	+1	-0	-0	+4		+9	-2	+1		-1	-1		-1	-3	+1	+9	-6	+3	-3	+46		+0	+47
CHO 4	+12.7%	+172	-0	+3	+1	+3	+7	+4	+3	+20	+11	-2		+35	+16	+1	-3	+4	+1	+1	-0	+20	-2	+5	+19	+21	+2	+86	-1	+1	+86
CHO 5	+11.5%	+109	-2	+3	-4	+0	-3	+20	+12	+17	+2	-2		+50	+2	+4	-0	-1	-5		+0	-0	-2	+7	-3	+2	+1	+62	+1	-3	+60
CHO 6	+6.1%	+46	-1	-2		-5	-8	+0	-2	+3	-5	+1	+1	-2	+7	+2	-1	-0	+1	+0	+0	+9	+0	-3	+16	+13	+2	+32		+1	+32
CHO 7	+5.1%	+87	+1	-2	+3	+1	+3	+5	+10	-6	+1	+2		+12	-9	+1	+0	-0	+4	-1	-3	-8	-3	+11	+15	+23	-5	+63		-2	+62
CHO 8	+8.6%	+119	+0	+4	-1	+0	+3	-0	+7	+6	+1	+10	+1	+25	+8	+2	+1	+0	+0	+1	+1	+13	-4	+6	+8	+10	-2	+70	-0	+1	+71
CHO 9	+13.2%	+165	+0	-3	+4	-1	-0	+6	+2	+5	+7	+5	+1	+26	+15	-1	-1	+6	-0	+3	-1	+21	+1	+11	+38	+50	-1	+61		+9	+69
other Community Services	+9.4%	+11		-3	+4	-0	+1	+2		+4				+7		+0	+0	+2		+0	+1	+4	+3	-4	+0	-1	+1			+0	+0
		+9.2%	-4.2%	+2.2%	+12.2%	-0.1%	+1.1%	+12.5%	+29.0%	+7.5%	+1.3%	+10.9%	+75.0%	+6.2%	+3.5%	+11.4%	-7.8%	+8.6%	-0.3%	+9.0%	-0.6%	+3.4%	-2.2%	+10.7%	+5.2%	+5.6%	+0.4%	+207.1%	-0.1%	+1.9%	+54.1%



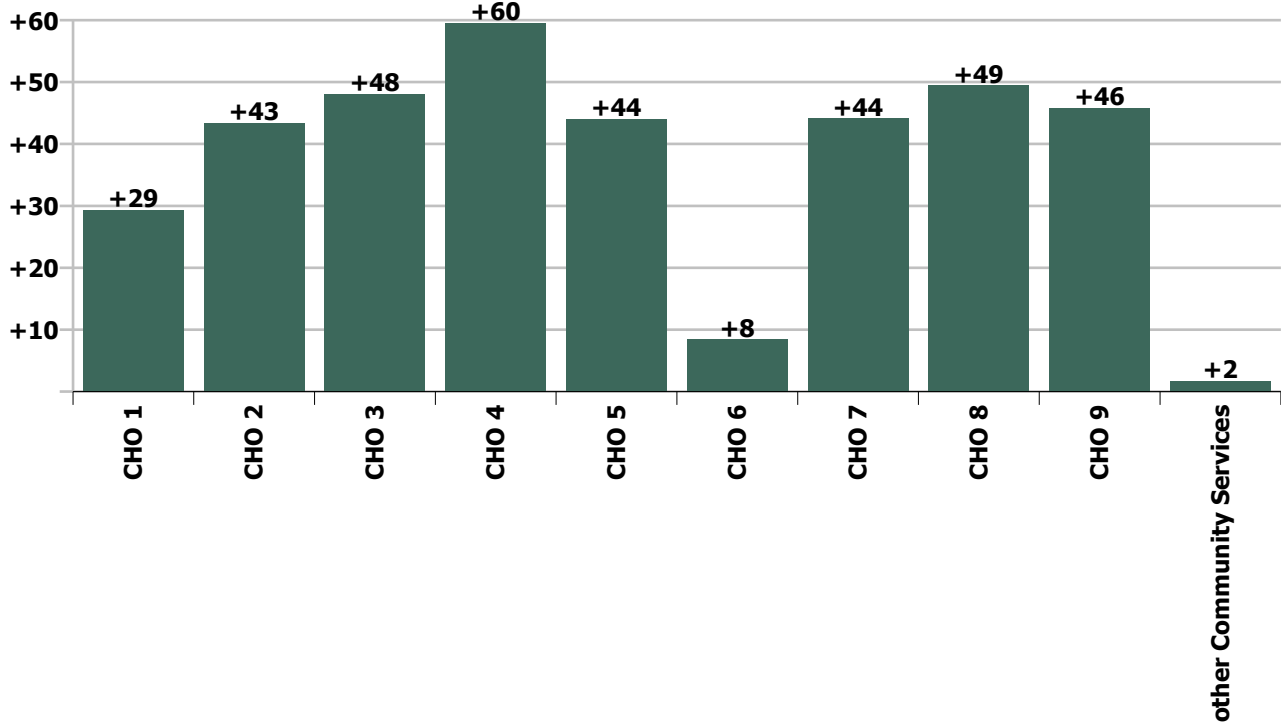
Staff Group change since: Nov 2020



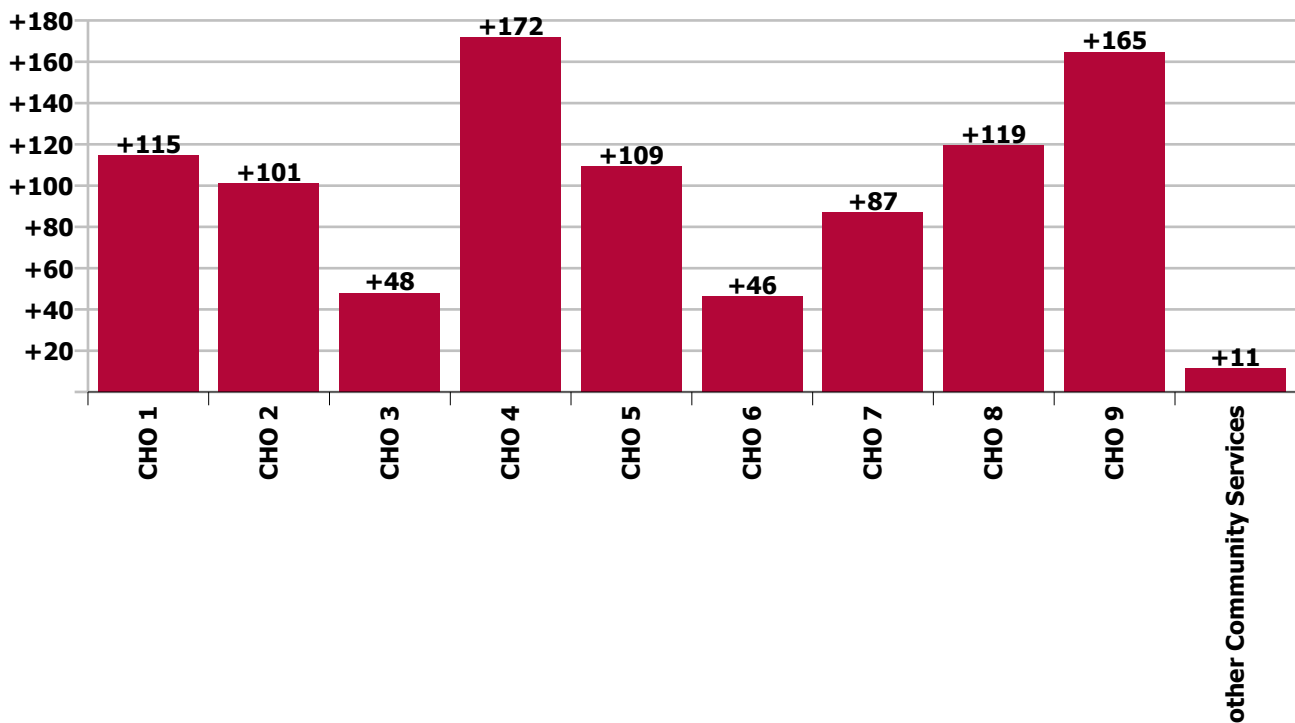
Staff Group change since: Dec 2019



CHO change since: Nov 2020



CHO change since: Dec 2019



Longitudinal Employment Levels by Grade Group - Oct 2013 to Dec 2020

Dec 2020 (Oct 2013 figure: 10,789)	WTE Dec 2020	WTE change since Oct 13	WTE change since Dec 15	WTE change since Dec 16	WTE change since Dec 17	WTE change since Dec 18	WTE change since Dec 19	% change since Oct 13	% change since Dec 15	% change since Dec 16	% change since Dec 17	% change since Dec 18	% change since Dec 19
Overall	11,572	+783	+1,262	+1,126	+1,054	+642	+973	+7.3%	+12.2%	+10.8%	+10.0%	+5.9%	+9.2%
Consultant Anaesthesia		-0						-100.0%	-100.0%	-100.0%	-100.0%	-100.0%	-100.0%
Consultant Dentistry	10	+0	-0	-0	-1	-1	-1	+0.9%	-3.8%	-3.8%	-12.1%	-12.1%	-8.4%
Consultant Medicine	20	+5	+4	+2	+0	+3	+3	+29.1%	+25.6%	+11.8%	+2.3%	+19.4%	+14.2%
Consultant, Other		-1	-1	-1				-100.0%	-100.0%	-100.0%	-100.0%	-100.0%	-100.0%
Consultant Paediatrics	2	+1	+1	+1				+50.0%	+50.0%	+50.0%			
Consultant Psychiatry	8	+1	-1	+1	-1	+2	+0	+20.0%	-6.0%	+20.0%	-10.9%	+31.3%	+0.4%
Consultant Radiology	1												
Consultant Surgery	1	-6	-4	-4	-4	-4	-3	-90.5%	-88.0%	-88.1%	-87.4%	-86.7%	-85.2%
Consultants	42	-0	-2	-2	-6		-2	-0.9%	-3.9%	-4.1%	-12.8%		-4.2%
Registrar	390	+62	+52	+60	+47	+29	+8	+19.1%	+15.5%	+18.2%	+13.8%	+8.1%	+2.1%
Senior Registrar	2	-3	-2	-2	-2	-2	-1	-57.5%	-46.8%	-47.2%	-47.2%	-51.0%	-29.1%
Specialist Registrar	11	+0	+2	+3	+2	+2	+1	+3.9%	+27.0%	+43.6%	+17.0%	+16.8%	+13.3%
Registrars	403	+60	+53	+62	+47	+29	+9	+17.5%	+15.1%	+18.1%	+13.2%	+7.7%	+2.2%
Senior House Officer	42	+9	-6	+2	+12	+5	+5	+27.5%	-12.1%	+4.1%	+40.8%	+12.8%	+12.2%
SHO/ Interns	42	+9	-6	+2	+12	+5	+5	+27.5%	-12.1%	+4.1%	+40.8%	+12.8%	+12.2%
Dentists	302	-8	+1	-2	-0	-3	+1	-2.5%	+0.4%	-0.7%	-0.1%	-1.1%	+0.2%
Other Medical	217	-5	-4	+1	-17	-20	-1	-2.1%	-1.9%	+0.4%	-7.3%	-8.6%	-0.4%
Medical/ Dental, other	519	-12	-3	-1	-17	-24	-0	-2.3%	-0.6%	-0.2%	-3.2%	-4.4%	-0.1%
Medical & Dental	1,006	+56	+43	+61	+36	+10	+11	+5.9%	+4.4%	+6.4%	+3.7%	+1.0%	+1.1%
Clinical Nurse/ Midwife Manager	192	+54	+42	+43	+33	+22	+25	+39.4%	+28.1%	+28.9%	+20.8%	+12.7%	+14.7%
Director Nursing/Midwifery, Assistant	172	+52	+34	+19	+32	+21	+18	+43.2%	+24.9%	+12.7%	+23.2%	+14.2%	+11.4%
Director of Nursing/Midwifery	40	+20	+6	+7	+7	+5	+3	+98.1%	+16.6%	+22.3%	+20.2%	+12.6%	+7.6%
Nurse/ Midwife Manager	404	+126	+82	+70	+72	+48	+45	+45.4%	+25.5%	+20.9%	+21.7%	+13.3%	+12.5%
Advanced Nurse/ Midwife Practitioner	13	+11	+11	+10	+11	+11	+11	+563.5%	+563.5%	+375.6%	+479.5%	+422.4%	+422.4%
Clinical Nurse/ Midwife Specialist	171	+76	+58	+53	+31	+28	+31	+80.1%	+51.4%	+45.3%	+22.3%	+19.2%	+21.9%
Nurse/ Midwife Specialist & AN/MP	184	+87	+69	+64	+42	+38	+41	+90.1%	+60.3%	+52.9%	+29.7%	+26.2%	+29.0%
Staff Midwives	6	+5	+4	+3	+0	-1	-3	+587.5%	+175.0%	+97.8%	+4.6%	-15.3%	-32.3%

Dec 2020 (Oct 2013 figure: 10,789)	WTE Dec 2020	WTE change since Oct 13	WTE change since Dec 15	WTE change since Dec 16	WTE change since Dec 17	WTE change since Dec 18	WTE change since Dec 19	% change since Oct 13	% change since Dec 15	% change since Dec 16	% change since Dec 17	% change since Dec 18	% change since Dec 19
Overall	11,572	+783	+1,262	+1,126	+1,054	+642	+973	+7.3%	+12.2%	+10.8%	+10.0%	+5.9%	+9.2%
Staff Nurse [Psychiatric]	14	+10	+9	+8	-1	+5	+5	+299.4%	+208.6%	+156.2%	-4.2%	+63.0%	+59.6%
Staff Nurses [General/ Children's]	908	+234	+151	+99	+70	+43	+63	+34.7%	+20.0%	+12.2%	+8.4%	+4.9%	+7.4%
Staff Nurse/ Staff Midwife	927	+249	+164	+110	+70	+47	+65	+36.6%	+21.4%	+13.4%	+8.2%	+5.3%	+7.5%
Public Health Nurse	1,533	+73	+62	+61	+46	+18		+5.0%	+4.2%	+4.1%	+3.1%	+1.2%	
Public Health Nurse, Senior (Immunisation)		-1	-1	-1	-1	-1		-100.0%	-100.0%	-100.0%	-100.0%	-100.0%	
Public Health Nurse	1,533	+72	+61	+60	+45	+17	+20	+4.9%	+4.1%	+4.1%	+3.0%	+1.2%	+1.3%
Public Health Nurse	1,533	+72	+61	+60	+45	+17	+20	+4.9%	+4.1%	+4.1%	+3.0%	+1.2%	+1.3%
Post-registration Nurse/ Midwife Student	106	+87	-5	-6	-23	+13	+10	+452.1%	-4.4%	-5.2%	-17.8%	+14.2%	+10.9%
Nursing/ Midwifery Student	106	+87	-5	-6	-23	+13	+10	+452.1%	-4.4%	-5.2%	-17.8%	+14.2%	+10.9%
Nursing Education/Clinical	7	+4	+3	+3	+3	+4	+3	+170.3%	+63.8%	+90.0%	+90.0%	+121.7%	+75.0%
Other Nursing/ Midwifery		-2	-2	-2	-0	-1		-100.0%	-100.0%	-100.0%	-100.0%	-100.0%	-100.0%
Nursing/ Midwifery other	7	+2	+1	+1	+3	+3	+3	+49.1%	+9.7%	+20.9%	+68.4%	+66.3%	+75.0%
Nursing & Midwifery	3,161	+623	+372	+299	+209	+166	+185	+24.6%	+13.3%	+10.4%	+7.1%	+5.5%	+6.2%
Dietitians	125	+65	+37	+35	+20	+8	+15	+110.1%	+41.5%	+38.5%	+19.2%	+6.7%	+14.2%
Occupational Therapists	543	+82	+39	+47	+27	+3	+28	+17.8%	+7.8%	+9.6%	+5.2%	+0.5%	+5.5%
Orthoptists	18	+12	+10	+12	+11	+8	+4	+210.5%	+145.6%	+199.3%	+174.9%	+77.0%	+32.2%
Physiotherapists	561	+83	+20	+17	-2	-2	+18	+17.4%	+3.7%	+3.2%	-0.3%	-0.4%	+3.4%
Podiatrists & Chiropodists	29	+10	+14	+10	+7	+6	+5	+53.6%	+94.8%	+53.0%	+32.0%	+25.4%	+20.0%
Speech & Language Therapists	516	+94	+64	+14	-30	-33	-10	+22.4%	+14.3%	+2.7%	-5.5%	-5.9%	-1.9%
Therapy Professions	1,792	+347	+185	+135	+34	-10	+61	+24.0%	+11.5%	+8.1%	+1.9%	-0.6%	+3.5%
Audiology	52	+31	+24	+23	+23	+4	+8	+146.0%	+86.1%	+79.8%	+75.6%	+8.8%	+19.2%
Biochemists	8	+1	+1	+0	+0	-0	+0	+23.8%	+14.8%	+1.8%	+1.8%	-3.0%	+1.7%
Clinical Engineering	8	+7	+7	+5	+6	+1		+700.0%	+700.0%	+166.7%	+300.0%	+14.3%	
Medical Laboratory	45	-37	-11	-1	-1	-2	+3	-45.1%	-20.3%	-1.2%	-2.4%	-4.2%	+6.9%
Phlebotomists	1	+1	+1	+1	+1	+1	+1	+74.3%	+183.7%	+87.7%	+93.7%	+454.5%	+454.5%
Physicists	2	+0	-1	-1	+0			+11.1%	-33.3%	-33.3%	+12.4%		
Radiographers	4	-1	-1	-1	-2	-1	-0	-23.3%	-19.1%	-19.1%	-27.2%	-20.4%	-1.6%
Health Science/ Diagnostics	121	+2	+20	+26	+27	+3	+12	+1.6%	+19.3%	+27.9%	+28.4%	+2.5%	+11.4%
Social Care	33	-66	-2	-2	-0	-1	-3	-66.8%	-5.6%	-6.8%	-1.1%	-4.2%	-7.8%

Dec 2020 (Oct 2013 figure: 10,789)	WTE Dec 2020	WTE change since Oct 13	WTE change since Dec 15	WTE change since Dec 16	WTE change since Dec 17	WTE change since Dec 18	WTE change since Dec 19	% change since Oct 13	% change since Dec 15	% change since Dec 16	% change since Dec 17	% change since Dec 18	% change since Dec 19
Overall	11,572	+783	+1,262	+1,126	+1,054	+642	+973	+7.3%	+12.2%	+10.8%	+10.0%	+5.9%	+9.2%
Social Workers	151	+10	+11	+1	-2	-1	+12	+6.8%	+7.9%	+0.5%	-1.4%	-0.8%	+8.6%
Psychologists	300	+83	+7	+16	+16	+2	-1	+38.3%	+2.4%	+5.6%	+5.7%	+0.8%	-0.3%
Pharmacy	63	+4	-2	+1	-0	+4	+5	+7.3%	-3.2%	+1.1%	-0.0%	+7.5%	+9.0%
Counsellor Therapists	112	-1	+15	-3	-9	-4	-3	-1.0%	+16.0%	-2.6%	-7.8%	-3.4%	-2.6%
Dental Hygienists	61	+7	+7	+6	+7	+4	+4	+12.2%	+12.9%	+11.4%	+12.6%	+6.7%	+6.7%
Environmental Health Officers							-1	-100.0%	-100.0%	-100.0%	-100.0%	-100.0%	-100.0%
Other Health & Social Care	6	-4	-2	-1	-2	-3	-1	-38.6%	-21.8%	-14.7%	-22.5%	-29.1%	-16.2%
Play Therapists/ Specialists	2	+0	-0	+0	-0	-0	-0	+7.0%	-10.8%	+12.0%	-14.7%	-14.7%	-7.4%
H&SC, Other	182	+2	+20	+2	-5	-3	-1	+0.9%	+12.6%	+1.3%	-2.6%	-1.7%	-0.6%
Health & Social Care Professionals	2,641	+382	+239	+179	+69	-6	+86	+16.9%	+10.0%	+7.3%	+2.7%	-0.2%	+3.4%
Executive Management	74	+49	+37	+9	+3	+0	+4	+192.6%	+101.5%	+14.1%	+4.5%	+0.4%	+5.1%
Senior Management (VIII & GM)	224	+59	+30	+31	+3	-11	-10	+35.9%	+15.3%	+15.8%	+1.4%	-4.7%	-4.5%
Management (VIII & above)	299	+108	+67	+40	+6	-11	-7	+56.7%	+29.1%	+15.3%	+2.2%	-3.5%	-2.2%
Middle Management (V-VII)	684	+188	+228	+194	+140	+59	+67	+38.0%	+50.0%	+39.7%	+25.8%	+9.4%	+10.9%
Other Administrative	1	+0	+0	+0	+0	-1	-1	+94.0%	+94.0%	+94.0%	+94.0%	-51.5%	-51.5%
Administrative/ Supervisory (V to VII)	685	+189	+228	+195	+141	+58	+66	+38.1%	+50.0%	+39.7%	+25.8%	+9.2%	+10.7%
General Administrative (III & IV)	1,838	-44	+64	+65	+39	+9	+91	-2.3%	+3.6%	+3.7%	+2.2%	+0.5%	+5.2%
Clerical (III & IV)	1,838	-44	+64	+65	+39	+9	+91	-2.3%	+3.6%	+3.7%	+2.2%	+0.5%	+5.2%
Management & Administrative	2,821	+253	+359	+299	+186	+55	+150	+9.9%	+14.6%	+11.9%	+7.1%	+2.0%	+5.6%
Catering	22	+7	-1	+0	-3	-2	-0	+43.2%	-2.9%	+0.5%	-13.4%	-6.7%	-2.0%
Household Services	137	+19	-14	-10	-4	-10	+3	+15.7%	-9.4%	-6.9%	-2.6%	-6.8%	+2.1%
Other Labs & Associated	5	+1	+1	+3	+0	+0	+2	+29.5%	+30.5%	+150.0%	+2.9%	+5.5%	+60.8%
Other Support	113	-9	-6	-11	-20	-16	+0	-7.6%	-5.3%	-8.7%	-14.7%	-12.5%	+0.4%
Portering	74	-20	-14	-12	-8	-5	-0	-21.1%	-15.8%	-13.5%	-10.0%	-6.6%	-0.1%
Support	351	-3	-34	-29	-35	-33	+5	-0.8%	-8.8%	-7.7%	-9.0%	-8.6%	+1.4%
Maintenance	55	-4	-10	-2	-1	-2	-3	-6.5%	-14.8%	-3.5%	-0.9%	-3.6%	-5.3%
Technical Services	1		+1			+0			-100.0%			+11.1%	
Maintenance/ Technical	56	-4	-9	-2	-1	-2	-3	-6.4%	-13.2%	-3.5%	-0.9%	-3.4%	-5.2%

Dec 2020 (Oct 2013 figure: 10,789)	WTE Dec 2020	WTE change since Oct 13	WTE change since Dec 15	WTE change since Dec 16	WTE change since Dec 17	WTE change since Dec 18	WTE change since Dec 19	% change since Oct 13	% change since Dec 15	% change since Dec 16	% change since Dec 17	% change since Dec 18	% change since Dec 19
Overall	11,572	+783	+1,262	+1,126	+1,054	+642	+973	+7.3%	+12.2%	+10.8%	+10.0%	+5.9%	+9.2%
General Support	407	-7	-43	-31	-35	-35	+2	-1.6%	-9.5%	-7.2%	-7.9%	-7.9%	+0.4%
HCA, Nurse's Aide, etc.	675	+511	+505	+505	+499	+476	+490	+312.5%	+297.1%	+297.3%	+283.9%	+239.7%	+265.6%
Health & Social Care Assistants	105	+84	+87	+85	+82	-20	+35	+397.8%	+493.8%	+435.2%	+353.6%	-16.3%	+51.2%
Health Care Assistants	779	+595	+592	+590	+581	+456	+526	+322.2%	+315.6%	+311.5%	+292.0%	+140.8%	+207.1%
Home Help	18	-1,073	-279	-265	-4	-1	-0	-98.3%	-93.8%	-93.5%	-17.7%	-4.1%	-0.1%
Community Welfare Officers	1	-11	-4	-4	-3	-2	-1	-92.5%	-82.2%	-82.2%	-77.1%	-69.2%	-45.7%
Other Care Grades	737	-34	-16	-1	+15	-1	+14	-4.4%	-2.1%	-0.2%	+2.1%	-0.2%	+2.0%
Care, other	737	-45	-20	-5	+12	-3	+14	-5.7%	-2.6%	-0.7%	+1.7%	-0.5%	+1.9%
Ambulance Officers		-1						-100.0%	-100.0%	-100.0%	-100.0%	-100.0%	-100.0%
Pre-Hospital Care (Ambulance)		-1	-1					-100.0%	-100.0%	-100.0%	-100.0%	-100.0%	-100.0%
Ambulance Staff		-2	-1					-100.0%	-100.0%	-100.0%	-100.0%	-100.0%	-100.0%
Patient & Client Care	1,535	-524	+292	+320	+589	+451	+539	-25.5%	+23.5%	+26.3%	+62.2%	+41.7%	+54.1%

Source: Health Service Personnel Census

Longitudinal Employment Levels by Grade Group - Mar 2009 to Dec 2020

Dec 2020 (Oct 2013 figure: 10,789)	WTE Dec 2020	WTE change since Oct 13	WTE change since Dec 17	WTE change since Dec 18	WTE change since Dec 19	% change since Oct 13	% change since Dec 17	% change since Dec 18	% change since Dec 19
Overall	11,572	+783	+1,054	+642	+973	+7.3%	+10.0%	+5.9%	+9.2%
Consultant Anaesthesia		-0				-100.0%	-100.0%	-100.0%	-100.0%
Consultant Dentistry	10	+0	-1	-1	-1	+0.9%	-12.1%	-12.1%	-8.4%
Consultant Medicine	20	+5	+0	+3	+3	+29.1%	+2.3%	+19.4%	+14.2%
Consultant, Other		-1				-100.0%	-100.0%	-100.0%	-100.0%
Consultant Paediatrics	2	+1				+50.0%			
Consultant Psychiatry	8	+1	-1	+2	+0	+20.0%	-10.9%	+31.3%	+0.4%
Consultant Radiology	1								
Consultant Surgery	1	-6	-4	-4	-3	-90.5%	-87.4%	-86.7%	-85.2%
Consultants	42	-0	-6		-2	-0.9%	-12.8%		-4.2%
Registrar	390	+62	+47	+29	+8	+19.1%	+13.8%	+8.1%	+2.1%
Senior Registrar	2	-3	-2	-2	-1	-57.5%	-47.2%	-51.0%	-29.1%
Specialist Registrar	11	+0	+2	+2	+1	+3.9%	+17.0%	+16.8%	+13.3%
Registrars	403	+60	+47	+29	+9	+17.5%	+13.2%	+7.7%	+2.2%
Senior House Officer	42	+9	+12	+5	+5	+27.5%	+40.8%	+12.8%	+12.2%
SHO/ Interns	42	+9	+12	+5	+5	+27.5%	+40.8%	+12.8%	+12.2%
Dentists	302	-8	-0	-3	+1	-2.5%	-0.1%	-1.1%	+0.2%
Other Medical	217	-5	-17	-20	-1	-2.1%	-7.3%	-8.6%	-0.4%
Medical/ Dental, other	519	-12	-17	-24	-0	-2.3%	-3.2%	-4.4%	-0.1%
Medical & Dental	1,006	+56	+36	+10	+11	+5.9%	+3.7%	+1.0%	+1.1%
Clinical Nurse/ Midwife Manager	192	+54	+33	+22	+25	+39.4%	+20.8%	+12.7%	+14.7%
Director Nursing/Midwifery, Assistant	172	+52	+32	+21	+18	+43.2%	+23.2%	+14.2%	+11.4%
Director of Nursing/Midwifery	40	+20	+7	+5	+3	+98.1%	+20.2%	+12.6%	+7.6%
Nurse/ Midwife Manager	404	+126	+72	+48	+45	+45.4%	+21.7%	+13.3%	+12.5%
Advanced Nurse/ Midwife Practitioner	13	+11	+11	+11	+11	+563.5%	+479.5%	+422.4%	+422.4%
Clinical Nurse/ Midwife Specialist	171	+76	+31	+28	+31	+80.1%	+22.3%	+19.2%	+21.9%
Nurse/ Midwife Specialist & AN/MP	184	+87	+42	+38	+41	+90.1%	+29.7%	+26.2%	+29.0%
Staff Midwives	6	+5	+0	-1	-3	+587.5%	+4.6%	-15.3%	-32.3%
Staff Nurse [Psychiatric]	14	+10	-1	+5	+5	+299.4%	-4.2%	+63.0%	+59.6%
Staff Nurses [General/ Children's]	908	+234	+70	+43	+63	+34.7%	+8.4%	+4.9%	+7.4%
Staff Nurse/ Staff Midwife	927	+249	+70	+47	+65	+36.6%	+8.2%	+5.3%	+7.5%
Public Health Nurse	1,533	+72	+45	+17	+20	+4.9%	+3.0%	+1.2%	+1.3%
Public Health Nurse	1,533	+72	+45	+17	+20	+4.9%	+3.0%	+1.2%	+1.3%
Post-registration Nurse/ Midwife Student	106	+87	-23	+13	+10	+452.1%	-17.8%	+14.2%	+10.9%
Nursing/ Midwifery Student	106	+87	-23	+13	+10	+452.1%	-17.8%	+14.2%	+10.9%
Nursing Education/Clinical	7	+4	+3	+4	+3	+170.3%	+90.0%	+121.7%	+75.0%
Other Nursing/ Midwifery		-2	-0	-1		-100.0%	-100.0%	-100.0%	-100.0%
Nursing/ Midwifery other	7	+2	+3	+3	+3	+49.1%	+68.4%	+66.3%	+75.0%
Nursing & Midwifery	3,161	+623	+209	+166	+185	+24.6%	+7.1%	+5.5%	+6.2%
Dietitians	125	+65	+20	+8	+15	+110.1%	+19.2%	+6.7%	+14.2%
Occupational Therapists	543	+82	+27	+3	+28	+17.8%	+5.2%	+0.5%	+5.5%
Orthoptists	18	+12	+11	+8	+4	+210.5%	+174.9%	+77.0%	+32.2%
Physiotherapists	561	+83	-2	-2	+18	+17.4%	-0.3%	-0.4%	+3.4%
Podiatrists & Chiropodists	30	+10	+7	+6	+5	+53.6%	+32.0%	+25.4%	+20.0%
Speech & Language Therapists	516	+94	-30	-33	-10	+22.4%	-5.5%	-5.9%	-1.9%
Therapy Professions	1,792	+347	+34	-10	+61	+24.0%	+1.9%	-0.6%	+3.5%
Audiology	52	+31	+23	+4	+8	+146.0%	+75.6%	+8.8%	+19.2%
Biochemists	8	+1	+0	-0	+0	+23.8%	+1.8%	-3.0%	+1.7%
Clinical Engineering	8	+7	+6	+1		+700.0%	+300.0%	+14.3%	
Medical Laboratory	45	-37	-1	-2	+3	-45.1%	-2.4%	-4.2%	+6.9%
Phlebotomists	1	+1	+1	+1	+1	+74.3%	+93.7%	+454.5%	+454.5%
Physicists	2	+0	+0			+11.1%	+12.4%		
Radiographers	4	-1	-2	-1	-0	-23.3%	-27.2%	-20.4%	-1.6%
Health Science/ Diagnostics	121	+2	+27	+3	+12	+1.6%	+28.4%	+2.5%	+11.4%
Social Care	33	-66	-0	-1	-3	-66.8%	-1.1%	-4.2%	-7.8%
Social Workers	151	+10	-2	-1	+12	+6.8%	-1.4%	-0.8%	+8.6%
Psychologists	300	+83	+16	+2	-1	+38.3%	+5.7%	+0.8%	-0.3%
Pharmacy	63	+4	-0	+4	+5	+7.3%	-0.0%	+7.5%	+9.0%
Counsellor Therapists	112	-1	-9	-4	-3	-1.0%	-7.8%	-3.4%	-2.6%
Dental Hygienists	61	+7	+7	+4	+4	+12.2%	+12.6%	+6.7%	+6.7%
Environmental Health Officers					-1	-100.0%	-100.0%		-100.0%
Other Health & Social Care	6	-4	-2	-3	-1	-38.6%	-22.5%	-29.1%	-16.2%
Play Therapists/ Specialists	2	+0	-0	-0	-0	+7.0%	-14.7%	-14.7%	-7.4%
H&SC, Other	182	+2	-5	-3	-1	+0.9%	-2.6%	-1.7%	-0.6%

Dec 2020 (Oct 2013 figure: 10,789)	WTE Dec 2020	WTE change since Oct 13	WTE change since Dec 17	WTE change since Dec 18	WTE change since Dec 19	% change since Oct 13	% change since Dec 17	% change since Dec 18	% change since Dec 19
Overall	11,572	+783	+1,054	+642	+973	+7.3%	+10.0%	+5.9%	+9.2%
Health & Social Care Professionals	2,641	+382	+69	-6	+86	+16.9%	+2.7%	-0.2%	+3.4%
Executive Management	74	+49	+3	+0	+4	+192.6%	+4.5%	+0.4%	+5.1%
Senior Management (VIII & GM)	224	+59	+3	-11	-10	+35.9%	+1.4%	-4.7%	-4.5%
Management (VIII & above)	299	+108	+6	-11	-7	+56.7%	+2.2%	-3.5%	-2.2%
Middle Management (V-VII)	684	+188	+140	+59	+67	+38.0%	+25.8%	+9.4%	+10.9%
Other Administrative	1	+0	+0	-1	-1	+94.0%	+94.0%	-51.5%	-51.5%
Administrative/ Supervisory (V to VII)	685	+189	+141	+58	+66	+38.1%	+25.8%	+9.2%	+10.7%
General Administrative (III & IV)	1,838	-44	+39	+9	+91	-2.3%	+2.2%	+0.5%	+5.2%
Clerical (III & IV)	1,838	-44	+39	+9	+91	-2.3%	+2.2%	+0.5%	+5.2%
Management & Administrative	2,821	+253	+186	+55	+150	+9.9%	+7.1%	+2.0%	+5.6%
Support	351	-3	-35	-33	+5	-0.8%	-9.0%	-8.6%	+1.4%
Maintenance	55	-4	-1	-2	-3	-6.5%	-0.9%	-3.6%	-5.3%
Technical Services	1			+0				+11.1%	
Maintenance/ Technical	56	-4	-1	-2	-3	-6.4%	-0.9%	-3.4%	-5.2%
General Support	407	-7	-35	-35	+2	-1.6%	-7.9%	-7.9%	+0.4%
HCA, Nurse's Aide, etc.	675	+511	+499	+476	+490	+312.5%	+283.9%	+239.7%	+265.6%
Health & Social Care Assistants	105	+84	+82	-20	+35	+397.8%	+353.6%	-16.3%	+51.2%
Health Care Assistants	779	+595	+581	+456	+526	+322.2%	+292.0%	+140.8%	+207.1%
Home Help	18	-1,073	-4	-1	-0	-98.3%	-17.7%	-4.1%	-0.1%
Community Welfare Officers	1	-11	-3	-2	-1	-92.5%	-77.1%	-69.2%	-45.7%
Other Care Grades	737	-34	+15	-1	+14	-4.4%	+2.1%	-0.2%	+2.0%
Care, other	737	-45	+12	-3	+14	-5.7%	+1.7%	-0.5%	+1.9%
Ambulance Officers		-1				-100.0%	-100.0%	-100.0%	-100.0%
Pre-Hospital Care (Ambulance)		-1				-100.0%	-100.0%	-100.0%	-100.0%
Ambulance Staff		-2				-100.0%	-100.0%	-100.0%	-100.0%
Patient & Client Care	1,535	-524	+589	+451	+539	-25.5%	+62.2%	+41.7%	+54.1%

Source: Health Service Personnel Census