

Primary Care Service Employment Report: January 2021

Employment by Staff Group

Jan 2021 (Dec 2019 figure: 10,599)	WTE Dec 2020	WTE Jan 2021	WTE change since Dec 20	% change since Dec 20	WTE change since Dec 19	WTE change since Jan 20
Overall	11,572	11,731	+159	+1.4%	+1,132	+1,164
Consultants	42	42	-0	-0.5%	-2	-1
Registrars	403	403			+9	+13
SHO/ Interns	42	44	+2	+4.5%	+6	+3
Medical/ Dental, other	519	512	-7	-1.4%	-8	+2
Medical & Dental	1,006	1,001	-6	-0.6%	+5	+17
Nurse/ Midwife Manager	404	411	+6	+1.6%	+52	+43
Nurse/ Midwife Specialist & AN/MP	184	185	+0	+0.2%	+42	+38
Staff Nurse/ Staff Midwife	927	934	+7	+0.8%	+72	+69
Public Health Nurse	1,533	1,520	-13	-0.8%	+7	+17
<i>Post-registration Nurse/ Midwife Student</i>	<i>106</i>	<i>108</i>	<i>+2</i>	<i>+1.5%</i>	<i>+15</i>	<i>+11</i>
Nursing/ Midwifery Student	106	108	+2	+1.5%	+12	+11
Nursing/ Midwifery other	7	7	+0	+0.6%	+3	+2
Nursing & Midwifery	3,161	3,164	+3	+0.1%	+188	+180
Therapy Professions	1,792	1,804	+12	+0.7%	+73	+72
Health Science/ Diagnostics	121	117	-4	-3.2%	+9	+9
Social Care	33	33	+0	+1.0%	-2	-3
Social Workers	151	152	+1	+0.5%	+13	+12
Psychologists	300	297	-3	-1.1%	-4	+1
Pharmacy	63	59	-4	-6.5%	+1	+1
H&SC, Other	182	183	+1	+0.6%	+0	+1
Health & Social Care Professionals	2,641	2,644	+3	+0.1%	+89	+92
Management (VIII & above)	299	302	+3	+1.0%	-4	+3
Administrative/ Supervisory (V to VII)	685	698	+13	+1.8%	+79	+80
Clerical (III & IV)	1,838	1,864	+26	+1.4%	+117	+134
Management & Administrative	2,821	2,863	+41	+1.5%	+192	+217
Support	351	351	-0	-0.1%	+4	+3
Maintenance/ Technical	56	57	+1	+2.2%	-2	-1
General Support	407	408	+1	+0.2%	+3	+2
Health Care Assistants	779	894	+115	+14.8%	+641	+643
Home Help	18	18	-1	-4.6%	-1	-1
Care, other	737	739	+2	+0.3%	+16	+16
Patient & Client Care	1,535	1,651	+116	+7.6%	+655	+658

Primary Care Services Employment by Administration (HSE / S38): January 2021

Jan 2021 (Dec 2019 figure: 10,599)	WTE Dec 2020	WTE Jan 2021	WTE change since Dec 20	% change since Dec 20	WTE change since Dec 19	WTE change since Jan 20
Total	11,572	11,731	+159	+1.4%	+1,132	+1,164
HSE	10,872	11,035	+163	+1.5%	+1,112	+1,144
Section 38 Voluntary Agencies	700	696	-4	-0.6%	+20	+21

Employment by Staff Group

Jan 2021 (Dec 2019 figure: 9,923)	WTE Dec 2020	WTE Jan 2021	WTE change since Dec 20	% change since Dec 20	WTE change since Dec 19	WTE change since Jan 20
Health Service Executive	10,872	11,035	+163	+1.5%	+1,112	+1,144
Consultants	30	29	-1	-2.3%	-3	-4
Registrars	390	390			+6	+11
SHO/ Interns	22	24	+2	+8.9%	+4	+1
Medical/ Dental, other	505	499	-6	-1.2%	-6	+3
Medical & Dental	947	942	-5	-0.5%	+1	+11
Nurse/ Midwife Manager	356	363	+7	+1.9%	+52	+43
Nurse/ Midwife Specialist & AN/MP	147	148	+1	+0.5%	+34	+31
Staff Nurse/ Staff Midwife	819	825	+6	+0.7%	+73	+70
Public Health Nurse	1,533	1,520	-13	-0.8%	+7	+17
Post-registration Nurse/ Midwife Student	106	108	+2	+1.5%	+15	+11
Nursing/ Midwifery Student	106	108	+2	+1.5%	+12	+11
Nursing/ Midwifery other	5	5	+0	+0.9%	+3	+2
Nursing & Midwifery	2,965	2,967	+2	+0.1%	+181	+173
Therapy Professions	1,756	1,770	+13	+0.8%	+76	+75
Health Science/ Diagnostics	116	112	-4	-3.4%	+8	+8
Social Care	33	33	+0	+1.0%	-2	-3
Social Workers	141	142	+1	+0.5%	+13	+13
Psychologists	299	296	-3	-1.2%	-4	+1
Pharmacy	53	49	-4	-7.8%	+1	+2
H&SC, Other	178	179	+1	+0.7%	-2	-1
Health & Social Care Professionals	2,577	2,581	+4	+0.2%	+89	+93
Management (VIII & above)	290	293	+3	+1.0%	-4	+2
Administrative/ Supervisory (V to VII)	653	665	+12	+1.8%	+80	+82
Clerical (III & IV)	1,769	1,797	+27	+1.5%	+114	+130
Management & Administrative	2,713	2,755	+42	+1.5%	+190	+214
Support	255	255	-0	-0.1%	+3	+2
Maintenance/ Technical	46	47	+1	+2.7%	-3	-2
General Support	302	302	+1	+0.3%	+1	-0
Health Care Assistants	671	788	+117	+17.4%	+637	+640
Home Help	18	18	-1	-4.6%	-1	-1
Care, other	679	682	+3	+0.4%	+14	+14
Patient & Client Care	1,368	1,487	+119	+8.7%	+650	+653

Employment by Staff Group

Jan 2021 (Dec 2019 figure: 676)	WTE Dec 2020	WTE Jan 2021	WTE change since Dec 20	% change since Dec 20	WTE change since Dec 19	WTE change since Jan 20
Section 38 Voluntary Agencies	700	696	-4	-0.6%	+20	+21
Consultants	12	13	+0	+3.8%	+1	+2
Registrars	13	13			+2	+2
SHO/ Interns	20	20	-0	-0.4%	+2	+2
Medical/ Dental, other	14	13	-1	-9.8%	-1	-1
Medical & Dental	60	59	-1	-1.7%	+4	+6
Nurse/ Midwife Manager	49	48	-0	-0.8%	-1	+1
Nurse/ Midwife Specialist & AN/MP	37	37	-0	-0.9%	+8	+7
Staff Nurse/ Staff Midwife	108	109	+1	+1.3%	-1	-1
Nursing/ Midwifery other	2	2				
Nursing & Midwifery	196	196	+1	+0.3%	+7	+7
Therapy Professions	36	34	-1	-3.5%	-3	-3
Health Science/ Diagnostics	5	5	+0	+0.6%	+1	+1
Social Workers	10	10	+0	+0.7%	-1	-1
Psychologists	1	1	+0	+15.0%	+0	+0
Pharmacy	9	10	+0	+1.2%	-0	-0
H&SC, Other	3	3	-0	-0.6%	+2	+2
Health & Social Care Professionals	64	63	-1	-1.5%	-1	-1
Management (VIII & above)	9	9				+1
Administrative/ Supervisory (V to VII)	32	33	+1	+3.3%	-1	-2
Clerical (III & IV)	68	67	-1	-1.8%	+3	+4
Management & Administrative	108	108	-0	-0.2%	+2	+3
Support	96	96	-0	-0.0%	+1	+1
Maintenance/ Technical	10	10			+1	+1
General Support	106	106	-0	-0.0%	+2	+2
Health Care Assistants	108	106	-2	-1.6%	+4	+3
Care, other	59	58	-1	-1.5%	+1	+2
Patient & Client Care	167	164	-3	-1.6%	+5	+4

Primary Care Services Employment by CHO: Jan 2021

Jan 2021 (Dec 2019 figure: 10,599)	WTE Dec 2020	WTE Jan 2021	WTE change since Dec 20	% change since Dec 20	WTE change since Dec 19	WTE change since Jan 20
Overall	11,572	11,731	+159	+1.4%	+1,132	+1,164
CHO 1	1,296	1,316	+20	+1.5%	+135	+137
CHO 2	1,235	1,250	+15	+1.2%	+116	+107
CHO 3	812	848	+37	+4.5%	+85	+86
CHO 4	1,517	1,539	+22	+1.4%	+193	+197
CHO 5	1,061	1,070	+9	+0.8%	+118	+125
CHO 6	811	827	+16	+2.0%	+62	+67
CHO 7	1,789	1,785	-4	-0.2%	+83	+97
CHO 8	1,506	1,533	+27	+1.8%	+147	+143
CHO 9	1,412	1,428	+16	+1.1%	+181	+192
other Community Services	134	135	+1	+0.9%	+13	+15

Primary Care Services Employment by CHO etc. Jan 2021

CHO 1

Jan 2021 (Dec 2019 figure: 1,182)	WTE Dec 2020	WTE Jan 2021	WTE change since Dec 20	% change since Dec 20	WTE change since Dec 19	WTE change since Jan 20
Overall	1,296	1,316	+20	+1.5%	+135	+137
Consultants	4	4	0		+1	+0
Registrars	42	41	-1	-2%	+1	+3
SHO/ Interns	1	1	0			
Medical/ Dental, other	45	46	+1	+2%	-2	+0
Medical & Dental	92	92	+0	+0.0%	-1	+4
Nurse/ Midwife Manager	39	37	-1	-3%	+1	-1
Nurse/ Midwife Specialist & AN/MP	26	26	+0	+1%	+6	+6
Staff Nurse/ Staff Midwife	96	95	-2	-2%	+9	+10
Public Health Nurse	153	151	-2	-1%	-5	-4
Nursing/ Midwifery Student	3	3	0		-4	-4
Nursing/ Midwifery other	1	1	0		-0	+0
Nursing & Midwifery	318	314	-4	-1.3%	+7	+6
Therapy Professions	230	236	+5	+2%	+9	+9
Health Science/ Diagnostics	5	5	+0	+2%	-0	-0
Social Workers	16	17	+1	+5%	+4	+4
Psychologists	31	30	-1	-5%	-5	-5
Pharmacy	2	2	0		+1	+1
H&SC, Other	7	7	-0	-1%	+0	-0
Health & Social Care Professionals	292	297	+5	+1.7%	+9	+9
Management (VIII & above)	30	30	-0	-1%	-2	-1
Administrative/ Supervisory (V to VII)	76	78	+2	+3%	+15	+11
Clerical (III & IV)	250	259	+10	+4%	+24	+25
Management & Administrative	356	367	+12	+3.3%	+36	+35
Support	77	79	+2	+2%	+7	+8
Maintenance/ Technical	7	7	+0	+0%	+1	+1
General Support	84	86	+2	+2.0%	+8	+9
Health Care Assistants	96	100	+4	+4%	+68	+68
Home Help	1	1	-0	-4%	+1	+1
Care, other	58	60	+2	+4%	+5	+5
Patient & Client Care	155	161	+6	+3.9%	+74	+74

CHO 2

Jan 2021 (Dec 2019 figure: 1,134)	WTE Dec 2020	WTE Jan 2021	WTE change since Dec 20	% change since Dec 20	WTE change since Dec 19	WTE change since Jan 20
Overall	1,235	1,250	+15	+1.2%	+116	+107
Consultants	1	1	-0	-6%	-0	
Registrars	47	50	+2	+5%	+10	+9
Senior House Officer	3	2	-1	-33%	+2	+1
SHO/ Interns	3	2	-1	-33%	+1	+1
Medical/ Dental, other	49	46	-3	-6%	+1	+1
Medical & Dental	101	99	-2	-1.6%	+11	+10
Nurse/ Midwife Manager	28	31	+3	+11%	+4	+3
Nurse/ Midwife Specialist & AN/MP	21	21	+0	+2%	+4	+4
Staff Nurse/ Staff Midwife	79	82	+3	+4%	+8	+5
Public Health Nurse	198	193	-4	-2%	+3	+1
Post-registration Nurse/ Midwife Student				-100%	-13	-4
Nursing/ Midwifery Student				-100%	-4	-4
Nursing & Midwifery	326	328	+3	+0.8%	+15	+9
Therapy Professions	248	248	+1	+0%	+22	+16
Health Science/ Diagnostics	34	34	-0	-1%	+2	+1
Social Care	9	9	-0	-0%	+0	
Social Workers	6	5	-0	-6%	-1	-1
Psychologists	27	26	-0	-1%	+2	+4
Pharmacy	1	1	+0	+49%	+0	+1
H&SC, Other	14	14	+0	+1%	+1	+0
Health & Social Care Professionals	339	339	+0	+0.1%	+26	+21
Management (VIII & above)	35	38	+3	+8%	+5	+5
Administrative/ Supervisory (V to VII)	73	76	+3	+5%	+14	+15
Clerical (III & IV)	229	229	+1	+0%	-9	-5
Management & Administrative	337	344	+7	+2.0%	+11	+16
Support	22	22	+0	+1%	+2	+0
Maintenance/ Technical	8	9	+1	+12%	-0	-0
General Support	30	31	+1	+4.3%	+1	+0
Health Care Assistants	57	64	+7	+13%	+50	+51
Care, other	46	44	-2	-4%	+1	-0
Patient & Client Care	103	108	+6	+5.5%	+51	+51

CHO 3

Jan 2021 (Dec 2019 figure: 764)	WTE Dec 2020	WTE Jan 2021	WTE change since Dec 20	% change since Dec 20	WTE change since Dec 19	WTE change since Jan 20
Overall	812	848	+37	+4.5%	+85	+86
Consultants	1	1	0		-1	-1
Registrars	25	26	+1	+4%	+2	+3
SHO/ Interns	1	1	-0	-1%	-5	-5
Medical/ Dental, other	52	52	+0	+0%	-0	+0
Medical & Dental	79	80	+1	+1.3%	-4	-2
Nurse/ Midwife Manager	23	22	-0	-2%	+4	+4
Nurse/ Midwife Specialist & AN/MP	3	3	-0	-2%	+1	+1
Staff Nurse/ Staff Midwife	56	56	+0	+0%	+0	-0
Public Health Nurse	126	127	+1	+1%	+0	+0
<i>Post-registration Nurse/ Midwife Student</i>	4	4	0			+4
Nursing/ Midwifery Student	4	4	0		+4	+4
Nursing & Midwifery	212	212	+1	+0.3%	+9	+9
Therapy Professions	84	86	+2	+2%	-0	-1
<i>Audiology</i>	6	5	-1	-16%	+1	+0
Health Science/ Diagnostics	6	5	-1	-16%	+0	+0
Social Care	1	1	0			
Social Workers	10	10	-0	-0%	-1	+0
Psychologists	15	14	-0	-2%	-1	+0
Pharmacy	1	2	+1	+91%	+1	+1
H&SC, Other	10	10	-0	-0%	-1	-1
Health & Social Care Professionals	126	128	+2	+1.3%	-2	-1
Management (VIII & above)	24	24	+1	+2%	+1	+0
Administrative/ Supervisory (V to VII)	63	65	+2	+3%	+11	+10
Clerical (III & IV)	150	157	+7	+5%	+1	+2
Management & Administrative	237	246	+10	+4.0%	+13	+12
Support	13	13	-0	-1%	-0	+1
Maintenance/ Technical	27	27	+0	+1%	-3	-2
General Support	40	40	+0	+0.2%	-3	-1
Health Care Assistants	67	90	+23	+34%	+69	+69
Home Help	1	1	0			
Care, other	50	50	+1	+1%	+1	+0
Patient & Client Care	117	141	+24	+20.1%	+70	+69

CHO 4

Jan 2021 (Dec 2019 figure: 1,346)	WTE Dec 2020	WTE Jan 2021	WTE change since Dec 20	% change since Dec 20	WTE change since Dec 19	WTE change since Jan 20
Overall	1,517	1,539	+22	+1.4%	+193	+197
Consultants	3	3	+0	+1%	+0	+0
Registrars	58	57	-1	-2%	+2	+2
SHO/ Interns	7	7	-0	-1%	+1	+1
Medical/ Dental, other	91	91	+0	+0%	+3	+3
Medical & Dental	159	158	-1	-0.6%	+6	+6
Nurse/ Midwife Manager	61	65	+4	+7%	+9	+4
Nurse/ Midwife Specialist & AN/MP	7	7	-1	-8%	+2	+1
Staff Nurse/ Staff Midwife	139	141	+2	+1%	+22	+26
Public Health Nurse	222	218	-4	-2%	+7	+8
<i>Post-registration Nurse/ Midwife Student</i>	15	15	+0	+0%	+1	-4
Nursing/ Midwifery Student	15	15	+0	+0%	-2	-4
Nursing & Midwifery	443	445	+2	+0.4%	+37	+35
Therapy Professions	237	239	+1	+0%	+17	+16
Health Science/ Diagnostics	12	11	-1	-8%	+0	+0
Social Care	5	5	0		-3	-3
Social Workers	28	28	-0	-1%	+4	+4
Psychologists	22	21	-1	-4%	+1	+0
Pharmacy	4	4	+0	+3%	+1	+1
H&SC, Other	41	42	+1	+2%	+1	+2
Health & Social Care Professionals	349	349	+0	+0.1%	+20	+20
Management (VIII & above)	35	34	-0	-1%	-2	-3
Administrative/ Supervisory (V to VII)	73	76	+4	+5%	+8	+10
Clerical (III & IV)	224	227	+4	+2%	+22	+23
Management & Administrative	331	338	+7	+2.1%	+28	+30
Support	18	18	-0	-1%	+2	+5
General Support	18	18	-0	-1.1%	+2	+5
Health Care Assistants	103	118	+15	+14%	+100	+101
Home Help	9	9	-0	-4%	-1	-1
Care, other	105	105	-1	-1%	-0	+2
Patient & Client Care	218	231	+14	+6.2%	+99	+101

CHO 5

Jan 2021 (Dec 2019 figure: 952)	WTE Dec 2020	WTE Jan 2021	WTE change since Dec 20	% change since Dec 20	WTE change since Dec 19	WTE change since Jan 20
Overall	1,061	1,070	+9	+0.8%	+118	+125
Consultants	1	1	0		-2	-2
Registrars	21	22	+1	+4%	+4	+3
SHO/ Interns	2	2	-0	-11%	-4	-4
Medical/ Dental, other	55	56	+1	+2%	+2	+2
Medical & Dental	79	80	+2	+2.3%	-1	-1
Nurse/ Midwife Manager	46	42	-4	-9%	+16	+14
Nurse/ Midwife Specialist & AN/MP	18	19	+1	+6%	+13	+12
Staff Nurse/ Staff Midwife	84	82	-2	-2%	+15	+16
Public Health Nurse	167	167	-0	-0%	+2	+5
<i>Post-registration Nurse/ Midwife Student</i>	3	4	+1	+20%	-3	-1
Nursing/ Midwifery Student	3	4	+1	+20%	-1	-1
<i>Nursing Education/Clinical</i>	1	1	+0	+6%	+1	+0
Nursing/ Midwifery other	1	1	+0	+6%	+0	+0
Nursing & Midwifery	320	316	-4	-1.3%	+46	+46
Therapy Professions	186	190	+4	+2%	+6	+8
Health Science/ Diagnostics	8	7	-1	-13%	+3	+3
Social Care	5	5	0		-0	-0
Social Workers	7	7	-0	-1%	-1	-1
Psychologists	38	37	-2	-4%	-7	-5
Pharmacy	1	1	0			
H&SC, Other	19	19	-0	-0%	+0	+1
Health & Social Care Professionals	264	265	+1	+0.4%	+1	+5
Management (VIII & above)	24	23	-1	-4%	-3	-1
Administrative/ Supervisory (V to VII)	59	57	-2	-3%	+5	+5
Clerical (III & IV)	161	156	-5	-3%	-8	-5
Management & Administrative	243	235	-7	-3.1%	-6	-1
Support	26	25	-2	-6%	-1	-3
General Support	26	25	-2	-6.5%	-1	-3
Health Care Assistants	70	87	+17	+25%	+79	+79
Home Help	8	7	-0	-6%	+0	-0
Care, other	52	54	+2	+4%	-1	-1
Patient & Client Care	130	149	+19	+14.8%	+79	+79

CHO 6

Jan 2021 (Dec 2019 figure: 765)	WTE Dec 2020	WTE Jan 2021	WTE change since Dec 20	% change since Dec 20	WTE change since Dec 19	WTE change since Jan 20
Overall	811	827	+16	+2.0%	+62	+67
Consultants	8	8	0		-1	+0
Registrars	24	24	-0	-1%	-3	-3
SHO/ Interns	7	7	0			
Medical/ Dental, other	41	43	+2	+5%	-3	-1
Medical & Dental	80	81	+2	+2.1%	-7	-4
Nurse/ Midwife Manager	22	23	+0	+1%	+0	+0
Nurse/ Midwife Specialist & AN/MP	4	4	+1	+14%	-2	-2
Staff Nurse/ Staff Midwife	55	56	+1	+1%	+4	+4
Public Health Nurse	112	112	+0	+0%	-4	-0
<i>Post-registration Nurse/ Midwife Student</i>	15	15	+0	+1%	+4	+2
Nursing/ Midwifery Student	15	15	+0	+1%	+2	+2
<i>Nursing Education/Clinical</i>	1	1	0		+1	+1
Nursing/ Midwifery other	1	1	0		+1	+1
Nursing & Midwifery	209	211	+2	+1.0%	+0	+6
Therapy Professions	110	113	+3	+2%	+9	+9
Health Science/ Diagnostics	20	20	-0	-2%	+1	+2
Social Care	3	3	+0	+9%	-1	-1
Social Workers	4	5	+0	+7%	-0	+0
Psychologists	20	20	-0	-1%	+1	+1
Pharmacy	1	0	-1	-75%	-1	-1
H&SC, Other	4	4	0		+0	+0
Health & Social Care Professionals	162	164	+2	+1.1%	+10	+11
Management (VIII & above)	30	31	+1	+2%	+1	+0
Administrative/ Supervisory (V to VII)	65	64	-1	-2%	-4	-3
Clerical (III & IV)	128	133	+5	+4%	+21	+19
Management & Administrative	223	227	+4	+2.0%	+18	+16
Support	26	26	-0	-0%	+2	-1
Maintenance/ Technical	2	2	0			
General Support	28	28	-0	-0.4%	+2	-1
Health Care Assistants	38	44	+6	+15%	+37	+36
Care, other	72	72	+0	+1%	+1	+3
Patient & Client Care	110	116	+6	+5.5%	+38	+39

CHO 7

Jan 2021 (Dec 2019 figure: 1,702)	WTE Dec 2020	WTE Jan 2021	WTE change since Dec 20	% change since Dec 20	WTE change since Dec 19	WTE change since Jan 20
Overall	1,789	1,785	-4	-0.2%	+83	+97
Consultants	13	13	+0	+4%	+2	+2
Registrars	44	46	+2	+5%	-0	+1
SHO/ Interns	9	9	-0	-0%	+3	+3
Medical/ Dental, other	77	69	-8	-10%	-6	-2
Medical & Dental	142	137	-5	-3.6%	-2	+4
Nurse/ Midwife Manager	86	84	-1	-1%	+4	+5
Nurse/ Midwife Specialist & AN/MP	56	54	-1	-2%	+9	+7
Staff Nurse/ Staff Midwife	199	200	+0	+0%	-5	-6
Public Health Nurse	177	173	-3	-2%	-2	-1
<i>Post-registration Nurse/ Midwife Student</i>	23	23	0		+16	+2
Nursing/ Midwifery Student	23	23	0		+2	+2
Nursing/ Midwifery other	2	2	0			
Nursing & Midwifery	542	537	-5	-0.9%	+7	+6
Therapy Professions	257	254	-3	-1%	-12	-11
Health Science/ Diagnostics	1	1	+0	+2%	+1	+1
Social Care	4	4	-0	-1%	+0	+0
Social Workers	26	26	-1	-2%	-1	-1
Psychologists	25	27	+1	+5%	+5	+5
Pharmacy	31	25	-5	-17%	-6	-7
H&SC, Other	21	21	-0	-1%	-3	-3
Health & Social Care Professionals	365	357	-8	-2.1%	-16	-16
Management (VIII & above)	30	30	-0	-1%	-3	-2
Administrative/ Supervisory (V to VII)	87	90	+2	+3%	+14	+15
Clerical (III & IV)	193	191	-2	-1%	+13	+17
Management & Administrative	310	311	+1	+0.2%	+24	+30
Support	110	110	+0	+0%	-6	-6
Maintenance/ Technical	9	9	+0	+0%	+1	+0
General Support	120	120	+0	+0.0%	-5	-5
Health Care Assistants	184	197	+13	+7%	+76	+77
Care, other	126	127	+1	+1%	-1	+2
Patient & Client Care	310	324	+14	+4.4%	+75	+79

CHO 8

Jan 2021 (Dec 2019 figure: 1,387)	WTE Dec 2020	WTE Jan 2021	WTE change since Dec 20	% change since Dec 20	WTE change since Dec 19	WTE change since Jan 20
Overall	1,506	1,533	+27	+1.8%	+147	+143
Consultants	6	6	-0	-2%		
Registrars	82	79	-3	-4%	+1	-0
SHO/ Interns	1	1	0		-1	-1
Medical/ Dental, other	61	61	+0	+0%	+0	+1
Medical & Dental	149	146	-3	-2.1%	-0	-1
Nurse/ Midwife Manager	51	54	+4	+7%	+3	+4
Nurse/ Midwife Specialist & AN/MP	42	42	-0	-0%	+7	+7
Staff Nurse/ Staff Midwife	104	106	+1	+1%	+7	+5
Public Health Nurse	197	199	+2	+1%	+3	+1
<i>Post-registration Nurse/ Midwife Student</i>	12	13	+1	+6%	+5	+11
Nursing/ Midwifery Student	12	13	+1	+6%	+11	+11
Nursing/ Midwifery other	1	1	+0	+3%	+1	+0
Nursing & Midwifery	407	414	+7	+1.8%	+32	+27
Therapy Professions	228	232	+3	+1%	+11	+12
Health Science/ Diagnostics	7	7	0		+2	+2
Social Care	1	1	0		+1	+1
Social Workers	16	14	-1	-8%	-1	-2
Psychologists	56	56	-0	-0%	+0	+2
Pharmacy	5	5	+1	+10%	+2	+2
H&SC, Other	26	27	+1	+4%	+2	+2
Health & Social Care Professionals	339	343	+4	+1.0%	+17	+19
Management (VIII & above)	41	40	-1	-2%	-5	-3
Administrative/ Supervisory (V to VII)	84	85	+1	+1%	+7	+7
Clerical (III & IV)	272	273	+0	+0%	+8	+6
Management & Administrative	397	397	+0	+0.1%	+10	+10
Support	20	20	-1	-3%	-3	-2
Maintenance/ Technical	3	3	+0	+1%	+0	+0
General Support	23	23	-0	-2.1%	-3	-1
Health Care Assistants	90	113	+22	+25%	+92	+93
Home Help				-100%	-0	-0
Care, other	100	98	-2	-2%	-1	-3
Patient & Client Care	190	210	+20	+10.6%	+91	+90

CHO 9

Jan 2021 (Dec 2019 figure: 1,247)	WTE Dec 2020	WTE Jan 2021	WTE change since Dec 20	% change since Dec 20	WTE change since Dec 19	WTE change since Jan 20
Overall	1,412	1,428	+16	+1.1%	+181	+192
Consultants	4	4	-1	-11%	-0	-1
Registrars	52	50	-2	-4%	-5	-2
SHO/ Interns	5	9	+4	+78%	+8	+5
Medical/ Dental, other	49	48	-1	-2%	-2	-2
Medical & Dental	111	111	+0	+0.4%	+0	+1
Nurse/ Midwife Manager	43	45	+2	+5%	+8	+9
Nurse/ Midwife Specialist & AN/MP	8	8	-0	-1%	+2	+2
Staff Nurse/ Staff Midwife	105	108	+3	+3%	+8	+6
Public Health Nurse	182	179	-3	-2%	+4	+7
<i>Post-registration Nurse/ Midwife Student</i>	31	31	0		+9	+5
Nursing/ Midwifery Student	31	31	0		+5	+5
Nursing/ Midwifery other	1	1	-0	-4%	+1	+1
Nursing & Midwifery	370	372	+2	+0.4%	+27	+30
Therapy Professions	211	207	-4	-2%	+11	+13
Health Science/ Diagnostics	20	19	-0	-1%	-1	-1
Social Care	4	4	+0	+1%	-1	-1
Social Workers	23	23	+0	+2%	+6	+6
Psychologists	65	65	-0	-0%	-0	-1
Pharmacy	15	15	-0	-1%	+3	+3
H&SC, Other	36	35	-1	-2%	-2	-2
Health & Social Care Professionals	373	368	-4	-1.1%	+17	+17
Management (VIII & above)	29	30	+2	+6%	+2	+3
Administrative/ Supervisory (V to VII)	88	89	+1	+1%	+12	+12
Clerical (III & IV)	221	226	+6	+3%	+44	+51
Management & Administrative	338	346	+8	+2.4%	+58	+66
Support	33	34	+0	+1%	-1	-1
General Support	33	34	+0	+0.9%	-1	-1
Health Care Assistants	74	81	+8	+10%	+68	+69
Care, other	114	115	+2	+2%	+10	+9
Patient & Client Care	187	197	+9	+5.0%	+79	+78

other Community Services

Jan 2021 (Dec 2019 figure: 122)	WTE Dec 2020	WTE Jan 2021	WTE change since Dec 20	% change since Dec 20	WTE change since Dec 19	WTE change since Jan 20
Overall	134	135	+1	+0.9%	+13	+15
Consultants	1	1	0			
Registrars	9	9	+1	+7%	-3	-2
SHO/ Interns	6	5	-1	-11%	+4	+3
Medical/ Dental, other	0	0	+0	+300%		
Medical & Dental	16	16	+0	+1.0%	+1	+1
Nurse/ Midwife Manager	6	6	+0	+3%	+3	+2
Staff Nurse/ Staff Midwife	9	9	-0	-3%	+4	+5
Nursing & Midwifery	16	16	-0	-0.2%	+7	+6
Health Science/ Diagnostics	8	8	-0	-1%	+0	+0
Social Care	2	2	+0	+8%	+0	+0
Social Workers	16	17	+2	+10%	+4	+4
Psychologists	1	1	0			
Pharmacy	3	3	0		+0	+0
H&SC, Other	4	4	0		+1	+2
Health & Social Care Professionals	33	35	+2	+4.9%	+5	+6
Management (VIII & above)	21	21	-0	-1%	+2	+3
Administrative/ Supervisory (V to VII)	17	17	+1	+4%	-3	-2
Clerical (III & IV)	12	12	-0	-0%	+0	+0
Management & Administrative	50	51	+0	+0.9%	-0	+2
Support	4	4	0		+2	+1
Maintenance/ Technical				-100%	-1	-1
General Support	4	4			+1	+0
Care, other	15	14	-1	-7%	-1	-1
Patient & Client Care	15	14	-1	-6.8%	-1	-1

Primary Care Services Employment by Grade Group: Jan 2021

Jan 2021 (Dec 2019 figure: 10,599)	WTE Dec 2020	WTE Jan 2021	WTE change since Dec 20	% change since Dec 20	WTE change since Dec 19	WTE change since Jan 20
Overall	11,572	11,731	+159	+1.4%	+1,132	+1,164
Consultant Dentistry	10	10			-1	+0
Consultant Medicine	20	21	+0	+1.8%	+3	+3
Consultant Paediatrics	2	2				
Consultant Psychiatry	8	8	-1	-6.0%	-0	-1
Consultant Radiology	1	1				
Consultant Surgery	1	1	-0	-13.3%	-4	-3
Consultants	42	42	-0	-0.5%	-2	-1
Registrar	390	389	-1	-0.2%	+7	+11
Senior Registrar	2	3	+1	+47.7%	+0	+0
Specialist Registrar	11	11			+1	+1
Registrars	403	403			+9	+13
Senior House Officer	42	44	+2	+4.5%	+6	+3
SHO/ Interns	42	44	+2	+4.5%	+6	+3
Dentists	302	301	-1	-0.3%	-0	+2
Other Medical	217	211	-6	-2.9%	-7	-0
Medical/ Dental, other	519	512	-7	-1.4%	-8	+2
Medical & Dental	1,006	1,001	-6	-0.6%	+5	+17
Clinical Nurse/ Midwife Manager	192	194	+2	+1.1%	+27	+26
Director Nursing/Midwifery, Assistant	172	176	+4	+2.3%	+22	+15
Director of Nursing/Midwifery	40	41	+0	+1.1%	+3	+3
Nurse/ Midwife Manager	404	411	+6	+1.6%	+52	+43
Advanced Nurse/ Midwife Practitioner	13	16	+3	+19.2%	+13	+12
Clinical Nurse/ Midwife Specialist	171	169	-2	-1.3%	+28	+25
Nurse/ Midwife Specialist & AN/MP	184	185	+0	+0.2%	+42	+38
Staff Midwives	6	6	+0	+2.7%	-2	-0
Staff Nurse [Psychiatric]	14	14	+1	+6.5%	+6	+7
Staff Nurses [General/ Children's]	908	914	+6	+0.7%	+69	+63
Staff Nurse/ Staff Midwife	927	934	+7	+0.8%	+72	+69
Public Health Nurse	1,533	1,520	-13	-0.8%	+7	+17
Public Health Nurse	1,533	1,520	-13	-0.8%	+7	+17
Post-registration Nurse/ Midwife Student	106	108	+2	+1.5%	+12	+11
Nursing/ Midwifery Student	106	108	+2	+1.5%	+12	+11
Nursing Education/Clinical	7	7	+0	+0.6%	+3	+2
Nursing/ Midwifery other	7	7	+0	+0.6%	+3	+2
Nursing & Midwifery	3,161	3,164	+3	+0.1%	+188	+180
Dietitians	125	121	-4	-3.3%	+11	+11
Occupational Therapists	543	553	+9	+1.7%	+38	+36
Orthoptists	18	17	-1	-4.4%	+3	+4
Physiotherapists	561	564	+3	+0.5%	+21	+23
Podiatrists & Chiropodists	30	29	-1	-2.1%	+4	+4
Speech & Language Therapists	516	521	+5	+1.0%	-5	-5
Therapy Professions	1,792	1,804	+12	+0.7%	+73	+72
Audiology	52	49	-3	-6.0%	+5	+6
Biochemists	8	8	-0	-0.6%	+0	+0
Clinical Engineering	8	8				
Medical Laboratory	45	44	-1	-1.7%	+2	+2
Phlebotomists	1	1	+0	+2.5%	+1	+1
Physicists	2	2				
Radiographers	4	4	+0	+0.7%	-0	+0
Health Science/ Diagnostics	121	117	-4	-3.2%	+9	+9
Social Care	33	33	+0	+1.0%	-2	-3

Jan 2021 (Dec 2019 figure: 10,599)	WTE Dec 2020	WTE Jan 2021	WTE change since Dec 20	% change since Dec 20	WTE change since Dec 19	WTE change since Jan 20
Overall	11,572	11,731	+159	+1.4%	+1,132	+1,164
Social Workers	151	152	+1	+0.5%	+13	+12
Psychologists	300	297	-3	-1.1%	-4	+1
Pharmacy	63	59	-4	-6.5%	+1	+1
Counsellor Therapists	112	113	+2	+1.3%	-2	-1
Dental Hygienists	61	62	+0	+0.5%	+4	+4
Environmental Health Officers				-100.0%	-1	
Other Health & Social Care	6	6	+0	+0.6%	-1	-1
Play Therapists/ Specialists	2	1	-1	-30.8%	-1	-1
H&SC, Other	182	183	+1	+0.6%	+0	+1
Health & Social Care Professionals	2,641	2,644	+3	+0.1%	+89	+92
Executive Management	74	74	-0	-0.2%	+3	+3
Senior Management (VIII & GM)	224	227	+3	+1.3%	-8	-0
Management (VIII & above)	299	302	+3	+1.0%	-4	+3
Middle Management (V-VII)	684	697	+13	+1.8%	+80	+80
Other Administrative	1	1			-1	-0
Administrative/ Supervisory (V to VII)	685	698	+13	+1.8%	+79	+80
General Administrative (III & IV)	1,838	1,864	+26	+1.4%	+117	+134
Clerical (III & IV)	1,838	1,864	+26	+1.4%	+117	+134
Management & Administrative	2,821	2,863	+41	+1.5%	+192	+217
Catering	22	22	+0	+0.6%	-0	+0
Household Services	137	138	+1	+0.7%	+4	+2
Other Labs & Associated	5	5	-0	-1.0%	+2	+1
Other Support	113	113	-1	-0.6%	-0	-0
Portering	74	74	-1	-0.9%	-1	-0
Support	351	351	-0	-0.1%	+4	+3
Maintenance	55	56	+1	+2.2%	-2	-1
Technical Services	1	1				
Maintenance/ Technical	56	57	+1	+2.2%	-2	-1
General Support	407	408	+1	+0.2%	+3	+2
HCA, Nurse's Aide, etc.	675	786	+111	+16.4%	+601	+600
Health & Social Care Assistants	105	109	+4	+4.0%	+40	+43
Health Care Assistants	779	894	+115	+14.8%	+641	+643
Home Help	18	18	-1	-4.6%	-1	-1
Care, other	737	739	+2	+0.3%	+16	+16
Patient & Client Care	1,535	1,651	+116	+7.6%	+655	+658

Employment by WTE, Headcount, Gender, Full-Time /Part-Time etc.: Jan 2021

Primary Care Services Staff Group	WTE	Headcount	WTE: no.	% Male	% female	Male WTE: no.	Female WTE: no.	% Total Perm	% Male Perm	% Female Perm	% Total Full Time	% Total Part Time	% Male FT	% Female FT
Overall	11,731	13,995	1.19	14.1%	85.9%	1.11	1.21	79.0%	67.3%	80.9%	67.2%	32.8%	84.0%	64.5%
Consultant Dentistry	10	12	1.18	50.0%	50.0%	1.17	1.18	100.0%	100.0%	100.0%	66.7%	33.3%	66.7%	66.7%
Consultant Medicine	21	24	1.16	29.2%	70.8%	1.04	1.22	58.3%	58.3%	52.9%	70.8%	29.2%	85.7%	64.7%
Consultant Paediatrics	2	2	1.33		100.0%		1.33	100.0%	100.0%	100.0%	50.0%	50.0%		50.0%
Consultant Psychiatry	8	9	1.14	77.8%	22.2%	1.19	1.00	66.7%	66.7%	50.0%	88.9%	11.1%	85.7%	100.0%
Consultant Radiology	1	1	1.00	100.0%		1.00		100.0%	100.0%		100.0%	0.0%	100.0%	
Consultant Surgery	1	2	3.85		100.0%		3.85	50.0%	50.0%	50.0%	0.0%	100.0%		0.0%
Consultants	42	50	1.20	42.0%	58.0%	1.12	1.26	72.0%	81.0%	65.5%	70.0%	30.0%	81.0%	62.1%
Registrar	389	415	1.07	34.0%	66.0%	1.05	1.07	1.4%	1.4%	0.7%	99.0%	1.0%	97.9%	99.6%
Senior Registrar	3	5	1.72	40.0%	60.0%	1.49	1.91	0.0%	0.0%	0.0%	40.0%	60.0%	50.0%	33.3%
Specialist Registrar	11	12	1.06	25.0%	75.0%	1.29	1.00	33.3%	33.3%	22.2%	91.7%	8.3%	66.7%	100.0%
Registrars	403	432	1.07	33.8%	66.2%	1.06	1.08	2.3%	4.1%	1.4%	98.1%	1.9%	96.6%	99.0%
Senior House Officer	44	56	1.28	35.7%	64.3%	1.48	1.20	1.8%	1.8%	2.8%	94.6%	5.4%	100.0%	91.7%
SHO/ Interns	44	56	1.28	35.7%	64.3%	1.48	1.20	1.8%	0.0%	2.8%	94.6%	5.4%	100.0%	91.7%
Dentists	301	391	1.30	26.1%	73.9%	1.28	1.30	89.8%	89.8%	89.6%	54.0%	46.0%	64.7%	50.2%
Other Medical	211	304	1.44	27.0%	73.0%	1.47	1.43	62.5%	62.5%	65.8%	39.8%	60.2%	46.3%	37.4%
Medical/ Dental, other	512	695	1.36	26.5%	73.5%	1.36	1.36	77.8%	73.9%	79.3%	47.8%	52.2%	56.5%	44.6%
Medical & Dental	1,001	1,233	1.23	30.1%	69.9%	1.22	1.24	47.7%	42.9%	49.8%	68.5%	31.5%	76.0%	65.2%
Clinical Nurse/ Midwife Manager	194	221	1.14	4.5%	95.5%	1.02	1.14	94.6%	94.6%	94.8%	66.1%	33.9%	100.0%	64.5%
Director Nursing/Midwifery, Assistant	176	194	1.10	1.0%	99.0%	1.00	1.11	97.9%	97.9%	97.9%	77.8%	22.2%	100.0%	77.6%
Director of Nursing/Midwifery	41	46	1.13	2.2%	97.8%	1.00	1.13	91.3%	91.3%	91.1%	87.0%	13.0%	100.0%	86.7%
Nurse/ Midwife Manager	411	461	1.12	2.8%	97.2%	1.01	1.13	95.7%	92.3%	95.8%	73.1%	26.9%	100.0%	72.3%
Advanced Nurse/ Midwife Practitioner	16	17	1.07		100.0%		1.07	94.1%	94.1%	94.1%	88.2%	11.8%		88.2%
Clinical Nurse/ Midwife Specialist	169	193	1.14	5.7%	94.3%	1.05	1.15	97.4%	97.4%	97.3%	66.8%	33.2%	100.0%	64.8%
Nurse/ Midwife Specialist & AN/MP	184	210	1.14	5.2%	94.8%	1.05	1.14	97.1%	100.0%	97.0%	68.6%	31.4%	100.0%	66.8%
Staff Midwives	6	8	1.42		100.0%		1.42	100.0%	100.0%	100.0%	0.0%	100.0%		0.0%
Staff Nurse [Psychiatric]	14	19	1.31	21.1%	78.9%	1.27	1.33	57.9%	57.9%	66.7%	52.6%	47.4%	25.0%	60.0%
Staff Nurses [General/ Children's]	914	1,218	1.33	3.1%	96.9%	1.07	1.34	82.9%	82.9%	83.0%	44.5%	55.5%	81.6%	43.3%
Staff Nurse/ Staff Midwife	934	1,245	1.33	3.4%	96.6%	1.09	1.34	82.7%	76.2%	82.9%	44.3%	55.7%	76.2%	43.2%
Public Health Nurse	1,520	1,812	1.19	0.4%	99.6%	1.08	1.19	94.6%	94.6%	94.6%	70.7%	29.3%	85.7%	70.6%

Public Health Nurse	1,520	1,812	1.19	0.4%	99.6%	1.08	1.19	94.6%	100.0%	94.6%	70.7%	29.3%	85.7%	70.6%
Post-registration Nurse/ Midwife Student	108	108	1.00	1.9%	98.1%	1.00	1.00	25.0%	25.0%	25.5%	98.1%	1.9%	100.0%	98.1%
Nursing/ Midwifery Student	108	108	1.00	1.9%	98.1%	1.00	1.00	25.0%	0.0%	25.5%	98.1%	1.9%	100.0%	98.1%
Nursing Education/Clinical	7	7	1.05		100.0%		1.05	85.7%	85.7%	85.7%	100.0%	0.0%		100.0%
Nursing/ Midwifery other	7	7	1.05		100.0%		1.05	85.7%		85.7%	100.0%	0.0%		100.0%
Nursing & Midwifery	3,164	3,843	1.21	2.0%	98.0%	1.07	1.22	89.0%	82.7%	89.1%	63.2%	36.8%	85.3%	62.7%
Health & Social Care	2,644	3,072	1.16	12.7%	87.3%	1.06	1.18	88.8%	86.4%	89.1%	70.3%	29.7%	88.2%	67.7%
Executive Management	74	77	1.04	39.0%	61.0%	1.09	1.01	88.3%	88.3%	89.4%	94.8%	5.2%	90.0%	97.9%
Senior Management (VIII & GM)	227	240	1.06	26.3%	73.8%	1.05	1.06	95.8%	95.8%	96.0%	90.0%	10.0%	93.7%	88.7%
Management (VIII & above)	302	317	1.05	29.3%	70.7%	1.06	1.05	94.0%	92.5%	94.6%	91.2%	8.8%	92.5%	90.6%
Middle Management (V-VII)	697	754	1.08	17.8%	82.2%	1.06	1.09	95.1%	95.1%	96.1%	84.0%	16.0%	97.8%	81.0%
Other Administrative	1	1	1.03		100.0%		1.03	100.0%	100.0%	100.0%	0.0%	100.0%		0.0%
Administrative/ Supervisory (V to VII)	698	755	1.08	17.7%	82.3%	1.06	1.09	95.1%	90.3%	96.1%	83.8%	16.2%	97.8%	80.8%
General Administrative (III & IV)	1,864	2,187	1.17	8.8%	91.2%	1.09	1.18	81.3%	81.3%	82.6%	64.8%	35.2%	86.5%	62.7%
Clerical (III & IV)	1,864	2,187	1.17	8.8%	91.2%	1.09	1.18	81.3%	68.2%	82.6%	64.8%	35.2%	86.5%	62.7%
Management & Administrative	2,863	3,259	1.14	12.9%	87.1%	1.07	1.15	85.8%	80.7%	86.5%	71.8%	28.2%	91.4%	68.9%
Catering	22	24	1.09	29.2%	70.8%	1.05	1.11	100.0%	100.0%	100.0%	62.5%	37.5%	100.0%	47.1%
Household Services	138	173	1.26	24.3%	75.7%	1.04	1.35	79.2%	79.2%	79.4%	44.5%	55.5%	76.2%	34.4%
Other Labs & Associated	5	5	1.01	20.0%	80.0%	1.00	1.01	100.0%	100.0%	100.0%	100.0%	0.0%	100.0%	100.0%
Other Support	113	249	2.21	31.7%	68.3%	1.38	3.07	48.2%	48.2%	35.9%	30.9%	69.1%	60.8%	17.1%
Portering	74	78	1.06	93.6%	6.4%	1.05	1.26	85.9%	85.9%	80.0%	92.3%	7.7%	95.9%	40.0%
Support	351	529	1.51	38.2%	61.8%	1.15	1.86	66.7%	80.7%	58.1%	46.5%	53.5%	78.2%	26.9%
Maintenance	56	60	1.06	98.3%	1.7%	1.06	1.00	93.3%	93.3%	100.0%	98.3%	1.7%	98.3%	100.0%
Technical Services	1	1	1.00	100.0%		1.00		100.0%	100.0%		100.0%	0.0%	100.0%	
Maintenance/ Technical	57	61	1.06	98.4%	1.6%	1.06	1.00	93.4%	93.3%	100.0%	98.4%	1.6%	98.3%	100.0%
General Support	408	590	1.45	44.4%	55.6%	1.13	1.85	69.5%	83.6%	58.2%	51.9%	48.1%	82.8%	27.1%
HCA, Nurse's Aide, etc.	786	933	1.19	26.7%	73.3%	1.12	1.21	24.2%	24.2%	26.6%	73.8%	26.2%	84.7%	69.9%
Health & Social Care Assistants	109	115	1.06	13.0%	87.0%	1.05	1.06	16.5%	16.5%	17.0%	93.9%	6.1%	100.0%	93.0%
Health Care Assistants	894	1,048	1.17	25.2%	74.8%	1.12	1.19	23.4%	17.4%	25.4%	76.0%	24.0%	85.6%	72.8%
Home Help	18	44	2.51	25.0%	75.0%	2.58	2.49	27.3%	18.2%	30.3%	4.5%	95.5%	9.1%	3.0%
Care, other	739	906	1.23	19.4%	80.6%	1.10	1.26	93.9%	91.5%	94.5%	58.4%	41.6%	76.7%	54.0%
Patient & Client Care	1,651	1,998	1.21	22.6%	77.4%	1.13	1.24	55.5%	46.3%	58.1%	66.5%	33.5%	80.3%	62.4%

Employment by WTE, Headcount, Gender, Full-Time /Part-Time etc.: Jan 2021

Primary Care Services CHO	WTE	Headcount	WTE: no.	% Male	% female	Male WTE: no.	Female WTE: no.	% Total Perm	% Male Perm	% Female Perm	% Total Full Time	% Total Part Time	% Male FT	% Female FT
Overall	11,731	13,995	1.19	14.1%	85.9%	1.11	1.21	79.0%	67.3%	80.9%	67.2%	32.8%	84.0%	64.5%
<i>CHO 1</i>	<i>1,316</i>	<i>1,565</i>	<i>1.19</i>	<i>14.6%</i>	<i>85.4%</i>	<i>1.09</i>	<i>1.21</i>	<i>84.7%</i>	<i>84.7%</i>	<i>86.8%</i>	<i>66.3%</i>	<i>33.7%</i>	<i>84.2%</i>	<i>63.2%</i>
<i>CHO 2</i>	<i>1,250</i>	<i>1,433</i>	<i>1.15</i>	<i>12.4%</i>	<i>87.6%</i>	<i>1.08</i>	<i>1.16</i>	<i>82.3%</i>	<i>82.3%</i>	<i>83.8%</i>	<i>70.6%</i>	<i>29.4%</i>	<i>83.1%</i>	<i>68.8%</i>
<i>CHO 3</i>	<i>848</i>	<i>996</i>	<i>1.17</i>	<i>12.8%</i>	<i>87.2%</i>	<i>1.09</i>	<i>1.19</i>	<i>74.1%</i>	<i>74.1%</i>	<i>75.5%</i>	<i>71.7%</i>	<i>28.3%</i>	<i>89.8%</i>	<i>69.0%</i>
<i>CHO 4</i>	<i>1,539</i>	<i>1,903</i>	<i>1.24</i>	<i>10.9%</i>	<i>89.1%</i>	<i>1.20</i>	<i>1.24</i>	<i>68.5%</i>	<i>68.5%</i>	<i>70.3%</i>	<i>60.1%</i>	<i>39.9%</i>	<i>73.4%</i>	<i>58.4%</i>
<i>CHO 5</i>	<i>1,070</i>	<i>1,299</i>	<i>1.21</i>	<i>11.5%</i>	<i>88.5%</i>	<i>1.11</i>	<i>1.23</i>	<i>80.4%</i>	<i>80.4%</i>	<i>82.3%</i>	<i>64.2%</i>	<i>35.8%</i>	<i>83.9%</i>	<i>61.7%</i>
<i>CHO 6</i>	<i>827</i>	<i>1,058</i>	<i>1.28</i>	<i>13.0%</i>	<i>87.0%</i>	<i>1.24</i>	<i>1.29</i>	<i>76.7%</i>	<i>76.7%</i>	<i>77.7%</i>	<i>68.8%</i>	<i>31.2%</i>	<i>93.5%</i>	<i>65.1%</i>
<i>CHO 7</i>	<i>1,785</i>	<i>2,105</i>	<i>1.18</i>	<i>16.6%</i>	<i>83.4%</i>	<i>1.10</i>	<i>1.20</i>	<i>84.8%</i>	<i>84.8%</i>	<i>86.6%</i>	<i>68.4%</i>	<i>31.6%</i>	<i>82.5%</i>	<i>65.5%</i>
<i>CHO 8</i>	<i>1,533</i>	<i>1,828</i>	<i>1.19</i>	<i>14.3%</i>	<i>85.7%</i>	<i>1.09</i>	<i>1.21</i>	<i>82.5%</i>	<i>82.5%</i>	<i>85.6%</i>	<i>63.1%</i>	<i>36.9%</i>	<i>81.2%</i>	<i>60.1%</i>
<i>CHO 9</i>	<i>1,428</i>	<i>1,650</i>	<i>1.16</i>	<i>16.5%</i>	<i>83.5%</i>	<i>1.08</i>	<i>1.17</i>	<i>75.5%</i>	<i>75.5%</i>	<i>77.8%</i>	<i>73.4%</i>	<i>26.6%</i>	<i>88.3%</i>	<i>70.4%</i>
<i>other Community Services</i>	<i>135</i>	<i>158</i>	<i>1.17</i>	<i>37.3%</i>	<i>62.7%</i>	<i>1.22</i>	<i>1.14</i>	<i>66.5%</i>	<i>66.5%</i>	<i>69.7%</i>	<i>84.2%</i>	<i>15.8%</i>	<i>88.1%</i>	<i>81.8%</i>

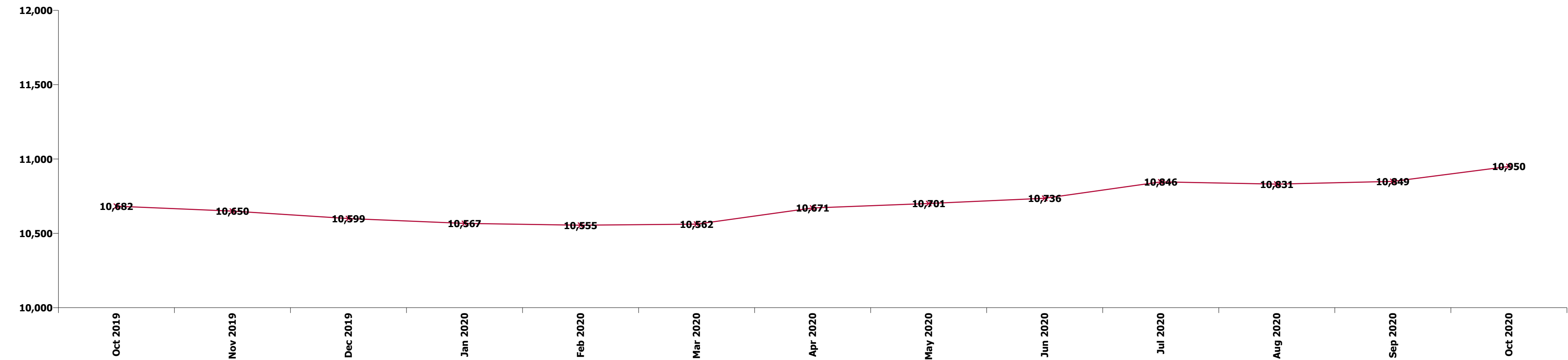
Summary Staff Movement: January 2021

Month-on-month
Summary

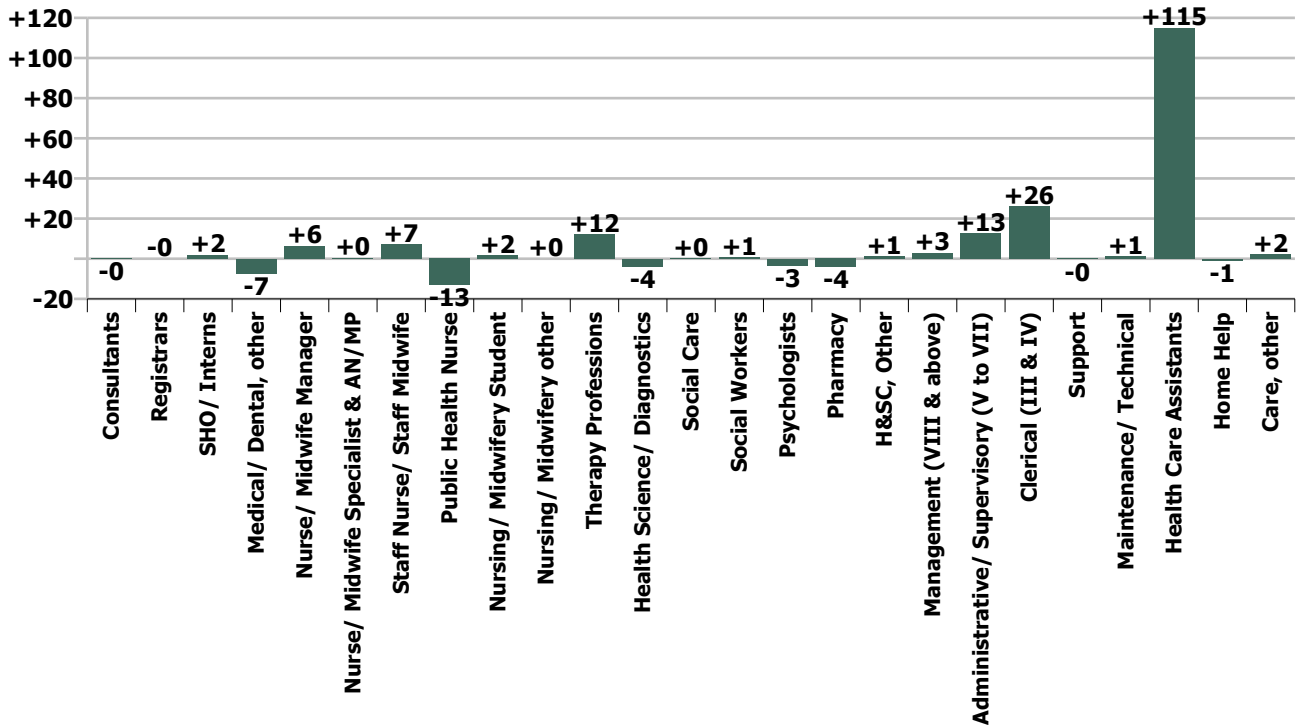
WTE change since Dec 20	% change since Dec 20	overall	Consultants	Registrars	SHO/ Interns	Medical/ Dental, other	Medical & Dental	Nurse/ Midwife Manager	Nurse/ Midwife Specialist & AN/MP	Staff Nurse/ Staff Midwife	Public Health Nurse	Nursing/ Midwifery Student	Nursing/ Midwifery other	Nursing & Midwifery	Therapy Professions	Health Science/ Diagnostics	Social Care	Social Workers	Psychologists	Pharmacy	H&SC, Other	Health & Social Care Professionals	Management (VIII & above)	Administrativ e/ Supervisory (V to VII)	Clerical (III & IV)	Management & Administrativ e	General Support	Health Care Assistants	Home Help	Care, other	Patient & Client Care
Overall	+1.4%	+159	-0	-0	+2	-7	-6	+6	+0	+7	-13	+2	+0	+3	+12	-4	+0	+1	-3	-4	+1	+3	+3	+13	+26	+41	+1	+115	-1	+2	+116
CHO 1	+1.5%	+20		-1		+1	+0	-1	+0	-2	-2			-4	+5	+0		+1	-1		-0	+5	-0	+2	+10	+12	+2	+4	-0	+2	+6
CHO 2	+1.2%	+15	-0	+2	-1	-3	-2	+3	+0	+3	-4			+3	+1	-0	-0	-0	-0	+0	+0	+0	+3	+3	+1	+7	+1	+7		-2	+6
CHO 3	+4.5%	+37		+1	-0	+0	+1	-0	-0	+0	+1			+1	+2	-1		-0	-0	+1	-0	+2	+1	+2	+7	+10	+0	+23		+1	+24
CHO 4	+1.4%	+22	+0	-1	-0	+0	-1	+4	-1	+2	-4	+0		+2	+1	-1		-0	-1	+0	+1	+0	-0	+4	+4	+7	-0	+15	-0	-1	+14
CHO 5	+0.8%	+9		+1	-0	+1	+2	-4	+1	-2	-0	+1	+0	-4	+4	-1		-0	-2		-0	+1	-1	-2	-5	-7	-2	+17	-0	+2	+19
CHO 6	+2.0%	+16		-0		+2	+2	+0	+1	+1	+0	+0		+2	+3	-0	+0	+0	-0	-1		+2	+1	-1	+5	+4	-0	+6		+0	+6
CHO 7	-0.2%	-4	+0	+2	-0	-8	-5	-1	-1	+0	-3			-5	-3	+0	-0	-1	+1	-5	-0	-8	-0	+2	-2	+1	+0	+13		+1	+14
CHO 8	+1.8%	+27	-0	-3		+0	-3	+4	-0	+1	+2	+1	+0	+7	+3			-1	-0	+1	+1	+4	-1	+1	+0	+0	-0	+22		-2	+20
CHO 9	+1.1%	+16	-1	-2	+4	-1	+0	+2	-0	+3	-3		-0	+2	-4	-0	+0	+0	-0	-0	-1	-4	+2	+1	+6	+8	+0	+8		+2	+9
other Community Services	+0.9%	+1		+1	-1	+0	+0	+0		-0				-0		-0	+0	+2				+2	-0	+1	-0	+0			-1	-1	
		+1.4%	-0.5%	-0.0%	+4.5%	-1.4%	-0.6%	+1.6%	+0.2%	+0.8%	-0.8%	+1.5%	+0.6%	+0.1%	+0.7%	-3.2%	+1.0%	+0.5%	-1.1%	-6.5%	+0.6%	+0.1%	+1.0%	+1.8%	+1.4%	+1.5%	+0.2%	+14.8%	-4.6%	+0.3%	+7.6%

Year-on-year Summary

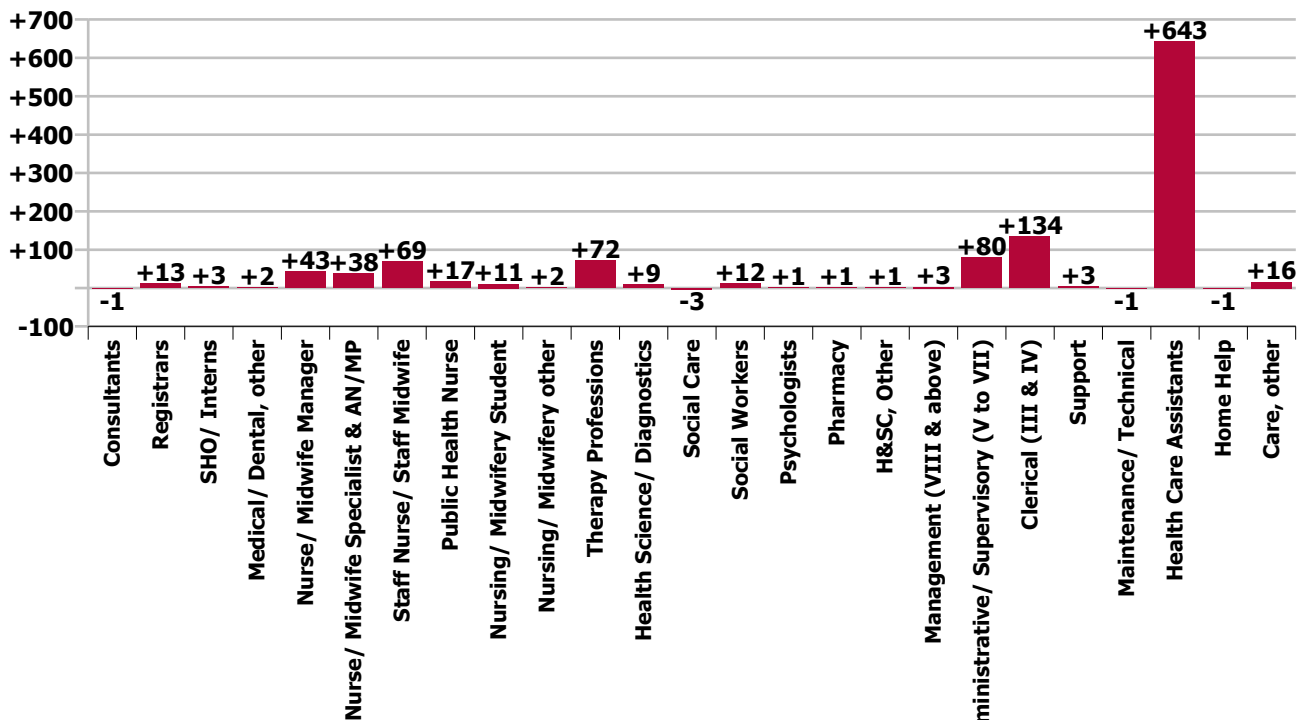
WTE change since Jan 20	% change since Jan 20	overall	Consultants	Registrars	SHO/ Interns	Medical/ Dental, other	Medical & Dental	Nurse/ Midwife Manager	Nurse/ Midwife Specialist & AN/MP	Staff Nurse/ Staff Midwife	Public Health Nurse	Nursing/ Midwifery Student	Nursing/ Midwifery other	Nursing & Midwifery	Therapy Professions	Health Science/ Diagnostics	Social Care	Social Workers	Psychologists	Pharmacy	H&SC, Other	Health & Social Care Professionals	Management (VIII & above)	Administrativ e/ Supervisory (V to VII)	Clerical (III & IV)	Management & Administrativ e	General Support	Health Care Assistants	Home Help	Care, other	Patient & Client Care
Overall	+11.0%	+1,164	-1	+13	+3	+2	+17	+43	+38	+69	+17	+11	+2	+180	+72	+9	-3	+12	+1	+1	+1	+92	+3	+80	+134	+217	+2	+643	-1	+16	+658
CHO 1	+11.6%	+137	+0	+3		+0	+4	-1	+6	+10	-4	-4	+0	+6	+9	-0		+4	-5	+1	-0	+9	-1	+11	+25	+35	+9	+68	+1	+5	+74
CHO 2	+9.3%	+107		+9	+1	+1	+10	+3	+4	+5	+1	-4		+9	+16	+1		-1	+4	+1	+0	+21	+5	+15	-5	+16	+0	+51		-0	+51
CHO 3	+11.3%	+86	-1	+3	-5	+0	-2	+4	+1	-0	+0	+4		+9	-1	+0		+0	+0	+1	-1	-1	+0	+10	+2	+12	-1	+69		+0	+69
CHO 4	+14.7%	+197	+0	+2	+1	+3	+6	+4	+1	+26	+8	-4		+35	+16	+0	-3	+4	+0	+1	+2	+20	-3	+10	+23	+30	+5	+101	-1	+2	+101
CHO 5	+13.2%	+125	-2	+3	-4	+2	-1	+14	+12	+16	+5	-1	+0	+46	+8	+3	-0	-1	-5		+1	+5	-1	+5	-5	-1	-3	+79	-0	-1	+79
CHO 6	+8.8%	+67	+0	-3		-1	-4	+0	-2	+4	-0	+2	+1	+6	+9	+2	-1	+0	+1	-1	+0	+11	+0	-3	+19	+16	-1	+36		+3	+39
CHO 7	+5.7%	+97	+2	+1	+3	-2	+4	+5	+7	-6	-1	+2		+6	-11	+1	+0	-1	+5	-7	-3	-16	-2	+15	+17	+30	-5	+77		+2	+79
CHO 8	+10.3%	+143		-0	-1	+1	-1	+4	+7	+5	+1	+11	+0	+27	+12	+2	+1	-2	+2	+2	+2	+19	-3	+7	+6	+10	-1	+93	-0	-3	+90
CHO 9	+15.5%	+192	-1	-2	+5	-2	+1	+9	+2	+6	+7	+5	+1	+30	+13	-1	-1	+6	-1	+3	-2	+17	+3	+12	+51	+66	-1	+69		+9	+78
other Community Services	+12.2%	+15		-2	+3		+1	+2		+5				+6		+0	+0	+4		+0	+2	+6	+3	-2	+0	+2	+0			-1	-1
		+11.0%	-3.4%	+3.3%	+7.8%	+0.4%	+1.7%	+11.8%	+25.5%	+8.0%	+1.1%	+11.1%	+48.7%	+6.0%	+4.1%	+8.1%	-7.9%	+8.5%	+0.2%	+2.3%	+0.4%	+3.6%	+1.0%	+13.0%	+7.7%	+8.2%	+0.5%	+255.5%	-6.4%	+2.2%	+66.2%



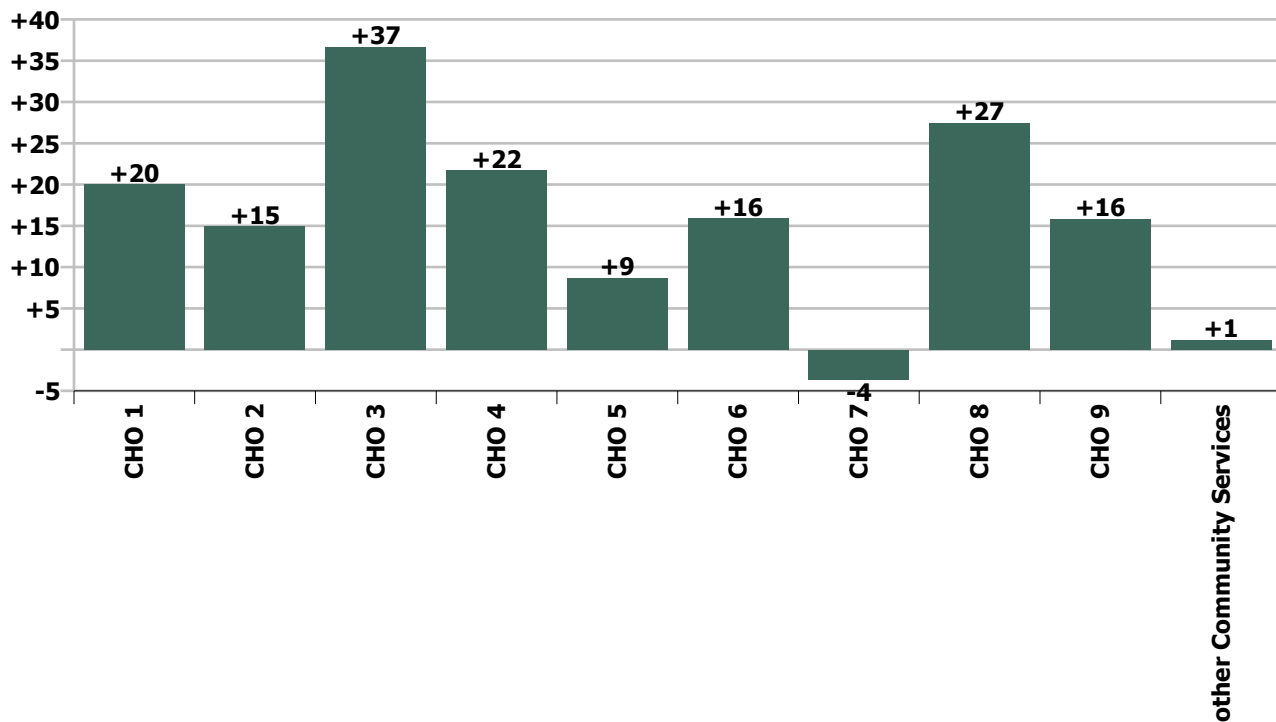
Staff Group change since: Dec 2020



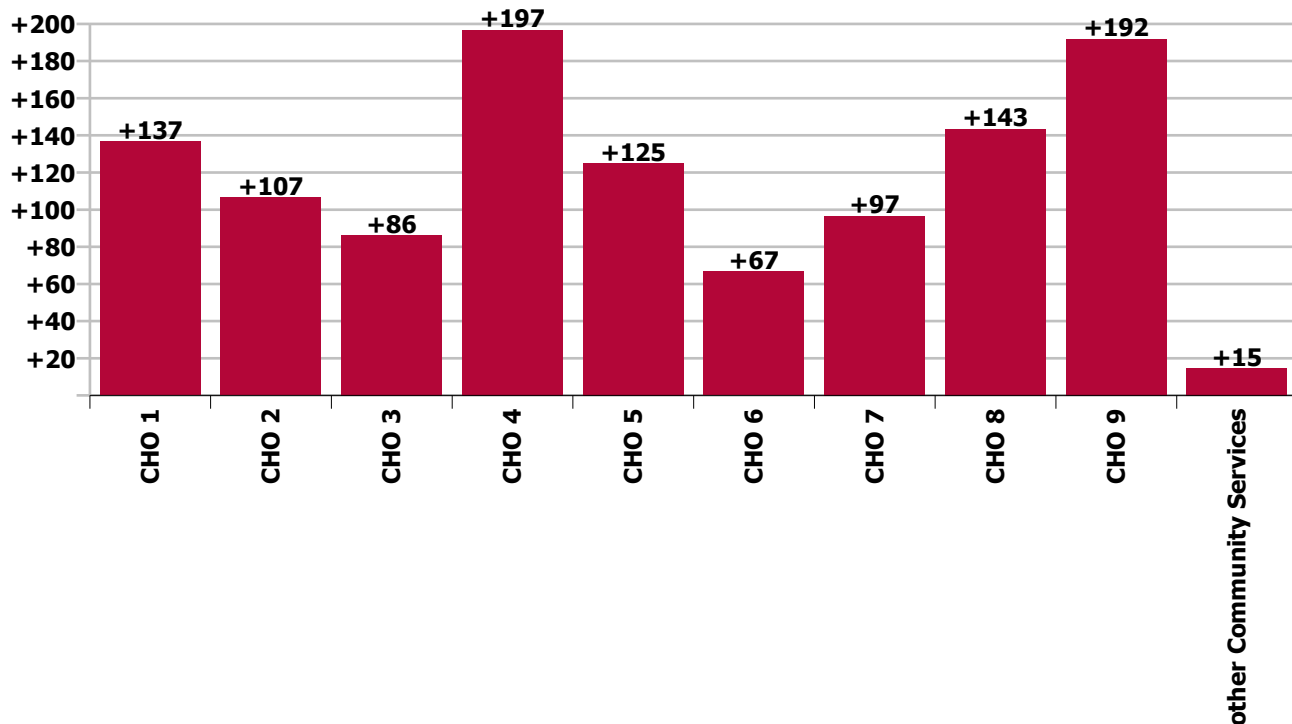
Staff Group change since: Jan 2020



CHO change since: Dec 2020



CHO change since: Jan 2020



Longitudinal Employment Levels by Grade Group - Oct 2013 to Jan 2021

Jan 2021 (Oct 2013 figure: 10,789)	WTE Jan 2021	WTE change since Oct 13	WTE change since Dec 15	WTE change since Dec 16	WTE change since Dec 17	WTE change since Dec 18	WTE change since Dec 19	% change since Oct 13	% change since Dec 15	% change since Dec 16	% change since Dec 17	% change since Dec 18	% change since Dec 19
Overall	11,731	+942	+1,421	+1,285	+1,212	+800	+1,132	+8.7%	+13.8%	+12.3%	+11.5%	+7.3%	+10.7%
Consultant Anaesthesia		-0						-100.0%	-100.0%	-100.0%	-100.0%	-100.0%	-100.0%
Consultant Dentistry	10	+0	-0	-0	-1	-1	-1	+0.9%	-3.8%	-3.8%	-12.1%	-12.1%	-8.4%
Consultant Medicine	21	+5	+5	+3	+1	+4	+3	+31.4%	+27.9%	+13.8%	+4.1%	+21.5%	+16.3%
Consultant, Other		-1	-1	-1				-100.0%	-100.0%	-100.0%	-100.0%	-100.0%	-100.0%
Consultant Paediatrics	2	+1	+1	+1				+50.0%	+50.0%	+50.0%			
Consultant Psychiatry	8	+1	-1	+1	-2	+2	-0	+12.9%	-11.6%	+12.9%	-16.2%	+23.4%	-5.6%
Consultant Radiology	1												
Consultant Surgery	1	-6	-5	-5	-4	-4	-4	-91.8%	-89.6%	-89.7%	-89.1%	-88.4%	-87.2%
Consultants	42	-1	-2	-2	-6	-0	-2	-1.5%	-4.4%	-4.6%	-13.2%	-0.5%	-4.7%
Registrar	389	+61	+51	+59	+46	+28	+7	+18.8%	+15.2%	+17.9%	+13.5%	+7.9%	+1.8%
Senior Registrar	3	-2	-1	-1	-1	-1	+0	-37.1%	-21.4%	-22.0%	-22.0%	-27.6%	+4.7%
Specialist Registrar	11	+0	+2	+3	+2	+2	+1	+3.9%	+27.0%	+43.6%	+17.0%	+16.8%	+13.3%
Registrars	403	+60	+53	+62	+47	+29	+9	+17.5%	+15.1%	+18.1%	+13.2%	+7.7%	+2.2%
Senior House Officer	44	+11	-4	+4	+14	+7	+6	+33.3%	-8.1%	+8.8%	+47.2%	+17.9%	+17.2%
SHO/ Interns	44	+11	-4	+4	+14	+7	+6	+33.3%	-8.1%	+8.8%	+47.2%	+17.9%	+17.2%
Dentists	301	-9	+0	-3	-1	-4	-0	-2.8%	+0.1%	-1.0%	-0.4%	-1.4%	-0.1%
Other Medical	211	-11	-11	-5	-23	-27	-7	-5.0%	-4.8%	-2.5%	-10.0%	-11.2%	-3.3%
Medical/ Dental, other	512	-20	-10	-8	-25	-31	-8	-3.7%	-2.0%	-1.6%	-4.6%	-5.7%	-1.5%
Medical & Dental	1,001	+51	+37	+55	+30	+4	+5	+5.3%	+3.8%	+5.8%	+3.1%	+0.4%	+0.5%
Clinical Nurse/ Midwife Manager	194	+57	+44	+45	+35	+24	+27	+41.0%	+29.6%	+30.4%	+22.2%	+14.0%	+15.9%
Director Nursing/Midwifery, Assistant	176	+56	+38	+23	+36	+25	+22	+46.5%	+27.8%	+15.2%	+25.9%	+16.8%	+14.0%
Director of Nursing/Midwifery	41	+20	+6	+8	+7	+5	+3	+100.2%	+17.8%	+23.6%	+21.5%	+13.8%	+8.7%
Nurse/ Midwife Manager	411	+133	+89	+76	+79	+54	+52	+47.7%	+27.5%	+22.8%	+23.7%	+15.1%	+14.3%
Advanced Nurse/ Midwife Practitioner	16	+14	+14	+13	+14	+13	+13	+691.0%	+691.0%	+467.0%	+590.8%	+522.8%	+522.8%
Clinical Nurse/ Midwife Specialist	169	+74	+56	+51	+29	+25	+28	+77.8%	+49.5%	+43.4%	+20.8%	+17.7%	+20.3%
Nurse/ Midwife Specialist & AN/MP	185	+88	+70	+64	+43	+39	+42	+90.4%	+60.7%	+53.3%	+30.0%	+26.5%	+29.2%
Staff Midwives	6	+5	+4	+3	+0	-1	-2	+606.3%	+182.5%	+103.2%	+7.4%	-12.9%	-30.4%

Jan 2021 (Oct 2013 figure: 10,789)	WTE Jan 2021	WTE change since Oct 13	WTE change since Dec 15	WTE change since Dec 16	WTE change since Dec 17	WTE change since Dec 18	WTE change since Dec 19	% change since Oct 13	% change since Dec 15	% change since Dec 16	% change since Dec 17	% change since Dec 18	% change since Dec 19
Overall	11,731	+942	+1,421	+1,285	+1,212	+800	+1,132	+8.7%	+13.8%	+12.3%	+11.5%	+7.3%	+10.7%
Staff Nurse [Psychiatric]	14	+11	+10	+9	+0	+6	+6	+325.3%	+228.6%	+172.8%	+2.0%	+73.6%	+69.9%
Staff Nurses [General/ Children's]	914	+240	+157	+105	+77	+49	+69	+35.6%	+20.8%	+13.0%	+9.1%	+5.6%	+8.1%
Staff Nurse/ Staff Midwife	934	+256	+171	+117	+77	+54	+72	+37.7%	+22.4%	+14.3%	+9.0%	+6.2%	+8.4%
Public Health Nurse	1,520	+60	+49	+48	+33	+5		+4.1%	+3.3%	+3.3%	+2.2%	+0.4%	
Public Health Nurse, Senior (Immunisation)		-1	-1	-1	-1	-1		-100.0%	-100.0%	-100.0%	-100.0%	-100.0%	
Public Health Nurse	1,520	+59	+48	+47	+32	+4	+7	+4.0%	+3.2%	+3.2%	+2.2%	+0.3%	+0.5%
Public Health Nurse	1,520	+59	+48	+47	+32	+4	+7	+4.0%	+3.2%	+3.2%	+2.2%	+0.3%	+0.5%
Post-registration Nurse/ Midwife Student	108	+89	-3	-4	-21	+15	+12	+460.3%	-2.9%	-3.8%	-16.6%	+15.9%	+12.6%
Nursing/ Midwifery Student	108	+89	-3	-4	-21	+15	+12	+460.3%	-2.9%	-3.8%	-16.6%	+15.9%	+12.6%
Nursing Education/Clinical	7	+4	+3	+3	+3	+4	+3	+172.0%	+64.8%	+91.1%	+91.1%	+123.0%	+76.1%
Other Nursing/ Midwifery		-2	-2	-2	-0	-1		-100.0%	-100.0%	-100.0%	-100.0%	-100.0%	-100.0%
Nursing/ Midwifery other	7	+2	+1	+1	+3	+3	+3	+50.0%	+10.4%	+21.6%	+69.4%	+67.3%	+76.1%
Nursing & Midwifery	3,164	+626	+374	+301	+212	+169	+188	+24.7%	+13.4%	+10.5%	+7.2%	+5.6%	+6.3%
Dietitians	121	+61	+32	+31	+16	+4	+11	+103.1%	+36.8%	+33.9%	+15.2%	+3.2%	+10.4%
Occupational Therapists	553	+92	+49	+57	+36	+12	+38	+19.9%	+9.7%	+11.5%	+7.1%	+2.3%	+7.3%
Orthoptists	17	+11	+10	+11	+10	+7	+3	+196.8%	+134.8%	+186.2%	+162.8%	+69.3%	+26.3%
Physiotherapists	564	+86	+23	+20	+1	+1	+21	+18.0%	+4.2%	+3.7%	+0.2%	+0.2%	+3.9%
Podiatrists & Chiropodists	29	+10	+14	+10	+7	+5	+4	+50.3%	+90.7%	+49.7%	+29.2%	+22.7%	+17.4%
Speech & Language Therapists	521	+99	+69	+19	-25	-28	-5	+23.6%	+15.4%	+3.7%	-4.5%	-5.0%	-1.0%
Therapy Professions	1,804	+359	+197	+147	+46	+2	+73	+24.9%	+12.3%	+8.9%	+2.6%	+0.1%	+4.2%
Audiology	49	+28	+21	+20	+19	+1	+5	+131.3%	+75.0%	+69.0%	+65.1%	+2.3%	+12.1%
Biochemists	8	+1	+1	+0	+0	-0	+0	+23.0%	+14.1%	+1.2%	+1.2%	-3.6%	+1.0%
Clinical Engineering	8	+7	+7	+5	+6	+1		+700.0%	+700.0%	+166.7%	+300.0%	+14.3%	
Medical Laboratory	44	-38	-12	-1	-2	-3	+2	-46.0%	-21.6%	-2.9%	-4.0%	-5.8%	+5.1%
Phlebotomists	1	+1	+1	+1	+1	+1	+1	+78.6%	+190.7%	+92.3%	+98.4%	+468.2%	+468.2%
Physicists	2	+0	-1	-1	+0			+11.1%	-33.3%	-33.3%	+12.4%		
Radiographers	4	-1	-1	-1	-2	-1	-0	-22.8%	-18.5%	-18.5%	-26.7%	-19.9%	-0.9%
Health Science/ Diagnostics	117	-2	+16	+23	+23	-1	+9	-1.7%	+15.4%	+23.8%	+24.3%	-0.8%	+7.9%
Social Care	33	-65	-2	-2	-0	-1	-2	-66.4%	-4.6%	-5.8%	-0.1%	-3.3%	-6.9%

Jan 2021 (Oct 2013 figure: 10,789)	WTE Jan 2021	WTE change since Oct 13	WTE change since Dec 15	WTE change since Dec 16	WTE change since Dec 17	WTE change since Dec 18	WTE change since Dec 19	% change since Oct 13	% change since Dec 15	% change since Dec 16	% change since Dec 17	% change since Dec 18	% change since Dec 19
Overall	11,731	+942	+1,421	+1,285	+1,212	+800	+1,132	+8.7%	+13.8%	+12.3%	+11.5%	+7.3%	+10.7%
Social Workers	152	+10	+12	+2	-1	-1	+13	+7.3%	+8.5%	+1.0%	-0.9%	-0.3%	+9.1%
Psychologists	297	+80	+4	+13	+13	-1	-4	+36.7%	+1.3%	+4.4%	+4.5%	-0.3%	-1.4%
Pharmacy	59	+0	-6	-3	-4	+0	+1	+0.3%	-9.4%	-5.5%	-6.5%	+0.6%	+2.0%
Counsellor Therapists	113	+0	+17	-1	-8	-2	-2	+0.3%	+17.6%	-1.3%	-6.6%	-2.1%	-1.3%
Dental Hygienists	62	+7	+7	+7	+7	+4	+4	+12.8%	+13.4%	+12.0%	+13.2%	+7.2%	+7.2%
Environmental Health Officers							-1	-100.0%	-100.0%	-100.0%	-100.0%	-100.0%	-100.0%
Other Health & Social Care	6	-4	-2	-1	-2	-3	-1	-38.2%	-21.3%	-14.2%	-22.0%	-28.7%	-15.7%
Play Therapists/ Specialists	1	-1	-1	-0	-1	-1	-1	-26.0%	-38.3%	-22.5%	-41.0%	-41.0%	-35.9%
H&SC, Other	183	+3	+22	+4	-4	-2	+0	+1.6%	+13.4%	+2.0%	-2.0%	-1.1%	+0.0%
Health & Social Care Professionals	2,644	+385	+242	+182	+72	-3	+89	+17.0%	+10.1%	+7.4%	+2.8%	-0.1%	+3.5%
Executive Management	74	+49	+37	+9	+3	+0	+3	+192.1%	+101.2%	+13.9%	+4.3%	+0.3%	+4.9%
Senior Management (VIII & GM)	227	+62	+33	+34	+6	-8	-8	+37.7%	+16.8%	+17.3%	+2.8%	-3.5%	-3.2%
Management (VIII & above)	302	+111	+70	+43	+9	-8	-4	+58.2%	+30.3%	+16.4%	+3.1%	-2.6%	-1.3%
Middle Management (V-VII)	697	+201	+240	+207	+153	+71	+80	+40.6%	+52.7%	+42.3%	+28.1%	+11.4%	+12.9%
Other Administrative	1	+0	+0	+0	+0	-1	-1	+94.0%	+94.0%	+94.0%	+94.0%	-51.5%	-51.5%
Administrative/ Supervisory (V to VII)	698	+201	+241	+207	+153	+70	+79	+40.6%	+52.8%	+42.3%	+28.1%	+11.2%	+12.7%
General Administrative (III & IV)	1,864	-18	+90	+91	+65	+35	+117	-1.0%	+5.0%	+5.1%	+3.6%	+1.9%	+6.7%
Clerical (III & IV)	1,864	-18	+90	+91	+65	+35	+117	-1.0%	+5.0%	+5.1%	+3.6%	+1.9%	+6.7%
Management & Administrative	2,863	+294	+401	+341	+227	+97	+192	+11.5%	+16.3%	+13.5%	+8.6%	+3.5%	+7.2%
Catering	22	+7	-1	+0	-3	-1	-0	+44.1%	-2.3%	+1.1%	-12.8%	-6.1%	-1.4%
Household Services	138	+19	-13	-9	-3	-9	+4	+16.5%	-8.8%	-6.2%	-1.9%	-6.2%	+2.8%
Other Labs & Associated	5	+1	+1	+3	+0	+0	+2	+28.2%	+29.2%	+147.5%	+1.9%	+4.4%	+59.2%
Other Support	113	-10	-7	-11	-20	-17	-0	-8.1%	-5.8%	-9.3%	-15.2%	-13.0%	-0.2%
Portering	74	-20	-15	-12	-9	-6	-1	-21.8%	-16.6%	-14.3%	-10.8%	-7.5%	-0.9%
Support	351	-3	-34	-30	-35	-33	+4	-0.9%	-8.9%	-7.8%	-9.1%	-8.6%	+1.3%
Maintenance	56	-3	-8	-1	+1	-1	-2	-4.4%	-12.9%	-1.4%	+1.3%	-1.5%	-3.2%
Technical Services	1		+1			+0			-100.0%			+11.1%	
Maintenance/ Technical	57	-3	-7	-1	+1	-1	-2	-4.4%	-11.3%	-1.4%	+1.3%	-1.3%	-3.1%

Jan 2021 (Oct 2013 figure: 10,789)	WTE Jan 2021	WTE change since Oct 13	WTE change since Dec 15	WTE change since Dec 16	WTE change since Dec 17	WTE change since Dec 18	WTE change since Dec 19	% change since Oct 13	% change since Dec 15	% change since Dec 16	% change since Dec 17	% change since Dec 18	% change since Dec 19
Overall	11,731	+942	+1,421	+1,285	+1,212	+800	+1,132	+8.7%	+13.8%	+12.3%	+11.5%	+7.3%	+10.7%
General Support	408	-6	-42	-31	-34	-34	+3	-1.4%	-9.3%	-7.0%	-7.7%	-7.7%	+0.6%
HCA, Nurse's Aide, etc.	786	+622	+616	+616	+610	+587	+601	+380.3%	+362.4%	+362.6%	+347.0%	+295.5%	+325.7%
Health & Social Care Assistants	109	+88	+91	+89	+86	-16	+40	+417.5%	+517.4%	+456.4%	+371.6%	-13.0%	+57.2%
Health Care Assistants	894	+710	+707	+705	+696	+571	+641	+384.6%	+376.9%	+372.3%	+349.9%	+176.3%	+252.5%
Home Help	18	-1,074	-280	-265	-5	-2	-1	-98.4%	-94.1%	-93.8%	-21.5%	-8.5%	-4.6%
Community Welfare Officers	1	-11	-4	-4	-3	-2	-1	-92.7%	-82.6%	-82.6%	-77.6%	-69.9%	-47.0%
Other Care Grades	739	-32	-14	+1	+17	+1	+16	-4.1%	-1.8%	+0.1%	+2.4%	+0.1%	+2.3%
Care, other	739	-43	-18	-3	+14	-1	+16	-5.4%	-2.4%	-0.5%	+1.9%	-0.2%	+2.2%
Ambulance Officers		-1						-100.0%	-100.0%	-100.0%	-100.0%	-100.0%	-100.0%
Pre-Hospital Care (Ambulance)		-1	-1					-100.0%	-100.0%	-100.0%	-100.0%	-100.0%	-100.0%
Ambulance Staff		-2	-1					-100.0%	-100.0%	-100.0%	-100.0%	-100.0%	-100.0%
Patient & Client Care	1,651	-408	+409	+436	+705	+568	+655	-19.8%	+32.9%	+35.9%	+74.5%	+52.4%	+65.8%

Source: Health Service Personnel Census

Longitudinal Employment Levels by Grade Group - Mar 2009 to Jan 2021

Jan 2021 (Oct 2013 figure: 10,789)	WTE Jan 2021	WTE change since Oct 13	WTE change since Dec 17	WTE change since Dec 18	WTE change since Dec 19	% change since Oct 13	% change since Dec 17	% change since Dec 18	% change since Dec 19
Overall	11,731	+942	+1,212	+800	+1,132	+8.7%	+11.5%	+7.3%	+10.7%
Consultant Anaesthesia		-0				-100.0%	-100.0%	-100.0%	-100.0%
Consultant Dentistry	10	+0	-1	-1	-1	+0.9%	-12.1%	-12.1%	-8.4%
Consultant Medicine	21	+5	+1	+4	+3	+31.4%	+4.1%	+21.5%	+16.3%
Consultant, Other		-1				-100.0%	-100.0%	-100.0%	-100.0%
Consultant Paediatrics	2	+1				+50.0%			
Consultant Psychiatry	8	+1	-2	+2	-0	+12.9%	-16.2%	+23.4%	-5.6%
Consultant Radiology	1								
Consultant Surgery	1	-6	-4	-4	-4	-91.8%	-89.1%	-88.4%	-87.2%
Consultants	42	-1	-6	-0	-2	-1.5%	-13.2%	-0.5%	-4.7%
Registrar	389	+61	+46	+28	+7	+18.8%	+13.5%	+7.9%	+1.8%
Senior Registrar	3	-2	-1	-1	+0	-37.1%	-22.0%	-27.6%	+4.7%
Specialist Registrar	11	+0	+2	+2	+1	+3.9%	+17.0%	+16.8%	+13.3%
Registrars	403	+60	+47	+29	+9	+17.5%	+13.2%	+7.7%	+2.2%
Senior House Officer	44	+11	+14	+7	+6	+33.3%	+47.2%	+17.9%	+17.2%
SHO/ Interns	44	+11	+14	+7	+6	+33.3%	+47.2%	+17.9%	+17.2%
Dentists	301	-9	-1	-4	-0	-2.8%	-0.4%	-1.4%	-0.1%
Other Medical	211	-11	-23	-27	-7	-5.0%	-10.0%	-11.2%	-3.3%
Medical/ Dental, other	512	-20	-25	-31	-8	-3.7%	-4.6%	-5.7%	-1.5%
Medical & Dental	1,001	+51	+30	+4	+5	+5.3%	+3.1%	+0.4%	+0.5%
Clinical Nurse/ Midwife Manager	194	+57	+35	+24	+27	+41.0%	+22.2%	+14.0%	+15.9%
Director Nursing/Midwifery, Assistant	176	+56	+36	+25	+22	+46.5%	+25.9%	+16.8%	+14.0%
Director of Nursing/Midwifery	41	+20	+7	+5	+3	+100.2%	+21.5%	+13.8%	+8.7%
Nurse/ Midwife Manager	411	+133	+79	+54	+52	+47.7%	+23.7%	+15.1%	+14.3%
Advanced Nurse/ Midwife Practitioner	16	+14	+14	+13	+13	+691.0%	+590.8%	+522.8%	+522.8%
Clinical Nurse/ Midwife Specialist	169	+74	+29	+25	+28	+77.8%	+20.8%	+17.7%	+20.3%
Nurse/ Midwife Specialist & AN/MP	185	+88	+43	+39	+42	+90.4%	+30.0%	+26.5%	+29.2%
Staff Midwives	6	+5	+0	-1	-2	+606.3%	+7.4%	-12.9%	-30.4%
Staff Nurse [Psychiatric]	14	+11	+0	+6	+6	+325.3%	+2.0%	+73.6%	+69.9%
Staff Nurses [General/ Children's]	914	+240	+77	+49	+69	+35.6%	+9.1%	+5.6%	+8.1%
Staff Nurse/ Staff Midwife	934	+256	+77	+54	+72	+37.7%	+9.0%	+6.2%	+8.4%
Public Health Nurse	1,520	+59	+32	+4	+7	+4.0%	+2.2%	+0.3%	+0.5%
Public Health Nurse	1,520	+59	+32	+4	+7	+4.0%	+2.2%	+0.3%	+0.5%
Post-registration Nurse/ Midwife Student	108	+89	-21	+15	+12	+460.3%	-16.6%	+15.9%	+12.6%
Nursing/ Midwifery Student	108	+89	-21	+15	+12	+460.3%	-16.6%	+15.9%	+12.6%
Nursing Education/Clinical	7	+4	+3	+4	+3	+172.0%	+91.1%	+123.0%	+76.1%
Other Nursing/ Midwifery		-2	-0	-1		-100.0%	-100.0%	-100.0%	-100.0%
Nursing/ Midwifery other	7	+2	+3	+3	+3	+50.0%	+69.4%	+67.3%	+76.1%
Nursing & Midwifery	3,164	+626	+212	+169	+188	+24.7%	+7.2%	+5.6%	+6.3%
Dietitians	121	+61	+16	+4	+11	+103.1%	+15.2%	+3.2%	+10.4%
Occupational Therapists	553	+92	+36	+12	+38	+19.9%	+7.1%	+2.3%	+7.3%
Orthoptists	17	+11	+10	+7	+3	+196.8%	+162.8%	+69.3%	+26.3%
Physiotherapists	564	+86	+1	+1	+21	+18.0%	+0.2%	+0.2%	+3.9%
Podiatrists & Chiropodists	29	+10	+7	+5	+4	+50.3%	+29.2%	+22.7%	+17.4%
Speech & Language Therapists	521	+99	-25	-28	-5	+23.6%	-4.5%	-5.0%	-1.0%
Therapy Professions	1,804	+359	+46	+2	+73	+24.9%	+2.6%	+0.1%	+4.2%
Audiology	49	+28	+19	+1	+5	+131.3%	+65.1%	+2.3%	+12.1%
Biochemists	8	+1	+0	-0	+0	+23.0%	+1.2%	-3.6%	+1.0%
Clinical Engineering	8	+7	+6	+1		+700.0%	+300.0%	+14.3%	
Medical Laboratory	44	-38	-2	-3	+2	-46.0%	-4.0%	-5.8%	+5.1%
Phlebotomists	1	+1	+1	+1	+1	+78.6%	+98.4%	+468.2%	+468.2%
Physicists	2	+0	+0			+11.1%	+12.4%		
Radiographers	4	-1	-2	-1	-0	-22.8%	-26.7%	-19.9%	-0.9%
Health Science/ Diagnostics	117	-2	+23	-1	+9	-1.7%	+24.3%	-0.8%	+7.9%
Social Care	33	-65	-0	-1	-2	-66.4%	-0.1%	-3.3%	-6.9%
Social Workers	152	+10	-1	-1	+13	+7.3%	-0.9%	-0.3%	+9.1%
Psychologists	297	+80	+13	-1	-4	+36.7%	+4.5%	-0.3%	-1.4%
Pharmacy	59	+0	-4	+0	+1	+0.3%	-6.5%	+0.6%	+2.0%
Counsellor Therapists	113	+0	-8	-2	-2	+0.3%	-6.6%	-2.1%	-1.3%
Dental Hygienists	62	+7	+7	+4	+4	+12.8%	+13.2%	+7.2%	+7.2%
Environmental Health Officers					-1	-100.0%	-100.0%		-100.0%
Other Health & Social Care	6	-4	-2	-3	-1	-38.2%	-22.0%	-28.7%	-15.7%
Play Therapists/ Specialists	1	-1	-1	-1	-1	-26.0%	-41.0%	-41.0%	-35.9%
H&SC, Other	183	+3	-4	-2	+0	+1.6%	-2.0%	-1.1%	+0.0%

Jan 2021 (Oct 2013 figure: 10,789)	WTE Jan 2021	WTE change since Oct 13	WTE change since Dec 17	WTE change since Dec 18	WTE change since Dec 19	% change since Oct 13	% change since Dec 17	% change since Dec 18	% change since Dec 19
Overall	11,731	+942	+1,212	+800	+1,132	+8.7%	+11.5%	+7.3%	+10.7%
Health & Social Care Professionals	2,644	+385	+72	-3	+89	+17.0%	+2.8%	-0.1%	+3.5%
Executive Management	74	+49	+3	+0	+3	+192.1%	+4.3%	+0.3%	+4.9%
Senior Management (VIII & GM)	227	+62	+6	-8	-8	+37.7%	+2.8%	-3.5%	-3.2%
Management (VIII & above)	302	+111	+9	-8	-4	+58.2%	+3.1%	-2.6%	-1.3%
Middle Management (V-VII)	697	+201	+153	+71	+80	+40.6%	+28.1%	+11.4%	+12.9%
Other Administrative	1	+0	+0	-1	-1	+94.0%	+94.0%	-51.5%	-51.5%
Administrative/ Supervisory (V to VII)	698	+201	+153	+70	+79	+40.6%	+28.1%	+11.2%	+12.7%
General Administrative (III & IV)	1,864	-18	+65	+35	+117	-1.0%	+3.6%	+1.9%	+6.7%
Clerical (III & IV)	1,864	-18	+65	+35	+117	-1.0%	+3.6%	+1.9%	+6.7%
Management & Administrative	2,863	+294	+227	+97	+192	+11.5%	+8.6%	+3.5%	+7.2%
Support	351	-3	-35	-33	+4	-0.9%	-9.1%	-8.6%	+1.3%
Maintenance	56	-3	+1	-1	-2	-4.4%	+1.3%	-1.5%	-3.2%
Technical Services	1			+0				+11.1%	
Maintenance/ Technical	57	-3	+1	-1	-2	-4.4%	+1.3%	-1.3%	-3.1%
General Support	408	-6	-34	-34	+3	-1.4%	-7.7%	-7.7%	+0.6%
HCA, Nurse's Aide, etc.	786	+622	+610	+587	+601	+380.3%	+347.0%	+295.5%	+325.7%
Health & Social Care Assistants	109	+88	+86	-16	+40	+417.5%	+371.6%	-13.0%	+57.2%
Health Care Assistants	894	+710	+696	+571	+641	+384.6%	+349.9%	+176.3%	+252.5%
Home Help	18	-1,074	-5	-2	-1	-98.4%	-21.5%	-8.5%	-4.6%
Community Welfare Officers	1	-11	-3	-2	-1	-92.7%	-77.6%	-69.9%	-47.0%
Other Care Grades	739	-32	+17	+1	+16	-4.1%	+2.4%	+0.1%	+2.3%
Care, other	739	-43	+14	-1	+16	-5.4%	+1.9%	-0.2%	+2.2%
Ambulance Officers		-1				-100.0%	-100.0%	-100.0%	-100.0%
Pre-Hospital Care (Ambulance)		-1				-100.0%	-100.0%	-100.0%	-100.0%
Ambulance Staff		-2				-100.0%	-100.0%	-100.0%	-100.0%
Patient & Client Care	1,651	-408	+705	+568	+655	-19.8%	+74.5%	+52.4%	+65.8%

Source: Health Service Personnel Census