

Primary Care Service Employment Report: March 2021

Employment by Staff Group

Mar 2021 (Dec 2020 figure: 11,572)	WTE Feb 2021	WTE Mar 2021	WTE change since Feb 21	% change since Feb 21	WTE change since Dec 20	WTE change since Mar 20
Overall	11,868	11,929	+61	+0.5%	+357	+1,367
Consultants	42	44	+2	+4.5%	+2	+0
Registrars	399	394	-5	-1.2%	-9	+14
SHO/ Interns	42	43	+1	+1.4%	+1	-1
Medical/ Dental, other	524	528	+4	+0.8%	+9	+14
Medical & Dental	1,007	1,009	+2	+0.2%	+3	+27
Nurse/ Midwife Manager	411	408	-3	-0.7%	+4	+36
Nurse/ Midwife Specialist & AN/MP	186	194	+7	+3.8%	+9	+44
Staff Nurse/ Staff Midwife	945	955	+10	+1.1%	+28	+98
Public Health Nurse	1,518	1,510	-8	-0.5%	-23	+23
<i>Post-registration Nurse/ Midwife Student</i>	<i>108</i>	<i>108</i>	<i>+0</i>	<i>+0.4%</i>	<i>+13</i>	<i>+12</i>
Nursing/ Midwifery Student	108	108	+0	+0.4%	+2	+12
Nursing/ Midwifery other	6	6	-0	-0.3%	-1	+1
Nursing & Midwifery	3,175	3,181	+7	+0.2%	+20	+214
Therapy Professions	1,810	1,813	+3	+0.2%	+21	+81
Health Science/ Diagnostics	91	92	+1	+0.8%	-2	+11
Social Care	33	32	-1	-2.0%	-0	-2
Social Workers	151	153	+2	+1.3%	+2	+15
Psychologists	296	295	-1	-0.3%	-5	+0
Pharmacy	68	70	+2	+3.1%	+7	+13
H&SC, Other	208	215	+7	+3.5%	+6	+10
Health & Social Care Professionals	2,657	2,670	+13	+0.5%	+29	+128
Management (VIII & above)	300	294	-5	-1.7%	-4	-2
Administrative/ Supervisory (V to VII)	715	727	+12	+1.7%	+42	+105
Clerical (III & IV)	1,881	1,874	-6	-0.3%	+37	+144
Management & Administrative	2,895	2,896	+1	+0.0%	+74	+247
Support	355	358	+3	+0.9%	+7	+3
Maintenance/ Technical	59	60	+1	+2.1%	+3	+2
General Support	413	418	+4	+1.0%	+10	+5
Health Care Assistants	958	974	+16	+1.7%	+195	+711
Home Help	17	18	+1	+3.0%	-1	-1
Care, other	746	764	+18	+2.4%	+27	+37
Patient & Client Care	1,722	1,756	+34	+2.0%	+220	+747

Primary Care Services Employment by Administration (HSE / S38): March 2021

Mar 2021 (Dec 2020 figure: 11,572)	WTE Feb 2021	WTE Mar 2021	WTE change since Feb 21	% change since Feb 21	WTE change since Dec 20	WTE change since Mar 20
Total	11,868	11,929	+61	+0.5%	+357	+1,367
HSE	11,164	11,216	+52	+0.5%	+344	+1,336
Section 38 Voluntary Agencies	704	713	+9	+1.3%	+13	+31

Employment by Staff Group

Mar 2021 (Dec 2020 figure: 10,872)	WTE Feb 2021	WTE Mar 2021	WTE change since Feb 21	% change since Feb 21	WTE change since Dec 20	WTE change since Mar 20
Health Service Executive	11,164	11,216	+52	+0.5%	+344	+1,336
Consultants	29	31	+2	+7.9%	+1	-2
Registrars	386	381	-5	-1.2%	-9	+12
SHO/ Interns	23	23	+0	+1.5%	+1	-3
Medical/ Dental, other	509	512	+3	+0.5%	+7	+12
Medical & Dental	947	947	+0	+0.0%	+1	+19
Nurse/ Midwife Manager	362	358	-4	-1.1%	+2	+34
Nurse/ Midwife Specialist & AN/MP	149	156	+6	+4.1%	+9	+35
Staff Nurse/ Staff Midwife	833	843	+9	+1.1%	+23	+95
Public Health Nurse	1,518	1,510	-8	-0.5%	-23	+23
Post-registration Nurse/ Midwife Student	108	108	+0	+0.4%	+13	+12
Nursing/ Midwifery Student	108	108	+0	+0.4%	+2	+12
Nursing/ Midwifery other	4	4	-0	-0.5%	-1	+1
Nursing & Midwifery	2,974	2,978	+4	+0.1%	+13	+199
Therapy Professions	1,776	1,779	+3	+0.2%	+23	+83
Health Science/ Diagnostics	87	87	+1	+0.6%	-2	+10
Social Care	33	32	-1	-2.0%	-0	-2
Social Workers	140	142	+2	+1.5%	+1	+15
Psychologists	295	294	-1	-0.3%	-5	+0
Pharmacy	57	60	+2	+4.1%	+6	+12
H&SC, Other	204	211	+6	+3.1%	+5	+7
Health & Social Care Professionals	2,593	2,606	+13	+0.5%	+28	+126
Management (VIII & above)	291	285	-6	-2.1%	-5	-4
Administrative/ Supervisory (V to VII)	681	694	+13	+1.9%	+41	+106
Clerical (III & IV)	1,813	1,805	-7	-0.4%	+36	+141
Management & Administrative	2,785	2,784	-1	-0.0%	+71	+243
Support	261	263	+2	+0.8%	+7	+6
Maintenance/ Technical	49	50	+1	+2.6%	+3	+1
General Support	309	313	+3	+1.1%	+11	+8
Health Care Assistants	850	865	+15	+1.7%	+193	+706
Home Help	17	18	+1	+3.0%	-1	-1
Care, other	689	706	+17	+2.5%	+27	+36
Patient & Client Care	1,556	1,588	+32	+2.1%	+220	+741

Employment by Staff Group

Mar 2021 (Dec 2020 figure: 700)	WTE Feb 2021	WTE Mar 2021	WTE change since Feb 21	% change since Feb 21	WTE change since Dec 20	WTE change since Mar 20
Section 38 Voluntary Agencies	704	713	+9	+1.3%	+13	+31
Consultants	13	13	-0	-2.7%	+1	+3
Registrars	13	13			-0	+2
SHO/ Interns	19	20	+0	+1.4%	-0	+2
Medical/ Dental, other	14	16	+2	+11.1%	+2	+1
Medical & Dental	60	62	+2	+2.5%	+2	+8
Nurse/ Midwife Manager	49	50	+1	+2.3%	+2	+2
Nurse/ Midwife Specialist & AN/MP	37	38	+1	+2.5%	+1	+9
Staff Nurse/ Staff Midwife	112	113	+1	+0.9%	+5	+4
Nursing/ Midwifery other	2	2				
Nursing & Midwifery	200	203	+3	+1.5%	+7	+15
Therapy Professions	34	34	-0	-1.0%	-2	-2
Health Science/ Diagnostics	4	4	+0	+3.7%	-0	+0
Social Workers	11	11	-0	-1.2%	+1	+0
Psychologists	1	1				
Pharmacy	10	10	-0	-2.6%	+1	+1
H&SC, Other	3	4	+1	+22.2%	+1	+3
Health & Social Care Professionals	64	64	+0	+0.3%	+0	+2
Management (VIII & above)	9	10	+1	+11.8%	+1	+2
Administrative/ Supervisory (V to VII)	33	33	-0	-1.2%	+1	-1
Clerical (III & IV)	68	69	+1	+1.6%	+1	+3
Management & Administrative	110	112	+2	+1.5%	+3	+4
Support	94	95	+1	+1.0%	-1	-4
Maintenance/ Technical	10	10	-0	-0.4%	-0	+1
General Support	104	105	+1	+0.9%	-1	-3
Health Care Assistants	108	109	+1	+1.1%	+1	+4
Care, other	58	58	+0	+0.8%	-1	+1
Patient & Client Care	166	167	+2	+1.0%	+1	+5

Primary Care Services Employment by CHO: Mar 2021

Mar 2021 (Dec 2020 figure: 11,572)	WTE Feb 2021	WTE Mar 2021	WTE change since Feb 21	% change since Feb 21	WTE change since Dec 20	WTE change since Mar 20
Overall	11,868	11,929	+61	+0.5%	+357	+1,367
CHO 1	1,342	1,369	+26	+2.0%	+72	+181
CHO 2	1,248	1,271	+24	+1.9%	+37	+126
CHO 3	870	891	+22	+2.5%	+80	+128
CHO 4	1,572	1,582	+10	+0.6%	+65	+245
CHO 5	1,054	1,048	-6	-0.6%	-13	+110
CHO 6	841	844	+3	+0.3%	+33	+91
CHO 7	1,815	1,814	-1	-0.1%	+25	+132
CHO 8	1,550	1,566	+16	+1.0%	+60	+169
CHO 9	1,437	1,405	-32	-2.2%	-7	+168
other Community Services	138	139	+1	+0.4%	+5	+19

Primary Care Services Employment by CHO etc. Mar 2021

CHO 1

Mar 2021 (Dec 2020 figure: 1,296)	WTE Feb 2021	WTE Mar 2021	WTE change since Feb 21	% change since Feb 21	WTE change since Dec 20	WTE change since Mar 20
Overall	1,342	1,369	+26	+2.0%	+72	+181
Consultants	4	4	0		+0	-0
Registrars	42	41	-2	-4%	-1	+3
SHO/ Interns	1	1	+0	+2%		
Medical/ Dental, other	47	49	+1	+3%	+4	+3
Medical & Dental	94	94	-0	-0.3%	+2	+6
Nurse/ Midwife Manager	37	38	+0	+1%	-1	-3
Nurse/ Midwife Specialist & AN/MP	27	28	+1	+3%	+2	+6
Staff Nurse/ Staff Midwife	97	98	+2	+2%	+2	+12
Public Health Nurse	151	153	+2	+2%	+1	+1
Nursing/ Midwifery Student	3	3	0			-4
Nursing/ Midwifery other	1	1	-0	-2%	-0	-0
Nursing & Midwifery	316	322	+5	+1.6%	+4	+11
Therapy Professions	235	238	+3	+1%	+7	+9
Health Science/ Diagnostics	5	5	-0	-1%	-0	+1
Social Workers	16	18	+1	+9%	+2	+5
Psychologists	31	31	+0	+0%	-1	-2
Pharmacy	2	2	0			+1
H&SC, Other	7	7	+0	+2%	-0	+0
Health & Social Care Professionals	296	300	+5	+1.5%	+8	+14
Management (VIII & above)	32	32	-0	-0%	+2	+1
Administrative/ Supervisory (V to VII)	81	85	+4	+5%	+9	+17
Clerical (III & IV)	267	268	+1	+1%	+19	+35
Management & Administrative	380	385	+6	+1.5%	+29	+53
Support	85	88	+3	+4%	+11	+14
Maintenance/ Technical	7	7	-0	-0%	-0	+1
General Support	92	95	+3	+3.3%	+11	+15
Health Care Assistants	104	108	+4	+4%	+12	+75
Home Help	0	1	+0	+35%	-0	+0
Care, other	60	64	+4	+6%	+6	+7
Patient & Client Care	165	173	+8	+4.9%	+18	+82

CHO 2

Mar 2021 (Dec 2020 figure: 1,235)	WTE Feb 2021	WTE Mar 2021	WTE change since Feb 21	% change since Feb 21	WTE change since Dec 20	WTE change since Mar 20
Overall	1,248	1,271	+24	+1.9%	+37	+126
Consultants	1	1	+0	+22%	+0	+0
Registrars	48	47	-1	-3%	-1	+5
Senior House Officer	2	3	+1	+50%	+2	+1
SHO/ Interns	2	3	+1	+50%		+1
Medical/ Dental, other	45	47	+2	+5%	-2	+1
Medical & Dental	96	99	+2	+2.3%	-2	+8
Nurse/ Midwife Manager	29	31	+2	+7%	+4	+5
Nurse/ Midwife Specialist & AN/MP	22	23	+1	+5%	+2	+5
Staff Nurse/ Staff Midwife	81	82	+2	+2%	+3	+6
Public Health Nurse	195	193	-2	-1%	-5	+1
Post-registration Nurse/ Midwife Student				-100%	-4	-4
Nursing/ Midwifery Student				-100%		-4
Nursing & Midwifery	327	330	+3	+0.9%	+4	+13
Therapy Professions	246	254	+8	+3%	+6	+19
Health Science/ Diagnostics	7	7	+0	+7%	+0	+1
Social Care	9	9	-0	-0%	-0	
Social Workers	5	6	+1	+19%		-1
Psychologists	27	29	+2	+9%	+3	+5
Pharmacy	2	2	+0	+1%	+1	+2
H&SC, Other	41	42	+1	+2%	+0	+2
Health & Social Care Professionals	337	349	+13	+3.7%	+11	+30
Management (VIII & above)	38	37	-1	-3%	+1	+4
Administrative/ Supervisory (V to VII)	79	81	+2	+2%	+8	+17
Clerical (III & IV)	226	229	+3	+1%	+0	-4
Management & Administrative	343	347	+3	+0.9%	+10	+17
Support	22	22	-0	-0%		-0
Maintenance/ Technical	9	9	0		+1	
General Support	31	31	-0	-0.2%	+1	-0
Health Care Assistants	68	68	+0	+1%	+11	+54
Care, other	46	48	+2	+5%	+2	+3
Patient & Client Care	113	116	+3	+2.2%	+13	+58

CHO 3

Mar 2021 (Dec 2020 figure: 812)	WTE Feb 2021	WTE Mar 2021	WTE change since Feb 21	% change since Feb 21	WTE change since Dec 20	WTE change since Mar 20
Overall	870	891	+22	+2.5%	+80	+128
Consultants	1	1	0			-1
Registrars	25	25	-1	-2%		+3
SHO/ Interns	1	1	0			-5
Medical/ Dental, other	52	51	-1	-1%	-1	-1
Medical & Dental	79	78	-1	-1.5%	-1	-3
Nurse/ Midwife Manager	22	21	-1	-6%	-2	+1
Nurse/ Midwife Specialist & AN/MP	3	3	+0	+1%		+1
Staff Nurse/ Staff Midwife	57	62	+6	+11%	+7	+7
Public Health Nurse	127	126	-0	-0%	+0	-0
<i>Post-registration Nurse/ Midwife Student</i>	4	4	0		+4	+4
Nursing/ Midwifery Student	4	4	0			+4
Nursing & Midwifery	213	217	+4	+1.9%	+5	+13
Therapy Professions	87	86	-1	-1%	+3	-0
<i>Audiology</i>	5	5	+0	+0%	+0	+0
Health Science/ Diagnostics	5	5	+0	+0%	-1	+0
Social Care	1	1	0			
Social Workers	10	10	+0	+0%		+0
Psychologists	15	15	-0	-1%	+0	+1
Pharmacy	2	2	0		+1	+1
H&SC, Other	10	10	-0	-4%	-1	-1
Health & Social Care Professionals	130	129	-1	-1.0%	+2	+1
Management (VIII & above)	25	25	+0	+0%	+1	+0
Administrative/ Supervisory (V to VII)	70	77	+6	+9%	+13	+18
Clerical (III & IV)	161	168	+7	+4%	+18	+14
Management & Administrative	256	269	+13	+5.1%	+32	+33
Support	13	13	-0	-0%	+0	-0
Maintenance/ Technical	28	30	+1	+4%	+3	+1
General Support	42	43	+1	+3.0%	+3	+1
Health Care Assistants	100	103	+3	+3%	+35	+80
Home Help	1	1	0			
Care, other	50	52	+3	+6%	+3	+4
Patient & Client Care	150	156	+5	+3.6%	+38	+84

CHO 4

Mar 2021 (Dec 2020 figure: 1,517)	WTE Feb 2021	WTE Mar 2021	WTE change since Feb 21	% change since Feb 21	WTE change since Dec 20	WTE change since Mar 20
Overall	1,572	1,582	+10	+0.6%	+65	+245
Consultants	3	3	0			
Registrars	56	55	-1	-2%	-3	+3
SHO/ Interns	7	7	0		-0	+1
Medical/ Dental, other	96	95	-1	-1%	+4	+7
Medical & Dental	162	160	-2	-0.9%	+2	+10
Nurse/ Midwife Manager	69	68	-1	-2%	+8	+6
Nurse/ Midwife Specialist & AN/MP	7	8	+1	+16%	+0	+2
Staff Nurse/ Staff Midwife	144	142	-2	-1%	+3	+25
Public Health Nurse	215	216	+1	+1%	-6	+6
<i>Post-registration Nurse/ Midwife Student</i>	15	15	+0	+0%	-2	-4
Nursing/ Midwifery Student	15	15	+0	+0%	+0	-4
Nursing & Midwifery	449	449	-1	-0.1%	+5	+36
Therapy Professions	247	252	+5	+2%	+14	+34
Health Science/ Diagnostics	12	12	-0	-0%	-0	+1
Social Care	5	5	0			-2
Social Workers	28	27	-1	-4%	-1	+3
Psychologists	20	20	-0	-2%	-2	-1
Pharmacy	4	4	0			+1
H&SC, Other	41	41	-0	-0%	+0	+2
Health & Social Care Professionals	358	361	+3	+0.8%	+12	+38
Management (VIII & above)	34	33	-1	-4%	-2	-3
Administrative/ Supervisory (V to VII)	78	78	-1	-1%	+5	+13
Clerical (III & IV)	235	243	+8	+4%	+19	+42
Management & Administrative	347	354	+7	+1.9%	+23	+52
Support	18	18	-0	-0%	-0	+3
General Support	18	18	-0	-0.2%	-0	+3
Health Care Assistants	121	120	-1	-1%	+17	+101
Home Help	9	9	+0	+5%	-0	-1
Care, other	109	112	+3	+3%	+7	+6
Patient & Client Care	239	241	+2	+1.0%	+23	+106

CHO 5

Mar 2021 (Dec 2020 figure: 1,061)	WTE Feb 2021	WTE Mar 2021	WTE change since Feb 21	% change since Feb 21	WTE change since Dec 20	WTE change since Mar 20
Overall	1,054	1,048	-6	-0.6%	-13	+110
Consultants	1	2	+1	+100%	+1	-1
Registrars	22	24	+2	+8%	+3	+10
SHO/ Interns	2	1	-1	-50%	-1	-8
Medical/ Dental, other	57	59	+2	+3%	+5	+6
Medical & Dental	83	86	+4	+4.3%	+8	+8
Nurse/ Midwife Manager	37	35	-1	-3%	-11	+7
Nurse/ Midwife Specialist & AN/MP	18	17	-0	-1%	-0	+11
Staff Nurse/ Staff Midwife	84	85	+1	+1%	+0	+19
Public Health Nurse	168	165	-3	-2%	-2	+7
<i>Post-registration Nurse/ Midwife Student</i>	4	4	0		-1	-1
Nursing/ Midwifery Student	4	4	0		+1	-1
<i>Nursing Education/Clinical</i>				-100%	-1	-1
Nursing/ Midwifery other				-100%	-1	-1
Nursing & Midwifery	310	306	-4	-1.2%	-14	+41
Therapy Professions	186	186	+0	+0%	-0	+3
Health Science/ Diagnostics	7	7	+0	+0%	-1	+3
Social Care	5	4	-1	-14%	-1	-1
Social Workers	5	5	-0	-1%	-2	-5
Psychologists	36	34	-2	-5%	-5	-8
Pharmacy	1	1	0			
H&SC, Other	19	18	-1	-6%	-1	+0
Health & Social Care Professionals	257	254	-3	-1.4%	-10	-7
Management (VIII & above)	18	19	+1	+5%	-5	-5
Administrative/ Supervisory (V to VII)	54	59	+5	+9%	+0	+9
Clerical (III & IV)	151	141	-11	-7%	-20	-21
Management & Administrative	224	219	-5	-2.3%	-24	-17
Support	25	25	-0	-1%	-2	-3
General Support	25	25	-0	-0.6%	-2	-3
Health Care Assistants	96	93	-3	-3%	+23	+85
Home Help	7	7	-0	-1%	-1	-1
Care, other	53	59	+6	+11%	+6	+3
Patient & Client Care	156	158	+3	+1.8%	+29	+88

CHO 6

Mar 2021 (Dec 2020 figure: 811)	WTE Feb 2021	WTE Mar 2021	WTE change since Feb 21	% change since Feb 21	WTE change since Dec 20	WTE change since Mar 20
Overall	841	844	+3	+0.3%	+33	+91
Consultants	8	8	0			+0
Registrars	23	23	-0	-0%	-1	-2
SHO/ Interns	7	7	0			
Medical/ Dental, other	44	44	+1	+1%	+3	-0
Medical & Dental	82	82	+0	+0.6%	+3	-2
Nurse/ Midwife Manager	24	22	-2	-9%	-1	-0
Nurse/ Midwife Specialist & AN/MP	4	4	+0	+1%	+1	-2
Staff Nurse/ Staff Midwife	57	59	+2	+3%	+4	+10
Public Health Nurse	110	109	-1	-1%	-2	-2
<i>Post-registration Nurse/ Midwife Student</i>	15	15	0		+2	+2
Nursing/ Midwifery Student	15	15	0		+0	+2
<i>Nursing Education/Clinical</i>	1	1	0		+1	+1
Nursing/ Midwifery other	1	1	0			+1
Nursing & Midwifery	211	210	-1	-0.5%	+2	+9
Therapy Professions	116	115	-1	-1%	+5	+7
Health Science/ Diagnostics	19	19	-0	-0%	-1	+2
Social Care	3	3	-0	-1%	+0	+0
Social Workers	4	5	+0	+8%	+0	+0
Psychologists	19	19	-0	-3%	-1	-1
Pharmacy		2	+2	-100%	+1	+1
H&SC, Other	4	4	-0	-2%	-0	+0
Health & Social Care Professionals	166	166	+1	+0.4%	+4	+10
Management (VIII & above)	31	30	-1	-3%	-0	-1
Administrative/ Supervisory (V to VII)	66	69	+2	+3%	+4	+4
Clerical (III & IV)	135	138	+2	+2%	+10	+25
Management & Administrative	233	237	+4	+1.6%	+13	+29
Support	25	25	-0	-1%	-1	-2
Maintenance/ Technical	2	2	0			
General Support	27	27	-0	-0.5%	-1	-2
Health Care Assistants	50	50	+0	+0%	+12	+45
Care, other	73	72	-1	-2%	+0	+3
Patient & Client Care	123	122	-1	-0.7%	+12	+47

CHO 7

Mar 2021 (Dec 2020 figure: 1,789)	WTE Feb 2021	WTE Mar 2021	WTE change since Feb 21	% change since Feb 21	WTE change since Dec 20	WTE change since Mar 20
Overall	1,815	1,814	-1	-0.1%	+25	+132
Consultants	14	13	-0	-3%	+1	+2
Registrars	44	44	-0	-0%	+1	-0
SHO/ Interns	9	10	+1	+12%	+1	+3
Medical/ Dental, other	75	74	-1	-1%	-3	-2
Medical & Dental	142	141	-1	-0.4%	-0	+2
Nurse/ Midwife Manager	88	90	+3	+3%	+4	+9
Nurse/ Midwife Specialist & AN/MP	55	57	+2	+3%	+2	+10
Staff Nurse/ Staff Midwife	202	201	-1	-1%	+1	-3
Public Health Nurse	172	171	-1	-1%	-5	+5
<i>Post-registration Nurse/ Midwife Student</i>	23	23	0		+2	+2
Nursing/ Midwifery Student	23	23	0			+2
Nursing/ Midwifery other	2	2	0			
Nursing & Midwifery	542	544	+2	+0.4%	+2	+24
Therapy Professions	252	249	-3	-1%	-8	-8
Health Science/ Diagnostics	1	1	+0	+20%	-0	+0
Social Care	4	4	+0	+1%	+0	+0
Social Workers	27	27	-0	-1%	+1	+0
Psychologists	26	24	-1	-5%	-1	+2
Pharmacy	32	32	-1	-2%	+1	+1
H&SC, Other	21	21	-0	-1%	-0	-3
Health & Social Care Professionals	363	358	-5	-1.4%	-7	-8
Management (VIII & above)	31	32	+2	+6%	+2	+3
Administrative/ Supervisory (V to VII)	93	91	-2	-2%	+4	+17
Clerical (III & IV)	192	190	-2	-1%	-3	+10
Management & Administrative	315	313	-2	-0.6%	+3	+30
Support	110	110	-1	-0%	-1	-8
Maintenance/ Technical	9	9	-0	-0%	-0	+1
General Support	120	119	-1	-0.5%	-1	-7
Health Care Assistants	208	212	+4	+2%	+28	+89
Care, other	126	126	+0	+0%	+0	+2
Patient & Client Care	334	338	+5	+1.4%	+28	+91

CHO 8

Mar 2021 (Dec 2020 figure: 1,506)	WTE Feb 2021	WTE Mar 2021	WTE change since Feb 21	% change since Feb 21	WTE change since Dec 20	WTE change since Mar 20
Overall	1,550	1,566	+16	+1.0%	+60	+169
Consultants	6	6	0		-0	
Registrars	80	78	-1	-2%	-4	+1
SHO/ Interns	1	1	+0	+19%	+0	-1
Medical/ Dental, other	60	61	+1	+2%	+0	+0
Medical & Dental	146	146	-0	-0.2%	-3	-0
Nurse/ Midwife Manager	51	50	-2	-3%	-1	-1
Nurse/ Midwife Specialist & AN/MP	42	44	+2	+5%	+2	+7
Staff Nurse/ Staff Midwife	106	106	+1	+1%	+2	+7
Public Health Nurse	201	199	-2	-1%	+2	-3
<i>Post-registration Nurse/ Midwife Student</i>	13	13	0		+11	+11
Nursing/ Midwifery Student	13	13	0		+1	+11
Nursing/ Midwifery other	1	1	0		+0	+0
Nursing & Midwifery	414	414	-1	-0.2%	+7	+21
Therapy Professions	233	229	-4	-2%	+0	+10
Health Science/ Diagnostics	8	8	+0	+0%	+1	+2
Social Care	1	1	0			+1
Social Workers	15	16	+1	+4%	-0	-1
Psychologists	55	55	+0	+1%	-1	+0
Pharmacy	7	7	+0	+2%	+2	+3
H&SC, Other	26	34	+8	+31%	+8	+10
Health & Social Care Professionals	345	350	+5	+1.4%	+11	+26
Management (VIII & above)	41	43	+2	+4%	+2	+1
Administrative/ Supervisory (V to VII)	83	83	-0	-0%	-1	+3
Clerical (III & IV)	271	273	+2	+1%	+1	+6
Management & Administrative	395	399	+4	+1.0%	+2	+10
Support	21	21	+0	+0%	+0	-2
Maintenance/ Technical	3	3	0			+0
General Support	23	24	+0	+0.2%	+0	-2
Health Care Assistants	128	134	+6	+5%	+44	+115
Home Help				-100%		
Care, other	98	100	+2	+2%	+0	-1
Patient & Client Care	226	234	+8	+3.5%	+44	+114

CHO 9

Mar 2021 (Dec 2020 figure: 1,412)	WTE Feb 2021	WTE Mar 2021	WTE change since Feb 21	% change since Feb 21	WTE change since Dec 20	WTE change since Mar 20
Overall	1,437	1,405	-32	-2.2%	-7	+168
Consultants	3	4	+1	+29%		
Registrars	48	47	-1	-1%	-5	-4
SHO/ Interns	8	8	-1	-7%	+3	+4
Medical/ Dental, other	48	47	-1	-1%	-2	-1
Medical & Dental	107	106	-1	-0.6%	-4	-1
Nurse/ Midwife Manager	47	48	+1	+3%	+6	+13
Nurse/ Midwife Specialist & AN/MP	9	9	+1	+6%	+1	+3
Staff Nurse/ Staff Midwife	110	109	-1	-1%	+3	+8
Public Health Nurse	179	176	-3	-2%	-6	+8
<i>Post-registration Nurse/ Midwife Student</i>	31	31	+0	+1%	+5	+5
Nursing/ Midwifery Student	31	31	+0	+1%	+0	+5
Nursing/ Midwifery other	1	1	0		-0	+1
Nursing & Midwifery	377	375	-2	-0.6%	+4	+39
Therapy Professions	208	204	-4	-2%	-7	+7
Health Science/ Diagnostics	19	20	+0	+1%	+0	-0
Social Care	4	4	+0	+2%	+0	-1
Social Workers	22	22	0		-0	+6
Psychologists	68	68	+0	+1%	+3	+2
Pharmacy	15	16	+1	+5%	+1	+3
H&SC, Other	35	35	-0	-0%	-1	-1
Health & Social Care Professionals	371	368	-2	-0.7%	-4	+17
Management (VIII & above)	29	23	-5	-18%	-5	-5
Administrative/ Supervisory (V to VII)	92	86	-6	-7%	-2	+5
Clerical (III & IV)	229	211	-18	-8%	-10	+36
Management & Administrative	350	320	-30	-8.5%	-17	+36
Support	32	33	+1	+3%	-0	-0
General Support	32	33	+1	+2.7%	-0	-0
Health Care Assistants	85	87	+2	+2%	+13	+67
Care, other	116	116	-0	-0%	+2	+10
Patient & Client Care	201	203	+2	+0.8%	+15	+77

other Community Services

Mar 2021 (Dec 2020 figure: 134)	WTE Feb 2021	WTE Mar 2021	WTE change since Feb 21	% change since Feb 21	WTE change since Dec 20	WTE change since Mar 20
Overall	138	139	+1	+0.4%	+5	+19
Consultants	1	1	0			
Registrars	10	10	-0	-0%	+1	-4
SHO/ Interns	5	5	+0	+1%	-1	+4
Medical/ Dental, other				-100%	-0	-0
Medical & Dental	16	16	+0	+0.1%	+0	-0
Nurse/ Midwife Manager	6	5	-2	-29%	-2	+0
Staff Nurse/ Staff Midwife	9	11	+2	+20%	+2	+6
Nursing & Midwifery	15	15	-0	-0.3%	-0	+7
Health Science/ Diagnostics	8	8	-0	-1%	-0	-0
Social Care	2	2	0		+0	+0
Social Workers	18	18	-0	-0%	+2	+6
Psychologists	1	1	0			
Pharmacy	3	3	0			+0
H&SC, Other	4	4	0			+1
Health & Social Care Professionals	35	35	-0	-0.5%	+2	+7
Management (VIII & above)	22	21	-1	-5%	-1	+2
Administrative/ Supervisory (V to VII)	17	19	+1	+9%	+2	+0
Clerical (III & IV)	13	14	+1	+7%	+2	+2
Management & Administrative	52	54	+1	+2.5%	+3	+5
Support	4	4	-0	-1%	-0	+1
Maintenance/ Technical				-100%		-1
General Support	4	4	-0	-0.7%	-0	+0
Care, other	15	15	-0	-3%	-0	-0
Patient & Client Care	15	15	-0	-3.2%	-0	-0

Primary Care Services Employment by Grade Group: Mar 2021

Mar 2021 (Dec 2020 figure: 11,572)	WTE Feb 2021	WTE Mar 2021	WTE change since Feb 21	% change since Feb 21	WTE change since Dec 20	WTE change since Mar 20
Overall	11,868	11,929	+61	+0.5%	+357	+1,367
Consultant Dentistry	10	10	+0	+0.0%	+0	+0
Consultant Medicine	21	22	+1	+3.0%	+2	+3
Consultant Paediatrics	2	2				
Consultant Psychiatry	7	8	+1	+13.5%		
Consultant Radiology	1	1				
Consultant Surgery	0	1	+0	+55.3%	+0	-3
Consultants	42	44	+2	+4.5%	+2	+0
Registrar	385	380	-5	-1.2%	-10	+13
Senior Registrar	3	3			+1	-0
Specialist Registrar	11	11			-0	+1
Registrars	399	394	-5	-1.2%	-9	+14
Senior House Officer	42	43	+1	+1.4%	+1	-1
SHO/ Interns	42	43	+1	+1.4%	+1	-1
Dentists	300	302	+2	+0.8%	+0	+2
Other Medical	224	226	+2	+0.8%	+9	+12
Medical/ Dental, other	524	528	+4	+0.8%	+9	+14
Medical & Dental	1,007	1,009	+2	+0.2%	+3	+27
Clinical Nurse/ Midwife Manager	191	189	-1	-0.6%	-3	+16
Director Nursing/Midwifery, Assistant	178	179	+2	+1.0%	+8	+19
Director of Nursing/Midwifery	43	39	-4	-8.3%	-1	+1
Nurse/ Midwife Manager	411	408	-3	-0.7%	+4	+36
Advanced Nurse/ Midwife Practitioner	16	16	+0	+1.1%	+3	+13
Clinical Nurse/ Midwife Specialist	170	177	+7	+4.1%	+6	+31
Nurse/ Midwife Specialist & AN/MP	186	194	+7	+3.8%	+9	+44
Staff Midwives	6	6	-0	-0.9%	+1	+0
Staff Nurse [Psychiatric]	15	15	-0	-3.1%	+1	+7
Staff Nurses [General/ Children's]	923	934	+11	+1.2%	+26	+92
Staff Nurse/ Staff Midwife	945	955	+10	+1.1%	+28	+98
Public Health Nurse	1,518	1,510	-8	-0.5%	-23	+23
Public Health Nurse	1,518	1,510	-8	-0.5%	-23	+23
Post-registration Nurse/ Midwife Student	108	108	+0	+0.4%	+2	+12
Nursing/ Midwifery Student	108	108	+0	+0.4%	+2	+12
Nursing Education/Clinical	6	6	-0	-0.3%	-1	+1
Nursing/ Midwifery other	6	6	-0	-0.3%	-1	+1
Nursing & Midwifery	3,175	3,181	+7	+0.2%	+20	+214
Dietitians	119	122	+3	+2.8%	-3	+15
Occupational Therapists	561	562	+1	+0.2%	+19	+47
Orthoptists	16	16	-0	-1.2%	-1	+3
Physiotherapists	564	566	+2	+0.3%	+5	+22
Podiatrists & Chiropodists	31	32	+1	+3.6%	+2	+5
Speech & Language Therapists	519	515	-4	-0.8%	-1	-10
Therapy Professions	1,810	1,813	+3	+0.2%	+21	+81
Audiology	51	52	+1	+1.5%	-1	+8
Biochemists	8	8	-0	-1.4%	-0	-0
Clinical Engineering	8	8	-0	-0.5%	-0	
Medical Science	17	17	-0	-0.3%	-1	+2
Phlebotomists	1	1	+0	+19.8%	-0	+0
Physicists	2	2				
Radiographers	4	4			+0	+0
Health Science/ Diagnostics	91	92	+1	+0.8%	-2	+11
Social Care	33	32	-1	-2.0%	-0	-2

Mar 2021 (Dec 2020 figure: 11,572)	WTE Feb 2021	WTE Mar 2021	WTE change since Feb 21	% change since Feb 21	WTE change since Dec 20	WTE change since Mar 20
Overall	11,868	11,929	+61	+0.5%	+357	+1,367
Social Workers	151	153	+2	+1.3%	+2	+15
Psychologists	296	295	-1	-0.3%	-5	+0
Pharmacy	68	70	+2	+3.1%	+7	+13
Counsellor Therapists	113	121	+8	+7.1%	+9	+8
Dental Hygienists	61	60	-1	-1.6%	-2	+3
Environmental Health Officers				-100.0%		
Other Health & Social Care	33	33	+0	+0.4%	-1	-0
Play Therapists/ Specialists	1	1			-1	-1
H&SC, Other	208	215	+7	+3.5%	+6	+10
Health & Social Care Professionals	2,657	2,670	+13	+0.5%	+29	+128
Executive Management	73	71	-1	-1.7%	-3	+2
Senior Management (VIII & GM)	227	223	-4	-1.7%	-1	-3
Management (VIII & above)	300	294	-5	-1.7%	-4	-2
Middle Management (V-VII)	710	720	+10	+1.4%	+36	+103
Other Administrative	4	7	+3	+65.2%	+6	+2
Administrative/ Supervisory (V to VII)	715	727	+12	+1.7%	+42	+105
General Administrative (III & IV)	1,881	1,874	-6	-0.3%	+37	+144
Clerical (III & IV)	1,881	1,874	-6	-0.3%	+37	+144
Management & Administrative	2,895	2,896	+1	+0.0%	+74	+247
Catering	22	22	+0	+0.7%	+0	-0
Household Services	142	145	+3	+2.0%	+8	+7
Other Labs & Associated	5	5	-0	-1.6%	-0	+1
Other Support	114	114	+0	+0.3%	+1	-3
Portering	72	72	-0	-0.3%	-3	-2
Support	355	358	+3	+0.9%	+7	+3
Maintenance	58	59	+1	+2.1%	+3	+2
Technical Services	1	1				
Maintenance/ Technical	59	60	+1	+2.1%	+3	+2
General Support	413	418	+4	+1.0%	+10	+5
HCA, Nurse's Aide, etc.	207	210	+3	+1.3%	+7	+20
HCA (Student Nurse/Midwife COVID-19)				-100.0%	-0	
Health & Social Care Assistants	114	116	+2	+1.9%	+11	+42
Swabber (COVID-19)	638	649	+11	+1.7%	+177	+649
Health Care Assistants	958	974	+16	+1.7%	+195	+711
Home Help	17	18	+1	+3.0%	-1	-1
Care, other	746	764	+18	+2.4%	+27	+37
Patient & Client Care	1,722	1,756	+34	+2.0%	+220	+747

Employment by WTE, Headcount, Gender, Full-Time /Part-Time etc.: Mar 2021

Primary Care Services Staff Group	WTE	Headcount	WTE: no.	% Male	% female	Male WTE: no.	Female WTE: no.	% Total Perm	% Male Perm	% Female Perm	% Total Full Time	% Total Part Time	% Male FT	% Female FT
Overall	11,929	14,111	1.18	14.1%	85.9%	1.10	1.20	78.4%	67.3%	80.2%	67.4%	32.6%	84.0%	64.7%
Consultant Dentistry	10	12	1.18	50.0%	50.0%	1.17	1.18	100.0%	100.0%	100.0%	66.7%	33.3%	66.7%	66.7%
Consultant Medicine	22	26	1.18	26.9%	73.1%	1.05	1.24	57.7%	57.7%	52.6%	73.1%	26.9%	85.7%	68.4%
Consultant Paediatrics	2	2	1.33		100.0%		1.33	100.0%	100.0%	100.0%	50.0%	50.0%		50.0%
Consultant Psychiatry	8	9	1.07	77.8%	22.2%	1.09	1.00	66.7%	66.7%	50.0%	88.9%	11.1%	85.7%	100.0%
Consultant Radiology	1	1	1.00	100.0%		1.00		100.0%	100.0%		100.0%	0.0%	100.0%	
Consultant Surgery	1	2	2.74		100.0%		2.74	50.0%	50.0%	50.0%	0.0%	100.0%		0.0%
Consultants	44	52	1.19	40.4%	59.6%	1.10	1.26	71.2%	81.0%	64.5%	71.2%	28.8%	81.0%	64.5%
Registrar	380	391	1.03	34.5%	65.5%	1.01	1.04	1.5%	1.5%	0.8%	99.0%	1.0%	98.5%	99.2%
Senior Registrar	3	5	1.68	40.0%	60.0%	1.43	1.91	0.0%	0.0%	0.0%	40.0%	60.0%	50.0%	33.3%
Specialist Registrar	11	12	1.07	25.0%	75.0%	1.29	1.02	33.3%	33.3%	22.2%	91.7%	8.3%	66.7%	100.0%
Registrars	394	408	1.03	34.3%	65.7%	1.02	1.04	2.5%	4.3%	1.5%	98.0%	2.0%	97.1%	98.5%
Senior House Officer	43	52	1.21	25.0%	75.0%	1.27	1.19	3.8%	3.8%	5.1%	94.2%	5.8%	100.0%	92.3%
SHO/ Interns	43	52	1.21	25.0%	75.0%	1.27	1.19	3.8%	0.0%	5.1%	94.2%	5.8%	100.0%	92.3%
Dentists	302	396	1.31	25.5%	74.5%	1.30	1.32	88.1%	88.1%	86.8%	52.0%	48.0%	61.4%	48.8%
Other Medical	226	310	1.37	27.1%	72.9%	1.34	1.39	61.0%	61.0%	64.6%	39.7%	60.3%	46.4%	37.2%
Medical/ Dental, other	528	706	1.34	26.2%	73.8%	1.31	1.35	76.2%	73.5%	77.2%	46.6%	53.4%	54.6%	43.8%
Medical & Dental	1,009	1,218	1.21	29.5%	70.5%	1.17	1.22	48.2%	44.3%	49.8%	66.9%	33.1%	74.4%	63.8%
Clinical Nurse/ Midwife Manager	189	215	1.13	5.6%	94.4%	1.00	1.14	94.0%	94.0%	94.6%	66.5%	33.5%	100.0%	64.5%
Director Nursing/Midwifery, Assistant	179	199	1.11	1.0%	99.0%	1.09	1.11	98.0%	98.0%	98.0%	78.9%	21.1%	100.0%	78.7%
Director of Nursing/Midwifery	39	42	1.07	2.4%	97.6%	1.00	1.07	90.5%	90.5%	90.2%	85.7%	14.3%	100.0%	85.4%
Nurse/ Midwife Manager	408	456	1.12	3.3%	96.7%	1.01	1.12	95.4%	86.7%	95.7%	73.7%	26.3%	100.0%	72.8%
Advanced Nurse/ Midwife Practitioner	16	17	1.04		100.0%		1.04	94.1%	94.1%	94.1%	88.2%	11.8%		88.2%
Clinical Nurse/ Midwife Specialist	177	204	1.15	5.9%	94.1%	1.09	1.16	97.1%	97.1%	96.9%	66.7%	33.3%	100.0%	64.6%
Nurse/ Midwife Specialist & AN/MP	194	221	1.14	5.4%	94.6%	1.09	1.14	96.8%	100.0%	96.7%	68.3%	31.7%	100.0%	66.5%
Staff Midwives	6	9	1.43		100.0%		1.43	100.0%	100.0%	100.0%	22.2%	77.8%		22.2%
Staff Nurse [Psychiatric]	15	20	1.35	20.0%	80.0%	1.35	1.35	55.0%	55.0%	62.5%	50.0%	50.0%	25.0%	56.3%
Staff Nurses [General/ Children's]	934	1,242	1.33	3.2%	96.8%	1.11	1.34	82.8%	82.8%	82.6%	43.9%	56.1%	82.5%	42.6%
Staff Nurse/ Staff Midwife	955	1,271	1.33	3.5%	96.5%	1.13	1.34	82.5%	81.8%	82.5%	43.8%	56.2%	77.3%	42.6%
Public Health Nurse	1,510	1,793	1.19	0.4%	99.6%	1.07	1.19	94.4%	94.4%	94.4%	70.1%	29.9%	85.7%	70.0%

Public Health Nurse	1,510	1,793	1.19	0.4%	99.6%	1.07	1.19	94.4%	100.0%	94.4%	70.1%	29.9%	85.7%	70.0%
Post-registration Nurse/ Midwife Student	108	109	1.01	1.8%	98.2%	1.00	1.01	25.7%	25.7%	26.2%	98.2%	1.8%	100.0%	98.1%
Nursing/ Midwifery Student	108	109	1.01	1.8%	98.2%	1.00	1.01	25.7%	0.0%	26.2%	98.2%	1.8%	100.0%	98.1%
Nursing Education/Clinical	6	6	1.01		100.0%		1.01	83.3%	83.3%	83.3%	100.0%	0.0%		100.0%
Nursing/ Midwifery other	6	6	1.01		100.0%		1.01	83.3%		83.3%	100.0%	0.0%		100.0%
Nursing & Midwifery	3,181	3,856	1.21	2.1%	97.9%	1.09	1.22	88.8%	85.0%	88.9%	62.6%	37.4%	86.3%	62.1%
Health & Social Care	2,670	3,093	1.16	12.6%	87.4%	1.06	1.17	88.2%	86.9%	88.4%	70.4%	29.6%	87.7%	67.9%
Executive Management	71	74	1.04	37.8%	62.2%	1.10	1.00	90.5%	90.5%	91.3%	94.6%	5.4%	89.3%	97.8%
Senior Management (VIII & GM)	223	235	1.05	26.8%	73.2%	1.05	1.05	95.3%	95.3%	95.3%	90.6%	9.4%	93.7%	89.5%
Management (VIII & above)	294	309	1.05	29.4%	70.6%	1.07	1.04	94.2%	93.4%	94.5%	91.6%	8.4%	92.3%	91.3%
Middle Management (V-VII)	720	776	1.08	17.8%	82.2%	1.05	1.08	95.4%	95.4%	96.1%	85.7%	14.3%	97.8%	83.1%
Other Administrative	7	7	1.00	28.6%	71.4%	1.00	1.01	14.3%	14.3%	20.0%	85.7%	14.3%	100.0%	80.0%
Administrative/ Supervisory (V to VII)	727	783	1.08	17.9%	82.1%	1.05	1.08	94.6%	90.7%	95.5%	85.7%	14.3%	97.9%	83.0%
General Administrative (III & IV)	1,874	2,187	1.17	8.8%	91.2%	1.07	1.18	79.6%	79.6%	80.8%	65.4%	34.6%	87.6%	63.2%
Clerical (III & IV)	1,874	2,187	1.17	8.8%	91.2%	1.07	1.18	79.6%	66.8%	80.8%	65.4%	34.6%	87.6%	63.2%
Management & Administrative	2,896	3,279	1.13	12.9%	87.1%	1.06	1.14	84.6%	80.4%	85.2%	72.7%	27.3%	92.0%	69.8%
Catering	22	24	1.10	29.2%	70.8%	1.03	1.13	100.0%	100.0%	100.0%	62.5%	37.5%	100.0%	47.1%
Household Services	145	179	1.23	25.7%	74.3%	1.05	1.31	77.1%	77.1%	78.2%	47.5%	52.5%	78.3%	36.8%
Other Labs & Associated	5	5	1.05	20.0%	80.0%	1.01	1.06	100.0%	100.0%	100.0%	100.0%	0.0%	100.0%	100.0%
Other Support	114	243	2.13	31.7%	68.3%	1.32	2.96	49.0%	49.0%	36.1%	32.1%	67.9%	62.3%	18.1%
Portering	72	77	1.07	93.5%	6.5%	1.06	1.26	88.3%	88.3%	80.0%	90.9%	9.1%	94.4%	40.0%
Support	358	528	1.48	38.4%	61.6%	1.14	1.80	67.0%	81.3%	58.2%	47.9%	52.1%	78.8%	28.6%
Maintenance	59	62	1.06	98.4%	1.6%	1.06	1.00	96.8%	96.8%	100.0%	98.4%	1.6%	98.4%	100.0%
Technical Services	1	1	1.00	100.0%		1.00		100.0%	100.0%		100.0%	0.0%	100.0%	
Maintenance/ Technical	60	63	1.06	98.4%	1.6%	1.06	1.00	96.8%	96.8%	100.0%	98.4%	1.6%	98.4%	100.0%
General Support	418	591	1.42	44.8%	55.2%	1.12	1.80	70.2%	84.9%	58.3%	53.3%	46.7%	83.4%	28.8%
HCA, Nurse's Aide, etc.	210	256	1.22	17.6%	82.4%	1.05	1.27	88.7%	88.7%	87.2%	60.2%	39.8%	84.4%	55.0%
Health & Social Care Assistants	116	121	1.05	10.7%	89.3%	1.00	1.05	16.5%	16.5%	17.6%	93.4%	6.6%	100.0%	92.6%
Swabber (COVID-19)	649	721	1.11	31.5%	68.5%	1.08	1.12	0.8%	0.8%	0.6%	80.0%	20.0%	85.0%	77.7%
Health Care Assistants	974	1,098	1.13	26.0%	74.0%	1.07	1.15	23.0%	16.5%	25.3%	76.9%	23.1%	85.6%	73.8%
Home Help	18	43	2.45	25.6%	74.4%	2.59	2.41	27.9%	18.2%	31.3%	4.7%	95.3%	9.1%	3.1%
Care, other	764	933	1.22	18.8%	81.2%	1.09	1.26	92.9%	90.3%	93.5%	59.7%	40.3%	77.7%	55.5%
Patient & Client Care	1,756	2,074	1.18	22.7%	77.3%	1.10	1.21	54.6%	43.9%	57.7%	67.6%	32.4%	80.9%	63.8%

Employment by WTE, Headcount, Gender, Full-Time /Part-Time etc.: Mar 2021

Primary Care Services CHO	WTE	Headcount	WTE: no.	% Male	% female	Male WTE: no.	Female WTE: no.	% Total Perm	% Male Perm	% Female Perm	% Total Full Time	% Total Part Time	% Male FT	% Female FT
Overall	11,929	14,111	1.18	14.1%	85.9%	1.10	1.20	78.4%	67.3%	80.2%	67.4%	32.6%	84.0%	64.7%
CHO 1	1,369	1,591	1.16	14.5%	85.5%	1.07	1.18	83.3%	83.3%	85.5%	67.2%	32.8%	84.0%	64.3%
CHO 2	1,271	1,451	1.14	12.5%	87.5%	1.09	1.15	81.3%	81.3%	82.9%	70.9%	29.1%	82.4%	69.3%
CHO 3	891	1,034	1.16	13.6%	86.4%	1.06	1.18	72.4%	72.4%	74.0%	72.9%	27.1%	91.5%	70.0%
CHO 4	1,582	1,945	1.23	10.6%	89.4%	1.17	1.24	67.6%	67.6%	69.1%	60.5%	39.5%	74.3%	58.9%
CHO 5	1,048	1,270	1.21	11.7%	88.3%	1.11	1.23	79.2%	79.2%	80.8%	63.5%	36.5%	83.2%	60.8%
CHO 6	844	1,075	1.27	13.4%	86.6%	1.24	1.28	76.4%	76.4%	77.2%	68.7%	31.3%	91.7%	65.1%
CHO 7	1,814	2,123	1.17	16.6%	83.4%	1.08	1.19	84.9%	84.9%	86.6%	68.0%	32.0%	82.7%	65.1%
CHO 8	1,566	1,860	1.19	14.5%	85.5%	1.08	1.21	82.0%	82.0%	85.3%	63.9%	36.1%	81.0%	61.0%
CHO 9	1,405	1,609	1.15	16.4%	83.6%	1.06	1.16	76.3%	76.3%	78.4%	73.1%	26.9%	88.6%	70.0%
other Community Services	139	153	1.10	33.3%	66.7%	1.07	1.12	69.9%	69.9%	71.6%	83.0%	17.0%	88.2%	80.4%

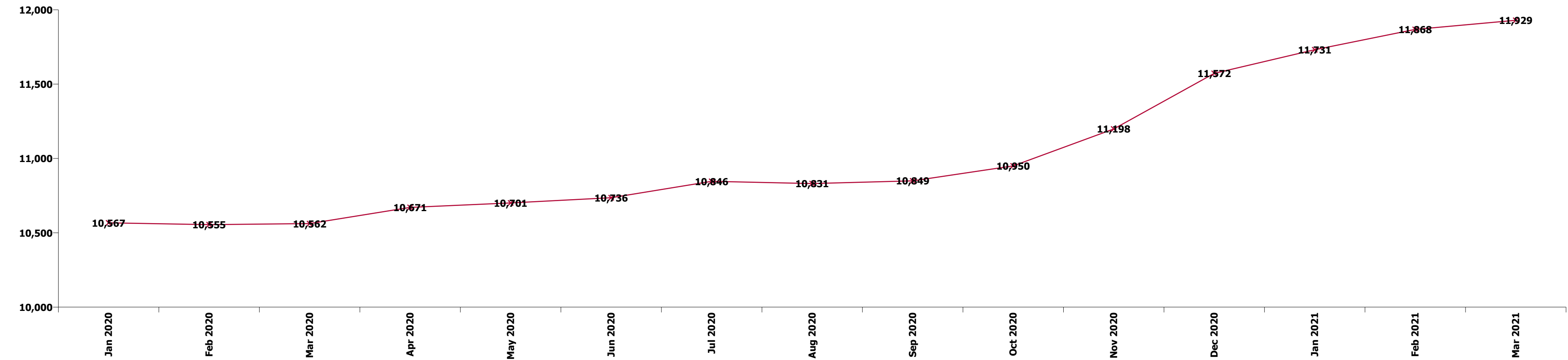
Summary Staff Movement: March 2021

Month-on-month
Summary

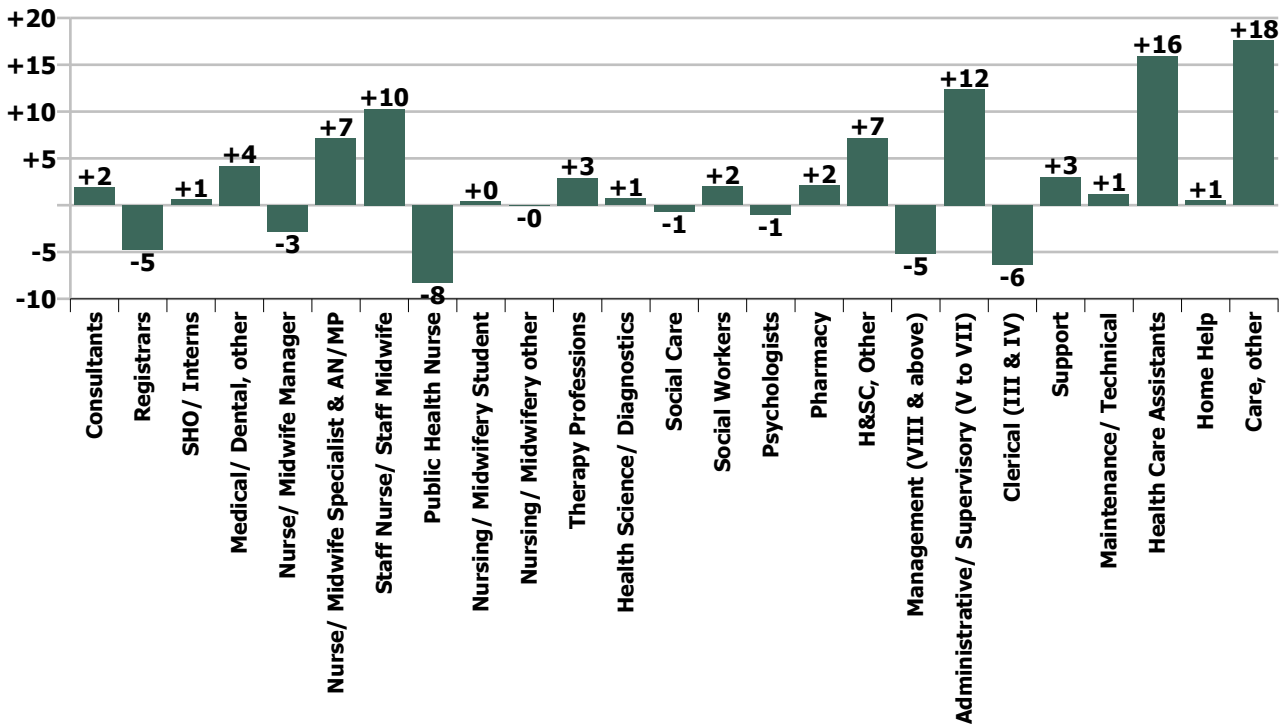
WTE change since Feb 21	% change since Feb 21	overall	Consultants	Registrars	SHO/ Interns	Medical/ Dental, other	Medical & Dental	Nurse/ Midwife Manager	Nurse/ Midwife Specialist & AN/MP	Staff Nurse/ Staff Midwife	Public Health Nurse	Nursing/ Midwifery Student	Nursing/ Midwifery other	Nursing & Midwifery	Therapy Professions	Health Science/ Diagnostics	Social Care	Social Workers	Psychologists	Pharmacy	H&SC, Other	Health & Social Care Professionals	Management (VIII & above)	Administrativ e/ Supervisory (V to VII)	Clerical (III & IV)	Management & Administrativ e	General Support	Health Care Assistants	Home Help	Care, other	Patient & Client Care
Overall	+0.5%	+61	+2	-5	+1	+4	+2	-3	+7	+10	-8	+0	-0	+7	+3	+1	-1	+2	-1	+2	+7	+13	-5	+12	-6	+1	+4	+16	+1	+18	+34
CHO 1	+2.0%	+26		-2	+0	+1	-0	+0	+1	+2	+2		-0	+5	+3	-0		+1	+0		+0	+5	-0	+4	+1	+6	+3	+4	+0	+4	+8
CHO 2	+1.9%	+24	+0	-1	+1	+2	+2	+2	+1	+2	-2			+3	+8	+0	-0	+1	+2	+0	+1	+13	-1	+2	+3	+3	-0	+0		+2	+3
CHO 3	+2.5%	+22		-1		-1	-1	-1	+0	+6	-0			+4	-1	+0		+0	-0		-0	-1	+0	+6	+7	+13	+1	+3		+3	+5
CHO 4	+0.6%	+10		-1		-1	-2	-1	+1	-2	+1	+0		-1	+5	-0		-1	-0		-0	+3	-1	-1	+8	+7	-0	-1	+0	+3	+2
CHO 5	-0.6%	-6	+1	+2	-1	+2	+4	-1	-0	+1	-3			-4	+0	+0	-1	-0	-2		-1	-3	+1	+5	-11	-5	-0	-3	-0	+6	+3
CHO 6	+0.3%	+3	+0	-0		+1	+0	-2	+0	+2	-1			-1	-1	-0	-0	+0	-0	+2	-0	+1	-1	+2	+2	+4	-0	+0		-1	-1
CHO 7	-0.1%	-1	-0	-0	+1	-1	-1	+3	+2	-1	-1			+2	-3	+0	+0	-0	-1	-1	-0	-5	+2	-2	-2	-2	-1	+4		+0	+5
CHO 8	+1.0%	+16		-1	+0	+1	-0	-2	+2	+1	-2			-1	-4	+0		+1	+0	+0	+8	+5	+2	-0	+2	+4	+0	+6		+2	+8
CHO 9	-2.2%	-32	+1	-1	-1	-1	-1	+1	+1	-1	-3	+0		-2	-4	+0	+0		+0	+1	-0	-2	-5	-6	-18	-30	+1	+2		-0	+2
other Community Services	+0.4%	+1		-0	+0		+0	-2		+2				-0		-0		-0				-0	-1	+1	+1	+1	-0			-0	-0
		+0.5%	+4.5%	-1.2%	+1.4%	+0.8%	+0.2%	-0.7%	+3.8%	+1.1%	-0.5%	+0.4%	-0.3%	+0.2%	+0.2%	+0.8%	-2.0%	+1.3%	-0.3%	+3.1%	+3.5%	+0.5%	-1.7%	+1.7%	-0.3%	+0.0%	+1.0%	+1.7%	+3.0%	+2.4%	+2.0%

Year-on-year Summary

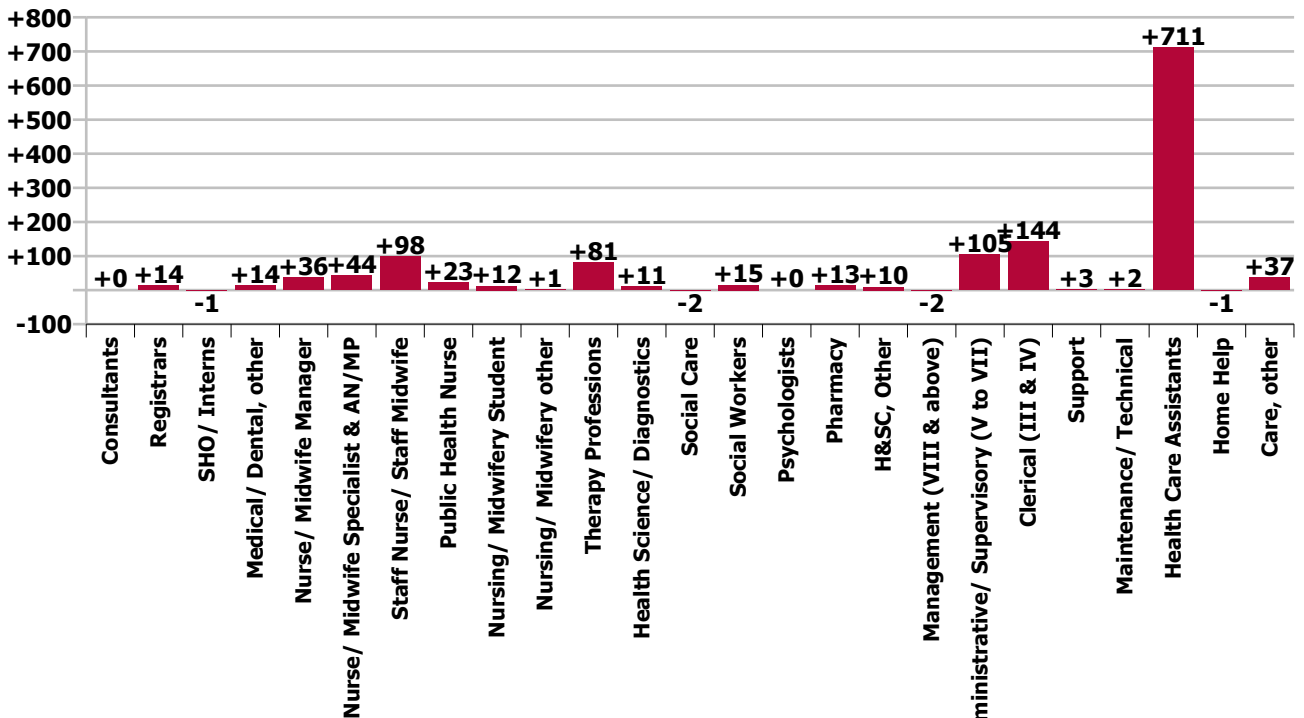
WTE change since Mar 20	% change since Mar 20	overall	Consultants	Registrars	SHO/ Interns	Medical/ Dental, other	Medical & Dental	Nurse/ Midwife Manager	Nurse/ Midwife Specialist & AN/MP	Staff Nurse/ Staff Midwife	Public Health Nurse	Nursing/ Midwifery Student	Nursing/ Midwifery other	Nursing & Midwifery	Therapy Professions	Health Science/ Diagnostics	Social Care	Social Workers	Psychologists	Pharmacy	H&SC, Other	Health & Social Care Professionals	Management (VIII & above)	Administrativ e/ Supervisory (V to VII)	Clerical (III & IV)	Management & Administrativ e	General Support	Health Care Assistants	Home Help	Care, other	Patient & Client Care
Overall	+12.9%	+1,367	+0	+14	-1	+14	+27	+36	+44	+98	+23	+12	+1	+214	+81	+11	-2	+15	+0	+13	+10	+128	-2	+105	+144	+247	+5	+710	-1	+37	+747
CHO 1	+15.2%	+181	-0	+3		+3	+6	-3	+6	+12	+1	-4	-0	+11	+9	+1		+5	-2	+1	+0	+14	+1	+17	+35	+53	+15	+75	+0	+7	+82
CHO 2	+11.0%	+126	+0	+5	+1	+1	+8	+5	+5	+6	+1	-4		+13	+19	+1		-1	+5	+2	+2	+30	+4	+17	-4	+17	-0	+54		+3	+58
CHO 3	+16.7%	+128	-1	+3	-5	-1	-3	+1	+1	+7	-0	+4		+13	-0	+0	+1	+1	+1	+1	-1	+1	+0	+18	+14	+33	+1	+80		+4	+84
CHO 4	+18.3%	+245		+3	+1	+7	+10	+6	+2	+25	+6	-4		+36	+34	+1	-2	+3	-1	+1	+2	+38	-3	+13	+42	+52	+3	+101	-1	+6	+106
CHO 5	+11.7%	+110	-1	+10	-8	+6	+8	+7	+11	+19	+7	-1	-1	+41	+3	+3	-1	-5	-8		+0	-7	-5	+9	-21	-17	-3	+85	-1	+3	+88
CHO 6	+12.1%	+91	+0	-2		-0	-2	-0	-2	+10	-2	+2	+1	+9	+7	+2	+0	+0	-1	+1	+0	+10	-1	+4	+25	+29	-2	+45		+3	+47
CHO 7	+7.8%	+132	+2	-0	+3	-2	+2	+9	+10	-3	+5	+2		+24	-8	+0	+0	+0	+2	+1	-3	-8	+3	+17	+10	+30	-7	+89		+2	+91
CHO 8	+12.1%	+169		+1	-1	+0	-0	-1	+7	+7	-3	+11	+0	+21	+10	+2	+1	-1	+0	+3	+10	+26	+1	+3	+6	+10	-2	+115		-1	+114
CHO 9	+13.6%	+168		-4	+4	-1	-1	+13	+3	+8	+8	+5	+1	+39	+7	-0	-1	+6	+2	+3	-1	+17	-5	+5	+36	+36	-0	+67		+10	+77
other Community Services	+15.7%	+19		-4	+4	-0	-0	+0		+6				+7		-0	+0	+6		+0	+1	+7	+2	+0	+2	+5	+0			-0	-0
		+12.9%	+0.3%	+3.7%	-2.6%	+2.7%	+2.7%	+9.7%	+29.4%	+11.5%	+1.5%	+12.2%	+19.4%	+7.2%	+4.7%	+13.2%	-5.5%	+11.0%	+0.1%	+23.5%	+4.7%	+5.0%	-0.5%	+16.8%	+8.3%	+9.3%	+1.2%	+269.4%	-5.8%	+5.1%	+74.0%



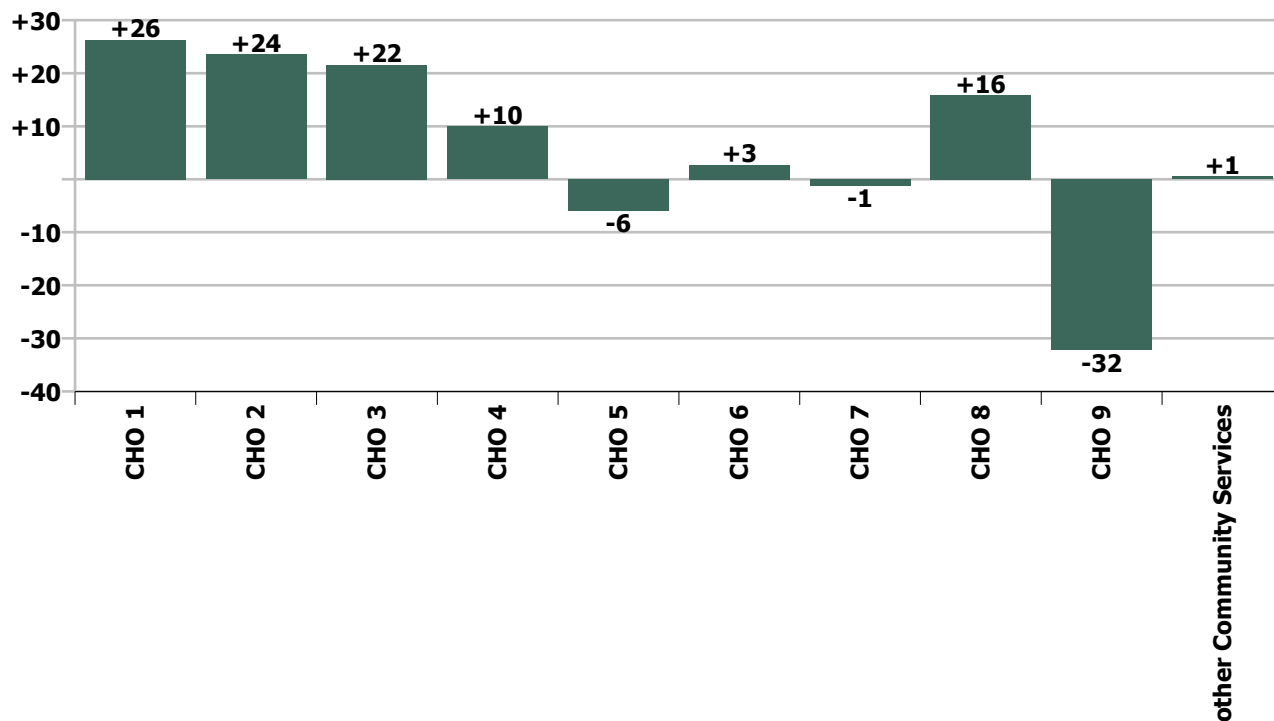
Staff Group change since: Feb 2021



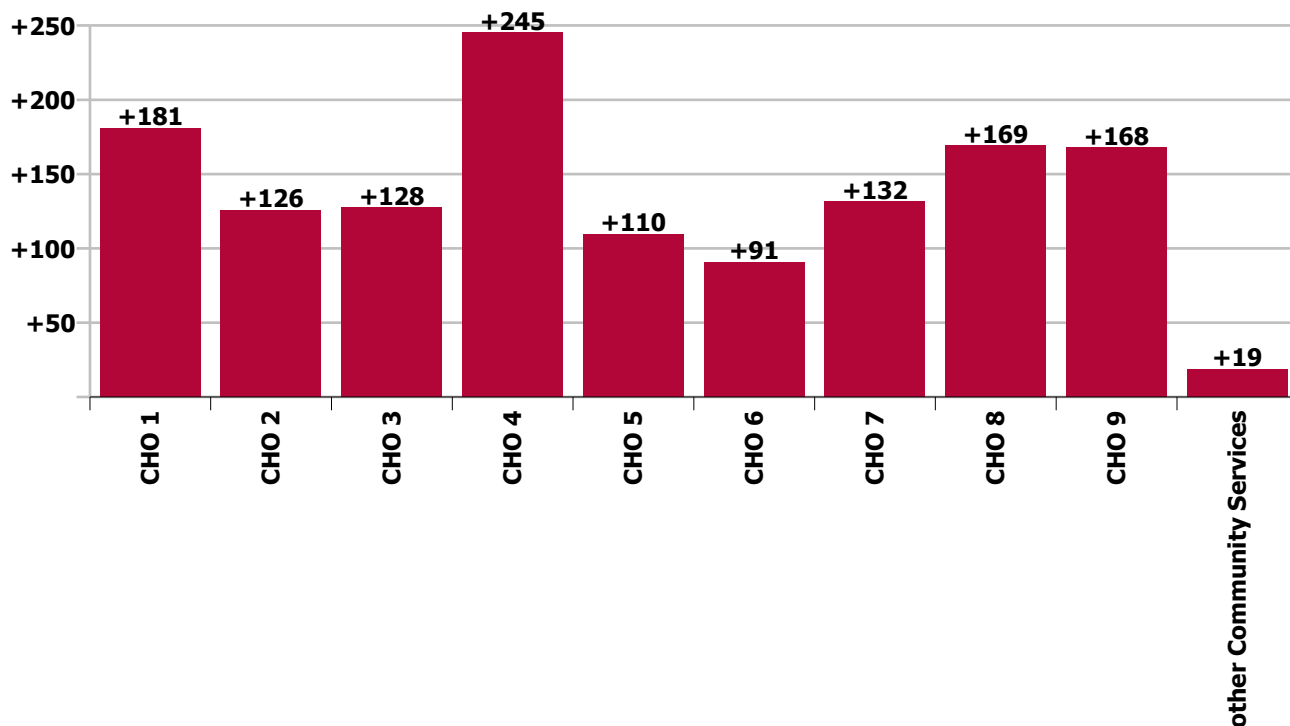
Staff Group change since: Mar 2020



CHO change since: Feb 2021



CHO change since: Mar 2020



Longitudinal Employment Levels by Grade Group - Dec 2015 to Mar 2021

Mar 2021 (Dec 2015 figure: 10,311)	WTE Mar 2021	WTE change since Dec 15	WTE change since Dec 16	WTE change since Dec 17	WTE change since Dec 18	WTE change since Dec 19	WTE change since Dec 20	% change since Dec 15	% change since Dec 16	% change since Dec 17	% change since Dec 18	% change since Dec 19	% change since Dec 20
Overall	11,929	+1,619	+1,483	+1,410	+998	+1,330	+357	+15.7%	+14.2%	+13.4%	+9.1%	+12.5%	+3.1%
Consultant Dentistry	10	-0	-0	-1	-1	-1	+0	-3.8%	-3.8%	-12.1%	-12.1%	-8.4%	+0.0%
Consultant Medicine	22	+6	+4	+2	+5	+4	+2	+36.0%	+21.0%	+10.7%	+29.3%	+23.6%	+8.2%
Consultant, Other		-1	-1					-100.0%	-100.0%	-100.0%	-100.0%	-100.0%	-100.0%
Consultant Paediatrics	2	+1	+1					+50.0%	+50.0%				
Consultant Psychiatry	8	-1	+1	-1	+2	+0		-6.0%	+20.0%	-10.9%	+31.3%	+0.4%	
Consultant Radiology	1												
Consultant Surgery	1	-4	-4	-4	-4	-3	+0	-85.5%	-85.5%	-84.7%	-83.8%	-82.0%	+21.7%
Consultants	44	+0		-4	+2	-0	+2	+0.2%		-9.0%	+4.3%	-0.1%	+4.3%
Registrar	380	+43	+50	+38	+20	-2	-10	+12.6%	+15.3%	+11.0%	+5.5%	-0.4%	-2.5%
Senior Registrar	3	-1	-1	-1	-1	+0	+1	-19.7%	-20.4%	-20.4%	-26.1%	+6.8%	+50.8%
Specialist Registrar	11	+2	+3	+1	+1	+1	-0	+25.2%	+41.6%	+15.4%	+15.2%	+11.7%	-1.4%
Registrars	394	+44	+53	+38	+20	-0	-9	+12.6%	+15.5%	+10.7%	+5.4%	-0.1%	-2.2%
Senior House Officer	43	-4	+3	+13	+6	+6	+1	-9.1%	+7.5%	+45.5%	+16.5%	+15.9%	+3.3%
SHO/ Interns	43	-4	+3	+13	+6	+6	+1	-9.1%	+7.5%	+45.5%	+16.5%	+15.9%	+3.3%
Dentists	302	+1	-2	-0	-3	+1	+0	+0.4%	-0.7%	-0.1%	-1.1%	+0.2%	+0.0%
Other Medical	226	+4	+10	-8	-12	+8	+9	+2.0%	+4.4%	-3.6%	-4.9%	+3.5%	+4.0%
Medical/ Dental, other	528	+6	+8	-9	-15	+8	+9	+1.1%	+1.5%	-1.6%	-2.8%	+1.6%	+1.7%
Medical & Dental	1,009	+46	+64	+39	+13	+14	+3	+4.7%	+6.7%	+4.0%	+1.3%	+1.4%	+0.3%
Clinical Nurse/ Midwife Manager	189	+39	+40	+30	+19	+22	-3	+26.3%	+27.1%	+19.1%	+11.0%	+13.0%	-1.5%
Director Nursing/Midwifery, Assistant	179	+42	+27	+40	+29	+25	+8	+30.5%	+17.7%	+28.6%	+19.3%	+16.4%	+4.4%
Director of Nursing/Midwifery	39	+5	+6	+6	+4	+2	-1	+13.7%	+19.2%	+17.2%	+9.8%	+4.9%	-2.5%
Nurse/ Midwife Manager	408	+86	+74	+76	+51	+49	+4	+26.7%	+22.0%	+22.9%	+14.4%	+13.6%	+0.9%
Advanced Nurse/ Midwife Practitioner	16	+14	+14	+14	+14	+14	+3	+717.0%	+485.7%	+613.5%	+543.3%	+543.3%	+23.1%
Clinical Nurse/ Midwife Specialist	177	+64	+60	+38	+34	+37	+6	+57.1%	+50.7%	+26.9%	+23.7%	+26.4%	+3.7%
Nurse/ Midwife Specialist & AN/MP	194	+79	+73	+52	+48	+51	+9	+68.6%	+60.8%	+36.4%	+32.7%	+35.6%	+5.1%
Staff Midwives	6	+4	+4	+1	-0	-2	+1	+215.5%	+127.0%	+20.0%	-2.8%	-22.3%	+14.7%
Staff Nurse [Psychiatric]	15	+10	+10	+1	+7	+6	+1	+237.3%	+180.0%	+4.7%	+78.2%	+74.4%	+9.3%

Mar 2021 (Dec 2015 figure: 10,311)	WTE Mar 2021	WTE change since Dec 15	WTE change since Dec 16	WTE change since Dec 17	WTE change since Dec 18	WTE change since Dec 19	WTE change since Dec 20	% change since Dec 15	% change since Dec 16	% change since Dec 17	% change since Dec 18	% change since Dec 19	% change since Dec 20
Overall	11,929	+1,619	+1,483	+1,410	+998	+1,330	+357	+15.7%	+14.2%	+13.4%	+9.1%	+12.5%	+3.1%
Staff Nurses [General/ Children's]	934	+177	+125	+96	+69	+89	+26	+23.4%	+15.4%	+11.5%	+8.0%	+10.5%	+2.9%
Staff Nurse/ Staff Midwife	955	+192	+138	+98	+75	+93	+28	+25.1%	+16.9%	+11.5%	+8.5%	+10.8%	+3.0%
Public Health Nurse	1,510	+38	+38	+23	-5	-2		+2.6%	+2.6%	+1.6%	-0.3%	-0.2%	
Public Health Nurse, Senior (Immunisation)		-1	-1	-1	-1	-0		-100.0%	-100.0%	-100.0%	-100.0%	-100.0%	
Public Health Nurse	1,510	+37	+37	+22	-6	-3	-23	+2.5%	+2.5%	+1.5%	-0.4%	-0.2%	-1.5%
Public Health Nurse	1,510	+37	+37	+22	-6	-3	-23	+2.5%	+2.5%	+1.5%	-0.4%	-0.2%	-1.5%
Post-registration Nurse/ Midwife Student	108	-3	-4	-21	+15	+13	+2	-2.3%	-3.2%	-16.1%	+16.6%	+13.3%	+2.1%
Nursing/ Midwifery Student	108	-3	-4	-21	+15	+13	+2	-2.3%	-3.2%	-16.1%	+16.6%	+13.3%	+2.1%
Nursing Education/Clinical	6	+2	+2	+2	+3	+2	-1	+45.8%	+69.1%	+69.1%	+97.3%	+55.8%	-11.0%
Other Nursing/ Midwifery		-2	-2	-0	-1			-100.0%	-100.0%	-100.0%	-100.0%	-100.0%	-100.0%
Nursing/ Midwifery other	6	-0	+0	+2	+2	+2	-1	-2.3%	+7.6%	+49.9%	+48.0%	+55.8%	-11.0%
Nursing & Midwifery	3,181	+392	+319	+229	+186	+205	+20	+14.0%	+11.1%	+7.8%	+6.2%	+6.9%	+0.6%
Dietitians	122	+34	+32	+17	+5	+13	-3	+38.6%	+35.6%	+16.7%	+4.5%	+11.8%	-2.1%
Occupational Therapists	562	+58	+66	+46	+21	+47	+19	+11.5%	+13.3%	+8.8%	+4.0%	+9.1%	+3.4%
Orthoptists	16	+9	+10	+10	+6	+3	-1	+126.6%	+176.2%	+153.7%	+63.4%	+22.0%	-7.7%
Physiotherapists	566	+25	+22	+3	+3	+23	+5	+4.6%	+4.1%	+0.6%	+0.5%	+4.3%	+0.9%
Podiatrists & Chiropodists	32	+17	+13	+9	+8	+7	+2	+109.9%	+64.8%	+42.2%	+35.1%	+29.2%	+7.7%
Speech & Language Therapists	515	+63	+13	-31	-34	-11	-1	+14.0%	+2.5%	-5.6%	-6.1%	-2.1%	-0.2%
Therapy Professions	1,813	+206	+156	+55	+11	+82	+21	+12.8%	+9.4%	+3.1%	+0.6%	+4.7%	+1.2%
Audiology	52	+24	+23	+22	+4	+8	-1	+84.0%	+77.8%	+73.6%	+7.6%	+17.9%	-1.1%
Biochemists	8	+1	+0	+0	-0	+0	-0	+13.3%	+0.5%	+0.5%	-4.2%	+0.4%	-1.3%
Clinical Engineering	8	+7	+5	+6	+1	-0	-0	+696.0%	+165.3%	+298.0%	+13.7%	-0.5%	-0.5%
Laboratory Manager			-1	-1	-1	-1		-100.0%	-100.0%	-100.0%	-100.0%	-100.0%	
Medical Scientist	11	-7	+0	-0	+1	+5		-38.2%	+2.3%	-2.2%	+10.1%	+77.4%	
Medical Scientist, Chief	1	-1						-44.8%					
Medical Scientist, Senior	4	-6	-2	-1	-3	-2		-61.5%	-33.3%	-20.0%	-42.9%	-33.3%	
Medical Scientist, Specialist	1	+1	+1	-1	-1	-1		-100.0%	-100.0%	-50.0%	-50.0%	-50.0%	
Medical Science	17	-13	-1	-3	-4	+1	-1	-43.4%	-7.1%	-14.1%	-17.4%	+7.7%	-4.6%
Phlebotomists	1	+1	+0	+0	+1	+1	-0	+125.6%	+49.2%	+54.0%	+340.9%	+340.9%	-20.5%
Physicists	2	-1	-1	+0				-33.3%	-33.3%	+12.4%			

Mar 2021 (Dec 2015 figure: 10,311)	WTE Mar 2021	WTE change since Dec 15	WTE change since Dec 16	WTE change since Dec 17	WTE change since Dec 18	WTE change since Dec 19	WTE change since Dec 20	% change since Dec 15	% change since Dec 16	% change since Dec 17	% change since Dec 18	% change since Dec 19	% change since Dec 20
Overall	11,929	+1,619	+1,483	+1,410	+998	+1,330	+357	+15.7%	+14.2%	+13.4%	+9.1%	+12.5%	+3.1%
Radiographers	4	-1	-1	-2	-1	-0	+0	-18.5%	-18.5%	-26.7%	-19.9%	-0.9%	+0.7%
Health Science/ Diagnostics	92	+17	+25	+24	+0	+10	-2	+23.0%	+36.9%	+35.8%	+0.4%	+11.9%	-1.9%
Social Care	32	-2	-3	-1	-2	-3	-0	-6.5%	-7.7%	-2.1%	-5.2%	-8.7%	-1.0%
Social Workers	153	+13	+3	-0	+1	+14	+2	+9.2%	+1.8%	-0.2%	+0.4%	+9.9%	+1.2%
Psychologists	295	+2	+11	+11	-2	-6	-5	+0.8%	+3.9%	+4.0%	-0.8%	-1.9%	-1.6%
Pharmacy	70	+5	+8	+7	+11	+12	+7	+7.7%	+12.4%	+11.2%	+19.6%	+21.3%	+11.2%
Counsellor Therapists	121	+24	+6	-1	+5	+6	+9	+25.2%	+5.1%	-0.5%	+4.2%	+5.0%	+7.9%
Dental Hygienists	60	+5	+5	+5	+2	+2	-2	+10.0%	+8.6%	+9.7%	+3.9%	+3.9%	-2.6%
Environmental Health Officers						-1		-100.0%	-100.0%	-100.0%	-100.0%	-100.0%	-100.0%
Other Health & Social Care	33	-2	-2	-2	-3	-1	-1	-5.3%	-5.4%	-4.9%	-7.3%	-3.1%	-2.1%
Play Therapists/ Specialists	1	-1	-0	-1	-1	-1	-1	-39.6%	-24.1%	-42.2%	-42.2%	-37.2%	-32.2%
H&SC, Other	215	+27	+8	+2	+3	+6	+6	+14.3%	+3.9%	+0.9%	+1.6%	+2.7%	+2.8%
Health & Social Care Professionals	2,670	+268	+207	+98	+22	+115	+29	+11.1%	+8.4%	+3.8%	+0.8%	+4.5%	+1.1%
Executive Management	71	+34	+6	+0	-3	+1	-3	+93.5%	+9.5%	+0.3%	-3.6%	+0.9%	-4.0%
Senior Management (VIII & GM)	223	+28	+29	+2	-13	-12	-1	+14.6%	+15.0%	+0.8%	-5.3%	-5.1%	-0.6%
Management (VIII & above)	294	+63	+35	+2	-15	-11	-4	+27.2%	+13.6%	+0.7%	-4.9%	-3.7%	-1.5%
Middle Management (V-VII)	720	+264	+230	+176	+95	+103	+36	+57.8%	+47.0%	+32.4%	+15.1%	+16.7%	+5.3%
Other Administrative	7	+6	+6	+6	+5	+5	+6	+1294.0%	+1294.0%	+1294.0%	+248.5%	+248.5%	+618.6%
Administrative/ Supervisory (V to VII)	727	+270	+237	+183	+100	+108	+42	+59.2%	+48.3%	+33.5%	+15.9%	+17.4%	+6.1%
General Administrative (III & IV)	1,874	+100	+102	+76	+45	+128	+37	+5.6%	+5.7%	+4.2%	+2.5%	+7.3%	+2.0%
Clerical (III & IV)	1,874	+100	+102	+76	+45	+128	+37	+5.6%	+5.7%	+4.2%	+2.5%	+7.3%	+2.0%
Management & Administrative	2,896	+433	+374	+260	+130	+225	+74	+17.6%	+14.8%	+9.9%	+4.7%	+8.4%	+2.6%
Catering	22	-1	+0	-3	-2	-0	+0	-2.7%	+0.7%	-13.2%	-6.5%	-1.8%	+0.2%
Household Services	145	-6	-2	+5	-2	+11	+8	-3.9%	-1.1%	+3.4%	-1.1%	+8.4%	+6.2%
Other Labs & Associated	5	+1	+3	-0	+0	+2	-0	+24.5%	+138.5%	-1.9%	+0.6%	+53.4%	-4.6%
Other Support	114	-5	-10	-18	-15	+2	+1	-4.3%	-7.8%	-13.9%	-11.7%	+1.4%	+1.0%
Portering	72	-16	-14	-11	-8	-3	-3	-18.7%	-16.5%	-13.0%	-9.8%	-3.5%	-3.4%
Support	358	-27	-23	-28	-26	+11	+7	-7.1%	-5.9%	-7.2%	-6.8%	+3.3%	+1.9%
Maintenance	59	-6	+1	+3	+1	+0	+3	-9.5%	+2.5%	+5.3%	+2.4%	+0.6%	+6.2%

Mar 2021 (Dec 2015 figure: 10,311)	WTE Mar 2021	WTE change since Dec 15	WTE change since Dec 16	WTE change since Dec 17	WTE change since Dec 18	WTE change since Dec 19	WTE change since Dec 20	% change since Dec 15	% change since Dec 16	% change since Dec 17	% change since Dec 18	% change since Dec 19	% change since Dec 20
Overall	11,929	+1,619	+1,483	+1,410	+998	+1,330	+357	+15.7%	+14.2%	+13.4%	+9.1%	+12.5%	+3.1%
Technical Services	1	+1			+0			-100.0%			+11.1%		
Maintenance/ Technical	60	-5	+1	+3	+1	+0	+3	-7.9%	+2.4%	+5.2%	+2.5%	+0.6%	+6.1%
General Support	418	-32	-21	-25	-25	+12	+10	-7.2%	-4.8%	-5.6%	-5.6%	+2.9%	+2.5%
HCA, Nurse's Aide, etc.	210	+40	+40	+34	+11	+25	+7	+23.3%	+23.4%	+19.2%	+5.5%	+13.6%	+3.6%
Health Care Assistant (Student Nurse/Mi								-100.0%	-100.0%	-100.0%	-100.0%	-100.0%	
HCA (Student Nurse/Midwife COVID-19)							-0	-100.0%	-100.0%	-100.0%	-100.0%	-100.0%	-100.0%
Health & Social Care Assistants	116	+98	+96	+93	-9	+46	+11	+556.2%	+491.5%	+401.3%	-7.5%	+67.1%	+10.5%
Community Swabber (COVID-19)	649	+649	+649	+649	+649	+649		-100.0%	-100.0%	-100.0%	-100.0%	-100.0%	
Swabber (COVID-19)	649	+649	+649	+649	+649	+649	+177	-100.0%	-100.0%	-100.0%	-100.0%	-100.0%	+37.5%
Health Care Assistants	974	+787	+785	+775	+650	+720	+195	+419.5%	+414.4%	+390.0%	+200.9%	+283.9%	+25.0%
Home Help	18	-280	-265	-5	-2	-1	-1	-94.1%	-93.8%	-21.5%	-8.5%	-4.6%	-4.6%
Other Care Grades	764	+7	+21	+39	+23	+40	+27	+0.9%	+2.8%	+5.3%	+3.1%	+5.5%	+3.6%
Care, other	764	+7	+21	+39	+23	+40	+27	+0.9%	+2.8%	+5.3%	+3.1%	+5.5%	+3.6%
Pre-Hospital Care (Ambulance)		-1						-100.0%	-100.0%	-100.0%	-100.0%	-100.0%	-100.0%
Ambulance Staff		-1						-100.0%	-100.0%	-100.0%	-100.0%	-100.0%	-100.0%
Patient & Client Care	1,756	+513	+540	+809	+672	+760	+220	+41.3%	+44.5%	+85.5%	+62.0%	+76.3%	+14.4%

Source: Health Service Personnel Census

Longitudinal Employment Levels by Grade Group - Dec 2015 to Mar 2021

Mar 2021 (Dec 2015 figure: 10,311)	WTE Mar 2021	WTE change since Dec 15	WTE change since Dec 18	WTE change since Dec 19	WTE change since Dec 20	% change since Dec 15	% change since Dec 18	% change since Dec 19	% change since Dec 20
Overall	11,929	+1,619	+998	+1,330	+357	+15.7%	+9.1%	+12.5%	+3.1%
Consultant Dentistry	10	-0	-1	-1	+0	-3.8%	-12.1%	-8.4%	+0.0%
Consultant Medicine	22	+6	+5	+4	+2	+36.0%	+29.3%	+23.6%	+8.2%
Consultant, Other		-1				-100.0%	-100.0%	-100.0%	-100.0%
Consultant Paediatrics	2	+1				+50.0%			
Consultant Psychiatry	8	-1	+2	+0		-6.0%	+31.3%	+0.4%	
Consultant Radiology	1								
Consultant Surgery	1	-4	-4	-3	+0	-85.5%	-83.8%	-82.0%	+21.7%
Consultants	44	+0	+2	-0	+2	+0.2%	+4.3%	-0.1%	+4.3%
Registrar	380	+43	+20	-2	-10	+12.6%	+5.5%	-0.4%	-2.5%
Senior Registrar	3	-1	-1	+0	+1	-19.7%	-26.1%	+6.8%	+50.8%
Specialist Registrar	11	+2	+1	+1	-0	+25.2%	+15.2%	+11.7%	-1.4%
Registrars	394	+44	+20	-0	-9	+12.6%	+5.4%	-0.1%	-2.2%
Senior House Officer	43	-4	+6	+6	+1	-9.1%	+16.5%	+15.9%	+3.3%
SHO/ Interns	43	-4	+6	+6	+1	-9.1%	+16.5%	+15.9%	+3.3%
Dentists	302	+1	-3	+1	+0	+0.4%	-1.1%	+0.2%	+0.0%
Other Medical	226	+4	-12	+8	+9	+2.0%	-4.9%	+3.5%	+4.0%
Medical/ Dental, other	528	+6	-15	+8	+9	+1.1%	-2.8%	+1.6%	+1.7%
Medical & Dental	1,009	+46	+13	+14	+3	+4.7%	+1.3%	+1.4%	+0.3%
Clinical Nurse/ Midwife Manager	189	+39	+19	+22	-3	+26.3%	+11.0%	+13.0%	-1.5%
Director Nursing/Midwifery, Assistant	179	+42	+29	+25	+8	+30.5%	+19.3%	+16.4%	+4.4%
Director of Nursing/Midwifery	39	+5	+4	+2	-1	+13.7%	+9.8%	+4.9%	-2.5%
Nurse/ Midwife Manager	408	+86	+51	+49	+4	+26.7%	+14.4%	+13.6%	+0.9%
Advanced Nurse/ Midwife Practitioner	16	+14	+14	+14	+3	+717.0%	+543.3%	+543.3%	+23.1%
Clinical Nurse/ Midwife Specialist	177	+64	+34	+37	+6	+57.1%	+23.7%	+26.4%	+3.7%
Nurse/ Midwife Specialist & AN/MP	194	+79	+48	+51	+9	+68.6%	+32.7%	+35.6%	+5.1%
Staff Midwives	6	+4	-0	-2	+1	+215.5%	-2.8%	-22.3%	+14.7%
Staff Nurse [Psychiatric]	15	+10	+7	+6	+1	+237.3%	+78.2%	+74.4%	+9.3%
Staff Nurses [General/ Children's]	934	+177	+69	+89	+26	+23.4%	+8.0%	+10.5%	+2.9%
Staff Nurse/ Staff Midwife	955	+192	+75	+93	+28	+25.1%	+8.5%	+10.8%	+3.0%
Public Health Nurse	1,510	+37	-6	-3	-23	+2.5%	-0.4%	-0.2%	-1.5%
Public Health Nurse	1,510	+37	-6	-3	-23	+2.5%	-0.4%	-0.2%	-1.5%
Post-registration Nurse/ Midwife Student	108	-3	+15	+13	+2	-2.3%	+16.6%	+13.3%	+2.1%
Nursing/ Midwifery Student	108	-3	+15	+13	+2	-2.3%	+16.6%	+13.3%	+2.1%
Nursing Education/Clinical	6	+2	+3	+2	-1	+45.8%	+97.3%	+55.8%	-11.0%
Other Nursing/ Midwifery		-2	-1			-100.0%	-100.0%	-100.0%	-100.0%
Nursing/ Midwifery other	6	-0	+2	+2	-1	-2.3%	+48.0%	+55.8%	-11.0%
Nursing & Midwifery	3,181	+392	+186	+205	+20	+14.0%	+6.2%	+6.9%	+0.6%
Dietitians	122	+34	+5	+13	-3	+38.6%	+4.5%	+11.8%	-2.1%
Occupational Therapists	562	+58	+21	+47	+19	+11.5%	+4.0%	+9.1%	+3.4%
Orthoptists	16	+9	+6	+3	-1	+126.6%	+63.4%	+22.0%	-7.7%
Physiotherapists	566	+25	+3	+23	+5	+4.6%	+0.5%	+4.3%	+0.9%
Podiatrists & Chiropodists	32	+17	+8	+7	+2	+109.9%	+35.1%	+29.2%	+7.7%
Speech & Language Therapists	515	+63	-34	-11	-1	+14.0%	-6.1%	-2.1%	-0.2%
Therapy Professions	1,813	+206	+11	+82	+21	+12.8%	+0.6%	+4.7%	+1.2%
Audiology	52	+24	+4	+8	-1	+84.0%	+7.6%	+17.9%	-1.1%
Biochemists	8	+1	-0	+0	-0	+13.3%	-4.2%	+0.4%	-1.3%
Clinical Engineering	8	+7	+1	-0	-0	+696.0%	+13.7%	-0.5%	-0.5%
Medical Science	17	-13	-4	+1	-1	-43.4%	-17.4%	+7.7%	-4.6%
Phlebotomists	1	+1	+1	+1	-0	+125.6%	+340.9%	+340.9%	-20.5%
Physicists	2	-1				-33.3%			
Radiographers	4	-1	-1	-0	+0	-18.5%	-19.9%	-0.9%	+0.7%
Health Science/ Diagnostics	92	+17	+0	+10	-2	+23.0%	+0.4%	+11.9%	-1.9%
Social Care	32	-2	-2	-3	-0	-6.5%	-5.2%	-8.7%	-1.0%
Social Workers	153	+13	+1	+14	+2	+9.2%	+0.4%	+9.9%	+1.2%
Psychologists	295	+2	-2	-6	-5	+0.8%	-0.8%	-1.9%	-1.6%
Pharmacy	70	+5	+11	+12	+7	+7.7%	+19.6%	+21.3%	+11.2%
Counsellor Therapists	121	+24	+5	+6	+9	+25.2%	+4.2%	+5.0%	+7.9%
Dental Hygienists	60	+5	+2	+2	-2	+10.0%	+3.9%	+3.9%	-2.6%
Environmental Health Officers				-1		-100.0%	-100.0%	-100.0%	-100.0%
Other Health & Social Care	33	-2	-3	-1	-1	-5.3%	-7.3%	-3.1%	-2.1%
Play Therapists/ Specialists	1	-1	-1	-1	-1	-39.6%	-42.2%	-37.2%	-32.2%
H&SC, Other	215	+27	+3	+6	+6	+14.3%	+1.6%	+2.7%	+2.8%

Mar 2021 (Dec 2015 figure: 10,311)	WTE Mar 2021	WTE change since Dec 15	WTE change since Dec 18	WTE change since Dec 19	WTE change since Dec 20	% change since Dec 15	% change since Dec 18	% change since Dec 19	% change since Dec 20
Overall	11,929	+1,619	+998	+1,330	+357	+15.7%	+9.1%	+12.5%	+3.1%
Health & Social Care Professionals	2,670	+268	+22	+115	+29	+11.1%	+0.8%	+4.5%	+1.1%
Executive Management	71	+34	-3	+1	-3	+93.5%	-3.6%	+0.9%	-4.0%
Senior Management (VIII & GM)	223	+28	-13	-12	-1	+14.6%	-5.3%	-5.1%	-0.6%
Management (VIII & above)	294	+63	-15	-11	-4	+27.2%	-4.9%	-3.7%	-1.5%
Middle Management (V-VII)	720	+264	+95	+103	+36	+57.8%	+15.1%	+16.7%	+5.3%
Other Administrative	7	+6	+5	+5	+6	+1294.0%	+248.5%	+248.5%	+618.6%
Administrative/ Supervisory (V to VII)	727	+270	+100	+108	+42	+59.2%	+15.9%	+17.4%	+6.1%
General Administrative (III & IV)	1,874	+100	+45	+128	+37	+5.6%	+2.5%	+7.3%	+2.0%
Clerical (III & IV)	1,874	+100	+45	+128	+37	+5.6%	+2.5%	+7.3%	+2.0%
Management & Administrative	2,896	+433	+130	+225	+74	+17.6%	+4.7%	+8.4%	+2.6%
Support	358	-27	-26	+11	+7	-7.1%	-6.8%	+3.3%	+1.9%
Maintenance	59	-6	+1	+0	+3	-9.5%	+2.4%	+0.6%	+6.2%
Technical Services	1	+1	+0			-100.0%	+11.1%		
Maintenance/ Technical	60	-5	+1	+0	+3	-7.9%	+2.5%	+0.6%	+6.1%
General Support	418	-32	-25	+12	+10	-7.2%	-5.6%	+2.9%	+2.5%
HCA, Nurse's Aide, etc.	210	+40	+11	+25	+7	+23.3%	+5.5%	+13.6%	+3.6%
HCA (Student Nurse/Midwife COVID-19)					-0	-100.0%	-100.0%	-100.0%	-100.0%
Health & Social Care Assistants	116	+98	-9	+46	+11	+556.2%	-7.5%	+67.1%	+10.5%
Swabber (COVID-19)	649	+649	+649	+649	+177	-100.0%	-100.0%	-100.0%	+37.5%
Health Care Assistants	974	+787	+650	+720	+195	+419.5%	+200.9%	+283.9%	+25.0%
Home Help	18	-280	-2	-1	-1	-94.1%	-8.5%	-4.6%	-4.6%
Other Care Grades	764	+7	+23	+40	+27	+0.9%	+3.1%	+5.5%	+3.6%
Care, other	764	+7	+23	+40	+27	+0.9%	+3.1%	+5.5%	+3.6%
Pre-Hospital Care (Ambulance)		-1				-100.0%	-100.0%	-100.0%	-100.0%
Ambulance Staff		-1				-100.0%	-100.0%	-100.0%	-100.0%
Patient & Client Care	1,756	+513	+672	+760	+220	+41.3%	+62.0%	+76.3%	+14.4%

Source: Health Service Personnel Census