

Primary Care Service Employment Report: November 2020

Employment by Staff Group

Nov 2020 (Dec 2019 figure: 10,599)	WTE Oct 2020	WTE Nov 2020	WTE change since Oct 20	% change since Oct 20	WTE change since Dec 19	WTE change since Nov 19
Overall	10,950	11,198	+248	+2.3%	+599	+549
Consultants	45	44	-2	-3.5%	-0	+1
Registrars	404	404	+1	+0.1%	+10	+9
SHO/ Interns	45	42	-4	-8.1%	+5	+3
Medical/ Dental, other	527	524	-3	-0.6%	+5	+6
Medical & Dental	1,022	1,014	-8	-0.8%	+19	+18
Nurse/ Midwife Manager	402	396	-7	-1.6%	+36	+31
Nurse/ Midwife Specialist & AN/MP	173	179	+6	+3.5%	+37	+36
Staff Nurse/ Staff Midwife	902	910	+8	+0.9%	+48	+39
Public Health Nurse	1,522	1,538	+16	+1.0%	+25	+22
<i>Post-registration Nurse/ Midwife Student</i>	99	104	+6	+5.7%	+11	+9
Nursing/ Midwifery Student	99	104	+6	+5.7%	+9	+9
Nursing/ Midwifery other	6	7	+1	+18.0%	+3	+2
Nursing & Midwifery	3,104	3,134	+30	+1.0%	+158	+140
Therapy Professions	1,790	1,793	+3	+0.2%	+62	+54
Health Science/ Diagnostics	116	118	+2	+2.1%	+10	+10
Social Care	32	31	-1	-2.9%	-4	-4
Social Workers	144	148	+4	+2.5%	+9	+8
Psychologists	292	296	+5	+1.7%	-4	-5
Pharmacy	64	63	-1	-1.6%	+5	+7
H&SC, Other	180	181	+1	+0.4%	-2	-1
Health & Social Care Professionals	2,618	2,631	+13	+0.5%	+75	+69
Management (VIII & above)	302	298	-4	-1.4%	-8	-5
Administrative/ Supervisory (V to VII)	654	658	+4	+0.6%	+39	+30
Clerical (III & IV)	1,782	1,811	+29	+1.6%	+65	+54
Management & Administrative	2,737	2,767	+29	+1.1%	+96	+79
Support	350	351	+1	+0.3%	+4	+1
Maintenance/ Technical	58	57	-1	-1.4%	-2	-2
General Support	408	408	+0	+0.1%	+2	-1
Health Care Assistants	311	491	+179	+57.6%	+237	+235
Home Help	19	18	-1	-6.6%	-0	+0
Care, other	730	736	+6	+0.8%	+12	+9
Patient & Client Care	1,061	1,245	+184	+17.3%	+249	+244

Primary Care Services Employment by Administration (HSE / S38): November 2020

Nov 2020 (Dec 2019 figure: 10,599)	WTE Oct 2020	WTE Nov 2020	WTE change since Oct 20	% change since Oct 20	WTE change since Dec 19	WTE change since Nov 19
Total	10,950	11,198	+248	+2.3%	+599	+549
HSE	10,256	10,505	+249	+2.4%	+581	+533
Section 38 Voluntary Agencies	694	694	-1	-0.1%	+18	+15

Employment by Staff Group

Nov 2020 (Dec 2019 figure: 9,923)	WTE Oct 2020	WTE Nov 2020	WTE change since Oct 20	% change since Oct 20	WTE change since Dec 19	WTE change since Nov 19
Health Service Executive	10,256	10,505	+249	+2.4%	+581	+533
Consultants	31	31	-0	-0.4%	-1	-1
Registrars	392	391	-0	-0.1%	+8	+8
SHO/ Interns	25	22	-3	-12.3%	+3	+2
Medical/ Dental, other	511	510	-0	-0.1%	+5	+8
Medical & Dental	959	955	-4	-0.4%	+14	+16
Nurse/ Midwife Manager	352	347	-5	-1.5%	+37	+31
Nurse/ Midwife Specialist & AN/MP	142	145	+3	+1.9%	+31	+30
Staff Nurse/ Staff Midwife	793	804	+11	+1.4%	+52	+44
Public Health Nurse	1,522	1,538	+16	+1.0%	+25	+22
Post-registration Nurse/ Midwife Student	99	104	+6	+5.7%	+11	+9
Nursing/ Midwifery Student	99	104	+6	+5.7%	+9	+9
Nursing/ Midwifery other	4	5	+1	+26.7%	+3	+2
Nursing & Midwifery	2,912	2,943	+31	+1.1%	+157	+139
Therapy Professions	1,752	1,756	+4	+0.2%	+62	+53
Health Science/ Diagnostics	111	113	+2	+2.2%	+9	+9
Social Care	32	31	-1	-2.9%	-4	-4
Social Workers	134	137	+3	+2.2%	+8	+8
Psychologists	291	296	+5	+1.7%	-4	-5
Pharmacy	55	54	-1	-1.7%	+6	+7
H&SC, Other	177	177	+1	+0.4%	-4	-2
Health & Social Care Professionals	2,551	2,564	+13	+0.5%	+72	+66
Management (VIII & above)	293	289	-4	-1.4%	-8	-5
Administrative/ Supervisory (V to VII)	623	626	+3	+0.5%	+41	+32
Clerical (III & IV)	1,714	1,744	+30	+1.7%	+61	+49
Management & Administrative	2,630	2,659	+29	+1.1%	+94	+76
Support	256	254	-2	-0.6%	+2	-1
Maintenance/ Technical	48	47	-1	-1.8%	-3	-3
General Support	304	301	-2	-0.8%	-1	-4
Health Care Assistants	207	386	+178	+86.2%	+234	+233
Home Help	19	18	-1	-6.6%	-0	+0
Care, other	673	678	+6	+0.8%	+11	+8
Patient & Client Care	899	1,082	+183	+20.3%	+245	+241

Employment by Staff Group

Nov 2020 (Dec 2019 figure: 676)	WTE Oct 2020	WTE Nov 2020	WTE change since Oct 20	% change since Oct 20	WTE change since Dec 19	WTE change since Nov 19
Section 38 Voluntary Agencies	694	694	-1	-0.1%	+18	+15
Consultants	14	13	-1	-10.4%	+1	+1
Registrars	12	13	+1	+8.3%	+2	+1
SHO/ Interns	20	20	-1	-2.8%	+2	+1
Medical/ Dental, other	17	14	-3	-16.1%	-0	-2
Medical & Dental	63	59	-4	-5.9%	+5	+2
Nurse/ Midwife Manager	50	49	-1	-2.9%	-0	-0
Nurse/ Midwife Specialist & AN/MP	31	34	+3	+10.8%	+6	+6
Staff Nurse/ Staff Midwife	108	105	-3	-2.7%	-4	-5
Nursing/ Midwifery other	2	2				
Nursing & Midwifery	191	190	-1	-0.5%	+1	+1
Therapy Professions	38	37	-1	-2.1%	+0	+0
Health Science/ Diagnostics	5	5	+0	+0.2%	+1	+1
Social Workers	10	11	+1	+6.2%	+0	+0
Psychologists	1	1	+0	+5.0%	+0	-0
Pharmacy	10	9	-0	-1.1%	-0	+0
H&SC, Other	3	3			+2	+2
Health & Social Care Professionals	67	67	-0	-0.3%	+3	+3
Management (VIII & above)	9	9				
Administrative/ Supervisory (V to VII)	30	31	+1	+3.6%	-2	-2
Clerical (III & IV)	68	68	-1	-0.8%	+4	+5
Management & Administrative	107	108	+1	+0.5%	+2	+3
Support	94	97	+3	+2.8%	+2	+2
Maintenance/ Technical	10	10	+0	+0.4%	+1	+1
General Support	104	107	+3	+2.6%	+3	+3
Health Care Assistants	104	105	+1	+0.9%	+3	+2
Care, other	58	58	+0	+0.2%	+1	+1
Patient & Client Care	162	163	+1	+0.6%	+4	+3

Primary Care Services Employment by CHO: Nov 2020

Nov 2020 (Dec 2019 figure: 10,599)	WTE Oct 2020	WTE Nov 2020	WTE change since Oct 20	% change since Oct 20	WTE change since Dec 19	WTE change since Nov 19
Overall	10,950	11,198	+248	+2.3%	+599	+549
CHO 1	1,244	1,267	+23	+1.8%	+85	+85
CHO 2	1,170	1,191	+21	+1.8%	+58	+55
CHO 3	748	763	+16	+2.1%	-0	-4
CHO 4	1,404	1,458	+54	+3.8%	+112	+113
CHO 5	985	1,017	+32	+3.2%	+65	+58
CHO 6	792	802	+10	+1.3%	+38	+28
CHO 7	1,734	1,745	+11	+0.6%	+43	+26
CHO 8	1,429	1,456	+27	+1.9%	+70	+62
CHO 9	1,313	1,366	+53	+4.0%	+119	+112
other Community Services	130	132	+2	+1.2%	+10	+12

Primary Care Services Employment by CHO etc. Nov 2020

CHO 1

Nov 2020 (Dec 2019 figure: 1,182)	WTE Oct 2020	WTE Nov 2020	WTE change since Oct 20	% change since Oct 20	WTE change since Dec 19	WTE change since Nov 19
Overall	1,244	1,267	+23	+1.8%	+85	+85
Consultants	3	3	+0	+11%	+0	+0
Registrars	44	42	-2	-4%	+2	+0
SHO/ Interns	1	1	0			
Medical/ Dental, other	46	44	-1	-3%	-3	-2
Medical & Dental	94	91	-3	-3.0%	-1	-2
Nurse/ Midwife Manager	37	37	-1	-2%	+0	+0
Nurse/ Midwife Specialist & AN/MP	27	28	+1	+3%	+7	+7
Staff Nurse/ Staff Midwife	95	95	+1	+1%	+10	+10
Public Health Nurse	151	153	+2	+2%	-3	-1
Nursing/ Midwifery Student	3	3	-0	-12%	-4	-3
Nursing/ Midwifery other	1	1	0			
Nursing & Midwifery	314	317	+3	+1.0%	+11	+13
Therapy Professions	237	235	-2	-1%	+8	+3
Health Science/ Diagnostics	5	5	-0	-2%	-0	-0
Social Workers	16	17	+1	+5%	+4	+5
Psychologists	28	28	+0	+2%	-6	-6
Pharmacy	2	2	0		+1	+1
H&SC, Other	7	7	-0	-1%	+0	+0
Health & Social Care Professionals	295	294	-1	-0.5%	+7	+3
Management (VIII & above)	31	30	-1	-4%	-2	-1
Administrative/ Supervisory (V to VII)	73	73	+0	+0%	+10	+11
Clerical (III & IV)	245	250	+5	+2%	+15	+16
Management & Administrative	350	354	+4	+1.1%	+22	+26
Support	77	77	-0	-1%	+5	+3
Maintenance/ Technical	7	7	+0	+2%	+1	+1
General Support	84	84	-0	-0.4%	+6	+4
Health Care Assistants	51	71	+20	+39%	+39	+39
Home Help	1	0	-0	-38%	+0	+0
Care, other	56	56	+0	+0%	+1	+2
Patient & Client Care	108	128	+20	+18.7%	+41	+42

CHO 2

Nov 2020 (Dec 2019 figure: 1,134)	WTE Oct 2020	WTE Nov 2020	WTE change since Oct 20	% change since Oct 20	WTE change since Dec 19	WTE change since Nov 19
Overall	1,170	1,191	+21	+1.8%	+58	+55
Consultants	1	1	+0	+4%	+0	-0
Registrars	50	50	-0	-1%	+10	+9
Senior House Officer	3	3	-0	-2%	+3	+3
SHO/ Interns	3	3	-0	-2%	+2	+3
Medical/ Dental, other	48	49	+1	+3%	+4	+3
Medical & Dental	102	103	+1	+1.0%	+16	+15
Nurse/ Midwife Manager	29	28	-1	-3%	+0	+1
Nurse/ Midwife Specialist & AN/MP	20	20	-0	-0%	+3	+3
Staff Nurse/ Staff Midwife	74	77	+4	+5%	+3	+1
Public Health Nurse	197	198	+1	+1%	+7	+6
Post-registration Nurse/ Midwife Student				-100%	-13	-4
Nursing/ Midwifery Student				-100%	-4	-4
Nursing & Midwifery	319	323	+4	+1.2%	+10	+7
Therapy Professions	245	246	+1	+1%	+20	+22
Health Science/ Diagnostics	33	34	+0	+1%	+1	+2
Social Care	9	9	-0	-1%	+0	+0
Social Workers	6	6	-0	-0%	-1	-1
Psychologists	26	26	-0	-1%	+2	+3
Pharmacy	1	1	0			
H&SC, Other	12	12	+0	+1%	-2	-1
Health & Social Care Professionals	332	333	+1	+0.4%	+21	+25
Management (VIII & above)	34	34	-0	-0%	+1	+1
Administrative/ Supervisory (V to VII)	63	69	+7	+11%	+8	+7
Clerical (III & IV)	230	229	-1	-0%	-9	-9
Management & Administrative	327	333	+6	+1.9%	+0	-0
Support	22	22	+0	+0%	+2	+1
Maintenance/ Technical	9	8	-1	-11%	-1	-1
General Support	31	30	-1	-2.9%	+1	-0
Health Care Assistants	13	22	+9	+66%	+8	+8
Care, other	45	46	+1	+1%	+3	+0
Patient & Client Care	59	68	+9	+16.2%	+11	+8

CHO 3

Nov 2020 (Dec 2019 figure: 764)	WTE Oct 2020	WTE Nov 2020	WTE change since Oct 20	% change since Oct 20	WTE change since Dec 19	WTE change since Nov 19
Overall	748	763	+16	+2.1%	-0	-4
Consultants	2	2	0			
Registrars	24	24	+0	+1%	+1	+2
SHO/ Interns	1	1	-0	-12%	-5	-5
Medical/ Dental, other	53	52	-0	-1%	+0	+0
Medical & Dental	80	79	-0	-0.3%	-4	-3
Nurse/ Midwife Manager	22	22	-1	-3%	+3	+3
Nurse/ Midwife Specialist & AN/MP	3	3	0		+1	+1
Staff Nurse/ Staff Midwife	49	52	+2	+5%	-4	-5
Public Health Nurse	127	126	-1	-1%	-0	-2
<i>Post-registration Nurse/ Midwife Student</i>	3	4	+1	+19%		+4
Nursing/ Midwifery Student	3	4	+1	+19%	+4	+4
Nursing & Midwifery	205	207	+1	+0.7%	+4	+1
Therapy Professions	81	82	+1	+1%	-4	-4
<i>Audiology</i>	6	6	+0	+2%	+2	+1
Health Science/ Diagnostics	6	6	+0	+2%	+1	+1
Social Care	1	1	0			
Social Workers	10	10	-0	-0%	-1	-1
Psychologists	15	15	+0	+0%	-1	-1
Pharmacy	1	1	0			
H&SC, Other	11	10	-1	-10%	-0	-1
Health & Social Care Professionals	125	125	-0	-0.0%	-4	-6
Management (VIII & above)	23	23	+0	+0%	-0	+0
Administrative/ Supervisory (V to VII)	57	57	+0	+1%	+3	+1
Clerical (III & IV)	140	145	+4	+3%	-11	-11
Management & Administrative	220	225	+5	+2.2%	-9	-10
Support	14	13	-1	-7%	+0	-0
Maintenance/ Technical	28	28	0		-2	-2
General Support	42	41	-1	-2.3%	-2	-2
Health Care Assistants	25	36	+11	+44%	+15	+15
Home Help	1	1	0			
Care, other	50	50	+0	+0%	+0	+0
Patient & Client Care	75	86	+11	+14.5%	+15	+15

CHO 4

Nov 2020 (Dec 2019 figure: 1,346)	WTE Oct 2020	WTE Nov 2020	WTE change since Oct 20	% change since Oct 20	WTE change since Dec 19	WTE change since Nov 19
Overall	1,404	1,458	+54	+3.8%	+112	+113
Consultants	3	3	+0	+0%	-0	
Registrars	56	56	-0	-0%	+1	+1
SHO/ Interns	8	7	-0	-5%	+1	+0
Medical/ Dental, other	90	91	+1	+1%	+3	+2
Medical & Dental	156	157	+0	+0.2%	+5	+4
Nurse/ Midwife Manager	64	57	-6	-10%	+1	-1
Nurse/ Midwife Specialist & AN/MP	6	7	+1	+19%	+2	+2
Staff Nurse/ Staff Midwife	135	130	-5	-4%	+11	+13
Public Health Nurse	214	226	+12	+6%	+16	+18
Post-registration Nurse/ Midwife Student	14	15	+1	+10%	+1	-2
Nursing/ Midwifery Student	14	15	+1	+10%	-2	-2
Nursing & Midwifery	432	436	+3	+0.8%	+28	+30
Therapy Professions	229	232	+3	+1%	+10	+12
Health Science/ Diagnostics	11	12	+1	+6%	+1	+1
Social Care	5	5	-0	-0%	-3	-2
Social Workers	27	28	+0	+1%	+3	+3
Psychologists	21	21	+0	+2%	+1	+2
Pharmacy	4	4	-0	-3%	+1	+1
H&SC, Other	42	42	-0	-1%	+1	+1
Health & Social Care Professionals	340	344	+4	+1.1%	+15	+19
Management (VIII & above)	37	35	-1	-3%	-1	-0
Administrative/ Supervisory (V to VII)	72	71	-1	-2%	+3	+3
Clerical (III & IV)	216	220	+4	+2%	+16	+12
Management & Administrative	325	327	+2	+0.5%	+17	+15
Support	16	18	+2	+13%	+3	+2
General Support	16	18	+2	+12.7%	+3	+2
Health Care Assistants	23	63	+40	+178%	+46	+45
Home Help	9	9	0		-1	-1
Care, other	103	105	+2	+2%	+0	+0
Patient & Client Care	134	177	+43	+31.8%	+45	+44

CHO 5

Nov 2020 (Dec 2019 figure: 952)	WTE Oct 2020	WTE Nov 2020	WTE change since Oct 20	% change since Oct 20	WTE change since Dec 19	WTE change since Nov 19
Overall	985	1,017	+32	+3.2%	+65	+58
Consultants	1	1	0		-2	-2
Registrars	18	19	+1	+6%	+1	+2
SHO/ Interns	5	3	-2	-42%	-3	-5
Medical/ Dental, other	55	54	-1	-2%	+0	+0
Medical & Dental	79	77	-2	-2.7%	-4	-4
Nurse/ Midwife Manager	47	47	-0	-0%	+20	+20
Nurse/ Midwife Specialist & AN/MP	17	17	-0	-0%	+11	+11
Staff Nurse/ Staff Midwife	81	83	+2	+3%	+16	+15
Public Health Nurse	163	166	+3	+2%	+0	+2
<i>Post-registration Nurse/ Midwife Student</i>	3	3	-0	-10%	-4	-2
Nursing/ Midwifery Student	3	3	-0	-10%	-2	-2
<i>Nursing Education/Clinical</i>	1	1	+0	+6%	+1	+0
Nursing/ Midwifery other	1	1	+0	+6%	+0	+0
Nursing & Midwifery	311	316	+5	+1.5%	+46	+46
Therapy Professions	181	184	+3	+2%	+1	+0
Health Science/ Diagnostics	7	7	+0	+7%	+3	+3
Social Care	5	5	-0	-1%	-0	-0
Social Workers	7	7	+0	+6%	-1	-1
Psychologists	38	38	+0	+0%	-6	-8
Pharmacy	1	1	0			
H&SC, Other	18	19	+0	+2%	+0	+1
Health & Social Care Professionals	257	261	+5	+1.8%	-2	-5
Management (VIII & above)	25	25	+0	+2%	-0	+1
Administrative/ Supervisory (V to VII)	57	57	-1	-1%	+5	+1
Clerical (III & IV)	157	160	+3	+2%	-4	-5
Management & Administrative	239	241	+2	+0.9%	+0	-2
Support	26	25	-1	-2%	-1	-2
General Support	26	25	-1	-2.1%	-1	-2
Health Care Assistants	11	36	+25	+228%	+28	+28
Home Help	9	8	-1	-11%	+1	+1
Care, other	53	52	-1	-2%	-3	-3
Patient & Client Care	73	96	+23	+31.4%	+26	+26

CHO 6

Nov 2020 (Dec 2019 figure: 765)	WTE Oct 2020	WTE Nov 2020	WTE change since Oct 20	% change since Oct 20	WTE change since Dec 19	WTE change since Nov 19
Overall	792	802	+10	+1.3%	+38	+28
Consultants	8	8	-0	-0%	-1	-1
Registrars	24	24	+0	+0%	-2	-2
SHO/ Interns	7	7	0			
Medical/ Dental, other	45	45	+0	+0%	-1	-1
Medical & Dental	83	83	+0	+0.1%	-5	-4
Nurse/ Midwife Manager	25	24	-1	-3%	+2	+3
Nurse/ Midwife Specialist & AN/MP	6	5	-1	-16%	-1	-1
Staff Nurse/ Staff Midwife	54	55	+0	+1%	+3	+1
Public Health Nurse	113	114	+1	+1%	-3	-6
<i>Post-registration Nurse/ Midwife Student</i>	14	14	+0	+2%	+3	
Nursing/ Midwifery Student	14	14	+0	+2%	+1	
<i>Nursing Education/Clinical</i>	1	2	+1	+50%	+2	+2
Nursing/ Midwifery other	1	2	+1	+50%	+2	+2
Nursing & Midwifery	213	213	+0	+0.1%	+3	-2
Therapy Professions	116	112	-5	-4%	+8	+4
Health Science/ Diagnostics	18	19	+0	+2%	+1	+1
Social Care	3	3	-0	-11%	-1	-1
Social Workers	4	4	-0	-2%	-1	-1
Psychologists	19	19	-0	-1%	-0	-0
Pharmacy	1	1	0		+0	+0
H&SC, Other	4	4	0		+0	+1
Health & Social Care Professionals	166	161	-5	-2.9%	+8	+3
Management (VIII & above)	30	30	+0	+1%	-0	-0
Administrative/ Supervisory (V to VII)	66	65	-1	-2%	-3	-2
Clerical (III & IV)	125	126	+1	+1%	+14	+13
Management & Administrative	221	220	-0	-0.1%	+11	+11
Support	26	26	+0	+1%	+2	+2
Maintenance/ Technical	2	2	0			
General Support	28	28	+0	+1.3%	+2	+2
Health Care Assistants	13	26	+13	+100%	+20	+20
Care, other	69	71	+2	+2%	-1	-2
Patient & Client Care	82	97	+15	+18.0%	+19	+18

CHO 7

Nov 2020 (Dec 2019 figure: 1,702)	WTE Oct 2020	WTE Nov 2020	WTE change since Oct 20	% change since Oct 20	WTE change since Dec 19	WTE change since Nov 19
Overall	1,734	1,745	+11	+0.6%	+43	+26
Consultants	15	13	-2	-13%	+1	+1
Registrars	44	44	+0	+1%	-2	-2
SHO/ Interns	9	9	-0	-2%	+3	+2
Medical/ Dental, other	80	78	-2	-2%	+3	+3
Medical & Dental	148	144	-4	-2.5%	+5	+4
Nurse/ Midwife Manager	85	84	-1	-1%	+4	+3
Nurse/ Midwife Specialist & AN/MP	51	54	+3	+6%	+8	+8
Staff Nurse/ Staff Midwife	202	196	-6	-3%	-9	-11
Public Health Nurse	177	175	-1	-1%	+0	-2
<i>Post-registration Nurse/ Midwife Student</i>	20	22	+2	+13%	+15	+1
Nursing/ Midwifery Student	20	22	+2	+13%	+1	+1
Nursing/ Midwifery other	2	2	0			-1
Nursing & Midwifery	535	533	-2	-0.4%	+3	-2
Therapy Professions	261	259	-2	-1%	-7	-10
Health Science/ Diagnostics	1	1	+0	+1%	+1	+1
Social Care	4	4	0		+0	-0
Social Workers	25	26	+1	+6%	+0	-1
Psychologists	23	24	+1	+4%	+3	+3
Pharmacy	32	31	-1	-3%	-1	+1
H&SC, Other	20	21	+1	+4%	-3	-3
Health & Social Care Professionals	366	366	+0	+0.1%	-7	-9
Management (VIII & above)	30	28	-1	-4%	-5	-6
Administrative/ Supervisory (V to VII)	83	82	-0	-0%	+6	+3
Clerical (III & IV)	191	192	+1	+0%	+14	+12
Management & Administrative	304	303	-1	-0.2%	+16	+9
Support	112	112	-0	-0%	-4	-4
Maintenance/ Technical	9	9	+0	+0%	+1	+1
General Support	121	121	+0	+0.0%	-3	-3
Health Care Assistants	132	151	+19	+14%	+30	+29
Care, other	127	126	-1	-1%	-2	-2
Patient & Client Care	260	277	+17	+6.7%	+28	+28

CHO 8

Nov 2020 (Dec 2019 figure: 1,387)	WTE Oct 2020	WTE Nov 2020	WTE change since Oct 20	% change since Oct 20	WTE change since Dec 19	WTE change since Nov 19
Overall	1,429	1,456	+27	+1.9%	+70	+62
Consultants	7	7	-0	-0%	+1	+1
Registrars	84	84	+1	+1%	+6	+6
SHO/ Interns	1	1	-0	-1%	-1	-0
Medical/ Dental, other	61	60	-1	-1%	-0	+1
Medical & Dental	153	153	-0	-0.2%	+6	+7
Nurse/ Midwife Manager	51	52	+1	+2%	+1	-0
Nurse/ Midwife Specialist & AN/MP	36	38	+2	+6%	+4	+3
Staff Nurse/ Staff Midwife	102	107	+5	+5%	+9	+4
Public Health Nurse	196	195	-0	-0%	-0	-1
<i>Post-registration Nurse/ Midwife Student</i>	9	12	+3	+27%	+4	+10
Nursing/ Midwifery Student	9	12	+3	+27%	+10	+10
Nursing/ Midwifery other	1	1	+0	+6%	+1	+1
Nursing & Midwifery	395	406	+11	+2.7%	+24	+17
Therapy Professions	230	230	+1	+0%	+10	+10
Health Science/ Diagnostics	7	7	-0	-0%	+2	+2
Social Care	1	1	0		+1	+1
Social Workers	17	16	-0	-2%	+1	+0
Psychologists	58	57	-1	-2%	+1	+1
Pharmacy	5	5	+0	+0%	+1	+1
H&SC, Other	25	26	+1	+3%	+1	+1
Health & Social Care Professionals	343	342	-0	-0.1%	+17	+17
Management (VIII & above)	44	42	-2	-5%	-3	-3
Administrative/ Supervisory (V to VII)	79	80	+1	+1%	+3	+3
Clerical (III & IV)	271	272	+1	+0%	+8	+6
Management & Administrative	395	394	-0	-0.1%	+7	+6
Support	21	21	+0	+0%	-2	-2
Maintenance/ Technical	3	3	+0	+1%	+0	
General Support	24	24	+0	+0.4%	-2	-2
Health Care Assistants	20	37	+18	+90%	+16	+15
Home Help				-100%	-0	-0
Care, other	101	101	-0	-0%	+2	+2
Patient & Client Care	120	138	+18	+14.5%	+18	+17

CHO 9

Nov 2020 (Dec 2019 figure: 1,247)	WTE Oct 2020	WTE Nov 2020	WTE change since Oct 20	% change since Oct 20	WTE change since Dec 19	WTE change since Nov 19
Overall	1,313	1,366	+53	+4.0%	+119	+112
Consultants	4	4	0		+0	+1
Registrars	52	51	-1	-1%	-4	-5
SHO/ Interns	5	5	0		+4	+4
Medical/ Dental, other	49	49	+0	+1%	-0	-0
Medical & Dental	110	110	-0	-0.1%	-1	-1
Nurse/ Midwife Manager	39	41	+2	+5%	+4	+2
Nurse/ Midwife Specialist & AN/MP	8	8	+0	+2%	+2	+2
Staff Nurse/ Staff Midwife	100	103	+3	+3%	+3	+3
Public Health Nurse	184	183	-1	-0%	+8	+9
<i>Post-registration Nurse/ Midwife Student</i>	33	32	-1	-3%	+10	+6
Nursing/ Midwifery Student	33	32	-1	-3%	+6	+6
Nursing/ Midwifery other	0	1	+1	+104%	+1	+1
Nursing & Midwifery	364	368	+4	+1.1%	+23	+22
Therapy Professions	209	212	+3	+1%	+16	+16
Health Science/ Diagnostics	18	19	+1	+3%	-1	-1
Social Care	3	3	-1	-20%	-2	-2
Social Workers	20	20	+0	+1%	+4	+4
Psychologists	63	67	+5	+7%	+2	+1
Pharmacy	15	15	0		+3	+3
H&SC, Other	36	36	+0	+1%	-1	-0
Health & Social Care Professionals	364	372	+8	+2.2%	+21	+22
Management (VIII & above)	27	28	+1	+4%	+0	+0
Administrative/ Supervisory (V to VII)	87	87	+0	+0%	+10	+6
Clerical (III & IV)	193	205	+12	+6%	+23	+19
Management & Administrative	308	320	+13	+4.2%	+33	+25
Support	33	33	-0	-0%	-2	-1
General Support	33	33	-0	-0.2%	-2	-1
Health Care Assistants	23	48	+25	+104%	+35	+34
Care, other	111	115	+4	+3%	+10	+11
Patient & Client Care	135	163	+28	+20.9%	+45	+45

other Community Services

Nov 2020 (Dec 2019 figure: 122)	WTE Oct 2020	WTE Nov 2020	WTE change since Oct 20	% change since Oct 20	WTE change since Dec 19	WTE change since Nov 19
Overall	130	132	+2	+1.2%	+10	+12
Consultants	1	1	0			
Registrars	9	10	+1	+12%	-2	-2
SHO/ Interns	7	6	-1	-14%	+4	+4
Medical/ Dental, other	0	0	+0	+12%	-0	-0
Medical & Dental	17	17	+0	+0.6%	+2	+2
Nurse/ Midwife Manager	5	5	-0	-1%	+1	+0
Staff Nurse/ Staff Midwife	10	11	+1	+11%	+6	+7
Nursing & Midwifery	15	16	+1	+7.1%	+7	+7
Health Science/ Diagnostics	8	8	+0	+0%	+0	+0
Social Care	2	2	+0	+11%	+0	+0
Social Workers	13	14	+1	+7%	-0	-0
Psychologists	1	1	0			
Pharmacy	3	3	0		+0	+0
H&SC, Other	4	4	+0	+6%	+1	+1
Health & Social Care Professionals	30	31	+1	+4.3%	+1	+2
Management (VIII & above)	21	21	+0	+0%	+3	+4
Administrative/ Supervisory (V to VII)	16	16	+0	+1%	-4	-4
Clerical (III & IV)	13	12	-1	-10%	-0	+0
Management & Administrative	51	49	-1	-2.3%	-1	+0
Support	3	4	+1	+21%	+2	+2
Maintenance/ Technical				-100%	-1	-1
General Support	3	4	+1	+21.0%	+1	+1
Care, other	15	15	-0	-2%	+0	+0
Patient & Client Care	15	15	-0	-1.6%	+0	+0

Primary Care Services Employment by Grade Group: Nov 2020

Nov 2020 (Dec 2019 figure: 10,599)	WTE Oct 2020	WTE Nov 2020	WTE change since Oct 20	% change since Oct 20	WTE change since Dec 19	WTE change since Nov 19
Overall	10,950	11,198	+248	+2.3%	+599	+549
Consultant Dentistry	10	10	-0	-0.1%	-1	-1
Consultant Medicine	23	21	-1	-5.1%	+4	+4
Consultant Paediatrics	1	2	+0	+0.7%		
Consultant Psychiatry	8	8			+0	+1
Consultant Radiology	1	1				
Consultant Surgery	2	1	-0	-25.6%	-3	-3
Consultants	45	44	-2	-3.5%	-0	+1
Registrar	391	391	+0	+0.1%	+10	+9
Senior Registrar	3	2	-1	-26.2%	-1	-1
Specialist Registrar	10	11	+1	+10.0%	+1	+1
Registrars	404	404	+1	+0.1%	+10	+9
Senior House Officer	45	42	-4	-8.1%	+5	+3
SHO/ Interns	45	42	-4	-8.1%	+5	+3
Dentists	300	301	+0	+0.1%	-1	-1
Other Medical	227	224	-3	-1.4%	+5	+7
Medical/ Dental, other	527	524	-3	-0.6%	+5	+6
Medical & Dental	1,022	1,014	-8	-0.8%	+19	+18
Clinical Nurse/ Midwife Manager	188	188	+1	+0.4%	+21	+22
Director Nursing/Midwifery, Assistant	173	168	-5	-3.0%	+14	+9
Director of Nursing/Midwifery	41	39	-2	-5.1%	+2	-0
Nurse/ Midwife Manager	402	396	-7	-1.6%	+36	+31
Advanced Nurse/ Midwife Practitioner	10	10	+0	+4.1%	+8	+8
Clinical Nurse/ Midwife Specialist	163	169	+6	+3.4%	+29	+28
Nurse/ Midwife Specialist & AN/MP	173	179	+6	+3.5%	+37	+36
Staff Midwives	7	5	-3	-35.4%	-3	-3
Staff Nurse [Psychiatric]	11	11	-0	-0.7%	+2	+2
Staff Nurses [General/ Children's]	884	894	+11	+1.2%	+49	+40
Staff Nurse/ Staff Midwife	902	910	+8	+0.9%	+48	+39
Public Health Nurse	1,522	1,538	+16	+1.0%	+25	+22
Public Health Nurse	1,522	1,538	+16	+1.0%	+25	+22
Post-registration Nurse/ Midwife Student	99	104	+6	+5.7%	+9	+9
Nursing/ Midwifery Student	99	104	+6	+5.7%	+9	+9
Nursing Education/Clinical	6	7	+1	+18.0%	+3	+3
Other Nursing/ Midwifery				-100.0%		-1
Nursing/ Midwifery other	6	7	+1	+18.0%	+3	+2
Nursing & Midwifery	3,104	3,134	+30	+1.0%	+158	+140
Dietitians	119	122	+3	+2.6%	+13	+11
Occupational Therapists	543	546	+2	+0.5%	+30	+33
Orthoptists	16	17	+2	+10.7%	+4	+4
Physiotherapists	563	559	-3	-0.6%	+16	+9
Podiatrists & Chiropodists	32	30	-2	-5.2%	+5	+6
Speech & Language Therapists	518	519	+1	+0.2%	-7	-10
Therapy Professions	1,790	1,793	+3	+0.2%	+62	+54
Audiology	49	51	+1	+3.0%	+7	+7
Biochemists	8	8	+0	+0.1%	+0	+0
Clinical Engineering	8	8				+0
Medical Laboratory	44	44	+0	+0.6%	+2	+2
Phlebotomists	1	1	+0	+0.8%	+1	+1
Physicists	1	2	+1	+49.3%		
Radiographers	4	4			-0	-0
Health Science/ Diagnostics	116	118	+2	+2.1%	+10	+10

Nov 2020 (Dec 2019 figure: 10,599)	WTE Oct 2020	WTE Nov 2020	WTE change since Oct 20	% change since Oct 20	WTE change since Dec 19	WTE change since Nov 19
Overall	10,950	11,198	+248	+2.3%	+599	+549
Social Care	32	31	-1	-2.9%	-4	-4
Social Workers	144	148	+4	+2.5%	+9	+8
Psychologists	292	296	+5	+1.7%	-4	-5
Pharmacy	64	63	-1	-1.6%	+5	+7
Counsellor Therapists	110	111	+1	+1.4%	-4	-2
Dental Hygienists	61	61	+0	+0.0%	+4	+4
Environmental Health Officers				-100.0%	-1	
Other Health & Social Care	7	6	-1	-12.4%	-2	-2
Play Therapists/ Specialists	2	2			+0	+0
H&SC, Other	180	181	+1	+0.4%	-2	-1
Health & Social Care Professionals	2,618	2,631	+13	+0.5%	+75	+69
Executive Management	76	78	+2	+2.0%	+7	+7
Senior Management (VIII & GM)	226	220	-6	-2.5%	-15	-12
Management (VIII & above)	302	298	-4	-1.4%	-8	-5
Middle Management (V-VII)	652	657	+5	+0.7%	+40	+31
Other Administrative	2	1	-1	-33.3%	-1	-1
Administrative/ Supervisory (V to VII)	654	658	+4	+0.6%	+39	+30
General Administrative (III & IV)	1,782	1,811	+29	+1.6%	+65	+54
Clerical (III & IV)	1,782	1,811	+29	+1.6%	+65	+54
Management & Administrative	2,737	2,767	+29	+1.1%	+96	+79
Catering	22	21	-0	-1.5%	-1	-0
Household Services	140	138	-1	-1.0%	+4	+3
Other Labs & Associated	4	5	+1	+15.7%	+2	+2
Other Support	110	112	+2	+1.5%	-1	-4
Portering	74	74	+0	+0.6%	+0	+1
Support	350	351	+1	+0.3%	+4	+1
Maintenance	57	56	-1	-1.4%	-2	-2
Technical Services	1	1				
Maintenance/ Technical	58	57	-1	-1.4%	-2	-2
General Support	408	408	+0	+0.1%	+2	-1
HCA, Nurse's Aide, etc.	211	388	+177	+83.8%	+204	+204
Health & Social Care Assistants	100	103	+2	+2.3%	+33	+31
Health Care Assistants	311	491	+179	+57.6%	+237	+235
Home Help	19	18	-1	-6.6%	-0	+0
Care, other	730	736	+6	+0.8%	+12	+9
Patient & Client Care	1,061	1,245	+184	+17.3%	+249	+244

Employment by WTE, Headcount, Gender, Full-Time /Part-Time etc.: Nov 2020

Primary Care Services Staff Group	WTE	Headcount	WTE: no.	% Male	% female	Male WTE: no.	Female WTE: no.	% Total Perm	% Male Perm	% Female Perm	% Total Full Time	% Total Part Time	% Male FT	% Female FT
Overall	11,198	13,483	1.20	13.6%	86.4%	1.11	1.22	81.3%	71.0%	82.9%	66.3%	33.7%	83.7%	63.6%
Consultant Dentistry	10	12	1.18	50.0%	50.0%	1.17	1.18	100.0%	100.0%	100.0%	66.7%	33.3%	66.7%	66.7%
Consultant Medicine	21	25	1.17	28.0%	72.0%	1.05	1.22	60.0%	60.0%	55.6%	72.0%	28.0%	85.7%	66.7%
Consultant Paediatrics	2	2	1.33		100.0%		1.33	100.0%	100.0%	100.0%	50.0%	50.0%		50.0%
Consultant Psychiatry	8	9	1.07	77.8%	22.2%	1.09	1.00	66.7%	66.7%	50.0%	88.9%	11.1%	85.7%	100.0%
Consultant Radiology	1	1	1.00	100.0%		1.00		100.0%	100.0%		100.0%	0.0%	100.0%	
Consultant Surgery	1	2	1.56		100.0%		1.56	50.0%	50.0%	50.0%	0.0%	100.0%		0.0%
Consultants	44	51	1.16	41.2%	58.8%	1.10	1.22	72.5%	81.0%	66.7%	70.6%	29.4%	81.0%	63.3%
Registrar	391	402	1.03	33.1%	66.9%	1.02	1.03	1.2%	1.2%	0.7%	99.3%	0.7%	98.5%	99.6%
Senior Registrar	2	4	2.03	25.0%	75.0%	2.50	1.91	0.0%	0.0%	0.0%	25.0%	75.0%	0.0%	33.3%
Specialist Registrar	11	11	1.00	18.2%	81.8%	1.00	1.00	27.3%	27.3%	22.2%	100.0%	0.0%	100.0%	100.0%
Registrars	404	417	1.03	32.6%	67.4%	1.02	1.04	1.9%	2.9%	1.4%	98.6%	1.4%	97.8%	98.9%
Senior House Officer	42	55	1.32	27.3%	72.7%	1.37	1.30	0.0%	0.0%	0.0%	94.5%	5.5%	100.0%	92.5%
SHO/ Interns	42	55	1.32	27.3%	72.7%	1.37	1.30	0.0%	0.0%	0.0%	94.5%	5.5%	100.0%	92.5%
Dentists	301	389	1.29	26.0%	74.0%	1.25	1.31	90.0%	90.0%	89.9%	52.2%	47.8%	62.4%	48.6%
Other Medical	224	300	1.34	26.7%	73.3%	1.31	1.35	56.7%	56.7%	64.1%	39.3%	60.7%	46.3%	36.8%
Medical/ Dental, other	524	689	1.31	26.3%	73.7%	1.28	1.33	75.5%	66.3%	78.7%	46.6%	53.4%	55.2%	43.5%
Medical & Dental	1,014	1,212	1.19	29.1%	70.9%	1.16	1.21	46.6%	39.9%	49.4%	67.7%	32.3%	75.1%	64.6%
Clinical Nurse/ Midwife Manager	188	218	1.16	5.0%	95.0%	1.02	1.17	94.5%	94.5%	94.7%	64.7%	35.3%	100.0%	62.8%
Director Nursing/Midwifery, Assistant	168	186	1.11	1.6%	98.4%	1.00	1.11	97.8%	97.8%	97.8%	76.3%	23.7%	100.0%	76.0%
Director of Nursing/Midwifery	39	41	1.05	2.4%	97.6%	1.00	1.05	95.1%	95.1%	95.0%	92.7%	7.3%	100.0%	92.5%
Nurse/ Midwife Manager	396	445	1.13	3.4%	96.6%	1.02	1.13	96.0%	93.3%	96.0%	72.1%	27.9%	100.0%	71.2%
Advanced Nurse/ Midwife Practitioner	10	11	1.07		100.0%		1.07	90.9%	90.9%	90.9%	81.8%	18.2%		81.8%
Clinical Nurse/ Midwife Specialist	169	198	1.17	5.1%	94.9%	1.04	1.18	96.5%	96.5%	96.3%	67.2%	32.8%	100.0%	65.4%
Nurse/ Midwife Specialist & AN/MP	179	209	1.17	4.8%	95.2%	1.04	1.17	96.2%	100.0%	96.0%	67.9%	32.1%	100.0%	66.3%
Staff Midwives	5	7	1.48		100.0%		1.48	100.0%	100.0%	100.0%	14.3%	85.7%		14.3%
Staff Nurse [Psychiatric]	11	13	1.20	7.7%	92.3%	1.00	1.22	76.9%	76.9%	75.0%	76.9%	23.1%	100.0%	75.0%
Staff Nurses [General/ Children's]	894	1,189	1.33	3.4%	96.6%	1.09	1.34	82.4%	82.4%	82.5%	44.7%	55.3%	82.5%	43.3%
Staff Nurse/ Staff Midwife	910	1,209	1.33	3.4%	96.6%	1.08	1.34	82.5%	80.5%	82.5%	44.8%	55.2%	82.9%	43.5%
Public Health Nurse	1,538	1,832	1.19	0.4%	99.6%	1.08	1.19	94.6%	94.6%	94.6%	70.2%	29.8%	85.7%	70.1%

Public Health Nurse	1,538	1,832	1.19	0.4%	99.6%	1.08	1.19	94.6%	100.0%	94.6%	70.2%	29.8%	85.7%	70.1%
Post-registration Nurse/ Midwife Student	104	105	1.01	1.9%	98.1%	1.00	1.01	24.8%	24.8%	25.2%	98.1%	1.9%	100.0%	98.1%
Nursing/ Midwifery Student	104	105	1.01	1.9%	98.1%	1.00	1.01	24.8%	0.0%	25.2%	98.1%	1.9%	100.0%	98.1%
Nursing Education/Clinical	7	8	1.10		100.0%		1.10	87.5%	87.5%	87.5%	87.5%	12.5%		87.5%
Nursing/ Midwifery other	7	8	1.10		100.0%		1.10	87.5%		87.5%	87.5%	12.5%		87.5%
Nursing & Midwifery	3,134	3,808	1.22	2.0%	98.0%	1.06	1.22	89.0%	85.3%	89.1%	63.1%	36.9%	89.3%	62.5%
Health & Social Care	2,631	3,067	1.17	12.8%	87.2%	1.05	1.18	89.3%	87.0%	89.6%	69.6%	30.4%	87.2%	67.1%
Executive Management	78	81	1.04	39.5%	60.5%	1.09	1.01	88.9%	88.9%	89.8%	95.1%	4.9%	90.6%	98.0%
Senior Management (VIII & GM)	220	232	1.05	26.3%	73.7%	1.05	1.06	95.3%	95.3%	95.3%	90.1%	9.9%	95.1%	88.3%
Management (VIII & above)	298	313	1.05	29.7%	70.3%	1.06	1.05	93.6%	92.5%	94.1%	91.4%	8.6%	93.5%	90.5%
Middle Management (V-VII)	657	720	1.10	18.6%	81.4%	1.06	1.11	95.0%	95.0%	96.2%	82.8%	17.2%	97.8%	79.4%
Other Administrative	1	1	1.00		100.0%		1.00	100.0%	100.0%	100.0%	0.0%	100.0%		0.0%
Administrative/ Supervisory (V to VII)	658	721	1.10	18.6%	81.4%	1.06	1.11	95.0%	89.6%	96.3%	82.7%	17.3%	97.8%	79.2%
General Administrative (III & IV)	1,811	2,138	1.18	8.5%	91.5%	1.09	1.19	83.5%	83.5%	84.7%	63.8%	36.2%	86.3%	61.7%
Clerical (III & IV)	1,811	2,138	1.18	8.5%	91.5%	1.09	1.19	83.5%	70.9%	84.7%	63.8%	36.2%	86.3%	61.7%
Management & Administrative	2,767	3,172	1.15	12.9%	87.1%	1.07	1.16	87.1%	81.9%	87.9%	70.8%	29.2%	91.7%	67.7%
Catering	21	24	1.12	29.2%	70.8%	1.02	1.16	100.0%	100.0%	100.0%	62.5%	37.5%	100.0%	47.1%
Household Services	138	172	1.25	24.4%	75.6%	1.07	1.31	77.9%	77.9%	78.5%	44.8%	55.2%	76.2%	34.6%
Other Labs & Associated	5	5	1.08	20.0%	80.0%	1.00	1.10	100.0%	100.0%	100.0%	100.0%	0.0%	100.0%	100.0%
Other Support	112	247	2.20	31.2%	68.8%	1.36	3.07	47.8%	47.8%	35.3%	30.0%	70.0%	58.4%	17.1%
Portering	74	79	1.06	93.7%	6.3%	1.05	1.25	82.3%	82.3%	80.0%	91.1%	8.9%	94.6%	40.0%
Support	351	527	1.50	38.1%	61.9%	1.15	1.85	65.7%	79.1%	57.4%	46.1%	53.9%	77.1%	27.0%
Maintenance	56	59	1.05	98.3%	1.7%	1.05	1.00	93.2%	93.2%	100.0%	98.3%	1.7%	98.3%	100.0%
Technical Services	1	1	1.00	100.0%		1.00		100.0%	100.0%		100.0%	0.0%	100.0%	
Maintenance/ Technical	57	60	1.05	98.3%	1.7%	1.05	1.00	93.3%	93.2%	100.0%	98.3%	1.7%	98.3%	100.0%
General Support	408	587	1.44	44.3%	55.7%	1.13	1.84	68.5%	82.3%	57.5%	51.4%	48.6%	81.9%	27.2%
HCA, Nurse's Aide, etc.	388	579	1.49	24.5%	75.5%	1.35	1.54	38.3%	38.3%	41.2%	71.2%	28.8%	85.2%	66.6%
Health & Social Care Assistants	103	113	1.10	15.0%	85.0%	1.16	1.09	17.7%	17.7%	18.8%	92.0%	8.0%	100.0%	90.6%
Health Care Assistants	491	692	1.41	23.0%	77.0%	1.33	1.43	35.0%	27.7%	37.1%	74.6%	25.4%	86.8%	70.9%
Home Help	18	45	2.51	24.4%	75.6%	2.59	2.48	13.3%	0.0%	17.6%	4.4%	95.6%	9.1%	2.9%
Care, other	736	900	1.22	19.3%	80.7%	1.09	1.26	94.7%	93.1%	95.0%	58.0%	42.0%	77.0%	53.4%
Patient & Client Care	1,245	1,637	1.32	21.0%	79.0%	1.21	1.35	67.2%	59.9%	69.1%	63.5%	36.5%	79.4%	59.3%

Employment by WTE, Headcount, Gender, Full-Time /Part-Time etc.: Nov 2020

Primary Care Services CHO	WTE	Headcount	WTE: no.	% Male	% female	Male WTE: no.	Female WTE: no.	% Total Perm	% Male Perm	% Female Perm	% Total Full Time	% Total Part Time	% Male FT	% Female FT
Overall	11,198	13,483	1.20	13.6%	86.4%	1.11	1.22	81.3%	71.0%	82.9%	66.3%	33.7%	83.7%	63.6%
<i>CHO 1</i>	<i>1,267</i>	<i>1,512</i>	<i>1.19</i>	<i>14.2%</i>	<i>85.8%</i>	<i>1.09</i>	<i>1.21</i>	<i>86.2%</i>	<i>86.2%</i>	<i>88.0%</i>	<i>65.6%</i>	<i>34.4%</i>	<i>85.1%</i>	<i>62.4%</i>
<i>CHO 2</i>	<i>1,191</i>	<i>1,379</i>	<i>1.16</i>	<i>12.2%</i>	<i>87.8%</i>	<i>1.08</i>	<i>1.17</i>	<i>84.4%</i>	<i>84.4%</i>	<i>85.7%</i>	<i>69.5%</i>	<i>30.5%</i>	<i>83.3%</i>	<i>67.6%</i>
<i>CHO 3</i>	<i>763</i>	<i>919</i>	<i>1.20</i>	<i>12.4%</i>	<i>87.6%</i>	<i>1.06</i>	<i>1.23</i>	<i>79.5%</i>	<i>79.5%</i>	<i>80.7%</i>	<i>69.9%</i>	<i>30.1%</i>	<i>90.4%</i>	<i>67.0%</i>
<i>CHO 4</i>	<i>1,458</i>	<i>1,823</i>	<i>1.25</i>	<i>10.6%</i>	<i>89.4%</i>	<i>1.18</i>	<i>1.26</i>	<i>71.3%</i>	<i>71.3%</i>	<i>72.8%</i>	<i>58.9%</i>	<i>41.1%</i>	<i>73.2%</i>	<i>57.2%</i>
<i>CHO 5</i>	<i>1,017</i>	<i>1,262</i>	<i>1.24</i>	<i>10.8%</i>	<i>89.2%</i>	<i>1.13</i>	<i>1.26</i>	<i>83.1%</i>	<i>83.1%</i>	<i>84.5%</i>	<i>62.8%</i>	<i>37.2%</i>	<i>81.6%</i>	<i>60.5%</i>
<i>CHO 6</i>	<i>802</i>	<i>1,031</i>	<i>1.28</i>	<i>12.6%</i>	<i>87.4%</i>	<i>1.26</i>	<i>1.29</i>	<i>78.5%</i>	<i>78.5%</i>	<i>78.9%</i>	<i>67.9%</i>	<i>32.1%</i>	<i>91.5%</i>	<i>64.5%</i>
<i>CHO 7</i>	<i>1,745</i>	<i>2,063</i>	<i>1.18</i>	<i>16.2%</i>	<i>83.8%</i>	<i>1.10</i>	<i>1.20</i>	<i>85.2%</i>	<i>85.2%</i>	<i>87.3%</i>	<i>68.2%</i>	<i>31.8%</i>	<i>82.1%</i>	<i>65.5%</i>
<i>CHO 8</i>	<i>1,456</i>	<i>1,763</i>	<i>1.21</i>	<i>13.4%</i>	<i>86.6%</i>	<i>1.12</i>	<i>1.23</i>	<i>85.8%</i>	<i>85.8%</i>	<i>88.0%</i>	<i>62.5%</i>	<i>37.5%</i>	<i>80.9%</i>	<i>59.7%</i>
<i>CHO 9</i>	<i>1,366</i>	<i>1,586</i>	<i>1.16</i>	<i>16.1%</i>	<i>83.9%</i>	<i>1.10</i>	<i>1.17</i>	<i>77.8%</i>	<i>77.8%</i>	<i>79.7%</i>	<i>73.1%</i>	<i>26.9%</i>	<i>89.4%</i>	<i>69.9%</i>
<i>other Community Services</i>	<i>132</i>	<i>145</i>	<i>1.10</i>	<i>34.5%</i>	<i>65.5%</i>	<i>1.08</i>	<i>1.11</i>	<i>69.7%</i>	<i>69.7%</i>	<i>69.5%</i>	<i>82.8%</i>	<i>17.2%</i>	<i>86.0%</i>	<i>81.1%</i>

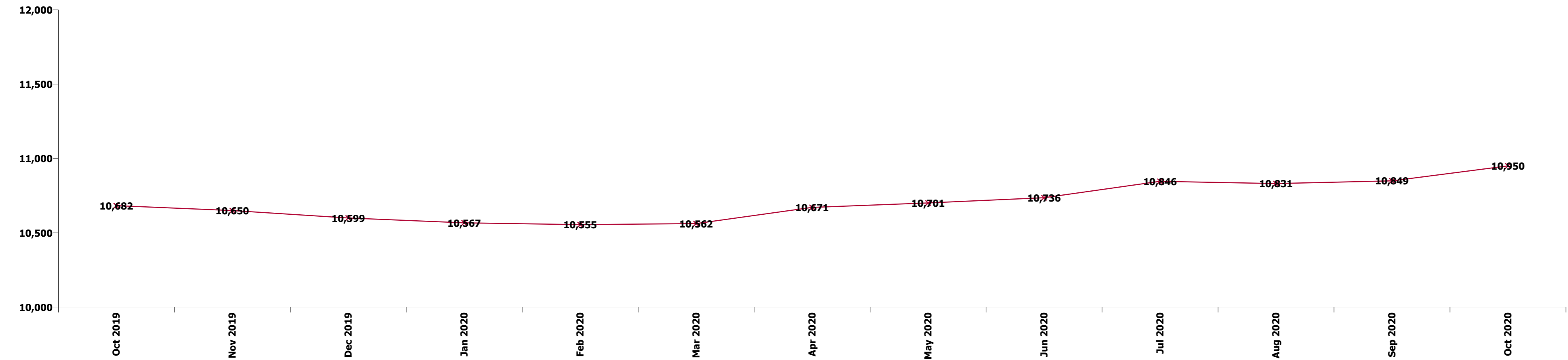
Summary Staff Movement: November 2020

Month-on-month
Summary

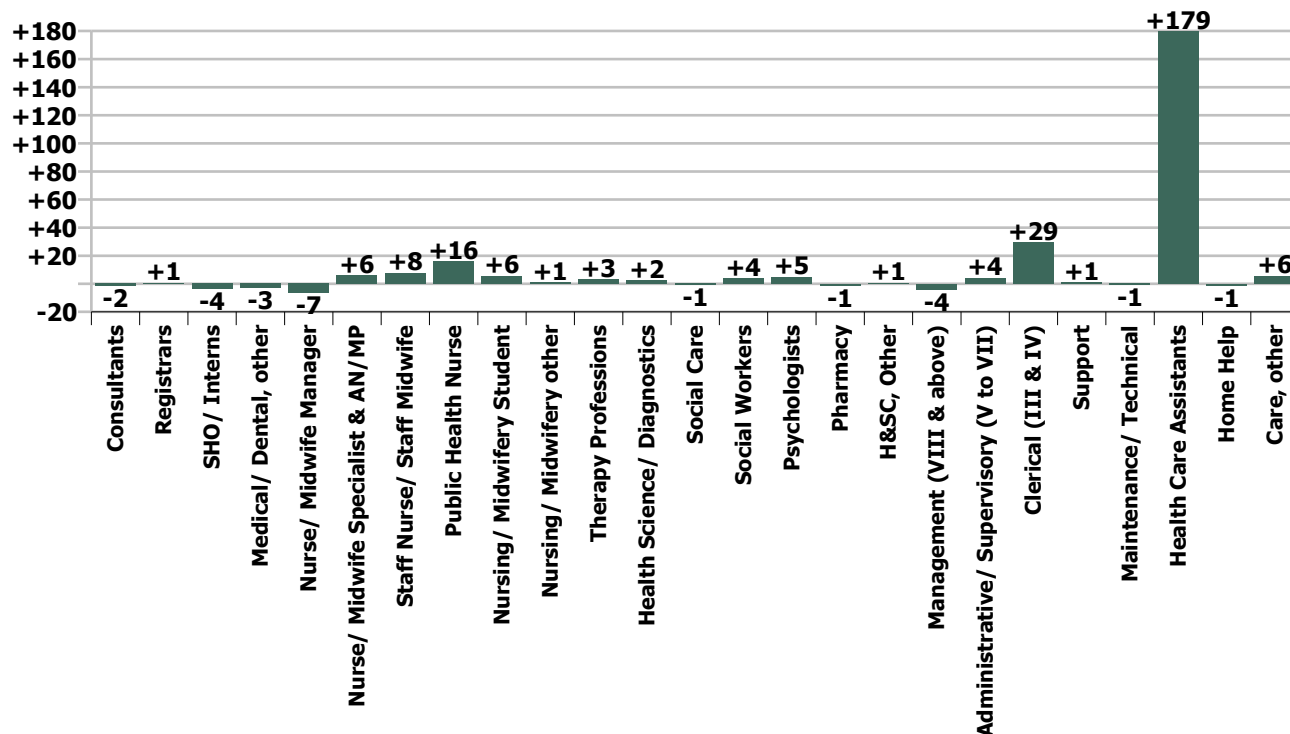
WTE change since Oct 20	% change since Oct 20	overall	Consultants	Registrars	SHO/ Interns	Medical/ Dental, other	Medical & Dental	Nurse/ Midwife Manager	Nurse/ Midwife Specialist & AN/MP	Staff Nurse/ Staff Midwife	Public Health Nurse	Nursing/ Midwifery Student	Nursing/ Midwifery other	Nursing & Midwifery	Therapy Professions	Health Science/ Diagnostics	Social Care	Social Workers	Psychologists	Pharmacy	H&SC, Other	Health & Social Care Professionals	Management (VIII & above)	Administrative/ Supervisory (V to VII)	Clerical (III & IV)	Management & Administrative	General Support	Health Care Assistants	Home Help	Care, other	Patient & Client Care
Overall	+2.3%	+248	-2	+1	-4	-3	-8	-7	+6	+8	+16	+6	+1	+30	+3	+2	-1	+4	+5	-1	+1	+13	-4	+4	+29	+29	+0	+179	-1	+6	+184
CHO 1	+1.8%	+23	+0	-2		-1	-3	-1	+1	+1	+2	-0		+3	-2	-0		+1	+0		-0	-1	-1	+0	+5	+4	-0	+20	-0	+0	+20
CHO 2	+1.8%	+21	+0	-0	-0	+1	+1	-1	-0	+4	+1			+4	+1	+0	-0	-0	-0		+0	+1	-0	+7	-1	+6	-1	+9		+1	+9
CHO 3	+2.1%	+16		+0	-0	-0	-0	-1		+2	-1	+1		+1	+1	+0		-0	+0		-1	-0	+0	+0	+4	+5	-1	+11		+0	+11
CHO 4	+3.8%	+54	+0	-0	-0	+1	+0	-6	+1	-5	+12	+1		+3	+3	+1	-0	+0	+0	-0	-0	+4	-1	-1	+4	+2	+2	+40		+2	+43
CHO 5	+3.2%	+32		+1	-2	-1	-2	-0	-0	+2	+3	-0	+0	+5	+3	+0	-0	+0	+0		+0	+5	+0	-1	+3	+2	-1	+25	-1	-1	+23
CHO 6	+1.3%	+10	-0	+0		+0	+0	-1	-1	+0	+1	+0	+1	+0	-5	+0	-0	-0	-0			-5	+0	-1	+1	-0	+0	+13		+2	+15
CHO 7	+0.6%	+11	-2	+0	-0	-2	-4	-1	+3	-6	-1	+2		-2	-2	+0		+1	+1	-1	+1	+0	-1	-0	+1	-1	+0	+19		-1	+17
CHO 8	+1.9%	+27	-0	+1	-0	-1	-0	+1	+2	+5	-0	+3	+0	+11	+1	-0		-0	-1	+0	+1	-0	-2	+1	+1	-0	+0	+18		-0	+18
CHO 9	+4.0%	+53		-1		+0	-0	+2	+0	+3	-1	-1	+1	+4	+3	+1	-1	+0	+5		+0	+8	+1	+0	+12	+13	-0	+25		+4	+28
other Community Services	+1.2%	+2		+1	-1	+0	+0	-0		+1				+1		+0	+0	+1			+0	+1	+0	+0	-1	-1	+1		-0	-0	
		+2.3%	-3.5%	+0.1%	-8.1%	-0.6%	-0.8%	-1.6%	+3.5%	+0.9%	+1.0%	+5.7%	+18.0%	+1.0%	+0.2%	+2.1%	-2.9%	+2.5%	+1.7%	-1.6%	+0.4%	+0.5%	-1.4%	+0.6%	+1.6%	+1.1%	+0.1%	+57.6%	-6.6%	+0.8%	+17.3%

Year-on-year Summary

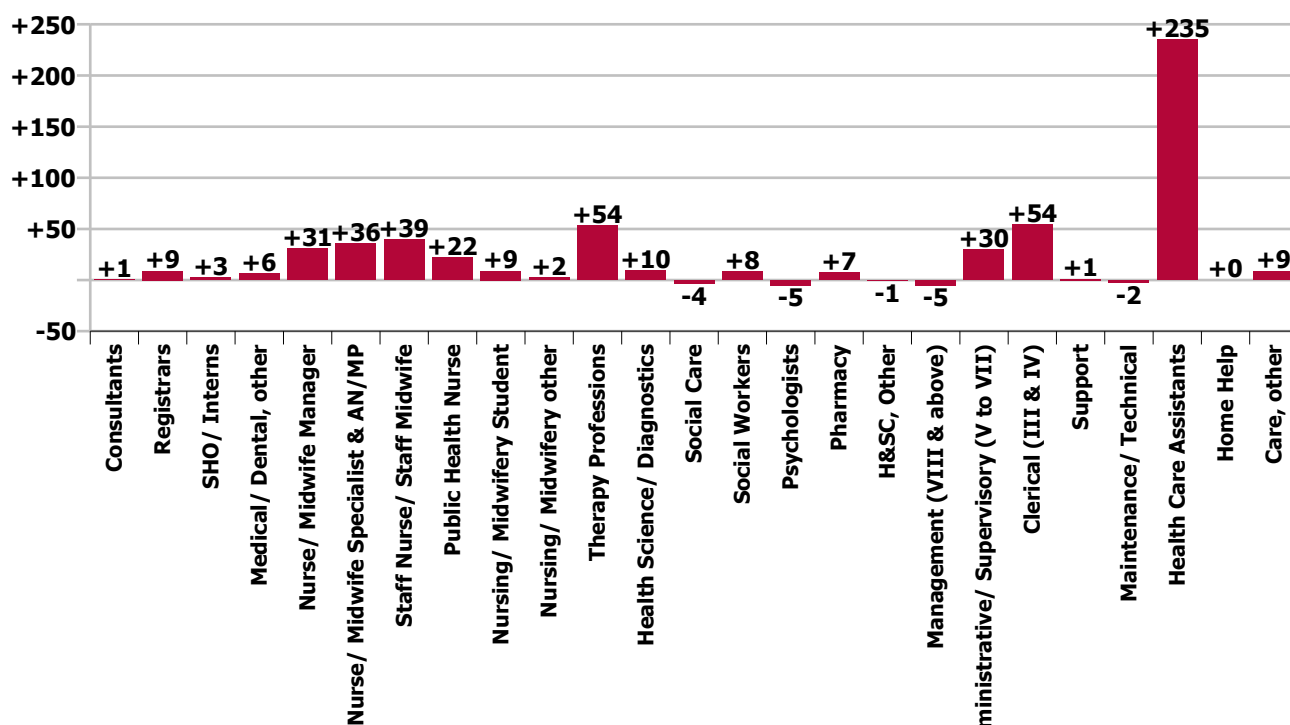
WTE change since Nov 19	% change since Nov 19	overall	Consultants	Registrars	SHO/ Interns	Medical/ Dental, other	Medical & Dental	Nurse/ Midwife Manager	Nurse/ Midwife Specialist & AN/MP	Staff Nurse/ Staff Midwife	Public Health Nurse	Nursing/ Midwifery Student	Nursing/ Midwifery other	Nursing & Midwifery	Therapy Professions	Health Science/ Diagnostics	Social Care	Social Workers	Psychologists	Pharmacy	H&SC, Other	Health & Social Care Professionals	Management (VIII & above)	Administrative/ Supervision (V to VII)	Clerical (III & IV)	Management & Administrative	General Support	Health Care Assistants	Home Help	Care, other	Patient & Client Care
Overall	+5.2%	+549	+1	+9	+3	+6	+18	+31	+36	+39	+22	+9	+2	+140	+54	+10	-4	+8	-5	+7	-1	+69	-5	+30	+54	+79	-1	+235	+0	+9	+244
CHO 1	+7.2%	+85	+0	+0		-2	-2	+0	+7	+10	-1	-3		+13	+3	-0		+5	-6	+1	+0	+3	-1	+11	+16	+26	+4	+39	+0	+2	+42
CHO 2	+4.8%	+55	-0	+9	+3	+3	+15	+1	+3	+1	+6	-4		+7	+22	+2	+0	-1	+3		-1	+25	+1	+7	-9	-0	-0	+8		+0	+8
CHO 3	-0.6%	-4		+2	-5	+0	-3	+3	+1	-5	-2	+4		+1	-4	+1		-1	-1		-1	-6	+0	+1	-11	-10	-2	+15		+0	+15
CHO 4	+8.4%	+113		+1	+0	+2	+4	-1	+2	+13	+18	-2		+30	+12	+1	-2	+3	+2	+1	+1	+19	-0	+3	+12	+15	+2	+45	-1	+0	+44
CHO 5	+6.1%	+58	-2	+2	-5	+0	-4	+20	+11	+15	+2	-2	+0	+46	+0	+3	-0	-1	-8		+1	-5	+1	+1	-5	-2	-2	+28	+1	-3	+26
CHO 6	+3.6%	+28	-1	-2		-1	-4	+3	-1	+1	-6		+2	-2	+4	+1	-1	-1	-0	+0	+1	+3	-0	-2	+13	+11	+2	+20		-2	+18
CHO 7	+1.5%	+26	+1	-2	+2	+3	+4	+3	+8	-11	-2	+1	-1	-2	-10	+1	-0	-1	+3	+1	-3	-9	-6	+3	+12	+9	-3	+29		-2	+28
CHO 8	+4.5%	+62	+1	+6	-0	+1	+7	-0	+3	+4	-1	+10	+1	+17	+10	+2	+1	+0	+1	+1	+1	+17	-3	+3	+6	+6	-2	+15	-0	+2	+17
CHO 9	+9.0%	+112	+1	-5	+4	-0	-1	+2	+2	+3	+9	+6	+1	+22	+16	-1	-2	+4	+1	+3	-0	+22	+0	+6	+19	+25	-1	+34		+11	+45
other Community Services	+10.4%	+12		-2	+4	-0	+2	+0		+7				+7		+0	+0	-0		+0	+1	+2	+4	-4	+0	+0	+1		+0	+0	
		+5.2%	+1.3%	+2.2%	+7.4%	+1.2%	+1.9%	+8.5%	+25.1%	+4.5%	+1.5%	+9.4%	+51.5%	+4.7%	+3.1%	+8.8%	-10.1%	+5.7%	-1.7%	+12.6%	-0.3%	+2.7%	-1.7%	+4.7%	+3.1%	+2.9%	-0.3%	+91.8%	+0.7%	+1.2%	+24.4%



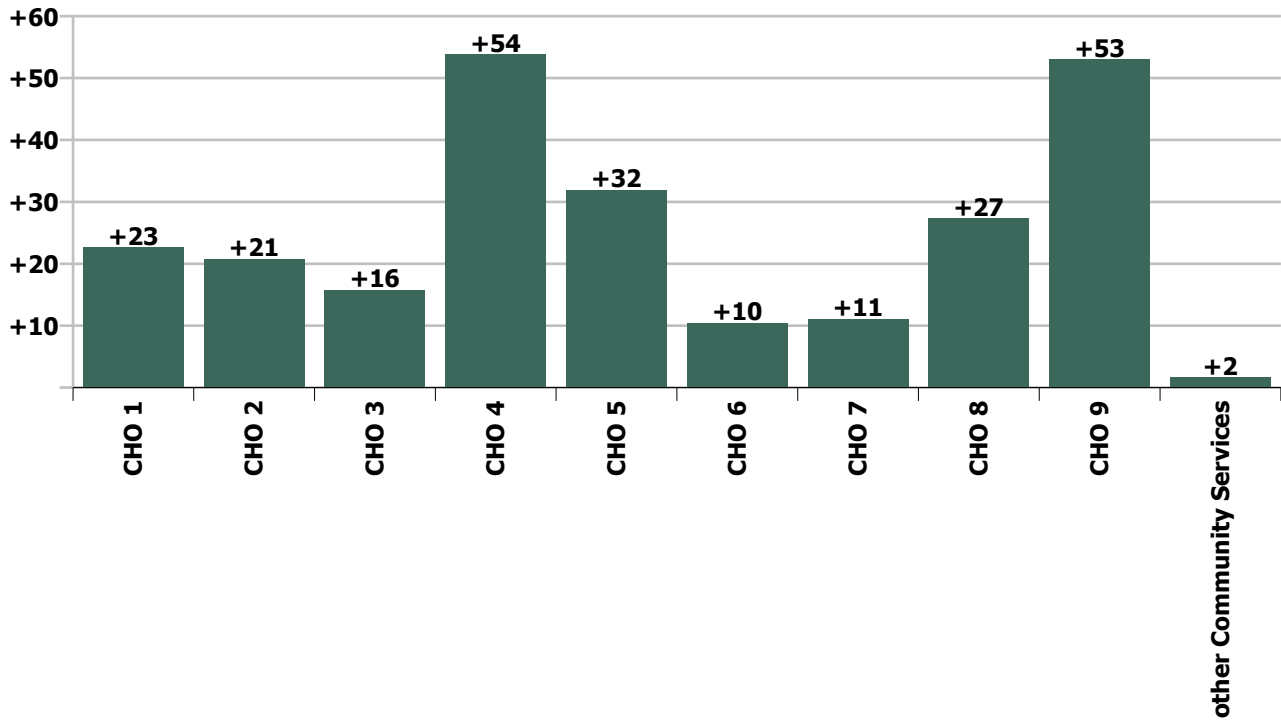
Staff Group change since: Oct 2020



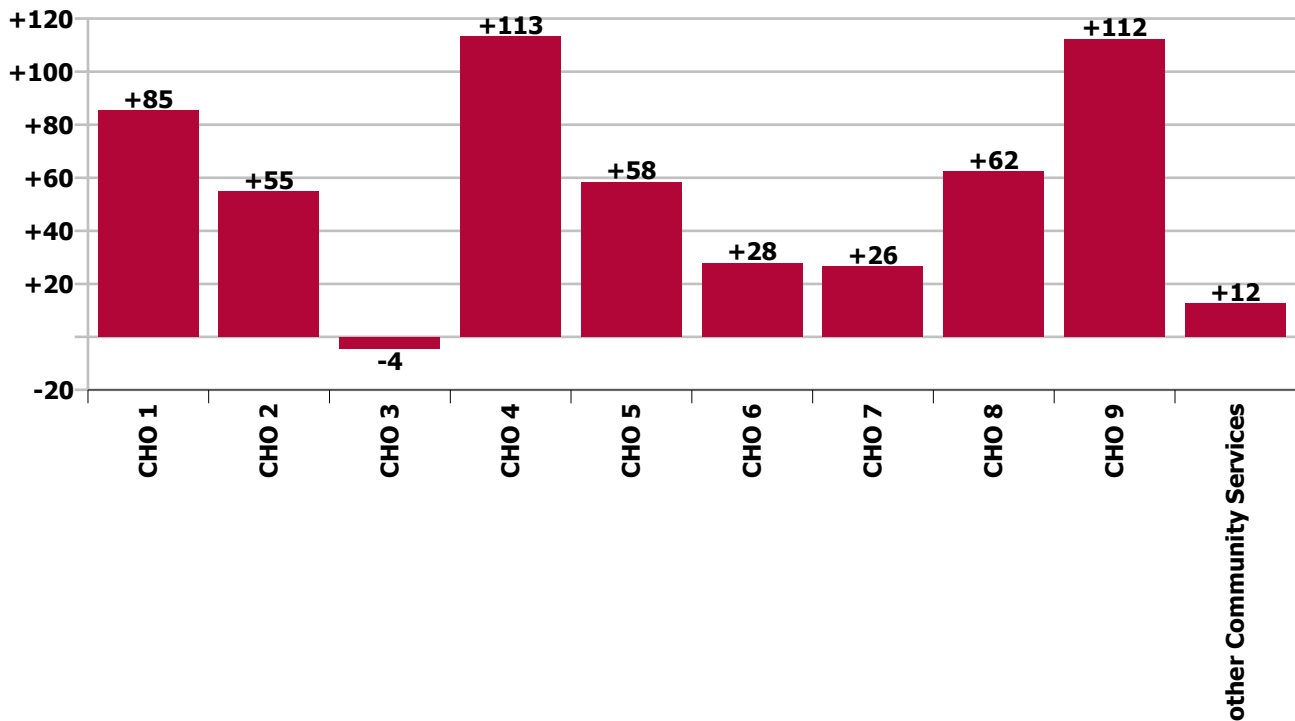
Staff Group change since: Nov 2019



CHO change since: Oct 2020



CHO change since: Nov 2019



Longitudinal Employment Levels by Grade Group - Oct 2013 to Nov 2020

Nov 2020 (Oct 2013 figure: 10,789)	WTE Nov 2020	WTE change since Oct 13	WTE change since Dec 15	WTE change since Dec 16	WTE change since Dec 17	WTE change since Dec 18	WTE change since Dec 19	% change since Oct 13	% change since Dec 15	% change since Dec 16	% change since Dec 17	% change since Dec 18	% change since Dec 19
Overall	11,198	+409	+888	+752	+680	+267	+599	+3.8%	+8.6%	+7.2%	+6.5%	+2.4%	+5.7%
Consultant Anaesthesia		-0						-100.0%	-100.0%	-100.0%	-100.0%	-100.0%	-100.0%
Consultant Dentistry	10	+0	-0	-0	-1	-1	-1	+0.9%	-3.8%	-3.8%	-12.1%	-12.1%	-8.4%
Consultant Medicine	21	+6	+5	+3	+2	+4	+4	+36.1%	+32.5%	+17.9%	+7.9%	+26.0%	+20.5%
Consultant, Other		-1	-1	-1				-100.0%	-100.0%	-100.0%	-100.0%	-100.0%	-100.0%
Consultant Paediatrics	2	+1	+1	+1				+50.0%	+50.0%	+50.0%			
Consultant Psychiatry	8	+1	-1	+1	-1	+2	+0	+20.0%	-6.0%	+20.0%	-10.9%	+31.3%	+0.4%
Consultant Radiology	1												
Consultant Surgery	1	-5	-4	-4	-3	-3	-3	-79.7%	-74.5%	-74.6%	-73.2%	-71.6%	-68.4%
Consultants	44	+1	+0	-0	-4	+2	-0	+3.3%	+0.2%	-0.0%	-9.0%	+4.3%	-0.1%
Registrar	391	+64	+54	+62	+49	+31	+10	+19.5%	+15.9%	+18.7%	+14.2%	+8.6%	+2.5%
Senior Registrar	2	-3	-2	-2	-2	-2	-1	-57.5%	-46.8%	-47.2%	-47.2%	-51.0%	-29.1%
Specialist Registrar	11	+0	+2	+3	+1	+1	+1	+0.9%	+23.3%	+39.4%	+13.6%	+13.4%	+10.0%
Registrars	404	+61	+54	+63	+48	+30	+10	+17.9%	+15.5%	+18.4%	+13.6%	+8.1%	+2.5%
Senior House Officer	42	+9	-6	+2	+12	+5	+5	+27.5%	-12.1%	+4.1%	+40.8%	+12.8%	+12.2%
SHO/ Interns	42	+9	-6	+2	+12	+5	+5	+27.5%	-12.1%	+4.1%	+40.8%	+12.8%	+12.2%
Dentists	301	-9	-0	-3	-2	-5	-1	-2.9%	-0.0%	-1.1%	-0.5%	-1.5%	-0.2%
Other Medical	224	+2	+2	+7	-11	-14	+5	+0.7%	+0.9%	+3.4%	-4.6%	-5.9%	+2.5%
Medical/ Dental, other	524	-7	+2	+4	-12	-19	+5	-1.4%	+0.4%	+0.8%	-2.3%	-3.4%	+0.9%
Medical & Dental	1,014	+64	+51	+69	+44	+18	+19	+6.8%	+5.2%	+7.2%	+4.5%	+1.8%	+1.9%
Clinical Nurse/ Midwife Manager	188	+50	+38	+39	+29	+18	+21	+36.6%	+25.5%	+26.3%	+18.4%	+10.4%	+12.3%
Director Nursing/Midwifery, Assistant	168	+48	+31	+16	+29	+18	+14	+40.1%	+22.2%	+10.2%	+20.5%	+11.7%	+9.0%
Director of Nursing/Midwifery	39	+19	+4	+6	+6	+3	+2	+91.8%	+12.9%	+18.4%	+16.4%	+9.0%	+4.2%
Nurse/ Midwife Manager	396	+117	+73	+61	+63	+39	+36	+42.1%	+22.8%	+18.2%	+19.1%	+10.8%	+10.0%
Advanced Nurse/ Midwife Practitioner	10	+8	+8	+8	+8	+8	+8	+416.0%	+416.0%	+269.9%	+350.7%	+306.3%	+306.3%
Clinical Nurse/ Midwife Specialist	169	+74	+56	+51	+29	+26	+29	+78.1%	+49.8%	+43.7%	+21.0%	+17.9%	+20.5%
Nurse/ Midwife Specialist & AN/MP	179	+82	+64	+59	+37	+33	+37	+85.1%	+56.1%	+48.9%	+26.3%	+22.9%	+25.6%
Staff Midwives	5	+4	+3	+2	-1	-2	-3	+491.3%	+136.5%	+70.1%	-10.1%	-27.1%	-41.7%

Nov 2020 (Oct 2013 figure: 10,789)	WTE Nov 2020	WTE change since Oct 13	WTE change since Dec 15	WTE change since Dec 16	WTE change since Dec 17	WTE change since Dec 18	WTE change since Dec 19	% change since Oct 13	% change since Dec 15	% change since Dec 16	% change since Dec 17	% change since Dec 18	% change since Dec 19
Overall	11,198	+409	+888	+752	+680	+267	+599	+3.8%	+8.6%	+7.2%	+6.5%	+2.4%	+5.7%
Staff Nurse [Psychiatric]	11	+7	+6	+6	-3	+3	+2	+219.1%	+146.6%	+104.7%	-23.5%	+30.3%	+27.5%
Staff Nurses [General/ Children's]	894	+220	+137	+85	+56	+29	+49	+32.6%	+18.1%	+10.5%	+6.7%	+3.3%	+5.8%
Staff Nurse/ Staff Midwife	910	+231	+146	+92	+53	+30	+48	+34.1%	+19.2%	+11.3%	+6.1%	+3.4%	+5.5%
Public Health Nurse	1,538	+78	+67	+66	+51	+24		+5.3%	+4.5%	+4.5%	+3.4%	+1.6%	
Public Health Nurse, Senior (Immunisation)		-1	-1	-1	-1	-1		-100.0%	-100.0%	-100.0%	-100.0%	-100.0%	
Public Health Nurse	1,538	+77	+66	+65	+50	+23	+25	+5.3%	+4.5%	+4.4%	+3.4%	+1.5%	+1.7%
Public Health Nurse	1,538	+77	+66	+65	+50	+23	+25	+5.3%	+4.5%	+4.4%	+3.4%	+1.5%	+1.7%
Post-registration Nurse/ Midwife Student	104	+85	-7	-8	-25	+11	+9	+442.2%	-6.1%	-6.9%	-19.3%	+12.1%	+8.9%
Nursing/ Midwifery Student	104	+85	-7	-8	-25	+11	+9	+442.2%	-6.1%	-6.9%	-19.3%	+12.1%	+8.9%
Nursing Education/Clinical	7	+5	+3	+4	+4	+4	+3	+195.5%	+79.1%	+107.7%	+107.7%	+142.3%	+91.3%
Other Nursing/ Midwifery		-2	-2	-2	-0	-1		-100.0%	-100.0%	-100.0%	-100.0%	-100.0%	-100.0%
Nursing/ Midwifery other	7	+3	+1	+2	+3	+3	+3	+63.0%	+20.0%	+32.2%	+84.1%	+81.7%	+91.3%
Nursing & Midwifery	3,134	+596	+344	+271	+182	+139	+158	+23.5%	+12.3%	+9.5%	+6.2%	+4.6%	+5.3%
Dietitians	122	+63	+34	+32	+17	+5	+13	+105.7%	+38.5%	+35.6%	+16.7%	+4.5%	+11.8%
Occupational Therapists	546	+85	+42	+50	+29	+5	+30	+18.3%	+8.3%	+10.0%	+5.7%	+1.0%	+5.9%
Orthoptists	17	+12	+10	+12	+11	+8	+4	+208.5%	+144.0%	+197.4%	+173.2%	+75.9%	+31.3%
Physiotherapists	559	+81	+18	+15	-4	-4	+16	+17.0%	+3.3%	+2.8%	-0.7%	-0.7%	+3.0%
Podiatrists & Chiropodists	30	+11	+15	+11	+8	+6	+5	+56.3%	+98.3%	+55.7%	+34.3%	+27.6%	+22.1%
Speech & Language Therapists	519	+97	+67	+17	-27	-30	-7	+23.1%	+14.9%	+3.3%	-4.9%	-5.4%	-1.4%
Therapy Professions	1,793	+348	+186	+136	+35	-9	+62	+24.1%	+11.6%	+8.2%	+2.0%	-0.5%	+3.6%
Audiology	51	+30	+23	+22	+21	+3	+7	+138.7%	+80.6%	+74.5%	+70.4%	+5.6%	+15.7%
Biochemists	8	+1	+1	+0	+0	-0	+0	+23.3%	+14.3%	+1.4%	+1.4%	-3.4%	+1.3%
Clinical Engineering	8	+7	+7	+5	+6	+1		+700.0%	+700.0%	+166.7%	+300.0%	+14.3%	
Medical Laboratory	44	-38	-13	-2	-2	-3	+2	-46.6%	-22.4%	-3.9%	-5.1%	-6.8%	+4.0%
Phlebotomists	1	+1	+1	+1	+1	+1	+1	+75.7%	+186.0%	+89.2%	+95.2%	+459.1%	+459.1%
Physicists	2	+0	-1	-1	+0			+11.1%	-33.3%	-33.3%	+12.4%		
Radiographers	4	-1	-1	-1	-2	-1	-0	-23.3%	-19.1%	-19.1%	-27.2%	-20.4%	-1.6%
Health Science/ Diagnostics	118	-1	+17	+24	+24	+0	+10	-0.7%	+16.5%	+25.0%	+25.5%	+0.1%	+8.9%
Social Care	31	-67	-3	-4	-2	-3	-4	-68.0%	-9.1%	-10.2%	-4.8%	-7.8%	-11.2%

Nov 2020 (Oct 2013 figure: 10,789)	WTE Nov 2020	WTE change since Oct 13	WTE change since Dec 15	WTE change since Dec 16	WTE change since Dec 17	WTE change since Dec 18	WTE change since Dec 19	% change since Oct 13	% change since Dec 15	% change since Dec 16	% change since Dec 17	% change since Dec 18	% change since Dec 19
Overall	11,198	+409	+888	+752	+680	+267	+599	+3.8%	+8.6%	+7.2%	+6.5%	+2.4%	+5.7%
Social Workers	148	+6	+8	-3	-5	-5	+9	+4.4%	+5.5%	-1.7%	-3.6%	-3.0%	+6.2%
Psychologists	296	+80	+4	+12	+13	-1	-4	+36.7%	+1.2%	+4.4%	+4.5%	-0.4%	-1.4%
Pharmacy	63	+5	-2	+1	+0	+5	+5	+7.8%	-2.7%	+1.5%	+0.4%	+8.0%	+9.5%
Counsellor Therapists	111	-2	+15	-4	-10	-5	-4	-1.7%	+15.3%	-3.3%	-8.4%	-4.1%	-3.3%
Dental Hygienists	61	+7	+7	+6	+7	+4	+4	+12.3%	+13.0%	+11.5%	+12.8%	+6.8%	+6.8%
Environmental Health Officers							-1	-100.0%	-100.0%	-100.0%	-100.0%	-100.0%	-100.0%
Other Health & Social Care	6	-5	-2	-2	-2	-3	-2	-44.2%	-29.0%	-22.5%	-29.6%	-35.6%	-23.9%
Play Therapists/ Specialists	2	+0	+0	+1	-0	-0	+0	+23.5%	+2.9%	+29.3%	-1.6%	-1.6%	+6.9%
H&SC, Other	181	+1	+19	+1	-6	-4	-2	+0.4%	+12.0%	+0.8%	-3.1%	-2.2%	-1.1%
Health & Social Care Professionals	2,631	+371	+229	+168	+59	-17	+75	+16.4%	+9.5%	+6.8%	+2.3%	-0.6%	+3.0%
Executive Management	78	+52	+41	+13	+7	+4	+7	+205.9%	+110.7%	+19.3%	+9.2%	+5.0%	+9.9%
Senior Management (VIII & GM)	220	+55	+25	+26	-1	-15	-15	+33.2%	+13.1%	+13.5%	-0.5%	-6.6%	-6.3%
Management (VIII & above)	298	+107	+66	+39	+5	-12	-8	+56.2%	+28.6%	+15.0%	+1.8%	-3.8%	-2.6%
Middle Management (V-VII)	657	+161	+201	+167	+113	+31	+40	+32.5%	+44.0%	+34.1%	+20.8%	+5.0%	+6.4%
Other Administrative	1	+1	+1	+1	+1	-1	-1	+100.0%	+100.0%	+100.0%	+100.0%	-50.0%	-50.0%
Administrative/ Supervisory (V to VII)	658	+162	+201	+168	+113	+30	+39	+32.6%	+44.0%	+34.2%	+20.8%	+4.8%	+6.3%
General Administrative (III & IV)	1,811	-70	+37	+39	+13	-18	+65	-3.7%	+2.1%	+2.2%	+0.7%	-1.0%	+3.7%
Clerical (III & IV)	1,811	-70	+37	+39	+13	-18	+65	-3.7%	+2.1%	+2.2%	+0.7%	-1.0%	+3.7%
Management & Administrative	2,767	+198	+304	+245	+131	+1	+96	+7.7%	+12.4%	+9.7%	+5.0%	+0.0%	+3.6%
Catering	21	+6	-1	-0	-4	-2	-1	+41.3%	-4.2%	-0.9%	-14.6%	-8.0%	-3.3%
Household Services	138	+20	-13	-9	-2	-9	+4	+16.8%	-8.6%	-6.0%	-1.6%	-6.0%	+3.1%
Other Labs & Associated	5	+1	+1	+3	-0	-0	+2	+19.9%	+20.9%	+131.5%	-4.7%	-2.3%	+48.9%
Other Support	112	-10	-7	-12	-21	-17	-1	-8.4%	-6.2%	-9.6%	-15.5%	-13.3%	-0.5%
Portering	74	-20	-14	-11	-8	-5	+0	-20.9%	-15.6%	-13.3%	-9.7%	-6.4%	+0.2%
Support	351	-3	-34	-30	-35	-33	+4	-0.9%	-8.9%	-7.8%	-9.0%	-8.6%	+1.3%
Maintenance	56	-3	-9	-1	+1	-1	-2	-4.8%	-13.2%	-1.7%	+1.0%	-1.8%	-3.5%
Technical Services	1		+1			+0			-100.0%			+11.1%	
Maintenance/ Technical	57	-3	-8	-1	+1	-1	-2	-4.7%	-11.6%	-1.7%	+0.9%	-1.6%	-3.4%

Nov 2020 (Oct 2013 figure: 10,789)	WTE Nov 2020	WTE change since Oct 13	WTE change since Dec 15	WTE change since Dec 16	WTE change since Dec 17	WTE change since Dec 18	WTE change since Dec 19	% change since Oct 13	% change since Dec 15	% change since Dec 16	% change since Dec 17	% change since Dec 18	% change since Dec 19
Overall	11,198	+409	+888	+752	+680	+267	+599	+3.8%	+8.6%	+7.2%	+6.5%	+2.4%	+5.7%
General Support	408	-6	-42	-31	-34	-34	+2	-1.4%	-9.3%	-7.0%	-7.8%	-7.7%	+0.6%
HCA, Nurse's Aide, etc.	388	+225	+218	+218	+213	+190	+204	+137.4%	+128.5%	+128.7%	+121.0%	+95.5%	+110.4%
Health & Social Care Assistants	103	+82	+85	+83	+80	-22	+33	+387.8%	+481.9%	+424.5%	+344.5%	-18.0%	+48.2%
Health Care Assistants	491	+306	+303	+302	+292	+167	+237	+165.9%	+161.8%	+159.2%	+146.9%	+51.6%	+93.4%
Home Help	18	-1,073	-280	-265	-4	-1	-0	-98.4%	-94.0%	-93.7%	-19.6%	-6.3%	-2.3%
Community Welfare Officers	1	-11	-4	-4	-3	-2	-1	-92.5%	-82.2%	-82.2%	-77.1%	-69.2%	-45.7%
Other Care Grades	735	-35	-18	-3	+13	-3	+13	-4.6%	-2.3%	-0.4%	+1.9%	-0.4%	+1.8%
Care, other	736	-46	-22	-7	+10	-5	+12	-5.9%	-2.9%	-1.0%	+1.4%	-0.7%	+1.6%
Ambulance Officers		-1						-100.0%	-100.0%	-100.0%	-100.0%	-100.0%	-100.0%
Pre-Hospital Care (Ambulance)		-1	-1					-100.0%	-100.0%	-100.0%	-100.0%	-100.0%	-100.0%
Ambulance Staff		-2	-1					-100.0%	-100.0%	-100.0%	-100.0%	-100.0%	-100.0%
Patient & Client Care	1,245	-815	+2	+29	+298	+161	+249	-39.6%	+0.1%	+2.4%	+31.5%	+14.8%	+25.0%

Source: Health Service Personnel Census

Longitudinal Employment Levels by Grade Group - Mar 2009 to Nov 2020

Nov 2020 (Oct 2013 figure: 10,789)	WTE Nov 2020	WTE change since Oct 13	WTE change since Dec 17	WTE change since Dec 18	WTE change since Dec 19	% change since Oct 13	% change since Dec 17	% change since Dec 18	% change since Dec 19
Overall	11,198	+409	+680	+267	+599	+3.8%	+6.5%	+2.4%	+5.7%
Consultant Anaesthesia		-0				-100.0%	-100.0%	-100.0%	-100.0%
Consultant Dentistry	10	+0	-1	-1	-1	+0.9%	-12.1%	-12.1%	-8.4%
Consultant Medicine	21	+6	+2	+4	+4	+36.1%	+7.9%	+26.0%	+20.5%
Consultant, Other		-1				-100.0%	-100.0%	-100.0%	-100.0%
Consultant Paediatrics	2	+1				+50.0%			
Consultant Psychiatry	8	+1	-1	+2	+0	+20.0%	-10.9%	+31.3%	+0.4%
Consultant Radiology	1								
Consultant Surgery	1	-5	-3	-3	-3	-79.7%	-73.2%	-71.6%	-68.4%
Consultants	44	+1	-4	+2	-0	+3.3%	-9.0%	+4.3%	-0.1%
Registrar	391	+64	+49	+31	+10	+19.5%	+14.2%	+8.6%	+2.5%
Senior Registrar	2	-3	-2	-2	-1	-57.5%	-47.2%	-51.0%	-29.1%
Specialist Registrar	11	+0	+1	+1	+1	+0.9%	+13.6%	+13.4%	+10.0%
Registrars	404	+61	+48	+30	+10	+17.9%	+13.6%	+8.1%	+2.5%
Senior House Officer	42	+9	+12	+5	+5	+27.5%	+40.8%	+12.8%	+12.2%
SHO/ Interns	42	+9	+12	+5	+5	+27.5%	+40.8%	+12.8%	+12.2%
Dentists	301	-9	-2	-5	-1	-2.9%	-0.5%	-1.5%	-0.2%
Other Medical	224	+2	-11	-14	+5	+0.7%	-4.6%	-5.9%	+2.5%
Medical/ Dental, other	524	-7	-12	-19	+5	-1.4%	-2.3%	-3.4%	+0.9%
Medical & Dental	1,014	+64	+44	+18	+19	+6.8%	+4.5%	+1.8%	+1.9%
Clinical Nurse/ Midwife Manager	188	+50	+29	+18	+21	+36.6%	+18.4%	+10.4%	+12.3%
Director Nursing/Midwifery, Assistant	168	+48	+29	+18	+14	+40.1%	+20.5%	+11.7%	+9.0%
Director of Nursing/Midwifery	39	+19	+5	+3	+2	+91.8%	+16.4%	+9.0%	+4.2%
Nurse/ Midwife Manager	396	+117	+63	+39	+36	+42.1%	+19.1%	+10.8%	+10.0%
Advanced Nurse/ Midwife Practitioner	10	+8	+8	+8	+8	+416.0%	+350.7%	+306.3%	+306.3%
Clinical Nurse/ Midwife Specialist	169	+74	+29	+26	+29	+78.1%	+21.0%	+17.9%	+20.5%
Nurse/ Midwife Specialist & AN/MP	179	+82	+37	+33	+37	+85.1%	+26.3%	+22.9%	+25.6%
Staff Midwives	5	+4	-1	-2	-3	+491.3%	-10.1%	-27.1%	-41.7%
Staff Nurse [Psychiatric]	11	+7	-3	+3	+2	+219.1%	-23.5%	+30.3%	+27.5%
Staff Nurses [General/ Children's]	894	+220	+56	+29	+49	+32.6%	+6.7%	+3.3%	+5.8%
Staff Nurse/ Staff Midwife	910	+231	+53	+30	+48	+34.1%	+6.1%	+3.4%	+5.5%
Public Health Nurse	1,538	+77	+50	+23	+25	+5.3%	+3.4%	+1.5%	+1.7%
Public Health Nurse	1,538	+77	+50	+23	+25	+5.3%	+3.4%	+1.5%	+1.7%
Post-registration Nurse/ Midwife Student	104	+85	-25	+11	+9	+442.2%	-19.3%	+12.1%	+8.9%
Nursing/ Midwifery Student	104	+85	-25	+11	+9	+442.2%	-19.3%	+12.1%	+8.9%
Nursing Education/Clinical	7	+5	+4	+4	+3	+195.5%	+107.7%	+142.3%	+91.3%
Other Nursing/ Midwifery		-2	-0	-1		-100.0%	-100.0%	-100.0%	-100.0%
Nursing/ Midwifery other	7	+3	+3	+3	+3	+63.0%	+84.1%	+81.7%	+91.3%
Nursing & Midwifery	3,134	+596	+182	+139	+158	+23.5%	+6.2%	+4.6%	+5.3%
Dietitians	122	+63	+17	+5	+13	+105.7%	+16.7%	+4.5%	+11.8%
Occupational Therapists	546	+85	+29	+5	+30	+18.3%	+5.7%	+1.0%	+5.9%
Orthoptists	17	+12	+11	+8	+4	+208.5%	+173.2%	+75.9%	+31.3%
Physiotherapists	559	+81	-4	-4	+16	+17.0%	-0.7%	-0.7%	+3.0%
Podiatrists & Chiropodists	30	+11	+8	+7	+5	+56.3%	+34.3%	+27.6%	+22.1%
Speech & Language Therapists	519	+97	-27	-30	-7	+23.1%	-4.9%	-5.4%	-1.4%
Therapy Professions	1,793	+348	+35	-9	+62	+24.1%	+2.0%	-0.5%	+3.6%
Audiology	51	+30	+21	+3	+7	+138.7%	+70.4%	+5.6%	+15.7%
Biochemists	8	+1	+0	-0	+0	+23.3%	+1.4%	-3.4%	+1.3%
Clinical Engineering	8	+7	+6	+1		+700.0%	+300.0%	+14.3%	
Medical Laboratory	44	-38	-2	-3	+2	-46.6%	-5.1%	-6.8%	+4.0%
Phlebotomists	1	+1	+1	+1	+1	+75.7%	+95.2%	+459.1%	+459.1%
Physicists	2	+0	+0			+11.1%	+12.4%		
Radiographers	4	-1	-2	-1	-0	-23.3%	-27.2%	-20.4%	-1.6%
Health Science/ Diagnostics	118	-1	+24	+0	+10	-0.7%	+25.5%	+0.1%	+8.9%
Social Care	31	-67	-2	-3	-4	-68.0%	-4.8%	-7.8%	-11.2%
Social Workers	148	+6	-5	-5	+9	+4.4%	-3.6%	-3.0%	+6.2%
Psychologists	296	+80	+13	-1	-4	+36.7%	+4.5%	-0.4%	-1.4%
Pharmacy	63	+5	+0	+5	+5	+7.8%	+0.4%	+8.0%	+9.5%
Counsellor Therapists	111	-2	-10	-5	-4	-1.7%	-8.4%	-4.1%	-3.3%
Dental Hygienists	61	+7	+7	+4	+4	+12.3%	+12.8%	+6.8%	+6.8%
Environmental Health Officers					-1	-100.0%	-100.0%		-100.0%
Other Health & Social Care	6	-5	-2	-3	-2	-44.2%	-29.6%	-35.6%	-23.9%
Play Therapists/ Specialists	2	+0	-0	-0	+0	+23.5%	-1.6%	-1.6%	+6.9%
H&SC, Other	181	+1	-6	-4	-2	+0.4%	-3.1%	-2.2%	-1.1%

Nov 2020 (Oct 2013 figure: 10,789)	WTE Nov 2020	WTE change since Oct 13	WTE change since Dec 17	WTE change since Dec 18	WTE change since Dec 19	% change since Oct 13	% change since Dec 17	% change since Dec 18	% change since Dec 19
Overall	11,198	+409	+680	+267	+599	+3.8%	+6.5%	+2.4%	+5.7%
Health & Social Care Professionals	2,631	+371	+59	-17	+75	+16.4%	+2.3%	-0.6%	+3.0%
Executive Management	78	+52	+7	+4	+7	+205.9%	+9.2%	+5.0%	+9.9%
Senior Management (VIII & GM)	220	+55	-1	-15	-15	+33.2%	-0.5%	-6.6%	-6.3%
Management (VIII & above)	298	+107	+5	-12	-8	+56.2%	+1.8%	-3.8%	-2.6%
Middle Management (V-VII)	657	+161	+113	+31	+40	+32.5%	+20.8%	+5.0%	+6.4%
Other Administrative	1	+1	+1	-1	-1	+100.0%	+100.0%	-50.0%	-50.0%
Administrative/ Supervisory (V to VII)	658	+162	+113	+30	+39	+32.6%	+20.8%	+4.8%	+6.3%
General Administrative (III & IV)	1,811	-70	+13	-18	+65	-3.7%	+0.7%	-1.0%	+3.7%
Clerical (III & IV)	1,811	-70	+13	-18	+65	-3.7%	+0.7%	-1.0%	+3.7%
Management & Administrative	2,767	+198	+131	+1	+96	+7.7%	+5.0%	+0.0%	+3.6%
Support	351	-3	-35	-33	+4	-0.9%	-9.0%	-8.6%	+1.3%
Maintenance	56	-3	+1	-1	-2	-4.8%	+1.0%	-1.8%	-3.5%
Technical Services	1			+0				+11.1%	
Maintenance/ Technical	57	-3	+1	-1	-2	-4.7%	+0.9%	-1.6%	-3.4%
General Support	408	-6	-34	-34	+2	-1.4%	-7.8%	-7.7%	+0.6%
HCA, Nurse's Aide, etc.	388	+225	+213	+190	+204	+137.4%	+121.0%	+95.5%	+110.4%
Health & Social Care Assistants	103	+82	+80	-22	+33	+387.8%	+344.5%	-18.0%	+48.2%
Health Care Assistants	491	+306	+292	+167	+237	+165.9%	+146.9%	+51.6%	+93.4%
Home Help	18	-1,073	-4	-1	-0	-98.4%	-19.6%	-6.3%	-2.3%
Community Welfare Officers	1	-11	-3	-2	-1	-92.5%	-77.1%	-69.2%	-45.7%
Other Care Grades	735	-35	+13	-3	+13	-4.6%	+1.9%	-0.4%	+1.8%
Care, other	736	-46	+10	-5	+12	-5.9%	+1.4%	-0.7%	+1.6%
Ambulance Officers		-1				-100.0%	-100.0%	-100.0%	-100.0%
Pre-Hospital Care (Ambulance)		-1				-100.0%	-100.0%	-100.0%	-100.0%
Ambulance Staff		-2				-100.0%	-100.0%	-100.0%	-100.0%
Patient & Client Care	1,245	-815	+298	+161	+249	-39.6%	+31.5%	+14.8%	+25.0%

Source: Health Service Personnel Census