

Primary Care Service Employment Report: October 2020

Employment by Staff Group

Oct 2020 (Dec 2019 figure: 10,599)	WTE Sep 2020	WTE Oct 2020	WTE change since Sep 20	% change since Sep 20	WTE change since Dec 19	WTE change since Oct 19
Overall	10,849	10,950	+101	+0.9%	+350	+267
Consultants	46	45	-1	-1.3%	+2	+3
Registrars	412	404	-8	-1.9%	+9	+6
SHO/ Interns	46	45	-0	-0.7%	+8	+8
Medical/ Dental, other	535	527	-8	-1.5%	+8	+3
Medical & Dental	1,039	1,022	-17	-1.6%	+27	+20
Nurse/ Midwife Manager	403	402	-1	-0.1%	+43	+35
Nurse/ Midwife Specialist & AN/MP	168	173	+6	+3.3%	+31	+29
Staff Nurse/ Staff Midwife	897	902	+5	+0.5%	+40	+27
Public Health Nurse	1,524	1,522	-2	-0.1%	+9	+14
<i>Post-registration Nurse/ Midwife Student</i>	23	99	+75	+322.5%	+6	+3
Nursing/ Midwifery Student	23	99	+75	+322.5%	+3	+3
Nursing/ Midwifery other	5	6	+1	+14.9%	+2	+2
Nursing & Midwifery	3,020	3,104	+84	+2.8%	+128	+111
Therapy Professions	1,783	1,790	+7	+0.4%	+59	+42
Health Science/ Diagnostics	115	116	+1	+0.9%	+7	+6
Social Care	34	32	-1	-4.1%	-3	-1
Social Workers	143	144	+1	+0.8%	+5	+7
Psychologists	294	292	-3	-1.0%	-9	-1
Pharmacy	63	64	+2	+2.6%	+7	+9
H&SC, Other	175	180	+5	+3.0%	-3	-3
Health & Social Care Professionals	2,606	2,618	+12	+0.5%	+63	+59
Management (VIII & above)	300	302	+2	+0.5%	-4	-5
Administrative/ Supervisory (V to VII)	647	654	+7	+1.1%	+35	+24
Clerical (III & IV)	1,761	1,782	+21	+1.2%	+36	+16
Management & Administrative	2,708	2,737	+29	+1.1%	+67	+34
Support	362	350	-12	-3.3%	+3	-5
Maintenance/ Technical	60	58	-2	-3.0%	-1	-1
General Support	422	408	-14	-3.3%	+2	-6
Health Care Assistants	299	311	+12	+4.1%	+58	+45
Home Help	22	19	-3	-13.0%	+1	+1
Care, other	733	730	-3	-0.4%	+6	+3
Patient & Client Care	1,055	1,061	+6	+0.6%	+65	+50

Primary Care Services Employment by Administration (HSE / S38): October 2020

Oct 2020 (Dec 2019 figure: 10,599)	WTE Sep 2020	WTE Oct 2020	WTE change since Sep 20	% change since Sep 20	WTE change since Dec 19	WTE change since Oct 19
Total	10,849	10,950	+101	+0.9%	+350	+267
HSE	10,156	10,256	+99	+1.0%	+332	+248
Section 38 Voluntary Agencies	693	694	+1	+0.2%	+18	+20

Employment by Staff Group

Oct 2020 (Dec 2019 figure: 9,923)	WTE Sep 2020	WTE Oct 2020	WTE change since Sep 20	% change since Sep 20	WTE change since Dec 19	WTE change since Oct 19
Health Service Executive	10,156	10,256	+99	+1.0%	+332	+248
Consultants	32	31	-1	-3.2%	-1	+0
Registrars	399	392	-7	-1.7%	+8	+5
SHO/ Interns	26	25	-0	-1.9%	+6	+6
Medical/ Dental, other	522	511	-11	-2.1%	+5	+2
Medical & Dental	979	959	-19	-2.0%	+18	+13
Nurse/ Midwife Manager	354	352	-2	-0.5%	+42	+34
Nurse/ Midwife Specialist & AN/MP	137	142	+5	+3.7%	+28	+26
Staff Nurse/ Staff Midwife	789	793	+5	+0.6%	+41	+28
Public Health Nurse	1,524	1,522	-2	-0.1%	+9	+14
Post-registration Nurse/ Midwife Student	23	99	+75	+322.5%	+6	+3
Nursing/ Midwifery Student	23	99	+75	+322.5%	+3	+3
Nursing/ Midwifery other	3	4	+1	+23.8%	+2	+2
Nursing & Midwifery	2,830	2,912	+82	+2.9%	+126	+108
Therapy Professions	1,744	1,752	+7	+0.4%	+58	+40
Health Science/ Diagnostics	110	111	+1	+0.6%	+6	+5
Social Care	34	32	-1	-4.1%	-3	-1
Social Workers	132	134	+2	+1.4%	+5	+8
Psychologists	294	291	-3	-1.0%	-9	-1
Pharmacy	54	55	+1	+1.9%	+7	+8
H&SC, Other	171	177	+5	+3.0%	-5	-5
Health & Social Care Professionals	2,539	2,551	+12	+0.5%	+59	+54
Management (VIII & above)	292	293	+2	+0.5%	-4	-5
Administrative/ Supervisory (V to VII)	617	623	+7	+1.1%	+38	+26
Clerical (III & IV)	1,690	1,714	+24	+1.4%	+31	+9
Management & Administrative	2,599	2,630	+32	+1.2%	+65	+29
Support	267	256	-12	-4.4%	+4	-3
Maintenance/ Technical	50	48	-2	-3.5%	-2	-2
General Support	317	304	-14	-4.3%	+2	-5
Health Care Assistants	194	207	+13	+6.6%	+56	+45
Home Help	22	19	-3	-13.0%	+1	+1
Care, other	676	673	-3	-0.5%	+6	+2
Patient & Client Care	892	899	+6	+0.7%	+62	+49

Employment by Staff Group

Oct 2020 (Dec 2019 figure: 676)	WTE Sep 2020	WTE Oct 2020	WTE change since Sep 20	% change since Sep 20	WTE change since Dec 19	WTE change since Oct 19
Section 38 Voluntary Agencies	693	694	+1	+0.2%	+18	+20
Consultants	14	14	+0	+3.2%	+3	+3
Registrars	13	12	-1	-7.7%	+1	+1
SHO/ Interns	20	20	+0	+0.8%	+3	+2
Medical/ Dental, other	14	17	+3	+21.2%	+2	+1
Medical & Dental	60	63	+3	+4.2%	+9	+7
Nurse/ Midwife Manager	49	50	+1	+2.2%	+1	+1
Nurse/ Midwife Specialist & AN/MP	31	31	+1	+1.8%	+2	+3
Staff Nurse/ Staff Midwife	108	108	+0	+0.2%	-2	-1
Nursing/ Midwifery other	2	2				
Nursing & Midwifery	190	191	+2	+0.9%	+2	+3
Therapy Professions	39	38	-0	-1.0%	+1	+2
Health Science/ Diagnostics	4	5	+0	+10.0%	+1	+1
Social Workers	11	10	-1	-6.5%	-0	-0
Psychologists	1	1				-0
Pharmacy	9	10	+1	+6.9%	-0	+1
H&SC, Other	3	3			+2	+2
Health & Social Care Professionals	67	67	-0	-0.1%	+3	+5
Management (VIII & above)	9	9				
Administrative/ Supervisory (V to VII)	30	30	+0	+0.8%	-3	-2
Clerical (III & IV)	71	68	-3	-3.7%	+5	+7
Management & Administrative	109	107	-2	-2.2%	+1	+5
Support	94	94	-0	-0.3%	-1	-1
Maintenance/ Technical	10	10	-0	-0.4%	+1	+1
General Support	104	104	-0	-0.3%	+0	-0
Health Care Assistants	105	104	-0	-0.4%	+2	-0
Care, other	57	58	+0	+0.4%	+1	+1
Patient & Client Care	162	162	-0	-0.1%	+3	+1

Primary Care Services Employment by CHO: Oct 2020

Oct 2020 (Dec 2019 figure: 10,599)	WTE Sep 2020	WTE Oct 2020	WTE change since Sep 20	% change since Sep 20	WTE change since Dec 19	WTE change since Oct 19
Overall	10,849	10,950	+101	+0.9%	+350	+267
CHO 1	1,237	1,244	+8	+0.6%	+63	+55
CHO 2	1,156	1,170	+14	+1.2%	+37	+23
CHO 3	742	748	+6	+0.8%	-16	-33
CHO 4	1,410	1,404	-6	-0.4%	+58	+60
CHO 5	992	985	-7	-0.7%	+33	+33
CHO 6	774	792	+18	+2.3%	+27	+18
CHO 7	1,719	1,734	+15	+0.9%	+32	+16
CHO 8	1,416	1,429	+13	+0.9%	+42	+28
CHO 9	1,275	1,313	+38	+3.0%	+66	+62
other Community Services	129	130	+1	+0.9%	+8	+6

Primary Care Services Employment by CHO etc. Oct 2020

CHO 1

Oct 2020 (Dec 2019 figure: 1,182)	WTE Sep 2020	WTE Oct 2020	WTE change since Sep 20	% change since Sep 20	WTE change since Dec 19	WTE change since Oct 19
Overall	1,237	1,244	+8	+0.6%	+63	+55
Consultants	3	3	-0	-8%	+0	+0
Registrars	44	44	+0	+0%	+3	+2
SHO/ Interns	1	1	0			
Medical/ Dental, other	45	46	+1	+1%	-2	-3
Medical & Dental	94	94	+0	+0.4%	+2	-1
Nurse/ Midwife Manager	38	37	-1	-2%	+1	-0
Nurse/ Midwife Specialist & AN/MP	25	27	+2	+7%	+6	+6
Staff Nurse/ Staff Midwife	98	95	-3	-3%	+9	+9
Public Health Nurse	153	151	-2	-1%	-5	-2
Nursing/ Midwifery Student	1	3	+2	+240%	-4	-3
Nursing/ Midwifery other	1	1	0			
Nursing & Midwifery	316	314	-2	-0.7%	+7	+10
Therapy Professions	239	237	-2	-1%	+10	+2
Health Science/ Diagnostics	5	5	+0	+1%	+0	-0
Social Workers	15	16	+1	+6%	+3	+4
Psychologists	30	28	-2	-7%	-7	-6
Pharmacy	2	2	0		+1	+1
H&SC, Other	7	7	+1	+10%	+0	+0
Health & Social Care Professionals	298	295	-2	-0.8%	+8	+1
Management (VIII & above)	32	31	-1	-3%	-1	-0
Administrative/ Supervisory (V to VII)	71	73	+3	+4%	+10	+11
Clerical (III & IV)	238	245	+7	+3%	+10	+12
Management & Administrative	341	350	+9	+2.6%	+18	+23
Support	77	77	+0	+1%	+5	+4
Maintenance/ Technical	7	7	-0	-2%	+1	+1
General Support	84	84	+0	+0.4%	+6	+4
Health Care Assistants	47	51	+4	+9%	+19	+16
Home Help	1	1	-0	-3%	+1	+1
Care, other	57	56	-1	-1%	+1	+1
Patient & Client Care	105	108	+3	+3.0%	+21	+18

CHO 2

Oct 2020 (Dec 2019 figure: 1,134)	WTE Sep 2020	WTE Oct 2020	WTE change since Sep 20	% change since Sep 20	WTE change since Dec 19	WTE change since Oct 19
Overall	1,156	1,171	+14	+1.2%	+37	+23
Consultants	1	1	+0	+1%	-0	+0
Registrars	52	50	-1	-2%	+10	+9
Senior House Officer	3	3	+0	+2%	+3	+3
SHO/ Interns	3	3	+0	+2%	+2	+3
Medical/ Dental, other	47	48	+1	+3%	+2	+2
Medical & Dental	102	102	+0	+0.1%	+15	+14
Nurse/ Midwife Manager	28	29	+1	+3%	+1	+1
Nurse/ Midwife Specialist & AN/MP	19	20	+1	+6%	+3	+3
Staff Nurse/ Staff Midwife	81	74	-7	-9%	-0	-5
Public Health Nurse	193	197	+4	+2%	+6	+4
Post-registration Nurse/ Midwife Student				-100%	-13	-3
Nursing/ Midwifery Student				-100%	-4	-3
Nursing & Midwifery	321	319	-2	-0.6%	+6	-0
Therapy Professions	237	245	+8	+3%	+19	+19
Health Science/ Diagnostics	33	33	+0	+1%	+1	+0
Social Care	9	9	+0	+2%	+0	+0
Social Workers	5	6	+1	+12%	-1	+0
Psychologists	26	26	+0	+2%	+2	+2
Pharmacy	1	1	0			
H&SC, Other	12	12	+0	+0%	-2	-2
Health & Social Care Professionals	322	332	+10	+3.0%	+20	+19
Management (VIII & above)	34	34	+0	+0%	+1	+1
Administrative/ Supervisory (V to VII)	61	63	+2	+3%	+1	+1
Clerical (III & IV)	227	230	+3	+1%	-8	-10
Management & Administrative	322	327	+5	+1.5%	-6	-8
Support	22	22	+0	+1%	+1	-0
Maintenance/ Technical	9	9	0			
General Support	31	31	+0	+0.5%	+1	-0
Health Care Assistants	12	13	+1	+8%	-1	-2
Care, other	45	45	+0	+1%	+2	-0
Patient & Client Care	57	59	+1	+2.4%	+1	-2

CHO 3

Oct 2020 (Dec 2019 figure: 764)	WTE Sep 2020	WTE Oct 2020	WTE change since Sep 20	% change since Sep 20	WTE change since Dec 19	WTE change since Oct 19
Overall	742	748	+6	+0.8%	-16	-33
Consultants	2	2	0			
Registrars	25	24	-1	-5%	+1	+2
SHO/ Interns		1	+1	-100%	-5	-5
Medical/ Dental, other	52	53	+1	+1%	+1	+0
Medical & Dental	79	80	+0	+0.2%	-4	-3
Nurse/ Midwife Manager	22	22	+0	+0%	+4	+2
Nurse/ Midwife Specialist & AN/MP	3	3	0		+1	+1
Staff Nurse/ Staff Midwife	49	49	+0	+1%	-7	-9
Public Health Nurse	127	127	-0	-0%	+1	-2
<i>Post-registration Nurse/ Midwife Student</i>		3	+3	-100%	-1	+3
Nursing/ Midwifery Student		3	+3	-100%	+3	+3
Nursing & Midwifery	202	205	+4	+1.8%	+2	-5
Therapy Professions	79	81	+3	+3%	-5	-6
<i>Audiology</i>	6	6	-0	-2%	+2	+1
Health Science/ Diagnostics	6	6	-0	-2%	+1	+1
Social Care	1	1	0			
Social Workers	10	10	+0	+0%	-1	-1
Psychologists	15	15	-0	-0%	-1	+1
Pharmacy	1	1	0			
H&SC, Other	10	11	+1	+10%	+1	+0
Health & Social Care Professionals	122	125	+3	+2.8%	-4	-5
Management (VIII & above)	23	23	+0	+2%	-0	+0
Administrative/ Supervisory (V to VII)	60	57	-3	-5%	+3	-7
Clerical (III & IV)	140	140	-0	-0%	-16	-17
Management & Administrative	223	220	-3	-1.2%	-13	-24
Support	13	14	+1	+11%	+1	+1
Maintenance/ Technical	28	28	0		-2	-2
General Support	41	42	+1	+3.6%	-1	-1
Health Care Assistants	24	25	+1	+4%	+4	+4
Home Help	1	1	0			
Care, other	51	50	-1	-2%	+0	+1
Patient & Client Care	75	75	-0	-0.3%	+4	+5

CHO 4

Oct 2020 (Dec 2019 figure: 1,346)	WTE Sep 2020	WTE Oct 2020	WTE change since Sep 20	% change since Sep 20	WTE change since Dec 19	WTE change since Oct 19
Overall	1,410	1,404	-6	-0.4%	+58	+60
Consultants	3	3	-1	-17%	-0	-0
Registrars	57	56	-1	-2%	+1	+1
SHO/ Interns	7	8	+1	+15%	+1	+1
Medical/ Dental, other	96	90	-5	-5%	+2	-4
Medical & Dental	162	156	-6	-3.6%	+5	-2
Nurse/ Midwife Manager	65	64	-1	-2%	+7	+6
Nurse/ Midwife Specialist & AN/MP	6	6	-0	-2%	+1	+1
Staff Nurse/ Staff Midwife	125	135	+10	+8%	+16	+20
Public Health Nurse	215	214	-1	-0%	+3	+10
<i>Post-registration Nurse/ Midwife Student</i>	9	14	+5	+56%	-1	-3
Nursing/ Midwifery Student	9	14	+5	+56%	-4	-3
Nursing & Midwifery	419	432	+13	+3.1%	+25	+33
Therapy Professions	227	229	+2	+1%	+7	+9
Health Science/ Diagnostics	11	11	+0	+3%	+1	+1
Social Care	5	5	0		-3	-1
Social Workers	27	27	+0	+1%	+3	+3
Psychologists	21	21	+0	+0%	+1	+3
Pharmacy	4	4	+0	+4%	+1	+1
H&SC, Other	41	42	+2	+4%	+1	+1
Health & Social Care Professionals	336	340	+5	+1.4%	+11	+16
Management (VIII & above)	37	37	-1	-2%	-0	-0
Administrative/ Supervisory (V to VII)	72	72	+1	+1%	+4	+5
Clerical (III & IV)	216	216	-0	-0%	+11	+8
Management & Administrative	325	325	-0	-0.1%	+15	+13
Support	31	16	-15	-48%	+1	+0
General Support	31	16	-15	-48.3%	+1	+0
Health Care Assistants	16	23	+6	+39%	+5	+5
Home Help	12	9	-3	-28%	-1	-1
Care, other	108	103	-5	-5%	-2	-2
Patient & Client Care	137	134	-3	-1.9%	+2	+1

CHO 5

Oct 2020 (Dec 2019 figure: 952)	WTE Sep 2020	WTE Oct 2020	WTE change since Sep 20	% change since Sep 20	WTE change since Dec 19	WTE change since Oct 19
Overall	992	985	-7	-0.7%	+33	+33
Consultants	1	1	0		-2	-2
Registrars	20	18	-3	-13%	-0	-3
SHO/ Interns	6	5	-1	-21%	-1	-0
Medical/ Dental, other	63	55	-7	-11%	+1	+2
Medical & Dental	90	79	-11	-12.2%	-2	-4
Nurse/ Midwife Manager	46	47	+1	+2%	+20	+20
Nurse/ Midwife Specialist & AN/MP	17	17	-0	-1%	+11	+11
Staff Nurse/ Staff Midwife	80	81	+0	+1%	+14	+14
Public Health Nurse	161	163	+2	+1%	-2	+1
<i>Post-registration Nurse/ Midwife Student</i>	1	3	+2	+238%	-4	-2
Nursing/ Midwifery Student	1	3	+2	+238%	-2	-2
<i>Nursing Education/Clinical</i>	0	1	+0	+100%	+1	
Nursing/ Midwifery other	0	1	+0	+100%		
Nursing & Midwifery	306	311	+6	+1.8%	+41	+45
Therapy Professions	182	181	-1	-0%	-2	-4
Health Science/ Diagnostics	7	7	+0	+1%	+3	+3
Social Care	5	5	-0	-2%	-0	-0
Social Workers	7	7	-0	-3%	-2	-2
Psychologists	38	38	-0	-1%	-6	-6
Pharmacy	1	1	0			
H&SC, Other	18	18	+0	+1%	+0	+1
Health & Social Care Professionals	258	257	-1	-0.5%	-7	-8
Management (VIII & above)	24	25	+1	+2%	-1	+0
Administrative/ Supervisory (V to VII)	62	57	-5	-7%	+5	+5
Clerical (III & IV)	155	157	+2	+1%	-7	-6
Management & Administrative	241	239	-2	-0.8%	-2	-1
Support	25	26	+1	+3%	-0	-2
General Support	25	26	+1	+3.2%	-0	-2
Health Care Assistants	12	11	-1	-7%	+3	+3
Home Help	8	9	+1	+7%	+2	+2
Care, other	52	53	+1	+2%	-2	-2
Patient & Client Care	72	73	+1	+1.4%	+3	+3

CHO 6

Oct 2020 (Dec 2019 figure: 765)	WTE Sep 2020	WTE Oct 2020	WTE change since Sep 20	% change since Sep 20	WTE change since Dec 19	WTE change since Oct 19
Overall	774	792	+18	+2.3%	+27	+18
Consultants	8	8	0		-1	-1
Registrars	24	24	-0	-1%	-2	-0
SHO/ Interns	7	7	0			
Medical/ Dental, other	44	45	+1	+2%	-1	-1
Medical & Dental	83	83	+1	+0.6%	-5	-2
Nurse/ Midwife Manager	23	25	+2	+8%	+2	+4
Nurse/ Midwife Specialist & AN/MP	6	6	-0	-2%	-0	-0
Staff Nurse/ Staff Midwife	50	54	+4	+8%	+2	+1
Public Health Nurse	116	113	-2	-2%	-3	-7
<i>Post-registration Nurse/ Midwife Student</i>	2	14	+12	+811%	+3	-0
Nursing/ Midwifery Student	2	14	+12	+811%	+0	-0
<i>Nursing Education/Clinical</i>	1	1	0		+1	+1
Nursing/ Midwifery other	1	1	0		+1	+1
Nursing & Midwifery	197	213	+15	+7.8%	+3	-1
Therapy Professions	119	116	-2	-2%	+13	+8
Health Science/ Diagnostics	18	18	+0	+1%	+0	+0
Social Care	3	3	-0	-1%	-1	-1
Social Workers	5	4	-0	-7%	-0	-0
Psychologists	19	19	-0	-1%	+0	+0
Pharmacy	1	1	0		+0	
H&SC, Other	3	4	+1	+17%	+0	+1
Health & Social Care Professionals	168	166	-2	-1.3%	+12	+8
Management (VIII & above)	29	30	+1	+2%	-0	-1
Administrative/ Supervisory (V to VII)	64	66	+2	+3%	-2	+1
Clerical (III & IV)	124	125	+1	+0%	+13	+9
Management & Administrative	218	221	+3	+1.3%	+11	+9
Support	26	26	-0	-2%	+2	+1
Maintenance/ Technical	2	2	0			
General Support	28	28	-0	-1.6%	+2	+1
Health Care Assistants	11	13	+2	+17%	+7	+7
Care, other	69	69	-0	-0%	-2	-3
Patient & Client Care	80	82	+2	+2.1%	+5	+3

CHO 7

Oct 2020 (Dec 2019 figure: 1,702)	WTE Sep 2020	WTE Oct 2020	WTE change since Sep 20	% change since Sep 20	WTE change since Dec 19	WTE change since Oct 19
Overall	1,719	1,734	+15	+0.9%	+32	+16
Consultants	15	15	+0	+1%	+3	+3
Registrars	45	44	-1	-3%	-2	-2
SHO/ Interns	10	9	-1	-8%	+3	+2
Medical/ Dental, other	80	80	+0	+0%	+5	+5
Medical & Dental	149	148	-2	-1.1%	+9	+9
Nurse/ Midwife Manager	84	85	+1	+1%	+4	+3
Nurse/ Midwife Specialist & AN/MP	50	51	+1	+1%	+5	+6
Staff Nurse/ Staff Midwife	203	202	-1	-0%	-3	-6
Public Health Nurse	177	177	-1	-0%	+1	+1
<i>Post-registration Nurse/ Midwife Student</i>		20	+20	-100%	+13	-1
Nursing/ Midwifery Student		20	+20	-100%	-1	-1
Nursing/ Midwifery other	2	2	0			
Nursing & Midwifery	516	535	+20	+3.8%	+6	+2
Therapy Professions	265	261	-4	-2%	-5	-7
Health Science/ Diagnostics	1	1	+0	+54%	+1	+1
Social Care	4	4	-0	-5%	+0	-0
Social Workers	26	25	-1	-3%	-1	+0
Psychologists	24	23	-1	-3%	+2	+2
Pharmacy	32	32	+0	+1%	+0	+3
H&SC, Other	20	20	-0	-1%	-4	-4
Health & Social Care Professionals	372	366	-5	-1.4%	-7	-5
Management (VIII & above)	31	30	-1	-3%	-4	-4
Administrative/ Supervisory (V to VII)	79	83	+4	+5%	+7	+4
Clerical (III & IV)	192	191	-0	-0%	+13	+9
Management & Administrative	301	304	+3	+0.9%	+17	+9
Support	111	112	+1	+1%	-4	-5
Maintenance/ Technical	10	9	-1	-6%	+1	+1
General Support	121	121	-0	-0.0%	-3	-4
Health Care Assistants	133	132	-0	-0%	+11	+7
Care, other	127	127	-0	-0%	-0	-1
Patient & Client Care	260	260	-1	-0.2%	+11	+6

CHO 8

Oct 2020 (Dec 2019 figure: 1,387)	WTE Sep 2020	WTE Oct 2020	WTE change since Sep 20	% change since Sep 20	WTE change since Dec 19	WTE change since Oct 19
Overall	1,416	1,429	+13	+0.9%	+42	+28
Consultants	7	7	+0	+1%	+1	+1
Registrars	83	84	+1	+1%	+6	+5
SHO/ Interns	1	1	-0	-5%	-1	-1
Medical/ Dental, other	61	61	+1	+1%	+1	+1
Medical & Dental	151	153	+1	+1.0%	+6	+6
Nurse/ Midwife Manager	53	51	-2	-3%	-0	-1
Nurse/ Midwife Specialist & AN/MP	34	36	+2	+7%	+2	+0
Staff Nurse/ Staff Midwife	102	102	-0	-0%	+4	-3
Public Health Nurse	199	196	-3	-2%	-0	+3
<i>Post-registration Nurse/ Midwife Student</i>	1	9	+8	+823%	+1	+5
Nursing/ Midwifery Student	1	9	+8	+823%	+7	+5
Nursing/ Midwifery other	1	1	-0	-9%	+1	+1
Nursing & Midwifery	389	395	+6	+1.5%	+13	+5
Therapy Professions	229	230	+1	+0%	+9	+7
Health Science/ Diagnostics	7	7	+0	+1%	+2	+2
Social Care	1	1	0		+1	+1
Social Workers	17	17	+0	+0%	+1	+0
Psychologists	56	58	+2	+3%	+2	+3
Pharmacy	5	5	-0	-0%	+1	+1
H&SC, Other	24	25	+1	+3%	+0	-0
Health & Social Care Professionals	339	343	+3	+1.0%	+17	+15
Management (VIII & above)	43	44	+1	+3%	-1	-1
Administrative/ Supervisory (V to VII)	79	79	+0	+0%	+2	+4
Clerical (III & IV)	268	271	+3	+1%	+7	+2
Management & Administrative	390	395	+5	+1.2%	+7	+5
Support	21	21	-0	-1%	-2	-2
Maintenance/ Technical	3	3	-0	-1%	+0	-0
General Support	24	24	-0	-1.1%	-2	-2
Health Care Assistants	22	20	-2	-11%	-1	-2
Home Help				-100%	-0	-0
Care, other	100	101	+1	+1%	+2	+2
Patient & Client Care	122	120	-2	-1.4%	+1	-1

CHO 9

Oct 2020 (Dec 2019 figure: 1,247)	WTE Sep 2020	WTE Oct 2020	WTE change since Sep 20	% change since Sep 20	WTE change since Dec 19	WTE change since Oct 19
Overall	1,275	1,313	+38	+3.0%	+66	+62
Consultants	4	4	0		+0	+1
Registrars	53	52	-1	-2%	-4	-3
SHO/ Interns	5	5	0		+4	+4
Medical/ Dental, other	49	49	-0	-0%	-1	+1
Medical & Dental	111	110	-1	-0.8%	-1	+3
Nurse/ Midwife Manager	40	39	-1	-4%	+2	+0
Nurse/ Midwife Specialist & AN/MP	8	8	+0	+1%	+2	+2
Staff Nurse/ Staff Midwife	99	100	+0	+0%	-0	+1
Public Health Nurse	182	184	+2	+1%	+9	+8
<i>Post-registration Nurse/ Midwife Student</i>	10	33	+22	+219%	+11	+7
Nursing/ Midwifery Student	10	33	+22	+219%	+7	+7
Nursing/ Midwifery other		0	+0	-100%	+0	+0
Nursing & Midwifery	340	364	+24	+7.0%	+19	+18
Therapy Professions	206	209	+3	+1%	+13	+15
Health Science/ Diagnostics	19	18	-0	-2%	-2	-2
Social Care	4	3	-1	-25%	-1	-1
Social Workers	20	20	+1	+3%	+4	+4
Psychologists	64	63	-1	-2%	-3	-0
Pharmacy	14	15	+1	+9%	+3	+3
H&SC, Other	35	36	+0	+1%	-1	-0
Health & Social Care Professionals	362	364	+2	+0.6%	+13	+18
Management (VIII & above)	27	27	+1	+2%	-1	-1
Administrative/ Supervisory (V to VII)	84	87	+3	+4%	+9	+3
Clerical (III & IV)	189	193	+5	+2%	+11	+6
Management & Administrative	299	308	+8	+2.8%	+20	+9
Support	33	33	+0	+0%	-2	-3
General Support	33	33	+0	+0.4%	-2	-3
Health Care Assistants	22	23	+2	+8%	+10	+9
Care, other	108	111	+3	+3%	+6	+9
Patient & Client Care	130	135	+5	+3.7%	+17	+17

other Community Services

Oct 2020 (Dec 2019 figure: 122)	WTE Sep 2020	WTE Oct 2020	WTE change since Sep 20	% change since Sep 20	WTE change since Dec 19	WTE change since Oct 19
Overall	129	130	+1	+0.9%	+8	+6
Consultants	1	1	0			
Registrars	9	9	-0	-1%	-3	-3
SHO/ Interns	7	7	0		+5	+5
Medical/ Dental, other	0	0	0		-0	-0
Medical & Dental	17	17	-0	-0.6%	+2	+1
Nurse/ Midwife Manager	5	5	-0	-1%	+1	+0
Staff Nurse/ Staff Midwife	9	10	+1	+13%	+5	+5
Nursing & Midwifery	14	15	+1	+8.4%	+6	+5
Health Science/ Diagnostics	8	8	0		+0	+0
Social Care	2	2	-0	-2%	+0	+0
Social Workers	13	13	0		-1	-1
Psychologists	1	1	0			
Pharmacy	3	3	0		+0	+0
H&SC, Other	4	4	-0	-1%	+1	+1
Health & Social Care Professionals	30	30	-0	-0.3%	+0	+0
Management (VIII & above)	20	21	+1	+5%	+3	+2
Administrative/ Supervisory (V to VII)	16	16	-0	-1%	-4	-4
Clerical (III & IV)	12	13	+1	+8%	+1	+2
Management & Administrative	49	51	+2	+3.8%	-0	+0
Support	3	3	0		+1	+1
Maintenance/ Technical	1		-1	-100%	-1	-1
General Support	4	3	-1	-25.0%	-0	+0
Care, other	16	15	-1	-4%	+0	-1
Patient & Client Care	16	15	-1	-4.3%	+0	-1

Primary Care Services Employment by Grade Group: Oct 2020

Oct 2020 (Dec 2019 figure: 10,599)	WTE Sep 2020	WTE Oct 2020	WTE change since Sep 20	% change since Sep 20	WTE change since Dec 19	WTE change since Oct 19
Overall	10,849	10,950	+101	+0.9%	+350	+267
Consultant Dentistry	10	10	+0	+0.1%	-1	-1
Consultant Medicine	22	23	+0	+1.0%	+5	+5
Consultant Paediatrics	2	1	-1	-25.5%	-0	-0
Consultant Psychiatry	8	8			+0	+1
Consultant Radiology	1	1				
Consultant Surgery	2	2	-0	-14.9%	-2	-2
Consultants	46	45	-1	-1.3%	+2	+3
Registrar	398	391	-6	-1.6%	+9	+6
Senior Registrar	4	3	-2	-36.9%	-0	-0
Specialist Registrar	10	10				
Registrars	412	404	-8	-1.9%	+9	+6
Senior House Officer	46	45	-0	-0.7%	+8	+8
SHO/ Interns	46	45	-0	-0.7%	+8	+8
Dentists	296	300	+4	+1.5%	-1	-3
Other Medical	239	227	-12	-5.2%	+9	+6
Medical/ Dental, other	535	527	-8	-1.5%	+8	+3
Medical & Dental	1,039	1,022	-17	-1.6%	+27	+20
Clinical Nurse/ Midwife Manager	188	188	-1	-0.3%	+20	+19
Director Nursing/Midwifery, Assistant	174	173	-0	-0.2%	+19	+14
Director of Nursing/Midwifery	41	41	+0	+1.0%	+4	+1
Nurse/ Midwife Manager	403	402	-1	-0.1%	+43	+35
Advanced Nurse/ Midwife Practitioner	7	10	+3	+35.8%	+7	+7
Clinical Nurse/ Midwife Specialist	160	163	+3	+1.8%	+23	+22
Nurse/ Midwife Specialist & AN/MP	168	173	+6	+3.3%	+31	+29
Staff Midwives	5	7	+2	+49.1%	-1	-0
Staff Nurse [Psychiatric]	11	11	+0	+1.3%	+2	+2
Staff Nurses [General/ Children's]	881	884	+2	+0.2%	+38	+25
Staff Nurse/ Staff Midwife	897	902	+5	+0.5%	+40	+27
Public Health Nurse	1,524	1,522	-2	-0.1%	+9	+14
Public Health Nurse	1,524	1,522	-2	-0.1%	+9	+14
Post-registration Nurse/ Midwife Student	23	99	+75	+322.5%	+3	+3
Nursing/ Midwifery Student	23	99	+75	+322.5%	+3	+3
Nursing Education/Clinical	5	6	+1	+14.9%	+2	+2
Nursing/ Midwifery other	5	6	+1	+14.9%	+2	+2
Nursing & Midwifery	3,020	3,104	+84	+2.8%	+128	+111
Dietitians	116	119	+3	+2.3%	+10	+5
Occupational Therapists	538	543	+5	+1.0%	+28	+27
Orthoptists	14	16	+2	+12.0%	+2	+4
Physiotherapists	563	563	-0	-0.1%	+20	+12
Podiatrists & Chiropodists	32	32	-0	-0.9%	+7	+7
Speech & Language Therapists	520	518	-2	-0.3%	-8	-13
Therapy Professions	1,783	1,790	+7	+0.4%	+59	+42
Audiology	50	49	-0	-0.6%	+5	+4
Biochemists	8	8			+0	+0
Clinical Engineering	8	8				+0
Medical Laboratory	43	44	+1	+1.3%	+1	+1
Phlebotomists	1	1	+0	+54.4%	+1	+1
Physicists	1	1	+0	+34.0%	-1	-1
Radiographers	4	4			-0	-0
Health Science/ Diagnostics	115	116	+1	+0.9%	+7	+6
Social Care	34	32	-1	-4.1%	-3	-1

Oct 2020 (Dec 2019 figure: 10,599)	WTE Sep 2020	WTE Oct 2020	WTE change since Sep 20	% change since Sep 20	WTE change since Dec 19	WTE change since Oct 19
Overall	10,849	10,950	+101	+0.9%	+350	+267
Social Workers	143	144	+1	+0.8%	+5	+7
Psychologists	294	292	-3	-1.0%	-9	-1
Pharmacy	63	64	+2	+2.6%	+7	+9
Counsellor Therapists	106	110	+4	+3.7%	-5	-6
Dental Hygienists	60	61	+2	+2.9%	+4	+4
Environmental Health Officers				-100.0%	-1	
Other Health & Social Care	7	7	-0	-5.9%	-1	-1
Play Therapists/ Specialists	2	2	+0	+0.4%	+0	+0
H&SC, Other	175	180	+5	+3.0%	-3	-3
Health & Social Care Professionals	2,606	2,618	+12	+0.5%	+63	+59
Executive Management	72	76	+4	+5.6%	+5	+4
Senior Management (VIII & GM)	228	226	-3	-1.1%	-9	-9
Management (VIII & above)	300	302	+2	+0.5%	-4	-5
Middle Management (V-VII)	642	652	+10	+1.5%	+35	+23
Other Administrative	5	2	-3	-66.7%	-1	+1
Administrative/ Supervisory (V to VII)	647	654	+7	+1.1%	+35	+24
General Administrative (III & IV)	1,761	1,782	+21	+1.2%	+36	+16
Clerical (III & IV)	1,761	1,782	+21	+1.2%	+36	+16
Management & Administrative	2,708	2,737	+29	+1.1%	+67	+34
Catering	21	22	+0	+1.9%	-0	+1
Household Services	138	140	+1	+0.7%	+5	+1
Other Labs & Associated	4	4			+1	+1
Other Support	125	110	-14	-11.4%	-2	-6
Portering	73	74	+1	+0.9%	-0	-2
Support	362	350	-12	-3.3%	+3	-5
Maintenance	59	57	-2	-3.0%	-1	-1
Technical Services	1	1				
Maintenance/ Technical	60	58	-2	-3.0%	-1	-1
General Support	422	408	-14	-3.3%	+2	-6
HCA, Nurse's Aide, etc.	198	211	+13	+6.8%	+27	+24
Health & Social Care Assistants	101	100	-1	-1.0%	+31	+21
Health Care Assistants	299	311	+12	+4.1%	+58	+45
Home Help	22	19	-3	-13.0%	+1	+1
Care, other	733	730	-3	-0.4%	+6	+3
Patient & Client Care	1,055	1,061	+6	+0.6%	+65	+50

Employment by WTE, Headcount, Gender, Full-Time /Part-Time etc.: Oct 2020

Primary Care Services Staff Group	WTE	Headcount	WTE: no.	% Male	% female	Male WTE: no.	Female WTE: no.	% Total Perm	% Male Perm	% Female Perm	% Total Full Time	% Total Part Time	% Male FT	% Female FT
Overall	10,950	13,176	1.20	13.2%	86.8%	1.11	1.22	83.1%	74.5%	84.4%	66.0%	34.0%	83.4%	63.3%
Consultant Dentistry	10	12	1.17	50.0%	50.0%	1.17	1.18	100.0%	100.0%	100.0%	66.7%	33.3%	66.7%	66.7%
Consultant Medicine	23	27	1.20	25.9%	74.1%	1.05	1.26	59.3%	59.3%	55.0%	77.8%	22.2%	85.7%	75.0%
Consultant Paediatrics	1	2	1.34		100.0%		1.34	100.0%	100.0%	100.0%	50.0%	50.0%		50.0%
Consultant Psychiatry	8	9	1.07	77.8%	22.2%	1.09	1.00	66.7%	66.7%	50.0%	88.9%	11.1%	85.7%	100.0%
Consultant Radiology	1	1	1.00	100.0%		1.00		100.0%	100.0%		100.0%	0.0%	100.0%	
Consultant Surgery	2	3	1.74		100.0%		1.74	33.3%	33.3%	33.3%	0.0%	100.0%		0.0%
Consultants	45	54	1.19	38.9%	61.1%	1.10	1.26	70.4%	81.0%	63.6%	72.2%	27.8%	81.0%	66.7%
Registrar	391	401	1.02	32.2%	67.8%	1.01	1.03	1.2%	1.2%	0.7%	99.3%	0.7%	98.4%	99.6%
Senior Registrar	3	6	2.25	50.0%	50.0%	3.00	1.80	0.0%	0.0%	0.0%	16.7%	83.3%	0.0%	33.3%
Specialist Registrar	10	10	1.00	20.0%	80.0%	1.00	1.00	30.0%	30.0%	25.0%	100.0%	0.0%	100.0%	100.0%
Registrars	404	417	1.03	32.1%	67.9%	1.03	1.04	1.9%	3.0%	1.4%	98.1%	1.9%	96.3%	98.9%
Senior House Officer	45	55	1.21	30.9%	69.1%	1.33	1.17	0.0%	0.0%	0.0%	94.5%	5.5%	100.0%	92.1%
SHO/ Interns	45	55	1.21	30.9%	69.1%	1.33	1.17	0.0%	0.0%	0.0%	94.5%	5.5%	100.0%	92.1%
Dentists	300	385	1.28	25.5%	74.5%	1.26	1.29	89.6%	89.6%	89.5%	51.9%	48.1%	61.2%	48.8%
Other Medical	227	304	1.34	27.3%	72.7%	1.33	1.34	56.3%	56.3%	63.8%	40.1%	59.9%	45.8%	38.0%
Medical/ Dental, other	527	689	1.31	26.3%	73.7%	1.29	1.31	74.9%	65.2%	78.3%	46.7%	53.3%	54.1%	44.1%
Medical & Dental	1,022	1,215	1.19	29.1%	70.9%	1.17	1.20	46.3%	39.4%	49.1%	67.7%	32.3%	73.9%	65.1%
Clinical Nurse/ Midwife Manager	188	220	1.17	4.5%	95.5%	1.00	1.18	95.5%	95.5%	95.2%	63.2%	36.8%	100.0%	61.4%
Director Nursing/Midwifery, Assistant	173	191	1.10	2.1%	97.9%	1.11	1.10	97.4%	97.4%	97.3%	77.0%	23.0%	100.0%	76.5%
Director of Nursing/Midwifery	41	44	1.07	2.3%	97.7%	1.00	1.07	95.5%	95.5%	95.3%	86.4%	13.6%	100.0%	86.0%
Nurse/ Midwife Manager	402	455	1.13	3.3%	96.7%	1.03	1.14	96.3%	100.0%	96.1%	71.2%	28.8%	100.0%	70.2%
Advanced Nurse/ Midwife Practitioner	10	11	1.11		100.0%		1.11	90.9%	90.9%	90.9%	81.8%	18.2%		81.8%
Clinical Nurse/ Midwife Specialist	163	190	1.16	5.3%	94.7%	1.02	1.17	96.3%	96.3%	96.1%	66.8%	33.2%	100.0%	65.0%
Nurse/ Midwife Specialist & AN/MP	173	201	1.16	5.0%	95.0%	1.02	1.17	96.0%	100.0%	95.8%	67.7%	32.3%	100.0%	66.0%
Staff Midwives	7	9	1.23		100.0%		1.23	100.0%	100.0%	100.0%	33.3%	66.7%		33.3%
Staff Nurse [Psychiatric]	11	13	1.19	7.7%	92.3%	1.00	1.21	76.9%	76.9%	75.0%	76.9%	23.1%	100.0%	75.0%
Staff Nurses [General/ Children's]	884	1,183	1.34	3.2%	96.8%	1.08	1.35	82.4%	82.4%	82.4%	44.5%	55.5%	81.6%	43.3%
Staff Nurse/ Staff Midwife	902	1,205	1.34	3.2%	96.8%	1.08	1.35	82.5%	82.1%	82.5%	44.8%	55.2%	82.1%	43.6%
Public Health Nurse	1,522	1,830	1.20	0.4%	99.6%	1.07	1.20	94.6%	94.6%	94.6%	70.3%	29.7%	85.7%	70.3%

Public Health Nurse	1,522	1,830	1.20	0.4%	99.6%	1.07	1.20	94.6%	100.0%	94.6%	70.3%	29.7%	85.7%	70.3%
Post-registration Nurse/ Midwife Student	99	110	1.12	1.8%	98.2%	1.00	1.12	27.3%	27.3%	27.8%	97.3%	2.7%	100.0%	97.2%
Nursing/ Midwifery Student	99	110	1.12	1.8%	98.2%	1.00	1.12	27.3%	0.0%	27.8%	97.3%	2.7%	100.0%	97.2%
Nursing Education/Clinical	6	7	1.14		100.0%		1.14	85.7%	85.7%	85.7%	100.0%	0.0%		100.0%
Nursing/ Midwifery other	6	7	1.14		100.0%		1.14	85.7%		85.7%	100.0%	0.0%		100.0%
Nursing & Midwifery	3,104	3,808	1.23	1.9%	98.1%	1.06	1.23	89.1%	87.7%	89.1%	63.1%	36.9%	89.0%	62.5%
Health & Social Care	2,618	3,077	1.18	12.7%	87.3%	1.06	1.19	89.1%	87.2%	89.4%	69.4%	30.6%	87.2%	66.8%
Executive Management	76	81	1.06	39.5%	60.5%	1.08	1.05	88.9%	88.9%	89.8%	95.1%	4.9%	90.6%	98.0%
Senior Management (VIII & GM)	226	235	1.04	25.5%	74.5%	1.04	1.04	95.7%	95.7%	96.0%	90.6%	9.4%	96.7%	88.6%
Management (VIII & above)	302	316	1.05	29.1%	70.9%	1.05	1.04	94.0%	92.4%	94.6%	91.8%	8.2%	94.6%	90.6%
Middle Management (V-VII)	652	711	1.09	18.4%	81.6%	1.05	1.10	94.9%	94.9%	96.2%	82.3%	17.7%	97.7%	78.8%
Other Administrative	2	2	1.33	50.0%	50.0%	2.00	1.00	50.0%	50.0%	100.0%	50.0%	50.0%	100.0%	0.0%
Administrative/ Supervisory (V to VII)	654	713	1.09	18.5%	81.5%	1.06	1.10	94.8%	88.6%	96.2%	82.2%	17.8%	97.7%	78.7%
General Administrative (III & IV)	1,782	2,111	1.18	8.4%	91.6%	1.10	1.19	84.3%	84.3%	85.4%	63.8%	36.2%	86.0%	61.7%
Clerical (III & IV)	1,782	2,111	1.18	8.4%	91.6%	1.10	1.19	84.3%	72.5%	85.4%	63.8%	36.2%	86.0%	61.7%
Management & Administrative	2,737	3,140	1.15	12.8%	87.2%	1.08	1.16	87.7%	82.3%	88.5%	70.8%	29.2%	91.8%	67.7%
Catering	22	24	1.10	29.2%	70.8%	1.02	1.14	100.0%	100.0%	100.0%	62.5%	37.5%	100.0%	47.1%
Household Services	139	178	1.28	23.6%	76.4%	1.06	1.36	76.4%	76.4%	76.5%	44.4%	55.6%	73.8%	35.3%
Other Labs & Associated	4	4	1.00	25.0%	75.0%	1.00	1.00	100.0%	100.0%	100.0%	100.0%	0.0%	100.0%	100.0%
Other Support	110	250	2.26	30.8%	69.2%	1.36	3.21	46.4%	46.4%	34.7%	28.8%	71.2%	58.4%	15.6%
Portering	74	80	1.08	93.8%	6.3%	1.07	1.26	82.5%	82.5%	80.0%	91.3%	8.8%	94.7%	40.0%
Support	350	536	1.53	37.7%	62.3%	1.16	1.90	64.6%	78.2%	56.3%	45.3%	54.7%	76.7%	26.3%
Maintenance	57	61	1.07	98.4%	1.6%	1.07	1.00	93.4%	93.4%	100.0%	96.7%	3.3%	96.7%	100.0%
Technical Services	1	1	1.00	100.0%		1.00		100.0%	100.0%		100.0%	0.0%	100.0%	
Maintenance/ Technical	58	62	1.07	98.4%	1.6%	1.07	1.00	93.5%	93.4%	100.0%	96.8%	3.2%	96.7%	100.0%
General Support	408	598	1.47	44.0%	56.0%	1.14	1.90	67.6%	81.7%	56.4%	50.7%	49.3%	81.4%	26.6%
HCA, Nurse's Aide, etc.	211	293	1.39	19.8%	80.2%	1.30	1.41	75.8%	75.8%	76.6%	63.1%	36.9%	86.2%	57.4%
Health & Social Care Assistants	100	108	1.08	13.9%	86.1%	1.04	1.08	19.4%	19.4%	20.4%	92.6%	7.4%	100.0%	91.4%
Health Care Assistants	311	401	1.29	18.2%	81.8%	1.24	1.30	60.6%	60.3%	60.7%	71.1%	28.9%	89.0%	67.1%
Home Help	19	46	2.39	26.1%	73.9%	2.76	2.28	13.0%	0.0%	17.6%	4.3%	95.7%	8.3%	2.9%
Care, other	730	891	1.22	19.2%	80.8%	1.08	1.26	94.8%	94.2%	95.0%	58.4%	41.6%	77.8%	53.8%
Patient & Client Care	1,061	1,338	1.26	19.1%	80.9%	1.16	1.29	81.8%	80.1%	82.2%	60.3%	39.7%	77.7%	56.2%

Employment by WTE, Headcount, Gender, Full-Time /Part-Time etc.: Oct 2020

Primary Care Services CHO	WTE	Headcount	WTE: no.	% Male	% female	Male WTE: no.	Female WTE: no.	% Total Perm	% Male Perm	% Female Perm	% Total Full Time	% Total Part Time	% Male FT	% Female FT
Overall	10,950	13,176	1.20	13.2%	86.8%	1.11	1.22	83.1%	74.5%	84.4%	66.0%	34.0%	83.4%	63.3%
CHO 1	1,244	1,479	1.19	13.7%	86.3%	1.07	1.21	88.0%	88.0%	89.4%	65.3%	34.7%	85.1%	62.2%
CHO 2	1,170	1,359	1.16	12.2%	87.8%	1.08	1.17	85.7%	85.7%	86.9%	69.5%	30.5%	84.3%	67.5%
CHO 3	748	888	1.19	12.3%	87.7%	1.06	1.21	83.0%	83.0%	84.3%	70.0%	30.0%	90.8%	67.1%
CHO 4	1,404	1,765	1.26	10.3%	89.7%	1.19	1.27	73.9%	73.9%	75.2%	57.6%	42.4%	70.7%	56.1%
CHO 5	985	1,213	1.23	10.6%	89.4%	1.12	1.25	85.8%	85.8%	86.8%	61.8%	38.2%	80.5%	59.6%
CHO 6	792	1,019	1.29	12.1%	87.9%	1.26	1.29	79.9%	79.9%	80.0%	68.0%	32.0%	91.1%	64.8%
CHO 7	1,734	2,046	1.18	15.8%	84.2%	1.08	1.20	86.3%	86.3%	88.2%	67.7%	32.3%	81.7%	65.1%
CHO 8	1,429	1,725	1.21	12.6%	87.4%	1.09	1.23	86.8%	86.8%	88.3%	61.6%	38.4%	79.3%	59.0%
CHO 9	1,313	1,540	1.17	15.5%	84.5%	1.12	1.18	79.3%	79.3%	80.6%	73.5%	26.5%	90.4%	70.4%
other Community Services	130	142	1.09	35.2%	64.8%	1.07	1.10	70.4%	70.4%	70.7%	83.1%	16.9%	86.0%	81.5%

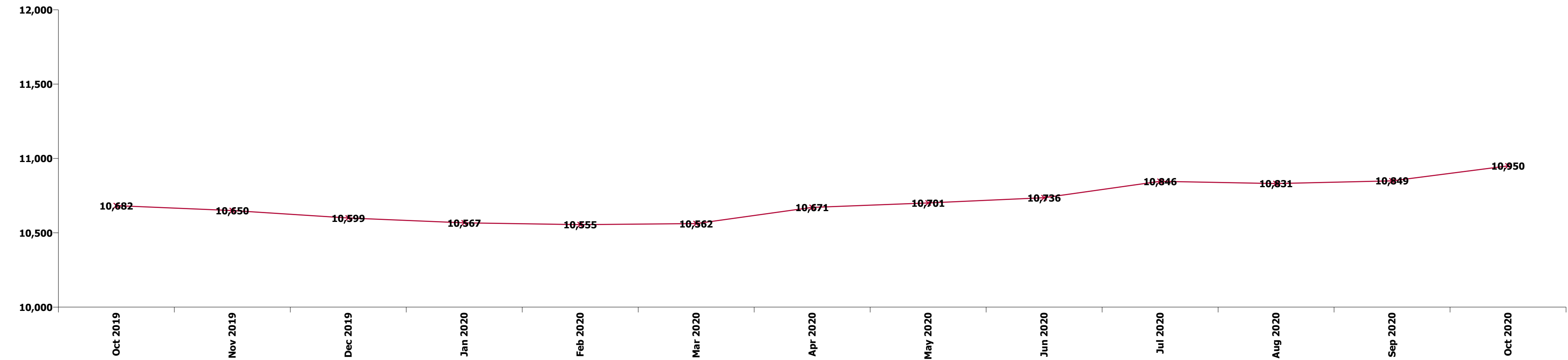
Summary Staff Movement: October 2020

Month-on-month
Summary

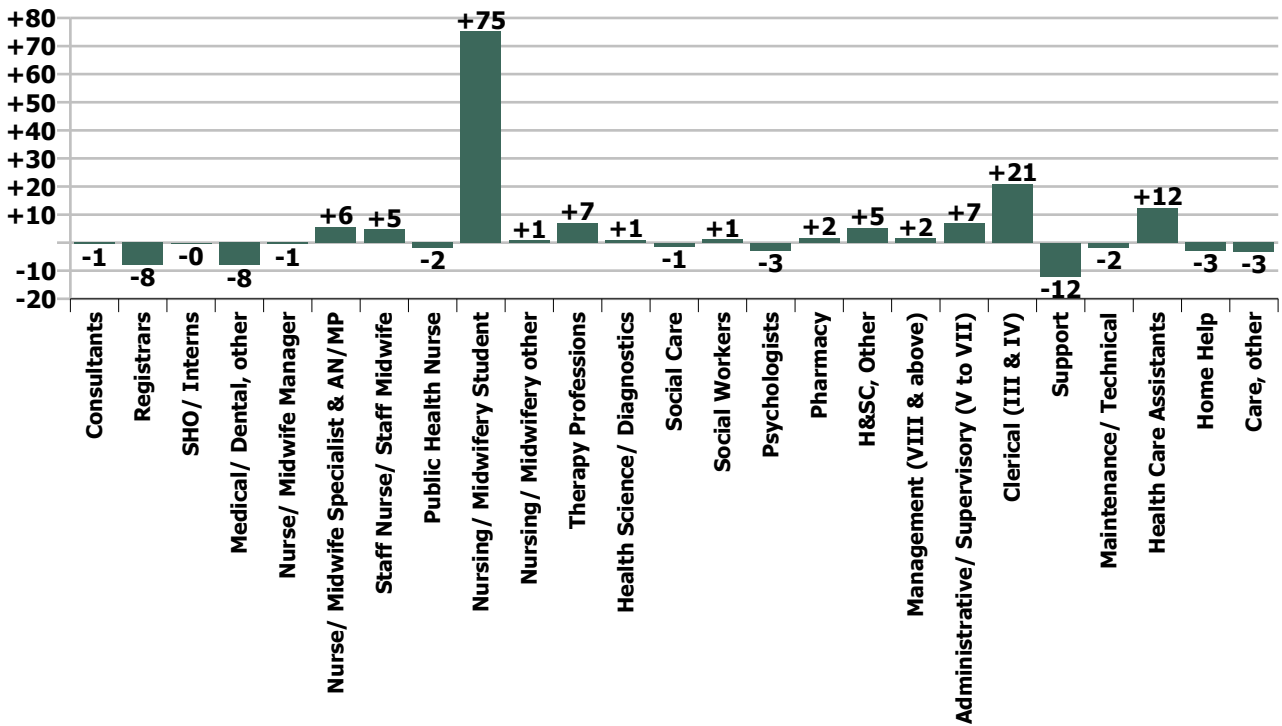
WTE change since Sep 20	% change since Sep 20	overall	Consultants	Registrars	SHO/ Interns	Medical/ Dental, other	Medical & Dental	Nurse/ Midwife Manager	Nurse/ Midwife Specialist & AN/MP	Staff Nurse/ Staff Midwife	Public Health Nurse	Nursing/ Midwifery Student	Nursing/ Midwifery other	Nursing & Midwifery	Therapy Professions	Health Science/ Diagnostics	Social Care	Social Workers	Psychologists	Pharmacy	H&SC, Other	Health & Social Care Professionals	Management (VIII & above)	Administrativ e/ Supervisory (V to VII)	Clerical (III & IV)	Management & Administrativ e	General Support	Health Care Assistants	Home Help	Care, other	Patient & Client Care
Overall	+0.9%	+101	-1	-8	-0	-8	-17	-1	+6	+5	-2	+75	+1	+84	+7	+1	-1	+1	-3	+2	+5	+12	+2	+7	+21	+29	-14	+12	-3	-3	+6
CHO 1	+0.6%	+8	-0	+0		+1	+0	-1	+2	-3	-2	+2		-2	-2	+0		+1	-2		+1	-2	-1	+3	+7	+9	+0	+4	-0	-1	+3
CHO 2	+1.2%	+14	+0	-1	+0	+1	+0	+1	+1	-7	+4			-2	+8	+0	+0		+1	+0		+10	+0	+2	+3	+5	+0	+1		+0	+1
CHO 3	+0.8%	+6		-1	+1	+1	+0	+0		+0	-0	+3		+4	+3	-0		+0	-0		+1	+3	+0	-3	-0	-3	+1	+1		-1	-0
CHO 4	-0.4%	-6	-1	-1	+1	-5	-6	-1	-0	+10	-1	+5		+13	+2	+0		+0	+0	+0	+2	+5	-1	+1	-0	-0	-15	+6	-3	-5	-3
CHO 5	-0.7%	-7		-3	-1	-7	-11	+1	-0	+0	+2	+2	+0	+6	-1	+0	-0		-0	-0	+0	-1	+1	-5	+2	-2	+1	-1	+1	+1	-2
CHO 6	+2.3%	+18		-0		+1	+1	+2	-0	+4	-2	+12		+15	-2	+0	-0	-0	-0		+1	-2	+1	+2	+1	+3	-0	+2		-0	+2
CHO 7	+0.9%	+15	+0	-1	-1	+0	-2	+1	+1	-1	-1	+20		+20	-4	+0	-0	-1	-1	+0	-0	-5	-1	+4	-0	+3	-0	-0		-0	-1
CHO 8	+0.9%	+13	+0	+1	-0	+1	+1	-2	+2	-0	-3	+8	-0	+6	+1	+0		+0	+2	-0	+1	+3	+1	+0	+3	+5	-0	-2		+1	-2
CHO 9	+3.0%	+38		-1		-0	-1	-1	+0	+0	+2	+22	+0	+24	+3	-0	-1	+1	-1	+1	+0	+2	+1	+3	+5	+8	+0	+2		+3	+5
other Community Services	+0.9%	+1		-0			-0	-0		+1				+1			-0				-0	-0	+1	-0	+1	+2	-1			-1	-1
		+0.9%	-1.3%	-1.9%	-0.7%	-1.5%	-1.6%	-0.1%	+3.3%	+0.5%	-0.1%	+322.5%	+14.9%	+2.8%	+0.4%	+0.9%	-4.1%	+0.8%	-1.0%	+2.6%	+3.0%	+0.5%	+0.5%	+1.1%	+1.2%	+1.1%	-3.3%	+4.1%	-13.0%	-0.4%	+0.6%

Year-on-year Summary

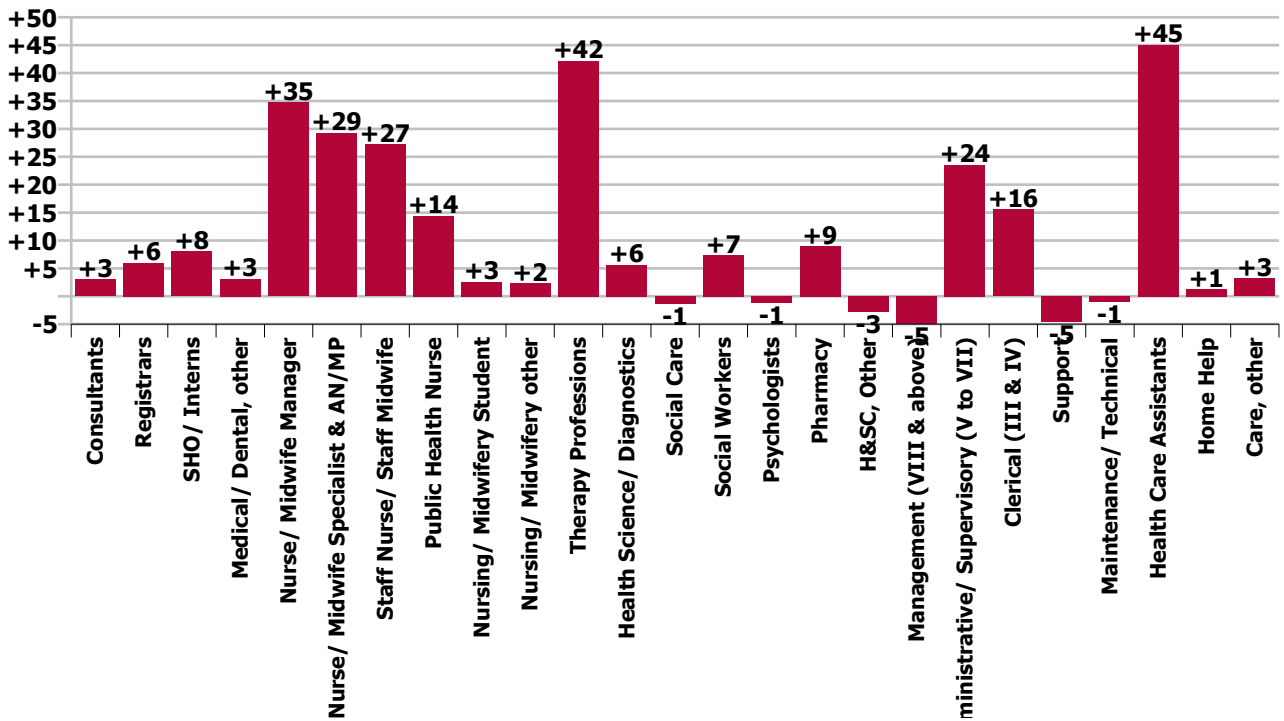
WTE change since Oct 19	% change since Oct 19	overall	Consultants	Registrars	SHO/ Interns	Medical/ Dental, other	Medical & Dental	Nurse/ Midwife Manager	Nurse/ Midwife Specialist & AN/MP	Staff Nurse/ Staff Midwife	Public Health Nurse	Nursing/ Midwifery Student	Nursing/ Midwifery other	Nursing & Midwifery	Therapy Professions	Health Science/ Diagnostics	Social Care	Social Workers	Psychologists	Pharmacy	H&SC, Other	Health & Social Care Professionals	Management (VIII & above)	Administrativ e/ Supervisory (V to VII)	Clerical (III & IV)	Management & Administrativ e	General Support	Health Care Assistants	Home Help	Care, other	Patient & Client Care
Overall	+2.5%	+267	+3	+6	+8	+3	+20	+35	+29	+27	+14	+3	+2	+111	+42	+6	-1	+7	-1	+9	-3	+59	-5	+24	+16	+34	-6	+45	+1	+3	+50
CHO 1	+4.6%	+55	+0	+2		-3	-1	-0	+6	+9	-2	-3		+10	+2	-0		+4	-6	+1	+0	+1	-0	+11	+12	+23	+4	+16	+1	+1	+18
CHO 2	+2.0%	+23	+0	+9	+3	+2	+14	+1	+3	-5	+4	-3		-0	+19	+0	+0	+0	+2		-2	+19	+1	+1	-10	-8	-0	-2		-0	-2
CHO 3	-4.3%	-33		+2	-5	+0	-3	+2	+1	-9	-2	+3		-5	-6	+1		-1	+1		+0	-5	+0	-7	-17	-24	-1	+4		+1	+5
CHO 4	+4.5%	+60	-0	+1	+1	-4	-2	+6	+1	+20	+10	-3		+33	+9	+1	-1	+3	+3	+1	+1	+16	-0	+5	+8	+13	+0	+5	-1	-2	+1
CHO 5	+3.5%	+33	-2	-3	-0	+2	-4	+20	+11	+14	+1	-2		+45	-4	+3	-0	-2	-6		+1	-8	+0	+5	-6	-1	-2	+3	+2	-2	+3
CHO 6	+2.3%	+18	-1	-0		-1	-2	+4	-0	+1	-7	-0	+1	-1	+8	+0	-1	-0	+0		+1	+8	-1	+1	+9	+9	+1	+7		-3	+3
CHO 7	+0.9%	+16	+3	-2	+2	+5	+9	+3	+6	-6	+1	-1		+2	-7	+1	-0	+0	+2	+3	-4	-5	-4	+4	+9	+9	-4	+7		-1	+6
CHO 8	+2.0%	+28	+1	+5	-1	+1	+6	-1	+0	-3	+3	+5	+1	+5	+7	+2	+1	+0	+3	+1	-0	+15	-1	+4	+2	+5	-2	-2	-0	+2	-1
CHO 9	+5.0%	+62	+1	-3	+4	+1	+3	+0	+2	+1	+8	+7	+0	+18	+15	-2	-1	+4	-0	+3	-0	+18	-1	+3	+6	+9	-3	+9		+9	+17
other Community Services	+5.0%	+6		-3	+5	-0	+1	+0		+5				+5		+0	+0	-1		+0	+1	+0	+2	-4	+2	+0	+0			-1	-1
		+2.5%	+7.1%	+1.5%	+21.6%	+0.6%	+2.0%	+9.5%	+20.3%	+3.1%	+1.0%	+2.7%	+62.1%	+3.7%	+2.4%	+5.1%	-3.9%	+5.4%	-0.4%	+16.2%	-1.5%	+2.3%	-1.6%	+3.7%	+0.9%	+1.3%	-1.4%	+16.9%	+7.1%	+0.4%	+4.9%



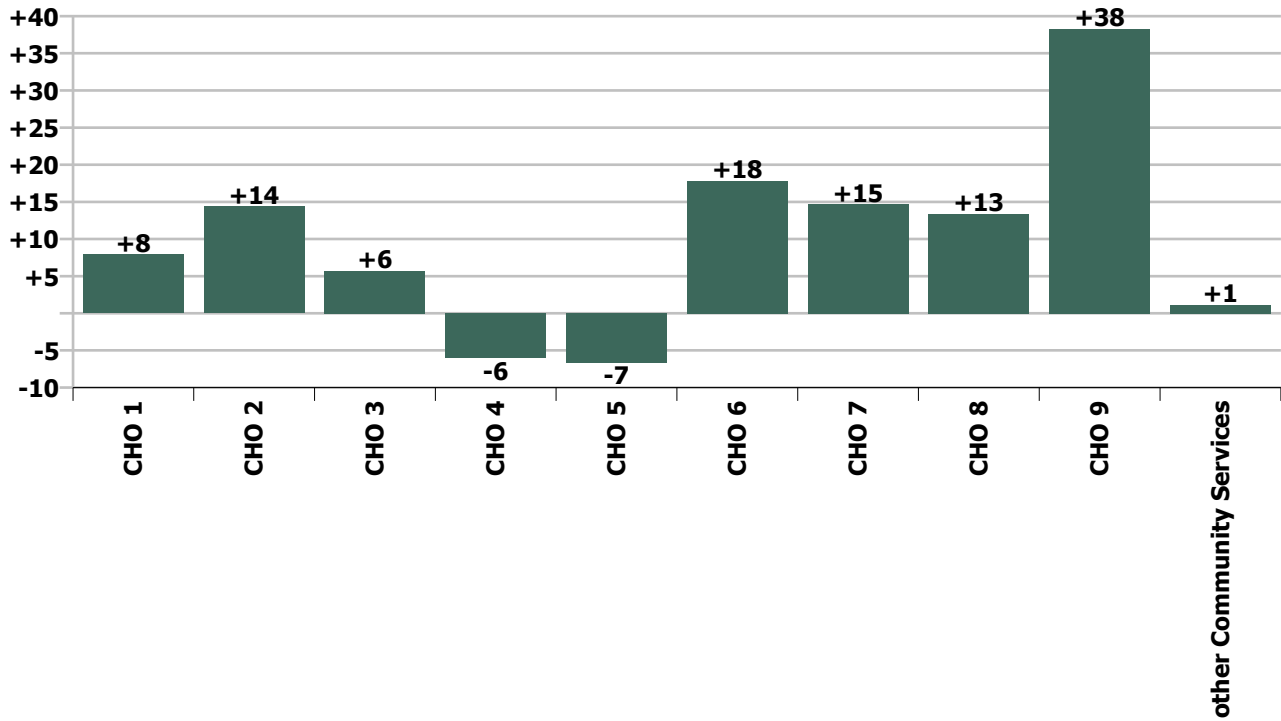
Staff Group change since: Sep 2020



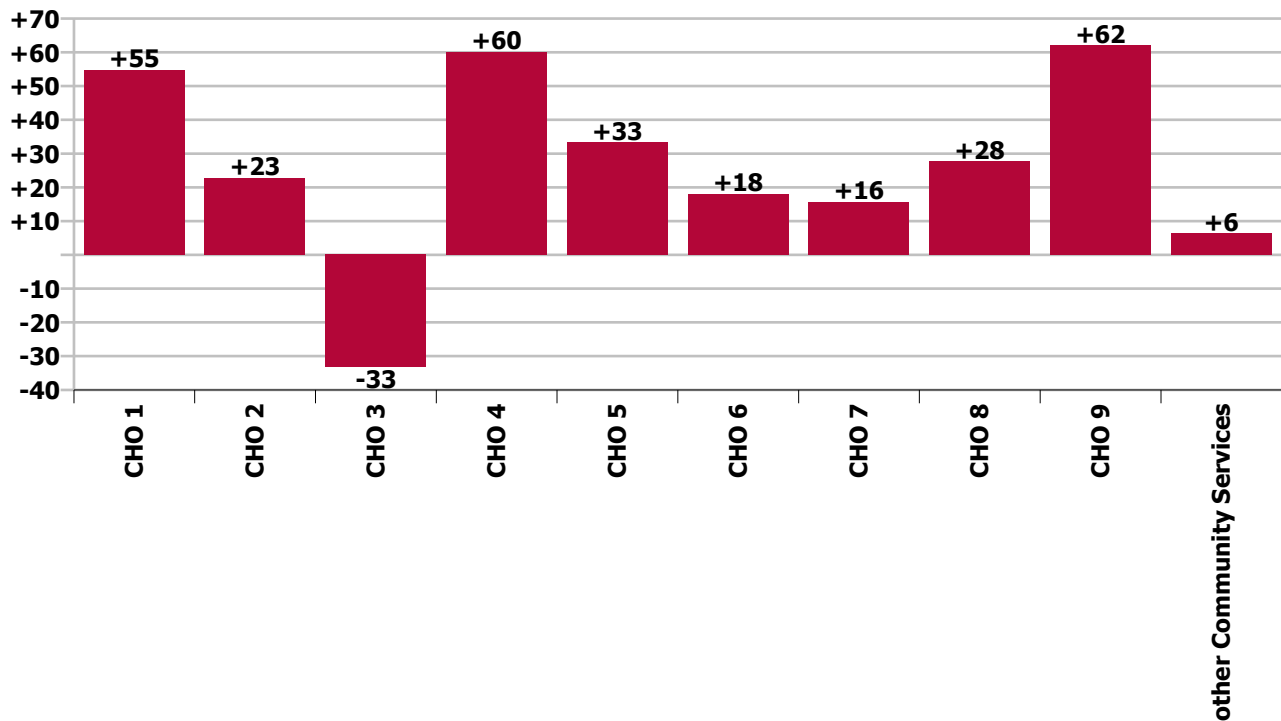
Staff Group change since: Oct 2019



CHO change since: Sep 2020



CHO change since: Oct 2019



Longitudinal Employment Levels by Grade Group - Oct 2013 to Oct 2020

Oct 2020 (Oct 2013 figure: 10,789)	WTE Oct 2020	WTE change since Oct 13	WTE change since Dec 15	WTE change since Dec 16	WTE change since Dec 17	WTE change since Dec 18	WTE change since Dec 19	% change since Oct 13	% change since Dec 15	% change since Dec 16	% change since Dec 17	% change since Dec 18	% change since Dec 19
Overall	10,950	+161	+639	+503	+431	+19	+350	+1.5%	+6.2%	+4.8%	+4.1%	+0.2%	+3.3%
Consultant Anaesthesia		-0						-100.0%	-100.0%	-100.0%	-100.0%	-100.0%	-100.0%
Consultant Dentistry	10	+0	-0	-0	-1	-1	-1	+1.0%	-3.7%	-3.7%	-12.0%	-12.0%	-8.3%
Consultant Medicine	23	+7	+6	+4	+3	+6	+5	+43.4%	+39.6%	+24.2%	+13.7%	+32.7%	+26.9%
Consultant, Other		-1	-1	-1				-100.0%	-100.0%	-100.0%	-100.0%	-100.0%	-100.0%
Consultant Paediatrics	1	+0	+0	+0	-0	-0	-0	+49.0%	+49.0%	+49.0%	-0.7%	-0.7%	-0.7%
Consultant Psychiatry	8	+1	-1	+1	-1	+2	+0	+20.0%	-6.0%	+20.0%	-10.9%	+31.3%	+0.4%
Consultant Radiology	1												
Consultant Surgery	2	-5	-3	-3	-3	-3	-2	-72.7%	-65.7%	-65.9%	-63.9%	-61.8%	-57.5%
Consultants	45	+3	+2	+2	-3	+3	+2	+7.0%	+3.8%	+3.6%	-5.8%	+8.0%	+3.5%
Registrar	391	+64	+54	+61	+48	+31	+9	+19.5%	+15.9%	+18.6%	+14.1%	+8.5%	+2.4%
Senior Registrar	3	-2	-1	-1	-1	-1	-0	-42.3%	-27.8%	-28.4%	-28.4%	-33.6%	-4.0%
Specialist Registrar	10	-1	+1	+2	+0	+0		-8.3%	+12.1%	+26.7%	+3.3%	+3.1%	
Registrars	404	+61	+54	+62	+48	+30	+9	+17.7%	+15.3%	+18.3%	+13.4%	+7.9%	+2.3%
Senior House Officer	45	+13	-2	+5	+16	+8	+8	+38.7%	-4.3%	+13.2%	+53.2%	+22.7%	+22.0%
SHO/ Interns	45	+13	-2	+5	+16	+8	+8	+38.7%	-4.3%	+13.2%	+53.2%	+22.7%	+22.0%
Dentists	300	-9	-0	-3	-2	-5	-1	-3.0%	-0.1%	-1.1%	-0.6%	-1.6%	-0.3%
Other Medical	227	+5	+5	+11	-7	-11	+9	+2.2%	+2.4%	+4.9%	-3.2%	-4.5%	+4.0%
Medical/ Dental, other	527	-4	+5	+7	-9	-16	+8	-0.8%	+1.0%	+1.4%	-1.7%	-2.9%	+1.5%
Medical & Dental	1,022	+72	+58	+76	+52	+26	+27	+7.6%	+6.1%	+8.1%	+5.3%	+2.6%	+2.7%
Clinical Nurse/ Midwife Manager	188	+50	+38	+39	+29	+17	+20	+36.1%	+25.1%	+25.9%	+18.0%	+10.0%	+11.9%
Director Nursing/Midwifery, Assistant	173	+53	+36	+21	+34	+23	+19	+44.4%	+26.0%	+13.6%	+24.2%	+15.1%	+12.4%
Director of Nursing/Midwifery	41	+21	+7	+8	+8	+5	+4	+102.1%	+18.9%	+24.8%	+22.6%	+14.9%	+9.7%
Nurse/ Midwife Manager	402	+124	+80	+67	+70	+45	+43	+44.5%	+24.8%	+20.2%	+21.0%	+12.7%	+11.9%
Advanced Nurse/ Midwife Practitioner	10	+8	+8	+7	+8	+7	+7	+395.5%	+395.5%	+255.2%	+332.8%	+290.2%	+290.2%
Clinical Nurse/ Midwife Specialist	163	+69	+51	+46	+24	+20	+23	+72.2%	+44.8%	+38.9%	+17.0%	+14.0%	+16.5%
Nurse/ Midwife Specialist & AN/MP	173	+76	+58	+53	+31	+27	+31	+78.9%	+50.9%	+44.0%	+22.1%	+18.8%	+21.4%
Staff Midwives	7	+7	+5	+5	+2	+1	-1	+815.0%	+266.0%	+163.3%	+39.2%	+12.8%	-9.9%

Oct 2020 (Oct 2013 figure: 10,789)	WTE Oct 2020	WTE change since Oct 13	WTE change since Dec 15	WTE change since Dec 16	WTE change since Dec 17	WTE change since Dec 18	WTE change since Dec 19	% change since Oct 13	% change since Dec 15	% change since Dec 16	% change since Dec 17	% change since Dec 18	% change since Dec 19
Overall	10,950	+161	+639	+503	+431	+19	+350	+1.5%	+6.2%	+4.8%	+4.1%	+0.2%	+3.3%
Staff Nurse [Psychiatric]	11	+8	+7	+6	-3	+3	+2	+221.5%	+148.4%	+106.2%	-22.9%	+31.2%	+28.4%
Staff Nurses [General/ Children's]	884	+209	+127	+74	+46	+18	+38	+31.1%	+16.7%	+9.2%	+5.5%	+2.1%	+4.5%
Staff Nurse/ Staff Midwife	902	+223	+139	+85	+45	+22	+40	+32.9%	+18.1%	+10.3%	+5.2%	+2.5%	+4.6%
Public Health Nurse	1,522	+62	+51	+50	+35	+8		+4.3%	+3.4%	+3.4%	+2.4%	+0.5%	
Public Health Nurse, Senior (Immunisation)		-1	-1	-1	-1	-1		-100.0%	-100.0%	-100.0%	-100.0%	-100.0%	
Public Health Nurse	1,522	+61	+50	+49	+34	+7	+9	+4.2%	+3.4%	+3.3%	+2.3%	+0.4%	+0.6%
Public Health Nurse	1,522	+61	+50	+49	+34	+7	+9	+4.2%	+3.4%	+3.3%	+2.3%	+0.4%	+0.6%
Post-registration Nurse/ Midwife Student	99	+79	-12	-13	-31	+6	+3	+412.8%	-11.2%	-12.0%	-23.6%	+6.0%	+3.0%
Nursing/ Midwifery Student	99	+79	-12	-13	-31	+6	+3	+412.8%	-11.2%	-12.0%	-23.6%	+6.0%	+3.0%
Nursing Education/Clinical	6	+4	+2	+3	+3	+3	+2	+150.4%	+51.7%	+76.0%	+76.0%	+105.3%	+62.1%
Other Nursing/ Midwifery		-2	-2	-2	-0	-1		-100.0%	-100.0%	-100.0%	-100.0%	-100.0%	-100.0%
Nursing/ Midwifery other	6	+2	+0	+1	+2	+2	+2	+38.1%	+1.7%	+12.0%	+55.9%	+54.0%	+62.1%
Nursing & Midwifery	3,104	+566	+314	+241	+152	+109	+128	+22.3%	+11.3%	+8.4%	+5.1%	+3.6%	+4.3%
Dietitians	119	+60	+31	+29	+14	+2	+10	+100.5%	+35.1%	+32.2%	+13.8%	+1.9%	+9.0%
Occupational Therapists	543	+82	+39	+47	+27	+3	+28	+17.8%	+7.8%	+9.5%	+5.2%	+0.5%	+5.4%
Orthoptists	16	+10	+9	+10	+9	+6	+2	+178.7%	+120.5%	+168.7%	+146.8%	+58.9%	+18.6%
Physiotherapists	563	+85	+21	+19	-1	-1	+20	+17.7%	+3.9%	+3.4%	-0.1%	-0.1%	+3.6%
Podiatrists & Chiropodists	32	+12	+17	+12	+9	+8	+7	+64.8%	+109.0%	+64.2%	+41.6%	+34.6%	+28.7%
Speech & Language Therapists	518	+96	+66	+16	-28	-31	-8	+22.8%	+14.7%	+3.1%	-5.1%	-5.6%	-1.6%
Therapy Professions	1,790	+345	+183	+133	+31	-13	+59	+23.9%	+11.4%	+8.0%	+1.8%	-0.7%	+3.4%
Audiology	49	+28	+21	+20	+20	+1	+5	+131.9%	+75.5%	+69.5%	+65.5%	+2.6%	+12.4%
Biochemists	8	+1	+1	+0	+0	-0	+0	+23.1%	+14.2%	+1.3%	+1.3%	-3.5%	+1.2%
Clinical Engineering	8	+7	+7	+5	+6	+1		+700.0%	+700.0%	+166.7%	+300.0%	+14.3%	
Medical Laboratory	44	-39	-13	-2	-3	-3	+1	-46.9%	-22.9%	-4.5%	-5.6%	-7.4%	+3.3%
Phlebotomists	1	+1	+1	+1	+1	+1	+1	+74.3%	+183.7%	+87.7%	+93.7%	+454.5%	+454.5%
Physicists	1	-0	-2	-2	-0	-1	-1	-25.6%	-55.3%	-55.3%	-24.7%	-33.0%	-33.0%
Radiographers	4	-1	-1	-1	-2	-1	-0	-23.3%	-19.1%	-19.1%	-27.2%	-20.4%	-1.6%
Health Science/ Diagnostics	116	-3	+14	+21	+22	-2	+7	-2.8%	+14.1%	+22.4%	+22.9%	-1.9%	+6.6%
Social Care	32	-66	-2	-3	-1	-2	-3	-67.0%	-6.4%	-7.6%	-1.9%	-5.1%	-8.6%

Oct 2020 (Oct 2013 figure: 10,789)	WTE Oct 2020	WTE change since Oct 13	WTE change since Dec 15	WTE change since Dec 16	WTE change since Dec 17	WTE change since Dec 18	WTE change since Dec 19	% change since Oct 13	% change since Dec 15	% change since Dec 16	% change since Dec 17	% change since Dec 18	% change since Dec 19
Overall	10,950	+161	+639	+503	+431	+19	+350	+1.5%	+6.2%	+4.8%	+4.1%	+0.2%	+3.3%
Social Workers	144	+3	+4	-6	-9	-8	+5	+1.9%	+3.0%	-4.1%	-5.9%	-5.4%	+3.6%
Psychologists	292	+75	-1	+8	+8	-6	-9	+34.5%	-0.4%	+2.7%	+2.8%	-2.0%	-3.0%
Pharmacy	64	+6	-1	+2	+1	+6	+7	+9.5%	-1.1%	+3.2%	+2.1%	+9.8%	+11.3%
Counsellor Therapists	110	-3	+13	-5	-12	-6	-5	-3.0%	+13.7%	-4.6%	-9.7%	-5.4%	-4.6%
Dental Hygienists	61	+7	+7	+6	+7	+4	+4	+12.3%	+12.9%	+11.5%	+12.7%	+6.7%	+6.8%
Environmental Health Officers							-1	-100.0%	-100.0%	-100.0%	-100.0%	-100.0%	-100.0%
Other Health & Social Care	7	-4	-2	-1	-2	-2	-1	-36.3%	-18.9%	-11.5%	-19.6%	-26.5%	-13.1%
Play Therapists/ Specialists	2	+0	+0	+1	-0	-0	+0	+23.5%	+2.9%	+29.3%	-1.6%	-1.6%	+6.9%
H&SC, Other	180	-0	+19	+1	-6	-5	-3	-0.0%	+11.6%	+0.4%	-3.5%	-2.6%	-1.5%
Health & Social Care Professionals	2,618	+359	+216	+155	+46	-30	+63	+15.9%	+9.0%	+6.3%	+1.8%	-1.1%	+2.4%
Executive Management	76	+51	+39	+11	+5	+2	+5	+200.0%	+106.6%	+17.0%	+7.1%	+2.9%	+7.7%
Senior Management (VIII & GM)	226	+61	+31	+32	+4	-10	-9	+36.6%	+16.0%	+16.4%	+2.0%	-4.2%	-3.9%
Management (VIII & above)	302	+111	+70	+43	+9	-8	-4	+58.4%	+30.4%	+16.5%	+3.2%	-2.5%	-1.2%
Middle Management (V-VII)	652	+157	+196	+162	+108	+27	+35	+31.6%	+43.0%	+33.2%	+19.9%	+4.3%	+5.7%
Other Administrative	2	+1	+1	+1	+1	-1	-1	+200.0%	+200.0%	+200.0%	+200.0%	-25.0%	-25.0%
Administrative/ Supervisory (V to VII)	654	+158	+197	+163	+109	+26	+35	+31.8%	+43.1%	+33.3%	+20.1%	+4.2%	+5.6%
General Administrative (III & IV)	1,782	-100	+8	+9	-17	-47	+36	-5.3%	+0.4%	+0.5%	-0.9%	-2.6%	+2.0%
Clerical (III & IV)	1,782	-100	+8	+9	-17	-47	+36	-5.3%	+0.4%	+0.5%	-0.9%	-2.6%	+2.0%
Management & Administrative	2,737	+169	+275	+215	+102	-29	+67	+6.6%	+11.2%	+8.5%	+3.9%	-1.0%	+2.5%
Catering	22	+7	-1	+0	-3	-2	-0	+43.4%	-2.8%	+0.6%	-13.3%	-6.6%	-1.9%
Household Services	140	+21	-12	-7	-1	-7	+5	+18.0%	-7.7%	-5.0%	-0.7%	-5.0%	+4.1%
Other Labs & Associated	4	+0	+0	+2	-1	-1	+1	+3.6%	+4.4%	+100.0%	-17.7%	-15.6%	+28.6%
Other Support	110	-12	-9	-14	-22	-19	-2	-9.8%	-7.6%	-11.0%	-16.8%	-14.7%	-2.0%
Portering	74	-20	-14	-12	-8	-6	-0	-21.4%	-16.1%	-13.9%	-10.3%	-7.0%	-0.4%
Support	350	-4	-35	-31	-36	-34	+3	-1.2%	-9.2%	-8.1%	-9.3%	-8.9%	+1.0%
Maintenance	57	-2	-8	-0	+1	-0	-1	-3.4%	-11.9%	-0.3%	+2.4%	-0.4%	-2.1%
Technical Services	1		+1			+0			-100.0%			+11.1%	
Maintenance/ Technical	58	-2	-7	-0	+1	-0	-1	-3.3%	-10.4%	-0.3%	+2.4%	-0.2%	-2.1%

Oct 2020 (Oct 2013 figure: 10,789)	WTE Oct 2020	WTE change since Oct 13	WTE change since Dec 15	WTE change since Dec 16	WTE change since Dec 17	WTE change since Dec 18	WTE change since Dec 19	% change since Oct 13	% change since Dec 15	% change since Dec 16	% change since Dec 17	% change since Dec 18	% change since Dec 19
Overall	10,950	+161	+639	+503	+431	+19	+350	+1.5%	+6.2%	+4.8%	+4.1%	+0.2%	+3.3%
General Support	408	-6	-42	-31	-35	-34	+2	-1.5%	-9.3%	-7.1%	-7.8%	-7.8%	+0.5%
HCA, Nurse's Aide, etc.	211	+48	+41	+41	+35	+13	+27	+29.1%	+24.3%	+24.4%	+20.2%	+6.3%	+14.5%
Health & Social Care Assistants	100	+79	+83	+81	+77	-25	+31	+376.7%	+468.6%	+412.5%	+334.4%	-19.9%	+44.8%
Health Care Assistants	311	+127	+124	+122	+113	-12	+58	+68.7%	+66.1%	+64.5%	+56.7%	-3.8%	+22.7%
Home Help	19	-1,072	-278	-264	-3	+0	+1	-98.2%	-93.5%	-93.2%	-13.9%	+0.3%	+4.6%
Community Welfare Officers	1	-11	-4	-4	-3	-2	-1	-92.5%	-82.2%	-82.2%	-77.1%	-69.2%	-45.7%
Other Care Grades	729	-41	-23	-9	+8	-9	+7	-5.3%	-3.1%	-1.2%	+1.1%	-1.2%	+1.0%
Care, other	730	-52	-27	-13	+5	-11	+6	-6.6%	-3.6%	-1.7%	+0.7%	-1.4%	+0.9%
Ambulance Officers		-1						-100.0%	-100.0%	-100.0%	-100.0%	-100.0%	-100.0%
Pre-Hospital Care (Ambulance)		-1	-1					-100.0%	-100.0%	-100.0%	-100.0%	-100.0%	-100.0%
Ambulance Staff		-2	-1					-100.0%	-100.0%	-100.0%	-100.0%	-100.0%	-100.0%
Patient & Client Care	1,061	-999	-182	-154	+114	-23	+65	-48.5%	-14.7%	-12.7%	+12.1%	-2.1%	+6.5%

Source: Health Service Personnel Census

Longitudinal Employment Levels by Grade Group - Mar 2009 to Oct 2020

Oct 2020 (Oct 2013 figure: 10,789)	WTE Oct 2020	WTE change since Oct 13	WTE change since Dec 17	WTE change since Dec 18	WTE change since Dec 19	% change since Oct 13	% change since Dec 17	% change since Dec 18	% change since Dec 19
Overall	10,950	+161	+431	+19	+350	+1.5%	+4.1%	+0.2%	+3.3%
Consultant Anaesthesia		-0				-100.0%	-100.0%	-100.0%	-100.0%
Consultant Dentistry	10	+0	-1	-1	-1	+1.0%	-12.0%	-12.0%	-8.3%
Consultant Medicine	23	+7	+3	+6	+5	+43.4%	+13.7%	+32.7%	+26.9%
Consultant, Other		-1				-100.0%	-100.0%	-100.0%	-100.0%
Consultant Paediatrics	1	+0	-0	-0	-0	+49.0%	-0.7%	-0.7%	-0.7%
Consultant Psychiatry	8	+1	-1	+2	+0	+20.0%	-10.9%	+31.3%	+0.4%
Consultant Radiology	1								
Consultant Surgery	2	-5	-3	-3	-2	-72.7%	-63.9%	-61.8%	-57.5%
Consultants	45	+3	-3	+3	+2	+7.0%	-5.8%	+8.0%	+3.5%
Registrar	391	+64	+48	+31	+9	+19.5%	+14.1%	+8.5%	+2.4%
Senior Registrar	3	-2	-1	-1	-0	-42.3%	-28.4%	-33.6%	-4.0%
Specialist Registrar	10	-1	+0	+0		-8.3%	+3.3%	+3.1%	
Registrars	404	+61	+48	+30	+9	+17.7%	+13.4%	+7.9%	+2.3%
Senior House Officer	45	+13	+16	+8	+8	+38.7%	+53.2%	+22.7%	+22.0%
SHO/ Interns	45	+13	+16	+8	+8	+38.7%	+53.2%	+22.7%	+22.0%
Dentists	300	-9	-2	-5	-1	-3.0%	-0.6%	-1.6%	-0.3%
Other Medical	227	+5	-7	-11	+9	+2.2%	-3.2%	-4.5%	+4.0%
Medical/ Dental, other	527	-4	-9	-16	+8	-0.8%	-1.7%	-2.9%	+1.5%
Medical & Dental	1,022	+72	+52	+26	+27	+7.6%	+5.3%	+2.6%	+2.7%
Clinical Nurse/ Midwife Manager	188	+50	+29	+17	+20	+36.1%	+18.0%	+10.0%	+11.9%
Director Nursing/Midwifery, Assistant	173	+53	+34	+23	+19	+44.4%	+24.2%	+15.1%	+12.4%
Director of Nursing/Midwifery	41	+21	+8	+5	+4	+102.1%	+22.6%	+14.9%	+9.7%
Nurse/ Midwife Manager	402	+124	+70	+45	+43	+44.5%	+21.0%	+12.7%	+11.9%
Advanced Nurse/ Midwife Practitioner	10	+8	+8	+7	+7	+395.5%	+332.8%	+290.2%	+290.2%
Clinical Nurse/ Midwife Specialist	163	+69	+24	+20	+23	+72.2%	+17.0%	+14.0%	+16.5%
Nurse/ Midwife Specialist & AN/MP	173	+76	+31	+27	+31	+78.9%	+22.1%	+18.8%	+21.4%
Staff Midwives	7	+7	+2	+1	-1	+815.0%	+39.2%	+12.8%	-9.9%
Staff Nurse [Psychiatric]	11	+8	-3	+3	+2	+221.5%	-22.9%	+31.2%	+28.4%
Staff Nurses [General/ Children's]	884	+209	+46	+18	+38	+31.1%	+5.5%	+2.1%	+4.5%
Staff Nurse/ Staff Midwife	902	+223	+45	+22	+40	+32.9%	+5.2%	+2.5%	+4.6%
Public Health Nurse	1,522	+61	+34	+7	+9	+4.2%	+2.3%	+0.4%	+0.6%
Public Health Nurse	1,522	+61	+34	+7	+9	+4.2%	+2.3%	+0.4%	+0.6%
Post-registration Nurse/ Midwife Student	99	+79	-31	+6	+3	+412.8%	-23.6%	+6.0%	+3.0%
Nursing/ Midwifery Student	99	+79	-31	+6	+3	+412.8%	-23.6%	+6.0%	+3.0%
Nursing Education/Clinical	6	+4	+3	+3	+2	+150.4%	+76.0%	+105.3%	+62.1%
Other Nursing/ Midwifery		-2	-0	-1		-100.0%	-100.0%	-100.0%	-100.0%
Nursing/ Midwifery other	6	+2	+2	+2	+2	+38.1%	+55.9%	+54.0%	+62.1%
Nursing & Midwifery	3,104	+566	+152	+109	+128	+22.3%	+5.1%	+3.6%	+4.3%
Dietitians	119	+60	+14	+2	+10	+100.5%	+13.8%	+1.9%	+9.0%
Occupational Therapists	543	+82	+27	+3	+28	+17.8%	+5.2%	+0.5%	+5.4%
Orthoptists	16	+10	+9	+6	+2	+178.7%	+146.8%	+58.9%	+18.6%
Physiotherapists	563	+85	-1	-1	+20	+17.7%	-0.1%	-0.1%	+3.6%
Podiatrists & Chiropodists	32	+12	+9	+8	+7	+64.8%	+41.6%	+34.6%	+28.7%
Speech & Language Therapists	518	+96	-28	-31	-8	+22.8%	-5.1%	-5.6%	-1.6%
Therapy Professions	1,790	+345	+31	-13	+59	+23.9%	+1.8%	-0.7%	+3.4%
Audiology	49	+28	+20	+1	+5	+131.9%	+65.5%	+2.6%	+12.4%
Biochemists	8	+1	+0	-0	+0	+23.1%	+1.3%	-3.5%	+1.2%
Clinical Engineering	8	+7	+6	+1		+700.0%	+300.0%	+14.3%	
Medical Laboratory	44	-39	-3	-3	+1	-46.9%	-5.6%	-7.4%	+3.3%
Phlebotomists	1	+1	+1	+1	+1	+74.3%	+93.7%	+454.5%	+454.5%
Physicists	1	-0	-0	-1	-1	-25.6%	-24.7%	-33.0%	-33.0%
Radiographers	4	-1	-2	-1	-0	-23.3%	-27.2%	-20.4%	-1.6%
Health Science/ Diagnostics	116	-3	+22	-2	+7	-2.8%	+22.9%	-1.9%	+6.6%
Social Care	32	-66	-1	-2	-3	-67.0%	-1.9%	-5.1%	-8.6%
Social Workers	144	+3	-9	-8	+5	+1.9%	-5.9%	-5.4%	+3.6%
Psychologists	292	+75	+8	-6	-9	+34.5%	+2.8%	-2.0%	-3.0%
Pharmacy	64	+6	+1	+6	+7	+9.5%	+2.1%	+9.8%	+11.3%
Counsellor Therapists	110	-3	-12	-6	-5	-3.0%	-9.7%	-5.4%	-4.6%
Dental Hygienists	61	+7	+7	+4	+4	+12.3%	+12.7%	+6.7%	+6.8%
Environmental Health Officers					-1	-100.0%	-100.0%		-100.0%
Other Health & Social Care	7	-4	-2	-2	-1	-36.3%	-19.6%	-26.5%	-13.1%
Play Therapists/ Specialists	2	+0	-0	-0	+0	+23.5%	-1.6%	-1.6%	+6.9%
H&SC, Other	180	-0	-6	-5	-3	-0.0%	-3.5%	-2.6%	-1.5%

Oct 2020 (Oct 2013 figure: 10,789)	WTE Oct 2020	WTE change since Oct 13	WTE change since Dec 17	WTE change since Dec 18	WTE change since Dec 19	% change since Oct 13	% change since Dec 17	% change since Dec 18	% change since Dec 19
Overall	10,950	+161	+431	+19	+350	+1.5%	+4.1%	+0.2%	+3.3%
Health & Social Care Professionals	2,618	+359	+46	-30	+63	+15.9%	+1.8%	-1.1%	+2.4%
Executive Management	76	+51	+5	+2	+5	+200.0%	+7.1%	+2.9%	+7.7%
Senior Management (VIII & GM)	226	+61	+4	-10	-9	+36.6%	+2.0%	-4.2%	-3.9%
Management (VIII & above)	302	+111	+9	-8	-4	+58.4%	+3.2%	-2.5%	-1.2%
Middle Management (V-VII)	652	+157	+108	+27	+35	+31.6%	+19.9%	+4.3%	+5.7%
Other Administrative	2	+1	+1	-1	-1	+200.0%	+200.0%	-25.0%	-25.0%
Administrative/ Supervisory (V to VII)	654	+158	+109	+26	+35	+31.8%	+20.1%	+4.2%	+5.6%
General Administrative (III & IV)	1,782	-100	-17	-47	+36	-5.3%	-0.9%	-2.6%	+2.0%
Clerical (III & IV)	1,782	-100	-17	-47	+36	-5.3%	-0.9%	-2.6%	+2.0%
Management & Administrative	2,737	+169	+102	-29	+67	+6.6%	+3.9%	-1.0%	+2.5%
Support	350	-4	-36	-34	+3	-1.2%	-9.3%	-8.9%	+1.0%
Maintenance	57	-2	+1	-0	-1	-3.4%	+2.4%	-0.4%	-2.1%
Technical Services	1			+0				+11.1%	
Maintenance/ Technical	58	-2	+1	-0	-1	-3.3%	+2.4%	-0.2%	-2.1%
General Support	408	-6	-35	-34	+2	-1.5%	-7.8%	-7.8%	+0.5%
HCA, Nurse's Aide, etc.	211	+48	+35	+13	+27	+29.1%	+20.2%	+6.3%	+14.5%
Health & Social Care Assistants	100	+79	+77	-25	+31	+376.7%	+334.4%	-19.9%	+44.8%
Health Care Assistants	311	+127	+113	-12	+58	+68.7%	+56.7%	-3.8%	+22.7%
Home Help	19	-1,072	-3	+0	+1	-98.2%	-13.9%	+0.3%	+4.6%
Community Welfare Officers	1	-11	-3	-2	-1	-92.5%	-77.1%	-69.2%	-45.7%
Other Care Grades	729	-41	+8	-9	+7	-5.3%	+1.1%	-1.2%	+1.0%
Care, other	730	-52	+5	-11	+6	-6.6%	+0.7%	-1.4%	+0.9%
Ambulance Officers		-1				-100.0%	-100.0%	-100.0%	-100.0%
Pre-Hospital Care (Ambulance)		-1				-100.0%	-100.0%	-100.0%	-100.0%
Ambulance Staff		-2				-100.0%	-100.0%	-100.0%	-100.0%
Patient & Client Care	1,061	-999	+114	-23	+65	-48.5%	+12.1%	-2.1%	+6.5%

Source: Health Service Personnel Census