

Social Care Disability Services Employment Report: November 2021

Employment by Staff Group

Nov 2021	WTE Dec 2019	WTE Dec 2020	WTE Oct 2021	WTE Nov 2021	WTE change since Oct 21	WTE change since Dec 20	% change since Dec 20	WTE change since Dec 19	% change since Dec 19	No. Nov 2021
Overall	18,303	18,944	19,449	19,507	+57	+562	+3.0%	+1,204	+6.6%	23,043
Consultants	24	24	22	22	+0	-3	-10.9%	-2	-9.0%	30
Registrars	13	8	9	9	-0	+1	+12.4%	-4	-30.8%	9
SHO/ Interns	7	9	9	8	-1	-1	-15.3%	+1	+9.5%	10
Medical/ Dental, other	14	14	14	14	-0	-0	-0.1%	-0	-0.7%	22
Medical & Dental	58	56	54	53	-1	-3	-5.5%	-6	-9.6%	71
Nurse/ Midwife Manager	894	897	910	926	+16	+29	+3.2%	+32	+3.6%	996
Nurse/ Midwife Specialist & AN/MP	62	64	69	68	-1	+4	+5.5%	+6	+9.0%	75
Staff Nurse/ Staff Midwife	2,572	2,593	2,573	2,597	+24	+4	+0.2%	+25	+1.0%	3,002
Public Health Nurse	6	7	10	12	+2	+5	+76.9%	+6	+94.1%	14
<i>Pre-registration Nurse Intern (COVID-19)</i>		32	2	1	-1	-31	-97.7%	+1	-100.0%	1
<i>Pre-registration Nurse/ Midwife Intern</i>	28	3	27	21	-6	+19	+752.4%	-7	-24.6%	37
<i>Nursing/ Midwifery awaiting registration</i>	14	13	9	7	-3	-6	-49.2%	-7	-52.2%	8
Nursing/ Midwifery Student	42	47	38	29	-9	-19	-39.4%	-13	-32.0%	46
Nursing/ Midwifery other	22	24	23	23	+0	-1	-5.2%	+0	+1.7%	25
Nursing & Midwifery	3,599	3,632	3,623	3,654	+31	+22	+0.6%	+56	+1.6%	4,158
Therapy Professions	765	795	822	824	+2	+29	+3.7%	+60	+7.8%	949
Health Science/ Diagnostics	20	20	21	21	-0	+1	+4.9%	+1	+4.6%	21
Social Care	2,595	2,789	2,945	2,996	+50	+206	+7.4%	+401	+15.4%	3,506
Social Workers	219	228	235	233	-1	+5	+2.3%	+15	+6.7%	271
Psychologists	204	229	243	242	-1	+12	+5.4%	+37	+18.3%	273
Pharmacy	7	6	7	8	+1	+2	+29.4%	+1	+15.1%	10
H&SC, Other	85	76	70	72	+2	-4	-4.6%	-13	-15.0%	93
Health & Social Care Professionals	3,894	4,144	4,342	4,396	+54	+252	+6.1%	+502	+12.9%	5,123
Management (VIII & above)	180	204	218	215	-3	+11	+5.5%	+36	+19.8%	218
Administrative/ Supervisory (V to VII)	479	527	567	560	-7	+33	+6.3%	+81	+16.9%	607
Clerical (III & IV)	660	685	710	711	+1	+25	+3.7%	+50	+7.6%	861
Management & Administrative	1,319	1,416	1,495	1,486	-9	+70	+4.9%	+167	+12.7%	1,686
Support	734	663	643	637	-6	-26	-3.9%	-97	-13.2%	917
Maintenance/ Technical	124	132	134	134	+0	+2	+1.2%	+10	+7.8%	147
General Support	858	795	777	771	-6	-24	-3.0%	-87	-10.2%	1,064
Health Care Assistants	6,826	7,102	7,319	7,305	-14	+203	+2.9%	+479	+7.0%	8,667
Home Help	109	94	84	81	-3	-13	-13.6%	-28	-25.5%	232
Care, other	1,639	1,706	1,755	1,761	+6	+55	+3.2%	+122	+7.4%	2,042
Patient & Client Care	8,574	8,902	9,158	9,147	-11	+245	+2.8%	+573	+6.7%	10,941

Social Care Disability Services Employment by Administration (HSE / S38): November 2021

Nov 2021	WTE Dec 2019	WTE Dec 2020	WTE Oct 2021	WTE Nov 2021	WTE change since Oct 21	WTE change since Dec 20	% change since Dec 20	WTE change since Dec 19	% change since Dec 19	No. Nov 2021
Total	18,303	18,944	19,449	19,507	+57	+562	+3.0%	+1,204	+6.6%	23,043
HSE	3,903	4,085	4,161	4,137	-24	+52	+1.3%	+234	+6.0%	4,745
Section 38 Voluntary Agencies	14,400	14,860	15,288	15,370	+81	+510	+3.4%	+970	+6.7%	18,298

Employment by Staff Group

Nov 2021	WTE Dec 2019	WTE Dec 2020	WTE Oct 2021	WTE Nov 2021	WTE change since Oct 21	WTE change since Dec 20	% change since Dec 20	WTE change since Dec 19	% change since Dec 19	No. Nov 2021
Health Service Executive	3,903	4,085	4,161	4,137	-24	+52	+1.3%	+234	+6.0%	4,745
Consultants	8	9	8	7	-0	-1	-16.7%	-0	-5.6%	8
Registrars	3	1	2	2	+0	+1	+99.0%	-1	-33.7%	2
SHO/ Interns		2	1	1	-0	-1	-53.0%	+1	-100.0%	1
Medical/ Dental, other	6	6	6	6	-0	-0	-0.2%	-0	-1.6%	10
Medical & Dental	17	18	17	16	-0	-2	-8.5%	-1	-3.5%	21
Nurse/ Midwife Manager	258	261	264	263	-1	+2	+0.6%	+4	+1.6%	280
Nurse/ Midwife Specialist & AN/MP	14	15	18	16	-1	+2	+10.9%	+3	+19.7%	18
Staff Nurse/ Staff Midwife	791	772	790	785	-5	+13	+1.7%	-6	-0.7%	884
Public Health Nurse	6	7	10	12	+2	+5	+76.9%	+6	+94.1%	14
Pre-registration Nurse Intern (COVID-19)		9				-9	-100.0%		-100.0%	
Pre-registration Nurse/ Midwife Intern	3	3	16	11	-5	+8	+332.8%	+8	+232.9%	16
Nursing/ Midwifery awaiting registration	14	13	6	7	+0	-6	-49.2%	-7	-52.2%	8
Nursing/ Midwifery Student	17	24	22	17	-5	-7	-27.6%	+0	+2.0%	24
Nursing/ Midwifery other	8	7	5	5	-0	-2	-28.9%	-3	-38.2%	5
Nursing & Midwifery	1,094	1,086	1,109	1,099	-10	+13	+1.2%	+4	+0.4%	1,225
Therapy Professions	332	373	375	369	-5	-3	-0.9%	+38	+11.4%	431
Health Science/ Diagnostics	2	4	5	5	-0	+1	+24.6%	+3	+146.0%	5
Social Care	89	101	99	102	+3	+1	+1.3%	+13	+14.6%	112
Social Workers	58	67	69	68	-1	+1	+1.4%	+10	+17.1%	75
Psychologists	76	83	98	98	+0	+16	+19.2%	+22	+29.2%	113
H&SC, Other	26	25	22	22	-0	-3	-13.0%	-4	-16.8%	25
Health & Social Care Professionals	583	652	667	664	-3	+12	+1.9%	+81	+14.0%	761
Management (VIII & above)	45	58	63	61	-2	+3	+5.4%	+16	+36.5%	62
Administrative/ Supervisory (V to VII)	141	168	193	194	+1	+26	+15.2%	+53	+37.2%	211
Clerical (III & IV)	178	199	210	208	-2	+9	+4.7%	+30	+16.7%	243
Management & Administrative	364	425	465	463	-2	+38	+8.9%	+99	+27.0%	516
Support	88	88	69	68	-1	-20	-22.3%	-20	-22.8%	79
Maintenance/ Technical	21	26	25	25	-0	-2	-5.7%	+4	+17.4%	25
General Support	109	114	94	93	-1	-21	-18.5%	-17	-15.1%	104
Health Care Assistants	1,518	1,557	1,560	1,558	-2	+1	+0.1%	+41	+2.7%	1,711
Home Help	109	94	84	81	-3	-13	-13.6%	-28	-25.5%	232
Care, other	109	140	164	163	-1	+23	+16.4%	+54	+49.3%	175
Patient & Client Care	1,736	1,791	1,809	1,802	-6	+12	+0.6%	+67	+3.8%	2,118

Employment by Staff Group

Nov 2021	WTE Dec 2019	WTE Dec 2020	WTE Oct 2021	WTE Nov 2021	WTE change since Oct 21	WTE change since Dec 20	% change since Dec 20	WTE change since Dec 19	% change since Dec 19	No. Nov 2021
Section 38 Voluntary Agencies	14,400	14,860	15,288	15,370	+81	+510	+3.4%	+970	+6.7%	18,298
Consultants	16	16	14	15	+1	-1	-7.7%	-2	-10.5%	22
Registrars	10	7	7	7	-0			-3	-30.0%	7
SHO/ Interns	7	7	8	7	-1	-0	-4.6%	-0	-4.0%	9
Medical/ Dental, other	8	8	8	8						12
Medical & Dental	41	38	37	36	-1	-2	-4.1%	-5	-12.1%	50
Nurse/ Midwife Manager	635	636	646	664	+17	+28	+4.3%	+28	+4.4%	716
Nurse/ Midwife Specialist & AN/MP	48	49	51	51	-0	+2	+3.9%	+3	+6.0%	57
Staff Nurse/ Staff Midwife	1,781	1,821	1,783	1,812	+29	-9	-0.5%	+31	+1.7%	2,118
Pre-registration Nurse Intern (COVID-19)		23	2	1	-1	-23	-96.9%	+1	-100.0%	1
Pre-registration Nurse/ Midwife Intern	25		11	10	-1	+10	-100.0%	-15	-58.0%	21
Nursing/ Midwifery awaiting registration			3		-3		-100.0%		-100.0%	
Nursing/ Midwifery Student	25	23	16	11	-5	-12	-51.7%	-14	-55.2%	22
Nursing/ Midwifery other	14	17	18	18	+0	+1	+4.1%	+3	+23.0%	20
Nursing & Midwifery	2,504	2,546	2,514	2,556	+42	+9	+0.4%	+51	+2.1%	2,933
Therapy Professions	433	423	448	455	+7	+33	+7.7%	+22	+5.1%	518
Health Science/ Diagnostics	18	16	16	16				-2	-11.1%	16
Social Care	2,506	2,689	2,846	2,894	+47	+205	+7.6%	+388	+15.5%	3,394
Social Care	2,506	2,689	2,846	2,894	+47	+205	+7.6%	+388	+15.5%	3,394
Social Workers	161	162	166	166	-0	+4	+2.7%	+5	+2.9%	196
Psychologists	128	147	145	143	-2	-4	-2.4%	+15	+11.8%	160
Pharmacy	7	6	7	8	+1	+2	+29.4%	+1	+15.1%	10
H&SC, Other	59	51	48	50	+2	-0	-0.5%	-8	-14.1%	68
Health & Social Care Professionals	3,312	3,492	3,675	3,732	+57	+240	+6.9%	+420	+12.7%	4,362
Management (VIII & above)	135	146	156	154	-1	+8	+5.6%	+19	+14.3%	156
Administrative/ Supervisory (V to VII)	338	358	375	366	-8	+8	+2.1%	+28	+8.4%	396
Clerical (III & IV)	482	487	500	503	+3	+16	+3.3%	+21	+4.3%	618
Management & Administrative	955	991	1,030	1,023	-7	+32	+3.2%	+68	+7.2%	1,170
Support	646	575	574	569	-5	-6	-1.1%	-77	-11.9%	838
Maintenance/ Technical	103	106	109	109	+0	+3	+2.9%	+6	+5.9%	122
General Support	749	681	683	678	-5	-3	-0.4%	-71	-9.5%	960
Health Care Assistants	5,308	5,545	5,758	5,746	-12	+201	+3.6%	+438	+8.3%	6,956
Care, other	1,530	1,566	1,591	1,598	+7	+32	+2.1%	+68	+4.4%	1,867
Patient & Client Care	6,839	7,111	7,349	7,345	-5	+233	+3.3%	+506	+7.4%	8,823

Social Care Disability Services Employment by CHO: Nov 2021

Nov 2021	WTE Dec 2019	WTE Dec 2020	WTE Oct 2021	WTE Nov 2021	WTE change since Oct 21	WTE change since Dec 20	% change since Dec 20	WTE change since Dec 19	% change since Dec 19	No. Nov 2021
Overall	18,303	18,944	19,449	19,507	+57	+562	+3.0%	+1,204	+6.6%	23,043
CHO 1	1,498	1,547	1,583	1,584	+1	+37	+2.4%	+86	+5.7%	1,772
CHO 2	1,497	1,516	1,546	1,558	+12	+42	+2.8%	+61	+4.1%	1,931
CHO 3	1,823	1,947	1,980	1,978	-2	+31	+1.6%	+155	+8.5%	2,330
CHO 4	2,439	2,556	2,605	2,614	+9	+59	+2.3%	+176	+7.2%	3,136
CHO 5	1,505	1,563	1,644	1,645	+1	+82	+5.3%	+140	+9.3%	1,937
CHO 6	1,198	1,217	1,227	1,236	+9	+19	+1.6%	+38	+3.2%	1,399
CHO 7	2,982	3,103	3,249	3,269	+20	+166	+5.3%	+287	+9.6%	3,865
CHO 8	2,162	2,205	2,278	2,269	-9	+64	+2.9%	+107	+5.0%	2,733
CHO 9	3,194	3,285	3,330	3,348	+17	+63	+1.9%	+154	+4.8%	3,934
other Community Services	5	6	6	6	-0	-0	-0.7%	+1	+19.4%	6

Social Care Disability Services Employment by CHO etc. Nov 2021

CHO 1

Nov 2021	WTE Dec 2019	WTE Dec 2020	WTE Oct 2021	WTE Nov 2021	WTE change since Oct 21	WTE change since Dec 20	% change since Dec 20	WTE change since Dec 19	% change since Dec 19	No. Nov 2021
Overall	1,498	1,547	1,583	1,584	+1	+37	+2.4%	+86	+5.7%	1,772
Medical/ Dental, other	3	3	3	3	-0	-0	-0.3%	-0	-3.3%	6
Medical & Dental	3	3	3	3	-0	-0	-0.3%	-0	-3.3%	6
Nurse/ Midwife Manager	105	106	114	115	+1	+9	+8.0%	+10	+9.3%	122
Nurse/ Midwife Specialist & AN/MP	7	9	10	9	-1	-0	-1.9%	+2	+25.6%	10
Staff Nurse/ Staff Midwife	324	328	344	347	+2	+18	+5.6%	+23	+7.1%	389
Public Health Nurse				2	+2	+2	-100.0%	+2	-100.0%	2
Nursing/ Midwifery Student	14	17	15	10	-5	-7	-40.4%	-4	-25.5%	14
Nursing/ Midwifery other	5	4	2	2	-0	-2	-48.7%	-3	-57.8%	2
Nursing & Midwifery	455	465	485	485	-0	+20	+4.3%	+30	+6.6%	539
Therapy Professions	42	44	48	48	-0	+4	+9.2%	+5	+12.3%	54
<i>Social Care</i>	<i>8</i>	<i>11</i>	<i>10</i>	<i>10</i>	<i>-0</i>	<i>-1</i>	<i>-13.2%</i>	<i>+2</i>	<i>+29.5%</i>	<i>12</i>
Social Care	8	11	10	10	-0	-1	-13.2%	+2	+29.5%	12
Social Workers	16	19	19	18	-1	-1	-3.3%	+2	+15.3%	19
Psychologists	5	7	14	15	+0	+7	+98.8%	+10	+220.8%	16
H&SC, Other	12	10	8	8	0	-2	-22.1%	-5	-38.6%	9
Health & Social Care Professionals	82	91	98	98	-0	+7	+7.9%	+15	+18.5%	110
Management (VIII & above)	14	17	15	15	-1	-2	-12.2%	+1	+4.2%	15
Administrative/ Supervisory (V to VII)	28	34	45	43	-2	+9	+25.7%	+15	+55.7%	47
Clerical (III & IV)	50	53	50	50	-0	-3	-5.5%	+0	+0.1%	58
Management & Administrative	91	103	111	107	-4	+4	+3.8%	+16	+17.6%	120
Support	49	49	34	34	-0	-15	-31.1%	-15	-31.3%	40
Maintenance/ Technical	6	6	5	5	-0	-1	-17.0%	-1	-17.0%	5
General Support	55	55	39	39	-0	-16	-29.5%	-16	-29.7%	45
Health Care Assistants	761	775	782	787	+5	+12	+1.5%	+26	+3.4%	871
Home Help	13	14	14	14	+0	+0	+1.9%	+1	+5.8%	27
Care, other	37	41	51	51	-0	+11	+25.9%	+14	+38.7%	54
Patient & Client Care	812	830	847	853	+5	+23	+2.7%	+41	+5.0%	952

CHO 2

Nov 2021	WTE Dec 2019	WTE Dec 2020	WTE Oct 2021	WTE Nov 2021	WTE change since Oct 21	WTE change since Dec 20	% change since Dec 20	WTE change since Dec 19	% change since Dec 19	No. Nov 2021
Overall	1,497	1,516	1,546	1,558	+12	+42	+2.8%	+61	+4.1%	1,931
Consultants	3	3	3	3	0					4
Registrars	2	2	2	2	0					2
Medical/ Dental, other	1	1	1	1	0					1
Medical & Dental	6	6	6	6						7
Nurse/ Midwife Manager	77	78	73	73	+0	-5	-6.0%	-4	-5.4%	80
Nurse/ Midwife Specialist & AN/MP	6	6	7	7	-0	+1	+15.1%	+1	+11.9%	8
Staff Nurse/ Staff Midwife	165	169	159	164	+5	-5	-3.1%	-1	-0.8%	204
<i>Pre-registration Nurse Intern (COVID-19)</i>		1				-1	-100.0%		-100.0%	
Nursing/ Midwifery Student		1				-1	-100.0%		-100.0%	
Nursing & Midwifery	249	253	238	244	+5	-10	-3.8%	-5	-2.0%	292
Therapy Professions	41	34	33	36	+3	+2	+5.1%	-6	-13.7%	43
Social Care	222	243	265	266	+1	+22	+9.1%	+44	+19.7%	334
Social Workers	26	26	27	29	+2	+3	+12.0%	+3	+11.1%	38
Psychologists	16	14	15	14	-1			-2	-9.8%	17
H&SC, Other	16	12	10	11	+1	-1	-6.3%	-5	-31.3%	17
Health & Social Care Professionals	321	329	350	355	+6	+26	+8.0%	+35	+10.8%	449
Management (VIII & above)	16	16	18	17	-1	+1	+6.7%	+1	+6.0%	17
Administrative/ Supervisory (V to VII)	40	44	47	49	+2	+4	+9.1%	+8	+20.0%	51
Clerical (III & IV)	50	50	49	50	+1	-0	-0.8%	+0	+0.0%	62
Management & Administrative	106	110	113	115	+2	+5	+4.2%	+9	+8.5%	130
Support	45	43	44	45	+1	+2	+3.9%	+0	+0.1%	77
Maintenance/ Technical	13	13	13	13	-0	-0	-2.9%	-1	-3.8%	14
General Support	58	56	57	57	+1	+1	+2.4%	-0	-0.8%	91
Health Care Assistants	623	625	645	647	+1	+22	+3.5%	+23	+3.7%	787
Care, other	134	136	136	133	-2	-2	-1.7%	-1	-0.6%	175
Patient & Client Care	757	761	781	780	-1	+19	+2.5%	+22	+3.0%	962

CHO 3

Nov 2021	WTE Dec 2019	WTE Dec 2020	WTE Oct 2021	WTE Nov 2021	WTE change since Oct 21	WTE change since Dec 20	% change since Dec 20	WTE change since Dec 19	% change since Dec 19	No. Nov 2021
Overall	1,823	1,947	1,980	1,978	-2	+31	+1.6%	+155	+8.5%	2,330
Consultants	1	2	1	1	-0	-1	-59.9%	-0	-23.0%	2
Medical/ Dental, other	1	1	1	1	0					2
Medical & Dental	2	3	2	2	-0	-1	-40.4%	-0	-11.9%	4
Nurse/ Midwife Manager	76	75	79	80	+1	+5	+6.5%	+4	+5.1%	84
Nurse/ Midwife Specialist & AN/MP	13	10	8	8	0	-3	-25.0%	-5	-38.4%	9
Staff Nurse/ Staff Midwife	247	271	254	254	+1	-16	-6.1%	+7	+2.8%	279
<i>Pre-registration Nurse Intern (COVID-19)</i>		2	2	1	-1	-1	-52.0%	+1	-100.0%	1
<i>Pre-registration Nurse/ Midwife Intern</i>	12						-100.0%	-12	-100.0%	
Nursing/ Midwifery Student	12	2	2	1	-1	-1	-52.0%	-11	-93.7%	1
<i>Nursing Education/Clinical</i>	3	3	3	3	0					3
<i>Other Nursing/ Midwifery</i>	1	1	1	1	0					1
Nursing/ Midwifery other	4	4	4	4	0					4
Nursing & Midwifery	351	361	346	346	+0	-15	-4.1%	-5	-1.4%	377
Therapy Professions	74	84	77	77	-1	-7	-8.5%	+3	+3.6%	85
Health Science/ Diagnostics		2	3	3	-0	+1	+49.7%	+3	-100.0%	3
Social Care	241	284	284	289	+5	+5	+1.9%	+48	+20.1%	331
Social Workers	17	17	17	17	-0	-0	-0.3%	+1	+4.1%	19
Psychologists	16	20	19	19	+0	-1	-4.4%	+4	+22.0%	21
H&SC, Other	12	11	11	11	+0	-0	-2.6%	-1	-7.4%	15
Health & Social Care Professionals	359	419	412	416	+4	-2	-0.5%	+57	+15.9%	474
Management (VIII & above)	7	8	9	8	-1			+1	+14.7%	8
Administrative/ Supervisory (V to VII)	41	45	43	44	+1	-1	-1.9%	+3	+7.8%	46
Clerical (III & IV)	59	59	59	59	-1	+0	+0.1%	-0	-0.6%	66
Management & Administrative	107	111	111	110	-0	-1	-0.7%	+4	+3.6%	120
Support	53	53	54	54	-0	+1	+1.0%	+1	+2.0%	63
Maintenance/ Technical	14	19	20	20	-0	+1	+2.7%	+5	+37.9%	22
General Support	67	73	74	74	-0	+1	+1.4%	+7	+9.7%	85
Health Care Assistants	764	800	837	834	-3	+35	+4.3%	+70	+9.2%	1,051
Care, other	173	181	198	195	-3	+14	+7.7%	+22	+12.8%	219
Patient & Client Care	937	981	1,035	1,030	-6	+49	+5.0%	+92	+9.8%	1,270

CHO 4

Nov 2021	WTE Dec 2019	WTE Dec 2020	WTE Oct 2021	WTE Nov 2021	WTE change since Oct 21	WTE change since Dec 20	% change since Dec 20	WTE change since Dec 19	% change since Dec 19	No. Nov 2021
Overall	2,439	2,556	2,605	2,614	+9	+59	+2.3%	+176	+7.2%	3,136
Consultants	2	3	3	2	-0	-0	-15.2%	+1	+41.3%	3
Medical/ Dental, other	0	0	0	0	0					1
Medical & Dental	2	3	3	2	-0	-0	-13.4%	+1	+33.9%	4
Nurse/ Midwife Manager	89	91	91	94	+3	+3	+3.1%	+4	+4.8%	102
Nurse/ Midwife Specialist & AN/MP	13	14	13	13	0	-1	-6.9%			15
Staff Nurse/ Staff Midwife	309	312	294	302	+8	-10	-3.2%	-7	-2.1%	366
<i>Pre-registration Nurse Intern (COVID-19)</i>		8				-8	-100.0%		-100.0%	
<i>Pre-registration Nurse/ Midwife Intern</i>	6		10	10	+0	+10	-100.0%	+4	+66.7%	20
<i>Nursing/ Midwifery awaiting registration</i>	1	2				-2	-100.0%	-1	-100.0%	
Nursing/ Midwifery Student	7	10	10	10	+0	+0	+4.7%	+3	+42.9%	20
<i>Nursing Education/Clinical</i>	1						-100.0%	-1	-100.0%	
Nursing/ Midwifery other	1						-100.0%	-1	-100.0%	
Nursing & Midwifery	419	427	408	419	+11	-8	-1.8%	+0	+0.1%	503
Therapy Professions	108	104	118	119	+1	+15	+14.7%	+11	+10.2%	142
Social Care	227	238	248	250	+2	+11	+4.7%	+23	+10.2%	281
Social Workers	27	27	28	27	-1	-0	-1.3%	-0	-1.2%	33
Psychologists	35	36	35	34	-1	-2	-5.3%	-1	-1.9%	39
H&SC, Other	8	10	9	10	+1	-1	-5.3%	+1	+15.0%	10
Health & Social Care Professionals	405	415	437	439	+2	+24	+5.7%	+34	+8.5%	505
Management (VIII & above)	22	22	22	22	-1	-1	-3.3%	-1	-2.4%	23
Administrative/ Supervisory (V to VII)	53	58	52	55	+3	-3	-4.8%	+1	+2.6%	63
Clerical (III & IV)	84	90	90	92	+2	+3	+2.9%	+8	+9.6%	119
Management & Administrative	160	170	165	169	+4	-1	-0.5%	+9	+5.6%	205
Support	141	139	142	142	+1	+4	+2.7%	+1	+0.9%	251
<i>Maintenance</i>	9	10	10	10	0			+1	+9.8%	14
<i>Technical Services</i>	1	2	2	2	0			+1	+100.0%	2
Maintenance/ Technical	10	12	12	12	0			+2	+18.6%	16
General Support	151	151	154	154	+1	+4	+2.5%	+3	+2.1%	267
Health Care Assistants	995	1,058	1,106	1,092	-15	+33	+3.2%	+97	+9.7%	1,264
Care, other	307	332	333	339	+6	+7	+2.0%	+31	+10.2%	388
Patient & Client Care	1,302	1,390	1,439	1,430	-9	+40	+2.9%	+128	+9.8%	1,652

CHO 5

Nov 2021	WTE Dec 2019	WTE Dec 2020	WTE Oct 2021	WTE Nov 2021	WTE change since Oct 21	WTE change since Dec 20	% change since Dec 20	WTE change since Dec 19	% change since Dec 19	No. Nov 2021
Overall	1,505	1,563	1,644	1,645	+1	+82	+5.3%	+140	+9.3%	1,937
Consultants	1	1	1	1	0	+0	+28.4%			1
Medical & Dental	1	1	1	1		+0	+28.4%			1
Nurse/ Midwife Manager	66	70	73	70	-3	+0	+0.5%	+5	+7.1%	73
Nurse/ Midwife Specialist & AN/MP	2	2	3	3	-0	+1	+25.3%	+1	+36.0%	3
Staff Nurse/ Staff Midwife	170	168	159	172	+13	+3	+2.1%	+2	+1.0%	194
Public Health Nurse	5	6	9	9	+0	+3	+56.4%	+4	+74.1%	11
<i>Pre-registration Nurse Intern (COVID-19)</i>		1				-1	-100.0%		-100.0%	
<i>Pre-registration Nurse/ Midwife Intern</i>			0		-0		-100.0%		-100.0%	
<i>Nursing/ Midwifery awaiting registration</i>	2		2		-2		-100.0%	-2	-100.0%	
Nursing/ Midwifery Student	2	1	2		-2	-1	-100.0%	-2	-100.0%	
Nursing/ Midwifery other			1	1	-0	+1	-100.0%	+1	-100.0%	1
Nursing & Midwifery	245	247	247	255	+8	+7	+3.0%	+10	+4.0%	282
Therapy Professions	63	65	69	68	-1	+3	+5.1%	+5	+8.5%	81
Social Care	154	143	152	159	+7	+16	+10.9%	+5	+3.0%	192
Social Workers	21	24	26	26	-1	+1	+5.7%	+5	+21.9%	28
Psychologists	14	19	20	21	+1	+2	+9.4%	+7	+48.6%	23
H&SC, Other	7	5	6	7	+1	+2	+31.9%	+0	+1.9%	9
Health & Social Care Professionals	259	256	274	280	+7	+24	+9.3%	+21	+8.3%	333
Management (VIII & above)	11	13	14	14	+0	+1	+9.4%	+3	+28.0%	14
Administrative/ Supervisory (V to VII)	39	41	56	52	-4	+12	+28.9%	+14	+35.0%	57
Clerical (III & IV)	61	62	65	66	+1	+4	+7.0%	+5	+9.0%	80
Management & Administrative	110	115	135	132	-3	+17	+15.0%	+22	+20.0%	151
Support	15	12	10	10	-1	-2	-19.2%	-6	-36.9%	14
<i>Maintenance</i>	6	6	8	8	0	+2	+31.6%	+2	+31.6%	9
<i>Technical Services</i>	1	1	1	1	0					1
Maintenance/ Technical	7	7	9	9	0	+2	+27.3%	+2	+27.3%	10
General Support	23	19	20	19	-1	-0	-1.6%	-4	-16.1%	24
Health Care Assistants	671	732	761	750	-11	+18	+2.5%	+79	+11.7%	859
Home Help	53	40	32	31	-1	-9	-22.8%	-23	-42.6%	80
Care, other	144	153	176	178	+2	+25	+16.1%	+34	+23.7%	207
Patient & Client Care	868	924	968	958	-10	+34	+3.7%	+90	+10.4%	1,146

CHO 6

Nov 2021	WTE Dec 2019	WTE Dec 2020	WTE Oct 2021	WTE Nov 2021	WTE change since Oct 21	WTE change since Dec 20	% change since Dec 20	WTE change since Dec 19	% change since Dec 19	No. Nov 2021
Overall	1,198	1,217	1,227	1,236	+9	+19	+1.6%	+38	+3.2%	1,399
Consultants	3	3	3	3	-0	-0	-0.7%	-0	-0.7%	3
SHO/ Interns			1	1	-0	+1	-100.0%	+1	-100.0%	1
Medical/ Dental, other	1	1	1	1	0					1
Medical & Dental	4	4	5	5	-0	+1	+23.0%	+1	+23.0%	5
Nurse/ Midwife Manager	44	43	42	43	+1	-1	-1.4%	-1	-1.7%	47
Staff Nurse/ Staff Midwife	147	142	144	143	-1	+1	+0.6%	-4	-2.8%	159
Nursing & Midwifery	191	186	186	186	-0	+0	+0.2%	-5	-2.5%	206
Therapy Professions	42	42	38	36	-2	-7	-15.6%	-6	-13.9%	44
Social Care	334	361	379	390	+11	+30	+8.2%	+56	+16.8%	441
Social Workers	11	10	10	10	-0	-0	-3.9%	-2	-15.0%	10
Psychologists	14	14	16	16	+0	+3	+18.7%	+2	+18.3%	20
H&SC, Other	2	1	1	1	-0	-0	-9.4%	-1	-36.6%	2
Health & Social Care Professionals	403	428	444	453	+9	+25	+5.8%	+50	+12.5%	517
Management (VIII & above)	31	30	30	30	+0	-0	-0.8%	-1	-2.7%	30
Administrative/ Supervisory (V to VII)	53	54	57	55	-3	+1	+1.0%	+1	+2.3%	58
Clerical (III & IV)	54	56	51	51	+0	-5	-8.7%	-3	-5.6%	60
Management & Administrative	138	140	138	135	-3	-5	-3.2%	-3	-1.9%	148
Support	23	26	22	19	-3	-6	-24.1%	-3	-14.2%	24
Maintenance/ Technical	7	5	6	7	+1	+2	+39.0%	+0	+3.0%	7
General Support	29	31	28	26	-2	-4	-13.8%	-3	-10.3%	31
Health Care Assistants	187	184	184	188	+4	+4	+2.3%	+1	+0.7%	213
Care, other	246	245	242	243	+0	-2	-1.0%	-4	-1.6%	279
Patient & Client Care	433	428	426	430	+5	+2	+0.5%	-3	-0.6%	492

CHO 7

Nov 2021	WTE Dec 2019	WTE Dec 2020	WTE Oct 2021	WTE Nov 2021	WTE change since Oct 21	WTE change since Dec 20	% change since Dec 20	WTE change since Dec 19	% change since Dec 19	No. Nov 2021
Overall	2,982	3,103	3,249	3,269	+20	+166	+5.3%	+287	+9.6%	3,865
Consultants	1	1				-1	-100.0%	-1	-100.0%	
Registrars	3	3	2	2	-0	-1	-33.3%	-1	-33.3%	2
SHO/ Interns	7	7	8	7	-1	-0	-4.6%	-0	-4.0%	9
Medical/ Dental, other	1	1	1	1	0					1
Medical & Dental	12	12	11	10	-2	-2	-16.1%	-2	-15.8%	12
Nurse/ Midwife Manager	122	118	131	133	+2	+15	+12.4%	+11	+9.1%	145
Nurse/ Midwife Specialist & AN/MP	5	4	4	4	0			-1	-16.0%	5
Staff Nurse/ Staff Midwife	374	378	410	416	+6	+38	+10.0%	+42	+11.2%	476
<i>Pre-registration Nurse/ Midwife Intern</i>			1		-1		-100.0%		-100.0%	
<i>Nursing/ Midwifery awaiting registration</i>			1		-1		-100.0%		-100.0%	
Nursing/ Midwifery Student			2		-2		-100.0%		-100.0%	
Nursing/ Midwifery other	1	2	3	3	0	+1	+66.7%	+2	+400.0%	3
Nursing & Midwifery	502	502	550	556	+6	+54	+10.7%	+54	+10.8%	629
Therapy Professions	122	138	140	147	+7	+8	+6.0%	+25	+20.5%	160
Health Science/ Diagnostics	3	3	2	2	0	-1	-33.3%	-1	-33.3%	2
Social Care	360	389	416	424	+8	+35	+9.1%	+64	+17.7%	468
Social Workers	33	32	35	35	+0	+3	+10.8%	+2	+5.5%	40
Psychologists	28	32	34	34	+0	+2	+7.2%	+7	+23.8%	38
Pharmacy	5	4	5	6	+1	+2	+44.0%	+1	+21.4%	8
H&SC, Other	2	2	2	2	0					2
Health & Social Care Professionals	553	600	633	650	+17	+50	+8.4%	+97	+17.6%	718
Management (VIII & above)	32	43	47	47	+0	+4	+9.9%	+15	+46.6%	47
Administrative/ Supervisory (V to VII)	79	92	93	95	+2	+3	+3.4%	+16	+20.1%	103
Clerical (III & IV)	92	101	104	105	+0	+4	+3.7%	+13	+14.3%	125
Management & Administrative	203	236	244	247	+2	+11	+4.7%	+44	+21.6%	275
Support	167	155	154	152	-2	-3	-2.1%	-15	-8.8%	215
Maintenance/ Technical	28	33	34	33	-1	+1	+1.6%	+5	+17.0%	37
General Support	195	188	188	185	-3	-3	-1.4%	-10	-5.1%	252
Health Care Assistants	1,112	1,146	1,194	1,199	+5	+52	+4.5%	+86	+7.7%	1,424
<i>Home Helps</i>	19	17	17	16	-1	-2	-9.9%	-4	-20.3%	81
Home Help	19	17	17	16	-1	-2	-9.9%	-4	-20.3%	81
Care, other	386	403	412	407	-5	+5	+1.2%	+22	+5.6%	474
Patient & Client Care	1,518	1,566	1,623	1,621	-1	+55	+3.5%	+104	+6.8%	1,979

CHO 8

Nov 2021	WTE Dec 2019	WTE Dec 2020	WTE Oct 2021	WTE Nov 2021	WTE change since Oct 21	WTE change since Dec 20	% change since Dec 20	WTE change since Dec 19	% change since Dec 19	No. Nov 2021
Overall	2,162	2,205	2,278	2,269	-9	+64	+2.9%	+107	+5.0%	2,733
Consultants	1	1				-1	-100.0%	-1	-100.0%	
Registrars	2	1	1	1	0			-1	-50.0%	1
Medical/ Dental, other	1	1	1	1	0					1
Medical & Dental	4	3	2	2		-1	-33.3%	-2	-50.0%	2
Nurse/ Midwife Manager	123	119	113	113	+0	-6	-5.0%	-10	-8.0%	124
Nurse/ Midwife Specialist & AN/MP	7	6	6	6	0	+0	+4.4%	-1	-9.0%	7
Staff Nurse/ Staff Midwife	319	312	303	302	-1	-10	-3.3%	-17	-5.3%	360
Public Health Nurse	1	1	1	1	-0	-0	-2.1%	-0	-1.0%	1
Pre-registration Nurse Intern (COVID-19)		4				-4	-100.0%		-100.0%	
Pre-registration Nurse/ Midwife Intern			1	1	-0	+1	-100.0%	+1	-100.0%	2
Nursing/ Midwifery awaiting registration			2		-2		-100.0%		-100.0%	
Nursing/ Midwifery Student		4	3	1	-2	-3	-75.3%	+1	-100.0%	2
Nursing/ Midwifery other	5	7	7	7	+0	+1	+10.7%	+2	+33.9%	8
Nursing & Midwifery	455	449	434	431	-3	-18	-4.1%	-24	-5.4%	502
Therapy Professions	92	98	94	92	-3	-6	-6.3%	+0	+0.3%	108
Health Science/ Diagnostics	2	2	2	2	0					2
Social Care	361	380	395	399	+4	+19	+4.9%	+38	+10.5%	482
Social Workers	24	24	27	25	-1	+1	+5.3%	+1	+6.0%	29
Psychologists	25	22	26	27	+0	+4	+19.5%	+2	+7.9%	29
H&SC, Other	7	6	7	6	-0	+0	+3.1%	-1	-8.4%	7
Health & Social Care Professionals	510	533	551	551	+0	+18	+3.4%	+41	+8.0%	657
Management (VIII & above)	9	13	16	16	+0	+3	+18.6%	+7	+80.8%	16
Administrative/ Supervisory (V to VII)	56	56	57	58	+1	+2	+3.2%	+2	+3.5%	61
Clerical (III & IV)	84	88	90	91	+1	+3	+3.7%	+6	+7.7%	112
Management & Administrative	149	157	163	165	+2	+8	+4.8%	+16	+10.4%	189
Support	46	41	39	38	-1	-4	-8.7%	-9	-18.8%	47
Maintenance/ Technical	16	14	14	14	+0	-0	-0.5%	-2	-13.3%	14
General Support	62	55	53	52	-1	-4	-6.7%	-11	-17.4%	61
Health Care Assistants	844	872	941	934	-7	+63	+7.2%	+91	+10.8%	1,145
Home Help	22	23	22	21	-1	-2	-10.0%	-2	-8.1%	44
Care, other	115	113	113	114	+1	+1	+0.5%	-1	-0.7%	133
Patient & Client Care	981	1,008	1,076	1,069	-7	+61	+6.0%	+88	+9.0%	1,322

CHO 9

Nov 2021	WTE Dec 2019	WTE Dec 2020	WTE Oct 2021	WTE Nov 2021	WTE change since Oct 21	WTE change since Dec 20	% change since Dec 20	WTE change since Dec 19	% change since Dec 19	No. Nov 2021
Overall	3,194	3,285	3,330	3,348	+17	+63	+1.9%	+154	+4.8%	3,934
Consultants	13	11	11	12	+1	+0	+2.0%	-1	-7.8%	17
Registrars	6	2	4	4	+0	+2	+99.5%	-2	-33.5%	4
SHO/ Interns		2				-2	-100.0%		-100.0%	
Medical/ Dental, other	6	6	6	6	0					9
Medical & Dental	25	21	21	22	+1	+0	+1.0%	-3	-12.1%	30
Nurse/ Midwife Manager	192	196	194	205	+11	+9	+4.7%	+13	+7.0%	219
Nurse/ Midwife Specialist & AN/MP	9	12	17	17	-0	+6	+47.5%	+9	+100.5%	18
Staff Nurse/ Staff Midwife	517	513	507	498	-9	-15	-2.9%	-19	-3.8%	575
<i>Pre-registration Nurse Intern (COVID-19)</i>		11				-11	-100.0%		-100.0%	
<i>Pre-registration Nurse/ Midwife Intern</i>	8	3	1	1	+0	-2	-65.2%	-7	-88.8%	2
<i>Nursing/ Midwifery awaiting registration</i>			4	6	+2	+6	-100.0%	+6	-100.0%	7
Nursing/ Midwifery Student	8	13	4	7	+2	-7	-50.3%	-1	-16.1%	9
Nursing/ Midwifery other	7	8	6	6	-0	-2	-22.5%	-1	-13.8%	7
Nursing & Midwifery	732	741	729	733	+4	-9	-1.1%	+0	+0.1%	828
Therapy Professions	181	187	205	203	-2	+16	+8.8%	+22	+12.1%	232
Health Science/ Diagnostics	15	13	14	14	0	+1	+7.7%	-1	-6.7%	14
Social Care	689	740	796	810	+13	+70	+9.4%	+121	+17.5%	965
Social Workers	44	50	46	47	+1	-3	-5.2%	+3	+6.3%	55
Psychologists	53	64	63	61	-2	-3	-5.0%	+8	+15.3%	70
Pharmacy	2	2	2	2	0					2
H&SC, Other	19	18	17	17	-0	-2	-8.6%	-2	-11.7%	22
Health & Social Care Professionals	1,003	1,073	1,144	1,153	+9	+80	+7.4%	+150	+15.0%	1,360
Management (VIII & above)	37	41	47	47	+0	+5	+12.8%	+9	+25.0%	47
Administrative/ Supervisory (V to VII)	88	100	114	107	-7	+7	+6.7%	+19	+22.0%	118
Clerical (III & IV)	125	126	148	146	-2	+20	+15.6%	+21	+16.5%	177
Management & Administrative	250	268	309	300	-9	+32	+11.8%	+49	+19.7%	342
Support	196	145	144	144	-1	-1	-0.7%	-52	-26.5%	186
<i>Maintenance</i>	20	20	18	18	0	-2	-10.0%	-2	-10.0%	19
<i>Technical Services</i>	2	3	3	3	0			+1	+50.0%	3
Maintenance/ Technical	22	23	21	21	+0	-2	-8.7%	-1	-4.6%	22
General Support	218	168	165	165	-1	-3	-1.8%	-53	-24.3%	208
Health Care Assistants	869	911	868	875	+7	-36	-4.0%	+6	+0.7%	1,053
Care, other	97	102	94	100	+6	-1	-1.2%	+4	+3.7%	113
Patient & Client Care	966	1,013	962	975	+13	-37	-3.7%	+10	+1.0%	1,166

other Community Services

Nov 2021	WTE Dec 2019	WTE Dec 2020	WTE Oct 2021	WTE Nov 2021	WTE change since Oct 21	WTE change since Dec 20	% change since Dec 20	WTE change since Dec 19	% change since Dec 19	No. Nov 2021
Overall	5	6	6	6	-0	-0	-0.7%	+1	+19.4%	6
Management (VIII & above)	1	1	1	1	0					1
Administrative/ Supervisory (V to VII)	2	3	3	3	-0	-0	-0.3%	+1	+49.5%	3
Clerical (III & IV)	2	2	2	2	-0	-0	-1.5%	-0	-1.5%	2
Management & Administrative	5	6	6	6	-0	-0	-0.7%	+1	+19.4%	6

Social Care Disability Services Employment by Grade Group: Nov 2021

Nov 2021	WTE Dec 2019	WTE Dec 2020	WTE Oct 2021	WTE Nov 2021	WTE change since Oct 21	WTE change since Dec 20	% change since Dec 20	WTE change since Dec 19	% change since Dec 19	No. Nov 2021
Overall	18,303	18,944	19,449	19,507	+57	+562	+3.0%	+1,204	+6.6%	23,043
Consultant Paediatrics	3	3	2	2		-1	-29.2%	-1	-29.2%	4
Consultant Psychiatry	21	21	19	20	+0	-2	-8.2%	-1	-6.0%	26
Consultants	24	24	22	22	+0	-3	-10.9%	-2	-9.0%	30
Registrar	7	3	6	6	-0	+3	+99.7%	-1	-14.4%	6
Senior Registrar	2	3	2	2		-1	-33.3%			2
Specialist Registrar	4	2	1	1		-1	-50.0%	-3	-75.0%	1
Registrars	13	8	9	9	-0	+1	+12.4%	-4	-30.8%	9
Senior House Officer	7	9	9	8	-1	-1	-15.3%	+1	+9.5%	10
SHO/ Interns	7	9	9	8	-1	-1	-15.3%	+1	+9.5%	10
Other Medical	14	14	14	14	-0	-0	-0.1%	-0	-0.7%	22
Medical/ Dental, other	14	14	14	14	-0	-0	-0.1%	-0	-0.7%	22
Medical & Dental	58	56	54	53	-1	-3	-5.5%	-6	-9.6%	71
Clinical Nurse/ Midwife Manager	811	814	832	836	+3	+21	+2.6%	+25	+3.1%	903
Director Nursing/Midwifery, Assistant	41	46	42	43	+1	-3	-5.8%	+2	+5.4%	44
Director of Nursing/Midwifery	42	37	36	47	+12	+11	+28.6%	+5	+12.5%	49
Nurse/ Midwife Manager	894	897	910	926	+16	+29	+3.2%	+32	+3.6%	996
Advanced Nurse/ Midwife Practitioner	2	8	9	9	-0	+1	+12.3%	+7	+349.0%	9
Clinical Nurse/ Midwife Specialist	60	56	60	59	-1	+3	+4.5%	-1	-2.3%	66
Nurse/ Midwife Specialist & AN/MP	62	64	69	68	-1	+4	+5.5%	+6	+9.0%	75
Staff Nurse [Psychiatric]	83	53	194	197	+3	+145	+275.0%	+114	+136.4%	233
Staff Nurses [General/ Children's]	892	752	627	637	+10	-115	-15.3%	-255	-28.6%	738
Staff Nurse [Intellectual Disability]	1,597	1,788	1,752	1,763	+11	-25	-1.4%	+166	+10.4%	2,031
Staff Nurse/ Staff Midwife	2,572	2,593	2,573	2,597	+24	+4	+0.2%	+25	+1.0%	3,002
Public Health Nurse	6	7	10	12	+2	+5	+76.9%	+6	+94.1%	14
Public Health Nurse	6	7	10	12	+2	+5	+76.9%	+6	+94.1%	14
Pre-registration Nurse Intern (COVID-19)		32	2	1	-1	-31	-97.7%	+1	-100.0%	1
Pre-registration Nurse/ Midwife Intern	28	3	27	21	-6	+19	+752.4%	-7	-24.6%	37
Nursing/ Midwifery awaiting registration	14	13	9	7	-3	-6	-49.2%	-7	-52.2%	8
Nursing/ Midwifery Student	42	47	38	29	-9	-19	-39.4%	-13	-32.0%	46
Nursing Education/Clinical	21	23	21	21	+0	-2	-9.8%	-1	-2.9%	23
Other Nursing/ Midwifery	1	1	2	2		+1	+100.0%	+1	+100.0%	2
Nursing/ Midwifery other	22	24	23	23	+0	-1	-5.2%	+0	+1.7%	25
Nursing & Midwifery	3,599	3,632	3,623	3,654	+31	+22	+0.6%	+56	+1.6%	4,158
Dietitians	18	16	18	21	+2	+4	+26.5%	+2	+12.4%	26
Occupational Therapists	264	279	299	299	+0	+21	+7.4%	+35	+13.2%	337
Physiotherapists	189	193	199	195	-4	+2	+1.0%	+6	+3.0%	227
Speech & Language Therapists	293	307	306	310	+3	+2	+0.8%	+17	+5.8%	359
Therapy Professions	765	795	822	824	+2	+29	+3.7%	+60	+7.8%	949
Clinical Engineering	13	13	15	15	-0	+2	+15.2%	+2	+14.8%	15
Medical Science	4	4	4	4						4
Phlebotomists	1						-100.0%	-1	-100.0%	
Radiographers	1	1				-1	-100.0%	-1	-100.0%	
Clinical Measurement	1	2	2	2				+1	+100.0%	2
Health Science/ Diagnostics	20	20	21	21	-0	+1	+4.9%	+1	+4.6%	21
Social Care	2,595	2,789	2,945	2,996	+50	+206	+7.4%	+401	+15.4%	3,506
Social Workers	219	228	235	233	-1	+5	+2.3%	+15	+6.7%	271
Psychologists	204	229	243	242	-1	+12	+5.4%	+37	+18.3%	273
Pharmacy	7	6	7	8	+1	+2	+29.4%	+1	+15.1%	10
Counsellor Therapists	19	20	21	22	+0	+2	+10.2%	+3	+15.2%	26
Other Health & Social Care	51	45	38	39	+2	-6	-13.3%	-11	-22.7%	52

Nov 2021	WTE Dec 2019	WTE Dec 2020	WTE Oct 2021	WTE Nov 2021	WTE change since Oct 21	WTE change since Dec 20	% change since Dec 20	WTE change since Dec 19	% change since Dec 19	No. Nov 2021
Overall	18,303	18,944	19,449	19,507	+57	+562	+3.0%	+1,204	+6.6%	23,043
Play Therapists/ Specialists	15	11	11	11	+0	+0	+4.3%	-4	-26.6%	15
H&SC, Other	85	76	70	72	+2	-4	-4.6%	-13	-15.0%	93
Health & Social Care Professionals	3,894	4,144	4,342	4,396	+54	+252	+6.1%	+502	#####	5,123
Executive Management	31	36	38	38	+0	+2	+5.4%	+7	+23.3%	38
Senior Management (VIII & GM)	149	168	180	177	-3	+9	+5.6%	+28	+19.1%	180
Management (VIII & above)	180	204	218	215	-3	+11	+5.5%	+36	+19.8%	218
Middle Management (V-VII)	464	511	553	546	-7	+35	+6.8%	+82	+17.7%	593
Other Administrative	15	16	14	14		-2	-11.5%	-1	-6.4%	14
Administrative/ Supervisory (V to VII)	479	527	567	560	-7	+33	+6.3%	+81	+16.9%	607
General Administrative (III & IV)	660	685	710	711	+1	+25	+3.7%	+50	+7.6%	861
Clerical (III & IV)	660	685	710	711	+1	+25	+3.7%	+50	+7.6%	861
Management & Administrative	1,319	1,416	1,495	1,486	-9	+70	+4.9%	+167	#####	1,686
Catering	98	96	84	82	-1	-14	-14.3%	-16	-16.0%	100
Household Services	420	406	391	388	-3	-17	-4.3%	-31	-7.4%	563
Other Labs & Associated	1	1	1	1						1
Other Support	188	136	150	148	-2	+13	+9.3%	-40	-21.2%	229
Portering	28	24	17	17	-0	-7	-29.1%	-10	-37.5%	24
Support	734	663	643	637	-6	-26	-3.9%	-97	-13.2%	917
Maintenance	116	121	119	119	+0	-2	-1.9%	+3	+2.5%	132
Technical Services	8	11	15	15		+4	+35.1%	+7	+85.2%	15
Maintenance/ Technical	124	132	134	134	+0	+2	+1.2%	+10	+7.8%	147
General Support	858	795	777	771	-6	-24	-3.0%	-87	-10.2%	1,064
HCA, Nurse's Aide, etc.	6,817	7,091	7,306	7,293	-13	+202	+2.8%	+476	+7.0%	8,651
Health & Social Care Assistants	10	11	13	12	-1	+1	+8.6%	+2	+25.4%	16
Health Care Assistants	6,826	7,102	7,319	7,305	-14	+203	+2.9%	+479	+7.0%	8,667
Home Help	109	94	84	81	-3	-13	-13.6%	-28	-25.5%	232
Care, other	1,639	1,706	1,755	1,761	+6	+55	+3.2%	+122	+7.4%	2,042
Patient & Client Care	8,574	8,902	9,158	9,147	-11	+245	+2.8%	+573	+6.7%	10,941

Employment by WTE, Headcount, Gender, Full-Time /Part-Time etc.: Nov 2021

Social Care Disability Services Staff Group	WTE	Headcount	WTE: no.	% Male	% female	Male WTE: no.	Female WTE: no.	% Total Perm	% Male Perm	% Female Perm	% Total Full Time	% Total Part Time	% Male FT	% Female FT
Overall	19,507	23,043	1.18	19.2%	80.8%	1.11	1.20	88.2%	87.2%	88.4%	58.1%	41.9%	69.1%	55.4%
Consultant Paediatrics	2	4	1.85		100.0%		1.85	75.0%	75.0%	75.0%	25.0%	75.0%		25.0%
Consultant Psychiatry	20	26	1.33	26.9%	73.1%	1.22	1.37	76.9%	76.9%	84.2%	57.7%	42.3%	71.4%	52.6%
Consultants	22	30	1.38	23.3%	76.7%	1.22	1.43	76.7%	57.1%	82.6%	53.3%	46.7%	71.4%	47.8%
Registrar	6	6	1.00	50.0%	50.0%	1.00	1.00	0.0%	0.0%	0.0%	100.0%	0.0%	100.0%	100.0%
Senior Registrar	2	2	1.00		100.0%		1.00	0.0%	0.0%	0.0%	100.0%	0.0%		100.0%
Specialist Registrar	1	1	1.00		100.0%		1.00	0.0%	0.0%	0.0%	100.0%	0.0%		100.0%
Registrars	9	9	1.00	33.3%	66.7%	1.00	1.00	0.0%	0.0%	0.0%	100.0%	0.0%	100.0%	100.0%
Senior House Officer	8	10	1.31	30.0%	70.0%	1.35	1.30	0.0%	0.0%	0.0%	100.0%	0.0%	100.0%	100.0%
SHO/ Interns	8	10	1.31	30.0%	70.0%	1.35	1.30	0.0%	0.0%	0.0%	100.0%	0.0%	100.0%	100.0%
Other Medical	14	22	1.54	45.5%	54.5%	1.29	1.84	90.9%	90.9%	100.0%	40.9%	59.1%	50.0%	33.3%
Medical/ Dental, other	14	22	1.54	45.5%	54.5%	1.29	1.84	90.9%	80.0%	100.0%	40.9%	59.1%	50.0%	33.3%
Medical & Dental	53	71	1.35	32.4%	67.6%	1.23	1.41	60.6%	52.2%	64.6%	62.0%	38.0%	69.6%	58.3%
Clinical Nurse/ Midwife Manager	836	903	1.08	12.8%	87.2%	1.03	1.09	94.8%	94.8%	94.7%	81.4%	18.6%	97.4%	79.0%
Director Nursing/Midwifery, Assistant	43	44	1.02	18.2%	81.8%	1.00	1.03	97.7%	97.7%	97.2%	95.5%	4.5%	100.0%	94.4%
Director of Nursing/Midwifery	47	49	1.03	10.2%	89.8%	1.00	1.04	89.8%	89.8%	88.6%	93.9%	6.1%	100.0%	93.2%
Nurse/ Midwife Manager	926	996	1.08	13.0%	87.0%	1.02	1.08	94.7%	96.1%	94.5%	82.6%	17.4%	97.7%	80.4%
Advanced Nurse/ Midwife Practitioner	9	9	1.00	33.3%	66.7%	1.00	1.00	88.9%	88.9%	83.3%	100.0%	0.0%	100.0%	100.0%
Clinical Nurse/ Midwife Specialist	59	66	1.13	6.1%	93.9%	1.02	1.14	95.5%	95.5%	95.2%	59.1%	40.9%	100.0%	56.5%
Nurse/ Midwife Specialist & AN/MP	68	75	1.11	9.3%	90.7%	1.01	1.12	94.7%	100.0%	94.1%	64.0%	36.0%	100.0%	60.3%
Staff Nurse [Psychiatric]	197	233	1.18	11.6%	88.4%	1.10	1.19	90.1%	90.1%	90.8%	63.5%	36.5%	81.5%	61.2%
Staff Nurses [General/ Children's]	637	738	1.16	13.8%	86.2%	1.06	1.18	94.6%	94.6%	94.3%	66.1%	33.9%	87.3%	62.7%
Staff Nurse [Intellectual Disability]	1,763	2,031	1.15	8.6%	91.4%	1.07	1.16	95.2%	95.2%	95.3%	66.9%	33.1%	82.8%	65.4%
Staff Nurse/ Staff Midwife	2,597	3,002	1.16	10.1%	89.9%	1.07	1.17	94.7%	94.4%	94.7%	66.4%	33.6%	84.2%	64.4%
Public Health Nurse	12	14	1.15		100.0%		1.15	100.0%	100.0%	100.0%	64.3%	35.7%		64.3%
Public Health Nurse	12	14	1.15		100.0%		1.15	100.0%		100.0%	64.3%	35.7%		64.3%
Pre-registration Nurse Intern (COVID-19)	1	1	1.39		100.0%		1.39	0.0%	0.0%	0.0%	0.0%	100.0%		0.0%
Pre-registration Nurse/ Midwife Intern	21	37	1.74	8.1%	91.9%	1.22	1.80	2.7%	2.7%	2.9%	89.2%	10.8%	66.7%	91.2%
Nursing/ Midwifery awaiting registration	7	8	1.21	12.5%	87.5%	1.25	1.20	25.0%	25.0%	28.6%	100.0%	0.0%	100.0%	100.0%
Nursing/ Midwifery Student	29	46	1.61	8.7%	91.3%	1.23	1.65	6.5%	0.0%	7.1%	89.1%	10.9%	75.0%	90.5%

Nursing Education/Clinical	21	23	1.12		100.0%		1.12	95.7%	95.7%	95.7%	65.2%	34.8%		65.2%
Other Nursing/ Midwifery	2	2	1.00	50.0%	50.0%	1.00	1.00	100.0%	100.0%	100.0%	100.0%	0.0%	100.0%	100.0%
Nursing/ Midwifery other	23	25	1.11	4.0%	96.0%	1.00	1.11	96.0%	100.0%	95.8%	68.0%	32.0%	100.0%	66.7%
Nursing & Midwifery	3,654	4,158	1.14	10.7%	89.3%	1.06	1.15	93.7%	94.1%	93.7%	70.5%	29.5%	88.3%	68.4%
Health & Social Care	4,396	5,123	1.17	14.9%	85.1%	1.09	1.18	90.5%	92.1%	90.3%	57.2%	42.8%	70.4%	54.9%
Executive Management	38	38	1.00	31.6%	68.4%	1.00	1.00	92.1%	92.1%	96.2%	100.0%	0.0%	100.0%	100.0%
Senior Management (VIII & GM)	177	180	1.02	31.7%	68.3%	1.00	1.02	96.1%	96.1%	96.7%	95.6%	4.4%	100.0%	93.5%
Management (VIII & above)	215	218	1.01	31.7%	68.3%	1.00	1.02	95.4%	92.8%	96.6%	96.3%	3.7%	100.0%	94.6%
Middle Management (V-VII)	546	593	1.09	21.2%	78.8%	1.05	1.10	93.9%	93.9%	94.2%	79.3%	20.7%	88.9%	76.7%
Other Administrative	14	14	1.00	14.3%	85.7%	1.00	1.00	100.0%	100.0%	100.0%	100.0%	0.0%	100.0%	100.0%
Administrative/ Supervisory (V to VII)	560	607	1.08	21.1%	78.9%	1.05	1.09	94.1%	93.0%	94.4%	79.7%	20.3%	89.1%	77.2%
General Administrative (III & IV)	711	861	1.21	10.3%	89.7%	1.13	1.22	89.5%	89.5%	90.3%	58.5%	41.5%	76.4%	56.5%
Clerical (III & IV)	711	861	1.21	10.3%	89.7%	1.13	1.22	89.5%	83.1%	90.3%	58.5%	41.5%	76.4%	56.5%
Management & Administrative	1,486	1,686	1.13	17.0%	83.0%	1.06	1.15	91.9%	89.9%	92.4%	71.1%	28.9%	87.8%	67.6%
Catering	82	100	1.22	31.0%	69.0%	1.07	1.30	98.0%	98.0%	100.0%	57.0%	43.0%	77.4%	47.8%
Household Services	388	563	1.45	16.2%	83.8%	1.50	1.44	87.6%	87.6%	90.3%	35.5%	64.5%	57.1%	31.4%
Other Labs & Associated	1	1	1.00		100.0%		1.00	100.0%	100.0%	100.0%	100.0%	0.0%		100.0%
Other Support	148	229	1.54	52.8%	47.2%	1.29	1.99	92.1%	92.1%	100.0%	28.8%	71.2%	47.9%	7.4%
Portering	17	24	1.39	95.8%	4.2%	1.40	1.25	87.5%	87.5%	100.0%	41.7%	58.3%	43.5%	0.0%
Support	637	917	1.44	29.0%	71.0%	1.33	1.49	89.9%	82.3%	92.9%	36.4%	63.6%	54.1%	29.2%
Maintenance	119	132	1.11	87.9%	12.1%	1.10	1.17	93.9%	93.9%	100.0%	75.8%	24.2%	78.4%	56.3%
Technical Services	15	15	1.00	80.0%	20.0%	1.00	1.00	93.3%	93.3%	100.0%	100.0%	0.0%	100.0%	100.0%
Maintenance/ Technical	134	147	1.10	87.1%	12.9%	1.09	1.14	93.9%	93.0%	100.0%	78.2%	21.8%	80.5%	63.2%
General Support	771	1,064	1.38	37.0%	63.0%	1.24	1.48	90.4%	85.8%	93.1%	42.2%	57.8%	62.7%	30.1%
HCA, Nurse's Aide, etc.	7,293	8,651	1.19	23.1%	76.9%	1.11	1.21	84.2%	84.2%	84.0%	52.4%	47.6%	62.8%	49.3%
Health & Social Care Assistants	12	16	1.33	6.3%	93.8%	1.00	1.36	93.8%	93.8%	93.3%	43.8%	56.3%	100.0%	40.0%
Health Care Assistants	7,305	8,667	1.19	23.1%	76.9%	1.11	1.21	84.2%	84.8%	84.0%	52.4%	47.6%	62.8%	49.3%
Home Help	81	232	2.87	8.6%	91.4%	4.25	2.78	55.6%	55.0%	55.7%	2.2%	97.8%	0.0%	2.4%
Care, other	1,761	2,042	1.16	24.3%	75.7%	1.11	1.18	88.1%	85.9%	88.7%	62.8%	37.2%	72.4%	59.8%
Patient & Client Care	9,147	10,941	1.20	23.0%	77.0%	1.12	1.22	84.3%	84.7%	84.2%	53.3%	46.7%	64.2%	50.0%

Employment by WTE, Headcount, Gender, Full-Time /Part-Time etc.: Nov 2021

Social Care Disability Services CHO	WTE	Headcount	WTE: no.	% Male	% female	Male WTE: no.	Female WTE: no.	% Total Perm	% Male Perm	% Female Perm	% Total Full Time	% Total Part Time	% Male FT	% Female FT
Overall	19,507	23,043	1.18	19.2%	80.8%	1.11	1.20	88.2%	87.2%	88.4%	58.1%	41.9%	69.1%	55.4%
CHO 1	1,584	1,772	1.12	20.6%	79.4%	1.06	1.14	90.7%	90.7%	91.0%	77.8%	22.2%	88.8%	74.9%
CHO 2	1,558	1,931	1.24	23.7%	76.3%	1.21	1.25	81.5%	81.5%	81.7%	44.3%	55.7%	49.8%	42.6%
CHO 3	1,978	2,330	1.18	12.4%	87.6%	1.13	1.19	83.2%	83.2%	83.5%	40.4%	59.6%	44.3%	39.8%
CHO 4	2,614	3,136	1.20	20.3%	79.7%	1.11	1.22	84.0%	84.0%	84.7%	66.5%	33.5%	74.5%	64.4%
CHO 5	1,645	1,937	1.18	19.2%	80.8%	1.10	1.20	86.2%	86.2%	86.8%	53.6%	46.4%	63.6%	51.2%
CHO 6	1,236	1,399	1.13	21.5%	78.5%	1.07	1.15	94.2%	94.2%	94.8%	66.3%	33.7%	81.7%	62.0%
CHO 7	3,269	3,865	1.18	22.8%	77.2%	1.12	1.20	88.7%	88.7%	88.9%	67.7%	32.3%	79.2%	64.3%
CHO 8	2,269	2,733	1.20	20.0%	80.0%	1.12	1.23	95.2%	95.2%	95.1%	48.4%	51.6%	54.8%	46.8%
CHO 9	3,348	3,934	1.18	14.6%	85.4%	1.09	1.19	89.9%	89.9%	89.7%	56.3%	43.7%	73.4%	53.4%
other Community Services	6	6	1.02	16.7%	83.3%	1.00	1.02	83.3%	83.3%	80.0%	83.3%	16.7%	100.0%	80.0%

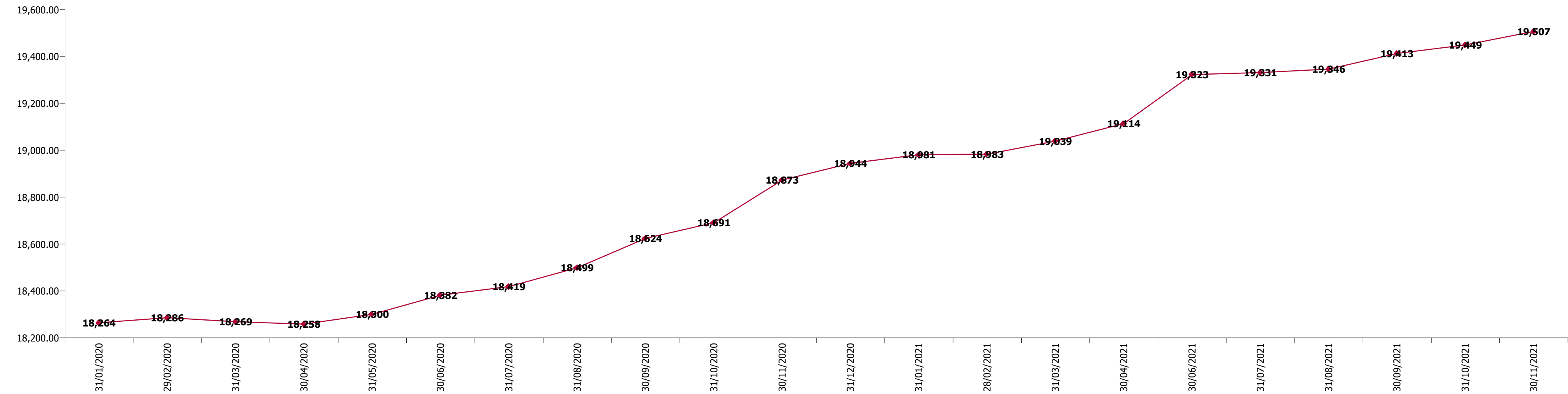
Summary Staff Movement: November 2021

Month-on-month
Summary

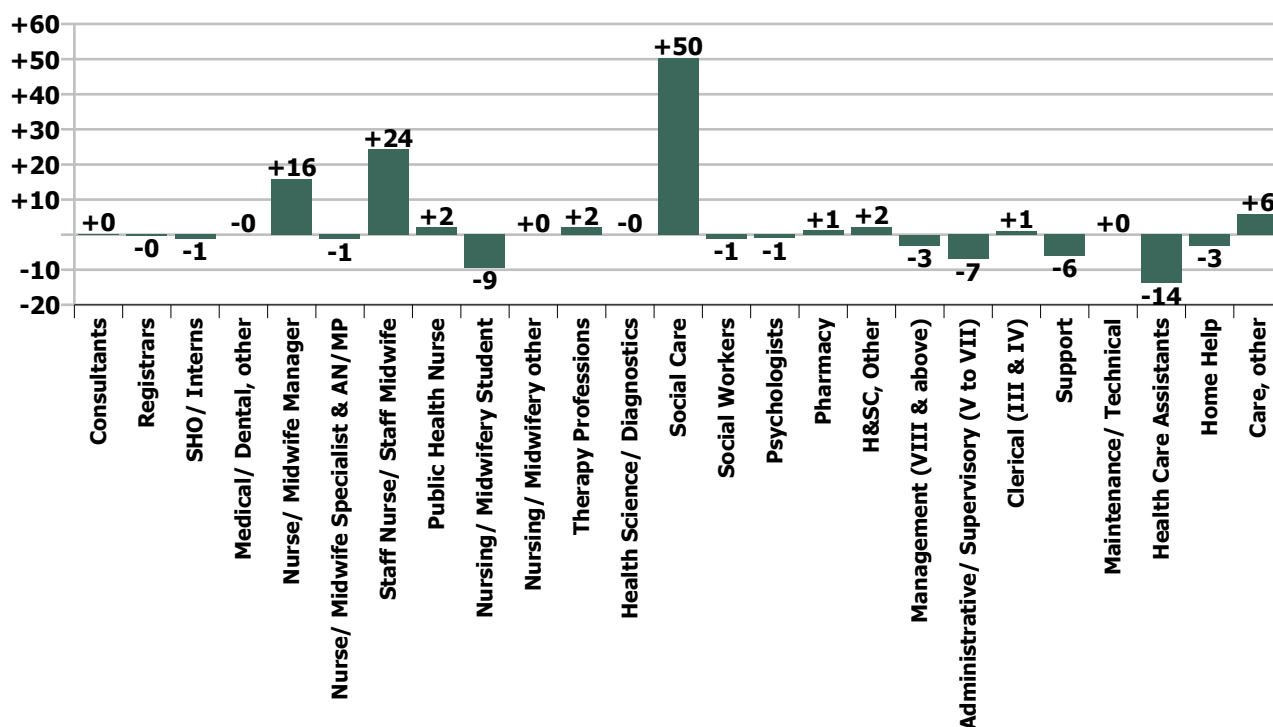
WTE change since Oct 21	% change since Oct 21	overall	Consultants	Registrars	SHO/ Interns	Medical/ Dental, other	Medical & Dental	Nurse/ Midwife Manager	Nurse/ Midwife Specialist & AN/MP	Staff Nurse/ Staff Midwife	Public Health Nurse	Nursing/ Midwifery Student	Nursing/ Midwifery other	Nursing & Midwifery	Therapy Professions	Health Science/ Diagnostics	Social Care	Social Workers	Psychologists	Pharmacy	H&SC, Other	Health & Social Care Professionals	Management (VIII & above)	Administrativ e/ Supervisory (V to VII)	Clerical (III & IV)	Management & Administrative	General Support	Health Care Assistants	Home Help	Care, other	Patient & Client Care
Overall	+0.3%	+57	+0	-0	-1	-0	-1	+16	-1	+24	+2	-9	+0	+31	+2	-0	+50	-1	-1	+1	+2	+54	-3	-7	+1	-9	-6	-14	-3	+6	-11
CHO 1	+0.1%	+1				-0	-0	+1	-1	+2	+2	-5	-0	-0	-0		-0	-1	+0			-0	-1	-2	-0	-4	-0	+5	+0	-0	+5
CHO 2	+0.8%	+12						+0	-0	+5				+5	+3		+1	+2	-1		+1	+6	-1	+2	+1	+2	+1	+1	-2	-1	
CHO 3	-0.1%	-2	-0				-0	+1		+1		-1		+0	-1	-0	+5	-0	+0		+0	+4	-1	+1	-1	-0	-0	-3		-3	-6
CHO 4	+0.3%	+9	-0				-0	+3		+8		+0		+11	+1		+2	-1	-1		+1	+2	-1	+3	+2	+4	+1	-15		+6	-9
CHO 5	+0.1%	+1						-3	-0	+13	+0	-2	-0	+8	-1		+7	-1	+1		+1	+7	+0	-4	+1	-3	-1	-11	-1	+2	-10
CHO 6	+0.7%	+9	-0		-0		-0	+1		-1				-0	-2		+11	-0	+0		-0	+9	+0	-3	+0	-3	-2	+4		+0	+5
CHO 7	+0.6%	+20		-0	-1		-2	+2		+6		-2		+6	+7		+8	+0	+0	+1		+17	+0	+2	+0	+2	-3	+5	-1	-5	-1
CHO 8	-0.4%	-9						+0		-1	-0	-2	+0	-3	-3		+4	-1	+0		-0	+0	+0	+1	+1	+2	-1	-7	-1	+1	-7
CHO 9	+0.5%	+17	+1	+0			+1	+11	-0	-9		+2	-0	+4	-2		+13	+1	-2		-0	+9	+0	-7	-2	-9	-1	+7		+6	+13
other Community Services	-0.7%	-0																					-0	-0	-0	-0					
		+0.3%	+1.1%	-3.7%	-14.5%	-0.1%	-2.6%	+1.7%	-2.0%	+0.9%	+21.3%	-24.8%	+0.1%	+0.9%	+0.3%	-0.1%	+1.7%	-0.5%	-0.4%	+17.5%	+3.1%	+1.2%	-1.4%	-1.2%	+0.1%	-0.6%	-0.8%	-0.2%	-3.9%	+0.3%	-0.1%

Year-on-year Summary

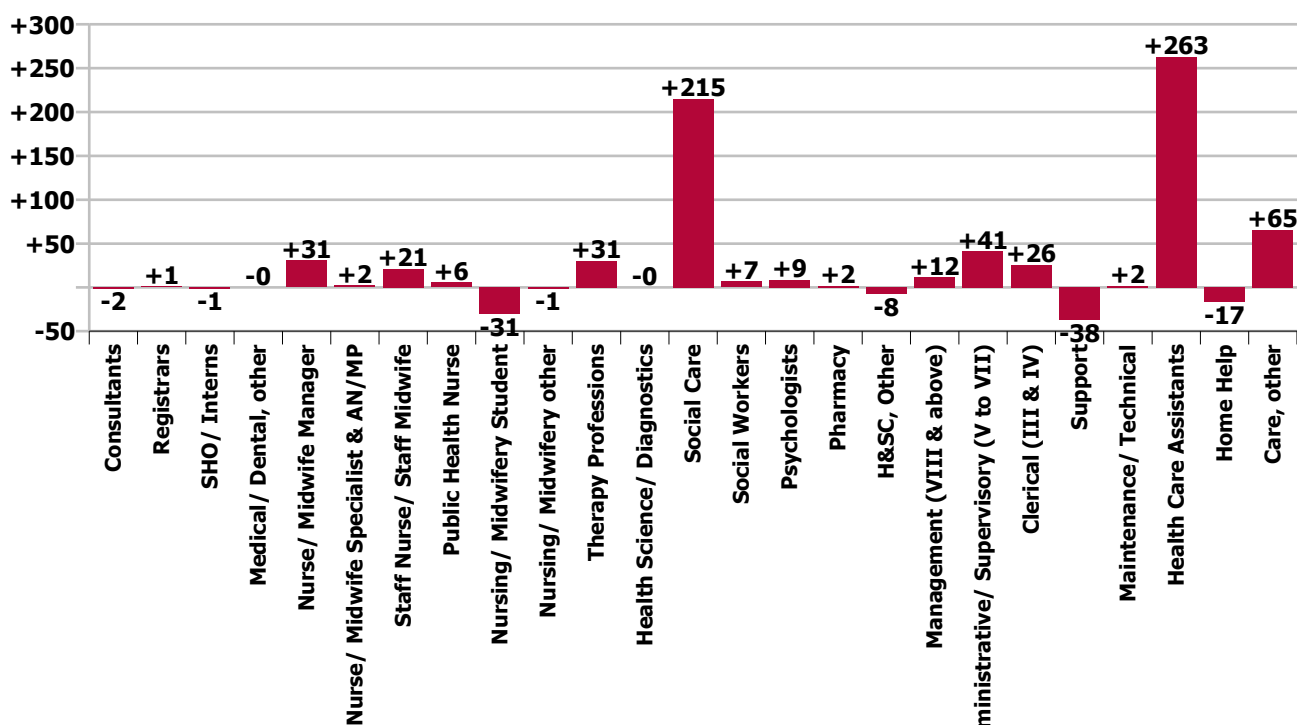
WTE change since Nov 20	% change since Nov 20	overall	Consultants	Registrars	SHO/ Interns	Medical/ Dental, other	Medical & Dental	Nurse/ Midwife Manager	Nurse/ Midwife Specialist & AN/MP	Staff Nurse/ Staff Midwife	Public Health Nurse	Nursing/ Midwifery Student	Nursing/ Midwifery other	Nursing & Midwifery	Therapy Professions	Health Science/ Diagnostics	Social Care	Social Workers	Psychologists	Pharmacy	H&SC, Other	Health & Social Care Professionals	Management (VIII & above)	Administrative/ Supervisory (V to VII)	Clerical (III & IV)	Management & Administrative	General Support	Health Care Assistants	Home Help	Care, other	Patient & Client Care
Overall	+3.4%	+634	-2	+1	-1	-0	-2	+31	+2	+21	+6	-31	-1	+27	+31	-0	+215	+7	+9	+2	-8	+255	+12	+41	+26	+79	-36	+263	-17	+65	+311
CHO 1	+1.8%	+27				-0	-0	+5	-0	+19	+2	-13	-3	+10	+4		-0	-1	+4		-2	+6	-1	+9	-2	+6	-16	+14	-0	+9	+22
CHO 2	+3.5%	+53						-4	+1	+2		-1		-1	+1		+25	+4	-1		-5	+24		+5	-0	+5	+1	+26		-2	+24
CHO 3	+2.6%	+50	-0				-0	+7	-3	-16		-1		-13	-6	+1	+13	+2	-1		-0	+9	+0	-2	-1	-3	+2	+40		+15	+55
CHO 4	+2.7%	+68	-0				-0	+3	-1	+2		-9		-5	+16		+6	+0	-2		-0	+20	+0	-4	+2	-1	-2	+39		+17	+56
CHO 5	+6.8%	+104	+0				+0	-1	+1	+10	+4	-6	+1	+9	+5		+15	+1	+2		+2	+25	+1	+12	+4	+18	-1	+41	-13	+26	+54
CHO 6	+0.2%	+2	-0		+1		+1	+0		-2				-2	-6		+28	-0	+1		-0	+22	-2	+1	-6	-7	-6	+1	-7	-6	
CHO 7	+6.2%	+192	-1	-1	-0		-2	+17		+39			+1	+57	+10	-1	+41	+2	+4	+2		+58	+3	+8	+6	+17	-3	+58	-2	+8	+65
CHO 8	+3.4%	+76	-1				-1	-6	-0	-15	+0	-4	+2	-23	-6		+21	+1	+3		-1	+19	+3	+4	+3	+10	-6	+81	-2	-2	+77
CHO 9	+1.9%	+62	+0	+2	-2		+0	+8	+6	-19		+2	-2	-5	+12		+66	-2	-2		-2	+73	+7	+8	+20	+35	-4	-39		+2	-37
other Community Services	-0.7%	-0																						-0	-0	-0					
	+3.4%		-7.8%	+12.8%	-14.0%	-0.8%	-3.9%	+3.4%	+3.4%	+0.8%	+84.4%	-51.7%	-6.0%	+0.7%	+3.8%	-0.1%	+7.7%	+3.0%	+3.7%	+32.0%	-9.9%	+6.1%	+5.7%	+7.9%	+3.8%	+5.6%	-4.4%	+3.7%	-17.4%	+3.9%	+3.5%



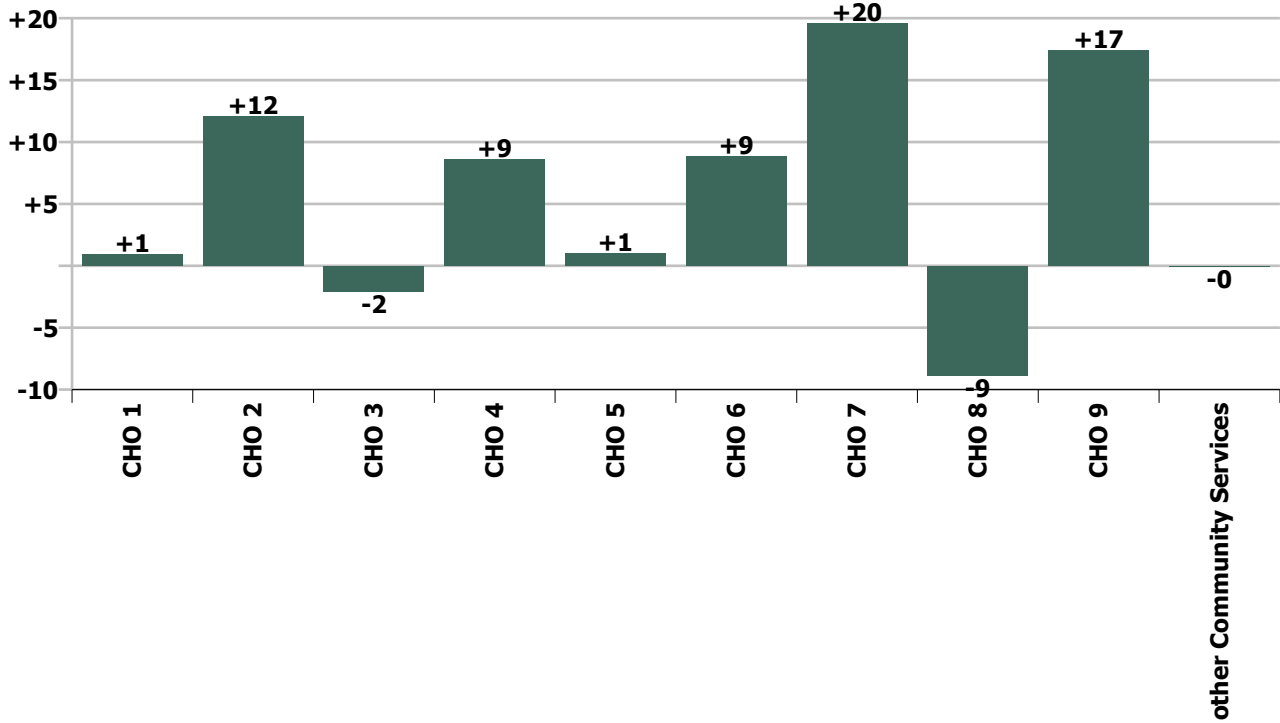
Staff Group change since: Oct 2021



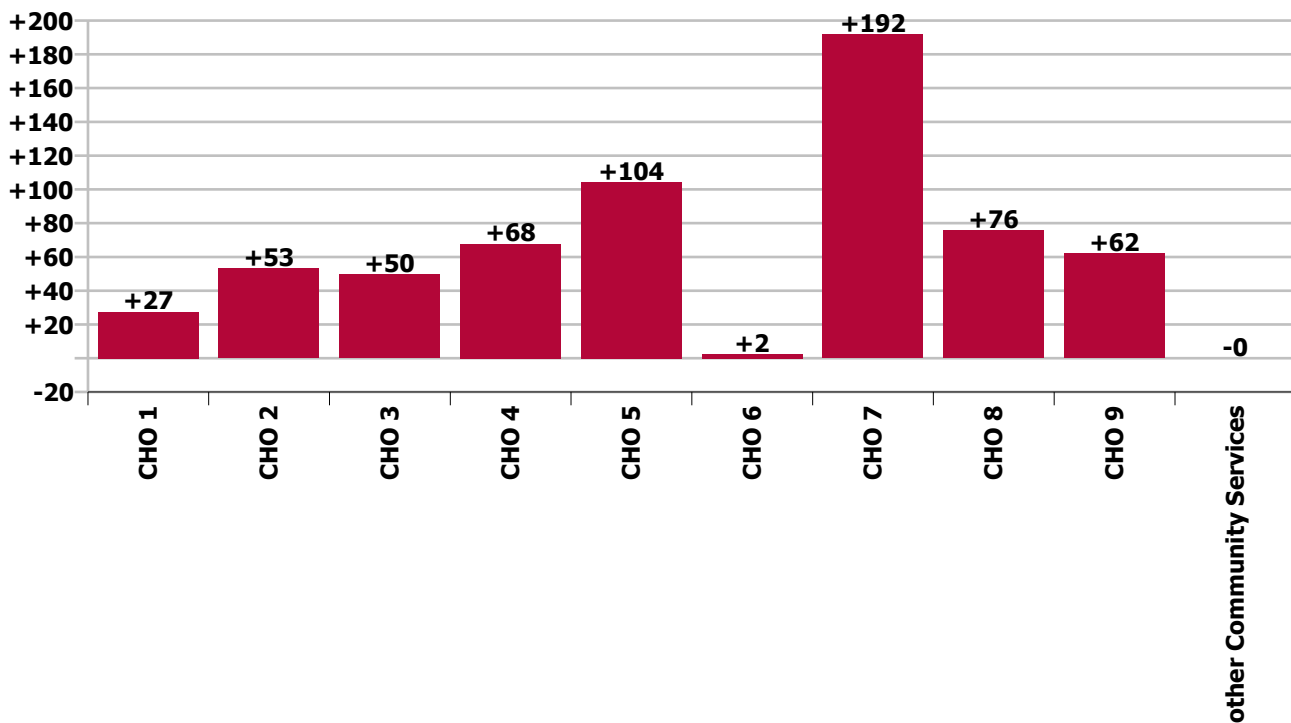
Staff Group change since: Nov 2020



CHO change since: Oct 2021



CHO change since: Nov 2020



Longitudinal Employment Levels by Grade Group - Dec 2016 to Nov 2021

Nov 2021 (Dec 2015 figure: 15,715)	WTE Nov 2021	WTE change since Dec 16	WTE change since Dec 17	WTE change since Dec 18	WTE change since Dec 19	WTE change since Dec 20	WTE change since Oct 21	% change since Dec 16	% change since Dec 17	% change since Dec 18	% change since Dec 19	% change since Dec 20	% change since Oct 21
Overall	19,507	+2,753	+2,110	+1,687	+1,204	+562	+57	+16.4%	+12.1%	+9.5%	+6.6%	+3.0%	+0.3%
Consultant Medicine		-2						-100.0%	-100.0%	-100.0%	-100.0%	-100.0%	-100.0%
Consultant Paediatrics	2	-1	-1	-1	-1	-1		-32.7%	-31.2%	-29.2%	-29.2%	-29.2%	
Consultant Psychiatry	20	-2	-3	+2	-1	-2	+0	-7.3%	-14.3%	+9.4%	-6.0%	-8.2%	+1.2%
Consultant Surgery		-0						-100.0%	-100.0%	-100.0%	-100.0%	-100.0%	-100.0%
Consultants	22	-4	-4	+1	-2	-3	+0	-16.4%	-16.3%	+3.8%	-9.0%	-10.9%	+1.1%
Registrar	6	-0	-0	+1	-1	+3	-0	-0.2%	-0.2%	+12.6%	-14.4%	+99.7%	-5.5%
Senior Registrar	2		-1			-1			-33.3%			-33.3%	
Specialist Registrar	1	-1	-3		-3	-1		-50.0%	-75.0%		-75.0%	-50.0%	
Registrars	9	-1	-4	+1	-4	+1	-0	-10.1%	-30.8%	+8.1%	-30.8%	+12.4%	-3.7%
Senior House Officer	8	+2	+1	+1	+1	-1	-1	+27.0%	+8.9%	+9.6%	+9.5%	-15.3%	-14.5%
SHO/ Interns	8	+2	+1	+1	+1	-1	-1	+27.0%	+8.9%	+9.6%	+9.5%	-15.3%	-14.5%
Dentists								-100.0%	-100.0%	-100.0%	-100.0%	-100.0%	-100.0%
Other Medical	14	-1	+0	+0	-0	-0	-0	-3.9%	+0.1%	+1.0%	-0.7%	-0.1%	-0.1%
Medical/ Dental, other	14	-1	+0	+0	-0	-0	-0	-3.9%	+0.1%	+1.0%	-0.7%	-0.1%	-0.1%
Medical & Dental	53	-4	-8	+2	-6	-3	-1	-7.5%	-12.6%	+4.5%	-9.6%	-5.5%	-2.6%
Clinical Nurse/ Midwife Manager	836	+24	+27	+27	+25	+21	+3	+3.0%	+3.4%	+3.4%	+3.1%	+2.6%	+0.4%
Director Nursing/Midwifery, Assistant	43	+1	+6	+5	+2	-3	+1	+1.7%	+16.0%	+13.2%	+5.4%	-5.8%	+2.1%
Director of Nursing/Midwifery	47	+4	+2	+9	+5	+11	+12	+8.7%	+4.3%	+25.0%	+12.5%	+28.6%	+32.1%
Nurse/ Midwife Manager	926	+29	+35	+42	+32	+29	+16	+3.2%	+3.9%	+4.7%	+3.6%	+3.2%	+1.7%
Advanced Nurse/ Midwife Practitioner	9	+8	+7	+7	+7	+1	-0	+798.0%	+349.0%	+349.0%	+349.0%	+12.3%	-0.2%
Clinical Nurse/ Midwife Specialist	59	-12	-9	-8	-1	+3	-1	-17.5%	-13.8%	-11.7%	-2.3%	+4.5%	-2.2%
Nurse/ Midwife Specialist & AN/MP	68	-4	-2	-1	+6	+4	-1	-6.1%	-3.5%	-1.1%	+9.0%	+5.5%	-2.0%
Staff Nurse [Psychiatric]	197	+113	+127	+126	+114	+145	+3	+132.8%	+180.2%	+178.4%	+136.4%	+275.0%	+1.8%
Staff Nurses [General/ Children's]	637	-296	-287	-231	-255	-115	+10	-31.8%	-31.1%	-26.6%	-28.6%	-15.3%	+1.6%
Enhanced Nurse (Intellectual Disability)	399	+399	+399	+399	+399			-100.0%	-100.0%	-100.0%	-100.0%		
Enhanced Nurse, Senior (Intellectual Disability)	308	+308	+308	+308	+308			-100.0%	-100.0%	-100.0%	-100.0%		
Staff Nurse, Dual Qualified (Intellectual D	2	-1	-119	-4	-3			-31.1%	-98.7%	-73.0%	-62.6%		
Staff Nurse - Intellectual Disability	887	-558	-423	-495	-422			-38.6%	-32.3%	-35.8%	-32.3%		

Nov 2021 (Dec 2015 figure: 15,715)	WTE Nov 2021	WTE change since Dec 16	WTE change since Dec 17	WTE change since Dec 18	WTE change since Dec 19	WTE change since Dec 20	WTE change since Oct 21	% change since Dec 16	% change since Dec 17	% change since Dec 18	% change since Dec 19	% change since Dec 20	% change since Oct 21
Overall	19,507	+2,753	+2,110	+1,687	+1,204	+562	+57	+16.4%	+12.1%	+9.5%	+6.6%	+3.0%	+0.3%
Staff Nurse, Senior (Dual Qualified Intelle		-2	-3	-2	-3			-100.0%	-100.0%	-100.0%	-100.0%		
Staff Nurse, Senior (Intellectual Disability)	167	-109	-102	-127	-113			-39.4%	-38.0%	-43.2%	-40.4%		
Staff Nurse [Intellectual Disability]	1,763	+38	+60	+79	+166	-25	+11	+2.2%	+3.5%	+4.7%	+10.4%	-1.4%	+0.6%
Staff Nurse, Intellectual Disability (Gradu								-100.0%	-100.0%	-100.0%	-100.0%		
Graduate Nursing/ Midwifery								-100.0%	-100.0%	-100.0%	-100.0%	-100.0%	-100.0%
Staff Nurse/ Staff Midwife	2,597	-146	-100	-26	+25	+4	+24	-5.3%	-3.7%	-1.0%	+1.0%	+0.2%	+0.9%
Public Health Nurse	12	+6	+6	+5	+6			+87.3%	+99.5%	+81.7%	+94.1%		
Public Health Nurse	12	+6	+6	+5	+6	+5	+2	+87.3%	+99.5%	+81.7%	+94.1%	+76.9%	+21.3%
Public Health Nurse	12	+6	+6	+5	+6	+5	+2	+87.3%	+99.5%	+81.7%	+94.1%	+76.9%	+21.3%
Student Intellectual Disability Nursing Int	1	+1	+1	+1	+1			-100.0%	-100.0%	-100.0%	-100.0%		
Pre-registration Nurse Intern (COVID-19)	1	+1	+1	+1	+1	-31	-1	-100.0%	-100.0%	-100.0%	-100.0%	-97.7%	-56.1%
Student General Nursing Intern (pre-registration)								-100.0%	-100.0%	-100.0%	-100.0%		
Student Intellectual Disability Nursing Int	20	+9	+9	-15	-8			+84.6%	+72.3%	-41.7%	-28.1%		
Student Psychiatric Nursing Intern (pre-re	1		+1	+1	+1				-100.0%	-100.0%	-100.0%		
Pre-registration Nurse/ Midwife Intern	21	+9	+10	-14	-7	+19	-6	+77.6%	+80.7%	-38.8%	-24.6%	+752.4%	-21.2%
Staff Midwife (awaiting-registration)	1	+1	+1	+1	+1			-100.0%	-100.0%	-100.0%	-100.0%		
Staff Nurse, General (awaiting-registration)					-2			-100.0%	-100.0%	-100.0%	-100.0%		
Staff Nurse, Intellectual Disability (awaitin					-11			-100.0%	-100.0%	-100.0%	-100.0%		
Staff Nurse, Psychiatric (awaiting-registration)	6	+6	+6	+6	+5			-100.0%	-100.0%	-100.0%	+463.0%		
Nursing/ Midwifery awaiting registration	7	+7	+7	+7	-7	-6	-3	-100.0%	-100.0%	-100.0%	-52.2%	-49.2%	-29.8%
Nursing/ Midwifery Student	29	+17	+17	-6	-13	-19	-9	+138.7%	+142.9%	-17.7%	-32.0%	-39.4%	-24.8%
Nursing Education/Clinical	21	-1	-1	-1	-1	-2	+0	-3.2%	-2.5%	-2.8%	-2.9%	-9.8%	+0.1%
Other Nursing/ Midwifery	2	-3	-3	+1	+1	+1		-60.0%	-60.0%	+100.0%	+100.0%	+100.0%	
Nursing/ Midwifery other	23	-4	-4	+0	+0	-1	+0	-14.0%	-13.5%	+1.8%	+1.7%	-5.2%	+0.1%
Nursing & Midwifery	3,654	-103	-48	+15	+56	+22	+31	-2.7%	-1.3%	+0.4%	+1.6%	+0.6%	+0.9%
Dietitians	21	+8	+9	+7	+2	+4	+2	+57.7%	+74.0%	+51.3%	+12.4%	+26.5%	+12.8%
Occupational Therapists	299	+48	+50	+58	+35	+21	+0	+19.1%	+20.3%	+24.1%	+13.2%	+7.4%	+0.1%
Physiotherapists	195	+10	+10	+14	+6	+2	-4	+5.5%	+5.6%	+7.8%	+3.0%	+1.0%	-2.0%
Podiatrists & Chiropodists		-0	-0					-100.0%	-100.0%	-100.0%	-100.0%	-100.0%	-100.0%
Speech & Language Therapists	310	+39	+27	+31	+17	+2	+3	+14.4%	+9.6%	+11.0%	+5.8%	+0.8%	+1.1%
Therapy Professions	824	+104	+96	+110	+60	+29	+2	+14.5%	+13.3%	+15.4%	+7.8%	+3.7%	+0.3%

Nov 2021 (Dec 2015 figure: 15,715)	WTE Nov 2021	WTE change since Dec 16	WTE change since Dec 17	WTE change since Dec 18	WTE change since Dec 19	WTE change since Dec 20	WTE change since Oct 21	% change since Dec 16	% change since Dec 17	% change since Dec 18	% change since Dec 19	% change since Dec 20	% change since Oct 21
Overall	19,507	+2,753	+2,110	+1,687	+1,204	+562	+57	+16.4%	+12.1%	+9.5%	+6.6%	+3.0%	+0.3%
Audiology		-13	-18					-100.0%	-100.0%	-100.0%	-100.0%	-100.0%	-100.0%
Clinical Engineering	15	-3	-3	+3	+2	+2	-0	-18.5%	-17.1%	+24.3%	+14.8%	+15.2%	-0.2%
Medical Science	4	+1	+1					+33.3%	+33.3%				
Phlebotomists				-1	-1			-100.0%	-100.0%	-100.0%	-100.0%	-100.0%	-100.0%
Radiographers		-1	-1	-1	-1	-1		-100.0%	-100.0%	-100.0%	-100.0%	-100.0%	-100.0%
Respiratory Physiologist		-1	-1	-1	-1			-100.0%	-100.0%	-100.0%	-100.0%		
Respiratory Physiologist, Senior	2	+2	+2	+2	+2			-100.0%	-100.0%	-100.0%	-100.0%		
Clinical Measurement	2	+1	+1	+1	+1			+100.0%	+100.0%	+100.0%	+100.0%		
Health Science/ Diagnostics	21	-15	-20	+2	+1	+1	-0	-41.8%	-48.8%	+10.1%	+4.6%	+4.9%	-0.1%
Social Care	2,996	+804	+650	+507	+401	+206	+50	+36.7%	+27.7%	+20.4%	+15.4%	+7.4%	+1.7%
Social Workers	233	+18	+13	+14	+15	+5	-1	+8.3%	+5.8%	+6.4%	+6.7%	+2.3%	-0.5%
Psychologists	242	+32	+18	+35	+37	+12	-1	+15.1%	+8.0%	+16.9%	+18.3%	+5.4%	-0.4%
Pharmacy	8	+2	+2	+1	+1	+2	+1	+27.3%	+28.1%	+11.4%	+15.1%	+29.4%	+17.5%
Counsellor Therapists	22	+5	+2	+4	+3	+2	+0	+29.3%	+12.1%	+22.6%	+15.2%	+10.2%	+1.3%
Other Health & Social Care	39	-19	-20	-13	-11	-6	+2	-33.0%	-33.5%	-24.7%	-22.7%	-13.3%	+4.2%
Play Therapists/ Specialists	11	-2	-2	-3	-4	+0	+0	-16.9%	-13.9%	-22.2%	-26.6%	+4.3%	+3.1%
Social Care Worker, Trainee		-2	-1					-100.0%	-100.0%	-100.0%	-100.0%		
HSCP Trainees/ Students		-2	-1					-100.0%	-100.0%	-100.0%	-100.0%	-100.0%	-100.0%
H&SC, Other	72	-19	-20	-12	-13	-4	+2	-20.8%	-21.4%	-14.3%	-15.0%	-4.6%	+3.1%
Health & Social Care Professionals	4,396	+926	+739	+656	+502	+252	+54	+26.7%	+20.2%	+17.6%	+12.9%	+6.1%	+1.2%
Executive Management	38	+9	-0	+6	+7	+2	+0	+30.8%	-0.2%	+19.3%	+23.3%	+5.4%	+0.1%
Senior Management (VIII & GM)	177	+40	+37	+33	+28	+9	-3	+29.0%	+25.9%	+22.7%	+19.1%	+5.6%	-1.7%
Management (VIII & above)	215	+49	+36	+39	+36	+11	-3	+29.3%	+20.4%	+22.1%	+19.8%	+5.5%	-1.4%
Middle Management (V-VII)	546	+167	+154	+118	+82	+35	-7	+43.9%	+39.1%	+27.6%	+17.7%	+6.8%	-1.3%
Other Administrative	14	+0	-2	-2	-1	-2		+1.3%	-12.3%	-11.5%	-6.4%	-11.5%	
Administrative/ Supervisory (V to VII)	560	+167	+152	+116	+81	+33	-7	+42.4%	+37.1%	+26.2%	+16.9%	+6.3%	-1.2%
General Administrative (III & IV)	711	+104	+79	+57	+50	+25	+1	+17.1%	+12.5%	+8.8%	+7.6%	+3.7%	+0.1%
Clerical (III & IV)	711	+104	+79	+57	+50	+25	+1	+17.1%	+12.5%	+8.8%	+7.6%	+3.7%	+0.1%
Management & Administrative	1,486	+320	+267	+213	+167	+70	-9	+27.4%	+21.9%	+16.7%	+12.7%	+4.9%	-0.6%

Nov 2021 (Dec 2015 figure: 15,715)	WTE Nov 2021	WTE change since Dec 16	WTE change since Dec 17	WTE change since Dec 18	WTE change since Dec 19	WTE change since Dec 20	WTE change since Oct 21	% change since Dec 16	% change since Dec 17	% change since Dec 18	% change since Dec 19	% change since Dec 20	% change since Oct 21
Overall	19,507	+2,753	+2,110	+1,687	+1,204	+562	+57	+16.4%	+12.1%	+9.5%	+6.6%	+3.0%	+0.3%
Catering	82	-31	-23	-22	-16	-14	-1	-27.3%	-22.1%	-21.1%	-16.0%	-14.3%	-1.7%
Household Services	388	-119	-78	-63	-31	-17	-3	-23.5%	-16.8%	-14.0%	-7.4%	-4.3%	-0.7%
Other Labs & Associated	1	-0		-0				-6.5%		-3.8%			
Other Support	148	-45	-41	-43	-40	+13	-2	-23.5%	-21.7%	-22.4%	-21.2%	+9.3%	-1.2%
Portering	17	-9	-9	-8	-10	-7		-35.3%	-34.9%	-32.9%	-37.5%	-29.1%	
Support	637	-205	-152	-137	-97	-26	-6	-24.3%	-19.2%	-17.7%	-13.2%	-3.9%	-0.9%
Maintenance	119	-6	-12	-1	+3	-2	+0	-4.6%	-9.2%	-0.8%	+2.5%	-1.9%	+0.0%
Technical Services	15	+10	+10	+9	+7	+4		+194.1%	+194.1%	+145.9%	+85.2%	+35.1%	
Maintenance/ Technical	134	+4	-2	+8	+10	+2	+0	+3.2%	-1.6%	+6.3%	+7.8%	+1.2%	+0.0%
General Support	771	-201	-154	-129	-87	-24	-6	-20.7%	-16.6%	-14.3%	-10.2%	-3.0%	-0.8%
HCA, Nurse's Aide, etc.	7,293	+1,540	+1,117	+762	+476	+202	-13	+26.8%	+18.1%	+11.7%	+7.0%	+2.8%	-0.2%
Health & Social Care Assistants	12	+1	+3	+1	+2	+1	-1	+11.8%	+31.9%	+10.1%	+25.4%	+8.6%	-8.1%
Health Care Assistants	7,305	+1,541	+1,120	+763	+479	+203	-14	+26.7%	+18.1%	+11.7%	+7.0%	+2.9%	-0.2%
Home Help	81	-14	-43	-32	-28	-13	-3	-15.1%	-34.5%	-28.1%	-25.5%	-13.6%	-3.9%
Other Care Grades	1,761	+289	+237	+198	+122	+55	+6	+19.6%	+15.5%	+12.7%	+7.4%	+3.2%	+0.3%
Care, other	1,761	+289	+237	+198	+122	+55	+6	+19.6%	+15.5%	+12.7%	+7.4%	+3.2%	+0.3%
Patient & Client Care	9,147	+1,815	+1,314	+930	+573	+245	-11	+24.8%	+16.8%	+11.3%	+6.7%	+2.8%	-0.1%

Source: Health Service Personnel Census

Longitudinal Employment Levels by Grade Group - Dec 2016 to Nov 2021

Nov 2021 (Dec 2015 figure: 15,715)	WTE Nov 2021	WTE change since Dec 16	WTE change since Dec 17	WTE change since Dec 18	WTE change since Dec 19	WTE change since Dec 20	WTE change since Oct 21	% change since Dec 16	% change since Dec 17	% change since Dec 18	% change since Dec 19	% change since Dec 20	% change since Oct 21
Overall	19,507	+2,753	+2,110	+1,687	+1,204	+562	+57	+16.4%	+12.1%	+9.5%	+6.6%	+3.0%	+0.3%
Consultant Medicine		-2						-100.0%	-100.0%	-100.0%	-100.0%	-100.0%	-100.0%
Consultant Paediatrics	2	-1	-1	-1	-1	-1		-32.7%	-31.2%	-29.2%	-29.2%	-29.2%	
Consultant Psychiatry	20	-2	-3	+2	-1	-2	+0	-7.3%	-14.3%	+9.4%	-6.0%	-8.2%	+1.2%
Consultant Surgery		-0						-100.0%	-100.0%	-100.0%	-100.0%	-100.0%	-100.0%
Consultants	22	-4	-4	+1	-2	-3	+0	-16.4%	-16.3%	+3.8%	-9.0%	-10.9%	+1.1%
Registrar	6	-0	-0	+1	-1	+3	-0	-0.2%	-0.2%	+12.6%	-14.4%	+99.7%	-5.5%
Senior Registrar	2		-1			-1			-33.3%			-33.3%	
Specialist Registrar	1	-1	-3		-3	-1		-50.0%	-75.0%		-75.0%	-50.0%	
Registrars	9	-1	-4	+1	-4	+1	-0	-10.1%	-30.8%	+8.1%	-30.8%	+12.4%	-3.7%
Senior House Officer	8	+2	+1	+1	+1	-1	-1	+27.0%	+8.9%	+9.6%	+9.5%	-15.3%	-14.5%
SHO/ Interns	8	+2	+1	+1	+1	-1	-1	+27.0%	+8.9%	+9.6%	+9.5%	-15.3%	-14.5%
Dentists								-100.0%	-100.0%	-100.0%	-100.0%	-100.0%	-100.0%
Other Medical	14	-1	+0	+0	-0	-0	-0	-3.9%	+0.1%	+1.0%	-0.7%	-0.1%	-0.1%
Medical/ Dental, other	14	-1	+0	+0	-0	-0	-0	-3.9%	+0.1%	+1.0%	-0.7%	-0.1%	-0.1%
Medical & Dental	53	-4	-8	+2	-6	-3	-1	-7.5%	-12.6%	+4.5%	-9.6%	-5.5%	-2.6%
Clinical Nurse/ Midwife Manager	836	+24	+27	+27	+25	+21	+3	+3.0%	+3.4%	+3.4%	+3.1%	+2.6%	+0.4%
Director Nursing/Midwifery, Assistant	43	+1	+6	+5	+2	-3	+1	+1.7%	+16.0%	+13.2%	+5.4%	-5.8%	+2.1%
Director of Nursing/Midwifery	47	+4	+2	+9	+5	+11	+12	+8.7%	+4.3%	+25.0%	+12.5%	+28.6%	+32.1%
Nurse/ Midwife Manager	926	+29	+35	+42	+32	+29	+16	+3.2%	+3.9%	+4.7%	+3.6%	+3.2%	+1.7%
Advanced Nurse/ Midwife Practitioner	9	+8	+7	+7	+7	+1	-0	+798.0%	+349.0%	+349.0%	+349.0%	+12.3%	-0.2%
Clinical Nurse/ Midwife Specialist	59	-12	-9	-8	-1	+3	-1	-17.5%	-13.8%	-11.7%	-2.3%	+4.5%	-2.2%
Nurse/ Midwife Specialist & AN/MP	68	-4	-2	-1	+6	+4	-1	-6.1%	-3.5%	-1.1%	+9.0%	+5.5%	-2.0%
Staff Nurse [Psychiatric]	197	+113	+127	+126	+114	+145	+3	+132.8%	+180.2%	+178.4%	+136.4%	+275.0%	+1.8%
Staff Nurses [General/ Children's]	637	-296	-287	-231	-255	-115	+10	-31.8%	-31.1%	-26.6%	-28.6%	-15.3%	+1.6%
Staff Nurse [Intellectual Disability]	1,763	+38	+60	+79	+166	-25	+11	+2.2%	+3.5%	+4.7%	+10.4%	-1.4%	+0.6%
Graduate Nursing/ Midwifery								-100.0%	-100.0%	-100.0%	-100.0%	-100.0%	-100.0%
Staff Nurse/ Staff Midwife	2,597	-146	-100	-26	+25	+4	+24	-5.3%	-3.7%	-1.0%	+1.0%	+0.2%	+0.9%
Public Health Nurse	12	+6	+6	+5	+6	+5	+2	+87.3%	+99.5%	+81.7%	+94.1%	+76.9%	+21.3%
Public Health Nurse	12	+6	+6	+5	+6	+5	+2	+87.3%	+99.5%	+81.7%	+94.1%	+76.9%	+21.3%
Pre-registration Nurse Intern (COVID-19)	1	+1	+1	+1	+1	-31	-1	-100.0%	-100.0%	-100.0%	-100.0%	-97.7%	-56.1%
Pre-registration Nurse/ Midwife Intern	21	+9	+10	-14	-7	+19	-6	+77.6%	+80.7%	-38.8%	-24.6%	+752.4%	-21.2%
Nursing/ Midwifery awaiting registration	7	+7	+7	+7	-7	-6	-3	-100.0%	-100.0%	-100.0%	-52.2%	-49.2%	-29.8%
Nursing/ Midwifery Student	29	+17	+17	-6	-13	-19	-9	+138.7%	+142.9%	-17.7%	-32.0%	-39.4%	-24.8%
Nursing Education/Clinical	21	-1	-1	-1	-1	-2	+0	-3.2%	-2.5%	-2.8%	-2.9%	-9.8%	+0.1%
Other Nursing/ Midwifery	2	-3	-3	+1	+1	+1		-60.0%	-60.0%	+100.0%	+100.0%	+100.0%	
Nursing/ Midwifery other	23	-4	-4	+0	+0	-1	+0	-14.0%	-13.5%	+1.8%	+1.7%	-5.2%	+0.1%
Nursing & Midwifery	3,654	-103	-48	+15	+56	+22	+31	-2.7%	-1.3%	+0.4%	+1.6%	+0.6%	+0.9%
Dietitians	21	+8	+9	+7	+2	+4	+2	+57.7%	+74.0%	+51.3%	+12.4%	+26.5%	+12.8%
Occupational Therapists	299	+48	+50	+58	+35	+21	+0	+19.1%	+20.3%	+24.1%	+13.2%	+7.4%	+0.1%
Physiotherapists	195	+10	+10	+14	+6	+2	-4	+5.5%	+5.6%	+7.8%	+3.0%	+1.0%	-2.0%
Podiatrists & Chiropodists		-0	-0					-100.0%	-100.0%	-100.0%	-100.0%	-100.0%	-100.0%
Speech & Language Therapists	310	+39	+27	+31	+17	+2	+3	+14.4%	+9.6%	+11.0%	+5.8%	+0.8%	+1.1%
Therapy Professions	824	+104	+96	+110	+60	+29	+2	+14.5%	+13.3%	+15.4%	+7.8%	+3.7%	+0.3%
Audiology		-13	-18					-100.0%	-100.0%	-100.0%	-100.0%	-100.0%	-100.0%
Clinical Engineering	15	-3	-3	+3	+2	+2	-0	-18.5%	-17.1%	+24.3%	+14.8%	+15.2%	-0.2%
Medical Science	4	+1	+1					+33.3%	+33.3%				
Phlebotomists				-1	-1			-100.0%	-100.0%	-100.0%	-100.0%	-100.0%	-100.0%
Radiographers		-1	-1	-1	-1	-1		-100.0%	-100.0%	-100.0%	-100.0%	-100.0%	-100.0%
Clinical Measurement	2	+1	+1	+1	+1			+100.0%	+100.0%	+100.0%	+100.0%		
Health Science/ Diagnostics	21	-15	-20	+2	+1	+1	-0	-41.8%	-48.8%	+10.1%	+4.6%	+4.9%	-0.1%
Social Care	2,996	+804	+650	+507	+401	+206	+50	+36.7%	+27.7%	+20.4%	+15.4%	+7.4%	+1.7%
Social Workers	233	+18	+13	+14	+15	+5	-1	+8.3%	+5.8%	+6.4%	+6.7%	+2.3%	-0.5%
Psychologists	242	+32	+18	+35	+37	+12	-1	+15.1%	+8.0%	+16.9%	+18.3%	+5.4%	-0.4%
Pharmacy	8	+2	+2	+1	+1	+2	+1	+27.3%	+28.1%	+11.4%	+15.1%	+29.4%	+17.5%
Counsellor Therapists	22	+5	+2	+4	+3	+2	+0	+29.3%	+12.1%	+22.6%	+15.2%	+10.2%	+1.3%
Other Health & Social Care	39	-19	-20	-13	-11	-6	+2	-33.0%	-33.5%	-24.7%	-22.7%	-13.3%	+4.2%
Play Therapists/ Specialists	11	-2	-2	-3	-4	+0	+0	-16.9%	-13.9%	-22.2%	-26.6%	+4.3%	+3.1%
HSCP Trainees/ Students		-2	-1					-100.0%	-100.0%	-100.0%	-100.0%	-100.0%	-100.0%
H&SC, Other	72	-19	-20	-12	-13	-4	+2	-20.8%	-21.4%	-14.3%	-15.0%	-4.6%	+3.1%
Health & Social Care Professionals	4,396	+926	+739	+656	+502	+252	+54	+26.7%	+20.2%	+17.6%	+12.9%	+6.1%	+1.2%
Executive Management	38	+9	-0	+6	+7	+2	+0	+30.8%	-0.2%	+19.3%	+23.3%	+5.4%	+0.1%
Senior Management (VIII & GM)	177	+40	+37	+33	+28	+9	-3	+29.0%	+25.9%	+22.7%	+19.1%	+5.6%	-1.7%
Management (VIII & above)	215	+49	+36	+39	+36	+11	-3	+29.3%	+20.4%	+22.1%	+19.8%	+5.5%	-1.4%
Middle Management (V-VII)	546	+167	+154	+118	+82	+35	-7	+43.9%	+39.1%	+27.6%	+17.7%	+6.8%	-1.3%
Other Administrative	14	+0	-2	-2	-1	-2		+1.3%	-12.3%	-11.5%	-6.4%	-11.5%	
Administrative/ Supervisory (V to VII)	560	+167	+152	+116	+81	+33	-7	+42.4%	+37.1%	+26.2%	+16.9%	+6.3%	-1.2%
General Administrative (III & IV)	711	+104	+79	+57	+50	+25	+1	+17.1%	+12.5%	+8.8%	+7.6%	+3.7%	+0.1%
Clerical (III & IV)	711	+104	+79	+57	+50	+25	+1	+17.1%	+12.5%	+8.8%	+7.6%	+3.7%	+0.1%
Management & Administrative	1,486	+320	+267	+213	+167	+70	-9	+27.4%	+21.9%	+16.7%	+12.7%	+4.9%	-0.6%
Support	637	-205	-152	-137	-97	-26	-6	-24.3%	-19.2%	-17.7%	-13.2%	-3.9%	-0.9%
Maintenance	119	-6	-12	-1	+3	-2	+0	-4.6%	-9.2%	-0.8%	+2.5%	-1.9%	+0.0%
Technical Services	15	+10	+10	+9	+7	+4		+194.1%	+194.1%	+145.9%	+85.2%	+35.1%	
Maintenance/ Technical	134	+4	-2	+8	+10	+2	+0	+3.2%	-1.6%	+6.3%	+7.8%	+1.2%	+0.0%
General Support	771	-201	-154	-129	-87	-24	-6	-20.7%	-16.6%	-14.3%	-10.2%	-3.0%	-0.8%
HCA, Nurse's Aide, etc.	7,293	+1,540	+1,117	+762	+476	+202	-13	+26.8%	+18.1%	+11.7%	+7.0%	+2.8%	-0.2%
Health & Social Care Assistants	12	+1	+3	+1	+2	+1	-1	+11.8%	+31.9%	+10.1%	+25.4%	+8.6%	-8.1%
Health Care Assistants	7,305	+1,541	+1,120	+763	+479	+203	-14	+26.7%	+18.1%	+11.7%	+7.0%	+2.9%	-0.2%
Home Help	81	-14	-43	-32	-28	-13	-3	-15.1%	-34.5%	-28.1%	-25.5%	-13.6%	-3.9%
Other Care Grades	1,761	+289	+237	+198	+122	+55	+6	+19.6%	+15.5%	+12.7%	+7.4%	+3.2%	+0.3%
Care, other	1,761	+289	+237	+198	+122	+55	+6	+19.6%	+15.5%	+12.7%	+7.4%	+3.2%	+0.3%
Patient & Client Care	9,147	+1,815	+1,314	+930	+573	+245	-11	+24.8%	+16.8%	+11.3%	+6.7%	+2.8%	-0.1%

Source: Health Service Personnel Census