

# Social Care Service Employment Report: August 2022

## Employment by Staff Group

Aug 2022	WTE Dec 2019	WTE Dec 2020	WTE Jul 2022	WTE Aug 2022	WTE change since Jul 22	WTE change since Dec 20	% change since Dec 20	WTE change since Dec 19	% change since Dec 19	No. Aug 2022
<b>Overall</b>	<b>31,535</b>	<b>32,359</b>	<b>33,496</b>	<b>33,470</b>	<b>-25</b>	<b>+1,111</b>	<b>+3.4%</b>	<b>+1,935</b>	<b>+6.1%</b>	<b>39,897</b>
Consultants	27	29	28	26	-2	-3	-8.8%	-1	-4.4%	35
Registrars	23	17	22	19	-3	+3	+14.9%	-3	-14.0%	22
SHO/ Interns	22	23	24	21	-2	-1	-6.0%	-1	-3.0%	22
Medical/ Dental, other	111	118	98	100	+1	-18	-15.6%	-11	-10.1%	174
<b>Medical &amp; Dental</b>	<b>183</b>	<b>186</b>	<b>172</b>	<b>167</b>	<b>-6</b>	<b>-20</b>	<b>-10.6%</b>	<b>-16</b>	<b>-8.8%</b>	<b>253</b>
Nurse/ Midwife Manager	1,603	1,643	1,673	1,673	-1	+29	+1.8%	+70	+4.4%	1,802
Nurse/ Midwife Specialist & AN/MP	88	102	126	128	+3	+26	+25.7%	+40	+45.3%	140
Staff Nurse/ Staff Midwife	5,149	5,217	5,282	5,267	-15	+49	+0.9%	+118	+2.3%	6,036
Public Health Nurse	20	20	24	24	+0	+4	+19.8%	+5	+23.7%	29
<i>Pre-registration Nurse Intern (COVID-19)</i>		32				-32	-100.0%		-100.0%	
<i>Pre-registration Nurse/ Midwife Intern</i>	28	3	83	84	+2	+82	+3278.8%	+56	+199.0%	170
<i>Post-registration Nurse/ Midwife Student</i>	1						-100.0%	-1	-100.0%	
<i>Nursing/ Midwifery awaiting registration</i>	15	14	2	2	-0	-12	-86.6%	-13	-87.1%	3
Nursing/ Midwifery Student	44	49	85	86	+1	+38	+77.6%	+42	+95.9%	173
Nursing/ Midwifery other	23	28	30	31	+1	+3	+12.1%	+8	+34.4%	34
<b>Nursing &amp; Midwifery</b>	<b>6,927</b>	<b>7,060</b>	<b>7,220</b>	<b>7,210</b>	<b>-11</b>	<b>+150</b>	<b>+2.1%</b>	<b>+283</b>	<b>+4.1%</b>	<b>8,214</b>
Therapy Professions	1,053	1,091	1,104	1,105	+1	+14	+1.3%	+52	+5.0%	1,282
Health Science/ Diagnostics	26	25	26	26	+0	+1	+3.8%	-0	-0.4%	31
Social Care	2,598	2,792	3,005	3,001	-4	+209	+7.5%	+403	+15.5%	3,511
Social Workers	317	328	302	305	+3	-23	-7.1%	-13	-3.9%	352
Psychologists	206	230	234	232	-2	+2	+0.9%	+26	+12.6%	263
Pharmacy	22	23	27	27	-0	+4	+16.0%	+5	+22.4%	39
H&SC, Other	86	77	69	70	+1	-7	-9.3%	-16	-18.7%	93
<b>Health &amp; Social Care Professionals</b>	<b>4,308</b>	<b>4,567</b>	<b>4,767</b>	<b>4,766</b>	<b>-1</b>	<b>+199</b>	<b>+4.4%</b>	<b>+457</b>	<b>+10.6%</b>	<b>5,571</b>
Management (VIII & above)	254	283	336	334	-2	+52	+18.4%	+80	+31.6%	341
Administrative/ Supervisory (V to VII)	644	703	862	877	+15	+174	+24.8%	+233	+36.1%	932
Clerical (III & IV)	1,231	1,272	1,335	1,342	+7	+70	+5.5%	+111	+9.0%	1,575
<b>Management &amp; Administrative</b>	<b>2,130</b>	<b>2,258</b>	<b>2,533</b>	<b>2,553</b>	<b>+20</b>	<b>+295</b>	<b>+13.1%</b>	<b>+424</b>	<b>+19.9%</b>	<b>2,848</b>
Support	1,563	1,464	1,404	1,390	-14	-74	-5.0%	-173	-11.1%	1,767
Maintenance/ Technical	223	227	221	216	-6	-12	-5.1%	-7	-3.1%	231
<b>General Support</b>	<b>1,786</b>	<b>1,691</b>	<b>1,626</b>	<b>1,606</b>	<b>-20</b>	<b>-85</b>	<b>-5.1%</b>	<b>-180</b>	<b>-10.1%</b>	<b>1,998</b>
Health Care Assistants	10,869	11,221	11,637	11,614	-23	+394	+3.5%	+745	+6.9%	13,524
Home Help	3,551	3,525	3,632	3,658	+26	+133	+3.8%	+107	+3.0%	5,246
Care, other	1,781	1,852	1,908	1,897	-11	+45	+2.4%	+116	+6.5%	2,243
<b>Patient &amp; Client Care</b>	<b>16,201</b>	<b>16,598</b>	<b>17,177</b>	<b>17,169</b>	<b>-8</b>	<b>+572</b>	<b>+3.4%</b>	<b>+968</b>	<b>+6.0%</b>	<b>21,013</b>

## Social Care Services Employment by Administration (HSE / S38): August 2022

Aug 2022	WTE Dec 2019	WTE Dec 2020	WTE Jul 2022	WTE Aug 2022	WTE change since Jul 22	WTE change since Dec 20	% change since Dec 20	WTE change since Dec 19	% change since Dec 19	No. Aug 2022
<b>Total</b>	<b>31,535</b>	<b>32,359</b>	<b>33,496</b>	<b>33,470</b>	<b>-25</b>	<b>+1,111</b>	<b>+3.4%</b>	<b>+1,935</b>	<b>+6.1%</b>	<b>39,897</b>
HSE	16,428	16,758	17,204	17,219	+15	+462	+2.8%	+792	+4.8%	20,620
Section 38 Voluntary Agencies	15,107	15,601	16,291	16,251	-40	+650	+4.2%	+1,143	+7.6%	19,277

### Employment by Staff Group

Aug 2022	WTE Dec 2019	WTE Dec 2020	WTE Jul 2022	WTE Aug 2022	WTE change since Jul 22	WTE change since Dec 20	% change since Dec 20	WTE change since Dec 19	% change since Dec 19	No. Aug 2022
<b>Health Service Executive</b>	<b>16,428</b>	<b>16,758</b>	<b>17,204</b>	<b>17,219</b>	<b>+15</b>	<b>+462</b>	<b>+2.8%</b>	<b>+792</b>	<b>+4.8%</b>	<b>20,620</b>
Consultants	11	11	12	12	-0	+0	+3.2%	+1	+11.2%	13
Registrars	10	7	12	8	-3	+1	+21.2%	-1	-12.8%	10
SHO/ Interns	10	12	9	9	-0	-3	-24.2%	-1	-11.5%	9
Medical/ Dental, other	101	108	90	92	+2	-16	-14.8%	-9	-8.7%	163
<b>Medical &amp; Dental</b>	<b>131</b>	<b>138</b>	<b>123</b>	<b>121</b>	<b>-2</b>	<b>-17</b>	<b>-12.3%</b>	<b>-10</b>	<b>-7.6%</b>	<b>195</b>
Nurse/ Midwife Manager	914	958	947	943	-4	-15	-1.5%	+30	+3.2%	1,004
Nurse/ Midwife Specialist & AN/MP	40	53	72	76	+4	+23	+42.9%	+35	+88.4%	81
Staff Nurse/ Staff Midwife	3,192	3,211	3,309	3,308	-1	+97	+3.0%	+116	+3.6%	3,768
Public Health Nurse	20	20	24	24	+0	+4	+19.8%	+5	+23.7%	29
Pre-registration Nurse Intern (COVID-19)		9				-9	-100.0%		-100.0%	
Pre-registration Nurse/ Midwife Intern	3	3	29	29	-0	+26	+1056.0%	+26	+789.2%	57
Post-registration Nurse/ Midwife Student	1						-100.0%	-1	-100.0%	
Nursing/ Midwifery awaiting registration	15	14	2	2	-1	-13	-89.5%	-13	-89.9%	2
Nursing/ Midwifery Student	19	25	31	30	-1	+5	+19.6%	+11	+59.2%	59
Nursing/ Midwifery other	9	11	12	12	+0	+1	+8.4%	+3	+32.9%	13
<b>Nursing &amp; Midwifery</b>	<b>4,193</b>	<b>4,278</b>	<b>4,395</b>	<b>4,393</b>	<b>-2</b>	<b>+115</b>	<b>+2.7%</b>	<b>+200</b>	<b>+4.8%</b>	<b>4,954</b>
Therapy Professions	562	596	590	584	-6	-12	-2.1%	+22	+3.8%	682
Health Science/ Diagnostics	7	8	9	9	+0	+1	+9.9%	+2	+24.4%	12
Social Care	92	103	105	106	+1	+3	+2.6%	+14	+15.7%	119
Social Workers	142	151	119	119	+0	-32	-21.0%	-23	-16.2%	136
Psychologists	78	83	100	98	-3	+14	+17.3%	+20	+25.4%	111
Pharmacy	11	12	14	14	-0	+2	+19.3%	+3	+32.6%	21
H&SC, Other	28	27	23	22	-1	-4	-16.2%	-5	-19.1%	27
<b>Health &amp; Social Care Professionals</b>	<b>919</b>	<b>980</b>	<b>960</b>	<b>952</b>	<b>-8</b>	<b>-28</b>	<b>-2.9%</b>	<b>+33</b>	<b>+3.6%</b>	<b>1,108</b>
Management (VIII & above)	117	133	170	170	-0	+37	+28.2%	+53	+45.0%	174
Administrative/ Supervisory (V to VII)	287	326	434	447	+13	+121	+37.0%	+160	+55.6%	476
Clerical (III & IV)	722	755	793	793	-1	+37	+5.0%	+70	+9.8%	902
<b>Management &amp; Administrative</b>	<b>1,126</b>	<b>1,214</b>	<b>1,397</b>	<b>1,409</b>	<b>+12</b>	<b>+196</b>	<b>+16.1%</b>	<b>+283</b>	<b>+25.1%</b>	<b>1,552</b>
Support	815	782	735	732	-3	-50	-6.4%	-83	-10.2%	831
Maintenance/ Technical	109	110	106	105	-1	-5	-4.7%	-5	-4.2%	110
<b>General Support</b>	<b>924</b>	<b>892</b>	<b>841</b>	<b>837</b>	<b>-4</b>	<b>-55</b>	<b>-6.2%</b>	<b>-88</b>	<b>-9.5%</b>	<b>941</b>
Health Care Assistants	5,338	5,449	5,515	5,512	-3	+62	+1.1%	+174	+3.3%	6,238
Home Help	3,551	3,525	3,632	3,658	+26	+133	+3.8%	+107	+3.0%	5,246
Care, other	246	282	342	338	-3	+56	+19.8%	+93	+37.8%	386
<b>Patient &amp; Client Care</b>	<b>9,134</b>	<b>9,257</b>	<b>9,488</b>	<b>9,507</b>	<b>+19</b>	<b>+251</b>	<b>+2.7%</b>	<b>+374</b>	<b>+4.1%</b>	<b>11,870</b>

## Employment by Staff Group

Aug 2022	WTE Dec 2019	WTE Dec 2020	WTE Jul 2022	WTE Aug 2022	WTE change since Jul 22	WTE change since Dec 20	% change since Dec 20	WTE change since Dec 19	% change since Dec 19	No. Aug 2022
<b>Section 38 Voluntary Agencies</b>	<b>15,107</b>	<b>15,601</b>	<b>16,291</b>	<b>16,251</b>	<b>-40</b>	<b>+650</b>	<b>+4.2%</b>	<b>+1,144</b>	<b>+7.6%</b>	<b>19,277</b>
Consultants	17	18	16	15	-2	-3	-16.5%	-2	-14.0%	22
Registrars	13	10	11	11	+0	+1	+10.6%	-2	-14.9%	12
SHO/ Interns	12	11	14	12	-2	+1	+13.3%	+1	+4.2%	13
Medical/ Dental, other	10	10	8	8	-0	-2	-24.1%	-2	-24.1%	11
<b>Medical &amp; Dental</b>	<b>52</b>	<b>49</b>	<b>50</b>	<b>46</b>	<b>-4</b>	<b>-3</b>	<b>-5.8%</b>	<b>-6</b>	<b>-12.0%</b>	<b>58</b>
Nurse/ Midwife Manager	689	685	726	729	+3	+44	+6.4%	+40	+5.8%	798
Nurse/ Midwife Specialist & AN/MP	48	49	54	53	-1	+4	+7.2%	+5	+9.4%	59
Staff Nurse/ Staff Midwife	1,957	2,007	1,973	1,959	-15	-48	-2.4%	+2	+0.1%	2,268
<i>Pre-registration Nurse Intern (COVID-19)</i>		23				-23	-100.0%		-100.0%	
<i>Pre-registration Nurse/ Midwife Intern</i>	25		54	56	+2	+56	-100.0%	+31	+122.3%	113
<i>Nursing/ Midwifery awaiting registration</i>				0	+0	+0	-100.0%	+0	-100.0%	1
Nursing/ Midwifery Student	25	23	54	56	+2	+33	+141.1%	+31	+124.0%	114
Nursing/ Midwifery other	14	17	18	20	+1	+2	+14.4%	+5	+35.2%	21
<b>Nursing &amp; Midwifery</b>	<b>2,734</b>	<b>2,782</b>	<b>2,826</b>	<b>2,816</b>	<b>-9</b>	<b>+35</b>	<b>+1.3%</b>	<b>+82</b>	<b>+3.0%</b>	<b>3,260</b>
Therapy Professions	491	495	514	521	+7	+27	+5.4%	+31	+6.2%	600
Health Science/ Diagnostics	19	17	17	17	+0	+0	+0.9%	-2	-9.7%	19
Social Care	2,506	2,689	2,899	2,895	-5	+206	+7.7%	+389	+15.5%	3,392
Social Workers	175	177	183	186	+2	+8	+4.7%	+10	+6.0%	216
Psychologists	128	147	134	135	+1	-12	-8.4%	+6	+4.9%	152
Pharmacy	11	11	13	13	+0	+1	+12.7%	+1	+12.9%	18
H&SC, Other	59	51	46	48	+2	-3	-5.6%	-11	-18.5%	66
<b>Health &amp; Social Care Professionals</b>	<b>3,389</b>	<b>3,587</b>	<b>3,807</b>	<b>3,814</b>	<b>+7</b>	<b>+228</b>	<b>+6.3%</b>	<b>+425</b>	<b>+12.5%</b>	<b>4,463</b>
Management (VIII & above)	137	150	166	164	-2	+14	+9.6%	+28	+20.1%	167
Administrative/ Supervisory (V to VII)	357	377	428	430	+2	+53	+14.1%	+73	+20.5%	456
Clerical (III & IV)	509	517	542	549	+8	+32	+6.2%	+40	+7.9%	673
<b>Management &amp; Administrative</b>	<b>1,003</b>	<b>1,044</b>	<b>1,136</b>	<b>1,144</b>	<b>+8</b>	<b>+100</b>	<b>+9.6%</b>	<b>+141</b>	<b>+14.0%</b>	<b>1,296</b>
Support	748	682	669	658	-11	-24	-3.5%	-90	-12.1%	936
Maintenance/ Technical	113	117	115	111	-4	-6	-5.5%	-2	-2.1%	121
<b>General Support</b>	<b>862</b>	<b>799</b>	<b>784</b>	<b>769</b>	<b>-16</b>	<b>-30</b>	<b>-3.8%</b>	<b>-93</b>	<b>-10.8%</b>	<b>1,057</b>
Health Care Assistants	5,532	5,771	6,122	6,103	-20	+332	+5.7%	+571	+10.3%	7,286
Care, other	1,536	1,570	1,567	1,559	-8	-11	-0.7%	+23	+1.5%	1,857
<b>Patient &amp; Client Care</b>	<b>7,067</b>	<b>7,341</b>	<b>7,689</b>	<b>7,662</b>	<b>-27</b>	<b>+321</b>	<b>+4.4%</b>	<b>+594</b>	<b>+8.4%</b>	<b>9,143</b>

## Social Care Services Employment by CHO: Aug 2022

Aug 2022	WTE Dec 2019	WTE Dec 2020	WTE Jul 2022	WTE Aug 2022	WTE change since Jul 22	WTE change since Dec 20	% change since Dec 20	WTE change since Dec 19	% change since Dec 19	No. Aug 2022
<b>Overall</b>	<b>31,535</b>	<b>32,359</b>	<b>33,496</b>	<b>33,470</b>	<b>-25</b>	<b>+1,111</b>	<b>+3.4%</b>	<b>+1,935</b>	<b>+6.1%</b>	<b>39,897</b>
CHO 1	3,334	3,464	3,710	3,694	-16	+230	+6.6%	+360	+10.8%	4,290
CHO 2	3,103	3,105	3,119	3,109	-9	+4	+0.1%	+7	+0.2%	3,725
CHO 3	2,798	2,976	3,238	3,231	-7	+255	+8.6%	+433	+15.5%	3,887
CHO 4	5,358	5,486	5,576	5,576	-0	+90	+1.6%	+218	+4.1%	6,951
CHO 5	3,152	3,213	3,358	3,360	+2	+147	+4.6%	+208	+6.6%	4,009
CHO 6	2,021	2,020	2,044	2,032	-12	+12	+0.6%	+11	+0.5%	2,261
CHO 7	3,978	4,125	4,334	4,331	-3	+206	+5.0%	+354	+8.9%	5,108
CHO 8	3,650	3,689	3,758	3,779	+21	+89	+2.4%	+128	+3.5%	4,579
CHO 9	4,063	4,199	4,268	4,265	-3	+66	+1.6%	+202	+5.0%	4,986
other Community Services	78	81	91	93	+3	+12	+15.1%	+15	+19.0%	101

## Social Care Services Employment by CHO etc. Aug 2022

### CHO 1

Aug 2022	WTE Dec 2019	WTE Dec 2020	WTE Jul 2022	WTE Aug 2022	WTE change since Jul 22	WTE change since Dec 20	% change since Dec 20	WTE change since Dec 19	% change since Dec 19	No. Aug 2022
<b>Overall</b>	<b>3,334</b>	<b>3,464</b>	<b>3,710</b>	<b>3,694</b>	<b>-16</b>	<b>+230</b>	<b>+6.6%</b>	<b>+360</b>	<b>+10.8%</b>	<b>4,290</b>
Registrars			1		-1		-100.0%		-100.0%	
Medical/ Dental, other	33	35	18	18	-0	-17	-49.3%	-15	-45.3%	46
<b>Medical &amp; Dental</b>	<b>33</b>	<b>35</b>	<b>19</b>	<b>18</b>	<b>-1</b>	<b>-17</b>	<b>-49.3%</b>	<b>-15</b>	<b>-45.3%</b>	<b>46</b>
Nurse/ Midwife Manager	196	194	209	206	-3	+12	+6.1%	+10	+5.0%	219
Nurse/ Midwife Specialist & AN/MP	14	18	21	22	+1	+4	+20.6%	+8	+56.4%	24
Staff Nurse/ Staff Midwife	631	643	657	650	-7	+7	+1.1%	+19	+3.0%	734
Public Health Nurse			1	1	0	+1	-100.0%	+1	-100.0%	1
<i>Pre-registration Nurse Intern (COVID-19)</i>		6				-6	-100.0%		-100.0%	
<i>Pre-registration Nurse/ Midwife Intern</i>	3		18	17	-0	+17	-100.0%	+14	+480.0%	34
<i>Nursing/ Midwifery awaiting registration</i>	11	11				-11	-100.0%	-11	-100.0%	
Nursing/ Midwifery Student	14	17	18	17	-0	-0	-0.5%	+3	+24.3%	34
Nursing/ Midwifery other	5	5	5	5	+0	+0	+7.6%	+1	+11.2%	6
<b>Nursing &amp; Midwifery</b>	<b>860</b>	<b>877</b>	<b>911</b>	<b>901</b>	<b>-10</b>	<b>+24</b>	<b>+2.7%</b>	<b>+41</b>	<b>+4.8%</b>	<b>1,018</b>
Therapy Professions	53	56	90	89	-1	+33	+58.6%	+35	+66.1%	99
Health Science/ Diagnostics	1	2				-2	-100.0%	-1	-100.0%	
Social Care	8	11	12	12	+0	+1	+5.7%	+4	+57.7%	15
Social Workers	33	34	23	24	+1	-10	-28.7%	-9	-27.6%	27
Psychologists	5	7	15	14	-1	+7	+92.1%	+10	+210.0%	15
H&SC, Other	12	10	8	8	-0	-2	-22.4%	-5	-38.8%	9
<b>Health &amp; Social Care Professionals</b>	<b>112</b>	<b>120</b>	<b>147</b>	<b>147</b>	<b>-1</b>	<b>+27</b>	<b>+22.5%</b>	<b>+34</b>	<b>+30.5%</b>	<b>165</b>
Management (VIII & above)	22	25	22	22	+0	-3	-10.8%	+0	+0.0%	23
Administrative/ Supervisory (V to VII)	42	49	73	74	+2	+25	+50.5%	+33	+78.0%	78
Clerical (III & IV)	135	141	134	137	+3	-3	-2.3%	+3	+2.0%	156
<b>Management &amp; Administrative</b>	<b>199</b>	<b>215</b>	<b>228</b>	<b>234</b>	<b>+5</b>	<b>+19</b>	<b>+8.9%</b>	<b>+35</b>	<b>+17.8%</b>	<b>257</b>
Support	172	168	148	149	+1	-18	-10.9%	-22	-13.1%	179
Maintenance/ Technical	13	13	11	11	-0	-2	-18.5%	-2	-18.5%	11
<b>General Support</b>	<b>185</b>	<b>181</b>	<b>159</b>	<b>160</b>	<b>+1</b>	<b>-21</b>	<b>-11.5%</b>	<b>-25</b>	<b>-13.5%</b>	<b>190</b>
Health Care Assistants	1,325	1,355	1,453	1,451	-2	+96	+7.1%	+127	+9.6%	1,639
Home Help	556	618	716	710	-6	+91	+14.8%	+153	+27.6%	893
Care, other	65	63	76	74	-2	+11	+16.7%	+9	+13.6%	82
<b>Patient &amp; Client Care</b>	<b>1,946</b>	<b>2,037</b>	<b>2,245</b>	<b>2,235</b>	<b>-10</b>	<b>+198</b>	<b>+9.7%</b>	<b>+289</b>	<b>+14.9%</b>	<b>2,614</b>

## CHO 2

Aug 2022	WTE Dec 2019	WTE Dec 2020	WTE Jul 2022	WTE Aug 2022	WTE change since Jul 22	WTE change since Dec 20	% change since Dec 20	WTE change since Dec 19	% change since Dec 19	No. Aug 2022
<b>Overall</b>	<b>3,103</b>	<b>3,105</b>	<b>3,119</b>	<b>3,109</b>	<b>-9</b>	<b>+4</b>	<b>+0.1%</b>	<b>+7</b>	<b>+0.2%</b>	<b>3,725</b>
Consultants	3	3	3	3	0					4
Registrars	2	2	1	1	0	-1	-50.0%	-1	-50.0%	1
SHO/ Interns			1	1	0	+1	-100.0%	+1	-100.0%	1
Medical/ Dental, other	12	12	10	10	+0	-1	-10.8%	-2	-14.5%	11
<b>Medical &amp; Dental</b>	<b>18</b>	<b>17</b>	<b>16</b>	<b>16</b>	<b>+0</b>	<b>-1</b>	<b>-7.4%</b>	<b>-2</b>	<b>-10.0%</b>	<b>17</b>
Nurse/ Midwife Manager	136	144	145	145	-0	+1	+0.5%	+9	+6.9%	158
Nurse/ Midwife Specialist & AN/MP	8	8	13	13	0	+6	+74.6%	+6	+71.0%	14
Staff Nurse/ Staff Midwife	466	474	470	471	+0	-4	-0.7%	+4	+0.9%	550
Public Health Nurse	1	1	1	1	-0	-0	-10.0%	+0	+12.5%	1
Pre-registration Nurse Intern (COVID-19)		1				-1	-100.0%		-100.0%	
Nursing/ Midwifery Student		1				-1	-100.0%		-100.0%	
<b>Nursing &amp; Midwifery</b>	<b>611</b>	<b>628</b>	<b>630</b>	<b>630</b>	<b>+0</b>	<b>+2</b>	<b>+0.3%</b>	<b>+19</b>	<b>+3.1%</b>	<b>723</b>
Therapy Professions	67	59	68	63	-5	+4	+6.3%	-4	-5.9%	75
Health Science/ Diagnostics	1	1	1	1	+0	+0	+5.0%	+0	+5.0%	1
Social Care	222	243	275	268	-7	+24	+10.0%	+46	+20.7%	326
Social Workers	36	36	37	35	-2	-1	-3.8%	-1	-3.9%	44
Psychologists	16	14	19	18	-1	+3	+23.0%	+2	+10.9%	21
Pharmacy	1	1	1	1	+0	-1	-48.5%	-0	-47.5%	1
H&SC, Other	16	12	12	11	-1	-0	-2.9%	-5	-28.8%	17
<b>Health &amp; Social Care Professionals</b>	<b>358</b>	<b>366</b>	<b>411</b>	<b>396</b>	<b>-15</b>	<b>+29</b>	<b>+8.0%</b>	<b>+37</b>	<b>+10.4%</b>	<b>485</b>
Management (VIII & above)	18	18	23	23	-1	+5	+28.0%	+5	+27.3%	23
Administrative/ Supervisory (V to VII)	48	54	71	72	+2	+19	+34.6%	+24	+50.2%	76
Clerical (III & IV)	121	116	114	112	-1	-4	-3.1%	-9	-7.3%	135
<b>Management &amp; Administrative</b>	<b>187</b>	<b>187</b>	<b>208</b>	<b>207</b>	<b>-0</b>	<b>+20</b>	<b>+10.7%</b>	<b>+20</b>	<b>+10.8%</b>	<b>234</b>
Support	101	99	94	90	-5	-10	-9.6%	-11	-11.0%	123
Maintenance/ Technical	32	32	32	32	-0	-1	-2.1%	-0	-0.9%	34
<b>General Support</b>	<b>133</b>	<b>132</b>	<b>126</b>	<b>121</b>	<b>-5</b>	<b>-10</b>	<b>-7.8%</b>	<b>-11</b>	<b>-8.6%</b>	<b>157</b>
Health Care Assistants	1,138	1,151	1,170	1,169	-2	+18	+1.5%	+30	+2.7%	1,364
Home Help	499	456	385	400	+15	-57	-12.4%	-100	-20.0%	531
Care, other	159	168	173	171	-2	+3	+1.9%	+13	+8.1%	214
<b>Patient &amp; Client Care</b>	<b>1,796</b>	<b>1,775</b>	<b>1,728</b>	<b>1,739</b>	<b>+11</b>	<b>-36</b>	<b>-2.0%</b>	<b>-57</b>	<b>-3.2%</b>	<b>2,109</b>

### CHO 3

Aug 2022	WTE Dec 2019	WTE Dec 2020	WTE Jul 2022	WTE Aug 2022	WTE change since Jul 22	WTE change since Dec 20	% change since Dec 20	WTE change since Dec 19	% change since Dec 19	No. Aug 2022
<b>Overall</b>	<b>2,798</b>	<b>2,976</b>	<b>3,238</b>	<b>3,231</b>	<b>-7</b>	<b>+255</b>	<b>+8.6%</b>	<b>+433</b>	<b>+15.5%</b>	<b>3,887</b>
Consultants	2	3	4	3	-1	+0	+6.2%	+1	+55.0%	4
Registrars			2	2	-0	+2	-100.0%	+2	-100.0%	2
SHO/ Interns			2	1	-1	+1	-100.0%	+1	-100.0%	1
Medical/ Dental, other	6	7	7	6	-1	-1	-9.8%	+0	+5.4%	7
<b>Medical &amp; Dental</b>	<b>8</b>	<b>10</b>	<b>15</b>	<b>12</b>	<b>-3</b>	<b>+2</b>	<b>+21.5%</b>	<b>+4</b>	<b>+50.9%</b>	<b>14</b>
Nurse/ Midwife Manager	140	139	142	145	+3	+6	+4.4%	+5	+3.8%	151
Nurse/ Midwife Specialist & AN/MP	14	14	16	16	+0	+2	+15.3%	+2	+12.4%	18
Staff Nurse/ Staff Midwife	486	502	521	522	+1	+20	+3.9%	+36	+7.3%	584
Public Health Nurse	1	1				-1	-100.0%	-1	-100.0%	
<i>Pre-registration Nurse Intern (COVID-19)</i>		2				-2	-100.0%		-100.0%	
<i>Pre-registration Nurse/ Midwife Intern</i>	12		7	7	0	+7	-100.0%	-5	-39.1%	14
Nursing/ Midwifery Student	12	2	7	7	0	+6	+366.7%	-5	-39.1%	14
Nursing/ Midwifery other	4	4	3	3	+0	-1	-26.1%	-1	-26.1%	3
<b>Nursing &amp; Midwifery</b>	<b>656</b>	<b>661</b>	<b>688</b>	<b>693</b>	<b>+4</b>	<b>+31</b>	<b>+4.8%</b>	<b>+36</b>	<b>+5.5%</b>	<b>770</b>
Therapy Professions	102	113	86	86	-0	-27	-23.7%	-16	-15.3%	97
Health Science/ Diagnostics	1	3	5	5	+0	+2	+80.1%	+4	+562.0%	6
Social Care	241	284	273	270	-3	-14	-4.9%	+29	+12.2%	315
Social Workers	24	23	25	24	-1	+1	+2.9%	+1	+2.6%	28
Psychologists	16	20	21	21	-0	+0	+1.0%	+5	+28.9%	22
Pharmacy	1	1	1	1	0					1
H&SC, Other	12	11	11	11	+0	-0	-4.0%	-1	-8.7%	15
<b>Health &amp; Social Care Professionals</b>	<b>396</b>	<b>456</b>	<b>422</b>	<b>418</b>	<b>-4</b>	<b>-38</b>	<b>-8.4%</b>	<b>+22</b>	<b>+5.5%</b>	<b>484</b>
Management (VIII & above)	13	14	20	20	+1	+7	+49.1%	+8	+62.8%	21
Administrative/ Supervisory (V to VII)	61	61	87	86	-0	+25	+40.7%	+25	+41.0%	89
Clerical (III & IV)	109	107	116	116	+0	+9	+8.8%	+8	+7.2%	130
<b>Management &amp; Administrative</b>	<b>183</b>	<b>182</b>	<b>222</b>	<b>223</b>	<b>+1</b>	<b>+41</b>	<b>+22.6%</b>	<b>+41</b>	<b>+22.3%</b>	<b>240</b>
Support	117	116	100	98	-2	-18	-15.3%	-19	-15.9%	113
Maintenance/ Technical	37	40	42	42	+0	+1	+3.6%	+5	+14.6%	44
<b>General Support</b>	<b>153</b>	<b>157</b>	<b>142</b>	<b>140</b>	<b>-2</b>	<b>-16</b>	<b>-10.4%</b>	<b>-13</b>	<b>-8.6%</b>	<b>157</b>
Health Care Assistants	1,043	1,101	1,208	1,205	-3	+104	+9.5%	+161	+15.5%	1,472
Home Help	175	216	334	332	-3	+115	+53.1%	+156	+89.2%	511
Care, other	183	193	207	208	+2	+15	+7.8%	+25	+13.9%	239
<b>Patient &amp; Client Care</b>	<b>1,402</b>	<b>1,511</b>	<b>1,748</b>	<b>1,745</b>	<b>-3</b>	<b>+234</b>	<b>+15.5%</b>	<b>+343</b>	<b>+24.5%</b>	<b>2,222</b>



## CHO 4

Aug 2022	WTE Dec 2019	WTE Dec 2020	WTE Jul 2022	WTE Aug 2022	WTE change since Jul 22	WTE change since Dec 20	% change since Dec 20	WTE change since Dec 19	% change since Dec 19	No. Aug 2022
<b>Overall</b>	<b>5,358</b>	<b>5,486</b>	<b>5,576</b>	<b>5,576</b>	<b>-0</b>	<b>+90</b>	<b>+1.6%</b>	<b>+218</b>	<b>+4.1%</b>	<b>6,951</b>
Consultants	3	4	3	3	+0	-1	-23.4%	+0	+7.2%	4
Registrars	3	3	1	0	-1	-3	-97.3%	-3	-97.3%	1
SHO/ Interns	1	1	1		-1	-1	-100.0%	-1	-100.0%	
Medical/ Dental, other	21	23	25	28	+3	+4	+19.0%	+7	+32.1%	55
<b>Medical &amp; Dental</b>	<b>28</b>	<b>31</b>	<b>30</b>	<b>31</b>	<b>+1</b>	<b>-0</b>	<b>-0.9%</b>	<b>+3</b>	<b>+11.0%</b>	<b>60</b>
Nurse/ Midwife Manager	207	213	209	206	-3	-6	-2.9%	-0	-0.1%	236
Nurse/ Midwife Specialist & AN/MP	17	20	17	17	+0	-3	-16.8%	+0	+1.3%	19
Staff Nurse/ Staff Midwife	824	840	856	855	-0	+15	+1.8%	+31	+3.8%	1,038
Public Health Nurse	5	6	6	6	+0	+1	+9.8%	+1	+27.1%	8
<i>Pre-registration Nurse Intern (COVID-19)</i>		8				-8	-100.0%		-100.0%	
<i>Pre-registration Nurse/ Midwife Intern</i>	6		12	12	0	+12	-100.0%	+6	+100.0%	24
<i>Post-registration Nurse/ Midwife Student</i>	1						-100.0%	-1	-100.0%	
<i>Nursing/ Midwifery awaiting registration</i>	2	2				-2	-100.0%	-2	-100.0%	
Nursing/ Midwifery Student	9	10	12	12	0	+2	+25.7%	+3	+33.3%	24
Nursing/ Midwifery other	1		1	1	0	+1	-100.0%	+0	+96.1%	1
<b>Nursing &amp; Midwifery</b>	<b>1,062</b>	<b>1,089</b>	<b>1,101</b>	<b>1,098</b>	<b>-3</b>	<b>+10</b>	<b>+0.9%</b>	<b>+36</b>	<b>+3.4%</b>	<b>1,326</b>
Therapy Professions	152	145	135	137	+2	-8	-5.3%	-15	-9.9%	172
Health Science/ Diagnostics	1	1	0	1	+0	-1	-57.4%	-1	-51.8%	2
Social Care	228	240	254	251	-3	+11	+4.5%	+23	+10.0%	288
Social Workers	37	39	37	38	+1	-1	-2.5%	+1	+2.7%	44
Psychologists	35	36	33	32	-1	-4	-12.0%	-3	-8.9%	38
Pharmacy	3	4	5	5	-0	+1	+24.0%	+2	+81.5%	10
H&SC, Other	8	10	7	6	-0	-4	-39.8%	-2	-26.9%	7
<b>Health &amp; Social Care Professionals</b>	<b>465</b>	<b>476</b>	<b>471</b>	<b>470</b>	<b>-1</b>	<b>-6</b>	<b>-1.3%</b>	<b>+5</b>	<b>+1.0%</b>	<b>561</b>
Management (VIII & above)	35	37	40	40	+0	+3	+8.7%	+5	+13.7%	42
Administrative/ Supervisory (V to VII)	70	78	90	93	+3	+15	+19.6%	+23	+32.2%	100
Clerical (III & IV)	212	221	213	220	+7	-1	-0.4%	+7	+3.5%	270
<b>Management &amp; Administrative</b>	<b>318</b>	<b>335</b>	<b>343</b>	<b>353</b>	<b>+10</b>	<b>+17</b>	<b>+5.2%</b>	<b>+35</b>	<b>+11.0%</b>	<b>412</b>
Support	241	252	262	261	-1	+8	+3.4%	+19	+7.9%	374
Maintenance/ Technical	16	18	16	15	-1	-4	-19.3%	-1	-8.6%	18
<b>General Support</b>	<b>258</b>	<b>271</b>	<b>278</b>	<b>275</b>	<b>-2</b>	<b>+5</b>	<b>+1.8%</b>	<b>+18</b>	<b>+6.9%</b>	<b>392</b>
Health Care Assistants	1,776	1,852	1,974	1,951	-23	+99	+5.4%	+175	+9.9%	2,212
Home Help	1,113	1,067	1,013	1,025	+11	-42	-3.9%	-89	-8.0%	1,545
Care, other	338	366	366	373	+7	+7	+2.0%	+35	+10.5%	443
<b>Patient &amp; Client Care</b>	<b>3,228</b>	<b>3,285</b>	<b>3,354</b>	<b>3,349</b>	<b>-5</b>	<b>+65</b>	<b>+2.0%</b>	<b>+122</b>	<b>+3.8%</b>	<b>4,200</b>



## CHO 5

Aug 2022	WTE Dec 2019	WTE Dec 2020	WTE Jul 2022	WTE Aug 2022	WTE change since Jul 22	WTE change since Dec 20	% change since Dec 20	WTE change since Dec 19	% change since Dec 19	No. Aug 2022
<b>Overall</b>	<b>3,152</b>	<b>3,213</b>	<b>3,358</b>	<b>3,360</b>	<b>+2</b>	<b>+147</b>	<b>+4.6%</b>	<b>+208</b>	<b>+6.6%</b>	<b>4,009</b>
Consultants	1	1	1	1	-0	-0	-32.4%	-0	-47.4%	1
Medical/ Dental, other	10	15	15	15	0	-0	-1.1%	+5	+48.5%	18
<b>Medical &amp; Dental</b>	<b>11</b>	<b>16</b>	<b>16</b>	<b>15</b>	<b>-0</b>	<b>-0</b>	<b>-2.6%</b>	<b>+4</b>	<b>+40.1%</b>	<b>19</b>
Nurse/ Midwife Manager	147	158	155	155	-1	-4	-2.2%	+7	+5.0%	162
Nurse/ Midwife Specialist & AN/MP	4	6	7	10	+3	+4	+68.8%	+6	+152.8%	11
Staff Nurse/ Staff Midwife	485	476	478	473	-5	-3	-0.7%	-12	-2.4%	548
Public Health Nurse	9	9	12	12	+0	+3	+36.9%	+3	+29.3%	14
<i>Pre-registration Nurse Intern (COVID-19)</i>		1				-1	-100.0%		-100.0%	
<i>Pre-registration Nurse/ Midwife Intern</i>			8	8	+0	+8	-100.0%	+8	-100.0%	16
<i>Nursing/ Midwifery awaiting registration</i>	2						-100.0%	-2	-100.0%	
Nursing/ Midwifery Student	2	1	8	8	+0	+7	+700.0%	+6	+334.8%	16
Nursing/ Midwifery other			1	1	+0	+1	-100.0%	+1	-100.0%	1
<b>Nursing &amp; Midwifery</b>	<b>647</b>	<b>650</b>	<b>661</b>	<b>659</b>	<b>-2</b>	<b>+9</b>	<b>+1.3%</b>	<b>+12</b>	<b>+1.8%</b>	<b>752</b>
Therapy Professions	104	97	98	99	+1	+2	+2.1%	-4	-4.1%	116
Social Care	154	143	151	158	+7	+15	+10.6%	+4	+2.7%	190
Social Workers	24	28	31	31	+0	+2	+7.7%	+6	+26.5%	35
Psychologists	14	19	24	22	-2	+3	+16.7%	+8	+58.5%	25
Pharmacy		1	1	1	0	+0	+3.1%	+1	-100.0%	1
H&SC, Other	7	5	6	9	+3	+4	+69.9%	+2	+31.2%	11
<b>Health &amp; Social Care Professionals</b>	<b>303</b>	<b>294</b>	<b>312</b>	<b>320</b>	<b>+9</b>	<b>+26</b>	<b>+8.9%</b>	<b>+18</b>	<b>+5.8%</b>	<b>378</b>
Management (VIII & above)	15	17	28	30	+2	+13	+80.9%	+15	+103.6%	30
Administrative/ Supervisory (V to VII)	53	58	73	73	-0	+15	+26.5%	+20	+37.9%	78
Clerical (III & IV)	93	93	124	124	+0	+31	+33.4%	+31	+33.5%	144
<b>Management &amp; Administrative</b>	<b>160</b>	<b>167</b>	<b>224</b>	<b>227</b>	<b>+2</b>	<b>+60</b>	<b>+35.7%</b>	<b>+66</b>	<b>+41.4%</b>	<b>252</b>
Support	139	95	84	84	+0	-11	-11.6%	-54	-39.2%	102
Maintenance/ Technical	16	11	13	13	+0	+2	+16.7%	-2	-14.9%	15
<b>General Support</b>	<b>154</b>	<b>107</b>	<b>97</b>	<b>97</b>	<b>+0</b>	<b>-9</b>	<b>-8.6%</b>	<b>-57</b>	<b>-36.8%</b>	<b>117</b>
Health Care Assistants	1,062	1,180	1,205	1,204	-1	+24	+2.0%	+142	+13.4%	1,362
Home Help	661	638	641	644	+3	+5	+0.8%	-18	-2.7%	889
Care, other	154	162	203	194	-9	+32	+19.9%	+40	+25.7%	240
<b>Patient &amp; Client Care</b>	<b>1,877</b>	<b>1,980</b>	<b>2,049</b>	<b>2,042</b>	<b>-7</b>	<b>+62</b>	<b>+3.1%</b>	<b>+165</b>	<b>+8.8%</b>	<b>2,491</b>

## CHO 6

Aug 2022	WTE Dec 2019	WTE Dec 2020	WTE Jul 2022	WTE Aug 2022	WTE change since Jul 22	WTE change since Dec 20	% change since Dec 20	WTE change since Dec 19	% change since Dec 19	No. Aug 2022
<b>Overall</b>	<b>2,021</b>	<b>2,020</b>	<b>2,044</b>	<b>2,032</b>	<b>-12</b>	<b>+12</b>	<b>+0.6%</b>	<b>+11</b>	<b>+0.5%</b>	<b>2,261</b>
Consultants	3	3	3	3	0					3
Registrars	1	1	3	2	-1	+1	+100.0%	+1	+100.0%	2
Medical/ Dental, other	5	4	3	3	-0	-1	-27.9%	-2	-44.8%	4
<b>Medical &amp; Dental</b>	<b>9</b>	<b>8</b>	<b>9</b>	<b>8</b>	<b>-1</b>	<b>-0</b>	<b>-0.9%</b>	<b>-1</b>	<b>-13.8%</b>	<b>9</b>
Nurse/ Midwife Manager	112	106	104	103	-1	-3	-2.6%	-9	-7.6%	109
Nurse/ Midwife Specialist & AN/MP	1	1				-1	-100.0%	-1	-100.0%	
Staff Nurse/ Staff Midwife	351	348	342	340	-3	-8	-2.4%	-11	-3.2%	363
<i>Nursing Education/Clinical</i>			1	1	0	+1	-100.0%	+1	-100.0%	1
Nursing/ Midwifery other			1	1	0	+1	-100.0%	+1	-100.0%	1
<b>Nursing &amp; Midwifery</b>	<b>464</b>	<b>455</b>	<b>448</b>	<b>444</b>	<b>-4</b>	<b>-11</b>	<b>-2.4%</b>	<b>-20</b>	<b>-4.3%</b>	<b>473</b>
Therapy Professions	91	89	75	70	-5	-18	-20.8%	-21	-23.2%	84
Social Care	334	361	390	393	+3	+32	+8.9%	+59	+17.5%	434
Social Workers	23	20	13	13	+0	-7	-34.3%	-9	-40.8%	15
Psychologists	16	15	11	15	+4	-0	-0.3%	-1	-7.0%	19
Pharmacy	3	3	4	4	-0	+1	+21.4%	+1	+23.1%	5
H&SC, Other	2	1	1	1	+0	+0	+6.3%	-0	-25.7%	2
<b>Health &amp; Social Care Professionals</b>	<b>469</b>	<b>489</b>	<b>495</b>	<b>496</b>	<b>+1</b>	<b>+7</b>	<b>+1.5%</b>	<b>+27</b>	<b>+5.8%</b>	<b>559</b>
Management (VIII & above)	35	35	41	40	-0	+5	+14.5%	+6	+15.8%	41
Administrative/ Supervisory (V to VII)	76	73	92	92	-0	+18	+25.1%	+16	+21.6%	98
Clerical (III & IV)	83	89	90	86	-4	-3	-3.3%	+2	+3.0%	98
<b>Management &amp; Administrative</b>	<b>194</b>	<b>197</b>	<b>222</b>	<b>218</b>	<b>-5</b>	<b>+21</b>	<b>+10.4%</b>	<b>+24</b>	<b>+12.5%</b>	<b>237</b>
Support	131	128	125	126	+1	-2	-1.2%	-5	-3.6%	144
Maintenance/ Technical	15	14	15	15	-0	+1	+5.4%			15
<b>General Support</b>	<b>146</b>	<b>142</b>	<b>140</b>	<b>141</b>	<b>+1</b>	<b>-1</b>	<b>-0.6%</b>	<b>-5</b>	<b>-3.3%</b>	<b>159</b>
Health Care Assistants	487	479	494	492	-2	+13	+2.7%	+6	+1.1%	555
Care, other	254	250	236	234	-3	-17	-6.7%	-20	-7.9%	269
<b>Patient &amp; Client Care</b>	<b>740</b>	<b>730</b>	<b>730</b>	<b>726</b>	<b>-5</b>	<b>-4</b>	<b>-0.5%</b>	<b>-15</b>	<b>-2.0%</b>	<b>824</b>

## CHO 7

Aug 2022	WTE Dec 2019	WTE Dec 2020	WTE Jul 2022	WTE Aug 2022	WTE change since Jul 22	WTE change since Dec 20	% change since Dec 20	WTE change since Dec 19	% change since Dec 19	No. Aug 2022
<b>Overall</b>	<b>3,978</b>	<b>4,125</b>	<b>4,334</b>	<b>4,331</b>	<b>-3</b>	<b>+206</b>	<b>+5.0%</b>	<b>+354</b>	<b>+8.9%</b>	<b>5,108</b>
Consultants	1	1				-1	-100.0%	-1	-100.0%	
Registrars	3	3	3	4	+1	+1	+35.3%	+1	+35.3%	5
SHO/ Interns	9	9	9	9	+0	+0	+5.1%	+1	+5.6%	10
Medical/ Dental, other	5	3	2	2	0	-1	-32.9%	-3	-59.2%	4
<b>Medical &amp; Dental</b>	<b>18</b>	<b>16</b>	<b>15</b>	<b>16</b>	<b>+1</b>	<b>-0</b>	<b>-0.1%</b>	<b>-2</b>	<b>-11.1%</b>	<b>19</b>
Nurse/ Midwife Manager	199	204	230	231	+1	+27	+13.1%	+32	+16.0%	246
Nurse/ Midwife Specialist & AN/MP	8	7	10	11	+0	+3	+45.9%	+3	+35.4%	12
Staff Nurse/ Staff Midwife	593	620	650	645	-5	+25	+4.1%	+52	+8.7%	730
<i>Pre-registration Nurse/ Midwife Intern</i>			7	7	0	+7	-100.0%	+7	-100.0%	14
<i>Nursing/ Midwifery awaiting registration</i>		1	2	2	-1	+0	+11.1%	+2	-100.0%	2
Nursing/ Midwifery Student		1	9	9	-1	+7	+529.6%	+9	-100.0%	16
Nursing/ Midwifery other	1	2	3	4	+1	+2	+133.3%	+3	+600.0%	4
<b>Nursing &amp; Midwifery</b>	<b>801</b>	<b>834</b>	<b>902</b>	<b>899</b>	<b>-3</b>	<b>+64</b>	<b>+7.7%</b>	<b>+98</b>	<b>+12.2%</b>	<b>1,008</b>
Therapy Professions	136	152	162	174	+12	+22	+14.7%	+38	+28.4%	193
Health Science/ Diagnostics	3	3	3	3	+0	+0	+5.0%	+0	+5.0%	4
Social Care	360	389	443	443	+0	+54	+14.0%	+83	+23.0%	497
Social Workers	44	44	45	46	+1	+2	+4.8%	+2	+4.7%	53
Psychologists	28	32	32	31	-1	-1	-2.9%	+3	+12.1%	35
Pharmacy	7	6	8	9	+1	+3	+47.0%	+2	+21.7%	11
H&SC, Other	3	3	3	3	0					3
<b>Health &amp; Social Care Professionals</b>	<b>581</b>	<b>628</b>	<b>696</b>	<b>709</b>	<b>+13</b>	<b>+81</b>	<b>+12.8%</b>	<b>+128</b>	<b>+22.1%</b>	<b>796</b>
Management (VIII & above)	37	50	59	58	-2	+8	+15.7%	+21	+56.0%	58
Administrative/ Supervisory (V to VII)	91	106	119	120	+1	+13	+12.6%	+29	+32.2%	128
Clerical (III & IV)	126	138	147	150	+3	+12	+8.8%	+24	+19.3%	177
<b>Management &amp; Administrative</b>	<b>253</b>	<b>294</b>	<b>325</b>	<b>328</b>	<b>+2</b>	<b>+33</b>	<b>+11.4%</b>	<b>+74</b>	<b>+29.3%</b>	<b>363</b>
Support	277	274	273	266	-8	-9	-3.1%	-11	-4.1%	353
Maintenance/ Technical	30	35	35	31	-3	-3	-9.6%	+1	+3.2%	33
<b>General Support</b>	<b>307</b>	<b>309</b>	<b>308</b>	<b>297</b>	<b>-11</b>	<b>-12</b>	<b>-3.8%</b>	<b>-10</b>	<b>-3.4%</b>	<b>386</b>
Health Care Assistants	1,500	1,504	1,555	1,552	-3	+48	+3.2%	+52	+3.4%	1,826
Home Help	127	132	130	130	+0	-2	-1.4%	+3	+2.3%	239
Care, other	391	408	404	401	-3	-6	-1.6%	+11	+2.7%	471
<b>Patient &amp; Client Care</b>	<b>2,018</b>	<b>2,043</b>	<b>2,089</b>	<b>2,083</b>	<b>-5</b>	<b>+40</b>	<b>+1.9%</b>	<b>+65</b>	<b>+3.2%</b>	<b>2,536</b>

## CHO 8

Aug 2022	WTE Dec 2019	WTE Dec 2020	WTE Jul 2022	WTE Aug 2022	WTE change since Jul 22	WTE change since Dec 20	% change since Dec 20	WTE change since Dec 19	% change since Dec 19	No. Aug 2022
<b>Overall</b>	<b>3,650</b>	<b>3,689</b>	<b>3,758</b>	<b>3,779</b>	<b>+21</b>	<b>+89</b>	<b>+2.4%</b>	<b>+128</b>	<b>+3.5%</b>	<b>4,579</b>
Consultants	1	1				-1	-100.0%	-1	-100.0%	
Registrars	2	1	1	1	0			-1	-50.0%	1
Medical/ Dental, other	12	12	12	12	-0	-0	-2.9%	-0	-2.4%	20
<b>Medical &amp; Dental</b>	<b>15</b>	<b>14</b>	<b>13</b>	<b>13</b>	<b>-0</b>	<b>-1</b>	<b>-9.6%</b>	<b>-2</b>	<b>-15.4%</b>	<b>21</b>
Nurse/ Midwife Manager	200	208	194	194	+0	-14	-6.6%	-5	-2.7%	211
Nurse/ Midwife Specialist & AN/MP	9	10	11	9	-1	-1	-6.2%	+0	+3.6%	10
Staff Nurse/ Staff Midwife	568	567	571	574	+2	+7	+1.2%	+6	+1.0%	651
Public Health Nurse	3	4	3	3	-0	-1	-16.8%	-0	-3.0%	4
<i>Pre-registration Nurse Intern (COVID-19)</i>		4				-4	-100.0%		-100.0%	
<i>Pre-registration Nurse/ Midwife Intern</i>			12	14	+2	+14	-100.0%	+14	-100.0%	29
<i>Nursing/ Midwifery awaiting registration</i>				0	+0	+0	-100.0%	+0	-100.0%	1
Nursing/ Midwifery Student		4	12	14	+2	+10	+249.8%	+14	-100.0%	30
Nursing/ Midwifery other	5	9	9	9	+0	+1	+10.2%	+4	+73.6%	10
<b>Nursing &amp; Midwifery</b>	<b>786</b>	<b>802</b>	<b>801</b>	<b>804</b>	<b>+3</b>	<b>+2</b>	<b>+0.3%</b>	<b>+18</b>	<b>+2.3%</b>	<b>916</b>
Therapy Professions	112	122	105	100	-4	-22	-17.9%	-12	-10.5%	121
Health Science/ Diagnostics	2	2	3	3	0	+1	+50.0%	+1	+50.0%	3
Social Care	361	380	417	415	-2	+35	+9.2%	+54	+15.0%	496
Social Workers	31	29	22	23	+1	-6	-20.8%	-7	-24.4%	27
Psychologists	25	22	23	24	+1	+1	+6.1%	-1	-4.2%	27
Pharmacy	3	2	2	2	-0	-0	-8.5%	-1	-26.8%	3
H&SC, Other	7	6	7	7	-1	+0	+6.2%	-0	-5.6%	9
<b>Health &amp; Social Care Professionals</b>	<b>540</b>	<b>564</b>	<b>578</b>	<b>574</b>	<b>-5</b>	<b>+10</b>	<b>+1.7%</b>	<b>+34</b>	<b>+6.2%</b>	<b>686</b>
Management (VIII & above)	14	20	26	26	-0	+5	+25.7%	+11	+78.1%	26
Administrative/ Supervisory (V to VII)	76	78	82	86	+4	+8	+10.2%	+9	+12.3%	90
Clerical (III & IV)	154	159	165	167	+2	+8	+5.0%	+13	+8.6%	194
<b>Management &amp; Administrative</b>	<b>245</b>	<b>257</b>	<b>273</b>	<b>279</b>	<b>+6</b>	<b>+21</b>	<b>+8.2%</b>	<b>+34</b>	<b>+13.8%</b>	<b>310</b>
Support	72	67	61	61	-0	-5	-7.9%	-11	-15.1%	71
Maintenance/ Technical	40	38	36	36	+0	-1	-4.0%	-4	-9.2%	38
<b>General Support</b>	<b>112</b>	<b>104</b>	<b>97</b>	<b>98</b>	<b>+0</b>	<b>-7</b>	<b>-6.5%</b>	<b>-15</b>	<b>-13.0%</b>	<b>109</b>
Health Care Assistants	1,400	1,416	1,449	1,458	+9	+42	+3.0%	+58	+4.2%	1,735
Home Help	418	397	413	418	+6	+22	+5.4%	+1	+0.1%	638
Care, other	135	135	133	136	+2	+1	+0.5%	+0	+0.2%	164
<b>Patient &amp; Client Care</b>	<b>1,953</b>	<b>1,948</b>	<b>1,995</b>	<b>2,012</b>	<b>+17</b>	<b>+64</b>	<b>+3.3%</b>	<b>+59</b>	<b>+3.0%</b>	<b>2,537</b>

## CHO 9

Aug 2022	WTE Dec 2019	WTE Dec 2020	WTE Jul 2022	WTE Aug 2022	WTE change since Jul 22	WTE change since Dec 20	% change since Dec 20	WTE change since Dec 19	% change since Dec 19	No. Aug 2022
<b>Overall</b>	<b>4,064</b>	<b>4,199</b>	<b>4,268</b>	<b>4,265</b>	<b>-3</b>	<b>+66</b>	<b>+1.6%</b>	<b>+202</b>	<b>+5.0%</b>	<b>4,986</b>
Consultants	14	14	15	14	-1	-0	-0.8%	-0	-3.5%	19
Registrars	12	7	11	9	-1	+3	+38.7%	-2	-17.5%	10
SHO/ Interns	12	13	10	10	-0	-3	-21.5%	-2	-17.1%	10
Medical/ Dental, other	7	7	6	6	-0	-1	-13.3%	-1	-13.3%	9
<b>Medical &amp; Dental</b>	<b>45</b>	<b>40</b>	<b>42</b>	<b>39</b>	<b>-3</b>	<b>-1</b>	<b>-2.8%</b>	<b>-6</b>	<b>-12.3%</b>	<b>48</b>
Nurse/ Midwife Manager	266	277	284	287	+2	+10	+3.6%	+20	+7.6%	310
Nurse/ Midwife Specialist & AN/MP	13	18	30	30	-0	+12	+69.2%	+16	+121.9%	32
Staff Nurse/ Staff Midwife	744	747	737	737	+1	-9	-1.2%	-7	-0.9%	838
Public Health Nurse	0		1	1	0	+1	-100.0%	+1	+163.2%	1
<i>Pre-registration Nurse Intern (COVID-19)</i>		11				-11	-100.0%		-100.0%	
<i>Pre-registration Nurse/ Midwife Intern</i>	8	3	20	20	0	+17	+680.0%	+12	+151.6%	39
Nursing/ Midwifery Student	8	13	20	20	0	+6	+49.1%	+12	+151.6%	39
Nursing/ Midwifery other	8	9	7	7	+0	-2	-18.9%	-1	-10.8%	8
<b>Nursing &amp; Midwifery</b>	<b>1,040</b>	<b>1,063</b>	<b>1,079</b>	<b>1,082</b>	<b>+2</b>	<b>+19</b>	<b>+1.8%</b>	<b>+42</b>	<b>+4.0%</b>	<b>1,228</b>
Therapy Professions	236	257	285	286	+1	+28	+11.0%	+50	+21.3%	325
Health Science/ Diagnostics	16	14	14	14	0			-2	-14.9%	15
Social Care	690	741	789	791	+2	+50	+6.8%	+101	+14.7%	950
Social Workers	65	73	69	70	+1	-3	-4.5%	+5	+7.0%	79
Psychologists	53	64	56	56	-0	-9	-13.3%	+3	+5.2%	60
Pharmacy	5	6	6	6	0			+1	+15.3%	7
H&SC, Other	19	19	15	15	-0	-4	-22.8%	-5	-24.7%	20
<b>Health &amp; Social Care Professionals</b>	<b>1,084</b>	<b>1,174</b>	<b>1,234</b>	<b>1,237</b>	<b>+3</b>	<b>+63</b>	<b>+5.3%</b>	<b>+152</b>	<b>+14.1%</b>	<b>1,456</b>
Management (VIII & above)	46	50	61	58	-2	+8	+16.1%	+12	+26.0%	59
Administrative/ Supervisory (V to VII)	103	121	139	141	+3	+20	+16.6%	+39	+37.7%	153
Clerical (III & IV)	165	170	198	195	-3	+24	+14.3%	+29	+17.8%	233
<b>Management &amp; Administrative</b>	<b>314</b>	<b>342</b>	<b>398</b>	<b>394</b>	<b>-3</b>	<b>+53</b>	<b>+15.4%</b>	<b>+80</b>	<b>+25.5%</b>	<b>445</b>
Support	314	265	256	255	-1	-10	-3.9%	-59	-18.8%	308
Maintenance/ Technical	24	25	22	21	-1	-4	-16.6%	-3	-13.2%	23
<b>General Support</b>	<b>338</b>	<b>290</b>	<b>278</b>	<b>276</b>	<b>-2</b>	<b>-14</b>	<b>-5.0%</b>	<b>-62</b>	<b>-18.4%</b>	<b>331</b>
Health Care Assistants	1,139	1,182	1,128	1,132	+4	-51	-4.3%	-7	-0.6%	1,358
Care, other	103	107	110	105	-4	-2	-1.7%	+2	+2.0%	120
<b>Patient &amp; Client Care</b>	<b>1,242</b>	<b>1,289</b>	<b>1,238</b>	<b>1,237</b>	<b>-1</b>	<b>-53</b>	<b>-4.1%</b>	<b>-5</b>	<b>-0.4%</b>	<b>1,478</b>

## other Community Services

Aug 2022	WTE Dec 2019	WTE Dec 2020	WTE Jul 2022	WTE Aug 2022	WTE change since Jul 22	WTE change since Dec 20	% change since Dec 20	WTE change since Dec 19	% change since Dec 19	No. Aug 2022
<b>Overall</b>	<b>78</b>	<b>81</b>	<b>91</b>	<b>93</b>	<b>+3</b>	<b>+12</b>	<b>+15.1%</b>	<b>+15</b>	<b>+19.0%</b>	<b>101</b>
Health Science/ Diagnostics	1						-100.0%	-1	-100.0%	
Psychologists			1	1	0	+1	-100.0%	+1	-100.0%	1
<b>Health &amp; Social Care Professionals</b>	<b>1</b>		<b>1</b>	<b>1</b>		<b>+1</b>	<b>-100.0%</b>			<b>1</b>
Management (VIII & above)	20	18	18	18	-0	-0	-0.2%	-2	-9.8%	18
Administrative/ Supervisory (V to VII)	24	24	37	39	+2	+15	+61.8%	+15	+59.9%	42
Clerical (III & IV)	33	39	34	34	+1	-5	-11.8%	+1	+3.4%	38
<b>Management &amp; Administrative</b>	<b>77</b>	<b>81</b>	<b>88</b>	<b>91</b>	<b>+3</b>	<b>+10</b>	<b>+12.8%</b>	<b>+14</b>	<b>+17.9%</b>	<b>98</b>
Health Care Assistants	0	0	0	0	0			+0	+420.0%	1
Care, other			1	1	0	+1	-100.0%	+1	-100.0%	1
<b>Patient &amp; Client Care</b>	<b>0</b>	<b>0</b>	<b>1</b>	<b>1</b>		<b>+1</b>	<b>+334.6%</b>	<b>+1</b>	<b>+2160.0%</b>	<b>2</b>

## Social Care Services Employment by Grade Group: Aug 2022

Aug 2022	WTE Dec 2019	WTE Dec 2020	WTE Jul 2022	WTE Aug 2022	WTE change since Jul 22	WTE change since Dec 20	% change since Dec 20	WTE change since Dec 19	% change since Dec 19	No. Aug 2022
<b>Overall</b>	<b>31,535</b>	<b>32,359</b>	<b>33,496</b>	<b>33,470</b>	<b>-25</b>	<b>+1,111</b>	<b>+3.4%</b>	<b>+1,935</b>	<b>+6.1%</b>	<b>39,897</b>
Consultant Medicine	4	4	7	6	-1	+2	+39.1%	+3	+70.8%	8
Consultant Paediatrics	3	3	2	2	+0	-1	-32.5%	-1	-32.5%	3
Consultant Psychiatry	21	21	19	18	-1	-3	-15.3%	-3	-13.2%	24
<b>Consultants</b>	<b>27</b>	<b>29</b>	<b>28</b>	<b>26</b>	<b>-2</b>	<b>-3</b>	<b>-8.8%</b>	<b>-1</b>	<b>-4.4%</b>	<b>35</b>
Registrar	14	9	14	12	-2	+3	+30.3%	-2	-14.7%	13
Senior Registrar	3	4	5	4	-1	+0	+2.0%	+1	+36.0%	5
Specialist Registrar	6	4	3	4	+0	-0	-6.3%	-2	-37.5%	4
<b>Registrars</b>	<b>23</b>	<b>17</b>	<b>22</b>	<b>19</b>	<b>-3</b>	<b>+3</b>	<b>+14.9%</b>	<b>-3</b>	<b>-14.0%</b>	<b>22</b>
Senior House Officer	22	23	24	21	-2	-1	-6.0%	-1	-3.0%	22
<b>SHO/ Interns</b>	<b>22</b>	<b>23</b>	<b>24</b>	<b>21</b>	<b>-2</b>	<b>-1</b>	<b>-6.0%</b>	<b>-1</b>	<b>-3.0%</b>	<b>22</b>
Other Medical	111	118	98	100	+1	-18	-15.6%	-11	-10.1%	174
<b>Medical/ Dental, other</b>	<b>111</b>	<b>118</b>	<b>98</b>	<b>100</b>	<b>+1</b>	<b>-18</b>	<b>-15.6%</b>	<b>-11</b>	<b>-10.1%</b>	<b>174</b>
<b>Medical &amp; Dental</b>	<b>183</b>	<b>186</b>	<b>172</b>	<b>167</b>	<b>-6</b>	<b>-20</b>	<b>-10.6%</b>	<b>-16</b>	<b>-8.8%</b>	<b>253</b>
Clinical Nurse/ Midwife Manager	1,319	1,350	1,388	1,385	-2	+35	+2.6%	+66	+5.0%	1,504
Director Nursing/Midwifery, Assistant	143	152	139	142	+3	-9	-6.2%	-1	-0.6%	148
Director of Nursing/Midwifery	140	141	146	145	-1	+4	+2.6%	+4	+3.2%	150
<b>Nurse/ Midwife Manager</b>	<b>1,603</b>	<b>1,643</b>	<b>1,673</b>	<b>1,673</b>	<b>-1</b>	<b>+29</b>	<b>+1.8%</b>	<b>+70</b>	<b>+4.4%</b>	<b>1,802</b>
Advanced Nurse/ Midwife Practitioner	13	25	31	33	+3	+9	+35.1%	+21	+161.6%	36
Clinical Nurse/ Midwife Specialist	76	78	95	95	+0	+18	+22.7%	+19	+25.7%	104
<b>Nurse/ Midwife Specialist &amp; AN/MP</b>	<b>88</b>	<b>102</b>	<b>126</b>	<b>128</b>	<b>+3</b>	<b>+26</b>	<b>+25.7%</b>	<b>+40</b>	<b>+45.3%</b>	<b>140</b>
Staff Midwives		1	1	1	+0	-0	-3.4%	+1	-100.0%	1
Staff Nurse [Psychiatric]	88	58	127	69	-58	+11	+19.4%	-19	-21.9%	87
Staff Nurses [General/ Children's]	3,463	3,369	3,495	3,499	+4	+130	+3.9%	+36	+1.0%	3,981
Staff Nurse [Intellectual Disability]	1,597	1,789	1,659	1,698	+38	-92	-5.1%	+100	+6.3%	1,967
<b>Staff Nurse/ Staff Midwife</b>	<b>5,149</b>	<b>5,217</b>	<b>5,282</b>	<b>5,267</b>	<b>-15</b>	<b>+49</b>	<b>+0.9%</b>	<b>+118</b>	<b>+2.3%</b>	<b>6,036</b>
<b>Public Health Nurse</b>	<b>20</b>	<b>20</b>	<b>24</b>	<b>24</b>	<b>+0</b>	<b>+4</b>	<b>+19.8%</b>	<b>+5</b>	<b>+23.7%</b>	<b>29</b>
Pre-registration Nurse Intern (COVID-19)		32				-32	-100.0%		-100.0%	
Pre-registration Nurse/ Midwife Intern	28	3	83	84	+2	+82	+3278.8%	+56	+199.0%	170
Post-registration Nurse/ Midwife Student	1						-100.0%	-1	-100.0%	
Nursing/ Midwifery awaiting registration	15	14	2	2	-0	-12	-86.6%	-13	-87.1%	3
<b>Nursing/ Midwifery Student</b>	<b>44</b>	<b>49</b>	<b>85</b>	<b>86</b>	<b>+1</b>	<b>+38</b>	<b>+77.6%</b>	<b>+42</b>	<b>+95.9%</b>	<b>173</b>
Nursing Education/Clinical	22	27	29	30	+1	+3	+12.6%	+8	+35.9%	33
Other Nursing/ Midwifery	1	1	1	1						1
<b>Nursing/ Midwifery other</b>	<b>23</b>	<b>28</b>	<b>30</b>	<b>31</b>	<b>+1</b>	<b>+3</b>	<b>+12.1%</b>	<b>+8</b>	<b>+34.4%</b>	<b>34</b>
<b>Nursing &amp; Midwifery</b>	<b>6,927</b>	<b>7,060</b>	<b>7,220</b>	<b>7,210</b>	<b>-11</b>	<b>+150</b>	<b>+2.1%</b>	<b>+283</b>	<b>+4.1%</b>	<b>8,214</b>
Dietitians	35	34	45	40	-5	+6	+16.1%	+5	+14.6%	50
Occupational Therapists	377	392	397	407	+10	+15	+3.9%	+30	+7.8%	462
Physiotherapists	313	325	343	343	-0	+18	+5.4%	+30	+9.6%	402
Podiatrists & Chiropodists	12	13	3	3	-0	-10	-75.7%	-9	-74.5%	6
Speech & Language Therapists	316	327	315	312	-3	-15	-4.5%	-3	-1.1%	362
<b>Therapy Professions</b>	<b>1,053</b>	<b>1,091</b>	<b>1,104</b>	<b>1,105</b>	<b>+1</b>	<b>+14</b>	<b>+1.3%</b>	<b>+52</b>	<b>+5.0%</b>	<b>1,282</b>
Clinical Engineering	13	13	16	16	+0	+3	+23.6%	+3	+23.1%	16
Medical Science	4	4	4	4						4
Phlebotomists	1						-100.0%	-1	-100.0%	
Radiographers	7	6	4	4	+0	-2	-35.3%	-3	-44.3%	8
Respiratory Physiologists	1	2	2	2				+1	+100.0%	2
Vascular Physiologists	0	0	0	0		+0	+6.3%	-0	-19.0%	1
<b>Health Science/ Diagnostics</b>	<b>26</b>	<b>25</b>	<b>26</b>	<b>26</b>	<b>+0</b>	<b>+1</b>	<b>+3.8%</b>	<b>-0</b>	<b>-0.4%</b>	<b>31</b>
<b>Social Care</b>	<b>2,598</b>	<b>2,792</b>	<b>3,005</b>	<b>3,001</b>	<b>-4</b>	<b>+209</b>	<b>+7.5%</b>	<b>+403</b>	<b>+15.5%</b>	<b>3,511</b>
<b>Social Workers</b>	<b>317</b>	<b>328</b>	<b>302</b>	<b>305</b>	<b>+3</b>	<b>-23</b>	<b>-7.1%</b>	<b>-13</b>	<b>-3.9%</b>	<b>352</b>



Aug 2022	WTE Dec 2019	WTE Dec 2020	WTE Jul 2022	WTE Aug 2022	WTE change since Jul 22	WTE change since Dec 20	% change since Dec 20	WTE change since Dec 19	% change since Dec 19	No. Aug 2022
<b>Overall</b>	<b>31,535</b>	<b>32,359</b>	<b>33,496</b>	<b>33,470</b>	<b>-25</b>	<b>+1,111</b>	<b>+3.4%</b>	<b>+1,935</b>	<b>+6.1%</b>	<b>39,897</b>
<b>Psychologists</b>	<b>206</b>	<b>230</b>	<b>234</b>	<b>232</b>	<b>-2</b>	<b>+2</b>	<b>+0.9%</b>	<b>+26</b>	<b>+12.6%</b>	<b>263</b>
Pharmacists	18	18	21	21	+0	+3	+17.1%	+3	+15.2%	32
Pharmacy Technicians	4	6	6	6	-0	+1	+12.5%	+2	+54.8%	7
<b>Pharmacy</b>	<b>22</b>	<b>23</b>	<b>27</b>	<b>27</b>	<b>-0</b>	<b>+4</b>	<b>+16.0%</b>	<b>+5</b>	<b>+22.4%</b>	<b>39</b>
Counsellor Therapists	19	20	22	21	-1	+2	+8.6%	+3	+13.5%	27
Other Health & Social Care	51	46	36	33	-3	-13	-27.6%	-18	-35.1%	47
Play Therapists/ Specialists	16	12	11	16	+5	+4	+31.4%	-1	-5.2%	19
<b>H&amp;SC, Other</b>	<b>86</b>	<b>77</b>	<b>69</b>	<b>70</b>	<b>+1</b>	<b>-7</b>	<b>-9.3%</b>	<b>-16</b>	<b>-18.7%</b>	<b>93</b>
<b>Health &amp; Social Care Professionals</b>	<b>4,308</b>	<b>4,567</b>	<b>4,767</b>	<b>4,766</b>	<b>-1</b>	<b>+199</b>	<b>+4.4%</b>	<b>+457</b>	<b>+10.6%</b>	<b>5,571</b>
Executive Management	43	51	55	53	-2	+2	+3.5%	+10	+23.2%	53
Senior Management (VIII & GM)	212	232	281	282	+0	+50	+21.6%	+70	+33.3%	288
<b>Management (VIII &amp; above)</b>	<b>254</b>	<b>283</b>	<b>336</b>	<b>334</b>	<b>-2</b>	<b>+52</b>	<b>+18.4%</b>	<b>+80</b>	<b>+31.6%</b>	<b>341</b>
Middle Management (V-VII)	628	687	848	863	+15	+176	+25.6%	+235	+37.4%	918
Other Administrative	16	16	14	14		-2	-12.1%	-2	-12.9%	14
<b>Administrative/ Supervisory (V to VII)</b>	<b>644</b>	<b>703</b>	<b>862</b>	<b>877</b>	<b>+15</b>	<b>+174</b>	<b>+24.8%</b>	<b>+233</b>	<b>+36.1%</b>	<b>932</b>
<b>Clerical (III &amp; IV)</b>	<b>1,231</b>	<b>1,272</b>	<b>1,335</b>	<b>1,342</b>	<b>+7</b>	<b>+70</b>	<b>+5.5%</b>	<b>+111</b>	<b>+9.0%</b>	<b>1,575</b>
<b>Management &amp; Administrative</b>	<b>2,130</b>	<b>2,258</b>	<b>2,533</b>	<b>2,553</b>	<b>+20</b>	<b>+295</b>	<b>+13.1%</b>	<b>+424</b>	<b>+19.9%</b>	<b>2,848</b>
Catering	319	312	309	306	-3	-7	-2.2%	-14	-4.2%	341
Household Services	912	885	839	831	-7	-54	-6.0%	-81	-8.8%	1,080
Other Labs & Associated	1	1	1	1						1
Other Support	222	165	168	164	-4	-1	-0.3%	-58	-26.1%	248
Portering	109	101	88	88	-0	-13	-12.9%	-21	-19.4%	97
<b>Support</b>	<b>1,563</b>	<b>1,464</b>	<b>1,404</b>	<b>1,390</b>	<b>-14</b>	<b>-74</b>	<b>-5.0%</b>	<b>-173</b>	<b>-11.1%</b>	<b>1,767</b>
Maintenance	215	216	201	196	-5	-20	-9.3%	-19	-8.6%	211
Technical Services	8	11	21	20	-1	+9	+77.1%	+12	+142.7%	20
<b>Maintenance/ Technical</b>	<b>223</b>	<b>227</b>	<b>221</b>	<b>216</b>	<b>-6</b>	<b>-12</b>	<b>-5.1%</b>	<b>-7</b>	<b>-3.1%</b>	<b>231</b>
<b>General Support</b>	<b>1,786</b>	<b>1,691</b>	<b>1,626</b>	<b>1,606</b>	<b>-20</b>	<b>-85</b>	<b>-5.1%</b>	<b>-180</b>	<b>-10.1%</b>	<b>1,998</b>
Attendant/ Aide	2,524	2,458	1,880	1,867	-13	-591	-24.0%	-657	-26.0%	2,180
Health & Social Care Assistants	31	38	67	73	+6	+35	+91.1%	+42	+137.6%	84
Health Care Assistant/ Care Assistant	8,315	8,702	9,690	9,674	-16	+972	+11.2%	+1,359	+16.3%	11,260
HCA (Student Nurse/Midwife COVID-19)		22				-22	-100.0%		-100.0%	
<b>Health Care Assistants</b>	<b>10,869</b>	<b>11,221</b>	<b>11,637</b>	<b>11,614</b>	<b>-23</b>	<b>+394</b>	<b>+3.5%</b>	<b>+745</b>	<b>+6.9%</b>	<b>13,524</b>
<b>Home Help</b>	<b>3,551</b>	<b>3,525</b>	<b>3,632</b>	<b>3,658</b>	<b>+26</b>	<b>+133</b>	<b>+3.8%</b>	<b>+107</b>	<b>+3.0%</b>	<b>5,246</b>
Home Care Services	114	117	144	144	+0	+27	+22.8%	+30	+26.1%	157
Other Care Grades	197	240	277	280	+2	+39	+16.4%	+83	+42.0%	318
Pastoral Care	42	37	30	29	-1	-8	-21.6%	-13	-31.0%	58
Workshop Services	1,428	1,458	1,457	1,445	-13	-13	-0.9%	+16	+1.2%	1,710
<b>Care, other</b>	<b>1,781</b>	<b>1,852</b>	<b>1,908</b>	<b>1,897</b>	<b>-11</b>	<b>+45</b>	<b>+2.4%</b>	<b>+116</b>	<b>+6.5%</b>	<b>2,243</b>
<b>Patient &amp; Client Care</b>	<b>16,201</b>	<b>16,598</b>	<b>17,177</b>	<b>17,169</b>	<b>-8</b>	<b>+572</b>	<b>+3.4%</b>	<b>+968</b>	<b>+6.0%</b>	<b>21,013</b>

## Employment by WTE, Headcount, Gender, Full-Time /Part-Time etc.: Aug 2022

Social Care Services Staff Group	WTE	Headcount	WTE: no.	% Male	% female	Male WTE: no.	Female WTE: no.	% Total Perm	% Male Perm	% Female Perm	% Total Full Time	% Total Part Time	% Male FT	% Female FT
<b>Overall</b>	<b>33,470</b>	<b>39,897</b>	<b>1.19</b>	<b>17.1%</b>	<b>82.9%</b>	<b>1.10</b>	<b>1.21</b>	<b>85.9%</b>	<b>84.8%</b>	<b>86.1%</b>	<b>55.2%</b>	<b>44.8%</b>	<b>72.0%</b>	<b>51.7%</b>
Consultant Medicine	6	8	1.30	12.5%	87.5%	1.61	1.27	75.0%	75.0%	71.4%	50.0%	50.0%	0.0%	57.1%
Consultant Paediatrics	2	3	1.46		100.0%		1.46	100.0%	100.0%	100.0%	33.3%	66.7%		33.3%
Consultant Psychiatry	18	24	1.33	29.2%	70.8%	1.06	1.48	75.0%	75.0%	88.2%	54.2%	45.8%	85.7%	41.2%
<b>Consultants</b>	<b>26</b>	<b>35</b>	<b>1.33</b>	<b>22.9%</b>	<b>77.1%</b>	<b>1.10</b>	<b>1.42</b>	<b>77.1%</b>	<b>50.0%</b>	<b>85.2%</b>	<b>51.4%</b>	<b>48.6%</b>	<b>75.0%</b>	<b>44.4%</b>
Registrar	12	13	1.13	30.8%	69.2%	1.00	1.20	46.2%	46.2%	33.3%	92.3%	7.7%	100.0%	88.9%
Senior Registrar	4	5	1.23	40.0%	60.0%	1.85	1.00	20.0%	20.0%	33.3%	80.0%	20.0%	50.0%	100.0%
Specialist Registrar	4	4	1.07	50.0%	50.0%	1.14	1.00	25.0%	25.0%	0.0%	100.0%	0.0%	100.0%	100.0%
<b>Registrars</b>	<b>19</b>	<b>22</b>	<b>1.14</b>	<b>36.4%</b>	<b>63.6%</b>	<b>1.17</b>	<b>1.12</b>	<b>36.4%</b>	<b>50.0%</b>	<b>28.6%</b>	<b>90.9%</b>	<b>9.1%</b>	<b>87.5%</b>	<b>92.9%</b>
Senior House Officer	21	22	1.03	36.4%	63.6%	1.00	1.05	40.9%	40.9%	42.9%	100.0%	0.0%	100.0%	100.0%
<b>SHO/ Interns</b>	<b>21</b>	<b>22</b>	<b>1.03</b>	<b>36.4%</b>	<b>63.6%</b>	<b>1.00</b>	<b>1.05</b>	<b>40.9%</b>	<b>37.5%</b>	<b>42.9%</b>	<b>100.0%</b>	<b>0.0%</b>	<b>100.0%</b>	<b>100.0%</b>
Other Medical	100	174	1.75	59.8%	40.2%	1.80	1.67	59.8%	59.8%	60.0%	28.2%	71.8%	26.0%	31.4%
<b>Medical/ Dental, other</b>	<b>100</b>	<b>174</b>	<b>1.75</b>	<b>59.8%</b>	<b>40.2%</b>	<b>1.80</b>	<b>1.67</b>	<b>59.8%</b>	<b>59.6%</b>	<b>60.0%</b>	<b>28.2%</b>	<b>71.8%</b>	<b>26.0%</b>	<b>31.4%</b>
<b>Medical &amp; Dental</b>	<b>167</b>	<b>253</b>	<b>1.52</b>	<b>50.6%</b>	<b>49.4%</b>	<b>1.61</b>	<b>1.44</b>	<b>58.5%</b>	<b>57.0%</b>	<b>60.0%</b>	<b>43.1%</b>	<b>56.9%</b>	<b>37.5%</b>	<b>48.8%</b>
Clinical Nurse/ Midwife Manager	1,385	1,504	1.09	11.0%	89.0%	1.02	1.09	94.7%	94.7%	94.8%	80.3%	19.7%	91.0%	79.0%
Director Nursing/Midwifery, Assistant	142	148	1.04	8.8%	91.2%	1.01	1.04	98.0%	98.0%	98.5%	91.2%	8.8%	100.0%	90.4%
Director of Nursing/Midwifery	145	150	1.03	8.0%	92.0%	1.02	1.04	95.3%	95.3%	94.9%	85.3%	14.7%	75.0%	86.2%
<b>Nurse/ Midwife Manager</b>	<b>1,673</b>	<b>1,802</b>	<b>1.08</b>	<b>10.6%</b>	<b>89.4%</b>	<b>1.02</b>	<b>1.08</b>	<b>95.1%</b>	<b>94.8%</b>	<b>95.1%</b>	<b>81.6%</b>	<b>18.4%</b>	<b>90.6%</b>	<b>80.6%</b>
Advanced Nurse/ Midwife Practitioner	33	36	1.08	8.3%	91.7%	1.00	1.09	94.4%	94.4%	93.9%	100.0%	0.0%	100.0%	100.0%
Clinical Nurse/ Midwife Specialist	95	104	1.09	7.7%	92.3%	1.01	1.10	100.0%	100.0%	100.0%	72.1%	27.9%	100.0%	69.8%
<b>Nurse/ Midwife Specialist &amp; AN/MP</b>	<b>128</b>	<b>140</b>	<b>1.09</b>	<b>7.9%</b>	<b>92.1%</b>	<b>1.00</b>	<b>1.10</b>	<b>98.6%</b>	<b>100.0%</b>	<b>98.4%</b>	<b>79.3%</b>	<b>20.7%</b>	<b>100.0%</b>	<b>77.5%</b>
Staff Midwives	1	1	1.18		100.0%		1.18	100.0%	100.0%	100.0%	0.0%	100.0%		0.0%
Staff Nurse [Psychiatric]	69	87	1.26	21.8%	78.2%	1.21	1.28	80.5%	80.5%	82.4%	60.9%	39.1%	63.2%	60.3%
Staff Nurses [General/ Children's]	3,499	3,981	1.14	9.9%	90.1%	1.05	1.15	87.7%	87.7%	87.6%	67.4%	32.6%	89.6%	65.0%
Staff Nurse [Intellectual Disability]	1,698	1,967	1.16	9.7%	90.3%	1.06	1.17	95.7%	95.7%	95.7%	66.9%	33.1%	86.4%	64.8%
<b>Staff Nurse/ Staff Midwife</b>	<b>5,266</b>	<b>6,036</b>	<b>1.15</b>	<b>10.0%</b>	<b>90.0%</b>	<b>1.05</b>	<b>1.16</b>	<b>90.2%</b>	<b>90.4%</b>	<b>90.2%</b>	<b>67.1%</b>	<b>32.9%</b>	<b>87.8%</b>	<b>64.8%</b>
<b>Public Health Nurse</b>	<b>24</b>	<b>29</b>	<b>1.19</b>		<b>100.0%</b>		<b>1.19</b>	<b>96.6%</b>		<b>96.6%</b>	<b>65.5%</b>	<b>34.5%</b>		<b>65.5%</b>
Pre-registration Nurse/ Midwife Intern	84	170	2.01	7.1%	92.9%	2.09	2.01	35.3%	35.3%	37.3%	67.1%	32.9%	75.0%	66.5%
Nursing/ Midwifery awaiting registration	2	3	1.56	33.3%	66.7%	1.00	2.17	66.7%	66.7%	50.0%	66.7%	33.3%	100.0%	50.0%
<b>Nursing/ Midwifery Student</b>	<b>86</b>	<b>173</b>	<b>2.00</b>	<b>7.5%</b>	<b>92.5%</b>	<b>1.93</b>	<b>2.01</b>	<b>35.8%</b>	<b>15.4%</b>	<b>37.5%</b>	<b>67.1%</b>	<b>32.9%</b>	<b>76.9%</b>	<b>66.3%</b>

<b>Nursing/ Midwifery other</b>	<b>31</b>	<b>34</b>	<b>1.09</b>	<b>2.9%</b>	<b>97.1%</b>	<b>1.00</b>	<b>1.09</b>	<b>97.1%</b>	<b>100.0%</b>	<b>97.0%</b>	<b>73.5%</b>	<b>26.5%</b>	<b>100.0%</b>	<b>72.7%</b>
<b>Nursing &amp; Midwifery</b>	<b>7,210</b>	<b>8,214</b>	<b>1.14</b>	<b>10.0%</b>	<b>90.0%</b>	<b>1.05</b>	<b>1.15</b>	<b>90.3%</b>	<b>90.4%</b>	<b>90.3%</b>	<b>70.6%</b>	<b>29.4%</b>	<b>88.4%</b>	<b>68.6%</b>
Dietitians	40	50	1.25	2.0%	98.0%	2.00	1.24	96.0%	96.0%	95.9%	64.0%	36.0%	100.0%	63.3%
Occupational Therapists	407	462	1.14	6.7%	93.3%	1.11	1.14	92.6%	92.6%	92.3%	79.9%	20.1%	87.1%	79.4%
Physiotherapists	343	402	1.17	16.9%	83.1%	1.06	1.20	90.5%	90.5%	90.4%	71.1%	28.9%	88.2%	67.7%
Podiatrists & Chiropodists	3	6	1.95		100.0%		1.95	66.7%	66.7%	66.7%	16.7%	83.3%		16.7%
Speech & Language Therapists	312	362	1.16	1.4%	98.6%	1.16	1.16	89.5%	89.5%	89.4%	74.9%	25.1%	80.0%	74.8%
<b>Therapy Professions</b>	<b>1,105</b>	<b>1,282</b>	<b>1.16</b>	<b>8.2%</b>	<b>91.8%</b>	<b>1.08</b>	<b>1.17</b>	<b>91.1%</b>	<b>93.3%</b>	<b>90.9%</b>	<b>74.8%</b>	<b>25.2%</b>	<b>87.6%</b>	<b>73.7%</b>
Clinical Engineering	16	16	1.00	93.8%	6.3%	1.00	1.00	81.3%	81.3%	100.0%	93.8%	6.3%	93.3%	100.0%
Medical Science	4	4	1.00	50.0%	50.0%	1.00	1.00	50.0%	50.0%	50.0%	100.0%	0.0%	100.0%	100.0%
Radiographers	4	8	2.07	12.5%	87.5%	1.89	2.10	75.0%	75.0%	71.4%	25.0%	75.0%	0.0%	28.6%
Respiratory Physiologists	2	2	1.00	100.0%		1.00		100.0%	100.0%		100.0%	0.0%	100.0%	
Vascular Physiologists	0	1	5.88		100.0%		5.88	0.0%	0.0%	0.0%	0.0%	100.0%		0.0%
<b>Health Science/ Diagnostics</b>	<b>26</b>	<b>31</b>	<b>1.19</b>	<b>64.5%</b>	<b>35.5%</b>	<b>1.02</b>	<b>1.69</b>	<b>74.2%</b>	<b>80.0%</b>	<b>63.6%</b>	<b>74.2%</b>	<b>25.8%</b>	<b>90.0%</b>	<b>45.5%</b>
<b>Social Care</b>	<b>3,001</b>	<b>3,511</b>	<b>1.17</b>	<b>16.6%</b>	<b>83.4%</b>	<b>1.09</b>	<b>1.19</b>	<b>91.5%</b>	<b>91.1%</b>	<b>91.6%</b>	<b>48.8%</b>	<b>51.2%</b>	<b>62.2%</b>	<b>46.1%</b>
<b>Social Workers</b>	<b>305</b>	<b>352</b>	<b>1.16</b>	<b>16.2%</b>	<b>83.8%</b>	<b>1.06</b>	<b>1.18</b>	<b>94.0%</b>	<b>91.2%</b>	<b>94.6%</b>	<b>73.6%</b>	<b>26.4%</b>	<b>87.7%</b>	<b>70.8%</b>
<b>Psychologists</b>	<b>232</b>	<b>263</b>	<b>1.13</b>	<b>19.0%</b>	<b>81.0%</b>	<b>1.03</b>	<b>1.16</b>	<b>97.0%</b>	<b>98.0%</b>	<b>96.7%</b>	<b>76.8%</b>	<b>23.2%</b>	<b>90.0%</b>	<b>73.7%</b>
Pharmacists	21	32	1.54	18.8%	81.3%	2.21	1.44	81.3%	81.3%	84.6%	40.6%	59.4%	33.3%	42.3%
Pharmacy Technicians	6	7	1.13	14.3%	85.7%	1.00	1.16	71.4%	71.4%	66.7%	85.7%	14.3%	100.0%	83.3%
<b>Pharmacy</b>	<b>27</b>	<b>39</b>	<b>1.45</b>	<b>17.9%</b>	<b>82.1%</b>	<b>1.88</b>	<b>1.38</b>	<b>79.5%</b>	<b>71.4%</b>	<b>81.3%</b>	<b>48.7%</b>	<b>51.3%</b>	<b>42.9%</b>	<b>50.0%</b>
Counsellor Therapists	21	27	1.26	3.7%	96.3%	1.00	1.27	96.3%	96.3%	96.2%	55.6%	44.4%	100.0%	53.8%
Other Health & Social Care	33	47	1.42	10.6%	89.4%	1.30	1.44	91.5%	91.5%	90.5%	29.8%	70.2%	40.0%	28.6%
Play Therapists/ Specialists	16	19	1.22	21.1%	78.9%	1.00	1.29	94.7%	94.7%	93.3%	57.9%	42.1%	100.0%	46.7%
<b>H&amp;SC, Other</b>	<b>70</b>	<b>93</b>	<b>1.33</b>	<b>10.8%</b>	<b>89.2%</b>	<b>1.13</b>	<b>1.36</b>	<b>93.5%</b>	<b>100.0%</b>	<b>92.8%</b>	<b>43.0%</b>	<b>57.0%</b>	<b>70.0%</b>	<b>39.8%</b>
<b>Health &amp; Social Care</b>	<b>4,766</b>	<b>5,571</b>	<b>1.17</b>	<b>15.0%</b>	<b>85.0%</b>	<b>1.09</b>	<b>1.18</b>	<b>91.7%</b>	<b>91.5%</b>	<b>91.7%</b>	<b>57.7%</b>	<b>42.3%</b>	<b>69.4%</b>	<b>55.6%</b>
Executive Management	53	53	1.01	43.4%	56.6%	1.00	1.01	94.3%	94.3%	96.7%	100.0%	0.0%	100.0%	100.0%
Senior Management (VIII & GM)	282	288	1.02	31.3%	68.8%	1.02	1.02	94.8%	94.8%	96.5%	97.9%	2.1%	98.9%	97.5%
<b>Management (VIII &amp; above)</b>	<b>335</b>	<b>341</b>	<b>1.02</b>	<b>33.1%</b>	<b>66.9%</b>	<b>1.01</b>	<b>1.02</b>	<b>94.7%</b>	<b>91.2%</b>	<b>96.5%</b>	<b>98.2%</b>	<b>1.8%</b>	<b>99.1%</b>	<b>97.8%</b>
Middle Management (V-VII)	863	918	1.06	20.7%	79.3%	1.03	1.07	93.7%	93.7%	93.8%	85.1%	14.9%	93.2%	83.0%
Other Administrative	14	14	1.01	7.1%	92.9%	1.00	1.01	78.6%	78.6%	76.9%	100.0%	0.0%	100.0%	100.0%
<b>Administrative/ Supervisory (V to VII)</b>	<b>877</b>	<b>932</b>	<b>1.06</b>	<b>20.5%</b>	<b>79.5%</b>	<b>1.03</b>	<b>1.07</b>	<b>93.5%</b>	<b>93.2%</b>	<b>93.5%</b>	<b>85.3%</b>	<b>14.7%</b>	<b>93.2%</b>	<b>83.3%</b>
<b>Clerical (III &amp; IV)</b>	<b>1,342</b>	<b>1,575</b>	<b>1.17</b>	<b>10.0%</b>	<b>90.0%</b>	<b>1.11</b>	<b>1.18</b>	<b>86.1%</b>	<b>75.9%</b>	<b>87.2%</b>	<b>61.0%</b>	<b>39.0%</b>	<b>79.1%</b>	<b>58.9%</b>
<b>Management &amp; Administrative</b>	<b>2,553</b>	<b>2,848</b>	<b>1.12</b>	<b>16.2%</b>	<b>83.8%</b>	<b>1.05</b>	<b>1.13</b>	<b>89.5%</b>	<b>86.8%</b>	<b>90.1%</b>	<b>73.4%</b>	<b>26.6%</b>	<b>89.8%</b>	<b>70.2%</b>
Catering	306	341	1.12	33.7%	66.3%	1.03	1.16	95.0%	95.0%	96.9%	68.6%	31.4%	90.4%	57.5%
Household Services	831	1,080	1.30	17.7%	82.3%	1.26	1.31	84.4%	84.4%	86.6%	45.9%	54.1%	68.6%	41.1%

Other Labs & Associated	1	1	1.00		100.0%		1.00	100.0%	100.0%	100.0%	100.0%	0.0%		100.0%
Other Support	164	248	1.51	51.2%	48.8%	1.26	1.91	94.0%	94.0%	98.3%		33.5%	66.5%	9.1%
Portering	88	97	1.10	94.8%	5.2%	1.10	1.10	89.7%	89.7%	100.0%		81.4%	18.6%	80.0%
<b>Support</b>	<b>1,390</b>	<b>1,767</b>	<b>1.27</b>	<b>29.7%</b>	<b>70.3%</b>	<b>1.17</b>	<b>1.32</b>	<b>88.1%</b>	<b>84.4%</b>	<b>89.7%</b>		<b>50.5%</b>	<b>49.5%</b>	<b>41.1%</b>
Maintenance	196	211	1.08	97.2%	2.8%	1.08	1.08	95.7%	95.7%	100.0%		83.9%	16.1%	66.7%
Technical Services	20	20	1.02	80.0%	20.0%	1.00	1.09	90.0%	90.0%	75.0%		95.0%	5.0%	75.0%
<b>Maintenance/ Technical</b>	<b>216</b>	<b>231</b>	<b>1.07</b>	<b>95.7%</b>	<b>4.3%</b>	<b>1.07</b>	<b>1.09</b>	<b>95.2%</b>	<b>95.5%</b>	<b>90.0%</b>		<b>84.8%</b>	<b>15.2%</b>	<b>70.0%</b>
<b>General Support</b>	<b>1,606</b>	<b>1,998</b>	<b>1.24</b>	<b>37.3%</b>	<b>62.7%</b>	<b>1.14</b>	<b>1.32</b>	<b>88.9%</b>	<b>87.7%</b>	<b>89.7%</b>		<b>54.5%</b>	<b>45.5%</b>	<b>41.4%</b>
Attendant/ Aide	1,867	2,180	1.17	20.8%	79.2%	1.08	1.19	84.7%	84.7%	85.5%		55.8%	44.2%	48.9%
Health & Social Care Assistants	73	84	1.15	20.2%	79.8%	1.10	1.16	90.5%	90.5%	94.0%		75.0%	25.0%	73.1%
Health Care Assistant/ Care Assistant	9,674	11,260	1.16	22.7%	77.3%	1.09	1.19	86.0%	86.0%	85.8%		55.5%	44.5%	51.7%
<b>Health Care Assistants</b>	<b>11,614</b>	<b>13,524</b>	<b>1.16</b>	<b>22.4%</b>	<b>77.6%</b>	<b>1.09</b>	<b>1.19</b>	<b>85.8%</b>	<b>85.6%</b>	<b>85.8%</b>		<b>55.7%</b>	<b>44.3%</b>	<b>51.3%</b>
<b>Home Help</b>	<b>3,658</b>	<b>5,246</b>	<b>1.43</b>	<b>4.7%</b>	<b>95.3%</b>	<b>1.33</b>	<b>1.44</b>	<b>70.9%</b>	<b>44.8%</b>	<b>72.2%</b>		<b>14.8%</b>	<b>85.2%</b>	<b>14.6%</b>
Home Care Services	144	157	1.09	9.6%	90.4%	1.01	1.10	93.0%	93.0%	93.7%		77.7%	22.3%	76.1%
Other Care Grades	280	318	1.14	30.5%	69.5%	1.14	1.13	88.7%	88.7%	91.4%		74.2%	25.8%	71.0%
Pastoral Care	29	58	2.00	82.8%	17.2%	2.05	1.80	34.5%	34.5%	80.0%		34.5%	65.5%	30.0%
Workshop Services	1,445	1,710	1.18	23.7%	76.3%	1.11	1.21	87.1%	87.1%	87.3%		60.5%	39.5%	57.4%
<b>Care, other</b>	<b>1,897</b>	<b>2,243</b>	<b>1.18</b>	<b>25.2%</b>	<b>74.8%</b>	<b>1.16</b>	<b>1.19</b>	<b>86.4%</b>	<b>80.7%</b>	<b>88.3%</b>		<b>63.0%</b>	<b>37.0%</b>	<b>60.6%</b>
<b>Patient &amp; Client Care</b>	<b>17,169</b>	<b>21,013</b>	<b>1.22</b>	<b>18.3%</b>	<b>81.7%</b>	<b>1.11</b>	<b>1.25</b>	<b>82.1%</b>	<b>82.3%</b>	<b>82.1%</b>		<b>46.3%</b>	<b>53.7%</b>	<b>41.6%</b>

## Employment by WTE, Headcount, Gender, Full-Time /Part-Time etc.: Aug 2022

Social Care Services CHO	WTE	Headcount	WTE: no.	% Male	% female	Male WTE: no.	Female WTE: no.	% Total Perm	% Male Perm	% Female Perm	% Total Full Time	% Total Part Time	% Male FT	% Female FT
<b>Overall</b>	<b>33,470</b>	<b>39,897</b>	<b>1.19</b>	<b>17.1%</b>	<b>82.9%</b>	<b>1.10</b>	<b>1.21</b>	<b>85.9%</b>	<b>84.8%</b>	<b>86.1%</b>	<b>55.2%</b>	<b>44.8%</b>	<b>72.0%</b>	<b>51.7%</b>
<i>CHO 1</i>	3,694	4,290	1.16	16.1%	83.9%	1.10	1.17	81.5%	81.5%	80.2%	58.1%	41.9%	79.4%	54.0%
<i>CHO 2</i>	3,109	3,725	1.20	18.2%	81.8%	1.13	1.22	87.6%	87.6%	88.4%	48.3%	51.7%	64.7%	44.7%
<i>CHO 3</i>	3,231	3,887	1.20	13.2%	86.8%	1.09	1.22	87.5%	87.5%	87.9%	47.3%	52.7%	62.8%	44.9%
<i>CHO 4</i>	5,576	6,951	1.25	15.9%	84.1%	1.13	1.27	71.4%	71.4%	72.4%	50.7%	49.3%	70.2%	47.0%
<i>CHO 5</i>	3,360	4,009	1.19	15.2%	84.8%	1.11	1.21	92.1%	92.1%	92.7%	49.9%	50.1%	67.3%	46.8%
<i>CHO 6</i>	2,032	2,261	1.11	23.4%	76.6%	1.06	1.13	92.8%	92.8%	93.2%	71.3%	28.7%	83.4%	67.7%
<i>CHO 7</i>	4,331	5,108	1.18	21.2%	78.8%	1.10	1.20	88.4%	88.4%	88.5%	68.0%	32.0%	81.3%	64.3%
<i>CHO 8</i>	3,779	4,579	1.21	17.2%	82.8%	1.13	1.23	93.2%	93.2%	93.5%	48.8%	51.2%	59.4%	46.6%
<i>CHO 9</i>	4,265	4,986	1.17	16.2%	83.8%	1.08	1.19	89.7%	89.7%	89.8%	59.3%	40.7%	75.9%	56.1%
<i>other Community Services</i>	93	101	1.08	21.8%	78.2%	1.04	1.09	92.1%	92.1%	92.4%	86.1%	13.9%	90.9%	84.8%

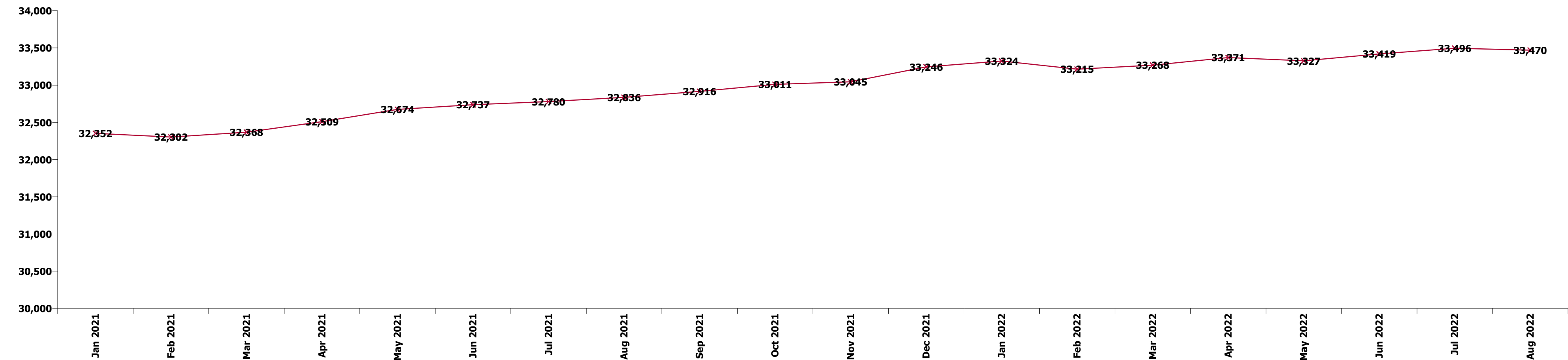
Summary Staff Movement: August 2022

Month-on-month  
Summary

WTE change since Jul 22	% change since Jul 22	overall	Consultants	Registrars	SHO/ Interns	Medical/ Dental, other	Medical & Dental	Nurse/ Midwife Manager	Nurse/ Midwife Specialist & AN/MP	Staff Nurse/ Staff Midwife	Public Health Nurse	Nursing/ Midwifery Student	Nursing/ Midwifery other	Nursing & Midwifery	Therapy Professions	Health Science/ Diagnostics	Social Care	Social Workers	Psychologists	Pharmacy	H&SC, Other	Health & Social Care Professionals	Management (VIII & above)	Administrativ e/ Supervisory (V to VII)	Clerical (III & IV)	Management & Administrative	General Support	Health Care Assistants	Home Help	Care, other	Patient & Client Care
Overall	-0.1%	-25	-2	-3	-2	+1	-6	-1	+3	-15	+0	+1	+1	-11	+1	+0	-4	+3	-2	-0	+1	-1	-2	+15	+7	+20	-20	-23	+26	-11	-8
CHO 1	-0.4%	-16		-1		-0	-1	-3	+1	-7		-0	+0	-10	-1		+0	+1	-1		-0	-1	+0	+2	+3	+5	+1	-2	-6	-2	-10
CHO 2	-0.3%	-9				+0	+0	-0		+0	-0			+0	-5	+0	-7	-2	-1	+0	-1	-15	-1	+2	-1	-0	-5	-2	+15	-2	+11
CHO 3	-0.2%	-7	-1	-0	-1	-1	-3	+3	+0	+1			+0	+4	-0	+0	-3	-1	-0		+0	-4	+1	-0	+0	+1	-2	-3	-3	+2	-3
CHO 4	-0.0%	-0	+0	-1	-1	+3	+1	-3	+0	-0	+0			-3	+2	+0	-3	+1	-1	-0	-0	-1	+0	+3	+7	+10	-2	-23	+11	+7	-5
CHO 5	+0.1%	+2	-0				-0	-1	+3	-5	+0	+0	+0	-2	+1		+7	+0	-2		+3	+9	+2	-0	+0	+2	+0	-1	+3	-9	-7
CHO 6	-0.6%	-12		-1		-0	-1	-1		-3				-4	-5		+3	+0	+4	-0	+0	+1	-0	-0	-4	-5	+1	-2		-3	-5
CHO 7	-0.1%	-3		+1	+0		+1	+1	+0	-5		-1	+1	-3	+12	+0	+0	+1	-1	+1		+13	-2	+1	+3	+2	-11	-3	+0	-3	-5
CHO 8	+0.6%	+21				-0	-0	+0	-1	+2	-0	+2	+0	+3	-4		-2	+1	+1	-0	-1	-5	-0	+4	+2	+6	+0	+9	+6	+2	+17
CHO 9	-0.1%	-3	-1	-1	-0	-0	-3	+2	-0	+1			+0	+2	+1		+2	+1	-0		-0	+3	-2	+3	-3	-3	-2	+4		-4	-1
other Community Services	+3.0%	+3																					-0	+2	+1	+3					
		-0.1%	-7.4%	-13.6%	-9.3%	+1.5%	-3.4%	-0.0%	+2.2%	-0.3%	+0.1%	+1.4%	+4.0%	-0.2%	+0.1%	+1.4%	-0.1%	+0.9%	-0.9%	-0.3%	+1.4%	-0.0%	-0.5%	+1.8%	+0.5%	+0.8%	-1.2%	-0.2%	+0.7%	-0.6%	-0.0%

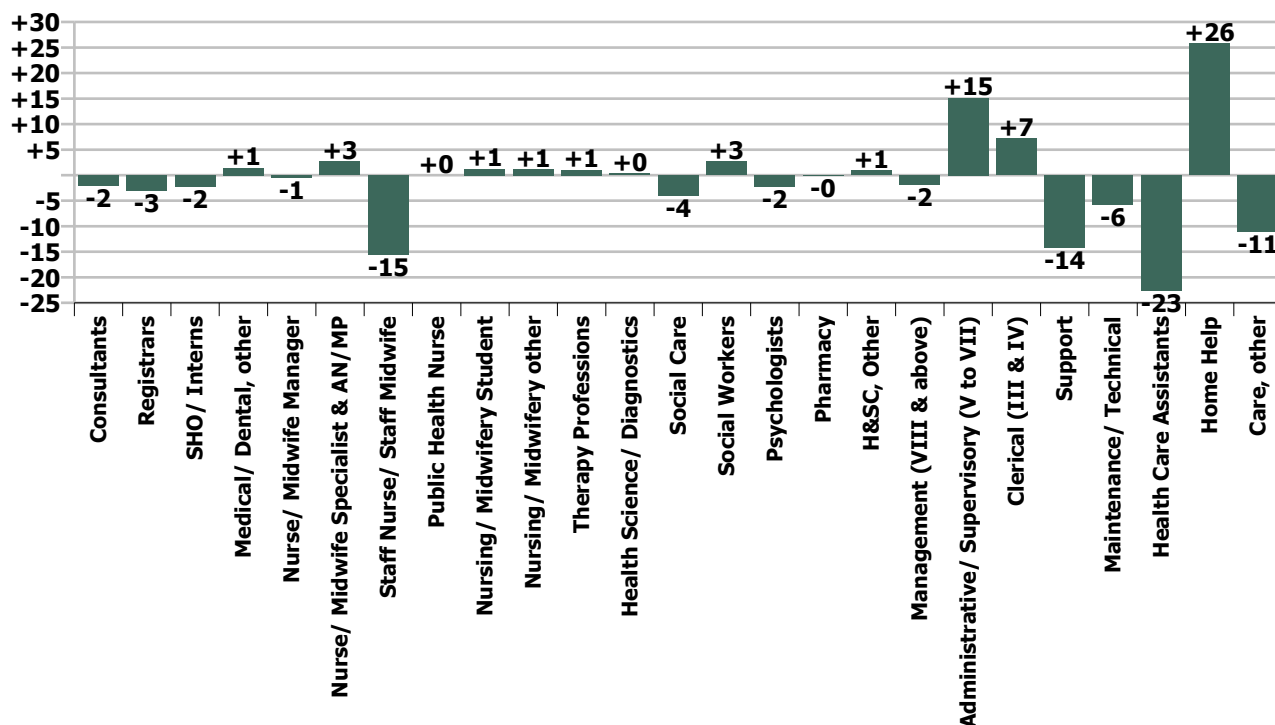
Year-on-year Summary

WTE change since Aug 21	% change since Aug 21	overall	Consultants	Registrars	SHO/ Interns	Medical/ Dental, other	Medical & Dental	Nurse/ Midwife Manager	Nurse/ Midwife Specialist & AN/MP	Staff Nurse/ Staff Midwife	Public Health Nurse	Nursing/ Midwifery Student	Nursing/ Midwifery other	Nursing & Midwifery	Therapy Professions	Health Science/ Diagnostics	Social Care	Social Workers	Psychologists	Pharmacy	H&SC, Other	Health & Social Care Professionals	Management (VIII & above)	Administrative/ Supervisory (V to VII)	Clerical (III & IV)	Management & Administrative	General Support	Health Care Assistants	Home Help	Care, other	Patient & Client Care
Overall	+1.9%	+634	-3	-2	-4	+2	-6	+4	+19	+2	+3	-0	+5	+32	-40	+0	+76	-18	-2	+1	-2	+16	+38	+124	+60	+221	-36	+197	+181	+29	+407
CHO 1	+7.1%	+244				+0	+0	+7	+2	-23		-2	+2	-14	+28	-2	+2	-7	+1		-1	+21	+2	+17	+4	+22	-0	+118	+100	-3	+215
CHO 2	-0.4%	-11		-1	+1	-1	-1	+0	+5	-2	-0			+3	+6	+0	+3	-2	+3	+0	+1	+10	+4	+12	+6	+22	-3	-20	-22	-1	-42
CHO 3	+3.5%	+110	-1	+2	+1	+0	+2	+8	+4	+8	-1	-1	-1	+17	-28	+1	-16	+1	+0		+0	-40	+7	+23	+3	+32	-15	+46	+66	+2	+114
CHO 4	+0.6%	+36	-1	-3	-2	+6	+0	-6	-1	+15	+2	+2	+1	+13	-27	-1	+3	+0	-4	+0	-2	-30	+1	+17	-1	+18	+1	+20	+4	+10	+34
CHO 5	+3.1%	+101	-0			-1	-1	-5	+4	-6	+2	-1	-0	-7	-0		+16	+2	+0	+1	+3	+22	+11	-1	+27	+37	-2	+33	-9	+28	+52
CHO 6	-0.2%	-4			-1		-1	-7	-2	+7			+1	-2	-24		+15	-3	+1	-1	+0	-11	+0	+11	+3	+15	-2	+7		-10	-3
CHO 7	+2.8%	+117	-0	+1	+1	-1	+1	+5	+3	+10		-1	+1	+19	+13	+1	+32	+1	-1	+2	-1	+48	+5	+12	+9	+26	-4	+18	+6	+3	+28
CHO 8	+1.1%	+41				-0	-0	-10	-7	+0	-1	+2	-1	-16	-18	+1	+28	-9	-1	-2	-0	-1	+5	+16	+2	+23	-3	+4	+36	-2	+39
CHO 9	-0.3%	-13	-0	-1	-4	-1	-6	+11	+11	-8	+1	+2	+1	+18	+11	-1	-7	-0	-2		-3	-3	+3	+2	+7	+13	-7	-29		+0	-28
other Community Services	+18.2%	+14																	+1			+1	-1	+14	+1	+13				-0	-0
		+1.9%	-9.4%	-8.4%	-15.8%	+2.3%	-3.6%	+0.2%	+17.6%	+0.0%	+12.9%	-0.3%	+18.4%	+0.4%	-3.5%	+1.0%	+2.6%	-5.6%	-0.7%	+3.3%	-2.5%	+0.3%	+12.7%	+16.4%	+4.7%	+9.5%	-2.2%	+1.7%	+5.2%	+1.5%	+2.4%

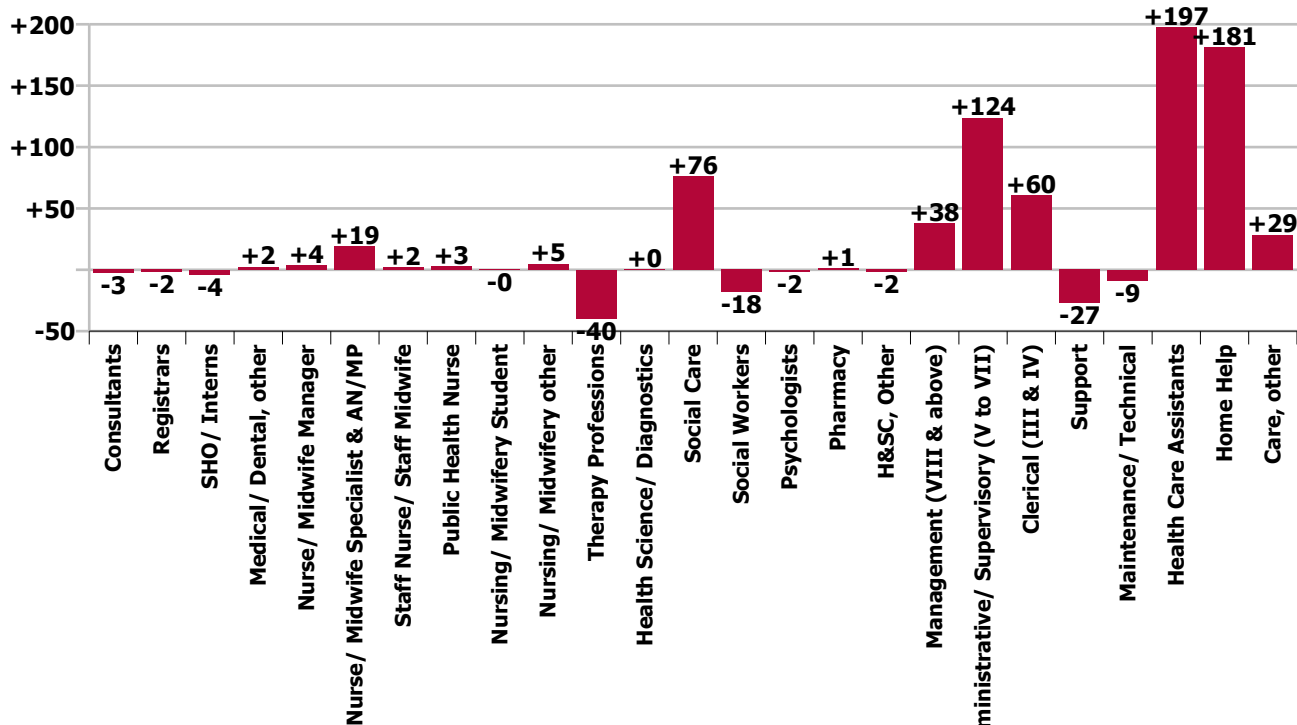




### Staff Group change since: Jul 2022

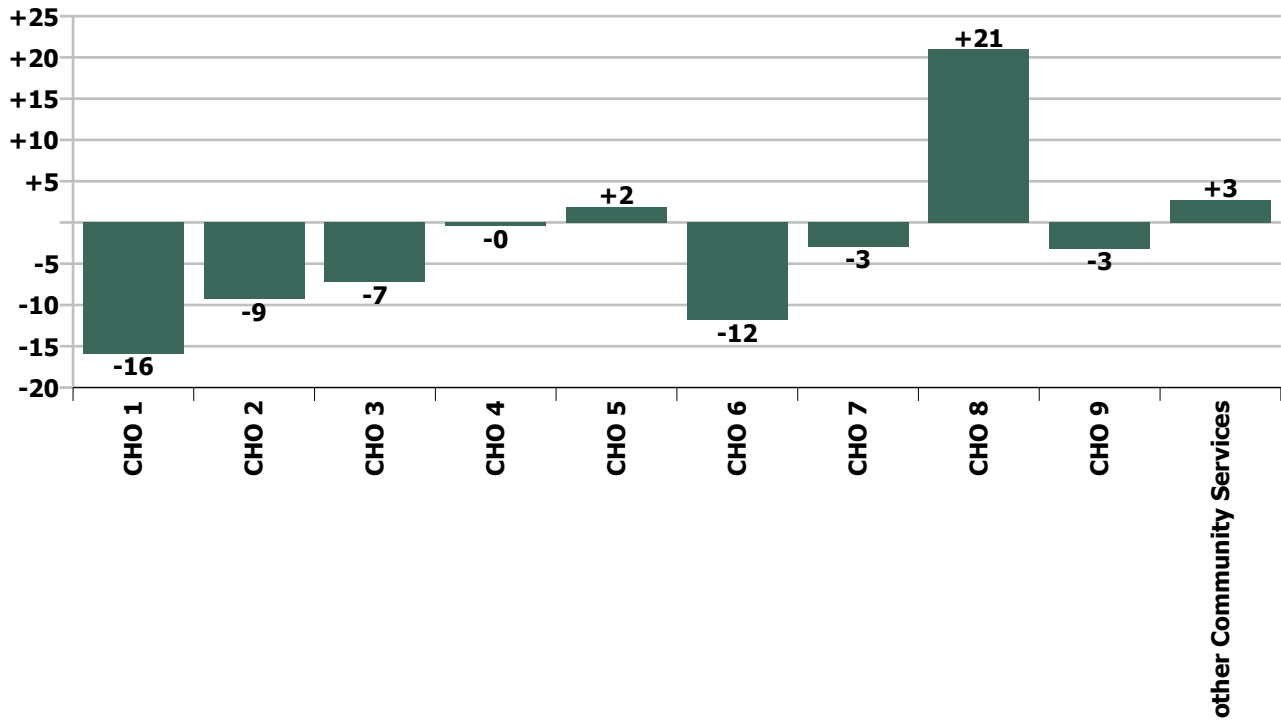


### Staff Group change since: Aug 2021

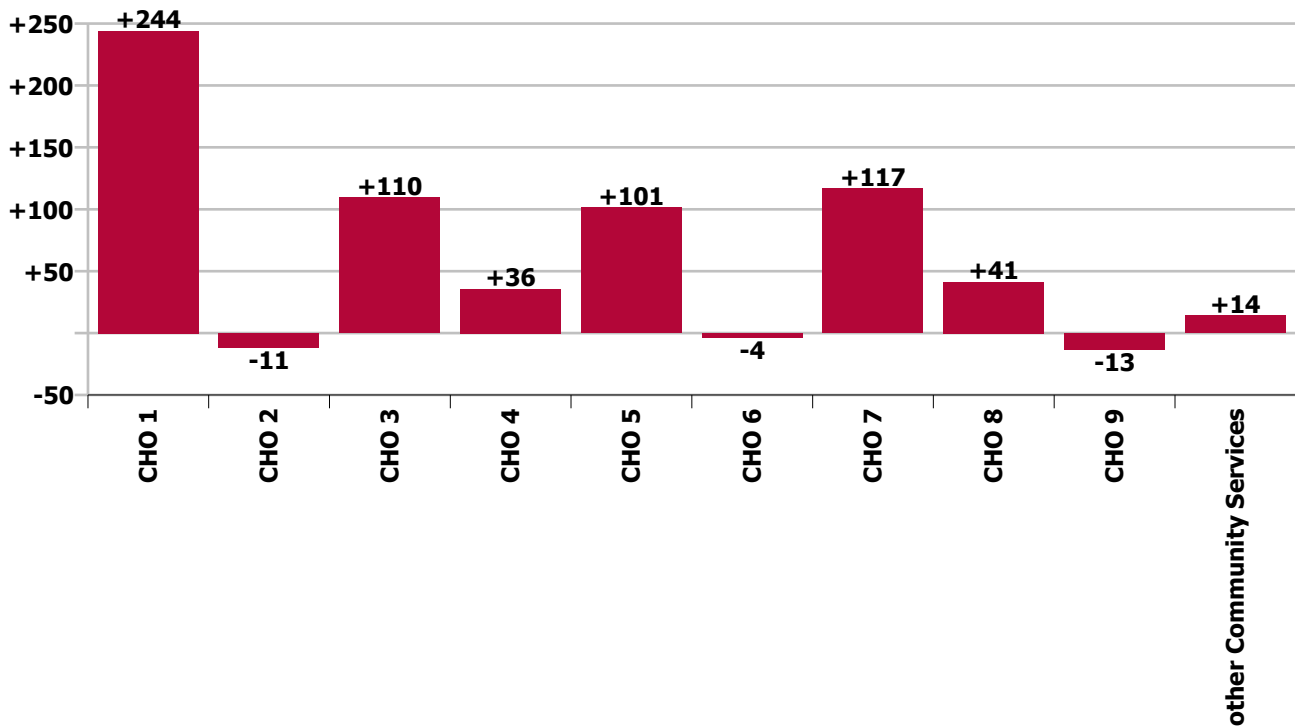




CHO change since: Jul 2022



CHO change since: Aug 2021



## Longitudinal Employment Levels by Grade Group - Dec 2016 to Aug 2022

Aug 2022 (Dec 2015 figure: 28,322)	WTE Aug 2022	WTE change since Dec 16	WTE change since Dec 17	WTE change since Dec 18	WTE change since Dec 19	WTE change since Dec 20	WTE change since Jul 22	% change since Dec 16	% change since Dec 17	% change since Dec 18	% change since Dec 19	% change since Dec 20	% change since Jul 22
<b>Overall</b>	<b>33,470</b>	<b>+4,234</b>	<b>+2,970</b>	<b>+2,346</b>	<b>+1,935</b>	<b>+1,111</b>	<b>-25</b>	<b>+14.5%</b>	<b>+9.7%</b>	<b>+7.5%</b>	<b>+6.1%</b>	<b>+3.4%</b>	<b>-0.1%</b>
Consultant Medicine	6	-5	-3	+3	+3	+2	-1	-43.9%	-33.2%	+70.8%	+70.8%	+39.1%	-13.6%
Consultant Paediatrics	2	-1	-1	-1	-1	-1	+0	-35.8%	-34.4%	-32.5%	-32.5%	-32.5%	+2.5%
Consultant Psychiatry	18	-4	-6	+0	-3	-3	-1	-17.8%	-23.7%	+0.9%	-13.2%	-15.3%	-6.2%
Consultant Surgery		-1	-0	-0				-100.0%	-100.0%	-100.0%	-100.0%	-100.0%	-100.0%
<b>Consultants</b>	<b>26</b>	<b>-11</b>	<b>-10</b>	<b>+2</b>	<b>-1</b>	<b>-3</b>	<b>-2</b>	<b>-29.0%</b>	<b>-27.3%</b>	<b>+6.5%</b>	<b>-4.4%</b>	<b>-8.8%</b>	<b>-7.4%</b>
Registrar	12	+0	-2	-1	-2	+3	-2	+0.1%	-14.7%	-9.1%	-14.7%	+30.3%	-16.7%
Senior Registrar	4	+1	+0	+0	+1	+0	-1	+36.0%	+2.0%	+2.0%	+36.0%	+2.0%	-19.7%
Specialist Registrar	4	-0	-1	+2	-2	-0	+0	-6.3%	-25.0%	+87.5%	-37.5%	-6.3%	+7.8%
<b>Registrars</b>	<b>19</b>	<b>+1</b>	<b>-3</b>	<b>+1</b>	<b>-3</b>	<b>+3</b>	<b>-3</b>	<b>+4.5%</b>	<b>-14.0%</b>	<b>+3.6%</b>	<b>-14.0%</b>	<b>+14.9%</b>	<b>-13.6%</b>
Senior House Officer	21	+5	+4	+2	-1	-1	-2	+33.6%	+26.0%	+12.9%	-3.0%	-6.0%	-9.3%
<b>SHO/ Interns</b>	<b>21</b>	<b>+5</b>	<b>+4</b>	<b>+2</b>	<b>-1</b>	<b>-1</b>	<b>-2</b>	<b>+33.6%</b>	<b>+26.0%</b>	<b>+12.9%</b>	<b>-3.0%</b>	<b>-6.0%</b>	<b>-9.3%</b>
Dentists								-100.0%	-100.0%	-100.0%	-100.0%	-100.0%	-100.0%
Other Medical	100	-1	-0	+0	-11	-18	+1	-1.1%	-0.5%	+0.1%	-10.1%	-15.6%	+1.5%
<b>Medical/ Dental, other</b>	<b>100</b>	<b>-1</b>	<b>-0</b>	<b>+0</b>	<b>-11</b>	<b>-18</b>	<b>+1</b>	<b>-1.1%</b>	<b>-0.5%</b>	<b>+0.1%</b>	<b>-10.1%</b>	<b>-15.6%</b>	<b>+1.5%</b>
<b>Medical &amp; Dental</b>	<b>167</b>	<b>-6</b>	<b>-9</b>	<b>+5</b>	<b>-16</b>	<b>-20</b>	<b>-6</b>	<b>-3.3%</b>	<b>-5.2%</b>	<b>+3.0%</b>	<b>-8.8%</b>	<b>-10.6%</b>	<b>-3.4%</b>
Clinical Nurse/ Midwife Manager	1,385	+39	+49	+53	+66	+35	-2	+2.9%	+3.6%	+4.0%	+5.0%	+2.6%	-0.2%
Director Nursing/Midwifery, Assistant	142	+13	+14	+18	-1	-9	+3	+9.7%	+10.7%	+14.3%	-0.6%	-6.2%	+2.2%
Director of Nursing/Midwifery	145	+16	+17	+24	+4	+4	-1	+12.6%	+13.2%	+20.2%	+3.2%	+2.6%	-1.0%
<b>Nurse/ Midwife Manager</b>	<b>1,673</b>	<b>+68</b>	<b>+79</b>	<b>+95</b>	<b>+70</b>	<b>+29</b>	<b>-1</b>	<b>+4.3%</b>	<b>+5.0%</b>	<b>+6.0%</b>	<b>+4.4%</b>	<b>+1.8%</b>	<b>-0.0%</b>
Advanced Nurse/ Midwife Practitioner	33	+29	+28	+24	+21	+9	+3	+731.8%	+565.4%	+270.5%	+161.6%	+35.1%	+8.1%
Clinical Nurse/ Midwife Specialist	95	+12	+16	+12	+19	+18	+0	+14.0%	+20.2%	+14.6%	+25.7%	+22.7%	+0.2%
<b>Nurse/ Midwife Specialist &amp; AN/MP</b>	<b>128</b>	<b>+41</b>	<b>+44</b>	<b>+36</b>	<b>+40</b>	<b>+26</b>	<b>+3</b>	<b>+46.8%</b>	<b>+52.6%</b>	<b>+39.6%</b>	<b>+45.3%</b>	<b>+25.7%</b>	<b>+2.2%</b>
Graduate Nursing/ Midwifery								-100.0%	-100.0%	-100.0%	-100.0%	-100.0%	-100.0%
Staff Midwives	1	+0	-1	+1	+1	-0	+0	+112.5%	-52.8%	-100.0%	-100.0%	-3.4%	+1.2%
Staff Nurse [Psychiatric]	69	-21	-7	-7	-19	+11	-58	-23.6%	-9.1%	-9.7%	-21.9%	+19.4%	-45.5%
Staff Nurses [General/ Children's]	3,499	-17	+14	+26	+36	+130	+4	-0.5%	+0.4%	+0.8%	+1.0%	+3.9%	+0.1%
Staff Nurse [Intellectual Disability]	1,698	-28	-6	+12	+101	-92	+38	-1.6%	-0.3%	+0.7%	+6.3%	-5.1%	+2.3%

Aug 2022 (Dec 2015 figure: 28,322)	WTE Aug 2022	WTE change since Dec 16	WTE change since Dec 17	WTE change since Dec 18	WTE change since Dec 19	WTE change since Dec 20	WTE change since Jul 22	% change since Dec 16	% change since Dec 17	% change since Dec 18	% change since Dec 19	% change since Dec 20	% change since Jul 22
<b>Overall</b>	<b>33,470</b>	<b>+4,234</b>	<b>+2,970</b>	<b>+2,346</b>	<b>+1,935</b>	<b>+1,111</b>	<b>-25</b>	<b>+14.5%</b>	<b>+9.7%</b>	<b>+7.5%</b>	<b>+6.1%</b>	<b>+3.4%</b>	<b>-0.1%</b>
<b>Staff Nurse/ Staff Midwife</b>	<b>5,267</b>	<b>-66</b>	<b>-0</b>	<b>+32</b>	<b>+118</b>	<b>+49</b>	<b>-15</b>	<b>-1.2%</b>	<b>-0.0%</b>	<b>+0.6%</b>	<b>+2.3%</b>	<b>+0.9%</b>	<b>-0.3%</b>
Public Health Nurse	24	+4	+3	+4	+5	+4	+0	+17.4%	+16.7%	+20.2%	+23.7%	+19.8%	+0.1%
<b>Public Health Nurse</b>	<b>24</b>	<b>+4</b>	<b>+3</b>	<b>+4</b>	<b>+5</b>	<b>+4</b>	<b>+0</b>	<b>+17.4%</b>	<b>+16.7%</b>	<b>+20.2%</b>	<b>+23.7%</b>	<b>+19.8%</b>	<b>+0.1%</b>
Pre-registration Nurse Intern (COVID-19)						-32		-100.0%	-100.0%	-100.0%	-100.0%	-100.0%	-100.0%
Pre-registration Nurse/ Midwife Intern	84	+72	+73	+50	+56	+82	+2	+603.9%	+616.5%	+142.6%	+199.0%	+3278.8%	+1.9%
Post-registration Nurse/ Midwife Student					-1			-100.0%	-100.0%	-100.0%	-100.0%	-100.0%	-100.0%
Nursing/ Midwifery awaiting registration	2	+2	-12	+2	-13	-12	-0	-100.0%	-86.3%	-100.0%	-87.1%	-86.6%	-14.7%
<b>Nursing/ Midwifery Student</b>	<b>86</b>	<b>+74</b>	<b>+61</b>	<b>+52</b>	<b>+42</b>	<b>+38</b>	<b>+1</b>	<b>+619.9%</b>	<b>+235.0%</b>	<b>+148.1%</b>	<b>+95.9%</b>	<b>+77.6%</b>	<b>+1.4%</b>
Nursing Education/Clinical	30	+8	+8	+8	+8	+3	+1	+35.5%	+36.5%	+36.0%	+35.9%	+12.6%	+4.1%
Other Nursing/ Midwifery	1	-4	-4					-80.0%	-80.0%				
<b>Nursing/ Midwifery other</b>	<b>31</b>	<b>+4</b>	<b>+4</b>	<b>+8</b>	<b>+8</b>	<b>+3</b>	<b>+1</b>	<b>+14.3%</b>	<b>+15.0%</b>	<b>+34.5%</b>	<b>+34.4%</b>	<b>+12.1%</b>	<b>+4.0%</b>
<b>Nursing &amp; Midwifery</b>	<b>7,210</b>	<b>+125</b>	<b>+191</b>	<b>+227</b>	<b>+283</b>	<b>+150</b>	<b>-11</b>	<b>+1.8%</b>	<b>+2.7%</b>	<b>+3.3%</b>	<b>+4.1%</b>	<b>+2.1%</b>	<b>-0.2%</b>
Dietitians	40	+11	+11	+9	+5	+6	-5	+37.7%	+35.7%	+28.7%	+14.6%	+16.1%	-11.2%
Occupational Therapists	407	+60	+64	+62	+30	+15	+10	+17.3%	+18.5%	+18.0%	+7.8%	+3.9%	+2.4%
Physiotherapists	343	+42	+37	+34	+30	+18	-0	+14.0%	+12.1%	+11.2%	+9.6%	+5.4%	-0.1%
Podiatrists & Chiropodists	3	-12	-13	-12	-9	-10	-0	-79.2%	-81.0%	-79.4%	-74.5%	-75.7%	-10.2%
Speech & Language Therapists	312	+21	+6	+10	-3	-15	-3	+7.3%	+2.0%	+3.4%	-1.1%	-4.5%	-0.9%
<b>Therapy Professions</b>	<b>1,105</b>	<b>+123</b>	<b>+104</b>	<b>+104</b>	<b>+52</b>	<b>+14</b>	<b>+1</b>	<b>+12.5%</b>	<b>+10.4%</b>	<b>+10.4%</b>	<b>+5.0%</b>	<b>+1.3%</b>	<b>+0.1%</b>
Audiology		-13	-18					-100.0%	-100.0%	-100.0%	-100.0%	-100.0%	-100.0%
Clinical Engineering	16	-2	-2	+4	+3	+3	+0	-12.6%	-11.1%	+33.3%	+23.1%	+23.6%	+0.3%
Medical Science	4		+1						+33.3%				
Phlebotomists		-1	-1	-1	-1			-100.0%	-100.0%	-100.0%	-100.0%	-100.0%	-100.0%
Radiographers	4	-4	-4	-3	-3	-2	+0	-52.4%	-53.0%	-41.8%	-44.3%	-35.3%	+9.0%
Respiratory Physiologists	2	+1	+1	+1	+1			+100.0%	+100.0%	+100.0%	+100.0%		
Vascular Physiologists	0	+0	+0	+0	-0	+0		-100.0%	-100.0%	+112.5%	-19.0%	+6.3%	
<b>Health Science/ Diagnostics</b>	<b>26</b>	<b>-19</b>	<b>-23</b>	<b>+1</b>	<b>-0</b>	<b>+1</b>	<b>+0</b>	<b>-42.3%</b>	<b>-47.0%</b>	<b>+5.3%</b>	<b>-0.4%</b>	<b>+3.8%</b>	<b>+1.4%</b>
<b>Social Care</b>	<b>3,001</b>	<b>+807</b>	<b>+652</b>	<b>+509</b>	<b>+403</b>	<b>+209</b>	<b>-4</b>	<b>+36.8%</b>	<b>+27.8%</b>	<b>+20.4%</b>	<b>+15.5%</b>	<b>+7.5%</b>	<b>-0.1%</b>
<b>Social Workers</b>	<b>305</b>	<b>+2</b>	<b>+0</b>	<b>-10</b>	<b>-13</b>	<b>-23</b>	<b>+3</b>	<b>+0.8%</b>	<b>+0.1%</b>	<b>-3.1%</b>	<b>-3.9%</b>	<b>-7.1%</b>	<b>+0.9%</b>
<b>Psychologists</b>	<b>232</b>	<b>+22</b>	<b>+9</b>	<b>+25</b>	<b>+26</b>	<b>+2</b>	<b>-2</b>	<b>+10.4%</b>	<b>+3.8%</b>	<b>+12.2%</b>	<b>+12.6%</b>	<b>+0.9%</b>	<b>-0.9%</b>

Aug 2022 (Dec 2015 figure: 28,322)	WTE Aug 2022	WTE change since Dec 16	WTE change since Dec 17	WTE change since Dec 18	WTE change since Dec 19	WTE change since Dec 20	WTE change since Jul 22	% change since Dec 16	% change since Dec 17	% change since Dec 18	% change since Dec 19	% change since Dec 20	% change since Jul 22
<b>Overall</b>	<b>33,470</b>	<b>+4,234</b>	<b>+2,970</b>	<b>+2,346</b>	<b>+1,935</b>	<b>+1,111</b>	<b>-25</b>	<b>+14.5%</b>	<b>+9.7%</b>	<b>+7.5%</b>	<b>+6.1%</b>	<b>+3.4%</b>	<b>-0.1%</b>
Pharmacists	21	+6	+5	+3	+3	+3	+0	+38.6%	+31.6%	+17.8%	+15.2%	+17.1%	+0.7%
Pharmacy Technicians	6	+0	+1	+0	+2	+1	-0	+8.8%	+9.6%	+8.8%	+54.7%	+12.5%	-3.7%
<b>Pharmacy</b>	<b>27</b>	<b>+6</b>	<b>+6</b>	<b>+4</b>	<b>+5</b>	<b>+4</b>	<b>-0</b>	<b>+30.4%</b>	<b>+25.8%</b>	<b>+15.6%</b>	<b>+22.4%</b>	<b>+16.0%</b>	<b>-0.3%</b>
Counsellor Therapists	21	+5	+2	+4	+3	+2	-1	+27.4%	+10.4%	+20.8%	+13.5%	+8.6%	-2.6%
HSCP Trainees/ Students		-2	-1					-100.0%	-100.0%	-100.0%	-100.0%	-100.0%	-100.0%
Other Health & Social Care	33	-27	-27	-20	-18	-13	-3	-44.6%	-45.0%	-37.9%	-35.1%	-27.6%	-9.1%
Play Therapists/ Specialists	16	+0	+1	+0	-1	+4	+5	+2.4%	+10.1%	+0.2%	-5.2%	+31.4%	+44.7%
<b>H&amp;SC, Other</b>	<b>70</b>	<b>-24</b>	<b>-24</b>	<b>-16</b>	<b>-16</b>	<b>-7</b>	<b>+1</b>	<b>-25.5%</b>	<b>-25.6%</b>	<b>-19.0%</b>	<b>-18.7%</b>	<b>-9.3%</b>	<b>+1.4%</b>
<b>Health &amp; Social Care Professionals</b>	<b>4,766</b>	<b>+917</b>	<b>+723</b>	<b>+617</b>	<b>+457</b>	<b>+199</b>	<b>-1</b>	<b>+23.8%</b>	<b>+17.9%</b>	<b>+14.9%</b>	<b>+10.6%</b>	<b>+4.4%</b>	<b>-0.0%</b>
Executive Management	53	+17	+7	+11	+10	+2	-2	+46.0%	+14.5%	+25.8%	+23.2%	+3.5%	-4.1%
Senior Management (VIII & GM)	282	+104	+104	+89	+70	+50	+0	+58.5%	+58.7%	+46.1%	+33.3%	+21.6%	+0.2%
<b>Management (VIII &amp; above)</b>	<b>335</b>	<b>+121</b>	<b>+111</b>	<b>+100</b>	<b>+80</b>	<b>+52</b>	<b>-2</b>	<b>+56.4%</b>	<b>+49.6%</b>	<b>+42.5%</b>	<b>+31.6%</b>	<b>+18.4%</b>	<b>-0.5%</b>
Middle Management (V-VII)	863	+367	+343	+293	+235	+176	+15	+74.0%	+65.9%	+51.5%	+37.4%	+25.6%	+1.8%
Other Administrative	14	-1	-3	-3	-2	-2		-6.2%	-18.0%	-17.4%	-12.9%	-12.1%	
<b>Administrative/ Supervisory (V to VII)</b>	<b>877</b>	<b>+366</b>	<b>+340</b>	<b>+290</b>	<b>+233</b>	<b>+174</b>	<b>+15</b>	<b>+71.6%</b>	<b>+63.2%</b>	<b>+49.5%</b>	<b>+36.1%</b>	<b>+24.8%</b>	<b>+1.8%</b>
<b>Clerical (III &amp; IV)</b>	<b>1,342</b>	<b>+252</b>	<b>+201</b>	<b>+124</b>	<b>+111</b>	<b>+70</b>	<b>+7</b>	<b>+23.1%</b>	<b>+17.6%</b>	<b>+10.2%</b>	<b>+9.0%</b>	<b>+5.5%</b>	<b>+0.5%</b>
<b>Management &amp; Administrative</b>	<b>2,553</b>	<b>+738</b>	<b>+651</b>	<b>+514</b>	<b>+424</b>	<b>+295</b>	<b>+20</b>	<b>+40.7%</b>	<b>+34.3%</b>	<b>+25.2%</b>	<b>+19.9%</b>	<b>+13.1%</b>	<b>+0.8%</b>
Catering	306	-21	-12	-14	-14	-7	-3	-6.3%	-3.7%	-4.4%	-4.2%	-2.2%	-0.9%
Household Services	831	-240	-180	-138	-81	-54	-7	-22.4%	-17.8%	-14.3%	-8.8%	-6.0%	-0.9%
Other Labs & Associated	1	-0		-0				-6.5%		-3.8%			
Other Support	164	-70	-69	-65	-58	-1	-4	-29.8%	-29.4%	-28.3%	-26.1%	-0.3%	-2.1%
Portering	88	-24	-22	-17	-21	-13	-0	-21.2%	-20.3%	-16.5%	-19.4%	-12.9%	-0.4%
<b>Support</b>	<b>1,390</b>	<b>-353</b>	<b>-283</b>	<b>-235</b>	<b>-173</b>	<b>-74</b>	<b>-14</b>	<b>-20.3%</b>	<b>-16.9%</b>	<b>-14.4%</b>	<b>-11.1%</b>	<b>-5.0%</b>	<b>-1.0%</b>
Maintenance	196	-32	-37	-26	-19	-20	-5	-14.1%	-15.8%	-11.8%	-8.6%	-9.3%	-2.3%
Technical Services	20	+15	+15	+14	+12	+9	-1	+285.5%	+285.5%	+222.3%	+142.7%	+77.1%	-5.1%
<b>Maintenance/ Technical</b>	<b>216</b>	<b>-18</b>	<b>-22</b>	<b>-13</b>	<b>-7</b>	<b>-12</b>	<b>-6</b>	<b>-7.6%</b>	<b>-9.4%</b>	<b>-5.6%</b>	<b>-3.1%</b>	<b>-5.1%</b>	<b>-2.6%</b>
<b>General Support</b>	<b>1,606</b>	<b>-371</b>	<b>-305</b>	<b>-247</b>	<b>-180</b>	<b>-85</b>	<b>-20</b>	<b>-18.8%</b>	<b>-16.0%</b>	<b>-13.3%</b>	<b>-10.1%</b>	<b>-5.1%</b>	<b>-1.2%</b>
Attendant/ Aide	1,867	-1,270	-1,125	-987	-657	-591	-13	-40.5%	-37.6%	-34.6%	-26.0%	-24.0%	-0.7%
Health & Social Care Assistants	73	+37	+38	+38	+42	+35	+6	+99.7%	+109.4%	+108.5%	+137.6%	+91.1%	+8.9%

Aug 2022 (Dec 2015 figure: 28,322)	WTE Aug 2022	WTE change since Dec 16	WTE change since Dec 17	WTE change since Dec 18	WTE change since Dec 19	WTE change since Dec 20	WTE change since Jul 22	% change since Dec 16	% change since Dec 17	% change since Dec 18	% change since Dec 19	% change since Dec 20	% change since Jul 22
<b>Overall</b>	<b>33,470</b>	<b>+4,234</b>	<b>+2,970</b>	<b>+2,346</b>	<b>+1,935</b>	<b>+1,111</b>	<b>-25</b>	<b>+14.5%</b>	<b>+9.7%</b>	<b>+7.5%</b>	<b>+6.1%</b>	<b>+3.4%</b>	<b>-0.1%</b>
Health Care Assistant/ Care Assistant	9,674	+3,011	+2,405	+1,866	+1,359	+972	-16	+45.2%	+33.1%	+23.9%	+16.3%	+11.2%	-0.2%
HCA (Student Nurse/Midwife COVID-19)						-22		-100.0%	-100.0%	-100.0%	-100.0%	-100.0%	-100.0%
<b>Health Care Assistants</b>	<b>11,614</b>	<b>+1,778</b>	<b>+1,318</b>	<b>+918</b>	<b>+745</b>	<b>+394</b>	<b>-23</b>	<b>+18.1%</b>	<b>+12.8%</b>	<b>+8.6%</b>	<b>+6.9%</b>	<b>+3.5%</b>	<b>-0.2%</b>
<b>Home Help</b>	<b>3,658</b>	<b>+767</b>	<b>+178</b>	<b>+125</b>	<b>+107</b>	<b>+133</b>	<b>+26</b>	<b>+26.5%</b>	<b>+5.1%</b>	<b>+3.5%</b>	<b>+3.0%</b>	<b>+3.8%</b>	<b>+0.7%</b>
Home Care Services	144	+55	+37	+35	+30	+27	+0	+61.5%	+34.8%	+32.0%	+26.1%	+22.8%	+0.1%
Other Care Grades	280	+48	+62	+70	+83	+39	+2	+20.5%	+28.6%	+33.6%	+42.0%	+16.4%	+0.9%
Pastoral Care	29	-18	-17	-15	-13	-8	-1	-38.5%	-37.0%	-34.1%	-31.0%	-21.6%	-3.3%
Workshop Services	1,445	+201	+139	+98	+16	-13	-13	+16.2%	+10.7%	+7.3%	+1.2%	-0.9%	-0.9%
<b>Care, other</b>	<b>1,897</b>	<b>+286</b>	<b>+221</b>	<b>+188</b>	<b>+116</b>	<b>+45</b>	<b>-11</b>	<b>+17.7%</b>	<b>+13.2%</b>	<b>+11.0%</b>	<b>+6.5%</b>	<b>+2.4%</b>	<b>-0.6%</b>
<b>Patient &amp; Client Care</b>	<b>17,169</b>	<b>+2,831</b>	<b>+1,718</b>	<b>+1,230</b>	<b>+968</b>	<b>+572</b>	<b>-8</b>	<b>+19.7%</b>	<b>+11.1%</b>	<b>+7.7%</b>	<b>+6.0%</b>	<b>+3.4%</b>	<b>-0.0%</b>

Source: Health Service Personnel Census

Longitudinal Employment Levels by Grade Group - Dec 2016 to Aug 2022

Aug 2022 (Dec 2015 figure: 28,322)	WTE Aug 2022	WTE change since Dec 16	WTE change since Dec 17	WTE change since Dec 18	WTE change since Dec 19	WTE change since Dec 20	WTE change since Jul 22	% change since Dec 16	% change since Dec 17	% change since Dec 18	% change since Dec 19	% change since Dec 20	% change since Jul 22
Overall	33,470	+4,234	+2,970	+2,346	+1,935	+1,111	-25	+14.5%	+9.7%	+7.5%	+6.1%	+3.4%	-0.1%
Consultant Medicine	6	-5	-3	+3	+3	+2	-1	-43.9%	-33.2%	+70.8%	+70.8%	+39.1%	-13.6%
Consultant Paediatrics	2	-1	-1	-1	-1	-1	+0	-35.8%	-34.4%	-32.5%	-32.5%	-32.5%	+2.5%
Consultant Psychiatry	18	-4	-6	+0	-3	-3	-1	-17.8%	-23.7%	+0.9%	-13.2%	-15.3%	-6.2%
Consultant Surgery		-1	-0	-0				-100.0%	-100.0%	-100.0%	-100.0%	-100.0%	-100.0%
Consultants	26	-11	-10	+2	-1	-3	-2	-29.0%	-27.3%	+6.5%	-4.4%	-8.8%	-7.4%
Registrar	12	+0	-2	-1	-2	+3	-2	+0.1%	-14.7%	-9.1%	-14.7%	+30.3%	-16.7%
Senior Registrar	4	+1	+0	+0	+1	+0	-1	+36.0%	+2.0%	+2.0%	+36.0%	+2.0%	-19.7%
Specialist Registrar	4	-0	-1	+2	-2	-0	+0	-6.3%	-25.0%	+87.5%	-37.5%	-6.3%	+7.8%
Registrars	19	+1	-3	+1	-3	+3	-3	+4.5%	-14.0%	+3.6%	-14.0%	+14.9%	-13.6%
Senior House Officer	21	+5	+4	+2	-1	-1	-2	+33.6%	+26.0%	+12.9%	-3.0%	-6.0%	-9.3%
SHO/ Interns	21	+5	+4	+2	-1	-1	-2	+33.6%	+26.0%	+12.9%	-3.0%	-6.0%	-9.3%
Dentists								-100.0%	-100.0%	-100.0%	-100.0%	-100.0%	-100.0%
Other Medical	100	-1	-0	+0	-11	-18	+1	-1.1%	-0.5%	+0.1%	-10.1%	-15.6%	+1.5%
Medical/ Dental, other	100	-1	-0	+0	-11	-18	+1	-1.1%	-0.5%	+0.1%	-10.1%	-15.6%	+1.5%
Medical & Dental	167	-6	-9	+5	-16	-20	-6	-3.3%	-5.2%	+3.0%	-8.8%	-10.6%	-3.4%
Clinical Nurse/ Midwife Manager	1,385	+39	+49	+53	+66	+35	-2	+2.9%	+3.6%	+4.0%	+5.0%	+2.6%	-0.2%
Director Nursing/Midwifery, Assistant	142	+13	+14	+18	-1	-9	+3	+9.7%	+10.7%	+14.3%	-0.6%	-6.2%	+2.2%
Director of Nursing/Midwifery	145	+16	+17	+24	+4	+4	-1	+12.6%	+13.2%	+20.2%	+3.2%	+2.6%	-1.0%
Nurse/ Midwife Manager	1,673	+68	+79	+95	+70	+29	-1	+4.3%	+5.0%	+6.0%	+4.4%	+1.8%	-0.0%
Advanced Nurse/ Midwife Practitioner	33	+29	+28	+24	+21	+9	+3	+731.8%	+565.4%	+270.5%	+161.6%	+35.1%	+8.1%
Clinical Nurse/ Midwife Specialist	95	+12	+16	+12	+19	+18	+0	+14.0%	+20.2%	+14.6%	+25.7%	+22.7%	+0.2%
Nurse/ Midwife Specialist & AN/MP	128	+41	+44	+36	+40	+26	+3	+46.8%	+52.6%	+39.6%	+45.3%	+25.7%	+2.2%
Graduate Nursing/ Midwifery								-100.0%	-100.0%	-100.0%	-100.0%	-100.0%	-100.0%
Staff Midwives	1	+0	-1	+1	+1	-0	+0	+112.5%	-52.8%	-100.0%	-100.0%	-3.4%	+1.2%
Staff Nurse [Psychiatric]	69	-21	-7	-7	-19	+11	-58	-23.6%	-9.1%	-9.7%	-21.9%	+19.4%	-45.5%
Staff Nurses [General/ Children's]	3,499	-17	+14	+26	+36	+130	+4	-0.5%	+0.4%	+0.8%	+1.0%	+3.9%	+0.1%
Staff Nurse [Intellectual Disability]	1,698	-28	-6	+12	+100	-92	+38	-1.6%	-0.3%	+0.7%	+6.3%	-5.1%	+2.3%
Staff Nurse/ Staff Midwife	5,267	-66	-0	+32	+118	+49	-15	-1.2%	-0.0%	+0.6%	+2.3%	+0.9%	-0.3%
Public Health Nurse	24	+4	+3	+4	+5	+4	+0	+17.4%	+16.7%	+20.2%	+23.7%	+19.8%	+0.1%
Public Health Nurse	24	+4	+3	+4	+5	+4	+0	+17.4%	+16.7%	+20.2%	+23.7%	+19.8%	+0.1%
Pre-registration Nurse Intern (COVID-19)						-32		-100.0%	-100.0%	-100.0%	-100.0%	-100.0%	-100.0%
Pre-registration Nurse/ Midwife Intern	84	+72	+73	+50	+56	+82	+2	+603.9%	+616.5%	+142.6%	+199.0%	+3278.8%	+1.9%
Post-registration Nurse/ Midwife Student					-1			-100.0%	-100.0%	-100.0%	-100.0%	-100.0%	-100.0%
Nursing/ Midwifery awaiting registration	2	+2	-12	+2	-13	-12	-0	-100.0%	-86.3%	-100.0%	-87.1%	-86.6%	-14.7%
Nursing/ Midwifery Student	86	+74	+61	+52	+42	+38	+1	+619.9%	+235.0%	+148.1%	+95.9%	+77.6%	+1.4%
Nursing Education/Clinical	30	+8	+8	+8	+8	+3	+1	+35.5%	+36.5%	+36.0%	+35.9%	+12.6%	+4.1%
Other Nursing/ Midwifery	1	-4	-4					-80.0%	-80.0%				
Nursing/ Midwifery other	31	+4	+4	+8	+8	+3	+1	+14.3%	+15.0%	+34.5%	+34.4%	+12.1%	+4.0%
Nursing & Midwifery	7,210	+125	+191	+227	+283	+150	-11	+1.8%	+2.7%	+3.3%	+4.1%	+2.1%	-0.2%
Dietitians	40	+11	+11	+9	+5	+6	-5	+37.7%	+35.7%	+28.7%	+14.6%	+16.1%	-11.2%
Occupational Therapists	407	+60	+64	+62	+30	+15	+10	+17.3%	+18.5%	+18.0%	+7.8%	+3.9%	+2.4%
Physiotherapists	343	+42	+37	+34	+30	+18	-0	+14.0%	+12.1%	+11.2%	+9.6%	+5.4%	-0.1%
Podiatrists & Chiropodists	3	-12	-13	-12	-9	-10	-0	-79.2%	-81.0%	-79.4%	-74.5%	-75.7%	-10.2%
Speech & Language Therapists	312	+21	+6	+10	-3	-15	-3	+7.3%	+2.0%	+3.4%	-1.1%	-4.5%	-0.9%
Therapy Professions	1,105	+123	+104	+104	+52	+14	+1	+12.5%	+10.4%	+10.4%	+5.0%	+1.3%	+0.1%
Audiology		-13	-18					-100.0%	-100.0%	-100.0%	-100.0%	-100.0%	-100.0%
Clinical Engineering	16	-2	-2	+4	+3	+3	+0	-12.6%	-11.1%	+33.3%	+23.1%	+23.6%	+0.3%
Medical Science	4		+1						+33.3%				
Phlebotomists		-1	-1	-1	-1			-100.0%	-100.0%	-100.0%	-100.0%	-100.0%	-100.0%
Radiographers	4	-4	-4	-3	-3	-2	+0	-52.4%	-53.0%	-41.8%	-44.3%	-35.3%	+9.0%
Respiratory Physiologists	2	+1	+1	+1	+1			+100.0%	+100.0%	+100.0%	+100.0%		
Vascular Physiologists	0	+0	+0	+0	-0	+0		-100.0%	-100.0%	+112.5%	-19.0%	+6.3%	
Health Science/ Diagnostics	26	-19	-23	+1	-0	+1	+0	-42.3%	-47.0%	+5.3%	-0.4%	+3.8%	+1.4%
Social Care	3,001	+807	+652	+509	+403	+209	-4	+36.8%	+27.8%	+20.4%	+15.5%	+7.5%	-0.1%
Social Workers	305	+2	+0	-10	-13	-23	+3	+0.8%	+0.1%	-3.1%	-3.9%	-7.1%	+0.9%
Psychologists	232	+22	+9	+25	+26	+2	-2	+10.4%	+3.8%	+12.2%	+12.6%	+0.9%	-0.9%
Pharmacists	21	+6	+5	+3	+3	+3	+0	+38.6%	+31.6%	+17.8%	+15.2%	+17.1%	+0.7%
Pharmacy Technicians	6	+1	+1	+1	+2	+1	-0	+8.8%	+9.6%	+8.8%	+54.8%	+12.5%	-3.7%
Pharmacy	27	+6	+6	+4	+5	+4	-0	+30.4%	+25.8%	+15.6%	+22.4%	+16.0%	-0.3%
Counsellor Therapists	21	+5	+2	+4	+3	+2	-1	+27.4%	+10.4%	+20.8%	+13.5%	+8.6%	-2.6%
HSCP Trainees/ Students		-2	-1					-100.0%	-100.0%	-100.0%	-100.0%	-100.0%	-100.0%
Other Health & Social Care	33	-27	-27	-20	-18	-13	-3	-44.6%	-45.0%	-37.9%	-35.1%	-27.6%	-9.1%
Play Therapists/ Specialists	16	+0	+1	+0	-1	+4	+5	+2.4%	+10.1%	+0.2%	-5.2%	+31.4%	+44.7%
H&SC, Other	70	-24	-24	-16	-16	-7	+1	-25.5%	-25.6%	-19.0%	-18.7%	-9.3%	+1.4%
Health & Social Care Professionals	4,766	+917	+723	+617	+457	+199	-1	+23.8%	+17.9%	+14.9%	+10.6%	+4.4%	-0.0%
Executive Management	53	+17	+7	+11	+10	+2	-2	+46.0%	+14.5%	+25.8%	+23.2%	+3.5%	-4.1%
Senior Management (VIII & GM)	282	+104	+104	+89	+70	+50	+0	+58.5%	+58.7%	+46.1%	+33.3%	+21.6%	+0.2%
Management (VIII & above)	334	+121	+111	+100	+80	+52	-2	+56.4%	+49.6%	+42.5%	+31.6%	+18.4%	-0.5%
Middle Management (V-VII)	863	+367	+343	+293	+235	+176	+15	+74.0%	+65.9%	+51.5%	+37.4%	+25.6%	+1.8%
Other Administrative	14	-1	-3	-3	-2	-2		-6.2%	-18.0%	-17.4%	-12.9%	-12.1%	
Administrative/ Supervisory (V to VII)	877	+366	+340	+290	+233	+174	+15	+71.6%	+63.2%	+49.5%	+36.1%	+24.8%	+1.8%
Clerical (III & IV)	1,342	+252	+201	+124	+111	+70	+7	+23.1%	+17.6%	+10.2%	+9.0%	+5.5%	+0.5%
Management & Administrative	2,553	+738	+651	+514	+424	+295	+20	+40.7%	+34.3%	+25.2%	+19.9%	+13.1%	+0.8%
Support	1,390	-353	-283	-235	-173	-74	-14	-20.3%	-16.9%	-14.4%	-11.1%	-5.0%	-1.0%
Maintenance	196	-32	-37	-26	-19	-20	-5	-14.1%	-15.8%	-11.8%	-8.6%	-9.3%	-2.3%
Technical Services	20	+15	+15	+14	+12	+9	-1	+285.5%	+285.5%	+222.3%	+142.7%	+77.1%	-5.1%
Maintenance/ Technical	216	-18	-22	-13	-7	-12	-6	-7.6%	-9.4%	-5.6%	-3.1%	-5.1%	-2.6%
General Support	1,606	-371	-305	-247	-180	-85	-20	-18.8%	-16.0%	-13.3%	-10.1%	-5.1%	-1.2%
Attendant/ Aide	1,867	-1,270	-1,125	-987	-657	-591	-13	-40.5%	-37.6%	-34.6%	-26.0%	-24.0%	-0.7%
Health & Social Care Assistants	73	+37	+38	+38	+42	+35	+6	+99.7%	+109.4%	+108.5%	+137.6%	+91.1%	+8.9%
Health Care Assistant/ Care Assistant	9,674	+3,011	+2,405	+1,866	+1,359	+972	-16	+45.2%	+33.1%	+23.9%	+16.3%	+11.2%	-0.2%
HCA (Student Nurse/Midwife COVID-19)						-22		-100.0%	-100.0%	-100.0%	-100.0%	-100.0%	-100.0%
Health Care Assistants	11,614	+1,778	+1,318	+918	+745	+394	-23	+18.1%	+12.8%	+8.6%	+6.9%	+3.5%	-0.2%



Aug 2022 (Dec 2015 figure: 28,322)	WTE Aug 2022	WTE change since Dec 16	WTE change since Dec 17	WTE change since Dec 18	WTE change since Dec 19	WTE change since Dec 20	WTE change since Jul 22	% change since Dec 16	% change since Dec 17	% change since Dec 18	% change since Dec 19	% change since Dec 20	% change since Jul 22
Overall	33,470	+4,234	+2,970	+2,346	+1,935	+1,111	-25	+14.5%	+9.7%	+7.5%	+6.1%	+3.4%	-0.1%
Home Help	3,658	+767	+178	+125	+107	+133	+26	+26.5%	+5.1%	+3.5%	+3.0%	+3.8%	+0.7%
Home Care Services	144	+55	+37	+35	+30	+27	+0	+61.5%	+34.8%	+32.0%	+26.1%	+22.8%	+0.1%
Other Care Grades	280	+48	+62	+70	+83	+39	+2	+20.5%	+28.6%	+33.6%	+42.0%	+16.4%	+0.9%
Pastoral Care	29	-18	-17	-15	-13	-8	-1	-38.5%	-37.0%	-34.1%	-31.0%	-21.6%	-3.3%
Workshop Services	1,445	+201	+139	+98	+16	-13	-13	+16.2%	+10.7%	+7.3%	+1.2%	-0.9%	-0.9%
Care, other	1,897	+286	+221	+188	+116	+45	-11	+17.7%	+13.2%	+11.0%	+6.5%	+2.4%	-0.6%
Patient & Client Care	17,169	+2,831	+1,718	+1,230	+968	+572	-8	+19.7%	+11.1%	+7.7%	+6.0%	+3.4%	-0.0%

Source: Health Service Personnel Census