

# Social Care Service Employment Report: December 2021

## Employment by Staff Group

Dec 2021	WTE Dec 2019	WTE Dec 2020	WTE Nov 2021	WTE Dec 2021	WTE change since Nov 21	WTE change since Dec 20	% change since Dec 20	WTE change since Dec 19	% change since Dec 19	No. Dec 2021
<b>Overall</b>	<b>31,535</b>	<b>32,359</b>	<b>33,045</b>	<b>33,246</b>	<b>+200</b>	<b>+886</b>	<b>+2.7%</b>	<b>+1,710</b>	<b>+5.4%</b>	<b>39,752</b>
Consultants	27	29	29	28	-1	-1	-3.4%	+0	+1.2%	37
Registrars	23	17	19	20	+2	+3	+19.3%	-2	-10.8%	22
SHO/ Interns	22	23	22	22	-1	-1	-3.8%	-0	-0.7%	22
Medical/ Dental, other	111	118	101	109	+8	-9	-7.6%	-2	-1.6%	179
<b>Medical &amp; Dental</b>	<b>183</b>	<b>186</b>	<b>171</b>	<b>179</b>	<b>+8</b>	<b>-8</b>	<b>-4.1%</b>	<b>-4</b>	<b>-2.2%</b>	<b>260</b>
Nurse/ Midwife Manager	1,603	1,643	1,696	1,689	-7	+45	+2.8%	+86	+5.4%	1,825
Nurse/ Midwife Specialist & AN/MP	88	102	105	103	-2	+0	+0.4%	+14	+16.1%	113
Staff Nurse/ Staff Midwife	5,149	5,217	5,269	5,311	+42	+94	+1.8%	+162	+3.1%	6,163
Public Health Nurse	20	20	24	23	-1	+3	+14.0%	+3	+17.7%	28
<i>Pre-registration Nurse Intern (COVID-19)</i>		32	1		-1	-32	-100.0%		-100.0%	
<i>Pre-registration Nurse/ Midwife Intern</i>	28	3	22	21	-0	+19	+759.2%	-7	-24.0%	37
<i>Post-registration Nurse/ Midwife Student</i>	1						-100.0%	-1	-100.0%	
<i>Nursing/ Midwifery awaiting registration</i>	15	14	9	7	-1	-7	-49.3%	-8	-51.0%	8
Nursing/ Midwifery Student	44	49	31	29	-2	-20	-40.9%	-15	-34.8%	45
Nursing/ Midwifery other	23	28	26	29	+3	+2	+5.7%	+6	+26.6%	32
<b>Nursing &amp; Midwifery</b>	<b>6,927</b>	<b>7,060</b>	<b>7,152</b>	<b>7,184</b>	<b>+32</b>	<b>+124</b>	<b>+1.8%</b>	<b>+256</b>	<b>+3.7%</b>	<b>8,206</b>
Therapy Professions	1,053	1,091	1,172	1,178	+6	+87	+8.0%	+125	+11.9%	1,350
Health Science/ Diagnostics	26	25	26	25	-1	-1	-2.3%	-2	-6.3%	28
Social Care	2,598	2,792	2,998	3,014	+16	+222	+8.0%	+417	+16.0%	3,536
Social Workers	317	328	326	325	-1	-3	-0.9%	+8	+2.5%	373
Psychologists	206	230	243	249	+7	+19	+8.3%	+43	+20.9%	280
Pharmacy	22	23	28	29	+1	+6	+26.9%	+7	+33.9%	39
H&SC, Other	86	77	74	71	-3	-6	-7.9%	-15	-17.6%	94
<b>Health &amp; Social Care Professionals</b>	<b>4,308</b>	<b>4,567</b>	<b>4,867</b>	<b>4,892</b>	<b>+25</b>	<b>+325</b>	<b>+7.1%</b>	<b>+584</b>	<b>+13.5%</b>	<b>5,700</b>
Management (VIII & above)	254	283	315	319	+4	+37	+13.0%	+65	+25.6%	327
Administrative/ Supervisory (V to VII)	644	703	759	771	+11	+68	+9.7%	+127	+19.7%	822
Clerical (III & IV)	1,231	1,272	1,309	1,328	+19	+55	+4.4%	+96	+7.8%	1,574
<b>Management &amp; Administrative</b>	<b>2,130</b>	<b>2,258</b>	<b>2,384</b>	<b>2,418</b>	<b>+34</b>	<b>+160</b>	<b>+7.1%</b>	<b>+288</b>	<b>+13.5%</b>	<b>2,723</b>
Support	1,563	1,464	1,434	1,420	-14	-44	-3.0%	-143	-9.1%	1,793
Maintenance/ Technical	223	227	228	227	-1	-0	-0.1%	+4	+2.0%	244
<b>General Support</b>	<b>1,786</b>	<b>1,691</b>	<b>1,662</b>	<b>1,647</b>	<b>-15</b>	<b>-44</b>	<b>-2.6%</b>	<b>-139</b>	<b>-7.8%</b>	<b>2,037</b>
Health Care Assistants	10,869	11,221	11,376	11,454	+78	+233	+2.1%	+584	+5.4%	13,389
Home Help	3,551	3,525	3,492	3,529	+37	+4	+0.1%	-22	-0.6%	5,152
Care, other	1,781	1,852	1,941	1,944	+2	+91	+4.9%	+162	+9.1%	2,285
<b>Patient &amp; Client Care</b>	<b>16,201</b>	<b>16,598</b>	<b>16,809</b>	<b>16,926</b>	<b>+117</b>	<b>+328</b>	<b>+2.0%</b>	<b>+725</b>	<b>+4.5%</b>	<b>20,826</b>

## Social Care Services Employment by Administration (HSE / S38): December 2021

Dec 2021	WTE Dec 2019	WTE Dec 2020	WTE Nov 2021	WTE Dec 2021	WTE change since Nov 21	WTE change since Dec 20	% change since Dec 20	WTE change since Dec 19	% change since Dec 19	No. Dec 2021
<b>Total</b>	<b>31,535</b>	<b>32,359</b>	<b>33,045</b>	<b>33,246</b>	<b>+200</b>	<b>+886</b>	<b>+2.7%</b>	<b>+1,710</b>	<b>+5.4%</b>	<b>39,752</b>
HSE	16,428	16,758	16,925	17,065	+140	+307	+1.8%	+637	+3.9%	20,540
Section 38 Voluntary Agencies	15,107	15,601	16,121	16,181	+60	+580	+3.7%	+1,073	+7.1%	19,212

### Employment by Staff Group

Dec 2021	WTE Dec 2019	WTE Dec 2020	WTE Nov 2021	WTE Dec 2021	WTE change since Nov 21	WTE change since Dec 20	% change since Dec 20	WTE change since Dec 19	% change since Dec 19	No. Dec 2021
<b>Health Service Executive</b>	<b>16,428</b>	<b>16,758</b>	<b>16,925</b>	<b>17,065</b>	<b>+140</b>	<b>+307</b>	<b>+1.8%</b>	<b>+637</b>	<b>+3.9%</b>	<b>20,540</b>
Consultants	11	11	13	11	-1	+0	+1.0%	+1	+8.9%	13
Registrars	10	7	8	9	+2	+2	+32.9%	-0	-4.4%	11
SHO/ Interns	10	12	12	12	+0	+0	+1.1%	+2	+18.0%	12
Medical/ Dental, other	101	108	92	100	+8	-8	-7.4%	-1	-0.7%	166
<b>Medical &amp; Dental</b>	<b>131</b>	<b>138</b>	<b>124</b>	<b>132</b>	<b>+8</b>	<b>-6</b>	<b>-4.0%</b>	<b>+2</b>	<b>+1.2%</b>	<b>202</b>
Nurse/ Midwife Manager	914	958	979	971	-8	+13	+1.4%	+57	+6.3%	1,042
Nurse/ Midwife Specialist & AN/MP	40	53	54	51	-2	-2	-3.2%	+11	+27.7%	56
Staff Nurse/ Staff Midwife	3,192	3,211	3,277	3,307	+30	+96	+3.0%	+115	+3.6%	3,818
Public Health Nurse	20	20	24	23	-1	+3	+14.0%	+3	+17.7%	28
Pre-registration Nurse Intern (COVID-19)		9				-9	-100.0%		-100.0%	
Pre-registration Nurse/ Midwife Intern	3	3	11	5	-7	+2	+85.6%	+1	+42.8%	9
Post-registration Nurse/ Midwife Student	1						-100.0%	-1	-100.0%	
Nursing/ Midwifery awaiting registration	15	14	9	7	-1	-7	-49.3%	-8	-51.0%	8
Nursing/ Midwifery Student	19	25	20	12	-8	-14	-53.1%	-7	-37.6%	17
Nursing/ Midwifery other	9	11	9	10	+1	-1	-9.6%	+1	+10.8%	10
<b>Nursing &amp; Midwifery</b>	<b>4,193</b>	<b>4,278</b>	<b>4,363</b>	<b>4,374</b>	<b>+11</b>	<b>+96</b>	<b>+2.2%</b>	<b>+181</b>	<b>+4.3%</b>	<b>4,971</b>
Therapy Professions	562	596	641	640	-1	+44	+7.4%	+78	+13.9%	742
Health Science/ Diagnostics	7	8	9	8	-1	-1	-7.2%	+0	+5.0%	10
Social Care	92	103	105	104	-0	+1	+0.9%	+13	+13.8%	118
Social Workers	142	151	144	140	-4	-11	-7.1%	-2	-1.4%	155
Psychologists	78	83	99	104	+5	+21	+24.8%	+26	+33.4%	118
Pharmacy	11	12	15	16	+1	+4	+33.3%	+5	+48.3%	21
H&SC, Other	28	27	23	24	+1	-2	-8.9%	-3	-12.1%	29
<b>Health &amp; Social Care Professionals</b>	<b>919</b>	<b>980</b>	<b>1,036</b>	<b>1,036</b>	<b>+0</b>	<b>+56</b>	<b>+5.7%</b>	<b>+117</b>	<b>+12.7%</b>	<b>1,193</b>
Management (VIII & above)	117	133	157	160	+3	+28	+21.0%	+43	+36.7%	166
Administrative/ Supervisory (V to VII)	287	326	371	377	+6	+52	+15.8%	+91	+31.6%	403
Clerical (III & IV)	722	755	775	792	+16	+36	+4.8%	+69	+9.6%	915
<b>Management &amp; Administrative</b>	<b>1,126</b>	<b>1,214</b>	<b>1,303</b>	<b>1,329</b>	<b>+26</b>	<b>+116</b>	<b>+9.5%</b>	<b>+203</b>	<b>+18.0%</b>	<b>1,484</b>
Support	815	782	755	753	-2	-29	-3.7%	-62	-7.6%	854
Maintenance/ Technical	109	110	109	110	+2	+0	+0.2%	+1	+0.7%	114
<b>General Support</b>	<b>924</b>	<b>892</b>	<b>864</b>	<b>863</b>	<b>-0</b>	<b>-29</b>	<b>-3.2%</b>	<b>-61</b>	<b>-6.6%</b>	<b>968</b>
Health Care Assistants	5,338	5,449	5,403	5,460	+57	+10	+0.2%	+122	+2.3%	6,177
Home Help	3,551	3,525	3,492	3,529	+37	+4	+0.1%	-22	-0.6%	5,152
Care, other	246	282	340	341	+1	+58	+20.7%	+95	+38.8%	393
<b>Patient &amp; Client Care</b>	<b>9,134</b>	<b>9,257</b>	<b>9,235</b>	<b>9,329</b>	<b>+94</b>	<b>+73</b>	<b>+0.8%</b>	<b>+195</b>	<b>+2.1%</b>	<b>11,722</b>

## Employment by Staff Group

Dec 2021	WTE Dec 2019	WTE Dec 2020	WTE Nov 2021	WTE Dec 2021	WTE change since Nov 21	WTE change since Dec 20	% change since Dec 20	WTE change since Dec 19	% change since Dec 19	No. Dec 2021
<b>Section 38 Voluntary Agencies</b>	<b>15,107</b>	<b>15,601</b>	<b>16,121</b>	<b>16,181</b>	<b>+60</b>	<b>+580</b>	<b>+3.7%</b>	<b>+1,073</b>	<b>+7.1%</b>	<b>19,212</b>
Consultants	17	17	16	16	+0	-1	-6.3%	-1	-3.5%	24
Registrars	13	10	11	11		+1	+10.0%	-2	-15.4%	11
SHO/ Interns	12	11	11	10	-1	-1	-9.1%	-2	-16.4%	10
Medical/ Dental, other	10	10	9	9		-1	-9.9%	-1	-9.9%	13
<b>Medical &amp; Dental</b>	<b>52</b>	<b>49</b>	<b>47</b>	<b>46</b>	<b>-1</b>	<b>-2</b>	<b>-4.3%</b>	<b>-6</b>	<b>-10.7%</b>	<b>58</b>
Nurse/ Midwife Manager	689	685	717	718	+1	+32	+4.7%	+29	+4.1%	783
Nurse/ Midwife Specialist & AN/MP	48	49	51	51	+0	+2	+4.3%	+3	+6.5%	57
Staff Nurse/ Staff Midwife	1,957	2,007	1,992	2,004	+12	-3	-0.1%	+47	+2.4%	2,345
Pre-registration Nurse Intern (COVID-19)		23	1		-1	-23	-100.0%		-100.0%	
Pre-registration Nurse/ Midwife Intern	25		10	17	+6	+17	-100.0%	-8	-32.6%	28
Nursing/ Midwifery Student	25	23	11	17	+6	-6	-27.5%	-8	-32.6%	28
Nursing/ Midwifery other	14	17	18	20	+2	+3	+15.3%	+5	+36.2%	22
<b>Nursing &amp; Midwifery</b>	<b>2,734</b>	<b>2,782</b>	<b>2,789</b>	<b>2,810</b>	<b>+21</b>	<b>+28</b>	<b>+1.0%</b>	<b>+76</b>	<b>+2.8%</b>	<b>3,235</b>
Therapy Professions	491	495	531	538	+6	+43	+8.7%	+47	+9.5%	608
Health Science/ Diagnostics	19	17	17	17				-2	-10.5%	18
Social Care	2,506	2,689	2,894	2,910	+16	+221	+8.2%	+404	+16.1%	3,418
Social Workers	175	177	182	185	+3	+8	+4.4%	+10	+5.7%	218
Psychologists	128	147	144	146	+2	-1	-1.0%	+17	+13.4%	162
Pharmacy	11	11	13	14	+0	+2	+20.2%	+2	+20.4%	18
H&SC, Other	59	51	50	47	-4	-4	-7.5%	-12	-20.1%	65
<b>Health &amp; Social Care Professionals</b>	<b>3,389</b>	<b>3,587</b>	<b>3,831</b>	<b>3,856</b>	<b>+25</b>	<b>+269</b>	<b>+7.5%</b>	<b>+466</b>	<b>+13.8%</b>	<b>4,507</b>
Management (VIII & above)	137	150	158	159	+1	+9	+6.0%	+22	+16.1%	161
Administrative/ Supervisory (V to VII)	357	377	388	393	+5	+16	+4.4%	+36	+10.1%	419
Clerical (III & IV)	509	517	534	536	+2	+19	+3.7%	+27	+5.3%	659
<b>Management &amp; Administrative</b>	<b>1,003</b>	<b>1,044</b>	<b>1,081</b>	<b>1,089</b>	<b>+8</b>	<b>+44</b>	<b>+4.2%</b>	<b>+85</b>	<b>+8.5%</b>	<b>1,239</b>
Support	748	682	680	667	-12	-15	-2.2%	-81	-10.9%	939
Maintenance/ Technical	113	117	119	117	-2	-0	-0.4%	+4	+3.2%	130
<b>General Support</b>	<b>862</b>	<b>799</b>	<b>799</b>	<b>784</b>	<b>-15</b>	<b>-15</b>	<b>-1.9%</b>	<b>-78</b>	<b>-9.0%</b>	<b>1,069</b>
Health Care Assistants	5,532	5,771	5,973	5,994	+21	+223	+3.9%	+462	+8.4%	7,212
Care, other	1,536	1,570	1,601	1,603	+2	+33	+2.1%	+67	+4.4%	1,892
<b>Patient &amp; Client Care</b>	<b>7,067</b>	<b>7,341</b>	<b>7,574</b>	<b>7,597</b>	<b>+22</b>	<b>+255</b>	<b>+3.5%</b>	<b>+529</b>	<b>+7.5%</b>	<b>9,104</b>

## Social Care Services Employment by CHO: Dec 2021

Dec 2021	WTE Dec 2019	WTE Dec 2020	WTE Nov 2021	WTE Dec 2021	WTE change since Nov 21	WTE change since Dec 20	% change since Dec 20	WTE change since Dec 19	% change since Dec 19	No. Dec 2021
<b>Overall</b>	<b>31,535</b>	<b>32,359</b>	<b>33,045</b>	<b>33,246</b>	<b>+200</b>	<b>+886</b>	<b>+2.7%</b>	<b>+1,710</b>	<b>+5.4%</b>	<b>39,752</b>
CHO 1	3,334	3,464	3,557	3,606	+48	+141	+4.1%	+272	+8.2%	4,157
CHO 2	3,103	3,105	3,073	3,109	+36	+4	+0.1%	+7	+0.2%	3,741
CHO 3	2,798	2,976	3,139	3,165	+25	+189	+6.3%	+367	+13.1%	3,849
CHO 4	5,358	5,486	5,556	5,576	+19	+90	+1.6%	+218	+4.1%	6,981
CHO 5	3,152	3,213	3,291	3,313	+22	+99	+3.1%	+160	+5.1%	3,952
CHO 6	2,021	2,020	2,048	2,041	-7	+21	+1.0%	+20	+1.0%	2,278
CHO 7	3,978	4,125	4,264	4,295	+31	+170	+4.1%	+317	+8.0%	5,086
CHO 8	3,650	3,689	3,709	3,742	+33	+53	+1.4%	+92	+2.5%	4,586
CHO 9	4,064	4,199	4,325	4,316	-9	+117	+2.8%	+253	+6.2%	5,032
other Community Services	78	81	82	83	+1	+2	+2.7%	+5	+6.2%	90

## Social Care Services Employment by CHO etc. Dec 2021

### CHO 1

Dec 2021	WTE Dec 2019	WTE Dec 2020	WTE Nov 2021	WTE Dec 2021	WTE change since Nov 21	WTE change since Dec 20	% change since Dec 20	WTE change since Dec 19	% change since Dec 19	No. Dec 2021
<b>Overall</b>	<b>3,334</b>	<b>3,464</b>	<b>3,557</b>	<b>3,606</b>	<b>+48</b>	<b>+141</b>	<b>+4.1%</b>	<b>+272</b>	<b>+8.2%</b>	<b>4,157</b>
Registrars				1	+1	+1	-100.0%	+1	-100.0%	1
Medical/ Dental, other	33	35	21	30	+9	-5	-14.5%	-3	-7.7%	48
<b>Medical &amp; Dental</b>	<b>33</b>	<b>35</b>	<b>21</b>	<b>31</b>	<b>+9</b>	<b>-5</b>	<b>-13.0%</b>	<b>-2</b>	<b>-6.1%</b>	<b>49</b>
Nurse/ Midwife Manager	196	194	212	210	-2	+16	+8.2%	+14	+7.1%	224
Nurse/ Midwife Specialist & AN/MP	14	18	17	17	+0	-1	-6.8%	+3	+20.9%	18
Staff Nurse/ Staff Midwife	631	643	666	675	+9	+32	+5.0%	+44	+7.0%	767
Public Health Nurse			2	2	+0	+2	-100.0%	+2	-100.0%	2
Nursing/ Midwifery Student	14	17	10	5	-5	-12	-71.4%	-9	-64.2%	8
Nursing/ Midwifery other	5	5	3	3	+0	-2	-38.5%	-2	-36.4%	3
<b>Nursing &amp; Midwifery</b>	<b>860</b>	<b>877</b>	<b>910</b>	<b>912</b>	<b>+2</b>	<b>+34</b>	<b>+3.9%</b>	<b>+52</b>	<b>+6.1%</b>	<b>1,022</b>
Therapy Professions	53	56	71	71	-1	+15	+26.1%	+17	+32.0%	80
Health Science/ Diagnostics	1	2	1		-1	-2	-100.0%	-1	-100.0%	
Social Care	8	11	10	10	+0	-1	-13.0%	+2	+29.9%	12
Social Workers	33	34	35	35	-0	+1	+4.0%	+2	+5.6%	38
Psychologists	5	7	15	15	+0	+7	+99.5%	+10	+221.9%	16
H&SC, Other	12	10	8	8	+0	-2	-20.6%	-5	-37.5%	9
<b>Health &amp; Social Care Professionals</b>	<b>112</b>	<b>120</b>	<b>140</b>	<b>138</b>	<b>-2</b>	<b>+18</b>	<b>+15.3%</b>	<b>+26</b>	<b>+22.8%</b>	<b>155</b>
Management (VIII & above)	22	25	23	23	+1	-1	-5.9%	+1	+5.5%	24
Administrative/ Supervisory (V to VII)	42	49	61	61	+0	+12	+23.3%	+19	+45.7%	65
Clerical (III & IV)	135	141	138	142	+4	+1	+1.0%	+7	+5.4%	162
<b>Management &amp; Administrative</b>	<b>199</b>	<b>215</b>	<b>221</b>	<b>226</b>	<b>+5</b>	<b>+11</b>	<b>+5.3%</b>	<b>+28</b>	<b>+13.9%</b>	<b>251</b>
Support	172	168	149	145	-4	-23	-13.6%	-27	-15.7%	174
Maintenance/ Technical	13	13	12	12	-0	-1	-8.6%	-1	-8.6%	12
<b>General Support</b>	<b>185</b>	<b>181</b>	<b>161</b>	<b>157</b>	<b>-4</b>	<b>-24</b>	<b>-13.2%</b>	<b>-28</b>	<b>-15.2%</b>	<b>186</b>
Health Care Assistants	1,325	1,355	1,374	1,405	+30	+49	+3.6%	+80	+6.0%	1,574
Home Help	556	618	654	662	+8	+43	+7.0%	+105	+18.9%	835
Care, other	65	63	77	76	-1	+13	+20.5%	+11	+17.2%	85
<b>Patient &amp; Client Care</b>	<b>1,946</b>	<b>2,037</b>	<b>2,105</b>	<b>2,142</b>	<b>+37</b>	<b>+106</b>	<b>+5.2%</b>	<b>+196</b>	<b>+10.1%</b>	<b>2,494</b>

## CHO 2

Dec 2021	WTE Dec 2019	WTE Dec 2020	WTE Nov 2021	WTE Dec 2021	WTE change since Nov 21	WTE change since Dec 20	% change since Dec 20	WTE change since Dec 19	% change since Dec 19	No. Dec 2021
<b>Overall</b>	<b>3,103</b>	<b>3,105</b>	<b>3,073</b>	<b>3,109</b>	<b>+36</b>	<b>+4</b>	<b>+0.1%</b>	<b>+7</b>	<b>+0.2%</b>	<b>3,741</b>
Consultants	3	3	3	3	0					4
Registrars	2	2	2	2	0					2
Medical/ Dental, other	12	12	11	11	-0	-1	-4.9%	-1	-8.8%	12
<b>Medical &amp; Dental</b>	<b>18</b>	<b>17</b>	<b>17</b>	<b>16</b>	<b>-0</b>	<b>-1</b>	<b>-3.3%</b>	<b>-1</b>	<b>-6.1%</b>	<b>18</b>
Nurse/ Midwife Manager	136	144	144	143	-1	-1	-0.9%	+7	+5.4%	156
Nurse/ Midwife Specialist & AN/MP	8	8	9	8	-1	+0	+2.1%	+0	+0.0%	9
Staff Nurse/ Staff Midwife	466	474	462	477	+15	+3	+0.6%	+10	+2.2%	561
Public Health Nurse	1	1	1	1	+0			+0	+25.0%	1
Pre-registration Nurse Intern (COVID-19)		1				-1	-100.0%		-100.0%	
Nursing/ Midwifery Student		1				-1	-100.0%		-100.0%	
<b>Nursing &amp; Midwifery</b>	<b>611</b>	<b>628</b>	<b>616</b>	<b>629</b>	<b>+13</b>	<b>+1</b>	<b>+0.2%</b>	<b>+18</b>	<b>+3.0%</b>	<b>727</b>
Therapy Professions	67	59	58	62	+4	+3	+5.1%	-5	-7.0%	71
Health Science/ Diagnostics	1	1	1	1	0					1
Social Care	222	243	266	278	+12	+35	+14.2%	+56	+25.3%	336
Social Workers	36	36	39	40	+0	+3	+9.5%	+3	+9.4%	49
Psychologists	16	14	14	14	-0	-0	-0.4%	-2	-10.1%	17
Pharmacy	1	1	1	1	0	-1	-51.5%	-1	-50.5%	1
H&SC, Other	16	12	11	10	-1	-2	-15.4%	-6	-38.0%	16
<b>Health &amp; Social Care Professionals</b>	<b>358</b>	<b>366</b>	<b>389</b>	<b>405</b>	<b>+16</b>	<b>+39</b>	<b>+10.6%</b>	<b>+47</b>	<b>+13.1%</b>	<b>491</b>
Management (VIII & above)	18	18	20	20	+0	+2	+13.5%	+2	+12.8%	21
Administrative/ Supervisory (V to VII)	48	54	62	64	+2	+10	+19.2%	+16	+33.0%	67
Clerical (III & IV)	121	116	112	112	+1	-3	-3.0%	-9	-7.2%	133
<b>Management &amp; Administrative</b>	<b>187</b>	<b>187</b>	<b>194</b>	<b>197</b>	<b>+3</b>	<b>+9</b>	<b>+4.9%</b>	<b>+9</b>	<b>+5.0%</b>	<b>221</b>
Support	101	99	98	97	-1	-2	-2.2%	-4	-3.7%	136
Maintenance/ Technical	32	32	30	30	+0	-2	-7.4%	-2	-6.2%	32
<b>General Support</b>	<b>133</b>	<b>132</b>	<b>128</b>	<b>127</b>	<b>-1</b>	<b>-5</b>	<b>-3.5%</b>	<b>-6</b>	<b>-4.3%</b>	<b>168</b>
Health Care Assistants	1,138	1,151	1,159	1,162	+3	+11	+0.9%	+23	+2.1%	1,360
Home Help	499	456	392	395	+4	-61	-13.4%	-104	-20.9%	532
Care, other	159	168	179	179	-0	+11	+6.3%	+20	+12.8%	224
<b>Patient &amp; Client Care</b>	<b>1,796</b>	<b>1,775</b>	<b>1,729</b>	<b>1,735</b>	<b>+6</b>	<b>-40</b>	<b>-2.2%</b>	<b>-61</b>	<b>-3.4%</b>	<b>2,116</b>

### CHO 3

Dec 2021	WTE Dec 2019	WTE Dec 2020	WTE Nov 2021	WTE Dec 2021	WTE change since Nov 21	WTE change since Dec 20	% change since Dec 20	WTE change since Dec 19	% change since Dec 19	No. Dec 2021
<b>Overall</b>	<b>2,798</b>	<b>2,976</b>	<b>3,139</b>	<b>3,165</b>	<b>+25</b>	<b>+189</b>	<b>+6.3%</b>	<b>+367</b>	<b>+13.1%</b>	<b>3,849</b>
Consultants	2	3	4	4	-0	+1	+36.6%	+2	+99.5%	5
Registrars				1	+1	+1	-100.0%	+1	-100.0%	1
Medical/ Dental, other	6	7	6	5	-0	-2	-21.6%	-1	-8.4%	7
<b>Medical &amp; Dental</b>	<b>8</b>	<b>10</b>	<b>10</b>	<b>10</b>	<b>+1</b>	<b>+1</b>	<b>+5.8%</b>	<b>+2</b>	<b>+31.4%</b>	<b>13</b>
Nurse/ Midwife Manager	140	139	144	142	-2	+2	+1.8%	+2	+1.2%	149
Nurse/ Midwife Specialist & AN/MP	14	14	14	13	-0	-1	-7.6%	-1	-9.9%	15
Staff Nurse/ Staff Midwife	486	502	513	515	+1	+13	+2.5%	+29	+5.9%	587
Public Health Nurse	1	1	1	1	0					1
Pre-registration Nurse Intern (COVID-19)		2	1		-1	-2	-100.0%		-100.0%	
Pre-registration Nurse/ Midwife Intern	12						-100.0%	-12	-100.0%	
Nursing/ Midwifery Student	12	2	1		-1	-2	-100.0%	-12	-100.0%	
Nursing/ Midwifery other	4	4	4	4	0					4
<b>Nursing &amp; Midwifery</b>	<b>656</b>	<b>661</b>	<b>676</b>	<b>674</b>	<b>-2</b>	<b>+13</b>	<b>+1.9%</b>	<b>+17</b>	<b>+2.6%</b>	<b>756</b>
Therapy Professions	102	113	114	115	+0	+2	+1.6%	+13	+12.9%	130
Health Science/ Diagnostics	1	3	4	4	+0	+1	+38.3%	+3	+408.5%	5
Social Care	241	284	289	285	-5	+1	+0.3%	+44	+18.2%	327
Social Workers	24	23	24	24	-0	+1	+2.6%	+1	+2.3%	27
Psychologists	16	20	20	20	-0	-0	-0.4%	+4	+27.2%	22
Pharmacy	1	1	1	1	+0					1
H&SC, Other	12	11	11	11	-0	-0	-3.3%	-1	-8.1%	15
<b>Health &amp; Social Care Professionals</b>	<b>396</b>	<b>456</b>	<b>464</b>	<b>459</b>	<b>-4</b>	<b>+4</b>	<b>+0.8%</b>	<b>+64</b>	<b>+16.1%</b>	<b>527</b>
Management (VIII & above)	13	14	16	16	+0	+2	+14.2%	+3	+24.7%	16
Administrative/ Supervisory (V to VII)	61	61	63	64	+1	+3	+4.3%	+3	+4.5%	66
Clerical (III & IV)	109	107	112	115	+3	+8	+7.4%	+6	+5.8%	130
<b>Management &amp; Administrative</b>	<b>183</b>	<b>182</b>	<b>191</b>	<b>195</b>	<b>+4</b>	<b>+12</b>	<b>+6.9%</b>	<b>+12</b>	<b>+6.7%</b>	<b>212</b>
Support	117	116	116	115	-1	-1	-1.2%	-2	-1.9%	131
Maintenance/ Technical	37	40	42	43	+1	+3	+7.5%	+7	+18.9%	46
<b>General Support</b>	<b>154</b>	<b>157</b>	<b>158</b>	<b>158</b>	<b>-0</b>	<b>+2</b>	<b>+1.1%</b>	<b>+5</b>	<b>+3.1%</b>	<b>177</b>
Health Care Assistants	1,043	1,101	1,150	1,156	+6	+55	+5.0%	+113	+10.8%	1,431
Home Help	175	216	278	294	+16	+77	+35.6%	+118	+67.6%	487
Care, other	183	193	213	219	+6	+25	+13.1%	+36	+19.5%	246
<b>Patient &amp; Client Care</b>	<b>1,402</b>	<b>1,511</b>	<b>1,641</b>	<b>1,668</b>	<b>+27</b>	<b>+157</b>	<b>+10.4%</b>	<b>+267</b>	<b>+19.0%</b>	<b>2,164</b>



## CHO 4

Dec 2021	WTE Dec 2019	WTE Dec 2020	WTE Nov 2021	WTE Dec 2021	WTE change since Nov 21	WTE change since Dec 20	% change since Dec 20	WTE change since Dec 19	% change since Dec 19	No. Dec 2021
<b>Overall</b>	<b>5,358</b>	<b>5,486</b>	<b>5,556</b>	<b>5,576</b>	<b>+19</b>	<b>+90</b>	<b>+1.6%</b>	<b>+218</b>	<b>+4.1%</b>	<b>6,981</b>
Consultants	3	4	3	3	-1	-1	-28.6%			4
Registrars	3	3	2	2	0	-1	-30.7%	-1	-30.7%	3
SHO/ Interns	1	1	2	2	0	+1	+100.0%	+1	+100.0%	2
Medical/ Dental, other	21	23	23	22	-1	-1	-5.0%	+1	+5.4%	52
<b>Medical &amp; Dental</b>	<b>28</b>	<b>31</b>	<b>30</b>	<b>29</b>	<b>-1</b>	<b>-2</b>	<b>-6.8%</b>	<b>+1</b>	<b>+4.5%</b>	<b>61</b>
Nurse/ Midwife Manager	207	213	218	220	+2	+8	+3.6%	+14	+6.5%	245
Nurse/ Midwife Specialist & AN/MP	17	20	17	17	-0	-3	-16.4%	+0	+1.8%	19
Staff Nurse/ Staff Midwife	824	840	855	852	-3	+12	+1.4%	+28	+3.4%	1,043
Public Health Nurse	5	6	4	5	+0	-1	-23.2%	-1	-11.2%	6
Pre-registration Nurse Intern (COVID-19)		8				-8	-100.0%		-100.0%	
Pre-registration Nurse/ Midwife Intern	6		10	5	-5	+5	-100.0%	-1	-15.3%	6
Post-registration Nurse/ Midwife Student	1						-100.0%	-1	-100.0%	
Nursing/ Midwifery awaiting registration	2	2				-2	-100.0%	-2	-100.0%	
Nursing/ Midwifery Student	9	10	10	5	-5	-4	-46.8%	-4	-43.6%	6
Nursing/ Midwifery other	1			1	+1	+1	-100.0%	+0	+96.1%	1
<b>Nursing &amp; Midwifery</b>	<b>1,062</b>	<b>1,089</b>	<b>1,105</b>	<b>1,100</b>	<b>-5</b>	<b>+11</b>	<b>+1.0%</b>	<b>+38</b>	<b>+3.6%</b>	<b>1,320</b>
Therapy Professions	152	145	170	172	+1	+27	+18.4%	+19	+12.7%	207
Health Science/ Diagnostics	1	1	1	1	0			+0	+13.2%	2
Social Care	228	240	251	252	+0	+12	+4.9%	+24	+10.3%	287
Social Workers	37	39	38	40	+3	+1	+2.2%	+3	+7.7%	47
Psychologists	35	36	34	35	+1	-1	-3.0%	+0	+0.5%	41
Pharmacy	3	4	4	5	+0	+1	+24.5%	+2	+82.2%	8
H&SC, Other	8	10	10	9	-1	-2	-16.4%	+0	+1.5%	9
<b>Health &amp; Social Care Professionals</b>	<b>465</b>	<b>476</b>	<b>509</b>	<b>513</b>	<b>+4</b>	<b>+37</b>	<b>+7.9%</b>	<b>+48</b>	<b>+10.4%</b>	<b>601</b>
Management (VIII & above)	35	37	41	41	+0	+5	+12.7%	+6	+17.9%	44
Administrative/ Supervisory (V to VII)	70	78	81	86	+5	+8	+10.9%	+16	+22.6%	92
Clerical (III & IV)	212	221	221	224	+3	+3	+1.3%	+11	+5.3%	275
<b>Management &amp; Administrative</b>	<b>318</b>	<b>335</b>	<b>343</b>	<b>351</b>	<b>+8</b>	<b>+16</b>	<b>+4.8%</b>	<b>+33</b>	<b>+10.5%</b>	<b>411</b>
Support	241	252	263	265	+2	+13	+5.1%	+24	+9.8%	378
Maintenance/ Technical	16	18	19	18	-1	-1	-2.8%	+2	+10.1%	21
<b>General Support</b>	<b>258</b>	<b>271</b>	<b>282</b>	<b>283</b>	<b>+0</b>	<b>+12</b>	<b>+4.6%</b>	<b>+25</b>	<b>+9.8%</b>	<b>399</b>
Health Care Assistants	1,776	1,852	1,892	1,900	+8	+48	+2.6%	+124	+7.0%	2,178
Home Help	1,113	1,067	1,023	1,030	+7	-37	-3.5%	-84	-7.5%	1,572
Care, other	338	366	372	370	-2	+4	+1.0%	+32	+9.3%	439
<b>Patient &amp; Client Care</b>	<b>3,228</b>	<b>3,285</b>	<b>3,287</b>	<b>3,300</b>	<b>+12</b>	<b>+15</b>	<b>+0.5%</b>	<b>+72</b>	<b>+2.2%</b>	<b>4,189</b>



## CHO 5

Dec 2021	WTE Dec 2019	WTE Dec 2020	WTE Nov 2021	WTE Dec 2021	WTE change since Nov 21	WTE change since Dec 20	% change since Dec 20	WTE change since Dec 19	% change since Dec 19	No. Dec 2021
<b>Overall</b>	<b>3,152</b>	<b>3,213</b>	<b>3,291</b>	<b>3,313</b>	<b>+22</b>	<b>+99</b>	<b>+3.1%</b>	<b>+160</b>	<b>+5.1%</b>	<b>3,952</b>
Consultants	1	1	1	1	0	+0	+28.4%			1
Medical/ Dental, other	10	15	15	15	+0	+1	+4.0%	+6	+56.2%	21
<b>Medical &amp; Dental</b>	<b>11</b>	<b>16</b>	<b>16</b>	<b>16</b>	<b>+0</b>	<b>+1</b>	<b>+5.2%</b>	<b>+6</b>	<b>+51.2%</b>	<b>22</b>
Nurse/ Midwife Manager	147	158	156	156	+1	-2	-1.3%	+9	+5.9%	169
Nurse/ Midwife Specialist & AN/MP	4	6	5	5	-0	-1	-15.7%	+1	+26.3%	6
Staff Nurse/ Staff Midwife	485	476	479	481	+1	+4	+0.9%	-4	-0.9%	567
Public Health Nurse	9	9	11	11	-0	+2	+25.9%	+2	+18.9%	13
<i>Pre-registration Nurse Intern (COVID-19)</i>		1				-1	-100.0%		-100.0%	
<i>Nursing/ Midwifery awaiting registration</i>	2						-100.0%	-2	-100.0%	
Nursing/ Midwifery Student	2	1				-1	-100.0%	-2	-100.0%	
Nursing/ Midwifery other			1	1	+0	+1	-100.0%	+1	-100.0%	1
<b>Nursing &amp; Midwifery</b>	<b>647</b>	<b>650</b>	<b>652</b>	<b>653</b>	<b>+2</b>	<b>+3</b>	<b>+0.5%</b>	<b>+6</b>	<b>+0.9%</b>	<b>756</b>
Therapy Professions	104	97	101	104	+3	+6	+6.4%	-0	-0.1%	119
Social Care	154	143	159	158	-1	+15	+10.4%	+4	+2.5%	190
Social Workers	24	28	32	30	-2	+1	+3.9%	+5	+22.0%	34
Psychologists	14	19	21	21	+1	+3	+13.2%	+8	+53.8%	24
Pharmacy		1	1	1	0	+0	+3.1%	+1	-100.0%	1
H&SC, Other	7	5	7	6	-2	+0	+3.0%	-1	-20.5%	8
<b>Health &amp; Social Care Professionals</b>	<b>303</b>	<b>294</b>	<b>320</b>	<b>319</b>	<b>-1</b>	<b>+25</b>	<b>+8.4%</b>	<b>+16</b>	<b>+5.3%</b>	<b>376</b>
Management (VIII & above)	15	17	24	25	+2	+9	+51.9%	+10	+71.0%	26
Administrative/ Supervisory (V to VII)	53	58	62	62	-0	+5	+8.0%	+9	+17.8%	68
Clerical (III & IV)	93	93	111	119	+8	+26	+27.8%	+26	+27.9%	143
<b>Management &amp; Administrative</b>	<b>160</b>	<b>167</b>	<b>197</b>	<b>206</b>	<b>+9</b>	<b>+39</b>	<b>+23.4%</b>	<b>+46</b>	<b>+28.5%</b>	<b>237</b>
Support	139	95	89	88	-1	-7	-7.9%	-51	-36.6%	105
Maintenance/ Technical	16	11	14	14	+0	+3	+22.7%	-2	-10.4%	16
<b>General Support</b>	<b>154</b>	<b>107</b>	<b>102</b>	<b>102</b>	<b>-0</b>	<b>-5</b>	<b>-4.6%</b>	<b>-52</b>	<b>-34.0%</b>	<b>121</b>
Health Care Assistants	1,062	1,180	1,167	1,178	+11	-2	-0.1%	+117	+11.0%	1,336
Home Help	661	638	642	641	-1	+3	+0.5%	-20	-3.0%	871
Care, other	154	162	195	197	+2	+35	+21.9%	+43	+27.8%	233
<b>Patient &amp; Client Care</b>	<b>1,877</b>	<b>1,980</b>	<b>2,004</b>	<b>2,016</b>	<b>+13</b>	<b>+37</b>	<b>+1.8%</b>	<b>+139</b>	<b>+7.4%</b>	<b>2,440</b>

## CHO 6

Dec 2021	WTE Dec 2019	WTE Dec 2020	WTE Nov 2021	WTE Dec 2021	WTE change since Nov 21	WTE change since Dec 20	% change since Dec 20	WTE change since Dec 19	% change since Dec 19	No. Dec 2021
<b>Overall</b>	<b>2,021</b>	<b>2,020</b>	<b>2,048</b>	<b>2,041</b>	<b>-7</b>	<b>+21</b>	<b>+1.0%</b>	<b>+20</b>	<b>+1.0%</b>	<b>2,278</b>
Consultants	3	3	3	3	+0					3
Registrars	1	1	1	1	0					1
SHO/ Interns			1	1	+0	+1	-100.0%	+1	-100.0%	1
Medical/ Dental, other	5	4	3	3	-0	-1	-30.0%	-2	-46.4%	4
<b>Medical &amp; Dental</b>	<b>9</b>	<b>8</b>	<b>8</b>	<b>8</b>	<b>+0</b>	<b>-0</b>	<b>-1.9%</b>	<b>-1</b>	<b>-14.7%</b>	<b>9</b>
Nurse/ Midwife Manager	112	106	107	105	-2	-1	-1.1%	-7	-6.2%	111
Nurse/ Midwife Specialist & AN/MP	1	1	1	1	+0					1
Staff Nurse/ Staff Midwife	351	348	340	339	-1	-9	-2.7%	-12	-3.5%	371
<b>Nursing &amp; Midwifery</b>	<b>464</b>	<b>455</b>	<b>447</b>	<b>445</b>	<b>-3</b>	<b>-11</b>	<b>-2.3%</b>	<b>-19</b>	<b>-4.1%</b>	<b>483</b>
Therapy Professions	91	89	82	79	-3	-9	-10.4%	-12	-13.1%	92
Social Care	334	361	390	397	+7	+37	+10.1%	+63	+18.8%	448
Social Workers	23	20	18	16	-2	-4	-19.5%	-6	-27.4%	18
Psychologists	16	15	17	14	-2	-0	-1.4%	-1	-8.0%	18
Pharmacy	3	3	4	4	+0	+1	+45.5%	+1	+47.6%	5
H&SC, Other	2	1	1	1	+0	-0	-0.8%	-1	-30.6%	2
<b>Health &amp; Social Care Professionals</b>	<b>469</b>	<b>489</b>	<b>512</b>	<b>513</b>	<b>+1</b>	<b>+24</b>	<b>+5.0%</b>	<b>+44</b>	<b>+9.5%</b>	<b>583</b>
Management (VIII & above)	35	35	37	38	+0	+3	+7.5%	+3	+8.7%	38
Administrative/ Supervisory (V to VII)	76	73	80	79	-0	+6	+8.3%	+4	+5.2%	84
Clerical (III & IV)	83	89	81	79	-3	-10	-11.1%	-4	-5.3%	91
<b>Management &amp; Administrative</b>	<b>194</b>	<b>197</b>	<b>198</b>	<b>196</b>	<b>-2</b>	<b>-1</b>	<b>-0.6%</b>	<b>+3</b>	<b>+1.3%</b>	<b>213</b>
Support	131	128	127	125	-2	-3	-2.1%	-6	-4.5%	141
Maintenance/ Technical	15	14	15	15	+0	+1	+7.1%	+0	+1.7%	15
<b>General Support</b>	<b>146</b>	<b>142</b>	<b>142</b>	<b>140</b>	<b>-2</b>	<b>-2</b>	<b>-1.2%</b>	<b>-6</b>	<b>-3.9%</b>	<b>156</b>
Health Care Assistants	487	479	493	498	+5	+18	+3.8%	+11	+2.3%	558
Care, other	254	250	247	242	-5	-8	-3.4%	-12	-4.6%	276
<b>Patient &amp; Client Care</b>	<b>740</b>	<b>730</b>	<b>740</b>	<b>740</b>	<b>-0</b>	<b>+10</b>	<b>+1.4%</b>	<b>-1</b>	<b>-0.1%</b>	<b>834</b>

## CHO 7

Dec 2021	WTE Dec 2019	WTE Dec 2020	WTE Nov 2021	WTE Dec 2021	WTE change since Nov 21	WTE change since Dec 20	% change since Dec 20	WTE change since Dec 19	% change since Dec 19	No. Dec 2021
<b>Overall</b>	<b>3,978</b>	<b>4,125</b>	<b>4,264</b>	<b>4,295</b>	<b>+31</b>	<b>+170</b>	<b>+4.1%</b>	<b>+317</b>	<b>+8.0%</b>	<b>5,086</b>
Consultants	1	1				-1	-100.0%	-1	-100.0%	
Registrars	3	3	2	2	0	-1	-33.3%	-1	-33.3%	2
SHO/ Interns	9	9	9	8	-1	-1	-11.1%	-1	-10.7%	8
Medical/ Dental, other	5	3	3	3	+0			-2	-39.2%	5
<b>Medical &amp; Dental</b>	<b>18</b>	<b>16</b>	<b>14</b>	<b>13</b>	<b>-1</b>	<b>-3</b>	<b>-16.3%</b>	<b>-4</b>	<b>-25.5%</b>	<b>15</b>
Nurse/ Midwife Manager	199	204	230	229	-0	+25	+12.3%	+30	+15.2%	248
Nurse/ Midwife Specialist & AN/MP	8	7	8	8	+0	+0	+5.4%	-0	-2.1%	9
Staff Nurse/ Staff Midwife	593	620	653	651	-3	+31	+5.0%	+58	+9.7%	735
Public Health Nurse			1		-1		-100.0%		-100.0%	
<i>Nursing/ Midwifery awaiting registration</i>		1	2	2	+0	+1	+48.1%	+2	-100.0%	2
Nursing/ Midwifery Student		1	2	2	+0	+1	+48.1%	+2	-100.0%	2
Nursing/ Midwifery other	1	2	3	3	0	+1	+66.7%	+2	+400.0%	3
<b>Nursing &amp; Midwifery</b>	<b>801</b>	<b>834</b>	<b>896</b>	<b>893</b>	<b>-4</b>	<b>+58</b>	<b>+7.0%</b>	<b>+92</b>	<b>+11.5%</b>	<b>997</b>
Therapy Professions	136	152	159	170	+11	+18	+11.9%	+34	+25.2%	186
Health Science/ Diagnostics	3	3	2	3	+1					3
Social Care	360	389	424	423	-1	+35	+8.9%	+63	+17.5%	482
Social Workers	44	44	46	47	+1	+3	+7.4%	+3	+7.3%	54
Psychologists	28	32	34	36	+1	+4	+11.7%	+8	+29.0%	40
Pharmacy	7	6	8	9	+1	+3	+49.7%	+2	+23.9%	12
H&SC, Other	3	3	2	3	+0					3
<b>Health &amp; Social Care Professionals</b>	<b>581</b>	<b>628</b>	<b>677</b>	<b>691</b>	<b>+14</b>	<b>+63</b>	<b>+10.0%</b>	<b>+110</b>	<b>+19.0%</b>	<b>780</b>
Management (VIII & above)	37	50	54	55	+1	+6	+11.4%	+19	+50.2%	56
Administrative/ Supervisory (V to VII)	91	106	111	115	+5	+9	+8.5%	+25	+27.4%	124
Clerical (III & IV)	126	138	141	145	+4	+7	+5.1%	+19	+15.2%	172
<b>Management &amp; Administrative</b>	<b>253</b>	<b>294</b>	<b>306</b>	<b>316</b>	<b>+9</b>	<b>+22</b>	<b>+7.4%</b>	<b>+62</b>	<b>+24.7%</b>	<b>352</b>
Support	277	274	270	263	-7	-11	-4.2%	-14	-5.1%	338
Maintenance/ Technical	30	35	35	36	+1	+1	+3.1%	+5	+17.7%	40
<b>General Support</b>	<b>307</b>	<b>309</b>	<b>305</b>	<b>299</b>	<b>-6</b>	<b>-10</b>	<b>-3.4%</b>	<b>-9</b>	<b>-2.9%</b>	<b>378</b>
Health Care Assistants	1,500	1,504	1,533	1,549	+17	+45	+3.0%	+49	+3.3%	1,841
Home Help	127	132	122	122	+0	-10	-7.4%	-5	-3.9%	232
Care, other	391	408	411	412	+1	+5	+1.1%	+22	+5.5%	491
<b>Patient &amp; Client Care</b>	<b>2,018</b>	<b>2,043</b>	<b>2,066</b>	<b>2,084</b>	<b>+18</b>	<b>+40</b>	<b>+2.0%</b>	<b>+66</b>	<b>+3.3%</b>	<b>2,564</b>

## CHO 8

Dec 2021	WTE Dec 2019	WTE Dec 2020	WTE Nov 2021	WTE Dec 2021	WTE change since Nov 21	WTE change since Dec 20	% change since Dec 20	WTE change since Dec 19	% change since Dec 19	No. Dec 2021
<b>Overall</b>	<b>3,650</b>	<b>3,689</b>	<b>3,709</b>	<b>3,742</b>	<b>+33</b>	<b>+53</b>	<b>+1.4%</b>	<b>+92</b>	<b>+2.5%</b>	<b>4,586</b>
Consultants	1	1				-1	-100.0%	-1	-100.0%	
Registrars	2	1	1	1	0			-1	-50.0%	1
Medical/ Dental, other	12	12	12	12	0	-0	-0.9%	-0	-0.5%	20
<b>Medical &amp; Dental</b>	<b>15</b>	<b>14</b>	<b>13</b>	<b>13</b>		<b>-1</b>	<b>-8.0%</b>	<b>-2</b>	<b>-13.9%</b>	<b>21</b>
Nurse/ Midwife Manager	200	208	200	196	-3	-12	-5.7%	-3	-1.7%	215
Nurse/ Midwife Specialist & AN/MP	9	10	11	11	-0	+1	+11.6%	+2	+23.3%	12
Staff Nurse/ Staff Midwife	568	567	549	569	+21	+3	+0.4%	+1	+0.3%	674
Public Health Nurse	3	4	4	4	-0	-0	-0.5%	+1	+15.9%	5
Pre-registration Nurse Intern (COVID-19)		4				-4	-100.0%		-100.0%	
Pre-registration Nurse/ Midwife Intern			1	1	+0	+1	-100.0%	+1	-100.0%	2
Nursing/ Midwifery Student		4	1	1	+0	-3	-66.5%	+1	-100.0%	2
Nursing/ Midwifery other	5	9	10	10	-0	+1	+17.4%	+5	+85.1%	11
<b>Nursing &amp; Midwifery</b>	<b>786</b>	<b>802</b>	<b>775</b>	<b>792</b>	<b>+17</b>	<b>-9</b>	<b>-1.2%</b>	<b>+7</b>	<b>+0.8%</b>	<b>919</b>
Therapy Professions	112	122	121	118	-3	-4	-3.7%	+6	+5.0%	140
Health Science/ Diagnostics	2	2	2	2	0					2
Social Care	361	380	399	401	+3	+22	+5.7%	+41	+11.3%	486
Social Workers	31	29	26	25	-1	-4	-13.2%	-5	-17.2%	29
Psychologists	25	22	27	27	+0	+5	+20.8%	+2	+9.1%	30
Pharmacy	3	2	4	4	0	+2	+75.0%	+1	+40.0%	5
H&SC, Other	7	6	6	7	+1	+1	+18.0%	+0	+4.9%	9
<b>Health &amp; Social Care Professionals</b>	<b>540</b>	<b>564</b>	<b>585</b>	<b>585</b>	<b>-0</b>	<b>+21</b>	<b>+3.7%</b>	<b>+45</b>	<b>+8.3%</b>	<b>701</b>
Management (VIII & above)	14	20	23	24	+1	+3	+17.0%	+9	+65.9%	24
Administrative/ Supervisory (V to VII)	76	78	77	77	+0	-1	-1.4%	+0	+0.5%	81
Clerical (III & IV)	154	159	157	161	+4	+2	+1.2%	+7	+4.6%	190
<b>Management &amp; Administrative</b>	<b>245</b>	<b>257</b>	<b>256</b>	<b>262</b>	<b>+6</b>	<b>+4</b>	<b>+1.7%</b>	<b>+17</b>	<b>+6.9%</b>	<b>295</b>
Support	72	67	62	62	-0	-5	-7.1%	-10	-14.4%	72
Maintenance/ Technical	40	38	38	36	-2	-2	-5.1%	-4	-10.3%	37
<b>General Support</b>	<b>112</b>	<b>104</b>	<b>99</b>	<b>98</b>	<b>-2</b>	<b>-7</b>	<b>-6.4%</b>	<b>-14</b>	<b>-12.9%</b>	<b>109</b>
Health Care Assistants	1,400	1,416	1,461	1,468	+7	+52	+3.7%	+68	+4.9%	1,751
Home Help	418	397	382	385	+4	-12	-2.9%	-33	-7.8%	623
Care, other	135	135	139	140	+1	+5	+3.6%	+4	+3.3%	167
<b>Patient &amp; Client Care</b>	<b>1,953</b>	<b>1,948</b>	<b>1,981</b>	<b>1,993</b>	<b>+12</b>	<b>+45</b>	<b>+2.3%</b>	<b>+40</b>	<b>+2.0%</b>	<b>2,541</b>

## CHO 9

Dec 2021	WTE Dec 2019	WTE Dec 2020	WTE Nov 2021	WTE Dec 2021	WTE change since Nov 21	WTE change since Dec 20	% change since Dec 20	WTE change since Dec 19	% change since Dec 19	No. Dec 2021
<b>Overall</b>	<b>4,064</b>	<b>4,199</b>	<b>4,325</b>	<b>4,316</b>	<b>-9</b>	<b>+117</b>	<b>+2.8%</b>	<b>+253</b>	<b>+6.2%</b>	<b>5,032</b>
Consultants	14	14	14	14	-0	+0	+2.0%	-0	-0.8%	20
Registrars	12	7	10	11	+0	+4	+53.7%	-1	-8.7%	11
SHO/ Interns	12	13	11	11	-0	-2	-14.8%	-1	-10.0%	11
Medical/ Dental, other	7	7	7	7	0					10
<b>Medical &amp; Dental</b>	<b>45</b>	<b>40</b>	<b>43</b>	<b>42</b>	<b>-0</b>	<b>+2</b>	<b>+5.1%</b>	<b>-2</b>	<b>-5.2%</b>	<b>52</b>
Nurse/ Midwife Manager	266	277	287	287	+0	+10	+3.7%	+21	+7.7%	308
Nurse/ Midwife Specialist & AN/MP	13	18	24	23	-1	+5	+30.0%	+9	+70.5%	24
Staff Nurse/ Staff Midwife	744	747	752	753	+1	+6	+0.8%	+9	+1.1%	858
Public Health Nurse	0						-100.0%	-0	-100.0%	
<i>Pre-registration Nurse Intern (COVID-19)</i>		11				-11	-100.0%		-100.0%	
<i>Pre-registration Nurse/ Midwife Intern</i>	8	3	1	11	+10	+9	+342.0%	+3	+42.6%	22
<i>Nursing/ Midwifery awaiting registration</i>			6	4	-1	+4	-100.0%	+4	-100.0%	5
Nursing/ Midwifery Student	8	13	7	15	+9	+2	+17.1%	+8	+97.7%	27
Nursing/ Midwifery other	8	9	6	8	+2	-1	-9.1%			9
<b>Nursing &amp; Midwifery</b>	<b>1,040</b>	<b>1,063</b>	<b>1,075</b>	<b>1,086</b>	<b>+11</b>	<b>+23</b>	<b>+2.2%</b>	<b>+46</b>	<b>+4.4%</b>	<b>1,226</b>
Therapy Professions	236	257	296	288	-8	+31	+11.9%	+52	+22.3%	325
Health Science/ Diagnostics	16	14	15	14	-1			-2	-14.9%	15
Social Care	690	741	811	810	-1	+69	+9.3%	+120	+17.4%	968
Social Workers	65	73	66	67	+1	-6	-7.8%	+2	+3.2%	77
Psychologists	53	64	61	65	+4	+1	+1.9%	+13	+23.7%	71
Pharmacy	5	6	6	6	0			+1	+15.3%	6
H&SC, Other	19	19	17	17	+0	-2	-8.1%	-2	-10.3%	23
<b>Health &amp; Social Care Professionals</b>	<b>1,084</b>	<b>1,174</b>	<b>1,272</b>	<b>1,268</b>	<b>-4</b>	<b>+94</b>	<b>+8.0%</b>	<b>+183</b>	<b>+16.9%</b>	<b>1,485</b>
Management (VIII & above)	46	50	60	60	-1	+9	+18.3%	+13	+28.4%	60
Administrative/ Supervisory (V to VII)	103	121	134	133	-1	+12	+9.5%	+30	+29.3%	144
Clerical (III & IV)	165	170	203	196	-6	+26	+15.3%	+31	+18.8%	240
<b>Management &amp; Administrative</b>	<b>314</b>	<b>342</b>	<b>397</b>	<b>389</b>	<b>-8</b>	<b>+47</b>	<b>+13.7%</b>	<b>+74</b>	<b>+23.6%</b>	<b>444</b>
Support	314	265	261	261	+0	-4	-1.4%	-52	-16.7%	318
Maintenance/ Technical	24	25	23	23	+0	-2	-7.9%	-1	-4.1%	25
<b>General Support</b>	<b>338</b>	<b>290</b>	<b>284</b>	<b>285</b>	<b>+0</b>	<b>-6</b>	<b>-2.0%</b>	<b>-53</b>	<b>-15.8%</b>	<b>343</b>
Health Care Assistants	1,139	1,182	1,148	1,138	-10	-44	-3.8%	-1	-0.1%	1,359
Care, other	103	107	107	109	+2	+1	+1.3%	+5	+5.2%	123
<b>Patient &amp; Client Care</b>	<b>1,242</b>	<b>1,289</b>	<b>1,255</b>	<b>1,247</b>	<b>-8</b>	<b>-43</b>	<b>-3.3%</b>	<b>+5</b>	<b>+0.4%</b>	<b>1,482</b>

## other Community Services

Dec 2021	WTE Dec 2019	WTE Dec 2020	WTE Nov 2021	WTE Dec 2021	WTE change since Nov 21	WTE change since Dec 20	% change since Dec 20	WTE change since Dec 19	% change since Dec 19	No. Dec 2021
<b>Overall</b>	<b>78</b>	<b>81</b>	<b>82</b>	<b>83</b>	<b>+1</b>	<b>+2</b>	<b>+2.7%</b>	<b>+5</b>	<b>+6.2%</b>	<b>90</b>
Health Science/ Diagnostics	1						-100.0%	-1	-100.0%	
Psychologists				1	+1	+1	-100.0%	+1	-100.0%	1
<b>Health &amp; Social Care Professionals</b>	<b>1</b>			<b>1</b>	<b>+1</b>	<b>+1</b>	<b>-100.0%</b>			<b>1</b>
Management (VIII & above)	20	18	18	17	-0	-0	-2.3%	-2	-11.8%	18
Administrative/ Supervisory (V to VII)	24	24	29	29	+0	+5	+19.8%	+4	+18.3%	31
Clerical (III & IV)	33	39	34	35	+1	-4	-10.5%	+2	+5.0%	38
<b>Management &amp; Administrative</b>	<b>77</b>	<b>81</b>	<b>81</b>	<b>81</b>	<b>+0</b>	<b>+0</b>	<b>+0.4%</b>	<b>+4</b>	<b>+4.9%</b>	<b>87</b>
Health Care Assistants	0	0	0	0	0			+0	+420.0%	1
Care, other			1	1	+0	+1	-100.0%	+1	-100.0%	1
<b>Patient &amp; Client Care</b>	<b>0</b>	<b>0</b>	<b>1</b>	<b>1</b>	<b>+0</b>	<b>+1</b>	<b>+334.6%</b>	<b>+1</b>	<b>+2160.0%</b>	<b>2</b>

## Social Care Services Employment by Grade Group: Dec 2021

Dec 2021	WTE Dec 2019	WTE Dec 2020	WTE Nov 2021	WTE Dec 2021	WTE change since Nov 21	WTE change since Dec 20	% change since Dec 20	WTE change since Dec 19	% change since Dec 19	No. Dec 2021
<b>Overall</b>	<b>31,535</b>	<b>32,359</b>	<b>33,045</b>	<b>33,246</b>	<b>+200</b>	<b>+886</b>	<b>+2.7%</b>	<b>+1,710</b>	<b>+5.4%</b>	<b>39,752</b>
Consultant Medicine	4	4	7	7	-1	+2	+47.7%	+3	+81.4%	9
Consultant Paediatrics	3	3	2	2		-1	-29.2%	-1	-29.2%	4
Consultant Psychiatry	21	21	20	19	-0	-2	-10.4%	-2	-8.2%	24
<b>Consultants</b>	<b>27</b>	<b>29</b>	<b>29</b>	<b>28</b>	<b>-1</b>	<b>-1</b>	<b>-3.4%</b>	<b>+0</b>	<b>+1.2%</b>	<b>37</b>
Registrar	14	9	11	13	+2	+4	+47.2%	-1	-3.7%	14
Senior Registrar	3	4	3	3		-1	-23.0%	+0	+2.7%	4
Specialist Registrar	6	4	4	4				-2	-33.3%	4
<b>Registrars</b>	<b>23</b>	<b>17</b>	<b>19</b>	<b>20</b>	<b>+2</b>	<b>+3</b>	<b>+19.3%</b>	<b>-2</b>	<b>-10.8%</b>	<b>22</b>
Senior House Officer	22	23	22	22	-1	-1	-3.8%	-0	-0.7%	22
<b>SHO/ Interns</b>	<b>22</b>	<b>23</b>	<b>22</b>	<b>22</b>	<b>-1</b>	<b>-1</b>	<b>-3.8%</b>	<b>-0</b>	<b>-0.7%</b>	<b>22</b>
Other Medical	111	118	101	109	+8	-9	-7.6%	-2	-1.6%	179
<b>Medical/ Dental, other</b>	<b>111</b>	<b>118</b>	<b>101</b>	<b>109</b>	<b>+8</b>	<b>-9</b>	<b>-7.6%</b>	<b>-2</b>	<b>-1.6%</b>	<b>179</b>
<b>Medical &amp; Dental</b>	<b>183</b>	<b>186</b>	<b>171</b>	<b>179</b>	<b>+8</b>	<b>-8</b>	<b>-4.1%</b>	<b>-4</b>	<b>-2.2%</b>	<b>260</b>
Clinical Nurse/ Midwife Manager	1,319	1,350	1,398	1,392	-6	+42	+3.1%	+73	+5.5%	1,514
Director Nursing/Midwifery, Assistant	143	152	148	147	-1	-5	-3.2%	+4	+2.5%	156
Director of Nursing/Midwifery	140	141	150	150	-0	+9	+6.1%	+9	+6.7%	155
<b>Nurse/ Midwife Manager</b>	<b>1,603</b>	<b>1,643</b>	<b>1,696</b>	<b>1,689</b>	<b>-7</b>	<b>+45</b>	<b>+2.8%</b>	<b>+86</b>	<b>+5.4%</b>	<b>1,825</b>
Advanced Nurse/ Midwife Practitioner	13	25	24	23	-1	-2	-6.4%	+10	+81.1%	24
Clinical Nurse/ Midwife Specialist	76	78	81	80	-2	+2	+2.6%	+4	+5.2%	89
<b>Nurse/ Midwife Specialist &amp; AN/MP</b>	<b>88</b>	<b>102</b>	<b>105</b>	<b>103</b>	<b>-2</b>	<b>+0</b>	<b>+0.4%</b>	<b>+14</b>	<b>+16.1%</b>	<b>113</b>
Staff Midwives		1	1	1		-0	-10.2%	+1	-100.0%	1
Staff Nurse [Psychiatric]	88	58	207	179	-28	+122	+210.3%	+91	+102.9%	215
Staff Nurses [General/ Children's]	3,463	3,369	3,297	3,311	+14	-58	-1.7%	-152	-4.4%	3,846
Staff Nurse [Intellectual Disability]	1,597	1,789	1,764	1,819	+55	+30	+1.7%	+222	+13.9%	2,101
<b>Staff Nurse/ Staff Midwife</b>	<b>5,149</b>	<b>5,217</b>	<b>5,269</b>	<b>5,311</b>	<b>+42</b>	<b>+94</b>	<b>+1.8%</b>	<b>+162</b>	<b>+3.1%</b>	<b>6,163</b>
Public Health Nurse	20	20	24	23	-1	+3	+14.0%	+3	+17.7%	28
<b>Public Health Nurse</b>	<b>20</b>	<b>20</b>	<b>24</b>	<b>23</b>	<b>-1</b>	<b>+3</b>	<b>+14.0%</b>	<b>+3</b>	<b>+17.7%</b>	<b>28</b>
Pre-registration Nurse Intern (COVID-19)		32	1		-1	-32	-100.0%		-100.0%	
Pre-registration Nurse/ Midwife Intern	28	3	22	21	-0	+19	+759.2%	-7	-24.0%	37
Post-registration Nurse/ Midwife Student	1						-100.0%	-1	-100.0%	
Nursing/ Midwifery awaiting registration	15	14	9	7	-1	-7	-49.3%	-8	-51.0%	8
<b>Nursing/ Midwifery Student</b>	<b>44</b>	<b>49</b>	<b>31</b>	<b>29</b>	<b>-2</b>	<b>-20</b>	<b>-40.9%</b>	<b>-15</b>	<b>-34.8%</b>	<b>45</b>
Nursing Education/Clinical	22	27	24	27	+3	+1	+2.2%	+5	+23.3%	30
Other Nursing/ Midwifery	1	1	2	2		+1	+100.0%	+1	+100.0%	2
<b>Nursing/ Midwifery other</b>	<b>23</b>	<b>28</b>	<b>26</b>	<b>29</b>	<b>+3</b>	<b>+2</b>	<b>+5.7%</b>	<b>+6</b>	<b>+26.6%</b>	<b>32</b>
<b>Nursing &amp; Midwifery</b>	<b>6,927</b>	<b>7,060</b>	<b>7,152</b>	<b>7,184</b>	<b>+32</b>	<b>+124</b>	<b>+1.8%</b>	<b>+256</b>	<b>+3.7%</b>	<b>8,206</b>
Dietitians	35	34	46	46	+1	+12	+33.9%	+11	+32.2%	57
Occupational Therapists	377	392	418	422	+4	+30	+7.7%	+44	+11.7%	476
Physiotherapists	313	325	354	356	+2	+31	+9.5%	+43	+13.7%	409
Podiatrists & Chiropodists	12	13	13	10	-3	-2	-19.5%	-2	-15.4%	14
Speech & Language Therapists	316	327	341	344	+3	+17	+5.3%	+29	+9.1%	394
<b>Therapy Professions</b>	<b>1,053</b>	<b>1,091</b>	<b>1,172</b>	<b>1,178</b>	<b>+6</b>	<b>+87</b>	<b>+8.0%</b>	<b>+125</b>	<b>+11.9%</b>	<b>1,350</b>
Clinical Engineering	13	13	15	15	+0	+2	+15.4%	+2	+15.0%	15
Medical Science	4	4	4	3	-1	-1	-25.0%	-1	-25.0%	3
Phlebotomists	1						-100.0%	-1	-100.0%	
Radiographers	7	6	4	4	-0	-2	-26.5%	-3	-36.7%	7
Respiratory Physiologists	1	2	2	2				+1	+100.0%	2
Vascular Physiologists	0	0	0	0				-0	-23.8%	1
<b>Health Science/ Diagnostics</b>	<b>26</b>	<b>25</b>	<b>26</b>	<b>25</b>	<b>-1</b>	<b>-1</b>	<b>-2.3%</b>	<b>-2</b>	<b>-6.3%</b>	<b>28</b>
<b>Social Care</b>	<b>2,598</b>	<b>2,792</b>	<b>2,998</b>	<b>3,014</b>	<b>+16</b>	<b>+222</b>	<b>+8.0%</b>	<b>+417</b>	<b>+16.0%</b>	<b>3,536</b>



Dec 2021	WTE Dec 2019	WTE Dec 2020	WTE Nov 2021	WTE Dec 2021	WTE change since Nov 21	WTE change since Dec 20	% change since Dec 20	WTE change since Dec 19	% change since Dec 19	No. Dec 2021
<b>Overall</b>	<b>31,535</b>	<b>32,359</b>	<b>33,045</b>	<b>33,246</b>	<b>+200</b>	<b>+886</b>	<b>+2.7%</b>	<b>+1,710</b>	<b>+5.4%</b>	<b>39,752</b>
<b>Social Workers</b>	<b>317</b>	<b>328</b>	<b>326</b>	<b>325</b>	<b>-1</b>	<b>-3</b>	<b>-0.9%</b>	<b>+8</b>	<b>+2.5%</b>	<b>373</b>
<b>Psychologists</b>	<b>206</b>	<b>230</b>	<b>243</b>	<b>249</b>	<b>+7</b>	<b>+19</b>	<b>+8.3%</b>	<b>+43</b>	<b>+20.9%</b>	<b>280</b>
Pharmacists	18	18	23	23	+1	+5	+30.8%	+5	+28.7%	32
Pharmacy Technicians	4	6	6	6	+1	+1	+14.2%	+2	+57.0%	7
<b>Pharmacy</b>	<b>22</b>	<b>23</b>	<b>28</b>	<b>29</b>	<b>+1</b>	<b>+6</b>	<b>+26.9%</b>	<b>+7</b>	<b>+33.9%</b>	<b>39</b>
Counsellor Therapists	19	20	22	21	-1	+1	+5.8%	+2	+10.6%	25
Other Health & Social Care	51	46	40	39	-0	-6	-14.1%	-12	-23.0%	54
Play Therapists/ Specialists	16	12	12	11	-1	-1	-7.3%	-5	-33.1%	15
<b>H&amp;SC, Other</b>	<b>86</b>	<b>77</b>	<b>74</b>	<b>71</b>	<b>-3</b>	<b>-6</b>	<b>-7.9%</b>	<b>-15</b>	<b>-17.6%</b>	<b>94</b>
<b>Health &amp; Social Care Professionals</b>	<b>4,308</b>	<b>4,567</b>	<b>4,867</b>	<b>4,892</b>	<b>+25</b>	<b>+325</b>	<b>+7.1%</b>	<b>+584</b>	<b>#####</b>	<b>5,700</b>
Executive Management	43	51	53	54	+1	+3	+5.7%	+11	+25.8%	54
Senior Management (VIII & GM)	212	232	263	266	+3	+34	+14.6%	+54	+25.6%	273
<b>Management (VIII &amp; above)</b>	<b>254</b>	<b>283</b>	<b>315</b>	<b>319</b>	<b>+4</b>	<b>+37</b>	<b>+13.0%</b>	<b>+65</b>	<b>+25.6%</b>	<b>327</b>
Middle Management (V-VII)	628	687	745	757	+11	+70	+10.2%	+129	+20.5%	808
Other Administrative	16	16	14	14		-2	-11.5%	-2	-12.3%	14
<b>Administrative/ Supervisory (V to VII)</b>	<b>644</b>	<b>703</b>	<b>759</b>	<b>771</b>	<b>+11</b>	<b>+68</b>	<b>+9.7%</b>	<b>+127</b>	<b>+19.7%</b>	<b>822</b>
General Administrative (III & IV)	1,231	1,272	1,309	1,328	+19	+55	+4.4%	+96	+7.8%	1,574
<b>Clerical (III &amp; IV)</b>	<b>1,231</b>	<b>1,272</b>	<b>1,309</b>	<b>1,328</b>	<b>+19</b>	<b>+55</b>	<b>+4.4%</b>	<b>+96</b>	<b>+7.8%</b>	<b>1,574</b>
<b>Management &amp; Administrative</b>	<b>2,130</b>	<b>2,258</b>	<b>2,384</b>	<b>2,418</b>	<b>+34</b>	<b>+160</b>	<b>+7.1%</b>	<b>+288</b>	<b>#####</b>	<b>2,723</b>
Catering	319	312	300	302	+2	-11	-3.4%	-17	-5.5%	338
Household Services	912	885	864	852	-11	-33	-3.7%	-60	-6.6%	1,091
Other Labs & Associated	1	1	1	1						1
Other Support	222	165	178	173	-5	+8	+4.8%	-49	-22.3%	260
Portering	109	101	92	93	+1	-8	-8.3%	-16	-15.0%	103
<b>Support</b>	<b>1,563</b>	<b>1,464</b>	<b>1,434</b>	<b>1,420</b>	<b>-14</b>	<b>-44</b>	<b>-3.0%</b>	<b>-143</b>	<b>-9.1%</b>	<b>1,793</b>
Maintenance	215	216	209	208	-1	-8	-3.8%	-7	-3.0%	225
Technical Services	8	11	19	19		+8	+71.2%	+11	+134.6%	19
<b>Maintenance/ Technical</b>	<b>223</b>	<b>227</b>	<b>228</b>	<b>227</b>	<b>-1</b>	<b>-0</b>	<b>-0.1%</b>	<b>+4</b>	<b>+2.0%</b>	<b>244</b>
<b>General Support</b>	<b>1,786</b>	<b>1,691</b>	<b>1,662</b>	<b>1,647</b>	<b>-15</b>	<b>-44</b>	<b>-2.6%</b>	<b>-139</b>	<b>-7.8%</b>	<b>2,037</b>
Attendant/ Aide	2,524	2,458	2,246	2,172	-73	-286	-11.6%	-352	-13.9%	2,521
Health & Social Care Assistants	31	38	52	55	+3	+17	+43.9%	+24	+78.9%	63
Health Care Assistant/ Care Assistant	8,315	8,702	9,078	9,225	+148	+523	+6.0%	+911	+11.0%	10,803
HCA (Student Nurse/Midwife COVID-19)		22	1	1	+0	-21	-95.3%	+1	-100.0%	2
<b>Health Care Assistants</b>	<b>10,869</b>	<b>11,221</b>	<b>11,376</b>	<b>11,454</b>	<b>+78</b>	<b>+233</b>	<b>+2.1%</b>	<b>+584</b>	<b>+5.4%</b>	<b>13,389</b>
<b>Home Help</b>	<b>3,551</b>	<b>3,525</b>	<b>3,492</b>	<b>3,529</b>	<b>+37</b>	<b>+4</b>	<b>+0.1%</b>	<b>-22</b>	<b>-0.6%</b>	<b>5,152</b>
Home Care Services	114	117	153	151	-2	+34	+28.7%	+37	+32.2%	167
Other Care Grades	197	240	267	272	+5	+32	+13.2%	+75	+38.2%	315
Pastoral Care	42	37	34	33	-0	-4	-9.5%	-9	-20.3%	61
Workshop Services	1,428	1,458	1,488	1,487	-1	+29	+2.0%	+59	+4.1%	1,742
<b>Care, other</b>	<b>1,781</b>	<b>1,852</b>	<b>1,941</b>	<b>1,944</b>	<b>+2</b>	<b>+91</b>	<b>+4.9%</b>	<b>+162</b>	<b>+9.1%</b>	<b>2,285</b>
<b>Patient &amp; Client Care</b>	<b>16,201</b>	<b>16,598</b>	<b>16,809</b>	<b>16,926</b>	<b>+117</b>	<b>+328</b>	<b>+2.0%</b>	<b>+725</b>	<b>+4.5%</b>	<b>20,826</b>

## Employment by WTE, Headcount, Gender, Full-Time /Part-Time etc.: Dec 2021

Social Care Services Staff Group	WTE	Headcount	WTE: no.	% Male	% female	Male WTE: no.	Female WTE: no.	% Total Perm	% Male Perm	% Female Perm	% Total Full Time	% Total Part Time	% Male FT	% Female FT
<b>Overall</b>	<b>33,246</b>	<b>39,752</b>	<b>1.20</b>	<b>16.9%</b>	<b>83.1%</b>	<b>1.11</b>	<b>1.21</b>	<b>85.8%</b>	<b>84.5%</b>	<b>86.0%</b>	<b>58.5%</b>	<b>41.5%</b>	<b>73.8%</b>	<b>55.4%</b>
Consultant Medicine	7	9	1.38	11.1%	88.9%	2.00	1.33	66.7%	66.7%	62.5%	44.4%	55.6%	0.0%	50.0%
Consultant Paediatrics	2	4	1.85		100.0%		1.85	75.0%	75.0%	75.0%	25.0%	75.0%		25.0%
Consultant Psychiatry	19	24	1.25	25.0%	75.0%	1.02	1.36	79.2%	79.2%	83.3%	58.3%	41.7%	83.3%	50.0%
<b>Consultants</b>	<b>28</b>	<b>37</b>	<b>1.33</b>	<b>18.9%</b>	<b>81.1%</b>	<b>1.10</b>	<b>1.40</b>	<b>75.7%</b>	<b>71.4%</b>	<b>76.7%</b>	<b>51.4%</b>	<b>48.6%</b>	<b>71.4%</b>	<b>46.7%</b>
Registrar	13	14	1.08	35.7%	64.3%	1.00	1.12	35.7%	35.7%	22.2%	92.9%	7.1%	100.0%	88.9%
Senior Registrar	3	4	1.30	25.0%	75.0%	12.50	1.00	25.0%	25.0%	33.3%	75.0%	25.0%	0.0%	100.0%
Specialist Registrar	4	4	1.00	50.0%	50.0%	1.00	1.00	0.0%	0.0%	0.0%	100.0%	0.0%	100.0%	100.0%
<b>Registrars</b>	<b>20</b>	<b>22</b>	<b>1.10</b>	<b>36.4%</b>	<b>63.6%</b>	<b>1.13</b>	<b>1.08</b>	<b>27.3%</b>	<b>37.5%</b>	<b>21.4%</b>	<b>90.9%</b>	<b>9.1%</b>	<b>87.5%</b>	<b>92.9%</b>
Senior House Officer	22	22	1.01	31.8%	68.2%	1.00	1.01	9.1%	9.1%	0.0%	100.0%	0.0%	100.0%	100.0%
<b>SHO/ Interns</b>	<b>22</b>	<b>22</b>	<b>1.01</b>	<b>31.8%</b>	<b>68.2%</b>	<b>1.00</b>	<b>1.01</b>	<b>9.1%</b>	<b>28.6%</b>	<b>0.0%</b>	<b>100.0%</b>	<b>0.0%</b>	<b>100.0%</b>	<b>100.0%</b>
Other Medical	109	179	1.64	60.9%	39.1%	1.74	1.51	59.2%	59.2%	60.0%	35.8%	64.2%	32.1%	41.4%
<b>Medical/ Dental, other</b>	<b>109</b>	<b>179</b>	<b>1.64</b>	<b>60.9%</b>	<b>39.1%</b>	<b>1.74</b>	<b>1.51</b>	<b>59.2%</b>	<b>58.7%</b>	<b>60.0%</b>	<b>35.8%</b>	<b>64.2%</b>	<b>32.1%</b>	<b>41.4%</b>
<b>Medical &amp; Dental</b>	<b>179</b>	<b>260</b>	<b>1.45</b>	<b>50.4%</b>	<b>49.6%</b>	<b>1.58</b>	<b>1.35</b>	<b>54.6%</b>	<b>56.5%</b>	<b>52.7%</b>	<b>48.1%</b>	<b>51.9%</b>	<b>41.2%</b>	<b>55.0%</b>
Clinical Nurse/ Midwife Manager	1,392	1,514	1.09	10.8%	89.2%	1.04	1.09	94.7%	94.7%	94.8%	81.0%	19.0%	96.9%	79.1%
Director Nursing/Midwifery, Assistant	147	156	1.06	8.3%	91.7%	1.08	1.06	98.7%	98.7%	98.6%	91.7%	8.3%	100.0%	90.9%
Director of Nursing/Midwifery	150	155	1.03	7.7%	92.3%	1.01	1.04	96.1%	96.1%	95.8%	95.5%	4.5%	100.0%	95.1%
<b>Nurse/ Midwife Manager</b>	<b>1,689</b>	<b>1,825</b>	<b>1.08</b>	<b>10.3%</b>	<b>89.7%</b>	<b>1.04</b>	<b>1.09</b>	<b>95.2%</b>	<b>94.7%</b>	<b>95.2%</b>	<b>83.2%</b>	<b>16.8%</b>	<b>97.3%</b>	<b>81.6%</b>
Advanced Nurse/ Midwife Practitioner	23	24	1.04	16.7%	83.3%	1.17	1.02	95.8%	95.8%	95.0%	100.0%	0.0%	100.0%	100.0%
Clinical Nurse/ Midwife Specialist	80	89	1.12	9.0%	91.0%	1.01	1.13	96.6%	96.6%	96.3%	62.9%	37.1%	100.0%	59.3%
<b>Nurse/ Midwife Specialist &amp; AN/MP</b>	<b>103</b>	<b>113</b>	<b>1.10</b>	<b>10.6%</b>	<b>89.4%</b>	<b>1.05</b>	<b>1.11</b>	<b>96.5%</b>	<b>100.0%</b>	<b>96.0%</b>	<b>70.8%</b>	<b>29.2%</b>	<b>100.0%</b>	<b>67.3%</b>
Staff Midwives	1	1	1.27		100.0%		1.27	100.0%	100.0%	100.0%	0.0%	100.0%		0.0%
Staff Nurse [Psychiatric]	179	215	1.20	10.7%	89.3%	1.09	1.21	87.4%	87.4%	88.0%	64.2%	35.8%	78.3%	62.5%
Staff Nurses [General/ Children's]	3,311	3,846	1.16	9.4%	90.6%	1.04	1.18	87.7%	87.7%	87.9%	64.4%	35.6%	90.6%	61.7%
Staff Nurse [Intellectual Disability]	1,819	2,101	1.15	8.6%	91.4%	1.07	1.16	95.3%	95.3%	95.2%	67.2%	32.8%	83.4%	65.7%
<b>Staff Nurse/ Staff Midwife</b>	<b>5,311</b>	<b>6,163</b>	<b>1.16</b>	<b>9.2%</b>	<b>90.8%</b>	<b>1.05</b>	<b>1.17</b>	<b>90.3%</b>	<b>89.0%</b>	<b>90.4%</b>	<b>65.3%</b>	<b>34.7%</b>	<b>87.8%</b>	<b>63.1%</b>
Public Health Nurse	23	28	1.21		100.0%		1.21	100.0%	100.0%	100.0%	60.7%	39.3%		60.7%
<b>Public Health Nurse</b>	<b>23</b>	<b>28</b>	<b>1.21</b>		<b>100.0%</b>		<b>1.21</b>	<b>100.0%</b>		<b>100.0%</b>	<b>60.7%</b>	<b>39.3%</b>		<b>60.7%</b>
Pre-registration Nurse/ Midwife Intern	21	37	1.72	5.4%	94.6%	1.44	1.74	56.8%	56.8%	60.0%	43.2%	56.8%	100.0%	40.0%
Nursing/ Midwifery awaiting registration	7	8	1.10		100.0%		1.10	12.5%	12.5%	12.5%	100.0%	0.0%		100.0%

<b>Nursing/ Midwifery Student</b>	<b>29</b>	<b>45</b>	<b>1.57</b>	<b>4.4%</b>	<b>95.6%</b>	<b>1.44</b>	<b>1.57</b>	<b>48.9%</b>	<b>0.0%</b>	<b>51.2%</b>	<b>53.3%</b>	<b>46.7%</b>	<b>100.0%</b>	<b>51.2%</b>
<b>Nursing/ Midwifery other</b>	<b>29</b>	<b>32</b>	<b>1.09</b>	<b>3.1%</b>	<b>96.9%</b>	<b>1.00</b>	<b>1.09</b>	<b>96.9%</b>	<b>100.0%</b>	<b>96.8%</b>	<b>75.0%</b>	<b>25.0%</b>	<b>100.0%</b>	<b>74.2%</b>
<b>Nursing &amp; Midwifery</b>	<b>7,184</b>	<b>8,206</b>	<b>1.14</b>	<b>9.4%</b>	<b>90.6%</b>	<b>1.05</b>	<b>1.15</b>	<b>91.3%</b>	<b>90.4%</b>	<b>91.4%</b>	<b>69.3%</b>	<b>30.7%</b>	<b>90.4%</b>	<b>67.2%</b>
<b>Health &amp; Social Care</b>	<b>4,892</b>	<b>5,700</b>	<b>1.17</b>	<b>14.6%</b>	<b>85.4%</b>	<b>1.08</b>	<b>1.18</b>	<b>90.3%</b>	<b>91.7%</b>	<b>90.1%</b>	<b>58.4%</b>	<b>41.6%</b>	<b>72.1%</b>	<b>56.1%</b>
Executive Management	54	54	1.01	38.9%	61.1%	1.00	1.01	92.6%	92.6%	93.9%	100.0%	0.0%	100.0%	100.0%
Senior Management (VIII & GM)	266	273	1.03	31.5%	68.5%	1.02	1.03	95.6%	95.6%	96.8%	96.3%	3.7%	98.8%	95.2%
<b>Management (VIII &amp; above)</b>	<b>319</b>	<b>327</b>	<b>1.02</b>	<b>32.7%</b>	<b>67.3%</b>	<b>1.01</b>	<b>1.03</b>	<b>95.1%</b>	<b>92.5%</b>	<b>96.4%</b>	<b>96.9%</b>	<b>3.1%</b>	<b>99.1%</b>	<b>95.9%</b>
Middle Management (V-VII)	757	808	1.07	20.5%	79.5%	1.03	1.08	94.6%	94.6%	95.2%	80.2%	19.8%	89.8%	77.7%
Other Administrative	14	14	1.00	14.3%	85.7%	1.00	1.00	100.0%	100.0%	100.0%	100.0%	0.0%	100.0%	100.0%
<b>Administrative/ Supervisory (V to VII)</b>	<b>771</b>	<b>822</b>	<b>1.07</b>	<b>20.4%</b>	<b>79.6%</b>	<b>1.03</b>	<b>1.08</b>	<b>94.6%</b>	<b>92.3%</b>	<b>95.3%</b>	<b>80.5%</b>	<b>19.5%</b>	<b>89.9%</b>	<b>78.1%</b>
General Administrative (III & IV)	1,328	1,574	1.19	9.5%	90.5%	1.11	1.19	87.7%	87.7%	88.5%	61.7%	38.3%	83.2%	59.4%
<b>Clerical (III &amp; IV)</b>	<b>1,328</b>	<b>1,574</b>	<b>1.19</b>	<b>9.5%</b>	<b>90.5%</b>	<b>1.11</b>	<b>1.19</b>	<b>87.7%</b>	<b>80.5%</b>	<b>88.5%</b>	<b>61.7%</b>	<b>38.3%</b>	<b>83.2%</b>	<b>59.4%</b>
<b>Management &amp; Administrative</b>	<b>2,418</b>	<b>2,723</b>	<b>1.13</b>	<b>15.6%</b>	<b>84.4%</b>	<b>1.05</b>	<b>1.14</b>	<b>90.7%</b>	<b>88.2%</b>	<b>91.2%</b>	<b>71.6%</b>	<b>28.4%</b>	<b>89.9%</b>	<b>68.2%</b>
Catering	302	338	1.12	33.4%	66.6%	1.05	1.16	94.4%	94.4%	97.3%	68.9%	31.1%	90.3%	58.2%
Household Services	852	1,091	1.28	17.5%	82.5%	1.25	1.29	85.0%	85.0%	87.2%	47.8%	52.2%	70.7%	42.9%
Other Labs & Associated	1	1	1.00		100.0%		1.00	100.0%	100.0%	100.0%	100.0%	0.0%		100.0%
Other Support	173	260	1.51	53.8%	46.2%	1.28	1.88	90.4%	90.4%	98.3%	33.1%	66.9%	52.9%	10.0%
Portering	93	103	1.11	98.1%	1.9%	1.11	1.30	87.4%	87.4%	100.0%	80.6%	19.4%	81.2%	50.0%
<b>Support</b>	<b>1,420</b>	<b>1,793</b>	<b>1.26</b>	<b>30.4%</b>	<b>69.6%</b>	<b>1.18</b>	<b>1.30</b>	<b>87.7%</b>	<b>82.0%</b>	<b>90.1%</b>	<b>51.5%</b>	<b>48.5%</b>	<b>72.1%</b>	<b>42.5%</b>
Maintenance	208	225	1.08	96.0%	4.0%	1.08	1.21	94.7%	94.7%	100.0%	84.0%	16.0%	85.6%	44.4%
Technical Services	19	19	1.00	84.2%	15.8%	1.00	1.00	94.7%	94.7%	100.0%	100.0%	0.0%	100.0%	100.0%
<b>Maintenance/ Technical</b>	<b>227</b>	<b>244</b>	<b>1.07</b>	<b>95.1%</b>	<b>4.9%</b>	<b>1.07</b>	<b>1.15</b>	<b>94.7%</b>	<b>94.4%</b>	<b>100.0%</b>	<b>85.2%</b>	<b>14.8%</b>	<b>86.6%</b>	<b>58.3%</b>
<b>General Support</b>	<b>1,647</b>	<b>2,037</b>	<b>1.24</b>	<b>38.1%</b>	<b>61.9%</b>	<b>1.15</b>	<b>1.30</b>	<b>88.5%</b>	<b>85.7%</b>	<b>90.2%</b>	<b>55.6%</b>	<b>44.4%</b>	<b>76.4%</b>	<b>42.7%</b>
Attendant/ Aide	2,172	2,521	1.16	19.8%	80.2%	1.07	1.19	86.4%	86.4%	87.1%	57.5%	42.5%	82.2%	51.4%
Health & Social Care Assistants	55	63	1.14	20.6%	79.4%	1.12	1.15	93.7%	93.7%	94.0%	76.2%	23.8%	92.3%	72.0%
Health Care Assistant/ Care Assistant	9,225	10,803	1.17	22.9%	77.1%	1.09	1.20	85.3%	85.3%	85.1%	55.3%	44.7%	68.3%	51.5%
HCA (Student Nurse/Midwife COVID-19)	1	2	1.90		100.0%		1.90	0.0%	0.0%	0.0%	50.0%	50.0%		50.0%
<b>Health Care Assistants</b>	<b>11,454</b>	<b>13,389</b>	<b>1.17</b>	<b>22.3%</b>	<b>77.7%</b>	<b>1.09</b>	<b>1.19</b>	<b>85.5%</b>	<b>85.3%</b>	<b>85.5%</b>	<b>55.8%</b>	<b>44.2%</b>	<b>70.7%</b>	<b>51.6%</b>
<b>Home Help</b>	<b>3,529</b>	<b>5,152</b>	<b>1.46</b>	<b>4.0%</b>	<b>96.0%</b>	<b>1.43</b>	<b>1.46</b>	<b>70.0%</b>	<b>36.7%</b>	<b>71.3%</b>	<b>41.1%</b>	<b>58.9%</b>	<b>53.1%</b>	<b>40.5%</b>
Home Care Services	151	167	1.11	11.4%	88.6%	1.06	1.11	92.2%	92.2%	93.2%	74.3%	25.7%	78.9%	73.6%
Other Care Grades	272	315	1.16	31.4%	68.6%	1.13	1.17	91.4%	91.4%	93.1%	71.4%	28.6%	78.8%	68.1%
Pastoral Care	33	61	1.82	83.6%	16.4%	1.90	1.50	36.1%	36.1%	80.0%	44.3%	55.7%	45.1%	40.0%
Workshop Services	1,487	1,742	1.17	23.4%	76.6%	1.13	1.18	87.3%	87.3%	87.7%	61.0%	39.0%	69.4%	58.5%
<b>Care, other</b>	<b>1,944</b>	<b>2,285</b>	<b>1.18</b>	<b>25.3%</b>	<b>74.7%</b>	<b>1.17</b>	<b>1.18</b>	<b>86.8%</b>	<b>80.9%</b>	<b>88.8%</b>	<b>63.0%</b>	<b>37.0%</b>	<b>69.2%</b>	<b>60.9%</b>
<b>Patient &amp; Client Care</b>	<b>16,926</b>	<b>20,826</b>	<b>1.23</b>	<b>18.1%</b>	<b>81.9%</b>	<b>1.12</b>	<b>1.26</b>	<b>81.8%</b>	<b>82.0%</b>	<b>81.7%</b>	<b>53.0%</b>	<b>47.0%</b>	<b>69.5%</b>	<b>49.3%</b>

## Employment by WTE, Headcount, Gender, Full-Time /Part-Time etc.: Dec 2021

Social Care Services CHO	WTE	Headcount	WTE: no.	% Male	% female	Male WTE: no.	Female WTE: no.	% Total Perm	% Male Perm	% Female Perm	% Total Full Time	% Total Part Time	% Male FT	% Female FT
<b>Overall</b>	<b>33,246</b>	<b>39,752</b>	<b>1.20</b>	<b>16.9%</b>	<b>83.1%</b>	<b>1.11</b>	<b>1.21</b>	<b>85.8%</b>	<b>84.5%</b>	<b>86.0%</b>	<b>58.5%</b>	<b>41.5%</b>	<b>73.8%</b>	<b>55.4%</b>
CHO 1	3,606	4,157	1.15	15.9%	84.1%	1.09	1.17	80.5%	80.5%	79.1%	58.1%	41.9%	79.5%	54.0%
CHO 2	3,109	3,741	1.20	18.4%	81.6%	1.15	1.22	86.2%	86.2%	86.9%	47.3%	52.7%	62.6%	43.8%
CHO 3	3,165	3,849	1.22	12.6%	87.4%	1.10	1.24	86.3%	86.3%	86.7%	46.6%	53.4%	62.8%	44.2%
CHO 4	5,576	6,981	1.25	15.7%	84.3%	1.13	1.28	72.6%	72.6%	73.6%	71.3%	28.7%	80.3%	69.6%
CHO 5	3,313	3,952	1.19	14.7%	85.3%	1.11	1.21	91.7%	91.7%	92.7%	50.1%	49.9%	68.4%	46.9%
CHO 6	2,041	2,278	1.12	22.7%	77.3%	1.06	1.13	93.1%	93.1%	93.6%	70.8%	29.2%	83.8%	67.0%
CHO 7	4,295	5,086	1.18	21.5%	78.5%	1.11	1.21	89.0%	89.0%	89.4%	66.9%	33.1%	80.3%	63.2%
CHO 8	3,742	4,586	1.23	16.7%	83.3%	1.13	1.25	92.8%	92.8%	92.8%	47.8%	52.2%	60.3%	45.3%
CHO 9	4,316	5,032	1.17	15.7%	84.3%	1.08	1.18	89.7%	89.7%	89.8%	60.4%	39.6%	77.1%	57.3%
other Community Services	83	90	1.08	24.4%	75.6%	1.07	1.09	92.2%	92.2%	92.6%	86.7%	13.3%	90.9%	85.3%

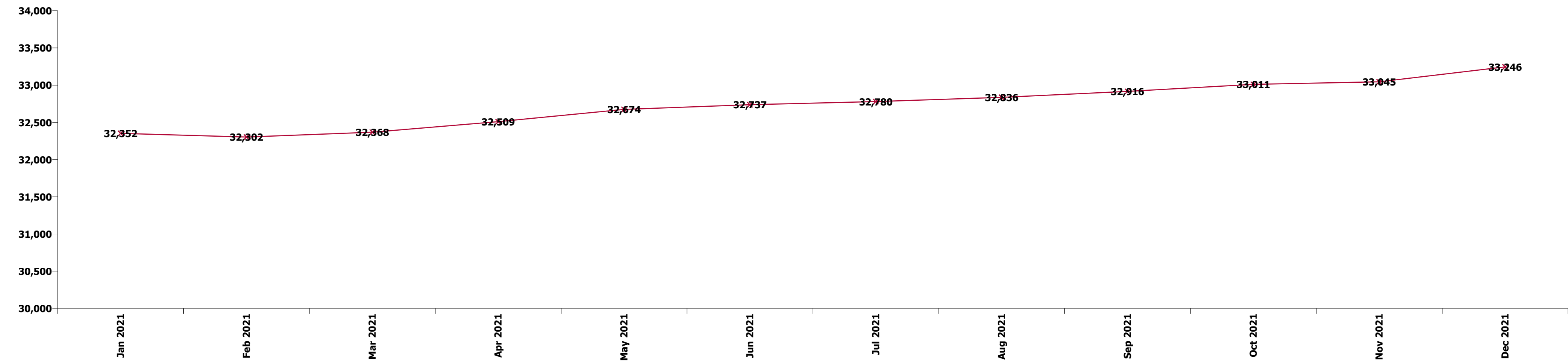
Summary Staff Movement: December 2021

Month-on-month  
Summary

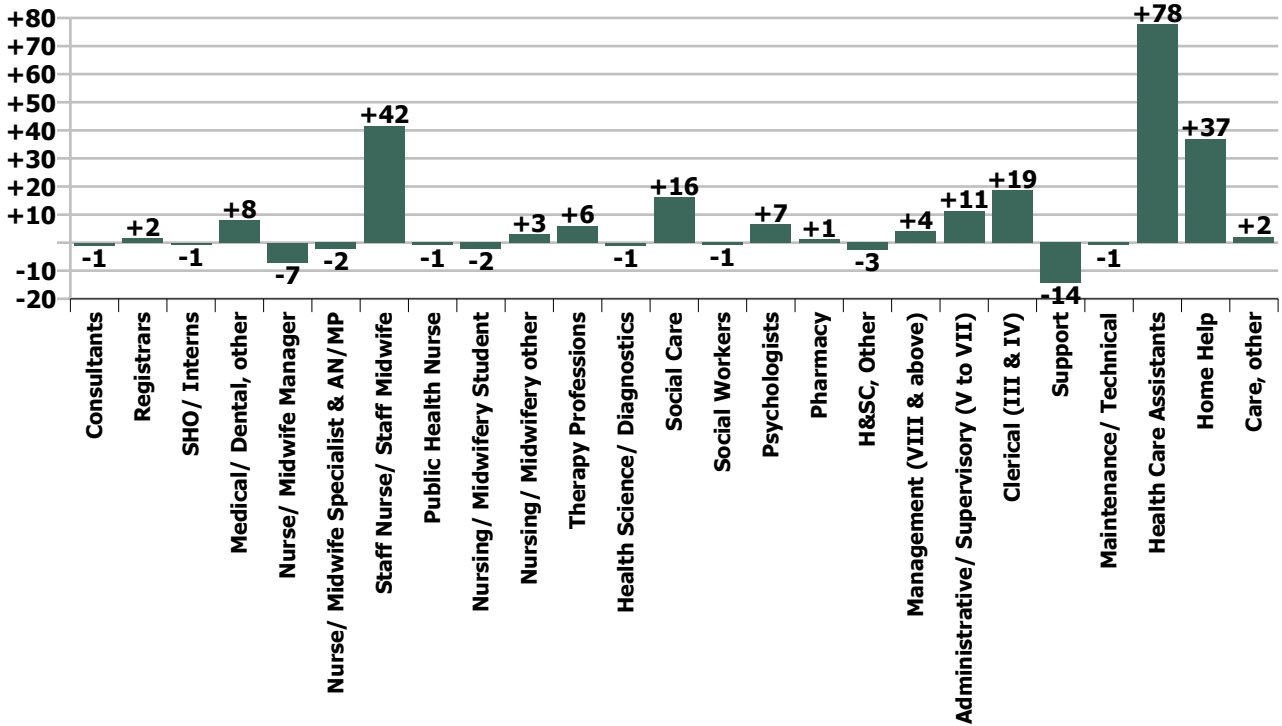
WTE change since Nov 21	% change since Nov 21	overall	Consultants	Registrars	SHO/ Interns	Medical/ Dental, other	Medical & Dental	Nurse/ Midwife Manager	Nurse/ Midwife Specialist & AN/MP	Staff Nurse/ Staff Midwife	Public Health Nurse	Nursing/ Midwifery Student	Nursing/ Midwifery other	Nursing & Midwifery	Therapy Professions	Health Science/ Diagnostics	Social Care	Social Workers	Psychologists	Pharmacy	H&SC, Other	Health & Social Care Professionals	Management (VIII & above)	Administrativ e/ Supervisory (V to VII)	Clerical (III & IV)	Management & Administrative	General Support	Health Care Assistants	Home Help	Care, other	Patient & Client Care
Overall	+0.6%	+200	-1	+2	-1	+8	+8	-7	-2	+42	-1	-2	+3	+32	+6	-1	+16	-1	+7	+1	-3	+25	+4	+11	+19	+34	-15	+78	+37	+2	+117
CHO 1	+1.4%	+48		+1		+9	+9	-2	+0	+9	+0	-5	+0	+2	-1	-1	+0	-0	+0		+0	-2	+1	+0	+4	+5	-4	+30	+8	-1	+37
CHO 2	+1.2%	+36				-0	-0	-1	-1	+15	+0			+13	+4		+12	+0	-0		-1	+16	+0	+2	+1	+3	-1	+3	+4	-0	+6
CHO 3	+0.8%	+25	-0	+1		-0	+1	-2	-0	+1		-1		-2	+0	+0	-5	-0	-0	+0	-0	-4	+0	+1	+3	+4	-0	+6	+16	+6	+27
CHO 4	+0.3%	+19	-1			-1	-1	+2	-0	-3	+0	-5	+1	-5	+1		+0	+3	+1	+0	-1	+4	+0	+5	+3	+8	+0	+8	+7	-2	+12
CHO 5	+0.7%	+22				+0	+0	+1	-0	+1	-0		+0	+2	+3		-1	-2	+1		-2	-1	+2	-0	+8	+9	-0	+11	-1	+2	+13
CHO 6	-0.3%	-7	+0		+0	-0	+0	-2	+0	-1				-3	-3		+7	-2	-2	+0	+0	+1	+0	-0	-3	-2	-2	+5		-5	-0
CHO 7	+0.7%	+31			-1	+0	-1	-0	+0	-3	-1	+0		-4	+11	+1	-1	+1	+1	+1	+0	+14	+1	+5	+4	+9	-6	+17	+0	+1	+18
CHO 8	+0.9%	+33						-3	-0	+21	-0	+0	-0	+17	-3		+3	-1	+0		+1	-0	+1	+0	+4	+6	-2	+7	+4	+1	+12
CHO 9	-0.2%	-9	-0	+0	-0		-0	+0	-1	+1		+9	+2	+11	-8	-1	-1	+1	+4		+0	-4	-1	-1	-6	-8	+0	-10		+2	-8
other Community Services	+1.4%	+1																	+1			+1	-0	+0	+1	+0			+0		+0
		+0.6%	-3.5%	+8.3%	-2.9%	+7.8%	+4.5%	-0.4%	-2.1%	+0.8%	-4.0%	-7.4%	+11.0%	+0.4%	+0.5%	-4.1%	+0.5%	-0.2%	+2.7%	+4.3%	-3.6%	+0.5%	+1.3%	+1.5%	+1.4%	+1.4%	-0.9%	+0.7%	+1.1%	+0.1%	+0.7%

Year-on-year Summary

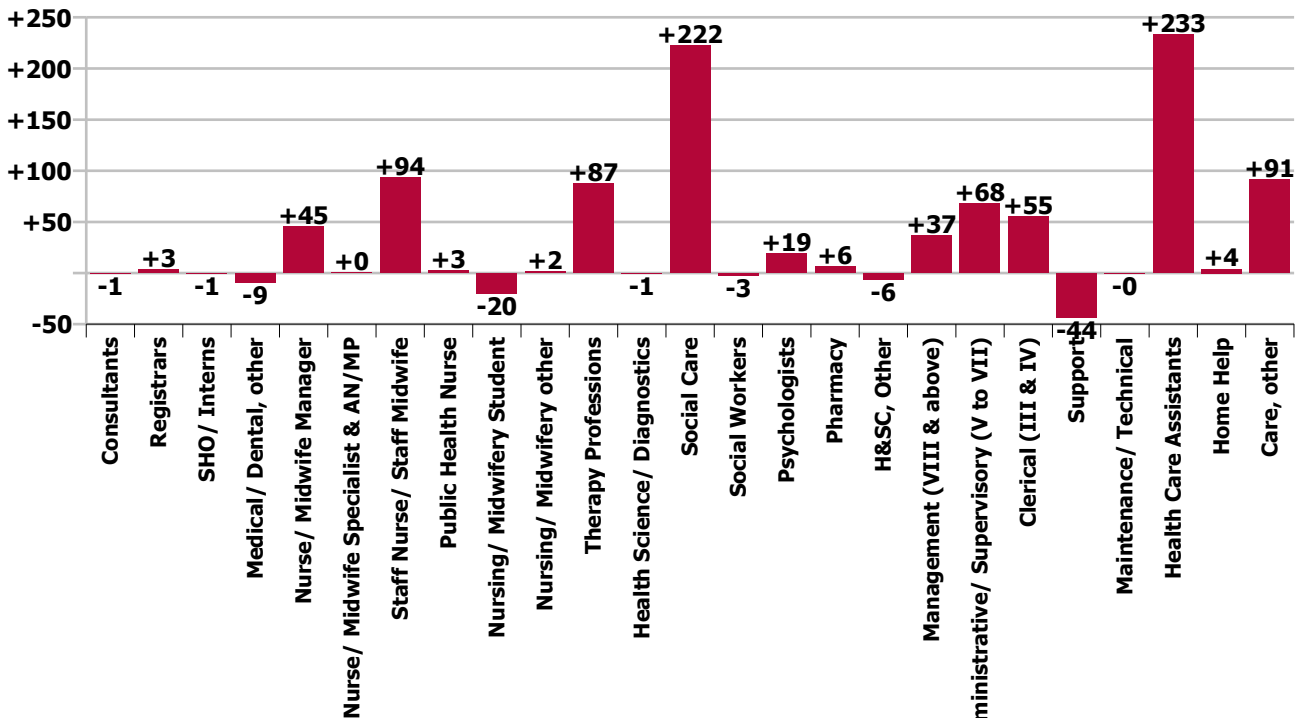
WTE change since Dec 20	% change since Dec 20	overall	Consultants	Registrars	SHO/ Interns	Medical/ Dental, other	Medical & Dental	Nurse/ Midwife Manager	Nurse/ Midwife Specialist & AN/MP	Staff Nurse/ Staff Midwife	Public Health Nurse	Nursing/ Midwifery Student	Nursing/ Midwifery other	Nursing & Midwifery	Therapy Professions	Health Science/ Diagnostics	Social Care	Social Workers	Psychologists	Pharmacy	H&SC, Other	Health & Social Care Professionals	Management (VIII & above)	Administrative/ Supervisory (V to VII)	Clerical (III & IV)	Management & Administrative	General Support	Health Care Assistants	Home Help	Care, other	Patient & Client Care
Overall	+2.7%	+886	-1	+3	-1	-9	-8	+45	+0	+94	+3	-20	+2	+124	+87	-1	+222	-3	+19	+6	-6	+325	+37	+68	+55	+160	-44	+233	+4	+91	+328
CHO 1	+4.1%	+141		+1		-5	-5	+16	-1	+32	+2	-12	-2	+34	+15	-2	-1	+1	+7		-2	+18	-1	+12	+1	+11	-24	+49	+43	+13	+106
CHO 2	+0.1%	+4				-1	-1	-1	+0	+3		-1		+1	+3		+35	+3	-0	-1	-2	+39	+2	+10	-3	+9	-5	+11	-61	+11	-40
CHO 3	+6.3%	+189	+1	+1		-2	+1	+2	-1	+13		-2		+13	+2	+1	+1	+1	-0		-0	+4	+2	+3	+8	+12	+2	+55	+77	+25	+157
CHO 4	+1.6%	+90	-1	-1	+1	-1	-2	+8	-3	+12	-1	-4	+1	+11	+27		+12	+1	-1	+1	-2	+37	+5	+8	+3	+16	+12	+48	-37	+4	+15
CHO 5	+3.1%	+99	+0			+1	+1	-2	-1	+4	+2	-1	+1	+3	+6		+15	+1	+3	+0	+0	+25	+9	+5	+26	+39	-5	-2	+3	+35	+37
CHO 6	+1.0%	+21			+1	-1	-0	-1		-9				-11	-9		+37	-4	-0	+1	-0	+24	+3	+6	-10	-1	-2	+18		-8	+10
CHO 7	+4.1%	+170	-1	-1	-1	-3	+25	+0	+31			+1	+1	+58	+18		+35	+3	+4	+3		+63	+6	+9	+7	+22	-10	+45	-10	+5	+40
CHO 8	+1.4%	+53	-1			-0	-1	-12	+1	+3	-0	-3	+1	-9	-4		+22	-4	+5	+2	+1	+21	+3	-1	+2	+4	-7	+52	-12	+5	+45
CHO 9	+2.8%	+117	+0	+4	-2		+2	+10	+5	+6		+2	-1	+23	+31		+69	-6	+1		-2	+94	+9	+12	+26	+47	-6	-44		+1	-43
other Community Services	+2.7%	+2																	+1			+1	-0	+5	-4	+0				+1	+1
		+2.7%	-3.4%	+19.3%	-3.8%	-7.6%	-4.1%	+2.8%	+0.4%	+1.8%	+14.0%	-40.9%	+5.7%	+1.8%	+8.0%	-2.3%	+8.0%	-0.9%	+8.3%	+26.9%	-7.9%	+7.1%	+13.0%	+9.7%	+4.4%	+7.1%	-2.6%	+2.1%	+0.1%	+4.9%	+2.0%



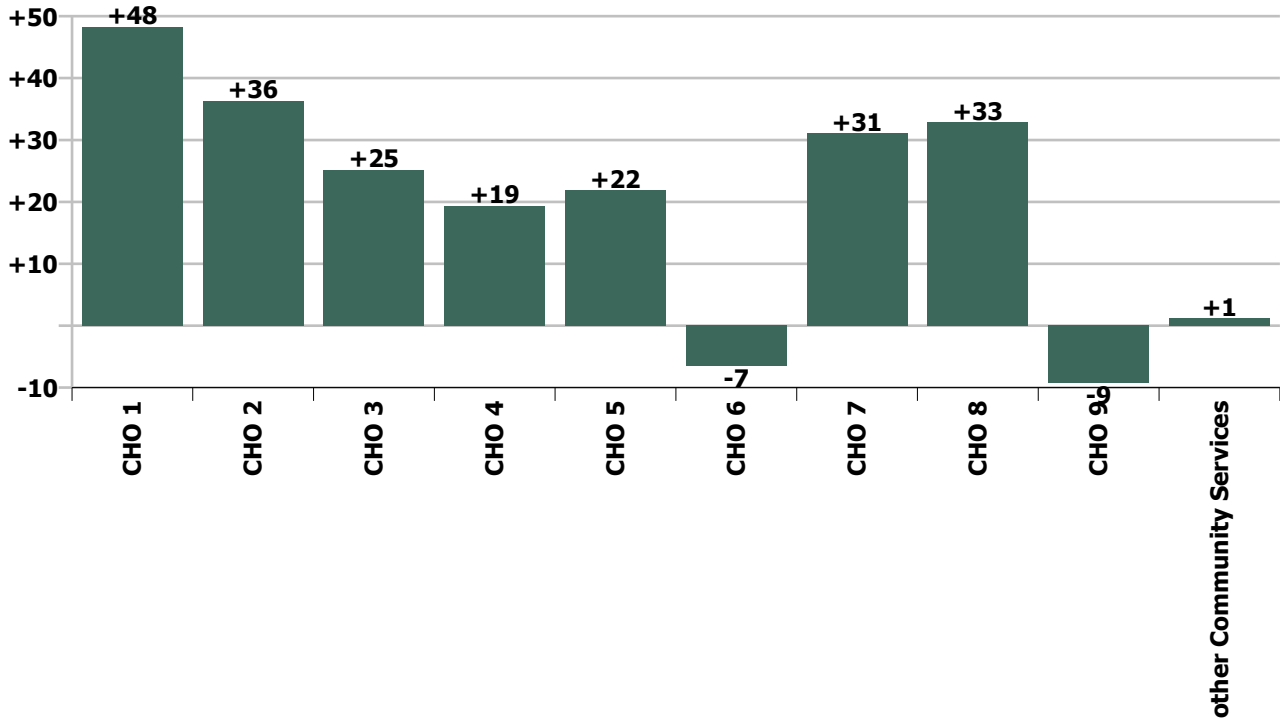
Staff Group change since: Nov 2021



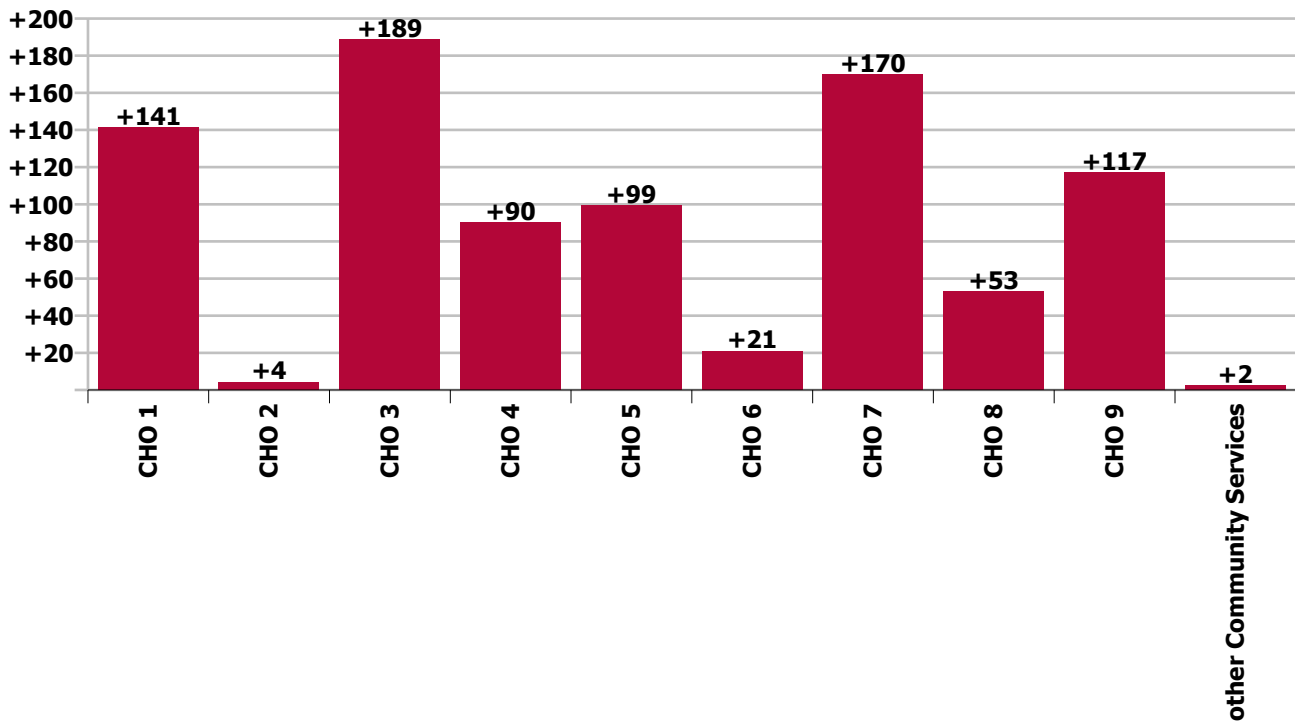
Staff Group change since: Dec 2020



CHO change since: Nov 2021



CHO change since: Dec 2020





## Longitudinal Employment Levels by Grade Group - Dec 2016 to Dec 2021

Dec 2021 (Dec 2015 figure: 28,322)	WTE Dec 2021	WTE change since Dec 16	WTE change since Dec 17	WTE change since Dec 18	WTE change since Dec 19	WTE change since Dec 20	WTE change since Nov 21	% change since Dec 16	% change since Dec 17	% change since Dec 18	% change since Dec 19	% change since Dec 20	% change since Nov 21
<b>Overall</b>	<b>33,246</b>	<b>+4,009</b>	<b>+2,745</b>	<b>+2,121</b>	<b>+1,710</b>	<b>+886</b>	<b>+200</b>	<b>+13.7%</b>	<b>+9.0%</b>	<b>+6.8%</b>	<b>+5.4%</b>	<b>+2.7%</b>	<b>+0.6%</b>
Consultant Medicine	7	-4	-3	+3	+3	+2	-1	-40.4%	-29.0%	+81.4%	+81.4%	+47.7%	-7.9%
Consultant Paediatrics	2	-1	-1	-1	-1	-1		-32.7%	-31.2%	-29.2%	-29.2%	-29.2%	
Consultant Psychiatry	19	-3	-5	+1	-2	-2	-0	-13.0%	-19.2%	+6.9%	-8.2%	-10.4%	-2.3%
Consultant Surgery		-1	-0	-0				-100.0%	-100.0%	-100.0%	-100.0%	-100.0%	-100.0%
<b>Consultants</b>	<b>28</b>	<b>-9</b>	<b>-8</b>	<b>+3</b>	<b>+0</b>	<b>-1</b>	<b>-1</b>	<b>-24.8%</b>	<b>-23.0%</b>	<b>+12.8%</b>	<b>+1.2%</b>	<b>-3.4%</b>	<b>-3.5%</b>
Registrar	13	+2	-1	+0	-1	+4	+2	+13.0%	-3.7%	+2.6%	-3.7%	+47.2%	+13.4%
Senior Registrar	3	+0	-1	-1	+0	-1		+2.7%	-23.0%	-23.0%	+2.7%	-23.0%	
Specialist Registrar	4		-1	+2	-2				-20.0%	+100.0%	-33.3%		
<b>Registrars</b>	<b>20</b>	<b>+2</b>	<b>-2</b>	<b>+1</b>	<b>-2</b>	<b>+3</b>	<b>+2</b>	<b>+8.5%</b>	<b>-10.8%</b>	<b>+7.5%</b>	<b>-10.8%</b>	<b>+19.3%</b>	<b>+8.3%</b>
Senior House Officer	22	+6	+5	+3	-0	-1	-1	+36.7%	+28.9%	+15.5%	-0.7%	-3.8%	-2.9%
<b>SHO/ Interns</b>	<b>22</b>	<b>+6</b>	<b>+5</b>	<b>+3</b>	<b>-0</b>	<b>-1</b>	<b>-1</b>	<b>+36.7%</b>	<b>+28.9%</b>	<b>+15.5%</b>	<b>-0.7%</b>	<b>-3.8%</b>	<b>-2.9%</b>
Dentists								-100.0%	-100.0%	-100.0%	-100.0%	-100.0%	-100.0%
Other Medical	109	+8	+9	+9	-2	-9	+8	+8.2%	+8.9%	+9.5%	-1.6%	-7.6%	+7.8%
<b>Medical/ Dental, other</b>	<b>109</b>	<b>+8</b>	<b>+9</b>	<b>+9</b>	<b>-2</b>	<b>-9</b>	<b>+8</b>	<b>+8.2%</b>	<b>+8.9%</b>	<b>+9.5%</b>	<b>-1.6%</b>	<b>-7.6%</b>	<b>+7.8%</b>
<b>Medical &amp; Dental</b>	<b>179</b>	<b>+7</b>	<b>+3</b>	<b>+17</b>	<b>-4</b>	<b>-8</b>	<b>+8</b>	<b>+3.8%</b>	<b>+1.7%</b>	<b>+10.5%</b>	<b>-2.2%</b>	<b>-4.1%</b>	<b>+4.5%</b>
Clinical Nurse/ Midwife Manager	1,392	+46	+55	+59	+73	+42	-6	+3.4%	+4.1%	+4.5%	+5.5%	+3.1%	-0.4%
Director Nursing/Midwifery, Assistant	147	+17	+18	+22	+4	-5	-1	+13.2%	+14.2%	+17.9%	+2.5%	-3.2%	-0.7%
Director of Nursing/Midwifery	150	+21	+22	+29	+9	+9	-0	+16.5%	+17.0%	+24.2%	+6.7%	+6.1%	-0.2%
<b>Nurse/ Midwife Manager</b>	<b>1,689</b>	<b>+84</b>	<b>+95</b>	<b>+111</b>	<b>+86</b>	<b>+45</b>	<b>-7</b>	<b>+5.2%</b>	<b>+6.0%</b>	<b>+7.0%</b>	<b>+5.4%</b>	<b>+2.8%</b>	<b>-0.4%</b>
Advanced Nurse/ Midwife Practitioner	23	+19	+18	+14	+10	-2	-1	+476.0%	+360.8%	+156.6%	+81.1%	-6.4%	-2.3%
Clinical Nurse/ Midwife Specialist	80	-4	+0	-3	+4	+2	-2	-4.6%	+0.5%	-4.1%	+5.2%	+2.6%	-2.1%
<b>Nurse/ Midwife Specialist &amp; AN/MP</b>	<b>103</b>	<b>+15</b>	<b>+18</b>	<b>+11</b>	<b>+14</b>	<b>+0</b>	<b>-2</b>	<b>+17.3%</b>	<b>+21.9%</b>	<b>+11.5%</b>	<b>+16.1%</b>	<b>+0.4%</b>	<b>-2.1%</b>
Graduate Nursing/ Midwifery								-100.0%	-100.0%	-100.0%	-100.0%	-100.0%	-100.0%
Staff Midwives	1	+0	-1	+1	+1	-0		+97.5%	-56.1%	-100.0%	-100.0%	-10.2%	
Staff Nurse [Psychiatric]	179	+89	+103	+103	+91	+122	-28	+98.6%	+136.2%	+134.7%	+102.9%	+210.3%	-13.5%
Staff Nurses [General/ Children's]	3,311	-205	-174	-161	-152	-58	+14	-5.8%	-5.0%	-4.6%	-4.4%	-1.7%	+0.4%
Staff Nurse [Intellectual Disability]	1,819	+93	+116	+134	+222	+30	+55	+5.4%	+6.8%	+8.0%	+13.9%	+1.7%	+3.1%

Dec 2021 (Dec 2015 figure: 28,322)	WTE Dec 2021	WTE change since Dec 16	WTE change since Dec 17	WTE change since Dec 18	WTE change since Dec 19	WTE change since Dec 20	WTE change since Nov 21	% change since Dec 16	% change since Dec 17	% change since Dec 18	% change since Dec 19	% change since Dec 20	% change since Nov 21
<b>Overall</b>	<b>33,246</b>	<b>+4,009</b>	<b>+2,745</b>	<b>+2,121</b>	<b>+1,710</b>	<b>+886</b>	<b>+200</b>	<b>+13.7%</b>	<b>+9.0%</b>	<b>+6.8%</b>	<b>+5.4%</b>	<b>+2.7%</b>	<b>+0.6%</b>
<b>Staff Nurse/ Staff Midwife</b>	<b>5,311</b>	<b>-22</b>	<b>+44</b>	<b>+76</b>	<b>+162</b>	<b>+94</b>	<b>+42</b>	<b>-0.4%</b>	<b>+0.8%</b>	<b>+1.5%</b>	<b>+3.1%</b>	<b>+1.8%</b>	<b>+0.8%</b>
Public Health Nurse	23	+2	+2	+3	+3	+3	-1	+11.7%	+11.1%	+14.4%	+17.7%	+14.0%	-4.0%
<b>Public Health Nurse</b>	<b>23</b>	<b>+2</b>	<b>+2</b>	<b>+3</b>	<b>+3</b>	<b>+3</b>	<b>-1</b>	<b>+11.7%</b>	<b>+11.1%</b>	<b>+14.4%</b>	<b>+17.7%</b>	<b>+14.0%</b>	<b>-4.0%</b>
Student Intellectual Disability Nursing Intern (COVID-19 HCA)								-100.0%	-100.0%	-100.0%	-100.0%		
Pre-registration Nurse Intern (COVID-19)						-32	-1	-100.0%	-100.0%	-100.0%	-100.0%	-100.0%	-100.0%
Student General Nursing Intern (pre-registration)								-100.0%	-100.0%	-100.0%	-100.0%		
Student Intellectual Disability Nursing Intern (pre-registration)	21	+10	+10	-13	-7			+94.5%	+81.5%	-38.5%	-24.2%		
Student Psychiatric Nursing Intern (pre-registration)	0	-1	+0	+0	+0			-92.0%	-100.0%	-100.0%	-100.0%		
Pre-registration Nurse/ Midwife Intern	21	+9	+10	-13	-7	+19	-0	+79.0%	+82.2%	-38.3%	-24.0%	+759.2%	-1.2%
Post-registration Nurse/ Midwife Student					-1			-100.0%	-100.0%	-100.0%	-100.0%	-100.0%	-100.0%
Staff Midwife (awaiting-registration)	1	+1	+1	+1	+1			-100.0%	-100.0%	-100.0%	-100.0%		
Staff Nurse, General (awaiting-registration)	2	+2	-12	+2	+0			-100.0%	-85.7%	-100.0%	+8.7%		
Staff Nurse, Intellectual Disability (awaiting-registration)					-11			-100.0%	-100.0%	-100.0%	-100.0%		
Staff Nurse, Psychiatric (awaiting-registration)	4	+4	+4	+4	+2			-100.0%	-100.0%	-100.0%	+113.5%		
Nursing/ Midwifery awaiting registration	7	+7	-7	+7	-8	-7	-1	-100.0%	-48.1%	-100.0%	-51.0%	-49.3%	-15.4%
<b>Nursing/ Midwifery Student</b>	<b>29</b>	<b>+17</b>	<b>+3</b>	<b>-6</b>	<b>-15</b>	<b>-20</b>	<b>-2</b>	<b>+139.6%</b>	<b>+11.5%</b>	<b>-17.4%</b>	<b>-34.8%</b>	<b>-40.9%</b>	<b>-7.4%</b>
Nursing Education/Clinical	27	+5	+5	+5	+5	+1	+3	+22.9%	+23.8%	+23.4%	+23.3%	+2.2%	+11.9%
Other Nursing/ Midwifery	2	-3	-3	+1	+1	+1		-60.0%	-60.0%	+100.0%	+100.0%	+100.0%	
<b>Nursing/ Midwifery other</b>	<b>29</b>	<b>+2</b>	<b>+2</b>	<b>+6</b>	<b>+6</b>	<b>+2</b>	<b>+3</b>	<b>+7.7%</b>	<b>+8.4%</b>	<b>+26.7%</b>	<b>+26.6%</b>	<b>+5.7%</b>	<b>+11.0%</b>
<b>Nursing &amp; Midwifery</b>	<b>7,184</b>	<b>+99</b>	<b>+165</b>	<b>+201</b>	<b>+256</b>	<b>+124</b>	<b>+32</b>	<b>+1.4%</b>	<b>+2.4%</b>	<b>+2.9%</b>	<b>+3.7%</b>	<b>+1.8%</b>	<b>+0.4%</b>
Dietitians	46	+17	+17	+15	+11	+12	+1	+58.8%	+56.5%	+48.5%	+32.2%	+33.9%	+1.2%
Occupational Therapists	422	+75	+78	+77	+44	+30	+4	+21.5%	+22.8%	+22.2%	+11.7%	+7.7%	+0.9%
Physiotherapists	356	+55	+50	+48	+43	+31	+2	+18.3%	+16.4%	+15.4%	+13.7%	+9.5%	+0.4%
Podiatrists & Chiropodists	10	-5	-6	-5	-2	-2	-3	-31.1%	-36.9%	-31.9%	-15.4%	-19.5%	-22.5%
Speech & Language Therapists	344	+53	+38	+42	+29	+17	+3	+18.3%	+12.4%	+14.0%	+9.1%	+5.3%	+0.9%
<b>Therapy Professions</b>	<b>1,178</b>	<b>+195</b>	<b>+177</b>	<b>+177</b>	<b>+125</b>	<b>+87</b>	<b>+6</b>	<b>+19.9%</b>	<b>+17.7%</b>	<b>+17.7%</b>	<b>+11.9%</b>	<b>+8.0%</b>	<b>+0.5%</b>
Audiology		-13	-18					-100.0%	-100.0%	-100.0%	-100.0%	-100.0%	-100.0%
Clinical Engineering	15	-3	-3	+3	+2	+2	+0	-18.3%	-16.9%	+24.6%	+15.0%	+15.4%	+0.2%
Medical Science	3	-1		-1	-1	-1	-1	-25.0%		-25.0%	-25.0%	-25.0%	-25.0%
Phlebotomists		-1	-1	-1	-1			-100.0%	-100.0%	-100.0%	-100.0%	-100.0%	-100.0%
Radiographers	4	-4	-4	-2	-3	-2	-0	-45.9%	-46.5%	-33.8%	-36.7%	-26.5%	-2.0%

Dec 2021 (Dec 2015 figure: 28,322)	WTE Dec 2021	WTE change since Dec 16	WTE change since Dec 17	WTE change since Dec 18	WTE change since Dec 19	WTE change since Dec 20	WTE change since Nov 21	% change since Dec 16	% change since Dec 17	% change since Dec 18	% change since Dec 19	% change since Dec 20	% change since Nov 21
<b>Overall</b>	<b>33,246</b>	<b>+4,009</b>	<b>+2,745</b>	<b>+2,121</b>	<b>+1,710</b>	<b>+886</b>	<b>+200</b>	<b>+13.7%</b>	<b>+9.0%</b>	<b>+6.8%</b>	<b>+5.4%</b>	<b>+2.7%</b>	<b>+0.6%</b>
Respiratory Physiologists	2	+1	+1	+1	+1			+100.0%	+100.0%	+100.0%	+100.0%		
Vascular Physiologists	0	+0	+0	+0	-0			-100.0%	-100.0%	+100.0%	-23.8%		
<b>Health Science/ Diagnostics</b>	<b>25</b>	<b>-21</b>	<b>-25</b>	<b>-0</b>	<b>-2</b>	<b>-1</b>	<b>-1</b>	<b>-45.7%</b>	<b>-50.1%</b>	<b>-0.8%</b>	<b>-6.3%</b>	<b>-2.3%</b>	<b>-4.1%</b>
<b>Social Care</b>	<b>3,014</b>	<b>+820</b>	<b>+666</b>	<b>+523</b>	<b>+417</b>	<b>+222</b>	<b>+16</b>	<b>+37.4%</b>	<b>+28.3%</b>	<b>+21.0%</b>	<b>+16.0%</b>	<b>+8.0%</b>	<b>+0.5%</b>
<b>Social Workers</b>	<b>325</b>	<b>+23</b>	<b>+21</b>	<b>+11</b>	<b>+8</b>	<b>-3</b>	<b>-1</b>	<b>+7.6%</b>	<b>+6.8%</b>	<b>+3.5%</b>	<b>+2.5%</b>	<b>-0.9%</b>	<b>-0.2%</b>
<b>Psychologists</b>	<b>249</b>	<b>+39</b>	<b>+26</b>	<b>+42</b>	<b>+43</b>	<b>+19</b>	<b>+7</b>	<b>+18.6%</b>	<b>+11.5%</b>	<b>+20.4%</b>	<b>+20.9%</b>	<b>+8.3%</b>	<b>+2.7%</b>
<b>Pharmacy</b>	<b>29</b>	<b>+9</b>	<b>+8</b>	<b>+6</b>	<b>+7</b>	<b>+6</b>	<b>+1</b>	<b>+42.6%</b>	<b>+37.6%</b>	<b>+26.4%</b>	<b>+33.9%</b>	<b>+26.9%</b>	<b>+4.3%</b>
Counsellor Therapists	21	+4	+1	+3	+2	+1	-1	+24.1%	+7.6%	+17.7%	+10.6%	+5.8%	-4.0%
HSCP Trainees/ Students		-2	-1					-100.0%	-100.0%	-100.0%	-100.0%	-100.0%	-100.0%
Other Health & Social Care	39	-20	-21	-14	-12	-6	-0	-34.3%	-34.8%	-26.4%	-23.0%	-14.1%	-1.0%
Play Therapists/ Specialists	11	-4	-3	-5	-5	-1	-1	-27.8%	-22.4%	-29.4%	-33.1%	-7.3%	-10.8%
<b>H&amp;SC, Other</b>	<b>71</b>	<b>-23</b>	<b>-23</b>	<b>-15</b>	<b>-15</b>	<b>-6</b>	<b>-3</b>	<b>-24.4%</b>	<b>-24.6%</b>	<b>-17.9%</b>	<b>-17.6%</b>	<b>-7.9%</b>	<b>-3.6%</b>
<b>Health &amp; Social Care Professionals</b>	<b>4,892</b>	<b>+1,043</b>	<b>+850</b>	<b>+743</b>	<b>+584</b>	<b>+325</b>	<b>+25</b>	<b>+27.1%</b>	<b>+21.0%</b>	<b>+17.9%</b>	<b>+13.5%</b>	<b>+7.1%</b>	<b>+0.5%</b>
Executive Management	54	+18	+8	+12	+11	+3	+1	+49.2%	+17.0%	+28.5%	+25.8%	+5.7%	+1.9%
Senior Management (VIII & GM)	266	+88	+88	+73	+54	+34	+3	+49.3%	+49.5%	+37.7%	+25.6%	+14.6%	+1.1%
<b>Management (VIII &amp; above)</b>	<b>319</b>	<b>+105</b>	<b>+96</b>	<b>+85</b>	<b>+65</b>	<b>+37</b>	<b>+4</b>	<b>+49.3%</b>	<b>+42.8%</b>	<b>+36.0%</b>	<b>+25.6%</b>	<b>+13.0%</b>	<b>+1.3%</b>
Middle Management (V-VII)	757	+261	+237	+187	+129	+70	+11	+52.6%	+45.5%	+32.8%	+20.5%	+10.2%	+1.5%
Other Administrative	14	-1	-3	-3	-2	-2		-5.5%	-17.5%	-16.8%	-12.3%	-11.5%	
<b>Administrative/ Supervisory (V to VII)</b>	<b>771</b>	<b>+260</b>	<b>+234</b>	<b>+184</b>	<b>+127</b>	<b>+68</b>	<b>+11</b>	<b>+50.9%</b>	<b>+43.5%</b>	<b>+31.4%</b>	<b>+19.7%</b>	<b>+9.7%</b>	<b>+1.5%</b>
General Administrative (III & IV)	1,328	+238	+187	+110	+96	+55	+19	+21.8%	+16.4%	+9.0%	+7.8%	+4.4%	+1.4%
<b>Clerical (III &amp; IV)</b>	<b>1,328</b>	<b>+238</b>	<b>+187</b>	<b>+110</b>	<b>+96</b>	<b>+55</b>	<b>+19</b>	<b>+21.8%</b>	<b>+16.4%</b>	<b>+9.0%</b>	<b>+7.8%</b>	<b>+4.4%</b>	<b>+1.4%</b>
<b>Management &amp; Administrative</b>	<b>2,418</b>	<b>+603</b>	<b>+516</b>	<b>+379</b>	<b>+288</b>	<b>+160</b>	<b>+34</b>	<b>+33.2%</b>	<b>+27.1%</b>	<b>+18.6%</b>	<b>+13.5%</b>	<b>+7.1%</b>	<b>+1.4%</b>
Catering	302	-24	-16	-18	-17	-11	+2	-7.5%	-4.9%	-5.6%	-5.5%	-3.4%	+0.6%
Household Services	852	-219	-159	-117	-60	-33	-11	-20.4%	-15.7%	-12.1%	-6.6%	-3.7%	-1.3%
Other Labs & Associated	1	-0		-0				-6.5%		-3.8%			
Other Support	173	-61	-60	-56	-49	+8	-5	-26.2%	-25.8%	-24.6%	-22.3%	+4.8%	-3.0%
Portering	93	-19	-18	-13	-16	-8	+1	-17.0%	-16.0%	-12.0%	-15.0%	-8.3%	+0.8%
<b>Support</b>	<b>1,420</b>	<b>-323</b>	<b>-252</b>	<b>-204</b>	<b>-143</b>	<b>-44</b>	<b>-14</b>	<b>-18.5%</b>	<b>-15.1%</b>	<b>-12.6%</b>	<b>-9.1%</b>	<b>-3.0%</b>	<b>-1.0%</b>
Maintenance	208	-20	-25	-14	-7	-8	-1	-8.9%	-10.7%	-6.4%	-3.0%	-3.8%	-0.5%

Dec 2021 (Dec 2015 figure: 28,322)	WTE Dec 2021	WTE change since Dec 16	WTE change since Dec 17	WTE change since Dec 18	WTE change since Dec 19	WTE change since Dec 20	WTE change since Nov 21	% change since Dec 16	% change since Dec 17	% change since Dec 18	% change since Dec 19	% change since Dec 20	% change since Nov 21
<b>Overall</b>	<b>33,246</b>	<b>+4,009</b>	<b>+2,745</b>	<b>+2,121</b>	<b>+1,710</b>	<b>+886</b>	<b>+200</b>	<b>+13.7%</b>	<b>+9.0%</b>	<b>+6.8%</b>	<b>+5.4%</b>	<b>+2.7%</b>	<b>+0.6%</b>
Technical Services	19	+14	+14	+13	+11	+8		+272.5%	+272.5%	+211.5%	+134.6%	+71.2%	
<b>Maintenance/ Technical</b>	<b>227</b>	<b>-6</b>	<b>-11</b>	<b>-1</b>	<b>+4</b>	<b>-0</b>	<b>-1</b>	<b>-2.7%</b>	<b>-4.6%</b>	<b>-0.6%</b>	<b>+2.0%</b>	<b>-0.1%</b>	<b>-0.4%</b>
<b>General Support</b>	<b>1,647</b>	<b>-330</b>	<b>-263</b>	<b>-206</b>	<b>-139</b>	<b>-44</b>	<b>-15</b>	<b>-16.7%</b>	<b>-13.8%</b>	<b>-11.1%</b>	<b>-7.8%</b>	<b>-2.6%</b>	<b>-0.9%</b>
Attendant/ Aide	2,172	-965	-820	-682	-352	-286	-73	-30.8%	-27.4%	-23.9%	-13.9%	-11.6%	-3.3%
Health & Social Care Assistants	55	+18	+20	+20	+24	+17	+3	+50.3%	+57.6%	+57.0%	+78.9%	+43.9%	+5.7%
Health Care Assistant/ Care Assistant	9,225	+2,562	+1,956	+1,417	+911	+523	+148	+38.5%	+26.9%	+18.2%	+11.0%	+6.0%	+1.6%
HCA (Student Nurse/Midwife COVID-19)	1	+1	+1	+1	+1	-21	+0	-100.0%	-100.0%	-100.0%	-100.0%	-95.3%	+75.0%
<b>Health Care Assistants</b>	<b>11,454</b>	<b>+1,617</b>	<b>+1,157</b>	<b>+757</b>	<b>+584</b>	<b>+233</b>	<b>+78</b>	<b>+16.4%</b>	<b>+11.2%</b>	<b>+7.1%</b>	<b>+5.4%</b>	<b>+2.1%</b>	<b>+0.7%</b>
<b>Home Help</b>	<b>3,529</b>	<b>+638</b>	<b>+49</b>	<b>-4</b>	<b>-22</b>	<b>+4</b>	<b>+37</b>	<b>+22.1%</b>	<b>+1.4%</b>	<b>-0.1%</b>	<b>-0.6%</b>	<b>+0.1%</b>	<b>+1.1%</b>
Home Care Services	151	+62	+44	+42	+37	+34	-2	+69.3%	+41.3%	+38.4%	+32.2%	+28.7%	-1.5%
Other Care Grades	272	+40	+55	+63	+75	+32	+5	+17.3%	+25.1%	+30.0%	+38.2%	+13.2%	+2.0%
Pastoral Care	33	-14	-13	-11	-9	-4	-0	-28.9%	-27.2%	-24.0%	-20.3%	-9.5%	-0.3%
Workshop Services	1,487	+244	+181	+140	+59	+29	-1	+19.6%	+13.9%	+10.4%	+4.1%	+2.0%	-0.1%
<b>Care, other</b>	<b>1,944</b>	<b>+332</b>	<b>+268</b>	<b>+234</b>	<b>+162</b>	<b>+91</b>	<b>+2</b>	<b>+20.6%</b>	<b>+16.0%</b>	<b>+13.7%</b>	<b>+9.1%</b>	<b>+4.9%</b>	<b>+0.1%</b>
<b>Patient &amp; Client Care</b>	<b>16,926</b>	<b>+2,587</b>	<b>+1,474</b>	<b>+987</b>	<b>+725</b>	<b>+328</b>	<b>+117</b>	<b>+18.0%</b>	<b>+9.5%</b>	<b>+6.2%</b>	<b>+4.5%</b>	<b>+2.0%</b>	<b>+0.7%</b>

Source: Health Service Personnel Census

Longitudinal Employment Levels by Grade Group - Dec 2016 to Dec 2021

Dec 2021 (Dec 2015 figure: 28,322)	WTE Dec 2021	WTE change since Dec 16	WTE change since Dec 17	WTE change since Dec 18	WTE change since Dec 19	WTE change since Dec 20	WTE change since Nov 21	% change since Dec 16	% change since Dec 17	% change since Dec 18	% change since Dec 19	% change since Dec 20	% change since Nov 21
Overall	33,246	+4,009	+2,745	+2,121	+1,710	+886	+200	+13.7%	+9.0%	+6.8%	+5.4%	+2.7%	+0.6%
Consultant Medicine	7	-4	-3	+3	+3	+2	-1	-40.4%	-29.0%	+81.4%	+81.4%	+47.7%	-7.9%
Consultant Paediatrics	2	-1	-1	-1	-1	-1	-1	-32.7%	-31.2%	-29.2%	-29.2%	-29.2%	
Consultant Psychiatry	19	-3	-5	+1	-2	-2	-0	-13.0%	-19.2%	+6.9%	-8.2%	-10.4%	-2.3%
Consultant Surgery		-1	-0	-0				-100.0%	-100.0%	-100.0%	-100.0%	-100.0%	-100.0%
Consultants	28	-9	-8	+3	+0	-1	-1	-24.8%	-23.0%	+12.8%	+1.2%	-3.4%	-3.5%
Registrar	13	+2	-1	+0	-1	+4	+2	+13.0%	-3.7%	+2.6%	-3.7%	+47.2%	+13.4%
Senior Registrar	3	+0	-1	-1	+0	-1		+2.7%	-23.0%	-23.0%	+2.7%	-23.0%	
Specialist Registrar	4		-1	+2	-2				-20.0%	+100.0%	-33.3%		
Registrars	20	+2	-2	+1	-2	+3	+2	+8.5%	-10.8%	+7.5%	-10.8%	+19.3%	+8.3%
Senior House Officer	22	+6	+5	+3	-0	-1	-1	+36.7%	+28.9%	+15.5%	-0.7%	-3.8%	-2.9%
SHO/ Interns	22	+6	+5	+3	-0	-1	-1	+36.7%	+28.9%	+15.5%	-0.7%	-3.8%	-2.9%
Dentists								-100.0%	-100.0%	-100.0%	-100.0%	-100.0%	-100.0%
Other Medical	109	+8	+9	+9	-2	-9	+8	+8.2%	+8.9%	+9.5%	-1.6%	-7.6%	+7.8%
Medical/ Dental, other	109	+8	+9	+9	-2	-9	+8	+8.2%	+8.9%	+9.5%	-1.6%	-7.6%	+7.8%
Medical & Dental	179	+7	+3	+17	-4	-8	+8	+3.8%	+1.7%	+10.5%	-2.2%	-4.1%	+4.5%
Clinical Nurse/ Midwife Manager	1,392	+46	+55	+59	+73	+42	-6	+3.4%	+4.1%	+4.5%	+5.5%	+3.1%	-0.4%
Director Nursing/Midwifery, Assistant	147	+17	+18	+22	+4	-5	-1	+13.2%	+14.2%	+17.9%	+2.5%	-3.2%	-0.7%
Director of Nursing/Midwifery	150	+21	+22	+29	+9	+9	-0	+16.5%	+17.0%	+24.2%	+6.7%	+6.1%	-0.2%
Nurse/ Midwife Manager	1,689	+84	+95	+111	+86	+45	-7	+5.2%	+6.0%	+7.0%	+5.4%	+2.8%	-0.4%
Advanced Nurse/ Midwife Practitioner	23	+19	+18	+14	+10	-2	-1	+476.0%	+360.8%	+156.6%	+81.1%	-6.4%	-2.3%
Clinical Nurse/ Midwife Specialist	80	-4	+0	-3	+4	+2	-2	-4.6%	+0.5%	-4.1%	+5.2%	+2.6%	-2.1%
Nurse/ Midwife Specialist & AN/MP	103	+15	+18	+11	+14	+0	-2	+17.3%	+21.9%	+11.5%	+16.1%	+0.4%	-2.1%
Graduate Nursing/ Midwifery								-100.0%	-100.0%	-100.0%	-100.0%	-100.0%	-100.0%
Staff Midwives	1	+0	-1	+1	+1	-0		+97.5%	-56.1%	-100.0%	-100.0%	-10.2%	
Staff Nurse [Psychiatric]	179	+89	+103	+103	+91	+122	-28	+98.6%	+136.2%	+134.7%	+102.9%	+210.3%	-13.5%
Staff Nurses [General/ Children's]	3,311	-205	-174	-161	-152	-58	+14	-5.8%	-5.0%	-4.6%	-4.4%	-1.7%	+0.4%
Staff Nurse [Intellectual Disability]	1,819	+93	+116	+134	+222	+30	+55	+5.4%	+6.8%	+8.0%	+13.9%	+1.7%	+3.1%
Staff Nurse/ Staff Midwife	5,311	-22	+44	+76	+162	+94	+42	-0.4%	+0.8%	+1.5%	+3.1%	+1.8%	+0.8%
Public Health Nurse	23	+2	+2	+3	+3	+3	-1	+11.7%	+11.1%	+14.4%	+17.7%	+14.0%	-4.0%
Public Health Nurse	23	+2	+2	+3	+3	+3	-1	+11.7%	+11.1%	+14.4%	+17.7%	+14.0%	-4.0%
Pre-registration Nurse Intern (COVID-19)						-32	-1	-100.0%	-100.0%	-100.0%	-100.0%	-100.0%	-100.0%
Pre-registration Nurse/ Midwife Intern	21	+9	+10	-13	-7	+19	-0	+79.0%	+82.2%	-38.3%	-24.0%	+759.2%	-1.2%
Post-registration Nurse/ Midwife Student					-1			-100.0%	-100.0%	-100.0%	-100.0%	-100.0%	-100.0%
Nursing/ Midwifery awaiting registration	7	+7	-7	+7	-8	-7	-1	-100.0%	-48.1%	-100.0%	-51.0%	-49.3%	-15.4%
Nursing/ Midwifery Student	29	+17	+3	-6	-15	-20	-2	+139.6%	+11.5%	-17.4%	-34.8%	-40.9%	-7.4%
Nursing Education/Clinical	27	+5	+5	+5	+5	+1	+3	+22.9%	+23.8%	+23.4%	+23.3%	+2.2%	+11.9%
Other Nursing/ Midwifery	2	-3	-3	+1	+1	+1		-60.0%	-60.0%	+100.0%	+100.0%	+100.0%	
Nursing/ Midwifery other	29	+2	+2	+6	+6	+2	+3	+7.7%	+8.4%	+26.7%	+26.6%	+5.7%	+11.0%
Nursing & Midwifery	7,184	+99	+165	+201	+256	+124	+32	+1.4%	+2.4%	+2.9%	+3.7%	+1.8%	+0.4%
Dietitians	46	+17	+17	+15	+11	+12	+1	+58.8%	+56.5%	+48.5%	+32.2%	+33.9%	+1.2%
Occupational Therapists	422	+75	+78	+77	+44	+30	+4	+21.5%	+22.8%	+22.2%	+11.7%	+7.7%	+0.9%
Physiotherapists	356	+55	+50	+48	+43	+31	+2	+18.3%	+16.4%	+15.4%	+13.7%	+9.5%	+0.4%
Podiatrists & Chiropodists	10	-5	-6	-5	-2	-2	-3	-31.1%	-36.9%	-31.9%	-15.4%	-19.5%	-22.5%
Speech & Language Therapists	344	+53	+38	+42	+29	+17	+3	+18.3%	+12.4%	+14.0%	+9.1%	+5.3%	+0.9%
Therapy Professions	1,178	+195	+177	+177	+125	+87	+6	+19.9%	+17.7%	+17.7%	+11.9%	+8.0%	+0.5%
Audiology		-13	-18					-100.0%	-100.0%	-100.0%	-100.0%	-100.0%	-100.0%
Clinical Engineering	15	-3	-3	+3	+2	+2	+0	-18.3%	-16.9%	+24.6%	+15.0%	+15.4%	+0.2%
Medical Science	3	-1		-1	-1	-1	-1	-25.0%		-25.0%	-25.0%	-25.0%	-25.0%
Phlebotomists		-1	-1	-1	-1	-1		-100.0%	-100.0%	-100.0%	-100.0%	-100.0%	-100.0%
Radiographers	4	-4	-4	-2	-3	-2	-0	-45.9%	-46.5%	-33.8%	-36.7%	-26.5%	-2.0%
Respiratory Physiologists	2	+1	+1	+1	+1			+100.0%	+100.0%	+100.0%	+100.0%		
Vascular Physiologists	0	+0	+0	+0	-0			-100.0%	-100.0%	+100.0%	-23.8%		
Health Science/ Diagnostics	25	-21	-25	-0	-2	-1	-1	-45.7%	-50.1%	-0.8%	-6.3%	-2.3%	-4.1%
Social Care	3,014	+820	+666	+523	+417	+222	+16	+37.4%	+28.3%	+21.0%	+16.0%	+8.0%	+0.5%
Social Workers	325	+23	+21	+11	+8	-3	-1	+7.6%	+6.8%	+3.5%	+2.5%	-0.9%	-0.2%
Psychologists	249	+39	+26	+42	+43	+19	+7	+18.6%	+11.5%	+20.4%	+20.9%	+8.3%	+2.7%
Pharmacy	29	+9	+8	+6	+7	+6	+1	+42.6%	+37.6%	+26.4%	+33.9%	+26.9%	+4.3%
Counsellor Therapists	21	+4	+1	+3	+2	+1	-1	+24.1%	+7.6%	+17.7%	+10.6%	+5.8%	-4.0%
HSCP Trainees/ Students		-2	-1					-100.0%	-100.0%	-100.0%	-100.0%	-100.0%	-100.0%
Other Health & Social Care	39	-20	-21	-14	-12	-6	-0	-34.3%	-34.8%	-26.4%	-23.0%	-14.1%	-1.0%
Play Therapists/ Specialists	11	-4	-3	-5	-5	-1	-1	-27.8%	-22.4%	-29.4%	-33.1%	-7.3%	-10.8%
H&SC, Other	71	-23	-23	-15	-15	-6	-3	-24.4%	-24.6%	-17.9%	-17.6%	-7.9%	-3.6%
Health & Social Care Professionals	4,892	+1,043	+850	+743	+584	+325	+25	+27.1%	+21.0%	+17.9%	+13.5%	+7.1%	+0.5%
Executive Management	54	+18	+8	+12	+11	+3	+1	+49.2%	+17.0%	+28.5%	+25.8%	+5.7%	+1.9%
Senior Management (VIII & GM)	266	+88	+88	+73	+54	+34	+3	+49.3%	+49.5%	+37.7%	+25.6%	+14.6%	+1.1%
Management (VIII & above)	319	+105	+96	+85	+65	+37	+4	+49.3%	+42.8%	+36.0%	+25.6%	+13.0%	+1.3%
Middle Management (V-VII)	757	+261	+237	+187	+129	+70	+11	+52.6%	+45.5%	+32.8%	+20.5%	+10.2%	+1.5%
Other Administrative	14	-1	-3	-3	-2	-2		-5.5%	-17.5%	-16.8%	-12.3%	-11.5%	
Administrative/ Supervisory (V to VII)	771	+260	+234	+184	+127	+68	+11	+50.9%	+43.5%	+31.4%	+19.7%	+9.7%	+1.5%
General Administrative (III & IV)	1,328	+238	+187	+110	+96	+55	+19	+21.8%	+16.4%	+9.0%	+7.8%	+4.4%	+1.4%
Clerical (III & IV)	1,328	+238	+187	+110	+96	+55	+19	+21.8%	+16.4%	+9.0%	+7.8%	+4.4%	+1.4%
Management & Administrative	2,418	+603	+516	+379	+288	+160	+34	+33.2%	+27.1%	+18.6%	+13.5%	+7.1%	+1.4%
Support	1,420	-323	-252	-204	-143	-44	-14	-18.5%	-15.1%	-12.6%	-9.1%	-3.0%	-1.0%
Maintenance	208	-20	-25	-14	-7	-8	-1	-8.9%	-10.7%	-6.4%	-3.0%	-3.8%	-0.5%
Technical Services	19	+14	+14	+13	+11	+8		+272.5%	+272.5%	+211.5%	+134.6%	+71.2%	
Maintenance/ Technical	227	-6	-11	-1	+4	-0	-1	-2.7%	-4.6%	-0.6%	+2.0%	-0.1%	-0.4%
General Support	1,647	-330	-263	-206	-139	-44	-15	-16.7%	-13.8%	-11.1%	-7.8%	-2.6%	-0.9%
Attendant/ Aide	2,172	-965	-820	-682	-352	-286	-73	-30.8%	-27.4%	-23.9%	-13.9%	-11.6%	-3.3%
Health & Social Care Assistants	55	+18	+20	+20	+24	+17	+3	+50.3%	+57.6%	+57.0%	+78.9%	+43.9%	+5.7%
Health Care Assistant/ Care Assistant	9,225	+2,562	+1,956	+1,417	+911	+523	+148	+38.5%	+26.9%	+18.2%	+11.0%	+6.0%	+1.6%
HCA (Student Nurse/Midwife COVID-19)	1	+1	+1	+1	+1	-21	+0	-100.0%	-100.0%	-100.0%	-100.0%	-95.3%	+75.0%
Health Care Assistants	11,454	+1,617	+1,157	+757	+584	+233	+78	+16.4%	+11.2%	+7.1%	+5.4%	+2.1%	+0.7%
Home Help	3,529	+638	+49	-4	-22	+4	+37	+22.1%	+1.4%	-0.1%	-0.6%	+0.1%	+1.1%



Dec 2021 (Dec 2015 figure: 28,322)	WTE Dec 2021	WTE change since Dec 16	WTE change since Dec 17	WTE change since Dec 18	WTE change since Dec 19	WTE change since Dec 20	WTE change since Nov 21	% change since Dec 16	% change since Dec 17	% change since Dec 18	% change since Dec 19	% change since Dec 20	% change since Nov 21
Overall	33,246	+4,009	+2,745	+2,121	+1,710	+886	+200	+13.7%	+9.0%	+6.8%	+5.4%	+2.7%	+0.6%
Home Care Services	151	+62	+44	+42	+37	+34	-2	+69.3%	+41.3%	+38.4%	+32.2%	+28.7%	-1.5%
Other Care Grades	272	+40	+55	+63	+75	+32	+5	+17.3%	+25.1%	+30.0%	+38.2%	+13.2%	+2.0%
Pastoral Care	33	-14	-13	-11	-9	-4	-0	-28.9%	-27.2%	-24.0%	-20.3%	-9.5%	-0.3%
Workshop Services	1,487	+244	+181	+140	+59	+29	-1	+19.6%	+13.9%	+10.4%	+4.1%	+2.0%	-0.1%
Care, other	1,944	+332	+268	+234	+162	+91	+2	+20.6%	+16.0%	+13.7%	+9.1%	+4.9%	+0.1%
Patient & Client Care	16,926	+2,587	+1,474	+987	+725	+328	+117	+18.0%	+9.5%	+6.2%	+4.5%	+2.0%	+0.7%

Source: Health Service Personnel Census