

Social Care Service Employment Report: February 2022

Employment by Staff Group

Feb 2022	WTE Dec 2019	WTE Dec 2020	WTE Jan 2022	WTE Feb 2022	WTE change since Jan 22	WTE change since Dec 20	% change since Dec 20	WTE change since Dec 19	% change since Dec 19	No. Feb 2022
Overall	31,535	32,359	33,324	33,215	-109	+856	+2.6%	+1,680	+5.3%	39,774
Consultants	27	29	28	29	+1	+0	+0.6%	+2	+5.5%	38
Registrars	23	17	20	21	+0	+4	+22.2%	-2	-8.6%	22
SHO/ Interns	22	23	24	24	+0	+1	+4.7%	+2	+8.1%	24
Medical/ Dental, other	111	118	99	95	-4	-23	-19.5%	-16	-14.2%	175
Medical & Dental	183	186	171	168	-3	-18	-9.7%	-14	-7.9%	259
Nurse/ Midwife Manager	1,603	1,643	1,680	1,668	-12	+24	+1.5%	+65	+4.0%	1,792
Nurse/ Midwife Specialist & AN/MP	88	102	105	112	+7	+10	+9.8%	+24	+27.0%	121
Staff Nurse/ Staff Midwife	5,149	5,217	5,307	5,298	-9	+80	+1.5%	+149	+2.9%	6,118
Public Health Nurse	20	20	24	23	-1	+3	+15.0%	+4	+18.8%	28
<i>Pre-registration Nurse Intern (COVID-19)</i>		32				-32	-100.0%		-100.0%	
<i>Pre-registration Nurse/ Midwife Intern</i>	28	3	68	85	+18	+83	+3314.0%	+57	+202.1%	174
<i>Post-registration Nurse/ Midwife Student</i>	1						-100.0%	-1	-100.0%	
<i>Nursing/ Midwifery awaiting registration</i>	15	14	3	3	-1	-12	-82.6%	-12	-83.2%	3
Nursing/ Midwifery Student	44	49	71	88	+17	+39	+80.6%	+44	+99.3%	177
Nursing/ Midwifery other	23	28	30	30	-0	+2	+6.6%	+6	+27.8%	33
Nursing & Midwifery	6,927	7,060	7,216	7,218	+2	+159	+2.3%	+291	+4.2%	8,269
Therapy Professions	1,053	1,091	1,141	1,140	-1	+49	+4.5%	+87	+8.3%	1,311
Health Science/ Diagnostics	26	25	24	26	+1	+0	+1.7%	-1	-2.4%	29
Social Care	2,598	2,792	3,035	3,002	-33	+210	+7.5%	+404	+15.6%	3,531
Social Workers	317	328	319	322	+3	-6	-1.8%	+5	+1.5%	367
Psychologists	206	230	252	257	+5	+27	+11.7%	+51	+24.8%	288
Pharmacy	22	23	29	29	-1	+5	+22.8%	+7	+29.5%	39
H&SC, Other	86	77	73	73	+0	-4	-5.8%	-13	-15.6%	95
Health & Social Care Professionals	4,308	4,567	4,874	4,848	-26	+281	+6.2%	+540	+12.5%	5,660
Management (VIII & above)	254	283	322	328	+6	+46	+16.2%	+74	+29.2%	337
Administrative/ Supervisory (V to VII)	644	703	776	785	+9	+82	+11.6%	+141	+21.8%	834
Clerical (III & IV)	1,231	1,272	1,341	1,351	+10	+79	+6.2%	+120	+9.7%	1,589
Management & Administrative	2,130	2,258	2,439	2,464	+25	+206	+9.1%	+334	+15.7%	2,760
Support	1,563	1,464	1,421	1,418	-3	-45	-3.1%	-145	-9.3%	1,787
Maintenance/ Technical	223	227	224	222	-2	-5	-2.2%	-0	-0.2%	237
General Support	1,786	1,691	1,646	1,641	-5	-51	-3.0%	-145	-8.1%	2,024
Health Care Assistants	10,869	11,221	11,445	11,399	-47	+178	+1.6%	+530	+4.9%	13,355
Home Help	3,551	3,525	3,591	3,530	-61	+5	+0.1%	-21	-0.6%	5,178
Care, other	1,781	1,852	1,942	1,947	+5	+94	+5.1%	+165	+9.3%	2,269
Patient & Client Care	16,201	16,598	16,978	16,875	-103	+278	+1.7%	+674	+4.2%	20,802

Social Care Services Employment by Administration (HSE / S38): February 2022

Feb 2022	WTE Dec 2019	WTE Dec 2020	WTE Jan 2022	WTE Feb 2022	WTE change since Jan 22	WTE change since Dec 20	% change since Dec 20	WTE change since Dec 19	% change since Dec 19	No. Feb 2022
Total	31,535	32,359	33,324	33,215	-109	+856	+2.6%	+1,680	+5.3%	39,774
HSE	16,428	16,758	17,084	17,066	-19	+308	+1.8%	+638	+3.9%	20,532
Section 38 Voluntary Agencies	15,107	15,601	16,240	16,149	-90	+548	+3.5%	+1,042	+6.9%	19,242

Employment by Staff Group

Feb 2022	WTE Dec 2019	WTE Dec 2020	WTE Jan 2022	WTE Feb 2022	WTE change since Jan 22	WTE change since Dec 20	% change since Dec 20	WTE change since Dec 19	% change since Dec 19	No. Feb 2022
Health Service Executive	16,428	16,758	17,084	17,066	-19	+308	+1.8%	+638	+3.9%	20,532
Consultants	11	11	12	12	+1	+1	+6.0%	+2	+14.3%	13
Registrars	10	7	9	10	+1	+3	+40.1%	+0	+0.7%	11
SHO/ Interns	10	12	12	13	+1	+1	+9.1%	+3	+27.3%	13
Medical/ Dental, other	101	108	90	86	-4	-22	-20.4%	-15	-14.7%	162
Medical & Dental	131	138	122	120	-2	-18	-12.7%	-10	-8.0%	199
Nurse/ Midwife Manager	914	958	968	955	-13	-3	-0.3%	+41	+4.5%	1,013
Nurse/ Midwife Specialist & AN/MP	40	53	55	61	+6	+8	+14.5%	+20	+51.0%	64
Staff Nurse/ Staff Midwife	3,192	3,211	3,306	3,309	+3	+98	+3.1%	+117	+3.7%	3,805
Public Health Nurse	20	20	24	23	-1	+3	+15.0%	+4	+18.8%	28
Pre-registration Nurse Intern (COVID-19)		9				-9	-100.0%		-100.0%	
Pre-registration Nurse/ Midwife Intern	3	3	15	30	+15	+27	+1087.2%	+26	+813.2%	58
Post-registration Nurse/ Midwife Student	1						-100.0%	-1	-100.0%	
Nursing/ Midwifery awaiting registration	15	14	3	3	-1	-12	-82.6%	-12	-83.2%	3
Nursing/ Midwifery Student	19	25	18	32	+14	+7	+26.6%	+13	+68.6%	61
Nursing/ Midwifery other	9	11	11	11	-0	+0	+0.7%	+2	+23.4%	12
Nursing & Midwifery	4,193	4,278	4,382	4,391	+9	+113	+2.6%	+197	+4.7%	4,983
Therapy Professions	562	596	608	609	+1	+13	+2.2%	+47	+8.4%	704
Health Science/ Diagnostics	7	8	7	8	+0	-1	-7.2%	+0	+5.0%	10
Social Care	92	103	105	102	-3	-1	-1.0%	+11	+11.6%	115
Social Workers	142	151	133	136	+3	-15	-10.0%	-6	-4.6%	150
Psychologists	78	83	106	107	+1	+24	+29.3%	+30	+38.3%	121
Pharmacy	11	12	15	15	-0	+3	+28.1%	+4	+42.5%	20
H&SC, Other	28	27	24	24	-0	-3	-10.6%	-4	-13.7%	29
Health & Social Care Professionals	919	980	998	1,001	+3	+21	+2.2%	+82	+8.9%	1,149
Management (VIII & above)	117	133	164	167	+3	+34	+25.8%	+49	+42.2%	171
Administrative/ Supervisory (V to VII)	287	326	377	379	+2	+53	+16.3%	+92	+32.1%	402
Clerical (III & IV)	722	755	800	808	+8	+52	+7.0%	+86	+11.8%	921
Management & Administrative	1,126	1,214	1,340	1,354	+13	+140	+11.5%	+227	+20.2%	1,494
Support	815	782	751	754	+3	-27	-3.5%	-60	-7.4%	851
Maintenance/ Technical	109	110	107	108	+1	-2	-1.6%	-1	-1.1%	112
General Support	924	892	858	863	+4	-29	-3.3%	-62	-6.7%	963
Health Care Assistants	5,338	5,449	5,453	5,463	+10	+13	+0.2%	+125	+2.3%	6,172
Home Help	3,551	3,525	3,591	3,530	-61	+5	+0.1%	-21	-0.6%	5,178
Care, other	246	282	339	344	+5	+62	+22.0%	+99	+40.2%	394
Patient & Client Care	9,134	9,257	9,383	9,337	-46	+81	+0.9%	+203	+2.2%	11,744

Employment by Staff Group

Feb 2022	WTE Dec 2019	WTE Dec 2020	WTE Jan 2022	WTE Feb 2022	WTE change since Jan 22	WTE change since Dec 20	% change since Dec 20	WTE change since Dec 19	% change since Dec 19	No. Feb 2022
Section 38 Voluntary Agencies	15,107	15,601	16,240	16,149	-90	+548	+3.5%	+1,042	+6.9%	19,242
Consultants	17	17	17	17	+0	-1	-2.9%	-0	-0.0%	25
Registrars	13	10	11	11	-0	+1	+10.0%	-2	-15.4%	11
SHO/ Interns	12	11	12	11	-1			-1	-8.0%	11
Medical/ Dental, other	10	10	9	9		-1	-9.9%	-1	-9.9%	13
Medical & Dental	52	49	49	48	-1	-1	-1.0%	-4	-7.6%	60
Nurse/ Midwife Manager	689	685	712	713	+1	+27	+4.0%	+24	+3.4%	779
Nurse/ Midwife Specialist & AN/MP	48	49	50	52	+1	+2	+4.8%	+3	+6.9%	57
Staff Nurse/ Staff Midwife	1,957	2,007	2,001	1,989	-11	-18	-0.9%	+32	+1.6%	2,313
<i>Pre-registration Nurse Intern (COVID-19)</i>		23				-23	-100.0%		-100.0%	
<i>Pre-registration Nurse/ Midwife Intern</i>	25		53	56	+3	+56	-100.0%	+31	+122.7%	116
Nursing/ Midwifery Student	25	23	53	56	+3	+32	+139.8%	+31	+122.7%	116
Nursing/ Midwifery other	14	17	19	19	+0	+2	+10.3%	+4	+30.4%	21
Nursing & Midwifery	2,734	2,782	2,834	2,828	-6	+46	+1.7%	+94	+3.4%	3,286
Therapy Professions	491	495	533	531	-2	+36	+7.3%	+40	+8.1%	607
Health Science/ Diagnostics	19	17	17	18	+1	+1	+5.9%	-1	-5.3%	19
Social Care	2,506	2,689	2,930	2,900	-31	+211	+7.9%	+394	+15.7%	3,416
Social Workers	175	177	186	186	+0	+9	+5.2%	+11	+6.5%	217
Psychologists	128	147	146	150	+4	+3	+1.8%	+21	+16.6%	167
Pharmacy	11	11	14	13	-1	+2	+17.3%	+2	+17.5%	19
H&SC, Other	59	51	49	49	+0	-2	-3.3%	-10	-16.5%	66
Health & Social Care Professionals	3,389	3,587	3,875	3,847	-29	+260	+7.3%	+457	+13.5%	4,511
Management (VIII & above)	137	150	159	162	+3	+12	+7.7%	+25	+18.0%	166
Administrative/ Supervisory (V to VII)	357	377	399	405	+6	+29	+7.6%	+48	+13.5%	432
Clerical (III & IV)	509	517	541	543	+3	+26	+5.1%	+34	+6.7%	668
Management & Administrative	1,003	1,044	1,099	1,110	+12	+66	+6.3%	+107	+10.7%	1,266
Support	748	682	670	664	-6	-18	-2.7%	-84	-11.3%	936
Maintenance/ Technical	113	117	117	114	-3	-3	-2.8%	+1	+0.6%	125
General Support	862	799	787	778	-9	-22	-2.7%	-84	-9.7%	1,061
Health Care Assistants	5,532	5,771	5,992	5,936	-56	+165	+2.9%	+404	+7.3%	7,183
Care, other	1,536	1,570	1,603	1,602	-0	+32	+2.1%	+66	+4.3%	1,875
Patient & Client Care	7,067	7,341	7,595	7,538	-57	+197	+2.7%	+471	+6.7%	9,058

Social Care Services Employment by CHO: Feb 2022

Feb 2022	WTE Dec 2019	WTE Dec 2020	WTE Jan 2022	WTE Feb 2022	WTE change since Jan 22	WTE change since Dec 20	% change since Dec 20	WTE change since Dec 19	% change since Dec 19	No. Feb 2022
Overall	31,535	32,359	33,324	33,215	-109	+856	+2.6%	+1,680	+5.3%	39,774
CHO 1	3,334	3,464	3,654	3,620	-34	+156	+4.5%	+286	+8.6%	4,196
CHO 2	3,103	3,105	3,094	3,088	-6	-17	-0.6%	-15	-0.5%	3,730
CHO 3	2,798	2,976	3,142	3,178	+36	+202	+6.8%	+381	+13.6%	3,845
CHO 4	5,358	5,486	5,579	5,541	-38	+55	+1.0%	+183	+3.4%	6,957
CHO 5	3,152	3,213	3,310	3,312	+2	+99	+3.1%	+160	+5.1%	3,955
CHO 6	2,021	2,020	2,062	2,056	-7	+35	+1.8%	+35	+1.7%	2,291
CHO 7	3,978	4,125	4,307	4,284	-22	+159	+3.9%	+307	+7.7%	5,049
CHO 8	3,650	3,689	3,775	3,706	-69	+17	+0.5%	+56	+1.5%	4,591
CHO 9	4,064	4,199	4,318	4,346	+28	+147	+3.5%	+282	+7.0%	5,070
other Community Services	78	81	82	83	+1	+2	+2.7%	+5	+6.2%	90

Social Care Services Employment by CHO etc. Feb 2022

CHO 1

Feb 2022	WTE Dec 2019	WTE Dec 2020	WTE Jan 2022	WTE Feb 2022	WTE change since Jan 22	WTE change since Dec 20	% change since Dec 20	WTE change since Dec 19	% change since Dec 19	No. Feb 2022
Overall	3,334	3,464	3,654	3,620	-34	+156	+4.5%	+286	+8.6%	4,196
Registrars			1	1	0	+1	-100.0%	+1	-100.0%	1
Medical/ Dental, other	33	35	21	18	-3	-18	-49.5%	-15	-45.5%	47
Medical & Dental	33	35	22	19	-3	-16	-46.7%	-14	-42.4%	48
Nurse/ Midwife Manager	196	194	209	203	-6	+9	+4.7%	+7	+3.6%	215
Nurse/ Midwife Specialist & AN/MP	14	18	18	19	+1	+1	+5.3%	+5	+36.6%	20
Staff Nurse/ Staff Midwife	631	643	673	669	-4	+26	+4.0%	+38	+6.0%	754
Public Health Nurse			1	1	0	+1	-100.0%	+1	-100.0%	1
<i>Pre-registration Nurse Intern (COVID-19)</i>		6				-6	-100.0%		-100.0%	
<i>Pre-registration Nurse/ Midwife Intern</i>	3		9	18	+9	+18	-100.0%	+15	+506.0%	35
<i>Nursing/ Midwifery awaiting registration</i>	11	11				-11	-100.0%	-11	-100.0%	
Nursing/ Midwifery Student	14	17	9	18	+9	+1	+3.9%	+4	+29.9%	35
Nursing/ Midwifery other	5	5	5	4	-0	-0	-8.0%	-0	-4.9%	5
Nursing & Midwifery	860	877	915	915	+0	+37	+4.2%	+55	+6.4%	1,030
Therapy Professions	53	56	75	78	+4	+22	+39.9%	+25	+46.5%	88
Health Science/ Diagnostics	1	2				-2	-100.0%	-1	-100.0%	
Social Care	8	11	10	10	-0	-1	-13.1%	+2	+29.7%	12
Social Workers	33	34	27	26	-1	-8	-22.4%	-7	-21.2%	28
Psychologists	5	7	16	16	-0	+9	+117.6%	+12	+251.2%	17
H&SC, Other	12	10	9	8	-0	-1	-14.0%	-4	-32.2%	10
Health & Social Care Professionals	112	120	137	139	+2	+19	+16.0%	+26	+23.5%	155
Management (VIII & above)	22	25	23	24	+1	-1	-4.1%	+2	+7.5%	24
Administrative/ Supervisory (V to VII)	42	49	60	62	+2	+12	+24.8%	+20	+47.6%	65
Clerical (III & IV)	135	141	138	137	-1	-3	-2.4%	+3	+1.9%	156
Management & Administrative	199	215	221	223	+2	+8	+3.7%	+24	+12.1%	245
Support	172	168	142	143	+1	-25	-14.7%	-29	-16.8%	172
Maintenance/ Technical	13	13	10	11	+1	-2	-18.0%	-2	-18.0%	11
General Support	185	181	152	154	+2	-27	-15.0%	-31	-16.9%	183
Health Care Assistants	1,325	1,355	1,414	1,425	+11	+69	+5.1%	+100	+7.5%	1,590
Home Help	556	618	719	671	-48	+53	+8.5%	+115	+20.7%	861
Care, other	65	63	75	76	+0	+13	+20.2%	+11	+16.9%	84
Patient & Client Care	1,946	2,037	2,208	2,172	-36	+135	+6.6%	+226	+11.6%	2,535

CHO 2

Feb 2022	WTE Dec 2019	WTE Dec 2020	WTE Jan 2022	WTE Feb 2022	WTE change since Jan 22	WTE change since Dec 20	% change since Dec 20	WTE change since Dec 19	% change since Dec 19	No. Feb 2022
Overall	3,103	3,105	3,094	3,088	-6	-17	-0.6%	-15	-0.5%	3,730
Consultants	3	3	3	3	0					4
Registrars	2	2	2	2	0					2
Medical/ Dental, other	12	12	11	11	0	-1	-8.7%	-2	-12.4%	11
Medical & Dental	18	17	16	16		-1	-5.9%	-2	-8.6%	17
Nurse/ Midwife Manager	136	144	140	140	+0	-4	-2.7%	+5	+3.5%	154
Nurse/ Midwife Specialist & AN/MP	8	8	8	11	+3	+3	+36.8%	+3	+34.1%	12
Staff Nurse/ Staff Midwife	466	474	478	473	-5	-1	-0.2%	+7	+1.4%	566
Public Health Nurse	1	1	1	1	0			+0	+25.0%	1
<i>Pre-registration Nurse Intern (COVID-19)</i>		1				-1	-100.0%		-100.0%	
Nursing/ Midwifery Student		1				-1	-100.0%		-100.0%	
Nursing & Midwifery	611	628	627	625	-2	-3	-0.5%	+14	+2.3%	733
Therapy Professions	67	59	61	64	+3	+5	+8.7%	-3	-3.9%	76
Health Science/ Diagnostics	1	1	1	1	0					1
Social Care	222	243	269	266	-3	+23	+9.4%	+44	+20.0%	328
Social Workers	36	36	39	39	+0	+3	+7.9%	+3	+7.8%	47
Psychologists	16	14	16	18	+2	+4	+28.5%	+3	+15.9%	21
Pharmacy	1	1	1	1	0	-1	-51.5%	-1	-50.5%	1
H&SC, Other	16	12	12	12	-0	+0	+2.9%	-4	-24.5%	18
Health & Social Care Professionals	358	366	399	401	+2	+35	+9.5%	+43	+11.9%	492
Management (VIII & above)	18	18	20	20	0	+2	+11.6%	+2	+10.9%	20
Administrative/ Supervisory (V to VII)	48	54	65	68	+3	+15	+27.7%	+20	+42.4%	71
Clerical (III & IV)	121	116	115	113	-1	-2	-2.1%	-8	-6.3%	134
Management & Administrative	187	187	200	202	+2	+14	+7.7%	+15	+7.8%	225
Support	101	99	97	98	+1	-1	-0.8%	-2	-2.4%	136
Maintenance/ Technical	32	32	30	30	0	-2	-7.3%	-2	-6.2%	32
General Support	133	132	127	128	+1	-3	-2.4%	-4	-3.3%	168
Health Care Assistants	1,138	1,151	1,143	1,148	+5	-3	-0.3%	+10	+0.8%	1,348
Home Help	499	456	398	386	-11	-70	-15.4%	-113	-22.7%	523
Care, other	159	168	184	182	-2	+14	+8.0%	+23	+14.6%	224
Patient & Client Care	1,796	1,775	1,724	1,716	-9	-60	-3.4%	-81	-4.5%	2,095

CHO 3

Feb 2022	WTE Dec 2019	WTE Dec 2020	WTE Jan 2022	WTE Feb 2022	WTE change since Jan 22	WTE change since Dec 20	% change since Dec 20	WTE change since Dec 19	% change since Dec 19	No. Feb 2022
Overall	2,798	2,976	3,142	3,178	+36	+202	+6.8%	+381	+13.6%	3,845
Consultants	2	3	4	4	-0	+1	+34.9%	+2	+97.0%	5
Registrars			1	1	0	+1	-100.0%	+1	-100.0%	1
Medical/ Dental, other	6	7	5	6	+1	-1	-14.4%			7
Medical & Dental	8	10	10	11	+0	+1	+10.4%	+3	+37.1%	13
Nurse/ Midwife Manager	140	139	144	143	-1	+4	+2.7%	+3	+2.2%	148
Nurse/ Midwife Specialist & AN/MP	14	14	13	14	+1	-1	-3.5%	-1	-6.0%	15
Staff Nurse/ Staff Midwife	486	502	509	514	+5	+12	+2.4%	+28	+5.8%	581
Public Health Nurse	1	1	1		-1	-1	-100.0%	-1	-100.0%	
<i>Pre-registration Nurse Intern (COVID-19)</i>		2				-2	-100.0%		-100.0%	
<i>Pre-registration Nurse/ Midwife Intern</i>	12		7	7	+1	+7	-100.0%	-5	-39.1%	14
Nursing/ Midwifery Student	12	2	7	7	+1	+6	+366.7%	-5	-39.1%	14
Nursing/ Midwifery other	4	4	4	4	0					4
Nursing & Midwifery	656	661	677	681	+4	+20	+3.0%	+25	+3.8%	762
Therapy Professions	102	113	85	91	+6	-22	-19.2%	-10	-10.2%	102
Health Science/ Diagnostics	1	3	4	4	+0	+1	+38.3%	+3	+408.5%	5
Social Care	241	284	280	281	+1	-3	-0.9%	+40	+16.8%	323
Social Workers	24	23	24	26	+2	+3	+12.8%	+3	+12.5%	29
Psychologists	16	20	20	20	-0	-1	-3.2%	+4	+23.5%	21
Pharmacy	1	1	1	1	+0					1
H&SC, Other	12	11	11	12	+1	+1	+7.1%	+0	+1.8%	16
Health & Social Care Professionals	396	456	425	436	+10	-20	-4.4%	+40	+10.1%	497
Management (VIII & above)	13	14	17	17	-1	+3	+20.9%	+4	+32.0%	17
Administrative/ Supervisory (V to VII)	61	61	63	64	+1	+3	+5.0%	+3	+5.1%	67
Clerical (III & IV)	109	107	114	113	-0	+6	+5.7%	+4	+4.1%	127
Management & Administrative	183	182	194	194	+0	+12	+6.6%	+12	+6.4%	211
Support	117	116	115	113	-2	-3	-2.5%	-4	-3.2%	129
Maintenance/ Technical	37	40	43	44	+1	+3	+8.6%	+7	+20.1%	46
General Support	154	157	158	157	-1	+1	+0.4%	+4	+2.4%	175
Health Care Assistants	1,043	1,101	1,149	1,161	+12	+60	+5.5%	+118	+11.3%	1,431
Home Help	175	216	311	320	+8	+103	+47.7%	+145	+82.5%	511
Care, other	183	193	217	219	+1	+25	+13.1%	+36	+19.5%	245
Patient & Client Care	1,402	1,511	1,678	1,700	+22	+189	+12.5%	+298	+21.3%	2,187

CHO 4

Feb 2022	WTE Dec 2019	WTE Dec 2020	WTE Jan 2022	WTE Feb 2022	WTE change since Jan 22	WTE change since Dec 20	% change since Dec 20	WTE change since Dec 19	% change since Dec 19	No. Feb 2022
Overall	5,358	5,486	5,579	5,541	-38	+55	+1.0%	+183	+3.4%	6,957
Consultants	3	4	3	3	+1	-1	-14.3%	+1	+20.0%	4
Registrars	3	3	2	2	0	-1	-30.7%	-1	-30.7%	3
SHO/ Interns	1	1	2	2	0	+1	+100.0%	+1	+100.0%	2
Medical/ Dental, other	21	23	23	21	-1	-2	-8.5%	+0	+1.5%	51
Medical & Dental	28	31	29	29	-1	-2	-7.8%	+1	+3.3%	60
Nurse/ Midwife Manager	207	213	217	214	-3	+2	+0.9%	+8	+3.7%	239
Nurse/ Midwife Specialist & AN/MP	17	20	17	17	+0	-3	-16.0%	+0	+2.3%	19
Staff Nurse/ Staff Midwife	824	840	855	853	-2	+12	+1.5%	+29	+3.5%	1,043
Public Health Nurse	5	6	5	5	+1	-1	-8.5%	+0	+5.9%	7
<i>Pre-registration Nurse Intern (COVID-19)</i>		8				-8	-100.0%		-100.0%	
<i>Pre-registration Nurse/ Midwife Intern</i>	6		12	13	+1	+13	-100.0%	+7	+116.7%	26
<i>Post-registration Nurse/ Midwife Student</i>	1						-100.0%	-1	-100.0%	
<i>Nursing/ Midwifery awaiting registration</i>	2	2				-2	-100.0%	-2	-100.0%	
Nursing/ Midwifery Student	9	10	12	13	+1	+3	+36.1%	+4	+44.4%	26
Nursing/ Midwifery other	1		1	1	0	+1	-100.0%	+0	+96.1%	1
Nursing & Midwifery	1,062	1,089	1,107	1,104	-4	+15	+1.4%	+41	+3.9%	1,335
Therapy Professions	152	145	168	156	-12	+11	+7.5%	+4	+2.3%	191
Health Science/ Diagnostics	1	1	1	1	0			+0	+13.2%	2
Social Care	228	240	252	256	+3	+16	+6.5%	+27	+12.0%	289
Social Workers	37	39	41	41	-0	+1	+3.7%	+3	+9.3%	47
Psychologists	35	36	34	36	+2	-0	-1.0%	+1	+2.6%	42
Pharmacy	3	4	4	5	+0	+1	+22.4%	+2	+79.2%	8
H&SC, Other	8	10	9	8	-0	-2	-18.3%	-0	-0.8%	9
Health & Social Care Professionals	465	476	509	502	-7	+27	+5.6%	+37	+8.1%	588
Management (VIII & above)	35	37	42	42	+0	+6	+15.4%	+7	+20.7%	44
Administrative/ Supervisory (V to VII)	70	78	88	89	+1	+12	+14.8%	+19	+27.0%	94
Clerical (III & IV)	212	221	224	223	-1	+3	+1.3%	+11	+5.2%	278
Management & Administrative	318	335	354	355	+1	+20	+5.9%	+37	+11.7%	416
Support	241	252	268	262	-6	+10	+3.9%	+21	+8.5%	372
Maintenance/ Technical	16	18	19	19	-0	+0	+1.2%	+2	+14.6%	22
General Support	258	271	286	281	-6	+10	+3.7%	+23	+8.9%	394
Health Care Assistants	1,776	1,852	1,915	1,889	-26	+37	+2.0%	+113	+6.3%	2,173
Home Help	1,113	1,067	1,009	1,009	-1	-58	-5.4%	-105	-9.4%	1,554
Care, other	338	366	368	373	+5	+7	+1.9%	+35	+10.3%	437
Patient & Client Care	3,228	3,285	3,293	3,271	-22	-14	-0.4%	+43	+1.3%	4,164

CHO 5

Feb 2022	WTE Dec 2019	WTE Dec 2020	WTE Jan 2022	WTE Feb 2022	WTE change since Jan 22	WTE change since Dec 20	% change since Dec 20	WTE change since Dec 19	% change since Dec 19	No. Feb 2022
Overall	3,152	3,213	3,310	3,312	+2	+99	+3.1%	+160	+5.1%	3,955
Consultants	1	1	1	1	0	+0	+28.4%			1
Medical/ Dental, other	10	15	15	15	0	+1	+4.0%	+6	+56.2%	21
Medical & Dental	11	16	16	16	+0	+1	+5.2%	+6	+51.2%	22
Nurse/ Midwife Manager	147	158	159	158	-1	-0	-0.1%	+11	+7.3%	167
Nurse/ Midwife Specialist & AN/MP	4	6	5	5	0	-1	-20.7%	+1	+18.8%	5
Staff Nurse/ Staff Midwife	485	476	480	478	-2	+1	+0.3%	-7	-1.5%	561
Public Health Nurse	9	9	11	11	-0	+3	+31.7%	+2	+24.3%	13
<i>Pre-registration Nurse Intern (COVID-19)</i>		1				-1	-100.0%		-100.0%	
<i>Pre-registration Nurse/ Midwife Intern</i>			5	8	+3	+8	-100.0%	+8	-100.0%	16
<i>Nursing/ Midwifery awaiting registration</i>	2						-100.0%	-2	-100.0%	
Nursing/ Midwifery Student	2	1	5	8	+3	+7	+696.0%	+6	+332.6%	16
Nursing/ Midwifery other			1	1	0	+1	-100.0%	+1	-100.0%	1
Nursing & Midwifery	647	650	660	661	+1	+10	+1.6%	+13	+2.1%	763
Therapy Professions	104	97	97	98	+0	+0	+0.3%	-6	-5.8%	112
Social Care	154	143	152	153	+1	+11	+7.4%	-1	-0.3%	189
Social Workers	24	28	29	31	+2	+3	+8.8%	+7	+27.9%	34
Psychologists	14	19	22	24	+2	+5	+26.6%	+10	+72.0%	27
Pharmacy		1	1	1	-0	-0	-1.0%	+1	-100.0%	1
H&SC, Other	7	5	5	5	-0	-1	-11.1%	-2	-31.4%	7
Health & Social Care Professionals	303	294	306	312	+6	+18	+6.0%	+9	+3.0%	370
Management (VIII & above)	15	17	27	27	-0	+10	+61.6%	+12	+81.9%	27
Administrative/ Supervisory (V to VII)	53	58	66	65	-0	+8	+13.6%	+13	+23.8%	70
Clerical (III & IV)	93	93	125	126	+1	+33	+36.0%	+34	+36.2%	146
Management & Administrative	160	167	218	218	+0	+51	+30.8%	+58	+36.3%	243
Support	139	95	88	90	+1	-6	-5.9%	-49	-35.3%	106
Maintenance/ Technical	16	11	13	13	+0	+2	+16.4%	-2	-15.0%	15
General Support	154	107	101	103	+1	-4	-3.5%	-51	-33.3%	121
Health Care Assistants	1,062	1,180	1,168	1,182	+14	+2	+0.1%	+120	+11.3%	1,337
Home Help	661	638	642	625	-17	-14	-2.1%	-37	-5.5%	868
Care, other	154	162	198	196	-2	+34	+21.2%	+42	+27.1%	231
Patient & Client Care	1,877	1,980	2,008	2,002	-6	+22	+1.1%	+125	+6.7%	2,436

CHO 6

Feb 2022	WTE Dec 2019	WTE Dec 2020	WTE Jan 2022	WTE Feb 2022	WTE change since Jan 22	WTE change since Dec 20	% change since Dec 20	WTE change since Dec 19	% change since Dec 19	No. Feb 2022
Overall	2,021	2,020	2,062	2,056	-7	+35	+1.8%	+35	+1.7%	2,291
Consultants	3	3	3	3	0					3
Registrars	1	1	1	2	+1	+1	+99.0%	+1	+99.0%	2
Medical/ Dental, other	5	4	3	3	0	-1	-27.9%	-2	-44.8%	4
Medical & Dental	9	8	7	8	+1	-0	-1.0%	-1	-13.9%	9
Nurse/ Midwife Manager	112	106	107	105	-2	-1	-0.8%	-7	-6.0%	111
Nurse/ Midwife Specialist & AN/MP	1	1				-1	-100.0%	-1	-100.0%	
Staff Nurse/ Staff Midwife	351	348	339	339	+0	-9	-2.6%	-12	-3.4%	364
Nursing & Midwifery	464	455	446	444	-2	-11	-2.4%	-20	-4.2%	475
Therapy Professions	91	89	79	75	-4	-14	-15.5%	-17	-18.1%	89
Social Care	334	361	411	398	-13	+37	+10.2%	+63	+19.0%	451
Social Workers	23	20	15	14	-1	-6	-29.3%	-8	-36.3%	16
Psychologists	16	15	14	14	-0	-0	-2.7%	-1	-9.1%	18
Pharmacy	3	3	4	4	0	+1	+43.8%	+1	+45.8%	5
H&SC, Other	2	1	1	1	+0	+0	+7.0%	-0	-25.1%	2
Health & Social Care Professionals	469	489	525	507	-18	+18	+3.7%	+38	+8.1%	581
Management (VIII & above)	35	35	40	42	+2	+7	+20.0%	+7	+21.4%	44
Administrative/ Supervisory (V to VII)	76	73	84	85	+1	+11	+15.5%	+9	+12.2%	90
Clerical (III & IV)	83	89	79	82	+3	-7	-7.8%	-2	-1.8%	94
Management & Administrative	194	197	203	209	+6	+11	+5.8%	+15	+7.8%	228
Support	131	128	129	127	-2	-1	-0.6%	-4	-3.0%	142
Maintenance/ Technical	15	14	15	15	0	+1	+7.1%	+0	+1.7%	15
General Support	146	142	144	142	-2	+0	+0.2%	-4	-2.5%	157
Health Care Assistants	487	479	495	501	+7	+22	+4.6%	+15	+3.0%	561
Care, other	254	250	243	245	+2	-6	-2.3%	-9	-3.5%	280
Patient & Client Care	740	730	738	746	+8	+16	+2.3%	+6	+0.8%	841

CHO 7

Feb 2022	WTE Dec 2019	WTE Dec 2020	WTE Jan 2022	WTE Feb 2022	WTE change since Jan 22	WTE change since Dec 20	% change since Dec 20	WTE change since Dec 19	% change since Dec 19	No. Feb 2022
Overall	3,978	4,125	4,307	4,284	-22	+159	+3.9%	+307	+7.7%	5,049
Consultants	1	1				-1	-100.0%	-1	-100.0%	
Registrars	3	3	2	3	+1					3
SHO/ Interns	9	9	9	9	+0			+0	+0.4%	9
Medical/ Dental, other	5	3	3	3	0			-2	-39.2%	5
Medical & Dental	18	16	14	15	+1	-1	-3.5%	-2	-14.1%	17
Nurse/ Midwife Manager	199	204	225	226	+1	+21	+10.4%	+26	+13.3%	242
Nurse/ Midwife Specialist & AN/MP	8	7	8	8	+0	+1	+7.9%	+0	+0.1%	9
Staff Nurse/ Staff Midwife	593	620	645	642	-3	+22	+3.6%	+49	+8.2%	724
<i>Pre-registration Nurse/ Midwife Intern</i>			7	7	0	+7	-100.0%	+7	-100.0%	14
<i>Nursing/ Midwifery awaiting registration</i>		1	2	2	-1	+0	+11.1%	+2	-100.0%	2
Nursing/ Midwifery Student		1	9	9	-1	+7	+529.6%	+9	-100.0%	16
Nursing/ Midwifery other	1	2	3	3	0	+1	+66.7%	+2	+400.0%	3
Nursing & Midwifery	801	834	889	886	-2	+52	+6.2%	+86	+10.7%	994
Therapy Professions	136	152	169	164	-4	+13	+8.4%	+29	+21.3%	180
Health Science/ Diagnostics	3	3	3	3	0					3
Social Care	360	389	438	437	-0	+49	+12.5%	+77	+21.4%	481
Social Workers	44	44	48	49	+0	+5	+10.3%	+5	+10.2%	56
Psychologists	28	32	34	34	-0	+2	+6.2%	+6	+22.6%	38
Pharmacy	7	6	9	9	-1	+3	+45.0%	+1	+20.1%	12
H&SC, Other	3	3	3	3	0					3
Health & Social Care Professionals	581	628	703	699	-5	+70	+11.2%	+118	+20.4%	773
Management (VIII & above)	37	50	55	55	+0	+5	+10.7%	+18	+49.3%	57
Administrative/ Supervisory (V to VII)	91	106	114	113	-0	+7	+6.5%	+23	+25.1%	122
Clerical (III & IV)	126	138	149	152	+4	+14	+10.3%	+26	+20.9%	180
Management & Administrative	253	294	317	321	+4	+27	+9.0%	+67	+26.5%	359
Support	277	274	264	265	+1	-10	-3.5%	-12	-4.5%	340
Maintenance/ Technical	30	35	36	32	-4	-3	-9.2%	+1	+3.6%	34
General Support	307	309	299	296	-3	-13	-4.2%	-11	-3.7%	374
Health Care Assistants	1,500	1,504	1,550	1,532	-18	+28	+1.9%	+32	+2.1%	1,822
Home Help	127	132	121	123	+2	-9	-6.9%	-4	-3.4%	230
Care, other	391	408	412	412	+0	+5	+1.1%	+22	+5.6%	480
Patient & Client Care	2,018	2,043	2,084	2,067	-16	+24	+1.2%	+49	+2.4%	2,532

CHO 8

Feb 2022	WTE Dec 2019	WTE Dec 2020	WTE Jan 2022	WTE Feb 2022	WTE change since Jan 22	WTE change since Dec 20	% change since Dec 20	WTE change since Dec 19	% change since Dec 19	No. Feb 2022
Overall	3,650	3,689	3,775	3,706	-69	+17	+0.5%	+56	+1.5%	4,591
Consultants	1	1				-1	-100.0%	-1	-100.0%	
Registrars	2	1	1	1	0			-1	-50.0%	1
Medical/ Dental, other	12	12	11	11	0	-1	-8.8%	-1	-8.4%	19
Medical & Dental	15	14	12	12		-2	-14.7%	-3	-20.2%	20
Nurse/ Midwife Manager	200	208	193	192	-2	-16	-7.9%	-8	-4.0%	211
Nurse/ Midwife Specialist & AN/MP	9	10	11	11	+0	+1	+11.3%	+2	+23.0%	12
Staff Nurse/ Staff Midwife	568	567	569	565	-4	-2	-0.3%	-3	-0.5%	659
Public Health Nurse	3	4	4	4	-0	-0	-4.7%	+0	+11.0%	5
<i>Pre-registration Nurse Intern (COVID-19)</i>		4				-4	-100.0%		-100.0%	
<i>Pre-registration Nurse/ Midwife Intern</i>			12	13	+1	+13	-100.0%	+13	-100.0%	31
Nursing/ Midwifery Student		4	12	13	+1	+9	+230.3%	+13	-100.0%	31
Nursing/ Midwifery other	5	9	9	9	+0	+1	+7.8%	+4	+69.9%	10
Nursing & Midwifery	786	802	799	794	-4	-7	-0.9%	+9	+1.1%	928
Therapy Professions	112	122	116	117	+1	-6	-4.6%	+5	+4.1%	137
Health Science/ Diagnostics	2	2	2	2	0					2
Social Care	361	380	413	393	-21	+13	+3.3%	+32	+8.8%	490
Social Workers	31	29	24	23	-1	-6	-19.7%	-7	-23.4%	28
Psychologists	25	22	28	28	-0	+6	+24.6%	+3	+12.5%	31
Pharmacy	3	2	4	3	-1	+1	+50.0%	+1	+20.0%	4
H&SC, Other	7	6	7	7	-0	+1	+15.6%	+0	+2.7%	9
Health & Social Care Professionals	540	564	594	573	-21	+9	+1.6%	+33	+6.1%	701
Management (VIII & above)	14	20	25	28	+3	+7	+35.6%	+13	+92.2%	28
Administrative/ Supervisory (V to VII)	76	78	77	78	+1	+0	+0.1%	+2	+2.0%	82
Clerical (III & IV)	154	159	164	162	-2	+3	+1.7%	+8	+5.2%	189
Management & Administrative	245	257	266	267	+2	+10	+3.9%	+23	+9.3%	299
Support	72	67	60	61	+0	-6	-8.9%	-12	-16.0%	73
Maintenance/ Technical	40	38	36	36	+1	-1	-3.6%	-4	-8.9%	37
General Support	112	104	96	97	+1	-7	-7.0%	-15	-13.5%	110
Health Care Assistants	1,400	1,416	1,479	1,427	-52	+11	+0.8%	+27	+1.9%	1,734
Home Help	418	397	391	397	+6	+0	+0.0%	-21	-5.0%	631
Care, other	135	135	139	139	+0	+4	+3.0%	+4	+2.7%	168
Patient & Client Care	1,953	1,948	2,009	1,963	-46	+15	+0.8%	+10	+0.5%	2,533

CHO 9

Feb 2022	WTE Dec 2019	WTE Dec 2020	WTE Jan 2022	WTE Feb 2022	WTE change since Jan 22	WTE change since Dec 20	% change since Dec 20	WTE change since Dec 19	% change since Dec 19	No. Feb 2022
Overall	4,064	4,199	4,318	4,346	+28	+147	+3.5%	+282	+7.0%	5,070
Consultants	14	14	15	15	+0	+1	+7.1%	+1	+4.3%	21
Registrars	12	7	10	9	-1	+2	+24.4%	-3	-26.1%	9
SHO/ Interns	12	13	13	13	-0	+0	+0.5%	+1	+6.1%	13
Medical/ Dental, other	7	7	7	7	0					10
Medical & Dental	45	40	44	43	-1	+3	+6.7%	-2	-3.7%	53
Nurse/ Midwife Manager	266	277	285	286	+2	+10	+3.5%	+20	+7.5%	305
Nurse/ Midwife Specialist & AN/MP	13	18	26	28	+2	+11	+59.7%	+15	+109.5%	29
Staff Nurse/ Staff Midwife	744	747	759	765	+6	+19	+2.5%	+21	+2.8%	866
Public Health Nurse	0		1	1	0	+1	-100.0%	+1	+163.2%	1
<i>Pre-registration Nurse Intern (COVID-19)</i>		11				-11	-100.0%		-100.0%	
<i>Pre-registration Nurse/ Midwife Intern</i>	8	3	16	19	+3	+17	+660.0%	+11	+145.2%	38
<i>Nursing/ Midwifery awaiting registration</i>			1	1	0	+1	-100.0%	+1	-100.0%	1
Nursing/ Midwifery Student	8	13	17	20	+3	+7	+52.9%	+12	+158.1%	39
Nursing/ Midwifery other	8	9	8	8	-0	-1	-13.5%	-0	-4.9%	9
Nursing & Midwifery	1,040	1,063	1,096	1,108	+12	+45	+4.3%	+68	+6.6%	1,249
Therapy Professions	236	257	292	296	+4	+39	+15.0%	+61	+25.7%	336
Health Science/ Diagnostics	16	14	14	15	+1	+1	+7.1%	-1	-8.8%	16
Social Care	690	741	809	808	-1	+67	+9.1%	+118	+17.1%	968
Social Workers	65	73	71	72	+1	-1	-1.5%	+7	+10.2%	82
Psychologists	53	64	66	66	+0	+2	+3.3%	+13	+25.3%	72
Pharmacy	5	6	6	6	0			+1	+15.3%	7
H&SC, Other	19	19	17	16	-0	-3	-14.9%	-3	-17.0%	21
Health & Social Care Professionals	1,084	1,174	1,274	1,279	+5	+105	+8.9%	+195	+18.0%	1,502
Management (VIII & above)	46	50	57	57	+0	+6	+12.8%	+10	+22.4%	58
Administrative/ Supervisory (V to VII)	103	121	130	131	+1	+10	+8.1%	+28	+27.6%	142
Clerical (III & IV)	165	170	199	206	+7	+36	+20.9%	+41	+24.6%	247
Management & Administrative	314	342	386	394	+8	+52	+15.2%	+79	+25.3%	447
Support	314	265	258	260	+2	-5	-1.9%	-54	-17.1%	317
Maintenance/ Technical	24	25	23	23	0	-2	-9.2%	-1	-5.5%	25
General Support	338	290	281	283	+2	-7	-2.5%	-55	-16.2%	342
Health Care Assistants	1,139	1,182	1,132	1,134	+2	-49	-4.1%	-5	-0.4%	1,358
Care, other	103	107	105	105	-0	-2	-2.2%	+2	+1.5%	119
Patient & Client Care	1,242	1,289	1,237	1,239	+2	-51	-4.0%	-3	-0.3%	1,477

other Community Services

Feb 2022	WTE Dec 2019	WTE Dec 2020	WTE Jan 2022	WTE Feb 2022	WTE change since Jan 22	WTE change since Dec 20	% change since Dec 20	WTE change since Dec 19	% change since Dec 19	No. Feb 2022
Overall	78	81	82	83	+1	+2	+2.7%	+5	+6.2%	90
Health Science/ Diagnostics	1						-100.0%	-1	-100.0%	
Psychologists			1	1	0	+1	-100.0%	+1	-100.0%	1
Health & Social Care Professionals	1		1	1		+1	-100.0%			1
Management (VIII & above)	20	18	18	18	+0	-0	-0.5%	-2	-10.1%	18
Administrative/ Supervisory (V to VII)	24	24	28	28	-0	+4	+16.4%	+4	+15.1%	31
Clerical (III & IV)	33	39	34	35	+1	-4	-9.2%	+2	+6.4%	38
Management & Administrative	77	81	80	81	+1	+0	+0.4%	+4	+4.9%	87
Health Care Assistants	0	0	0	0	0			+0	+420.0%	1
Care, other			1	1	0	+1	-100.0%	+1	-100.0%	1
Patient & Client Care	0	0	1	1		+1	+334.6%	+1	+2160.0%	2

Social Care Services Employment by Grade Group: Feb 2022

Feb 2022	WTE Dec 2019	WTE Dec 2020	WTE Jan 2022	WTE Feb 2022	WTE change since Jan 22	WTE change since Dec 20	% change since Dec 20	WTE change since Dec 19	% change since Dec 19	No. Feb 2022
Overall	31,535	32,359	33,324	33,215	-109	+856	+2.6%	+1,680	+5.3%	39,774
Consultant Medicine	4	4	7	7	+1	+3	+60.6%	+3	+97.2%	9
Consultant Paediatrics	3	3	2	2		-1	-29.2%	-1	-29.2%	4
Consultant Psychiatry	21	21	20	20	+0	-2	-7.6%	-1	-5.3%	25
Consultants	27	29	28	29	+1	+0	+0.6%	+2	+5.5%	38
Registrar	14	9	12	12	-1	+3	+30.1%	-2	-14.9%	12
Senior Registrar	3	4	3	4	+1	+0	+2.0%	+1	+36.0%	5
Specialist Registrar	6	4	5	5	+0	+1	+25.0%	-1	-16.7%	5
Registrars	23	17	20	21	+0	+4	+22.2%	-2	-8.6%	22
Senior House Officer	22	23	24	24	+0	+1	+4.7%	+2	+8.1%	24
SHO/ Interns	22	23	24	24	+0	+1	+4.7%	+2	+8.1%	24
Other Medical	111	118	99	95	-4	-23	-19.5%	-16	-14.2%	175
Medical/ Dental, other	111	118	99	95	-4	-23	-19.5%	-16	-14.2%	175
Medical & Dental	183	186	171	168	-3	-18	-9.7%	-14	-7.9%	259
Clinical Nurse/ Midwife Manager	1,319	1,350	1,382	1,367	-14	+17	+1.2%	+48	+3.6%	1,482
Director Nursing/Midwifery, Assistant	143	152	148	152	+4	-0	-0.0%	+8	+5.9%	156
Director of Nursing/Midwifery	140	141	150	149	-1	+8	+5.4%	+8	+6.0%	154
Nurse/ Midwife Manager	1,603	1,643	1,680	1,668	-12	+24	+1.5%	+65	+4.0%	1,792
Advanced Nurse/ Midwife Practitioner	13	25	26	29	+3	+4	+15.9%	+16	+124.3%	29
Clinical Nurse/ Midwife Specialist	76	78	79	84	+5	+6	+7.9%	+8	+10.6%	92
Nurse/ Midwife Specialist & AN/MP	88	102	105	112	+7	+10	+9.8%	+24	+27.0%	121
Staff Midwives		1	1	1	-0	-0	-19.3%	+1	-100.0%	1
Staff Nurse [Psychiatric]	88	58	65	142	+77	+84	+146.2%	+54	+61.0%	172
Staff Nurses [General/ Children's]	3,463	3,369	3,305	3,420	+115	+50	+1.5%	-44	-1.3%	3,950
Staff Nurse [Intellectual Disability]	1,597	1,789	1,936	1,735	-201	-54	-3.0%	+138	+8.6%	1,995
Staff Nurse/ Staff Midwife	5,149	5,217	5,307	5,298	-9	+80	+1.5%	+149	+2.9%	6,118
Public Health Nurse	20	20	24	23	-1	+3	+15.0%	+4	+18.8%	28
Pre-registration Nurse Intern (COVID-19)		32				-32	-100.0%		-100.0%	
Pre-registration Nurse/ Midwife Intern	28	3	68	85	+18	+83	+3314.0%	+57	+202.1%	174
Post-registration Nurse/ Midwife Student	1						-100.0%	-1	-100.0%	
Nursing/ Midwifery awaiting registration	15	14	3	3	-1	-12	-82.6%	-12	-83.2%	3
Nursing/ Midwifery Student	44	49	71	88	+17	+39	+80.6%	+44	+99.3%	177
Nursing Education/Clinical	22	27	28	28	-0	+1	+3.1%	+5	+24.5%	31
Other Nursing/ Midwifery	1	1	2	2		+1	+100.0%	+1	+100.0%	2
Nursing/ Midwifery other	23	28	30	30	-0	+2	+6.6%	+6	+27.8%	33
Nursing & Midwifery	6,927	7,060	7,216	7,218	+2	+159	+2.3%	+291	+4.2%	8,269
Dietitians	35	34	47	47	-0	+12	+35.6%	+12	+33.9%	58
Occupational Therapists	377	392	408	410	+2	+19	+4.8%	+33	+8.8%	464
Physiotherapists	313	325	348	352	+4	+27	+8.4%	+40	+12.7%	407
Podiatrists & Chiropodists	12	13	9	7	-2	-6	-47.0%	-5	-44.4%	10
Speech & Language Therapists	316	327	328	324	-5	-4	-1.1%	+8	+2.4%	372
Therapy Professions	1,053	1,091	1,141	1,140	-1	+49	+4.5%	+87	+8.3%	1,311
Clinical Engineering	13	13	15	15		+2	+15.4%	+2	+15.0%	15
Medical Science	4	4	3	4	+1					4
Phlebotomists	1						-100.0%	-1	-100.0%	
Radiographers	7	6	4	4	-0	-2	-26.5%	-3	-36.7%	7
Respiratory Physiologists	1	2	2	2				+1	+100.0%	2
Vascular Physiologists	0	0	0	0	+0			-0	-23.8%	1
Health Science/ Diagnostics	26	25	24	26	+1	+0	+1.7%	-1	-2.4%	29
Social Care	2,598	2,792	3,035	3,002	-33	+210	+7.5%	+404	+15.6%	3,531
Social Workers	317	328	319	322	+3	-6	-1.8%	+5	+1.5%	367

Feb 2022	WTE Dec 2019	WTE Dec 2020	WTE Jan 2022	WTE Feb 2022	WTE change since Jan 22	WTE change since Dec 20	% change since Dec 20	WTE change since Dec 19	% change since Dec 19	No. Feb 2022
Overall	31,535	32,359	33,324	33,215	-109	+856	+2.6%	+1,680	+5.3%	39,774
Psychologists	206	230	252	257	+5	+27	+11.7%	+51	+24.8%	288
Pharmacists	18	18	23	22	-1	+4	+24.7%	+4	+22.7%	32
Pharmacy Technicians	4	6	6	6	+0	+1	+16.5%	+2	+60.3%	7
Pharmacy	22	23	29	29	-1	+5	+22.8%	+7	+29.5%	39
Counsellor Therapists	19	20	23	23	-0	+3	+15.3%	+4	+20.6%	27
Other Health & Social Care	51	46	39	38	-1	-7	-15.9%	-13	-24.6%	53
Play Therapists/ Specialists	16	12	11	12	+1	-0	-2.1%	-5	-29.4%	15
H&SC, Other	86	77	73	73	+0	-4	-5.8%	-13	-15.6%	95
Health & Social Care Professionals	4,308	4,567	4,874	4,848	-26	+281	+6.2%	+540	+12.5%	5,660
Executive Management	43	51	54	57	+3	+6	+11.5%	+14	+32.7%	58
Senior Management (VIII & GM)	212	232	269	272	+3	+40	+17.2%	+60	+28.5%	279
Management (VIII & above)	254	283	322	328	+6	+46	+16.2%	+74	+29.2%	337
Middle Management (V-VII)	628	687	762	772	+9	+85	+12.3%	+143	+22.8%	821
Other Administrative	16	16	13	13	-0	-3	-17.8%	-3	-18.5%	13
Administrative/ Supervisory (V to VII)	644	703	776	785	+9	+82	+11.6%	+141	+21.8%	834
General Administrative (III & IV)	1,231	1,272	1,341	1,351	+10	+79	+6.2%	+120	+9.7%	1,589
Clerical (III & IV)	1,231	1,272	1,341	1,351	+10	+79	+6.2%	+120	+9.7%	1,589
Management & Administrative	2,130	2,258	2,439	2,464	+25	+206	+9.1%	+334	+15.7%	2,760
Catering	319	312	301	304	+3	-8	-2.7%	-15	-4.7%	342
Household Services	912	885	853	848	-5	-36	-4.1%	-63	-7.0%	1,080
Other Labs & Associated	1	1	1	1						1
Other Support	222	165	173	172	-2	+7	+4.1%	-51	-22.8%	259
Portering	109	101	93	93	+1	-8	-7.6%	-16	-14.4%	105
Support	1,563	1,464	1,421	1,418	-3	-45	-3.1%	-145	-9.3%	1,787
Maintenance	215	216	205	203	-2	-13	-5.9%	-11	-5.2%	218
Technical Services	8	11	19	19	-0	+8	+69.4%	+11	+132.1%	19
Maintenance/ Technical	223	227	224	222	-2	-5	-2.2%	-0	-0.2%	237
General Support	1,786	1,691	1,646	1,641	-5	-51	-3.0%	-145	-8.1%	2,024
Attendant/ Aide	2,524	2,458	2,146	2,064	-81	-394	-16.0%	-460	-18.2%	2,402
Health & Social Care Assistants	31	38	55	55	+0	+17	+43.2%	+24	+78.0%	63
Health Care Assistant/ Care Assistant	8,315	8,702	9,245	9,280	+35	+578	+6.6%	+965	+11.6%	10,890
HCA (Student Nurse/Midwife COVID-19)		22	0		-0	-22	-100.0%		-100.0%	
Health Care Assistants	10,869	11,221	11,445	11,399	-47	+178	+1.6%	+530	+4.9%	13,355
Home Help	3,551	3,525	3,591	3,530	-61	+5	+0.1%	-21	-0.6%	5,178
Home Care Services	114	117	155	158	+4	+41	+34.9%	+44	+38.5%	174
Other Care Grades	197	240	271	273	+1	+32	+13.4%	+76	+38.4%	315
Pastoral Care	42	37	33	34	+0	-3	-9.1%	-8	-20.0%	60
Workshop Services	1,428	1,458	1,482	1,482	-0	+24	+1.7%	+54	+3.8%	1,719
Health Promotion			0	1	+0	+1	-100.0%	+1	-100.0%	1
Care, other	1,781	1,852	1,942	1,947	+5	+94	+5.1%	+165	+9.3%	2,269
Patient & Client Care	16,201	16,598	16,978	16,875	-103	+278	+1.7%	+674	+4.2%	20,802

Employment by WTE, Headcount, Gender, Full-Time /Part-Time etc.: Feb 2022

Social Care Services Staff Group	WTE	Headcount	WTE: no.	% Male	% female	Male WTE: no.	Female WTE: no.	% Total Perm	% Male Perm	% Female Perm	% Total Full Time	% Total Part Time	% Male FT	% Female FT
Overall	33,215	39,774	1.20	16.9%	83.1%	1.11	1.22	85.6%	84.5%	85.9%	58.6%	41.4%	73.6%	55.5%
Consultant Medicine	7	9	1.27	11.1%	88.9%	1.00	1.31	66.7%	66.7%	62.5%	44.4%	55.6%	0.0%	50.0%
Consultant Paediatrics	2	4	1.85		100.0%		1.85	75.0%	75.0%	75.0%	25.0%	75.0%		25.0%
Consultant Psychiatry	20	25	1.27	28.0%	72.0%	1.09	1.35	76.0%	76.0%	83.3%	56.0%	44.0%	71.4%	50.0%
Consultants	29	38	1.31	21.1%	78.9%	1.08	1.39	73.7%	62.5%	76.7%	50.0%	50.0%	62.5%	46.7%
Registrar	12	12	1.04	41.7%	58.3%	1.00	1.08	50.0%	50.0%	42.9%	91.7%	8.3%	100.0%	85.7%
Senior Registrar	4	5	1.23	20.0%	80.0%	12.50	1.00	20.0%	20.0%	25.0%	80.0%	20.0%	0.0%	100.0%
Specialist Registrar	5	5	1.00	40.0%	60.0%	1.00	1.00	0.0%	0.0%	0.0%	100.0%	0.0%	100.0%	100.0%
Registrars	21	22	1.07	36.4%	63.6%	1.13	1.04	31.8%	37.5%	28.6%	90.9%	9.1%	87.5%	92.9%
Senior House Officer	24	24	1.01	29.2%	70.8%	1.00	1.02	12.5%	12.5%	5.9%	100.0%	0.0%	100.0%	100.0%
SHO/ Interns	24	24	1.01	29.2%	70.8%	1.00	1.02	12.5%	28.6%	5.9%	100.0%	0.0%	100.0%	100.0%
Other Medical	95	175	1.84	61.1%	38.9%	1.95	1.69	58.9%	58.9%	60.3%	35.4%	64.6%	30.8%	42.6%
Medical/ Dental, other	95	175	1.84	61.1%	38.9%	1.95	1.69	58.9%	57.9%	60.3%	35.4%	64.6%	30.8%	42.6%
Medical & Dental	168	259	1.54	50.2%	49.8%	1.70	1.40	54.4%	55.4%	53.5%	48.3%	51.7%	40.0%	56.6%
Clinical Nurse/ Midwife Manager	1,367	1,482	1.08	10.9%	89.1%	1.02	1.09	94.5%	94.5%	94.6%	81.1%	18.9%	96.3%	79.3%
Director Nursing/Midwifery, Assistant	152	156	1.03	7.7%	92.3%	1.00	1.03	98.7%	98.7%	98.6%	91.0%	9.0%	100.0%	90.3%
Director of Nursing/Midwifery	149	154	1.03	7.8%	92.2%	1.01	1.04	96.8%	96.8%	96.5%	95.5%	4.5%	100.0%	95.1%
Nurse/ Midwife Manager	1,668	1,792	1.07	10.3%	89.7%	1.02	1.08	95.1%	94.6%	95.1%	83.2%	16.8%	96.8%	81.6%
Advanced Nurse/ Midwife Practitioner	29	29	1.02	10.3%	89.7%	1.00	1.02	96.6%	96.6%	96.2%	100.0%	0.0%	100.0%	100.0%
Clinical Nurse/ Midwife Specialist	84	92	1.10	8.7%	91.3%	1.01	1.11	97.8%	97.8%	97.6%	66.3%	33.7%	100.0%	63.1%
Nurse/ Midwife Specialist & AN/MP	112	121	1.08	9.1%	90.9%	1.00	1.09	97.5%	100.0%	97.3%	74.4%	25.6%	100.0%	71.8%
Staff Midwives	1	1	1.41		100.0%		1.41	100.0%	100.0%	100.0%	0.0%	100.0%		0.0%
Staff Nurse [Psychiatric]	142	172	1.21	16.3%	83.7%	1.13	1.23	84.9%	84.9%	84.7%	55.8%	44.2%	67.9%	53.5%
Staff Nurses [General/ Children's]	3,420	3,950	1.16	9.5%	90.5%	1.05	1.17	87.8%	87.8%	87.9%	64.9%	35.1%	91.2%	62.1%
Staff Nurse [Intellectual Disability]	1,735	1,995	1.15	7.8%	92.2%	1.06	1.16	94.7%	94.7%	94.6%	67.9%	32.1%	87.1%	66.3%
Staff Nurse/ Staff Midwife	5,298	6,118	1.15	9.1%	90.9%	1.06	1.17	90.0%	89.1%	90.1%	65.6%	34.4%	88.9%	63.2%
Public Health Nurse	23	28	1.20		100.0%		1.20	100.0%		100.0%	64.3%	35.7%		64.3%
Pre-registration Nurse/ Midwife Intern	85	174	2.04	7.5%	92.5%	1.97	2.04	21.3%	21.3%	22.4%	68.4%	31.6%	76.9%	67.7%
Nursing/ Midwifery awaiting registration	3	3	1.20		100.0%		1.20	0.0%	0.0%	0.0%	100.0%	0.0%		100.0%
Nursing/ Midwifery Student	88	177	2.01	7.3%	92.7%	1.97	2.02	20.9%	7.7%	22.0%	68.9%	31.1%	76.9%	68.3%

Nursing/ Midwifery other	30	33	1.11	3.0%	97.0%	1.00	1.12	97.0%	100.0%	96.9%	72.7%	27.3%	100.0%	71.9%
Nursing & Midwifery	7,218	8,269	1.15	9.3%	90.7%	1.05	1.16	89.8%	89.2%	89.8%	69.6%	30.4%	90.8%	67.5%
Dietitians	47	58	1.24	5.2%	94.8%	1.00	1.26	93.1%	93.1%	94.5%	63.8%	36.2%	100.0%	61.8%
Occupational Therapists	410	464	1.13	7.1%	92.9%	1.07	1.14	90.9%	90.9%	91.0%	81.0%	19.0%	87.9%	80.5%
Physiotherapists	352	407	1.15	16.7%	83.3%	1.05	1.18	90.2%	90.2%	90.0%	73.0%	27.0%	92.6%	69.0%
Podiatrists & Chiropodists	7	10	1.49	10.0%	90.0%	1.00	1.58	60.0%	60.0%	55.6%	50.0%	50.0%	100.0%	44.4%
Speech & Language Therapists	324	372	1.15	2.2%	97.8%	1.01	1.15	89.2%	89.2%	89.3%	75.0%	25.0%	87.5%	74.7%
Therapy Professions	1,140	1,311	1.15	8.6%	91.4%	1.05	1.16	90.1%	90.3%	90.1%	75.8%	24.2%	91.2%	74.4%
Clinical Engineering	15	15	1.00	93.3%	6.7%	1.00	1.00	86.7%	86.7%	100.0%	93.3%	6.7%	92.9%	100.0%
Medical Science	4	4	1.00	50.0%	50.0%	1.00	1.00	50.0%	50.0%	50.0%	100.0%	0.0%	100.0%	100.0%
Radiographers	4	7	1.59	14.3%	85.7%	2.00	1.54	85.7%	85.7%	83.3%	28.6%	71.4%	0.0%	33.3%
Respiratory Physiologists	2	2	1.00	100.0%		1.00		100.0%	100.0%		100.0%	0.0%	100.0%	
Vascular Physiologists	0	1	6.25		100.0%		6.25	0.0%	0.0%	0.0%	0.0%	100.0%		0.0%
Health Science/ Diagnostics	26	29	1.14	65.5%	34.5%	1.03	1.42	79.3%	84.2%	70.0%	75.9%	24.1%	89.5%	50.0%
Social Care	3,002	3,531	1.18	16.3%	83.7%	1.09	1.19	90.7%	92.2%	90.4%	49.1%	50.9%	63.7%	46.2%
Social Workers	322	367	1.14	17.2%	82.8%	1.07	1.15	92.4%	90.5%	92.8%	75.2%	24.8%	85.7%	73.0%
Psychologists	257	288	1.12	18.4%	81.6%	1.05	1.14	93.1%	94.3%	92.8%	77.8%	22.2%	88.7%	75.3%
Pharmacists	22	32	1.45	15.6%	84.4%	1.40	1.46	78.1%	78.1%	81.5%	53.1%	46.9%	60.0%	51.9%
Pharmacy Technicians	6	7	1.09	14.3%	85.7%	1.00	1.11	71.4%	71.4%	66.7%	85.7%	14.3%	100.0%	83.3%
Pharmacy	28	39	1.37	15.4%	84.6%	1.31	1.38	76.9%	66.7%	78.8%	59.0%	41.0%	66.7%	57.6%
Counsellor Therapists	23	27	1.18	3.7%	96.3%	1.00	1.19	100.0%	100.0%	100.0%	55.6%	44.4%	100.0%	53.8%
Other Health & Social Care	38	53	1.38	13.2%	86.8%	1.03	1.46	88.7%	88.7%	87.0%	43.4%	56.6%	85.7%	37.0%
Play Therapists/ Specialists	12	15	1.29	26.7%	73.3%	1.00	1.44	93.3%	93.3%	90.9%	46.7%	53.3%	100.0%	27.3%
H&SC, Other	73	95	1.31	12.6%	87.4%	1.02	1.36	92.6%	100.0%	91.6%	47.4%	52.6%	91.7%	41.0%
Health & Social Care	4,848	5,660	1.17	14.9%	85.1%	1.08	1.18	90.6%	91.7%	90.5%	58.6%	41.4%	71.6%	56.3%
Executive Management	57	58	1.02	39.7%	60.3%	1.04	1.01	94.8%	94.8%	97.1%	98.3%	1.7%	95.7%	100.0%
Senior Management (VIII & GM)	272	279	1.03	32.3%	67.7%	1.01	1.04	95.0%	95.0%	95.8%	96.1%	3.9%	98.9%	94.7%
Management (VIII & above)	328	337	1.03	33.5%	66.5%	1.02	1.03	95.0%	92.9%	96.0%	96.4%	3.6%	98.2%	95.5%
Middle Management (V-VII)	772	821	1.06	20.2%	79.8%	1.02	1.08	94.0%	94.0%	94.5%	81.2%	18.8%	90.4%	78.9%
Other Administrative	13	13	1.00	7.7%	92.3%	1.00	1.00	92.3%	92.3%	91.7%	100.0%	0.0%	100.0%	100.0%
Administrative/ Supervisory (V to VII)	785	834	1.06	20.0%	80.0%	1.02	1.07	94.0%	92.2%	94.5%	81.5%	18.5%	90.4%	79.3%
General Administrative (III & IV)	1,351	1,589	1.18	9.3%	90.7%	1.10	1.18	86.8%	86.8%	87.4%	62.2%	37.8%	83.8%	60.0%
Clerical (III & IV)	1,351	1,589	1.18	9.3%	90.7%	1.10	1.18	86.8%	80.4%	87.4%	62.2%	37.8%	83.8%	60.0%
Management & Administrative	2,464	2,760	1.12	15.5%	84.5%	1.05	1.14	90.0%	88.3%	90.3%	72.2%	27.8%	90.2%	69.0%
Catering	304	342	1.12	34.2%	65.8%	1.06	1.16	94.4%	94.4%	97.8%	68.4%	31.6%	90.6%	56.9%

Household Services	848	1,080	1.27	17.9%	82.1%	1.24	1.28	85.3%	85.3%	87.4%	46.4%	53.6%	71.0%	41.0%
Other Labs & Associated	1	1	1.00		100.0%		1.00	100.0%	100.0%	100.0%	100.0%	0.0%		100.0%
Other Support	172	259	1.51	53.3%	46.7%	1.29	1.89	90.3%	90.3%	98.3%	32.0%	68.0%	50.7%	10.7%
Portering	93	105	1.13	98.1%	1.9%	1.12	1.30	87.6%	87.6%	100.0%	81.0%	19.0%	81.6%	50.0%
Support	1,418	1,787	1.26	30.8%	69.2%	1.18	1.30	87.9%	82.4%	90.4%	50.6%	49.4%	72.1%	41.0%
Maintenance	203	218	1.07	97.2%	2.8%	1.07	1.08	95.4%	95.4%	100.0%	83.5%	16.5%	84.0%	66.7%
Technical Services	19	19	1.01	84.2%	15.8%	1.00	1.07	94.7%	94.7%	100.0%	94.7%	5.3%	100.0%	66.7%
Maintenance/ Technical	222	237	1.07	96.2%	3.8%	1.07	1.08	95.4%	95.2%	100.0%	84.4%	15.6%	85.1%	66.7%
General Support	1,641	2,024	1.23	38.5%	61.5%	1.15	1.29	88.8%	86.1%	90.4%	54.5%	45.5%	75.9%	41.2%
Attendant/ Aide	2,064	2,402	1.16	20.2%	79.8%	1.07	1.19	86.3%	86.3%	86.9%	56.9%	43.1%	81.9%	50.5%
Health & Social Care Assistants	55	63	1.15	20.6%	79.4%	1.05	1.17	95.2%	95.2%	96.0%	73.0%	27.0%	92.3%	68.0%
Health Care Assistant/ Care Assistant	9,280	10,890	1.17	22.9%	77.1%	1.10	1.20	85.9%	85.9%	85.8%	55.5%	44.5%	68.1%	51.8%
Health Care Assistants	11,399	13,355	1.17	22.4%	77.6%	1.09	1.20	86.0%	85.8%	86.0%	55.9%	44.1%	70.5%	51.6%
Home Help	3,530	5,178	1.47	4.2%	95.8%	1.42	1.47	70.4%	39.1%	71.8%	41.0%	59.0%	52.7%	40.5%
Home Care Services	158	174	1.10	11.5%	88.5%	1.05	1.11	92.5%	92.5%	93.5%	73.6%	26.4%	80.0%	72.7%
Other Care Grades	273	315	1.16	32.1%	67.9%	1.15	1.16	89.8%	89.8%	93.5%	71.7%	28.3%	79.2%	68.2%
Pastoral Care	34	60	1.79	83.3%	16.7%	1.87	1.45	36.7%	36.7%	80.0%	45.0%	55.0%	46.0%	40.0%
Workshop Services	1,482	1,719	1.16	23.3%	76.7%	1.10	1.18	87.0%	87.0%	87.5%	60.7%	39.3%	70.5%	57.7%
Health Promotion	1	1	2.00		100.0%		2.00	100.0%	100.0%	100.0%	0.0%	100.0%		0.0%
Care, other	1,947	2,269	1.17	25.2%	74.8%	1.15	1.17	86.5%	79.9%	88.8%	62.8%	37.2%	70.2%	60.2%
Patient & Client Care	16,875	20,802	1.23	18.2%	81.8%	1.12	1.26	82.2%	82.2%	82.1%	52.9%	47.1%	69.4%	49.2%

Employment by WTE, Headcount, Gender, Full-Time /Part-Time etc.: Feb 2022

Social Care Services CHO	WTE	Headcount	WTE: no.	% Male	% female	Male WTE: no.	Female WTE: no.	% Total Perm	% Male Perm	% Female Perm	% Total Full Time	% Total Part Time	% Male FT	% Female FT
Overall	33,215	39,774	1.20	16.9%	83.1%	1.11	1.22	85.6%	84.5%	85.9%	58.6%	41.4%	73.6%	55.5%
<i>CHO 1</i>	3,620	4,196	1.16	16.0%	84.0%	1.10	1.17	80.0%	80.0%	78.6%	58.2%	41.8%	79.3%	54.1%
<i>CHO 2</i>	3,088	3,730	1.21	18.5%	81.5%	1.14	1.22	87.0%	87.0%	87.5%	47.8%	52.2%	62.8%	44.4%
<i>CHO 3</i>	3,178	3,845	1.21	12.8%	87.2%	1.10	1.23	86.9%	86.9%	87.4%	46.5%	53.5%	61.9%	44.3%
<i>CHO 4</i>	5,541	6,957	1.26	15.8%	84.2%	1.13	1.28	72.3%	72.3%	73.2%	71.4%	28.6%	80.2%	69.8%
<i>CHO 5</i>	3,312	3,955	1.19	14.7%	85.3%	1.11	1.21	91.7%	91.7%	92.6%	49.6%	50.4%	67.2%	46.5%
<i>CHO 6</i>	2,056	2,291	1.11	23.1%	76.9%	1.06	1.13	93.3%	93.3%	93.8%	70.9%	29.1%	83.4%	67.1%
<i>CHO 7</i>	4,284	5,049	1.18	21.4%	78.6%	1.10	1.20	88.6%	88.6%	88.9%	67.2%	32.8%	80.7%	63.5%
<i>CHO 8</i>	3,706	4,591	1.24	16.8%	83.2%	1.15	1.26	92.1%	92.1%	92.0%	47.8%	52.2%	60.9%	45.2%
<i>CHO 9</i>	4,346	5,070	1.17	15.8%	84.2%	1.08	1.18	89.7%	89.7%	89.9%	60.6%	39.4%	76.8%	57.6%
<i>other Community Services</i>	83	90	1.08	23.3%	76.7%	1.05	1.09	90.0%	90.0%	89.9%	86.7%	13.3%	90.5%	85.5%

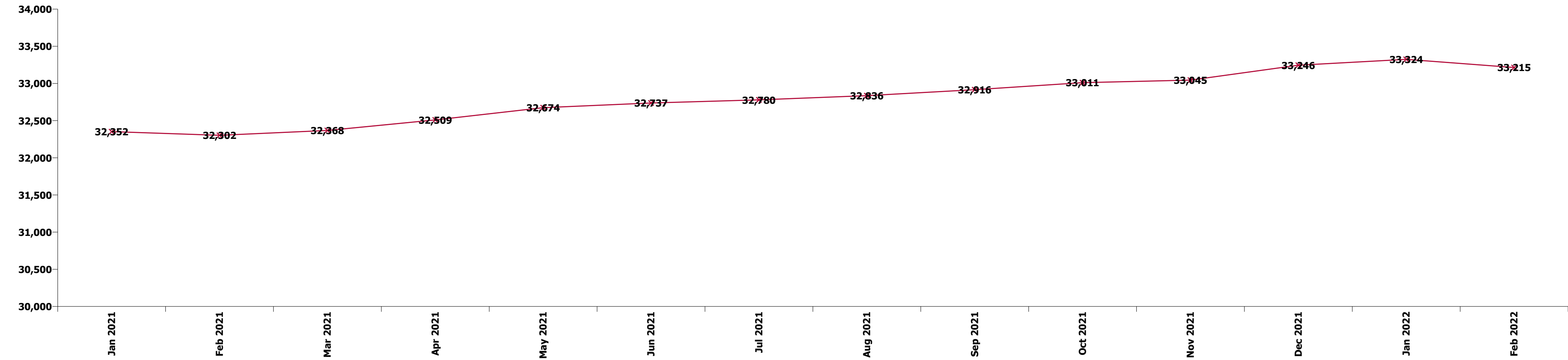
Summary Staff Movement: February 2022

Month-on-month
Summary

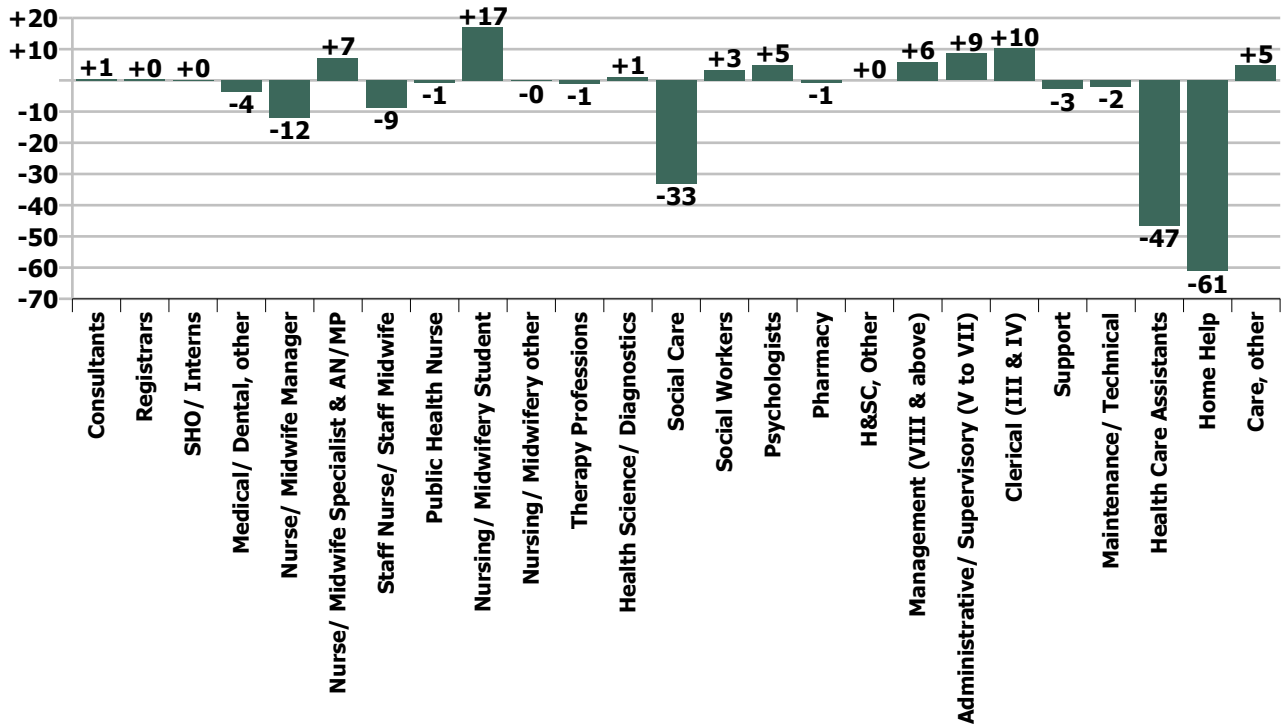
WTE change since Jan 22	% change since Jan 22	overall	Consultants	Registrars	SHO/ Interns	Medical/ Dental, other	Medical & Dental	Nurse/ Midwife Manager	Nurse/ Midwife Specialist & AN/MP	Staff Nurse/ Staff Midwife	Public Health Nurse	Nursing/ Midwifery Student	Nursing/ Midwifery other	Nursing & Midwifery	Therapy Professions	Health Science/ Diagnostics	Social Care	Social Workers	Psychologists	Pharmacy	H&SC, Other	Health & Social Care Professionals	Management (VIII & above)	Administrativ e/ Supervisory (V to VII)	Clerical (III & IV)	Management & Administrative	General Support	Health Care Assistants	Home Help	Care, other	Patient & Client Care	
Overall	-0.3%	-109	+1	+0	+0	-4	-3	-12	+7	-9	-1	+17	-0	+2	-1	+1	-33	+3	+5	-1	+0	-26	+6	+9	+10	+25	-5	-47	-61	+5	-103	
CHO 1	-0.9%	-34				-3	-3	-6	+1	-4		+9	-0	+0	+4		-0	-1	-0		-0	+2	+1	+2	-1	+2	+2	+11	-48	+0	-36	
CHO 2	-0.2%	-6						+0	+3	-5				-2	+3		-3	+0	+2		-0	+2		+3	-1	+2	+1	+5	-11	-2	-9	
CHO 3	+1.1%	+36	-0			+1	+0	-1	+1	+5	-1	+1		+4	+6	+0	+1	+2	-0	+0	+1	+10	-1	+1	-0	+0	-1	+12	+8	+1	+22	
CHO 4	-0.7%	-38	+1			-1	-1	-3	+0	-2	+1	+1		-4	-12		+3	-0	+2	+0	-0	-7	+0	+1	-1	+1	-6	-26	-1	+5	-22	
CHO 5	+0.1%	+2					+0	-1		-2	-0	+3		+1	+0		+1	+2	+2	-0	-0	+6	-0	-0	+1	+0	+1	+14	-17	-2	-6	
CHO 6	-0.3%	-7		+1			+1	-2		+0				-2	-4		-13	-1	-0		+0	-18	+2	+1	+3	+6	-2	+7		+2	+8	
CHO 7	-0.5%	-22		+1	+0		+1	+1	+0	-3		-1		-2	-4		-0	+0	-0	-1		-5	+0	-0	+4	+4	-3	-18	+2	+0	-16	
CHO 8	-1.8%	-69						-2	+0	-4	-0	+1	+0	-4	+1		-21	-1	-0	-1	-0	-21	+3	+1	-2	+2	+1	-52	+6	+0	-46	
CHO 9	+0.6%	+28	+0	-1	-0		-1	+2	+2	+6		+3	-0	+12	+4	+1	-1	+1	+0		-0	+5	+0	+1	+7	+8	+2	+2		-0	+2	
other Community Services	+1.4%	+1																				+0	-0	+1	+1						+2	
			-0.3%	+1.8%	+1.7%	+0.7%	-3.7%	-1.5%	-0.7%	+6.8%	-0.2%	-2.7%	+24.0%	-1.1%	+0.0%	-0.1%	+4.4%	-1.1%	+1.1%	+2.0%	-2.4%	+0.0%	-0.5%	+1.8%	+1.1%	+0.8%	+1.0%	-0.3%	-0.4%	-1.7%	+0.2%	-0.6%

Year-on-year Summary

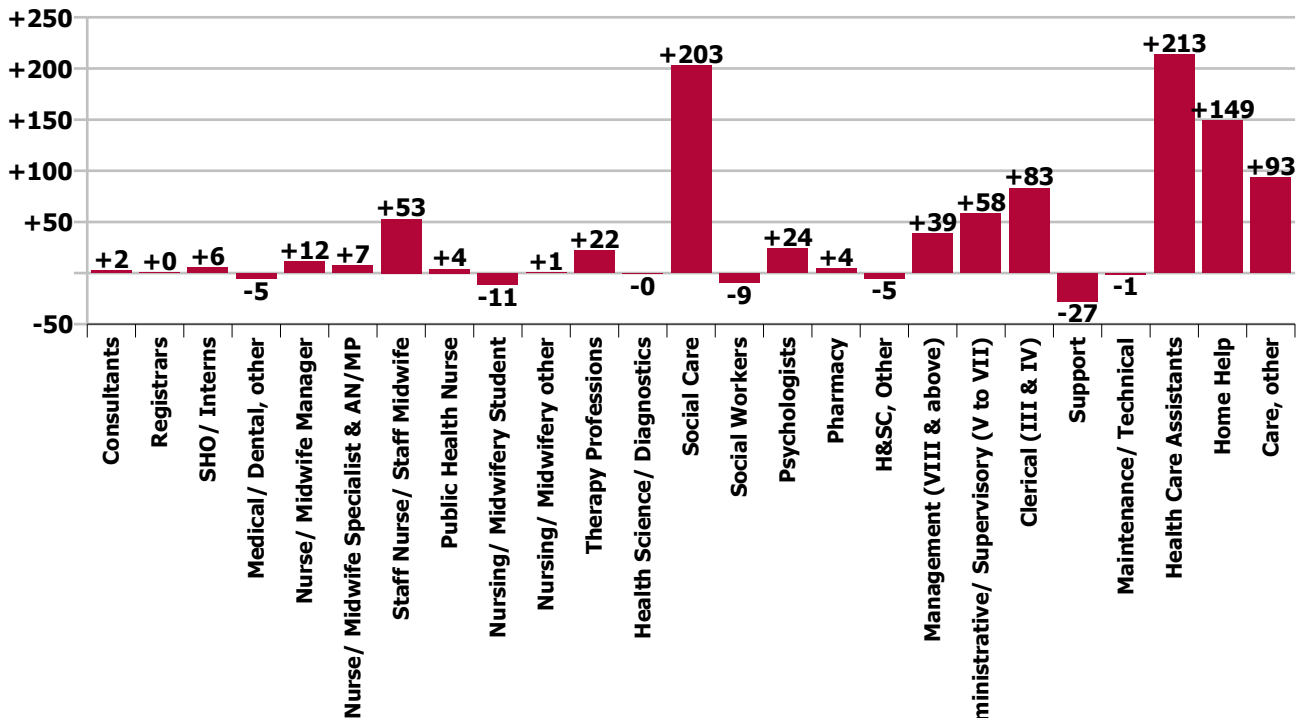
WTE change since Feb 21	% change since Feb 21	overall	Consultants	Registrars	SHO/ Interns	Medical/ Dental, other	Medical & Dental	Nurse/ Midwife Manager	Nurse/ Midwife Specialist & AN/MP	Staff Nurse/ Staff Midwife	Public Health Nurse	Nursing/ Midwifery Student	Nursing/ Midwifery other	Nursing & Midwifery	Therapy Professions	Health Science/ Diagnostics	Social Care	Social Workers	Psychologists	Pharmacy	H&SC, Other	Health & Social Care Professionals	Management (VIII & above)	Administrative/ Supervisory (V to VII)	Clerical (III & IV)	Management & Administrative	General Support	Health Care Assistants	Home Help	Care, other	Patient & Client Care
Overall	+2.8%	+912	+2	+0	+6	-5	+3	+12	+7	+53	+4	-11	+1	+65	+22	-0	+203	-9	+24	+4	-5	+238	+39	+58	+83	+180	-29	+213	+149	+93	+455
CHO 1	+5.3%	+181		+1		-1	-0	+11	-0	+20	+1	-17	-0	+14	+20	-2	-1	-9	+5		-2	+12	-1	+8	-1	+6	-27	+64	+97	+16	+176
CHO 2	+0.6%	+17				-1	-1	-10	+3	+3				-4	+2		+19	+2	+3	-1	+1	+26	+1	+15	+3	+19	+0	+4	-38	+13	-22
CHO 3	+6.2%	+185	+2	+1		-1	+2	+2	+0	+8	-1	-1		+9	-17	+1	+4	+4	-1		+1	-8	+3	+1	+2	+6	-1	+50	+106	+21	+177
CHO 4	+1.3%	+71	-1	-1	+1	-0	-1	-1	-2	+3	-1	+2	+1	+3	+1		+11	+2	-0	+1	-2	+14	+5	+14	+1	+20	+13	+22	-7	+7	+22
CHO 5	+2.4%	+79	+0				+0	-0	-3	+3	+4	-2		+1	-7		+14	+2	+4	-0	-1	+12	+6	-2	+25	+29	-2	+14	-5	+30	+38
CHO 6	+1.1%	+21		-1		-1	-2	+0	-1	-5				-5	-20		+33	-6	-2	+2	-0	+7	+7	+8	-10	+5	+5	+11		+2	+13
CHO 7	+4.8%	+195	-1				-1	+18	+1	+22		+0	+1	+41	+19		+52	+3	+5	+2		+81	+3	+7	+15	+26	-5	+59	-7	+1	+53
CHO 8	+0.2%	+6				-1	-1	-20	+1	-14	-0	+7	+0	-26	-6		+15	-7	+4		+1	+7	+7	+2	+4	+13	-6	+11	+4	+4	+19
CHO 9	+3.7%	+153	+1		+5		+6	+12	+9	+13	+1	-1	-1	+32	+30		+56	-1	+5		-3	+86	+8	+2	+46	+56	-7	-21		-1	-21
other Community Services	+2.9%	+2																	+1			+1	-0	+3	-2	+0				+1	+1
		+2.8%	+8.9%	+1.3%	+31.8%	-5.3%	+1.8%	+0.7%	+6.7%	+1.0%	+20.3%	-11.3%	+2.2%	+0.9%	+1.9%	-1.8%	+7.2%	-2.8%	+10.1%	+18.3%	-6.4%	+5.2%	+13.3%	+8.0%	+6.6%	+7.9%	-1.7%	+1.9%	+4.4%	+5.0%	+2.8%



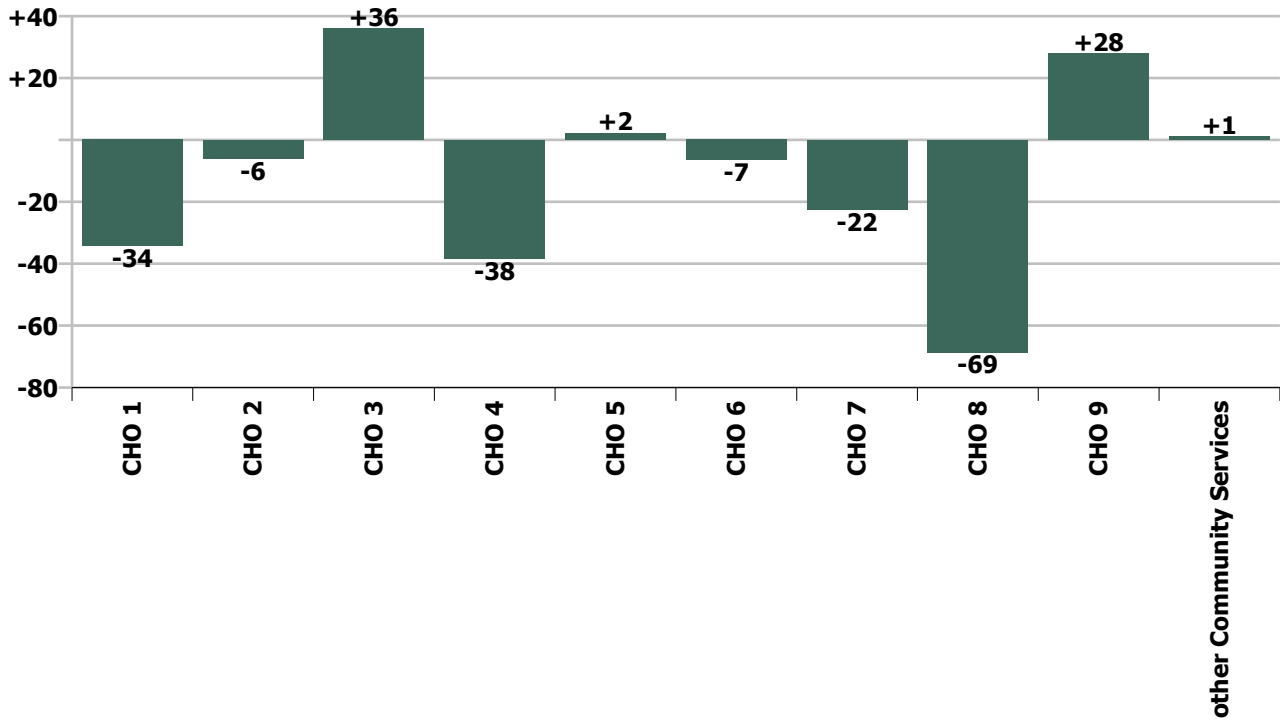
Staff Group change since: Jan 2022



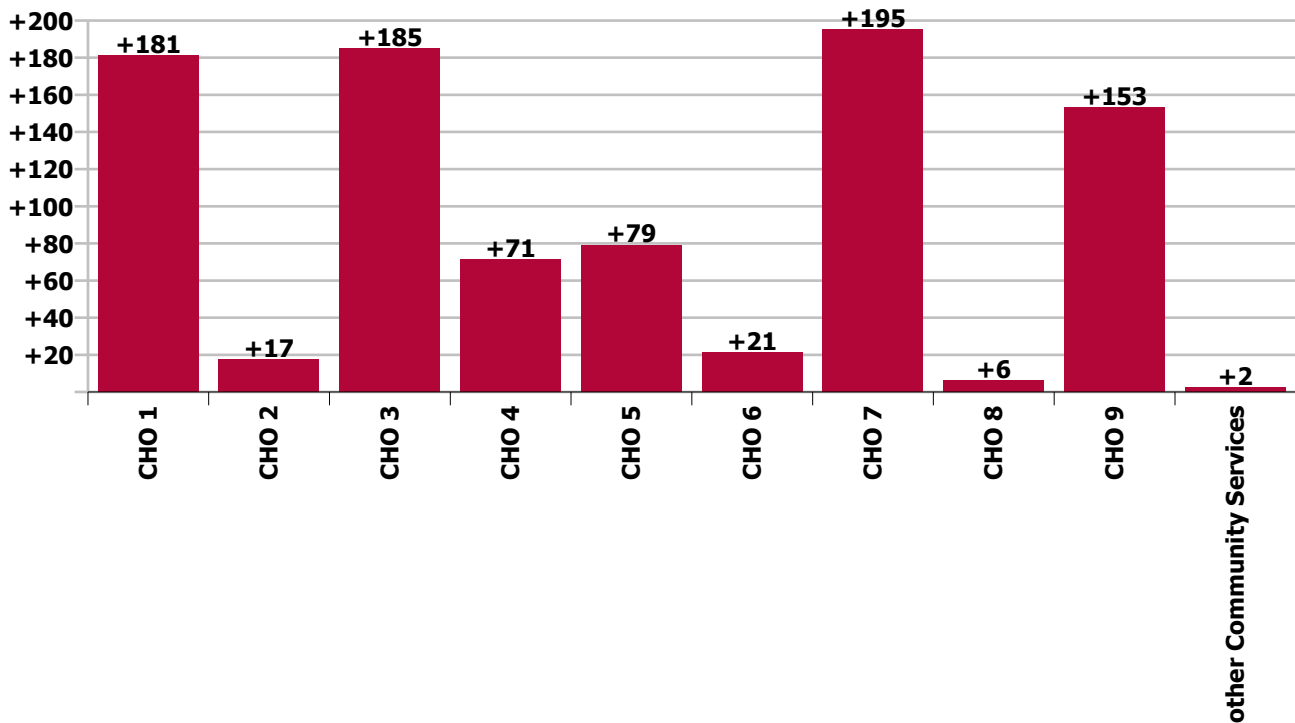
Staff Group change since: Feb 2021



CHO change since: Jan 2022



CHO change since: Feb 2021



Longitudinal Employment Levels by Grade Group - Dec 2016 to Feb 2022

Feb 2022 (Dec 2015 figure: 28,322)	WTE Feb 2022	WTE change since Dec 16	WTE change since Dec 17	WTE change since Dec 18	WTE change since Dec 19	WTE change since Dec 20	WTE change since Jan 22	% change since Dec 16	% change since Dec 17	% change since Dec 18	% change since Dec 19	% change since Dec 20	% change since Jan 22
Overall	33,215	+3,978	+2,714	+2,091	+1,680	+856	-109	+13.6%	+8.9%	+6.7%	+5.3%	+2.6%	-0.3%
Consultant Medicine	7	-4	-2	+3	+3	+3	+1	-35.2%	-22.8%	+97.2%	+97.2%	+60.6%	+7.6%
Consultant Paediatrics	2	-1	-1	-1	-1	-1		-32.7%	-31.2%	-29.2%	-29.2%	-29.2%	
Consultant Psychiatry	20	-2	-4	+2	-1	-2	+0	-10.3%	-16.8%	+10.2%	-5.3%	-7.6%	+0.1%
Consultant Surgery		-1	-0	-0				-100.0%	-100.0%	-100.0%	-100.0%	-100.0%	-100.0%
Consultants	29	-8	-7	+4	+2	+0	+1	-21.7%	-19.8%	+17.5%	+5.5%	+0.6%	+1.8%
Registrar	12	-0	-2	-1	-2	+3	-1	-0.1%	-14.9%	-9.3%	-14.9%	+30.1%	-7.3%
Senior Registrar	4	+1	+0	+0	+1	+0	+1	+36.0%	+2.0%	+2.0%	+36.0%	+2.0%	+32.5%
Specialist Registrar	5	+1		+3	-1	+1	+0	+25.0%		+150.0%	-16.7%	+25.0%	+5.5%
Registrars	21	+2	-2	+2	-2	+4	+0	+11.2%	-8.6%	+10.2%	-8.6%	+22.2%	+1.7%
Senior House Officer	24	+8	+7	+5	+2	+1	+0	+48.8%	+40.3%	+25.7%	+8.1%	+4.7%	+0.7%
SHO/ Interns	24	+8	+7	+5	+2	+1	+0	+48.8%	+40.3%	+25.7%	+8.1%	+4.7%	+0.7%
Dentists								-100.0%	-100.0%	-100.0%	-100.0%	-100.0%	-100.0%
Other Medical	95	-6	-5	-5	-16	-23	-4	-5.7%	-5.1%	-4.6%	-14.2%	-19.5%	-3.7%
Medical/ Dental, other	95	-6	-5	-5	-16	-23	-4	-5.7%	-5.1%	-4.6%	-14.2%	-19.5%	-3.7%
Medical & Dental	168	-4	-7	+7	-14	-18	-3	-2.3%	-4.2%	+4.0%	-7.9%	-9.7%	-1.5%
Clinical Nurse/ Midwife Manager	1,367	+21	+30	+35	+48	+17	-14	+1.6%	+2.3%	+2.6%	+3.6%	+1.2%	-1.0%
Director Nursing/Midwifery, Assistant	152	+22	+23	+27	+8	-0	+4	+16.9%	+17.9%	+21.8%	+5.9%	-0.0%	+2.6%
Director of Nursing/Midwifery	149	+20	+21	+28	+8	+8	-1	+15.7%	+16.3%	+23.5%	+6.0%	+5.4%	-0.9%
Nurse/ Midwife Manager	1,668	+63	+74	+90	+65	+24	-12	+3.9%	+4.7%	+5.7%	+4.0%	+1.5%	-0.7%
Advanced Nurse/ Midwife Practitioner	29	+25	+24	+20	+16	+4	+3	+613.3%	+470.6%	+217.7%	+124.3%	+15.9%	+10.2%
Clinical Nurse/ Midwife Specialist	84	+0	+5	+1	+8	+6	+5	+0.3%	+5.7%	+0.8%	+10.6%	+7.9%	+5.7%
Nurse/ Midwife Specialist & AN/MP	112	+25	+28	+20	+24	+10	+7	+28.3%	+33.3%	+22.0%	+27.0%	+9.8%	+6.8%
Graduate Nursing/ Midwifery								-100.0%	-100.0%	-100.0%	-100.0%	-100.0%	-100.0%
Staff Midwives	1	+0	-1	+1	+1	-0	-0	+77.5%	-60.6%	-100.0%	-100.0%	-19.3%	-11.3%
Staff Nurse [Psychiatric]	142	+52	+66	+66	+54	+84	+77	+57.6%	+87.3%	+86.2%	+61.0%	+146.2%	+118.6%
Staff Nurses [General/ Children's]	3,420	-96	-66	-53	-44	+50	+115	-2.7%	-1.9%	-1.5%	-1.3%	+1.5%	+3.5%
Staff Nurse [Intellectual Disability]	1,735	+9	+31	+50	+138	-54	-201	+0.5%	+1.8%	+3.0%	+8.6%	-3.0%	-10.4%

Feb 2022 (Dec 2015 figure: 28,322)	WTE Feb 2022	WTE change since Dec 16	WTE change since Dec 17	WTE change since Dec 18	WTE change since Dec 19	WTE change since Dec 20	WTE change since Jan 22	% change since Dec 16	% change since Dec 17	% change since Dec 18	% change since Dec 19	% change since Dec 20	% change since Jan 22
Overall	33,215	+3,978	+2,714	+2,091	+1,680	+856	-109	+13.6%	+8.9%	+6.7%	+5.3%	+2.6%	-0.3%
Staff Nurse/ Staff Midwife	5,298	-35	+31	+63	+149	+80	-9	-0.7%	+0.6%	+1.2%	+2.9%	+1.5%	-0.2%
Public Health Nurse	23	+3	+3	+3	+4	+3	-1	+12.7%	+12.1%	+15.4%	+18.8%	+15.0%	-2.7%
Public Health Nurse	23	+3	+3	+3	+4	+3	-1	+12.7%	+12.1%	+15.4%	+18.8%	+15.0%	-2.7%
Pre-registration Nurse Intern (COVID-19)						-32		-100.0%	-100.0%	-100.0%	-100.0%	-100.0%	-100.0%
Pre-registration Nurse/ Midwife Intern	85	+73	+74	+51	+57	+83	+18	+611.3%	+623.9%	+145.1%	+202.1%	+3314.0%	+25.8%
Post-registration Nurse/ Midwife Student					-1			-100.0%	-100.0%	-100.0%	-100.0%	-100.0%	-100.0%
Nursing/ Midwifery awaiting registration	3	+3	-12	+3	-12	-12	-1	-100.0%	-82.1%	-100.0%	-83.2%	-82.6%	-16.7%
Nursing/ Midwifery Student	88	+76	+62	+53	+44	+39	+17	+632.1%	+240.6%	+152.3%	+99.3%	+80.6%	+24.0%
Nursing Education/Clinical	28	+5	+6	+5	+5	+1	-0	+24.1%	+25.0%	+24.6%	+24.5%	+3.1%	-1.2%
Other Nursing/ Midwifery	2	-3	-3	+1	+1	+1		-60.0%	-60.0%	+100.0%	+100.0%	+100.0%	
Nursing/ Midwifery other	30	+2	+3	+6	+6	+2	-0	+8.7%	+9.3%	+27.9%	+27.8%	+6.6%	-1.1%
Nursing & Midwifery	7,218	+134	+200	+236	+291	+159	+2	+1.9%	+2.9%	+3.4%	+4.2%	+2.3%	+0.0%
Dietitians	47	+18	+17	+16	+12	+12	-0	+60.8%	+58.5%	+50.4%	+33.9%	+35.6%	-1.0%
Occupational Therapists	410	+63	+67	+65	+33	+19	+2	+18.3%	+19.5%	+19.0%	+8.8%	+4.8%	+0.5%
Physiotherapists	352	+52	+47	+44	+40	+27	+4	+17.2%	+15.3%	+14.3%	+12.7%	+8.4%	+1.2%
Podiatrists & Chiropodists	7	-8	-9	-8	-5	-6	-2	-54.7%	-58.5%	-55.2%	-44.4%	-47.0%	-25.4%
Speech & Language Therapists	324	+32	+17	+21	+8	-4	-5	+11.2%	+5.6%	+7.1%	+2.4%	-1.1%	-1.5%
Therapy Professions	1,140	+157	+139	+139	+87	+49	-1	+16.0%	+13.9%	+13.8%	+8.3%	+4.5%	-0.1%
Audiology		-13	-18					-100.0%	-100.0%	-100.0%	-100.0%	-100.0%	-100.0%
Clinical Engineering	15	-3	-3	+3	+2	+2		-18.3%	-16.9%	+24.6%	+15.0%	+15.4%	
Medical Science	4		+1				+1		+33.3%				+33.3%
Phlebotomists		-1	-1	-1	-1			-100.0%	-100.0%	-100.0%	-100.0%	-100.0%	-100.0%
Radiographers	4	-4	-4	-2	-3	-2	-0	-45.9%	-46.5%	-33.8%	-36.7%	-26.5%	-0.0%
Respiratory Physiologists	2	+1	+1	+1	+1			+100.0%	+100.0%	+100.0%	+100.0%		
Vascular Physiologists	0	+0	+0	+0	-0		+0	-100.0%	-100.0%	+100.0%	-23.8%		+100.0%
Health Science/ Diagnostics	26	-20	-24	+1	-1	+0	+1	-43.4%	-48.0%	+3.2%	-2.4%	+1.7%	+4.4%
Social Care	3,002	+808	+653	+511	+404	+210	-33	+36.8%	+27.8%	+20.5%	+15.6%	+7.5%	-1.1%
Social Workers	322	+20	+18	+8	+5	-6	+3	+6.6%	+5.8%	+2.5%	+1.5%	-1.8%	+1.1%
Psychologists	257	+47	+34	+50	+51	+27	+5	+22.3%	+15.0%	+24.3%	+24.8%	+11.7%	+2.0%

Feb 2022 (Dec 2015 figure: 28,322)	WTE Feb 2022	WTE change since Dec 16	WTE change since Dec 17	WTE change since Dec 18	WTE change since Dec 19	WTE change since Dec 20	WTE change since Jan 22	% change since Dec 16	% change since Dec 17	% change since Dec 18	% change since Dec 19	% change since Dec 20	% change since Jan 22
Overall	33,215	+3,978	+2,714	+2,091	+1,680	+856	-109	+13.6%	+8.9%	+6.7%	+5.3%	+2.6%	-0.3%
Pharmacists	22	+7	+6	+4	+4	+4	-1	+47.7%	+40.2%	+25.5%	+22.7%	+24.7%	-3.4%
Pharmacy Technicians	6	+1	+1	+1	+2	+1	+0	+12.7%	+13.5%	+12.7%	+60.3%	+16.5%	+1.4%
Pharmacy	29	+8	+7	+5	+7	+5	-1	+38.0%	+33.1%	+22.4%	+29.5%	+22.8%	-2.4%
Counsellor Therapists	23	+6	+3	+5	+4	+3	-0	+35.3%	+17.3%	+28.3%	+20.6%	+15.3%	-1.0%
HSCP Trainees/ Students		-2	-1					-100.0%	-100.0%	-100.0%	-100.0%	-100.0%	-100.0%
Other Health & Social Care	38	-21	-22	-15	-13	-7	-1	-35.7%	-36.2%	-27.9%	-24.6%	-15.9%	-1.5%
Play Therapists/ Specialists	12	-4	-3	-4	-5	-0	+1	-23.8%	-18.0%	-25.4%	-29.4%	-2.1%	+7.7%
H&SC, Other	73	-21	-21	-14	-13	-4	+0	-22.6%	-22.8%	-15.9%	-15.6%	-5.8%	+0.0%
Health & Social Care Professionals	4,848	+999	+806	+699	+540	+281	-26	+26.0%	+19.9%	+16.9%	+12.5%	+6.2%	-0.5%
Executive Management	57	+21	+11	+15	+14	+6	+3	+57.3%	+23.3%	+35.5%	+32.7%	+11.5%	+5.3%
Senior Management (VIII & GM)	272	+94	+94	+79	+60	+40	+3	+52.8%	+52.9%	+40.8%	+28.5%	+17.2%	+1.1%
Management (VIII & above)	328	+114	+105	+94	+74	+46	+6	+53.5%	+46.9%	+39.9%	+29.2%	+16.2%	+1.8%
Middle Management (V-VII)	772	+276	+251	+202	+143	+85	+9	+55.6%	+48.3%	+35.4%	+22.8%	+12.3%	+1.2%
Other Administrative	13	-2	-4	-4	-3	-3	-0	-12.3%	-23.3%	-22.7%	-18.5%	-17.8%	-3.5%
Administrative/ Supervisory (V to VII)	785	+274	+247	+198	+141	+82	+9	+53.6%	+46.1%	+33.8%	+21.8%	+11.6%	+1.1%
General Administrative (III & IV)	1,351	+261	+210	+133	+120	+79	+10	+23.9%	+18.4%	+10.9%	+9.7%	+6.2%	+0.8%
Clerical (III & IV)	1,351	+261	+210	+133	+120	+79	+10	+23.9%	+18.4%	+10.9%	+9.7%	+6.2%	+0.8%
Management & Administrative	2,464	+649	+562	+425	+334	+206	+25	+35.8%	+29.6%	+20.8%	+15.7%	+9.1%	+1.0%
Catering	304	-22	-13	-16	-15	-8	+3	-6.8%	-4.2%	-4.9%	-4.7%	-2.7%	+1.0%
Household Services	848	-222	-163	-121	-63	-36	-5	-20.8%	-16.1%	-12.5%	-7.0%	-4.1%	-0.6%
Other Labs & Associated	1	-0		-0				-6.5%		-3.8%			
Other Support	172	-62	-61	-57	-51	+7	-2	-26.6%	-26.3%	-25.1%	-22.8%	+4.1%	-1.1%
Portering	93	-18	-17	-12	-16	-8	+1	-16.4%	-15.4%	-11.4%	-14.4%	-7.6%	+0.7%
Support	1,418	-325	-254	-206	-145	-45	-3	-18.6%	-15.2%	-12.7%	-9.3%	-3.1%	-0.2%
Maintenance	203	-25	-29	-19	-11	-13	-2	-10.9%	-12.6%	-8.5%	-5.2%	-5.9%	-1.0%
Technical Services	19	+14	+14	+13	+11	+8	-0	+268.6%	+268.6%	+208.2%	+132.1%	+69.4%	-0.5%
Maintenance/ Technical	222	-11	-16	-6	-0	-5	-2	-4.8%	-6.6%	-2.7%	-0.2%	-2.2%	-0.9%
General Support	1,641	-336	-270	-212	-145	-51	-5	-17.0%	-14.1%	-11.5%	-8.1%	-3.0%	-0.3%
Attendant/ Aide	2,064	-1,073	-928	-790	-460	-394	-81	-34.2%	-31.0%	-27.7%	-18.2%	-16.0%	-3.8%

Feb 2022 (Dec 2015 figure: 28,322)	WTE Feb 2022	WTE change since Dec 16	WTE change since Dec 17	WTE change since Dec 18	WTE change since Dec 19	WTE change since Dec 20	WTE change since Jan 22	% change since Dec 16	% change since Dec 17	% change since Dec 18	% change since Dec 19	% change since Dec 20	% change since Jan 22
Overall	33,215	+3,978	+2,714	+2,091	+1,680	+856	-109	+13.6%	+8.9%	+6.7%	+5.3%	+2.6%	-0.3%
Health & Social Care Assistants	55	+18	+20	+20	+24	+17	+0	+49.6%	+56.8%	+56.2%	+78.0%	+43.2%	+0.1%
Health Care Assistant/ Care Assistant	9,280	+2,617	+2,011	+1,472	+965	+578	+35	+39.3%	+27.7%	+18.9%	+11.6%	+6.6%	+0.4%
HCA (Student Nurse/Midwife COVID-19)						-22	-0	-100.0%	-100.0%	-100.0%	-100.0%	-100.0%	-100.0%
Health Care Assistants	11,399	+1,562	+1,103	+702	+530	+178	-47	+15.9%	+10.7%	+6.6%	+4.9%	+1.6%	-0.4%
Home Help	3,530	+639	+50	-3	-21	+5	-61	+22.1%	+1.4%	-0.1%	-0.6%	+0.1%	-1.7%
Home Care Services	158	+69	+51	+49	+44	+41	+4	+77.5%	+48.1%	+45.1%	+38.5%	+34.9%	+2.4%
Other Care Grades	273	+40	+55	+63	+76	+32	+1	+17.4%	+25.3%	+30.1%	+38.4%	+13.4%	+0.4%
Pastoral Care	34	-13	-12	-10	-8	-3	+0	-28.6%	-26.9%	-23.6%	-20.0%	-9.1%	+0.4%
Workshop Services	1,482	+239	+176	+135	+54	+24	-0	+19.2%	+13.5%	+10.0%	+3.8%	+1.7%	-0.0%
Health Promotion Officer	1	+1	+1	+1	+1			-100.0%	-100.0%	-100.0%	-100.0%		
Health Promotion	1	+1	+1	+1	+1	+1	+0	-100.0%	-100.0%	-100.0%	-100.0%	-100.0%	+117.4%
Care, other	1,947	+335	+271	+237	+165	+94	+5	+20.8%	+16.2%	+13.9%	+9.3%	+5.1%	+0.2%
Patient & Client Care	16,875	+2,537	+1,424	+937	+674	+278	-103	+17.7%	+9.2%	+5.9%	+4.2%	+1.7%	-0.6%

Source: Health Service Personnel Census

Longitudinal Employment Levels by Grade Group - Dec 2016 to Feb 2022

Feb 2022 (Dec 2015 figure: 28,322)	WTE Feb 2022	WTE change since Dec 16	WTE change since Dec 17	WTE change since Dec 18	WTE change since Dec 19	WTE change since Dec 20	WTE change since Jan 22	% change since Dec 16	% change since Dec 17	% change since Dec 18	% change since Dec 19	% change since Dec 20	% change since Jan 22
Overall	33,215	+3,978	+2,714	+2,091	+1,680	+856	-109	+13.6%	+8.9%	+6.7%	+5.3%	+2.6%	-0.3%
Consultant Medicine	7	-4	-2	+3	+3	+3	+1	-35.2%	-22.8%	+97.2%	+97.2%	+60.6%	+7.6%
Consultant Paediatrics	2	-1	-1	-1	-1	-1	-1	-32.7%	-31.2%	-29.2%	-29.2%	-29.2%	
Consultant Psychiatry	20	-2	-4	+2	-1	-2	+0	-10.3%	-16.8%	+10.2%	-5.3%	-7.6%	+0.1%
Consultant Surgery		-1	-0	-0				-100.0%	-100.0%	-100.0%	-100.0%	-100.0%	-100.0%
Consultants	29	-8	-7	+4	+2	+0	+1	-21.7%	-19.8%	+17.5%	+5.5%	+0.6%	+1.8%
Registrar	12	-0	-2	-1	-2	+3	-1	-0.1%	-14.9%	-9.3%	-14.9%	+30.1%	-7.3%
Senior Registrar	4	+1	+0	+0	+1	+0	+1	+36.0%	+2.0%	+2.0%	+36.0%	+2.0%	+32.5%
Specialist Registrar	5	+1		+3	-1	+1	+0	+25.0%		+150.0%	-16.7%	+25.0%	+5.5%
Registrars	21	+2	-2	+2	-2	+4	+0	+11.2%	-8.6%	+10.2%	-8.6%	+22.2%	+1.7%
Senior House Officer	24	+8	+7	+5	+2	+1	+0	+48.8%	+40.3%	+25.7%	+8.1%	+4.7%	+0.7%
SHO/ Interns	24	+8	+7	+5	+2	+1	+0	+48.8%	+40.3%	+25.7%	+8.1%	+4.7%	+0.7%
Dentists								-100.0%	-100.0%	-100.0%	-100.0%	-100.0%	-100.0%
Other Medical	95	-6	-5	-5	-16	-23	-4	-5.7%	-5.1%	-4.6%	-14.2%	-19.5%	-3.7%
Medical/ Dental, other	95	-6	-5	-5	-16	-23	-4	-5.7%	-5.1%	-4.6%	-14.2%	-19.5%	-3.7%
Medical & Dental	168	-4	-7	+7	-14	-18	-3	-2.3%	-4.2%	+4.0%	-7.9%	-9.7%	-1.5%
Clinical Nurse/ Midwife Manager	1,367	+21	+30	+35	+48	+17	-14	+1.6%	+2.3%	+2.6%	+3.6%	+1.2%	-1.0%
Director Nursing/Midwifery, Assistant	152	+22	+23	+27	+8	-0	+4	+16.9%	+17.9%	+21.8%	+5.9%	-0.0%	+2.6%
Director of Nursing/Midwifery	149	+20	+21	+28	+8	+8	-1	+15.7%	+16.3%	+23.5%	+6.0%	+5.4%	-0.9%
Nurse/ Midwife Manager	1,668	+63	+74	+90	+65	+24	-12	+3.9%	+4.7%	+5.7%	+4.0%	+1.5%	-0.7%
Advanced Nurse/ Midwife Practitioner	29	+25	+24	+20	+16	+4	+3	+613.3%	+470.6%	+217.7%	+124.3%	+15.9%	+10.2%
Clinical Nurse/ Midwife Specialist	84	+0	+5	+1	+8	+6	+5	+0.3%	+5.7%	+0.8%	+10.6%	+7.9%	+5.7%
Nurse/ Midwife Specialist & AN/MP	112	+25	+28	+20	+24	+10	+7	+28.3%	+33.3%	+22.0%	+27.0%	+9.8%	+6.8%
Graduate Nursing/ Midwifery								-100.0%	-100.0%	-100.0%	-100.0%	-100.0%	-100.0%
Staff Midwives	1	+0	-1	+1	+1	-0	-0	+77.5%	-60.6%	-100.0%	-100.0%	-19.3%	-11.3%
Staff Nurse [Psychiatric]	142	+52	+66	+66	+54	+84	+77	+57.6%	+87.3%	+86.2%	+61.0%	+146.2%	+118.6%
Staff Nurses [General/ Children's]	3,420	-96	-66	-53	-44	+50	+115	-2.7%	-1.9%	-1.5%	-1.3%	+1.5%	+3.5%
Staff Nurse [Intellectual Disability]	1,735	+9	+31	+50	+138	-54	-201	+0.5%	+1.8%	+3.0%	+8.6%	-3.0%	-10.4%
Staff Nurse/ Staff Midwife	5,298	-35	+31	+63	+149	+80	-9	-0.7%	+0.6%	+1.2%	+2.9%	+1.5%	-0.2%
Public Health Nurse	23	+3	+3	+3	+4	+3	-1	+12.7%	+12.1%	+15.4%	+18.8%	+15.0%	-2.7%
Public Health Nurse	23	+3	+3	+3	+4	+3	-1	+12.7%	+12.1%	+15.4%	+18.8%	+15.0%	-2.7%
Pre-registration Nurse Intern (COVID-19)						-32		-100.0%	-100.0%	-100.0%	-100.0%	-100.0%	-100.0%
Pre-registration Nurse/ Midwife Intern	85	+73	+74	+51	+57	+83	+18	+611.3%	+623.9%	+145.1%	+202.1%	+3314.0%	+25.8%
Post-registration Nurse/ Midwife Student					-1			-100.0%	-100.0%	-100.0%	-100.0%	-100.0%	-100.0%
Nursing/ Midwifery awaiting registration	3	+3	-12	+3	-12	-12	-1	-100.0%	-82.1%	-100.0%	-83.2%	-82.6%	-16.7%
Nursing/ Midwifery Student	88	+76	+62	+53	+44	+39	+17	+632.1%	+240.6%	+152.3%	+99.3%	+80.6%	+24.0%
Nursing Education/Clinical	28	+5	+6	+5	+5	+1	-0	+24.1%	+25.0%	+24.6%	+24.5%	+3.1%	-1.2%
Other Nursing/ Midwifery	2	-3	-3	+1	+1	+1		-60.0%	-60.0%	+100.0%	+100.0%	+100.0%	
Nursing/ Midwifery other	30	+2	+3	+6	+6	+2	-0	+8.7%	+9.3%	+27.9%	+27.8%	+6.6%	-1.1%
Nursing & Midwifery	7,218	+134	+200	+236	+291	+159	+2	+1.9%	+2.9%	+3.4%	+4.2%	+2.3%	+0.0%
Dietitians	47	+18	+17	+16	+12	+12	-0	+60.8%	+58.5%	+50.4%	+33.9%	+35.6%	-1.0%
Occupational Therapists	410	+63	+67	+65	+33	+19	+2	+18.3%	+19.5%	+19.0%	+8.8%	+4.8%	+0.5%
Physiotherapists	352	+52	+47	+44	+40	+27	+4	+17.2%	+15.3%	+14.3%	+12.7%	+8.4%	+1.2%
Podiatrists & Chiropodists	7	-8	-9	-8	-5	-6	-2	-54.7%	-58.5%	-55.2%	-44.4%	-47.0%	-25.4%
Speech & Language Therapists	324	+32	+17	+21	+8	-4	-5	+11.2%	+5.6%	+7.1%	+2.4%	-1.1%	-1.5%
Therapy Professions	1,140	+157	+139	+139	+87	+49	-1	+16.0%	+13.9%	+13.8%	+8.3%	+4.5%	-0.1%
Audiology		-13	-18					-100.0%	-100.0%	-100.0%	-100.0%	-100.0%	-100.0%
Clinical Engineering	15	-3	-3	+3	+2	+2		-18.3%	-16.9%	+24.6%	+15.0%	+15.4%	
Medical Science	4		+1				+1		+33.3%				+33.3%
Phlebotomists		-1	-1	-1	-1			-100.0%	-100.0%	-100.0%	-100.0%	-100.0%	-100.0%
Radiographers	4	-4	-4	-2	-3	-2	-0	-45.9%	-46.5%	-33.8%	-36.7%	-26.5%	-0.0%
Respiratory Physiologists	2	+1	+1	+1	+1			+100.0%	+100.0%	+100.0%	+100.0%		
Vascular Physiologists	0	+0	+0	+0	-0		+0	-100.0%	-100.0%	+100.0%	-23.8%		+100.0%
Health Science/ Diagnostics	26	-20	-24	+1	-1	+0	+1	-43.4%	-48.0%	+3.2%	-2.4%	+1.7%	+4.4%
Social Care	3,002	+808	+653	+511	+404	+210	-33	+36.8%	+27.8%	+20.5%	+15.6%	+7.5%	-1.1%
Social Workers	322	+20	+18	+8	+5	-6	+3	+6.6%	+5.8%	+2.5%	+1.5%	-1.8%	+1.1%
Psychologists	257	+47	+34	+50	+51	+27	+5	+22.3%	+15.0%	+24.3%	+24.8%	+11.7%	+2.0%
Pharmacists	22	+7	+6	+4	+4	+4	-1	+47.7%	+40.2%	+25.5%	+22.7%	+24.7%	-3.4%
Pharmacy Technicians	6	+1	+1	+1	+2	+1	+0	+12.7%	+13.5%	+12.7%	+60.3%	+16.5%	+1.4%
Pharmacy	29	+8	+7	+5	+7	+5	-1	+38.0%	+33.1%	+22.4%	+29.5%	+22.8%	-2.4%
Counsellor Therapists	23	+6	+3	+5	+4	+3	-0	+35.3%	+17.3%	+28.3%	+20.6%	+15.3%	-1.0%
HSCP Trainees/ Students		-2	-1					-100.0%	-100.0%	-100.0%	-100.0%	-100.0%	-100.0%
Other Health & Social Care	38	-21	-22	-15	-13	-7	-1	-35.7%	-36.2%	-27.9%	-24.6%	-15.9%	-1.5%
Play Therapists/ Specialists	12	-4	-3	-4	-5	-0	+1	-23.8%	-18.0%	-25.4%	-29.4%	-2.1%	+7.7%
H&SC, Other	73	-21	-21	-14	-13	-4	+0	-22.6%	-22.8%	-15.9%	-15.6%	-5.8%	+0.0%
Health & Social Care Professionals	4,848	+999	+806	+699	+540	+281	-26	+26.0%	+19.9%	+16.9%	+12.5%	+6.2%	-0.5%
Executive Management	57	+21	+11	+15	+14	+6	+3	+57.3%	+23.3%	+35.5%	+32.7%	+11.5%	+5.3%
Senior Management (VIII & GM)	272	+94	+94	+79	+60	+40	+3	+52.8%	+52.9%	+40.8%	+28.5%	+17.2%	+1.1%
Management (VIII & above)	328	+114	+105	+94	+74	+46	+6	+53.5%	+46.9%	+39.9%	+29.2%	+16.2%	+1.8%
Middle Management (V-VII)	772	+276	+251	+202	+143	+85	+9	+55.6%	+48.3%	+35.4%	+22.8%	+12.3%	+1.2%
Other Administrative	13	-2	-4	-4	-3	-3	-0	-12.3%	-23.3%	-22.7%	-18.5%	-17.8%	-3.5%
Administrative/ Supervisory (V to VII)	785	+274	+247	+198	+141	+82	+9	+53.6%	+46.1%	+33.8%	+21.8%	+11.6%	+1.1%
General Administrative (III & IV)	1,351	+261	+210	+133	+120	+79	+10	+23.9%	+18.4%	+10.9%	+9.7%	+6.2%	+0.8%
Clerical (III & IV)	1,351	+261	+210	+133	+120	+79	+10	+23.9%	+18.4%	+10.9%	+9.7%	+6.2%	+0.8%
Management & Administrative	2,464	+649	+562	+425	+334	+206	+25	+35.8%	+29.6%	+20.8%	+15.7%	+9.1%	+1.0%
Support	1,418	-325	-254	-206	-145	-45	-3	-18.6%	-15.2%	-12.7%	-9.3%	-3.1%	-0.2%
Maintenance	203	-25	-29	-19	-11	-13	-2	-10.9%	-12.6%	-8.5%	-5.2%	-5.9%	-1.0%
Technical Services	19	+14	+14	+13	+11	+8	-0	+268.6%	+268.6%	+208.2%	+132.1%	+69.4%	-0.5%
Maintenance/ Technical	222	-11	-16	-6	-0	-5	-2	-4.8%	-6.6%	-2.7%	-0.2%	-2.2%	-0.9%
General Support	1,641	-336	-270	-212	-145	-51	-5	-17.0%	-14.1%	-11.5%	-8.1%	-3.0%	-0.3%
Attendant/ Aide	2,064	-1,073	-928	-790	-460	-394	-81	-34.2%	-31.0%	-27.7%	-18.2%	-16.0%	-3.8%
Health & Social Care Assistants	55	+18	+20	+20	+24	+17	+0	+49.6%	+56.8%	+56.2%	+78.0%	+43.2%	+0.1%
Health Care Assistant/ Care Assistant	9,280	+2,617	+2,011	+1,472	+965	+578	+35	+39.3%	+27.7%	+18.9%	+11.6%	+6.6%	+0.4%
HCA (Student Nurse/Midwife COVID-19)						-22	-0	-100.0%	-100.0%	-100.0%	-100.0%	-100.0%	-100.0%
Health Care Assistants	11,399	+1,562	+1,103	+702	+530	+178	-47	+15.9%	+10.7%	+6.6%	+4.9%	+1.6%	-0.4%

Feb 2022 (Dec 2015 figure: 28,322)	WTE Feb 2022	WTE change since Dec 16	WTE change since Dec 17	WTE change since Dec 18	WTE change since Dec 19	WTE change since Dec 20	WTE change since Jan 22	% change since Dec 16	% change since Dec 17	% change since Dec 18	% change since Dec 19	% change since Dec 20	% change since Jan 22
Overall	33,215	+3,978	+2,714	+2,091	+1,680	+856	-109	+13.6%	+8.9%	+6.7%	+5.3%	+2.6%	-0.3%
Home Help	3,530	+639	+50	-3	-21	+5	-61	+22.1%	+1.4%	-0.1%	-0.6%	+0.1%	-1.7%
Home Care Services	158	+69	+51	+49	+44	+41	+4	+77.5%	+48.1%	+45.1%	+38.5%	+34.9%	+2.4%
Other Care Grades	273	+40	+55	+63	+76	+32	+1	+17.4%	+25.3%	+30.1%	+38.4%	+13.4%	+0.4%
Pastoral Care	34	-13	-12	-10	-8	-3	+0	-28.6%	-26.9%	-23.6%	-20.0%	-9.1%	+0.4%
Workshop Services	1,482	+239	+176	+135	+54	+24	-0	+19.2%	+13.5%	+10.0%	+3.8%	+1.7%	-0.0%
Health Promotion	1	+1	+1	+1	+1	+1	+0	-100.0%	-100.0%	-100.0%	-100.0%	-100.0%	+117.4%
Care, other	1,947	+335	+271	+237	+165	+94	+5	+20.8%	+16.2%	+13.9%	+9.3%	+5.1%	+0.2%
Patient & Client Care	16,875	+2,537	+1,424	+937	+674	+278	-103	+17.7%	+9.2%	+5.9%	+4.2%	+1.7%	-0.6%

Source: Health Service Personnel Census