

# Social Care Service Employment Report: October 2021

## Employment by Staff Group

Oct 2021	WTE Dec 2019	WTE Dec 2020	WTE Sep 2021	WTE Oct 2021	WTE change since Sep 21	WTE change since Dec 20	% change since Dec 20	WTE change since Dec 19	% change since Dec 19	No. Oct 2021
<b>Overall</b>	<b>31,535</b>	<b>32,359</b>	<b>32,916</b>	<b>33,011</b>	<b>+94</b>	<b>+651</b>	<b>+2.0%</b>	<b>+1,476</b>	<b>+4.7%</b>	<b>39,471</b>
Consultants	27	29	30	29	-1	+0	+1.0%	+2	+5.9%	39
Registrars	23	17	19	19	-0	+2	+12.4%	-4	-15.9%	21
SHO/ Interns	22	23	27	24	-3	+1	+5.2%	+2	+8.6%	24
Medical/ Dental, other	111	118	99	96	-3	-22	-18.8%	-15	-13.4%	177
<b>Medical &amp; Dental</b>	<b>183</b>	<b>186</b>	<b>174</b>	<b>168</b>	<b>-6</b>	<b>-19</b>	<b>-10.0%</b>	<b>-15</b>	<b>-8.2%</b>	<b>261</b>
Nurse/ Midwife Manager	1,603	1,643	1,667	1,681	+15	+38	+2.3%	+78	+4.9%	1,797
Nurse/ Midwife Specialist & AN/MP	88	102	108	103	-5	+0	+0.4%	+14	+16.0%	113
Staff Nurse/ Staff Midwife	5,149	5,217	5,254	5,259	+4	+42	+0.8%	+110	+2.1%	6,087
Public Health Nurse	20	20	20	21	+1	+1	+4.8%	+2	+8.3%	26
<i>Pre-registration Nurse Intern (COVID-19)</i>		32	2	2	-1	+2	-94.8%	+2	-100.0%	2
<i>Pre-registration Nurse/ Midwife Intern</i>	28	3	50	28	-22	-1	+1001.2%	-1	-2.5%	52
<i>Post-registration Nurse/ Midwife Student</i>	1					-1	-100.0%	-1	-100.0%	
<i>Nursing/ Midwifery awaiting registration</i>	15	14	14	11	-3	-3	-20.5%	-3	-23.1%	15
Nursing/ Midwifery Student	44	49	66	41	-26	-8	-16.6%	-4	-8.0%	69
Nursing/ Midwifery other	23	28	25	26	+1	-1	-4.9%	+3	+14.0%	29
<b>Nursing &amp; Midwifery</b>	<b>6,927</b>	<b>7,060</b>	<b>7,140</b>	<b>7,131</b>	<b>-9</b>	<b>+71</b>	<b>+1.0%</b>	<b>+204</b>	<b>+2.9%</b>	<b>8,121</b>
Therapy Professions	1,053	1,091	1,161	1,167	+6	+76	+7.0%	+114	+10.8%	1,345
Health Science/ Diagnostics	26	25	26	26	+0	+1	+4.3%	+0	+0.1%	31
Social Care	2,598	2,792	2,938	2,948	+10	+156	+5.6%	+350	+13.5%	3,477
Social Workers	317	328	328	328	+0	+0	+0.1%	+11	+3.5%	380
Psychologists	206	230	240	245	+5	+14	+6.3%	+38	+18.7%	277
Pharmacy	22	23	26	26	-0	+2	+10.0%	+4	+16.0%	34
H&SC, Other	86	77	73	72	-1	-6	-7.4%	-15	-17.1%	95
<b>Health &amp; Social Care Professionals</b>	<b>4,308</b>	<b>4,567</b>	<b>4,791</b>	<b>4,811</b>	<b>+20</b>	<b>+244</b>	<b>+5.3%</b>	<b>+502</b>	<b>+11.7%</b>	<b>5,639</b>
Management (VIII & above)	254	283	302	313	+10	+30	+10.6%	+58	+23.0%	319
Administrative/ Supervisory (V to VII)	644	703	753	765	+12	+62	+8.9%	+121	+18.8%	825
Clerical (III & IV)	1,231	1,272	1,292	1,303	+10	+30	+2.4%	+71	+5.8%	1,549
<b>Management &amp; Administrative</b>	<b>2,130</b>	<b>2,258</b>	<b>2,348</b>	<b>2,380</b>	<b>+32</b>	<b>+123</b>	<b>+5.4%</b>	<b>+251</b>	<b>+11.8%</b>	<b>2,693</b>
Support	1,563	1,464	1,439	1,440	+1	-24	-1.7%	-124	-7.9%	1,816
Maintenance/ Technical	223	227	226	227	+1	-0	-0.0%	+5	+2.0%	244
<b>General Support</b>	<b>1,786</b>	<b>1,691</b>	<b>1,665</b>	<b>1,667</b>	<b>+2</b>	<b>-24</b>	<b>-1.4%</b>	<b>-119</b>	<b>-6.7%</b>	<b>2,060</b>
Health Care Assistants	10,869	11,221	11,375	11,388	+13	+167	+1.5%	+519	+4.8%	13,271
Home Help	3,551	3,525	3,509	3,535	+26	+10	+0.3%	-16	-0.4%	5,168
Care, other	1,781	1,852	1,915	1,931	+16	+78	+4.2%	+149	+8.4%	2,258
<b>Patient &amp; Client Care</b>	<b>16,201</b>	<b>16,598</b>	<b>16,798</b>	<b>16,854</b>	<b>+56</b>	<b>+256</b>	<b>+1.5%</b>	<b>+653</b>	<b>+4.0%</b>	<b>20,697</b>

## Social Care Services Employment by Administration (HSE / S38): October 2021

Oct 2021	WTE Dec 2019	WTE Dec 2020	WTE Sep 2021	WTE Oct 2021	WTE change since Sep 21	WTE change since Dec 20	% change since Dec 20	WTE change since Dec 19	% change since Dec 19	No. Oct 2021
<b>Total</b>	<b>31,535</b>	<b>32,359</b>	<b>32,916</b>	<b>33,011</b>	<b>+94</b>	<b>+651</b>	<b>+2.0%</b>	<b>+1,476</b>	<b>+4.7%</b>	<b>39,471</b>
HSE	16,428	16,758	16,882	16,973	+92	+215	+1.3%	+546	+3.3%	20,435
Section 38 Voluntary Agencies	15,107	15,601	16,035	16,037	+3	+436	+2.8%	+930	+6.2%	19,036

### Employment by Staff Group

Oct 2021	WTE Dec 2019	WTE Dec 2020	WTE Sep 2021	WTE Oct 2021	WTE change since Sep 21	WTE change since Dec 20	% change since Dec 20	WTE change since Dec 19	% change since Dec 19	No. Oct 2021
<b>Health Service Executive</b>	<b>16,428</b>	<b>16,758</b>	<b>16,882</b>	<b>16,973</b>	<b>+92</b>	<b>+215</b>	<b>+1.3%</b>	<b>+546</b>	<b>+3.3%</b>	<b>20,435</b>
Consultants	11	11	13	14	+0	+2	+19.3%	+3	+28.6%	15
Registrars	10	7	8	8	-0	+1	+10.5%	-2	-20.5%	9
SHO/ Interns	10	12	12	12	-0	+0	+2.2%	+2	+19.3%	12
Medical/ Dental, other	101	108	90	87	-3	-21	-19.6%	-14	-13.8%	164
<b>Medical &amp; Dental</b>	<b>131</b>	<b>138</b>	<b>123</b>	<b>120</b>	<b>-3</b>	<b>-18</b>	<b>-13.1%</b>	<b>-11</b>	<b>-8.4%</b>	<b>200</b>
Nurse/ Midwife Manager	914	958	977	983	+6	+25	+2.6%	+69	+7.6%	1,044
Nurse/ Midwife Specialist & AN/MP	40	53	58	51	-6	-2	-3.0%	+11	+27.9%	56
Staff Nurse/ Staff Midwife	3,192	3,211	3,298	3,295	-3	+85	+2.6%	+103	+3.2%	3,795
Public Health Nurse	20	20	20	21	+1	+1	+4.8%	+2	+8.3%	26
Pre-registration Nurse Intern (COVID-19)		9					-100.0%		-100.0%	
Pre-registration Nurse/ Midwife Intern	3	3	24	16	-8	+13	+552.8%	+13	+402.2%	29
Post-registration Nurse/ Midwife Student	1					-1	-100.0%	-1	-100.0%	
Nursing/ Midwifery awaiting registration	15	14	6	8	+3	-6	-40.8%	-6	-42.8%	12
Nursing/ Midwifery Student	19	25	30	25	-5	-1	-2.4%	+6	+30.0%	41
Nursing/ Midwifery other	9	11	8	9	+1	-2	-18.8%	-0	-0.5%	9
<b>Nursing &amp; Midwifery</b>	<b>4,193</b>	<b>4,278</b>	<b>4,390</b>	<b>4,384</b>	<b>-5</b>	<b>+106</b>	<b>+2.5%</b>	<b>+191</b>	<b>+4.6%</b>	<b>4,971</b>
Therapy Professions	562	596	640	640	+0	+44	+7.4%	+78	+13.9%	744
Health Science/ Diagnostics	7	8	9	9	+0	+1	+13.5%	+2	+28.4%	13
Social Care	92	103	100	102	+2	-2	-1.6%	+10	+11.0%	115
Social Workers	142	151	149	148	-2	-3	-2.1%	+5	+3.8%	165
Psychologists	78	83	97	100	+3	+16	+19.7%	+22	+28.0%	114
Pharmacy	11	12	13	13	-0	+1	+12.1%	+3	+24.7%	18
H&SC, Other	28	27	23	24	+1	-3	-11.5%	-4	-14.6%	29
<b>Health &amp; Social Care Professionals</b>	<b>919</b>	<b>980</b>	<b>1,031</b>	<b>1,035</b>	<b>+4</b>	<b>+55</b>	<b>+5.6%</b>	<b>+116</b>	<b>+12.6%</b>	<b>1,198</b>
Management (VIII & above)	117	133	145	153	+8	+20	+15.4%	+36	+30.4%	158
Administrative/ Supervisory (V to VII)	287	326	362	370	+9	+44	+13.6%	+83	+29.0%	395
Clerical (III & IV)	722	755	762	773	+11	+18	+2.4%	+51	+7.0%	893
<b>Management &amp; Administrative</b>	<b>1,126</b>	<b>1,214</b>	<b>1,269</b>	<b>1,296</b>	<b>+28</b>	<b>+82</b>	<b>+6.8%</b>	<b>+170</b>	<b>+15.1%</b>	<b>1,446</b>
Support	815	782	754	753	-1	-29	-3.7%	-62	-7.6%	853
Maintenance/ Technical	109	110	107	108	+1	-2	-1.8%	-1	-1.3%	112
<b>General Support</b>	<b>924</b>	<b>892</b>	<b>861</b>	<b>861</b>	<b>-1</b>	<b>-31</b>	<b>-3.5%</b>	<b>-64</b>	<b>-6.9%</b>	<b>965</b>
Health Care Assistants	5,338	5,449	5,366	5,406	+40	-44	-0.8%	+68	+1.3%	6,097
Home Help	3,551	3,525	3,509	3,535	+26	+10	+0.3%	-16	-0.4%	5,168
Care, other	246	282	334	336	+3	+54	+19.2%	+91	+37.0%	390
<b>Patient &amp; Client Care</b>	<b>9,134</b>	<b>9,257</b>	<b>9,208</b>	<b>9,277</b>	<b>+69</b>	<b>+21</b>	<b>+0.2%</b>	<b>+143</b>	<b>+1.6%</b>	<b>11,655</b>

## Employment by Staff Group

Oct 2021	WTE Dec 2019	WTE Dec 2020	WTE Sep 2021	WTE Oct 2021	WTE change since Sep 21	WTE change since Dec 20	% change since Dec 20	WTE change since Dec 19	% change since Dec 19	No. Oct 2021
<b>Section 38 Voluntary Agencies</b>	<b>15,107</b>	<b>15,601</b>	<b>16,035</b>	<b>16,037</b>	<b>+3</b>	<b>+436</b>	<b>+2.8%</b>	<b>+930</b>	<b>+6.2%</b>	<b>19,036</b>
Consultants	17	18	16	16	-1	-2	-10.8%	-1	-8.1%	24
Registrars	13	10	11	11		+1	+13.7%	-2	-12.5%	12
SHO/ Interns	12	11	15	12	-3	+1	+8.3%	-0	-0.4%	12
Medical/ Dental, other	10	10	9	9		-1	-9.9%	-1	-9.9%	13
<b>Medical &amp; Dental</b>	<b>52</b>	<b>49</b>	<b>52</b>	<b>48</b>	<b>-4</b>	<b>-1</b>	<b>-1.3%</b>	<b>-4</b>	<b>-7.8%</b>	<b>61</b>
Nurse/ Midwife Manager	689	685	690	698	+9	+13	+1.9%	+9	+1.3%	753
Nurse/ Midwife Specialist & AN/MP	48	49	50	51	+1	+2	+4.0%	+3	+6.2%	57
Staff Nurse/ Staff Midwife	1,957	2,007	1,957	1,964	+7	-43	-2.1%	+7	+0.3%	2,292
Pre-registration Nurse Intern (COVID-19)		23	2	2	-1	+2	-92.9%	+2	-100.0%	2
Pre-registration Nurse/ Midwife Intern	25		26	11	-14	-14	-100.0%	-14	-55.2%	23
Nursing/ Midwifery awaiting registration			8	3	-5	+3	-100.0%	+3	-100.0%	3
Nursing/ Midwifery Student	25	23	36	16	-20	-7	-32.1%	-9	-36.9%	28
Nursing/ Midwifery other	14	17	17	18	+0	+1	+3.8%	+3	+22.7%	20
<b>Nursing &amp; Midwifery</b>	<b>2,734</b>	<b>2,782</b>	<b>2,750</b>	<b>2,747</b>	<b>-4</b>	<b>-35</b>	<b>-1.3%</b>	<b>+13</b>	<b>+0.5%</b>	<b>3,150</b>
Therapy Professions	491	495	521	526	+6	+32	+6.4%	+36	+7.3%	601
Health Science/ Diagnostics	19	17	17	17				-2	-10.5%	18
Social Care	2,506	2,689	2,838	2,846	+8	+340	+5.9%	+340	+13.6%	3,362
Social Care	2,506	2,689	2,838	2,846	+8	+158	+5.9%	+340	+13.6%	3,362
Social Workers	175	177	179	181	+2	+3	+2.0%	+6	+3.2%	215
Psychologists	128	147	143	145	+2	-2	-1.3%	+17	+13.0%	163
Pharmacy	11	11	13	12	-0	+1	+7.7%	+1	+7.9%	16
H&SC, Other	59	51	50	48	-2	-3	-5.2%	-11	-18.2%	66
<b>Health &amp; Social Care Professionals</b>	<b>3,389</b>	<b>3,587</b>	<b>3,760</b>	<b>3,776</b>	<b>+16</b>	<b>+189</b>	<b>+5.3%</b>	<b>+386</b>	<b>+11.4%</b>	<b>4,441</b>
Management (VIII & above)	137	150	158	160	+2	+10	+6.4%	+23	+16.6%	161
Administrative/ Supervisory (V to VII)	357	377	392	395	+3	+18	+4.8%	+38	+10.6%	430
Clerical (III & IV)	509	517	530	530	-0	+12	+2.4%	+20	+4.0%	656
<b>Management &amp; Administrative</b>	<b>1,003</b>	<b>1,044</b>	<b>1,080</b>	<b>1,084</b>	<b>+5</b>	<b>+40</b>	<b>+3.8%</b>	<b>+81</b>	<b>+8.1%</b>	<b>1,247</b>
Support	748	682	685	687	+2	+5	+0.7%	-61	-8.2%	963
Maintenance/ Technical	113	117	119	119	+0	+2	+1.6%	+6	+5.3%	132
<b>General Support</b>	<b>862</b>	<b>799</b>	<b>804</b>	<b>806</b>	<b>+2</b>	<b>+7</b>	<b>+0.9%</b>	<b>-55</b>	<b>-6.4%</b>	<b>1,095</b>
Health Care Assistants	5,532	5,771	6,009	5,982	-26	+211	+3.7%	+451	+8.1%	7,174
Care, other	1,536	1,570	1,581	1,594	+13	+24	+1.6%	+59	+3.8%	1,868
<b>Patient &amp; Client Care</b>	<b>7,067</b>	<b>7,341</b>	<b>7,590</b>	<b>7,577</b>	<b>-13</b>	<b>+236</b>	<b>+3.2%</b>	<b>+509</b>	<b>+7.2%</b>	<b>9,042</b>

## Social Care Services Employment by CHO: Oct 2021

Oct 2021	WTE Dec 2019	WTE Dec 2020	WTE Sep 2021	WTE Oct 2021	WTE change since Sep 21	WTE change since Dec 20	% change since Dec 20	WTE change since Dec 19	% change since Dec 19	No. Oct 2021
<b>Overall</b>	<b>31,535</b>	<b>32,359</b>	<b>32,916</b>	<b>33,011</b>	<b>+94</b>	<b>+651</b>	<b>+2.0%</b>	<b>+1,476</b>	<b>+4.7%</b>	<b>39,471</b>
CHO 1	3,334	3,464	3,471	3,546	+74	+81	+2.4%	+212	+6.4%	4,100
CHO 2	3,103	3,105	3,084	3,079	-5	-26	-0.8%	-23	-0.8%	3,737
CHO 3	2,798	2,976	3,127	3,139	+12	+163	+5.5%	+342	+12.2%	3,805
CHO 4	5,358	5,486	5,547	5,535	-12	+50	+0.9%	+177	+3.3%	6,969
CHO 5	3,152	3,213	3,294	3,306	+12	+92	+2.9%	+153	+4.9%	3,924
CHO 6	2,021	2,020	2,044	2,041	-3	+20	+1.0%	+20	+1.0%	2,294
CHO 7	3,978	4,125	4,248	4,248	+0	+123	+3.0%	+270	+6.8%	4,983
CHO 8	3,650	3,689	3,718	3,734	+16	+44	+1.2%	+83	+2.3%	4,565
CHO 9	4,064	4,199	4,301	4,301	-0	+102	+2.4%	+237	+5.8%	5,005
other Community Services	78	81	82	82	-0	+1	+1.4%	+4	+4.9%	89

# Social Care Services Employment by CHO etc. Oct 2021

## CHO 1

Oct 2021	WTE Dec 2019	WTE Dec 2020	WTE Sep 2021	WTE Oct 2021	WTE change since Sep 21	WTE change since Dec 20	% change since Dec 20	WTE change since Dec 19	% change since Dec 19	No. Oct 2021
<b>Overall</b>	<b>3,334</b>	<b>3,464</b>	<b>3,471</b>	<b>3,546</b>	<b>+74</b>	<b>+81</b>	<b>+2.4%</b>	<b>+212</b>	<b>+6.4%</b>	<b>4,100</b>
Medical/ Dental, other	33	35	18	17	-1	-18	-51.1%	-15	-47.2%	47
<b>Medical &amp; Dental</b>	<b>33</b>	<b>35</b>	<b>18</b>	<b>17</b>	<b>-1</b>	<b>-18</b>	<b>-51.1%</b>	<b>-15</b>	<b>-47.2%</b>	<b>47</b>
Nurse/ Midwife Manager	196	194	201	209	+8	+14	+7.4%	+12	+6.3%	220
Nurse/ Midwife Specialist & AN/MP	14	18	18	17	-1	-1	-7.2%	+3	+20.4%	18
Staff Nurse/ Staff Midwife	631	643	673	666	-7	+23	+3.6%	+35	+5.6%	756
Nursing/ Midwifery Student	14	17	16	15	-1	-2	-13.8%	+1	+7.6%	25
Nursing/ Midwifery other	5	5	3	3	+0	-2	-38.5%	-2	-36.4%	3
<b>Nursing &amp; Midwifery</b>	<b>860</b>	<b>877</b>	<b>911</b>	<b>910</b>	<b>-1</b>	<b>+32</b>	<b>+3.7%</b>	<b>+50</b>	<b>+5.8%</b>	<b>1,022</b>
Therapy Professions	53	56	65	71	+6	+15	+26.6%	+17	+32.5%	80
Health Science/ Diagnostics	1	2	2	2	+0	+0	+8.2%	+0	+37.9%	3
<i>Social Care</i>	<i>8</i>	<i>11</i>	<i>10</i>	<i>10</i>	<i>+0</i>	<i>-1</i>	<i>-12.5%</i>	<i>+2</i>	<i>+30.6%</i>	<i>12</i>
Social Care	8	11	10	10	+0	-1	-12.5%	+2	+30.6%	12
Social Workers	33	34	32	33	+1	-0	-1.5%	+0	+0.1%	36
Psychologists	5	7	14	14	+0	+7	+94.6%	+10	+214.1%	15
H&SC, Other	12	10	9	8	-1	-2	-22.1%	-5	-38.6%	9
<b>Health &amp; Social Care Professionals</b>	<b>112</b>	<b>120</b>	<b>131</b>	<b>138</b>	<b>+7</b>	<b>+18</b>	<b>+15.0%</b>	<b>+25</b>	<b>+22.5%</b>	<b>155</b>
Management (VIII & above)	22	25	20	23	+3	-1	-5.1%	+1	+6.5%	24
Administrative/ Supervisory (V to VII)	42	49	58	63	+6	+14	+28.3%	+22	+51.6%	67
Clerical (III & IV)	135	141	135	137	+2	-4	-2.7%	+2	+1.5%	156
<b>Management &amp; Administrative</b>	<b>199</b>	<b>215</b>	<b>213</b>	<b>224</b>	<b>+11</b>	<b>+9</b>	<b>+4.2%</b>	<b>+25</b>	<b>+12.6%</b>	<b>247</b>
Support	172	168	148	146	-2	-21	-12.6%	-25	-14.7%	173
Maintenance/ Technical	13	13	12	12	+0	-1	-9.4%	-1	-9.4%	12
<b>General Support</b>	<b>185</b>	<b>181</b>	<b>160</b>	<b>158</b>	<b>-2</b>	<b>-22</b>	<b>-12.4%</b>	<b>-27</b>	<b>-14.4%</b>	<b>185</b>
Health Care Assistants	1,325	1,355	1,338	1,369	+31	+14	+1.0%	+44	+3.3%	1,525
Home Help	556	618	623	652	+29	+34	+5.5%	+96	+17.2%	832
Care, other	65	63	78	78	+0	+15	+24.2%	+14	+20.9%	87
<b>Patient &amp; Client Care</b>	<b>1,946</b>	<b>2,037</b>	<b>2,039</b>	<b>2,099</b>	<b>+61</b>	<b>+63</b>	<b>+3.1%</b>	<b>+154</b>	<b>+7.9%</b>	<b>2,444</b>

## CHO 2

Oct 2021	WTE Dec 2019	WTE Dec 2020	WTE Sep 2021	WTE Oct 2021	WTE change since Sep 21	WTE change since Dec 20	% change since Dec 20	WTE change since Dec 19	% change since Dec 19	No. Oct 2021
<b>Overall</b>	<b>3,103</b>	<b>3,105</b>	<b>3,084</b>	<b>3,079</b>	<b>-5</b>	<b>-26</b>	<b>-0.8%</b>	<b>-23</b>	<b>-0.8%</b>	<b>3,737</b>
Consultants	3	3	3	3	0					4
Registrars	2	2	2	2	0					2
Medical/ Dental, other	12	12	12	11	-0	-0	-1.5%	-1	-5.5%	12
<b>Medical &amp; Dental</b>	<b>18</b>	<b>17</b>	<b>17</b>	<b>17</b>	<b>-0</b>	<b>-0</b>	<b>-1.0%</b>	<b>-1</b>	<b>-3.8%</b>	<b>18</b>
Nurse/ Midwife Manager	136	144	143	145	+2	+0	+0.2%	+9	+6.5%	156
Nurse/ Midwife Specialist & AN/MP	8	8	9	9	-0	+1	+12.3%	+1	+10.0%	10
Staff Nurse/ Staff Midwife	466	474	468	466	-2	-8	-1.7%	-1	-0.1%	551
Public Health Nurse	1	1	1	1	0			+0	+25.0%	1
<i>Pre-registration Nurse Intern (COVID-19)</i>		1				-1	-100.0%		-100.0%	
Nursing/ Midwifery Student		1				-1	-100.0%		-100.0%	
<b>Nursing &amp; Midwifery</b>	<b>611</b>	<b>628</b>	<b>620</b>	<b>620</b>	<b>+0</b>	<b>-8</b>	<b>-1.2%</b>	<b>+9</b>	<b>+1.5%</b>	<b>718</b>
Therapy Professions	67	59	57	55	-1	-4	-6.4%	-12	-17.2%	66
Health Science/ Diagnostics	1	1	1	1	0					1
Social Care	222	243	261	265	+4	+21	+8.8%	+43	+19.3%	328
Social Workers	36	36	37	38	+1	+1	+4.0%	+1	+3.9%	48
Psychologists	16	14	15	15	-0	+1	+3.6%	-1	-6.6%	18
Pharmacy	1	1	1	1	0	-1	-51.5%	-1	-50.5%	1
H&SC, Other	16	12	12	10	-2	-2	-14.0%	-6	-36.9%	16
<b>Health &amp; Social Care Professionals</b>	<b>358</b>	<b>366</b>	<b>382</b>	<b>384</b>	<b>+1</b>	<b>+17</b>	<b>+4.7%</b>	<b>+25</b>	<b>+7.1%</b>	<b>478</b>
Management (VIII & above)	18	18	21	21	+0	+3	+17.2%	+3	+16.5%	21
Administrative/ Supervisory (V to VII)	48	54	61	60	-1	+7	+12.5%	+12	+25.5%	62
Clerical (III & IV)	121	116	109	111	+2	-5	-4.6%	-11	-8.8%	132
<b>Management &amp; Administrative</b>	<b>187</b>	<b>187</b>	<b>190</b>	<b>192</b>	<b>+1</b>	<b>+4</b>	<b>+2.3%</b>	<b>+5</b>	<b>+2.5%</b>	<b>215</b>
Support	101	99	99	97	-2	-2	-1.8%	-3	-3.4%	136
Maintenance/ Technical	32	32	29	30	+1	-2	-7.3%	-2	-6.1%	32
<b>General Support</b>	<b>133</b>	<b>132</b>	<b>129</b>	<b>127</b>	<b>-1</b>	<b>-4</b>	<b>-3.2%</b>	<b>-5</b>	<b>-4.0%</b>	<b>168</b>
Health Care Assistants	1,138	1,151	1,158	1,158	-0	+7	+0.6%	+20	+1.7%	1,367
<i>Home Helps</i>	499	456	408	402	-6	-55	-12.0%	-98	-19.6%	548
Home Help	499	456	408	402	-6	-55	-12.0%	-98	-19.6%	548
Care, other	159	168	180	180	-0	+12	+7.2%	+22	+13.7%	225
<b>Patient &amp; Client Care</b>	<b>1,796</b>	<b>1,775</b>	<b>1,746</b>	<b>1,740</b>	<b>-6</b>	<b>-36</b>	<b>-2.0%</b>	<b>-57</b>	<b>-3.1%</b>	<b>2,140</b>

### CHO 3

Oct 2021	WTE Dec 2019	WTE Dec 2020	WTE Sep 2021	WTE Oct 2021	WTE change since Sep 21	WTE change since Dec 20	% change since Dec 20	WTE change since Dec 19	% change since Dec 19	No. Oct 2021
<b>Overall</b>	<b>2,798</b>	<b>2,976</b>	<b>3,127</b>	<b>3,139</b>	<b>+12</b>	<b>+163</b>	<b>+5.5%</b>	<b>+342</b>	<b>+12.2%</b>	<b>3,805</b>
Consultants	2	3	5	5	+0	+2	+75.0%	+3	+155.5%	6
Medical/ Dental, other	6	7	6	5	-1	-2	-25.3%	-1	-12.6%	7
<b>Medical &amp; Dental</b>	<b>8</b>	<b>10</b>	<b>11</b>	<b>10</b>	<b>-1</b>	<b>+0</b>	<b>+4.5%</b>	<b>+2</b>	<b>+29.8%</b>	<b>13</b>
Nurse/ Midwife Manager	140	139	138	144	+6	+5	+3.6%	+4	+3.0%	153
Nurse/ Midwife Specialist & AN/MP	14	14	12	12	-1	-3	-17.7%	-3	-19.8%	13
Staff Nurse/ Staff Midwife	486	502	513	511	-2	+10	+1.9%	+25	+5.2%	580
Public Health Nurse	1	1	1	1	0					1
<i>Pre-registration Nurse Intern (COVID-19)</i>		2	1	2	+0	+0	+9.3%	+2	-100.0%	2
<i>Pre-registration Nurse/ Midwife Intern</i>	12		1		-1		-100.0%	-12	-100.0%	
Nursing/ Midwifery Student	12	2	2	2	-1	+0	+9.3%	-10	-85.7%	2
<i>Nursing Education/Clinical</i>	3	3	3	3	0					3
<i>Other Nursing/ Midwifery</i>	1	1	1	1	0					1
Nursing/ Midwifery other	4	4	4	4	0					4
<b>Nursing &amp; Midwifery</b>	<b>656</b>	<b>661</b>	<b>670</b>	<b>673</b>	<b>+3</b>	<b>+12</b>	<b>+1.8%</b>	<b>+17</b>	<b>+2.6%</b>	<b>753</b>
Therapy Professions	102	113	117	115	-1	+3	+2.2%	+14	+13.5%	130
Health Science/ Diagnostics	1	3	4	4	+0	+1	+36.8%	+3	+402.8%	5
Social Care	241	284	282	284	+2	+0	+0.1%	+43	+18.0%	328
Social Workers	24	23	22	23	+1	-0	-2.1%	-1	-2.3%	25
Psychologists	16	20	20	20	+0	-0	-1.8%	+4	+25.4%	22
Pharmacy	1	1	1	1	0					1
H&SC, Other	12	11	11	11	+0	-0	-3.4%	-1	-8.2%	15
<b>Health &amp; Social Care Professionals</b>	<b>396</b>	<b>456</b>	<b>455</b>	<b>458</b>	<b>+3</b>	<b>+3</b>	<b>+0.6%</b>	<b>+63</b>	<b>+15.8%</b>	<b>526</b>
Management (VIII & above)	13	14	15	16	+1	+2	+14.1%	+3	+24.5%	16
Administrative/ Supervisory (V to VII)	61	61	63	62	-1	+1	+1.0%	+1	+1.2%	65
Clerical (III & IV)	109	107	115	113	-1	+6	+5.9%	+5	+4.4%	128
<b>Management &amp; Administrative</b>	<b>183</b>	<b>182</b>	<b>192</b>	<b>191</b>	<b>-1</b>	<b>+9</b>	<b>+4.9%</b>	<b>+9</b>	<b>+4.7%</b>	<b>209</b>
Support	117	116	114	116	+3	+0	+0.1%	-1	-0.7%	132
Maintenance/ Technical	37	40	42	42	+0	+2	+4.0%	+6	+15.1%	45
<b>General Support</b>	<b>154</b>	<b>157</b>	<b>155</b>	<b>158</b>	<b>+3</b>	<b>+2</b>	<b>+1.1%</b>	<b>+5</b>	<b>+3.1%</b>	<b>177</b>
Health Care Assistants	1,043	1,101	1,151	1,151	-0	+50	+4.5%	+107	+10.3%	1,416
Home Help	175	216	280	281	+2	+65	+30.0%	+106	+60.6%	465
Care, other	183	193	212	216	+4	+22	+11.6%	+33	+17.9%	246
<b>Patient &amp; Client Care</b>	<b>1,402</b>	<b>1,511</b>	<b>1,643</b>	<b>1,648</b>	<b>+5</b>	<b>+137</b>	<b>+9.1%</b>	<b>+246</b>	<b>+17.6%</b>	<b>2,127</b>

## CHO 4

Oct 2021	WTE Dec 2019	WTE Dec 2020	WTE Sep 2021	WTE Oct 2021	WTE change since Sep 21	WTE change since Dec 20	% change since Dec 20	WTE change since Dec 19	% change since Dec 19	No. Oct 2021
<b>Overall</b>	<b>5,358</b>	<b>5,486</b>	<b>5,547</b>	<b>5,535</b>	<b>-12</b>	<b>+50</b>	<b>+0.9%</b>	<b>+177</b>	<b>+3.3%</b>	<b>6,969</b>
Consultants	3	4	4	4	0			+1	+40.0%	5
Registrars	3	3	2	2	0	-1	-30.7%	-1	-30.7%	3
SHO/ Interns	1	1	2	2	0	+1	+100.0%	+1	+100.0%	2
Medical/ Dental, other	21	23	23	22	-1	-2	-7.0%	+1	+3.2%	51
<b>Medical &amp; Dental</b>	<b>28</b>	<b>31</b>	<b>30</b>	<b>29</b>	<b>-1</b>	<b>-2</b>	<b>-5.1%</b>	<b>+2</b>	<b>+6.3%</b>	<b>61</b>
Nurse/ Midwife Manager	207	213	214	216	+2	+4	+1.7%	+9	+4.5%	233
Nurse/ Midwife Specialist & AN/MP	17	20	18	17	-1	-3	-16.4%	+0	+1.8%	19
Staff Nurse/ Staff Midwife	824	840	836	835	-0	-5	-0.6%	+11	+1.4%	1,041
Public Health Nurse	5	6	5	5	-0	-1	-23.7%	-1	-11.8%	6
<i>Pre-registration Nurse Intern (COVID-19)</i>		8				-8	-100.0%		-100.0%	
<i>Pre-registration Nurse/ Midwife Intern</i>	6		10	10	+0	+10	-100.0%	+4	+71.2%	22
<i>Post-registration Nurse/ Midwife Student</i>	1						-100.0%	-1	-100.0%	
<i>Nursing/ Midwifery awaiting registration</i>	2	2				-2	-100.0%	-2	-100.0%	
Nursing/ Midwifery Student	9	10	10	10	+0	+1	+7.5%	+1	+14.1%	22
<i>Nursing Education/Clinical</i>	1						-100.0%	-1	-100.0%	
Nursing/ Midwifery other	1						-100.0%	-1	-100.0%	
<b>Nursing &amp; Midwifery</b>	<b>1,062</b>	<b>1,089</b>	<b>1,082</b>	<b>1,083</b>	<b>+1</b>	<b>-5</b>	<b>-0.5%</b>	<b>+21</b>	<b>+2.0%</b>	<b>1,321</b>
Therapy Professions	152	145	163	168	+4	+23	+15.7%	+15	+10.1%	202
Health Science/ Diagnostics	1	1	1	1	0			+0	+13.2%	2
Social Care	228	240	246	250	+4	+10	+4.0%	+21	+9.4%	284
Social Workers	37	39	39	39	+0	+0	+0.3%	+2	+5.7%	47
Psychologists	35	36	36	35	-1	-1	-3.7%	-0	-0.2%	40
Pharmacy	3	4	4	4	-0	+0	+12.7%	+2	+64.9%	7
H&SC, Other	8	10	8	9	+0	-1	-13.2%	+0	+5.4%	10
<b>Health &amp; Social Care Professionals</b>	<b>465</b>	<b>476</b>	<b>499</b>	<b>506</b>	<b>+8</b>	<b>+30</b>	<b>+6.4%</b>	<b>+41</b>	<b>+8.9%</b>	<b>592</b>
Management (VIII & above)	35	37	39	42	+3	+5	+14.0%	+7	+19.2%	44
Administrative/ Supervisory (V to VII)	70	78	79	78	-1	-0	-0.1%	+7	+10.4%	88
Clerical (III & IV)	212	221	220	220	+0	-0	-0.1%	+8	+3.8%	279
<b>Management &amp; Administrative</b>	<b>318</b>	<b>335</b>	<b>337</b>	<b>340</b>	<b>+3</b>	<b>+5</b>	<b>+1.4%</b>	<b>+22</b>	<b>+7.0%</b>	<b>411</b>
Support	241	252	259	262	+2	+10	+3.8%	+20	+8.4%	380
<i>Maintenance</i>	15	16	17	17	+0	+1	+4.6%	+2	+12.5%	21
<i>Technical Services</i>	1	2	2	2	0			+1	+100.0%	2
Maintenance/ Technical	16	18	19	19	+0	+1	+4.1%	+3	+17.9%	23
<b>General Support</b>	<b>258</b>	<b>271</b>	<b>279</b>	<b>281</b>	<b>+2</b>	<b>+10</b>	<b>+3.8%</b>	<b>+23</b>	<b>+9.0%</b>	<b>403</b>
Health Care Assistants	1,776	1,852	1,918	1,903	-15	+51	+2.8%	+127	+7.2%	2,176
Home Help	1,113	1,067	1,035	1,027	-8	-39	-3.7%	-86	-7.7%	1,573
Care, other	338	366	367	365	-2	-1	-0.3%	+27	+7.9%	432
<b>Patient &amp; Client Care</b>	<b>3,228</b>	<b>3,285</b>	<b>3,321</b>	<b>3,296</b>	<b>-25</b>	<b>+11</b>	<b>+0.3%</b>	<b>+68</b>	<b>+2.1%</b>	<b>4,181</b>



## CHO 5

Oct 2021	WTE Dec 2019	WTE Dec 2020	WTE Sep 2021	WTE Oct 2021	WTE change since Sep 21	WTE change since Dec 20	% change since Dec 20	WTE change since Dec 19	% change since Dec 19	No. Oct 2021
<b>Overall</b>	<b>3,152</b>	<b>3,213</b>	<b>3,294</b>	<b>3,306</b>	<b>+12</b>	<b>+92</b>	<b>+2.9%</b>	<b>+153</b>	<b>+4.9%</b>	<b>3,924</b>
Consultants	1	1	1	1	0	+0	+28.4%			1
Medical/ Dental, other	10	15	15	15	0	+1	+4.0%	+6	+56.2%	21
<b>Medical &amp; Dental</b>	<b>11</b>	<b>16</b>	<b>16</b>	<b>16</b>	<b>+0</b>	<b>+1</b>	<b>+5.2%</b>	<b>+6</b>	<b>+51.2%</b>	<b>22</b>
Nurse/ Midwife Manager	147	158	159	159	+0	+1	+0.5%	+12	+7.9%	167
Nurse/ Midwife Specialist & AN/MP	4	6	6	6	+1	+1	+8.3%	+2	+62.3%	7
Staff Nurse/ Staff Midwife	485	476	476	473	-3	-4	-0.7%	-12	-2.5%	553
Public Health Nurse	9	9	10	11	+1	+2	+27.6%	+2	+20.5%	13
<i>Pre-registration Nurse Intern (COVID-19)</i>		1				-1	-100.0%		-100.0%	
<i>Pre-registration Nurse/ Midwife Intern</i>			7	0	-7	+0	-100.0%	+0	-100.0%	1
<i>Nursing/ Midwifery awaiting registration</i>	2		1	2	+2	+2	-100.0%	+0	+22.3%	4
Nursing/ Midwifery Student	2	1	8	2	-5	+1	+148.0%	+1	+34.8%	5
Nursing/ Midwifery other			1	1	0	+1	-100.0%	+1	-100.0%	1
<b>Nursing &amp; Midwifery</b>	<b>647</b>	<b>650</b>	<b>659</b>	<b>653</b>	<b>-6</b>	<b>+2</b>	<b>+0.4%</b>	<b>+5</b>	<b>+0.8%</b>	<b>746</b>
Therapy Professions	104	97	102	102	-0	+4	+4.3%	-2	-2.1%	117
Social Care	154	143	147	152	+5	+9	+6.3%	-2	-1.3%	186
Social Workers	24	28	31	32	+1	+4	+13.3%	+8	+33.2%	37
Psychologists	14	19	22	20	-2	+1	+5.7%	+6	+43.6%	22
Pharmacy		1				-1	-100.0%		-100.0%	
H&SC, Other	7	5	6	6	0	+1	+9.5%	-1	-15.5%	8
<b>Health &amp; Social Care Professionals</b>	<b>303</b>	<b>294</b>	<b>307</b>	<b>312</b>	<b>+4</b>	<b>+18</b>	<b>+6.0%</b>	<b>+9</b>	<b>+3.0%</b>	<b>370</b>
Management (VIII & above)	15	17	19	20	+0	+3	+20.5%	+5	+35.7%	21
Administrative/ Supervisory (V to VII)	53	58	66	67	+1	+9	+16.4%	+14	+26.8%	73
Clerical (III & IV)	93	93	100	106	+6	+13	+14.1%	+13	+14.3%	125
<b>Management &amp; Administrative</b>	<b>160</b>	<b>167</b>	<b>185</b>	<b>193</b>	<b>+8</b>	<b>+26</b>	<b>+15.5%</b>	<b>+33</b>	<b>+20.4%</b>	<b>219</b>
Support	139	95	90	89	-1	-6	-6.6%	-50	-35.8%	107
<i>Maintenance</i>	15	10	12	12	-0	+2	+18.2%	-2	-15.9%	14
<i>Technical Services</i>	1	1	1	1	0					1
Maintenance/ Technical	16	11	13	13	-0	+2	+16.6%	-2	-14.9%	15
<b>General Support</b>	<b>154</b>	<b>107</b>	<b>103</b>	<b>102</b>	<b>-1</b>	<b>-4</b>	<b>-4.1%</b>	<b>-52</b>	<b>-33.7%</b>	<b>122</b>
Health Care Assistants	1,062	1,180	1,182	1,180	-2	-0	-0.0%	+118	+11.1%	1,333
Home Help	661	638	655	656	+2	+18	+2.8%	-5	-0.8%	886
Care, other	154	162	187	194	+7	+32	+20.0%	+40	+25.8%	226
<b>Patient &amp; Client Care</b>	<b>1,877</b>	<b>1,980</b>	<b>2,023</b>	<b>2,030</b>	<b>+7</b>	<b>+50</b>	<b>+2.5%</b>	<b>+153</b>	<b>+8.1%</b>	<b>2,445</b>

## CHO 6

Oct 2021	WTE Dec 2019	WTE Dec 2020	WTE Sep 2021	WTE Oct 2021	WTE change since Sep 21	WTE change since Dec 20	% change since Dec 20	WTE change since Dec 19	% change since Dec 19	No. Oct 2021
<b>Overall</b>	<b>2,021</b>	<b>2,020</b>	<b>2,044</b>	<b>2,041</b>	<b>-3</b>	<b>+20</b>	<b>+1.0%</b>	<b>+20</b>	<b>+1.0%</b>	<b>2,294</b>
Consultants	3	3	3	3	0					3
Registrars	1	1	1	1	0					1
SHO/ Interns			1	1	0	+1	-100.0%	+1	-100.0%	1
Medical/ Dental, other	5	4	3	3	0	-1	-27.9%	-2	-44.8%	4
<b>Medical &amp; Dental</b>	<b>9</b>	<b>8</b>	<b>8</b>	<b>8</b>		<b>-0</b>	<b>-0.9%</b>	<b>-1</b>	<b>-13.8%</b>	<b>9</b>
Nurse/ Midwife Manager	112	106	107	105	-1	-1	-0.6%	-6	-5.7%	112
Nurse/ Midwife Specialist & AN/MP	1	1	2	1	-1					1
Staff Nurse/ Staff Midwife	351	348	341	343	+2	-5	-1.5%	-8	-2.3%	368
<b>Nursing &amp; Midwifery</b>	<b>464</b>	<b>455</b>	<b>450</b>	<b>449</b>	<b>-1</b>	<b>-6</b>	<b>-1.3%</b>	<b>-15</b>	<b>-3.1%</b>	<b>481</b>
Therapy Professions	91	89	89	87	-2	-1	-1.6%	-4	-4.5%	103
Social Care	334	361	382	379	-2	+18	+5.1%	+45	+13.4%	437
Social Workers	23	20	16	18	+2	-2	-11.3%	-5	-20.1%	20
Psychologists	16	15	14	16	+2	+2	+11.5%	+1	+4.1%	21
Pharmacy	3	3	4	4	-0	+1	+43.8%	+1	+45.8%	5
H&SC, Other	2	1	1	1	+0	+0	+3.9%	-1	-27.3%	2
<b>Health &amp; Social Care Professionals</b>	<b>469</b>	<b>489</b>	<b>507</b>	<b>506</b>	<b>-0</b>	<b>+18</b>	<b>+3.6%</b>	<b>+38</b>	<b>+8.1%</b>	<b>588</b>
Management (VIII & above)	35	35	38	37	-1	+2	+4.6%	+2	+5.8%	37
Administrative/ Supervisory (V to VII)	76	73	81	81	+0	+8	+10.9%	+6	+7.7%	88
Clerical (III & IV)	83	89	84	82	-3	-7	-7.8%	-2	-1.8%	96
<b>Management &amp; Administrative</b>	<b>194</b>	<b>197</b>	<b>203</b>	<b>200</b>	<b>-3</b>	<b>+3</b>	<b>+1.3%</b>	<b>+6</b>	<b>+3.3%</b>	<b>221</b>
Support	131	128	132	132	-0	+5	+3.5%	+1	+1.0%	146
Maintenance/ Technical	15	14	15	14	-1			-1	-5.1%	14
<b>General Support</b>	<b>146</b>	<b>142</b>	<b>147</b>	<b>146</b>	<b>-1</b>	<b>+5</b>	<b>+3.2%</b>	<b>+1</b>	<b>+0.4%</b>	<b>160</b>
Health Care Assistants	487	479	483	485	+1	+5	+1.1%	-2	-0.4%	549
Care, other	254	250	246	247	+1	-4	-1.5%	-7	-2.8%	286
<b>Patient &amp; Client Care</b>	<b>740</b>	<b>730</b>	<b>729</b>	<b>731</b>	<b>+2</b>	<b>+1</b>	<b>+0.2%</b>	<b>-9</b>	<b>-1.2%</b>	<b>835</b>

## CHO 7

Oct 2021	WTE Dec 2019	WTE Dec 2020	WTE Sep 2021	WTE Oct 2021	WTE change since Sep 21	WTE change since Dec 20	% change since Dec 20	WTE change since Dec 19	% change since Dec 19	No. Oct 2021
<b>Overall</b>	<b>3,978</b>	<b>4,125</b>	<b>4,248</b>	<b>4,248</b>	<b>+0</b>	<b>+123</b>	<b>+3.0%</b>	<b>+270</b>	<b>+6.8%</b>	<b>4,983</b>
Consultants	1	1	0		-0	-1	-100.0%	-1	-100.0%	
Registrars	3	3	2	2	0	-1	-21.0%	-1	-21.0%	3
SHO/ Interns	9	9	10	10	0	+1	+10.1%	+1	+10.6%	10
Medical/ Dental, other	5	3	3	3	0			-2	-39.2%	5
<b>Medical &amp; Dental</b>	<b>18</b>	<b>16</b>	<b>16</b>	<b>15</b>	<b>-0</b>	<b>-0</b>	<b>-1.7%</b>	<b>-2</b>	<b>-12.5%</b>	<b>18</b>
Nurse/ Midwife Manager	199	204	226	228	+2	+24	+11.6%	+29	+14.5%	245
Nurse/ Midwife Specialist & AN/MP	8	7	8	8	-0	+0	+3.1%	-0	-4.3%	9
Staff Nurse/ Staff Midwife	593	620	636	651	+15	+31	+4.9%	+57	+9.6%	734
<i>Pre-registration Nurse/ Midwife Intern</i>			1	1	0	+1	-100.0%	+1	-100.0%	1
<i>Nursing/ Midwifery awaiting registration</i>		1	10	3	-7	+2	+122.2%	+3	-100.0%	3
Nursing/ Midwifery Student		1	11	4	-7	+2	+159.3%	+4	-100.0%	4
Nursing/ Midwifery other	1	2	3	3	0	+1	+66.7%	+2	+400.0%	3
<b>Nursing &amp; Midwifery</b>	<b>801</b>	<b>834</b>	<b>882</b>	<b>892</b>	<b>+10</b>	<b>+58</b>	<b>+6.9%</b>	<b>+91</b>	<b>+11.4%</b>	<b>995</b>
Therapy Professions	136	152	164	153	-11	+1	+0.8%	+17	+12.8%	170
Health Science/ Diagnostics	3	3	2	2	0	-1	-33.3%	-1	-33.3%	2
Social Care	360	389	421	416	-5	+27	+6.9%	+56	+15.4%	464
Social Workers	44	44	46	47	+1	+3	+6.5%	+3	+6.4%	54
Psychologists	28	32	32	34	+2	+2	+6.1%	+6	+22.5%	37
Pharmacy	7	6	7	7	0	+1	+10.1%	-1	-8.8%	9
H&SC, Other	3	3	3	3	0					3
<b>Health &amp; Social Care Professionals</b>	<b>581</b>	<b>628</b>	<b>675</b>	<b>661</b>	<b>-14</b>	<b>+33</b>	<b>+5.2%</b>	<b>+80</b>	<b>+13.8%</b>	<b>739</b>
Management (VIII & above)	37	50	53	52	-0	+3	+5.4%	+16	+42.1%	53
Administrative/ Supervisory (V to VII)	91	106	110	111	+1	+5	+4.3%	+20	+22.5%	121
Clerical (III & IV)	126	138	139	141	+1	+3	+2.0%	+15	+11.8%	166
<b>Management &amp; Administrative</b>	<b>253</b>	<b>294</b>	<b>302</b>	<b>304</b>	<b>+2</b>	<b>+10</b>	<b>+3.4%</b>	<b>+51</b>	<b>+20.0%</b>	<b>340</b>
Support	277	274	267	270	+3	-4	-1.4%	-7	-2.4%	345
Maintenance/ Technical	30	35	35	36	+1	+1	+3.9%	+6	+18.5%	40
<b>General Support</b>	<b>307</b>	<b>309</b>	<b>303</b>	<b>306</b>	<b>+4</b>	<b>-2</b>	<b>-0.8%</b>	<b>-1</b>	<b>-0.3%</b>	<b>385</b>
Health Care Assistants	1,500	1,504	1,541	1,528	-13	+24	+1.6%	+28	+1.9%	1,793
<i>Home Helps</i>	127	132	124	125	+0	-7	-5.3%	-2	-1.7%	234
Home Help	127	132	124	125	+0	-7	-5.3%	-2	-1.7%	234
Care, other	391	408	405	416	+11	+8	+2.1%	+25	+6.5%	479
<b>Patient &amp; Client Care</b>	<b>2,018</b>	<b>2,043</b>	<b>2,070</b>	<b>2,069</b>	<b>-1</b>	<b>+26</b>	<b>+1.2%</b>	<b>+51</b>	<b>+2.5%</b>	<b>2,506</b>

## CHO 8

Oct 2021	WTE Dec 2019	WTE Dec 2020	WTE Sep 2021	WTE Oct 2021	WTE change since Sep 21	WTE change since Dec 20	% change since Dec 20	WTE change since Dec 19	% change since Dec 19	No. Oct 2021
<b>Overall</b>	<b>3,650</b>	<b>3,689</b>	<b>3,718</b>	<b>3,734</b>	<b>+16</b>	<b>+44</b>	<b>+1.2%</b>	<b>+83</b>	<b>+2.3%</b>	<b>4,565</b>
Consultants	1	1				-1	-100.0%	-1	-100.0%	
Registrars	2	1	1	1	0			-1	-50.0%	1
Medical/ Dental, other	12	12	12	12	0	-0	-0.4%			20
<b>Medical &amp; Dental</b>	<b>15</b>	<b>14</b>	<b>13</b>	<b>13</b>		<b>-1</b>	<b>-7.5%</b>	<b>-2</b>	<b>-13.4%</b>	<b>21</b>
Nurse/ Midwife Manager	200	208	204	201	-3	-8	-3.7%	+1	+0.4%	218
Nurse/ Midwife Specialist & AN/MP	9	10	16	11	-5	+1	+12.1%	+2	+23.8%	12
Staff Nurse/ Staff Midwife	568	567	562	553	-9	-14	-2.5%	-15	-2.6%	644
Public Health Nurse	3	4	4	4	+0			+1	+16.5%	5
Pre-registration Nurse Intern (COVID-19)		4	1		-1	-4	-100.0%		-100.0%	
Pre-registration Nurse/ Midwife Intern			9	1	-8	+1	-100.0%	+1	-100.0%	3
Nursing/ Midwifery awaiting registration			0	2	+2	+2	-100.0%	+2	-100.0%	2
Nursing/ Midwifery Student		4	10	3	-7	-1	-21.8%	+3	-100.0%	5
Nursing/ Midwifery other	5	9	9	10	+1	+2	+18.1%	+5	+86.2%	11
<b>Nursing &amp; Midwifery</b>	<b>786</b>	<b>802</b>	<b>804</b>	<b>782</b>	<b>-22</b>	<b>-20</b>	<b>-2.5%</b>	<b>-4</b>	<b>-0.5%</b>	<b>895</b>
Therapy Professions	112	122	120	123	+3	+1	+0.5%	+11	+9.5%	146
Health Science/ Diagnostics	2	2	2	2	+0					2
Social Care	361	380	389	395	+6	+15	+4.0%	+34	+9.5%	484
Social Workers	31	29	33	30	-3	+1	+4.3%	-0	-0.5%	34
Psychologists	25	22	25	26	+2	+4	+17.5%	+2	+6.1%	30
Pharmacy	3	2	3	3	+0	+1	+72.5%	+1	+38.0%	5
H&SC, Other	7	6	6	7	+1	+1	+10.4%	-0	-1.9%	9
<b>Health &amp; Social Care Professionals</b>	<b>540</b>	<b>564</b>	<b>578</b>	<b>587</b>	<b>+9</b>	<b>+23</b>	<b>+4.1%</b>	<b>+47</b>	<b>+8.7%</b>	<b>710</b>
Management (VIII & above)	14	20	22	23	+1	+2	+12.0%	+8	+58.8%	23
Administrative/ Supervisory (V to VII)	76	78	71	76	+4	-2	-2.5%	-1	-0.7%	80
Clerical (III & IV)	154	159	158	156	-2	-4	-2.3%	+2	+1.1%	186
<b>Management &amp; Administrative</b>	<b>245</b>	<b>257</b>	<b>251</b>	<b>254</b>	<b>+3</b>	<b>-3</b>	<b>-1.2%</b>	<b>+10</b>	<b>+3.9%</b>	<b>289</b>
Support	72	67	64	63	-1	-4	-5.4%	-9	-12.8%	75
Maintenance/ Technical	40	38	37	38	+0	-0	-0.2%	-2	-5.6%	38
<b>General Support</b>	<b>112</b>	<b>104</b>	<b>101</b>	<b>101</b>	<b>-1</b>	<b>-4</b>	<b>-3.5%</b>	<b>-11</b>	<b>-10.2%</b>	<b>113</b>
Health Care Assistants	1,400	1,416	1,454	1,472	+18	+56	+3.9%	+72	+5.1%	1,745
Home Help	418	397	384	391	+7	-5	-1.3%	-26	-6.3%	630
Care, other	135	135	133	134	+0	-1	-1.0%	-2	-1.3%	162
<b>Patient &amp; Client Care</b>	<b>1,953</b>	<b>1,948</b>	<b>1,971</b>	<b>1,997</b>	<b>+26</b>	<b>+49</b>	<b>+2.5%</b>	<b>+44</b>	<b>+2.2%</b>	<b>2,537</b>

## CHO 9

Oct 2021	WTE Dec 2019	WTE Dec 2020	WTE Sep 2021	WTE Oct 2021	WTE change since Sep 21	WTE change since Dec 20	% change since Dec 20	WTE change since Dec 19	% change since Dec 19	No. Oct 2021
<b>Overall</b>	<b>4,064</b>	<b>4,199</b>	<b>4,301</b>	<b>4,301</b>	<b>-0</b>	<b>+102</b>	<b>+2.4%</b>	<b>+237</b>	<b>+5.8%</b>	<b>5,005</b>
Consultants	14	14	14	13	-0	-1	-4.2%	-1	-6.7%	20
Registrars	12	7	11	10	-0	+4	+53.2%	-1	-8.9%	11
SHO/ Interns	12	13	14	11	-3	-2	-13.7%	-1	-8.9%	11
Medical/ Dental, other	7	7	7	7	+0					10
<b>Medical &amp; Dental</b>	<b>45</b>	<b>40</b>	<b>45</b>	<b>42</b>	<b>-3</b>	<b>+1</b>	<b>+3.3%</b>	<b>-3</b>	<b>-6.8%</b>	<b>52</b>
Nurse/ Midwife Manager	266	277	277	275	-2	-2	-0.5%	+9	+3.3%	293
Nurse/ Midwife Specialist & AN/MP	13	18	20	22	+2	+5	+26.2%	+9	+65.6%	24
Staff Nurse/ Staff Midwife	744	747	750	760	+11	+14	+1.9%	+16	+2.2%	860
Public Health Nurse	0						-100.0%	-0	-100.0%	
<i>Pre-registration Nurse Intern (COVID-19)</i>		11				-11	-100.0%		-100.0%	
<i>Pre-registration Nurse/ Midwife Intern</i>	8	3	6	1	-5	-2	-80.0%	-7	-93.5%	1
<i>Nursing/ Midwifery awaiting registration</i>			3	4	+1	+4	-100.0%	+4	-100.0%	5
Nursing/ Midwifery Student	8	13	9	4	-5	-9	-65.7%	-3	-42.1%	6
Nursing/ Midwifery other	8	9	6	6	0	-3	-30.9%	-2	-24.0%	7
<b>Nursing &amp; Midwifery</b>	<b>1,040</b>	<b>1,063</b>	<b>1,062</b>	<b>1,069</b>	<b>+6</b>	<b>+6</b>	<b>+0.5%</b>	<b>+28</b>	<b>+2.7%</b>	<b>1,190</b>
Therapy Professions	236	257	285	292	+8	+35	+13.6%	+57	+24.2%	331
Health Science/ Diagnostics	16	14	15	15	0	+1	+7.1%	-1	-8.8%	16
Social Care	690	741	802	797	-5	+57	+7.6%	+107	+15.6%	954
Social Workers	65	73	72	67	-5	-6	-8.1%	+2	+2.9%	79
Psychologists	53	64	61	64	+3	-0	-0.2%	+11	+21.2%	72
Pharmacy	5	6	6	6	0			+1	+15.3%	6
H&SC, Other	19	19	17	17	+0	-1	-7.3%	-2	-9.6%	23
<b>Health &amp; Social Care Professionals</b>	<b>1,084</b>	<b>1,174</b>	<b>1,258</b>	<b>1,259</b>	<b>+1</b>	<b>+85</b>	<b>+7.3%</b>	<b>+175</b>	<b>+16.1%</b>	<b>1,481</b>
Management (VIII & above)	46	50	58	60	+3	+10	+20.1%	+14	+30.3%	61
Administrative/ Supervisory (V to VII)	103	121	137	138	+1	+17	+14.3%	+36	+34.9%	151
Clerical (III & IV)	165	170	198	203	+5	+32	+19.0%	+37	+22.7%	243
<b>Management &amp; Administrative</b>	<b>314</b>	<b>342</b>	<b>393</b>	<b>402</b>	<b>+9</b>	<b>+60</b>	<b>+17.5%</b>	<b>+87</b>	<b>+27.8%</b>	<b>455</b>
Support	314	265	265	263	-2	-2	-0.7%	-50	-16.1%	322
<i>Maintenance</i>	22	22	20	20	0	-2	-8.9%	-2	-9.0%	22
<i>Technical Services</i>	2	3	3	3	0			+1	+50.0%	3
Maintenance/ Technical	24	25	23	23	-0	-2	-7.9%	-1	-4.1%	25
<b>General Support</b>	<b>338</b>	<b>290</b>	<b>288</b>	<b>287</b>	<b>-2</b>	<b>-4</b>	<b>-1.3%</b>	<b>-51</b>	<b>-15.2%</b>	<b>347</b>
Health Care Assistants	1,139	1,182	1,150	1,143	-7	-40	-3.4%	+4	+0.4%	1,366
Care, other	103	107	106	100	-5	-7	-6.2%	-3	-2.6%	114
<b>Patient &amp; Client Care</b>	<b>1,242</b>	<b>1,289</b>	<b>1,255</b>	<b>1,243</b>	<b>-12</b>	<b>-46</b>	<b>-3.6%</b>	<b>+1</b>	<b>+0.1%</b>	<b>1,480</b>

## other Community Services

Oct 2021	WTE Dec 2019	WTE Dec 2020	WTE Sep 2021	WTE Oct 2021	WTE change since Sep 21	WTE change since Dec 20	% change since Dec 20	WTE change since Dec 19	% change since Dec 19	No. Oct 2021
<b>Overall</b>	<b>78</b>	<b>81</b>	<b>82</b>	<b>82</b>	<b>-0</b>	<b>+1</b>	<b>+1.4%</b>	<b>+4</b>	<b>+4.9%</b>	<b>89</b>
Health Science/ Diagnostics	1						-100.0%	-1	-100.0%	
<b>Health &amp; Social Care Professionals</b>	<b>1</b>						<b>-100.0%</b>	<b>-1</b>	<b>-100.0%</b>	
Management (VIII & above)	20	18	19	19	+0	+1	+4.9%	-1	-5.2%	19
Administrative/ Supervisory (V to VII)	24	24	27	28	+1	+4	+15.8%	+4	+14.5%	30
Clerical (III & IV)	33	39	35	34	-1	-5	-11.7%	+1	+3.5%	38
<b>Management &amp; Administrative</b>	<b>77</b>	<b>81</b>	<b>81</b>	<b>81</b>	<b>-0</b>	<b>+0</b>	<b>+0.2%</b>	<b>+4</b>	<b>+4.8%</b>	<b>87</b>
HCA, Nurse's Aide, etc.	0	0	0	0	0			+0	+420.0%	1
Health Care Assistants	0	0	0	0	0			+0	+420.0%	1
Care, other			1	1	0	+1	-100.0%	+1	-100.0%	1
<b>Patient &amp; Client Care</b>	<b>0</b>	<b>0</b>	<b>1</b>	<b>1</b>		<b>+1</b>	<b>+353.8%</b>	<b>+1</b>	<b>#####</b>	<b>2</b>

## Social Care Services Employment by Grade Group: Oct 2021

Oct 2021	WTE Dec 2019	WTE Dec 2020	WTE Sep 2021	WTE Oct 2021	WTE change since Sep 21	WTE change since Dec 20	% change since Dec 20	WTE change since Dec 19	% change since Dec 19	No. Oct 2021
<b>Overall</b>	<b>31,535</b>	<b>32,359</b>	<b>32,916</b>	<b>33,011</b>	<b>+94</b>	<b>+651</b>	<b>+2.0%</b>	<b>+1,476</b>	<b>+4.7%</b>	<b>39,471</b>
Consultant Medicine	4	4	8	8	+0	+3	+71.9%	+4	+111.1%	10
Consultant Paediatrics	3	3	3	2	-0	-1	-29.2%	-1	-29.2%	4
Consultant Psychiatry	21	21	20	19	-0	-2	-9.4%	-1	-7.1%	25
<b>Consultants</b>	<b>27</b>	<b>29</b>	<b>30</b>	<b>29</b>	<b>-1</b>	<b>+0</b>	<b>+1.0%</b>	<b>+2</b>	<b>+5.9%</b>	<b>39</b>
Registrar	14	9	12	12	-0	+3	+34.0%	-2	-12.3%	13
Senior Registrar	3	4	3	3	+0	-1	-23.0%	+0	+2.7%	4
Specialist Registrar	6	4	4	4				-2	-33.3%	4
<b>Registrars</b>	<b>23</b>	<b>17</b>	<b>19</b>	<b>19</b>	<b>-0</b>	<b>+2</b>	<b>+12.4%</b>	<b>-4</b>	<b>-15.9%</b>	<b>21</b>
Senior House Officer	22	23	27	24	-3	+1	+5.2%	+2	+8.6%	24
<b>SHO/ Interns</b>	<b>22</b>	<b>23</b>	<b>27</b>	<b>24</b>	<b>-3</b>	<b>+1</b>	<b>+5.2%</b>	<b>+2</b>	<b>+8.6%</b>	<b>24</b>
Other Medical	111	118	99	96	-3	-22	-18.8%	-15	-13.4%	177
<b>Medical/ Dental, other</b>	<b>111</b>	<b>118</b>	<b>99</b>	<b>96</b>	<b>-3</b>	<b>-22</b>	<b>-18.8%</b>	<b>-15</b>	<b>-13.4%</b>	<b>177</b>
<b>Medical &amp; Dental</b>	<b>183</b>	<b>186</b>	<b>174</b>	<b>168</b>	<b>-6</b>	<b>-19</b>	<b>-10.0%</b>	<b>-15</b>	<b>-8.2%</b>	<b>261</b>
Clinical Nurse/ Midwife Manager	1,319	1,350	1,376	1,391	+15	+41	+3.0%	+72	+5.5%	1,497
Director Nursing/Midwifery, Assistant	143	152	151	151	-0	-1	-0.6%	+8	+5.3%	158
Director of Nursing/Midwifery	140	141	139	139	-1	-2	-1.6%	-2	-1.1%	142
<b>Nurse/ Midwife Manager</b>	<b>1,603</b>	<b>1,643</b>	<b>1,667</b>	<b>1,681</b>	<b>+15</b>	<b>+38</b>	<b>+2.3%</b>	<b>+78</b>	<b>+4.9%</b>	<b>1,797</b>
Advanced Nurse/ Midwife Practitioner	13	25	28	24	-5	-1	-4.5%	+11	+84.7%	24
Clinical Nurse/ Midwife Specialist	76	78	80	79	-1	+1	+1.9%	+3	+4.5%	89
<b>Nurse/ Midwife Specialist &amp; AN/MP</b>	<b>88</b>	<b>102</b>	<b>108</b>	<b>103</b>	<b>-5</b>	<b>+0</b>	<b>+0.4%</b>	<b>+14</b>	<b>+16.0%</b>	<b>113</b>
Staff Midwives		1	0	1	+0	-0	-17.0%	+1	-100.0%	1
Staff Nurse [Psychiatric]	88	58	204	202	-2	+144	+249.7%	+114	+128.7%	234
Staff Nurses [General/ Children's]	3,463	3,369	3,310	3,303	-6	-66	-2.0%	-160	-4.6%	3,845
Staff Nurse [Intellectual Disability]	1,597	1,789	1,740	1,753	+12	-36	-2.0%	+156	+9.7%	2,007
<b>Staff Nurse/ Staff Midwife</b>	<b>5,149</b>	<b>5,217</b>	<b>5,254</b>	<b>5,259</b>	<b>+4</b>	<b>+42</b>	<b>+0.8%</b>	<b>+110</b>	<b>+2.1%</b>	<b>6,087</b>
Public Health Nurse	20	20	20	21	+1	+1	+4.8%	+2	+8.3%	26
<b>Public Health Nurse</b>	<b>20</b>	<b>20</b>	<b>20</b>	<b>21</b>	<b>+1</b>	<b>+1</b>	<b>+4.8%</b>	<b>+2</b>	<b>+8.3%</b>	<b>26</b>
Pre-registration Nurse Intern (COVID-19)		32	2	2	-1	-30	-94.8%	+2	-100.0%	2
Pre-registration Nurse/ Midwife Intern	28	3	50	28	-22	+25	#####	-1	-2.5%	52
Post-registration Nurse/ Midwife Student	1						-100.0%	-1	-100.0%	
Nursing/ Midwifery awaiting registration	15	14	14	11	-3	-3	-20.5%	-3	-23.1%	15
<b>Nursing/ Midwifery Student</b>	<b>44</b>	<b>49</b>	<b>66</b>	<b>41</b>	<b>-26</b>	<b>-8</b>	<b>-16.6%</b>	<b>-4</b>	<b>-8.0%</b>	<b>69</b>
Nursing Education/Clinical	22	27	23	24	+1	-2	-8.8%	+2	+10.1%	27
Other Nursing/ Midwifery	1	1	2	2		+1	+100.0%	+1	+100.0%	2
<b>Nursing/ Midwifery other</b>	<b>23</b>	<b>28</b>	<b>25</b>	<b>26</b>	<b>+1</b>	<b>-1</b>	<b>-4.9%</b>	<b>+3</b>	<b>+14.0%</b>	<b>29</b>
<b>Nursing &amp; Midwifery</b>	<b>6,927</b>	<b>7,060</b>	<b>7,140</b>	<b>7,131</b>	<b>-9</b>	<b>+71</b>	<b>+1.0%</b>	<b>+204</b>	<b>+2.9%</b>	<b>8,121</b>
Dietitians	35	34	44	44	+0	+10	+28.7%	+9	+27.1%	54
Occupational Therapists	377	392	422	420	-2	+28	+7.2%	+42	+11.2%	474
Physiotherapists	313	325	345	356	+11	+31	+9.5%	+43	+13.7%	411
Podiatrists & Chiropodists	12	13	10	11	+0	-2	-16.8%	-2	-12.6%	15
Speech & Language Therapists	316	327	339	336	-3	+9	+2.8%	+21	+6.5%	391
<b>Therapy Professions</b>	<b>1,053</b>	<b>1,091</b>	<b>1,161</b>	<b>1,167</b>	<b>+6</b>	<b>+76</b>	<b>+7.0%</b>	<b>+114</b>	<b>+10.8%</b>	<b>1,345</b>
Clinical Engineering	13	13	15	15	+0	+2	+15.4%	+2	+15.0%	15
Medical Science	4	4	4	4						4
Phlebotomists	1						-100.0%	-1	-100.0%	
Radiographers	7	6	5	5	+0	-1	-14.6%	-2	-26.4%	9
Clinical Measurement	1	2	2	2	+0	-0	-1.9%	+1	+75.2%	3
<b>Health Science/ Diagnostics</b>	<b>26</b>	<b>25</b>	<b>26</b>	<b>26</b>	<b>+0</b>	<b>+1</b>	<b>+4.3%</b>	<b>+0</b>	<b>+0.1%</b>	<b>31</b>
<b>Social Care</b>	<b>2,598</b>	<b>2,792</b>	<b>2,938</b>	<b>2,948</b>	<b>+10</b>	<b>+156</b>	<b>+5.6%</b>	<b>+350</b>	<b>+13.5%</b>	<b>3,477</b>
<b>Social Workers</b>	<b>317</b>	<b>328</b>	<b>328</b>	<b>328</b>	<b>+0</b>	<b>+0</b>	<b>+0.1%</b>	<b>+11</b>	<b>+3.5%</b>	<b>380</b>



Oct 2021	WTE Dec 2019	WTE Dec 2020	WTE Sep 2021	WTE Oct 2021	WTE change since Sep 21	WTE change since Dec 20	% change since Dec 20	WTE change since Dec 19	% change since Dec 19	No. Oct 2021
<b>Overall</b>	<b>31,535</b>	<b>32,359</b>	<b>32,916</b>	<b>33,011</b>	<b>+94</b>	<b>+651</b>	<b>+2.0%</b>	<b>+1,476</b>	<b>+4.7%</b>	<b>39,471</b>
<b>Psychologists</b>	<b>206</b>	<b>230</b>	<b>240</b>	<b>245</b>	<b>+5</b>	<b>+14</b>	<b>+6.3%</b>	<b>+38</b>	<b>+18.7%</b>	<b>277</b>
<b>Pharmacy</b>	<b>22</b>	<b>23</b>	<b>26</b>	<b>26</b>	<b>-0</b>	<b>+2</b>	<b>+10.0%</b>	<b>+4</b>	<b>+16.0%</b>	<b>34</b>
Counsellor Therapists	19	20	23	21	-2	+2	+8.8%	+3	+13.7%	26
Other Health & Social Care	51	46	37	38	+1	-8	-16.6%	-13	-25.3%	53
Play Therapists/ Specialists	16	12	12	12	+0	+0	+1.1%	-4	-27.1%	16
<b>H&amp;SC, Other</b>	<b>86</b>	<b>77</b>	<b>73</b>	<b>72</b>	<b>-1</b>	<b>-6</b>	<b>-7.4%</b>	<b>-15</b>	<b>-17.1%</b>	<b>95</b>
<b>Health &amp; Social Care Professionals</b>	<b>4,308</b>	<b>4,567</b>	<b>4,791</b>	<b>4,811</b>	<b>+20</b>	<b>+244</b>	<b>+5.3%</b>	<b>+502</b>	<b>#####</b>	<b>5,639</b>
Executive Management	43	51	55	53	-2	+2	+3.7%	+10	+23.4%	53
Senior Management (VIII & GM)	212	232	248	260	+12	+28	+12.1%	+48	+22.9%	266
<b>Management (VIII &amp; above)</b>	<b>254</b>	<b>283</b>	<b>302</b>	<b>313</b>	<b>+10</b>	<b>+30</b>	<b>+10.6%</b>	<b>+58</b>	<b>+23.0%</b>	<b>319</b>
Middle Management (V-VII)	628	687	740	751	+11	+64	+9.3%	+123	+19.6%	811
Other Administrative	16	16	13	14	+1	-2	-11.5%	-2	-12.3%	14
<b>Administrative/ Supervisory (V to VII)</b>	<b>644</b>	<b>703</b>	<b>753</b>	<b>765</b>	<b>+12</b>	<b>+62</b>	<b>+8.9%</b>	<b>+121</b>	<b>+18.8%</b>	<b>825</b>
General Administrative (III & IV)	1,231	1,272	1,292	1,303	+10	+30	+2.4%	+71	+5.8%	1,549
<b>Clerical (III &amp; IV)</b>	<b>1,231</b>	<b>1,272</b>	<b>1,292</b>	<b>1,303</b>	<b>+10</b>	<b>+30</b>	<b>+2.4%</b>	<b>+71</b>	<b>+5.8%</b>	<b>1,549</b>
<b>Management &amp; Administrative</b>	<b>2,130</b>	<b>2,258</b>	<b>2,348</b>	<b>2,380</b>	<b>+32</b>	<b>+123</b>	<b>+5.4%</b>	<b>+251</b>	<b>#####</b>	<b>2,693</b>
Catering	319	312	301	301	+0	-12	-3.7%	-18	-5.7%	341
Household Services	912	885	870	867	-3	-18	-2.0%	-45	-5.0%	1,107
Other Labs & Associated	1	1	1	1						1
Other Support	222	165	177	179	+2	+14	+8.7%	-43	-19.3%	266
Portering	109	101	91	92	+1	-9	-8.9%	-17	-15.6%	101
<b>Support</b>	<b>1,563</b>	<b>1,464</b>	<b>1,439</b>	<b>1,440</b>	<b>+1</b>	<b>-24</b>	<b>-1.7%</b>	<b>-124</b>	<b>-7.9%</b>	<b>1,816</b>
Maintenance	215	216	207	208	+1	-8	-3.7%	-6	-3.0%	225
Technical Services	8	11	19	19	-0	+8	+71.2%	+11	+134.6%	19
<b>Maintenance/ Technical</b>	<b>223</b>	<b>227</b>	<b>226</b>	<b>227</b>	<b>+1</b>	<b>-0</b>	<b>-0.0%</b>	<b>+5</b>	<b>+2.0%</b>	<b>244</b>
<b>General Support</b>	<b>1,786</b>	<b>1,691</b>	<b>1,665</b>	<b>1,667</b>	<b>+2</b>	<b>-24</b>	<b>-1.4%</b>	<b>-119</b>	<b>-6.7%</b>	<b>2,060</b>
HCA, Nurse's Aide, etc.	10,838	11,160	11,320	11,336	+16	+176	+1.6%	+498	+4.6%	13,207
HCA (Student Nurse/Midwife COVID-19)		22	3	1	-2	-21	-95.2%	+1	-100.0%	4
Health & Social Care Assistants	31	38	50	51	+0	+12	+32.3%	+20	+64.4%	60
Swabber (COVID-19)			1		-1		-100.0%		-100.0%	
<b>Health Care Assistants</b>	<b>10,869</b>	<b>11,221</b>	<b>11,375</b>	<b>11,388</b>	<b>+13</b>	<b>+167</b>	<b>+1.5%</b>	<b>+519</b>	<b>+4.8%</b>	<b>13,271</b>
<b>Home Help</b>	<b>3,551</b>	<b>3,525</b>	<b>3,509</b>	<b>3,535</b>	<b>+26</b>	<b>+10</b>	<b>+0.3%</b>	<b>-16</b>	<b>-0.4%</b>	<b>5,168</b>
<b>Care, other</b>	<b>1,781</b>	<b>1,852</b>	<b>1,915</b>	<b>1,931</b>	<b>+16</b>	<b>+78</b>	<b>+4.2%</b>	<b>+149</b>	<b>+8.4%</b>	<b>2,258</b>
<b>Patient &amp; Client Care</b>	<b>16,201</b>	<b>16,598</b>	<b>16,798</b>	<b>16,854</b>	<b>+56</b>	<b>+256</b>	<b>+1.5%</b>	<b>+653</b>	<b>+4.0%</b>	<b>20,697</b>



## Employment by WTE, Headcount, Gender, Full-Time /Part-Time etc.: Oct 2021

Social Care Services Staff Group	WTE	Headcount	WTE: no.	% Male	% female	Male WTE: no.	Female WTE: no.	% Total Perm	% Male Perm	% Female Perm	% Total Full Time	% Total Part Time	% Male FT	% Female FT
<b>Overall</b>	<b>33,011</b>	<b>39,471</b>	<b>1.20</b>	<b>16.8%</b>	<b>83.2%</b>	<b>1.11</b>	<b>1.21</b>	<b>85.5%</b>	<b>84.3%</b>	<b>85.7%</b>	<b>58.1%</b>	<b>41.9%</b>	<b>73.5%</b>	<b>55.0%</b>
Consultant Medicine	8	10	1.32	20.0%	80.0%	1.33	1.31	60.0%	60.0%	62.5%	50.0%	50.0%	50.0%	50.0%
Consultant Paediatrics	2	4	1.85		100.0%		1.85	75.0%	75.0%	75.0%	25.0%	75.0%		25.0%
Consultant Psychiatry	19	25	1.29	28.0%	72.0%	1.15	1.36	76.0%	76.0%	83.3%	56.0%	44.0%	71.4%	50.0%
<b>Consultants</b>	<b>29</b>	<b>39</b>	<b>1.34</b>	<b>23.1%</b>	<b>76.9%</b>	<b>1.19</b>	<b>1.39</b>	<b>71.8%</b>	<b>55.6%</b>	<b>76.7%</b>	<b>51.3%</b>	<b>48.7%</b>	<b>66.7%</b>	<b>46.7%</b>
Registrar	12	13	1.10	38.5%	61.5%	1.14	1.07	30.8%	30.8%	25.0%	92.3%	7.7%	100.0%	87.5%
Senior Registrar	3	4	1.30	25.0%	75.0%	12.50	1.00	25.0%	25.0%	33.3%	75.0%	25.0%	0.0%	100.0%
Specialist Registrar	4	4	1.00	50.0%	50.0%	1.00	1.00	0.0%	0.0%	0.0%	100.0%	0.0%	100.0%	100.0%
<b>Registrars</b>	<b>19</b>	<b>21</b>	<b>1.11</b>	<b>38.1%</b>	<b>61.9%</b>	<b>1.24</b>	<b>1.04</b>	<b>23.8%</b>	<b>25.0%</b>	<b>23.1%</b>	<b>90.5%</b>	<b>9.5%</b>	<b>87.5%</b>	<b>92.3%</b>
Senior House Officer	24	24	1.01	33.3%	66.7%	1.01	1.01	8.3%	8.3%	0.0%	100.0%	0.0%	100.0%	100.0%
<b>SHO/ Interns</b>	<b>24</b>	<b>24</b>	<b>1.01</b>	<b>33.3%</b>	<b>66.7%</b>	<b>1.01</b>	<b>1.01</b>	<b>8.3%</b>	<b>25.0%</b>	<b>0.0%</b>	<b>100.0%</b>	<b>0.0%</b>	<b>100.0%</b>	<b>100.0%</b>
Other Medical	96	177	1.85	61.0%	39.0%	1.96	1.69	58.8%	58.8%	58.0%	36.2%	63.8%	31.5%	43.5%
<b>Medical/ Dental, other</b>	<b>96</b>	<b>177</b>	<b>1.85</b>	<b>61.0%</b>	<b>39.0%</b>	<b>1.96</b>	<b>1.69</b>	<b>58.8%</b>	<b>59.3%</b>	<b>58.0%</b>	<b>36.2%</b>	<b>63.8%</b>	<b>31.5%</b>	<b>43.5%</b>
<b>Medical &amp; Dental</b>	<b>168</b>	<b>261</b>	<b>1.56</b>	<b>51.0%</b>	<b>49.0%</b>	<b>1.72</b>	<b>1.41</b>	<b>53.3%</b>	<b>54.9%</b>	<b>51.6%</b>	<b>48.7%</b>	<b>51.3%</b>	<b>41.4%</b>	<b>56.3%</b>
Clinical Nurse/ Midwife Manager	1,391	1,497	1.08	10.6%	89.4%	1.02	1.08	94.9%	94.9%	95.1%	80.7%	19.3%	95.6%	78.9%
Director Nursing/Midwifery, Assistant	151	158	1.05	8.2%	91.8%	1.00	1.05	98.7%	98.7%	98.6%	91.8%	8.2%	100.0%	91.0%
Director of Nursing/Midwifery	139	142	1.02	6.3%	93.7%	1.02	1.02	96.5%	96.5%	96.2%	96.5%	3.5%	100.0%	96.2%
<b>Nurse/ Midwife Manager</b>	<b>1,681</b>	<b>1,797</b>	<b>1.07</b>	<b>10.0%</b>	<b>90.0%</b>	<b>1.02</b>	<b>1.07</b>	<b>95.4%</b>	<b>93.9%</b>	<b>95.5%</b>	<b>82.9%</b>	<b>17.1%</b>	<b>96.1%</b>	<b>81.4%</b>
Advanced Nurse/ Midwife Practitioner	24	24	1.02	20.8%	79.2%	1.00	1.03	95.8%	95.8%	94.7%	100.0%	0.0%	100.0%	100.0%
Clinical Nurse/ Midwife Specialist	79	89	1.13	7.9%	92.1%	1.01	1.14	96.6%	96.6%	96.3%	60.7%	39.3%	100.0%	57.3%
<b>Nurse/ Midwife Specialist &amp; AN/MP</b>	<b>103</b>	<b>113</b>	<b>1.10</b>	<b>10.6%</b>	<b>89.4%</b>	<b>1.00</b>	<b>1.11</b>	<b>96.5%</b>	<b>100.0%</b>	<b>96.0%</b>	<b>69.0%</b>	<b>31.0%</b>	<b>100.0%</b>	<b>65.3%</b>
Staff Midwives	1	1	1.37		100.0%		1.37	100.0%	100.0%	100.0%	0.0%	100.0%		0.0%
Staff Nurse [Psychiatric]	202	234	1.16	12.0%	88.0%	1.09	1.17	88.9%	88.9%	89.3%	64.5%	35.5%	78.6%	62.6%
Staff Nurses [General/ Children's]	3,303	3,845	1.16	9.3%	90.7%	1.05	1.18	87.6%	87.6%	87.8%	64.1%	35.9%	91.6%	61.3%
Staff Nurse [Intellectual Disability]	1,753	2,007	1.14	8.7%	91.3%	1.08	1.15	95.3%	95.3%	95.3%	66.2%	33.8%	82.8%	64.6%
<b>Staff Nurse/ Staff Midwife</b>	<b>5,259</b>	<b>6,087</b>	<b>1.16</b>	<b>9.2%</b>	<b>90.8%</b>	<b>1.06</b>	<b>1.17</b>	<b>90.2%</b>	<b>88.7%</b>	<b>90.3%</b>	<b>64.8%</b>	<b>35.2%</b>	<b>88.2%</b>	<b>62.5%</b>
Public Health Nurse	21	26	1.22		100.0%		1.22	100.0%	100.0%	100.0%	57.7%	42.3%		57.7%
<b>Public Health Nurse</b>	<b>21</b>	<b>26</b>	<b>1.22</b>		<b>100.0%</b>		<b>1.22</b>	<b>100.0%</b>		<b>100.0%</b>	<b>57.7%</b>	<b>42.3%</b>		<b>57.7%</b>
Pre-registration Nurse Intern (COVID-19)	2	2	1.22		100.0%		1.22	0.0%	0.0%	0.0%	0.0%	100.0%		0.0%
Pre-registration Nurse/ Midwife Intern	28	52	1.89	7.7%	92.3%	1.35	1.95	1.9%	1.9%	2.1%	73.1%	26.9%	50.0%	75.0%

Nursing/ Midwifery awaiting registration	11	15	1.31	6.7%	93.3%	1.09	1.33	20.0%	20.0%	14.3%	93.3%	6.7%	0.0%	100.0%
<b>Nursing/ Midwifery Student</b>	<b>41</b>	<b>69</b>	<b>1.70</b>	<b>7.2%</b>	<b>92.8%</b>	<b>1.29</b>	<b>1.74</b>	<b>5.8%</b>	<b>20.0%</b>	<b>4.7%</b>	<b>75.4%</b>	<b>24.6%</b>	<b>40.0%</b>	<b>78.1%</b>
Nursing Education/Clinical	24	27	1.10		100.0%		1.10	96.3%	96.3%	96.3%	70.4%	29.6%		70.4%
Other Nursing/ Midwifery	2	2	1.00	50.0%	50.0%	1.00	1.00	100.0%	100.0%	100.0%	100.0%	0.0%	100.0%	100.0%
<b>Nursing/ Midwifery other</b>	<b>26</b>	<b>29</b>	<b>1.10</b>	<b>3.4%</b>	<b>96.6%</b>	<b>1.00</b>	<b>1.10</b>	<b>96.6%</b>	<b>100.0%</b>	<b>96.4%</b>	<b>72.4%</b>	<b>27.6%</b>	<b>100.0%</b>	<b>71.4%</b>
<b>Nursing &amp; Midwifery</b>	<b>7,131</b>	<b>8,121</b>	<b>1.14</b>	<b>9.3%</b>	<b>90.7%</b>	<b>1.05</b>	<b>1.15</b>	<b>90.8%</b>	<b>89.7%</b>	<b>90.9%</b>	<b>69.0%</b>	<b>31.0%</b>	<b>89.9%</b>	<b>66.8%</b>
<b>Health &amp; Social Care</b>	<b>4,811</b>	<b>5,639</b>	<b>1.17</b>	<b>14.7%</b>	<b>85.3%</b>	<b>1.09</b>	<b>1.19</b>	<b>89.9%</b>	<b>91.0%</b>	<b>89.7%</b>	<b>58.0%</b>	<b>42.0%</b>	<b>72.3%</b>	<b>55.6%</b>
Executive Management	53	53	1.01	37.7%	62.3%	1.00	1.01	94.3%	94.3%	97.0%	100.0%	0.0%	100.0%	100.0%
Senior Management (VIII & GM)	260	266	1.02	31.6%	68.4%	1.02	1.03	94.7%	94.7%	95.6%	96.2%	3.8%	98.8%	95.1%
<b>Management (VIII &amp; above)</b>	<b>313</b>	<b>319</b>	<b>1.02</b>	<b>32.6%</b>	<b>67.4%</b>	<b>1.01</b>	<b>1.02</b>	<b>94.7%</b>	<b>92.3%</b>	<b>95.8%</b>	<b>96.9%</b>	<b>3.1%</b>	<b>99.0%</b>	<b>95.8%</b>
Middle Management (V-VII)	751	811	1.08	19.7%	80.3%	1.03	1.09	94.3%	94.3%	94.9%	78.5%	21.5%	86.9%	76.5%
Other Administrative	14	14	1.00	14.3%	85.7%	1.00	1.00	100.0%	100.0%	100.0%	100.0%	0.0%	100.0%	100.0%
<b>Administrative/ Supervisory (V to VII)</b>	<b>765</b>	<b>825</b>	<b>1.08</b>	<b>19.6%</b>	<b>80.4%</b>	<b>1.03</b>	<b>1.09</b>	<b>94.4%</b>	<b>92.0%</b>	<b>95.0%</b>	<b>78.9%</b>	<b>21.1%</b>	<b>87.0%</b>	<b>76.9%</b>
General Administrative (III & IV)	1,303	1,549	1.19	9.7%	90.3%	1.11	1.20	86.7%	86.7%	87.6%	60.9%	39.1%	82.0%	58.7%
<b>Clerical (III &amp; IV)</b>	<b>1,303</b>	<b>1,549</b>	<b>1.19</b>	<b>9.7%</b>	<b>90.3%</b>	<b>1.11</b>	<b>1.20</b>	<b>86.7%</b>	<b>78.0%</b>	<b>87.6%</b>	<b>60.9%</b>	<b>39.1%</b>	<b>82.0%</b>	<b>58.7%</b>
<b>Management &amp; Administrative</b>	<b>2,380</b>	<b>2,693</b>	<b>1.13</b>	<b>15.4%</b>	<b>84.6%</b>	<b>1.05</b>	<b>1.15</b>	<b>90.0%</b>	<b>87.0%</b>	<b>90.6%</b>	<b>70.7%</b>	<b>29.3%</b>	<b>88.2%</b>	<b>67.5%</b>
Catering	301	341	1.13	32.6%	67.4%	1.05	1.18	94.7%	94.7%	97.4%	68.3%	31.7%	90.1%	57.8%
Household Services	867	1,107	1.28	17.0%	83.0%	1.24	1.28	85.4%	85.4%	87.2%	47.7%	52.3%	71.3%	42.9%
Other Labs & Associated	1	1	1.00		100.0%		1.00	100.0%	100.0%	100.0%	100.0%	0.0%		100.0%
Other Support	179	266	1.48	53.8%	46.2%	1.26	1.88	91.0%	91.0%	98.4%	33.8%	66.2%	53.8%	10.6%
Portering	92	101	1.10	98.0%	2.0%	1.09	1.30	88.1%	88.1%	100.0%	81.2%	18.8%	81.8%	50.0%
<b>Support</b>	<b>1,440</b>	<b>1,816</b>	<b>1.26</b>	<b>29.8%</b>	<b>70.2%</b>	<b>1.17</b>	<b>1.30</b>	<b>88.1%</b>	<b>83.4%</b>	<b>90.1%</b>	<b>51.4%</b>	<b>48.6%</b>	<b>72.5%</b>	<b>42.5%</b>
Maintenance	208	225	1.08	95.1%	4.9%	1.07	1.26	93.8%	93.8%	100.0%	83.6%	16.4%	86.0%	36.4%
Technical Services	19	19	1.00	84.2%	15.8%	1.00	1.00	94.7%	94.7%	100.0%	100.0%	0.0%	100.0%	100.0%
<b>Maintenance/ Technical</b>	<b>227</b>	<b>244</b>	<b>1.07</b>	<b>94.3%</b>	<b>5.7%</b>	<b>1.07</b>	<b>1.19</b>	<b>93.9%</b>	<b>93.5%</b>	<b>100.0%</b>	<b>84.8%</b>	<b>15.2%</b>	<b>87.0%</b>	<b>50.0%</b>
<b>General Support</b>	<b>1,667</b>	<b>2,060</b>	<b>1.24</b>	<b>37.4%</b>	<b>62.6%</b>	<b>1.14</b>	<b>1.30</b>	<b>88.8%</b>	<b>86.4%</b>	<b>90.2%</b>	<b>55.4%</b>	<b>44.6%</b>	<b>76.8%</b>	<b>42.6%</b>
HCA, Nurse's Aide, etc.	11,336	13,207	1.17	22.2%	77.8%	1.10	1.19	85.2%	85.2%	85.2%	55.4%	44.6%	70.0%	51.2%
HCA (Student Nurse/Midwife COVID-19)	1	4	3.74		100.0%		3.74	0.0%	0.0%	0.0%	25.0%	75.0%		25.0%
Health & Social Care Assistants	51	60	1.18	20.0%	80.0%	1.20	1.18	90.0%	90.0%	89.6%	75.0%	25.0%	91.7%	70.8%
<b>Health Care Assistants</b>	<b>11,388</b>	<b>13,271</b>	<b>1.17</b>	<b>22.2%</b>	<b>77.8%</b>	<b>1.10</b>	<b>1.19</b>	<b>85.2%</b>	<b>85.1%</b>	<b>85.2%</b>	<b>55.5%</b>	<b>44.5%</b>	<b>70.1%</b>	<b>51.3%</b>
<b>Home Help</b>	<b>3,535</b>	<b>5,168</b>	<b>1.46</b>	<b>4.0%</b>	<b>96.0%</b>	<b>1.45</b>	<b>1.46</b>	<b>70.2%</b>	<b>37.7%</b>	<b>71.6%</b>	<b>40.6%</b>	<b>59.4%</b>	<b>51.7%</b>	<b>40.2%</b>
<b>Care, other</b>	<b>1,931</b>	<b>2,258</b>	<b>1.17</b>	<b>25.0%</b>	<b>75.0%</b>	<b>1.15</b>	<b>1.17</b>	<b>87.2%</b>	<b>81.9%</b>	<b>89.0%</b>	<b>63.6%</b>	<b>36.4%</b>	<b>71.5%</b>	<b>61.0%</b>
<b>Patient &amp; Client Care</b>	<b>16,854</b>	<b>20,697</b>	<b>1.23</b>	<b>18.0%</b>	<b>82.0%</b>	<b>1.12</b>	<b>1.25</b>	<b>81.7%</b>	<b>82.0%</b>	<b>81.6%</b>	<b>52.7%</b>	<b>47.3%</b>	<b>69.3%</b>	<b>49.0%</b>

## Employment by WTE, Headcount, Gender, Full-Time /Part-Time etc.: Oct 2021

Social Care Services CHO	WTE	Headcount	WTE: no.	% Male	% female	Male WTE: no.	Female WTE: no.	% Total Perm	% Male Perm	% Female Perm	% Total Full Time	% Total Part Time	% Male FT	% Female FT
<b>Overall</b>	<b>33,011</b>	<b>39,471</b>	<b>1.20</b>	<b>16.8%</b>	<b>83.2%</b>	<b>1.11</b>	<b>1.21</b>	<b>85.5%</b>	<b>84.3%</b>	<b>85.7%</b>	<b>58.1%</b>	<b>41.9%</b>	<b>73.5%</b>	<b>55.0%</b>
CHO 1	3,546	4,100	1.16	15.6%	84.4%	1.10	1.17	80.0%	80.0%	78.7%	57.4%	42.6%	78.9%	53.4%
CHO 2	3,079	3,737	1.21	18.4%	81.6%	1.15	1.23	86.0%	86.0%	86.8%	46.1%	53.9%	61.8%	42.6%
CHO 3	3,139	3,805	1.21	12.4%	87.6%	1.12	1.23	86.4%	86.4%	87.0%	46.4%	53.6%	61.9%	44.2%
CHO 4	5,535	6,969	1.26	15.3%	84.7%	1.14	1.28	72.7%	72.7%	73.6%	70.8%	29.2%	80.0%	69.2%
CHO 5	3,306	3,924	1.19	14.5%	85.5%	1.11	1.20	91.0%	91.0%	91.9%	49.3%	50.7%	67.9%	46.1%
CHO 6	2,041	2,294	1.12	23.2%	76.8%	1.07	1.14	93.2%	93.2%	93.6%	71.1%	28.9%	84.4%	67.1%
CHO 7	4,248	4,983	1.17	21.5%	78.5%	1.10	1.20	88.9%	88.9%	89.3%	67.6%	32.4%	80.5%	64.1%
CHO 8	3,734	4,565	1.22	16.9%	83.1%	1.14	1.24	92.0%	92.0%	92.0%	47.1%	52.9%	60.7%	44.4%
CHO 9	4,301	5,005	1.16	15.8%	84.2%	1.08	1.18	89.3%	89.3%	89.4%	60.1%	39.9%	77.0%	56.9%
other Community Services	82	89	1.08	24.7%	75.3%	1.08	1.08	89.9%	89.9%	91.0%	86.5%	13.5%	90.9%	85.1%

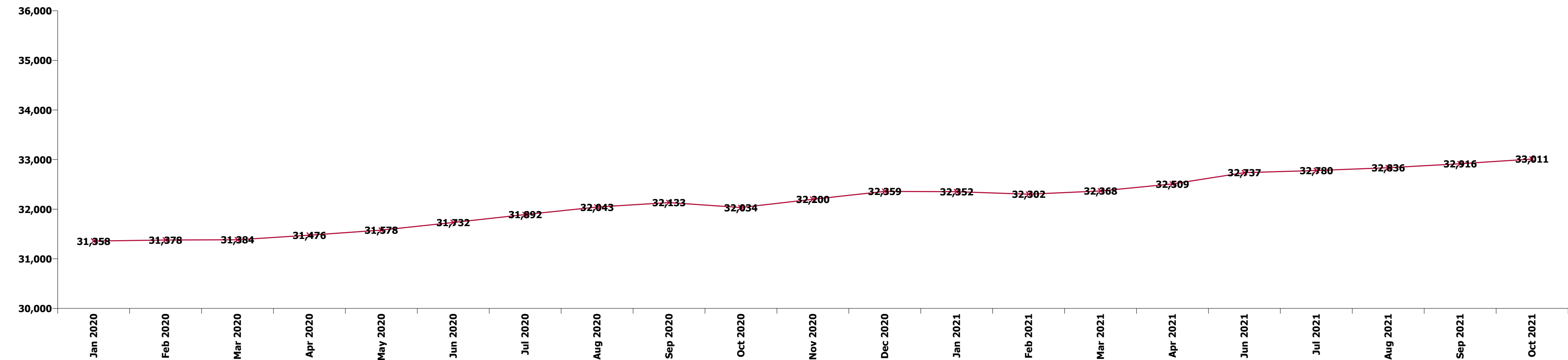
Summary Staff Movement: October 2021

Month-on-month  
Summary

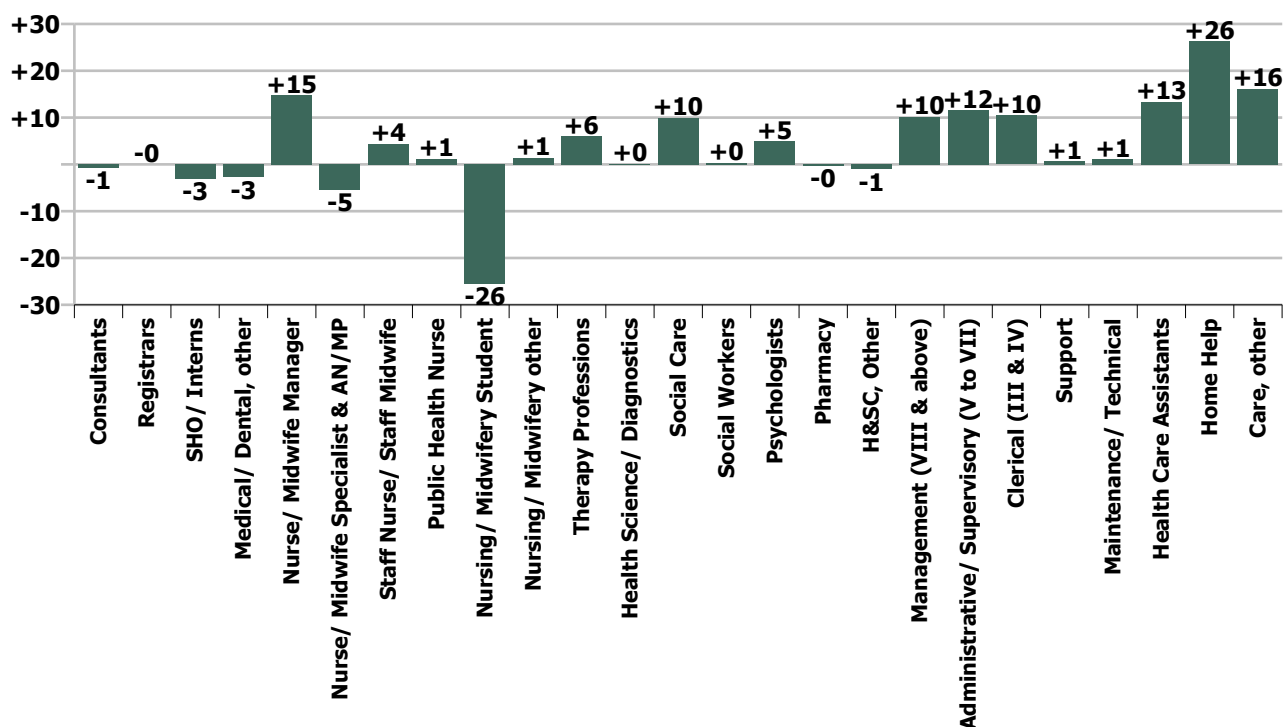
WTE change since Sep 21	% change since Sep 21	overall	Consultants	Registrars	SHO/ Interns	Medical/ Dental, other	Medical & Dental	Nurse/ Midwife Manager	Nurse/ Midwife Specialist & AN/MP	Staff Nurse/ Staff Midwife	Public Health Nurse	Nursing/ Midwifery Student	Nursing/ Midwifery other	Nursing & Midwifery	Therapy Professions	Health Science/ Diagnostics	Social Care	Social Workers	Psychologists	Pharmacy	H&SC, Other	Health & Social Care Professionals	Management (VIII & above)	Administrativ e/ Supervisory (V to VII)	Clerical (III & IV)	Management & Administrative	General Support	Health Care Assistants	Home Help	Care, other	Patient & Client Care	
Overall	+0.3%	+94	-1	-0	-3	-3	-6	+15	-5	+4	+1	-26	+1	-9	+6	+0	+10	+0	+5	-0	-1	+20	+10	+12	+10	+32	+2	+13	+26	+16	+56	
CHO 1	+2.1%	+74				-1	-1	+8	-1	-7		-1	+0	-1	+6	+0	+0	+1	+0		-1	+7	+3	+6	+2	+11	-2	+31	+29	+0	+61	
CHO 2	-0.2%	-5				-0	-0	+2	-0	-2				+0	-1		+4	+1	-0		-2	+1	+0	-1	+2	+1	-1	-0	-6	-0	-6	
CHO 3	+0.4%	+12	+0			-1	-1	+6	-1	-2		-1		+3	-1	+0	+2	+1	+0		+0	+3	+1	-1	-1	-1	+3	-0	+2	+4	+5	
CHO 4	-0.2%	-12				-1	-1	+2	-1	-0	-0	+0		+1	+4		+4	+0	-1	-0	+0	+8	+3	-1	+0	+3	+2	-15	-8	-2	-25	
CHO 5	+0.4%	+12					+0	+0	+1	-3	+1	-5		-6	-0		+5	+1	-2			+4	+0	+1	+6	+8	-1	-2	+2	+7	+7	
CHO 6	-0.1%	-3						-1	-1	+2				-1	-2		-2	+2	+2	-0	+0	-0	-1	+0	-3	-3	-1	+1		+1	+2	
CHO 7	+0.0%	+0	-0				-0	+2	-0	+15		-7		+10	-11		-5	+1	+2			-14	-0	+1	+1	+2	+4	-13	+0	+11	-1	
CHO 8	+0.4%	+16						-3	-5	-9	+0	-7	+1	-22	+3	+0	+6	-3	+2		+0	+1	+9	+1	+4	-2	+3	-1	+18	+7	+0	+26
CHO 9	-0.0%	-0	-0	-0	-3	+0	-3	-2	+2	+11		-5		+6	+8		-5	-5	+3		+0	+1	+3	+1	+5	+9	-2	-7		-5	-12	
other Community Services	-0.2%	-0																					+0	+1	-1	-0						
		+0.3%	-2.2%	-0.1%	-11.3%	-2.8%	-3.7%	+0.9%	-5.0%	+0.1%	+6.1%	-38.6%	+5.6%	-0.1%	+0.5%	+0.5%	+0.3%	+0.1%	+2.1%	-1.1%	-1.4%	+0.4%	+3.4%	+1.5%	+0.8%	+1.4%	+0.1%	+0.1%	+0.7%	+0.8%	+0.3%	

Year-on-year Summary

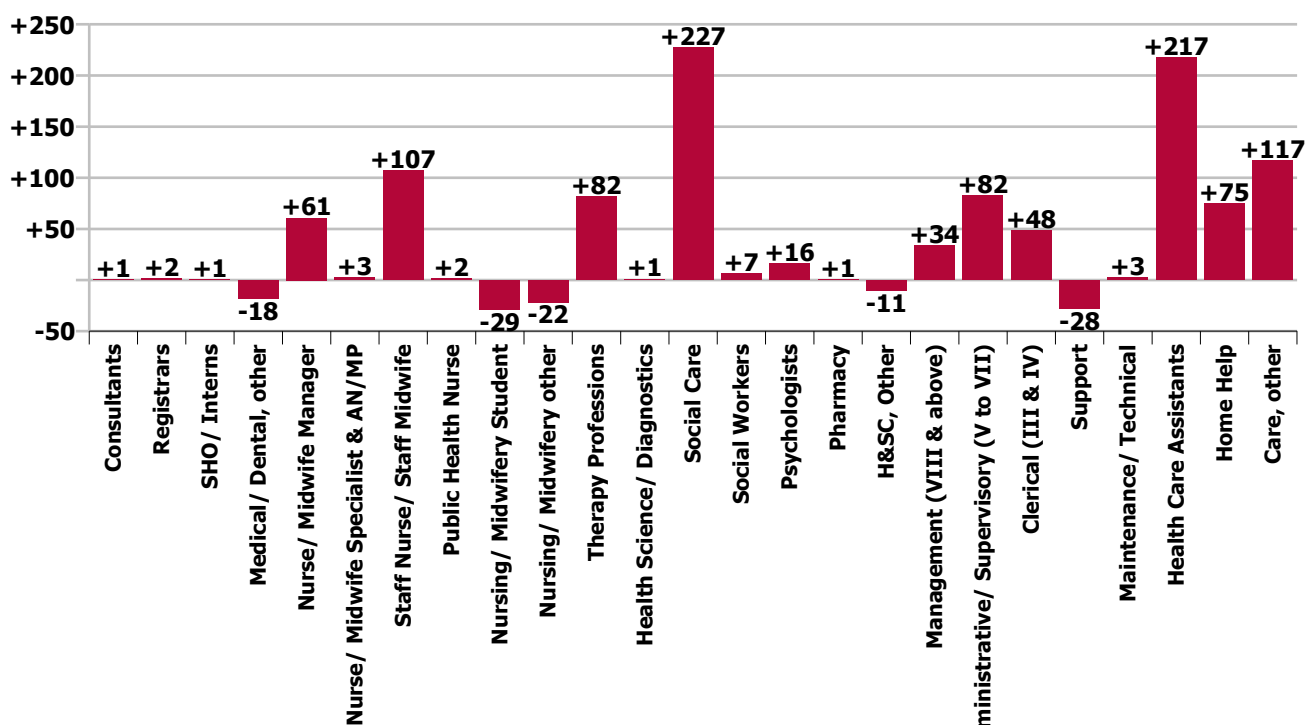
WTE change since Oct 20	% change since Oct 20	overall	Consultants	Registrars	SHO/ Interns	Medical/ Dental, other	Medical & Dental	Nurse/ Midwife Manager	Nurse/ Midwife Specialist & AN/MP	Staff Nurse/ Staff Midwife	Public Health Nurse	Nursing/ Midwifery Student	Nursing/ Midwifery other	Nursing & Midwifery	Therapy Professions	Health Science/ Diagnostics	Social Care	Social Workers	Psychologists	Pharmacy	H&SC, Other	Health & Social Care Professionals	Management (VIII & above)	Administrative/ Supervisory (V to VII)	Clerical (III & IV)	Management & Administrative	General Support	Health Care Assistants	Home Help	Care, other	Patient & Client Care	
Overall	+3.1%	+977	+1	+2	+1	-18	-15	+61	+3	+107	+2	-29	-22	+121	+82	+1	+227	+7	+16	+1	-11	+323	+34	+82	+48	+164	-25	+217	+75	+117	+409	
CHO 1	+4.1%	+139				-3	-3	+9	-2	+30		-16	-3	+17	+13	+0	+1	+0	+4		-2	+17	-1	+15	-1	+14	-21	+14	+92	+10	+116	
CHO 2	+0.3%	+10				-0	-0	+0	+1	-4		-0		-4	-6		+28	+1	+0	-1	-4	+19	+1	+7	-6	+3	-4	-0	-24	+22	-3	
CHO 3	+7.2%	+210	+3			-1	+1	+2	-2	+22		-1		+21	+7	+1	+15	+2	-0		-0	+24	+2	-2	+6	+6	+2	+61	+68	+27	+156	
CHO 4	+1.2%	+66	+0	-1	+1	-8	-8	+4	-4	+24	-2	-8		+14	+19		+9	+2	-1	+0	-1	+28	+5	+3	+1	+9	+11	+58	-51	+4	+12	
CHO 5	+3.0%	+96	+0			-1	-1	+4	+1	-2	+3	-4	+1	+2	+7		+9	+5	+1	-1	-1	+20	+4	+10	+13	+28	-6	+14	+3	+36	+52	
CHO 6	+1.3%	+26			+1	-2	-1	-3		-2				-4	-1		+29	-1	+0	+1	-0	+29	+0	+8	-9	-1	+3	-0		+2	+1	
CHO 7	+4.8%	+194	-1	-0	+1	-2	-2	+28	-1	+36		+2	+1	+66	+6	-1	+42	+0	+3	-1		+50	+7	+13	+6	+25	+4	+36	-8	+23	+52	
CHO 8	+2.4%	+86	-1			-0	-1	+14	+4	-13	+0	+1	-18	-11	+6		+21	-1	+5	+1	-0	+31	+2	-1	-1	+1	-6	+78	-6		+72	
CHO 9	+3.4%	+140	-1	+3	-2		+0	+3	+6	+17		-2	-3	+21	+31	+1	+74	-2	+3		-2	+105	+13	+24	+35	+71	-8	-43		-6	-49	
other Community Services	+14.6%	+10																					-0	+6	+4	+10					+1	+1
		+3.1%	+1.9%	+11.4%	+2.6%	-15.8%	-8.2%	+3.7%	+2.8%	+2.1%	+8.0%	-41.7%	-44.9%	+1.7%	+7.5%	+4.0%	+8.4%	+2.0%	+7.0%	+2.3%	-12.8%	+7.2%	+12.0%	+12.1%	+3.8%	+7.4%	-1.5%	+1.9%	+2.2%	+6.4%	+2.5%	



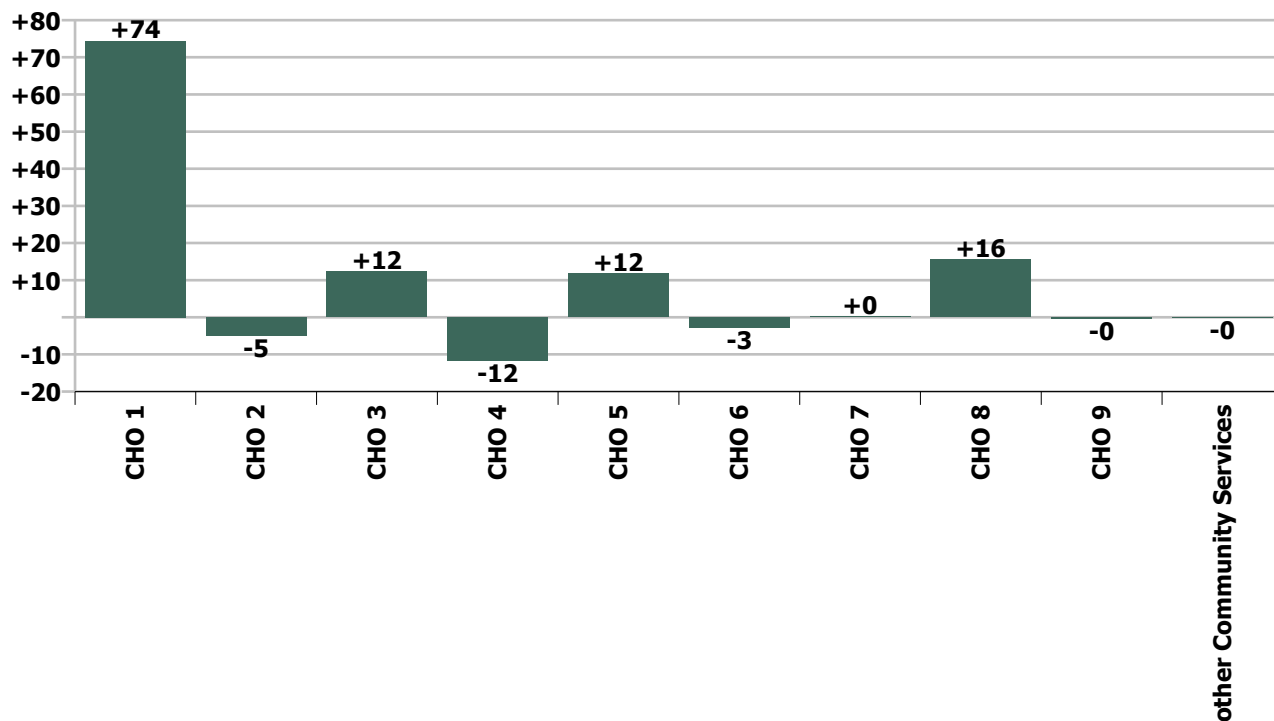
### Staff Group change since: Sep 2021



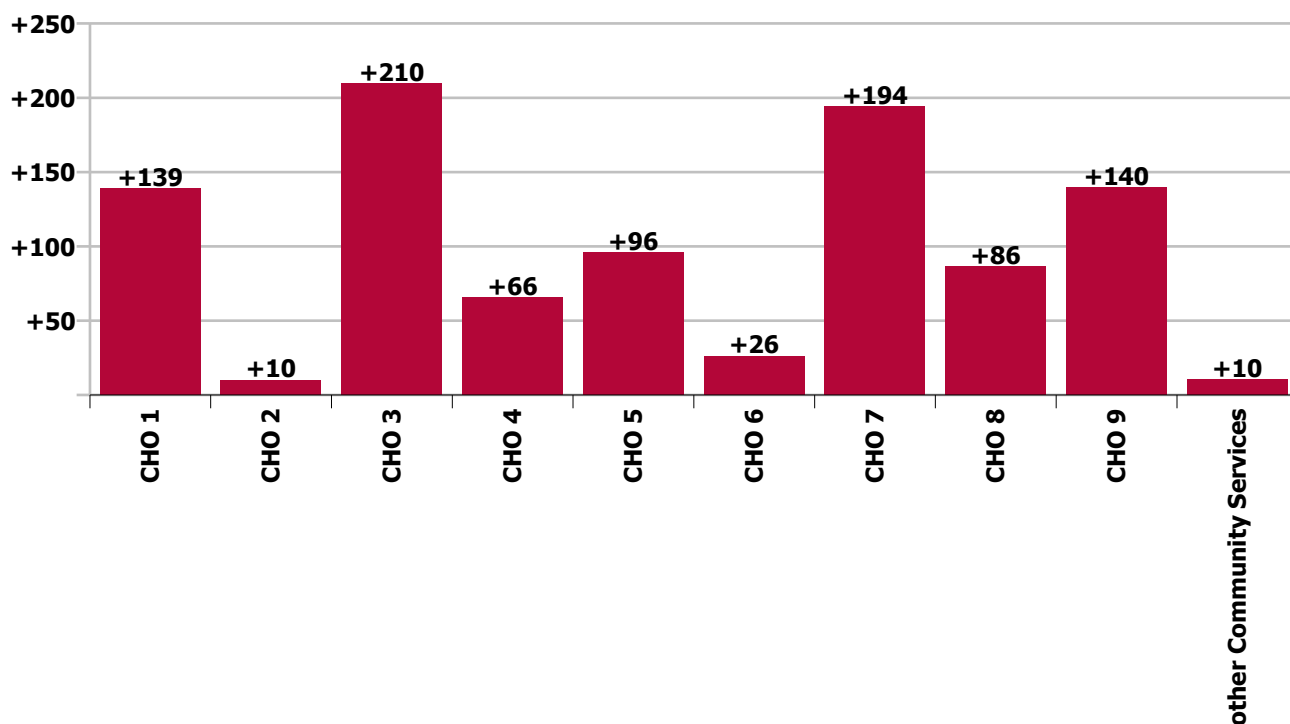
### Staff Group change since: Oct 2020



CHO change since: Sep 2021



CHO change since: Oct 2020



## Longitudinal Employment Levels by Grade Group - Dec 2016 to Oct 2021

Oct 2021 (Dec 2015 figure: 28,322)	WTE Oct 2021	WTE change since Dec 16	WTE change since Dec 17	WTE change since Dec 18	WTE change since Dec 19	WTE change since Dec 20	WTE change since Sep 21	% change since Dec 16	% change since Dec 17	% change since Dec 18	% change since Dec 19	% change since Dec 20	% change since Sep 21
<b>Overall</b>	<b>33,011</b>	<b>+3,774</b>	<b>+2,510</b>	<b>+1,887</b>	<b>+1,476</b>	<b>+651</b>	<b>+94</b>	<b>+12.9%</b>	<b>+8.2%</b>	<b>+6.1%</b>	<b>+4.7%</b>	<b>+2.0%</b>	<b>+0.3%</b>
Consultant Medicine	8	-3	-2	+4	+4	+3	+0	-30.7%	-17.4%	+111.1%	+111.1%	+71.9%	+0.1%
Consultant Paediatrics	2	-1	-1	-1	-1	-1	-0	-32.7%	-31.2%	-29.2%	-29.2%	-29.2%	-13.6%
Consultant Psychiatry	19	-3	-4	+1	-1	-2	-0	-12.0%	-18.4%	+8.0%	-7.1%	-9.4%	-1.7%
Consultant Surgery		-1	-0	-0				-100.0%	-100.0%	-100.0%	-100.0%	-100.0%	-100.0%
<b>Consultants</b>	<b>29</b>	<b>-8</b>	<b>-7</b>	<b>+4</b>	<b>+2</b>	<b>+0</b>	<b>-1</b>	<b>-21.3%</b>	<b>-19.5%</b>	<b>+17.9%</b>	<b>+5.9%</b>	<b>+1.0%</b>	<b>-2.2%</b>
Registrar	12	+0	-2	-1	-2	+3	-0	+3.0%	-12.3%	-6.5%	-12.3%	+34.0%	-0.3%
Senior Registrar	3	+0	-1	-1	+0	-1	+0	+2.7%	-23.0%	-23.0%	+2.7%	-23.0%	+0.3%
Specialist Registrar	4		-1	+2	-2				-20.0%	+100.0%	-33.3%		
<b>Registrars</b>	<b>19</b>	<b>+0</b>	<b>-4</b>	<b>+0</b>	<b>-4</b>	<b>+2</b>	<b>-0</b>	<b>+2.3%</b>	<b>-15.9%</b>	<b>+1.3%</b>	<b>-15.9%</b>	<b>+12.4%</b>	<b>-0.1%</b>
Senior House Officer	24	+8	+7	+5	+2	+1	-3	+49.5%	+41.0%	+26.3%	+8.6%	+5.2%	-11.3%
<b>SHO/ Interns</b>	<b>24</b>	<b>+8</b>	<b>+7</b>	<b>+5</b>	<b>+2</b>	<b>+1</b>	<b>-3</b>	<b>+49.5%</b>	<b>+41.0%</b>	<b>+26.3%</b>	<b>+8.6%</b>	<b>+5.2%</b>	<b>-11.3%</b>
Dentists								-100.0%	-100.0%	-100.0%	-100.0%	-100.0%	-100.0%
Other Medical	96	-5	-4	-4	-15	-22	-3	-4.8%	-4.2%	-3.7%	-13.4%	-18.8%	-2.8%
<b>Medical/ Dental, other</b>	<b>96</b>	<b>-5</b>	<b>-4</b>	<b>-4</b>	<b>-15</b>	<b>-22</b>	<b>-3</b>	<b>-4.8%</b>	<b>-4.2%</b>	<b>-3.7%</b>	<b>-13.4%</b>	<b>-18.8%</b>	<b>-2.8%</b>
<b>Medical &amp; Dental</b>	<b>168</b>	<b>-4</b>	<b>-8</b>	<b>+6</b>	<b>-15</b>	<b>-19</b>	<b>-6</b>	<b>-2.6%</b>	<b>-4.5%</b>	<b>+3.7%</b>	<b>-8.2%</b>	<b>-10.0%</b>	<b>-3.7%</b>
Clinical Nurse/ Midwife Manager	1,391	+45	+55	+59	+72	+41	+15	+3.4%	+4.1%	+4.4%	+5.5%	+3.0%	+1.1%
Director Nursing/Midwifery, Assistant	151	+21	+22	+26	+8	-1	-0	+16.3%	+17.3%	+21.1%	+5.3%	-0.6%	-0.1%
Director of Nursing/Midwifery	139	+10	+11	+18	-2	-2	-1	+8.0%	+8.5%	+15.2%	-1.1%	-1.6%	-0.4%
<b>Nurse/ Midwife Manager</b>	<b>1,681</b>	<b>+77</b>	<b>+88</b>	<b>+104</b>	<b>+78</b>	<b>+38</b>	<b>+15</b>	<b>+4.8%</b>	<b>+5.5%</b>	<b>+6.6%</b>	<b>+4.9%</b>	<b>+2.3%</b>	<b>+0.9%</b>
Advanced Nurse/ Midwife Practitioner	24	+20	+19	+15	+11	-1	-5	+487.5%	+370.0%	+161.7%	+84.7%	-4.5%	-16.2%
Clinical Nurse/ Midwife Specialist	79	-4	-0	-4	+3	+1	-1	-5.3%	-0.1%	-4.8%	+4.5%	+1.9%	-1.1%
<b>Nurse/ Midwife Specialist &amp; AN/MP</b>	<b>103</b>	<b>+15</b>	<b>+18</b>	<b>+11</b>	<b>+14</b>	<b>+0</b>	<b>-5</b>	<b>+17.3%</b>	<b>+21.9%</b>	<b>+11.5%</b>	<b>+16.0%</b>	<b>+0.4%</b>	<b>-5.0%</b>
Staff Midwives	1	+0	-1	+1	+1	-0	+0	+82.5%	-59.4%	-100.0%	-100.0%	-17.0%	+78.0%
Staff Nurse [Psychiatric]	202	+112	+126	+126	+114	+144	-2	+123.8%	+166.1%	+164.5%	+128.7%	+249.7%	-1.0%
Staff Nurses [General/ Children's]	3,303	-213	-182	-170	-160	-66	-6	-6.1%	-5.2%	-4.9%	-4.6%	-2.0%	-0.2%
Enhanced Nurse (Intellectual Disability)	417	+417	+417	+417	+417			-100.0%	-100.0%	-100.0%	-100.0%		
Enhanced Nurse, Senior (Intellectual Disability)	285	+285	+285	+285	+285			-100.0%	-100.0%	-100.0%	-100.0%		
Staff Nurse, Dual Qualified (Intellectual D	2	+0	-118	-3	-2			+3.1%	-98.0%	-59.6%	-44.0%		



Oct 2021 (Dec 2015 figure: 28,322)	WTE Oct 2021	WTE change since Dec 16	WTE change since Dec 17	WTE change since Dec 18	WTE change since Dec 19	WTE change since Dec 20	WTE change since Sep 21	% change since Dec 16	% change since Dec 17	% change since Dec 18	% change since Dec 19	% change since Dec 20	% change since Sep 21
<b>Overall</b>	<b>33,011</b>	<b>+3,774</b>	<b>+2,510</b>	<b>+1,887</b>	<b>+1,476</b>	<b>+651</b>	<b>+94</b>	<b>+12.9%</b>	<b>+8.2%</b>	<b>+6.1%</b>	<b>+4.7%</b>	<b>+2.0%</b>	<b>+0.3%</b>
Staff Nurse - Intellectual Disability	875	-572	-437	-508	-435			-39.5%	-33.3%	-36.7%	-33.2%		
Staff Nurse, Senior (Dual Qualified Intelle		-2	-3	-2	-3			-100.0%	-100.0%	-100.0%	-100.0%		
Staff Nurse, Senior (Intellectual Disability)	174	-102	-96	-120	-106			-36.9%	-35.5%	-40.9%	-37.9%		
Staff Nurse [Intellectual Disability]	1,753	+27	+49	+68	+156	-36	+12	+1.6%	+2.9%	+4.0%	+9.7%	-2.0%	+0.7%
Staff Nurse, General (Graduate Scheme)								-100.0%	-100.0%	-100.0%	-100.0%		
Staff Nurse, Intellectual Disability (Gradu								-100.0%	-100.0%	-100.0%	-100.0%		
Staff Nurse, Mental Health (Graduate Scheme)								-100.0%	-100.0%	-100.0%	-100.0%		
Graduate Nursing/ Midwifery								-100.0%	-100.0%	-100.0%	-100.0%	-100.0%	-100.0%
<b>Staff Nurse/ Staff Midwife</b>	<b>5,259</b>	<b>-74</b>	<b>-8</b>	<b>+24</b>	<b>+110</b>	<b>+42</b>	<b>+4</b>	<b>-1.4%</b>	<b>-0.2%</b>	<b>+0.5%</b>	<b>+2.1%</b>	<b>+0.8%</b>	<b>+0.1%</b>
Public Health Nurse	21	+1	+0	+1	+2			+2.7%	+2.2%	+5.2%	+8.3%		
Public Health Nurse	21	+1	+0	+1	+2	+1	+1	+2.7%	+2.2%	+5.2%	+8.3%	+4.8%	+6.1%
<b>Public Health Nurse</b>	<b>21</b>	<b>+1</b>	<b>+0</b>	<b>+1</b>	<b>+2</b>	<b>+1</b>	<b>+1</b>	<b>+2.7%</b>	<b>+2.2%</b>	<b>+5.2%</b>	<b>+8.3%</b>	<b>+4.8%</b>	<b>+6.1%</b>
Student Intellectual Disability Nursing Int	2	+2	+2	+2	+2			-100.0%	-100.0%	-100.0%	-100.0%		
Pre-registration Nurse Intern (COVID-19)	2	+2	+2	+2	+2	-30	-1	-100.0%	-100.0%	-100.0%	-100.0%	-94.8%	-27.4%
Student General Nursing Intern (pre-registration)	0	+0	+0	+0	+0			-100.0%	-100.0%	-100.0%	-100.0%		
Student Intellectual Disability Nursing Int	26	+15	+14	-9	-2			+138.7%	+122.7%	-24.6%	-7.0%		
Student Psychiatric Nursing Intern (pre-re	1	+0	+1	+1	+1			+2.0%	-100.0%	-100.0%	-100.0%		
Pre-registration Nurse/ Midwife Intern	28	+16	+16	-7	-1	+25	-22	+129.4%	+133.5%	-20.9%	-2.5%	+1001.2%	-44.6%
Post-registration Nurse/ Midwife Student					-1			-100.0%	-100.0%	-100.0%	-100.0%	-100.0%	-100.0%
Staff Midwife (awaiting-registration)	0	+0	+0	+0	+0			-100.0%	-100.0%	-100.0%	-100.0%		
Staff Nurse, General (awaiting-registration)	2	+2	-12	+2	+0			-100.0%	-85.7%	-100.0%	+8.7%		
Staff Nurse, Intellectual Disability (awaitin	5	+5	+5	+5	-6			-100.0%	-100.0%	-100.0%	-53.0%		
Staff Nurse, Psychiatric (awaiting-registration)	4	+4	+4	+4	+2			-100.0%	-100.0%	-100.0%	+99.5%		
Nursing/ Midwifery awaiting registration	11	+11	-3	+11	-3	-3	-3	-100.0%	-18.5%	-100.0%	-23.1%	-20.5%	-19.2%
<b>Nursing/ Midwifery Student</b>	<b>41</b>	<b>+29</b>	<b>+15</b>	<b>+6</b>	<b>-4</b>	<b>-8</b>	<b>-26</b>	<b>+238.2%</b>	<b>+57.3%</b>	<b>+16.5%</b>	<b>-8.0%</b>	<b>-16.6%</b>	<b>-38.6%</b>
Nursing Education/Clinical	24	+2	+2	+2	+2	-2	+1	+9.7%	+10.5%	+10.2%	+10.1%	-8.8%	+6.1%
Other Nursing/ Midwifery	2	-3	-3	+1	+1	+1		-60.0%	-60.0%	+100.0%	+100.0%	+100.0%	
<b>Nursing/ Midwifery other</b>	<b>26</b>	<b>-1</b>	<b>-1</b>	<b>+3</b>	<b>+3</b>	<b>-1</b>	<b>+1</b>	<b>-3.0%</b>	<b>-2.5%</b>	<b>+14.1%</b>	<b>+14.0%</b>	<b>-4.9%</b>	<b>+5.6%</b>
<b>Nursing &amp; Midwifery</b>	<b>7,131</b>	<b>+46</b>	<b>+113</b>	<b>+149</b>	<b>+204</b>	<b>+71</b>	<b>-9</b>	<b>+0.7%</b>	<b>+1.6%</b>	<b>+2.1%</b>	<b>+2.9%</b>	<b>+1.0%</b>	<b>-0.1%</b>
Dietitians	44	+15	+15	+13	+9	+10	+0	+52.7%	+50.5%	+42.8%	+27.1%	+28.7%	+0.3%
Occupational Therapists	420	+73	+76	+75	+42	+28	-2	+20.9%	+22.2%	+21.7%	+11.2%	+7.2%	-0.5%
Physiotherapists	356	+55	+50	+48	+43	+31	+11	+18.3%	+16.4%	+15.4%	+13.7%	+9.5%	+3.2%



Oct 2021 (Dec 2015 figure: 28,322)	WTE Oct 2021	WTE change since Dec 16	WTE change since Dec 17	WTE change since Dec 18	WTE change since Dec 19	WTE change since Dec 20	WTE change since Sep 21	% change since Dec 16	% change since Dec 17	% change since Dec 18	% change since Dec 19	% change since Dec 20	% change since Sep 21
<b>Overall</b>	<b>33,011</b>	<b>+3,774</b>	<b>+2,510</b>	<b>+1,887</b>	<b>+1,476</b>	<b>+651</b>	<b>+94</b>	<b>+12.9%</b>	<b>+8.2%</b>	<b>+6.1%</b>	<b>+4.7%</b>	<b>+2.0%</b>	<b>+0.3%</b>
Podiatrists & Chiropodists	11	-4	-6	-4	-2	-2	+0	-28.8%	-34.8%	-29.6%	-12.6%	-16.8%	+0.9%
Speech & Language Therapists	336	+45	+30	+34	+21	+9	-3	+15.6%	+9.8%	+11.4%	+6.5%	+2.8%	-0.9%
<b>Therapy Professions</b>	<b>1,167</b>	<b>+184</b>	<b>+166</b>	<b>+165</b>	<b>+114</b>	<b>+76</b>	<b>+6</b>	<b>+18.7%</b>	<b>+16.5%</b>	<b>+16.5%</b>	<b>+10.8%</b>	<b>+7.0%</b>	<b>+0.5%</b>
Audiology		-13	-18					-100.0%	-100.0%	-100.0%	-100.0%	-100.0%	-100.0%
Clinical Engineering	15	-3	-3	+3	+2	+2	+0	-18.3%	-16.9%	+24.6%	+15.0%	+15.4%	+0.2%
Medical Science	4		+1						+33.3%				
Phlebotomists		-1	-1	-1	-1			-100.0%	-100.0%	-100.0%	-100.0%	-100.0%	-100.0%
Radiographers	5	-3	-3	-2	-2	-1	+0	-37.1%	-37.9%	-23.1%	-26.4%	-14.6%	+0.8%
Respiratory Physiologist		-1	-1	-1	-1			-100.0%	-100.0%	-100.0%	-100.0%		
Respiratory Physiologist, Senior	2	+2	+2	+2	+2			-100.0%	-100.0%	-100.0%	-100.0%		
Vascular Physiologist	0	+0	+0	+0	-0			-100.0%	-100.0%	+50.0%	-42.9%		
Clinical Measurement	2	+1	+1	+1	+1	-0	+0	+112.0%	+112.0%	+96.3%	+75.2%	-1.9%	+3.4%
<b>Health Science/ Diagnostics</b>	<b>26</b>	<b>-19</b>	<b>-23</b>	<b>+1</b>	<b>+0</b>	<b>+1</b>	<b>+0</b>	<b>-41.9%</b>	<b>-46.7%</b>	<b>+5.9%</b>	<b>+0.1%</b>	<b>+4.3%</b>	<b>+0.5%</b>
<b>Social Care</b>	<b>2,948</b>	<b>+754</b>	<b>+599</b>	<b>+457</b>	<b>+350</b>	<b>+156</b>	<b>+10</b>	<b>+34.4%</b>	<b>+25.5%</b>	<b>+18.3%</b>	<b>+13.5%</b>	<b>+5.6%</b>	<b>+0.3%</b>
<b>Social Workers</b>	<b>328</b>	<b>+26</b>	<b>+24</b>	<b>+14</b>	<b>+11</b>	<b>+0</b>	<b>+0</b>	<b>+8.6%</b>	<b>+7.8%</b>	<b>+4.5%</b>	<b>+3.5%</b>	<b>+0.1%</b>	<b>+0.1%</b>
<b>Psychologists</b>	<b>245</b>	<b>+34</b>	<b>+21</b>	<b>+38</b>	<b>+38</b>	<b>+14</b>	<b>+5</b>	<b>+16.3%</b>	<b>+9.4%</b>	<b>+18.2%</b>	<b>+18.7%</b>	<b>+6.3%</b>	<b>+2.1%</b>
<b>Pharmacy</b>	<b>26</b>	<b>+5</b>	<b>+4</b>	<b>+2</b>	<b>+4</b>	<b>+2</b>	<b>-0</b>	<b>+23.6%</b>	<b>+19.2%</b>	<b>+9.6%</b>	<b>+16.0%</b>	<b>+10.0%</b>	<b>-1.1%</b>
Counsellor Therapists	21	+5	+2	+4	+3	+2	-2	+27.6%	+10.6%	+21.0%	+13.7%	+8.8%	-8.4%
Other Health & Social Care	38	-22	-22	-15	-13	-8	+1	-36.2%	-36.7%	-28.5%	-25.3%	-16.6%	+2.4%
Play Therapists/ Specialists	12	-3	-2	-4	-4	+0	+0	-21.3%	-15.3%	-22.9%	-27.1%	+1.1%	+0.5%
Social Care Worker, Trainee		-2	-1					-100.0%	-100.0%	-100.0%	-100.0%		
HSCP Trainees/ Students		-2	-1					-100.0%	-100.0%	-100.0%	-100.0%	-100.0%	-100.0%
<b>H&amp;SC, Other</b>	<b>72</b>	<b>-23</b>	<b>-23</b>	<b>-15</b>	<b>-15</b>	<b>-6</b>	<b>-1</b>	<b>-24.0%</b>	<b>-24.1%</b>	<b>-17.4%</b>	<b>-17.1%</b>	<b>-7.4%</b>	<b>-1.4%</b>
<b>Health &amp; Social Care Professionals</b>	<b>4,811</b>	<b>+962</b>	<b>+768</b>	<b>+662</b>	<b>+502</b>	<b>+244</b>	<b>+20</b>	<b>+25.0%</b>	<b>+19.0%</b>	<b>+16.0%</b>	<b>+11.7%</b>	<b>+5.3%</b>	<b>+0.4%</b>
Executive Management	53	+17	+7	+11	+10	+2	-2	+46.3%	+14.7%	+26.0%	+23.4%	+3.7%	-3.8%
Senior Management (VIII & GM)	260	+82	+82	+67	+48	+28	+12	+46.1%	+46.3%	+34.7%	+22.9%	+12.1%	+5.0%
<b>Management (VIII &amp; above)</b>	<b>313</b>	<b>+99</b>	<b>+89</b>	<b>+78</b>	<b>+58</b>	<b>+30</b>	<b>+10</b>	<b>+46.2%</b>	<b>+39.8%</b>	<b>+33.2%</b>	<b>+23.0%</b>	<b>+10.6%</b>	<b>+3.4%</b>
Middle Management (V-VII)	751	+255	+231	+181	+123	+64	+11	+51.4%	+44.4%	+31.8%	+19.6%	+9.3%	+1.4%
Other Administrative	14	-1	-3	-3	-2	-2	+1	-5.5%	-17.5%	-16.8%	-12.3%	-11.5%	+7.7%
<b>Administrative/ Supervisory (V to VII)</b>	<b>765</b>	<b>+254</b>	<b>+228</b>	<b>+179</b>	<b>+121</b>	<b>+62</b>	<b>+12</b>	<b>+49.8%</b>	<b>+42.4%</b>	<b>+30.4%</b>	<b>+18.8%</b>	<b>+8.9%</b>	<b>+1.5%</b>

Oct 2021 (Dec 2015 figure: 28,322)	WTE Oct 2021	WTE change since Dec 16	WTE change since Dec 17	WTE change since Dec 18	WTE change since Dec 19	WTE change since Dec 20	WTE change since Sep 21	% change since Dec 16	% change since Dec 17	% change since Dec 18	% change since Dec 19	% change since Dec 20	% change since Sep 21
<b>Overall</b>	<b>33,011</b>	<b>+3,774</b>	<b>+2,510</b>	<b>+1,887</b>	<b>+1,476</b>	<b>+651</b>	<b>+94</b>	<b>+12.9%</b>	<b>+8.2%</b>	<b>+6.1%</b>	<b>+4.7%</b>	<b>+2.0%</b>	<b>+0.3%</b>
General Administrative (III & IV)	1,303	+212	+162	+85	+71	+30	+10	+19.5%	+14.2%	+6.9%	+5.8%	+2.4%	+0.8%
<b>Clerical (III &amp; IV)</b>	<b>1,303</b>	<b>+212</b>	<b>+162</b>	<b>+85</b>	<b>+71</b>	<b>+30</b>	<b>+10</b>	<b>+19.5%</b>	<b>+14.2%</b>	<b>+6.9%</b>	<b>+5.8%</b>	<b>+2.4%</b>	<b>+0.8%</b>
<b>Management &amp; Administrative</b>	<b>2,380</b>	<b>+566</b>	<b>+478</b>	<b>+341</b>	<b>+251</b>	<b>+123</b>	<b>+32</b>	<b>+31.2%</b>	<b>+25.2%</b>	<b>+16.7%</b>	<b>+11.8%</b>	<b>+5.4%</b>	<b>+1.4%</b>
Catering	301	-25	-16	-19	-18	-12	+0	-7.7%	-5.2%	-5.9%	-5.7%	-3.7%	+0.1%
Household Services	867	-204	-144	-103	-45	-18	-3	-19.1%	-14.3%	-10.6%	-5.0%	-2.0%	-0.4%
Other Labs & Associated	1	-0		-0				-6.5%		-3.8%			
Other Support	179	-55	-54	-50	-43	+14	+2	-23.4%	-23.0%	-21.8%	-19.3%	+8.7%	+1.3%
Portering	92	-20	-18	-13	-17	-9	+1	-17.6%	-16.6%	-12.6%	-15.6%	-8.9%	+1.6%
<b>Support</b>	<b>1,440</b>	<b>-304</b>	<b>-233</b>	<b>-185</b>	<b>-124</b>	<b>-24</b>	<b>+1</b>	<b>-17.4%</b>	<b>-13.9%</b>	<b>-11.4%</b>	<b>-7.9%</b>	<b>-1.7%</b>	<b>+0.0%</b>
Maintenance	208	-20	-25	-14	-6	-8	+1	-8.8%	-10.6%	-6.3%	-3.0%	-3.7%	+0.6%
Technical Services	19	+14	+14	+13	+11	+8	-0	+272.5%	+272.5%	+211.5%	+134.6%	+71.2%	-0.5%
<b>Maintenance/ Technical</b>	<b>227</b>	<b>-6</b>	<b>-11</b>	<b>-1</b>	<b>+5</b>	<b>-0</b>	<b>+1</b>	<b>-2.7%</b>	<b>-4.5%</b>	<b>-0.5%</b>	<b>+2.0%</b>	<b>-0.0%</b>	<b>+0.5%</b>
<b>General Support</b>	<b>1,667</b>	<b>-310</b>	<b>-244</b>	<b>-186</b>	<b>-119</b>	<b>-24</b>	<b>+2</b>	<b>-15.7%</b>	<b>-12.8%</b>	<b>-10.0%</b>	<b>-6.7%</b>	<b>-1.4%</b>	<b>+0.1%</b>
HCA, Nurse's Aide, etc.	11,336	+1,536	+1,075	+675	+498	+176	+16	+15.7%	+10.5%	+6.3%	+4.6%	+1.6%	+0.1%
Health Care Assistant (Student Nurse/Mi	1	+1	+1	+1	+1			-100.0%	-100.0%	-100.0%	-100.0%		
HCA (Student Nurse/Midwife COVID-19)	1	+1	+1	+1	+1	-21	-2	-100.0%	-100.0%	-100.0%	-100.0%	-95.2%	-68.9%
Health & Social Care Assistants	51	+14	+16	+16	+20	+12	+0	+38.2%	+44.9%	+44.3%	+64.4%	+32.3%	+0.8%
Community Swabber (COVID-19)								-100.0%	-100.0%	-100.0%	-100.0%		
Swabber (COVID-19)							-1	-100.0%	-100.0%	-100.0%	-100.0%	-100.0%	-100.0%
<b>Health Care Assistants</b>	<b>11,388</b>	<b>+1,551</b>	<b>+1,092</b>	<b>+691</b>	<b>+519</b>	<b>+167</b>	<b>+13</b>	<b>+15.8%</b>	<b>+10.6%</b>	<b>+6.5%</b>	<b>+4.8%</b>	<b>+1.5%</b>	<b>+0.1%</b>
<b>Home Help</b>	<b>3,535</b>	<b>+645</b>	<b>+56</b>	<b>+2</b>	<b>-16</b>	<b>+10</b>	<b>+26</b>	<b>+22.3%</b>	<b>+1.6%</b>	<b>+0.1%</b>	<b>-0.4%</b>	<b>+0.3%</b>	<b>+0.7%</b>
Other Care Grades	1,931	+319	+255	+221	+149	+78	+16	+19.8%	+15.2%	+13.0%	+8.4%	+4.2%	+0.8%
<b>Care, other</b>	<b>1,931</b>	<b>+319</b>	<b>+255</b>	<b>+221</b>	<b>+149</b>	<b>+78</b>	<b>+16</b>	<b>+19.8%</b>	<b>+15.2%</b>	<b>+13.0%</b>	<b>+8.4%</b>	<b>+4.2%</b>	<b>+0.8%</b>
<b>Patient &amp; Client Care</b>	<b>16,854</b>	<b>+2,515</b>	<b>+1,402</b>	<b>+915</b>	<b>+653</b>	<b>+256</b>	<b>+56</b>	<b>+17.5%</b>	<b>+9.1%</b>	<b>+5.7%</b>	<b>+4.0%</b>	<b>+1.5%</b>	<b>+0.3%</b>

Source: Health Service Personnel Census

Longitudinal Employment Levels by Grade Group - Dec 2016 to Oct 2021

Oct 2021 (Dec 2015 figure: 28,322)	WTE Oct 2021	WTE change since Dec 16	WTE change since Dec 17	WTE change since Dec 18	WTE change since Dec 19	WTE change since Dec 20	WTE change since Sep 21	% change since Dec 16	% change since Dec 17	% change since Dec 18	% change since Dec 19	% change since Dec 20	% change since Sep 21
Overall	33,011	+3,774	+2,510	+1,887	+1,476	+651	+94	+12.9%	+8.2%	+6.1%	+4.7%	+2.0%	+0.3%
Consultant Medicine	8	-3	-2	+4	+4	+3	+0	-30.7%	-17.4%	+111.1%	+111.1%	+71.9%	+0.1%
Consultant Paediatrics	2	-1	-1	-1	-1	-1	-0	-32.7%	-31.2%	-29.2%	-29.2%	-29.2%	-13.6%
Consultant Psychiatry	19	-3	-4	+1	-1	-2	-0	-12.0%	-18.4%	+8.0%	-7.1%	-9.4%	-1.7%
Consultant Surgery		-1	-0	-0				-100.0%	-100.0%	-100.0%	-100.0%	-100.0%	-100.0%
Consultants	29	-8	-7	+4	+2	+0	-1	-21.3%	-19.5%	+17.9%	+5.9%	+1.0%	-2.2%
Registrar	12	+0	-2	-1	-2	+3	-0	+3.0%	-12.3%	-6.5%	-12.3%	+34.0%	-0.3%
Senior Registrar	3	+0	-1	-1	+0	-1	+0	+2.7%	-23.0%	-23.0%	+2.7%	-23.0%	+0.3%
Specialist Registrar	4		-1	+2	-2				-20.0%	+100.0%	-33.3%		
Registrars	19	+0	-4	+0	-4	+2	-0	+2.3%	-15.9%	+1.3%	-15.9%	+12.4%	-0.1%
Senior House Officer	24	+8	+7	+5	+2	+1	-3	+49.5%	+41.0%	+26.3%	+8.6%	+5.2%	-11.3%
SHO/ Interns	24	+8	+7	+5	+2	+1	-3	+49.5%	+41.0%	+26.3%	+8.6%	+5.2%	-11.3%
Dentists								-100.0%	-100.0%	-100.0%	-100.0%	-100.0%	-100.0%
Other Medical	96	-5	-4	-4	-15	-22	-3	-4.8%	-4.2%	-3.7%	-13.4%	-18.8%	-2.8%
Medical/ Dental, other	96	-5	-4	-4	-15	-22	-3	-4.8%	-4.2%	-3.7%	-13.4%	-18.8%	-2.8%
Medical & Dental	168	-4	-8	+6	-15	-19	-6	-2.6%	-4.5%	+3.7%	-8.2%	-10.0%	-3.7%
Clinical Nurse/ Midwife Manager	1,391	+45	+55	+59	+72	+41	+15	+3.4%	+4.1%	+4.4%	+5.5%	+3.0%	+1.1%
Director Nursing/Midwifery, Assistant	151	+21	+22	+26	+8	-1	-0	+16.3%	+17.3%	+21.1%	+5.3%	-0.6%	-0.1%
Director of Nursing/Midwifery	139	+10	+11	+18	-2	-2	-1	+8.0%	+8.5%	+15.2%	-1.1%	-1.6%	-0.4%
Nurse/ Midwife Manager	1,681	+77	+88	+104	+78	+38	+15	+4.8%	+5.5%	+6.6%	+4.9%	+2.3%	+0.9%
Advanced Nurse/ Midwife Practitioner	24	+20	+19	+15	+11	-1	-5	+487.5%	+370.0%	+161.7%	+84.7%	-4.5%	-16.2%
Clinical Nurse/ Midwife Specialist	79	-4	-0	-4	+3	+1	-1	-5.3%	-0.1%	-4.8%	+4.5%	+1.9%	-1.1%
Nurse/ Midwife Specialist & AN/MP	103	+15	+18	+11	+14	+0	-5	+17.3%	+21.9%	+11.5%	+16.0%	+0.4%	-5.0%
Staff Midwives	1	+0	-1	+1	+1	-0	+0	+82.5%	-59.4%	-100.0%	-100.0%	-17.0%	+78.0%
Staff Nurse [Psychiatric]	202	+112	+126	+126	+114	+144	-2	+123.8%	+166.1%	+164.5%	+128.7%	+249.7%	-1.0%
Staff Nurses [General/ Children's]	3,303	-213	-182	-170	-160	-66	-6	-6.1%	-5.2%	-4.9%	-4.6%	-2.0%	-0.2%
Staff Nurse [Intellectual Disability]	1,753	+27	+49	+68	+156	-36	+12	+1.6%	+2.9%	+4.0%	+9.7%	-2.0%	+0.7%
Graduate Nursing/ Midwifery								-100.0%	-100.0%	-100.0%	-100.0%	-100.0%	-100.0%
Staff Nurse/ Staff Midwife	5,259	-74	-8	+24	+110	+42	+4	-1.4%	-0.2%	+0.5%	+2.1%	+0.8%	+0.1%
Public Health Nurse	21	+1	+0	+1	+2	+1	+1	+2.7%	+2.2%	+5.2%	+8.3%	+4.8%	+6.1%
Public Health Nurse	21	+1	+0	+1	+2	+1	+1	+2.7%	+2.2%	+5.2%	+8.3%	+4.8%	+6.1%
Pre-registration Nurse Intern (COVID-19)	2	+2	+2	+2	+2	-30	-1	-100.0%	-100.0%	-100.0%	-100.0%	-94.8%	-27.4%
Pre-registration Nurse/ Midwife Intern	28	+16	+16	-7	-1	+25	-22	+129.4%	+133.5%	-20.9%	-2.5%	+1001.2%	-44.6%
Post-registration Nurse/ Midwife Student					-1			-100.0%	-100.0%	-100.0%	-100.0%	-100.0%	-100.0%
Nursing/ Midwifery awaiting registration	11	+11	-3	+11	-3	-3	-3	-100.0%	-18.5%	-100.0%	-23.1%	-20.5%	-19.2%
Nursing/ Midwifery Student	41	+29	+15	+6	-4	-8	-26	+238.2%	+57.3%	+16.5%	-8.0%	-16.6%	-38.6%
Nursing Education/Clinical	24	+2	+2	+2	+2	-2	+1	+9.7%	+10.5%	+10.2%	+10.1%	-8.8%	+6.1%
Other Nursing/ Midwifery	2	-3	-3	+1	+1	+1		-60.0%	-60.0%	+100.0%	+100.0%	+100.0%	
Nursing/ Midwifery other	26	-1	-1	+3	+3	-1	+1	-3.0%	-2.5%	+14.1%	+14.0%	-4.9%	+5.6%
Nursing & Midwifery	7,131	+46	+113	+149	+204	+71	-9	+0.7%	+1.6%	+2.1%	+2.9%	+1.0%	-0.1%
Dietitians	44	+15	+15	+13	+9	+10	+0	+52.7%	+50.5%	+42.8%	+27.1%	+28.7%	+0.3%
Occupational Therapists	420	+73	+76	+75	+42	+28	-2	+20.9%	+22.2%	+21.7%	+11.2%	+7.2%	-0.5%
Physiotherapists	356	+55	+50	+48	+43	+31	+11	+18.3%	+16.4%	+15.4%	+13.7%	+9.5%	+3.2%
Podiatrists & Chiropodists	11	-4	-6	-4	-2	-2	+0	-28.8%	-34.8%	-29.6%	-12.6%	-16.8%	+0.9%
Speech & Language Therapists	336	+45	+30	+34	+21	+9	-3	+15.6%	+9.8%	+11.4%	+6.5%	+2.8%	-0.9%
Therapy Professions	1,167	+184	+166	+165	+114	+76	+6	+18.7%	+16.5%	+16.5%	+10.8%	+7.0%	+0.5%
Audiology		-13	-18					-100.0%	-100.0%	-100.0%	-100.0%	-100.0%	-100.0%
Clinical Engineering	15	-3	-3	+3	+2	+2	+0	-18.3%	-16.9%	+24.6%	+15.0%	+15.4%	+0.2%
Medical Science	4		+1						+33.3%				
Phlebotomists		-1	-1	-1	-1			-100.0%	-100.0%	-100.0%	-100.0%	-100.0%	-100.0%
Radiographers	5	-3	-3	-2	-2	-1	+0	-37.1%	-37.9%	-23.1%	-26.4%	-14.6%	+0.8%
Clinical Measurement	2	+1	+1	+1	+1	-0	+0	+112.0%	+112.0%	+96.3%	+75.2%	-1.9%	+3.4%
Health Science/ Diagnostics	26	-19	-23	+1	+0	+1	+0	-41.9%	-46.7%	+5.9%	+0.1%	+4.3%	+0.5%
Social Care	2,948	+754	+599	+457	+350	+156	+10	+34.4%	+25.5%	+18.3%	+13.5%	+5.6%	+0.3%
Social Workers	328	+26	+24	+14	+11	+0	+0	+8.6%	+7.8%	+4.5%	+3.5%	+0.1%	+0.1%
Psychologists	245	+34	+21	+38	+38	+14	+5	+16.3%	+9.4%	+18.2%	+18.7%	+6.3%	+2.1%
Pharmacy	26	+5	+4	+2	+4	+2	-0	+23.6%	+19.2%	+9.6%	+16.0%	+10.0%	-1.1%
Counsellor Therapists	21	+5	+2	+4	+3	+2	-2	+27.6%	+10.6%	+21.0%	+13.7%	+8.8%	-8.4%
Other Health & Social Care	38	-22	-22	-15	-13	-8	+1	-36.2%	-36.7%	-28.5%	-25.3%	-16.6%	+2.4%
Play Therapists/ Specialists	12	-3	-2	-4	-4	+0	+0	-21.3%	-15.3%	-22.9%	-27.1%	+1.1%	+0.5%
HSCP Trainees/ Students		-2	-1					-100.0%	-100.0%	-100.0%	-100.0%	-100.0%	-100.0%
H&SC, Other	72	-23	-23	-15	-15	-6	-1	-24.0%	-24.1%	-17.4%	-17.1%	-7.4%	-1.4%
Health & Social Care Professionals	4,811	+962	+768	+662	+502	+244	+20	+25.0%	+19.0%	+16.0%	+11.7%	+5.3%	+0.4%
Executive Management	53	+17	+7	+11	+10	+2	-2	+46.3%	+14.7%	+26.0%	+23.4%	+3.7%	-3.8%
Senior Management (VIII & GM)	260	+82	+82	+67	+48	+28	+12	+46.1%	+46.3%	+34.7%	+22.9%	+12.1%	+5.0%
Management (VIII & above)	313	+99	+89	+78	+58	+30	+10	+46.2%	+39.8%	+33.2%	+23.0%	+10.6%	+3.4%
Middle Management (V-VII)	751	+255	+231	+181	+123	+64	+11	+51.4%	+44.4%	+31.8%	+19.6%	+9.3%	+1.4%
Other Administrative	14	-1	-3	-3	-2	-2	+1	-5.5%	-17.5%	-16.8%	-12.3%	-11.5%	+7.7%
Administrative/ Supervisory (V to VII)	765	+254	+228	+179	+121	+62	+12	+49.8%	+42.4%	+30.4%	+18.8%	+8.9%	+1.5%
General Administrative (III & IV)	1,303	+212	+162	+85	+71	+30	+10	+19.5%	+14.2%	+6.9%	+5.8%	+2.4%	+0.8%
Clerical (III & IV)	1,303	+212	+162	+85	+71	+30	+10	+19.5%	+14.2%	+6.9%	+5.8%	+2.4%	+0.8%
Management & Administrative	2,380	+566	+478	+341	+251	+123	+32	+31.2%	+25.2%	+16.7%	+11.8%	+5.4%	+1.4%
Support	1,440	-304	-233	-185	-124	-24	+1	-17.4%	-13.9%	-11.4%	-7.9%	-1.7%	+0.0%
Maintenance	208	-20	-25	-14	-6	-8	+1	-8.8%	-10.6%	-6.3%	-3.0%	-3.7%	+0.6%
Technical Services	19	+14	+14	+13	+11	+8	-0	+272.5%	+272.5%	+211.5%	+134.6%	+71.2%	-0.5%
Maintenance/ Technical	227	-6	-11	-1	+5	-0	+1	-2.7%	-4.5%	-0.5%	+2.0%	-0.0%	+0.5%
General Support	1,667	-310	-244	-186	-119	-24	+2	-15.7%	-12.8%	-10.0%	-6.7%	-1.4%	+0.1%
HCA, Nurse's Aide, etc.	11,336	+1,536	+1,075	+675	+498	+176	+16	+15.7%	+10.5%	+6.3%	+4.6%	+1.6%	+0.1%
HCA (Student Nurse/Midwife COVID-19)	1	+1	+1	+1	+1	-21	-2	-100.0%	-100.0%	-100.0%	-100.0%	-95.2%	-68.9%
Health & Social Care Assistants	51	+14	+16	+16	+20	+12	+0	+38.2%	+44.9%	+44.3%	+64.4%	+32.3%	+0.8%
Swabber (COVID-19)							-1	-100.0%	-100.0%	-100.0%	-100.0%	-100.0%	-100.0%
Health Care Assistants	11,388	+1,551	+1,092	+691	+519	+167	+13	+15.8%	+10.6%	+6.5%	+4.8%	+1.5%	+0.1%
Home Help	3,535	+645	+56	+2	-16	+10	+26	+22.3%	+1.6%	+0.1%	-0.4%	+0.3%	+0.7%
Other Care Grades	1,931	+319	+255	+221	+149	+78	+16	+19.8%	+15.2%	+13.0%	+8.4%	+4.2%	+0.8%

Oct 2021 (Dec 2015 figure: 28,322)	WTE Oct 2021	WTE change since Dec 16	WTE change since Dec 17	WTE change since Dec 18	WTE change since Dec 19	WTE change since Dec 20	WTE change since Sep 21	% change since Dec 16	% change since Dec 17	% change since Dec 18	% change since Dec 19	% change since Dec 20	% change since Sep 21
Overall	33,011	+3,774	+2,510	+1,887	+1,476	+651	+94	+12.9%	+8.2%	+6.1%	+4.7%	+2.0%	+0.3%
Care, other	1,931	+319	+255	+221	+149	+78	+16	+19.8%	+15.2%	+13.0%	+8.4%	+4.2%	+0.8%
Patient & Client Care	16,854	+2,515	+1,402	+915	+653	+256	+56	+17.5%	+9.1%	+5.7%	+4.0%	+1.5%	+0.3%

Source: Health Service Personnel Census