

# Social Care Older Persons Services Employment Report: April 2021

## Employment by Staff Group

Apr 2021 (Dec 2020 figure: 13,415)	WTE Mar 2021	WTE Apr 2021	WTE change since Mar 21	% change since Mar 21	WTE change since Dec 20	WTE change since Apr 20
<b>Overall</b>	<b>13,329</b>	<b>13,395</b>	<b>+67</b>	<b>+0.5%</b>	<b>-19</b>	<b>+178</b>
Consultants	4	5	+1	+27.8%	+0	+0
Registrars	11	11	-0	-1.1%	+2	+0
SHO/ Interns	12	12	-0	-1.2%	-2	-1
Medical/ Dental, other	86	86	+0	+0.1%	-17	+1
<b>Medical &amp; Dental</b>	<b>113</b>	<b>114</b>	<b>+1</b>	<b>+0.7%</b>	<b>-17</b>	<b>+1</b>
Nurse/ Midwife Manager	760	763	+2	+0.3%	+16	+35
Nurse/ Midwife Specialist & AN/MP	39	38	-0	-1.3%	+0	+7
Staff Nurse/ Staff Midwife	2,631	2,638	+7	+0.3%	+14	+18
Public Health Nurse	13	12	-1	-8.7%	-2	-2
Post-registration Nurse/ Midwife Student				-100.0%		-1
Nursing/ Midwifery awaiting registration	2	1.49	-0	-0.7%	+0	-8
Nursing/ Midwifery Student	2	1	-0	-0.7%	+0	-9
Nursing/ Midwifery other	4	4	-0	-4.8%	-0	+2
<b>Nursing &amp; Midwifery</b>	<b>3,449</b>	<b>3,456</b>	<b>+7</b>	<b>+0.2%</b>	<b>+28</b>	<b>+51</b>
Therapy Professions	330	335	+5	+1.6%	+40	+37
Health Science/ Diagnostics	5	5	-0	-5.3%	-0	-0
Social Care	3	3	+0	+1.8%	+0	
Social Workers	103	103	+0	+0.2%	+3	+5
Psychologists	2	2			+1	+0
Pharmacy	18	19	+1	+2.8%	+1	+1
H&SC, Other	2	2				+0
<b>Health &amp; Social Care Professionals</b>	<b>463</b>	<b>468</b>	<b>+6</b>	<b>+1.2%</b>	<b>+45</b>	<b>+43</b>
Management (VIII & above)	79	81	+2	+3.0%	+2	+6
Administrative/ Supervisory (V to VII)	196	192	-4	-1.9%	+16	+24
Clerical (III & IV)	598	596	-2	-0.3%	+9	+24
<b>Management &amp; Administrative</b>	<b>872</b>	<b>869</b>	<b>-3</b>	<b>-0.4%</b>	<b>+27</b>	<b>+53</b>
Support	795	800	+5	+0.6%	-1	-25
Maintenance/ Technical	93	94	+0	+0.5%	-1	-5
<b>General Support</b>	<b>889</b>	<b>894</b>	<b>+5</b>	<b>+0.6%</b>	<b>-2</b>	<b>-30</b>
Health Care Assistants	4,114	4,100	-14	-0.3%	-18	+32
Home Help	3,274	3,333	+58	+1.8%	-99	+7
Care, other	156	162	+6	+4.2%	+16	+20
<b>Patient &amp; Client Care</b>	<b>7,544</b>	<b>7,595</b>	<b>+51</b>	<b>+0.7%</b>	<b>-101</b>	<b>+60</b>

## Social Care Older Persons Services Employment by Administration (HSE / S38): April 2021

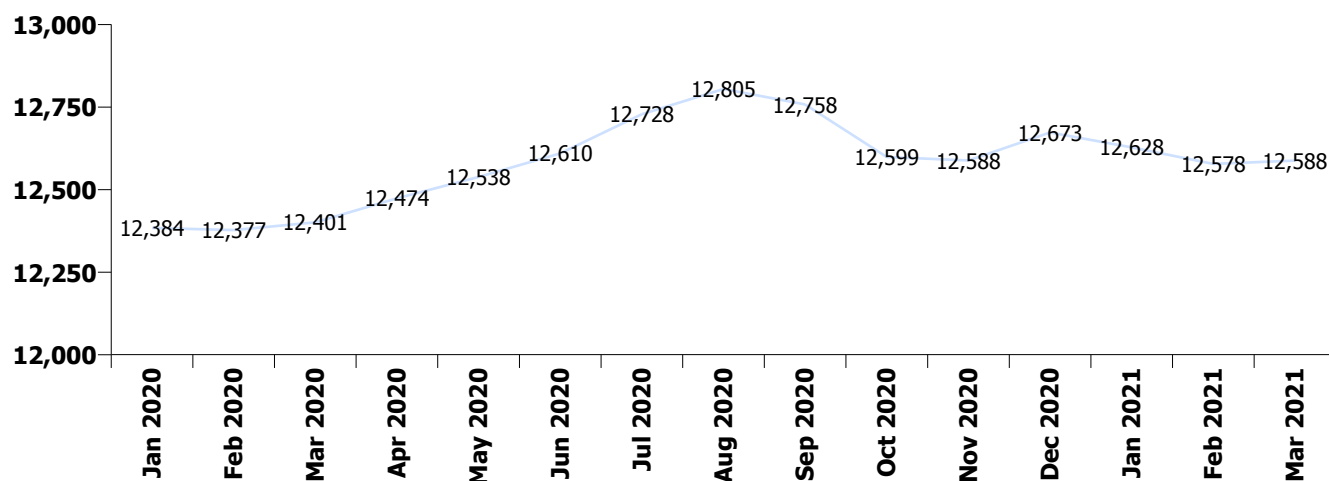
Apr 2021 (Dec 2020 figure: 13,415)	WTE Mar 2021	WTE Apr 2021	WTE change since Mar 21	% change since Mar 21	WTE change since Dec 20	WTE change since Apr 20
<b>Overall</b>	<b>13,329</b>	<b>13,395</b>	<b>+67</b>	<b>+0.5%</b>	<b>-19</b>	<b>+178</b>
<b>HSE</b>	<b>12,588</b>	<b>12,650</b>	<b>+62</b>	<b>+0.5%</b>	<b>-24</b>	<b>+176</b>
<b>Section 38</b>	<b>741</b>	<b>746</b>	<b>+5</b>	<b>+0.7%</b>	<b>+4</b>	<b>+2</b>

### HSE

Apr 2021 (Dec 2020 figure: 12,673)	WTE Mar 2021	WTE Apr 2021	WTE change since Mar 21	% change since Mar 21	WTE change since Dec 20	WTE change since Apr 20
<b>Overall</b>	<b>12,588</b>	<b>12,650</b>	<b>+62</b>	<b>+0.5%</b>	<b>-24</b>	<b>+176</b>
Consultants	2	3.00	+1	+50.0%	+0	
Registrars	7	6.64	-0	-1.8%	+1	-1
SHO/ Interns	8	7.85	-0	-1.9%	-2	-1
Medical/ Dental, other	85	85.48	+0	+0.1%	-16	+2
<b>Medical &amp; Dental</b>	<b>102</b>	<b>103</b>	<b>+1</b>	<b>+0.8%</b>	<b>-17</b>	<b>+1</b>
Nurse/ Midwife Manager	712	714.03	+2	+0.3%	+17	+39
Nurse/ Midwife Specialist & AN/MP	39	38.32	-0	-1.3%	+0	+7
Staff Nurse/ Staff Midwife	2,450	2,455.61	+6	+0.2%	+17	+23
Public Health Nurse	13	11.59	-1	-8.7%	-2	-2
Post-registration Nurse/ Midwife Student				-100.0%		-1
Nursing/ Midwifery awaiting registration	2	1.49	-0	-0.7%	+0	-8
Nursing/ Midwifery Student	2	1.49	-0	-0.7%	+0	-9
Nursing/ Midwifery other	4	3.79	-0	-4.8%	-0	+2
<b>Nursing &amp; Midwifery</b>	<b>3,219</b>	<b>3,225</b>	<b>+6</b>	<b>+0.2%</b>	<b>+33</b>	<b>+61</b>
Therapy Professions	254	260.00	+6	+2.4%	+37	+27
Health Science/ Diagnostics	4	3.83	-0	-6.6%	-0	-0
Social Care	3	2.79	+0	+1.8%	+0	
Social Workers	87	87.36	+0	+0.3%	+3	+3
Psychologists	2	1.60			+1	+0
Pharmacy	13	13.09	+0	+3.4%	+1	+0
H&SC, Other	2	1.54				+0
<b>Health &amp; Social Care Professionals</b>	<b>364</b>	<b>370</b>	<b>+7</b>	<b>+1.8%</b>	<b>+42</b>	<b>+31</b>
Management (VIII & above)	75	76.87	+2	+3.2%	+2	+4
Administrative/ Supervisory (V to VII)	173	169.85	-4	-2.0%	+12	+21
Clerical (III & IV)	569	566.97	-2	-0.3%	+10	+23
<b>Management &amp; Administrative</b>	<b>817</b>	<b>814</b>	<b>-3</b>	<b>-0.4%</b>	<b>+25</b>	<b>+49</b>
Support	690	691.88	+2	+0.3%	-2	-25
Maintenance/ Technical	83	83.76	+0	+0.6%	-0	-4
<b>General Support</b>	<b>773</b>	<b>776</b>	<b>+2</b>	<b>+0.3%</b>	<b>-2</b>	<b>-29</b>
Health Care Assistants	3,887	3,871.39	-15	-0.4%	-21	+36
Home Help	3,274	3,332.52	+58	+1.8%	-99	+7
Care, other	152	158.29	+6	+4.2%	+16	+21
<b>Patient &amp; Client Care</b>	<b>7,313</b>	<b>7,362</b>	<b>+49</b>	<b>+0.7%</b>	<b>-104</b>	<b>+64</b>

## Section 38

Apr 2021 (Dec 2020 figure: 742)	WTE Mar 2021	WTE Apr 2021	WTE change since Mar 21	% change since Mar 21	WTE change since Dec 20	WTE change since Apr 20
<b>Overall</b>	<b>741</b>	<b>746</b>	<b>+5</b>	<b>+0.7%</b>	<b>+4</b>	<b>+2</b>
Consultants	2	1.60				+0
Registrars	4	4.00			+1	+1
SHO/ Interns	4	4.00				
Medical/ Dental, other	1	1.00			-1	-1
<b>Medical &amp; Dental</b>	<b>11</b>	<b>11</b>				<b>+0</b>
Nurse/ Midwife Manager	48	48.61	+0	+0.5%	-1	-5
Staff Nurse/ Staff Midwife	181	182.27	+1	+0.6%	-3	-5
<b>Nursing &amp; Midwifery</b>	<b>230</b>	<b>231</b>	<b>+1</b>	<b>+0.6%</b>	<b>-4</b>	<b>-9</b>
Therapy Professions	76	75.48	-1	-1.3%	+3	+10
Health Science/ Diagnostics	1	1.00				
Social Workers	16	15.61	-0	-0.0%	-0	+1
Psychologists	1	0.50				
Pharmacy	6	5.58	+0	+1.5%	+0	+1
<b>Health &amp; Social Care Professionals</b>	<b>99</b>	<b>98</b>	<b>-1</b>	<b>-0.9%</b>	<b>+4</b>	<b>+12</b>
Management (VIII & above)	4	4.00				+2
Administrative/ Supervisory (V to VII)	22	22.06	-0	-0.4%	+4	+3
Clerical (III & IV)	29	29.33			-1	+0
<b>Management &amp; Administrative</b>	<b>55</b>	<b>55</b>	<b>-0</b>	<b>-0.1%</b>	<b>+2</b>	<b>+5</b>
<b>General Support</b>	<b>116</b>	<b>118</b>	<b>+3</b>	<b>+2.4%</b>	<b>+0</b>	<b>-1</b>
<b>Patient &amp; Client Care</b>	<b>231</b>	<b>233</b>	<b>+2</b>	<b>+0.8%</b>	<b>+3</b>	<b>-4</b>



## Social Care Older Persons Services Employment by CHO etc. Apr 2021

### CHO 1

Apr 2021 (Dec 2020 figure: 1,918)	WTE Mar 2021	WTE Apr 2021	WTE change since Mar 21	% change since Mar 21	WTE change since Dec 20	WTE change since Apr 20
<b>Overall</b>	<b>1,886</b>	<b>1,887</b>	<b>+1</b>	<b>+0.1%</b>	<b>-30</b>	<b>+59</b>
Medical/ Dental, other	16	16	+0	+0.9%	-17	-2
<b>Medical &amp; Dental</b>	<b>16</b>	<b>16</b>	<b>+0</b>	<b>+0.9%</b>	<b>-17</b>	<b>-2</b>
Nurse/ Midwife Manager	87	87	+0	+0.2%	-1	-1
Nurse/ Midwife Specialist & AN/MP	9	9			+0	+1
Staff Nurse/ Staff Midwife	320	327	+7	+2.3%	+13	+14
Nursing/ Midwifery other	1	1				+1
<b>Nursing &amp; Midwifery</b>	<b>417</b>	<b>424</b>	<b>+7</b>	<b>+1.8%</b>	<b>+12</b>	<b>+15</b>
Therapy Professions	15	16	+0	+2.7%	+3	+5
Health Science/ Diagnostics	2	1	-0	-15.8%	-0	+0
Social Workers	17	16	-1	-3.7%	+1	-2
<b>Health &amp; Social Care Professionals</b>	<b>34</b>	<b>33</b>	<b>-0</b>	<b>-1.4%</b>	<b>+4</b>	<b>+4</b>
Management (VIII & above)	8	8				
Administrative/ Supervisory (V to VII)	17	16	-1	-5.7%	+1	+1
Clerical (III & IV)	86	86	+0	+0.2%	-2	+3
<b>Management &amp; Administrative</b>	<b>111</b>	<b>110</b>	<b>-1</b>	<b>-0.8%</b>	<b>-1</b>	<b>+4</b>
Support	119	117	-2	-1.5%	-2	-6
Maintenance/ Technical	6	7	+1	+16.7%		
<b>General Support</b>	<b>125</b>	<b>124</b>	<b>-1</b>	<b>-0.6%</b>	<b>-2</b>	<b>-6</b>
Health Care Assistants	582	584	+2	+0.4%	+4	+14
Home Help	579	567	-12	-2.1%	-37	+31
Care, other	22	28	+5	+24.2%	+6	-0
<b>Patient &amp; Client Care</b>	<b>1,184</b>	<b>1,179</b>	<b>-4</b>	<b>-0.4%</b>	<b>-28</b>	<b>+45</b>

## CHO 2

Apr 2021 (Dec 2020 figure: 1,590)	WTE Mar 2021	WTE Apr 2021	WTE change since Mar 21	% change since Mar 21	WTE change since Dec 20	WTE change since Apr 20
<b>Overall</b>	<b>1,549</b>	<b>1,570</b>	<b>+20</b>	<b>+1.3%</b>	<b>-20</b>	<b>+26</b>
Medical/ Dental, other	11	11				
<b>Medical &amp; Dental</b>	<b>11</b>	<b>11</b>				
Nurse/ Midwife Manager	71	70	-1	-1.8%	+4	+6
Nurse/ Midwife Specialist & AN/MP	2	2				
Staff Nurse/ Staff Midwife	306	304	-2	-0.6%	-1	-2
Public Health Nurse	1	1				
<b>Nursing &amp; Midwifery</b>	<b>380</b>	<b>377</b>	<b>-3</b>	<b>-0.8%</b>	<b>+3</b>	<b>+5</b>
Therapy Professions	29	30	+1	+5.0%	+5	+5
Health Science/ Diagnostics	1	1				
Social Workers	10	11	+0	+1.0%	+0	+0
Pharmacy	1	1				+0
H&SC, Other				-100.0%		
<b>Health &amp; Social Care Professionals</b>	<b>41</b>	<b>42</b>	<b>+2</b>	<b>+3.8%</b>	<b>+5</b>	<b>+5</b>
Management (VIII & above)	1	1			-1	-1
Administrative/ Supervisory (V to VII)	9	8	-1	-11.2%	-1	-1
Clerical (III & IV)	62	62	+0	+0.7%	-4	-9
<b>Management &amp; Administrative</b>	<b>72</b>	<b>71</b>	<b>-1</b>	<b>-0.8%</b>	<b>-6</b>	<b>-11</b>
Support	56	59	+3	+5.7%	+3	+4
Maintenance/ Technical	20	19	-0	-0.1%		+1
<b>General Support</b>	<b>76</b>	<b>79</b>	<b>+3</b>	<b>+4.2%</b>	<b>+3</b>	<b>+5</b>
Health Care Assistants	526	523	-4	-0.7%	-3	+4
Home Help	408	427	+19	+4.8%	-29	+3
Care, other	36	40	+3	+9.3%	+7	+15
<b>Patient &amp; Client Care</b>	<b>970</b>	<b>989</b>	<b>+19</b>	<b>+2.0%</b>	<b>-25</b>	<b>+22</b>

### CHO 3

Apr 2021 (Dec 2020 figure: 1,029)	WTE Mar 2021	WTE Apr 2021	WTE change since Mar 21	% change since Mar 21	WTE change since Dec 20	WTE change since Apr 20
<b>Overall</b>	<b>1,065</b>	<b>1,075</b>	<b>+9</b>	<b>+0.9%</b>	<b>+46</b>	<b>+101</b>
Consultants	1	1				
Medical/ Dental, other	6	6				+1
<b>Medical &amp; Dental</b>	<b>7</b>	<b>7</b>				<b>+1</b>
Nurse/ Midwife Manager	64	66	+3	+4.0%	+2	+1
Nurse/ Midwife Specialist & AN/MP	4	4			+0	+2
Staff Nurse/ Staff Midwife	242	245	+3	+1.2%	+14	+10
Public Health Nurse	1	1				
<b>Nursing &amp; Midwifery</b>	<b>311</b>	<b>316</b>	<b>+6</b>	<b>+1.8%</b>	<b>+16</b>	<b>+13</b>
Therapy Professions	31	31	+1	+2.2%	+2	+4
Health Science/ Diagnostics	1	1			-0	-0
Social Workers	7	7	-1	-8.8%	+0	-0
Pharmacy	1	1				
<b>Health &amp; Social Care Professionals</b>	<b>39</b>	<b>39</b>	<b>+0</b>	<b>+0.2%</b>	<b>+2</b>	<b>+3</b>
Management (VIII & above)	7	6	-1	-10.6%	+0	-0
Administrative/ Supervisory (V to VII)	18	17	-0	-2.2%	+1	-3
Clerical (III & IV)	57	57	+0	+0.8%	+9	+7
<b>Management &amp; Administrative</b>	<b>81</b>	<b>80</b>	<b>-1</b>	<b>-0.8%</b>	<b>+9</b>	<b>+4</b>
Support	63	63	-1	-1.0%	-0	+0
Maintenance/ Technical	21	21	-0	-1.4%	+0	-1
<b>General Support</b>	<b>85</b>	<b>84</b>	<b>-1</b>	<b>-1.1%</b>	<b>-0</b>	<b>-1</b>
Health Care Assistants	314	318	+4	+1.3%	+16	+38
Home Help	212	215	+3	+1.4%	-1	+38
Care, other	16	15	-2	-9.7%	+3	+4
<b>Patient &amp; Client Care</b>	<b>542</b>	<b>548</b>	<b>+5</b>	<b>+1.0%</b>	<b>+18</b>	<b>+81</b>

## CHO 4

Apr 2021 (Dec 2020 figure: 2,930)	WTE Mar 2021	WTE Apr 2021	WTE change since Mar 21	% change since Mar 21	WTE change since Dec 20	WTE change since Apr 20
<b>Overall</b>	<b>2,877</b>	<b>2,891</b>	<b>+14</b>	<b>+0.5%</b>	<b>-39</b>	<b>-64</b>
Consultants	1	1				
Registrars	3	3	+0	+4.3%	+0	+0
SHO/ Interns	1	1				+1
Medical/ Dental, other	23	23	+0	+0.2%	-0	-0
<b>Medical &amp; Dental</b>	<b>28</b>	<b>28</b>	<b>+0</b>	<b>+0.6%</b>	<b>-0</b>	<b>+1</b>
Nurse/ Midwife Manager	126	126	-1	-0.6%	+4	+6
Nurse/ Midwife Specialist & AN/MP	5	4	-0	-5.7%	-2	+0
Staff Nurse/ Staff Midwife	524	520	-4	-0.7%	-8	-11
Public Health Nurse	6	5	-1	-16.9%	-1	-0
Post-registration Nurse/ Midwife Student				-100.0%	-1	-1
Nursing/ Midwifery awaiting registration				-100.0%	-1	
Nursing/ Midwifery Student				-100.0%		-1
<b>Nursing &amp; Midwifery</b>	<b>661</b>	<b>655</b>	<b>-6</b>	<b>-0.9%</b>	<b>-6</b>	<b>-6</b>
Therapy Professions	54	53	-1	-2.1%	+11	+6
Health Science/ Diagnostics	1	1				
Social Care	2	2				
Social Workers	10	11	+1	+7.1%	-1	+2
Pharmacy	4	4	+0	+11.8%	+0	+0
<b>Health &amp; Social Care Professionals</b>	<b>71</b>	<b>71</b>	<b>+0</b>	<b>+0.1%</b>	<b>+10</b>	<b>+8</b>
Management (VIII & above)	14	16	+2	+13.0%	+2	+3
Administrative/ Supervisory (V to VII)	21	21	+0	+0.4%	+1	+3
Clerical (III & IV)	131	132	+1	+0.8%	+1	+4
<b>Management &amp; Administrative</b>	<b>166</b>	<b>169</b>	<b>+3</b>	<b>+1.8%</b>	<b>+4</b>	<b>+10</b>
Support	112	113	+1	+0.6%	-1	+7
Maintenance/ Technical	7	7			+1	+1
<b>General Support</b>	<b>119</b>	<b>120</b>	<b>+1</b>	<b>+0.6%</b>	<b>-0</b>	<b>+8</b>
Health Care Assistants	791	795	+3	+0.4%	+1	+8
Home Help	1,004	1,018	+14	+1.4%	-49	-96
Care, other	36	35	-1	-1.9%	+1	+3
<b>Patient &amp; Client Care</b>	<b>1,831</b>	<b>1,847</b>	<b>+16</b>	<b>+0.9%</b>	<b>-47</b>	<b>-85</b>

## CHO 5

Apr 2021 (Dec 2020 figure: 1,650)	WTE Mar 2021	WTE Apr 2021	WTE change since Mar 21	% change since Mar 21	WTE change since Dec 20	WTE change since Apr 20
<b>Overall</b>	<b>1,645</b>	<b>1,667</b>	<b>+22</b>	<b>+1.4%</b>	<b>+17</b>	<b>+36</b>
Medical/ Dental, other	15	15			+1	+6
<b>Medical &amp; Dental</b>	<b>15</b>	<b>15</b>			<b>+1</b>	<b>+6</b>
Nurse/ Midwife Manager	87	87	-0	-0.3%	-1	+1
Nurse/ Midwife Specialist & AN/MP	5	5	-0	-1.0%	+1	+3
Staff Nurse/ Staff Midwife	315	316	+1	+0.3%	+8	-3
Public Health Nurse	2	2			-1	-2
<b>Nursing &amp; Midwifery</b>	<b>409</b>	<b>410</b>	<b>+1</b>	<b>+0.1%</b>	<b>+7</b>	<b>-1</b>
Therapy Professions	33	32	-1	-4.5%	-1	-9
Social Workers	4	4	-0	-6.7%	-0	+0
Pharmacy	1	1			+0	+0
<b>Health &amp; Social Care Professionals</b>	<b>39</b>	<b>37</b>	<b>-2</b>	<b>-4.6%</b>	<b>-1</b>	<b>-8</b>
Management (VIII & above)	5	5			+1	+1
Administrative/ Supervisory (V to VII)	23	23	+0	+0.7%	+6	+9
Clerical (III & IV)	36	35	-2	-4.5%	+3	+3
<b>Management &amp; Administrative</b>	<b>64</b>	<b>62</b>	<b>-1</b>	<b>-2.3%</b>	<b>+10</b>	<b>+13</b>
Support	82	82	+0	+0.3%	-1	-35
Maintenance/ Technical	4	4	-0	-1.7%		-4
<b>General Support</b>	<b>86</b>	<b>86</b>	<b>+0</b>	<b>+0.2%</b>	<b>-1</b>	<b>-39</b>
Health Care Assistants	436	429	-6	-1.4%	-19	+29
Home Help	589	620	+31	+5.3%	+21	+39
Care, other	8	8	-0	-1.1%	-1	-3
<b>Patient &amp; Client Care</b>	<b>1,032</b>	<b>1,057</b>	<b>+25</b>	<b>+2.4%</b>	<b>+1</b>	<b>+65</b>

## CHO 6

Apr 2021 (Dec 2020 figure: 804)	WTE Mar 2021	WTE Apr 2021	WTE change since Mar 21	% change since Mar 21	WTE change since Dec 20	WTE change since Apr 20
<b>Overall</b>	<b>805</b>	<b>804</b>	<b>-1</b>	<b>-0.1%</b>	<b>-0</b>	<b>-14</b>
Registrars	2	2			+1	+1
Medical/ Dental, other	2	2	-0	-2.2%	-1	-2
<b>Medical &amp; Dental</b>	<b>4</b>	<b>4</b>	<b>-0</b>	<b>-1.0%</b>	<b>-0</b>	<b>-1</b>
Nurse/ Midwife Manager	62	61	-1	-1.1%	-2	-5
Nurse/ Midwife Specialist & AN/MP	1	1	-0	-1.0%	-0	-0
Staff Nurse/ Staff Midwife	198	198	+0	+0.2%	-8	-9
<b>Nursing &amp; Midwifery</b>	<b>261</b>	<b>260</b>	<b>-0</b>	<b>-0.1%</b>	<b>-9</b>	<b>-14</b>
Therapy Professions	50	49	-0	-1.0%	+3	+3
Social Workers	11	11	-0	-0.4%	+1	+0
Psychologists	2	2			+1	+0
Pharmacy	3	3	+0	+2.7%	+0	+0
<b>Health &amp; Social Care Professionals</b>	<b>66</b>	<b>66</b>	<b>-0</b>	<b>-0.7%</b>	<b>+5</b>	<b>+4</b>
Management (VIII & above)	6	6	+0	+0.9%	+1	+2
Administrative/ Supervisory (V to VII)	24	22	-2	-8.9%	+2	+1
Clerical (III & IV)	32	32	-0	-0.2%	-1	+0
<b>Management &amp; Administrative</b>	<b>62</b>	<b>59</b>	<b>-2</b>	<b>-3.5%</b>	<b>+2</b>	<b>+4</b>
Support	101	105	+3	+3.1%	+3	-2
Maintenance/ Technical	8	8			-1	-1
<b>General Support</b>	<b>109</b>	<b>113</b>	<b>+3</b>	<b>+2.9%</b>	<b>+2</b>	<b>-3</b>
Health Care Assistants	298	297	-1	-0.5%	+1	-2
Care, other	5	5	+0	+3.5%	-0	-0
<b>Patient &amp; Client Care</b>	<b>303</b>	<b>302</b>	<b>-1</b>	<b>-0.4%</b>	<b>+1</b>	<b>-3</b>

## CHO 7

Apr 2021 (Dec 2020 figure: 1,021)	WTE Mar 2021	WTE Apr 2021	WTE change since Mar 21	% change since Mar 21	WTE change since Dec 20	WTE change since Apr 20
<b>Overall</b>	<b>1,018</b>	<b>1,016</b>	<b>-2</b>	<b>-0.2%</b>	<b>-5</b>	<b>+0</b>
SHO/ Interns	2	2				
Medical/ Dental, other	2	2				-2
<b>Medical &amp; Dental</b>	<b>4</b>	<b>4</b>				<b>-2</b>
Nurse/ Midwife Manager	93	96	+3	+3.3%	+10	+18
Nurse/ Midwife Specialist & AN/MP	3	3	-0	-7.4%	-0	-0
Staff Nurse/ Staff Midwife	240	240	-0	-0.2%	-2	+15
<i>Nursing/ Midwifery awaiting registration</i>	2	1	-0	-0.7%	+1	-8
Nursing/ Midwifery Student	2	1	-0	-0.7%	+0	-8
<b>Nursing &amp; Midwifery</b>	<b>338</b>	<b>340</b>	<b>+2</b>	<b>+0.7%</b>	<b>+8</b>	<b>+25</b>
Therapy Professions	16	16	+1	+5.2%	+3	+2
Social Workers	12	12	+0	+0.2%	-0	-1
Pharmacy	2	2				-1
H&SC, Other	1	1				
<b>Health &amp; Social Care Professionals</b>	<b>31</b>	<b>32</b>	<b>+1</b>	<b>+2.7%</b>	<b>+3</b>	<b>-1</b>
Management (VIII & above)	6	6			-1	+1
Administrative/ Supervisory (V to VII)	15	15	-0	-2.3%	+0	+3
Clerical (III & IV)	38	36	-2	-6.1%	-1	-0
<b>Management &amp; Administrative</b>	<b>60</b>	<b>58</b>	<b>-3</b>	<b>-4.5%</b>	<b>-1</b>	<b>+4</b>
Support	119	118	-1	-0.6%	-1	+11
Maintenance/ Technical	2	2				
<b>General Support</b>	<b>121</b>	<b>120</b>	<b>-1</b>	<b>-0.6%</b>	<b>-1</b>	<b>+11</b>
Health Care Assistants	348	347	-1	-0.2%	-10	-31
Home Help	112	111	-1	-0.9%	-3	-7
Care, other	5	5				+0
<b>Patient &amp; Client Care</b>	<b>465</b>	<b>463</b>	<b>-2</b>	<b>-0.4%</b>	<b>-14</b>	<b>-37</b>

## CHO 8

Apr 2021 (Dec 2020 figure: 1,484)	WTE Mar 2021	WTE Apr 2021	WTE change since Mar 21	% change since Mar 21	WTE change since Dec 20	WTE change since Apr 20
<b>Overall</b>	<b>1,485</b>	<b>1,482</b>	<b>-3</b>	<b>-0.2%</b>	<b>-2</b>	<b>-5</b>
Medical/ Dental, other	11	11	-0	-0.5%	-0	
<b>Medical &amp; Dental</b>	<b>11</b>	<b>11</b>	<b>-0</b>	<b>-0.5%</b>	<b>-0</b>	
Nurse/ Midwife Manager	91	90	-1	-0.9%	+1	+8
Nurse/ Midwife Specialist & AN/MP	5	5	+0	+1.9%	+1	+2
Staff Nurse/ Staff Midwife	255	255	+1	+0.2%	+0	+1
Public Health Nurse	3	3	-0	-3.3%	+0	+1
Nursing/ Midwifery other	2	2	+0	+1.0%	+0	+1
<b>Nursing &amp; Midwifery</b>	<b>355</b>	<b>355</b>	<b>-0</b>	<b>-0.0%</b>	<b>+2</b>	<b>+12</b>
Therapy Professions	26	26	+1	+1.9%	+2	+5
Social Workers	5	6	+0	+4.0%	+1	+1
Pharmacy	3	3			+1	+1
<b>Health &amp; Social Care Professionals</b>	<b>34</b>	<b>35</b>	<b>+1</b>	<b>+2.1%</b>	<b>+4</b>	<b>+6</b>
Management (VIII & above)	6	6	-0	-4.5%	-1	+0
Administrative/ Supervisory (V to VII)	23	23	-0	-0.7%	+1	+2
Clerical (III & IV)	69	68	-1	-1.6%	-4	-2
<b>Management &amp; Administrative</b>	<b>98</b>	<b>96</b>	<b>-2</b>	<b>-1.6%</b>	<b>-4</b>	<b>-0</b>
Support	25	25	+0	+0.4%	+0	-3
Maintenance/ Technical	23	23	-0	-0.7%	-1	-1
<b>General Support</b>	<b>48</b>	<b>48</b>	<b>-0</b>	<b>-0.1%</b>	<b>-1</b>	<b>-4</b>
Health Care Assistants	548	542	-6	-1.1%	-2	-18
Home Help	369	374	+4	+1.2%	-0	-3
Care, other	21	21	-0	-0.4%	-1	+1
<b>Patient &amp; Client Care</b>	<b>939</b>	<b>937</b>	<b>-2</b>	<b>-0.2%</b>	<b>-3</b>	<b>-20</b>

## CHO 9

Apr 2021 (Dec 2020 figure: 914)	WTE Mar 2021	WTE Apr 2021	WTE change since Mar 21	% change since Mar 21	WTE change since Dec 20	WTE change since Apr 20
<b>Overall</b>	<b>924</b>	<b>927</b>	<b>+3</b>	<b>+0.3%</b>	<b>+13</b>	<b>+31</b>
Consultants	2	3	+1	+62.5%	+0	+0
Registrars	6	6	-0	-4.3%	+1	-1
SHO/ Interns	9	9	-0	-1.7%	-2	-2
Medical/ Dental, other	1	1				
<b>Medical &amp; Dental</b>	<b>17</b>	<b>18</b>	<b>+1</b>	<b>+3.5%</b>	<b>-1</b>	<b>-2</b>
Nurse/ Midwife Manager	79	80	+0	+0.4%	-1	+1
Nurse/ Midwife Specialist & AN/MP	6	6	-0	-0.5%	-0	-0
Staff Nurse/ Staff Midwife	231	231	+1	+0.3%	-3	+2
Public Health Nurse				-100.0%		-0
Nursing/ Midwifery other	1	1	-0	-21.0%	-0	-0
<b>Nursing &amp; Midwifery</b>	<b>317</b>	<b>318</b>	<b>+1</b>	<b>+0.3%</b>	<b>-4</b>	<b>+3</b>
Therapy Professions	77	82	+4	+5.8%	+11	+17
Health Science/ Diagnostics	1	1				
Social Care	1	1	+0	+5.0%	+0	
Social Workers	25	25	+1	+3.0%	+2	+5
Pharmacy	4	4				+1
H&SC, Other	1	1				+0
<b>Health &amp; Social Care Professionals</b>	<b>108</b>	<b>113</b>	<b>+5</b>	<b>+4.9%</b>	<b>+12</b>	<b>+22</b>
Management (VIII & above)	8	9	+1	+9.0%	-0	-0
Administrative/ Supervisory (V to VII)	24	24	-0	-0.2%	+3	+8
Clerical (III & IV)	52	53	+1	+2.2%	+9	+11
<b>Management &amp; Administrative</b>	<b>84</b>	<b>86</b>	<b>+2</b>	<b>+2.2%</b>	<b>+12</b>	<b>+18</b>
Support	118	118	+0	+0.3%	-2	-1
Maintenance/ Technical	2	2				
<b>General Support</b>	<b>120</b>	<b>121</b>	<b>+0</b>	<b>+0.3%</b>	<b>-2</b>	<b>-1</b>
Health Care Assistants	271	265	-6	-2.1%	-6	-8
Care, other	7	6	-0	-1.1%	+1	+0
<b>Patient &amp; Client Care</b>	<b>277</b>	<b>272</b>	<b>-6</b>	<b>-2.1%</b>	<b>-5</b>	<b>-8</b>

## other Community Services

Apr 2021 (Dec 2020 figure: 75)	WTE Mar 2021	WTE Apr 2021	WTE change since Mar 21	% change since Mar 21	WTE change since Dec 20	WTE change since Apr 20
<b>Overall</b>	<b>75</b>	<b>77</b>	<b>+2</b>	<b>+2.6%</b>	<b>+1</b>	<b>+8</b>
Health Science/ Diagnostics				-100.0%		
<b>Health &amp; Social Care Professionals</b>				<b>-100.0%</b>		
Management (VIII & above)	17	18	+1	+4.2%	+1	+1
Administrative/ Supervisory (V to VII)	22	23	+1	+5.5%	+2	+0
Clerical (III & IV)	35	35			-2	+6
<b>Management &amp; Administrative</b>	<b>74</b>	<b>76</b>	<b>+2</b>	<b>+2.6%</b>	<b>+1</b>	<b>+8</b>
Health Care Assistants	0	0				
<b>Patient &amp; Client Care</b>	<b>0</b>	<b>0</b>				

## Social Care Older Persons Services Employment by CHO & Admin : Apr 2021

Apr 2021 (Dec 2020 figure: 13,415)	WTE Mar 2021	WTE Apr 2021	WTE change since Mar 21	% change since Mar 21	WTE change since Dec 20	WTE change since Apr 20
<b>Overall</b>	<b>13,329</b>	<b>13,395</b>	<b>+67</b>	<b>+0.5%</b>	<b>-19</b>	<b>+178</b>
<b>CHO 1</b>	<b>1,886</b>	<b>1,887</b>	<b>+1</b>	<b>+0.1%</b>	<b>-30</b>	<b>+59</b>
Health Service Executive	1,549	1,570	+20	+1.3%	-20	+26
<b>CHO 2</b>	<b>1,549</b>	<b>1,570</b>	<b>+20</b>	<b>+1.3%</b>	<b>-20</b>	<b>+26</b>
Health Service Executive	1,065	1,075	+9	+0.9%	+46	+101
<b>CHO 3</b>	<b>1,065</b>	<b>1,075</b>	<b>+9</b>	<b>+0.9%</b>	<b>+46</b>	<b>+101</b>
Health Service Executive	2,877	2,891	+14	+0.5%	-39	-64
<b>CHO 4</b>	<b>2,877</b>	<b>2,891</b>	<b>+14</b>	<b>+0.5%</b>	<b>-39</b>	<b>-64</b>
Health Service Executive	1,645	1,667	+22	+1.4%	+17	+36
<b>CHO 5</b>	<b>1,645</b>	<b>1,667</b>	<b>+22</b>	<b>+1.4%</b>	<b>+17</b>	<b>+36</b>
Health Service Executive	335	329	-6	-1.8%	-0	-8
Leopardstown Park Hospital	201	208	+7	+3.5%	+1	+3
Royal Hospital, Donnybrook, Dublin	269	267	-2	-0.8%	-1	-9
<b>Section 38 Voluntary Agencies</b>	<b>470</b>	<b>475</b>	<b>+5</b>	<b>+1.0%</b>	<b>+0</b>	<b>-5</b>
<b>CHO 6</b>	<b>805</b>	<b>804</b>	<b>-1</b>	<b>-0.1%</b>	<b>-0</b>	<b>-14</b>
Health Service Executive	1,018	1,016	-2	-0.2%	-5	+0
<b>CHO 7</b>	<b>1,018</b>	<b>1,016</b>	<b>-2</b>	<b>-0.2%</b>	<b>-5</b>	<b>-0</b>
Health Service Executive	1,485	1,482	-3	-0.2%	-2	-5
<b>CHO 8</b>	<b>1,485</b>	<b>1,482</b>	<b>-3</b>	<b>-0.2%</b>	<b>-2</b>	<b>-5</b>
Health Service Executive	653	656	+3	+0.5%	+9	+24
Incorporated Orthopaedic Hospital	271	271			+4	+8
<b>Section 38 Voluntary Agencies</b>	<b>271</b>	<b>271</b>	<b>+0</b>	<b>+0.0%</b>	<b>+4</b>	<b>+8</b>
<b>CHO 9</b>	<b>924</b>	<b>927</b>	<b>+3</b>	<b>+0.3%</b>	<b>+13</b>	<b>+31</b>
<b>other Community Services</b>	<b>75</b>	<b>77</b>	<b>+2</b>	<b>+2.6%</b>	<b>+1</b>	<b>+8</b>

## Social Care Older Persons Services Employment by CHO etc. Apr 2021

### Incorporated Orthopaedic Hospital

Apr 2021 (Dec 2020 figure: 267)	WTE Mar 2021	WTE Apr 2021	WTE change since Mar 21	% change since Mar 21	WTE change since Dec 20	WTE change since Apr 20
<b>Overall</b>	<b>271</b>	<b>271</b>			<b>+4</b>	<b>+8</b>
Consultants	2	2				+0
Registrars	2	2				
SHO/ Interns	4	4				
<b>Medical &amp; Dental</b>	<b>8</b>	<b>8</b>				<b>+0</b>
Nurse/ Midwife Manager	18	18				+1
Staff Nurse/ Staff Midwife	70	70				-1
<b>Nursing &amp; Midwifery</b>	<b>88</b>	<b>88</b>				<b>+0</b>
Therapy Professions	37	37			+3	+7
Health Science/ Diagnostics	1	1				
Social Workers	9	9				+1
Pharmacy	4	4				+1
<b>Health &amp; Social Care Professionals</b>	<b>51</b>	<b>51</b>			<b>+3</b>	<b>+9</b>
Management (VIII & above)	2	2				+1
Administrative/ Supervisory (V to VII)	7	7			+1	+1
Clerical (III & IV)	10	10				-1
<b>Management &amp; Administrative</b>	<b>19</b>	<b>19</b>			<b>+1</b>	<b>+1</b>
Support	40	40				
Maintenance/ Technical	2	2				
<b>General Support</b>	<b>42</b>	<b>42</b>				<b>+0</b>
Health Care Assistants	64	64				-3
Care, other	0	0				
<b>Patient &amp; Client Care</b>	<b>64</b>	<b>64</b>				<b>-3</b>

## Leopardstown Park Hospital

Apr 2021 (Dec 2020 figure: 207)	WTE Mar 2021	WTE Apr 2021	WTE change since Mar 21	% change since Mar 21	WTE change since Dec 20	WTE change since Apr 20
<b>Overall</b>	<b>201</b>	<b>208</b>	<b>+7</b>	<b>+3.5%</b>	<b>+1</b>	<b>+3</b>
Medical/ Dental, other				-100.0%	-1	-1
<b>Medical &amp; Dental</b>				<b>-100.0%</b>	<b>-1</b>	<b>-1</b>
Nurse/ Midwife Manager	13	13	+0	+2.0%	-1	-3
Staff Nurse/ Staff Midwife	37	39	+2	+5.6%	-3	-2
<b>Nursing &amp; Midwifery</b>	<b>49</b>	<b>52</b>	<b>+2</b>	<b>+4.7%</b>	<b>-4</b>	<b>-4</b>
Therapy Professions	10	10	+0	+0.9%	+1	+4
Social Workers	1	1				+0
Pharmacy	2	2	+0	+4.0%	+0	+0
<b>Health &amp; Social Care Professionals</b>	<b>13</b>	<b>13</b>	<b>+0</b>	<b>+1.3%</b>	<b>+1</b>	<b>+4</b>
Management (VIII & above)	1	1				
Administrative/ Supervisory (V to VII)	7	7	-0	-1.2%	-0	-0
Clerical (III & IV)	11	11			-0	+1
<b>Management &amp; Administrative</b>	<b>19</b>	<b>19</b>	<b>-0</b>	<b>-0.4%</b>	<b>-1</b>	<b>+1</b>
Support	33	36	+3	+8.4%	+2	+1
Maintenance/ Technical	4	4				
<b>General Support</b>	<b>37</b>	<b>40</b>	<b>+3</b>	<b>+7.5%</b>	<b>+2</b>	<b>+1</b>
Health Care Assistants	79	81	+2	+2.0%	+4	+2
Care, other	3	3	+0	+6.0%	+0	+0
<b>Patient &amp; Client Care</b>	<b>82</b>	<b>84</b>	<b>+2</b>	<b>+2.2%</b>	<b>+4</b>	<b>+2</b>

Apr 2021 (Dec 2020 figure: 268)	WTE Mar 2021	WTE Apr 2021	WTE change since Mar 21	% change since Mar 21	WTE change since Dec 20	WTE change since Apr 20
<b>Overall</b>	<b>269</b>	<b>267</b>	<b>-2</b>	<b>-0.8%</b>	<b>-1</b>	<b>-9</b>
Registrars	2	2			+1	+1
Medical/ Dental, other	1	1				
<b>Medical &amp; Dental</b>	<b>3</b>	<b>3</b>			<b>+1</b>	<b>+1</b>
Nurse/ Midwife Manager	17	17			-0	-3
Staff Nurse/ Staff Midwife	75	74	-1	-1.3%		-3
<b>Nursing &amp; Midwifery</b>	<b>92</b>	<b>91</b>	<b>-1</b>	<b>-1.1%</b>	<b>-0</b>	<b>-6</b>
Therapy Professions	30	29	-1	-3.5%	-1	-1
Social Workers	6	6				
Psychologists	1	1				
<b>Health &amp; Social Care Professionals</b>	<b>36</b>	<b>35</b>	<b>-1</b>	<b>-2.9%</b>	<b>-1</b>	<b>-1</b>
Management (VIII & above)	1	1				+1
Administrative/ Supervisory (V to VII)	8	8			+3	+2
Clerical (III & IV)	8	8			-1	
<b>Management &amp; Administrative</b>	<b>17</b>	<b>17</b>			<b>+2</b>	<b>+3</b>
Support	33	33			-1	-2
Maintenance/ Technical	4	4			-1	-1
<b>General Support</b>	<b>37</b>	<b>37</b>			<b>-2</b>	<b>-3</b>
Health Care Assistants	84	84			-1	-3
Care, other	1	1			-1	-1
<b>Patient &amp; Client Care</b>	<b>85</b>	<b>85</b>			<b>-2</b>	<b>-3</b>

## Social Care Older Persons Services Employment by Grade Group: Apr 2021

Apr 2021 (Dec 2020 figure: 13,415)	WTE Mar 2021	WTE Apr 2021	WTE change since Mar 21	% change since Mar 21	WTE change since Dec 20	WTE change since Apr 20
<b>Overall</b>	<b>13,329</b>	<b>13,395</b>	<b>+67</b>	<b>+0.5%</b>	<b>-19</b>	<b>+178</b>
Consultant Medicine	4	5	+1	+27.8%	+0	+0
<b>Consultants</b>	<b>4</b>	<b>5</b>	<b>+1</b>	<b>+27.8%</b>	<b>+0</b>	<b>+0</b>
Registrar	8	7	-1	-13.3%	+1	
Senior Registrar	1	1	+0	+13.0%	+0	+0
Specialist Registrar	2	3	+1	+33.3%	+1	
<b>Registrars</b>	<b>11</b>	<b>11</b>	<b>-0</b>	<b>-1.1%</b>	<b>+2</b>	<b>+0</b>
<b>SHO/ Interns</b>	<b>12</b>	<b>12</b>	<b>-0</b>	<b>-1.2%</b>	<b>-2</b>	<b>-1</b>
<b>Medical/ Dental, other</b>	<b>86</b>	<b>86</b>	<b>+0</b>	<b>+0.1%</b>	<b>-17</b>	<b>+1</b>
<b>Medical &amp; Dental</b>	<b>113</b>	<b>114</b>	<b>+1</b>	<b>+0.7%</b>	<b>-17</b>	<b>+1</b>
Clinical Nurse/ Midwife Manager	547	550	+3	+0.5%	+14	+23
Director Nursing/Midwifery, Assistant	105	104	-1	-1.2%	-2	+7
Director of Nursing/Midwifery	108	109	+1	+0.6%	+5	+6
<b>Nurse/ Midwife Manager</b>	<b>760</b>	<b>763</b>	<b>+2</b>	<b>+0.3%</b>	<b>+16</b>	<b>+35</b>
Advanced Nurse/ Midwife Practitioner	18	18	-0	-1.1%	+2	+6
Clinical Nurse/ Midwife Specialist	20	20	-0	-1.4%	-2	+1
<b>Nurse/ Midwife Specialist &amp; AN/MP</b>	<b>39</b>	<b>38</b>	<b>-0</b>	<b>-1.3%</b>	<b>+0</b>	<b>+7</b>
Staff Midwives	1	1			+0	+1
Staff Nurse [Intellectual Disability]	1	1				+1
Staff Nurse [Psychiatric]	7	7	-0	-0.1%	+2	+2
Staff Nurses [General/ Children's]	2,623	2,629	+7	+0.3%	+12	+14
<b>Staff Nurse/ Staff Midwife</b>	<b>2,631</b>	<b>2,638</b>	<b>+7</b>	<b>+0.3%</b>	<b>+14</b>	<b>+18</b>
<b>Public Health Nurse</b>	<b>13</b>	<b>12</b>	<b>-1</b>	<b>-8.7%</b>	<b>-2</b>	<b>-2</b>
Post-registration Nurse/ Midwife Student				-100.0%		-1
Nursing/ Midwifery awaiting registration	2	1	-0	-0.7%	+0	-8
<b>Nursing/ Midwifery Student</b>	<b>2</b>	<b>1</b>	<b>-0</b>	<b>-0.7%</b>	<b>+0</b>	<b>-9</b>
Nursing Education/Clinical	4	4	-0	-4.8%	-0	+2
<b>Nursing/ Midwifery other</b>	<b>4</b>	<b>4</b>	<b>-0</b>	<b>-4.8%</b>	<b>-0</b>	<b>+2</b>
<b>Nursing &amp; Midwifery</b>	<b>3,449</b>	<b>3,456</b>	<b>+7</b>	<b>+0.2%</b>	<b>+28</b>	<b>+51</b>
Dietitians	23	25	+1	+5.5%	+7	+5
Occupational Therapists	122	124	+2	+1.9%	+11	+9
Physiotherapists	144	147	+3	+1.9%	+15	+18
Podiatrists & Chiropodists	15	14	-1	-7.7%	+1	+0
Speech & Language Therapists	26	26	+0	+0.3%	+6	+4
<b>Therapy Professions</b>	<b>330</b>	<b>335</b>	<b>+5</b>	<b>+1.6%</b>	<b>+40</b>	<b>+37</b>
Clinical Measurement				-100.0%	-0	-0
Radiographers	5	5	-0	-5.3%	-0	+0
<b>Health Science/ Diagnostics</b>	<b>5</b>	<b>5</b>	<b>-0</b>	<b>-5.3%</b>	<b>-0</b>	<b>-0</b>
<b>Social Care</b>	<b>3</b>	<b>3</b>	<b>+0</b>	<b>+1.8%</b>	<b>+0</b>	
<b>Social Workers</b>	<b>103</b>	<b>103</b>	<b>+0</b>	<b>+0.2%</b>	<b>+3</b>	<b>+5</b>
<b>Psychologists</b>	<b>2</b>	<b>2</b>			<b>+1</b>	<b>+0</b>
<b>Pharmacy</b>	<b>18</b>	<b>19</b>	<b>+1</b>	<b>+2.8%</b>	<b>+1</b>	<b>+1</b>
Other Health & Social Care	1	1				+0
Play Therapists/ Specialists	1	1				
<b>H&amp;SC, Other</b>	<b>2</b>	<b>2</b>				<b>+0</b>
<b>Health &amp; Social Care Professionals</b>	<b>463</b>	<b>468</b>	<b>+6</b>	<b>+1.2%</b>	<b>+45</b>	<b>+43</b>
Executive Management	17	16	-1	-5.1%	+1	+2
Senior Management (VIII & GM)	62	65	+3	+5.1%	+1	+4

Apr 2021 (Dec 2020 figure: 13,415)	WTE Mar 2021	WTE Apr 2021	WTE change since Mar 21	% change since Mar 21	WTE change since Dec 20	WTE change since Apr 20
<b>Overall</b>	<b>13,329</b>	<b>13,395</b>	<b>+67</b>	<b>+0.5%</b>	<b>-19</b>	<b>+178</b>
<b>Management (VIII &amp; above)</b>	<b>79</b>	<b>81</b>	<b>+2</b>	<b>+3.0%</b>	<b>+2</b>	<b>+6</b>
Middle Management (V-VII)	196	192	-4	-1.9%	+16	+27
Other Administrative				-100.0%		-3
<b>Administrative/ Supervisory (V to VII)</b>	<b>196</b>	<b>192</b>	<b>-4</b>	<b>-1.9%</b>	<b>+16</b>	<b>+24</b>
<b>Clerical (III &amp; IV)</b>	<b>598</b>	<b>596</b>	<b>-2</b>	<b>-0.3%</b>	<b>+9</b>	<b>+24</b>
<b>Management &amp; Administrative</b>	<b>872</b>	<b>869</b>	<b>-3</b>	<b>-0.4%</b>	<b>+27</b>	<b>+53</b>
Catering	216	216	+0	+0.1%	-0	-8
Household Services	476	480	+3	+0.7%	+1	-9
Other Support	28	28	-0	-0.3%	-1	-6
Portering	75	76	+1	+1.6%	-0	-2
<b>Support</b>	<b>795</b>	<b>800</b>	<b>+5</b>	<b>+0.6%</b>	<b>-1</b>	<b>-25</b>
Maintenance	89	90	+0	+0.5%	-5	-9
Technical Services	4	4			+4	+4
<b>Maintenance/ Technical</b>	<b>93</b>	<b>94</b>	<b>+0</b>	<b>+0.5%</b>	<b>-1</b>	<b>-5</b>
<b>General Support</b>	<b>889</b>	<b>894</b>	<b>+5</b>	<b>+0.6%</b>	<b>-2</b>	<b>-30</b>
HCA, Nurse's Aide, etc.	4,088	4,071	-16	-0.4%	-19	+27
Health & Social Care Assistants	26	29	+2	+8.3%	+1	+6
<b>Health Care Assistants</b>	<b>4,114</b>	<b>4,100</b>	<b>-14</b>	<b>-0.3%</b>	<b>-18</b>	<b>+32</b>
<b>Home Help</b>	<b>3,274</b>	<b>3,333</b>	<b>+58</b>	<b>+1.8%</b>	<b>-99</b>	<b>+7</b>
<b>Care, other</b>	<b>156</b>	<b>162</b>	<b>+6</b>	<b>+4.2%</b>	<b>+16</b>	<b>+20</b>
<b>Patient &amp; Client Care</b>	<b>7,544</b>	<b>7,595</b>	<b>+51</b>	<b>+0.7%</b>	<b>-101</b>	<b>+60</b>

## Employment by WTE, Headcount, Gender, Full-Time /Part-Time etc.: Apr 2021

Social Care Older Persons Services Staff Group	WTE	Headcount	WTE: no.	% Male	% female	Male WTE: no.	Female WTE: no.	% Total Perm	% Male Perm	% Female Perm	% Total Full Time	% Total Part Time	% Male FT	% Female FT
<b>Overall</b>	<b>13,395</b>	<b>16,465</b>	<b>1.23</b>	<b>13.0%</b>	<b>87.0%</b>	<b>1.11</b>	<b>1.25</b>	<b>80.9%</b>	<b>78.9%</b>	<b>81.2%</b>	<b>58.3%</b>	<b>41.7%</b>	<b>82.4%</b>	<b>54.7%</b>
Consultant Medicine	5	7	1.52	14.3%	85.7%	2.00	1.46	85.7%	85.7%	83.3%	28.6%	71.4%	0.0%	33.3%
<b>Consultants</b>	<b>5</b>	<b>7</b>	<b>1.52</b>	<b>14.3%</b>	<b>85.7%</b>	<b>2.00</b>	<b>1.46</b>	<b>85.7%</b>	<b>100.0%</b>	<b>83.3%</b>	<b>28.6%</b>	<b>71.4%</b>	<b>0.0%</b>	<b>33.3%</b>
Registrar	7	7	1.08	42.9%	57.1%	1.00	1.14	57.1%	57.1%	50.0%	85.7%	14.3%	100.0%	75.0%
Senior Registrar	1	2	1.77	50.0%	50.0%	7.69	1.00	50.0%	50.0%	100.0%	50.0%	50.0%	0.0%	100.0%
Specialist Registrar	3	3	1.00	66.7%	33.3%	1.00	1.00	0.0%	0.0%	0.0%	100.0%	0.0%	100.0%	100.0%
<b>Registrars</b>	<b>11</b>	<b>12</b>	<b>1.13</b>	<b>50.0%</b>	<b>50.0%</b>	<b>1.17</b>	<b>1.09</b>	<b>41.7%</b>	<b>33.3%</b>	<b>50.0%</b>	<b>83.3%</b>	<b>16.7%</b>	<b>83.3%</b>	<b>83.3%</b>
<b>SHO/ Interns</b>	<b>12</b>	<b>12</b>	<b>1.01</b>	<b>25.0%</b>	<b>75.0%</b>	<b>1.00</b>	<b>1.02</b>	<b>16.7%</b>	<b>66.7%</b>	<b>0.0%</b>	<b>100.0%</b>	<b>0.0%</b>	<b>100.0%</b>	<b>100.0%</b>
<b>Medical/ Dental, other</b>	<b>86</b>	<b>161</b>	<b>1.86</b>	<b>64.6%</b>	<b>35.4%</b>	<b>2.01</b>	<b>1.64</b>	<b>53.4%</b>	<b>56.7%</b>	<b>47.4%</b>	<b>35.4%</b>	<b>64.6%</b>	<b>29.8%</b>	<b>45.6%</b>
<b>Medical &amp; Dental</b>	<b>114</b>	<b>192</b>	<b>1.69</b>	<b>59.4%</b>	<b>40.6%</b>	<b>1.89</b>	<b>1.46</b>	<b>51.6%</b>	<b>56.1%</b>	<b>44.9%</b>	<b>42.2%</b>	<b>57.8%</b>	<b>34.2%</b>	<b>53.8%</b>
Clinical Nurse/ Midwife Manager	550	589	1.07	7.0%	93.0%	1.03	1.07	96.8%	96.8%	96.9%	80.0%	20.0%	92.7%	79.0%
Director Nursing/Midwifery, Assistant	104	108	1.04	6.5%	93.5%	1.00	1.04	98.1%	98.1%	98.0%	91.7%	8.3%	100.0%	91.1%
Director of Nursing/Midwifery	109	110	1.01	5.5%	94.5%	1.03	1.01	98.2%	98.2%	98.1%	96.4%	3.6%	100.0%	96.2%
<b>Nurse/ Midwife Manager</b>	<b>763</b>	<b>807</b>	<b>1.06</b>	<b>6.7%</b>	<b>93.3%</b>	<b>1.03</b>	<b>1.06</b>	<b>97.1%</b>	<b>96.3%</b>	<b>97.2%</b>	<b>83.8%</b>	<b>16.2%</b>	<b>94.4%</b>	<b>83.0%</b>
Advanced Nurse/ Midwife Practitioner	18	19	1.04	10.5%	89.5%	1.00	1.04	100.0%	100.0%	100.0%	100.0%	0.0%	100.0%	100.0%
Clinical Nurse/ Midwife Specialist	20	22	1.10	9.1%	90.9%	1.01	1.11	100.0%	100.0%	100.0%	72.7%	27.3%	100.0%	70.0%
<b>Nurse/ Midwife Specialist &amp; AN/MP</b>	<b>38</b>	<b>41</b>	<b>1.07</b>	<b>9.8%</b>	<b>90.2%</b>	<b>1.01</b>	<b>1.08</b>	<b>100.0%</b>	<b>100.0%</b>	<b>100.0%</b>	<b>85.4%</b>	<b>14.6%</b>	<b>100.0%</b>	<b>83.8%</b>
Staff Midwives	1	1	1.11		100.0%		1.11	100.0%	100.0%	100.0%	0.0%	100.0%		0.0%
Staff Nurse [Intellectual Disability]	1	1	1.00		100.0%		1.00	100.0%	100.0%	100.0%	100.0%	0.0%		100.0%
Staff Nurse [Psychiatric]	7	8	1.19	25.0%	75.0%	1.00	1.26	37.5%	37.5%	16.7%	50.0%	50.0%	100.0%	33.3%
Staff Nurses [General/ Children's]	2,629	3,070	1.17	7.5%	92.5%	1.04	1.18	88.6%	88.6%	88.8%	61.9%	38.1%	93.1%	59.4%
<b>Staff Nurse/ Staff Midwife</b>	<b>2,638</b>	<b>3,080</b>	<b>1.17</b>	<b>7.6%</b>	<b>92.4%</b>	<b>1.04</b>	<b>1.18</b>	<b>88.5%</b>	<b>86.3%</b>	<b>88.7%</b>	<b>61.9%</b>	<b>38.1%</b>	<b>93.1%</b>	<b>59.3%</b>
<b>Public Health Nurse</b>	<b>12</b>	<b>14</b>	<b>1.21</b>		<b>100.0%</b>	<b>#DIV/0</b>	<b>1.21</b>	<b>100.0%</b>		<b>100.0%</b>	<b>57.1%</b>	<b>42.9%</b>	<b>#DIV/0</b>	<b>57.1%</b>
<b>Nursing/ Midwifery Student</b>	<b>1</b>	<b>2</b>	<b>1.34</b>		<b>100.0%</b>	<b>#DIV/0</b>	<b>1.34</b>	<b>50.0%</b>		<b>50.0%</b>	<b>50.0%</b>	<b>50.0%</b>	<b>#DIV/0</b>	<b>50.0%</b>
Nursing Education/Clinical	4	4	1.06	25.0%	75.0%	1.00	1.08	100.0%	100.0%	100.0%	100.0%	0.0%	100.0%	100.0%
<b>Nursing/ Midwifery other</b>	<b>4</b>	<b>4</b>	<b>1.06</b>	<b>25.0%</b>	<b>75.0%</b>	<b>1.00</b>	<b>1.08</b>	<b>100.0%</b>	<b>100.0%</b>	<b>100.0%</b>	<b>100.0%</b>	<b>0.0%</b>	<b>100.0%</b>	<b>100.0%</b>
<b>Nursing &amp; Midwifery</b>	<b>3,456</b>	<b>3,948</b>	<b>1.14</b>	<b>7.4%</b>	<b>92.6%</b>	<b>1.03</b>	<b>1.15</b>	<b>90.4%</b>	<b>88.4%</b>	<b>90.6%</b>	<b>66.6%</b>	<b>33.4%</b>	<b>93.5%</b>	<b>64.5%</b>
Dietitians	25	32	1.29	6.3%	93.8%	1.00	1.32	90.6%	90.6%	90.0%	56.3%	43.8%	100.0%	53.3%

Occupational Therapists	124	139	1.12	10.1%	89.9%	1.02	1.14	82.0%	82.0%	80.0%	79.9%	20.1%	100.0%	77.6%
Physiotherapists	147	167	1.14	16.2%	83.8%	1.08	1.15	85.0%	85.0%	85.7%	76.6%	23.4%	88.9%	74.3%
Podiatrists & Chiropodists	14	18	1.27	16.7%	83.3%	1.00	1.35	50.0%	50.0%	53.3%	61.1%	38.9%	66.7%	60.0%
Speech & Language Therapists	26	31	1.19	3.2%	96.8%	1.00	1.20	93.5%	93.5%	93.3%	67.7%	32.3%	100.0%	66.7%
<b>Therapy Professions</b>	<b>335</b>	<b>387</b>	<b>1.15</b>	<b>12.1%</b>	<b>87.9%</b>	<b>1.05</b>	<b>1.17</b>	<b>83.5%</b>	<b>85.1%</b>	<b>83.2%</b>	<b>74.7%</b>	<b>25.3%</b>	<b>91.5%</b>	<b>72.4%</b>
Radiographers	5	9	1.86	11.1%	88.9%	2.00	1.85	88.9%	88.9%	87.5%	11.1%	88.9%	0.0%	12.5%
<b>Health Science/ Diagnostics</b>	<b>5</b>	<b>9</b>	<b>1.86</b>	<b>11.1%</b>	<b>88.9%</b>	<b>2.00</b>	<b>1.85</b>	<b>88.9%</b>	<b>100.0%</b>	<b>87.5%</b>	<b>11.1%</b>	<b>88.9%</b>	<b>0.0%</b>	<b>12.5%</b>
<b>Social Care</b>	<b>3</b>	<b>5</b>	<b>1.79</b>		<b>100.0%</b>	<b>#DIV/0</b>	<b>1.79</b>	<b>100.0%</b>		<b>100.0%</b>	<b>0.0%</b>	<b>100.0%</b>	<b>#DIV/0</b>	<b>0.0%</b>
<b>Social Workers</b>	<b>103</b>	<b>114</b>	<b>1.11</b>	<b>13.2%</b>	<b>86.8%</b>	<b>1.03</b>	<b>1.12</b>	<b>91.2%</b>	<b>86.7%</b>	<b>91.9%</b>	<b>85.1%</b>	<b>14.9%</b>	<b>93.3%</b>	<b>83.8%</b>
<b>Psychologists</b>	<b>2</b>	<b>3</b>	<b>1.43</b>		<b>100.0%</b>	<b>#DIV/0</b>	<b>1.43</b>	<b>100.0%</b>		<b>100.0%</b>	<b>33.3%</b>	<b>66.7%</b>	<b>#DIV/0</b>	<b>33.3%</b>
<b>Pharmacy</b>	<b>19</b>	<b>26</b>	<b>1.39</b>	<b>15.4%</b>	<b>84.6%</b>	<b>1.22</b>	<b>1.43</b>	<b>73.1%</b>	<b>100.0%</b>	<b>68.2%</b>	<b>46.2%</b>	<b>53.8%</b>	<b>75.0%</b>	<b>40.9%</b>
Other Health & Social Care	1	1	1.85		100.0%		1.85	100.0%	100.0%	100.0%	0.0%	100.0%		0.0%
Play Therapists/ Specialists	1	1	1.00	100.0%		1.00		100.0%	100.0%		100.0%	0.0%	100.0%	
<b>H&amp;SC, Other</b>	<b>2</b>	<b>2</b>	<b>1.30</b>	<b>50.0%</b>	<b>50.0%</b>	<b>1.00</b>	<b>1.85</b>	<b>100.0%</b>	<b>100.0%</b>	<b>100.0%</b>	<b>50.0%</b>	<b>50.0%</b>	<b>100.0%</b>	<b>0.0%</b>
<b>Health &amp; Social Care</b>	<b>468</b>	<b>546</b>	<b>1.17</b>	<b>12.5%</b>	<b>87.5%</b>	<b>1.06</b>	<b>1.18</b>	<b>85.0%</b>	<b>86.8%</b>	<b>84.7%</b>	<b>73.4%</b>	<b>26.6%</b>	<b>89.7%</b>	<b>71.1%</b>
Executive Management	16	16	1.02	50.0%	50.0%	1.00	1.04	100.0%	100.0%	100.0%	100.0%	0.0%	100.0%	100.0%
Senior Management (VIII & GM)	65	67	1.03	28.4%	71.6%	1.08	1.01	88.1%	88.1%	91.7%	95.5%	4.5%	84.2%	100.0%
<b>Management (VIII &amp; above)</b>	<b>81</b>	<b>83</b>	<b>1.03</b>	<b>32.5%</b>	<b>67.5%</b>	<b>1.05</b>	<b>1.01</b>	<b>90.4%</b>	<b>85.2%</b>	<b>92.9%</b>	<b>96.4%</b>	<b>3.6%</b>	<b>88.9%</b>	<b>100.0%</b>
<b>Administrative/ Supervisory (V to VII)</b>	<b>192</b>	<b>207</b>	<b>1.08</b>	<b>15.0%</b>	<b>85.0%</b>	<b>1.03</b>	<b>1.09</b>	<b>96.1%</b>	<b>93.5%</b>	<b>96.6%</b>	<b>78.7%</b>	<b>21.3%</b>	<b>87.1%</b>	<b>77.3%</b>
<b>Clerical (III &amp; IV)</b>	<b>596</b>	<b>691</b>	<b>1.16</b>	<b>8.0%</b>	<b>92.0%</b>	<b>1.06</b>	<b>1.17</b>	<b>84.1%</b>	<b>70.9%</b>	<b>85.2%</b>	<b>64.3%</b>	<b>35.7%</b>	<b>90.9%</b>	<b>61.9%</b>
<b>Management &amp; Administrative</b>	<b>869</b>	<b>981</b>	<b>1.13</b>	<b>11.5%</b>	<b>88.5%</b>	<b>1.05</b>	<b>1.14</b>	<b>87.2%</b>	<b>80.5%</b>	<b>88.0%</b>	<b>70.0%</b>	<b>30.0%</b>	<b>89.4%</b>	<b>67.5%</b>
Catering	216	237	1.10	33.8%	66.2%	1.04	1.13	93.7%	93.7%	95.5%	71.3%	28.7%	91.3%	61.1%
Household Services	480	546	1.14	17.6%	82.4%	1.05	1.16	84.2%	84.2%	84.9%	59.0%	41.0%	85.4%	53.3%
Other Support	28	33	1.18	54.5%	45.5%	1.10	1.31	81.8%	81.8%	80.0%	63.6%	36.4%	83.3%	40.0%
Portering	76	80	1.05	98.8%	1.3%	1.04	1.35	85.0%	85.0%	100.0%	92.5%	7.5%	92.4%	100.0%
<b>Support</b>	<b>800</b>	<b>896</b>	<b>1.12</b>	<b>30.5%</b>	<b>69.5%</b>	<b>1.05</b>	<b>1.15</b>	<b>86.7%</b>	<b>85.0%</b>	<b>87.5%</b>	<b>65.4%</b>	<b>34.6%</b>	<b>89.0%</b>	<b>55.1%</b>
<b>Maintenance/ Technical</b>	<b>94</b>	<b>98</b>	<b>1.05</b>	<b>99.0%</b>	<b>1.0%</b>	<b>1.05</b>	<b>1.00</b>	<b>92.9%</b>	<b>92.8%</b>	<b>100.0%</b>	<b>92.9%</b>	<b>7.1%</b>	<b>92.8%</b>	<b>100.0%</b>
<b>General Support</b>	<b>894</b>	<b>994</b>	<b>1.11</b>	<b>37.2%</b>	<b>62.8%</b>	<b>1.05</b>	<b>1.15</b>	<b>87.3%</b>	<b>87.0%</b>	<b>87.5%</b>	<b>68.1%</b>	<b>31.9%</b>	<b>90.0%</b>	<b>55.1%</b>
HCA, Nurse's Aide, etc.	4,071	4,654	1.14	20.0%	80.0%	1.06	1.17	86.3%	86.3%	86.4%	62.2%	37.8%	86.8%	56.0%
Health & Social Care Assistants	29	32	1.12	31.3%	68.8%	1.10	1.12	93.8%	93.8%	90.9%	84.4%	15.6%	90.0%	81.8%
<b>Health Care Assistants</b>	<b>4,100</b>	<b>4,686</b>	<b>1.14</b>	<b>20.1%</b>	<b>79.9%</b>	<b>1.06</b>	<b>1.17</b>	<b>86.4%</b>	<b>86.0%</b>	<b>86.5%</b>	<b>62.3%</b>	<b>37.7%</b>	<b>86.9%</b>	<b>56.2%</b>
<b>Home Help</b>	<b>3,333</b>	<b>4,910</b>	<b>1.47</b>	<b>3.5%</b>	<b>96.5%</b>	<b>1.40</b>	<b>1.48</b>	<b>66.6%</b>	<b>32.4%</b>	<b>67.9%</b>	<b>42.1%</b>	<b>57.9%</b>	<b>57.6%</b>	<b>41.5%</b>
<b>Care, other</b>	<b>162</b>	<b>208</b>	<b>1.28</b>	<b>36.1%</b>	<b>63.9%</b>	<b>1.59</b>	<b>1.16</b>	<b>72.6%</b>	<b>42.7%</b>	<b>89.5%</b>	<b>63.9%</b>	<b>36.1%</b>	<b>57.3%</b>	<b>67.7%</b>
<b>Patient &amp; Client Care</b>	<b>7,595</b>	<b>9,804</b>	<b>1.29</b>	<b>12.1%</b>	<b>87.9%</b>	<b>1.12</b>	<b>1.32</b>	<b>76.2%</b>	<b>75.6%</b>	<b>76.3%</b>	<b>52.2%</b>	<b>47.8%</b>	<b>80.8%</b>	<b>48.3%</b>

## Employment by WTE, Headcount, Gender, Full-Time /Part-Time etc.: Apr 2021

Social Care Older Persons Services CHO	WTE	Headcount	WTE: no.	% Male	% female	Male WTE: no.	Female WTE: no.	% Total Perm	% Male Perm	% Female Perm	% Total Full Time	% Total Part Time	% Male FT	% Female FT
<b>Overall</b>	<b>13,395</b>	<b>16,465</b>	<b>1.23</b>	<b>13.0%</b>	<b>87.0%</b>	<b>1.11</b>	<b>1.25</b>	<b>80.9%</b>	<b>78.9%</b>	<b>81.2%</b>	<b>58.3%</b>	<b>41.7%</b>	<b>82.4%</b>	<b>54.7%</b>
<b>CHO 1</b>	<b>1,887</b>	<b>2,294</b>	<b>1.22</b>	<b>12.3%</b>	<b>87.7%</b>	<b>1.17</b>	<b>1.22</b>	<b>73.1%</b>	<b>73.1%</b>	<b>71.6%</b>	<b>43.8%</b>	<b>56.2%</b>	<b>67.4%</b>	<b>40.5%</b>
HSE	1,570	1,866	1.19	12.5%	87.5%	1.05	1.21	90.7%	90.7%	91.4%	48.1%	51.9%	88.8%	88.8%
<b>CHO 2</b>	<b>1,570</b>	<b>1,866</b>	<b>1.19</b>	<b>12.5%</b>	<b>87.5%</b>	<b>1.05</b>	<b>1.21</b>	<b>90.7%</b>	<b>90.7%</b>	<b>91.4%</b>	<b>48.1%</b>	<b>51.9%</b>	<b>88.8%</b>	<b>42.3%</b>
HSE	1,075	1,398	1.30	11.7%	88.3%	1.08	1.34	90.8%	90.8%	91.5%	50.6%	49.4%	87.8%	87.8%
<b>CHO 3</b>	<b>1,075</b>	<b>1,398</b>	<b>1.30</b>	<b>11.7%</b>	<b>88.3%</b>	<b>1.08</b>	<b>1.34</b>	<b>90.8%</b>	<b>90.8%</b>	<b>91.5%</b>	<b>50.6%</b>	<b>49.4%</b>	<b>87.8%</b>	<b>45.6%</b>
HSE	2,891	3,829	1.32	11.0%	89.0%	1.19	1.34	65.1%	65.1%	67.1%	74.7%	25.3%	85.3%	85.3%
<b>CHO 4</b>	<b>2,891</b>	<b>3,829</b>	<b>1.32</b>	<b>11.0%</b>	<b>89.0%</b>	<b>1.19</b>	<b>1.34</b>	<b>65.1%</b>	<b>65.1%</b>	<b>67.1%</b>	<b>74.7%</b>	<b>25.3%</b>	<b>85.3%</b>	<b>73.4%</b>
HSE	1,667	2,004	1.20	9.8%	90.2%	1.11	1.21	83.0%	83.0%	82.4%	46.1%	53.9%	78.1%	78.1%
<b>CHO 5</b>	<b>1,667</b>	<b>2,004</b>	<b>1.20</b>	<b>9.8%</b>	<b>90.2%</b>	<b>1.11</b>	<b>1.21</b>	<b>83.0%</b>	<b>83.0%</b>	<b>82.4%</b>	<b>46.1%</b>	<b>53.9%</b>	<b>78.1%</b>	<b>42.6%</b>
HSE	329	370	1.12	22.7%	77.3%	1.07	1.14	78.1%	78.1%	77.6%	70.8%	29.2%	83.3%	83.3%
Section 38	475	519	1.09	26.6%	73.4%	1.07	1.10	96.1%	96.1%	94.8%	80.9%	19.1%	91.3%	91.3%
<b>CHO 6</b>	<b>804</b>	<b>889</b>	<b>1.11</b>	<b>25.0%</b>	<b>75.0%</b>	<b>1.07</b>	<b>1.12</b>	<b>88.6%</b>	<b>88.6%</b>	<b>87.4%</b>	<b>76.7%</b>	<b>23.3%</b>	<b>88.3%</b>	<b>72.9%</b>
HSE	1,016	1,169	1.15	16.2%	83.8%	1.06	1.17	91.2%	91.2%	92.3%	67.1%	32.9%	85.7%	85.7%
<b>CHO 7</b>	<b>1,016</b>	<b>1,169</b>	<b>1.15</b>	<b>16.2%</b>	<b>83.8%</b>	<b>1.06</b>	<b>1.17</b>	<b>91.2%</b>	<b>91.2%</b>	<b>92.3%</b>	<b>67.1%</b>	<b>32.9%</b>	<b>85.7%</b>	<b>63.5%</b>
HSE	1,482	1,883	1.27	11.4%	88.6%	1.18	1.28	89.0%	89.0%	89.4%	47.1%	52.9%	74.3%	74.3%
<b>CHO 8</b>	<b>1,482</b>	<b>1,883</b>	<b>1.27</b>	<b>11.4%</b>	<b>88.6%</b>	<b>1.18</b>	<b>1.28</b>	<b>89.0%</b>	<b>89.0%</b>	<b>89.4%</b>	<b>47.1%</b>	<b>52.9%</b>	<b>74.3%</b>	<b>43.6%</b>
HSE	656	743	1.13	21.9%	78.1%	1.07	1.15	89.2%	89.2%	90.9%	74.0%	26.0%	85.9%	85.9%
Section 38	271	308	1.14	13.0%	87.0%	1.06	1.15	87.0%	87.0%	87.3%	74.7%	25.3%	95.0%	95.0%
<b>CHO 9</b>	<b>927</b>	<b>1,051</b>	<b>1.13</b>	<b>19.3%</b>	<b>80.7%</b>	<b>1.07</b>	<b>1.15</b>	<b>88.6%</b>	<b>88.6%</b>	<b>89.7%</b>	<b>74.2%</b>	<b>25.8%</b>	<b>87.7%</b>	<b>71.0%</b>
<b>other Community Services</b>	<b>77</b>	<b>82</b>	<b>1.07</b>	<b>24.4%</b>	<b>75.6%</b>	<b>1.05</b>	<b>1.08</b>	<b>85.4%</b>	<b>85.4%</b>	<b>87.1%</b>	<b>87.8%</b>	<b>12.2%</b>	<b>90.0%</b>	<b>87.1%</b>

Summary Staff Movement: April 2021

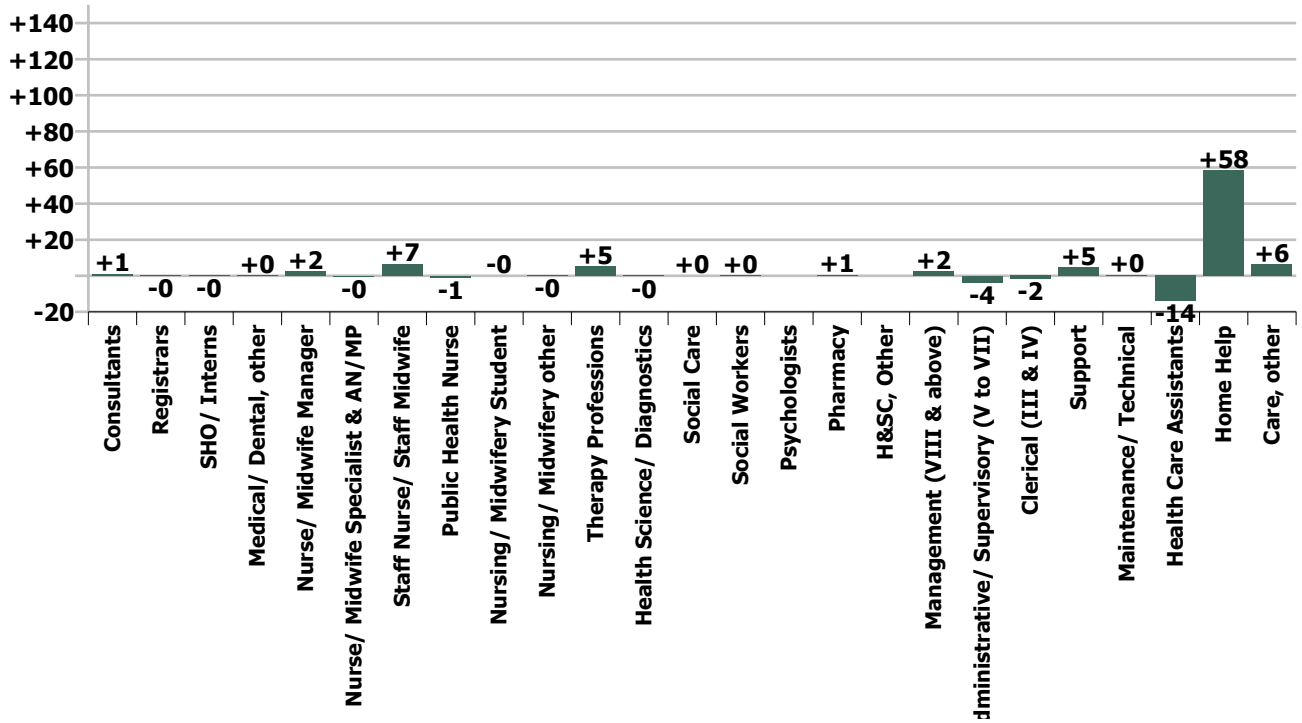
Month-on-month  
Summary

WTE change since Mar 21	% change since Mar 21	overall	Consultants	Registrars	SHO/ Interns	Medical/ Dental, other	Medical & Dental	Nurse/ Midwife Manager	Nurse/ Midwife Specialist & AN/MP	Staff Nurse/ Staff Midwife	Public Health Nurse	Nursing/ Midwifery Student	Nursing/ Midwifery other	Nursing & Midwifery	Therapy Professions	Health Science/ Diagnostics	Social Care	Social Workers	Psychologists	Pharmacy	H&SC, Other	Health & Social Care Professionals	Management (VIII & above)	Administrative Supervisory (V to VII)	Clerical (III & IV)	Management & Administrative	Support	Maintenance/ Technical	General Support	Health Care Assistants	Home Help	Care, other	Patient & Client Care	
Overall	+0.5%	+67	+1.0	-0.1	-0.1	+0.1	+0.8	+2.4	-0.5	+6.6	-1.1	-0.0	-0.2	+7.1	+5.2	-0.3	+0.0	+0.2	0.0	+0.5	0.0	+5.8	+2.4	-3.6	-1.9	-3.2	+4.7	+0.5	+5.2	-13.9	+58.3	+6.5	+50.9	
CHO 1	+0.1%	+1				+0.1	+0.1	+0.2		+7.2				+7.4	+0.4	-0.3		-0.6				-0.5		-1.0	+0.1	-0.8	-1.7	+1.0	-0.8	+2.1	-12.1	+5.4	-4.5	
CHO 2	+1.3%	+20					0.0	-1.3		-1.9				-3.2	+1.4			+0.1				+1.5		-1.0	+0.4	-0.6	+3.2	-0.0	+3.2	-3.6	+19.4	+3.4	+19.2	
CHO 3	+0.9%	+9					0.0	+2.5		+3.0				+5.5	+0.7			-0.6				+0.1	-0.7	-0.4	+0.5	-0.6	-0.6	-0.3	-0.9	+4.1	+2.9	-1.6	+5.4	
CHO 4	+0.5%	+14		+0.1		+0.0	+0.2	-0.7	-0.3	-3.9	-1.0			-5.9	-1.1			+0.8			+0.4		+0.1	+1.9	+0.1	+1.0	+3.0	+0.7	+0.7	+3.3	+13.7	-0.7	+16.3	
CHO 5	+1.4%	+22					0.0	-0.3	-0.0	+0.8				+0.5	-1.5			-0.3				-1.8		+0.1	-1.6	-1.5	+0.3	-0.1	+0.2	-6.2	+31.2	-0.1	+24.9	
CHO 6	-0.1%	-1				-0.0	-0.0	-0.7	-0.0	+0.4				-0.3	-0.5			-0.0			+0.1		-0.4	+0.0	-2.1	-0.1	-2.1	+3.2		+3.2	-1.4		+0.2	-1.2
CHO 7	-0.2%	-2					0.0	+3.1	-0.2	-0.4		-0.0		+2.4	+0.8			+0.0				+0.8		-0.3	-2.4	-2.7	-0.8		-0.8	-0.7	-1.0		-1.7	
CHO 8	-0.2%	-3				-0.0	-0.0	-0.8	+0.1	+0.6	-0.1		+0.0	-0.2	+0.5			+0.2				+0.7	-0.3	-0.2	-1.1	-1.6	+0.1	-0.2	-0.1	-5.9	+4.3	-0.1	-1.7	
CHO 9	+0.3%	+3	+1.0	-0.3	-0.1		+0.6	+0.3	-0.0	+0.8			-0.2	+0.8	+4.4		+0.1	+0.7				+5.2	+0.7	-0.0	+1.2	+1.8	+0.4		+0.4	-5.7		-0.1	-5.8	
other Community Services	+2.6%	+2																					+0.7	+1.2		+1.9							0.0	
		+0.5%	+27.8%	-1.1%	-1.2%	+0.1%	+0.7%	+0.3%	-1.3%	+0.3%	-8.7%	-0.7%	-4.8%	+0.2%	+1.6%	-5.3%	+1.8%	+0.2%		+2.8%		+1.2%	+3.0%	-1.9%	-0.3%	-0.4%	+0.6%	+0.5%	+0.6%	-0.3%	+1.8%	+4.2%	+0.7%	

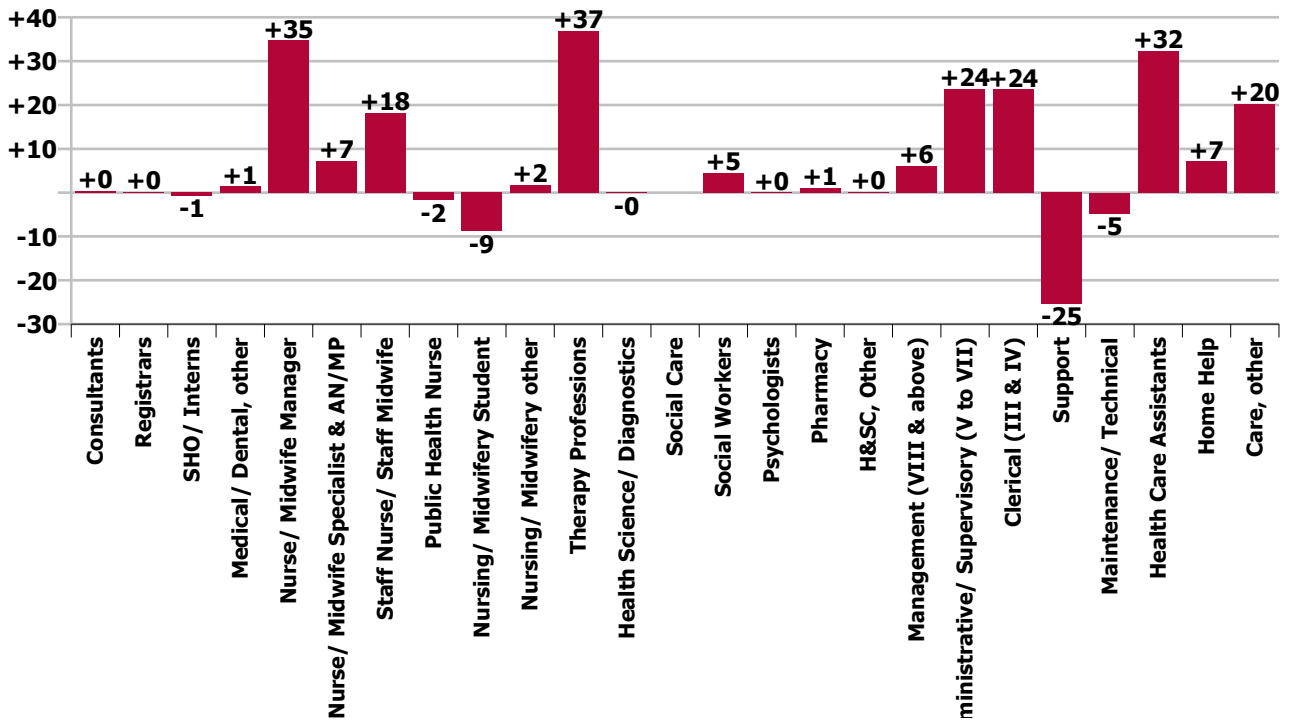
Year-on-year Summary

WTE change since Apr 20	% change since Apr 20	overall	Consultants	Registrars	SHO/ Interns	Medical/ Dental, other	Medical & Dental	Nurse/ Midwife Manager	Nurse/ Midwife Specialist & AN/MP	Staff Nurse/ Staff Midwife	Public Health Nurse	Nursing/ Midwifery Student	Nursing/ Midwifery other	Nursing & Midwifery	Therapy Professions	Health Science/ Diagnostics	Social Care	Social Workers	Psychologists	Pharmacy	H&SC, Other	Health & Social Care Professionals	Management (VIII & above)	Administrativ e Supervisory (V to VII)	Clerical (III & IV)	Management & Administrativ e	Support	Maintenance/ Technical	General Support	Health Care Assistants	Home Help	Care, other	Patient & Client Care	
Overall	+1.3%	+178	+0	+0	-1	+1	+1	+35	+7	+18	-2	-9	+2	+51	+37	-0		+5	-2	+0	+1	+0	+43	+6	+24	+24	+53	-25	-5	-30	+32	+7	+20	+60
CHO 1	+3.3%	+59				-2	-2	-1	+1	+14			+1	+15	+5	+0		-2					+4		+1	+3	+4	-7		-6	+14	+31	-0	+45
CHO 2	+1.7%	+26						+6		-2				+5	+5			+0			+0		+5	-1	-1	-9	-11	+4	+1	+5	+4	+3	+15	+22
CHO 3	+10.4%	+101				+1	+1	+1	+2	+10				+13	+4	-0		-0					+3	-0	-3	+7	+4	+0	-1	-1	+38	+38	+4	+81
CHO 4	-2.2%	-64		+0	+1	-0	+1	+6	+0	-11	-0	-1		-6	+6			+2			+0		+8	+3	+3	+4	+10	+7	+1	+8	+8	-96	+3	-85
CHO 5	+2.2%	+36				+6	+6	+1	+3	-3	-2			-1	-9			+0			+0		-8	+1	+9	+3	+13	-35	-4	-39	+29	+39	-3	+65
CHO 6	-1.7%	-14		+1		-2	-1	-5	-0	-9				-14	+3			+0		+0			+4	+2	+1	+0	+4	-2	-1	-3	-2		-0	-3
CHO 7						-2	-2	+18	-0	+15		-8		+25	+2			-1					-1	+1	+3	-0	+4	+11		+11	-31	-7	+0	-37
CHO 8	-0.3%	-5						+8	+2	+1	+1		+1	+12	+5			+1			+1		+6	+0	+2	-2	-0	-3	-1	-4	-18	-3	+1	-20
CHO 9	+3.5%	+31	+0	-1	-2		-2	+1	-0	+2	-0		-0	+3	+17			+5			+1	+0	+22	-0	+8	+11	+18	-1		-1	-8		+0	-8
other Community Services	+11.1%	+8																					+1	+0	+6	+8								
		+1.3%	+9.5%	+1.2%	-6.3%	+1.7%	+1.1%	+4.8%	+23.4%	+0.7%	-13.1%	-85.5%	+89.5%	+1.5%	+12.4%	-3.0%		+4.6%	+2.4%	+6.1%	+13.2%	+10.0%	+8.2%	+14.0%	+4.1%	+6.5%	-3.1%	-4.9%	-3.3%	+0.8%	+0.2%	+14.2%	+0.8%	

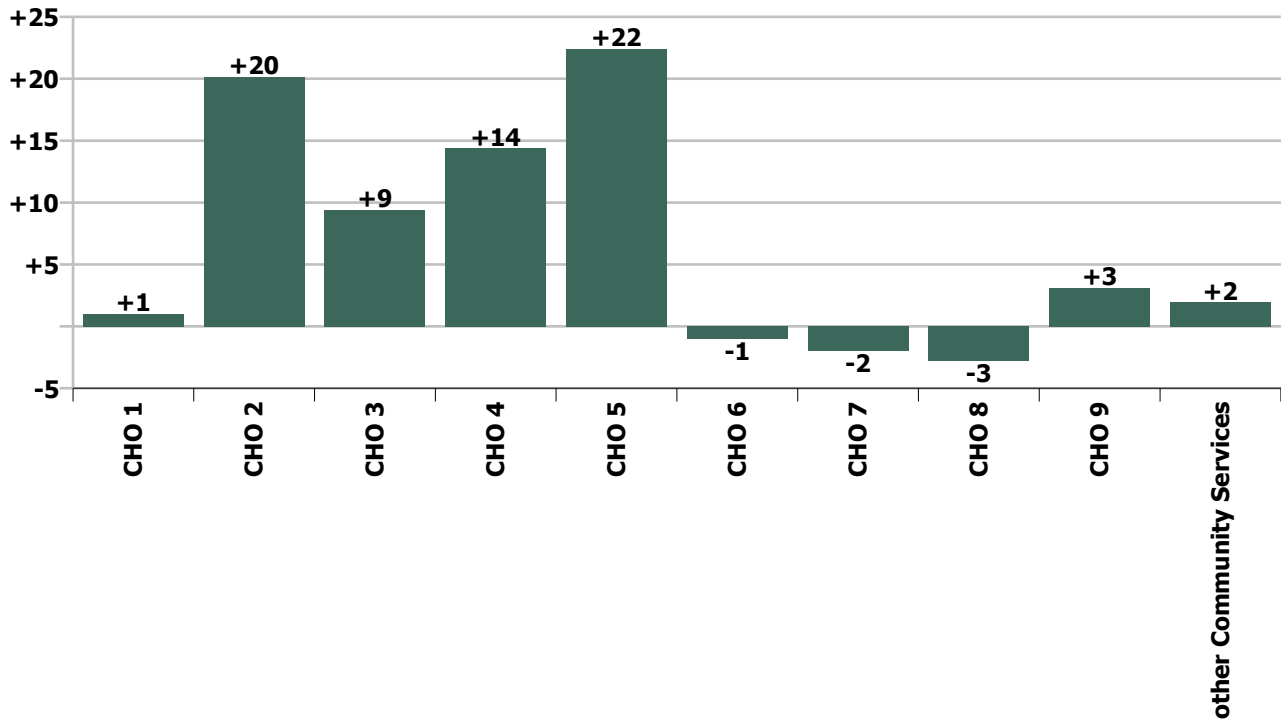
Staff Group change since: Mar 2021



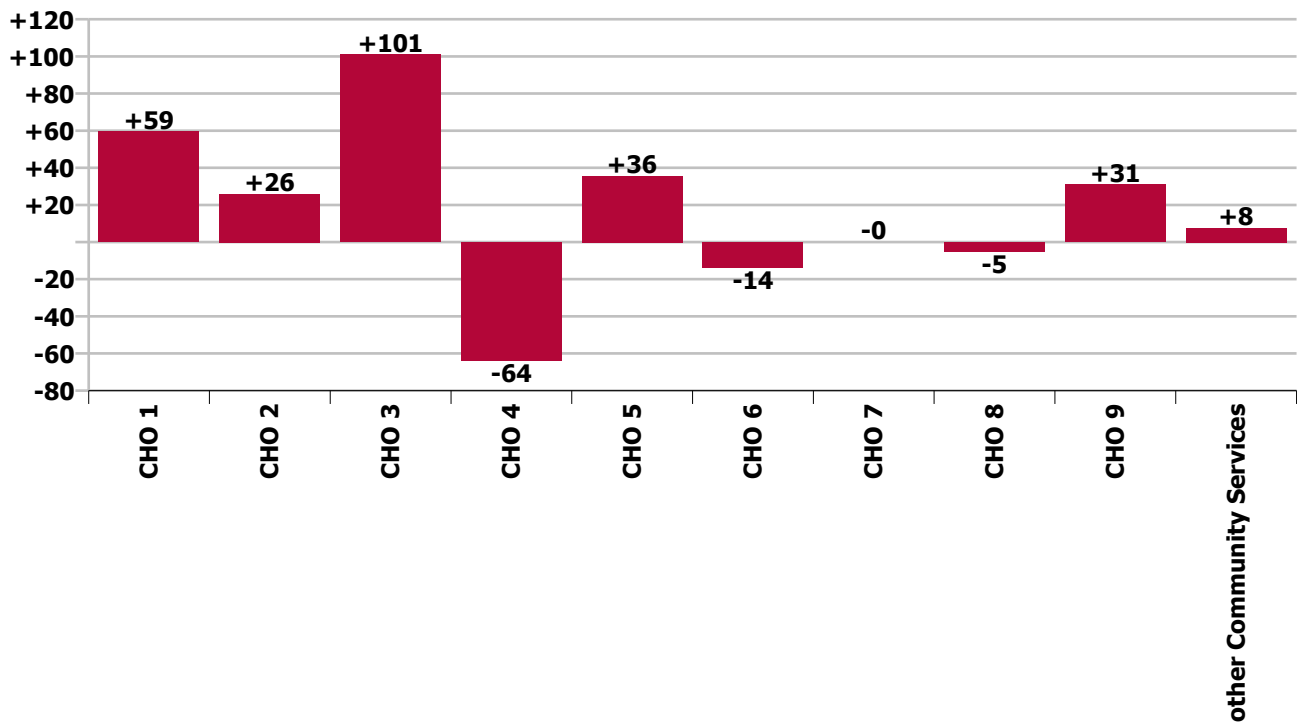
Staff Group change since: Apr 2020



CHO change since: Mar 2021



CHO change since: Apr 2020



## Longitudinal Employment Levels by Grade Group - Dec 2015 to Apr 2021

Apr 2021 (Dec 2015 figure: 12,607)	WTE Apr 2021	WTE change since Dec 15	WTE change since Dec 16	WTE change since Dec 17	WTE change since Dec 18	WTE change since Dec 19	WTE change since Dec 20	% change since Dec 15	% change since Dec 16	% change since Dec 17	% change since Dec 18	% change since Dec 19	% change since Dec 20
<b>Overall</b>	<b>13,395</b>	<b>+789</b>	<b>+913</b>	<b>+292</b>	<b>+91</b>	<b>+163</b>	<b>-19</b>	<b>+6.3%</b>	<b>+7.3%</b>	<b>+2.2%</b>	<b>+0.7%</b>	<b>+1.2%</b>	<b>-0.1%</b>
Consultant Medicine	5	-2	-5	-5	+1	+1	+0	-30.3%	-50.9%	-50.0%	+27.8%	+27.8%	+4.1%
Consultant Psychiatry		-1	-1	-1				-100.0%	-100.0%	-100.0%	-100.0%	-100.0%	-100.0%
Consultant Surgery		-1	-1	-0	-0			-100.0%	-100.0%	-100.0%	-100.0%	-100.0%	-100.0%
<b>Consultants</b>	<b>5</b>	<b>-4</b>	<b>-6</b>	<b>-6</b>	<b>+1</b>	<b>+1</b>	<b>+0</b>	<b>-46.5%</b>	<b>-58.1%</b>	<b>-54.8%</b>	<b>+23.7%</b>	<b>+27.8%</b>	<b>+4.1%</b>
Registrar	7	-2	+1	-1	-1		+1	-19.4%	+18.1%	-13.3%	-11.5%		+11.5%
Senior Registrar	1	+0	+0	+0	-1	+0	+0	+13.0%	+13.0%	+13.0%	-43.5%	+13.0%	+13.0%
Specialist Registrar	3		+1	+2	+2	+1	+1		+50.0%	+200.0%	+200.0%	+50.0%	+50.0%
<b>Registrars</b>	<b>11</b>	<b>-1</b>	<b>+2</b>	<b>+1</b>	<b>+0</b>	<b>+1</b>	<b>+2</b>	<b>-11.9%</b>	<b>+25.0%</b>	<b>+11.9%</b>	<b>+2.7%</b>	<b>+11.9%</b>	<b>+20.4%</b>
<b>SHO/ Interns</b>	<b>12</b>	<b>+1</b>	<b>+2</b>	<b>+2</b>	<b>-0</b>	<b>-3</b>	<b>-2</b>	<b>+9.8%</b>	<b>+19.1%</b>	<b>+19.6%</b>	<b>-0.7%</b>	<b>-21.0%</b>	<b>-13.3%</b>
Other Medical	86	+4	+1	+1	+1	-10	-17	+4.4%	+0.7%	+0.7%	+1.2%	-10.3%	-16.7%
<b>Medical/ Dental, other</b>	<b>86</b>	<b>+4</b>	<b>+1</b>	<b>+1</b>	<b>+1</b>	<b>-10</b>	<b>-17</b>	<b>+4.4%</b>	<b>+0.7%</b>	<b>+0.7%</b>	<b>+1.2%</b>	<b>-10.3%</b>	<b>-16.7%</b>
<b>Medical &amp; Dental</b>	<b>114</b>	<b>-1</b>	<b>-2</b>	<b>-2</b>	<b>+2</b>	<b>-11</b>	<b>-17</b>	<b>-0.6%</b>	<b>-1.5%</b>	<b>-1.6%</b>	<b>+1.9%</b>	<b>-8.8%</b>	<b>-13.1%</b>
Clinical Nurse/ Midwife Manager	550	+22	+15	+22	+26	+42	+14	+4.2%	+2.9%	+4.1%	+5.0%	+8.2%	+2.6%
Director Nursing/Midwifery, Assistant	104	+18	+16	+12	+17	+1	-2	+21.0%	+18.5%	+13.2%	+19.7%	+1.2%	-2.3%
Director of Nursing/Midwifery	109	+28	+24	+26	+26	+11	+5	+34.3%	+28.1%	+31.9%	+31.7%	+10.7%	+4.3%
<b>Nurse/ Midwife Manager</b>	<b>763</b>	<b>+68</b>	<b>+56</b>	<b>+60</b>	<b>+69</b>	<b>+54</b>	<b>+16</b>	<b>+9.8%</b>	<b>+7.9%</b>	<b>+8.6%</b>	<b>+10.0%</b>	<b>+7.5%</b>	<b>+2.2%</b>
Advanced Nurse/ Midwife Practitioner	18	+16	+15	+15	+11	+8	+2	+814.0%	+509.3%	+509.3%	+161.9%	+70.5%	+10.0%
Clinical Nurse/ Midwife Specialist	20	+3	+8	+9	+3	+4	-2	+19.9%	+59.9%	+78.6%	+19.6%	+27.2%	-7.1%
<b>Nurse/ Midwife Specialist &amp; AN/MP</b>	<b>38</b>	<b>+20</b>	<b>+23</b>	<b>+24</b>	<b>+15</b>	<b>+12</b>	<b>+0</b>	<b>+104.7%</b>	<b>+146.7%</b>	<b>+169.5%</b>	<b>+61.4%</b>	<b>+44.8%</b>	<b>+0.3%</b>
Graduate Nursing/ Midwifery		-2						-100.0%	-100.0%	-100.0%	-100.0%	-100.0%	-100.0%
Staff Midwives	1	+0	+1	-1	+1	+1	+0	+12.5%	+125.0%	-50.0%	-100.0%	-100.0%	+2.3%
Staff Nurse [Intellectual Disability]	1			+0		+1				+29.9%		-100.0%	
Staff Nurse [Psychiatric]	7	+2	+1	+1	+1	+2	+2	+48.7%	+22.3%	+22.3%	+21.8%	+37.5%	+30.6%
Staff Nurses [General/ Children's]	2,629	+22	+47	+68	+25	+58	+12	+0.8%	+1.8%	+2.7%	+1.0%	+2.2%	+0.5%
<b>Staff Nurse/ Staff Midwife</b>	<b>2,638</b>	<b>+22</b>	<b>+48</b>	<b>+69</b>	<b>+27</b>	<b>+61</b>	<b>+14</b>	<b>+0.8%</b>	<b>+1.9%</b>	<b>+2.7%</b>	<b>+1.0%</b>	<b>+2.4%</b>	<b>+0.5%</b>
<b>Public Health Nurse</b>	<b>12</b>	<b>-4</b>	<b>-3</b>	<b>-3</b>	<b>-2</b>	<b>-2</b>	<b>-2</b>	<b>-25.0%</b>	<b>-18.6%</b>	<b>-21.4%</b>	<b>-14.5%</b>	<b>-13.5%</b>	<b>-13.8%</b>
Post-registration Nurse/ Midwife Student						-1		-100.0%	-100.0%	-100.0%	-100.0%	-100.0%	-100.0%
Nursing/ Midwifery awaiting registration	1	+1	+1	-13	+1	+0	+0	-100.0%	-100.0%	-89.4%	-100.0%	+49.0%	+10.4%
<b>Nursing/ Midwifery Student</b>	<b>1</b>	<b>+1</b>	<b>+1</b>	<b>-13</b>	<b>+1</b>	<b>-1</b>	<b>+0</b>	<b>-100.0%</b>	<b>-100.0%</b>	<b>-89.4%</b>	<b>-100.0%</b>	<b>-25.5%</b>	<b>+10.4%</b>
Nursing Education/Clinical	4	+3	+3	+3	+3	+3	-0	+279.0%	+279.0%	+279.0%	+279.0%	+279.0%	-4.8%
<b>Nursing/ Midwifery other</b>	<b>4</b>	<b>+3</b>	<b>+3</b>	<b>+3</b>	<b>+3</b>	<b>+3</b>	<b>-0</b>	<b>+279.0%</b>	<b>+279.0%</b>	<b>+279.0%</b>	<b>+279.0%</b>	<b>+279.0%</b>	<b>-4.8%</b>
<b>Nursing &amp; Midwifery</b>	<b>3,456</b>	<b>+110</b>	<b>+128</b>	<b>+140</b>	<b>+113</b>	<b>+127</b>	<b>+28</b>	<b>+3.3%</b>	<b>+3.9%</b>	<b>+4.2%</b>	<b>+3.4%</b>	<b>+3.8%</b>	<b>+0.8%</b>
Dietitians	25	+14	+9	+7	+7	+8	+7	+138.6%	+56.5%	+41.7%	+43.3%	+51.4%	+37.9%
Occupational Therapists	124	+31	+28	+29	+20	+11	+11	+34.0%	+29.3%	+30.8%	+19.0%	+9.4%	+9.6%
Physiotherapists	147	+26	+31	+26	+19	+23	+15	+21.9%	+26.7%	+21.3%	+15.2%	+18.7%	+11.1%
Podiatrists & Chiropodists	14	+2	-1	-2	-1	+2	+1	+17.6%	-4.0%	-12.1%	-5.7%	+17.1%	+11.4%
Speech & Language Therapists	26	+6	+6	+2	+3	+3	+6	+27.4%	+27.8%	+9.3%	+12.7%	+12.5%	+31.1%

Apr 2021 (Dec 2015 figure: 12,607)	WTE Apr 2021	WTE change since Dec 15	WTE change since Dec 16	WTE change since Dec 17	WTE change since Dec 18	WTE change since Dec 19	WTE change since Dec 20	% change since Dec 15	% change since Dec 16	% change since Dec 17	% change since Dec 18	% change since Dec 19	% change since Dec 20
<b>Overall</b>	<b>13,395</b>	<b>+789</b>	<b>+913</b>	<b>+292</b>	<b>+91</b>	<b>+163</b>	<b>-19</b>	<b>+6.3%</b>	<b>+7.3%</b>	<b>+2.2%</b>	<b>+0.7%</b>	<b>+1.2%</b>	<b>-0.1%</b>
<b>Therapy Professions</b>	<b>335</b>	<b>+80</b>	<b>+73</b>	<b>+62</b>	<b>+49</b>	<b>+47</b>	<b>+40</b>	<b>+31.2%</b>	<b>+27.8%</b>	<b>+22.9%</b>	<b>+17.0%</b>	<b>+16.4%</b>	<b>+13.5%</b>
Clinical Measurement					-0	-0	-0	-100.0%	-100.0%	-100.0%	-100.0%	-100.0%	-100.0%
Medical Science			-1					-100.0%	-100.0%	-100.0%	-100.0%	-100.0%	-100.0%
Phlebotomists		-1	-1	-1				-100.0%	-100.0%	-100.0%	-100.0%	-100.0%	-100.0%
Radiographers	5	-2	-2	-2	-1	-1	-0	-33.4%	-32.1%	-33.0%	-14.2%	-18.5%	-2.8%
<b>Health Science/ Diagnostics</b>	<b>5</b>	<b>-3</b>	<b>-4</b>	<b>-3</b>	<b>-1</b>	<b>-1</b>	<b>-0</b>	<b>-41.5%</b>	<b>-47.0%</b>	<b>-41.2%</b>	<b>-15.4%</b>	<b>-21.3%</b>	<b>-5.8%</b>
<b>Social Care</b>	<b>3</b>	<b>-1</b>	<b>+0</b>	<b>+0</b>	<b>+0</b>	<b>+0</b>	<b>+0</b>	<b>-24.0%</b>	<b>+3.3%</b>	<b>+4.5%</b>	<b>+1.8%</b>	<b>+1.8%</b>	<b>+1.8%</b>
<b>Social Workers</b>	<b>103</b>	<b>+28</b>	<b>+16</b>	<b>+19</b>	<b>+8</b>	<b>+5</b>	<b>+3</b>	<b>+37.9%</b>	<b>+18.8%</b>	<b>+22.9%</b>	<b>+8.5%</b>	<b>+4.7%</b>	<b>+3.2%</b>
<b>Psychologists</b>	<b>2</b>	<b>+2</b>	<b>+2</b>	<b>+2</b>	<b>+2</b>		<b>+1</b>	<b>+320.0%</b>	<b>+320.0%</b>	<b>-100.0%</b>	<b>+320.0%</b>		<b>+90.9%</b>
<b>Pharmacy</b>	<b>19</b>	<b>+4</b>	<b>+4</b>	<b>+3</b>	<b>+2</b>	<b>+3</b>	<b>+1</b>	<b>+25.9%</b>	<b>+28.5%</b>	<b>+21.8%</b>	<b>+14.5%</b>	<b>+22.6%</b>	<b>+8.6%</b>
Other Health & Social Care	1	-1	-1	-1	-1	+0		-56.5%	-60.3%	-60.3%	-60.3%	+50.0%	
Play Therapists/ Specialists	1	-0	-1					-30.1%	-37.1%				
<b>H&amp;SC, Other</b>	<b>2</b>	<b>-1</b>	<b>-1</b>	<b>-1</b>	<b>-1</b>	<b>+0</b>		<b>-42.3%</b>	<b>-47.8%</b>	<b>-34.7%</b>	<b>-34.7%</b>	<b>+13.2%</b>	
<b>Health &amp; Social Care Professionals</b>	<b>468</b>	<b>+108</b>	<b>+89</b>	<b>+83</b>	<b>+59</b>	<b>+54</b>	<b>+45</b>	<b>+30.0%</b>	<b>+23.6%</b>	<b>+21.5%</b>	<b>+14.5%</b>	<b>+13.1%</b>	<b>+10.7%</b>
Executive Management	16	+10	+9	+8	+6	+4	+1	+161.0%	+123.7%	+97.7%	+56.6%	+31.5%	+5.9%
Senior Management (VIII & GM)	65	+29	+25	+28	+17	+3	+1	+80.4%	+61.3%	+76.6%	+34.4%	+4.1%	+2.0%
<b>Management (VIII &amp; above)</b>	<b>81</b>	<b>+39</b>	<b>+33</b>	<b>+36</b>	<b>+22</b>	<b>+6</b>	<b>+2</b>	<b>+91.9%</b>	<b>+70.5%</b>	<b>+80.4%</b>	<b>+38.2%</b>	<b>+8.4%</b>	<b>+2.7%</b>
Middle Management (V-VII)	192	+85	+75	+64	+50	+28	+16	+80.1%	+64.5%	+50.3%	+35.3%	+17.0%	+9.1%
Other Administrative		-1	-1	-1	-1	-1		-100.0%	-100.0%	-100.0%	-100.0%	-100.0%	-100.0%
<b>Administrative/ Supervisory (V to VII)</b>	<b>192</b>	<b>+84</b>	<b>+74</b>	<b>+63</b>	<b>+49</b>	<b>+27</b>	<b>+16</b>	<b>+78.5%</b>	<b>+63.1%</b>	<b>+49.1%</b>	<b>+34.4%</b>	<b>+16.3%</b>	<b>+9.1%</b>
<b>Clerical (III &amp; IV)</b>	<b>596</b>	<b>+135</b>	<b>+113</b>	<b>+87</b>	<b>+32</b>	<b>+25</b>	<b>+9</b>	<b>+29.4%</b>	<b>+23.3%</b>	<b>+17.1%</b>	<b>+5.6%</b>	<b>+4.4%</b>	<b>+1.5%</b>
<b>Management &amp; Administrative</b>	<b>869</b>	<b>+258</b>	<b>+221</b>	<b>+186</b>	<b>+103</b>	<b>+58</b>	<b>+27</b>	<b>+42.3%</b>	<b>+34.0%</b>	<b>+27.3%</b>	<b>+13.4%</b>	<b>+7.2%</b>	<b>+3.2%</b>
Catering	216	+6	+3	+5	+1	-5	-0	+2.6%	+1.5%	+2.1%	+0.4%	-2.2%	-0.0%
Household Services	480	-102	-84	-65	-38	-13	+1	-17.6%	-14.9%	-11.9%	-7.4%	-2.6%	+0.1%
Other Support	28	-17	-12	-15	-10	-6	-1	-38.0%	-30.5%	-35.7%	-26.4%	-18.0%	-4.1%
Portering	76	-8	-9	-7	-3	-5	-0	-9.5%	-10.1%	-8.9%	-4.0%	-6.2%	-0.3%
<b>Support</b>	<b>800</b>	<b>-122</b>	<b>-101</b>	<b>-83</b>	<b>-51</b>	<b>-29</b>	<b>-1</b>	<b>-13.2%</b>	<b>-11.2%</b>	<b>-9.4%</b>	<b>-5.9%</b>	<b>-3.5%</b>	<b>-0.1%</b>
Maintenance	90	-17	-14	-12	-13	-9	-5	-15.7%	-13.4%	-11.9%	-12.4%	-8.8%	-5.4%
Technical Services	4	+4	+4	+4	+4	+4	+4	-100.0%	-100.0%	-100.0%	-100.0%	-100.0%	-100.0%
<b>Maintenance/ Technical</b>	<b>94</b>	<b>-13</b>	<b>-10</b>	<b>-8</b>	<b>-9</b>	<b>-5</b>	<b>-1</b>	<b>-12.0%</b>	<b>-9.5%</b>	<b>-7.9%</b>	<b>-8.5%</b>	<b>-4.8%</b>	<b>-1.1%</b>
<b>General Support</b>	<b>894</b>	<b>-135</b>	<b>-111</b>	<b>-91</b>	<b>-59</b>	<b>-34</b>	<b>-2</b>	<b>-13.1%</b>	<b>-11.1%</b>	<b>-9.3%</b>	<b>-6.2%</b>	<b>-3.6%</b>	<b>-0.2%</b>
HCA, Nurse's Aide, etc.	4,071	+85	+25	-14	-60	+50	-19	+2.1%	+0.6%	-0.3%	-1.4%	+1.2%	-0.5%
Health & Social Care Assistants	29	+1	+3	+3	+4	+7	+1	+3.4%	+10.3%	+10.6%	+18.1%	+34.6%	+4.9%
<b>Health Care Assistants</b>	<b>4,100</b>	<b>+86</b>	<b>+27</b>	<b>-11</b>	<b>-55</b>	<b>+57</b>	<b>-18</b>	<b>+2.1%</b>	<b>+0.7%</b>	<b>-0.3%</b>	<b>-1.3%</b>	<b>+1.4%</b>	<b>-0.4%</b>
<b>Home Help</b>	<b>3,333</b>	<b>+332</b>	<b>+537</b>	<b>-23</b>	<b>-88</b>	<b>-109</b>	<b>-99</b>	<b>+11.1%</b>	<b>+19.2%</b>	<b>-0.7%</b>	<b>-2.6%</b>	<b>-3.2%</b>	<b>-2.9%</b>
<b>Care, other</b>	<b>162</b>	<b>+29</b>	<b>+23</b>	<b>+10</b>	<b>+15</b>	<b>+20</b>	<b>+16</b>	<b>+21.9%</b>	<b>+16.5%</b>	<b>+6.9%</b>	<b>+10.5%</b>	<b>+14.3%</b>	<b>+10.6%</b>
<b>Patient &amp; Client Care</b>	<b>7,595</b>	<b>+447</b>	<b>+588</b>	<b>-24</b>	<b>-127</b>	<b>-32</b>	<b>-101</b>	<b>+6.3%</b>	<b>+8.4%</b>	<b>-0.3%</b>	<b>-1.6%</b>	<b>-0.4%</b>	<b>-1.3%</b>

Apr 2021 (Dec 2015 figure: 12,607)	WTE Apr 2021	WTE change since Dec 15	WTE change since Dec 16	WTE change since Dec 17	WTE change since Dec 18	WTE change since Dec 19	WTE change since Dec 20	% change since Dec 15	% change since Dec 16	% change since Dec 17	% change since Dec 18	% change since Dec 19	% change since Dec 20
Overall	13,395	+789	+913	+292	+91	+163	-19	+6.3%	+7.3%	+2.2%	+0.7%	+1.2%	-0.1%

Source: Health Service Personnel Census