

Social Care Older Persons Services Employment Report: February 2021

Employment by Staff Group

Feb 2021 (Dec 2020 figure: 13,415)	WTE Jan 2021	WTE Feb 2021	WTE change since Jan 21	% change since Jan 21	WTE change since Dec 20	WTE change since Feb 20
Overall	13,371	13,319	-52	-0.4%	-96	+227
Consultants	4	4	-0	-0.5%	-0	-0
Registrars	11	11			+2	+1
SHO/ Interns	12	11	-1	-10.2%	-3	-1
Medical/ Dental, other	88	86	-1	-1.6%	-18	+2
Medical & Dental	114	112	-3	-2.4%	-19	+1
Nurse/ Midwife Manager	747	755	+8	+1.1%	+9	+41
Nurse/ Midwife Specialist & AN/MP	38	38	-0	-0.2%	-0	+9
Staff Nurse/ Staff Midwife	2,637	2,641	+4	+0.1%	+17	+54
Public Health Nurse	13	13	-1	-6.6%	-1	+0
Post-registration Nurse/ Midwife Student				-100.0%		-1
Nursing/ Midwifery awaiting registration	2	1.27	-0	-15.3%	-0	-1
Nursing/ Midwifery Student	2	1	-0	-15.3%	-0	-2
Nursing/ Midwifery other	4	4			+0	+3
Nursing & Midwifery	3,442	3,452	+11	+0.3%	+25	+106
Therapy Professions	310	319	+9	+2.8%	+23	+31
Health Science/ Diagnostics	5	5	-0	-1.2%	-0	+0
Social Care	3	3			-0	
Social Workers	102	102	-0	-0.1%	+2	+7
Psychologists	1	2	+1	+68.0%	+1	+0
Pharmacy	17	18	+0	+1.6%	+1	-0
H&SC, Other	2	2				+0
Health & Social Care Professionals	440	450	+10	+2.2%	+27	+38
Management (VIII & above)	79	79	-0	-0.2%	+0	+4
Administrative/ Supervisory (V to VII)	184	189	+5	+2.7%	+13	+25
Clerical (III & IV)	598	585	-13	-2.1%	-2	+15
Management & Administrative	861	853	-8	-0.9%	+11	+44
Support	799	798	-1	-0.2%	-4	-23
Maintenance/ Technical	94	94	+0	+0.1%	-1	-6
General Support	893	892	-1	-0.2%	-4	-29
Health Care Assistants	4,110	4,119	+9	+0.2%	+0	+87
Home Help	3,364	3,289	-75	-2.2%	-142	-33
Care, other	147	153	+6	+3.9%	+6	+13
Patient & Client Care	7,621	7,561	-60	-0.8%	-135	+67

Social Care Older Persons Services Employment by Administration (HSE / S38): February 2021

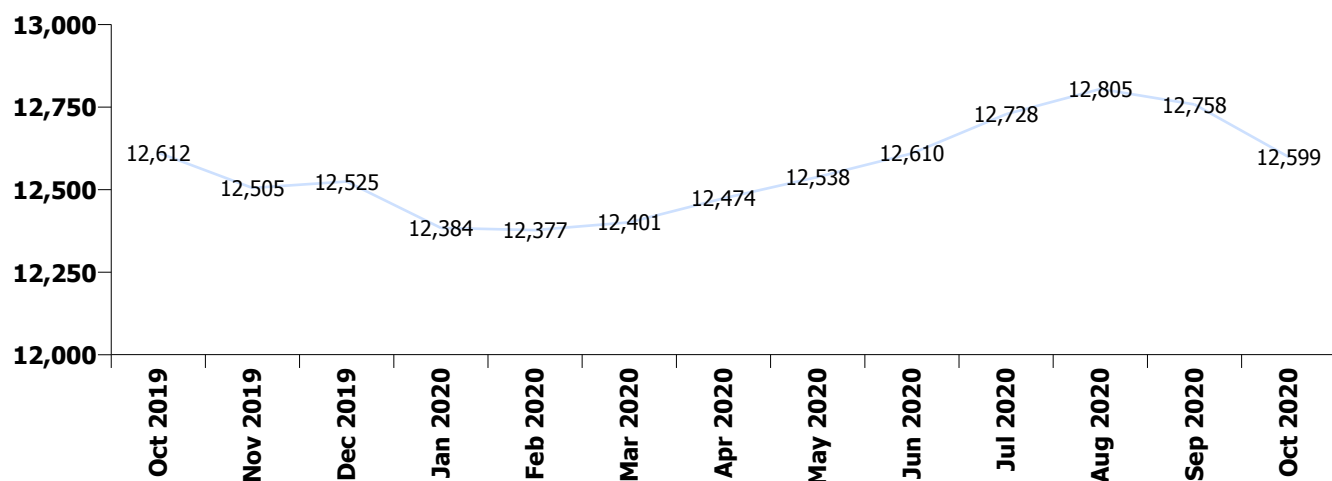
Feb 2021 (Dec 2020 figure: 13,415)	WTE Jan 2021	WTE Feb 2021	WTE change since Jan 21	% change since Jan 21	WTE change since Dec 20	WTE change since Feb 20
Overall	13,371	13,319	-52	-0.4%	-96	+227
HSE	12,628	12,578	-50	-0.4%	-95	+200
Section 38	743	741	-1	-0.2%	-0	+27

HSE

Feb 2021 (Dec 2020 figure: 12,673)	WTE Jan 2021	WTE Feb 2021	WTE change since Jan 21	% change since Jan 21	WTE change since Dec 20	WTE change since Feb 20
Overall	12,628	12,578	-50	-0.4%	-95	+200
Consultants	2	2.44	-0	-0.8%	-0	-1
Registrars	7	6.51			+1	
SHO/ Interns	8	7.00	-1	-15.2%	-3	-1
Medical/ Dental, other	86	84.07	-1	-1.7%	-18	+2
Medical & Dental	103	100	-3	-2.6%	-20	+0
Nurse/ Midwife Manager	701	707.99	+7	+1.0%	+11	+48
Nurse/ Midwife Specialist & AN/MP	38	37.93	-0	-0.2%	-0	+9
Staff Nurse/ Staff Midwife	2,452	2,457.47	+6	+0.2%	+19	+49
Public Health Nurse	13	12.58	-1	-6.6%	-1	+0
Post-registration Nurse/ Midwife Student				-100.0%		-1
Nursing/ Midwifery awaiting registration	2	1.27	-0	-15.3%	-0	-1
Nursing/ Midwifery Student	2	1.27	-0	-15.3%	-0	-2
Nursing/ Midwifery other	4	4.00			+0	+3
Nursing & Midwifery	3,210	3,221	+11	+0.4%	+29	+108
Therapy Professions	238	244.12	+6	+2.7%	+21	+17
Health Science/ Diagnostics	4	4.01	-0	-1.5%	-0	+0
Social Care	3	2.74			-0	
Social Workers	87	86.57	-0	-0.1%	+2	+5
Psychologists	1	1.60	+1	+113.3%	+1	+0
Pharmacy	12	12.70	+0	+2.3%	+1	-1
H&SC, Other	2	1.54				+0
Health & Social Care Professionals	346	353	+7	+2.1%	+25	+22
Management (VIII & above)	75	74.96	-0	-0.2%	+0	+2
Administrative/ Supervisory (V to VII)	164	167.68	+3	+2.0%	+10	+24
Clerical (III & IV)	567	555.66	-11	-2.0%	-1	+13
Management & Administrative	807	798	-8	-1.0%	+10	+38
Support	691	690.14	-1	-0.1%	-4	-27
Maintenance/ Technical	84	83.97	+0	+0.1%	+0	-5
General Support	775	774	-1	-0.1%	-4	-32
Health Care Assistants	3,881	3,892.03	+11	+0.3%	-0	+83
Home Help	3,364	3,289.41	-75	-2.2%	-142	-33
Care, other	143	149.22	+6	+4.4%	+7	+14
Patient & Client Care	7,388	7,331	-57	-0.8%	-135	+64

Section 38

Feb 2021 (Dec 2020 figure: 742)	WTE Jan 2021	WTE Feb 2021	WTE change since Jan 21	% change since Jan 21	WTE change since Dec 20	WTE change since Feb 20
Overall	743	741	-1	-0.2%	-0	+27
Consultants	2	1.60				+0
Registrars	4	4.00			+1	+1
SHO/ Interns	4	4.00				
Medical/ Dental, other	2	2.00				
Medical & Dental	12	12			+1	+1
Nurse/ Midwife Manager	46	47.41	+1	+2.2%	-2	-7
Staff Nurse/ Staff Midwife	185	183.67	-2	-0.9%	-2	+5
Nursing & Midwifery	232	231	-1	-0.3%	-4	-2
Therapy Professions	72	74.39	+2	+3.2%	+2	+14
Health Science/ Diagnostics	1	1.00				
Social Workers	16	15.61	+0	+0.0%		+2
Psychologists	1	0.50				
Pharmacy	5	5.04			-0	+0
Health & Social Care Professionals	94	97	+2	+2.4%	+2	+16
Management (VIII & above)	4	4.00				+2
Administrative/ Supervisory (V to VII)	19	21.14	+2	+8.6%	+3	+2
Clerical (III & IV)	31	29.33	-1	-4.2%	-1	+2
Management & Administrative	54	54	+0	+0.7%	+1	+6
General Support	118	117	-0	-0.4%	-1	+3
Patient & Client Care	233	230	-3	-1.3%	+0	+3



Social Care Older Persons Services Employment by CHO etc. Feb 2021

CHO 1

Feb 2021 (Dec 2020 figure: 1,918)	WTE Jan 2021	WTE Feb 2021	WTE change since Jan 21	% change since Jan 21	WTE change since Dec 20	WTE change since Feb 20
Overall	1,871	1,864	-7	-0.4%	-53	+51
Medical/ Dental, other	17	16	-1	-6.7%	-16	-2
Medical & Dental	17	16	-1	-6.7%	-16	-2
Nurse/ Midwife Manager	86	86	-0	-0.2%	-1	-2
Nurse/ Midwife Specialist & AN/MP	9	9			+0	+1
Staff Nurse/ Staff Midwife	317	317	+1	+0.2%	+2	+6
Nursing/ Midwifery other	1	1				+1
Nursing & Midwifery	413	413	+0	+0.1%	+1	+6
Therapy Professions	14	15	+1	+7.2%	+2	+5
Health Science/ Diagnostics	2	2	+0	+3.8%	+0	+0
Social Workers	16	17	+1	+5.7%	+2	-0
Health & Social Care Professionals	31	33	+2	+6.3%	+4	+5
Management (VIII & above)	8	8	+0	+1.1%		
Administrative/ Supervisory (V to VII)	16	17	+1	+5.5%	+2	+4
Clerical (III & IV)	86	86	-0	-0.2%	-2	-0
Management & Administrative	111	111	+1	+0.7%	+0	+4
Support	119	118	-1	-1.0%	-0	-5
Maintenance/ Technical	6	6			-1	-1
General Support	125	124	-1	-0.9%	-1	-6
Health Care Assistants	583	585	+2	+0.4%	+5	+17
Home Help	568	560	-9	-1.5%	-45	+33
Care, other	23	22	-1	-6.3%	-1	-6
Patient & Client Care	1,174	1,166	-8	-0.7%	-40	+45

CHO 2

Feb 2021 (Dec 2020 figure: 1,590)	WTE Jan 2021	WTE Feb 2021	WTE change since Jan 21	% change since Jan 21	WTE change since Dec 20	WTE change since Feb 20
Overall	1,576	1,562	-14	-0.9%	-28	+12
Medical/ Dental, other	11	11	-0	-0.7%	-0	-0
Medical & Dental	11	11	-0	-0.7%	-0	-0
Nurse/ Midwife Manager	67	70	+3	+4.9%	+4	+13
Nurse/ Midwife Specialist & AN/MP	2	2				
Staff Nurse/ Staff Midwife	306	304	-1	-0.5%	-1	+1
Public Health Nurse	1	1				+0
Nursing & Midwifery	376	378	+2	+0.5%	+3	+14
Therapy Professions	27	27	+0	+1.6%	+2	+1
Health Science/ Diagnostics	1	1				
Social Workers	10	10				+1
Pharmacy	1	1				+0
H&SC, Other				-100.0%		
Health & Social Care Professionals	39	40	+0	+1.1%	+2	+2
Management (VIII & above)	2	2				+0
Administrative/ Supervisory (V to VII)	8	8	+1	+9.4%	-1	-0
Clerical (III & IV)	65	61	-4	-6.3%	-5	-9
Management & Administrative	75	72	-3	-4.5%	-5	-9
Support	56	55	-1	-1.8%	-1	-0
Maintenance/ Technical	19	20	+0	+0.4%	+0	+0
General Support	76	75	-1	-1.2%	-1	+0
Health Care Assistants	522	527	+4	+0.8%	+1	+17
Home Help	445	425	-20	-4.5%	-32	-24
Care, other	32	36	+4	+11.6%	+4	+11
Patient & Client Care	999	987	-12	-1.2%	-27	+5

CHO 3

Feb 2021 (Dec 2020 figure: 1,029)	WTE Jan 2021	WTE Feb 2021	WTE change since Jan 21	% change since Jan 21	WTE change since Dec 20	WTE change since Feb 20
Overall	1,039	1,056	+17	+1.6%	+27	+95
Consultants	1	1				
Medical/ Dental, other	6	6				+1
Medical & Dental	7	7				+1
Nurse/ Midwife Manager	66	65	-1	-2.0%	+1	+2
Nurse/ Midwife Specialist & AN/MP	4	4			+0	+2
Staff Nurse/ Staff Midwife	236	242	+6	+2.4%	+10	+3
Public Health Nurse	1	1	-0	-1.0%	-0	
Nursing & Midwifery	307	311	+4	+1.4%	+11	+7
Therapy Professions	30	30	-1	-2.2%	+0	+1
Health Science/ Diagnostics	1	1	-0	-19.4%	-0	
Social Workers	7	6	-1	-16.4%	-0	-1
Pharmacy	1	1				
Health & Social Care Professionals	39	37	-2	-4.9%	-0	-0
Management (VIII & above)	6	6	-0	-6.6%	-0	-0
Administrative/ Supervisory (V to VII)	18	18	+0	+0.0%	+1	-0
Clerical (III & IV)	52	52	+0	+0.6%	+4	+2
Management & Administrative	75	75	-0	-0.1%	+4	+1
Support	62	64	+1	+2.2%	+1	+0
Maintenance/ Technical	21	22	+1	+3.5%	+1	
General Support	84	86	+2	+2.6%	+2	+0
Health Care Assistants	302	310	+8	+2.7%	+8	+36
Home Help	215	214	-1	-0.3%	-3	+42
Care, other	11	16	+5	+44.2%	+4	+7
Patient & Client Care	527	540	+12	+2.4%	+10	+85

CHO 4

Feb 2021 (Dec 2020 figure: 2,930)	WTE Jan 2021	WTE Feb 2021	WTE change since Jan 21	% change since Jan 21	WTE change since Dec 20	WTE change since Feb 20
Overall	2,918	2,900	-18	-0.6%	-30	+1
Consultants	1	1				
Registrars	3	3				
SHO/ Interns	1	1				+1
Medical/ Dental, other	22	21	-1	-4.0%	-2	-1
Medical & Dental	27	26	-1	-3.3%	-2	+0
Nurse/ Midwife Manager	125	127	+2	+1.8%	+5	+5
Nurse/ Midwife Specialist & AN/MP	6	5	-1	-18.6%	-1	+0
Staff Nurse/ Staff Midwife	531	534	+3	+0.5%	+5	+12
Public Health Nurse	6	6				+2
Post-registration Nurse/ Midwife Student				-100.0%	-1	-1
Nursing/ Midwifery awaiting registration				-100.0%	-1	
Nursing/ Midwifery Student				-100.0%		-1
Nursing & Midwifery	667	671	+4	+0.6%	+9	+19
Therapy Professions	44	50	+6	+13.1%	+8	+6
Health Science/ Diagnostics	1	1				
Social Care	2	2				
Social Workers	11	11	-0	-2.6%	-1	+1
Pharmacy	4	4	-0	-1.1%	-0	-0
Health & Social Care Professionals	62	68	+5	+8.7%	+7	+7
Management (VIII & above)	15	15	-0	-1.2%	+1	+2
Administrative/ Supervisory (V to VII)	20	20	+1	+4.3%	+0	+3
Clerical (III & IV)	135	132	-2	-1.8%	+1	+4
Management & Administrative	170	168	-2	-1.1%	+2	+10
Support	114	112	-1	-1.2%	-1	+14
Maintenance/ Technical	7	7			+1	+1
General Support	121	119	-1	-1.1%	-1	+15
Health Care Assistants	796	797	+2	+0.2%	+4	+19
Home Help	1,040	1,015	-25	-2.4%	-51	-71
Care, other	35	35	+0	+1.3%	+1	+3
Patient & Client Care	1,871	1,848	-23	-1.2%	-46	-49

CHO 5

Feb 2021 (Dec 2020 figure: 1,650)	WTE Jan 2021	WTE Feb 2021	WTE change since Jan 21	% change since Jan 21	WTE change since Dec 20	WTE change since Feb 20
Overall	1,671	1,649	-22	-1.3%	-2	+15
Medical/ Dental, other	15	15	+1	+4.0%	+1	+6
Medical & Dental	15	15	+1	+4.0%	+1	+6
Nurse/ Midwife Manager	87	88	+1	+0.6%	-1	+4
Nurse/ Midwife Specialist & AN/MP	4	4	-0	-1.6%	-0	+2
Staff Nurse/ Staff Midwife	313	313	+1	+0.2%	+5	-1
Public Health Nurse	3	2	-1	-33.7%	-1	-2
<i>Nursing/ Midwifery awaiting registration</i>				-100.0%		-2
Nursing/ Midwifery Student				-100.0%		-2
Nursing & Midwifery	406	407	+0	+0.0%	+3	+1
Therapy Professions	34	34	+0	+0.6%	+2	-7
Social Workers	4	4			+0	+0
Pharmacy	1	1			+0	
Health & Social Care Professionals	40	40	+0	+0.5%	+2	-6
Management (VIII & above)	4	5	+1	+26.2%	+1	+1
Administrative/ Supervisory (V to VII)	21	20	-1	-5.2%	+3	+6
Clerical (III & IV)	35	38	+3	+8.4%	+7	+7
Management & Administrative	60	63	+3	+4.8%	+11	+14
Support	82	83	+1	+1.1%	-1	-37
Maintenance/ Technical	4	4	+0	+1.7%	+0	-4
General Support	86	87	+1	+1.1%	-0	-41
Health Care Assistants	443	436	-6	-1.4%	-12	+39
Home Help	612	593	-19	-3.1%	-6	+5
Care, other	9	8	-1	-14.7%	-1	-3
Patient & Client Care	1,063	1,037	-27	-2.5%	-19	+41

CHO 6

Feb 2021 (Dec 2020 figure: 804)	WTE Jan 2021	WTE Feb 2021	WTE change since Jan 21	% change since Jan 21	WTE change since Dec 20	WTE change since Feb 20
Overall	806	807	+1	+0.2%	+3	-16
Registrars	2	2			+1	+1
Medical/ Dental, other	3	3	+0	+3.6%	+0	-1
Medical & Dental	5	5	+0	+2.1%	+1	-0
Nurse/ Midwife Manager	60	61	+1	+1.6%	-2	-6
Nurse/ Midwife Specialist & AN/MP	1	1				
Staff Nurse/ Staff Midwife	203	201	-2	-1.1%	-5	-7
Nursing & Midwifery	264	262	-1	-0.5%	-7	-13
Therapy Professions	47	50	+2	+4.6%	+3	+0
Social Workers	11	11	-0	-0.1%	+1	-0
Psychologists	1	2	+1	+68.0%	+1	+0
Pharmacy	3	3			-0	-0
Health & Social Care Professionals	62	65	+3	+4.8%	+5	-0
Management (VIII & above)	5	5				+0
Administrative/ Supervisory (V to VII)	21	23	+2	+7.7%	+4	+1
Clerical (III & IV)	34	31	-2	-6.7%	-2	+3
Management & Administrative	60	59	-1	-1.0%	+2	+4
Support	103	103	-0	-0.3%	+0	-4
Maintenance/ Technical	8	8			-1	-1
General Support	111	111	-0	-0.3%	-1	-5
Health Care Assistants	299	300	+1	+0.4%	+4	-0
Care, other	5	5	-1	-11.0%	-1	-1
Patient & Client Care	304	305	+1	+0.2%	+3	-2

CHO 7

Feb 2021 (Dec 2020 figure: 1,021)	WTE Jan 2021	WTE Feb 2021	WTE change since Jan 21	% change since Jan 21	WTE change since Dec 20	WTE change since Feb 20
Overall	1,022	1,014	-8	-0.8%	-8	+16
SHO/ Interns	2	2				
Medical/ Dental, other	2	2				-2
Medical & Dental	4	4				-2
Nurse/ Midwife Manager	86	88	+2	+1.9%	+2	+10
Nurse/ Midwife Specialist & AN/MP	3	3	+0	+1.0%	+0	-0
Staff Nurse/ Staff Midwife	242	242	+1	+0.4%	+1	+27
<i>Nursing/ Midwifery awaiting registration</i>	2	1	-0	-15.3%	+1	+1
Nursing/ Midwifery Student	2	1	-0	-15.3%	-0	+1
Nursing & Midwifery	332	334	+2	+0.7%	+2	+38
Therapy Professions	15	15	+1	+3.7%	+2	+2
Social Workers	14	13	-1	-4.4%	+1	+2
Pharmacy	2	2				-1
H&SC, Other	1	1				
Health & Social Care Professionals	32	31	-0	-0.2%	+3	+3
Management (VIII & above)	7	7	+0	+0.7%	+0	+2
Administrative/ Supervisory (V to VII)	15	16	+0	+0.3%	+1	+4
Clerical (III & IV)	37	36	-1	-1.8%	-0	+1
Management & Administrative	60	59	-1	-1.0%	+1	+8
Support	118	118	-0	-0.3%	-1	+10
Maintenance/ Technical	2	2				
General Support	120	120	-0	-0.3%	-1	+10
Health Care Assistants	358	347	-11	-3.0%	-10	-36
Home Help	111	113	+1	+1.2%	-2	-4
Care, other	5	5	-0	-1.4%	-0	+0
Patient & Client Care	474	465	-9	-2.0%	-13	-40

CHO 8

Feb 2021 (Dec 2020 figure: 1,484)	WTE Jan 2021	WTE Feb 2021	WTE change since Jan 21	% change since Jan 21	WTE change since Dec 20	WTE change since Feb 20
Overall	1,482	1,482	+0	+0.0%	-2	-2
Medical/ Dental, other	11	11			-0	
Medical & Dental	11	11			-0	
Nurse/ Midwife Manager	90	91	+1	+1.0%	+2	+12
Nurse/ Midwife Specialist & AN/MP	4	5	+1	+26.5%	+1	+3
Staff Nurse/ Staff Midwife	254	255	+1	+0.2%	+0	+4
Public Health Nurse	3	3	+0	+1.0%	+0	+1
Nursing/ Midwifery other	2	2			+0	+2
Nursing & Midwifery	353	356	+3	+0.7%	+3	+21
Therapy Professions	26	26	-0	-1.5%	+1	+4
Social Workers	5	5	+0	+1.0%		+0
Pharmacy	3	3	+0	+11.9%	+1	+1
Health & Social Care Professionals	34	34	-0	-0.1%	+2	+5
Management (VIII & above)	7	7	-0	-0.6%	+0	+1
Administrative/ Supervisory (V to VII)	22	22	+0	+0.8%	+0	
Clerical (III & IV)	73	69	-4	-5.6%	-3	-3
Management & Administrative	101	97	-4	-3.9%	-3	-2
Support	25	25	+0	+1.7%	+0	-2
Maintenance/ Technical	24	23	-1	-3.5%	-1	-1
General Support	49	48	-0	-0.8%	-1	-3
Health Care Assistants	540	545	+5	+0.9%	+1	-12
Home Help	373	370	-3	-0.7%	-4	-13
Care, other	21	21	-0	-2.0%	-1	+2
Patient & Client Care	934	936	+2	+0.2%	-4	-24

CHO 9

Feb 2021 (Dec 2020 figure: 914)	WTE Jan 2021	WTE Feb 2021	WTE change since Jan 21	% change since Jan 21	WTE change since Dec 20	WTE change since Feb 20
Overall	911	910	-0	-0.0%	-4	+50
Consultants	2	2	-0	-1.0%	-0	-0
Registrars	6	6			+1	
SHO/ Interns	9	8	-1	-13.5%	-3	-2
Medical/ Dental, other	1	1				
Medical & Dental	18	17	-1	-7.1%	-2	-2
Nurse/ Midwife Manager	80	80	-0	-0.2%	-1	+3
Nurse/ Midwife Specialist & AN/MP	6	6	-0	-0.4%	-0	+1
Staff Nurse/ Staff Midwife	236	233	-3	-1.4%	-1	+10
Public Health Nurse				-100.0%		-0
Nursing/ Midwifery other	1	1				
Nursing & Midwifery	323	319	-3	-1.1%	-2	+13
Therapy Professions	73	72	-0	-0.4%	+1	+18
Health Science/ Diagnostics	1	1				
Social Care	1	1				
Social Workers	24	25	+1	+4.1%	+1	+4
Pharmacy	4	4				+1
H&SC, Other	1	1				+0
Health & Social Care Professionals	102	103	+1	+0.7%	+2	+23
Management (VIII & above)	8	7	-1	-7.8%	-2	-2
Administrative/ Supervisory (V to VII)	22	23	+1	+4.6%	+2	+7
Clerical (III & IV)	43	43	-0	-1.0%	-2	+3
Management & Administrative	72	72	-0	-0.1%	-1	+8
Support	119	120	+0	+0.1%	-1	+3
Maintenance/ Technical	2	2				
General Support	122	122	+0	+0.1%	-1	+3
Health Care Assistants	268	271	+3	+1.2%	+0	+6
Care, other	5	6	+0	+7.8%	+0	-1
Patient & Client Care	274	277	+4	+1.4%	+0	+6

other Community Services

Feb 2021 (Dec 2020 figure: 75)	WTE Jan 2021	WTE Feb 2021	WTE change since Jan 21	% change since Jan 21	WTE change since Dec 20	WTE change since Feb 20
Overall	76	75	-1	-1.6%	-0	+6
Health Science/ Diagnostics				-100.0%		
Health & Social Care Professionals				-100.0%		
Management (VIII & above)	17	17	-0	-0.4%	+0	-1
Administrative/ Supervisory (V to VII)	21	22	+1	+3.1%	+1	+0
Clerical (III & IV)	38	36	-2	-4.9%	-1	+6
Management & Administrative	76	75	-1	-1.6%	-0	+5
Health Care Assistants	0	0				+0
Patient & Client Care	0	0				+0

Social Care Older Persons Services Employment by CHO & Admin : Feb 2021

Feb 2021 (Dec 2020 figure: 13,415)	WTE Jan 2021	WTE Feb 2021	WTE change since Jan 21	% change since Jan 21	WTE change since Dec 20	WTE change since Feb 20
Overall	13,371	13,319	-52	-0.4%	-96	+227
CHO 1	1,871	1,864	-7	-0.4%	-54	+51
Health Service Executive	1,576	1,562	-14	-0.9%	-28	+12
CHO 2	1,576	1,562	-14	-0.9%	-28	+12
Health Service Executive	1,039	1,056	+17	+1.6%	+27	+95
CHO 3	1,039	1,056	+17	+1.6%	+27	+95
Health Service Executive	2,918	2,900	-18	-0.6%	-30	+1
CHO 4	2,918	2,900	-18	-0.6%	-30	+1
Health Service Executive	1,671	1,649	-22	-1.3%	-2	+15
CHO 5	1,671	1,649	-22	-1.3%	-2	+15
Health Service Executive	330	335	+5	+1.5%	+6	+0
Leopardstown Park Hospital	207	203	-3	-1.6%	-3	-7
Royal Hospital, Donnybrook, Dublin	269	269	-0	-0.1%	+1	-9
Section 38 Voluntary Agencies	476	472	-3	-0.7%	-2	-16
CHO 6	806	807	+1	+0.2%	+3	-16
Health Service Executive	1,022	1,014	-8	-0.8%	-8	+16
CHO 7	1,022	1,014	-8	-0.8%	-8	+16
Health Service Executive	1,482	1,482	+0	+0.0%	-2	-2
CHO 8	1,482	1,482	+0	+0.0%	-2	-2
Health Service Executive	644	641	-2	-0.3%	-6	+8
Incorporated Orthopaedic Hospital	267	269	+2	+0.7%	+2	+43
Section 38 Voluntary Agencies	267	269	+2	+0.7%	+2	+43
CHO 9	911	910	-0	-0.0%	-4	+50
other Community Services	76	75	-1	-1.6%	-0	+6

Social Care Older Persons Services Employment by CHO etc. Feb 2021

Incorporated Orthopaedic Hospital

Feb 2021 (Dec 2020 figure: 267)	WTE Jan 2021	WTE Feb 2021	WTE change since Jan 21	% change since Jan 21	WTE change since Dec 20	WTE change since Feb 20
Overall	267	269	+2	+0.7%	+2	+43
Consultants	2	2				+0
Registrars	2	2				
SHO/ Interns	4	4				
Medical & Dental	8	8				+0
Nurse/ Midwife Manager	18	18				-0
Staff Nurse/ Staff Midwife	70	70				+10
Nursing & Midwifery	88	88				+10
Therapy Professions	34	35	+1	+3.0%	+1	+12
Health Science/ Diagnostics	1	1				
Social Workers	9	9				+2
Pharmacy	4	4				+1
Health & Social Care Professionals	47	48	+1	+2.1%	+1	+14
Management (VIII & above)	2	2				+1
Administrative/ Supervisory (V to VII)	6	7	+1	+15.5%	+1	+1
Clerical (III & IV)	10	10				
Management & Administrative	18	19	+1	+5.5%	+1	+2
Support	40	40				+5
Maintenance/ Technical	2	2				
General Support	42	42				+5
Health Care Assistants	64	64				+11
Care, other	0	0				
Patient & Client Care	64	64				+11

Leopardstown Park Hospital

Feb 2021 (Dec 2020 figure: 207)	WTE Jan 2021	WTE Feb 2021	WTE change since Jan 21	% change since Jan 21	WTE change since Dec 20	WTE change since Feb 20
Overall	207	203	-3	-1.6%	-3	-7
Medical/ Dental, other	1	1				
Medical & Dental	1	1				
Nurse/ Midwife Manager	12	13	+1	+9.1%	-1	-3
Staff Nurse/ Staff Midwife	41	39	-2	-4.0%	-3	-4
Nursing & Midwifery	52	52	-1	-1.1%	-4	-7
Therapy Professions	9	9				+2
Social Workers	1	1				
Pharmacy	2	2			-0	-0
Health & Social Care Professionals	12	12			-0	+2
Management (VIII & above)	1	1				
Administrative/ Supervisory (V to VII)	7	7	-0	-4.5%	-0	-0
Clerical (III & IV)	12	11	-0	-2.5%	-0	+1
Management & Administrative	20	19	-1	-3.1%	-1	+1
Support	34	34	-1	-1.5%	+0	+0
Maintenance/ Technical	4	4				
General Support	38	38	-1	-1.3%	+0	+0
Health Care Assistants	80	79	-1	-1.8%	+2	-3
Care, other	3	3	-0	-4.4%	-0	-0
Patient & Client Care	83	82	-2	-1.9%	+2	-3

Feb 2021 (Dec 2020 figure: 268)	WTE Jan 2021	WTE Feb 2021	WTE change since Jan 21	% change since Jan 21	WTE change since Dec 20	WTE change since Feb 20
Overall	269	269	-0	-0.1%	+1	-9
Registrars	2	2			+1	+1
Medical/ Dental, other	1	1				
Medical & Dental	3	3			+1	+1
Nurse/ Midwife Manager	16	16	-0	-0.2%	-1	-4
Staff Nurse/ Staff Midwife	75	75			+1	-2
Nursing & Midwifery	91	91	-0	-0.0%	-0	-6
Therapy Professions	29	30	+1	+4.5%	+1	-0
Social Workers	6	6				
Psychologists	1	1				
Health & Social Care Professionals	35	36	+1	+3.7%	+1	-0
Management (VIII & above)	1	1				+1
Administrative/ Supervisory (V to VII)	6	7	+1	+17.1%	+2	+1
Clerical (III & IV)	9	8	-1	-10.9%	-1	+1
Management & Administrative	16	16			+1	+3
Support	34	34				-2
Maintenance/ Technical	4	4			-1	-1
General Support	38	38			-1	-3
Health Care Assistants	85	84	-1	-1.2%	-1	-4
Care, other	1	1	-1	-50.0%	-1	-1
Patient & Client Care	86	85	-2	-1.7%	-2	-4

Social Care Older Persons Services Employment by Grade Group: Feb 2021

Feb 2021 (Dec 2020 figure: 13,415)	WTE Jan 2021	WTE Feb 2021	WTE change since Jan 21	% change since Jan 21	WTE change since Dec 20	WTE change since Feb 20
Overall	13,371	13,319	-52	-0.4%	-96	+227
Consultant Medicine	4	4	-0	-0.5%	-0	-0
Consultants	4	4	-0	-0.5%	-0	-0
Registrar	8	8			+2	+1
Senior Registrar	1	1				
Specialist Registrar	2	2				
Registrars	11	11			+2	+1
SHO/ Interns	12	11	-1	-10.2%	-3	-1
Medical/ Dental, other	88	86	-1	-1.6%	-18	+2
Medical & Dental	114	112	-3	-2.4%	-19	+1
Clinical Nurse/ Midwife Manager	538	543	+5	+1.0%	+7	+31
Director Nursing/Midwifery, Assistant	108	106	-2	-1.5%	-0	+7
Director of Nursing/Midwifery	102	106	+4	+4.1%	+2	+4
Nurse/ Midwife Manager	747	755	+8	+1.1%	+9	+41
Advanced Nurse/ Midwife Practitioner	18	19	+1	+5.6%	+2	+7
Clinical Nurse/ Midwife Specialist	20	19	-1	-5.1%	-2	+2
Nurse/ Midwife Specialist & AN/MP	38	38	-0	-0.2%	-0	+9
Staff Midwives	1	1	+0	+13.9%	+0	+1
Staff Nurse [Intellectual Disability]	1	1				+1
Staff Nurse [Psychiatric]	5	6	+0	+6.0%	+1	+1
Staff Nurses [General/ Children's]	2,630	2,633	+4	+0.1%	+16	+51
Staff Nurse/ Staff Midwife	2,637	2,641	+4	+0.1%	+17	+54
Public Health Nurse	13	13	-1	-6.6%	-1	+0
Post-registration Nurse/ Midwife Student				-100.0%		-1
Nursing/ Midwifery awaiting registration	2	1	-0	-15.3%	-0	-1
Nursing/ Midwifery Student	2	1	-0	-15.3%	-0	-2
Nursing Education/Clinical	4	4			+0	+3
Nursing/ Midwifery other	4	4			+0	+3
Nursing & Midwifery	3,442	3,452	+11	+0.3%	+25	+106
Dietitians	20	22	+2	+12.4%	+4	+7
Occupational Therapists	117	119	+3	+2.2%	+6	+4
Physiotherapists	137	140	+3	+2.3%	+8	+17
Podiatrists & Chiropodists	15	15	-0	-0.7%	+2	+3
Speech & Language Therapists	22	23	+1	+3.2%	+3	+0
Therapy Professions	310	319	+9	+2.8%	+23	+31
Clinical Measurement	0		-0	-100.0%	-0	
Radiographers	5	5	+0	+1.2%	+0	+0
Health Science/ Diagnostics	5	5	-0	-1.2%	-0	+0
Social Care	3	3			-0	
Social Workers	102	102	-0	-0.1%	+2	+7
Psychologists	1	2	+1	+68.0%	+1	+0
Pharmacy	17	18	+0	+1.6%	+1	-0
Other Health & Social Care	1	1				+0
Play Therapists/ Specialists	1	1				
H&SC, Other	2	2				+0
Health & Social Care Professionals	440	450	+10	+2.2%	+27	+38
Executive Management	15	15	+1	+4.1%	+1	+3
Senior Management (VIII & GM)	64	64	-1	-1.2%	-0	+0

Feb 2021 (Dec 2020 figure: 13,415)	WTE Jan 2021	WTE Feb 2021	WTE change since Jan 21	% change since Jan 21	WTE change since Dec 20	WTE change since Feb 20
Overall	13,371	13,319	-52	-0.4%	-96	+227
Management (VIII & above)	79	79	-0	-0.2%	+0	+4
Middle Management (V-VII)	184	189	+5	+2.7%	+13	+27
Other Administrative				-100.0%		-2
Administrative/ Supervisory (V to VII)	184	189	+5	+2.7%	+13	+25
Clerical (III & IV)	598	585	-13	-2.1%	-2	+15
Management & Administrative	861	853	-8	-0.9%	+11	+44
Catering	216	217	+2	+0.7%	+1	-8
Household Services	479	476	-3	-0.6%	-3	-3
Other Support	28	29	+0	+1.0%	-0	-6
Portering	76	75	-1	-0.7%	-1	-6
Support	799	798	-1	-0.2%	-4	-23
Maintenance	94	90	-4	-4.2%	-5	-10
Technical Services		4	+4	-100.0%	+4	+4
Maintenance/ Technical	94	94	+0	+0.1%	-1	-6
General Support	893	892	-1	-0.2%	-4	-29
HCA, Nurse's Aide, etc.	4,066	4,079	+14	+0.3%	+11	+69
HCA (Student Nurse/Midwife COVID-19)	17	13	-4	-22.0%	-9	+13
Health & Social Care Assistants	27	26	-1	-4.3%	-1	+5
Health Care Assistants	4,110	4,119	+9	+0.2%	+0	+87
Home Help	3,364	3,289	-75	-2.2%	-142	-33
Care, other	147	153	+6	+3.9%	+6	+13
Patient & Client Care	7,621	7,561	-60	-0.8%	-135	+67

Employment by WTE, Headcount, Gender, Full-Time /Part-Time etc.: Feb 2021

Social Care Older Persons Services Staff Group	WTE	Headcount	WTE: no.	% Male	% female	Male WTE: no.	Female WTE: no.	% Total Perm	% Male Perm	% Female Perm	% Total Full Time	% Total Part Time	% Male FT	% Female FT
Overall	13,319	16,366	1.23	12.9%	87.1%	1.11	1.25	80.3%	78.9%	80.5%	57.9%	42.1%	82.5%	54.3%
Consultant Medicine	4	7	1.73	14.3%	85.7%	2.00	1.69	85.7%	85.7%	83.3%	28.6%	71.4%	0.0%	33.3%
Consultants	4	7	1.73	14.3%	85.7%	2.00	1.69	85.7%	100.0%	83.3%	28.6%	71.4%	0.0%	33.3%
Registrar	8	8	1.07	37.5%	62.5%	1.00	1.11	50.0%	50.0%	40.0%	87.5%	12.5%	100.0%	80.0%
Senior Registrar	1	1	1.00		100.0%		1.00	100.0%	100.0%	100.0%	100.0%	0.0%		100.0%
Specialist Registrar	2	2	1.00	100.0%		1.00		0.0%	0.0%		100.0%	0.0%	100.0%	
Registrars	11	11	1.05	45.5%	54.5%	1.00	1.09	45.5%	40.0%	50.0%	90.9%	9.1%	100.0%	83.3%
SHO/ Interns	11	11	1.00	27.3%	72.7%	1.00	1.00	18.2%	66.7%	0.0%	100.0%	0.0%	100.0%	100.0%
Medical/ Dental, other	86	161	1.87	65.2%	34.8%	2.02	1.64	54.0%	57.1%	48.2%	35.4%	64.6%	30.5%	44.6%
Medical & Dental	112	190	1.70	60.0%	40.0%	1.89	1.48	52.6%	57.0%	46.1%	42.1%	57.9%	35.1%	52.6%
Clinical Nurse/ Midwife Manager	543	579	1.07	7.4%	92.6%	1.03	1.07	96.7%	96.7%	97.2%	79.1%	20.9%	93.0%	78.0%
Director Nursing/Midwifery, Assistant	106	110	1.04	4.5%	95.5%	1.00	1.04	98.2%	98.2%	98.1%	90.9%	9.1%	100.0%	90.5%
Director of Nursing/Midwifery	106	108	1.02	5.6%	94.4%	1.17	1.01	97.2%	97.2%	97.1%	97.2%	2.8%	100.0%	97.1%
Nurse/ Midwife Manager	755	797	1.06	6.8%	93.2%	1.04	1.06	97.0%	92.6%	97.3%	83.2%	16.8%	94.4%	82.4%
Advanced Nurse/ Midwife Practitioner	19	19	1.02	10.5%	89.5%	1.00	1.03	100.0%	100.0%	100.0%	100.0%	0.0%	100.0%	100.0%
Clinical Nurse/ Midwife Specialist	19	21	1.09	9.5%	90.5%	1.00	1.10	100.0%	100.0%	100.0%	76.2%	23.8%	100.0%	73.7%
Nurse/ Midwife Specialist & AN/MP	38	40	1.05	10.0%	90.0%	1.00	1.06	100.0%	100.0%	100.0%	87.5%	12.5%	100.0%	86.1%
Staff Midwives	1	1	1.11		100.0%		1.11	100.0%	100.0%	100.0%	0.0%	100.0%		0.0%
Staff Nurse [Intellectual Disability]	1	1	1.00		100.0%		1.00	100.0%	100.0%	100.0%	100.0%	0.0%		100.0%
Staff Nurse [Psychiatric]	6	7	1.21	28.6%	71.4%	1.04	1.29	42.9%	42.9%	20.0%	57.1%	42.9%	100.0%	40.0%
Staff Nurses [General/ Children's]	2,633	3,052	1.16	7.3%	92.7%	1.04	1.17	89.3%	89.3%	89.5%	61.4%	38.6%	92.3%	59.0%
Staff Nurse/ Staff Midwife	2,641	3,061	1.16	7.3%	92.7%	1.04	1.17	89.2%	86.6%	89.4%	61.4%	38.6%	92.4%	59.0%
Public Health Nurse	13	15	1.19	6.7%	93.3%	1.00	1.21	100.0%	100.0%	100.0%	60.0%	40.0%	100.0%	57.1%
Nursing/ Midwifery Student	1	2	1.57		100.0%	#DIV/0	1.57	50.0%		50.0%	50.0%	50.0%	#DIV/0	50.0%
Nursing Education/Clinical	4	4	1.00	25.0%	75.0%	1.00	1.00	100.0%	100.0%	100.0%	100.0%	0.0%	100.0%	100.0%
Nursing/ Midwifery other	4	4	1.00	25.0%	75.0%	1.00	1.00	100.0%	100.0%	100.0%	100.0%	0.0%	100.0%	100.0%
Nursing & Midwifery	3,452	3,919	1.14	7.2%	92.8%	1.04	1.14	90.9%	88.0%	91.2%	66.1%	33.9%	93.0%	64.0%
Dietitians	22	29	1.32	6.9%	93.1%	1.00	1.35	93.1%	93.1%	92.6%	58.6%	41.4%	100.0%	55.6%

Occupational Therapists	119	132	1.11	10.6%	89.4%	1.01	1.12	83.3%	83.3%	81.4%	78.8%	21.2%	100.0%	76.3%
Physiotherapists	140	160	1.15	15.6%	84.4%	1.10	1.15	85.6%	85.6%	85.9%	75.0%	25.0%	88.0%	72.6%
Podiatrists & Chiropodists	15	19	1.30	21.1%	78.9%	1.00	1.41	47.4%	47.4%	46.7%	63.2%	36.8%	75.0%	60.0%
Speech & Language Therapists	23	28	1.22	3.6%	96.4%	1.00	1.23	96.4%	96.4%	96.3%	71.4%	28.6%	100.0%	70.4%
Therapy Professions	319	368	1.16	12.5%	87.5%	1.05	1.17	84.2%	87.0%	83.9%	74.2%	25.8%	91.3%	71.7%
Radiographers	5	9	1.80	11.1%	88.9%	2.00	1.77	88.9%	88.9%	87.5%	11.1%	88.9%	0.0%	12.5%
Health Science/ Diagnostics	5	9	1.80	11.1%	88.9%	2.00	1.77	88.9%	100.0%	87.5%	11.1%	88.9%	0.0%	12.5%
Social Care	3	5	1.82		100.0%	#DIV/0	1.82	100.0%		100.0%	0.0%	100.0%	#DIV/0	0.0%
Social Workers	102	113	1.11	14.2%	85.8%	1.02	1.12	91.2%	87.5%	91.8%	85.0%	15.0%	93.8%	83.5%
Psychologists	2	3	1.43		100.0%	#DIV/0	1.43	100.0%		100.0%	33.3%	66.7%	#DIV/0	33.3%
Pharmacy	18	25	1.41	16.0%	84.0%	1.22	1.45	72.0%	100.0%	66.7%	48.0%	52.0%	75.0%	42.9%
Other Health & Social Care	1	1	1.85		100.0%		1.85	100.0%	100.0%	100.0%	0.0%	100.0%		0.0%
Play Therapists/ Specialists	1	1	1.00	100.0%		1.00		100.0%	100.0%		100.0%	0.0%	100.0%	
H&SC, Other	2	2	1.30	50.0%	50.0%	1.00	1.85	100.0%	100.0%	100.0%	50.0%	50.0%	100.0%	0.0%
Health & Social Care	450	525	1.17	13.0%	87.0%	1.06	1.18	85.5%	88.2%	85.1%	73.1%	26.9%	89.7%	70.7%
Executive Management	15	16	1.04	56.3%	43.8%	1.00	1.10	100.0%	100.0%	100.0%	100.0%	0.0%	100.0%	100.0%
Senior Management (VIII & GM)	64	66	1.04	27.3%	72.7%	1.08	1.02	89.4%	89.4%	93.8%	93.9%	6.1%	83.3%	97.9%
Management (VIII & above)	79	82	1.04	32.9%	67.1%	1.05	1.03	91.5%	85.2%	94.5%	95.1%	4.9%	88.9%	98.2%
Administrative/ Supervisory (V to VII)	189	202	1.07	13.9%	86.1%	1.05	1.07	95.5%	92.9%	96.0%	78.7%	21.3%	85.7%	77.6%
Clerical (III & IV)	585	676	1.16	7.5%	92.5%	1.05	1.16	84.0%	76.5%	84.6%	63.9%	36.1%	90.2%	61.8%
Management & Administrative	853	960	1.13	11.0%	89.0%	1.05	1.14	87.1%	83.0%	87.6%	69.7%	30.3%	88.7%	67.3%
Catering	217	238	1.10	34.5%	65.5%	1.03	1.13	93.3%	93.3%	95.5%	71.0%	29.0%	91.5%	60.3%
Household Services	476	540	1.13	17.6%	82.4%	1.05	1.15	84.4%	84.4%	84.9%	59.1%	40.9%	84.2%	53.7%
Other Support	29	35	1.22	51.4%	48.6%	1.13	1.34	80.0%	80.0%	76.5%	62.9%	37.1%	83.3%	41.2%
Portering	75	77	1.02	98.7%	1.3%	1.02	1.35	85.7%	85.7%	100.0%	93.5%	6.5%	93.4%	100.0%
Support	798	890	1.12	30.4%	69.6%	1.04	1.15	86.7%	85.2%	87.4%	65.4%	34.6%	88.9%	55.1%
Maintenance/ Technical	94	97	1.03	99.0%	1.0%	1.03	1.00	91.8%	91.7%	100.0%	92.8%	7.2%	92.7%	100.0%
General Support	892	987	1.11	37.2%	62.8%	1.04	1.15	87.2%	86.9%	87.4%	68.1%	31.9%	89.9%	55.2%
HCA, Nurse's Aide, etc.	4,079	4,620	1.13	19.9%	80.1%	1.05	1.16	86.4%	86.4%	86.5%	62.4%	37.6%	87.3%	56.2%
HCA (Student Nurse/Midwife COVID-19)	13	23	1.78	21.7%	78.3%	2.18	1.69	0.0%	0.0%	0.0%	21.7%	78.3%	40.0%	16.7%
Health & Social Care Assistants	26	29	1.10	34.5%	65.5%	1.08	1.12	89.7%	89.7%	84.2%	82.8%	17.2%	90.0%	78.9%
Health Care Assistants	4,119	4,672	1.13	20.0%	80.0%	1.05	1.16	86.0%	85.9%	86.1%	62.3%	37.7%	87.1%	56.1%
Home Help	3,289	4,914	1.49	3.2%	96.8%	1.36	1.50	64.4%	29.6%	65.5%	41.6%	58.4%	59.1%	41.1%
Care, other	153	199	1.30	36.7%	63.3%	1.63	1.17	72.9%	39.7%	92.1%	63.3%	36.7%	56.2%	67.5%

Patient & Client Care	7,561	9,785	1.29	11.9%	88.1%	1.11	1.32	74.9%	75.3%	74.8%	51.9%	48.1%	81.3%	48.0%
-----------------------	-------	-------	------	-------	-------	------	------	-------	-------	-------	-------	-------	-------	-------

Employment by WTE, Headcount, Gender, Full-Time /Part-Time etc.: Feb 2021

Social Care Older Persons Services CHO	WTE	Headcount	WTE: no.	% Male	% female	Male WTE: no.	Female WTE: no.	% Total Perm	% Male Perm	% Female Perm	% Total Full Time	% Total Part Time	% Male FT	% Female FT
Overall	13,319	16,366	1.23	12.9%	87.1%	1.11	1.25	80.3%	78.9%	80.5%	57.9%	42.1%	82.5%	54.3%
CHO 1	1,864	2,242	1.20	12.2%	87.8%	1.16	1.21	73.3%	73.3%	71.7%	43.3%	56.7%	68.2%	39.8%
HSE	1,562	1,872	1.20	12.2%	87.8%	1.05	1.22	90.7%	90.7%	91.2%	47.5%	52.5%	89.0%	89.0%
CHO 2	1,562	1,872	1.20	12.2%	87.8%	1.05	1.22	90.7%	90.7%	91.2%	47.5%	52.5%	89.0%	41.8%
HSE	1,056	1,383	1.31	11.6%	88.4%	1.05	1.35	92.1%	92.1%	92.9%	49.7%	50.3%	88.2%	88.2%
CHO 3	1,056	1,383	1.31	11.6%	88.4%	1.05	1.35	92.1%	92.1%	92.9%	49.7%	50.3%	88.2%	44.6%
HSE	2,900	3,846	1.33	10.8%	89.2%	1.19	1.35	65.7%	65.7%	67.7%	74.6%	25.4%	85.3%	85.3%
CHO 4	2,900	3,846	1.33	10.8%	89.2%	1.19	1.35	65.7%	65.7%	67.7%	74.6%	25.4%	85.3%	73.4%
HSE	1,649	1,985	1.20	9.6%	90.4%	1.10	1.22	82.1%	82.1%	81.6%	46.2%	53.8%	78.5%	78.5%
CHO 5	1,649	1,985	1.20	9.6%	90.4%	1.10	1.22	82.1%	82.1%	81.6%	46.2%	53.8%	78.5%	42.8%
HSE	335	370	1.10	22.7%	77.3%	1.07	1.12	76.8%	76.8%	76.6%	71.4%	28.6%	84.5%	84.5%
Section 38	472	513	1.09	26.5%	73.5%	1.05	1.10	96.5%	96.5%	95.5%	81.5%	18.5%	91.9%	91.9%
CHO 6	807	883	1.09	24.9%	75.1%	1.06	1.11	88.2%	88.2%	87.3%	77.2%	22.8%	89.1%	73.3%
HSE	1,014	1,170	1.15	15.9%	84.1%	1.05	1.18	91.5%	91.5%	92.6%	65.8%	34.2%	85.5%	85.5%
CHO 7	1,014	1,170	1.15	15.9%	84.1%	1.05	1.18	91.5%	91.5%	92.6%	65.8%	34.2%	85.5%	62.1%
HSE	1,482	1,879	1.27	11.4%	88.6%	1.17	1.28	82.3%	82.3%	82.0%	46.1%	53.9%	73.4%	73.4%
CHO 8	1,482	1,879	1.27	11.4%	88.6%	1.17	1.28	82.3%	82.3%	82.0%	46.1%	53.9%	73.4%	42.6%
HSE	641	721	1.12	21.8%	78.2%	1.06	1.14	88.3%	88.3%	89.5%	73.2%	26.8%	85.4%	85.4%
Section 38	269	305	1.13	13.1%	86.9%	1.06	1.14	87.9%	87.9%	88.3%	74.8%	25.2%	95.0%	95.0%
CHO 9	910	1,026	1.13	19.2%	80.8%	1.06	1.14	88.2%	88.2%	89.1%	73.7%	26.3%	87.3%	70.4%
other Community Services	75	80	1.07	25.0%	75.0%	1.05	1.07	81.3%	81.3%	81.7%	87.5%	12.5%	90.0%	86.7%

Summary Staff Movement: February 2021

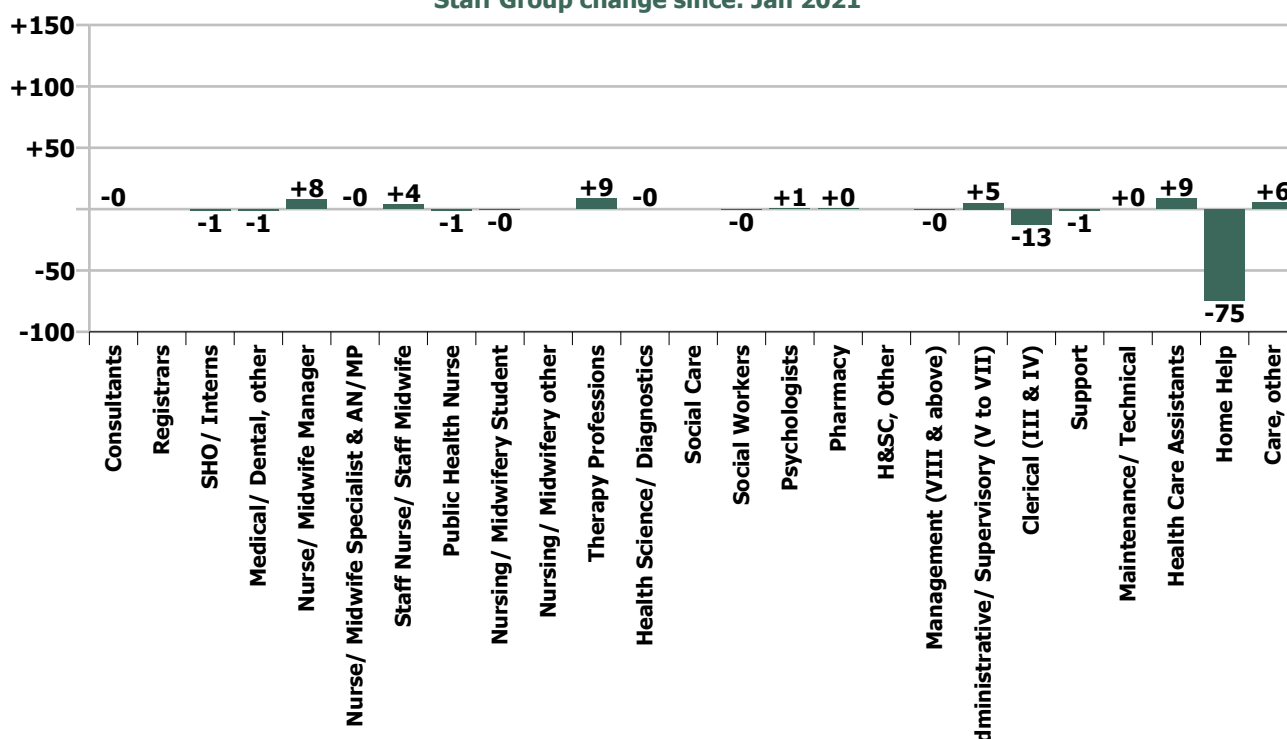
Month-on-month
Summary

WTE change since Jan 21	% change since Jan 21	overall	Consultants	Registrars	SHO/ Interns	Medical/ Dental, other	Medical & Dental	Nurse/ Midwife Manager	Nurse/ Midwife Specialist & AN/MP	Staff Nurse/ Staff Midwife	Public Health Nurse	Nursing/ Midwifery Student	Nursing/ Midwifery other	Nursing & Midwifery	Therapy Professions	Health Science/ Diagnostics	Social Care	Social Workers	Psychologists	Pharmacy	H&SC, Other	Health & Social Care Professionals	Management (VIII & above)	Administrativ e/ Supervisory (V to VII)	Clerical (III & IV)	Management & Administrativ e	Support	Maintenance/ Technical	General Support	Health Care Assistants	Home Help	Care, other	Patient & Client Care
Overall	-0.4%	-52	-0.0	0.0	-1.3	-1.4	-2.7	+7.9	-0.1	+3.9	-0.9	-0.2	0.0	+10.7	+8.7	-0.1	0.0	-0.1	+0.9	+0.3	0.0	+9.7	-0.1	+4.9	-12.8	-8.0	-1.5	+0.1	-1.4	+8.7	-74.5	+5.7	-60.1
CHO 1	-0.4%	-7				-1.2	-1.2	-0.1		+0.5				+0.4	+1.0	+0.1		+0.9				+1.9	+0.1	+0.9	-0.2	+0.8	-1.2		-1.2	+2.1	-8.6	-1.4	-7.9
CHO 2	-0.9%	-14				-0.1	-0.1	+3.3		-1.5				+1.8	+0.4							+0.4		+0.7	-4.1	-3.4	-1.0	+0.1	-0.9	+4.3	-20.1	+3.8	-12.0
CHO 3	+1.6%	+17					0.0	-1.3		+5.6	-0.0			+4.2	-0.7	-0.1		-1.1				-1.9	-0.4	+0.0	+0.3	-0.1	+1.4	+0.8	+2.1	+8.2	-0.6	+4.9	+12.5
CHO 4	-0.6%	-18				-0.9	-0.9	+2.2	-1.1	+2.8				+4.0	+5.8			-0.3		-0.0		+5.4	-0.2	+0.8	-2.5	-1.8	-1.4		-1.4	+1.6	-25.0	+0.5	-22.9
CHO 5	-1.3%	-22				+0.6	+0.6	+0.5	-0.1	+0.5	-0.9			+0.1	+0.2							+0.2	+1.0	-1.1	+3.0	+2.9	+0.9	+0.1	+0.9	-6.3	-18.9	-1.3	-26.5
CHO 6	+0.2%	+1				+0.1	+0.1	+1.0		-2.2				-1.2	+2.2			-0.0	+0.9			+3.0		+1.6	-2.3	-0.6	-0.4		-0.4	+1.1		-0.6	+0.5
CHO 7	-0.8%	-8					0.0	+1.6	+0.0	+0.9		-0.2		+2.3	+0.6			-0.6				-0.1	+0.0	+0.1	-0.7	-0.6	-0.4		-0.4	-10.6	+1.3	-0.1	-9.4
CHO 8	+0.0%	+0					0.0	+0.9	+1.0	+0.6	+0.0			+2.5	-0.4			+0.0		+0.3		-0.0	-0.0	+0.2	-4.1	-3.9	+0.4	-0.8	-0.4	+5.0	-2.6	-0.4	+1.9
CHO 9	-0.0%	-0	-0.0		-1.3		-1.3	-0.1	-0.0	-3.2				-3.4	-0.3			+1.0				+0.7	-0.6	+1.0	-0.4	-0.0	+0.1		+0.1	+3.3		+0.4	+3.7
other Community Services	-1.6%	-1																				-0.1	+0.7	-1.8	-1.2								0.0
		-0.4%	-0.5%		-10.2%	-1.6%	-2.4%	+1.1%	-0.2%	+0.1%	-6.6%	-15.3%		+0.3%	+2.8%	-1.2%		-0.1%	+68.0%	+1.6%		+2.2%	-0.2%	+2.7%	-2.1%	-0.9%	-0.2%	+0.1%	-0.2%	+0.2%	-2.2%	+3.9%	-0.8%

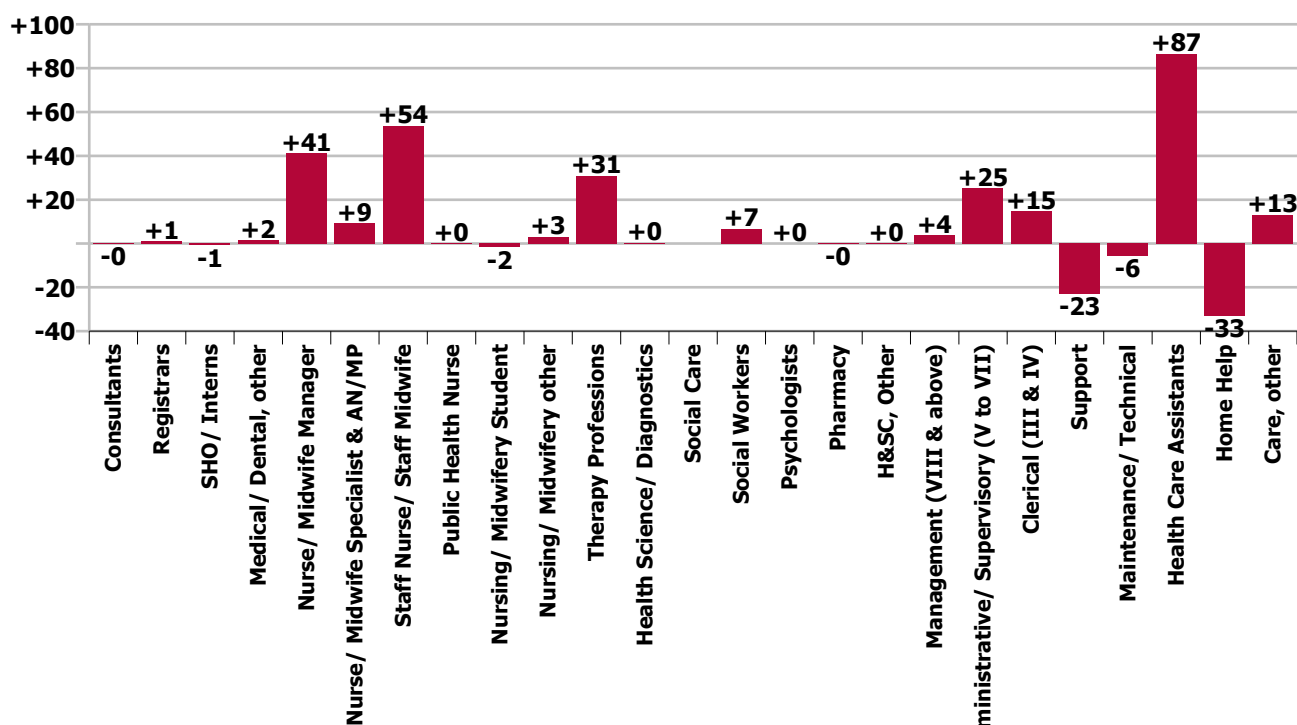
Year-on-year Summary

WTE change since Feb 20	% change since Feb 20	overall	Consultants	Registrars	SHO/ Interns	Medical/ Dental, other	Medical & Dental	Nurse/ Midwife Manager	Nurse/ Midwife Specialist & AN/MP	Staff Nurse/ Staff Midwife	Public Health Nurse	Nursing/ Midwifery Student	Nursing/ Midwifery other	Nursing & Midwifery	Therapy Professions	Health Science/ Diagnostics	Social Care	Social Workers	Psychologists	Pharmacy	H&SC, Other	Health & Social Care Professionals	Management (VIII & above)	Administrative Supervisory (V to VII)	Clerical (III & IV)	Management & Administrative	Support	Maintenance/ Technical	General Support	Health Care Assistants	Home Help	Care, other	Patient & Client Care	
Overall	+1.7%	+227	-0	+1	-1	+2	+1	+41	+9	+54	+0	-2	+3	+106	+31	+0		+7	+0	-0	+0	+38	+4	+25	+15	+44	-23	-6	-29	+87	-33	+13	+67	
CHO 1	+2.8%	+51				-2	-2	-2	+1	+6			+1	+6	+5	+0		-0				+5	+4	+4	-0	+4	-5	-1	-6	+17	+33	-6	+45	
CHO 2	+0.8%	+12				-0	-0	+13		+1	+0			+14	+1			+1			+0	+2	+0	-0	-9	-9	-0	+0	+17	-24	+11	+5		
CHO 3	+9.9%	+95				+1	+1	+2	+2	+3				+7	+1			-1				-0	-0	-0	+2	+1	+0	+0	+36	+42	+7	+85		
CHO 4	+0.0%	+1			+1	-1	+0	+5	+0	+12	+2	-1		+19	+6			+1		-1	-0	+7	+2	+3	+4	+10	+14	+1	+15	+19	-71	+3	-49	
CHO 5	+0.9%	+15				+6	+6	+4	+2	-1	-2	-2		+1	-7			+0				-6	+1	+6	+7	+14	-37	-4	-41	+39	+5	-3	+41	
CHO 6	-1.9%	-16		+1		-1	-0	-6		-7				-13	+0			-0	+0	+0	-0	-0	+0	+1	+3	+4	-4	-1	-5	-0		-1	-2	
CHO 7	+1.6%	+16				-2	-2	+10	-0	+27		+1		+38	+2			+2			-1	+3	+2	+4	+1	+8	+10		+10	-36	-4	+0	-40	
CHO 8	-0.2%	-2						+12	+3	+4	+1		+2	+21	+4			+0			+1	+5	+1		-3	-2	-2	-1	-3	-12	-13	+2	-24	
CHO 9	+5.9%	+50	-0		-2		-2	+3	+1	+10	-0			+13	+18			+4			+1	+0	+23	-2	+7	+3	+8	+3		+3	+6		-1	+6
other Community Services	+7.9%	+6																				-1	+0		+6	+5				+0			+0	
		+1.7%	-3.8%	+10.5%	-7.4%	+1.8%	+1.3%	+5.8%	+31.8%	+2.1%	+1.3%	-57.7%	+300.0%	+3.2%	+10.7%	+9.9%		+7.0%	+0.5%	-0.7%	+13.2%	+9.3%	+5.1%	+15.5%	+2.6%	+5.4%	-2.8%	-5.7%	-3.1%	+2.1%	-1.0%	+9.3%	+0.9%	

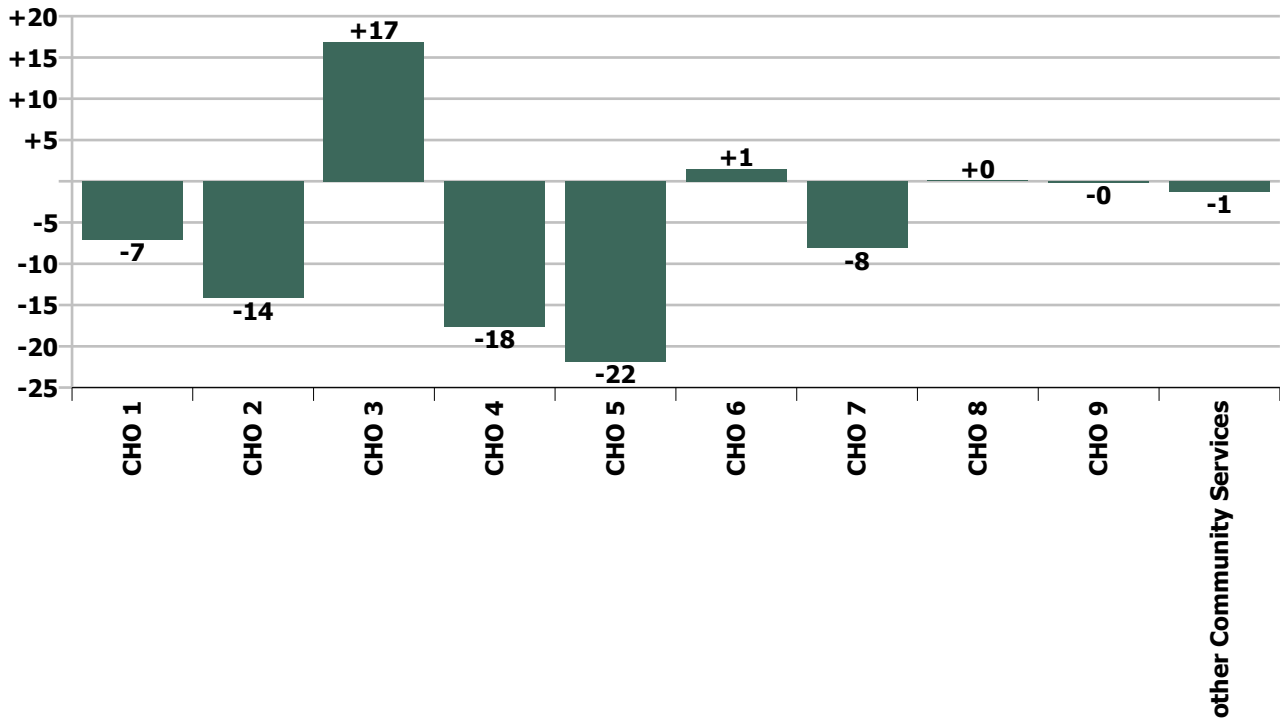
Staff Group change since: Jan 2021



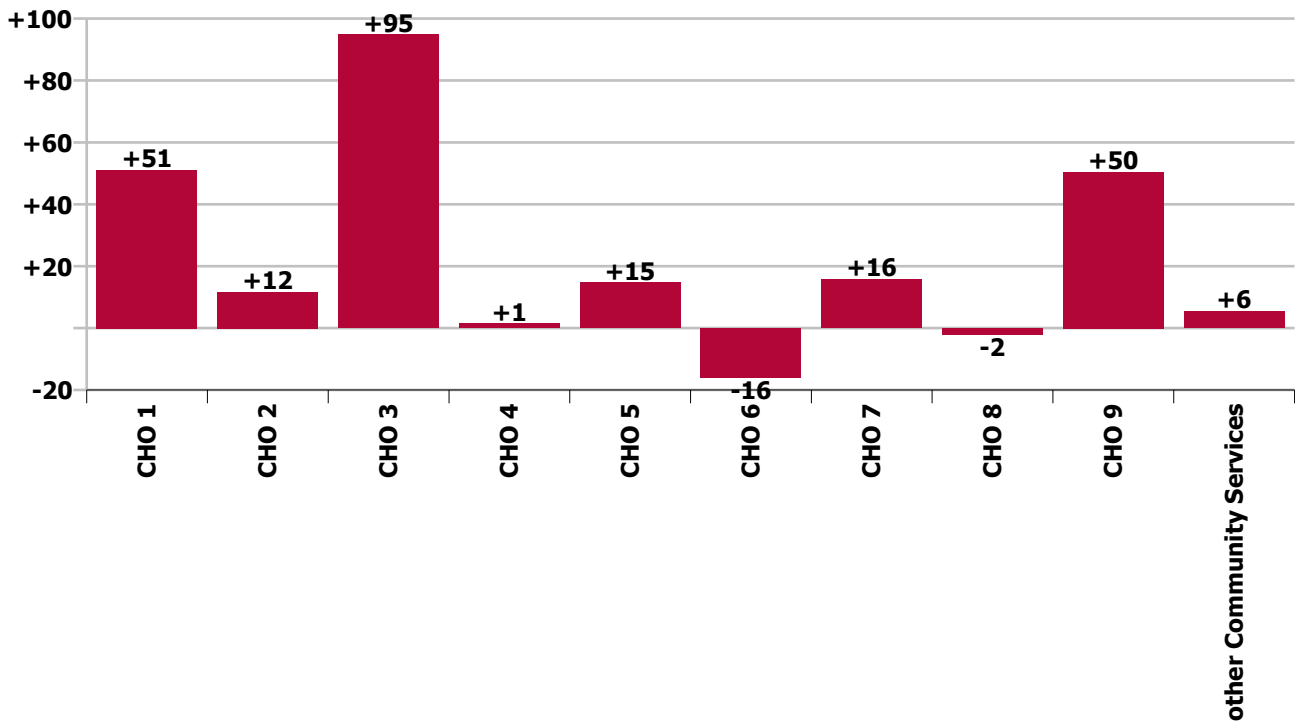
Staff Group change since: Feb 2020



CHO change since: Jan 2021



CHO change since: Feb 2020



Longitudinal Employment Levels by Grade Group - Dec 2015 to Feb 2021

Feb 2021 (Dec 2015 figure: 12,607)	WTE Feb 2021	WTE change since Dec 15	WTE change since Dec 16	WTE change since Dec 17	WTE change since Dec 18	WTE change since Dec 19	WTE change since Dec 20	% change since Dec 15	% change since Dec 16	% change since Dec 17	% change since Dec 18	% change since Dec 19	% change since Dec 20
Overall	13,319	+712	+837	+216	+14	+87	-96	+5.7%	+6.7%	+1.6%	+0.1%	+0.7%	-0.7%
Consultant Medicine	4	-3	-5	-5	+0	+0	-0	-38.8%	-56.8%	-56.1%	+12.2%	+12.2%	-8.6%
Consultant Psychiatry		-1	-1	-1				-100.0%	-100.0%	-100.0%	-100.0%	-100.0%	-100.0%
Consultant Surgery		-1	-1	-0	-0			-100.0%	-100.0%	-100.0%	-100.0%	-100.0%	-100.0%
Consultants	4	-5	-7	-6	+0	+0	-0	-53.0%	-63.2%	-60.3%	+8.6%	+12.2%	-8.6%
Registrar	8	-1	+2		+0	+1	+2	-7.1%	+36.3%		+2.0%	+15.4%	+28.6%
Senior Registrar	1				-1						-50.0%		
Specialist Registrar	2	-1		+1	+1			-33.3%		+100.0%	+100.0%		
Registrars	11	-2	+2	+1	+0	+1	+2	-13.0%	+23.5%	+10.5%	+1.4%	+10.5%	+18.9%
SHO/ Interns	11	+0	+1	+1	-1	-4	-3	+1.9%	+10.6%	+11.0%	-7.8%	-26.7%	-19.5%
Other Medical	86	+3	+0	+0	+1	-10	-18	+3.9%	+0.2%	+0.2%	+0.8%	-10.7%	-17.1%
Medical/ Dental, other	86	+3	+0	+0	+1	-10	-18	+3.9%	+0.2%	+0.2%	+0.8%	-10.7%	-17.1%
Medical & Dental	112	-3	-4	-4	+0	-13	-19	-2.3%	-3.2%	-3.3%	+0.2%	-10.4%	-14.6%
Clinical Nurse/ Midwife Manager	543	+15	+8	+15	+19	+35	+7	+2.9%	+1.6%	+2.8%	+3.6%	+6.8%	+1.3%
Director Nursing/Midwifery, Assistant	106	+20	+19	+14	+19	+4	-0	+23.8%	+21.2%	+15.8%	+22.5%	+3.5%	-0.0%
Director of Nursing/Midwifery	106	+25	+21	+24	+24	+8	+2	+31.1%	+25.0%	+28.7%	+28.6%	+8.1%	+1.9%
Nurse/ Midwife Manager	755	+61	+48	+53	+62	+46	+9	+8.7%	+6.8%	+7.5%	+8.9%	+6.5%	+1.2%
Advanced Nurse/ Midwife Practitioner	19	+17	+16	+16	+12	+8	+2	+829.0%	+519.3%	+519.3%	+166.2%	+73.3%	+11.8%
Clinical Nurse/ Midwife Specialist	19	+3	+7	+8	+3	+4	-2	+15.7%	+54.4%	+72.5%	+15.5%	+22.9%	-10.3%
Nurse/ Midwife Specialist & AN/MP	38	+19	+22	+24	+14	+11	-0	+102.6%	+144.2%	+166.7%	+59.8%	+43.3%	-0.7%
Graduate Nursing/ Midwifery		-2						-100.0%	-100.0%	-100.0%	-100.0%	-100.0%	-100.0%
Staff Midwives	1	+0	+1	-1	+1	+1	+0	+12.5%	+125.0%	-50.0%	-100.0%	-100.0%	+2.3%
Staff Nurse [Intellectual Disability]	1			+0		+1				+29.9%		-100.0%	
Staff Nurse [Psychiatric]	6	+1	+0	+0	+0	+1	+1	+27.8%	+5.1%	+5.1%	+4.7%	+18.1%	+12.2%
Staff Nurses [General/ Children's]	2,633	+26	+51	+72	+29	+62	+16	+1.0%	+2.0%	+2.8%	+1.1%	+2.4%	+0.6%
Staff Nurse/ Staff Midwife	2,641	+25	+52	+72	+30	+65	+17	+1.0%	+2.0%	+2.8%	+1.2%	+2.5%	+0.7%
Public Health Nurse	13	-3	-2	-2	-1	-1	-1	-18.6%	-11.6%	-14.7%	-7.2%	-6.1%	-6.4%
Post-registration Nurse/ Midwife Student						-1		-100.0%	-100.0%	-100.0%	-100.0%	-100.0%	-100.0%
Nursing/ Midwifery awaiting registration	1	+1	+1	-13	+1	+0	-0	-100.0%	-100.0%	-90.9%	-100.0%	+27.0%	-5.9%
Nursing/ Midwifery Student	1	+1	+1	-13	+1	-1	-0	-100.0%	-100.0%	-90.9%	-100.0%	-36.5%	-5.9%
Nursing Education/Clinical	4	+3	+3	+3	+3	+3	+0	+300.0%	+300.0%	+300.0%	+300.0%	+300.0%	+0.5%
Nursing/ Midwifery other	4	+3	+3	+3	+3	+3	+0	+300.0%	+300.0%	+300.0%	+300.0%	+300.0%	+0.5%
Nursing & Midwifery	3,452	+107	+125	+137	+110	+124	+25	+3.2%	+3.8%	+4.1%	+3.3%	+3.7%	+0.7%
Dietitians	22	+12	+6	+5	+5	+6	+4	+111.8%	+39.0%	+25.8%	+27.2%	+34.5%	+22.4%
Occupational Therapists	119	+27	+23	+25	+15	+6	+6	+28.9%	+24.4%	+25.9%	+14.5%	+5.3%	+5.5%
Physiotherapists	140	+19	+24	+19	+12	+16	+8	+16.0%	+20.6%	+15.4%	+9.6%	+13.0%	+5.7%
Podiatrists & Chiropodists	15	+3	-0	-1	-0	+3	+2	+22.1%	-0.3%	-8.7%	-2.0%	+21.6%	+15.8%
Speech & Language Therapists	23	+3	+3	-1	-0	-0	+3	+12.8%	+13.2%	-3.2%	-0.2%	-0.4%	+16.1%

Feb 2021 (Dec 2015 figure: 12,607)	WTE Feb 2021	WTE change since Dec 15	WTE change since Dec 16	WTE change since Dec 17	WTE change since Dec 18	WTE change since Dec 19	WTE change since Dec 20	% change since Dec 15	% change since Dec 16	% change since Dec 17	% change since Dec 18	% change since Dec 19	% change since Dec 20
Overall	13,319	+712	+837	+216	+14	+87	-96	+5.7%	+6.7%	+1.6%	+0.1%	+0.7%	-0.7%
Therapy Professions	319	+63	+56	+45	+32	+30	+23	+24.6%	+21.3%	+16.7%	+11.1%	+10.5%	+7.8%
Clinical Measurement					-0	-0	-0	-100.0%	-100.0%	-100.0%	-100.0%	-100.0%	-100.0%
Medical Science			-1					-100.0%	-100.0%	-100.0%	-100.0%	-100.0%	-100.0%
Phlebotomists		-1	-1	-1				-100.0%	-100.0%	-100.0%	-100.0%	-100.0%	-100.0%
Radiographers	5	-2	-2	-2	-1	-1	+0	-30.9%	-29.5%	-30.5%	-11.0%	-15.5%	+0.8%
Health Science/ Diagnostics	5	-3	-4	-3	-1	-1	-0	-39.3%	-45.0%	-39.0%	-12.3%	-18.4%	-2.3%
Social Care	3	-1	+0	+0	-0		-0	-25.3%	+1.5%	+2.6%	-0.0%		-0.0%
Social Workers	102	+27	+16	+18	+7	+4	+2	+36.8%	+17.9%	+22.0%	+7.7%	+3.9%	+2.4%
Psychologists	2	+2	+2	+2	+2		+1	+320.0%	+320.0%	-100.0%	+320.0%		+90.9%
Pharmacy	18	+3	+3	+2	+1	+3	+1	+19.6%	+22.1%	+15.7%	+8.8%	+16.5%	+3.2%
Other Health & Social Care	1	-1	-1	-1	-1	+0		-56.5%	-60.3%	-60.3%	-60.3%	+50.0%	
Play Therapists/ Specialists	1	-0	-1					-30.1%	-37.1%				
H&SC, Other	2	-1	-1	-1	-1	+0		-42.3%	-47.8%	-34.7%	-34.7%	+13.2%	
Health & Social Care Professionals	450	+90	+71	+64	+41	+36	+27	+24.9%	+18.7%	+16.7%	+9.9%	+8.6%	+6.3%
Executive Management	15	+9	+8	+7	+5	+3	+1	+156.0%	+119.4%	+93.9%	+53.6%	+29.0%	+3.9%
Senior Management (VIII & GM)	64	+27	+23	+27	+15	+1	-0	+76.0%	+57.3%	+72.3%	+31.1%	+1.5%	-0.5%
Management (VIII & above)	79	+37	+32	+34	+20	+4	+0	+87.4%	+66.5%	+76.1%	+34.9%	+5.9%	+0.3%
Middle Management (V-VII)	189	+82	+72	+61	+47	+25	+13	+77.2%	+61.9%	+47.9%	+33.1%	+15.2%	+7.4%
Other Administrative		-1	-1	-1	-1	-1		-100.0%	-100.0%	-100.0%	-100.0%	-100.0%	-100.0%
Administrative/ Supervisory (V to VII)	189	+81	+71	+60	+46	+24	+13	+75.6%	+60.5%	+46.7%	+32.2%	+14.5%	+7.4%
Clerical (III & IV)	585	+124	+102	+76	+20	+14	-2	+26.9%	+21.0%	+14.9%	+3.6%	+2.4%	-0.4%
Management & Administrative	853	+242	+204	+170	+87	+42	+11	+39.7%	+31.5%	+24.9%	+11.3%	+5.2%	+1.3%
Catering	217	+6	+4	+5	+2	-4	+1	+3.0%	+1.9%	+2.5%	+0.8%	-1.9%	+0.3%
Household Services	476	-106	-87	-68	-41	-16	-3	-18.1%	-15.4%	-12.5%	-8.0%	-3.2%	-0.5%
Other Support	29	-16	-11	-15	-9	-5	-0	-36.3%	-28.5%	-33.8%	-24.3%	-15.7%	-1.3%
Portering	75	-9	-10	-9	-4	-6	-1	-10.9%	-11.4%	-10.2%	-5.4%	-7.6%	-1.8%
Support	798	-125	-104	-86	-53	-31	-4	-13.5%	-11.5%	-9.7%	-6.3%	-3.8%	-0.4%
Maintenance	90	-17	-14	-12	-12	-8	-5	-15.5%	-13.2%	-11.7%	-12.2%	-8.6%	-5.1%
Technical Services	4	+4	+4	+4	+4	+4	+4	-100.0%	-100.0%	-100.0%	-100.0%	-100.0%	-100.0%
Maintenance/ Technical	94	-13	-10	-8	-8	-4	-1	-11.8%	-9.3%	-7.7%	-8.3%	-4.6%	-0.9%
General Support	892	-137	-114	-94	-62	-36	-4	-13.3%	-11.3%	-9.5%	-6.5%	-3.9%	-0.5%
HCA, Nurse's Aide, etc.	4,079	+93	+33	-6	-52	+57	+11	+2.3%	+0.8%	-0.1%	-1.3%	+1.4%	+0.3%
HCA (Student Nurse/Midwife COVID-19)	13	+13	+13	+13	+13	+13	-9	-100.0%	-100.0%	-100.0%	-100.0%	-100.0%	-41.5%
Health & Social Care Assistants	26	-1	+0	+0	+2	+5	-1	-5.1%	+1.2%	+1.5%	+8.4%	+23.6%	-3.7%
Health Care Assistants	4,119	+104	+46	+7	-37	+75	+0	+2.6%	+1.1%	+0.2%	-0.9%	+1.9%	+0.0%
Home Help	3,289	+289	+494	-67	-131	-152	-142	+9.6%	+17.7%	-2.0%	-3.8%	-4.4%	-4.1%
Care, other	153	+20	+14	+1	+6	+11	+6	+14.9%	+9.8%	+0.8%	+4.2%	+7.7%	+4.3%

Feb 2021 (Dec 2015 figure: 12,607)	WTE Feb 2021	WTE change since Dec 15	WTE change since Dec 16	WTE change since Dec 17	WTE change since Dec 18	WTE change since Dec 19	WTE change since Dec 20	% change since Dec 15	% change since Dec 16	% change since Dec 17	% change since Dec 18	% change since Dec 19	% change since Dec 20
Overall	13,319	+712	+837	+216	+14	+87	-96	+5.7%	+6.7%	+1.6%	+0.1%	+0.7%	-0.7%
Patient & Client Care	7,561	+414	+554	-58	-161	-66	-135	+5.8%	+7.9%	-0.8%	-2.1%	-0.9%	-1.8%

Source: Health Service Personnel Census