

Social Care Older Persons Services Employment Report: February 2022

Employment by Staff Group

Feb 2022	WTE Dec 2019	WTE Dec 2020	WTE Jan 2022	WTE Feb 2022	WTE change since Jan 22	WTE change since Dec 20	% change since Dec 20	WTE change since Dec 19	% change since Dec 19	No. Feb 2022
Overall	13,233	13,415	13,662	13,614	-48	+199	+1.5%	+381	+2.9%	16,558
Consultants	4	4	7	7	+1	+3	+60.6%	+3	+97.2%	9
Registrars	10	9	11	10	-1	+1	+8.5%	+0	+0.8%	11
SHO/ Interns	15	14	15	15	-0	+1	+7.8%	-0	-1.8%	15
Medical/ Dental, other	96	104	84	81	-4	-23	-22.2%	-16	-16.3%	153
Medical & Dental	125	131	116	112	-4	-19	-14.2%	-12	-9.9%	188
Nurse/ Midwife Manager	709	746	757	749	-8	+3	+0.4%	+40	+5.7%	796
Nurse/ Midwife Specialist & AN/MP	26	38	39	45	+7	+7	+18.0%	+19	+70.3%	47
Staff Nurse/ Staff Midwife	2,576	2,624	2,678	2,680	+2	+56	+2.1%	+104	+4.0%	3,100
Public Health Nurse	13	13	13	12	-1	-1	-10.9%	-1	-10.7%	15
<i>Pre-registration Nurse/ Midwife Intern</i>			0		-0		-100.0%		-100.0%	
<i>Post-registration Nurse/ Midwife Student</i>	1						-100.0%	-1	-100.0%	
<i>Nursing/ Midwifery awaiting registration</i>	1	1	2	2	-1	+0	+11.1%	+1	+50.0%	2
Nursing/ Midwifery Student	2	1	2	2	-1	+0	+11.1%	-1	-25.0%	2
Nursing/ Midwifery other	1	4	4	4	+0	-0	-2.5%	+3	+288.0%	4
Nursing & Midwifery	3,328	3,427	3,493	3,492	-1	+65	+1.9%	+164	+4.9%	3,964
Therapy Professions	288	295	346	347	+0	+51	+17.4%	+59	+20.3%	399
Health Science/ Diagnostics	6	5	3	4	+0	-2	-30.8%	-3	-42.2%	7
Social Care	3	3	3	3	+0			+0	+0.0%	5
Social Workers	98	100	83	86	+3	-14	-13.8%	-12	-12.5%	94
Psychologists	2	1	3	4	+1	+3	+262.7%	+2	+90.0%	5
Pharmacy	15	17	21	21	-0	+4	+20.8%	+6	+36.4%	28
H&SC, Other	1	2	2	2				+0	+13.2%	2
Health & Social Care Professionals	414	423	461	465	+4	+42	+10.0%	+51	+12.4%	540
Management (VIII & above)	75	79	105	105	+1	+26	+33.6%	+31	+41.0%	108
Administrative/ Supervisory (V to VII)	165	176	202	202	+0	+26	+14.7%	+37	+22.3%	214
Clerical (III & IV)	571	587	612	616	+4	+29	+4.9%	+45	+7.9%	708
Management & Administrative	811	842	918	923	+5	+81	+9.6%	+112	+13.8%	1,030
Support	829	801	794	798	+4	-3	-0.4%	-31	-3.7%	894
Maintenance/ Technical	98	95	94	95	+1	+1	+0.7%	-3	-3.0%	99
General Support	927	896	888	894	+5	-2	-0.2%	-34	-3.6%	993
Health Care Assistants	4,043	4,118	4,092	4,092	+0	-26	-0.6%	+49	+1.2%	4,666
Home Help	3,442	3,431	3,511	3,450	-61	+19	+0.6%	+8	+0.2%	4,950
Care, other	142	147	182	185	+3	+38	+26.2%	+43	+30.4%	227
Patient & Client Care	7,627	7,696	7,785	7,727	-57	+32	+0.4%	+100	+1.3%	9,843

Social Care Older Persons Services Employment by Administration (HSE / S38): February 2022

Feb 2022	WTE Dec 2019	WTE Dec 2020	WTE Jan 2022	WTE Feb 2022	WTE change since Jan 22	WTE change since Dec 20	% change since Dec 20	WTE change since Dec 19	% change since Dec 19	No. Feb 2022
Total	13,233	13,415	13,662	13,614	-48	+199	+1.5%	+381	+2.9%	16,558
HSE	12,525	12,673	12,913	12,872	-41	+199	+1.6%	+347	+2.8%	15,739
Section 38 Voluntary Agencies	708	742	750	742	-8	+0	+0.0%	+34	+4.8%	819

Employment by Staff Group

Feb 2022	WTE Dec 2019	WTE Dec 2020	WTE Jan 2022	WTE Feb 2022	WTE change since Jan 22	WTE change since Dec 20	% change since Dec 20	WTE change since Dec 19	% change since Dec 19	No. Feb 2022
Health Service Executive	12,525	12,673	12,913	12,872	-41	+199	+1.6%	+347	+2.8%	15,739
Consultants	3	3	5	6	+1	+3	+95.0%	+3	+83.3%	6
Registrars	7	6	7	7		+1	+12.8%	+0	+1.2%	8
SHO/ Interns	10	10	10	11	+1	+1	+11.0%	+1	+7.3%	11
Medical/ Dental, other	94	102	83	80	-4	-22	-21.7%	-15	-15.5%	152
Medical & Dental	114	120	105	103	-2	-18	-14.6%	-11	-10.0%	177
Nurse/ Midwife Manager	655	697	704	698	-7	+1	+0.1%	+42	+6.5%	740
Nurse/ Midwife Specialist & AN/MP	26	38	39	45	+7	+7	+18.0%	+19	+70.3%	47
Staff Nurse/ Staff Midwife	2,401	2,438	2,503	2,506	+2	+68	+2.8%	+105	+4.4%	2,908
Public Health Nurse	13	13	13	12	-1	-1	-10.9%	-1	-10.7%	15
<i>Pre-registration Nurse/ Midwife Intern</i>			0		-0		-100.0%		-100.0%	
<i>Post-registration Nurse/ Midwife Student</i>	1						-100.0%	-1	-100.0%	
<i>Nursing/ Midwifery awaiting registration</i>	1	1	2	2	-1	+0	+11.1%	+1	+50.0%	2
Nursing/ Midwifery Student	2	1	2	2	-1	+0	+11.1%	-1	-25.0%	2
<i>Nursing Education/Clinical</i>	1	4	4	4	+0	-0	-2.5%	+3	+288.0%	4
Nursing/ Midwifery other	1	4	4	4	+0	-0	-2.5%	+3	+288.0%	4
Nursing & Midwifery	3,099	3,192	3,265	3,266	+1	+74	+2.3%	+167	+5.4%	3,716
Therapy Professions	231	223	270	272	+2	+49	+21.7%	+41	+17.9%	315
Health Science/ Diagnostics	5	4	2	3	+0	-2	-38.3%	-3	-50.4%	5
Social Care	3	3	3	3	+0			+0	+0.0%	5
Social Workers	84	84	69	73	+4	-11	-13.5%	-12	-13.8%	78
Psychologists	2	1	3	3	+1	+3	+481.7%	+2	+118.1%	4
Pharmacy	11	12	15	15	-0	+3	+28.1%	+4	+42.5%	20
H&SC, Other	1	2	2	2				+0	+13.2%	2
Health & Social Care Professionals	336	328	363	370	+7	+42	+12.7%	+34	+10.0%	429
Management (VIII & above)	73	75	101	101	+1	+26	+35.4%	+29	+39.4%	104
Administrative/ Supervisory (V to VII)	146	157	178	179	+1	+21	+13.5%	+33	+22.8%	190
Clerical (III & IV)	544	557	580	585	+5	+28	+5.1%	+41	+7.5%	669
Management & Administrative	762	789	859	865	+6	+76	+9.6%	+103	+13.5%	963
Support	726	694	683	688	+5	-6	-0.9%	-39	-5.3%	773
Maintenance/ Technical	88	84	84	85	+1	+2	+2.0%	-3	-3.3%	89
General Support	815	778	767	773	+6	-5	-0.6%	-42	-5.1%	862
Health Care Assistants	3,820	3,892	3,864	3,863	-1	-29	-0.7%	+43	+1.1%	4,422
Home Help	3,442	3,431	3,511	3,450	-61	+19	+0.6%	+8	+0.2%	4,950
Care, other	136	142	179	182	+3	+39	+27.6%	+45	+33.0%	220
Patient & Client Care	7,398	7,466	7,553	7,495	-58	+29	+0.4%	+97	+1.3%	9,592

Employment by Staff Group

Feb 2022	WTE Dec 2019	WTE Dec 2020	WTE Jan 2022	WTE Feb 2022	WTE change since Jan 22	WTE change since Dec 20	% change since Dec 20	WTE change since Dec 19	% change since Dec 19	No. Feb 2022
Section 38 Voluntary Agencies	708	742	750	742	-8	+0	+0.0%	+34	+4.8%	819
Consultants	1	2	2	2				+1	+166.7%	3
Registrars	3	3	4	3	-1					3
SHO/ Interns	5	4	5	4	-1			-1	-20.0%	4
Medical/ Dental, other	2	2	1	1		-1	-50.0%	-1	-50.0%	1
Medical & Dental	11	11	12	10	-2	-1	-9.4%	-1	-9.4%	11
Nurse/ Midwife Manager	54	49	53	52	-1	+2	+4.5%	-2	-3.9%	56
Staff Nurse/ Staff Midwife	176	186	175	174	-1	-11	-6.1%	-1	-0.7%	192
Nursing & Midwifery	230	235	228	226	-2	-9	-3.8%	-3	-1.5%	248
Therapy Professions	58	72	77	75	-2	+3	+4.0%	+17	+29.7%	84
Health Science/ Diagnostics	1	1	1	1						2
Social Workers	14	16	14	13	-1	-2	-15.4%	-1	-5.0%	16
Psychologists	1	1	1	1						1
Pharmacy	5	5	6	6		+0	+5.0%	+1	+22.5%	8
Health & Social Care Professionals	78	95	98	95	-3	+1	+0.8%	+18	+22.5%	111
Management (VIII & above)	2	4	4	4				+2	+100.0%	4
Administrative/ Supervisory (V to VII)	19	18	24	23	-1	+5	+24.8%	+4	+18.3%	24
Clerical (III & IV)	27	31	31	31	-0	+1	+1.6%	+4	+14.0%	39
Management & Administrative	49	53	59	58	-1	+5	+9.6%	+9	+19.2%	67
Support	103	107	111	111	-1	+3	+3.2%	+8	+7.8%	121
Maintenance/ Technical	10	11	10	10		-1	-9.1%			10
General Support	113	118	121	121	-1	+2	+2.1%	+8	+7.1%	131
Health Care Assistants	223	226	228	229	+1	+3	+1.3%	+6	+2.5%	244
Care, other	5	4	3	3	+0	-1	-20.2%	-2	-37.3%	7
Patient & Client Care	229	230	231	232	+1	+2	+0.9%	+4	+1.5%	251

Social Care Older Persons Services Employment by CHO: Feb 2022

Feb 2022	WTE Dec 2019	WTE Dec 2020	WTE Jan 2022	WTE Feb 2022	WTE change since Jan 22	WTE change since Dec 20	% change since Dec 20	WTE change since Dec 19	% change since Dec 19	No. Feb 2022
Overall	13,233	13,415	13,662	13,614	-48	+199	+1.5%	+381	+2.9%	16,558
CHO 1	1,836	1,918	2,012	1,962	-50	+44	+2.3%	+126	+6.9%	2,344
CHO 2	1,606	1,590	1,535	1,525	-10	-65	-4.1%	-81	-5.0%	1,796
CHO 3	974	1,029	1,209	1,230	+21	+202	+19.6%	+256	+26.3%	1,538
CHO 4	2,919	2,930	2,940	2,928	-13	-3	-0.1%	+8	+0.3%	3,819
CHO 5	1,647	1,650	1,666	1,648	-18	-2	-0.1%	+1	+0.1%	2,000
CHO 6	823	804	811	810	-1	+6	+0.8%	-13	-1.6%	885
CHO 7	996	1,021	988	986	-2	-35	-3.5%	-10	-1.0%	1,138
CHO 8	1,488	1,484	1,452	1,454	+3	-29	-2.0%	-34	-2.3%	1,839
CHO 9	870	914	972	993	+21	+79	+8.6%	+124	+14.2%	1,115
other Community Services	73	75	76	77	+1	+2	+2.9%	+4	+5.3%	84

Social Care Older Persons Services Employment by CHO etc. Feb 2022

CHO 1

Feb 2022	WTE Dec 2019	WTE Dec 2020	WTE Jan 2022	WTE Feb 2022	WTE change since Jan 22	WTE change since Dec 20	% change since Dec 20	WTE change since Dec 19	% change since Dec 19	No. Feb 2022
Overall	1,836	1,918	2,012	1,962	-50	+44	+2.3%	+126	+6.9%	2,344
Medical/ Dental, other	30	32	18	15	-3	-17	-53.9%	-15	-49.8%	41
Medical & Dental	30	32	18	15	-3	-17	-53.9%	-15	-49.8%	41
Nurse/ Midwife Manager	91	88	93	90	-3	+3	+2.9%	-1	-0.8%	96
Nurse/ Midwife Specialist & AN/MP	7	9	9	11	+2	+2	+22.1%	+4	+60.6%	11
Staff Nurse/ Staff Midwife	307	315	323	323	-1	+8	+2.5%	+15	+5.0%	367
Nursing/ Midwifery other		1	1	1	0			+1	-100.0%	1
Nursing & Midwifery	405	412	427	425	-2	+12	+3.0%	+20	+4.9%	475
Therapy Professions	11	12	21	21	+0	+9	+70.4%	+10	+91.2%	24
Health Science/ Diagnostics	1	2				-2	-100.0%	-1	-100.0%	
Social Workers	18	15	10	10	+0	-6	-36.7%	-8	-45.7%	10
Health & Social Care Professionals	30	29	31	31	+0	+2	+5.7%	+1	+3.0%	34
Management (VIII & above)	8	8	8	8	+0			+0	+0.8%	8
Administrative/ Supervisory (V to VII)	14	15	15	16	+0	+1	+3.9%	+2	+11.4%	17
Clerical (III & IV)	85	88	81	80	-2	-8	-9.5%	-5	-6.5%	91
Management & Administrative	107	111	105	103	-1	-8	-7.0%	-4	-3.6%	116
Support	123	119	109	110	+1	-8	-7.1%	-12	-10.1%	133
Maintenance/ Technical	7	7	6	7	+1	-0	-4.9%	-0	-4.9%	7
General Support	130	126	115	117	+2	-9	-7.0%	-13	-9.8%	140
Health Care Assistants	563	580	587	587	+1	+7	+1.3%	+24	+4.3%	673
Home Help	543	604	705	658	-47	+53	+8.8%	+115	+21.2%	833
Care, other	28	22	26	26	+0	+4	+16.6%	-2	-6.4%	32
Patient & Client Care	1,134	1,207	1,317	1,271	-46	+64	+5.3%	+137	+12.1%	1,538

CHO 2

Feb 2022	WTE Dec 2019	WTE Dec 2020	WTE Jan 2022	WTE Feb 2022	WTE change since Jan 22	WTE change since Dec 20	% change since Dec 20	WTE change since Dec 19	% change since Dec 19	No. Feb 2022
Overall	1,606	1,590	1,535	1,525	-10	-65	-4.1%	-81	-5.0%	1,796
Medical/ Dental, other	11	11	10	10	+0	-1	-9.5%	-2	-13.6%	10
Medical & Dental	11	11	10	10	-0	-1	-9.5%	-2	-13.6%	10
Nurse/ Midwife Manager	58	66	68	67	-1	+1	+0.9%	+9	+15.0%	72
Nurse/ Midwife Specialist & AN/MP	2	2	2	4	+2	+2	+119.5%	+2	+119.5%	5
Staff Nurse/ Staff Midwife	301	305	309	309	+0	+4	+1.3%	+8	+2.7%	360
Public Health Nurse	1	1	1	1	0			+0	+25.0%	1
Nursing & Midwifery	362	374	380	381	+1	+7	+1.9%	+19	+5.3%	438
Therapy Professions	26	25	24	26	+2	+1	+3.3%	+1	+2.0%	29
Health Science/ Diagnostics	1	1	1	1	0					1
Social Workers	10	10	10	10	0			+0	+1.8%	11
Pharmacy	1	1	1	1	0	-1	-51.5%	-1	-50.5%	1
H&SC, Other	0						-100.0%		-100.0%	
Health & Social Care Professionals	37	37	36	38	+2	+0	+0.8%	+0	+0.5%	42
Management (VIII & above)	2	2	4	4	0	+2	+100.0%	+2	+100.0%	4
Administrative/ Supervisory (V to VII)	8	9	14	14	+1	+5	+57.5%	+7	+89.1%	15
Clerical (III & IV)	72	66	64	62	-2	-4	-5.8%	-9	-13.3%	70
Management & Administrative	81	77	82	80	-2	+3	+4.5%	-1	-0.9%	89
Support	56	56	53	53	+0	-3	-6.0%	-3	-5.8%	58
Maintenance/ Technical	19	19	18	18	0	-2	-10.2%	-1	-7.7%	18
General Support	75	76	70	70	+0	-5	-7.1%	-5	-6.3%	76
Health Care Assistants	515	526	513	512	-1	-13	-2.6%	-3	-0.5%	569
Home Help	499	456	398	386	-11	-70	-15.4%	-113	-22.7%	523
Care, other	24	33	46	47	+1	+14	+44.4%	+23	+92.1%	49
Patient & Client Care	1,039	1,015	957	945	-12	-69	-6.8%	-93	-9.0%	1,141

CHO 3

Feb 2022	WTE Dec 2019	WTE Dec 2020	WTE Jan 2022	WTE Feb 2022	WTE change since Jan 22	WTE change since Dec 20	% change since Dec 20	WTE change since Dec 19	% change since Dec 19	No. Feb 2022
Overall	974	1,029	1,209	1,230	+21	+202	+19.6%	+256	+26.3%	1,538
Consultants	1	1	3	3	0	+2	+200.0%	+2	+200.0%	3
Registrars			1	1	0	+1	-100.0%	+1	-100.0%	1
Medical/ Dental, other	5	6	5	5	+1	-1	-16.7%			5
Medical & Dental	6	7	9	9	+1	+2	+28.6%	+3	+50.0%	9
Nurse/ Midwife Manager	64	64	63	63	-0	-1	-1.2%	-1	-0.9%	66
Nurse/ Midwife Specialist & AN/MP	2	4	5	5	+0	+1	+29.3%	+3	+165.7%	5
Staff Nurse/ Staff Midwife	239	231	258	263	+5	+32	+13.7%	+24	+10.2%	304
Public Health Nurse	1	1	1		-1	-1	-100.0%	-1	-100.0%	
Nursing & Midwifery	305	300	328	331	+4	+31	+10.4%	+26	+8.5%	375
Therapy Professions	28	29	41	42	+1	+13	+45.9%	+15	+53.6%	49
Health Science/ Diagnostics	1	1	1	1	+0			-0	-7.0%	2
Social Workers	7	6	8	9	+1	+2	+39.3%	+2	+23.6%	9
Psychologists			1	1	-0	+1	-100.0%	+1	-100.0%	1
Pharmacy	1	1	1	1	+0					1
Health & Social Care Professionals	36	37	51	54	+2	+17	+44.9%	+17	+47.3%	62
Management (VIII & above)	6	6	8	8	+0	+2	+32.3%	+2	+35.7%	8
Administrative/ Supervisory (V to VII)	21	17	19	22	+3	+5	+29.4%	+1	+4.8%	23
Clerical (III & IV)	50	48	56	54	-2	+6	+11.8%	+5	+9.2%	62
Management & Administrative	76	71	83	84	+1	+13	+17.6%	+8	+10.0%	93
Support	64	63	62	62	-0	-1	-1.5%	-2	-3.7%	68
Maintenance/ Technical	22	21	24	25	+1	+4	+18.3%	+3	+12.6%	25
General Support	86	84	86	87	+0	+3	+3.4%	+0	+0.5%	93
Health Care Assistants	279	301	324	327	+4	+26	+8.7%	+48	+17.3%	375
Home Help	175	216	311	320	+8	+103	+47.7%	+145	+82.5%	511
Care, other	10	12	18	19	+1	+7	+59.0%	+9	+93.8%	20
Patient & Client Care	464	530	653	666	+13	+136	+25.8%	+202	+43.5%	906

CHO 4

Feb 2022	WTE Dec 2019	WTE Dec 2020	WTE Jan 2022	WTE Feb 2022	WTE change since Jan 22	WTE change since Dec 20	% change since Dec 20	WTE change since Dec 19	% change since Dec 19	No. Feb 2022
Overall	2,919	2,930	2,940	2,928	-13	-3	-0.1%	+8	+0.3%	3,819
Consultants	1	1	1	2	+1	+1	+50.0%	+1	+50.0%	2
Registrars	3	3	2	2	0	-1	-30.7%	-1	-30.7%	3
SHO/ Interns	1	1	2	2	0	+1	+100.0%	+1	+100.0%	2
Medical/ Dental, other	21	23	22	21	-1	-2	-8.6%	+0	+1.5%	50
Medical & Dental	26	28	27	27	-1	-1	-5.0%	+1	+3.5%	57
Nurse/ Midwife Manager	118	122	122	121	-1	-0	-0.3%	+4	+3.4%	130
Nurse/ Midwife Specialist & AN/MP	3	6	4	4	+0	-2	-38.2%	+0	+11.9%	4
Staff Nurse/ Staff Midwife	515	528	548	548	-0	+20	+3.7%	+33	+6.3%	675
Public Health Nurse	5	6	5	5	+1	-1	-8.5%	+0	+5.9%	7
Pre-registration Nurse/ Midwife Intern			0		-0		-100.0%		-100.0%	
Post-registration Nurse/ Midwife Student	1						-100.0%	-1	-100.0%	
Nursing/ Midwifery awaiting registration	1						-100.0%	-1	-100.0%	
Nursing/ Midwifery Student	2		0		-0		-100.0%	-2	-100.0%	
Nursing & Midwifery	643	662	679	678	-1	+17	+2.5%	+35	+5.5%	816
Therapy Professions	45	41	54	48	-6	+6	+14.6%	+3	+6.7%	57
Health Science/ Diagnostics	1	1	1	1	0			+0	+13.2%	2
Social Care	2	2	2	2	0					3
Social Workers	10	12	12	12	+0	-0	-2.6%	+2	+16.2%	13
Pharmacy	3	4	4	5	+0	+1	+22.4%	+2	+79.2%	8
Health & Social Care Professionals	60	61	73	67	-5	+7	+10.8%	+7	+11.4%	83
Management (VIII & above)	13	14	20	19	-1	+5	+32.8%	+6	+47.5%	19
Administrative/ Supervisory (V to VII)	17	20	29	30	+1	+10	+47.9%	+13	+76.1%	31
Clerical (III & IV)	128	131	130	130	+1	-1	-0.5%	+2	+1.7%	159
Management & Administrative	158	166	179	179	+1	+14	+8.2%	+21	+13.4%	209
Support	100	114	128	126	-2	+12	+10.5%	+25	+24.9%	134
Maintenance/ Technical	6	6	7	7	-0	+0	+6.6%	+1	+11.0%	7
General Support	106	120	135	132	-2	+12	+10.3%	+26	+24.1%	141
Health Care Assistants	781	794	804	801	-4	+7	+0.9%	+19	+2.5%	910
Home Help	1,113	1,067	1,009	1,009	-1	-58	-5.4%	-105	-9.4%	1,554
Care, other	31	34	34	35	+0	+1	+2.1%	+4	+12.7%	49
Patient & Client Care	1,925	1,894	1,848	1,844	-4	-50	-2.7%	-82	-4.2%	2,513

CHO 5

Feb 2022	WTE Dec 2019	WTE Dec 2020	WTE Jan 2022	WTE Feb 2022	WTE change since Jan 22	WTE change since Dec 20	% change since Dec 20	WTE change since Dec 19	% change since Dec 19	No. Feb 2022
Overall	1,647	1,650	1,666	1,648	-18	-2	-0.1%	+1	+0.1%	2,000
Medical/ Dental, other	10	15	15	15	0	+1	+4.0%	+6	+56.2%	21
Medical & Dental	10	15	15	15		+1	+4.0%	+6	+56.2%	21
Nurse/ Midwife Manager	82	88	86	86	-1	-3	-3.0%	+4	+4.8%	92
Nurse/ Midwife Specialist & AN/MP	2	4	2	2	0	-2	-47.6%			2
Staff Nurse/ Staff Midwife	315	308	312	309	-2	+1	+0.4%	-5	-1.7%	370
Public Health Nurse	4	3	2	2	-0	-1	-29.7%	-2	-50.3%	2
Nursing & Midwifery	403	403	402	399	-3	-4	-1.0%	-3	-0.9%	466
Therapy Professions	41	32	31	32	+1	+0	+0.1%	-8	-20.5%	37
Social Workers	3	4	5	6	+0	+2	+36.8%	+3	+80.0%	7
Psychologists				1	+1	+1	-100.0%	+1	-100.0%	1
Pharmacy		1	1	1	-0	-0	-1.0%	+1	-100.0%	1
Health & Social Care Professionals	44	38	38	40	+2	+2	+6.5%	-4	-9.0%	46
Management (VIII & above)	4	4	11	11	-0	+7	+185.0%	+7	+185.0%	11
Administrative/ Supervisory (V to VII)	14	17	12	11	-1	-6	-35.1%	-3	-21.5%	12
Clerical (III & IV)	32	31	58	58	-0	+27	+86.8%	+26	+80.7%	64
Management & Administrative	50	52	81	80	-1	+28	+54.1%	+30	+60.0%	87
Support	123	83	80	81	+2	-2	-2.3%	-42	-34.0%	94
Maintenance/ Technical	8	4	4	4	+0	+0	+1.5%	-4	-50.4%	5
General Support	131	87	84	85	+2	-2	-2.1%	-46	-35.0%	99
Health Care Assistants	391	448	418	415	-3	-33	-7.3%	+25	+6.3%	470
Home Help	608	599	612	594	-17	-4	-0.7%	-14	-2.2%	789
Care, other	10	9	17	18	+2	+10	+112.4%	+8	+73.9%	22
Patient & Client Care	1,009	1,056	1,046	1,028	-19	-28	-2.6%	+19	+1.9%	1,281

CHO 6

Feb 2022	WTE Dec 2019	WTE Dec 2020	WTE Jan 2022	WTE Feb 2022	WTE change since Jan 22	WTE change since Dec 20	% change since Dec 20	WTE change since Dec 19	% change since Dec 19	No. Feb 2022
Overall	823	804	811	810	-1	+6	+0.8%	-13	-1.6%	885
Registrars	1	1	1	1	0					1
Medical/ Dental, other	4	3	2	2	0	-1	-37.8%	-2	-56.0%	3
Medical & Dental	5	4	3	3		-1	-27.9%	-2	-44.8%	4
Nurse/ Midwife Manager	68	63	65	63	-1	+1	+1.3%	-5	-7.1%	66
Nurse/ Midwife Specialist & AN/MP	1	1				-1	-100.0%	-1	-100.0%	
Staff Nurse/ Staff Midwife	204	206	197	196	-0	-10	-4.6%	-7	-3.7%	207
Nursing & Midwifery	273	269	262	260	-2	-10	-3.6%	-13	-4.9%	273
Therapy Professions	50	46	43	41	-2	-6	-12.0%	-9	-18.3%	47
Social Workers	11	10	8	7	-1	-4	-37.2%	-5	-42.4%	8
Psychologists	2	1	1	1	0	-1	-54.5%	-2	-76.2%	1
Pharmacy	3	3	4	4	0	+1	+43.8%	+1	+45.8%	5
Health & Social Care Professionals	66	61	55	52	-3	-9	-14.4%	-14	-21.5%	61
Management (VIII & above)	4	5	9	9	0	+4	+78.0%	+5	+122.5%	9
Administrative/ Supervisory (V to VII)	22	19	28	28	+0	+8	+42.8%	+5	+24.7%	29
Clerical (III & IV)	30	33	30	31	+1	-2	-6.0%	+2	+5.5%	36
Management & Administrative	56	58	67	68	+1	+10	+17.8%	+12	+21.5%	74
Support	108	102	110	110	-1	+7	+7.3%	+1	+1.2%	119
Maintenance/ Technical	8	9	8	8	0	-1	-11.1%			8
General Support	116	111	118	118	-1	+6	+5.8%	+1	+1.1%	127
Health Care Assistants	300	296	303	306	+3	+10	+3.3%	+6	+1.9%	339
Care, other	7	6	5	5	-0	-1	-16.9%	-3	-36.9%	7
Patient & Client Care	307	301	307	310	+3	+9	+3.0%	+3	+1.0%	346

CHO 7

Feb 2022	WTE Dec 2019	WTE Dec 2020	WTE Jan 2022	WTE Feb 2022	WTE change since Jan 22	WTE change since Dec 20	% change since Dec 20	WTE change since Dec 19	% change since Dec 19	No. Feb 2022
Overall	996	1,021	988	986	-2	-35	-3.5%	-10	-1.0%	1,138
SHO/ Interns	2	2	2	2	0					2
Medical/ Dental, other	4	2	2	2	0			-2	-49.0%	4
Medical & Dental	6	4	4	4				-2	-32.7%	6
Nurse/ Midwife Manager	77	86	93	93	+1	+8	+8.7%	+16	+21.1%	97
Nurse/ Midwife Specialist & AN/MP	3	3	2	3	+0	-0	-13.8%	-0	-6.1%	3
Staff Nurse/ Staff Midwife	219	242	231	226	-5	-16	-6.6%	+7	+3.1%	250
<i>Nursing/ Midwifery awaiting registration</i>		1	2	2	-1	+0	+11.1%	+2	-100.0%	2
Nursing/ Midwifery Student		1	2	2	-1	+0	+11.1%	+2	-100.0%	2
Nursing & Midwifery	299	332	328	324	-4	-9	-2.6%	+25	+8.2%	352
Therapy Professions	14	13	13	12	-1	-1	-7.6%	-1	-10.5%	15
Social Workers	11	12	10	11	+1	-2	-12.3%	+0	+0.4%	12
Pharmacy	3	2	3	3	0	+1	+50.0%	+1	+20.0%	3
H&SC, Other	1	1	1	1	0					1
Health & Social Care Professionals	28	29	28	27	-0	-2	-5.3%	-1	-3.2%	31
Management (VIII & above)	5	7	8	8	+0	+1	+17.0%	+3	+68.0%	10
Administrative/ Supervisory (V to VII)	12	15	18	15	-2	+1	+6.3%	+4	+34.1%	16
Clerical (III & IV)	34	37	39	42	+3	+5	+13.0%	+8	+22.0%	45
Management & Administrative	51	59	65	66	+1	+7	+11.8%	+15	+29.3%	71
Support	110	119	110	111	+1	-7	-6.2%	+1	+1.2%	123
Maintenance/ Technical	2	2	2	2	0					2
General Support	112	121	112	113	+1	-7	-6.1%	+1	+1.2%	125
Health Care Assistants	388	358	341	340	-1	-17	-4.8%	-47	-12.2%	395
Home Help	108	115	105	107	+2	-7	-6.5%	-0	-0.4%	153
Care, other	5	5	5	5	0			+0	+3.5%	5
Patient & Client Care	500	477	451	453	+1	-25	-5.2%	-48	-9.5%	553

CHO 8

Feb 2022	WTE Dec 2019	WTE Dec 2020	WTE Jan 2022	WTE Feb 2022	WTE change since Jan 22	WTE change since Dec 20	% change since Dec 20	WTE change since Dec 19	% change since Dec 19	No. Feb 2022
Overall	1,488	1,484	1,452	1,454	+3	-29	-2.0%	-34	-2.3%	1,839
Medical/ Dental, other	11	11	10	10	0	-1	-9.6%	-1	-9.2%	18
Medical & Dental	11	11	10	10		-1	-9.6%	-1	-9.2%	18
Nurse/ Midwife Manager	77	89	84	83	-1	-6	-6.5%	+6	+8.4%	91
Nurse/ Midwife Specialist & AN/MP	2	4	5	5	0	+1	+25.9%	+3	+143.0%	5
Staff Nurse/ Staff Midwife	249	255	248	250	+2	-5	-1.9%	+1	+0.3%	288
Public Health Nurse	2	3	3	3	-0	-0	-6.0%	+0	+15.5%	4
Nursing/ Midwifery other		2	3	3	+0	+1	+45.5%	+3	-100.0%	3
Nursing & Midwifery	330	353	343	344	+1	-9	-2.5%	+13	+4.0%	391
Therapy Professions	21	24	29	29	+0	+5	+19.9%	+9	+41.5%	35
Social Workers	7	5	0	0	0	-5	-100.0%	-7	-100.0%	0
Pharmacy	3	2	4	3	-1	+1	+50.0%	+1	+20.0%	4
Health & Social Care Professionals	30	31	32	32	-0	+1	+2.7%	+3	+8.4%	39
Management (VIII & above)	6	7	8	9	+1	+2	+27.4%	+3	+59.0%	9
Administrative/ Supervisory (V to VII)	20	21	18	18	-0	-3	-15.6%	-2	-10.3%	19
Clerical (III & IV)	70	72	68	68	-1	-4	-5.8%	-2	-3.1%	77
Management & Administrative	95	100	94	95	+0	-6	-5.6%	-1	-1.0%	105
Support	26	25	24	25	+1	+0	+0.7%	-0	-1.3%	28
Maintenance/ Technical	24	24	23	23	+0	-0	-1.4%	-0	-1.8%	24
General Support	50	49	47	49	+1	-0	-0.3%	-1	-1.6%	52
Health Care Assistants	556	544	529	525	-4	-19	-3.5%	-31	-5.6%	614
Home Help	395	374	371	377	+6	+3	+0.7%	-19	-4.8%	587
Care, other	20	22	24	24	-0	+2	+9.4%	+3	+15.1%	33
Patient & Client Care	972	940	924	925	+1	-14	-1.5%	-47	-4.8%	1,234

CHO 9

Feb 2022	WTE Dec 2019	WTE Dec 2020	WTE Jan 2022	WTE Feb 2022	WTE change since Jan 22	WTE change since Dec 20	% change since Dec 20	WTE change since Dec 19	% change since Dec 19	No. Feb 2022
Overall	870	914	972	993	+21	+79	+8.6%	+124	+14.2%	1,115
Consultants	2	2	3	3	0	+0	+7.4%	+1	+62.5%	4
Registrars	6	5	7	6	-1	+1	+13.8%			6
SHO/ Interns	12	11	11	11	-0	+0	+0.6%	-1	-10.6%	11
Medical/ Dental, other	1	1	1	1	0					1
Medical & Dental	20	19	21	20	-1	+1	+4.8%	-0	-1.3%	22
Nurse/ Midwife Manager	75	81	82	82	-0	+1	+1.3%	+7	+9.4%	86
Nurse/ Midwife Specialist & AN/MP	5	6	10	12	+2	+6	+101.5%	+7	+147.2%	12
Staff Nurse/ Staff Midwife	227	234	253	256	+3	+22	+9.3%	+29	+12.7%	279
Public Health Nurse	0		1	1	0	+1	-100.0%	+1	+163.2%	1
Nursing/ Midwifery other	1	1				-1	-100.0%	-1	-100.0%	
Nursing & Midwifery	308	322	345	350	+5	+29	+8.9%	+42	+13.8%	378
Therapy Professions	54	71	90	95	+5	+24	+34.0%	+40	+74.3%	106
Health Science/ Diagnostics	1	1	1	1	0			-0	-31.0%	2
Social Care	1	1	1	1	0					2
Social Workers	21	24	20	22	+2	-2	-6.6%	+1	+4.1%	24
Psychologists			1	1	0	+1	-100.0%	+1	-100.0%	1
Pharmacy	3	4	4	4	0			+1	+26.4%	5
H&SC, Other	0	1	1	1	0			+0	+50.0%	1
Health & Social Care Professionals	81	101	117	124	+7	+23	+23.2%	+43	+52.4%	141
Management (VIII & above)	9	9	13	13	+0	+4	+44.3%	+4	+42.3%	13
Administrative/ Supervisory (V to VII)	15	21	24	22	-1	+2	+7.2%	+7	+49.6%	24
Clerical (III & IV)	40	44	53	58	+5	+14	+31.6%	+18	+45.1%	68
Management & Administrative	64	74	89	93	+4	+19	+26.2%	+29	+45.8%	105
Support	118	120	119	120	+2	-0	-0.2%	+2	+1.5%	137
Maintenance/ Technical	2	2	2	2	0					3
General Support	121	123	121	122	+2	-0	-0.2%	+2	+1.5%	140
Health Care Assistants	270	271	272	277	+5	+6	+2.2%	+7	+2.8%	320
Care, other	6	5	6	6	+0	+1	+18.1%	+0	+2.7%	9
Patient & Client Care	276	277	278	284	+5	+7	+2.5%	+8	+2.8%	329

other Community Services

Feb 2022	WTE Dec 2019	WTE Dec 2020	WTE Jan 2022	WTE Feb 2022	WTE change since Jan 22	WTE change since Dec 20	% change since Dec 20	WTE change since Dec 19	% change since Dec 19	No. Feb 2022
Overall	73	75	76	77	+1	+2	+2.9%	+4	+5.3%	84
Health Science/ Diagnostics	1						-100.0%	-1	-100.0%	
Psychologists			1	1	0	+1	-100.0%	+1	-100.0%	1
Health & Social Care Professionals	1		1	1		+1	-100.0%			1
Management (VIII & above)	19	17	17	17	+0	-0	-0.5%	-2	-10.6%	17
Administrative/ Supervisory (V to VII)	22	21	25	25	-0	+4	+18.8%	+3	+12.0%	28
Clerical (III & IV)	31	37	32	33	+1	-4	-9.7%	+2	+6.8%	36
Management & Administrative	72	75	74	75	+1	+0	+0.4%	+3	+3.9%	81
Health Care Assistants	0	0	0	0	0			+0	+420.0%	1
Care, other			1	1	0	+1	-100.0%	+1	-100.0%	1
Patient & Client Care	0	0	1	1		+1	+334.6%	+1	+2160.0%	2

Social Care Older Persons Services Employment by Grade Group: Feb 2022

Feb 2022	WTE Dec 2019	WTE Dec 2020	WTE Jan 2022	WTE Feb 2022	WTE change since Jan 22	WTE change since Dec 20	% change since Dec 20	WTE change since Dec 19	% change since Dec 19	No. Feb 2022
Overall	13,233	13,415	13,662	13,614	-48	+199	+1.5%	+381	+2.9%	16,558
Consultant Medicine	4	4	7	7	+1	+3	+60.6%	+3	+97.2%	9
Consultants	4	4	7	7	+1	+3	+60.6%	+3	+97.2%	9
Registrar	7	6	7	5	-2	-1	-22.8%	-2	-30.7%	5
Senior Registrar	1	1	1	2	+1	+1	+108.0%	+1	+108.0%	3
Specialist Registrar	2	2	3	3		+1	+50.0%	+1	+50.0%	3
Registrars	10	9	11	10	-1	+1	+8.5%	+0	+0.8%	11
Senior House Officer	15	14	15	15	-0	+1	+7.8%	-0	-1.8%	15
SHO/ Interns	15	14	15	15	-0	+1	+7.8%	-0	-1.8%	15
Other Medical	96	104	84	81	-4	-23	-22.2%	-16	-16.3%	153
Medical/ Dental, other	96	104	84	81	-4	-23	-22.2%	-16	-16.3%	153
Medical & Dental	125	131	116	112	-4	-19	-14.2%	-12	-9.9%	188
Clinical Nurse/ Midwife Manager	508	536	548	538	-11	+2	+0.3%	+29	+5.8%	579
Director Nursing/Midwifery, Assistant	103	106	108	111	+3	+4	+4.2%	+8	+7.8%	114
Director of Nursing/Midwifery	98	104	101	101	+0	-3	-3.1%	+3	+2.9%	103
Nurse/ Midwife Manager	709	746	757	749	-8	+3	+0.4%	+40	+5.7%	796
Advanced Nurse/ Midwife Practitioner	11	17	17	20	+3	+3	+17.5%	+9	+82.2%	20
Clinical Nurse/ Midwife Specialist	16	22	22	26	+4	+4	+18.5%	+10	+62.2%	27
Nurse/ Midwife Specialist & AN/MP	26	38	39	45	+7	+7	+18.0%	+19	+70.3%	47
Staff Midwives		1	1	1	-0	-0	-19.3%	+1	-100.0%	1
Staff Nurse [Psychiatric]	5	5	8	8	+0	+3	+54.0%	+3	+62.1%	10
Staff Nurses [General/ Children's]	2,572	2,617	2,669	2,671	+2	+54	+2.1%	+99	+3.9%	3,088
Staff Nurse [Intellectual Disability]		1	1	1	-0	-0	-16.0%	+1	-100.0%	1
Staff Nurse/ Staff Midwife	2,576	2,624	2,678	2,680	+2	+56	+2.1%	+104	+4.0%	3,100
Public Health Nurse	13	13	13	12	-1	-1	-10.9%	-1	-10.7%	15
Public Health Nurse	13	13	13	12	-1	-1	-10.9%	-1	-10.7%	15
Pre-registration Nurse/ Midwife Intern			0		-0		-100.0%		-100.0%	
Post-registration Nurse/ Midwife Student	1						-100.0%	-1	-100.0%	
Nursing/ Midwifery awaiting registration	1	1	2	2	-1	+0	+11.1%	+1	+50.0%	2
Nursing/ Midwifery Student	2	1	2	2	-1	+0	+11.1%	-1	-25.0%	2
Nursing Education/Clinical	1	4	4	4	+0	-0	-2.5%	+3	+288.0%	4
Nursing/ Midwifery other	1	4	4	4	+0	-0	-2.5%	+3	+288.0%	4
Nursing & Midwifery	3,328	3,427	3,493	3,492	-1	+65	+1.9%	+164	+4.9%	3,964
Dietitians	16	18	24	25	+1	+7	+38.3%	+8	+51.9%	31
Occupational Therapists	113	113	123	120	-3	+7	+6.1%	+7	+5.9%	135
Physiotherapists	124	132	159	166	+7	+33	+25.3%	+42	+33.9%	188
Podiatrists & Chiropodists	12	13	9	7	-2	-6	-47.0%	-5	-44.4%	10
Speech & Language Therapists	23	20	32	30	-2	+10	+50.8%	+7	+29.4%	35
Therapy Professions	288	295	346	347	+0	+51	+17.4%	+59	+20.3%	399
Radiographers	6	5	3	3		-2	-31.8%	-3	-42.8%	6
Vascular Physiologists	0	0	0	0	+0			-0	-23.8%	1
Health Science/ Diagnostics	6	5	3	4	+0	-2	-30.8%	-3	-42.2%	7
Social Care	3	3	3	3	+0			+0	+0.0%	5
Social Workers	98	100	83	86	+3	-14	-13.8%	-12	-12.5%	94
Psychologists	2	1	3	4	+1	+3	+262.7%	+2	+90.0%	5
Pharmacists	13	13	15	15	-0	+3	+20.3%	+3	+20.0%	22
Pharmacy Technicians	3	5	5	6	+0	+1	+22.2%	+3	+120.0%	6
Pharmacy	15	17	21	21	-0	+4	+20.8%	+6	+36.4%	28
Other Health & Social Care	0	1	1	1				+0	+50.0%	1
Play Therapists/ Specialists	1	1	1	1						1
H&SC, Other	1	2	2	2				+0	+13.2%	2

Feb 2022	WTE Dec 2019	WTE Dec 2020	WTE Jan 2022	WTE Feb 2022	WTE change since Jan 22	WTE change since Dec 20	% change since Dec 20	WTE change since Dec 19	% change since Dec 19	No. Feb 2022
Overall	13,233	13,415	13,662	13,614	-48	+199	+1.5%	+381	+2.9%	16,558
Health & Social Care Professionals	414	423	461	465	+4	+42	+10.0%	+51	+12.4%	540
Executive Management	12	15	15	15	+0	+0	+0.4%	+3	+24.7%	15
Senior Management (VIII & GM)	63	64	90	90	+1	+26	+41.3%	+28	+44.1%	93
Management (VIII & above)	75	79	105	105	+1	+26	+33.6%	+31	+41.0%	108
Middle Management (V-VII)	164	176	201	201	-0	+25	+14.2%	+37	+22.4%	213
Other Administrative	1		0	1	+1	+1	-100.0%			1
Administrative/ Supervisory (V to VII)	165	176	202	202	+0	+26	+14.7%	+37	+22.3%	214
General Administrative (III & IV)	571	587	612	616	+4	+29	+4.9%	+45	+7.9%	708
Clerical (III & IV)	571	587	612	616	+4	+29	+4.9%	+45	+7.9%	708
Management & Administrative	811	842	918	923	+5	+81	+9.6%	+112	+13.8%	1,030
Catering	221	216	220	222	+2	+5	+2.5%	+1	+0.2%	243
Household Services	492	479	473	474	+0	-5	-1.1%	-19	-3.8%	537
Other Support	34	29	26	27	+1	-2	-7.9%	-7	-21.3%	34
Portering	81	77	75	76	+1	-1	-0.8%	-5	-6.7%	80
Support	829	801	794	798	+4	-3	-0.4%	-31	-3.7%	894
Maintenance	98	95	90	91	+1	-3	-3.5%	-7	-7.1%	95
Technical Services			4	4		+4	-100.0%	+4	-100.0%	4
Maintenance/ Technical	98	95	94	95	+1	+1	+0.7%	-3	-3.0%	99
General Support	927	896	888	894	+5	-2	-0.2%	-34	-3.6%	993
Attendant/ Aide	2,293	2,211	1,938	1,859	-79	-352	-15.9%	-434	-18.9%	2,137
Health & Social Care Assistants	21	27	44	43	-1	+16	+58.5%	+22	+103.2%	47
Health Care Assistant/ Care Assistant	1,729	1,858	2,110	2,190	+80	+332	+17.9%	+461	+26.7%	2,482
HCA (Student Nurse/Midwife COVID-19)		22	0		-0	-22	-100.0%		-100.0%	
Health Care Assistants	4,043	4,118	4,092	4,092	+0	-26	-0.6%	+49	+1.2%	4,666
Home Help	3,442	3,431	3,511	3,450	-61	+19	+0.6%	+8	+0.2%	4,950
Home Care Services	86	99	134	137	+3	+39	+39.2%	+52	+60.3%	147
Other Care Grades	22	19	21	21	-0	+2	+9.9%	-1	-6.6%	28
Pastoral Care	32	27	24	24	+0	-3	-11.4%	-8	-25.0%	49
Workshop Services	2	2	3	3		+1	+43.5%	+1	+35.4%	3
Care, other	142	147	182	185	+3	+38	+26.2%	+43	+30.4%	227
Patient & Client Care	7,627	7,696	7,785	7,727	-57	+32	+0.4%	+100	+1.3%	9,843

Employment by WTE, Headcount, Gender, Full-Time /Part-Time etc.: Feb 2022

Social Care Older Persons Services Staff Group	WTE	Headcount	WTE: no.	% Male	% female	Male WTE: no.	Female WTE: no.	% Total Perm	% Male Perm	% Female Perm	% Total Full Time	% Total Part Time	% Male FT	% Female FT
Overall	13,614	16,558	1.22	13.6%	86.4%	1.11	1.24	82.3%	79.1%	82.8%	59.1%	40.9%	82.4%	55.4%
Consultant Medicine	7	9	1.27	11.1%	88.9%	1.00	1.31	66.7%	66.7%	62.5%	44.4%	55.6%	0.0%	50.0%
Consultants	7	9	1.27	11.1%	88.9%	1.00	1.31	66.7%	100.0%	62.5%	44.4%	55.6%	0.0%	50.0%
Registrar	5	5	1.11	40.0%	60.0%	1.00	1.20	80.0%	80.0%	66.7%	80.0%	20.0%	100.0%	66.7%
Senior Registrar	2	3	1.44	33.3%	66.7%	12.50	1.00	33.3%	33.3%	50.0%	66.7%	33.3%	0.0%	100.0%
Specialist Registrar	3	3	1.00	66.7%	33.3%	1.00	1.00	0.0%	0.0%	0.0%	100.0%	0.0%	100.0%	100.0%
Registrars	10	11	1.15	45.5%	54.5%	1.23	1.09	45.5%	40.0%	50.0%	81.8%	18.2%	80.0%	83.3%
Senior House Officer	15	15	1.02	26.7%	73.3%	1.00	1.03	13.3%	13.3%	0.0%	100.0%	0.0%	100.0%	100.0%
SHO/ Interns	15	15	1.02	26.7%	73.3%	1.00	1.03	13.3%	50.0%	0.0%	100.0%	0.0%	100.0%	100.0%
Other Medical	81	153	1.90	63.4%	36.6%	2.06	1.66	54.2%	54.2%	51.8%	34.6%	65.4%	28.9%	44.6%
Medical/ Dental, other	81	153	1.90	63.4%	36.6%	2.06	1.66	54.2%	55.7%	51.8%	34.6%	65.4%	28.9%	44.6%
Medical & Dental	112	188	1.68	56.9%	43.1%	1.91	1.45	51.1%	55.1%	45.7%	43.1%	56.9%	33.6%	55.6%
Clinical Nurse/ Midwife Manager	538	579	1.08	7.8%	92.2%	1.04	1.08	95.3%	95.3%	95.7%	79.3%	20.7%	93.3%	78.1%
Director Nursing/Midwifery, Assistant	111	114	1.03	4.4%	95.6%	1.00	1.03	99.1%	99.1%	99.1%	90.4%	9.6%	100.0%	89.9%
Director of Nursing/Midwifery	101	103	1.02	5.8%	94.2%	1.02	1.02	99.0%	99.0%	99.0%	97.1%	2.9%	100.0%	96.9%
Nurse/ Midwife Manager	749	796	1.06	7.0%	93.0%	1.03	1.06	96.4%	92.9%	96.6%	83.2%	16.8%	94.6%	82.3%
Advanced Nurse/ Midwife Practitioner	20	20	1.02	5.0%	95.0%	1.00	1.03	100.0%	100.0%	100.0%	100.0%	0.0%	100.0%	100.0%
Clinical Nurse/ Midwife Specialist	26	27	1.06	14.8%	85.2%	1.01	1.07	100.0%	100.0%	100.0%	77.8%	22.2%	100.0%	73.9%
Nurse/ Midwife Specialist & AN/MP	45	47	1.04	10.6%	89.4%	1.01	1.05	100.0%	100.0%	100.0%	87.2%	12.8%	100.0%	85.7%
Staff Midwives	1	1	1.41		100.0%		1.41	100.0%	100.0%	100.0%	0.0%	100.0%		0.0%
Staff Nurse [Psychiatric]	8	10	1.26	20.0%	80.0%	1.23	1.26	50.0%	50.0%	37.5%	60.0%	40.0%	50.0%	62.5%
Staff Nurses [General/ Children's]	2,671	3,088	1.16	8.3%	91.7%	1.04	1.17	86.0%	86.0%	86.3%	64.2%	35.8%	92.5%	61.6%
Staff Nurse [Intellectual Disability]	1	1	1.19		100.0%		1.19	100.0%	100.0%	100.0%	100.0%	0.0%		100.0%
Staff Nurse/ Staff Midwife	2,680	3,100	1.16	8.3%	91.7%	1.04	1.17	85.9%	82.1%	86.2%	64.1%	35.9%	92.2%	61.6%
Public Health Nurse	12	15	1.25		100.0%		1.25	100.0%		100.0%	60.0%	40.0%		60.0%
Nursing/ Midwifery awaiting registration	2	2	1.33		100.0%		1.33	0.0%	0.0%	0.0%	100.0%	0.0%		100.0%
Nursing/ Midwifery Student	2	2	1.33		100.0%		1.33	0.0%		0.0%	100.0%	0.0%		100.0%
Nursing Education/Clinical	4	4	1.03		100.0%		1.03	100.0%	100.0%	100.0%	100.0%	0.0%		100.0%
Nursing/ Midwifery other	4	4	1.03		100.0%		1.03	100.0%		100.0%	100.0%	0.0%		100.0%

Nursing & Midwifery	3,492	3,964	1.14	8.0%	92.0%	1.04	1.14	88.2%	84.3%	88.5%	68.3%	31.7%	92.8%	66.1%
Dietitians	25	31	1.25	6.5%	93.5%	1.00	1.27	93.5%	93.5%	96.6%	64.5%	35.5%	100.0%	62.1%
Occupational Therapists	120	135	1.13	9.6%	90.4%	1.04	1.14	84.4%	84.4%	82.8%	83.7%	16.3%	92.3%	82.8%
Physiotherapists	166	188	1.14	16.5%	83.5%	1.05	1.16	87.8%	87.8%	87.9%	77.7%	22.3%	93.5%	74.5%
Podiatrists & Chiropodists	7	10	1.49	10.0%	90.0%	1.00	1.58	60.0%	60.0%	55.6%	50.0%	50.0%	100.0%	44.4%
Speech & Language Therapists	30	35	1.17		100.0%		1.17	91.4%	91.4%	91.4%	74.3%	25.7%		74.3%
Therapy Professions	347	399	1.15	11.8%	88.2%	1.04	1.17	86.7%	89.4%	86.4%	77.7%	22.3%	93.6%	75.6%
Radiographers	3	6	1.77	16.7%	83.3%	2.00	1.73	83.3%	83.3%	80.0%	16.7%	83.3%	0.0%	20.0%
Vascular Physiologists	0	1	6.25		100.0%		6.25	0.0%	0.0%	0.0%	0.0%	100.0%		0.0%
Health Science/ Diagnostics	4	7	1.97	14.3%	85.7%	2.00	1.97	71.4%	100.0%	66.7%	14.3%	85.7%	0.0%	16.7%
Social Care	3	5	1.82		100.0%		1.82	100.0%		100.0%	0.0%	100.0%		0.0%
Social Workers	86	94	1.09	16.0%	84.0%	1.00	1.11	91.5%	86.7%	92.4%	84.0%	16.0%	100.0%	81.0%
Psychologists	4	5	1.25	20.0%	80.0%	1.00	1.34	100.0%	100.0%	100.0%	80.0%	20.0%	100.0%	75.0%
Pharmacists	15	22	1.44	18.2%	81.8%	1.55	1.42	77.3%	77.3%	77.8%	40.9%	59.1%	50.0%	38.9%
Pharmacy Technicians	6	6	1.09	16.7%	83.3%	1.00	1.11	66.7%	66.7%	60.0%	83.3%	16.7%	100.0%	80.0%
Pharmacy	21	28	1.35	17.9%	82.1%	1.40	1.34	75.0%	80.0%	73.9%	50.0%	50.0%	60.0%	47.8%
Other Health & Social Care	1	1	1.85		100.0%		1.85	100.0%	100.0%	100.0%	0.0%	100.0%		0.0%
Play Therapists/ Specialists	1	1	1.00	100.0%		1.00		100.0%	100.0%		100.0%	0.0%	100.0%	
H&SC, Other	2	2	1.30	50.0%	50.0%	1.00	1.85	100.0%	100.0%	100.0%	50.0%	50.0%	100.0%	0.0%
Health & Social Care	465	540	1.16	13.0%	87.0%	1.06	1.18	87.0%	88.6%	86.8%	75.7%	24.3%	91.4%	73.4%
Executive Management	15	15	1.01	53.3%	46.7%	1.00	1.02	100.0%	100.0%	100.0%	100.0%	0.0%	100.0%	100.0%
Senior Management (VIII & GM)	90	93	1.03	32.3%	67.7%	1.03	1.03	93.5%	93.5%	95.2%	97.8%	2.2%	96.7%	98.4%
Management (VIII & above)	105	108	1.03	35.2%	64.8%	1.02	1.03	94.4%	92.1%	95.7%	98.1%	1.9%	97.4%	98.6%
Middle Management (V-VII)	201	213	1.06	14.6%	85.4%	1.04	1.07	93.9%	93.9%	95.1%	84.0%	16.0%	87.1%	83.5%
Other Administrative	1	1	1.00		100.0%		1.00	0.0%	0.0%	0.0%	100.0%	0.0%		100.0%
Administrative/ Supervisory (V to VII)	202	214	1.06	14.5%	85.5%	1.04	1.06	93.5%	87.1%	94.5%	84.1%	15.9%	87.1%	83.6%
General Administrative (III & IV)	616	708	1.15	8.6%	91.4%	1.08	1.16	84.6%	84.6%	85.3%	66.8%	33.2%	93.4%	64.3%
Clerical (III & IV)	616	708	1.15	8.6%	91.4%	1.08	1.16	84.6%	77.0%	85.3%	66.8%	33.2%	93.4%	64.3%
Management & Administrative	923	1,030	1.12	12.6%	87.4%	1.05	1.13	87.5%	83.8%	88.0%	73.7%	26.3%	93.1%	70.9%
Catering	222	243	1.10	35.8%	64.2%	1.05	1.12	93.8%	93.8%	96.8%	73.3%	26.7%	90.8%	63.5%
Household Services	474	537	1.13	18.2%	81.8%	1.06	1.15	83.6%	83.6%	84.7%	57.7%	42.3%	85.7%	51.5%
Other Support	27	34	1.27	55.9%	44.1%	1.16	1.44	82.4%	82.4%	86.7%	58.8%	41.2%	78.9%	33.3%
Portering	76	80	1.05	98.8%	1.3%	1.05	1.35	87.5%	87.5%	100.0%	92.5%	7.5%	92.4%	100.0%
Support	798	894	1.12	31.7%	68.3%	1.06	1.15	86.7%	84.1%	87.9%	65.1%	34.9%	88.7%	54.2%
Maintenance	91	95	1.04	98.9%	1.1%	1.04	1.00	95.8%	95.8%	100.0%	93.7%	6.3%	93.6%	100.0%

Technical Services	4	4	1.00	100.0%		1.00		100.0%	100.0%		100.0%	0.0%	100.0%	
Maintenance/ Technical	95	99	1.04	99.0%	1.0%	1.04	1.00	96.0%	95.9%	100.0%	93.9%	6.1%	93.9%	100.0%
General Support	894	993	1.11	38.4%	61.6%	1.05	1.15	87.6%	87.1%	87.9%	68.0%	32.0%	90.0%	54.2%
Attendant/ Aide	1,859	2,137	1.15	19.8%	80.2%	1.06	1.17	86.4%	86.4%	87.0%	58.3%	41.7%	84.9%	51.7%
Health & Social Care Assistants	43	47	1.09	25.5%	74.5%	1.06	1.10	95.7%	95.7%	97.1%	83.0%	17.0%	91.7%	80.0%
Health Care Assistant/ Care Assistant	2,190	2,482	1.13	21.4%	78.6%	1.05	1.16	89.1%	89.1%	89.3%	64.3%	35.7%	87.2%	58.1%
Health Care Assistants	4,092	4,666	1.14	20.7%	79.3%	1.05	1.16	87.9%	86.4%	88.3%	61.7%	38.3%	86.2%	55.4%
Home Help	3,450	4,950	1.43	4.1%	95.9%	1.35	1.44	71.0%	37.9%	72.4%	42.7%	57.3%	57.1%	42.1%
Home Care Services	137	147	1.07	9.5%	90.5%	1.00	1.08	96.6%	96.6%	96.2%	80.3%	19.7%	92.9%	78.9%
Other Care Grades	21	28	1.34	46.4%	53.6%	1.11	1.64	82.1%	82.1%	86.7%	46.4%	53.6%	84.6%	13.3%
Pastoral Care	24	49	2.06	89.8%	10.2%	2.06	2.08	26.5%	26.5%	60.0%	38.8%	61.2%	43.2%	0.0%
Workshop Services	3	3	1.05		100.0%		1.05	66.7%	66.7%	66.7%	33.3%	66.7%		33.3%
Care, other	185	227	1.23	31.3%	68.7%	1.51	1.13	79.3%	47.9%	93.6%	66.5%	33.5%	60.6%	69.2%
Patient & Client Care	7,727	9,843	1.27	12.6%	87.4%	1.11	1.30	79.2%	76.3%	79.7%	52.3%	47.7%	80.0%	48.3%

Employment by WTE, Headcount, Gender, Full-Time /Part-Time etc.: Feb 2022

Social Care Older Persons Services CHO	WTE	Headcount	WTE: no.	% Male	% female	Male WTE: no.	Female WTE: no.	% Total Perm	% Male Perm	% Female Perm	% Total Full Time	% Total Part Time	% Male FT	% Female FT
Overall	13,614	16,558	1.22	13.6%	86.4%	1.11	1.24	82.3%	79.1%	82.8%	59.1%	40.9%	82.4%	55.4%
CHO 1	1,962	2,344	1.19	12.5%	87.5%	1.16	1.20	71.9%	71.9%	70.4%	41.8%	58.2%	65.4%	38.4%
CHO 2	1,525	1,796	1.18	12.8%	87.2%	1.04	1.20	91.5%	91.5%	91.9%	50.1%	49.9%	87.0%	44.7%
CHO 3	1,230	1,538	1.25	12.9%	87.1%	1.05	1.29	91.1%	91.1%	91.6%	57.0%	43.0%	89.9%	52.1%
CHO 4	2,928	3,819	1.30	11.6%	88.4%	1.17	1.32	62.9%	62.9%	64.9%	74.8%	25.2%	86.9%	73.2%
CHO 5	1,648	2,000	1.21	10.1%	90.0%	1.10	1.23	97.4%	97.4%	98.1%	45.9%	54.2%	76.6%	42.4%
CHO 6	810	885	1.09	25.3%	74.7%	1.06	1.11	91.3%	91.3%	90.9%	78.0%	22.0%	88.4%	74.4%
CHO 7	986	1,138	1.15	17.1%	82.9%	1.07	1.17	89.7%	89.7%	90.7%	66.7%	33.3%	87.2%	62.5%
CHO 8	1,454	1,839	1.26	12.0%	88.0%	1.19	1.28	90.5%	90.5%	91.0%	48.1%	51.9%	73.6%	44.6%
CHO 9	993	1,115	1.12	20.0%	80.0%	1.07	1.14	88.1%	88.1%	89.6%	75.6%	24.4%	87.4%	72.6%
other Community Services	77	84	1.09	23.8%	76.2%	1.05	1.10	90.5%	90.5%	90.6%	86.9%	13.1%	90.0%	85.9%

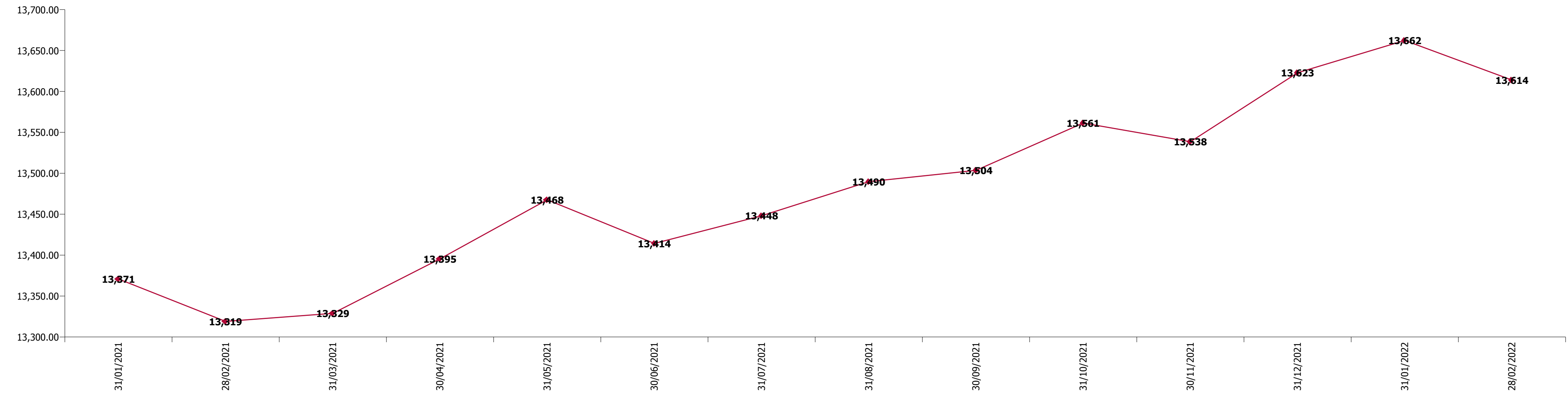
Summary Staff Movement: February 2022

Month-on-month
Summary

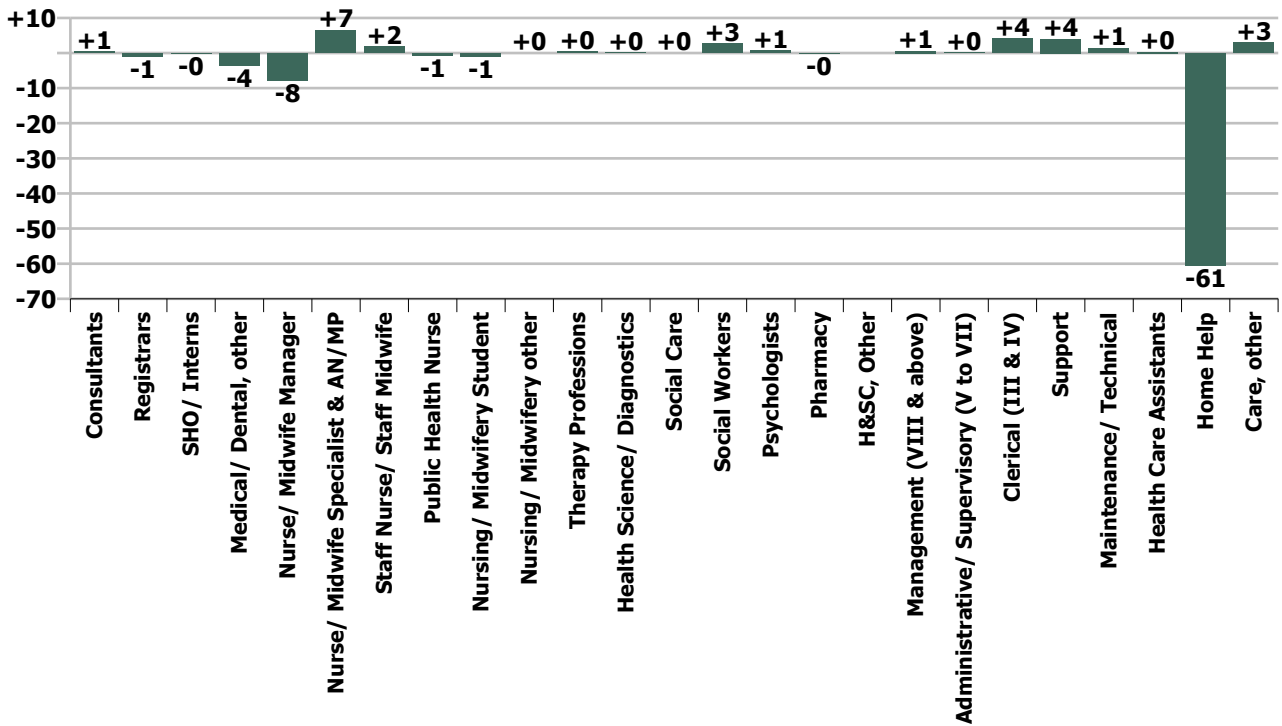
WTE change since Jan 22	% change since Jan 22	overall	Consultants	Registrars	SHO/ Interns	Medical/ Dental, other	Medical & Dental	Nurse/ Midwife Manager	Nurse/ Midwife Specialist & AN/MP	Staff Nurse/ Staff Midwife	Public Health Nurse	Nursing/ Midwifery Student	Nursing/ Midwifery other	Nursing & Midwifery	Therapy Professions	Health Science/ Diagnostics	Social Care	Social Workers	Psychologists	Pharmacy	H&SC, Other	Health & Social Care Professionals	Management (VIII & above)	Administrativ e/ Supervisory (V to VII)	Clerical (III & IV)	Management & Administrative	General Support	Health Care Assistants	Home Help	Care, other	Patient & Client Care
Overall	-0.4%	-48	+1	-1	-0	-4	-4	-8	+7	+2	-1	-1	+0	-1	+0	+0		+3	+1	-0		+4	+1	+0	+4	+5	+5	+0	-61	+3	-57
CHO 1	-2.5%	-50				-3	-3	-3	+2	-1				-2	+0			+0				+0	+0	+0	-2	-1	+2	+1	-47	+0	-46
CHO 2	-0.7%	-10				+0	-0	-1	+2	+0				+1	+2							+2	+1	+1	-2	-2	+0	-1	-11	+1	-12
CHO 3	+1.7%	+21				+1	+1	-0	+0	+5	-1			+4	+1	+0		+1	-0	+0		+2	+0	+3	-2	+1	+0	+4	+8	+1	+13
CHO 4	-0.4%	-13	+1			-1	-1	-1	+0	-0	+1	-0		-1	-6			+0		+0		-5	-1	+1	+1	+1	-2	-4	-1	+0	-4
CHO 5	-1.1%	-18						-1		-2	-0			-3	+1			+0	+1	-0		+2	-0	-1	-0	-1	+2	-3	-17	+2	-19
CHO 6	-0.2%	-1						-1		-0				-2	-2			-1				-3	+0	+1	+1	+1	-1	+3		-0	+3
CHO 7	-0.2%	-2						+1	+0	-5		-1		-4	-1			+1				-0	+0	-2	+3	+1	+1	-1	+2		+1
CHO 8	+0.2%	+3						-1		+2	-0		+0	+1	+0					-1		-0	+1	-0	-1	+0	+1	-4	+6	-0	+1
CHO 9	+2.2%	+21		-1	-0		-1	-0	+2	+3				+5	+5			+2				+7	+0	-1	+5	+4	+2	+5		+0	+5
other Community Services	+1.6%	+1																				+0	+0	-0	+1	+1					
		-0.4%	+7.6%	-9.4%	-1.3%	-4.3%	-3.7%	-1.0%	+17.0%	+0.1%	-4.9%	-39.3%	+0.5%	-0.0%	+0.1%	+2.3%		+3.3%	+25.9%	-0.4%		+0.9%	+0.6%	+0.0%	+0.7%	+0.5%	+0.6%	+0.0%	-1.7%	+1.7%	-0.7%

Year-on-year Summary

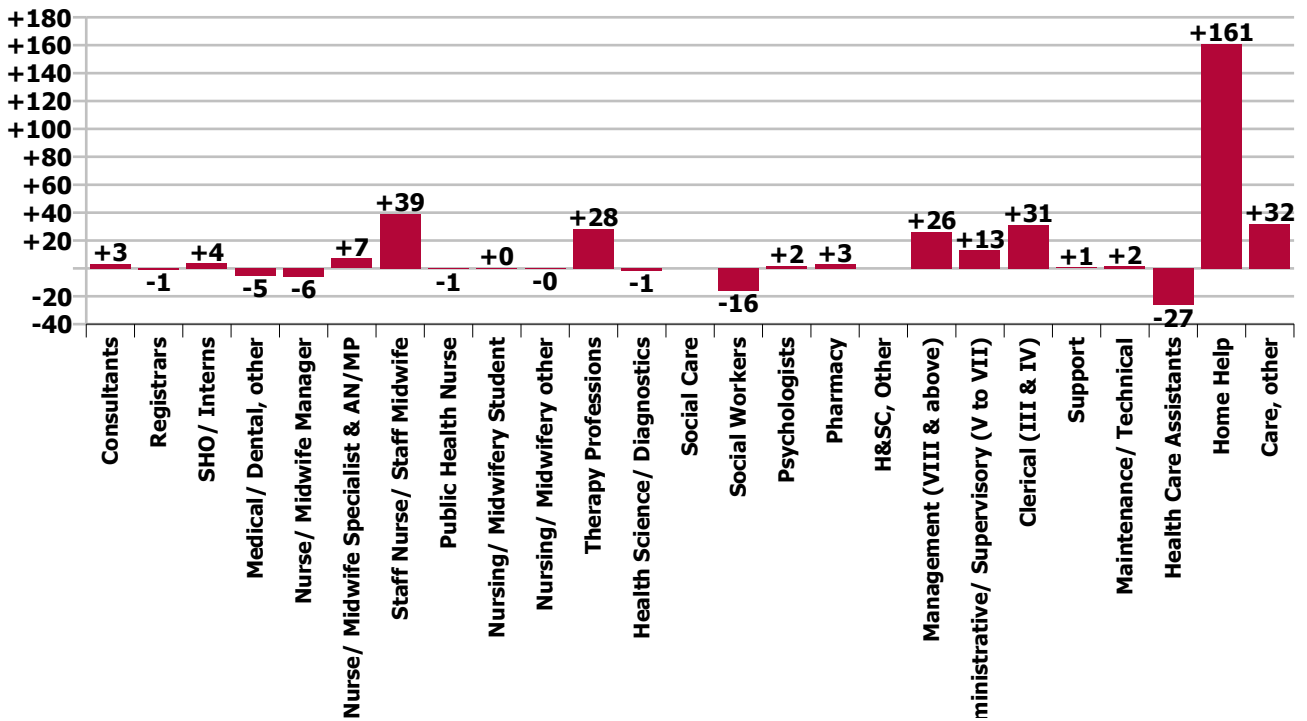
WTE change since Feb 21	% change since Feb 21	overall	Consultants	Registrars	SHO/ Interns	Medical/ Dental, other	Medical & Dental	Nurse/ Midwife Manager	Nurse/ Midwife Specialist & AN/MP	Staff Nurse/ Staff Midwife	Public Health Nurse	Nursing/ Midwifery Student	Nursing/ Midwifery other	Nursing & Midwifery	Therapy Professions	Health Science/ Diagnostics	Social Care	Social Workers	Psychologists	Pharmacy	H&SC, Other	Health & Social Care Professionals	Management (VIII & above)	Administrative/ Supervisory (V to VII)	Clerical (III & IV)	Management & Administrative	General Support	Health Care Assistants	Home Help	Care, other	Patient & Client Care
Overall	+2.2%	+295	+3	-1	+4	-5	+1	-6	+7	+39	-1	+0	-0	+40	+28	-1	-0	-16	+2	+3		+16	+26	+13	+31	+70	+2	-27	+161	+32	+166
CHO 1	+5.3%	+98				-1	-1	+4	+2	+5				+11	+7	-2			-7			-2	+2	-1	-7	-8	-7	+2	+98	+5	+105
CHO 2	-2.4%	-37				-1	-1	-4	+2	+5				+4	-1						-1	-2	+2	+6	+1	+9	-5	-14	-38	+11	-42
CHO 3	+16.5%	+174	+2	+1		-1	+2	-2	+1	+21	-1			+20	+13	+0		+3	+1			+17	+2	+4	+2	+8	+1	+18	+106	+3	+126
CHO 4	+1.0%	+28	+1	-1	+1	-0	+0	-6	-1	+14	-1			+7	-2			+1	+1		+1	-0	+4	+10	-2	+11	+13	+3	-7	-1	-4
CHO 5	-0.0%	-1						-2	-2	-4	+0			-7	-2			+1	+1		-0	+0	+6	-9	+20	+17	-1	-21	+1	+10	-9
CHO 6	+0.3%	+3		-1		-1	-2	+3	-1	-4				-3	-9			-5	-2		+2	-13	+4	+5	-0	+8	+7	+6		-0	+6
CHO 7	-2.7%	-27						+6	-0	-16		+0		-11	-3			-2			+1	-4	+1	-0	+5	+6	-6	-7	-5	+0	-12
CHO 8	-1.9%	-28				-1	-1	-8	-0	-5	-0		+1	-12	+4			-5				-1	+2	-4	-1	-3	+0	-20	+6	+3	-11
CHO 9	+9.1%	+83	+1		+3		+3	+2	+6	+23	+1		-1	+31	+23				-3	+1		+21	+6	-0	+15	+21	+1	+6		+1	+6
other Community Services	+3.1%	+2																	+1			+1	-0	+3	-2	+0				+1	+1
		+2.2%	+75.7%	-8.8%	+33.9%	-6.2%	+0.5%	-0.8%	+18.9%	+1.5%	-4.8%	+18.1%	-3.0%	+1.2%	+8.9%	-29.1%	-0.0%	-15.8%	+90.0%	+17.1%		+3.5%	+33.2%	+6.9%	+5.3%	+8.2%	+0.3%	-0.6%	+4.9%	+21.0%	+2.2%



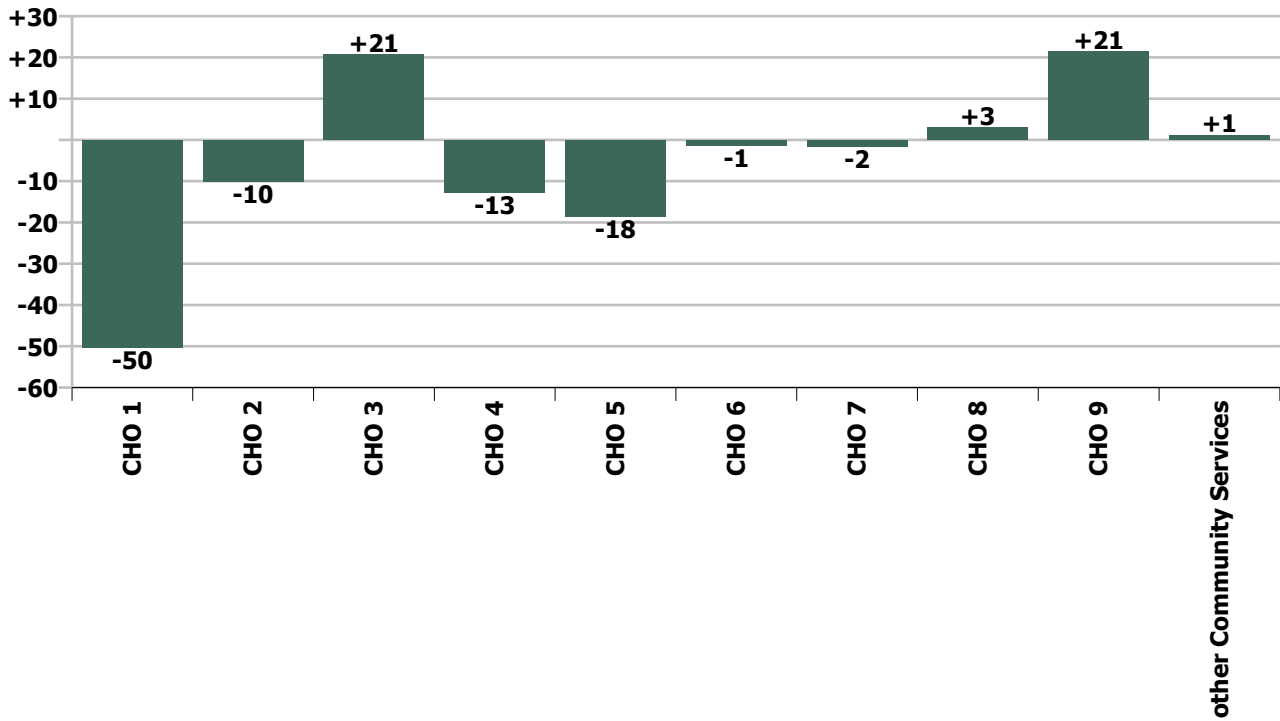
Staff Group change since: Jan 2022



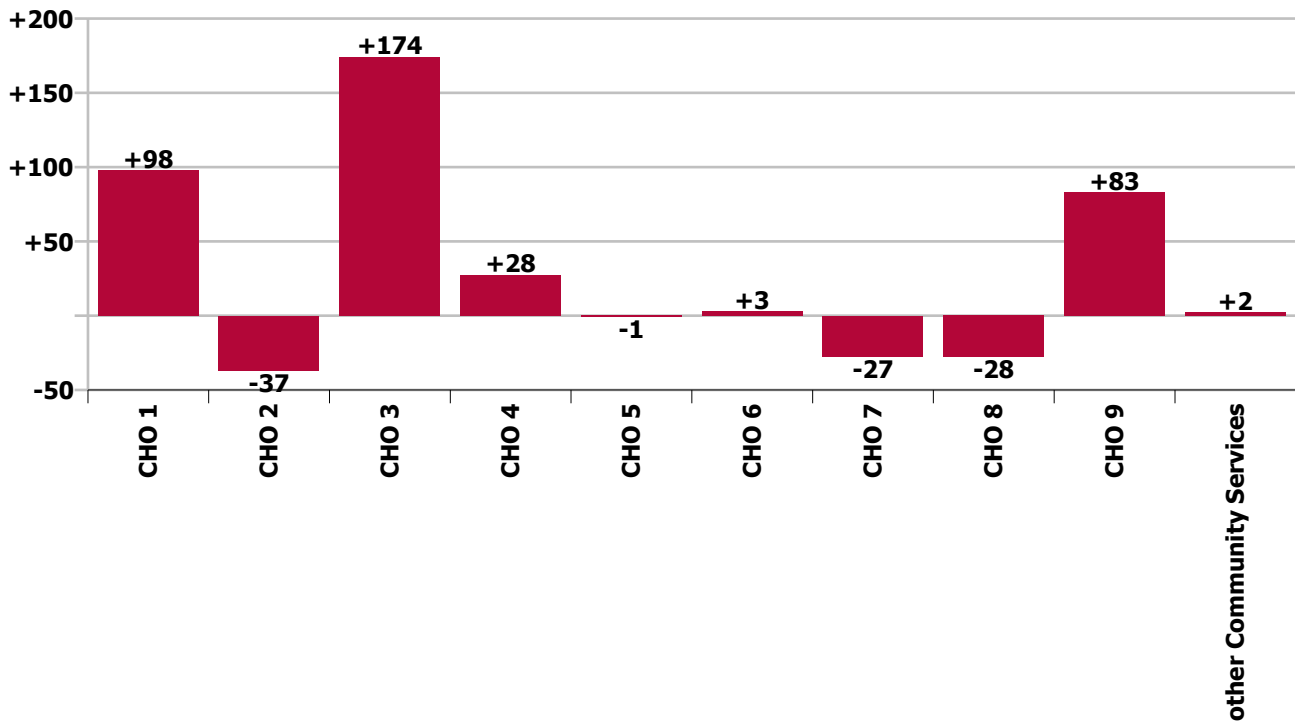
Staff Group change since: Feb 2021



CHO change since: Jan 2022



CHO change since: Feb 2021



Longitudinal Employment Levels by Grade Group - Dec 2016 to Feb 2022

Feb 2022 (Dec 2015 figure: 12,607)	WTE Feb 2022	WTE change since Dec 16	WTE change since Dec 17	WTE change since Dec 18	WTE change since Dec 19	WTE change since Dec 20	WTE change since Jan 22	% change since Dec 16	% change since Dec 17	% change since Dec 18	% change since Dec 19	% change since Dec 20	% change since Jan 22
Overall	13,614	+1,132	+510	+309	+381	+199	-48	+9.1%	+3.9%	+2.3%	+2.9%	+1.5%	-0.4%
Consultant Medicine	7	-2	-2	+3	+3	+3	+1	-24.1%	-22.8%	+97.2%	+97.2%	+60.6%	+7.6%
Consultant Psychiatry		-1	-1					-100.0%	-100.0%	-100.0%	-100.0%	-100.0%	-100.0%
Consultant Surgery		-1	-0	-0				-100.0%	-100.0%	-100.0%	-100.0%	-100.0%	-100.0%
Consultants	7	-4	-3	+3	+3	+3	+1	-35.3%	-30.2%	+90.9%	+97.2%	+60.6%	+7.6%
Registrar	5	-1	-3	-3	-2	-1	-2	-18.1%	-39.9%	-38.7%	-30.7%	-22.8%	-30.7%
Senior Registrar	2	+1	+1	+0	+1	+1	+1	+108.0%	+108.0%	+4.0%	+108.0%	+108.0%	+92.6%
Specialist Registrar	3	+1	+2	+2	+1	+1		+50.0%	+200.0%	+200.0%	+50.0%	+50.0%	
Registrars	10	+1	+0	-1	+0	+1	-1	+12.7%	+0.8%	-7.4%	+0.8%	+8.5%	-9.4%
Senior House Officer	15	+5	+5	+3	-0	+1	-0	+48.0%	+48.6%	+23.5%	-1.8%	+7.8%	-1.3%
SHO/ Interns	15	+5	+5	+3	-0	+1	-0	+48.0%	+48.6%	+23.5%	-1.8%	+7.8%	-1.3%
Other Medical	81	-5	-5	-5	-16	-23	-4	-6.0%	-6.0%	-5.5%	-16.3%	-22.2%	-4.3%
Medical/ Dental, other	81	-5	-5	-5	-16	-23	-4	-6.0%	-6.0%	-5.5%	-16.3%	-22.2%	-4.3%
Medical & Dental	112	-3	-3	+1	-12	-19	-4	-2.8%	-2.9%	+0.6%	-9.9%	-14.2%	-3.7%
Clinical Nurse/ Midwife Manager	538	+3	+9	+14	+29	+2	-11	+0.6%	+1.8%	+2.6%	+5.8%	+0.3%	-2.0%
Director Nursing/Midwifery, Assistant	111	+23	+19	+24	+8	+4	+3	+26.3%	+20.7%	+27.6%	+7.8%	+4.2%	+2.5%
Director of Nursing/Midwifery	101	+16	+19	+18	+3	-3	+0	+19.0%	+22.5%	+22.3%	+2.9%	-3.1%	+0.2%
Nurse/ Midwife Manager	749	+42	+47	+56	+40	+3	-8	+6.0%	+6.7%	+8.1%	+5.7%	+0.4%	-1.0%
Advanced Nurse/ Midwife Practitioner	20	+17	+17	+13	+9	+3	+3	+551.0%	+551.0%	+179.8%	+82.2%	+17.5%	+15.6%
Clinical Nurse/ Midwife Specialist	26	+13	+14	+9	+10	+4	+4	+103.9%	+127.7%	+52.4%	+62.2%	+18.5%	+18.1%
Nurse/ Midwife Specialist & AN/MP	45	+30	+31	+21	+19	+7	+7	+190.3%	+217.0%	+89.9%	+70.3%	+18.0%	+17.0%
Graduate Nursing/ Midwifery								-100.0%	-100.0%	-100.0%	-100.0%	-100.0%	-100.0%
Staff Midwives	1	+0	-1	+1	+1	-0	-0	+77.5%	-60.6%	-100.0%	-100.0%	-19.3%	-11.3%
Staff Nurse [Psychiatric]	8	+2	+2	+2	+3	+3	+0	+44.2%	+44.2%	+43.7%	+62.1%	+54.0%	+5.0%
Staff Nurses [General/ Children's]	2,671	+88	+110	+66	+99	+54	+2	+3.4%	+4.3%	+2.5%	+3.9%	+2.1%	+0.1%
Staff Nurse [Intellectual Disability]	1	-0	+0	-0	+1	-0	-0	-16.0%	+9.1%	-16.0%	-100.0%	-16.0%	-16.0%
Staff Nurse/ Staff Midwife	2,680	+91	+111	+69	+104	+56	+2	+3.5%	+4.3%	+2.7%	+4.0%	+2.1%	+0.1%
Public Health Nurse	12	-2	-3	-2	-1	-1	-1	-15.9%	-18.8%	-11.7%	-10.7%	-10.9%	-4.9%

Feb 2022 (Dec 2015 figure: 12,607)	WTE Feb 2022	WTE change since Dec 16	WTE change since Dec 17	WTE change since Dec 18	WTE change since Dec 19	WTE change since Dec 20	WTE change since Jan 22	% change since Dec 16	% change since Dec 17	% change since Dec 18	% change since Dec 19	% change since Dec 20	% change since Jan 22
Overall	13,614	+1,132	+510	+309	+381	+199	-48	+9.1%	+3.9%	+2.3%	+2.9%	+1.5%	-0.4%
Public Health Nurse	12	-2	-3	-2	-1	-1	-1	-15.9%	-18.8%	-11.7%	-10.7%	-10.9%	-4.9%
Pre-registration Nurse/ Midwife Intern							-0	-100.0%	-100.0%	-100.0%	-100.0%	-100.0%	-100.0%
Post-registration Nurse/ Midwife Student					-1			-100.0%	-100.0%	-100.0%	-100.0%	-100.0%	-100.0%
Nursing/ Midwifery awaiting registration	2	+2	-13	+2	+1	+0	-1	-100.0%	-89.3%	-100.0%	+50.0%	+11.1%	-25.0%
Nursing/ Midwifery Student	2	+2	-13	+2	-1	+0	-1	-100.0%	-89.3%	-100.0%	-25.0%	+11.1%	-39.3%
Nursing Education/Clinical	4	+3	+3	+3	+3	-0	+0	+288.0%	+288.0%	+288.0%	+288.0%	-2.5%	+0.5%
Nursing/ Midwifery other	4	+3	+3	+3	+3	-0	+0	+288.0%	+288.0%	+288.0%	+288.0%	-2.5%	+0.5%
Nursing & Midwifery	3,492	+165	+177	+149	+164	+65	-1	+5.0%	+5.3%	+4.5%	+4.9%	+1.9%	-0.0%
Dietitians	25	+9	+7	+8	+8	+7	+1	+56.9%	+42.1%	+43.7%	+51.9%	+38.3%	+2.4%
Occupational Therapists	120	+24	+25	+16	+7	+7	-3	+25.1%	+26.6%	+15.2%	+5.9%	+6.1%	-2.2%
Physiotherapists	166	+50	+44	+38	+42	+33	+7	+42.9%	+36.8%	+30.0%	+33.9%	+25.3%	+4.3%
Podiatrists & Chiropodists	7	-8	-9	-8	-5	-6	-2	-54.4%	-58.2%	-55.2%	-44.4%	-47.0%	-25.4%
Speech & Language Therapists	30	+10	+6	+7	+7	+10	-2	+47.0%	+25.7%	+29.6%	+29.4%	+50.8%	-6.1%
Therapy Professions	347	+84	+74	+60	+59	+51	+0	+32.1%	+27.0%	+21.0%	+20.3%	+17.4%	+0.1%
Medical Science		-1						-100.0%	-100.0%	-100.0%	-100.0%	-100.0%	-100.0%
Phlebotomists		-1	-1					-100.0%	-100.0%	-100.0%	-100.0%	-100.0%	-100.0%
Radiographers	3	-4	-4	-2	-3	-2		-52.3%	-53.0%	-39.8%	-42.8%	-31.8%	
Vascular Physiologists	0	+0	+0	+0	-0		+0	-100.0%	-100.0%	+100.0%	-23.8%		+100.0%
Health Science/ Diagnostics	4	-6	-5	-2	-3	-2	+0	-61.0%	-56.8%	-37.8%	-42.2%	-30.8%	+2.3%
Social Care	3	+0	+0		+0		+0	+1.5%	+2.6%		+0.0%		+0.0%
Social Workers	86	-1	+2	-9	-12	-14	+3	-0.7%	+2.7%	-9.3%	-12.5%	-13.8%	+3.3%
Psychologists	4	+3	+4	+3	+2	+3	+1	+698.0%	-100.0%	+698.0%	+90.0%	+262.7%	+25.9%
Pharmacists	15	+5	+5	+4	+3	+3	-0	+55.2%	+43.5%	+31.5%	+20.0%	+20.3%	-0.7%
Pharmacy Technicians	6	+1	+1	+1	+3	+1	+0	+17.3%	+17.3%	+17.3%	+120.0%	+22.2%	+0.4%
Pharmacy	21	+6	+5	+4	+6	+4	-0	+42.9%	+35.5%	+27.4%	+36.4%	+20.8%	-0.4%
Other Health & Social Care	1	-1	-1	-1	+0			-60.3%	-60.3%	-60.3%	+50.0%		
Play Therapists/ Specialists	1	-1						-37.1%					
H&SC, Other	2	-1	-1	-1	+0			-47.8%	-34.7%	-34.7%	+13.2%		
Health & Social Care Professionals	465	+86	+80	+56	+51	+42	+4	+22.8%	+20.8%	+13.7%	+12.4%	+10.0%	+0.9%

Feb 2022 (Dec 2015 figure: 12,607)	WTE Feb 2022	WTE change since Dec 16	WTE change since Dec 17	WTE change since Dec 18	WTE change since Dec 19	WTE change since Dec 20	WTE change since Jan 22	% change since Dec 16	% change since Dec 17	% change since Dec 18	% change since Dec 19	% change since Dec 20	% change since Jan 22
Overall	13,614	+1,132	+510	+309	+381	+199	-48	+9.1%	+3.9%	+2.3%	+2.9%	+1.5%	-0.4%
Executive Management	15	+8	+7	+5	+3	+0	+0	+112.1%	+87.5%	+48.5%	+24.7%	+0.4%	+0.1%
Senior Management (VIII & GM)	90	+50	+53	+42	+28	+26	+1	+123.4%	+144.6%	+86.0%	+44.1%	+41.3%	+0.7%
Management (VIII & above)	105	+58	+60	+47	+31	+26	+1	+121.7%	+134.5%	+79.6%	+41.0%	+33.6%	+0.6%
Middle Management (V-VII)	201	+84	+73	+59	+37	+25	-0	+72.1%	+57.3%	+41.6%	+22.4%	+14.2%	-0.2%
Other Administrative	1					+1	+1					-100.0%	+112.8%
Administrative/ Supervisory (V to VII)	202	+84	+73	+59	+37	+26	+0	+71.5%	+56.8%	+41.3%	+22.3%	+14.7%	+0.0%
General Administrative (III & IV)	616	+133	+107	+51	+45	+29	+4	+27.4%	+21.0%	+9.1%	+7.9%	+4.9%	+0.7%
Clerical (III & IV)	616	+133	+107	+51	+45	+29	+4	+27.4%	+21.0%	+9.1%	+7.9%	+4.9%	+0.7%
Management & Administrative	923	+274	+240	+157	+112	+81	+5	+42.3%	+35.2%	+20.5%	+13.8%	+9.6%	+0.5%
Catering	222	+9	+10	+6	+1	+5	+2	+4.1%	+4.7%	+2.9%	+0.2%	+2.5%	+1.0%
Household Services	474	-90	-71	-44	-19	-5	+0	-15.9%	-13.0%	-8.5%	-3.8%	-1.1%	+0.1%
Other Support	27	-13	-17	-11	-7	-2	+1	-33.3%	-38.2%	-29.3%	-21.3%	-7.9%	+3.3%
Portering	76	-9	-8	-4	-5	-1	+1	-10.5%	-9.3%	-4.5%	-6.7%	-0.8%	+0.8%
Support	798	-103	-85	-53	-31	-3	+4	-11.5%	-9.6%	-6.2%	-3.7%	-0.4%	+0.5%
Maintenance	92	-12	-10	-11	-7	-3	+1	-11.7%	-10.2%	-10.7%	-7.1%	-3.5%	+1.6%
Technical Services	4	+4	+4	+4	+4	+4		-100.0%	-100.0%	-100.0%	-100.0%	-100.0%	
Maintenance/ Technical	96	-8	-6	-7	-3	+1	+1	-7.8%	-6.2%	-6.8%	-3.0%	+0.7%	+1.5%
General Support	894	-111	-92	-59	-34	-2	+5	-11.1%	-9.3%	-6.2%	-3.6%	-0.2%	+0.6%
Attendant/ Aide	1,859	-905	-836	-771	-434	-352	-79	-32.7%	-31.0%	-29.3%	-18.9%	-15.9%	-4.1%
Health & Social Care Assistants	43	+17	+17	+19	+22	+16	-1	+66.5%	+66.9%	+78.4%	+103.2%	+58.5%	-1.3%
Health Care Assistant/ Care Assistant	2,190	+907	+799	+689	+461	+332	+80	+70.7%	+57.5%	+45.9%	+26.7%	+17.9%	+3.8%
HCA (Student Nurse/Midwife COVID-19)						-22	-0	-100.0%	-100.0%	-100.0%	-100.0%	-100.0%	-100.0%
Health Care Assistants	4,092	+19	-19	-63	+49	-26	+0	+0.5%	-0.5%	-1.5%	+1.2%	-0.6%	+0.0%
Home Help	3,450	+655	+94	+30	+8	+19	-61	+23.4%	+2.8%	+0.9%	+0.2%	+0.6%	-1.7%
Home Care Services	137	+70	+54	+51	+52	+39	+3	+102.3%	+64.0%	+59.9%	+60.3%	+39.2%	+2.2%
Other Care Grades	21	-14	-12	-4	-1	+2	-0	-39.4%	-36.4%	-15.5%	-6.6%	+9.9%	-0.2%
Pastoral Care	24	-11	-9	-10	-8	-3	+0	-31.4%	-27.8%	-29.8%	-25.0%	-11.4%	+0.6%
Workshop Services	3	+1	+1	+1	+1	+1		+35.4%	+35.4%	+35.4%	+35.4%	+43.5%	
Care, other	185	+46	+33	+38	+43	+38	+3	+32.9%	+22.0%	+26.1%	+30.4%	+26.2%	+1.7%

Feb 2022 (Dec 2015 figure: 12,607)	WTE Feb 2022	WTE change since Dec 16	WTE change since Dec 17	WTE change since Dec 18	WTE change since Dec 19	WTE change since Dec 20	WTE change since Jan 22	% change since Dec 16	% change since Dec 17	% change since Dec 18	% change since Dec 19	% change since Dec 20	% change since Jan 22
Overall	13,614	+1,132	+510	+309	+381	+199	-48	+9.1%	+3.9%	+2.3%	+2.9%	+1.5%	-0.4%
Patient & Client Care	7,727	+720	+108	+5	+100	+32	-57	+10.3%	+1.4%	+0.1%	+1.3%	+0.4%	-0.7%

Source: Health Service Personnel Census

Longitudinal Employment Levels by Grade Group - Dec 2016 to Feb 2022

Feb 2022 (Dec 2015 figure: 12,607)	WTE Feb 2022	WTE change since Dec 16	WTE change since Dec 17	WTE change since Dec 18	WTE change since Dec 19	WTE change since Dec 20	WTE change since Jan 22	% change since Dec 16	% change since Dec 17	% change since Dec 18	% change since Dec 19	% change since Dec 20	% change since Jan 22
Overall	13,614	+1,132	+510	+309	+381	+199	-48	+9.1%	+3.9%	+2.3%	+2.9%	+1.5%	-0.4%
Consultant Medicine	7	-2	-2	+3	+3	+3	+1	-24.1%	-22.8%	+97.2%	+97.2%	+60.6%	+7.6%
Consultant Psychiatry		-1	-1					-100.0%	-100.0%	-100.0%	-100.0%	-100.0%	-100.0%
Consultant Surgery		-1	-0	-0				-100.0%	-100.0%	-100.0%	-100.0%	-100.0%	-100.0%
Consultants	7	-4	-3	+3	+3	+3	+1	-35.3%	-30.2%	+90.9%	+97.2%	+60.6%	+7.6%
Registrar	5	-1	-3	-3	-2	-1	-2	-18.1%	-39.9%	-38.7%	-30.7%	-22.8%	-30.7%
Senior Registrar	2	+1	+1	+0	+1	+1	+1	+108.0%	+108.0%	+4.0%	+108.0%	+108.0%	+92.6%
Specialist Registrar	3	+1	+2	+2	+1	+1		+50.0%	+200.0%	+200.0%	+50.0%	+50.0%	
Registrars	10	+1	+0	-1	+0	+1	-1	+12.7%	+0.8%	-7.4%	+0.8%	+8.5%	-9.4%
Senior House Officer	15	+5	+5	+3	-0	+1	-0	+48.0%	+48.6%	+23.5%	-1.8%	+7.8%	-1.3%
SHO/ Interns	15	+5	+5	+3	-0	+1	-0	+48.0%	+48.6%	+23.5%	-1.8%	+7.8%	-1.3%
Other Medical	81	-5	-5	-5	-16	-23	-4	-6.0%	-6.0%	-5.5%	-16.3%	-22.2%	-4.3%
Medical/ Dental, other	81	-5	-5	-5	-16	-23	-4	-6.0%	-6.0%	-5.5%	-16.3%	-22.2%	-4.3%
Medical & Dental	112	-3	-3	+1	-12	-19	-4	-2.8%	-2.9%	+0.6%	-9.9%	-14.2%	-3.7%
Clinical Nurse/ Midwife Manager	538	+3	+9	+14	+29	+2	-11	+0.6%	+1.8%	+2.6%	+5.8%	+0.3%	-2.0%
Director Nursing/Midwifery, Assistant	111	+23	+19	+24	+8	+4	+3	+26.3%	+20.7%	+27.6%	+7.8%	+4.2%	+2.5%
Director of Nursing/Midwifery	101	+16	+19	+18	+3	-3	+0	+19.0%	+22.5%	+22.3%	+2.9%	-3.1%	+0.2%
Nurse/ Midwife Manager	749	+42	+47	+56	+40	+3	-8	+6.0%	+6.7%	+8.1%	+5.7%	+0.4%	-1.0%
Advanced Nurse/ Midwife Practitioner	20	+17	+17	+13	+9	+3	+3	+551.0%	+551.0%	+179.8%	+82.2%	+17.5%	+15.6%
Clinical Nurse/ Midwife Specialist	26	+13	+14	+9	+10	+4	+4	+103.9%	+127.7%	+52.4%	+62.2%	+18.5%	+18.1%
Nurse/ Midwife Specialist & AN/MP	45	+30	+31	+21	+19	+7	+7	+190.3%	+217.0%	+89.9%	+70.3%	+18.0%	+17.0%
Staff Nurse/ Staff Midwife	2,680	+91	+111	+69	+104	+56	+2	+3.5%	+4.3%	+2.7%	+4.0%	+2.1%	+0.1%
Public Health Nurse	12	-2	-3	-2	-1	-1	-1	-15.9%	-18.8%	-11.7%	-10.7%	-10.9%	-4.9%
Public Health Nurse	12	-2	-3	-2	-1	-1	-1	-15.9%	-18.8%	-11.7%	-10.7%	-10.9%	-4.9%
Pre-registration Nurse/ Midwife Intern							-0	-100.0%	-100.0%	-100.0%	-100.0%	-100.0%	-100.0%
Post-registration Nurse/ Midwife Student					-1			-100.0%	-100.0%	-100.0%	-100.0%	-100.0%	-100.0%
Nursing/ Midwifery awaiting registration	2	+2	-13	+2	+1	+0	-1	-100.0%	-89.3%	-100.0%	+50.0%	+11.1%	-25.0%
Nursing/ Midwifery Student	2	+2	-13	+2	-1	+0	-1	-100.0%	-89.3%	-100.0%	-25.0%	+11.1%	-39.3%
Nursing Education/Clinical	4	+3	+3	+3	+3	-0	+0	+288.0%	+288.0%	+288.0%	+288.0%	-2.5%	+0.5%
Nursing/ Midwifery other	4	+3	+3	+3	+3	-0	+0	+288.0%	+288.0%	+288.0%	+288.0%	-2.5%	+0.5%
Nursing & Midwifery	3,492	+165	+177	+149	+164	+65	-1	+5.0%	+5.3%	+4.5%	+4.9%	+1.9%	-0.0%
Dietitians	25	+9	+7	+8	+8	+7	+1	+56.9%	+42.1%	+43.7%	+51.9%	+38.3%	+2.4%
Occupational Therapists	120	+24	+25	+16	+7	+7	-3	+25.1%	+26.6%	+15.2%	+5.9%	+6.1%	-2.2%
Physiotherapists	166	+50	+45	+38	+42	+33	+7	+42.9%	+36.8%	+30.0%	+33.9%	+25.3%	+4.3%
Podiatrists & Chiropodists	7	-8	-9	-8	-5	-6	-2	-54.4%	-58.2%	-55.2%	-44.4%	-47.0%	-25.4%
Speech & Language Therapists	30	+10	+6	+7	+7	+10	-2	+47.0%	+25.7%	+29.6%	+29.4%	+50.8%	-6.1%
Therapy Professions	347	+84	+74	+60	+59	+51	+0	+32.1%	+27.0%	+21.0%	+20.3%	+17.4%	+0.1%
Medical Science		-1						-100.0%	-100.0%	-100.0%	-100.0%	-100.0%	-100.0%
Phlebotomists		-1	-1					-100.0%	-100.0%	-100.0%	-100.0%	-100.0%	-100.0%
Radiographers	3	-4	-4	-2	-3	-2		-52.3%	-53.0%	-39.8%	-42.8%	-31.8%	
Vascular Physiologists	0	+0	+0	+0	-0		+0	-100.0%	-100.0%	+100.0%	-23.8%		+100.0%
Health Science/ Diagnostics	4	-6	-5	-2	-3	-2	+0	-61.0%	-56.8%	-37.8%	-42.2%	-30.8%	+2.3%
Social Care	3	+0	+0		+0		+0	+1.5%	+2.6%		+0.0%		+0.0%
Social Workers	86	-1	+2	-9	-12	-14	+3	-0.7%	+2.7%	-9.3%	-12.5%	-13.8%	+3.3%
Psychologists	4	+3	+4	+3	+2	+3	+1	+698.0%	-100.0%	+698.0%	+90.0%	+262.7%	+25.9%
Pharmacists	15	+5	+5	+4	+3	+3	-0	+55.2%	+43.5%	+31.5%	+20.0%	+20.3%	-0.7%
Pharmacy Technicians	6	+1	+1	+1	+3	+1	+0	+17.3%	+17.3%	+17.3%	+120.0%	+22.2%	+0.4%
Pharmacy	21	+6	+5	+4	+6	+4	-0	+42.9%	+35.5%	+27.4%	+36.4%	+20.8%	-0.4%
Other Health & Social Care	1	-1	-1	-1	+0			-60.3%	-60.3%	-60.3%	+50.0%		
Play Therapists/ Specialists	1	-1						-37.1%					
H&SC, Other	2	-1	-1	-1	+0			-47.8%	-34.7%	-34.7%	+13.2%		
Health & Social Care Professionals	465	+86	+80	+56	+51	+42	+4	+22.8%	+20.8%	+13.7%	+12.4%	+10.0%	+0.9%
Executive Management	15	+8	+7	+5	+3	+0	+0	+112.1%	+87.5%	+48.5%	+24.7%	+0.4%	+0.1%
Senior Management (VIII & GM)	90	+50	+53	+42	+28	+26	+1	+123.4%	+144.6%	+86.0%	+44.1%	+41.3%	+0.7%
Management (VIII & above)	105	+58	+60	+47	+31	+26	+1	+121.7%	+134.5%	+79.6%	+41.0%	+33.6%	+0.6%
Middle Management (V-VII)	201	+84	+73	+59	+37	+25	-0	+72.1%	+57.3%	+41.6%	+22.4%	+14.2%	-0.2%
Other Administrative	1					+1	+1					-100.0%	+112.8%
Administrative/ Supervisory (V to VII)	202	+84	+73	+59	+37	+26	+0	+71.5%	+56.8%	+41.3%	+22.3%	+14.7%	+0.0%
General Administrative (III & IV)	616	+133	+107	+51	+45	+29	+4	+27.4%	+21.0%	+9.1%	+7.9%	+4.9%	+0.7%
Clerical (III & IV)	616	+133	+107	+51	+45	+29	+4	+27.4%	+21.0%	+9.1%	+7.9%	+4.9%	+0.7%
Management & Administrative	923	+274	+240	+157	+112	+81	+5	+42.3%	+35.2%	+20.5%	+13.8%	+9.6%	+0.5%
Support	798	-103	-85	-53	-31	-3	+4	-11.5%	-9.6%	-6.2%	-3.7%	-0.4%	+0.5%
Maintenance	91	-12	-10	-11	-7	-3	+1	-11.7%	-10.2%	-10.7%	-7.1%	-3.5%	+1.6%
Technical Services	4	+4	+4	+4	+4	+4		-100.0%	-100.0%	-100.0%	-100.0%	-100.0%	
Maintenance/ Technical	95	-8	-6	-7	-3	+1	+1	-7.8%	-6.2%	-6.8%	-3.0%	+0.7%	+1.5%
General Support	894	-111	-92	-59	-34	-2	+5	-11.1%	-9.3%	-6.2%	-3.6%	-0.2%	+0.6%
Attendant/ Aide	1,859	-905	-836	-771	-434	-352	-79	-32.7%	-31.0%	-29.3%	-18.9%	-15.9%	-4.1%
Health & Social Care Assistants	43	+17	+17	+19	+22	+16	-1	+66.5%	+66.9%	+78.4%	+103.2%	+58.5%	-1.3%
Health Care Assistant/ Care Assistant	2,190	+907	+799	+689	+461	+332	+80	+70.7%	+57.5%	+45.9%	+26.7%	+17.9%	+3.8%
HCA (Student Nurse/Midwife COVID-19)						-22	-0	-100.0%	-100.0%	-100.0%	-100.0%	-100.0%	-100.0%
Health Care Assistants	4,092	+19	-19	-63	+49	-26	+0	+0.5%	-0.5%	-1.5%	+1.2%	-0.6%	+0.0%
Home Help	3,450	+655	+94	+30	+8	+19	-61	+23.4%	+2.8%	+0.9%	+0.2%	+0.6%	-1.7%
Home Care Services	137	+70	+54	+51	+52	+39	+3	+102.3%	+64.0%	+59.9%	+60.3%	+39.2%	+2.2%
Other Care Grades	21	-14	-12	-4	-1	+2	-0	-39.4%	-36.4%	-15.5%	-6.6%	+9.9%	-0.2%
Pastoral Care	24	-11	-9	-10	-8	-3	+0	-31.4%	-27.8%	-29.8%	-25.0%	-11.4%	+0.6%
Workshop Services	3	+1	+1	+1	+1	+1		+35.4%	+35.4%	+35.4%	+35.4%	+43.5%	
Care, other	185	+46	+33	+38	+43	+38	+3	+32.9%	+22.0%	+26.1%	+30.4%	+26.2%	+1.7%
Patient & Client Care	7,727	+720	+108	+5	+100	+32	-57	+10.3%	+1.4%	+0.1%	+1.3%	+0.4%	-0.7%

Source: Health Service Personnel Census