

# Social Care Older Persons Services Employment Report: January 2022

## Employment by Staff Group

Jan 2022	WTE Dec 2019	WTE Dec 2020	WTE Dec 2021	WTE Jan 2022	WTE change since Dec 21	WTE change since Dec 20	% change since Dec 20	WTE change since Dec 19	% change since Dec 19	No. Jan 2022
<b>Overall</b>	<b>13,233</b>	<b>13,415</b>	<b>13,623</b>	<b>13,662</b>	<b>+39</b>	<b>+247</b>	<b>+1.8%</b>	<b>+430</b>	<b>+3.2%</b>	<b>16,546</b>
Consultants	4	4	7	7	+0	+2	+49.3%	+3	+83.3%	9
Registrars	10	9	11	11		+2	+19.8%	+1	+11.4%	12
SHO/ Interns	15	14	15	15	+0	+1	+9.2%	-0	-0.5%	18
Medical/ Dental, other	96	104	95	84	-10	-19	-18.7%	-12	-12.5%	156
<b>Medical &amp; Dental</b>	<b>125</b>	<b>131</b>	<b>127</b>	<b>116</b>	<b>-10</b>	<b>-14</b>	<b>-10.9%</b>	<b>-8</b>	<b>-6.5%</b>	<b>195</b>
Nurse/ Midwife Manager	709	746	764	757	-7	+11	+1.4%	+48	+6.8%	804
Nurse/ Midwife Specialist & AN/MP	26	38	35	39	+4	+0	+0.9%	+12	+45.6%	42
Staff Nurse/ Staff Midwife	2,576	2,624	2,682	2,678	-4	+54	+2.1%	+102	+4.0%	3,100
Public Health Nurse	13	13	11	13	+1	-1	-6.3%	-1	-6.0%	15
<i>Pre-registration Nurse/ Midwife Intern</i>			0	0	+0	+0	-100.0%	+0	-100.0%	1
<i>Post-registration Nurse/ Midwife Student</i>	1						-100.0%	-1	-100.0%	
<i>Nursing/ Midwifery awaiting registration</i>	1	1	2	2		+1	+48.1%	+1	+100.0%	2
Nursing/ Midwifery Student	2	1	2	2	+0	+1	+83.0%	+0	+23.5%	3
Nursing/ Midwifery other	1	4	4	4		-0	-3.0%	+3	+286.0%	4
<b>Nursing &amp; Midwifery</b>	<b>3,328</b>	<b>3,427</b>	<b>3,498</b>	<b>3,493</b>	<b>-5</b>	<b>+66</b>	<b>+1.9%</b>	<b>+165</b>	<b>+4.9%</b>	<b>3,968</b>
Therapy Professions	288	295	352	346	-6	+51	+17.2%	+58	+20.1%	397
Health Science/ Diagnostics	6	5	4	3	-0	-2	-32.4%	-3	-43.5%	7
Social Care	3	3	3	3	-0	-0	-0.0%			5
Social Workers	98	100	90	83	-7	-17	-16.6%	-15	-15.3%	93
Psychologists	2	1	2	3	+1	+2	+188.2%	+1	+51.0%	4
Pharmacy	15	17	21	21	-1	+4	+21.3%	+6	+36.9%	29
H&SC, Other	1	2	2	2				+0	+13.2%	2
<b>Health &amp; Social Care Professionals</b>	<b>414</b>	<b>423</b>	<b>473</b>	<b>461</b>	<b>-12</b>	<b>+38</b>	<b>+9.1%</b>	<b>+47</b>	<b>+11.4%</b>	<b>537</b>
Management (VIII & above)	75	79	102	105	+3	+26	+32.8%	+30	+40.2%	107
Administrative/ Supervisory (V to VII)	165	176	201	202	+1	+26	+14.7%	+37	+22.3%	215
Clerical (III & IV)	571	587	608	612	+4	+25	+4.2%	+41	+7.1%	704
<b>Management &amp; Administrative</b>	<b>811</b>	<b>842</b>	<b>911</b>	<b>918</b>	<b>+7</b>	<b>+76</b>	<b>+9.1%</b>	<b>+107</b>	<b>+13.2%</b>	<b>1,026</b>
Support	829	801	794	794	+1	-7	-0.8%	-35	-4.2%	891
Maintenance/ Technical	98	95	95	94	-1	-1	-0.8%	-4	-4.4%	98
<b>General Support</b>	<b>927</b>	<b>896</b>	<b>889</b>	<b>888</b>	<b>-1</b>	<b>-8</b>	<b>-0.8%</b>	<b>-39</b>	<b>-4.2%</b>	<b>989</b>
Health Care Assistants	4,043	4,118	4,099	4,092	-8	-26	-0.6%	+49	+1.2%	4,670
Home Help	3,442	3,431	3,447	3,511	+64	+80	+2.3%	+69	+2.0%	4,935
Care, other	142	147	178	182	+4	+35	+24.1%	+40	+28.2%	226
<b>Patient &amp; Client Care</b>	<b>7,627</b>	<b>7,696</b>	<b>7,724</b>	<b>7,785</b>	<b>+60</b>	<b>+89</b>	<b>+1.2%</b>	<b>+158</b>	<b>+2.1%</b>	<b>9,831</b>

## Social Care Older Persons Services Employment by Administration (HSE / S38): January 2022

Jan 2022	WTE Dec 2019	WTE Dec 2020	WTE Dec 2021	WTE Jan 2022	WTE change since Dec 21	WTE change since Dec 20	% change since Dec 20	WTE change since Dec 19	% change since Dec 19	No. Jan 2022
<b>Total</b>	<b>13,233</b>	<b>13,415</b>	<b>13,623</b>	<b>13,662</b>	<b>+39</b>	<b>+247</b>	<b>+1.8%</b>	<b>+430</b>	<b>+3.2%</b>	<b>16,546</b>
HSE	12,525	12,673	12,872	12,913	+40	+240	+1.9%	+388	+3.1%	15,716
Section 38 Voluntary Agencies	708	742	750	750	-1	+8	+1.1%	+42	+5.9%	830

### Employment by Staff Group

Jan 2022	WTE Dec 2019	WTE Dec 2020	WTE Dec 2021	WTE Jan 2022	WTE change since Dec 21	WTE change since Dec 20	% change since Dec 20	WTE change since Dec 19	% change since Dec 19	No. Jan 2022
<b>Health Service Executive</b>	<b>12,525</b>	<b>12,673</b>	<b>12,872</b>	<b>12,913</b>	<b>+40</b>	<b>+240</b>	<b>+1.9%</b>	<b>+388</b>	<b>+3.1%</b>	<b>15,716</b>
Consultants	3	3	5	5	+0	+2	+77.3%	+2	+66.7%	6
Registrars	7	6	7	7		+1	+12.8%	+0	+1.2%	8
SHO/ Interns	10	10	11	10	-1	+0	+2.7%	-0	-0.7%	13
Medical/ Dental, other	94	102	94	83	-10	-18	-18.1%	-11	-11.7%	155
<b>Medical &amp; Dental</b>	<b>114</b>	<b>120</b>	<b>116</b>	<b>105</b>	<b>-11</b>	<b>-15</b>	<b>-12.7%</b>	<b>-9</b>	<b>-7.9%</b>	<b>182</b>
Nurse/ Midwife Manager	655	697	711	704	-7	+7	+1.1%	+49	+7.5%	747
Nurse/ Midwife Specialist & AN/MP	26	38	35	39	+4	+0	+0.9%	+12	+45.6%	42
Staff Nurse/ Staff Midwife	2,401	2,438	2,503	2,503	+0	+65	+2.7%	+103	+4.3%	2,906
Public Health Nurse	13	13	11	13	+1	-1	-6.3%	-1	-6.0%	15
Pre-registration Nurse/ Midwife Intern			0	0	+0	+0	-100.0%	+0	-100.0%	1
Post-registration Nurse/ Midwife Student	1						-100.0%	-1	-100.0%	
Nursing/ Midwifery awaiting registration	1	1	2	2		+1	+48.1%	+1	+100.0%	2
Nursing/ Midwifery Student	2	1	2	2	+0	+1	+83.0%	+0	+23.5%	3
Nursing Education/Clinical	1	4	4	4		-0	-3.0%	+3	+286.0%	4
Nursing/ Midwifery other	1	4	4	4		-0	-3.0%	+3	+286.0%	4
<b>Nursing &amp; Midwifery</b>	<b>3,099</b>	<b>3,192</b>	<b>3,267</b>	<b>3,265</b>	<b>-2</b>	<b>+73</b>	<b>+2.3%</b>	<b>+166</b>	<b>+5.4%</b>	<b>3,717</b>
Therapy Professions	231	223	275	270	-5	+46	+20.6%	+39	+16.9%	311
Health Science/ Diagnostics	5	4	3	2	-0	-2	-40.2%	-3	-51.9%	5
Social Care	3	3	3	3	-0	-0	-0.0%			5
Social Workers	84	84	75	69	-6	-15	-18.0%	-15	-18.2%	76
Psychologists	2	1	2	3	+1	+2	+345.0%	+1	+66.9%	3
Pharmacy	11	12	16	15	-1	+3	+28.8%	+5	+43.2%	21
H&SC, Other	1	2	2	2				+0	+13.2%	2
<b>Health &amp; Social Care Professionals</b>	<b>336</b>	<b>328</b>	<b>374</b>	<b>363</b>	<b>-11</b>	<b>+35</b>	<b>+10.6%</b>	<b>+27</b>	<b>+7.9%</b>	<b>423</b>
Management (VIII & above)	73	75	98	101	+3	+26	+34.6%	+28	+38.5%	103
Administrative/ Supervisory (V to VII)	146	157	178	178	-1	+20	+12.9%	+32	+22.1%	190
Clerical (III & IV)	544	557	578	580	+3	+24	+4.3%	+37	+6.7%	665
<b>Management &amp; Administrative</b>	<b>762</b>	<b>789</b>	<b>854</b>	<b>859</b>	<b>+5</b>	<b>+70</b>	<b>+8.9%</b>	<b>+97</b>	<b>+12.7%</b>	<b>958</b>
Support	726	694	684	683	-0	-11	-1.6%	-43	-6.0%	770
Maintenance/ Technical	88	84	85	84	-1	+0	+0.3%	-4	-4.9%	88
<b>General Support</b>	<b>815</b>	<b>778</b>	<b>769</b>	<b>767</b>	<b>-2</b>	<b>-11</b>	<b>-1.4%</b>	<b>-48</b>	<b>-5.8%</b>	<b>858</b>
Health Care Assistants	3,820	3,892	3,871	3,864	-7	-28	-0.7%	+44	+1.2%	4,424
Home Help	3,442	3,431	3,447	3,511	+64	+80	+2.3%	+69	+2.0%	4,935
Care, other	136	142	175	179	+4	+36	+25.4%	+42	+30.8%	219
<b>Patient &amp; Client Care</b>	<b>7,398</b>	<b>7,466</b>	<b>7,493</b>	<b>7,553</b>	<b>+61</b>	<b>+88</b>	<b>+1.2%</b>	<b>+155</b>	<b>+2.1%</b>	<b>9,578</b>

## Employment by Staff Group

Jan 2022	WTE Dec 2019	WTE Dec 2020	WTE Dec 2021	WTE Jan 2022	WTE change since Dec 21	WTE change since Dec 20	% change since Dec 20	WTE change since Dec 19	% change since Dec 19	No. Jan 2022
<b>Section 38 Voluntary Agencies</b>	<b>708</b>	<b>742</b>	<b>750</b>	<b>750</b>	<b>-1</b>	<b>+8</b>	<b>+1.1%</b>	<b>+42</b>	<b>+5.9%</b>	<b>830</b>
Consultants	1	2	2	2				+1	+166.7%	3
Registrars	3	3	4	4		+1	+33.3%	+1	+33.3%	4
SHO/ Interns	5	4	4	5	+1	+1	+25.0%			5
Medical/ Dental, other	2	2	1	1		-1	-50.0%	-1	-50.0%	1
<b>Medical &amp; Dental</b>	<b>11</b>	<b>11</b>	<b>11</b>	<b>12</b>	<b>+1</b>	<b>+1</b>	<b>+9.4%</b>	<b>+1</b>	<b>+9.4%</b>	<b>13</b>
Nurse/ Midwife Manager	54	49	53	53	+0	+3	+6.9%	-1	-1.7%	57
Staff Nurse/ Staff Midwife	176	186	179	175	-4	-11	-5.7%	-1	-0.3%	194
<b>Nursing &amp; Midwifery</b>	<b>230</b>	<b>235</b>	<b>232</b>	<b>228</b>	<b>-4</b>	<b>-7</b>	<b>-3.0%</b>	<b>-1</b>	<b>-0.6%</b>	<b>251</b>
Therapy Professions	58	72	77	77	-0	+5	+6.6%	+19	+33.1%	86
Health Science/ Diagnostics	1	1	1	1						2
Social Workers	14	16	15	14	-1	-1	-9.0%	+0	+2.2%	17
Psychologists	1	1	1	1						1
Pharmacy	5	5	6	6	-0	+0	+5.0%	+1	+22.5%	8
<b>Health &amp; Social Care Professionals</b>	<b>78</b>	<b>95</b>	<b>100</b>	<b>98</b>	<b>-1</b>	<b>+4</b>	<b>+3.9%</b>	<b>+20</b>	<b>+26.3%</b>	<b>114</b>
Management (VIII & above)	2	4	4	4				+2	+100.0%	4
Administrative/ Supervisory (V to VII)	19	18	22	24	+2	+6	+30.2%	+5	+23.5%	25
Clerical (III & IV)	27	31	31	31	+1	+1	+2.6%	+4	+15.0%	39
<b>Management &amp; Administrative</b>	<b>49</b>	<b>53</b>	<b>57</b>	<b>59</b>	<b>+2</b>	<b>+6</b>	<b>+12.0%</b>	<b>+11</b>	<b>+21.9%</b>	<b>68</b>
Support	103	107	110	111	+1	+4	+3.7%	+9	+8.3%	121
Maintenance/ Technical	10	11	10	10		-1	-9.1%			10
<b>General Support</b>	<b>113</b>	<b>118</b>	<b>120</b>	<b>121</b>	<b>+1</b>	<b>+3</b>	<b>+2.5%</b>	<b>+9</b>	<b>+7.6%</b>	<b>131</b>
Health Care Assistants	223	226	228	228	-0	+2	+0.9%	+4	+2.0%	246
Care, other	5	4	3	3		-1	-20.4%	-2	-37.5%	7
<b>Patient &amp; Client Care</b>	<b>229</b>	<b>230</b>	<b>232</b>	<b>231</b>	<b>-0</b>	<b>+1</b>	<b>+0.5%</b>	<b>+2</b>	<b>+1.1%</b>	<b>253</b>

## Social Care Older Persons Services Employment by CHO: Jan 2022

Jan 2022	WTE Dec 2019	WTE Dec 2020	WTE Dec 2021	WTE Jan 2022	WTE change since Dec 21	WTE change since Dec 20	% change since Dec 20	WTE change since Dec 19	% change since Dec 19	No. Jan 2022
<b>Overall</b>	<b>13,233</b>	<b>13,415</b>	<b>13,623</b>	<b>13,662</b>	<b>+39</b>	<b>+247</b>	<b>+1.8%</b>	<b>+430</b>	<b>+3.2%</b>	<b>16,546</b>
CHO 1	1,836	1,918	1,988	2,012	+24	+95	+4.9%	+177	+9.6%	2,339
CHO 2	1,606	1,590	1,527	1,535	+8	-55	-3.4%	-71	-4.4%	1,800
CHO 3	974	1,029	1,190	1,209	+20	+181	+17.6%	+235	+24.2%	1,517
CHO 4	2,919	2,930	2,954	2,940	-13	+10	+0.3%	+21	+0.7%	3,843
CHO 5	1,647	1,650	1,661	1,666	+6	+16	+1.0%	+19	+1.2%	1,995
CHO 6	823	804	814	811	-3	+7	+0.9%	-12	-1.5%	892
CHO 7	996	1,021	996	988	-8	-34	-3.3%	-8	-0.8%	1,132
CHO 8	1,488	1,484	1,450	1,452	+2	-32	-2.2%	-37	-2.5%	1,843
CHO 9	870	914	967	972	+5	+58	+6.3%	+102	+11.7%	1,102
other Community Services	73	75	77	76	-1	+1	+1.3%	+3	+3.7%	83

## Social Care Older Persons Services Employment by CHO etc. Jan 2022

### CHO 1

Jan 2022	WTE Dec 2019	WTE Dec 2020	WTE Dec 2021	WTE Jan 2022	WTE change since Dec 21	WTE change since Dec 20	% change since Dec 20	WTE change since Dec 19	% change since Dec 19	No. Jan 2022
<b>Overall</b>	<b>1,836</b>	<b>1,918</b>	<b>1,988</b>	<b>2,012</b>	<b>+24</b>	<b>+95</b>	<b>+4.9%</b>	<b>+177</b>	<b>+9.6%</b>	<b>2,339</b>
Medical/ Dental, other	30	32	27	18	-10	-15	-45.1%	-12	-40.1%	42
<b>Medical &amp; Dental</b>	<b>30</b>	<b>32</b>	<b>27</b>	<b>18</b>	<b>-10</b>	<b>-15</b>	<b>-45.1%</b>	<b>-12</b>	<b>-40.1%</b>	<b>42</b>
Nurse/ Midwife Manager	91	88	96	93	-3	+6	+6.4%	+2	+2.6%	99
Nurse/ Midwife Specialist & AN/MP	7	9	8	9	+1	-0	-0.1%	+2	+31.3%	9
Staff Nurse/ Staff Midwife	307	315	323	323	+0	+9	+2.8%	+16	+5.2%	370
Nursing/ Midwifery other		1	1	1	0			+1	-100.0%	1
<b>Nursing &amp; Midwifery</b>	<b>405</b>	<b>412</b>	<b>428</b>	<b>427</b>	<b>-2</b>	<b>+14</b>	<b>+3.5%</b>	<b>+22</b>	<b>+5.3%</b>	<b>479</b>
Therapy Professions	11	12	24	21	-3	+9	+70.2%	+10	+90.9%	24
Health Science/ Diagnostics	1	2				-2	-100.0%	-1	-100.0%	
Social Workers	18	15	16	10	-7	-6	-36.8%	-8	-45.7%	10
<b>Health &amp; Social Care Professionals</b>	<b>30</b>	<b>29</b>	<b>40</b>	<b>31</b>	<b>-10</b>	<b>+2</b>	<b>+5.6%</b>	<b>+1</b>	<b>+2.8%</b>	<b>34</b>
Management (VIII & above)	8	8	8	8	+0	-0	-1.1%	-0	-0.4%	8
Administrative/ Supervisory (V to VII)	14	15	16	15	-1	+0	+0.8%	+1	+8.1%	17
Clerical (III & IV)	85	88	88	81	-7	-7	-7.5%	-4	-4.4%	93
<b>Management &amp; Administrative</b>	<b>107</b>	<b>111</b>	<b>112</b>	<b>105</b>	<b>-8</b>	<b>-7</b>	<b>-5.9%</b>	<b>-3</b>	<b>-2.4%</b>	<b>118</b>
Support	123	119	111	109	-2	-9	-7.9%	-13	-10.9%	130
Maintenance/ Technical	7	7	7	6	-1	-1	-17.9%	-1	-17.9%	6
<b>General Support</b>	<b>130</b>	<b>126</b>	<b>118</b>	<b>115</b>	<b>-3</b>	<b>-11</b>	<b>-8.4%</b>	<b>-15</b>	<b>-11.2%</b>	<b>136</b>
Health Care Assistants	563	580	589	587	-2	+7	+1.2%	+24	+4.2%	674
Home Help	543	604	647	705	+57	+100	+16.6%	+162	+29.8%	824
Care, other	28	22	25	26	+1	+4	+15.8%	-2	-7.0%	32
<b>Patient &amp; Client Care</b>	<b>1,134</b>	<b>1,207</b>	<b>1,262</b>	<b>1,317</b>	<b>+56</b>	<b>+111</b>	<b>+9.2%</b>	<b>+183</b>	<b>+16.2%</b>	<b>1,530</b>

## CHO 2

Jan 2022	WTE Dec 2019	WTE Dec 2020	WTE Dec 2021	WTE Jan 2022	WTE change since Dec 21	WTE change since Dec 20	% change since Dec 20	WTE change since Dec 19	% change since Dec 19	No. Jan 2022
<b>Overall</b>	<b>1,606</b>	<b>1,590</b>	<b>1,527</b>	<b>1,535</b>	<b>+8</b>	<b>-55</b>	<b>-3.4%</b>	<b>-71</b>	<b>-4.4%</b>	<b>1,800</b>
Medical/ Dental, other	11	11	10	10	-0	-1	-9.5%	-2	-13.6%	10
<b>Medical &amp; Dental</b>	<b>11</b>	<b>11</b>	<b>10</b>	<b>10</b>	<b>-0</b>	<b>-1</b>	<b>-9.5%</b>	<b>-2</b>	<b>-13.6%</b>	<b>10</b>
Nurse/ Midwife Manager	58	66	70	68	-2	+2	+2.9%	+10	+17.3%	72
Nurse/ Midwife Specialist & AN/MP	2	2	2	2	0					2
Staff Nurse/ Staff Midwife	301	305	305	309	+4	+4	+1.3%	+8	+2.6%	357
Public Health Nurse	1	1	1	1	0			+0	+25.0%	1
<b>Nursing &amp; Midwifery</b>	<b>362</b>	<b>374</b>	<b>378</b>	<b>380</b>	<b>+2</b>	<b>+6</b>	<b>+1.6%</b>	<b>+18</b>	<b>+5.0%</b>	<b>432</b>
Therapy Professions	26	25	23	24	+1	-1	-3.9%	-1	-5.1%	27
Health Science/ Diagnostics	1	1	1	1	0					1
Social Workers	10	10	10	10	0			+0	+1.8%	11
Pharmacy	1	1	1	1	0	-1	-51.5%	-1	-50.5%	1
H&SC, Other	0						-100.0%		-100.0%	
<b>Health &amp; Social Care Professionals</b>	<b>37</b>	<b>37</b>	<b>35</b>	<b>36</b>	<b>+1</b>	<b>-2</b>	<b>-4.0%</b>	<b>-2</b>	<b>-4.3%</b>	<b>40</b>
Management (VIII & above)	2	2	4	4	+0	+2	+100.0%	+2	+100.0%	4
Administrative/ Supervisory (V to VII)	8	9	14	14	+0	+5	+52.0%	+6	+82.4%	15
Clerical (III & IV)	72	66	63	64	+2	-2	-2.4%	-7	-10.2%	72
<b>Management &amp; Administrative</b>	<b>81</b>	<b>77</b>	<b>80</b>	<b>82</b>	<b>+2</b>	<b>+5</b>	<b>+6.7%</b>	<b>+1</b>	<b>+1.2%</b>	<b>91</b>
Support	56	56	54	53	-1	-3	-6.2%	-3	-6.1%	59
Maintenance/ Technical	19	19	17	18	+0	-2	-10.2%	-1	-7.7%	18
<b>General Support</b>	<b>75</b>	<b>76</b>	<b>71</b>	<b>70</b>	<b>-1</b>	<b>-5</b>	<b>-7.2%</b>	<b>-5</b>	<b>-6.5%</b>	<b>77</b>
Health Care Assistants	515	526	511	513	+2	-13	-2.4%	-2	-0.3%	571
Home Help	499	456	395	398	+2	-59	-12.9%	-102	-20.4%	530
Care, other	24	33	46	46	+0	+14	+42.7%	+22	+89.9%	49
<b>Patient &amp; Client Care</b>	<b>1,039</b>	<b>1,015</b>	<b>953</b>	<b>957</b>	<b>+5</b>	<b>-57</b>	<b>-5.7%</b>	<b>-82</b>	<b>-7.9%</b>	<b>1,150</b>

## CHO 3

Jan 2022	WTE Dec 2019	WTE Dec 2020	WTE Dec 2021	WTE Jan 2022	WTE change since Dec 21	WTE change since Dec 20	% change since Dec 20	WTE change since Dec 19	% change since Dec 19	No. Jan 2022
<b>Overall</b>	<b>974</b>	<b>1,029</b>	<b>1,190</b>	<b>1,209</b>	<b>+20</b>	<b>+181</b>	<b>+17.6%</b>	<b>+235</b>	<b>+24.2%</b>	<b>1,517</b>
Consultants	1	1	3	3	0	+2	+200.0%	+2	+200.0%	3
Registrars			1	1	0	+1	-100.0%	+1	-100.0%	1
Medical/ Dental, other	5	6	5	5	0	-2	-25.0%	-1	-10.0%	5
<b>Medical &amp; Dental</b>	<b>6</b>	<b>7</b>	<b>9</b>	<b>9</b>		<b>+2</b>	<b>+21.4%</b>	<b>+3</b>	<b>+41.7%</b>	<b>9</b>
Nurse/ Midwife Manager	64	64	63	63	+1	-1	-1.0%	-0	-0.8%	66
Nurse/ Midwife Specialist & AN/MP	2	4	5	5	-0	+1	+28.0%	+3	+163.0%	5
Staff Nurse/ Staff Midwife	239	231	258	258	+1	+27	+11.7%	+20	+8.3%	305
Public Health Nurse	1	1	1	1	0					1
<b>Nursing &amp; Midwifery</b>	<b>305</b>	<b>300</b>	<b>327</b>	<b>328</b>	<b>+1</b>	<b>+28</b>	<b>+9.2%</b>	<b>+22</b>	<b>+7.3%</b>	<b>377</b>
Therapy Professions	28	29	40	41	+2	+12	+41.1%	+13	+48.5%	48
Health Science/ Diagnostics	1	1	1	1	-0	-0	-12.1%	-0	-18.3%	2
Social Workers	7	6	8	8	+0	+2	+26.3%	+1	+12.1%	8
Psychologists			1	1	+0	+1	-100.0%	+1	-100.0%	1
Pharmacy	1	1	1	1	-0	-0	-2.0%	-0	-2.0%	1
<b>Health &amp; Social Care Professionals</b>	<b>36</b>	<b>37</b>	<b>50</b>	<b>51</b>	<b>+2</b>	<b>+14</b>	<b>+38.9%</b>	<b>+15</b>	<b>+41.2%</b>	<b>60</b>
Management (VIII & above)	6	6	8	8	-0	+2	+28.0%	+2	+31.4%	8
Administrative/ Supervisory (V to VII)	21	17	20	19	-1	+2	+12.6%	-2	-8.8%	20
Clerical (III & IV)	50	48	56	56	+0	+8	+16.1%	+7	+13.4%	63
<b>Management &amp; Administrative</b>	<b>76</b>	<b>71</b>	<b>84</b>	<b>83</b>	<b>-1</b>	<b>+12</b>	<b>+16.3%</b>	<b>+7</b>	<b>+8.7%</b>	<b>91</b>
Support	64	63	62	62	-0	-1	-1.1%	-2	-3.2%	68
Maintenance/ Technical	22	21	23	24	+1	+3	+14.8%	+2	+9.2%	25
<b>General Support</b>	<b>86</b>	<b>84</b>	<b>86</b>	<b>86</b>	<b>+1</b>	<b>+2</b>	<b>+2.9%</b>	<b>-0</b>	<b>-0.0%</b>	<b>93</b>
Health Care Assistants	279	301	324	324	-0	+22	+7.4%	+44	+15.9%	370
Home Help	175	216	294	311	+18	+95	+43.9%	+136	+77.8%	498
Care, other	10	12	18	18	+0	+6	+52.1%	+8	+85.2%	19
<b>Patient &amp; Client Care</b>	<b>464</b>	<b>530</b>	<b>635</b>	<b>653</b>	<b>+18</b>	<b>+124</b>	<b>+23.3%</b>	<b>+189</b>	<b>+40.7%</b>	<b>887</b>

## CHO 4

Jan 2022	WTE Dec 2019	WTE Dec 2020	WTE Dec 2021	WTE Jan 2022	WTE change since Dec 21	WTE change since Dec 20	% change since Dec 20	WTE change since Dec 19	% change since Dec 19	No. Jan 2022
<b>Overall</b>	<b>2,919</b>	<b>2,930</b>	<b>2,954</b>	<b>2,940</b>	<b>-13</b>	<b>+10</b>	<b>+0.3%</b>	<b>+21</b>	<b>+0.7%</b>	<b>3,843</b>
Consultants	1	1	1	1	0					2
Registrars	3	3	2	2	0	-1	-30.7%	-1	-30.7%	3
SHO/ Interns	1	1	2	2	0	+1	+100.0%	+1	+100.0%	2
Medical/ Dental, other	21	23	22	22	+0	-1	-3.2%	+2	+7.5%	52
<b>Medical &amp; Dental</b>	<b>26</b>	<b>28</b>	<b>27</b>	<b>27</b>	<b>+0</b>	<b>-1</b>	<b>-2.4%</b>	<b>+2</b>	<b>+6.4%</b>	<b>59</b>
Nurse/ Midwife Manager	118	122	123	122	-1	+0	+0.3%	+5	+4.0%	132
Nurse/ Midwife Specialist & AN/MP	3	6	4	4	0	-2	-39.7%	+0	+9.1%	4
Staff Nurse/ Staff Midwife	515	528	550	548	-2	+20	+3.7%	+33	+6.4%	677
Public Health Nurse	5	6	5	5	+0	-1	-18.6%	-0	-5.9%	6
Pre-registration Nurse/ Midwife Intern			0	0	+0	+0	-100.0%	+0	-100.0%	1
Post-registration Nurse/ Midwife Student	1						-100.0%	-1	-100.0%	
Nursing/ Midwifery awaiting registration	1						-100.0%	-1	-100.0%	
Nursing/ Midwifery Student	2		0	0	+0	+0	-100.0%	-2	-76.5%	1
<b>Nursing &amp; Midwifery</b>	<b>643</b>	<b>662</b>	<b>681</b>	<b>679</b>	<b>-2</b>	<b>+17</b>	<b>+2.6%</b>	<b>+36</b>	<b>+5.6%</b>	<b>820</b>
Therapy Professions	45	41	54	54	-0	+12	+29.0%	+9	+20.2%	63
Health Science/ Diagnostics	1	1	1	1	0			+0	+13.2%	2
Social Care	2	2	2	2	0					3
Social Workers	10	12	11	12	+1	-0	-3.5%	+2	+15.0%	13
Pharmacy	3	4	5	4	-1	+0	+11.3%	+2	+62.9%	8
<b>Health &amp; Social Care Professionals</b>	<b>60</b>	<b>61</b>	<b>72</b>	<b>73</b>	<b>+1</b>	<b>+12</b>	<b>+19.8%</b>	<b>+12</b>	<b>+20.4%</b>	<b>89</b>
Management (VIII & above)	13	14	19	20	+1	+6	+39.8%	+7	+55.3%	20
Administrative/ Supervisory (V to VII)	17	20	27	29	+2	+9	+43.0%	+12	+70.3%	31
Clerical (III & IV)	128	131	130	130	-0	-1	-1.0%	+2	+1.2%	158
<b>Management &amp; Administrative</b>	<b>158</b>	<b>166</b>	<b>177</b>	<b>179</b>	<b>+2</b>	<b>+13</b>	<b>+7.9%</b>	<b>+21</b>	<b>+13.0%</b>	<b>209</b>
Support	100	114	124	128	+3	+14	+12.3%	+27	+27.0%	137
Maintenance/ Technical	6	6	7	7	-0	+1	+11.5%	+1	+16.2%	7
<b>General Support</b>	<b>106</b>	<b>120</b>	<b>131</b>	<b>135</b>	<b>+3</b>	<b>+15</b>	<b>+12.3%</b>	<b>+28</b>	<b>+26.4%</b>	<b>144</b>
Health Care Assistants	781	794	802	804	+2	+11	+1.4%	+23	+2.9%	913
Home Help	1,113	1,067	1,030	1,009	-20	-57	-5.4%	-104	-9.3%	1,559
Care, other	31	34	33	34	+1	+0	+1.2%	+4	+11.7%	50
<b>Patient &amp; Client Care</b>	<b>1,925</b>	<b>1,894</b>	<b>1,865</b>	<b>1,848</b>	<b>-17</b>	<b>-46</b>	<b>-2.4%</b>	<b>-77</b>	<b>-4.0%</b>	<b>2,522</b>



## CHO 5

Jan 2022	WTE Dec 2019	WTE Dec 2020	WTE Dec 2021	WTE Jan 2022	WTE change since Dec 21	WTE change since Dec 20	% change since Dec 20	WTE change since Dec 19	% change since Dec 19	No. Jan 2022
<b>Overall</b>	<b>1,647</b>	<b>1,650</b>	<b>1,661</b>	<b>1,666</b>	<b>+6</b>	<b>+16</b>	<b>+1.0%</b>	<b>+19</b>	<b>+1.2%</b>	<b>1,995</b>
Medical/ Dental, other	10	15	15	15	0	+1	+4.0%	+6	+56.2%	21
<b>Medical &amp; Dental</b>	<b>10</b>	<b>15</b>	<b>15</b>	<b>15</b>		<b>+1</b>	<b>+4.0%</b>	<b>+6</b>	<b>+56.2%</b>	<b>21</b>
Nurse/ Midwife Manager	82	88	85	86	+2	-2	-2.2%	+5	+5.6%	93
Nurse/ Midwife Specialist & AN/MP	2	4	2	2	-0	-2	-47.6%			2
Staff Nurse/ Staff Midwife	315	308	312	312	-1	+3	+1.1%	-3	-1.0%	369
Public Health Nurse	4	3	2	2	+0	-1	-27.5%	-2	-48.7%	2
<b>Nursing &amp; Midwifery</b>	<b>403</b>	<b>403</b>	<b>402</b>	<b>402</b>	<b>+0</b>	<b>-1</b>	<b>-0.3%</b>	<b>-1</b>	<b>-0.1%</b>	<b>466</b>
Therapy Professions	41	32	35	31	-4	-1	-3.7%	-10	-23.5%	36
Social Workers	3	4	7	5	-1	+1	+28.5%	+2	+69.1%	7
Pharmacy		1	1	1	-0	+0	+1.0%	+1	-100.0%	1
<b>Health &amp; Social Care Professionals</b>	<b>44</b>	<b>38</b>	<b>43</b>	<b>38</b>	<b>-5</b>			<b>-6</b>	<b>-14.5%</b>	<b>44</b>
Management (VIII & above)	4	4	11	11	+0	+7	+187.7%	+7	+187.7%	11
Administrative/ Supervisory (V to VII)	14	17	11	12	+1	-5	-28.6%	-2	-13.7%	13
Clerical (III & IV)	32	31	50	58	+8	+27	+86.9%	+26	+80.9%	64
<b>Management &amp; Administrative</b>	<b>50</b>	<b>52</b>	<b>72</b>	<b>81</b>	<b>+9</b>	<b>+29</b>	<b>+56.5%</b>	<b>+31</b>	<b>+62.5%</b>	<b>88</b>
Support	123	83	79	80	+0	-4	-4.4%	-44	-35.4%	93
Maintenance/ Technical	8	4	5	4	-1	+0	+0.7%	-4	-50.7%	5
<b>General Support</b>	<b>131</b>	<b>87</b>	<b>84</b>	<b>84</b>	<b>-0</b>	<b>-4</b>	<b>-4.2%</b>	<b>-48</b>	<b>-36.4%</b>	<b>98</b>
Health Care Assistants	391	448	419	418	-0	-30	-6.7%	+28	+7.1%	470
Home Help	608	599	610	612	+2	+13	+2.2%	+4	+0.6%	787
Care, other	10	9	17	17	-0	+8	+94.5%	+6	+59.2%	21
<b>Patient &amp; Client Care</b>	<b>1,009</b>	<b>1,056</b>	<b>1,045</b>	<b>1,046</b>	<b>+1</b>	<b>-9</b>	<b>-0.9%</b>	<b>+37</b>	<b>+3.7%</b>	<b>1,278</b>

## CHO 6

Jan 2022	WTE Dec 2019	WTE Dec 2020	WTE Dec 2021	WTE Jan 2022	WTE change since Dec 21	WTE change since Dec 20	% change since Dec 20	WTE change since Dec 19	% change since Dec 19	No. Jan 2022
<b>Overall</b>	<b>823</b>	<b>804</b>	<b>814</b>	<b>811</b>	<b>-3</b>	<b>+7</b>	<b>+0.9%</b>	<b>-12</b>	<b>-1.5%</b>	<b>892</b>
Registrars	1	1	1	1	0					1
Medical/ Dental, other	4	3	2	2	+0	-1	-37.8%	-2	-56.0%	3
<b>Medical &amp; Dental</b>	<b>5</b>	<b>4</b>	<b>3</b>	<b>3</b>	<b>+0</b>	<b>-1</b>	<b>-27.9%</b>	<b>-2</b>	<b>-44.8%</b>	<b>4</b>
Nurse/ Midwife Manager	68	63	63	65	+2	+2	+3.6%	-3	-5.0%	67
Nurse/ Midwife Specialist & AN/MP	1	1	1		-1	-1	-100.0%	-1	-100.0%	
Staff Nurse/ Staff Midwife	204	206	198	197	-1	-9	-4.4%	-7	-3.5%	208
<b>Nursing &amp; Midwifery</b>	<b>273</b>	<b>269</b>	<b>262</b>	<b>262</b>	<b>-0</b>	<b>-8</b>	<b>-2.9%</b>	<b>-11</b>	<b>-4.2%</b>	<b>275</b>
Therapy Professions	50	46	45	43	-2	-3	-7.3%	-7	-13.9%	48
Social Workers	11	10	9	8	-1	-3	-27.6%	-4	-33.6%	9
Psychologists	2	1	1	1	0	-1	-54.5%	-2	-76.2%	1
Pharmacy	3	3	4	4	-0	+1	+43.8%	+1	+45.8%	5
<b>Health &amp; Social Care Professionals</b>	<b>66</b>	<b>61</b>	<b>58</b>	<b>55</b>	<b>-3</b>	<b>-6</b>	<b>-9.2%</b>	<b>-11</b>	<b>-16.7%</b>	<b>63</b>
Management (VIII & above)	4	5	9	9	+0	+4	+78.0%	+5	+122.5%	9
Administrative/ Supervisory (V to VII)	22	19	26	28	+2	+8	+42.7%	+5	+24.5%	29
Clerical (III & IV)	30	33	30	30	+0	-3	-9.5%	+0	+1.5%	35
<b>Management &amp; Administrative</b>	<b>56</b>	<b>58</b>	<b>64</b>	<b>67</b>	<b>+2</b>	<b>+9</b>	<b>+15.7%</b>	<b>+11</b>	<b>+19.4%</b>	<b>73</b>
Support	108	102	107	110	+3	+8	+7.9%	+2	+1.7%	119
Maintenance/ Technical	8	9	8	8	0	-1	-11.1%			8
<b>General Support</b>	<b>116</b>	<b>111</b>	<b>115</b>	<b>118</b>	<b>+3</b>	<b>+7</b>	<b>+6.3%</b>	<b>+2</b>	<b>+1.6%</b>	<b>127</b>
Health Care Assistants	300	296	308	303	-5	+7	+2.3%	+3	+0.9%	343
Care, other	7	6	5	5	+0	-1	-16.7%	-3	-36.7%	7
<b>Patient &amp; Client Care</b>	<b>307</b>	<b>301</b>	<b>312</b>	<b>307</b>	<b>-5</b>	<b>+6</b>	<b>+2.0%</b>	<b>-0</b>	<b>-0.0%</b>	<b>350</b>

## CHO 7

Jan 2022	WTE Dec 2019	WTE Dec 2020	WTE Dec 2021	WTE Jan 2022	WTE change since Dec 21	WTE change since Dec 20	% change since Dec 20	WTE change since Dec 19	% change since Dec 19	No. Jan 2022
<b>Overall</b>	<b>996</b>	<b>1,021</b>	<b>996</b>	<b>988</b>	<b>-8</b>	<b>-34</b>	<b>-3.3%</b>	<b>-8</b>	<b>-0.8%</b>	<b>1,132</b>
SHO/ Interns	2	2	2	2	0					2
Medical/ Dental, other	4	2	2	2	0			-2	-49.0%	4
<b>Medical &amp; Dental</b>	<b>6</b>	<b>4</b>	<b>4</b>	<b>4</b>				<b>-2</b>	<b>-32.7%</b>	<b>6</b>
Nurse/ Midwife Manager	77	86	96	93	-3	+7	+8.1%	+16	+20.4%	96
Nurse/ Midwife Specialist & AN/MP	3	3	2	2	+0	-1	-19.0%	-0	-11.8%	3
Staff Nurse/ Staff Midwife	219	242	234	231	-3	-11	-4.7%	+11	+5.2%	249
<i>Nursing/ Midwifery awaiting registration</i>		1	2	2	0	+1	+48.1%	+2	-100.0%	2
Nursing/ Midwifery Student		1	2	2	0	+1	+48.1%	+2	-100.0%	2
<b>Nursing &amp; Midwifery</b>	<b>299</b>	<b>332</b>	<b>334</b>	<b>328</b>	<b>-6</b>	<b>-4</b>	<b>-1.3%</b>	<b>+29</b>	<b>+9.6%</b>	<b>350</b>
Therapy Professions	14	13	13	13	-0	-0	-1.1%	-1	-4.2%	16
Social Workers	11	12	11	10	-1	-2	-16.7%	-1	-4.7%	12
Pharmacy	3	2	3	3	0	+1	+50.0%	+1	+20.0%	3
H&SC, Other	1	1	1	1	0					1
<b>Health &amp; Social Care Professionals</b>	<b>28</b>	<b>29</b>	<b>28</b>	<b>28</b>	<b>-1</b>	<b>-1</b>	<b>-4.2%</b>	<b>-1</b>	<b>-2.1%</b>	<b>32</b>
Management (VIII & above)	5	7	8	8	+1	+1	+14.9%	+3	+65.0%	9
Administrative/ Supervisory (V to VII)	12	15	18	18	-1	+3	+20.6%	+6	+52.1%	18
Clerical (III & IV)	34	37	38	39	+1	+2	+5.7%	+5	+14.1%	44
<b>Management &amp; Administrative</b>	<b>51</b>	<b>59</b>	<b>63</b>	<b>65</b>	<b>+1</b>	<b>+6</b>	<b>+10.5%</b>	<b>+14</b>	<b>+27.7%</b>	<b>71</b>
Support	110	119	112	110	-1	-9	-7.3%	+0	+0.1%	122
Maintenance/ Technical	2	2	2	2	0					2
<b>General Support</b>	<b>112</b>	<b>121</b>	<b>114</b>	<b>112</b>	<b>-1</b>	<b>-9</b>	<b>-7.1%</b>	<b>+0</b>	<b>+0.1%</b>	<b>124</b>
Health Care Assistants	388	358	343	341	-1	-16	-4.6%	-47	-12.0%	392
Home Help	108	115	107	105	-1	-9	-8.1%	-2	-2.1%	152
Care, other	5	5	3	5	+2			+0	+3.5%	5
<b>Patient &amp; Client Care</b>	<b>500</b>	<b>477</b>	<b>452</b>	<b>451</b>	<b>-1</b>	<b>-26</b>	<b>-5.4%</b>	<b>-49</b>	<b>-9.7%</b>	<b>549</b>

## CHO 8

Jan 2022	WTE Dec 2019	WTE Dec 2020	WTE Dec 2021	WTE Jan 2022	WTE change since Dec 21	WTE change since Dec 20	% change since Dec 20	WTE change since Dec 19	% change since Dec 19	No. Jan 2022
<b>Overall</b>	<b>1,488</b>	<b>1,484</b>	<b>1,450</b>	<b>1,452</b>	<b>+2</b>	<b>-32</b>	<b>-2.2%</b>	<b>-37</b>	<b>-2.5%</b>	<b>1,843</b>
Medical/ Dental, other	11	11	11	10	-1	-1	-9.6%	-1	-9.2%	18
<b>Medical &amp; Dental</b>	<b>11</b>	<b>11</b>	<b>11</b>	<b>10</b>	<b>-1</b>	<b>-1</b>	<b>-9.6%</b>	<b>-1</b>	<b>-9.2%</b>	<b>18</b>
Nurse/ Midwife Manager	77	89	87	84	-3	-5	-5.4%	+7	+9.7%	93
Nurse/ Midwife Specialist & AN/MP	2	4	5	5	+0	+1	+25.9%	+3	+143.0%	5
Staff Nurse/ Staff Midwife	249	255	248	248	+1	-7	-2.6%	-1	-0.5%	289
Public Health Nurse	2	3	3	3	-0	-0	-0.4%	+1	+22.4%	4
Nursing/ Midwifery other		2	3	3	0	+1	+44.4%	+3	-100.0%	3
<b>Nursing &amp; Midwifery</b>	<b>330</b>	<b>353</b>	<b>345</b>	<b>343</b>	<b>-2</b>	<b>-10</b>	<b>-2.7%</b>	<b>+13</b>	<b>+3.8%</b>	<b>394</b>
Therapy Professions	21	24	29	29	-0	+5	+18.6%	+8	+40.0%	35
Social Workers	7	5	0	0	0	-5	-100.0%	-7	-100.0%	0
Pharmacy	3	2	4	4	0	+2	+75.0%	+1	+40.0%	5
<b>Health &amp; Social Care Professionals</b>	<b>30</b>	<b>31</b>	<b>33</b>	<b>32</b>	<b>-0</b>	<b>+1</b>	<b>+3.3%</b>	<b>+3</b>	<b>+9.0%</b>	<b>40</b>
Management (VIII & above)	6	7	7	8	+1	+1	+12.3%	+2	+40.1%	8
Administrative/ Supervisory (V to VII)	20	21	19	18	-1	-3	-14.2%	-2	-8.9%	19
Clerical (III & IV)	70	72	68	68	+0	-4	-4.9%	-2	-2.2%	77
<b>Management &amp; Administrative</b>	<b>95</b>	<b>100</b>	<b>94</b>	<b>94</b>	<b>+0</b>	<b>-6</b>	<b>-5.8%</b>	<b>-1</b>	<b>-1.2%</b>	<b>104</b>
Support	26	25	24	24	+0	-1	-4.5%	-2	-6.4%	26
Maintenance/ Technical	24	24	24	23	-0	-0	-1.6%	-0	-2.1%	24
<b>General Support</b>	<b>50</b>	<b>49</b>	<b>48</b>	<b>47</b>	<b>-0</b>	<b>-2</b>	<b>-3.1%</b>	<b>-2</b>	<b>-4.3%</b>	<b>50</b>
Health Care Assistants	556	544	530	529	-1	-15	-2.7%	-27	-4.8%	619
Home Help	395	374	365	371	+6	-3	-0.8%	-24	-6.2%	585
Care, other	20	22	25	24	-1	+3	+11.6%	+4	+17.4%	33
<b>Patient &amp; Client Care</b>	<b>972</b>	<b>940</b>	<b>919</b>	<b>924</b>	<b>+5</b>	<b>-15</b>	<b>-1.6%</b>	<b>-48</b>	<b>-4.9%</b>	<b>1,237</b>

## CHO 9

Jan 2022	WTE Dec 2019	WTE Dec 2020	WTE Dec 2021	WTE Jan 2022	WTE change since Dec 21	WTE change since Dec 20	% change since Dec 20	WTE change since Dec 19	% change since Dec 19	No. Jan 2022
<b>Overall</b>	<b>870</b>	<b>914</b>	<b>967</b>	<b>972</b>	<b>+5</b>	<b>+58</b>	<b>+6.3%</b>	<b>+102</b>	<b>+11.7%</b>	<b>1,102</b>
Consultants	2	2	3	3	+0	+0	+7.4%	+1	+62.5%	4
Registrars	6	5	7	7	0	+2	+34.5%	+1	+18.1%	7
SHO/ Interns	12	11	11	11	+0	+0	+2.4%	-1	-8.9%	14
Medical/ Dental, other	1	1	1	1	0					1
<b>Medical &amp; Dental</b>	<b>20</b>	<b>19</b>	<b>21</b>	<b>21</b>	<b>+0</b>	<b>+2</b>	<b>+11.1%</b>	<b>+1</b>	<b>+4.6%</b>	<b>26</b>
Nurse/ Midwife Manager	75	81	82	82	+0	+1	+1.4%	+7	+9.5%	86
Nurse/ Midwife Specialist & AN/MP	5	6	6	10	+4	+4	+69.6%	+5	+108.0%	12
Staff Nurse/ Staff Midwife	227	234	255	253	-2	+19	+8.0%	+26	+11.3%	276
Public Health Nurse	0			1	+1	+1	-100.0%	+1	+163.2%	1
Nursing/ Midwifery other	1	1				-1	-100.0%	-1	-100.0%	
<b>Nursing &amp; Midwifery</b>	<b>308</b>	<b>322</b>	<b>342</b>	<b>345</b>	<b>+3</b>	<b>+24</b>	<b>+7.4%</b>	<b>+38</b>	<b>+12.2%</b>	<b>375</b>
Therapy Professions	54	71	89	90	+1	+19	+27.3%	+36	+65.7%	100
Health Science/ Diagnostics	1	1	1	1	0			-0	-31.0%	2
Social Care	1	1	1	1	0					2
Social Workers	21	24	18	20	+2	-3	-14.7%	-1	-4.8%	23
Psychologists				1	+1	+1	-100.0%	+1	-100.0%	1
Pharmacy	3	4	4	4	0			+1	+26.4%	5
H&SC, Other	0	1	1	1	0			+0	+50.0%	1
<b>Health &amp; Social Care Professionals</b>	<b>81</b>	<b>101</b>	<b>114</b>	<b>117</b>	<b>+4</b>	<b>+17</b>	<b>+16.6%</b>	<b>+36</b>	<b>+44.3%</b>	<b>134</b>
Management (VIII & above)	9	9	13	13	-0	+4	+43.8%	+4	+41.9%	13
Administrative/ Supervisory (V to VII)	15	21	23	24	+1	+3	+12.5%	+9	+57.0%	25
Clerical (III & IV)	40	44	52	53	+1	+9	+19.9%	+13	+32.1%	63
<b>Management &amp; Administrative</b>	<b>64</b>	<b>74</b>	<b>88</b>	<b>89</b>	<b>+1</b>	<b>+15</b>	<b>+20.7%</b>	<b>+25</b>	<b>+39.3%</b>	<b>101</b>
Support	118	120	120	119	-2	-2	-1.5%	+0	+0.2%	137
Maintenance/ Technical	2	2	2	2	0					3
<b>General Support</b>	<b>121</b>	<b>123</b>	<b>123</b>	<b>121</b>	<b>-2</b>	<b>-2</b>	<b>-1.5%</b>	<b>+0</b>	<b>+0.2%</b>	<b>140</b>
Health Care Assistants	270	271	273	272	-1	+1	+0.3%	+2	+0.9%	317
Care, other	6	5	6	6	+0	+1	+15.1%	+0	+0.2%	9
<b>Patient &amp; Client Care</b>	<b>276</b>	<b>277</b>	<b>279</b>	<b>278</b>	<b>-1</b>	<b>+2</b>	<b>+0.6%</b>	<b>+2</b>	<b>+0.8%</b>	<b>326</b>

## other Community Services

Jan 2022	WTE Dec 2019	WTE Dec 2020	WTE Dec 2021	WTE Jan 2022	WTE change since Dec 21	WTE change since Dec 20	% change since Dec 20	WTE change since Dec 19	% change since Dec 19	No. Jan 2022
<b>Overall</b>	<b>73</b>	<b>75</b>	<b>77</b>	<b>76</b>	<b>-1</b>	<b>+1</b>	<b>+1.3%</b>	<b>+3</b>	<b>+3.7%</b>	<b>83</b>
Health Science/ Diagnostics	1						-100.0%	-1	-100.0%	
Psychologists			1	1	0	+1	-100.0%	+1	-100.0%	1
<b>Health &amp; Social Care Professionals</b>	<b>1</b>		<b>1</b>	<b>1</b>		<b>+1</b>	<b>-100.0%</b>			<b>1</b>
Management (VIII & above)	19	17	16	17	+0	-0	-1.3%	-2	-11.3%	17
Administrative/ Supervisory (V to VII)	22	21	26	25	-1	+4	+19.6%	+3	+12.7%	28
Clerical (III & IV)	31	37	33	32	-1	-5	-13.1%	+1	+2.9%	35
<b>Management &amp; Administrative</b>	<b>72</b>	<b>75</b>	<b>75</b>	<b>74</b>	<b>-1</b>	<b>-1</b>	<b>-1.2%</b>	<b>+2</b>	<b>+2.2%</b>	<b>80</b>
Health Care Assistants	0	0	0	0	0			+0	+420.0%	1
Care, other			1	1	0	+1	-100.0%	+1	-100.0%	1
<b>Patient &amp; Client Care</b>	<b>0</b>	<b>0</b>	<b>1</b>	<b>1</b>		<b>+1</b>	<b>+334.6%</b>	<b>+1</b>	<b>+2160.0%</b>	<b>2</b>

## Social Care Older Persons Services Employment by Grade Group: Jan 2022

Jan 2022	WTE Dec 2019	WTE Dec 2020	WTE Dec 2021	WTE Jan 2022	WTE change since Dec 21	WTE change since Dec 20	% change since Dec 20	WTE change since Dec 19	% change since Dec 19	No. Jan 2022
<b>Overall</b>	<b>13,233</b>	<b>13,415</b>	<b>13,623</b>	<b>13,662</b>	<b>+39</b>	<b>+247</b>	<b>+1.8%</b>	<b>+430</b>	<b>+3.2%</b>	<b>16,546</b>
Consultant Medicine	4	4	7	7	+0	+2	+49.3%	+3	+83.3%	9
<b>Consultants</b>	<b>4</b>	<b>4</b>	<b>7</b>	<b>7</b>	<b>+0</b>	<b>+2</b>	<b>+49.3%</b>	<b>+3</b>	<b>+83.3%</b>	<b>9</b>
Registrar	7	6	7	7		+1	+11.5%			7
Senior Registrar	1	1	1	1		+0	+8.0%	+0	+8.0%	2
Specialist Registrar	2	2	3	3		+1	+50.0%	+1	+50.0%	3
<b>Registrars</b>	<b>10</b>	<b>9</b>	<b>11</b>	<b>11</b>		<b>+2</b>	<b>+19.8%</b>	<b>+1</b>	<b>+11.4%</b>	<b>12</b>
Senior House Officer	15	14	15	15	+0	+1	+9.2%	-0	-0.5%	18
<b>SHO/ Interns</b>	<b>15</b>	<b>14</b>	<b>15</b>	<b>15</b>	<b>+0</b>	<b>+1</b>	<b>+9.2%</b>	<b>-0</b>	<b>-0.5%</b>	<b>18</b>
Other Medical	96	104	95	84	-10	-19	-18.7%	-12	-12.5%	156
<b>Medical/ Dental, other</b>	<b>96</b>	<b>104</b>	<b>95</b>	<b>84</b>	<b>-10</b>	<b>-19</b>	<b>-18.7%</b>	<b>-12</b>	<b>-12.5%</b>	<b>156</b>
<b>Medical &amp; Dental</b>	<b>125</b>	<b>131</b>	<b>127</b>	<b>116</b>	<b>-10</b>	<b>-14</b>	<b>-10.9%</b>	<b>-8</b>	<b>-6.5%</b>	<b>195</b>
Clinical Nurse/ Midwife Manager	508	536	557	548	-8	+13	+2.3%	+40	+7.9%	589
Director Nursing/Midwifery, Assistant	103	106	107	108	+1	+2	+1.6%	+5	+5.2%	112
Director of Nursing/Midwifery	98	104	100	101	+1	-3	-3.3%	+3	+2.7%	103
<b>Nurse/ Midwife Manager</b>	<b>709</b>	<b>746</b>	<b>764</b>	<b>757</b>	<b>-7</b>	<b>+11</b>	<b>+1.4%</b>	<b>+48</b>	<b>+6.8%</b>	<b>804</b>
Advanced Nurse/ Midwife Practitioner	11	17	14	17	+3	+0	+1.7%	+6	+57.6%	18
Clinical Nurse/ Midwife Specialist	16	22	21	22	+1	+0	+0.3%	+6	+37.3%	24
<b>Nurse/ Midwife Specialist &amp; AN/MP</b>	<b>26</b>	<b>38</b>	<b>35</b>	<b>39</b>	<b>+4</b>	<b>+0</b>	<b>+0.9%</b>	<b>+12</b>	<b>+45.6%</b>	<b>42</b>
Staff Midwives		1	1	1	+0	-0	-9.1%	+1	-100.0%	1
Staff Nurse [Psychiatric]	5	5	7	8	+0	+2	+46.6%	+3	+54.4%	10
Staff Nurses [General/ Children's]	2,572	2,617	2,673	2,669	-4	+52	+2.0%	+98	+3.8%	3,088
Staff Nurse [Intellectual Disability]		1	1	1				+1	-100.0%	1
<b>Staff Nurse/ Staff Midwife</b>	<b>2,576</b>	<b>2,624</b>	<b>2,682</b>	<b>2,678</b>	<b>-4</b>	<b>+54</b>	<b>+2.1%</b>	<b>+102</b>	<b>+4.0%</b>	<b>3,100</b>
Public Health Nurse	13	13	11	13	+1	-1	-6.3%	-1	-6.0%	15
<b>Public Health Nurse</b>	<b>13</b>	<b>13</b>	<b>11</b>	<b>13</b>	<b>+1</b>	<b>-1</b>	<b>-6.3%</b>	<b>-1</b>	<b>-6.0%</b>	<b>15</b>
Pre-registration Nurse/ Midwife Intern			0	0	+0	+0	-100.0%	+0	-100.0%	1
Post-registration Nurse/ Midwife Student	1						-100.0%	-1	-100.0%	
Nursing/ Midwifery awaiting registration	1	1	2	2		+1	+48.1%	+1	+100.0%	2
<b>Nursing/ Midwifery Student</b>	<b>2</b>	<b>1</b>	<b>2</b>	<b>2</b>	<b>+0</b>	<b>+1</b>	<b>+83.0%</b>	<b>+0</b>	<b>+23.5%</b>	<b>3</b>
Nursing Education/Clinical	1	4	4	4		-0	-3.0%	+3	+286.0%	4
<b>Nursing/ Midwifery other</b>	<b>1</b>	<b>4</b>	<b>4</b>	<b>4</b>		<b>-0</b>	<b>-3.0%</b>	<b>+3</b>	<b>+286.0%</b>	<b>4</b>
<b>Nursing &amp; Midwifery</b>	<b>3,328</b>	<b>3,427</b>	<b>3,498</b>	<b>3,493</b>	<b>-5</b>	<b>+66</b>	<b>+1.9%</b>	<b>+165</b>	<b>+4.9%</b>	<b>3,968</b>
Dietitians	16	18	25	24	-1	+6	+35.0%	+8	+48.3%	29
Occupational Therapists	113	113	124	123	-1	+10	+8.5%	+9	+8.2%	141
Physiotherapists	124	132	161	159	-2	+27	+20.2%	+35	+28.5%	178
Podiatrists & Chiropodists	12	13	10	9	-1	-4	-29.0%	-3	-25.4%	13
Speech & Language Therapists	23	20	32	32	+0	+12	+60.6%	+9	+37.7%	36
<b>Therapy Professions</b>	<b>288</b>	<b>295</b>	<b>352</b>	<b>346</b>	<b>-6</b>	<b>+51</b>	<b>+17.2%</b>	<b>+58</b>	<b>+20.1%</b>	<b>397</b>
Radiographers	6	5	3	3	+0	-2	-31.8%	-3	-42.8%	6
Vascular Physiologists	0	0	0	0	-0	-0	-50.0%	-0	-61.9%	1
<b>Health Science/ Diagnostics</b>	<b>6</b>	<b>5</b>	<b>4</b>	<b>3</b>	<b>-0</b>	<b>-2</b>	<b>-32.4%</b>	<b>-3</b>	<b>-43.5%</b>	<b>7</b>
<b>Social Care</b>	<b>3</b>	<b>3</b>	<b>3</b>	<b>3</b>	<b>-0</b>	<b>-0</b>	<b>-0.0%</b>			<b>5</b>
<b>Social Workers</b>	<b>98</b>	<b>100</b>	<b>90</b>	<b>83</b>	<b>-7</b>	<b>-17</b>	<b>-16.6%</b>	<b>-15</b>	<b>-15.3%</b>	<b>93</b>
<b>Psychologists</b>	<b>2</b>	<b>1</b>	<b>2</b>	<b>3</b>	<b>+1</b>	<b>+2</b>	<b>+188.2%</b>	<b>+1</b>	<b>+51.0%</b>	<b>4</b>
Pharmacists	13	13	16	15	-1	+3	+21.1%	+3	+20.7%	23
Pharmacy Technicians	3	5	6	5	-0	+1	+21.8%	+3	+119.2%	6
<b>Pharmacy</b>	<b>15</b>	<b>17</b>	<b>21</b>	<b>21</b>	<b>-1</b>	<b>+4</b>	<b>+21.3%</b>	<b>+6</b>	<b>+36.9%</b>	<b>29</b>
Other Health & Social Care	0	1	1	1				+0	+50.0%	1
Play Therapists/ Specialists	1	1	1	1						1
<b>H&amp;SC, Other</b>	<b>1</b>	<b>2</b>	<b>2</b>	<b>2</b>				<b>+0</b>	<b>+13.2%</b>	<b>2</b>

Jan 2022	WTE Dec 2019	WTE Dec 2020	WTE Dec 2021	WTE Jan 2022	WTE change since Dec 21	WTE change since Dec 20	% change since Dec 20	WTE change since Dec 19	% change since Dec 19	No. Jan 2022
<b>Overall</b>	<b>13,233</b>	<b>13,415</b>	<b>13,623</b>	<b>13,662</b>	<b>+39</b>	<b>+247</b>	<b>+1.8%</b>	<b>+430</b>	<b>+3.2%</b>	<b>16,546</b>
<b>Health &amp; Social Care Professionals</b>	<b>414</b>	<b>423</b>	<b>473</b>	<b>461</b>	<b>-12</b>	<b>+38</b>	<b>+9.1%</b>	<b>+47</b>	<b>+11.4%</b>	<b>537</b>
Executive Management	12	15	15	15	+0	+0	+0.3%	+3	+24.6%	15
Senior Management (VIII & GM)	63	64	87	90	+2	+26	+40.3%	+27	+43.2%	92
<b>Management (VIII &amp; above)</b>	<b>75</b>	<b>79</b>	<b>102</b>	<b>105</b>	<b>+3</b>	<b>+26</b>	<b>+32.8%</b>	<b>+30</b>	<b>+40.2%</b>	<b>107</b>
Middle Management (V-VII)	164	176	201	201	+1	+25	+14.4%	+37	+22.7%	214
Other Administrative	1			0	+0	+0	-100.0%	-1	-53.0%	1
<b>Administrative/ Supervisory (V to VII)</b>	<b>165</b>	<b>176</b>	<b>201</b>	<b>202</b>	<b>+1</b>	<b>+26</b>	<b>+14.7%</b>	<b>+37</b>	<b>+22.3%</b>	<b>215</b>
General Administrative (III & IV)	571	587	608	612	+4	+25	+4.2%	+41	+7.1%	704
<b>Clerical (III &amp; IV)</b>	<b>571</b>	<b>587</b>	<b>608</b>	<b>612</b>	<b>+4</b>	<b>+25</b>	<b>+4.2%</b>	<b>+41</b>	<b>+7.1%</b>	<b>704</b>
<b>Management &amp; Administrative</b>	<b>811</b>	<b>842</b>	<b>911</b>	<b>918</b>	<b>+7</b>	<b>+76</b>	<b>+9.1%</b>	<b>+107</b>	<b>+13.2%</b>	<b>1,026</b>
Catering	221	216	220	220	-1	+3	+1.5%	-2	-0.7%	240
Household Services	492	479	470	473	+3	-6	-1.2%	-19	-3.9%	540
Other Support	34	29	28	26	-2	-3	-10.8%	-8	-23.8%	32
Portering	81	77	75	75		-1	-1.6%	-6	-7.4%	79
<b>Support</b>	<b>829</b>	<b>801</b>	<b>794</b>	<b>794</b>	<b>+1</b>	<b>-7</b>	<b>-0.8%</b>	<b>-35</b>	<b>-4.2%</b>	<b>891</b>
Maintenance	98	95	91	90	-1	-5	-5.0%	-8	-8.5%	94
Technical Services			4	4		+4	-100.0%	+4	-100.0%	4
<b>Maintenance/ Technical</b>	<b>98</b>	<b>95</b>	<b>95</b>	<b>94</b>	<b>-1</b>	<b>-1</b>	<b>-0.8%</b>	<b>-4</b>	<b>-4.4%</b>	<b>98</b>
<b>General Support</b>	<b>927</b>	<b>896</b>	<b>889</b>	<b>888</b>	<b>-1</b>	<b>-8</b>	<b>-0.8%</b>	<b>-39</b>	<b>-4.2%</b>	<b>989</b>
Attendant/ Aide	2,293	2,211	1,960	1,938	-22	-273	-12.4%	-356	-15.5%	2,222
Health & Social Care Assistants	21	27	43	44	+1	+17	+60.5%	+23	+105.9%	47
Health Care Assistant/ Care Assistant	1,729	1,858	2,095	2,110	+14	+252	+13.6%	+381	+22.1%	2,400
HCA (Student Nurse/Midwife COVID-19)		22	1	0	-1	-22	-98.4%	+0	-100.0%	1
<b>Health Care Assistants</b>	<b>4,043</b>	<b>4,118</b>	<b>4,099</b>	<b>4,092</b>	<b>-8</b>	<b>-26</b>	<b>-0.6%</b>	<b>+49</b>	<b>+1.2%</b>	<b>4,670</b>
<b>Home Help</b>	<b>3,442</b>	<b>3,431</b>	<b>3,447</b>	<b>3,511</b>	<b>+64</b>	<b>+80</b>	<b>+2.3%</b>	<b>+69</b>	<b>+2.0%</b>	<b>4,935</b>
Home Care Services	86	99	131	134	+4	+36	+36.2%	+49	+56.8%	145
Other Care Grades	22	19	21	21	-0	+2	+10.2%	-1	-6.4%	28
Pastoral Care	32	27	24	24	+0	-3	-11.9%	-8	-25.4%	50
Workshop Services	2	2	3	3		+1	+43.5%	+1	+35.4%	3
<b>Care, other</b>	<b>142</b>	<b>147</b>	<b>178</b>	<b>182</b>	<b>+4</b>	<b>+35</b>	<b>+24.1%</b>	<b>+40</b>	<b>+28.2%</b>	<b>226</b>
<b>Patient &amp; Client Care</b>	<b>7,627</b>	<b>7,696</b>	<b>7,724</b>	<b>7,785</b>	<b>+60</b>	<b>+89</b>	<b>+1.2%</b>	<b>+158</b>	<b>+2.1%</b>	<b>9,831</b>



## Employment by WTE, Headcount, Gender, Full-Time /Part-Time etc.: Jan 2022

Social Care Older Persons Services Staff Group	WTE	Headcount	WTE: no.	% Male	% female	Male WTE: no.	Female WTE: no.	% Total Perm	% Male Perm	% Female Perm	% Total Full Time	% Total Part Time	% Male FT	% Female FT
<b>Overall</b>	<b>13,662</b>	<b>16,546</b>	<b>1.21</b>	<b>13.5%</b>	<b>86.5%</b>	<b>1.11</b>	<b>1.23</b>	<b>82.2%</b>	<b>79.2%</b>	<b>82.7%</b>	<b>59.0%</b>	<b>41.0%</b>	<b>83.0%</b>	<b>55.3%</b>
Consultant Medicine	7	9	1.36	11.1%	88.9%	2.00	1.31	66.7%	66.7%	62.5%	44.4%	55.6%	0.0%	50.0%
<b>Consultants</b>	<b>7</b>	<b>9</b>	<b>1.36</b>	<b>11.1%</b>	<b>88.9%</b>	<b>2.00</b>	<b>1.31</b>	<b>66.7%</b>	<b>100.0%</b>	<b>62.5%</b>	<b>44.4%</b>	<b>55.6%</b>	<b>0.0%</b>	<b>50.0%</b>
Registrar	7	7	1.08	28.6%	71.4%	1.00	1.11	57.1%	57.1%	40.0%	85.7%	14.3%	100.0%	80.0%
Senior Registrar	1	2	1.85	50.0%	50.0%	12.50	1.00	50.0%	50.0%	100.0%	50.0%	50.0%	0.0%	100.0%
Specialist Registrar	3	3	1.00	66.7%	33.3%	1.00	1.00	0.0%	0.0%	0.0%	100.0%	0.0%	100.0%	100.0%
<b>Registrars</b>	<b>11</b>	<b>12</b>	<b>1.13</b>	<b>41.7%</b>	<b>58.3%</b>	<b>1.23</b>	<b>1.08</b>	<b>41.7%</b>	<b>40.0%</b>	<b>42.9%</b>	<b>83.3%</b>	<b>16.7%</b>	<b>80.0%</b>	<b>85.7%</b>
Senior House Officer	15	18	1.21	27.8%	72.2%	1.00	1.31	11.1%	11.1%	0.0%	100.0%	0.0%	100.0%	100.0%
<b>SHO/ Interns</b>	<b>15</b>	<b>18</b>	<b>1.21</b>	<b>27.8%</b>	<b>72.2%</b>	<b>1.00</b>	<b>1.31</b>	<b>11.1%</b>	<b>40.0%</b>	<b>0.0%</b>	<b>100.0%</b>	<b>0.0%</b>	<b>100.0%</b>	<b>100.0%</b>
Other Medical	84	156	1.85	62.8%	37.2%	2.01	1.63	54.5%	54.5%	51.7%	35.3%	64.7%	29.6%	44.8%
<b>Medical/ Dental, other</b>	<b>84</b>	<b>156</b>	<b>1.85</b>	<b>62.8%</b>	<b>37.2%</b>	<b>2.01</b>	<b>1.63</b>	<b>54.5%</b>	<b>56.1%</b>	<b>51.7%</b>	<b>35.3%</b>	<b>64.7%</b>	<b>29.6%</b>	<b>44.8%</b>
<b>Medical &amp; Dental</b>	<b>116</b>	<b>195</b>	<b>1.67</b>	<b>55.9%</b>	<b>44.1%</b>	<b>1.87</b>	<b>1.48</b>	<b>50.3%</b>	<b>55.0%</b>	<b>44.2%</b>	<b>44.6%</b>	<b>55.4%</b>	<b>34.9%</b>	<b>57.0%</b>
Clinical Nurse/ Midwife Manager	548	589	1.07	7.6%	92.4%	1.03	1.08	95.4%	95.4%	95.8%	79.5%	20.5%	93.3%	78.3%
Director Nursing/Midwifery, Assistant	108	112	1.04	5.4%	94.6%	1.09	1.04	99.1%	99.1%	99.1%	89.3%	10.7%	100.0%	88.7%
Director of Nursing/Midwifery	101	103	1.02	5.8%	94.2%	1.02	1.02	99.0%	99.0%	99.0%	97.1%	2.9%	100.0%	96.9%
<b>Nurse/ Midwife Manager</b>	<b>757</b>	<b>804</b>	<b>1.06</b>	<b>7.1%</b>	<b>92.9%</b>	<b>1.04</b>	<b>1.06</b>	<b>96.4%</b>	<b>93.0%</b>	<b>96.7%</b>	<b>83.1%</b>	<b>16.9%</b>	<b>94.7%</b>	<b>82.2%</b>
Advanced Nurse/ Midwife Practitioner	17	18	1.07	5.6%	94.4%	1.00	1.07	100.0%	100.0%	100.0%	100.0%	0.0%	100.0%	100.0%
Clinical Nurse/ Midwife Specialist	22	24	1.11	16.7%	83.3%	1.01	1.13	100.0%	100.0%	100.0%	75.0%	25.0%	100.0%	70.0%
<b>Nurse/ Midwife Specialist &amp; AN/MP</b>	<b>39</b>	<b>42</b>	<b>1.09</b>	<b>11.9%</b>	<b>88.1%</b>	<b>1.01</b>	<b>1.10</b>	<b>100.0%</b>	<b>100.0%</b>	<b>100.0%</b>	<b>85.7%</b>	<b>14.3%</b>	<b>100.0%</b>	<b>83.8%</b>
Staff Midwives	1	1	1.25		100.0%		1.25	100.0%	100.0%	100.0%	0.0%	100.0%		0.0%
Staff Nurse [Psychiatric]	8	10	1.32	20.0%	80.0%	1.23	1.34	50.0%	50.0%	37.5%	60.0%	40.0%	50.0%	62.5%
Staff Nurses [General/ Children's]	2,669	3,088	1.16	8.2%	91.8%	1.04	1.17	86.1%	86.1%	86.4%	64.0%	36.0%	92.9%	61.4%
Staff Nurse [Intellectual Disability]	1	1	1.00		100.0%		1.00	100.0%	100.0%	100.0%	100.0%	0.0%		100.0%
<b>Staff Nurse/ Staff Midwife</b>	<b>2,678</b>	<b>3,100</b>	<b>1.16</b>	<b>8.3%</b>	<b>91.7%</b>	<b>1.04</b>	<b>1.17</b>	<b>86.0%</b>	<b>82.8%</b>	<b>86.3%</b>	<b>64.0%</b>	<b>36.0%</b>	<b>92.6%</b>	<b>61.4%</b>
<b>Public Health Nurse</b>	<b>13</b>	<b>15</b>	<b>1.19</b>		<b>100.0%</b>		<b>1.19</b>	<b>100.0%</b>		<b>100.0%</b>	<b>60.0%</b>	<b>40.0%</b>		<b>60.0%</b>
Pre-registration Nurse/ Midwife Intern	0	1	2.13		100.0%		2.13	0.0%	0.0%	0.0%	100.0%	0.0%		100.0%
Nursing/ Midwifery awaiting registration	2	2	1.00		100.0%		1.00	0.0%	0.0%	0.0%	100.0%	0.0%		100.0%
<b>Nursing/ Midwifery Student</b>	<b>2</b>	<b>3</b>	<b>1.21</b>		<b>100.0%</b>		<b>1.21</b>	<b>0.0%</b>		<b>0.0%</b>	<b>100.0%</b>	<b>0.0%</b>		<b>100.0%</b>
Nursing Education/Clinical	4	4	1.04		100.0%		1.04	100.0%	100.0%	100.0%	100.0%	0.0%		100.0%

<b>Nursing/ Midwifery other</b>	<b>4</b>	<b>4</b>	<b>1.04</b>		<b>100.0%</b>		<b>1.04</b>	<b>100.0%</b>		<b>100.0%</b>	<b>100.0%</b>	<b>0.0%</b>		<b>100.0%</b>
<b>Nursing &amp; Midwifery</b>	<b>3,493</b>	<b>3,968</b>	<b>1.14</b>	<b>8.0%</b>	<b>92.0%</b>	<b>1.04</b>	<b>1.14</b>	<b>88.2%</b>	<b>84.9%</b>	<b>88.5%</b>	<b>68.1%</b>	<b>31.9%</b>	<b>93.1%</b>	<b>66.0%</b>
Dietitians	24	29	1.19	6.9%	93.1%	1.00	1.21	93.1%	93.1%	96.3%	62.1%	37.9%	100.0%	59.3%
Occupational Therapists	123	141	1.15	9.2%	90.8%	1.03	1.16	81.6%	81.6%	79.7%	81.6%	18.4%	92.3%	80.5%
Physiotherapists	159	178	1.12	16.3%	83.7%	1.03	1.14	88.2%	88.2%	87.9%	77.0%	23.0%	93.1%	73.8%
Podiatrists & Chiropodists	9	13	1.44	7.7%	92.3%	1.00	1.50	61.5%	61.5%	58.3%	46.2%	53.8%	100.0%	41.7%
Speech & Language Therapists	32	36	1.13		100.0%		1.13	91.7%	91.7%	91.7%	77.8%	22.2%		77.8%
<b>Therapy Professions</b>	<b>346</b>	<b>397</b>	<b>1.15</b>	<b>11.3%</b>	<b>88.7%</b>	<b>1.03</b>	<b>1.16</b>	<b>85.6%</b>	<b>91.1%</b>	<b>84.9%</b>	<b>76.6%</b>	<b>23.4%</b>	<b>93.3%</b>	<b>74.4%</b>
Radiographers	3	6	1.77	16.7%	83.3%	2.00	1.73	83.3%	83.3%	80.0%	16.7%	83.3%	0.0%	20.0%
Vascular Physiologists	0	1	12.50		100.0%		12.50	0.0%	0.0%	0.0%	0.0%	100.0%		0.0%
<b>Health Science/ Diagnostics</b>	<b>3</b>	<b>7</b>	<b>2.02</b>	<b>14.3%</b>	<b>85.7%</b>	<b>2.00</b>	<b>2.02</b>	<b>71.4%</b>	<b>100.0%</b>	<b>66.7%</b>	<b>14.3%</b>	<b>85.7%</b>	<b>0.0%</b>	<b>16.7%</b>
<b>Social Care</b>	<b>3</b>	<b>5</b>	<b>1.82</b>		<b>100.0%</b>		<b>1.82</b>	<b>100.0%</b>		<b>100.0%</b>	<b>0.0%</b>	<b>100.0%</b>		<b>0.0%</b>
<b>Social Workers</b>	<b>83</b>	<b>93</b>	<b>1.12</b>	<b>16.1%</b>	<b>83.9%</b>	<b>1.14</b>	<b>1.11</b>	<b>91.4%</b>	<b>86.7%</b>	<b>92.3%</b>	<b>83.9%</b>	<b>16.1%</b>	<b>100.0%</b>	<b>80.8%</b>
<b>Psychologists</b>	<b>3</b>	<b>4</b>	<b>1.26</b>	<b>25.0%</b>	<b>75.0%</b>	<b>1.00</b>	<b>1.38</b>	<b>100.0%</b>	<b>100.0%</b>	<b>100.0%</b>	<b>75.0%</b>	<b>25.0%</b>	<b>100.0%</b>	<b>66.7%</b>
Pharmacists	15	23	1.50	17.4%	82.6%	1.55	1.49	78.3%	78.3%	78.9%	39.1%	60.9%	50.0%	36.8%
Pharmacy Technicians	5	6	1.09	16.7%	83.3%	1.00	1.12	66.7%	66.7%	60.0%	83.3%	16.7%	100.0%	80.0%
<b>Pharmacy</b>	<b>21</b>	<b>29</b>	<b>1.39</b>	<b>17.2%</b>	<b>82.8%</b>	<b>1.40</b>	<b>1.39</b>	<b>75.9%</b>	<b>80.0%</b>	<b>75.0%</b>	<b>48.3%</b>	<b>51.7%</b>	<b>60.0%</b>	<b>45.8%</b>
Other Health & Social Care	1	1	1.85		100.0%		1.85	100.0%	100.0%	100.0%	0.0%	100.0%		0.0%
Play Therapists/ Specialists	1	1	1.00	100.0%		1.00		100.0%	100.0%		100.0%	0.0%	100.0%	
<b>H&amp;SC, Other</b>	<b>2</b>	<b>2</b>	<b>1.30</b>	<b>50.0%</b>	<b>50.0%</b>	<b>1.00</b>	<b>1.85</b>	<b>100.0%</b>	<b>100.0%</b>	<b>100.0%</b>	<b>50.0%</b>	<b>50.0%</b>	<b>100.0%</b>	<b>0.0%</b>
<b>Health &amp; Social Care</b>	<b>461</b>	<b>537</b>	<b>1.16</b>	<b>12.7%</b>	<b>87.3%</b>	<b>1.08</b>	<b>1.18</b>	<b>86.2%</b>	<b>89.7%</b>	<b>85.7%</b>	<b>74.7%</b>	<b>25.3%</b>	<b>91.2%</b>	<b>72.3%</b>
Executive Management	15	15	1.01	53.3%	46.7%	1.00	1.02	100.0%	100.0%	100.0%	100.0%	0.0%	100.0%	100.0%
Senior Management (VIII & GM)	90	92	1.03	32.6%	67.4%	1.02	1.03	92.4%	92.4%	95.2%	96.7%	3.3%	93.3%	98.4%
<b>Management (VIII &amp; above)</b>	<b>105</b>	<b>107</b>	<b>1.02</b>	<b>35.5%</b>	<b>64.5%</b>	<b>1.02</b>	<b>1.03</b>	<b>93.5%</b>	<b>89.5%</b>	<b>95.7%</b>	<b>97.2%</b>	<b>2.8%</b>	<b>94.7%</b>	<b>98.6%</b>
Middle Management (V-VII)	201	214	1.06	15.9%	84.1%	1.03	1.07	94.4%	94.4%	95.6%	83.2%	16.8%	88.2%	82.2%
Other Administrative	0	1	2.13		100.0%		2.13	0.0%	0.0%	0.0%	100.0%	0.0%		100.0%
<b>Administrative/ Supervisory (V to VII)</b>	<b>202</b>	<b>215</b>	<b>1.07</b>	<b>15.8%</b>	<b>84.2%</b>	<b>1.03</b>	<b>1.07</b>	<b>94.0%</b>	<b>88.2%</b>	<b>95.0%</b>	<b>83.3%</b>	<b>16.7%</b>	<b>88.2%</b>	<b>82.3%</b>
General Administrative (III & IV)	612	704	1.15	8.2%	91.8%	1.04	1.16	85.1%	85.1%	86.1%	65.9%	34.1%	96.6%	63.2%
<b>Clerical (III &amp; IV)</b>	<b>612</b>	<b>704</b>	<b>1.15</b>	<b>8.2%</b>	<b>91.8%</b>	<b>1.04</b>	<b>1.16</b>	<b>85.1%</b>	<b>74.1%</b>	<b>86.1%</b>	<b>65.9%</b>	<b>34.1%</b>	<b>96.6%</b>	<b>63.2%</b>
<b>Management &amp; Administrative</b>	<b>918</b>	<b>1,026</b>	<b>1.12</b>	<b>12.7%</b>	<b>87.3%</b>	<b>1.03</b>	<b>1.13</b>	<b>87.8%</b>	<b>82.3%</b>	<b>88.6%</b>	<b>72.8%</b>	<b>27.2%</b>	<b>93.8%</b>	<b>69.8%</b>
Catering	220	240	1.09	35.4%	64.6%	1.03	1.13	93.3%	93.3%	96.1%	73.8%	26.3%	91.8%	63.9%
Household Services	473	540	1.14	18.3%	81.7%	1.06	1.16	83.3%	83.3%	84.4%	58.3%	41.7%	84.8%	52.4%
Other Support	26	32	1.23	59.4%	40.6%	1.13	1.42	84.4%	84.4%	84.6%	62.5%	37.5%	84.2%	30.8%
Portering	75	79	1.05	98.7%	1.3%	1.05	1.35	87.3%	87.3%	100.0%	92.4%	7.6%	92.3%	100.0%
<b>Support</b>	<b>794</b>	<b>891</b>	<b>1.12</b>	<b>31.5%</b>	<b>68.5%</b>	<b>1.05</b>	<b>1.16</b>	<b>86.4%</b>	<b>84.3%</b>	<b>87.4%</b>	<b>65.7%</b>	<b>34.3%</b>	<b>89.0%</b>	<b>54.9%</b>

Maintenance	90	94	1.04	98.9%	1.1%	1.04	1.00	95.7%	95.7%	100.0%	93.6%	6.4%	93.5%	100.0%
Technical Services	4	4	1.00	100.0%		1.00		100.0%	100.0%		100.0%	0.0%	100.0%	
<b>Maintenance/ Technical</b>	<b>94</b>	<b>98</b>	<b>1.04</b>	<b>99.0%</b>	<b>1.0%</b>	<b>1.04</b>	<b>1.00</b>	<b>95.9%</b>	<b>95.9%</b>	<b>100.0%</b>	<b>93.9%</b>	<b>6.1%</b>	<b>93.8%</b>	<b>100.0%</b>
<b>General Support</b>	<b>888</b>	<b>989</b>	<b>1.11</b>	<b>38.2%</b>	<b>61.8%</b>	<b>1.05</b>	<b>1.16</b>	<b>87.4%</b>	<b>87.3%</b>	<b>87.4%</b>	<b>68.5%</b>	<b>31.5%</b>	<b>90.2%</b>	<b>55.0%</b>
Attendant/ Aide	1,938	2,222	1.15	19.7%	80.3%	1.06	1.17	86.7%	86.7%	87.5%	58.6%	41.4%	85.8%	52.0%
Health & Social Care Assistants	44	47	1.07	25.5%	74.5%	1.05	1.08	93.6%	93.6%	94.3%	87.2%	12.8%	91.7%	85.7%
Health Care Assistant/ Care Assistant	2,110	2,400	1.14	21.5%	78.5%	1.05	1.16	88.8%	88.8%	88.8%	64.3%	35.7%	88.2%	57.7%
HCA (Student Nurse/Midwife COVID-19)	0	1	2.78		100.0%		2.78	0.0%	0.0%	0.0%	0.0%	100.0%		0.0%
<b>Health Care Assistants</b>	<b>4,092</b>	<b>4,670</b>	<b>1.14</b>	<b>20.7%</b>	<b>79.3%</b>	<b>1.06</b>	<b>1.17</b>	<b>87.8%</b>	<b>86.4%</b>	<b>88.2%</b>	<b>61.8%</b>	<b>38.2%</b>	<b>87.2%</b>	<b>55.2%</b>
<b>Home Help</b>	<b>3,511</b>	<b>4,935</b>	<b>1.41</b>	<b>3.9%</b>	<b>96.1%</b>	<b>1.30</b>	<b>1.41</b>	<b>70.8%</b>	<b>37.6%</b>	<b>72.1%</b>	<b>42.9%</b>	<b>57.1%</b>	<b>57.7%</b>	<b>42.2%</b>
Home Care Services	134	145	1.08	9.7%	90.3%	1.01	1.09	96.6%	96.6%	96.2%	80.0%	20.0%	92.9%	78.6%
Other Care Grades	21	28	1.34	46.4%	53.6%	1.11	1.63	82.1%	82.1%	86.7%	46.4%	53.6%	84.6%	13.3%
Pastoral Care	24	50	2.12	90.0%	10.0%	2.11	2.23	26.0%	26.0%	60.0%	38.0%	62.0%	42.2%	0.0%
Workshop Services	3	3	1.05		100.0%		1.05	66.7%	66.7%	66.7%	33.3%	66.7%		33.3%
<b>Care, other</b>	<b>182</b>	<b>226</b>	<b>1.24</b>	<b>31.9%</b>	<b>68.1%</b>	<b>1.53</b>	<b>1.14</b>	<b>78.8%</b>	<b>47.2%</b>	<b>93.5%</b>	<b>65.9%</b>	<b>34.1%</b>	<b>59.7%</b>	<b>68.8%</b>
<b>Patient &amp; Client Care</b>	<b>7,785</b>	<b>9,831</b>	<b>1.26</b>	<b>12.5%</b>	<b>87.5%</b>	<b>1.11</b>	<b>1.29</b>	<b>79.0%</b>	<b>76.4%</b>	<b>79.4%</b>	<b>52.4%</b>	<b>47.6%</b>	<b>80.9%</b>	<b>48.3%</b>

## Employment by WTE, Headcount, Gender, Full-Time /Part-Time etc.: Jan 2022

Social Care Older Persons Services CHO	WTE	Headcount	WTE: no.	% Male	% female	Male WTE: no.	Female WTE: no.	% Total Perm	% Male Perm	% Female Perm	% Total Full Time	% Total Part Time	% Male FT	% Female FT
<b>Overall</b>	<b>13,662</b>	<b>16,546</b>	<b>1.21</b>	<b>13.5%</b>	<b>86.5%</b>	<b>1.11</b>	<b>1.23</b>	<b>82.2%</b>	<b>79.2%</b>	<b>82.7%</b>	<b>59.0%</b>	<b>41.0%</b>	<b>83.0%</b>	<b>55.3%</b>
CHO 1	2,012	2,339	1.16	12.3%	87.7%	1.13	1.17	72.1%	72.1%	70.5%	42.1%	57.9%	66.9%	38.6%
CHO 2	1,535	1,800	1.17	12.9%	87.1%	1.06	1.19	91.4%	91.4%	91.9%	49.8%	50.2%	87.5%	44.2%
CHO 3	1,209	1,517	1.25	13.0%	87.0%	1.06	1.29	91.0%	91.0%	91.6%	56.5%	43.5%	89.8%	51.5%
CHO 4	2,940	3,843	1.31	11.5%	88.5%	1.18	1.33	62.9%	62.9%	64.8%	74.8%	25.2%	86.9%	73.2%
CHO 5	1,666	1,995	1.20	10.0%	90.0%	1.09	1.21	97.3%	97.3%	98.0%	46.4%	53.6%	78.4%	42.8%
CHO 6	811	892	1.10	25.2%	74.8%	1.06	1.11	91.3%	91.3%	91.0%	77.8%	22.2%	88.4%	74.2%
CHO 7	988	1,132	1.15	17.1%	82.9%	1.05	1.17	89.9%	89.9%	90.9%	66.7%	33.3%	88.1%	62.3%
CHO 8	1,452	1,843	1.27	11.8%	88.2%	1.17	1.28	89.6%	89.6%	90.1%	47.8%	52.2%	74.2%	44.3%
CHO 9	972	1,102	1.13	20.0%	80.0%	1.07	1.15	87.6%	87.6%	89.0%	75.3%	24.7%	87.7%	72.2%
other Community Services	76	83	1.09	24.1%	75.9%	1.06	1.10	92.8%	92.8%	93.7%	86.7%	13.3%	90.0%	85.7%

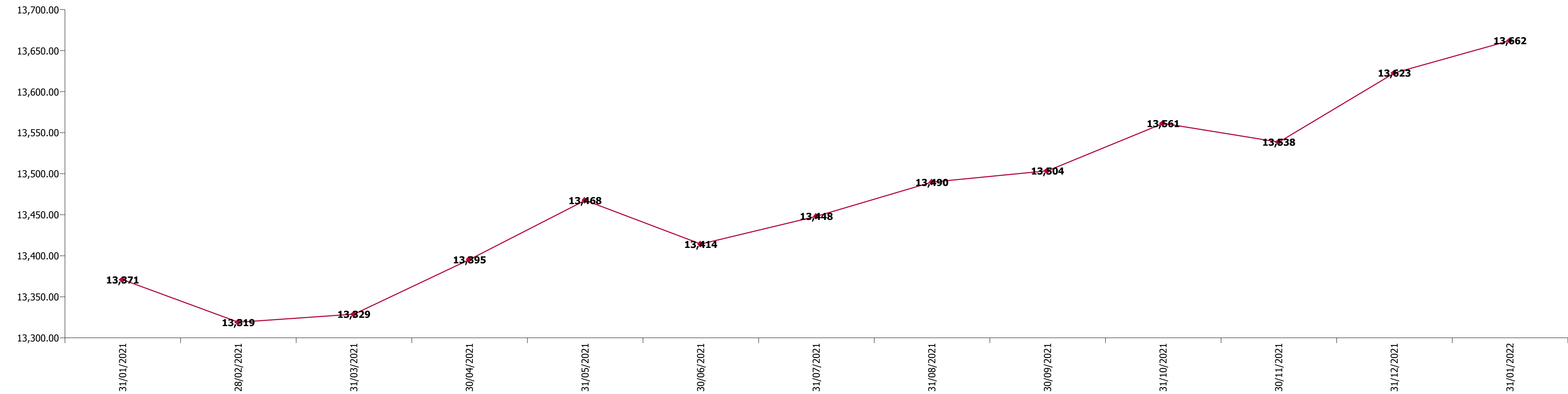
Summary Staff Movement: January 2022

Month-on-month  
Summary

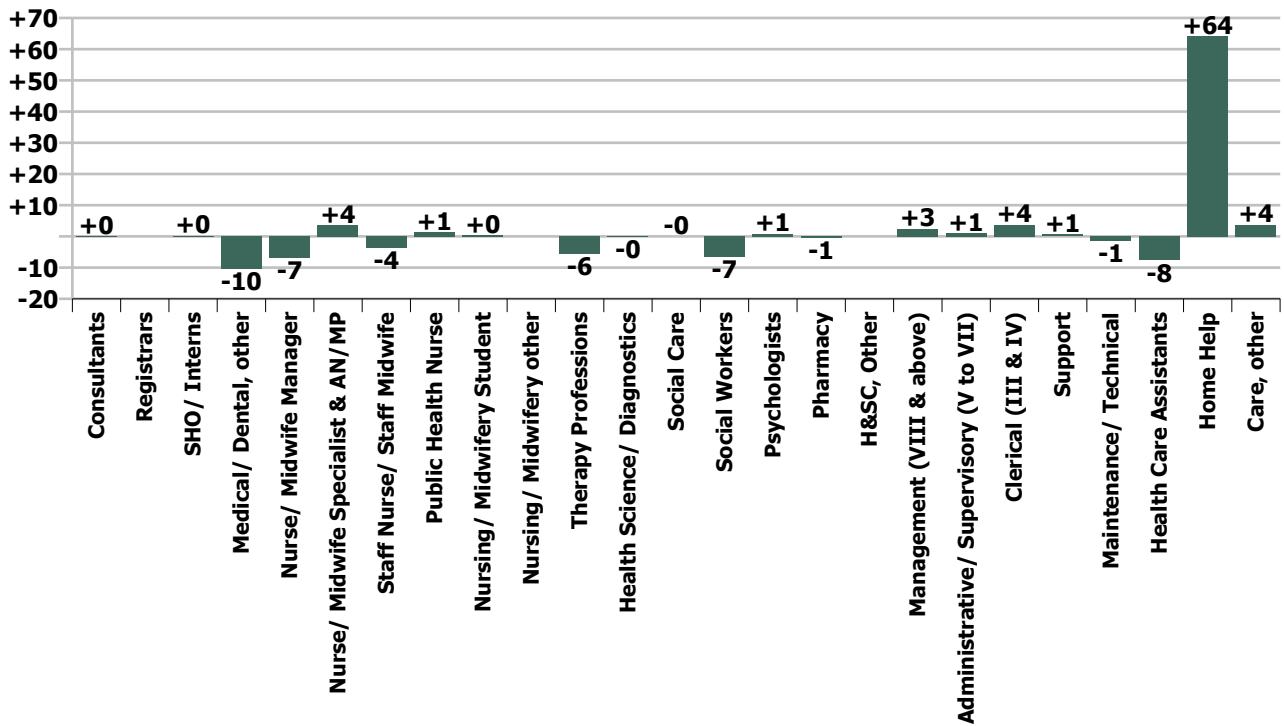
WTE change since Dec 21	% change since Dec 21	overall	Consultants	Registrars	SHO/ Interns	Medical/ Dental, other	Medical & Dental	Nurse/ Midwife Manager	Nurse/ Midwife Specialist & AN/MP	Staff Nurse/ Staff Midwife	Public Health Nurse	Nursing/ Midwifery Student	Nursing/ Midwifery other	Nursing & Midwifery	Therapy Professions	Health Science/ Diagnostics	Social Care	Social Workers	Psychologists	Pharmacy	H&SC, Other	Health & Social Care Professionals	Management (VIII & above)	Administrativ e/ Supervisory (V to VII)	Clerical (III & IV)	Management & Administrative	General Support	Health Care Assistants	Home Help	Care, other	Patient & Client Care
Overall	+0.3%	+39	+0		+0	-10	-10	-7	+4	-4	+1	+0		-5	-6	-0	-0	-7	+1	-1		-12	+3	+1	+4	+7	-1	-8	+64	+4	+60
CHO 1	+1.2%	+24				-10	-10	-3	+1	+0				-2	-3			-7				-10	+0	-1	-7	-8	-3	-2	+57	+1	+56
CHO 2	+0.5%	+8				-0	-0	-2		+4				+2	+1							+1	+0	+0	+2	+2	-1	+2	+2	+0	+5
CHO 3	+1.7%	+20						+1	-0	+1				+1	+2	-0		+0	+0	-0		+2	-0	-1	+2	-1	+1	-0	+18	+0	+18
CHO 4	-0.4%	-13				+0	+0	-1		-2	+0	+0		-2	-0			+1		-1		+1	+1	+2	-0	+2	+3	+2	-20	+1	-17
CHO 5	+0.3%	+6						+2	-0	-1	+0			+0	-4			-1		-0		-5	+0	+1	+8	+9	-0	-0	+2	-0	+1
CHO 6	-0.4%	-3				+0	+0	+2	-1	-1				-0	-2			-1		-0		-3	+0	+2	+0	+2	+3	-5		+0	-5
CHO 7	-0.8%	-8						-3	+0	-3				-6	-0			-1				-1	+1	-1	+1	+1	-1	-1	-1	+2	-1
CHO 8	+0.1%	+2				-1	-1	-3	+0	+1	-0			-2	-0							-0	+1	-1	+0	+0	-0	-1	+6	-1	+5
CHO 9	+0.6%	+5	+0		+0		+0	+0	+4	-2	+1			+3	+1			+2	+1			+4	-0	+1	+1	+1	-2	-1		+0	-1
other Community Services	-1.5%	-1																				+0	-1	-1	-1						
		+0.3%	+1.1%		+0.9%	-11.0%	-8.0%	-0.9%	+10.3%	-0.1%	+11.9%	+18.7%		-0.1%	-1.6%	-2.3%	-0.0%	-7.2%	+36.1%	-2.8%		-2.5%	+2.5%	+0.5%	+0.6%	+0.8%	-0.1%	-0.2%	+1.9%	+2.1%	+0.8%

Year-on-year Summary

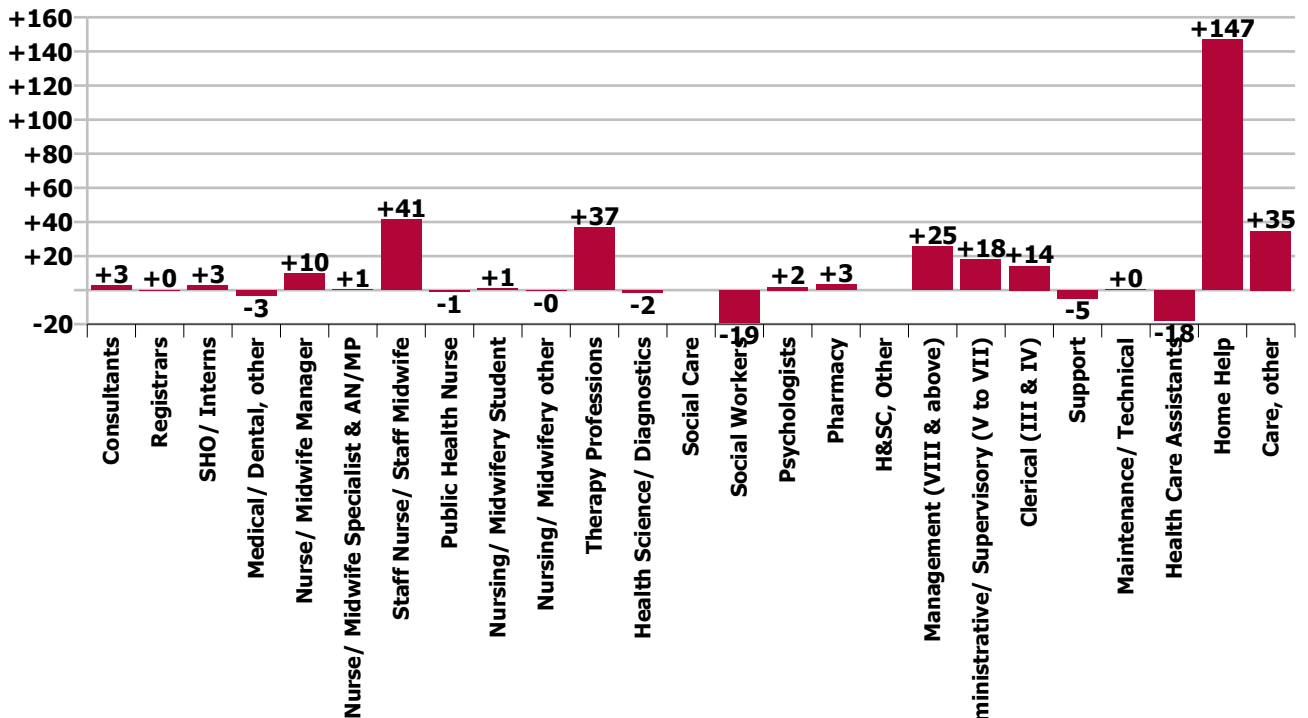
WTE change since Jan 21	% change since Jan 21	overall	Consultants	Registrars	SHO/ Interns	Medical/ Dental, other	Medical & Dental	Nurse/ Midwife Manager	Nurse/ Midwife Specialist & AN/MP	Staff Nurse/ Staff Midwife	Public Health Nurse	Nursing/ Midwifery Student	Nursing/ Midwifery other	Nursing & Midwifery	Therapy Professions	Health Science/ Diagnostics	Social Care	Social Workers	Psychologists	Pharmacy	H&SC, Other	Health & Social Care Professionals	Management (VIII & above)	Administrative/ Supervisory (V to VII)	Clerical (III & IV)	Management & Administrative	General Support	Health Care Assistants	Home Help	Care, other	Patient & Client Care
Overall	+2.2%	+291	+3	+0	+3	-3	+2	+10	+1	+41	-1	+1	-0	+52	+37	-2		-19	+2	+3		+21	+25	+18	+14	+57	-5	-18	+147	+35	+164
CHO 1	+7.5%	+141				+1	+1	+7		+7				+14	+8	-2		-6				-0	+25	-1	-5	-6	-10	+4	+136	+3	+143
CHO 2	-2.6%	-41				-1	-1	+1		+3				+4	-3					-1		-3	+2	+6	-1	+7	-6	-9	-47	+14	-42
CHO 3	+16.4%	+170	+2	+1		-2	+2	-3	+1	+22				+20	+11	-0		+1	+1	-0		+13	+2	+1	+4	+7	+3	+22	+97	+7	+126
CHO 4	+0.8%	+23		-1	+1	+0	+0	-3	-2	+17	-1	+0		+12	+9			+1		+1		+10	+4	+9	-5	+9	+14	+9	-31	-0	-23
CHO 5	-0.3%	-4				+1	+1	-1	-2	-1	-1			-4	-3			+1		-0		-2	+7	-9	+23	+21	-2	-24	-0	+8	-17
CHO 6	+0.7%	+6		-1		-1	-2	+5	-1	-6				-2	-5			-4	-1	+2		-7	+4	+6	-4	+7	+7	+4		-1	+3
CHO 7	-3.3%	-34						+7	-1	-11		+1		-4	-2			-3		+1		-4	+1	+2	+2	+5	-8	-17	-6		-23
CHO 8	-2.1%	-30				-1	-1	-6	+1	-6	-0		+1	-10	+3			-5		+1		-1	+1	-3	-4	-7	-1	-11	-2	+3	-10
CHO 9	+6.7%	+61	+1	+1	+2		+3	+2	+4	+16	+1		-1	+23	+18			-3	+1			+15	+5	+2	+10	+17	-1	+4		+1	+5
other Community Services	-0.1%	-0																	+1			+1	-0	+4	-6	-2				+1	+1
		+2.2%	+62.6%	+0.8%	+21.9%	-3.6%	+1.9%	+1.3%	+1.4%	+1.6%	-6.5%	+64.7%	-3.5%	+1.5%	+11.8%	-31.6%		-18.6%	+153.6%	+19.4%		+4.8%	+32.2%	+9.7%	+2.4%	+6.7%	-0.5%	-0.4%	+4.4%	+23.6%	+2.1%



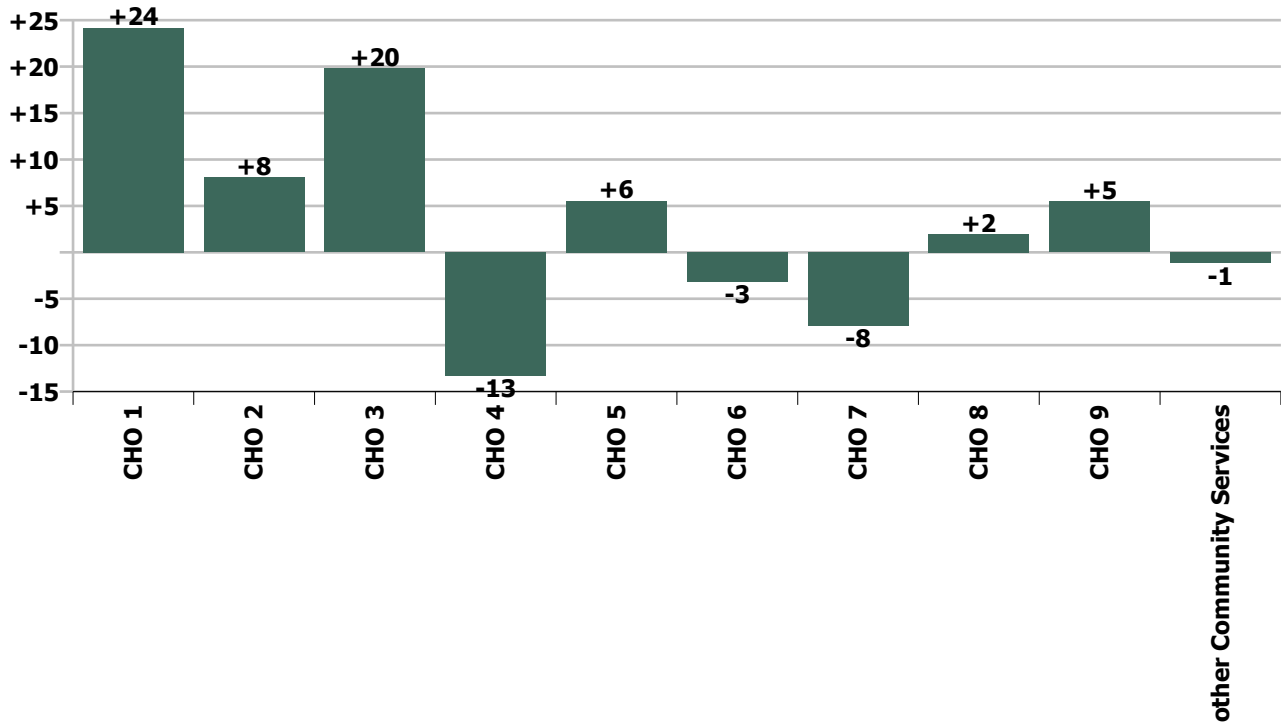
### Staff Group change since: Dec 2021



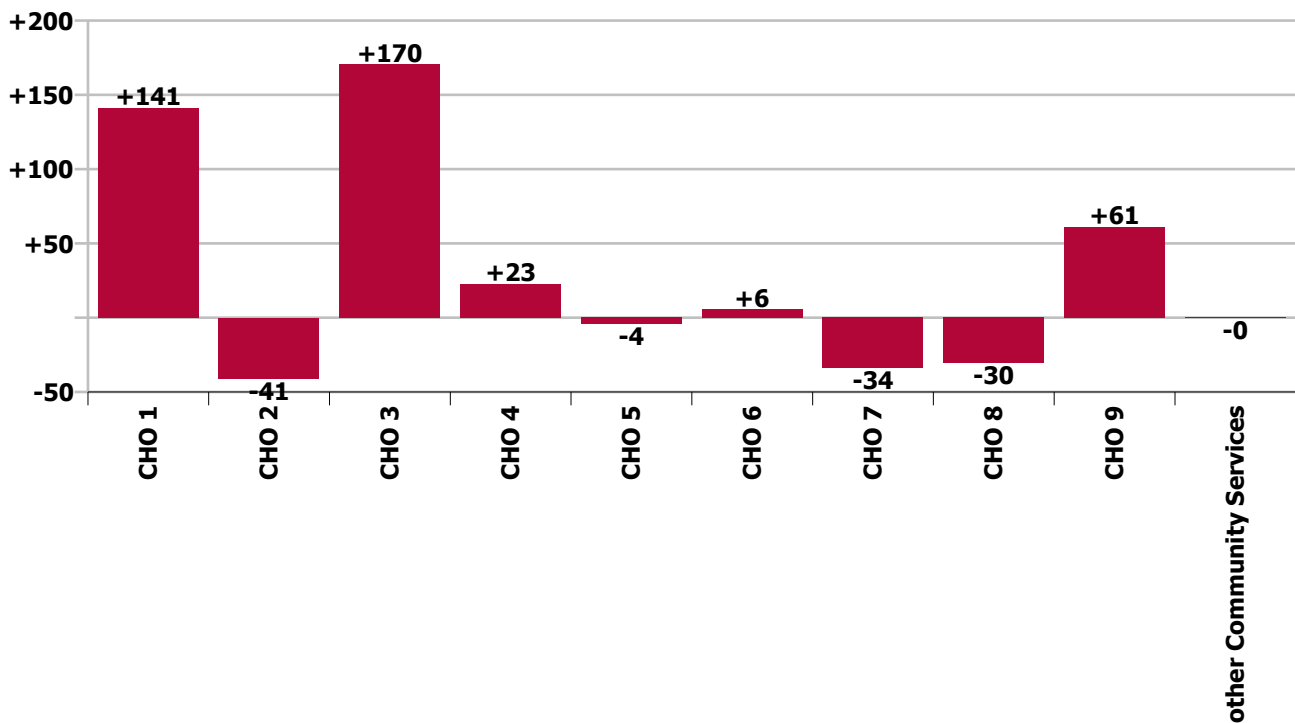
### Staff Group change since: Jan 2021



CHO change since: Dec 2021



CHO change since: Jan 2021





## Longitudinal Employment Levels by Grade Group - Dec 2016 to Jan 2022

Jan 2022 (Dec 2015 figure: 12,607)	WTE Jan 2022	WTE change since Dec 16	WTE change since Dec 17	WTE change since Dec 18	WTE change since Dec 19	WTE change since Dec 20	WTE change since Dec 21	% change since Dec 16	% change since Dec 17	% change since Dec 18	% change since Dec 19	% change since Dec 20	% change since Dec 21
<b>Overall</b>	<b>13,662</b>	<b>+1,180</b>	<b>+559</b>	<b>+357</b>	<b>+430</b>	<b>+247</b>	<b>+39</b>	<b>+9.5%</b>	<b>+4.3%</b>	<b>+2.7%</b>	<b>+3.2%</b>	<b>+1.8%</b>	<b>+0.3%</b>
Consultant Medicine	7	-3	-3	+3	+3	+2	+0	-29.5%	-28.3%	+83.3%	+83.3%	+49.3%	+1.1%
Consultant Psychiatry		-1	-1					-100.0%	-100.0%	-100.0%	-100.0%	-100.0%	-100.0%
Consultant Surgery		-1	-0	-0				-100.0%	-100.0%	-100.0%	-100.0%	-100.0%	-100.0%
<b>Consultants</b>	<b>7</b>	<b>-4</b>	<b>-4</b>	<b>+3</b>	<b>+3</b>	<b>+2</b>	<b>+0</b>	<b>-39.9%</b>	<b>-35.1%</b>	<b>+77.4%</b>	<b>+83.3%</b>	<b>+49.3%</b>	<b>+1.1%</b>
Registrar	7	+1	-1	-1		+1		+18.1%	-13.3%	-11.5%		+11.5%	
Senior Registrar	1	+0	+0	-1	+0	+0		+8.0%	+8.0%	-46.0%	+8.0%	+8.0%	
Specialist Registrar	3	+1	+2	+2	+1	+1		+50.0%	+200.0%	+200.0%	+50.0%	+50.0%	
<b>Registrars</b>	<b>11</b>	<b>+2</b>	<b>+1</b>	<b>+0</b>	<b>+1</b>	<b>+2</b>		<b>+24.4%</b>	<b>+11.4%</b>	<b>+2.2%</b>	<b>+11.4%</b>	<b>+19.8%</b>	
Senior House Officer	15	+5	+5	+3	-0	+1	+0	+50.1%	+50.7%	+25.1%	-0.5%	+9.2%	+0.9%
<b>SHO/ Interns</b>	<b>15</b>	<b>+5</b>	<b>+5</b>	<b>+3</b>	<b>-0</b>	<b>+1</b>	<b>+0</b>	<b>+50.1%</b>	<b>+50.7%</b>	<b>+25.1%</b>	<b>-0.5%</b>	<b>+9.2%</b>	<b>+0.9%</b>
Other Medical	84	-2	-2	-1	-12	-19	-10	-1.8%	-1.7%	-1.2%	-12.5%	-18.7%	-11.0%
<b>Medical/ Dental, other</b>	<b>84</b>	<b>-2</b>	<b>-2</b>	<b>-1</b>	<b>-12</b>	<b>-19</b>	<b>-10</b>	<b>-1.8%</b>	<b>-1.7%</b>	<b>-1.2%</b>	<b>-12.5%</b>	<b>-18.7%</b>	<b>-11.0%</b>
<b>Medical &amp; Dental</b>	<b>116</b>	<b>+1</b>	<b>+1</b>	<b>+5</b>	<b>-8</b>	<b>-14</b>	<b>-10</b>	<b>+1.0%</b>	<b>+0.9%</b>	<b>+4.5%</b>	<b>-6.5%</b>	<b>-10.9%</b>	<b>-8.0%</b>
Clinical Nurse/ Midwife Manager	548	+14	+20	+24	+40	+13	-8	+2.6%	+3.8%	+4.7%	+7.9%	+2.3%	-1.5%
Director Nursing/Midwifery, Assistant	108	+20	+16	+21	+5	+2	+1	+23.2%	+17.7%	+24.5%	+5.2%	+1.6%	+0.8%
Director of Nursing/Midwifery	101	+16	+18	+18	+3	-3	+1	+18.7%	+22.3%	+22.1%	+2.7%	-3.3%	+0.5%
<b>Nurse/ Midwife Manager</b>	<b>757</b>	<b>+50</b>	<b>+55</b>	<b>+64</b>	<b>+48</b>	<b>+11</b>	<b>-7</b>	<b>+7.1%</b>	<b>+7.8%</b>	<b>+9.2%</b>	<b>+6.8%</b>	<b>+1.4%</b>	<b>-0.9%</b>
Advanced Nurse/ Midwife Practitioner	17	+14	+14	+10	+6	+0	+3	+463.3%	+463.3%	+142.1%	+57.6%	+1.7%	+20.3%
Clinical Nurse/ Midwife Specialist	22	+9	+10	+5	+6	+0	+1	+72.6%	+92.8%	+29.1%	+37.3%	+0.3%	+3.6%
<b>Nurse/ Midwife Specialist &amp; AN/MP</b>	<b>39</b>	<b>+23</b>	<b>+24</b>	<b>+15</b>	<b>+12</b>	<b>+0</b>	<b>+4</b>	<b>+148.1%</b>	<b>+171.0%</b>	<b>+62.3%</b>	<b>+45.6%</b>	<b>+0.9%</b>	<b>+10.3%</b>
Graduate Nursing/ Midwifery								-100.0%	-100.0%	-100.0%	-100.0%	-100.0%	-100.0%
Staff Midwives	1	+0	-1	+1	+1	-0	+0	+100.0%	-55.6%	-100.0%	-100.0%	-9.1%	+1.3%
Staff Nurse [Psychiatric]	8	+2	+2	+2	+3	+2	+0	+37.3%	+37.3%	+36.8%	+54.4%	+46.6%	+2.7%
Staff Nurses [General/ Children's]	2,669	+87	+108	+65	+98	+52	-4	+3.4%	+4.2%	+2.5%	+3.8%	+2.0%	-0.1%
Staff Nurse [Intellectual Disability]	1		+0		+1				+29.9%		-100.0%		
<b>Staff Nurse/ Staff Midwife</b>	<b>2,678</b>	<b>+89</b>	<b>+109</b>	<b>+67</b>	<b>+102</b>	<b>+54</b>	<b>-4</b>	<b>+3.4%</b>	<b>+4.3%</b>	<b>+2.6%</b>	<b>+4.0%</b>	<b>+2.1%</b>	<b>-0.1%</b>
Public Health Nurse	13	-2	-2	-1	-1	-1	+1	-11.5%	-14.6%	-7.1%	-6.0%	-6.3%	+11.9%



Jan 2022 (Dec 2015 figure: 12,607)	WTE Jan 2022	WTE change since Dec 16	WTE change since Dec 17	WTE change since Dec 18	WTE change since Dec 19	WTE change since Dec 20	WTE change since Dec 21	% change since Dec 16	% change since Dec 17	% change since Dec 18	% change since Dec 19	% change since Dec 20	% change since Dec 21
<b>Overall</b>	<b>13,662</b>	<b>+1,180</b>	<b>+559</b>	<b>+357</b>	<b>+430</b>	<b>+247</b>	<b>+39</b>	<b>+9.5%</b>	<b>+4.3%</b>	<b>+2.7%</b>	<b>+3.2%</b>	<b>+1.8%</b>	<b>+0.3%</b>
<b>Public Health Nurse</b>	<b>13</b>	<b>-2</b>	<b>-2</b>	<b>-1</b>	<b>-1</b>	<b>-1</b>	<b>+1</b>	<b>-11.5%</b>	<b>-14.6%</b>	<b>-7.1%</b>	<b>-6.0%</b>	<b>-6.3%</b>	<b>+11.9%</b>
Pre-registration Nurse/ Midwife Intern	0	+0	+0	+0	+0	+0	+0	-100.0%	-100.0%	-100.0%	-100.0%	-100.0%	+487.5%
Post-registration Nurse/ Midwife Student					-1			-100.0%	-100.0%	-100.0%	-100.0%	-100.0%	-100.0%
Nursing/ Midwifery awaiting registration	2	+2	-12	+2	+1	+1		-100.0%	-85.7%	-100.0%	+100.0%	+48.1%	
<b>Nursing/ Midwifery Student</b>	<b>2</b>	<b>+2</b>	<b>-12</b>	<b>+2</b>	<b>+0</b>	<b>+1</b>	<b>+0</b>	<b>-100.0%</b>	<b>-82.4%</b>	<b>-100.0%</b>	<b>+23.5%</b>	<b>+83.0%</b>	<b>+18.7%</b>
Nursing Education/Clinical	4	+3	+3	+3	+3	-0		+286.0%	+286.0%	+286.0%	+286.0%	-3.0%	
<b>Nursing/ Midwifery other</b>	<b>4</b>	<b>+3</b>	<b>+3</b>	<b>+3</b>	<b>+3</b>	<b>-0</b>		<b>+286.0%</b>	<b>+286.0%</b>	<b>+286.0%</b>	<b>+286.0%</b>	<b>-3.0%</b>	
<b>Nursing &amp; Midwifery</b>	<b>3,493</b>	<b>+166</b>	<b>+178</b>	<b>+151</b>	<b>+165</b>	<b>+66</b>	<b>-5</b>	<b>+5.0%</b>	<b>+5.4%</b>	<b>+4.5%</b>	<b>+4.9%</b>	<b>+1.9%</b>	<b>-0.1%</b>
Dietitians	24	+8	+7	+7	+8	+6	-1	+53.2%	+38.8%	+40.3%	+48.3%	+35.0%	-2.6%
Occupational Therapists	123	+27	+28	+19	+9	+10	-1	+27.9%	+29.5%	+17.8%	+8.2%	+8.5%	-1.2%
Physiotherapists	159	+43	+38	+31	+35	+27	-2	+37.1%	+31.2%	+24.7%	+28.5%	+20.2%	-1.4%
Podiatrists & Chiropodists	9	-6	-7	-6	-3	-4	-1	-38.8%	-44.0%	-39.9%	-25.4%	-29.0%	-11.8%
Speech & Language Therapists	32	+11	+8	+9	+9	+12	+0	+56.5%	+33.8%	+38.0%	+37.7%	+60.6%	+0.4%
<b>Therapy Professions</b>	<b>346</b>	<b>+84</b>	<b>+73</b>	<b>+60</b>	<b>+58</b>	<b>+51</b>	<b>-6</b>	<b>+31.9%</b>	<b>+26.9%</b>	<b>+20.8%</b>	<b>+20.1%</b>	<b>+17.2%</b>	<b>-1.6%</b>
Medical Science		-1						-100.0%	-100.0%	-100.0%	-100.0%	-100.0%	-100.0%
Phlebotomists		-1	-1					-100.0%	-100.0%	-100.0%	-100.0%	-100.0%	-100.0%
Radiographers	3	-4	-4	-2	-3	-2	+0	-52.3%	-53.0%	-39.8%	-42.8%	-31.8%	+0.0%
Vascular Physiologists	0	+0	+0		-0	-0	-0	-100.0%	-100.0%		-61.9%	-50.0%	-50.0%
<b>Health Science/ Diagnostics</b>	<b>3</b>	<b>-6</b>	<b>-5</b>	<b>-2</b>	<b>-3</b>	<b>-2</b>	<b>-0</b>	<b>-61.9%</b>	<b>-57.7%</b>	<b>-39.2%</b>	<b>-43.5%</b>	<b>-32.4%</b>	<b>-2.3%</b>
<b>Social Care</b>	<b>3</b>	<b>+0</b>	<b>+0</b>	<b>-0</b>		<b>-0</b>	<b>-0</b>	<b>+1.5%</b>	<b>+2.6%</b>	<b>-0.0%</b>		<b>-0.0%</b>	<b>-0.0%</b>
<b>Social Workers</b>	<b>83</b>	<b>-3</b>	<b>-0</b>	<b>-12</b>	<b>-15</b>	<b>-17</b>	<b>-7</b>	<b>-3.9%</b>	<b>-0.6%</b>	<b>-12.2%</b>	<b>-15.3%</b>	<b>-16.6%</b>	<b>-7.2%</b>
<b>Psychologists</b>	<b>3</b>	<b>+3</b>	<b>+3</b>	<b>+3</b>	<b>+1</b>	<b>+2</b>	<b>+1</b>	<b>+534.0%</b>	<b>-100.0%</b>	<b>+534.0%</b>	<b>+51.0%</b>	<b>+188.2%</b>	<b>+36.1%</b>
Pharmacists	15	+6	+5	+4	+3	+3	-1	+56.2%	+44.5%	+32.4%	+20.7%	+21.1%	-3.6%
Pharmacy Technicians	5	+1	+1	+1	+3	+1	-0	+16.8%	+16.8%	+16.8%	+119.2%	+21.8%	-0.4%
<b>Pharmacy</b>	<b>21</b>	<b>+6</b>	<b>+6</b>	<b>+5</b>	<b>+6</b>	<b>+4</b>	<b>-1</b>	<b>+43.5%</b>	<b>+36.0%</b>	<b>+27.9%</b>	<b>+36.9%</b>	<b>+21.3%</b>	<b>-2.8%</b>
Other Health & Social Care	1	-1	-1	-1	+0			-60.3%	-60.3%	-60.3%	+50.0%		
Play Therapists/ Specialists	1	-1						-37.1%					
<b>H&amp;SC, Other</b>	<b>2</b>	<b>-1</b>	<b>-1</b>	<b>-1</b>	<b>+0</b>			<b>-47.8%</b>	<b>-34.7%</b>	<b>-34.7%</b>	<b>+13.2%</b>		
<b>Health &amp; Social Care Professionals</b>	<b>461</b>	<b>+82</b>	<b>+76</b>	<b>+52</b>	<b>+47</b>	<b>+38</b>	<b>-12</b>	<b>+21.8%</b>	<b>+19.7%</b>	<b>+12.8%</b>	<b>+11.4%</b>	<b>+9.1%</b>	<b>-2.5%</b>

Jan 2022 (Dec 2015 figure: 12,607)	WTE Jan 2022	WTE change since Dec 16	WTE change since Dec 17	WTE change since Dec 18	WTE change since Dec 19	WTE change since Dec 20	WTE change since Dec 21	% change since Dec 16	% change since Dec 17	% change since Dec 18	% change since Dec 19	% change since Dec 20	% change since Dec 21
<b>Overall</b>	<b>13,662</b>	<b>+1,180</b>	<b>+559</b>	<b>+357</b>	<b>+430</b>	<b>+247</b>	<b>+39</b>	<b>+9.5%</b>	<b>+4.3%</b>	<b>+2.7%</b>	<b>+3.2%</b>	<b>+1.8%</b>	<b>+0.3%</b>
Executive Management	15	+8	+7	+5	+3	+0	+0	+112.0%	+87.4%	+48.4%	+24.6%	+0.3%	+0.2%
Senior Management (VIII & GM)	90	+49	+53	+41	+27	+26	+2	+121.9%	+143.0%	+84.8%	+43.2%	+40.3%	+2.8%
<b>Management (VIII &amp; above)</b>	<b>105</b>	<b>+57</b>	<b>+60</b>	<b>+46</b>	<b>+30</b>	<b>+26</b>	<b>+3</b>	<b>+120.5%</b>	<b>+133.1%</b>	<b>+78.6%</b>	<b>+40.2%</b>	<b>+32.8%</b>	<b>+2.5%</b>
Middle Management (V-VII)	201	+85	+74	+59	+37	+25	+1	+72.5%	+57.6%	+41.9%	+22.7%	+14.4%	+0.3%
Other Administrative	0	-1	-1	-1	-1	+0	+0	-53.0%	-53.0%	-53.0%	-53.0%	-100.0%	-100.0%
<b>Administrative/ Supervisory (V to VII)</b>	<b>202</b>	<b>+84</b>	<b>+73</b>	<b>+59</b>	<b>+37</b>	<b>+26</b>	<b>+1</b>	<b>+71.5%</b>	<b>+56.8%</b>	<b>+41.2%</b>	<b>+22.3%</b>	<b>+14.7%</b>	<b>+0.5%</b>
General Administrative (III & IV)	612	+128	+103	+47	+41	+25	+4	+26.6%	+20.2%	+8.3%	+7.1%	+4.2%	+0.6%
<b>Clerical (III &amp; IV)</b>	<b>612</b>	<b>+128</b>	<b>+103</b>	<b>+47</b>	<b>+41</b>	<b>+25</b>	<b>+4</b>	<b>+26.6%</b>	<b>+20.2%</b>	<b>+8.3%</b>	<b>+7.1%</b>	<b>+4.2%</b>	<b>+0.6%</b>
<b>Management &amp; Administrative</b>	<b>918</b>	<b>+270</b>	<b>+235</b>	<b>+152</b>	<b>+107</b>	<b>+76</b>	<b>+7</b>	<b>+41.6%</b>	<b>+34.5%</b>	<b>+19.8%</b>	<b>+13.2%</b>	<b>+9.1%</b>	<b>+0.8%</b>
Catering	220	+7	+8	+4	-2	+3	-1	+3.1%	+3.7%	+1.9%	-0.7%	+1.5%	-0.3%
Household Services	473	-90	-71	-45	-19	-6	+3	-16.0%	-13.1%	-8.6%	-3.9%	-1.2%	+0.7%
Other Support	26	-14	-17	-12	-8	-3	-2	-35.4%	-40.2%	-31.5%	-23.8%	-10.8%	-6.6%
Portering	75	-10	-8	-4	-6	-1		-11.2%	-10.1%	-5.3%	-7.4%	-1.6%	
<b>Support</b>	<b>794</b>	<b>-107</b>	<b>-89</b>	<b>-57</b>	<b>-35</b>	<b>-7</b>	<b>+1</b>	<b>-11.9%</b>	<b>-10.1%</b>	<b>-6.6%</b>	<b>-4.2%</b>	<b>-0.8%</b>	<b>+0.1%</b>
Maintenance	90	-14	-12	-12	-8	-5	-1	-13.1%	-11.5%	-12.1%	-8.5%	-5.0%	-1.5%
Technical Services	4	+4	+4	+4	+4	+4		-100.0%	-100.0%	-100.0%	-100.0%	-100.0%	
<b>Maintenance/ Technical</b>	<b>94</b>	<b>-10</b>	<b>-8</b>	<b>-8</b>	<b>-4</b>	<b>-1</b>	<b>-1</b>	<b>-9.2%</b>	<b>-7.6%</b>	<b>-8.2%</b>	<b>-4.4%</b>	<b>-0.8%</b>	<b>-1.4%</b>
<b>General Support</b>	<b>888</b>	<b>-117</b>	<b>-97</b>	<b>-65</b>	<b>-39</b>	<b>-8</b>	<b>-1</b>	<b>-11.6%</b>	<b>-9.8%</b>	<b>-6.8%</b>	<b>-4.2%</b>	<b>-0.8%</b>	<b>-0.1%</b>
Attendant/ Aide	1,938	-826	-757	-693	-356	-273	-22	-29.9%	-28.1%	-26.3%	-15.5%	-12.4%	-1.1%
Health & Social Care Assistants	44	+18	+18	+20	+23	+17	+1	+68.7%	+69.1%	+80.7%	+105.9%	+60.5%	+1.6%
Health Care Assistant/ Care Assistant	2,110	+827	+720	+609	+381	+252	+14	+64.5%	+51.8%	+40.6%	+22.1%	+13.6%	+0.7%
HCA (Student Nurse/Midwife COVID-19)	0	+0	+0	+0	+0	-22	-1	-100.0%	-100.0%	-100.0%	-100.0%	-98.4%	-65.7%
<b>Health Care Assistants</b>	<b>4,092</b>	<b>+19</b>	<b>-19</b>	<b>-64</b>	<b>+49</b>	<b>-26</b>	<b>-8</b>	<b>+0.5%</b>	<b>-0.5%</b>	<b>-1.5%</b>	<b>+1.2%</b>	<b>-0.6%</b>	<b>-0.2%</b>
<b>Home Help</b>	<b>3,511</b>	<b>+716</b>	<b>+155</b>	<b>+91</b>	<b>+69</b>	<b>+80</b>	<b>+64</b>	<b>+25.6%</b>	<b>+4.6%</b>	<b>+2.7%</b>	<b>+2.0%</b>	<b>+2.3%</b>	<b>+1.9%</b>
Home Care Services	134	+67	+51	+49	+49	+36	+4	+97.9%	+60.5%	+56.4%	+56.8%	+36.2%	+2.9%
Other Care Grades	21	-14	-12	-4	-1	+2	-0	-39.3%	-36.3%	-15.3%	-6.4%	+10.2%	-0.3%
Pastoral Care	24	-11	-9	-10	-8	-3	+0	-31.8%	-28.2%	-30.2%	-25.4%	-11.9%	+0.0%
Workshop Services	3	+1	+1	+1	+1	+1		+35.4%	+35.4%	+35.4%	+35.4%	+43.5%	
<b>Care, other</b>	<b>182</b>	<b>+43</b>	<b>+30</b>	<b>+35</b>	<b>+40</b>	<b>+35</b>	<b>+4</b>	<b>+30.7%</b>	<b>+19.9%</b>	<b>+24.0%</b>	<b>+28.2%</b>	<b>+24.1%</b>	<b>+2.1%</b>

Jan 2022 (Dec 2015 figure: 12,607)	WTE Jan 2022	WTE change since Dec 16	WTE change since Dec 17	WTE change since Dec 18	WTE change since Dec 19	WTE change since Dec 20	WTE change since Dec 21	% change since Dec 16	% change since Dec 17	% change since Dec 18	% change since Dec 19	% change since Dec 20	% change since Dec 21
<b>Overall</b>	<b>13,662</b>	<b>+1,180</b>	<b>+559</b>	<b>+357</b>	<b>+430</b>	<b>+247</b>	<b>+39</b>	<b>+9.5%</b>	<b>+4.3%</b>	<b>+2.7%</b>	<b>+3.2%</b>	<b>+1.8%</b>	<b>+0.3%</b>
<b>Patient &amp; Client Care</b>	<b>7,785</b>	<b>+778</b>	<b>+166</b>	<b>+63</b>	<b>+158</b>	<b>+89</b>	<b>+60</b>	<b>+11.1%</b>	<b>+2.2%</b>	<b>+0.8%</b>	<b>+2.1%</b>	<b>+1.2%</b>	<b>+0.8%</b>

Source: Health Service Personnel Census

Longitudinal Employment Levels by Grade Group - Dec 2016 to Jan 2022

Jan 2022 (Dec 2015 figure: 12,607)	WTE Jan 2022	WTE change since Dec 16	WTE change since Dec 17	WTE change since Dec 18	WTE change since Dec 19	WTE change since Dec 20	WTE change since Dec 21	% change since Dec 16	% change since Dec 17	% change since Dec 18	% change since Dec 19	% change since Dec 20	% change since Dec 21
Overall	13,662	+1,180	+559	+357	+430	+247	+39	+9.5%	+4.3%	+2.7%	+3.2%	+1.8%	+0.3%
Consultant Medicine	7	-3	-3	+3	+3	+2	+0	-29.5%	-28.3%	+83.3%	+83.3%	+49.3%	+1.1%
Consultant Psychiatry		-1	-1					-100.0%	-100.0%	-100.0%	-100.0%	-100.0%	-100.0%
Consultant Surgery		-1	-0	-0				-100.0%	-100.0%	-100.0%	-100.0%	-100.0%	-100.0%
Consultants	7	-4	-4	+3	+3	+2	+0	-39.9%	-35.1%	+77.4%	+83.3%	+49.3%	+1.1%
Registrar	7	+1	-1	-1		+1		+18.1%	-13.3%	-11.5%		+11.5%	
Senior Registrar	1	+0	+0	-1	+0	+0		+8.0%	+8.0%	-46.0%	+8.0%	+8.0%	
Specialist Registrar	3	+1	+2	+2	+1	+1		+50.0%	+200.0%	+200.0%	+50.0%	+50.0%	
Registrars	11	+2	+1	+0	+1	+2		+24.4%	+11.4%	+2.2%	+11.4%	+19.8%	
Senior House Officer	15	+5	+5	+3	-0	+1	+0	+50.1%	+50.7%	+25.1%	-0.5%	+9.2%	+0.9%
SHO/ Interns	15	+5	+5	+3	-0	+1	+0	+50.1%	+50.7%	+25.1%	-0.5%	+9.2%	+0.9%
Other Medical	84	-2	-2	-1	-12	-19	-10	-1.8%	-1.7%	-1.2%	-12.5%	-18.7%	-11.0%
Medical/ Dental, other	84	-2	-2	-1	-12	-19	-10	-1.8%	-1.7%	-1.2%	-12.5%	-18.7%	-11.0%
Medical & Dental	116	+1	+1	+5	-8	-14	-10	+1.0%	+0.9%	+4.5%	-6.5%	-10.9%	-8.0%
Clinical Nurse/ Midwife Manager	548	+14	+20	+24	+40	+13	-8	+2.6%	+3.8%	+4.7%	+7.9%	+2.3%	-1.5%
Director Nursing/Midwifery, Assistant	108	+20	+16	+21	+5	+2	+1	+23.2%	+17.7%	+24.5%	+5.2%	+1.6%	+0.8%
Director of Nursing/Midwifery	101	+16	+18	+18	+3	-3	+1	+18.7%	+22.3%	+22.1%	+2.7%	-3.3%	+0.5%
Nurse/ Midwife Manager	757	+50	+55	+64	+48	+11	-7	+7.1%	+7.8%	+9.2%	+6.8%	+1.4%	-0.9%
Advanced Nurse/ Midwife Practitioner	17	+14	+14	+10	+6	+0	+3	+463.3%	+463.3%	+142.1%	+57.6%	+1.7%	+20.3%
Clinical Nurse/ Midwife Specialist	22	+9	+10	+5	+6	+0	+1	+72.6%	+92.8%	+29.1%	+37.3%	+0.3%	+3.6%
Nurse/ Midwife Specialist & AN/MP	39	+23	+24	+15	+12	+0	+4	+148.1%	+171.0%	+62.3%	+45.6%	+0.9%	+10.3%
Staff Nurse/ Staff Midwife	2,678	+89	+109	+67	+102	+54	-4	+3.4%	+4.3%	+2.6%	+4.0%	+2.1%	-0.1%
Public Health Nurse	13	-2	-2	-1	-1	-1	+1	-11.5%	-14.6%	-7.1%	-6.0%	-6.3%	+11.9%
Public Health Nurse	13	-2	-2	-1	-1	-1	+1	-11.5%	-14.6%	-7.1%	-6.0%	-6.3%	+11.9%
Pre-registration Nurse/ Midwife Intern	0	+0	+0	+0	+0	+0	+0	-100.0%	-100.0%	-100.0%	-100.0%	-100.0%	+487.5%
Post-registration Nurse/ Midwife Student					-1			-100.0%	-100.0%	-100.0%	-100.0%	-100.0%	-100.0%
Nursing/ Midwifery awaiting registration	2	+2	-12	+2	+1	+1		-100.0%	-85.7%	-100.0%	+100.0%	+48.1%	
Nursing/ Midwifery Student	2	+2	-12	+2	+0	+1	+0	-100.0%	-82.4%	-100.0%	+23.5%	+83.0%	+18.7%
Nursing Education/Clinical	4	+3	+3	+3	+3	-0		+286.0%	+286.0%	+286.0%	+286.0%	-3.0%	
Nursing/ Midwifery other	4	+3	+3	+3	+3	-0		+286.0%	+286.0%	+286.0%	+286.0%	-3.0%	
Nursing & Midwifery	3,493	+166	+178	+151	+165	+66	-5	+5.0%	+5.4%	+4.5%	+4.9%	+1.9%	-0.1%
Dietitians	24	+8	+7	+7	+8	+6	-1	+53.2%	+38.8%	+40.3%	+48.3%	+35.0%	-2.6%
Occupational Therapists	123	+27	+28	+19	+9	+10	-1	+27.9%	+29.5%	+17.8%	+8.2%	+8.5%	-1.2%
Physiotherapists	159	+43	+38	+31	+35	+27	-2	+37.1%	+31.2%	+24.7%	+28.5%	+20.2%	-1.4%
Podiatrists & Chiropodists	9	-6	-7	-6	-3	-4	-1	-38.8%	-44.0%	-39.9%	-25.4%	-29.0%	-11.8%
Speech & Language Therapists	32	+11	+8	+9	+9	+12	+0	+56.5%	+33.8%	+38.0%	+37.7%	+60.6%	+0.4%
Therapy Professions	346	+84	+73	+60	+58	+51	-6	+31.9%	+26.9%	+20.8%	+20.1%	+17.2%	-1.6%
Medical Science		-1						-100.0%	-100.0%	-100.0%	-100.0%	-100.0%	-100.0%
Phlebotomists		-1	-1					-100.0%	-100.0%	-100.0%	-100.0%	-100.0%	-100.0%
Radiographers	3	-4	-4	-2	-3	-2	+0	-52.3%	-53.0%	-39.8%	-42.8%	-31.8%	+0.0%
Vascular Physiologists	0	+0	+0		-0	-0	-0	-100.0%	-100.0%		-61.9%	-50.0%	-50.0%
Health Science/ Diagnostics	3	-6	-5	-2	-3	-2	-0	-61.9%	-57.7%	-39.2%	-43.5%	-32.4%	-2.3%
Social Care	3	+0	+0	-0		-0	-0	+1.5%	+2.6%	-0.0%		-0.0%	-0.0%
Social Workers	83	-3	-0	-12	-15	-17	-7	-3.9%	-0.6%	-12.2%	-15.3%	-16.6%	-7.2%
Psychologists	3	+3	+3	+3	+1	+2	+1	+534.0%	-100.0%	+534.0%	+51.0%	+188.2%	+36.1%
Pharmacists	15	+6	+5	+4	+3	+3	-1	+56.2%	+44.5%	+32.4%	+20.7%	+21.1%	-3.6%
Pharmacy Technicians	5	+1	+1	+1	+3	+1	-0	+16.8%	+16.8%	+16.8%	+119.2%	+21.8%	-0.4%
Pharmacy	21	+6	+6	+5	+6	+4	-1	+43.5%	+36.0%	+27.9%	+36.9%	+21.3%	-2.8%
Other Health & Social Care	1	-1	-1	-1	+0			-60.3%	-60.3%	-60.3%	+50.0%		
Play Therapists/ Specialists	1	-1						-37.1%					
H&SC, Other	2	-1	-1	-1	+0			-47.8%	-34.7%	-34.7%	+13.2%		
Health & Social Care Professionals	461	+82	+76	+52	+47	+38	-12	+21.8%	+19.7%	+12.8%	+11.4%	+9.1%	-2.5%
Executive Management	15	+8	+7	+5	+3	+0	+0	+112.0%	+87.4%	+48.4%	+24.6%	+0.3%	+0.2%
Senior Management (VIII & GM)	90	+49	+53	+41	+27	+26	+2	+121.9%	+143.0%	+84.8%	+43.2%	+40.3%	+2.8%
Management (VIII & above)	105	+57	+60	+46	+30	+26	+3	+120.5%	+133.1%	+78.6%	+40.2%	+32.8%	+2.5%
Middle Management (V-VII)	201	+85	+74	+59	+37	+25	+1	+72.5%	+57.6%	+41.9%	+22.7%	+14.4%	+0.3%
Other Administrative	0	-1	-1	-1	-1	+0	+0	-53.0%	-53.0%	-53.0%	-53.0%	-100.0%	-100.0%
Administrative/ Supervisory (V to VII)	202	+84	+73	+59	+37	+26	+1	+71.5%	+56.8%	+41.2%	+22.3%	+14.7%	+0.5%
General Administrative (III & IV)	612	+128	+103	+47	+41	+25	+4	+26.6%	+20.2%	+8.3%	+7.1%	+4.2%	+0.6%
Clerical (III & IV)	612	+128	+103	+47	+41	+25	+4	+26.6%	+20.2%	+8.3%	+7.1%	+4.2%	+0.6%
Management & Administrative	918	+270	+235	+152	+107	+76	+7	+41.6%	+34.5%	+19.8%	+13.2%	+9.1%	+0.8%
Support	794	-107	-89	-57	-35	-7	+1	-11.9%	-10.1%	-6.6%	-4.2%	-0.8%	+0.1%
Maintenance	90	-14	-12	-12	-8	-5	-1	-13.1%	-11.5%	-12.1%	-8.5%	-5.0%	-1.5%
Technical Services	4	+4	+4	+4	+4	+4		-100.0%	-100.0%	-100.0%	-100.0%	-100.0%	
Maintenance/ Technical	94	-10	-8	-8	-4	-1	-1	-9.2%	-7.6%	-8.2%	-4.4%	-0.8%	-1.4%
General Support	888	-117	-97	-65	-39	-8	-1	-11.6%	-9.8%	-6.8%	-4.2%	-0.8%	-0.1%
Attendant/ Aide	1,938	-826	-757	-693	-356	-273	-22	-29.9%	-28.1%	-26.3%	-15.5%	-12.4%	-1.1%
Health & Social Care Assistants	44	+18	+18	+20	+23	+17	+1	+68.7%	+69.1%	+80.7%	+105.9%	+60.5%	+1.6%
Health Care Assistant/ Care Assistant	2,110	+827	+720	+609	+381	+252	+14	+64.5%	+51.8%	+40.6%	+22.1%	+13.6%	+0.7%
HCA (Student Nurse/Midwife COVID-19)	0	+0	+0	+0	+0	-22	-1	-100.0%	-100.0%	-100.0%	-100.0%	-98.4%	-65.7%
Health Care Assistants	4,092	+19	-19	-64	+49	-26	-8	+0.5%	-0.5%	-1.5%	+1.2%	-0.6%	-0.2%
Home Help	3,511	+716	+155	+91	+69	+80	+64	+25.6%	+4.6%	+2.7%	+2.0%	+2.3%	+1.9%
Home Care Services	134	+67	+51	+49	+49	+36	+4	+97.9%	+60.5%	+56.4%	+56.8%	+36.2%	+2.9%
Other Care Grades	21	-14	-12	-4	-1	+2	-0	-39.3%	-36.3%	-15.3%	-6.4%	+10.2%	-0.3%
Pastoral Care	24	-11	-9	-10	-8	-3	+0	-31.8%	-28.2%	-30.2%	-25.4%	-11.9%	+0.0%
Workshop Services	3	+1	+1	+1	+1	+1		+35.4%	+35.4%	+35.4%	+35.4%	+43.5%	
Care, other	182	+43	+30	+35	+40	+35	+4	+30.7%	+19.9%	+24.0%	+28.2%	+24.1%	+2.1%
Patient & Client Care	7,785	+778	+166	+63	+158	+89	+60	+11.1%	+2.2%	+0.8%	+2.1%	+1.2%	+0.8%

Source: Health Service Personnel Census