

Social Care Older Persons Services Employment Report: July 2020

Employment by Staff Group

Jul 2020 (Dec 2019 figure: 13,233)	WTE Jun 2020	WTE Jul 2020	WTE change since Jun 20	% change since Jun 20	WTE change since Dec 19	WTE change since Jul 19
Overall	13,350	13,473	+123	+0.9%	+240	+101
Consultants	4	5	+0	+9.5%	+1	+1
Registrars	10	9	-1	-13.3%	-1	-1
SHO/ Interns	13	12	-1	-7.7%	-3	-2
Medical/ Dental, other	85	85	-0	-0.5%	-11	-1
Medical & Dental	113	110	-2	-2.1%	-14	-3
Nurse/ Midwife Manager	732	740	+8	+1.1%	+31	+6
Nurse/ Midwife Specialist & AN/MP	33	31	-2	-5.3%	+5	+5
Staff Nurse/ Staff Midwife	2,621	2,614	-7	-0.3%	+37	+24
Public Health Nurse	13	13	+0	+1.1%	-0	+0
Post-registration Nurse/ Midwife Student	1		-1	-100.0%	-1	
Nursing/ Midwifery awaiting registration	2	2.55	+1	+70.0%	+2	+3
Nursing/ Midwifery Student	3	3	+0	+2.0%	+1	+3
Nursing/ Midwifery other	3	3	+0	+1.7%	+2	+1
Nursing & Midwifery	3,404	3,404	-0	-0.0%	+76	+39
Therapy Professions	301	299	-1	-0.4%	+11	+12
Health Science/ Diagnostics	5	5	+0	+2.0%	-1	+0
Social Care	3	3			+0	
Social Workers	97	98	+1	+1.2%	-1	-6
Psychologists	2	2				
Pharmacy	17	17	+1	+4.5%	+2	+3
H&SC, Other	1	1				
Health & Social Care Professionals	425	426	+1	+0.2%	+12	+9
Management (VIII & above)	73	74	+1	+1.5%	-1	+4
Administrative/ Supervisory (V to VII)	170	169	-1	-0.6%	+4	+8
Clerical (III & IV)	566	566	-0	-0.0%	-6	-8
Management & Administrative	809	809	+0	+0.0%	-2	+3
Support	827	837	+10	+1.3%	+8	-6
Maintenance/ Technical	98	99	+1	+0.5%	+0	-1
General Support	925	936	+11	+1.2%	+9	-7
Health Care Assistants	4,415	4,492	+76	+1.7%	+448	+341
Home Help	3,108	3,148	+39	+1.3%	-294	-284
Care, other	150	149	-1	-0.7%	+7	+2
Patient & Client Care	7,674	7,788	+114	+1.5%	+161	+60

Social Care Older Persons Services Employment by Administration (HSE / S38): July 2020

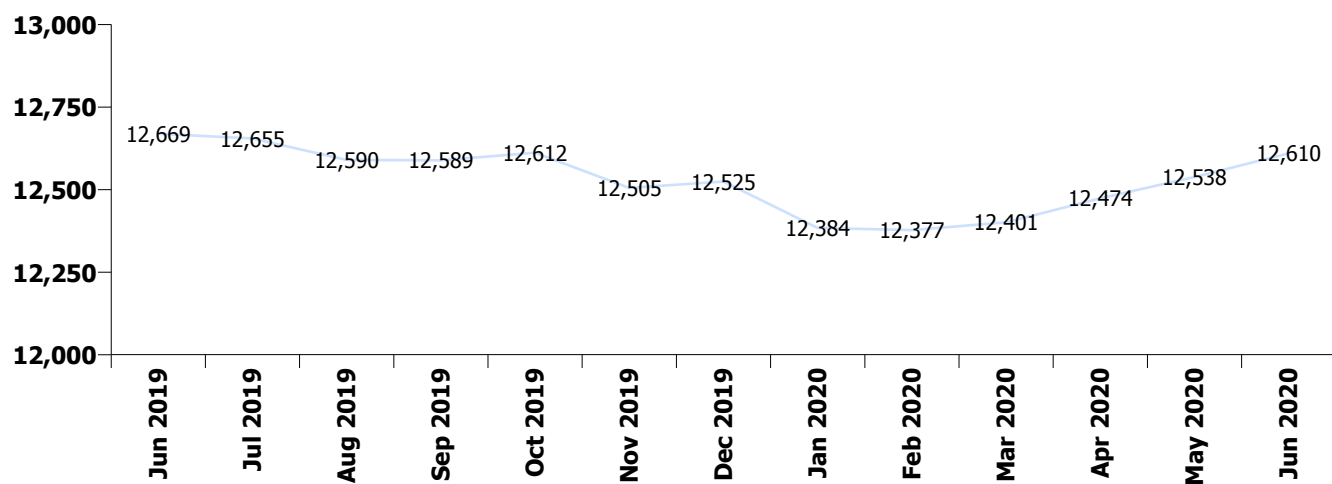
Jul 2020 (Dec 2019 figure: 13,233)	WTE Jun 2020	WTE Jul 2020	WTE change since Jun 20	% change since Jun 20	WTE change since Dec 19	WTE change since Jul 19
Overall	13,350	13,473	+123	+0.9%	+240	+101
HSE	12,610	12,728	+119	+0.9%	+204	+73
Section 38	740	744	+4	+0.6%	+36	+27

HSE

Jul 2020 (Dec 2019 figure: 12,525)	WTE Jun 2020	WTE Jul 2020	WTE change since Jun 20	% change since Jun 20	WTE change since Dec 19	WTE change since Jul 19
Overall	12,610	12,728	+119	+0.9%	+204	+73
Consultants	3	3.00				
Registrars	7	5.68	-1	-19.0%	-1	-1
SHO/ Interns	9	8.00	-1	-11.1%	-2	-1
Medical/ Dental, other	83	83.03	-0	-0.5%	-11	-1
Medical & Dental	102	100	-3	-2.7%	-14	-3
Nurse/ Midwife Manager	679	686.88	+8	+1.2%	+32	+9
Nurse/ Midwife Specialist & AN/MP	33	31.39	-2	-5.3%	+5	+5
Staff Nurse/ Staff Midwife	2,434	2,424.66	-9	-0.4%	+24	+10
Public Health Nurse	13	13.36	+0	+1.1%	-0	+0
Post-registration Nurse/ Midwife Student	1		-1	-100.0%	-1	
Nursing/ Midwifery awaiting registration	2	2.55	+1	+70.0%	+2	+3
Nursing/ Midwifery Student	3	2.55	+0	+2.0%	+1	+3
Nursing/ Midwifery other	3	3.00	+0	+1.7%	+2	+1
Nursing & Midwifery	3,164	3,162	-2	-0.1%	+63	+27
Therapy Professions	235	233.71	-1	-0.6%	+3	+5
Health Science/ Diagnostics	4	4.08	+0	+2.5%	-1	+0
Social Care	3	2.74	+0	+0.0%	+0	
Social Workers	82	83.11	+1	+0.8%	-1	-6
Psychologists	2	1.60				
Pharmacy	12	12.08	+0	+1.6%	+1	+2
H&SC, Other	1	1.36				
Health & Social Care Professionals	339	339	-0	-0.1%	+2	+0
Management (VIII & above)	71	71.61	+1	+1.6%	-1	+5
Administrative/ Supervisory (V to VII)	151	149.90	-1	-0.7%	+4	+8
Clerical (III & IV)	536	536.29	-0	-0.0%	-8	-9
Management & Administrative	758	758	+0	+0.0%	-4	+3
Support	720	728.57	+9	+1.2%	+2	-12
Maintenance/ Technical	87	87.81	+1	+0.6%	-1	-3
General Support	807	816	+9	+1.2%	+1	-15
Health Care Assistants	4,185	4,262.34	+77	+1.8%	+442	+342
Home Help	3,108	3,147.71	+39	+1.3%	-294	-284
Care, other	145	143.97	-1	-0.9%	+7	+3
Patient & Client Care	7,439	7,554	+115	+1.5%	+156	+61

Section 38

Jul 2020 (Dec 2019 figure: 708)	WTE Jun 2020	WTE Jul 2020	WTE change since Jun 20	% change since Jun 20	WTE change since Dec 19	WTE change since Jul 19
Overall	740	744	+4	+0.6%	+36	+27
Consultants	1	1.60	+0	+33.3%	+1	+1
Registrars	3	3.00				
SHO/ Interns	4	4.00			-1	-1
Medical/ Dental, other	2	2.00				
Medical & Dental	10	11	+0	+3.9%		
Nurse/ Midwife Manager	53	53.27			-1	-3
Staff Nurse/ Staff Midwife	187	188.87	+2	+1.0%	+13	+14
Nursing & Midwifery	240	242	+2	+0.8%	+13	+12
Therapy Professions	66	65.77	+0	+0.2%	+8	+7
Health Science/ Diagnostics	1	1.00				
Social Workers	14	14.61	+0	+3.2%	+1	+0
Psychologists	1	0.50				
Pharmacy	5	5.40	+1	+11.6%	+1	+1
Health & Social Care Professionals	86	87	+1	+1.3%	+9	+8
Management (VIII & above)	2	2.00				-1
Administrative/ Supervisory (V to VII)	19	19.46				+0
Clerical (III & IV)	29	29.31			+2	+1
Management & Administrative	51	51	-0	-0.0%	+2	+0
General Support	118	120	+2	+1.3%	+7	+8
Patient & Client Care	234	234	-1	-0.3%	+5	-1



Social Care Older Persons Services Employment by CHO etc. Jul 2020

CHO 1

Jul 2020 (Dec 2019 figure: 1,836)	WTE Jun 2020	WTE Jul 2020	WTE change since Jun 20	% change since Jun 20	WTE change since Dec 19	WTE change since Jul 19
Overall	1,856	1,885	+30	+1.6%	+50	+33
Medical/ Dental, other	17	17			-12	+1
Medical & Dental	17	17			-12	+1
Nurse/ Midwife Manager	88	91	+3	+3.6%	-0	-5
Nurse/ Midwife Specialist & AN/MP	9	8	-1	-11.6%	+1	+2
Staff Nurse/ Staff Midwife	313	313	-1	-0.3%	+5	+2
Nursing/ Midwifery other	1	1	+0	+5.3%	+1	+1
Nursing & Midwifery	411	412	+1	+0.3%	+7	+0
Therapy Professions	12	12	+0	+1.0%	+1	+0
Health Science/ Diagnostics	1	1	+0	+6.0%	-0	-0
Social Workers	16	16	-0	-0.4%	-1	-0
Health & Social Care Professionals	29	29	+0	+0.4%	-1	+0
Management (VIII & above)	8	8			+0	+0
Administrative/ Supervisory (V to VII)	15	15	-0	-0.4%	+1	+0
Clerical (III & IV)	81	82	+2	+2.2%	-3	-2
Management & Administrative	104	106	+2	+1.7%	-2	-2
Support	118	119	+0	+0.4%	-4	-6
Maintenance/ Technical	7	7				-1
General Support	125	126	+0	+0.4%	-4	-7
Health Care Assistants	626	646	+20	+3.2%	+83	+78
Home Help	515	520	+6	+1.1%	-22	-37
Care, other	28	28	+0	+0.5%	+1	-1
Patient & Client Care	1,169	1,195	+26	+2.2%	+61	+40

CHO 2

Jul 2020 (Dec 2019 figure: 1,606)	WTE Jun 2020	WTE Jul 2020	WTE change since Jun 20	% change since Jun 20	WTE change since Dec 19	WTE change since Jul 19
Overall	1,584	1,598	+14	+0.9%	-8	+25
Medical/ Dental, other	11	10	-0	-4.0%	-1	-1
Medical & Dental	11	10	-0	-4.0%	-1	-1
Nurse/ Midwife Manager	67	65	-2	-3.0%	+7	+4
Nurse/ Midwife Specialist & AN/MP	2	2	+0	+2.6%		+1
Staff Nurse/ Staff Midwife	301	300	-1	-0.2%	-1	-3
Public Health Nurse	1	1			+0	
Nursing & Midwifery	370	368	-3	-0.7%	+6	+2
Therapy Professions	25	26	+1	+4.9%	+0	-2
Health Science/ Diagnostics	1	1				
Social Workers	9	10	+1	+9.3%	-0	+0
Pharmacy	1	1				+0
H&SC, Other				-100.0%		
Health & Social Care Professionals	36	38	+2	+5.9%	+0	-1
Management (VIII & above)	1	1			-1	-1
Administrative/ Supervisory (V to VII)	9	9	+0	+4.7%	+2	+1
Clerical (III & IV)	69	66	-3	-3.7%	-5	-8
Management & Administrative	79	77	-2	-2.7%	-5	-8
Support	56	56	+0	+0.5%	+0	-4
Maintenance/ Technical	19	20	+0	+2.0%	+1	+0
General Support	75	76	+1	+0.9%	+1	-4
Health Care Assistants	568	584	+16	+2.8%	+69	+53
Home Help	420	418	-2	-0.5%	-81	-18
Care, other	26	28	+3	+10.3%	+4	+2
Patient & Client Care	1,014	1,030	+16	+1.6%	-8	+37

CHO 3

Jul 2020 (Dec 2019 figure: 974)	WTE Jun 2020	WTE Jul 2020	WTE change since Jun 20	% change since Jun 20	WTE change since Dec 19	WTE change since Jul 19
Overall	1,048	1,049	+1	+0.1%	+74	+56
Consultants	1	1				
Medical/ Dental, other	5	5				
Medical & Dental	6	6				
Nurse/ Midwife Manager	62	63	+1	+1.1%	-1	+1
Nurse/ Midwife Specialist & AN/MP	2	2	-0	-2.8%	-0	-0
Staff Nurse/ Staff Midwife	229	228	-1	-0.6%	-11	-17
Public Health Nurse	1	1				+1
Nursing & Midwifery	295	294	-1	-0.3%	-12	-16
Therapy Professions	28	27	-1	-4.0%	-1	-0
Health Science/ Diagnostics	1	1	+0	+3.2%	+0	+0
Social Workers	7	7	-0	-3.4%	-0	-2
Pharmacy	1	1				
Health & Social Care Professionals	37	35	-1	-3.6%	-1	-2
Management (VIII & above)	6	6	-0	-2.2%	+0	+1
Administrative/ Supervisory (V to VII)	20	18	-2	-10.4%	-2	+2
Clerical (III & IV)	50	50	+0	+0.0%	+0	+1
Management & Administrative	76	74	-2	-2.9%	-2	+4
Support	62	63	+1	+1.6%	-1	-1
Maintenance/ Technical	21	21			-1	-1
General Support	83	84	+1	+1.2%	-2	-2
Health Care Assistants	317	324	+6	+2.0%	+44	+34
Home Help	219	218	-1	-0.6%	+43	+33
Care, other	15	14	-1	-6.9%	+4	+3
Patient & Client Care	551	556	+4	+0.7%	+91	+71

CHO 4

Jul 2020 (Dec 2019 figure: 2,919)	WTE Jun 2020	WTE Jul 2020	WTE change since Jun 20	% change since Jun 20	WTE change since Dec 19	WTE change since Jul 19
Overall	2,885	2,867	-18	-0.6%	-52	-67
Consultants	1	1				
Registrars	3	3				+1
SHO/ Interns				-100.0%	-1	-1
Medical/ Dental, other	23	23	-0	-0.2%	+2	+2
Medical & Dental	27	27	-0	-0.2%	+1	+2
Nurse/ Midwife Manager	122	126	+3	+2.6%	+8	-0
Nurse/ Midwife Specialist & AN/MP	5	5	-0	-4.4%	+2	+1
Staff Nurse/ Staff Midwife	529	527	-2	-0.3%	+12	+0
Public Health Nurse	5	5				-0
Post-registration Nurse/ Midwife Student	1		-1	-100.0%		
Nursing/ Midwifery awaiting registration				-100.0%		
Nursing/ Midwifery Student	1		-1	-100.0%	-2	
Nursing & Midwifery	663	663	+0	+0.0%	+20	+1
Therapy Professions	49	48	-1	-2.0%	+3	+2
Health Science/ Diagnostics	1	1			+0	+0
Social Care	2	2				
Social Workers	9	9	-1	-5.3%	-2	-0
Pharmacy	4	4	+0	+5.3%	+1	+1
Health & Social Care Professionals	65	63	-1	-2.0%	+3	+3
Management (VIII & above)	13	13			+0	+1
Administrative/ Supervisory (V to VII)	18	19	+0	+0.3%	+2	+3
Clerical (III & IV)	130	129	-1	-0.5%	+1	-1
Management & Administrative	162	161	-1	-0.4%	+3	+3
Support	114	119	+5	+4.6%	+19	+16
Maintenance/ Technical	6	6				+0
General Support	120	125	+5	+4.4%	+19	+16
Health Care Assistants	835	840	+6	+0.7%	+59	+46
Home Help	980	957	-23	-2.4%	-157	-136
Care, other	34	30	-4	-10.8%	-0	-2
Patient & Client Care	1,849	1,827	-21	-1.2%	-98	-92

CHO 5

Jul 2020 (Dec 2019 figure: 1,647)	WTE Jun 2020	WTE Jul 2020	WTE change since Jun 20	% change since Jun 20	WTE change since Dec 19	WTE change since Jul 19
Overall	1,609	1,687	+78	+4.8%	+40	-0
Medical/ Dental, other	9	9	+0	+0.3%	-1	-2
Medical & Dental	9	9	+0	+0.3%	-1	-2
Nurse/ Midwife Manager	85	85	+0	+0.1%	+3	-1
Nurse/ Midwife Specialist & AN/MP	2	2			-0	-0
Staff Nurse/ Staff Midwife	318	319	+1	+0.4%	+5	+13
Public Health Nurse	4	4	+0	+2.6%	+0	+0
Nursing & Midwifery	409	410	+1	+0.3%	+7	+12
Therapy Professions	41	40	-1	-2.2%	-1	-1
Social Workers	4	4	+0	+4.2%	+1	+0
Pharmacy	1	1			+1	+1
Health & Social Care Professionals	46	45	-1	-1.6%	+1	+0
Management (VIII & above)	4	4				+1
Administrative/ Supervisory (V to VII)	14	14	-0	-1.1%	-0	-1
Clerical (III & IV)	31	31	+0	+1.5%	-1	-1
Management & Administrative	49	49	+0	+0.6%	-1	-1
Support	117	116	-0	-0.4%	-7	-7
Maintenance/ Technical	8	8	+0	+1.8%	-0	+0
General Support	124	124	-0	-0.2%	-7	-7
Health Care Assistants	470	487	+17	+3.7%	+97	+90
Home Help	492	552	+60	+12.2%	-56	-93
Care, other	11	10	-0	-3.9%	-0	-1
Patient & Client Care	973	1,050	+77	+7.9%	+41	-3

CHO 6

Jul 2020 (Dec 2019 figure: 823)	WTE Jun 2020	WTE Jul 2020	WTE change since Jun 20	% change since Jun 20	WTE change since Dec 19	WTE change since Jul 19
Overall	849	841	-8	-1.0%	+17	+12
Registrars	1	1				
Medical/ Dental, other	4	4				
Medical & Dental	5	5				
Nurse/ Midwife Manager	67	67	+0	+0.3%	-1	-3
Nurse/ Midwife Specialist & AN/MP	1	1				
Staff Nurse/ Staff Midwife	204	203	-1	-0.5%	-0	+5
Nursing & Midwifery	273	272	-1	-0.3%	-1	+2
Therapy Professions	45	44	-1	-2.5%	-6	-2
Social Workers	11	11	+1	+4.8%	-0	-0
Psychologists	2	2				
Pharmacy	3	3	+0	+2.1%	+0	+0
Health & Social Care Professionals	61	61	-1	-0.9%	-6	-2
Management (VIII & above)	4	4				-1
Administrative/ Supervisory (V to VII)	20	20	+0	+0.0%	-2	-2
Clerical (III & IV)	31	32	+1	+1.8%	+2	-1
Management & Administrative	56	56	+1	+1.0%	+1	-5
Support	106	106	+1	+0.8%	-2	+0
Maintenance/ Technical	9	9			+1	+2
General Support	115	115	+1	+0.8%	-1	+2
Health Care Assistants	334	326	-8	-2.5%	+26	+17
Care, other	6	6	+0	+3.8%	-1	-1
Patient & Client Care	340	332	-8	-2.4%	+24	+16

CHO 7

Jul 2020 (Dec 2019 figure: 996)	WTE Jun 2020	WTE Jul 2020	WTE change since Jun 20	% change since Jun 20	WTE change since Dec 19	WTE change since Jul 19
Overall	1,022	1,034	+12	+1.2%	+38	+20
SHO/ Interns	2	2				
Medical/ Dental, other	4	4				-1
Medical & Dental	6	6				-1
Nurse/ Midwife Manager	75	80	+4	+5.6%	+2	+4
Nurse/ Midwife Specialist & AN/MP	4	4	+1	+14.7%	+1	+0
Staff Nurse/ Staff Midwife	244	241	-4	-1.6%	+22	+21
<i>Nursing/ Midwifery awaiting registration</i>	2	3	+1	+70.0%	+3	+3
Nursing/ Midwifery Student	2	3	+1	+70.0%	+3	+3
Nursing & Midwifery	325	327	+2	+0.6%	+28	+28
Therapy Professions	13	13	-0	-0.9%	-0	-3
Social Workers	14	14	+0	+0.4%	+3	-1
Pharmacy	3	3			+1	
H&SC, Other	1	1				
Health & Social Care Professionals	31	31	-0	-0.2%	+3	-4
Management (VIII & above)	6	6	-0	-1.0%	+1	+2
Administrative/ Supervisory (V to VII)	14	14	-1	-6.6%	+2	+1
Clerical (III & IV)	34	34	-0	-1.0%	-0	+5
Management & Administrative	55	53	-1	-2.5%	+3	+8
Support	105	109	+4	+4.0%	-1	-5
Maintenance/ Technical	2	2				-1
General Support	107	111	+4	+3.9%	-1	-6
Health Care Assistants	379	386	+7	+1.7%	-2	-17
Home Help	115	115	+1	+0.5%	+8	+12
Care, other	4	5	+0	+5.8%	-0	+1
Patient & Client Care	498	505	+7	+1.5%	+5	-4

CHO 8

Jul 2020 (Dec 2019 figure: 1,488)	WTE Jun 2020	WTE Jul 2020	WTE change since Jun 20	% change since Jun 20	WTE change since Dec 19	WTE change since Jul 19
Overall	1,509	1,510	+1	+0.0%	+21	-15
Medical/ Dental, other	11	11	+0	+0.0%	+0	-0
Medical & Dental	11	11	+0	+0.0%	+0	-0
Nurse/ Midwife Manager	83	85	+2	+2.3%	+8	+1
Nurse/ Midwife Specialist & AN/MP	3	3			+1	
Staff Nurse/ Staff Midwife	252	248	-5	-2.0%	-2	-0
Public Health Nurse	2	2	+0	+2.2%	+0	-0
Nursing/ Midwifery other	1	1			+1	
Nursing & Midwifery	342	339	-3	-0.9%	+8	+0
Therapy Professions	20	20	+0	+0.9%	-1	+0
Social Workers	5	5	-0	-0.4%	-2	-1
Pharmacy	2	2			-1	-1
Health & Social Care Professionals	26	26	+0	+0.6%	-3	-1
Management (VIII & above)	7	7	+0	+3.5%	+2	+2
Administrative/ Supervisory (V to VII)	19	19	+0	+0.8%	-1	+1
Clerical (III & IV)	71	71	+0	+0.2%	+1	+1
Management & Administrative	97	98	+1	+0.5%	+2	+4
Support	28	28	-1	-2.7%	+2	+2
Maintenance/ Technical	24	24				-0
General Support	52	51	-1	-1.5%	+2	+2
Health Care Assistants	592	596	+4	+0.6%	+40	+22
Home Help	368	367	-1	-0.2%	-28	-45
Care, other	21	22	+1	+3.8%	+1	+2
Patient & Client Care	981	985	+4	+0.4%	+12	-21

CHO 9

Jul 2020 (Dec 2019 figure: 870)	WTE Jun 2020	WTE Jul 2020	WTE change since Jun 20	% change since Jun 20	WTE change since Dec 19	WTE change since Jul 19
Overall	922	936	+14	+1.5%	+66	+40
Consultants	2	3	+0	+18.2%	+1	+1
Registrars	6	5	-1	-22.1%	-1	-2
SHO/ Interns	11	10	-1	-9.1%	-2	-1
Medical/ Dental, other	1	1				
Medical & Dental	20	18	-2	-9.5%	-2	-2
Nurse/ Midwife Manager	82	79	-3	-4.1%	+4	+5
Nurse/ Midwife Specialist & AN/MP	6	5	-1	-17.1%	+0	+1
Staff Nurse/ Staff Midwife	229	235	+6	+2.8%	+8	+4
Public Health Nurse				-100.0%	-0	-0
Nursing/ Midwifery other	1	1				
Nursing & Midwifery	318	320	+2	+0.6%	+12	+9
Therapy Professions	69	71	+2	+2.2%	+16	+16
Health Science/ Diagnostics	1	1			-0	-1
Social Care	1	1				
Social Workers	21	22	+0	+1.7%	+0	-1
Pharmacy	3	4	+1	+16.7%	+1	+1
H&SC, Other	0	0				
Health & Social Care Professionals	96	98	+2	+2.5%	+17	+15
Management (VIII & above)	8	8			-1	
Administrative/ Supervisory (V to VII)	16	18	+2	+11.8%	+3	+1
Clerical (III & IV)	41	42	+1	+2.7%	+2	+1
Management & Administrative	66	69	+3	+4.6%	+5	+2
Support	121	120	-1	-0.4%	+2	-2
Maintenance/ Technical	2	2				
General Support	123	123	-1	-0.4%	+2	-2
Health Care Assistants	294	303	+9	+3.1%	+33	+18
Care, other	5	5			-1	-1
Patient & Client Care	299	308	+9	+3.0%	+32	+17

other Community Services

Jul 2020 (Dec 2019 figure: 73)	WTE Jun 2020	WTE Jul 2020	WTE change since Jun 20	% change since Jun 20	WTE change since Dec 19	WTE change since Jul 19
Overall	67	67	+0	+0.4%	-6	-2
Health Science/ Diagnostics				-100.0%	-1	
Health & Social Care Professionals				-100.0%	-1	
Management (VIII & above)	16	17	+1	+6.6%	-2	-2
Administrative/ Supervisory (V to VII)	23	23	-0	-1.2%	+0	+2
Clerical (III & IV)	28	27	-1	-1.8%	-4	-2
Management & Administrative	66	67	+0	+0.4%	-6	-2
Health Care Assistants	0	0			+0	
Patient & Client Care	0	0			+0	

Social Care Older Persons Services Employment by CHO & Admin : Jul 2020

Jul 2020 (Dec 2019 figure: 13,233)	WTE Jun 2020	WTE Jul 2020	WTE change since Jun 20	% change since Jun 20	WTE change since Dec 19	WTE change since Jul 19
Overall	13,350	13,473	+123	+0.9%	+240	+101
CHO 1	1,856	1,885	+30	+1.6%	+50	+33
Health Service Executive	1,584	1,598	+14	+0.9%	-8	+25
CHO 2	1,584	1,598	+14	+0.9%	-8	+25
Health Service Executive	1,048	1,048	+1	+0.1%	+74	+56
CHO 3	1,048	1,049	+1	+0.1%	+74	+56
Health Service Executive	2,885	2,867	-18	-0.6%	-52	-67
CHO 4	2,885	2,867	-18	-0.6%	-52	-67
Health Service Executive	1,609	1,687	+78	+4.8%	+40	-0
CHO 5	1,609	1,687	+78	+4.8%	+40	-0
Health Service Executive	367	360	-7	-1.8%	+19	+24
Leopardstown Park Hospital	205	204	-1	-0.7%	-7	-5
Royal Hospital, Donnybrook, Dublin	277	277			+5	-6
Section 38 Voluntary Agencies	482	481	-1	-0.3%	-2	-12
CHO 6	849	841	-8	-1.0%	+17	+12
Health Service Executive	1,022	1,034	+12	+1.2%	+38	+20
CHO 7	1,022	1,034	+12	+1.2%	+38	+20
Health Service Executive	1,509	1,510	+1	+0.0%	+21	-15
CHO 8	1,509	1,510	+1	+0.0%	+21	-15
Health Service Executive	664	672	+8	+1.2%	+28	+1
Incorporated Orthopaedic Hospital	258	264	+6	+2.3%	+38	+39
Section 38 Voluntary Agencies	258	264	+6	+2.3%	+38	+39
CHO 9	922	936	+14	+1.5%	+66	+40
other Community Services	67	67	+0	+0.4%	-6	-2

Social Care Older Persons Services Employment by CHO etc. Jul 2020

Incorporated Orthopaedic Hospital

Jul 2020 (Dec 2019 figure: 226)	WTE Jun 2020	WTE Jul 2020	WTE change since Jun 20	% change since Jun 20	WTE change since Dec 19	WTE change since Jul 19
Overall	258	264	+6	+2.3%	+38	+39
Consultants	1	2	+0	+33.3%	+1	+1
Registrars	2	2				
SHO/ Interns	4	4			-1	-1
Medical & Dental	7	8	+0	+5.6%		
Nurse/ Midwife Manager	17	17			-1	-1
Staff Nurse/ Staff Midwife	71	74	+3	+4.3%	+14	+14
Nursing & Midwifery	88	91	+3	+3.4%	+13	+13
Therapy Professions	30	30			+10	+10
Health Science/ Diagnostics	1	1				
Social Workers	8	8			+1	+1
Pharmacy	3	4	+1	+16.7%	+1	+1
Health & Social Care Professionals	42	43	+1	+1.2%	+11	+11
Management (VIII & above)	1	1				
Administrative/ Supervisory (V to VII)	6	6				
Clerical (III & IV)	11	11			+1	+2
Management & Administrative	18	18			+1	+2
Support	40	40			+6	+6
Maintenance/ Technical	2	2				
General Support	42	42	+0	+0.0%	+6	+6
Health Care Assistants	61	63	+2	+3.3%	+7	+7
Care, other	0	0				
Patient & Client Care	61	63	+2	+3.3%	+7	+7

Leopardstown Park Hospital

Jul 2020 (Dec 2019 figure: 211)	WTE Jun 2020	WTE Jul 2020	WTE change since Jun 20	% change since Jun 20	WTE change since Dec 19	WTE change since Jul 19
Overall	205	204	-1	-0.7%	-7	-5
Medical/ Dental, other	1	1				
Medical & Dental	1	1				
Nurse/ Midwife Manager	16	16			+1	+1
Staff Nurse/ Staff Midwife	40	39	-1	-2.6%	-3	-0
Nursing & Midwifery	57	56	-1	-1.8%	-2	+1
Therapy Professions	7	7	+0	+2.1%		+1
Social Workers	1	1	+0	+81.8%		
Pharmacy	2	2	+0	+3.3%	+0	+0
Health & Social Care Professionals	9	10	+1	+7.0%	+0	+1
Management (VIII & above)	1	1				
Administrative/ Supervisory (V to VII)	7	7				
Clerical (III & IV)	10	10				-1
Management & Administrative	19	19				-1
Support	34	35	+2	+4.5%	+2	+1
Maintenance/ Technical	4	4				+1
General Support	38	39	+2	+4.0%	+2	+2
Health Care Assistants	79	76	-3	-3.6%	-6	-6
Care, other	3	3	+0	+6.8%	-1	-1
Patient & Client Care	82	79	-3	-3.2%	-7	-8

Jul 2020 (Dec 2019 figure: 272)	WTE Jun 2020	WTE Jul 2020	WTE change since Jun 20	% change since Jun 20	WTE change since Dec 19	WTE change since Jul 19
Overall	277	277			+5	-6
Registrars	1	1				
Medical/ Dental, other	1	1				
Medical & Dental	2	2				
Nurse/ Midwife Manager	19	19			-1	-3
Staff Nurse/ Staff Midwife	76	76			+2	+1
Nursing & Midwifery	95	95			+1	-2
Therapy Professions	29	29			-2	-3
Social Workers	6	6				-0
Psychologists	1	1				
Health & Social Care Professionals	35	35	+0	+0.0%	-2	-3
Management (VIII & above)				-100.0%		-1
Administrative/ Supervisory (V to VII)	6	6				+0
Clerical (III & IV)	8	8			+1	-0
Management & Administrative	14	14			+1	-1
Support	34	34			-2	-1
Maintenance/ Technical	5	5			+1	+1
General Support	39	39			-1	+0
Health Care Assistants	91	91			+5	-0
Care, other	1	1			+1	+1
Patient & Client Care	92	92			+6	+0

Social Care Older Persons Services Employment by Grade Group: Jul 2020

Jul 2020 (Dec 2019 figure: 13,233)	WTE Jun 2020	WTE Jul 2020	WTE change since Jun 20	% change since Jun 20	WTE change since Dec 19	WTE change since Jul 19
Overall	13,350	13,473	+123	+0.9%	+240	+101
Consultant Medicine	4	5	+0	+9.5%	+1	+1
Consultants	4	5	+0	+9.5%	+1	+1
Registrar	6	5	-1	-22.1%	-2	-2
Senior Registrar	1	1				
Specialist Registrar	3	3			+1	+1
Registrars	10	9	-1	-13.3%	-1	-1
SHO/ Interns	13	12	-1	-7.7%	-3	-2
Medical/ Dental, other	85	85	-0	-0.5%	-11	-1
Medical & Dental	113	110	-2	-2.1%	-14	-3
Clinical Nurse/ Midwife Manager	527	534	+8	+1.5%	+26	-4
Director Nursing/Midwifery, Assistant	100	102	+2	+2.0%	-0	+1
Director of Nursing/Midwifery	105	104	-2	-1.4%	+5	+9
Nurse/ Midwife Manager	732	740	+8	+1.1%	+31	+6
Advanced Nurse/ Midwife Practitioner	12	13	+1	+8.4%	+2	+4
Clinical Nurse/ Midwife Specialist	21	19	-3	-12.8%	+3	+1
Nurse/ Midwife Specialist & AN/MP	33	31	-2	-5.3%	+5	+5
Staff Nurse [Psychiatric]	7	5	-2	-28.9%	-0	-0
Staff Nurses [General/ Children's]	2,614	2,609	-5	-0.2%	+37	+24
Staff Nurse/ Staff Midwife	2,621	2,614	-7	-0.3%	+37	+24
Public Health Nurse	13	13	+0	+1.1%	-0	+0
Post-registration Nurse/ Midwife Student	1		-1	-100.0%	-1	
Nursing/ Midwifery awaiting registration	2	3	+1	+70.0%	+2	+3
Nursing/ Midwifery Student	3	3	+0	+2.0%	+1	+3
Nursing Education/Clinical	3	3	+0	+1.7%	+2	+1
Nursing/ Midwifery other	3	3	+0	+1.7%	+2	+1
Nursing & Midwifery	3,404	3,404	-0	-0.0%	+76	+39
Dietitians	21	22	+1	+5.5%	+6	+3
Occupational Therapists	116	116	-0	-0.0%	+3	+7
Physiotherapists	129	128	-2	-1.3%	+4	+3
Podiatrists & Chiropodists	12	12	-0	-1.1%	+0	+1
Speech & Language Therapists	22	22	-1	-2.3%	-1	-2
Therapy Professions	301	299	-1	-0.4%	+11	+12
Clinical Measurement	0	0	+0	+7.0%	+0	+0
Radiographers	5	5	+0	+1.5%	-1	-0
Health Science/ Diagnostics	5	5	+0	+2.0%	-1	+0
Social Care	3	3			+0	
Social Workers	97	98	+1	+1.2%	-1	-6
Psychologists	2	2				
Pharmacy	17	17	+1	+4.5%	+2	+3
Other Health & Social Care	0	0				
Play Therapists/ Specialists	1	1				
H&SC, Other	1	1				
Health & Social Care Professionals	425	426	+1	+0.2%	+12	+9
Executive Management	12	12	+0	+0.2%	+0	+1
Senior Management (VIII & GM)	61	62	+1	+1.8%	-1	+3
Management (VIII & above)	73	74	+1	+1.5%	-1	+4
Middle Management (V-VII)	167	167	+0	+0.0%	+3	+8

Jul 2020 (Dec 2019 figure: 13,233)	WTE Jun 2020	WTE Jul 2020	WTE change since Jun 20	% change since Jun 20	WTE change since Dec 19	WTE change since Jul 19
Overall	13,350	13,473	+123	+0.9%	+240	+101
Other Administrative	3	2	-1	-33.3%	+1	
Administrative/ Supervisory (V to VII)	170	169	-1	-0.6%	+4	+8
Clerical (III & IV)	566	566	-0	-0.0%	-6	-8
Management & Administrative	809	809	+0	+0.0%	-2	+3
Catering	224	225	+1	+0.3%	+3	+6
Household Services	491	500	+9	+1.9%	+8	-8
Other Support	32	33	+0	+0.6%	-1	-2
Portering	80	80	+0	+0.1%	-2	-3
Support	827	837	+10	+1.3%	+8	-6
Maintenance	98	99	+1	+0.5%	+0	-1
Maintenance/ Technical	98	99	+1	+0.5%	+0	-1
General Support	925	936	+11	+1.2%	+9	-7
HCA, Nurse's Aide, etc.	4,391	4,468	+77	+1.8%	+446	+340
Health & Social Care Assistants	24	23	-1	-3.7%	+2	+1
Health Care Assistants	4,415	4,492	+76	+1.7%	+448	+341
Home Help	3,108	3,148	+39	+1.3%	-294	-284
Care, other	150	149	-1	-0.7%	+7	+2
Patient & Client Care	7,674	7,788	+114	+1.5%	+161	+60

Employment by WTE, Headcount, Gender, Full-Time /Part-Time etc.: Jul 2020

Social Care Older Persons Services Staff Group	WTE	Headcount	WTE: no.	% Male	% female	Male WTE: no.	Female WTE: no.	% Total Perm	% Male Perm	% Female Perm	% Total Full Time	% Total Part Time	% Male FT	% Female FT
Overall	13,473	16,909	1.26	12.6%	87.4%	1.12	1.28	88.6%	87.9%	88.7%	46.8%	53.2%	76.6%	42.5%
Consultant Medicine	5	7	1.52	14.3%	85.7%	2.00	1.46	85.7%	85.7%	83.3%	28.6%	71.4%	0.0%	33.3%
Consultants	5	7	1.52	14.3%	85.7%	2.00	1.46	85.7%	100.0%	83.3%	28.6%	71.4%	0.0%	33.3%
Registrar	5	6	1.28	50.0%	50.0%	1.38	1.20	33.3%	33.3%	0.0%	83.3%	16.7%	100.0%	66.7%
Senior Registrar	1	1	1.00		100.0%		1.00	100.0%	100.0%	100.0%	100.0%	0.0%		100.0%
Specialist Registrar	3	4	1.33		100.0%		1.33	0.0%	0.0%	0.0%	100.0%	0.0%		100.0%
Registrars	9	11	1.27	27.3%	72.7%	1.38	1.23	27.3%	66.7%	12.5%	90.9%	9.1%	100.0%	87.5%
SHO/ Interns	12	15	1.25	53.3%	46.7%	1.17	1.35	0.0%	0.0%	0.0%	100.0%	0.0%	100.0%	100.0%
Medical/ Dental, other	85	162	1.91	66.0%	34.0%	2.05	1.67	86.4%	88.8%	81.8%	22.8%	77.2%	19.6%	29.1%
Medical & Dental	110	195	1.77	61.0%	39.0%	1.93	1.56	76.4%	82.4%	67.1%	32.8%	67.2%	26.9%	42.1%
Clinical Nurse/ Midwife Manager	534	575	1.08	7.1%	92.9%	1.03	1.08	98.8%	98.8%	98.9%	77.4%	22.6%	87.8%	76.6%
Director Nursing/Midwifery, Assistant	102	108	1.06	4.6%	95.4%	1.00	1.06	99.1%	99.1%	99.0%	88.0%	12.0%	100.0%	87.4%
Director of Nursing/Midwifery	104	105	1.01	5.7%	94.3%	1.00	1.01	98.1%	98.1%	98.0%	98.1%	1.9%	100.0%	98.0%
Nurse/ Midwife Manager	740	788	1.06	6.6%	93.4%	1.02	1.07	98.7%	98.1%	98.8%	81.6%	18.4%	90.4%	81.0%
Advanced Nurse/ Midwife Practitioner	13	13	1.02	7.7%	92.3%	1.00	1.02	100.0%	100.0%	100.0%	92.3%	7.7%	100.0%	91.7%
Clinical Nurse/ Midwife Specialist	19	22	1.18	9.1%	90.9%	1.00	1.20	100.0%	100.0%	100.0%	59.1%	40.9%	100.0%	55.0%
Nurse/ Midwife Specialist & AN/MP	31	35	1.12	8.6%	91.4%	1.00	1.13	100.0%	100.0%	100.0%	71.4%	28.6%	100.0%	68.8%
Staff Nurse [Psychiatric]	5	5	1.02	60.0%	40.0%	1.00	1.06	100.0%	100.0%	100.0%	80.0%	20.0%	100.0%	50.0%
Staff Nurses [General/ Children's]	2,609	3,063	1.17	7.0%	93.0%	1.04	1.19	96.7%	96.7%	96.9%	57.9%	42.1%	88.7%	55.5%
Staff Nurse/ Staff Midwife	2,614	3,068	1.17	7.0%	93.0%	1.04	1.19	96.7%	93.5%	96.9%	57.9%	42.1%	88.9%	55.5%
Public Health Nurse	13	15	1.12	13.3%	86.7%	1.00	1.14	100.0%	100.0%	100.0%	60.0%	40.0%	100.0%	53.8%
Nursing/ Midwifery Student	3	3	1.18	33.3%	66.7%	1.03	1.27	33.3%	0.0%	50.0%	66.7%	33.3%	100.0%	50.0%
Nursing Education/Clinical	3	3	1.00		100.0%		1.00	100.0%	100.0%	100.0%	100.0%	0.0%		100.0%
Nursing/ Midwifery other	3	3	1.00		100.0%	#DIV/0	1.00	100.0%		100.0%	100.0%	0.0%	#DIV/0	100.0%
Nursing & Midwifery	3,404	3,912	1.15	7.0%	93.0%	1.04	1.16	97.1%	94.2%	97.3%	62.8%	37.2%	89.4%	60.8%
Dietitians	22	28	1.27	7.1%	92.9%	1.00	1.29	85.7%	85.7%	84.6%	53.6%	46.4%	100.0%	50.0%
Occupational Therapists	116	130	1.12	10.8%	89.2%	1.01	1.14	93.1%	93.1%	92.2%	76.9%	23.1%	92.9%	75.0%
Physiotherapists	128	145	1.14	15.2%	84.8%	1.04	1.15	94.5%	94.5%	95.1%	66.2%	33.8%	81.8%	63.4%

Podiatrists & Chiropodists	12	17	1.41	23.5%	76.5%	1.14	1.52	100.0%	100.0%	100.0%	47.1%	52.9%	75.0%	38.5%
Speech & Language Therapists	22	25	1.15	4.0%	96.0%	1.00	1.16	100.0%	100.0%	100.0%	60.0%	40.0%	100.0%	58.3%
Therapy Professions	299	345	1.15	12.5%	87.5%	1.04	1.17	93.9%	95.3%	93.7%	67.8%	32.2%	86.0%	65.2%
Clinical Measurement	0	1	2.17		100.0%		2.17	0.0%	0.0%	0.0%	0.0%	100.0%		0.0%
Radiographers	5	9	1.95	11.1%	88.9%	2.00	1.94	88.9%	88.9%	87.5%	11.1%	88.9%	0.0%	12.5%
Health Science/ Diagnostics	5	10	1.97	10.0%	90.0%	2.00	1.97	80.0%	100.0%	77.8%	10.0%	90.0%	0.0%	11.1%
Social Care	3	5	1.82		100.0%	#DIV/0	1.82	100.0%		100.0%	0.0%	100.0%	#DIV/0	0.0%
Social Workers	98	108	1.11	14.8%	85.2%	1.02	1.12	97.2%	100.0%	96.7%	79.6%	20.4%	93.8%	77.2%
Psychologists	2	3	1.43		100.0%	#DIV/0	1.43	100.0%		100.0%	33.3%	66.7%	#DIV/0	33.3%
Pharmacy	17	24	1.37	20.8%	79.2%	1.17	1.44	91.7%	100.0%	89.5%	50.0%	50.0%	80.0%	42.1%
Other Health & Social Care	0	1	2.78		100.0%		2.78	100.0%	100.0%	100.0%	0.0%	100.0%		0.0%
Play Therapists/ Specialists	1	1	1.00	100.0%		1.00		100.0%	100.0%		100.0%	0.0%	100.0%	
H&SC, Other	1	2	1.47	50.0%	50.0%	1.00	2.78	100.0%	100.0%	100.0%	50.0%	50.0%	100.0%	0.0%
Health & Social Care	426	497	1.17	13.3%	86.7%	1.05	1.19	94.4%	97.0%	94.0%	67.4%	32.6%	86.4%	64.5%
Executive Management	12	12	1.00	58.3%	41.7%	1.00	1.01	100.0%	100.0%	100.0%	100.0%	0.0%	100.0%	100.0%
Senior Management (VIII & GM)	62	64	1.04	29.7%	70.3%	1.09	1.02	92.2%	92.2%	93.3%	92.2%	7.8%	84.2%	95.6%
Management (VIII & above)	74	76	1.03	34.2%	65.8%	1.06	1.02	93.4%	92.3%	94.0%	93.4%	6.6%	88.5%	96.0%
Middle Management (V-VII)	167	181	1.08	13.3%	86.7%	1.04	1.09	96.7%	96.7%	96.8%	75.7%	24.3%	87.5%	73.9%
Other Administrative	2	2	1.00	100.0%		1.00		50.0%	50.0%		100.0%	0.0%	100.0%	
Administrative/ Supervisory (V to VII)	169	183	1.08	14.2%	85.8%	1.04	1.09	96.2%	92.3%	96.8%	76.0%	24.0%	88.5%	73.9%
Clerical (III & IV)	566	666	1.18	7.2%	92.8%	1.05	1.19	92.2%	83.3%	92.9%	61.4%	38.6%	91.7%	59.1%
Management & Administrative	809	925	1.14	10.8%	89.2%	1.05	1.16	93.1%	88.0%	93.7%	66.9%	33.1%	90.0%	64.1%
Catering	225	248	1.10	32.3%	67.7%	1.03	1.14	96.4%	96.4%	97.0%	71.0%	29.0%	96.3%	58.9%
Household Services	500	584	1.17	18.8%	81.2%	1.18	1.16	92.0%	92.0%	92.6%	55.5%	44.5%	71.8%	51.7%
Other Support	33	42	1.29	54.8%	45.2%	1.19	1.43	78.6%	78.6%	78.9%	57.1%	42.9%	73.9%	36.8%
Portering	80	83	1.04	98.8%	1.2%	1.04	1.35	86.7%	86.7%	100.0%	90.4%	9.6%	90.2%	100.0%
Support	837	957	1.14	30.8%	69.2%	1.10	1.16	92.1%	89.2%	93.4%	62.6%	37.4%	83.7%	53.2%
Maintenance	99	102	1.03	98.0%	2.0%	1.03	1.00	95.1%	95.1%	100.0%	93.1%	6.9%	93.0%	100.0%
Maintenance/ Technical	99	102	1.03	98.0%	2.0%	1.03	1.00	95.1%	95.0%	100.0%	93.1%	6.9%	93.0%	100.0%
General Support	936	1,059	1.13	37.3%	62.7%	1.08	1.16	92.4%	90.6%	93.4%	65.5%	34.5%	86.1%	53.3%
HCA, Nurse's Aide, etc.	4,468	5,092	1.14	18.6%	81.4%	1.06	1.16	87.1%	87.1%	86.6%	61.0%	39.0%	84.4%	55.6%
Health & Social Care Assistants	23	26	1.11	34.6%	65.4%	1.03	1.16	96.2%	96.2%	94.1%	76.9%	23.1%	100.0%	64.7%
Health Care Assistants	4,492	5,118	1.14	18.7%	81.3%	1.06	1.16	87.2%	89.6%	86.6%	61.1%	38.9%	84.6%	55.6%
Home Help	3,148	5,025	1.60	3.2%	96.8%	1.49	1.60	82.0%	71.3%	82.4%	10.0%	90.0%	13.1%	9.9%

Care, other	149	178	1.20	33.1%	66.9%	1.27	1.17	80.3%	59.3%	90.8%	64.0%	36.0%	64.4%	63.9%
Patient & Client Care	7,788	10,321	1.33	11.4%	88.6%	1.11	1.36	84.6%	85.6%	84.4%	36.3%	63.7%	73.8%	31.4%

Employment by WTE, Headcount, Gender, Full-Time /Part-Time etc.: Jul 2020

Social Care Older Persons Services CHO	WTE	Headcount	WTE: no.	% Male	% female	Male WTE: no.	Female WTE: no.	% Total Perm	% Male Perm	% Female Perm	% Total Full Time	% Total Part Time	% Male FT	% Female FT
Overall	13,473	16,909	1.26	12.6%	87.4%	1.12	1.28	88.6%	87.9%	88.7%	46.8%	53.2%	76.6%	42.5%
CHO 1	1,885	2,327	1.23	12.0%	88.0%	1.14	1.25	69.8%	69.8%	68.7%	43.6%	56.4%	69.2%	40.1%
HSE	1,598	1,934	1.21	12.0%	88.0%	1.05	1.24	87.7%	87.7%	88.1%	46.9%	53.1%	86.7%	86.7%
CHO 2	1,598	1,934	1.21	12.0%	88.0%	1.05	1.24	87.7%	87.7%	88.1%	46.9%	53.1%	86.7%	41.4%
HSE	1,049	1,390	1.33	11.4%	88.6%	1.06	1.37	92.1%	92.1%	92.9%	48.1%	51.9%	88.0%	88.0%
CHO 3	1,049	1,390	1.33	11.4%	88.6%	1.06	1.37	92.1%	92.1%	92.9%	48.1%	51.9%	88.0%	42.9%
HSE	2,867	3,939	1.37	10.6%	89.4%	1.21	1.40	99.9%	99.9%	99.9%	29.1%	70.9%	58.2%	58.2%
CHO 4	2,867	3,939	1.37	10.6%	89.4%	1.21	1.40	99.9%	99.9%	99.9%	29.1%	70.9%	58.2%	25.6%
HSE	1,687	2,087	1.24	8.9%	91.1%	1.12	1.25	99.4%	99.4%	99.4%	45.9%	54.1%	74.7%	74.7%
CHO 5	1,687	2,087	1.24	8.9%	91.1%	1.12	1.25	99.4%	99.4%	99.4%	45.9%	54.1%	74.7%	43.0%
HSE	360	403	1.12	22.6%	77.4%	1.07	1.13	68.7%	68.7%	69.2%	70.7%	29.3%	83.5%	83.5%
Section 38	481	520	1.08	26.7%	73.3%	1.05	1.09	99.2%	99.2%	99.2%	81.0%	19.0%	92.1%	92.1%
CHO 6	841	923	1.10	24.9%	75.1%	1.06	1.11	85.9%	85.9%	85.7%	76.5%	23.5%	88.7%	72.4%
HSE	1,034	1,218	1.18	14.9%	85.1%	1.05	1.20	89.6%	89.6%	89.8%	65.8%	34.2%	86.7%	86.7%
CHO 7	1,034	1,218	1.18	14.9%	85.1%	1.05	1.20	89.6%	89.6%	89.8%	65.8%	34.2%	86.7%	62.1%
HSE	1,510	1,946	1.29	11.4%	88.6%	1.19	1.30	78.7%	78.7%	78.1%	44.8%	55.2%	72.4%	72.4%
CHO 8	1,510	1,946	1.29	11.4%	88.6%	1.19	1.30	78.7%	78.7%	78.1%	44.8%	55.2%	72.4%	41.3%
HSE	672	772	1.15	21.0%	79.0%	1.10	1.16	81.5%	81.5%	82.8%	71.9%	28.1%	84.0%	84.0%
Section 38	264	299	1.13	14.4%	85.6%	1.06	1.15	88.6%	88.6%	91.0%	74.2%	25.8%	95.3%	95.3%
CHO 9	936	1,071	1.14	19.1%	80.9%	1.09	1.16	83.5%	83.5%	85.2%	72.5%	27.5%	86.3%	69.3%
other Community Services	67	74	1.10	29.7%	70.3%	1.08	1.12	82.4%	82.4%	80.8%	86.5%	13.5%	90.9%	84.6%

Summary Staff Movement: July 2020

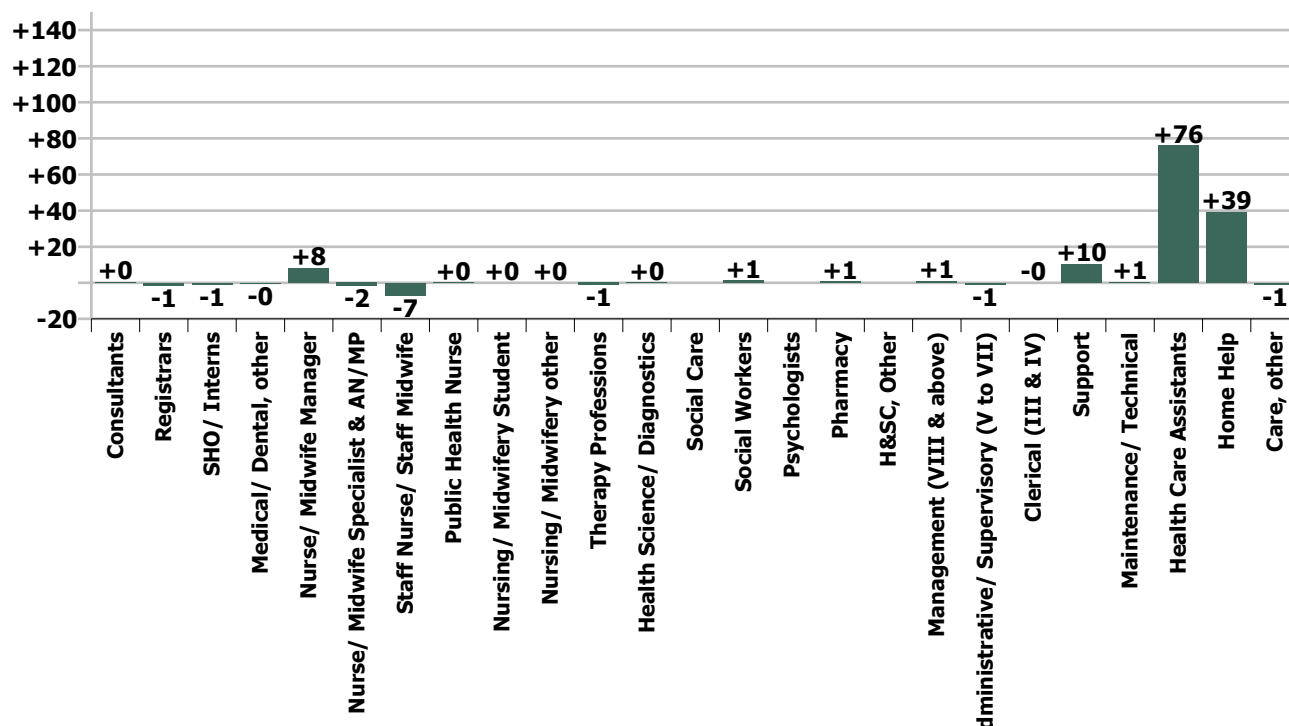
Month-on-month
Summary

WTE change since Jun 20	% change since Jun 20	overall	Consultants	Registrars	SHO/ Interns	Medical/ Dental, other	Medical & Dental	Nurse/ Midwife Manager	Nurse/ Midwife Specialist & AN/MP	Staff Nurse/ Staff Midwife	Public Health Nurse	Nursing/ Midwifery Student	Nursing/ Midwifery other	Nursing & Midwifery	Therapy Professions	Health Science/ Diagnostics	Social Care	Social Workers	Psychologists	Pharmacy	H&SC, Other	Health & Social Care Professionals	Management (VIII & above)	Administrative Supervisory (V to VII)	Clerical (III & IV)	Management & Administrative	Support	Maintenance/ Technical	General Support	Health Care Assistants	Home Help	Care, other	Patient & Client Care
Overall	+0.9%	+123	+0.4	-1.3	-1.0	-0.4	-2.4	+8.1	-1.7	-7.1	+0.1	+0.0	+0.0	-0.5	-1.2	+0.1	0.0	+1.2	0.0	+0.8	0.0	+0.8	+1.1	-1.0	-0.1	+0.0	+10.4	+0.5	+11.0	+76.1	+39.2	-1.1	+114.3
CHO 1	+1.6%	+30					0.0	+3.2	-1.0	-0.9			+0.0	+1.3	+0.1	+0.1		-0.1				+0.1		-0.1	+1.8	+1.7	+0.5	+0.5	+20.1	+5.8	+0.2	+26.1	
CHO 2	+0.9%	+14				-0.4	-0.4	-2.0	+0.0	-0.7				-2.6	+1.2			+0.9				+2.1		+0.4	-2.6	-2.2	+0.3	+0.4	+0.7	+15.6	-1.9	+2.6	+16.3
CHO 3	+0.1%	+1					0.0	+0.7	-0.1	-1.5				-0.9	-1.1	+0.0			-0.2				-1.3	-0.1	-2.1	+0.0	-2.2	+1.0	+1.0	+6.4	-1.3	-1.0	+4.1
CHO 4	-0.6%	-18				-0.1	-0.1	+3.2	-0.2	-1.8		-1.0		+0.2	-1.0				-0.5	+0.2			-1.3		+0.1	-0.7	-0.6	+5.3	+5.7	-23.4	-3.7	-21.4	
CHO 5	+4.8%	+78				+0.0	+0.0	+0.1		+1.1	+0.1			+1.3	-0.9			+0.2				-0.8		-0.2	+0.4	+0.3	-0.4	+0.1	-0.3	+17.5	+60.1	-0.4	+77.1
CHO 6	-1.0%	-8					0.0	+0.2		-1.0				-0.8	-1.1			+0.5		+0.1		-0.5		+0.0	+0.6	+0.6	+0.9		+0.9	-8.4		+0.2	-8.1
CHO 7	+1.2%	+12					0.0	+4.2	+0.5	-3.8		+1.0		+2.0	-0.1			+0.0				-0.1	-0.1	-0.9	-0.4	-1.4	+4.2	+4.2	+6.6	+0.6	+0.3	+7.4	
CHO 8	+0.0%	+1				+0.0	+0.0	+1.9		-5.0	+0.0			-3.0	+0.2			-0.0				+0.2	+0.2	+0.2	+0.1	+0.5	-0.8		-0.8	+3.5	-0.6	+0.8	+3.7
CHO 9	+1.5%	+14	+0.4	-1.3	-1.0		-1.9	-3.3	-1.0	+6.3				+2.0	+1.5			+0.4		+0.5		+2.4		+1.9	+1.1	+3.0	-0.5		-0.5	+9.1			+9.1
other Community Services	+0.4%	+0																					+1.1	-0.3	-0.5	+0.3							0.0
		+0.9%	+9.5%	-13.3%	-7.7%	-0.5%	-2.1%	+1.1%	-5.3%	-0.3%	+1.1%	+2.0%	+1.7%	-0.0%	-0.4%	+2.0%		+1.2%		+4.5%		+0.2%	+1.5%	-0.6%	-0.0%	+0.0%	+1.3%	+0.5%	+1.2%	+1.7%	+1.3%	-0.7%	+1.5%

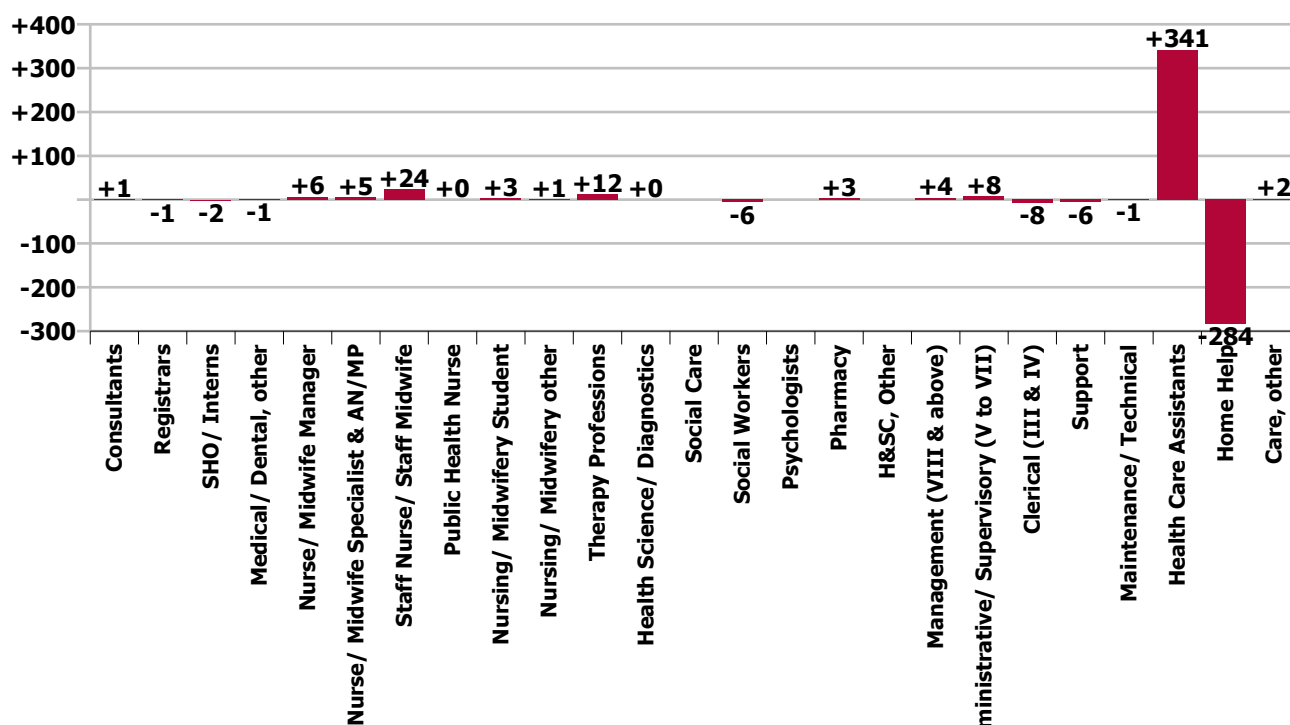
Year-on-year Summary

WTE change since Jul 19	% change since Jul 19	overall	Consultants	Registrars	SHO/ Interns	Medical/ Dental, other	Medical & Dental	Nurse/ Midwife Manager	Nurse/ Midwife Specialist & AN/MP	Staff Nurse/ Staff Midwife	Public Health Nurse	Nursing/ Midwifery Student	Nursing/ Midwifery other	Nursing & Midwifery	Therapy Professions	Health Science/ Diagnostics	Social Care	Social Workers	Psychologists	Pharmacy	H&SC, Other	Health & Social Care Professionals	Management (VIII & above)	Administrativ e Supervisory (V to VII)	Clerical (III & IV)	Management & Administrativ e	Support	Maintenance/ Technical	General Support	Health Care Assistants	Home Help	Care, other	Patient & Client Care	
Overall	+0.8%	+101	+1	-1	-2	-1	-3	+6	+5	+24	+0	+3	+1	+39	+12	+0			-6		+3		+9	+4	+8	-8	+3	-6	-1	-7	+341	-284	+2	+60
CHO 1	+1.8%	+33				+1	+1	-5	+2	+2			+1	+0	+0	-0			-0				+0	+0	+0	-2	-2	-6	-1	-7	+78	-37	-1	+40
CHO 2	+1.6%	+25				-1	-1	+4	+1	-3				+2	-2			+0			+0		-1	-1	+1	-8	-8	-4	+0	-4	+53	-18	+2	+37
CHO 3	+5.6%	+56						+1	-0	-17	+1			-16	-0	+0			-2				-2	+1	+2	+1	+4	-1	-1	-2	+34	+33	+3	+71
CHO 4	-2.3%	-67		+1	-1	+2	+2	-0	+1	+0	-0			+1	+2	+0			-0		+1		+3	+1	+3	-1	+3	+16	+0	+16	+46	-136	-2	-92
CHO 5	-0.0%	-0				-2	-2	-1	-0	+13	+0			+12	-1			+0		+1		+0	+1	-1	-1	-1	-7	+0	-7	+90	-93	-1	-3	
CHO 6	+1.5%	+12						-3		+5				+2	-2			-0		+0		-2	-2	-1	-2	-1	-5	+0	+2	+2	+17		-1	+16
CHO 7	+2.0%	+20				-1	-1	+4	+0	+21		+3		+28	-3			-1				-4	+2	+1	+5	+8	-5	-1	-6	-17	+12	+1	-4	
CHO 8	-1.0%	-15				-0	-0	+1		-0	-0			+0	+0			-1		-1		-1	+2	+1	+1	+4	+2	-0	+2	+22	-45	+2	-21	
CHO 9	+4.4%	+40	+1	-2	-1		-2	+5	+1	+4	-0			+9	+16	-1			-1		+1		+15		+1	+1	+2	-2		-2	+18		-1	+17
other Community Services	-3.3%	-2																					-2	+2	-2	-2								
		+0.8%	+27.8%	-13.2%	-13.7%	-1.2%	-2.9%	+0.8%	+19.7%	+0.9%	+1.1%	-100.0%	+50.0%	+1.2%	+4.2%	+0.8%		-5.8%		+16.8%		+2.1%	+5.6%	+4.7%	-1.4%	+0.4%	-0.7%	-0.9%	-0.7%	+8.2%	-8.3%	+1.5%	+0.8%	

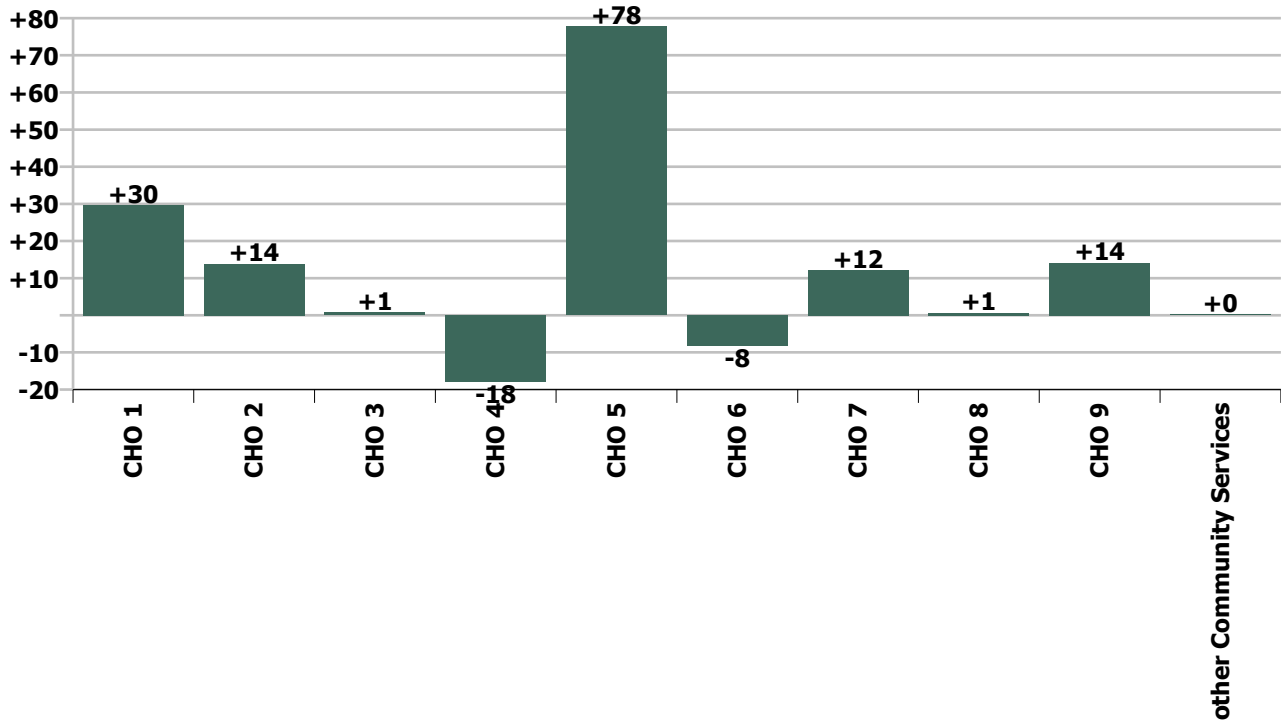
Staff Group change since: Jun 2020



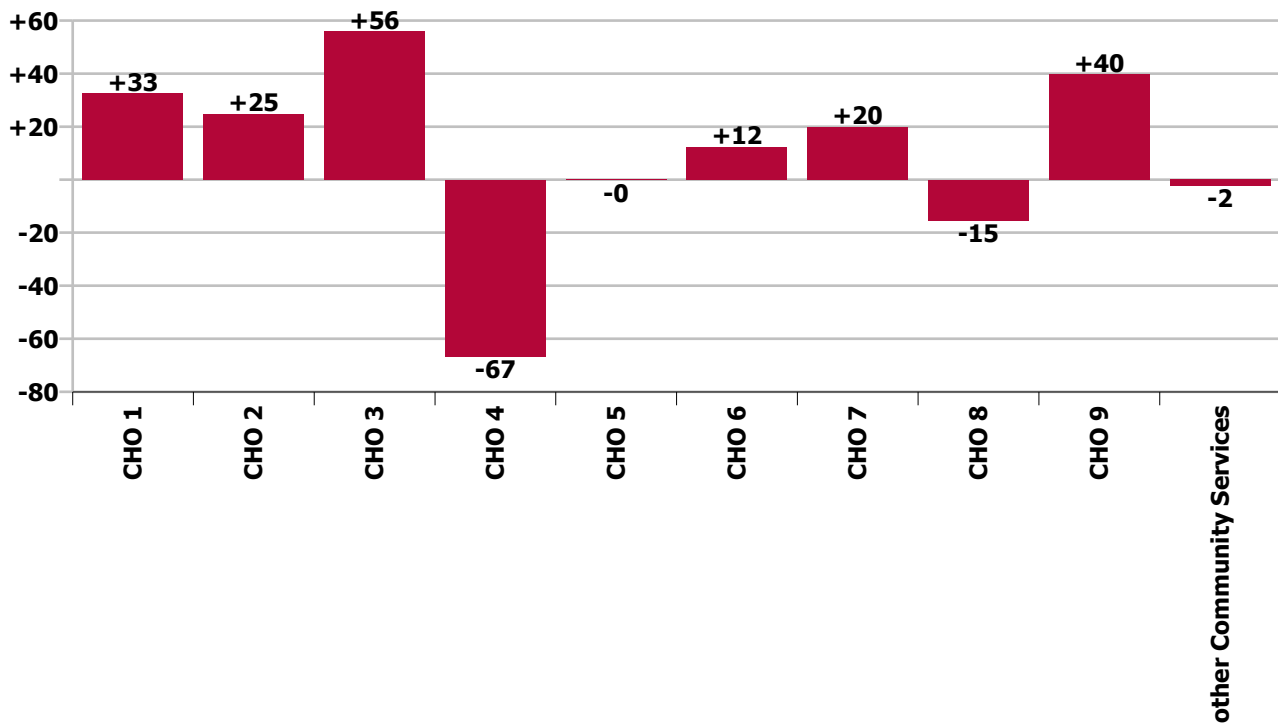
Staff Group change since: Jul 2019



CHO change since: Jun 2020



CHO change since: Jul 2019



Longitudinal Employment Levels by Grade Group - Oct 2013 to Jul 2020

Jul 2020 (Oct 2013 figure: 11,493)	WTE Jul 2020	WTE change since Oct 13	WTE change since Dec 15	WTE change since Dec 16	WTE change since Dec 17	WTE change since Dec 18	WTE change since Dec 19	% change since Oct 13	% change since Dec 15	% change since Dec 16	% change since Dec 17	% change since Dec 18	% change since Dec 19
Overall	13,473	+1,980	+866	+991	+369	+168	+240	+17.2%	+6.9%	+7.9%	+2.8%	+1.3%	+1.8%
Consultant Medicine	5	+3	-2	-5	-5	+1	+1	+131.2%	-30.3%	-50.9%	-50.0%	+27.8%	+27.8%
Consultant Psychiatry		-1	-1	-1	-1			-100.0%	-100.0%	-100.0%	-100.0%	-100.0%	-100.0%
Consultant Radiology		-0						-100.0%	-100.0%	-100.0%	-100.0%	-100.0%	-100.0%
Consultant Surgery		-1	-1	-1	-0	-0		-100.0%	-100.0%	-100.0%	-100.0%	-100.0%	-100.0%
Consultants	5	+1	-4	-6	-6	+1	+1	+25.7%	-46.5%	-58.1%	-54.8%	+23.7%	+27.8%
Registrar	5	-4	-3	-1	-3	-3	-2	-44.1%	-42.1%	-15.1%	-37.7%	-36.4%	-28.1%
Senior Registrar	1					-1						-50.0%	
Specialist Registrar	3	+1		+1	+2	+2	+1	+50.0%		+50.0%	+200.0%	+200.0%	+50.0%
Registrars	9	-3	-3	+0	-1	-2	-1	-23.7%	-28.1%	+2.0%	-8.7%	-16.2%	-8.7%
SHO/ Interns	12	-1	+1	+2	+2	+0	-3	-6.6%	+11.2%	+20.6%	+21.1%	+0.6%	-20.0%
Other Medical	85	+1	+2	-1	-1	-0	-11	+0.9%	+2.7%	-1.0%	-1.0%	-0.5%	-11.8%
Medical/ Dental, other	85	+1	+2	-1	-1	-0	-11	+0.9%	+2.7%	-1.0%	-1.0%	-0.5%	-11.8%
Medical & Dental	110	-2	-4	-5	-5	-1	-14	-1.6%	-3.5%	-4.4%	-4.5%	-1.0%	-11.4%
Clinical Nurse/ Midwife Manager	534	+49	+6	-0	+6	+10	+26	+10.2%	+1.2%	-0.0%	+1.2%	+2.0%	+5.1%
Director Nursing/Midwifery, Assistant	102	+21	+16	+15	+10	+15	-0	+26.3%	+19.1%	+16.7%	+11.4%	+17.9%	-0.4%
Director of Nursing/Midwifery	104	+31	+23	+19	+21	+21	+5	+42.6%	+27.8%	+21.9%	+25.6%	+25.4%	+5.4%
Nurse/ Midwife Manager	740	+102	+45	+33	+38	+47	+31	+15.9%	+6.5%	+4.7%	+5.4%	+6.7%	+4.4%
Advanced Nurse/ Midwife Practitioner	13	+10	+11	+10	+10	+6	+2	+341.3%	+535.5%	+323.7%	+323.7%	+82.1%	+18.6%
Clinical Nurse/ Midwife Specialist	19	+2	+2	+6	+7	+2	+3	+12.9%	+11.7%	+49.1%	+66.5%	+11.5%	+18.6%
Nurse/ Midwife Specialist & AN/MP	31	+12	+13	+16	+17	+8	+5	+61.6%	+67.7%	+102.1%	+120.7%	+32.2%	+18.6%
Graduate Nursing/ Midwifery		-1	-2					-100.0%	-100.0%	-100.0%	-100.0%	-100.0%	-100.0%
Staff Midwives		-1	-1	-0	-2			-100.0%	-100.0%	-100.0%	-100.0%	-100.0%	-100.0%
Staff Nurse [Intellectual Disability]		-1	-1	-1	-1	-1		-100.0%	-100.0%	-100.0%	-100.0%	-100.0%	-100.0%
Staff Nurse [Psychiatric]	5	+1	+0	-1	-1	-1	-0	+14.3%	+7.5%	-11.6%	-11.6%	-11.9%	-0.6%
Staff Nurses [General/ Children's]	2,609	-145	+1	+26	+48	+4	+37	-5.2%	+0.0%	+1.0%	+1.9%	+0.2%	+1.4%
Staff Nurse/ Staff Midwife	2,614	-147	-2	+24	+44	+3	+37	-5.3%	-0.1%	+0.9%	+1.7%	+0.1%	+1.4%
Public Health Nurse	13	-1	-2	-1	-1	-0	-0	-8.8%	-13.5%	-6.1%	-9.4%	-1.4%	-0.3%
Pre-registration Nurse/ Midwife Intern		-2						-100.0%	-100.0%	-100.0%	-100.0%	-100.0%	-100.0%
Post-registration Nurse/ Midwife Student		-1					-1	-100.0%	-100.0%	-100.0%	-100.0%	-100.0%	-100.0%
Nursing/ Midwifery awaiting registration	3	+3	+3	+3	-11	+3	+2	-100.0%	-100.0%	-100.0%	-81.8%	-100.0%	+155.0%
Nursing/ Midwifery Student	3	+0	+3	+3	-11	+3	+1	+2.0%	-100.0%	-100.0%	-81.8%	-100.0%	+27.5%
Nursing Education/Clinical	3	+1	+2	+2	+2	+2	+2	+50.0%	+200.0%	+200.0%	+200.0%	+200.0%	+200.0%
Nursing/ Midwifery other	3	+1	+2	+2	+2	+2	+2	+50.0%	+200.0%	+200.0%	+200.0%	+200.0%	+200.0%
Nursing & Midwifery	3,404	-34	+58	+77	+88	+61	+76	-1.0%	+1.7%	+2.3%	+2.7%	+1.8%	+2.3%
Dietitians	22	+14	+12	+6	+5	+5	+6	+185.2%	+112.7%	+39.5%	+26.4%	+27.7%	+35.0%
Occupational Therapists	116	+40	+24	+20	+21	+12	+3	+51.6%	+25.6%	+21.2%	+22.6%	+11.6%	+2.5%
Physiotherapists	128	+14	+7	+12	+7	+0	+4	+12.4%	+6.0%	+10.1%	+5.4%	+0.2%	+3.2%

Jul 2020 (Oct 2013 figure: 11,493)	WTE Jul 2020	WTE change since Oct 13	WTE change since Dec 15	WTE change since Dec 16	WTE change since Dec 17	WTE change since Dec 18	WTE change since Dec 19	% change since Oct 13	% change since Dec 15	% change since Dec 16	% change since Dec 17	% change since Dec 18	% change since Dec 19
Overall	13,473	+1,980	+866	+991	+369	+168	+240	+17.2%	+6.9%	+7.9%	+2.8%	+1.3%	+1.8%
Podiatrists & Chiropodists	12	-1	+0	-3	-4	-3	+0	-8.0%	+0.5%	-17.9%	-24.9%	-19.4%	+0.1%
Speech & Language Therapists	22	+4	+1	+1	-2	-1	-1	+21.1%	+6.2%	+6.5%	-8.9%	-6.1%	-6.2%
Therapy Professions	299	+71	+44	+37	+26	+13	+11	+30.9%	+17.2%	+14.1%	+9.7%	+4.4%	+3.9%
Clinical Measurement	0	+0	+0	+0	+0	+0	+0	-100.0%	-100.0%	-100.0%	-100.0%	+475.0%	+119.0%
Medical Laboratory				-1				-100.0%	-100.0%	-100.0%	-100.0%	-100.0%	-100.0%
Phlebotomists		-1	-1	-1	-1			-100.0%	-100.0%	-100.0%	-100.0%	-100.0%	-100.0%
Radiographers	5	-4	-3	-2	-3	-1	-1	-46.1%	-36.3%	-35.0%	-35.9%	-17.9%	-22.1%
Health Science/ Diagnostics	5	-4	-3	-4	-3	-1	-1	-46.9%	-38.4%	-44.2%	-38.1%	-11.0%	-17.3%
Social Care	3	-1	-1	+0	+0		+0	-29.2%	-25.3%	+1.5%	+2.6%		+0.0%
Social Workers	98	+42	+23	+11	+14	+3	-1	+76.1%	+30.9%	+12.8%	+16.7%	+3.0%	-0.7%
Psychologists	2	-0	+2	+2	+2	+2		-8.7%	+320.0%	+320.0%	-100.0%	+320.0%	
Pharmacy	17	+4	+3	+3	+2	+1	+2	+34.2%	+17.9%	+20.3%	+14.0%	+7.2%	+14.8%
Other Health & Social Care	0	-3	-1	-1	-1	-1		-89.4%	-71.0%	-73.5%	-73.5%	-73.5%	
Play Therapists/ Specialists	1	-0	-0	-1				-30.1%	-30.1%	-37.1%			
H&SC, Other	1	-3	-1	-2	-1	-1		-71.8%	-49.1%	-53.9%	-42.4%	-42.4%	
Health & Social Care Professionals	426	+108	+66	+47	+41	+17	+12	+34.0%	+18.3%	+12.4%	+10.5%	+4.1%	+2.8%
Executive Management	12	+9	+6	+5	+4	+2	+0	+298.7%	+99.3%	+70.9%	+51.0%	+19.6%	+0.4%
Senior Management (VIII & GM)	62	+47	+26	+21	+25	+13	-1	+323.7%	+70.6%	+52.5%	+67.0%	+27.0%	-1.6%
Management (VIII & above)	74	+56	+31	+26	+29	+15	-1	+319.4%	+74.7%	+55.2%	+64.2%	+25.8%	-1.3%
Middle Management (V-VII)	167	+66	+61	+51	+40	+26	+3	+65.8%	+57.1%	+43.5%	+31.1%	+18.0%	+2.1%
Other Administrative	2	+1	+1	+1	+1	+1	+1	+66.7%	+100.0%	+100.0%	+100.0%	+100.0%	+100.0%
Administrative/ Supervisory (V to VII)	169	+67	+62	+52	+41	+27	+4	+65.8%	+57.5%	+44.0%	+31.6%	+18.6%	+2.7%
Clerical (III & IV)	566	+158	+105	+82	+56	+1	-6	+38.9%	+22.7%	+17.0%	+11.1%	+0.1%	-1.0%
Management & Administrative	809	+282	+198	+160	+126	+42	-2	+53.4%	+32.4%	+24.7%	+18.4%	+5.5%	-0.3%
Catering	225	+28	+14	+12	+13	+9	+3	+14.2%	+6.6%	+5.5%	+6.1%	+4.2%	+1.5%
Household Services	500	-130	-82	-63	-44	-17	+8	-20.6%	-14.0%	-11.2%	-8.1%	-3.4%	+1.6%
Other Support	33	-12	-12	-8	-11	-5	-1	-27.0%	-27.6%	-18.8%	-24.9%	-14.0%	-4.2%
Portering	80	-14	-5	-5	-4	+0	-2	-15.0%	-5.6%	-6.1%	-4.9%	+0.2%	-2.1%
Support	837	-128	-85	-64	-46	-13	+8	-13.3%	-9.2%	-7.1%	-5.2%	-1.6%	+1.0%
Maintenance	99	-12	-8	-5	-3	-4	+0	-11.0%	-7.2%	-4.6%	-3.0%	-3.5%	+0.4%
Maintenance/ Technical	99	-12	-8	-5	-3	-4	+0	-11.0%	-7.2%	-4.6%	-3.0%	-3.5%	+0.4%
General Support	936	-140	-92	-69	-49	-17	+9	-13.0%	-9.0%	-6.9%	-5.0%	-1.8%	+0.9%
HCA, Nurse's Aide, etc.	4,468	+897	+482	+422	+383	+337	+446	+25.1%	+12.1%	+10.4%	+9.4%	+8.2%	+11.1%
Health & Social Care Assistants	23	-0	-4	-3	-3	-1	+2	-0.3%	-15.7%	-10.2%	-9.9%	-3.7%	+9.7%
Health Care Assistants	4,492	+897	+477	+419	+380	+336	+448	+25.0%	+11.9%	+10.3%	+9.3%	+8.1%	+11.1%
Home Help	3,148	+839	+148	+353	-208	-272	-294	+36.3%	+4.9%	+12.6%	-6.2%	-8.0%	-8.5%
Care, other	149	+30	+16	+9	-3	+2	+7	+24.8%	+11.7%	+6.8%	-2.0%	+1.3%	+4.7%

Jul 2020 (Oct 2013 figure: 11,493)	WTE Jul 2020	WTE change since Oct 13	WTE change since Dec 15	WTE change since Dec 16	WTE change since Dec 17	WTE change since Dec 18	WTE change since Dec 19	% change since Oct 13	% change since Dec 15	% change since Dec 16	% change since Dec 17	% change since Dec 18	% change since Dec 19
Overall	13,473	+1,980	+866	+991	+369	+168	+240	+17.2%	+6.9%	+7.9%	+2.8%	+1.3%	+1.8%
Patient & Client Care	7,788	+1,766	+641	+781	+169	+66	+161	+29.3%	+9.0%	+11.1%	+2.2%	+0.9%	+2.1%

Source: Health Service Personnel Census