

# Social Care Older Persons Services Employment Report: July 2021

## Employment by Staff Group

Jul 2021 (Dec 2020 figure: 13,415)	WTE Jun 2021	WTE Jul 2021	WTE change since Jun 21	% change since Jun 21	WTE change since Dec 20	WTE change since Jul 20
<b>Overall</b>	<b>13,414</b>	<b>13,448</b>	<b>+34</b>	<b>+0.3%</b>	<b>+33</b>	<b>-25</b>
Consultants	4	4			-0	-0
Registrars	11	11	+1	+6.0%	+2	+3
SHO/ Interns	14	13	-1	-3.9%	-1	+1
Medical/ Dental, other	84	84	-0	-0.3%	-20	-1
<b>Medical &amp; Dental</b>	<b>113</b>	<b>112</b>	<b>-0</b>	<b>-0.1%</b>	<b>-18</b>	<b>+2</b>
Nurse/ Midwife Manager	759	768	+9	+1.2%	+22	+28
Nurse/ Midwife Specialist & AN/MP	38	40	+2	+4.0%	+2	+9
Staff Nurse/ Staff Midwife	2,674	2,671	-3	-0.1%	+47	+57
Public Health Nurse	12	12	-0	-2.3%	-1	-1
<i>Nursing/ Midwifery awaiting registration</i>	2	1.39	-0	-23.2%	+0	-1
Nursing/ Midwifery Student	2	1	-0	-23.2%	+0	-1
Nursing/ Midwifery other	4	4			+0	+1
<b>Nursing &amp; Midwifery</b>	<b>3,489</b>	<b>3,496</b>	<b>+7</b>	<b>+0.2%</b>	<b>+69</b>	<b>+92</b>
Therapy Professions	343	336	-7	-2.0%	+41	+37
Health Science/ Diagnostics	5	5	-0	-0.6%	-0	-0
Social Care	3	3	+0	+0.0%		
Social Workers	102	101	-1	-0.6%	+1	+3
Psychologists	2	1	-2	-76.2%	-1	-2
Pharmacy	18	20	+1	+6.6%	+2	+2
H&SC, Other	2	2				+0
<b>Health &amp; Social Care Professionals</b>	<b>474</b>	<b>466</b>	<b>-8</b>	<b>-1.7%</b>	<b>+43</b>	<b>+40</b>
Management (VIII & above)	78	82	+3	+4.3%	+3	+8
Administrative/ Supervisory (V to VII)	188	191	+3	+1.4%	+15	+22
Clerical (III & IV)	594	584	-10	-1.7%	-3	+18
<b>Management &amp; Administrative</b>	<b>861</b>	<b>857</b>	<b>-4</b>	<b>-0.5%</b>	<b>+15</b>	<b>+48</b>
Support	797	788	-8	-1.1%	-13	-49
Maintenance/ Technical	95	92	-3	-2.8%	-2	-6
<b>General Support</b>	<b>892</b>	<b>881</b>	<b>-11</b>	<b>-1.2%</b>	<b>-15</b>	<b>-56</b>
Health Care Assistants	4,113	4,102	-11	-0.3%	-16	-390
Home Help	3,311	3,366	+55	+1.7%	-66	+218
Care, other	162	168	+7	+4.1%	+22	+20
<b>Patient &amp; Client Care</b>	<b>7,585</b>	<b>7,636</b>	<b>+50</b>	<b>+0.7%</b>	<b>-60</b>	<b>-152</b>

## Social Care Older Persons Services Employment by Administration (HSE / S38): July 2021

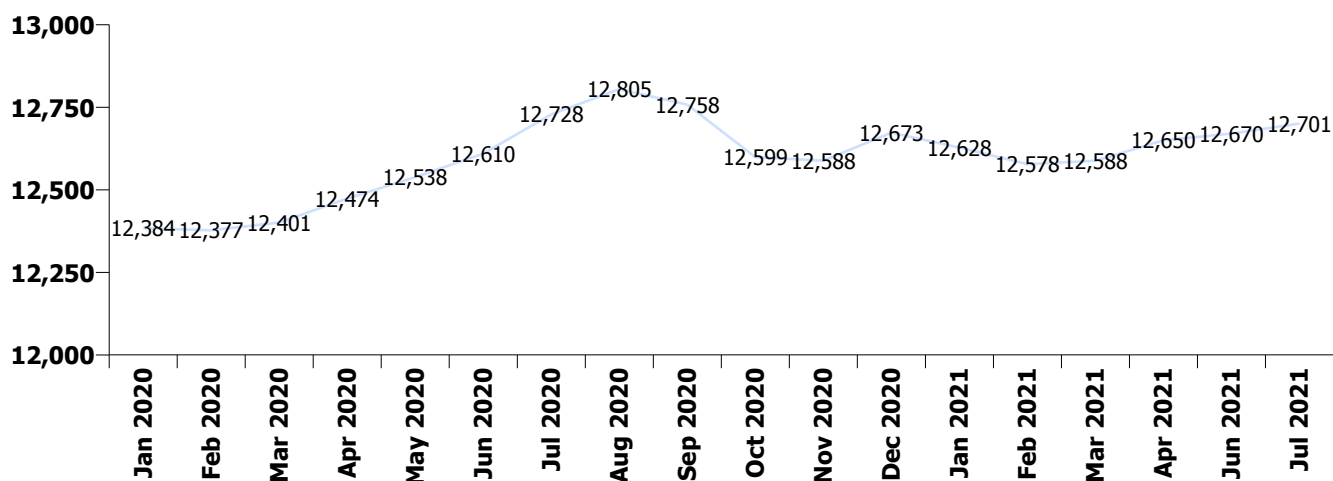
Jul 2021 (Dec 2020 figure: 13,415)	WTE Jun 2021	WTE Jul 2021	WTE change since Jun 21	% change since Jun 21	WTE change since Dec 20	WTE change since Jul 20
<b>Overall</b>	<b>13,414</b>	<b>13,448</b>	<b>+34</b>	<b>+0.3%</b>	<b>+33</b>	<b>-25</b>
<b>HSE</b>	<b>12,670</b>	<b>12,701</b>	<b>+30</b>	<b>+0.2%</b>	<b>+27</b>	<b>-28</b>
<b>Section 38</b>	<b>744</b>	<b>748</b>	<b>+4</b>	<b>+0.5%</b>	<b>+6</b>	<b>+3</b>

### HSE

Jul 2021 (Dec 2020 figure: 12,673)	WTE Jun 2021	WTE Jul 2021	WTE change since Jun 21	% change since Jun 21	WTE change since Dec 20	WTE change since Jul 20
<b>Overall</b>	<b>12,670</b>	<b>12,701</b>	<b>+30</b>	<b>+0.2%</b>	<b>+27</b>	<b>-28</b>
Consultants	3	2.80			-0	-0
Registrars	7	6.23	-0	-5.5%	+0	+1
SHO/ Interns	10	7.17	-3	-26.2%	-3	-1
Medical/ Dental, other	83	82.67	-0	-0.3%	-19	-0
<b>Medical &amp; Dental</b>	<b>102</b>	<b>99</b>	<b>-3</b>	<b>-3.1%</b>	<b>-21</b>	<b>-1</b>
Nurse/ Midwife Manager	711	717.75	+7	+0.9%	+21	+31
Nurse/ Midwife Specialist & AN/MP	38	39.94	+2	+4.0%	+2	+9
Staff Nurse/ Staff Midwife	2,492	2,490.84	-1	-0.0%	+53	+66
Public Health Nurse	12	11.98	-0	-2.3%	-1	-1
<i>Nursing/ Midwifery awaiting registration</i>	2	1.39	-0	-23.2%	+0	-1
Nursing/ Midwifery Student	2	1.39	-0	-23.2%	+0	-1
Nursing/ Midwifery other	4	4.00			+0	+1
<b>Nursing &amp; Midwifery</b>	<b>3,259</b>	<b>3,266</b>	<b>+7</b>	<b>+0.2%</b>	<b>+74</b>	<b>+104</b>
Therapy Professions	269	258.91	-10	-3.6%	+36	+25
Health Science/ Diagnostics	4	3.93	-0	-0.8%	-0	-0
Social Care	3	2.74	+0	+0.0%		+0
Social Workers	87	85.95	-1	-1.2%	+2	+3
Psychologists	2		-2	-100.0%	-1	-2
Pharmacy	13	13.72	+1	+6.4%	+2	+2
H&SC, Other	2	1.54				+0
<b>Health &amp; Social Care Professionals</b>	<b>378</b>	<b>367</b>	<b>-11</b>	<b>-3.0%</b>	<b>+38</b>	<b>+28</b>
Management (VIII & above)	74	77.79	+3	+4.5%	+3	+6
Administrative/ Supervisory (V to VII)	167	169.83	+3	+1.7%	+12	+20
Clerical (III & IV)	565	554.05	-11	-1.9%	-3	+18
<b>Management &amp; Administrative</b>	<b>806</b>	<b>802</b>	<b>-4</b>	<b>-0.6%</b>	<b>+13</b>	<b>+44</b>
Support	688	680.03	-8	-1.2%	-14	-49
Maintenance/ Technical	85	82.45	-3	-3.2%	-1	-5
<b>General Support</b>	<b>773</b>	<b>762</b>	<b>-11</b>	<b>-1.4%</b>	<b>-15</b>	<b>-54</b>
Health Care Assistants	3,883	3,874.48	-8	-0.2%	-18	-388
Home Help	3,311	3,365.51	+55	+1.7%	-66	+218
Care, other	158	164.83	+7	+4.3%	+22	+21
<b>Patient &amp; Client Care</b>	<b>7,352</b>	<b>7,405</b>	<b>+53</b>	<b>+0.7%</b>	<b>-61</b>	<b>-149</b>

## Section 38

Jul 2021 (Dec 2020 figure: 742)	WTE Jun 2021	WTE Jul 2021	WTE change since Jun 21	% change since Jun 21	WTE change since Dec 20	WTE change since Jul 20
<b>Overall</b>	<b>744</b>	<b>748</b>	<b>+4</b>	<b>+0.5%</b>	<b>+6</b>	<b>+3</b>
Consultants	2	1.60				
Registrars	4	5.00	+1	+25.0%	+2	+2
SHO/ Interns	4	6.00	+2	+50.0%	+2	+2
Medical/ Dental, other	1	1.00			-1	-1
<b>Medical &amp; Dental</b>	<b>11</b>	<b>14</b>	<b>+3</b>	<b>+28.3%</b>	<b>+3</b>	<b>+3</b>
Nurse/ Midwife Manager	48	50.32	+2	+5.1%	+1	-3
Staff Nurse/ Staff Midwife	182	179.95	-2	-1.2%	-6	-9
<b>Nursing &amp; Midwifery</b>	<b>230</b>	<b>230</b>	<b>+0</b>	<b>+0.1%</b>	<b>-5</b>	<b>-12</b>
Therapy Professions	74	77.14	+3	+3.8%	+5	+11
Health Science/ Diagnostics	1	1.00				
Social Workers	15	15.07	+0	+3.1%	-1	+0
Psychologists	1	0.50				
Pharmacy	5	5.82	+0	+7.0%	+0	+0
<b>Health &amp; Social Care Professionals</b>	<b>96</b>	<b>100</b>	<b>+4</b>	<b>+3.8%</b>	<b>+5</b>	<b>+12</b>
Management (VIII & above)	4	4.00				+2
Administrative/ Supervisory (V to VII)	21	21.13	-0	-0.9%	+3	+2
Clerical (III & IV)	30	30.02	+0	+1.6%	-1	+1
<b>Management &amp; Administrative</b>	<b>55</b>	<b>55</b>	<b>+0</b>	<b>+0.5%</b>	<b>+2</b>	<b>+4</b>
<b>General Support</b>	<b>119</b>	<b>118</b>	<b>-0</b>	<b>-0.4%</b>	<b>+0</b>	<b>-2</b>
<b>Patient &amp; Client Care</b>	<b>234</b>	<b>231</b>	<b>-3</b>	<b>-1.3%</b>	<b>+1</b>	<b>-3</b>



## Social Care Older Persons Services Employment by CHO etc. Jul 2021

### CHO 1

Jul 2021 (Dec 2020 figure: 1,918)	WTE Jun 2021	WTE Jul 2021	WTE change since Jun 21	% change since Jun 21	WTE change since Dec 20	WTE change since Jul 20
<b>Overall</b>	<b>1,914</b>	<b>1,908</b>	<b>-5</b>	<b>-0.3%</b>	<b>-9</b>	<b>+23</b>
Medical/ Dental, other	14	14	-0	-0.0%	-18	-3
<b>Medical &amp; Dental</b>	<b>14</b>	<b>14</b>			<b>-18</b>	<b>-3</b>
Nurse/ Midwife Manager	90	89	-1	-1.4%	+1	-2
Nurse/ Midwife Specialist & AN/MP	9	10	+1	+11.8%	+1	+2
Staff Nurse/ Staff Midwife	334	329	-5	-1.6%	+14	+16
Nursing/ Midwifery other	1	1				
<b>Nursing &amp; Midwifery</b>	<b>434</b>	<b>428</b>	<b>-5</b>	<b>-1.2%</b>	<b>+16</b>	<b>+16</b>
Therapy Professions	16	17	+1	+5.0%	+4	+5
Health Science/ Diagnostics	2	2	-0	-1.9%	-0	+0
Social Workers	16	15	-1	-7.1%	-1	-2
<b>Health &amp; Social Care Professionals</b>	<b>33</b>	<b>33</b>	<b>-0</b>	<b>-1.1%</b>	<b>+4</b>	<b>+3</b>
Management (VIII & above)	8	8				
Administrative/ Supervisory (V to VII)	16	17	+1	+6.1%	+2	+2
Clerical (III & IV)	85	82	-2	-2.6%	-5	+0
<b>Management &amp; Administrative</b>	<b>109</b>	<b>108</b>	<b>-1</b>	<b>-1.1%</b>	<b>-4</b>	<b>+2</b>
Support	115	116	+0	+0.4%	-3	-3
Maintenance/ Technical	7	7				
<b>General Support</b>	<b>122</b>	<b>123</b>	<b>+0</b>	<b>+0.4%</b>	<b>-3</b>	<b>-3</b>
Health Care Assistants	582	575	-7	-1.2%	-5	-71
Home Help	594	601	+8	+1.3%	-3	+81
Care, other	26	26	+0	+1.6%	+4	-2
<b>Patient &amp; Client Care</b>	<b>1,201</b>	<b>1,203</b>	<b>+1</b>	<b>+0.1%</b>	<b>-4</b>	<b>+8</b>

## CHO 2

Jul 2021 (Dec 2020 figure: 1,590)	WTE Jun 2021	WTE Jul 2021	WTE change since Jun 21	% change since Jun 21	WTE change since Dec 20	WTE change since Jul 20
<b>Overall</b>	<b>1,536</b>	<b>1,559</b>	<b>+23</b>	<b>+1.5%</b>	<b>-31</b>	<b>-39</b>
Medical/ Dental, other	11	11				+0
<b>Medical &amp; Dental</b>	<b>11</b>	<b>11</b>				<b>+0</b>
Nurse/ Midwife Manager	69	70	+1	+1.2%	+4	+5
Nurse/ Midwife Specialist & AN/MP	2	2	-0	-0.5%	-0	-0
Staff Nurse/ Staff Midwife	310	307	-3	-0.9%	+2	+7
Public Health Nurse	1	1				
<b>Nursing &amp; Midwifery</b>	<b>382</b>	<b>380</b>	<b>-2</b>	<b>-0.5%</b>	<b>+6</b>	<b>+12</b>
Therapy Professions	28	25	-3	-10.9%	-0	-1
Health Science/ Diagnostics	1	1				
Social Workers	10	10	+0	+0.0%	+0	+0
Pharmacy	1	1	-0	-6.8%	-0	-0
H&SC, Other				-100.0%		
<b>Health &amp; Social Care Professionals</b>	<b>40</b>	<b>37</b>	<b>-3</b>	<b>-7.8%</b>	<b>-0</b>	<b>-0</b>
Management (VIII & above)	2	2			-0	+1
Administrative/ Supervisory (V to VII)	9	11	+2	+20.5%	+1	+1
Clerical (III & IV)	62	59	-3	-5.5%	-7	-7
<b>Management &amp; Administrative</b>	<b>73</b>	<b>72</b>	<b>-2</b>	<b>-2.2%</b>	<b>-5</b>	<b>-5</b>
Support	59	57	-2	-3.3%	+1	+1
Maintenance/ Technical	19	18	-1	-5.4%	-2	-2
<b>General Support</b>	<b>77</b>	<b>74</b>	<b>-3</b>	<b>-3.8%</b>	<b>-1</b>	<b>-1</b>
Health Care Assistants	524	527	+3	+0.6%	+2	-57
Home Help	389	416	+27	+6.9%	-41	-2
Care, other	39	42	+3	+8.0%	+10	+14
<b>Patient &amp; Client Care</b>	<b>952</b>	<b>985</b>	<b>+33</b>	<b>+3.5%</b>	<b>-29</b>	<b>-45</b>

### CHO 3

Jul 2021 (Dec 2020 figure: 1,029)	WTE Jun 2021	WTE Jul 2021	WTE change since Jun 21	% change since Jun 21	WTE change since Dec 20	WTE change since Jul 20
<b>Overall</b>	<b>1,089</b>	<b>1,121</b>	<b>+32</b>	<b>+2.9%</b>	<b>+93</b>	<b>+73</b>
Consultants	1	1				
Medical/ Dental, other	5	5			-1	
<b>Medical &amp; Dental</b>	<b>6</b>	<b>6</b>			<b>-1</b>	
Nurse/ Midwife Manager	63	64	+0	+0.1%	-1	+0
Nurse/ Midwife Specialist & AN/MP	5	5	-0	-0.2%	+1	+3
Staff Nurse/ Staff Midwife	254	258	+4	+1.5%	+27	+30
Public Health Nurse	1	1				
<b>Nursing &amp; Midwifery</b>	<b>323</b>	<b>327</b>	<b>+4</b>	<b>+1.2%</b>	<b>+27</b>	<b>+33</b>
Therapy Professions	35	35	-0	-0.3%	+5	+8
Health Science/ Diagnostics	1	1			-0	-0
Social Workers	6	6	-0	-0.9%	-1	-1
Pharmacy	1	1				
<b>Health &amp; Social Care Professionals</b>	<b>42</b>	<b>42</b>	<b>-0</b>	<b>-0.3%</b>	<b>+5</b>	<b>+6</b>
Management (VIII & above)	6	6	+0	+0.7%	+0	+0
Administrative/ Supervisory (V to VII)	16	18	+2	+10.9%	+1	-1
Clerical (III & IV)	57	58	+1	+2.0%	+9	+8
<b>Management &amp; Administrative</b>	<b>78</b>	<b>81</b>	<b>+3</b>	<b>+3.7%</b>	<b>+10</b>	<b>+8</b>
Support	63	61	-2	-3.5%	-2	-2
Maintenance/ Technical	21	21	-1	-3.0%	-0	-0
<b>General Support</b>	<b>85</b>	<b>82</b>	<b>-3</b>	<b>-3.4%</b>	<b>-2</b>	<b>-2</b>
Health Care Assistants	320	319	-1	-0.3%	+18	-5
Home Help	220	250	+30	+13.6%	+33	+32
Care, other	15	15	-1	-5.4%	+3	+1
<b>Patient &amp; Client Care</b>	<b>555</b>	<b>583</b>	<b>+28</b>	<b>+5.1%</b>	<b>+54</b>	<b>+28</b>

## CHO 4

Jul 2021 (Dec 2020 figure: 2,930)	WTE Jun 2021	WTE Jul 2021	WTE change since Jun 21	% change since Jun 21	WTE change since Dec 20	WTE change since Jul 20
<b>Overall</b>	<b>2,911</b>	<b>2,892</b>	<b>-19</b>	<b>-0.6%</b>	<b>-38</b>	<b>+25</b>
Consultants	1	1				
Registrars	3	2	-1	-35.1%	-1	-1
SHO/ Interns	1	1				+1
Medical/ Dental, other	23	23	-0	-0.7%	-0	-1
<b>Medical &amp; Dental</b>	<b>28</b>	<b>27</b>	<b>-1</b>	<b>-4.5%</b>	<b>-1</b>	<b>-1</b>
Nurse/ Midwife Manager	125	127	+2	+1.3%	+5	+1
Nurse/ Midwife Specialist & AN/MP	5	5			-1	-0
Staff Nurse/ Staff Midwife	532	532	+0	+0.1%	+4	+5
Public Health Nurse	6	6			-0	+1
Post-registration Nurse/ Midwife Student				-100.0%	-1	
Nursing/ Midwifery awaiting registration				-100.0%	-1	
Nursing/ Midwifery Student				-100.0%		
<b>Nursing &amp; Midwifery</b>	<b>667</b>	<b>669</b>	<b>+2</b>	<b>+0.3%</b>	<b>+8</b>	<b>+7</b>
Therapy Professions	54	50	-3	-6.4%	+9	+2
Health Science/ Diagnostics	1	1				
Social Care	2	2				
Social Workers	12	11	-0	-3.5%	-1	+3
Pharmacy	4	5	+0	+8.9%	+1	+1
<b>Health &amp; Social Care Professionals</b>	<b>73</b>	<b>69</b>	<b>-3</b>	<b>-4.8%</b>	<b>+8</b>	<b>+6</b>
Management (VIII & above)	16	16			+2	+3
Administrative/ Supervisory (V to VII)	20	20			+0	+2
Clerical (III & IV)	131	131	-1	-0.6%	-0	+1
<b>Management &amp; Administrative</b>	<b>168</b>	<b>167</b>	<b>-1</b>	<b>-0.4%</b>	<b>+2</b>	<b>+6</b>
Support	114	111	-3	-2.6%	-3	-8
Maintenance/ Technical	7	7	+0	+0.1%	+1	+1
<b>General Support</b>	<b>121</b>	<b>118</b>	<b>-3</b>	<b>-2.4%</b>	<b>-2</b>	<b>-7</b>
Health Care Assistants	794	795	+1	+0.1%	+1	-45
Home Help	1,025	1,012	-14	-1.3%	-55	+55
Care, other	35	35	+0	+1.4%	+1	+5
<b>Patient &amp; Client Care</b>	<b>1,854</b>	<b>1,842</b>	<b>-12</b>	<b>-0.7%</b>	<b>-52</b>	<b>+14</b>

## CHO 5

Jul 2021 (Dec 2020 figure: 1,650)	WTE Jun 2021	WTE Jul 2021	WTE change since Jun 21	% change since Jun 21	WTE change since Dec 20	WTE change since Jul 20
<b>Overall</b>	<b>1,655</b>	<b>1,659</b>	<b>+4</b>	<b>+0.2%</b>	<b>+9</b>	<b>-28</b>
Medical/ Dental, other	15	15			+1	+6
<b>Medical &amp; Dental</b>	<b>15</b>	<b>15</b>			<b>+1</b>	<b>+6</b>
Nurse/ Midwife Manager	87	90	+3	+3.2%	+1	+5
Nurse/ Midwife Specialist & AN/MP	3	3	+0	+1.2%	-0	+2
Staff Nurse/ Staff Midwife	319	317	-1	-0.3%	+9	-2
Public Health Nurse	2	2			-1	-2
<i>Nursing/ Midwifery awaiting registration</i>	1		-1	-100.0%		
Nursing/ Midwifery Student	1		-1	-100.0%		
<b>Nursing &amp; Midwifery</b>	<b>411</b>	<b>412</b>	<b>+1</b>	<b>+0.2%</b>	<b>+9</b>	<b>+2</b>
Therapy Professions	31	32	+1	+2.8%	-1	-8
Social Workers	4	4	-0	-3.6%	-0	-0
Pharmacy	0		-0	-100.0%	-1	-1
<b>Health &amp; Social Care Professionals</b>	<b>35</b>	<b>36</b>	<b>+0</b>	<b>+1.4%</b>	<b>-2</b>	<b>-9</b>
Management (VIII & above)	4	4			+0	+0
Administrative/ Supervisory (V to VII)	24	23	-1	-3.4%	+6	+9
Clerical (III & IV)	34	33	-0	-0.9%	+2	+2
<b>Management &amp; Administrative</b>	<b>61</b>	<b>60</b>	<b>-1</b>	<b>-1.8%</b>	<b>+8</b>	<b>+11</b>
Support	81	81	-0	-0.4%	-3	-36
Maintenance/ Technical	4	4	-0	-0.7%	+0	-4
<b>General Support</b>	<b>85</b>	<b>85</b>	<b>-0</b>	<b>-0.4%</b>	<b>-3</b>	<b>-40</b>
Health Care Assistants	430	429	-1	-0.2%	-19	-58
Home Help	609	614	+5	+0.8%	+16	+62
Care, other	7	7	+0	+0.3%	-1	-3
<b>Patient &amp; Client Care</b>	<b>1,047</b>	<b>1,051</b>	<b>+4</b>	<b>+0.4%</b>	<b>-5</b>	<b>+1</b>



## CHO 6

Jul 2021 (Dec 2020 figure: 804)	WTE Jun 2021	WTE Jul 2021	WTE change since Jun 21	% change since Jun 21	WTE change since Dec 20	WTE change since Jul 20
<b>Overall</b>	<b>804</b>	<b>796</b>	<b>-9</b>	<b>-1.1%</b>	<b>-8</b>	<b>-45</b>
Registrars	2	2			+1	+1
Medical/ Dental, other	2	2	+0	+0.0%	-1	-2
<b>Medical &amp; Dental</b>	<b>4</b>	<b>4</b>			<b>-0</b>	<b>-1</b>
Nurse/ Midwife Manager	60	63	+3	+5.7%	+1	-4
Nurse/ Midwife Specialist & AN/MP	1	1				
Staff Nurse/ Staff Midwife	198	195	-4	-1.8%	-11	-9
<b>Nursing &amp; Midwifery</b>	<b>259</b>	<b>259</b>	<b>-0</b>	<b>-0.1%</b>	<b>-10</b>	<b>-12</b>
Therapy Professions	49	49	+0	+0.1%	+3	+5
Social Workers	9	9	+0	+4.4%	-1	-2
Psychologists	2	1	-2	-76.2%	-1	-2
Pharmacy	3	4	+1	+26.7%	+1	+1
<b>Health &amp; Social Care Professionals</b>	<b>63</b>	<b>63</b>	<b>-0</b>	<b>-0.3%</b>	<b>+3</b>	<b>+3</b>
Management (VIII & above)	5	6	+1	+17.8%	+1	+2
Administrative/ Supervisory (V to VII)	22	22	-0	-0.1%	+3	+2
Clerical (III & IV)	32	31	-0	-1.4%	-2	-1
<b>Management &amp; Administrative</b>	<b>59</b>	<b>59</b>	<b>+0</b>	<b>+0.6%</b>	<b>+2</b>	<b>+3</b>
Support	107	105	-1	-1.2%	+3	-1
Maintenance/ Technical	9	8	-1	-9.9%	-1	-1
<b>General Support</b>	<b>116</b>	<b>113</b>	<b>-2</b>	<b>-1.9%</b>	<b>+2</b>	<b>-2</b>
Health Care Assistants	298	292	-6	-2.1%	-4	-34
Care, other	5	5	-0	-1.5%	-1	-1
<b>Patient &amp; Client Care</b>	<b>303</b>	<b>297</b>	<b>-6</b>	<b>-2.1%</b>	<b>-5</b>	<b>-35</b>

## CHO 7

Jul 2021 (Dec 2020 figure: 1,021)	WTE Jun 2021	WTE Jul 2021	WTE change since Jun 21	% change since Jun 21	WTE change since Dec 20	WTE change since Jul 20
<b>Overall</b>	<b>1,019</b>	<b>1,017</b>	<b>-2</b>	<b>-0.2%</b>	<b>-5</b>	<b>-17</b>
SHO/ Interns	2	2				
Medical/ Dental, other	2	2				-2
<b>Medical &amp; Dental</b>	<b>4</b>	<b>4</b>				<b>-2</b>
Nurse/ Midwife Manager	97	97	+0	+0.2%	+12	+18
Nurse/ Midwife Specialist & AN/MP	2	2	-0	-0.4%	-1	-2
Staff Nurse/ Staff Midwife	239	242	+3	+1.1%	-0	+1
<i>Nursing/ Midwifery awaiting registration</i>	<i>1</i>	<i>1</i>	<i>+1</i>	<i>+71.6%</i>	<i>+1</i>	<i>-1</i>
Nursing/ Midwifery Student	1	1	+1	+71.6%	+0	-1
<b>Nursing &amp; Midwifery</b>	<b>340</b>	<b>343</b>	<b>+3</b>	<b>+1.0%</b>	<b>+11</b>	<b>+16</b>
Therapy Professions	18	17	-1	-4.7%	+4	+4
Social Workers	11	12	+1	+7.9%	-0	-1
Pharmacy	2	2				-1
H&SC, Other	1	1				
<b>Health &amp; Social Care Professionals</b>	<b>32</b>	<b>32</b>	<b>+0</b>	<b>+0.2%</b>	<b>+3</b>	<b>+1</b>
Management (VIII & above)	6	6			-1	+1
Administrative/ Supervisory (V to VII)	15	15	+1	+3.8%	+1	+2
Clerical (III & IV)	37	35	-2	-5.4%	-2	+1
<b>Management &amp; Administrative</b>	<b>59</b>	<b>57</b>	<b>-1</b>	<b>-2.5%</b>	<b>-2</b>	<b>+4</b>
Support	117	117	-0	-0.1%	-2	+7
Maintenance/ Technical	2	2				
<b>General Support</b>	<b>119</b>	<b>119</b>	<b>-0</b>	<b>-0.1%</b>	<b>-2</b>	<b>+7</b>
Health Care Assistants	352	348	-4	-1.0%	-9	-37
Home Help	109	108	-2	-1.4%	-7	-7
Care, other	5	6	+1	+20.0%	+1	+1
<b>Patient &amp; Client Care</b>	<b>467</b>	<b>462</b>	<b>-4</b>	<b>-0.9%</b>	<b>-15</b>	<b>-43</b>

## CHO 8

Jul 2021 (Dec 2020 figure: 1,484)	WTE Jun 2021	WTE Jul 2021	WTE change since Jun 21	% change since Jun 21	WTE change since Dec 20	WTE change since Jul 20
<b>Overall</b>	<b>1,476</b>	<b>1,473</b>	<b>-3</b>	<b>-0.2%</b>	<b>-11</b>	<b>-37</b>
Medical/ Dental, other	11	11	-0	-0.5%	-0	-0
<b>Medical &amp; Dental</b>	<b>11</b>	<b>11</b>	<b>-0</b>	<b>-0.5%</b>	<b>-0</b>	<b>-0</b>
Nurse/ Midwife Manager	88	88	-0	-0.2%	-1	+3
Nurse/ Midwife Specialist & AN/MP	7	7	+0	+6.9%	+3	+4
Staff Nurse/ Staff Midwife	257	257	-0	-0.1%	+2	+10
Public Health Nurse	3	2	-0	-10.1%	-0	+0
Nursing/ Midwifery other	3	3			+1	+2
<b>Nursing &amp; Midwifery</b>	<b>358</b>	<b>358</b>	<b>-0</b>	<b>-0.0%</b>	<b>+5</b>	<b>+19</b>
Therapy Professions	28	28	+0	+0.9%	+4	+8
Social Workers	7	7	+0	+2.8%	+2	+2
Pharmacy	3	3	+0	+8.3%	+1	+2
<b>Health &amp; Social Care Professionals</b>	<b>38</b>	<b>38</b>	<b>+1</b>	<b>+1.8%</b>	<b>+7</b>	<b>+12</b>
Management (VIII & above)	5	6	+1	+12.4%	-1	-1
Administrative/ Supervisory (V to VII)	22	19	-3	-15.3%	-2	-0
Clerical (III & IV)	68	68	+0	+0.6%	-4	-3
<b>Management &amp; Administrative</b>	<b>95</b>	<b>93</b>	<b>-2</b>	<b>-2.5%</b>	<b>-7</b>	<b>-4</b>
Support	24	24	-0	-0.1%	-1	-3
Maintenance/ Technical	24	24	-0	-0.6%	-0	-0
<b>General Support</b>	<b>48</b>	<b>48</b>	<b>-0</b>	<b>-0.4%</b>	<b>-1</b>	<b>-4</b>
Health Care Assistants	540	535	-4	-0.8%	-9	-60
Home Help	364	365	+0	+0.1%	-9	-2
Care, other	22	25	+3	+11.4%	+3	+3
<b>Patient &amp; Client Care</b>	<b>926</b>	<b>925</b>	<b>-1</b>	<b>-0.1%</b>	<b>-15</b>	<b>-60</b>

## CHO 9

Jul 2021 (Dec 2020 figure: 914)	WTE Jun 2021	WTE Jul 2021	WTE change since Jun 21	% change since Jun 21	WTE change since Dec 20	WTE change since Jul 20
<b>Overall</b>	<b>934</b>	<b>948</b>	<b>+14</b>	<b>+1.5%</b>	<b>+34</b>	<b>+13</b>
Consultants	2	2			-0	-0
Registrars	6	7	+2	+31.2%	+2	+3
SHO/ Interns	11	10	-1	-5.0%	-1	+0
Medical/ Dental, other	1	1				
<b>Medical &amp; Dental</b>	<b>20</b>	<b>21</b>	<b>+1</b>	<b>+6.0%</b>	<b>+2</b>	<b>+3</b>
Nurse/ Midwife Manager	80	81	+2	+1.9%	+0	+2
Nurse/ Midwife Specialist & AN/MP	5	5			-1	-0
Staff Nurse/ Staff Midwife	231	234	+3	+1.3%	-0	-1
Public Health Nurse				-100.0%		
Nursing/ Midwifery other				-100.0%	-1	-1
<b>Nursing &amp; Midwifery</b>	<b>315</b>	<b>319</b>	<b>+5</b>	<b>+1.5%</b>	<b>-2</b>	<b>-0</b>
Therapy Professions	85	84	-1	-1.6%	+13	+13
Health Science/ Diagnostics	1	1				
Social Care	1	1				
Social Workers	27	26	-0	-1.3%	+3	+5
Pharmacy	4	4				
H&SC, Other	1	1				+0
<b>Health &amp; Social Care Professionals</b>	<b>118</b>	<b>116</b>	<b>-2</b>	<b>-1.5%</b>	<b>+16</b>	<b>+18</b>
Management (VIII & above)	9	10	+1	+10.1%	+1	+2
Administrative/ Supervisory (V to VII)	22	24	+2	+9.5%	+3	+6
Clerical (III & IV)	53	52	-1	-1.0%	+8	+10
<b>Management &amp; Administrative</b>	<b>83</b>	<b>86</b>	<b>+2</b>	<b>+2.9%</b>	<b>+12</b>	<b>+17</b>
Support	117	117	-0	-0.1%	-3	-3
Maintenance/ Technical	2	2				
<b>General Support</b>	<b>119</b>	<b>119</b>	<b>-0</b>	<b>-0.1%</b>	<b>-3</b>	<b>-3</b>
Health Care Assistants	273	280	+8	+2.8%	+9	-23
Care, other	6	6	+0	+0.0%	+1	+1
<b>Patient &amp; Client Care</b>	<b>279</b>	<b>287</b>	<b>+8</b>	<b>+2.7%</b>	<b>+10</b>	<b>-22</b>

## other Community Services

Jul 2021 (Dec 2020 figure: 75)	WTE Jun 2021	WTE Jul 2021	WTE change since Jun 21	% change since Jun 21	WTE change since Dec 20	WTE change since Jul 20
<b>Overall</b>	<b>76</b>	<b>75</b>	<b>-1</b>	<b>-1.8%</b>	<b>-0</b>	<b>+8</b>
Health Science/ Diagnostics				-100.0%		
<b>Health &amp; Social Care Professionals</b>				<b>-100.0%</b>		
Management (VIII & above)	17	18	+1	+5.5%	+1	+1
Administrative/ Supervisory (V to VII)	22	22	-0	-1.5%	+0	-1
Clerical (III & IV)	36	34	-2	-5.4%	-3	+7
<b>Management &amp; Administrative</b>	<b>75</b>	<b>74</b>	<b>-1</b>	<b>-1.8%</b>	<b>-1</b>	<b>+7</b>
Health Care Assistants	0	0				
Other Care Grades	1	1			+1	+1
Care, other	1	1			+1	+1
<b>Patient &amp; Client Care</b>	<b>1</b>	<b>1</b>			<b>+1</b>	<b>+1</b>

## Social Care Older Persons Services Employment by CHO & Admin : Jul 2021

Jul 2021 (Dec 2020 figure: 13,415)	WTE Jun 2021	WTE Jul 2021	WTE change since Jun 21	% change since Jun 21	WTE change since Dec 20	WTE change since Jul 20
<b>Overall</b>	<b>13,414</b>	<b>13,448</b>	<b>+34</b>	<b>+0.3%</b>	<b>+33</b>	<b>-25</b>
CHO 1	1,914	1,908	-5	-0.3%	-9	+23
CHO 2	1,536	1,559	+23	+1.5%	-31	-39
CHO 3	1,089	1,121	+32	+2.9%	+93	+73
CHO 4	2,911	2,892	-19	-0.6%	-38	+25
CHO 5	1,655	1,659	+4	+0.2%	+9	-28
CHO 6	804	796	-9	-1.1%	-8	-45
CHO 7	1,019	1,017	-2	-0.2%	-5	-17
CHO 8	1,476	1,473	-3	-0.2%	-11	-37
CHO 9	934	948	+14	+1.5%	+34	+13
other Community Services	76	75	-1	-1.8%	-0	+8

## Social Care Older Persons Services Employment by CHO etc. Jul 2021

### Incorporated Orthopaedic Hospital

Jul 2021 (Dec 2020 figure: 267)	WTE Jun 2021	WTE Jul 2021	WTE change since Jun 21	% change since Jun 21	WTE change since Dec 20	WTE change since Jul 20
<b>Overall</b>	<b>271</b>	<b>276</b>	<b>+5</b>	<b>+1.8%</b>	<b>+9</b>	<b>+12</b>
Consultants	2	2				
Registrars	2	3	+1	+50.0%	+1	+1
SHO/ Interns	4	6	+2	+50.0%	+2	+2
<b>Medical &amp; Dental</b>	<b>8</b>	<b>11</b>	<b>+3</b>	<b>+39.5%</b>	<b>+3</b>	<b>+3</b>
Nurse/ Midwife Manager	18	18				+1
Staff Nurse/ Staff Midwife	70	70				-4
<b>Nursing &amp; Midwifery</b>	<b>88</b>	<b>88</b>				<b>-3</b>
Therapy Professions	35	35			+1	+5
Health Science/ Diagnostics	1	1				
Social Workers	9	9				+1
Pharmacy	4	4				
<b>Health &amp; Social Care Professionals</b>	<b>49</b>	<b>49</b>			<b>+1</b>	<b>+6</b>
Management (VIII & above)	2	2				+1
Administrative/ Supervisory (V to VII)	7	7			+1	+1
Clerical (III & IV)	10	10				-1
<b>Management &amp; Administrative</b>	<b>19</b>	<b>19</b>			<b>+1</b>	<b>+1</b>
Support	40	40				
Maintenance/ Technical	2	2				
<b>General Support</b>	<b>42</b>	<b>42</b>				
Health Care Assistants	66	68	+2	+3.1%	+4	+5
Care, other	0	0				
<b>Patient &amp; Client Care</b>	<b>66</b>	<b>68</b>	<b>+2</b>	<b>+3.0%</b>	<b>+4</b>	<b>+5</b>

## Leopardstown Park Hospital

Jul 2021 (Dec 2020 figure: 207)	WTE Jun 2021	WTE Jul 2021	WTE change since Jun 21	% change since Jun 21	WTE change since Dec 20	WTE change since Jul 20
<b>Overall</b>	<b>206</b>	<b>206</b>	<b>+0</b>	<b>+0.1%</b>	<b>-0</b>	<b>+2</b>
Medical/ Dental, other				-100.0%	-1	-1
<b>Medical &amp; Dental</b>				<b>-100.0%</b>	<b>-1</b>	<b>-1</b>
Nurse/ Midwife Manager	13	15	+2	+18.9%	+2	-1
Staff Nurse/ Staff Midwife	40	39	-1	-2.9%	-3	-0
<b>Nursing &amp; Midwifery</b>	<b>53</b>	<b>54</b>	<b>+1</b>	<b>+2.4%</b>	<b>-2</b>	<b>-1</b>
Therapy Professions	9	9	+0	+3.3%	-0	+2
Social Workers		0	+0	-100.0%	-1	-1
Pharmacy	2	2	+0	+19.6%	+0	+0
<b>Health &amp; Social Care Professionals</b>	<b>11</b>	<b>12</b>	<b>+1</b>	<b>+10.7%</b>	<b>-0</b>	<b>+2</b>
Management (VIII & above)	1	1				
Administrative/ Supervisory (V to VII)	6	6	-0	-3.3%	-1	-1
Clerical (III & IV)	11	12	+0	+4.3%	-0	+1
<b>Management &amp; Administrative</b>	<b>18</b>	<b>18</b>	<b>+0</b>	<b>+1.5%</b>	<b>-1</b>	<b>-0</b>
Support	36	36	-0	-1.3%	+2	+0
Maintenance/ Technical	4	4				
<b>General Support</b>	<b>40</b>	<b>40</b>	<b>-0</b>	<b>-1.2%</b>	<b>+2</b>	<b>+0</b>
Health Care Assistants	81	79	-2	-2.4%	+2	+4
Care, other	3	3	-0	-2.5%	-0	-1
<b>Patient &amp; Client Care</b>	<b>84</b>	<b>82</b>	<b>-2</b>	<b>-2.4%</b>	<b>+2</b>	<b>+3</b>

Jul 2021 (Dec 2020 figure: 268)	WTE Jun 2021	WTE Jul 2021	WTE change since Jun 21	% change since Jun 21	WTE change since Dec 20	WTE change since Jul 20
<b>Overall</b>	<b>266</b>	<b>265</b>	<b>-2</b>	<b>-0.6%</b>	<b>-3</b>	<b>-12</b>
Registrars	2	2			+1	+1
Medical/ Dental, other	1	1				
<b>Medical &amp; Dental</b>	<b>3</b>	<b>3</b>			<b>+1</b>	<b>+1</b>
Nurse/ Midwife Manager	17	17			-1	-3
Staff Nurse/ Staff Midwife	72	71	-1	-1.4%	-3	-5
<b>Nursing &amp; Midwifery</b>	<b>89</b>	<b>88</b>	<b>-1</b>	<b>-1.1%</b>	<b>-3</b>	<b>-8</b>
Therapy Professions	31	33	+3	+8.1%	+4	+5
Social Workers	6	6				
Psychologists	1	1				
<b>Health &amp; Social Care Professionals</b>	<b>37</b>	<b>39</b>	<b>+3</b>	<b>+6.8%</b>	<b>+4</b>	<b>+5</b>
Management (VIII & above)	1	1				+1
Administrative/ Supervisory (V to VII)	8	8			+3	+2
Clerical (III & IV)	9	9			-1	+0
<b>Management &amp; Administrative</b>	<b>18</b>	<b>18</b>			<b>+2</b>	<b>+3</b>
Support	33	33			-1	-1
Maintenance/ Technical	4	4			-1	-1
<b>General Support</b>	<b>37</b>	<b>37</b>			<b>-2</b>	<b>-2</b>
Health Care Assistants	83	80	-3	-3.6%	-5	-11
Care, other	1	1			-1	-1
<b>Patient &amp; Client Care</b>	<b>84</b>	<b>81</b>	<b>-3</b>	<b>-3.6%</b>	<b>-6</b>	<b>-11</b>



## Social Care Older Persons Services Employment by Grade Group: Jul 2021

Jul 2021 (Dec 2020 figure: 13,415)	WTE Jun 2021	WTE Jul 2021	WTE change since Jun 21	% change since Jun 21	WTE change since Dec 20	WTE change since Jul 20
<b>Overall</b>	<b>13,414</b>	<b>13,448</b>	<b>+34</b>	<b>+0.3%</b>	<b>+33</b>	<b>-25</b>
Consultant Medicine	4	4			-0	-0
<b>Consultants</b>	<b>4</b>	<b>4</b>			<b>-0</b>	<b>-0</b>
Registrar	7	6	-0	-0.5%	+1	+2
Senior Registrar	1	1			+0	+0
Specialist Registrar	3	4	+1	+22.3%	+2	+1
<b>Registrars</b>	<b>11</b>	<b>11</b>	<b>+1</b>	<b>+6.0%</b>	<b>+2</b>	<b>+3</b>
<b>SHO/ Interns</b>	<b>14</b>	<b>13</b>	<b>-1</b>	<b>-3.9%</b>	<b>-1</b>	<b>+1</b>
<b>Medical/ Dental, other</b>	<b>84</b>	<b>84</b>	<b>-0</b>	<b>-0.3%</b>	<b>-20</b>	<b>-1</b>
<b>Medical &amp; Dental</b>	<b>113</b>	<b>112</b>	<b>-0</b>	<b>-0.1%</b>	<b>-18</b>	<b>+2</b>
Clinical Nurse/ Midwife Manager	549	560	+12	+2.1%	+24	+26
Director Nursing/Midwifery, Assistant	105	104	-1	-1.2%	-3	+1
Director of Nursing/Midwifery	106	104	-1	-1.3%	-0	+1
<b>Nurse/ Midwife Manager</b>	<b>759</b>	<b>768</b>	<b>+9</b>	<b>+1.2%</b>	<b>+22</b>	<b>+28</b>
Advanced Nurse/ Midwife Practitioner	19	19	-0	-0.3%	+3	+7
Clinical Nurse/ Midwife Specialist	19	21	+2	+8.4%	-1	+2
<b>Nurse/ Midwife Specialist &amp; AN/MP</b>	<b>38</b>	<b>40</b>	<b>+2</b>	<b>+4.0%</b>	<b>+2</b>	<b>+9</b>
Staff Midwives	1	1	+0	+2.5%	-0	+1
Staff Nurse [Intellectual Disability]	1	1				+1
Staff Nurse [Psychiatric]	7	7	+0	+0.9%	+2	+2
Staff Nurses [General/ Children's]	2,665	2,662	-3	-0.1%	+45	+53
<b>Staff Nurse/ Staff Midwife</b>	<b>2,674</b>	<b>2,671</b>	<b>-3</b>	<b>-0.1%</b>	<b>+47</b>	<b>+57</b>
<b>Public Health Nurse</b>	<b>12</b>	<b>12</b>	<b>-0</b>	<b>-2.3%</b>	<b>-1</b>	<b>-1</b>
Nursing/ Midwifery awaiting registration	2	1	-0	-23.2%	+0	-1
<b>Nursing/ Midwifery Student</b>	<b>2</b>	<b>1</b>	<b>-0</b>	<b>-23.2%</b>	<b>+0</b>	<b>-1</b>
Nursing Education/Clinical	4	4			+0	+1
<b>Nursing/ Midwifery other</b>	<b>4</b>	<b>4</b>			<b>+0</b>	<b>+1</b>
<b>Nursing &amp; Midwifery</b>	<b>3,489</b>	<b>3,496</b>	<b>+7</b>	<b>+0.2%</b>	<b>+69</b>	<b>+92</b>
Dietitians	27	25	-2	-8.2%	+7	+2
Occupational Therapists	122	121	-1	-1.2%	+8	+4
Physiotherapists	149	150	+1	+0.7%	+18	+22
Podiatrists & Chiropodists	15	13	-2	-12.2%	+1	+1
Speech & Language Therapists	30	28	-2	-8.0%	+8	+6
<b>Therapy Professions</b>	<b>343</b>	<b>336</b>	<b>-7</b>	<b>-2.0%</b>	<b>+41</b>	<b>+37</b>
Clinical Measurement				-100.0%	-0	-0
Radiographers	5	5	-0	-0.6%	-0	+0
<b>Health Science/ Diagnostics</b>	<b>5</b>	<b>5</b>	<b>-0</b>	<b>-0.6%</b>	<b>-0</b>	<b>-0</b>
<b>Social Care</b>	<b>3</b>	<b>3</b>	<b>+0</b>	<b>+0.0%</b>		
<b>Social Workers</b>	<b>102</b>	<b>101</b>	<b>-1</b>	<b>-0.6%</b>	<b>+1</b>	<b>+3</b>
<b>Psychologists</b>	<b>2</b>	<b>1</b>	<b>-2</b>	<b>-76.2%</b>	<b>-1</b>	<b>-2</b>
<b>Pharmacy</b>	<b>18</b>	<b>20</b>	<b>+1</b>	<b>+6.6%</b>	<b>+2</b>	<b>+2</b>
Other Health & Social Care	1	1				+0
Play Therapists/ Specialists	1	1				
<b>H&amp;SC, Other</b>	<b>2</b>	<b>2</b>				<b>+0</b>
<b>Health &amp; Social Care Professionals</b>	<b>474</b>	<b>466</b>	<b>-8</b>	<b>-1.7%</b>	<b>+43</b>	<b>+40</b>
Executive Management	16	16	+0	+0.1%	+1	+4
Senior Management (VIII & GM)	63	66	+3	+5.4%	+2	+4
<b>Management (VIII &amp; above)</b>	<b>78</b>	<b>82</b>	<b>+3</b>	<b>+4.3%</b>	<b>+3</b>	<b>+8</b>

Jul 2021 (Dec 2020 figure: 13,415)	WTE Jun 2021	WTE Jul 2021	WTE change since Jun 21	% change since Jun 21	WTE change since Dec 20	WTE change since Jul 20
<b>Overall</b>	<b>13,414</b>	<b>13,448</b>	<b>+34</b>	<b>+0.3%</b>	<b>+33</b>	<b>-25</b>
Middle Management (V-VII)	188	191	+3	+1.4%	+15	+24
Other Administrative				-100.0%		-2
<b>Administrative/ Supervisory (V to VII)</b>	<b>188</b>	<b>191</b>	<b>+3</b>	<b>+1.4%</b>	<b>+15</b>	<b>+22</b>
<b>Clerical (III &amp; IV)</b>	<b>594</b>	<b>584</b>	<b>-10</b>	<b>-1.7%</b>	<b>-3</b>	<b>+18</b>
<b>Management &amp; Administrative</b>	<b>861</b>	<b>857</b>	<b>-4</b>	<b>-0.5%</b>	<b>+15</b>	<b>+48</b>
Catering	214	213	-2	-0.8%	-4	-12
Household Services	480	473	-8	-1.6%	-7	-28
Other Support	28	28	+1	+2.3%	-1	-4
Portering	74	75	+0	+0.2%	-2	-5
<b>Support</b>	<b>797</b>	<b>788</b>	<b>-8</b>	<b>-1.1%</b>	<b>-13</b>	<b>-49</b>
Maintenance	91	88	-3	-3.0%	-6	-10
Technical Services	4	4			+4	+4
<b>Maintenance/ Technical</b>	<b>95</b>	<b>92</b>	<b>-3</b>	<b>-2.8%</b>	<b>-2</b>	<b>-6</b>
<b>General Support</b>	<b>892</b>	<b>881</b>	<b>-11</b>	<b>-1.2%</b>	<b>-15</b>	<b>-56</b>
HCA, Nurse's Aide, etc.	4,076	4,064	-12	-0.3%	-5	+53
HCA (Student Nurse/Midwife COVID-19)	6	5	-1	-14.8%	-17	-453
Health & Social Care Assistants	31	33	+2	+6.3%	+6	+10
<b>Health Care Assistants</b>	<b>4,113</b>	<b>4,102</b>	<b>-11</b>	<b>-0.3%</b>	<b>-16</b>	<b>-390</b>
<b>Home Help</b>	<b>3,311</b>	<b>3,366</b>	<b>+55</b>	<b>+1.7%</b>	<b>-66</b>	<b>+218</b>
<b>Care, other</b>	<b>162</b>	<b>168</b>	<b>+7</b>	<b>+4.1%</b>	<b>+22</b>	<b>+20</b>
<b>Patient &amp; Client Care</b>	<b>7,585</b>	<b>7,636</b>	<b>+50</b>	<b>+0.7%</b>	<b>-60</b>	<b>-152</b>

## Employment by WTE, Headcount, Gender, Full-Time /Part-Time etc.: Jul 2021

Social Care Older Persons Services Staff Group	WTE	Headcount	WTE: no.	% Male	% female	Male WTE: no.	Female WTE: no.	% Total Perm	% Male Perm	% Female Perm	% Total Full Time	% Total Part Time	% Male FT	% Female FT
<b>Overall</b>	<b>13,448</b>	<b>16,471</b>	<b>1.22</b>	<b>13.1%</b>	<b>86.9%</b>	<b>1.11</b>	<b>1.24</b>	<b>82.6%</b>	<b>79.6%</b>	<b>83.0%</b>	<b>58.5%</b>	<b>41.5%</b>	<b>82.3%</b>	<b>54.9%</b>
Consultant Medicine	4	7	1.59	14.3%	85.7%	2.00	1.54	85.7%	85.7%	83.3%	28.6%	71.4%	0.0%	33.3%
<b>Consultants</b>	<b>4</b>	<b>7</b>	<b>1.59</b>	<b>14.3%</b>	<b>85.7%</b>	<b>2.00</b>	<b>1.54</b>	<b>85.7%</b>	<b>100.0%</b>	<b>83.3%</b>	<b>28.6%</b>	<b>71.4%</b>	<b>0.0%</b>	<b>33.3%</b>
Registrar	6	8	1.23	50.0%	50.0%	1.05	1.49	50.0%	50.0%	25.0%	87.5%	12.5%	100.0%	75.0%
Senior Registrar	1	2	1.85	50.0%	50.0%	12.50	1.00	50.0%	50.0%	100.0%	50.0%	50.0%	0.0%	100.0%
Specialist Registrar	4	4	1.09	50.0%	50.0%	1.04	1.14	0.0%	0.0%	0.0%	100.0%	0.0%	100.0%	100.0%
<b>Registrars</b>	<b>11</b>	<b>14</b>	<b>1.25</b>	<b>50.0%</b>	<b>50.0%</b>	<b>1.21</b>	<b>1.29</b>	<b>35.7%</b>	<b>42.9%</b>	<b>28.6%</b>	<b>85.7%</b>	<b>14.3%</b>	<b>85.7%</b>	<b>85.7%</b>
<b>SHO/ Interns</b>	<b>13</b>	<b>18</b>	<b>1.37</b>	<b>27.8%</b>	<b>72.2%</b>	<b>1.04</b>	<b>1.56</b>	<b>11.1%</b>	<b>40.0%</b>	<b>0.0%</b>	<b>100.0%</b>	<b>0.0%</b>	<b>100.0%</b>	<b>100.0%</b>
<b>Medical/ Dental, other</b>	<b>84</b>	<b>160</b>	<b>1.91</b>	<b>64.4%</b>	<b>35.6%</b>	<b>2.11</b>	<b>1.64</b>	<b>53.8%</b>	<b>56.3%</b>	<b>49.1%</b>	<b>34.4%</b>	<b>65.6%</b>	<b>28.2%</b>	<b>45.6%</b>
<b>Medical &amp; Dental</b>	<b>112</b>	<b>199</b>	<b>1.77</b>	<b>58.3%</b>	<b>41.7%</b>	<b>1.93</b>	<b>1.58</b>	<b>49.7%</b>	<b>55.2%</b>	<b>42.2%</b>	<b>43.7%</b>	<b>56.3%</b>	<b>34.5%</b>	<b>56.6%</b>
Clinical Nurse/ Midwife Manager	560	601	1.07	7.3%	92.7%	1.02	1.08	95.8%	95.8%	96.1%	80.5%	19.5%	93.2%	79.5%
Director Nursing/Midwifery, Assistant	104	109	1.05	4.6%	95.4%	1.01	1.06	100.0%	100.0%	100.0%	91.7%	8.3%	100.0%	91.3%
Director of Nursing/Midwifery	104	107	1.03	4.7%	95.3%	1.02	1.03	99.1%	99.1%	99.0%	96.3%	3.7%	100.0%	96.1%
<b>Nurse/ Midwife Manager</b>	<b>768</b>	<b>817</b>	<b>1.06</b>	<b>6.6%</b>	<b>93.4%</b>	<b>1.02</b>	<b>1.07</b>	<b>96.8%</b>	<b>94.4%</b>	<b>97.0%</b>	<b>84.1%</b>	<b>15.9%</b>	<b>94.4%</b>	<b>83.4%</b>
Advanced Nurse/ Midwife Practitioner	19	20	1.03	10.0%	90.0%	1.01	1.03	100.0%	100.0%	100.0%	100.0%	0.0%	100.0%	100.0%
Clinical Nurse/ Midwife Specialist	21	23	1.12	17.4%	82.6%	1.09	1.13	100.0%	100.0%	100.0%	69.6%	30.4%	100.0%	63.2%
<b>Nurse/ Midwife Specialist &amp; AN/MP</b>	<b>40</b>	<b>43</b>	<b>1.08</b>	<b>14.0%</b>	<b>86.0%</b>	<b>1.06</b>	<b>1.08</b>	<b>100.0%</b>	<b>100.0%</b>	<b>100.0%</b>	<b>83.7%</b>	<b>16.3%</b>	<b>100.0%</b>	<b>81.1%</b>
Staff Midwives	1	1	1.23		100.0%		1.23	100.0%	100.0%	100.0%	0.0%	100.0%		0.0%
Staff Nurse [Intellectual Disability]	1	1	1.00		100.0%		1.00	100.0%	100.0%	100.0%	100.0%	0.0%		100.0%
Staff Nurse [Psychiatric]	7	9	1.27	22.2%	77.8%	1.00	1.37	44.4%	44.4%	28.6%	55.6%	44.4%	100.0%	42.9%
Staff Nurses [General/ Children's]	2,662	3,108	1.17	7.8%	92.2%	1.03	1.18	87.4%	87.4%	87.7%	62.8%	37.2%	93.4%	60.2%
<b>Staff Nurse/ Staff Midwife</b>	<b>2,671</b>	<b>3,119</b>	<b>1.17</b>	<b>7.8%</b>	<b>92.2%</b>	<b>1.03</b>	<b>1.18</b>	<b>87.3%</b>	<b>84.0%</b>	<b>87.6%</b>	<b>62.8%</b>	<b>37.2%</b>	<b>93.4%</b>	<b>60.2%</b>
<b>Public Health Nurse</b>	<b>12</b>	<b>15</b>	<b>1.25</b>	<b>6.7%</b>	<b>93.3%</b>	<b>1.00</b>	<b>1.28</b>	<b>100.0%</b>	<b>100.0%</b>	<b>100.0%</b>	<b>60.0%</b>	<b>40.0%</b>	<b>100.0%</b>	<b>57.1%</b>
<b>Nursing/ Midwifery Student</b>	<b>1</b>	<b>2</b>	<b>1.44</b>		<b>100.0%</b>	<b>#DIV/0</b>	<b>1.44</b>	<b>0.0%</b>		<b>0.0%</b>	<b>100.0%</b>	<b>0.0%</b>	<b>#DIV/0</b>	<b>100.0%</b>
Nursing Education/Clinical	4	4	1.00	25.0%	75.0%	1.00	1.00	100.0%	100.0%	100.0%	100.0%	0.0%	100.0%	100.0%
<b>Nursing/ Midwifery other</b>	<b>4</b>	<b>4</b>	<b>1.00</b>	<b>25.0%</b>	<b>75.0%</b>	<b>1.00</b>	<b>1.00</b>	<b>100.0%</b>	<b>100.0%</b>	<b>100.0%</b>	<b>100.0%</b>	<b>0.0%</b>	<b>100.0%</b>	<b>100.0%</b>
<b>Nursing &amp; Midwifery</b>	<b>3,496</b>	<b>4,000</b>	<b>1.14</b>	<b>7.6%</b>	<b>92.4%</b>	<b>1.03</b>	<b>1.16</b>	<b>89.4%</b>	<b>86.2%</b>	<b>89.6%</b>	<b>67.4%</b>	<b>32.6%</b>	<b>93.8%</b>	<b>65.2%</b>
Dietitians	25	31	1.26	6.5%	93.5%	1.01	1.28	93.5%	93.5%	96.6%	58.1%	41.9%	100.0%	55.2%

Occupational Therapists	121	136	1.13	9.6%	90.4%	1.01	1.14	78.7%	78.7%	76.4%	80.1%	19.9%	100.0%	78.0%
Physiotherapists	150	170	1.13	15.3%	84.7%	1.06	1.15	87.1%	87.1%	86.1%	74.7%	25.3%	88.5%	72.2%
Podiatrists & Chiropodists	13	17	1.28	23.5%	76.5%	1.11	1.34	70.6%	70.6%	61.5%	70.6%	29.4%	100.0%	61.5%
Speech & Language Therapists	28	33	1.19		100.0%		1.19	90.9%	90.9%	90.9%	69.7%	30.3%		69.7%
<b>Therapy Professions</b>	<b>336</b>	<b>387</b>	<b>1.15</b>	<b>11.6%</b>	<b>88.4%</b>	<b>1.05</b>	<b>1.17</b>	<b>84.2%</b>	<b>93.3%</b>	<b>83.0%</b>	<b>74.7%</b>	<b>25.3%</b>	<b>93.3%</b>	<b>72.2%</b>
Radiographers	5	9	1.83	11.1%	88.9%	2.00	1.81	88.9%	88.9%	87.5%	11.1%	88.9%	0.0%	12.5%
<b>Health Science/ Diagnostics</b>	<b>5</b>	<b>9</b>	<b>1.83</b>	<b>11.1%</b>	<b>88.9%</b>	<b>2.00</b>	<b>1.81</b>	<b>88.9%</b>	<b>100.0%</b>	<b>87.5%</b>	<b>11.1%</b>	<b>88.9%</b>	<b>0.0%</b>	<b>12.5%</b>
<b>Social Care</b>	<b>3</b>	<b>5</b>	<b>1.82</b>		<b>100.0%</b>	<b>#DIV/0</b>	<b>1.82</b>	<b>100.0%</b>		<b>100.0%</b>	<b>0.0%</b>	<b>100.0%</b>	<b>#DIV/0</b>	<b>0.0%</b>
<b>Social Workers</b>	<b>101</b>	<b>113</b>	<b>1.12</b>	<b>13.3%</b>	<b>86.7%</b>	<b>1.02</b>	<b>1.14</b>	<b>91.2%</b>	<b>86.7%</b>	<b>91.8%</b>	<b>85.0%</b>	<b>15.0%</b>	<b>93.3%</b>	<b>83.7%</b>
<b>Psychologists</b>	<b>1</b>	<b>1</b>	<b>2.00</b>		<b>100.0%</b>	<b>#DIV/0</b>	<b>2.00</b>	<b>100.0%</b>		<b>100.0%</b>	<b>0.0%</b>	<b>100.0%</b>	<b>#DIV/0</b>	<b>0.0%</b>
<b>Pharmacy</b>	<b>20</b>	<b>27</b>	<b>1.38</b>	<b>14.8%</b>	<b>85.2%</b>	<b>1.22</b>	<b>1.42</b>	<b>74.1%</b>	<b>100.0%</b>	<b>69.6%</b>	<b>48.1%</b>	<b>51.9%</b>	<b>75.0%</b>	<b>43.5%</b>
Other Health & Social Care	1	1	1.85		100.0%		1.85	100.0%	100.0%	100.0%	0.0%	100.0%		0.0%
Play Therapists/ Specialists	1	1	1.00	100.0%		1.00		100.0%	100.0%		100.0%	0.0%	100.0%	
<b>H&amp;SC, Other</b>	<b>2</b>	<b>2</b>	<b>1.30</b>	<b>50.0%</b>	<b>50.0%</b>	<b>1.00</b>	<b>1.85</b>	<b>100.0%</b>	<b>100.0%</b>	<b>100.0%</b>	<b>50.0%</b>	<b>50.0%</b>	<b>100.0%</b>	<b>0.0%</b>
<b>Health &amp; Social Care</b>	<b>466</b>	<b>544</b>	<b>1.17</b>	<b>12.1%</b>	<b>87.9%</b>	<b>1.05</b>	<b>1.18</b>	<b>85.5%</b>	<b>92.4%</b>	<b>84.5%</b>	<b>73.5%</b>	<b>26.5%</b>	<b>90.9%</b>	<b>71.1%</b>
Executive Management	16	16	1.01	50.0%	50.0%	1.00	1.03	100.0%	100.0%	100.0%	100.0%	0.0%	100.0%	100.0%
Senior Management (VIII & GM)	66	68	1.03	29.4%	70.6%	1.06	1.02	91.2%	91.2%	95.8%	95.6%	4.4%	90.0%	97.9%
<b>Management (VIII &amp; above)</b>	<b>82</b>	<b>84</b>	<b>1.03</b>	<b>33.3%</b>	<b>66.7%</b>	<b>1.04</b>	<b>1.02</b>	<b>92.9%</b>	<b>85.7%</b>	<b>96.4%</b>	<b>96.4%</b>	<b>3.6%</b>	<b>92.9%</b>	<b>98.2%</b>
<b>Administrative/ Supervisory (V to VII)</b>	<b>191</b>	<b>206</b>	<b>1.08</b>	<b>16.0%</b>	<b>84.0%</b>	<b>1.05</b>	<b>1.09</b>	<b>96.1%</b>	<b>93.9%</b>	<b>96.5%</b>	<b>79.6%</b>	<b>20.4%</b>	<b>84.8%</b>	<b>78.6%</b>
<b>Clerical (III &amp; IV)</b>	<b>584</b>	<b>684</b>	<b>1.17</b>	<b>8.6%</b>	<b>91.4%</b>	<b>1.04</b>	<b>1.19</b>	<b>84.4%</b>	<b>76.3%</b>	<b>85.1%</b>	<b>64.0%</b>	<b>36.0%</b>	<b>91.5%</b>	<b>61.4%</b>
<b>Management &amp; Administrative</b>	<b>857</b>	<b>974</b>	<b>1.14</b>	<b>12.3%</b>	<b>87.7%</b>	<b>1.04</b>	<b>1.15</b>	<b>87.6%</b>	<b>83.3%</b>	<b>88.2%</b>	<b>70.1%</b>	<b>29.9%</b>	<b>90.0%</b>	<b>67.3%</b>
Catering	213	234	1.10	33.8%	66.2%	1.04	1.13	94.0%	94.0%	96.1%	71.8%	28.2%	91.1%	61.9%
Household Services	473	538	1.14	17.3%	82.7%	1.07	1.15	84.2%	84.2%	84.5%	58.9%	41.1%	84.9%	53.5%
Other Support	28	34	1.20	55.9%	44.1%	1.11	1.33	82.4%	82.4%	80.0%	64.7%	35.3%	84.2%	40.0%
Portering	75	79	1.06	98.7%	1.3%	1.06	1.35	87.3%	87.3%	100.0%	92.4%	7.6%	92.3%	100.0%
<b>Support</b>	<b>788</b>	<b>885</b>	<b>1.12</b>	<b>30.4%</b>	<b>69.6%</b>	<b>1.06</b>	<b>1.15</b>	<b>87.0%</b>	<b>86.2%</b>	<b>87.3%</b>	<b>65.5%</b>	<b>34.5%</b>	<b>88.8%</b>	<b>55.4%</b>
<b>Maintenance/ Technical</b>	<b>92</b>	<b>97</b>	<b>1.05</b>	<b>99.0%</b>	<b>1.0%</b>	<b>1.05</b>	<b>1.00</b>	<b>92.8%</b>	<b>92.7%</b>	<b>100.0%</b>	<b>93.8%</b>	<b>6.2%</b>	<b>93.8%</b>	<b>100.0%</b>
<b>General Support</b>	<b>881</b>	<b>982</b>	<b>1.12</b>	<b>37.2%</b>	<b>62.8%</b>	<b>1.06</b>	<b>1.15</b>	<b>87.6%</b>	<b>87.9%</b>	<b>87.4%</b>	<b>68.3%</b>	<b>31.7%</b>	<b>90.1%</b>	<b>55.4%</b>
HCA, Nurse's Aide, etc.	4,064	4,613	1.14	20.2%	79.8%	1.05	1.16	87.4%	87.4%	87.5%	61.9%	38.1%	86.5%	55.7%
HCA (Student Nurse/Midwife COVID-19)	5	9	1.81	22.2%	77.8%	3.64	1.59	0.0%	0.0%	0.0%	22.2%	77.8%	50.0%	14.3%
Health & Social Care Assistants	33	37	1.12	27.0%	73.0%	1.18	1.10	81.1%	81.1%	77.8%	83.8%	16.2%	90.0%	81.5%
<b>Health Care Assistants</b>	<b>4,102</b>	<b>4,659</b>	<b>1.14</b>	<b>20.2%</b>	<b>79.8%</b>	<b>1.05</b>	<b>1.16</b>	<b>87.2%</b>	<b>86.7%</b>	<b>87.3%</b>	<b>62.0%</b>	<b>38.0%</b>	<b>86.4%</b>	<b>55.8%</b>
<b>Home Help</b>	<b>3,366</b>	<b>4,899</b>	<b>1.46</b>	<b>3.6%</b>	<b>96.4%</b>	<b>1.39</b>	<b>1.46</b>	<b>72.0%</b>	<b>35.4%</b>	<b>73.4%</b>	<b>42.2%</b>	<b>57.8%</b>	<b>57.1%</b>	<b>41.6%</b>
<b>Care, other</b>	<b>168</b>	<b>214</b>	<b>1.27</b>	<b>34.1%</b>	<b>65.9%</b>	<b>1.60</b>	<b>1.15</b>	<b>75.2%</b>	<b>43.8%</b>	<b>91.5%</b>	<b>64.0%</b>	<b>36.0%</b>	<b>57.5%</b>	<b>67.4%</b>

Patient & Client Care	7,636	9,772	1.28	12.2%	87.8%	1.12	1.31	79.3%	76.6%	79.7%	52.1%	47.9%	80.4%	48.2%
-----------------------	-------	-------	------	-------	-------	------	------	-------	-------	-------	-------	-------	-------	-------

## Employment by WTE, Headcount, Gender, Full-Time /Part-Time etc.: Jul 2021

Social Care Older Persons Services CHO	WTE	Headcount	WTE: no.	% Male	% female	Male WTE: no.	Female WTE: no.	% Total Perm	% Male Perm	% Female Perm	% Total Full Time	% Total Part Time	% Male FT	% Female FT
<b>Overall</b>	<b>13,448</b>	<b>16,471</b>	<b>1.22</b>	<b>13.1%</b>	<b>86.9%</b>	<b>1.11</b>	<b>1.24</b>	<b>82.6%</b>	<b>79.6%</b>	<b>83.0%</b>	<b>58.5%</b>	<b>41.5%</b>	<b>82.3%</b>	<b>54.9%</b>
CHO 1	1,908	2,303	1.21	12.3%	87.7%	1.17	1.21	73.3%	73.3%	71.7%	42.9%	57.1%	67.3%	39.4%
CHO 2	1,559	1,857	1.19	12.3%	87.7%	1.05	1.21	90.8%	90.8%	91.4%	48.8%	51.2%	88.2%	43.3%
CHO 3	1,121	1,442	1.29	11.8%	88.2%	1.07	1.32	90.6%	90.6%	91.3%	53.0%	47.0%	88.2%	48.3%
CHO 4	2,892	3,817	1.32	11.1%	88.9%	1.18	1.34	64.9%	64.9%	66.8%	74.3%	25.7%	85.1%	72.9%
CHO 5	1,659	1,996	1.20	9.7%	90.3%	1.11	1.21	96.4%	96.4%	97.1%	46.3%	53.7%	77.8%	43.0%
CHO 6	796	872	1.10	25.0%	75.0%	1.06	1.11	89.9%	89.9%	88.5%	77.3%	22.7%	89.0%	73.4%
CHO 7	1,017	1,165	1.15	16.3%	83.7%	1.06	1.16	90.6%	90.6%	91.4%	67.6%	32.4%	85.3%	64.2%
CHO 8	1,473	1,864	1.27	11.9%	88.1%	1.17	1.28	89.3%	89.3%	89.7%	47.5%	52.5%	74.7%	43.8%
CHO 9	948	1,074	1.13	19.8%	80.2%	1.07	1.15	88.5%	88.5%	89.7%	74.1%	25.9%	87.3%	70.8%
other Community Services	75	81	1.08	25.9%	74.1%	1.05	1.09	86.4%	86.4%	88.3%	86.4%	13.6%	90.5%	85.0%

Summary Staff Movement: July 2021

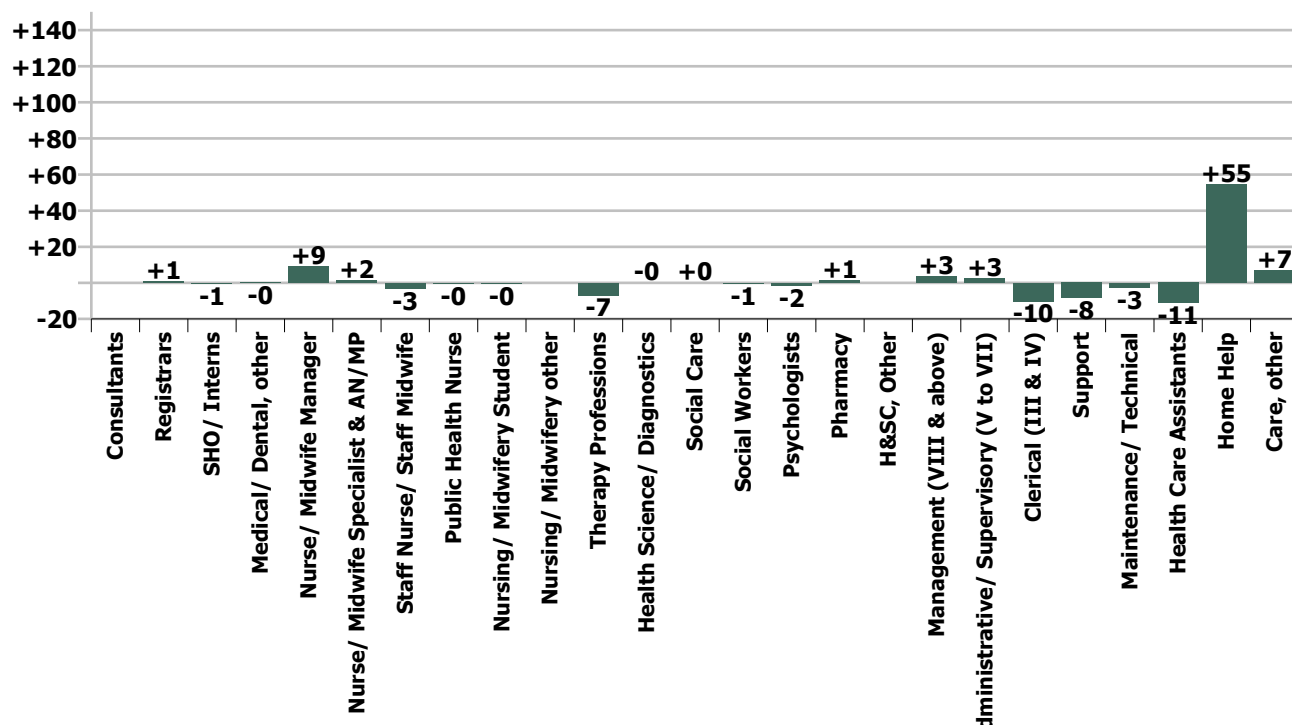
Month-on-month  
Summary

WTE change since Jun 21	% change since Jun 21	overall	Consultants	Registrars	SHO/ Interns	Medical/ Dental, other	Medical & Dental	Nurse/ Midwife Manager	Nurse/ Midwife Specialist & AN/MP	Staff Nurse/ Staff Midwife	Public Health Nurse	Nursing/ Midwifery Student	Nursing/ Midwifery other	Nursing & Midwifery	Therapy Professions	Health Science/ Diagnostics	Social Care	Social Workers	Psychologists	Pharmacy	H&SC, Other	Health & Social Care Professionals	Management (VIII & above)	Administrative Supervisory (V to VII)	Clerical (III & IV)	Management & Administrative	Support	Maintenance/ Technical	General Support	Health Care Assistants	Home Help	Care, other	Patient & Client Care
Overall	+0.3%	+34	0.0	+0.6	-0.5	-0.2	-0.1	+9.1	+1.5	-3.0	-0.3	-0.4	0.0	+6.9	-6.9	-0.0	+0.0	-0.6	-1.6	+1.2	0.0	-7.8	+3.4	+2.6	-10.1	-4.2	-8.4	-2.7	-11.1	-11.2	+54.7	+6.7	+50.2
CHO 1	-0.3%	-5				-0.0	0.0	-1.2	+1.1	-5.2				-5.4	+0.8	-0.0		-1.1				-0.4		+1.0	-2.2	-1.2	+0.5		+0.5	-6.9	+7.9	+0.4	+1.4
CHO 2	+1.5%	+23					0.0	+0.8	-0.0	-2.9				-2.1	-3.1			+0.0		-0.1		-3.2		+1.8	-3.4	-1.6	-1.9	-1.0	-2.9	+3.1	+26.7	+3.1	+32.9
CHO 3	+2.9%	+32					0.0	+0.1	-0.0	+3.9				+4.0	-0.1			-0.0				-0.1	+0.0	+1.7	+1.1	+2.9	-2.2	-0.6	-2.9	-0.9	+29.9	-0.8	+28.1
CHO 4	-0.6%	-19		-1.1		-0.2	-1.2	+1.7		+0.4				+2.0	-3.4			-0.4		+0.4		-3.5			-0.7	-0.7	-3.0	+0.0	-3.0	+1.1	-13.7	+0.5	-12.1
CHO 5	+0.2%	+4					0.0	+2.8	+0.0	-1.0		-1.0		+0.8	+0.9			-0.1		-0.3		+0.5		-0.8	-0.3	-1.1	-0.3	-0.0	-0.3	-1.0	+5.0	+0.0	+4.0
CHO 6	-1.1%	-9				+0.0	0.0	+3.4		-3.6				-0.1	+0.1			+0.4	-1.6	+0.9		-0.2	+0.9	-0.0	-0.5	+0.4	-1.3	-0.9	-2.2	-6.4		-0.1	-6.5
CHO 7	-0.2%	-2					0.0	+0.1	-0.0	+2.6		+0.6		+3.3	-0.8			+0.9				+0.1		+0.6	-2.0	-1.5	-0.1	-0.1	-3.7	-1.5	+1.0	-4.2	
CHO 8	-0.2%	-3				-0.0	-0.1	-0.2	+0.5	-0.2	-0.3			-0.2	+0.2			+0.2		+0.3		+0.7	+0.6	-3.4	+0.4	-2.4	-0.0	-0.1	-0.2	-4.1	+0.5	+2.5	-1.1
CHO 9	+1.5%	+14		+1.7	-0.5		+1.2	+1.5		+3.1				+4.6	-1.4			-0.3				-1.7	+0.9	+2.1	-0.5	+2.4	-0.1		-0.1	+7.7		+0.0	+7.7
other Community Services	-1.8%	-1																				+0.9	-0.3	-2.0	-1.3								0.0
		+0.3%		+6.0%	-3.9%	-0.3%	-0.1%	+1.2%	+4.0%	-0.1%	-2.3%	-23.2%		+0.2%	-2.0%	-0.6%	+0.0%	-0.6%	-76.2%	+6.6%		-1.7%	+4.3%	+1.4%	-1.7%	-0.5%	-1.1%	-2.8%	-1.2%	-0.3%	+1.7%	+4.1%	+0.7%

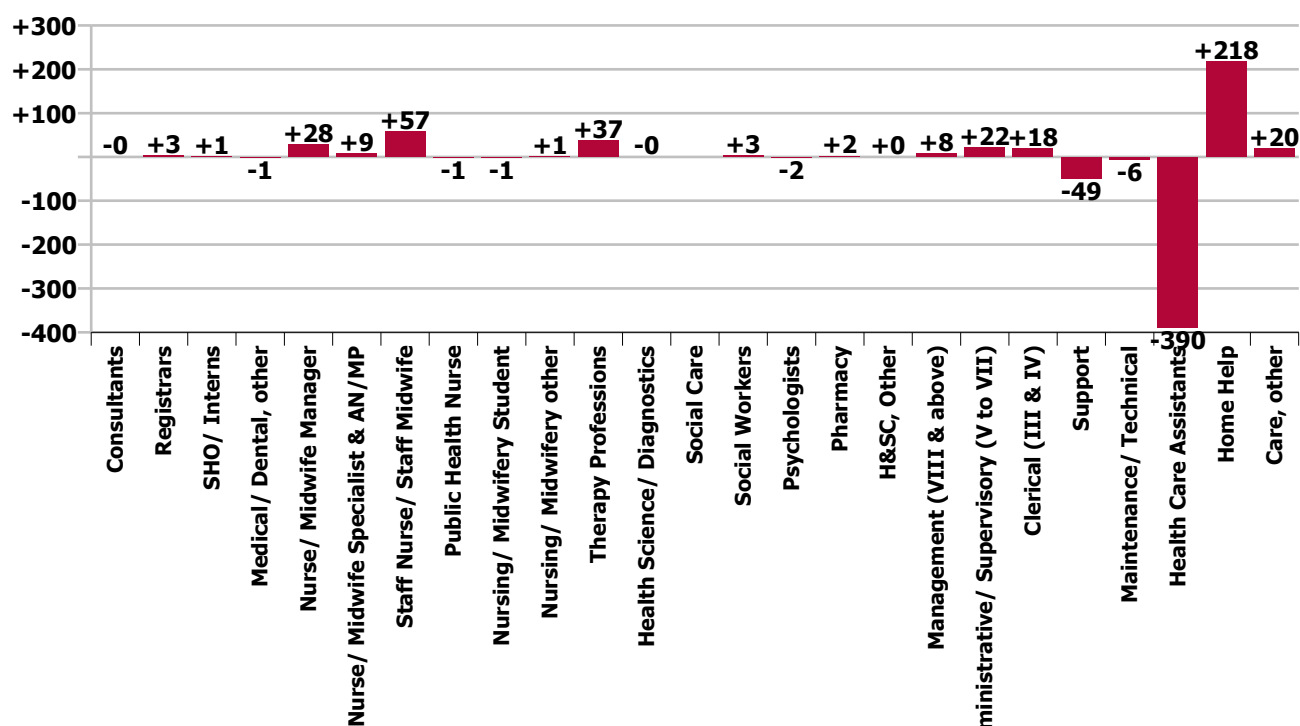
Year-on-year Summary

WTE change since Jul 20	% change since Jul 20	overall	Consultants	Registrars	SHO/ Interns	Medical/ Dental, other	Medical & Dental	Nurse/ Midwife Manager	Nurse/ Midwife Specialist & AN/MP	Staff Nurse/ Staff Midwife	Public Health Nurse	Nursing/ Midwifery Student	Nursing/ Midwifery other	Nursing & Midwifery	Therapy Professions	Health Science/ Diagnostics	Social Care	Social Workers	Psychologists	Pharmacy	H&SC, Other	Health & Social Care Professionals	Management (VIII & above)	Administrative Supervisory (V to VII)	Clerical (III & IV)	Management & Administrative	Support	Maintenance/ Technical	General Support	Health Care Assistants	Home Help	Care, other	Patient & Client Care
Overall	-0.2%	-25	-0	+3	+1	-1	+2	+28	+9	+57	-1	-1	+1	+92	+37	-0		+3	-2	+2	+0	+40	+8	+22	+18	+48	-49	-6	-56	-390	+218	+20	
CHO 1	+1.2%	+23				-3	-3	-2	+2	+16				+16	+5	+0		-2				+3		+2	+0	+2	-3		-3	-71	+81	-2	
CHO 2	-2.4%	-39				+0	+0	+5	-0	+7				+12	-1			+0			-0		-0	+1	+1	-7	-5	+1	-2	-1	-57	-2	+14
CHO 3	+6.9%	+73						+0	+3	+30				+33	+8	-0		-1				+6	+0	-1	+8	+8	-2	-0	-2	-5	+32	+1	
CHO 4	+0.9%	+25		-1	+1	-1	-1	+1	-0	+5	+1			+7	+2			+3			+1	+6	+3	+2	+1	+6	-8	+1	-7	-45	+55	+5	
CHO 5	-1.6%	-28				+6	+6	+5	+2	-2	-2			+2	-8			-0			-1	-9	+0	+9	+2	+11	-36	-4	-40	-58	+62	-3	
CHO 6	-5.4%	-45		+1		-2	-1	-4		-9				-12	+5	+3		-2	-2	+1	+1	+3	+2	+2	-1	+3	-1	-1	-2	-34		-1	
CHO 7	-1.6%	-17				-2	-2	+18	-2	+1		-1		+16	+4			-1			-1	+1	+1	+2	+1	+4	+7		+7	-37	-7	+1	
CHO 8	-2.4%	-37				-0	-0	+3	+4	+10	+0		+2	+19	+8			+2		+2		+12	-1	-0	-3	-4	-3	-0	-4	-60	-2	+3	
CHO 9	+1.3%	+13	-0	+3	+0		+3	+2	-0	-1			-1	-0	+13			+5			+0	+18	+2	+6	+10	+17	-3		-3	-23		+1	
other Community Services	+11.7%	+8																				+1	-1	+7		+7						+1	
		-0.2%	-4.3%	+29.4%	+9.7%	-1.6%	+2.0%	+3.8%	+27.2%	+2.2%	-10.3%	-45.5%	+33.3%	+2.7%	+12.2%	-3.0%		+3.4%	-76.2%	+11.8%	+13.2%	+9.5%	+11.1%	+12.8%	+3.3%	+6.0%	-5.9%	-6.4%	-5.9%	-8.7%	+6.9%	+13.3%	-2.0%

### Staff Group change since: Jun 2021

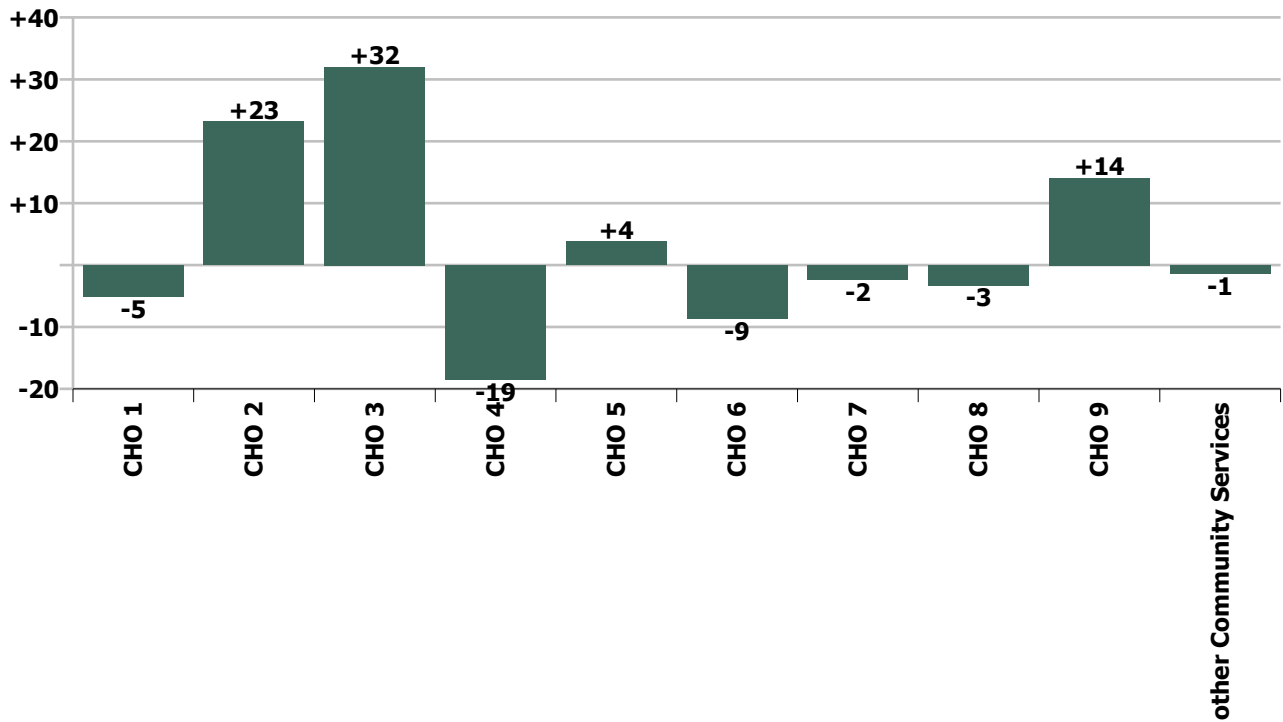


### Staff Group change since: Jul 2020

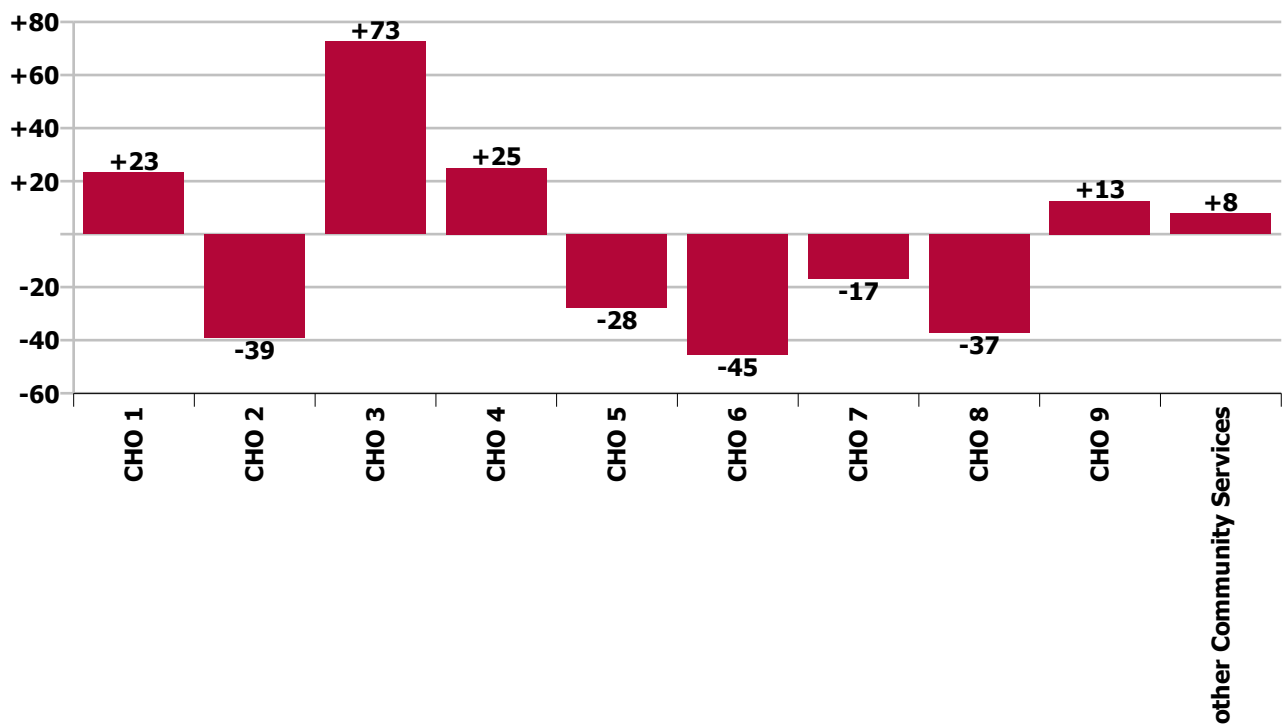




CHO change since: Jun 2021



CHO change since: Jul 2020



## Longitudinal Employment Levels by Grade Group - Dec 2016 to Jul 2021

Jul 2021 (Dec 2015 figure: 12,607)	WTE Jul 2021	WTE change since Dec 16	WTE change since Dec 17	WTE change since Dec 18	WTE change since Dec 19	WTE change since Dec 20	WTE change since Apr 21	% change since Dec 16	% change since Dec 17	% change since Dec 18	% change since Dec 19	% change since Dec 20	% change since Apr 21
<b>Overall</b>	<b>13,448</b>	<b>+966</b>	<b>+345</b>	<b>+143</b>	<b>+216</b>	<b>+33</b>	<b>+53</b>	<b>+7.7%</b>	<b>+2.6%</b>	<b>+1.1%</b>	<b>+1.6%</b>	<b>+0.2%</b>	<b>+0.4%</b>
Consultant Medicine	4	-5	-5	+1	+1	-0	-0	-53.0%	-52.2%	+22.2%	+22.2%	-0.5%	-4.3%
Consultant Psychiatry		-1	-1					-100.0%	-100.0%	-100.0%	-100.0%	-100.0%	-100.0%
Consultant Surgery		-1	-0	-0				-100.0%	-100.0%	-100.0%	-100.0%	-100.0%	-100.0%
<b>Consultants</b>	<b>4</b>	<b>-7</b>	<b>-6</b>	<b>+1</b>	<b>+1</b>	<b>-0</b>	<b>-0</b>	<b>-59.9%</b>	<b>-56.7%</b>	<b>+18.3%</b>	<b>+22.2%</b>	<b>-0.5%</b>	<b>-4.3%</b>
Registrar	6	+1	-1	-1	-0	+1	-0	+17.6%	-13.7%	-12.0%	-0.5%	+11.0%	-0.5%
Senior Registrar	1	+0	+0	-1	+0	+0	-0	+8.0%	+8.0%	-46.0%	+8.0%	+8.0%	-4.4%
Specialist Registrar	4	+2	+3	+3	+2	+2	+1	+83.5%	+267.0%	+267.0%	+83.5%	+83.5%	+22.3%
<b>Registrars</b>	<b>11</b>	<b>+3</b>	<b>+2</b>	<b>+1</b>	<b>+2</b>	<b>+2</b>	<b>+1</b>	<b>+32.0%</b>	<b>+18.1%</b>	<b>+8.4%</b>	<b>+18.1%</b>	<b>+27.0%</b>	<b>+5.5%</b>
<b>SHO/ Interns</b>	<b>13</b>	<b>+3</b>	<b>+3</b>	<b>+1</b>	<b>-2</b>	<b>-1</b>	<b>+1</b>	<b>+32.4%</b>	<b>+32.9%</b>	<b>+10.4%</b>	<b>-12.2%</b>	<b>-3.7%</b>	<b>+11.1%</b>
Other Medical	84	-2	-2	-2	-13	-20	-3	-2.6%	-2.6%	-2.0%	-13.2%	-19.4%	-3.2%
<b>Medical/ Dental, other</b>	<b>84</b>	<b>-2</b>	<b>-2</b>	<b>-2</b>	<b>-13</b>	<b>-20</b>	<b>-3</b>	<b>-2.6%</b>	<b>-2.6%</b>	<b>-2.0%</b>	<b>-13.2%</b>	<b>-19.4%</b>	<b>-3.2%</b>
<b>Medical &amp; Dental</b>	<b>112</b>	<b>-3</b>	<b>-3</b>	<b>+1</b>	<b>-12</b>	<b>-18</b>	<b>-1</b>	<b>-2.5%</b>	<b>-2.6%</b>	<b>+0.9%</b>	<b>-9.7%</b>	<b>-13.9%</b>	<b>-1.0%</b>
Clinical Nurse/ Midwife Manager	560	+26	+32	+36	+52	+24	+10	+4.8%	+6.1%	+6.9%	+10.2%	+4.5%	+1.9%
Director Nursing/Midwifery, Assistant	104	+16	+12	+17	+1	-3	-0	+18.3%	+13.0%	+19.5%	+0.9%	-2.5%	-0.2%
Director of Nursing/Midwifery	104	+19	+22	+22	+6	-0	-5	+22.7%	+26.4%	+26.2%	+6.1%	-0.0%	-4.2%
<b>Nurse/ Midwife Manager</b>	<b>768</b>	<b>+61</b>	<b>+66</b>	<b>+75</b>	<b>+59</b>	<b>+22</b>	<b>+5</b>	<b>+8.6%</b>	<b>+9.3%</b>	<b>+10.8%</b>	<b>+8.3%</b>	<b>+2.9%</b>	<b>+0.7%</b>
Advanced Nurse/ Midwife Practitioner	19	+16	+16	+12	+9	+3	+1	+547.0%	+547.0%	+178.1%	+81.1%	+16.8%	+6.2%
Clinical Nurse/ Midwife Specialist	21	+8	+9	+4	+5	-1	+0	+63.8%	+83.0%	+22.5%	+30.3%	-4.8%	+2.4%
<b>Nurse/ Midwife Specialist &amp; AN/MP</b>	<b>40</b>	<b>+24</b>	<b>+26</b>	<b>+16</b>	<b>+13</b>	<b>+2</b>	<b>+2</b>	<b>+157.2%</b>	<b>+180.9%</b>	<b>+68.2%</b>	<b>+50.9%</b>	<b>+4.6%</b>	<b>+4.2%</b>
Graduate Nursing/ Midwifery								-100.0%	-100.0%	-100.0%	-100.0%	-100.0%	-100.0%
Staff Midwives	1	+0	-1	+1	+1	-0	-0	+102.5%	-55.0%	-100.0%	-100.0%	-8.0%	-10.0%
Staff Nurse [Intellectual Disability]	1		+0		+1				+29.9%		-100.0%		
Staff Nurse [Psychiatric]	7	+2	+2	+2	+2	+2	+0	+28.8%	+28.8%	+28.3%	+44.8%	+37.5%	+5.3%
Staff Nurses [General/ Children's]	2,662	+79	+101	+57	+90	+45	+33	+3.1%	+3.9%	+2.2%	+3.5%	+1.7%	+1.2%
<b>Staff Nurse/ Staff Midwife</b>	<b>2,671</b>	<b>+81</b>	<b>+102</b>	<b>+60</b>	<b>+94</b>	<b>+47</b>	<b>+33</b>	<b>+3.1%</b>	<b>+4.0%</b>	<b>+2.3%</b>	<b>+3.7%</b>	<b>+1.8%</b>	<b>+1.2%</b>
<b>Public Health Nurse</b>	<b>12</b>	<b>-2</b>	<b>-3</b>	<b>-2</b>	<b>-1</b>	<b>-1</b>	<b>+0</b>	<b>-15.8%</b>	<b>-18.8%</b>	<b>-11.6%</b>	<b>-10.6%</b>	<b>-10.9%</b>	<b>+3.4%</b>
Post-registration Nurse/ Midwife Student					-1			-100.0%	-100.0%	-100.0%	-100.0%	-100.0%	-100.0%
Nursing/ Midwifery awaiting registration	1	+1	-13	+1	+0	+0	-0	-100.0%	-90.1%	-100.0%	+39.0%	+3.0%	-6.7%
<b>Nursing/ Midwifery Student</b>	<b>1</b>	<b>+1</b>	<b>-13</b>	<b>+1</b>	<b>-1</b>	<b>+0</b>	<b>-0</b>	<b>-100.0%</b>	<b>-90.1%</b>	<b>-100.0%</b>	<b>-30.5%</b>	<b>+3.0%</b>	<b>-6.7%</b>
Nursing Education/Clinical	4	+3	+3	+3	+3	+0	+0	+300.0%	+300.0%	+300.0%	+300.0%	+0.5%	+5.5%
<b>Nursing/ Midwifery other</b>	<b>4</b>	<b>+3</b>	<b>+3</b>	<b>+3</b>	<b>+3</b>	<b>+0</b>	<b>+0</b>	<b>+300.0%</b>	<b>+300.0%</b>	<b>+300.0%</b>	<b>+300.0%</b>	<b>+0.5%</b>	<b>+5.5%</b>
<b>Nursing &amp; Midwifery</b>	<b>3,496</b>	<b>+169</b>	<b>+181</b>	<b>+154</b>	<b>+168</b>	<b>+69</b>	<b>+40</b>	<b>+5.1%</b>	<b>+5.4%</b>	<b>+4.6%</b>	<b>+5.0%</b>	<b>+2.0%</b>	<b>+1.2%</b>
Dietitians	25	+9	+7	+7	+8	+7	-0	+55.1%	+40.4%	+42.0%	+50.0%	+36.6%	-0.9%
Occupational Therapists	121	+25	+26	+16	+7	+8	-3	+25.8%	+27.3%	+15.9%	+6.5%	+6.7%	-2.7%
Physiotherapists	150	+34	+29	+23	+26	+18	+3	+29.4%	+23.8%	+17.7%	+21.3%	+13.5%	+2.1%
Podiatrists & Chiropodists	13	-1	-3	-2	+1	+1	-1	-9.4%	-17.1%	-11.0%	+10.5%	+5.2%	-5.6%

Jul 2021 (Dec 2015 figure: 12,607)	WTE Jul 2021	WTE change since Dec 16	WTE change since Dec 17	WTE change since Dec 18	WTE change since Dec 19	WTE change since Dec 20	WTE change since Apr 21	% change since Dec 16	% change since Dec 17	% change since Dec 18	% change since Dec 19	% change since Dec 20	% change since Apr 21
<b>Overall</b>	<b>13,448</b>	<b>+966</b>	<b>+345</b>	<b>+143</b>	<b>+216</b>	<b>+33</b>	<b>+53</b>	<b>+7.7%</b>	<b>+2.6%</b>	<b>+1.1%</b>	<b>+1.6%</b>	<b>+0.2%</b>	<b>+0.4%</b>
Speech & Language Therapists	28	+7	+4	+5	+5	+8	+2	+36.5%	+16.7%	+20.3%	+20.1%	+40.0%	+6.8%
<b>Therapy Professions</b>	<b>336</b>	<b>+74</b>	<b>+63</b>	<b>+49</b>	<b>+48</b>	<b>+41</b>	<b>+1</b>	<b>+28.0%</b>	<b>+23.1%</b>	<b>+17.2%</b>	<b>+16.6%</b>	<b>+13.7%</b>	<b>+0.2%</b>
Clinical Measurement				-0	-0	-0		-100.0%	-100.0%	-100.0%	-100.0%	-100.0%	-100.0%
Medical Science		-1						-100.0%	-100.0%	-100.0%	-100.0%	-100.0%	-100.0%
Phlebotomists		-1	-1					-100.0%	-100.0%	-100.0%	-100.0%	-100.0%	-100.0%
Radiographers	5	-2	-2	-1	-1	-0	+0	-30.7%	-31.6%	-12.4%	-16.9%	-0.8%	+2.1%
<b>Health Science/ Diagnostics</b>	<b>5</b>	<b>-4</b>	<b>-3</b>	<b>-1</b>	<b>-1</b>	<b>-0</b>	<b>+0</b>	<b>-45.9%</b>	<b>-40.0%</b>	<b>-13.7%</b>	<b>-19.7%</b>	<b>-3.9%</b>	<b>+2.1%</b>
<b>Social Care</b>	<b>3</b>	<b>+0</b>	<b>+0</b>				<b>-0</b>	<b>+1.5%</b>	<b>+2.6%</b>				<b>-1.8%</b>
<b>Social Workers</b>	<b>101</b>	<b>+14</b>	<b>+17</b>	<b>+6</b>	<b>+3</b>	<b>+1</b>	<b>-2</b>	<b>+16.6%</b>	<b>+20.6%</b>	<b>+6.4%</b>	<b>+2.7%</b>	<b>+1.2%</b>	<b>-1.9%</b>
<b>Psychologists</b>	<b>1</b>		<b>+1</b>		<b>-2</b>	<b>-1</b>	<b>-2</b>		<b>-100.0%</b>		<b>-76.2%</b>	<b>-54.5%</b>	<b>-76.2%</b>
<b>Pharmacy</b>	<b>20</b>	<b>+5</b>	<b>+4</b>	<b>+3</b>	<b>+4</b>	<b>+2</b>	<b>+1</b>	<b>+34.5%</b>	<b>+27.5%</b>	<b>+19.9%</b>	<b>+28.3%</b>	<b>+13.7%</b>	<b>+4.7%</b>
Other Health & Social Care	1	-1	-1	-1	+0			-60.3%	-60.3%	-60.3%	+50.0%		
Play Therapists/ Specialists	1	-1						-37.1%					
<b>H&amp;SC, Other</b>	<b>2</b>	<b>-1</b>	<b>-1</b>	<b>-1</b>	<b>+0</b>			<b>-47.8%</b>	<b>-34.7%</b>	<b>-34.7%</b>	<b>+13.2%</b>		
<b>Health &amp; Social Care Professionals</b>	<b>466</b>	<b>+87</b>	<b>+81</b>	<b>+57</b>	<b>+52</b>	<b>+43</b>	<b>-2</b>	<b>+23.0%</b>	<b>+21.0%</b>	<b>+13.9%</b>	<b>+12.6%</b>	<b>+10.2%</b>	<b>-0.4%</b>
Executive Management	16	+9	+8	+6	+4	+1	+0	+125.4%	+99.2%	+57.8%	+32.5%	+6.7%	+0.8%
Senior Management (VIII & GM)	66	+26	+29	+17	+3	+2	+1	+63.3%	+78.8%	+36.0%	+5.3%	+3.3%	+1.2%
<b>Management (VIII &amp; above)</b>	<b>82</b>	<b>+34</b>	<b>+37</b>	<b>+23</b>	<b>+7</b>	<b>+3</b>	<b>+1</b>	<b>+72.5%</b>	<b>+82.4%</b>	<b>+39.7%</b>	<b>+9.7%</b>	<b>+3.9%</b>	<b>+1.1%</b>
Middle Management (V-VII)	191	+74	+63	+49	+27	+15	-1	+63.7%	+49.6%	+34.6%	+16.5%	+8.6%	-0.5%
Other Administrative		-1	-1	-1	-1			-100.0%	-100.0%	-100.0%	-100.0%	-100.0%	-100.0%
<b>Administrative/ Supervisory (V to VII)</b>	<b>191</b>	<b>+73</b>	<b>+62</b>	<b>+48</b>	<b>+26</b>	<b>+15</b>	<b>-1</b>	<b>+62.3%</b>	<b>+48.4%</b>	<b>+33.7%</b>	<b>+15.8%</b>	<b>+8.6%</b>	<b>-0.5%</b>
<b>Clerical (III &amp; IV)</b>	<b>584</b>	<b>+101</b>	<b>+75</b>	<b>+19</b>	<b>+13</b>	<b>-3</b>	<b>-12</b>	<b>+20.8%</b>	<b>+14.7%</b>	<b>+3.4%</b>	<b>+2.2%</b>	<b>-0.5%</b>	<b>-2.1%</b>
<b>Management &amp; Administrative</b>	<b>857</b>	<b>+208</b>	<b>+174</b>	<b>+91</b>	<b>+46</b>	<b>+15</b>	<b>-12</b>	<b>+32.1%</b>	<b>+25.5%</b>	<b>+11.8%</b>	<b>+5.7%</b>	<b>+1.8%</b>	<b>-1.4%</b>
Catering	213	-0	+1	-3	-9	-4	-4	-0.2%	+0.4%	-1.4%	-3.9%	-1.8%	-1.7%
Household Services	473	-91	-72	-45	-20	-7	-7	-16.1%	-13.2%	-8.8%	-4.0%	-1.4%	-1.5%
Other Support	28	-12	-15	-9	-6	-1	+1	-29.1%	-34.4%	-24.9%	-16.4%	-2.2%	+2.0%
Portering	75	-10	-9	-5	-7	-2	-2	-12.1%	-10.9%	-6.1%	-8.3%	-2.5%	-2.2%
<b>Support</b>	<b>788</b>	<b>-113</b>	<b>-95</b>	<b>-63</b>	<b>-41</b>	<b>-13</b>	<b>-12</b>	<b>-12.6%</b>	<b>-10.8%</b>	<b>-7.4%</b>	<b>-4.9%</b>	<b>-1.6%</b>	<b>-1.5%</b>
Maintenance	88	-15	-13	-14	-10	-6	-1	-14.6%	-13.1%	-13.6%	-10.2%	-6.7%	-1.5%
Technical Services	4	+4	+4	+4	+4	+4		-100.0%	-100.0%	-100.0%	-100.0%	-100.0%	
<b>Maintenance/ Technical</b>	<b>92</b>	<b>-11</b>	<b>-9</b>	<b>-10</b>	<b>-6</b>	<b>-2</b>	<b>-1</b>	<b>-10.8%</b>	<b>-9.2%</b>	<b>-9.7%</b>	<b>-6.1%</b>	<b>-2.5%</b>	<b>-1.4%</b>
<b>General Support</b>	<b>881</b>	<b>-125</b>	<b>-105</b>	<b>-73</b>	<b>-47</b>	<b>-15</b>	<b>-13</b>	<b>-12.4%</b>	<b>-10.6%</b>	<b>-7.6%</b>	<b>-5.1%</b>	<b>-1.7%</b>	<b>-1.5%</b>
HCA, Nurse's Aide, etc.	4,064	+17	-22	-67	+42	-5	+4	+0.4%	-0.5%	-1.6%	+1.0%	-0.1%	+0.1%
HCA (Student Nurse/Midwife COVID-19)	5	+5	+5	+5	+5	-17	-7	-100.0%	-100.0%	-100.0%	-100.0%	-77.6%	-56.8%
Health & Social Care Assistants	33	+7	+7	+9	+12	+6	+4	+27.3%	+27.7%	+36.4%	+55.4%	+21.2%	+15.5%
<b>Health Care Assistants</b>	<b>4,102</b>	<b>+29</b>	<b>-10</b>	<b>-54</b>	<b>+59</b>	<b>-16</b>	<b>+2</b>	<b>+0.7%</b>	<b>-0.2%</b>	<b>-1.3%</b>	<b>+1.4%</b>	<b>-0.4%</b>	<b>+0.0%</b>
<b>Home Help</b>	<b>3,366</b>	<b>+570</b>	<b>+10</b>	<b>-55</b>	<b>-76</b>	<b>-66</b>	<b>+33</b>	<b>+20.4%</b>	<b>+0.3%</b>	<b>-1.6%</b>	<b>-2.2%</b>	<b>-1.9%</b>	<b>+1.0%</b>

Jul 2021 (Dec 2015 figure: 12,607)	WTE Jul 2021	WTE change since Dec 16	WTE change since Dec 17	WTE change since Dec 18	WTE change since Dec 19	WTE change since Dec 20	WTE change since Apr 21	% change since Dec 16	% change since Dec 17	% change since Dec 18	% change since Dec 19	% change since Dec 20	% change since Apr 21
Overall	13,448	+966	+345	+143	+216	+33	+53	+7.7%	+2.6%	+1.1%	+1.6%	+0.2%	+0.4%
Care, other	168	+29	+17	+22	+26	+22	+6	+20.9%	+11.0%	+14.8%	+18.6%	+14.8%	+3.8%
Patient & Client Care	7,636	+629	+17	-86	+9	-60	+41	+9.0%	+0.2%	-1.1%	+0.1%	-0.8%	+0.5%