

# Social Care Older Persons Services Employment Report: November 2020

## Employment by Staff Group

Nov 2020 (Dec 2019 figure: 13,233)	WTE Oct 2020	WTE Nov 2020	WTE change since Oct 20	% change since Oct 20	WTE change since Dec 19	WTE change since Nov 19
<b>Overall</b>	<b>13,342</b>	<b>13,327</b>	<b>-15</b>	<b>-0.1%</b>	<b>+95</b>	<b>+113</b>
Consultants	5	5	+0	+0.4%	+1	+1
Registrars	10	10				
SHO/ Interns	14	14			-1	-1
Medical/ Dental, other	99	91	-8	-7.9%	-5	+7
<b>Medical &amp; Dental</b>	<b>127</b>	<b>119</b>	<b>-8</b>	<b>-6.2%</b>	<b>-5</b>	<b>+7</b>
Nurse/ Midwife Manager	748	743	-5	-0.6%	+34	+27
Nurse/ Midwife Specialist & AN/MP	38	40	+2	+5.7%	+13	+14
Staff Nurse/ Staff Midwife	2,620	2,624	+4	+0.2%	+48	+56
Public Health Nurse	14	13	-0	-1.8%	+0	+1
Post-registration Nurse/ Midwife Student				-100.0%	-1	-1
Nursing/ Midwifery awaiting registration	2	1.50			+1	+1
Nursing/ Midwifery Student	2	2			-1	-1
Nursing/ Midwifery other	3	3	+0	+8.3%	+2	+2
<b>Nursing &amp; Midwifery</b>	<b>3,423</b>	<b>3,425</b>	<b>+2</b>	<b>+0.0%</b>	<b>+96</b>	<b>+100</b>
Therapy Professions	300	297	-3	-1.0%	+8	+12
Health Science/ Diagnostics	5	5	-0	-1.5%	-1	-1
Social Care	3	3	+0	+1.1%	+0	+0
Social Workers	99	102	+4	+3.7%	+4	+4
Psychologists	1	1	-0	-24.1%	-1	-1
Pharmacy	18	17	-1	-5.9%	+2	+2
H&SC, Other	2	2	+0	+2.7%	+0	+0
<b>Health &amp; Social Care Professionals</b>	<b>427</b>	<b>426</b>	<b>-1</b>	<b>-0.2%</b>	<b>+12</b>	<b>+16</b>
Management (VIII & above)	79	79	+0	+0.0%	+5	+6
Administrative/ Supervisory (V to VII)	169	176	+7	+4.2%	+11	+10
Clerical (III & IV)	575	572	-3	-0.5%	+1	+1
<b>Management &amp; Administrative</b>	<b>823</b>	<b>827</b>	<b>+4</b>	<b>+0.5%</b>	<b>+16</b>	<b>+18</b>
Support	799	803	+5	+0.6%	-26	-32
Maintenance/ Technical	96	94	-2	-2.0%	-4	-5
<b>General Support</b>	<b>895</b>	<b>897</b>	<b>+3</b>	<b>+0.3%</b>	<b>-30</b>	<b>-38</b>
Health Care Assistants	4,142	4,123	-20	-0.5%	+79	+57
Home Help	3,355	3,358	+3	+0.1%	-83	-54
Care, other	149	151	+2	+1.3%	+9	+7
<b>Patient &amp; Client Care</b>	<b>7,647</b>	<b>7,632</b>	<b>-15</b>	<b>-0.2%</b>	<b>+5</b>	<b>+10</b>

## Social Care Older Persons Services Employment by Administration (HSE / S38): November 2020

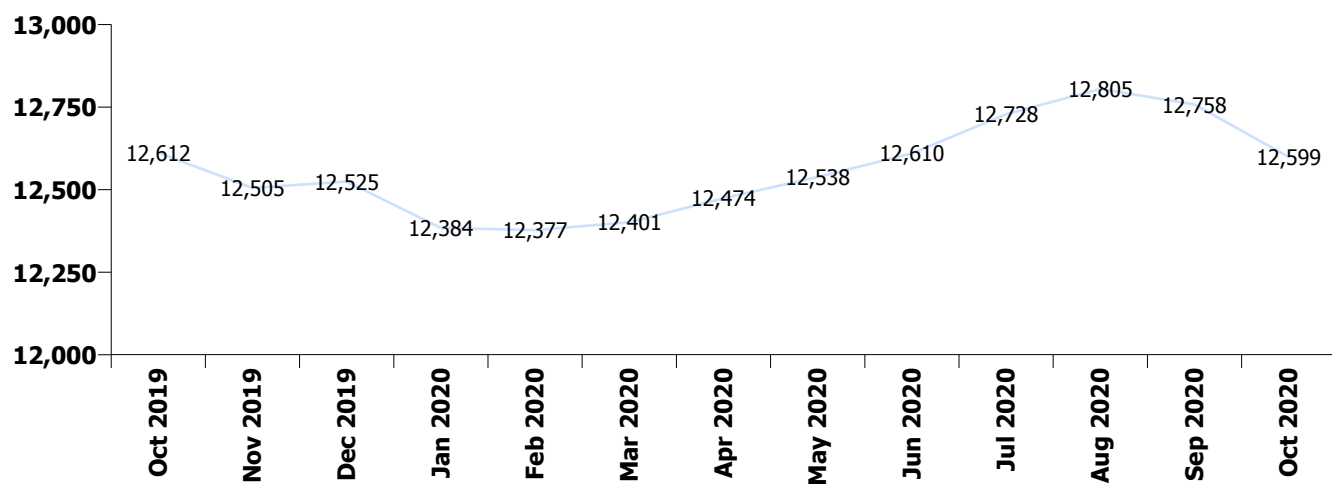
Nov 2020 (Dec 2019 figure: 13,233)	WTE Oct 2020	WTE Nov 2020	WTE change since Oct 20	% change since Oct 20	WTE change since Dec 19	WTE change since Nov 19
<b>Overall</b>	<b>13,342</b>	<b>13,327</b>	<b>-15</b>	<b>-0.1%</b>	<b>+95</b>	<b>+113</b>
<b>HSE</b>	<b>12,599</b>	<b>12,588</b>	<b>-10</b>	<b>-0.1%</b>	<b>+64</b>	<b>+83</b>
<b>Section 38</b>	<b>744</b>	<b>739</b>	<b>-5</b>	<b>-0.6%</b>	<b>+31</b>	<b>+30</b>

### HSE

Nov 2020 (Dec 2019 figure: 12,525)	WTE Oct 2020	WTE Nov 2020	WTE change since Oct 20	% change since Oct 20	WTE change since Dec 19	WTE change since Nov 19
<b>Overall</b>	<b>12,599</b>	<b>12,588</b>	<b>-10</b>	<b>-0.1%</b>	<b>+64</b>	<b>+83</b>
Consultants	3	3.00	+0	+0.7%		
Registrars	7	6.51				
SHO/ Interns	10	10.00				+0
Medical/ Dental, other	97	89.04	-8	-8.1%	-5	+7
<b>Medical &amp; Dental</b>	<b>116</b>	<b>109</b>	<b>-8</b>	<b>-6.7%</b>	<b>-5</b>	<b>+7</b>
Nurse/ Midwife Manager	696	692.58	-4	-0.5%	+37	+31
Nurse/ Midwife Specialist & AN/MP	38	39.78	+2	+5.7%	+13	+14
Staff Nurse/ Staff Midwife	2,435	2,438.51	+3	+0.1%	+38	+46
Public Health Nurse	14	13.40	-0	-1.8%	+0	+1
Post-registration Nurse/ Midwife Student				-100.0%	-1	-1
Nursing/ Midwifery awaiting registration	2	1.50			+1	+1
Nursing/ Midwifery Student	2	1.50			-1	-1
Nursing/ Midwifery other	3	3.25	+0	+8.3%	+2	+2
<b>Nursing &amp; Midwifery</b>	<b>3,187</b>	<b>3,189</b>	<b>+2</b>	<b>+0.0%</b>	<b>+90</b>	<b>+93</b>
Therapy Professions	230	226.31	-3	-1.4%	-4	-1
Health Science/ Diagnostics	4	4.13	-0	-1.9%	-1	-1
Social Care	3	2.74	+0	+1.1%	+0	+0
Social Workers	84	86.59	+3	+3.1%	+2	+2
Psychologists	1	0.60	-0	-36.8%	-1	-1
Pharmacy	13	11.69	-1	-8.0%	+1	+1
H&SC, Other	2	1.54	+0	+2.7%	+0	+0
<b>Health &amp; Social Care Professionals</b>	<b>336</b>	<b>334</b>	<b>-2</b>	<b>-0.6%</b>	<b>-3</b>	<b>+0</b>
Management (VIII & above)	76	76.14	+0	+0.0%	+4	+5
Administrative/ Supervisory (V to VII)	150	157.60	+7	+4.7%	+12	+11
Clerical (III & IV)	544	541.43	-2	-0.4%	-3	-1
<b>Management &amp; Administrative</b>	<b>770</b>	<b>775</b>	<b>+5</b>	<b>+0.6%</b>	<b>+13</b>	<b>+15</b>
Support	691	696.48	+6	+0.8%	-30	-37
Maintenance/ Technical	85	83.03	-2	-2.2%	-5	-6
<b>General Support</b>	<b>776</b>	<b>780</b>	<b>+4</b>	<b>+0.5%</b>	<b>-35</b>	<b>-43</b>
Health Care Assistants	3,913	3,896.90	-16	-0.4%	+77	+57
Home Help	3,355	3,358.47	+3	+0.1%	-83	-54
Care, other	145	147.02	+2	+1.3%	+11	+8
<b>Patient &amp; Client Care</b>	<b>7,413</b>	<b>7,402</b>	<b>-11</b>	<b>-0.1%</b>	<b>+4</b>	<b>+11</b>

## Section 38

Nov 2020 (Dec 2019 figure: 708)	WTE Oct 2020	WTE Nov 2020	WTE change since Oct 20	% change since Oct 20	WTE change since Dec 19	WTE change since Nov 19
<b>Overall</b>	<b>744</b>	<b>739</b>	<b>-5</b>	<b>-0.6%</b>	<b>+31</b>	<b>+30</b>
Consultants	2	1.60			+1	+1
Registrars	3	3.00				
SHO/ Interns	4	4.00			-1	-1
Medical/ Dental, other	2	2.00				
<b>Medical &amp; Dental</b>	<b>11</b>	<b>11</b>				
Nurse/ Midwife Manager	51	50.27	-1	-1.8%	-4	-4
Staff Nurse/ Staff Midwife	185	185.60	+1	+0.5%	+10	+10
<b>Nursing &amp; Midwifery</b>	<b>236</b>	<b>236</b>	<b>-0</b>	<b>-0.0%</b>	<b>+6</b>	<b>+7</b>
Therapy Professions	70	70.22	+0	+0.3%	+12	+13
Health Science/ Diagnostics	1	1.00				
Social Workers	15	15.61	+1	+6.8%	+2	+2
Psychologists	1	0.50				
Pharmacy	5	5.35	-0	-0.7%	+1	+1
<b>Health &amp; Social Care Professionals</b>	<b>92</b>	<b>93</b>	<b>+1</b>	<b>+1.3%</b>	<b>+15</b>	<b>+15</b>
Management (VIII & above)	3	3.00			+1	+1
Administrative/ Supervisory (V to VII)	18	18.46			-1	-1
Clerical (III & IV)	32	30.62	-1	-3.2%	+3	+2
<b>Management &amp; Administrative</b>	<b>53</b>	<b>52</b>	<b>-1</b>	<b>-1.9%</b>	<b>+3</b>	<b>+2</b>
<b>General Support</b>	<b>119</b>	<b>118</b>	<b>-1</b>	<b>-0.8%</b>	<b>+5</b>	<b>+5</b>
<b>Patient &amp; Client Care</b>	<b>234</b>	<b>230</b>	<b>-4</b>	<b>-1.6%</b>	<b>+1</b>	<b>-0</b>



## Social Care Older Persons Services Employment by CHO etc. Nov 2020

### CHO 1

Nov 2020 (Dec 2019 figure: 1,836)	WTE Oct 2020	WTE Nov 2020	WTE change since Oct 20	% change since Oct 20	WTE change since Dec 19	WTE change since Nov 19
<b>Overall</b>	<b>1,854</b>	<b>1,854</b>	<b>+0</b>	<b>+0.0%</b>	<b>+18</b>	<b>+18</b>
Medical/ Dental, other	17	17	-0	-2.7%	-13	-1
<b>Medical &amp; Dental</b>	<b>17</b>	<b>17</b>	<b>-0</b>	<b>-2.7%</b>	<b>-13</b>	<b>-1</b>
Nurse/ Midwife Manager	90	89	-2	-2.0%	-2	-3
Nurse/ Midwife Specialist & AN/MP	9	9	+0	+1.2%	+2	+3
Staff Nurse/ Staff Midwife	315	310	-5	-1.5%	+3	+1
Nursing/ Midwifery other	1	1			+1	+1
<b>Nursing &amp; Midwifery</b>	<b>415</b>	<b>409</b>	<b>-6</b>	<b>-1.5%</b>	<b>+4</b>	<b>+2</b>
Therapy Professions	13	13	-0	-0.4%	+2	+3
Health Science/ Diagnostics	2	2	+0	+0.6%	+0	+0
Social Workers	15	15	+0	+2.0%	-2	-2
<b>Health &amp; Social Care Professionals</b>	<b>30</b>	<b>30</b>	<b>+0</b>	<b>+0.9%</b>	<b>+0</b>	<b>+1</b>
Management (VIII & above)	8	8			+0	+1
Administrative/ Supervisory (V to VII)	15	15	-0	-0.1%	+1	
Clerical (III & IV)	87	87	+0	+0.4%	+2	+1
<b>Management &amp; Administrative</b>	<b>110</b>	<b>110</b>	<b>+0</b>	<b>+0.3%</b>	<b>+3</b>	<b>+2</b>
Support	117	118	+1	+0.9%	-4	-6
Maintenance/ Technical	7	7	+0	+1.5%	-0	-1
<b>General Support</b>	<b>124</b>	<b>125</b>	<b>+1</b>	<b>+0.9%</b>	<b>-4</b>	<b>-7</b>
Health Care Assistants	584	577	-7	-1.2%	+13	+10
Home Help	545	558	+12	+2.3%	+15	+10
Care, other	28	27	-0	-1.1%	-0	-0
<b>Patient &amp; Client Care</b>	<b>1,157</b>	<b>1,162</b>	<b>+5</b>	<b>+0.4%</b>	<b>+28</b>	<b>+21</b>

## CHO 2

Nov 2020 (Dec 2019 figure: 1,606)	WTE Oct 2020	WTE Nov 2020	WTE change since Oct 20	% change since Oct 20	WTE change since Dec 19	WTE change since Nov 19
<b>Overall</b>	<b>1,578</b>	<b>1,561</b>	<b>-17</b>	<b>-1.1%</b>	<b>-44</b>	<b>-2</b>
Medical/ Dental, other	11	11	-0	-0.4%	-1	-0
<b>Medical &amp; Dental</b>	<b>11</b>	<b>11</b>	<b>-0</b>	<b>-0.4%</b>	<b>-1</b>	<b>-0</b>
Nurse/ Midwife Manager	67	66	-2	-2.3%	+7	+6
Nurse/ Midwife Specialist & AN/MP	2	2	-0	-0.5%	-0	-0
Staff Nurse/ Staff Midwife	311	308	-3	-1.0%	+7	+9
Public Health Nurse	1	1			+0	+0
<b>Nursing &amp; Midwifery</b>	<b>381</b>	<b>376</b>	<b>-5</b>	<b>-1.2%</b>	<b>+14</b>	<b>+15</b>
Therapy Professions	27	27	-1	-2.1%	+1	+1
Health Science/ Diagnostics	1	1				
Social Workers	11	11	+0	+1.6%	+0	+1
Pharmacy	1	1	+0	+1.0%	+0	+0
H&SC, Other				-100.0%		
<b>Health &amp; Social Care Professionals</b>	<b>39</b>	<b>39</b>	<b>-0</b>	<b>-1.0%</b>	<b>+2</b>	<b>+2</b>
Management (VIII & above)	2	2				+0
Administrative/ Supervisory (V to VII)	11	10	-1	-7.9%	+2	+2
Clerical (III & IV)	67	64	-2	-3.4%	-7	-6
<b>Management &amp; Administrative</b>	<b>79</b>	<b>76</b>	<b>-3</b>	<b>-3.9%</b>	<b>-5</b>	<b>-4</b>
Support	58	57	-1	-1.4%	+1	-1
Maintenance/ Technical	20	19	-1	-4.2%	+0	-0
<b>General Support</b>	<b>78</b>	<b>76</b>	<b>-2</b>	<b>-2.1%</b>	<b>+1</b>	<b>-1</b>
Health Care Assistants	536	525	-12	-2.1%	+10	+6
Home Help	426	428	+2	+0.4%	-72	-25
Care, other	28	30	+3	+9.8%	+6	+6
<b>Patient &amp; Client Care</b>	<b>990</b>	<b>983</b>	<b>-7</b>	<b>-0.7%</b>	<b>-56</b>	<b>-13</b>

### CHO 3

Nov 2020 (Dec 2019 figure: 974)	WTE Oct 2020	WTE Nov 2020	WTE change since Oct 20	% change since Oct 20	WTE change since Dec 19	WTE change since Nov 19
<b>Overall</b>	<b>1,026</b>	<b>1,032</b>	<b>+6</b>	<b>+0.6%</b>	<b>+58</b>	<b>+60</b>
Consultants	1	1				
Medical/ Dental, other	6	6	+0	+5.6%	+1	+1
<b>Medical &amp; Dental</b>	<b>7</b>	<b>7</b>	<b>+0</b>	<b>+4.8%</b>	<b>+1</b>	<b>+1</b>
Nurse/ Midwife Manager	65	63	-3	-4.1%	-1	-1
Nurse/ Midwife Specialist & AN/MP	3	4	+1	+29.9%	+2	+2
Staff Nurse/ Staff Midwife	231	233	+2	+1.1%	-5	-5
Public Health Nurse	1	1				
<b>Nursing &amp; Midwifery</b>	<b>300</b>	<b>301</b>	<b>+1</b>	<b>+0.2%</b>	<b>-4</b>	<b>-4</b>
Therapy Professions	31	31	+0	+1.0%	+3	+4
Health Science/ Diagnostics	1	1	-0	-12.0%	-0	+0
Social Workers	6	7	+1	+12.5%	+0	+0
Pharmacy	1	1				
<b>Health &amp; Social Care Professionals</b>	<b>39</b>	<b>40</b>	<b>+1</b>	<b>+2.7%</b>	<b>+3</b>	<b>+4</b>
Management (VIII & above)	6	7	+1	+18.0%	+1	+1
Administrative/ Supervisory (V to VII)	19	19	-1	-3.6%	-2	-2
Clerical (III & IV)	48	47	-1	-3.0%	-3	-3
<b>Management &amp; Administrative</b>	<b>73</b>	<b>72</b>	<b>-1</b>	<b>-1.5%</b>	<b>-4</b>	<b>-4</b>
Support	62	63	+1	+1.1%	-1	-1
Maintenance/ Technical	21	21	-0	-0.5%	-1	-1
<b>General Support</b>	<b>83</b>	<b>84</b>	<b>+1</b>	<b>+0.7%</b>	<b>-2</b>	<b>-2</b>
Health Care Assistants	297	300	+3	+0.9%	+21	+19
Home Help	213	215	+2	+0.8%	+40	+43
Care, other	13	13	-0	-1.5%	+3	+3
<b>Patient &amp; Client Care</b>	<b>523</b>	<b>528</b>	<b>+4</b>	<b>+0.8%</b>	<b>+64</b>	<b>+65</b>

## CHO 4

Nov 2020 (Dec 2019 figure: 2,919)	WTE Oct 2020	WTE Nov 2020	WTE change since Oct 20	% change since Oct 20	WTE change since Dec 19	WTE change since Nov 19
<b>Overall</b>	<b>2,923</b>	<b>2,902</b>	<b>-20</b>	<b>-0.7%</b>	<b>-17</b>	<b>-39</b>
Consultants	1	1	+0	+2.0%		
Registrars	3	3				
SHO/ Interns	1	1				
Medical/ Dental, other	29	23	-6	-21.0%	+2	+2
<b>Medical &amp; Dental</b>	<b>34</b>	<b>28</b>	<b>-6</b>	<b>-17.9%</b>	<b>+2</b>	<b>+2</b>
Nurse/ Midwife Manager	122	121	-1	-0.8%	+4	+1
Nurse/ Midwife Specialist & AN/MP	6	6	+0	+1.9%	+3	+3
Staff Nurse/ Staff Midwife	516	518	+1	+0.3%	+2	+9
Public Health Nurse	6	6	-0	-3.1%	+1	+2
Post-registration Nurse/ Midwife Student				-100.0%		-1
Nursing/ Midwifery awaiting registration				-100.0%		-1
Nursing/ Midwifery Student				-100.0%	-2	-2
<b>Nursing &amp; Midwifery</b>	<b>651</b>	<b>651</b>	<b>+0</b>	<b>+0.0%</b>	<b>+8</b>	<b>+13</b>
Therapy Professions	46	43	-3	-6.3%	-2	-2
Health Science/ Diagnostics	1	1			+0	+1
Social Care	2	2	-0	-0.6%		
Social Workers	11	12	+1	+10.8%	+2	+2
Pharmacy	4	4	-0	-1.8%	+1	+1
<b>Health &amp; Social Care Professionals</b>	<b>64</b>	<b>62</b>	<b>-2</b>	<b>-2.8%</b>	<b>+1</b>	<b>+2</b>
Management (VIII & above)	14	14	-0	-1.1%	+1	+1
Administrative/ Supervisory (V to VII)	16	18	+2	+13.0%	+1	+0
Clerical (III & IV)	129	130	+1	+1.0%	+2	+4
<b>Management &amp; Administrative</b>	<b>159</b>	<b>162</b>	<b>+3</b>	<b>+2.0%</b>	<b>+4</b>	<b>+5</b>
Support	111	114	+3	+3.1%	+14	+13
Maintenance/ Technical	6	6				
<b>General Support</b>	<b>117</b>	<b>120</b>	<b>+3</b>	<b>+2.9%</b>	<b>+14</b>	<b>+13</b>
Health Care Assistants	786	794	+8	+1.0%	+13	+9
Home Help	1,078	1,050	-28	-2.6%	-63	-88
Care, other	36	36	+0	+0.6%	+5	+4
<b>Patient &amp; Client Care</b>	<b>1,899</b>	<b>1,880</b>	<b>-19</b>	<b>-1.0%</b>	<b>-46</b>	<b>-74</b>

## CHO 5

Nov 2020 (Dec 2019 figure: 1,647)	WTE Oct 2020	WTE Nov 2020	WTE change since Oct 20	% change since Oct 20	WTE change since Dec 19	WTE change since Nov 19
<b>Overall</b>	<b>1,673</b>	<b>1,686</b>	<b>+13</b>	<b>+0.8%</b>	<b>+39</b>	<b>+34</b>
Medical/ Dental, other	16	15	-2	-9.6%	+5	+5
<b>Medical &amp; Dental</b>	<b>16</b>	<b>15</b>	<b>-2</b>	<b>-9.6%</b>	<b>+5</b>	<b>+5</b>
Nurse/ Midwife Manager	86	87	+1	+1.5%	+6	+5
Nurse/ Midwife Specialist & AN/MP	4	4	+0	+6.1%	+2	+2
Staff Nurse/ Staff Midwife	316	314	-2	-0.6%	-1	-2
Public Health Nurse	3	3	-0	-1.9%	-1	-1
<b>Nursing &amp; Midwifery</b>	<b>408</b>	<b>408</b>	<b>-1</b>	<b>-0.1%</b>	<b>+5</b>	<b>+4</b>
Therapy Professions	32	32	-0	-1.2%	-9	-8
Social Workers	4	4	-0	-1.2%	+1	+1
Pharmacy	1	1	+0	+4.9%	+1	+1
<b>Health &amp; Social Care Professionals</b>	<b>37</b>	<b>37</b>	<b>-0</b>	<b>-1.0%</b>	<b>-7</b>	<b>-6</b>
Management (VIII & above)	4	4				
Administrative/ Supervisory (V to VII)	17	17	+0	+1.3%	+3	+3
Clerical (III & IV)	32	32	+0	+0.4%	-0	-0
<b>Management &amp; Administrative</b>	<b>53</b>	<b>53</b>	<b>+0</b>	<b>+0.7%</b>	<b>+3</b>	<b>+3</b>
Support	83	83	+0	+0.3%	-40	-40
Maintenance/ Technical	5	4	-1	-16.9%	-4	-4
<b>General Support</b>	<b>88</b>	<b>87</b>	<b>-1</b>	<b>-0.6%</b>	<b>-44</b>	<b>-44</b>
Health Care Assistants	458	456	-2	-0.4%	+65	+62
Home Help	604	622	+18	+3.0%	+14	+13
Care, other	9	8	-0	-2.3%	-2	-3
<b>Patient &amp; Client Care</b>	<b>1,071</b>	<b>1,087</b>	<b>+16</b>	<b>+1.5%</b>	<b>+78</b>	<b>+72</b>



## CHO 6

Nov 2020 (Dec 2019 figure: 823)	WTE Oct 2020	WTE Nov 2020	WTE change since Oct 20	% change since Oct 20	WTE change since Dec 19	WTE change since Nov 19
<b>Overall</b>	<b>810</b>	<b>803</b>	<b>-7</b>	<b>-0.9%</b>	<b>-20</b>	<b>-20</b>
Registrars	1	1				
Medical/ Dental, other	4	4				
<b>Medical &amp; Dental</b>	<b>5</b>	<b>5</b>				
Nurse/ Midwife Manager	65	63	-2	-3.0%	-5	-5
Nurse/ Midwife Specialist & AN/MP	1	1				
Staff Nurse/ Staff Midwife	204	205	+1	+0.4%	+1	+3
<b>Nursing &amp; Midwifery</b>	<b>271</b>	<b>269</b>	<b>-1</b>	<b>-0.5%</b>	<b>-4</b>	<b>-2</b>
Therapy Professions	45	45	-0	-0.6%	-5	-4
Social Workers	9	10	+1	+9.3%	-1	-1
Psychologists	1	1	-0	-24.1%	-1	-1
Pharmacy	3	3	-0	-1.4%	-0	+0
<b>Health &amp; Social Care Professionals</b>	<b>59</b>	<b>59</b>	<b>+0</b>	<b>+0.3%</b>	<b>-7</b>	<b>-6</b>
Management (VIII & above)	5	5			+1	+1
Administrative/ Supervisory (V to VII)	19	19			-3	-3
Clerical (III & IV)	33	33	-0	-0.2%	+4	+2
<b>Management &amp; Administrative</b>	<b>58</b>	<b>58</b>	<b>-0</b>	<b>-0.1%</b>	<b>+2</b>	<b>+0</b>
Support	103	102	-1	-0.6%	-6	-7
Maintenance/ Technical	9	9			+1	+1
<b>General Support</b>	<b>112</b>	<b>111</b>	<b>-1</b>	<b>-0.6%</b>	<b>-5</b>	<b>-6</b>
Health Care Assistants	301	296	-5	-1.8%	-4	-5
Care, other	6	6	-0	-0.9%	-2	-2
<b>Patient &amp; Client Care</b>	<b>307</b>	<b>301</b>	<b>-5</b>	<b>-1.8%</b>	<b>-6</b>	<b>-6</b>

## CHO 7

Nov 2020 (Dec 2019 figure: 996)	WTE Oct 2020	WTE Nov 2020	WTE change since Oct 20	% change since Oct 20	WTE change since Dec 19	WTE change since Nov 19
<b>Overall</b>	<b>1,026</b>	<b>1,027</b>	<b>+1</b>	<b>+0.1%</b>	<b>+31</b>	<b>+27</b>
SHO/ Interns	2	2				
Medical/ Dental, other	4	4				-1
<b>Medical &amp; Dental</b>	<b>6</b>	<b>6</b>				<b>-1</b>
Nurse/ Midwife Manager	83	85	+1	+1.8%	+8	+8
Nurse/ Midwife Specialist & AN/MP	4	4	-0	-4.7%	+1	+1
Staff Nurse/ Staff Midwife	242	246	+3	+1.4%	+27	+23
<i>Nursing/ Midwifery awaiting registration</i>	2	2			+2	+2
Nursing/ Midwifery Student	2	2			+2	+2
<b>Nursing &amp; Midwifery</b>	<b>331</b>	<b>336</b>	<b>+5</b>	<b>+1.4%</b>	<b>+37</b>	<b>+33</b>
Therapy Professions	13	13	-0	-0.7%	-0	-1
Social Workers	13	12	-1	-7.3%	+2	+1
Pharmacy	3	2	-1	-33.3%	-1	-1
H&SC, Other	1	1				
<b>Health &amp; Social Care Professionals</b>	<b>31</b>	<b>29</b>	<b>-2</b>	<b>-6.8%</b>	<b>+1</b>	<b>-1</b>
Management (VIII & above)	7	7	+0	+4.8%	+2	+2
Administrative/ Supervisory (V to VII)	13	15	+1	+7.6%	+3	+3
Clerical (III & IV)	39	39	-0	-1.0%	+5	+4
<b>Management &amp; Administrative</b>	<b>59</b>	<b>60</b>	<b>+1</b>	<b>+1.6%</b>	<b>+10</b>	<b>+10</b>
Support	115	117	+2	+1.9%	+7	+5
Maintenance/ Technical	2	2				
<b>General Support</b>	<b>117</b>	<b>119</b>	<b>+2</b>	<b>+1.9%</b>	<b>+7</b>	<b>+5</b>
Health Care Assistants	362	357	-4	-1.2%	-31	-35
Home Help	115	115	-0	-0.3%	+7	+15
Care, other	5	5			+0	+0
<b>Patient &amp; Client Care</b>	<b>481</b>	<b>477</b>	<b>-5</b>	<b>-1.0%</b>	<b>-23</b>	<b>-20</b>

## CHO 8

Nov 2020 (Dec 2019 figure: 1,488)	WTE Oct 2020	WTE Nov 2020	WTE change since Oct 20	% change since Oct 20	WTE change since Dec 19	WTE change since Nov 19
<b>Overall</b>	<b>1,477</b>	<b>1,481</b>	<b>+5</b>	<b>+0.3%</b>	<b>-7</b>	<b>-3</b>
Medical/ Dental, other	11	11			+0	-0
<b>Medical &amp; Dental</b>	<b>11</b>	<b>11</b>			<b>+0</b>	<b>-0</b>
Nurse/ Midwife Manager	89	89	+0	+0.2%	+13	+11
Nurse/ Midwife Specialist & AN/MP	3	4	+1	+30.7%	+2	+2
Staff Nurse/ Staff Midwife	251	258	+6	+2.4%	+8	+10
Public Health Nurse	3	3			+1	+1
Nursing/ Midwifery other	1	1	+0	+25.0%	+1	+1
<b>Nursing &amp; Midwifery</b>	<b>348</b>	<b>355</b>	<b>+8</b>	<b>+2.2%</b>	<b>+25</b>	<b>+25</b>
Therapy Professions	20	21	+1	+6.8%	+1	+1
Social Workers	7	7	+0	+3.2%	+0	+0
Pharmacy	2	2			-1	-1
<b>Health &amp; Social Care Professionals</b>	<b>29</b>	<b>30</b>	<b>+2</b>	<b>+5.5%</b>	<b>+1</b>	<b>+1</b>
Management (VIII & above)	7	7	-1	-8.2%	+1	+2
Administrative/ Supervisory (V to VII)	20	21	+1	+5.4%	+1	+3
Clerical (III & IV)	70	70	+0	+0.7%	+0	-1
<b>Management &amp; Administrative</b>	<b>97</b>	<b>98</b>	<b>+1</b>	<b>+1.0%</b>	<b>+3</b>	<b>+4</b>
Support	27	26	-1	-2.7%	+0	+0
Maintenance/ Technical	24	23	-0	-1.0%	-1	-0
<b>General Support</b>	<b>50</b>	<b>49</b>	<b>-1</b>	<b>-1.9%</b>	<b>-0</b>	<b>+0</b>
Health Care Assistants	548	546	-2	-0.4%	-11	-11
Home Help	374	371	-2	-0.6%	-24	-22
Care, other	21	20	-0	-1.4%	+0	+0
<b>Patient &amp; Client Care</b>	<b>942</b>	<b>937</b>	<b>-5</b>	<b>-0.5%</b>	<b>-35</b>	<b>-33</b>

## CHO 9

Nov 2020 (Dec 2019 figure: 870)	WTE Oct 2020	WTE Nov 2020	WTE change since Oct 20	% change since Oct 20	WTE change since Dec 19	WTE change since Nov 19
<b>Overall</b>	<b>910</b>	<b>914</b>	<b>+3</b>	<b>+0.4%</b>	<b>+44</b>	<b>+42</b>
Consultants	3	3			+1	+1
Registrars	6	6				
SHO/ Interns	11	11			-1	-1
Medical/ Dental, other	1	1				
<b>Medical &amp; Dental</b>	<b>20</b>	<b>20</b>	<b>+0</b>	<b>+0.0%</b>	<b>+0</b>	<b>+0</b>
Nurse/ Midwife Manager	78	80	+1	+1.7%	+5	+5
Nurse/ Midwife Specialist & AN/MP	6	6	+0	+0.5%	+1	+1
Staff Nurse/ Staff Midwife	233	233	-0	-0.1%	+6	+8
Public Health Nurse				-100.0%	-0	-0
Nursing/ Midwifery other	1	1				
<b>Nursing &amp; Midwifery</b>	<b>318</b>	<b>320</b>	<b>+1</b>	<b>+0.4%</b>	<b>+12</b>	<b>+14</b>
Therapy Professions	72	72	-1	-0.7%	+18	+17
Health Science/ Diagnostics	1	1			-0	-1
Social Care	1	1	+0	+4.2%		
Social Workers	22	23	+1	+5.0%	+1	+2
Pharmacy	4	4			+1	+1
H&SC, Other	1	1	+0	+8.0%	+0	+0
<b>Health &amp; Social Care Professionals</b>	<b>100</b>	<b>101</b>	<b>+1</b>	<b>+0.6%</b>	<b>+19</b>	<b>+20</b>
Management (VIII & above)	8	8	-0	-0.6%	-1	-1
Administrative/ Supervisory (V to VII)	18	21	+2	+12.2%	+6	+6
Clerical (III & IV)	43	42	-1	-2.6%	+2	+1
<b>Management &amp; Administrative</b>	<b>69</b>	<b>70</b>	<b>+1</b>	<b>+1.5%</b>	<b>+6</b>	<b>+6</b>
Support	123	123	-1	-0.7%	+4	+4
Maintenance/ Technical	2	2				
<b>General Support</b>	<b>126</b>	<b>125</b>	<b>-1</b>	<b>-0.6%</b>	<b>+4</b>	<b>+4</b>
Health Care Assistants	271	273	+1	+0.5%	+3	-0
Care, other	6	6	+0	+0.5%	-1	-1
<b>Patient &amp; Client Care</b>	<b>277</b>	<b>278</b>	<b>+1</b>	<b>+0.5%</b>	<b>+2</b>	<b>-1</b>

## other Community Services

Nov 2020 (Dec 2019 figure: 73)	WTE Oct 2020	WTE Nov 2020	WTE change since Oct 20	% change since Oct 20	WTE change since Dec 19	WTE change since Nov 19
<b>Overall</b>	<b>66</b>	<b>67</b>	<b>+1</b>	<b>+2.2%</b>	<b>-6</b>	<b>-5</b>
Health Science/ Diagnostics				-100.0%	-1	-1
<b>Health &amp; Social Care Professionals</b>				<b>-100.0%</b>	<b>-1</b>	<b>-1</b>
Management (VIII & above)	18	17	-1	-3.0%	-1	-1
Administrative/ Supervisory (V to VII)	19	21	+2	+10.6%	-1	-1
Clerical (III & IV)	28	28	-0	-0.2%	-3	-1
<b>Management &amp; Administrative</b>	<b>66</b>	<b>67</b>	<b>+1</b>	<b>+2.2%</b>	<b>-5</b>	<b>-4</b>
Health Care Assistants	0	0			+0	
<b>Patient &amp; Client Care</b>	<b>0</b>	<b>0</b>			<b>+0</b>	

# Social Care Older Persons Services Employment by CHO & Admin : Nov 2020

Nov 2020 (Dec 2019 figure: 13,233)	WTE Oct 2020	WTE Nov 2020	WTE change since Oct 20	% change since Oct 20	WTE change since Dec 19	WTE change since Nov 19
<b>Overall</b>	<b>13,342</b>	<b>13,327</b>	<b>-15</b>	<b>-0.1%</b>	<b>+95</b>	<b>+113</b>
<b>CHO 1</b>	<b>1,854</b>	<b>1,854</b>	<b>+0</b>	<b>+0.0%</b>	<b>+18</b>	<b>+18</b>
Health Service Executive	1,578	1,561	-17	-1.1%	-44	-2
<b>CHO 2</b>	<b>1,578</b>	<b>1,561</b>	<b>-17</b>	<b>-1.1%</b>	<b>-44</b>	<b>-2</b>
Health Service Executive	1,026	1,032	+6	+0.6%	+58	+60
<b>CHO 3</b>	<b>1,026</b>	<b>1,032</b>	<b>+6</b>	<b>+0.6%</b>	<b>+58</b>	<b>+60</b>
Health Service Executive	2,923	2,902	-20	-0.7%	-17	-39
<b>CHO 4</b>	<b>2,923</b>	<b>2,902</b>	<b>-20</b>	<b>-0.7%</b>	<b>-17</b>	<b>-39</b>
Health Service Executive	1,673	1,686	+13	+0.8%	+39	+34
<b>CHO 5</b>	<b>1,673</b>	<b>1,686</b>	<b>+13</b>	<b>+0.8%</b>	<b>+39</b>	<b>+34</b>
Health Service Executive	332	330	-2	-0.7%	-11	-10
Leopardstown Park Hospital	207	205	-2	-1.1%	-6	-7
Royal Hospital, Donnybrook, Dublin	271	268	-3	-0.9%	-4	-4
<b>Section 38 Voluntary Agencies</b>	<b>478</b>	<b>473</b>	<b>-5</b>	<b>-1.0%</b>	<b>-9</b>	<b>-10</b>
<b>CHO 6</b>	<b>810</b>	<b>803</b>	<b>-7</b>	<b>-0.9%</b>	<b>-20</b>	<b>-20</b>
Health Service Executive	1,026	1,027	+1	+0.1%	+31	+27
<b>CHO 7</b>	<b>1,026</b>	<b>1,027</b>	<b>+1</b>	<b>+0.1%</b>	<b>+31</b>	<b>+27</b>
Health Service Executive	1,477	1,481	+5	+0.3%	-7	-3
<b>CHO 8</b>	<b>1,477</b>	<b>1,481</b>	<b>+4</b>	<b>+0.3%</b>	<b>-7</b>	<b>-3</b>
Health Service Executive	645	648	+3	+0.5%	+4	+2
Incorporated Orthopaedic Hospital	266	266	+0	+0.1%	+40	+40
<b>Section 38 Voluntary Agencies</b>	<b>266</b>	<b>266</b>	<b>+0</b>	<b>+0.1%</b>	<b>+40</b>	<b>+40</b>
<b>CHO 9</b>	<b>910</b>	<b>914</b>	<b>+3</b>	<b>+0.4%</b>	<b>+44</b>	<b>+42</b>
<b>other Community Services</b>	<b>66</b>	<b>67</b>	<b>+1</b>	<b>+2.2%</b>	<b>-6</b>	<b>-5</b>

## Social Care Older Persons Services Employment by CHO etc. Nov 2020

### Incorporated Orthopaedic Hospital

Nov 2020 (Dec 2019 figure: 226)	WTE Oct 2020	WTE Nov 2020	WTE change since Oct 20	% change since Oct 20	WTE change since Dec 19	WTE change since Nov 19
<b>Overall</b>	<b>266</b>	<b>266</b>	<b>+0</b>	<b>+0.1%</b>	<b>+40</b>	<b>+40</b>
Consultants	2	2			+1	+1
Registrars	2	2				
SHO/ Interns	4	4			-1	-1
<b>Medical &amp; Dental</b>	<b>8</b>	<b>8</b>				
Nurse/ Midwife Manager	17	18	+1	+5.8%	+0	+0
Staff Nurse/ Staff Midwife	70	70	+0	+0.3%	+10	+10
<b>Nursing &amp; Midwifery</b>	<b>87</b>	<b>88</b>	<b>+1</b>	<b>+1.4%</b>	<b>+11</b>	<b>+11</b>
Therapy Professions	34	34			+14	+13
Health Science/ Diagnostics	1	1				
Social Workers	9	9			+2	+2
Pharmacy	4	4			+1	+1
<b>Health &amp; Social Care Professionals</b>	<b>47</b>	<b>47</b>			<b>+16</b>	<b>+16</b>
Management (VIII & above)	1	1				
Administrative/ Supervisory (V to VII)	6	6				
Clerical (III & IV)	11	10	-1	-9.3%		
<b>Management &amp; Administrative</b>	<b>18</b>	<b>17</b>	<b>-1</b>	<b>-5.5%</b>		
Support	40	40			+6	+6
Maintenance/ Technical	2	2				
<b>General Support</b>	<b>42</b>	<b>42</b>			<b>+6</b>	<b>+6</b>
Health Care Assistants	64	64			+8	+8
Care, other	0	0				
<b>Patient &amp; Client Care</b>	<b>64</b>	<b>64</b>			<b>+8</b>	<b>+8</b>

## Leopardstown Park Hospital

Nov 2020 (Dec 2019 figure: 211)	WTE Oct 2020	WTE Nov 2020	WTE change since Oct 20	% change since Oct 20	WTE change since Dec 19	WTE change since Nov 19
<b>Overall</b>	<b>207</b>	<b>205</b>	<b>-2</b>	<b>-1.1%</b>	<b>-6</b>	<b>-7</b>
Medical/ Dental, other	1	1				
<b>Medical &amp; Dental</b>	<b>1</b>	<b>1</b>				
Nurse/ Midwife Manager	15	14	-1	-9.5%	-2	-2
Staff Nurse/ Staff Midwife	42	42	+0	+0.5%	-1	-0
<b>Nursing &amp; Midwifery</b>	<b>57</b>	<b>56</b>	<b>-1</b>	<b>-2.1%</b>	<b>-2</b>	<b>-2</b>
Therapy Professions	8	8	+0	+2.4%	+1	+1
Social Workers	1	1				
Pharmacy	2	2	-0	-2.1%	-0	+0
<b>Health &amp; Social Care Professionals</b>	<b>11</b>	<b>11</b>	<b>+0</b>	<b>+1.4%</b>	<b>+1</b>	<b>+1</b>
Management (VIII & above)	1	1				
Administrative/ Supervisory (V to VII)	7	7				
Clerical (III & IV)	12	12			+1	+1
<b>Management &amp; Administrative</b>	<b>20</b>	<b>20</b>			<b>+1</b>	<b>+1</b>
Support	34	33	-1	-2.7%	+0	+0
Maintenance/ Technical	4	4				
<b>General Support</b>	<b>38</b>	<b>37</b>	<b>-1</b>	<b>-2.4%</b>	<b>+0</b>	<b>+0</b>
Health Care Assistants	77	77	-0	-0.4%	-5	-6
Care, other	3	3	-0	-1.6%	-2	-2
<b>Patient &amp; Client Care</b>	<b>80</b>	<b>80</b>	<b>-0</b>	<b>-0.4%</b>	<b>-6</b>	<b>-8</b>

Nov 2020 (Dec 2019 figure: 272)	WTE Oct 2020	WTE Nov 2020	WTE change since Oct 20	% change since Oct 20	WTE change since Dec 19	WTE change since Nov 19
<b>Overall</b>	<b>271</b>	<b>268</b>	<b>-3</b>	<b>-0.9%</b>	<b>-4</b>	<b>-4</b>
Registrars	1	1				
Medical/ Dental, other	1	1				
<b>Medical &amp; Dental</b>	<b>2</b>	<b>2</b>				
Nurse/ Midwife Manager	19	18	-1	-2.7%	-2	-2
Staff Nurse/ Staff Midwife	73	74	+1	+0.7%	-0	-0
<b>Nursing &amp; Midwifery</b>	<b>92</b>	<b>92</b>			<b>-2</b>	<b>-2</b>
Therapy Professions	28	28			-2	-1
Social Workers	5	6	+1	+22.2%		
Psychologists	1	1				
<b>Health &amp; Social Care Professionals</b>	<b>33</b>	<b>34</b>	<b>+1</b>	<b>+3.0%</b>	<b>-2</b>	<b>-1</b>
Management (VIII & above)	1	1			+1	+1
Administrative/ Supervisory (V to VII)	5	5			-1	-1
Clerical (III & IV)	9	9			+2	+1
<b>Management &amp; Administrative</b>	<b>15</b>	<b>15</b>			<b>+2</b>	<b>+1</b>
Support	34	34			-2	-2
Maintenance/ Technical	5	5			+1	+1
<b>General Support</b>	<b>39</b>	<b>39</b>			<b>-1</b>	<b>-1</b>
Health Care Assistants	89	85	-4	-3.9%	-1	-1
Care, other	1	1			+1	+1
<b>Patient &amp; Client Care</b>	<b>90</b>	<b>86</b>	<b>-4</b>	<b>-3.9%</b>		



## Social Care Older Persons Services Employment by Grade Group: Nov 2020

Nov 2020 (Dec 2019 figure: 13,233)	WTE Oct 2020	WTE Nov 2020	WTE change since Oct 20	% change since Oct 20	WTE change since Dec 19	WTE change since Nov 19
<b>Overall</b>	<b>13,342</b>	<b>13,327</b>	<b>-15</b>	<b>-0.1%</b>	<b>+95</b>	<b>+113</b>
Consultant Medicine	5	5	+0	+0.4%	+1	+1
<b>Consultants</b>	<b>5</b>	<b>5</b>	<b>+0</b>	<b>+0.4%</b>	<b>+1</b>	<b>+1</b>
Registrar	6	6			-1	
Senior Registrar	1	1				
Specialist Registrar	3	3			+1	
<b>Registrars</b>	<b>10</b>	<b>10</b>				
<b>SHO/ Interns</b>	<b>14</b>	<b>14</b>			<b>-1</b>	<b>-1</b>
<b>Medical/ Dental, other</b>	<b>99</b>	<b>91</b>	<b>-8</b>	<b>-7.9%</b>	<b>-5</b>	<b>+7</b>
<b>Medical &amp; Dental</b>	<b>127</b>	<b>119</b>	<b>-8</b>	<b>-6.2%</b>	<b>-5</b>	<b>+7</b>
Clinical Nurse/ Midwife Manager	535	534	-1	-0.1%	+26	+19
Director Nursing/Midwifery, Assistant	106	104	-1	-1.0%	+2	+1
Director of Nursing/Midwifery	107	104	-3	-2.8%	+6	+7
<b>Nurse/ Midwife Manager</b>	<b>748</b>	<b>743</b>	<b>-5</b>	<b>-0.6%</b>	<b>+34</b>	<b>+27</b>
Advanced Nurse/ Midwife Practitioner	15	17	+2	+11.2%	+6	+7
Clinical Nurse/ Midwife Specialist	23	23	+0	+2.0%	+7	+7
<b>Nurse/ Midwife Specialist &amp; AN/MP</b>	<b>38</b>	<b>40</b>	<b>+2</b>	<b>+5.7%</b>	<b>+13</b>	<b>+14</b>
Staff Midwives	1	1			+1	+1
Staff Nurse [Intellectual Disability]	1	1			+1	+1
Staff Nurse [Psychiatric]	9	7	-1	-15.2%	+2	+2
Staff Nurses [General/ Children's]	2,610	2,615	+5	+0.2%	+44	+52
<b>Staff Nurse/ Staff Midwife</b>	<b>2,620</b>	<b>2,624</b>	<b>+4</b>	<b>+0.2%</b>	<b>+48</b>	<b>+56</b>
<b>Public Health Nurse</b>	<b>14</b>	<b>13</b>	<b>-0</b>	<b>-1.8%</b>	<b>+0</b>	<b>+1</b>
Post-registration Nurse/ Midwife Student				-100.0%	-1	-1
Nursing/ Midwifery awaiting registration	2	2			+1	+1
<b>Nursing/ Midwifery Student</b>	<b>2</b>	<b>2</b>			<b>-1</b>	<b>-1</b>
Nursing Education/Clinical	3	3	+0	+8.3%	+2	+2
<b>Nursing/ Midwifery other</b>	<b>3</b>	<b>3</b>	<b>+0</b>	<b>+8.3%</b>	<b>+2</b>	<b>+2</b>
<b>Nursing &amp; Midwifery</b>	<b>3,423</b>	<b>3,425</b>	<b>+2</b>	<b>+0.0%</b>	<b>+96</b>	<b>+100</b>
Dietitians	18	18	+0	+2.6%	+2	+1
Occupational Therapists	117	115	-2	-1.5%	+2	+3
Physiotherapists	132	132	+0	+0.1%	+8	+9
Podiatrists & Chiropodists	11	13	+2	+14.1%	+1	+2
Speech & Language Therapists	22	19	-4	-15.7%	-4	-3
<b>Therapy Professions</b>	<b>300</b>	<b>297</b>	<b>-3</b>	<b>-1.0%</b>	<b>+8</b>	<b>+12</b>
Clinical Measurement	0	0	-0	-36.0%	-0	+0
Radiographers	5	5	+0	+0.2%	-1	-1
<b>Health Science/ Diagnostics</b>	<b>5</b>	<b>5</b>	<b>-0</b>	<b>-1.5%</b>	<b>-1</b>	<b>-1</b>
<b>Social Care</b>	<b>3</b>	<b>3</b>	<b>+0</b>	<b>+1.1%</b>	<b>+0</b>	<b>+0</b>
<b>Social Workers</b>	<b>99</b>	<b>102</b>	<b>+4</b>	<b>+3.7%</b>	<b>+4</b>	<b>+4</b>
<b>Psychologists</b>	<b>1</b>	<b>1</b>	<b>-0</b>	<b>-24.1%</b>	<b>-1</b>	<b>-1</b>
<b>Pharmacy</b>	<b>18</b>	<b>17</b>	<b>-1</b>	<b>-5.9%</b>	<b>+2</b>	<b>+2</b>
Other Health & Social Care	1	1	+0	+8.0%	+0	+0
Play Therapists/ Specialists	1	1				
<b>H&amp;SC, Other</b>	<b>2</b>	<b>2</b>	<b>+0</b>	<b>+2.7%</b>	<b>+0</b>	<b>+0</b>
<b>Health &amp; Social Care Professionals</b>	<b>427</b>	<b>426</b>	<b>-1</b>	<b>-0.2%</b>	<b>+12</b>	<b>+16</b>
Executive Management	13	15	+2	+14.2%	+3	+3
Senior Management (VIII & GM)	66	64	-2	-2.8%	+2	+3

Nov 2020 (Dec 2019 figure: 13,233)	WTE Oct 2020	WTE Nov 2020	WTE change since Oct 20	% change since Oct 20	WTE change since Dec 19	WTE change since Nov 19
<b>Overall</b>	<b>13,342</b>	<b>13,327</b>	<b>-15</b>	<b>-0.1%</b>	<b>+95</b>	<b>+113</b>
<b>Management (VIII &amp; above)</b>	<b>79</b>	<b>79</b>	<b>+0</b>	<b>+0.0%</b>	<b>+5</b>	<b>+6</b>
Middle Management (V-VII)	169	176	+7	+4.2%	+12	+11
Other Administrative				-100.0%	-1	-1
<b>Administrative/ Supervisory (V to VII)</b>	<b>169</b>	<b>176</b>	<b>+7</b>	<b>+4.2%</b>	<b>+11</b>	<b>+10</b>
<b>Clerical (III &amp; IV)</b>	<b>575</b>	<b>572</b>	<b>-3</b>	<b>-0.5%</b>	<b>+1</b>	<b>+1</b>
<b>Management &amp; Administrative</b>	<b>823</b>	<b>827</b>	<b>+4</b>	<b>+0.5%</b>	<b>+16</b>	<b>+18</b>
Catering	218	217	-1	-0.4%	-4	-6
Household Services	474	480	+6	+1.2%	-13	-17
Other Support	29	29	+0	+0.4%	-5	-6
Portering	78	77	-0	-0.5%	-4	-4
<b>Support</b>	<b>799</b>	<b>803</b>	<b>+5</b>	<b>+0.6%</b>	<b>-26</b>	<b>-32</b>
Maintenance	96	94	-2	-2.0%	-4	-5
<b>Maintenance/ Technical</b>	<b>96</b>	<b>94</b>	<b>-2</b>	<b>-2.0%</b>	<b>-4</b>	<b>-5</b>
<b>General Support</b>	<b>895</b>	<b>897</b>	<b>+3</b>	<b>+0.3%</b>	<b>-30</b>	<b>-38</b>
HCA, Nurse's Aide, etc.	4,116	4,096	-21	-0.5%	+74	+52
Health & Social Care Assistants	26	27	+1	+4.2%	+6	+5
<b>Health Care Assistants</b>	<b>4,142</b>	<b>4,123</b>	<b>-20</b>	<b>-0.5%</b>	<b>+79</b>	<b>+57</b>
<b>Home Help</b>	<b>3,355</b>	<b>3,358</b>	<b>+3</b>	<b>+0.1%</b>	<b>-83</b>	<b>-54</b>
<b>Care, other</b>	<b>149</b>	<b>151</b>	<b>+2</b>	<b>+1.3%</b>	<b>+9</b>	<b>+7</b>
<b>Patient &amp; Client Care</b>	<b>7,647</b>	<b>7,632</b>	<b>-15</b>	<b>-0.2%</b>	<b>+5</b>	<b>+10</b>

## Employment by WTE, Headcount, Gender, Full-Time /Part-Time etc.: Nov 2020

Social Care Older Persons Services Staff Group	WTE	Headcount	WTE: no.	% Male	% female	Male WTE: no.	Female WTE: no.	% Total Perm	% Male Perm	% Female Perm	% Total Full Time	% Total Part Time	% Male FT	% Female FT
<b>Overall</b>	<b>13,327</b>	<b>16,388</b>	<b>1.23</b>	<b>12.8%</b>	<b>87.2%</b>	<b>1.11</b>	<b>1.25</b>	<b>77.8%</b>	<b>77.7%</b>	<b>77.8%</b>	<b>57.4%</b>	<b>42.6%</b>	<b>82.4%</b>	<b>53.8%</b>
Consultant Medicine	5	7	1.52	14.3%	85.7%	2.00	1.46	85.7%	85.7%	83.3%	28.6%	71.4%	0.0%	33.3%
<b>Consultants</b>	<b>5</b>	<b>7</b>	<b>1.52</b>	<b>14.3%</b>	<b>85.7%</b>	<b>2.00</b>	<b>1.46</b>	<b>85.7%</b>	<b>100.0%</b>	<b>83.3%</b>	<b>28.6%</b>	<b>71.4%</b>	<b>0.0%</b>	<b>33.3%</b>
Registrar	6	6	1.09	50.0%	50.0%	1.00	1.20	33.3%	33.3%	0.0%	83.3%	16.7%	100.0%	66.7%
Senior Registrar	1	1	1.00		100.0%		1.00	100.0%	100.0%	100.0%	100.0%	0.0%		100.0%
Specialist Registrar	3	3	1.00	66.7%	33.3%	1.00	1.00	0.0%	0.0%	0.0%	100.0%	0.0%	100.0%	100.0%
<b>Registrars</b>	<b>10</b>	<b>10</b>	<b>1.05</b>	<b>50.0%</b>	<b>50.0%</b>	<b>1.00</b>	<b>1.11</b>	<b>30.0%</b>	<b>40.0%</b>	<b>20.0%</b>	<b>90.0%</b>	<b>10.0%</b>	<b>100.0%</b>	<b>80.0%</b>
<b>SHO/ Interns</b>	<b>14</b>	<b>14</b>	<b>1.00</b>	<b>35.7%</b>	<b>64.3%</b>	<b>1.00</b>	<b>1.00</b>	<b>0.0%</b>	<b>0.0%</b>	<b>0.0%</b>	<b>100.0%</b>	<b>0.0%</b>	<b>100.0%</b>	<b>100.0%</b>
<b>Medical/ Dental, other</b>	<b>91</b>	<b>163</b>	<b>1.79</b>	<b>64.4%</b>	<b>35.6%</b>	<b>1.90</b>	<b>1.62</b>	<b>52.1%</b>	<b>56.2%</b>	<b>44.8%</b>	<b>34.4%</b>	<b>65.6%</b>	<b>30.5%</b>	<b>41.4%</b>
<b>Medical &amp; Dental</b>	<b>119</b>	<b>194</b>	<b>1.63</b>	<b>59.8%</b>	<b>40.2%</b>	<b>1.76</b>	<b>1.46</b>	<b>48.5%</b>	<b>53.4%</b>	<b>41.0%</b>	<b>41.8%</b>	<b>58.2%</b>	<b>36.2%</b>	<b>50.0%</b>
Clinical Nurse/ Midwife Manager	534	573	1.07	7.7%	92.3%	1.02	1.08	97.9%	97.9%	98.3%	77.7%	22.3%	90.9%	76.6%
Director Nursing/Midwifery, Assistant	104	110	1.05	4.5%	95.5%	1.00	1.06	98.2%	98.2%	98.1%	89.1%	10.9%	100.0%	88.6%
Director of Nursing/Midwifery	104	105	1.01	5.7%	94.3%	1.02	1.01	97.1%	97.1%	97.0%	97.1%	2.9%	100.0%	97.0%
<b>Nurse/ Midwife Manager</b>	<b>743</b>	<b>788</b>	<b>1.06</b>	<b>7.0%</b>	<b>93.0%</b>	<b>1.02</b>	<b>1.06</b>	<b>97.8%</b>	<b>94.5%</b>	<b>98.1%</b>	<b>81.9%</b>	<b>18.1%</b>	<b>92.7%</b>	<b>81.0%</b>
Advanced Nurse/ Midwife Practitioner	17	17	1.01	11.8%	88.2%	1.00	1.01	100.0%	100.0%	100.0%	100.0%	0.0%	100.0%	100.0%
Clinical Nurse/ Midwife Specialist	23	26	1.13	7.7%	92.3%	1.00	1.15	96.2%	96.2%	95.8%	76.9%	23.1%	100.0%	75.0%
<b>Nurse/ Midwife Specialist &amp; AN/MP</b>	<b>40</b>	<b>43</b>	<b>1.08</b>	<b>9.3%</b>	<b>90.7%</b>	<b>1.00</b>	<b>1.09</b>	<b>97.7%</b>	<b>100.0%</b>	<b>97.4%</b>	<b>86.0%</b>	<b>14.0%</b>	<b>100.0%</b>	<b>84.6%</b>
Staff Midwives	1	1	1.27		100.0%		1.27	100.0%	100.0%	100.0%	0.0%	100.0%		0.0%
Staff Nurse [Intellectual Disability]	1	1	1.00		100.0%		1.00	100.0%	100.0%	100.0%	100.0%	0.0%		100.0%
Staff Nurse [Psychiatric]	7	10	1.38	50.0%	50.0%	1.15	1.72	30.0%	30.0%	20.0%	30.0%	70.0%	40.0%	20.0%
Staff Nurses [General/ Children's]	2,615	3,068	1.17	7.2%	92.8%	1.04	1.18	89.9%	89.9%	90.2%	61.2%	38.8%	91.9%	58.8%
<b>Staff Nurse/ Staff Midwife</b>	<b>2,624</b>	<b>3,080</b>	<b>1.17</b>	<b>7.4%</b>	<b>92.6%</b>	<b>1.05</b>	<b>1.19</b>	<b>89.7%</b>	<b>84.6%</b>	<b>90.1%</b>	<b>61.1%</b>	<b>38.9%</b>	<b>90.7%</b>	<b>58.7%</b>
<b>Public Health Nurse</b>	<b>13</b>	<b>16</b>	<b>1.19</b>	<b>6.3%</b>	<b>93.8%</b>	<b>1.00</b>	<b>1.21</b>	<b>100.0%</b>	<b>100.0%</b>	<b>100.0%</b>	<b>62.5%</b>	<b>37.5%</b>	<b>100.0%</b>	<b>60.0%</b>
<b>Nursing/ Midwifery Student</b>	<b>2</b>	<b>2</b>	<b>1.33</b>		<b>100.0%</b>	<b>#DIV/0</b>	<b>1.33</b>	<b>50.0%</b>		<b>50.0%</b>	<b>50.0%</b>	<b>50.0%</b>	<b>#DIV/0</b>	<b>50.0%</b>
Nursing Education/Clinical	3	4	1.23	25.0%	75.0%	4.00	1.00	100.0%	100.0%	100.0%	100.0%	0.0%	100.0%	100.0%
<b>Nursing/ Midwifery other</b>	<b>3</b>	<b>4</b>	<b>1.23</b>	<b>25.0%</b>	<b>75.0%</b>	<b>4.00</b>	<b>1.00</b>	<b>100.0%</b>	<b>100.0%</b>	<b>100.0%</b>	<b>100.0%</b>	<b>0.0%</b>	<b>100.0%</b>	<b>100.0%</b>
<b>Nursing &amp; Midwifery</b>	<b>3,425</b>	<b>3,933</b>	<b>1.15</b>	<b>7.3%</b>	<b>92.7%</b>	<b>1.04</b>	<b>1.16</b>	<b>91.4%</b>	<b>86.8%</b>	<b>91.8%</b>	<b>65.5%</b>	<b>34.5%</b>	<b>91.3%</b>	<b>63.5%</b>
Dietitians	18	24	1.31	4.2%	95.8%	1.00	1.33	91.7%	91.7%	91.3%	50.0%	50.0%	100.0%	47.8%

Occupational Therapists	115	131	1.14	10.7%	89.3%	1.01	1.16	85.5%	85.5%	83.8%	79.4%	20.6%	100.0%	76.9%
Physiotherapists	132	150	1.14	14.7%	85.3%	1.06	1.15	90.7%	90.7%	90.6%	74.0%	26.0%	90.9%	71.1%
Podiatrists & Chiropodists	13	17	1.34	23.5%	76.5%	1.14	1.41	64.7%	64.7%	69.2%	58.8%	41.2%	75.0%	53.8%
Speech & Language Therapists	19	22	1.16	4.5%	95.5%	1.00	1.17	100.0%	100.0%	100.0%	72.7%	27.3%	100.0%	71.4%
<b>Therapy Professions</b>	<b>297</b>	<b>344</b>	<b>1.16</b>	<b>12.2%</b>	<b>87.8%</b>	<b>1.05</b>	<b>1.18</b>	<b>88.1%</b>	<b>90.5%</b>	<b>87.7%</b>	<b>73.5%</b>	<b>26.5%</b>	<b>92.9%</b>	<b>70.9%</b>
Clinical Measurement	0	1	6.25		100.0%		6.25	0.0%	0.0%	0.0%	0.0%	100.0%		0.0%
Radiographers	5	9	1.81	11.1%	88.9%	2.00	1.79	88.9%	88.9%	87.5%	11.1%	88.9%	0.0%	12.5%
<b>Health Science/ Diagnostics</b>	<b>5</b>	<b>10</b>	<b>1.95</b>	<b>10.0%</b>	<b>90.0%</b>	<b>2.00</b>	<b>1.94</b>	<b>80.0%</b>	<b>100.0%</b>	<b>77.8%</b>	<b>10.0%</b>	<b>90.0%</b>	<b>0.0%</b>	<b>11.1%</b>
<b>Social Care</b>	<b>3</b>	<b>5</b>	<b>1.82</b>		<b>100.0%</b>	<b>#DIV/0</b>	<b>1.82</b>	<b>100.0%</b>		<b>100.0%</b>	<b>0.0%</b>	<b>100.0%</b>	<b>#DIV/0</b>	<b>0.0%</b>
<b>Social Workers</b>	<b>102</b>	<b>113</b>	<b>1.11</b>	<b>13.3%</b>	<b>86.7%</b>	<b>1.07</b>	<b>1.11</b>	<b>91.2%</b>	<b>86.7%</b>	<b>91.8%</b>	<b>85.0%</b>	<b>15.0%</b>	<b>93.3%</b>	<b>83.7%</b>
<b>Psychologists</b>	<b>1</b>	<b>2</b>	<b>1.82</b>		<b>100.0%</b>	<b>#DIV/0</b>	<b>1.82</b>	<b>100.0%</b>		<b>100.0%</b>	<b>0.0%</b>	<b>100.0%</b>	<b>#DIV/0</b>	<b>0.0%</b>
<b>Pharmacy</b>	<b>17</b>	<b>25</b>	<b>1.47</b>	<b>16.0%</b>	<b>84.0%</b>	<b>1.22</b>	<b>1.53</b>	<b>72.0%</b>	<b>100.0%</b>	<b>66.7%</b>	<b>44.0%</b>	<b>56.0%</b>	<b>75.0%</b>	<b>38.1%</b>
Other Health & Social Care	1	1	1.85		100.0%		1.85	100.0%	100.0%	100.0%	0.0%	100.0%		0.0%
Play Therapists/ Specialists	1	1	1.00	100.0%		1.00		100.0%	100.0%		100.0%	0.0%	100.0%	
<b>H&amp;SC, Other</b>	<b>2</b>	<b>2</b>	<b>1.30</b>	<b>50.0%</b>	<b>50.0%</b>	<b>1.00</b>	<b>1.85</b>	<b>100.0%</b>	<b>100.0%</b>	<b>100.0%</b>	<b>50.0%</b>	<b>50.0%</b>	<b>100.0%</b>	<b>0.0%</b>
<b>Health &amp; Social Care</b>	<b>426</b>	<b>501</b>	<b>1.18</b>	<b>12.6%</b>	<b>87.4%</b>	<b>1.07</b>	<b>1.19</b>	<b>88.0%</b>	<b>90.5%</b>	<b>87.7%</b>	<b>72.3%</b>	<b>27.7%</b>	<b>90.5%</b>	<b>69.6%</b>
Executive Management	15	15	1.01	60.0%	40.0%	1.01	1.02	100.0%	100.0%	100.0%	100.0%	0.0%	100.0%	100.0%
Senior Management (VIII & GM)	64	67	1.04	26.9%	73.1%	1.08	1.03	91.0%	91.0%	93.9%	94.0%	6.0%	83.3%	98.0%
<b>Management (VIII &amp; above)</b>	<b>79</b>	<b>82</b>	<b>1.04</b>	<b>32.9%</b>	<b>67.1%</b>	<b>1.05</b>	<b>1.03</b>	<b>92.7%</b>	<b>88.9%</b>	<b>94.5%</b>	<b>95.1%</b>	<b>4.9%</b>	<b>88.9%</b>	<b>98.2%</b>
<b>Administrative/ Supervisory (V to VII)</b>	<b>176</b>	<b>189</b>	<b>1.07</b>	<b>14.3%</b>	<b>85.7%</b>	<b>1.03</b>	<b>1.08</b>	<b>96.3%</b>	<b>92.6%</b>	<b>96.9%</b>	<b>77.8%</b>	<b>22.2%</b>	<b>88.9%</b>	<b>75.9%</b>
<b>Clerical (III &amp; IV)</b>	<b>572</b>	<b>661</b>	<b>1.16</b>	<b>7.4%</b>	<b>92.6%</b>	<b>1.04</b>	<b>1.17</b>	<b>85.6%</b>	<b>77.6%</b>	<b>86.3%</b>	<b>63.2%</b>	<b>36.8%</b>	<b>91.8%</b>	<b>60.9%</b>
<b>Management &amp; Administrative</b>	<b>827</b>	<b>932</b>	<b>1.13</b>	<b>11.1%</b>	<b>88.9%</b>	<b>1.04</b>	<b>1.14</b>	<b>88.4%</b>	<b>84.5%</b>	<b>88.9%</b>	<b>69.0%</b>	<b>31.0%</b>	<b>90.3%</b>	<b>66.3%</b>
Catering	217	240	1.10	33.3%	66.7%	1.03	1.14	93.8%	93.8%	95.0%	71.7%	28.3%	92.5%	61.3%
Household Services	480	545	1.14	17.6%	82.4%	1.06	1.15	82.6%	82.6%	84.2%	59.1%	40.9%	84.4%	53.7%
Other Support	29	36	1.24	52.8%	47.2%	1.17	1.34	80.6%	80.6%	76.5%	63.9%	36.1%	84.2%	41.2%
Portering	77	81	1.05	98.8%	1.2%	1.05	1.35	85.2%	85.2%	100.0%	92.6%	7.4%	92.5%	100.0%
<b>Support</b>	<b>803</b>	<b>902</b>	<b>1.12</b>	<b>30.5%</b>	<b>69.5%</b>	<b>1.05</b>	<b>1.16</b>	<b>85.7%</b>	<b>83.3%</b>	<b>86.8%</b>	<b>65.6%</b>	<b>34.4%</b>	<b>89.1%</b>	<b>55.3%</b>
<b>Maintenance/ Technical</b>	<b>94</b>	<b>98</b>	<b>1.04</b>	<b>99.0%</b>	<b>1.0%</b>	<b>1.04</b>	<b>1.01</b>	<b>90.8%</b>	<b>90.7%</b>	<b>100.0%</b>	<b>91.8%</b>	<b>8.2%</b>	<b>91.8%</b>	<b>100.0%</b>
<b>General Support</b>	<b>897</b>	<b>1,000</b>	<b>1.11</b>	<b>37.2%</b>	<b>62.8%</b>	<b>1.05</b>	<b>1.16</b>	<b>86.2%</b>	<b>85.2%</b>	<b>86.8%</b>	<b>68.2%</b>	<b>31.8%</b>	<b>89.8%</b>	<b>55.4%</b>
HCA, Nurse's Aide, etc.	4,096	4,674	1.14	19.6%	80.4%	1.06	1.16	85.2%	85.2%	85.2%	61.7%	38.3%	86.4%	55.7%
Health & Social Care Assistants	27	30	1.11	30.0%	70.0%	1.03	1.15	86.7%	86.7%	81.0%	83.3%	16.7%	100.0%	76.2%
<b>Health Care Assistants</b>	<b>4,123</b>	<b>4,704</b>	<b>1.14</b>	<b>19.7%</b>	<b>80.3%</b>	<b>1.06</b>	<b>1.16</b>	<b>85.2%</b>	<b>85.3%</b>	<b>85.2%</b>	<b>61.9%</b>	<b>38.1%</b>	<b>86.5%</b>	<b>55.8%</b>
<b>Home Help</b>	<b>3,358</b>	<b>4,934</b>	<b>1.47</b>	<b>3.1%</b>	<b>96.9%</b>	<b>1.34</b>	<b>1.47</b>	<b>56.4%</b>	<b>24.5%</b>	<b>57.5%</b>	<b>41.2%</b>	<b>58.8%</b>	<b>61.3%</b>	<b>40.6%</b>
<b>Care, other</b>	<b>151</b>	<b>190</b>	<b>1.26</b>	<b>38.9%</b>	<b>61.1%</b>	<b>1.44</b>	<b>1.16</b>	<b>71.6%</b>	<b>37.8%</b>	<b>93.1%</b>	<b>62.1%</b>	<b>37.9%</b>	<b>56.8%</b>	<b>65.5%</b>

Patient & Client Care	7,632	9,828	1.29	11.8%	88.2%	1.11	1.32	70.5%	74.1%	70.0%	51.5%	48.5%	81.2%	47.6%
-----------------------	-------	-------	------	-------	-------	------	------	-------	-------	-------	-------	-------	-------	-------

## Employment by WTE, Headcount, Gender, Full-Time /Part-Time etc.: Nov 2020

Social Care Older Persons Services CHO	WTE	Headcount	WTE: no.	% Male	% female	Male WTE: no.	Female WTE: no.	% Total Perm	% Male Perm	% Female Perm	% Total Full Time	% Total Part Time	% Male FT	% Female FT
<b>Overall</b>	<b>13,327</b>	<b>16,388</b>	<b>1.23</b>	<b>12.8%</b>	<b>87.2%</b>	<b>1.11</b>	<b>1.25</b>	<b>77.8%</b>	<b>77.7%</b>	<b>77.8%</b>	<b>57.4%</b>	<b>42.6%</b>	<b>82.4%</b>	<b>53.8%</b>
<b>CHO 1</b>	<b>1,854</b>	<b>2,248</b>	<b>1.21</b>	<b>11.9%</b>	<b>88.1%</b>	<b>1.13</b>	<b>1.23</b>	<b>73.0%</b>	<b>73.0%</b>	<b>71.6%</b>	<b>43.1%</b>	<b>56.9%</b>	<b>68.3%</b>	<b>39.6%</b>
HSE	1,561	1,879	1.20	12.1%	87.9%	1.06	1.23	90.7%	90.7%	91.1%	47.5%	52.5%	88.2%	88.2%
<b>CHO 2</b>	<b>1,561</b>	<b>1,879</b>	<b>1.20</b>	<b>12.1%</b>	<b>87.9%</b>	<b>1.06</b>	<b>1.23</b>	<b>90.7%</b>	<b>90.7%</b>	<b>91.1%</b>	<b>47.5%</b>	<b>52.5%</b>	<b>88.2%</b>	<b>41.9%</b>
HSE	1,032	1,363	1.32	11.5%	88.5%	1.06	1.36	93.3%	93.3%	93.9%	47.5%	52.5%	87.3%	87.3%
<b>CHO 3</b>	<b>1,032</b>	<b>1,363</b>	<b>1.32</b>	<b>11.5%</b>	<b>88.5%</b>	<b>1.06</b>	<b>1.36</b>	<b>93.3%</b>	<b>93.3%</b>	<b>93.9%</b>	<b>47.5%</b>	<b>52.5%</b>	<b>87.3%</b>	<b>42.4%</b>
HSE	2,902	3,830	1.32	10.8%	89.2%	1.18	1.34	66.4%	66.4%	68.6%	74.4%	25.6%	85.1%	85.1%
<b>CHO 4</b>	<b>2,902</b>	<b>3,830</b>	<b>1.32</b>	<b>10.8%</b>	<b>89.2%</b>	<b>1.18</b>	<b>1.34</b>	<b>66.4%</b>	<b>66.4%</b>	<b>68.6%</b>	<b>74.4%</b>	<b>25.6%</b>	<b>85.1%</b>	<b>73.1%</b>
HSE	1,686	2,003	1.19	9.5%	90.5%	1.11	1.20	61.9%	61.9%	59.8%	46.0%	54.0%	79.6%	79.6%
<b>CHO 5</b>	<b>1,686</b>	<b>2,003</b>	<b>1.19</b>	<b>9.5%</b>	<b>90.5%</b>	<b>1.11</b>	<b>1.20</b>	<b>61.9%</b>	<b>61.9%</b>	<b>59.8%</b>	<b>46.0%</b>	<b>54.0%</b>	<b>79.6%</b>	<b>42.4%</b>
HSE	330	365	1.11	23.3%	76.7%	1.05	1.12	74.5%	74.5%	76.8%	71.8%	28.2%	83.5%	83.5%
Section 38	473	515	1.09	26.2%	73.8%	1.05	1.10	98.8%	98.8%	98.9%	81.2%	18.8%	91.9%	91.9%
<b>CHO 6</b>	<b>803</b>	<b>880</b>	<b>1.10</b>	<b>25.0%</b>	<b>75.0%</b>	<b>1.05</b>	<b>1.11</b>	<b>88.8%</b>	<b>88.8%</b>	<b>89.5%</b>	<b>77.3%</b>	<b>22.7%</b>	<b>88.6%</b>	<b>73.5%</b>
HSE	1,027	1,178	1.15	15.6%	84.4%	1.04	1.17	90.7%	90.7%	91.5%	65.6%	34.4%	85.9%	85.9%
<b>CHO 7</b>	<b>1,027</b>	<b>1,178</b>	<b>1.15</b>	<b>15.6%</b>	<b>84.4%</b>	<b>1.04</b>	<b>1.17</b>	<b>90.7%</b>	<b>90.7%</b>	<b>91.5%</b>	<b>65.6%</b>	<b>34.4%</b>	<b>85.9%</b>	<b>61.9%</b>
HSE	1,481	1,894	1.28	11.4%	88.6%	1.18	1.29	81.2%	81.2%	80.7%	45.4%	54.6%	73.1%	73.1%
<b>CHO 8</b>	<b>1,481</b>	<b>1,894</b>	<b>1.28</b>	<b>11.4%</b>	<b>88.6%</b>	<b>1.18</b>	<b>1.29</b>	<b>81.2%</b>	<b>81.2%</b>	<b>80.7%</b>	<b>45.4%</b>	<b>54.6%</b>	<b>73.1%</b>	<b>41.8%</b>
HSE	648	738	1.14	21.5%	78.5%	1.08	1.16	86.0%	86.0%	87.4%	72.1%	27.9%	84.9%	84.9%
Section 38	266	302	1.13	12.9%	87.1%	1.07	1.15	88.4%	88.4%	88.6%	74.5%	25.5%	94.9%	94.9%
<b>CHO 9</b>	<b>914</b>	<b>1,040</b>	<b>1.14</b>	<b>19.0%</b>	<b>81.0%</b>	<b>1.07</b>	<b>1.15</b>	<b>86.7%</b>	<b>86.7%</b>	<b>87.8%</b>	<b>72.8%</b>	<b>27.2%</b>	<b>86.9%</b>	<b>69.5%</b>
<b>other Community Services</b>	<b>67</b>	<b>73</b>	<b>1.09</b>	<b>27.4%</b>	<b>72.6%</b>	<b>1.06</b>	<b>1.10</b>	<b>80.8%</b>	<b>80.8%</b>	<b>81.1%</b>	<b>86.3%</b>	<b>13.7%</b>	<b>90.0%</b>	<b>84.9%</b>

Summary Staff Movement: November 2020

Month-on-month  
Summary

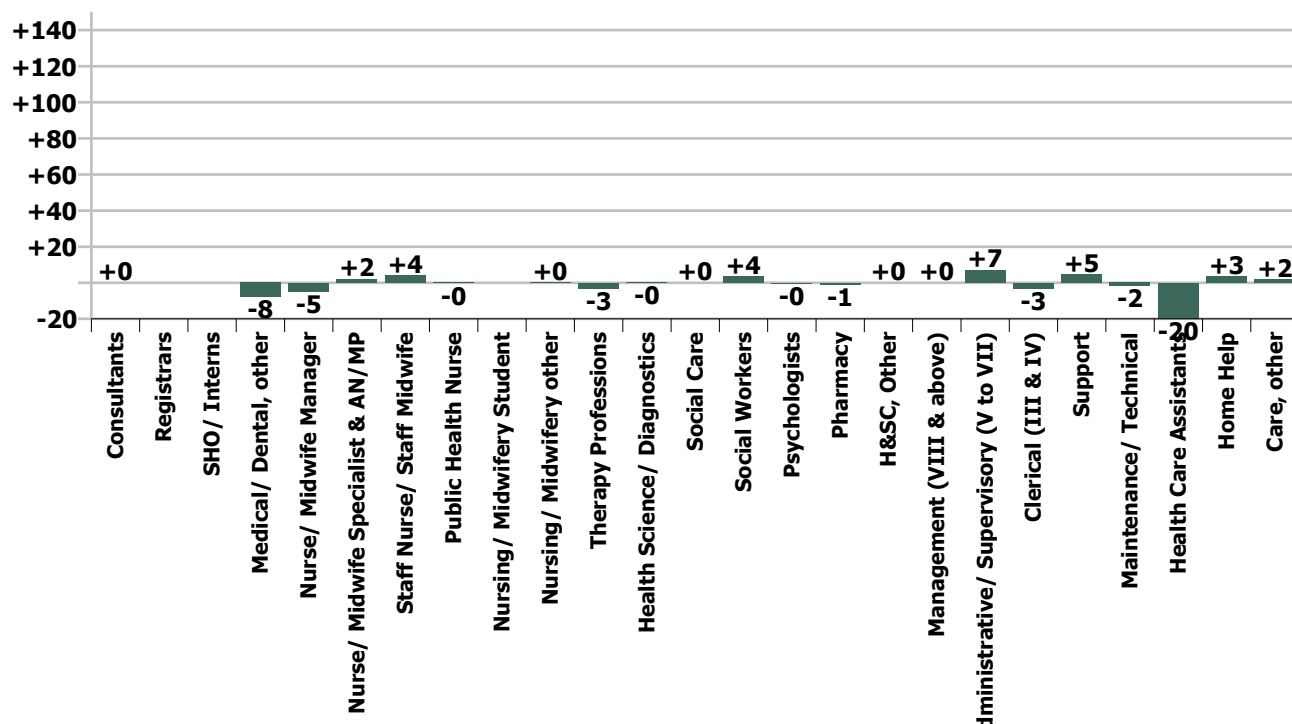
WTE change since Oct 20	% change since Oct 20	overall	Consultants	Registrars	SHO/ Interns	Medical/ Dental, other	Medical & Dental	Nurse/ Midwife Manager	Nurse/ Midwife Specialist & AN/MP	Staff Nurse/ Staff Midwife	Public Health Nurse	Nursing/ Midwifery Student	Nursing/ Midwifery other	Nursing & Midwifery	Therapy Professions	Health Science/ Diagnostics	Social Care	Social Workers	Psychologists	Pharmacy	H&SC, Other	Health & Social Care Professionals	Management (VIII & above)	Administrative Supervisory (V to VII)	Clerical (III & IV)	Management & Administrative	Support	Maintenance/ Technical	General Support	Health Care Assistants	Home Help	Care, other	Patient & Client Care	
Overall	-0.1%	-15	+0.0	0.0	0.0	-7.8	-7.8	-4.7	+2.1	+4.1	-0.2	0.0	+0.3	+1.6	-3.1	-0.1	+0.0	+3.6	-0.4	-1.1	+0.0	-0.9	+0.0	+7.1	-3.2	+4.0	+4.7	-1.9	+2.8	-19.9	+3.4	+1.9	-14.6	
CHO 1	+0.0%	+0				-0.5	-0.5	-1.8	+0.1	-4.6				-6.3	-0.1	+0.0		+0.3				+0.3		-0.0	+0.4	+0.3	+1.1	+0.1	+1.2	-6.9	+12.4	-0.3	+5.2	
CHO 2	-1.1%	-17				-0.0	-0.0	-1.5	-0.0	-3.2				-4.7	-0.6			+0.2			+0.0		-0.4		-0.8	-2.3	-3.1	-0.8	-0.8	-1.6	-11.5	+1.8	+2.7	-7.0
CHO 3	+0.6%	+6				+0.3	+0.3	-2.7	+0.8	+2.4				+0.6	+0.3	-0.1		+0.8				+1.0	+1.0	-0.7	-1.5	-1.1	+0.7	-0.1	+0.6	+2.8	+1.8	-0.2	+4.4	
CHO 4	-0.7%	-20	+0.0			-6.1	-6.1	-1.0	+0.1	+1.4	-0.2			+0.3	-2.9		-0.0	+1.2			-0.1		-1.8	-0.2	+2.1	+1.3	+3.2	+3.4	+3.4	+8.2	-27.8	+0.2	-19.4	
CHO 5	+0.8%	+13				-1.5	-1.6	+1.3	+0.2	-2.0	-0.0			-0.5	-0.4			-0.0			+0.0		-0.4		+0.2	+0.1	+0.4	+0.3	-0.8	-0.5	-2.0	+17.9	-0.2	+15.7
CHO 6	-0.9%	-7					0.0	-1.9		+0.7				-1.2	-0.3			+0.9	-0.4	-0.0			+0.2			-0.1	-0.0	-0.6		-0.6	-5.4		-0.0	-5.5
CHO 7	+0.1%	+1					0.0	+1.5	-0.2	+3.4				+4.7	-0.1			-1.0			-1.0		-2.1	+0.3	+1.0	-0.4	+0.9	+2.2	+2.2	-4.4	-0.3		-4.7	
CHO 8	+0.3%	+4					0.0	+0.2	+1.0	+6.2			+0.3	+7.6	+1.4			+0.2				+1.6	-0.6	+1.1	+0.5	+0.9	-0.7	-0.2	-0.9	-2.0	-2.3	-0.3	-4.7	
CHO 9	+0.4%	+3					+0.0	+1.3	+0.0	-0.2				+1.2	-0.5		+0.0	+1.1				+0.6	-0.0	+2.2	-1.1	+1.1	-0.8		-0.8	+1.3		+0.0	+1.4	
other Community Services	+2.2%	+1																					-0.5	+2.0	-0.1	+1.4							0.0	
		-0.1%	+0.4%			-7.9%	-6.2%	-0.6%	+5.7%	+0.2%	-1.8%		+8.3%	+0.0%	-1.0%	-1.5%	+1.1%	+3.7%	-24.1%	-5.9%	+2.7%	-0.2%	+0.0%	+4.2%	-0.5%	+0.5%	+0.6%	-2.0%	+0.3%	-0.5%	+0.1%	+1.3%	-0.2%	

Year-on-year Summary

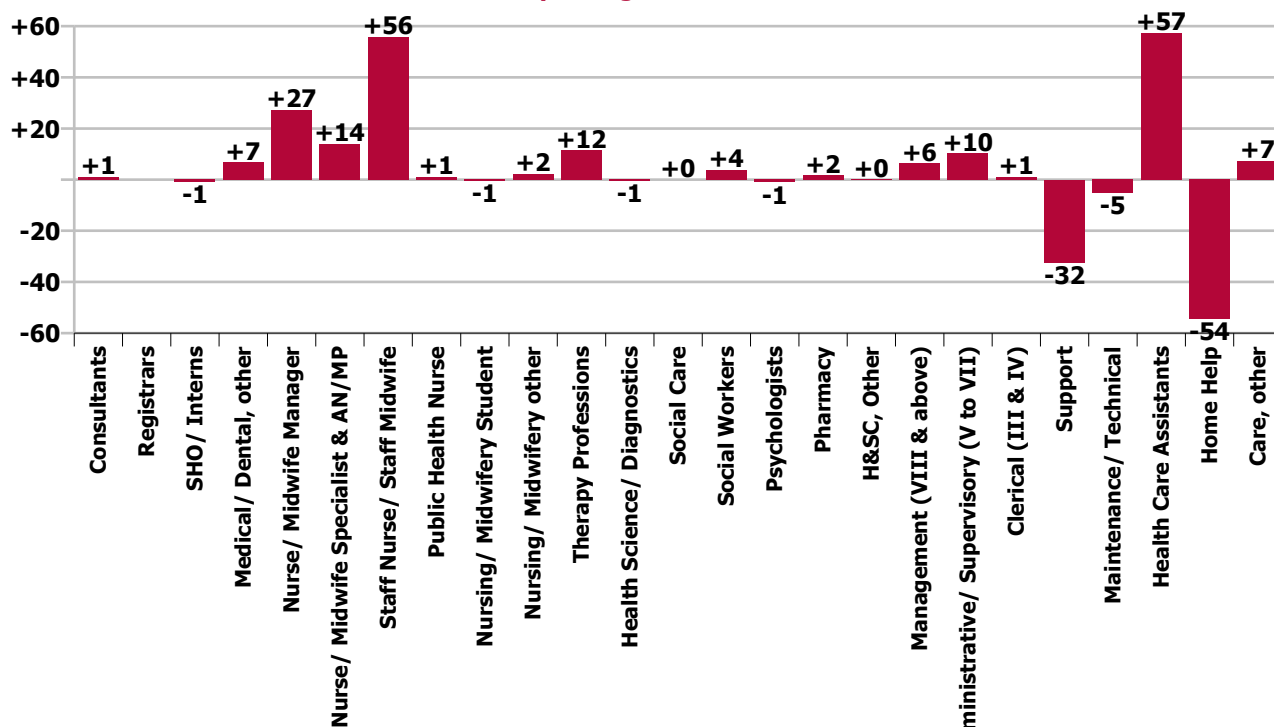
WTE change since Nov 19	% change since Nov 19	overall	Consultants	Registrars	SHO/ Interns	Medical/ Dental, other	Medical & Dental	Nurse/ Midwife Manager	Nurse/ Midwife Specialist & AN/MP	Staff Nurse/ Staff Midwife	Public Health Nurse	Nursing/ Midwifery Student	Nursing/ Midwifery other	Nursing & Midwifery	Therapy Professions	Health Science/ Diagnostics	Social Care	Social Workers	Psychologists	Pharmacy	H&SC, Other	Health & Social Care Professionals	Management (VIII & above)	Administrativ e Supervisory (V to VII)	Clerical (III & IV)	Management & Administrativ e	Support	Maintenance/ Technical	General Support	Health Care Assistants	Home Help	Care, other	Patient & Client Care	
Overall	+0.9%	+113	+1		-1	+7	+7	+27	+14	+56	+1	-1	+2	+100	+12	-1		+4	-1	+2	+0	+16	+6	+10	+1	+18	-32	-5	-38	+57	-54	+7	+10	
CHO 1	+1.0%	+18				-1	-1	-3	+3	+1			+1	+2	+3	+0		-2				+1	+1		+1	+2	-6	-1	-7	+10	+10	-0	+21	
CHO 2	-0.1%	-2				-0	-0	+6	-0	+9	+0			+15	+1			+1			+0		+2	+0	+2	-6	-4	-1	-0	-1	+6	-25	+6	-13
CHO 3	+6.2%	+60				+1	+1	-1	+2	-5				-4	+4	+0		+0				+4	+1	-2	-3	-4	-1	-1	-2	+19	+43	+3	+65	
CHO 4	-1.3%	-39				+2	+2	+1	+3	+9	+2	-2		+13	-2	+1		+2			+1	+2	+1	+0	+4	+5	+13		+13	+9	-88	+4	-74	
CHO 5	+2.1%	+34				+5	+5	+5	+2	-2	-1			+4	-8			+1			+1		-6		+3	-0	+3	-40	-4	-44	+62	+13	-3	+72
CHO 6	-2.4%	-20						-5		+3				-2	-4			-1	-1	+0			-6	+1	-3	+2	+0	-7	+1	-6	-5		-2	-6
CHO 7	+2.7%	+27				-1	-1	+8	+1	+23		+2		+33	-1			+1			-1		-1	+2	+3	+4	+10	+5	+5	-35	+15	+0	-20	
CHO 8	-0.2%	-3				-0	-0	+11	+2	+10	+1		+1	+25	+1			+0			-1		+1	+2	+3	-1	+4	+0	-0	+0	-11	-22	+0	-33
CHO 9	+4.9%	+42	+1		-1		+0	+5	+1	+8	-0			+14	+17	-1		+2			+1	+0	+20	-1	+6	+1	+6	+4		+4	-0		-1	-1
other Community Services	-6.9%	-5														-1						-1	-1	-1	-1	-4								
		+0.9%	+27.8%		-6.2%	+8.0%	+6.1%	+3.8%	+54.6%	+2.2%	+8.1%	-25.0%	+225.0%	+3.0%	+4.0%	-9.4%		+3.9%	-47.6%	+10.3%	+13.2%	+3.8%	+8.8%	+6.2%	+0.2%	+2.2%	-3.9%	-5.3%	-4.0%	+1.4%	-1.6%	+5.2%	+0.1%	



### Staff Group change since: Oct 2020

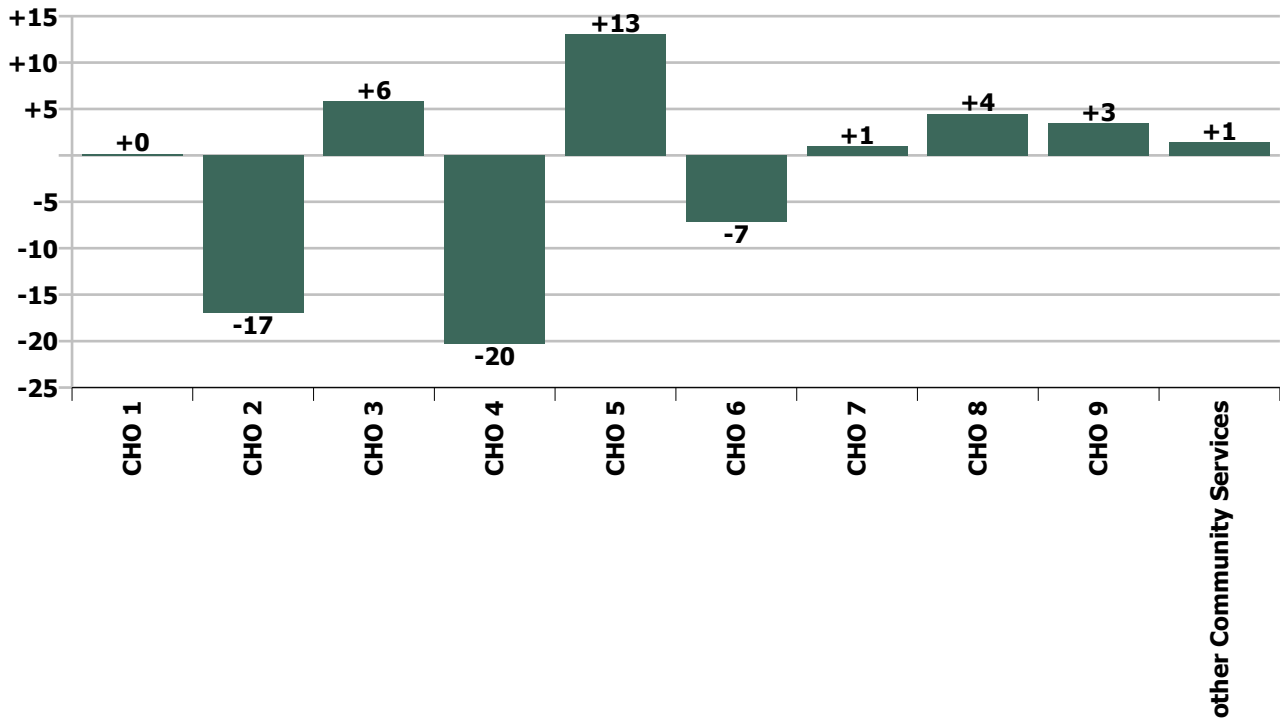


### Staff Group change since: Nov 2019

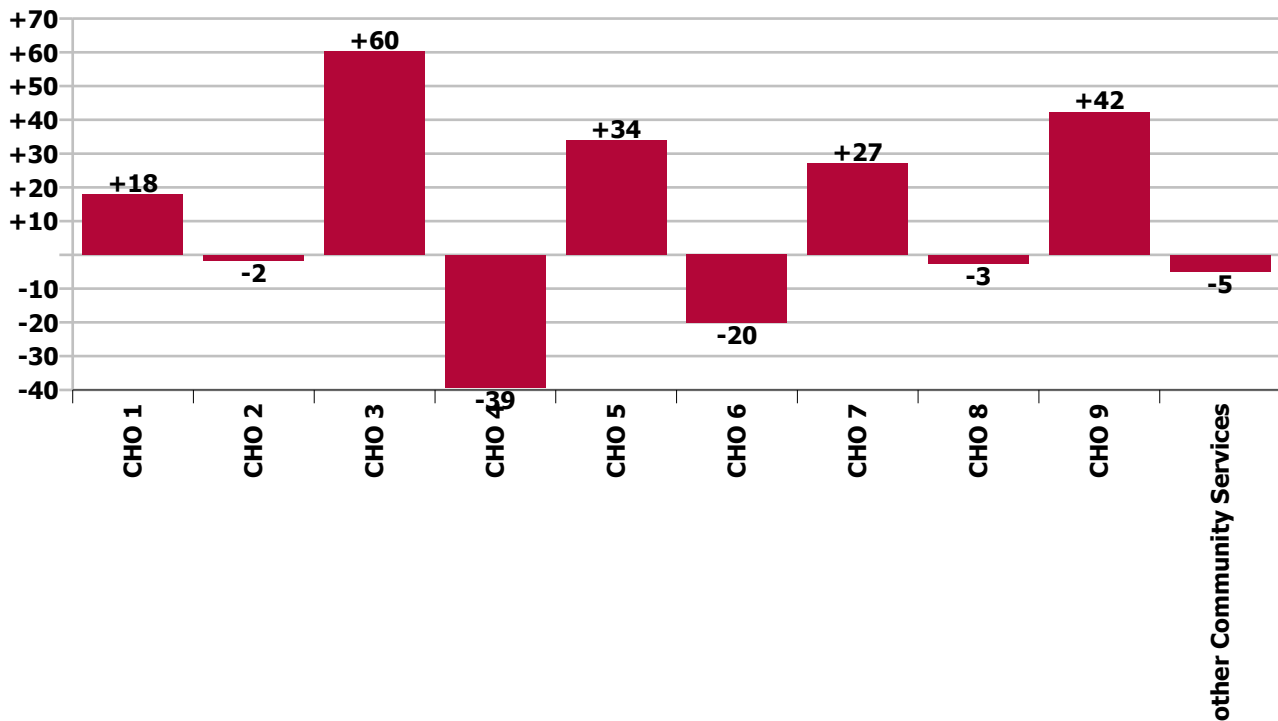




CHO change since: Oct 2020



CHO change since: Nov 2019



## Longitudinal Employment Levels by Grade Group - Oct 2013 to Nov 2020

Nov 2020 (Oct 2013 figure: 11,493)	WTE Nov 2020	WTE change since Oct 13	WTE change since Dec 15	WTE change since Dec 16	WTE change since Dec 17	WTE change since Dec 18	WTE change since Dec 19	% change since Oct 13	% change since Dec 15	% change since Dec 16	% change since Dec 17	% change since Dec 18	% change since Dec 19
<b>Overall</b>	<b>13,327</b>	<b>+1,834</b>	<b>+721</b>	<b>+845</b>	<b>+224</b>	<b>+23</b>	<b>+95</b>	<b>+16.0%</b>	<b>+5.7%</b>	<b>+6.8%</b>	<b>+1.7%</b>	<b>+0.2%</b>	<b>+0.7%</b>
Consultant Medicine	5	+3	-2	-5	-5	+1	+1	+131.2%	-30.3%	-50.9%	-50.0%	+27.8%	+27.8%
Consultant Psychiatry		-1	-1	-1	-1			-100.0%	-100.0%	-100.0%	-100.0%	-100.0%	-100.0%
Consultant Radiology		-0						-100.0%	-100.0%	-100.0%	-100.0%	-100.0%	-100.0%
Consultant Surgery		-1	-1	-1	-0	-0		-100.0%	-100.0%	-100.0%	-100.0%	-100.0%	-100.0%
<b>Consultants</b>	<b>5</b>	<b>+1</b>	<b>-4</b>	<b>-6</b>	<b>-6</b>	<b>+1</b>	<b>+1</b>	<b>+25.7%</b>	<b>-46.5%</b>	<b>-58.1%</b>	<b>-54.8%</b>	<b>+23.7%</b>	<b>+27.8%</b>
Registrar	6	-3	-3		-2	-2	-1	-34.2%	-31.8%		-26.6%	-25.1%	-15.4%
Senior Registrar	1					-1						-50.0%	
Specialist Registrar	3	+1		+1	+2	+2	+1	+50.0%		+50.0%	+200.0%	+200.0%	+50.0%
<b>Registrars</b>	<b>10</b>	<b>-2</b>	<b>-3</b>	<b>+1</b>		<b>-1</b>		<b>-16.4%</b>	<b>-21.3%</b>	<b>+11.8%</b>		<b>-8.2%</b>	
<b>SHO/ Interns</b>	<b>14</b>	<b>+1</b>	<b>+3</b>	<b>+4</b>	<b>+4</b>	<b>+2</b>	<b>-1</b>	<b>+8.9%</b>	<b>+29.7%</b>	<b>+40.7%</b>	<b>+41.3%</b>	<b>+17.4%</b>	<b>-6.7%</b>
Other Medical	91	+7	+8	+5	+5	+6	-5	+8.0%	+9.9%	+6.0%	+6.0%	+6.6%	-5.6%
<b>Medical/ Dental, other</b>	<b>91</b>	<b>+7</b>	<b>+8</b>	<b>+5</b>	<b>+5</b>	<b>+6</b>	<b>-5</b>	<b>+8.0%</b>	<b>+9.9%</b>	<b>+6.0%</b>	<b>+6.0%</b>	<b>+6.6%</b>	<b>-5.6%</b>
<b>Medical &amp; Dental</b>	<b>119</b>	<b>+7</b>	<b>+5</b>	<b>+4</b>	<b>+4</b>	<b>+8</b>	<b>-5</b>	<b>+6.2%</b>	<b>+4.3%</b>	<b>+3.3%</b>	<b>+3.2%</b>	<b>+6.9%</b>	<b>-4.3%</b>
Clinical Nurse/ Midwife Manager	534	+49	+6	-0	+6	+10	+26	+10.2%	+1.2%	-0.0%	+1.2%	+2.0%	+5.1%
Director Nursing/Midwifery, Assistant	104	+24	+19	+17	+13	+18	+2	+29.2%	+21.8%	+19.3%	+14.0%	+20.5%	+1.9%
Director of Nursing/Midwifery	104	+31	+23	+19	+22	+21	+6	+43.1%	+28.4%	+22.4%	+26.1%	+25.9%	+5.9%
<b>Nurse/ Midwife Manager</b>	<b>743</b>	<b>+104</b>	<b>+48</b>	<b>+36</b>	<b>+40</b>	<b>+49</b>	<b>+34</b>	<b>+16.3%</b>	<b>+6.9%</b>	<b>+5.1%</b>	<b>+5.8%</b>	<b>+7.1%</b>	<b>+4.8%</b>
Advanced Nurse/ Midwife Practitioner	17	+14	+15	+14	+14	+10	+6	+484.4%	+741.5%	+461.0%	+461.0%	+141.1%	+57.0%
Clinical Nurse/ Midwife Specialist	23	+6	+6	+10	+12	+6	+7	+38.7%	+37.3%	+83.2%	+104.5%	+36.9%	+45.7%
<b>Nurse/ Midwife Specialist &amp; AN/MP</b>	<b>40</b>	<b>+20</b>	<b>+21</b>	<b>+24</b>	<b>+26</b>	<b>+16</b>	<b>+13</b>	<b>+104.7%</b>	<b>+112.5%</b>	<b>+156.1%</b>	<b>+179.7%</b>	<b>+67.6%</b>	<b>+50.3%</b>
Graduate Nursing/ Midwifery		-1	-2					-100.0%	-100.0%	-100.0%	-100.0%	-100.0%	-100.0%
Staff Midwives	1	-0	-0	+0	-1	+1	+1	-21.0%	-1.2%	+97.5%	-56.1%	-100.0%	-100.0%
Staff Nurse [Intellectual Disability]	1				+0		+1				+29.9%		-100.0%
Staff Nurse [Psychiatric]	7	+3	+3	+2	+2	+2	+2	+69.8%	+59.7%	+31.3%	+31.3%	+30.9%	+47.7%
Staff Nurses [General/ Children's]	2,615	-138	+8	+33	+54	+11	+44	-5.0%	+0.3%	+1.3%	+2.1%	+0.4%	+1.7%
<b>Staff Nurse/ Staff Midwife</b>	<b>2,624</b>	<b>-136</b>	<b>+8</b>	<b>+35</b>	<b>+55</b>	<b>+13</b>	<b>+48</b>	<b>-4.9%</b>	<b>+0.3%</b>	<b>+1.3%</b>	<b>+2.1%</b>	<b>+0.5%</b>	<b>+1.9%</b>
<b>Public Health Nurse</b>	<b>13</b>	<b>-1</b>	<b>-2</b>	<b>-1</b>	<b>-1</b>	<b>-0</b>	<b>+0</b>	<b>-8.5%</b>	<b>-13.3%</b>	<b>-5.8%</b>	<b>-9.2%</b>	<b>-1.1%</b>	<b>+0.0%</b>
Pre-registration Nurse/ Midwife Intern		-2						-100.0%	-100.0%	-100.0%	-100.0%	-100.0%	-100.0%
Post-registration Nurse/ Midwife Student		-1					-1	-100.0%	-100.0%	-100.0%	-100.0%	-100.0%	-100.0%
Nursing/ Midwifery awaiting registration	2	+2	+2	+2	-13	+2	+1	-100.0%	-100.0%	-100.0%	-89.3%	-100.0%	+50.0%
<b>Nursing/ Midwifery Student</b>	<b>2</b>	<b>-1</b>	<b>+2</b>	<b>+2</b>	<b>-13</b>	<b>+2</b>	<b>-1</b>	<b>-40.0%</b>	<b>-100.0%</b>	<b>-100.0%</b>	<b>-89.3%</b>	<b>-100.0%</b>	<b>-25.0%</b>
Nursing Education/Clinical	3	+1	+2	+2	+2	+2	+2	+62.5%	+225.0%	+225.0%	+225.0%	+225.0%	+225.0%
<b>Nursing/ Midwifery other</b>	<b>3</b>	<b>+1</b>	<b>+2</b>	<b>+2</b>	<b>+2</b>	<b>+2</b>	<b>+2</b>	<b>+62.5%</b>	<b>+225.0%</b>	<b>+225.0%</b>	<b>+225.0%</b>	<b>+225.0%</b>	<b>+225.0%</b>
<b>Nursing &amp; Midwifery</b>	<b>3,425</b>	<b>-13</b>	<b>+79</b>	<b>+98</b>	<b>+109</b>	<b>+82</b>	<b>+96</b>	<b>-0.4%</b>	<b>+2.4%</b>	<b>+2.9%</b>	<b>+3.3%</b>	<b>+2.5%</b>	<b>+2.9%</b>
Dietitians	18	+11	+8	+2	+1	+1	+2	+136.0%	+76.0%	+15.5%	+4.6%	+5.7%	+11.7%
Occupational Therapists	115	+38	+23	+19	+20	+11	+2	+50.2%	+24.4%	+20.0%	+21.4%	+10.5%	+1.5%
Physiotherapists	132	+18	+11	+16	+11	+4	+8	+16.0%	+9.4%	+13.7%	+8.8%	+3.4%	+6.6%

Nov 2020 (Oct 2013 figure: 11,493)	WTE Nov 2020	WTE change since Oct 13	WTE change since Dec 15	WTE change since Dec 16	WTE change since Dec 17	WTE change since Dec 18	WTE change since Dec 19	% change since Oct 13	% change since Dec 15	% change since Dec 16	% change since Dec 17	% change since Dec 18	% change since Dec 19
<b>Overall</b>	<b>13,327</b>	<b>+1,834</b>	<b>+721</b>	<b>+845</b>	<b>+224</b>	<b>+23</b>	<b>+95</b>	<b>+16.0%</b>	<b>+5.7%</b>	<b>+6.8%</b>	<b>+1.7%</b>	<b>+0.2%</b>	<b>+0.7%</b>
Podiatrists & Chiropodists	13	-0	+1	-2	-3	-2	+1	-3.3%	+5.7%	-13.7%	-21.0%	-15.2%	+5.2%
Speech & Language Therapists	19	+1	-1	-1	-5	-4	-4	+5.7%	-7.3%	-7.0%	-20.5%	-18.0%	-18.2%
<b>Therapy Professions</b>	<b>297</b>	<b>+68</b>	<b>+41</b>	<b>+34</b>	<b>+24</b>	<b>+10</b>	<b>+8</b>	<b>+29.6%</b>	<b>+16.0%</b>	<b>+13.0%</b>	<b>+8.6%</b>	<b>+3.4%</b>	<b>+2.8%</b>
Clinical Measurement	0	+0	+0	+0	+0	+0	-0	-100.0%	-100.0%	-100.0%	-100.0%	+100.0%	-23.8%
Medical Laboratory				-1				-100.0%	-100.0%	-100.0%	-100.0%	-100.0%	-100.0%
Phlebotomists		-1	-1	-1	-1			-100.0%	-100.0%	-100.0%	-100.0%	-100.0%	-100.0%
Radiographers	5	-4	-2	-2	-2	-1	-1	-42.0%	-31.4%	-30.1%	-31.1%	-11.7%	-16.2%
<b>Health Science/ Diagnostics</b>	<b>5</b>	<b>-4</b>	<b>-3</b>	<b>-4</b>	<b>-3</b>	<b>-1</b>	<b>-1</b>	<b>-46.4%</b>	<b>-37.8%</b>	<b>-43.7%</b>	<b>-37.5%</b>	<b>-10.2%</b>	<b>-16.4%</b>
<b>Social Care</b>	<b>3</b>	<b>-1</b>	<b>-1</b>	<b>+0</b>	<b>+0</b>		<b>+0</b>	<b>-29.2%</b>	<b>-25.3%</b>	<b>+1.5%</b>	<b>+2.6%</b>		<b>+0.0%</b>
<b>Social Workers</b>	<b>102</b>	<b>+47</b>	<b>+28</b>	<b>+16</b>	<b>+18</b>	<b>+7</b>	<b>+4</b>	<b>+84.1%</b>	<b>+36.9%</b>	<b>+17.9%</b>	<b>+22.0%</b>	<b>+7.7%</b>	<b>+3.9%</b>
<b>Psychologists</b>	<b>1</b>	<b>-1</b>	<b>+1</b>	<b>+1</b>	<b>+1</b>	<b>+1</b>	<b>-1</b>	<b>-52.2%</b>	<b>+120.0%</b>	<b>+120.0%</b>	<b>-100.0%</b>	<b>+120.0%</b>	<b>-47.6%</b>
<b>Pharmacy</b>	<b>17</b>	<b>+4</b>	<b>+2</b>	<b>+3</b>	<b>+2</b>	<b>+1</b>	<b>+2</b>	<b>+30.8%</b>	<b>+14.9%</b>	<b>+17.3%</b>	<b>+11.2%</b>	<b>+4.5%</b>	<b>+11.9%</b>
Other Health & Social Care	1	-3	-1	-1	-1	-1	+0	-84.1%	-56.5%	-60.3%	-60.3%	-60.3%	+50.0%
Play Therapists/ Specialists	1	-0	-0	-1				-30.1%	-30.1%	-37.1%			
<b>H&amp;SC, Other</b>	<b>2</b>	<b>-3</b>	<b>-1</b>	<b>-1</b>	<b>-1</b>	<b>-1</b>	<b>+0</b>	<b>-68.1%</b>	<b>-42.3%</b>	<b>-47.8%</b>	<b>-34.7%</b>	<b>-34.7%</b>	<b>+13.2%</b>
<b>Health &amp; Social Care Professionals</b>	<b>426</b>	<b>+108</b>	<b>+66</b>	<b>+47</b>	<b>+41</b>	<b>+17</b>	<b>+12</b>	<b>+34.1%</b>	<b>+18.3%</b>	<b>+12.5%</b>	<b>+10.6%</b>	<b>+4.2%</b>	<b>+2.9%</b>
Executive Management	15	+12	+9	+8	+7	+5	+3	+393.0%	+146.5%	+111.3%	+86.7%	+47.9%	+24.2%
Senior Management (VIII & GM)	64	+50	+28	+24	+27	+16	+2	+342.3%	+78.1%	+59.2%	+74.3%	+32.6%	+2.7%
<b>Management (VIII &amp; above)</b>	<b>79</b>	<b>+62</b>	<b>+37</b>	<b>+32</b>	<b>+34</b>	<b>+21</b>	<b>+5</b>	<b>+350.9%</b>	<b>+87.8%</b>	<b>+66.9%</b>	<b>+76.5%</b>	<b>+35.2%</b>	<b>+6.1%</b>
Middle Management (V-VII)	176	+75	+70	+59	+48	+34	+12	+74.5%	+65.3%	+50.9%	+37.9%	+24.1%	+7.4%
Other Administrative		-1	-1	-1	-1	-1	-1	-100.0%	-100.0%	-100.0%	-100.0%	-100.0%	-100.0%
<b>Administrative/ Supervisory (V to VII)</b>	<b>176</b>	<b>+74</b>	<b>+69</b>	<b>+58</b>	<b>+47</b>	<b>+33</b>	<b>+11</b>	<b>+72.4%</b>	<b>+63.7%</b>	<b>+49.7%</b>	<b>+36.8%</b>	<b>+23.3%</b>	<b>+6.7%</b>
<b>Clerical (III &amp; IV)</b>	<b>572</b>	<b>+165</b>	<b>+111</b>	<b>+89</b>	<b>+63</b>	<b>+7</b>	<b>+1</b>	<b>+40.5%</b>	<b>+24.1%</b>	<b>+18.3%</b>	<b>+12.3%</b>	<b>+1.3%</b>	<b>+0.1%</b>
<b>Management &amp; Administrative</b>	<b>827</b>	<b>+300</b>	<b>+217</b>	<b>+179</b>	<b>+144</b>	<b>+61</b>	<b>+16</b>	<b>+57.0%</b>	<b>+35.5%</b>	<b>+27.6%</b>	<b>+21.2%</b>	<b>+8.0%</b>	<b>+2.0%</b>
Catering	217	+21	+7	+4	+6	+2	-4	+10.5%	+3.2%	+2.1%	+2.7%	+0.9%	-1.7%
Household Services	480	-151	-102	-84	-65	-38	-13	-23.9%	-17.6%	-14.9%	-11.9%	-7.4%	-2.6%
Other Support	29	-16	-16	-11	-14	-9	-5	-35.1%	-35.6%	-27.8%	-33.2%	-23.5%	-14.8%
Portering	77	-16	-7	-8	-7	-2	-4	-17.5%	-8.4%	-9.0%	-7.8%	-2.9%	-5.1%
<b>Support</b>	<b>803</b>	<b>-162</b>	<b>-119</b>	<b>-98</b>	<b>-80</b>	<b>-47</b>	<b>-26</b>	<b>-16.8%</b>	<b>-12.9%</b>	<b>-10.9%</b>	<b>-9.1%</b>	<b>-5.6%</b>	<b>-3.1%</b>
Maintenance	94	-17	-12	-10	-8	-8	-4	-15.3%	-11.7%	-9.3%	-7.7%	-8.2%	-4.5%
<b>Maintenance/ Technical</b>	<b>94</b>	<b>-17</b>	<b>-12</b>	<b>-10</b>	<b>-8</b>	<b>-8</b>	<b>-4</b>	<b>-15.3%</b>	<b>-11.7%</b>	<b>-9.3%</b>	<b>-7.7%</b>	<b>-8.2%</b>	<b>-4.5%</b>
<b>General Support</b>	<b>897</b>	<b>-179</b>	<b>-131</b>	<b>-108</b>	<b>-88</b>	<b>-56</b>	<b>-30</b>	<b>-16.6%</b>	<b>-12.8%</b>	<b>-10.7%</b>	<b>-8.9%</b>	<b>-5.9%</b>	<b>-3.2%</b>
HCA, Nurse's Aide, etc.	4,096	+525	+109	+49	+10	-36	+74	+14.7%	+2.7%	+1.2%	+0.2%	-0.9%	+1.8%
Health & Social Care Assistants	27	+4	-1	+1	+1	+3	+6	+15.4%	-2.4%	+4.0%	+4.3%	+11.5%	+27.0%
<b>Health Care Assistants</b>	<b>4,123</b>	<b>+528</b>	<b>+108</b>	<b>+50</b>	<b>+11</b>	<b>-33</b>	<b>+79</b>	<b>+14.7%</b>	<b>+2.7%</b>	<b>+1.2%</b>	<b>+0.3%</b>	<b>-0.8%</b>	<b>+2.0%</b>
<b>Home Help</b>	<b>3,358</b>	<b>+1,050</b>	<b>+358</b>	<b>+563</b>	<b>+3</b>	<b>-62</b>	<b>-83</b>	<b>+45.5%</b>	<b>+11.9%</b>	<b>+20.2%</b>	<b>+0.1%</b>	<b>-1.8%</b>	<b>-2.4%</b>
<b>Care, other</b>	<b>151</b>	<b>+32</b>	<b>+18</b>	<b>+12</b>	<b>-0</b>	<b>+5</b>	<b>+9</b>	<b>+27.1%</b>	<b>+13.8%</b>	<b>+8.8%</b>	<b>-0.2%</b>	<b>+3.2%</b>	<b>+6.7%</b>

Nov 2020 (Oct 2013 figure: 11,493)	WTE Nov 2020	WTE change since Oct 13	WTE change since Dec 15	WTE change since Dec 16	WTE change since Dec 17	WTE change since Dec 18	WTE change since Dec 19	% change since Oct 13	% change since Dec 15	% change since Dec 16	% change since Dec 17	% change since Dec 18	% change since Dec 19
<b>Overall</b>	<b>13,327</b>	<b>+1,834</b>	<b>+721</b>	<b>+845</b>	<b>+224</b>	<b>+23</b>	<b>+95</b>	<b>+16.0%</b>	<b>+5.7%</b>	<b>+6.8%</b>	<b>+1.7%</b>	<b>+0.2%</b>	<b>+0.7%</b>
<b>Patient &amp; Client Care</b>	<b>7,632</b>	<b>+1,610</b>	<b>+485</b>	<b>+625</b>	<b>+13</b>	<b>-90</b>	<b>+5</b>	<b>+26.7%</b>	<b>+6.8%</b>	<b>+8.9%</b>	<b>+0.2%</b>	<b>-1.2%</b>	<b>+0.1%</b>

Source: Health Service Personnel Census