

# Social Care Older Persons Services Employment Report: November 2021

## Employment by Staff Group

Nov 2021	WTE Dec 2019	WTE Dec 2020	WTE Oct 2021	WTE Nov 2021	WTE change since Oct 21	WTE change since Dec 20	% change since Dec 20	WTE change since Dec 19	% change since Dec 19	No. Nov 2021
<b>Overall</b>	<b>13,233</b>	<b>13,415</b>	<b>13,561</b>	<b>13,538</b>	<b>-23</b>	<b>+124</b>	<b>+0.9%</b>	<b>+306</b>	<b>+2.3%</b>	<b>16,572</b>
Consultants	4	4	8	7	-1	+3	+60.4%	+3	+96.9%	10
Registrars	10	9	10	10	-0	+1	+8.1%	+0	+0.5%	11
SHO/ Interns	15	14	15	15	-0	+1	+8.5%	-0	-1.1%	15
Medical/ Dental, other	96	104	82	87	+5	-17	-16.2%	-10	-9.9%	156
<b>Medical &amp; Dental</b>	<b>125</b>	<b>131</b>	<b>114</b>	<b>118</b>	<b>+5</b>	<b>-12</b>	<b>-9.4%</b>	<b>-6</b>	<b>-4.9%</b>	<b>192</b>
Nurse/ Midwife Manager	709	746	771	770	-1	+23	+3.1%	+61	+8.5%	824
Nurse/ Midwife Specialist & AN/MP	26	38	34	37	+4	-1	-2.2%	+11	+41.1%	41
Staff Nurse/ Staff Midwife	2,576	2,624	2,686	2,672	-14	+48	+1.8%	+95	+3.7%	3,117
Public Health Nurse	13	13	11	12	+1	-1	-11.1%	-1	-10.8%	15
<i>Pre-registration Nurse/ Midwife Intern</i>			0	0	-0	+0	-100.0%	+0	-100.0%	1
<i>Post-registration Nurse/ Midwife Student</i>	1						-100.0%	-1	-100.0%	
<i>Nursing/ Midwifery awaiting registration</i>	1	1	2	2	-0	+1	+46.7%	+1	+98.0%	2
Nursing/ Midwifery Student	2	1	2	2	-0	+1	+79.3%	+0	+21.0%	3
Nursing/ Midwifery other	1	4	4	4	+0	-0	-2.3%	+3	+289.0%	4
<b>Nursing &amp; Midwifery</b>	<b>3,328</b>	<b>3,427</b>	<b>3,508</b>	<b>3,497</b>	<b>-11</b>	<b>+70</b>	<b>+2.0%</b>	<b>+169</b>	<b>+5.1%</b>	<b>4,004</b>
Therapy Professions	288	295	344	348	+3	+52	+17.7%	+59	+20.6%	401
Health Science/ Diagnostics	6	5	5	5	-1	-0	-9.6%	-1	-24.4%	9
Social Care	3	3	3	3	-0	-0	-0.4%	-0	-0.4%	5
Social Workers	98	100	94	92	-1	-7	-7.3%	-6	-6.0%	103
Psychologists	2	1	2	1	-1	+0	+20.0%	-1	-37.1%	2
Pharmacy	15	17	19	20	+2	+3	+18.9%	+5	+34.2%	27
H&SC, Other	1	2	2	2	-0	-0	-0.6%	+0	+12.5%	2
<b>Health &amp; Social Care Professionals</b>	<b>414</b>	<b>423</b>	<b>469</b>	<b>471</b>	<b>+2</b>	<b>+48</b>	<b>+11.3%</b>	<b>+57</b>	<b>+13.7%</b>	<b>549</b>
Management (VIII & above)	75	79	94	100	+6	+21	+27.3%	+26	+34.4%	104
Administrative/ Supervisory (V to VII)	165	176	198	199	+1	+24	+13.4%	+35	+20.9%	215
Clerical (III & IV)	571	587	593	599	+6	+11	+1.9%	+27	+4.8%	702
<b>Management &amp; Administrative</b>	<b>811</b>	<b>842</b>	<b>885</b>	<b>898</b>	<b>+13</b>	<b>+56</b>	<b>+6.7%</b>	<b>+88</b>	<b>+10.8%</b>	<b>1,021</b>
Support	829	801	796	797	+1	-4	-0.5%	-32	-3.8%	901
Maintenance/ Technical	98	95	93	94	+1	-1	-0.9%	-4	-4.5%	99
<b>General Support</b>	<b>927</b>	<b>896</b>	<b>890</b>	<b>891</b>	<b>+2</b>	<b>-5</b>	<b>-0.5%</b>	<b>-36</b>	<b>-3.9%</b>	<b>1,000</b>
Health Care Assistants	4,043	4,118	4,069	4,071	+2	-47	-1.1%	+28	+0.7%	4,663
Home Help	3,442	3,431	3,451	3,411	-40	-20	-0.6%	-31	-0.9%	4,917
Care, other	142	147	176	180	+5	+34	+23.1%	+39	+27.2%	226
<b>Patient &amp; Client Care</b>	<b>7,627</b>	<b>7,696</b>	<b>7,696</b>	<b>7,662</b>	<b>-33</b>	<b>-33</b>	<b>-0.4%</b>	<b>+35</b>	<b>+0.5%</b>	<b>9,806</b>

## Social Care Older Persons Services Employment by Administration (HSE / S38): November 2021

Nov 2021	WTE Dec 2019	WTE Dec 2020	WTE Oct 2021	WTE Nov 2021	WTE change since Oct 21	WTE change since Dec 20	% change since Dec 20	WTE change since Dec 19	% change since Dec 19	No. Nov 2021
<b>Total</b>	<b>13,233</b>	<b>13,415</b>	<b>13,561</b>	<b>13,538</b>	<b>-23</b>	<b>+124</b>	<b>+0.9%</b>	<b>+306</b>	<b>+2.3%</b>	<b>16,572</b>
HSE	12,525	12,673	12,812	12,788	-25	+114	+0.9%	+263	+2.1%	15,744
Section 38 Voluntary Agencies	708	742	749	751	+2	+9	+1.2%	+43	+6.1%	828

### Employment by Staff Group

Nov 2021	WTE Dec 2019	WTE Dec 2020	WTE Oct 2021	WTE Nov 2021	WTE change since Oct 21	WTE change since Dec 20	% change since Dec 20	WTE change since Dec 19	% change since Dec 19	No. Nov 2021
<b>Health Service Executive</b>	<b>12,525</b>	<b>12,673</b>	<b>12,812</b>	<b>12,788</b>	<b>-25</b>	<b>+114</b>	<b>+0.9%</b>	<b>+263</b>	<b>+2.1%</b>	<b>15,744</b>
Consultants	3	3	6	5	-1	+3	+94.7%	+2	+83.0%	7
Registrars	7	6	6	6	-0	-0	-4.8%	-1	-14.6%	7
SHO/ Interns	10	10	11	11	-0	+1	+12.0%	+1	+8.3%	11
Medical/ Dental, other	94	102	81	86	+5	-16	-15.6%	-9	-9.0%	155
<b>Medical &amp; Dental</b>	<b>114</b>	<b>120</b>	<b>103</b>	<b>108</b>	<b>+5</b>	<b>-12</b>	<b>-10.2%</b>	<b>-6</b>	<b>-5.4%</b>	<b>180</b>
Nurse/ Midwife Manager	655	697	719	717	-2	+20	+2.8%	+61	+9.4%	767
Nurse/ Midwife Specialist & AN/MP	26	38	34	37	+4	-1	-2.2%	+11	+41.1%	41
Staff Nurse/ Staff Midwife	2,401	2,438	2,505	2,492	-13	+53	+2.2%	+91	+3.8%	2,919
Public Health Nurse	13	13	11	12	+1	-1	-11.1%	-1	-10.8%	15
Pre-registration Nurse/ Midwife Intern			0	0	-0	+0	-100.0%	+0	-100.0%	1
Post-registration Nurse/ Midwife Student	1						-100.0%	-1	-100.0%	
Nursing/ Midwifery awaiting registration	1	1	2	2	-0	+1	+46.7%	+1	+98.0%	2
Nursing/ Midwifery Student	2	1	2	2	-0	+1	+79.3%	+0	+21.0%	3
Nursing/ Midwifery other	1	4	4	4	+0	-0	-2.3%	+3	+289.0%	4
<b>Nursing &amp; Midwifery</b>	<b>3,099</b>	<b>3,192</b>	<b>3,275</b>	<b>3,264</b>	<b>-11</b>	<b>+72</b>	<b>+2.2%</b>	<b>+165</b>	<b>+5.3%</b>	<b>3,749</b>
Therapy Professions	231	223	265	272	+6	+48	+21.6%	+41	+17.8%	316
Health Science/ Diagnostics	5	4	4	4	-1	-0	-11.9%	-1	-29.2%	7
Social Care	3	3	3	3	-0	-0	-0.4%	-0	-0.4%	5
Social Workers	84	84	79	77	-2	-7	-8.7%	-8	-9.0%	84
Psychologists	2	1	2	1	-1	+0	+36.7%	-1	-48.8%	1
Pharmacy	11	12	13	15	+2	+3	+25.3%	+4	+39.3%	20
H&SC, Other	1	2	2	2	-0	-0	-0.6%	+0	+12.5%	2
<b>Health &amp; Social Care Professionals</b>	<b>336</b>	<b>328</b>	<b>368</b>	<b>372</b>	<b>+4</b>	<b>+44</b>	<b>+13.3%</b>	<b>+36</b>	<b>+10.6%</b>	<b>435</b>
Management (VIII & above)	73	75	90	96	+6	+21	+28.8%	+24	+32.5%	100
Administrative/ Supervisory (V to VII)	146	157	178	177	-1	+20	+12.5%	+32	+21.7%	191
Clerical (III & IV)	544	557	563	567	+4	+11	+1.9%	+23	+4.3%	663
<b>Management &amp; Administrative</b>	<b>762</b>	<b>789</b>	<b>831</b>	<b>841</b>	<b>+10</b>	<b>+52</b>	<b>+6.6%</b>	<b>+79</b>	<b>+10.3%</b>	<b>954</b>
Support	726	694	683	687	+3	-7	-1.1%	-40	-5.5%	781
Maintenance/ Technical	88	84	83	84	+1	+0	+0.2%	-4	-5.0%	89
<b>General Support</b>	<b>815</b>	<b>778</b>	<b>767</b>	<b>771</b>	<b>+4</b>	<b>-7</b>	<b>-0.9%</b>	<b>-44</b>	<b>-5.4%</b>	<b>870</b>
Health Care Assistants	3,820	3,892	3,845	3,845	-0	-48	-1.2%	+25	+0.6%	4,420
Home Help	3,442	3,431	3,451	3,411	-40	-20	-0.6%	-31	-0.9%	4,917
Care, other	136	142	172	177	+5	+35	+24.5%	+41	+29.9%	219
<b>Patient &amp; Client Care</b>	<b>7,398</b>	<b>7,466</b>	<b>7,468</b>	<b>7,433</b>	<b>-36</b>	<b>-33</b>	<b>-0.4%</b>	<b>+34</b>	<b>+0.5%</b>	<b>9,556</b>

## Employment by Staff Group

Nov 2021	WTE Dec 2019	WTE Dec 2020	WTE Oct 2021	WTE Nov 2021	WTE change since Oct 21	WTE change since Dec 20	% change since Dec 20	WTE change since Dec 19	% change since Dec 19	No. Nov 2021
<b>Section 38 Voluntary Agencies</b>	<b>708</b>	<b>742</b>	<b>749</b>	<b>751</b>	<b>+2</b>	<b>+9</b>	<b>+1.2%</b>	<b>+43</b>	<b>+6.1%</b>	<b>828</b>
Consultants	1	2	2	2				+1	+166.7%	3
Registrars	3	3	4	4		+1	+33.3%	+1	+33.3%	4
SHO/ Interns	5	4	4	4				-1	-20.0%	4
Medical/ Dental, other	2	2	1	1		-1	-50.0%	-1	-50.0%	1
<b>Medical &amp; Dental</b>	<b>11</b>	<b>11</b>	<b>11</b>	<b>11</b>						<b>12</b>
Nurse/ Midwife Manager	54	49	52	53	+1	+3	+7.0%	-1	-1.6%	57
Staff Nurse/ Staff Midwife	176	186	181	180	-1	-5	-2.9%	+5	+2.6%	198
<b>Nursing &amp; Midwifery</b>	<b>230</b>	<b>235</b>	<b>233</b>	<b>233</b>	<b>+0</b>	<b>-2</b>	<b>-0.8%</b>	<b>+4</b>	<b>+1.6%</b>	<b>255</b>
Therapy Professions	58	72	79	76	-3	+4	+5.5%	+18	+31.7%	85
Health Science/ Diagnostics	1	1	1	1						2
Social Workers	14	16	15	16	+1	+0	+0.0%	+2	+12.3%	19
Psychologists	1	1	1	1						1
Pharmacy	5	5	6	6		+0	+5.0%	+1	+22.5%	7
<b>Health &amp; Social Care Professionals</b>	<b>78</b>	<b>95</b>	<b>101</b>	<b>99</b>	<b>-2</b>	<b>+4</b>	<b>+4.5%</b>	<b>+21</b>	<b>+27.1%</b>	<b>114</b>
Management (VIII & above)	2	4	4	4				+2	+100.0%	4
Administrative/ Supervisory (V to VII)	19	18	20	22	+2	+4	+21.3%	+3	+15.1%	24
Clerical (III & IV)	27	31	30	31	+1	+1	+2.5%	+4	+14.9%	39
<b>Management &amp; Administrative</b>	<b>49</b>	<b>53</b>	<b>55</b>	<b>58</b>	<b>+3</b>	<b>+5</b>	<b>+8.9%</b>	<b>+9</b>	<b>+18.5%</b>	<b>67</b>
Support	103	107	113	111	-2	+4	+3.3%	+8	+7.9%	120
Maintenance/ Technical	10	11	10	10		-1	-9.1%			10
<b>General Support</b>	<b>113</b>	<b>118</b>	<b>123</b>	<b>121</b>	<b>-2</b>	<b>+3</b>	<b>+2.2%</b>	<b>+8</b>	<b>+7.2%</b>	<b>130</b>
Health Care Assistants	223	226	224	227	+2	+1	+0.3%	+3	+1.5%	243
Care, other	5	4	3	3	-0	-1	-24.6%	-2	-40.8%	7
<b>Patient &amp; Client Care</b>	<b>229</b>	<b>230</b>	<b>227</b>	<b>230</b>	<b>+2</b>	<b>-0</b>	<b>-0.1%</b>	<b>+1</b>	<b>+0.5%</b>	<b>250</b>

## Social Care Older Persons Services Employment by CHO: Nov 2021

Nov 2021	WTE Dec 2019	WTE Dec 2020	WTE Oct 2021	WTE Nov 2021	WTE change since Oct 21	WTE change since Dec 20	% change since Dec 20	WTE change since Dec 19	% change since Dec 19	No. Nov 2021
<b>Overall</b>	<b>13,233</b>	<b>13,415</b>	<b>13,561</b>	<b>13,538</b>	<b>-23</b>	<b>+124</b>	<b>+0.9%</b>	<b>+306</b>	<b>+2.3%</b>	<b>16,572</b>
CHO 1	1,836	1,918	1,963	1,973	+11	+56	+2.9%	+138	+7.5%	2,367
CHO 2	1,606	1,590	1,534	1,516	-18	-74	-4.7%	-90	-5.6%	1,803
CHO 3	974	1,029	1,159	1,161	+2	+133	+12.9%	+187	+19.2%	1,490
CHO 4	2,919	2,930	2,930	2,942	+13	+12	+0.4%	+23	+0.8%	3,843
CHO 5	1,647	1,650	1,661	1,646	-16	-5	-0.3%	-1	-0.1%	2,003
CHO 6	823	804	814	812	-2	+8	+1.0%	-12	-1.4%	890
CHO 7	996	1,021	999	995	-4	-27	-2.6%	-1	-0.1%	1,146
CHO 8	1,488	1,484	1,456	1,440	-16	-44	-2.9%	-48	-3.2%	1,836
CHO 9	870	914	971	978	+7	+63	+6.9%	+108	+12.4%	1,110
other Community Services	73	75	76	76	-0	+1	+1.4%	+3	+3.7%	84

## Social Care Older Persons Services Employment by CHO etc. Nov 2021

### CHO 1

Nov 2021	WTE Dec 2019	WTE Dec 2020	WTE Oct 2021	WTE Nov 2021	WTE change since Oct 21	WTE change since Dec 20	% change since Dec 20	WTE change since Dec 19	% change since Dec 19	No. Nov 2021
<b>Overall</b>	<b>1,836</b>	<b>1,918</b>	<b>1,963</b>	<b>1,973</b>	<b>+11</b>	<b>+56</b>	<b>+2.9%</b>	<b>+138</b>	<b>+7.5%</b>	<b>2,367</b>
Medical/ Dental, other	30	32	14	18	+4	-14	-43.3%	-11	-38.2%	41
<b>Medical &amp; Dental</b>	<b>30</b>	<b>32</b>	<b>14</b>	<b>18</b>	<b>+4</b>	<b>-14</b>	<b>-43.3%</b>	<b>-11</b>	<b>-38.2%</b>	<b>41</b>
Nurse/ Midwife Manager	91	88	95	97	+2	+9	+10.4%	+6	+6.5%	103
Nurse/ Midwife Specialist & AN/MP	7	9	7	8	+1	-1	-12.3%	+1	+15.3%	8
Staff Nurse/ Staff Midwife	307	315	322	319	-3	+4	+1.4%	+12	+3.8%	373
Nursing/ Midwifery other		1	1	1	0			+1	-100.0%	1
<b>Nursing &amp; Midwifery</b>	<b>405</b>	<b>412</b>	<b>425</b>	<b>425</b>	<b>+0</b>	<b>+12</b>	<b>+3.0%</b>	<b>+20</b>	<b>+4.9%</b>	<b>485</b>
Therapy Professions	11	12	23	24	+0	+11	+89.5%	+12	+112.5%	26
Health Science/ Diagnostics	1	2	2	1	-1	-0	-31.0%	-0	-12.1%	2
Social Workers	18	15	15	17	+3	+2	+14.2%	-0	-1.9%	18
<b>Health &amp; Social Care Professionals</b>	<b>30</b>	<b>29</b>	<b>40</b>	<b>42</b>	<b>+2</b>	<b>+13</b>	<b>+44.0%</b>	<b>+12</b>	<b>+40.2%</b>	<b>46</b>
Management (VIII & above)	8	8	8	8	0			+0	+0.8%	8
Administrative/ Supervisory (V to VII)	14	15	18	18	-0	+3	+16.4%	+4	+24.8%	19
Clerical (III & IV)	85	88	87	88	+1	-0	-0.2%	+3	+3.2%	101
<b>Management &amp; Administrative</b>	<b>107</b>	<b>111</b>	<b>113</b>	<b>114</b>	<b>+1</b>	<b>+2</b>	<b>+2.1%</b>	<b>+6</b>	<b>+5.9%</b>	<b>128</b>
Support	123	119	113	115	+2	-4	-3.3%	-8	-6.4%	138
Maintenance/ Technical	7	7	7	7	+0	-0	-0.7%	-0	-0.7%	7
<b>General Support</b>	<b>130</b>	<b>126</b>	<b>119</b>	<b>122</b>	<b>+2</b>	<b>-4</b>	<b>-3.1%</b>	<b>-8</b>	<b>-6.1%</b>	<b>145</b>
Health Care Assistants	563	580	587	587	+0	+7	+1.2%	+24	+4.2%	681
Home Help	543	604	638	640	+1	+35	+5.8%	+97	+17.9%	808
Care, other	28	22	27	26	-1	+4	+16.8%	-2	-6.2%	33
<b>Patient &amp; Client Care</b>	<b>1,134</b>	<b>1,207</b>	<b>1,252</b>	<b>1,253</b>	<b>+1</b>	<b>+46</b>	<b>+3.8%</b>	<b>+119</b>	<b>+10.5%</b>	<b>1,522</b>

## CHO 2

Nov 2021	WTE Dec 2019	WTE Dec 2020	WTE Oct 2021	WTE Nov 2021	WTE change since Oct 21	WTE change since Dec 20	% change since Dec 20	WTE change since Dec 19	% change since Dec 19	No. Nov 2021
<b>Overall</b>	<b>1,606</b>	<b>1,590</b>	<b>1,534</b>	<b>1,516</b>	<b>-18</b>	<b>-74</b>	<b>-4.7%</b>	<b>-90</b>	<b>-5.6%</b>	<b>1,803</b>
Medical/ Dental, other	11	11	10	10	-0	-0	-1.9%	-1	-6.3%	11
<b>Medical &amp; Dental</b>	<b>11</b>	<b>11</b>	<b>10</b>	<b>10</b>	<b>-0</b>	<b>-0</b>	<b>-1.9%</b>	<b>-1</b>	<b>-6.3%</b>	<b>11</b>
Nurse/ Midwife Manager	58	66	71	71	-0	+5	+7.2%	+13	+22.1%	77
Nurse/ Midwife Specialist & AN/MP	2	2	2	2	0	-0	-1.0%	-0	-1.0%	2
Staff Nurse/ Staff Midwife	301	305	307	298	-9	-7	-2.2%	-3	-0.9%	350
Public Health Nurse	1	1	1	1	-0	-0	-1.0%	+0	+23.7%	1
<b>Nursing &amp; Midwifery</b>	<b>362</b>	<b>374</b>	<b>382</b>	<b>372</b>	<b>-9</b>	<b>-2</b>	<b>-0.5%</b>	<b>+10</b>	<b>+2.9%</b>	<b>430</b>
Therapy Professions	26	25	23	22	-0	-3	-12.3%	-3	-13.4%	25
Health Science/ Diagnostics	1	1	1	1	0					1
Social Workers	10	10	10	10	+0			+0	+1.8%	11
Pharmacy	1	1	1	1	0	-1	-51.5%	-1	-50.5%	1
H&SC, Other	0						-100.0%		-100.0%	
<b>Health &amp; Social Care Professionals</b>	<b>37</b>	<b>37</b>	<b>34</b>	<b>34</b>	<b>-0</b>	<b>-4</b>	<b>-9.7%</b>	<b>-4</b>	<b>-10.0%</b>	<b>38</b>
Management (VIII & above)	2	2	3	3	-0	+1	+49.5%	+1	+49.5%	3
Administrative/ Supervisory (V to VII)	8	9	14	14	+0	+5	+51.0%	+6	+81.3%	15
Clerical (III & IV)	72	66	62	62	+1	-4	-5.6%	-9	-13.1%	71
<b>Management &amp; Administrative</b>	<b>81</b>	<b>77</b>	<b>78</b>	<b>79</b>	<b>+1</b>	<b>+2</b>	<b>+2.6%</b>	<b>-2</b>	<b>-2.7%</b>	<b>89</b>
Support	56	56	53	53	+0	-3	-4.9%	-3	-4.8%	60
Maintenance/ Technical	19	19	18	17	-0	-2	-10.9%	-2	-8.4%	18
<b>General Support</b>	<b>75</b>	<b>76</b>	<b>71</b>	<b>71</b>	<b>+0</b>	<b>-5</b>	<b>-6.5%</b>	<b>-4</b>	<b>-5.7%</b>	<b>78</b>
Health Care Assistants	515	526	512	512	-0	-14	-2.6%	-3	-0.6%	568
Home Helps	499	456	402	392	-10	-65	-14.2%	-108	-21.6%	541
Home Help	499	456	402	392	-10	-65	-14.2%	-108	-21.6%	541
Care, other	24	33	45	46	+1	+13	+40.1%	+21	+86.5%	48
<b>Patient &amp; Client Care</b>	<b>1,039</b>	<b>1,015</b>	<b>959</b>	<b>949</b>	<b>-9</b>	<b>-65</b>	<b>-6.5%</b>	<b>-90</b>	<b>-8.6%</b>	<b>1,157</b>

### CHO 3

Nov 2021	WTE Dec 2019	WTE Dec 2020	WTE Oct 2021	WTE Nov 2021	WTE change since Oct 21	WTE change since Dec 20	% change since Dec 20	WTE change since Dec 19	% change since Dec 19	No. Nov 2021
<b>Overall</b>	<b>974</b>	<b>1,029</b>	<b>1,159</b>	<b>1,161</b>	<b>+2</b>	<b>+133</b>	<b>+12.9%</b>	<b>+187</b>	<b>+19.2%</b>	<b>1,490</b>
Consultants	1	1	4	4	-1	+3	+250.0%	+3	+250.0%	4
Medical/ Dental, other	5	6	4	5	+0	-1	-21.3%	-0	-5.6%	5
<b>Medical &amp; Dental</b>	<b>6</b>	<b>7</b>	<b>8</b>	<b>8</b>	<b>-0</b>	<b>+1</b>	<b>+17.4%</b>	<b>+2</b>	<b>+37.0%</b>	<b>9</b>
Nurse/ Midwife Manager	64	64	65	64	-1	-0	-0.6%	-0	-0.3%	68
Nurse/ Midwife Specialist & AN/MP	2	4	4	6	+2	+2	+53.8%	+4	+216.0%	6
Staff Nurse/ Staff Midwife	239	231	258	259	+1	+28	+12.0%	+20	+8.5%	305
Public Health Nurse	1	1	1	1	0					1
<b>Nursing &amp; Midwifery</b>	<b>305</b>	<b>300</b>	<b>327</b>	<b>329</b>	<b>+2</b>	<b>+29</b>	<b>+9.8%</b>	<b>+24</b>	<b>+7.9%</b>	<b>380</b>
Therapy Professions	28	29	38	38	-0	+9	+29.6%	+10	+36.3%	44
Health Science/ Diagnostics	1	1	1	1	+0			-0	-7.0%	2
Social Workers	7	6	6	7	+1	+1	+15.4%	+0	+2.4%	8
Psychologists			1	1	+0	+1	-100.0%	+1	-100.0%	1
Pharmacy	1	1	1	1	-0	-0	-5.0%	-0	-5.0%	1
<b>Health &amp; Social Care Professionals</b>	<b>36</b>	<b>37</b>	<b>46</b>	<b>47</b>	<b>+1</b>	<b>+10</b>	<b>+27.9%</b>	<b>+11</b>	<b>+30.1%</b>	<b>56</b>
Management (VIII & above)	6	6	7	8	+1	+2	+32.4%	+2	+35.9%	8
Administrative/ Supervisory (V to VII)	21	17	19	19	-0	+3	+16.0%	-1	-6.1%	21
Clerical (III & IV)	50	48	54	53	-1	+5	+9.8%	+4	+7.3%	61
<b>Management &amp; Administrative</b>	<b>76</b>	<b>71</b>	<b>80</b>	<b>80</b>	<b>+0</b>	<b>+9</b>	<b>+13.2%</b>	<b>+4</b>	<b>+5.8%</b>	<b>90</b>
Support	64	63	62	62	+0	-0	-0.7%	-2	-2.8%	70
Maintenance/ Technical	22	21	22	22	+0	+1	+6.4%	+0	+1.3%	24
<b>General Support</b>	<b>86</b>	<b>84</b>	<b>84</b>	<b>85</b>	<b>+1</b>	<b>+1</b>	<b>+1.1%</b>	<b>-2</b>	<b>-1.8%</b>	<b>94</b>
Health Care Assistants	279	301	314	316	+2	+14	+4.8%	+36	+13.0%	376
Home Help	175	216	281	278	-3	+61	+28.4%	+103	+58.7%	466
Care, other	10	12	17	18	+0	+6	+49.0%	+8	+81.6%	19
<b>Patient &amp; Client Care</b>	<b>464</b>	<b>530</b>	<b>613</b>	<b>611</b>	<b>-2</b>	<b>+82</b>	<b>+15.4%</b>	<b>+147</b>	<b>+31.7%</b>	<b>861</b>

## CHO 4

Nov 2021	WTE Dec 2019	WTE Dec 2020	WTE Oct 2021	WTE Nov 2021	WTE change since Oct 21	WTE change since Dec 20	% change since Dec 20	WTE change since Dec 19	% change since Dec 19	No. Nov 2021
<b>Overall</b>	<b>2,919</b>	<b>2,930</b>	<b>2,930</b>	<b>2,942</b>	<b>+13</b>	<b>+12</b>	<b>+0.4%</b>	<b>+23</b>	<b>+0.8%</b>	<b>3,843</b>
Consultants	1	1	1	1	0					2
Registrars	3	3	2	2	0	-1	-30.7%	-1	-30.7%	3
SHO/ Interns	1	1	2	2	0	+1	+100.0%	+1	+100.0%	2
Medical/ Dental, other	21	23	21	22	+1	-1	-2.8%	+2	+8.1%	51
<b>Medical &amp; Dental</b>	<b>26</b>	<b>28</b>	<b>27</b>	<b>28</b>	<b>+1</b>	<b>-1</b>	<b>-2.0%</b>	<b>+2</b>	<b>+6.8%</b>	<b>58</b>
Nurse/ Midwife Manager	118	122	125	124	-1	+3	+2.1%	+7	+5.8%	133
Nurse/ Midwife Specialist & AN/MP	3	6	4	4	0	-2	-39.7%	+0	+9.1%	4
Staff Nurse/ Staff Midwife	515	528	542	553	+11	+25	+4.7%	+38	+7.3%	682
Public Health Nurse	5	6	5	4	-0	-2	-25.4%	-1	-13.7%	6
<i>Pre-registration Nurse/ Midwife Intern</i>			0	0	-0	+0	-100.0%	+0	-100.0%	1
<i>Post-registration Nurse/ Midwife Student</i>	1						-100.0%	-1	-100.0%	
<i>Nursing/ Midwifery awaiting registration</i>	1						-100.0%	-1	-100.0%	
Nursing/ Midwifery Student	2		0	0	-0	+0	-100.0%	-2	-78.0%	1
<b>Nursing &amp; Midwifery</b>	<b>643</b>	<b>662</b>	<b>675</b>	<b>686</b>	<b>+10</b>	<b>+24</b>	<b>+3.6%</b>	<b>+42</b>	<b>+6.6%</b>	<b>826</b>
Therapy Professions	45	41	50	52	+2	+10	+24.3%	+7	+15.8%	62
Health Science/ Diagnostics	1	1	1	1	0			+0	+13.2%	2
Social Care	2	2	2	2	0					3
Social Workers	10	12	12	11	-1	-1	-11.2%	+1	+5.9%	12
Pharmacy	3	4	4	4	+0	+1	+14.5%	+2	+67.6%	7
<b>Health &amp; Social Care Professionals</b>	<b>60</b>	<b>61</b>	<b>69</b>	<b>70</b>	<b>+1</b>	<b>+9</b>	<b>+15.2%</b>	<b>+10</b>	<b>+15.8%</b>	<b>86</b>
Management (VIII & above)	13	14	19	19	0	+5	+35.7%	+6	+50.7%	20
Administrative/ Supervisory (V to VII)	17	20	26	26	+0	+6	+30.4%	+9	+55.3%	28
Clerical (III & IV)	128	131	130	129	-1	-2	-1.8%	+0	+0.4%	160
<b>Management &amp; Administrative</b>	<b>158</b>	<b>166</b>	<b>175</b>	<b>174</b>	<b>-1</b>	<b>+9</b>	<b>+5.3%</b>	<b>+16</b>	<b>+10.3%</b>	<b>208</b>
Support	100	114	120	121	+1	+7	+6.6%	+21	+20.5%	132
<i>Maintenance</i>	6	6	7	7	-0	+1	+11.5%	+1	+16.2%	7
Maintenance/ Technical	6	6	7	7	-0	+1	+11.5%	+1	+16.2%	7
<b>General Support</b>	<b>106</b>	<b>120</b>	<b>127</b>	<b>128</b>	<b>+1</b>	<b>+8</b>	<b>+6.8%</b>	<b>+22</b>	<b>+20.3%</b>	<b>139</b>
Health Care Assistants	781	794	797	801	+4	+7	+0.9%	+19	+2.5%	905
Home Help	1,113	1,067	1,027	1,023	-4	-44	-4.1%	-90	-8.1%	1,572
Care, other	31	34	32	33	+1	-1	-1.6%	+3	+8.6%	49
<b>Patient &amp; Client Care</b>	<b>1,925</b>	<b>1,894</b>	<b>1,856</b>	<b>1,857</b>	<b>+1</b>	<b>-37</b>	<b>-2.0%</b>	<b>-69</b>	<b>-3.6%</b>	<b>2,526</b>



## CHO 5

Nov 2021	WTE Dec 2019	WTE Dec 2020	WTE Oct 2021	WTE Nov 2021	WTE change since Oct 21	WTE change since Dec 20	% change since Dec 20	WTE change since Dec 19	% change since Dec 19	No. Nov 2021
<b>Overall</b>	<b>1,647</b>	<b>1,650</b>	<b>1,661</b>	<b>1,646</b>	<b>-16</b>	<b>-5</b>	<b>-0.3%</b>	<b>-1</b>	<b>-0.1%</b>	<b>2,003</b>
Medical/ Dental, other	10	15	15	15	-0	+1	+3.9%	+6	+56.1%	21
<b>Medical &amp; Dental</b>	<b>10</b>	<b>15</b>	<b>15</b>	<b>15</b>	<b>-0</b>	<b>+1</b>	<b>+3.9%</b>	<b>+6</b>	<b>+56.1%</b>	<b>21</b>
Nurse/ Midwife Manager	82	88	86	85	-1	-3	-3.4%	+3	+4.2%	95
Nurse/ Midwife Specialist & AN/MP	2	4	3	2	-1	-1	-35.6%	+0	+23.0%	3
Staff Nurse/ Staff Midwife	315	308	314	307	-7	-1	-0.3%	-8	-2.4%	370
Public Health Nurse	4	3	2	2	-0	-1	-30.1%	-2	-50.5%	2
<b>Nursing &amp; Midwifery</b>	<b>403</b>	<b>403</b>	<b>406</b>	<b>397</b>	<b>-9</b>	<b>-6</b>	<b>-1.5%</b>	<b>-5</b>	<b>-1.4%</b>	<b>470</b>
Therapy Professions	41	32	32	32	-0	-0	-0.5%	-9	-20.9%	38
Social Workers	3	4	6	6	+1	+2	+52.5%	+3	+100.6%	8
Pharmacy		1		1	+1	+0	+3.1%	+1	-100.0%	1
<b>Health &amp; Social Care Professionals</b>	<b>44</b>	<b>38</b>	<b>38</b>	<b>40</b>	<b>+2</b>	<b>+2</b>	<b>+5.5%</b>	<b>-4</b>	<b>-9.8%</b>	<b>47</b>
Management (VIII & above)	4	4	6	10	+3	+6	+152.2%	+6	+152.2%	10
Administrative/ Supervisory (V to VII)	14	17	11	10	-1	-7	-40.8%	-4	-28.4%	11
Clerical (III & IV)	32	31	40	45	+4	+14	+44.2%	+13	+39.5%	54
<b>Management &amp; Administrative</b>	<b>50</b>	<b>52</b>	<b>58</b>	<b>65</b>	<b>+7</b>	<b>+13</b>	<b>+24.3%</b>	<b>+15</b>	<b>+29.0%</b>	<b>75</b>
Support	123	83	79	79	+0	-4	-5.3%	-44	-36.0%	92
Maintenance	8	4	4	4	+0	+0	+7.2%	-4	-47.6%	6
Maintenance/ Technical	8	4	4	4	+0	+0	+7.2%	-4	-47.6%	6
<b>General Support</b>	<b>131</b>	<b>87</b>	<b>82</b>	<b>83</b>	<b>+1</b>	<b>-4</b>	<b>-4.7%</b>	<b>-48</b>	<b>-36.7%</b>	<b>98</b>
Health Care Assistants	391	448	419	417	-2	-31	-7.0%	+26	+6.8%	471
Home Help	608	599	625	612	-13	+13	+2.1%	+4	+0.6%	799
Care, other	10	9	18	17	-1	+9	+101.5%	+7	+65.0%	22
<b>Patient &amp; Client Care</b>	<b>1,009</b>	<b>1,056</b>	<b>1,062</b>	<b>1,046</b>	<b>-16</b>	<b>-10</b>	<b>-0.9%</b>	<b>+37</b>	<b>+3.6%</b>	<b>1,292</b>

## CHO 6

Nov 2021	WTE Dec 2019	WTE Dec 2020	WTE Oct 2021	WTE Nov 2021	WTE change since Oct 21	WTE change since Dec 20	% change since Dec 20	WTE change since Dec 19	% change since Dec 19	No. Nov 2021
<b>Overall</b>	<b>823</b>	<b>804</b>	<b>814</b>	<b>812</b>	<b>-2</b>	<b>+8</b>	<b>+1.0%</b>	<b>-11</b>	<b>-1.4%</b>	<b>890</b>
Registrars	1	1	1	1	0					1
Medical/ Dental, other	4	3	2	2	-0	-1	-39.2%	-2	-57.0%	3
<b>Medical &amp; Dental</b>	<b>5</b>	<b>4</b>	<b>3</b>	<b>3</b>	<b>-0</b>	<b>-1</b>	<b>-29.0%</b>	<b>-2</b>	<b>-45.6%</b>	<b>4</b>
Nurse/ Midwife Manager	68	63	63	64	+1	+1	+1.9%	-4	-6.6%	66
Nurse/ Midwife Specialist & AN/MP	1	1	1	1	-0	-0	-3.0%	-0	-3.0%	1
Staff Nurse/ Staff Midwife	204	206	199	197	-2	-9	-4.4%	-7	-3.5%	209
<b>Nursing &amp; Midwifery</b>	<b>273</b>	<b>269</b>	<b>263</b>	<b>261</b>	<b>-2</b>	<b>-8</b>	<b>-3.0%</b>	<b>-12</b>	<b>-4.2%</b>	<b>276</b>
Therapy Professions	50	46	49	46	-3	-0	-0.1%	-4	-7.2%	52
Social Workers	11	10	8	9	+0	-2	-17.9%	-3	-24.8%	10
Psychologists	2	1	1	1	0	-1	-54.5%	-2	-76.2%	1
Pharmacy	3	3	4	4	-0	+1	+43.4%	+1	+45.5%	5
<b>Health &amp; Social Care Professionals</b>	<b>66</b>	<b>61</b>	<b>62</b>	<b>59</b>	<b>-3</b>	<b>-1</b>	<b>-2.0%</b>	<b>-7</b>	<b>-10.1%</b>	<b>68</b>
Management (VIII & above)	4	5	7	7	+1	+2	+48.2%	+3	+85.3%	8
Administrative/ Supervisory (V to VII)	22	19	24	25	+1	+6	+28.8%	+3	+12.4%	27
Clerical (III & IV)	30	33	31	31	-1	-2	-7.3%	+1	+4.0%	35
<b>Management &amp; Administrative</b>	<b>56</b>	<b>58</b>	<b>62</b>	<b>63</b>	<b>+1</b>	<b>+6</b>	<b>+9.7%</b>	<b>+7</b>	<b>+13.2%</b>	<b>70</b>
Support	108	102	110	108	-3	+6	+5.5%	-1	-0.5%	117
Maintenance/ Technical	8	9	8	8	0	-1	-11.1%			8
<b>General Support</b>	<b>116</b>	<b>111</b>	<b>118</b>	<b>116</b>	<b>-3</b>	<b>+5</b>	<b>+4.1%</b>	<b>-1</b>	<b>-0.5%</b>	<b>125</b>
Health Care Assistants	300	296	301	305	+4	+9	+3.2%	+5	+1.7%	340
Care, other	7	6	4	4	-0	-1	-20.4%	-3	-39.5%	7
<b>Patient &amp; Client Care</b>	<b>307</b>	<b>301</b>	<b>305</b>	<b>310</b>	<b>+4</b>	<b>+8</b>	<b>+2.7%</b>	<b>+2</b>	<b>+0.7%</b>	<b>347</b>

## CHO 7

Nov 2021	WTE Dec 2019	WTE Dec 2020	WTE Oct 2021	WTE Nov 2021	WTE change since Oct 21	WTE change since Dec 20	% change since Dec 20	WTE change since Dec 19	% change since Dec 19	No. Nov 2021
<b>Overall</b>	<b>996</b>	<b>1,021</b>	<b>999</b>	<b>995</b>	<b>-4</b>	<b>-27</b>	<b>-2.6%</b>	<b>-1</b>	<b>-0.1%</b>	<b>1,146</b>
SHO/ Interns	2	2	2	2	-0	-0	-1.0%	-0	-1.0%	2
Medical/ Dental, other	4	2	2	2	-0	-0	-2.0%	-2	-50.0%	4
<b>Medical &amp; Dental</b>	<b>6</b>	<b>4</b>	<b>4</b>	<b>4</b>	<b>-0</b>	<b>-0</b>	<b>-1.5%</b>	<b>-2</b>	<b>-33.7%</b>	<b>6</b>
Nurse/ Midwife Manager	77	86	97	97	-0	+11	+12.5%	+20	+25.3%	101
Nurse/ Midwife Specialist & AN/MP	3	3	3	3	+0	+0	+10.2%	+1	+20.0%	4
Staff Nurse/ Staff Midwife	219	242	240	238	-3	-4	-1.8%	+18	+8.4%	259
Public Health Nurse				1	+1	+1	-100.0%	+1	-100.0%	1
<i>Nursing/ Midwifery awaiting registration</i>		1	2	2	-0	+1	+46.7%	+2	-100.0%	2
Nursing/ Midwifery Student		1	2	2	-0	+1	+46.7%	+2	-100.0%	2
<b>Nursing &amp; Midwifery</b>	<b>299</b>	<b>332</b>	<b>342</b>	<b>340</b>	<b>-2</b>	<b>+8</b>	<b>+2.4%</b>	<b>+41</b>	<b>+13.8%</b>	<b>367</b>
Therapy Professions	14	13	13	12	-1	-1	-8.7%	-2	-11.6%	14
Social Workers	11	12	12	11	-1	-1	-9.7%	+0	+3.3%	13
Pharmacy	3	2	2	2	+0	+0	+24.5%	-0	-0.4%	3
H&SC, Other	1	1	1	1	-0	-0	-1.0%	-0	-1.0%	1
<b>Health &amp; Social Care Professionals</b>	<b>28</b>	<b>29</b>	<b>28</b>	<b>27</b>	<b>-1</b>	<b>-2</b>	<b>-6.5%</b>	<b>-1</b>	<b>-4.5%</b>	<b>31</b>
Management (VIII & above)	5	7	6	8	+2	+0	+6.5%	+3	+53.0%	8
Administrative/ Supervisory (V to VII)	12	15	18	16	-2	+1	+9.8%	+4	+38.5%	17
Clerical (III & IV)	34	37	36	36	+0	-1	-1.7%	+2	+6.2%	41
<b>Management &amp; Administrative</b>	<b>51</b>	<b>59</b>	<b>60</b>	<b>60</b>	<b>+0</b>	<b>+1</b>	<b>+2.2%</b>	<b>+9</b>	<b>+18.1%</b>	<b>66</b>
Support	110	119	116	118	+1	-1	-1.1%	+7	+6.8%	129
Maintenance/ Technical	2	2	2	2	0					2
<b>General Support</b>	<b>112</b>	<b>121</b>	<b>118</b>	<b>120</b>	<b>+1</b>	<b>-1</b>	<b>-1.0%</b>	<b>+7</b>	<b>+6.7%</b>	<b>131</b>
Health Care Assistants	388	358	334	334	+0	-23	-6.6%	-54	-13.8%	388
<i>Home Helps</i>	<i>108</i>	<i>115</i>	<i>108</i>	<i>106</i>	<i>-2</i>	<i>-8</i>	<i>-7.4%</i>	<i>-1</i>	<i>-1.3%</i>	<i>153</i>
Home Help	108	115	108	106	-2	-8	-7.4%	-1	-1.3%	153
Care, other	5	5	4	4	0	-1	-20.0%	-1	-17.2%	4
<b>Patient &amp; Client Care</b>	<b>500</b>	<b>477</b>	<b>446</b>	<b>444</b>	<b>-2</b>	<b>-33</b>	<b>-6.9%</b>	<b>-56</b>	<b>-11.2%</b>	<b>545</b>

## CHO 8

Nov 2021	WTE Dec 2019	WTE Dec 2020	WTE Oct 2021	WTE Nov 2021	WTE change since Oct 21	WTE change since Dec 20	% change since Dec 20	WTE change since Dec 19	% change since Dec 19	No. Nov 2021
<b>Overall</b>	<b>1,488</b>	<b>1,484</b>	<b>1,456</b>	<b>1,440</b>	<b>-16</b>	<b>-44</b>	<b>-2.9%</b>	<b>-48</b>	<b>-3.2%</b>	<b>1,836</b>
Medical/ Dental, other	11	11	11	11	-0	-0	-1.0%	-0	-0.6%	19
<b>Medical &amp; Dental</b>	<b>11</b>	<b>11</b>	<b>11</b>	<b>11</b>	<b>-0</b>	<b>-0</b>	<b>-1.0%</b>	<b>-0</b>	<b>-0.6%</b>	<b>19</b>
Nurse/ Midwife Manager	77	89	88	87	-1	-2	-2.8%	+10	+12.8%	94
Nurse/ Midwife Specialist & AN/MP	2	4	5	5	+0	+1	+24.9%	+3	+141.0%	5
Staff Nurse/ Staff Midwife	249	255	250	247	-3	-8	-3.1%	-2	-0.9%	290
Public Health Nurse	2	3	3	3	+0	+0	+1.1%	+1	+24.1%	4
Nursing/ Midwifery other		2	3	3	+0	+1	+46.0%	+3	-100.0%	3
<b>Nursing &amp; Midwifery</b>	<b>330</b>	<b>353</b>	<b>348</b>	<b>344</b>	<b>-4</b>	<b>-8</b>	<b>-2.4%</b>	<b>+14</b>	<b>+4.2%</b>	<b>396</b>
Therapy Professions	21	24	29	29	+1	+5	+20.1%	+9	+41.7%	35
Social Workers	7	5	4	1	-3	-4	-80.0%	-6	-84.8%	1
Pharmacy	3	2	3	4	+0	+2	+75.0%	+1	+40.0%	5
<b>Health &amp; Social Care Professionals</b>	<b>30</b>	<b>31</b>	<b>36</b>	<b>34</b>	<b>-2</b>	<b>+2</b>	<b>+7.6%</b>	<b>+4</b>	<b>+13.6%</b>	<b>41</b>
Management (VIII & above)	6	7	7	7	+0	-0	-0.6%	+1	+24.1%	7
Administrative/ Supervisory (V to VII)	20	21	19	18	-0	-3	-14.0%	-2	-8.6%	20
Clerical (III & IV)	70	72	66	66	+0	-6	-8.1%	-4	-5.4%	76
<b>Management &amp; Administrative</b>	<b>95</b>	<b>100</b>	<b>91</b>	<b>91</b>	<b>-0</b>	<b>-9</b>	<b>-8.8%</b>	<b>-4</b>	<b>-4.4%</b>	<b>103</b>
Support	26	25	24	24	-0	-1	-4.4%	-2	-6.3%	26
Maintenance/ Technical	24	24	24	24	-0	-0	-0.1%	-0	-0.5%	24
<b>General Support</b>	<b>50</b>	<b>49</b>	<b>48</b>	<b>48</b>	<b>-0</b>	<b>-1</b>	<b>-2.3%</b>	<b>-2</b>	<b>-3.5%</b>	<b>50</b>
Health Care Assistants	556	544	531	526	-4	-18	-3.3%	-30	-5.4%	615
Home Help	395	374	370	361	-9	-13	-3.5%	-34	-8.7%	578
Care, other	20	22	21	25	+4	+3	+15.8%	+4	+21.8%	34
<b>Patient &amp; Client Care</b>	<b>972</b>	<b>940</b>	<b>921</b>	<b>912</b>	<b>-9</b>	<b>-28</b>	<b>-2.9%</b>	<b>-60</b>	<b>-6.2%</b>	<b>1,227</b>

## CHO 9

Nov 2021	WTE Dec 2019	WTE Dec 2020	WTE Oct 2021	WTE Nov 2021	WTE change since Oct 21	WTE change since Dec 20	% change since Dec 20	WTE change since Dec 19	% change since Dec 19	No. Nov 2021
<b>Overall</b>	<b>870</b>	<b>914</b>	<b>971</b>	<b>978</b>	<b>+7</b>	<b>+63</b>	<b>+6.9%</b>	<b>+108</b>	<b>+12.4%</b>	<b>1,110</b>
Consultants	2	2	3	3	-0	+0	+7.0%	+1	+61.9%	4
Registrars	6	5	7	6	-0	+2	+33.9%	+1	+17.6%	7
SHO/ Interns	12	11	11	11	-0	+0	+1.7%	-1	-9.6%	11
Medical/ Dental, other	1	1	1	1	0					1
<b>Medical &amp; Dental</b>	<b>20</b>	<b>19</b>	<b>21</b>	<b>21</b>	<b>-0</b>	<b>+2</b>	<b>+10.5%</b>	<b>+1</b>	<b>+4.0%</b>	<b>23</b>
Nurse/ Midwife Manager	75	81	81	82	+1	+1	+1.0%	+7	+9.1%	87
Nurse/ Midwife Specialist & AN/MP	5	6	5	7	+2	+1	+13.0%	+2	+38.6%	8
Staff Nurse/ Staff Midwife	227	234	253	254	+1	+20	+8.5%	+27	+11.9%	279
Public Health Nurse	0						-100.0%	-0	-100.0%	
Nursing/ Midwifery other	1	1				-1	-100.0%	-1	-100.0%	
<b>Nursing &amp; Midwifery</b>	<b>308</b>	<b>322</b>	<b>339</b>	<b>342</b>	<b>+3</b>	<b>+20</b>	<b>+6.4%</b>	<b>+34</b>	<b>+11.1%</b>	<b>374</b>
Therapy Professions	54	71	87	93	+6	+22	+31.0%	+38	+70.5%	105
Health Science/ Diagnostics	1	1	1	1	0			-0	-31.0%	2
Social Care	1	1	1	1	-0	-0	-1.0%	-0	-1.0%	2
Social Workers	21	24	21	20	-1	-4	-17.6%	-2	-8.1%	22
Psychologists			1		-1		-100.0%		-100.0%	
Pharmacy	3	4	4	4	0			+1	+26.4%	4
H&SC, Other	0	1	1	1	0			+0	+50.0%	1
<b>Health &amp; Social Care Professionals</b>	<b>81</b>	<b>101</b>	<b>115</b>	<b>118</b>	<b>+3</b>	<b>+18</b>	<b>+17.7%</b>	<b>+37</b>	<b>+45.6%</b>	<b>136</b>
Management (VIII & above)	9	9	14	14	+0	+5	+54.9%	+5	+52.8%	14
Administrative/ Supervisory (V to VII)	15	21	25	27	+2	+6	+27.8%	+12	+78.4%	29
Clerical (III & IV)	40	44	55	57	+2	+13	+28.4%	+17	+41.5%	67
<b>Management &amp; Administrative</b>	<b>64</b>	<b>74</b>	<b>93</b>	<b>97</b>	<b>+4</b>	<b>+23</b>	<b>+31.4%</b>	<b>+33</b>	<b>+51.7%</b>	<b>110</b>
Support	118	120	119	117	-2	-3	-2.5%	-1	-0.7%	137
Maintenance	2	2	2	2	0					3
Maintenance/ Technical	2	2	2	2	0					3
<b>General Support</b>	<b>121</b>	<b>123</b>	<b>122</b>	<b>120</b>	<b>-2</b>	<b>-3</b>	<b>-2.4%</b>	<b>-1</b>	<b>-0.7%</b>	<b>140</b>
Health Care Assistants	270	271	274	273	-1	+2	+0.6%	+3	+1.2%	318
Care, other	6	5	6	6	-0	+1	+17.7%	+0	+2.4%	9
<b>Patient &amp; Client Care</b>	<b>276</b>	<b>277</b>	<b>281</b>	<b>279</b>	<b>-1</b>	<b>+3</b>	<b>+1.0%</b>	<b>+3</b>	<b>+1.3%</b>	<b>327</b>

## other Community Services

Nov 2021	WTE Dec 2019	WTE Dec 2020	WTE Oct 2021	WTE Nov 2021	WTE change since Oct 21	WTE change since Dec 20	% change since Dec 20	WTE change since Dec 19	% change since Dec 19	No. Nov 2021
<b>Overall</b>	<b>73</b>	<b>75</b>	<b>76</b>	<b>76</b>	<b>-0</b>	<b>+1</b>	<b>+1.4%</b>	<b>+3</b>	<b>+3.7%</b>	<b>84</b>
Health Science/ Diagnostics	1						-100.0%	-1	-100.0%	
<b>Health &amp; Social Care Professionals</b>	<b>1</b>						<b>-100.0%</b>	<b>-1</b>	<b>-100.0%</b>	
Management (VIII & above)	19	17	18	17	-1	+0	+0.2%	-2	-10.0%	18
Administrative/ Supervisory (V to VII)	22	21	25	26	+1	+5	+22.0%	+3	+15.0%	28
Clerical (III & IV)	31	37	32	32	-0	-5	-12.3%	+1	+3.8%	36
<b>Management &amp; Administrative</b>	<b>72</b>	<b>75</b>	<b>75</b>	<b>75</b>	<b>-0</b>	<b>+0</b>	<b>+0.2%</b>	<b>+3</b>	<b>+3.7%</b>	<b>82</b>
HCA, Nurse's Aide, etc.	0	0	0	0	0			+0	+420.0%	1
Health Care Assistants	0	0	0	0	0			+0	+420.0%	1
Care, other			1	1	-0	+1	-100.0%	+1	-100.0%	1
<b>Patient &amp; Client Care</b>	<b>0</b>	<b>0</b>	<b>1</b>	<b>1</b>	<b>-0</b>	<b>+1</b>	<b>+330.8%</b>	<b>+1</b>	<b>#####</b>	<b>2</b>

## Social Care Older Persons Services Employment by Grade Group: Nov 2021

Nov 2021	WTE Dec 2019	WTE Dec 2020	WTE Oct 2021	WTE Nov 2021	WTE change since Oct 21	WTE change since Dec 20	% change since Dec 20	WTE change since Dec 19	% change since Dec 19	No. Nov 2021
<b>Overall</b>	<b>13,233</b>	<b>13,415</b>	<b>13,561</b>	<b>13,538</b>	<b>-23</b>	<b>+124</b>	<b>+0.9%</b>	<b>+306</b>	<b>+2.3%</b>	<b>16,572</b>
Consultant Medicine	4	4	8	7	-1	+3	+60.4%	+3	+96.9%	10
<b>Consultants</b>	<b>4</b>	<b>4</b>	<b>8</b>	<b>7</b>	<b>-1</b>	<b>+3</b>	<b>+60.4%</b>	<b>+3</b>	<b>+96.9%</b>	<b>10</b>
Registrar	7	6	6	5	-0	-0	-6.2%	-1	-15.8%	6
Senior Registrar	1	1	1	1		+0	+8.0%	+0	+8.0%	2
Specialist Registrar	2	2	3	3		+1	+50.0%	+1	+50.0%	3
<b>Registrars</b>	<b>10</b>	<b>9</b>	<b>10</b>	<b>10</b>	<b>-0</b>	<b>+1</b>	<b>+8.1%</b>	<b>+0</b>	<b>+0.5%</b>	<b>11</b>
Senior House Officer	15	14	15	15	-0	+1	+8.5%	-0	-1.1%	15
<b>SHO/ Interns</b>	<b>15</b>	<b>14</b>	<b>15</b>	<b>15</b>	<b>-0</b>	<b>+1</b>	<b>+8.5%</b>	<b>-0</b>	<b>-1.1%</b>	<b>15</b>
Other Medical	96	104	82	87	+5	-17	-16.2%	-10	-9.9%	156
<b>Medical/ Dental, other</b>	<b>96</b>	<b>104</b>	<b>82</b>	<b>87</b>	<b>+5</b>	<b>-17</b>	<b>-16.2%</b>	<b>-10</b>	<b>-9.9%</b>	<b>156</b>
<b>Medical &amp; Dental</b>	<b>125</b>	<b>131</b>	<b>114</b>	<b>118</b>	<b>+5</b>	<b>-12</b>	<b>-9.4%</b>	<b>-6</b>	<b>-4.9%</b>	<b>192</b>
Clinical Nurse/ Midwife Manager	508	536	559	562	+3	+26	+4.9%	+54	+10.6%	608
Director Nursing/Midwifery, Assistant	103	106	109	105	-4	-1	-1.1%	+2	+2.4%	110
Director of Nursing/Midwifery	98	104	103	103	-0	-2	-1.5%	+4	+4.5%	106
<b>Nurse/ Midwife Manager</b>	<b>709</b>	<b>746</b>	<b>771</b>	<b>770</b>	<b>-1</b>	<b>+23</b>	<b>+3.1%</b>	<b>+61</b>	<b>+8.5%</b>	<b>824</b>
Advanced Nurse/ Midwife Practitioner	11	17	15	15	+0	-2	-12.2%	+4	+36.2%	15
Clinical Nurse/ Midwife Specialist	16	22	19	23	+4	+1	+5.5%	+7	+44.4%	26
<b>Nurse/ Midwife Specialist &amp; AN/MP</b>	<b>26</b>	<b>38</b>	<b>34</b>	<b>37</b>	<b>+4</b>	<b>-1</b>	<b>-2.2%</b>	<b>+11</b>	<b>+41.1%</b>	<b>41</b>
Staff Midwives		1	1	1	+0	-0	-10.2%	+1	-100.0%	1
Staff Nurse [Psychiatric]	5	5	8	10	+2	+5	+91.9%	+5	+102.0%	12
Staff Nurses [General/ Children's]	2,572	2,617	2,676	2,660	-16	+43	+1.7%	+89	+3.4%	3,103
Staff Nurse [Intellectual Disability]		1	1	1	-0	-0	-1.0%	+1	-100.0%	1
<b>Staff Nurse/ Staff Midwife</b>	<b>2,576</b>	<b>2,624</b>	<b>2,686</b>	<b>2,672</b>	<b>-14</b>	<b>+48</b>	<b>+1.8%</b>	<b>+95</b>	<b>+3.7%</b>	<b>3,117</b>
Public Health Nurse	13	13	11	12	+1	-1	-11.1%	-1	-10.8%	15
<b>Public Health Nurse</b>	<b>13</b>	<b>13</b>	<b>11</b>	<b>12</b>	<b>+1</b>	<b>-1</b>	<b>-11.1%</b>	<b>-1</b>	<b>-10.8%</b>	<b>15</b>
Pre-registration Nurse/ Midwife Intern			0	0	-0	+0	-100.0%	+0	-100.0%	1
Post-registration Nurse/ Midwife Student	1						-100.0%	-1	-100.0%	
Nursing/ Midwifery awaiting registration	1	1	2	2	-0	+1	+46.7%	+1	+98.0%	2
<b>Nursing/ Midwifery Student</b>	<b>2</b>	<b>1</b>	<b>2</b>	<b>2</b>	<b>-0</b>	<b>+1</b>	<b>+79.3%</b>	<b>+0</b>	<b>+21.0%</b>	<b>3</b>
Nursing Education/Clinical	1	4	4	4	+0	-0	-2.3%	+3	+289.0%	4
<b>Nursing/ Midwifery other</b>	<b>1</b>	<b>4</b>	<b>4</b>	<b>4</b>	<b>+0</b>	<b>-0</b>	<b>-2.3%</b>	<b>+3</b>	<b>+289.0%</b>	<b>4</b>
<b>Nursing &amp; Midwifery</b>	<b>3,328</b>	<b>3,427</b>	<b>3,508</b>	<b>3,497</b>	<b>-11</b>	<b>+70</b>	<b>+2.0%</b>	<b>+169</b>	<b>+5.1%</b>	<b>4,004</b>
Dietitians	16	18	26	25	-1	+7	+37.6%	+8	+51.1%	30
Occupational Therapists	113	113	121	119	-2	+6	+5.2%	+6	+4.9%	133
Physiotherapists	124	132	157	159	+2	+27	+20.6%	+36	+28.9%	185
Podiatrists & Chiropodists	12	13	11	13	+3	+0	+3.9%	+1	+9.1%	18
Speech & Language Therapists	23	20	30	32	+2	+12	+59.9%	+9	+37.1%	35
<b>Therapy Professions</b>	<b>288</b>	<b>295</b>	<b>344</b>	<b>348</b>	<b>+3</b>	<b>+52</b>	<b>+17.7%</b>	<b>+59</b>	<b>+20.6%</b>	<b>401</b>
Radiographers	6	5	5	4	-1	-0	-9.9%	-1	-24.5%	8
Clinical Measurement	0	0	0	0	+0			-0	-23.8%	1
<b>Health Science/ Diagnostics</b>	<b>6</b>	<b>5</b>	<b>5</b>	<b>5</b>	<b>-1</b>	<b>-0</b>	<b>-9.6%</b>	<b>-1</b>	<b>-24.4%</b>	<b>9</b>
<b>Social Care</b>	<b>3</b>	<b>3</b>	<b>3</b>	<b>3</b>	<b>-0</b>	<b>-0</b>	<b>-0.4%</b>	<b>-0</b>	<b>-0.4%</b>	<b>5</b>
<b>Social Workers</b>	<b>98</b>	<b>100</b>	<b>94</b>	<b>92</b>	<b>-1</b>	<b>-7</b>	<b>-7.3%</b>	<b>-6</b>	<b>-6.0%</b>	<b>103</b>
<b>Psychologists</b>	<b>2</b>	<b>1</b>	<b>2</b>	<b>1</b>	<b>-1</b>	<b>+0</b>	<b>+20.0%</b>	<b>-1</b>	<b>-37.1%</b>	<b>2</b>
<b>Pharmacy</b>	<b>15</b>	<b>17</b>	<b>19</b>	<b>20</b>	<b>+2</b>	<b>+3</b>	<b>+18.9%</b>	<b>+5</b>	<b>+34.2%</b>	<b>27</b>
Other Health & Social Care	0	1	1	1				+0	+50.0%	1
Play Therapists/ Specialists	1	1	1	1	-0	-0	-1.0%	-0	-1.0%	1
<b>H&amp;SC, Other</b>	<b>1</b>	<b>2</b>	<b>2</b>	<b>2</b>	<b>-0</b>	<b>-0</b>	<b>-0.6%</b>	<b>+0</b>	<b>+12.5%</b>	<b>2</b>
<b>Health &amp; Social Care Professionals</b>	<b>414</b>	<b>423</b>	<b>469</b>	<b>471</b>	<b>+2</b>	<b>+48</b>	<b>#####</b>	<b>+57</b>	<b>+13.7%</b>	<b>549</b>
Executive Management	12	15	15	15	+0	-0	-0.1%	+3	+24.1%	15

Nov 2021	WTE Dec 2019	WTE Dec 2020	WTE Oct 2021	WTE Nov 2021	WTE change since Oct 21	WTE change since Dec 20	% change since Dec 20	WTE change since Dec 19	% change since Dec 19	No. Nov 2021
<b>Overall</b>	<b>13,233</b>	<b>13,415</b>	<b>13,561</b>	<b>13,538</b>	<b>-23</b>	<b>+124</b>	<b>+0.9%</b>	<b>+306</b>	<b>+2.3%</b>	<b>16,572</b>
Senior Management (VIII & GM)	63	64	80	85	+6	+21	+33.6%	+23	+36.3%	89
<b>Management (VIII &amp; above)</b>	<b>75</b>	<b>79</b>	<b>94</b>	<b>100</b>	<b>+6</b>	<b>+21</b>	<b>+27.3%</b>	<b>+26</b>	<b>+34.4%</b>	<b>104</b>
Middle Management (V-VII)	164	176	198	199	+1	+24	+13.4%	+36	+21.7%	215
Other Administrative	1						-100.0%	-1	-100.0%	
<b>Administrative/ Supervisory (V to VII)</b>	<b>165</b>	<b>176</b>	<b>198</b>	<b>199</b>	<b>+1</b>	<b>+24</b>	<b>+13.4%</b>	<b>+35</b>	<b>+20.9%</b>	<b>215</b>
General Administrative (III & IV)	571	587	593	599	+6	+11	+1.9%	+27	+4.8%	702
<b>Clerical (III &amp; IV)</b>	<b>571</b>	<b>587</b>	<b>593</b>	<b>599</b>	<b>+6</b>	<b>+11</b>	<b>+1.9%</b>	<b>+27</b>	<b>+4.8%</b>	<b>702</b>
<b>Management &amp; Administrative</b>	<b>811</b>	<b>842</b>	<b>885</b>	<b>898</b>	<b>+13</b>	<b>+56</b>	<b>+6.7%</b>	<b>+88</b>	<b>+10.8%</b>	<b>1,021</b>
Catering	221	216	217	218	+1	+1	+0.6%	-3	-1.6%	241
Household Services	492	479	475	475	-0	-4	-0.8%	-17	-3.5%	545
Other Support	34	29	29	30	+1	+1	+2.1%	-4	-12.8%	37
Portering	81	77	75	75	-0	-2	-2.6%	-7	-8.3%	78
<b>Support</b>	<b>829</b>	<b>801</b>	<b>796</b>	<b>797</b>	<b>+1</b>	<b>-4</b>	<b>-0.5%</b>	<b>-32</b>	<b>-3.8%</b>	<b>901</b>
Maintenance	98	95	89	90	+1	-5	-5.1%	-8	-8.6%	95
Technical Services			4	4		+4	-100.0%	+4	-100.0%	4
<b>Maintenance/ Technical</b>	<b>98</b>	<b>95</b>	<b>93</b>	<b>94</b>	<b>+1</b>	<b>-1</b>	<b>-0.9%</b>	<b>-4</b>	<b>-4.5%</b>	<b>99</b>
<b>General Support</b>	<b>927</b>	<b>896</b>	<b>890</b>	<b>891</b>	<b>+2</b>	<b>-5</b>	<b>-0.5%</b>	<b>-36</b>	<b>-3.9%</b>	<b>1,000</b>
HCA, Nurse's Aide, etc.	4,022	4,069	4,031	4,030	-0	-38	-0.9%	+8	+0.2%	4,615
HCA (Student Nurse/Midwife COVID-19)		22	1	1	-0	-22	-97.3%	+1	-100.0%	3
Health & Social Care Assistants	21	27	38	40	+3	+13	+47.3%	+19	+88.9%	45
<b>Health Care Assistants</b>	<b>4,043</b>	<b>4,118</b>	<b>4,069</b>	<b>4,071</b>	<b>+2</b>	<b>-47</b>	<b>-1.1%</b>	<b>+28</b>	<b>+0.7%</b>	<b>4,663</b>
<b>Home Help</b>	<b>3,442</b>	<b>3,431</b>	<b>3,451</b>	<b>3,411</b>	<b>-40</b>	<b>-20</b>	<b>-0.6%</b>	<b>-31</b>	<b>-0.9%</b>	<b>4,917</b>
<b>Care, other</b>	<b>142</b>	<b>147</b>	<b>176</b>	<b>180</b>	<b>+5</b>	<b>+34</b>	<b>+23.1%</b>	<b>+39</b>	<b>+27.2%</b>	<b>226</b>
<b>Patient &amp; Client Care</b>	<b>7,627</b>	<b>7,696</b>	<b>7,696</b>	<b>7,662</b>	<b>-33</b>	<b>-33</b>	<b>-0.4%</b>	<b>+35</b>	<b>+0.5%</b>	<b>9,806</b>



## Employment by WTE, Headcount, Gender, Full-Time /Part-Time etc.: Nov 2021

Social Care Older Persons Services Staff Group	WTE	Headcount	WTE: no.	% Male	% female	Male WTE: no.	Female WTE: no.	% Total Perm	% Male Perm	% Female Perm	% Total Full Time	% Total Part Time	% Male FT	% Female FT
<b>Overall</b>	<b>13,538</b>	<b>16,572</b>	<b>1.22</b>	<b>13.4%</b>	<b>86.6%</b>	<b>1.11</b>	<b>1.24</b>	<b>82.2%</b>	<b>79.1%</b>	<b>82.7%</b>	<b>58.8%</b>	<b>41.2%</b>	<b>82.9%</b>	<b>55.1%</b>
Consultant Medicine	7	10	1.41	20.0%	80.0%	2.00	1.31	60.0%	60.0%	62.5%	50.0%	50.0%	50.0%	50.0%
<b>Consultants</b>	<b>7</b>	<b>10</b>	<b>1.41</b>	<b>20.0%</b>	<b>80.0%</b>	<b>2.00</b>	<b>1.31</b>	<b>60.0%</b>	<b>50.0%</b>	<b>62.5%</b>	<b>50.0%</b>	<b>50.0%</b>	<b>50.0%</b>	<b>50.0%</b>
Registrar	5	6	1.09	33.3%	66.7%	1.00	1.15	66.7%	66.7%	50.0%	83.3%	16.7%	100.0%	75.0%
Senior Registrar	1	2	1.85	50.0%	50.0%	12.50	1.00	50.0%	50.0%	100.0%	50.0%	50.0%	0.0%	100.0%
Specialist Registrar	3	3	1.00	66.7%	33.3%	1.00	1.00	0.0%	0.0%	0.0%	100.0%	0.0%	100.0%	100.0%
<b>Registrars</b>	<b>10</b>	<b>11</b>	<b>1.15</b>	<b>45.5%</b>	<b>54.5%</b>	<b>1.23</b>	<b>1.09</b>	<b>45.5%</b>	<b>40.0%</b>	<b>50.0%</b>	<b>81.8%</b>	<b>18.2%</b>	<b>80.0%</b>	<b>83.3%</b>
Senior House Officer	15	15	1.01	33.3%	66.7%	1.00	1.02	13.3%	13.3%	0.0%	100.0%	0.0%	100.0%	100.0%
<b>SHO/ Interns</b>	<b>15</b>	<b>15</b>	<b>1.01</b>	<b>33.3%</b>	<b>66.7%</b>	<b>1.00</b>	<b>1.02</b>	<b>13.3%</b>	<b>40.0%</b>	<b>0.0%</b>	<b>100.0%</b>	<b>0.0%</b>	<b>100.0%</b>	<b>100.0%</b>
Other Medical	87	156	1.79	62.8%	37.2%	1.94	1.59	53.8%	53.8%	48.3%	35.9%	64.1%	29.6%	46.6%
<b>Medical/ Dental, other</b>	<b>87</b>	<b>156</b>	<b>1.79</b>	<b>62.8%</b>	<b>37.2%</b>	<b>1.94</b>	<b>1.59</b>	<b>53.8%</b>	<b>57.1%</b>	<b>48.3%</b>	<b>35.9%</b>	<b>64.1%</b>	<b>29.6%</b>	<b>46.6%</b>
<b>Medical &amp; Dental</b>	<b>118</b>	<b>192</b>	<b>1.62</b>	<b>57.3%</b>	<b>42.7%</b>	<b>1.82</b>	<b>1.42</b>	<b>50.5%</b>	<b>55.5%</b>	<b>43.9%</b>	<b>44.3%</b>	<b>55.7%</b>	<b>35.5%</b>	<b>56.1%</b>
Clinical Nurse/ Midwife Manager	562	608	1.08	7.4%	92.6%	1.05	1.08	95.6%	95.6%	95.7%	79.4%	20.6%	93.3%	78.3%
Director Nursing/Midwifery, Assistant	105	110	1.05	4.5%	95.5%	1.00	1.05	99.1%	99.1%	99.0%	90.9%	9.1%	100.0%	90.5%
Director of Nursing/Midwifery	103	106	1.03	5.7%	94.3%	1.02	1.03	98.1%	98.1%	98.0%	95.3%	4.7%	100.0%	95.0%
<b>Nurse/ Midwife Manager</b>	<b>770</b>	<b>824</b>	<b>1.07</b>	<b>6.8%</b>	<b>93.2%</b>	<b>1.05</b>	<b>1.07</b>	<b>96.4%</b>	<b>94.6%</b>	<b>96.5%</b>	<b>83.0%</b>	<b>17.0%</b>	<b>94.6%</b>	<b>82.2%</b>
Advanced Nurse/ Midwife Practitioner	15	15	1.03	13.3%	86.7%	1.01	1.03	100.0%	100.0%	100.0%	100.0%	0.0%	100.0%	100.0%
Clinical Nurse/ Midwife Specialist	23	26	1.14	15.4%	84.6%	1.01	1.17	100.0%	100.0%	100.0%	65.4%	34.6%	100.0%	59.1%
<b>Nurse/ Midwife Specialist &amp; AN/MP</b>	<b>37</b>	<b>41</b>	<b>1.10</b>	<b>14.6%</b>	<b>85.4%</b>	<b>1.01</b>	<b>1.12</b>	<b>100.0%</b>	<b>100.0%</b>	<b>100.0%</b>	<b>78.0%</b>	<b>22.0%</b>	<b>100.0%</b>	<b>74.3%</b>
Staff Midwives	1	1	1.27		100.0%		1.27	100.0%	100.0%	100.0%	0.0%	100.0%		0.0%
Staff Nurse [Psychiatric]	10	12	1.21	16.7%	83.3%	1.25	1.20	58.3%	58.3%	50.0%	66.7%	33.3%	50.0%	70.0%
Staff Nurses [General/ Children's]	2,660	3,103	1.17	8.4%	91.6%	1.05	1.18	86.1%	86.1%	86.5%	63.8%	36.2%	93.1%	61.1%
Staff Nurse [Intellectual Disability]	1	1	1.01		100.0%		1.01	100.0%	100.0%	100.0%	100.0%	0.0%		100.0%
<b>Staff Nurse/ Staff Midwife</b>	<b>2,672</b>	<b>3,117</b>	<b>1.17</b>	<b>8.4%</b>	<b>91.6%</b>	<b>1.05</b>	<b>1.18</b>	<b>86.0%</b>	<b>82.1%</b>	<b>86.4%</b>	<b>63.8%</b>	<b>36.2%</b>	<b>92.7%</b>	<b>61.2%</b>
Public Health Nurse	12	15	1.26		100.0%		1.26	100.0%	100.0%	100.0%	60.0%	40.0%		60.0%
<b>Public Health Nurse</b>	<b>12</b>	<b>15</b>	<b>1.26</b>		<b>100.0%</b>		<b>1.26</b>	<b>100.0%</b>		<b>100.0%</b>	<b>60.0%</b>	<b>40.0%</b>		<b>60.0%</b>
Pre-registration Nurse/ Midwife Intern	0	1	2.27		100.0%		2.27	0.0%	0.0%	0.0%	100.0%	0.0%		100.0%
Nursing/ Midwifery awaiting registration	2	2	1.01		100.0%		1.01	0.0%	0.0%	0.0%	100.0%	0.0%		100.0%
<b>Nursing/ Midwifery Student</b>	<b>2</b>	<b>3</b>	<b>1.24</b>		<b>100.0%</b>		<b>1.24</b>	<b>0.0%</b>		<b>0.0%</b>	<b>100.0%</b>	<b>0.0%</b>		<b>100.0%</b>
Nursing Education/Clinical	4	4	1.03		100.0%		1.03	100.0%	100.0%	100.0%	100.0%	0.0%		100.0%

<b>Nursing/ Midwifery other</b>	<b>4</b>	<b>4</b>	<b>1.03</b>		<b>100.0%</b>		<b>1.03</b>	<b>100.0%</b>		<b>100.0%</b>	<b>100.0%</b>	<b>0.0%</b>		<b>100.0%</b>
<b>Nursing &amp; Midwifery</b>	<b>3,497</b>	<b>4,004</b>	<b>1.14</b>	<b>8.1%</b>	<b>91.9%</b>	<b>1.05</b>	<b>1.15</b>	<b>88.3%</b>	<b>84.6%</b>	<b>88.6%</b>	<b>68.0%</b>	<b>32.0%</b>	<b>93.2%</b>	<b>65.7%</b>
<b>Health &amp; Social Care</b>	<b>471</b>	<b>549</b>	<b>1.17</b>	<b>12.2%</b>	<b>87.8%</b>	<b>1.09</b>	<b>1.18</b>	<b>86.3%</b>	<b>91.0%</b>	<b>85.7%</b>	<b>74.0%</b>	<b>26.0%</b>	<b>92.5%</b>	<b>71.4%</b>
Executive Management	15	15	1.01	53.3%	46.7%	1.00	1.03	100.0%	100.0%	100.0%	100.0%	0.0%	100.0%	100.0%
Senior Management (VIII & GM)	85	89	1.04	32.6%	67.4%	1.02	1.05	93.3%	93.3%	95.0%	96.6%	3.4%	96.6%	96.7%
<b>Management (VIII &amp; above)</b>	<b>100</b>	<b>104</b>	<b>1.04</b>	<b>35.6%</b>	<b>64.4%</b>	<b>1.02</b>	<b>1.05</b>	<b>94.2%</b>	<b>91.9%</b>	<b>95.5%</b>	<b>97.1%</b>	<b>2.9%</b>	<b>97.3%</b>	<b>97.0%</b>
Middle Management (V-VII)	199	215	1.08	14.9%	85.1%	1.02	1.09	96.3%	96.3%	97.3%	81.4%	18.6%	87.5%	80.3%
<b>Administrative/ Supervisory (V to VII)</b>	<b>199</b>	<b>215</b>	<b>1.08</b>	<b>14.9%</b>	<b>85.1%</b>	<b>1.02</b>	<b>1.09</b>	<b>96.3%</b>	<b>90.6%</b>	<b>97.3%</b>	<b>81.4%</b>	<b>18.6%</b>	<b>87.5%</b>	<b>80.3%</b>
General Administrative (III & IV)	599	702	1.17	8.4%	91.6%	1.07	1.18	85.0%	85.0%	86.0%	65.2%	34.8%	93.2%	62.7%
<b>Clerical (III &amp; IV)</b>	<b>599</b>	<b>702</b>	<b>1.17</b>	<b>8.4%</b>	<b>91.6%</b>	<b>1.07</b>	<b>1.18</b>	<b>85.0%</b>	<b>74.6%</b>	<b>86.0%</b>	<b>65.2%</b>	<b>34.8%</b>	<b>93.2%</b>	<b>62.7%</b>
<b>Management &amp; Administrative</b>	<b>898</b>	<b>1,021</b>	<b>1.14</b>	<b>12.5%</b>	<b>87.5%</b>	<b>1.04</b>	<b>1.15</b>	<b>88.3%</b>	<b>83.6%</b>	<b>89.0%</b>	<b>71.9%</b>	<b>28.1%</b>	<b>93.0%</b>	<b>68.9%</b>
Catering	218	241	1.11	34.4%	65.6%	1.05	1.14	93.4%	93.4%	96.2%	73.4%	26.6%	91.6%	63.9%
Household Services	475	545	1.15	17.6%	82.4%	1.06	1.17	83.5%	83.5%	84.6%	58.7%	41.3%	84.4%	53.2%
Other Support	30	37	1.25	59.5%	40.5%	1.14	1.44	81.1%	81.1%	86.7%	62.2%	37.8%	81.8%	33.3%
Portering	75	78	1.05	98.7%	1.3%	1.04	1.35	88.5%	88.5%	100.0%	92.3%	7.7%	92.2%	100.0%
<b>Support</b>	<b>797</b>	<b>901</b>	<b>1.13</b>	<b>30.9%</b>	<b>69.1%</b>	<b>1.06</b>	<b>1.17</b>	<b>86.5%</b>	<b>83.8%</b>	<b>87.6%</b>	<b>65.7%</b>	<b>34.3%</b>	<b>88.5%</b>	<b>55.5%</b>
Maintenance	90	95	1.06	98.9%	1.1%	1.06	1.00	94.7%	94.7%	100.0%	93.7%	6.3%	93.6%	100.0%
Technical Services	4	4	1.00	100.0%		1.00		100.0%	100.0%		100.0%	0.0%	100.0%	
<b>Maintenance/ Technical</b>	<b>94</b>	<b>99</b>	<b>1.05</b>	<b>99.0%</b>	<b>1.0%</b>	<b>1.05</b>	<b>1.00</b>	<b>94.9%</b>	<b>94.9%</b>	<b>100.0%</b>	<b>93.9%</b>	<b>6.1%</b>	<b>93.9%</b>	<b>100.0%</b>
<b>General Support</b>	<b>891</b>	<b>1,000</b>	<b>1.12</b>	<b>37.6%</b>	<b>62.4%</b>	<b>1.06</b>	<b>1.17</b>	<b>87.3%</b>	<b>86.7%</b>	<b>87.7%</b>	<b>68.5%</b>	<b>31.5%</b>	<b>89.9%</b>	<b>55.6%</b>
HCA, Nurse's Aide, etc.	4,030	4,615	1.15	20.5%	79.5%	1.06	1.17	87.6%	87.6%	87.9%	61.7%	38.3%	87.0%	55.1%
HCA (Student Nurse/Midwife COVID-19)	1	3	5.00		100.0%		5.00	0.0%	0.0%	0.0%	0.0%	100.0%		0.0%
Health & Social Care Assistants	40	45	1.12	26.7%	73.3%	1.18	1.10	93.3%	93.3%	93.9%	86.7%	13.3%	91.7%	84.8%
<b>Health Care Assistants</b>	<b>4,071</b>	<b>4,663</b>	<b>1.15</b>	<b>20.5%</b>	<b>79.5%</b>	<b>1.06</b>	<b>1.17</b>	<b>87.6%</b>	<b>86.4%</b>	<b>87.9%</b>	<b>61.9%</b>	<b>38.1%</b>	<b>87.1%</b>	<b>55.4%</b>
<b>Home Help</b>	<b>3,411</b>	<b>4,917</b>	<b>1.44</b>	<b>3.8%</b>	<b>96.2%</b>	<b>1.35</b>	<b>1.45</b>	<b>70.7%</b>	<b>36.0%</b>	<b>72.1%</b>	<b>42.4%</b>	<b>57.6%</b>	<b>57.1%</b>	<b>41.9%</b>
<b>Care, other</b>	<b>180</b>	<b>226</b>	<b>1.25</b>	<b>32.3%</b>	<b>67.7%</b>	<b>1.56</b>	<b>1.15</b>	<b>78.3%</b>	<b>46.6%</b>	<b>93.5%</b>	<b>65.0%</b>	<b>35.0%</b>	<b>58.9%</b>	<b>68.0%</b>
<b>Patient &amp; Client Care</b>	<b>7,662</b>	<b>9,806</b>	<b>1.28</b>	<b>12.4%</b>	<b>87.6%</b>	<b>1.12</b>	<b>1.31</b>	<b>78.9%</b>	<b>76.2%</b>	<b>79.3%</b>	<b>52.2%</b>	<b>47.8%</b>	<b>80.7%</b>	<b>48.1%</b>

## Employment by WTE, Headcount, Gender, Full-Time /Part-Time etc.: Nov 2021

Social Care Older Persons Services CHO	WTE	Headcount	WTE: no.	% Male	% female	Male WTE: no.	Female WTE: no.	% Total Perm	% Male Perm	% Female Perm	% Total Full Time	% Total Part Time	% Male FT	% Female FT
<b>Overall</b>	<b>13,538</b>	<b>16,572</b>	<b>1.22</b>	<b>13.4%</b>	<b>86.6%</b>	<b>1.11</b>	<b>1.24</b>	<b>82.2%</b>	<b>79.1%</b>	<b>82.7%</b>	<b>58.8%</b>	<b>41.2%</b>	<b>82.9%</b>	<b>55.1%</b>
CHO 1	1,973	2,367	1.20	12.3%	87.7%	1.15	1.21	72.1%	72.1%	70.6%	42.7%	57.3%	66.8%	39.3%
CHO 2	1,516	1,803	1.19	12.6%	87.4%	1.05	1.21	91.3%	91.3%	91.9%	49.2%	50.8%	88.1%	43.6%
CHO 3	1,161	1,490	1.28	13.1%	86.9%	1.10	1.32	90.6%	90.6%	91.4%	56.1%	43.9%	90.3%	51.0%
CHO 4	2,942	3,843	1.31	11.4%	88.6%	1.17	1.33	63.3%	63.3%	65.3%	74.6%	25.4%	86.7%	73.1%
CHO 5	1,646	2,003	1.22	10.0%	90.0%	1.14	1.23	96.9%	96.9%	97.6%	45.8%	54.2%	77.6%	42.2%
CHO 6	812	890	1.10	25.3%	74.7%	1.05	1.11	91.0%	91.0%	90.5%	77.8%	22.2%	88.4%	74.1%
CHO 7	995	1,146	1.15	16.7%	83.3%	1.05	1.17	90.1%	90.1%	90.9%	67.1%	32.9%	88.0%	62.9%
CHO 8	1,440	1,836	1.27	11.9%	88.1%	1.18	1.29	89.5%	89.5%	90.0%	47.2%	52.8%	74.0%	43.5%
CHO 9	978	1,110	1.14	19.6%	80.4%	1.08	1.15	87.9%	87.9%	89.1%	75.0%	25.0%	88.1%	71.7%
other Community Services	76	84	1.10	23.8%	76.2%	1.06	1.12	92.9%	92.9%	93.8%	86.9%	13.1%	90.0%	85.9%

Summary Staff Movement: November 2021

Month-on-month  
Summary

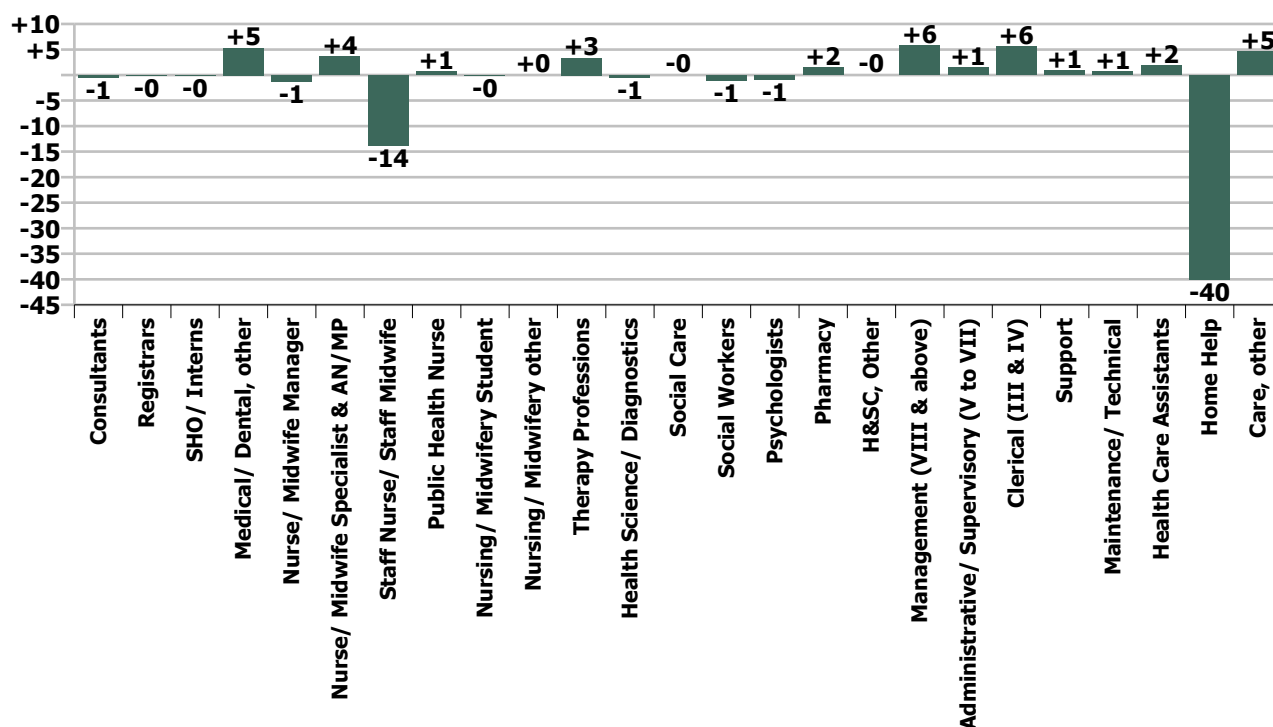
WTE change since Oct 21	% change since Oct 21	overall	Consultants	Registrars	SHO/ Interns	Medical/ Dental, other	Medical & Dental	Nurse/ Midwife Manager	Nurse/ Midwife Specialist & AN/MP	Staff Nurse/ Staff Midwife	Public Health Nurse	Nursing/ Midwifery Student	Nursing/ Midwifery other	Nursing & Midwifery	Therapy Professions	Health Science/ Diagnostics	Social Care	Social Workers	Psychologists	Pharmacy	H&SC, Other	Health & Social Care Professionals	Management (VIII & above)	Administrativ e/ Supervisory (V to VII)	Clerical (III & IV)	Management & Administrative	General Support	Health Care Assistants	Home Help	Care, other	Patient & Client Care
Overall	-0.2%	-23	-1	-0	-0	+5	+5	-1	+4	-14	+1	-0	+0	-11	+3	-1	-0	-1	-1	+2	-0	+2	+6	+1	+6	+13	+2	+2	-40	+5	-33
CHO 1	+0.5%	+11				+4	+4	+2	+1	-3				+0	+0	-1		+3				+2		-0	+1	+1	+2	+0	+1	-1	+1
CHO 2	-1.2%	-18				-0	-0	-0		-9	-0			-9	-0			+0				-0	-0	+0	+1	+1	+0	-0	-10	+1	-9
CHO 3	+0.2%	+2	-1			+0	-0	-1	+2	+1				+2	-0	+0		+1	+0		-0	+1	+1	-0	-1	+0	+1	+2	-3	+0	-2
CHO 4	+0.4%	+13				+1	+1	-1		+11	-0	-0		+10	+2			-1		+0		+1		+0	-1	-1	+1	+4	-4	+1	+1
CHO 5	-1.0%	-16				-0	-0	-1	-1	-7	-0			-9	-0			+1		+1		+2	+3	-1	+4	+7	+1	-2	-13	-1	-16
CHO 6	-0.2%	-2				-0	-0	+1	-0	-2				-2	-3			+0		-0		-3	+1	+1	-1	+1	-3	+4		-0	+4
CHO 7	-0.4%	-4			-0	-0	-0	-0	+0	-3	+1	-0		-2	-1			-1		+0	-0	-1	+2	-2	+0	+0	+1	+0	-2		-2
CHO 8	-1.1%	-16				-0	-0	-1	+0	-3	+0		+0	-4	+1			-3			+0	-2	+0	-0	+0	-0	-0	-4	-9	+4	-9
CHO 9	+0.7%	+7	-0	-0	-0		-0	+1	+2	+1				+3	+6		-0	-1	-1			+3	+0	+2	+2	+4	-2	-1		-0	-1
other Community Services	-0.1%	-0																				-1	+1	-0	-0				-0		-0
		-0.2%	-6.7%	-0.3%	-0.7%	+6.5%	+4.1%	-0.2%	+10.9%	-0.5%	+6.1%	-2.8%	+0.3%	-0.3%	+1.0%	-11.1%	-0.4%	-1.2%	-38.0%	+8.2%	-0.6%	+0.5%	+6.2%	+0.7%	+0.9%	+1.5%	+0.2%	+0.0%	-1.2%	+2.7%	-0.4%

Year-on-year Summary

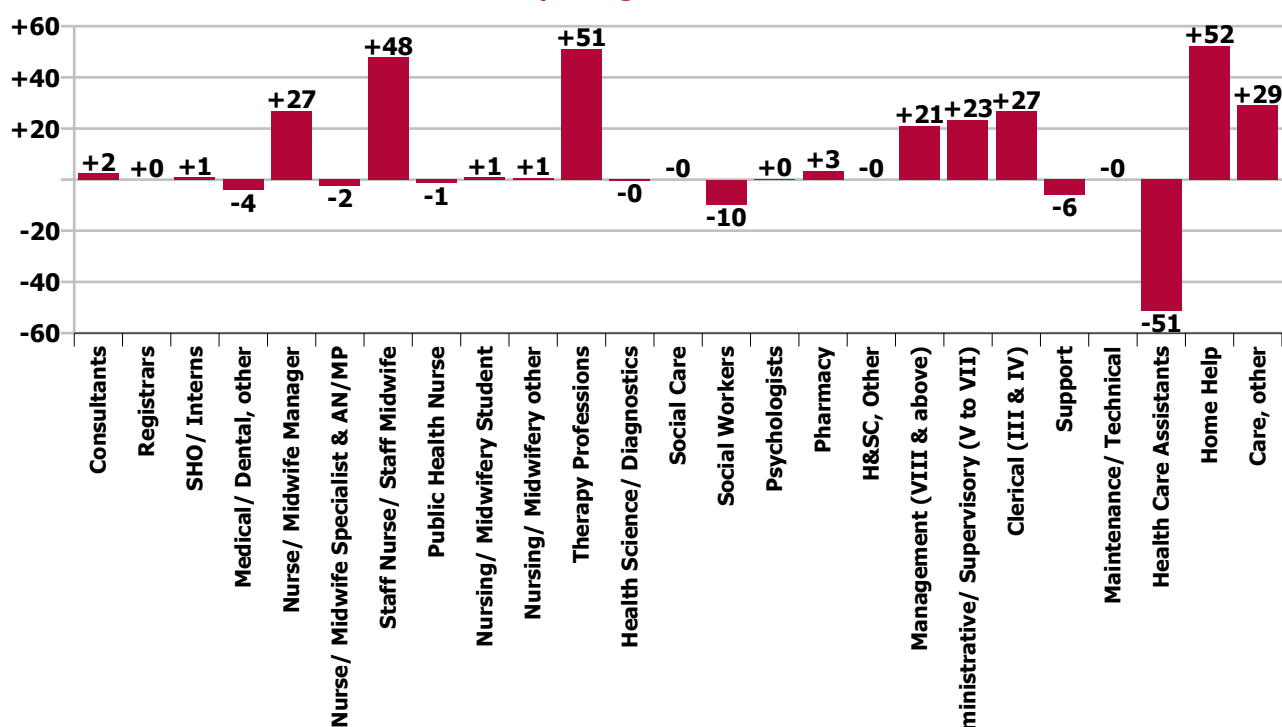
WTE change since Nov 20	% change since Nov 20	overall	Consultants	Registrars	SHO/ Interns	Medical/ Dental, other	Medical & Dental	Nurse/ Midwife Manager	Nurse/ Midwife Specialist & AN/MP	Staff Nurse/ Staff Midwife	Public Health Nurse	Nursing/ Midwifery Student	Nursing/ Midwifery other	Nursing & Midwifery	Therapy Professions	Health Science/ Diagnostics	Social Care	Social Workers	Psychologists	Pharmacy	H&SC, Other	Health & Social Care Professionals	Management (VIII & above)	Administrative/ Supervisory (V to VII)	Clerical (III & IV)	Management & Administrative	General Support	Health Care Assistants	Home Help	Care, other	Patient & Client Care
Overall	+1.6%	+211	+2	+0	+1	-4	-1	+27	-2	+48	-1	+1	+1	+72	+51	-0	-0	-10	+0	+3	-0	+45	+21	+23	+27	+71	-6	-51	+52	+29	+30
CHO 1	+6.5%	+120				+1	+1	+8	-1	+9				+16	+10	-0		+2				+12		+3	+1	+3	-4	+10	+82	-1	+91
CHO 2	-2.9%	-46				-0	-0	+5	-0	-9	-0			-4	-4			-0			-1	-5	+1	+4	-2	+3	-6	-13	-36	+15	-34
CHO 3	+12.6%	+130	+3			-1	+1	+1	+2	+26				+28	+7			-0	+1	-0		+8	+1	+1	+6	+8	+1	+16	+63	+5	+83
CHO 4	+1.4%	+40		-1	+1	-0	-0	+3	-3	+35	-2	+0		+35	+9			-1		+1		+8	+5	+8	-1	+13	+8	+7	-27	-2	-23
CHO 5	-2.4%	-41				+1	+1	-2	-1	-6	-1			-10	+0			+2		+0		+3	+6	-7	+13	+11	-4	-39	-11	+9	-41
CHO 6	+1.1%	+9				-2	-2	+0	-0	-8				-8	+2			-2	-1		+1	+1	+2	+6	-2	+6	+5	+9		-1	+8
CHO 7	-3.1%	-32			-0	-2	-2	+12	-0	-8	+1	+0		+4	-1			-1		+0	-0	-2	+0	+1	-2	-1	+1	-23	-8	-1	-32
CHO 8	-2.8%	-41				-0	-0	-3	+0	-11	+0		+2	-11	+8			-6		+2		+4	-0	-3	-4	-7	-1	-19	-10	+4	-25
CHO 9	+7.0%	+64	-0	+1	-0		+1	+2	+1	+21			-1	+22	+21		-0	-3				+18	+6	+6	+15	+27	-5	+0		+1	+1
other Community Services	+13.4%	+9																					-0	+5	+4	+8				+1	+1
		+1.6%	+54.1%	+0.5%	+5.9%	-4.5%	-0.6%	+3.6%	-6.1%	+1.8%	-10.8%	+61.3%	+19.7%	+2.1%	+17.2%	-9.6%	-0.4%	-9.5%	+20.0%	+20.0%	-0.6%	+10.5%	+26.6%	+13.3%	+4.6%	+8.6%	-0.7%	-1.2%	+1.6%	+19.2%	+0.4%



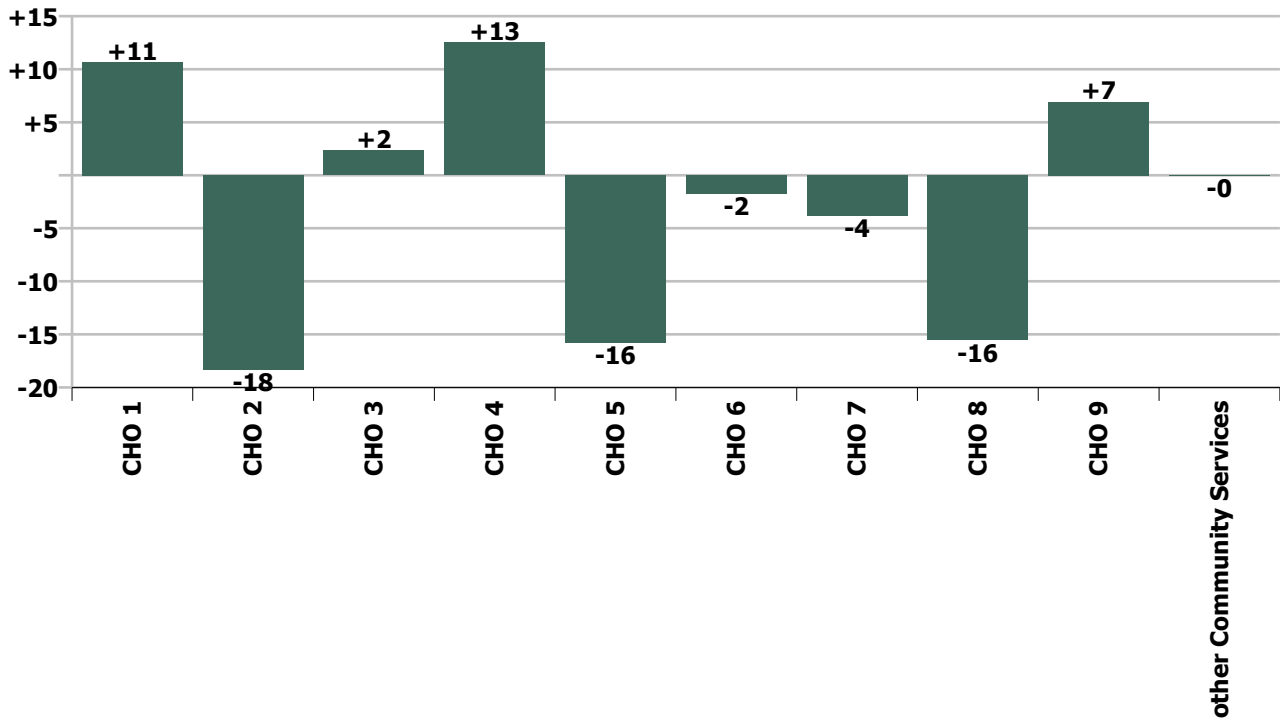
### Staff Group change since: Oct 2021



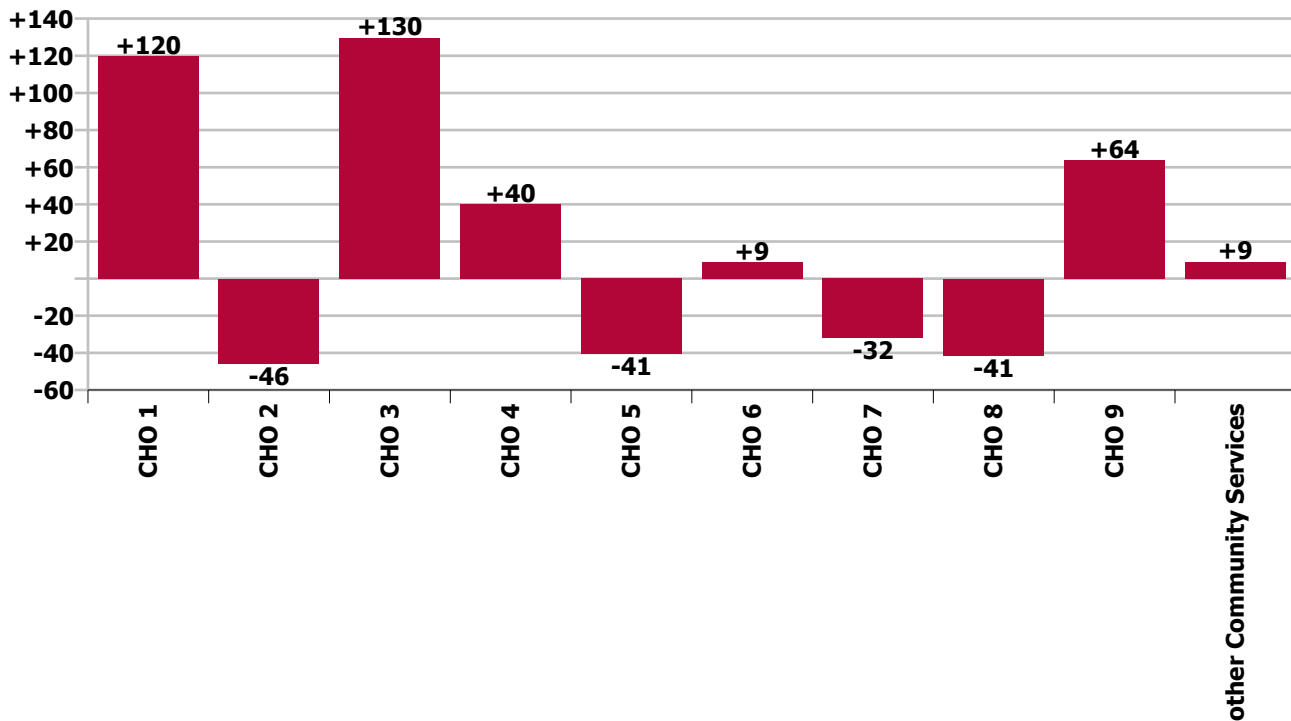
### Staff Group change since: Nov 2020



CHO change since: Oct 2021



CHO change since: Nov 2020



## Longitudinal Employment Levels by Grade Group - Dec 2016 to Nov 2021

Nov 2021 (Dec 2015 figure: 12,607)	WTE Nov 2021	WTE change since Dec 16	WTE change since Dec 17	WTE change since Dec 18	WTE change since Dec 19	WTE change since Dec 20	WTE change since Oct 21	% change since Dec 16	% change since Dec 17	% change since Dec 18	% change since Dec 19	% change since Dec 20	% change since Oct 21
<b>Overall</b>	<b>13,538</b>	<b>+1,056</b>	<b>+435</b>	<b>+234</b>	<b>+306</b>	<b>+124</b>	<b>-23</b>	<b>+8.5%</b>	<b>+3.3%</b>	<b>+1.8%</b>	<b>+2.3%</b>	<b>+0.9%</b>	<b>-0.2%</b>
Consultant Medicine	7	-2	-2	+3	+3	+3	-1	-24.3%	-22.9%	+96.9%	+96.9%	+60.4%	-6.7%
Consultant Psychiatry		-1	-1					-100.0%	-100.0%	-100.0%	-100.0%	-100.0%	-100.0%
Consultant Surgery		-1	-0	-0				-100.0%	-100.0%	-100.0%	-100.0%	-100.0%	-100.0%
<b>Consultants</b>	<b>7</b>	<b>-4</b>	<b>-3</b>	<b>+3</b>	<b>+3</b>	<b>+3</b>	<b>-1</b>	<b>-35.4%</b>	<b>-30.3%</b>	<b>+90.6%</b>	<b>+96.9%</b>	<b>+60.4%</b>	<b>-6.7%</b>
Registrar	5	-0	-2	-2	-1	-0	-0	-0.5%	-27.0%	-25.5%	-15.8%	-6.2%	-0.5%
Senior Registrar	1	+0	+0	-1	+0	+0		+8.0%	+8.0%	-46.0%	+8.0%	+8.0%	
Specialist Registrar	3	+1	+2	+2	+1	+1		+50.0%	+200.0%	+200.0%	+50.0%	+50.0%	
<b>Registrars</b>	<b>10</b>	<b>+1</b>	<b>+0</b>	<b>-1</b>	<b>+0</b>	<b>+1</b>	<b>-0</b>	<b>+12.3%</b>	<b>+0.5%</b>	<b>-7.7%</b>	<b>+0.5%</b>	<b>+8.1%</b>	<b>-0.3%</b>
Senior House Officer	15	+5	+5	+3	-0	+1	-0	+49.0%	+49.6%	+24.3%	-1.1%	+8.5%	-0.7%
<b>SHO/ Interns</b>	<b>15</b>	<b>+5</b>	<b>+5</b>	<b>+3</b>	<b>-0</b>	<b>+1</b>	<b>-0</b>	<b>+49.0%</b>	<b>+49.6%</b>	<b>+24.3%</b>	<b>-1.1%</b>	<b>+8.5%</b>	<b>-0.7%</b>
Other Medical	87	+1	+1	+1	-10	-17	+5	+1.2%	+1.2%	+1.7%	-9.9%	-16.2%	+6.5%
<b>Medical/ Dental, other</b>	<b>87</b>	<b>+1</b>	<b>+1</b>	<b>+1</b>	<b>-10</b>	<b>-17</b>	<b>+5</b>	<b>+1.2%</b>	<b>+1.2%</b>	<b>+1.7%</b>	<b>-9.9%</b>	<b>-16.2%</b>	<b>+6.5%</b>
<b>Medical &amp; Dental</b>	<b>118</b>	<b>+3</b>	<b>+3</b>	<b>+7</b>	<b>-6</b>	<b>-12</b>	<b>+5</b>	<b>+2.7%</b>	<b>+2.5%</b>	<b>+6.2%</b>	<b>-4.9%</b>	<b>-9.4%</b>	<b>+4.1%</b>
Clinical Nurse/ Midwife Manager	562	+27	+34	+38	+54	+26	+3	+5.1%	+6.4%	+7.2%	+10.6%	+4.9%	+0.5%
Director Nursing/Midwifery, Assistant	105	+17	+13	+18	+2	-1	-4	+19.9%	+14.5%	+21.2%	+2.4%	-1.1%	-3.6%
Director of Nursing/Midwifery	103	+18	+20	+20	+4	-2	-0	+20.9%	+24.5%	+24.3%	+4.5%	-1.5%	-0.2%
<b>Nurse/ Midwife Manager</b>	<b>770</b>	<b>+63</b>	<b>+67</b>	<b>+76</b>	<b>+61</b>	<b>+23</b>	<b>-1</b>	<b>+8.8%</b>	<b>+9.6%</b>	<b>+11.0%</b>	<b>+8.5%</b>	<b>+3.1%</b>	<b>-0.2%</b>
Advanced Nurse/ Midwife Practitioner	15	+12	+12	+8	+4	-2	+0	+386.7%	+386.7%	+109.2%	+36.2%	-12.2%	+0.7%
Clinical Nurse/ Midwife Specialist	23	+10	+12	+6	+7	+1	+4	+81.6%	+102.8%	+35.7%	+44.4%	+5.5%	+18.6%
<b>Nurse/ Midwife Specialist &amp; AN/MP</b>	<b>37</b>	<b>+22</b>	<b>+23</b>	<b>+14</b>	<b>+11</b>	<b>-1</b>	<b>+4</b>	<b>+140.5%</b>	<b>+162.7%</b>	<b>+57.3%</b>	<b>+41.1%</b>	<b>-2.2%</b>	<b>+10.9%</b>
Staff Midwives	1	+0	-1	+1	+1	-0	+0	+97.5%	-56.1%	-100.0%	-100.0%	-10.2%	+8.2%
Staff Nurse [Psychiatric]	10	+4	+4	+4	+5	+5	+2	+79.7%	+79.7%	+79.1%	+102.0%	+91.9%	+21.1%
Staff Nurses [General/ Children's]	2,660	+78	+99	+56	+89	+43	-16	+3.0%	+3.9%	+2.1%	+3.4%	+1.7%	-0.6%
Enhanced Nurse (Intellectual Disability)	1	+1	+1	+1	+1			-100.0%	-100.0%	-100.0%	-100.0%		
Staff Nurse - Intellectual Disability		-1	-1	-1				-100.0%	-100.0%	-100.0%	-100.0%		
Staff Nurse [Intellectual Disability]	1	-0	+0	-0	+1	-0	-0	-1.0%	+28.6%	-1.0%	-100.0%	-1.0%	-1.0%
Staff Nurse, General (Graduate Scheme)								-100.0%	-100.0%	-100.0%	-100.0%		
Staff Nurse, Mental Health (Graduate Scheme)								-100.0%	-100.0%	-100.0%	-100.0%		



Nov 2021 (Dec 2015 figure: 12,607)	WTE Nov 2021	WTE change since Dec 16	WTE change since Dec 17	WTE change since Dec 18	WTE change since Dec 19	WTE change since Dec 20	WTE change since Oct 21	% change since Dec 16	% change since Dec 17	% change since Dec 18	% change since Dec 19	% change since Dec 20	% change since Oct 21
<b>Overall</b>	<b>13,538</b>	<b>+1,056</b>	<b>+435</b>	<b>+234</b>	<b>+306</b>	<b>+124</b>	<b>-23</b>	<b>+8.5%</b>	<b>+3.3%</b>	<b>+1.8%</b>	<b>+2.3%</b>	<b>+0.9%</b>	<b>-0.2%</b>
Graduate Nursing/ Midwifery								-100.0%	-100.0%	-100.0%	-100.0%	-100.0%	-100.0%
<b>Staff Nurse/ Staff Midwife</b>	<b>2,672</b>	<b>+82</b>	<b>+103</b>	<b>+61</b>	<b>+95</b>	<b>+48</b>	<b>-14</b>	<b>+3.2%</b>	<b>+4.0%</b>	<b>+2.3%</b>	<b>+3.7%</b>	<b>+1.8%</b>	<b>-0.5%</b>
Public Health Nurse	12	-2	-3	-2	-1			-16.0%	-19.0%	-11.8%	-10.8%		
Public Health Nurse	12	-2	-3	-2	-1	-1	+1	-16.0%	-19.0%	-11.8%	-10.8%	-11.1%	+6.1%
<b>Public Health Nurse</b>	<b>12</b>	<b>-2</b>	<b>-3</b>	<b>-2</b>	<b>-1</b>	<b>-1</b>	<b>+1</b>	<b>-16.0%</b>	<b>-19.0%</b>	<b>-11.8%</b>	<b>-10.8%</b>	<b>-11.1%</b>	<b>+6.1%</b>
Student General Nursing Intern (pre-registration)								-100.0%	-100.0%	-100.0%	-100.0%		
Student Psychiatric Nursing Intern (pre-re	0	+0	+0	+0	+0			-100.0%	-100.0%	-100.0%	-100.0%		
Pre-registration Nurse/ Midwife Intern	0	+0	+0	+0	+0	+0	-0	-100.0%	-100.0%	-100.0%	-100.0%	-100.0%	-10.2%
Post-registration Nurse/ Midwife Student					-1			-100.0%	-100.0%	-100.0%	-100.0%	-100.0%	-100.0%
Staff Nurse, General (awaiting-registration)	2	+2	-12	+2	+2			-100.0%	-85.9%	-100.0%	-100.0%		
Staff Nurse, Psychiatric (awaiting-registration)					-1			-100.0%	-100.0%	-100.0%	-100.0%		
Nursing/ Midwifery awaiting registration	2	+2	-12	+2	+1	+1	-0	-100.0%	-85.9%	-100.0%	+98.0%	+46.7%	-1.0%
<b>Nursing/ Midwifery Student</b>	<b>2</b>	<b>+2</b>	<b>-12</b>	<b>+2</b>	<b>+0</b>	<b>+1</b>	<b>-0</b>	<b>-100.0%</b>	<b>-82.7%</b>	<b>-100.0%</b>	<b>+21.0%</b>	<b>+79.3%</b>	<b>-2.8%</b>
Nursing Education/Clinical	4	+3	+3	+3	+3	-0	+0	+289.0%	+289.0%	+289.0%	+289.0%	-2.3%	+0.3%
<b>Nursing/ Midwifery other</b>	<b>4</b>	<b>+3</b>	<b>+3</b>	<b>+3</b>	<b>+3</b>	<b>-0</b>	<b>+0</b>	<b>+289.0%</b>	<b>+289.0%</b>	<b>+289.0%</b>	<b>+289.0%</b>	<b>-2.3%</b>	<b>+0.3%</b>
<b>Nursing &amp; Midwifery</b>	<b>3,497</b>	<b>+170</b>	<b>+182</b>	<b>+155</b>	<b>+169</b>	<b>+70</b>	<b>-11</b>	<b>+5.1%</b>	<b>+5.5%</b>	<b>+4.6%</b>	<b>+5.1%</b>	<b>+2.0%</b>	<b>-0.3%</b>
Dietitians	25	+9	+7	+7	+8	+7	-1	+56.2%	+41.5%	+43.0%	+51.1%	+37.6%	-4.4%
Occupational Therapists	119	+23	+24	+15	+6	+6	-2	+24.0%	+25.5%	+14.2%	+4.9%	+5.2%	-1.7%
Physiotherapists	159	+43	+38	+32	+36	+27	+2	+37.5%	+31.6%	+25.1%	+28.9%	+20.6%	+1.5%
Podiatrists & Chiropodists	13	-2	-3	-2	+1	+0	+3	-10.5%	-18.1%	-12.1%	+9.1%	+3.9%	+24.9%
Speech & Language Therapists	32	+11	+8	+9	+9	+12	+2	+55.8%	+33.2%	+37.3%	+37.1%	+59.9%	+5.0%
<b>Therapy Professions</b>	<b>348</b>	<b>+85</b>	<b>+75</b>	<b>+61</b>	<b>+59</b>	<b>+52</b>	<b>+3</b>	<b>+32.4%</b>	<b>+27.3%</b>	<b>+21.3%</b>	<b>+20.6%</b>	<b>+17.7%</b>	<b>+1.0%</b>
Medical Science		-1						-100.0%	-100.0%	-100.0%	-100.0%	-100.0%	-100.0%
Phlebotomists		-1	-1					-100.0%	-100.0%	-100.0%	-100.0%	-100.0%	-100.0%
Radiographers	4	-3	-3	-1	-1	-0	-1	-37.0%	-37.9%	-20.4%	-24.5%	-9.9%	-12.2%
Vascular Physiologist	0	+0	+0	+0	-0			-100.0%	-100.0%	+100.0%	-23.8%		
Clinical Measurement	0	+0	+0	+0	-0		+0	-100.0%	-100.0%	+100.0%	-23.8%		+33.3%
<b>Health Science/ Diagnostics</b>	<b>5</b>	<b>-4</b>	<b>-4</b>	<b>-1</b>	<b>-1</b>	<b>-0</b>	<b>-1</b>	<b>-49.1%</b>	<b>-43.5%</b>	<b>-18.7%</b>	<b>-24.4%</b>	<b>-9.6%</b>	<b>-11.1%</b>
<b>Social Care</b>	<b>3</b>	<b>+0</b>	<b>+0</b>	<b>-0</b>	<b>-0</b>	<b>-0</b>	<b>-0</b>	<b>+1.1%</b>	<b>+2.2%</b>	<b>-0.4%</b>	<b>-0.4%</b>	<b>-0.4%</b>	<b>-0.4%</b>
<b>Social Workers</b>	<b>92</b>	<b>+6</b>	<b>+9</b>	<b>-2</b>	<b>-6</b>	<b>-7</b>	<b>-1</b>	<b>+6.7%</b>	<b>+10.4%</b>	<b>-2.5%</b>	<b>-6.0%</b>	<b>-7.3%</b>	<b>-1.2%</b>



Nov 2021 (Dec 2015 figure: 12,607)	WTE Nov 2021	WTE change since Dec 16	WTE change since Dec 17	WTE change since Dec 18	WTE change since Dec 19	WTE change since Dec 20	WTE change since Oct 21	% change since Dec 16	% change since Dec 17	% change since Dec 18	% change since Dec 19	% change since Dec 20	% change since Oct 21
<b>Overall</b>	<b>13,538</b>	<b>+1,056</b>	<b>+435</b>	<b>+234</b>	<b>+306</b>	<b>+124</b>	<b>-23</b>	<b>+8.5%</b>	<b>+3.3%</b>	<b>+1.8%</b>	<b>+2.3%</b>	<b>+0.9%</b>	<b>-0.2%</b>
<b>Psychologists</b>	<b>1</b>	<b>+1</b>	<b>+1</b>	<b>+1</b>	<b>-1</b>	<b>+0</b>	<b>-1</b>	<b>+164.0%</b>	<b>-100.0%</b>	<b>+164.0%</b>	<b>-37.1%</b>	<b>+20.0%</b>	<b>-38.0%</b>
<b>Pharmacy</b>	<b>20</b>	<b>+6</b>	<b>+5</b>	<b>+4</b>	<b>+5</b>	<b>+3</b>	<b>+2</b>	<b>+40.7%</b>	<b>+33.3%</b>	<b>+25.4%</b>	<b>+34.2%</b>	<b>+18.9%</b>	<b>+8.2%</b>
Other Health & Social Care	1	-1	-1	-1	+0			-60.3%	-60.3%	-60.3%	+50.0%		
Play Therapists/ Specialists	1	-1	-0	-0	-0	-0	-0	-37.7%	-1.0%	-1.0%	-1.0%	-1.0%	-1.0%
<b>H&amp;SC, Other</b>	<b>2</b>	<b>-1</b>	<b>-1</b>	<b>-1</b>	<b>+0</b>	<b>-0</b>	<b>-0</b>	<b>-48.1%</b>	<b>-35.2%</b>	<b>-35.2%</b>	<b>+12.5%</b>	<b>-0.6%</b>	<b>-0.6%</b>
<b>Health &amp; Social Care Professionals</b>	<b>471</b>	<b>+92</b>	<b>+85</b>	<b>+62</b>	<b>+57</b>	<b>+48</b>	<b>+2</b>	<b>+24.2%</b>	<b>+22.2%</b>	<b>+15.0%</b>	<b>+13.7%</b>	<b>+11.3%</b>	<b>+0.5%</b>
Executive Management	15	+8	+7	+5	+3	-0	+0	+111.1%	+86.6%	+47.8%	+24.1%	-0.1%	+0.1%
Senior Management (VIII & GM)	85	+45	+48	+37	+23	+21	+6	+111.3%	+131.3%	+76.0%	+36.3%	+33.6%	+7.3%
<b>Management (VIII &amp; above)</b>	<b>100</b>	<b>+53</b>	<b>+55</b>	<b>+42</b>	<b>+26</b>	<b>+21</b>	<b>+6</b>	<b>+111.3%</b>	<b>+123.4%</b>	<b>+71.2%</b>	<b>+34.4%</b>	<b>+27.3%</b>	<b>+6.2%</b>
Middle Management (V-VII)	199	+83	+72	+58	+36	+24	+1	+71.0%	+56.2%	+40.6%	+21.7%	+13.4%	+0.7%
Other Administrative		-1	-1	-1	-1			-100.0%	-100.0%	-100.0%	-100.0%	-100.0%	-100.0%
<b>Administrative/ Supervisory (V to VII)</b>	<b>199</b>	<b>+82</b>	<b>+71</b>	<b>+57</b>	<b>+35</b>	<b>+24</b>	<b>+1</b>	<b>+69.6%</b>	<b>+55.0%</b>	<b>+39.6%</b>	<b>+20.9%</b>	<b>+13.4%</b>	<b>+0.7%</b>
General Administrative (III & IV)	599	+115	+89	+34	+27	+11	+6	+23.8%	+17.5%	+6.0%	+4.8%	+1.9%	+0.9%
<b>Clerical (III &amp; IV)</b>	<b>599</b>	<b>+115</b>	<b>+89</b>	<b>+34</b>	<b>+27</b>	<b>+11</b>	<b>+6</b>	<b>+23.8%</b>	<b>+17.5%</b>	<b>+6.0%</b>	<b>+4.8%</b>	<b>+1.9%</b>	<b>+0.9%</b>
<b>Management &amp; Administrative</b>	<b>898</b>	<b>+250</b>	<b>+216</b>	<b>+132</b>	<b>+88</b>	<b>+56</b>	<b>+13</b>	<b>+38.5%</b>	<b>+31.6%</b>	<b>+17.2%</b>	<b>+10.8%</b>	<b>+6.7%</b>	<b>+1.5%</b>
Catering	218	+5	+6	+2	-3	+1	+1	+2.2%	+2.8%	+1.1%	-1.6%	+0.6%	+0.3%
Household Services	475	-88	-69	-43	-17	-4	-0	-15.7%	-12.7%	-8.2%	-3.5%	-0.8%	-0.1%
Other Support	30	-10	-14	-8	-4	+1	+1	-26.0%	-31.5%	-21.6%	-12.8%	+2.1%	+1.9%
Portering	75	-10	-9	-5	-7	-2	-0	-12.1%	-10.9%	-6.2%	-8.3%	-2.6%	-0.1%
<b>Support</b>	<b>797</b>	<b>-104</b>	<b>-86</b>	<b>-53</b>	<b>-32</b>	<b>-4</b>	<b>+1</b>	<b>-11.6%</b>	<b>-9.8%</b>	<b>-6.3%</b>	<b>-3.8%</b>	<b>-0.5%</b>	<b>+0.1%</b>
Maintenance	90	-14	-12	-12	-8	-5	+1	-13.1%	-11.6%	-12.1%	-8.6%	-5.1%	+0.8%
Technical Services	4	+4	+4	+4	+4	+4		-100.0%	-100.0%	-100.0%	-100.0%	-100.0%	
<b>Maintenance/ Technical</b>	<b>94</b>	<b>-10</b>	<b>-8</b>	<b>-8</b>	<b>-4</b>	<b>-1</b>	<b>+1</b>	<b>-9.3%</b>	<b>-7.7%</b>	<b>-8.2%</b>	<b>-4.5%</b>	<b>-0.9%</b>	<b>+0.8%</b>
<b>General Support</b>	<b>891</b>	<b>-114</b>	<b>-94</b>	<b>-62</b>	<b>-36</b>	<b>-5</b>	<b>+2</b>	<b>-11.3%</b>	<b>-9.5%</b>	<b>-6.5%</b>	<b>-3.9%</b>	<b>-0.5%</b>	<b>+0.2%</b>
HCA, Nurse's Aide, etc.	4,030	-16	-55	-101	+8	-38	-0	-0.4%	-1.3%	-2.4%	+0.2%	-0.9%	-0.0%
Health Care Assistant (Student Nurse/Mi	1	+1	+1	+1	+1			-100.0%	-100.0%	-100.0%	-100.0%		
HCA (Student Nurse/Midwife COVID-19)	1	+1	+1	+1	+1	-22	-0	-100.0%	-100.0%	-100.0%	-100.0%	-97.3%	-43.9%
Health & Social Care Assistants	40	+14	+14	+16	+19	+13	+3	+54.8%	+55.2%	+65.8%	+88.9%	+47.3%	+6.7%
<b>Health Care Assistants</b>	<b>4,071</b>	<b>-2</b>	<b>-40</b>	<b>-84</b>	<b>+28</b>	<b>-47</b>	<b>+2</b>	<b>-0.0%</b>	<b>-1.0%</b>	<b>-2.0%</b>	<b>+0.7%</b>	<b>-1.1%</b>	<b>+0.0%</b>

Nov 2021 (Dec 2015 figure: 12,607)	WTE Nov 2021	WTE change since Dec 16	WTE change since Dec 17	WTE change since Dec 18	WTE change since Dec 19	WTE change since Dec 20	WTE change since Oct 21	% change since Dec 16	% change since Dec 17	% change since Dec 18	% change since Dec 19	% change since Dec 20	% change since Oct 21
<b>Overall</b>	<b>13,538</b>	<b>+1,056</b>	<b>+435</b>	<b>+234</b>	<b>+306</b>	<b>+124</b>	<b>-23</b>	<b>+8.5%</b>	<b>+3.3%</b>	<b>+1.8%</b>	<b>+2.3%</b>	<b>+0.9%</b>	<b>-0.2%</b>
<b>Home Help</b>	<b>3,411</b>	<b>+616</b>	<b>+55</b>	<b>-9</b>	<b>-31</b>	<b>-20</b>	<b>-40</b>	<b>+22.0%</b>	<b>+1.6%</b>	<b>-0.3%</b>	<b>-0.9%</b>	<b>-0.6%</b>	<b>-1.2%</b>
Other Care Grades	180	+41	+29	+34	+39	+34	+5	+29.6%	+19.0%	+23.0%	+27.2%	+23.1%	+2.7%
<b>Care, other</b>	<b>180</b>	<b>+41</b>	<b>+29</b>	<b>+34</b>	<b>+39</b>	<b>+34</b>	<b>+5</b>	<b>+29.6%</b>	<b>+19.0%</b>	<b>+23.0%</b>	<b>+27.2%</b>	<b>+23.1%</b>	<b>+2.7%</b>
<b>Patient &amp; Client Care</b>	<b>7,662</b>	<b>+655</b>	<b>+43</b>	<b>-60</b>	<b>+35</b>	<b>-33</b>	<b>-33</b>	<b>+9.4%</b>	<b>+0.6%</b>	<b>-0.8%</b>	<b>+0.5%</b>	<b>-0.4%</b>	<b>-0.4%</b>

Source: Health Service Personnel Census

Longitudinal Employment Levels by Grade Group - Dec 2016 to Nov 2021

Nov 2021 (Dec 2015 figure: 12,607)	WTE Nov 2021	WTE change since Dec 16	WTE change since Dec 17	WTE change since Dec 18	WTE change since Dec 19	WTE change since Dec 20	WTE change since Oct 21	% change since Dec 16	% change since Dec 17	% change since Dec 18	% change since Dec 19	% change since Dec 20	% change since Oct 21
Overall	13,538	+1,056	+435	+234	+306	+124	-23	+8.5%	+3.3%	+1.8%	+2.3%	+0.9%	-0.2%
Consultant Medicine	7	-2	-2	+3	+3	+3	-1	-24.3%	-22.9%	+96.9%	+96.9%	+60.4%	-6.7%
Consultant Psychiatry		-1	-1					-100.0%	-100.0%	-100.0%	-100.0%	-100.0%	-100.0%
Consultant Surgery		-1	-0	-0				-100.0%	-100.0%	-100.0%	-100.0%	-100.0%	-100.0%
Consultants	7	-4	-3	+3	+3	+3	-1	-35.4%	-30.3%	+90.6%	+96.9%	+60.4%	-6.7%
Registrar	5	-0	-2	-2	-1	-0	-0	-0.5%	-27.0%	-25.5%	-15.8%	-6.2%	-0.5%
Senior Registrar	1	+0	+0	-1	+0	+0		+8.0%	+8.0%	-46.0%	+8.0%	+8.0%	
Specialist Registrar	3	+1	+2	+2	+1	+1		+50.0%	+200.0%	+200.0%	+50.0%	+50.0%	
Registrars	10	+1	+0	-1	+0	+1	-0	+12.3%	+0.5%	-7.7%	+0.5%	+8.1%	-0.3%
Senior House Officer	15	+5	+5	+3	-0	+1	-0	+49.0%	+49.6%	+24.3%	-1.1%	+8.5%	-0.7%
SHO/ Interns	15	+5	+5	+3	-0	+1	-0	+49.0%	+49.6%	+24.3%	-1.1%	+8.5%	-0.7%
Other Medical	87	+1	+1	+1	-10	-17	+5	+1.2%	+1.2%	+1.7%	-9.9%	-16.2%	+6.5%
Medical/ Dental, other	87	+1	+1	+1	-10	-17	+5	+1.2%	+1.2%	+1.7%	-9.9%	-16.2%	+6.5%
Medical & Dental	118	+3	+3	+7	-6	-12	+5	+2.7%	+2.5%	+6.2%	-4.9%	-9.4%	+4.1%
Clinical Nurse/ Midwife Manager	562	+27	+34	+38	+54	+26	+3	+5.1%	+6.4%	+7.2%	+10.6%	+4.9%	+0.5%
Director Nursing/Midwifery, Assistant	105	+17	+13	+18	+2	-1	-4	+19.9%	+14.5%	+21.2%	+2.4%	-1.1%	-3.6%
Director of Nursing/Midwifery	103	+18	+20	+20	+4	-2	-0	+20.9%	+24.5%	+24.3%	+4.5%	-1.5%	-0.2%
Nurse/ Midwife Manager	770	+63	+67	+76	+61	+23	-1	+8.8%	+9.6%	+11.0%	+8.5%	+3.1%	-0.2%
Advanced Nurse/ Midwife Practitioner	15	+12	+12	+8	+4	-2	+0	+386.7%	+386.7%	+109.2%	+36.2%	-12.2%	+0.7%
Clinical Nurse/ Midwife Specialist	23	+10	+12	+6	+7	+1	+4	+81.6%	+102.8%	+35.7%	+44.4%	+5.5%	+18.6%
Nurse/ Midwife Specialist & AN/MP	37	+22	+23	+14	+11	-1	+4	+140.5%	+162.7%	+57.3%	+41.1%	-2.2%	+10.9%
Staff Midwives	1	+0	-1	+1	+1	-0	+0	+97.5%	-56.1%	-100.0%	-100.0%	-10.2%	+8.2%
Staff Nurse [Psychiatric]	10	+4	+4	+4	+5	+5	+2	+79.7%	+79.7%	+79.1%	+102.0%	+91.9%	+21.1%
Staff Nurses [General/ Children's]	2,660	+78	+99	+56	+89	+43	-16	+3.0%	+3.9%	+2.1%	+3.4%	+1.7%	-0.6%
Staff Nurse [Intellectual Disability]	1	-0	+0	-0	+1	-0	-0	-1.0%	+28.6%	-1.0%	-100.0%	-1.0%	-1.0%
Graduate Nursing/ Midwifery								-100.0%	-100.0%	-100.0%	-100.0%	-100.0%	-100.0%
Staff Nurse/ Staff Midwife	2,672	+82	+103	+61	+95	+48	-14	+3.2%	+4.0%	+2.3%	+3.7%	+1.8%	-0.5%
Public Health Nurse	12	-2	-3	-2	-1	-1	+1	-16.0%	-19.0%	-11.8%	-10.8%	-11.1%	+6.1%
Public Health Nurse	12	-2	-3	-2	-1	-1	+1	-16.0%	-19.0%	-11.8%	-10.8%	-11.1%	+6.1%
Pre-registration Nurse/ Midwife Intern	0	+0	+0	+0	+0	+0	-0	-100.0%	-100.0%	-100.0%	-100.0%	-100.0%	-10.2%
Post-registration Nurse/ Midwife Student					-1			-100.0%	-100.0%	-100.0%	-100.0%	-100.0%	-100.0%
Nursing/ Midwifery awaiting registration	2	+2	-12	+2	+1	+1	-0	-100.0%	-85.9%	-100.0%	+98.0%	+46.7%	-1.0%
Nursing/ Midwifery Student	2	+2	-12	+2	+0	+1	-0	-100.0%	-82.7%	-100.0%	+21.0%	+79.3%	-2.8%
Nursing Education/Clinical	4	+3	+3	+3	+3	-0	+0	+289.0%	+289.0%	+289.0%	+289.0%	-2.3%	+0.3%
Nursing/ Midwifery other	4	+3	+3	+3	+3	-0	+0	+289.0%	+289.0%	+289.0%	+289.0%	-2.3%	+0.3%
Nursing & Midwifery	3,497	+170	+182	+155	+169	+70	-11	+5.1%	+5.5%	+4.6%	+5.1%	+2.0%	-0.3%
Dietitians	25	+9	+7	+7	+8	+7	-1	+56.2%	+41.5%	+43.0%	+51.1%	+37.6%	-4.4%
Occupational Therapists	119	+23	+24	+15	+6	+6	-2	+24.0%	+25.5%	+14.2%	+4.9%	+5.2%	-1.7%
Physiotherapists	159	+43	+38	+32	+36	+27	+2	+37.5%	+31.6%	+25.1%	+28.9%	+20.6%	+1.5%
Podiatrists & Chiropodists	13	-2	-3	-2	+1	+0	+3	-10.5%	-18.1%	-12.1%	+9.1%	+3.9%	+24.9%
Speech & Language Therapists	32	+11	+8	+9	+9	+12	+2	+55.8%	+33.2%	+37.3%	+37.1%	+59.9%	+5.0%
Therapy Professions	348	+85	+75	+61	+59	+52	+3	+32.4%	+27.3%	+21.3%	+20.6%	+17.7%	+1.0%
Medical Science		-1						-100.0%	-100.0%	-100.0%	-100.0%	-100.0%	-100.0%
Phlebotomists		-1	-1					-100.0%	-100.0%	-100.0%	-100.0%	-100.0%	-100.0%
Radiographers	4	-3	-3	-1	-1	-0	-1	-37.0%	-37.9%	-20.4%	-24.5%	-9.9%	-12.2%
Clinical Measurement	0	+0	+0	+0	-0		+0	-100.0%	-100.0%	+100.0%	-23.8%		+33.3%
Health Science/ Diagnostics	5	-4	-4	-1	-1	-0	-1	-49.1%	-43.5%	-18.7%	-24.4%	-9.6%	-11.1%
Social Care	3	+0	+0	-0	-0	-0	-0	+1.1%	+2.2%	-0.4%	-0.4%	-0.4%	-0.4%
Social Workers	92	+6	+9	-2	-6	-7	-1	+6.7%	+10.4%	-2.5%	-6.0%	-7.3%	-1.2%
Psychologists	1	+1	+1	+1	-1	+0	-1	+164.0%	-100.0%	+164.0%	-37.1%	+20.0%	-38.0%
Pharmacy	20	+6	+5	+4	+5	+3	+2	+40.7%	+33.3%	+25.4%	+34.2%	+18.9%	+8.2%
Other Health & Social Care	1	-1	-1	-1	+0			-60.3%	-60.3%	-60.3%	+50.0%		
Play Therapists/ Specialists	1	-1	-0	-0	-0	-0	-0	-37.7%	-1.0%	-1.0%	-1.0%	-1.0%	-1.0%
H&SC, Other	2	-1	-1	-1	+0	-0	-0	-48.1%	-35.2%	-35.2%	+12.5%	-0.6%	-0.6%
Health & Social Care Professionals	471	+92	+85	+62	+57	+48	+2	+24.2%	+22.2%	+15.0%	+13.7%	+11.3%	+0.5%
Executive Management	15	+8	+7	+5	+3	-0	+0	+111.1%	+86.6%	+47.8%	+24.1%	-0.1%	+0.1%
Senior Management (VIII & GM)	85	+45	+48	+37	+23	+21	+6	+111.3%	+131.3%	+76.0%	+36.3%	+33.6%	+7.3%
Management (VIII & above)	100	+53	+55	+42	+26	+21	+6	+111.3%	+123.4%	+71.2%	+34.4%	+27.3%	+6.2%
Middle Management (V-VII)	199	+83	+72	+58	+36	+24	+1	+71.0%	+56.2%	+40.6%	+21.7%	+13.4%	+0.7%
Other Administrative		-1	-1	-1	-1			-100.0%	-100.0%	-100.0%	-100.0%	-100.0%	-100.0%
Administrative/ Supervisory (V to VII)	199	+82	+71	+57	+35	+24	+1	+69.6%	+55.0%	+39.6%	+20.9%	+13.4%	+0.7%
General Administrative (III & IV)	599	+115	+89	+34	+27	+11	+6	+23.8%	+17.5%	+6.0%	+4.8%	+1.9%	+0.9%
Clerical (III & IV)	599	+115	+89	+34	+27	+11	+6	+23.8%	+17.5%	+6.0%	+4.8%	+1.9%	+0.9%
Management & Administrative	898	+250	+216	+132	+88	+56	+13	+38.5%	+31.6%	+17.2%	+10.8%	+6.7%	+1.5%
Support	797	-104	-86	-53	-32	-4	+1	-11.6%	-9.8%	-6.3%	-3.8%	-0.5%	+0.1%
Maintenance	90	-14	-12	-12	-8	-5	+1	-13.1%	-11.6%	-12.1%	-8.6%	-5.1%	+0.8%
Technical Services	4	+4	+4	+4	+4	+4		-100.0%	-100.0%	-100.0%	-100.0%	-100.0%	
Maintenance/ Technical	94	-10	-8	-8	-4	-1	+1	-9.3%	-7.7%	-8.2%	-4.5%	-0.9%	+0.8%
General Support	891	-114	-94	-62	-36	-5	+2	-11.3%	-9.5%	-6.5%	-3.9%	-0.5%	+0.2%
HCA, Nurse's Aide, etc.	4,030	-16	-55	-101	+8	-38	-0	-0.4%	-1.3%	-2.4%	+0.2%	-0.9%	-0.0%
HCA (Student Nurse/Midwife COVID-19)	1	+1	+1	+1	+1	-22	-0	-100.0%	-100.0%	-100.0%	-100.0%	-97.3%	-43.9%
Health & Social Care Assistants	40	+14	+14	+16	+19	+13	+3	+54.8%	+55.2%	+65.8%	+88.9%	+47.3%	+6.7%
Health Care Assistants	4,071	-2	-40	-84	+28	-47	+2	-0.0%	-1.0%	-2.0%	+0.7%	-1.1%	+0.0%
Home Help	3,411	+616	+55	-9	-31	-20	-40	+22.0%	+1.6%	-0.3%	-0.9%	-0.6%	-1.2%
Other Care Grades	180	+41	+29	+34	+39	+34	+5	+29.6%	+19.0%	+23.0%	+27.2%	+23.1%	+2.7%
Care, other	180	+41	+29	+34	+39	+34	+5	+29.6%	+19.0%	+23.0%	+27.2%	+23.1%	+2.7%
Patient & Client Care	7,662	+655	+43	-60	+35	-33	-33	+9.4%	+0.6%	-0.8%	+0.5%	-0.4%	-0.4%

Source: Health Service Personnel Census