

Social Care Older Persons Services Employment Report: October 2020

Employment by Staff Group

Oct 2020 (Dec 2019 figure: 13,233)	WTE Sep 2020	WTE Oct 2020	WTE change since Sep 20	% change since Sep 20	WTE change since Dec 19	WTE change since Oct 19
Overall	13,509	13,342	-167	-1.2%	+110	+20
Consultants	6	5	-1	-18.2%	+1	+1
Registrars	10	10				
SHO/ Interns	14	14	+0	+0.3%	-1	-1
Medical/ Dental, other	107	99	-8	-7.5%	+2	+15
Medical & Dental	136	127	-9	-6.6%	+2	+15
Nurse/ Midwife Manager	749	748	-1	-0.2%	+38	+28
Nurse/ Midwife Specialist & AN/MP	34	38	+4	+10.3%	+11	+13
Staff Nurse/ Staff Midwife	2,641	2,620	-21	-0.8%	+44	+45
Public Health Nurse	13	14	+1	+4.9%	+0	+1
<i>Post-registration Nurse/ Midwife Student</i>				<i>-100.0%</i>	<i>-1</i>	<i>-1</i>
<i>Nursing/ Midwifery awaiting registration</i>	2	1.50	-1	-39.8%	+1	+2
Nursing/ Midwifery Student	2	2	-1	-39.8%	-1	+1
Nursing/ Midwifery other	3	3			+2	+2
Nursing & Midwifery	3,442	3,423	-19	-0.5%	+95	+91
Therapy Professions	299	300	+0	+0.1%	+11	+11
Health Science/ Diagnostics	5	5	-0	-2.6%	-1	-0
Social Care	3	3	-0	-3.9%	-0	-0
Social Workers	100	99	-1	-1.3%	+0	-4
Psychologists	2	1	-1	-30.3%	-1	-1
Pharmacy	18	18	-0	-1.1%	+3	+3
H&SC, Other	1	2	+0	+10.3%	+0	+0
Health & Social Care Professionals	429	427	-2	-0.4%	+13	+8
Management (VIII & above)	78	79	+2	+2.0%	+5	+8
Administrative/ Supervisory (V to VII)	170	169	-1	-0.6%	+4	+7
Clerical (III & IV)	561	575	+14	+2.5%	+4	+5
Management & Administrative	809	823	+15	+1.8%	+12	+20
Support	800	799	-2	-0.2%	-30	-39
Maintenance/ Technical	96	96	+0	+0.2%	-3	-3
General Support	896	895	-1	-0.2%	-33	-42
Health Care Assistants	4,331	4,142	-188	-4.3%	+99	+35
Home Help	3,308	3,355	+47	+1.4%	-87	-113
Care, other	159	149	-9	-5.9%	+8	+6
Patient & Client Care	7,797	7,647	-150	-1.9%	+20	-72

Social Care Older Persons Services Employment by Administration (HSE / S38): October 2020

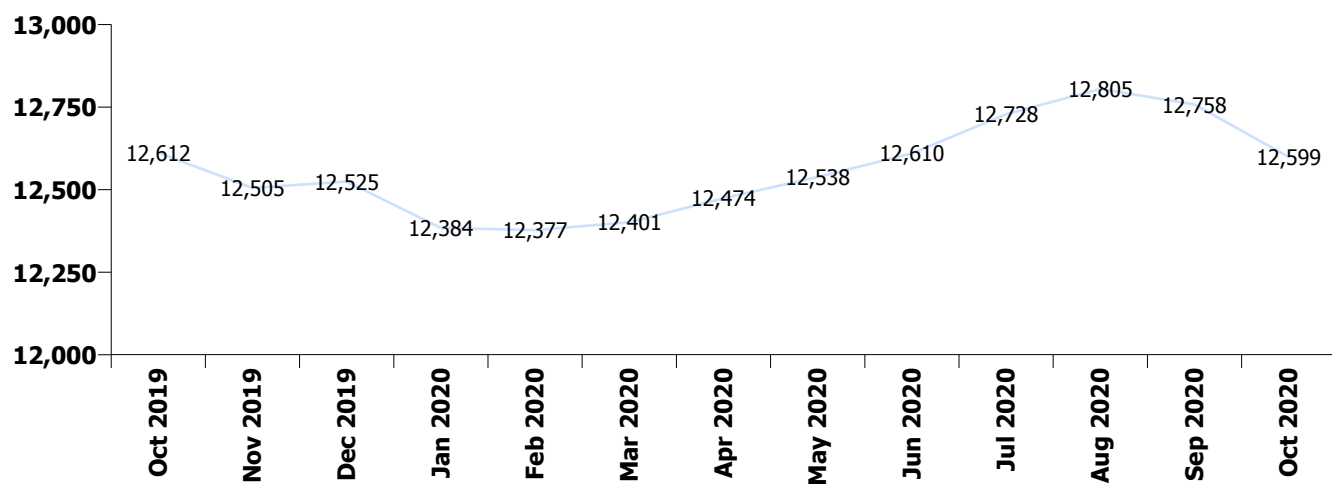
Oct 2020 (Dec 2019 figure: 13,233)	WTE Sep 2020	WTE Oct 2020	WTE change since Sep 20	% change since Sep 20	WTE change since Dec 19	WTE change since Oct 19
Overall	13,509	13,342	-167	-1.2%	+110	+20
HSE	12,758	12,599	-159	-1.2%	+74	-13
Section 38	751	744	-8	-1.0%	+36	+33

HSE

Oct 2020 (Dec 2019 figure: 12,525)	WTE Sep 2020	WTE Oct 2020	WTE change since Sep 20	% change since Sep 20	WTE change since Dec 19	WTE change since Oct 19
Overall	12,758	12,599	-159	-1.2%	+74	-13
Consultants	4	2.98	-1	-25.5%	-0	-0
Registrars	7	6.51				
SHO/ Interns	10	10.00	+0	+0.4%		+0
Medical/ Dental, other	105	96.88	-8	-7.7%	+2	+15
Medical & Dental	125	116	-9	-7.2%	+2	+15
Nurse/ Midwife Manager	697	696.33	-1	-0.1%	+41	+31
Nurse/ Midwife Specialist & AN/MP	34	37.64	+4	+10.3%	+11	+13
Staff Nurse/ Staff Midwife	2,451	2,435.34	-15	-0.6%	+35	+33
Public Health Nurse	13	13.64	+1	+4.9%	+0	+1
Post-registration Nurse/ Midwife Student				-100.0%	-1	-1
Nursing/ Midwifery awaiting registration	2	1.50	-1	-39.8%	+1	+2
Nursing/ Midwifery Student	2	1.50	-1	-39.8%	-1	+1
Nursing/ Midwifery other	3	3.00			+2	+2
Nursing & Midwifery	3,201	3,187	-13	-0.4%	+89	+81
Therapy Professions	230	229.62	-1	-0.3%	-1	-2
Health Science/ Diagnostics	4	4.21	-0	-3.2%	-1	-0
Social Care	3	2.71	-0	-3.9%	-0	-0
Social Workers	85	83.97	-1	-1.5%	-1	-4
Psychologists	2	0.95	-1	-39.9%	-1	-1
Pharmacy	13	12.71	-0	-1.9%	+2	+2
H&SC, Other	1	1.50	+0	+10.3%	+0	+0
Health & Social Care Professionals	339	336	-3	-0.9%	-1	-6
Management (VIII & above)	75	76.13	+2	+2.0%	+4	+7
Administrative/ Supervisory (V to VII)	151	150.46	-0	-0.0%	+5	+8
Clerical (III & IV)	530	543.58	+14	+2.7%	-0	+2
Management & Administrative	755	770	+16	+2.1%	+8	+17
Support	692	690.87	-1	-0.1%	-36	-43
Maintenance/ Technical	85	84.94	+0	+0.2%	-4	-5
General Support	776	776	-1	-0.1%	-39	-48
Health Care Assistants	4,100	3,913.01	-187	-4.6%	+93	+34
Home Help	3,308	3,355.04	+47	+1.4%	-87	-113
Care, other	154	145.09	-9	-6.0%	+9	+7
Patient & Client Care	7,562	7,413	-149	-2.0%	+15	-72

Section 38

Oct 2020 (Dec 2019 figure: 708)	WTE Sep 2020	WTE Oct 2020	WTE change since Sep 20	% change since Sep 20	WTE change since Dec 19	WTE change since Oct 19
Overall	751	744	-8	-1.0%	+36	+33
Consultants	2	1.60			+1	+1
Registrars	3	3.00				
SHO/ Interns	4	4.00			-1	-1
Medical/ Dental, other	2	2.00				
Medical & Dental	11	11				
Nurse/ Midwife Manager	52	51.19	-0	-0.7%	-3	-2
Staff Nurse/ Staff Midwife	190	184.70	-5	-2.8%	+9	+12
Nursing & Midwifery	242	236	-6	-2.4%	+6	+10
Therapy Professions	69	70.02	+1	+1.4%	+12	+13
Health Science/ Diagnostics	1	1.00				
Social Workers	15	14.61	+0	+0.0%	+1	+1
Psychologists	1	0.50				
Pharmacy	5	5.39	+0	+0.7%	+1	+1
Health & Social Care Professionals	90	92	+1	+1.1%	+14	+14
Management (VIII & above)	3	3.00			+1	+1
Administrative/ Supervisory (V to VII)	19	18.46	-1	-5.1%	-1	-1
Clerical (III & IV)	32	31.62	-0	-0.0%	+4	+3
Management & Administrative	54	53	-1	-1.8%	+4	+3
General Support	120	119	-1	-0.6%	+6	+6
Patient & Client Care	235	234	-1	-0.5%	+5	



Social Care Older Persons Services Employment by CHO etc. Oct 2020

CHO 1

Oct 2020 (Dec 2019 figure: 1,836)	WTE Sep 2020	WTE Oct 2020	WTE change since Sep 20	% change since Sep 20	WTE change since Dec 19	WTE change since Oct 19
Overall	1,890	1,854	-37	-1.9%	+18	-28
Medical/ Dental, other	17	17			-12	+1
Medical & Dental	17	17	+0	+0.0%	-12	+1
Nurse/ Midwife Manager	89	90	+2	+1.9%	-0	-3
Nurse/ Midwife Specialist & AN/MP	9	9	-0	-0.7%	+2	+3
Staff Nurse/ Staff Midwife	315	315	-0	-0.0%	+8	+3
Nursing/ Midwifery other	1	1			+1	+1
Nursing & Midwifery	414	415	+2	+0.4%	+10	+4
Therapy Professions	12	13	+2	+12.8%	+2	+3
Health Science/ Diagnostics	1	2	+0	+6.1%	+0	+0
Social Workers	16	15	-1	-9.0%	-3	-2
Health & Social Care Professionals	30	30	+0	+0.4%	+0	+1
Management (VIII & above)	8	8			+0	+1
Administrative/ Supervisory (V to VII)	15	15	-0	-0.1%	+1	-0
Clerical (III & IV)	84	87	+3	+3.2%	+2	+1
Management & Administrative	107	110	+3	+2.5%	+3	+1
Support	117	117	+0	+0.0%	-5	-6
Maintenance/ Technical	6	7	+1	+8.3%	-0	-1
General Support	124	124	+1	+0.5%	-6	-7
Health Care Assistants	628	584	-44	-7.0%	+20	+16
Home Help	543	545	+3	+0.5%	+2	-44
Care, other	28	28	-0	-1.0%	-0	-0
Patient & Client Care	1,198	1,157	-42	-3.5%	+23	-29

CHO 2

Oct 2020 (Dec 2019 figure: 1,606)	WTE Sep 2020	WTE Oct 2020	WTE change since Sep 20	% change since Sep 20	WTE change since Dec 19	WTE change since Oct 19
Overall	1,590	1,578	-12	-0.7%	-28	+15
Medical/ Dental, other	11	11			-1	-0
Medical & Dental	11	11			-1	-0
Nurse/ Midwife Manager	67	67	+0	+0.1%	+9	+9
Nurse/ Midwife Specialist & AN/MP	2	2				
Staff Nurse/ Staff Midwife	310	311	+1	+0.3%	+10	+9
Public Health Nurse	1	1			+0	+0
Nursing & Midwifery	380	381	+1	+0.2%	+19	+18
Therapy Professions	27	27	-0	-0.5%	+2	+2
Health Science/ Diagnostics	1	1				-0
Social Workers	10	11	+0	+1.2%	+0	+1
Pharmacy	1	1	+0	+1.0%	+0	
H&SC, Other				-100.0%		
Health & Social Care Professionals	39	39	-0	-0.0%	+2	+3
Management (VIII & above)	2	2				
Administrative/ Supervisory (V to VII)	10	11	+1	+5.8%	+3	+3
Clerical (III & IV)	65	67	+1	+2.0%	-5	-5
Management & Administrative	77	79	+2	+2.5%	-2	-2
Support	57	58	+1	+1.2%	+2	-3
Maintenance/ Technical	19	20	+1	+4.5%	+1	+1
General Support	76	78	+2	+2.0%	+3	-2
Health Care Assistants	559	536	-23	-4.2%	+21	+10
Home Help	418	426	+8	+1.8%	-73	-15
Care, other	28	28	-0	-0.9%	+3	+4
Patient & Client Care	1,006	990	-16	-1.6%	-49	-2

CHO 3

Oct 2020 (Dec 2019 figure: 974)	WTE Sep 2020	WTE Oct 2020	WTE change since Sep 20	% change since Sep 20	WTE change since Dec 19	WTE change since Oct 19
Overall	1,030	1,026	-4	-0.4%	+52	+71
Consultants	1	1				
Medical/ Dental, other	4	6	+1	+33.4%	+1	+1
Medical & Dental	5	7	+1	+27.0%	+1	+1
Nurse/ Midwife Manager	63	65	+2	+3.8%	+2	+4
Nurse/ Midwife Specialist & AN/MP	3	3	+0	+0.7%	+1	+1
Staff Nurse/ Staff Midwife	230	231	+1	+0.3%	-8	-6
Public Health Nurse	1	1				
Nursing & Midwifery	297	300	+3	+1.0%	-5	-1
Therapy Professions	29	31	+1	+5.1%	+3	+4
Health Science/ Diagnostics	1	1	-0	-23.5%	+0	+0
Social Workers	6	6	+0	+4.9%	-1	-1
Pharmacy	1	1				
Health & Social Care Professionals	37	39	+2	+4.2%	+2	+3
Management (VIII & above)	6	6	-0	-1.5%	+0	+1
Administrative/ Supervisory (V to VII)	18	19	+1	+4.3%	-1	+4
Clerical (III & IV)	50	48	-1	-2.6%	-1	+0
Management & Administrative	74	73	-1	-0.8%	-2	+5
Support	62	62	+0	+0.7%	-2	-1
Maintenance/ Technical	21	21			-1	-1
General Support	83	83	+0	+0.5%	-3	-2
Health Care Assistants	306	297	-8	-2.7%	+18	+16
Home Help	214	213	-1	-0.6%	+38	+46
Care, other	14	13	-1	-5.1%	+3	+3
Patient & Client Care	534	523	-10	-1.9%	+59	+65

CHO 4

Oct 2020 (Dec 2019 figure: 2,919)	WTE Sep 2020	WTE Oct 2020	WTE change since Sep 20	% change since Sep 20	WTE change since Dec 19	WTE change since Oct 19
Overall	2,950	2,923	-28	-0.9%	+3	-48
Consultants	2	1	-1	-51.0%	-0	-0
Registrars	3	3				
SHO/ Interns	1	1				
Medical/ Dental, other	35	29	-6	-16.2%	+8	+8
Medical & Dental	41	34	-7	-16.3%	+8	+8
Nurse/ Midwife Manager	129	122	-7	-5.2%	+5	-3
Nurse/ Midwife Specialist & AN/MP	6	6	+0	+1.5%	+3	+3
Staff Nurse/ Staff Midwife	524	516	-8	-1.5%	+1	+7
Public Health Nurse	6	6	+0	+2.4%	+1	+2
Post-registration Nurse/ Midwife Student				-100.0%		-1
Nursing/ Midwifery awaiting registration				-100.0%		
Nursing/ Midwifery Student				-100.0%	-2	-1
Nursing & Midwifery	665	651	-14	-2.2%	+8	+8
Therapy Professions	48	46	-2	-4.6%	+1	+1
Health Science/ Diagnostics	1	1			+0	+1
Social Care	2	2	+0	+0.6%	+0	+0
Social Workers	12	11	-1	-8.4%	+1	+1
Pharmacy	5	4	-1	-15.5%	+1	+1
Health & Social Care Professionals	68	64	-4	-5.8%	+3	+4
Management (VIII & above)	13	14	+1	+7.9%	+1	+1
Administrative/ Supervisory (V to VII)	18	16	-2	-13.0%	-1	-2
Clerical (III & IV)	117	129	+11	+9.6%	+0	+2
Management & Administrative	149	159	+10	+6.7%	+1	+1
Support	114	111	-3	-2.9%	+10	+9
Maintenance/ Technical	7	6	-1	-14.0%		
General Support	121	117	-4	-3.5%	+10	+9
Health Care Assistants	808	786	-22	-2.7%	+4	-9
Home Help	1,057	1,078	+21	+2.0%	-36	-73
Care, other	43	36	-7	-17.2%	+5	+3
Patient & Client Care	1,907	1,899	-8	-0.4%	-26	-79

CHO 5

Oct 2020 (Dec 2019 figure: 1,647)	WTE Sep 2020	WTE Oct 2020	WTE change since Sep 20	% change since Sep 20	WTE change since Dec 19	WTE change since Oct 19
Overall	1,687	1,673	-14	-0.9%	+26	+6
Medical/ Dental, other	20	16	-4	-19.0%	+6	+6
Medical & Dental	20	16	-4	-19.0%	+6	+6
Nurse/ Midwife Manager	85	86	+1	+1.4%	+4	+2
Nurse/ Midwife Specialist & AN/MP	2	4	+2	+116.2%	+2	+2
Staff Nurse/ Staff Midwife	323	316	-7	-2.2%	+1	-0
Public Health Nurse	3	3			-1	-1
Nursing & Midwifery	412	408	-4	-1.0%	+6	+3
Therapy Professions	33	32	-0	-1.0%	-9	-8
Social Workers	4	4	+0	+0.5%	+1	+0
Pharmacy	1	1	-0	-4.7%	+1	+1
Health & Social Care Professionals	38	37	-0	-1.0%	-7	-7
Management (VIII & above)	4	4	+0	+3.0%		
Administrative/ Supervisory (V to VII)	16	17	+1	+4.8%	+3	+3
Clerical (III & IV)	31	32	+0	+0.9%	-0	-0
Management & Administrative	52	53	+1	+2.3%	+3	+3
Support	83	83	+0	+0.4%	-40	-39
Maintenance/ Technical	5	5	-0	-6.5%	-3	-3
General Support	88	88	+0	+0.0%	-44	-43
Health Care Assistants	483	458	-25	-5.3%	+67	+62
Home Help	585	604	+19	+3.3%	-4	-15
Care, other	10	9	-1	-9.8%	-2	-3
Patient & Client Care	1,078	1,071	-7	-0.7%	+62	+43

CHO 6

Oct 2020 (Dec 2019 figure: 823)	WTE Sep 2020	WTE Oct 2020	WTE change since Sep 20	% change since Sep 20	WTE change since Dec 19	WTE change since Oct 19
Overall	820	810	-9	-1.1%	-13	-13
Registrars	1	1				
Medical/ Dental, other	4	4				
Medical & Dental	5	5				
Nurse/ Midwife Manager	66	65	-0	-0.6%	-3	-3
Nurse/ Midwife Specialist & AN/MP	1	1				
Staff Nurse/ Staff Midwife	205	204	-1	-0.3%	+1	+6
Nursing & Midwifery	272	271	-1	-0.4%	-2	+3
Therapy Professions	44	45	+1	+2.3%	-5	-4
Social Workers	10	9	-0	-1.8%	-2	-2
Psychologists	2	1	-1	-30.3%	-1	-1
Pharmacy	3	3	+0	+1.4%	+0	-0
Health & Social Care Professionals	58	59	+0	+0.4%	-7	-6
Management (VIII & above)	5	5			+1	+1
Administrative/ Supervisory (V to VII)	20	19	-1	-4.8%	-3	-3
Clerical (III & IV)	33	33	+0	+0.2%	+4	+3
Management & Administrative	58	58	-1	-1.6%	+2	+0
Support	105	103	-2	-1.8%	-5	-8
Maintenance/ Technical	9	9			+1	+1
General Support	114	112	-2	-1.6%	-4	-6
Health Care Assistants	307	301	-6	-1.8%	+1	-2
Care, other	6	6	-0	-1.8%	-2	-1
Patient & Client Care	312	307	-6	-1.8%	-1	-4

CHO 7

Oct 2020 (Dec 2019 figure: 996)	WTE Sep 2020	WTE Oct 2020	WTE change since Sep 20	% change since Sep 20	WTE change since Dec 19	WTE change since Oct 19
Overall	1,037	1,026	-11	-1.1%	+30	+20
SHO/ Interns	2	2				
Medical/ Dental, other	4	4				-1
Medical & Dental	6	6				-1
Nurse/ Midwife Manager	84	83	-1	-0.8%	+6	+10
Nurse/ Midwife Specialist & AN/MP	4	4	+0	+6.3%	+1	+1
Staff Nurse/ Staff Midwife	241	242	+1	+0.5%	+23	+20
<i>Nursing/ Midwifery awaiting registration</i>	2	2	-1	-39.8%	+2	+2
Nursing/ Midwifery Student	2	2	-1	-39.8%	+2	+2
Nursing & Midwifery	331	331	-0	-0.1%	+32	+32
Therapy Professions	14	13	-0	-1.8%	-0	-3
Social Workers	13	13	+0	+0.2%	+3	-2
Pharmacy	3	3			+1	
H&SC, Other	1	1				
Health & Social Care Professionals	31	31	-0	-0.7%	+3	-5
Management (VIII & above)	6	7	+0	+6.8%	+2	+2
Administrative/ Supervisory (V to VII)	12	13	+1	+8.5%	+2	+1
Clerical (III & IV)	37	39	+2	+5.4%	+5	+5
Management & Administrative	56	59	+4	+6.3%	+9	+8
Support	112	115	+2	+2.0%	+5	+3
Maintenance/ Technical	2	2				
General Support	114	117	+2	+2.0%	+5	+3
Health Care Assistants	379	362	-17	-4.6%	-26	-32
Home Help	114	115	+1	+0.9%	+7	+14
Care, other	5	5			+0	+0
Patient & Client Care	498	481	-16	-3.3%	-19	-18

CHO 8

Oct 2020 (Dec 2019 figure: 1,488)	WTE Sep 2020	WTE Oct 2020	WTE change since Sep 20	% change since Sep 20	WTE change since Dec 19	WTE change since Oct 19
Overall	1,512	1,477	-35	-2.3%	-11	-25
Medical/ Dental, other	11	11	-0	-0.5%	+0	-0
Medical & Dental	11	11	-0	-0.5%	+0	-0
Nurse/ Midwife Manager	89	89	+0	+0.4%	+12	+9
Nurse/ Midwife Specialist & AN/MP	3	3	+0	+10.7%	+1	+2
Staff Nurse/ Staff Midwife	254	251	-3	-1.0%	+2	+1
Public Health Nurse	2	3	+1	+21.3%	+1	+1
Nursing/ Midwifery other	1	1			+1	+1
Nursing & Midwifery	349	348	-1	-0.4%	+17	+14
Therapy Professions	19	20	+1	+4.5%	-1	-2
Social Workers	6	7	+1	+15.5%	+0	+0
Pharmacy	2	2	+1	+33.3%	-1	-0
Health & Social Care Professionals	26	29	+2	+8.6%	-1	-1
Management (VIII & above)	7	7	-0	-0.1%	+2	+3
Administrative/ Supervisory (V to VII)	20	20	+0	+1.5%	+0	+1
Clerical (III & IV)	71	70	-1	-1.9%	-0	-1
Management & Administrative	98	97	-1	-1.1%	+2	+3
Support	27	27	-1	-2.3%	+1	+1
Maintenance/ Technical	23	24	+0	+0.4%	-0	-0
General Support	51	50	-1	-1.1%	+1	+1
Health Care Assistants	579	548	-31	-5.4%	-9	-18
Home Help	377	374	-3	-0.8%	-22	-24
Care, other	21	21	+0	+1.3%	+0	+1
Patient & Client Care	976	942	-34	-3.5%	-30	-41

CHO 9

Oct 2020 (Dec 2019 figure: 870)	WTE Sep 2020	WTE Oct 2020	WTE change since Sep 20	% change since Sep 20	WTE change since Dec 19	WTE change since Oct 19
Overall	926	910	-16	-1.7%	+41	+30
Consultants	3	3			+1	+1
Registrars	6	6				
SHO/ Interns	11	11	+0	+0.4%	-1	-1
Medical/ Dental, other	1	1				
Medical & Dental	20	20	+0	+0.2%		+0
Nurse/ Midwife Manager	78	78	+1	+1.1%	+4	+3
Nurse/ Midwife Specialist & AN/MP	5	6	+1	+20.0%	+1	+2
Staff Nurse/ Staff Midwife	238	233	-5	-2.1%	+6	+6
Public Health Nurse				-100.0%	-0	-0
Nursing/ Midwifery other	1	1				
Nursing & Midwifery	322	318	-3	-1.0%	+11	+10
Therapy Professions	74	72	-2	-2.1%	+18	+17
Health Science/ Diagnostics	1	1			-0	-1
Social Care	1	1	-0	-11.1%	-0	-0
Social Workers	22	22	-0	-0.0%	+0	+1
Pharmacy	4	4			+1	+1
H&SC, Other	0	1	+0	+38.9%	+0	+0
Health & Social Care Professionals	102	100	-2	-1.5%	+19	+18
Management (VIII & above)	8	8			-1	-1
Administrative/ Supervisory (V to VII)	18	18	+0	+0.2%	+3	+3
Clerical (III & IV)	44	43	-1	-2.3%	+3	+3
Management & Administrative	70	69	-1	-1.4%	+5	+5
Support	123	123	+0	+0.3%	+5	+4
Maintenance/ Technical	2	2				
General Support	125	126	+0	+0.3%	+5	+4
Health Care Assistants	282	271	-11	-3.7%	+2	-7
Care, other	5	6	+0	+0.9%	-1	-1
Patient & Client Care	287	277	-10	-3.6%	+1	-8

other Community Services

Oct 2020 (Dec 2019 figure: 73)	WTE Sep 2020	WTE Oct 2020	WTE change since Sep 20	% change since Sep 20	WTE change since Dec 19	WTE change since Oct 19
Overall	67	66	-1	-1.6%	-8	-6
Health Science/ Diagnostics				-100.0%	-1	-1
Health & Social Care Professionals				-100.0%	-1	-1
Management (VIII & above)	18	18	+0	+0.2%	-1	-0
Administrative/ Supervisory (V to VII)	20	19	-1	-6.1%	-3	-2
Clerical (III & IV)	28	28	+0	+0.5%	-3	-3
Management & Administrative	67	66	-1	-1.6%	-7	-5
Health Care Assistants	0	0			+0	
Patient & Client Care	0	0			+0	

Social Care Older Persons Services Employment by CHO & Admin : Oct 2020

Oct 2020 (Dec 2019 figure: 13,233)	WTE Sep 2020	WTE Oct 2020	WTE change since Sep 20	% change since Sep 20	WTE change since Dec 19	WTE change since Oct 19
Overall	13,509	13,342	-167	-1.2%	+110	+20
CHO 1	1,890	1,854	-37	-1.9%	+18	-28
Health Service Executive	1,590	1,578	-12	-0.7%	-28	+15
CHO 2	1,590	1,578	-12	-0.7%	-28	+15
Health Service Executive	1,030	1,026	-4	-0.4%	+52	+71
CHO 3	1,030	1,026	-4	-0.4%	+52	+71
Health Service Executive	2,950	2,923	-28	-0.9%	+3	-48
CHO 4	2,950	2,923	-28	-0.9%	+3	-48
Health Service Executive	1,687	1,673	-14	-0.9%	+26	+6
CHO 5	1,687	1,673	-14	-0.9%	+26	+6
Health Service Executive	338	332	-5	-1.6%	-9	-7
Leopardstown Park Hospital	209	207	-2	-0.9%	-3	-4
Royal Hospital, Donnybrook, Dublin	273	271	-2	-0.7%	-1	-3
Section 38 Voluntary Agencies	482	478	-4	-0.8%	-4	-7
CHO 6	820	810	-9	-1.1%	-13	-13
Health Service Executive	1,037	1,026	-11	-1.1%	+30	+20
CHO 7	1,037	1,026	-11	-1.1%	+30	+20
Health Service Executive	1,512	1,477	-35	-2.3%	-11	-25
CHO 8	1,512	1,477	-35	-2.3%	-11	-25
Health Service Executive	657	645	-12	-1.8%	+0	-10
Incorporated Orthopaedic Hospital	270	266	-4	-1.4%	+40	+40
Section 38 Voluntary Agencies	270	266	-4	-1.4%	+40	+40
CHO 9	926	910	-16	-1.7%	+41	+30
other Community Services	67	66	-1	-1.6%	-8	-6

Social Care Older Persons Services Employment by CHO etc. Oct 2020

Incorporated Orthopaedic Hospital

Oct 2020 (Dec 2019 figure: 226)	WTE Sep 2020	WTE Oct 2020	WTE change since Sep 20	% change since Sep 20	WTE change since Dec 19	WTE change since Oct 19
Overall	270	266	-4	-1.4%	+40	+40
Consultants	2	2			+1	+1
Registrars	2	2				
SHO/ Interns	4	4			-1	-1
Medical & Dental	8	8				
Nurse/ Midwife Manager	17	17			-1	-1
Staff Nurse/ Staff Midwife	74	70	-4	-5.0%	+10	+10
Nursing & Midwifery	91	87	-4	-4.1%	+10	+10
Therapy Professions	34	34			+14	+13
Health Science/ Diagnostics	1	1				
Social Workers	9	9			+2	+2
Pharmacy	4	4			+1	+1
Health & Social Care Professionals	47	47			+16	+16
Management (VIII & above)	1	1				
Administrative/ Supervisory (V to VII)	6	6				
Clerical (III & IV)	11	11			+1	+1
Management & Administrative	18	18			+1	+1
Support	40	40			+6	+6
Maintenance/ Technical	2	2				
General Support	42	42			+6	+6
Health Care Assistants	64	64			+8	+8
Care, other	0	0				
Patient & Client Care	64	64			+8	+8

Leopardstown Park Hospital

Oct 2020 (Dec 2019 figure: 211)	WTE Sep 2020	WTE Oct 2020	WTE change since Sep 20	% change since Sep 20	WTE change since Dec 19	WTE change since Oct 19
Overall	209	207	-2	-0.9%	-3	-4
Medical/ Dental, other	1	1				
Medical & Dental	1	1				
Nurse/ Midwife Manager	16	15	-1	-5.5%	-0	-0
Staff Nurse/ Staff Midwife	41	42	+1	+2.1%	-1	+3
Nursing & Midwifery	57	57	-0	-0.1%	-1	+2
Therapy Professions	8	8			+1	+1
Social Workers	1	1				
Pharmacy	2	2	+0	+2.2%	+0	-0
Health & Social Care Professionals	11	11	+0	+0.4%	+1	+1
Management (VIII & above)	1	1				
Administrative/ Supervisory (V to VII)	7	7				
Clerical (III & IV)	12	12			+1	+1
Management & Administrative	20	20			+1	+1
Support	35	34	-1	-2.2%	+1	+0
Maintenance/ Technical	4	4				+1
General Support	39	38	-1	-1.9%	+1	+1
Health Care Assistants	78	77	-1	-1.4%	-4	-8
Care, other	3	3	-0	-3.2%	-2	-1
Patient & Client Care	81	80	-1	-1.5%	-6	-9

Oct 2020 (Dec 2019 figure: 272)	WTE Sep 2020	WTE Oct 2020	WTE change since Sep 20	% change since Sep 20	WTE change since Dec 19	WTE change since Oct 19
Overall	273	271	-2	-0.7%	-1	-3
Registrars	1	1				
Medical/ Dental, other	1	1				
Medical & Dental	2	2				
Nurse/ Midwife Manager	18	19	+1	+2.7%	-2	-2
Staff Nurse/ Staff Midwife	76	73	-3	-3.3%	-1	-1
Nursing & Midwifery	94	92	-2	-2.1%	-2	-2
Therapy Professions	27	28	+1	+3.7%	-2	-1
Social Workers	5	5			-1	-1
Psychologists	1	1				
Health & Social Care Professionals	32	33	+1	+3.1%	-3	-2
Management (VIII & above)	1	1			+1	+1
Administrative/ Supervisory (V to VII)	6	5	-1	-17.1%	-1	-1
Clerical (III & IV)	9	9			+2	+1
Management & Administrative	16	15	-1	-6.2%	+2	+1
Support	34	34			-2	-2
Maintenance/ Technical	5	5			+1	+1
General Support	39	39			-1	-1
Health Care Assistants	89	89			+3	+1
Care, other	1	1			+1	+1
Patient & Client Care	90	90			+4	+2

Social Care Older Persons Services Employment by Grade Group: Oct 2020

Oct 2020 (Dec 2019 figure: 13,233)	WTE Sep 2020	WTE Oct 2020	WTE change since Sep 20	% change since Sep 20	WTE change since Dec 19	WTE change since Oct 19
Overall	13,509	13,342	-167	-1.2%	+110	+20
Consultant Medicine	6	5	-1	-18.2%	+1	+1
Consultants	6	5	-1	-18.2%	+1	+1
Registrar	6	6			-1	
Senior Registrar	1	1				
Specialist Registrar	3	3			+1	
Registrars	10	10				
SHO/ Interns	14	14	+0	+0.3%	-1	-1
Medical/ Dental, other	107	99	-8	-7.5%	+2	+15
Medical & Dental	136	127	-9	-6.6%	+2	+15
Clinical Nurse/ Midwife Manager	535	535	+0	+0.1%	+27	+17
Director Nursing/Midwifery, Assistant	109	106	-3	-3.2%	+3	-1
Director of Nursing/Midwifery	105	107	+2	+1.8%	+9	+12
Nurse/ Midwife Manager	749	748	-1	-0.2%	+38	+28
Advanced Nurse/ Midwife Practitioner	14	15	+2	+11.0%	+4	+5
Clinical Nurse/ Midwife Specialist	20	23	+2	+9.9%	+7	+8
Nurse/ Midwife Specialist & AN/MP	34	38	+4	+10.3%	+11	+13
Staff Midwives	1	1	+0	+3.9%	+1	+1
Staff Nurse [Intellectual Disability]	1	1			+1	+1
Staff Nurse [Psychiatric]	8	9	+0	+1.9%	+4	+4
Staff Nurses [General/ Children's]	2,631	2,610	-21	-0.8%	+38	+40
Staff Nurse/ Staff Midwife	2,641	2,620	-21	-0.8%	+44	+45
Public Health Nurse	13	14	+1	+4.9%	+0	+1
Post-registration Nurse/ Midwife Student				-100.0%	-1	-1
Nursing/ Midwifery awaiting registration	2	2	-1	-39.8%	+1	+2
Nursing/ Midwifery Student	2	2	-1	-39.8%	-1	+1
Nursing Education/Clinical	3	3			+2	+2
Nursing/ Midwifery other	3	3			+2	+2
Nursing & Midwifery	3,442	3,423	-19	-0.5%	+95	+91
Dietitians	20	18	-2	-10.2%	+1	-1
Occupational Therapists	115	117	+2	+1.5%	+3	+5
Physiotherapists	131	132	+0	+0.4%	+8	+7
Podiatrists & Chiropodists	12	11	-1	-4.5%	-1	-1
Speech & Language Therapists	22	22	+1	+3.2%	-1	+0
Therapy Professions	299	300	+0	+0.1%	+11	+11
Clinical Measurement	0	0	-0	-47.9%	+0	+0
Radiographers	5	5	+0	+1.8%	-1	-1
Health Science/ Diagnostics	5	5	-0	-2.6%	-1	-0
Social Care	3	3	-0	-3.9%	-0	-0
Social Workers	100	99	-1	-1.3%	+0	-4
Psychologists	2	1	-1	-30.3%	-1	-1
Pharmacy	18	18	-0	-1.1%	+3	+3
Other Health & Social Care	0	1	+0	+38.9%	+0	+0
Play Therapists/ Specialists	1	1				
H&SC, Other	1	2	+0	+10.3%	+0	+0
Health & Social Care Professionals	429	427	-2	-0.4%	+13	+8
Executive Management	13	13	-0	-0.1%	+1	+3
Senior Management (VIII & GM)	65	66	+2	+2.4%	+4	+5

Oct 2020 (Dec 2019 figure: 13,233)	WTE Sep 2020	WTE Oct 2020	WTE change since Sep 20	% change since Sep 20	WTE change since Dec 19	WTE change since Oct 19
Overall	13,509	13,342	-167	-1.2%	+110	+20
Management (VIII & above)	78	79	+2	+2.0%	+5	+8
Middle Management (V-VII)	169	169	-1	-0.3%	+5	+8
Other Administrative	1		-1	-100.0%	-1	-1
Administrative/ Supervisory (V to VII)	170	169	-1	-0.6%	+4	+7
Clerical (III & IV)	561	575	+14	+2.5%	+4	+5
Management & Administrative	809	823	+15	+1.8%	+12	+20
Catering	223	218	-4	-2.0%	-3	-4
Household Services	469	474	+5	+1.1%	-19	-23
Other Support	30	29	-1	-4.2%	-5	-7
Portering	79	78	-1	-1.6%	-4	-5
Support	800	799	-2	-0.2%	-30	-39
Maintenance	96	96	+0	+0.2%	-3	-3
Maintenance/ Technical	96	96	+0	+0.2%	-3	-3
General Support	896	895	-1	-0.2%	-33	-42
HCA, Nurse's Aide, etc.	4,305	4,116	-189	-4.4%	+95	+32
Health & Social Care Assistants	25	26	+1	+2.0%	+5	+3
Health Care Assistants	4,331	4,142	-188	-4.3%	+99	+35
Home Help	3,308	3,355	+47	+1.4%	-87	-113
Care, other	159	149	-9	-5.9%	+8	+6
Patient & Client Care	7,797	7,647	-150	-1.9%	+20	-72

Employment by WTE, Headcount, Gender, Full-Time /Part-Time etc.: Oct 2020

Social Care Older Persons Services Staff Group	WTE	Headcount	WTE: no.	% Male	% female	Male WTE: no.	Female WTE: no.	% Total Perm	% Male Perm	% Female Perm	% Total Full Time	% Total Part Time	% Male FT	% Female FT
Overall	13,342	16,511	1.24	12.8%	87.2%	1.11	1.26	77.4%	77.0%	77.4%	57.5%	42.5%	82.3%	53.8%
Consultant Medicine	5	7	1.53	14.3%	85.7%	2.04	1.47	85.7%	85.7%	83.3%	28.6%	71.4%	0.0%	33.3%
Consultants	5	7	1.53	14.3%	85.7%	2.04	1.47	85.7%	100.0%	83.3%	28.6%	71.4%	0.0%	33.3%
Registrar	6	6	1.09	50.0%	50.0%	1.00	1.20	33.3%	33.3%	0.0%	83.3%	16.7%	100.0%	66.7%
Senior Registrar	1	1	1.00		100.0%		1.00	100.0%	100.0%	100.0%	100.0%	0.0%		100.0%
Specialist Registrar	3	3	1.00	66.7%	33.3%	1.00	1.00	0.0%	0.0%	0.0%	100.0%	0.0%	100.0%	100.0%
Registrars	10	10	1.05	50.0%	50.0%	1.00	1.11	30.0%	40.0%	20.0%	90.0%	10.0%	100.0%	80.0%
SHO/ Interns	14	14	1.00	35.7%	64.3%	1.00	1.00	0.0%	0.0%	0.0%	100.0%	0.0%	100.0%	100.0%
Medical/ Dental, other	99	164	1.66	64.6%	35.4%	1.74	1.52	51.8%	55.7%	44.8%	34.8%	65.2%	31.1%	41.4%
Medical & Dental	127	195	1.54	60.0%	40.0%	1.64	1.40	48.2%	53.0%	41.0%	42.1%	57.9%	36.8%	50.0%
Clinical Nurse/ Midwife Manager	535	575	1.08	7.7%	92.3%	1.04	1.08	97.6%	97.6%	97.9%	77.7%	22.3%	90.9%	76.6%
Director Nursing/Midwifery, Assistant	106	112	1.06	4.5%	95.5%	1.00	1.06	98.2%	98.2%	98.1%	89.3%	10.7%	100.0%	88.8%
Director of Nursing/Midwifery	107	108	1.01	5.6%	94.4%	1.01	1.01	97.2%	97.2%	97.1%	97.2%	2.8%	100.0%	97.1%
Nurse/ Midwife Manager	748	795	1.06	6.9%	93.1%	1.03	1.07	97.6%	94.5%	97.8%	82.0%	18.0%	92.7%	81.2%
Advanced Nurse/ Midwife Practitioner	15	16	1.06	12.5%	87.5%	1.00	1.07	100.0%	100.0%	100.0%	100.0%	0.0%	100.0%	100.0%
Clinical Nurse/ Midwife Specialist	23	25	1.11	8.0%	92.0%	1.00	1.12	96.0%	96.0%	95.7%	76.0%	24.0%	100.0%	73.9%
Nurse/ Midwife Specialist & AN/MP	38	41	1.09	9.8%	90.2%	1.00	1.10	97.6%	100.0%	97.3%	85.4%	14.6%	100.0%	83.8%
Staff Midwives	1	1	1.27		100.0%		1.27	100.0%	100.0%	100.0%	0.0%	100.0%		0.0%
Staff Nurse [Intellectual Disability]	1	1	1.00		100.0%		1.00	100.0%	100.0%	100.0%	100.0%	0.0%		100.0%
Staff Nurse [Psychiatric]	9	11	1.29	45.5%	54.5%	1.21	1.36	36.4%	36.4%	33.3%	27.3%	72.7%	40.0%	16.7%
Staff Nurses [General/ Children's]	2,610	3,069	1.18	7.2%	92.8%	1.05	1.19	90.0%	90.0%	90.4%	60.8%	39.2%	91.9%	58.4%
Staff Nurse/ Staff Midwife	2,620	3,082	1.18	7.3%	92.7%	1.05	1.19	89.8%	84.1%	90.3%	60.7%	39.3%	90.7%	58.3%
Public Health Nurse	14	16	1.17	6.3%	93.8%	1.00	1.19	100.0%	100.0%	100.0%	62.5%	37.5%	100.0%	60.0%
Nursing/ Midwifery Student	2	2	1.33		100.0%	#DIV/0	1.33	50.0%		50.0%	50.0%	50.0%	#DIV/0	50.0%
Nursing Education/Clinical	3	3	1.00		100.0%		1.00	100.0%	100.0%	100.0%	100.0%	0.0%		100.0%
Nursing/ Midwifery other	3	3	1.00		100.0%	#DIV/0	1.00	100.0%		100.0%	100.0%	0.0%	#DIV/0	100.0%
Nursing & Midwifery	3,423	3,939	1.15	7.3%	92.7%	1.05	1.16	91.5%	86.4%	91.9%	65.3%	34.7%	91.3%	63.3%
Dietitians	18	24	1.35	4.2%	95.8%	1.00	1.37	87.5%	87.5%	87.0%	54.2%	45.8%	100.0%	52.2%

Occupational Therapists	117	130	1.11	10.8%	89.2%	1.01	1.13	85.4%	85.4%	83.6%	79.2%	20.8%	100.0%	76.7%
Physiotherapists	132	152	1.16	14.5%	85.5%	1.05	1.18	90.8%	90.8%	90.8%	74.3%	25.7%	90.9%	71.5%
Podiatrists & Chiropodists	11	17	1.53	23.5%	76.5%	1.14	1.71	58.8%	58.8%	61.5%	58.8%	41.2%	75.0%	53.8%
Speech & Language Therapists	22	27	1.20	3.7%	96.3%	1.00	1.21	100.0%	100.0%	100.0%	74.1%	25.9%	100.0%	73.1%
Therapy Professions	300	350	1.17	12.0%	88.0%	1.04	1.19	87.7%	90.5%	87.3%	74.0%	26.0%	92.9%	71.4%
Clinical Measurement	0	1	4.00		100.0%		4.00	0.0%	0.0%	0.0%	0.0%	100.0%		0.0%
Radiographers	5	9	1.81	11.1%	88.9%	2.00	1.79	88.9%	88.9%	87.5%	11.1%	88.9%	0.0%	12.5%
Health Science/ Diagnostics	5	10	1.92	10.0%	90.0%	2.00	1.91	80.0%	100.0%	77.8%	10.0%	90.0%	0.0%	11.1%
Social Care	3	5	1.85		100.0%	#DIV/0	1.85	100.0%		100.0%	0.0%	100.0%	#DIV/0	0.0%
Social Workers	99	111	1.13	13.5%	86.5%	1.07	1.14	91.0%	86.7%	91.7%	84.7%	15.3%	93.3%	83.3%
Psychologists	1	3	2.07		100.0%	#DIV/0	2.07	100.0%		100.0%	33.3%	66.7%	#DIV/0	33.3%
Pharmacy	18	26	1.44	19.2%	80.8%	1.17	1.52	73.1%	100.0%	66.7%	46.2%	53.8%	80.0%	38.1%
Other Health & Social Care	1	1	2.00		100.0%		2.00	100.0%	100.0%	100.0%	0.0%	100.0%		0.0%
Play Therapists/ Specialists	1	1	1.00	100.0%		1.00		100.0%	100.0%		100.0%	0.0%	100.0%	
H&SC, Other	2	2	1.33	50.0%	50.0%	1.00	2.00	100.0%	100.0%	100.0%	50.0%	50.0%	100.0%	0.0%
Health & Social Care	427	507	1.19	12.6%	87.4%	1.06	1.21	87.8%	90.6%	87.4%	72.6%	27.4%	90.6%	70.0%
Executive Management	13	13	1.00	61.5%	38.5%	1.00	1.01	100.0%	100.0%	100.0%	100.0%	0.0%	100.0%	100.0%
Senior Management (VIII & GM)	66	70	1.06	28.6%	71.4%	1.11	1.04	90.0%	90.0%	94.0%	92.9%	7.1%	80.0%	98.0%
Management (VIII & above)	79	83	1.05	33.7%	66.3%	1.07	1.04	91.6%	85.7%	94.5%	94.0%	6.0%	85.7%	98.2%
Administrative/ Supervisory (V to VII)	169	184	1.09	15.2%	84.8%	1.03	1.10	96.2%	92.9%	96.8%	77.7%	22.3%	89.3%	75.6%
Clerical (III & IV)	575	672	1.17	7.3%	92.7%	1.05	1.18	84.8%	75.5%	85.6%	63.4%	36.6%	91.8%	61.2%
Management & Administrative	823	939	1.14	11.2%	88.8%	1.05	1.15	87.6%	82.9%	88.2%	68.9%	31.1%	89.5%	66.3%
Catering	218	245	1.12	33.1%	66.9%	1.06	1.16	92.2%	92.2%	93.9%	71.4%	28.6%	93.8%	60.4%
Household Services	474	548	1.16	17.0%	83.0%	1.07	1.18	83.2%	83.2%	84.6%	58.9%	41.1%	83.9%	53.8%
Other Support	29	37	1.28	54.1%	45.9%	1.19	1.40	78.4%	78.4%	76.5%	64.9%	35.1%	85.0%	41.2%
Portering	78	82	1.06	98.8%	1.2%	1.05	1.35	84.1%	84.1%	100.0%	92.7%	7.3%	92.6%	100.0%
Support	799	912	1.14	30.2%	69.8%	1.07	1.18	85.5%	82.5%	86.8%	65.6%	34.4%	89.5%	55.3%
Maintenance/ Technical	96	100	1.04	99.0%	1.0%	1.04	1.00	91.0%	90.9%	100.0%	92.0%	8.0%	91.9%	100.0%
General Support	895	1,012	1.13	37.0%	63.0%	1.06	1.18	86.1%	84.8%	86.8%	68.2%	31.8%	90.1%	55.3%
HCA, Nurse's Aide, etc.	4,116	4,763	1.16	19.5%	80.5%	1.07	1.18	83.9%	83.9%	83.9%	61.9%	38.1%	86.2%	55.9%
Health & Social Care Assistants	26	30	1.16	30.0%	70.0%	1.09	1.18	86.7%	86.7%	81.0%	83.3%	16.7%	100.0%	76.2%
Health Care Assistants	4,142	4,793	1.16	19.6%	80.4%	1.07	1.18	84.0%	84.2%	83.9%	62.0%	38.0%	86.4%	56.0%
Home Help	3,355	4,937	1.47	3.1%	96.9%	1.36	1.48	56.4%	23.4%	57.4%	41.3%	58.7%	61.0%	40.7%
Care, other	150	189	1.26	39.2%	60.8%	1.44	1.17	70.9%	37.8%	92.2%	61.9%	38.1%	56.8%	65.2%

Patient & Client Care	7,647	9,919	1.30	11.8%	88.2%	1.12	1.32	70.0%	73.3%	69.5%	51.7%	48.3%	81.1%	47.8%
-----------------------	-------	-------	------	-------	-------	------	------	-------	-------	-------	-------	-------	-------	-------

Employment by WTE, Headcount, Gender, Full-Time /Part-Time etc.: Oct 2020

Social Care Older Persons Services CHO	WTE	Headcount	WTE: no.	% Male	% female	Male WTE: no.	Female WTE: no.	% Total Perm	% Male Perm	% Female Perm	% Total Full Time	% Total Part Time	% Male FT	% Female FT
Overall	13,342	16,511	1.24	12.8%	87.2%	1.11	1.26	77.4%	77.0%	77.4%	57.5%	42.5%	82.3%	53.8%
CHO 1	1,854	2,255	1.22	12.2%	87.8%	1.15	1.23	72.7%	72.7%	71.5%	42.8%	57.2%	68.6%	39.2%
HSE	1,578	1,894	1.20	12.1%	87.9%	1.05	1.22	90.7%	90.7%	91.0%	47.4%	52.6%	88.3%	88.3%
CHO 2	1,578	1,894	1.20	12.1%	87.9%	1.05	1.22	90.7%	90.7%	91.0%	47.4%	52.6%	88.3%	41.7%
HSE	1,026	1,368	1.33	11.5%	88.5%	1.07	1.38	93.8%	93.8%	94.5%	47.7%	52.3%	87.3%	87.3%
CHO 3	1,026	1,368	1.33	11.5%	88.5%	1.07	1.38	93.8%	93.8%	94.5%	47.7%	52.3%	87.3%	42.5%
HSE	2,923	3,867	1.32	10.7%	89.3%	1.18	1.34	66.1%	66.1%	68.3%	74.2%	25.8%	84.5%	84.5%
CHO 4	2,923	3,867	1.32	10.7%	89.3%	1.18	1.34	66.1%	66.1%	68.3%	74.2%	25.8%	84.5%	73.0%
HSE	1,673	2,011	1.20	9.5%	90.5%	1.11	1.21	61.0%	61.0%	59.0%	46.6%	53.4%	80.2%	80.2%
CHO 5	1,673	2,011	1.20	9.5%	90.5%	1.11	1.21	61.0%	61.0%	59.0%	46.6%	53.4%	80.2%	43.0%
HSE	332	370	1.11	23.2%	76.8%	1.06	1.13	73.8%	73.8%	75.7%	71.6%	28.4%	83.7%	83.7%
Section 38	478	521	1.09	26.5%	73.5%	1.05	1.10	98.8%	98.8%	99.0%	81.0%	19.0%	92.0%	92.0%
CHO 6	810	891	1.10	25.1%	74.9%	1.06	1.12	88.4%	88.4%	89.1%	77.1%	22.9%	88.8%	73.2%
HSE	1,026	1,200	1.17	15.6%	84.4%	1.07	1.19	89.5%	89.5%	90.3%	66.8%	33.3%	86.6%	86.6%
CHO 7	1,026	1,200	1.17	15.6%	84.4%	1.07	1.19	89.5%	89.5%	90.3%	66.8%	33.3%	86.6%	63.1%
HSE	1,477	1,906	1.29	11.3%	88.7%	1.19	1.30	80.8%	80.8%	80.5%	45.0%	55.0%	72.7%	72.7%
CHO 8	1,477	1,906	1.29	11.3%	88.7%	1.19	1.30	80.8%	80.8%	80.5%	45.0%	55.0%	72.7%	41.4%
HSE	645	745	1.16	21.6%	78.4%	1.09	1.18	84.3%	84.3%	86.0%	71.9%	28.1%	84.5%	84.5%
Section 38	266	301	1.13	12.3%	87.7%	1.07	1.14	88.0%	88.0%	88.3%	74.4%	25.6%	94.6%	94.6%
CHO 9	910	1,046	1.15	18.9%	81.1%	1.08	1.17	85.4%	85.4%	86.7%	72.7%	27.3%	86.4%	69.5%
other Community Services	66	73	1.11	27.4%	72.6%	1.05	1.13	79.5%	79.5%	79.2%	84.9%	15.1%	90.0%	83.0%

Summary Staff Movement: October 2020

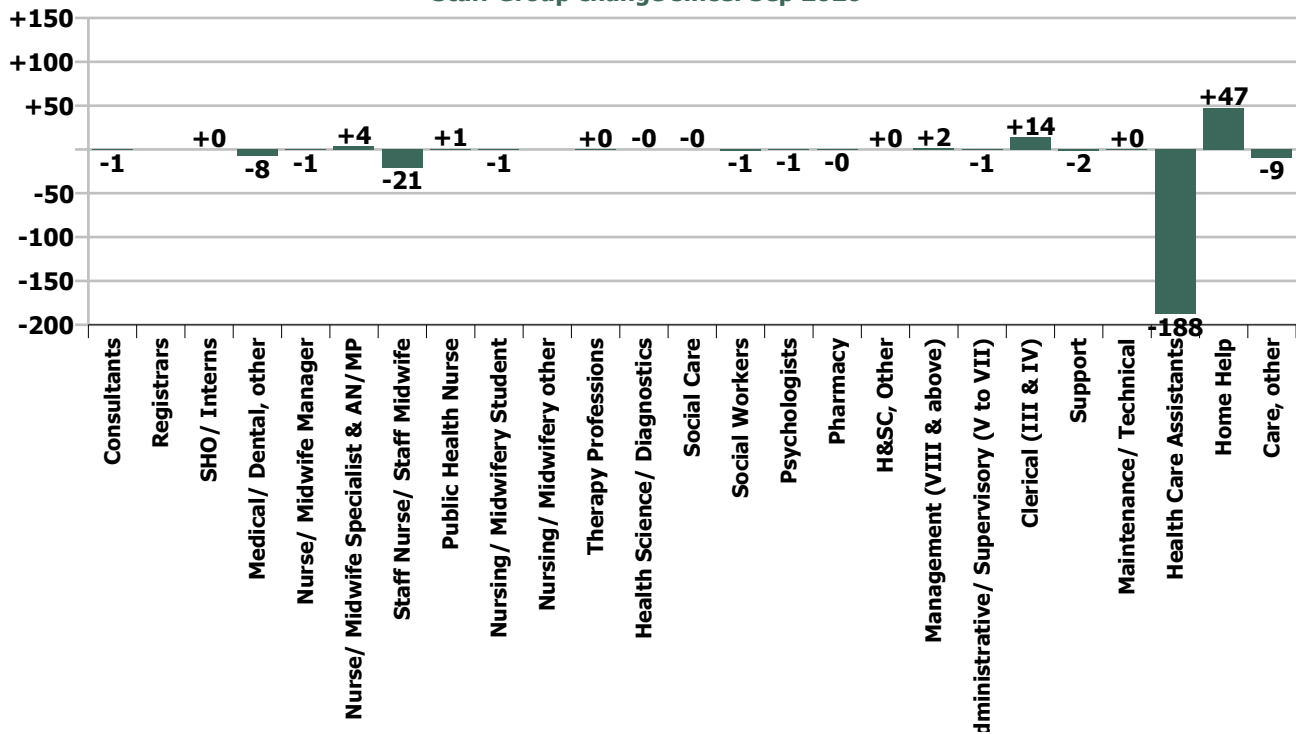
Month-on-month
Summary

WTE change since Sep 20	% change since Sep 20	overall	Consultants	Registrars	SHO/ Interns	Medical/ Dental, other	Medical & Dental	Nurse/ Midwife Manager	Nurse/ Midwife Specialist & AN/MP	Staff Nurse/ Staff Midwife	Public Health Nurse	Nursing/ Midwifery Student	Nursing/ Midwifery other	Nursing & Midwifery	Therapy Professions	Health Science/ Diagnostics	Social Care	Social Workers	Psychologists	Pharmacy	H&SC, Other	Health & Social Care Professionals	Management (VIII & above)	Administrative Supervisory (V to VII)	Clerical (III & IV)	Management & Administrative	Support	Maintenance/ Technical	General Support	Health Care Assistants	Home Help	Care, other	Patient & Client Care
Overall	-1.2%	-167	-1.0	0.0	+0.0	-8.0	-9.0	-1.2	+3.5	-20.8	+0.6	-1.0	0.0	-18.8	+0.4	-0.1	-0.1	-1.3	-0.6	-0.2	+0.1	-1.9	+1.5	-1.1	+14.1	+14.5	-1.6	+0.2	-1.4	-188.0	+47.1	-9.3	-150.2
CHO 1	-1.9%	-37					+0.0	+1.7	-0.1	-0.0				+1.6	+1.5	+0.1		-1.5				+0.1		-0.0	+2.7	+2.7	+0.0	+0.5	+0.6	-44.0	+2.7	-0.3	-41.6
CHO 2	-0.7%	-12					0.0	+0.1		+0.9				+1.0	-0.1			+0.1		+0.0		-0.0		+0.6	+1.3	+1.9	+0.7	+0.9	+1.5	-23.4	+7.6	-0.2	-16.0
CHO 3	-0.4%	-4				+1.4	+1.4	+2.4	+0.0	+0.7				+3.1	+1.5	-0.2		+0.3				+1.5	-0.1	+0.8	-1.3	-0.6	+0.4	+0.4	-8.4	-1.2	-0.7	-10.3	
CHO 4	-0.9%	-28	-1.0			-5.6	-6.6	-6.7	+0.1	-8.0	+0.1			-14.5	-2.2		+0.0	-1.0		-0.7		-3.9	+1.0	-2.4	+11.2	+9.9	-3.3	-1.0	-4.3	-22.0	+21.1	-7.4	-8.3
CHO 5	-0.9%	-14				-3.8	-3.8	+1.2	+1.9	-7.2				-4.1	-0.3			+0.0		-0.0		-0.4	+0.1	+0.8	+0.3	+1.2	+0.4	+0.0	-25.5	+19.1	-0.9	-7.3	
CHO 6	-1.1%	-9					0.0	-0.4		-0.7				-1.0	+1.0			-0.2	-0.6	+0.0		+0.2		-1.0	+0.1	-0.9	-1.8		-1.9	-5.6		-0.1	-5.7
CHO 7	-1.1%	-11					0.0	-0.6	+0.2	+1.2		-1.0		-0.2	-0.3			+0.0				-0.2	+0.4	+1.1	+2.0	+3.5	+2.3	+2.3	-17.4	+1.0		-16.4	
CHO 8	-2.3%	-35				-0.1	-0.1	+0.3	+0.3	-2.5	+0.5			-1.4	+0.9			+0.9		+0.5		+2.3	-0.0	+0.3	-1.4	-1.1	-0.6	+0.1	-0.5	-31.3	-3.2	+0.3	-34.2
CHO 9	-1.7%	-16			+0.0		+0.0	+0.9	+1.0	-5.1				-3.3	-1.6		-0.1	-0.0			+0.1	-1.5		+0.0	-1.0	-1.0	+0.4		+0.4	-10.5		+0.1	-10.5
other Community Services	-1.6%	-1																					+0.0	-1.3	+0.1	-1.1							0.0
		-1.2%	-18.2%		+0.3%	-7.5%	-6.6%	-0.2%	+10.3%	-0.8%	+4.9%	-39.8%		-0.5%	+0.1%	-2.6%	-3.9%	-1.3%	-30.3%	-1.1%	+10.3%	-0.4%	+2.0%	-0.6%	+2.5%	+1.8%	-0.2%	+0.2%	-0.2%	-4.3%	+1.4%	-5.9%	-1.9%

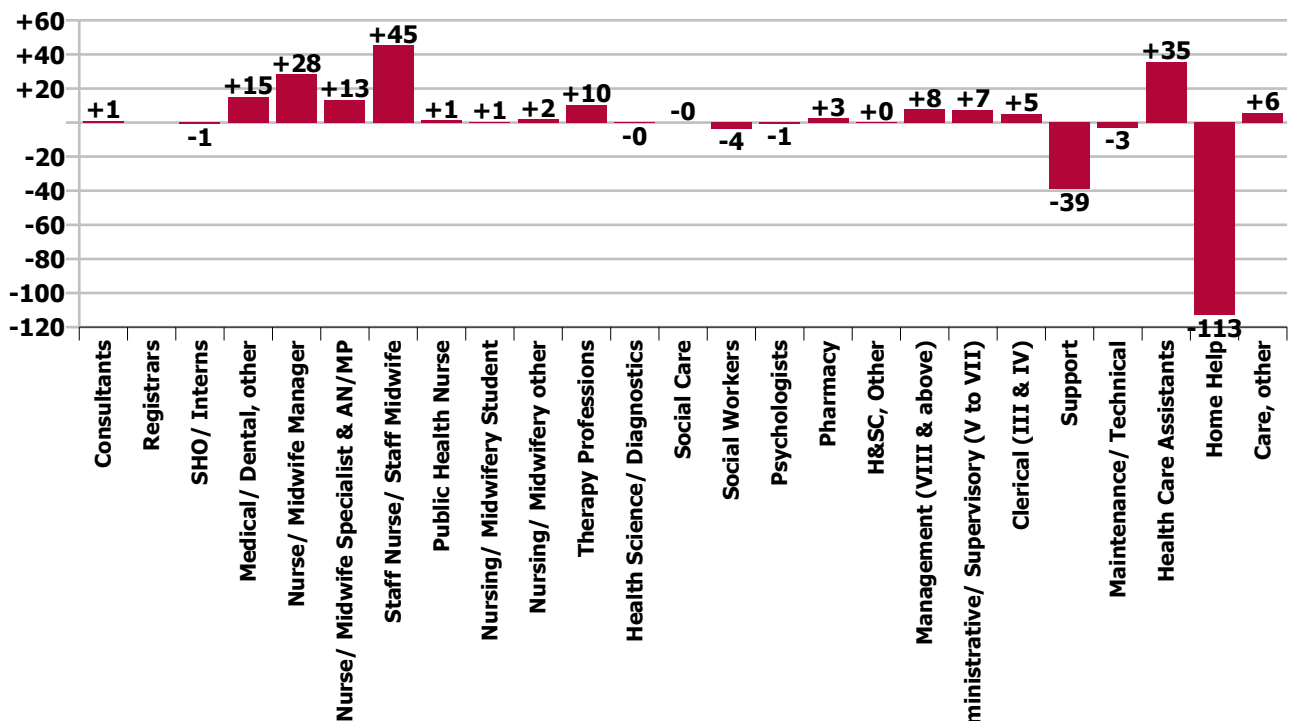
Year-on-year Summary

WTE change since Oct 19	% change since Oct 19	overall	Consultants	Registrars	SHO/ Interns	Medical/ Dental, other	Medical & Dental	Nurse/ Midwife Manager	Nurse/ Midwife Specialist & AN/MP	Staff Nurse/ Staff Midwife	Public Health Nurse	Nursing/ Midwifery Student	Nursing/ Midwifery other	Nursing & Midwifery	Therapy Professions	Health Science/ Diagnostics	Social Care	Social Workers	Psychologists	Pharmacy	H&SC, Other	Health & Social Care Professionals	Management (VIII & above)	Administrative Supervisory (V to VII)	Clerical (III & IV)	Management & Administrative	Support	Maintenance/ Technical	General Support	Health Care Assistants	Home Help	Care, other	Patient & Client Care	
Overall	+0.1%	+20	+1		-1	+15	+15	+28	+13	+45	+1	+1	+2	+91	+11	-0	-0	-4	-1	+3	+0	+8	+8	+7	+5	+20	-39	-3	-42	+35	-113	+6	-72	
CHO 1	-1.5%	-28				+1	+1	-3	+3	+3			+1	+4	+3	+0		-2				+1	+1	-0	+1	+1	-6	-1	-7	+16	-44	-0	-29	
CHO 2	+0.9%	+15				-0	-0	+9		+9	+0			+18	+2	-0		+1				+3		+3	-5	-2	-3	+1	-2	+10	-15	+4	-2	
CHO 3	+7.4%	+71				+1	+1	+4	+1	-6				-1	+4	+0		-1				+3	+1	+4	+0	+5	-1	-1	-2	+16	+46	+3	+65	
CHO 4	-1.6%	-48	-0			+8	+8	-3	+3	+7	+2	-1		+8	+1	+1	+0	+1			+1	+4	+1	-2	+2	+1	+9		+9	-9	-73	+3	-79	
CHO 5	+0.3%	+6				+6	+6	+2	+2	-0	-1			+3	-8			+0			+1		-7		+3	-0	+3	-39	-3	-43	+62	-15	-3	+43
CHO 6	-1.6%	-13						-3		+6				+3	-4			-2	-1	-0		-6	+1	-3	+3	+0	-8	+1		-6	-2		-1	-4
CHO 7	+1.9%	+20				-1	-1	+10	+1	+20		+2		+32	-3			-2				-5	+2	+1	+5	+8	+3		+3	-32	+14	+0	-18	
CHO 8	-1.7%	-25				-0	-0	+9	+2	+1	+1		+1	+14	-2			+0			-0		-1	+3	+1	-1	+3	+1	-0	+1	-18	-24	+1	-41
CHO 9	+3.4%	+30	+1		-1		+0	+3	+2	+6	-0			+10	+17	-1	-0	+1		+1	+0	+18	-1	+3	+3	+5	+4		+4	-7		-1	-8	
other Community Services	-8.4%	-6														-1						-1	-0	-2	-3	-5								
		+0.1%	+27.2%		-6.4%	+17.9%	+13.4%	+3.9%	+54.1%	+1.8%	+9.5%	+50.0%	+200.0%	+2.7%	+3.6%	-7.6%	-1.1%	-3.7%	-31.0%	+16.4%	+10.3%	+2.0%	+10.9%	+4.5%	+0.9%	+2.5%	-4.7%	-3.3%	-4.5%	+0.9%	-3.3%	+4.1%	-0.9%	

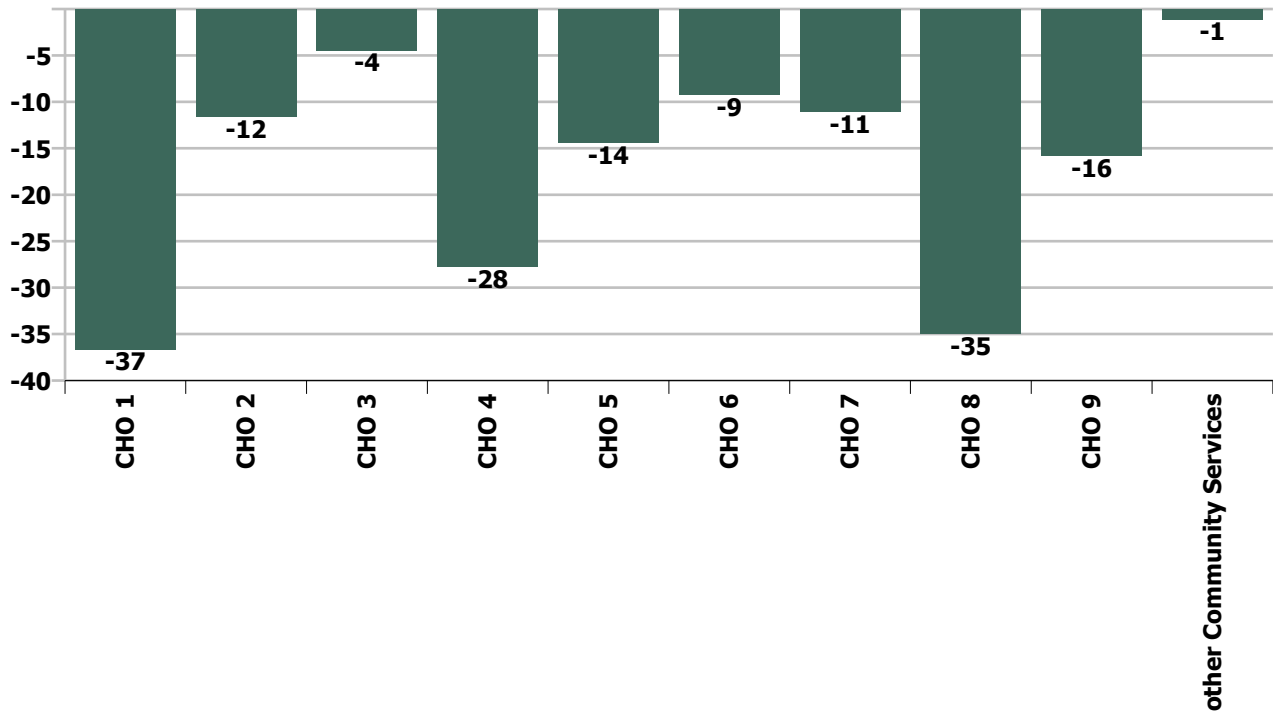
Staff Group change since: Sep 2020



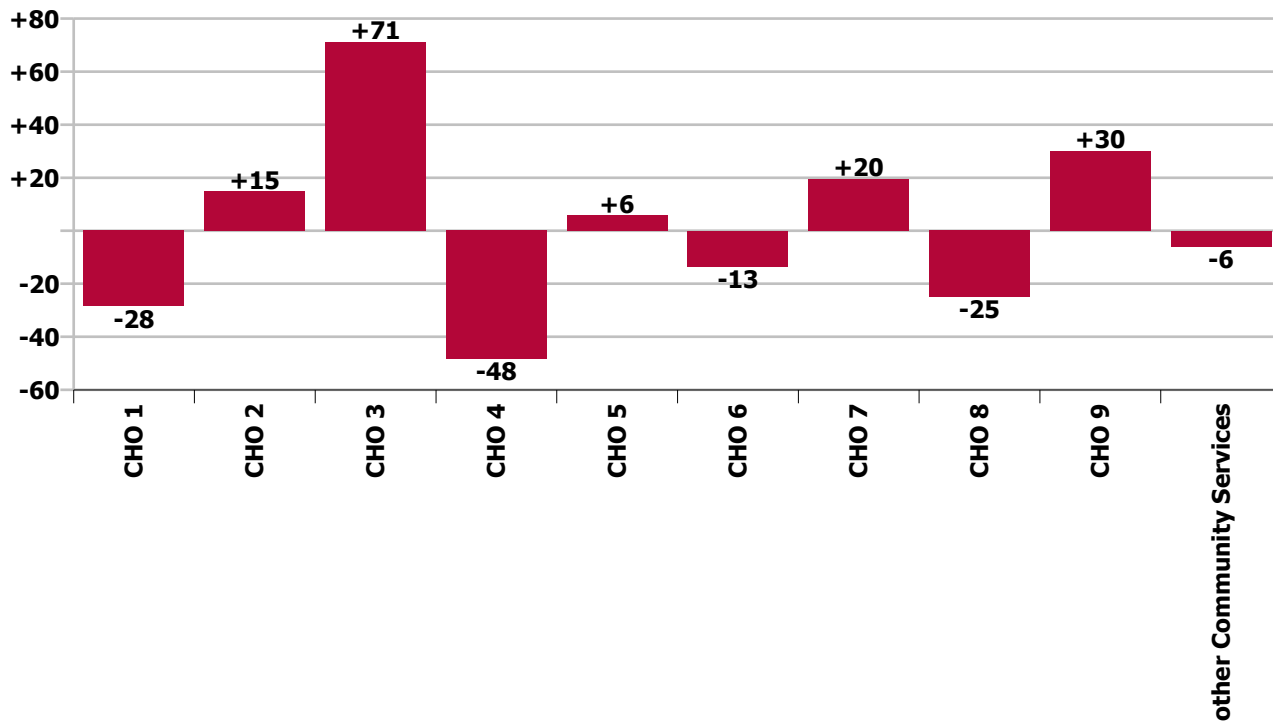
Staff Group change since: Oct 2019



CHO change since: Sep 2020



CHO change since: Oct 2019



Longitudinal Employment Levels by Grade Group - Oct 2013 to Oct 2020

Oct 2020 (Oct 2013 figure: 11,493)	WTE Oct 2020	WTE change since Oct 13	WTE change since Dec 15	WTE change since Dec 16	WTE change since Dec 17	WTE change since Dec 18	WTE change since Dec 19	% change since Oct 13	% change since Dec 15	% change since Dec 16	% change since Dec 17	% change since Dec 18	% change since Dec 19
Overall	13,342	+1,849	+736	+860	+239	+38	+110	+16.1%	+5.8%	+6.9%	+1.8%	+0.3%	+0.8%
Consultant Medicine	5	+3	-2	-5	-5	+1	+1	+130.2%	-30.6%	-51.1%	-50.2%	+27.2%	+27.2%
Consultant Psychiatry		-1	-1	-1	-1			-100.0%	-100.0%	-100.0%	-100.0%	-100.0%	-100.0%
Consultant Radiology		-0						-100.0%	-100.0%	-100.0%	-100.0%	-100.0%	-100.0%
Consultant Surgery		-1	-1	-1	-0	-0		-100.0%	-100.0%	-100.0%	-100.0%	-100.0%	-100.0%
Consultants	5	+1	-4	-6	-6	+1	+1	+25.1%	-46.7%	-58.3%	-55.0%	+23.1%	+27.2%
Registrar	6	-3	-3		-2	-2	-1	-34.2%	-31.8%		-26.6%	-25.1%	-15.4%
Senior Registrar	1					-1						-50.0%	
Specialist Registrar	3	+1		+1	+2	+2	+1	+50.0%		+50.0%	+200.0%	+200.0%	+50.0%
Registrars	10	-2	-3	+1		-1		-16.4%	-21.3%	+11.8%		-8.2%	
SHO/ Interns	14	+1	+3	+4	+4	+2	-1	+8.9%	+29.7%	+40.7%	+41.3%	+17.4%	-6.7%
Other Medical	99	+15	+16	+13	+13	+13	+2	+17.3%	+19.4%	+15.1%	+15.2%	+15.8%	+2.6%
Medical/ Dental, other	99	+15	+16	+13	+13	+13	+2	+17.3%	+19.4%	+15.1%	+15.2%	+15.8%	+2.6%
Medical & Dental	127	+15	+13	+12	+12	+16	+2	+13.2%	+11.1%	+10.1%	+10.0%	+13.9%	+2.0%
Clinical Nurse/ Midwife Manager	535	+50	+7	+0	+7	+11	+27	+10.3%	+1.3%	+0.1%	+1.3%	+2.1%	+5.2%
Director Nursing/Midwifery, Assistant	106	+25	+20	+18	+14	+19	+3	+30.6%	+23.1%	+20.6%	+15.2%	+21.8%	+2.9%
Director of Nursing/Midwifery	107	+34	+26	+22	+25	+24	+9	+47.3%	+32.1%	+26.0%	+29.8%	+29.6%	+9.0%
Nurse/ Midwife Manager	748	+109	+53	+40	+45	+54	+38	+17.1%	+7.6%	+5.7%	+6.4%	+7.8%	+5.4%
Advanced Nurse/ Midwife Practitioner	15	+12	+13	+12	+12	+8	+4	+425.7%	+657.0%	+404.7%	+404.7%	+116.9%	+41.2%
Clinical Nurse/ Midwife Specialist	23	+6	+6	+10	+11	+6	+7	+36.0%	+34.6%	+79.6%	+100.5%	+34.2%	+42.9%
Nurse/ Midwife Specialist & AN/MP	38	+18	+19	+22	+23	+14	+11	+93.7%	+101.1%	+142.4%	+164.7%	+58.6%	+42.2%
Graduate Nursing/ Midwifery		-1	-2					-100.0%	-100.0%	-100.0%	-100.0%	-100.0%	-100.0%
Staff Midwives	1	-0	-0	+0	-1	+1	+1	-21.0%	-1.2%	+97.5%	-56.1%	-100.0%	-100.0%
Staff Nurse [Intellectual Disability]	1				+0		+1				+29.9%		-100.0%
Staff Nurse [Psychiatric]	9	+4	+4	+3	+3	+3	+4	+100.2%	+88.3%	+54.9%	+54.9%	+54.3%	+74.1%
Staff Nurses [General/ Children's]	2,610	-143	+2	+27	+49	+5	+38	-5.2%	+0.1%	+1.1%	+1.9%	+0.2%	+1.5%
Staff Nurse/ Staff Midwife	2,620	-140	+4	+31	+51	+9	+44	-5.1%	+0.2%	+1.2%	+2.0%	+0.3%	+1.7%
Public Health Nurse	14	-1	-2	-1	-1	+0	+0	-6.9%	-11.7%	-4.1%	-7.5%	+0.7%	+1.8%
Pre-registration Nurse/ Midwife Intern		-2						-100.0%	-100.0%	-100.0%	-100.0%	-100.0%	-100.0%
Post-registration Nurse/ Midwife Student		-1					-1	-100.0%	-100.0%	-100.0%	-100.0%	-100.0%	-100.0%
Nursing/ Midwifery awaiting registration	2	+2	+2	+2	-13	+2	+1	-100.0%	-100.0%	-100.0%	-89.3%	-100.0%	+50.0%
Nursing/ Midwifery Student	2	-1	+2	+2	-13	+2	-1	-40.0%	-100.0%	-100.0%	-89.3%	-100.0%	-25.0%
Nursing Education/Clinical	3	+1	+2	+2	+2	+2	+2	+50.0%	+200.0%	+200.0%	+200.0%	+200.0%	+200.0%
Nursing/ Midwifery other	3	+1	+2	+2	+2	+2	+2	+50.0%	+200.0%	+200.0%	+200.0%	+200.0%	+200.0%
Nursing & Midwifery	3,423	-14	+78	+96	+108	+81	+95	-0.4%	+2.3%	+2.9%	+3.3%	+2.4%	+2.9%
Dietitians	18	+10	+7	+2	+0	+1	+1	+129.9%	+71.5%	+12.5%	+1.9%	+3.0%	+8.9%
Occupational Therapists	117	+40	+24	+21	+22	+13	+3	+52.5%	+26.3%	+21.8%	+23.3%	+12.2%	+3.1%
Physiotherapists	132	+18	+11	+16	+11	+4	+8	+15.9%	+9.3%	+13.6%	+8.7%	+3.3%	+6.5%

Oct 2020 (Oct 2013 figure: 11,493)	WTE Oct 2020	WTE change since Oct 13	WTE change since Dec 15	WTE change since Dec 16	WTE change since Dec 17	WTE change since Dec 18	WTE change since Dec 19	% change since Oct 13	% change since Dec 15	% change since Dec 16	% change since Dec 17	% change since Dec 18	% change since Dec 19
Overall	13,342	+1,849	+736	+860	+239	+38	+110	+16.1%	+5.8%	+6.9%	+1.8%	+0.3%	+0.8%
Podiatrists & Chiropodists	11	-2	-1	-4	-5	-4	-1	-15.2%	-7.4%	-24.4%	-30.8%	-25.7%	-7.8%
Speech & Language Therapists	22	+5	+2	+2	-1	-1	-1	+25.4%	+10.0%	+10.3%	-5.6%	-2.7%	-2.9%
Therapy Professions	300	+71	+44	+37	+27	+13	+11	+31.0%	+17.2%	+14.1%	+9.8%	+4.5%	+3.9%
Clinical Measurement	0	+0	+0	+0	+0	+0	+0	-100.0%	-100.0%	-100.0%	-100.0%	+212.5%	+19.0%
Medical Laboratory				-1				-100.0%	-100.0%	-100.0%	-100.0%	-100.0%	-100.0%
Phlebotomists		-1	-1	-1	-1			-100.0%	-100.0%	-100.0%	-100.0%	-100.0%	-100.0%
Radiographers	5	-4	-2	-2	-2	-1	-1	-42.1%	-31.6%	-30.2%	-31.2%	-11.9%	-16.4%
Health Science/ Diagnostics	5	-4	-3	-4	-3	-0	-1	-45.6%	-36.8%	-42.8%	-36.5%	-8.8%	-15.1%
Social Care	3	-1	-1	+0	+0	-0	-0	-30.0%	-26.2%	+0.4%	+1.5%	-1.1%	-1.1%
Social Workers	99	+43	+24	+12	+15	+4	+0	+77.6%	+32.0%	+13.8%	+17.7%	+3.9%	+0.2%
Psychologists	1	-1	+1	+1	+1	+1	-1	-37.0%	+190.0%	+190.0%	-100.0%	+190.0%	-31.0%
Pharmacy	18	+5	+3	+4	+3	+2	+3	+38.9%	+22.0%	+24.6%	+18.1%	+11.0%	+18.8%
Other Health & Social Care	1	-3	-1	-1	-1	-1	+0	-85.3%	-59.7%	-63.2%	-63.2%	-63.2%	+38.9%
Play Therapists/ Specialists	1	-0	-0	-1				-30.1%	-30.1%	-37.1%			
H&SC, Other	2	-3	-1	-1	-1	-1	+0	-68.9%	-43.8%	-49.2%	-36.4%	-36.4%	+10.3%
Health & Social Care Professionals	427	+109	+67	+48	+42	+18	+13	+34.4%	+18.6%	+12.7%	+10.9%	+4.4%	+3.1%
Executive Management	13	+10	+7	+6	+5	+3	+1	+331.7%	+115.8%	+85.0%	+63.5%	+29.5%	+8.7%
Senior Management (VIII & GM)	66	+52	+30	+26	+29	+18	+4	+354.8%	+83.1%	+63.7%	+79.3%	+36.4%	+5.6%
Management (VIII & above)	79	+62	+37	+32	+34	+21	+5	+350.9%	+87.8%	+66.9%	+76.5%	+35.2%	+6.1%
Middle Management (V-VII)	169	+68	+62	+52	+41	+27	+5	+67.4%	+58.6%	+44.8%	+32.3%	+19.1%	+3.0%
Other Administrative		-1	-1	-1	-1	-1	-1	-100.0%	-100.0%	-100.0%	-100.0%	-100.0%	-100.0%
Administrative/ Supervisory (V to VII)	169	+67	+61	+51	+40	+26	+4	+65.4%	+57.1%	+43.6%	+31.3%	+18.3%	+2.4%
Clerical (III & IV)	575	+168	+114	+92	+66	+10	+4	+41.2%	+24.8%	+19.0%	+12.9%	+1.8%	+0.7%
Management & Administrative	823	+296	+213	+175	+140	+57	+12	+56.2%	+34.8%	+26.9%	+20.6%	+7.5%	+1.5%
Catering	218	+22	+8	+5	+7	+3	-3	+11.0%	+3.6%	+2.5%	+3.1%	+1.4%	-1.3%
Household Services	474	-157	-108	-90	-71	-44	-19	-24.8%	-18.6%	-15.9%	-13.0%	-8.5%	-3.8%
Other Support	29	-16	-16	-11	-15	-9	-5	-35.4%	-35.9%	-28.1%	-33.5%	-23.8%	-15.2%
Portering	78	-16	-7	-7	-6	-2	-4	-17.1%	-8.0%	-8.6%	-7.3%	-2.4%	-4.6%
Support	799	-167	-123	-103	-85	-52	-30	-17.3%	-13.4%	-11.4%	-9.6%	-6.1%	-3.7%
Maintenance	96	-15	-11	-8	-6	-6	-3	-13.6%	-9.9%	-7.4%	-5.8%	-6.3%	-2.5%
Maintenance/ Technical	96	-15	-11	-8	-6	-6	-3	-13.6%	-9.9%	-7.4%	-5.8%	-6.3%	-2.5%
General Support	895	-182	-134	-110	-91	-59	-33	-16.9%	-13.0%	-11.0%	-9.2%	-6.1%	-3.5%
HCA, Nurse's Aide, etc.	4,116	+546	+130	+70	+31	-15	+95	+15.3%	+3.3%	+1.7%	+0.8%	-0.4%	+2.4%
Health & Social Care Assistants	26	+3	-2	-0	+0	+2	+5	+10.8%	-6.3%	-0.1%	+0.2%	+7.0%	+21.9%
Health Care Assistants	4,142	+548	+128	+70	+31	-13	+99	+15.2%	+3.2%	+1.7%	+0.8%	-0.3%	+2.5%
Home Help	3,355	+1,046	+355	+560	-1	-65	-87	+45.3%	+11.8%	+20.0%	-0.0%	-1.9%	-2.5%
Care, other	149	+30	+16	+10	-2	+3	+8	+25.5%	+12.4%	+7.4%	-1.4%	+1.9%	+5.4%

Oct 2020 (Oct 2013 figure: 11,493)	WTE Oct 2020	WTE change since Oct 13	WTE change since Dec 15	WTE change since Dec 16	WTE change since Dec 17	WTE change since Dec 18	WTE change since Dec 19	% change since Oct 13	% change since Dec 15	% change since Dec 16	% change since Dec 17	% change since Dec 18	% change since Dec 19
Overall	13,342	+1,849	+736	+860	+239	+38	+110	+16.1%	+5.8%	+6.9%	+1.8%	+0.3%	+0.8%
Patient & Client Care	7,647	+1,625	+500	+640	+28	-75	+20	+27.0%	+7.0%	+9.1%	+0.4%	-1.0%	+0.3%

Source: Health Service Personnel Census