

Social Care Older Persons Services Employment Report: September 2021

Employment by Staff Group

Sep 2021 (Dec 2020 figure: 13,415)	WTE Aug 2021	WTE Sep 2021	WTE change since Aug 21	% change since Aug 21	WTE change since Dec 20	WTE change since Sep 20
Overall	13,490	13,504	+14	+0.1%	+89	-6
Consultants	6	8	+1	+18.8%	+3	+2
Registrars	11	10	-2	-13.8%	+1	+0
SHO/ Interns	18	18	+0	+1.6%	+4	+4
Medical/ Dental, other	83	84	+1	+1.5%	-19	-23
Medical & Dental	118	119	+1	+1.0%	-11	-16
Nurse/ Midwife Manager	764	767	+2	+0.3%	+20	+18
Nurse/ Midwife Specialist & AN/MP	43	40	-3	-7.8%	+2	+6
Staff Nurse/ Staff Midwife	2,694	2,686	-9	-0.3%	+62	+45
Public Health Nurse	11	11	+0	+0.2%	-2	-2
<i>Nursing/ Midwifery awaiting registration</i>	2	2.00			+1	-0
Nursing/ Midwifery Student	2	2			+1	-0
Nursing/ Midwifery other	4	3	-1	-25.0%	-1	
Nursing & Midwifery	3,519	3,508	-11	-0.3%	+81	+66
Therapy Professions	336	335	-2	-0.4%	+39	+35
Health Science/ Diagnostics	5	5	+0	+0.2%	-0	-0
Social Care	3	3				-0
Social Workers	97	97	+0	+0.4%	-3	-3
Psychologists	2	2	-0	-6.1%	+1	+0
Pharmacy	19	19	-0	-0.5%	+2	+1
H&SC, Other	2	2				+0
Health & Social Care Professionals	464	463	-1	-0.3%	+40	+34
Management (VIII & above)	83	88	+5	+6.5%	+9	+11
Administrative/ Supervisory (V to VII)	194	195	+1	+0.4%	+19	+25
Clerical (III & IV)	581	581	+0	+0.0%	-6	+20
Management & Administrative	858	864	+6	+0.7%	+22	+55
Support	788	795	+6	+0.8%	-7	-6
Maintenance/ Technical	93	93	-0	-0.2%	-2	-3
General Support	881	887	+6	+0.7%	-9	-9
Health Care Assistants	4,094	4,070	-24	-0.6%	-48	-261
Home Help	3,388	3,420	+31	+0.9%	-11	+112
Care, other	167	172	+5	+3.0%	+26	+13
Patient & Client Care	7,649	7,662	+12	+0.2%	-34	-135

Social Care Older Persons Services Employment by Administration (HSE / S38): September 2021

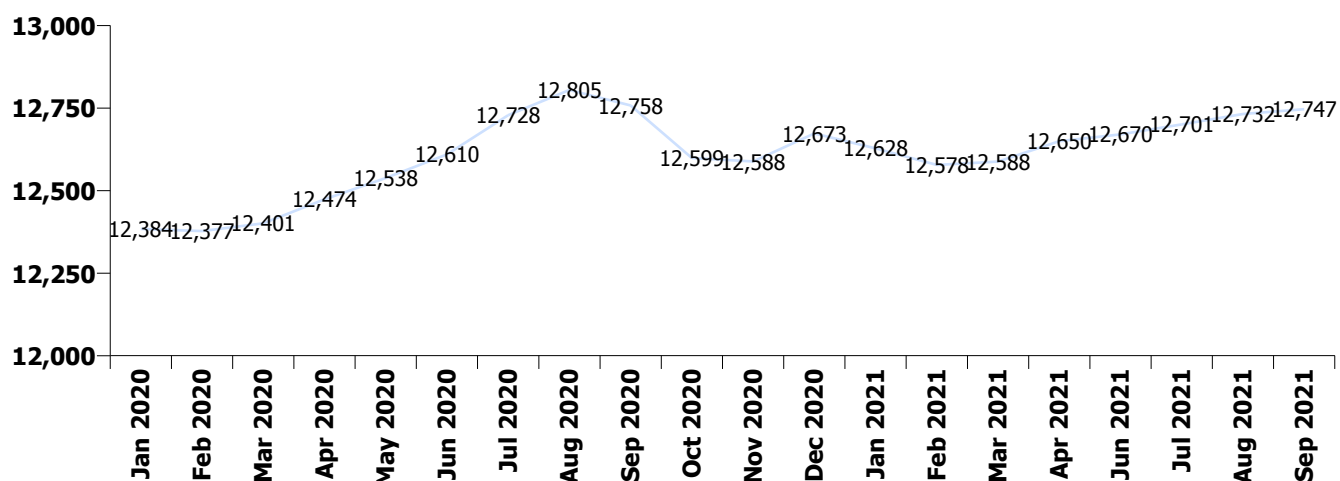
Sep 2021 (Dec 2020 figure: 13,415)	WTE Aug 2021	WTE Sep 2021	WTE change since Aug 21	% change since Aug 21	WTE change since Dec 20	WTE change since Sep 20
Overall	13,490	13,504	+14	+0.1%	+89	-6
HSE	12,732	12,747	+15	+0.1%	+74	-11
Section 38	758	757	-1	-0.1%	+15	+5

HSE

Sep 2021 (Dec 2020 figure: 12,673)	WTE Aug 2021	WTE Sep 2021	WTE change since Aug 21	% change since Aug 21	WTE change since Dec 20	WTE change since Sep 20
Overall	12,732	12,747	+15	+0.1%	+74	-11
Consultants	5	5.99	+1	+25.1%	+3	+2
Registrars	6	5.59	-1	-8.8%	-0	-1
SHO/ Interns	11	10.98	+0	+2.7%	+1	+1
Medical/ Dental, other	82	83.34	+1	+1.5%	-18	-22
Medical & Dental	104	106	+2	+2.1%	-14	-19
Nurse/ Midwife Manager	711	714.41	+3	+0.4%	+17	+17
Nurse/ Midwife Specialist & AN/MP	43	39.80	-3	-7.8%	+2	+6
Staff Nurse/ Staff Midwife	2,514	2,503.20	-10	-0.4%	+65	+52
Public Health Nurse	11	11.32	+0	+0.2%	-2	-2
<i>Nursing/ Midwifery awaiting registration</i>	2	2.00			+1	-0
Nursing/ Midwifery Student	2	2.00			+1	-0
Nursing/ Midwifery other	4	3.00	-1	-25.0%	-1	
Nursing & Midwifery	3,285	3,274	-12	-0.4%	+82	+73
Therapy Professions	258	256.41	-1	-0.5%	+33	+26
Health Science/ Diagnostics	4	4.11	+0	+0.2%	-0	-0
Social Care	3	2.74				-0
Social Workers	81	81.58	+0	+0.4%	-3	-4
Psychologists	2	1.81	-0	-7.7%	+1	+0
Pharmacy	13	13.23	-0	-2.0%	+1	+0
H&SC, Other	2	1.54				+0
Health & Social Care Professionals	363	361	-1	-0.4%	+33	+23
Management (VIII & above)	79	84.17	+5	+6.8%	+9	+10
Administrative/ Supervisory (V to VII)	172	172.47	+1	+0.4%	+15	+22
Clerical (III & IV)	551	551.16	+0	+0.0%	-5	+22
Management & Administrative	802	808	+6	+0.8%	+19	+53
Support	680	684.54	+5	+0.7%	-9	-7
Maintenance/ Technical	83	82.56	-0	-0.3%	-1	-2
General Support	763	767	+5	+0.6%	-11	-9
Health Care Assistants	3,863	3,842.11	-21	-0.6%	-50	-258
Home Help	3,388	3,419.59	+31	+0.9%	-11	+112
Care, other	164	169.05	+5	+3.1%	+27	+15
Patient & Client Care	7,416	7,431	+15	+0.2%	-35	-131

Section 38

Sep 2021 (Dec 2020 figure: 742)	WTE Aug 2021	WTE Sep 2021	WTE change since Aug 21	% change since Aug 21	WTE change since Dec 20	WTE change since Sep 20
Overall	758	757	-1	-0.1%	+15	+5
Consultants	2	1.60				
Registrars	5	4.00	-1	-20.0%	+1	+1
SHO/ Interns	7	7.00			+3	+3
Medical/ Dental, other	1	1.00			-1	-1
Medical & Dental	15	14	-1	-6.8%	+3	+3
Nurse/ Midwife Manager	53	52.19	-1	-1.2%	+3	+1
Staff Nurse/ Staff Midwife	181	182.39	+2	+0.9%	-3	-8
Nursing & Midwifery	234	235	+1	+0.4%	-1	-7
Therapy Professions	78	78.26	-0	-0.1%	+6	+9
Health Science/ Diagnostics	1	1.00				
Social Workers	16	15.61	-0	-0.0%		+1
Psychologists	1	0.50				
Pharmacy	6	5.94	+0	+2.9%	+1	+1
Health & Social Care Professionals	101	101	+0	+0.1%	+7	+11
Management (VIII & above)	4	4.00				+1
Administrative/ Supervisory (V to VII)	22	22.15	+0	+0.1%	+4	+3
Clerical (III & IV)	30	30.16	+0	+0.2%	-0	-1
Management & Administrative	56	56	+0	+0.1%	+3	+2
General Support	119	120	+1	+1.2%	+2	+0
Patient & Client Care	233	231	-2	-1.0%	+1	-4



Social Care Older Persons Services Employment by CHO etc. Sep 2021

CHO 1

Sep 2021 (Dec 2020 figure: 1,918)	WTE Aug 2021	WTE Sep 2021	WTE change since Aug 21	% change since Aug 21	WTE change since Dec 20	WTE change since Sep 20
Overall	1,904	1,914	+10	+0.5%	-4	+24
Medical/ Dental, other	15	15	+1	+6.3%	-17	-2
Medical & Dental	15	15	+1	+6.3%	-17	-2
Nurse/ Midwife Manager	87	90	+3	+3.0%	+2	+1
Nurse/ Midwife Specialist & AN/MP	10	8	-2	-23.2%	-1	-1
Staff Nurse/ Staff Midwife	327	324	-2	-0.7%	+10	+9
Nursing/ Midwifery other	1	1				
Nursing & Midwifery	425	423	-2	-0.4%	+11	+9
Therapy Professions	19	20	+2	+8.3%	+8	+8
Health Science/ Diagnostics	2	2	-0	-2.3%	+0	+0
Social Workers	14	13	-1	-6.3%	-2	-3
Health & Social Care Professionals	35	35	+1	+1.7%	+6	+5
Management (VIII & above)	8	8	+0	+0.3%	-0	-0
Administrative/ Supervisory (V to VII)	17	17	-0	-0.4%	+2	+2
Clerical (III & IV)	84	85	+1	+1.4%	-3	+1
Management & Administrative	109	110	+1	+1.1%	-1	+3
Support	115	115	+0	+0.1%	-4	-2
Maintenance/ Technical	7	7	-0	-4.3%	-0	+0
General Support	122	122	-0	-0.1%	-4	-2
Health Care Assistants	576	574	-2	-0.4%	-6	-53
Home Help	597	609	+13	+2.1%	+5	+67
Care, other	26	25	-1	-3.7%	+3	-3
Patient & Client Care	1,199	1,209	+9	+0.8%	+2	+10

CHO 2

Sep 2021 (Dec 2020 figure: 1,590)	WTE Aug 2021	WTE Sep 2021	WTE change since Aug 21	% change since Aug 21	WTE change since Dec 20	WTE change since Sep 20
Overall	1,565	1,544	-21	-1.4%	-46	-46
Medical/ Dental, other	11	11				
Medical & Dental	11	11				
Nurse/ Midwife Manager	70	72	+2	+2.5%	+6	+5
Nurse/ Midwife Specialist & AN/MP	2	2				
Staff Nurse/ Staff Midwife	312	310	-3	-0.8%	+4	-1
Public Health Nurse	1	1				
Nursing & Midwifery	385	385	-1	-0.2%	+10	+4
Therapy Professions	23	21	-2	-8.8%	-4	-6
Health Science/ Diagnostics	1	1				
Social Workers	10	10	-0	-3.3%	-0	-0
Pharmacy	1	1			-1	-1
H&SC, Other				-100.0%		
Health & Social Care Professionals	35	32	-2	-6.8%	-5	-7
Management (VIII & above)	2	3	+1	+43.4%	+1	+1
Administrative/ Supervisory (V to VII)	13	13	+0	+1.1%	+4	+3
Clerical (III & IV)	58	59	+1	+1.8%	-7	-7
Management & Administrative	73	75	+2	+2.8%	-2	-2
Support	57	56	-1	-2.2%	-0	-1
Maintenance/ Technical	17	17			-2	-2
General Support	75	73	-1	-1.7%	-2	-3
Health Care Assistants	523	516	-7	-1.3%	-9	-43
Home Help	421	408	-14	-3.2%	-48	-11
Care, other	42	44	+1	+3.0%	+11	+16
Patient & Client Care	987	968	-19	-1.9%	-47	-38

CHO 3

Sep 2021 (Dec 2020 figure: 1,029)	WTE Aug 2021	WTE Sep 2021	WTE change since Aug 21	% change since Aug 21	WTE change since Dec 20	WTE change since Sep 20
Overall	1,138	1,155	+17	+1.5%	+127	+125
Consultants	3	4	+1	+33.0%	+3	+3
Medical/ Dental, other	5	5			-1	+1
Medical & Dental	8	9	+1	+12.4%	+2	+4
Nurse/ Midwife Manager	63	65	+2	+3.5%	+1	+2
Nurse/ Midwife Specialist & AN/MP	4	4	-0	-4.0%	-0	+1
Staff Nurse/ Staff Midwife	262	259	-4	-1.4%	+27	+28
Public Health Nurse	1	1				
Nursing & Midwifery	330	328	-2	-0.5%	+28	+31
Therapy Professions	35	35	-0	-0.7%	+6	+6
Health Science/ Diagnostics	1	1	+0	+10.0%	-0	-0
Social Workers	5	5	+0	+4.1%	-1	-1
Psychologists	1	1	-0	-14.6%	+1	+1
Pharmacy	1	1				
Health & Social Care Professionals	42	42	-0	-0.3%	+5	+5
Management (VIII & above)	6	7	+1	+15.4%	+1	+1
Administrative/ Supervisory (V to VII)	20	20	+0	+2.1%	+3	+1
Clerical (III & IV)	55	55	-0	-0.3%	+6	+5
Management & Administrative	80	81	+1	+1.4%	+10	+7
Support	61	60	-0	-0.4%	-2	-2
Maintenance/ Technical	21	22	+0	+1.5%	+1	+1
General Support	82	82	+0	+0.1%	-2	-1
Health Care Assistants	317	316	-1	-0.4%	+15	+10
Home Help	266	280	+14	+5.3%	+63	+65
Care, other	13	17	+4	+27.1%	+5	+3
Patient & Client Care	596	613	+16	+2.7%	+83	+79

CHO 4

Sep 2021 (Dec 2020 figure: 2,930)	WTE Aug 2021	WTE Sep 2021	WTE change since Aug 21	% change since Aug 21	WTE change since Dec 20	WTE change since Sep 20
Overall	2,911	2,927	+16	+0.6%	-3	-23
Consultants	1	1	+0	+1.0%		-1
Registrars	3	2	-1	-20.6%	-1	-1
SHO/ Interns	2	2			+1	+1
Medical/ Dental, other	22	22	+0	+1.5%	-1	-12
Medical & Dental	28	27	-0	-0.7%	-1	-13
Nurse/ Midwife Manager	124	124	-1	-0.4%	+2	-5
Nurse/ Midwife Specialist & AN/MP	5	4	-0	-5.4%	-2	-2
Staff Nurse/ Staff Midwife	543	541	-1	-0.2%	+13	+17
Public Health Nurse	5	5	-0	-0.2%	-1	-1
Post-registration Nurse/ Midwife Student				-100.0%	-1	
Nursing/ Midwifery awaiting registration				-100.0%	-1	
Nursing/ Midwifery Student				-100.0%		
Nursing & Midwifery	676	674	-2	-0.3%	+12	+9
Therapy Professions	50	49	-2	-3.4%	+7	+1
Health Science/ Diagnostics	1	1				
Social Care	2	2				
Social Workers	11	12	+0	+1.2%	-1	-1
Pharmacy	5	4	-0	-3.5%	+1	-0
Health & Social Care Professionals	69	68	-2	-2.5%	+7	+0
Management (VIII & above)	16	17	+1	+6.5%	+3	+4
Administrative/ Supervisory (V to VII)	21	23	+3	+13.1%	+3	+5
Clerical (III & IV)	130	130	-0	-0.2%	-2	+12
Management & Administrative	167	170	+3	+2.1%	+4	+21
Support	113	116	+3	+2.7%	+3	+2
Maintenance/ Technical	7	7	-0	-0.3%	+1	
General Support	120	123	+3	+2.5%	+3	+2
Health Care Assistants	795	796	+1	+0.2%	+3	-12
Home Help	1,020	1,035	+15	+1.5%	-31	-21
Care, other	36	33	-2	-6.6%	-0	-10
Patient & Client Care	1,851	1,865	+14	+0.8%	-29	-42

CHO 5

Sep 2021 (Dec 2020 figure: 1,650)	WTE Aug 2021	WTE Sep 2021	WTE change since Aug 21	% change since Aug 21	WTE change since Dec 20	WTE change since Sep 20
Overall	1,648	1,645	-3	-0.2%	-5	-42
Medical/ Dental, other	15	15			+1	-5
Medical & Dental	15	15			+1	-5
Nurse/ Midwife Manager	87	87	-0	-0.1%	-1	+2
Nurse/ Midwife Specialist & AN/MP	3	3	-1	-19.8%	-1	+1
Staff Nurse/ Staff Midwife	315	314	-1	-0.4%	+6	-9
Public Health Nurse	2	2			-1	-1
Nursing & Midwifery	407	405	-2	-0.5%	+2	-7
Therapy Professions	31	32	+1	+1.7%	-1	-1
Social Workers	4	5	+1	+14.8%	+1	+1
Pharmacy				-100.0%	-1	-1
Health & Social Care Professionals	36	37	+1	+3.2%	-1	-1
Management (VIII & above)	4	5	+1	+19.2%	+1	+1
Administrative/ Supervisory (V to VII)	20	12	-8	-39.2%	-5	-4
Clerical (III & IV)	34	35	+0	+0.9%	+4	+3
Management & Administrative	59	52	-7	-11.7%	-0	+0
Support	79	79	+0	+0.6%	-4	-4
Maintenance/ Technical	4	4	+0	+0.7%	+0	-1
General Support	83	83	+0	+0.6%	-4	-5
Health Care Assistants	425	419	-6	-1.4%	-29	-64
Home Help	617	618	+1	+0.2%	+19	+33
Care, other	7	16	+9	+116.0%	+8	+7
Patient & Client Care	1,049	1,053	+4	+0.4%	-3	-25

CHO 6

Sep 2021 (Dec 2020 figure: 804)	WTE Aug 2021	WTE Sep 2021	WTE change since Aug 21	% change since Aug 21	WTE change since Dec 20	WTE change since Sep 20
Overall	809	814	+5	+0.6%	+10	-6
Registrars	2	1	-1	-50.0%		
Medical/ Dental, other	2	2	+0	+0.0%	-1	-2
Medical & Dental	4	3	-1	-26.6%	-1	-2
Nurse/ Midwife Manager	65	63	-2	-2.9%	+1	-2
Nurse/ Midwife Specialist & AN/MP	2	2			+1	+1
Staff Nurse/ Staff Midwife	195	199	+5	+2.4%	-6	-6
Nursing & Midwifery	262	265	+3	+1.0%	-5	-7
Therapy Professions	50	50	-0	-0.4%	+3	+5
Social Workers	7	7			-4	-3
Psychologists	1	1			-1	-2
Pharmacy	4	4	+0	+4.0%	+2	+2
Health & Social Care Professionals	61	61	-0	-0.0%	+0	+2
Management (VIII & above)	7	7	-0	-0.1%	+2	+2
Administrative/ Supervisory (V to VII)	25	25	+0	+0.1%	+6	+5
Clerical (III & IV)	31	31	+0	+1.1%	-2	-2
Management & Administrative	63	63	+0	+0.5%	+6	+5
Support	106	110	+4	+3.6%	+8	+6
Maintenance/ Technical	8	8			-1	-1
General Support	114	118	+4	+3.3%	+7	+5
Health Care Assistants	300	299	-1	-0.2%	+3	-7
Care, other	4	4	-0	-0.9%	-1	-1
Patient & Client Care	304	304	-1	-0.3%	+2	-9

CHO 7

Sep 2021 (Dec 2020 figure: 1,021)	WTE Aug 2021	WTE Sep 2021	WTE change since Aug 21	% change since Aug 21	WTE change since Dec 20	WTE change since Sep 20
Overall	1,016	1,007	-8	-0.8%	-14	-29
SHO/ Interns	2	2				
Medical/ Dental, other	2	2				-2
Medical & Dental	4	4				-2
Nurse/ Midwife Manager	97	96	-1	-1.0%	+10	+12
Nurse/ Midwife Specialist & AN/MP	3	3			+0	-0
Staff Nurse/ Staff Midwife	245	241	-4	-1.6%	-0	+0
<i>Nursing/ Midwifery awaiting registration</i>	2	2			+2	-0
Nursing/ Midwifery Student	2	2			+1	-0
Nursing & Midwifery	348	342	-5	-1.5%	+10	+11
Therapy Professions	17	16	-0	-0.4%	+3	+3
Social Workers	12	13	+0	+3.1%	+0	-1
Pharmacy	2	2				-1
H&SC, Other	1	1				
Health & Social Care Professionals	32	32	+0	+1.0%	+3	+1
Management (VIII & above)	6	6	-0	-2.6%	-1	-0
Administrative/ Supervisory (V to VII)	15	18	+3	+20.4%	+4	+6
Clerical (III & IV)	35	36	+1	+2.3%	-1	-1
Management & Administrative	57	61	+4	+6.5%	+2	+5
Support	116	115	-2	-1.5%	-4	+2
Maintenance/ Technical	2	2				
General Support	118	117	-2	-1.4%	-4	+2
Health Care Assistants	344	340	-3	-1.0%	-17	-39
Home Help	107	107	+0	+0.4%	-8	-7
Care, other	7	4	-3	-39.5%	-1	-1
Patient & Client Care	457	451	-5	-1.2%	-26	-47

CHO 8

Sep 2021 (Dec 2020 figure: 1,484)	WTE Aug 2021	WTE Sep 2021	WTE change since Aug 21	% change since Aug 21	WTE change since Dec 20	WTE change since Sep 20
Overall	1,465	1,455	-9	-0.6%	-28	-57
Medical/ Dental, other	11	11			-0	-0
Medical & Dental	11	11			-0	-0
Nurse/ Midwife Manager	89	88	-0	-0.5%	-0	-0
Nurse/ Midwife Specialist & AN/MP	10	10	-0	-0.2%	+6	+7
Staff Nurse/ Staff Midwife	255	251	-3	-1.3%	-4	-3
Public Health Nurse	3	3	+0	+1.1%	-0	+0
Nursing/ Midwifery other	3	2	-1	-33.3%	+0	+1
Nursing & Midwifery	359	354	-5	-1.3%	+2	+5
Therapy Professions	28	28	-0	-0.5%	+4	+9
Social Workers	7	7	+0	+0.9%	+2	+1
Pharmacy	3	3	-0	-3.2%	+1	+2
Health & Social Care Professionals	39	38	-0	-0.5%	+7	+12
Management (VIII & above)	6	7	+1	+17.7%	-0	-1
Administrative/ Supervisory (V to VII)	17	18	+2	+9.2%	-3	-2
Clerical (III & IV)	66	65	-1	-1.1%	-7	-6
Management & Administrative	88	90	+2	+2.1%	-10	-8
Support	24	25	+1	+3.7%	-0	-2
Maintenance/ Technical	23	23	-0	-1.1%	-1	-0
General Support	48	48	+1	+1.4%	-1	-2
Health Care Assistants	535	530	-6	-1.0%	-15	-49
Home Help	361	363	+2	+0.4%	-11	-14
Care, other	24	21	-3	-11.3%	-1	+0
Patient & Client Care	920	913	-7	-0.7%	-26	-63

CHO 9

Sep 2021 (Dec 2020 figure: 914)	WTE Aug 2021	WTE Sep 2021	WTE change since Aug 21	% change since Aug 21	WTE change since Dec 20	WTE change since Sep 20
Overall	961	965	+4	+0.4%	+51	+39
Consultants	2	3	+0	+8.3%	+0	
Registrars	7	7			+2	+1
SHO/ Interns	14	14	+0	+2.1%	+3	+3
Medical/ Dental, other	1	1	-0	-1.0%	-0	-0
Medical & Dental	24	24	+0	+2.0%	+5	+4
Nurse/ Midwife Manager	82	82	-0	-0.3%	+1	+4
Nurse/ Midwife Specialist & AN/MP	5	5			-1	-0
Staff Nurse/ Staff Midwife	241	246	+5	+2.1%	+12	+8
Public Health Nurse				-100.0%		
Nursing/ Midwifery other				-100.0%	-1	-1
Nursing & Midwifery	327	332	+5	+1.4%	+10	+10
Therapy Professions	83	84	+1	+1.0%	+13	+10
Health Science/ Diagnostics	1	1				
Social Care	1	1				-0
Social Workers	26	26	+0	+0.8%	+2	+4
Psychologists	1	1	-0	-1.0%	+1	+1
Pharmacy	4	4				
H&SC, Other	1	1				+0
Health & Social Care Professionals	116	117	+1	+0.9%	+16	+15
Management (VIII & above)	10	11	+1	+12.3%	+2	+3
Administrative/ Supervisory (V to VII)	24	23	-1	-4.3%	+2	+5
Clerical (III & IV)	57	52	-4	-7.4%	+8	+8
Management & Administrative	90	86	-4	-4.5%	+12	+16
Support	117	118	+1	+0.9%	-3	-5
Maintenance/ Technical	2	2				
General Support	119	120	+1	+0.9%	-3	-5
Health Care Assistants	278	279	+1	+0.2%	+8	-3
Care, other	6	7	+0	+0.5%	+1	+1
Patient & Client Care	285	286	+1	+0.2%	+9	-2

other Community Services

Sep 2021 (Dec 2020 figure: 75)	WTE Aug 2021	WTE Sep 2021	WTE change since Aug 21	% change since Aug 21	WTE change since Dec 20	WTE change since Sep 20
Overall	73	76	+3	+4.7%	+1	+10
Health Science/ Diagnostics				-100.0%		
Health & Social Care Professionals				-100.0%		
Management (VIII & above)	18	18	-0	-1.4%	+1	-0
Administrative/ Supervisory (V to VII)	22	24	+2	+8.4%	+3	+4
Clerical (III & IV)	32	33	+2	+5.7%	-3	+5
Management & Administrative	72	75	+3	+4.8%	+0	+9
Health Care Assistants	0	0				
<i>Other Care Grades</i>	1	1			+1	+1
Care, other	1	1			+1	+1
Patient & Client Care	1	1			+1	+1

Social Care Older Persons Services Employment by CHO & Admin : Sep 2021

Sep 2021 (Dec 2020 figure: 13,415)	WTE Aug 2021	WTE Sep 2021	WTE change since Aug 21	% change since Aug 21	WTE change since Dec 20	WTE change since Sep 20
Overall	13,490	13,504	+14	+0.1%	+89	-6
CHO 1	1,904	1,914	+10	+0.5%	-4	+24
CHO 2	1,565	1,544	-21	-1.4%	-46	-46
CHO 3	1,138	1,155	+17	+1.5%	+127	+125
CHO 4	2,911	2,927	+16	+0.6%	-3	-23
CHO 5	1,648	1,645	-3	-0.2%	-5	-42
CHO 6	809	814	+5	+0.6%	+10	-6
CHO 7	1,016	1,007	-8	-0.8%	-14	-29
CHO 8	1,465	1,455	-9	-0.6%	-28	-57
CHO 9	961	965	+4	+0.4%	+51	+39
other Community Services	73	76	+3	+4.7%	+1	+10

Social Care Older Persons Services Employment by CHO etc. Sep 2021

Incorporated Orthopaedic Hospital

Sep 2021 (Dec 2020 figure: 267)	WTE Aug 2021	WTE Sep 2021	WTE change since Aug 21	% change since Aug 21	WTE change since Dec 20	WTE change since Sep 20
Overall	278	279	+1	+0.4%	+12	+10
Consultants	2	2				
Registrars	3	3			+1	+1
SHO/ Interns	7	7			+3	+3
Medical & Dental	12	12			+4	+4
Nurse/ Midwife Manager	18	18				+1
Staff Nurse/ Staff Midwife	70	70				-4
Nursing & Midwifery	88	88				-3
Therapy Professions	35	35			+1	+1
Health Science/ Diagnostics	1	1				
Social Workers	9	9				
Pharmacy	4	4				
Health & Social Care Professionals	49	49			+1	+1
Management (VIII & above)	2	2				+1
Administrative/ Supervisory (V to VII)	8	8			+2	+2
Clerical (III & IV)	10	10				-1
Management & Administrative	20	20			+2	+2
Support	40	41	+1	+2.5%	+1	+1
Maintenance/ Technical	2	2				
General Support	42	43	+1	+2.4%	+1	+1
Health Care Assistants	68	68			+4	+4
Care, other	0	0				
Patient & Client Care	68	68			+4	+4

Leopardstown Park Hospital

Sep 2021 (Dec 2020 figure: 207)	WTE Aug 2021	WTE Sep 2021	WTE change since Aug 21	% change since Aug 21	WTE change since Dec 20	WTE change since Sep 20
Overall	211	209	-3	-1.4%	+2	-1
Medical/ Dental, other				-100.0%	-1	-1
Medical & Dental				-100.0%	-1	-1
Nurse/ Midwife Manager	16	15	-1	-4.1%	+2	-1
Staff Nurse/ Staff Midwife	41	40	-0	-0.8%	-2	-1
Nursing & Midwifery	57	56	-1	-1.7%	-0	-1
Therapy Professions	10	9	-1	-11.4%	-1	+0
Social Workers	1	1				
Pharmacy	2	2	+0	+7.5%	+1	+1
Health & Social Care Professionals	13	12	-1	-7.2%	-0	+1
Management (VIII & above)	1	1				
Administrative/ Supervisory (V to VII)	6	6	+0	+0.3%	-1	-1
Clerical (III & IV)	12	12				
Management & Administrative	19	19	+0	+0.1%	-1	-1
Support	36	36	+0	+1.1%	+2	+1
Maintenance/ Technical	4	4				
General Support	40	40	+0	+1.0%	+2	+1
Health Care Assistants	81	80	-1	-1.6%	+3	+2
Care, other	2	2	-0	-1.7%	-1	-1
Patient & Client Care	84	82	-1	-1.6%	+3	+1

Sep 2021 (Dec 2020 figure: 268)	WTE Aug 2021	WTE Sep 2021	WTE change since Aug 21	% change since Aug 21	WTE change since Dec 20	WTE change since Sep 20
Overall	268	269	+1	+0.4%	+1	-4
Registrars	2	1	-1	-50.0%		
Medical/ Dental, other	1	1				
Medical & Dental	3	2	-1	-33.3%		
Nurse/ Midwife Manager	19	19			+1	+0
Staff Nurse/ Staff Midwife	70	72	+2	+2.9%	-2	-4
Nursing & Midwifery	89	91	+2	+2.3%	-0	-3
Therapy Professions	34	35	+1	+3.0%	+6	+8
Social Workers	6	6				+1
Psychologists	1	1				
Health & Social Care Professionals	40	41	+1	+2.5%	+6	+9
Management (VIII & above)	1	1				
Administrative/ Supervisory (V to VII)	8	8			+3	+2
Clerical (III & IV)	9	9	+0	+0.6%	-0	-0
Management & Administrative	18	18	+0	+0.3%	+3	+2
Support	33	33	+0	+0.1%	-0	-0
Maintenance/ Technical	4	4			-1	-1
General Support	37	37	+0	+0.1%	-1	-1
Health Care Assistants	81	80	-1	-1.2%	-5	-9
Care, other	1	1			-1	-1
Patient & Client Care	82	81	-1	-1.2%	-6	-9

Social Care Older Persons Services Employment by Grade Group: Sep 2021

Sep 2021 (Dec 2020 figure: 13,415)	WTE Aug 2021	WTE Sep 2021	WTE change since Aug 21	% change since Aug 21	WTE change since Dec 20	WTE change since Sep 20
Overall	13,490	13,504	+14	+0.1%	+89	-6
Consultant Medicine	6	8	+1	+18.8%	+3	+2
Consultants	6	8	+1	+18.8%	+3	+2
Registrar	7	6	-1	-15.4%	-0	
Senior Registrar	2	1	-1	-33.3%	+0	+0
Specialist Registrar	3	3			+1	
Registrars	11	10	-2	-13.8%	+1	+0
SHO/ Interns	18	18	+0	+1.6%	+4	+4
Medical/ Dental, other	83	84	+1	+1.5%	-19	-23
Medical & Dental	118	119	+1	+1.0%	-11	-16
Clinical Nurse/ Midwife Manager	557	555	-2	-0.4%	+19	+20
Director Nursing/Midwifery, Assistant	107	108	+1	+0.6%	+2	-1
Director of Nursing/Midwifery	100	104	+4	+4.0%	-0	-1
Nurse/ Midwife Manager	764	767	+2	+0.3%	+20	+18
Advanced Nurse/ Midwife Practitioner	21	19	-2	-11.2%	+2	+5
Clinical Nurse/ Midwife Specialist	22	21	-1	-4.6%	-1	+0
Nurse/ Midwife Specialist & AN/MP	43	40	-3	-7.8%	+2	+6
Staff Midwives	1	0	-0	-31.7%	-0	-0
Staff Nurse [Intellectual Disability]	1	1	+0	+1.0%		
Staff Nurse [Psychiatric]	7	7	+0	+1.5%	+2	-2
Staff Nurses [General/ Children's]	2,686	2,677	-9	-0.3%	+60	+47
Staff Nurse/ Staff Midwife	2,694	2,686	-9	-0.3%	+62	+45
Public Health Nurse	11	11	+0	+0.2%	-2	-2
Nursing/ Midwifery awaiting registration	2	2			+1	-0
Nursing/ Midwifery Student	2	2			+1	-0
Nursing Education/Clinical	4	3	-1	-25.0%	-1	
Nursing/ Midwifery other	4	3	-1	-25.0%	-1	
Nursing & Midwifery	3,519	3,508	-11	-0.3%	+81	+66
Dietitians	24	25	+1	+4.3%	+8	+6
Occupational Therapists	121	120	-0	-0.2%	+7	+5
Physiotherapists	147	148	+1	+0.5%	+16	+17
Podiatrists & Chiropodists	14	10	-3	-23.6%	-2	-1
Speech & Language Therapists	30	30	+0	+0.7%	+11	+9
Therapy Professions	336	335	-2	-0.4%	+39	+35
Clinical Measurement		0	+0	-100.0%	-0	-0
Radiographers	5	5	-0	-0.8%	+0	+0
Health Science/ Diagnostics	5	5	+0	+0.2%	-0	-0
Social Care	3	3				-0
Social Workers	97	97	+0	+0.4%	-3	-3
Psychologists	2	2	-0	-6.1%	+1	+0
Pharmacy	19	19	-0	-0.5%	+2	+1
Other Health & Social Care	1	1				+0
Play Therapists/ Specialists	1	1				
H&SC, Other	2	2				+0
Health & Social Care Professionals	464	463	-1	-0.3%	+40	+34
Executive Management	16	15	-1	-6.3%	-0	+2
Senior Management (VIII & GM)	67	73	+6	+9.5%	+9	+9
Management (VIII & above)	83	88	+5	+6.5%	+9	+11

Sep 2021 (Dec 2020 figure: 13,415)	WTE Aug 2021	WTE Sep 2021	WTE change since Aug 21	% change since Aug 21	WTE change since Dec 20	WTE change since Sep 20
Overall	13,490	13,504	+14	+0.1%	+89	-6
Middle Management (V-VII)	194	195	+1	+0.4%	+19	+25
Other Administrative				-100.0%		-1
Administrative/ Supervisory (V to VII)	194	195	+1	+0.4%	+19	+25
Clerical (III & IV)	581	581	+0	+0.0%	-6	+20
Management & Administrative	858	864	+6	+0.7%	+22	+55
Catering	212	217	+4	+2.1%	+0	-6
Household Services	472	475	+3	+0.6%	-4	+6
Other Support	29	30	+1	+2.3%	+1	-0
Portering	75	73	-2	-2.4%	-3	-6
Support	788	795	+6	+0.8%	-7	-6
Maintenance	89	89	-0	-0.2%	-6	-7
Technical Services	4	4			+4	+4
Maintenance/ Technical	93	93	-0	-0.2%	-2	-3
General Support	881	887	+6	+0.7%	-9	-9
HCA, Nurse's Aide, etc.	4,052	4,028	-23	-0.6%	-40	-11
HCA (Student Nurse/Midwife COVID-19)	6	3	-2	-38.0%	-19	-262
Health & Social Care Assistants	36	37	+1	+2.8%	+10	+12
Swabber (COVID-19)		1	+1	-100.0%	+1	+1
Health Care Assistants	4,094	4,070	-24	-0.6%	-48	-261
Home Help	3,388	3,420	+31	+0.9%	-11	+112
Care, other	167	172	+5	+3.0%	+26	+13
Patient & Client Care	7,649	7,662	+12	+0.2%	-34	-135

Employment by WTE, Headcount, Gender, Full-Time /Part-Time etc.: Sep 2021

Social Care Older Persons Services Staff Group	WTE	Headcount	WTE: no.	% Male	% female	Male WTE: no.	Female WTE: no.	% Total Perm	% Male Perm	% Female Perm	% Total Full Time	% Total Part Time	% Male FT	% Female FT
Overall	13,504	16,474	1.22	13.3%	86.7%	1.11	1.24	82.3%	79.2%	82.7%	58.9%	41.1%	82.9%	55.2%
Consultant Medicine	8	10	1.32	20.0%	80.0%	1.33	1.31	60.0%	60.0%	62.5%	50.0%	50.0%	50.0%	50.0%
Consultants	8	10	1.32	20.0%	80.0%	1.33	1.31	60.0%	50.0%	62.5%	50.0%	50.0%	50.0%	50.0%
Registrar	6	6	1.09	33.3%	66.7%	1.00	1.14	50.0%	50.0%	25.0%	83.3%	16.7%	100.0%	75.0%
Senior Registrar	1	2	1.85	50.0%	50.0%	12.50	1.00	50.0%	50.0%	100.0%	50.0%	50.0%	0.0%	100.0%
Specialist Registrar	3	3	1.00	66.7%	33.3%	1.00	1.00	0.0%	0.0%	0.0%	100.0%	0.0%	100.0%	100.0%
Registrars	10	11	1.15	45.5%	54.5%	1.23	1.09	36.4%	40.0%	33.3%	81.8%	18.2%	80.0%	83.3%
SHO/ Interns	18	18	1.00	22.2%	77.8%	1.00	1.00	11.1%	50.0%	0.0%	100.0%	0.0%	100.0%	100.0%
Medical/ Dental, other	84	155	1.84	63.2%	36.8%	1.97	1.64	54.2%	57.1%	49.1%	35.5%	64.5%	29.6%	45.6%
Medical & Dental	119	194	1.62	56.2%	43.8%	1.84	1.41	49.5%	56.0%	41.2%	44.8%	55.2%	34.9%	57.6%
Clinical Nurse/ Midwife Manager	555	599	1.08	7.5%	92.5%	1.03	1.08	95.7%	95.7%	95.8%	80.3%	19.7%	93.3%	79.2%
Director Nursing/Midwifery, Assistant	108	113	1.05	5.3%	94.7%	1.00	1.05	99.1%	99.1%	99.1%	92.0%	8.0%	100.0%	91.6%
Director of Nursing/Midwifery	104	106	1.02	4.7%	95.3%	1.02	1.02	98.1%	98.1%	98.0%	96.2%	3.8%	100.0%	96.0%
Nurse/ Midwife Manager	767	818	1.07	6.8%	93.2%	1.03	1.07	96.5%	94.6%	96.6%	84.0%	16.0%	94.6%	83.2%
Advanced Nurse/ Midwife Practitioner	19	20	1.05	10.0%	90.0%	1.09	1.05	100.0%	100.0%	100.0%	100.0%	0.0%	100.0%	100.0%
Clinical Nurse/ Midwife Specialist	21	24	1.16	16.7%	83.3%	1.00	1.19	100.0%	100.0%	100.0%	70.8%	29.2%	100.0%	65.0%
Nurse/ Midwife Specialist & AN/MP	40	44	1.11	13.6%	86.4%	1.03	1.12	100.0%	100.0%	100.0%	84.1%	15.9%	100.0%	81.6%
Staff Midwives	0	1	2.44		100.0%		2.44	100.0%	100.0%	100.0%	0.0%	100.0%		0.0%
Staff Nurse [Intellectual Disability]	1	1	1.00		100.0%		1.00	100.0%	100.0%	100.0%	100.0%	0.0%		100.0%
Staff Nurse [Psychiatric]	7	8	1.18	25.0%	75.0%	1.00	1.26	50.0%	50.0%	33.3%	62.5%	37.5%	100.0%	50.0%
Staff Nurses [General/ Children's]	2,677	3,110	1.16	8.1%	91.9%	1.05	1.17	86.6%	86.6%	87.0%	63.5%	36.5%	92.8%	61.0%
Staff Nurse/ Staff Midwife	2,686	3,120	1.16	8.1%	91.9%	1.05	1.17	86.5%	82.2%	86.9%	63.5%	36.5%	92.9%	60.9%
Public Health Nurse	11	14	1.24		100.0%	#DIV/0	1.24	100.0%		100.0%	57.1%	42.9%	#DIV/0	57.1%
Nursing/ Midwifery Student	2	2	1.00		100.0%	#DIV/0	1.00	0.0%		0.0%	100.0%	0.0%	#DIV/0	100.0%
Nursing Education/Clinical	3	3	1.00		100.0%		1.00	100.0%	100.0%	100.0%	100.0%	0.0%		100.0%
Nursing/ Midwifery other	3	3	1.00		100.0%	#DIV/0	1.00	100.0%		100.0%	100.0%	0.0%	#DIV/0	100.0%
Nursing & Midwifery	3,508	4,001	1.14	7.9%	92.1%	1.04	1.15	88.7%	84.8%	89.0%	68.0%	32.0%	93.3%	65.8%
Dietitians	25	32	1.26	6.3%	93.8%	1.00	1.28	93.8%	93.8%	96.7%	62.5%	37.5%	100.0%	60.0%

Occupational Therapists	120	137	1.14	8.8%	91.2%	1.01	1.15	78.1%	78.1%	76.0%	81.0%	19.0%	100.0%	79.2%
Physiotherapists	148	172	1.16	15.7%	84.3%	1.06	1.18	87.2%	87.2%	86.2%	74.4%	25.6%	88.9%	71.7%
Podiatrists & Chiropodists	10	15	1.44	6.7%	93.3%	1.00	1.48	60.0%	60.0%	57.1%	53.3%	46.7%	100.0%	50.0%
Speech & Language Therapists	30	35	1.15		100.0%		1.15	91.4%	91.4%	91.4%	74.3%	25.7%		74.3%
Therapy Professions	335	391	1.17	10.7%	89.3%	1.04	1.19	83.9%	92.9%	82.8%	74.9%	25.1%	92.9%	72.8%
Clinical Measurement	0	1	20.00		100.0%		20.00	0.0%	0.0%	0.0%	0.0%	100.0%		0.0%
Radiographers	5	9	1.78	11.1%	88.9%	2.00	1.75	88.9%	88.9%	87.5%	11.1%	88.9%	0.0%	12.5%
Health Science/ Diagnostics	5	10	1.96	10.0%	90.0%	2.00	1.95	80.0%	100.0%	77.8%	10.0%	90.0%	0.0%	11.1%
Social Care	3	5	1.82		100.0%	#DIV/0	1.82	100.0%		100.0%	0.0%	100.0%	#DIV/0	0.0%
Social Workers	97	111	1.14	14.4%	85.6%	1.06	1.16	90.1%	81.3%	91.6%	84.7%	15.3%	100.0%	82.1%
Psychologists	2	3	1.30		100.0%	#DIV/0	1.30	100.0%		100.0%	66.7%	33.3%	#DIV/0	66.7%
Pharmacy	19	26	1.36	15.4%	84.6%	1.22	1.39	76.9%	100.0%	72.7%	50.0%	50.0%	75.0%	45.5%
Other Health & Social Care	1	1	1.85		100.0%		1.85	100.0%	100.0%	100.0%	0.0%	100.0%		0.0%
Play Therapists/ Specialists	1	1	1.00	100.0%		1.00		100.0%	100.0%		100.0%	0.0%	100.0%	
H&SC, Other	2	2	1.30	50.0%	50.0%	1.00	1.85	100.0%	100.0%	100.0%	50.0%	50.0%	100.0%	0.0%
Health & Social Care	463	548	1.18	11.7%	88.3%	1.06	1.20	85.0%	90.6%	84.3%	73.7%	26.3%	92.2%	71.3%
Executive Management	15	15	1.01	53.3%	46.7%	1.00	1.03	100.0%	100.0%	100.0%	100.0%	0.0%	100.0%	100.0%
Senior Management (VIII & GM)	73	78	1.06	32.1%	67.9%	1.10	1.05	91.0%	91.0%	94.3%	96.2%	3.8%	92.0%	98.1%
Management (VIII & above)	88	93	1.05	35.5%	64.5%	1.07	1.05	92.5%	87.9%	95.0%	96.8%	3.2%	93.9%	98.3%
Administrative/ Supervisory (V to VII)	195	208	1.07	16.8%	83.2%	1.04	1.07	95.2%	91.4%	96.0%	82.2%	17.8%	85.7%	81.5%
Clerical (III & IV)	581	678	1.17	8.7%	91.3%	1.05	1.18	84.2%	78.0%	84.8%	64.2%	35.8%	91.5%	61.6%
Management & Administrative	864	979	1.13	13.0%	87.0%	1.05	1.15	87.3%	84.3%	87.8%	71.1%	28.9%	90.6%	68.2%
Catering	217	239	1.10	35.1%	64.9%	1.07	1.12	93.3%	93.3%	96.1%	72.8%	27.2%	91.7%	62.6%
Household Services	475	545	1.15	17.4%	82.6%	1.07	1.17	83.5%	83.5%	84.0%	59.4%	40.6%	85.3%	54.0%
Other Support	30	36	1.20	55.6%	44.4%	1.08	1.40	83.3%	83.3%	87.5%	63.9%	36.1%	85.0%	37.5%
Portering	73	76	1.04	98.7%	1.3%	1.03	1.35	89.5%	89.5%	100.0%	93.4%	6.6%	93.3%	100.0%
Support	795	896	1.13	30.6%	69.4%	1.06	1.16	86.6%	85.4%	87.1%	66.1%	33.9%	89.4%	55.8%
Maintenance/ Technical	93	96	1.04	99.0%	1.0%	1.04	1.00	94.8%	94.7%	100.0%	93.8%	6.3%	93.7%	100.0%
General Support	887	992	1.12	37.2%	62.8%	1.05	1.16	87.4%	87.8%	87.2%	68.8%	31.3%	90.5%	55.9%
HCA, Nurse's Aide, etc.	4,028	4,608	1.14	20.4%	79.6%	1.06	1.17	87.5%	87.5%	87.8%	61.9%	38.1%	86.7%	55.5%
HCA (Student Nurse/Midwife COVID-19)	3	7	2.03	28.6%	71.4%	2.35	1.93	0.0%	0.0%	0.0%	28.6%	71.4%	50.0%	20.0%
Health & Social Care Assistants	37	41	1.10	22.0%	78.0%	1.09	1.10	82.9%	82.9%	81.3%	85.4%	14.6%	88.9%	84.4%
Swabber (COVID-19)	1	1	1.16		100.0%		1.16	0.0%	0.0%	0.0%	100.0%	0.0%		100.0%
Health Care Assistants	4,070	4,657	1.14	20.4%	79.6%	1.06	1.17	87.3%	86.1%	87.6%	62.0%	38.0%	86.7%	55.7%
Home Help	3,420	4,886	1.43	3.7%	96.3%	1.35	1.43	71.4%	35.0%	72.8%	42.7%	57.3%	58.9%	42.1%

Care, other	172	217	1.26	33.2%	66.8%	1.60	1.14	77.4%	44.4%	93.8%	65.9%	34.1%	58.3%	69.7%
Patient & Client Care	7,662	9,760	1.27	12.3%	87.7%	1.12	1.30	79.1%	76.0%	79.5%	52.4%	47.6%	80.8%	48.4%

Employment by WTE, Headcount, Gender, Full-Time /Part-Time etc.: Sep 2021

Social Care Older Persons Services CHO	WTE	Headcount	WTE: no.	% Male	% female	Male WTE: no.	Female WTE: no.	% Total Perm	% Male Perm	% Female Perm	% Total Full Time	% Total Part Time	% Male FT	% Female FT
Overall	13,504	16,474	1.22	13.3%	86.7%	1.11	1.24	82.3%	79.2%	82.7%	58.9%	41.1%	82.9%	55.2%
CHO 1	1,914	2,305	1.20	12.3%	87.7%	1.17	1.21	72.8%	72.8%	71.2%	43.0%	57.0%	66.8%	39.7%
CHO 2	1,544	1,825	1.18	12.6%	87.4%	1.06	1.20	91.0%	91.0%	91.5%	49.3%	50.7%	87.8%	43.7%
CHO 3	1,155	1,469	1.27	12.1%	87.9%	1.06	1.31	90.7%	90.7%	91.4%	54.9%	45.1%	89.3%	50.2%
CHO 4	2,927	3,826	1.31	11.2%	88.8%	1.18	1.33	63.7%	63.7%	65.7%	74.4%	25.6%	86.2%	72.9%
CHO 5	1,645	1,971	1.20	9.9%	90.1%	1.10	1.21	96.7%	96.7%	97.4%	46.4%	53.6%	79.0%	42.8%
CHO 6	814	887	1.09	25.1%	74.9%	1.06	1.10	90.1%	90.1%	89.8%	77.6%	22.4%	88.8%	73.8%
CHO 7	1,007	1,158	1.15	16.4%	83.6%	1.06	1.17	90.5%	90.5%	91.3%	67.6%	32.4%	86.8%	63.8%
CHO 8	1,455	1,856	1.28	11.9%	88.1%	1.18	1.29	89.4%	89.4%	89.9%	47.5%	52.5%	74.7%	43.8%
CHO 9	965	1,094	1.13	19.9%	80.1%	1.09	1.15	87.8%	87.8%	88.6%	75.2%	24.8%	88.1%	72.0%
other Community Services	76	83	1.09	25.3%	74.7%	1.05	1.10	89.2%	89.2%	90.3%	88.0%	12.0%	90.5%	87.1%

Summary Staff Movement: September 2021

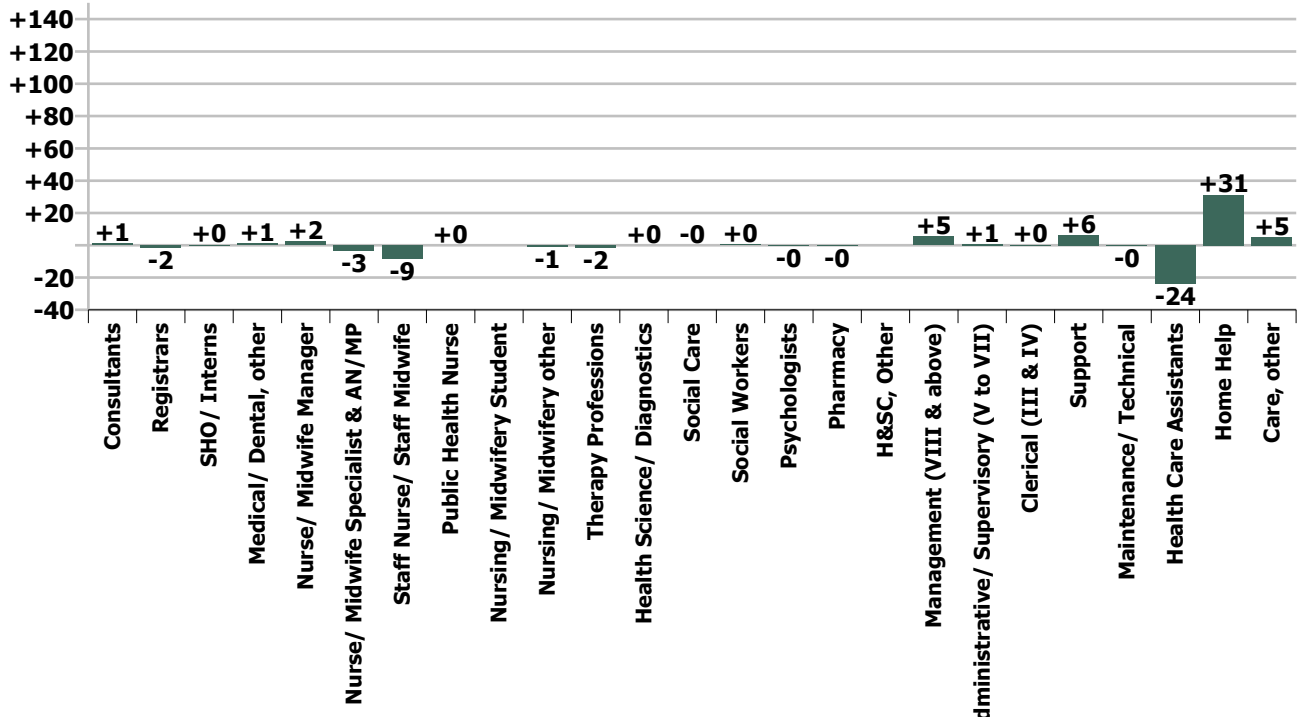
Month-on-month
Summary

WTE change since Aug 21	% change since Aug 21	overall	Consultants	Registrars	SHO/ Interns	Medical/ Dental, other	Medical & Dental	Nurse/ Midwife Manager	Nurse/ Midwife Specialist & AN/MP	Staff Nurse/ Staff Midwife	Public Health Nurse	Nursing/ Midwifery Student	Nursing/ Midwifery other	Nursing & Midwifery	Therapy Professions	Health Science/ Diagnostics	Social Care	Social Workers	Psychologists	Pharmacy	H&SC, Other	Health & Social Care Professionals	Management (VIII & above)	Administrativ e/ Supervisory (V to VII)	Clerical (III & IV)	Management & Administrative	Support	Maintenance/ Technical	General Support	Health Care Assistants	Home Help	Care, other	Patient & Client Care
Overall	+0.1%	+14	+1.2	-1.5	+0.3	+1.2	+1.2	+2.3	-3.4	-8.7	+0.0	0.0	-1.0	-10.7	-1.5	+0.0	0.0	+0.4	-0.1	-0.1	0.0	-1.4	+5.4	+0.7	+0.1	+6.2	+6.2	-0.2	+6.0	-23.7	+31.1	+5.0	+12.4
CHO 1	+0.5%	+10				+0.9	+0.9	+2.6	-2.3	-2.2				-1.9	+1.5	-0.0		-0.9				+0.6	+0.0	-0.1	+1.2	+1.2	+0.2	-0.3	-0.1	-2.3	+12.6	-1.0	+9.3
CHO 2	-1.4%	-21					0.0	+1.8		-2.6				-0.8	-2.0			-0.3				-2.4	+0.9	+0.2	+1.0	+2.1	-1.3		-1.3	-6.7	-13.5	+1.3	-19.0
CHO 3	+1.5%	+17	+1.0				+1.0	+2.2	-0.1	-3.6				-1.6	-0.3	+0.1		+0.2	-0.1			-0.1	+0.9	+0.4	-0.2	+1.1	-0.2	+0.3	+0.1	-1.3	+14.0	+3.6	+16.3
CHO 4	+0.6%	+16	+0.0	-0.5		+0.3	-0.2	-0.5	-0.3	-1.3	-0.0			-2.1	-1.7			+0.1			-0.2	-1.8	+1.0	+2.7	-0.3	+3.5	+3.0	-0.0	+3.0	+1.5	+15.0	-2.4	+14.0
CHO 5	-0.2%	-3					0.0	-0.1	-0.7	-1.1				-1.9	+0.5			+0.6				+1.1	+0.8	-7.9	+0.3	-6.8	+0.5	+0.0	+0.5	-5.9	+1.2	+8.7	+4.0
CHO 6	+0.6%	+5		-1.0		+0.0	-1.0	-1.9		+4.6				+2.7	-0.2						+0.2	-0.0	-0.0	+0.0	+0.3	+0.3	+3.8		+3.8	-0.7		-0.0	-0.8
CHO 7	-0.8%	-8					0.0	-1.0		-4.0				-5.0	-0.1			+0.4				+0.3	-0.2	+3.1	+0.8	+3.7	-1.7		-1.7	-3.3	+0.4	-2.6	-5.4
CHO 8	-0.6%	-9					0.0	-0.4	-0.0	-3.4	+0.0		-1.0	-4.8	-0.1			+0.1			-0.1	-0.2	+1.0	+1.5	-0.7	+1.8	+0.9	-0.3	+0.6	-5.6	+1.5	-2.7	-6.8
CHO 9	+0.4%	+4	+0.2		+0.3	-0.0	+0.5	-0.3		+5.0				+4.7	+0.8			+0.2	-0.0			+1.0	+1.2	-1.0	-4.2	-4.1	+1.1		+1.1	+0.6		+0.0	+0.6
other Community Services	+4.7%	+3																				-0.3	+1.9	+1.8	+3.4								0.0
		+0.1%	+18.8%	-13.8%	+1.6%	+1.5%	+1.0%	+0.3%	-7.8%	-0.3%	+0.2%		-25.0%	-0.3%	-0.4%	+0.2%		+0.4%	-6.1%	-0.5%		-0.3%	+6.5%	+0.4%	+0.0%	+0.7%	+0.8%	-0.2%	+0.7%	-0.6%	+0.9%	+3.0%	+0.2%

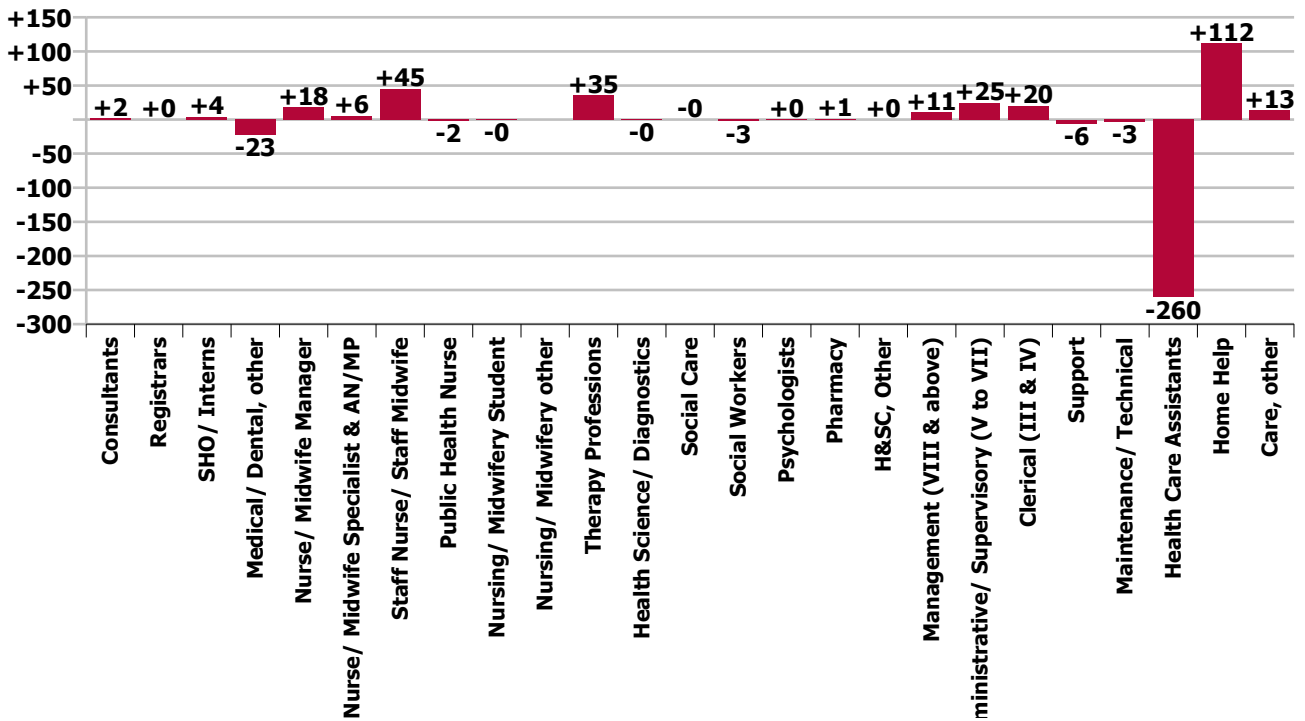
Year-on-year Summary

WTE change since Sep 20	% change since Sep 20	overall	Consultants	Registrars	SHO/ Interns	Medical/ Dental, other	Medical & Dental	Nurse/ Midwife Manager	Nurse/ Midwife Specialist & AN/MP	Staff Nurse/ Staff Midwife	Public Health Nurse	Nursing/ Midwifery Student	Nursing/ Midwifery other	Nursing & Midwifery	Therapy Professions	Health Science/ Diagnostics	Social Care	Social Workers	Psychologists	Pharmacy	H&SC, Other	Health & Social Care Professionals	Management (VIII & above)	Administrative Supervisory (V to VII)	Clerical (III & IV)	Management & Administrative	Support	Maintenance/ Technical	General Support	Health Care Assistants	Home Help	Care, other	Patient & Care	
Overall	-0.0%	-6	+2	+0	+4	-23	-16	+18	+6	+45	-2	-0		+66	+35	-0	-0	-3	+0	+1	+0	+34	+11	+25	+20	+55	-6	-3	-9	-260	+112	+13	-135	
CHO 1	+1.3%	+24				-2	-2	+1	-1	+9				+9	+8	+0		-3				+5	-0	+2	+1	+3	-2	+0	-2	-53	+67	-3	+10	
CHO 2	-2.9%	-46						+5		-1				+4	-6			-0			-1		-7	+1	+3	-7	-2	-1	-2	-3	-43	-11	+16	-38
CHO 3	+12.1%	+125	+3			+1	+4	+2	+1	+28				+31	+6	-0		-1	+1			+5	+1	+1	+5	+7	-2	+1	-1	+10	+65	+3	+79	
CHO 4	-0.8%	-23	-1	-1	+1	-12	-13	-5	-2	+17	-1			+9	+1			-1		+1	-0	+0	+4	+5	+12	+21	+2	+2	+2	+2	-12	-21	-10	-42
CHO 5	-2.5%	-42				-5	-5	+2	+1	-9	-1			-7	-1			+1			-1	-1	+1	-4	+3	+0	-4	-1	-5	-64	+33	+7	-25	
CHO 6	-0.7%	-6				-2	-2	-2	+1	-6				-7	+5			-3	-2	+2		+2	+2	+5	-2	+5	+6	-1	+5	-7		-1	-9	
CHO 7	-2.8%	-29				-2	-2	+12	-0	+0		-0		+11	+3			-1			-1	+1	-0	+6	-1	+5	+2		+2	-39	-7	-1	-47	
CHO 8	-3.7%	-57				-0	-0	-0	+7	-3	+0		+1	+5	+9			+1			+2	+12	-1	-2	-6	-8	-2	-0	-2	-49	-14	+0	-63	
CHO 9	+4.2%	+39		+1	+3	-0	+4	+4	-0	+8			-1	+10	+10		-0	+4	+1		+0	+15	+3	+5	+8	+16	-5		-5	-3			+1	-2
other Community Services	+14.3%	+10																				-0	+4	+5	+5	+9							+1	+1
		-0.0%	+35.5%	+0.8%	+28.8%	-21.1%	-12.1%	+2.4%	+16.6%	+1.7%	-12.9%	-19.7%		+1.9%	+11.8%	-4.5%	-2.8%	-2.7%	+11.1%	+4.8%	+13.2%	+7.9%	+13.6%	+14.5%	+3.6%	+6.8%	-0.7%	-3.3%	-1.0%	-6.0%	+3.4%	+8.5%	-1.7%	

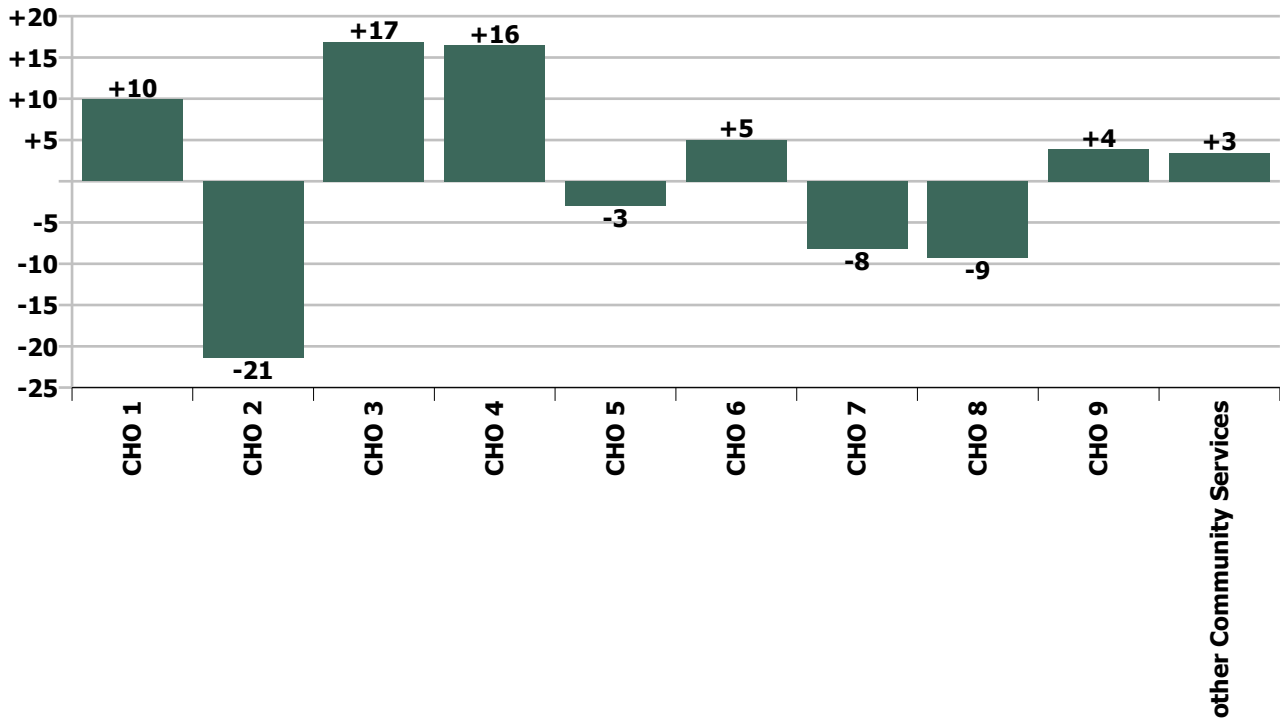
Staff Group change since: Aug 2021



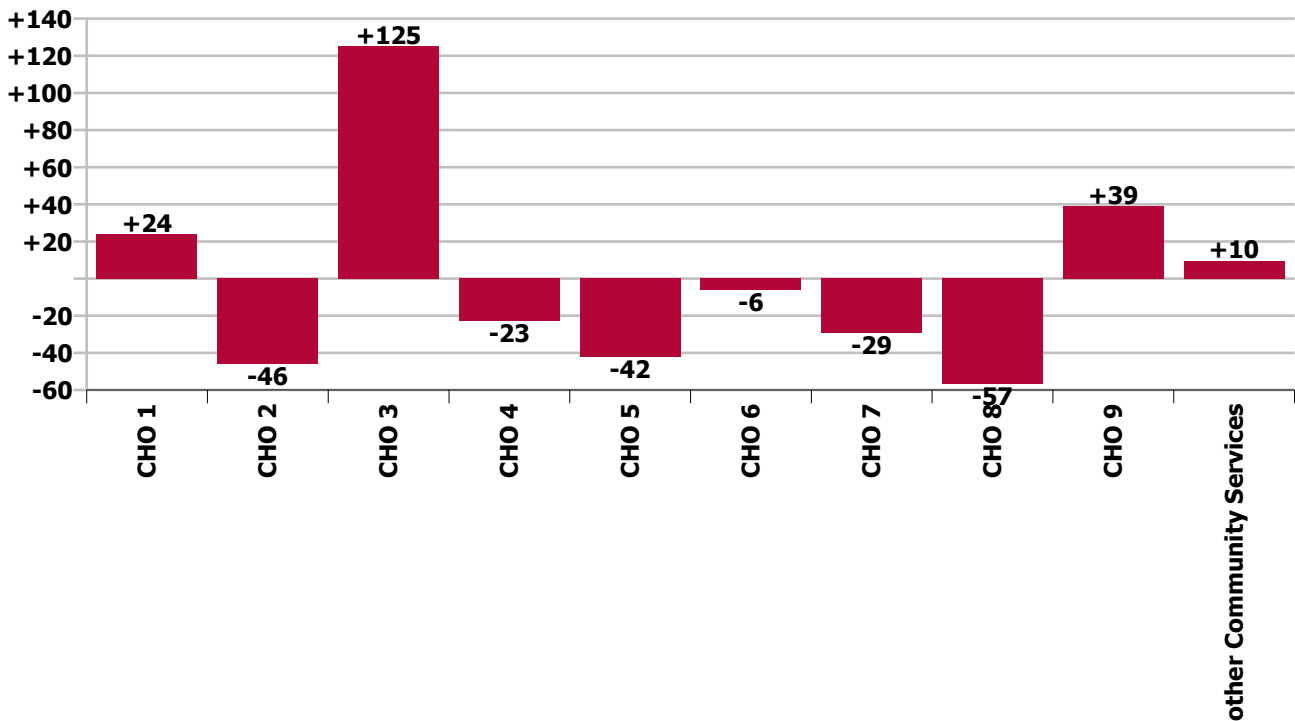
Staff Group change since: Sep 2020



CHO change since: Aug 2021



CHO change since: Sep 2020



Longitudinal Employment Levels by Grade Group - Dec 2016 to Sep 2021

Sep 2021 (Dec 2015 figure: 12,607)	WTE Sep 2021	WTE change since Dec 16	WTE change since Dec 17	WTE change since Dec 18	WTE change since Dec 19	WTE change since Dec 20	WTE change since Apr 21	% change since Dec 16	% change since Dec 17	% change since Dec 18	% change since Dec 19	% change since Dec 20	% change since Apr 21
Overall	13,504	+1,021	+400	+199	+271	+89	+108	+8.2%	+3.1%	+1.5%	+2.0%	+0.7%	+0.8%
Consultant Medicine	8	-2	-2	+4	+4	+3	+3	-18.9%	-17.5%	+110.8%	+110.8%	+71.7%	+65.0%
Consultant Psychiatry		-1	-1					-100.0%	-100.0%	-100.0%	-100.0%	-100.0%	-100.0%
Consultant Surgery		-1	-0	-0				-100.0%	-100.0%	-100.0%	-100.0%	-100.0%	-100.0%
Consultants	8	-3	-3	+4	+4	+3	+3	-30.9%	-25.4%	+104.0%	+110.8%	+71.7%	+65.0%
Registrar	6		-2	-2	-1	-0	-1		-26.6%	-25.1%	-15.4%	-5.7%	-15.4%
Senior Registrar	1	+0	+0	-1	+0	+0	-0	+8.0%	+8.0%	-46.0%	+8.0%	+8.0%	-4.4%
Specialist Registrar	3	+1	+2	+2	+1	+1		+50.0%	+200.0%	+200.0%	+50.0%	+50.0%	
Registrars	10	+1	+0	-1	+0	+1	-1	+12.7%	+0.8%	-7.4%	+0.8%	+8.5%	-9.9%
SHO/ Interns	18	+8	+8	+6	+3	+4	+6	+80.7%	+81.4%	+50.7%	+19.9%	+31.5%	+51.7%
Other Medical	84	-2	-2	-1	-12	-19	-2	-1.8%	-1.8%	-1.3%	-12.5%	-18.7%	-2.5%
Medical/ Dental, other	84	-2	-2	-1	-12	-19	-2	-1.8%	-1.8%	-1.3%	-12.5%	-18.7%	-2.5%
Medical & Dental	119	+4	+4	+8	-5	-11	+6	+3.6%	+3.5%	+7.2%	-4.0%	-8.6%	+5.2%
Clinical Nurse/ Midwife Manager	555	+20	+27	+31	+46	+19	+5	+3.8%	+5.0%	+5.9%	+9.1%	+3.5%	+0.9%
Director Nursing/Midwifery, Assistant	108	+20	+16	+21	+5	+2	+4	+23.4%	+17.8%	+24.6%	+5.3%	+1.7%	+4.1%
Director of Nursing/Midwifery	104	+19	+21	+21	+6	-0	-5	+22.2%	+25.8%	+25.6%	+5.6%	-0.5%	-4.6%
Nurse/ Midwife Manager	767	+59	+64	+73	+57	+20	+4	+8.4%	+9.1%	+10.6%	+8.1%	+2.7%	+0.5%
Advanced Nurse/ Midwife Practitioner	19	+16	+16	+12	+8	+2	+1	+534.3%	+534.3%	+172.6%	+77.5%	+14.5%	+4.1%
Clinical Nurse/ Midwife Specialist	21	+8	+10	+4	+5	-1	+1	+65.8%	+85.1%	+23.9%	+31.9%	-3.7%	+3.6%
Nurse/ Midwife Specialist & AN/MP	40	+24	+26	+16	+13	+2	+1	+156.3%	+179.9%	+67.6%	+50.4%	+4.2%	+3.9%
Graduate Nursing/ Midwifery								-100.0%	-100.0%	-100.0%	-100.0%	-100.0%	-100.0%
Staff Midwives	0	+0	-1	+0	+0	-0	-0	+2.5%	-77.2%	-100.0%	-100.0%	-53.4%	-54.4%
Staff Nurse [Intellectual Disability]	1		+0		+1				+29.9%		-100.0%		
Staff Nurse [Psychiatric]	7	+1	+1	+1	+2	+2	+0	+22.6%	+22.6%	+22.2%	+37.9%	+30.9%	+0.3%
Staff Nurses [General/ Children's]	2,677	+95	+116	+73	+106	+60	+48	+3.7%	+4.5%	+2.8%	+4.1%	+2.3%	+1.8%
Staff Nurse/ Staff Midwife	2,686	+96	+116	+75	+109	+62	+48	+3.7%	+4.5%	+2.9%	+4.2%	+2.3%	+1.8%
Public Health Nurse	11	-3	-3	-2	-2	-2	-0	-20.4%	-23.3%	-16.5%	-15.5%	-15.8%	-2.3%
Post-registration Nurse/ Midwife Student					-1			-100.0%	-100.0%	-100.0%	-100.0%	-100.0%	-100.0%
Nursing/ Midwifery awaiting registration	2	+2	-12	+2	+1	+1	+1	-100.0%	-85.7%	-100.0%	+100.0%	+48.1%	+34.2%
Nursing/ Midwifery Student	2	+2	-12	+2		+1	+1	-100.0%	-85.7%	-100.0%		+48.1%	+34.2%
Nursing Education/Clinical	3	+2	+2	+2	+2	-1	-1	+200.0%	+200.0%	+200.0%	+200.0%	-24.6%	-20.8%
Nursing/ Midwifery other	3	+2	+2	+2	+2	-1	-1	+200.0%	+200.0%	+200.0%	+200.0%	-24.6%	-20.8%
Nursing & Midwifery	3,508	+181	+193	+166	+180	+81	+53	+5.4%	+5.8%	+5.0%	+5.4%	+2.4%	+1.5%
Dietitians	25	+10	+8	+8	+9	+8	+1	+60.9%	+45.7%	+47.3%	+55.7%	+41.8%	+2.8%
Occupational Therapists	120	+25	+26	+16	+7	+7	-4	+25.6%	+27.1%	+15.7%	+6.3%	+6.5%	-2.8%
Physiotherapists	148	+32	+27	+21	+24	+16	+1	+27.7%	+22.3%	+16.2%	+19.7%	+12.0%	+0.8%
Podiatrists & Chiropodists	10	-4	-6	-5	-2	-2	-4	-29.0%	-35.0%	-30.2%	-13.3%	-17.5%	-26.0%
Speech & Language Therapists	30	+10	+7	+7	+7	+11	+4	+49.8%	+28.1%	+32.1%	+31.8%	+53.7%	+17.2%

Sep 2021 (Dec 2015 figure: 12,607)	WTE Sep 2021	WTE change since Dec 16	WTE change since Dec 17	WTE change since Dec 18	WTE change since Dec 19	WTE change since Dec 20	WTE change since Apr 21	% change since Dec 16	% change since Dec 17	% change since Dec 18	% change since Dec 19	% change since Dec 20	% change since Apr 21
Overall	13,504	+1,021	+400	+199	+271	+89	+108	+8.2%	+3.1%	+1.5%	+2.0%	+0.7%	+0.8%
Therapy Professions	335	+72	+62	+48	+46	+39	-1	+27.5%	+22.6%	+16.7%	+16.1%	+13.3%	-0.2%
Clinical Measurement	0	+0	+0	-0	-0	-0	+0	-100.0%	-100.0%	-37.5%	-76.2%	-68.8%	-100.0%
Medical Science		-1						-100.0%	-100.0%	-100.0%	-100.0%	-100.0%	-100.0%
Phlebotomists		-1	-1					-100.0%	-100.0%	-100.0%	-100.0%	-100.0%	-100.0%
Radiographers	5	-2	-2	-1	-1	+0	+0	-28.8%	-29.8%	-10.1%	-14.7%	+1.8%	+4.8%
Health Science/ Diagnostics	5	-4	-3	-1	-1	-0	+0	-43.9%	-37.8%	-10.5%	-16.8%	-0.4%	+5.8%
Social Care	3	+0	+0				-0	+1.5%	+2.6%				-1.8%
Social Workers	97	+11	+13	+2	-1	-3	-6	+12.2%	+16.0%	+2.4%	-1.2%	-2.6%	-5.6%
Psychologists	2	+2	+2	+2	+0	+1	+0	+362.0%	-100.0%	+362.0%	+10.0%	+110.0%	+10.0%
Pharmacy	19	+5	+4	+3	+4	+2	+1	+31.9%	+25.0%	+17.6%	+25.9%	+11.5%	+2.7%
Other Health & Social Care	1	-1	-1	-1	+0			-60.3%	-60.3%	-60.3%	+50.0%		
Play Therapists/ Specialists	1	-1						-37.1%					
H&SC, Other	2	-1	-1	-1	+0			-47.8%	-34.7%	-34.7%	+13.2%		
Health & Social Care Professionals	463	+84	+77	+53	+48	+40	-6	+22.1%	+20.1%	+13.1%	+11.7%	+9.4%	-1.2%
Executive Management	15	+8	+7	+5	+3	-0	-1	+111.1%	+86.6%	+47.8%	+24.1%	-0.1%	-5.6%
Senior Management (VIII & GM)	73	+33	+36	+25	+11	+9	+8	+81.6%	+98.8%	+51.2%	+17.1%	+14.8%	+12.5%
Management (VIII & above)	88	+41	+43	+30	+14	+9	+7	+85.9%	+96.6%	+50.6%	+18.2%	+12.0%	+9.0%
Middle Management (V-VII)	195	+78	+67	+53	+31	+19	+3	+66.9%	+52.4%	+37.2%	+18.7%	+10.7%	+1.4%
Other Administrative		-1	-1	-1	-1			-100.0%	-100.0%	-100.0%	-100.0%	-100.0%	-100.0%
Administrative/ Supervisory (V to VII)	195	+77	+66	+52	+30	+19	+3	+65.4%	+51.3%	+36.3%	+18.0%	+10.7%	+1.4%
Clerical (III & IV)	581	+98	+72	+17	+10	-6	-15	+20.2%	+14.1%	+2.9%	+1.8%	-1.0%	-2.5%
Management & Administrative	864	+216	+181	+98	+53	+22	-5	+33.2%	+26.6%	+12.8%	+6.6%	+2.6%	-0.6%
Catering	217	+4	+5	+1	-5	+0	+0	+1.7%	+2.3%	+0.6%	-2.1%	+0.1%	+0.2%
Household Services	475	-89	-70	-43	-18	-4	-5	-15.8%	-12.8%	-8.4%	-3.6%	-0.9%	-1.0%
Other Support	30	-10	-13	-8	-4	+1	+2	-25.5%	-31.1%	-21.1%	-12.2%	+2.8%	+7.2%
Portering	73	-12	-10	-6	-8	-3	-3	-13.7%	-12.5%	-7.9%	-10.0%	-4.3%	-4.0%
Support	795	-107	-89	-56	-35	-7	-6	-11.9%	-10.1%	-6.6%	-4.2%	-0.8%	-0.7%
Maintenance	89	-15	-13	-14	-10	-6	-1	-14.5%	-13.0%	-13.5%	-10.0%	-6.6%	-1.3%
Technical Services	4	+4	+4	+4	+4	+4		-100.0%	-100.0%	-100.0%	-100.0%	-100.0%	
Maintenance/ Technical	93	-11	-9	-10	-6	-2	-1	-10.7%	-9.1%	-9.6%	-6.0%	-2.4%	-1.3%
General Support	887	-118	-98	-66	-40	-9	-7	-11.7%	-10.0%	-6.9%	-4.4%	-1.0%	-0.8%
HCA, Nurse's Aide, etc.	4,028	-18	-57	-103	+6	-40	-32	-0.5%	-1.4%	-2.5%	+0.2%	-1.0%	-0.8%
HCA (Student Nurse/Midwife COVID-19)	3	+3	+3	+3	+3	-19	-8	-100.0%	-100.0%	-100.0%	-100.0%	-84.5%	-70.0%
Health & Social Care Assistants	37	+11	+11	+13	+16	+10	+9	+43.5%	+43.9%	+53.8%	+75.2%	+36.6%	+30.2%
Swabber (COVID-19)	1	+1	+1	+1	+1	+1	+1	-100.0%	-100.0%	-100.0%	-100.0%	-100.0%	-100.0%
Health Care Assistants	4,070	-3	-41	-85	+27	-48	-30	-0.1%	-1.0%	-2.1%	+0.7%	-1.2%	-0.7%
Home Help	3,420	+625	+64	-0	-22	-11	+87	+22.3%	+1.9%	-0.0%	-0.6%	-0.3%	+2.6%

Sep 2021 (Dec 2015 figure: 12,607)	WTE Sep 2021	WTE change since Dec 16	WTE change since Dec 17	WTE change since Dec 18	WTE change since Dec 19	WTE change since Dec 20	WTE change since Apr 21	% change since Dec 16	% change since Dec 17	% change since Dec 18	% change since Dec 19	% change since Dec 20	% change since Apr 21
Overall	13,504	+1,021	+400	+199	+271	+89	+108	+8.2%	+3.1%	+1.5%	+2.0%	+0.7%	+0.8%
Care, other	172	+33	+21	+26	+30	+26	+10	+23.8%	+13.6%	+17.4%	+21.4%	+17.5%	+6.2%
Patient & Client Care	7,662	+655	+43	-60	+35	-34	+67	+9.3%	+0.6%	-0.8%	+0.5%	-0.4%	+0.9%

Source: Health Service Personnel Census