

Social Care Older Persons Services Employment Report: August 2020

Employment by Staff Group

Aug 2020 (Dec 2019 figure: 13,233)	WTE Jul 2020	WTE Aug 2020	WTE change since Jul 20	% change since Jul 20	WTE change since Dec 19	WTE change since Aug 19
Overall	13,473	13,543	+71	+0.5%	+311	+240
Consultants	5	5			+1	+1
Registrars	9	9	+1	+7.4%	-0	-1
SHO/ Interns	12	12	+0	+3.5%	-3	-2
Medical/ Dental, other	85	93	+8	+9.1%	-4	+8
Medical & Dental	110	119	+9	+7.9%	-5	+7
Nurse/ Midwife Manager	740	740	-1	-0.1%	+31	+14
Nurse/ Midwife Specialist & AN/MP	31	31	-0	-0.6%	+5	+5
Staff Nurse/ Staff Midwife	2,614	2,629	+15	+0.6%	+52	+41
Public Health Nurse	13	13	-0	-2.0%	-0	-0
<i>Post-registration Nurse/ Midwife Student</i>				-100.0%	-1	
<i>Nursing/ Midwifery awaiting registration</i>	3	2.50	-0	-2.0%	+2	+3
Nursing/ Midwifery Student	3	3	-0	-2.0%	+1	+3
Nursing/ Midwifery other	3	3			+2	+2
Nursing & Midwifery	3,404	3,418	+14	+0.4%	+90	+64
Therapy Professions	299	301	+1	+0.4%	+12	+16
Health Science/ Diagnostics	5	5	+0	+1.6%	-1	+0
Social Care	3	3	+0	+2.9%	+0	+0
Social Workers	98	96	-2	-1.6%	-2	-6
Psychologists	2	2				
Pharmacy	17	18	+0	+0.2%	+2	+2
H&SC, Other	1	1				
Health & Social Care Professionals	426	426	-0	-0.1%	+11	+11
Management (VIII & above)	74	77	+3	+4.3%	+2	+7
Administrative/ Supervisory (V to VII)	169	170	+1	+0.5%	+5	+7
Clerical (III & IV)	566	567	+2	+0.3%	-4	-4
Management & Administrative	809	814	+6	+0.7%	+3	+10
Support	837	839	+1	+0.1%	+10	-4
Maintenance/ Technical	99	99	-0	-0.2%	+0	-1
General Support	936	937	+1	+0.1%	+10	-5
Health Care Assistants	4,492	4,437	-55	-1.2%	+394	+300
Home Help	3,148	3,247	+99	+3.1%	-195	-149
Care, other	149	146	-3	-2.0%	+4	+2
Patient & Client Care	7,788	7,829	+41	+0.5%	+202	+153

Social Care Older Persons Services Employment by Administration (HSE / S38): August 2020

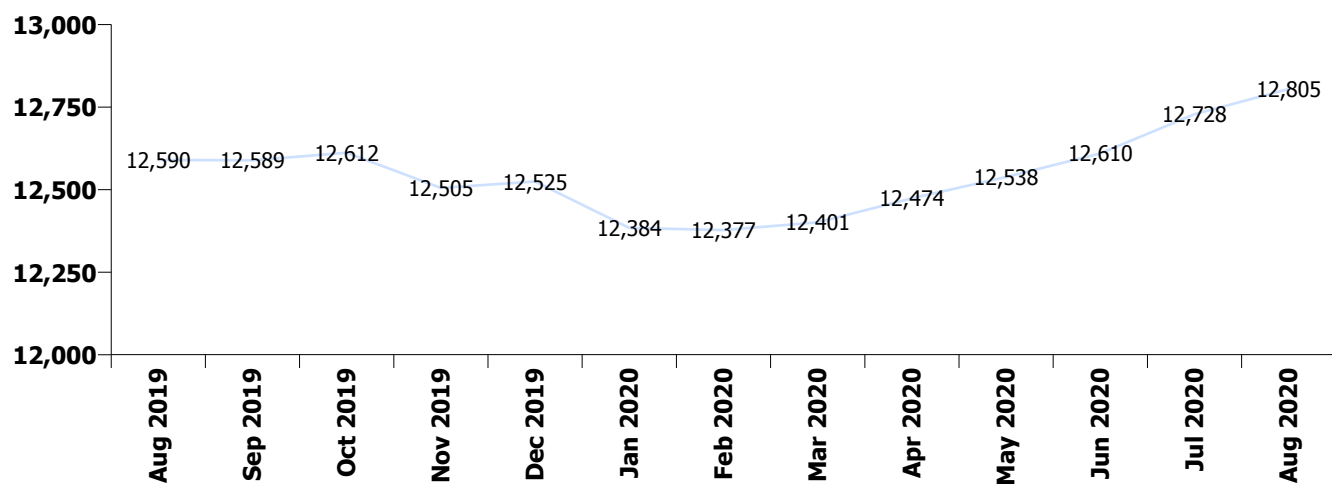
Aug 2020 (Dec 2019 figure: 13,233)	WTE Jul 2020	WTE Aug 2020	WTE change since Jul 20	% change since Jul 20	WTE change since Dec 19	WTE change since Aug 19
Overall	13,473	13,543	+71	+0.5%	+311	+240
HSE	12,728	12,805	+76	+0.6%	+280	+215
Section 38	744	739	-6	-0.8%	+31	+25

HSE

Aug 2020 (Dec 2019 figure: 12,525)	WTE Jul 2020	WTE Aug 2020	WTE change since Jul 20	% change since Jul 20	WTE change since Dec 19	WTE change since Aug 19
Overall	12,728	12,805	+76	+0.6%	+280	+215
Consultants	3	3.00				
Registrars	6	6.32	+1	+11.3%	-0	-1
SHO/ Interns	8	8.42	+0	+5.2%	-2	-1
Medical/ Dental, other	83	90.73	+8	+9.3%	-4	+8
Medical & Dental	100	108	+9	+8.8%	-5	+7
Nurse/ Midwife Manager	687	687.14	+0	+0.0%	+32	+15
Nurse/ Midwife Specialist & AN/MP	31	31.20	-0	-0.6%	+5	+5
Staff Nurse/ Staff Midwife	2,425	2,440.52	+16	+0.7%	+40	+29
Public Health Nurse	13	13.09	-0	-2.0%	-0	-0
Post-registration Nurse/ Midwife Student				-100.0%	-1	
Nursing/ Midwifery awaiting registration	3	2.50	-0	-2.0%	+2	+3
Nursing/ Midwifery Student	3	2.50	-0	-2.0%	+1	+3
Nursing/ Midwifery other	3	3.00			+2	+2
Nursing & Midwifery	3,162	3,177	+16	+0.5%	+79	+54
Therapy Professions	234	237.30	+4	+1.5%	+7	+8
Health Science/ Diagnostics	4	4.16	+0	+2.0%	-1	+0
Social Care	3	2.82	+0	+2.9%	+0	+0
Social Workers	83	82.52	-1	-0.7%	-2	-6
Psychologists	2	1.60				
Pharmacy	12	12.16	+0	+0.7%	+2	+1
H&SC, Other	1	1.36				
Health & Social Care Professionals	339	342	+3	+1.0%	+5	+3
Management (VIII & above)	72	73.76	+2	+3.0%	+1	+7
Administrative/ Supervisory (V to VII)	150	151.78	+2	+1.3%	+6	+8
Clerical (III & IV)	536	537.81	+2	+0.3%	-6	-4
Management & Administrative	758	763	+6	+0.7%	+1	+11
Support	729	730.50	+2	+0.3%	+4	-9
Maintenance/ Technical	88	87.61	-0	-0.2%	-1	-3
General Support	816	818	+2	+0.2%	+3	-12
Health Care Assistants	4,262	4,207.83	-55	-1.3%	+388	+299
Home Help	3,148	3,246.77	+99	+3.1%	-195	-149
Care, other	144	141.01	-3	-2.1%	+5	+2
Patient & Client Care	7,554	7,596	+42	+0.6%	+197	+152

Section 38

Aug 2020 (Dec 2019 figure: 708)	WTE Jul 2020	WTE Aug 2020	WTE change since Jul 20	% change since Jul 20	WTE change since Dec 19	WTE change since Aug 19
Overall	744	739	-6	-0.8%	+31	+25
Consultants	2	1.60			+1	+1
Registrars	3	3.00				
SHO/ Interns	4	4.00			-1	-1
Medical/ Dental, other	2	2.00				
Medical & Dental	11	11				
Nurse/ Midwife Manager	53	52.50	-1	-1.4%	-1	-2
Staff Nurse/ Staff Midwife	189	188.13	-1	-0.4%	+12	+12
Nursing & Midwifery	242	241	-2	-0.6%	+11	+10
Therapy Professions	66	63.32	-2	-3.7%	+6	+7
Health Science/ Diagnostics	1	1.00				
Social Workers	15	13.61	-1	-6.8%	-0	-0
Psychologists	1	0.50				
Pharmacy	5	5.35	-0	-0.9%	+1	+1
Health & Social Care Professionals	87	84	-4	-4.0%	+6	+7
Management (VIII & above)	2	3.00	+1	+50.0%	+1	
Administrative/ Supervisory (V to VII)	19	18.46	-1	-5.1%	-1	-1
Clerical (III & IV)	29	29.31			+2	+0
Management & Administrative	51	51			+2	-1
General Support	120	119	-1	-0.6%	+6	+7
Patient & Client Care	234	234	-0	-0.1%	+5	+1



Social Care Older Persons Services Employment by CHO etc. Aug 2020

CHO 1

Aug 2020 (Dec 2019 figure: 1,836)	WTE Jul 2020	WTE Aug 2020	WTE change since Jul 20	% change since Jul 20	WTE change since Dec 19	WTE change since Aug 19
Overall	1,885	1,891	+6	+0.3%	+55	+40
Medical/ Dental, other	17	17			-12	+1
Medical & Dental	17	17			-12	+1
Nurse/ Midwife Manager	91	88	-3	-3.1%	-3	-7
Nurse/ Midwife Specialist & AN/MP	8	8	-0	-0.1%	+1	+2
Staff Nurse/ Staff Midwife	313	316	+3	+1.1%	+9	+2
Nursing/ Midwifery other	1	1			+1	+1
Nursing & Midwifery	412	413	+0	+0.1%	+8	-2
Therapy Professions	12	12	+0	+0.5%	+1	+0
Health Science/ Diagnostics	1	1	+0	+4.1%	+0	+0
Social Workers	16	16	-0	-1.2%	-1	-1
Health & Social Care Professionals	29	29	-0	-0.3%	-1	-1
Management (VIII & above)	8	8			+0	+0
Administrative/ Supervisory (V to VII)	15	15	-0	-0.7%	+1	+1
Clerical (III & IV)	82	83	+1	+0.8%	-2	-3
Management & Administrative	106	106	+1	+0.6%	-1	-2
Support	119	119	+0	+0.3%	-3	-6
Maintenance/ Technical	7	7				-1
General Support	126	126	+0	+0.2%	-3	-7
Health Care Assistants	646	644	-2	-0.3%	+81	+76
Home Help	520	527	+6	+1.2%	-16	-24
Care, other	28	28	-0	-0.8%	+0	-1
Patient & Client Care	1,195	1,199	+5	+0.4%	+65	+51

CHO 2

Aug 2020 (Dec 2019 figure: 1,606)	WTE Jul 2020	WTE Aug 2020	WTE change since Jul 20	% change since Jul 20	WTE change since Dec 19	WTE change since Aug 19
Overall	1,598	1,626	+28	+1.8%	+21	+35
Medical/ Dental, other	10	10	-1	-5.6%	-2	-2
Medical & Dental	10	10	-1	-5.6%	-2	-2
Nurse/ Midwife Manager	65	65	-0	-0.0%	+7	+4
Nurse/ Midwife Specialist & AN/MP	2	2				+1
Staff Nurse/ Staff Midwife	300	307	+7	+2.4%	+6	+9
Public Health Nurse	1	1			+0	
Nursing & Midwifery	368	375	+7	+2.0%	+13	+14
Therapy Professions	26	27	+2	+6.5%	+2	+1
Health Science/ Diagnostics	1	1				
Social Workers	10	10			-0	+1
Pharmacy	1	1				
H&SC, Other				-100.0%		
Health & Social Care Professionals	38	39	+2	+4.4%	+2	+2
Management (VIII & above)	1	1			-1	-1
Administrative/ Supervisory (V to VII)	9	9	-0	-4.2%	+1	+0
Clerical (III & IV)	66	64	-2	-3.2%	-7	-8
Management & Administrative	77	74	-3	-3.3%	-7	-8
Support	56	59	+3	+4.9%	+3	-0
Maintenance/ Technical	20	19	-0	-0.1%	+1	-0
General Support	76	78	+3	+3.6%	+3	-0
Health Care Assistants	584	585	+1	+0.2%	+71	+54
Home Help	418	439	+21	+5.0%	-61	-26
Care, other	28	26	-2	-8.8%	+1	+1
Patient & Client Care	1,030	1,050	+20	+1.9%	+11	+30

CHO 3

Aug 2020 (Dec 2019 figure: 974)	WTE Jul 2020	WTE Aug 2020	WTE change since Jul 20	% change since Jul 20	WTE change since Dec 19	WTE change since Aug 19
Overall	1,049	1,050	+1	+0.1%	+76	+84
Consultants	1	1				
Medical/ Dental, other	5	5	-0	-3.8%	-0	
Medical & Dental	6	6	-0	-3.2%	-0	
Nurse/ Midwife Manager	63	62	-1	-1.1%	-1	+2
Nurse/ Midwife Specialist & AN/MP	2	2			-0	-0
Staff Nurse/ Staff Midwife	228	230	+2	+0.8%	-9	-15
Public Health Nurse	1	1				+1
Nursing & Midwifery	294	295	+1	+0.4%	-10	-12
Therapy Professions	27	29	+2	+8.3%	+1	+2
Health Science/ Diagnostics	1	1	+0	+3.1%	+0	+0
Social Workers	7	6	-0	-7.2%	-1	-1
Pharmacy	1	1				
Health & Social Care Professionals	35	37	+2	+4.9%	+1	+1
Management (VIII & above)	6	6			+0	+1
Administrative/ Supervisory (V to VII)	18	19	+1	+5.2%	-1	+4
Clerical (III & IV)	50	50	-0	-0.0%	+0	-0
Management & Administrative	74	75	+1	+1.3%	-1	+4
Support	63	62	-1	-1.9%	-2	-3
Maintenance/ Technical	21	21	-0	-0.3%	-1	-1
General Support	84	83	-1	-1.5%	-4	-4
Health Care Assistants	324	324	+1	+0.3%	+45	+39
Home Help	218	217	-2	-0.8%	+41	+51
Care, other	14	14	-0	-0.8%	+4	+4
Patient & Client Care	556	555	-1	-0.2%	+90	+94

CHO 4

Aug 2020 (Dec 2019 figure: 2,919)	WTE Jul 2020	WTE Aug 2020	WTE change since Jul 20	% change since Jul 20	WTE change since Dec 19	WTE change since Aug 19
Overall	2,867	2,911	+44	+1.5%	-8	-4
Consultants	1	1				
Registrars	3	3	-0	-5.3%	-0	-1
SHO/ Interns				-100.0%	-1	-1
Medical/ Dental, other	23	31	+7	+32.2%	+10	+10
Medical & Dental	27	35	+7	+26.9%	+9	+8
Nurse/ Midwife Manager	126	126	+1	+0.4%	+9	+3
Nurse/ Midwife Specialist & AN/MP	5	5	-0	-9.4%	+1	+1
Staff Nurse/ Staff Midwife	527	521	-6	-1.2%	+6	-4
Public Health Nurse	5	5	+0	+0.4%	+0	-0
Post-registration Nurse/ Midwife Student				-100.0%		
Nursing/ Midwifery awaiting registration				-100.0%		
Nursing/ Midwifery Student				-100.0%	-2	
Nursing & Midwifery	663	657	-6	-0.9%	+14	-0
Therapy Professions	48	48	-0	-0.1%	+3	+5
Health Science/ Diagnostics	1	1			+0	+0
Social Care	2	2				
Social Workers	9	10	+1	+14.5%	-0	+1
Pharmacy	4	4	+0	+2.1%	+1	+1
Health & Social Care Professionals	63	65	+1	+2.1%	+4	+7
Management (VIII & above)	13	13			+0	+0
Administrative/ Supervisory (V to VII)	19	18	-0	-1.5%	+1	+1
Clerical (III & IV)	129	128	-1	-0.8%	+0	+1
Management & Administrative	161	160	-1	-0.8%	+2	+2
Support	119	120	+1	+0.9%	+20	+18
Maintenance/ Technical	6	6	+0	+3.8%	+0	+0
General Support	125	127	+1	+1.0%	+20	+18
Health Care Assistants	840	819	-22	-2.6%	+37	+22
Home Help	957	1,019	+63	+6.6%	-94	-59
Care, other	30	31	+0	+1.4%	+0	-2
Patient & Client Care	1,827	1,869	+41	+2.3%	-57	-39

CHO 5

Aug 2020 (Dec 2019 figure: 1,647)	WTE Jul 2020	WTE Aug 2020	WTE change since Jul 20	% change since Jul 20	WTE change since Dec 19	WTE change since Aug 19
Overall	1,687	1,689	+2	+0.1%	+42	+18
Medical/ Dental, other	9	10	+1	+10.5%	+0	+0
Medical & Dental	9	10	+1	+10.5%	+0	+0
Nurse/ Midwife Manager	85	85	+1	+0.8%	+4	+1
Nurse/ Midwife Specialist & AN/MP	2	2			-0	-0
Staff Nurse/ Staff Midwife	319	324	+5	+1.5%	+9	+16
Public Health Nurse	4	4	-0	-2.6%	-0	
Nursing & Midwifery	410	415	+5	+1.3%	+13	+17
Therapy Professions	40	39	-1	-1.9%	-2	-0
Social Workers	4	4			+1	+0
Pharmacy	1	1			+1	+1
Health & Social Care Professionals	45	44	-1	-1.7%	+0	+1
Management (VIII & above)	4	4				+1
Administrative/ Supervisory (V to VII)	14	14	+0	+0.7%	-0	-1
Clerical (III & IV)	31	32	+1	+1.6%	-0	+0
Management & Administrative	49	49	+1	+1.2%	-1	+0
Support	116	115	-1	-1.0%	-8	-8
Maintenance/ Technical	8	8	-0	-1.0%	-0	-0
General Support	124	123	-1	-1.0%	-9	-8
Health Care Assistants	487	481	-7	-1.3%	+90	+81
Home Help	552	556	+4	+0.7%	-52	-72
Care, other	10	10	+0	+1.1%	-0	-1
Patient & Client Care	1,050	1,047	-3	-0.3%	+38	+8

CHO 6

Aug 2020 (Dec 2019 figure: 823)	WTE Jul 2020	WTE Aug 2020	WTE change since Jul 20	% change since Jul 20	WTE change since Dec 19	WTE change since Aug 19
Overall	841	822	-19	-2.2%	-1	-1
Registrars	1	1				
Medical/ Dental, other	4	4				
Medical & Dental	5	5				
Nurse/ Midwife Manager	67	67	-1	-1.0%	-2	-1
Nurse/ Midwife Specialist & AN/MP	1	1				
Staff Nurse/ Staff Midwife	203	202	-1	-0.7%	-2	+1
Nursing & Midwifery	272	270	-2	-0.8%	-3	-1
Therapy Professions	44	42	-2	-5.3%	-8	-5
Social Workers	11	10	-1	-10.1%	-1	-1
Psychologists	2	2				
Pharmacy	3	3	-0	-1.7%	-0	-0
Health & Social Care Professionals	61	57	-4	-5.9%	-9	-6
Management (VIII & above)	4	5	+1	+25.0%	+1	
Administrative/ Supervisory (V to VII)	20	19	-1	-4.8%	-3	-3
Clerical (III & IV)	32	31	-1	-2.2%	+2	-1
Management & Administrative	56	56	-1	-1.2%	-0	-4
Support	106	104	-3	-2.5%	-4	-4
Maintenance/ Technical	9	9			+1	+2
General Support	115	113	-3	-2.3%	-3	-3
Health Care Assistants	326	316	-10	-3.0%	+16	+13
Care, other	6	6	+0	+1.0%	-1	-1
Patient & Client Care	332	322	-10	-2.9%	+15	+12

CHO 7

Aug 2020 (Dec 2019 figure: 996)	WTE Jul 2020	WTE Aug 2020	WTE change since Jul 20	% change since Jul 20	WTE change since Dec 19	WTE change since Aug 19
Overall	1,034	1,036	+3	+0.3%	+41	+30
SHO/ Interns	2	2				
Medical/ Dental, other	4	4				-1
Medical & Dental	6	6				-1
Nurse/ Midwife Manager	80	82	+2	+2.9%	+5	+6
Nurse/ Midwife Specialist & AN/MP	4	4	+0	+7.1%	+2	+0
Staff Nurse/ Staff Midwife	241	240	-0	-0.1%	+21	+22
<i>Nursing/ Midwifery awaiting registration</i>	3	3	-0	-2.0%	+3	+3
Nursing/ Midwifery Student	3	3	-0	-2.0%	+3	+3
Nursing & Midwifery	327	329	+2	+0.7%	+30	+31
Therapy Professions	13	14	+0	+2.6%	-0	-2
Social Workers	14	13	-0	-1.2%	+3	-1
Pharmacy	3	3			+1	
H&SC, Other	1	1				
Health & Social Care Professionals	31	31	+0	+0.6%	+3	-3
Management (VIII & above)	6	7	+1	+15.1%	+2	+4
Administrative/ Supervisory (V to VII)	14	14	-0	-0.1%	+2	+1
Clerical (III & IV)	34	39	+5	+14.4%	+5	+8
Management & Administrative	53	59	+6	+10.8%	+8	+13
Support	109	110	+0	+0.4%	-0	-3
Maintenance/ Technical	2	2				-1
General Support	111	112	+0	+0.4%	-0	-3
Health Care Assistants	386	381	-5	-1.2%	-7	-18
Home Help	115	115	-1	-0.5%	+7	+12
Care, other	5	4	-1	-12.5%	-1	
Patient & Client Care	505	499	-6	-1.2%	-1	-6

CHO 8

Aug 2020 (Dec 2019 figure: 1,488)	WTE Jul 2020	WTE Aug 2020	WTE change since Jul 20	% change since Jul 20	WTE change since Dec 19	WTE change since Aug 19
Overall	1,510	1,519	+9	+0.6%	+30	+1
Medical/ Dental, other	11	11	+0	+0.0%	+0	+0
Medical & Dental	11	11			+0	+0
Nurse/ Midwife Manager	85	85	+0	+0.2%	+8	+1
Nurse/ Midwife Specialist & AN/MP	3	3			+1	
Staff Nurse/ Staff Midwife	248	253	+5	+2.1%	+3	+5
Public Health Nurse	2	2	-0	-8.1%	-0	-1
Nursing/ Midwifery other	1	1			+1	+1
Nursing & Midwifery	339	344	+5	+1.5%	+14	+6
Therapy Professions	20	19	-0	-2.1%	-1	-2
Social Workers	5	5			-2	-2
Pharmacy	2	2			-1	-1
Health & Social Care Professionals	26	26	-0	-1.6%	-4	-5
Management (VIII & above)	7	7	+0	+4.2%	+2	+3
Administrative/ Supervisory (V to VII)	19	20	+0	+0.6%	-1	+1
Clerical (III & IV)	71	71	-0	-0.3%	+1	+1
Management & Administrative	98	98	+0	+0.2%	+2	+5
Support	28	28	+0	+1.6%	+2	+2
Maintenance/ Technical	24	24	-0	-1.1%	-0	-0
General Support	51	52	+0	+0.3%	+2	+2
Health Care Assistants	596	592	-4	-0.6%	+36	+21
Home Help	367	375	+8	+2.1%	-21	-30
Care, other	22	22	-0	-0.5%	+1	+2
Patient & Client Care	985	989	+4	+0.4%	+16	-8

CHO 9

Aug 2020 (Dec 2019 figure: 870)	WTE Jul 2020	WTE Aug 2020	WTE change since Jul 20	% change since Jul 20	WTE change since Dec 19	WTE change since Aug 19
Overall	936	931	-5	-0.5%	+61	+39
Consultants	3	3			+1	+1
Registrars	5	5	+1	+17.1%	-0	-0
SHO/ Interns	10	10	+0	+4.2%	-2	-1
Medical/ Dental, other	1	1				
Medical & Dental	18	20	+1	+6.7%	-1	+0
Nurse/ Midwife Manager	79	79	+0	+0.1%	+5	+6
Nurse/ Midwife Specialist & AN/MP	5	5			+0	+1
Staff Nurse/ Staff Midwife	235	236	+1	+0.3%	+9	+4
Public Health Nurse				-100.0%	-0	-0
Nursing/ Midwifery other	1	1				
Nursing & Midwifery	320	321	+1	+0.2%	+13	+11
Therapy Professions	71	71	+0	+0.6%	+17	+17
Health Science/ Diagnostics	1	1			-0	-1
Social Care	1	1	+0	+8.0%	+0	+0
Social Workers	22	21	-1	-4.1%	-1	-2
Pharmacy	4	4			+1	+1
H&SC, Other	0	0				
Health & Social Care Professionals	98	98	-0	-0.4%	+16	+15
Management (VIII & above)	8	8	-0	-1.6%	-1	-1
Administrative/ Supervisory (V to VII)	18	19	+1	+5.7%	+4	+2
Clerical (III & IV)	42	43	+0	+0.6%	+3	+0
Management & Administrative	69	70	+1	+1.7%	+6	+1
Support	120	121	+1	+1.0%	+3	-0
Maintenance/ Technical	2	2				
General Support	123	124	+1	+1.0%	+3	-0
Health Care Assistants	303	294	-9	-2.9%	+24	+12
Care, other	5	5	+0	+0.0%	-1	-1
Patient & Client Care	308	300	-9	-2.8%	+24	+12

other Community Services

Aug 2020 (Dec 2019 figure: 73)	WTE Jul 2020	WTE Aug 2020	WTE change since Jul 20	% change since Jul 20	WTE change since Dec 19	WTE change since Aug 19
Overall	67	68	+1	+1.3%	-6	-1
Health Science/ Diagnostics				-100.0%	-1	
Health & Social Care Professionals				-100.0%	-1	
Management (VIII & above)	17	18	+1	+6.5%	-1	+0
Administrative/ Supervisory (V to VII)	23	23	+0	+1.9%	+1	+2
Clerical (III & IV)	27	27	-1	-2.4%	-5	-3
Management & Administrative	67	68	+1	+1.3%	-5	-1
Health Care Assistants	0	0			+0	
Patient & Client Care	0	0			+0	

Social Care Older Persons Services Employment by CHO & Admin : Aug 2020

Aug 2020 (Dec 2019 figure: 13,233)	WTE Jul 2020	WTE Aug 2020	WTE change since Jul 20	% change since Jul 20	WTE change since Dec 19	WTE change since Aug 19
Overall	13,473	13,543	+71	+0.5%	+311	+240
CHO 1	1,885	1,891	+6	+0.3%	+55	+40
Health Service Executive	1,598	1,626	+28	+1.8%	+21	+35
CHO 2	1,598	1,626	+28	+1.8%	+21	+35
Health Service Executive	1,048	1,050	+1	+0.1%	+76	+84
CHO 3	1,049	1,050	+1	+0.1%	+76	+84
Health Service Executive	2,867	2,911	+44	+1.5%	-8	-4
CHO 4	2,867	2,911	+44	+1.5%	-8	-4
Health Service Executive	1,687	1,689	+2	+0.1%	+42	+18
CHO 5	1,687	1,689	+2	+0.1%	+42	+18
Health Service Executive	360	347	-13	-3.6%	+6	+11
Leopardstown Park Hospital	204	203	-1	-0.3%	-7	-8
Royal Hospital, Donnybrook, Dublin	277	271	-5	-2.0%	-0	-5
Section 38 Voluntary Agencies	481	475	-6	-1.2%	-8	-13
CHO 6	841	822	-19	-2.2%	-1	-1
Health Service Executive	1,034	1,036	+3	+0.3%	+41	+30
CHO 7	1,034	1,036	+3	+0.3%	+41	+30
Health Service Executive	1,510	1,519	+9	+0.6%	+30	+1
CHO 8	1,510	1,519	+9	+0.6%	+30	+1
Health Service Executive	672	667	-5	-0.7%	+23	+1
Incorporated Orthopaedic Hospital	264	264			+38	+38
Section 38 Voluntary Agencies	264	264	-0	-0.0%	+38	+38
CHO 9	936	931	-5	-0.5%	+61	+39
other Community Services	67	68	+1	+1.3%	-6	-1

Social Care Older Persons Services Employment by CHO etc. Aug 2020

Incorporated Orthopaedic Hospital

Aug 2020 (Dec 2019 figure: 226)	WTE Jul 2020	WTE Aug 2020	WTE change since Jul 20	% change since Jul 20	WTE change since Dec 19	WTE change since Aug 19
Overall	264	264			+38	+38
Consultants	2	2			+1	+1
Registrars	2	2				
SHO/ Interns	4	4			-1	-1
Medical & Dental	8	8				
Nurse/ Midwife Manager	17	17			-1	-1
Staff Nurse/ Staff Midwife	74	74			+14	+14
Nursing & Midwifery	91	91			+13	+13
Therapy Professions	30	30			+10	+10
Health Science/ Diagnostics	1	1				
Social Workers	8	8			+1	+1
Pharmacy	4	4			+1	+1
Health & Social Care Professionals	43	43			+11	+11
Management (VIII & above)	1	1				
Administrative/ Supervisory (V to VII)	6	6				
Clerical (III & IV)	11	11			+1	+1
Management & Administrative	18	18			+1	+1
Support	40	40			+6	+6
Maintenance/ Technical	2	2				
General Support	42	42			+6	+6
Health Care Assistants	63	63			+7	+7
Care, other	0	0				
Patient & Client Care	63	63			+7	+7

Leopardstown Park Hospital

Aug 2020 (Dec 2019 figure: 211)	WTE Jul 2020	WTE Aug 2020	WTE change since Jul 20	% change since Jul 20	WTE change since Dec 19	WTE change since Aug 19
Overall	204	203	-1	-0.3%	-7	-8
Medical/ Dental, other	1	1				
Medical & Dental	1	1				
Nurse/ Midwife Manager	16	16	-1	-4.7%	+0	+0
Staff Nurse/ Staff Midwife	39	39	-1	-1.9%	-4	-2
Nursing & Midwifery	56	54	-2	-2.7%	-4	-2
Therapy Professions	7	7				-0
Social Workers	1	1				
Pharmacy	2	2	-0	-2.6%	-0	-0
Health & Social Care Professionals	10	10	-0	-0.5%	-0	-0
Management (VIII & above)	1	1				
Administrative/ Supervisory (V to VII)	7	7				
Clerical (III & IV)	10	10				-1
Management & Administrative	19	19				-1
Support	35	35	-1	-2.1%	+1	+0
Maintenance/ Technical	4	4				+1
General Support	39	39	-1	-1.9%	+1	+1
Health Care Assistants	76	78	+2	+2.3%	-4	-5
Care, other	3	3	+0	+1.8%	-1	-1
Patient & Client Care	79	81	+2	+2.2%	-5	-7

Aug 2020 (Dec 2019 figure: 272)	WTE Jul 2020	WTE Aug 2020	WTE change since Jul 20	% change since Jul 20	WTE change since Dec 19	WTE change since Aug 19
Overall	277	271	-5	-2.0%	-0	-5
Registrars	1	1				
Medical/ Dental, other	1	1				
Medical & Dental	2	2				
Nurse/ Midwife Manager	19	19			-1	-1
Staff Nurse/ Staff Midwife	76	76			+2	-1
Nursing & Midwifery	95	95			+1	-2
Therapy Professions	29	26	-2	-8.6%	-4	-2
Social Workers	6	5	-1	-18.1%	-1	-1
Psychologists	1	1				
Health & Social Care Professionals	35	31	-3	-10.0%	-5	-3
Management (VIII & above)		1	+1	-100.0%	+1	
Administrative/ Supervisory (V to VII)	6	5	-1	-17.1%	-1	-1
Clerical (III & IV)	8	8			+1	
Management & Administrative	14	14			+1	-1
Support	34	34			-2	-1
Maintenance/ Technical	5	5			+1	+1
General Support	39	39			-1	+0
Health Care Assistants	91	89	-2	-2.2%	+3	+0
Care, other	1	1			+1	+1
Patient & Client Care	92	90	-2	-2.2%	+4	+1

Social Care Older Persons Services Employment by Grade Group: Aug 2020

Aug 2020 (Dec 2019 figure: 13,233)	WTE Jul 2020	WTE Aug 2020	WTE change since Jul 20	% change since Jul 20	WTE change since Dec 19	WTE change since Aug 19
Overall	13,473	13,543	+71	+0.5%	+311	+240
Consultant Medicine	5	5			+1	+1
Consultants	5	5			+1	+1
Registrar	5	6	+1	+17.7%	-1	
Senior Registrar	1	1				
Specialist Registrar	3	3	-0	-6.3%	+1	-1
Registrars	9	9	+1	+7.4%	-0	-1
SHO/ Interns	12	12	+0	+3.5%	-3	-2
Medical/ Dental, other	85	93	+8	+9.1%	-4	+8
Medical & Dental	110	119	+9	+7.9%	-5	+7
Clinical Nurse/ Midwife Manager	534	530	-4	-0.7%	+22	+7
Director Nursing/Midwifery, Assistant	102	106	+4	+3.5%	+3	-1
Director of Nursing/Midwifery	104	104	-0	-0.1%	+5	+8
Nurse/ Midwife Manager	740	740	-1	-0.1%	+31	+14
Advanced Nurse/ Midwife Practitioner	13	13	+0	+0.1%	+2	+4
Clinical Nurse/ Midwife Specialist	19	18	-0	-1.1%	+3	+1
Nurse/ Midwife Specialist & AN/MP	31	31	-0	-0.6%	+5	+5
Staff Nurse [Psychiatric]	5	5			-0	
Staff Nurses [General/ Children's]	2,609	2,624	+15	+0.6%	+52	+41
Staff Nurse/ Staff Midwife	2,614	2,629	+15	+0.6%	+52	+41
Public Health Nurse	13	13	-0	-2.0%	-0	-0
Post-registration Nurse/ Midwife Student				-100.0%	-1	
Nursing/ Midwifery awaiting registration	3	3	-0	-2.0%	+2	+3
Nursing/ Midwifery Student	3	3	-0	-2.0%	+1	+3
Nursing Education/Clinical	3	3			+2	+2
Nursing/ Midwifery other	3	3			+2	+2
Nursing & Midwifery	3,404	3,418	+14	+0.4%	+90	+64
Dietitians	22	21	-1	-2.9%	+5	+3
Occupational Therapists	116	117	+1	+1.2%	+4	+7
Physiotherapists	128	129	+1	+0.8%	+5	+6
Podiatrists & Chiropodists	12	12	-0	-3.6%	-0	-0
Speech & Language Therapists	22	21	-0	-1.0%	-2	
Therapy Professions	299	301	+1	+0.4%	+12	+16
Clinical Measurement	0	0	+0	+6.5%	+0	+0
Radiographers	5	5	+0	+1.1%	-1	-0
Health Science/ Diagnostics	5	5	+0	+1.6%	-1	+0
Social Care	3	3	+0	+2.9%	+0	+0
Social Workers	98	96	-2	-1.6%	-2	-6
Psychologists	2	2				
Pharmacy	17	18	+0	+0.2%	+2	+2
Other Health & Social Care	0	0				
Play Therapists/ Specialists	1	1				
H&SC, Other	1	1				
Health & Social Care Professionals	426	426	-0	-0.1%	+11	+11
Executive Management	12	13	+1	+7.3%	+1	+2
Senior Management (VIII & GM)	62	64	+2	+3.7%	+1	+5
Management (VIII & above)	74	77	+3	+4.3%	+2	+7
Middle Management (V-VII)	167	169	+2	+1.1%	+5	+8

Aug 2020 (Dec 2019 figure: 13,233)	WTE Jul 2020	WTE Aug 2020	WTE change since Jul 20	% change since Jul 20	WTE change since Dec 19	WTE change since Aug 19
Overall	13,473	13,543	+71	+0.5%	+311	+240
Other Administrative	2	1	-1	-50.0%		-1
Administrative/ Supervisory (V to VII)	169	170	+1	+0.5%	+5	+7
Clerical (III & IV)	566	567	+2	+0.3%	-4	-4
Management & Administrative	809	814	+6	+0.7%	+3	+10
Catering	225	225	+0	+0.2%	+4	+4
Household Services	500	502	+2	+0.4%	+10	-1
Other Support	33	33	-0	-0.2%	-2	-2
Portering	80	79	-1	-1.4%	-3	-5
Support	837	839	+1	+0.1%	+10	-4
Maintenance	99	99	-0	-0.2%	+0	-1
Maintenance/ Technical	99	99	-0	-0.2%	+0	-1
General Support	936	937	+1	+0.1%	+10	-5
HCA, Nurse's Aide, etc.	4,468	4,413	-55	-1.2%	+392	+299
Health & Social Care Assistants	23	23	+0	+0.0%	+2	+1
Health Care Assistants	4,492	4,437	-55	-1.2%	+394	+300
Home Help	3,148	3,247	+99	+3.1%	-195	-149
Care, other	149	146	-3	-2.0%	+4	+2
Patient & Client Care	7,788	7,829	+41	+0.5%	+202	+153

Employment by WTE, Headcount, Gender, Full-Time /Part-Time etc.: Aug 2020

Social Care Older Persons Services Staff Group	WTE	Headcount	WTE: no.	% Male	% female	Male WTE: no.	Female WTE: no.	% Total Perm	% Male Perm	% Female Perm	% Total Full Time	% Total Part Time	% Male FT	% Female FT
Overall	13,543	16,895	1.25	12.6%	87.4%	1.11	1.27	80.9%	78.0%	81.4%	47.7%	52.3%	77.3%	43.4%
Consultant Medicine	5	7	1.52	14.3%	85.7%	2.00	1.46	85.7%	85.7%	83.3%	28.6%	71.4%	0.0%	33.3%
Consultants	5	7	1.52	14.3%	85.7%	2.00	1.46	85.7%	100.0%	83.3%	28.6%	71.4%	0.0%	33.3%
Registrar	6	6	1.09	50.0%	50.0%	1.00	1.20	33.3%	33.3%	0.0%	83.3%	16.7%	100.0%	66.7%
Senior Registrar	1	1	1.00		100.0%		1.00	100.0%	100.0%	100.0%	100.0%	0.0%		100.0%
Specialist Registrar	3	3	1.07	33.3%	66.7%	1.00	1.10	0.0%	0.0%	0.0%	100.0%	0.0%	100.0%	100.0%
Registrars	9	10	1.07	40.0%	60.0%	1.00	1.13	30.0%	50.0%	16.7%	90.0%	10.0%	100.0%	83.3%
SHO/ Interns	12	13	1.05	46.2%	53.8%	1.00	1.09	0.0%	0.0%	0.0%	100.0%	0.0%	100.0%	100.0%
Medical/ Dental, other	93	169	1.82	65.1%	34.9%	1.99	1.57	59.2%	63.6%	50.8%	22.5%	77.5%	20.9%	25.4%
Medical & Dental	119	199	1.67	60.8%	39.2%	1.84	1.46	54.8%	60.3%	46.2%	31.2%	68.8%	27.3%	37.2%
Clinical Nurse/ Midwife Manager	530	570	1.07	7.4%	92.6%	1.03	1.08	97.5%	97.5%	97.7%	78.1%	21.9%	88.1%	77.3%
Director Nursing/Midwifery, Assistant	106	111	1.05	5.4%	94.6%	1.09	1.05	97.3%	97.3%	97.1%	88.3%	11.7%	100.0%	87.6%
Director of Nursing/Midwifery	104	105	1.01	5.7%	94.3%	1.00	1.01	97.1%	97.1%	97.0%	97.1%	2.9%	100.0%	97.0%
Nurse/ Midwife Manager	740	786	1.06	6.9%	93.1%	1.03	1.06	97.5%	96.3%	97.5%	82.1%	17.9%	90.7%	81.4%
Advanced Nurse/ Midwife Practitioner	13	13	1.02	7.7%	92.3%	1.00	1.02	100.0%	100.0%	100.0%	92.3%	7.7%	100.0%	91.7%
Clinical Nurse/ Midwife Specialist	18	21	1.14	9.5%	90.5%	1.00	1.15	90.5%	90.5%	89.5%	61.9%	38.1%	100.0%	57.9%
Nurse/ Midwife Specialist & AN/MP	31	34	1.09	8.8%	91.2%	1.00	1.10	94.1%	100.0%	93.5%	73.5%	26.5%	100.0%	71.0%
Staff Nurse [Psychiatric]	5	5	1.02	60.0%	40.0%	1.00	1.06	100.0%	100.0%	100.0%	80.0%	20.0%	100.0%	50.0%
Staff Nurses [General/ Children's]	2,624	3,078	1.17	7.0%	93.0%	1.04	1.18	90.6%	90.6%	90.9%	60.3%	39.7%	91.1%	58.0%
Staff Nurse/ Staff Midwife	2,629	3,083	1.17	7.0%	93.0%	1.04	1.18	90.7%	87.1%	90.9%	60.3%	39.7%	91.2%	58.0%
Public Health Nurse	13	15	1.15	13.3%	86.7%	1.00	1.17	100.0%	100.0%	100.0%	53.3%	46.7%	100.0%	46.2%
Nursing/ Midwifery Student	3	3	1.20	33.3%	66.7%	1.00	1.33	33.3%	0.0%	50.0%	66.7%	33.3%	100.0%	50.0%
Nursing Education/Clinical	3	3	1.00		100.0%		1.00	100.0%	100.0%	100.0%	100.0%	0.0%		100.0%
Nursing/ Midwifery other	3	3	1.00		100.0%	#DIV/0	1.00	100.0%		100.0%	100.0%	0.0%	#DIV/0	100.0%
Nursing & Midwifery	3,418	3,924	1.15	7.1%	92.9%	1.04	1.16	92.0%	88.8%	92.3%	64.8%	35.2%	91.3%	62.8%
Dietitians	21	27	1.26	7.4%	92.6%	1.00	1.28	85.2%	85.2%	84.0%	55.6%	44.4%	100.0%	52.0%
Occupational Therapists	117	132	1.12	9.8%	90.2%	1.01	1.14	87.1%	87.1%	85.7%	78.0%	22.0%	92.3%	76.5%
Physiotherapists	129	146	1.14	15.1%	84.9%	1.04	1.15	91.8%	91.8%	91.9%	68.5%	31.5%	81.8%	66.1%

Podiatrists & Chiropodists	12	16	1.37	25.0%	75.0%	1.14	1.47	68.8%	68.8%	75.0%	50.0%	50.0%	75.0%	41.7%
Speech & Language Therapists	21	26	1.21	3.8%	96.2%	1.00	1.22	100.0%	100.0%	100.0%	65.4%	34.6%	100.0%	64.0%
Therapy Professions	301	347	1.15	12.1%	87.9%	1.04	1.17	89.0%	90.5%	88.9%	70.0%	30.0%	85.7%	67.9%
Clinical Measurement	0	1	2.04		100.0%		2.04	0.0%	0.0%	0.0%	0.0%	100.0%		0.0%
Radiographers	5	9	1.93	11.1%	88.9%	2.00	1.92	77.8%	77.8%	75.0%	11.1%	88.9%	0.0%	12.5%
Health Science/ Diagnostics	5	10	1.94	10.0%	90.0%	2.00	1.93	70.0%	100.0%	66.7%	10.0%	90.0%	0.0%	11.1%
Social Care	3	5	1.77		100.0%	#DIV/0	1.77	100.0%		100.0%	0.0%	100.0%	#DIV/0	0.0%
Social Workers	96	108	1.12	14.8%	85.2%	1.04	1.14	95.4%	93.8%	95.7%	82.4%	17.6%	93.8%	80.4%
Psychologists	2	3	1.43		100.0%	#DIV/0	1.43	100.0%		100.0%	33.3%	66.7%	#DIV/0	33.3%
Pharmacy	18	24	1.37	20.8%	79.2%	1.17	1.44	79.2%	100.0%	73.7%	50.0%	50.0%	80.0%	42.1%
Other Health & Social Care	0	1	2.78		100.0%		2.78	100.0%	100.0%	100.0%	0.0%	100.0%		0.0%
Play Therapists/ Specialists	1	1	1.00	100.0%		1.00		100.0%	100.0%		100.0%	0.0%	100.0%	
H&SC, Other	1	2	1.47	50.0%	50.0%	1.00	2.78	100.0%	100.0%	100.0%	50.0%	50.0%	100.0%	0.0%
Health & Social Care	426	499	1.17	13.0%	87.0%	1.05	1.19	89.8%	92.3%	89.4%	69.5%	30.5%	86.2%	67.1%
Executive Management	13	13	1.01	61.5%	38.5%	1.00	1.04	100.0%	100.0%	100.0%	100.0%	0.0%	100.0%	100.0%
Senior Management (VIII & GM)	64	66	1.03	28.8%	71.2%	1.07	1.02	90.9%	90.9%	93.6%	93.9%	6.1%	84.2%	97.9%
Management (VIII & above)	77	79	1.03	34.2%	65.8%	1.05	1.02	92.4%	88.9%	94.2%	94.9%	5.1%	88.9%	98.1%
Administrative/ Supervisory (V to VII)	170	186	1.09	15.1%	84.9%	1.07	1.10	95.2%	89.3%	96.2%	77.4%	22.6%	89.3%	75.3%
Clerical (III & IV)	567	670	1.18	7.3%	92.7%	1.06	1.19	85.7%	73.5%	86.6%	62.7%	37.3%	91.8%	60.4%
Management & Administrative	814	935	1.15	11.1%	88.9%	1.06	1.16	88.1%	81.7%	88.9%	68.3%	31.7%	90.4%	65.6%
Catering	225	249	1.11	32.5%	67.5%	1.05	1.13	92.8%	92.8%	94.0%	73.1%	26.9%	96.3%	61.9%
Household Services	502	584	1.16	18.7%	81.3%	1.18	1.16	85.4%	85.4%	89.1%	56.5%	43.5%	73.4%	52.6%
Other Support	33	41	1.26	53.7%	46.3%	1.14	1.44	78.0%	78.0%	78.9%	61.0%	39.0%	81.8%	36.8%
Portering	79	83	1.06	98.8%	1.2%	1.05	1.35	85.5%	85.5%	100.0%	91.6%	8.4%	91.5%	100.0%
Support	839	957	1.14	30.7%	69.3%	1.10	1.16	87.0%	80.3%	90.0%	64.1%	35.9%	85.4%	54.6%
Maintenance/ Technical	99	103	1.04	98.1%	1.9%	1.05	1.00	94.2%	94.1%	100.0%	92.2%	7.8%	92.1%	100.0%
General Support	937	1,060	1.13	37.3%	62.7%	1.09	1.16	87.7%	83.8%	90.1%	66.8%	33.2%	87.1%	54.7%
HCA, Nurse's Aide, etc.	4,413	5,056	1.15	18.6%	81.4%	1.05	1.17	80.5%	80.5%	80.0%	63.0%	37.0%	86.0%	57.7%
Health & Social Care Assistants	23	26	1.11	34.6%	65.4%	1.03	1.16	96.2%	96.2%	94.1%	76.9%	23.1%	100.0%	64.7%
Health Care Assistants	4,437	5,082	1.15	18.7%	81.3%	1.05	1.17	80.6%	82.9%	80.1%	63.0%	37.0%	86.1%	57.7%
Home Help	3,247	5,022	1.55	3.2%	96.8%	1.44	1.55	70.0%	27.5%	71.4%	8.8%	91.2%	7.5%	8.9%
Care, other	146	174	1.19	33.9%	66.1%	1.27	1.16	79.9%	59.3%	90.4%	63.8%	36.2%	64.4%	63.5%
Patient & Client Care	7,829	10,278	1.31	11.4%	88.6%	1.10	1.35	75.4%	74.1%	75.6%	36.6%	63.4%	74.3%	31.7%

Employment by WTE, Headcount, Gender, Full-Time /Part-Time etc.: Aug 2020

Social Care Older Persons Services CHO	WTE	Headcount	WTE: no.	% Male	% female	Male WTE: no.	Female WTE: no.	% Total Perm	% Male Perm	% Female Perm	% Total Full Time	% Total Part Time	% Male FT	% Female FT
Overall	13,543	16,895	1.25	12.6%	87.4%	1.11	1.27	80.9%	78.0%	81.4%	47.7%	52.3%	77.3%	43.4%
CHO 1	1,891	2,323	1.23	12.0%	88.0%	1.13	1.24	69.9%	69.9%	68.7%	43.9%	56.1%	69.8%	40.3%
HSE	1,626	1,939	1.19	12.1%	87.9%	1.04	1.22	87.9%	87.9%	88.2%	47.3%	52.7%	87.2%	87.2%
CHO 2	1,626	1,939	1.19	12.1%	87.9%	1.04	1.22	87.9%	87.9%	88.2%	47.3%	52.7%	87.2%	41.8%
HSE	1,050	1,392	1.33	11.3%	88.7%	1.05	1.37	92.2%	92.2%	92.9%	48.2%	51.8%	88.5%	88.5%
CHO 3	1,050	1,392	1.33	11.3%	88.7%	1.05	1.37	92.2%	92.2%	92.9%	48.2%	51.8%	88.5%	43.1%
HSE	2,911	3,967	1.36	10.8%	89.2%	1.21	1.38	66.8%	66.8%	69.0%	32.2%	67.8%	61.7%	61.7%
CHO 4	2,911	3,967	1.36	10.8%	89.2%	1.21	1.38	66.8%	66.8%	69.0%	32.2%	67.8%	61.7%	28.7%
HSE	1,689	2,072	1.23	8.9%	91.1%	1.12	1.24	99.5%	99.5%	99.4%	46.6%	53.4%	74.5%	74.5%
CHO 5	1,689	2,072	1.23	8.9%	91.1%	1.12	1.24	99.5%	99.5%	99.4%	46.6%	53.4%	74.5%	43.9%
HSE	347	399	1.15	22.3%	77.7%	1.08	1.17	69.2%	69.2%	70.0%	70.9%	29.1%	83.1%	83.1%
Section 38	475	515	1.09	26.6%	73.4%	1.05	1.10	99.6%	99.6%	99.7%	81.4%	18.6%	92.0%	92.0%
CHO 6	822	914	1.11	24.7%	75.3%	1.06	1.13	86.3%	86.3%	86.3%	76.8%	23.2%	88.5%	73.0%
HSE	1,036	1,207	1.16	15.1%	84.9%	1.06	1.18	89.6%	89.6%	89.9%	66.0%	34.0%	86.8%	86.8%
CHO 7	1,036	1,207	1.16	15.1%	84.9%	1.06	1.18	89.6%	89.6%	89.9%	66.0%	34.0%	86.8%	62.3%
HSE	1,519	1,947	1.28	11.2%	88.8%	1.19	1.30	78.7%	78.7%	78.1%	44.9%	55.1%	72.6%	72.6%
CHO 8	1,519	1,947	1.28	11.2%	88.8%	1.19	1.30	78.7%	78.7%	78.1%	44.9%	55.1%	72.6%	41.4%
HSE	667	759	1.14	20.8%	79.2%	1.07	1.16	81.9%	81.9%	83.2%	71.7%	28.3%	83.5%	83.5%
Section 38	264	299	1.13	14.4%	85.6%	1.06	1.15	88.6%	88.6%	91.0%	74.2%	25.8%	95.3%	95.3%
CHO 9	931	1,058	1.14	19.0%	81.0%	1.07	1.15	83.8%	83.8%	85.5%	72.4%	27.6%	86.1%	69.2%
other Community Services	68	76	1.12	28.9%	71.1%	1.09	1.13	80.3%	80.3%	79.6%	85.5%	14.5%	90.9%	83.3%

Summary Staff Movement: August 2020

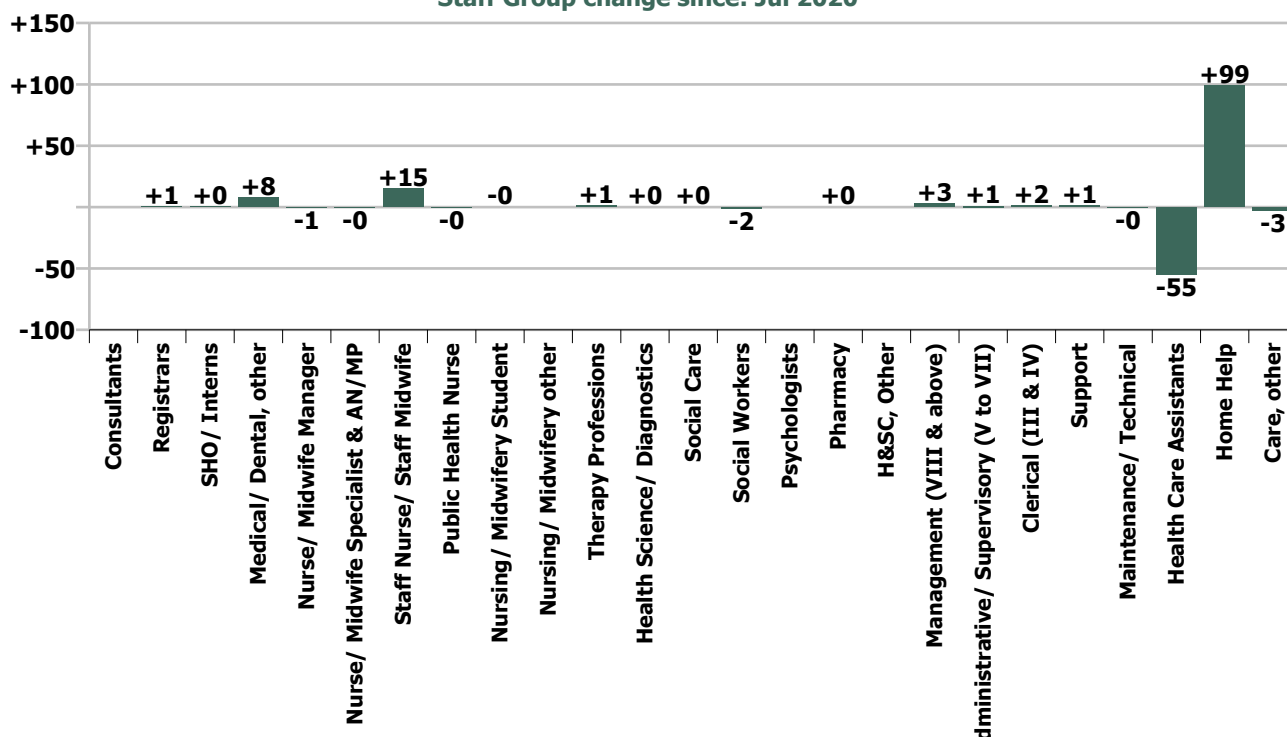
Month-on-month
Summary

WTE change since Jul 20	% change since Jul 20	overall	Consultants	Registrars	SHO/ Interns	Medical/ Dental, other	Medical & Dental	Nurse/ Midwife Manager	Nurse/ Midwife Specialist & AN/MP	Staff Nurse/ Staff Midwife	Public Health Nurse	Nursing/ Midwifery Student	Nursing/ Midwifery other	Nursing & Midwifery	Therapy Professions	Health Science/ Diagnostics	Social Care	Social Workers	Psychologists	Pharmacy	H&SC, Other	Health & Social Care Professionals	Management (VIII & above)	Administrativ e/ Supervisory (V to VII)	Clerical (III & IV)	Management & Administrativ e	Support	Maintenance/ Technical	General Support	Health Care Assistants	Home Help	Care, other	Patient & Client Care
Overall	+0.5%	+71	0.0	+0.6	+0.4	+7.7	+8.8	-0.5	-0.2	+15.1	-0.3	-0.0	0.0	+14.1	+1.1	+0.1	+0.1	-1.6	0.0	+0.0	0.0	-0.3	+3.2	+0.9	+1.5	+5.5	+1.2	-0.2	+1.0	-54.8	+99.1	-2.9	+41.4
CHO 1	+0.3%	+6					0.0	-2.9	-0.0	+3.3				+0.4	+0.1	+0.1		-0.2				-0.1		-0.1	+0.7	+0.6	+0.3		+0.3	-1.7	+6.4	-0.2	+4.5
CHO 2	+1.8%	+28				-0.6	-0.6	-0.0		+7.3				+7.3	+1.7							+1.7		-0.4	-2.1	-2.5	+2.7	-0.0	+2.7	+1.4	+20.8	-2.5	+19.7
CHO 3	+0.1%	+1				-0.2	-0.2	-0.7		+1.9				+1.2	+2.2	+0.0		-0.5				+1.8		+0.9	-0.0	+0.9	-1.2	-0.1	-1.3	+0.9	-1.7	-0.1	-0.9
CHO 4	+1.5%	+44		-0.2		+7.5	+7.3	+0.5	-0.5	-6.2	+0.0			-6.1	-0.0			+1.3			+0.1	+1.3		-0.3	-1.1	-1.4	+1.1	+0.2	+1.3	-21.9	+62.8	+0.4	+41.3
CHO 5	+0.1%	+2				+1.0	+1.0	+0.7		+4.8	-0.1			+5.4	-0.8							-0.8		+0.1	+0.5	+0.6	-1.2	-0.1	-1.2	-6.5	+3.7	+0.1	-2.7
CHO 6	-2.2%	-19					0.0	-0.7		-1.5				-2.1	-2.4			-1.1		-0.0		-3.5	+1.0	-1.0	-0.7	-0.7	-2.6		-2.6	-9.8		+0.1	-9.8
CHO 7	+0.3%	+3					0.0	+2.3	+0.3	-0.3		-0.0		+2.2	+0.4			-0.2				+0.2	+0.9	-0.0	+4.9	+5.8	+0.4		+0.4	-4.7	-0.6	-0.6	-5.9
CHO 8	+0.6%	+9				+0.0	0.0	+0.2		+5.2	-0.2			+5.2	-0.4							-0.4	+0.3	+0.1	-0.2	+0.2	+0.4	-0.3	+0.2	-3.7	+7.7	-0.1	+3.9
CHO 9	-0.5%	-5		+0.8	+0.4		+1.2	+0.1		+0.6				+0.7	+0.4		+0.1	-0.9				-0.4	-0.1	+1.1	+0.2	+1.2	+1.2		+1.2	-8.7		+0.0	-8.7
other Community Services	+1.3%	+1																					+1.1	+0.4	-0.7	+0.9							0.0
		+0.5%		+7.4%	+3.5%	+9.1%	+7.9%	-0.1%	-0.6%	+0.6%	-2.0%	-2.0%		+0.4%	+0.4%	+1.6%	+2.9%	-1.6%		+0.2%		-0.1%	+4.3%	+0.5%	+0.3%	+0.7%	+0.1%	-0.2%	+0.1%	-1.2%	+3.1%	-2.0%	+0.5%

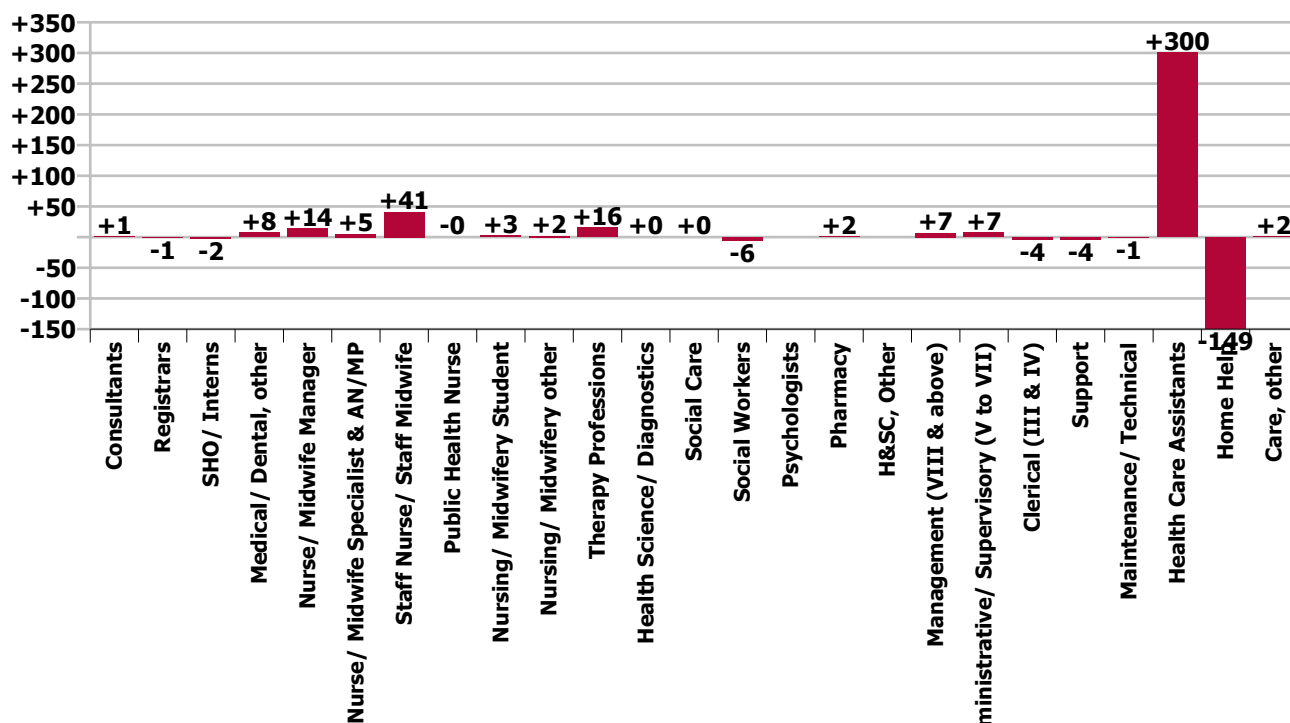
Year-on-year Summary

WTE change since Aug 19	% change since Aug 19	overall	Consultants	Registrars	SHO/ Interns	Medical/ Dental, other	Medical & Dental	Nurse/ Midwife Manager	Nurse/ Midwife Specialist & AN/MP	Staff Nurse/ Staff Midwife	Public Health Nurse	Nursing/ Midwifery Student	Nursing/ Midwifery other	Nursing & Midwifery	Therapy Professions	Health Science/ Diagnostics	Social Care	Social Workers	Psychologists	Pharmacy	H&SC, Other	Health & Social Care Professionals	Management (VIII & above)	Administrativ e Supervisory (V to VII)	Clerical (III & IV)	Management & Administrativ e	Support	Maintenance/ Technical	General Support	Health Care Assistants	Home Help	Care, other	Patient & Client Care	
Overall	+1.8%	+240	+1	-1	-2	+8	+7	+14	+5	+41	-0	+3	+2	+64	+16	+0	+0	-6			+2		+11	+7	+7	-4	+10	-4	-1	-5	+300	-149	+2	+153
CHO 1	+2.2%	+40				+1	+1	-7	+2	+2			+1	-2	+0	+0		-1				-1	+0	+1	-3	-2	-6	-1	-7	+76	-24	-1	+51	
CHO 2	+2.2%	+35				-2	-2	+4	+1	+9				+14	+1			+1				+2	-1	+0	-8	-8	-0	-0	-0	+54	-26	+1	+30	
CHO 3	+8.7%	+84						+2	-0	-15	+1			-12	+2	+0		-1				+1	+1	+4	-0	+4	-3	-1	-4	+39	+51	+4	+94	
CHO 4	-0.2%	-4		-1	-1	+10	+8	+3	+1	-4	-0			-0	+5	+0		+1	+1		+1	+7	+0	+1	+1	+2	+18	+0	+18	+22	-59	-2	-39	
CHO 5	+1.1%	+18				+0	+0	+1	-0	+16				+17	-0			+0			+1	+1	+1	-1	+0	+0	-8	-0	-8	+81	-72	-1	+8	
CHO 6	-0.1%	-1						-1		+1				-1	-5			-1			-0		-6		-3	-1	-4	+2	-3	+13		-1	+12	
CHO 7	+3.0%	+30				-1	-1	+6	+0	+22		+3		+31	-2			-1				-3	+4	+1	+8	+13	-3	-1	-3	-18	+12		-6	
CHO 8	+0.1%	+1				+0	+0	+1		+5	-1		+1	+6	-2			-2			-1		-5	+3	+1	+1	+5	+2	-0	+2	+21	-30	+2	-8
CHO 9	+4.4%	+39	+1	-0	-1		+0	+6	+1	+4	-0			+11	+17	-1	+0	-2			+1		+15	-1	+2	+0	+1	-0		-0	+12		-1	+12
other Community Services	-1.7%	-1																					+0	+2	-3	-1								
		+1.8%	+27.8%	-6.8%	-12.9%	+9.6%	+5.9%	+1.9%	+20.1%	+1.6%	-1.0%	-100.0%	+200.0%	+1.9%	+5.4%	+4.2%	+2.9%	-6.3%			+9.8%		+2.6%	+9.7%	+4.3%	-0.6%	+1.3%	-0.5%	-0.7%	-0.5%	+7.3%	-4.4%	+1.1%	+2.0%

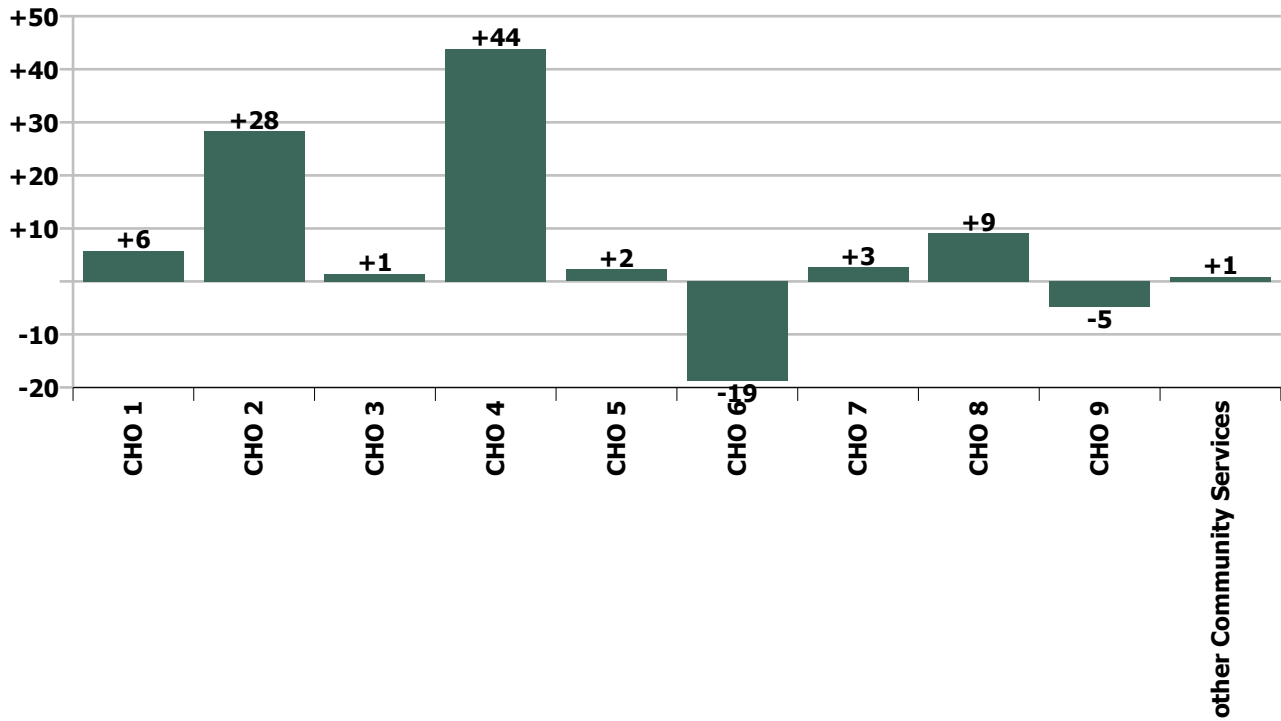
Staff Group change since: Jul 2020



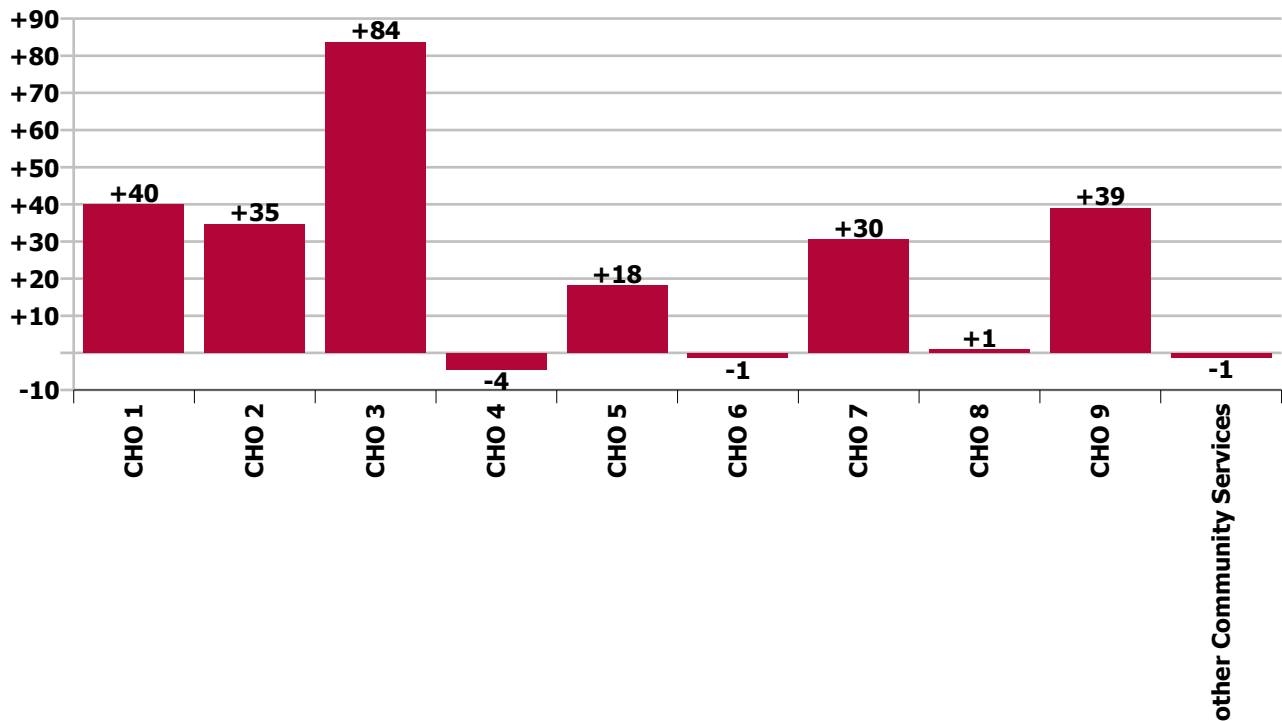
Staff Group change since: Aug 2019



CHO change since: Jul 2020



CHO change since: Aug 2019



Longitudinal Employment Levels by Grade Group - Oct 2013 to Aug 2020

Aug 2020 (Oct 2013 figure: 11,493)	WTE Aug 2020	WTE change since Oct 13	WTE change since Dec 15	WTE change since Dec 16	WTE change since Dec 17	WTE change since Dec 18	WTE change since Dec 19	% change since Oct 13	% change since Dec 15	% change since Dec 16	% change since Dec 17	% change since Dec 18	% change since Dec 19
Overall	13,543	+2,050	+937	+1,061	+440	+239	+311	+17.8%	+7.4%	+8.5%	+3.4%	+1.8%	+2.3%
Consultant Medicine	5	+3	-2	-5	-5	+1	+1	+131.2%	-30.3%	-50.9%	-50.0%	+27.8%	+27.8%
Consultant Psychiatry		-1	-1	-1	-1			-100.0%	-100.0%	-100.0%	-100.0%	-100.0%	-100.0%
Consultant Radiology		-0						-100.0%	-100.0%	-100.0%	-100.0%	-100.0%	-100.0%
Consultant Surgery		-1	-1	-1	-0	-0		-100.0%	-100.0%	-100.0%	-100.0%	-100.0%	-100.0%
Consultants	5	+1	-4	-6	-6	+1	+1	+25.7%	-46.5%	-58.1%	-54.8%	+23.7%	+27.8%
Registrar	6	-3	-3		-2	-2	-1	-34.2%	-31.8%		-26.6%	-25.1%	-15.4%
Senior Registrar	1					-1						-50.0%	
Specialist Registrar	3	+1	-0	+1	+2	+2	+1	+40.5%	-6.3%	+40.5%	+181.0%	+181.0%	+40.5%
Registrars	9	-2	-3	+1	-0	-1	-0	-18.0%	-22.8%	+9.5%	-2.0%	-10.0%	-2.0%
SHO/ Interns	12	-0	+2	+2	+3	+0	-3	-3.3%	+15.1%	+24.8%	+25.3%	+4.1%	-17.2%
Other Medical	93	+8	+10	+7	+7	+7	-4	+10.0%	+12.0%	+8.0%	+8.0%	+8.6%	-3.8%
Medical/ Dental, other	93	+8	+10	+7	+7	+7	-4	+10.0%	+12.0%	+8.0%	+8.0%	+8.6%	-3.8%
Medical & Dental	119	+7	+5	+4	+4	+8	-5	+6.2%	+4.2%	+3.2%	+3.1%	+6.9%	-4.4%
Clinical Nurse/ Midwife Manager	530	+45	+3	-4	+2	+6	+22	+9.4%	+0.5%	-0.8%	+0.4%	+1.2%	+4.4%
Director Nursing/Midwifery, Assistant	106	+25	+20	+18	+14	+19	+3	+30.7%	+23.2%	+20.7%	+15.3%	+21.9%	+3.0%
Director of Nursing/Midwifery	104	+31	+22	+19	+21	+21	+5	+42.5%	+27.8%	+21.9%	+25.5%	+25.3%	+5.4%
Nurse/ Midwife Manager	740	+101	+45	+33	+37	+46	+31	+15.8%	+6.5%	+4.6%	+5.3%	+6.7%	+4.3%
Advanced Nurse/ Midwife Practitioner	13	+10	+11	+10	+10	+6	+2	+341.7%	+536.0%	+324.0%	+324.0%	+82.2%	+18.7%
Clinical Nurse/ Midwife Specialist	18	+2	+2	+6	+7	+2	+3	+11.7%	+10.5%	+47.5%	+64.7%	+10.3%	+17.3%
Nurse/ Midwife Specialist & AN/MP	31	+12	+12	+16	+17	+7	+5	+60.6%	+66.7%	+100.9%	+119.4%	+31.4%	+17.9%
Graduate Nursing/ Midwifery		-1	-2					-100.0%	-100.0%	-100.0%	-100.0%	-100.0%	-100.0%
Staff Midwives		-1	-1	-0	-2			-100.0%	-100.0%	-100.0%	-100.0%	-100.0%	-100.0%
Staff Nurse [Intellectual Disability]		-1	-1	-1	-1	-1		-100.0%	-100.0%	-100.0%	-100.0%	-100.0%	-100.0%
Staff Nurse [Psychiatric]	5	+1	+0	-1	-1	-1	-0	+14.3%	+7.5%	-11.6%	-11.6%	-11.9%	-0.6%
Staff Nurses [General/ Children's]	2,624	-129	+16	+41	+63	+19	+52	-4.7%	+0.6%	+1.6%	+2.4%	+0.7%	+2.0%
Staff Nurse/ Staff Midwife	2,629	-132	+13	+39	+59	+18	+52	-4.8%	+0.5%	+1.5%	+2.3%	+0.7%	+2.0%
Public Health Nurse	13	-2	-2	-1	-2	-0	-0	-10.6%	-15.3%	-8.0%	-11.3%	-3.4%	-2.3%
Pre-registration Nurse/ Midwife Intern		-2						-100.0%	-100.0%	-100.0%	-100.0%	-100.0%	-100.0%
Post-registration Nurse/ Midwife Student		-1					-1	-100.0%	-100.0%	-100.0%	-100.0%	-100.0%	-100.0%
Nursing/ Midwifery awaiting registration	3	+3	+3	+3	-12	+3	+2	-100.0%	-100.0%	-100.0%	-82.1%	-100.0%	+150.0%
Nursing/ Midwifery Student	3		+3	+3	-12	+3	+1		-100.0%	-100.0%	-82.1%	-100.0%	+25.0%
Nursing Education/Clinical	3	+1	+2	+2	+2	+2	+2	+50.0%	+200.0%	+200.0%	+200.0%	+200.0%	+200.0%
Nursing/ Midwifery other	3	+1	+2	+2	+2	+2	+2	+50.0%	+200.0%	+200.0%	+200.0%	+200.0%	+200.0%
Nursing & Midwifery	3,418	-20	+72	+91	+103	+75	+90	-0.6%	+2.2%	+2.7%	+3.1%	+2.3%	+2.7%
Dietitians	21	+14	+11	+6	+4	+4	+5	+177.0%	+106.6%	+35.5%	+22.8%	+24.1%	+31.2%
Occupational Therapists	117	+41	+25	+22	+23	+13	+4	+53.4%	+27.1%	+22.6%	+24.1%	+12.9%	+3.7%
Physiotherapists	129	+15	+8	+13	+8	+1	+5	+13.3%	+6.9%	+11.0%	+6.3%	+1.0%	+4.1%

Aug 2020 (Oct 2013 figure: 11,493)	WTE Aug 2020	WTE change since Oct 13	WTE change since Dec 15	WTE change since Dec 16	WTE change since Dec 17	WTE change since Dec 18	WTE change since Dec 19	% change since Oct 13	% change since Dec 15	% change since Dec 16	% change since Dec 17	% change since Dec 18	% change since Dec 19
Overall	13,543	+2,050	+937	+1,061	+440	+239	+311	+17.8%	+7.4%	+8.5%	+3.4%	+1.8%	+2.3%
Podiatrists & Chiropodists	12	-1	-0	-3	-4	-3	-0	-11.3%	-3.1%	-20.9%	-27.6%	-22.2%	-3.5%
Speech & Language Therapists	21	+4	+1	+1	-2	-2	-2	+19.9%	+5.1%	+5.5%	-9.8%	-7.0%	-7.2%
Therapy Professions	301	+72	+45	+38	+28	+14	+12	+31.4%	+17.6%	+14.5%	+10.1%	+4.8%	+4.3%
Clinical Measurement	0	+0	+0	+0	+0	+0	+0	-100.0%	-100.0%	-100.0%	-100.0%	+512.5%	+133.3%
Medical Laboratory				-1				-100.0%	-100.0%	-100.0%	-100.0%	-100.0%	-100.0%
Phlebotomists		-1	-1	-1	-1			-100.0%	-100.0%	-100.0%	-100.0%	-100.0%	-100.0%
Radiographers	5	-4	-3	-2	-3	-1	-1	-45.5%	-35.6%	-34.3%	-35.2%	-17.1%	-21.2%
Health Science/ Diagnostics	5	-4	-3	-4	-3	-1	-1	-46.1%	-37.5%	-43.4%	-37.1%	-9.6%	-16.0%
Social Care	3	-1	-1	+0	+0	+0	+0	-27.1%	-23.2%	+4.4%	+5.6%	+2.9%	+2.9%
Social Workers	96	+41	+21	+9	+12	+1	-2	+73.2%	+28.7%	+10.9%	+14.8%	+1.3%	-2.3%
Psychologists	2	-0	+2	+2	+2	+2		-8.7%	+320.0%	+320.0%	-100.0%	+320.0%	
Pharmacy	18	+4	+3	+3	+2	+1	+2	+34.4%	+18.1%	+20.5%	+14.2%	+7.4%	+15.0%
Other Health & Social Care	0	-3	-1	-1	-1	-1		-89.4%	-71.0%	-73.5%	-73.5%	-73.5%	
Play Therapists/ Specialists	1	-0	-0	-1				-30.1%	-30.1%	-37.1%			
H&SC, Other	1	-3	-1	-2	-1	-1		-71.8%	-49.1%	-53.9%	-42.4%	-42.4%	
Health & Social Care Professionals	426	+108	+65	+47	+40	+16	+11	+33.9%	+18.2%	+12.3%	+10.5%	+4.0%	+2.8%
Executive Management	13	+10	+7	+6	+5	+3	+1	+327.7%	+113.8%	+83.3%	+62.0%	+28.3%	+7.7%
Senior Management (VIII & GM)	64	+49	+28	+24	+27	+15	+1	+339.4%	+76.9%	+58.2%	+73.2%	+31.7%	+2.0%
Management (VIII & above)	77	+59	+35	+29	+32	+18	+2	+337.4%	+82.2%	+61.9%	+71.2%	+31.1%	+2.9%
Middle Management (V-VII)	169	+68	+63	+53	+42	+27	+5	+67.7%	+58.9%	+45.1%	+32.6%	+19.3%	+3.2%
Other Administrative	1	-0						-16.7%					
Administrative/ Supervisory (V to VII)	170	+68	+63	+53	+42	+27	+5	+66.7%	+58.3%	+44.7%	+32.3%	+19.2%	+3.2%
Clerical (III & IV)	567	+160	+106	+84	+58	+2	-4	+39.2%	+23.0%	+17.3%	+11.4%	+0.4%	-0.7%
Management & Administrative	814	+287	+203	+166	+131	+48	+3	+54.5%	+33.3%	+25.5%	+19.2%	+6.3%	+0.4%
Catering	225	+28	+14	+12	+13	+10	+4	+14.4%	+6.8%	+5.7%	+6.3%	+4.5%	+1.7%
Household Services	502	-128	-80	-61	-42	-16	+10	-20.3%	-13.7%	-10.8%	-7.8%	-3.0%	+2.0%
Other Support	33	-12	-12	-8	-11	-5	-2	-27.2%	-27.7%	-19.0%	-25.0%	-14.1%	-4.4%
Portering	79	-15	-6	-6	-5	-1	-3	-16.1%	-6.9%	-7.5%	-6.2%	-1.2%	-3.5%
Support	839	-127	-84	-63	-45	-12	+10	-13.2%	-9.1%	-7.0%	-5.1%	-1.4%	+1.1%
Maintenance	99	-12	-8	-5	-3	-4	+0	-11.2%	-7.4%	-4.8%	-3.2%	-3.7%	+0.2%
Maintenance/ Technical	99	-12	-8	-5	-3	-4	+0	-11.2%	-7.4%	-4.8%	-3.2%	-3.7%	+0.2%
General Support	937	-139	-91	-68	-48	-16	+10	-13.0%	-8.9%	-6.8%	-4.9%	-1.7%	+1.0%
HCA, Nurse's Aide, etc.	4,413	+843	+427	+367	+328	+282	+392	+23.6%	+10.7%	+9.1%	+8.0%	+6.8%	+9.7%
Health & Social Care Assistants	23	-0	-4	-3	-3	-1	+2	-0.3%	-15.7%	-10.1%	-9.9%	-3.7%	+9.7%
Health Care Assistants	4,437	+842	+423	+364	+326	+281	+394	+23.4%	+10.5%	+8.9%	+7.9%	+6.8%	+9.7%
Home Help	3,247	+938	+247	+452	-109	-173	-195	+40.6%	+8.2%	+16.2%	-3.3%	-5.1%	-5.7%
Care, other	146	+27	+13	+7	-6	-1	+4	+22.3%	+9.5%	+4.7%	-3.9%	-0.7%	+2.7%

Aug 2020 (Oct 2013 figure: 11,493)	WTE Aug 2020	WTE change since Oct 13	WTE change since Dec 15	WTE change since Dec 16	WTE change since Dec 17	WTE change since Dec 18	WTE change since Dec 19	% change since Oct 13	% change since Dec 15	% change since Dec 16	% change since Dec 17	% change since Dec 18	% change since Dec 19
Overall	13,543	+2,050	+937	+1,061	+440	+239	+311	+17.8%	+7.4%	+8.5%	+3.4%	+1.8%	+2.3%
Patient & Client Care	7,829	+1,807	+682	+822	+210	+107	+202	+30.0%	+9.5%	+11.7%	+2.8%	+1.4%	+2.7%

Source: Health Service Personnel Census