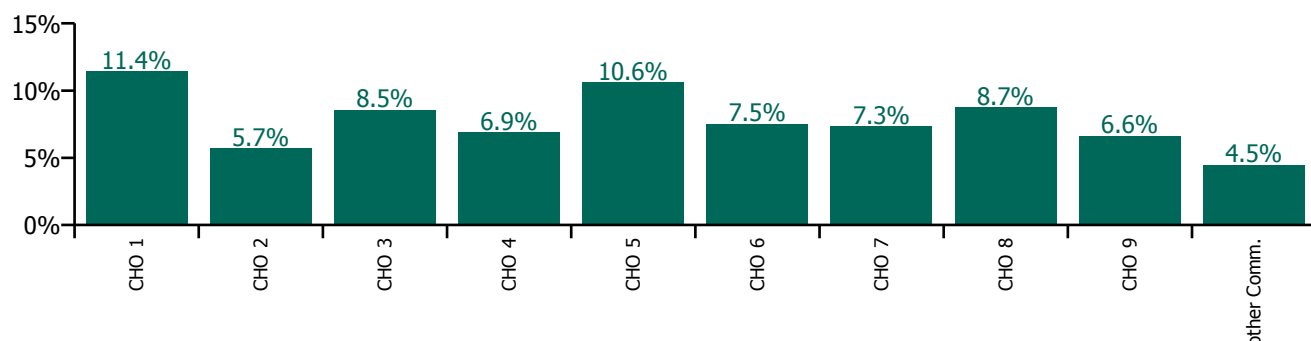


## December 2022

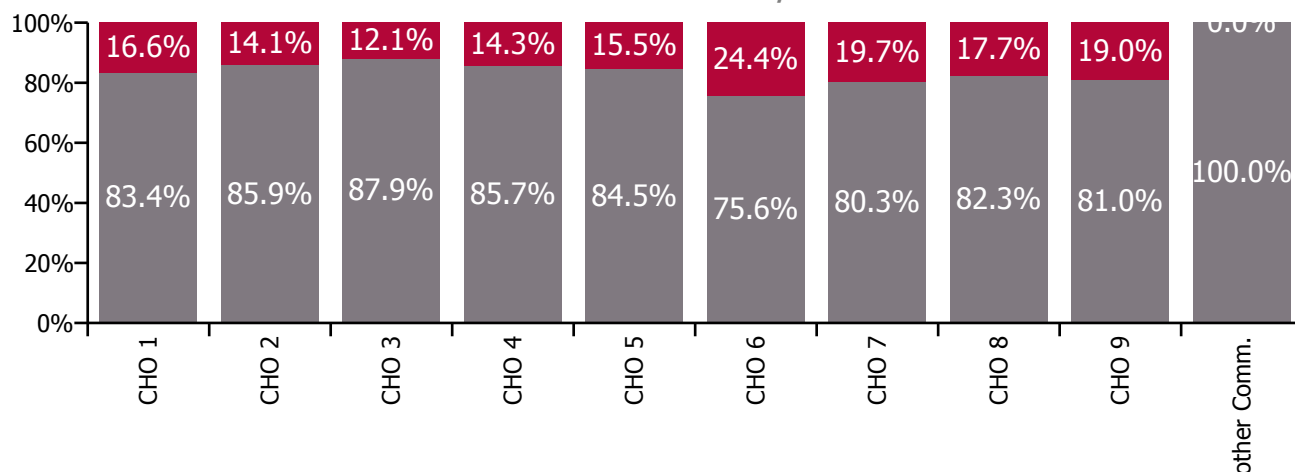
Health Service Absence Rate - by Staff Category: Dec 2022	Certified absence	Self-certified absence	Non Covid-19 absence	Covid-19 absence	Total absence rate	% Non Covid-19 absence	% Covid-19 absence
<b>Social Care</b>	<b>5.8%</b>	<b>0.8%</b>	<b>6.6%</b>	<b>1.4%</b>	<b>8.0%</b>	<b>83.1%</b>	<b>16.9%</b>
Medical & Dental	1.9%	0.3%	2.2%	0.2%	2.4%	92.9%	7.1%
Nursing & Midwifery	5.8%	1.0%	6.7%	1.5%	8.3%	81.4%	18.6%
Health & Social Care Professionals	4.9%	0.5%	5.4%	1.1%	6.5%	83.8%	16.2%
Management & Administrative	3.7%	0.4%	4.2%	0.8%	4.9%	84.6%	15.4%
General Support	6.3%	0.7%	7.0%	1.2%	8.2%	85.1%	14.9%
Patient & Client Care	6.5%	0.9%	7.4%	1.5%	8.9%	83.3%	16.7%

Health Service Absence Rate - Care Group by CHO: Dec 2022	Certified absence	Self-certified absence	Non Covid-19 absence	Covid-19 absence	Total absence rate	% Non Covid-19 absence	% Covid-19 absence
<b>Social Care</b>	<b>5.8%</b>	<b>0.8%</b>	<b>6.6%</b>	<b>1.4%</b>	<b>8.0%</b>	<b>83.1%</b>	<b>16.9%</b>
CHO 1	8.6%	0.9%	9.5%	1.9%	11.4%	83.4%	16.6%
CHO 2	4.4%	0.5%	4.9%	0.8%	5.7%	85.9%	14.1%
CHO 3	6.8%	0.7%	7.5%	1.0%	8.5%	87.9%	12.1%
CHO 4	4.8%	1.1%	5.9%	1.0%	6.9%	85.7%	14.3%
CHO 5	7.9%	1.1%	9.0%	1.6%	10.6%	84.5%	15.5%
CHO 6	4.9%	0.8%	5.7%	1.8%	7.5%	75.6%	24.4%
CHO 7	5.1%	0.7%	5.9%	1.4%	7.3%	80.3%	19.7%
CHO 8	6.5%	0.7%	7.2%	1.5%	8.7%	82.3%	17.7%
CHO 9	4.6%	0.7%	5.4%	1.3%	6.6%	81.0%	19.0%
Other Community Services	4.3%	0.2%	4.5%	0.0%	4.5%	100.0%	0.0%

**Total absence rate**



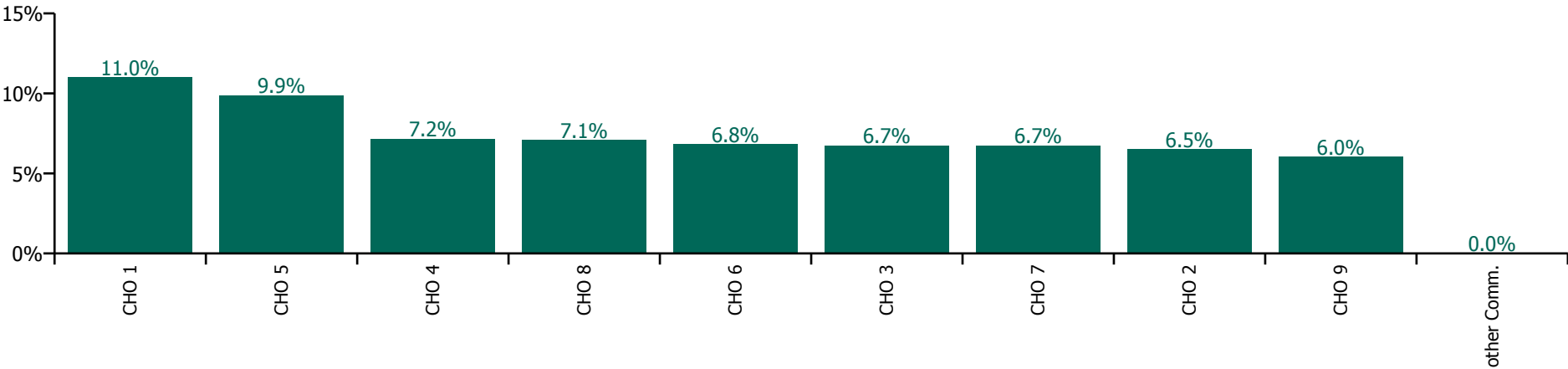
**% of Absence Non Covid-19 / Covid-19**



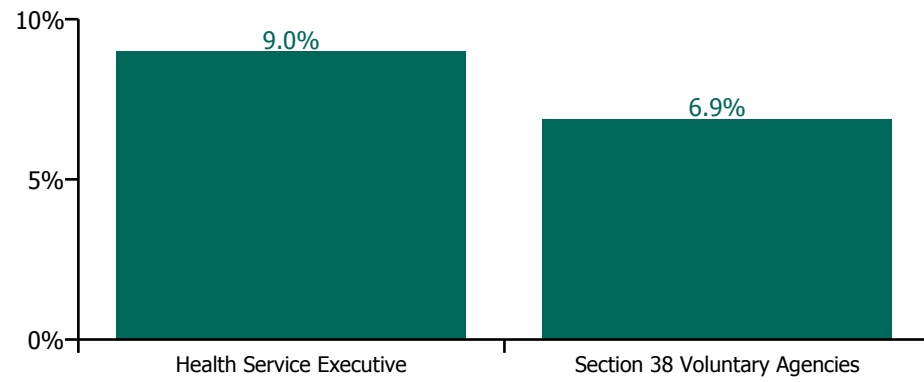
December 2022

Health Service Absence Rate - by Hospital Group & Staff Category: Dec 2022	Medical & Dental	Nursing & Midwifery	Health & Social Care Professionals	Management & Administrative	General Support	Patient & Client Care	Certified absence	Self-certified absence	Non Covid-19 absence	Covid-19 absence	Total absence rate
Social Care	0.9%	7.3%	6.6%	4.4%	7.0%	8.1%	5.4%	0.7%	6.1%	1.2%	7.3%
CHO 1	0.0%	10.5%	7.4%	5.1%	13.2%	12.2%	8.6%	0.9%	9.5%	1.5%	11.0%
CHO 2	0.0%	6.8%	7.0%	4.0%	8.8%	6.5%	5.3%	0.5%	5.8%	0.7%	6.5%
CHO 3	0.0%	5.9%	6.7%	5.2%	5.3%	7.3%	5.2%	0.6%	5.8%	1.0%	6.7%
CHO 4	0.0%	6.7%	8.7%	2.9%	7.4%	7.2%	4.9%	1.3%	6.2%	0.9%	7.2%
CHO 5	0.0%	9.7%	9.7%	7.6%	14.3%	10.2%	7.2%	1.1%	8.3%	1.5%	9.9%
CHO 6	0.0%	6.6%	6.4%	3.4%	1.4%	8.9%	4.6%	0.7%	5.3%	1.5%	6.8%
CHO 7	3.7%	7.5%	5.7%	3.8%	7.7%	7.3%	4.9%	0.6%	5.5%	1.3%	6.7%
CHO 8	0.0%	8.2%	6.5%	4.4%	4.0%	7.4%	5.3%	0.6%	5.9%	1.2%	7.1%
CHO 9	0.0%	5.2%	5.9%	4.3%	6.3%	7.5%	4.4%	0.5%	4.9%	1.2%	6.0%
Other Community Services				0.0%			0.0%	0.0%	0.0%	0.0%	0.0%

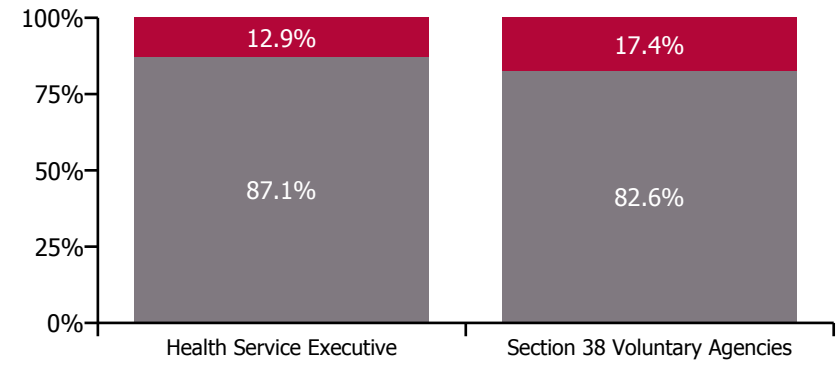
Total absence rate



**Total absence rate**



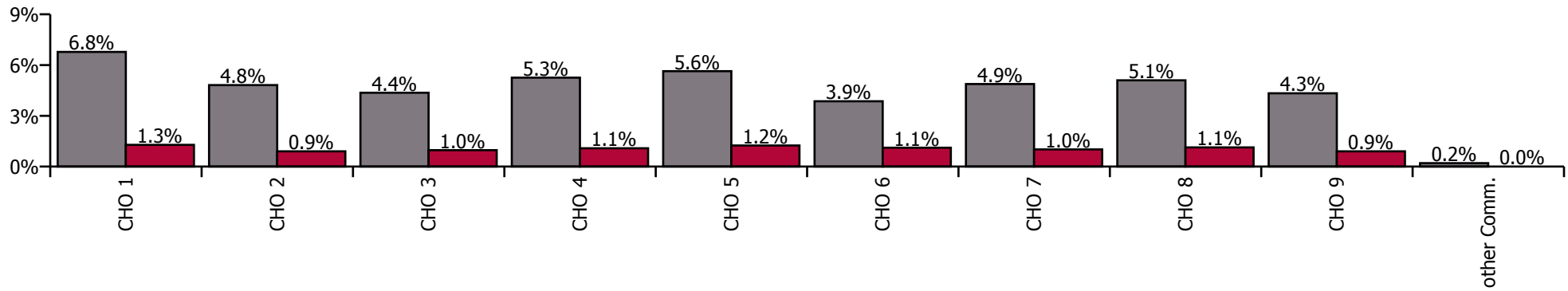
**Non Covid-19 & Covid-19 Absence**



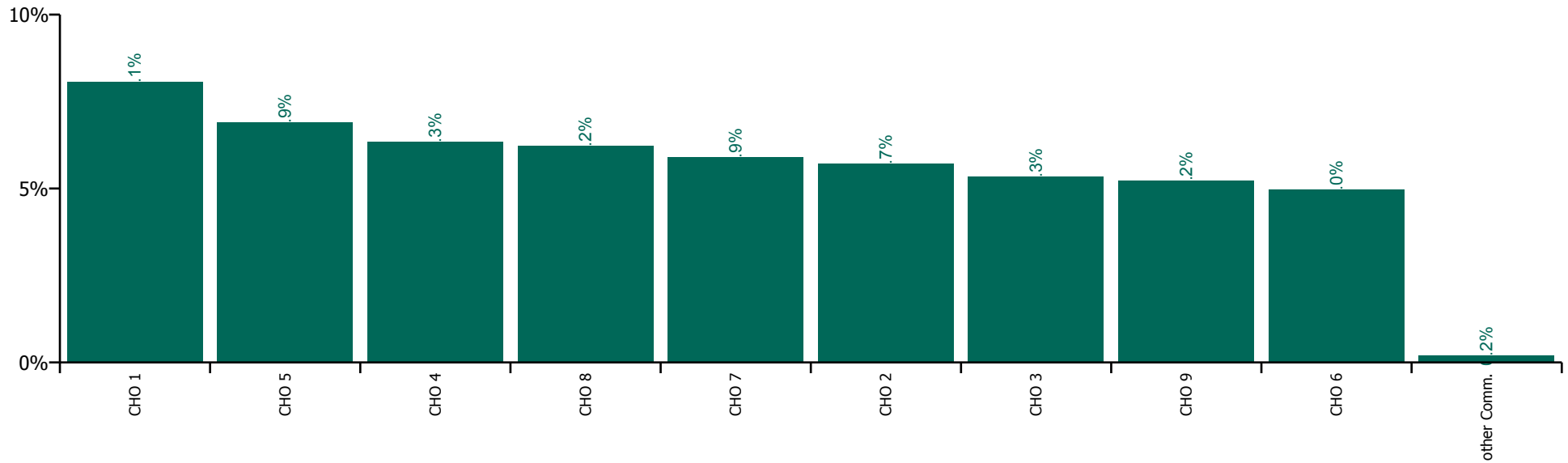
## December 2022

Health Service Absence Rate by Hospital: Dec 2022	Medical & Dental	Nursing & Midwifery	Health & Social Care Professionals	Management & Administrative	General Support	Patient & Client Care	Certified absence	Self-certified absence	Non Covid-19 absence	Covid-19 absence	Total absence rate
<b>Social Care</b>	<b>2.6%</b>	<b>6.6%</b>	<b>5.1%</b>	<b>3.7%</b>	<b>5.8%</b>	<b>6.5%</b>	<b>4.5%</b>	<b>0.5%</b>	<b>4.9%</b>	<b>1.0%</b>	<b>6.0%</b>
Health Service Executive	0.2%	9.0%	4.6%	4.0%	5.5%	8.5%	6.4%	0.4%	6.8%	1.3%	8.1%
<b>CHO 1</b>	<b>0.2%</b>	<b>9.0%</b>	<b>4.6%</b>	<b>4.0%</b>	<b>5.5%</b>	<b>8.5%</b>	<b>6.4%</b>	<b>0.4%</b>	<b>6.8%</b>	<b>1.3%</b>	<b>8.1%</b>
Health Service Executive	3.3%	7.0%	2.9%	1.5%	0.6%	4.7%	3.8%	0.2%	4.0%	0.5%	4.5%
Section 38 Voluntary Agencies	4.1%	6.0%	5.8%	3.5%	5.3%	6.2%	4.6%	0.4%	4.9%	1.0%	5.9%
<b>CHO 2</b>	<b>3.9%</b>	<b>6.2%</b>	<b>5.6%</b>	<b>3.1%</b>	<b>4.8%</b>	<b>6.1%</b>	<b>4.5%</b>	<b>0.3%</b>	<b>4.8%</b>	<b>0.9%</b>	<b>5.7%</b>
Health Service Executive			3.5%	5.3%	18.1%	6.5%	4.6%	0.3%	4.9%	0.8%	5.7%
Section 38 Voluntary Agencies	1.6%	5.8%	5.0%	3.2%	4.9%	5.4%	4.1%	0.3%	4.3%	1.0%	5.3%
<b>CHO 3</b>	<b>1.6%</b>	<b>5.8%</b>	<b>4.9%</b>	<b>3.9%</b>	<b>5.8%</b>	<b>5.4%</b>	<b>4.1%</b>	<b>0.3%</b>	<b>4.4%</b>	<b>1.0%</b>	<b>5.3%</b>
Health Service Executive	6.2%	6.2%	5.3%	2.1%	4.9%	5.4%	3.5%	0.7%	4.2%	0.9%	5.1%
Section 38 Voluntary Agencies	0.0%	7.4%	5.4%	3.3%	6.1%	6.8%	4.4%	1.0%	5.4%	1.1%	6.5%
<b>CHO 4</b>	<b>6.1%</b>	<b>7.3%</b>	<b>5.4%</b>	<b>3.0%</b>	<b>5.9%</b>	<b>6.7%</b>	<b>4.3%</b>	<b>0.9%</b>	<b>5.3%</b>	<b>1.1%</b>	<b>6.3%</b>
Health Service Executive	0.0%	8.2%	6.4%	6.6%	4.6%	8.5%	5.9%	0.5%	6.4%	1.2%	7.6%
Section 38 Voluntary Agencies	9.4%	7.5%	7.3%	5.0%	7.1%	6.6%	4.9%	0.6%	5.5%	1.3%	6.7%
<b>CHO 5</b>	<b>6.3%</b>	<b>7.7%</b>	<b>7.0%</b>	<b>5.5%</b>	<b>6.9%</b>	<b>6.8%</b>	<b>5.1%</b>	<b>0.6%</b>	<b>5.6%</b>	<b>1.2%</b>	<b>6.9%</b>
Health Service Executive	0.7%	8.2%	7.1%	5.7%	2.1%	10.1%	5.0%	0.6%	5.6%	2.7%	8.3%
Section 38 Voluntary Agencies	0.0%	5.1%	4.7%	2.3%	4.9%	5.1%	3.2%	0.5%	3.7%	0.9%	4.6%
<b>CHO 6</b>	<b>0.5%</b>	<b>5.7%</b>	<b>4.8%</b>	<b>2.6%</b>	<b>4.9%</b>	<b>5.7%</b>	<b>3.3%</b>	<b>0.5%</b>	<b>3.9%</b>	<b>1.1%</b>	<b>5.0%</b>
Health Service Executive		1.6%	5.1%	6.3%		3.8%	4.2%	0.3%	4.6%	0.8%	5.3%
Section 38 Voluntary Agencies	1.9%	6.3%	4.6%	3.5%	5.9%	6.6%	4.4%	0.5%	4.9%	1.0%	5.9%
<b>CHO 7</b>	<b>1.9%</b>	<b>6.2%</b>	<b>4.7%</b>	<b>3.8%</b>	<b>5.9%</b>	<b>6.6%</b>	<b>4.4%</b>	<b>0.5%</b>	<b>4.9%</b>	<b>1.0%</b>	<b>5.9%</b>
Health Service Executive	0.2%	11.0%	5.9%	6.3%	9.8%	11.4%	7.7%	0.5%	8.3%	1.4%	9.6%
Section 38 Voluntary Agencies	0.6%	5.4%	5.4%	3.1%	5.3%	5.5%	3.9%	0.4%	4.2%	1.1%	5.3%
<b>CHO 8</b>	<b>0.4%</b>	<b>6.8%</b>	<b>5.5%</b>	<b>4.4%</b>	<b>5.8%</b>	<b>6.7%</b>	<b>4.7%</b>	<b>0.4%</b>	<b>5.1%</b>	<b>1.1%</b>	<b>6.2%</b>
Health Service Executive	1.2%	7.2%	4.7%	4.5%	8.5%	9.0%	5.9%	0.5%	6.3%	1.1%	7.4%
Section 38 Voluntary Agencies	3.2%	4.8%	4.7%	3.3%	5.7%	5.8%	3.8%	0.3%	4.1%	0.9%	5.0%
<b>CHO 9</b>	<b>3.0%</b>	<b>5.4%</b>	<b>4.7%</b>	<b>3.4%</b>	<b>5.8%</b>	<b>6.2%</b>	<b>4.0%</b>	<b>0.3%</b>	<b>4.3%</b>	<b>0.9%</b>	<b>5.2%</b>
<b>Other Community Services</b>				<b>0.2%</b>			<b>0.1%</b>	<b>0.1%</b>	<b>0.2%</b>	<b>0.0%</b>	<b>0.2%</b>

Non Covid-19 / Covid-19 absence rates



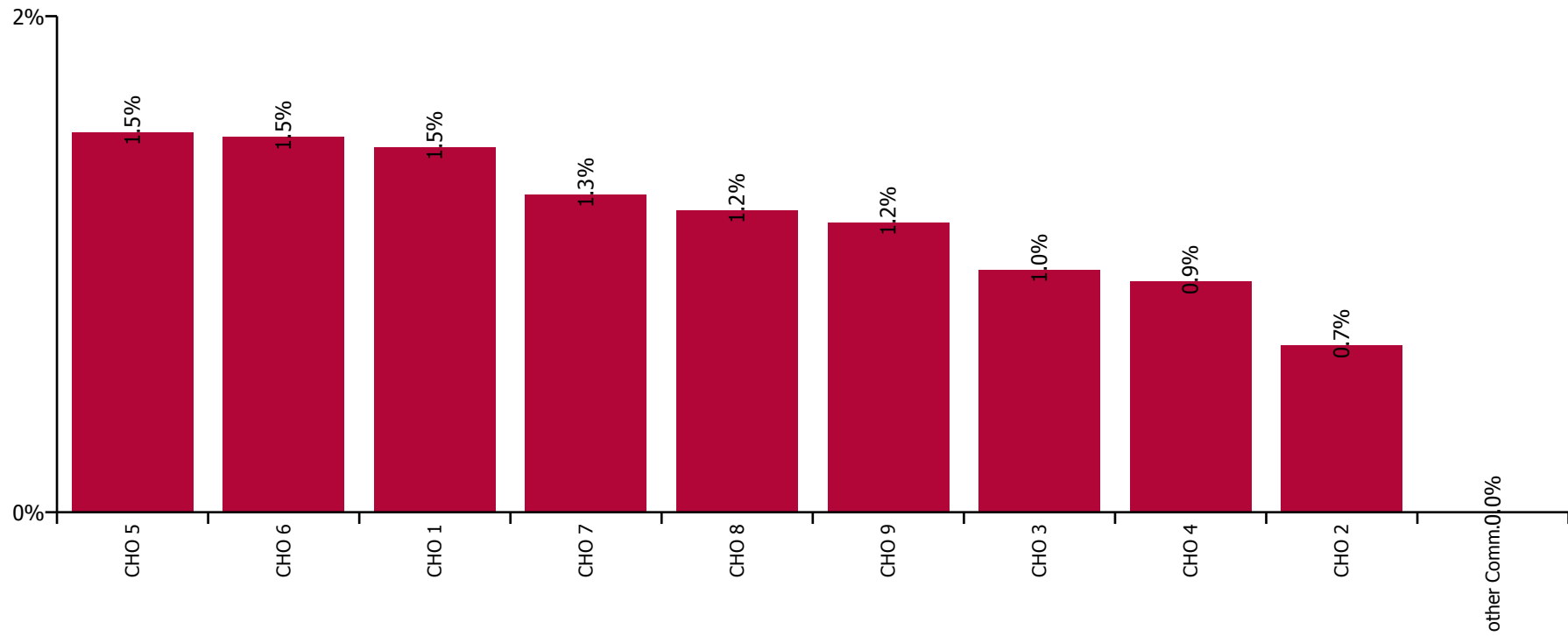
Total absence rate



## December 2022

Health Service Covid-19 Absence Rate - by Staff Category & Hospital: Dec 2022	Medical & Dental	Nursing & Midwifery	Health & Social Care Professionals	Management & Administrative	General Support	Patient & Client Care	Covid-19 absence	Non Covid-19 absence	Total absence rate
<b>Social Care</b>	<b>0.5%</b>	<b>1.3%</b>	<b>1.0%</b>	<b>4.4%</b>	<b>1.2%</b>	<b>1.3%</b>	<b>1.2%</b>	<b>6.1%</b>	<b>7.3%</b>
Health Service Executive	0.0%	1.4%	0.9%	5.1%	0.6%	1.6%	1.5%	9.5%	11.0%
<b>CHO 1</b>	<b>0.0%</b>	<b>1.4%</b>	<b>0.9%</b>	<b>5.1%</b>	<b>0.6%</b>	<b>1.6%</b>	<b>1.5%</b>	<b>9.5%</b>	<b>11.0%</b>
Health Service Executive	0.0%	0.0%	0.0%	5.4%	0.0%	0.0%	0.1%	2.9%	3.0%
Section 38 Voluntary Agencies	0.0%	1.3%	0.5%	3.5%	1.7%	0.7%	0.8%	6.4%	7.2%
<b>CHO 2</b>	<b>0.0%</b>	<b>1.0%</b>	<b>0.5%</b>	<b>4.0%</b>	<b>1.5%</b>	<b>0.6%</b>	<b>0.7%</b>	<b>5.8%</b>	<b>6.5%</b>
Health Service Executive			0.0%	5.0%	0.0%	0.0%	0.2%	5.6%	5.8%
Section 38 Voluntary Agencies	0.0%	1.4%	0.6%	5.3%	1.7%	1.0%	1.0%	5.8%	6.8%
<b>CHO 3</b>	<b>0.0%</b>	<b>1.4%</b>	<b>0.6%</b>	<b>5.2%</b>	<b>1.5%</b>	<b>0.9%</b>	<b>1.0%</b>	<b>5.8%</b>	<b>6.7%</b>
Health Service Executive	0.0%	1.3%	1.9%	4.8%	0.5%	0.7%	1.0%	4.2%	5.2%
Section 38 Voluntary Agencies		1.1%	0.6%	2.5%	1.7%	1.0%	0.9%	6.5%	7.4%
<b>CHO 4</b>	<b>0.0%</b>	<b>1.1%</b>	<b>0.8%</b>	<b>2.9%</b>	<b>1.6%</b>	<b>0.9%</b>	<b>0.9%</b>	<b>6.2%</b>	<b>7.2%</b>
Health Service Executive	0.0%	1.1%	0.7%	10.6%	0.0%	1.2%	1.0%	6.0%	7.0%
Section 38 Voluntary Agencies	0.0%	1.1%	3.3%	5.5%	0.0%	1.6%	1.7%	9.0%	10.7%
<b>CHO 5</b>	<b>0.0%</b>	<b>1.1%</b>	<b>2.5%</b>	<b>7.6%</b>	<b>0.0%</b>	<b>1.5%</b>	<b>1.5%</b>	<b>8.3%</b>	<b>9.9%</b>
Health Service Executive	0.0%	1.2%	6.0%	4.9%	6.3%	2.0%	2.0%	7.8%	9.9%
Section 38 Voluntary Agencies	0.0%	1.6%	1.2%	3.2%	0.3%	1.9%	1.4%	4.8%	6.3%
<b>CHO 6</b>	<b>0.0%</b>	<b>1.5%</b>	<b>1.5%</b>	<b>3.4%</b>	<b>0.6%</b>	<b>1.9%</b>	<b>1.5%</b>	<b>5.3%</b>	<b>6.8%</b>
Health Service Executive		0.0%	1.3%	6.7%		0.0%	1.2%	5.2%	6.4%
Section 38 Voluntary Agencies	1.9%	1.6%	0.8%	3.3%	0.9%	1.6%	1.3%	5.5%	6.7%
<b>CHO 7</b>	<b>1.9%</b>	<b>1.6%</b>	<b>0.8%</b>	<b>3.8%</b>	<b>0.9%</b>	<b>1.5%</b>	<b>1.3%</b>	<b>5.5%</b>	<b>6.7%</b>
Health Service Executive	0.0%	1.3%	1.6%	5.6%	0.0%	1.0%	1.1%	10.1%	11.2%
Section 38 Voluntary Agencies	0.0%	1.5%	1.4%	3.7%	1.0%	1.2%	1.3%	4.7%	5.9%
<b>CHO 8</b>	<b>0.0%</b>	<b>1.4%</b>	<b>1.5%</b>	<b>4.4%</b>	<b>0.9%</b>	<b>1.1%</b>	<b>1.2%</b>	<b>5.9%</b>	<b>7.1%</b>
Health Service Executive	0.0%	0.8%	0.7%	6.2%	0.0%	0.7%	0.7%	6.6%	7.4%
Section 38 Voluntary Agencies	0.0%	1.3%	0.8%	4.0%	2.0%	1.8%	1.2%	4.6%	5.8%
<b>CHO 9</b>	<b>0.0%</b>	<b>1.2%</b>	<b>0.8%</b>	<b>4.3%</b>	<b>1.9%</b>	<b>1.6%</b>	<b>1.2%</b>	<b>4.9%</b>	<b>6.0%</b>
<b>Other Community Services</b>				<b>0.0%</b>			<b>0.0%</b>	<b>0.0%</b>	<b>0.0%</b>

### Covid-19 absence rate



## December 2022

Health Service Absence Rate - by Staff Category: Dec 2022	Certified absence	Self- certified absence	Non Covid-19 absence	Covid-19 absence	Total absence rate	% Non Covid-19 absence	% Covid-19 absence
<b>HSE Social Care CHO 1</b>	<b>8.6%</b>	<b>0.9%</b>	<b>9.5%</b>	<b>1.9%</b>	<b>11.4%</b>	<b>83.4%</b>	<b>16.6%</b>
Medical & Dental	0.0%	0.0%	0.0%	0.0%	0.0%		
Nursing & Midwifery	8.1%	1.0%	9.0%	1.8%	10.8%	83.4%	16.6%
Health & Social Care Professionals	6.6%	0.7%	7.3%	1.2%	8.6%	85.9%	14.1%
Management & Administrative	4.3%	0.8%	5.0%	1.7%	6.7%	74.8%	25.2%
General Support	12.8%	0.5%	13.3%	1.0%	14.4%	92.9%	7.1%
Patient & Client Care	9.4%	0.9%	10.3%	2.1%	12.4%	82.7%	17.3%

## December 2022

Health Service Absence Rate - by Staff Category: Dec 2022	Certified absence	Self- certified absence	Non Covid-19 absence	Covid-19 absence	Total absence rate	% Non Covid-19 absence	% Covid-19 absence
<b>HSE Social Care CHO 2</b>	<b>4.4%</b>	<b>0.5%</b>	<b>4.9%</b>	<b>0.8%</b>	<b>5.7%</b>	<b>85.9%</b>	<b>14.1%</b>
Medical & Dental	0.0%	0.0%	0.0%	0.0%	0.0%		
Nursing & Midwifery	3.7%	0.5%	4.2%	1.0%	5.2%	80.9%	19.1%
Health & Social Care Professionals	5.7%	0.4%	6.1%	0.5%	6.5%	92.7%	7.3%
Management & Administrative	4.1%	0.1%	4.2%	0.5%	4.7%	89.6%	10.4%
General Support	4.5%	0.3%	4.8%	1.2%	5.9%	80.5%	19.5%
Patient & Client Care	4.5%	0.5%	5.0%	0.8%	5.8%	85.8%	14.2%

## December 2022

Health Service Absence Rate - by Staff Category: Dec 2022	Certified absence	Self- certified absence	Non Covid-19 absence	Covid-19 absence	Total absence rate	% Non Covid-19 absence	% Covid-19 absence
<b>HSE Social Care CHO 3</b>	<b>6.8%</b>	<b>0.7%</b>	<b>7.5%</b>	<b>1.0%</b>	<b>8.5%</b>	<b>87.9%</b>	<b>12.1%</b>
Medical & Dental	13.8%	0.0%	13.8%	0.0%	13.8%	100.0%	0.0%
Nursing & Midwifery	7.1%	1.0%	8.1%	1.4%	9.6%	85.1%	14.9%
Health & Social Care Professionals	5.4%	0.6%	5.9%	0.6%	6.5%	91.1%	8.9%
Management & Administrative	5.2%	0.4%	5.6%	0.8%	6.4%	87.2%	12.8%
General Support	5.0%	0.4%	5.4%	1.2%	6.5%	82.3%	17.7%
Patient & Client Care	7.4%	0.7%	8.1%	1.0%	9.1%	89.2%	10.8%

## December 2022

Health Service Absence Rate - by Staff Category: Dec 2022	Certified absence	Self- certified absence	Non Covid-19 absence	Covid-19 absence	Total absence rate	% Non Covid-19 absence	% Covid-19 absence
<b>HSE Social Care CHO 4</b>	<b>4.8%</b>	<b>1.1%</b>	<b>5.9%</b>	<b>1.0%</b>	<b>6.9%</b>	<b>85.7%</b>	<b>14.3%</b>
Medical & Dental	0.0%	0.0%	0.0%	0.0%	0.0%		
Nursing & Midwifery	4.5%	1.0%	5.5%	1.0%	6.5%	85.1%	14.9%
Health & Social Care Professionals	6.8%	0.8%	7.6%	0.7%	8.3%	91.2%	8.8%
Management & Administrative	1.8%	0.8%	2.6%	0.3%	2.9%	89.3%	10.7%
General Support	4.8%	0.8%	5.6%	1.6%	7.2%	78.3%	21.7%
Patient & Client Care	5.1%	1.2%	6.3%	1.1%	7.4%	85.4%	14.6%



## December 2022

Health Service Absence Rate - by Staff Category: Dec 2022	Certified absence	Self- certified absence	Non Covid-19 absence	Covid-19 absence	Total absence rate	% Non Covid-19 absence	% Covid-19 absence
<b>HSE Social Care CHO 5</b>	<b>7.9%</b>	<b>1.1%</b>	<b>9.0%</b>	<b>1.6%</b>	<b>10.6%</b>	<b>84.5%</b>	<b>15.5%</b>
Medical & Dental	6.2%	0.0%	6.2%	0.0%	6.2%	100.0%	0.0%
Nursing & Midwifery	8.0%	1.1%	9.1%	1.9%	11.0%	82.9%	17.1%
Health & Social Care Professionals	5.8%	1.0%	6.8%	2.6%	9.4%	72.4%	27.6%
Management & Administrative	5.5%	0.7%	6.1%	0.6%	6.7%	91.0%	9.0%
General Support	8.9%	1.2%	10.1%	1.0%	11.1%	90.6%	9.4%
Patient & Client Care	8.5%	1.2%	9.7%	1.6%	11.3%	86.2%	13.8%

## December 2022

Health Service Absence Rate - by Staff Category: Dec 2022	Certified absence	Self- certified absence	Non Covid-19 absence	Covid-19 absence	Total absence rate	% Non Covid-19 absence	% Covid-19 absence
<b>HSE Social Care CHO 6</b>	<b>4.9%</b>	<b>0.8%</b>	<b>5.7%</b>	<b>1.8%</b>	<b>7.5%</b>	<b>75.6%</b>	<b>24.4%</b>
Medical & Dental	0.0%	0.0%	0.0%	0.0%	0.0%		
Nursing & Midwifery	4.2%	1.1%	5.3%	2.2%	7.5%	70.6%	29.4%
Health & Social Care Professionals	3.9%	0.7%	4.5%	1.5%	6.0%	75.7%	24.3%
Management & Administrative	2.5%	0.4%	2.9%	0.9%	3.8%	76.2%	23.8%
General Support	5.0%	0.6%	5.6%	1.3%	6.9%	80.6%	19.4%
Patient & Client Care	6.6%	1.0%	7.6%	2.3%	9.9%	77.0%	23.0%

## December 2022

Health Service Absence Rate - by Staff Category: Dec 2022	Certified absence	Self- certified absence	Non Covid-19 absence	Covid-19 absence	Total absence rate	% Non Covid-19 absence	% Covid-19 absence
<b>HSE Social Care CHO 7</b>	<b>5.1%</b>	<b>0.7%</b>	<b>5.9%</b>	<b>1.4%</b>	<b>7.3%</b>	<b>80.3%</b>	<b>19.7%</b>
Medical & Dental	0.6%	0.6%	1.3%	1.3%	2.6%	48.8%	51.2%
Nursing & Midwifery	5.3%	1.1%	6.3%	2.0%	8.4%	75.7%	24.3%
Health & Social Care Professionals	4.4%	0.5%	4.9%	0.8%	5.7%	86.0%	14.0%
Management & Administrative	3.6%	0.3%	3.9%	1.0%	4.9%	79.9%	20.1%
General Support	6.2%	0.7%	6.9%	0.8%	7.7%	89.5%	10.5%
Patient & Client Care	5.5%	0.8%	6.2%	1.6%	7.8%	79.6%	20.4%

## December 2022

Health Service Absence Rate - by Staff Category: Dec 2022	Certified absence	Self- certified absence	Non Covid-19 absence	Covid-19 absence	Total absence rate	% Non Covid-19 absence	% Covid-19 absence
<b>HSE Social Care CHO 8</b>	<b>6.5%</b>	<b>0.7%</b>	<b>7.2%</b>	<b>1.5%</b>	<b>8.7%</b>	<b>82.3%</b>	<b>17.7%</b>
Medical & Dental	0.0%	0.0%	0.0%	0.0%	0.0%		
Nursing & Midwifery	7.6%	0.9%	8.5%	1.7%	10.2%	83.4%	16.6%
Health & Social Care Professionals	4.5%	0.6%	5.2%	1.5%	6.6%	77.9%	22.1%
Management & Administrative	3.9%	0.4%	4.3%	0.8%	5.2%	83.7%	16.3%
General Support	6.7%	0.6%	7.3%	1.4%	8.7%	83.7%	16.3%
Patient & Client Care	7.0%	0.7%	7.7%	1.6%	9.3%	82.6%	17.4%

## December 2022

Health Service Absence Rate - by Staff Category: Dec 2022	Certified absence	Self- certified absence	Non Covid-19 absence	Covid-19 absence	Total absence rate	% Non Covid-19 absence	% Covid-19 absence
HSE Social Care CHO 9	4.6%	0.7%	5.4%	1.3%	6.6%	81.0%	19.0%
Medical & Dental	0.0%	1.4%	1.4%	0.2%	1.6%	88.6%	11.4%
Nursing & Midwifery	4.2%	0.9%	5.2%	1.3%	6.5%	79.3%	20.7%
Health & Social Care Professionals	4.5%	0.3%	4.8%	0.9%	5.8%	83.9%	16.1%
Management & Administrative	3.6%	0.3%	3.9%	0.6%	4.5%	86.0%	14.0%
General Support	4.9%	1.0%	5.9%	1.5%	7.3%	80.2%	19.8%
Patient & Client Care	5.5%	1.0%	6.5%	1.7%	8.2%	79.3%	20.7%

## December 2022

Health Service Absence Rate - by Staff Category: Dec 2022	Certified absence	Self- certified absence	Non Covid-19 absence	Covid-19 absence	Total absence rate	% Non Covid-19 absence	% Covid-19 absence
HSE Social Care Other Community Services	4.3%	0.2%	4.5%	0.0%	4.5%	100.0%	0.0%
Medical & Dental							
Nursing & Midwifery	0.0%	0.0%	0.0%	0.0%	0.0%		#DIV/0
Health & Social Care Professionals							
Management & Administrative	4.5%	0.2%	4.6%	0.0%	4.6%	100.0%	0.0%
General Support							
Patient & Client Care	0.0%	0.0%	0.0%	0.0%	0.0%		#DIV/0

## December 2022

Avista Dublin absence by Staff Category	Certified absence	Self-certified absence	Non Covid-19 absence	Covid-19 absence	Total absence rate	% Non Covid-19 absence	% Covid-19 absence
<b>Avista Dublin (CHO 9)</b>	<b>3.7%</b>	<b>0.6%</b>	<b>4.3%</b>	<b>2.0%</b>	<b>6.3%</b>	<b>68.7%</b>	<b>31.3%</b>
Medical & Dental							
Nursing & Midwifery	3.2%	0.5%	3.7%	1.8%	5.5%	66.6%	33.4%
Health & Social Care Professionals	4.6%	0.6%	5.2%	1.6%	6.7%	76.6%	23.4%
Management & Administrative	2.7%	0.3%	3.0%	0.8%	3.7%	79.5%	20.5%
General Support	2.4%	0.5%	2.9%	2.2%	5.1%	57.3%	42.7%
Patient & Client Care	4.1%	0.8%	4.9%	2.6%	7.5%	65.4%	34.6%

## December 2022

Avista Limerick absence by Staff Category	Certified absence	Self-certified absence	Non Covid-19 absence	Covid-19 absence	Total absence rate	% Non Covid-19 absence	% Covid-19 absence
<b>Avista Limerick (CHO 3)</b>	<b>3.6%</b>	<b>0.3%</b>	<b>3.9%</b>	<b>1.3%</b>	<b>5.2%</b>	<b>74.1%</b>	<b>25.9%</b>
Medical & Dental							
Nursing & Midwifery	4.3%	0.4%	4.7%	1.8%	6.5%	71.9%	28.1%
Health & Social Care Professionals	3.0%	0.4%	3.4%	0.6%	4.0%	84.8%	15.2%
Management & Administrative	3.5%	0.0%	3.5%	0.6%	4.2%	85.3%	14.7%
General Support	1.6%	0.1%	1.7%	1.7%	3.4%	50.4%	49.6%
Patient & Client Care	3.6%	0.3%	3.8%	1.2%	5.0%	76.5%	23.5%

## December 2022

Avista Roscrea absence by Staff Category	Certified absence	Self-certified absence	Non Covid-19 absence	Covid-19 absence	Total absence rate	% Non Covid-19 absence	% Covid-19 absence
<b>Avista Roscrea (CHO 3)</b>	<b>3.6%</b>	<b>0.2%</b>	<b>3.9%</b>	<b>1.2%</b>	<b>5.0%</b>	<b>76.4%</b>	<b>23.6%</b>
Medical & Dental							
Nursing & Midwifery	1.7%	0.0%	1.7%	1.0%	2.7%	61.7%	38.3%
Health & Social Care Professionals	8.2%	0.0%	8.2%	1.3%	9.5%	86.5%	13.5%
Management & Administrative	0.0%	0.6%	0.6%	1.0%	1.6%	36.4%	63.6%
General Support							
Patient & Client Care	3.4%	0.3%	3.7%	1.2%	4.9%	75.3%	24.7%

## December 2022

Bros. of Charity, Clare absence by Staff Category	Certified absence	Self-certified absence	Non Covid-19 absence	Covid-19 absence	Total absence rate	% Non Covid-19 absence	% Covid-19 absence
<b>Bros. of Charity, Clare (CHO 3)</b>	<b>7.6%</b>	<b>0.9%</b>	<b>8.6%</b>	<b>0.7%</b>	<b>9.3%</b>	<b>92.5%</b>	<b>7.5%</b>
Medical & Dental	0.0%	0.0%	0.0%	0.0%	0.0%		
Nursing & Midwifery	0.0%	0.0%	0.0%	0.0%	0.0%		#DIV/0
Health & Social Care Professionals	8.5%	1.5%	10.0%	1.0%	11.0%	91.2%	8.8%
Management & Administrative	4.6%	0.0%	4.6%	0.0%	4.6%	100.0%	0.0%
General Support							
Patient & Client Care	7.6%	0.8%	8.4%	0.7%	9.0%	92.8%	7.2%

## December 2022

Bros. of Charity, Limerick absence by Staff Category	Certified absence	Self-certified absence	Non Covid-19 absence	Covid-19 absence	Total absence rate	% Non Covid-19 absence	% Covid-19 absence
<b>Bros. of Charity, Limerick (CHO 3)</b>	<b>6.2%</b>	<b>0.9%</b>	<b>7.0%</b>	<b>0.8%</b>	<b>7.8%</b>	<b>89.9%</b>	<b>10.1%</b>
Medical & Dental							
Nursing & Midwifery	4.0%	1.2%	5.2%	0.7%	6.0%	88.1%	11.9%
Health & Social Care Professionals	5.5%	0.4%	5.9%	0.3%	6.2%	95.7%	4.3%
Management & Administrative	10.1%	0.0%	10.1%	0.8%	10.9%	92.7%	7.3%
General Support	7.0%	0.1%	7.1%	1.7%	8.7%	80.8%	19.2%
Patient & Client Care	6.9%	1.0%	7.9%	1.0%	8.9%	88.9%	11.1%

## December 2022

Bros. of Charity, Southern absence by Staff Category	Certified absence	Self-certified absence	Non Covid-19 absence	Covid-19 absence	Total absence rate	% Non Covid-19 absence	% Covid-19 absence
<b>Bros. of Charity, Southern (CHO 4)</b>	<b>7.1%</b>	<b>0.7%</b>	<b>7.8%</b>	<b>0.4%</b>	<b>8.2%</b>	<b>95.4%</b>	<b>4.6%</b>
Medical & Dental							
Nursing & Midwifery	5.2%	0.7%	5.9%	0.2%	6.1%	97.2%	2.8%
Health & Social Care Professionals	9.9%	0.4%	10.3%	0.6%	10.9%	94.6%	5.4%
Management & Administrative	2.7%	1.3%	4.0%	0.0%	4.0%	100.0%	0.0%
General Support	1.2%	0.0%	1.2%	0.0%	1.2%	100.0%	0.0%
Patient & Client Care	6.7%	0.8%	7.5%	0.4%	7.8%	95.5%	4.5%

## December 2022

Bros. of Charity, Waterford absence by Staff Category	Certified absence	Self-certified absence	Non Covid-19 absence	Covid-19 absence	Total absence rate	% Non Covid-19 absence	% Covid-19 absence
<b>Bros. of Charity, Waterford (CHO 5)</b>	<b>8.4%</b>	<b>1.8%</b>	<b>10.2%</b>	<b>2.0%</b>	<b>12.2%</b>	<b>83.7%</b>	<b>16.3%</b>
Medical & Dental	0.0%	0.0%	0.0%	0.0%	0.0%		
Nursing & Midwifery	15.4%	2.1%	17.4%	1.3%	18.8%	92.9%	7.1%
Health & Social Care Professionals	4.2%	1.8%	6.0%	5.1%	11.2%	53.9%	46.1%
Management & Administrative	7.3%	0.8%	8.1%	0.9%	9.0%	90.2%	9.8%
General Support	21.3%	8.3%	29.6%	0.0%	29.6%	100.0%	0.0%
Patient & Client Care	8.2%	1.8%	10.0%	1.6%	11.6%	86.5%	13.5%

## December 2022

Bros. of Charity, West Region absence by Staff Category	Certified absence	Self-certified absence	Non Covid-19 absence	Covid-19 absence	Total absence rate	% Non Covid-19 absence	% Covid-19 absence
<b>Bros. of Charity, West Region (CHO 2)</b>	<b>5.7%</b>	<b>0.6%</b>	<b>6.4%</b>	<b>0.8%</b>	<b>7.2%</b>	<b>89.1%</b>	<b>10.9%</b>
Medical & Dental	0.0%	0.0%	0.0%	0.0%	0.0%		
Nursing & Midwifery	5.6%	0.7%	6.3%	1.3%	7.6%	83.3%	16.7%
Health & Social Care Professionals	6.9%	0.5%	7.4%	0.5%	7.9%	93.2%	6.8%
Management & Administrative	2.8%	0.2%	3.0%	0.5%	3.5%	84.8%	15.2%
General Support	7.8%	0.7%	8.5%	1.7%	10.2%	83.2%	16.8%
Patient & Client Care	5.5%	0.7%	6.3%	0.7%	7.0%	89.6%	10.4%

## December 2022

Carriglea Cairde Services absence by Staff Category	Certified absence	Self-certified absence	Non Covid-19 absence	Covid-19 absence	Total absence rate	% Non Covid-19 absence	% Covid-19 absence
<b>Carriglea Cairde Services (CHO 5)</b>	<b>4.1%</b>	<b>0.2%</b>	<b>4.3%</b>	<b>1.8%</b>	<b>6.1%</b>	<b>71.0%</b>	<b>29.0%</b>
Medical & Dental							
Nursing & Midwifery	4.0%	0.2%	4.2%	1.3%	5.5%	76.3%	23.7%
Health & Social Care Professionals	7.1%	0.2%	7.3%	0.0%	7.3%	100.0%	0.0%
Management & Administrative	0.0%	0.9%	0.9%	0.0%	0.9%	100.0%	0.0%
General Support	0.0%	0.5%	0.5%	0.0%	0.5%	100.0%	0.0%
Patient & Client Care	3.9%	0.2%	4.1%	2.5%	6.6%	61.7%	38.3%

## December 2022

Central Remedial Clinic absence by Staff Category	Certified absence	Self-certified absence	Non Covid-19 absence	Covid-19 absence	Total absence rate	% Non Covid-19 absence	% Covid-19 absence
<b>Central Remedial Clinic (CHO 9)</b>	<b>3.5%</b>	<b>0.5%</b>	<b>3.9%</b>	<b>1.3%</b>	<b>5.2%</b>	<b>75.0%</b>	<b>25.0%</b>
Medical & Dental	0.0%	0.0%	0.0%	0.0%	0.0%		
Nursing & Midwifery	1.4%	1.8%	3.1%	0.0%	3.1%	100.0%	0.0%
Health & Social Care Professionals	3.0%	0.3%	3.3%	0.9%	4.1%	79.5%	20.5%
Management & Administrative	3.2%	0.7%	3.8%	0.5%	4.3%	88.9%	11.1%
General Support	1.9%	0.5%	2.5%	0.0%	2.5%	100.0%	0.0%
Patient & Client Care	5.3%	0.4%	5.7%	3.1%	8.8%	64.3%	35.7%

## December 2022

Cheeverstown House absence by Staff Category	Certified absence	Self-certified absence	Non Covid-19 absence	Covid-19 absence	Total absence rate	% Non Covid-19 absence	% Covid-19 absence
<b>Cheeverstown House (CHO 7)</b>	<b>6.0%</b>	<b>1.1%</b>	<b>7.1%</b>	<b>3.3%</b>	<b>10.3%</b>	<b>68.6%</b>	<b>31.4%</b>
Medical & Dental							
Nursing & Midwifery	4.3%	1.2%	5.5%	3.3%	8.7%	62.5%	37.5%
Health & Social Care Professionals	3.7%	0.7%	4.4%	2.0%	6.3%	69.0%	31.0%
Management & Administrative	4.4%	0.4%	4.8%	0.0%	4.8%	100.0%	0.0%
General Support	12.6%	0.7%	13.2%	0.5%	13.8%	96.3%	3.7%
Patient & Client Care	8.1%	1.3%	9.4%	5.0%	14.3%	65.3%	34.7%

## December 2022

Children's Sunshine Home absence by Staff Category	Certified absence	Self-certified absence	Non Covid-19 absence	Covid-19 absence	Total absence rate	% Non Covid-19 absence	% Covid-19 absence
<b>Children's Sunshine Home (CHO 6)</b>	<b>9.0%</b>	<b>1.2%</b>	<b>10.2%</b>	<b>4.3%</b>	<b>14.5%</b>	<b>70.3%</b>	<b>29.7%</b>
Medical & Dental							
Nursing & Midwifery	7.8%	0.7%	8.5%	5.9%	14.5%	58.9%	41.1%
Health & Social Care Professionals	0.0%	0.0%	0.0%	0.0%	0.0%		#DIV/0
Management & Administrative	0.0%	0.0%	0.0%	0.0%	0.0%		#DIV/0
General Support	0.0%	0.0%	0.0%	0.0%	0.0%		
Patient & Client Care	16.5%	2.7%	19.2%	4.5%	23.7%	81.0%	19.0%

## December 2022

Cope Foundation absence by Staff Category	Certified absence	Self-certified absence	Non Covid-19 absence	Covid-19 absence	Total absence rate	% Non Covid-19 absence	% Covid-19 absence
<b>Cope Foundation (CHO 4)</b>	<b>4.5%</b>	<b>2.1%</b>	<b>6.7%</b>	<b>1.5%</b>	<b>8.2%</b>	<b>81.6%</b>	<b>18.4%</b>
Medical & Dental							
Nursing & Midwifery	4.1%	2.1%	6.2%	1.8%	7.9%	77.8%	22.2%
Health & Social Care Professionals	5.3%	1.8%	7.1%	0.7%	7.8%	91.4%	8.6%
Management & Administrative	1.4%	1.9%	3.3%	0.0%	3.3%	100.0%	0.0%
General Support	6.2%	1.3%	7.5%	2.1%	9.5%	78.4%	21.6%
Patient & Client Care	4.6%	2.4%	7.0%	1.6%	8.6%	81.0%	19.0%

## December 2022

Incorporated Orthopaedic Hospital absence by Staff Category	Certified absence	Self-certified absence	Non Covid-19 absence	Covid-19 absence	Total absence rate	% Non Covid-19 absence	% Covid-19 absence
<b>Incorporated Orthopaedic Hospital (CHO 9)</b>	<b>5.4%</b>	<b>2.2%</b>	<b>7.6%</b>	<b>3.1%</b>	<b>10.6%</b>	<b>71.2%</b>	<b>28.8%</b>
Medical & Dental	0.0%	3.9%	3.9%	0.8%	4.7%	83.0%	17.0%
Nursing & Midwifery	5.8%	2.0%	7.7%	3.8%	11.6%	67.0%	33.0%
Health & Social Care Professionals	0.0%	0.0%	0.0%	3.6%	3.6%	0.0%	100.0%
Management & Administrative	2.5%	0.6%	3.2%	2.1%	5.2%	60.3%	39.7%
General Support	6.4%	1.8%	8.2%	0.2%	8.4%	97.8%	2.2%
Patient & Client Care	8.2%	4.2%	12.5%	4.4%	16.9%	73.9%	26.1%

## December 2022

Kare, Newbridge, Co Kildare absence by Staff Category	Certified absence	Self-certified absence	Non Covid-19 absence	Covid-19 absence	Total absence rate	% Non Covid-19 absence	% Covid-19 absence
<b>Kare, Newbridge, Co Kildare (CHO 7)</b>	<b>6.7%</b>	<b>0.6%</b>	<b>7.3%</b>	<b>1.6%</b>	<b>8.9%</b>	<b>81.9%</b>	<b>18.1%</b>
Medical & Dental							
Nursing & Midwifery	7.4%	0.3%	7.7%	1.2%	8.9%	86.8%	13.2%
Health & Social Care Professionals	9.6%	0.3%	10.0%	1.0%	11.0%	90.8%	9.2%
Management & Administrative	5.3%	0.3%	5.6%	0.6%	6.1%	90.9%	9.1%
General Support	0.0%	0.0%	0.0%	0.0%	0.0%		
Patient & Client Care	5.4%	0.8%	6.2%	2.2%	8.4%	74.3%	25.7%

## December 2022

Leopardstown Park Hospital absence by Staff Category	Certified absence	Self-certified absence	Non Covid-19 absence	Covid-19 absence	Total absence rate	% Non Covid-19 absence	% Covid-19 absence
<b>Leopardstown Park Hospital (CHO 6)</b>	<b>5.9%</b>	<b>0.8%</b>	<b>6.7%</b>	<b>3.5%</b>	<b>10.2%</b>	<b>65.6%</b>	<b>34.4%</b>
Medical & Dental							
Nursing & Midwifery	5.4%	0.4%	5.9%	2.9%	8.8%	66.9%	33.1%
Health & Social Care Professionals	1.1%	0.0%	1.1%	0.0%	1.1%	100.0%	0.0%
Management & Administrative	5.7%	0.5%	6.3%	0.5%	6.7%	93.2%	6.8%
General Support	6.9%	0.7%	7.6%	1.5%	9.0%	83.9%	16.1%
Patient & Client Care	6.6%	1.3%	7.8%	6.3%	14.1%	55.4%	44.6%

## December 2022

Muiriosa Foundation, Laois/Offaly absence by Staff Category	Certified absence	Self-certified absence	Non Covid-19 absence	Covid-19 absence	Total absence rate	% Non Covid-19 absence	% Covid-19 absence
<b>Muiriosa Foundation, Laois/Offaly (CHO 8)</b>	<b>5.2%</b>	<b>0.5%</b>	<b>5.7%</b>	<b>1.8%</b>	<b>7.6%</b>	<b>76.0%</b>	<b>24.0%</b>
Medical & Dental							
Nursing & Midwifery	4.4%	0.4%	4.9%	3.4%	8.3%	58.6%	41.4%
Health & Social Care Professionals	4.9%	0.6%	5.5%	1.9%	7.4%	74.3%	25.7%
Management & Administrative	2.1%	0.1%	2.2%	1.2%	3.5%	64.6%	35.4%
General Support	0.0%	2.1%	2.1%	0.0%	2.1%	100.0%	0.0%
Patient & Client Care	6.1%	0.5%	6.5%	1.4%	8.0%	82.2%	17.8%

## December 2022

Muiriosa Foundation, Longford/Westmeath absence by Staff Category	Certified absence	Self-certified absence	Non Covid-19 absence	Covid-19 absence	Total absence rate	% Non Covid-19 absence	% Covid-19 absence
<b>Muiriosa Foundation, Longford/Westmeath (CHO 8)</b>	<b>4.1%</b>	<b>0.4%</b>	<b>4.5%</b>	<b>0.8%</b>	<b>5.3%</b>	<b>84.9%</b>	<b>15.1%</b>
Medical & Dental							
Nursing & Midwifery	4.3%	0.9%	5.3%	0.0%	5.3%	100.0%	0.0%
Health & Social Care Professionals	5.5%	0.6%	6.1%	1.5%	7.6%	80.2%	19.8%
Management & Administrative	1.9%	0.3%	2.3%	0.0%	2.3%	100.0%	0.0%
General Support	0.0%	0.0%	0.0%	0.0%	0.0%		
Patient & Client Care	3.4%	0.4%	3.7%	0.5%	4.2%	88.6%	11.4%

## December 2022

Muiriosa Foundation, South Kildare absence by Staff Category	Certified absence	Self-certified absence	Non Covid-19 absence	Covid-19 absence	Total absence rate	% Non Covid-19 absence	% Covid-19 absence
<b>Muiriosa Foundation, South Kildare (CHO 8)</b>	<b>3.6%</b>	<b>0.3%</b>	<b>3.9%</b>	<b>1.4%</b>	<b>5.3%</b>	<b>73.5%</b>	<b>26.5%</b>
Medical & Dental							
Nursing & Midwifery	3.9%	0.0%	3.9%	1.1%	5.0%	77.6%	22.4%
Health & Social Care Professionals	4.0%	0.3%	4.3%	1.4%	5.7%	75.7%	24.3%
Management & Administrative	1.5%	0.2%	1.6%	1.6%	3.2%	50.9%	49.1%
General Support	3.2%	0.0%	3.2%	0.0%	3.2%	100.0%	0.0%
Patient & Client Care	3.6%	0.5%	4.2%	1.6%	5.8%	72.1%	27.9%

## December 2022

Peamount Hospital (Newcastle) absence by Staff Category	Certified absence	Self-certified absence	Non Covid-19 absence	Covid-19 absence	Total absence rate	% Non Covid-19 absence	% Covid-19 absence
<b>Peamount Hospital (Newcastle) (CHO 7)</b>	<b>5.4%</b>	<b>0.8%</b>	<b>6.1%</b>	<b>1.7%</b>	<b>7.8%</b>	<b>78.4%</b>	<b>21.6%</b>
Medical & Dental	1.0%	0.5%	1.5%	2.1%	3.7%	42.1%	57.9%
Nursing & Midwifery	5.8%	0.7%	6.5%	1.4%	7.9%	82.6%	17.4%
Health & Social Care Professionals	3.3%	0.4%	3.8%	1.6%	5.4%	70.4%	29.6%
Management & Administrative	0.4%	0.4%	0.9%	0.3%	1.2%	71.2%	28.8%
General Support	6.4%	1.1%	7.6%	1.9%	9.5%	79.6%	20.4%
Patient & Client Care	6.6%	0.9%	7.4%	2.1%	9.6%	77.9%	22.1%



## December 2022

Royal Hospital, Donnybrook, Dublin absence by Staff Category	Certified absence	Self-certified absence	Non Covid-19 absence	Covid-19 absence	Total absence rate	% Non Covid-19 absence	% Covid-19 absence
Royal Hospital, Donnybrook, Dublin (CHO 6)	3.4%	1.0%	4.5%	1.4%	5.8%	76.3%	23.7%
Medical & Dental	0.0%	0.0%	0.0%	0.0%	0.0%		
Nursing & Midwifery	2.1%	1.1%	3.2%	1.5%	4.8%	67.4%	32.6%
Health & Social Care Professionals	1.2%	0.0%	1.2%	1.8%	3.0%	38.4%	61.6%
Management & Administrative	0.2%	0.0%	0.2%	1.5%	1.7%	11.4%	88.6%
General Support	3.9%	0.7%	4.6%	1.9%	6.5%	70.4%	29.6%
Patient & Client Care	6.8%	1.9%	8.7%	1.0%	9.7%	89.6%	10.4%

## December 2022

Stewart's Hospital, (Palmerstown) absence by Staff Category	Certified absence	Self-certified absence	Non Covid-19 absence	Covid-19 absence	Total absence rate	% Non Covid-19 absence	% Covid-19 absence
Stewart's Hospital, (Palmerstown) (CHO 7)	5.2%	0.5%	5.7%	0.9%	6.5%	86.6%	13.4%
Medical & Dental							
Nursing & Midwifery	5.3%	0.8%	6.1%	0.6%	6.7%	90.5%	9.5%
Health & Social Care Professionals	5.1%	0.3%	5.4%	0.5%	5.8%	92.2%	7.8%
Management & Administrative	2.9%	0.1%	3.0%	1.2%	4.3%	71.4%	28.6%
General Support	5.8%	0.3%	6.2%	0.7%	6.9%	89.3%	10.7%
Patient & Client Care	5.4%	0.5%	5.9%	0.9%	6.8%	86.1%	13.9%

## December 2022

St. John of God, Drumcar absence by Staff Category	Certified absence	Self-certified absence	Non Covid-19 absence	Covid-19 absence	Total absence rate	% Non Covid-19 absence	% Covid-19 absence
<b>St. John of God, Drumcar (CHO 8)</b>	<b>4.0%</b>	<b>0.5%</b>	<b>4.6%</b>	<b>1.1%</b>	<b>5.7%</b>	<b>80.1%</b>	<b>19.9%</b>
Medical & Dental	0.0%	0.0%	0.0%	0.0%	0.0%		
Nursing & Midwifery	4.1%	0.4%	4.6%	1.2%	5.8%	79.2%	20.8%
Health & Social Care Professionals	4.8%	1.3%	6.1%	0.8%	6.9%	88.5%	11.5%
Management & Administrative	5.9%	0.0%	5.9%	0.0%	5.9%	100.0%	0.0%
General Support	2.9%	0.0%	2.9%	2.1%	5.0%	58.8%	41.2%
Patient & Client Care	3.7%	0.5%	4.2%	1.2%	5.4%	78.1%	21.9%

## December 2022

St John of God HQ absence by Staff Category	Certified absence	Self- certified absence	Non Covid-19 absence	Covid-19 absence	Total absence rate	% Non Covid-19 absence	% Covid-19 absence
St John of God HQ (CHO 6)	2.8%	0.0%	2.8%	0.3%	3.1%	89.7%	10.3%
Medical & Dental							
Nursing & Midwifery	0.0%	0.0%	0.0%	0.0%	0.0%		#DIV/0
Health & Social Care Professionals	0.9%	0.0%	0.9%	0.0%	0.9%	100.0%	0.0%
Management & Administrative	3.1%	0.0%	3.1%	0.4%	3.5%	89.5%	10.5%
General Support	0.0%	0.0%	0.0%	0.0%	0.0%		
Patient & Client Care	0.0%	0.0%	0.0%	0.0%	0.0%		#DIV/0



## December 2022

St. John of God (IDS) absence by Staff Category	Certified absence	Self-certified absence	Non Covid-19 absence	Covid-19 absence	Total absence rate	% Non Covid-19 absence	% Covid-19 absence
<b>St. John of God (IDS) (CHO 6)</b>	<b>3.3%</b>	<b>0.7%</b>	<b>4.1%</b>	<b>1.1%</b>	<b>5.2%</b>	<b>78.2%</b>	<b>21.8%</b>
Medical & Dental	0.0%	0.0%	0.0%	0.0%	0.0%		
Nursing & Midwifery	2.0%	1.0%	3.0%	0.4%	3.4%	89.0%	11.0%
Health & Social Care Professionals	3.2%	0.8%	4.0%	0.9%	5.0%	81.0%	19.0%
Management & Administrative	1.1%	0.3%	1.4%	1.1%	2.5%	55.5%	44.5%
General Support	0.0%	0.2%	0.2%	0.5%	0.7%	28.6%	71.4%
Patient & Client Care	4.8%	0.7%	5.5%	1.7%	7.3%	76.0%	24.0%

## December 2022

St. John of God, Kerry absence by Staff Category	Certified absence	Self-certified absence	Non Covid-19 absence	Covid-19 absence	Total absence rate	% Non Covid-19 absence	% Covid-19 absence
<b>St. John of God, Kerry (CHO 4)</b>	<b>3.4%</b>	<b>0.4%</b>	<b>3.8%</b>	<b>0.3%</b>	<b>4.1%</b>	<b>92.0%</b>	<b>8.0%</b>
Medical & Dental							
Nursing & Midwifery	3.3%	0.4%	3.7%	0.0%	3.7%	100.0%	0.0%
Health & Social Care Professionals	5.1%	0.7%	5.8%	0.7%	6.5%	89.6%	10.4%
Management & Administrative	-1.7%	0.8%	-0.9%	0.0%	-0.9%	100.0%	0.0%
General Support	5.1%	0.1%	5.3%	1.5%	6.7%	78.3%	21.7%
Patient & Client Care	3.3%	0.2%	3.5%	0.2%	3.7%	95.0%	5.0%

## December 2022

St. John of God Liffey Services absence by Staff Category	Certified absence	Self-certified absence	Non Covid-19 absence	Covid-19 absence	Total absence rate	% Non Covid-19 absence	% Covid-19 absence
<b>St. John of God Liffey Services (CHO 7)</b>	<b>3.2%</b>	<b>0.5%</b>	<b>3.6%</b>	<b>0.7%</b>	<b>4.3%</b>	<b>84.6%</b>	<b>15.4%</b>
Medical & Dental	0.0%	4.1%	4.1%	0.0%	4.1%	100.0%	0.0%
Nursing & Midwifery	4.9%	0.5%	5.4%	1.0%	6.4%	84.5%	15.5%
Health & Social Care Professionals	2.9%	0.6%	3.4%	0.4%	3.9%	88.9%	11.1%
Management & Administrative	0.3%	0.2%	0.6%	0.0%	0.6%	100.0%	0.0%
General Support	4.0%	0.4%	4.5%	0.4%	4.8%	92.5%	7.5%
Patient & Client Care	2.9%	0.4%	3.3%	0.9%	4.2%	79.1%	20.9%

## December 2022

St. Michael's House, Dublin absence by Staff Category	Certified absence	Self-certified absence	Non Covid-19 absence	Covid-19 absence	Total absence rate	% Non Covid-19 absence	% Covid-19 absence
<b>St. Michael's House, Dublin (CHO 9)</b>	<b>4.6%</b>	<b>0.3%</b>	<b>4.9%</b>	<b>0.7%</b>	<b>5.6%</b>	<b>87.8%</b>	<b>12.2%</b>
Medical & Dental	0.0%	0.0%	0.0%	0.0%	0.0%		
Nursing & Midwifery	3.4%	0.3%	3.7%	0.9%	4.6%	80.5%	19.5%
Health & Social Care Professionals	5.1%	0.2%	5.3%	0.5%	5.9%	90.8%	9.2%
Management & Administrative	3.8%	0.0%	3.8%	0.3%	4.2%	92.2%	7.8%
General Support	5.4%	0.5%	5.9%	2.0%	7.9%	74.6%	25.4%
Patient & Client Care	4.7%	0.5%	5.2%	0.7%	5.9%	87.6%	12.4%

## December 2022

St. Patrick's, Kilkenny absence by Staff Category	Certified absence	Self-certified absence	Non Covid-19 absence	Covid-19 absence	Total absence rate	% Non Covid-19 absence	% Covid-19 absence
<b>St. Patrick's, Kilkenny (CHO 5)</b>	<b>9.8%</b>	<b>0.9%</b>	<b>10.8%</b>	<b>0.9%</b>	<b>11.6%</b>	<b>92.4%</b>	<b>7.6%</b>
Medical & Dental							
Nursing & Midwifery	12.4%	1.2%	13.7%	0.3%	14.0%	97.5%	2.5%
Health & Social Care Professionals	12.3%	0.6%	12.9%	2.1%	15.1%	85.8%	14.2%
Management & Administrative	0.8%	0.6%	1.4%	0.0%	1.4%	100.0%	0.0%
General Support	29.9%	0.0%	29.9%	0.0%	29.9%	100.0%	0.0%
Patient & Client Care	9.5%	1.0%	10.5%	0.9%	11.3%	92.3%	7.7%

## December 2022

Sunbeam House Services absence by Staff Category	Certified absence	Self-certified absence	Non Covid-19 absence	Covid-19 absence	Total absence rate	% Non Covid-19 absence	% Covid-19 absence
<b>Sunbeam House Services (CHO 6)</b>	<b>4.6%</b>	<b>0.7%</b>	<b>5.3%</b>	<b>1.5%</b>	<b>6.8%</b>	<b>77.6%</b>	<b>22.4%</b>
Medical & Dental							
Nursing & Midwifery	2.8%	0.9%	3.7%	1.2%	4.9%	75.8%	24.2%
Health & Social Care Professionals	4.9%	0.6%	5.5%	1.5%	6.9%	78.7%	21.3%
Management & Administrative	2.0%	0.2%	2.2%	1.5%	3.7%	59.6%	40.4%
General Support	2.7%	0.2%	2.9%	0.0%	2.9%	100.0%	0.0%
Patient & Client Care	5.5%	0.9%	6.3%	1.8%	8.1%	78.3%	21.7%

## Social Care

Year/ month	Medical & Dental	Nursing & Midwifery	Health & Social Care Professionals	Management & Administrative	General Support	Patient & Client Care	Certified absence	Self-certified absence	Non Covid-19 absence	Covid-19 absence	Total absence rate
<b>2022</b>	<b>2.5%</b>	<b>7.9%</b>	<b>6.1%</b>	<b>4.7%</b>	<b>7.2%</b>	<b>8.4%</b>	<b>4.8%</b>	<b>0.6%</b>	<b>5.4%</b>	<b>2.0%</b>	<b>7.4%</b>
Dec 2022	0.9%	7.3%	6.6%	4.4%	7.0%	8.1%	5.4%	0.7%	6.1%	1.2%	7.3%
Nov 2022	1.5%	6.5%	4.8%	3.6%	6.2%	6.7%	4.7%	0.6%	5.2%	0.7%	5.9%
Oct 2022	1.8%	6.2%	5.3%	3.7%	6.8%	7.3%	4.9%	0.6%	5.5%	0.8%	6.3%
Sep 2022	1.6%	6.7%	5.0%	4.2%	6.4%	7.3%	5.1%	0.6%	5.7%	0.7%	6.4%
Aug 2022	3.4%	6.3%	5.4%	3.7%	6.3%	7.4%	5.0%	0.5%	5.4%	0.9%	6.4%
Jul 2022	3.3%	7.9%	6.3%	4.7%	7.6%	8.8%	5.2%	0.5%	5.7%	2.0%	7.7%
Jun 2022	3.4%	7.2%	6.3%	4.9%	6.6%	8.0%	4.7%	0.6%	5.4%	1.8%	7.1%
May 2022	3.6%	6.7%	4.2%	4.5%	6.6%	7.4%	4.6%	0.6%	5.2%	1.1%	6.2%
Apr 2022	1.6%	9.1%	7.0%	5.1%	8.6%	9.1%	4.8%	0.7%	5.5%	2.9%	8.3%
Mar 2022	3.2%	11.5%	8.1%	7.2%	10.0%	10.7%	4.8%	0.7%	5.5%	4.4%	10.0%
Feb 2022	1.4%	8.5%	6.7%	5.1%	6.8%	8.5%	4.2%	0.6%	4.8%	2.9%	7.8%
Jan 2022	1.5%	11.0%	8.4%	6.0%	8.3%	11.2%	4.3%	0.6%	4.9%	5.1%	10.0%
<b>2021</b>	<b>3.9%</b>	<b>7.0%</b>	<b>5.5%</b>	<b>3.7%</b>	<b>6.2%</b>	<b>7.1%</b>	<b>4.4%</b>	<b>0.5%</b>	<b>4.9%</b>	<b>1.5%</b>	<b>6.4%</b>
Dec 2021	3.0%	8.7%	6.9%	4.9%	7.7%	8.9%	4.6%	0.7%	5.3%	2.8%	8.1%
Nov 2021	3.7%	9.1%	6.9%	5.9%	7.2%	8.6%	4.9%	0.7%	5.6%	2.4%	8.1%
Oct 2021	3.0%	7.7%	5.7%	4.6%	6.6%	7.0%	4.8%	0.5%	5.3%	1.3%	6.6%
Sep 2021	7.7%	6.9%	5.2%	4.2%	5.5%	6.6%	4.6%	0.5%	5.1%	1.0%	6.1%
Aug 2021	10.8%	6.0%	4.8%	4.0%	5.0%	6.6%	4.6%	0.4%	5.0%	0.9%	5.9%
Jul 2021	5.2%	5.8%	4.7%	3.5%	6.2%	6.0%	4.5%	0.4%	4.9%	0.6%	5.5%
Jun 2021	3.2%	5.4%	4.3%	3.0%	5.2%	5.8%	4.1%	0.5%	4.6%	0.5%	5.1%
May 2021	2.5%	5.2%	4.2%	2.3%	4.5%	5.7%	3.9%	0.4%	4.3%	0.7%	5.0%
Apr 2021	2.0%	5.8%	4.5%	2.7%	5.4%	5.5%	3.9%	0.4%	4.3%	0.8%	5.1%
Mar 2021	2.2%	5.7%	4.9%	3.1%	5.3%	6.1%	4.0%	0.5%	4.5%	1.0%	5.5%
Feb 2021	1.3%	7.5%	6.1%	2.9%	6.1%	7.7%	4.4%	0.5%	4.9%	2.0%	6.9%
Jan 2021	0.9%	10.5%	8.1%	3.5%	9.5%	10.5%	4.6%	0.3%	4.9%	4.5%	9.4%
<b>2020</b>	<b>3.1%</b>	<b>7.3%</b>	<b>5.0%</b>	<b>2.9%</b>	<b>6.6%</b>	<b>6.8%</b>	<b>4.5%</b>	<b>0.4%</b>	<b>4.9%</b>	<b>1.4%</b>	<b>6.2%</b>
Dec 2020	2.6%	6.5%	4.1%	3.1%	4.9%	6.2%	4.2%	0.4%	4.6%	1.0%	5.5%
Nov 2020	3.6%	5.7%	3.8%	2.9%	5.5%	5.7%	4.0%	0.3%	4.3%	0.8%	5.1%
Oct 2020	3.8%	7.0%	5.0%	2.6%	6.8%	6.7%	4.2%	0.4%	4.6%	1.5%	6.1%
Sep 2020	3.0%	7.0%	4.7%	2.3%	6.1%	6.2%	4.3%	0.4%	4.6%	1.1%	5.8%
Aug 2020	3.7%	6.3%	4.4%	2.5%	4.8%	5.9%	4.4%	0.3%	4.7%	0.6%	5.3%

Jul 2020	1.1%	6.1%	4.0%	2.1%	5.9%	5.9%	4.4%	0.4%	4.8%	0.5%	5.3%
Jun 2020	0.9%	6.0%	3.7%	1.9%	6.1%	5.5%	4.0%	0.3%	4.3%	0.7%	5.0%
May 2020	2.1%	8.7%	5.6%	2.6%	7.6%	7.9%	4.5%	0.2%	4.7%	2.5%	7.2%
Apr 2020	2.6%	13.6%	8.3%	3.4%	12.8%	12.0%	5.2%	0.4%	5.7%	5.3%	10.9%
Mar 2020	3.1%	9.0%	7.1%	4.7%	7.9%	8.5%	5.1%	0.4%	5.5%	2.6%	8.0%
Feb 2020	4.3%	5.6%	4.4%	3.5%	5.0%	5.3%	4.6%	0.5%	5.0%		5.0%
Jan 2020	4.6%	6.0%	5.0%	3.5%	6.2%	5.9%	5.0%	0.6%	5.6%		5.6%
<b>2019</b>	<b>1.3%</b>	<b>5.6%</b>	<b>4.2%</b>	<b>3.3%</b>	<b>4.8%</b>	<b>5.2%</b>	<b>4.4%</b>	<b>0.5%</b>	<b>4.9%</b>		<b>4.9%</b>
Dec 2019	3.7%	6.0%	4.7%	3.5%	5.4%	4.8%	4.4%	0.5%	4.9%		4.9%
Nov 2019	1.5%	6.1%	3.8%	3.0%	5.0%	5.4%	4.5%	0.5%	5.0%		5.0%
Oct 2019	0.5%	6.0%	4.2%	2.9%	5.3%	5.7%	4.7%	0.5%	5.2%		5.2%
Sep 2019	1.3%	5.6%	4.4%	3.5%	5.3%	5.0%	4.5%	0.5%	4.9%		4.9%
Aug 2019	1.9%	5.7%	4.6%	3.4%	4.5%	5.3%	4.7%	0.4%	5.0%		5.0%
Jul 2019	1.5%	5.3%	4.1%	3.5%	4.8%	5.1%	4.5%	0.3%	4.8%		4.8%
Jun 2019	2.5%	5.4%	3.9%	2.8%	4.1%	5.3%	4.4%	0.4%	4.8%		4.8%
May 2019	3.9%	5.8%	4.3%	2.7%	4.3%	5.2%	4.4%	0.5%	4.9%		4.9%
Apr 2019	0.1%	5.5%	3.9%	3.1%	4.9%	5.0%	4.3%	0.4%	4.7%		4.7%
Mar 2019	0.3%	5.0%	3.7%	3.5%	4.7%	4.9%	4.1%	0.4%	4.5%		4.5%
Feb 2019	1.0%	5.6%	3.9%	3.9%	4.7%	4.9%	4.3%	0.5%	4.7%		4.7%
Jan 2019	0.3%	5.6%	4.5%	4.2%	5.3%	5.5%	4.6%	0.5%	5.2%		5.2%

Social Care

Year/ month	CHO 1	CHO 2	CHO 3	CHO 4	CHO 5	CHO 6	CHO 7	CHO 8	CHO 9	other Comm.	Community Services absence rate	Certified absence	Self-certified absence	Non Covid-19 absence	Covid-19 absence	Total absence rate
2022	10.0%	7.0%	6.6%	8.1%	9.3%	6.4%	7.0%	8.2%	5.8%	0.4%	7.4%	4.8%	0.6%	5.4%	2.0%	7.4%
Dec 2022	11.0%	6.5%	6.7%	7.2%	9.9%	6.8%	6.7%	7.1%	6.0%		7.3%	5.4%	0.7%	6.1%	1.2%	7.30%
Nov 2022	8.3%	5.6%	5.4%	6.5%	7.9%	4.8%	5.6%	7.0%	4.4%		5.9%	4.7%	0.6%	5.2%	0.7%	5.95%
Oct 2022	9.7%	5.9%	5.5%	7.1%	8.4%	5.8%	5.5%	6.9%	4.8%		6.3%	4.9%	0.6%	5.5%	0.8%	6.33%
Sep 2022	9.2%	6.0%	5.0%	6.3%	8.3%	5.1%	6.3%	7.0%	5.2%		6.4%	5.1%	0.6%	5.7%	0.7%	6.36%
Aug 2022	10.3%	6.2%	4.7%	6.5%	8.7%	4.4%	5.9%	7.2%	4.9%	2.2%	6.4%	5.0%	0.5%	5.4%	0.9%	6.36%
Jul 2022	10.6%	7.0%	7.1%	7.7%	9.8%	6.0%	7.3%	9.0%	6.1%		7.7%	5.2%	0.5%	5.7%	2.0%	7.71%
Jun 2022	8.6%	7.9%	5.6%	7.7%	8.6%	7.3%	7.2%	7.7%	5.5%	0.7%	7.1%	4.7%	0.6%	5.4%	1.8%	7.15%
May 2022	8.1%	6.0%	5.4%	6.2%	7.9%	5.1%	6.3%	7.0%	5.1%		6.2%	4.6%	0.6%	5.2%	1.1%	6.22%
Apr 2022	9.7%	7.8%	8.3%	10.7%	9.5%	6.6%	8.0%	8.7%	6.2%		8.3%	4.8%	0.7%	5.5%	2.9%	8.31%
Mar 2022	13.3%	8.9%	8.4%	11.2%	11.6%	9.3%	10.0%	11.0%	7.8%		10.0%	4.8%	0.7%	5.5%	4.4%	9.98%
Feb 2022	10.2%	7.0%	7.8%	8.4%	9.0%	8.0%	7.3%	8.1%	6.1%		7.8%	4.2%	0.6%	4.8%	2.9%	7.75%
Jan 2022	11.6%	10.4%	9.8%	12.2%	12.3%	8.2%	8.4%	11.0%	8.0%	1.5%	10.0%	4.3%	0.6%	4.9%	5.1%	10.01%
2021	8.5%	5.8%	5.7%	7.1%	7.0%	5.8%	6.6%	6.6%	5.5%	0.2%	6.4%	4.4%	0.5%	4.9%	1.5%	6.4%
Dec 2021	10.2%	7.7%	7.7%	10.2%	9.2%	6.3%	8.4%	7.0%	6.5%	0.7%	8.1%	4.6%	0.7%	5.3%	2.8%	8.08%
Nov 2021	9.8%	6.7%	7.6%	10.3%	8.2%	6.7%	7.9%	8.0%	7.1%		8.1%	4.9%	0.7%	5.6%	2.4%	8.05%
Oct 2021	8.7%	5.4%	6.4%	8.1%	6.7%	5.2%	6.6%	6.9%	5.9%		6.6%	4.8%	0.5%	5.3%	1.3%	6.62%
Sep 2021	8.3%	4.6%	5.4%	6.9%	6.0%	6.3%	6.3%	6.8%	5.0%	1.9%	6.1%	4.6%	0.5%	5.1%	1.0%	6.12%
Aug 2021	8.9%	4.6%	4.8%	6.0%	6.4%	5.7%	6.2%	6.1%	4.9%		5.9%	4.6%	0.4%	5.0%	0.9%	5.86%
Jul 2021	8.3%	4.4%	4.1%	5.4%	5.1%	6.1%	5.8%	6.3%	4.9%		5.5%	4.5%	0.4%	4.9%	0.6%	5.48%
Jun 2021	7.1%	4.8%	4.5%	5.7%	5.3%	5.0%	5.1%	5.3%	4.5%		5.1%	4.1%	0.5%	4.6%	0.5%	5.15%
May 2021	6.6%	4.6%	4.7%	5.5%	4.8%	4.3%	5.1%	5.0%	4.3%		5.0%	3.9%	0.4%	4.3%	0.7%	4.96%
Apr 2021	6.2%	4.5%	3.9%	5.1%	5.3%	5.0%	5.8%	5.6%	4.6%		5.1%	3.9%	0.4%	4.3%	0.8%	5.13%
Mar 2021	7.1%	6.2%	4.5%	5.4%	6.4%	4.5%	5.5%	5.9%	4.7%		5.5%	4.0%	0.5%	4.5%	1.0%	5.48%
Feb 2021	8.5%	7.6%	5.9%	6.7%	9.0%	6.2%	6.6%	7.7%	5.6%		6.9%	4.4%	0.5%	4.9%	2.0%	6.89%
Jan 2021	12.3%	9.0%	8.8%	10.1%	11.3%	8.9%	9.6%	8.7%	7.8%		9.4%	4.6%	0.3%	4.9%	4.5%	9.40%
2020	7.1%	5.6%	5.2%	6.2%	6.6%	4.7%	7.3%	6.7%	5.8%	0.0%	6.2%	4.5%	0.4%	4.9%	1.4%	6.2%
Dec 2020	7.6%	5.7%	4.7%	5.4%	6.9%	3.8%	6.1%	5.6%	4.5%	0.3%	5.5%	4.2%	0.4%	4.6%	1.0%	5.51%
Nov 2020	7.2%	5.2%	4.9%	5.0%	5.5%	3.5%	5.5%	5.4%	4.1%		5.1%	4.0%	0.3%	4.3%	0.8%	5.09%
Oct 2020	8.6%	5.8%	5.3%	6.5%	5.7%	3.7%	7.2%	6.5%	5.1%		6.1%	4.2%	0.4%	4.6%	1.5%	6.08%
Sep 2020	7.6%	5.3%	5.0%	5.3%	5.7%	4.1%	6.9%	6.1%	5.3%		5.8%	4.3%	0.4%	4.6%	1.1%	5.76%
Aug 2020	7.0%	4.1%	5.6%	5.3%	5.5%	4.0%	5.7%	5.7%	4.8%		5.3%	4.4%	0.3%	4.7%	0.6%	5.32%
Jul 2020	6.1%	4.1%	3.9%	4.6%	6.3%	4.4%	6.1%	6.2%	5.2%		5.3%	4.4%	0.4%	4.8%	0.5%	5.26%
Jun 2020	5.6%	4.3%	4.8%	4.9%	5.4%	3.7%	5.5%	5.4%	4.7%		5.0%	4.0%	0.3%	4.3%	0.7%	5.00%
May 2020	6.2%	6.2%	5.9%	7.7%	6.9%	5.4%	9.2%	8.4%	6.5%		7.2%	4.5%	0.2%	4.7%	2.5%	7.19%
Apr 2020	8.8%	9.0%	6.0%	11.9%	10.2%	10.9%	15.8%	12.1%	9.9%		10.9%	5.2%	0.4%	5.7%	5.3%	10.91%
Mar 2020	9.2%	6.8%	6.8%	8.1%	7.7%	6.0%	9.6%	7.2%	8.5%		8.0%	5.1%	0.4%	5.5%	2.6%	8.01%
Feb 2020	5.5%	5.3%	4.4%	4.9%	6.0%	3.7%	4.9%	5.3%	5.2%		5.0%	4.6%	0.5%	5.0%		5.04%
Jan 2020	6.2%	6.3%	5.1%	5.3%	6.9%	4.0%	5.5%	6.4%	5.2%		5.6%	5.0%	0.6%	5.6%		5.59%
2019	7.2%	4.8%	4.4%	4.9%	5.4%	4.0%	4.6%	5.0%	4.6%		4.9%	4.4%	0.5%	4.9%		4.9%
Dec 2019	7.1%	5.0%	4.0%	5.3%	7.0%	3.0%	4.9%	5.0%	5.0%		4.9%	4.4%	0.5%	4.9%		4.94%
Nov 2019	6.3%	5.5%	4.8%	5.4%	6.4%	3.4%	4.5%	4.9%	4.6%		5.0%	4.5%	0.5%	5.0%		5.01%
Oct 2019	6.3%	5.8%	4.8%	5.6%	5.5%	5.0%	5.1%	5.3%	4.6%		5.2%	4.7%	0.5%	5.2%		5.24%
Sep 2019	6.4%	4.9%	4.2%	5.2%	5.5%	4.2%	4.4%	4.9%	4.8%		4.9%	4.5%	0.5%	4.9%		4.93%
Aug 2019	8.1%	5.0%	4.4%	4.7%	5.0%	5.0%	4.3%	5.5%	4.7%		5.0%	4.7%	0.4%	5.0%		5.04%
Jul 2019	7.6%	3.9%	4.3%	4.7%	4.9%	4.2%	4.2%	5.3%	4.5%		4.8%	4.5%	0.3%	4.8%		4.78%
Jun 2019	7.1%	4.1%	4.5%	4.4%	4.7%	4.3%	5.1%	5.0%	4.4%		4.8%	4.4%	0.4%	4.8%		4.82%
May 2019	6.9%	4.4%	4.2%	4.5%	5.2%	4.3%	5.1%	5.2%	4.4%		4.9%	4.4%	0.5%	4.9%		4.89%

Social Care

Year/ month	CHO 1	CHO 2	CHO 3	CHO 4	CHO 5	CHO 6	CHO 7	CHO 8	CHO 9	other Comm.	Community Services absence rate	Certified absence	Self-certified absence	Non Covid-19 absence	Covid-19 absence	Total absence rate
Apr 2019	6.7%	4.7%	4.6%	4.7%	5.5%	4.4%	4.4%	4.3%	4.0%		4.7%	4.3%	0.4%	4.7%		4.69%
Mar 2019	7.4%	4.4%	4.1%	4.2%	4.6%	3.4%	4.3%	4.9%	4.0%		4.5%	4.1%	0.4%	4.5%		4.54%
Feb 2019	7.9%	4.5%	4.4%	4.5%	4.9%	3.5%	4.2%	4.5%	4.8%		4.7%	4.3%	0.5%	4.7%		4.73%
Jan 2019	8.3%	4.8%	4.7%	5.4%	5.2%	3.8%	4.7%	5.2%	4.9%		5.2%	4.6%	0.5%	5.2%		5.18%

