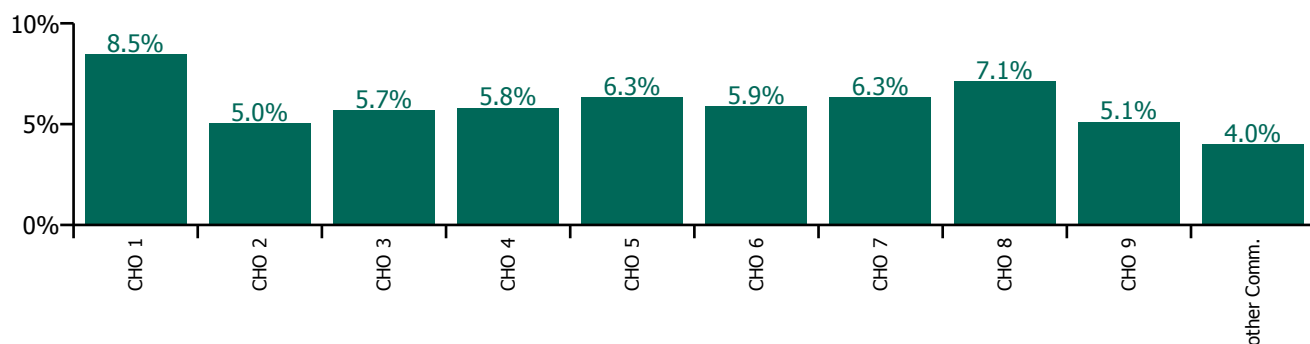


## July 2021

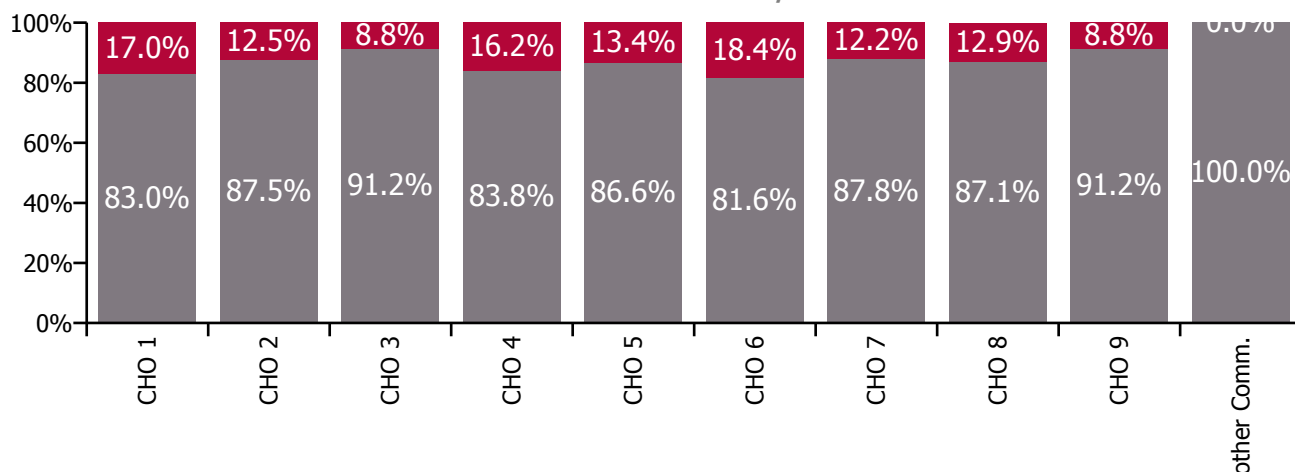
Health Service Absence Rate - by Staff Category: Jul 2021	Certified absence	Self-certified absence	Non Covid-19 absence	Covid-19 absence	Total absence rate	% Non Covid-19 absence	% Covid-19 absence
<b>Social Care</b>	<b>4.8%</b>	<b>0.5%</b>	<b>5.3%</b>	<b>0.8%</b>	<b>6.1%</b>	<b>86.7%</b>	<b>13.3%</b>
Medical & Dental	2.5%	0.2%	2.7%	0.2%	2.9%	94.4%	5.6%
Nursing & Midwifery	4.7%	0.6%	5.3%	1.1%	6.5%	82.3%	17.7%
Health & Social Care Professionals	3.6%	0.3%	3.9%	0.5%	4.4%	87.8%	12.2%
Management & Administrative	3.4%	0.2%	3.6%	0.0%	3.6%	98.9%	1.1%
General Support	6.0%	0.3%	6.3%	0.7%	7.0%	90.5%	9.5%
Patient & Client Care	5.5%	0.5%	6.0%	0.8%	6.9%	87.7%	12.3%

Health Service Absence Rate - Care Group by CHO: Jul 2021	Certified absence	Self-certified absence	Non Covid-19 absence	Covid-19 absence	Total absence rate	% Non Covid-19 absence	% Covid-19 absence
<b>Social Care</b>	<b>4.8%</b>	<b>0.5%</b>	<b>5.3%</b>	<b>0.8%</b>	<b>6.1%</b>	<b>86.7%</b>	<b>13.3%</b>
CHO 1	6.6%	0.4%	7.0%	1.4%	8.5%	83.0%	17.0%
CHO 2	4.2%	0.2%	4.4%	0.6%	5.0%	87.5%	12.5%
CHO 3	4.8%	0.4%	5.2%	0.5%	5.7%	91.2%	8.8%
CHO 4	4.3%	0.6%	4.9%	0.9%	5.8%	83.8%	16.2%
CHO 5	4.9%	0.5%	5.5%	0.8%	6.3%	86.6%	13.4%
CHO 6	4.2%	0.6%	4.8%	1.1%	5.9%	81.6%	18.4%
CHO 7	5.0%	0.6%	5.6%	0.8%	6.3%	87.8%	12.2%
CHO 8	5.9%	0.4%	6.2%	0.9%	7.1%	87.1%	12.9%
CHO 9	4.2%	0.4%	4.7%	0.4%	5.1%	91.2%	8.8%
Other Community Services	3.7%	0.3%	4.0%	0.0%	4.0%	100.0%	0.0%

**Total absence rate**

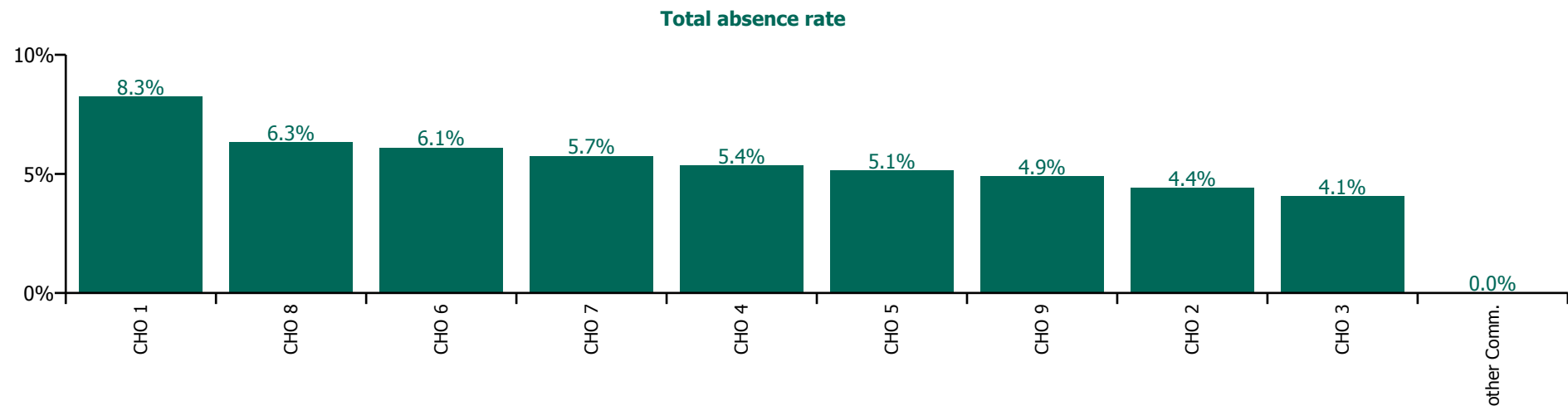


**% of Absence Non Covid-19 / Covid-19**

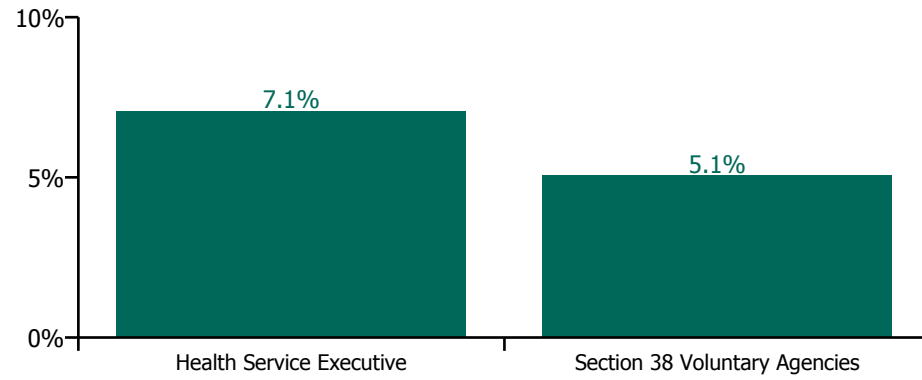


## July 2021

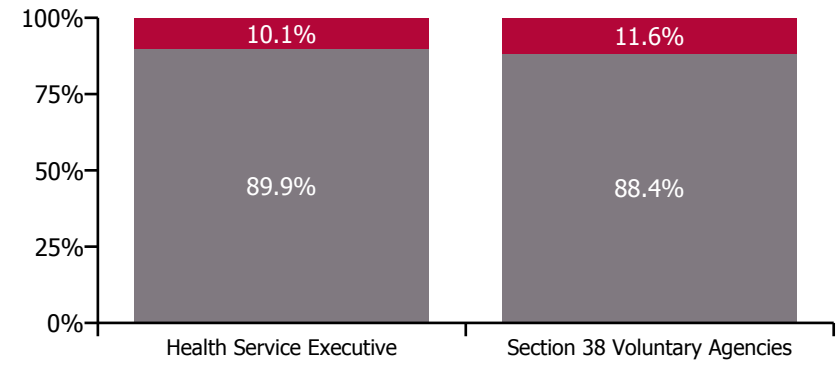
Health Service Absence Rate - by Hospital Group & Staff Category: Jul 2021	Medical & Dental	Nursing & Midwifery	Health & Social Care Professionals	Management & Administrative	General Support	Patient & Client Care	Certified absence	Self-certified absence	Non Covid-19 absence	Covid-19 absence	Total absence rate
<b>Social Care</b>	<b>5.2%</b>	<b>5.9%</b>	<b>4.7%</b>	<b>3.5%</b>	<b>6.2%</b>	<b>6.0%</b>	<b>4.5%</b>	<b>0.4%</b>	<b>4.9%</b>	<b>0.6%</b>	<b>5.5%</b>
CHO 1	0.0%	9.3%	3.7%	3.3%	9.1%	8.7%	6.8%	0.5%	7.3%	1.0%	8.3%
CHO 2	25.7%	5.7%	4.6%	2.1%	5.5%	4.0%	3.9%	0.2%	4.1%	0.3%	4.4%
CHO 3	0.0%	3.2%	4.3%	2.8%	4.6%	4.4%	3.3%	0.2%	3.5%	0.6%	4.1%
CHO 4	7.9%	6.2%	3.9%	3.4%	3.8%	5.8%	4.3%	0.7%	5.0%	0.4%	5.4%
CHO 5	2.9%	4.5%	4.7%	6.4%	8.5%	5.8%	3.6%	0.4%	4.0%	1.1%	5.1%
CHO 6	0.0%	6.0%	5.8%	3.8%	2.9%	7.5%	4.5%	0.7%	5.2%	0.9%	6.1%
CHO 7	0.4%	6.5%	4.8%	2.7%	7.1%	6.1%	4.6%	0.5%	5.1%	0.7%	5.7%
CHO 8	0.0%	6.6%	6.3%	6.0%	3.2%	6.5%	5.3%	0.3%	5.6%	0.7%	6.3%
CHO 9	9.8%	4.7%	4.0%	2.4%	6.5%	6.3%	4.2%	0.3%	4.5%	0.4%	4.9%
Other Community Services				0.0%			0.0%	0.0%	0.0%	0.0%	0.0%



**Total absence rate**



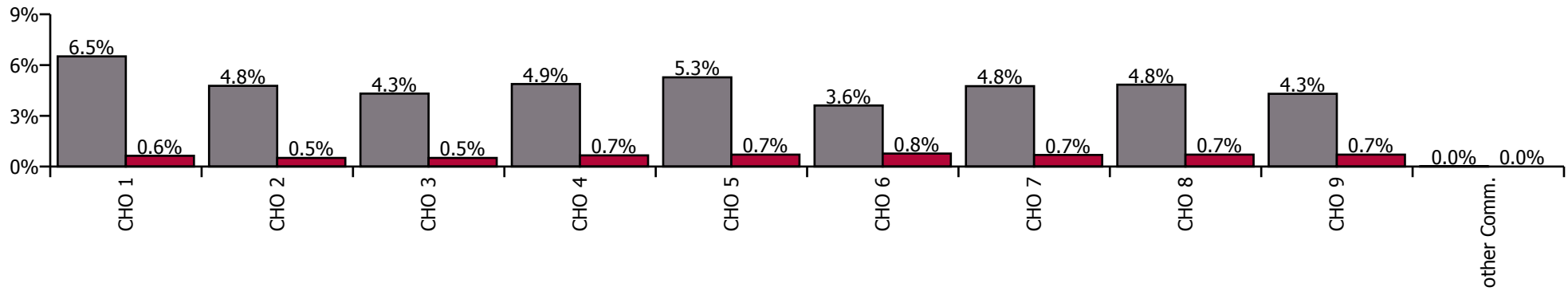
**Non Covid-19 & Covid-19 Absence**



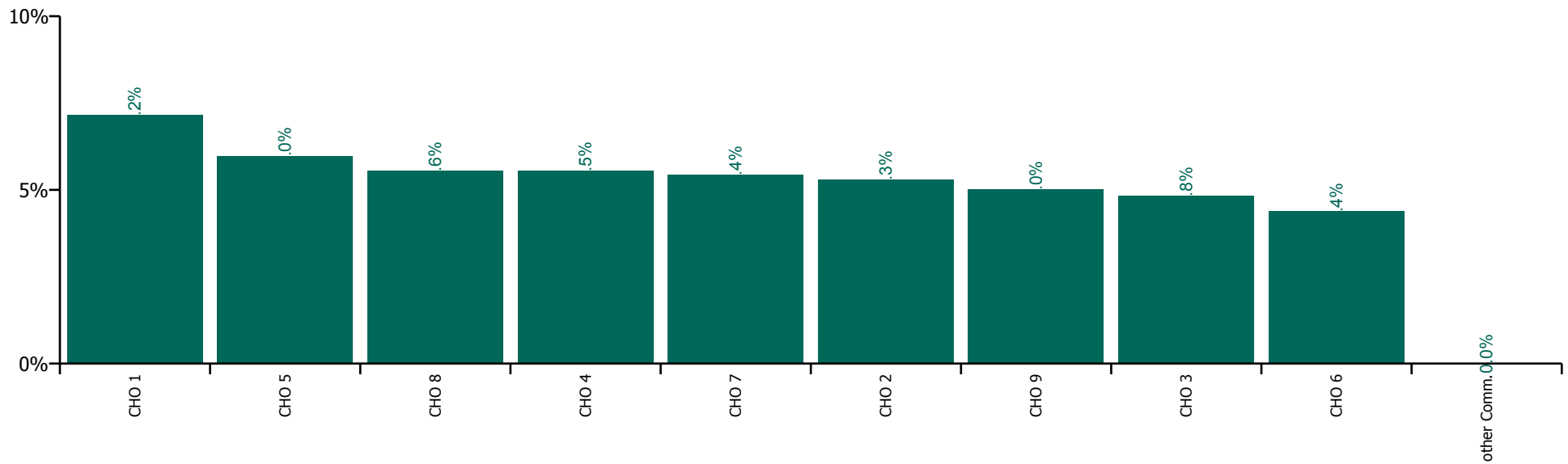
## July 2021

Health Service Absence Rate by Hospital: Jul 2021	Medical & Dental	Nursing & Midwifery	Health & Social Care Professionals	Management & Administrative	General Support	Patient & Client Care	Certified absence	Self-certified absence	Non Covid-19 absence	Covid-19 absence	Total absence rate
<b>Social Care</b>	<b>2.3%</b>	<b>6.1%</b>	<b>4.6%</b>	<b>3.2%</b>	<b>5.3%</b>	<b>5.8%</b>	<b>4.3%</b>	<b>0.4%</b>	<b>4.7%</b>	<b>0.7%</b>	<b>5.4%</b>
Health Service Executive	0.2%	8.4%	3.6%	3.0%	4.5%	7.5%	6.2%	0.3%	6.5%	0.6%	7.2%
<b>CHO 1</b>	<b>0.2%</b>	<b>8.4%</b>	<b>3.6%</b>	<b>3.0%</b>	<b>4.5%</b>	<b>7.5%</b>	<b>6.2%</b>	<b>0.3%</b>	<b>6.5%</b>	<b>0.6%</b>	<b>7.2%</b>
Health Service Executive	2.3%	8.2%	3.9%	1.2%	0.9%	5.3%	4.5%	0.2%	4.7%	0.5%	5.2%
Section 38 Voluntary Agencies	4.1%	5.4%	5.0%	3.2%	4.7%	5.7%	4.5%	0.3%	4.8%	0.5%	5.3%
<b>CHO 2</b>	<b>3.7%</b>	<b>5.9%</b>	<b>4.9%</b>	<b>2.9%</b>	<b>4.3%</b>	<b>5.7%</b>	<b>4.5%</b>	<b>0.3%</b>	<b>4.8%</b>	<b>0.5%</b>	<b>5.3%</b>
Health Service Executive			3.4%	4.0%	21.6%	5.6%	4.3%	0.3%	4.5%	0.4%	5.0%
Section 38 Voluntary Agencies	1.6%	5.5%	4.6%	2.5%	4.8%	4.8%	4.0%	0.3%	4.3%	0.5%	4.8%
<b>CHO 3</b>	<b>1.6%</b>	<b>5.5%</b>	<b>4.5%</b>	<b>2.9%</b>	<b>5.6%</b>	<b>4.8%</b>	<b>4.0%</b>	<b>0.3%</b>	<b>4.3%</b>	<b>0.5%</b>	<b>4.8%</b>
Health Service Executive	6.7%	5.1%	3.8%	1.9%	4.0%	4.6%	3.2%	0.6%	3.7%	0.5%	4.2%
Section 38 Voluntary Agencies	0.0%	6.6%	4.6%	3.1%	5.2%	6.0%	4.3%	0.7%	5.0%	0.7%	5.7%
<b>CHO 4</b>	<b>6.6%</b>	<b>6.5%</b>	<b>4.5%</b>	<b>2.9%</b>	<b>5.1%</b>	<b>5.9%</b>	<b>4.2%</b>	<b>0.7%</b>	<b>4.9%</b>	<b>0.7%</b>	<b>5.5%</b>
Health Service Executive	0.0%	7.4%	5.4%	5.3%	5.0%	8.1%	5.6%	0.5%	6.1%	0.7%	6.8%
Section 38 Voluntary Agencies	9.7%	6.6%	6.2%	4.5%	7.1%	5.7%	4.5%	0.6%	5.1%	0.7%	5.8%
<b>CHO 5</b>	<b>8.0%</b>	<b>6.8%</b>	<b>6.0%</b>	<b>4.7%</b>	<b>6.9%</b>	<b>5.9%</b>	<b>4.7%</b>	<b>0.6%</b>	<b>5.3%</b>	<b>0.7%</b>	<b>6.0%</b>
Health Service Executive	1.2%	6.5%	5.6%	4.0%	1.7%	9.1%	4.0%	0.5%	4.6%	2.4%	7.0%
Section 38 Voluntary Agencies	0.0%	4.4%	4.3%	2.3%	4.8%	4.5%	3.0%	0.5%	3.5%	0.7%	4.2%
<b>CHO 6</b>	<b>0.7%</b>	<b>4.7%</b>	<b>4.4%</b>	<b>2.4%</b>	<b>4.7%</b>	<b>4.9%</b>	<b>3.1%</b>	<b>0.5%</b>	<b>3.6%</b>	<b>0.8%</b>	<b>4.4%</b>
Health Service Executive		0.0%	5.3%	4.7%		4.3%	4.3%	0.3%	4.6%	0.4%	5.0%
Section 38 Voluntary Agencies	1.3%	5.9%	4.3%	3.0%	5.4%	6.1%	4.3%	0.4%	4.8%	0.7%	5.4%
<b>CHO 7</b>	<b>1.3%</b>	<b>5.9%</b>	<b>4.4%</b>	<b>3.1%</b>	<b>5.4%</b>	<b>6.0%</b>	<b>4.3%</b>	<b>0.4%</b>	<b>4.8%</b>	<b>0.7%</b>	<b>5.4%</b>
Health Service Executive	0.2%	10.0%	6.2%	5.6%	10.8%	10.8%	7.4%	0.5%	8.0%	1.2%	9.2%
Section 38 Voluntary Agencies	0.2%	4.6%	4.7%	2.9%	5.2%	4.8%	3.7%	0.3%	4.1%	0.6%	4.6%
<b>CHO 8</b>	<b>0.2%</b>	<b>5.9%</b>	<b>4.9%</b>	<b>3.9%</b>	<b>5.7%</b>	<b>6.0%</b>	<b>4.5%</b>	<b>0.4%</b>	<b>4.8%</b>	<b>0.7%</b>	<b>5.6%</b>
Health Service Executive	1.0%	8.0%	4.0%	3.1%	8.8%	8.3%	6.0%	0.4%	6.4%	0.9%	7.4%
Section 38 Voluntary Agencies	2.7%	4.6%	4.5%	3.0%	5.5%	5.4%	3.8%	0.3%	4.1%	0.7%	4.8%
<b>CHO 9</b>	<b>2.6%</b>	<b>5.2%</b>	<b>4.5%</b>	<b>3.0%</b>	<b>5.6%</b>	<b>5.7%</b>	<b>4.0%</b>	<b>0.3%</b>	<b>4.3%</b>	<b>0.7%</b>	<b>5.0%</b>
<b>Other Community Services</b>				<b>0.0%</b>			<b>0.0%</b>	<b>0.0%</b>	<b>0.0%</b>	<b>0.0%</b>	<b>0.0%</b>

Non Covid-19 / Covid-19 absence rates



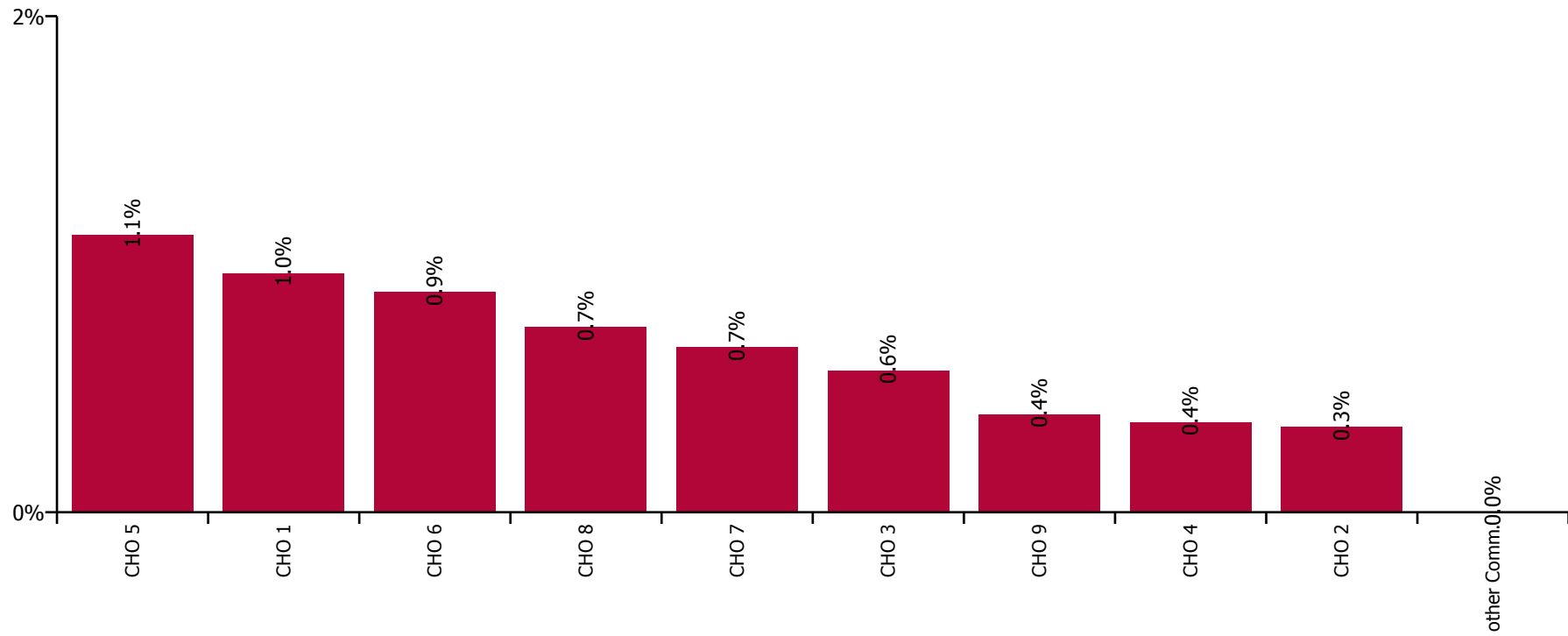
Total absence rate



## July 2021

Health Service Covid-19 Absence Rate - by Staff Category & Hospital: Jul 2021	Medical & Dental	Nursing & Midwifery	Health & Social Care Professionals	Management & Administrative	General Support	Patient & Client Care	Covid-19 absence	Non Covid-19 absence	Total absence rate
<b>Social Care</b>	<b>0.1%</b>	<b>0.7%</b>	<b>0.6%</b>	<b>3.5%</b>	<b>0.6%</b>	<b>0.7%</b>	<b>0.6%</b>	<b>4.9%</b>	<b>5.5%</b>
Health Service Executive	0.0%	1.1%	0.0%	3.3%	3.4%	1.0%	1.0%	7.3%	8.3%
<b>CHO 1</b>	<b>0.0%</b>	<b>1.1%</b>	<b>0.0%</b>	<b>3.3%</b>	<b>3.4%</b>	<b>1.0%</b>	<b>1.0%</b>	<b>7.3%</b>	<b>8.3%</b>
Health Service Executive	0.0%	0.0%	0.0%	1.5%	0.0%	0.0%	0.0%	2.3%	2.3%
Section 38 Voluntary Agencies	0.0%	0.4%	0.2%	2.3%	0.7%	0.5%	0.4%	4.5%	4.9%
<b>CHO 2</b>	<b>0.0%</b>	<b>0.3%</b>	<b>0.2%</b>	<b>2.1%</b>	<b>0.6%</b>	<b>0.5%</b>	<b>0.3%</b>	<b>4.1%</b>	<b>4.4%</b>
Health Service Executive			0.4%	7.4%	0.0%	0.7%	0.4%	5.6%	6.0%
Section 38 Voluntary Agencies	0.0%	0.6%	0.7%	0.6%	1.6%	0.5%	0.6%	3.4%	3.9%
<b>CHO 3</b>	<b>0.0%</b>	<b>0.6%</b>	<b>0.6%</b>	<b>2.8%</b>	<b>1.4%</b>	<b>0.5%</b>	<b>0.6%</b>	<b>3.5%</b>	<b>4.1%</b>
Health Service Executive	0.0%	2.2%	0.0%	5.0%	0.0%	0.3%	0.7%	4.4%	5.1%
Section 38 Voluntary Agencies		0.6%	0.2%	2.8%	0.0%	0.3%	0.3%	5.1%	5.4%
<b>CHO 4</b>	<b>0.0%</b>	<b>0.8%</b>	<b>0.2%</b>	<b>3.4%</b>	<b>0.0%</b>	<b>0.3%</b>	<b>0.4%</b>	<b>5.0%</b>	<b>5.4%</b>
Health Service Executive	0.0%	0.3%	0.0%	5.3%	1.5%	1.1%	0.4%	4.6%	5.0%
Section 38 Voluntary Agencies	0.0%	0.5%	2.5%	7.4%	0.1%	1.0%	1.4%	3.8%	5.2%
<b>CHO 5</b>	<b>0.0%</b>	<b>0.4%</b>	<b>1.5%</b>	<b>6.4%</b>	<b>0.2%</b>	<b>1.0%</b>	<b>1.1%</b>	<b>4.0%</b>	<b>5.1%</b>
Health Service Executive	0.0%	1.9%	4.1%	9.4%	0.0%	1.4%	1.7%	8.3%	10.0%
Section 38 Voluntary Agencies	0.0%	0.4%	0.7%	2.1%	0.0%	1.0%	0.7%	4.5%	5.2%
<b>CHO 6</b>	<b>0.0%</b>	<b>0.9%</b>	<b>1.0%</b>	<b>3.8%</b>	<b>0.0%</b>	<b>1.1%</b>	<b>0.9%</b>	<b>5.2%</b>	<b>6.1%</b>
Health Service Executive		0.0%	0.5%	1.2%		0.0%	0.3%	6.8%	7.1%
Section 38 Voluntary Agencies	0.4%	0.7%	0.6%	3.0%	1.0%	0.7%	0.7%	5.0%	5.7%
<b>CHO 7</b>	<b>0.4%</b>	<b>0.7%</b>	<b>0.6%</b>	<b>2.7%</b>	<b>1.0%</b>	<b>0.7%</b>	<b>0.7%</b>	<b>5.1%</b>	<b>5.7%</b>
Health Service Executive	0.0%	0.1%	1.2%	9.0%	7.6%	1.2%	0.9%	8.2%	9.0%
Section 38 Voluntary Agencies	0.0%	1.4%	0.6%	3.7%	0.0%	0.6%	0.7%	4.7%	5.4%
<b>CHO 8</b>	<b>0.0%</b>	<b>1.0%</b>	<b>0.7%</b>	<b>6.0%</b>	<b>1.0%</b>	<b>0.7%</b>	<b>0.7%</b>	<b>5.6%</b>	<b>6.3%</b>
Health Service Executive	0.0%	0.1%	0.7%	3.0%	0.0%	0.0%	0.1%	5.7%	5.9%
Section 38 Voluntary Agencies	0.0%	0.7%	0.3%	2.3%	0.1%	0.6%	0.4%	4.3%	4.7%
<b>CHO 9</b>	<b>0.0%</b>	<b>0.5%</b>	<b>0.4%</b>	<b>2.4%</b>	<b>0.1%</b>	<b>0.5%</b>	<b>0.4%</b>	<b>4.5%</b>	<b>4.9%</b>
<b>Other Community Services</b>				<b>0.0%</b>			<b>0.0%</b>	<b>0.0%</b>	<b>0.0%</b>

### Covid-19 absence rate



## July 2021

Health Service Absence Rate - by Staff Category: Jul 2021	Certified absence	Self-certified absence	Non Covid-19 absence	Covid-19 absence	Total absence rate	% Non Covid-19 absence	% Covid-19 absence
<b>HSE Social Care CHO 1</b>	<b>6.6%</b>	<b>0.4%</b>	<b>7.0%</b>	<b>1.4%</b>	<b>8.5%</b>	<b>83.0%</b>	<b>17.0%</b>
Medical & Dental	0.0%	0.0%	0.0%	0.0%	0.0%		
Nursing & Midwifery	6.7%	0.5%	7.2%	1.6%	8.8%	81.6%	18.4%
Health & Social Care Professionals	2.7%	0.3%	3.0%	0.0%	3.0%	100.0%	0.0%
Management & Administrative	3.7%	0.1%	3.8%	0.0%	3.8%	98.9%	1.1%
General Support	8.6%	0.3%	8.9%	2.0%	10.8%	81.9%	18.1%
Patient & Client Care	7.1%	0.5%	7.5%	1.6%	9.1%	82.6%	17.4%

## July 2021

Health Service Absence Rate - by Staff Category: Jul 2021	Certified absence	Self-certified absence	Non Covid-19 absence	Covid-19 absence	Total absence rate	% Non Covid-19 absence	% Covid-19 absence
<b>HSE Social Care CHO 2</b>	<b>4.2%</b>	<b>0.2%</b>	<b>4.4%</b>	<b>0.6%</b>	<b>5.0%</b>	<b>87.5%</b>	<b>12.5%</b>
Medical & Dental	10.8%	0.0%	10.8%	0.0%	10.8%	100.0%	0.0%
Nursing & Midwifery	4.7%	0.2%	4.9%	1.2%	6.1%	80.9%	19.1%
Health & Social Care Professionals	3.9%	0.1%	4.0%	0.2%	4.2%	95.7%	4.3%
Management & Administrative	2.1%	0.1%	2.2%	0.0%	2.2%	100.0%	0.0%
General Support	6.4%	0.2%	6.6%	0.3%	6.8%	95.7%	4.3%
Patient & Client Care	4.0%	0.3%	4.3%	0.6%	4.9%	87.8%	12.2%

## July 2021

Health Service Absence Rate - by Staff Category: Jul 2021	Certified absence	Self-certified absence	Non Covid-19 absence	Covid-19 absence	Total absence rate	% Non Covid-19 absence	% Covid-19 absence
<b>HSE Social Care CHO 3</b>	<b>4.8%</b>	<b>0.4%</b>	<b>5.2%</b>	<b>0.5%</b>	<b>5.7%</b>	<b>91.2%</b>	<b>8.8%</b>
Medical & Dental	0.0%	0.0%	0.0%	0.0%	0.0%		
Nursing & Midwifery	5.1%	0.6%	5.7%	0.6%	6.3%	90.6%	9.4%
Health & Social Care Professionals	3.4%	0.1%	3.5%	0.6%	4.1%	85.5%	14.5%
Management & Administrative	3.1%	0.2%	3.3%	0.1%	3.4%	98.2%	1.8%
General Support	4.5%	0.3%	4.8%	0.8%	5.6%	86.5%	13.5%
Patient & Client Care	5.4%	0.3%	5.7%	0.4%	6.2%	92.7%	7.3%

## July 2021

Health Service Absence Rate - by Staff Category: Jul 2021	Certified absence	Self-certified absence	Non Covid-19 absence	Covid-19 absence	Total absence rate	% Non Covid-19 absence	% Covid-19 absence
<b>HSE Social Care CHO 4</b>	<b>4.3%</b>	<b>0.6%</b>	<b>4.9%</b>	<b>0.9%</b>	<b>5.8%</b>	<b>83.8%</b>	<b>16.2%</b>
Medical & Dental	0.7%	0.0%	0.7%	0.0%	0.7%	100.0%	0.0%
Nursing & Midwifery	3.8%	0.6%	4.5%	1.4%	5.9%	75.6%	24.4%
Health & Social Care Professionals	3.0%	0.3%	3.3%	0.3%	3.6%	91.9%	8.1%
Management & Administrative	1.5%	0.4%	1.9%	0.0%	1.9%	98.6%	1.4%
General Support	4.1%	0.3%	4.4%	0.6%	4.9%	88.8%	11.2%
Patient & Client Care	5.3%	0.6%	6.0%	1.0%	6.9%	86.0%	14.0%



## July 2021

Health Service Absence Rate - by Staff Category: Jul 2021	Certified absence	Self- certified absence	Non Covid-19 absence	Covid-19 absence	Total absence rate	% Non Covid-19 absence	% Covid-19 absence
<b>HSE Social Care CHO 5</b>	<b>4.9%</b>	<b>0.5%</b>	<b>5.5%</b>	<b>0.8%</b>	<b>6.3%</b>	<b>86.6%</b>	<b>13.4%</b>
Medical & Dental	2.0%	0.1%	2.1%	0.0%	2.1%	100.0%	0.0%
Nursing & Midwifery	5.6%	0.7%	6.3%	0.6%	6.9%	91.7%	8.3%
Health & Social Care Professionals	2.6%	0.2%	2.9%	1.3%	4.2%	68.1%	31.9%
Management & Administrative	6.2%	0.1%	6.3%	0.1%	6.4%	98.9%	1.1%
General Support	7.6%	0.5%	8.1%	0.5%	8.5%	94.6%	5.4%
Patient & Client Care	5.2%	0.6%	5.8%	0.8%	6.5%	88.1%	11.9%

## July 2021

Health Service Absence Rate - by Staff Category: Jul 2021	Certified absence	Self- certified absence	Non Covid-19 absence	Covid-19 absence	Total absence rate	% Non Covid-19 absence	% Covid-19 absence
<b>HSE Social Care CHO 6</b>	<b>4.2%</b>	<b>0.6%</b>	<b>4.8%</b>	<b>1.1%</b>	<b>5.9%</b>	<b>81.6%</b>	<b>18.4%</b>
Medical & Dental	0.0%	0.0%	0.0%	0.0%	0.0%		
Nursing & Midwifery	3.0%	0.8%	3.8%	1.6%	5.4%	70.7%	29.3%
Health & Social Care Professionals	3.9%	0.8%	4.7%	0.9%	5.6%	83.8%	16.2%
Management & Administrative	4.0%	0.1%	4.2%	0.0%	4.2%	100.0%	0.0%
General Support	3.6%	0.2%	3.9%	0.0%	3.9%	100.0%	0.0%
Patient & Client Care	5.2%	0.7%	5.8%	1.4%	7.3%	80.2%	19.8%

## July 2021

Health Service Absence Rate - by Staff Category: Jul 2021	Certified absence	Self- certified absence	Non Covid-19 absence	Covid-19 absence	Total absence rate	% Non Covid-19 absence	% Covid-19 absence
<b>HSE Social Care CHO 7</b>	<b>5.0%</b>	<b>0.6%</b>	<b>5.6%</b>	<b>0.8%</b>	<b>6.3%</b>	<b>87.8%</b>	<b>12.2%</b>
Medical & Dental	0.0%	0.0%	0.0%	0.3%	0.3%	0.0%	100.0%
Nursing & Midwifery	4.9%	0.7%	5.6%	1.2%	6.8%	82.2%	17.8%
Health & Social Care Professionals	3.7%	0.4%	4.1%	0.6%	4.7%	87.6%	12.4%
Management & Administrative	2.7%	0.2%	3.0%	0.1%	3.1%	95.3%	4.7%
General Support	6.6%	0.5%	7.1%	1.0%	8.1%	88.1%	11.9%
Patient & Client Care	5.6%	0.6%	6.2%	0.7%	6.9%	89.9%	10.1%

## July 2021

Health Service Absence Rate - by Staff Category: Jul 2021	Certified absence	Self- certified absence	Non Covid-19 absence	Covid-19 absence	Total absence rate	% Non Covid-19 absence	% Covid-19 absence
<b>HSE Social Care CHO 8</b>	<b>5.9%</b>	<b>0.4%</b>	<b>6.2%</b>	<b>0.9%</b>	<b>7.1%</b>	<b>87.1%</b>	<b>12.9%</b>
Medical & Dental	0.0%	0.0%	0.0%	0.0%	0.0%		
Nursing & Midwifery	4.9%	0.4%	5.3%	1.4%	6.7%	79.4%	20.6%
Health & Social Care Professionals	5.0%	0.2%	5.2%	0.7%	5.9%	88.3%	11.7%
Management & Administrative	6.5%	0.3%	6.8%	0.0%	6.8%	99.4%	0.6%
General Support	2.8%	0.5%	3.3%	0.5%	3.8%	86.0%	14.0%
Patient & Client Care	6.8%	0.4%	7.2%	0.9%	8.1%	88.6%	11.4%

## July 2021

Health Service Absence Rate - by Staff Category: Jul 2021	Certified absence	Self- certified absence	Non Covid-19 absence	Covid-19 absence	Total absence rate	% Non Covid-19 absence	% Covid-19 absence
HSE Social Care CHO 9	4.2%	0.4%	4.7%	0.4%	5.1%	91.2%	8.8%
Medical & Dental	5.5%	0.8%	6.3%	0.7%	7.0%	90.0%	10.0%
Nursing & Midwifery	4.1%	0.5%	4.7%	0.7%	5.4%	86.8%	13.2%
Health & Social Care Professionals	3.3%	0.2%	3.6%	0.4%	3.9%	90.9%	9.1%
Management & Administrative	2.4%	0.2%	2.6%	0.0%	2.6%	100.0%	0.0%
General Support	6.8%	0.2%	7.0%	0.4%	7.4%	94.2%	5.8%
Patient & Client Care	5.2%	0.6%	5.8%	0.4%	6.2%	93.0%	7.0%

## July 2021

Health Service Absence Rate - by Staff Category: Jul 2021	Certified absence	Self-certified absence	Non Covid-19 absence	Covid-19 absence	Total absence rate	% Non Covid-19 absence	% Covid-19 absence
HSE Social Care Other Community Services	3.7%	0.3%	4.0%	0.0%	4.0%	100.0%	0.0%
Medical & Dental							
Nursing & Midwifery							
Health & Social Care Professionals							
Management & Administrative	3.8%	0.3%	4.1%	0.0%	4.1%	100.0%	0.0%
General Support							
Patient & Client Care	0.0%	0.0%	0.0%	0.0%	0.0%		#DIV/0

## July 2021

Bros. of Charity, Clare absence by Staff Category	Certified absence	Self-certified absence	Non Covid-19 absence	Covid-19 absence	Total absence rate	% Non Covid-19 absence	% Covid-19 absence
<b>Bros. of Charity, Clare (CHO 3)</b>	<b>4.2%</b>	<b>0.2%</b>	<b>4.4%</b>	<b>0.6%</b>	<b>5.0%</b>	<b>88.9%</b>	<b>11.1%</b>
Medical & Dental	0.0%	0.0%	0.0%	0.0%	0.0%		
Nursing & Midwifery	0.0%	0.0%	0.0%	0.0%	0.0%		#DIV/0
Health & Social Care Professionals	7.6%	0.2%	7.8%	1.5%	9.3%	83.8%	16.2%
Management & Administrative	0.0%	0.0%	0.0%	0.0%	0.0%		#DIV/0
General Support							
Patient & Client Care	3.4%	0.2%	3.6%	0.3%	3.9%	92.4%	7.6%

## July 2021

Bros. of Charity, Limerick absence by Staff Category	Certified absence	Self-certified absence	Non Covid-19 absence	Covid-19 absence	Total absence rate	% Non Covid-19 absence	% Covid-19 absence
<b>Bros. of Charity, Limerick (CHO 3)</b>	<b>4.6%</b>	<b>0.4%</b>	<b>5.0%</b>	<b>0.8%</b>	<b>5.8%</b>	<b>86.2%</b>	<b>13.8%</b>
Medical & Dental	0.0%	0.0%	0.0%	0.0%	0.0%		
Nursing & Midwifery	5.3%	0.6%	5.9%	0.6%	6.5%	91.5%	8.5%
Health & Social Care Professionals	3.7%	0.1%	3.7%	0.6%	4.3%	86.1%	13.9%
Management & Administrative	0.7%	0.0%	0.7%	0.0%	0.7%	100.0%	0.0%
General Support	0.0%	0.8%	0.8%	0.0%	0.8%	100.0%	0.0%
Patient & Client Care	5.1%	0.5%	5.6%	1.0%	6.6%	84.2%	15.8%

## July 2021

Bros. of Charity, Southern absence by Staff Category	Certified absence	Self-certified absence	Non Covid-19 absence	Covid-19 absence	Total absence rate	% Non Covid-19 absence	% Covid-19 absence
<b>Bros. of Charity, Southern (CHO 4)</b>	<b>4.5%</b>	<b>0.2%</b>	<b>4.7%</b>	<b>0.2%</b>	<b>4.9%</b>	<b>96.6%</b>	<b>3.4%</b>
Medical & Dental							
Nursing & Midwifery	4.3%	0.4%	4.7%	0.4%	5.2%	91.5%	8.5%
Health & Social Care Professionals	3.5%	0.0%	3.5%	0.3%	3.8%	91.4%	8.6%
Management & Administrative	4.5%	0.2%	4.7%	0.0%	4.7%	100.0%	0.0%
General Support	0.0%	0.0%	0.0%	0.0%	0.0%		
Patient & Client Care	5.2%	0.3%	5.4%	0.1%	5.5%	98.4%	1.6%

## July 2021

Bros. of Charity, Waterford absence by Staff Category	Certified absence	Self-certified absence	Non Covid-19 absence	Covid-19 absence	Total absence rate	% Non Covid-19 absence	% Covid-19 absence
<b>Bros. of Charity, Waterford (CHO 5)</b>	<b>3.2%</b>	<b>0.6%</b>	<b>3.8%</b>	<b>1.6%</b>	<b>5.4%</b>	<b>70.5%</b>	<b>29.5%</b>
Medical & Dental	0.0%	0.0%	0.0%	0.0%	0.0%		
Nursing & Midwifery	3.6%	1.0%	4.7%	0.8%	5.5%	85.0%	15.0%
Health & Social Care Professionals	1.7%	0.5%	2.1%	3.9%	6.0%	35.4%	64.6%
Management & Administrative	7.4%	0.4%	7.7%	0.0%	7.7%	100.0%	0.0%
General Support	7.0%	0.0%	7.0%	0.0%	7.0%	100.0%	0.0%
Patient & Client Care	3.0%	0.6%	3.6%	1.4%	5.0%	71.4%	28.6%

## July 2021

Bros. of Charity, West Region absence by Staff Category	Certified absence	Self-certified absence	Non Covid-19 absence	Covid-19 absence	Total absence rate	% Non Covid-19 absence	% Covid-19 absence
<b>Bros. of Charity, West Region (CHO 2)</b>	<b>4.2%</b>	<b>0.2%</b>	<b>4.5%</b>	<b>0.4%</b>	<b>4.9%</b>	<b>91.4%</b>	<b>8.6%</b>
Medical & Dental	28.5%	0.0%	28.5%	0.0%	28.5%	100.0%	0.0%
Nursing & Midwifery	5.7%	0.3%	6.0%	0.4%	6.4%	94.2%	5.8%
Health & Social Care Professionals	5.0%	0.1%	5.1%	0.2%	5.3%	95.5%	4.5%
Management & Administrative	2.3%	0.0%	2.3%	0.0%	2.3%	100.0%	0.0%
General Support	5.7%	0.3%	5.9%	0.7%	6.6%	89.6%	10.4%
Patient & Client Care	3.5%	0.3%	3.8%	0.5%	4.3%	87.5%	12.5%

## July 2021

Carriglea Cairde Services absence by Staff Category	Certified absence	Self-certified absence	Non Covid-19 absence	Covid-19 absence	Total absence rate	% Non Covid-19 absence	% Covid-19 absence
<b>Carriglea Cairde Services (CHO 5)</b>	<b>3.6%</b>	<b>0.1%</b>	<b>3.7%</b>	<b>0.9%</b>	<b>4.6%</b>	<b>80.8%</b>	<b>19.2%</b>
Medical & Dental							
Nursing & Midwifery	1.8%	0.2%	2.0%	0.0%	2.0%	100.0%	0.0%
Health & Social Care Professionals	4.9%	0.0%	4.9%	0.4%	5.3%	92.0%	8.0%
Management & Administrative	0.0%	0.0%	0.0%	0.0%	0.0%		#DIV/0
General Support	2.5%	0.0%	2.5%	0.7%	3.3%	77.6%	22.4%
Patient & Client Care	4.1%	0.1%	4.2%	1.3%	5.5%	76.8%	23.2%

## July 2021

Central Remedial Clinic absence by Staff Category	Certified absence	Self-certified absence	Non Covid-19 absence	Covid-19 absence	Total absence rate	% Non Covid-19 absence	% Covid-19 absence
<b>Central Remedial Clinic (CHO 9)</b>	<b>2.4%</b>	<b>0.2%</b>	<b>2.6%</b>	<b>0.0%</b>	<b>2.6%</b>	<b>100.0%</b>	<b>0.0%</b>
Medical & Dental	0.0%	0.0%	0.0%	0.0%	0.0%		
Nursing & Midwifery	0.3%	0.7%	1.0%	0.0%	1.0%	100.0%	0.0%
Health & Social Care Professionals	2.5%	0.0%	2.5%	0.0%	2.5%	100.0%	0.0%
Management & Administrative	0.7%	0.0%	0.7%	0.0%	0.7%	100.0%	0.0%
General Support	1.8%	0.0%	1.8%	0.0%	1.8%	100.0%	0.0%
Patient & Client Care	3.5%	0.4%	3.9%	0.0%	3.9%	100.0%	0.0%

## July 2021

Cheeverstown House absence by Staff Category	Certified absence	Self-certified absence	Non Covid-19 absence	Covid-19 absence	Total absence rate	% Non Covid-19 absence	% Covid-19 absence
<b>Cheeverstown House (CHO 7)</b>	<b>5.4%</b>	<b>0.5%</b>	<b>5.9%</b>	<b>1.5%</b>	<b>7.4%</b>	<b>80.0%</b>	<b>20.0%</b>
Medical & Dental	0.0%	0.0%	0.0%	0.0%	0.0%		
Nursing & Midwifery	5.6%	0.5%	6.1%	1.6%	7.7%	79.7%	20.3%
Health & Social Care Professionals	2.2%	0.3%	2.5%	0.1%	2.6%	94.6%	5.4%
Management & Administrative	3.0%	0.3%	3.3%	0.0%	3.3%	100.0%	0.0%
General Support	3.9%	0.0%	3.9%	1.7%	5.6%	69.9%	30.1%
Patient & Client Care	7.6%	0.8%	8.3%	2.3%	10.6%	78.6%	21.4%

## July 2021

Children's Sunshine Home absence by Staff Category	Certified absence	Self-certified absence	Non Covid-19 absence	Covid-19 absence	Total absence rate	% Non Covid-19 absence	% Covid-19 absence
<b>Children's Sunshine Home (CHO 6)</b>	<b>7.5%</b>	<b>2.4%</b>	<b>9.9%</b>	<b>1.1%</b>	<b>11.0%</b>	<b>90.1%</b>	<b>9.9%</b>
Medical & Dental							
Nursing & Midwifery	3.7%	3.9%	7.6%	0.0%	7.6%	100.0%	0.0%
Health & Social Care Professionals	0.0%	6.0%	6.0%	0.0%	6.0%	100.0%	0.0%
Management & Administrative	0.0%	0.0%	0.0%	0.0%	0.0%		#DIV/0
General Support	0.0%	0.0%	0.0%	0.0%	0.0%		
Patient & Client Care	18.2%	1.2%	19.4%	3.5%	22.9%	84.9%	15.1%

## July 2021

Cope Foundation absence by Staff Category	Certified absence	Self-certified absence	Non Covid-19 absence	Covid-19 absence	Total absence rate	% Non Covid-19 absence	% Covid-19 absence
<b>Cope Foundation (CHO 4)</b>	<b>4.1%</b>	<b>0.9%</b>	<b>5.0%</b>	<b>0.3%</b>	<b>5.3%</b>	<b>94.7%</b>	<b>5.3%</b>
Medical & Dental							
Nursing & Midwifery	3.9%	1.3%	5.2%	0.5%	5.7%	91.8%	8.2%
Health & Social Care Professionals	3.1%	0.5%	3.6%	0.0%	3.6%	100.0%	0.0%
Management & Administrative	0.0%	1.6%	1.6%	0.0%	1.6%	100.0%	0.0%
General Support	2.6%	0.3%	2.8%	0.0%	2.8%	100.0%	0.0%
Patient & Client Care	4.8%	0.9%	5.7%	0.3%	6.0%	94.7%	5.3%

## July 2021

Daughters of Charity, Dublin absence by Staff Category	Certified absence	Self-certified absence	Non Covid-19 absence	Covid-19 absence	Total absence rate	% Non Covid-19 absence	% Covid-19 absence
<b>Daughters of Charity, Dublin (CHO 9)</b>	<b>3.2%</b>	<b>0.4%</b>	<b>3.6%</b>	<b>0.8%</b>	<b>4.4%</b>	<b>81.4%</b>	<b>18.6%</b>
Medical & Dental	37.3%	0.0%	37.3%	0.0%	37.3%	100.0%	0.0%
Nursing & Midwifery	2.5%	0.4%	2.9%	1.0%	3.9%	74.2%	25.8%
Health & Social Care Professionals	2.8%	0.4%	3.3%	0.9%	4.2%	77.6%	22.4%
Management & Administrative	2.0%	0.2%	2.2%	0.0%	2.2%	100.0%	0.0%
General Support	4.5%	0.1%	4.6%	0.2%	4.8%	95.4%	4.6%
Patient & Client Care	3.4%	0.6%	4.0%	0.9%	4.9%	81.5%	18.5%

## July 2021

Daughters of Charity, Limerick absence by Staff Category	Certified absence	Self-certified absence	Non Covid-19 absence	Covid-19 absence	Total absence rate	% Non Covid-19 absence	% Covid-19 absence
<b>Daughters of Charity, Limerick (CHO 3)</b>	<b>1.1%</b>	<b>0.0%</b>	<b>1.1%</b>	<b>0.6%</b>	<b>1.7%</b>	<b>62.9%</b>	<b>37.1%</b>
Medical & Dental							
Nursing & Midwifery	0.9%	0.0%	1.0%	0.7%	1.7%	58.4%	41.6%
Health & Social Care Professionals	0.7%	0.0%	0.7%	0.0%	0.7%	100.0%	0.0%
Management & Administrative	0.8%	0.0%	0.8%	0.0%	0.8%	100.0%	0.0%
General Support	2.0%	0.0%	2.0%	2.2%	4.2%	48.3%	51.7%
Patient & Client Care	1.2%	0.0%	1.2%	0.6%	1.8%	67.5%	32.5%

## July 2021

Daughters of Charity, Roscrea absence by Staff Category	Certified absence	Self-certified absence	Non Covid-19 absence	Covid-19 absence	Total absence rate	% Non Covid-19 absence	% Covid-19 absence
<b>Daughters of Charity, Roscrea (CHO 3)</b>	<b>3.1%</b>	<b>0.2%</b>	<b>3.4%</b>	<b>0.1%</b>	<b>3.5%</b>	<b>97.0%</b>	<b>3.0%</b>
Medical & Dental							
Nursing & Midwifery	3.4%	0.0%	3.4%	0.0%	3.4%	100.0%	0.0%
Health & Social Care Professionals	1.1%	0.3%	1.4%	0.6%	2.0%	68.4%	31.6%
Management & Administrative	0.0%	0.3%	0.3%	0.0%	0.3%	100.0%	0.0%
General Support	0.0%	1.0%	1.0%	0.0%	1.0%	100.0%	0.0%
Patient & Client Care	3.7%	0.2%	4.0%	0.1%	4.0%	98.6%	1.4%

## July 2021

Incorporated Orthopaedic Hospital absence by Staff Category	Certified absence	Self-certified absence	Non Covid-19 absence	Covid-19 absence	Total absence rate	% Non Covid-19 absence	% Covid-19 absence
<b>Incorporated Orthopaedic Hospital (CHO 9)</b>	<b>3.5%</b>	<b>0.5%</b>	<b>4.1%</b>	<b>0.2%</b>	<b>4.3%</b>	<b>94.9%</b>	<b>5.1%</b>
Medical & Dental	0.0%	4.1%	4.1%	4.4%	8.5%	48.0%	52.0%
Nursing & Midwifery	4.2%	0.7%	5.0%	0.0%	5.0%	100.0%	0.0%
Health & Social Care Professionals	0.8%	0.7%	1.5%	0.7%	2.2%	68.6%	31.4%
Management & Administrative	1.0%	0.9%	1.9%	0.0%	1.9%	100.0%	0.0%
General Support	1.5%	0.0%	1.5%	0.0%	1.5%	100.0%	0.0%
Patient & Client Care	6.6%	0.0%	6.6%	0.0%	6.6%	100.0%	0.0%

## July 2021

Kare, Newbridge, Co Kildare absence by Staff Category	Certified absence	Self-certified absence	Non Covid-19 absence	Covid-19 absence	Total absence rate	% Non Covid-19 absence	% Covid-19 absence
<b>Kare, Newbridge, Co Kildare (CHO 7)</b>	<b>3.8%</b>	<b>0.3%</b>	<b>4.1%</b>	<b>0.8%</b>	<b>4.9%</b>	<b>83.4%</b>	<b>16.6%</b>
Medical & Dental							
Nursing & Midwifery	6.2%	0.4%	6.6%	2.9%	9.5%	69.1%	30.9%
Health & Social Care Professionals	4.0%	0.2%	4.2%	0.2%	4.4%	95.5%	4.5%
Management & Administrative	2.0%	0.2%	2.1%	0.0%	2.1%	100.0%	0.0%
General Support	0.0%	0.0%	0.0%	0.0%	0.0%		
Patient & Client Care	3.7%	0.3%	4.0%	0.9%	4.8%	81.9%	18.1%

## July 2021

Leopardstown Park Hospital absence by Staff Category	Certified absence	Self-certified absence	Non Covid-19 absence	Covid-19 absence	Total absence rate	% Non Covid-19 absence	% Covid-19 absence
<b>Leopardstown Park Hospital (CHO 6)</b>	<b>3.2%</b>	<b>0.4%</b>	<b>3.6%</b>	<b>0.4%</b>	<b>4.0%</b>	<b>89.2%</b>	<b>10.8%</b>
Medical & Dental							
Nursing & Midwifery	1.2%	0.4%	1.6%	0.1%	1.7%	92.4%	7.6%
Health & Social Care Professionals	3.7%	0.4%	4.1%	0.0%	4.1%	100.0%	0.0%
Management & Administrative	11.5%	0.0%	11.5%	0.0%	11.5%	100.0%	0.0%
General Support	0.4%	0.2%	0.6%	0.0%	0.6%	100.0%	0.0%
Patient & Client Care	3.9%	0.5%	4.5%	1.0%	5.5%	81.7%	18.3%

## July 2021

Muiriosa Foundation, Laois/Offaly absence by Staff Category	Certified absence	Self-certified absence	Non Covid-19 absence	Covid-19 absence	Total absence rate	% Non Covid-19 absence	% Covid-19 absence
<b>Muiriosa Foundation, Laois/Offaly (CHO 8)</b>	<b>3.8%</b>	<b>0.2%</b>	<b>4.0%</b>	<b>1.9%</b>	<b>5.9%</b>	<b>67.8%</b>	<b>32.2%</b>
Medical & Dental							
Nursing & Midwifery	3.8%	0.0%	3.8%	3.1%	6.9%	54.9%	45.1%
Health & Social Care Professionals	4.5%	0.3%	4.8%	2.0%	6.8%	70.6%	29.4%
Management & Administrative	5.1%	0.0%	5.1%	0.0%	5.1%	100.0%	0.0%
General Support	0.0%	0.0%	0.0%	0.0%	0.0%		
Patient & Client Care	3.3%	0.1%	3.4%	1.7%	5.2%	66.3%	33.7%

## July 2021

Muiriosa Foundation, Longford/Westmeath absence by Staff Category	Certified absence	Self-certified absence	Non Covid-19 absence	Covid-19 absence	Total absence rate	% Non Covid-19 absence	% Covid-19 absence
<b>Muiriosa Foundation, Longford/Westmeath (CHO 8)</b>	<b>5.6%</b>	<b>0.1%</b>	<b>5.7%</b>	<b>0.0%</b>	<b>5.7%</b>	<b>99.2%</b>	<b>0.8%</b>
Medical & Dental							
Nursing & Midwifery	9.1%	0.0%	9.1%	0.0%	9.1%	100.0%	0.0%
Health & Social Care Professionals	7.3%	0.1%	7.4%	0.0%	7.4%	100.0%	0.0%
Management & Administrative	0.0%	0.3%	0.3%	0.0%	0.3%	100.0%	0.0%
General Support	0.0%	0.0%	0.0%	0.0%	0.0%		
Patient & Client Care	4.9%	0.1%	5.0%	0.1%	5.1%	98.4%	1.6%

## July 2021

Muiriosa Foundation, South Kildare absence by Staff Category	Certified absence	Self-certified absence	Non Covid-19 absence	Covid-19 absence	Total absence rate	% Non Covid-19 absence	% Covid-19 absence
<b>Muiriosa Foundation, South Kildare (CHO 8)</b>	<b>3.0%</b>	<b>0.3%</b>	<b>3.3%</b>	<b>0.3%</b>	<b>3.6%</b>	<b>92.4%</b>	<b>7.6%</b>
Medical & Dental							
Nursing & Midwifery	1.2%	0.2%	1.4%	1.6%	3.0%	47.2%	52.8%
Health & Social Care Professionals	2.0%	0.2%	2.1%	0.1%	2.3%	94.1%	5.9%
Management & Administrative	6.1%	0.6%	6.6%	0.0%	6.6%	100.0%	0.0%
General Support	0.3%	0.1%	0.4%	0.0%	0.4%	100.0%	0.0%
Patient & Client Care	4.0%	0.3%	4.3%	0.0%	4.3%	100.0%	0.0%

## July 2021

Peamount Hospital (Newcastle) absence by Staff Category	Certified absence	Self-certified absence	Non Covid-19 absence	Covid-19 absence	Total absence rate	% Non Covid-19 absence	% Covid-19 absence
<b>Peamount Hospital (Newcastle) (CHO 7)</b>	<b>3.8%</b>	<b>0.7%</b>	<b>4.5%</b>	<b>1.0%</b>	<b>5.6%</b>	<b>81.1%</b>	<b>18.9%</b>
Medical & Dental	0.0%	0.0%	0.0%	0.6%	0.6%	0.0%	100.0%
Nursing & Midwifery	3.1%	0.8%	3.9%	0.4%	4.3%	89.9%	10.1%
Health & Social Care Professionals	1.9%	0.7%	2.7%	3.4%	6.0%	44.1%	55.9%
Management & Administrative	0.6%	0.4%	0.9%	0.0%	0.9%	100.0%	0.0%
General Support	5.3%	0.2%	5.4%	0.0%	5.4%	100.0%	0.0%
Patient & Client Care	4.9%	1.0%	5.8%	1.3%	7.1%	81.9%	18.1%



## July 2021

Royal Hospital, Donnybrook, Dublin absence by Staff Category	Certified absence	Self-certified absence	Non Covid-19 absence	Covid-19 absence	Total absence rate	% Non Covid-19 absence	% Covid-19 absence
<b>Royal Hospital, Donnybrook, Dublin (CHO 6)</b>	<b>3.8%</b>	<b>0.4%</b>	<b>4.3%</b>	<b>1.5%</b>	<b>5.8%</b>	<b>73.8%</b>	<b>26.2%</b>
Medical & Dental	0.0%	0.0%	0.0%	0.0%	0.0%		
Nursing & Midwifery	3.5%	0.9%	4.4%	3.3%	7.6%	57.0%	43.0%
Health & Social Care Professionals	4.2%	0.0%	4.2%	0.0%	4.2%	100.0%	0.0%
Management & Administrative	0.0%	0.0%	0.0%	0.0%	0.0%		#DIV/0
General Support	8.0%	0.5%	8.5%	0.0%	8.5%	100.0%	0.0%
Patient & Client Care	3.1%	0.3%	3.4%	1.4%	4.8%	71.0%	29.0%

## July 2021

Stewart's Hospital, (Palmerstown) absence by Staff Category	Certified absence	Self-certified absence	Non Covid-19 absence	Covid-19 absence	Total absence rate	% Non Covid-19 absence	% Covid-19 absence
<b>Stewart's Hospital, (Palmerstown) (CHO 7)</b>	<b>4.8%</b>	<b>0.5%</b>	<b>5.3%</b>	<b>0.2%</b>	<b>5.5%</b>	<b>95.7%</b>	<b>4.3%</b>
Medical & Dental	0.0%	0.0%	0.0%	0.0%	0.0%		
Nursing & Midwifery	7.6%	0.7%	8.3%	0.0%	8.3%	100.0%	0.0%
Health & Social Care Professionals	2.9%	0.2%	3.1%	0.0%	3.1%	100.0%	0.0%
Management & Administrative	0.1%	0.1%	0.2%	0.7%	0.8%	20.2%	79.8%
General Support	7.2%	0.4%	7.6%	0.1%	7.7%	98.6%	1.4%
Patient & Client Care	4.6%	0.6%	5.2%	0.3%	5.4%	95.0%	5.0%

## July 2021

St. John of God, Drumcar absence by Staff Category	Certified absence	Self-certified absence	Non Covid-19 absence	Covid-19 absence	Total absence rate	% Non Covid-19 absence	% Covid-19 absence
<b>St. John of God, Drumcar (CHO 8)</b>	<b>4.9%</b>	<b>0.4%</b>	<b>5.3%</b>	<b>0.6%</b>	<b>5.9%</b>	<b>90.2%</b>	<b>9.8%</b>
Medical & Dental	0.0%	0.0%	0.0%	0.0%	0.0%		
Nursing & Midwifery	4.4%	0.4%	4.8%	1.0%	5.8%	82.5%	17.5%
Health & Social Care Professionals	7.6%	0.3%	7.9%	0.0%	7.9%	100.0%	0.0%
Management & Administrative	0.0%	0.0%	0.0%	0.0%	0.0%		#DIV/0
General Support	3.9%	0.8%	4.7%	0.0%	4.7%	100.0%	0.0%
Patient & Client Care	5.0%	0.4%	5.4%	0.5%	5.9%	91.2%	8.8%

## July 2021

St. John of God (IDS) absence by Staff Category	Certified absence	Self-certified absence	Non Covid-19 absence	Covid-19 absence	Total absence rate	% Non Covid-19 absence	% Covid-19 absence
<b>St. John of God (IDS) (CHO 6)</b>	<b>3.4%</b>	<b>0.9%</b>	<b>4.3%</b>	<b>1.1%</b>	<b>5.4%</b>	<b>79.5%</b>	<b>20.5%</b>
Medical & Dental	0.0%	0.0%	0.0%	0.0%	0.0%		
Nursing & Midwifery	4.8%	0.7%	5.5%	0.0%	5.5%	100.0%	0.0%
Health & Social Care Professionals	2.2%	2.0%	4.3%	2.0%	6.2%	68.4%	31.6%
Management & Administrative	2.0%	0.1%	2.1%	0.0%	2.1%	100.0%	0.0%
General Support	6.0%	0.0%	6.0%	0.0%	6.0%	100.0%	0.0%
Patient & Client Care	4.4%	0.3%	4.7%	1.2%	5.9%	79.7%	20.3%



## July 2021

St. John of God, Kerry absence by Staff Category	Certified absence	Self-certified absence	Non Covid-19 absence	Covid-19 absence	Total absence rate	% Non Covid-19 absence	% Covid-19 absence
<b>St. John of God, Kerry (CHO 4)</b>	<b>5.5%</b>	<b>0.6%</b>	<b>6.0%</b>	<b>0.8%</b>	<b>6.8%</b>	<b>88.5%</b>	<b>11.5%</b>
Medical & Dental							
Nursing & Midwifery	8.6%	0.4%	8.9%	1.1%	10.1%	88.7%	11.3%
Health & Social Care Professionals	4.6%	0.6%	5.2%	0.5%	5.7%	92.1%	7.9%
Management & Administrative	1.3%	0.0%	1.3%	0.0%	1.3%	100.0%	0.0%
General Support	7.6%	0.6%	8.2%	0.2%	8.4%	97.9%	2.1%
Patient & Client Care	4.6%	0.7%	5.3%	1.0%	6.2%	84.7%	15.3%

## July 2021

St. John of God Liffey Services absence by Staff Category	Certified absence	Self-certified absence	Non Covid-19 absence	Covid-19 absence	Total absence rate	% Non Covid-19 absence	% Covid-19 absence
<b>St. John of God Liffey Services (CHO 7)</b>	<b>4.5%</b>	<b>0.5%</b>	<b>5.0%</b>	<b>0.5%</b>	<b>5.5%</b>	<b>91.7%</b>	<b>8.3%</b>
Medical & Dental	0.0%	0.0%	0.0%	0.0%	0.0%		
Nursing & Midwifery	4.3%	0.8%	5.1%	0.2%	5.2%	96.7%	3.3%
Health & Social Care Professionals	3.5%	0.4%	3.8%	0.4%	4.3%	89.9%	10.1%
Management & Administrative	10.1%	0.0%	10.1%	0.0%	10.1%	100.0%	0.0%
General Support	6.1%	0.5%	6.6%	3.2%	9.7%	67.3%	32.7%
Patient & Client Care	4.9%	0.5%	5.4%	0.3%	5.7%	95.1%	4.9%

## July 2021

St. Michael's House, Dublin absence by Staff Category	Certified absence	Self-certified absence	Non Covid-19 absence	Covid-19 absence	Total absence rate	% Non Covid-19 absence	% Covid-19 absence
<b>St. Michael's House, Dublin (CHO 9)</b>	<b>4.9%</b>	<b>0.2%</b>	<b>5.1%</b>	<b>0.2%</b>	<b>5.3%</b>	<b>95.9%</b>	<b>4.1%</b>
Medical & Dental	1.3%	0.0%	1.3%	0.0%	1.3%	100.0%	0.0%
Nursing & Midwifery	4.3%	0.2%	4.5%	0.3%	4.8%	94.1%	5.9%
Health & Social Care Professionals	3.9%	0.2%	4.0%	0.2%	4.2%	95.8%	4.2%
Management & Administrative	2.9%	0.1%	3.0%	0.0%	3.0%	100.0%	0.0%
General Support	11.1%	0.2%	11.3%	0.0%	11.3%	100.0%	0.0%
Patient & Client Care	7.3%	0.3%	7.6%	0.4%	8.0%	95.2%	4.8%

## July 2021

St. Patrick's, Kilkenny absence by Staff Category	Certified absence	Self-certified absence	Non Covid-19 absence	Covid-19 absence	Total absence rate	% Non Covid-19 absence	% Covid-19 absence
<b>St. Patrick's, Kilkenny (CHO 5)</b>						<b>#DIV/0</b>	
Medical & Dental	2.9%	0.2%	3.1%	0.0%	3.1%	100.0%	0.0%
Nursing & Midwifery	1.6%	0.2%	1.8%	0.0%	1.8%	100.0%	0.0%
Health & Social Care Professionals	4.6%	0.1%	4.7%	0.0%	4.7%	100.0%	0.0%
Management & Administrative	18.9%	0.0%	18.9%	2.4%	21.3%	88.9%	11.1%
General Support	8.0%	0.6%	8.6%	0.1%	8.7%	98.5%	1.5%
Patient & Client Care	6.5%	0.5%	7.0%	0.1%	7.1%	98.3%	1.7%

## July 2021

Sunbeam House Services absence by Staff Category	Certified absence	Self-certified absence	Non Covid-19 absence	Covid-19 absence	Total absence rate	% Non Covid-19 absence	% Covid-19 absence
<b>Sunbeam House Services (CHO 6)</b>	<b>3.7%</b>	<b>0.3%</b>	<b>4.1%</b>	<b>0.3%</b>	<b>4.4%</b>	<b>92.4%</b>	<b>7.6%</b>
Medical & Dental							
Nursing & Midwifery	0.0%	0.0%	0.0%	1.0%	1.1%	4.3%	95.7%
Health & Social Care Professionals	4.5%	0.2%	4.7%	0.0%	4.7%	100.0%	0.0%
Management & Administrative	2.3%	0.2%	2.5%	0.0%	2.5%	100.0%	0.0%
General Support	0.0%	0.0%	0.0%	0.0%	0.0%		
Patient & Client Care	4.1%	0.5%	4.7%	0.7%	5.4%	86.8%	13.2%

## Social Care

Year/ month	Medical & Dental	Nursing & Midwifery	Health & Social Care Professionals	Management & Administrative	General Support	Patient & Client Care	Certified absence	Self-certified absence	Non Covid-19 absence	Covid-19 absence	Total absence rate
<b>2021</b>	<b>2.7%</b>	<b>6.6%</b>	<b>5.2%</b>	<b>3.0%</b>	<b>6.0%</b>	<b>6.8%</b>	<b>4.2%</b>	<b>0.4%</b>	<b>4.7%</b>	<b>1.5%</b>	<b>6.1%</b>
Jul 2021	5.2%	5.9%	4.7%	3.5%	6.2%	6.0%	4.5%	0.4%	4.9%	0.6%	5.5%
Jun 2021	3.2%	5.4%	4.2%	3.1%	5.2%	5.8%	4.4%	0.5%	4.9%	0.6%	5.5%
May 2021	2.5%	5.2%	4.1%	2.4%	4.5%	5.7%	3.9%	0.4%	4.3%	0.7%	5.0%
Apr 2021	2.0%	5.8%	4.5%	2.7%	5.4%	5.5%	3.9%	0.4%	4.3%	0.8%	5.1%
Mar 2021	2.2%	5.7%	4.9%	3.1%	5.3%	6.1%	4.0%	0.5%	4.5%	1.0%	5.5%
Feb 2021	1.3%	7.5%	6.1%	2.9%	6.1%	7.7%	4.4%	0.5%	4.9%	2.0%	6.9%
Jan 2021	0.9%	10.5%	8.1%	3.5%	9.5%	10.5%	4.6%	0.3%	4.9%	4.5%	9.4%
<b>2020</b>	<b>3.1%</b>	<b>7.3%</b>	<b>5.0%</b>	<b>2.9%</b>	<b>6.6%</b>	<b>6.8%</b>	<b>4.5%</b>	<b>0.4%</b>	<b>4.9%</b>	<b>1.4%</b>	<b>6.2%</b>
Dec 2020	2.6%	6.5%	4.1%	3.1%	4.9%	6.2%	4.2%	0.4%	4.6%	1.0%	5.5%
Nov 2020	3.6%	5.7%	3.8%	2.9%	5.5%	5.7%	4.0%	0.3%	4.3%	0.8%	5.1%
Oct 2020	3.8%	7.0%	5.0%	2.6%	6.8%	6.7%	4.2%	0.4%	4.6%	1.5%	6.1%
Sep 2020	3.0%	7.0%	4.7%	2.3%	6.1%	6.2%	4.3%	0.4%	4.6%	1.1%	5.8%
Aug 2020	3.7%	6.3%	4.4%	2.5%	4.8%	5.9%	4.4%	0.3%	4.7%	0.6%	5.3%
Jul 2020	1.1%	6.1%	4.0%	2.1%	5.9%	5.9%	4.4%	0.4%	4.8%	0.5%	5.3%
Jun 2020	0.9%	6.0%	3.7%	1.9%	6.1%	5.5%	4.0%	0.3%	4.3%	0.7%	5.0%
May 2020	2.1%	8.7%	5.6%	2.6%	7.6%	7.9%	4.5%	0.2%	4.7%	2.5%	7.2%
Apr 2020	2.6%	13.6%	8.3%	3.4%	12.8%	12.0%	5.2%	0.4%	5.7%	5.3%	10.9%
Mar 2020	3.1%	9.0%	7.1%	4.7%	7.9%	8.5%	5.1%	0.4%	5.5%	2.6%	8.0%
Feb 2020	4.3%	5.6%	4.4%	3.5%	5.0%	5.3%	4.6%	0.5%	5.0%		5.0%
Jan 2020	4.6%	6.0%	5.0%	3.5%	6.2%	5.9%	5.0%	0.6%	5.6%		5.6%
<b>2019</b>	<b>1.3%</b>	<b>5.6%</b>	<b>4.2%</b>	<b>3.3%</b>	<b>4.8%</b>	<b>5.2%</b>	<b>4.4%</b>	<b>0.5%</b>	<b>4.9%</b>		<b>4.9%</b>
Dec 2019	3.7%	6.0%	4.7%	3.5%	5.4%	4.8%	4.4%	0.5%	4.9%		4.9%
Nov 2019	1.5%	6.1%	3.8%	3.0%	5.0%	5.4%	4.5%	0.5%	5.0%		5.0%
Oct 2019	0.5%	6.0%	4.2%	2.9%	5.3%	5.7%	4.7%	0.5%	5.2%		5.2%
Sep 2019	1.3%	5.6%	4.5%	3.5%	5.3%	5.2%	4.5%	0.5%	4.9%		4.9%
Aug 2019	1.9%	5.7%	4.6%	3.4%	4.5%	5.4%	4.7%	0.4%	5.0%		5.0%
Jul 2019	1.5%	5.3%	4.1%	3.5%	4.8%	5.1%	4.5%	0.3%	4.8%		4.8%
Jun 2019	2.5%	5.4%	3.9%	2.8%	4.1%	5.3%	4.4%	0.4%	4.8%		4.8%
May 2019	3.9%	5.8%	4.3%	2.7%	4.3%	5.2%	4.4%	0.5%	4.9%		4.9%
Apr 2019	0.1%	5.5%	3.9%	3.1%	4.9%	5.2%	4.3%	0.4%	4.7%		4.7%
Mar 2019	0.3%	5.0%	3.7%	3.5%	4.7%	4.9%	4.1%	0.4%	4.5%		4.5%

Feb 2019	1.0%	5.6%	3.9%	3.9%	4.7%	4.9%	4.3%	0.5%	4.7%		4.7%
Jan 2019	0.3%	5.6%	4.5%	4.2%	5.3%	5.5%	4.6%	0.5%	5.2%		5.2%
<b>2018</b>	<b>1.9%</b>	<b>4.6%</b>	<b>4.2%</b>	<b>3.4%</b>	<b>4.2%</b>	<b>4.8%</b>	<b>4.1%</b>	<b>0.4%</b>	<b>4.5%</b>		<b>4.5%</b>

Social Care

Year/ month	CHO 1	CHO 2	CHO 3	CHO 4	CHO 5	CHO 6	CHO 7	CHO 8	CHO 9	other Comm.	Community Services absence rate	Certified absence	Self-certified absence	Non Covid-19 absence	Covid-19 absence	Total absence rate
2021	8.0%	5.8%	5.2%	6.3%	6.8%	5.7%	6.2%	6.4%	5.5%		6.1%	4.2%	0.4%	4.7%	1.5%	6.1%
Jul 2021	8.3%	4.4%	4.1%	5.4%	5.1%	6.1%	5.7%	6.3%	4.9%		5.5%	4.5%	0.4%	4.9%	0.6%	5.48%
Jun 2021	7.1%	4.8%	4.5%	5.7%	5.3%	5.0%	5.1%	5.3%	6.8%		5.5%	4.4%	0.5%	4.9%	0.6%	5.48%
May 2021	6.6%	4.6%	4.7%	5.5%	4.8%	4.3%	5.1%	5.0%	4.3%		5.0%	3.9%	0.4%	4.3%	0.7%	4.96%
Apr 2021	6.2%	4.5%	3.9%	5.1%	5.3%	5.0%	5.8%	5.6%	4.6%		5.1%	3.9%	0.4%	4.3%	0.8%	5.13%
Mar 2021	7.1%	6.2%	4.5%	5.4%	6.4%	4.5%	5.5%	5.9%	4.7%		5.5%	4.0%	0.5%	4.5%	1.0%	5.48%
Feb 2021	8.5%	7.6%	5.9%	6.7%	9.0%	6.2%	6.6%	7.7%	5.6%		6.9%	4.4%	0.5%	4.9%	2.0%	6.89%
Jan 2021	12.3%	9.0%	8.8%	10.1%	11.3%	8.9%	9.6%	8.7%	7.8%		9.4%	4.6%	0.3%	4.9%	4.5%	9.40%
2020	7.1%	5.6%	5.2%	6.2%	6.6%	4.7%	7.3%	6.7%	5.8%	0.0%	6.2%	4.5%	0.4%	4.9%	1.4%	6.2%
Dec 2020	7.6%	5.7%	4.7%	5.4%	6.9%	3.8%	6.1%	5.6%	4.5%	0.3%	5.5%	4.2%	0.4%	4.6%	1.0%	5.51%
Nov 2020	7.2%	5.2%	4.9%	5.0%	5.5%	3.5%	5.5%	5.4%	4.1%		5.1%	4.0%	0.3%	4.3%	0.8%	5.09%
Oct 2020	8.6%	5.8%	5.3%	6.5%	5.7%	3.7%	7.2%	6.5%	5.1%		6.1%	4.2%	0.4%	4.6%	1.5%	6.08%
Sep 2020	7.6%	5.3%	5.0%	5.3%	5.7%	4.1%	6.9%	6.1%	5.3%		5.8%	4.3%	0.4%	4.6%	1.1%	5.76%
Aug 2020	7.0%	4.1%	5.6%	5.3%	5.5%	4.0%	5.7%	5.7%	4.8%		5.3%	4.4%	0.3%	4.7%	0.6%	5.32%
Jul 2020	6.1%	4.1%	3.9%	4.6%	6.3%	4.4%	6.1%	6.2%	5.2%		5.3%	4.4%	0.4%	4.8%	0.5%	5.26%
Jun 2020	5.6%	4.3%	4.8%	4.9%	5.4%	3.7%	5.5%	5.4%	4.7%		5.0%	4.0%	0.3%	4.3%	0.7%	5.00%
May 2020	6.2%	6.2%	5.9%	7.7%	6.9%	5.4%	9.2%	8.4%	6.5%		7.2%	4.5%	0.2%	4.7%	2.5%	7.19%
Apr 2020	8.8%	9.0%	6.0%	11.9%	10.2%	10.9%	15.8%	12.1%	9.9%		10.9%	5.2%	0.4%	5.7%	5.3%	10.91%
Mar 2020	9.2%	6.8%	6.8%	8.1%	7.7%	6.0%	9.6%	7.2%	8.5%		8.0%	5.1%	0.4%	5.5%	2.6%	8.01%
Feb 2020	5.5%	5.3%	4.4%	4.9%	6.0%	3.7%	4.9%	5.3%	5.2%		5.0%	4.6%	0.5%	5.0%		5.04%
Jan 2020	6.2%	6.3%	5.1%	5.3%	6.9%	4.0%	5.5%	6.4%	5.2%		5.6%	5.0%	0.6%	5.6%		5.59%
2019	7.2%	4.8%	4.4%	4.9%	5.4%	4.0%	4.6%	5.0%	4.6%		4.9%	4.4%	0.5%	4.9%		4.9%
Dec 2019	7.1%	5.0%	4.0%	5.3%	7.0%	3.0%	4.9%	5.0%	5.0%		4.9%	4.4%	0.5%	4.9%		4.94%
Nov 2019	6.3%	5.5%	4.8%	5.4%	6.4%	3.4%	4.5%	4.9%	4.6%		5.0%	4.5%	0.5%	5.0%		5.01%
Oct 2019	6.3%	5.8%	4.8%	5.6%	5.5%	5.0%	5.1%	5.3%	4.6%		5.2%	4.7%	0.5%	5.2%		5.24%
Sep 2019	6.4%	4.9%	4.2%	5.2%	5.5%	4.2%	4.4%	4.9%	4.8%		4.9%	4.5%	0.5%	4.9%		4.93%
Aug 2019	8.1%	5.0%	4.4%	4.7%	5.0%	5.0%	4.3%	5.5%	4.7%		5.0%	4.7%	0.4%	5.0%		5.04%
Jul 2019	7.6%	3.9%	4.3%	4.7%	4.9%	4.2%	4.2%	5.3%	4.5%		4.8%	4.5%	0.3%	4.8%		4.78%
Jun 2019	7.1%	4.1%	4.5%	4.4%	4.7%	4.3%	5.1%	5.0%	4.4%		4.8%	4.4%	0.4%	4.8%		4.82%
May 2019	6.9%	4.4%	4.2%	4.5%	5.2%	4.3%	5.1%	5.2%	4.4%		4.9%	4.4%	0.5%	4.9%		4.89%
Apr 2019	6.7%	4.7%	4.6%	4.7%	5.5%	4.4%	4.4%	4.3%	4.0%		4.7%	4.3%	0.4%	4.7%		4.69%
Mar 2019	7.4%	4.4%	4.1%	4.2%	4.6%	3.4%	4.3%	4.9%	4.0%		4.5%	4.1%	0.4%	4.5%		4.54%
Feb 2019	7.9%	4.5%	4.4%	4.5%	4.9%	3.5%	4.2%	4.5%	4.8%		4.7%	4.3%	0.5%	4.7%		4.73%
Jan 2019	8.3%	4.8%	4.7%	5.4%	5.2%	3.8%	4.7%	5.2%	4.9%		5.2%	4.6%	0.5%	5.2%		5.18%

